

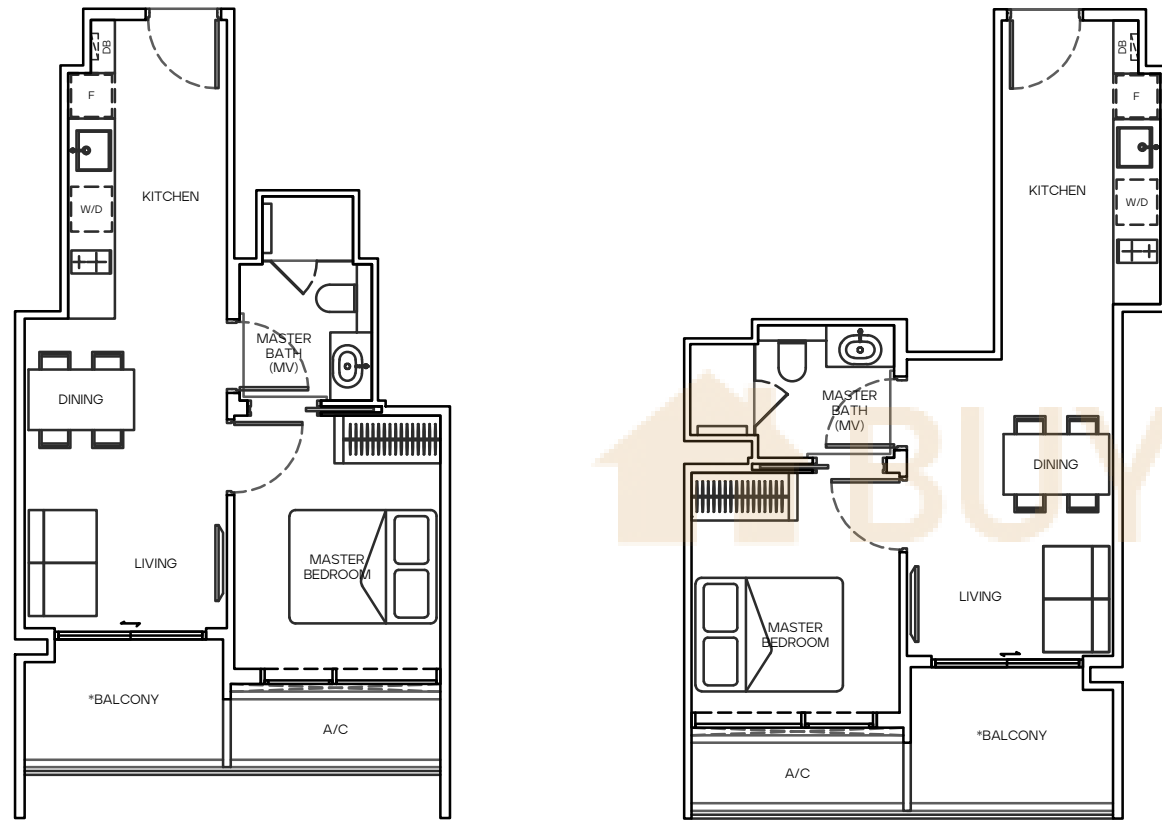
1 BEDROOM

TYPE A1
45 SQ M

#02-02' (MIRROR)
#03-02 to #08-02 (MIRROR)
#02-05'
#03-05 to #08-05

TYPE A2
46 SQ M

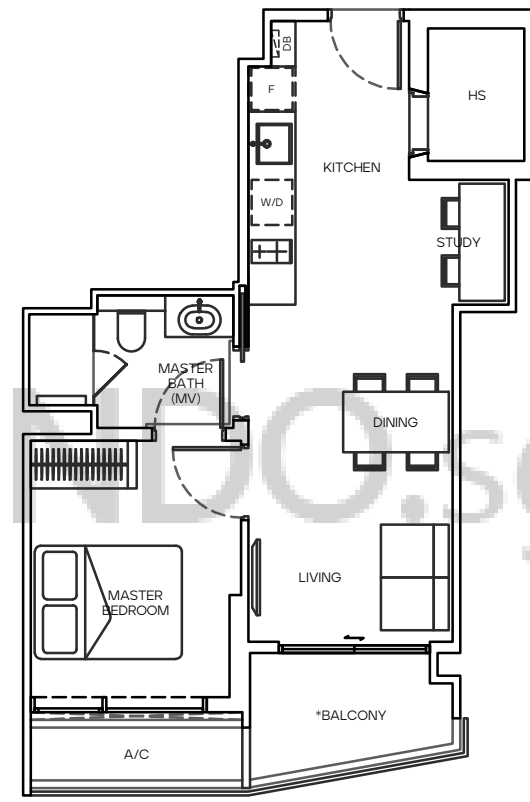
#02-06'
#03-06 to #08-06



1 BEDROOM + STUDY

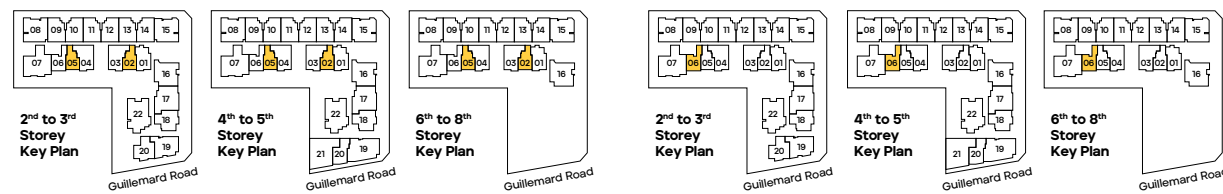
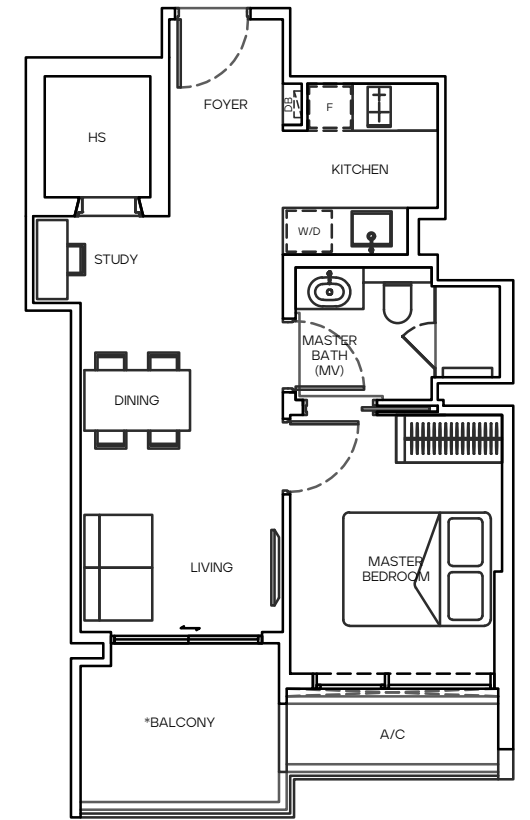
TYPE B1
51 SQ M

#04-20 to #05-20



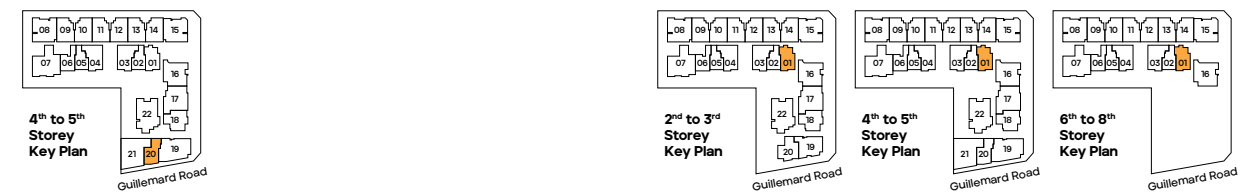
TYPE B2
55 SQ M

#02-01'
#03-01 to #08-01



All floor areas indicated are inclusive of AC Ledge, Balcony and Strata Void where applicable.
All floor areas are estimate only and subject to final survey.
All floor plans are subject to changes as may be required or approved by the relevant authorities.

^ #02-02, #02-05 and #02-06 – The living and/or certain bedroom(s) within the Unit directly front various communal areas, facilities and swimming pool in the Housing Project.
* The balcony shall not be enclosed unless with the approved balcony screen. For an illustration of the approved balcony screen, please refer to page 61 of this brochure.



All floor areas indicated are inclusive of AC Ledge, Balcony and Strata Void where applicable.
All floor areas are estimate only and subject to final survey.
All floor plans are subject to changes as may be required or approved by the relevant authorities.

^ #02-01 – The living and/or certain bedroom(s) within the Unit directly front various communal areas, facilities and swimming pool in the Housing Project.
* The balcony shall not be enclosed unless with the approved balcony screen. For an illustration of the approved balcony screen, please refer to page 61 of this brochure.



Impression only



Impression only



Impression only

Wabi-Sabi Tip #2:

Decorate your home with things that are personal to you. They don't have to be expensive. They just have to bring a smile to your face.



BUYCON

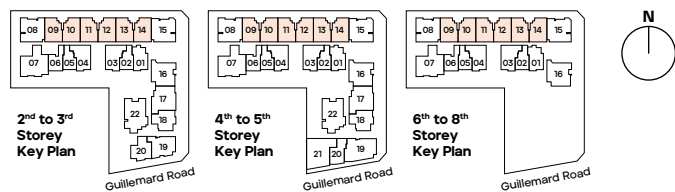
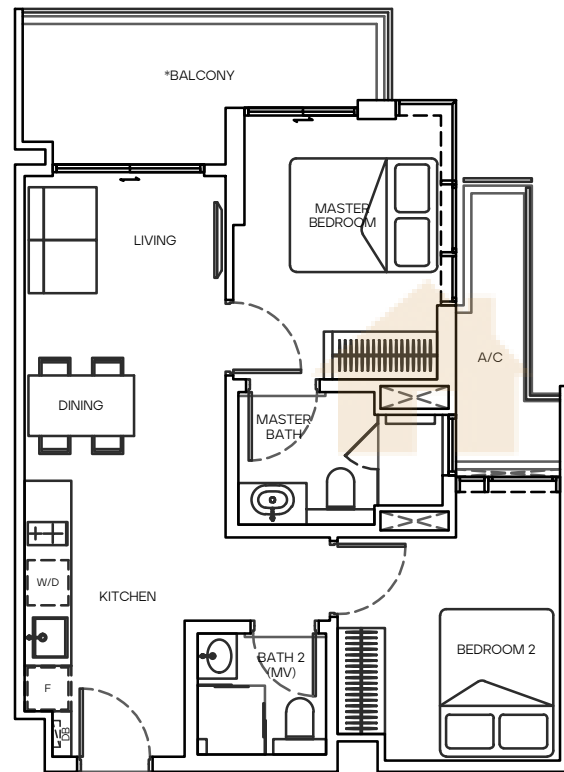
Type C1 Kitchen

Impression only

2 BEDROOM

TYPE C1
66 SQ M

- #02-09 to #08-09
- #02-10 to #08-10 (MIRROR)
- #02-11 to #08-11
- #02-12 to #08-12 (MIRROR)
- #02-13 to #08-13
- #02-14 to #08-14 (MIRROR)



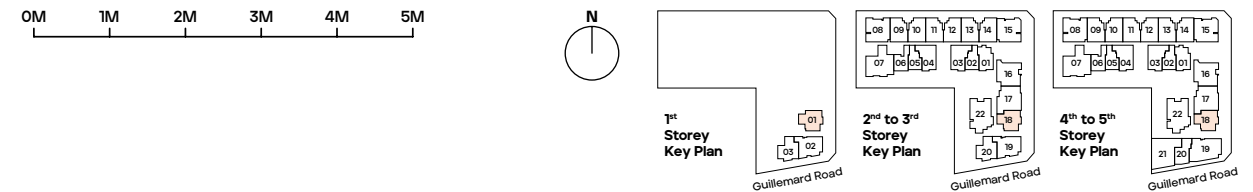
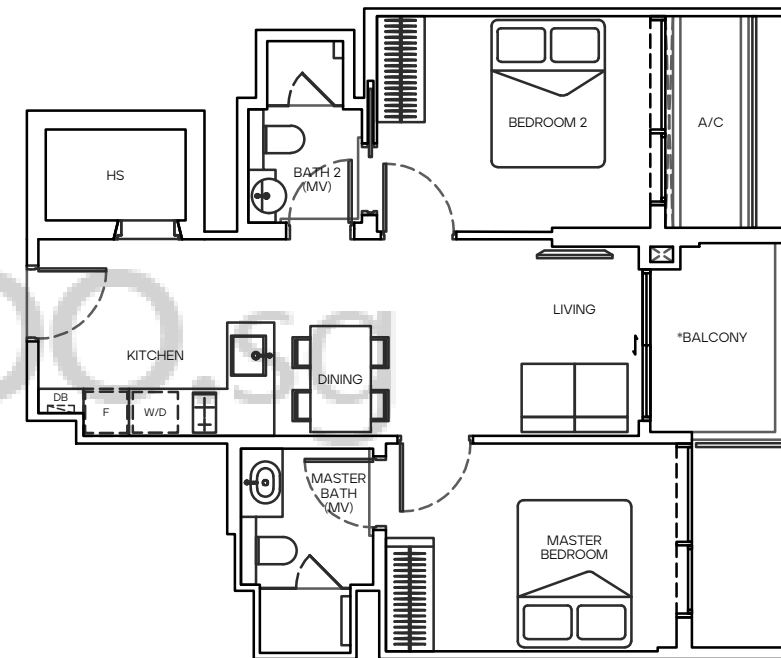
All floor areas indicated are inclusive of AC Ledge, Balcony and Strata Void where applicable.
All floor areas are estimate only and subject to final survey.
All floor plans are subject to changes as may be required or approved by the relevant authorities.

* The balcony shall not be enclosed unless with the approved balcony screen. For an illustration of the approved balcony screen, please refer to page 61 of this brochure.

2 BEDROOM

TYPE C2
66 SQ M

- #01-01
- #02-18 to #05-18



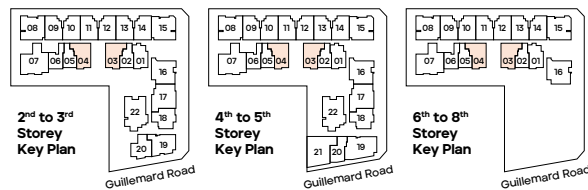
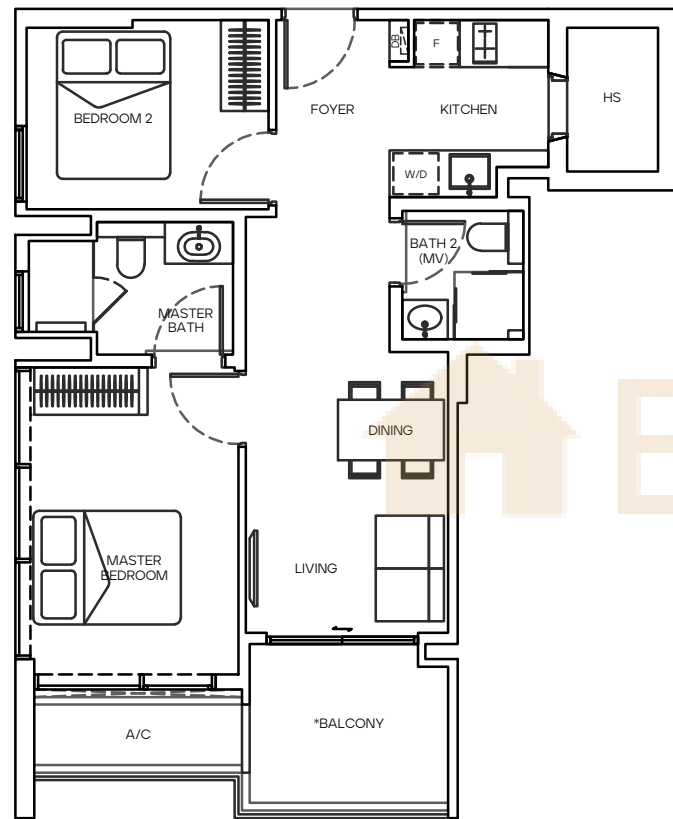
All floor areas indicated are inclusive of AC Ledge, Balcony and Strata Void where applicable.
All floor areas are estimate only and subject to final survey.
All floor plans are subject to changes as may be required or approved by the relevant authorities.

* The balcony shall not be enclosed unless with the approved balcony screen. For an illustration of the approved balcony screen, please refer to page 61 of this brochure.

2 BEDROOM

TYPE C3
67 SQ M

#02-03*
#03-03 to #08-03
#02-04* (MIRROR)
#03-04 to #08-04 (MIRROR)



All floor areas indicated are inclusive of AC Ledge, Balcony and Strata Void where applicable.
All floor areas are estimate only and subject to final survey.
All floor plans are subject to changes as may be required or approved by the relevant authorities.

^ #02-03 and #02-04 – The living and/or certain bedroom(s) within the Unit directly front various communal areas, facilities and swimming pool in the Housing Project.
* The balcony shall not be enclosed unless with the approved balcony screen. For an illustration of the approved balcony screen, please refer to page 61 of this brochure.



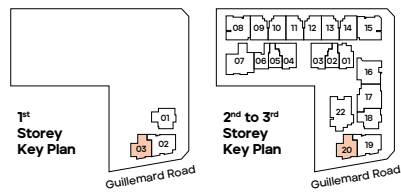
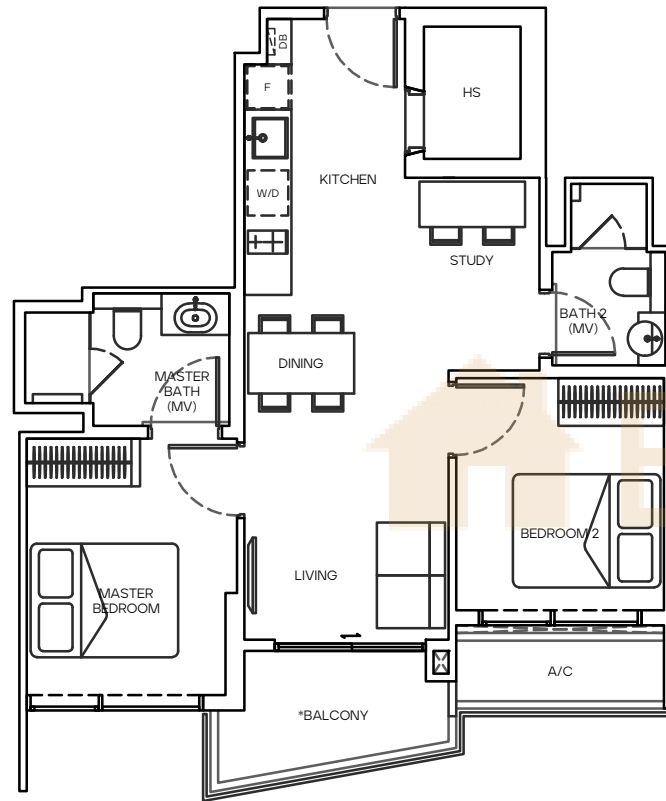
Type C1
Master Bath

Impression only

2 BEDROOM + STUDY

TYPE D
67 SQ M

#01-03
#02-20 to #03-20



0M 1M 2M 3M 4M 5M

All floor areas indicated are inclusive of AC Ledge, Balcony and Strata Void where applicable.
All floor areas are estimate only and subject to final survey.
All floor plans are subject to changes as may be required or approved by the relevant authorities.

* The balcony shall not be enclosed unless with the approved balcony screen. For an illustration of the approved balcony screen, please refer to page 61 of this brochure.



Impression only

Your bedroom is a place of rest and tranquility. Keep the space clutter-free with thoughtfully designed accessory drawers.



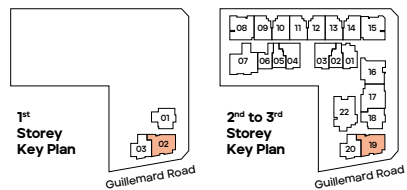
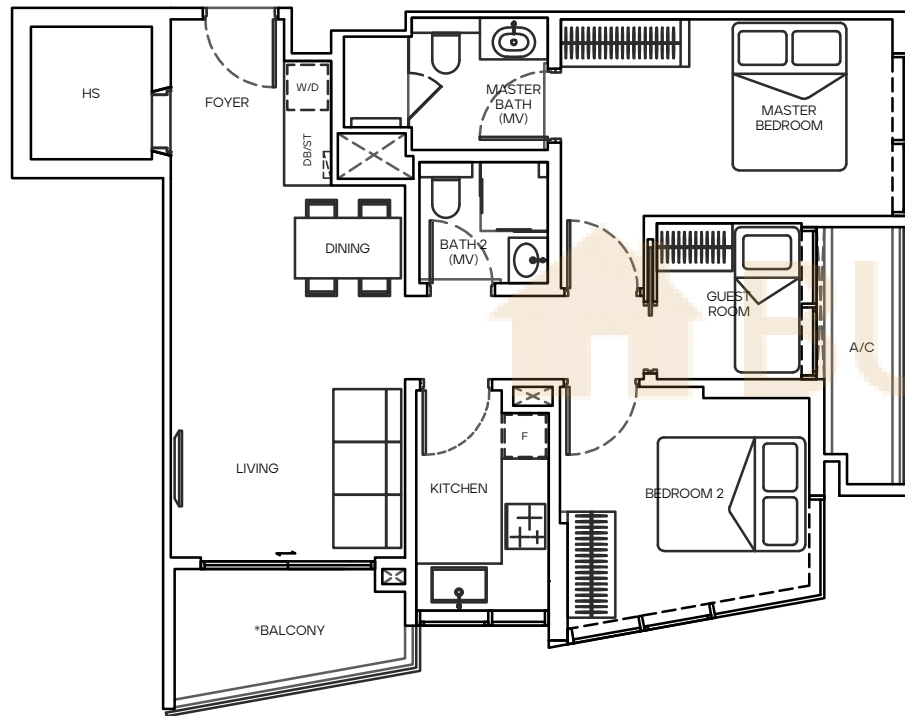
Type C1
Master Bedroom

Impression only

2 BEDROOM + GUEST

TYPE E 82 SQ M

#01-02
#02-19 to #03-19



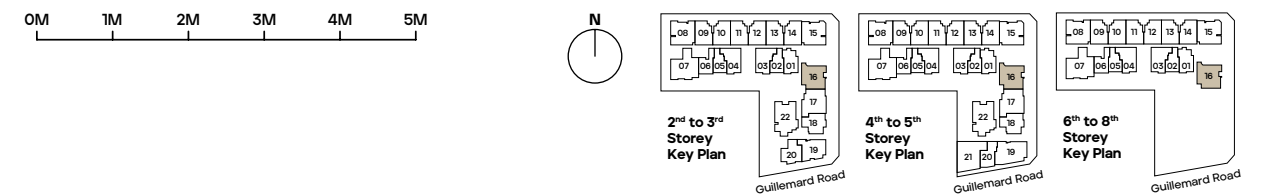
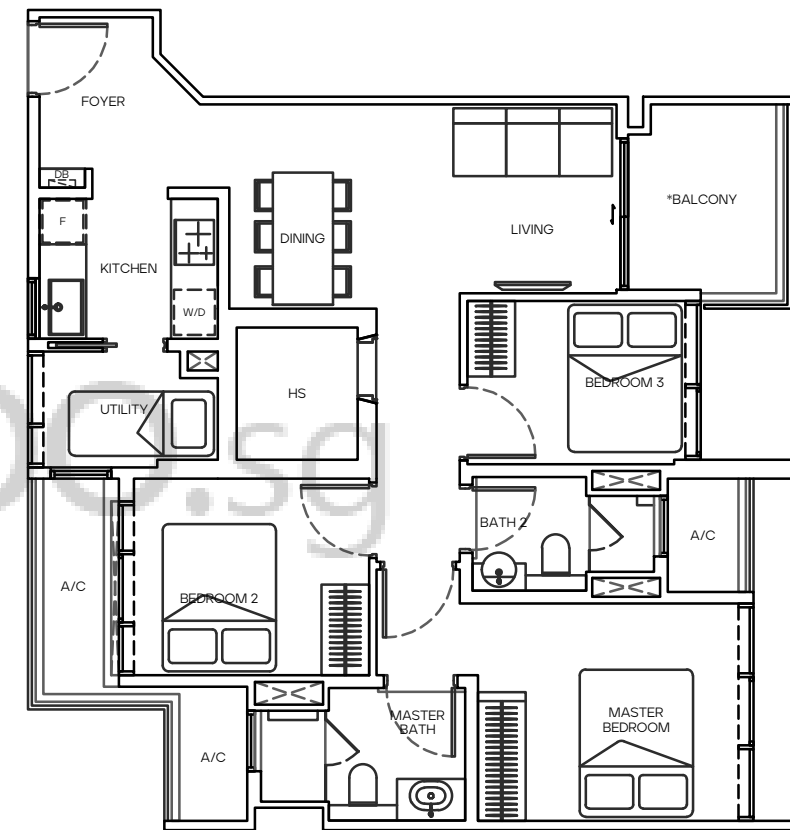
All floor areas indicated are inclusive of AC Ledge, Balcony and Strata Void where applicable.
All floor areas are estimate only and subject to final survey.
All floor plans are subject to changes as may be required or approved by the relevant authorities.

* The balcony shall not be enclosed unless with the approved balcony screen. For an illustration of the approved balcony screen, please refer to page 61 of this brochure.

3 BEDROOM

TYPE F1 89 SQ M

#02-16*
#03-16 to #05-16
#06-16*
#07-16 to #08-16



All floor areas indicated are inclusive of AC Ledge, Balcony and Strata Void where applicable.
All floor areas are estimate only and subject to final survey.
All floor plans are subject to changes as may be required or approved by the relevant authorities.

^ #02-16 and #06-16 – The living and/or certain bedroom(s) within the Unit directly front various communal areas, facilities and swimming pool in the Housing Project.
* The balcony shall not be enclosed unless with the approved balcony screen. For an illustration of the approved balcony screen, please refer to page 61 of this brochure.



Type G3
Living & Dining

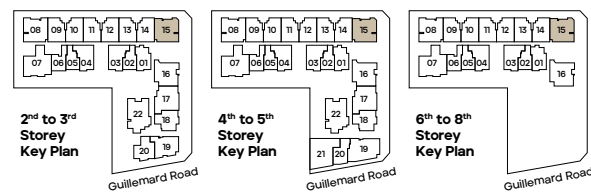
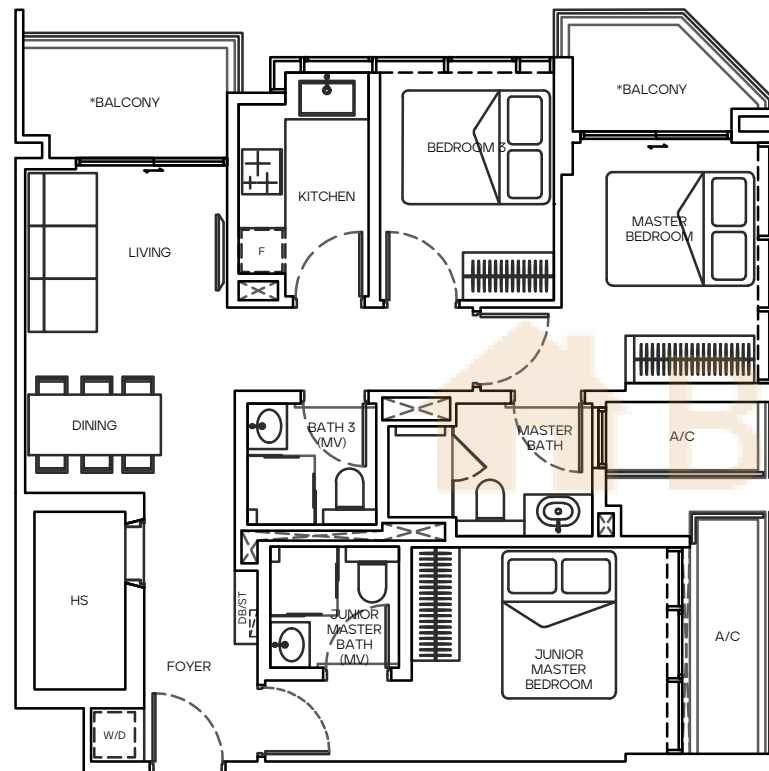
Impression only

Mori is a freehold home that can accommodate to your changing needs. Flexible and practical layouts let you reimagine a myriad of lifestyle possibilities by combining or opening up spaces. Whether you prefer a cosy dining nook, turning one of the rooms into a walk-in wardrobe, or winding down with drinks at the balcony, the choice is all yours.

3 BEDROOM

TYPE F2
91 SQ M

#02-15 to #08-15



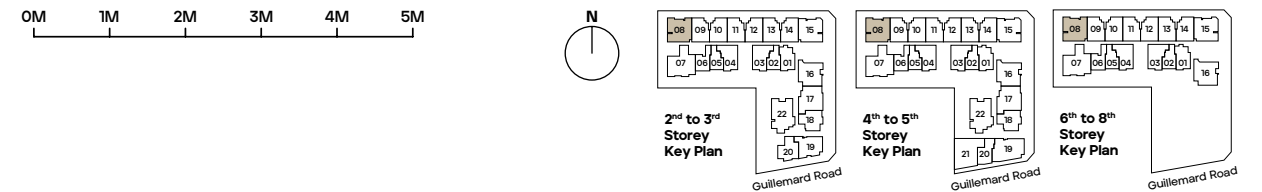
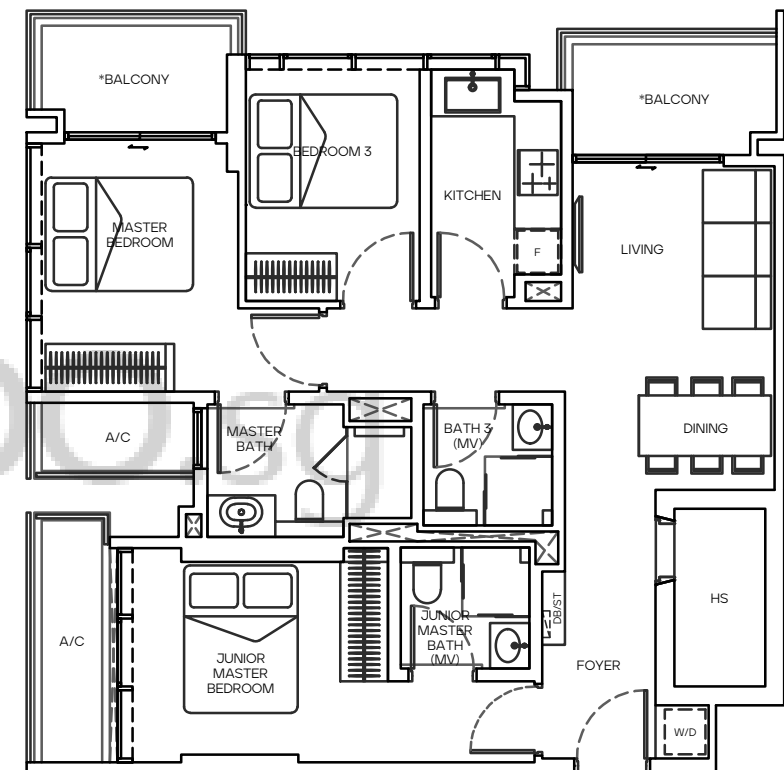
All floor areas indicated are inclusive of AC Ledge, Balcony and Strata Void where applicable.
All floor areas are estimate only and subject to final survey.
All floor plans are subject to changes as may be required or approved by the relevant authorities.

* The balcony shall not be enclosed unless with the approved balcony screen. For an illustration of the approved balcony screen, please refer to page 61 of this brochure.

3 BEDROOM

TYPE F3
92 SQ M

#02-08 to #08-08



All floor areas indicated are inclusive of AC Ledge, Balcony and Strata Void where applicable.
All floor areas are estimate only and subject to final survey.
All floor plans are subject to changes as may be required or approved by the relevant authorities.

* The balcony shall not be enclosed unless with the approved balcony screen. For an illustration of the approved balcony screen, please refer to page 61 of this brochure.

Your dream kitchen at Mori comes with generous countertop spaces and pull-out storage to keep things tidy and organised.



Impression only

Wabi-Sabi Tip #3:

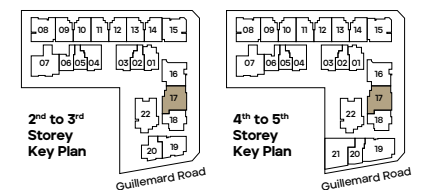
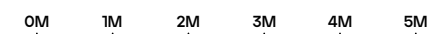
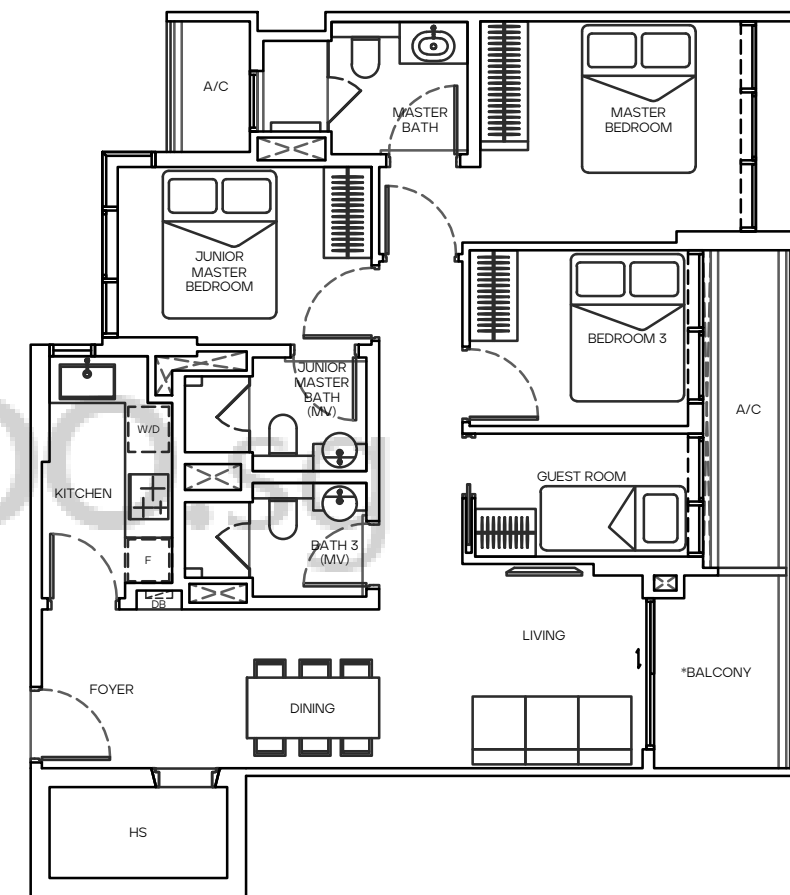
Consider all your five senses. From the smell of freshly toasted croissants to an artfully laid out table setting, little details can make your home feel extra cosy.

3 BEDROOM + GUEST
TYPE G1
95 SQ M
#02-17*
#03-17 to #05-17



Type G3 Kitchen

Impression only



All floor areas indicated are inclusive of AC Ledge, Balcony and Strata Void where applicable.
 All floor areas are estimate only and subject to final survey.
 All floor plans are subject to changes as may be required or approved by the relevant authorities.

* #02-17 – The living and/or certain bedroom(s) within the Unit directly front various communal areas, facilities and swimming pool in the Housing Project.
 * The balcony shall not be enclosed unless with the approved balcony screen. For an illustration of the approved balcony screen, please refer to page 61 of this brochure.

3 BEDROOM + GUEST

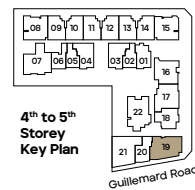
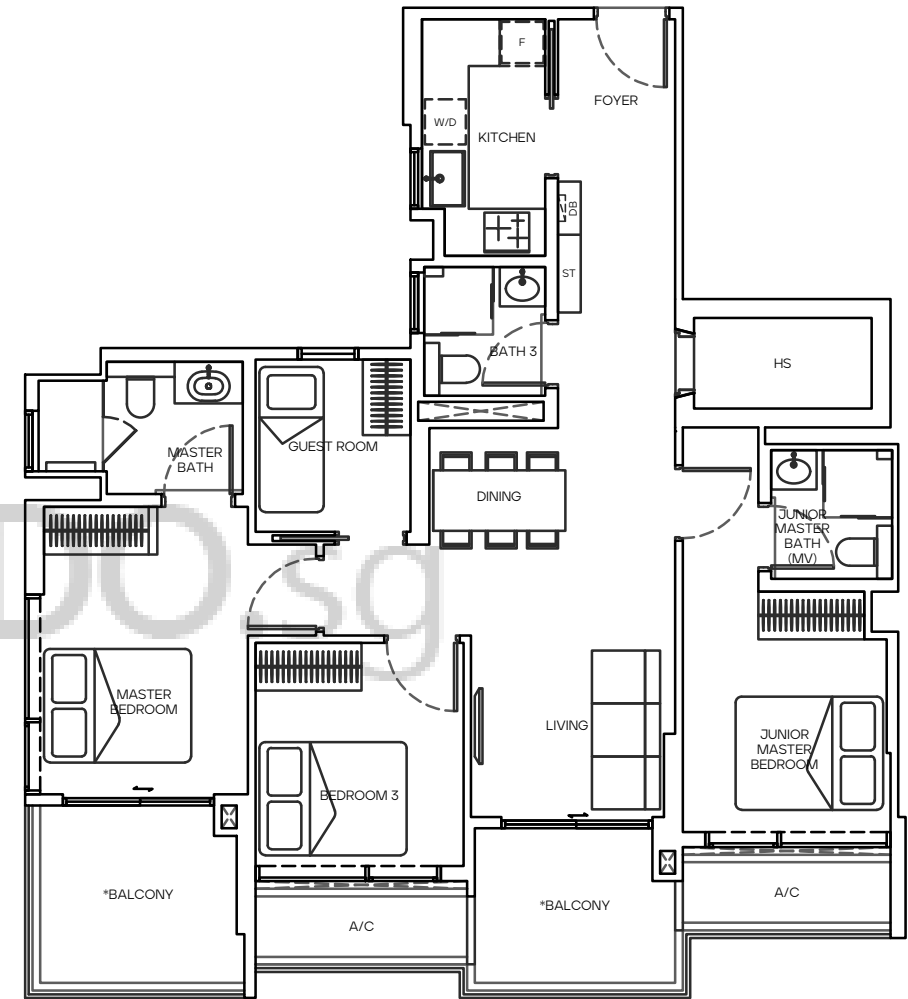
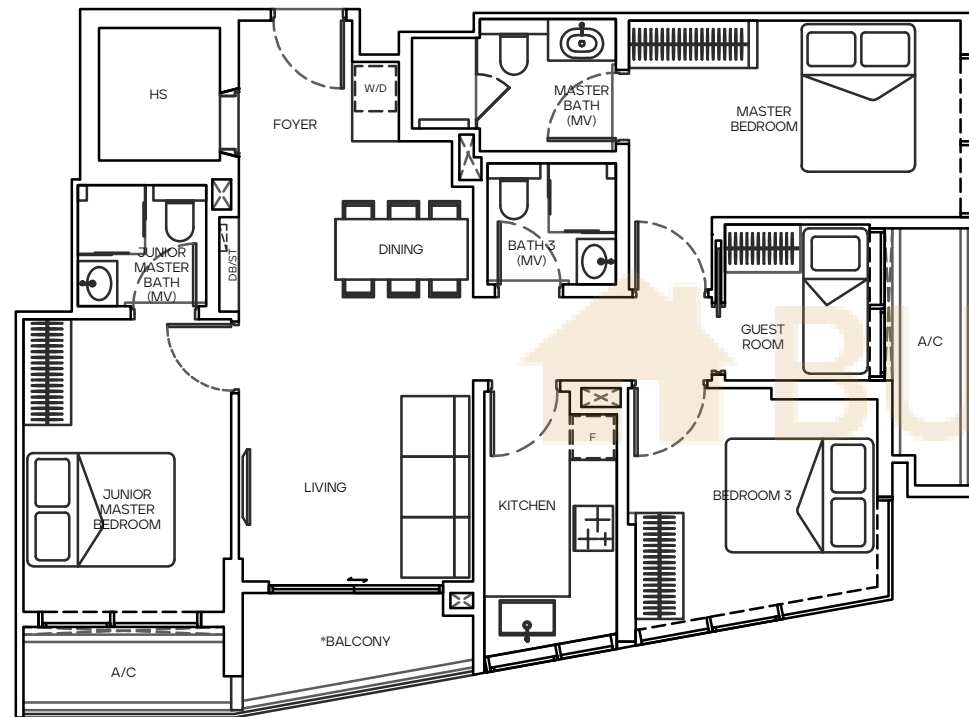
TYPE G2
102 SQ M

#04-19 to #05-19

3 BEDROOM + GUEST

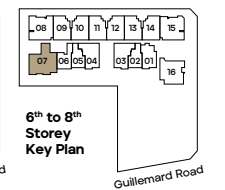
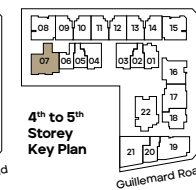
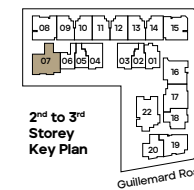
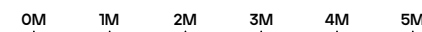
TYPE G3
109 SQ M

#02-07
#03-07 to #08-07



All floor areas indicated are inclusive of AC Ledge, Balcony and Strata Void where applicable.
All floor areas are estimate only and subject to final survey.
All floor plans are subject to changes as may be required or approved by the relevant authorities.

* The balcony shall not be enclosed unless with the approved balcony screen. For an illustration of the approved balcony screen, please refer to page 61 of this brochure.



All floor areas indicated are inclusive of AC Ledge, Balcony and Strata Void where applicable.
All floor areas are estimate only and subject to final survey.
All floor plans are subject to changes as may be required or approved by the relevant authorities.

^ #02-07 – The living and/or certain bedroom(s) within the Unit directly front various communal areas, facilities and swimming pool in the Housing Project.
* The balcony shall not be enclosed unless with the approved balcony screen. For an illustration of the approved balcony screen, please refer to page 61 of this brochure.



Type G3
Master Bath

Impression only

Whether you are starting or ending the day, a well-fitted bathroom brings focus and calm to your mind.

Wabi-Sabi Tip #4:

Create pockets of composure. A beautiful adjustable mirror. A candle with your favourite scent. A thoughtfully arranged bouquet.



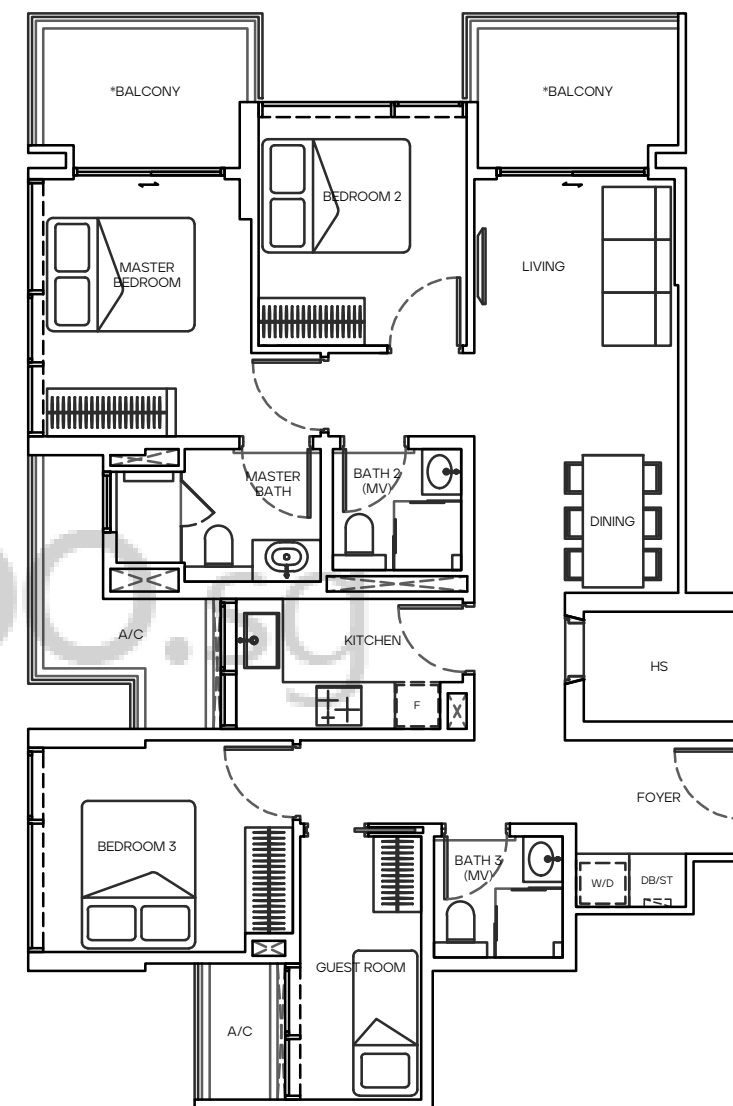
Impression only

3 BEDROOM + GUEST

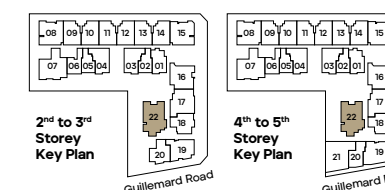
TYPE G4

110 SQ M

#02-22*
#03-22 to #05-22



0M 1M 2M 3M 4M 5M



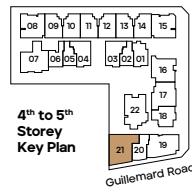
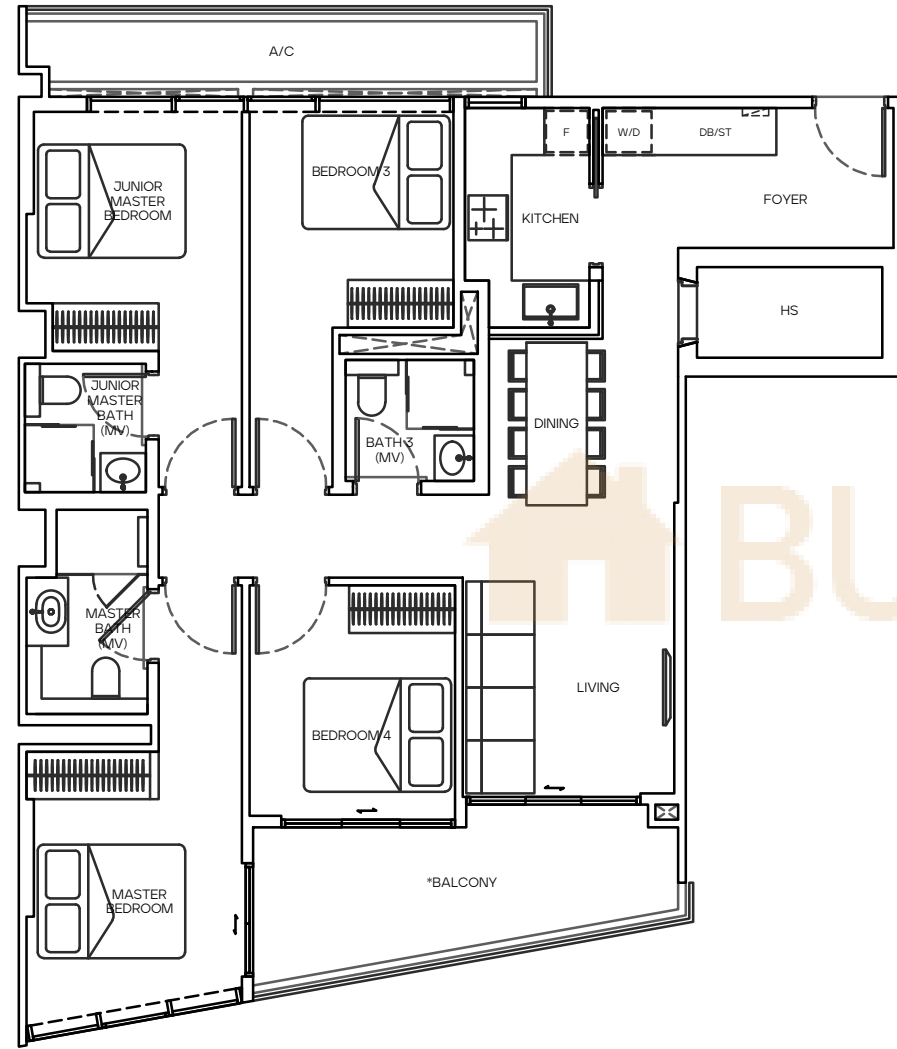
All floor areas indicated are inclusive of AC Ledge, Balcony and Strata Void where applicable.
All floor areas are estimate only and subject to final survey.
All floor plans are subject to changes as may be required or approved by the relevant authorities.

* #02-22 – The living and/or certain bedroom(s) within the Unit directly front various communal areas, facilities and swimming pool in the Housing Project.
* The balcony shall not be enclosed unless with the approved balcony screen. For an illustration of the approved balcony screen, please refer to page 61 of this brochure.

4 BEDROOM

TYPE H
117 SQ M

#04-21 to #05-21



All floor areas indicated are inclusive of AC Ledge, Balcony and Strata Void where applicable.
All floor areas are estimate only and subject to final survey.
All floor plans are subject to changes as may be required or approved by the relevant authorities.

* The balcony shall not be enclosed unless with the approved balcony screen. For an illustration of the approved balcony screen, please refer to page 61 of this brochure.

Enjoy functional and efficient storage spaces that have been thoughtfully designed for your everyday needs. Not too much such that it's a waste of space, and not too little such that it's not enough. Here, everything is just right.



Wabi-Sabi Tip #5:

Decluttering not only saves you time and money, it also helps you make space for the things you really love.



Type G3
Master Bedroom

Impression only