

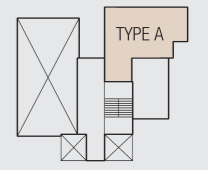
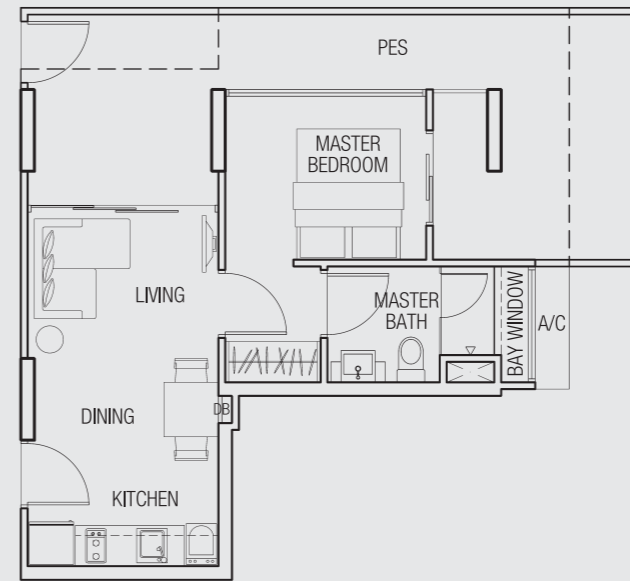


- A** Swimming Pool
- B** Pool Deck
- C** BBQ Area
- D** Playground
- E** Seating Area
- F** FAMP Entrance



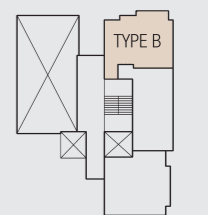
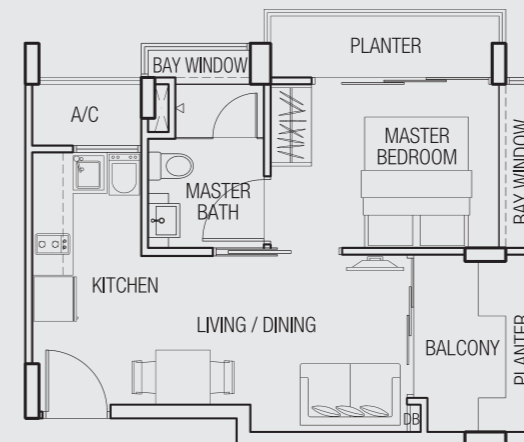
Type A (1-Bedroom)

Unit #01-01
 Area 614 sqft / 57 sqm
 (inclusive of bay window, pes and a/c ledge)



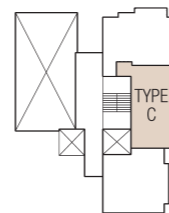
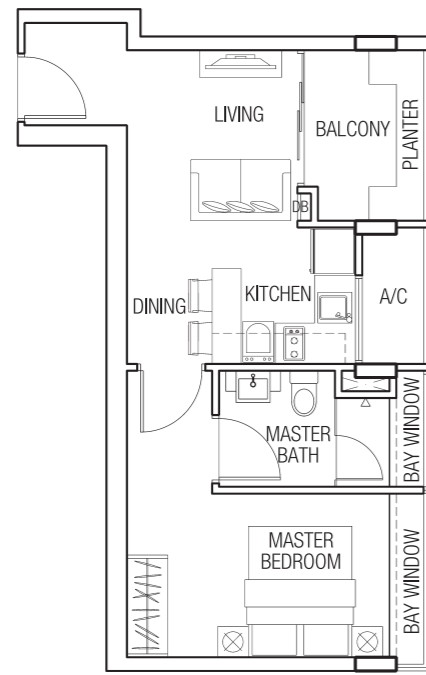
Type B (1-Bedroom)

Unit #02-01 to #09-01
 Area 452 sqft / 42 sqm
 (inclusive of bay window, planter, balcony and a/c ledge)



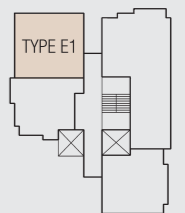
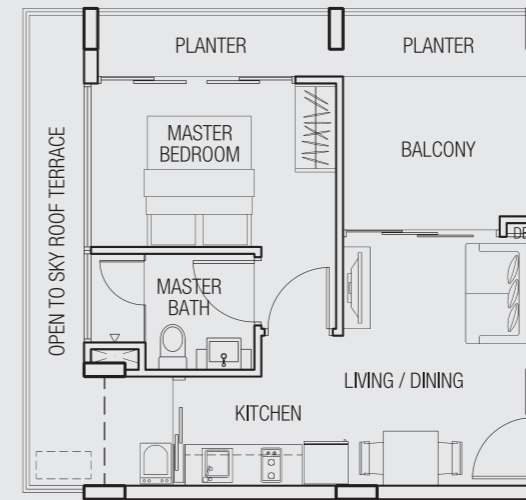
Type C (1-Bedroom)

Unit #02-02 to #09-02
Area 474 sqft / 44 sqm
(inclusive of bay window, planter, balcony and a/c ledge)



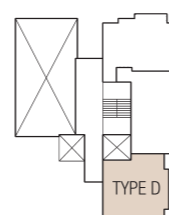
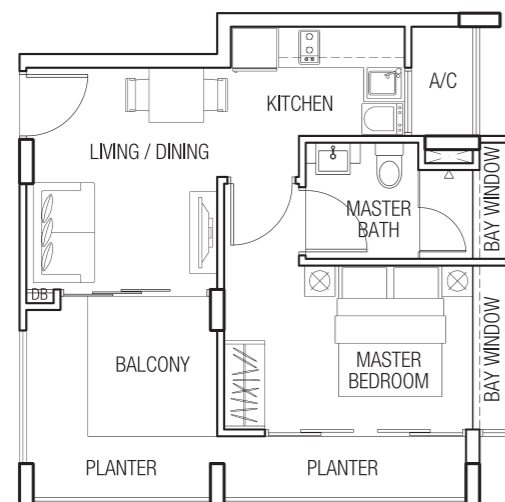
Type E1 (1-Bedroom)

Unit #10-04
Area 570 sqft / 53 sqm
(inclusive of planter, balcony and roof terrace)



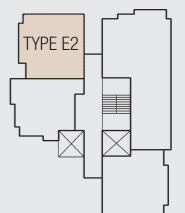
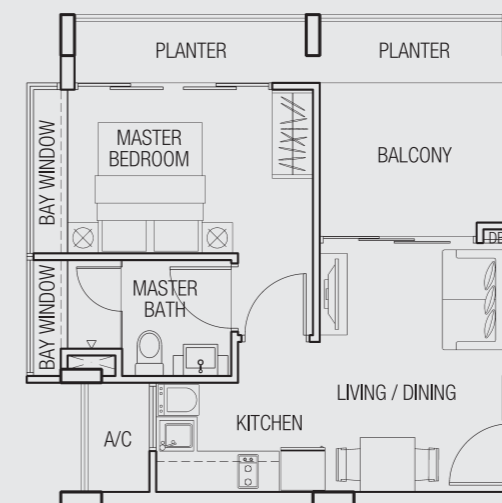
Type D (1-Bedroom)

Unit #02-03 to #09-03, #10-02 to #16-02
Area 506 sqft / 47 sqm
(inclusive of bay window, planter, balcony and a/c ledge)



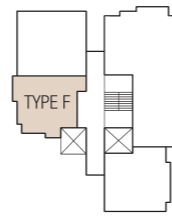
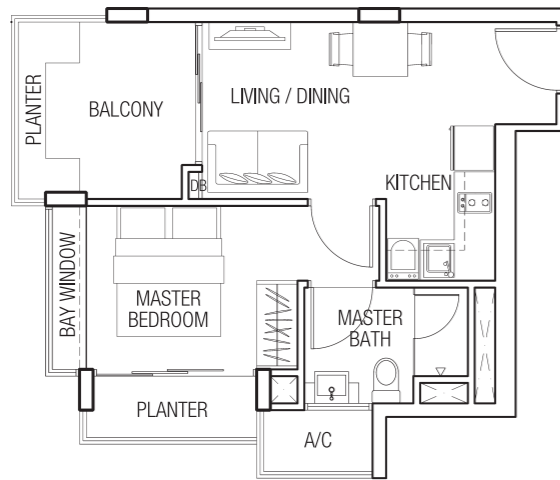
Type E2 (1-Bedroom)

Unit #11-04 to #16-04
Area 517 sqft / 48 sqm
(inclusive of bay window, planter, balcony and a/c ledge)



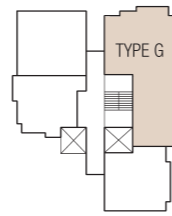
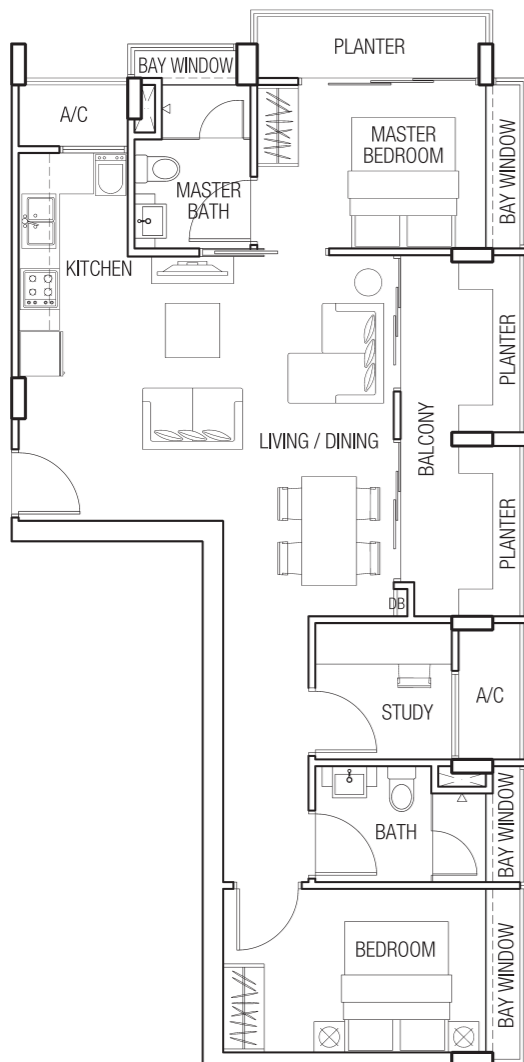
Type F (1-Bedroom)

Unit #10-03 to #16-03
 Area 463 sqft / 43 sqm
 (inclusive of bay window, planter, balcony and a/c ledge)



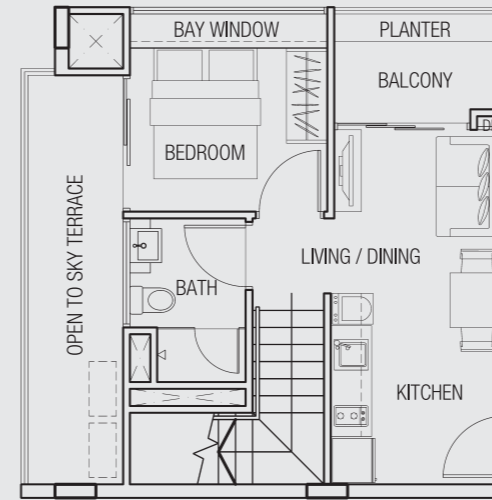
Type G (2+1-Bedroom)

Unit #10-01 to #16-01
 Area 947 sqft / 88 sqm
 (inclusive of bay window, planter, balcony and a/c ledge)

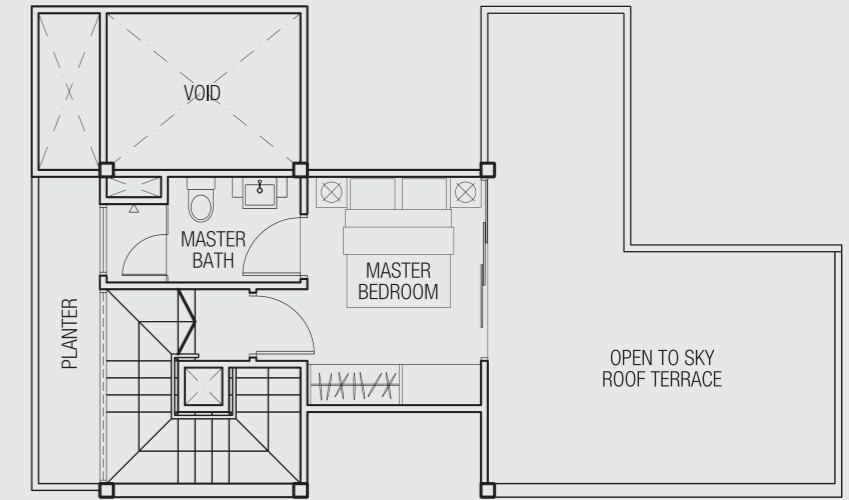


Type H (2-Bedroom Penthouse)

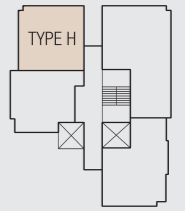
Unit #17-04
 Area 1087 sqft / 101 sqm
 (inclusive of bay window, planter, balcony and roof terrace)



Lower Storey

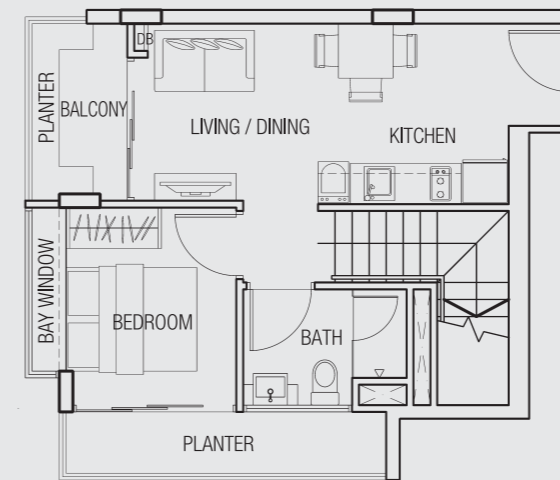


Upper Storey

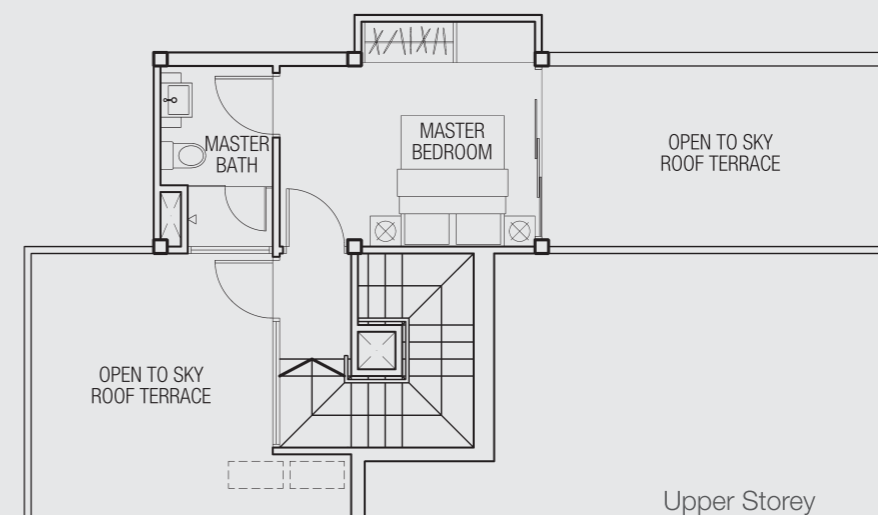


Type I (2-Bedroom Penthouse)

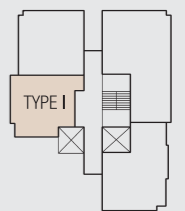
Unit #17-03
 Area 1098 sqft / 102 sqm
 (inclusive of bay window, planter, balcony and roof terrace)



Lower Storey

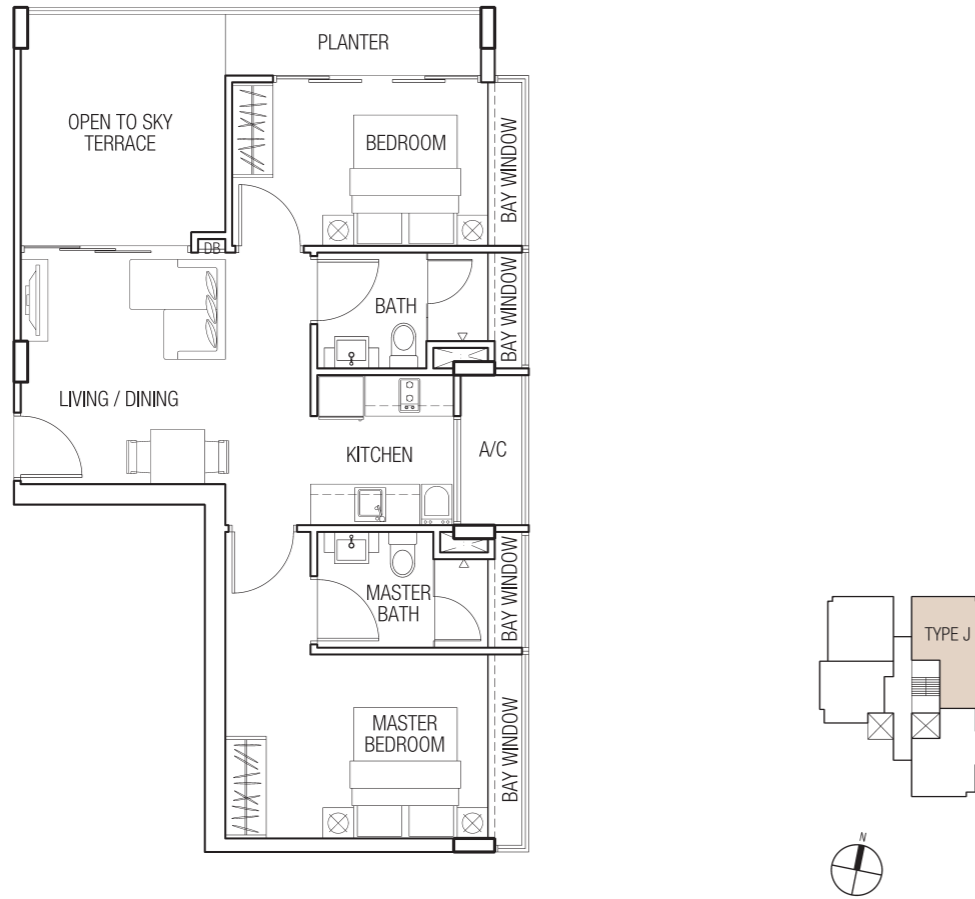


Upper Storey



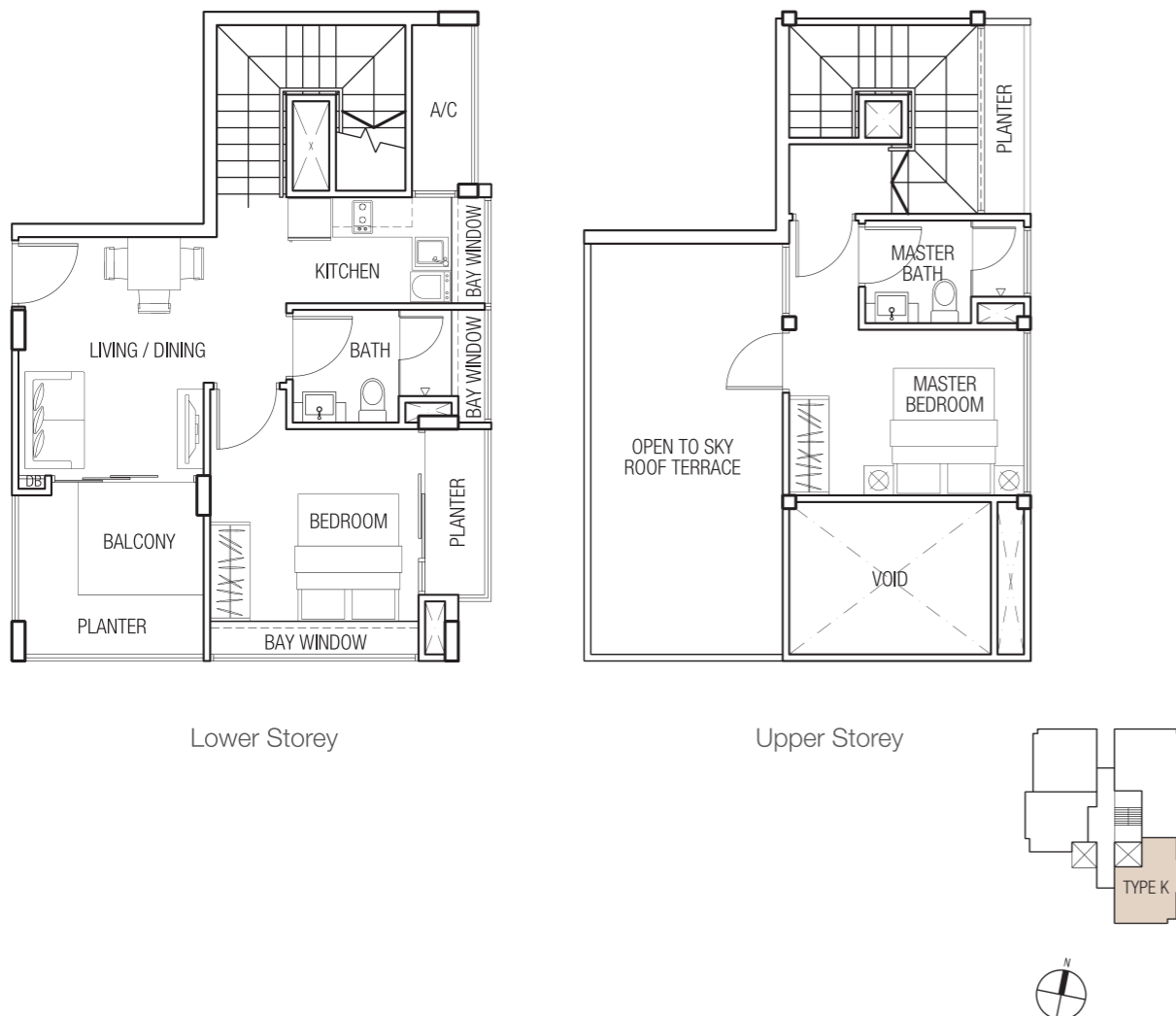
Type J (2-Bedroom)

Unit #17-01
Area 818 sqft / 76 sqm
(inclusive of bay window, planter, terrace and a/c ledge)



Type K (2-Bedroom Penthouse)

Unit #17-02
Area 1098 sqft / 102 sqm
(inclusive of bay window, planter, balcony, roof terrace and a/c ledge)



Lower Storey

Upper Storey

Specifications

- 1. Foundation**
Pile to Engineer's design.
- 2. Substructure & Superstructure**
Reinforced Concrete Framework to Engineer's specification.
- 3. Wall**
External : Common clay bricks and/or reinforced concrete.
Internal : Common clay bricks and/or cement blocks and/or reinforced concrete.
- 4. Roof**
Pitch Roof : Metal roofing with appropriate insulation.
RC Flat Roof : Reinforced concrete with appropriate waterproofing.
- 5. Ceiling**
 - a.) For Apartments**
 - i.) Living, Dining, Master Bedrooms, Bedrooms, and Study (where applicable)
Skim coat with emulsion paint.
 - ii.) Master Bathrooms, Bathrooms, and Kitchen
Box up / plaster board ceiling with emulsion paint.
 - iii.) Balcony
Skim coat and/or plaster board ceiling with emulsion paint.
 - b.) For Common Areas**
 - i.) Lift Lobby / Corridor
Plasterboard ceiling with emulsion paint and/or skim coat.
 - ii.) Staircases
Skim coat with emulsion paint.
- 6. Finishes**
 - a.) Wall [For Apartments]**
 - i.) Living, Dining, Master Bedrooms, Bedrooms, and Study (where applicable)
Cement and sand plaster with emulsion paint and/or skim coat with emulsion paint.
 - ii.) Master Bathroom, Bathroom, and Kitchen
Imported ceramic tiles and/or homogeneous tiles laid up to false ceiling height and on exposed surface only.
 - iii.) Balcony and Roof Terrace (where applicable)
Cement and sand plaster and/or skim coat with emulsion paint.
 - b.) Walls [Common Areas]**
 - i.) Internal Wall
1st Storey Lift Lobby
Stones and/or imported ceramic tiles laid up to false ceiling height and/or cement and sand plaster with emulsion paint.
Typical Lift Lobby
Cement and sand plaster with emulsion paint.
 - Staircases
Skim coat with emulsion paint.
 - ii.) External Wall
Cement and sand plaster with weather shield paint.
 - c.) Floor [For Apartments]**
 - i.) Living, Dining, and Study (where applicable)
Imported ceramic tiles and/or homogeneous tiles.
 - ii.) Master Bedrooms and Bedrooms
For Type G, H, I, J, and K : Timber strips.
For Type A, B, C, D, E, and F : Imported ceramic tiles and/or homogeneous tiles.
 - iii.) Master Bathroom and Bathrooms
Imported ceramic tiles and/or homogeneous tiles.
 - iv.) Balcony, Roof Terrace / Open Terrace (where applicable), and PES (for Type A)
Imported ceramic tiles and/or homogeneous tiles.
 - v.) Staircase (for Penthouse only)
Timber strips.
 - vi.) Planter Box
Cement screed.
 - d.) Floor [Common Areas]**
 - i.) 1st Storey Lift Lobby and Corridor
Stones and/or imported homogeneous tiles.
 - ii.) Typical Lift Lobby and Corridor
Imported ceramic tiles and/or homogeneous tiles.
 - iii.) Typical Staircase
Cement and sand screed with nosing tiles.

Note: Marble and granite are natural stone materials containing veins with tonality differences. There will be colour and marking caused by their complex mineral composition and incorporated impurities. While such material can be pre-selected before installation, this non-conformity cannot be totally avoided. Granite tiles are pre-polished before laying and care has been taken for their installation. However, granite being a much harder material than marble cannot be re-polished after installation. Hence some differences can be felt at the joint. Timber is a natural material containing grain and tonal differences. Thus it is not possible to achieve total consistency of colour and grain in its selection and installation.

- 7. Windows**
Aluminium framed sliding and/or casement with or without fixed glass panel.

Note: a.) All aluminium frames shall be powder coated finish.
b.) All glazing shall be approximately 6mm thick tinted glass.
c.) All casement windows are either side hung, top hung or bottom hung or any combination of the mentioned.
d.) All glazing below 1m shall be tempered and/or laminated glass.
- 8. Doors**
 - a.) For Apartments**
 - i.) Main Entrance
Approved fire-rated timber door.
 - ii.) Master Bedrooms, Bedrooms, Study (where applicable), Master Bathrooms, and Bathrooms
Hollow-core timber door.
 - iii.) Balcony and Roof Terrace / Open Terrace (where applicable)
Aluminium framed sliding and/or swing door with or without fixed glass panel.