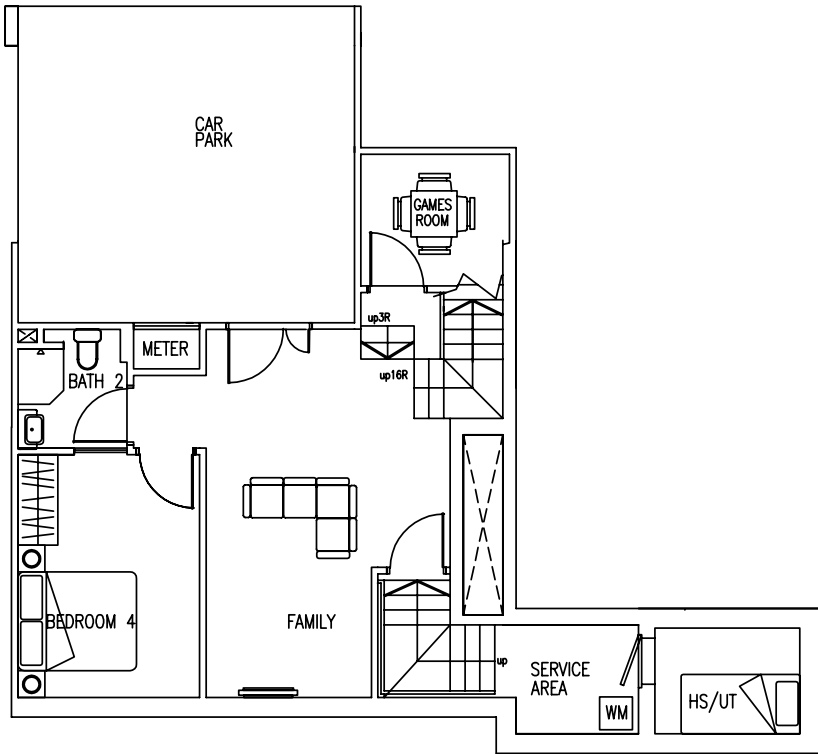


House no. 9A

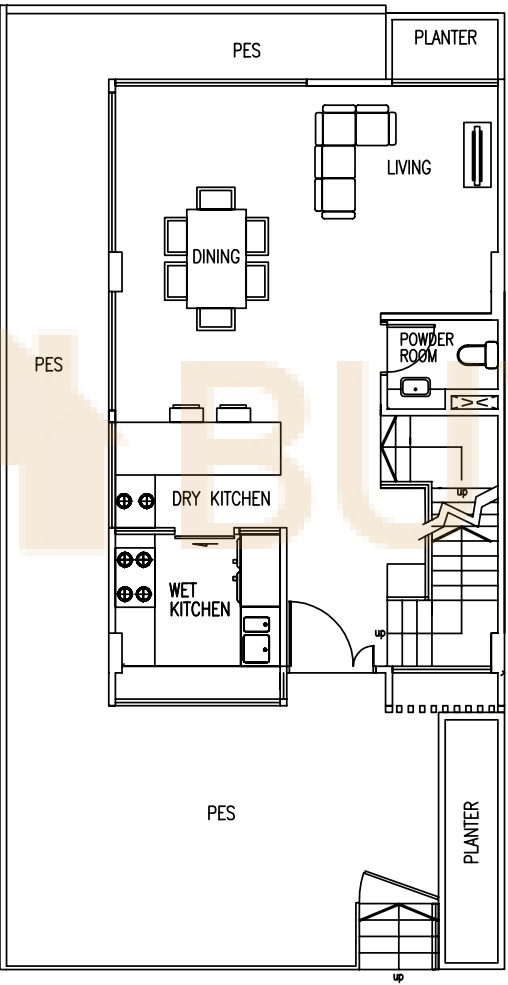
411 sqm | 4,424 sqft

The plans are subjected to change as may be required or approved by relevant authorities. These are not drawn to scale and are for the purpose of visual presentation of the different layouts that are available. Areas are estimates only and are subjected to final survey.

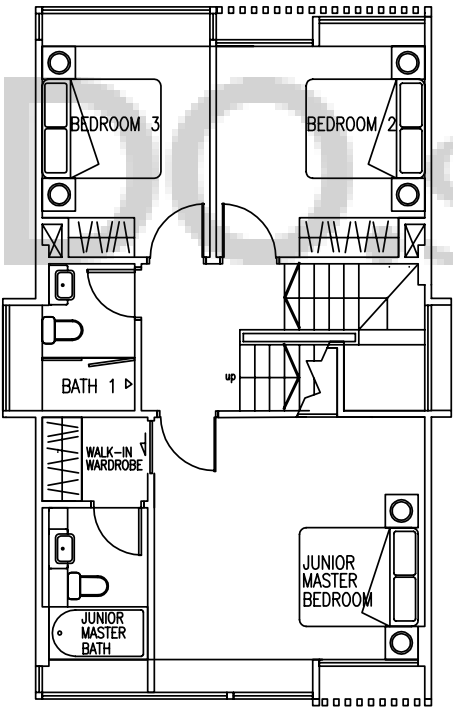
BASEMENT



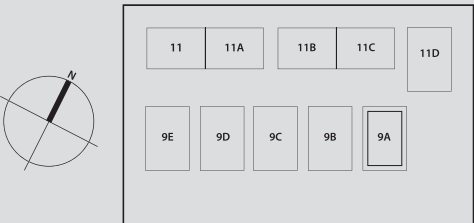
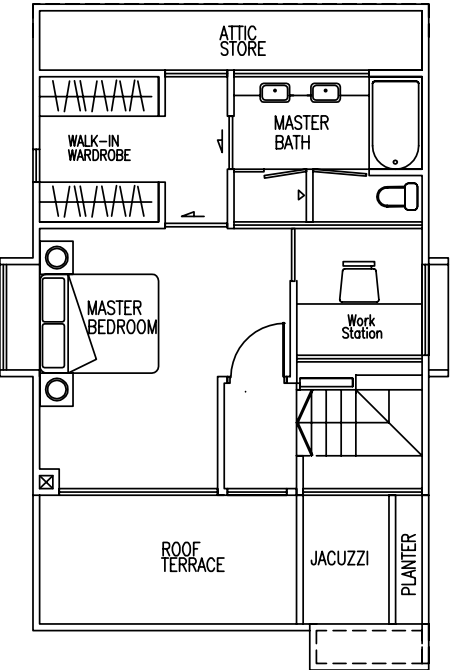
1st STOREY



2nd STOREY



ATTIC

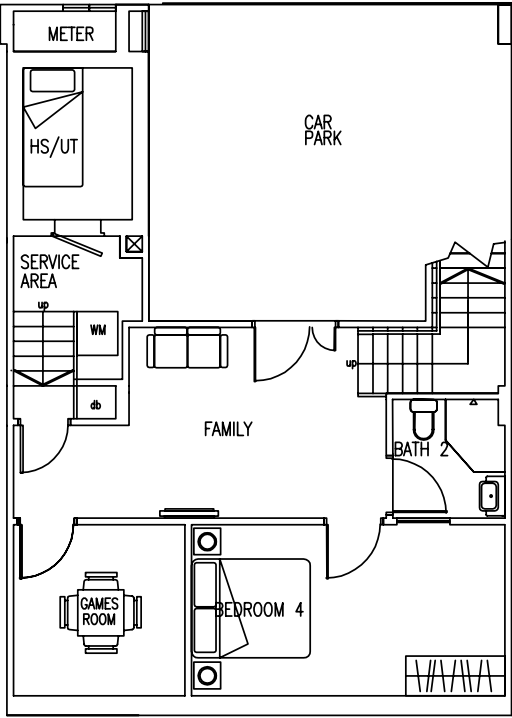


House no. 9B

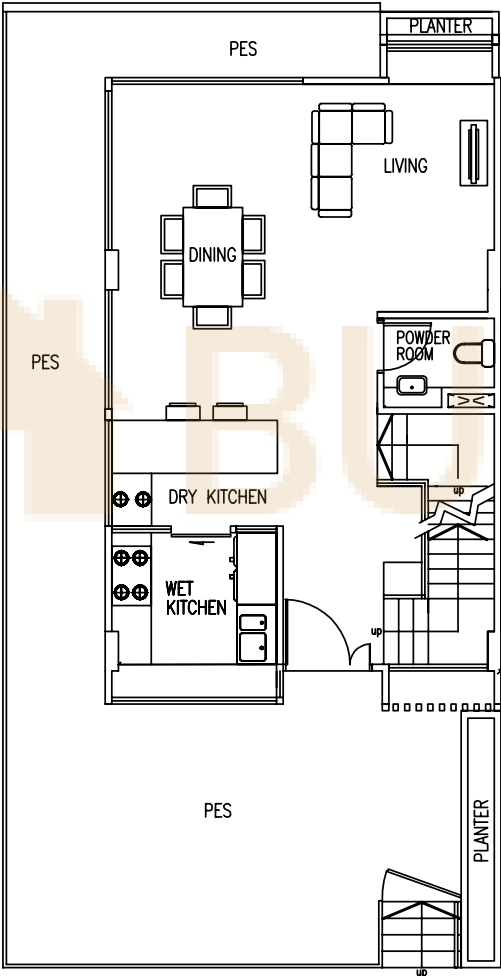
410 sqm | 4,413 sqft

The plans are subjected to change as may be required or approved by relevant authorities. These are not drawn to scale and are for the purpose of visual presentation of the different layouts that are available. Areas are estimates only and are subjected to final survey.

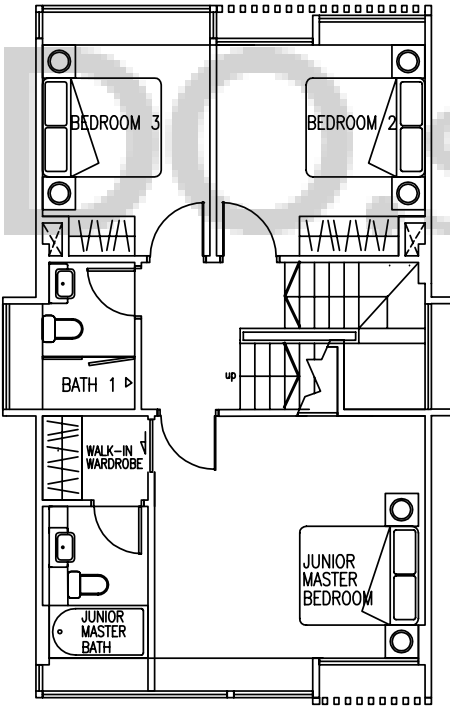
BASEMENT



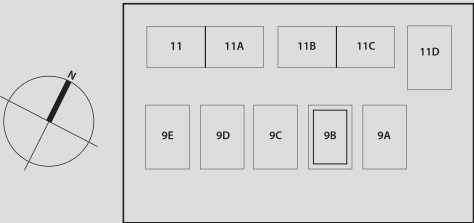
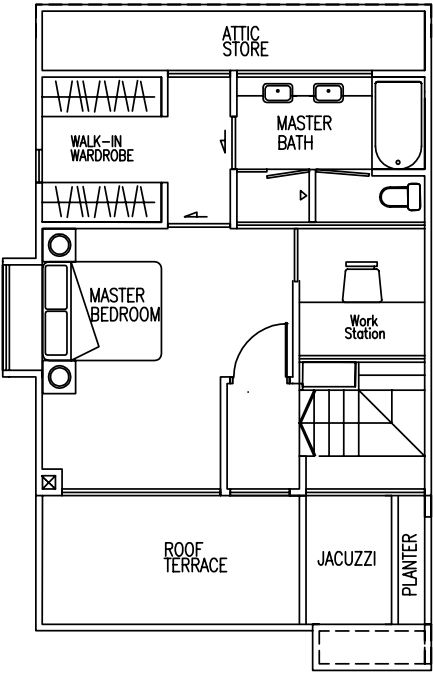
1st STOREY



2nd STOREY



ATTIC

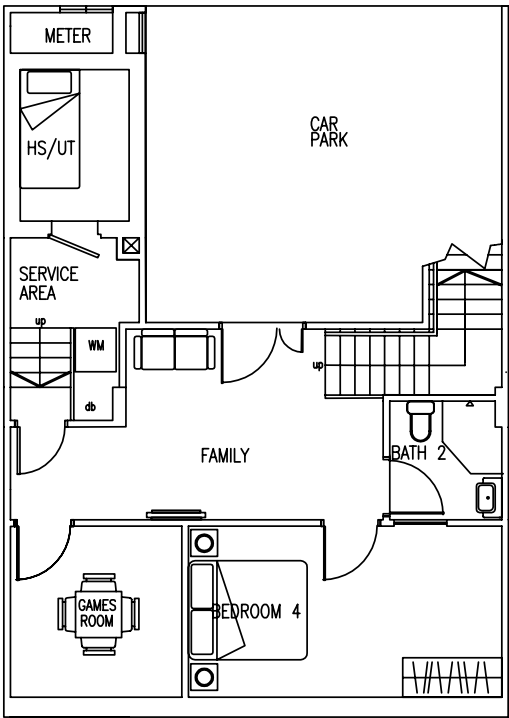


House no. 9C

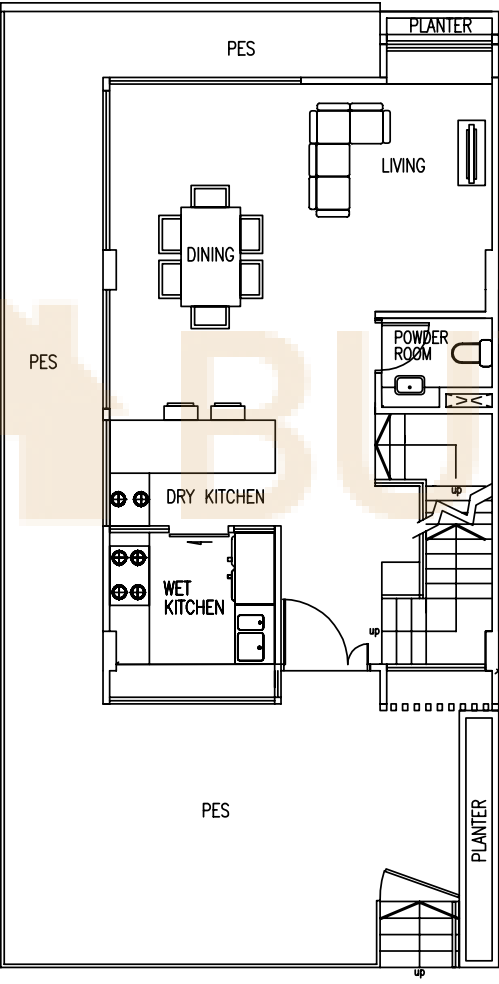
410 sqm | 4,413 sqft

The plans are subjected to change as may be required or approved by relevant authorities. These are not drawn to scale and are for the purpose of visual presentation of the different layouts that are available. Areas are estimates only and are subjected to final survey.

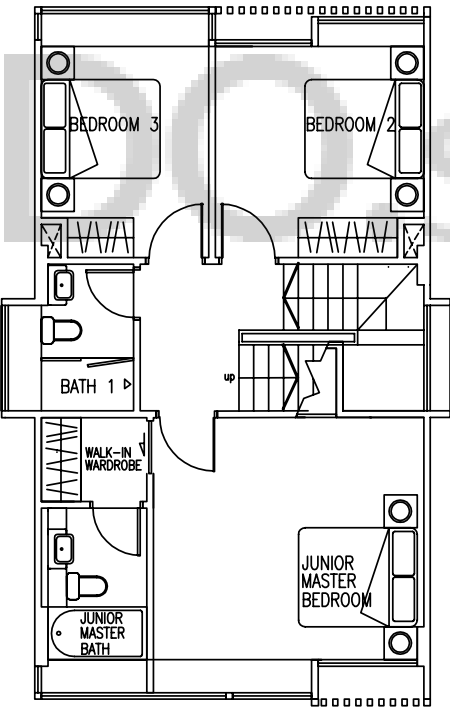
BASEMENT



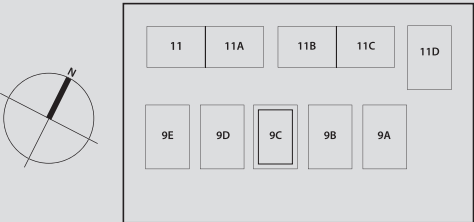
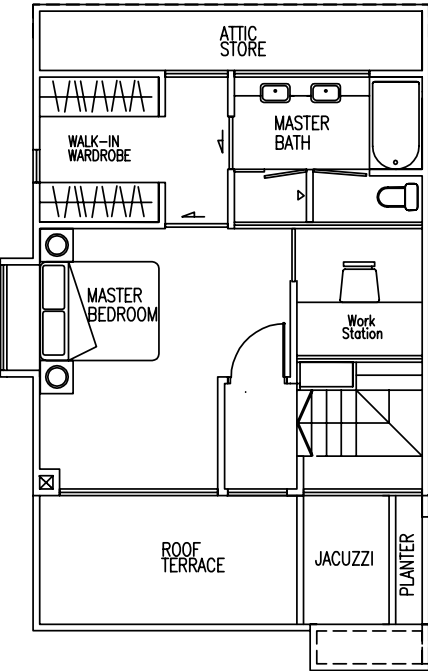
1st STOREY



2nd STOREY



ATTIC

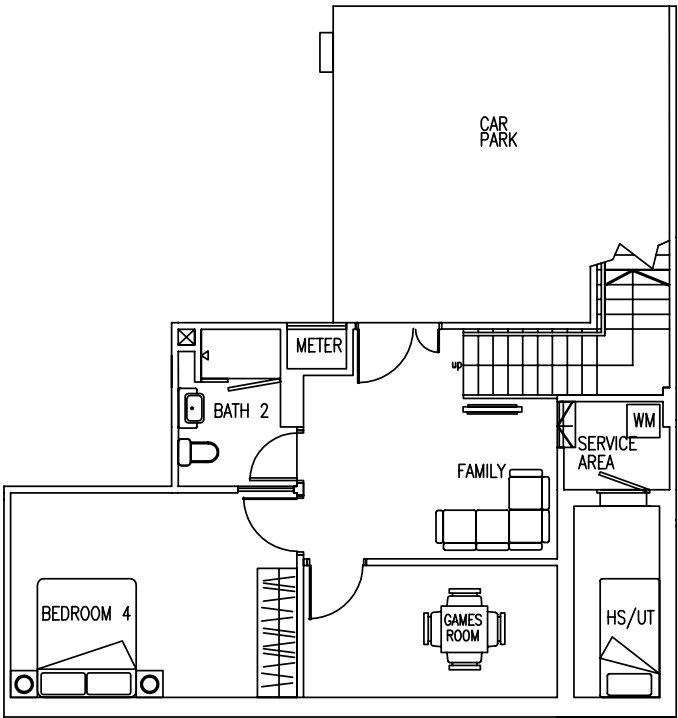


House no. 9D

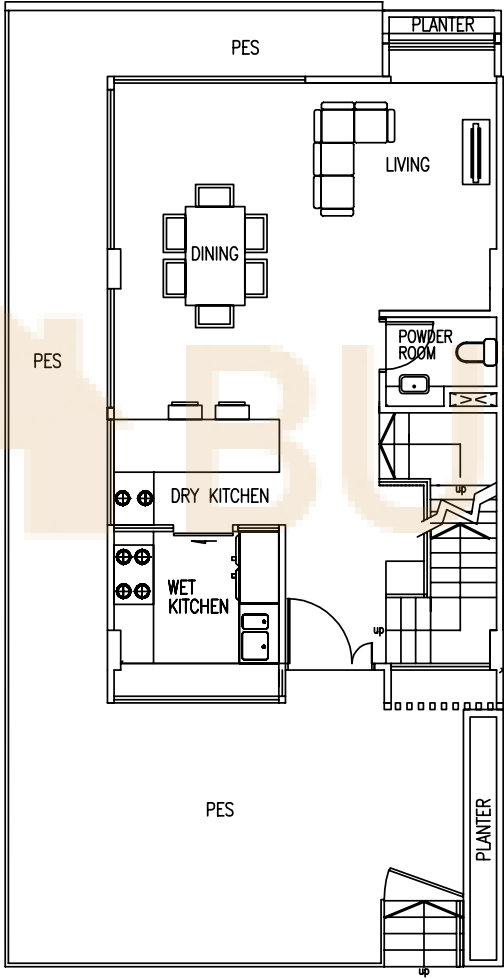
408 sqm | 4,391 sqft

The plans are subjected to change as may be required or approved by relevant authorities. These are not drawn to scale and are for the purpose of visual presentation of the different layouts that are available. Areas are estimates only and are subjected to final survey.

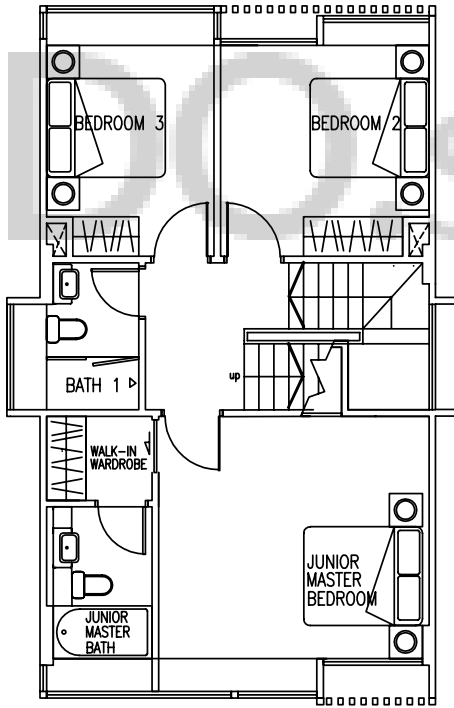
BASEMENT



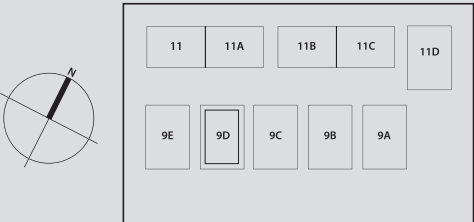
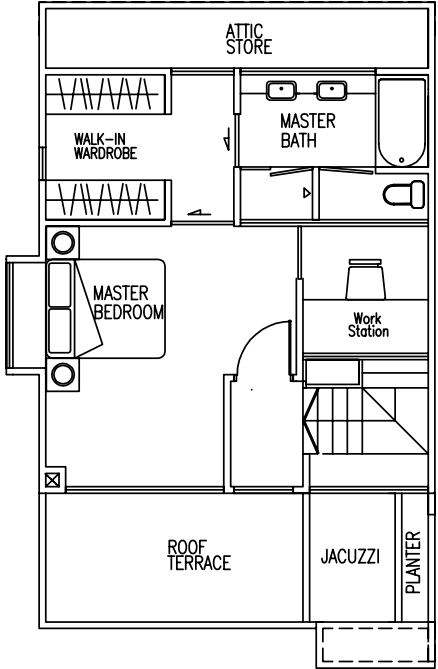
1st STOREY



2nd STOREY



ATTIC

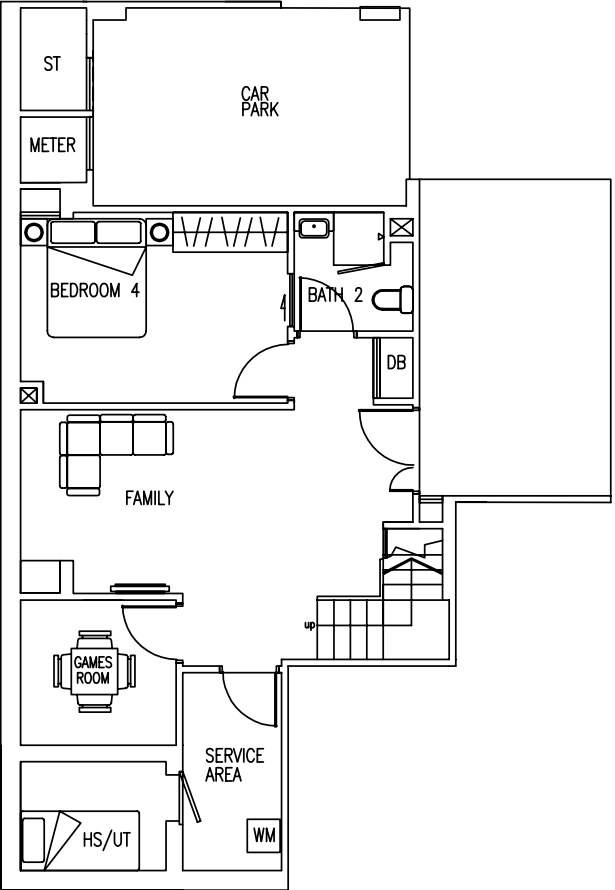


House no. 9E

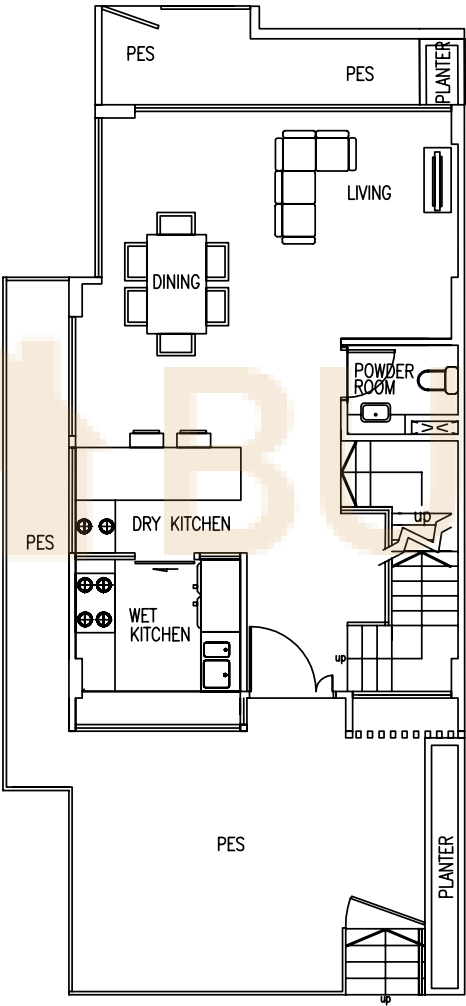
376 sqm | 4,047 sqft

The plans are subjected to change as may be required or approved by relevant authorities. These are not drawn to scale and are for the purpose of visual presentation of the different layouts that are available. Areas are estimates only and are subjected to final survey.

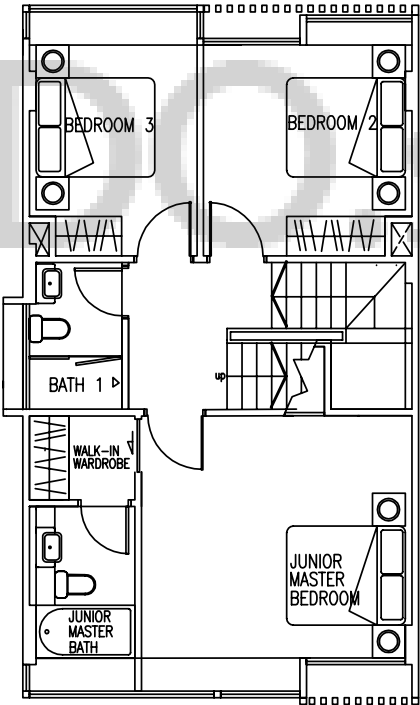
BASEMENT



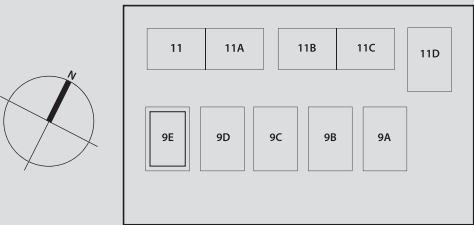
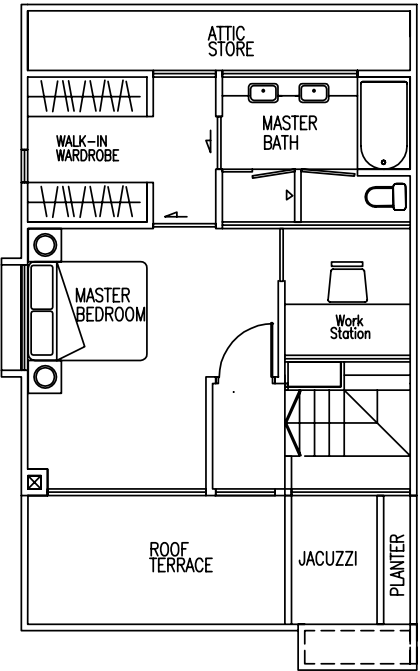
1st STOREY



2nd STOREY



ATTIC

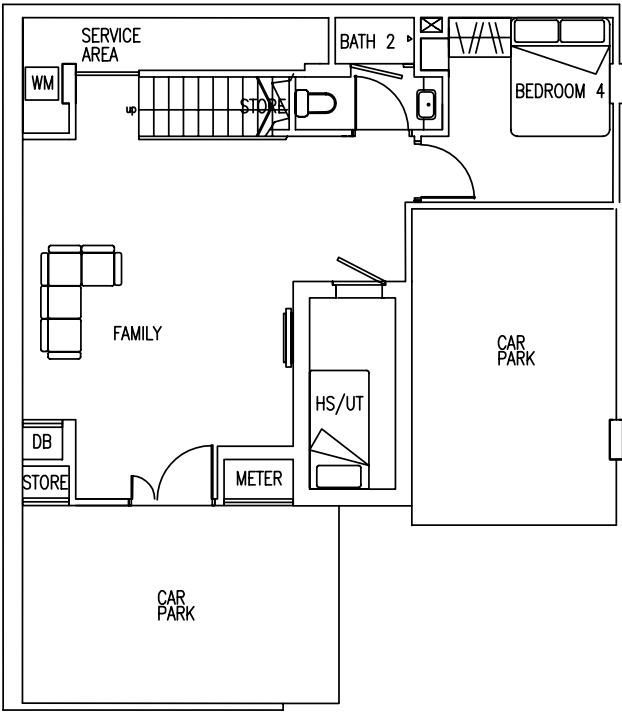


House no. 11

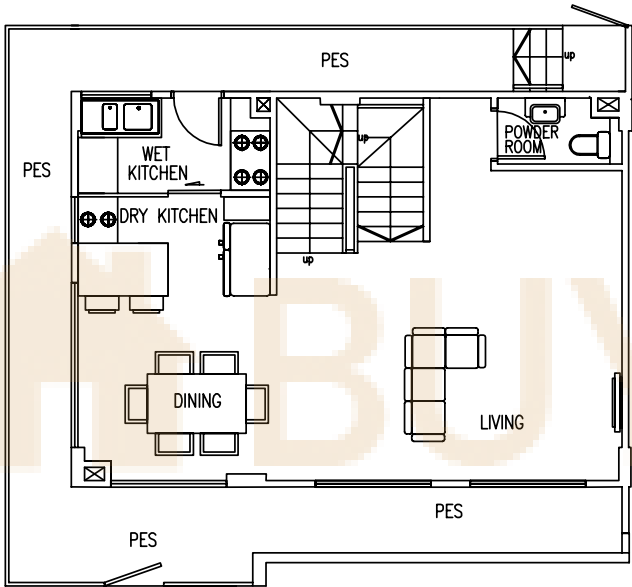
320 sqm | 3,444 sqft

The plans are subjected to change as may be required or approved by relevant authorities. These are not drawn to scale and are for the purpose of visual presentation of the different layouts that are available. Areas are estimates only and are subjected to final survey.

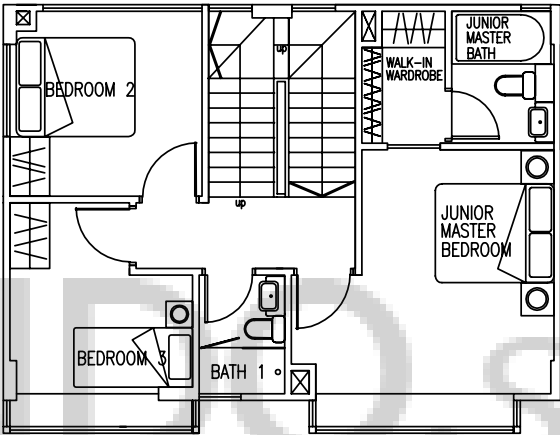
BASEMENT



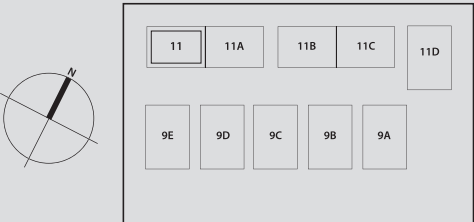
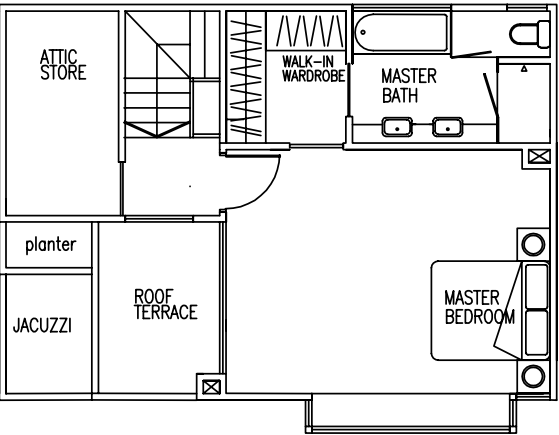
1st STOREY



2nd STOREY



ATTIC

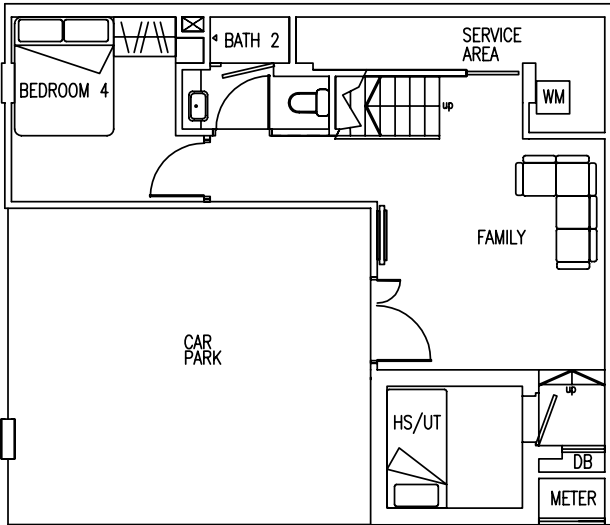


House no. 11A

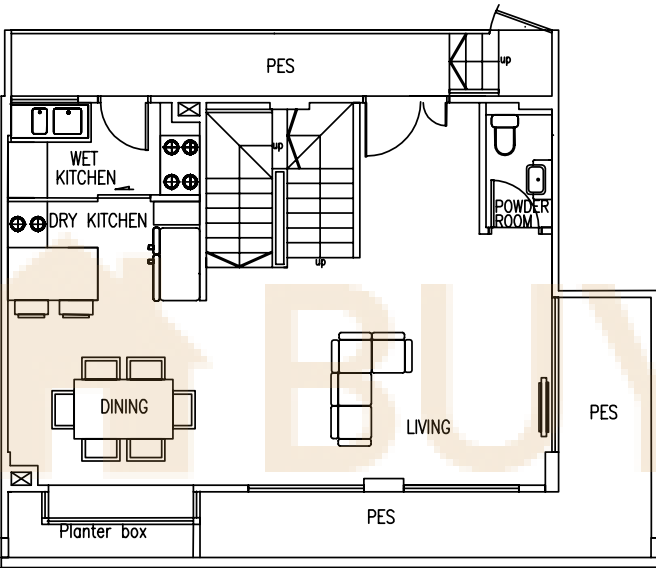
287 sqm | 3,089 sqft

The plans are subjected to change as may be required or approved by relevant authorities. These are not drawn to scale and are for the purpose of visual presentation of the different layouts that are available. Areas are estimates only and are subjected to final survey.

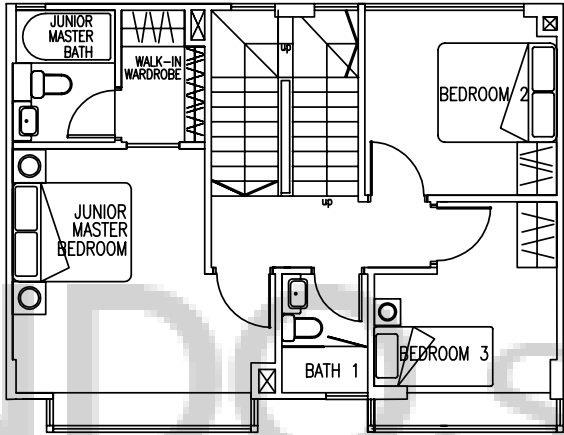
BASEMENT



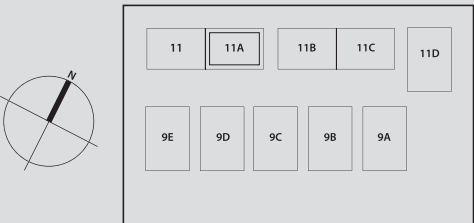
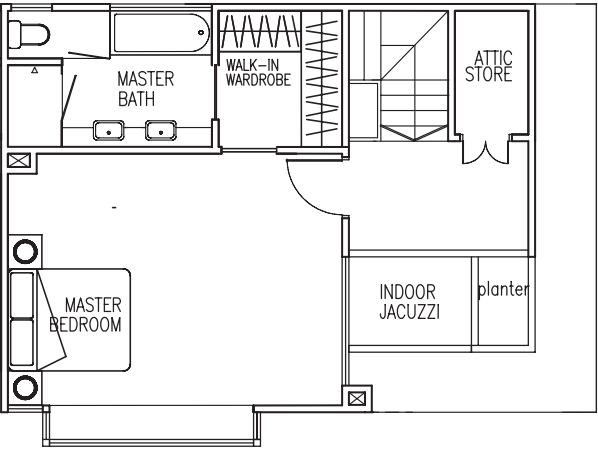
1st STOREY



2nd STOREY



ATTIC

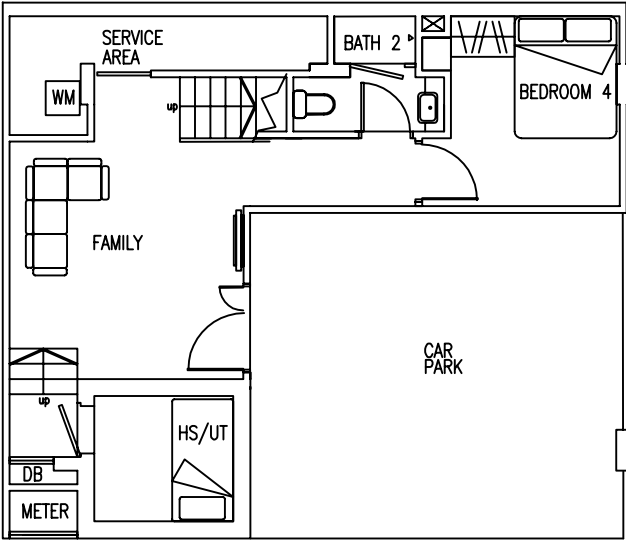


House no. 11B

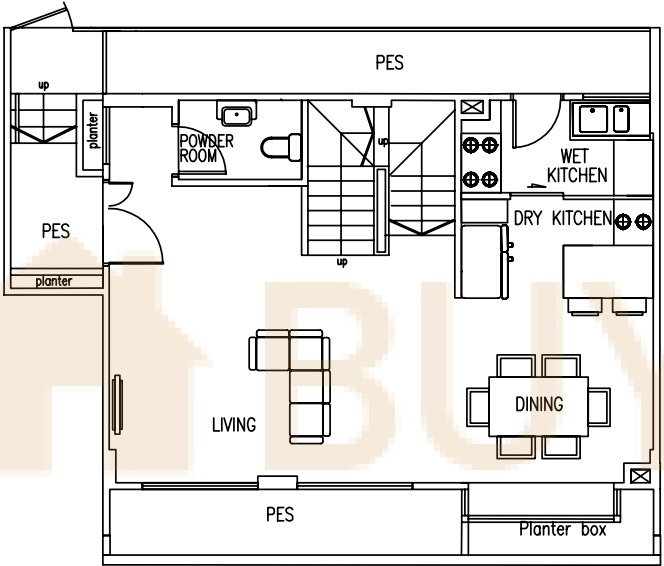
287 sqm | 3,089 sqft

The plans are subjected to change as may be required or approved by relevant authorities. These are not drawn to scale and are for the purpose of visual presentation of the different layouts that are available. Areas are estimates only and are subjected to final survey.

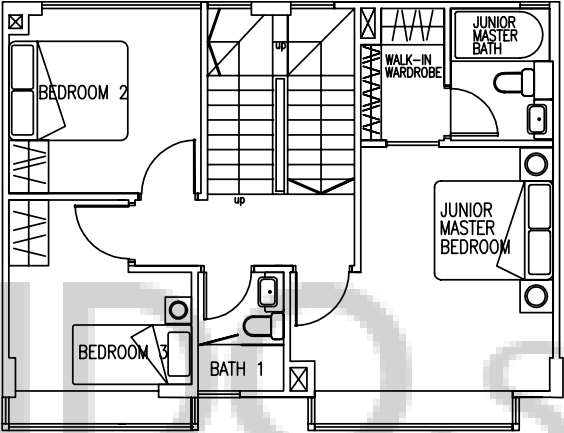
BASEMENT



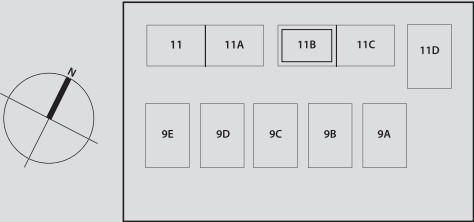
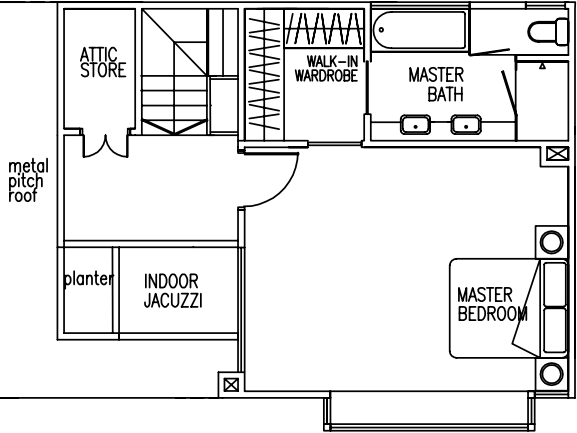
1st STOREY



2nd STOREY



ATTIC

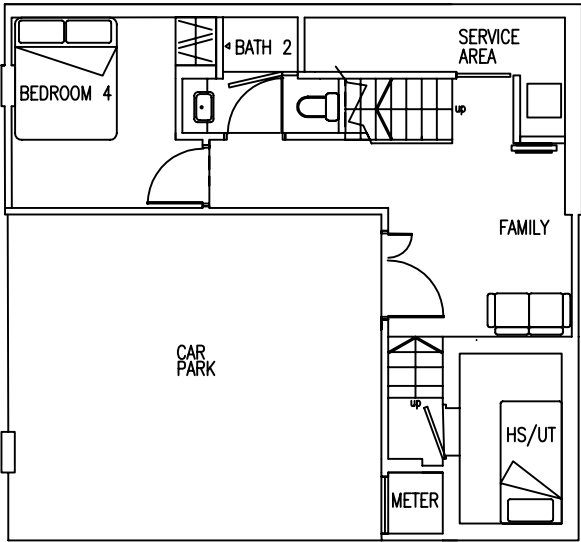


House no. 11C

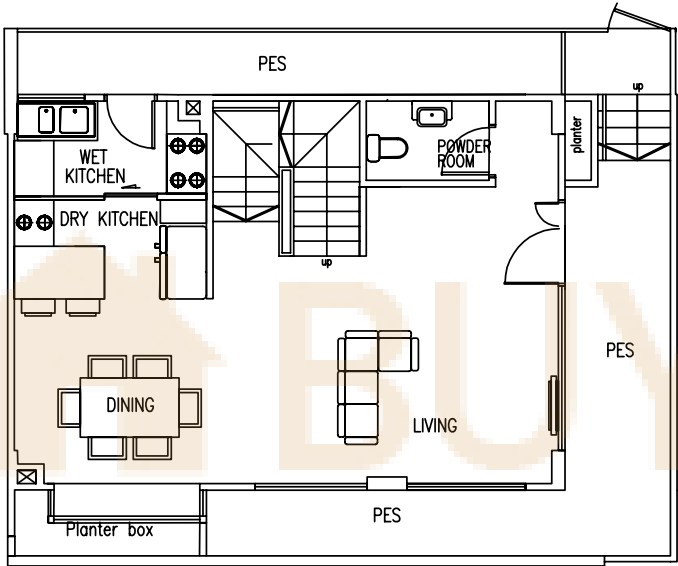
306 sqm | 3,293 sqft

The plans are subjected to change as may be required or approved by relevant authorities. These are not drawn to scale and are for the purpose of visual presentation of the different layouts that are available. Areas are estimates only and are subjected to final survey.

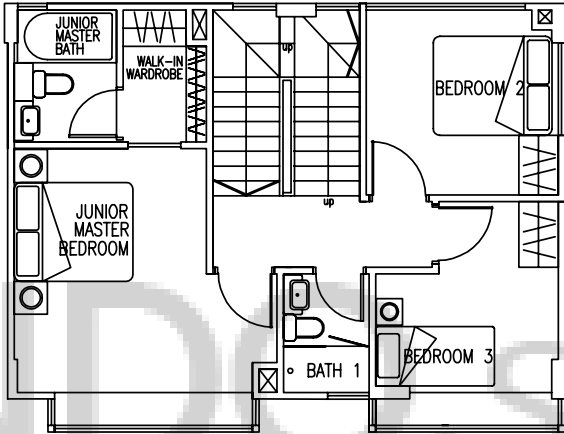
BASEMENT



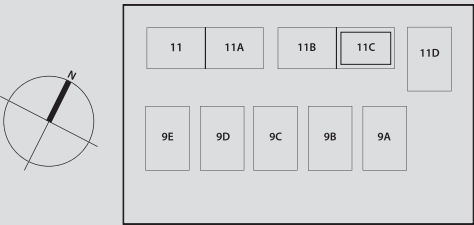
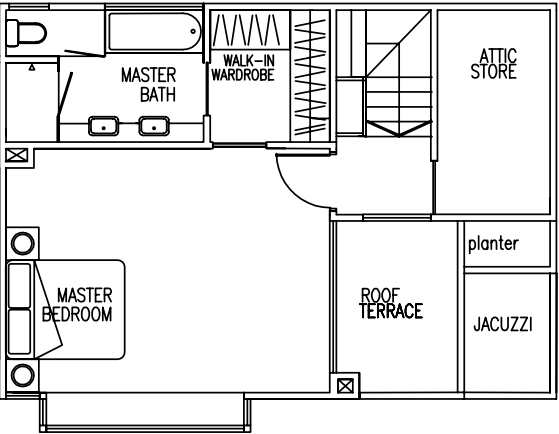
1st STOREY



2nd STOREY



ATTIC

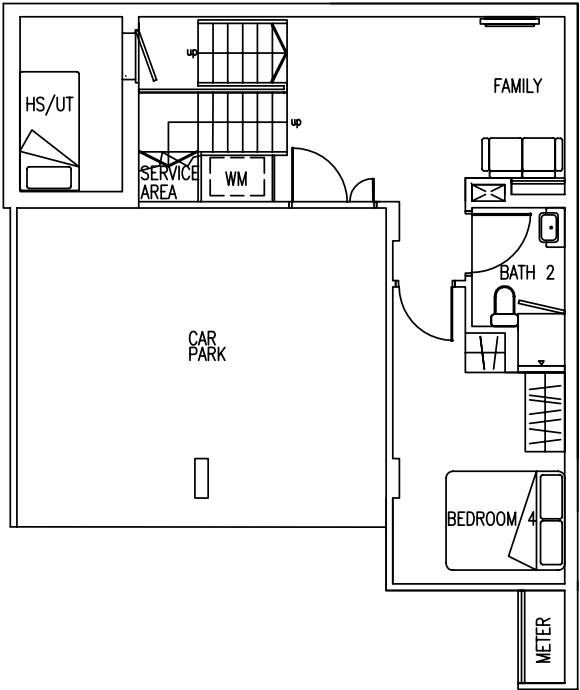


House no. 11D

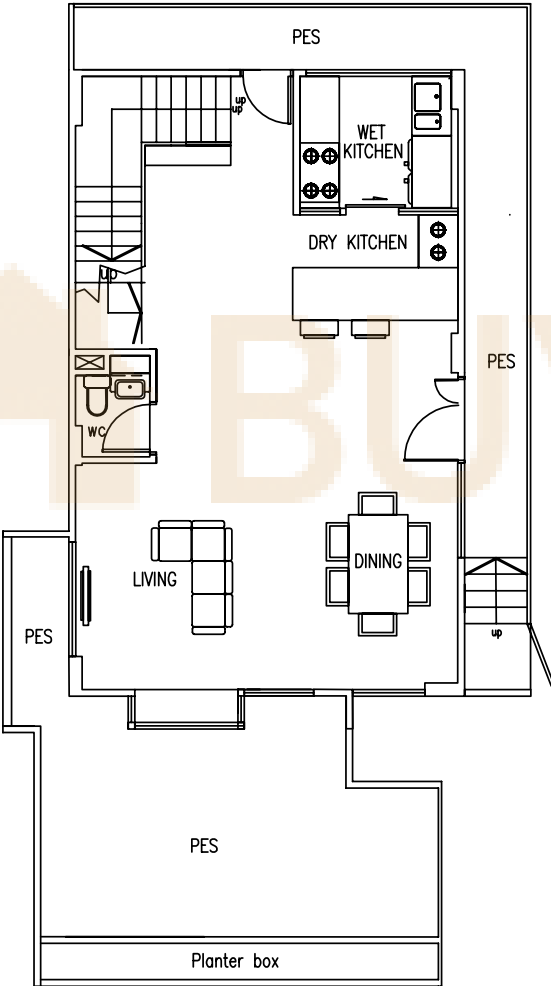
376 sqm | 4,047 sqft

The plans are subjected to change as may be required or approved by relevant authorities. These are not drawn to scale and are for the purpose of visual presentation of the different layouts that are available. Areas are estimates only and are subjected to final survey.

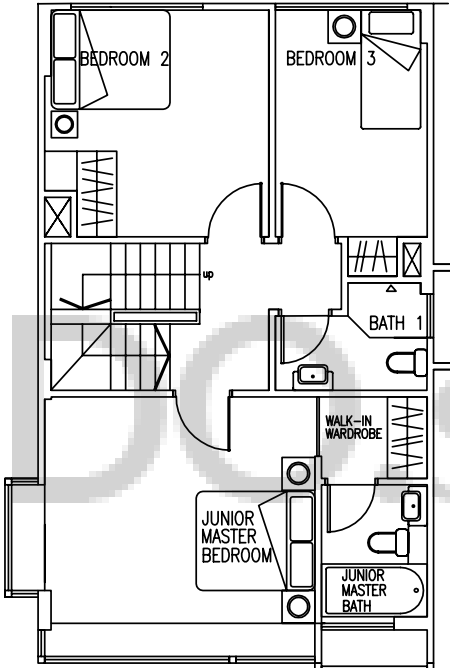
BASEMENT



1st STOREY



2nd STOREY



ATTIC

