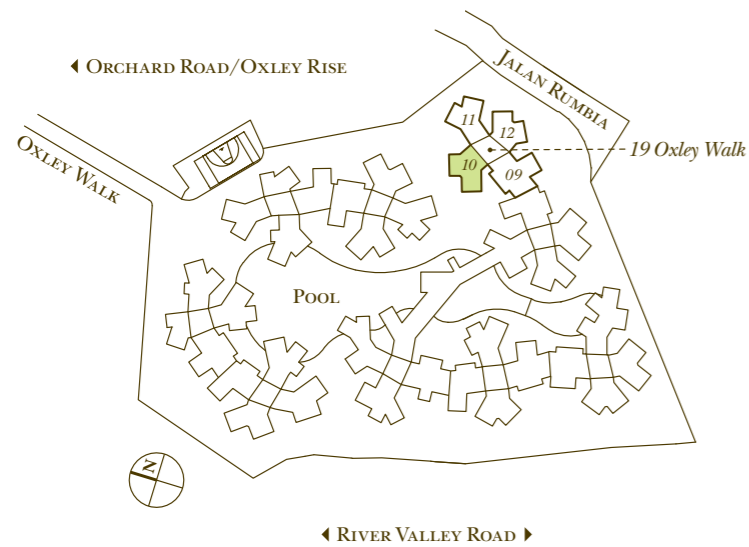
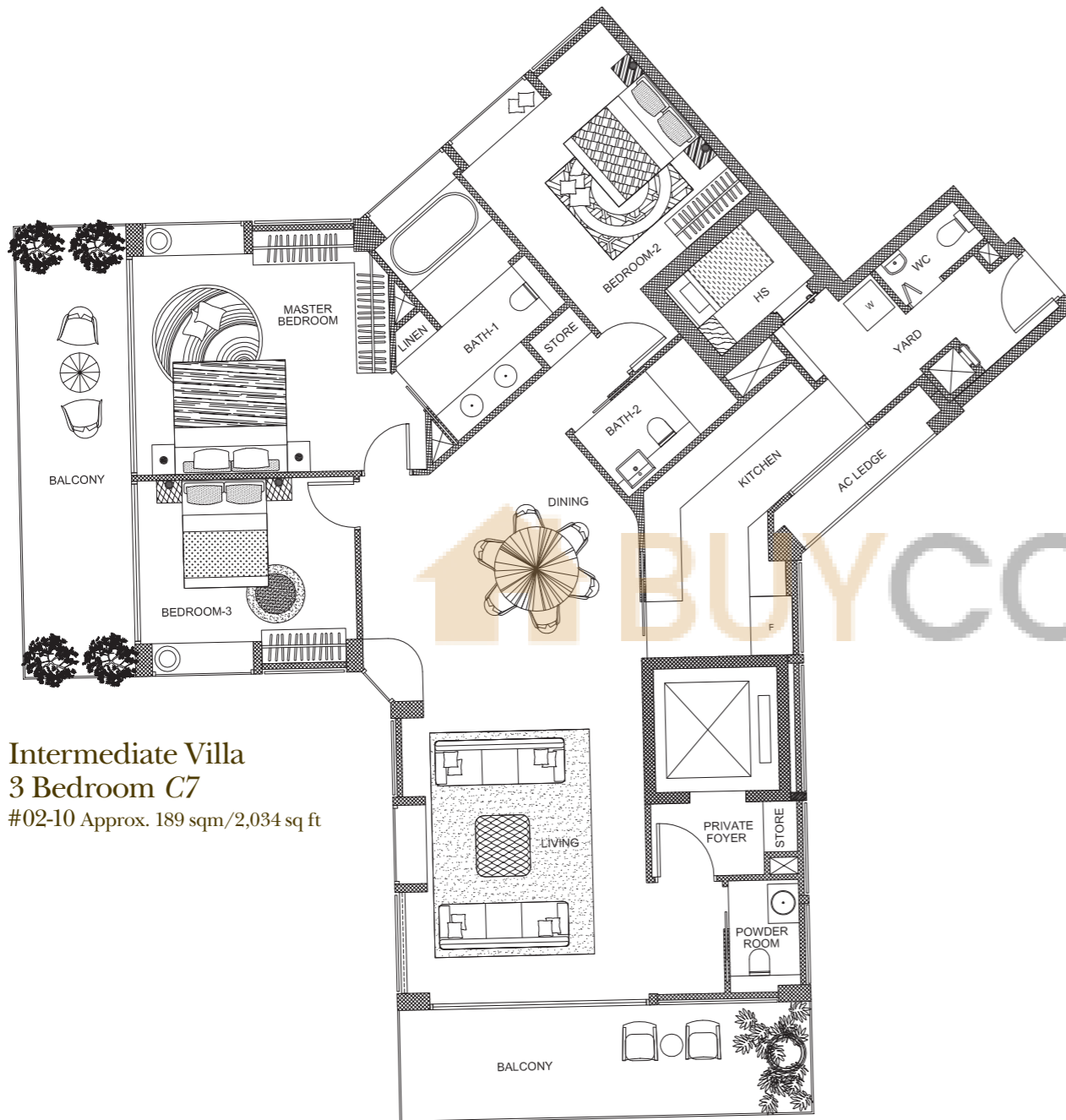




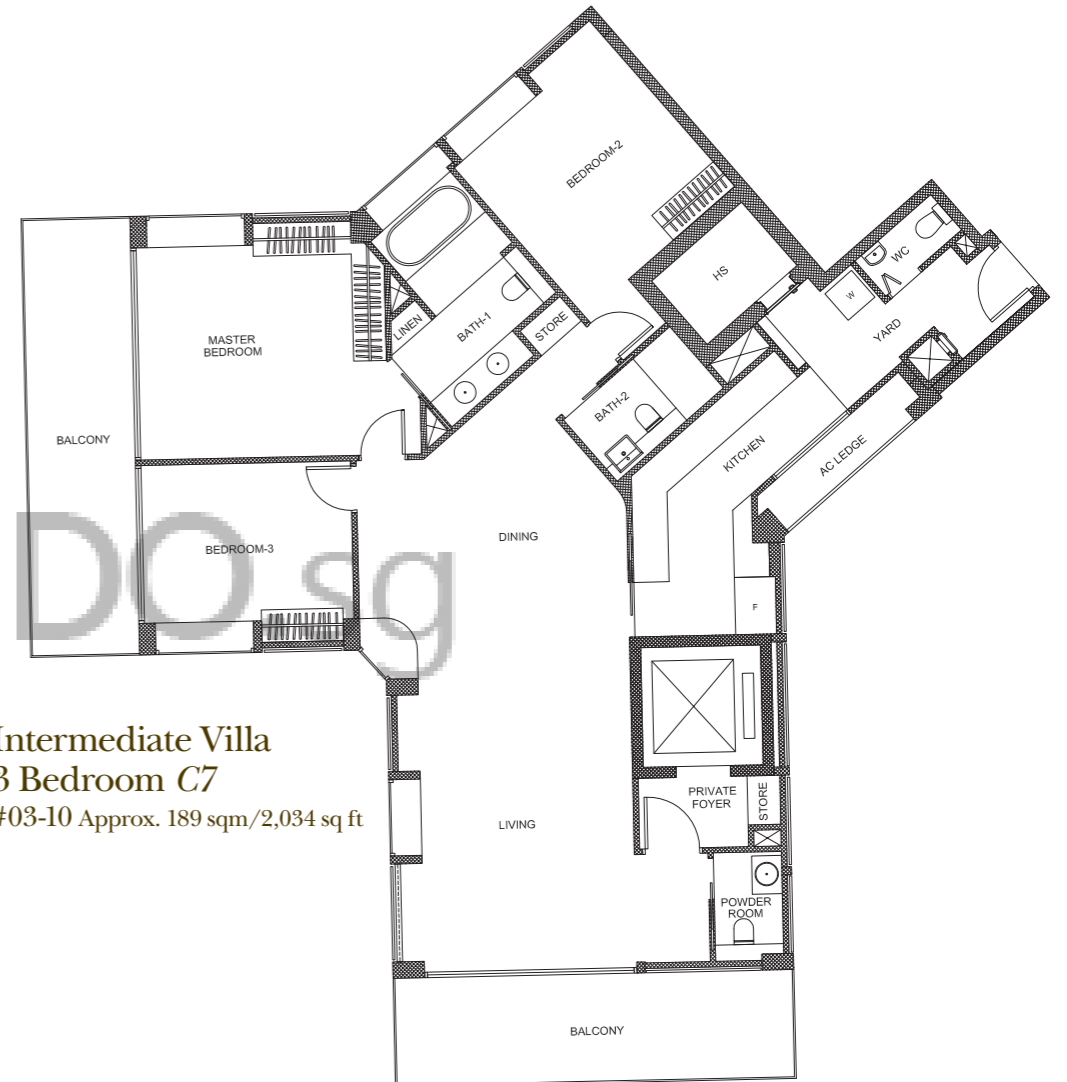
Patio Villa
3 Bedroom C7p
#01-10 Approx. 168 sqm/1,808 sq ft



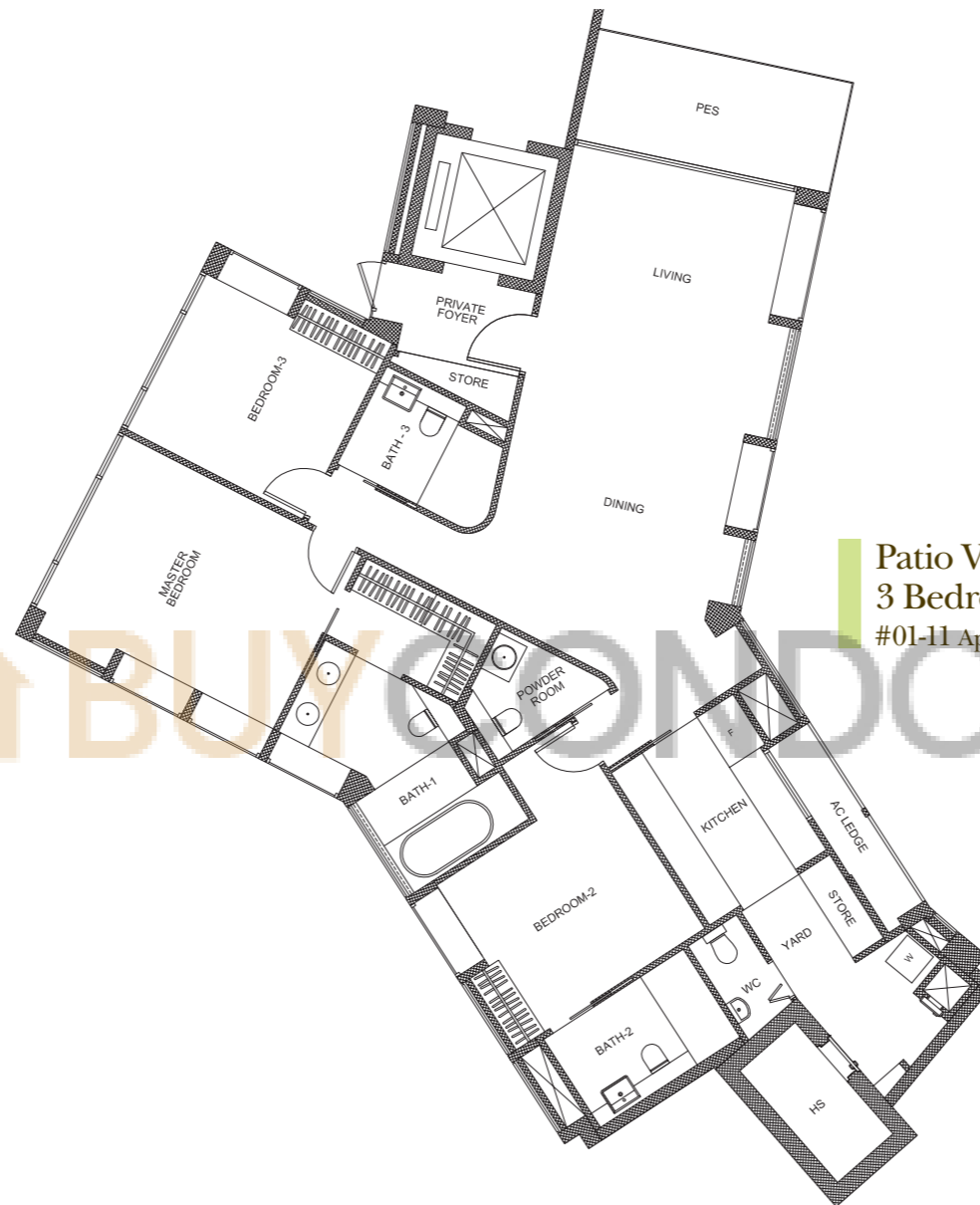
The above plans are not to scale and subject to any amendments as may be approved by the relevant authorities. All apartment areas are approximate of typical plans and are subject to final survey. The developer and its agents cannot be held liable for any inaccuracies. All external elevations/facades of the apartment including but not limited to sliding/swing glass doors, windows, bay windows, fixed glass panels, fixed timber panels, timber louvers, window panels, solid wall and/or any other features relevant to the facades are positioned, installed and/or subject to random rhythmic combination of architectural treatments. As such, the external elevations/facades/features/installations are modular and fluid and all apartments vary in some way or another.



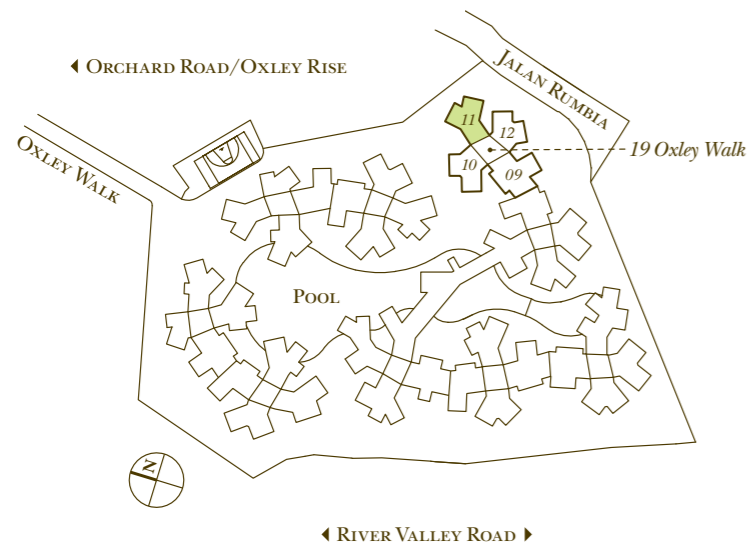
Intermediate Villa
3 Bedroom C7
 #02-10 Approx. 189 sqm/2,034 sq ft



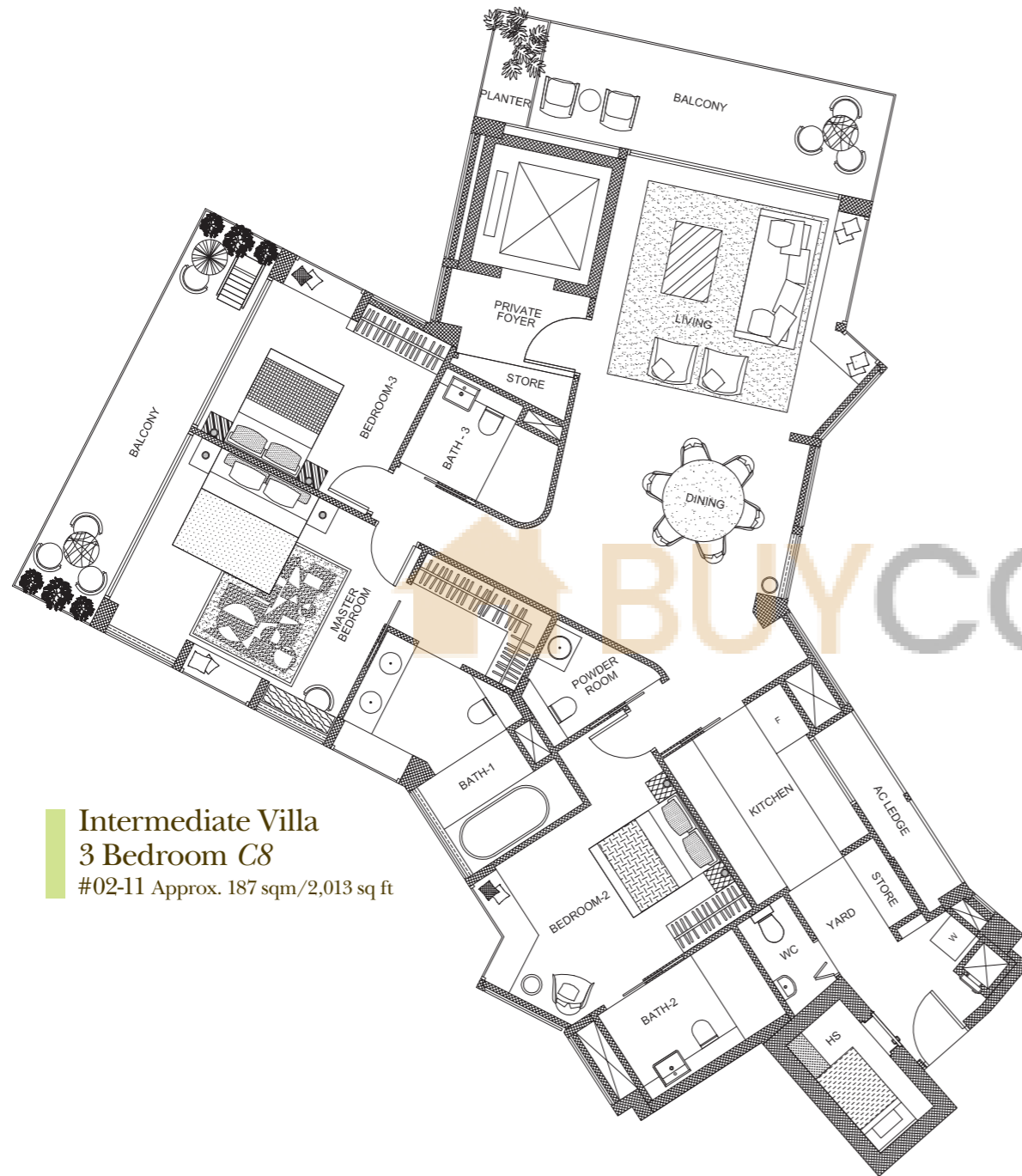
Intermediate Villa
3 Bedroom C7
 #03-10 Approx. 189 sqm/2,034 sq ft



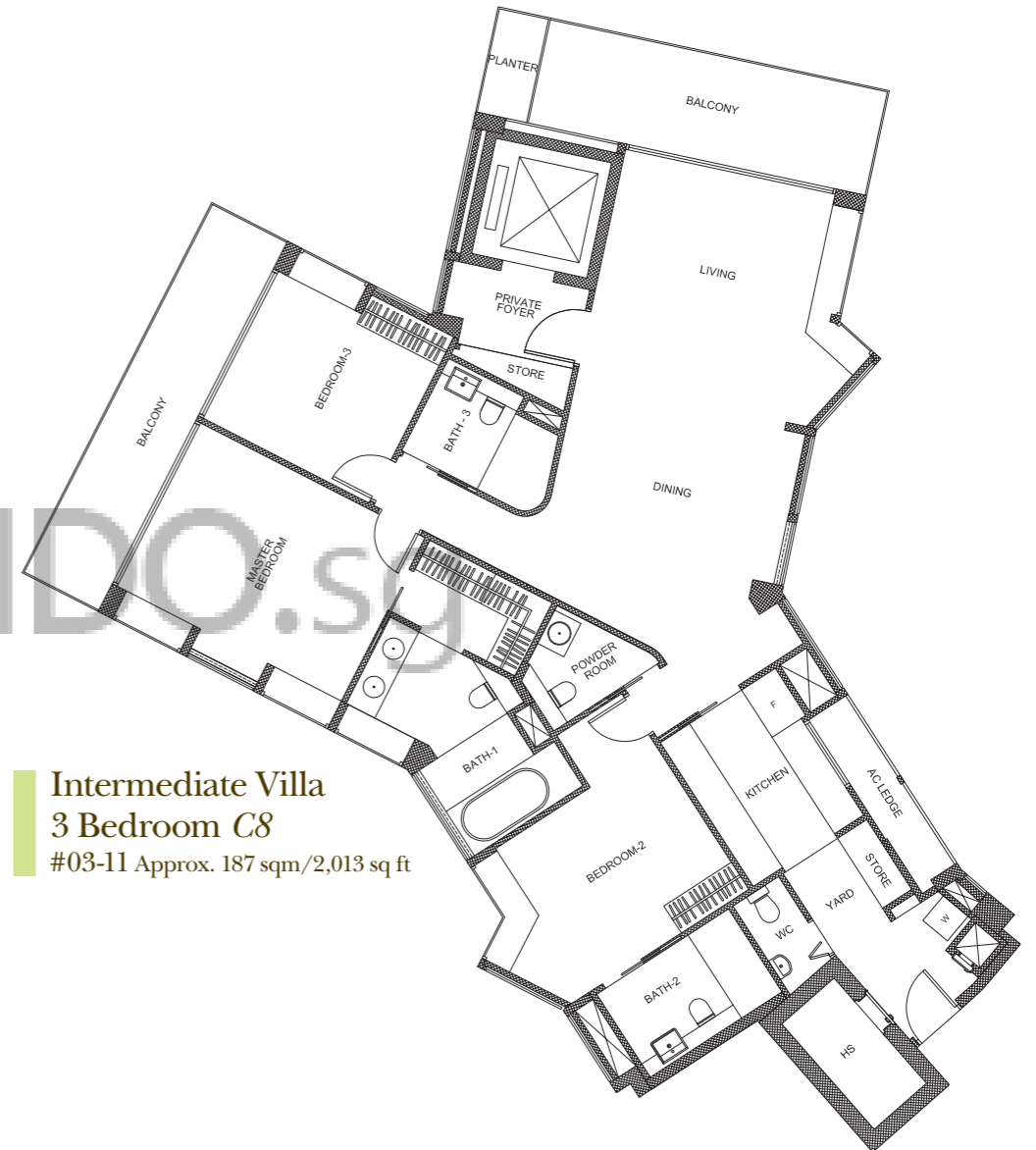
Patio Villa
3 Bedroom C8p
#01-11 Approx. 167 sqm/1,798 sq ft



The above plans are not to scale and subject to any amendments as may be approved by the relevant authorities. All apartment areas are approximate of typical plans and are subject to final survey. The developer and its agents cannot be held liable for any inaccuracies. All external elevations/facades of the apartment including but not limited to sliding/swing glass doors, windows, bay windows, fixed glass panels, fixed timber panels, timber louvers, window panels, solid wall and/or any other features relevant to the facades are positioned, installed and/or subject to random rhythmic combination of architectural treatments. As such, the external elevations/facades/features/installations are modular and fluid and all apartments vary in some way or another.



Intermediate Villa
3 Bedroom C8
#02-11 Approx. 187 sqm/2,013 sq ft

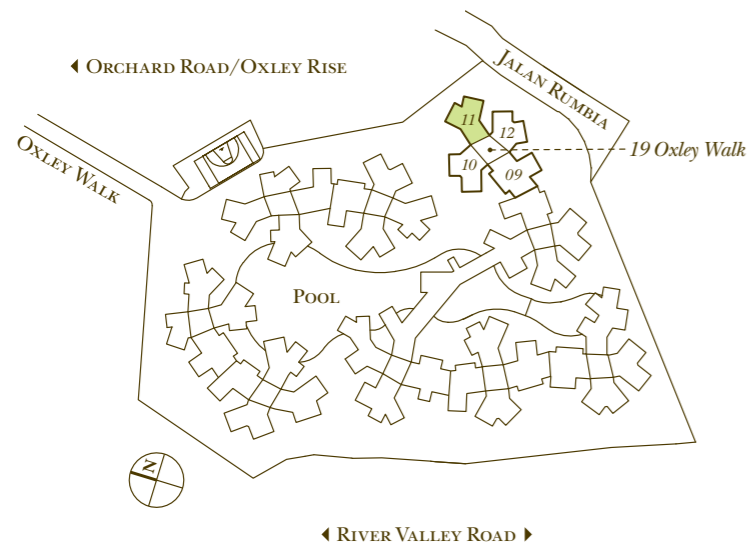


Intermediate Villa
3 Bedroom C8
#03-11 Approx. 187 sqm/2,013 sq ft

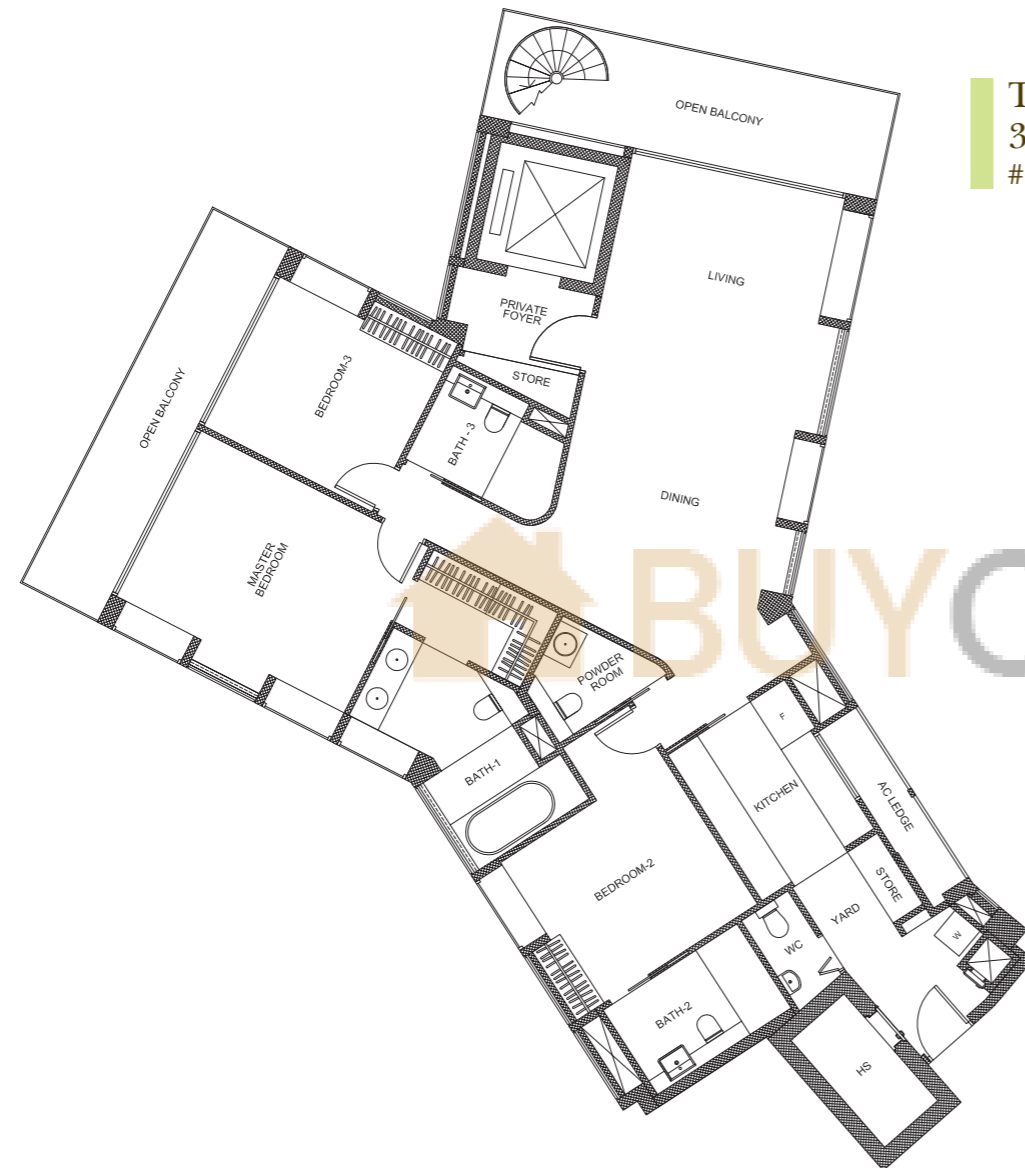
BUY CONDO.SG



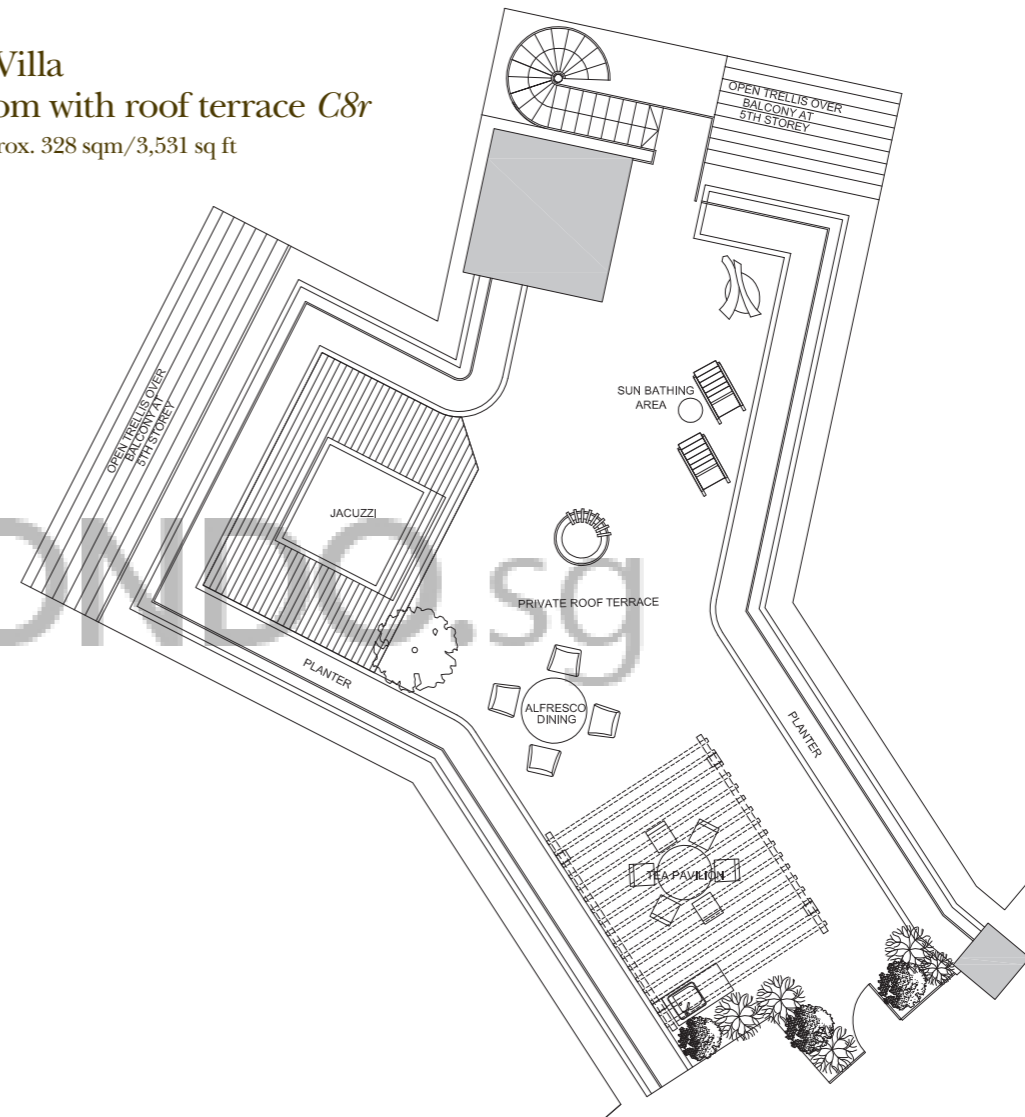
Intermediate Villa
3 Bedroom C8
#04-11 Approx. 187 sqm/2,013 sq ft

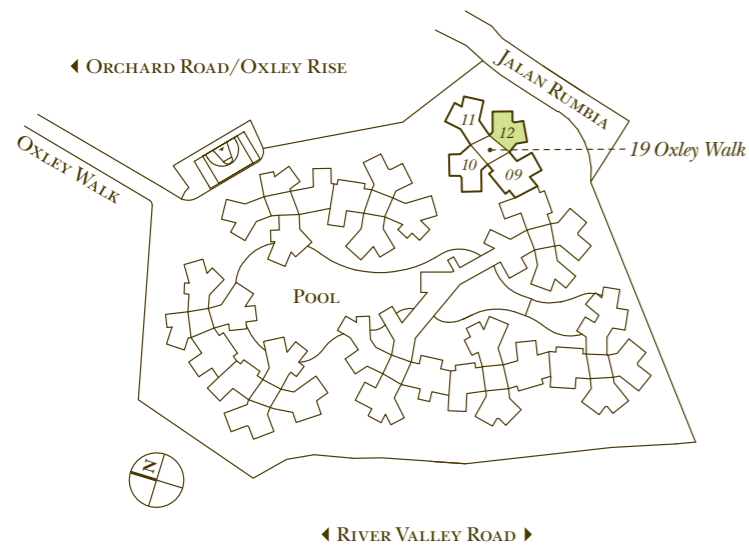
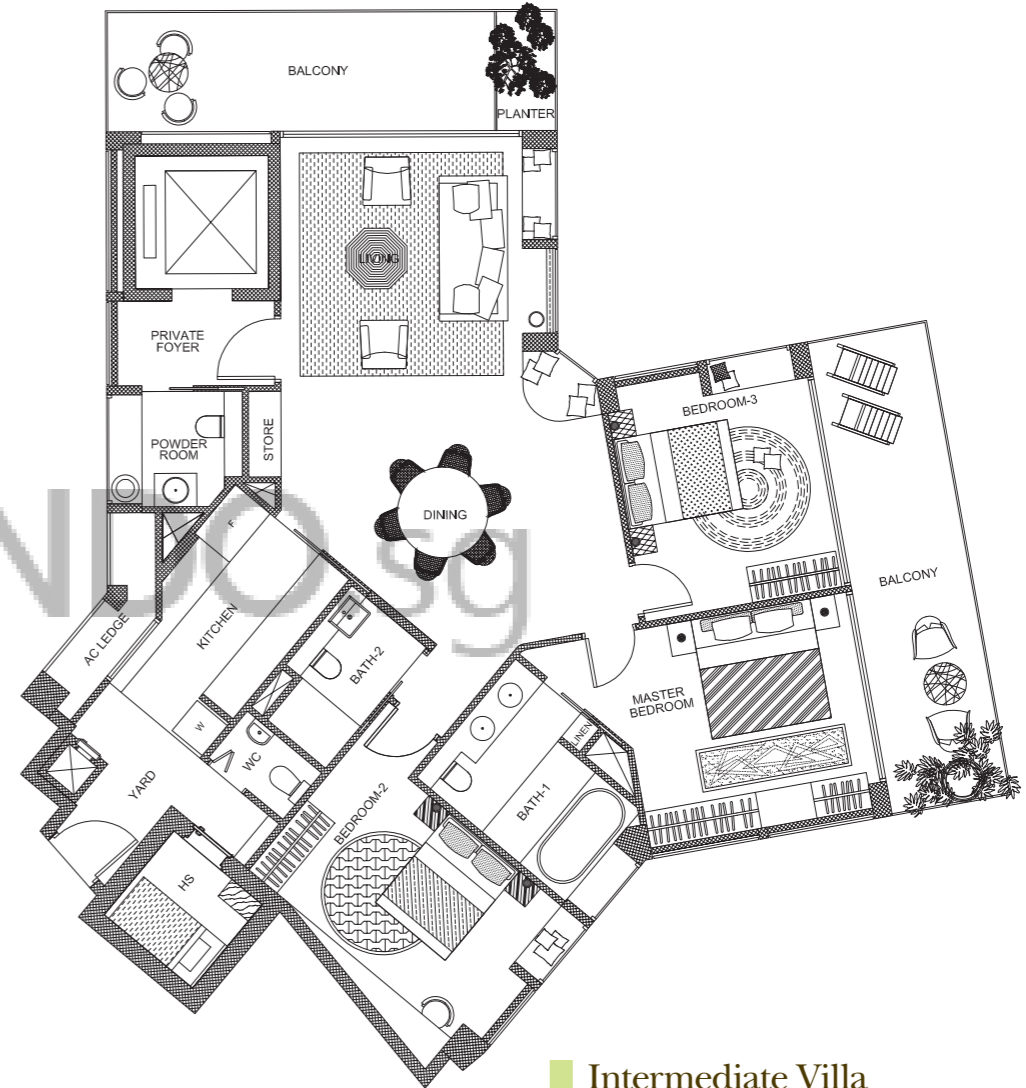
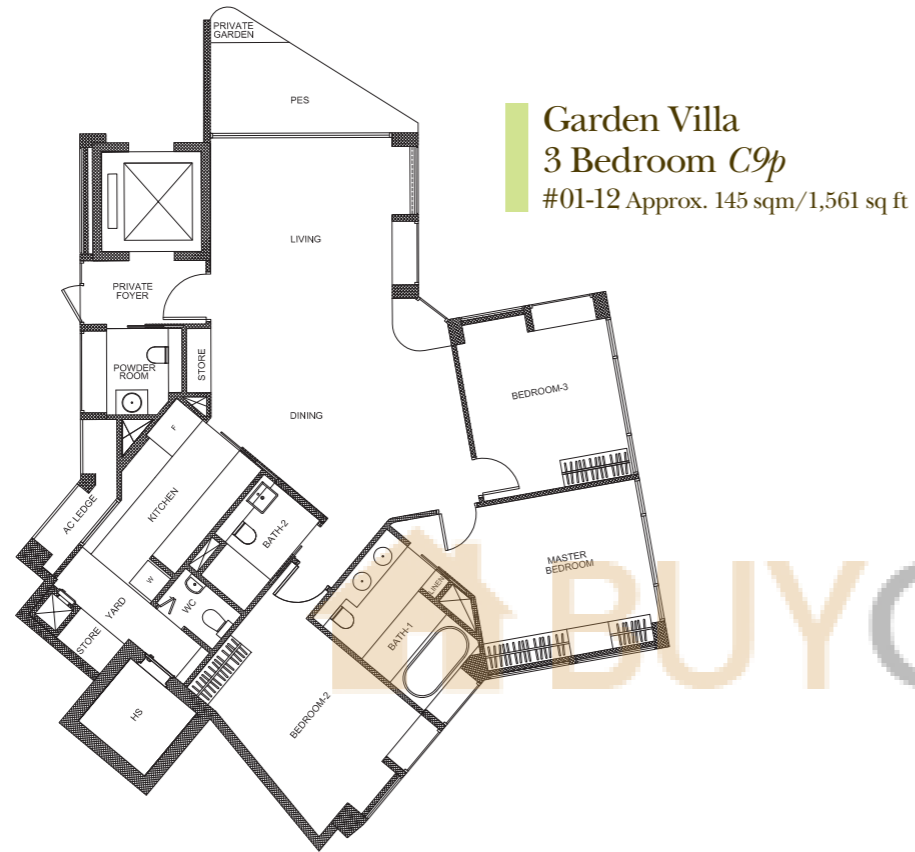


The above plans are not to scale and subject to any amendments as may be approved by the relevant authorities. All apartment areas are approximate of typical plans and are subject to final survey. The developer and its agents cannot be held liable for any inaccuracies. All external elevations/facades of the apartment including but not limited to sliding/swing glass doors, windows, bay windows, fixed glass panels, fixed timber panels, timber louvers, window panels, solid wall and/or any other features relevant to the facades are positioned, installed and/or subject to random rhythmic combination of architectural treatments. As such, the external elevations/facades/features/installations are modular and fluid and all apartments vary in some way or another.



Terrace Villa
3 Bedroom with roof terrace C8r
 #05-11 Approx. 328 sqm/3,531 sq ft

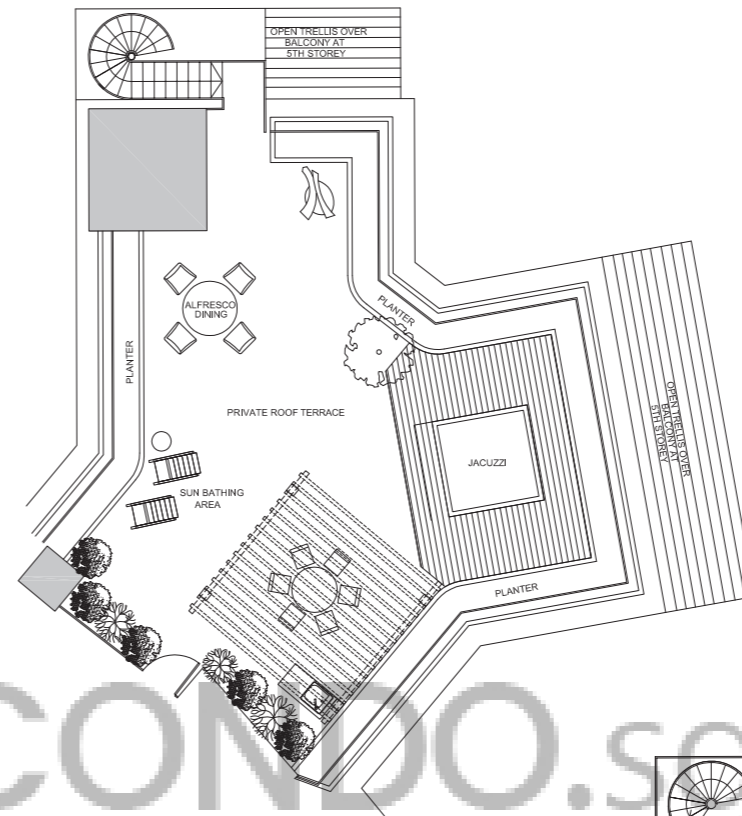




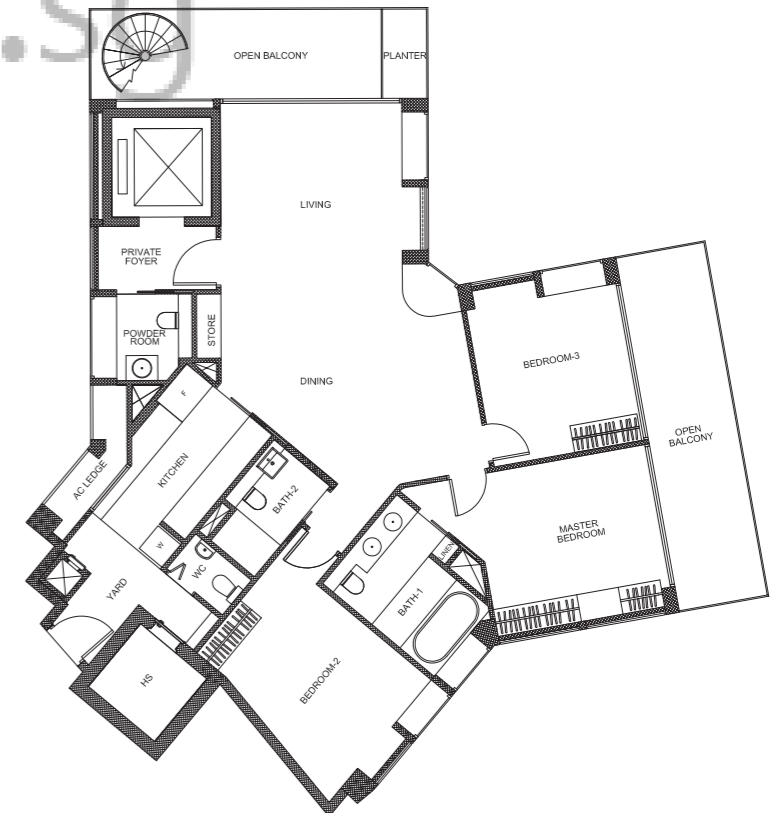
The above plans are not to scale and subject to any amendments as may be approved by the relevant authorities. All apartment areas are approximate of typical plans and are subject to final survey. The developer and its agents cannot be held liable for any inaccuracies. All external elevations/facades of the apartment including but not limited to sliding/swing glass doors, windows, bay windows, fixed glass panels, fixed timber panels, timber louvers, window panels, solid wall and/or any other features relevant to the facades are positioned, installed and/or subject to random rhythmic combination of architectural treatments. As such, the external elevations/facades/features/installations are modular and fluid and all apartments vary in some way or another.

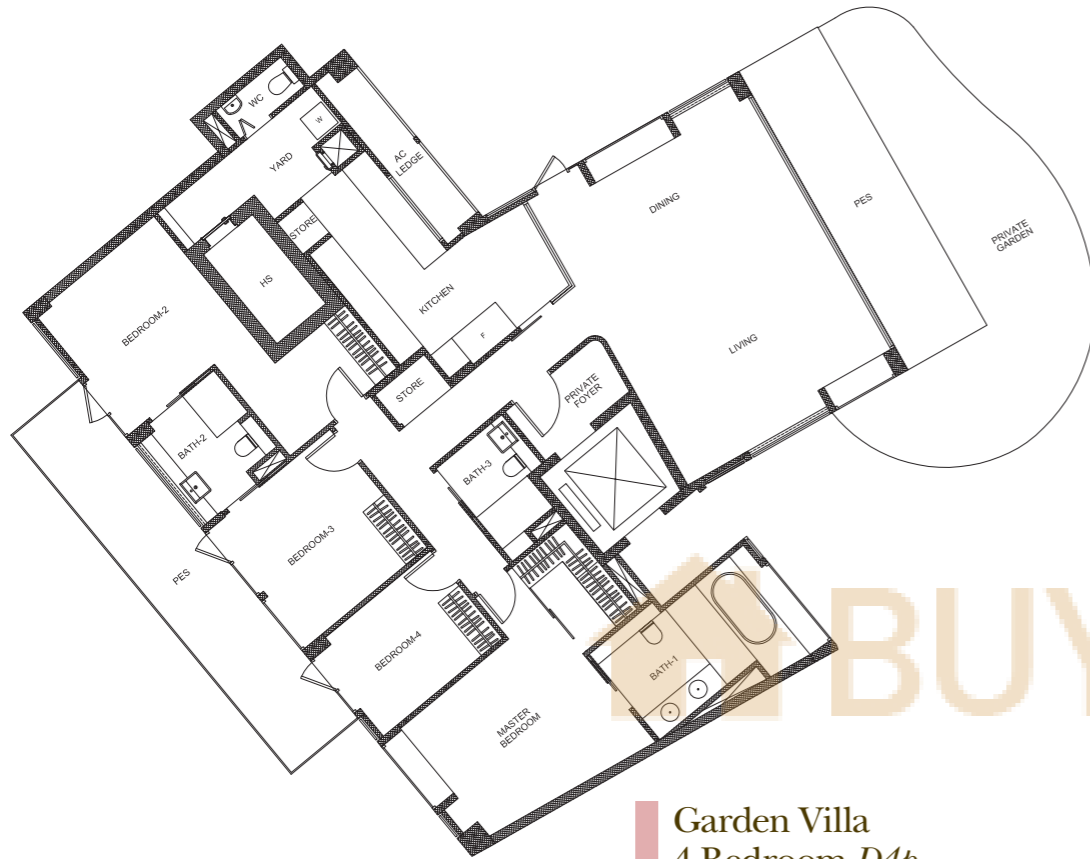


Intermediate Villa
3 Bedroom C9
#04-12 Approx. 170 sqm/1,830 sq ft

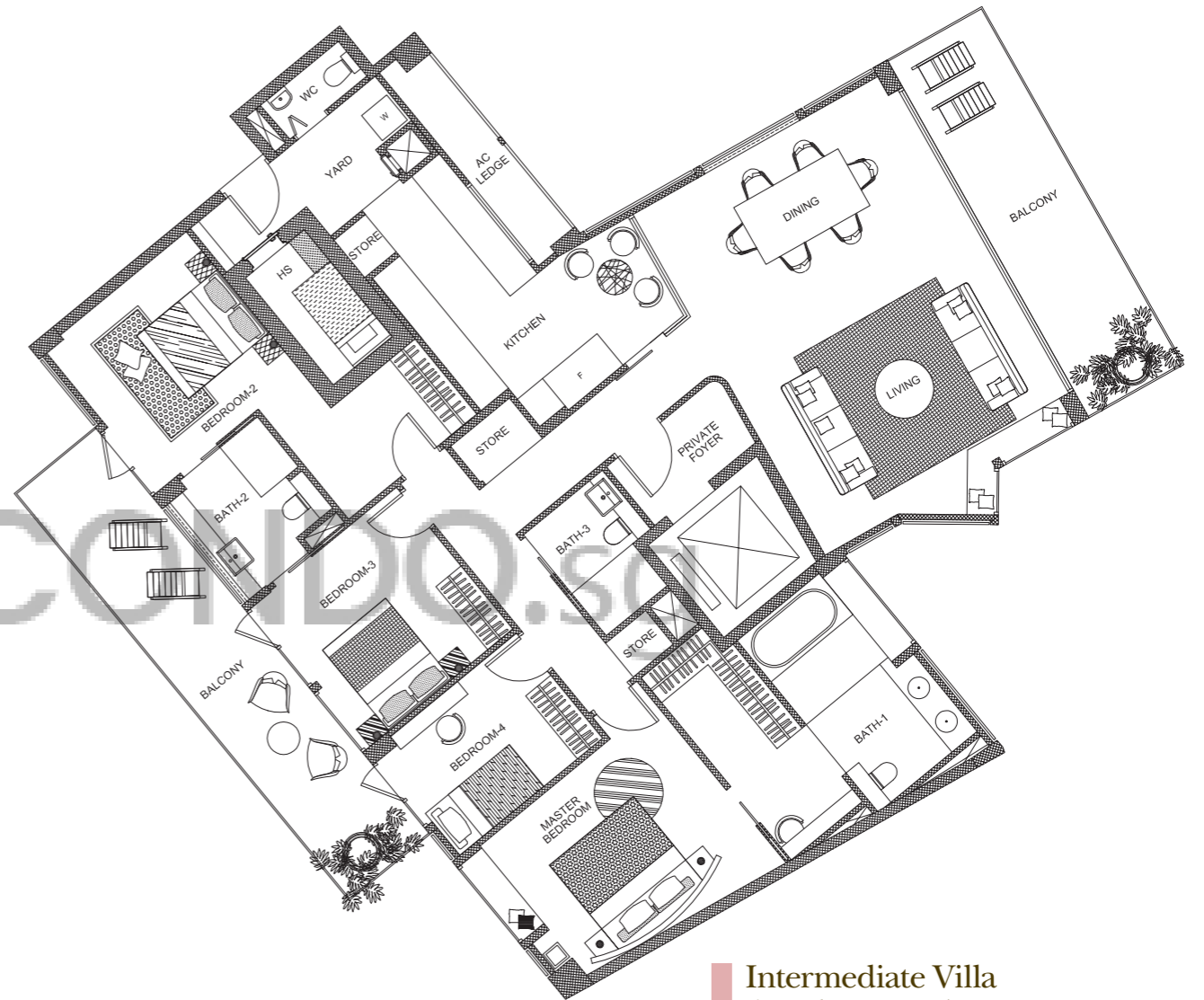


Terrace Villa
3 Bedroom with roof terrace C9r
#05-12 Approx. 295 sqm/3,175 sq ft

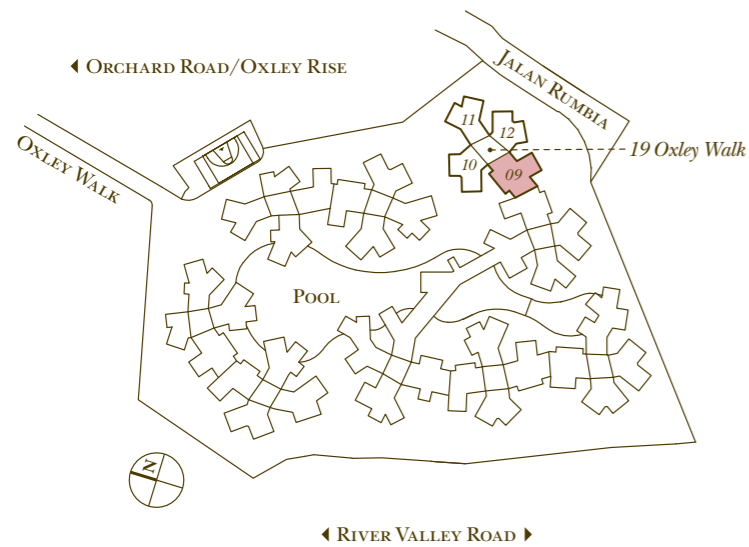




Garden Villa
4 Bedroom *D4p*
#01-09 Approx. 245 sqm/2,637 sq ft

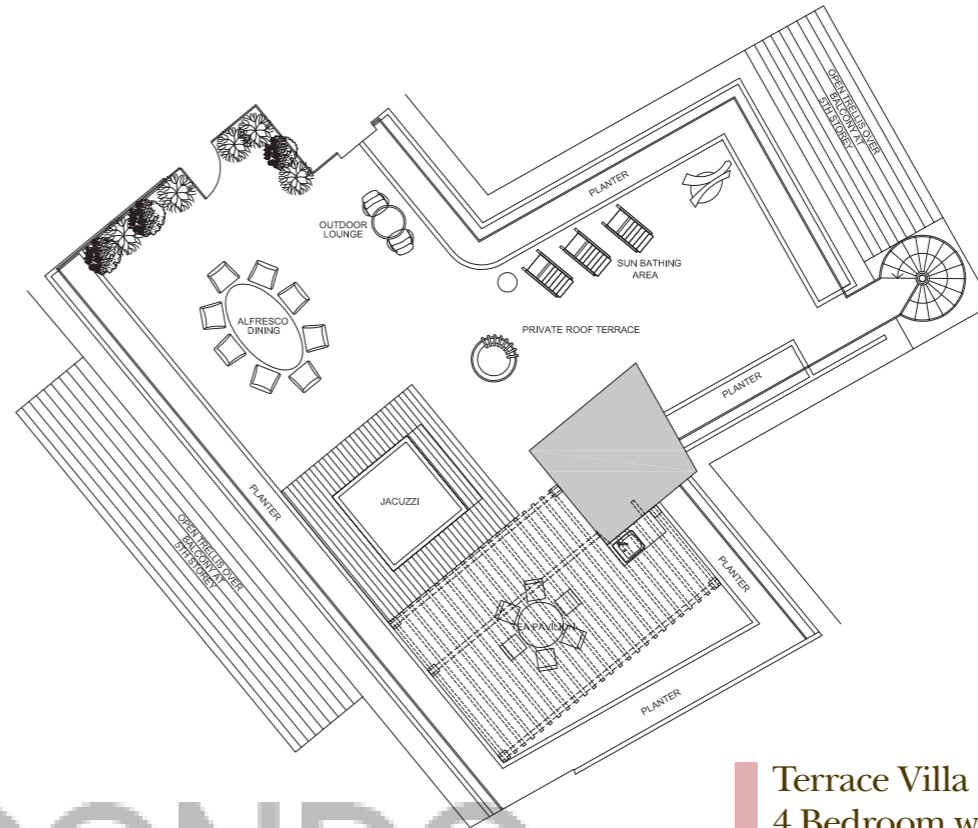


Intermediate Villa
4 Bedroom *D4*
#02-09/#04-09 Approx. 218 sqm/2,347 sq ft



The above plans are not to scale and subject to any amendments as may be approved by the relevant authorities. All apartment areas are approximate of typical plans and are subject to final survey. The developer and its agents cannot be held liable for any inaccuracies. All external elevations/facades of the apartment including but not limited to sliding/swing glass doors, windows, bay windows, fixed glass panels, fixed timber panels, timber louvers, window panels, solid wall and/or any other features relevant to the facades are positioned, installed and/or subject to random rhythmic combination of architectural treatments. As such, the external elevations/facades/features/installations are modular and fluid and all apartments vary in some way or another.

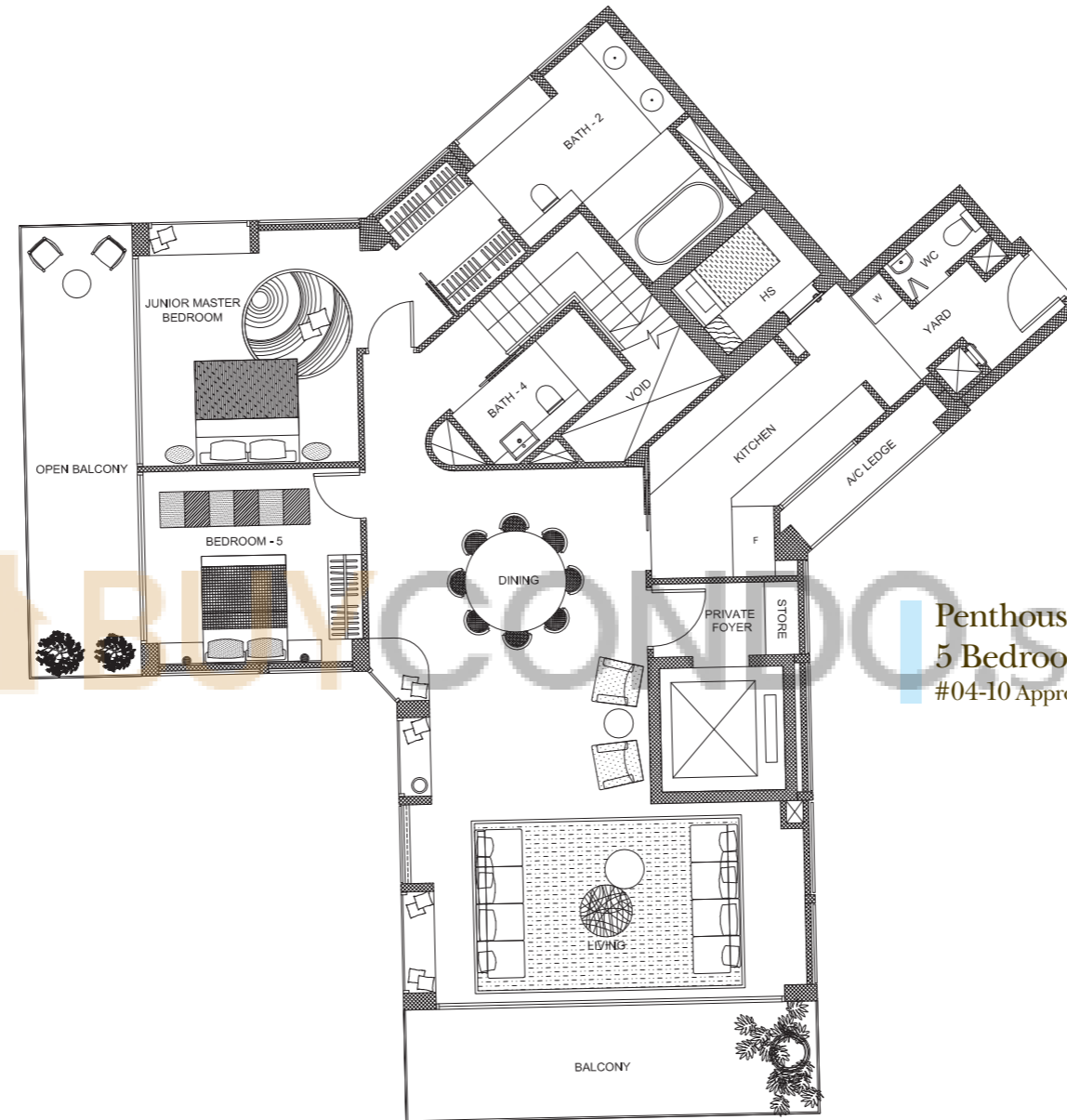
Intermediate Villa
4 Bedroom D4
#03-09 Approx. 218 sqm/2,347 sq ft



Terrace Villa
4 Bedroom with roof terrace D4r
#05-09 Approx. 380 sqm/4,090 sq ft

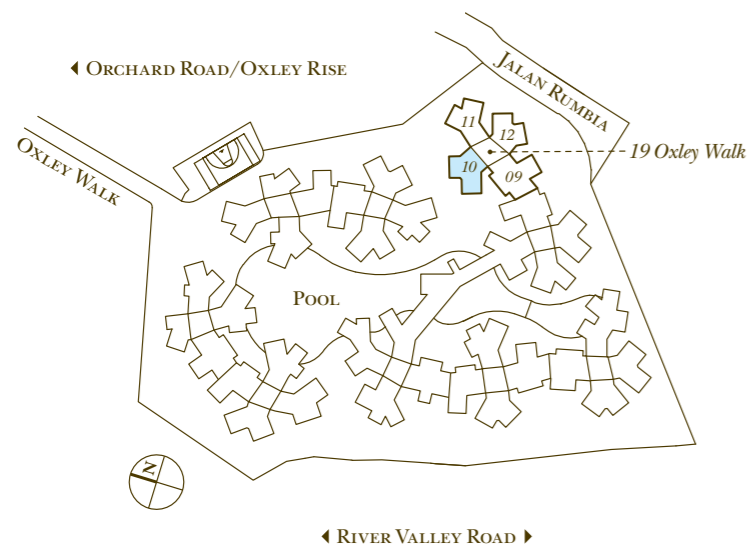


BUYCONDO.sg

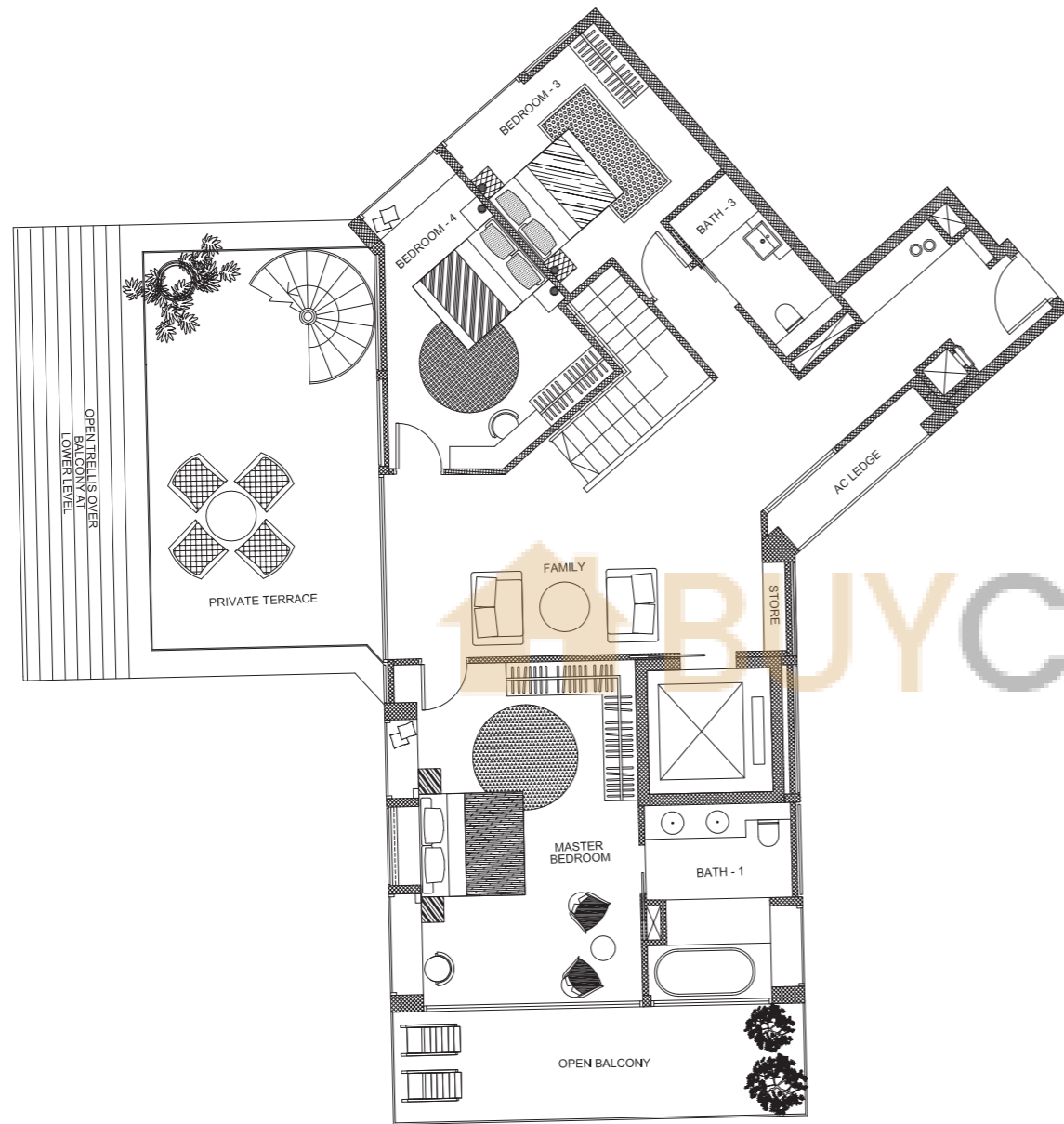


Penthouse Villa
5 Bedroom Duplex with roof terrace P1
#04-10 Approx. 465 sqm/5,005 sq ft

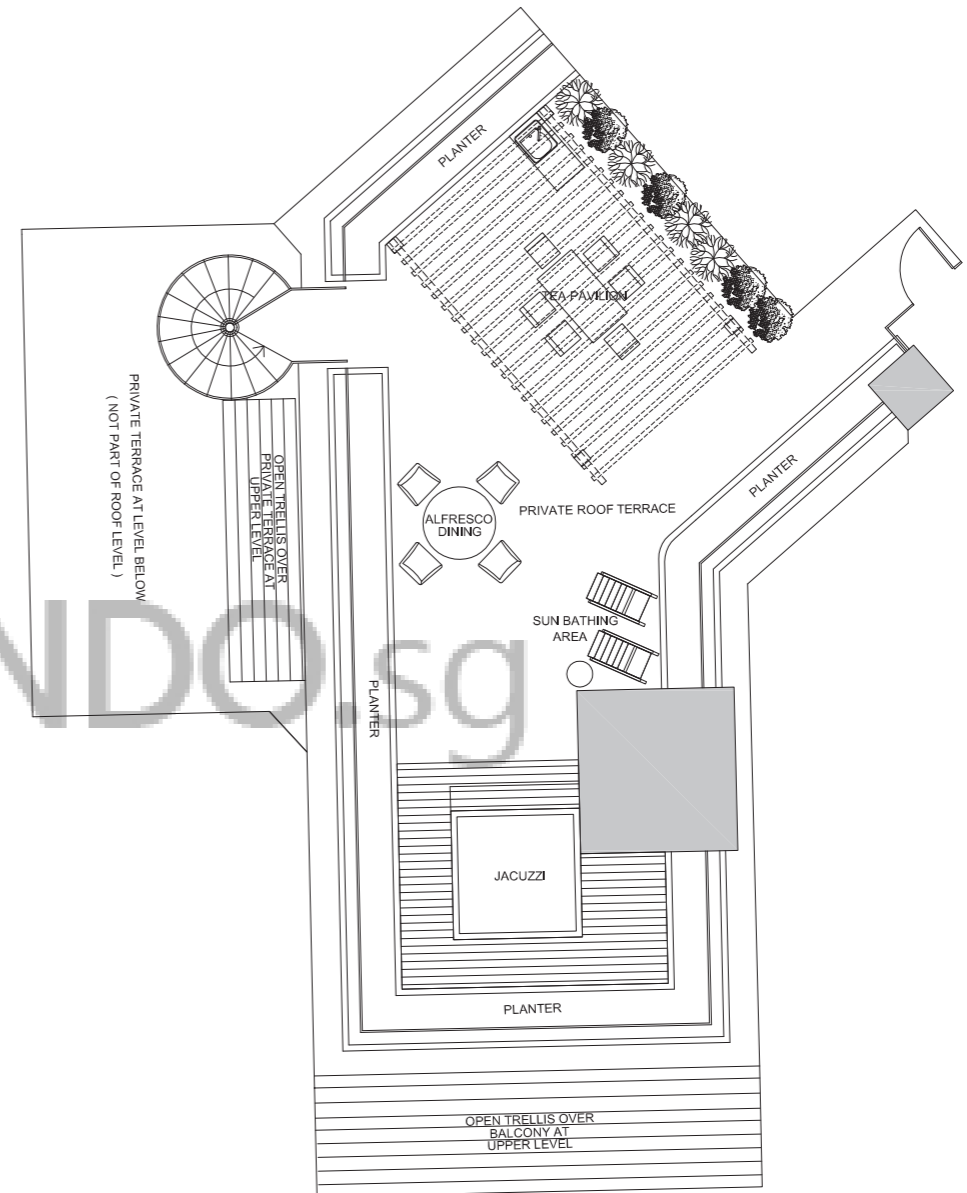
Lower Level



The above plans are not to scale and subject to any amendments as may be approved by the relevant authorities. All apartment areas are approximate of typical plans and are subject to final survey. The developer and its agents cannot be held liable for any inaccuracies. All external elevations/facades of the apartment including but not limited to sliding/swing glass doors, windows, bay windows, fixed glass panels, fixed timber panels, timber louvers, window panels, solid wall and/or any other features relevant to the facades are positioned, installed and/or subject to random rhythmic combination of architectural treatments. As such, the external elevations/facades/features/installations are modular and fluid and all apartments vary in some way or another.



Penthouse Villa Upper Level



Penthouse Villa Roof Level

 BUYCONDO.sg



WINGTAIASIA

SALES HOTLINE (65) 6380 3800 SHOWSUITE (65) 6782 3800

3 Killiney Road #10-01, Winsland House I, Singapore 239519

www.wingtaiasia.com.sg