

## TYPE C1

86 sqm / 926 sq ft

#02-08 to #04-08  
#06-08 to #08-08  
#10-08 to #12-08

#02-16 to #04-16  
#06-16 to #08-16  
#10-16 to #12-16

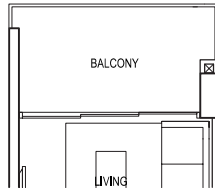
#02-24 to #04-24  
#06-24 to #08-24  
#10-24 to #12-24

#02-25 to #04-25 (mirror)  
#06-25 to #08-25 (mirror)  
#10-25 to #12-25 (mirror)

### TYPE C1 3 - BEDROOM

86 sqm / 926 sq ft

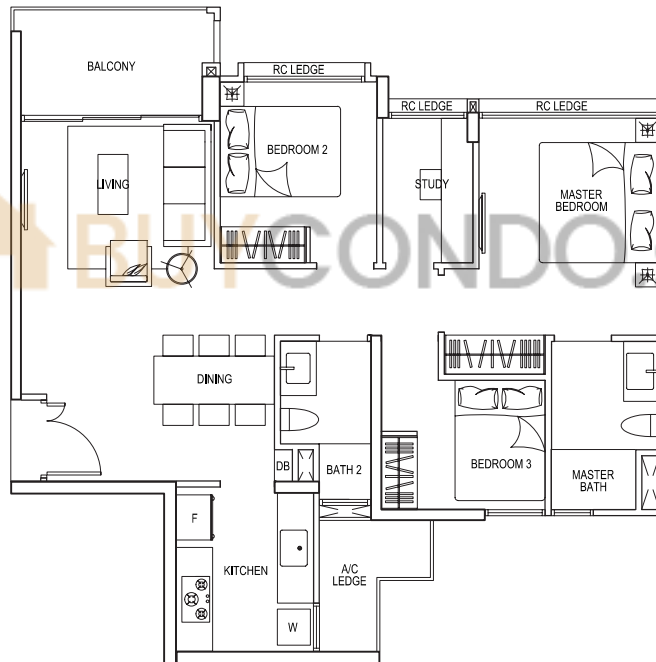
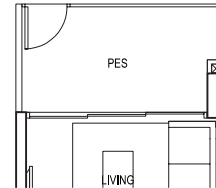
#05-08 #01-16 #01-24 #05-25 (mirror)  
#09-08 #05-16 #05-24 #09-25 (mirror)  
#09-16 #09-24



### TYPE C1p 3 - BEDROOM

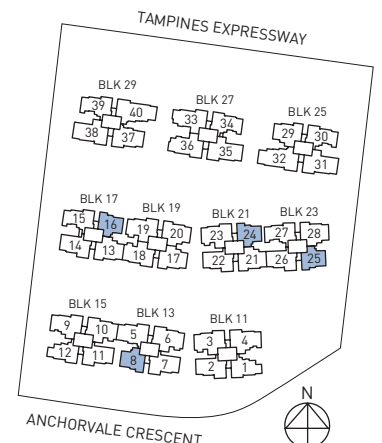
86 sqm / 926 sq ft

#01-08



window applicable to stack 25 only

Areas includes A/C ledge, Balcony, PES and Strata Void (where applicable). Orientations and facings will differ depending on the unit you are purchasing. Please refer to the key plan. All plans are not to scale and are subject to changes as may be approved by the relevant authorities. All floor areas are estimates and are subject to final survey.



# 3-BEDROOM

## TYPE C1A

89 sqm / 958 sq ft

#14-08

#15-08

#14-16

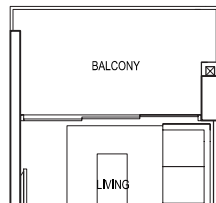
#15-16

#14-24

#15-24

#14-25 (mirror)

#15-25 (mirror)



### TYPE C1A 3 - BEDROOM

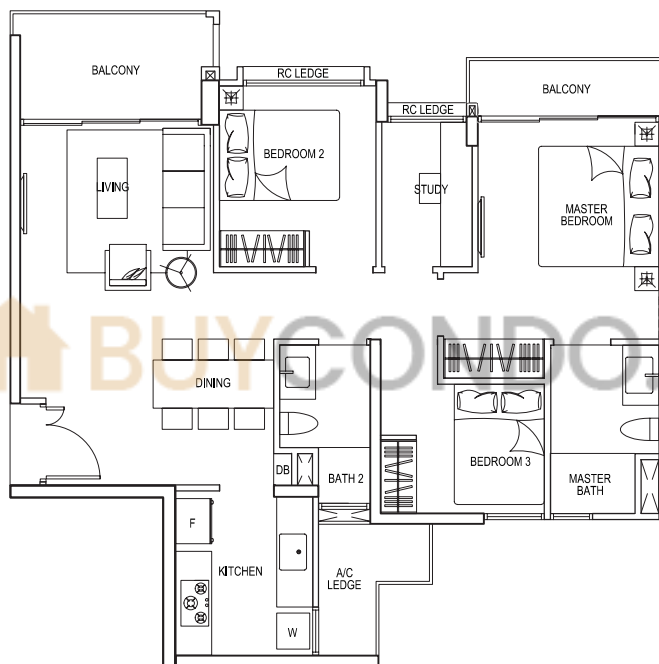
89 sqm / 958 sq ft

#13-08

#13-16

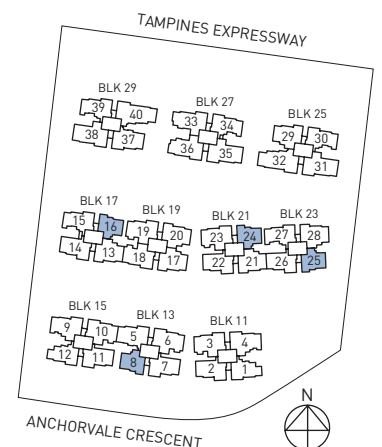
#13-24

#13-25 (mirror)



BUY CONDO . SG

Areas includes A/C ledge, Balcony, PES and Strata Void (where applicable). Orientations and facings will differ depending on the unit you are purchasing. Please refer to the key plan. All plans are not to scale and are subject to changes as may be approved by the relevant authorities. All floor areas are estimates and are subject to final survey.

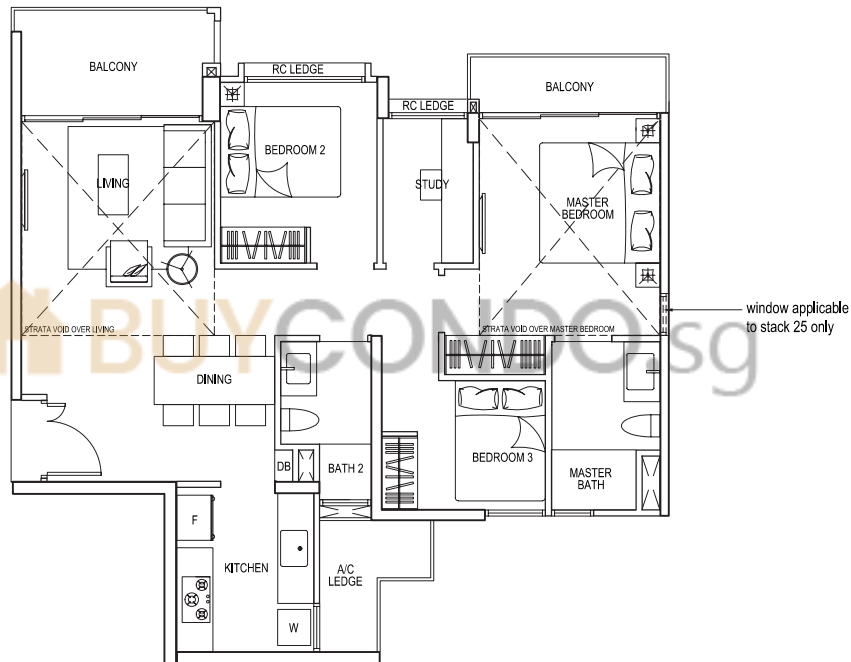


# 3-BEDROOM

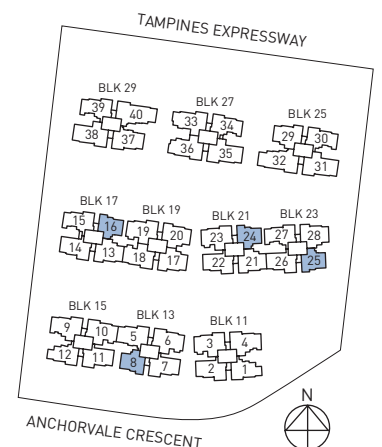
## TYPE C1PH

113 sqm / 1216 sq ft  
(Including Strata void area of approx. 24 sqm above  
living and master bedroom)

- #16-08
- #16-16
- #16-24
- #16-25 (mirror)



Areas includes A/C ledge, Balcony, PES and Strata Void (where applicable). Orientations and facings will differ depending on the unit you are purchasing. Please refer to the key plan. All plans are not to scale and are subject to changes as may be approved by the relevant authorities. All floor areas are estimates and are subject to final survey.



# 3-BEDROOM

## TYPE C2

92 sqm / 990 sq ft

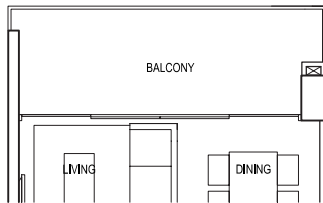
#02-01 to #04-01 (mirror)  
 #06-01 to #08-01 (mirror)  
 #10-01 to #12-01 (mirror)

#02-12 to #04-12  
 #06-12 to #08-12  
 #10-12 to #12-12

## TYPE C2 3 - BEDROOM

92 sqm / 990 sq ft

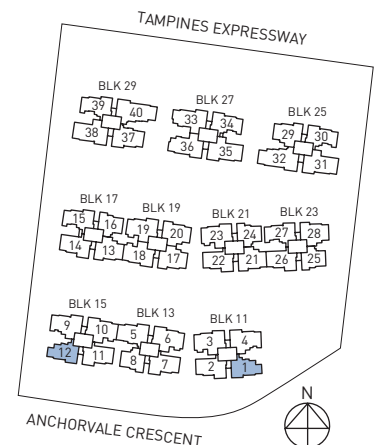
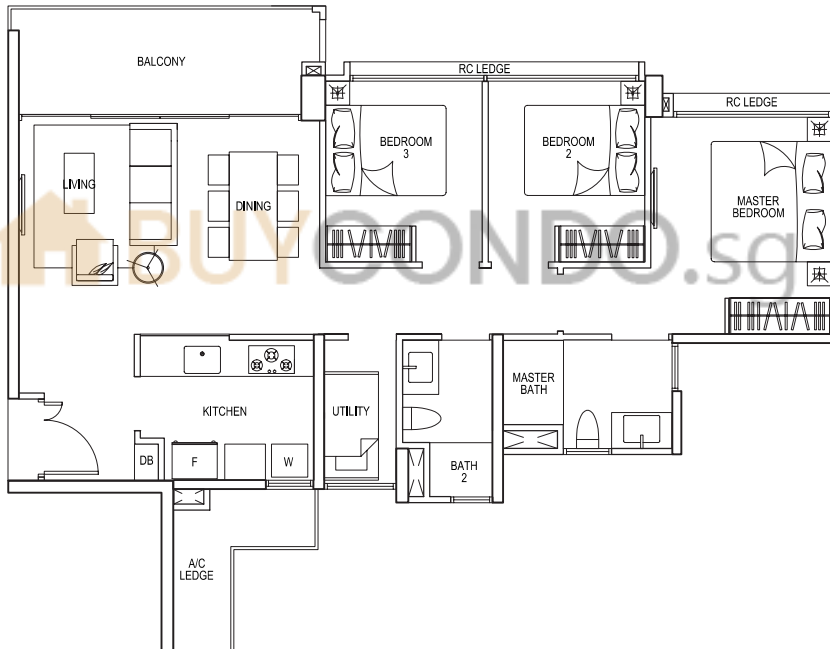
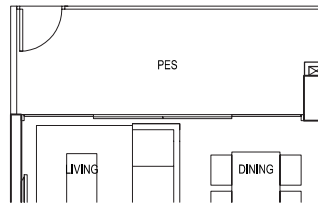
#05-01 (mirror) #05-12  
 #09-01 (mirror) #09-12



## TYPE C2p 3 - BEDROOM

92 sqm / 990 sq ft

#01-01 (mirror)  
 #01-12



Areas includes A/C ledge, Balcony, PES and Strata Void (where applicable). Orientations and facings will differ depending on the unit you are purchasing. Please refer to the key plan. All plans are not to scale and are subject to changes as may be approved by the relevant authorities. All floor areas are estimates and are subject to final survey.

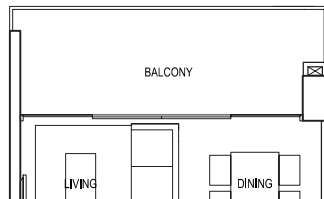
# 3-BEDROOM

## TYPE C2A

95 sqm / 1023 sq ft

#14-01 (mirror) #14-12

#15-01 (mirror) #15-12

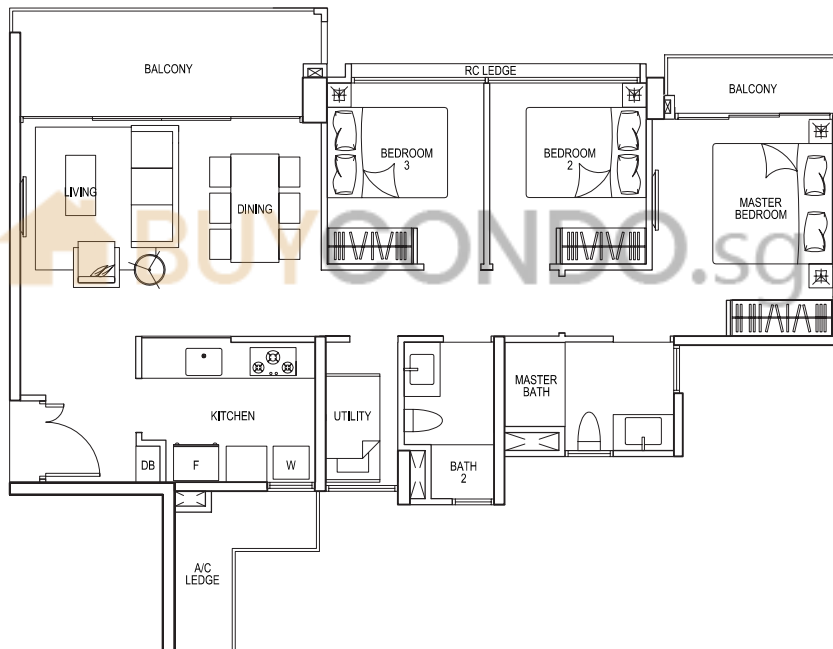


### TYPE C2A 3 - BEDROOM

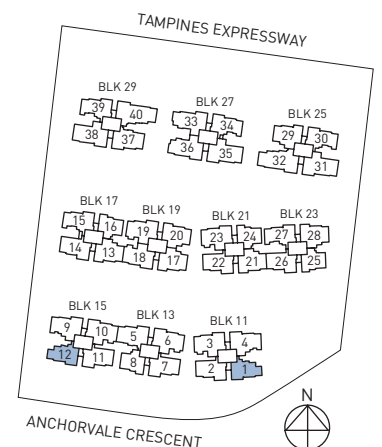
95 sqm / 1023 sq ft

#13-01 (mirror)

#13-12



Areas includes A/C ledge, Balcony, PES and Strata Void (where applicable). Orientations and facings will differ depending on the unit you are purchasing. Please refer to the key plan. All plans are not to scale and are subject to changes as may be approved by the relevant authorities. All floor areas are estimates and are subject to final survey.

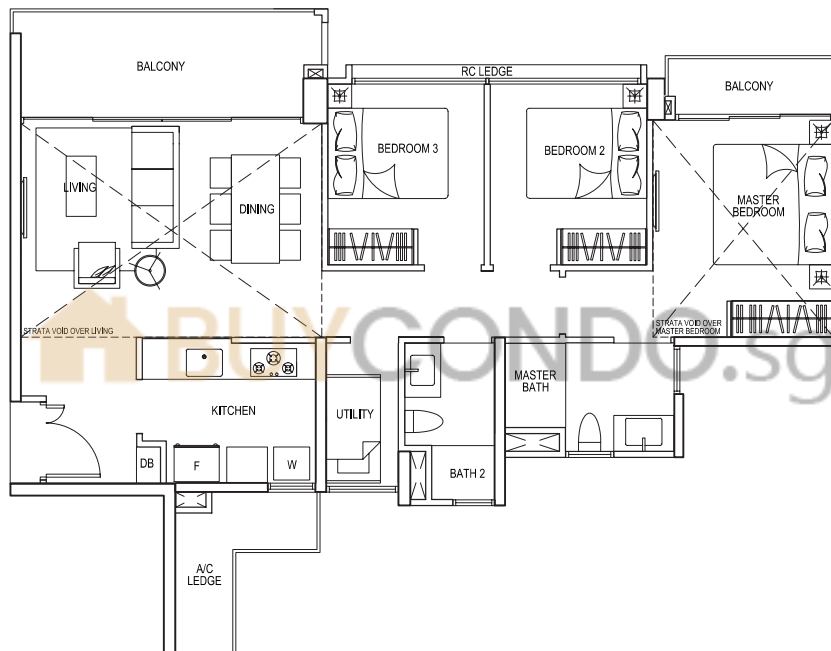


# 3-BEDROOM

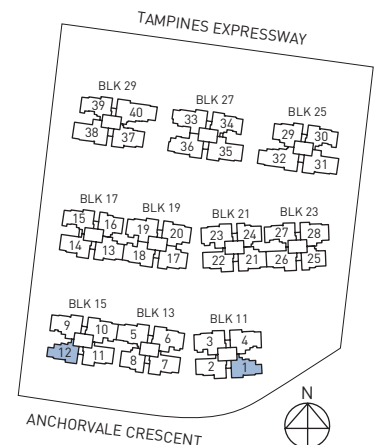
## TYPE C2PH

125 sqm / 1345 sq ft  
(Including Strata void area of approx. 30 sqm above  
living / dining and master bedroom)

#16-01 (mirror)  
#16-12



Areas includes A/C ledge, Balcony, PES and Strata Void (where applicable). Orientations and facings will differ depending on the unit you are purchasing. Please refer to the key plan. All plans are not to scale and are subject to changes as may be approved by the relevant authorities. All floor areas are estimates and are subject to final survey.



# 3-BEDROOM PREMIUM

## TYPE C3

99 sqm / 1066 sq ft

#02-02 to #04-02

#06-02 to #08-02

#10-02 to #12-02

#02-07 to #04-07 (mirror)

#06-07 to #08-07 (mirror)

#10-07 to #12-07 (mirror)

#02-11 to #04-11 (mirror)

#06-11 to #08-11 (mirror)

#10-11 to #12-11 (mirror)

#02-14 to #04-14

#06-14 to #08-14

#10-14 to #12-14

#02-22 to #04-22

#06-22 to #08-22

#10-22 to #12-22

#02-26 to #04-26

#06-26 to #08-26

#10-26 to #12-26

### TYPE C3 3 - BEDROOM PREMIUM

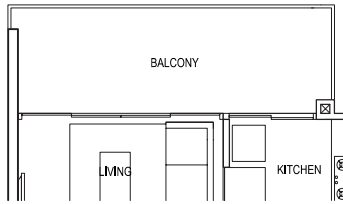
99 sqm / 1066 sq ft

#05-02 #05-11 (mirror) #05-22

#09-02 #09-11 (mirror) #09-22

#05-07 (mirror) #05-14 #05-26

#09-07 (mirror) #09-14 #09-26



### TYPE C3p 3 - BEDROOM PREMIUM

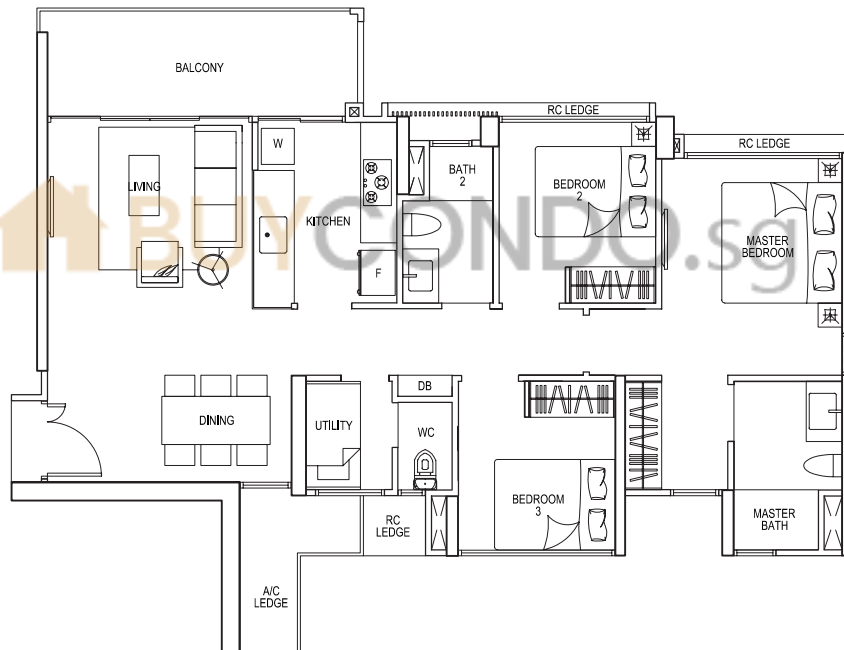
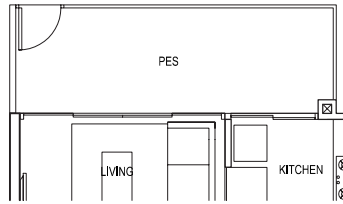
99 sqm / 1066 sq ft

#01-02 #01-22

#01-07 (mirror) #01-26

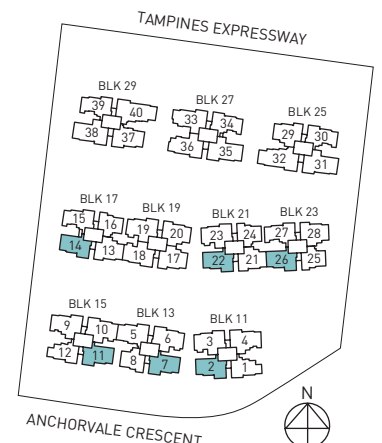
#01-11 (mirror)

#01-14



window applicable to stack 2, 7, 14, 22 only

Areas includes A/C ledge, Balcony, PES and Strata Void (where applicable). Orientations and facings will differ depending on the unit you are purchasing. Please refer to the key plan. All plans are not to scale and are subject to changes as may be approved by the relevant authorities. All floor areas are estimates and are subject to final survey.



# 3-BEDROOM PREMIUM

## TYPE C3A

102 sqm / 1098 sq ft

#14-02

#15-02

#14-07 (mirror)

#15-07 (mirror)

#14-11 (mirror)

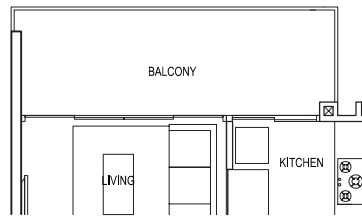
#15-11 (mirror)

#14-14

#15-14

#14-22

#15-22

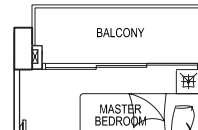


**TYPE C3A**  
**3 - BEDROOM PREMIUM**

102 sqm / 1098 sq ft

#13-02  
#13-07 (mirror)  
#13-11 (mirror)

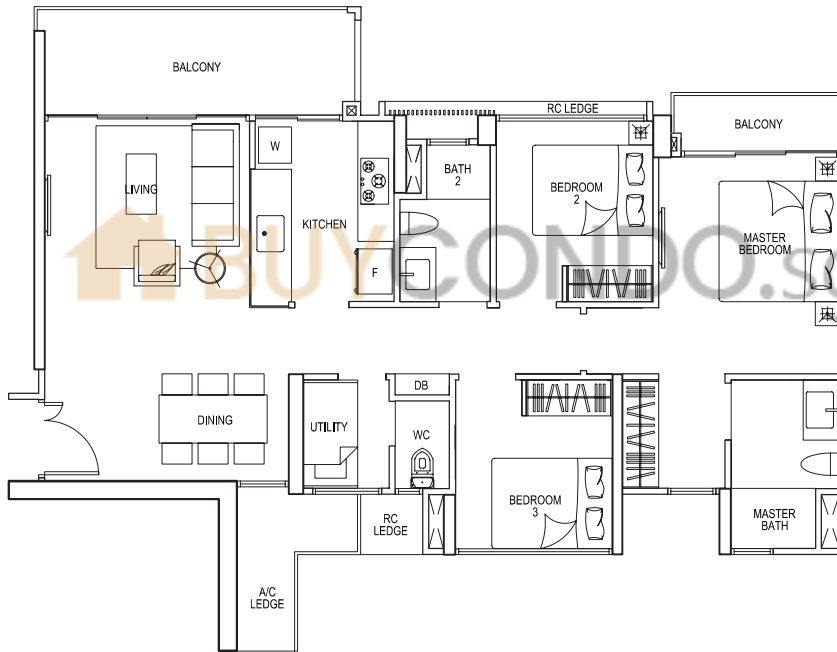
#13-14  
#13-22



**TYPE C3A**  
**3 - BEDROOM PREMIUM**

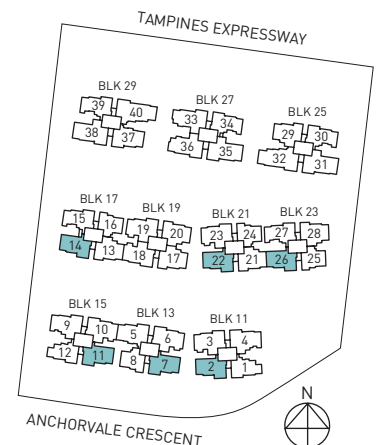
102 sqm / 1098 sq ft

#13-26  
#14-26  
#15-26



Window applicable to stack 2, 7, 14, 22 only

Areas includes A/C ledge, Balcony, PES and Strata Void (where applicable). Orientations and facings will differ depending on the unit you are purchasing. Please refer to the key plan. All plans are not to scale and are subject to changes as may be approved by the relevant authorities. All floor areas are estimates and are subject to final survey.





# 3-BEDROOM PREMIUM

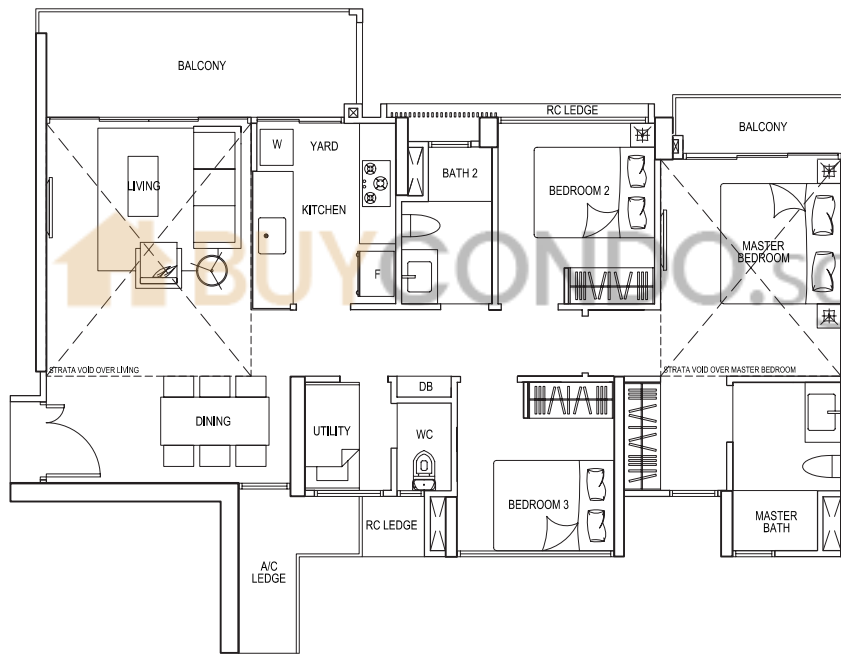
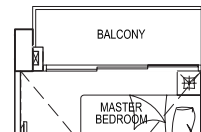
## TYPE C3PH

129 sqm / 1389 sq ft  
 (Including Strata void area of approx. 27 sqm above  
 living and master bedroom)

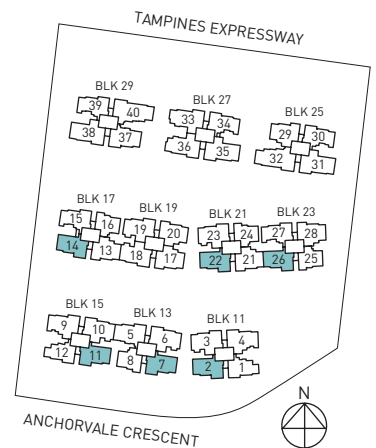
- #16-02                    #16-22
- #16-07 (mirror)
- #16-11 (mirror)
- #16-14

## TYPE C3PH 3 - BEDROOM PREMIUM

129 sqm / 1389 sq ft  
 (Including Strata void area of approx. 27 sqm  
 above living and master bedroom)  
 #16-26



window applicable  
 to stack 2, 7, 14, 22  
 only



Areas includes A/C ledge, Balcony, PES and Strata Void (where applicable). Orientations and facings will differ depending on the unit you are purchasing. Please refer to the key plan. All plans are not to scale and are subject to changes as may be approved by the relevant authorities. All floor areas are estimates and are subject to final survey.

# 3-BEDROOM PREMIUM

## TYPE C4

98 sqm / 1055 sq ft

#02-15 to #04-15 (mirror)  
 #06-15 to #08-15 (mirror)  
 #10-15 to #12-15 (mirror)

#02-30 to #05-30  
 #07-30 to #09-30  
 #11-30 to #13-30

#02-39 to #05-39 (mirror)  
 #07-39 to #09-39 (mirror)  
 #11-39 to #13-39 (mirror)

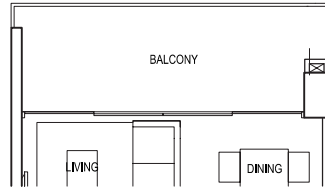
#02-27 to #04-27 (mirror)  
 #06-27 to #08-27 (mirror)  
 #10-27 to #12-27 (mirror)

#02-34 to #05-34  
 #07-34 to #09-34  
 #11-34 to #13-34

## TYPE C4 3 - BEDROOM PREMIUM

98 sqm / 1055 sq ft

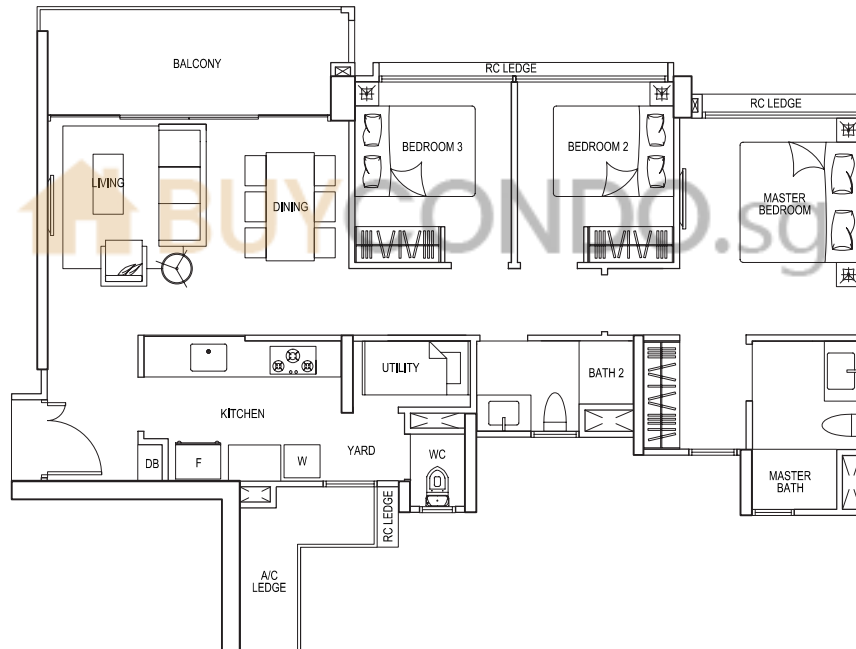
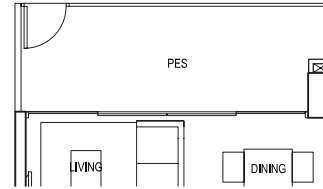
#01-15 (mirror)	#01-27 (mirror)	#06-30	#06-34	#06-39 (mirror)
#05-15 (mirror)	#05-27 (mirror)	#10-30	#10-34	#10-39 (mirror)
#09-15 (mirror)	#09-27 (mirror)			



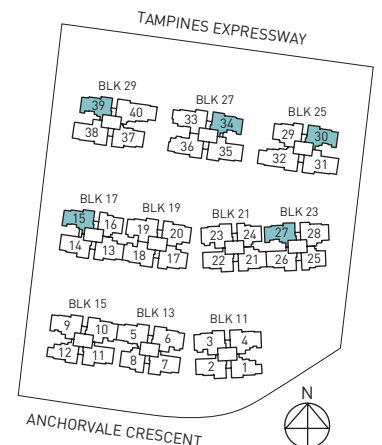
## TYPE C4p 3 - BEDROOM PREMIUM

98 sqm / 1055 sq ft

#01-30  
 #01-34  
 #01-39 (mirror)



Window applicable to stack 15, 30, 34, 39 only



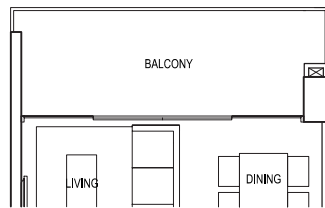
Areas includes A/C ledge, Balcony, PES and Strata Void (where applicable). Orientations and facings will differ depending on the unit you are purchasing. Please refer to the key plan. All plans are not to scale and are subject to changes as may be approved by the relevant authorities. All floor areas are estimates and are subject to final survey.

# 3-BEDROOM PREMIUM

## TYPE C4A

101 sqm / 1087 sq ft

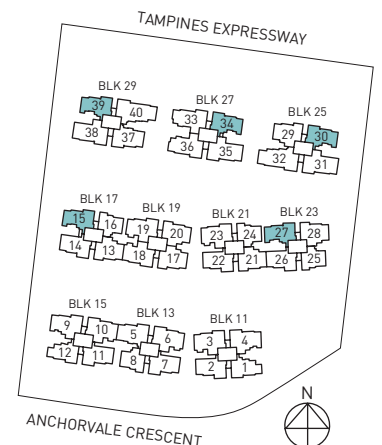
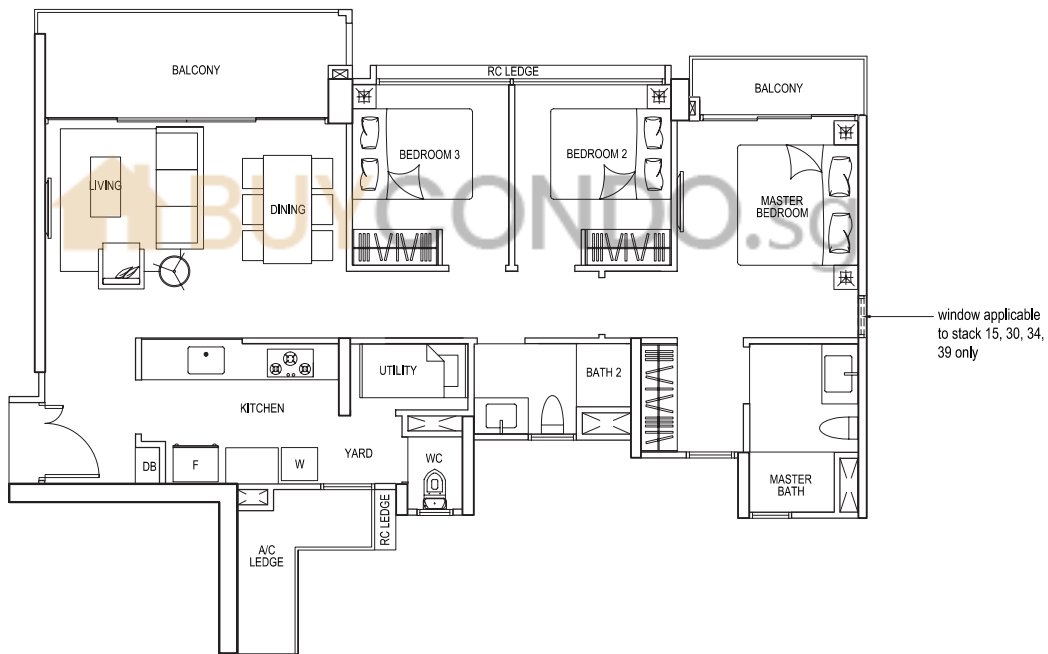
#14-15 (mirror)    #14-27 (mirror)    #15-30    #15-34    #15-39 (mirror)  
 #15-15 (mirror)    #15-27 (mirror)    #16-30    #16-34    #16-39 (mirror)



### TYPE C4A 3 - BEDROOM PREMIUM

101 sqm / 1087 sq ft

#13-15 (mirror)  
 #13-27 (mirror)  
 #14-30  
 #14-34  
 #14-39 (mirror)



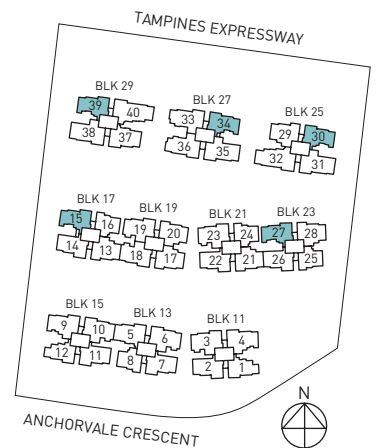
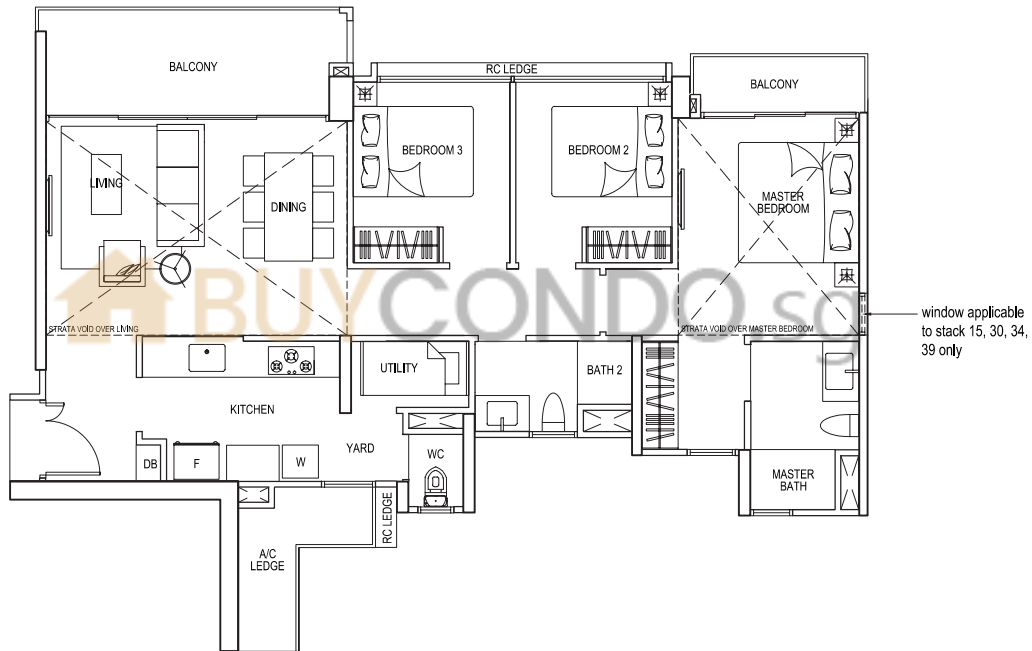
Areas includes A/C ledge, Balcony, PES and Strata Void (where applicable). Orientations and facings will differ depending on the unit you are purchasing. Please refer to the key plan. All plans are not to scale and are subject to changes as may be approved by the relevant authorities. All floor areas are estimates and are subject to final survey.

# 3-BEDROOM PREMIUM

## TYPE C4PH

131 sqm / 1410 sq ft  
 (Including Strata void area of approx. 30 sqm above  
 living / dining and master bedroom)

- #16-15 (mirror)    #17-30
- #16-27 (mirror)    #17-34
- #17-39 (mirror)



Areas includes A/C ledge, Balcony, PES and Strata Void (where applicable). Orientations and facings will differ depending on the unit you are purchasing. Please refer to the key plan. All plans are not to scale and are subject to changes as may be approved by the relevant authorities. All floor areas are estimates and are subject to final survey.

# 3-BEDROOM COSPACE

## TYPE CS3

115 sqm / 1238 sq ft

#02-03 to #04-03 (mirror)  
 #06-03 to #08-03 (mirror)  
 #10-03 to #12-03 (mirror)

#02-06 to #04-06  
 #06-06 to #08-06  
 #10-06 to #12-06

#02-10 to #04-10  
 #06-10 to #08-10  
 #10-10 to #12-10

#02-18 to #04-18  
 #06-18 to #08-18  
 #10-18 to #12-18

#02-19 to #04-19 (mirror)  
 #06-19 to #08-19 (mirror)  
 #10-19 to #12-19 (mirror)

#02-23 to #04-23 (mirror)  
 #06-23 to #08-23 (mirror)  
 #10-23 to #12-23 (mirror)

## TYPE CS3 3 - BEDROOM COSPACE

115 sqm / 1238 sq ft

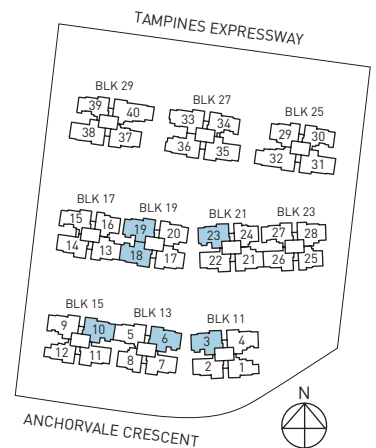
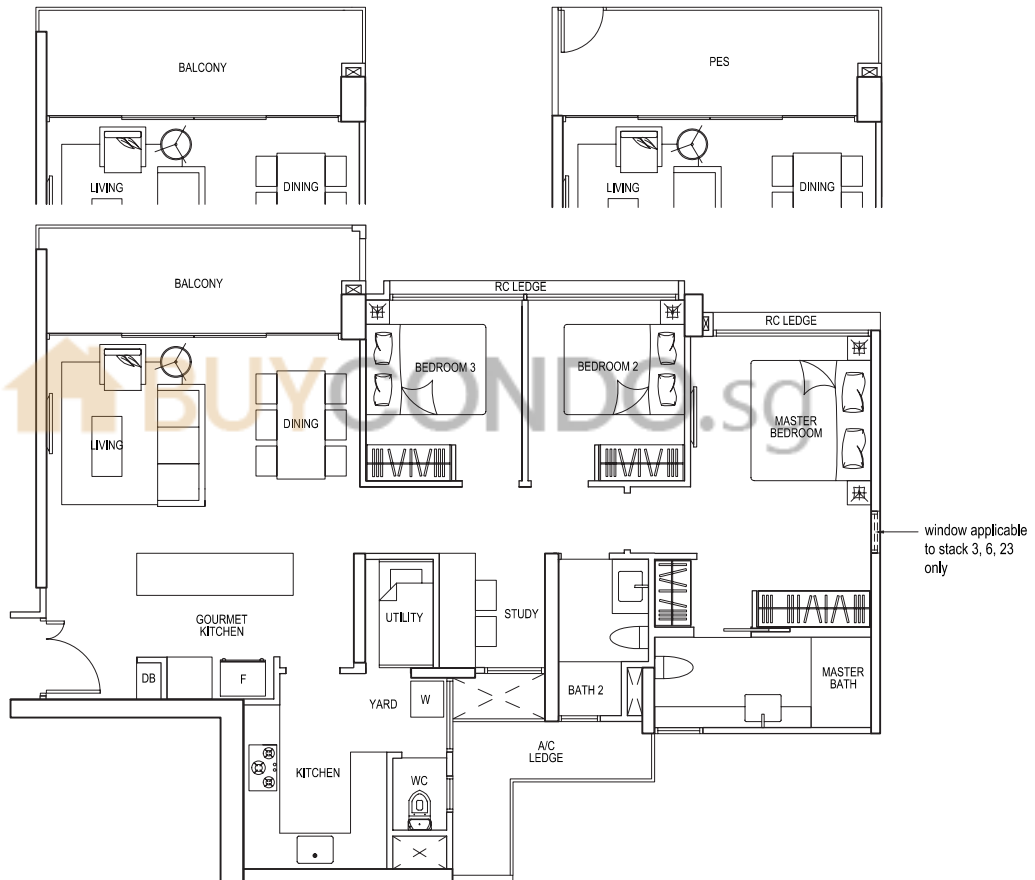
#05-03 (mirror) #05-10 #01-19 (mirror)  
 #09-03 (mirror) #09-10 #05-19 (mirror)  
 #09-19 (mirror)

#05-06 #05-18 #01-23 (mirror)  
 #09-06 #09-18 #05-23 (mirror)  
 #09-23 (mirror)

## TYPE CS3p 3 - BEDROOM COSPACE

115 sqm / 1238 sq ft

#01-03 (mirror)  
 #01-06  
 #01-10  
 #01-18



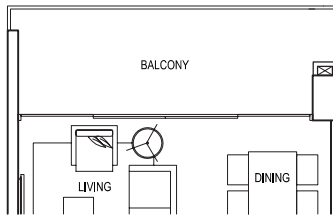
Areas includes A/C ledge, Balcony, PES and Strata Void (where applicable). Orientations and facings will differ depending on the unit you are purchasing. Please refer to the key plan. All plans are not to scale and are subject to changes as may be approved by the relevant authorities. All floor areas are estimates and are subject to final survey.

# 3-BEDROOM COSPACE

## TYPE CS3A

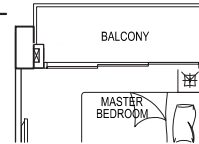
118 sqm / 1270 sq ft

#14-03 (mirror) #14-06 #14-19 (mirror) #14-23 (mirror)  
 #15-03 (mirror) #15-06 #15-19 (mirror) #15-23 (mirror)



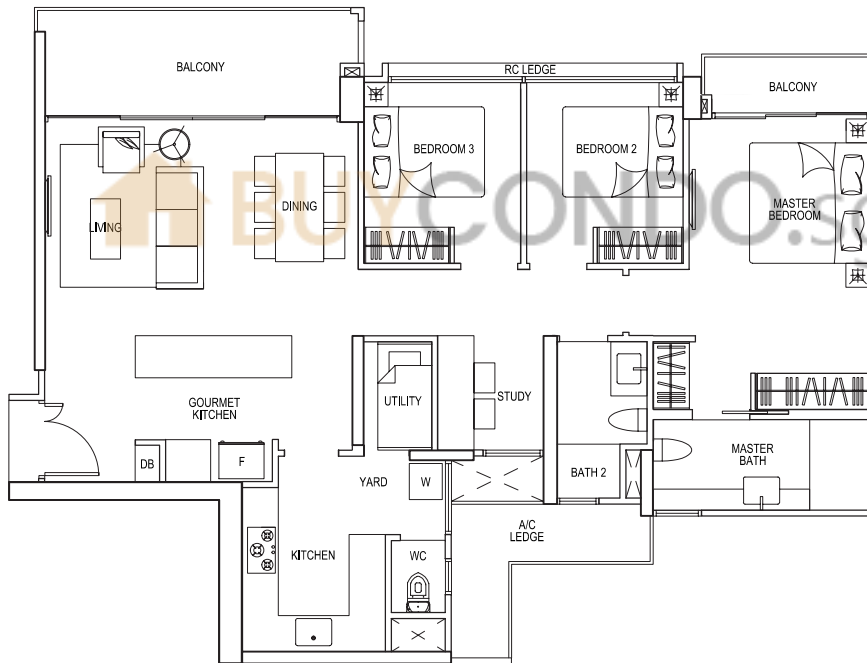
### TYPE CS3A 3 - BEDROOM COSPACE

118 sqm / 1270 sq ft  
 #13-03 (mirror) #13-19 (mirror)  
 #13-06 #13-23 (mirror)

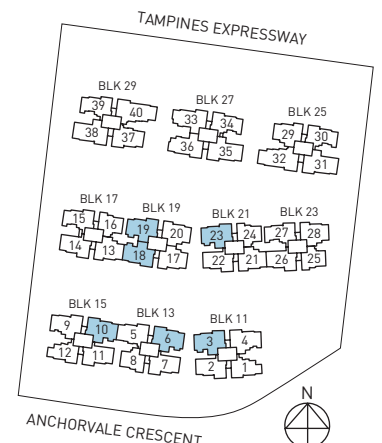


### TYPE CS3A 3 - BEDROOM COSPACE

118 sqm / 1270 sq ft  
 #13-10 #13-18  
 #14-10 #14-18  
 #15-10 #15-18



window applicable to stack 3, 6, 23 only



Areas includes A/C ledge, Balcony, PES and Strata Void (where applicable). Orientations and facings will differ depending on the unit you are purchasing. Please refer to the key plan. All plans are not to scale and are subject to changes as may be approved by the relevant authorities. All floor areas are estimates and are subject to final survey.

# 3-BEDROOM COSPACE

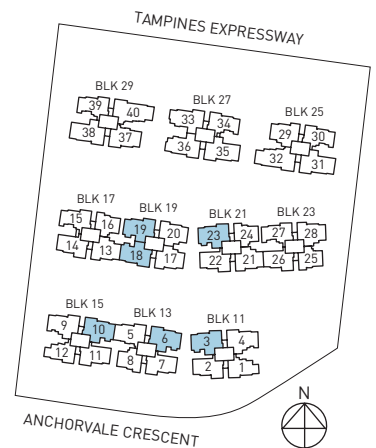
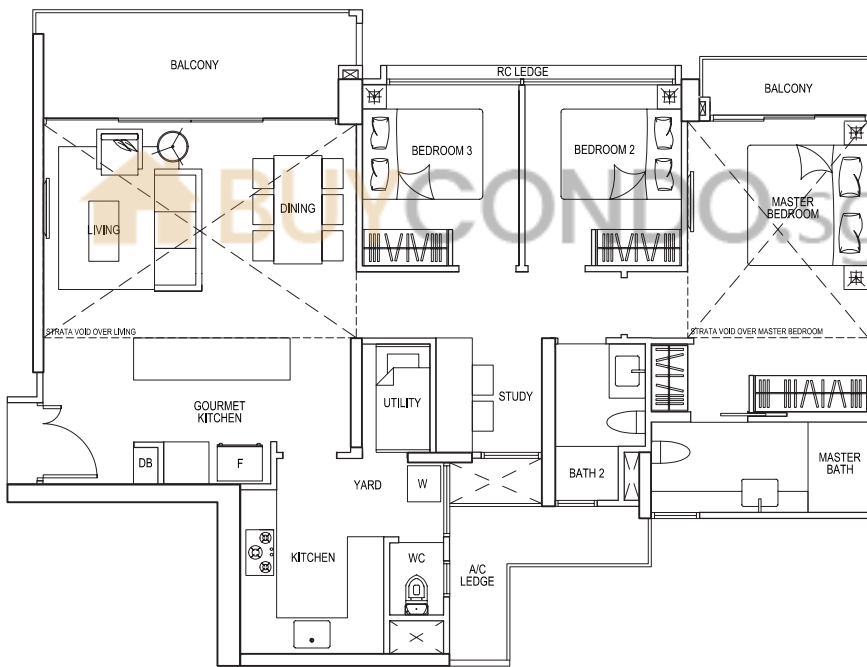
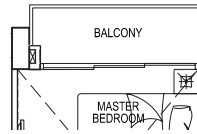
## TYPE CS3PH

149 sqm / 1604 sq ft  
 (Including Strata void area of approx. 31 sqm above  
 living / dining and master bedroom)

#16-03 (mirror) #16-19 (mirror)  
 #16-06 #16-23 (mirror)

### TYPE CS3PH 3 - BEDROOM COSPACE

149 sqm / 1604 sq ft  
 (Including Strata void area of approx. 31 sqm above  
 living / dining and master bedroom)  
 #16-10 #16-18



Areas includes A/C ledge, Balcony, PES and Strata Void (where applicable). Orientations and facings will differ depending on the unit you are purchasing. Please refer to the key plan. All plans are not to scale and are subject to changes as may be approved by the relevant authorities. All floor areas are estimates and are subject to final survey.

# 4-BEDROOM

## TYPE D1

105 sqm / 1130 sq ft

#02-13 to #04-13 (mirror)  
#06-13 to #08-13 (mirror)  
#10-13 to #12-13 (mirror)

#02-17 to #04-17 (mirror)  
#06-17 to #08-17 (mirror)  
#10-17 to #12-17 (mirror)

#02-20 to #04-20  
#06-20 to #08-20  
#10-20 to #12-20

#02-21 to #04-21 (mirror)  
#06-21 to #08-21 (mirror)  
#10-21 to #12-21 (mirror)

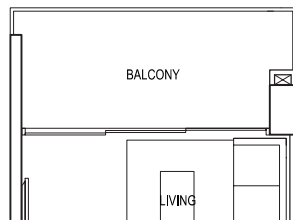
#02-28 to #04-28  
#06-28 to #08-28  
#10-28 to #12-28

#02-29 to #05-29 (mirror)  
#07-29 to #09-29 (mirror)  
#11-29 to #13-29 (mirror)

## TYPE D1 4 - BEDROOM

105 sqm / 1130 sq ft

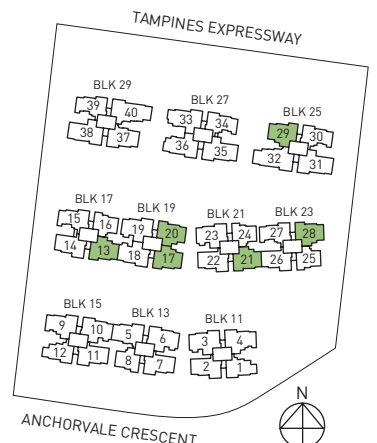
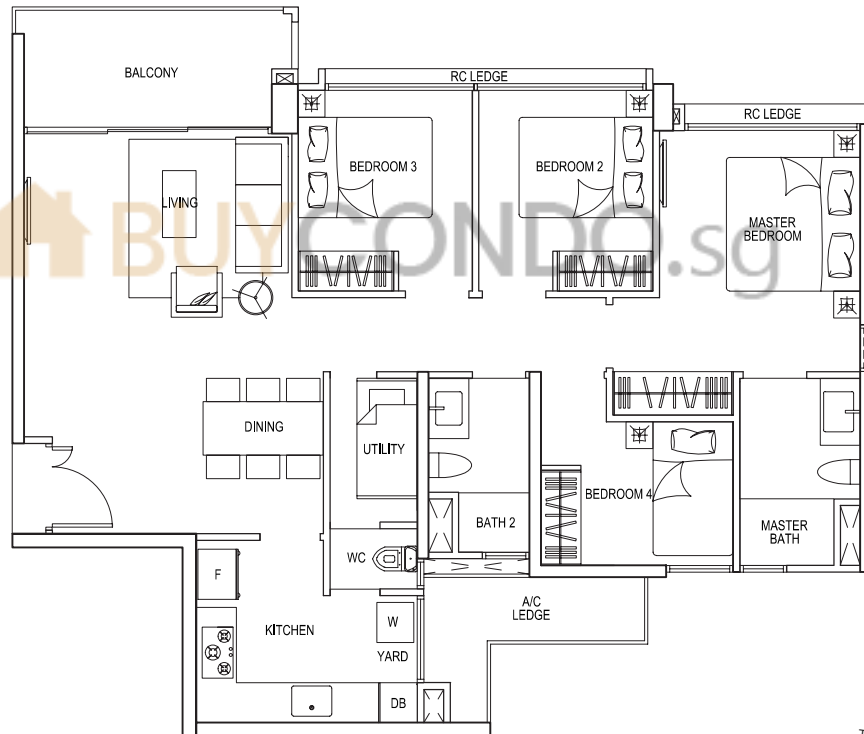
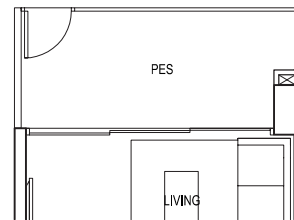
#05-13 (mirror) #05-17 (mirror) #01-20 #05-21 (mirror)  
#09-13 (mirror) #09-17 (mirror) #05-20 #09-21 (mirror)  
#01-28 #06-29 (mirror) #09-20  
#05-28 #10-29 (mirror)  
#09-28



## TYPE D1p 4 - BEDROOM

105 sqm / 1130 sq ft

#01-13 (mirror) #01-21 (mirror)  
#01-17 (mirror) #01-29 (mirror)



Areas includes A/C ledge, Balcony, PES and Strata Void (where applicable). Orientations and facings will differ depending on the unit you are purchasing. Please refer to the key plan. All plans are not to scale and are subject to changes as may be approved by the relevant authorities. All floor areas are estimates and are subject to final survey.



# 4-BEDROOM

## TYPE D1A

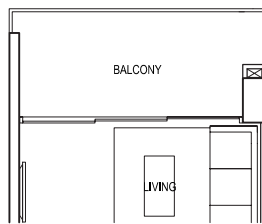
108 sqm / 1163 sq ft

#14-17 (mirror)  
#15-17 (mirror)

#14-20  
#15-20

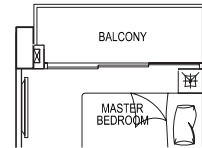
#14-28  
#15-28

#15-29 (mirror)  
#16-29 (mirror)



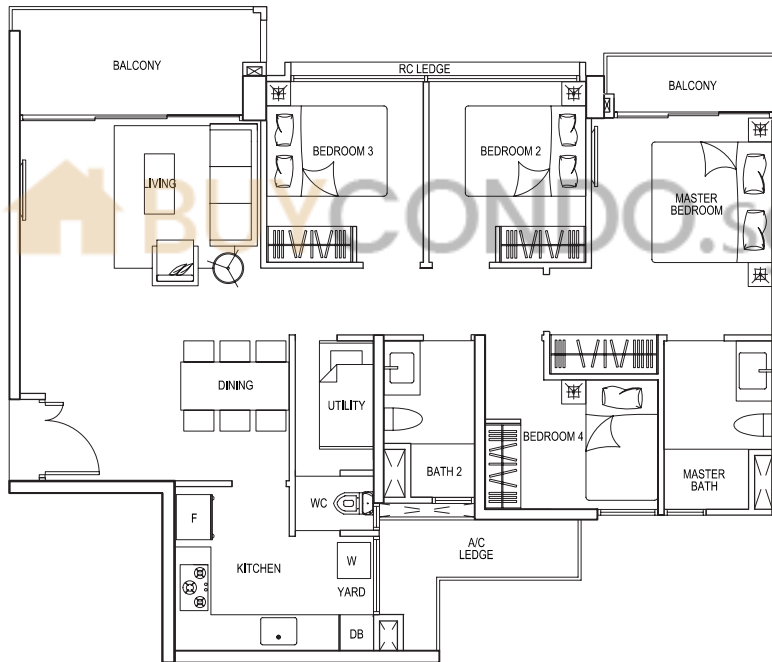
### TYPE D1A 4 - BEDROOM

108 sqm / 1163 sq ft  
#13-17 (mirror)  
#13-20  
#13-28  
#14-29 (mirror)



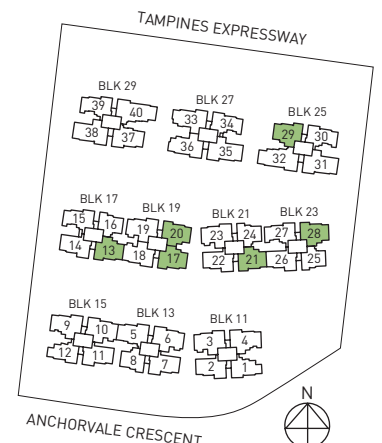
### TYPE D1A 4 - BEDROOM

108 sqm / 1163 sq ft  
#13-13 (mirror) #13-21 (mirror)  
#14-13 (mirror) #14-21 (mirror)  
#15-13 (mirror) #15-21 (mirror)



Window applicable to stack 17, 20, 28, 29 only

Areas includes A/C ledge, Balcony, PES and Strata Void (where applicable). Orientations and facings will differ depending on the unit you are purchasing. Please refer to the key plan. All plans are not to scale and are subject to changes as may be approved by the relevant authorities. All floor areas are estimates and are subject to final survey.



# 4-BEDROOM

## TYPE D1PH

135 sqm / 1453 sq ft  
(Including Strata void area of approx. 27 sqm above  
living and master bedroom)

#16-17 (mirror)

#16-20

#16-28

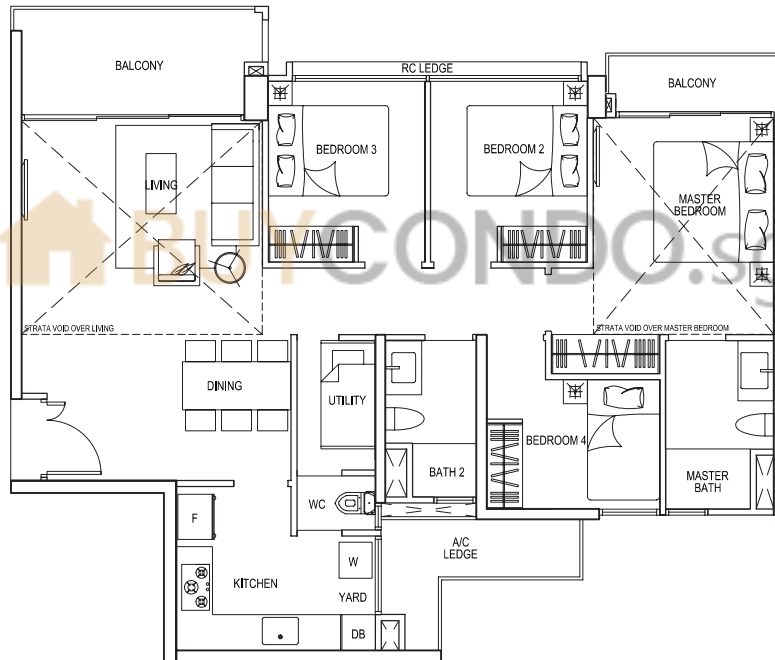
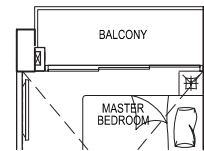
#17-29 (mirror)

### TYPE D1PH 4 - BEDROOM

135 sqm / 1453 sq ft  
(Including Strata void area of approx. 27 sqm  
above living and master bedroom)

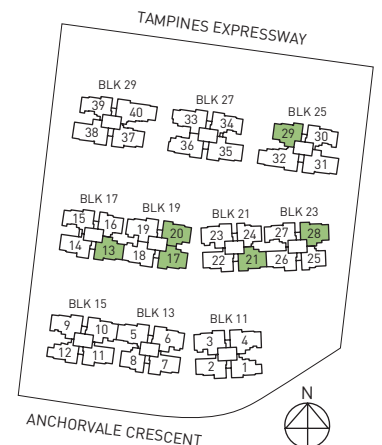
#16-13 (mirror)

#16-21 (mirror)



window applicable  
to stack 17, 20, 28,  
29 only

Areas includes A/C ledge, Balcony, PES and Strata Void (where applicable). Orientations and facings will differ depending on the unit you are purchasing. Please refer to the key plan. All plans are not to scale and are subject to changes as may be approved by the relevant authorities. All floor areas are estimates and are subject to final survey.



# 4-BEDROOM

## TYPE D2

108 sqm / 1163 sq ft

#02-05 to #04-05  
 #06-05 to #08-05  
 #10-05 to #12-05  
 #02-37 to #05-37  
 #07-37 to #09-37  
 #11-37 to #13-37

## TYPE D2 4 - BEDROOM

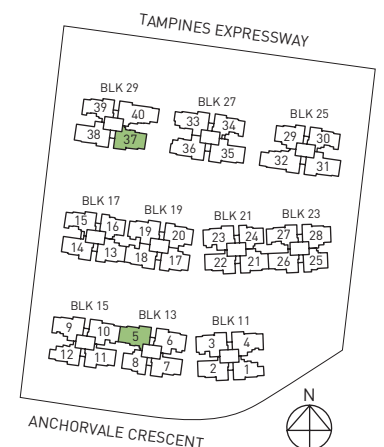
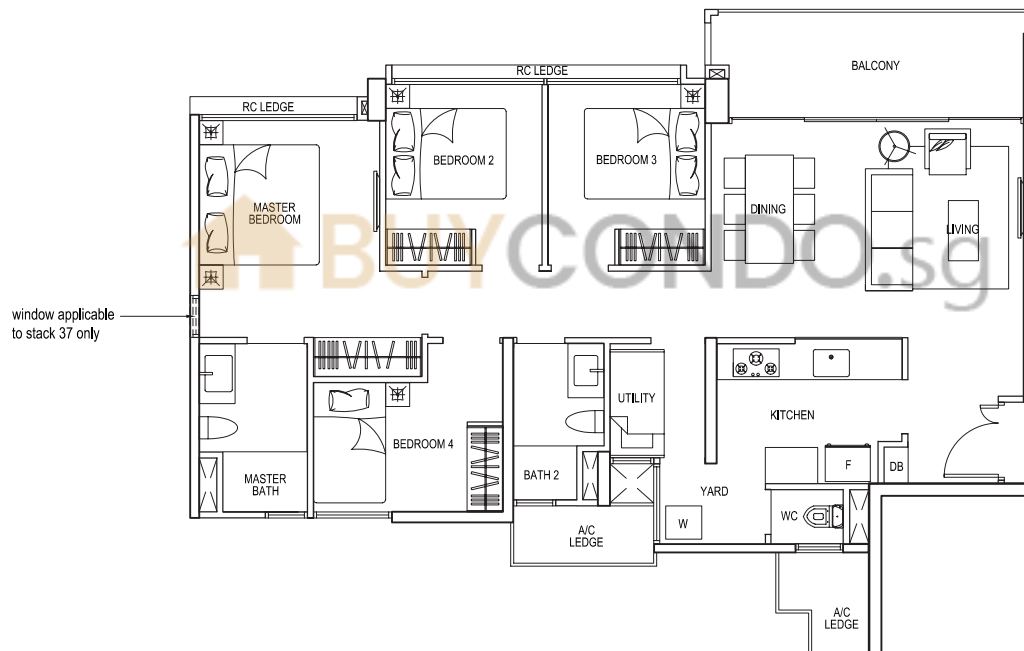
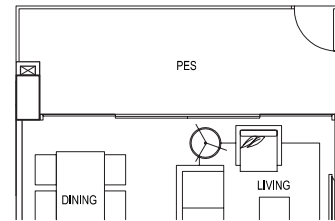
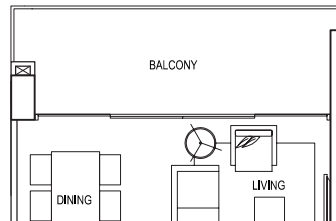
108 sqm / 1163 sq ft

#05-05 #06-37  
 #09-05 #10-37

## TYPE D2p 4 - BEDROOM

108 sqm / 1163 sq ft

#01-05  
 #01-37



Areas includes A/C ledge, Balcony, PES and Strata Void (where applicable). Orientations and facings will differ depending on the unit you are purchasing. Please refer to the key plan. All plans are not to scale and are subject to changes as may be approved by the relevant authorities. All floor areas are estimates and are subject to final survey.

# 4-BEDROOM

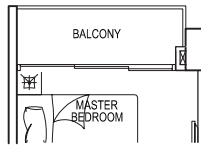
## TYPE D2A

111 sqm / 1195 sq ft

#15-37  
#16-37

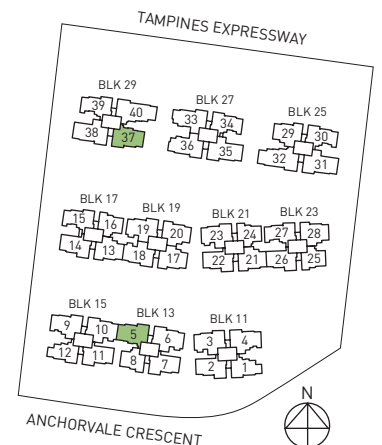
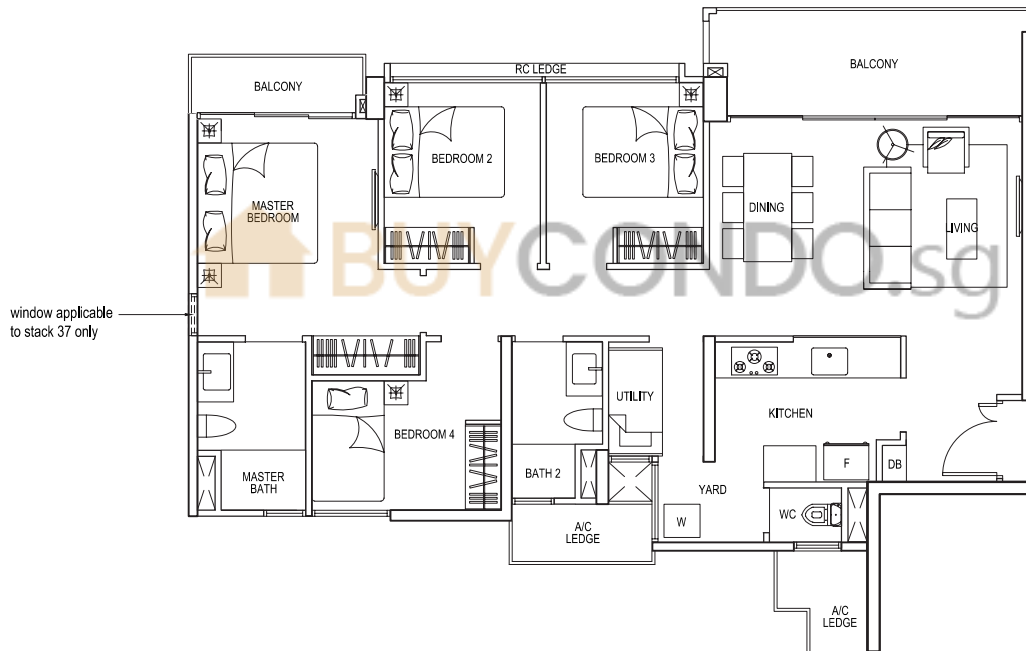
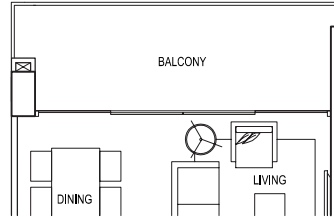
### TYPE D2A 4 - BEDROOM

111 sqm / 1195 sq ft  
#13-05  
#14-05  
#15-05



### TYPE D2A 4 - BEDROOM

111 sqm / 1195 sq ft  
#14-37



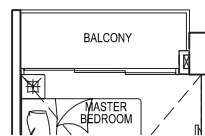
Areas includes A/C ledge, Balcony, PES and Strata Void (where applicable). Orientations and facings will differ depending on the unit you are purchasing. Please refer to the key plan. All plans are not to scale and are subject to changes as may be approved by the relevant authorities. All floor areas are estimates and are subject to final survey.

# 4-BEDROOM

## TYPE D2PH

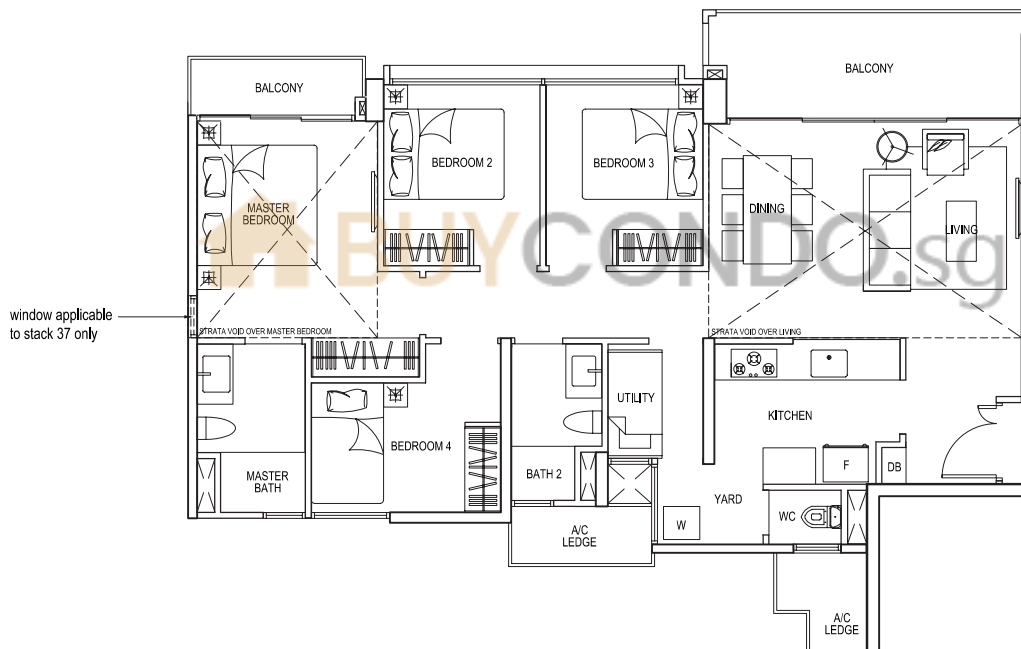
142 sqm / 1528 sq ft  
(Including Strata void area of approx. 31 sqm above  
living / dining and master bedroom)

#17-37

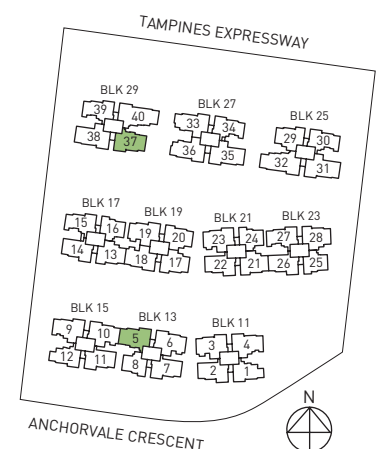


### TYPE D2PH 4 - BEDROOM

142 sqm / 1528 sq ft  
(Including Strata void area of approx. 31 sqm above  
living / dining and master bedroom)  
#16-05



Areas includes A/C ledge, Balcony, PES and Strata Void (where applicable). Orientations and facings will differ depending on the unit you are purchasing. Please refer to the key plan. All plans are not to scale and are subject to changes as may be approved by the relevant authorities. All floor areas are estimates and are subject to final survey.



# 4-BEDROOM PREMIUM

## TYPE D3

113 sqm / 1216 sq ft

#02-04 to #04-04

#06-04 to #08-04

#10-04 to #12-04

#02-09 to #04-09 (mirror)

#06-09 to #08-09 (mirror)

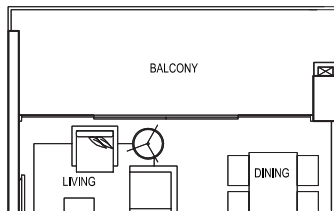
#10-09 to #12-09 (mirror)

## TYPE D3 4 - BEDROOM PREMIUM

113 sqm / 1216 sq ft

#05-04 #05-09 (mirror)

#09-04 #09-09 (mirror)

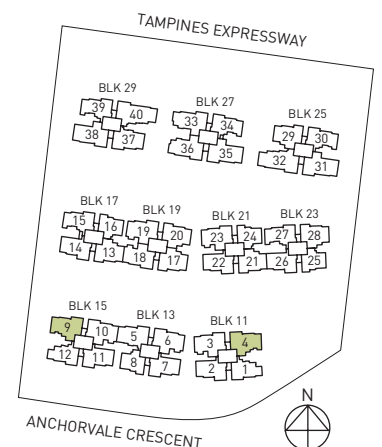
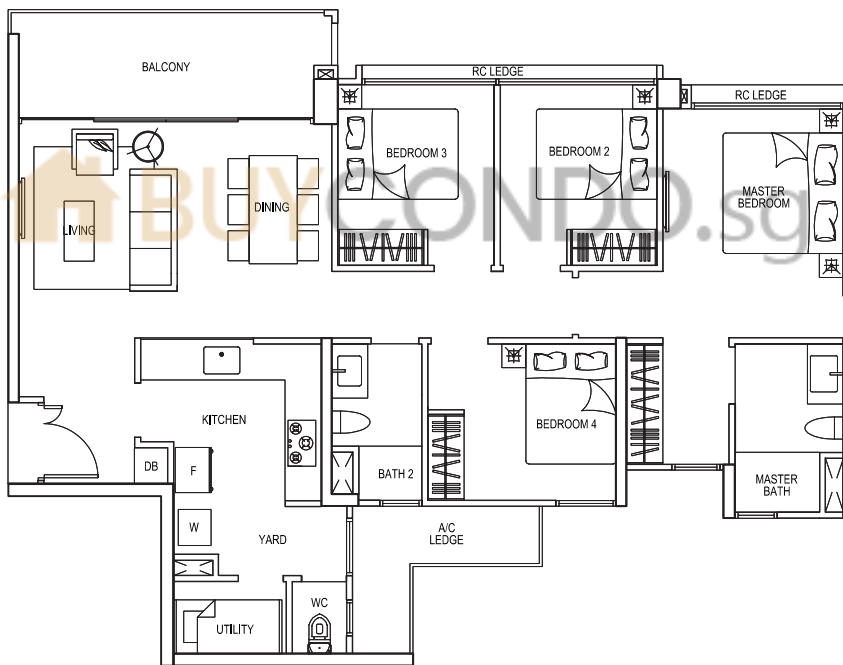
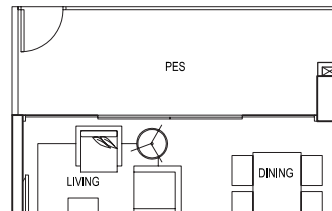


## TYPE D3p 4 - BEDROOM PREMIUM

113 sqm / 1216 sq ft

#01-04

#01-09 (mirror)



Areas includes A/C ledge, Balcony, PES and Strata Void (where applicable). Orientations and facings will differ depending on the unit you are purchasing. Please refer to the key plan. All plans are not to scale and are subject to changes as may be approved by the relevant authorities. All floor areas are estimates and are subject to final survey.

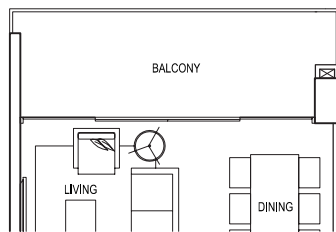
# 4-BEDROOM PREMIUM

## TYPE D3A

116 sqm / 1249 sq ft

#14-04 #14-09 (mirror)

#15-04 #15-09 (mirror)



### TYPE D3A 4 - BEDROOM PREMIUM

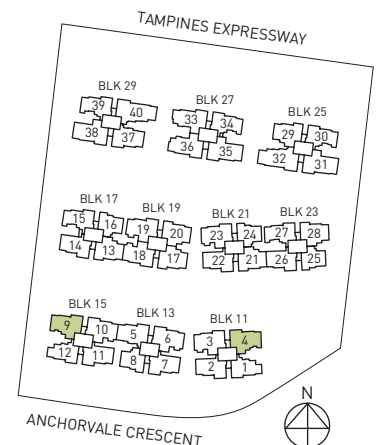
116 sqm / 1249 sq ft

#13-04

#13-09 (mirror)



Areas includes A/C ledge, Balcony, PES and Strata Void (where applicable). Orientations and facings will differ depending on the unit you are purchasing. Please refer to the key plan. All plans are not to scale and are subject to changes as may be approved by the relevant authorities. All floor areas are estimates and are subject to final survey.

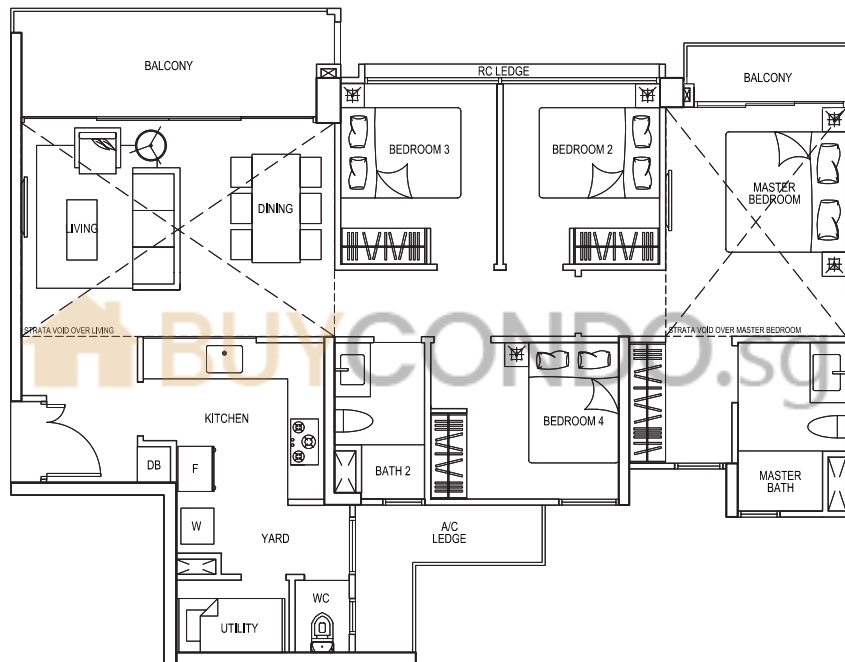


# 4-BEDROOM PREMIUM

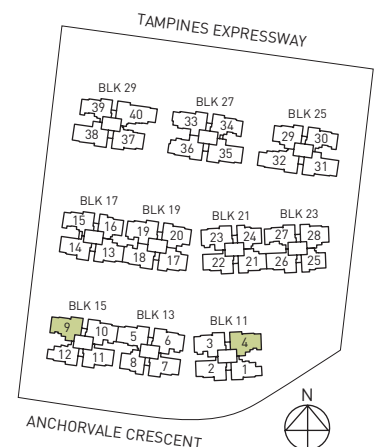
## TYPE D3PH

148 sqm / 1593 sq ft  
(Including Strata void area of approx. 32 sqm above  
living/ dining and master bedroom)

#16-04  
#16-09 (mirror)



Areas includes A/C ledge, Balcony, PES and Strata Void (where applicable). Orientations and facings will differ depending on the unit you are purchasing. Please refer to the key plan. All plans are not to scale and are subject to changes as may be approved by the relevant authorities. All floor areas are estimates and are subject to final survey.





# 4-BEDROOM PREMIUM

## TYPE D4

118 sqm / 1270 sq ft

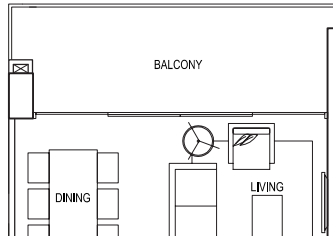
#02-33 to #05-33 (mirror)  
 #07-33 to #09-33 (mirror)  
 #11-33 to #13-33 (mirror)

#02-36 to #05-36  
 #07-36 to #09-36  
 #11-36 to #13-36

## TYPE D4 4 - BEDROOM PREMIUM

118 sqm / 1270 sq ft

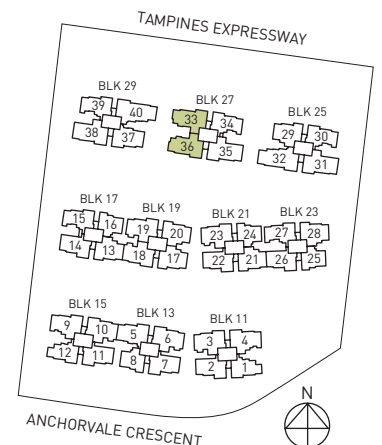
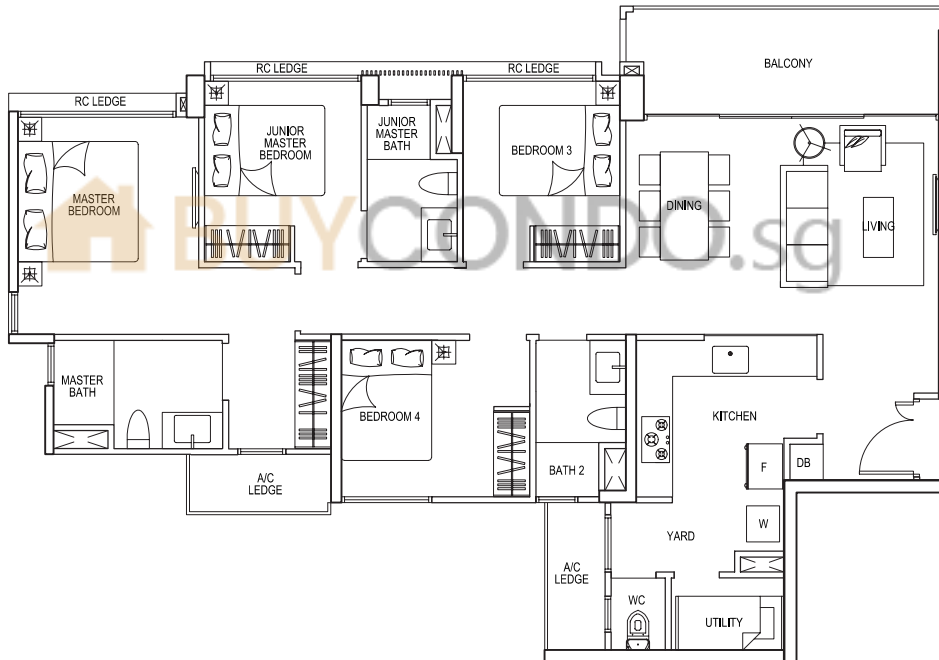
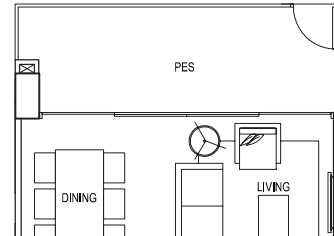
#06-33 #06-36 (mirror)  
 #10-33 #10-36 (mirror)



## TYPE D4p 4 - BEDROOM PREMIUM

118 sqm / 1270 sq ft

#01-33  
 #01-36 (mirror)



Areas includes A/C ledge, Balcony, PES and Strata Void (where applicable). Orientations and facings will differ depending on the unit you are purchasing. Please refer to the key plan. All plans are not to scale and are subject to changes as may be approved by the relevant authorities. All floor areas are estimates and are subject to final survey.

# 4-BEDROOM PREMIUM

## TYPE D4A

121 sqm / 1302 sq ft

#15-33 #15-36 (mirror)

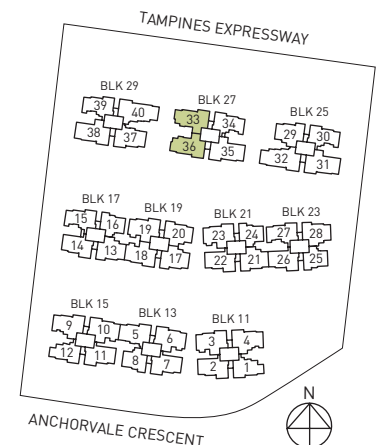
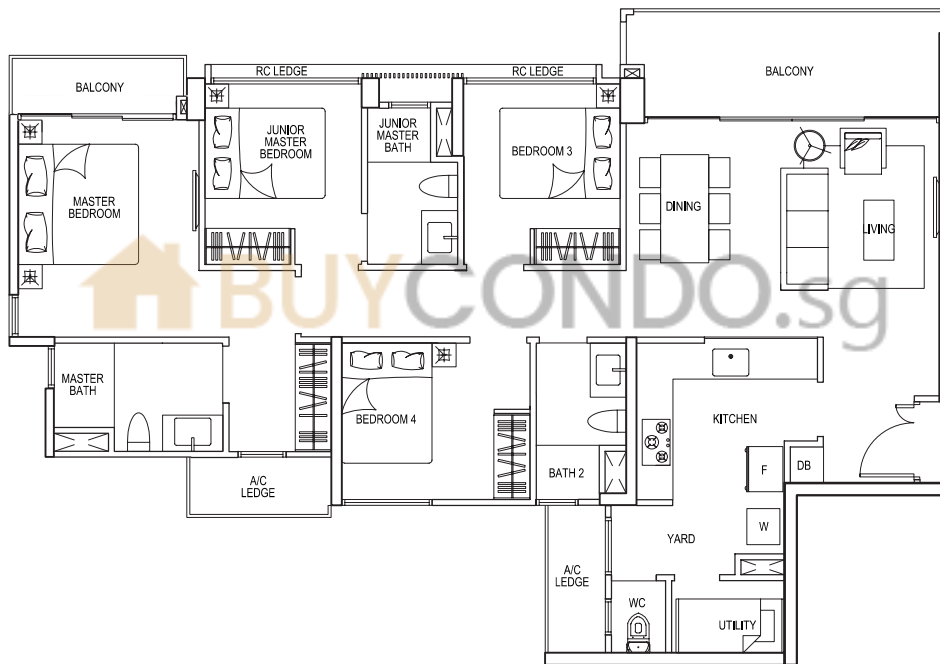
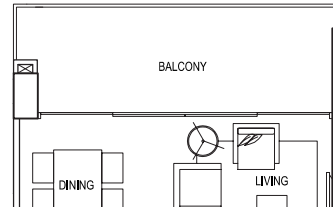
#16-33 #16-36 (mirror)

### TYPE D4A 4 - BEDROOM PREMIUM

121 sqm / 1302 sq ft

#14-33

#14-36 (mirror)



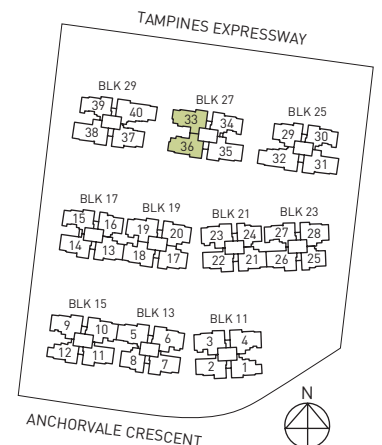
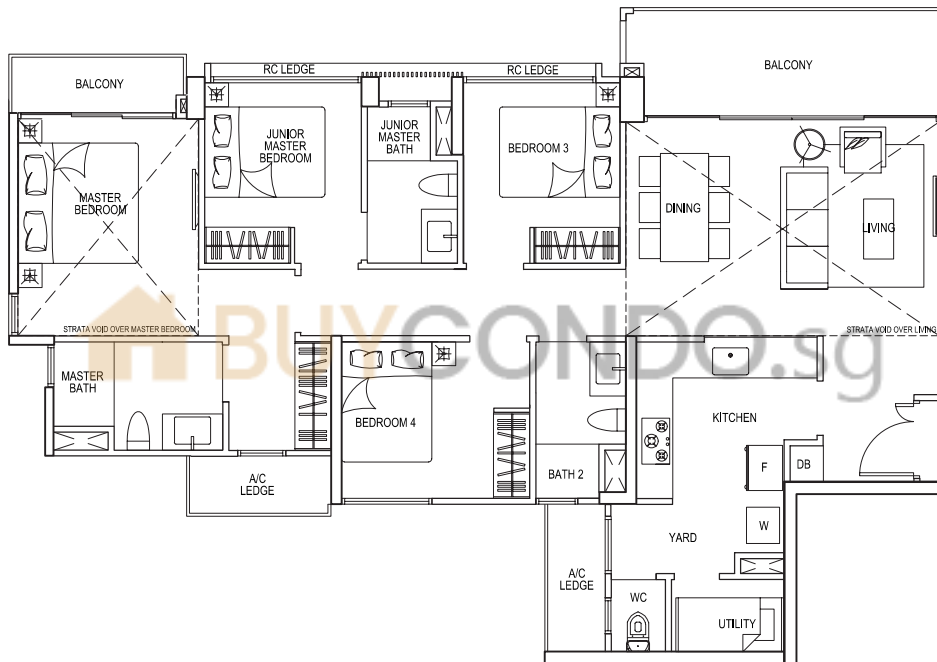
Areas includes A/C ledge, Balcony, PES and Strata Void (where applicable). Orientations and facings will differ depending on the unit you are purchasing. Please refer to the key plan. All plans are not to scale and are subject to changes as may be approved by the relevant authorities. All floor areas are estimates and are subject to final survey.

# 4-BEDROOM PREMIUM

## TYPE D4PH

152 sqm / 1636 sq ft  
(Including Strata void area of approx. 31 sqm above  
living / dining and master bedroom)

#17-33  
#17-36 (mirror)



Areas includes A/C ledge, Balcony, PES and Strata Void (where applicable). Orientations and facings will differ depending on the unit you are purchasing. Please refer to the key plan. All plans are not to scale and are subject to changes as may be approved by the relevant authorities. All floor areas are estimates and are subject to final survey.

# 4-BEDROOM COSPACE

## TYPE CS4

124 sqm / 1335 sq ft

#02-31 to #05-31 (mirror)  
 #07-31 to #09-31 (mirror)  
 #11-31 to #14-31 (mirror)

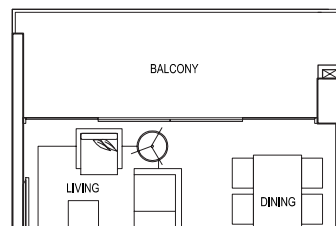
#02-35 to #05-35 (mirror)  
 #07-35 to #09-35 (mirror)  
 #11-35 to #14-35 (mirror)

#02-38 to #05-38  
 #07-38 to #09-38  
 #11-38 to #14-38

### TYPE CS4 4 - BEDROOM COSPACE

124 sqm / 1335 sq ft

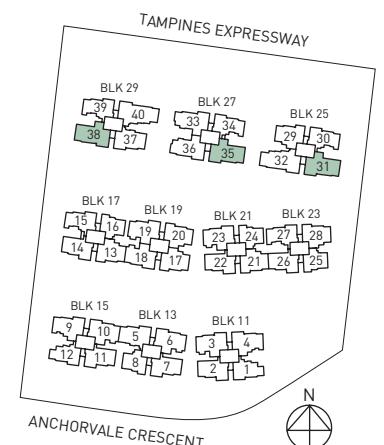
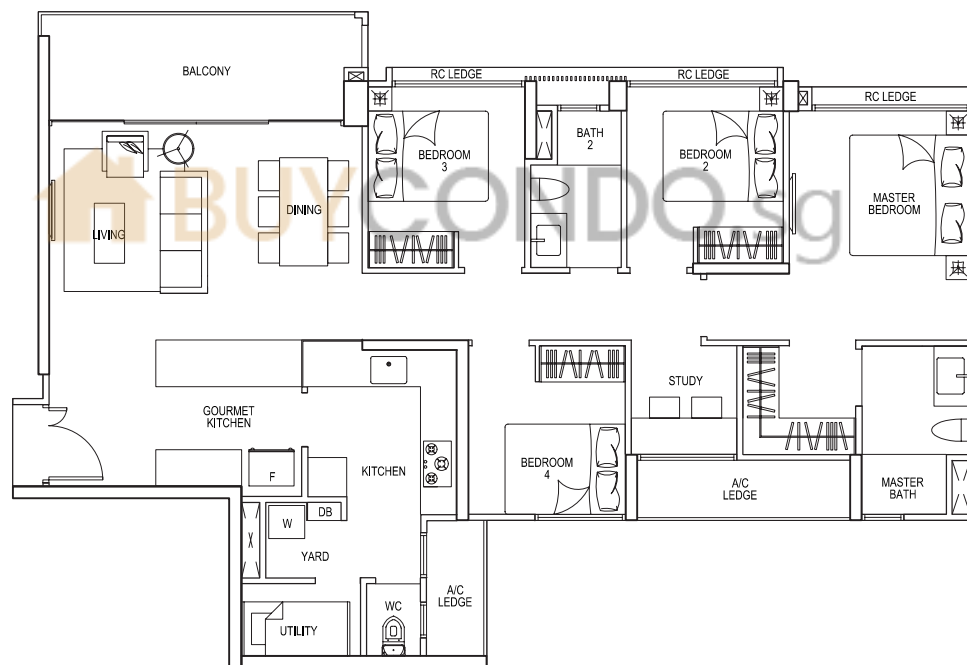
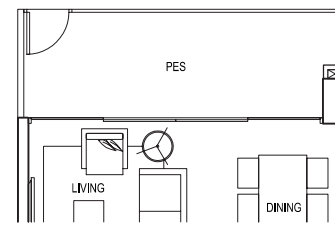
#06-31 (mirror) #06-35 (mirror) #06-38  
 #10-31 (mirror) #10-35 (mirror) #10-38



### TYPE CS4P 4 - BEDROOM COSPACE

124 sqm / 1335 sq ft

#01-31 (mirror)  
 #01-35 (mirror)  
 #01-38



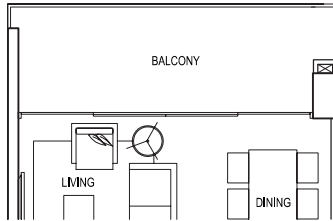
Areas includes A/C ledge, Balcony, PES and Strata Void (where applicable). Orientations and facings will differ depending on the unit you are purchasing. Please refer to the key plan. All plans are not to scale and are subject to changes as may be approved by the relevant authorities. All floor areas are estimates and are subject to final survey.

# 4-BEDROOM COSPACE

## TYPE CS4A

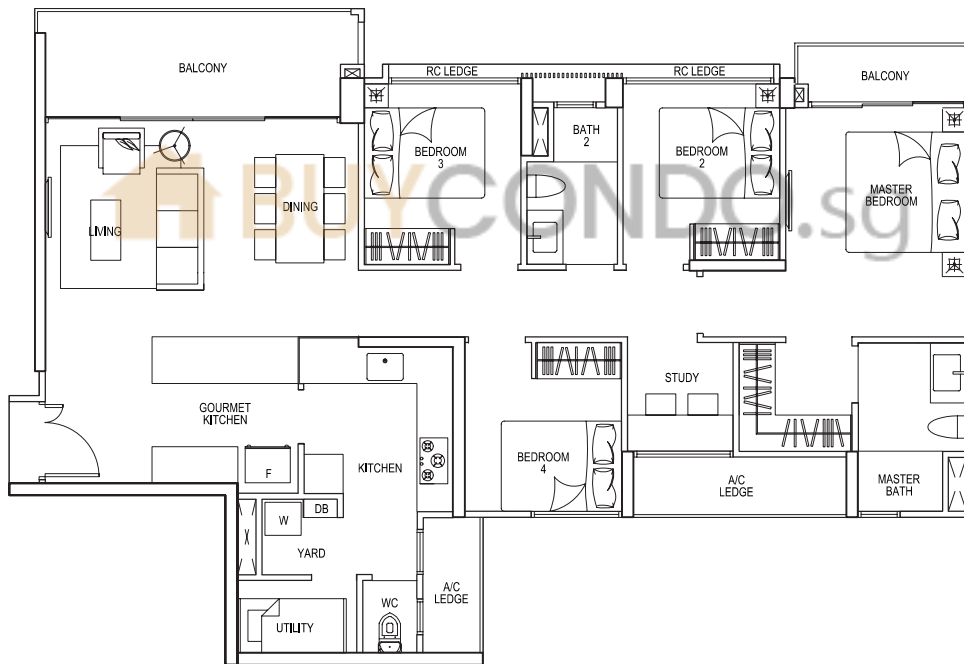
127 sqm / 1367 sq ft

#15-31 (mirror) #15-35 (mirror) #15-38  
#16-31 (mirror) #16-35 (mirror) #16-38

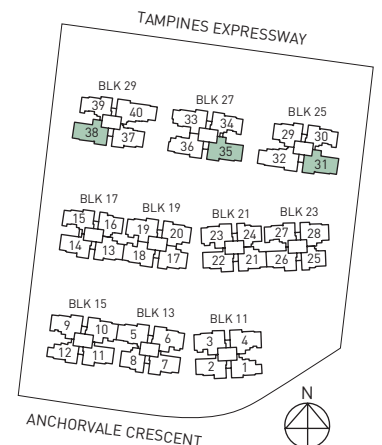


### TYPE CS4A 4 - BEDROOM COSPACE

127 sqm / 1367 sq ft  
#14-31 (mirror)  
#14-35 (mirror)  
#14-38



Areas includes A/C ledge, Balcony, PES and Strata Void (where applicable). Orientations and facings will differ depending on the unit you are purchasing. Please refer to the key plan. All plans are not to scale and are subject to changes as may be approved by the relevant authorities. All floor areas are estimates and are subject to final survey.

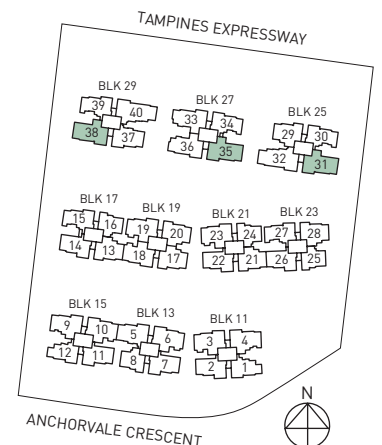
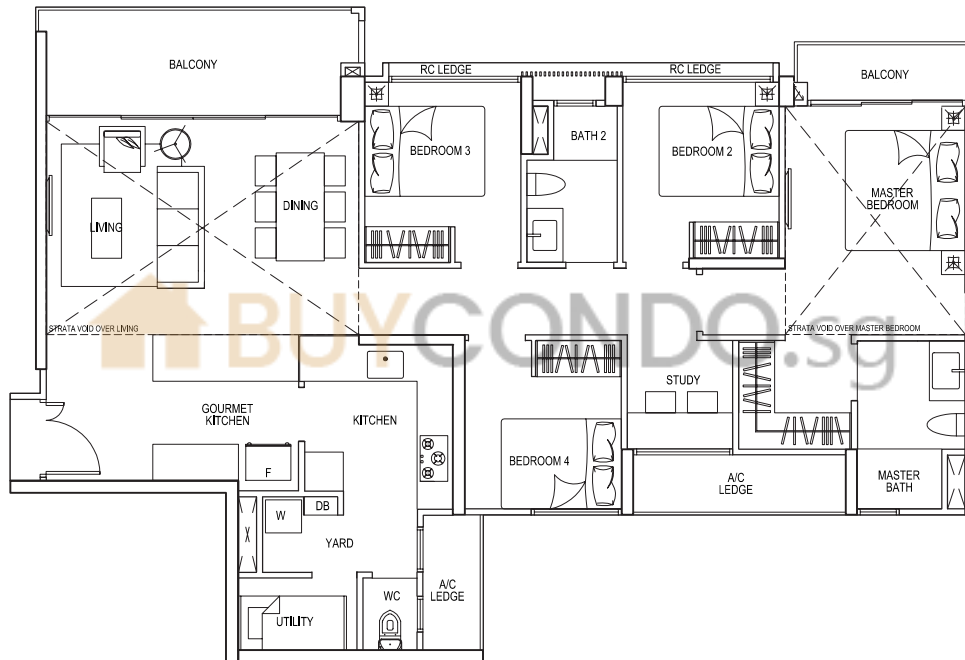


# 4-BEDROOM COSPACE

## TYPE CS4PH

159 sqm / 1711 sq ft  
(Including Strata void area of approx. 32 sqm above  
living / dining and master bedroom)

#17-31 (mirror)  
#17-35 (mirror)  
#17-38



Areas includes A/C ledge, Balcony, PES and Strata Void (where applicable). Orientations and facings will differ depending on the unit you are purchasing. Please refer to the key plan. All plans are not to scale and are subject to changes as may be approved by the relevant authorities. All floor areas are estimates and are subject to final survey.

# 5-BEDROOM COSPACE

## TYPE CS5

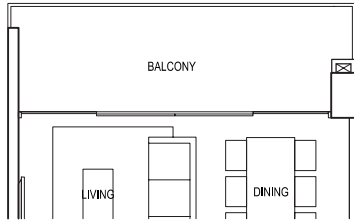
139 sqm / 1496 sq ft

#02-32 to #05-32    #02-40 to #05-40  
 #07-32 to #09-32    #07-40 to #09-40  
 #11-32 to #13-32    #11-40 to #13-40

### TYPE CS5 5 - BEDROOM COSPACE

139 sqm / 1496 sq ft

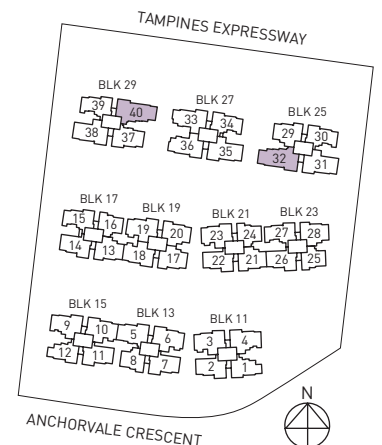
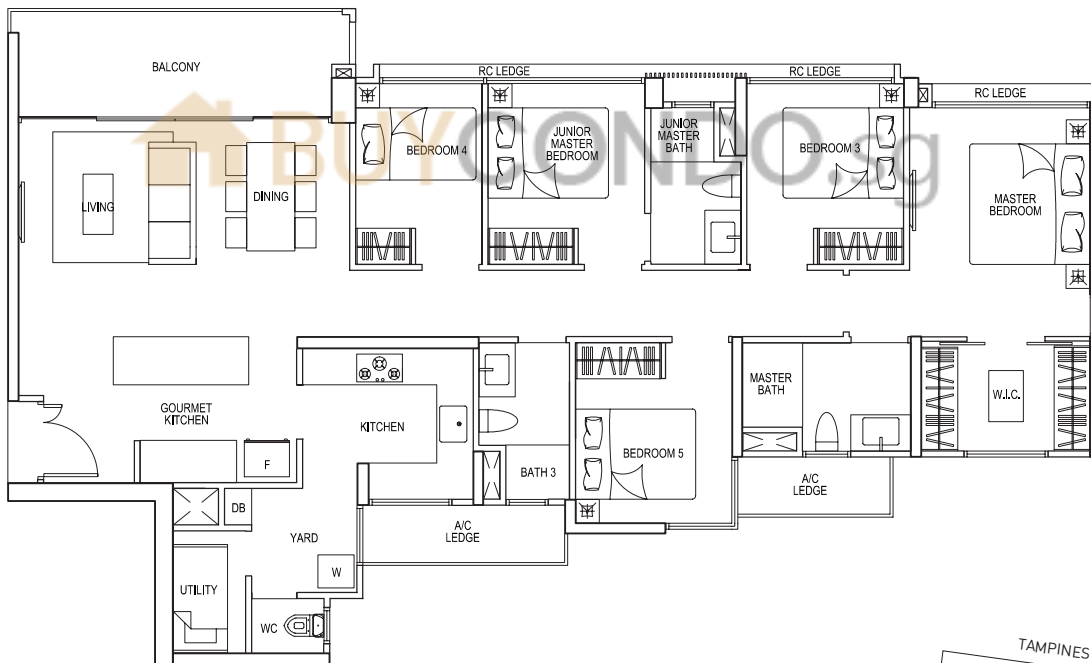
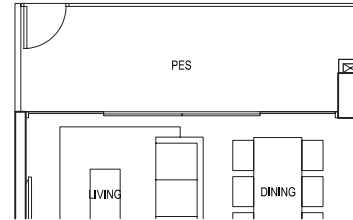
#06-32    #06-40  
 #10-32    #10-40



### TYPE CS5p 5 - BEDROOM COSPACE

139 sqm / 1496 sq ft

#01-32  
 #01-40



Areas includes A/C ledge, Balcony, PES and Strata Void (where applicable). Orientations and facings will differ depending on the unit you are purchasing. Please refer to the key plan. All plans are not to scale and are subject to changes as may be approved by the relevant authorities. All floor areas are estimates and are subject to final survey.

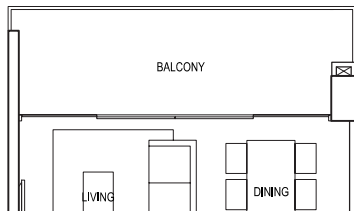
# 5-BEDROOM COSPACE

## TYPE CS5A

142 sqm / 1528 sq ft

#15-32 #15-40

#16-32 #16-40

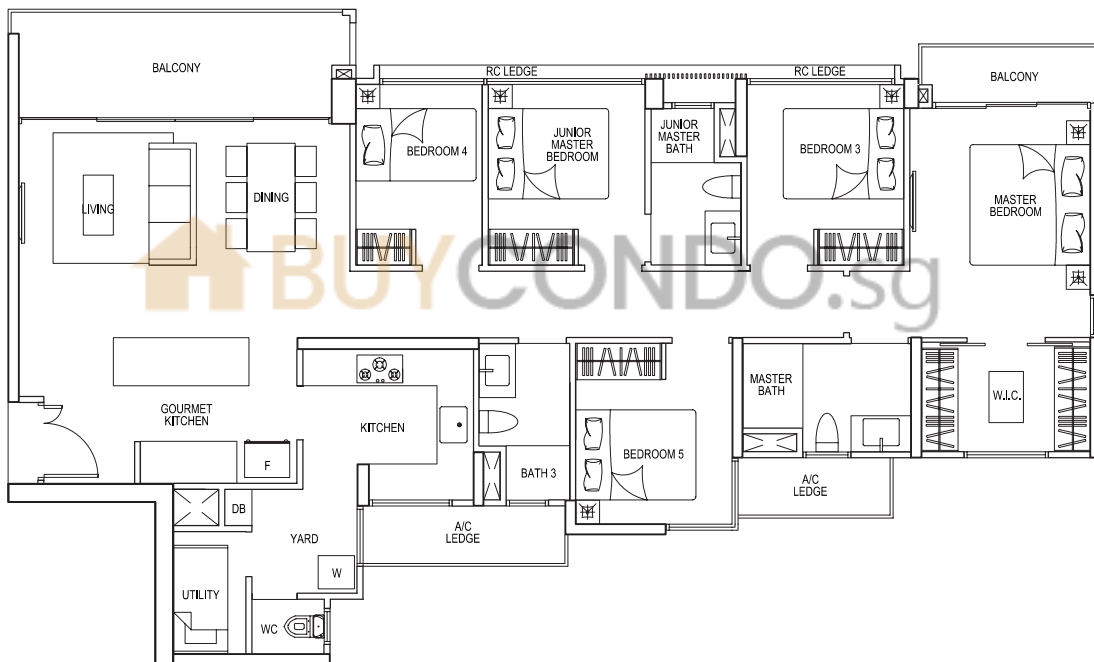


## TYPE CS5A 5 - BEDROOM COSPACE

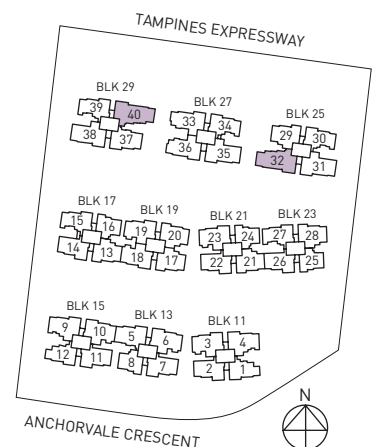
142 sqm / 1528 sq ft

#14-32

#14-40



Areas includes A/C ledge, Balcony, PES and Strata Void (where applicable). Orientations and facings will differ depending on the unit you are purchasing. Please refer to the key plan. All plans are not to scale and are subject to changes as may be approved by the relevant authorities. All floor areas are estimates and are subject to final survey.



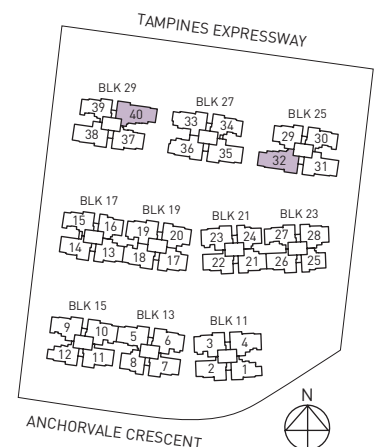
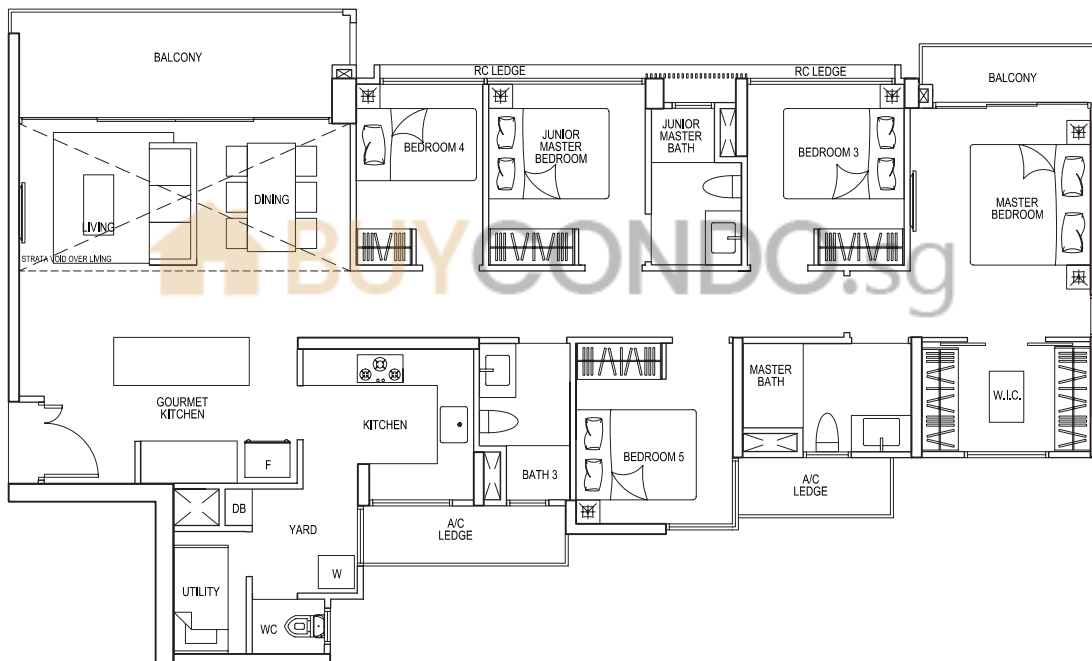


# 5-BEDROOM COSPACE

## TYPE CS5PH

156 sqm / 1679 sq ft  
(Including Strata void area of approx. 14 sqm above living / dining)

#17-32  
#17-40



Areas includes A/C ledge, Balcony, PES and Strata Void (where applicable). Orientations and facings will differ depending on the unit you are purchasing. Please refer to the key plan. All plans are not to scale and are subject to changes as may be approved by the relevant authorities. All floor areas are estimates and are subject to final survey.