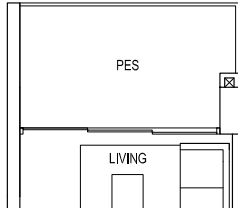


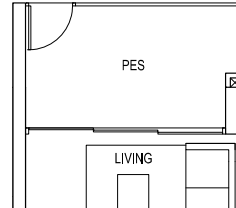
2

Bedroom



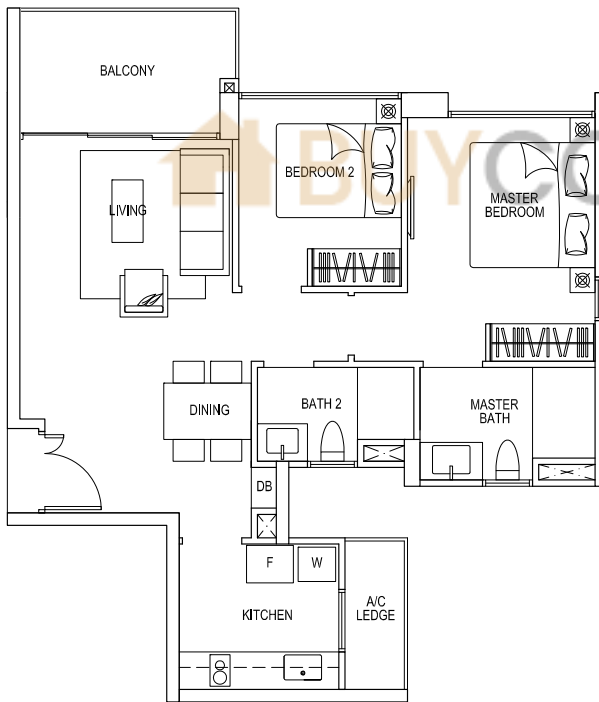
TYPE B1p 2 - BEDROOM

73 sqm / 786 sq ft
#01-04



TYPE B1p 2 - BEDROOM

73 sqm / 786 sq ft
#01-13 (mirror)
#01-28



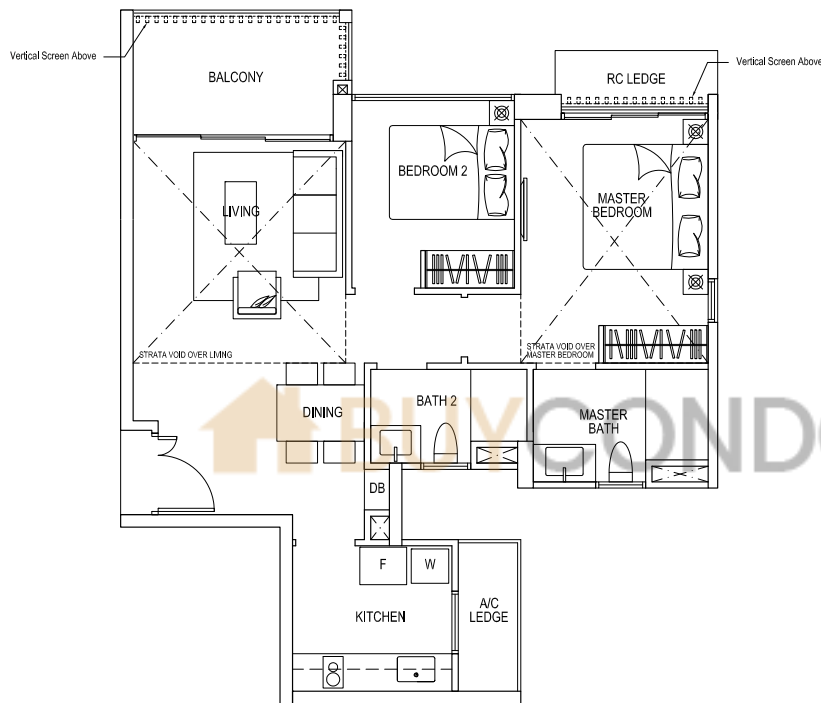
TYPE B1 2 - BEDROOM

73 sqm / 786 sq ft
#02-04 to #11-04
#02-13 to #11-13 (mirror)
#02-28 to #11-28



Areas includes A/C ledge, Balcony, PES and Strata Void (where applicable). Orientations and facings will differ depending on the unit you are purchasing. Please refer to the key plan. All plans are not to scale and are subject to changes as may be approved by the relevant authorities. All floor areas are estimates and are subject to final survey.

2 Bedroom



TYPE B1L 2 - BEDROOM

99 sqm / 1066 sq ft

(Including Strata void area of approx. 26 sqm above living/ dining and master bedroom)

#12-04

#12-13 (mirror)

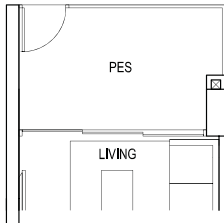
#12-28



Areas includes A/C ledge, Balcony, PES and Strata Void (where applicable). Orientations and facings will differ depending on the unit you are purchasing. Please refer to the key plan. All plans are not to scale and are subject to changes as may be approved by the relevant authorities. All floor areas are estimates and are subject to final survey.

3

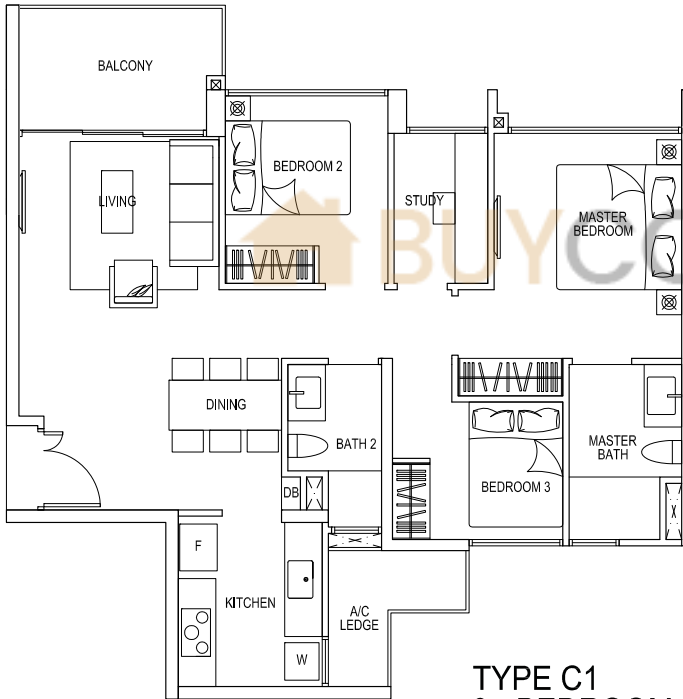
Bedroom



TYPE C1p 3 - BEDROOM

87 sqm / 936 sq ft

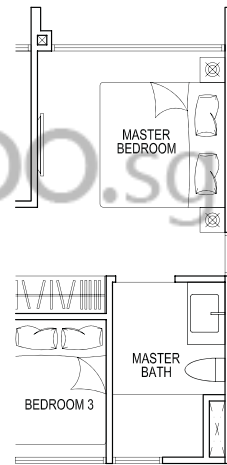
#01-17 (mirror)
#01-21 (mirror)
#01-25 (mirror)



TYPE C1 3 - BEDROOM

87 sqm / 936 sq ft

#02-12 to #03-12
#02-21 to #09-21 (mirror)



TYPE C1 3 - BEDROOM (w/ side window)

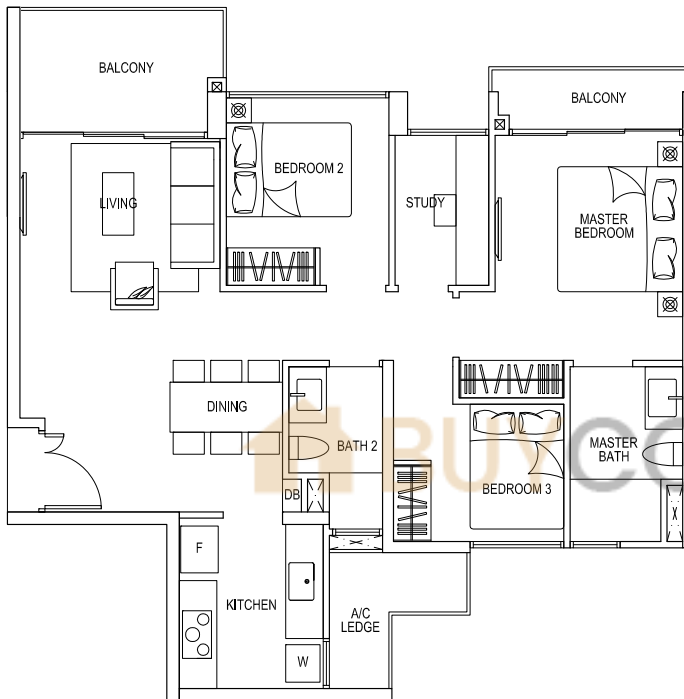
87 sqm / 936 sq ft

#04-12 to #09-12
#02-17 to #09-17 (mirror)
#02-25 to #09-25 (mirror)



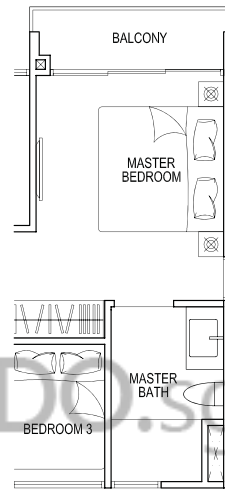
Areas includes A/C ledge, Balcony, PES and Strata Void (where applicable). Orientations and facings will differ depending on the unit you are purchasing. Please refer to the key plan. All plans are not to scale and are subject to changes as may be approved by the relevant authorities. All floor areas are estimates and are subject to final survey.

3 Bedroom



TYPE C1A 3 - BEDROOM

90 sqm / 969 sq ft
#10-21 to #11-21 (mirror)



TYPE C1A 3 - BEDROOM (w/ side window)

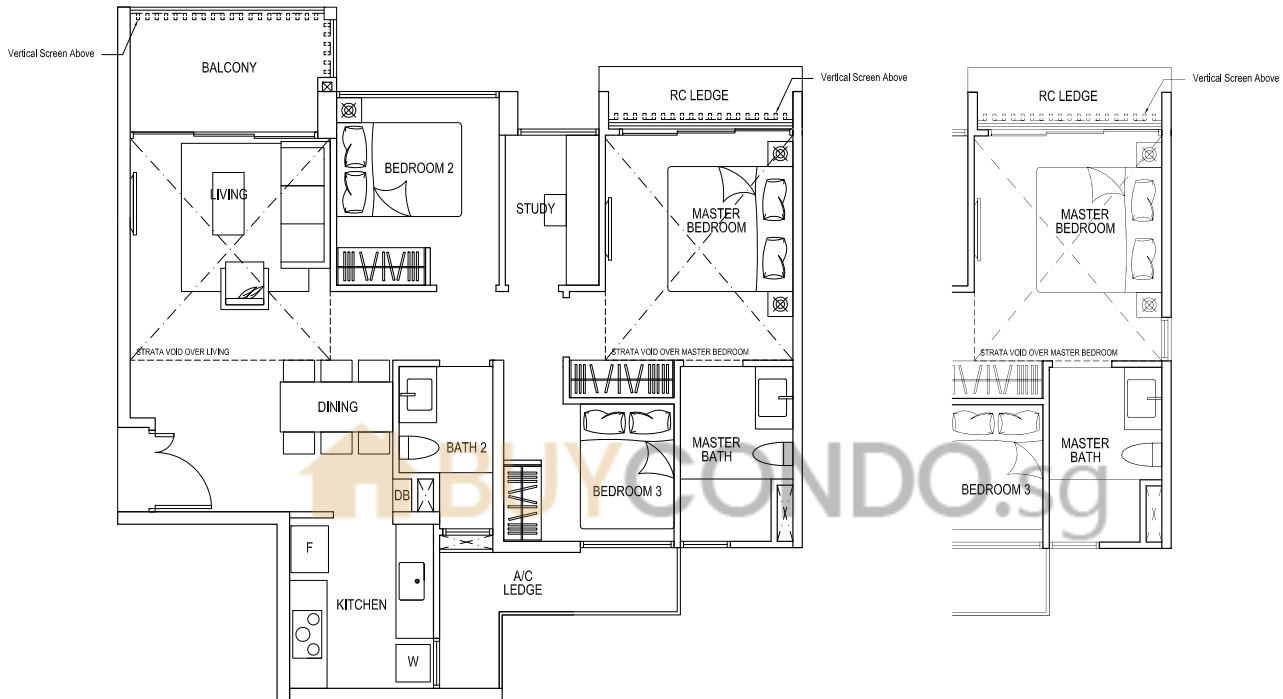
90 sqm / 969 sq ft
#10-12 to #11-12
#10-17 to #11-17 (mirror)
#10-25 to #11-25 (mirror)



Areas includes A/C ledge, Balcony, PES and Strata Void (where applicable). Orientations and facings will differ depending on the unit you are purchasing. Please refer to the key plan. All plans are not to scale and are subject to changes as may be approved by the relevant authorities. All floor areas are estimates and are subject to final survey.

3

Bedroom



TYPE C1L 3 - BEDROOM

113 sqm / 1216 sq ft

(Including Strata void area of approx. 24 sqm above living/ dining and master bedroom)

#12-21 (mirror)

TYPE C1L 3 - BEDROOM (w/ side window)

113 sqm / 1216 sq ft

(Including Strata void area of approx. 24 sqm above living/ dining and master bedroom)

#12-12

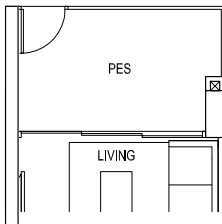
#12-17 (mirror)

#12-25 (mirror)



Areas includes A/C ledge, Balcony, PES and Strata Void (where applicable). Orientations and facings will differ depending on the unit you are purchasing. Please refer to the key plan. All plans are not to scale and are subject to changes as may be approved by the relevant authorities. All floor areas are estimates and are subject to final survey.

3 Bedroom



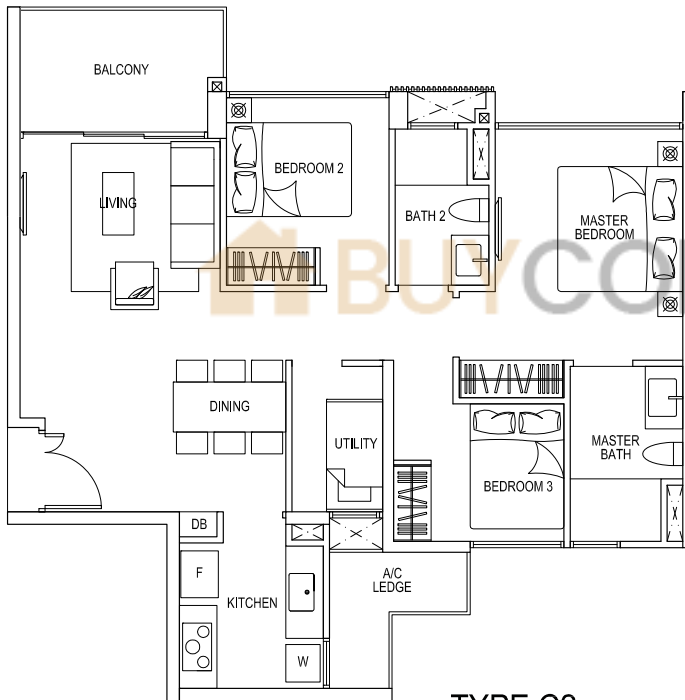
TYPE C2p 3 - BEDROOM

87 sqm / 936 sq ft

#01-29 (mirror)

#01-41(mirror)

#01-48



TYPE C2 3 - BEDROOM

87 sqm / 936 sq ft

#03-09 (mirror)

#02-41 to #08-41 (mirror)

#02-48 to #08-48

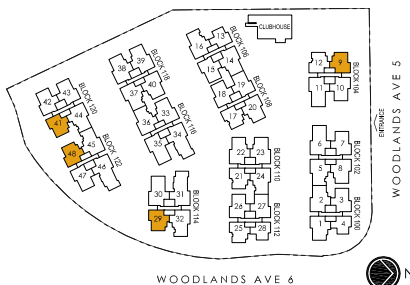


TYPE C2 3 - BEDROOM (w/ side window)

87 sqm / 936 sq ft

#04-09 to #09-09 (mirror)

#02-29 to #08-29 (mirror)



Areas includes A/C ledge, Balcony, PES and Strata Void (where applicable). Orientations and facings will differ depending on the unit you are purchasing. Please refer to the key plan. All plans are not to scale and are subject to changes as may be approved by the relevant authorities. All floor areas are estimates and are subject to final survey.

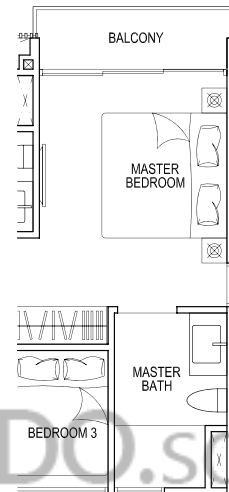
3

Bedroom



TYPE C2A 3 - BEDROOM

90 sqm / 969 sq ft
 #09-41 to #10-41 (mirror)
 #09-48 to #10-48



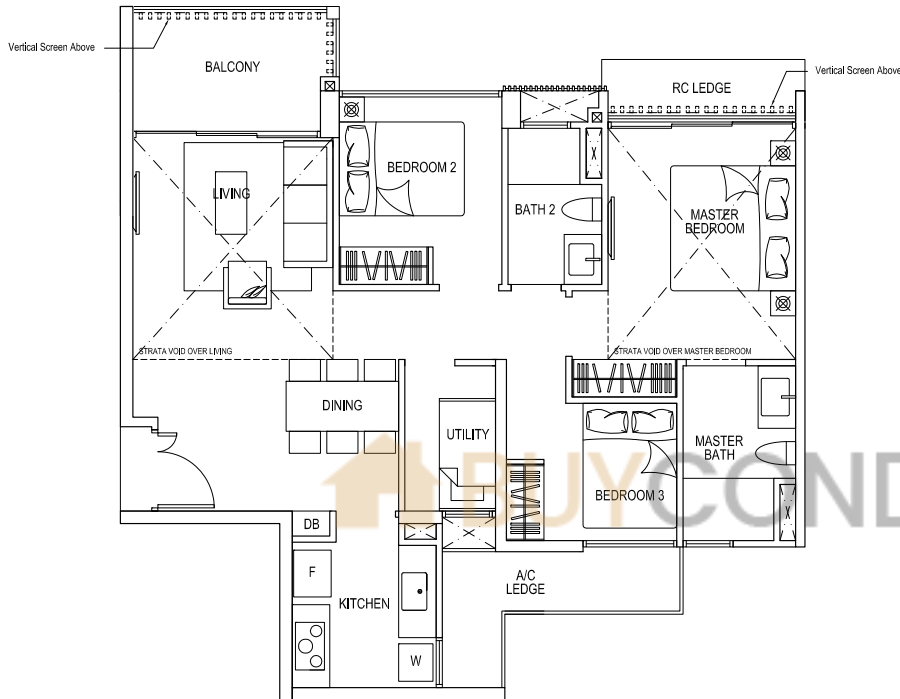
TYPE C2A 3 - BEDROOM (w/ side window)

90 sqm / 969 sq ft
 #10-09 to #11-09 (mirror)
 #09-29 to #10-29 (mirror)



Areas includes A/C ledge, Balcony, PES and Strata Void (where applicable). Orientations and facings will differ depending on the unit you are purchasing. Please refer to the key plan. All plans are not to scale and are subject to changes as may be approved by the relevant authorities. All floor areas are estimates and are subject to final survey.

3 Bedroom



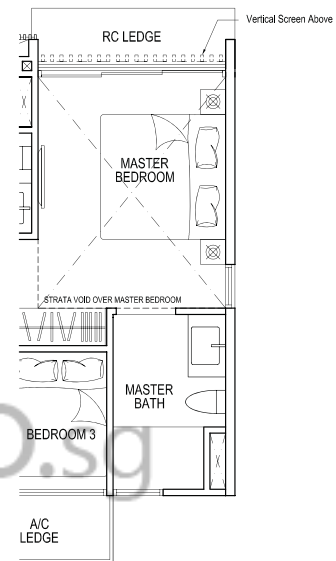
TYPE C2L 3 - BEDROOM

113 sqm / 1216 sq ft

(Including Strata void area of approx. 24 sqm above living/ dining and master bedroom)

#11-41 (mirror)

#11-48



TYPE C2L 3 - BEDROOM (w/ side window)

113 sqm / 1216 sq ft

(Including Strata void area of approx. 24 sqm above living/ dining and master bedroom)

#12-09 (mirror)

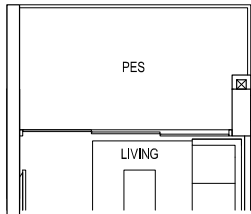
#11-29 (mirror)



Areas includes A/C ledge, Balcony, PES and Strata Void (where applicable). Orientations and facings will differ depending on the unit you are purchasing. Please refer to the key plan. All plans are not to scale and are subject to changes as may be approved by the relevant authorities. All floor areas are estimates and are subject to final survey.

3

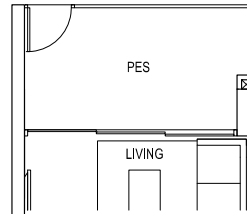
Bedroom Premium



TYPE C3p 3 - BEDROOM PREMIUM

99 sqm \ 1066 sq ft

- #01-03 (mirror)
- #01-07 (mirror)
- #01-10



TYPE C3p 3 - BEDROOM PREMIUM

99 sqm \ 1066 sq ft

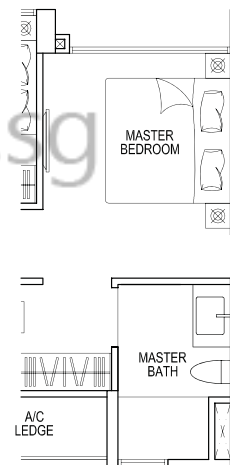
- #01-15 (mirror)
- #01-18
- #01-19 (mirror)
- #01-26
- #01-27 (mirror)
- #01-42
- #01-43 (mirror)
- #01-47 (mirror)



TYPE C3 3 - BEDROOM PREMIUM

99 sqm \ 1066 sq ft

- #02-03 to #09-03 (mirror)
- #02-07 to #09-07 (mirror)
- #02-10 to #09-10
- #02-15 to #09-15 (mirror)



TYPE C3 3 - BEDROOM PREMIUM (w/ side window)

99 sqm \ 1066 sq ft

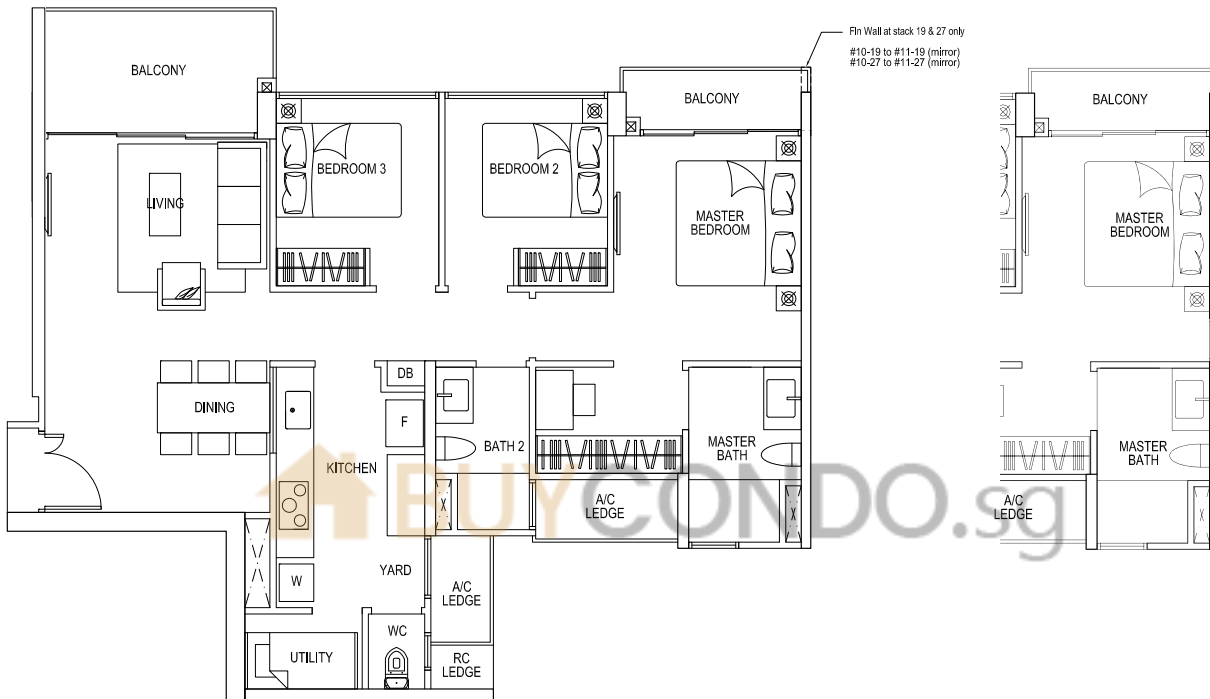
- #02-42 to #08-42
- #02-43 to #08-43 (mirror)
- #02-47 to #10-47 (mirror)



Areas includes A/C ledge, Balcony, PES and Strata Void (where applicable). Orientations and facings will differ depending on the unit you are purchasing. Please refer to the key plan. All plans are not to scale and are subject to changes as may be approved by the relevant authorities. All floor areas are estimates and are subject to final survey.

3

Bedroom Premium



TYPE C3A 3 - BEDROOM PREMIUM

102 sqm \ 1098 sq ft

- #10-03 to #11-03 (mirror)
- #10-07 to #11-07 (mirror)
- #10-10 to #11-10
- #10-15 to #11-15 (mirror)

- #10-18 to #11-18
- #10-19 to #11-19 (mirror)
- #10-26 to #11-26
- #10-27 to #11-27 (mirror)

TYPE C3A 3 - BEDROOM PREMIUM (w/ side window)

102 sqm \ 1098 sq ft

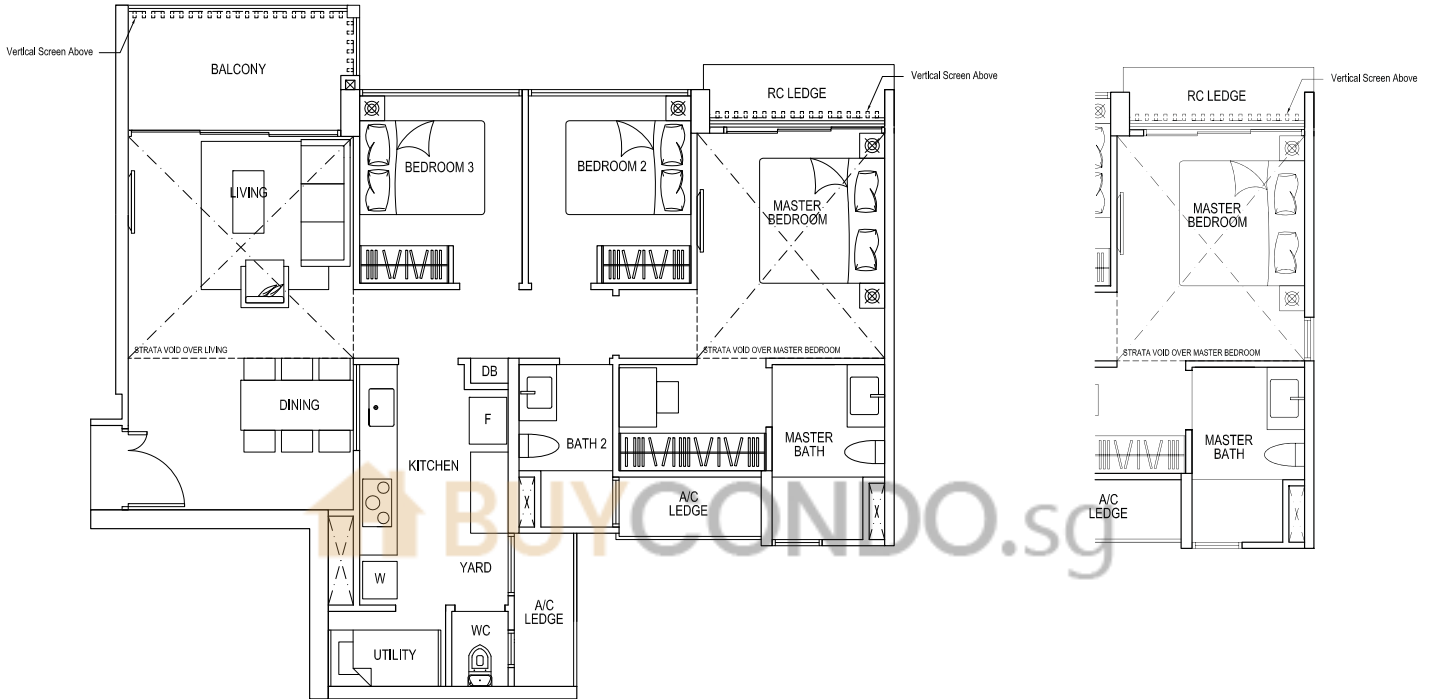
- #09-42 to #10-42
- #09-43 to #10-43 (mirror)



Areas includes A/C ledge, Balcony, PES and Strata Void (where applicable). Orientations and facings will differ depending on the unit you are purchasing. Please refer to the key plan. All plans are not to scale and are subject to changes as may be approved by the relevant authorities. All floor areas are estimates and are subject to final survey.

3

Bedroom Premium



TYPE C3L 3 - BEDROOM PREMIUM

125 sqm / 1345 sq ft

(Including Strata void area of approx. 25 sqm above living/ dining and master bedroom)

- | | |
|-----------------|-----------------|
| #12-03 (mirror) | #12-18 |
| #12-07 (mirror) | #12-19 (mirror) |
| #12-10 | #12-26 |
| #12-15 (mirror) | #12-27 (mirror) |

TYPE C3L 3 - BEDROOM PREMIUM (w/ side window)

125 sqm / 1345 sq ft

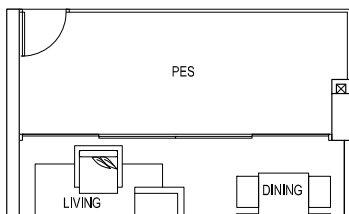
(Including Strata void area of approx. 25 sqm above living/ dining and master bedroom)

- | |
|-----------------|
| #11-42 |
| #11-43 (mirror) |
| #11-47 (mirror) |



Areas includes A/C ledge, Balcony, PES and Strata Void (where applicable). Orientations and facings will differ depending on the unit you are purchasing. Please refer to the key plan. All plans are not to scale and are subject to changes as may be approved by the relevant authorities. All floor areas are estimates and are subject to final survey.

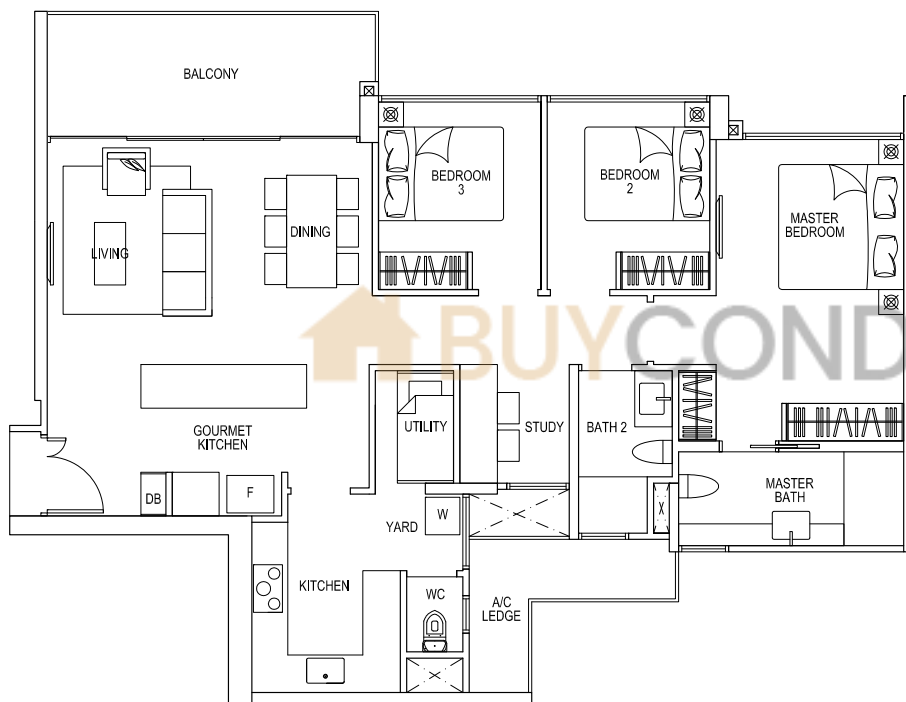
3 Bedroom CoSpace



TYPE CS3p 3 - BEDROOM COSPACE

116 sqm / 1249 sq ft

#01-02 #01-23 (mirror)
#01-14 #01-38
#01-22 #01-39 (mirror)



TYPE CS3 3 - BEDROOM COSPACE

116 sqm / 1249 sq ft

#02-02 to #09-02
#02-14 to #09-14

TYPE CS3 3 - BEDROOM COSPACE (w/ side window)

116 sqm / 1249 sq ft

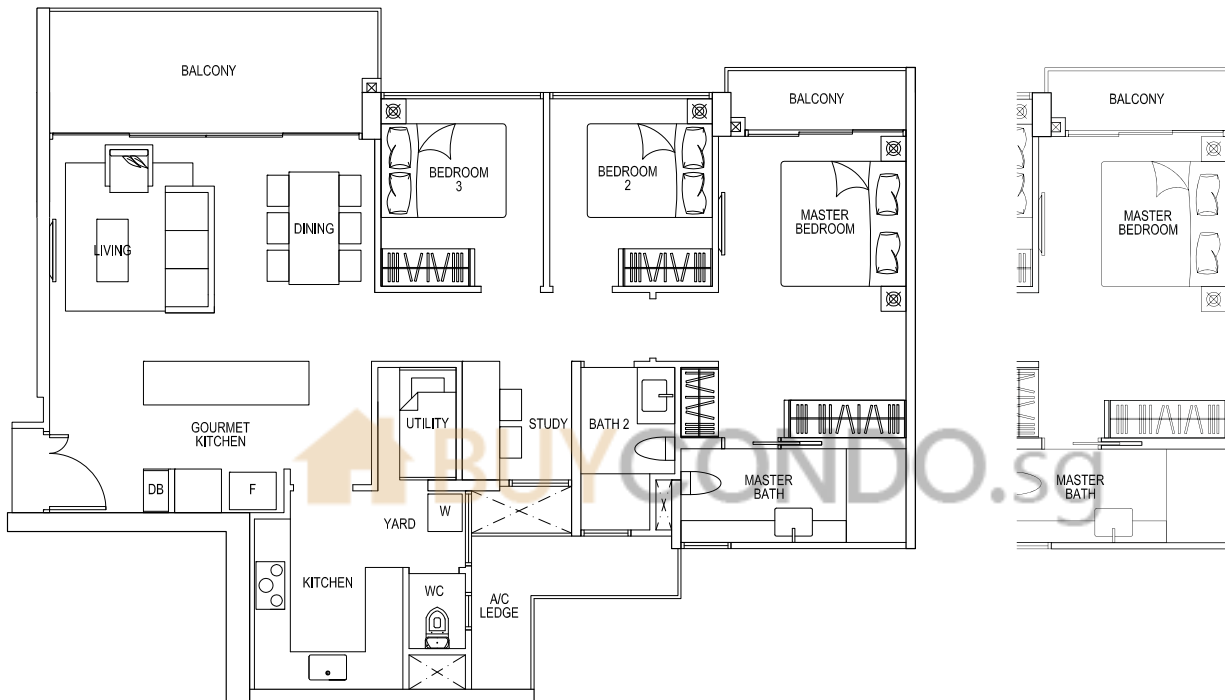
#02-22 to #09-22
#02-23 to #09-23 (mirror)
#02-38 to #09-38
#02-39 to #09-39 (mirror)



Areas includes A/C ledge, Balcony, PES and Strata Void (where applicable). Orientations and facings will differ depending on the unit you are purchasing. Please refer to the key plan. All plans are not to scale and are subject to changes as may be approved by the relevant authorities. All floor areas are estimates and are subject to final survey.

3

Bedroom CoSpace



TYPE CS3A 3 - BEDROOM COSPACE

119 sqm / 1281 sq ft

#10-02 to #11-02

#10-14 to #11-14

TYPE CS3A 3 - BEDROOM COSPACE (w/ side window)

119 sqm / 1281 sq ft

#10-22 to #11-22

#10-23 to #11-23 (mirror)

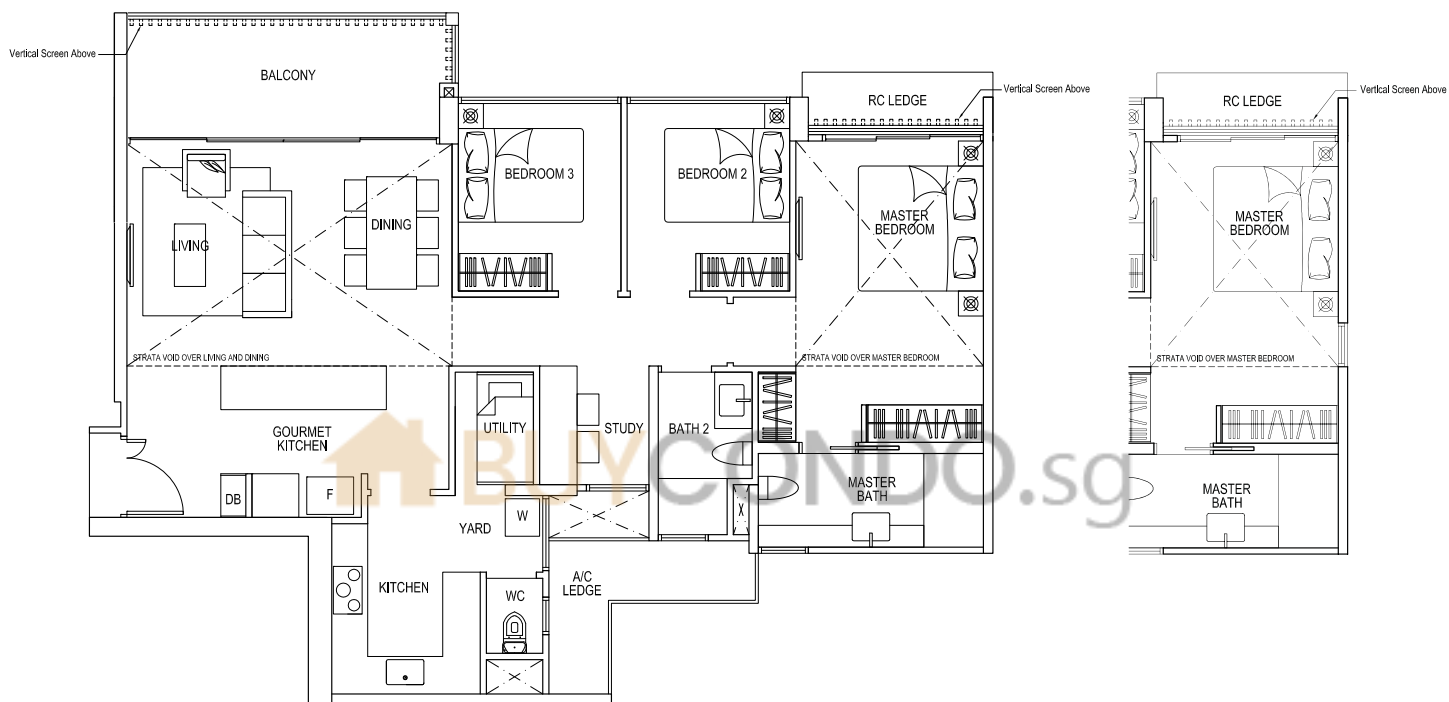
#10-38 to #11-38

#10-39 to #11-39 (mirror)



Areas includes A/C ledge, Balcony, PES and Strata Void (where applicable). Orientations and facings will differ depending on the unit you are purchasing. Please refer to the key plan. All plans are not to scale and are subject to changes as may be approved by the relevant authorities. All floor areas are estimates and are subject to final survey.

3 Bedroom CoSpace



TYPE CS3L 3 - BEDROOM COSPACE

147 sqm / 1582 sq ft

(Including Strata void area of approx. 31 sqm
above living/ dining and master bedroom)

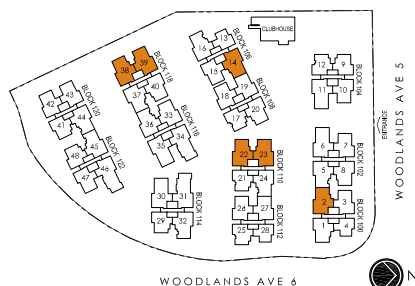
#12-02
#12-14

TYPE CS3L 3 - BEDROOM COSPACE (w/ side window)

147 sqm / 1582 sq ft

(Including Strata void area of approx. 31 sqm
above living/ dining and master bedroom)

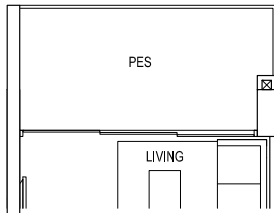
#12-22
#12-23 (mirror)
#12-38
#12-39 (mirror)



Areas includes A/C ledge, Balcony, PES and Strata Void (where applicable). Orientations and facings will differ depending on the unit you are purchasing. Please refer to the key plan. All plans are not to scale and are subject to changes as may be approved by the relevant authorities. All floor areas are estimates and are subject to final survey.

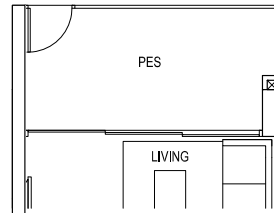
4

Bedroom



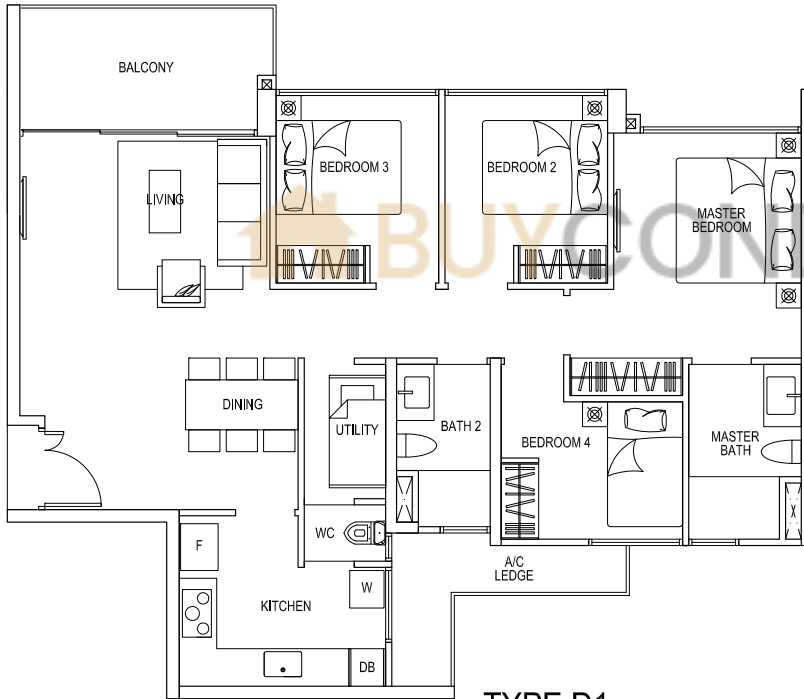
TYPE D1p 4 - BEDROOM

107 sqm / 1152 sq ft
#01-08



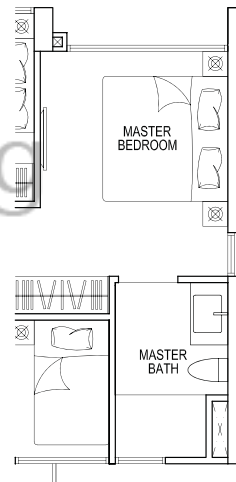
TYPE D1p 4 - BEDROOM

107 sqm / 1152 sq ft
#01-01 (mirror)
#01-20
#01-33 (mirror)
#01-40



TYPE D1 4 - BEDROOM

107 sqm / 1152 sq ft
#02-08 to #09-08
#02-33 to #09-33 (mirror)
#02-40 to #09-40



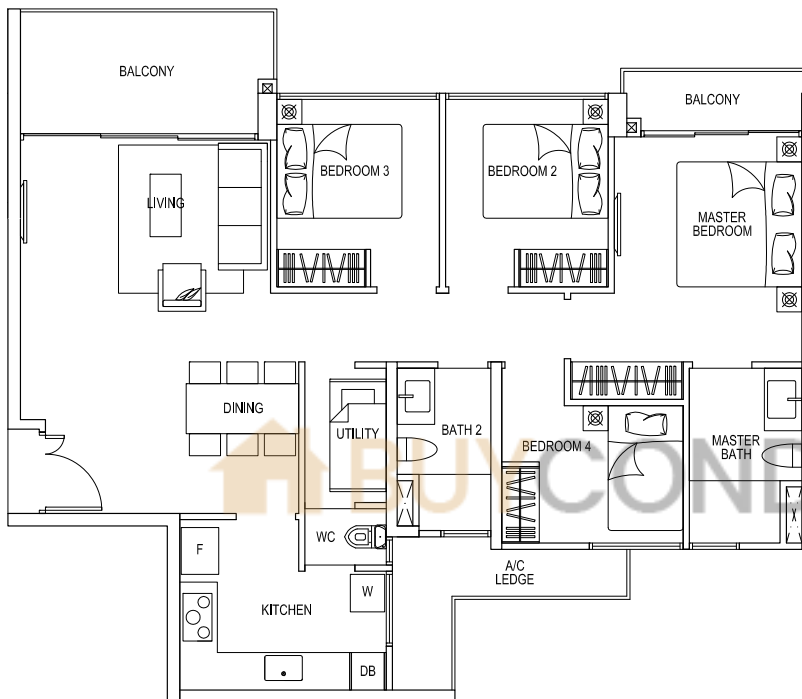
TYPE D1 4 - BEDROOM (w/ side window)

107 sqm / 1152 sq ft
#02-01 to #09-01 (mirror)
#02-20 to #09-20



Areas includes A/C ledge, Balcony, PES and Strata Void (where applicable). Orientations and facings will differ depending on the unit you are purchasing. Please refer to the key plan. All plans are not to scale and are subject to changes as may be approved by the relevant authorities. All floor areas are estimates and are subject to final survey.

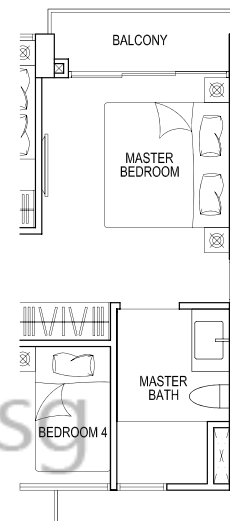
4 Bedroom



TYPE D1A 4 - BEDROOM

110 sqm / 1184 sq ft

#10-08 to #11-08
#10-33 to #11-33 (mirror)
#10-40 to #11-40



TYPE D1A 4 - BEDROOM (w/ side window)

110 sqm / 1184 sq ft

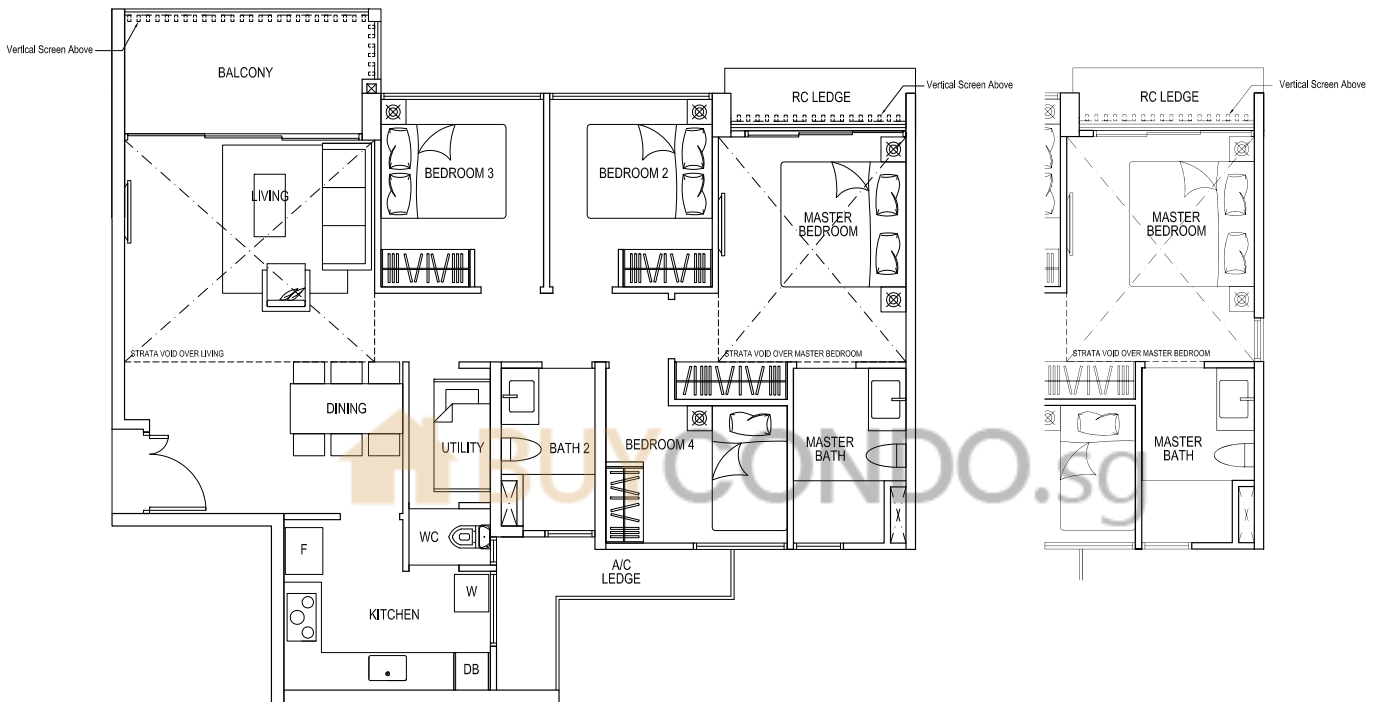
#10-01 to #11-01 (mirror)
#10-20 to #11-20



Areas includes A/C ledge, Balcony, PES and Strata Void (where applicable). Orientations and facings will differ depending on the unit you are purchasing. Please refer to the key plan. All plans are not to scale and are subject to changes as may be approved by the relevant authorities. All floor areas are estimates and are subject to final survey.

4

Bedroom



TYPE D1L 4 - BEDROOM

134 sqm / 1442 sq ft

(Including Strata void area of approx. 27 sqm above living/ dining and master bedroom)

- #12-08
- #12-33 (mirror)
- #12-40

TYPE D1L 4 - BEDROOM (w/ side window)

134 sqm / 1442 sq ft

(Including Strata void area of approx. 27 sqm above living/ dining and master bedroom)

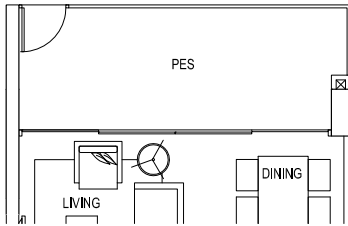
- #12-01 (mirror)
- #12-20



Areas includes A/C ledge, Balcony, PES and Strata Void (where applicable). Orientations and facings will differ depending on the unit you are purchasing. Please refer to the key plan. All plans are not to scale and are subject to changes as may be approved by the relevant authorities. All floor areas are estimates and are subject to final survey.

4

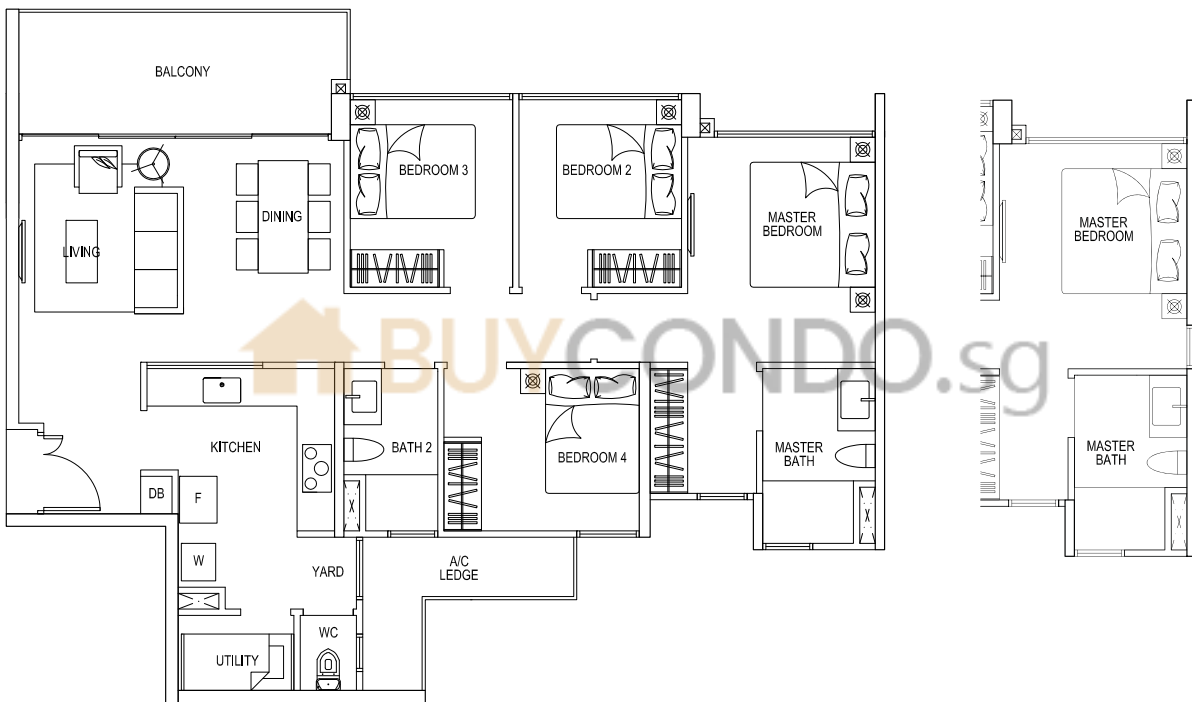
Bedroom Premium



TYPE D2p 4 - BEDROOM PREMIUM

114 sqm / 1227 sq ft

- | | |
|-----------------|-----------------|
| #01-05 (mirror) | #01-36 |
| #01-16 | #01-37 (mirror) |
| #01-24 | #01-44 |
| #01-32 | #01-45 (mirror) |



TYPE D2 4 - BEDROOM PREMIUM

114 sqm / 1227 sq ft

- | | |
|---------------------------|---------------------------|
| #02-05 to #09-05 (mirror) | #02-37 to #09-37 (mirror) |
| #02-24 to #09-24 | #02-44 to #08-44 |
| #02-36 to #09-36 | #02-45 to #08-45 (mirror) |

TYPE D2 4 - BEDROOM PREMIUM (w/ side window)

114 sqm / 1227 sq ft

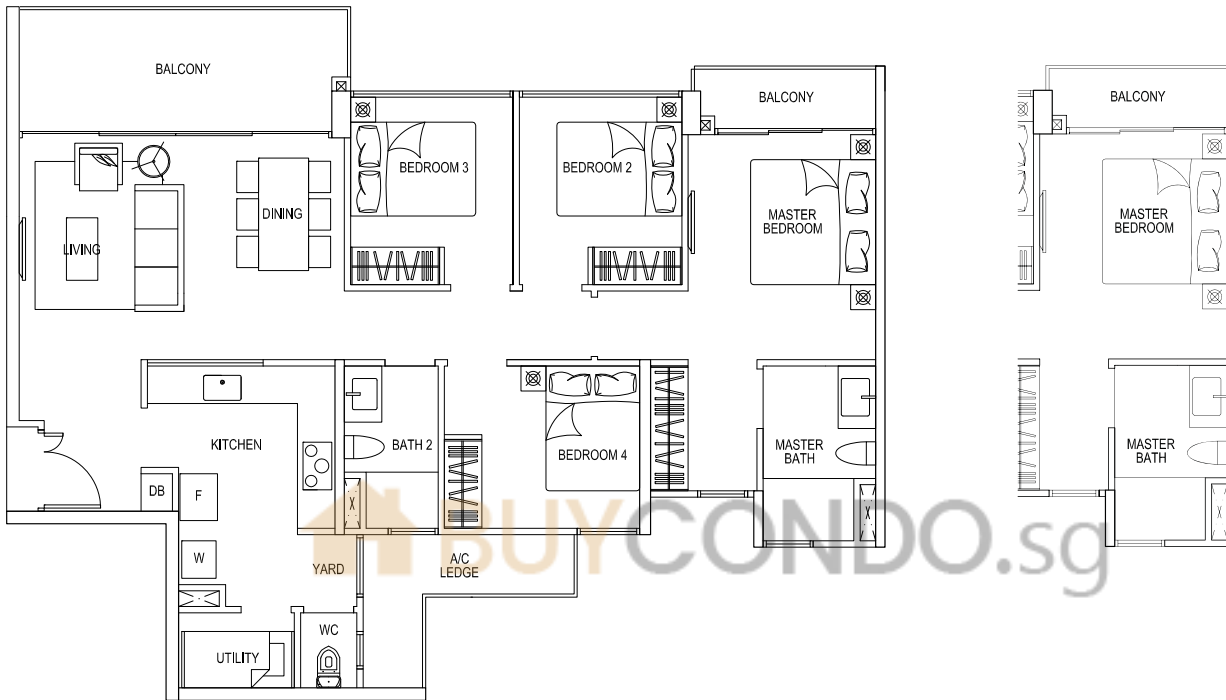
- | |
|------------------|
| #02-16 to #09-16 |
| #02-32 to #08-32 |



Areas includes A/C ledge, Balcony, PES and Strata Void (where applicable). Orientations and facings will differ depending on the unit you are purchasing. Please refer to the key plan. All plans are not to scale and are subject to changes as may be approved by the relevant authorities. All floor areas are estimates and are subject to final survey.

4

Bedroom Premium



TYPE D2A 4 - BEDROOM PREMIUM

117 sqm / 1259 sq ft

#10-05 to #11-05 (mirror) #10-37 to #11-37 (mirror)
 #10-24 to #11-24 #09-44 to #10-44
 #10-36 to #11-36 #09-45 to #10-45 (mirror)

TYPE D2A 4 - BEDROOM PREMIUM (w/ side window)

117 sqm / 1259 sq ft

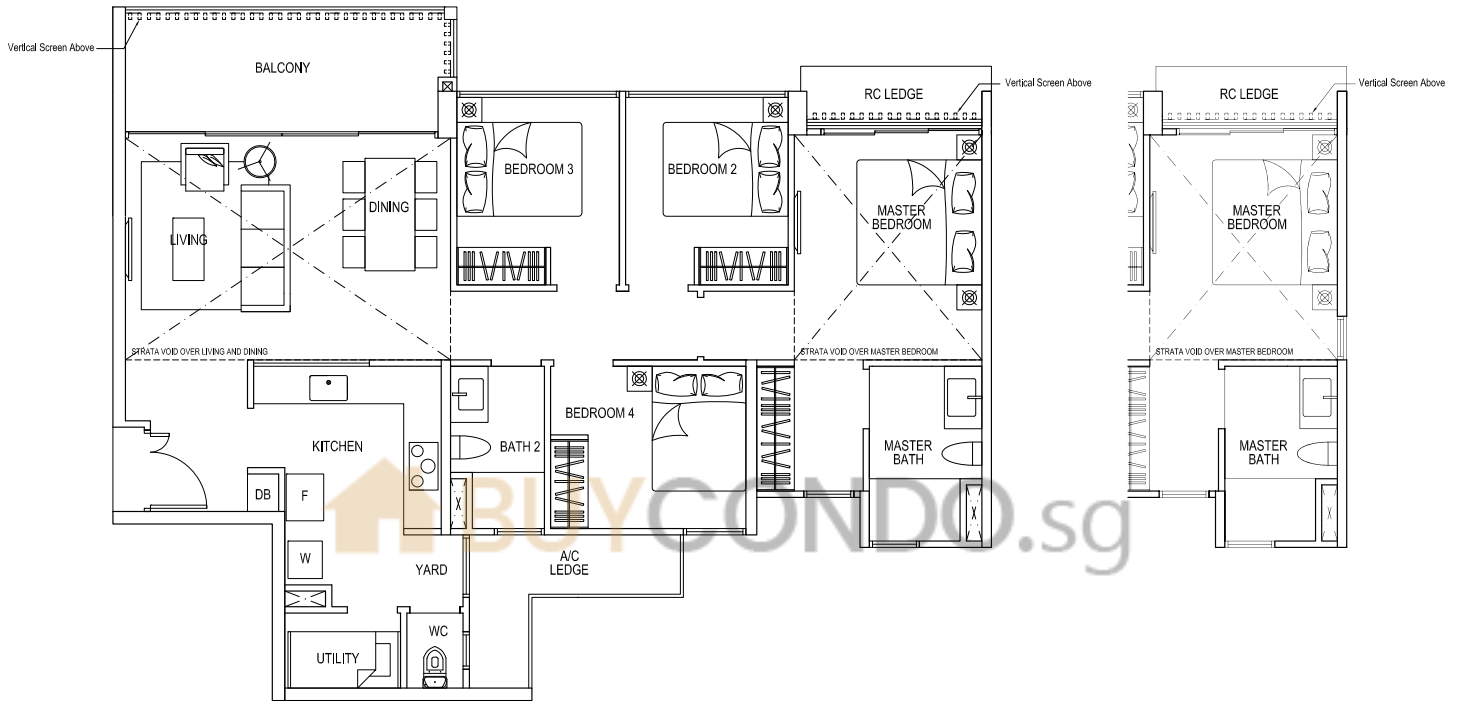
#10-16 to #11-16
 #09-32 to #10-32



Areas includes A/C ledge, Balcony, PES and Strata Void (where applicable). Orientations and facings will differ depending on the unit you are purchasing. Please refer to the key plan. All plans are not to scale and are subject to changes as may be approved by the relevant authorities. All floor areas are estimates and are subject to final survey.

4

Bedroom Premium



TYPE D2L 4 - BEDROOM PREMIUM

145 sqm / 1561 sq ft

(Including Strata void area of approx. 31 sqm above living/ dining and master bedroom)

- | | |
|-----------------|-----------------|
| #12-05 (mirror) | #12-37 (mirror) |
| #12-24 | #11-44 |
| #12-36 | #11-45 (mirror) |

TYPE D2L 4 - BEDROOM PREMIUM (w/ side window)

145 sqm / 1561 sq ft

(Including Strata void area of approx. 31 sqm above living/ dining and master bedroom)

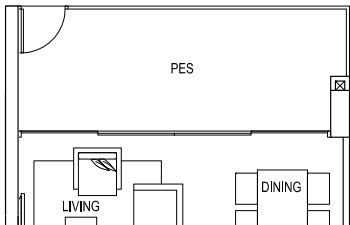
- #12-16
#11-32



Areas includes A/C ledge, Balcony, PES and Strata Void (where applicable). Orientations and facings will differ depending on the unit you are purchasing. Please refer to the key plan. All plans are not to scale and are subject to changes as may be approved by the relevant authorities. All floor areas are estimates and are subject to final survey.

4

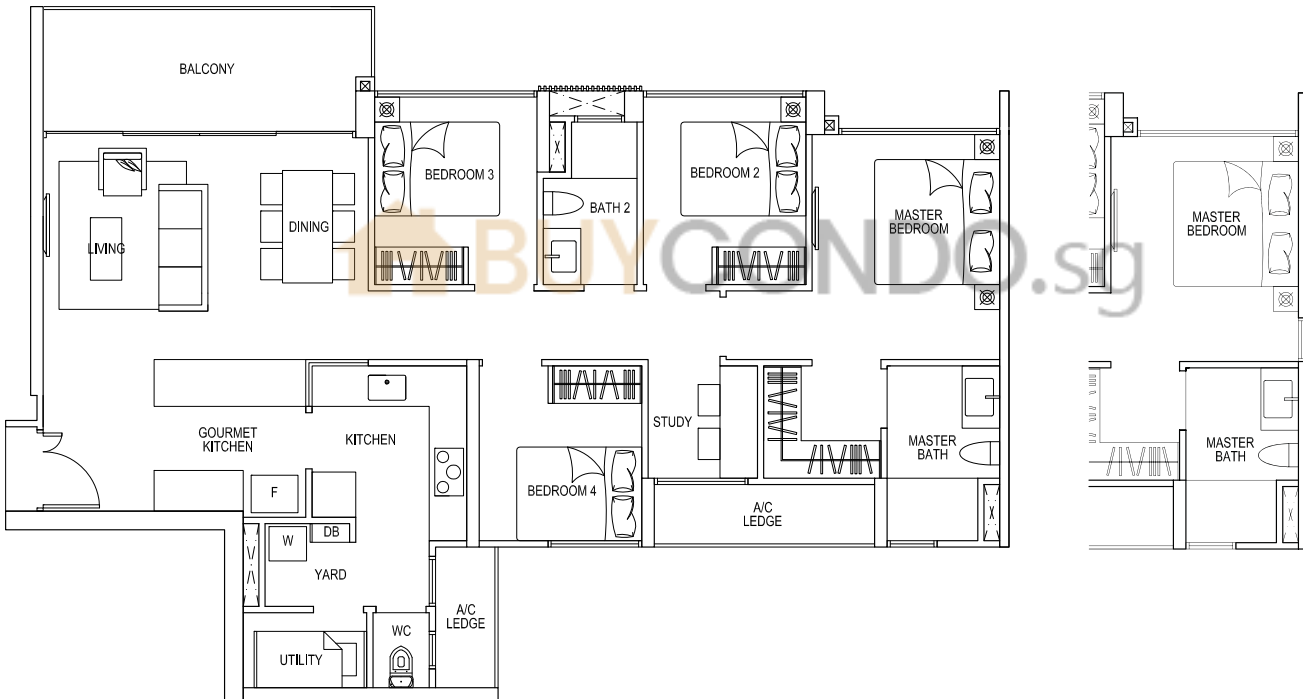
Bedroom Cospace



TYPE CS4p 4 - BEDROOM COSPACE

125 sqm / 1345 sq ft

- #01-06
- #01-11 (mirror)
- #01-30
- #01-35 (mirror)



TYPE CS4 4 - BEDROOM COSPACE

125 sqm / 1345 sq ft

- #02-06 to #09-06
- #02-11 to #09-11 (mirror)

TYPE CS4 4 - BEDROOM COSPACE (w/ side window)

125 sqm / 1345 sq ft

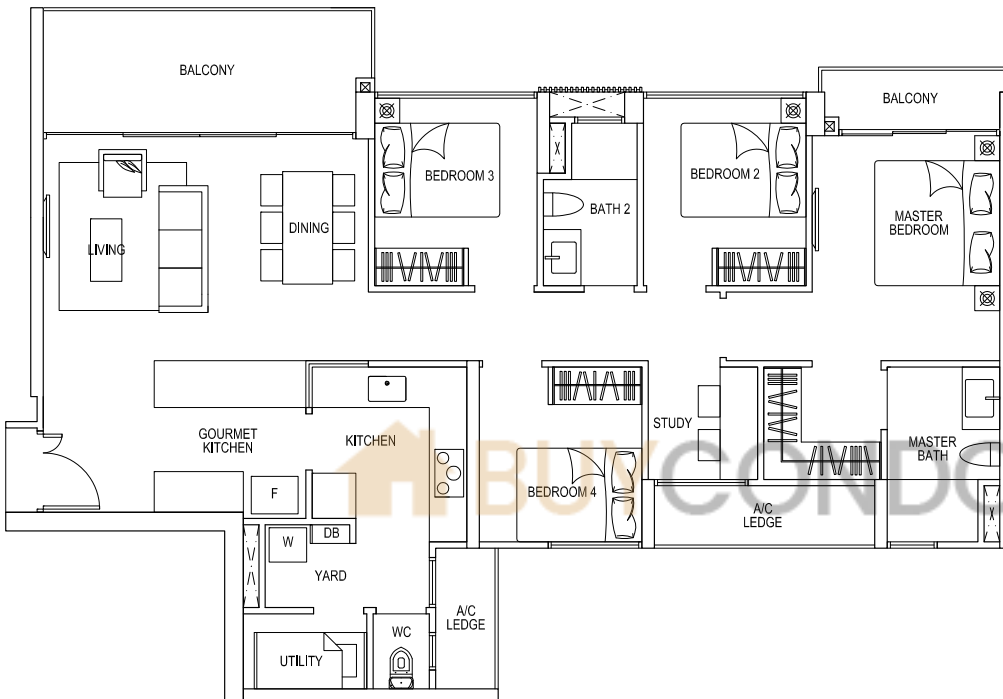
- #02-30 to #08-30
- #02-35 to #09-35 (mirror)



Areas includes A/C ledge, Balcony, PES and Strata Void (where applicable). Orientations and facings will differ depending on the unit you are purchasing. Please refer to the key plan. All plans are not to scale and are subject to changes as may be approved by the relevant authorities. All floor areas are estimates and are subject to final survey.

4

Bedroom CoSpace

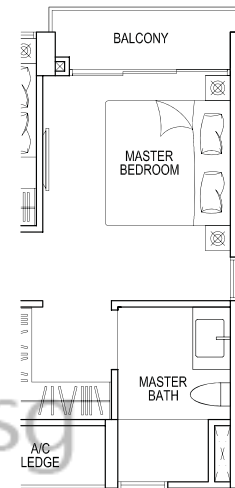


TYPE CS4A 4 - BEDROOM COSPACE

128 sqm / 1378 sq ft

#10-06 to #11-06

#10-11 to #11-11 (mirror)



TYPE CS4A 4 - BEDROOM COSPACE (w/ side window)

128 sqm / 1378 sq ft

#09-30 to #10-30

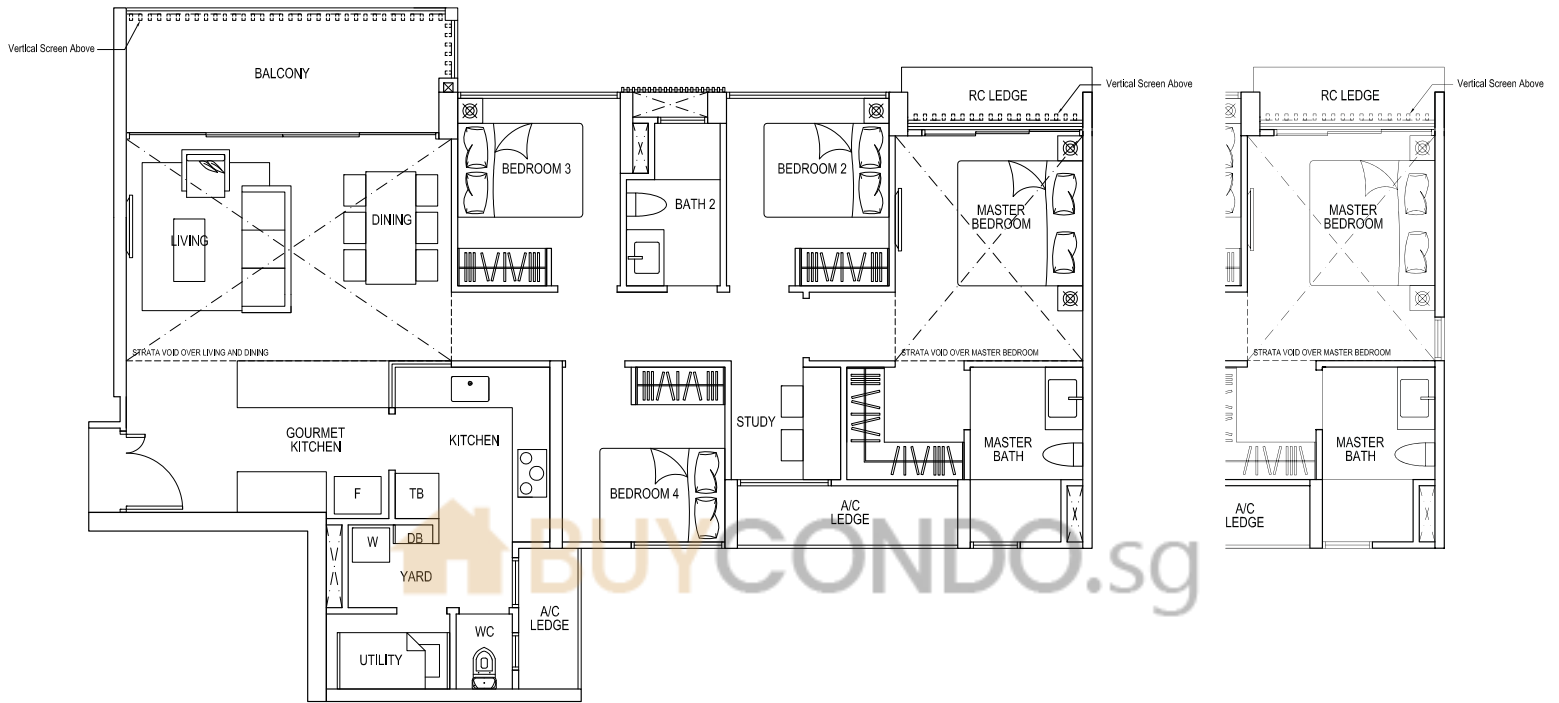
#10-35 to #11-35 (mirror)



Areas includes A/C ledge, Balcony, PES and Strata Void (where applicable). Orientations and facings will differ depending on the unit you are purchasing. Please refer to the key plan. All plans are not to scale and are subject to changes as may be approved by the relevant authorities. All floor areas are estimates and are subject to final survey.

4

Bedroom CoSpace



TYPE CS4L 4 - BEDROOM COSPACE

156 sqm / 1679 sq ft

(Including Strata void area of approx. 31 sqm above living/ dining and master bedroom)

#12-06

#12-11 (mirror)

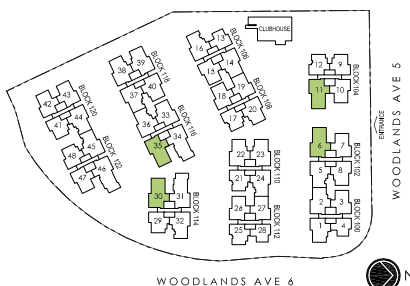
TYPE CS4L 4 - BEDROOM COSPACE (w/ side window)

156 sqm / 1679 sq ft

(Including Strata void area of approx. 31 sqm above living/ dining and master bedroom)

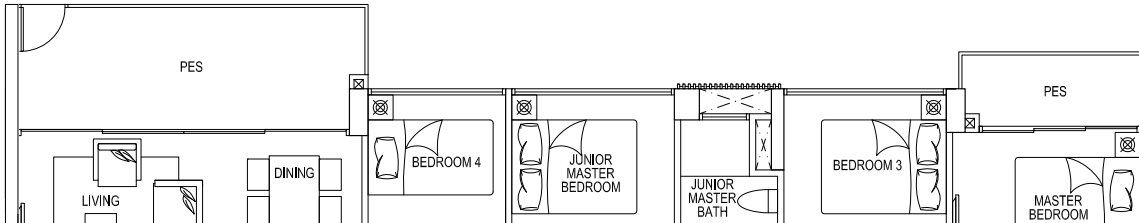
#11-30

#12-35 (mirror)



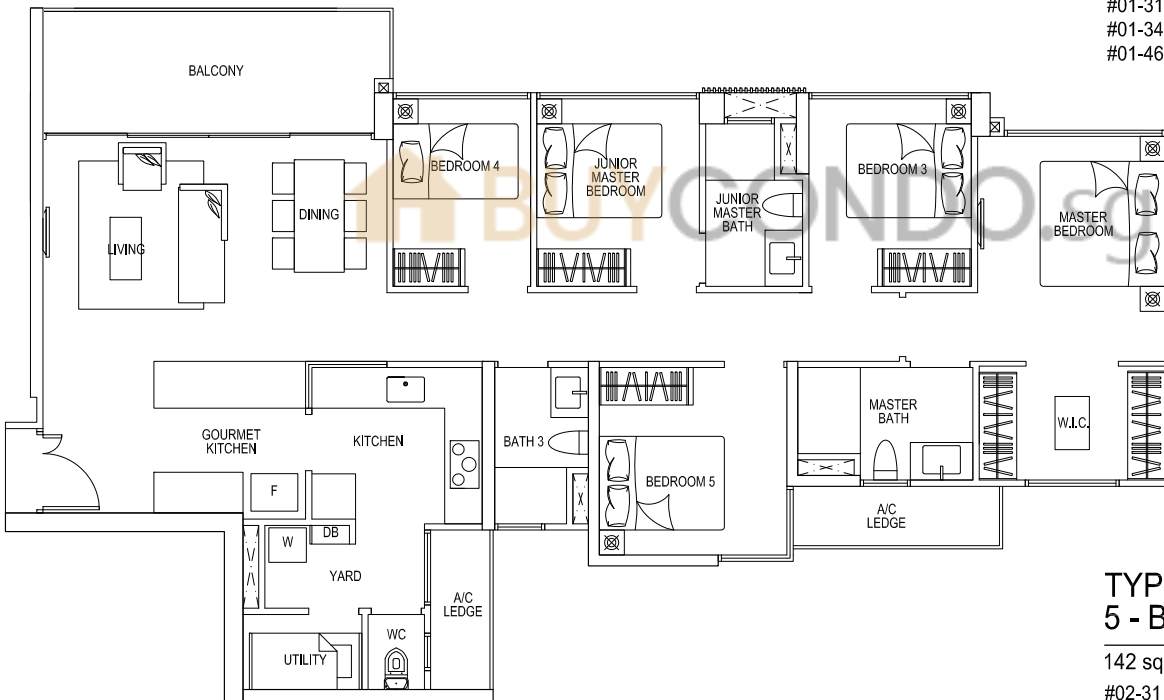
Areas includes A/C ledge, Balcony, PES and Strata Void (where applicable). Orientations and facings will differ depending on the unit you are purchasing. Please refer to the key plan. All plans are not to scale and are subject to changes as may be approved by the relevant authorities. All floor areas are estimates and are subject to final survey.

5 Bedroom Cospace



TYPE CS5p 5 - BEDROOM COSPACE

145 sqm / 1561 sq ft
 #01-31 (mirror)
 #01-34
 #01-46



TYPE CS5 5 - BEDROOM COSPACE

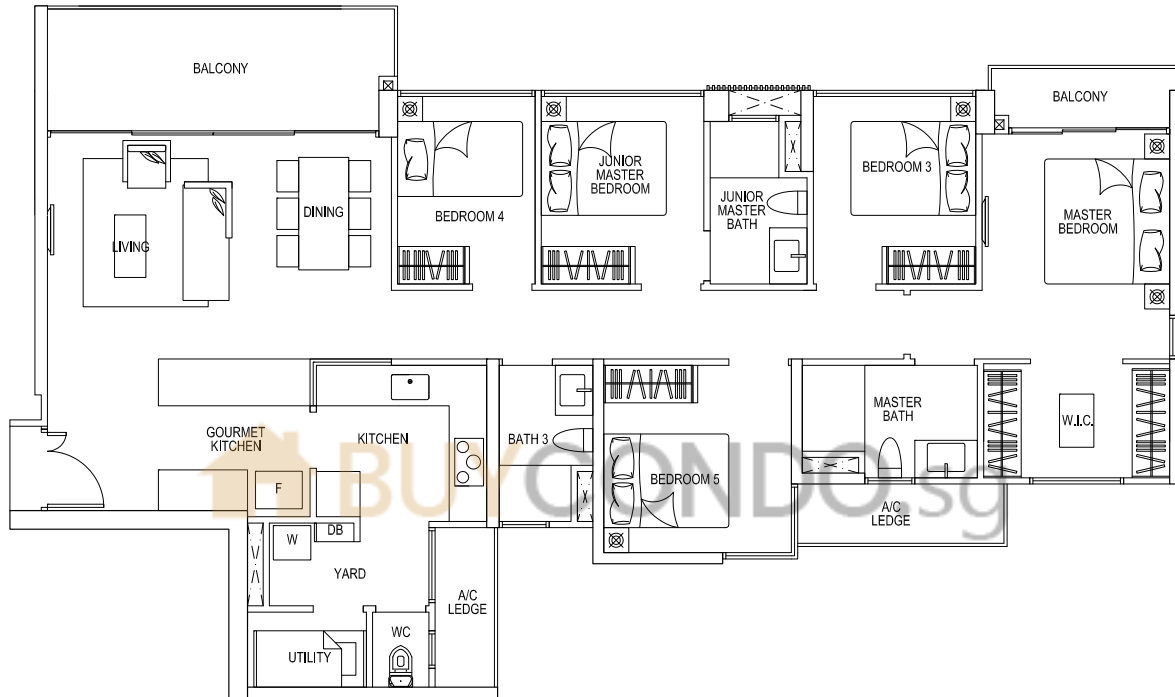
142 sqm / 1528 sq ft
 #02-31 to #08-31 (mirror)
 #02-34 to #09-34
 #02-46 to #08-46



Areas includes A/C ledge, Balcony, PES and Strata Void (where applicable). Orientations and facings will differ depending on the unit you are purchasing. Please refer to the key plan. All plans are not to scale and are subject to changes as may be approved by the relevant authorities. All floor areas are estimates and are subject to final survey.

5

Bedroom CoSpace



TYPE CS5A 5 - BEDROOM COSPACE

144 sqm / 1550 sq ft

#09-31 to #10-31 (mirror)

#10-34 to #11-34

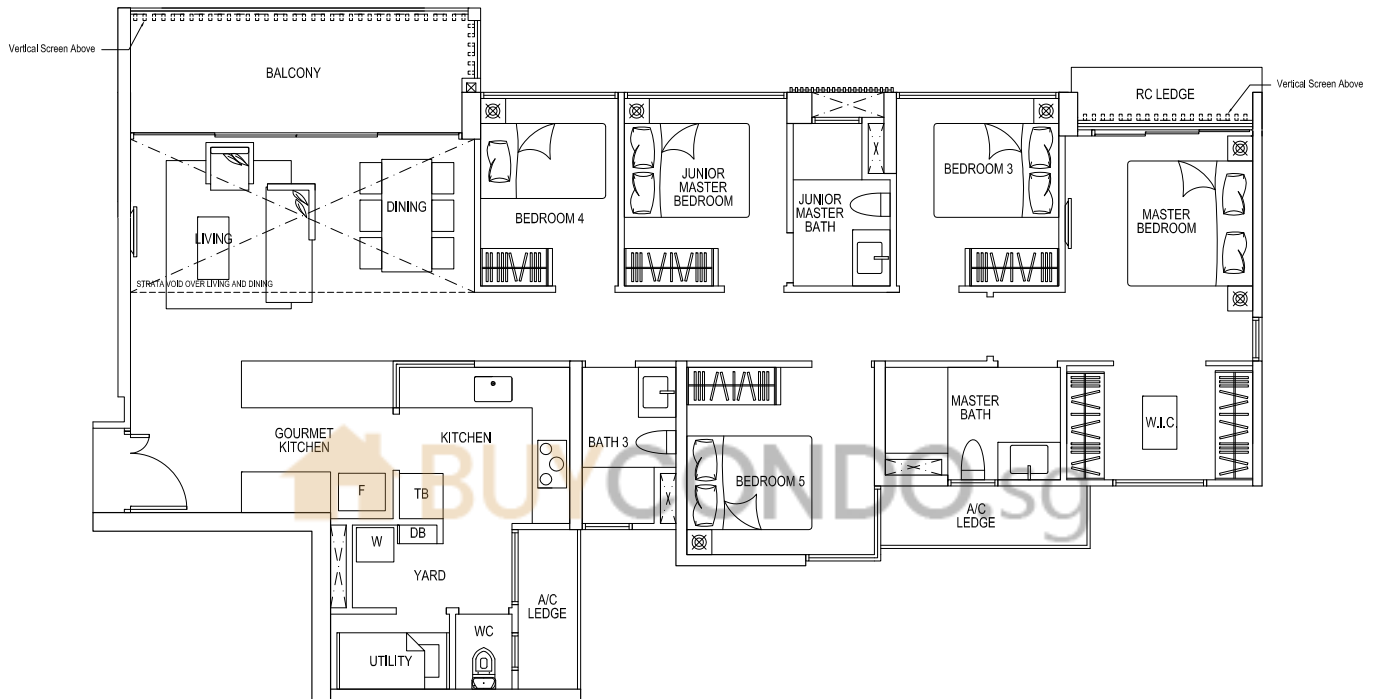
#09-46 to #10-46



Areas includes A/C ledge, Balcony, PES and Strata Void (where applicable). Orientations and facings will differ depending on the unit you are purchasing. Please refer to the key plan. All plans are not to scale and are subject to changes as may be approved by the relevant authorities. All floor areas are estimates and are subject to final survey.

5

Bedroom CoSpace



TYPE CS5L 5 - BEDROOM COSPACE

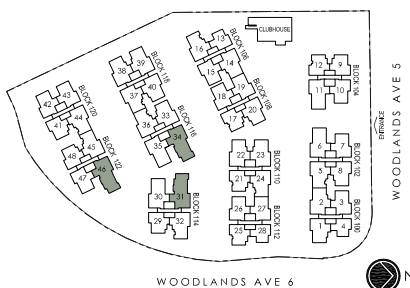
156 sqm / 1679 sq ft

(Including Strata void area of approx. 14 sqm
above living/ dining)

#11-31 (mirror)

#12-34

#11-46



Areas includes A/C ledge, Balcony, PES and Strata Void (where applicable). Orientations and facings will differ depending on the unit you are purchasing. Please refer to the key plan. All plans are not to scale and are subject to changes as may be approved by the relevant authorities. All floor areas are estimates and are subject to final survey.