

Unit Distribution Chart

Storey	Unit	01	02	03	04	05
	Roof Terrace		Type A8 2,174 sqft	Type A9 2,357 sqft	Type B14 1,765 sqft	
5th		Type A5 1,163 sqft	Type A6 1,249 sqft	Type B9 915 sqft	Type C5 495 sqft	Type B6 797 sqft
4th		Type A5 1,163 sqft	Type A6 1,249 sqft	Type B9 915 sqft	Type C5 495 sqft	Type B6 797 sqft
3rd		Type A5 1,163 sqft	Type A6 1,249 sqft	Type B9 915 sqft	Type C5 495 sqft	Type B6 797 sqft
2nd		Type A5 1,163 sqft	Type A6 1,249 sqft	Type B9 915 sqft	Type C5 495 sqft	Type B6 797 sqft
1st		Type A2 1,313 sqft	Type A3 1,227 sqft	Type B4 936 sqft	Type C1 506 sqft	Type B1 893 sqft

Storey	Unit	06	07	08	09	10
	Roof Terrace		Type A8 2,174 sqft	Type A9 2,357 sqft	Type A7 2,217 sqft	Type C6 592 sqft
5th		Type A5 1,163 sqft	Type A6 1,249 sqft	Type A4 1,227 sqft	Type C6 592 sqft	Type B7 840 sqft
4th		Type A5 1,163 sqft	Type A6 1,249 sqft	Type A4 1,227 sqft	Type C6 592 sqft	Type B7 840 sqft
3rd		Type A5 1,163 sqft	Type A6 1,249 sqft	Type A4 1,227 sqft	Type C6 592 sqft	Type B7 840 sqft
2nd		Type A5 1,163 sqft	Type A6 1,249 sqft	Type A4 1,227 sqft	Type C6 592 sqft	Type B7 840 sqft
1st		Type A2 1,313 sqft	Type A3 1,227 sqft	Type A1 1,130 sqft	Type C2 614 sqft	Type B2 915 sqft

Storey	Unit	11	12	13	14	15
	Roof Terrace		Type B14A 1,765 sqft	Type A9 2,357 sqft	Type A7 2,217 sqft	Type C6 592 sqft
5th		Type B9A 915 sqft	Type A6 1,249 sqft	Type A4 1,227 sqft	Type C6 592 sqft	Type B7 840 sqft
4th		Type B9A 915 sqft	Type A6 1,249 sqft	Type A4 1,227 sqft	Type C6 592 sqft	Type B7 840 sqft
3rd		Type B9A 915 sqft	Type A6 1,249 sqft	Type A4 1,227 sqft	Type C6 592 sqft	Type B7 840 sqft
2nd		Type B9A 915 sqft	Type A6 1,249 sqft	Type A4 1,227 sqft	Type C6 592 sqft	Type B7 840 sqft
1st		Type B4 936 sqft	Type A3 1,227 sqft	Type A1 1,130 sqft	Type C2 614 sqft	Type B2 915 sqft

Storey	Unit	16	17	18	19
	Roof Terrace		Type B15 1,776 sqft	Type A8 2,174 sqft	Type A9 2,357 sqft
5th		Type B10 926 sqft	Type A5 1,163 sqft	Type A6 1,249 sqft	Type C7 527 sqft
4th		Type B10 926 sqft	Type A5 1,163 sqft	Type A6 1,249 sqft	Type C7 527 sqft
3rd		Type B10 926 sqft	Type A5 1,163 sqft	Type A6 1,249 sqft	Type C7 527 sqft
2nd		Type B10 926 sqft	Type A5 1,163 sqft	Type A6 1,249 sqft	Type C7 527 sqft
1st		Type B5 936 sqft	Type A2 1,313 sqft	Type A3 1,227 sqft	Type C3 560 sqft

Storey	Unit	20	21	22	23	24
	Roof Terrace		Type B12 1,679 sqft	Type A8 2,174 sqft	Type A9 2,357 sqft	Type A8 2,174 sqft
5th		Type B7 840 sqft	Type A5 1,163 sqft	Type A6 1,249 sqft	Type A5 1,163 sqft	Type C6 592 sqft
4th		Type B7 840 sqft	Type A5 1,163 sqft	Type A6 1,249 sqft	Type A5 1,163 sqft	Type C6 592 sqft
3rd		Type B7 840 sqft	Type A5 1,163 sqft	Type A6 1,249 sqft	Type A5 1,163 sqft	Type C6 592 sqft
2nd		Type B7 840 sqft	Type A5 1,163 sqft	Type A6 1,249 sqft	Type A5 1,163 sqft	Type C6 592 sqft
1st		Type B2 915 sqft	Type A2 1,313 sqft	Type A3 1,227 sqft	Type A2 1,313 sqft	Type C2 614 sqft

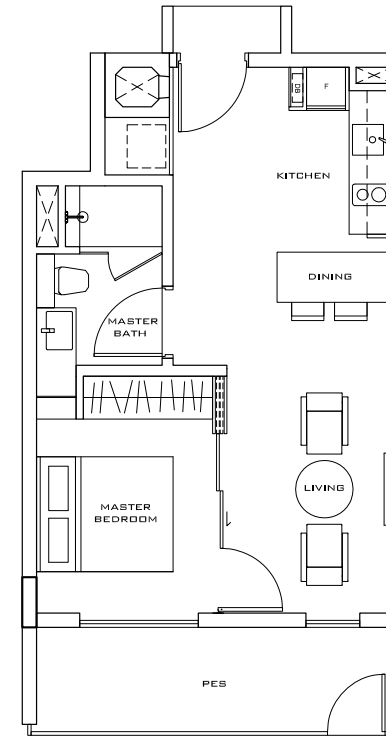
Storey	Unit	25	26	27	28
	Roof Terrace		Type B13 1,808 sqft	Type C8 527 sqft	Type A9 2,357 sqft
5th		Type B8 904 sqft	Type C8 527 sqft	Type A6 1,249 sqft	Type A5 1,163 sqft
4th		Type B8 904 sqft	Type C8 527 sqft	Type A6 1,249 sqft	Type A5 1,163 sqft
3rd		Type B8 904 sqft	Type C8 527 sqft	Type A6 1,249 sqft	Type A5 1,163 sqft
2nd		Type B8 904 sqft	Type C8 527 sqft	Type A6 1,249 sqft	Type A5 1,163 sqft
1st		Type B3 1,023 sqft	Type C4 527 sqft	Type A3 1,227 sqft	Type A2 1,313 sqft

- Penthouse
- Type C
- 1 Bedroom
- Type B
- 2 Bedroom
- Type A
- 3 Bedroom

Type C1

47 sq m/506 sq ft
(Including PES 8 sq m/86 sq ft)

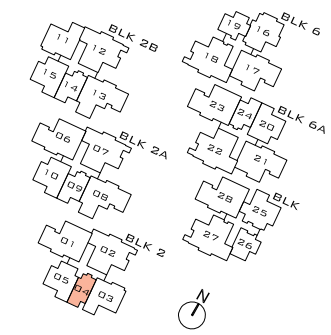
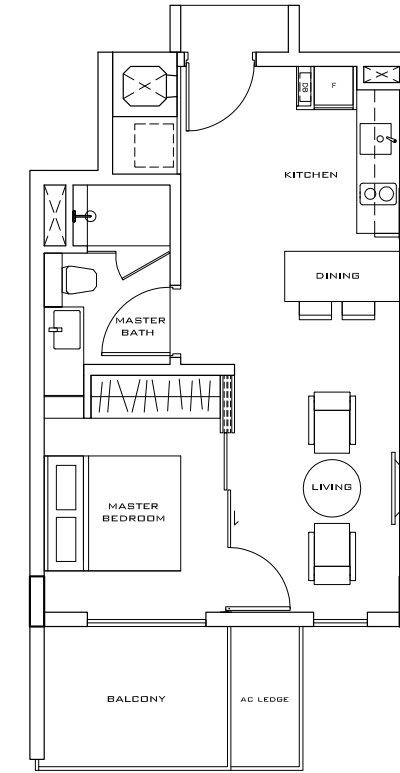
1 Bedroom -1G (Ground Level)
#01-04



Type C5

46 sq m/495 sq ft

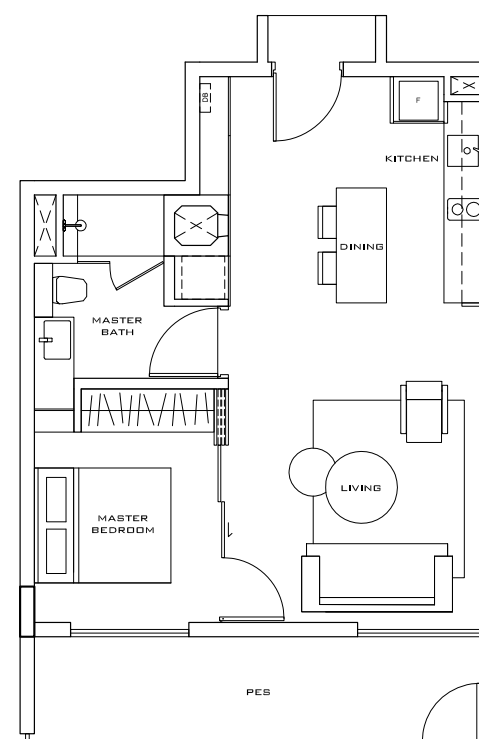
1 Bedroom -1
#02-04, 03-04, 04-04, 05-04



Type C2

57 sq m/614 sq ft
(Including PES 10 sq m/108 sq ft)

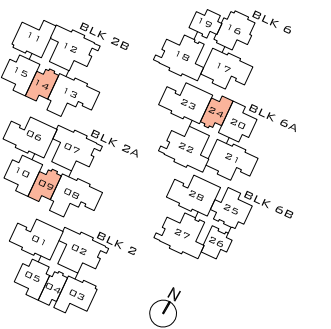
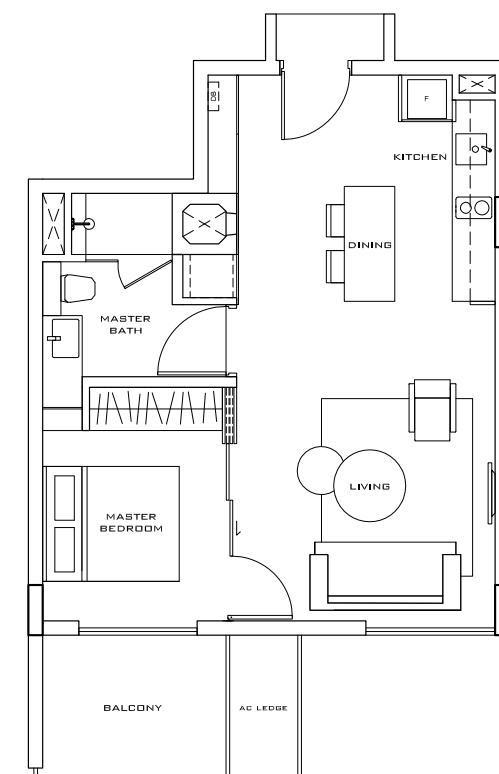
1 Bedroom -2G (Ground Level)
#01-09, 01-14, 01-24



Type C6

55 sq m/592 sq ft

1 Bedroom -2
#02-09, 03-09, 04-09, 05-09
#02-14, 03-14, 04-14, 05-14
#02-24, 03-24, 04-24, 05-24

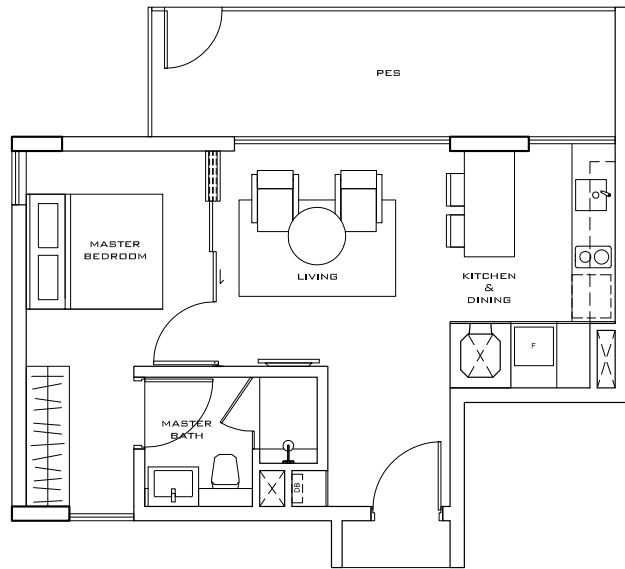


Area includes PES, balcony, AC ledge, planter, private pool and roof terrace. Plans are not drawn to scale and are subject to such amendment(s) as may be required or approved by the relevant authorities. All areas are approximate and are subject to final survey. The brand and model of all fittings, equipment and appliances supplied are subject to availability. In the event that they are not available, the developer will offer replacements of equivalent standard or value.

Type C3

52 sq m/560 sq ft
(Including PES 12 sq m/129 sq ft)

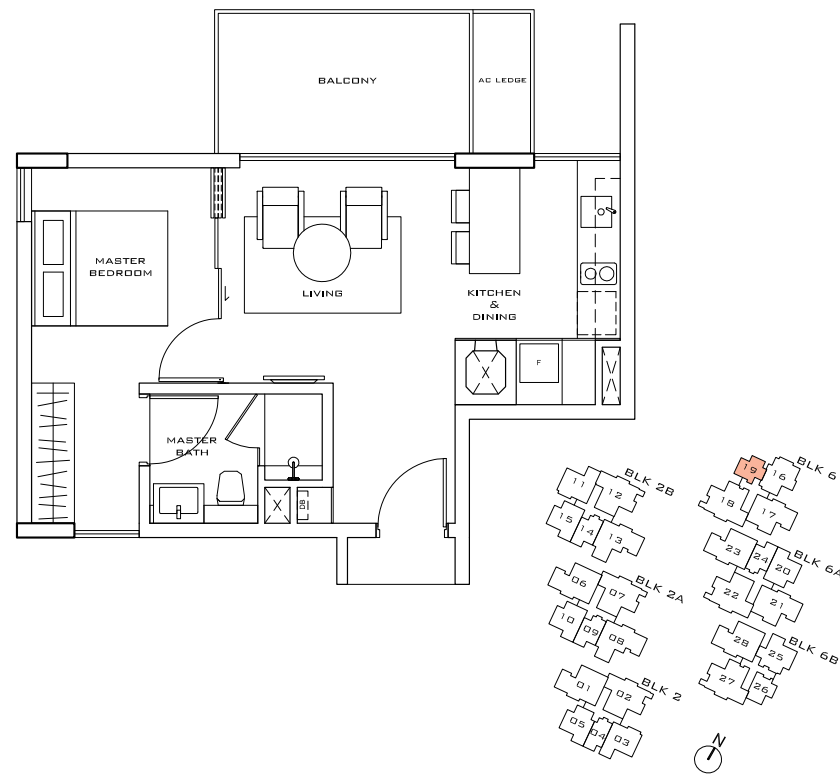
1 Bedroom -3G (Ground Level)
#01-19



Type C7

49 sq m/527 sq ft

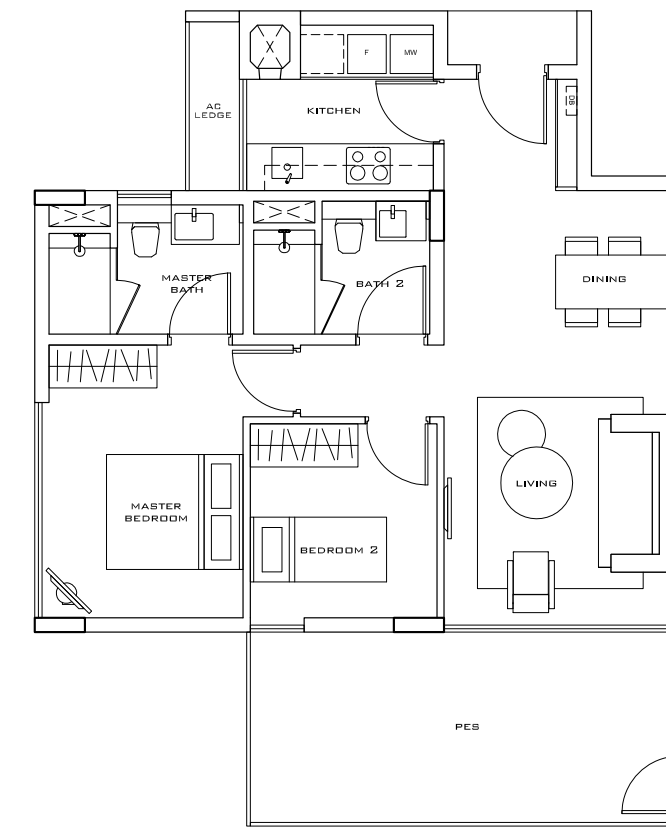
1 Bedroom -3
#02-19, 03-19, 04-19, 05-19



Type B1

83 sq m/893 sq ft
(Including PES 17 sq m/183 sq ft)

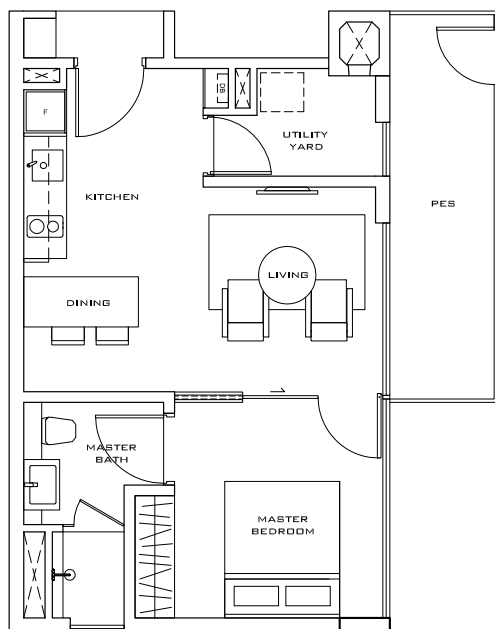
2 Bedroom -1G (Ground Level)
#01-05



Type C4

49 sq m/527 sq ft
(Including PES 8 sq m/86 sq ft)

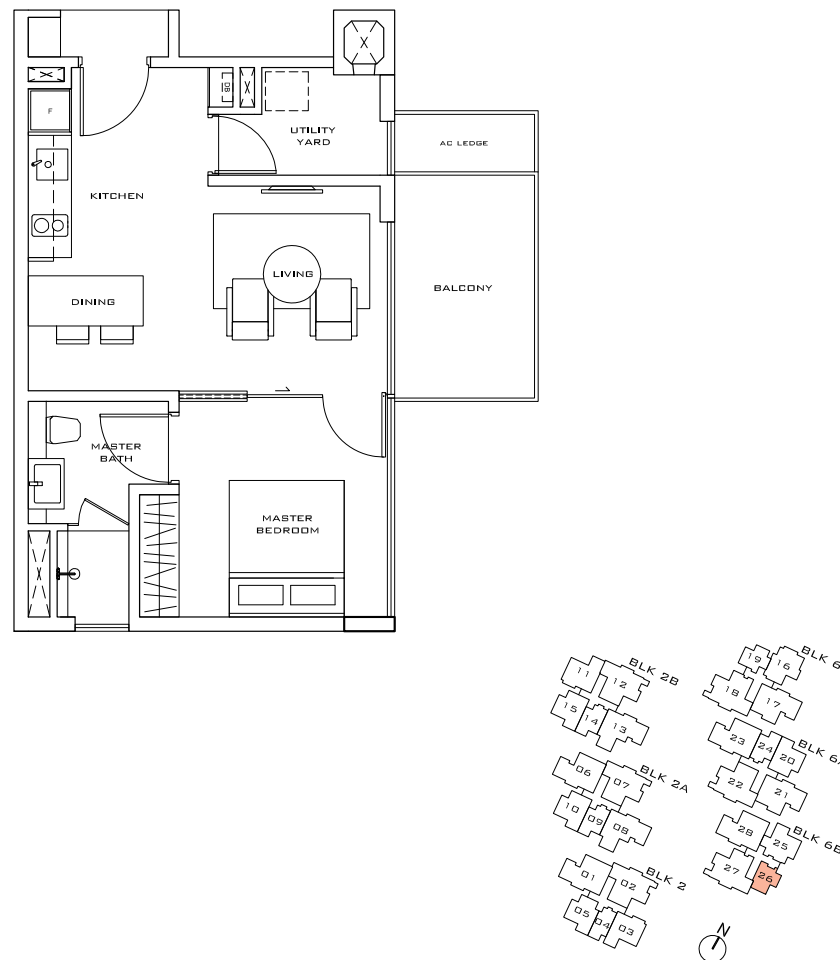
1 Bedroom -4G (Ground Level)
#01-26



Type C8

49 sq m/527 sq ft

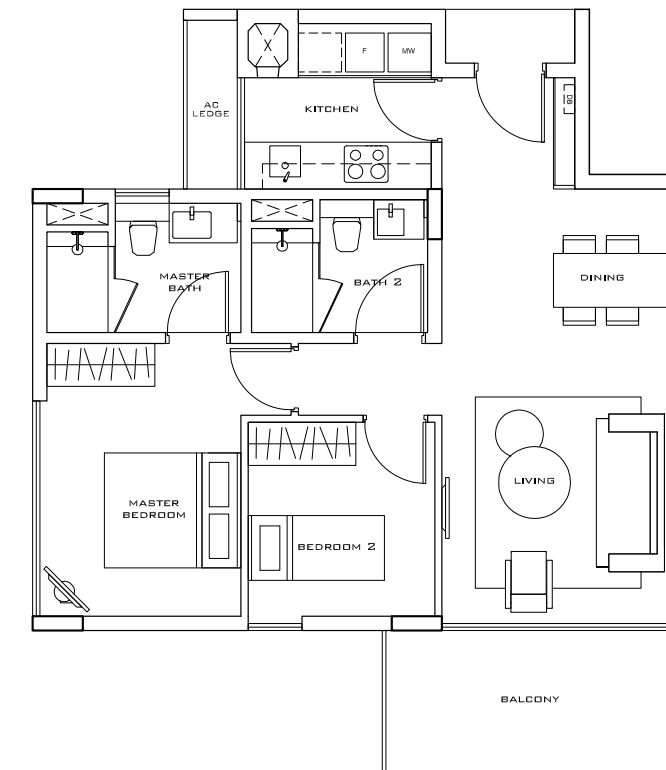
1 Bedroom -4
#02-26, 03-26, 04-26, 05-26



Type B6

74 sq m/797 sq ft

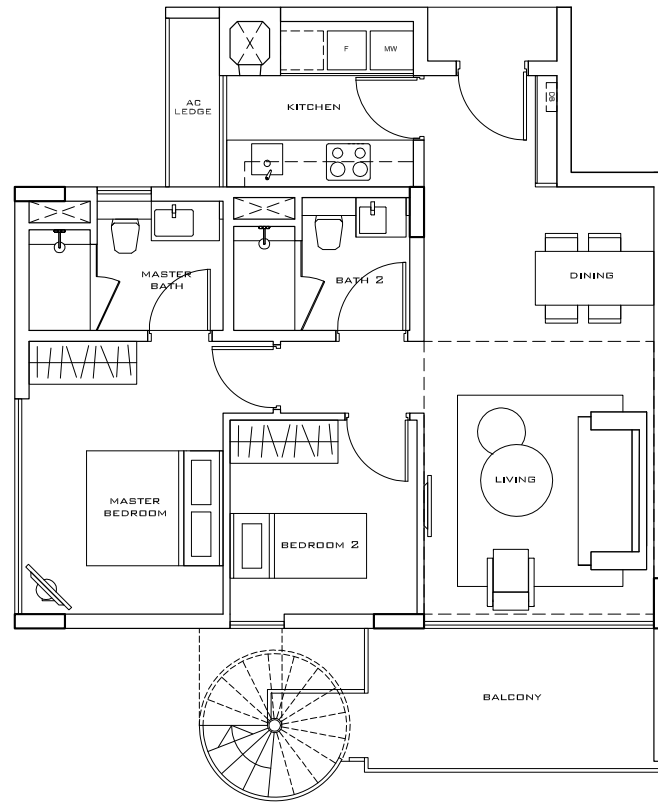
2 Bedroom -1
#02-05, 03-05, 04-05



Type B11

150 sq m/1615 sq ft
(Including Roof Terrace 72 sq m/775 sq ft)

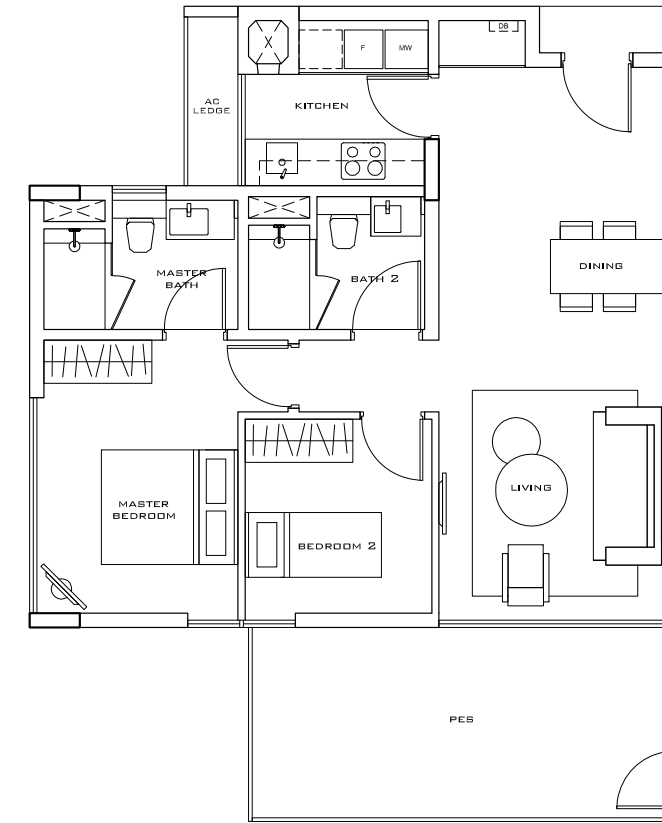
2 Bedroom -1PH
(Penthouse, Lower Floor)
#05-05



Type B2

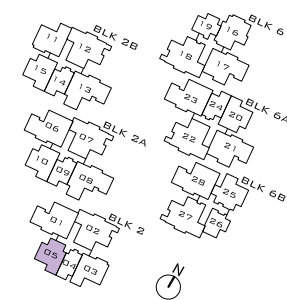
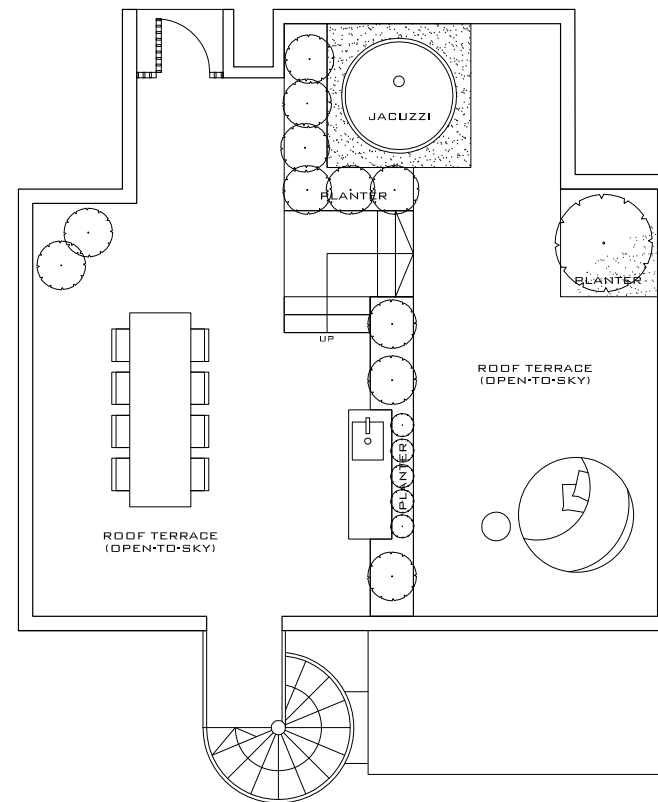
85 sq m/915 sq ft
(Including PES 16 sq m/172 sq ft)

2 Bedroom -1A-G (Ground Level)
#01-10, 01-15, 01-20



Type B11

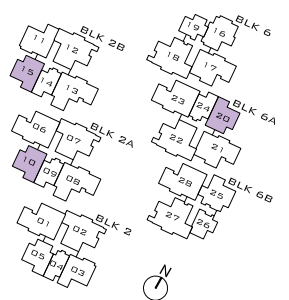
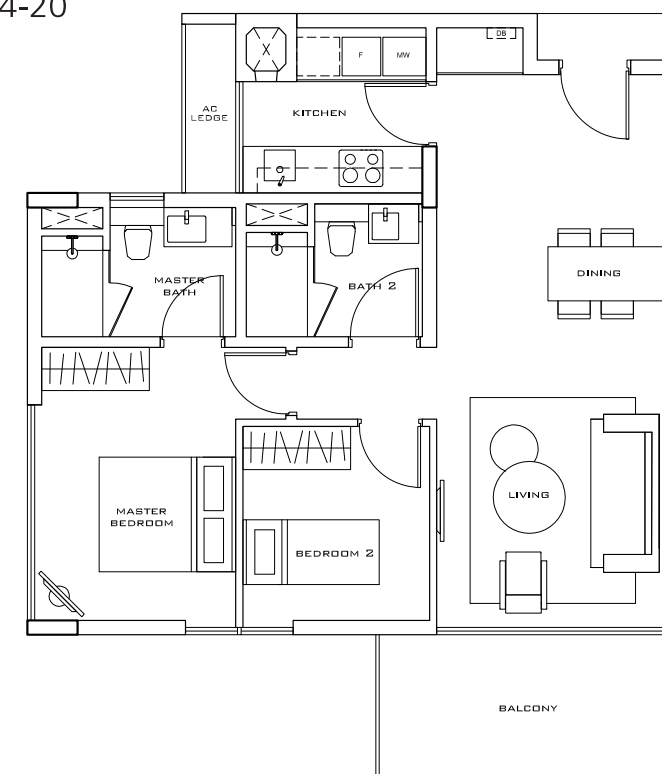
2 Bedroom -1 PH
(Penthouse, Upper Floor)



Type B7

78 sq m/840 sq ft

2 Bedroom -1A
#02-10, 03-10, 04-10
#02-15, 03-15, 04-15
#02-20, 03-20, 04-20



Area includes PES, balcony, AC ledge, planter, private pool and roof terrace. Plans are not drawn to scale and are subject to such amendment(s) as may be required or approved by the relevant authorities. All areas are approximate and are subject to final survey. The brand and model of all fittings, equipment and appliances supplied are subject to availability. In the event that they are not available, the developer will offer replacements of equivalent standard or value.

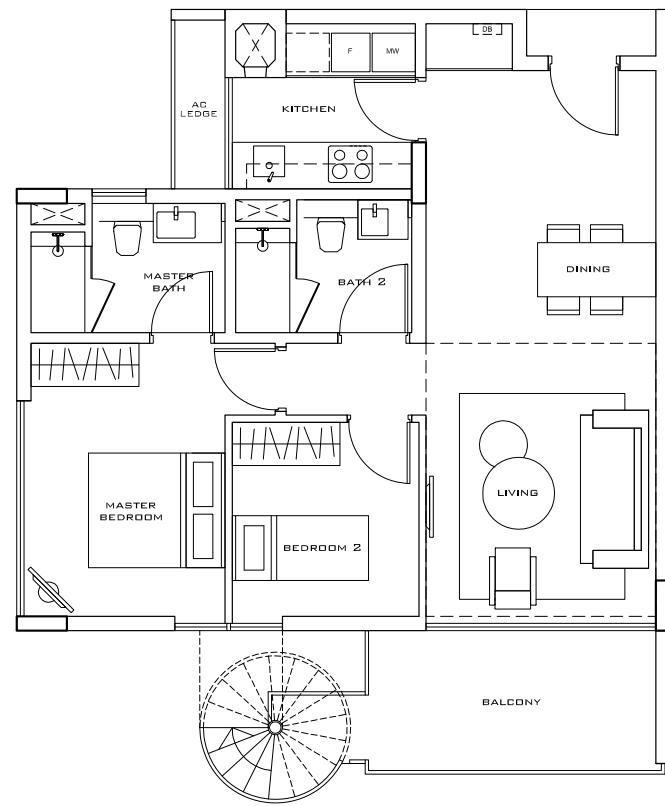
Area includes PES, balcony, AC ledge, planter, private pool and roof terrace. Plans are not drawn to scale and are subject to such amendment(s) as may be required or approved by the relevant authorities. All areas are approximate and are subject to final survey. The brand and model of all fittings, equipment and appliances supplied are subject to availability. In the event that they are not available, the developer will offer replacements of equivalent standard or value.

Type B12

156 sq m/1679 sq ft

(Including Roof Terrace 75 sq m/807 sq ft)

2 Bedroom -1A-PH
(Penthouse, Lower Floor)
#05-10, 05-15, 05-20

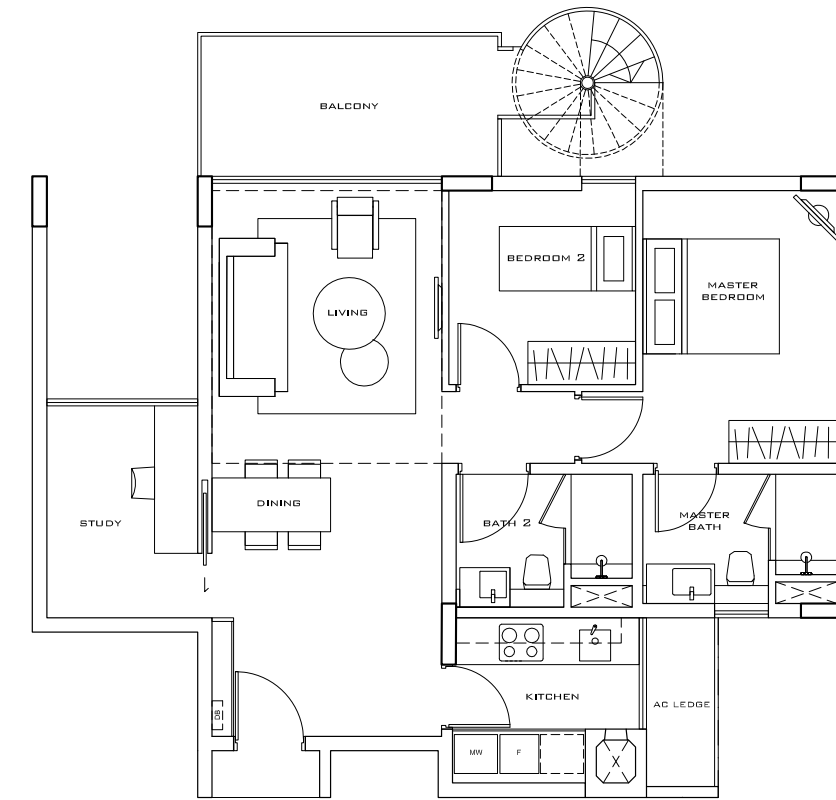


Type B13

168 sq m/1808 sq ft

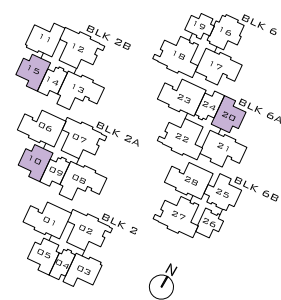
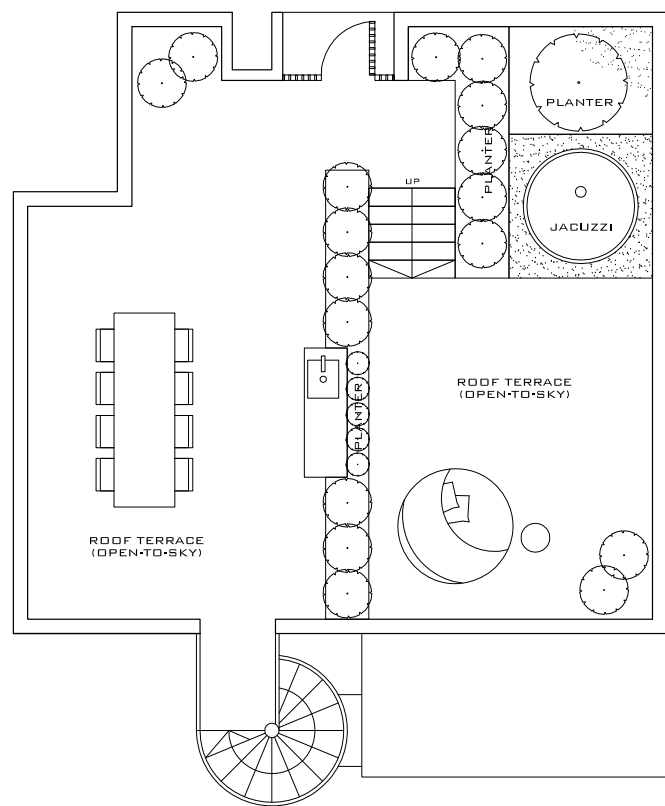
(Including Roof Terrace 80 sq m/861 sq ft)

2 Bedroom -1B-PH
(Penthouse, Lower Floor)
#05-25



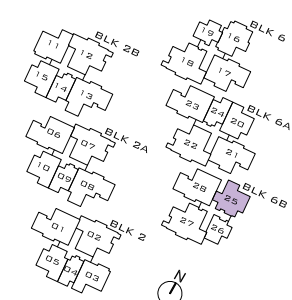
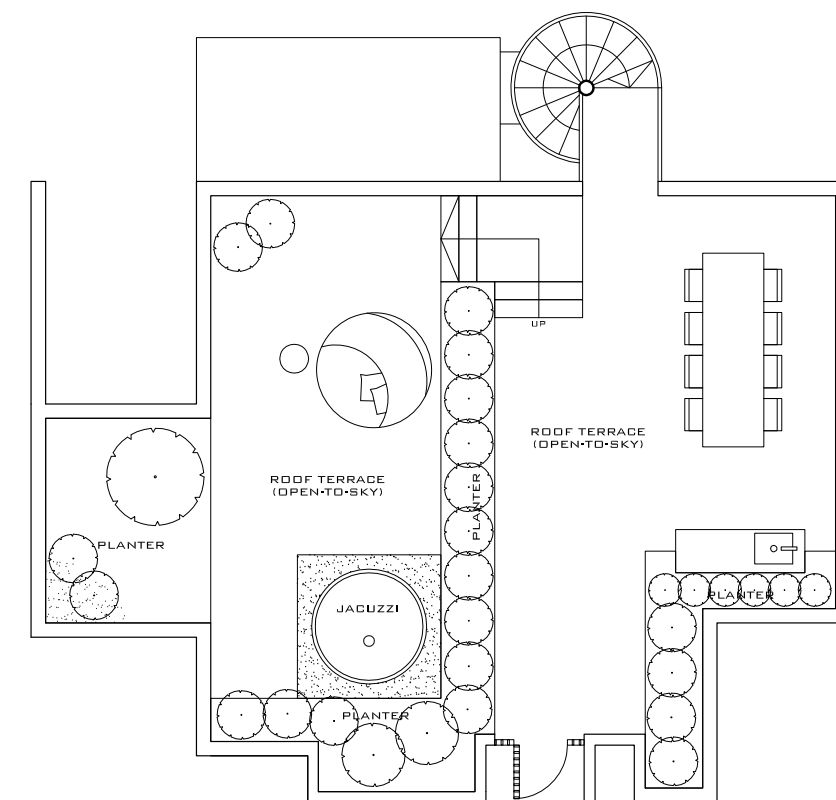
Type B12

2 Bedroom -1A-PH
(Penthouse, Upper Floor)



Type B13

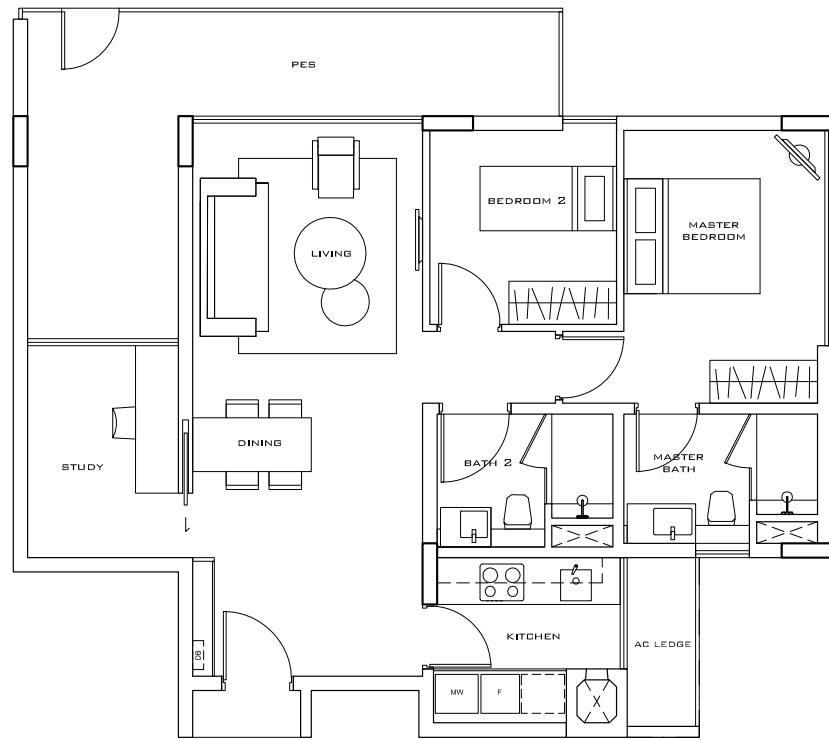
2 Bedroom -1B-PH
(Penthouse, Upper Floor)



Type B3

95 sq m/1023 sq ft
(Including PES 19 sq m/205 sq ft)

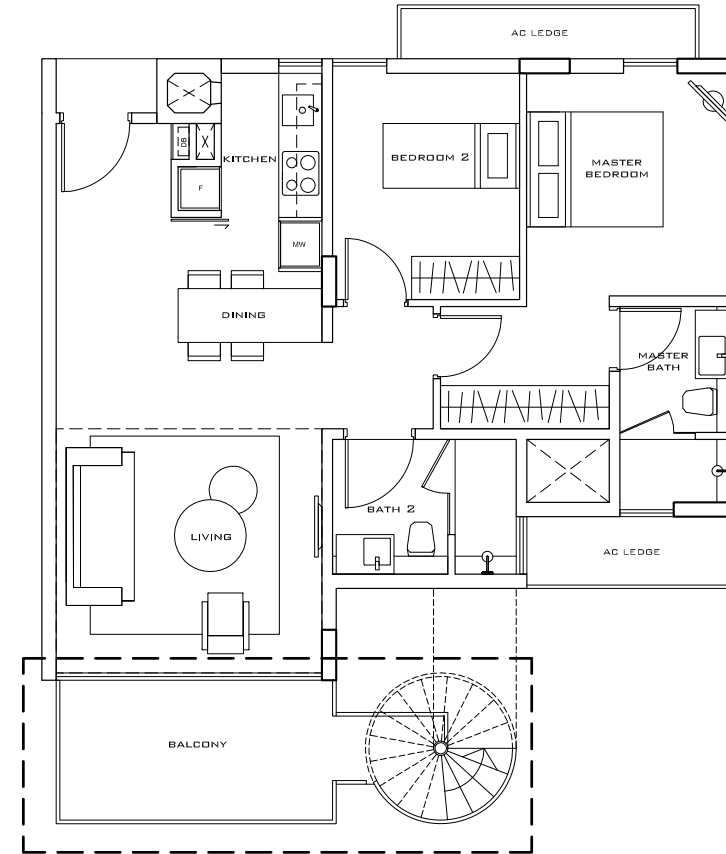
2 Bedroom -1B-G (Ground Level)
#01-25



Type B14

164 sq m/1765 sq ft
(Including Roof Terrace 76 sq m/818 sq ft)

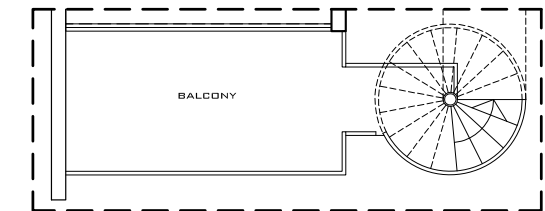
2 Bedroom -2-PH
(Penthouse, Lower Floor)
#05-03



Type B14A

164 sq m/1765 sq ft
(Including Roof Terrace 76 sq m/818 sq ft)

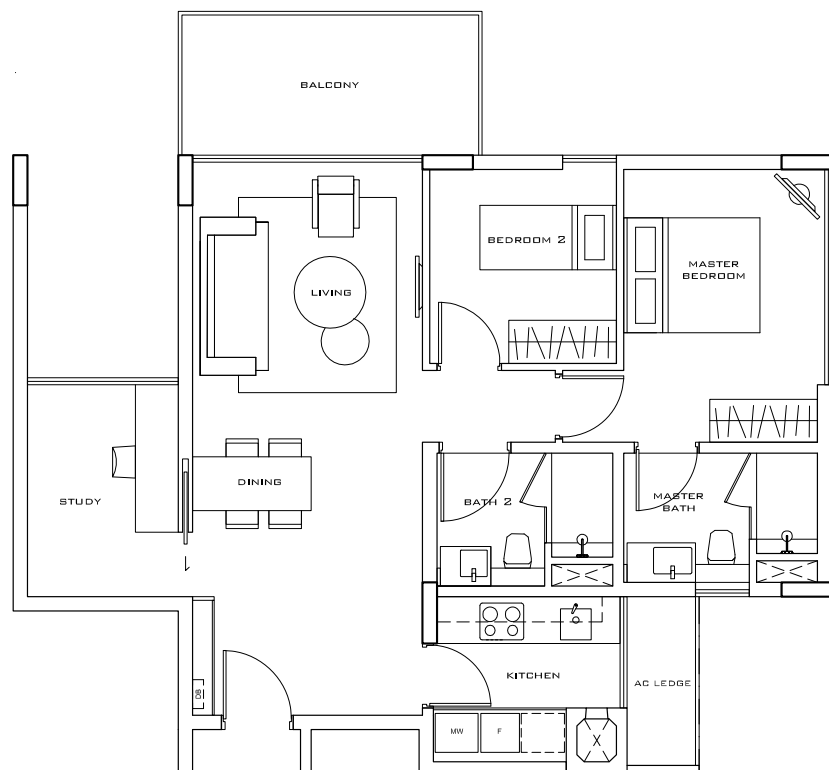
2 Bedroom -2A-PH
(Penthouse, Lower Floor)
#05-11



Type B8

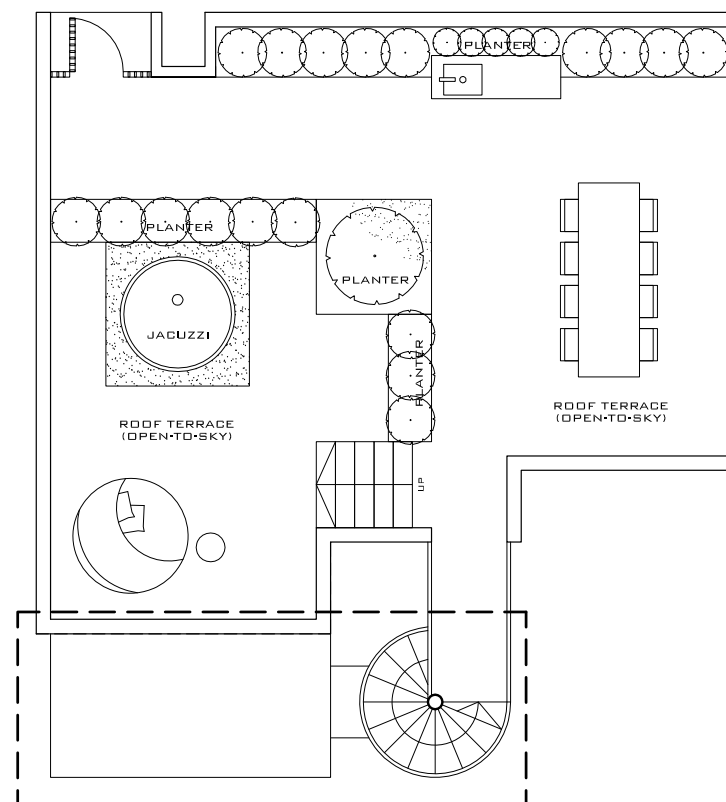
84 sq m/904 sq ft

2 Bedroom -1B
#02-25, 03-25, 04-25



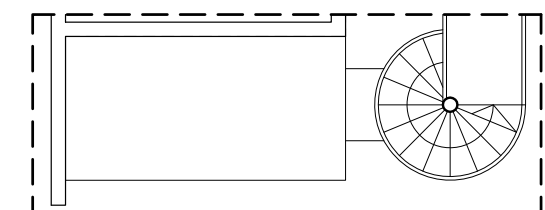
Type B14

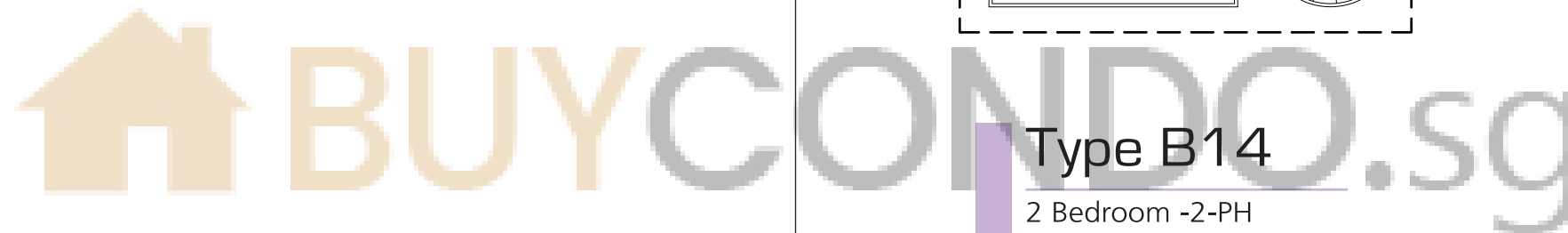
2 Bedroom -2-PH
(Penthouse, Upper Floor)
#05-03

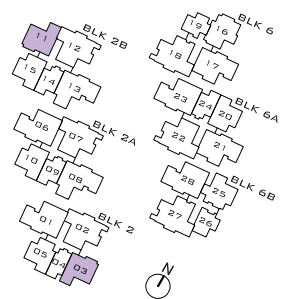


Type B14A

2 Bedroom -2A-PH
(Penthouse, Upper Floor)
#05-11



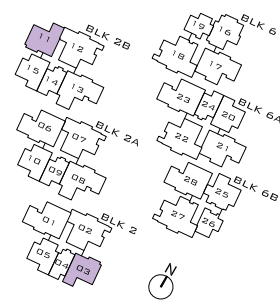
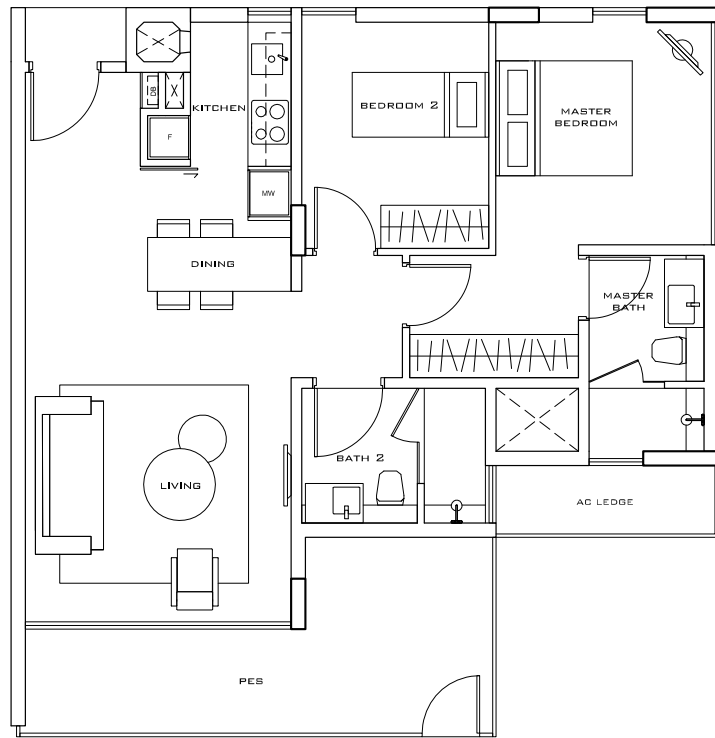




Type B4

87 sq m/936 sq ft
(Including PES 14 sq m/151 sq ft)

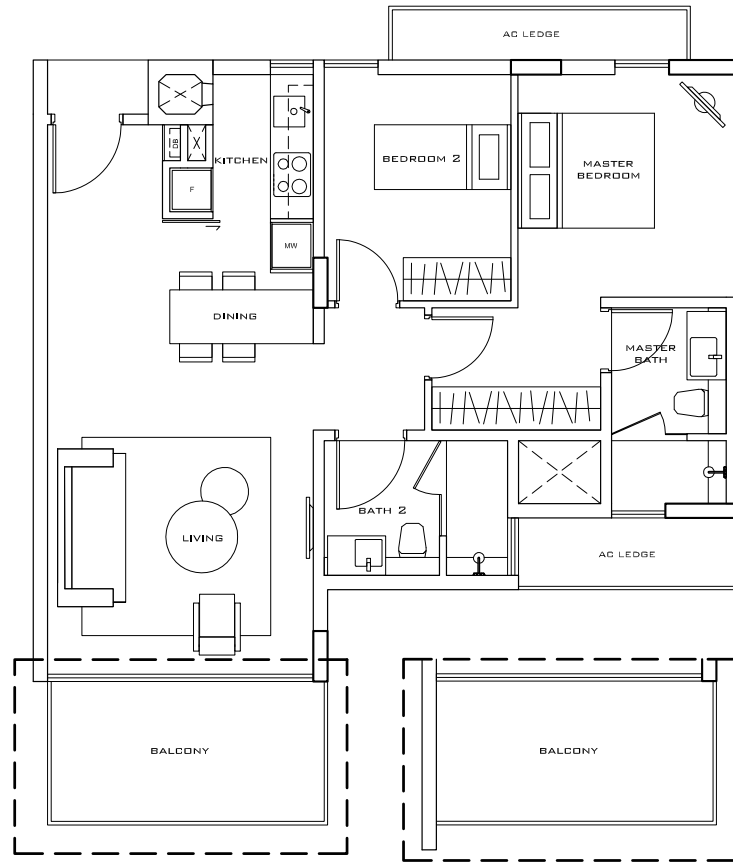
2 Bedroom -2-G (Ground Level)
#01-03, #01-11



Type B9

85 sq m/915 sq ft

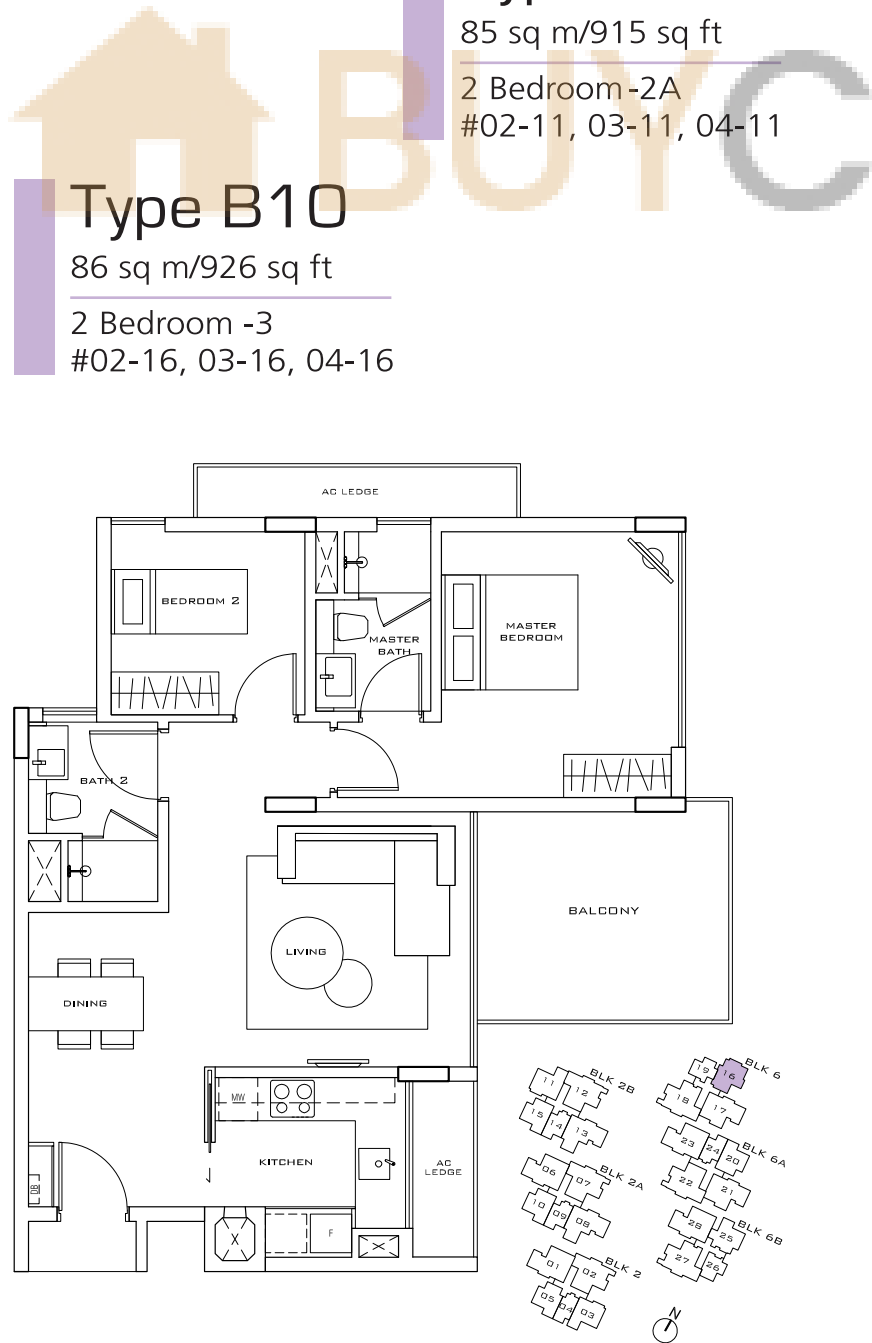
2 Bedroom-2
#02-03, 03-03, 04-03



Type B9A

85 sq m/915 sq ft

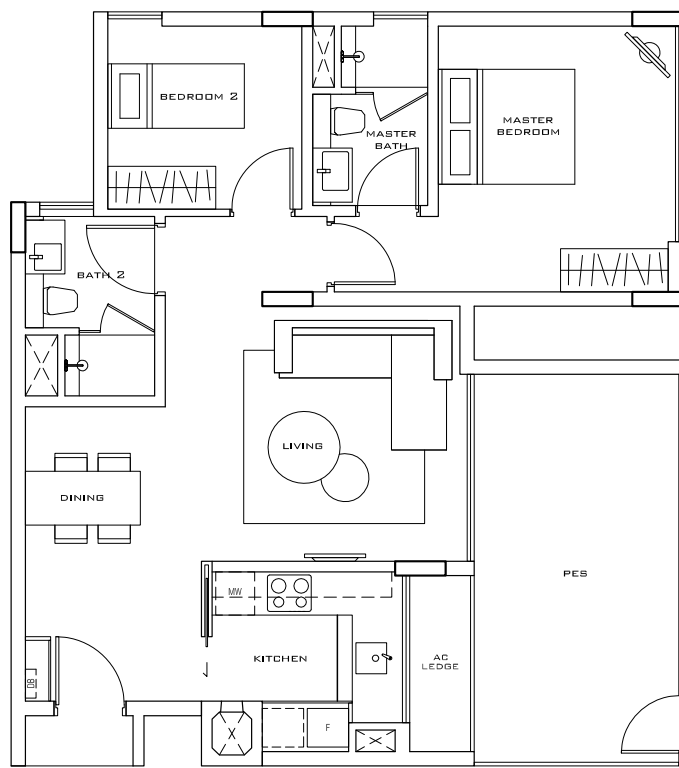
2 Bedroom-2A
#02-11, 03-11, 04-11



Type B5

87 sq m/936 sq ft
(Including PES 16 sq m/172 sq ft)

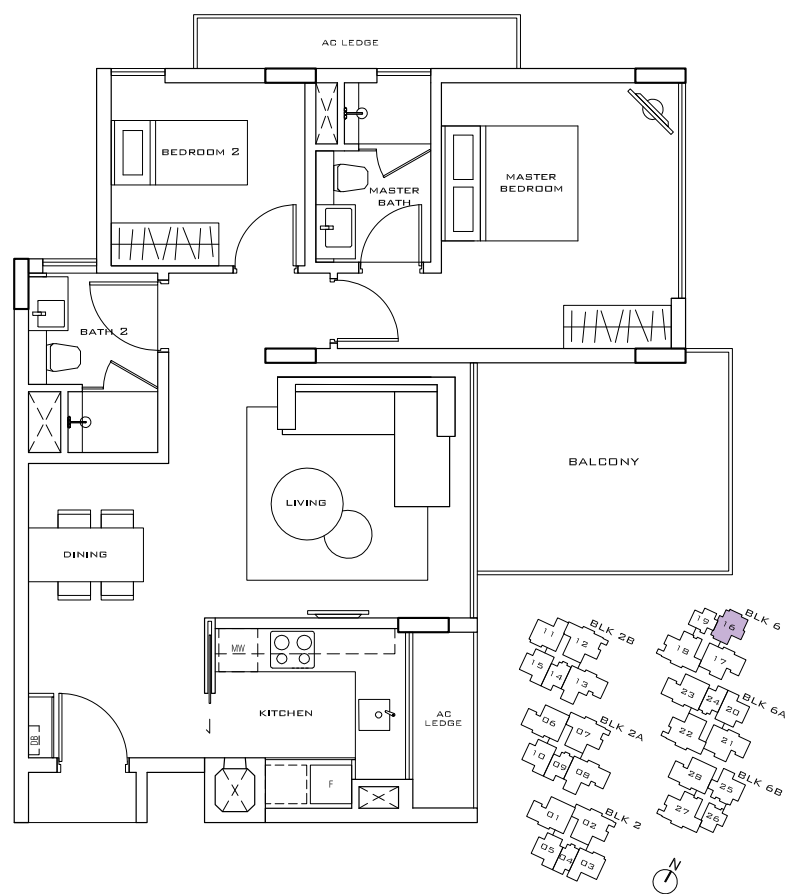
2 Bedroom -3-G (Ground Level)
#01-16



Type B10

86 sq m/926 sq ft

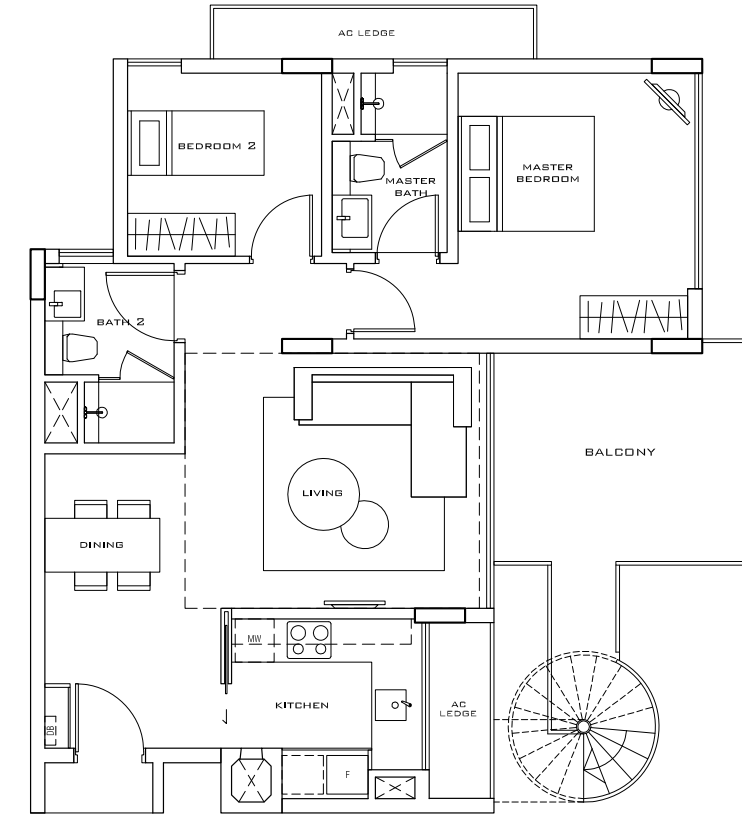
2 Bedroom -3
#02-16, 03-16, 04-16



Type B15

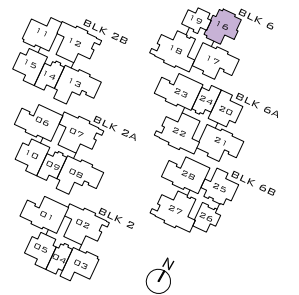
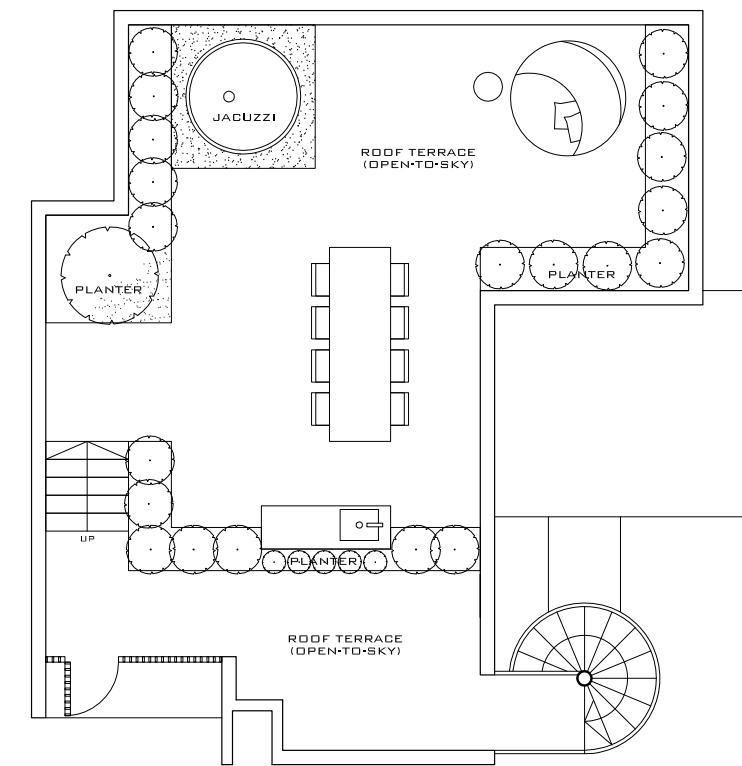
165 sq m/1776 sq ft
(Including Roof Terrace 75 sq m/807 sq ft)

2 Bedroom -3-PH
(Penthouse, Lower Floor)
#05-16



Type B15

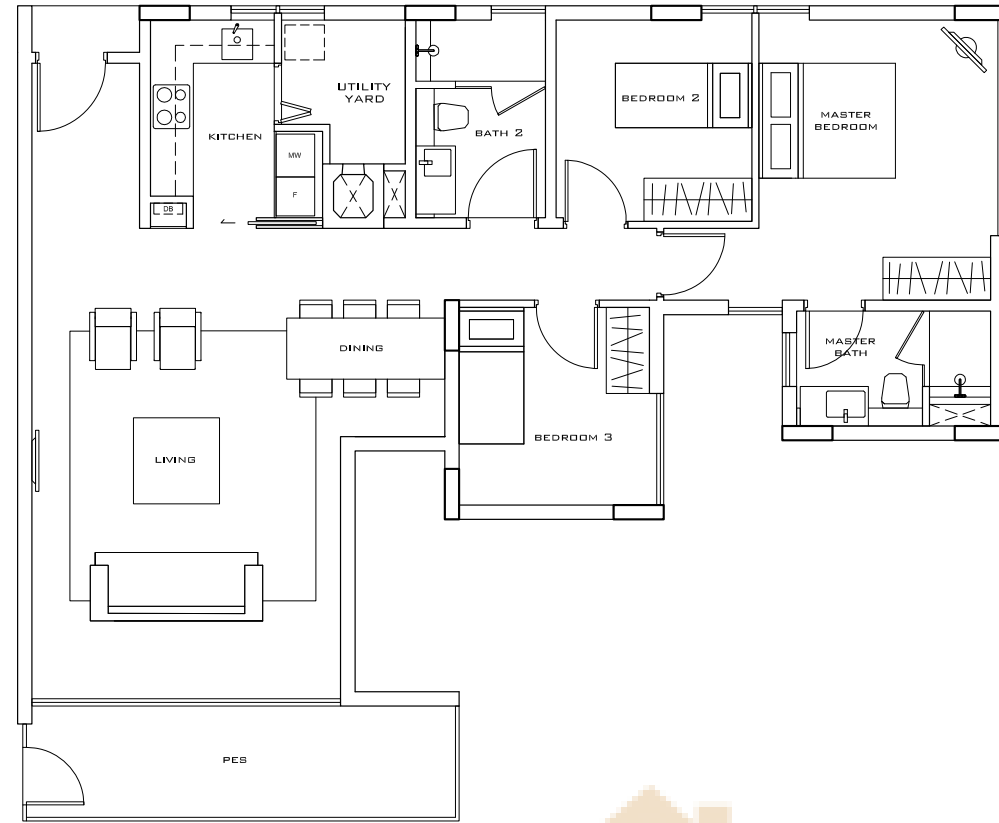
2 Bedroom -3-PH
(Penthouse, Upper Floor)



Type A1

105 sq m/1130 sq ft
(Including PES 12 sq m/129 sq ft)

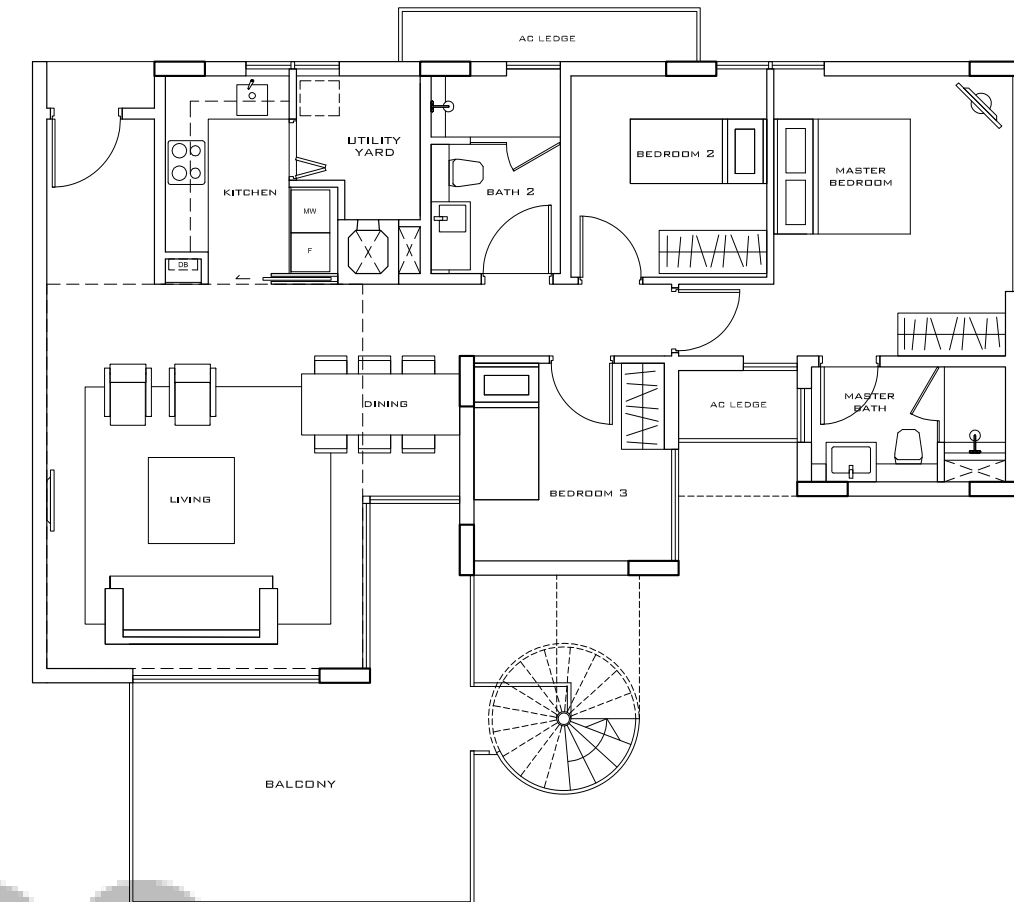
3 Bedroom -1-G (Ground Level)
#01-08, #01-13



Type A7

206 sq m/2217 sq ft
(Including Roof Terrace 89 sq m/958 sq ft)

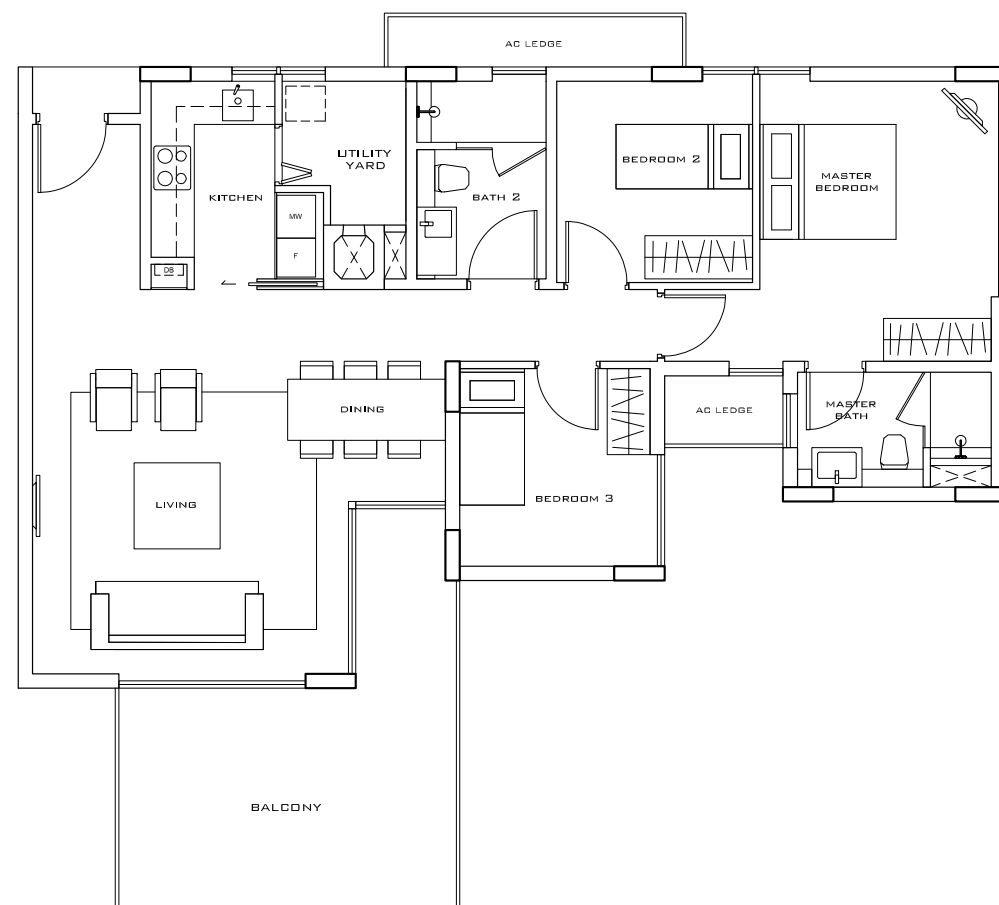
3 Bedroom -1-PH
(Penthouse, Lower Floor)
#05-08, #05-13



Type A4

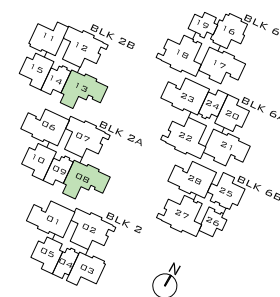
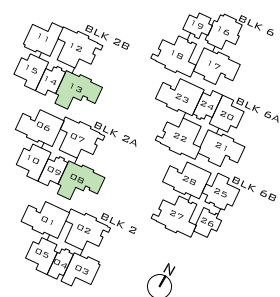
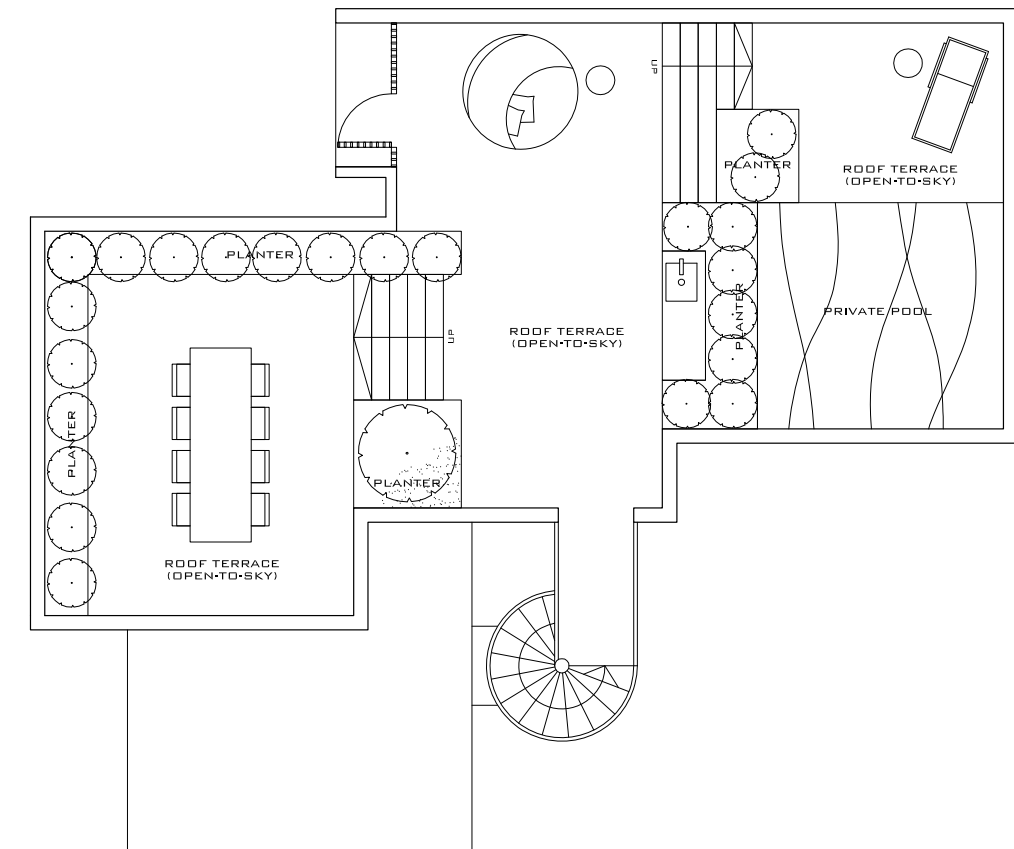
114 sq m/1227 sq ft

3 Bedroom -1
#02-08, 03-08, 04-08
#02-13, 03-13, 04-13



Type A7

3 Bedroom -1-PH
(Penthouse, Upper Floor)



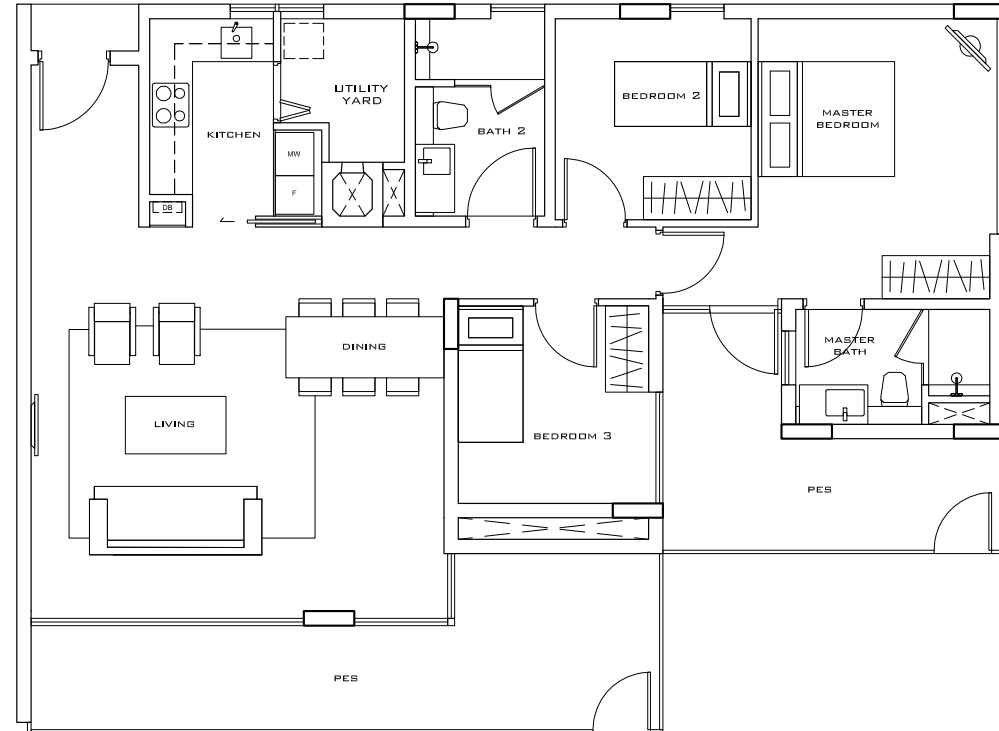
Area includes PES, balcony, AC ledge, planter, private pool and roof terrace. Plans are not drawn to scale and are subject to such amendment(s) as may be required or approved by the relevant authorities. All areas are approximate and are subject to final survey. The brand and model of all fittings, equipment and appliances supplied are subject to availability. In the event that they are not available, the developer will offer replacements of equivalent standard or value.

Area includes PES, balcony, AC ledge, planter, private pool and roof terrace. Plans are not drawn to scale and are subject to such amendment(s) as may be required or approved by the relevant authorities. All areas are approximate and are subject to final survey. The brand and model of all fittings, equipment and appliances supplied are subject to availability. In the event that they are not available, the developer will offer replacements of equivalent standard or value.

Type A2

122 sq m/1313 sq ft
(Including PES 28 sq m/301 sq ft)

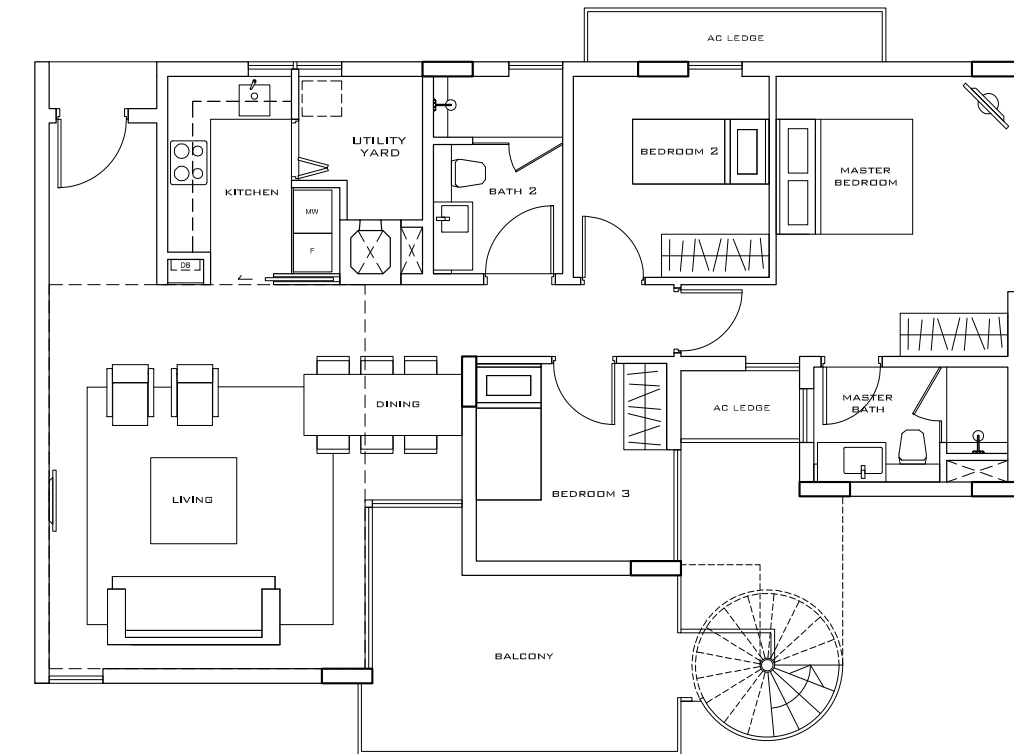
3 Bedroom - 1A-G
(Ground Level)
#01-01, #01-06, #01-17
#01-21, #01-23, #01-28



Type A8

202 sq m/2174 sq ft
(Including Roof Terrace 90 sq m/969 sq ft)

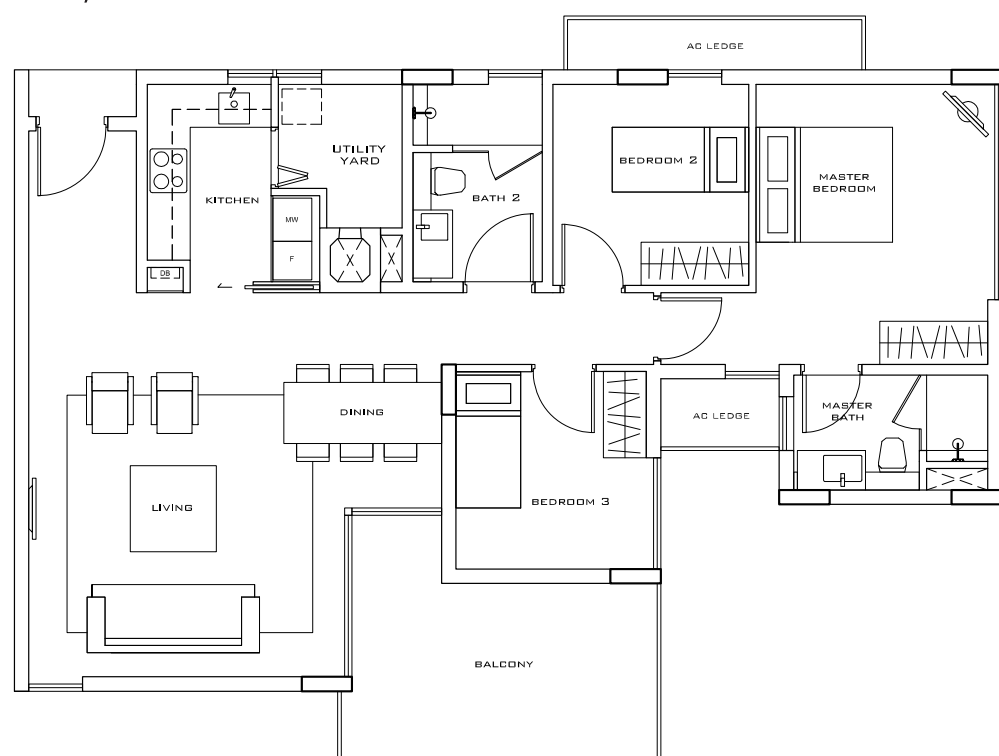
3 Bedroom -1A-PH
(Penthouse, Lower Floor)
#05-01, #05-06, #05-17, #05-21, #05-23, #05-28



Type A5

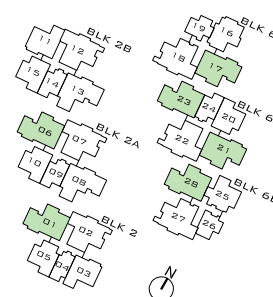
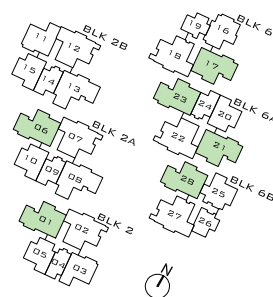
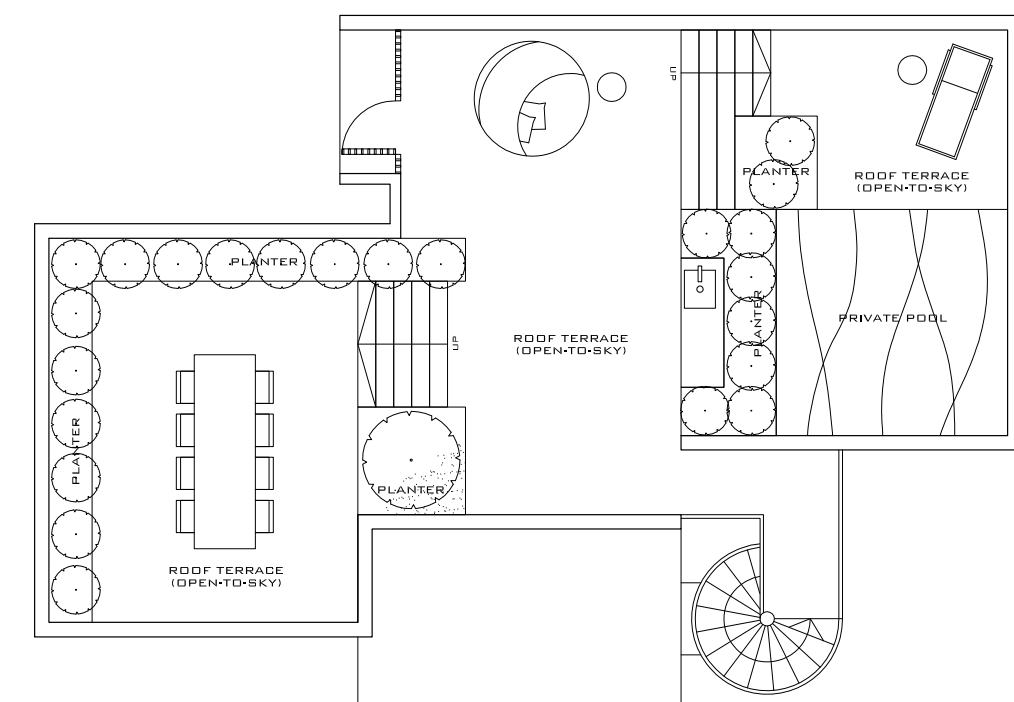
108 sq m/1163 sq ft

3 Bedroom-1A
#02-01, #03-01, #04-01
#02-06, #03-06, #04-06
#02-17, #03-17, #04-17
#02-21, #03-21, #04-21
#02-23, #03-23, #04-23
#02-28, #03-28, #04-28



Type A8

3 Bedroom -1A-PH
(Penthouse, Upper Floor)



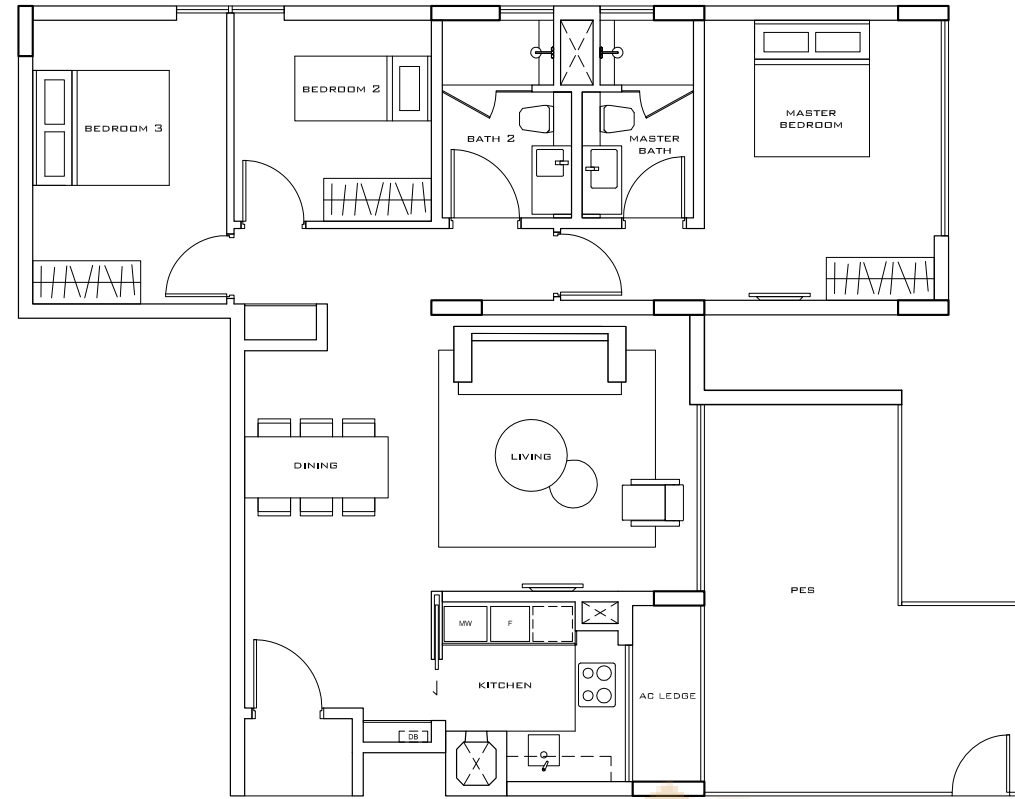
Area includes PES, balcony, AC ledge, planter, private pool and roof terrace. Plans are not drawn to scale and are subject to such amendment(s) as may be required or approved by the relevant authorities. All areas are approximate and are subject to final survey. The brand and model of all fittings, equipment and appliances supplied are subject to availability. In the event that they are not available, the developer will offer replacements of equivalent standard or value.

Area includes PES, balcony, AC ledge, planter, private pool and roof terrace. Plans are not drawn to scale and are subject to such amendment(s) as may be required or approved by the relevant authorities. All areas are approximate and are subject to final survey. The brand and model of all fittings, equipment and appliances supplied are subject to availability. In the event that they are not available, the developer will offer replacements of equivalent standard or value.

Type A3

114 sq m/1227 sq ft
(Including PES 20 sq m/215 sq ft)

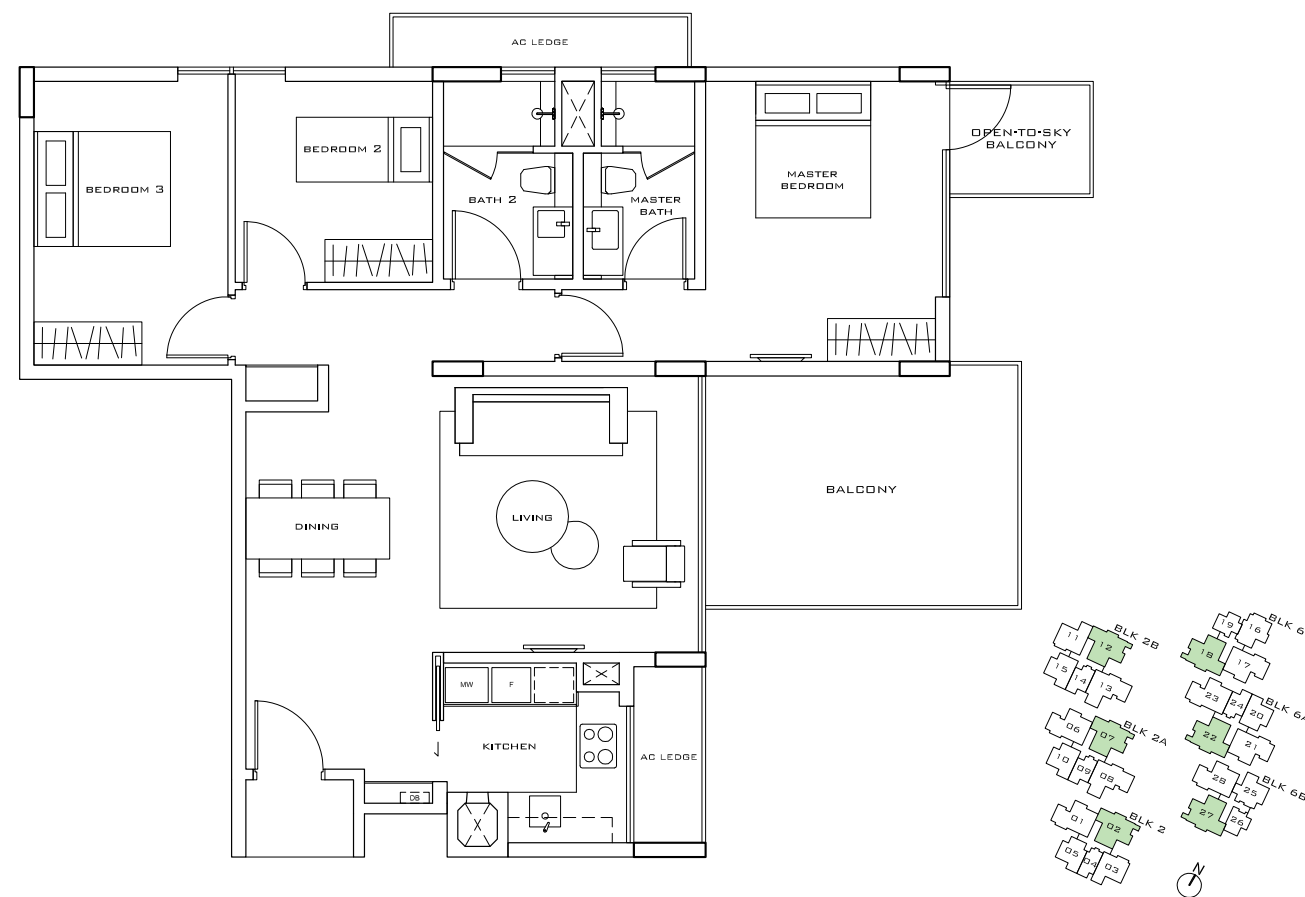
3 Bedroom - 2-G
(Ground Level)
#01-02, 01-07, 01-12
#01-18, 01-22, 01-27



Type A6

116 sq m/1249 sq ft

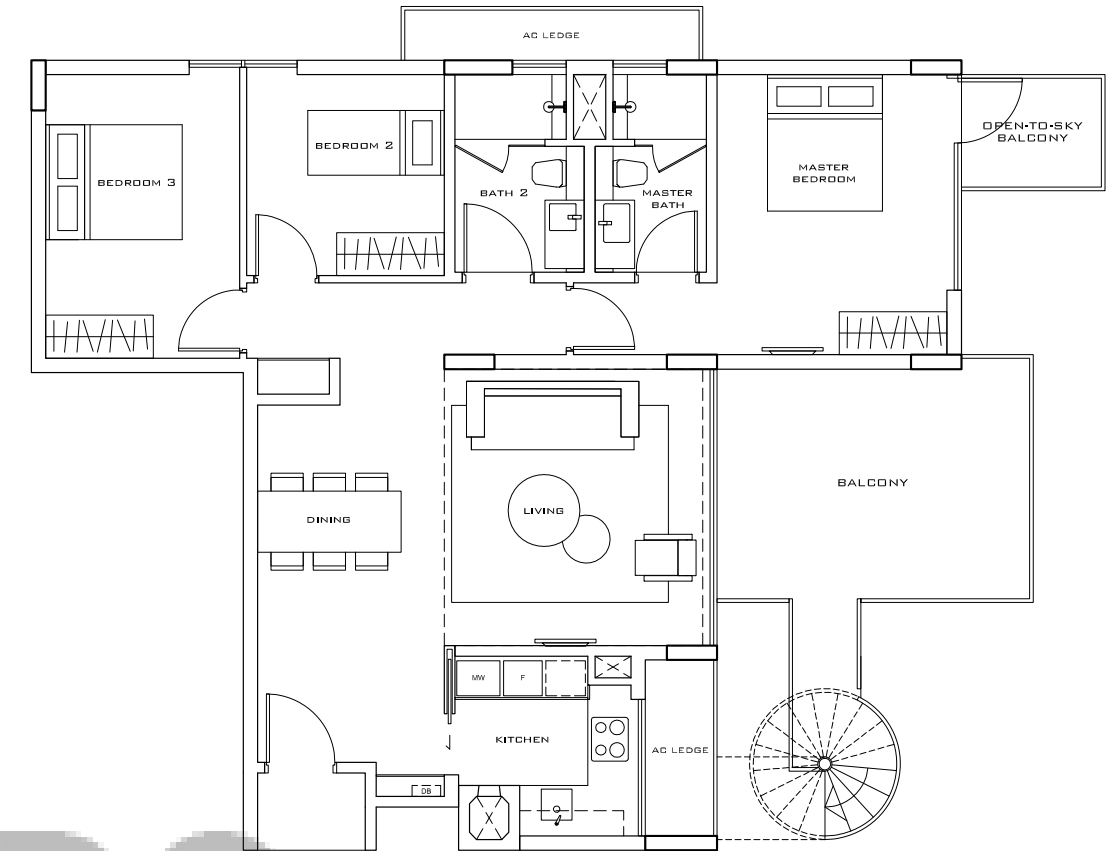
3 Bedroom-2
#02-02, 03-02, 04-02
#02-07, 03-07, 04-07
#02-12, 03-12, 04-12
#02-18, 03-18, 04-18
#02-22, 03-22, 04-22
#02-27, 03-27, 04-27



Type A9

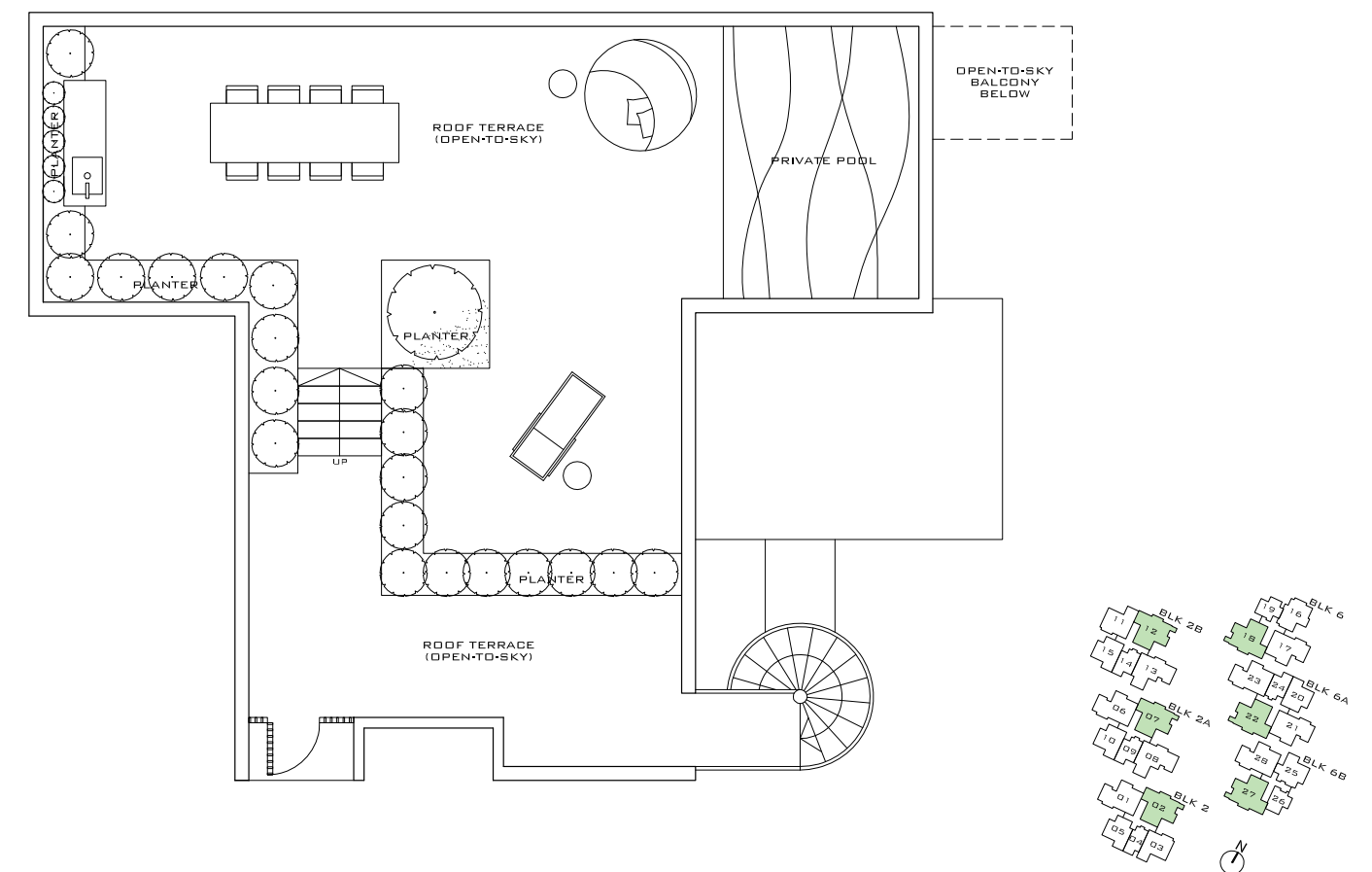
219 sq m/2357 sq ft
(Including Roof Terrace 99 sq m/1066 sq ft)

3 Bedroom -2-PH
(Penthouse, Lower Floor)
#05-02, 05-07, 05-12, 05-18, 05-22, 05-27



Type A9

3 Bedroom -2-PH
(Penthouse, Upper Floor)



Area includes PES, balcony, AC ledge, planter, private pool and roof terrace. Plans are not drawn to scale and are subject to such amendment(s) as may be required or approved by the relevant authorities. All areas are approximate and are subject to final survey. The brand and model of all fittings, equipment and appliances supplied are subject to availability. In the event that they are not available, the developer will offer replacements of equivalent standard or value.

Area includes PES, balcony, AC ledge, planter, private pool and roof terrace. Plans are not drawn to scale and are subject to such amendment(s) as may be required or approved by the relevant authorities. All areas are approximate and are subject to final survey. The brand and model of all fittings, equipment and appliances supplied are subject to availability. In the event that they are not available, the developer will offer replacements of equivalent standard or value.