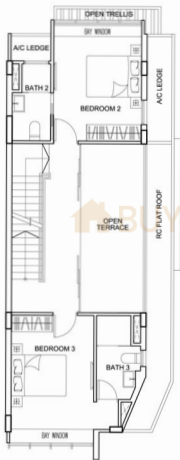


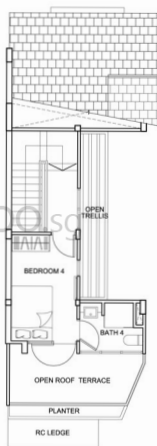
Type TW1a

(House 195)

Estimated Floor Area: 3,434 sq ft



3rd Storey



Attic

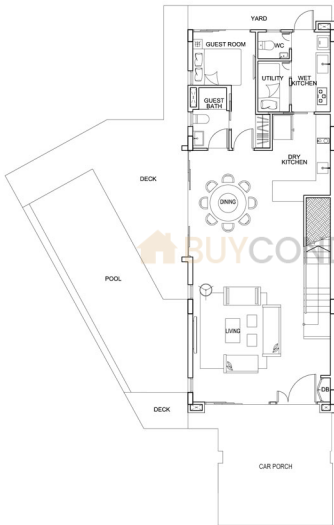


BROOKS SIGNATURE
@ SPRINGSIDE

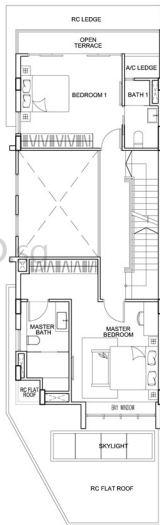
Type TW1b

(House 197)

Estimated Floor Area: 3,498 sq ft



1st Storey



2nd Storey

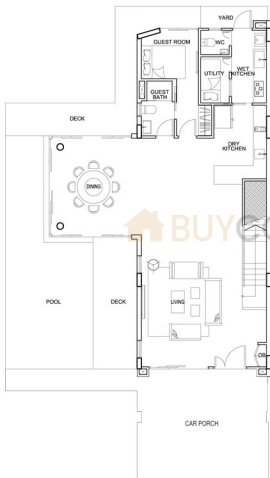


BROOKS SIGNATURE
@ SPRINGSIDE

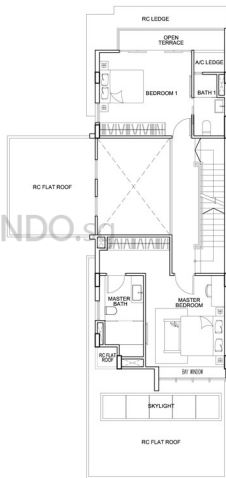
Type TW1d

(House 206)

Estimated Floor Area: 3,735 sq ft



1st Storey



2nd Storey

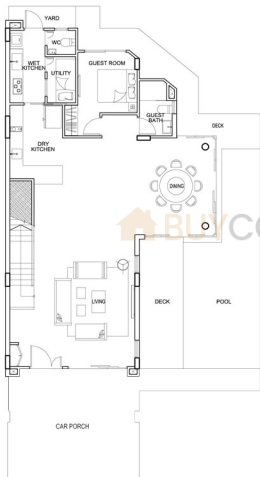


BROOKS SIGNATURE
@ SPRINGSIDE

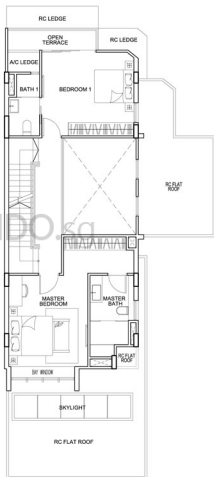
Type TW1e

(House 90)

Estimated Floor Area: 3,714 sq ft



1st Storey



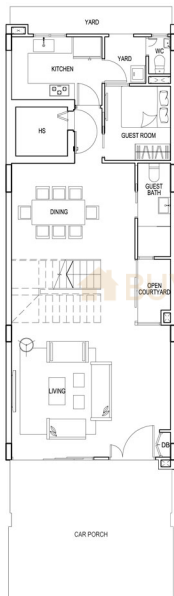
2nd Storey



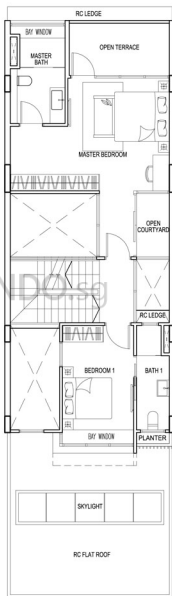
BROOKS SIGNATURE
@ SPRINGSIDE

Type TX

Estimated Floor Area: 3,907 sq ft



1st Storey



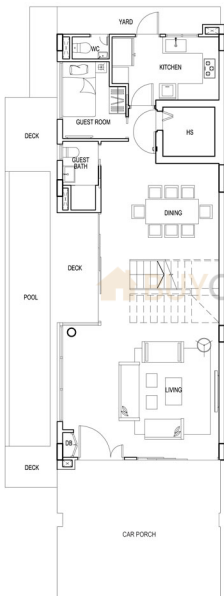
2nd Storey



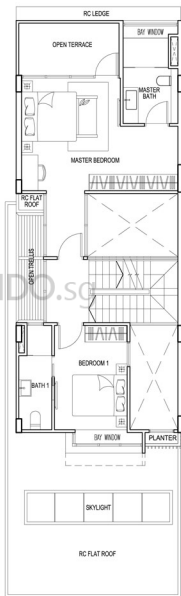
BROOKS SIGNATURE
@ SPRINGSIDE

Type TX1

Estimated Floor Area: 3,574 sq ft



1st Storey



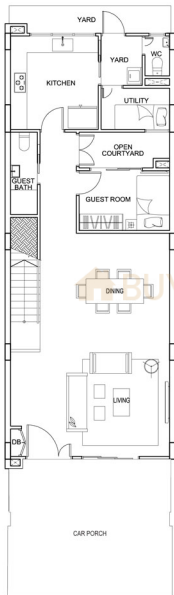
2nd Storey



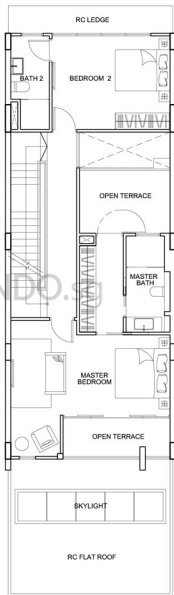
BROOKS SIGNATURE
@ SPRINGSIDE

Type TY

Estimated Floor Area: 3,864 sq ft



1st Storey



2nd Storey

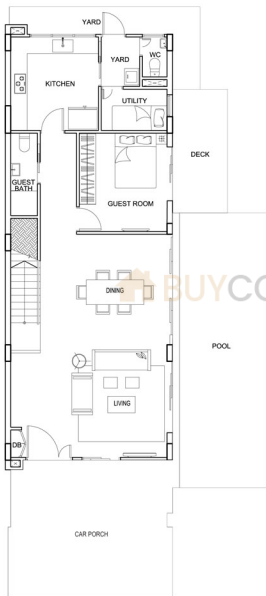


BROOKS SIGNATURE
@ SPRINGSIDE

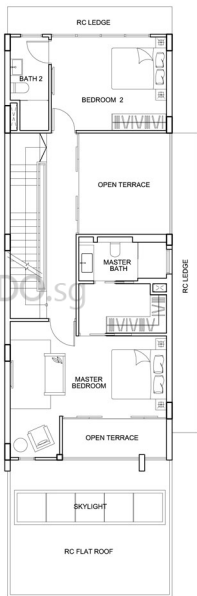
Type TY1

(House 145)

Estimated Floor Area: 3,423 sq ft



1st Storey



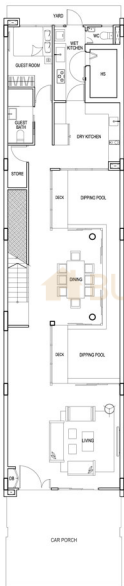
2nd Storey



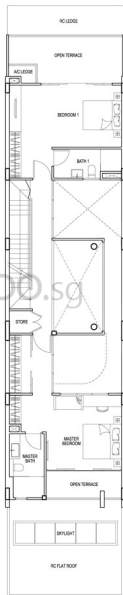
BROOKS SIGNATURE
@ SPRINGSIDE

Type TY2

Estimated Floor Area: 4,672 sq ft



1st Storey



2nd Storey

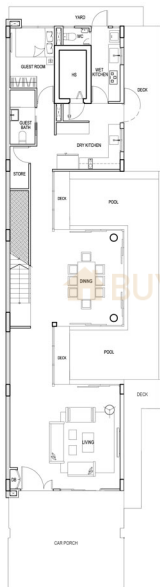


BROOKS SIGNATURE
@ SPRINGSIDE

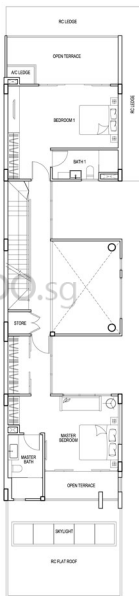
Type TY3

(House 169)

Estimated Floor Area: 4,672 sq ft



1st Storey



2nd Storey

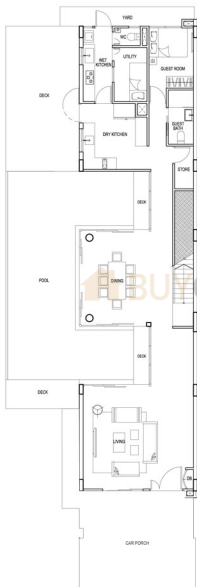


BROOKS SIGNATURE
@ SPRINGSIDE

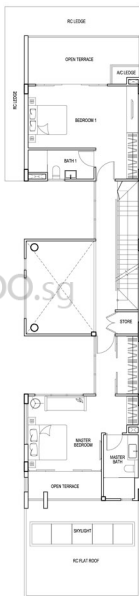
Type TY4

(House 141)

Estimated Floor Area: 4,672 sq ft



1st Storey



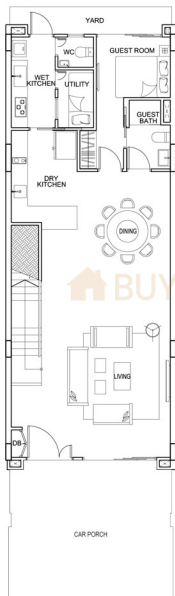
2nd Storey



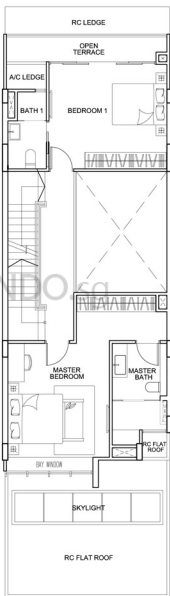
BROOKS SIGNATURE
@ SPRINGSIDE

Type TW

Estimated Floor Area: 3,681 sq ft



1st Storey



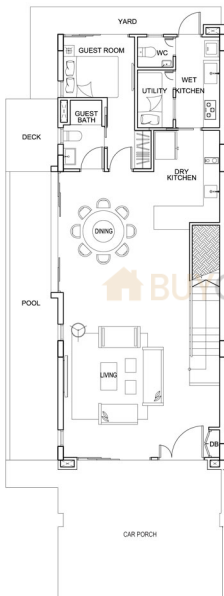
2nd Storey



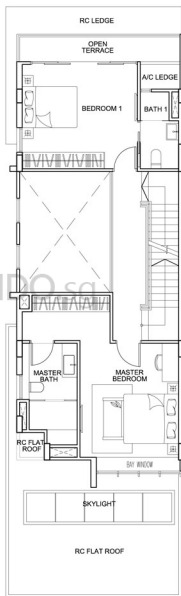
BROOKS SIGNATURE
@ SPRINGSIDE

Type TW1

Estimated Floor Area: 3,541 sq ft



1st Storey



2nd Storey