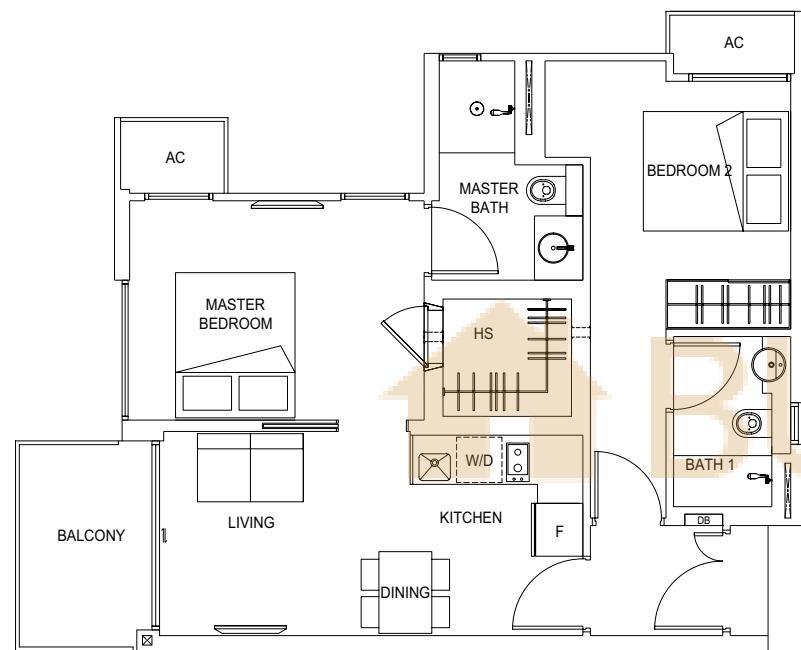


2-BEDROOM DUAL KEY

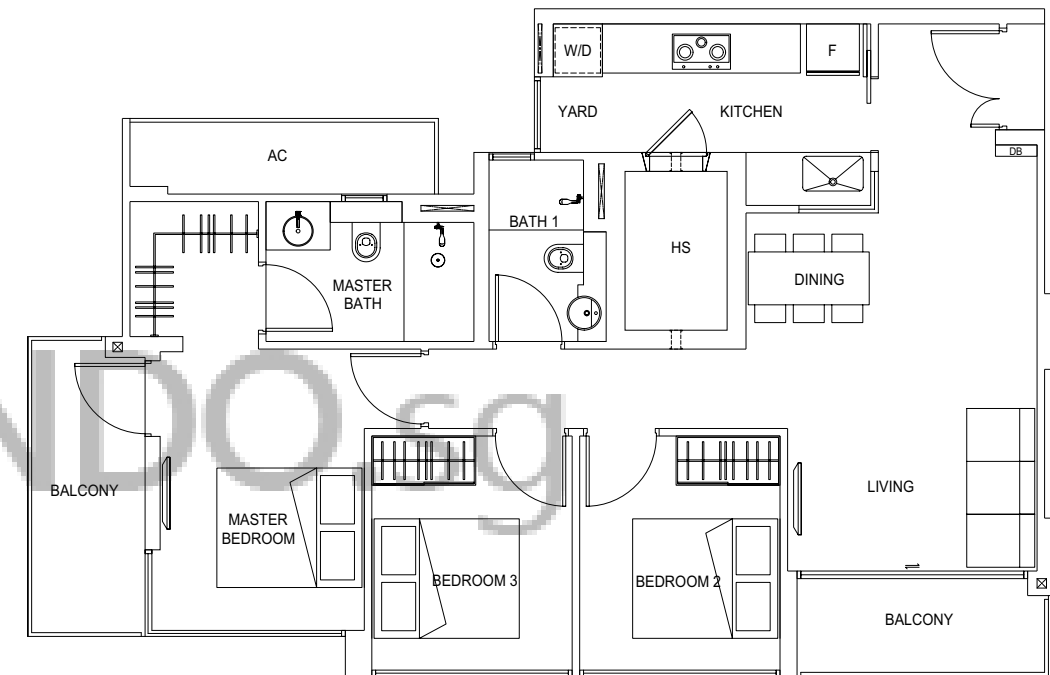


TYPE A1

Area = 67 sqm
#02-04 - #03-04

The plans are subject to change as may be required or approved by the relevant authorities. Areas are estimates only and subject to final survey. Plans are not drawn to scale and do not form part of the contract. The balcony shall not be enclosed unless with the approved balcony screen. For an illustration of the approved balcony screen, please refer to Page 16 & 17 of this brochure. The approved balcony screen will be installed by the buyers should the buyer intend to have balcony enclosure.

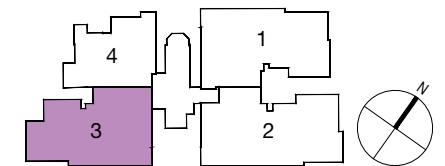
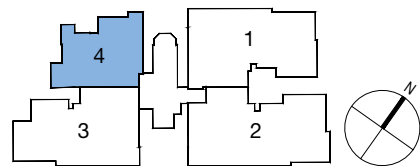
3-BEDROOM



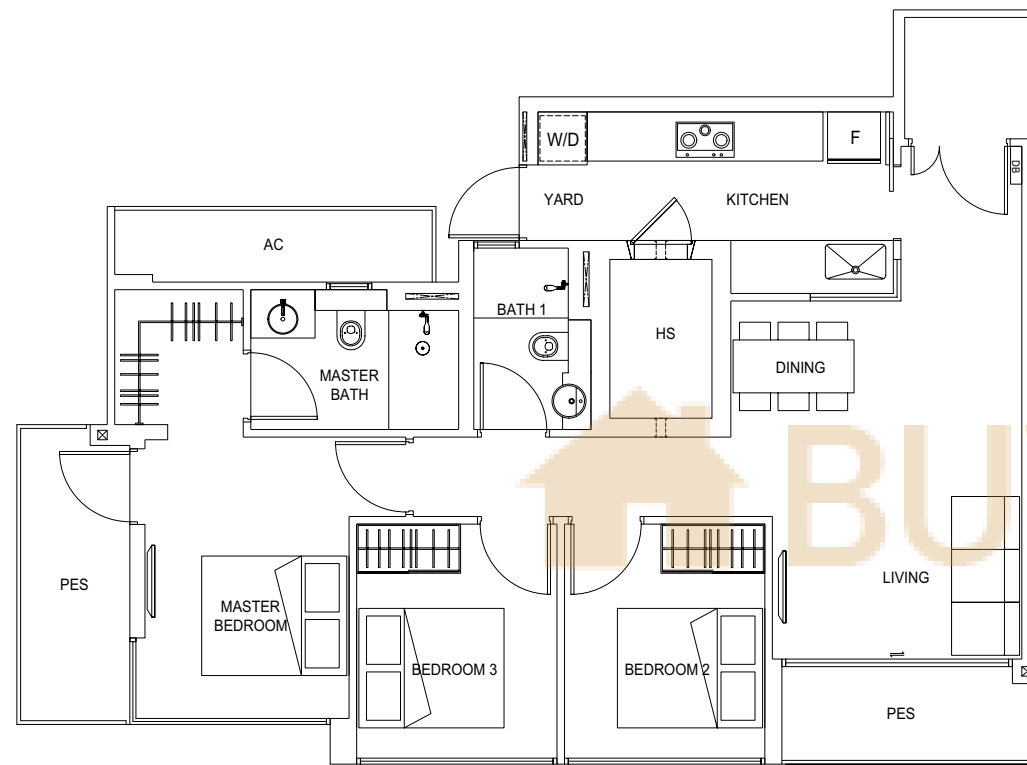
TYPE B1

Area = 100 sqm
#02-03 - #05-03

The plans are subject to change as may be required or approved by the relevant authorities. Areas are estimates only and subject to final survey. Plans are not drawn to scale and do not form part of the contract. The balcony shall not be enclosed unless with the approved balcony screen. For an illustration of the approved balcony screen, please refer to Page 16 & 17 of this brochure. The approved balcony screen will be installed by the buyers should the buyer intend to have balcony enclosure.



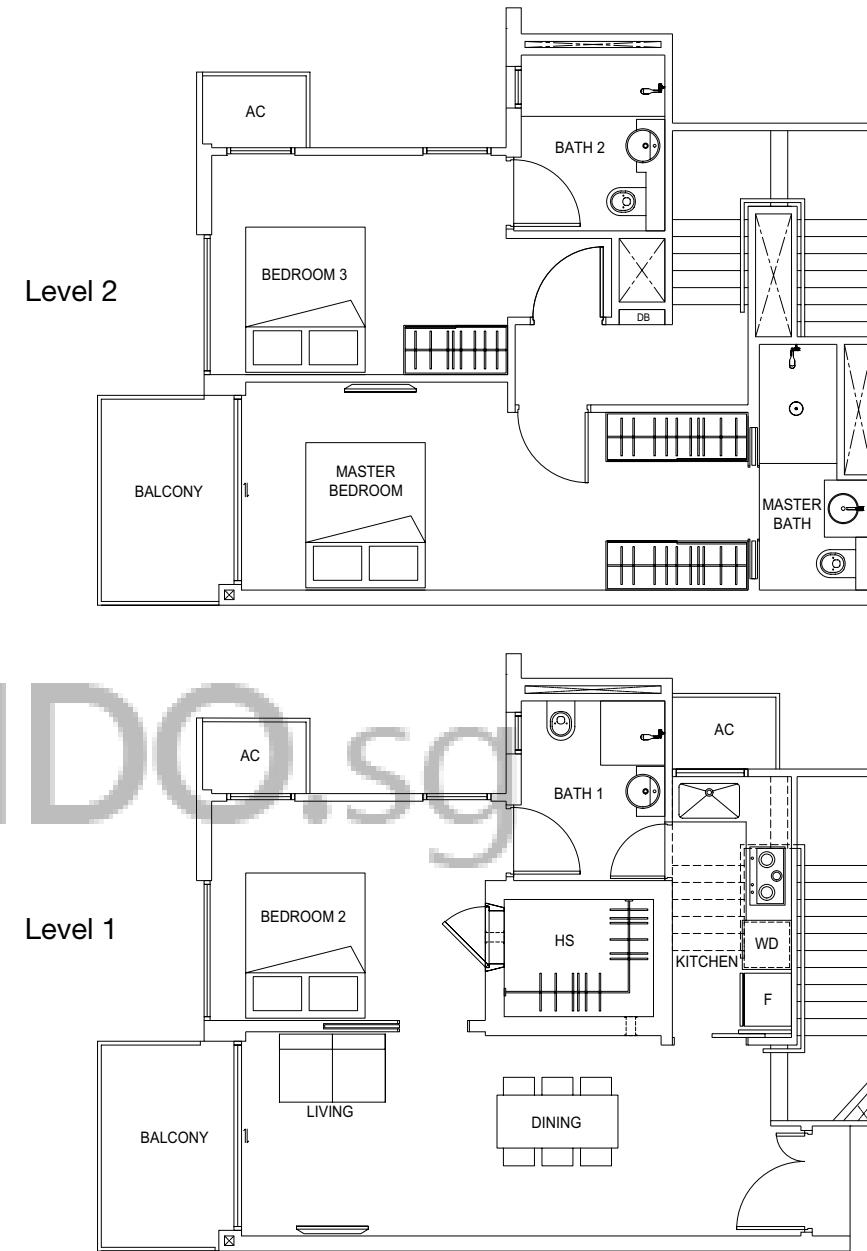
3-BEDROOM



TYPE B2 G

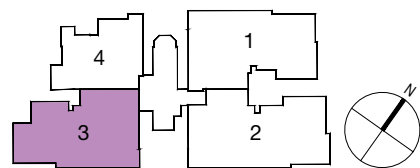
Area = 102 sqm
#01-03

3-BEDROOM PENTHOUSE

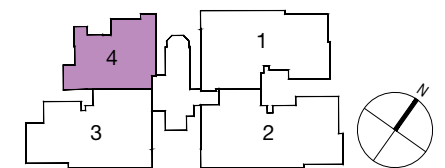


TYPE B3

Area = 118 sqm
#04-04



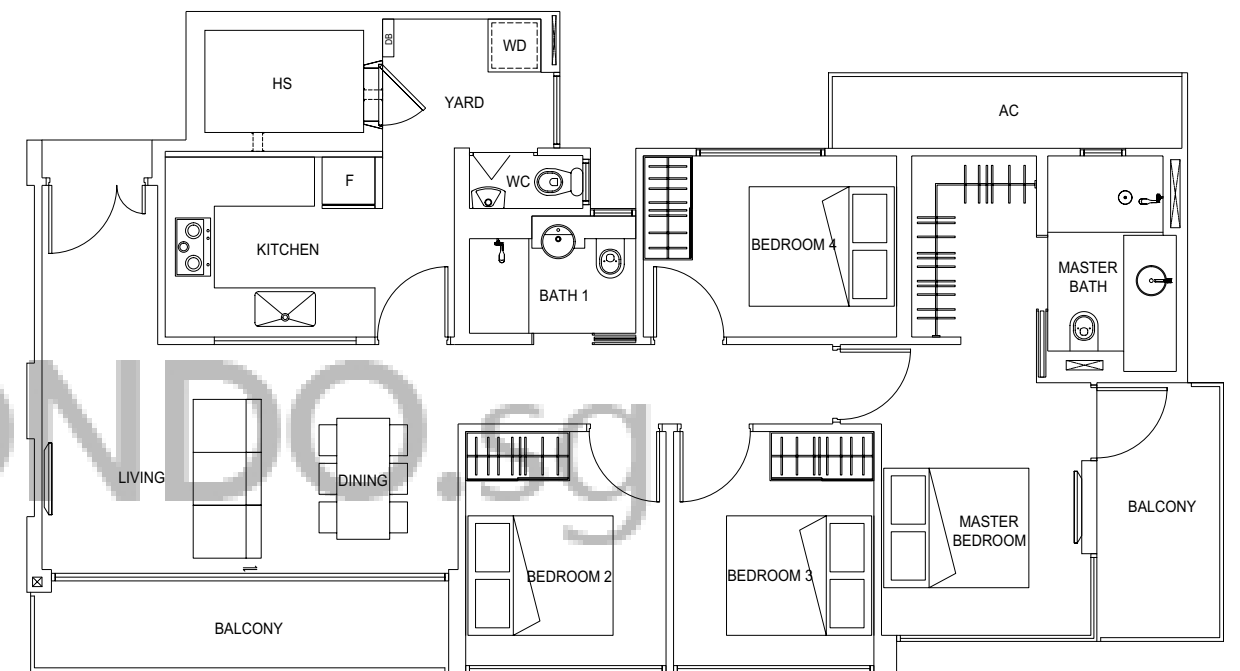
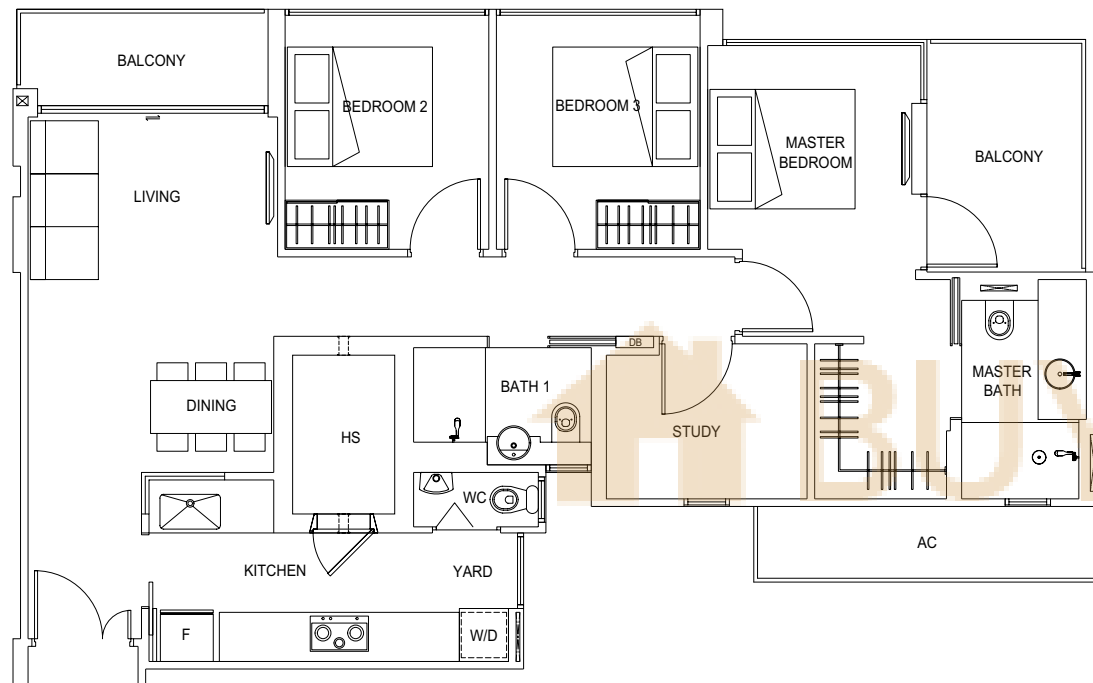
The plans are subject to change as may be required or approved by the relevant authorities. Areas are estimates only and subject to final survey. Plans are not drawn to scale and do not form part of the contract. The balcony shall not be enclosed unless with the approved balcony screen. For an illustration of the approved balcony screen, please refer to Page 16 & 17 of this brochure. The approved balcony screen will be installed by the buyers should the buyer intend to have balcony enclosure.



The plans are subject to change as may be required or approved by the relevant authorities. Areas are estimates only and subject to final survey. Plans are not drawn to scale and do not form part of the contract. The balcony shall not be enclosed unless with the approved balcony screen. For an illustration of the approved balcony screen, please refer to Page 16 & 17 of this brochure. The approved balcony screen will be installed by the buyers should the buyer intend to have balcony enclosure.

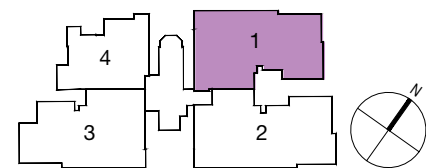
3-BEDROOM + STUDY

4-BEDROOM



TYPE C1

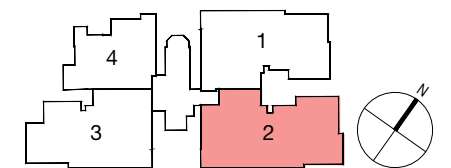
Area = 109 sqm
#02-01 - #05-01



The plans are subject to change as may be required or approved by the relevant authorities. Areas are estimates only and subject to final survey. Plans are not drawn to scale and do not form part of the contract. The balcony shall not be enclosed unless with the approved balcony screen. For an illustration of the approved balcony screen, please refer to Page 16 & 17 of this brochure. The approved balcony screen will be installed by the buyers should the buyer intend to have balcony enclosure.

TYPE D1

Area = 117 sqm
#02-02 - #05-02



The plans are subject to change as may be required or approved by the relevant authorities. Areas are estimates only and subject to final survey. Plans are not drawn to scale and do not form part of the contract. The balcony shall not be enclosed unless with the approved balcony screen. For an illustration of the approved balcony screen, please refer to Page 16 & 17 of this brochure. The approved balcony screen will be installed by the buyers should the buyer intend to have balcony enclosure.