

# Site Plan



## Legends

- a. Children's Play Area Below
- b. Gym Below
- c. BBQ
- d. Deck
- e. Infinity Lap Pool
- f. Wading Pool Below
- g. Private Pool / Jacuzzi for Type B1 and C1 Units

## Diagrammatic Chart

### Tower 1

18th	E1		Lift core	E2	
17th	A	A		D1	D2
16th	A	A		D1	D2
15th	A	A		D1	D2
14th	A	A		D1	D2
13th	A	A		D1	D2
12th	A	A		D1	D2
11th	A	A		D1	D2
10th	A	A		D1	D2
9th	A	A		D1	D2
8th	A	A		D1	D2
7th	A	A		D1	D2
6th	A	A		D1	D2
5th	A	A		D1	D2
4th	A	A		D1	D2
3rd	A	A		D1	D2
2nd (sky terrace)	A	Gym		D1	
1st	Carpark		Carpark		
Basement	Carpark		Carpark		

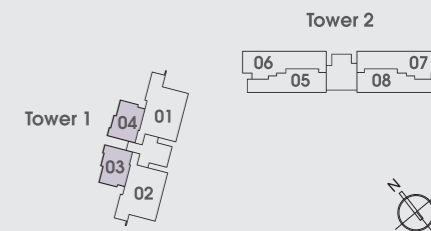
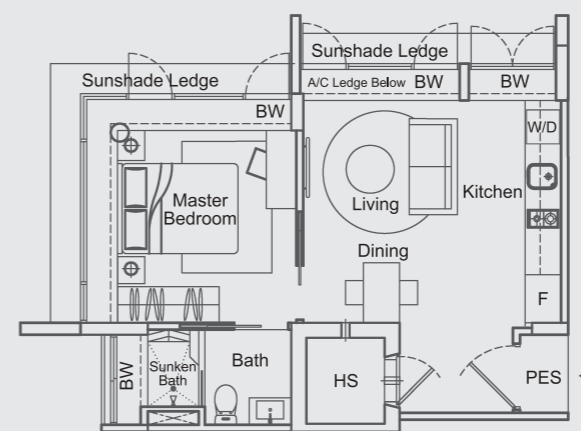
### Tower 2

Roof Terrace	Roof Terrace	Lift core	Roof Terrace	Roof Terrace
B1	C1		B1	C1
B	C		B	C
B	C		B	C
B	C		B	C
B	C		B	C
B	C		B	C
B	C		B	C
B	C		B	C
B	C		B	C
B	C		B	C
B	C		B	C
B	C		B	C
B	C		B	C
B	C		B	C
B	C		B	C
Carpark			Carpark	
Carpark		Carpark		

## Tower 1

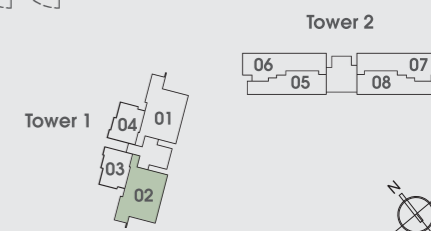
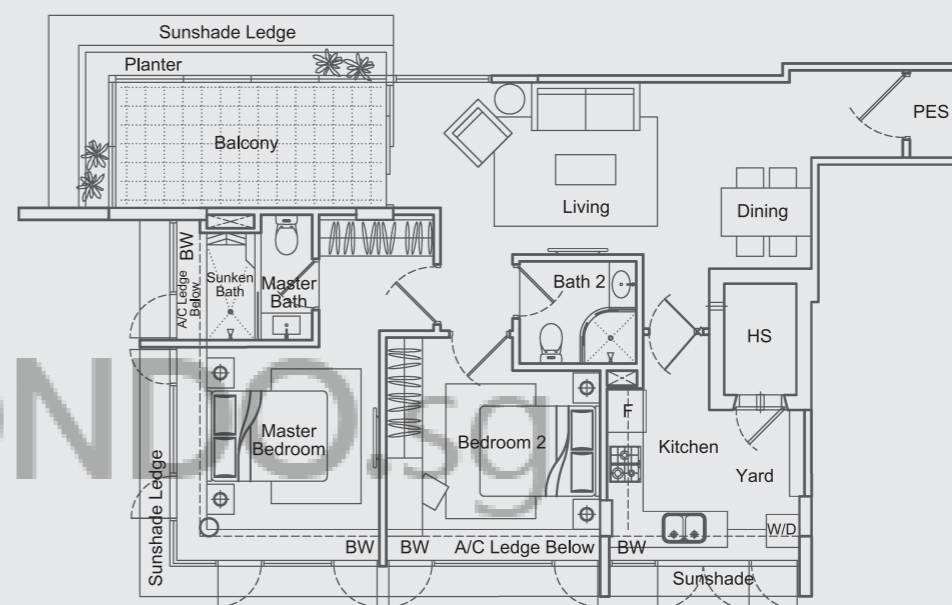
### Type A (1-Bedroom)

Unit #02-03 to #17-03  
 #03-04 to #17-04 (Mirrored)  
 Area 506 sqft / 47 sqm  
 (Inclusive of PES, Bay Window, & A/C Ledge)



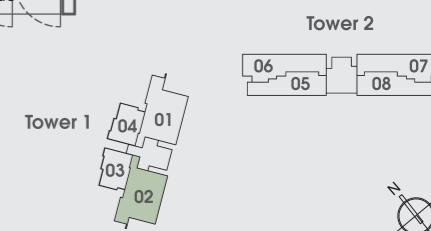
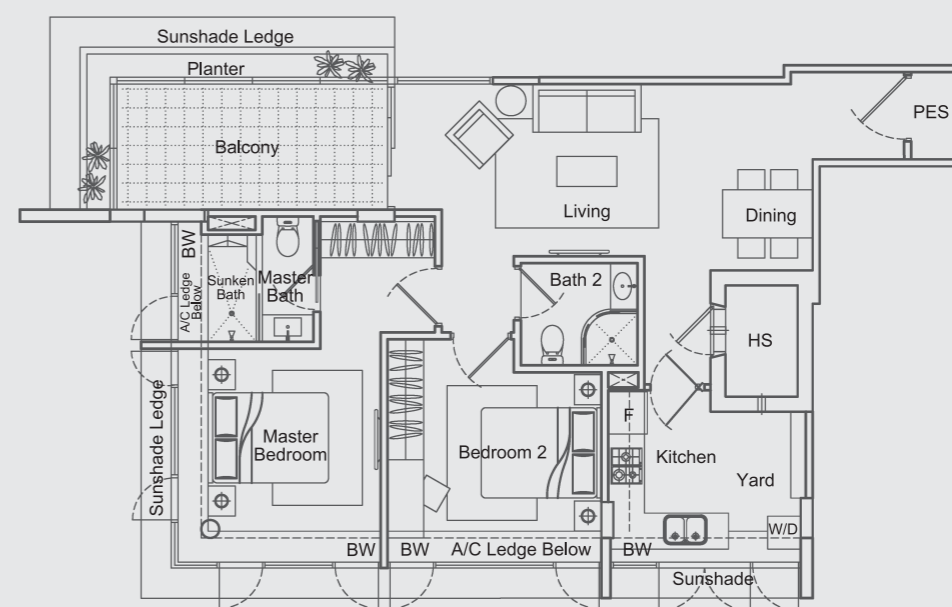
### Type D1 Typical (2-Bedroom)

Unit #03-02 to #17-02  
 Area 1044 sqft / 97 sqm  
 (Inclusive of PES, Bay Window, A/C Ledge, Planter & Balcony)



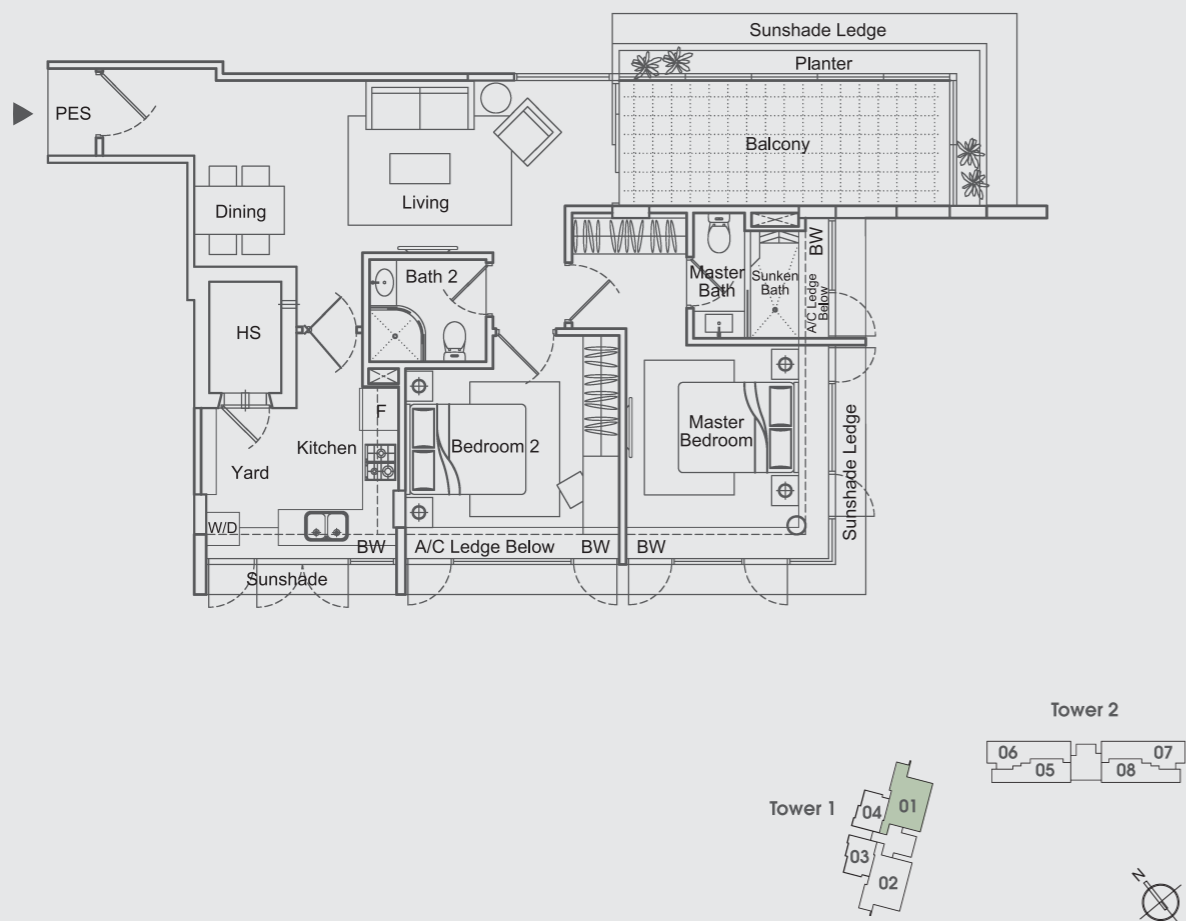
### Type D1 (2-Bedroom)

Unit #02-02  
 Area 1044 sqft / 97 sqm  
 (Inclusive of PES, Bay Window, A/C Ledge, Planter & Balcony)



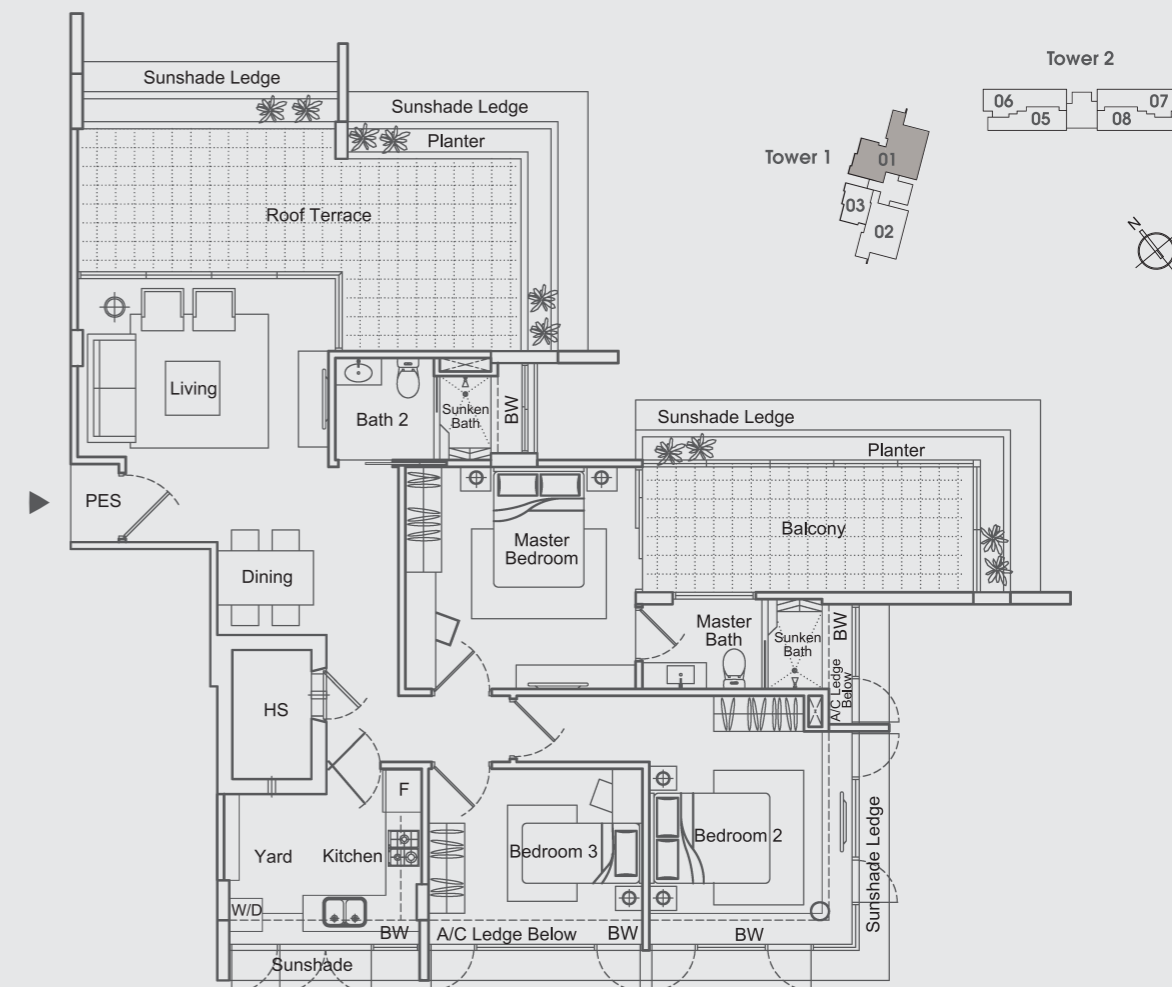
**Type D2 (2-Bedroom)**

Unit #03-01 to #17-01  
 Area 1076 sqft / 100 sqm  
 (Inclusive of PES, Bay Window, A/C Ledge, Planter & Balcony)



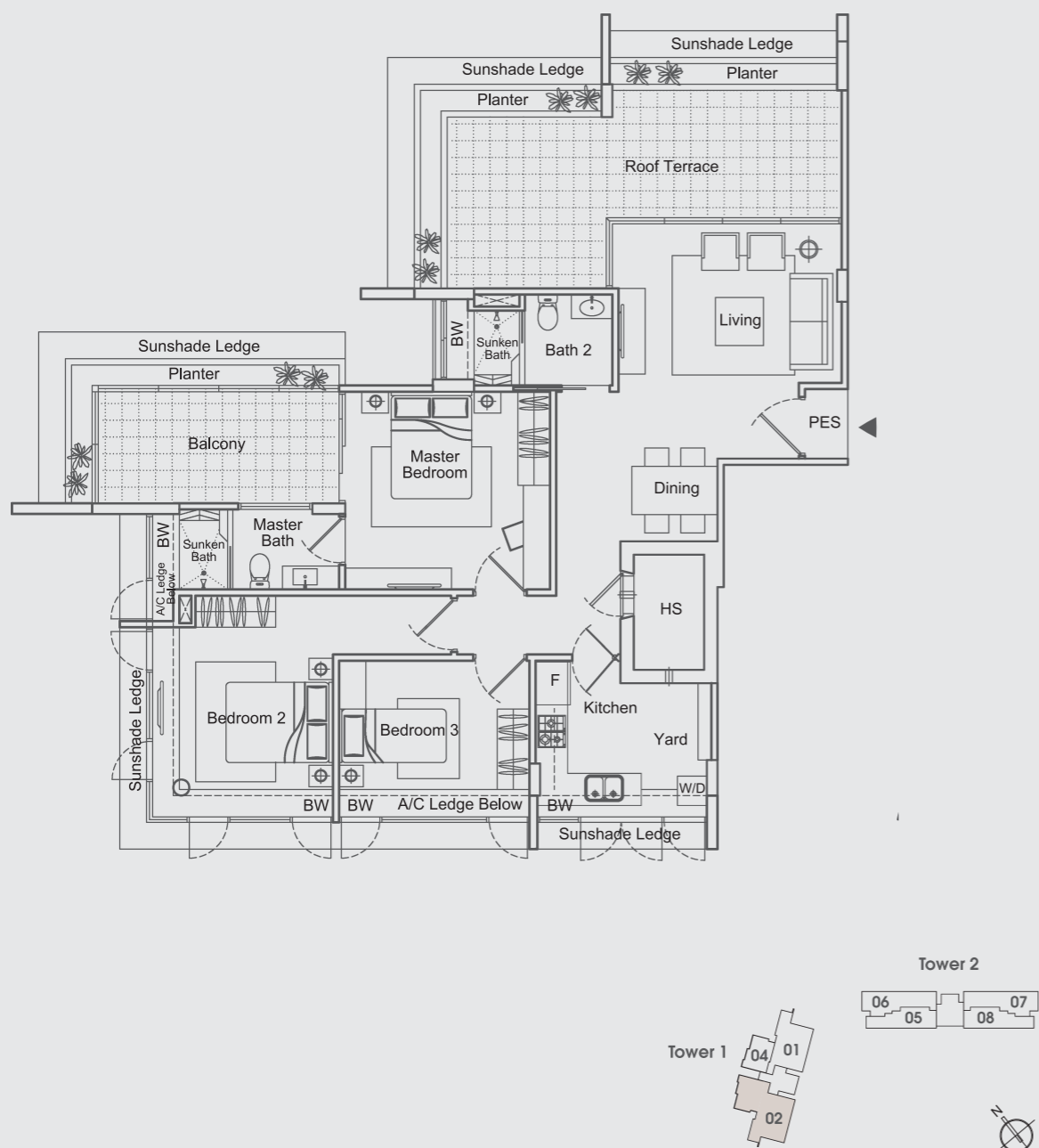
**Type E2 (3-Bedroom Penthouse)**

Unit #18-01  
 Area 1582 sqft / 147 sqm  
 (Inclusive of PES, Bay Window, A/C Ledge Planter & Roof Terrace)



**Type E1 (3-Bedroom Penthouse)**

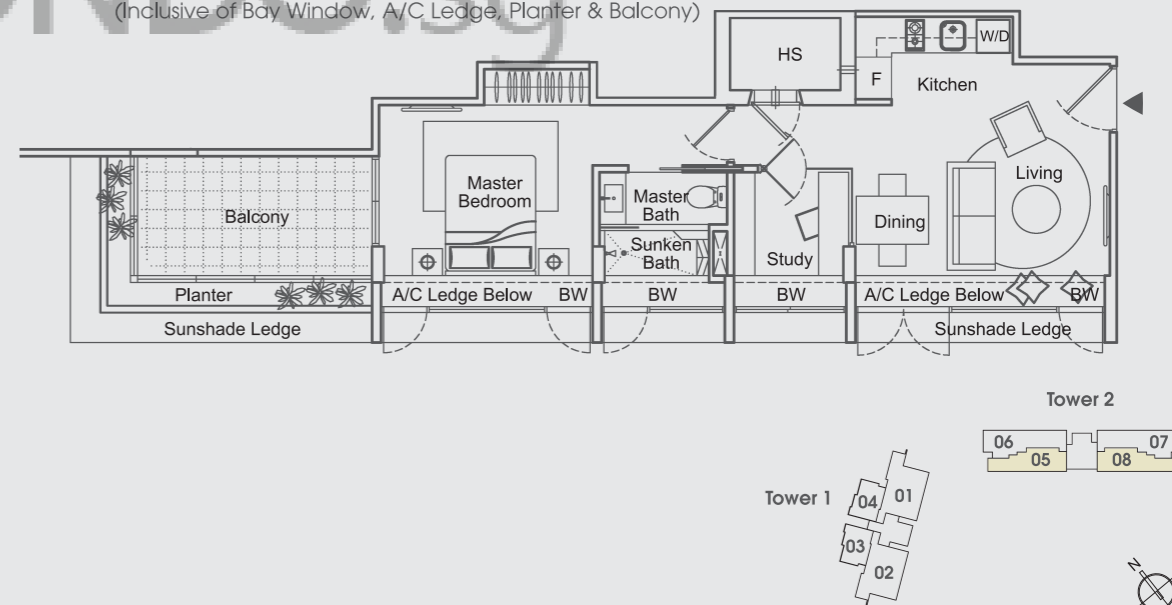
Unit #18-02  
 Area 1550 sqft / 144 sqm  
 (Inclusive of PES, Bay Window, A/C Ledge, Planter & Roof Terrace)



**Tower 2**

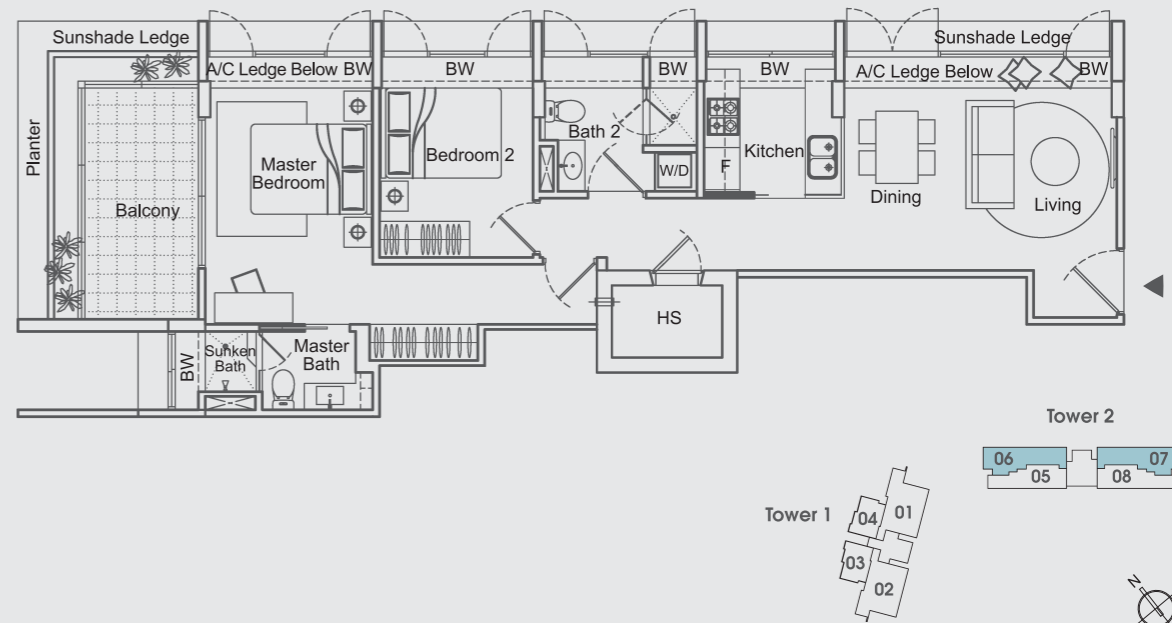
**Type B (1+1-Bedroom)**

Unit #03-05 to #11-05  
 #02-08 to #11-08 (Mirrored)  
 Area 710 sqft / 66 sqm  
 (Inclusive of Bay Window, A/C Ledge, Planter & Balcony)



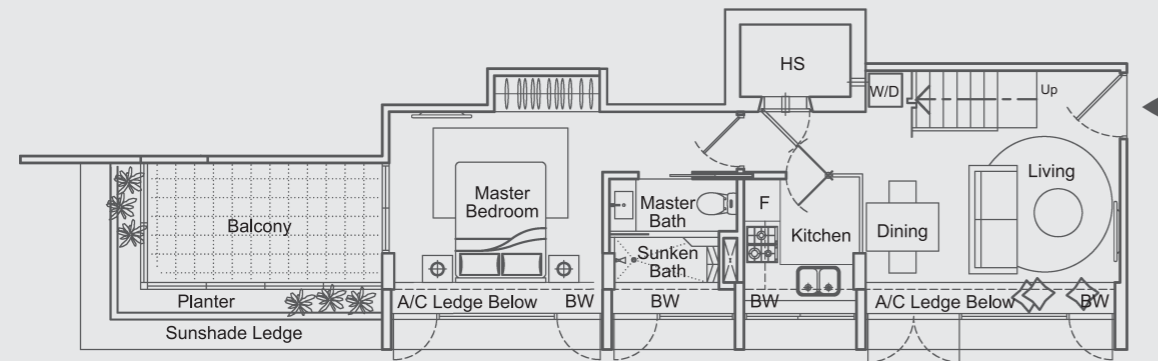
**Type C (2-Bedroom)**

Unit #03-06 to #11-06  
 #02-07 to #11-07 (Mirrored)  
 Area 926 sqft / 86 sqm  
 (Inclusive of Bay Window, A/C Ledge, Planter & Balcony)

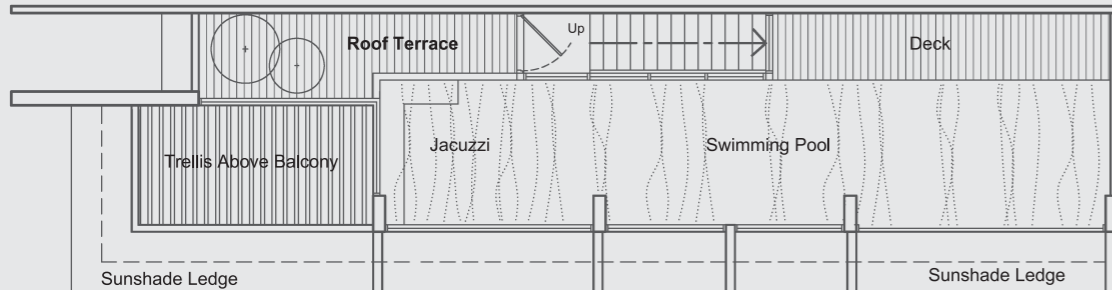


### Type B1 (1-Bedroom Penthouse)

Unit #12-05  
 #12-08 (Mirrored)  
 Area 1238 sqft / 115 sqm  
 (Inclusive of Bay Window, A/C Ledge, Planter, Balcony & Roof Terrace)



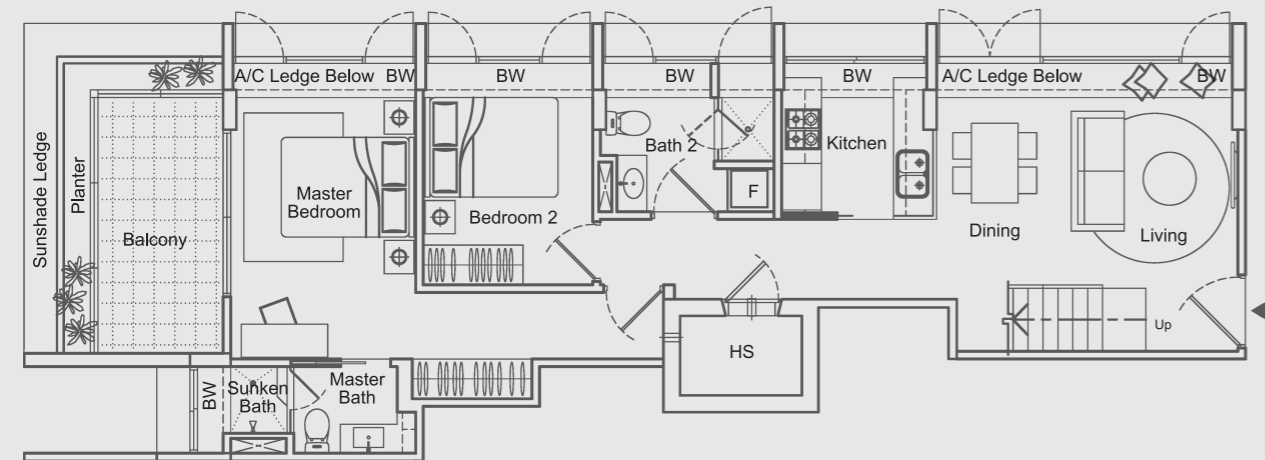
Lower Storey



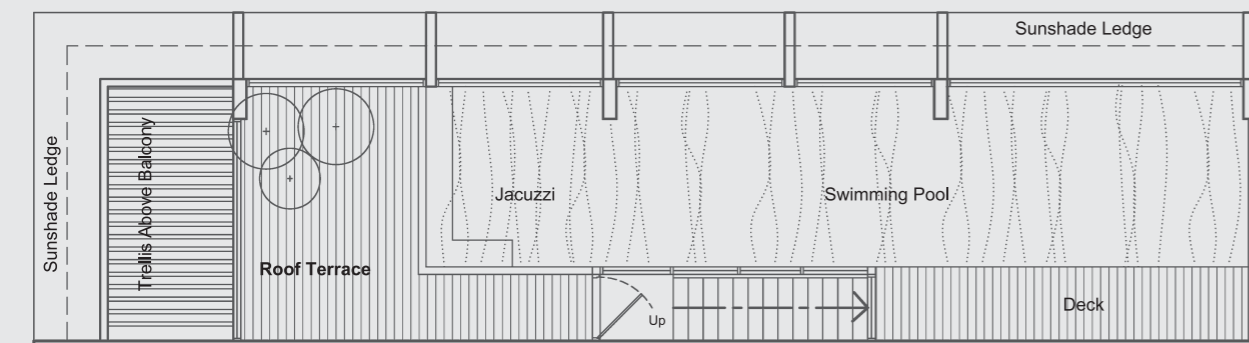
Upper Storey

### Type C1 (2-Bedroom Penthouse)

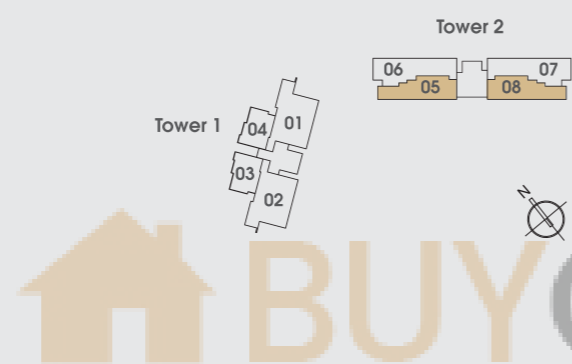
Unit #12-06  
 #12-07 (Mirrored)  
 Area 1615 sqft / 150 sqm  
 (Inclusive of Bay Window, A/C Ledge, Planter, Balcony & Roof Terrace)



Lower Storey



Upper Storey



### Specifications

- FOUNDATION**  
Reinforced concrete / steel piles to engineer's design
- SUPER-STRUCTURE**  
Reinforced concrete structure to engineer's specifications
- WALLS**  
External - Pre-cast Walling Panels / Common clay brick  
Internal - Pre-cast Walling Panels / Common clay brick
- ROOF**  
Flat roof - Reinforced concrete roof with waterproofing and insulation
- CEILING**  
Living / Dining / Bedrooms / Household Shelter & Yard - Skim coat and / or plaster ceiling boards  
Emulsion paint emulsion finish  
Master Bath / Common Toilet / Kitchen - Moisture resistant plaster ceiling boards with emulsion paint finish
- FINISHES**
  - Wall (For Apartments)**  
Living / Dining / Bedrooms / Household Shelter - Cement and Sand plaster and / or skim coat with emulsion paint  
Master Bath / Common Toilet - Ceramic tiles laid up to false ceiling height (exposed area only)  
Kitchen - Cement and sand plaster with emulsion paint / stainless steel
  - Wall (For Common Areas)**  
1st Storey Lift Lobbies - Granite / Ceramic tiles up to false ceiling height (exposed areas only)  
Typical lift lobbies - Ceramic tiles up to false ceiling height (exposed areas only), and/or cement and sand plaster with emulsion paint  
Staircases - Cement and sand plaster and / or skim coat with emulsion paint
  - Wall (For Common Areas)**  
External Wall - Cement and sand plaster and / or skim coat with weather proof paint
  - Floor (For Apartments)**  
Living / Dining - Compressed marble  
Bedroom / Study - Timber strip flooring with similar skirting  
Master Bath / Common Toilet - Ceramic Tiles  
Kitchen / Household Shelter - Ceramic Tiles  
Planter box - Smooth cement finish  
A/C Ledge - Smooth cement finish  
Balcony - Compressed marble / Ceramics tiles  
Roof Terrace - Ceramics tiles
  - Floor (Common Areas)**  
a) 1st stories lift lobbies - Granite / Ceramic tiles  
b) Typical lift lobbies - Ceramic tiles  
c) Staircases - Smooth cement finish  
d) Pool Area - Pebble wash / Timber deck / Granite tiles  
e) Walkway / Pavement - Granite tiles / Pebble wash
- WINDOWS**  
a) Powder coated aluminum framed windows with 6mm thick clear glass
- DOORS**  
a) Main Entrance - Fire-rated timber veneer door  
b) Bedrooms / Bathrooms - Semi-hollow core timber veneer door  
c) Kitchen (if applicable) - frameless glass door  
d) Household Shelter - PSB approved blast door  
e) Roof Garden - Powder coated aluminum framed doors with float / tempered clear glass  
f) Ironmongery - Quality locksets and hinges
- RAILINGS**  
Steel Framed Glass panels / Mild steel in painted finish
- SANITARY WARES AND FITTINGS**
  - Master Bath**  
a) 1 sunken bath with shower mixer, shower set and soap dish  
b) 1 basin and mixer tap with shelving below  
c) 1 water closet  
d) 1 mirror  
e) 1 toilet paper holder
  - Common Toilet**  
a) 1 shower cubicle complete with shower mixer, shower set and soap dish  
b) 1 basin and mixer  
c) 1 water closet  
d) 1 mirror  
e) 1 toilet paper holder
- ELECTRICAL INSTALLATION / TELEPHONE / TV / FM**

TYPE	A	B	B1	C	C1	D1	D2	E1	E2
Lighting Point	9	10	17	16	24	13	13	16	16
13 A switch Socket Outlet	14	17	15	17	18	17	17	20	20
Telephone Point	3	4	3	4	4	4	4	5	5
SCV TV Point	3	4	3	4	4	4	4	5	5
Bell Point	1	1	1	1	1	1	1	1	1
Water Heater Point	1	1	1	2	2	2	2	3	3
Cooker Hood Point	1	1	1	1	1	1	1	1	1
Gas Cooker Hob Point	1	1	1	1	1	1	1	1	1
Oven Point	1	1	1	1	1	1	1	1	1
Isolator For A/C	1	2	2	2	2	2	2	2	2