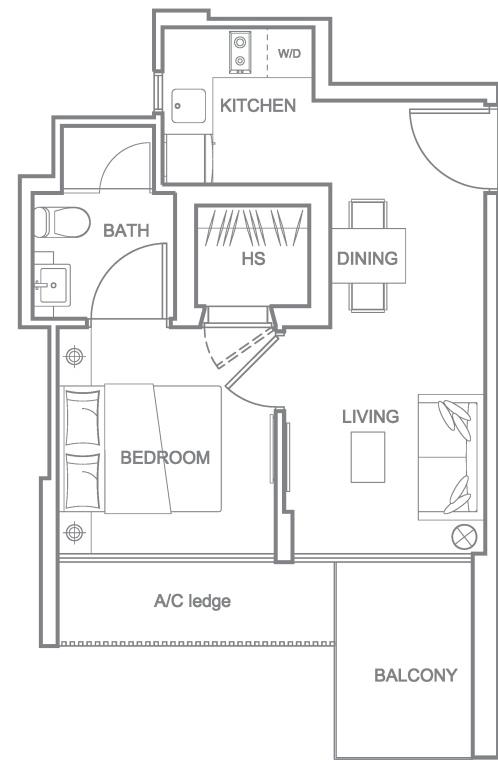


# 1-Bedroom Apartments

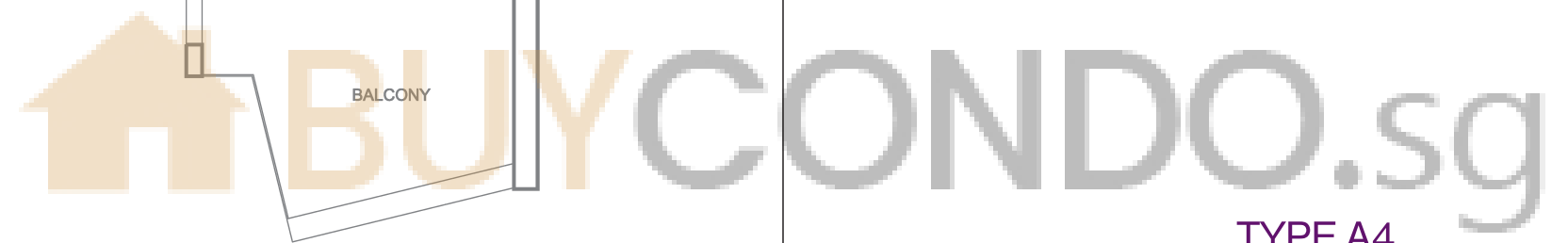
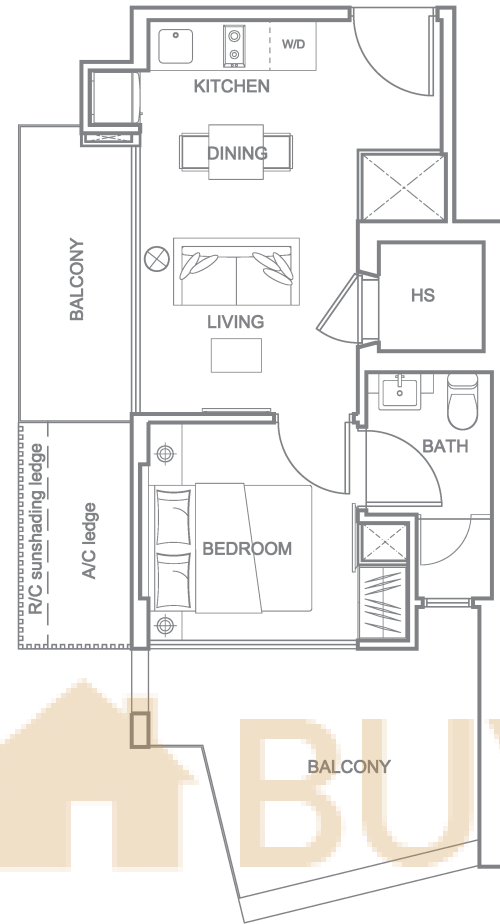
## TYPE A1

#03-02 to #12-02  
40 sqm / 431 sqft  
(inclusive of A/C ledge & balcony)



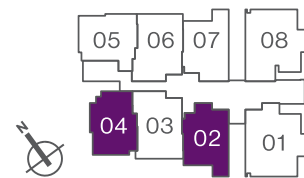
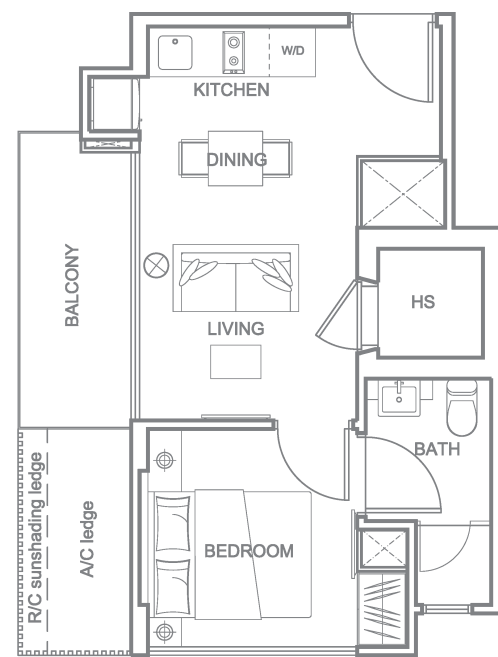
## TYPE A2a

#03-04  
49 sqm / 527 sqft  
(inclusive of A/C ledge & balcony)



## TYPE A2

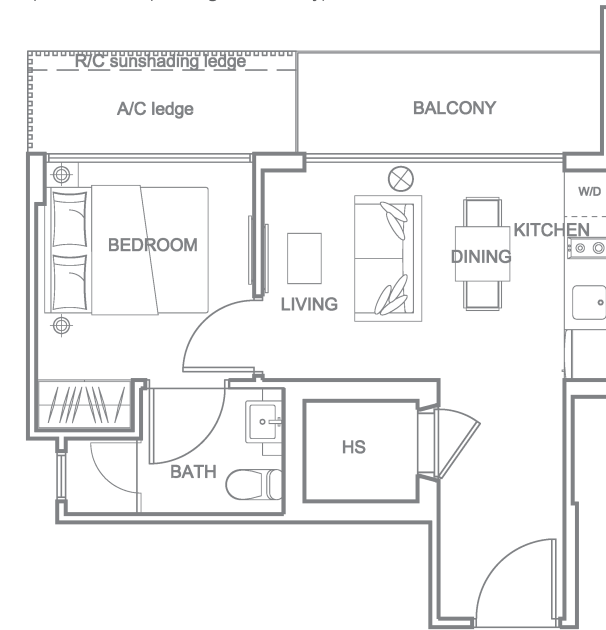
#04-04 to #12-04  
38 sqm / 409 sqft  
(inclusive of A/C ledge & balcony)



# 1-Bedroom Apartments

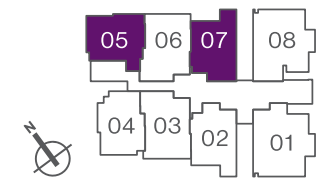
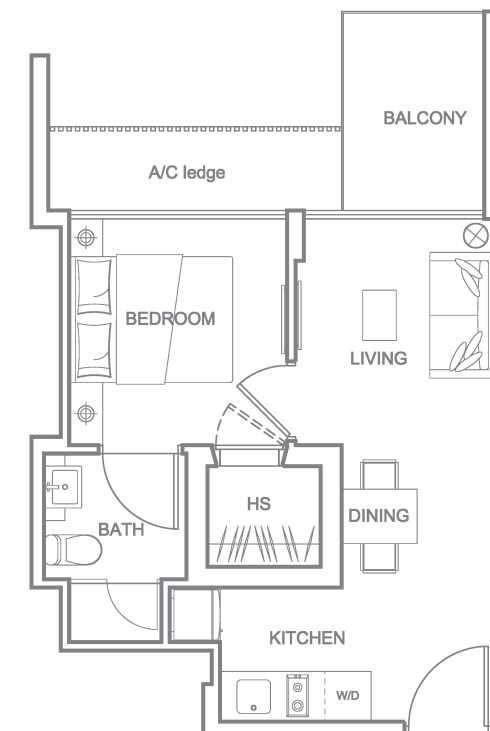
## TYPE A3

#03-05 to #12-05  
40 sqm / 431 sqft  
(inclusive of A/C ledge & balcony)



## TYPE A4

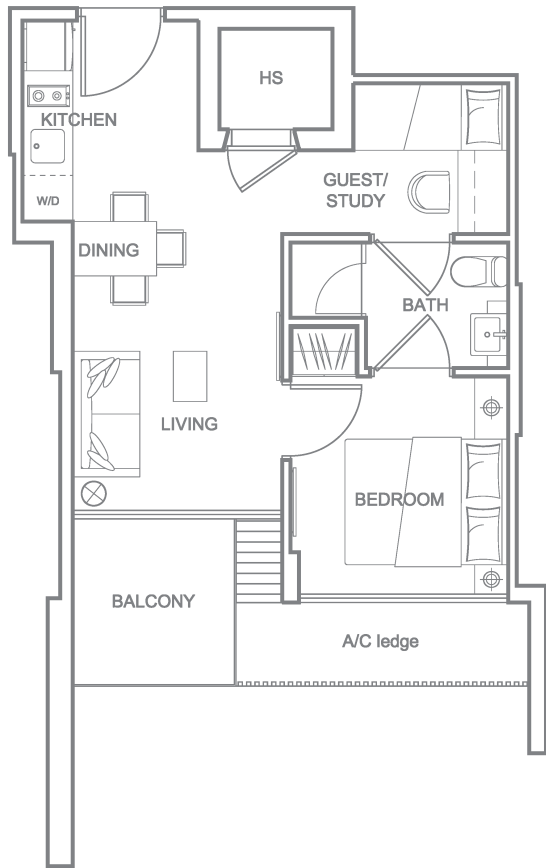
#03-07 to #12-07  
40 sqm / 431 sqft  
(inclusive of A/C ledge & balcony)



# 1-Bedroom + Guest / Study Apartments

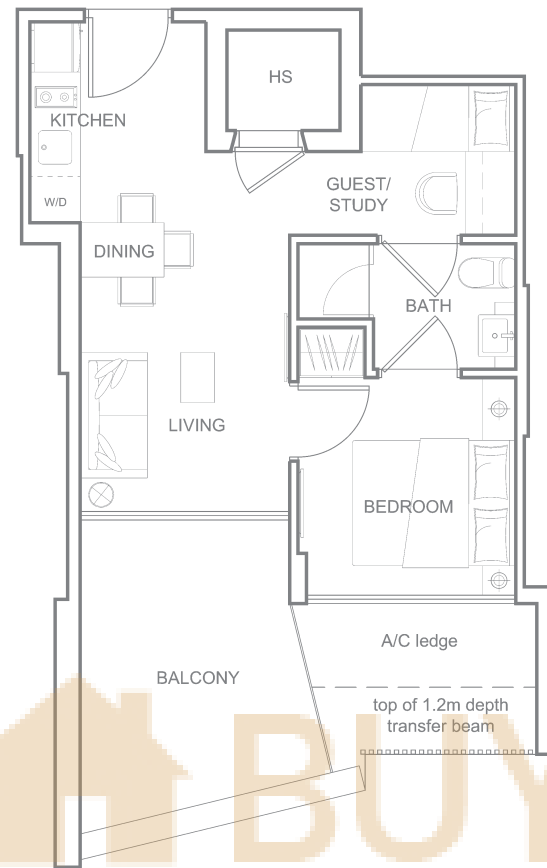
## TYPE B1

#04-03 to #12-03  
43 sqm / 463 sqft  
(inclusive of A/C ledge & balcony)



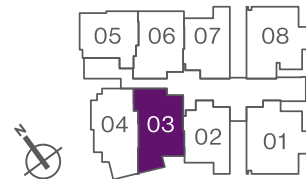
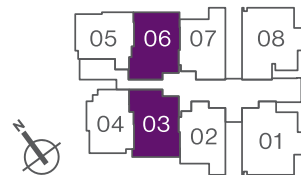
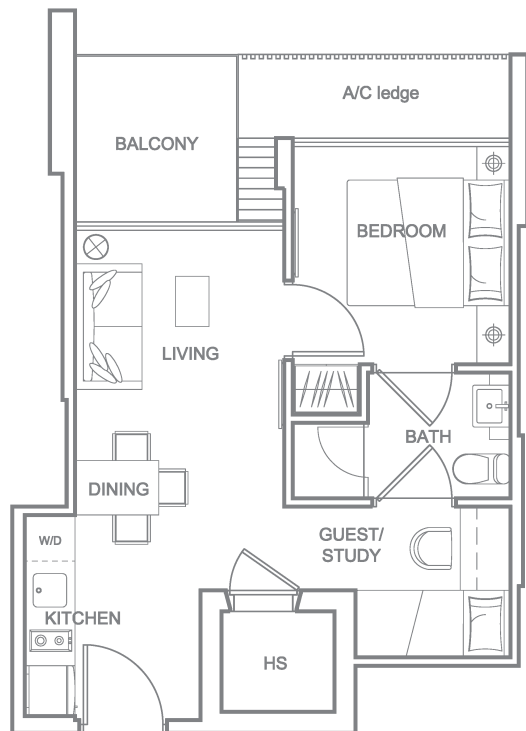
## TYPE B1a

#03-03  
49 sqm / 527 sqft  
(inclusive of A/C ledge & balcony)



## TYPE B2

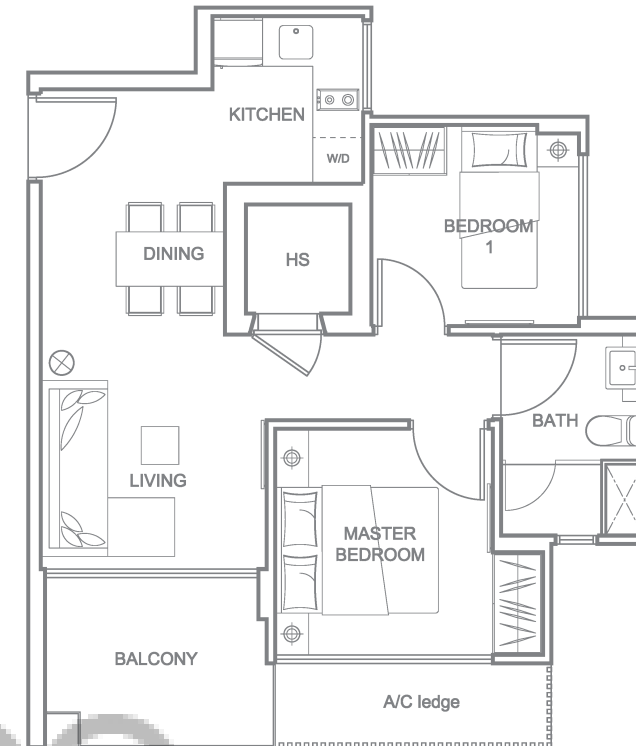
#03-06 to #12-06  
43 sqm / 463 sqft  
(inclusive of A/C ledge & balcony)



# 2-Bedroom Apartments

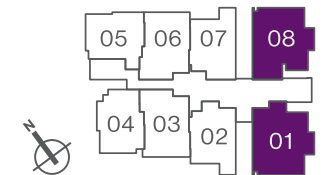
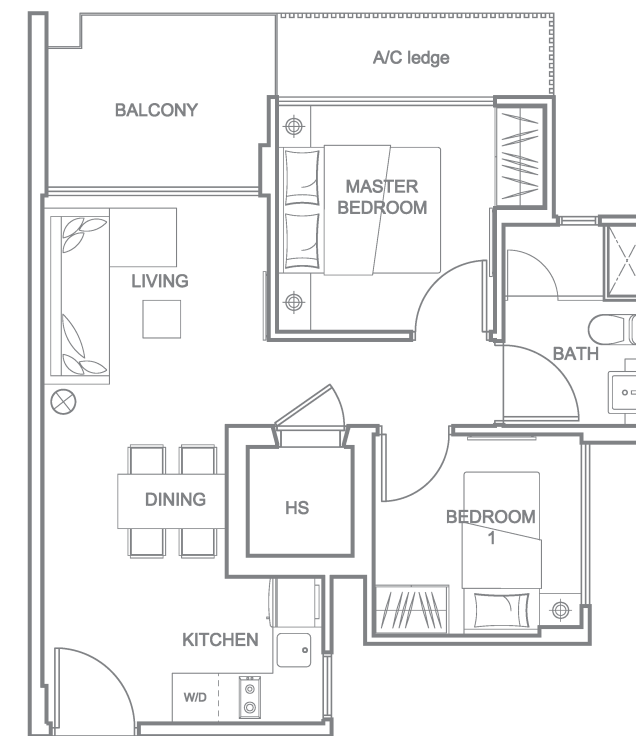
## TYPE C1

#03-01 to #12-01  
54 sqm / 581 sqft  
(inclusive of A/C ledge & balcony)



## TYPE C2

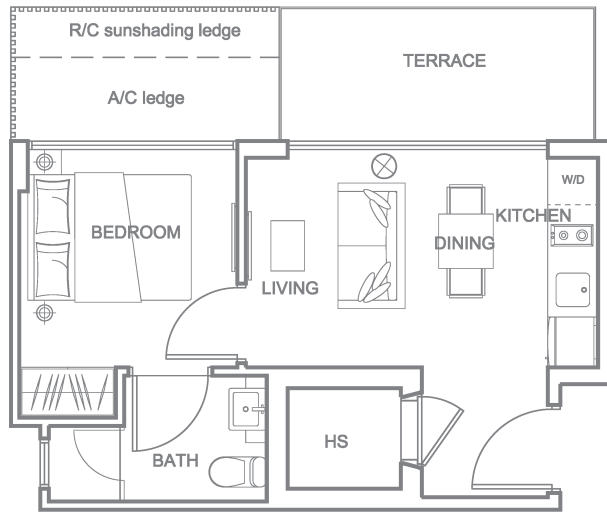
#03-08 to #12-08  
54 sqm / 581 sqft  
(inclusive of A/C ledge & balcony)



# Garden Suites

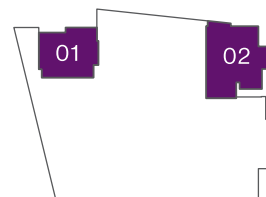
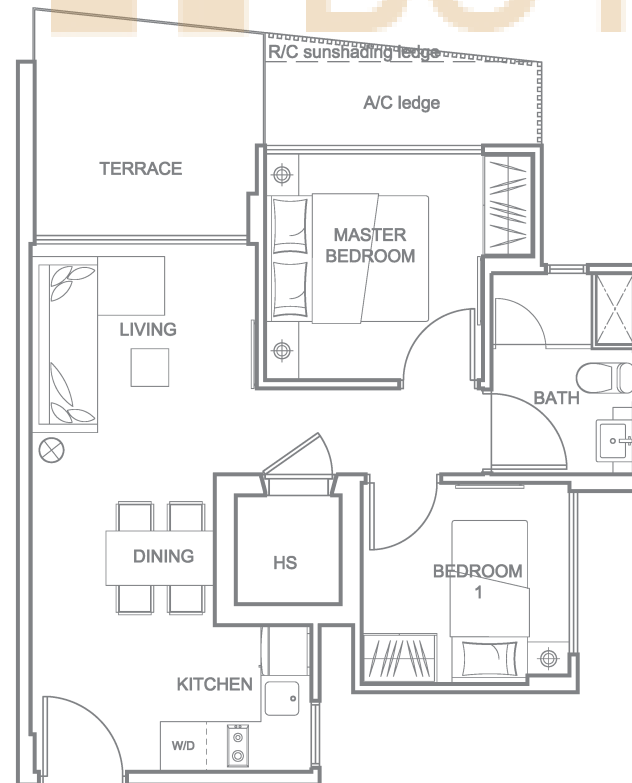
## TYPE G1

#02-01 (Ceiling Height - 6.0m)  
40 sqm / 431 sqft  
(inclusive of A/C ledge & terrace)



## TYPE G2

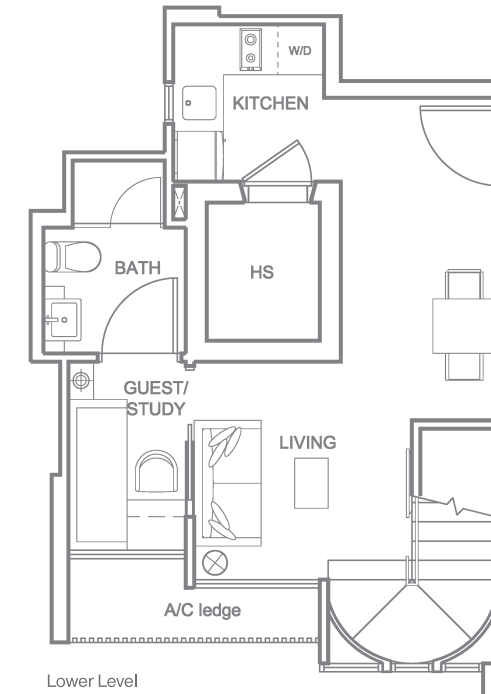
#02-02 (Ceiling Height - 6.0m)  
55 sqm / 592 sqft  
(inclusive of A/C ledge & terrace)



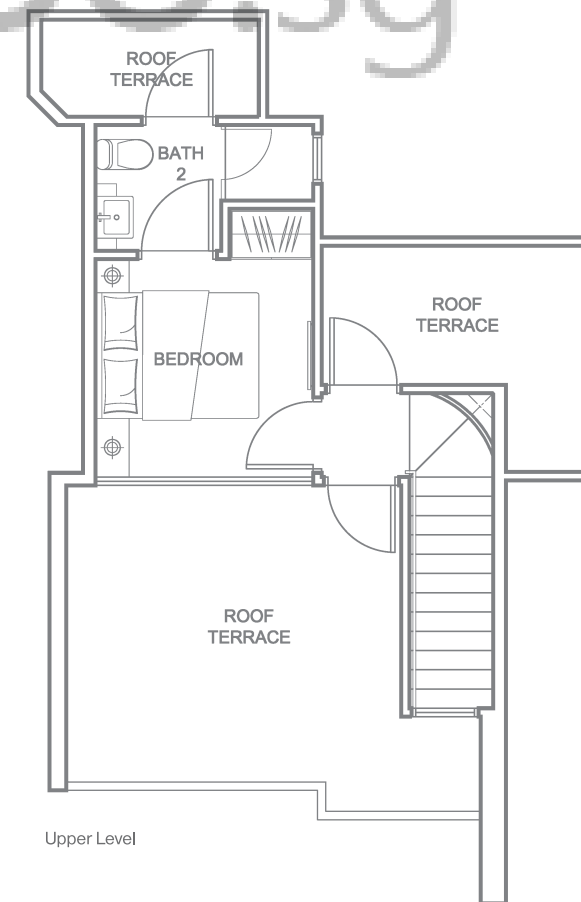
# Duplex Penthouse Suites

## TYPE PH1

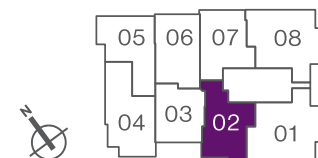
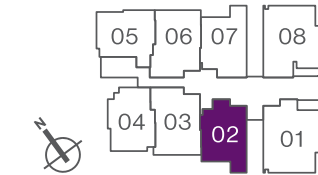
#13-02  
82 sqm / 883 sqft  
(inclusive of A/C ledge & roof terrace)



Lower Level



Upper Level

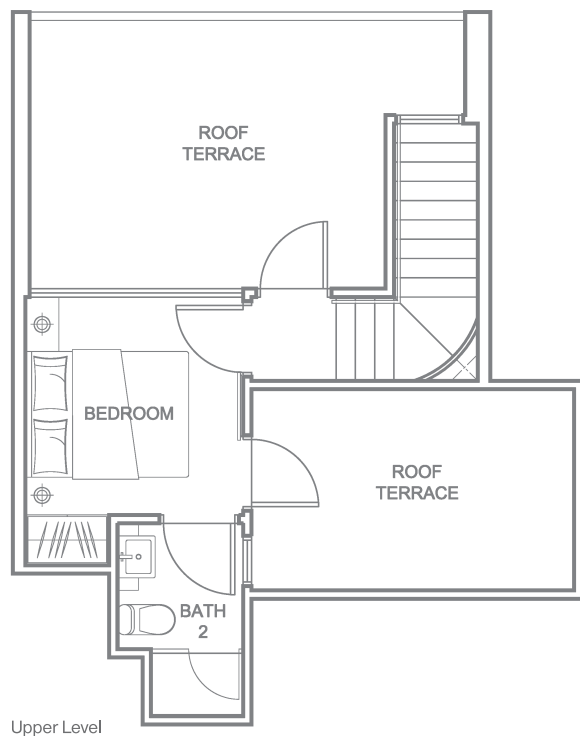
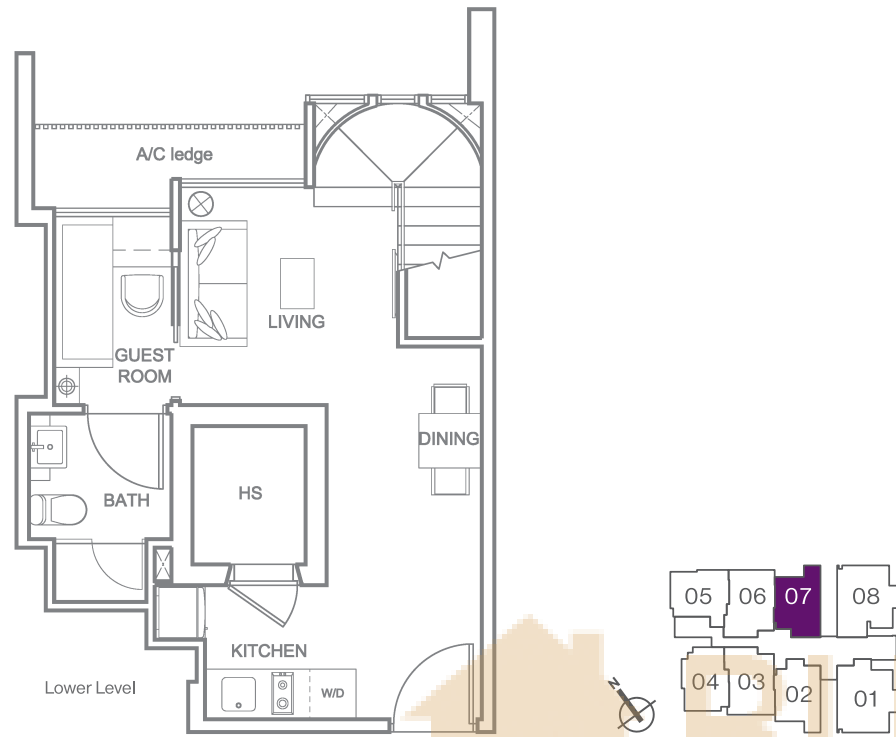


# Duplex Penthouse Suites

## TYPE PH2

#13-07

80 sqm / 861 sqft  
(inclusive of A/C ledge & roof terrace)

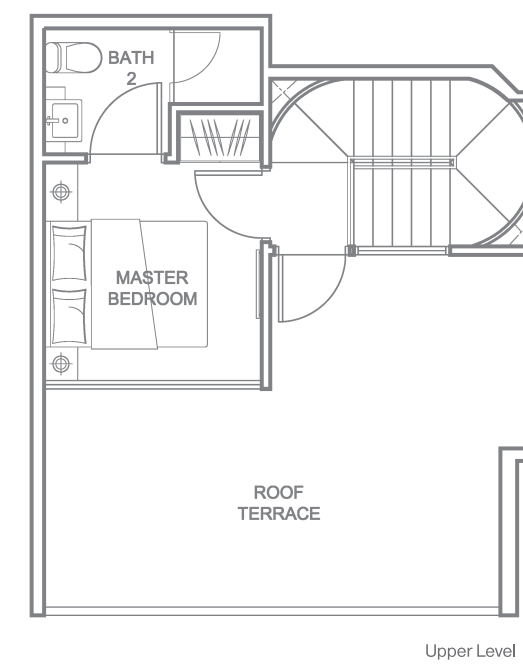


# Duplex Penthouse Suites

## TYPE PH3

#13-03

83 sqm / 893 sqft  
(inclusive of A/C ledge, balcony & roof terrace)



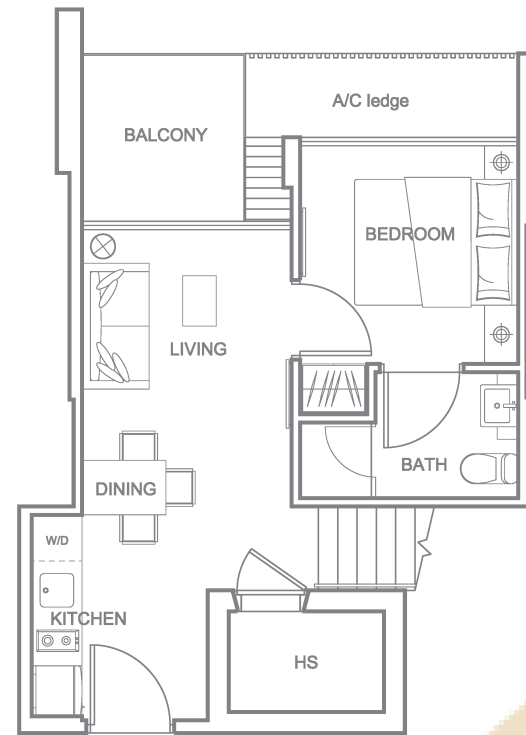
# Duplex Penthouse Suites

## TYPE PH4

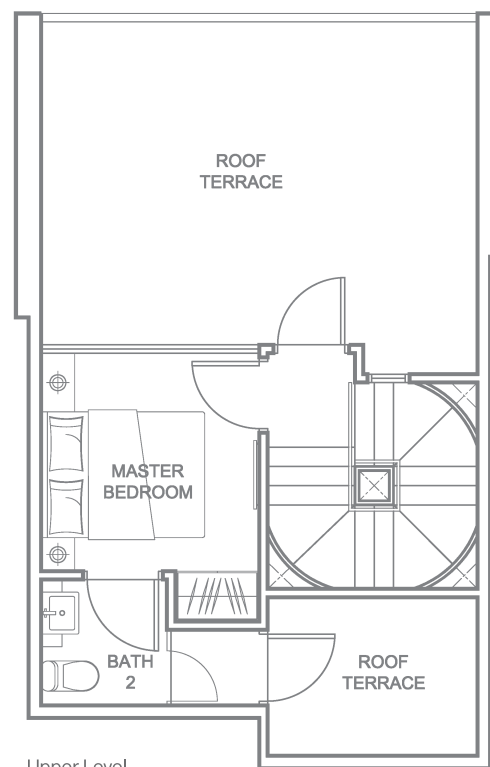
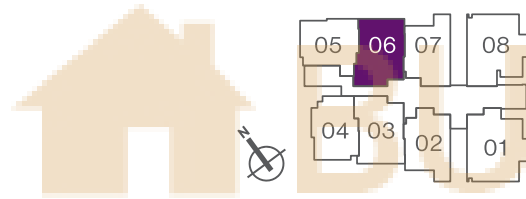
#13-06

90 sqm / 969 sqft

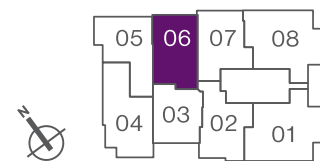
(inclusive of A/C ledge, balcony & roof terrace)



Lower Level



Upper Level



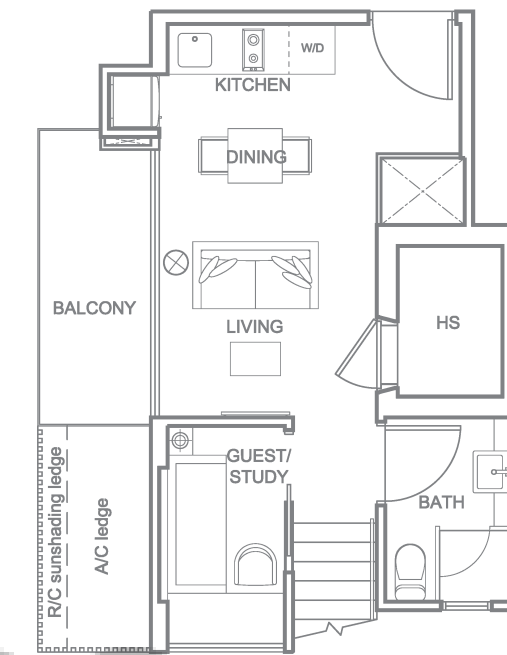
# Duplex Penthouse Suites With Private Pool

## TYPE PP1

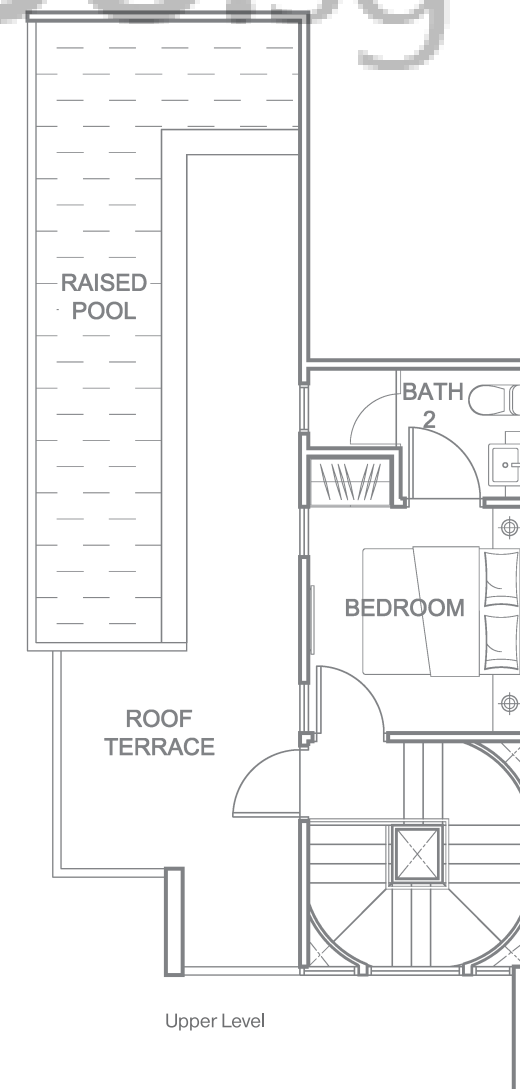
#13-04

92 sqm / 990 sqft

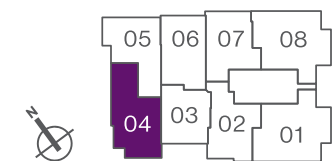
(inclusive of A/C ledge, balcony, roof terrace & raised pool)



Lower Level



Upper Level



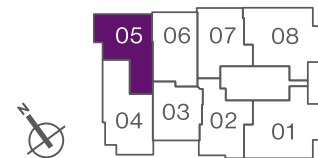
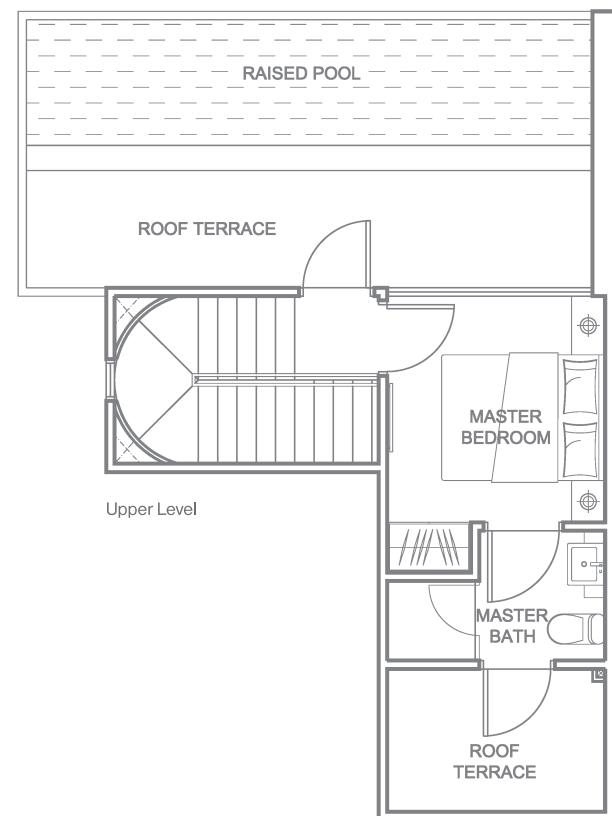
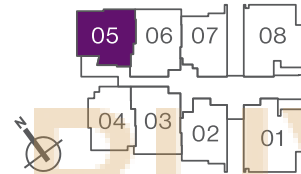
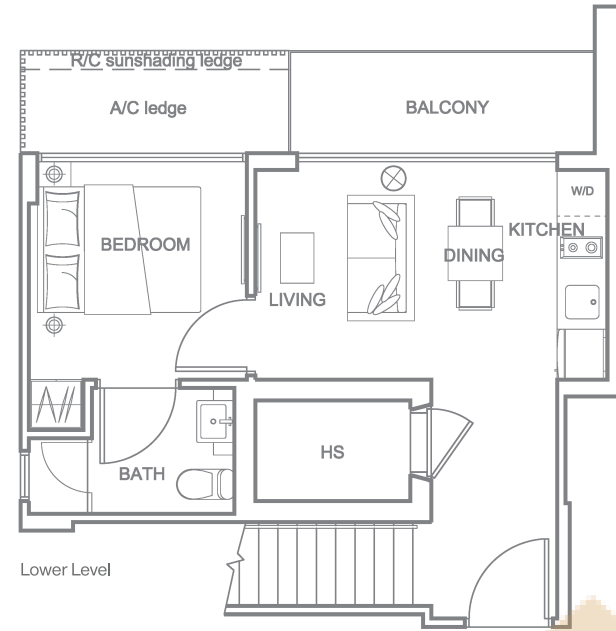
# Duplex Penthouse Suites With Private Pool

## TYPE PP2

#13-05

93 sqm / 1001 sqft

(inclusive of A/C ledge, balcony, roof terrace & raised pool)



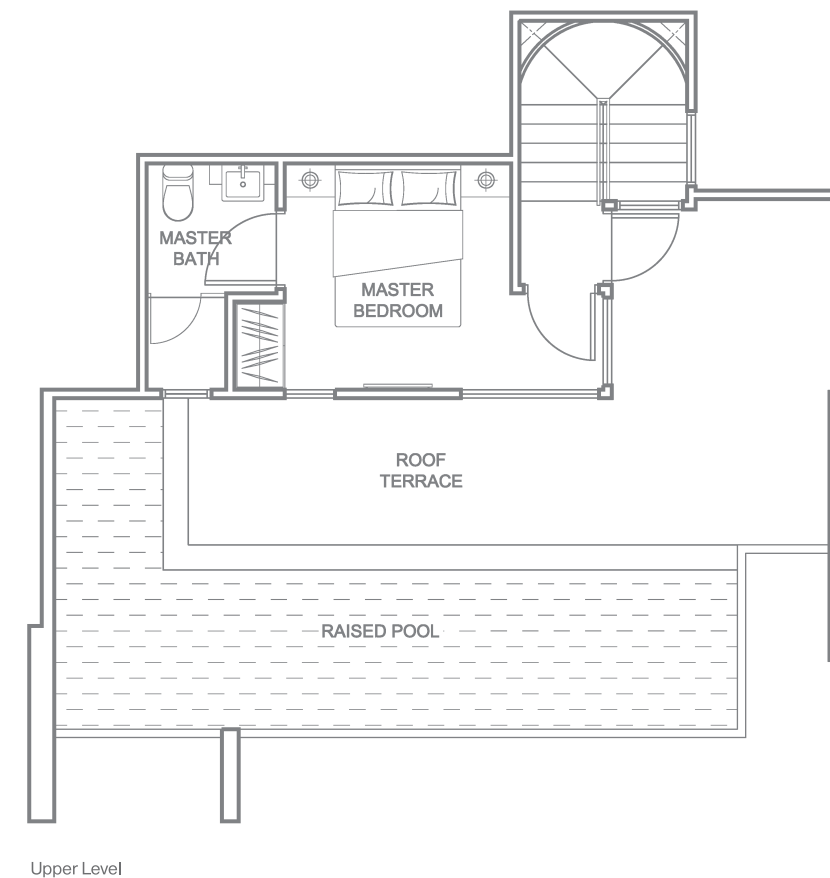
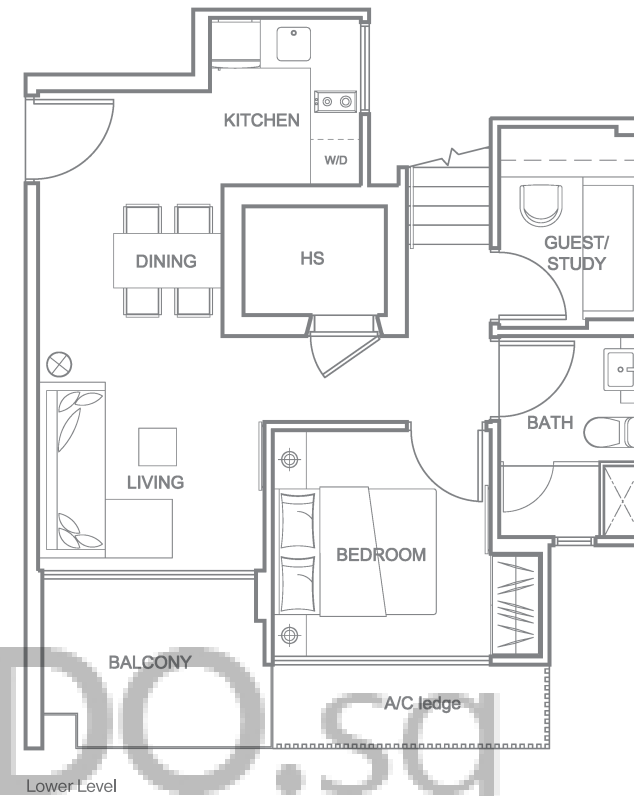
# Duplex Penthouse Suites With Private Pool

## TYPE PP3

#13-01

118 sqm / 1270 sqft

(inclusive of A/C ledge, balcony, roof terrace & raised pool)



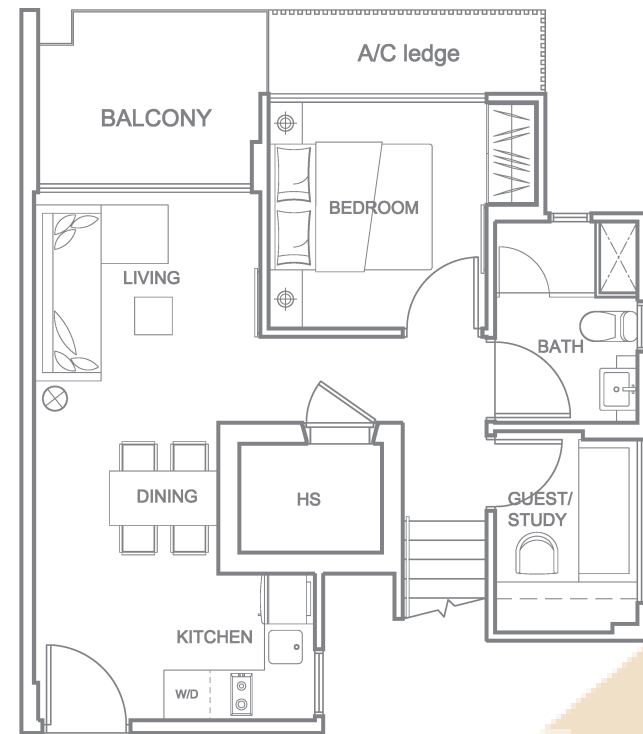
# Duplex Penthouse Suites With Private Pool

## TYPE PP4

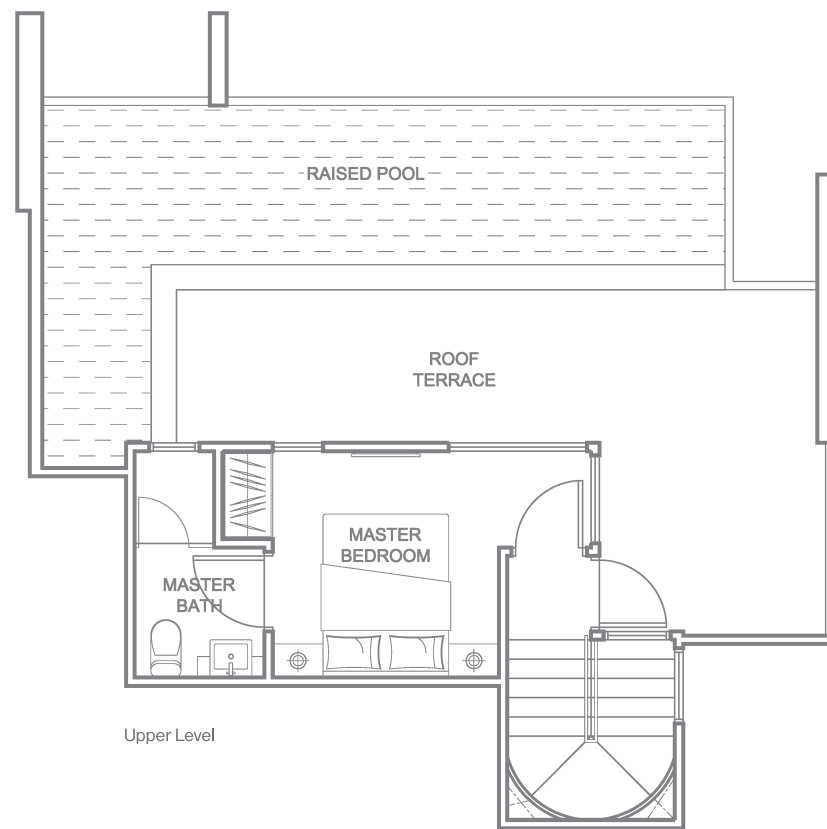
#13-08

119 sqm / 1281 sqft

(inclusive of A/C ledge, balcony, roof terrace & raised pool)



Lower Level



Upper Level



## Specifications

- 1. FOUNDATION**  
Reinforced concrete foundation to engineer's requirements
- 2. SUPER-STRUCTURE**  
Reinforced concrete structure to engineer's requirements
- 3. WALLS**
  - External - Pre-cast Concrete Panels and/or Common clay brick to Architect & Engineer's requirements
  - Internal - Pre-cast Concrete Panels and/or Common clay brick to Architect & Engineer's requirements
- 4. ROOF**  
Reinforced concrete flat roof
- 5. CEILING**
  - Living/Dining/Bedrooms - Skim coat and/or plaster ceiling boards with emulsion Paint to Architect's selection
  - Household Shelter, Balcony & Private Terrace - Skim coat with emulsion paint to Architect's selection
  - Bathroom/Kitchen - Moisture resistant plaster ceiling boards with emulsion paint finish to Architect's selection
- 6. FINISHES**
  - Wall (For Apartments)**
    - Living/Dining/Bedrooms/ Kitchen/Household Shelter/Balcony Bathroom - Cement and Sand plaster and/or skim coat with emulsion paint to Architect's selection
    - Household Shelter/Balcony Bathroom - Homogenous and/or Ceramic tiles lay up to false ceiling height (exposed area only) to Architect's design (Note: For Types G1 & G2 only - These units have a high floor-to-ceiling height of 6.0m. The internal brickwall/pre-cast panels/partitions of the bedrooms and toilets will be built to a height of 3.25m only)
  - Wall (For Common Areas)**
    - 1st Storey Lift Lobbies/ Typical Lift Lobbies/ Staircases - Cement and sand plaster and/or skim coat with emulsion paint to Architect's selection
  - Wall (For Common Areas)**
    - External Wall - Cement and sand plaster and/or skim coat with weather resistant paint to Architect's selection
  - Floor (For Apartments)**
    - Living/Dining/Kitchen/ Bedroom/Study - Compressed marble and/or Homogeneous tiles to Architect's selection
    - Bathroom - Ceramic and/or homogenous tiles to Architect's selection
    - Household Shelter/ Balcony/Private Terrace Planter Box - Ceramic and/or homogenous tiles to Architect's selection
    - A/C Ledge - Cement & Sand screeding
  - Private Pool (where applicable)**
    - a) Pool - Mosaic and/or ceramic tiles to Architect's selection
    - b) Pool Deck - Ceramic tiles and/or timber deck to Architect's selection
  - Floor (Common Areas)**
    - a) 1st Storey Lift Lobbies - Homogenous and/or Ceramic tiles to Architect's selection
    - b) Typical Lift Lobbies - Homogenous and/or Ceramic tiles to Architect's selection
    - c) Staircases - Cement & sand screed with nosing tiles to Architect's selection
    - d) Sky Terrace/Sun deck/ Pool Area - Ceramic tiles and/or timber deck to Architect's selection
    - e) Swimming Pool - Mosaic and/or ceramic tiles to Architect's selection
    - f) Walkway/Pavement - Pebbles wash and/or Homogenous and/or ceramic tiles to Architect's selection
- 7. WINDOWS**  
Powder coated aluminium framed windows with approx. 6mm thick tinted float glass to Architect's selection
- 8. DOORS**
  - a) Main Entrance - Fire-rated timber door to Architect's design
  - b) Bedrooms/Bathrooms - Semi-hollow core timber door to Architect's design
  - c) Household Shelter - Approved blast door
  - d) Ironmongery - Locksets and hinges to Architect's selection
- 9. RAILINGS**  
Stainless steel and/or mild steel with paint to Architect's selection
- 10. SANITARY WARES AND FITTINGS**
  - Bathroom**
    - a) 1 shower cubicle with shower mixer, rain shower head and shower set to Architect's selection
    - b) 1 wash basin and mixer tap to Architect's selection
    - c) 1 water closet to Architect's selection
    - d) 1 mirror to Architect's design
    - e) 1 toilet paper holder to Architect's selection
- 11. ELECTRICAL INSTALLATION/TELEPHONE/TV/FM**
  - a) All electrical wiring are concealed in floor and wall in conduits wherever possible except for electrical wiring above false ceiling, household shelter, and DB cabinet will be exposed in trunking and/or conduits
  - b) Refer to Electrical Schedule for details
- 12. LIGHTNING PROTECTION SYSTEM**
  - a) Lightning Protection System shall be provided in accordance with Singapore Standard CP33 1996
- 13. PAINTING**
  - a) External Walls - Spray textured coating and/or Weather-resistant emulsion paint to Architect's selection
  - b) Internal Walls - Emulsion paint to Architect's selection
- 14. WATERPROOFING**
  - a) Waterproofing is provided to floors of Bathrooms, Kitchen, Balcony, W.C., R.C. flat roof, Planter Box and where required
- 15. DRIVEWAY & CARPARK**
  - a) Surface Driveway - Interlocking pavement and/or concrete imprint to Architect's selection
  - b) Mechanical Carpark Systems - According to specialist's specifications
- 16. RECREATIONAL FACILITIES**
  - a) Swimming Pool
  - b) Jacuzzi
  - c) Cascading Water Feature
  - d) Pool Deck
  - e) Outdoor Gymnasium
  - f) BBQ Area
  - g) Landscaping
  - h) Children's Play Area
  - i) Wet Deck
- 17. OTHER ITEMS**
  - a) Kitchen Cabinets - High and low kitchen cabinets with solid surface work top complete with sink and mixer to Architect's design & selection
  - b) Kitchen Appliances - Cooker Hob and cooker hood, integrated fridge and washer-cum-dryer to Architect's selection
  - c) Bedroom Wardrobes - Built-in wardrobes to all bedrooms to Architect's design & selection
  - d) Air-conditioning - Multi-split air-conditioning to all Bedrooms and Living/Dining to M & E Engineer's requirements
  - f) Audio/Intercom System - Gate post with audio intercom to apartment units to M & E Engineer's selection
  - g) Electric Water Heater - Hot water supply to all bathrooms and kitchen except W.C. to M & E Engineer's requirements
  - h) Soil Treatment - Anti-termites soil treatment by specialist's specifications
  - i) Cable Vision - Provision of cable and outlet only