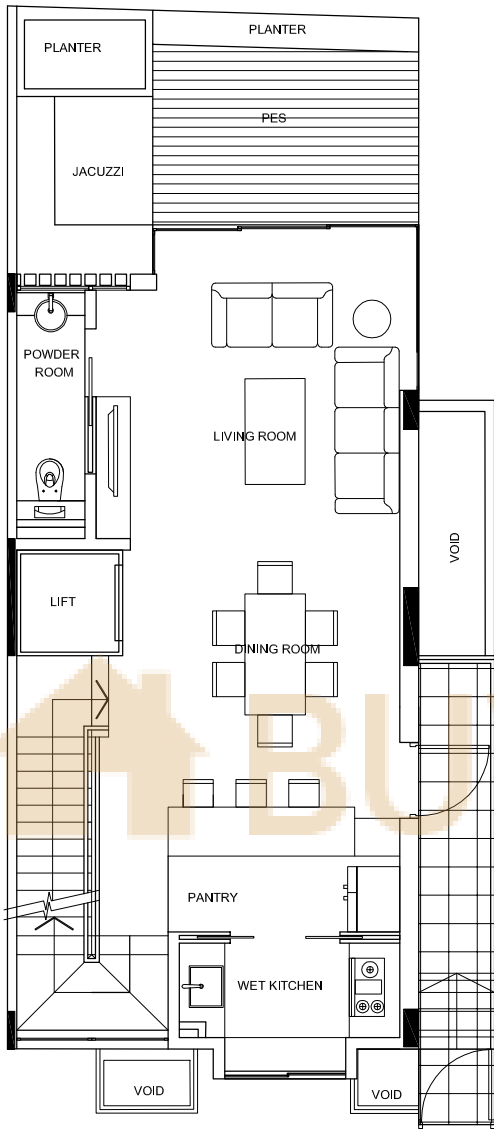
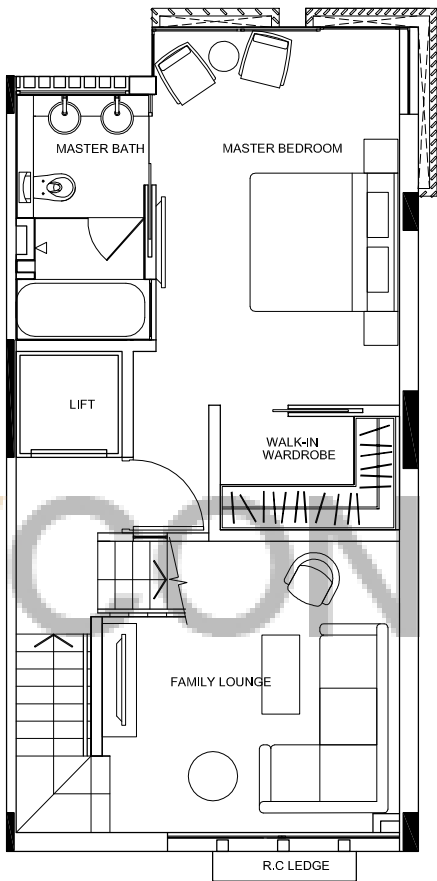


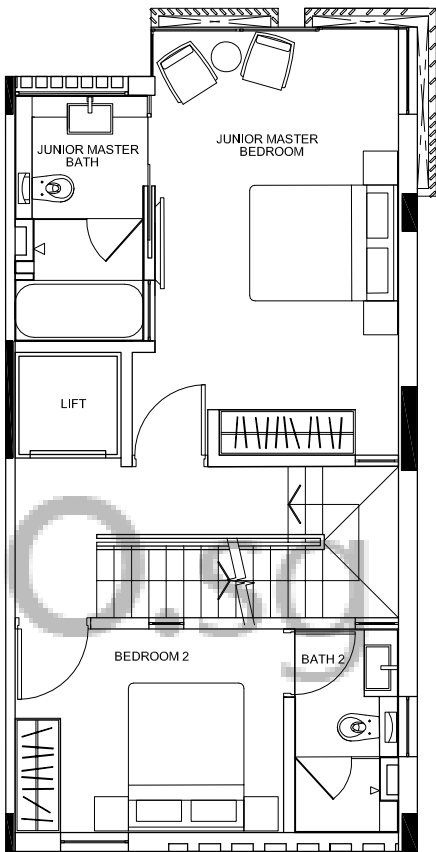
BASEMENT



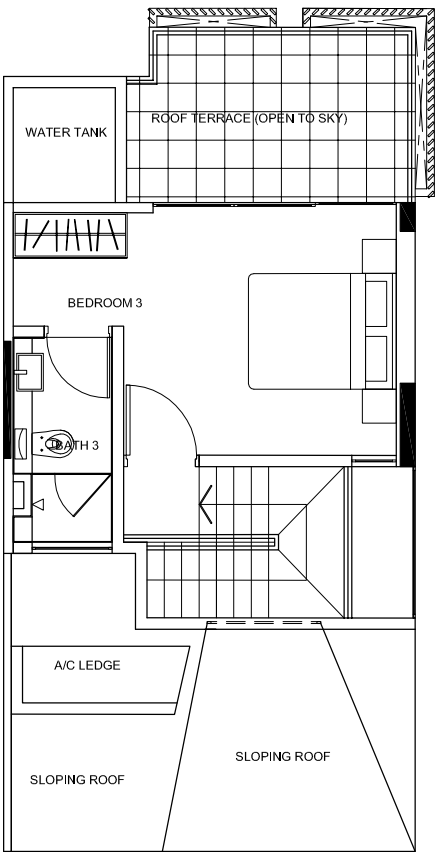
1ST STOREY



2nd STOREY



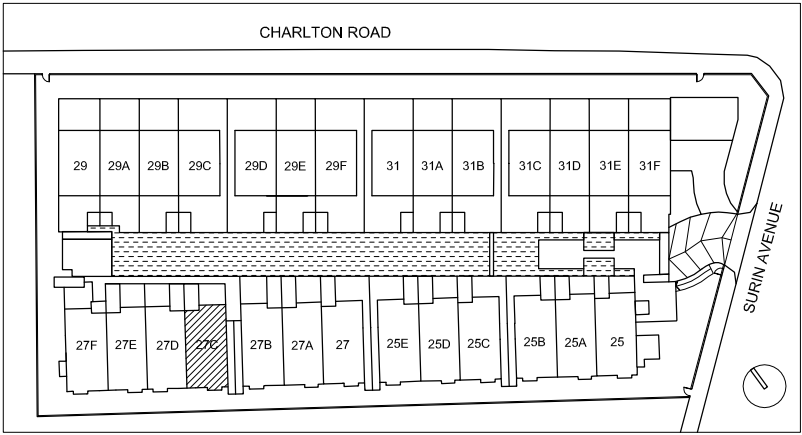
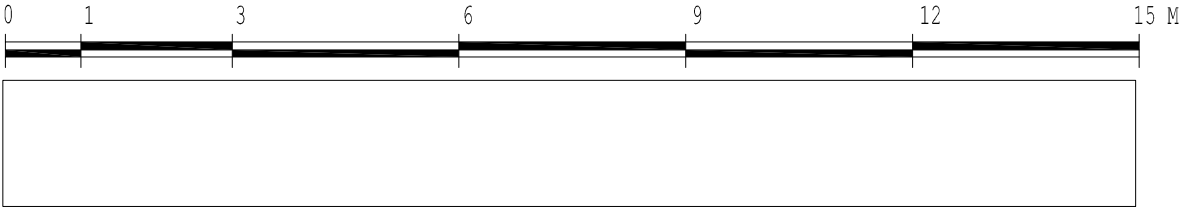
3rd STOREY



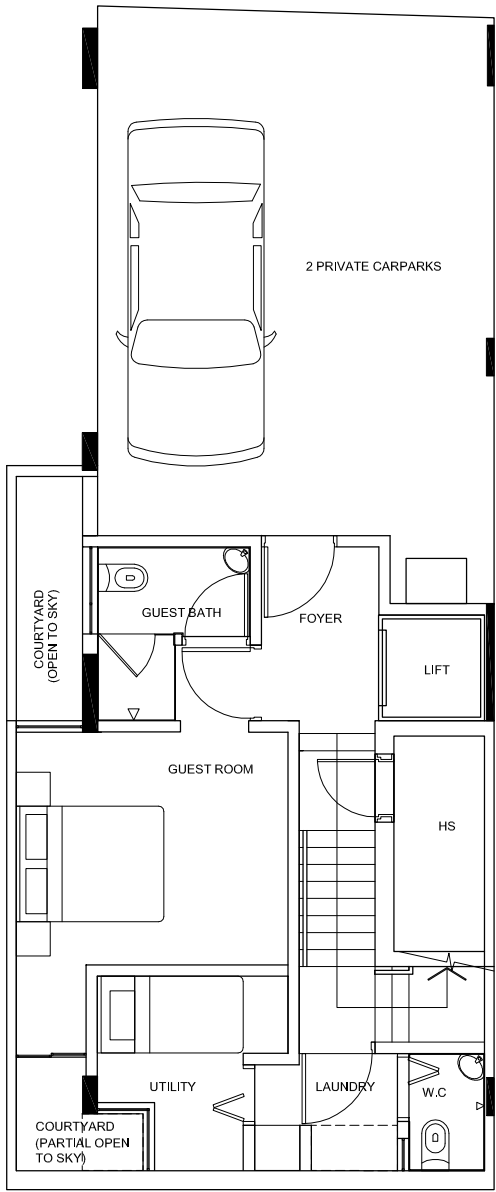
ATTIC

TYPE C5

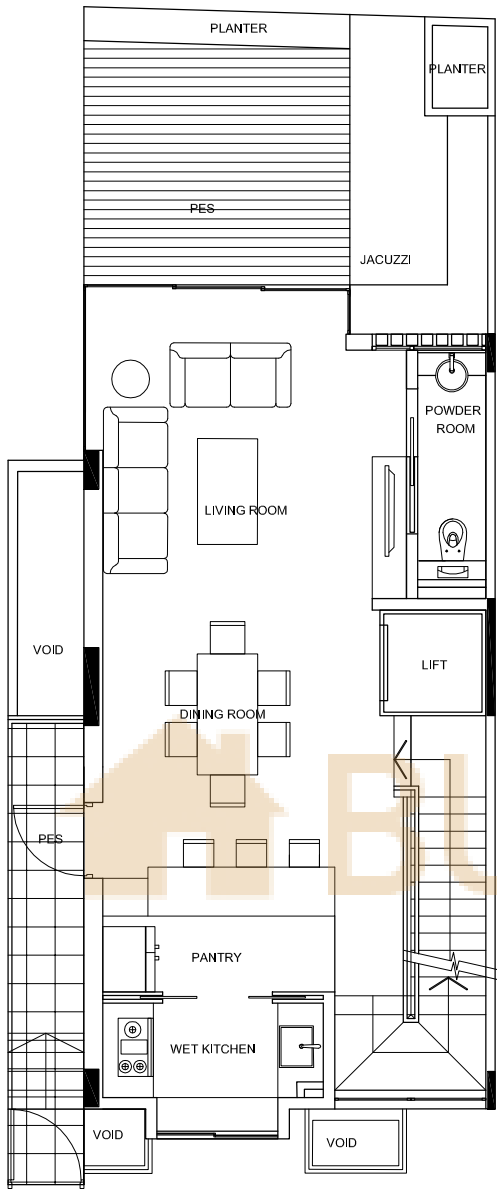
B.P No./ Date: A1678-08018-2012-BP01 dated 26-02-2013
UNIT NO. 27C



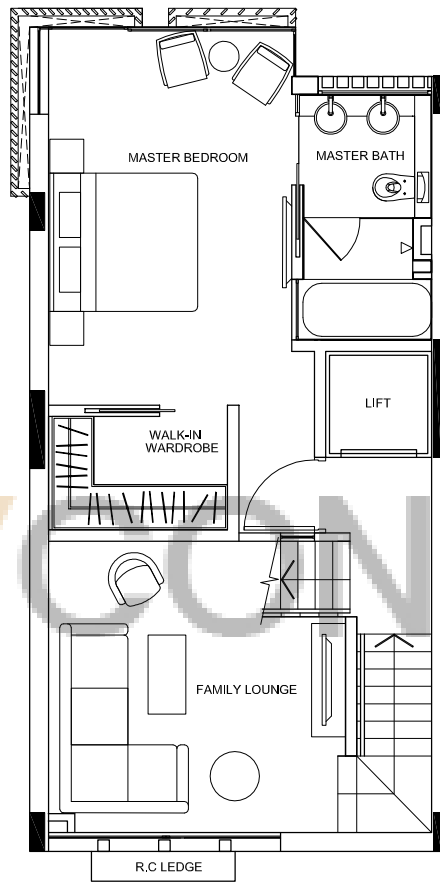
The above plan is subject to any amendments as may be approved by the relevant authorities.



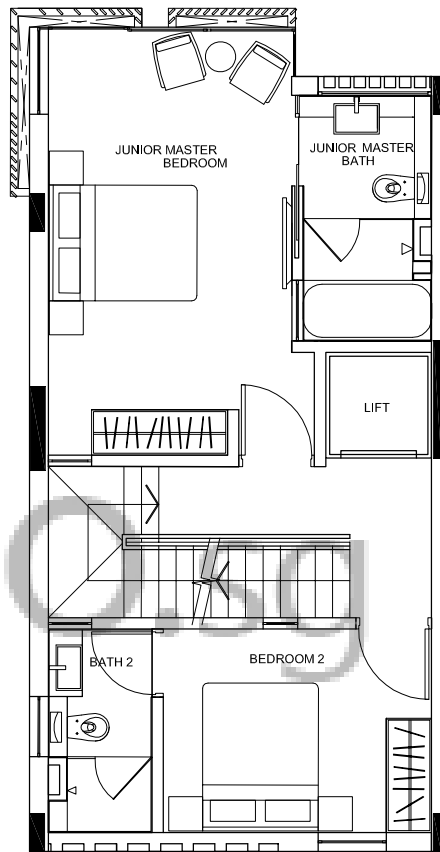
BASEMENT



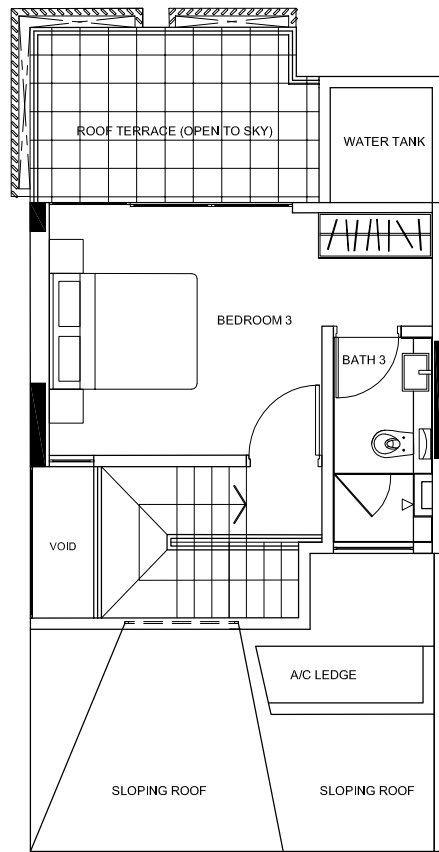
1ST STOREY



2nd STOREY



3rd STOREY

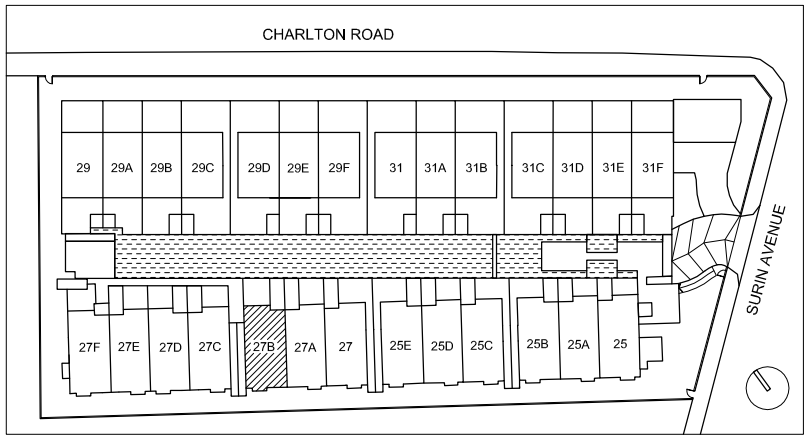
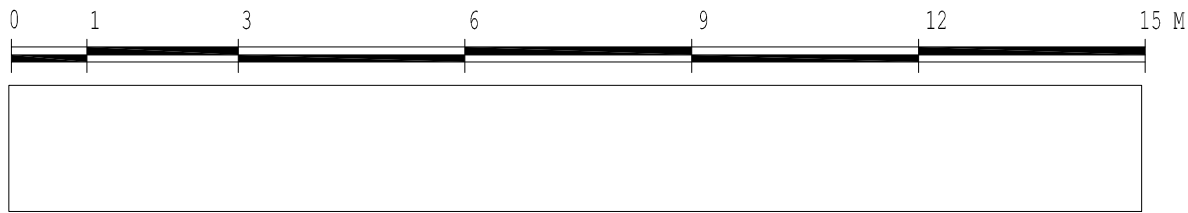


ATTIC

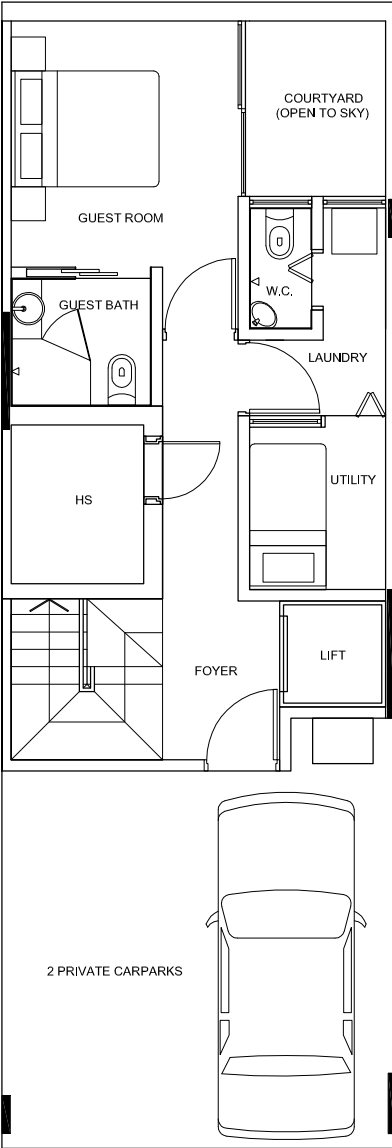
TYPE C4

B.P No./ Date: A1678-08018-2012-BP01 dated 26-02-2013

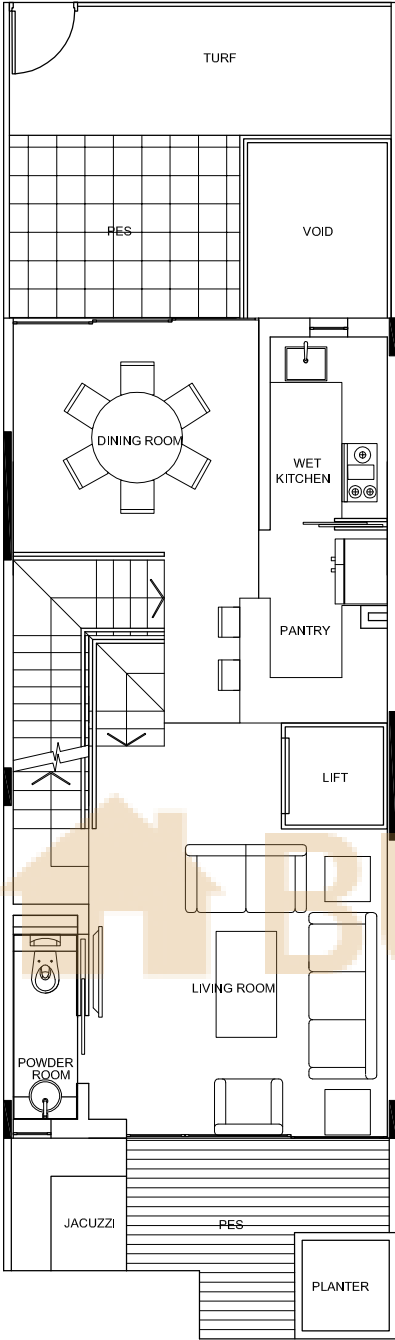
UNIT NO. 27B



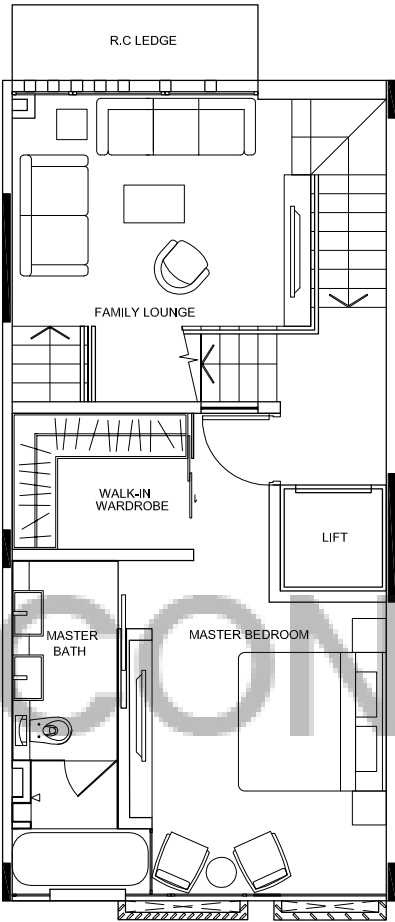
The above plan is subject to any amendments as may be approved by the relevant authorities.



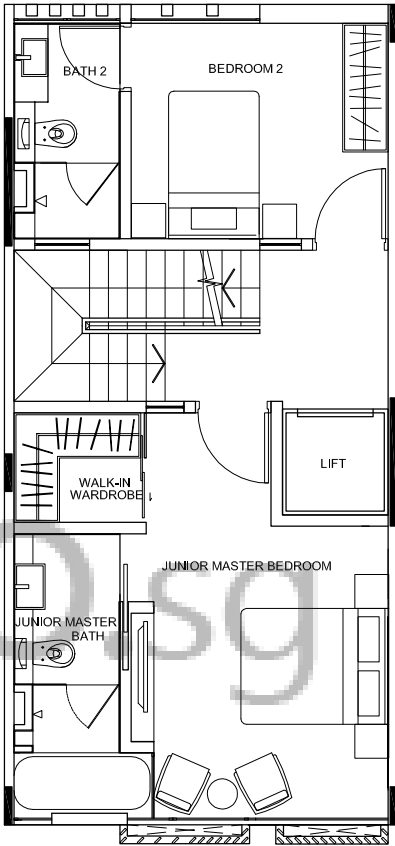
BASEMENT



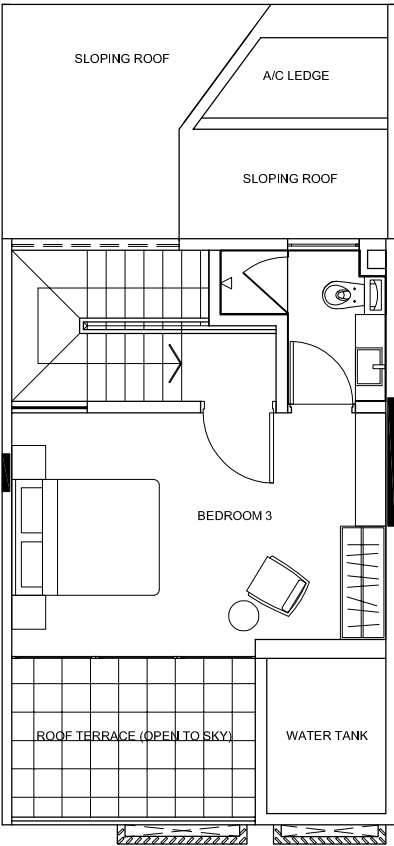
1ST STOREY



2nd STOREY



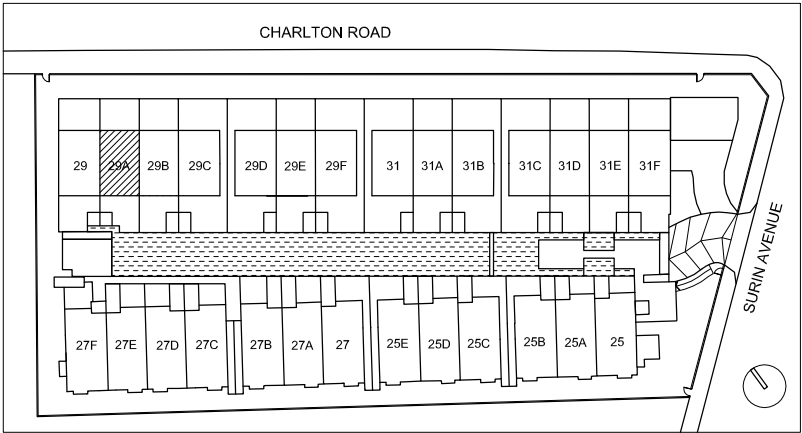
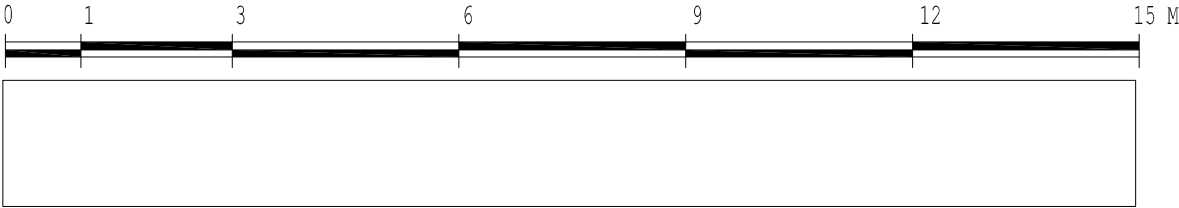
3rd STOREY



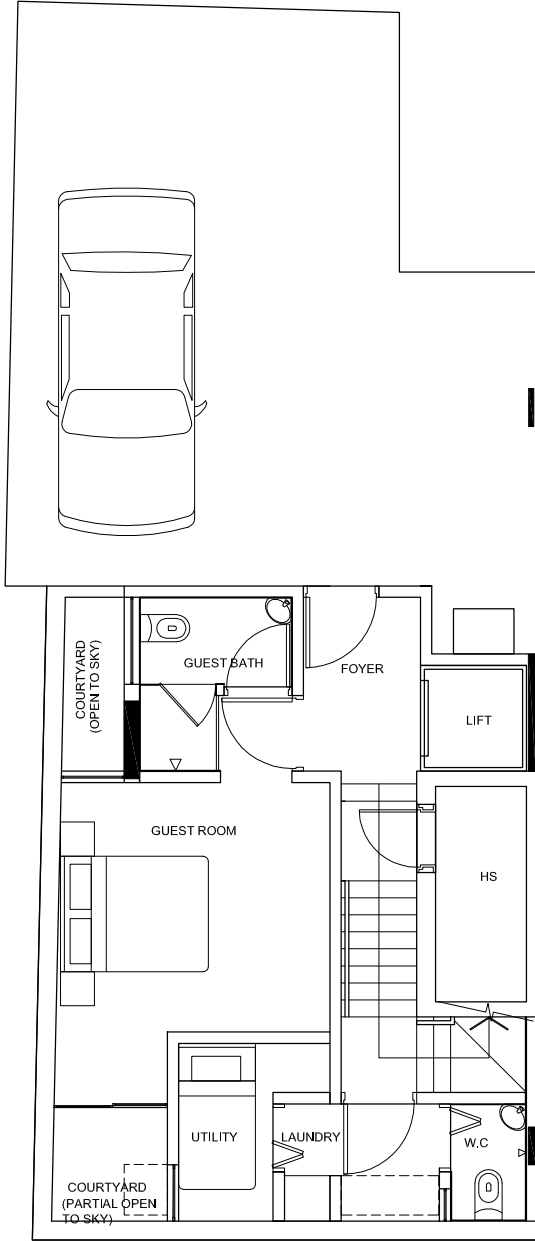
ATTIC

TYPE B4

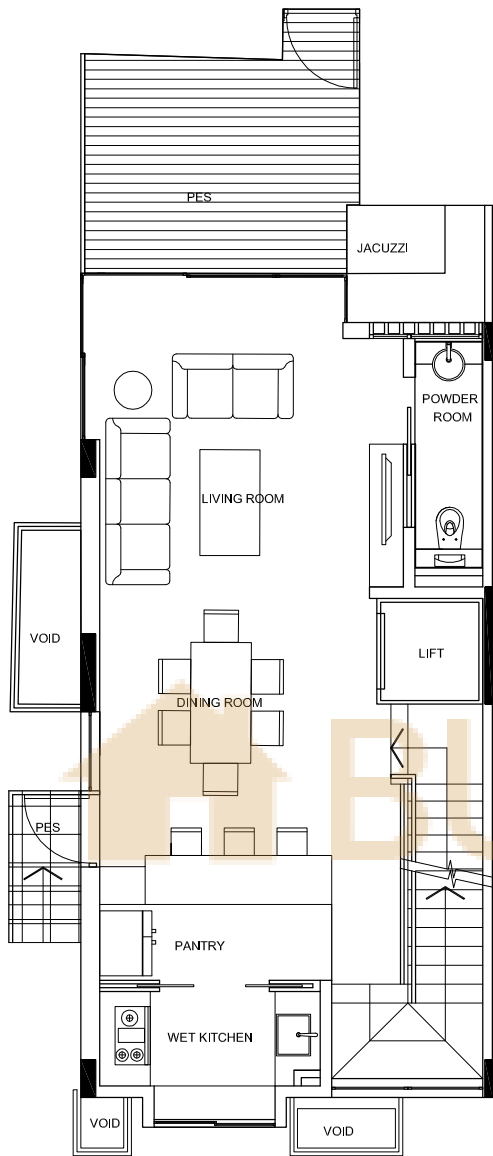
B.P No./ Date: A1678-08018-2012-BP01 dated 26-02-2013
UNIT NO. 29A



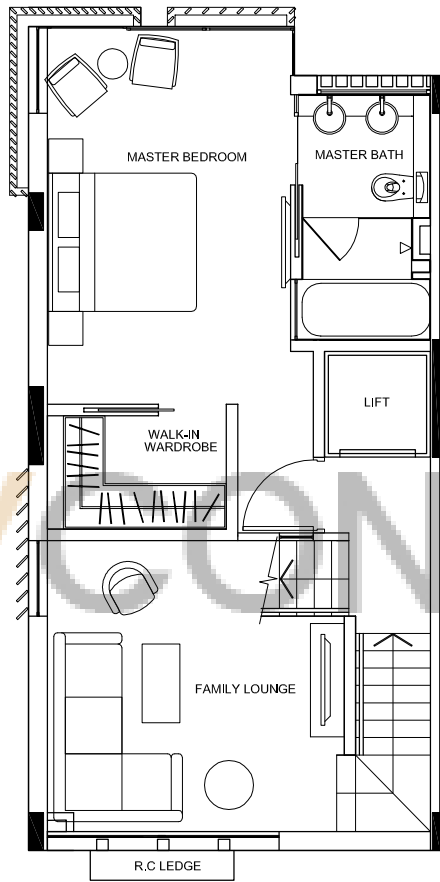
The above plan is subject to any amendments as may be approved by the relevant authorities.



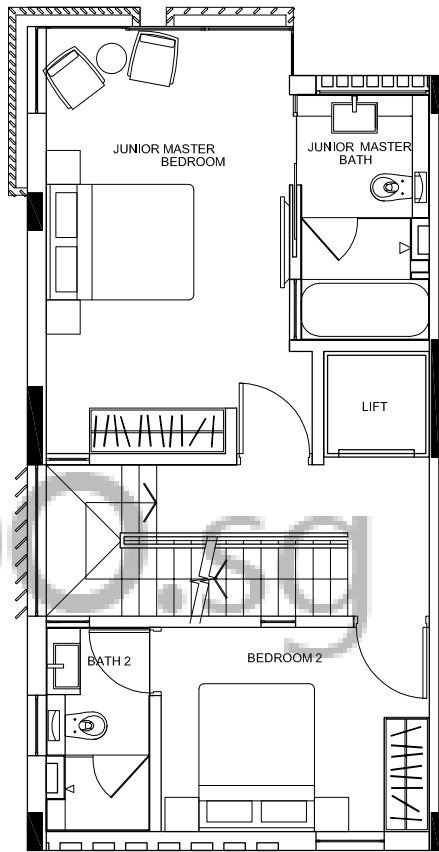
BASEMENT



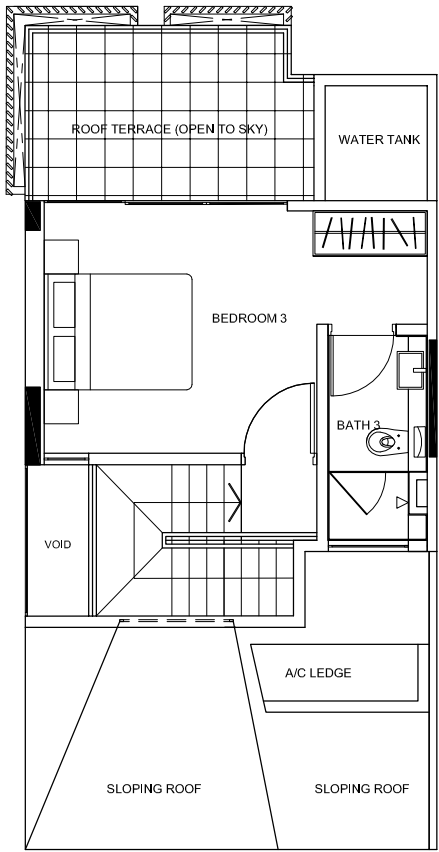
1ST STOREY



2nd STOREY



3rd STOREY

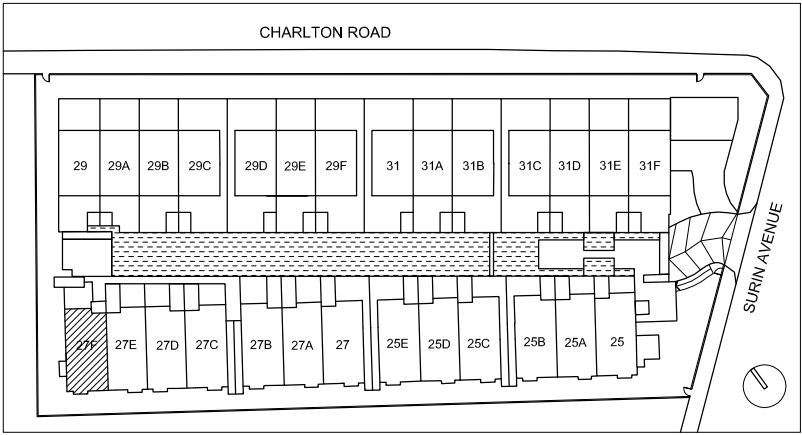
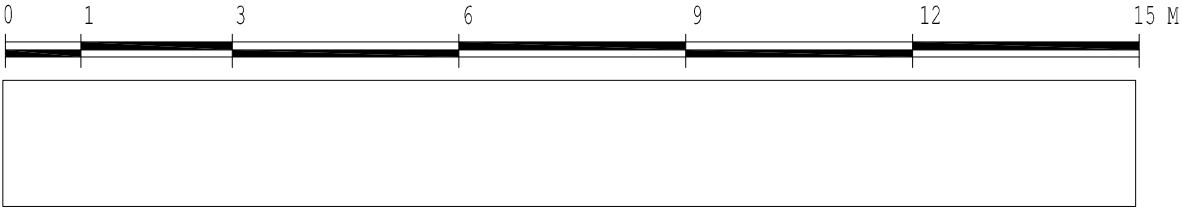


ATTIC

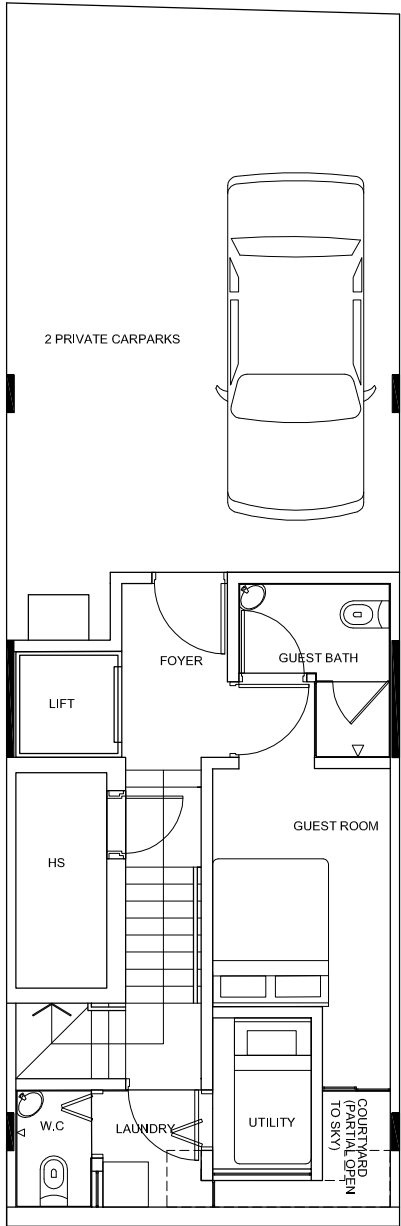
TYPE C6

B.P No./ Date: A1678-08018-2012-BP01 dated 26-02-2013

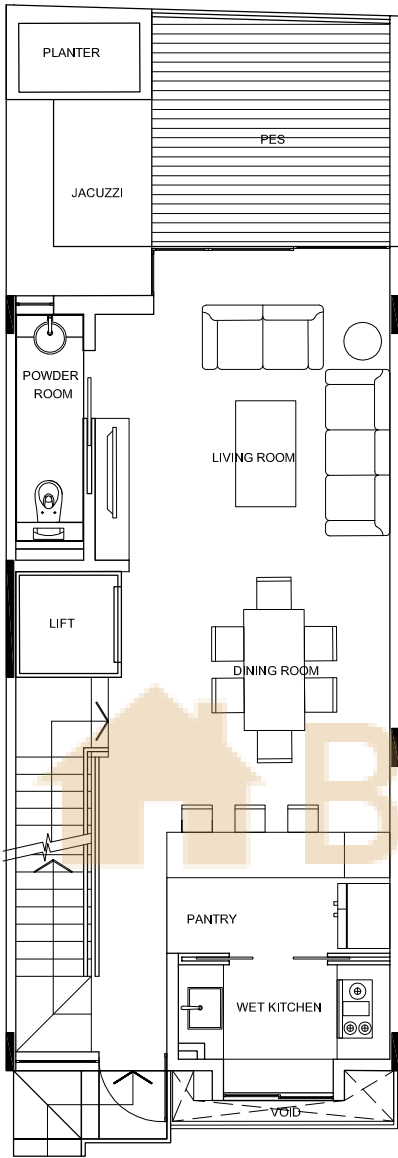
UNIT NO. 27F



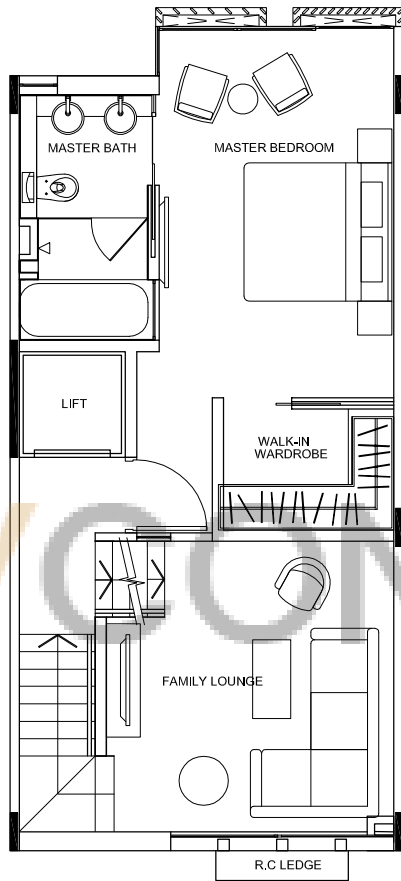
The above plan is subject to any amendments as may be approved by the relevant authorities.



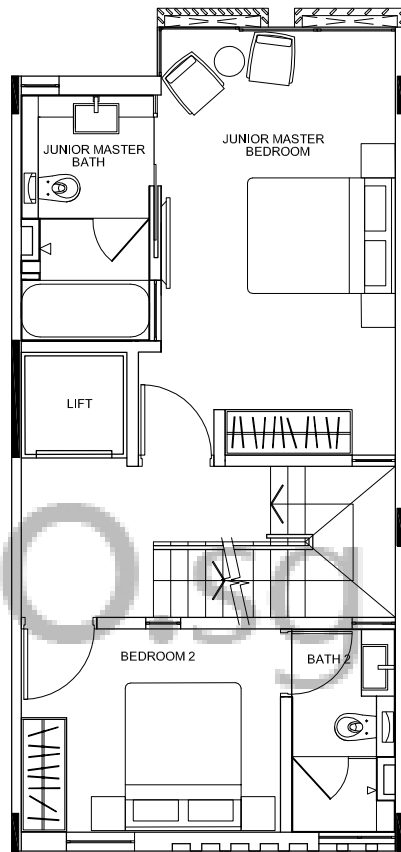
BASEMENT



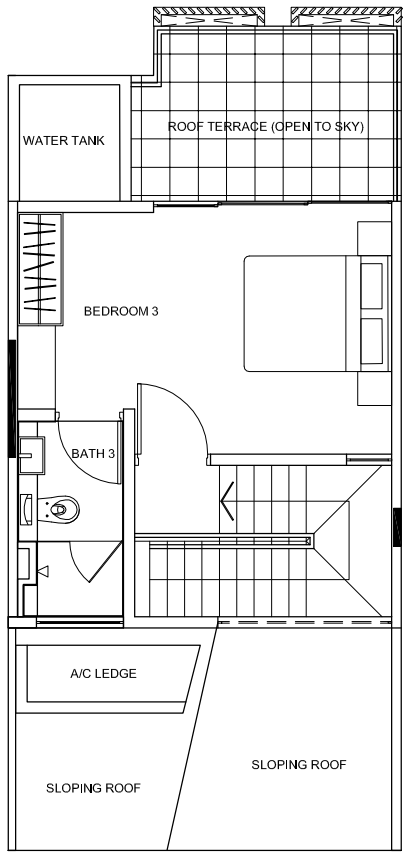
1ST STOREY



2nd STOREY



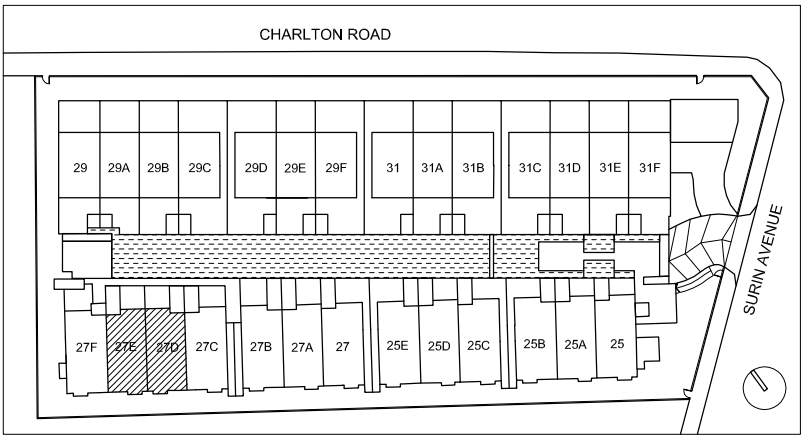
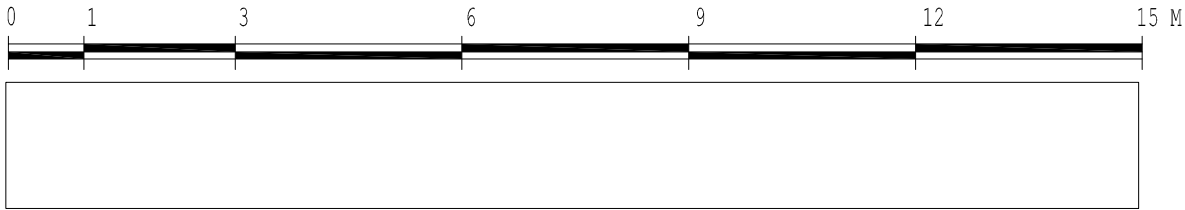
3rd STOREY



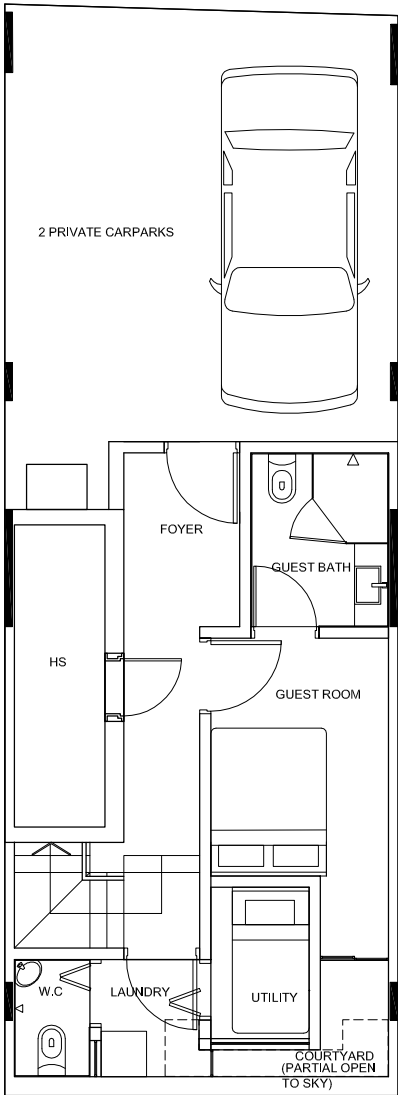
ATTIC

TYPE D3

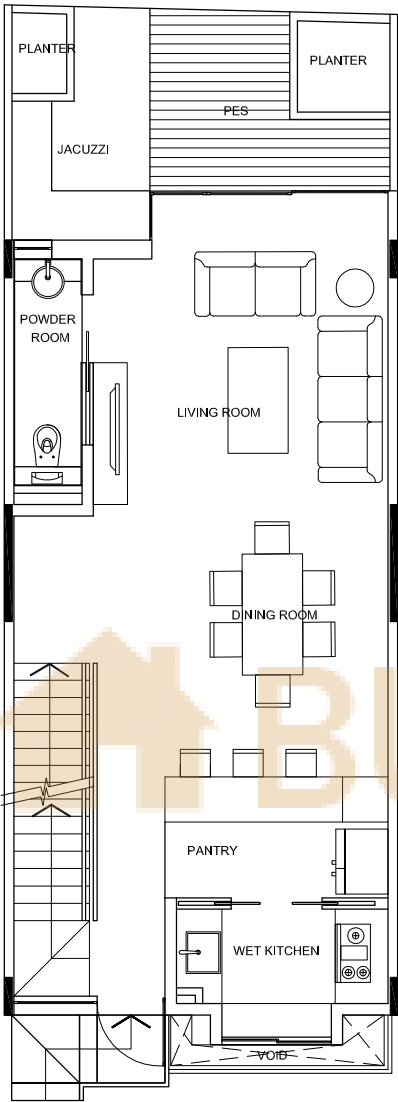
B.P No./ Date: A1678-08018-2012-BP01 dated 26-02-2013
UNIT NO. 27D / 27E



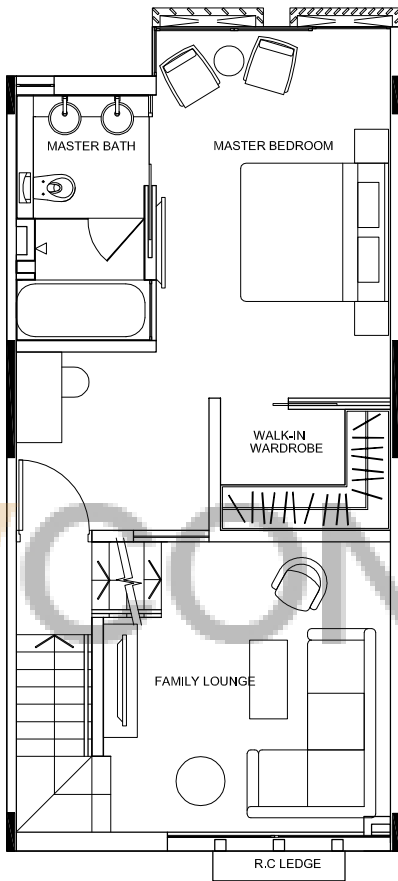
The above plan is subject to any amendments as may be approved by the relevant authorities.



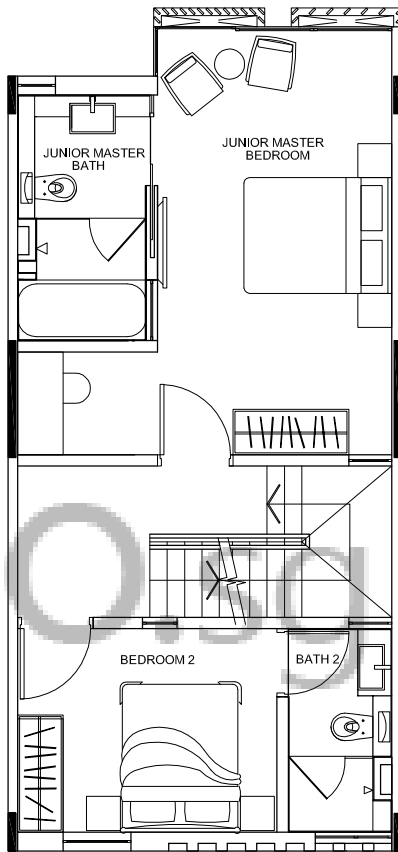
BASEMENT



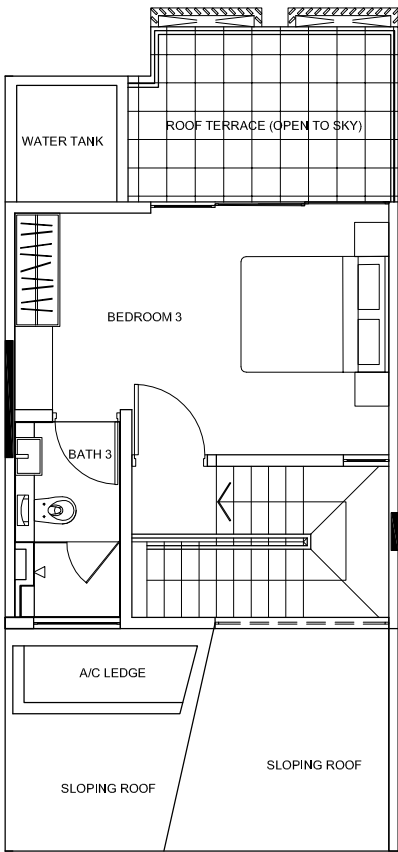
1ST STOREY



2nd STOREY



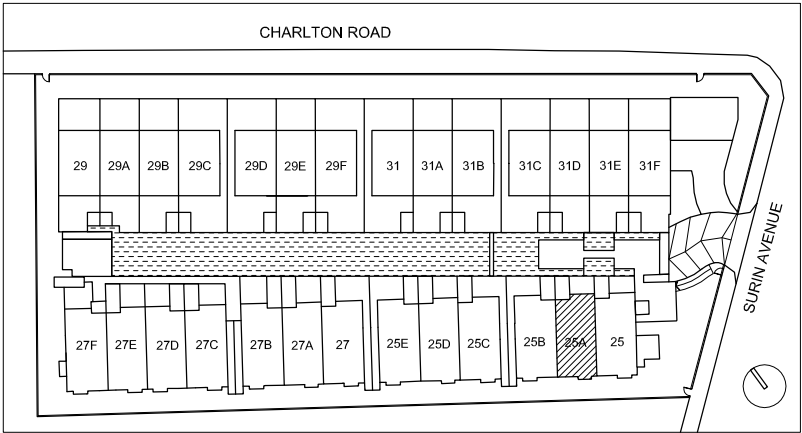
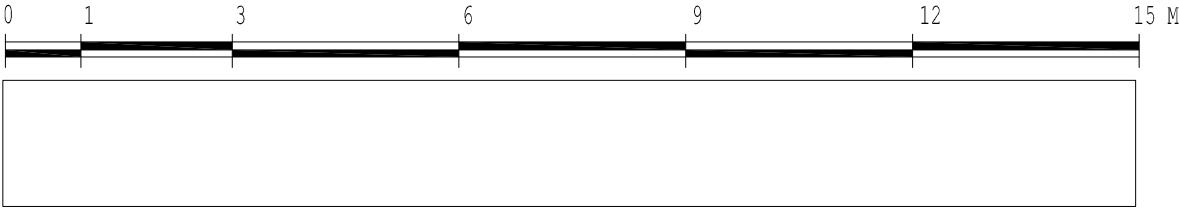
3rd STOREY



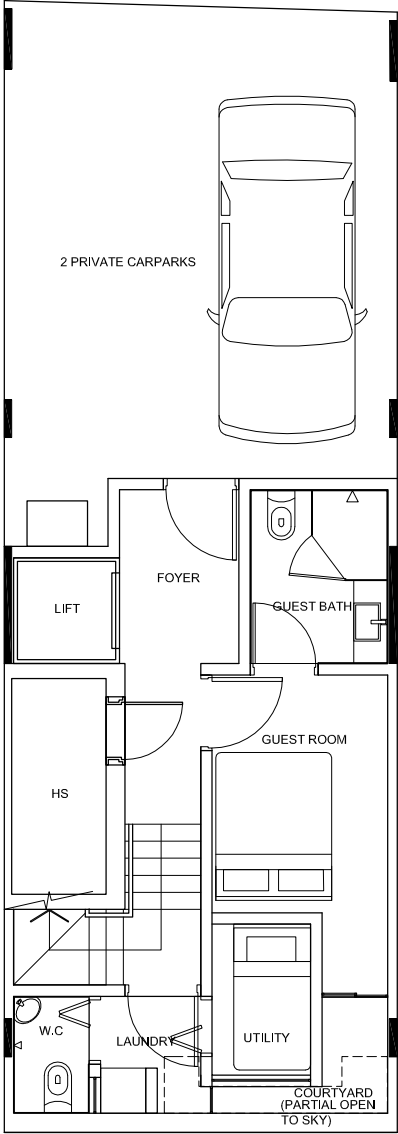
ATTIC

TYPE D1

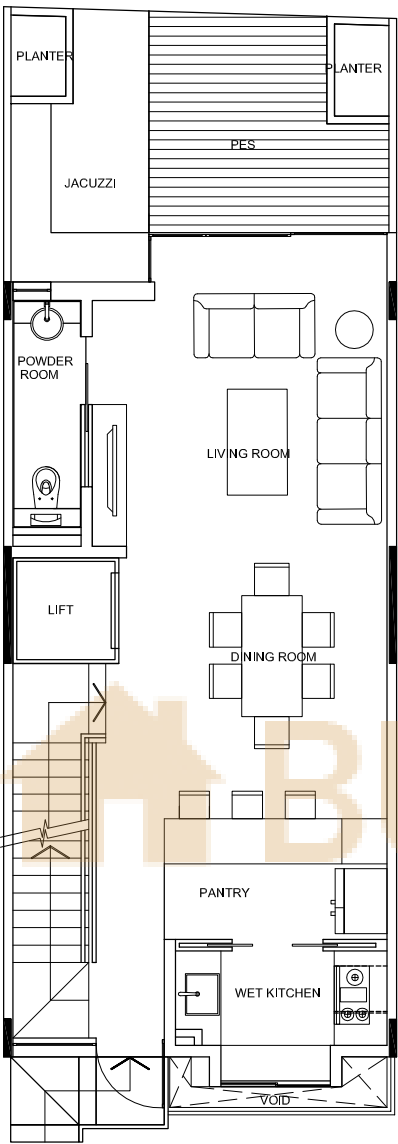
B.P No./ Date: A1678-08018-2012-BP01 dated 26-02-2013
UNIT NO. 25A



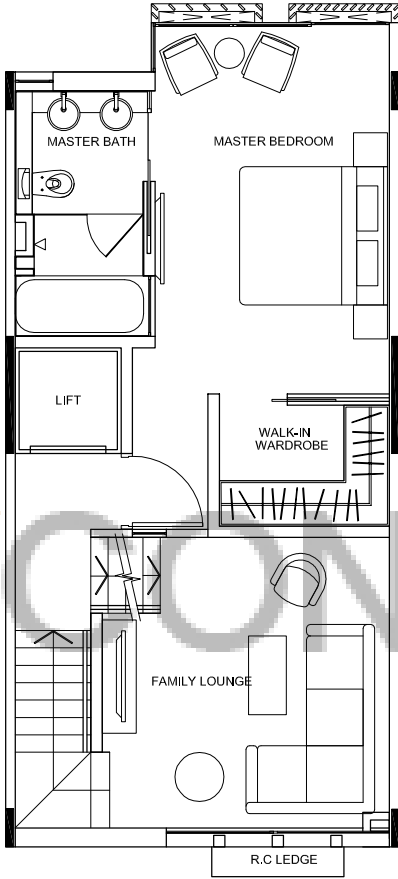
The above plan is subject to any amendments as may be approved by the relevant authorities.



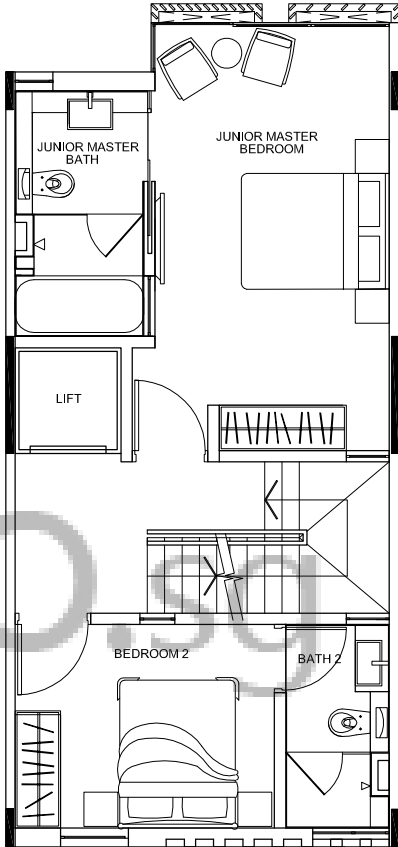
BASEMENT



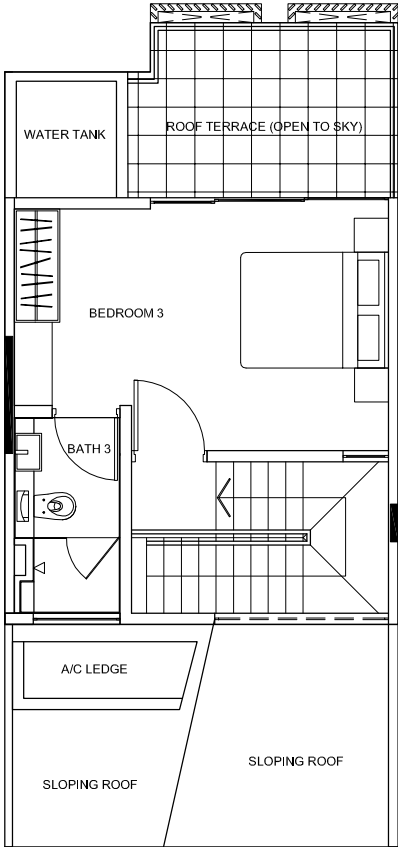
1ST STOREY



2nd STOREY



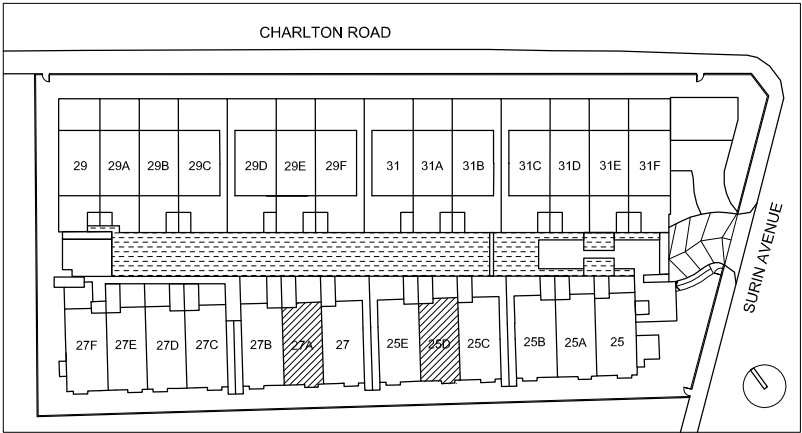
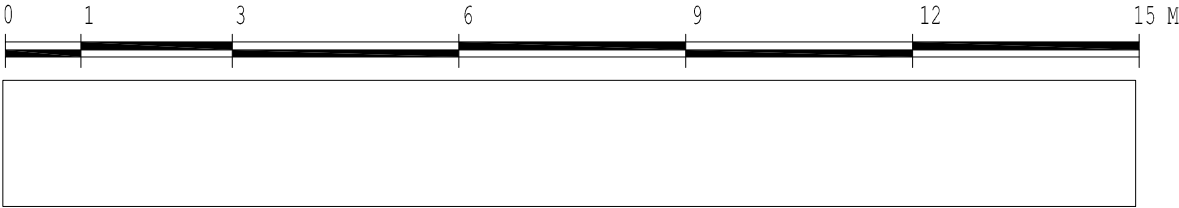
3rd STOREY



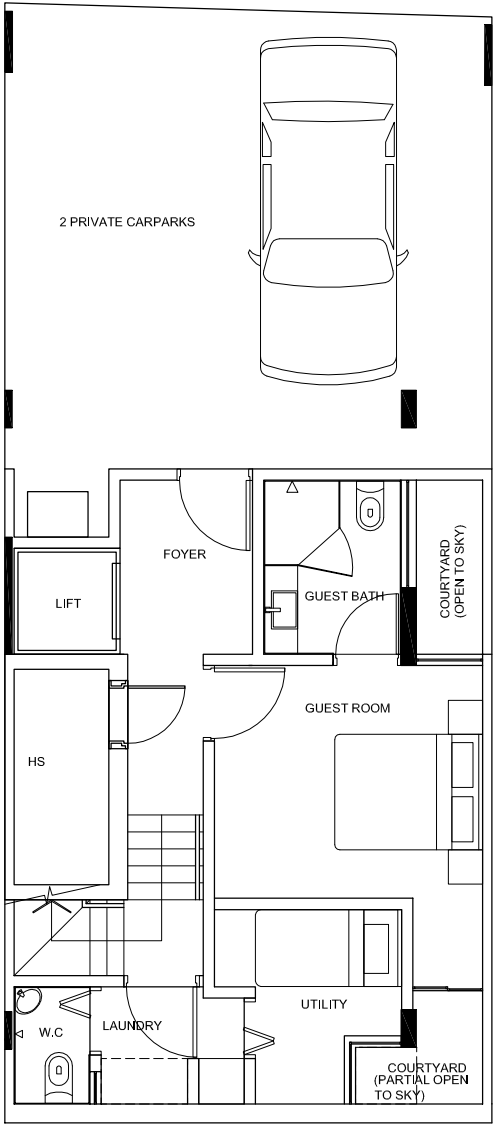
ATTIC

TYPE D2

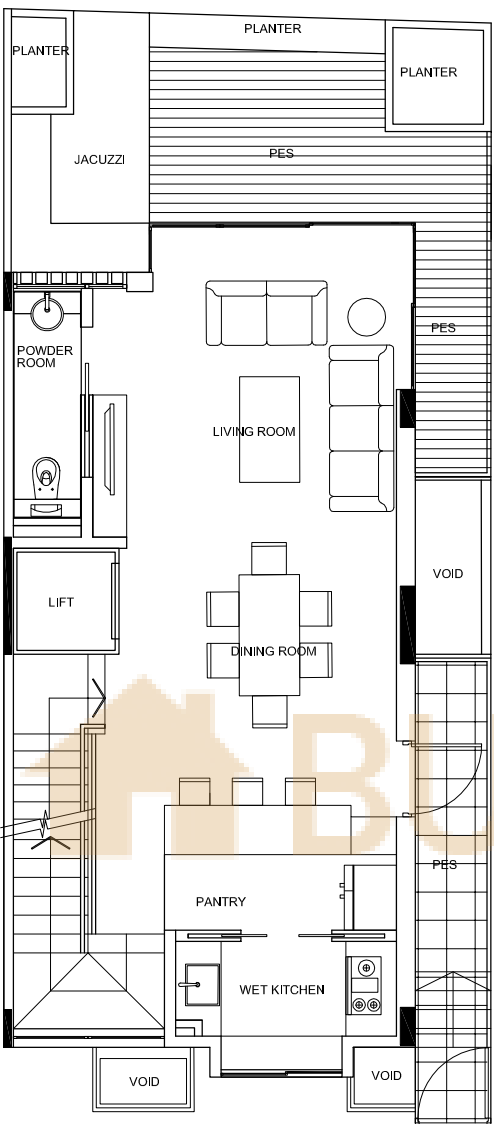
B.P No./ Date: A1678-08018-2012-BP01 dated 26-02-2013
UNIT NO. 25D/27A



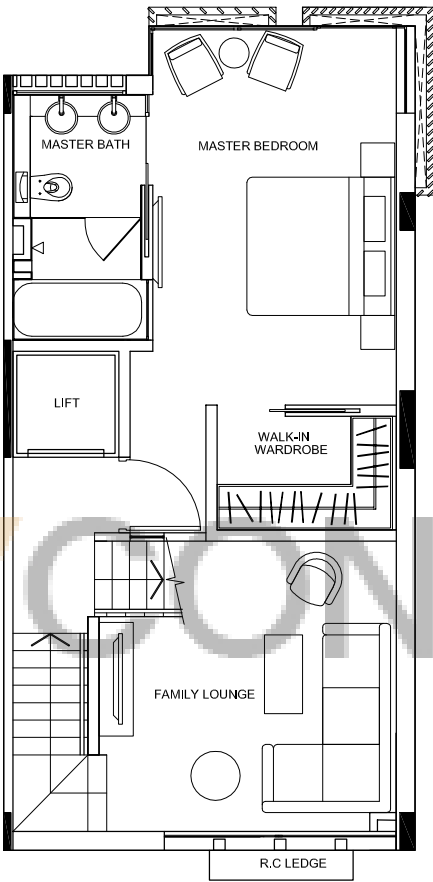
The above plan is subject to any amendments as may be approved by the relevant authorities.



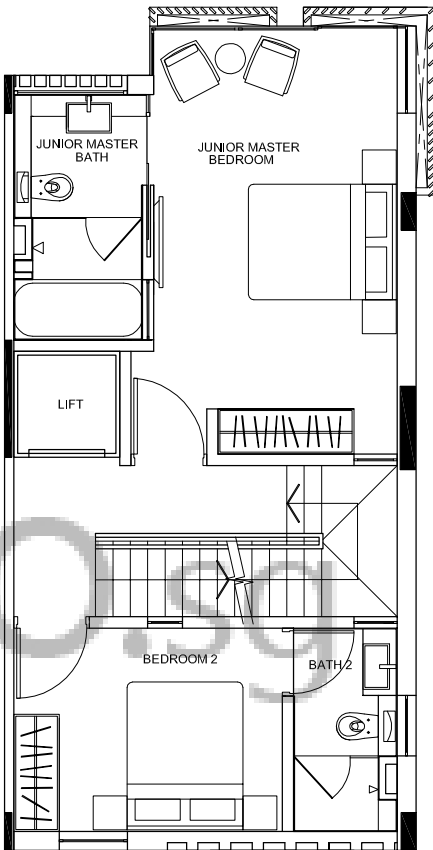
BASEMENT



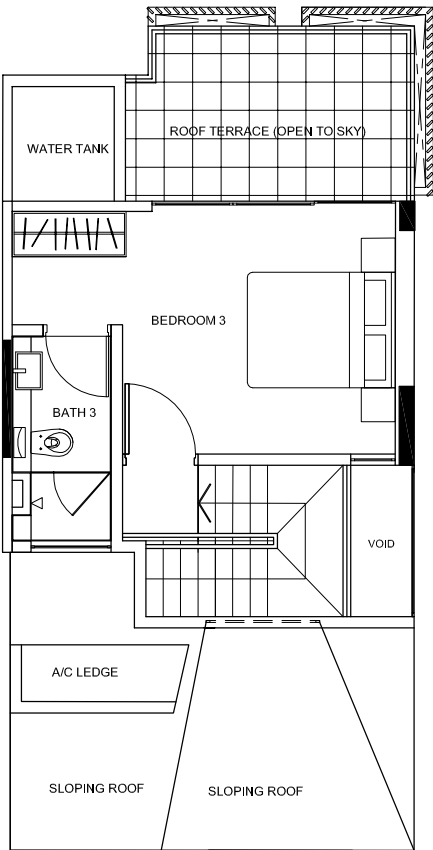
1ST STOREY



2nd STOREY



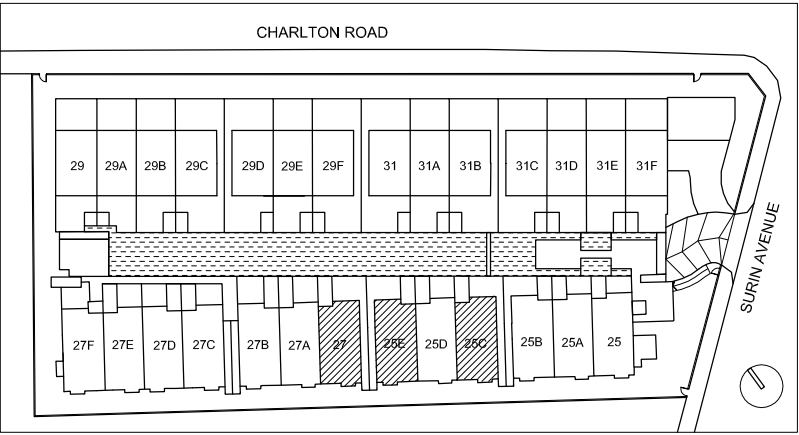
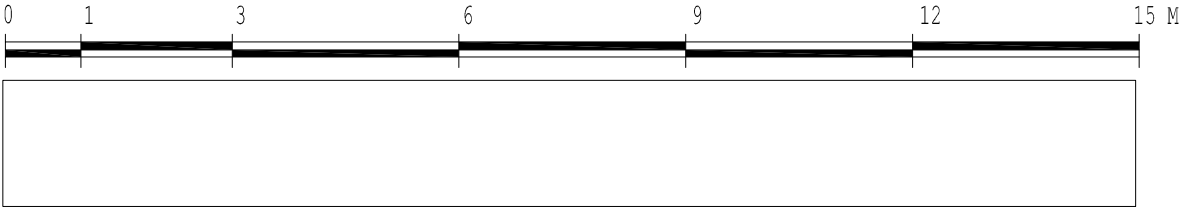
3rd STOREY



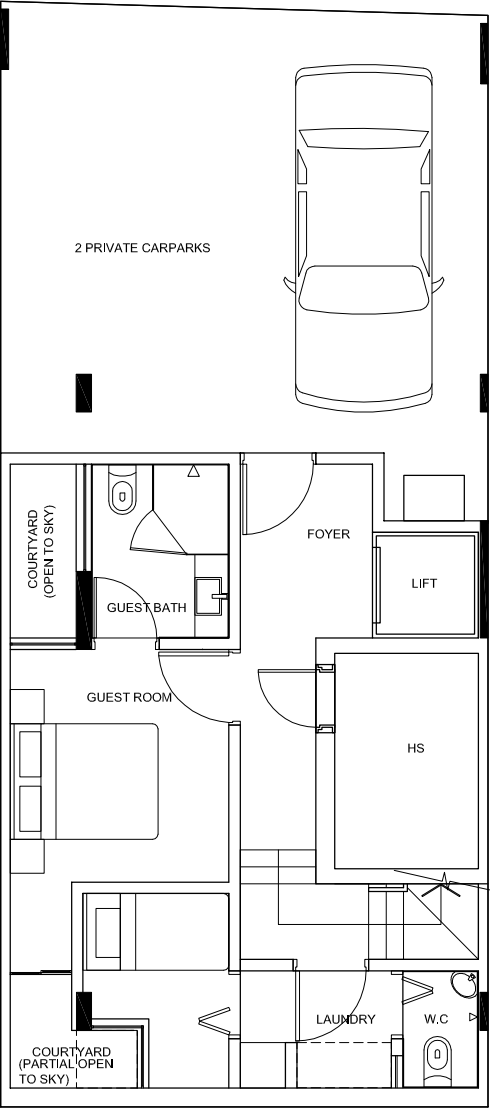
ATTIC

TYPE C3

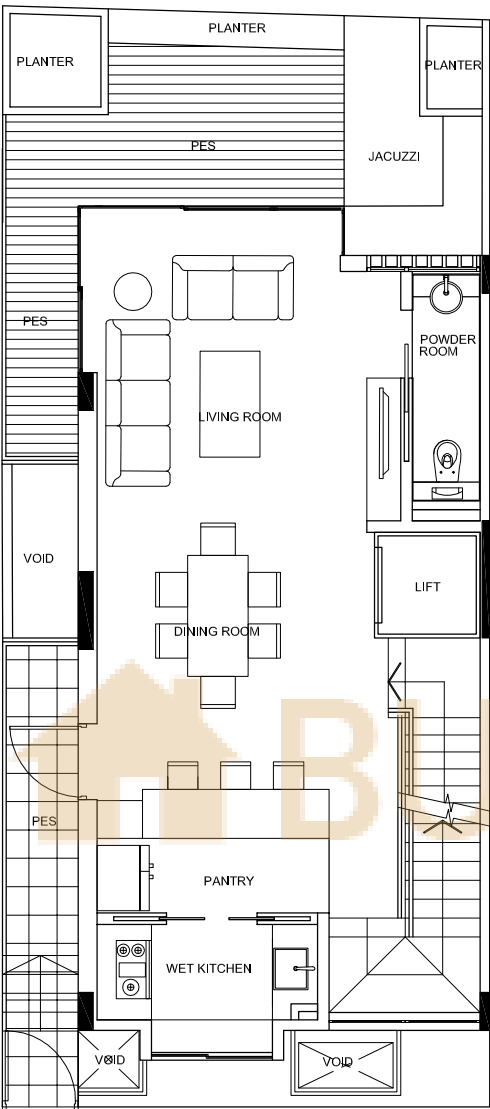
B.P No./ Date: A1678-08018-2012-BP01 dated 26-02-2013
UNIT NO. 25C/25E/27



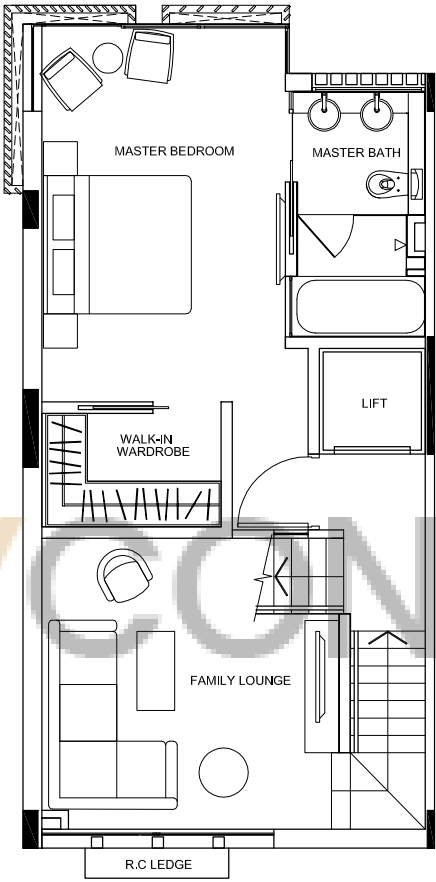
The above plan is subject to any amendments as may be approved by the relevant authorities.



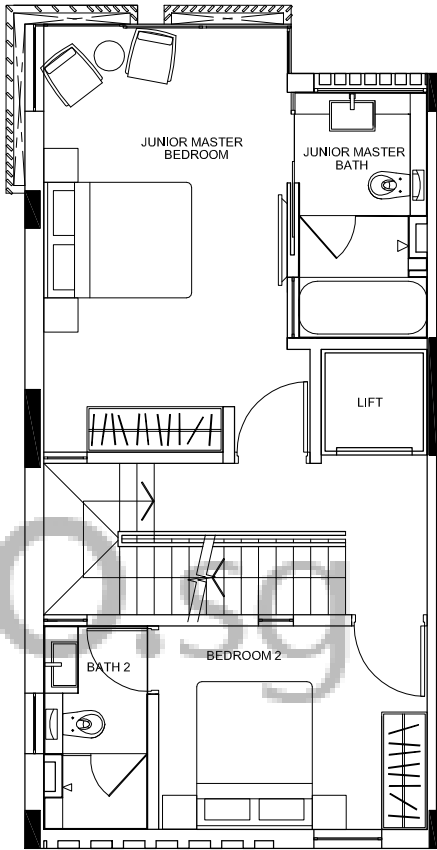
BASEMENT



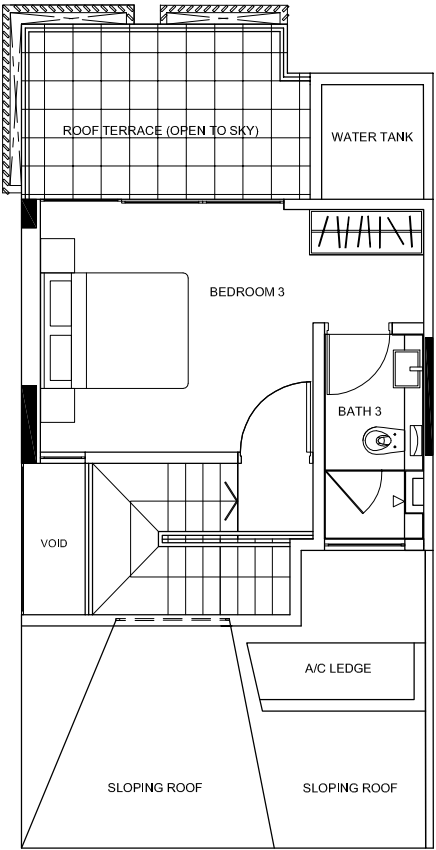
1ST STOREY



2nd STOREY



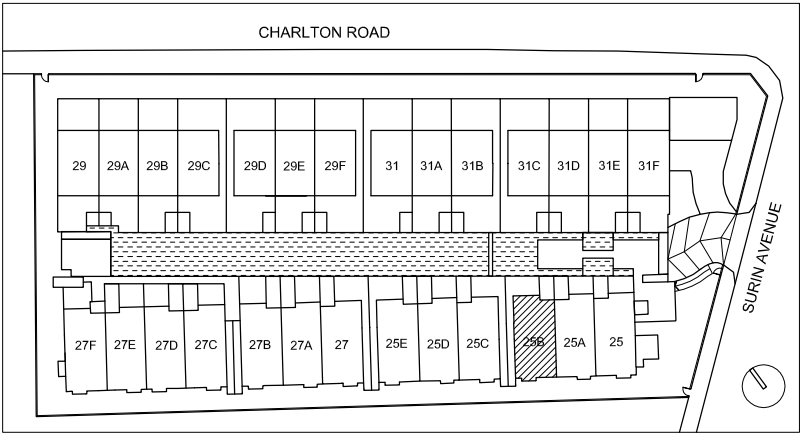
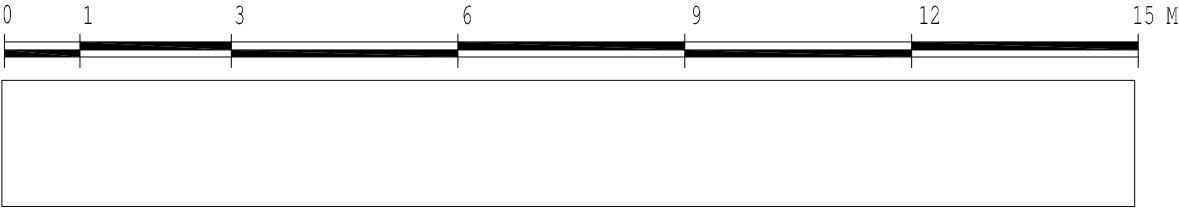
3rd STOREY



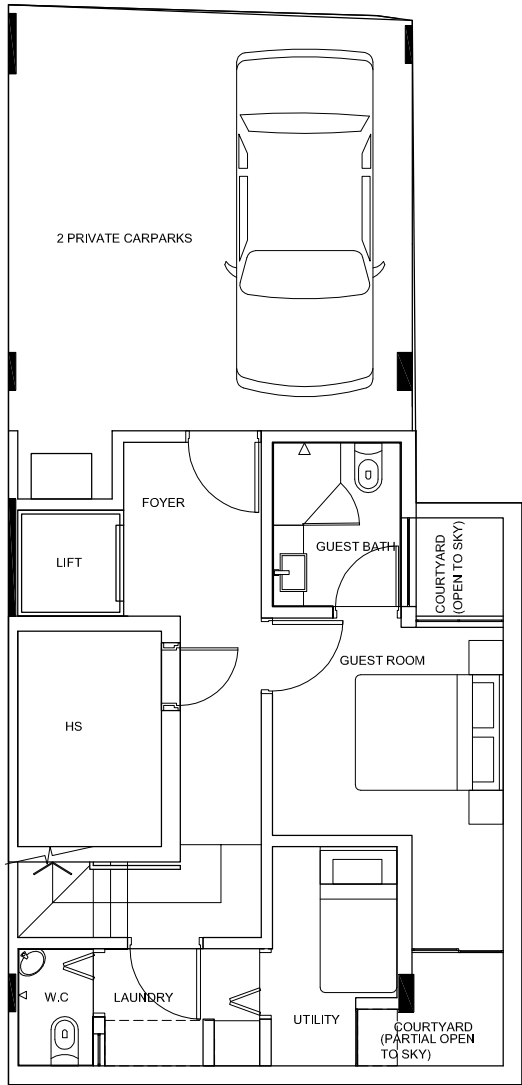
ATTIC

TYPE C2

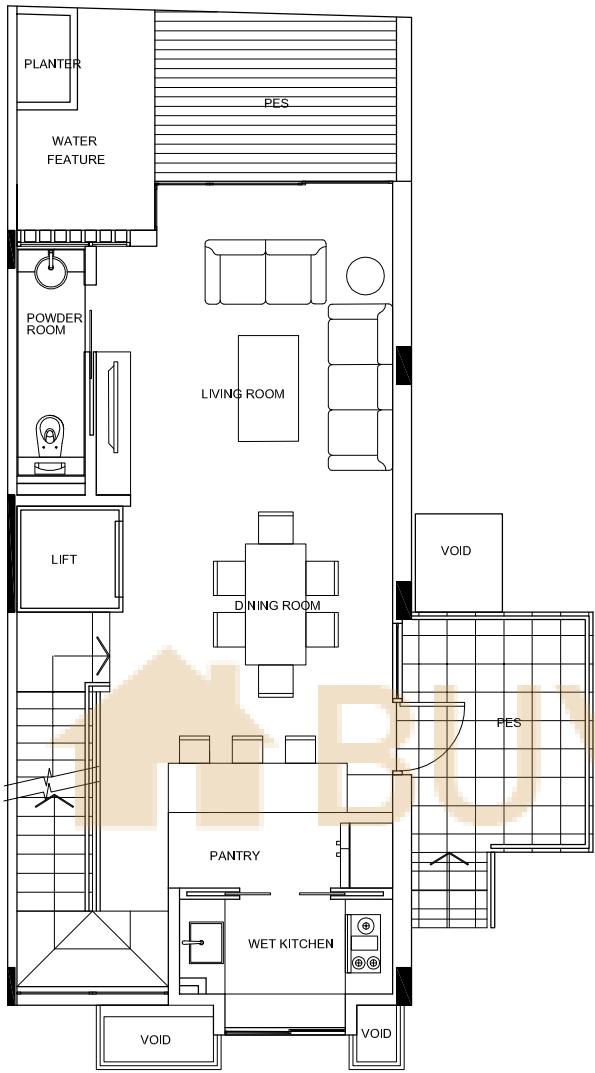
B.P No./ Date: A1678-08018-2012-BP01 dated 26-02-2013
UNIT NO. 25B



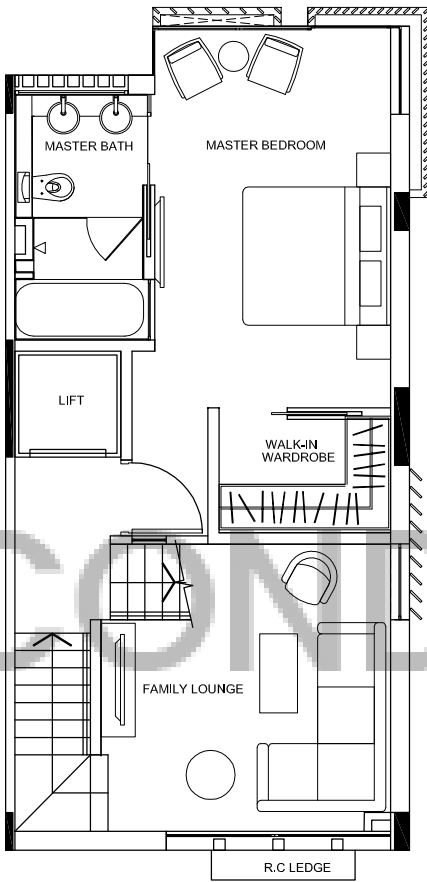
The above plan is subject to any amendments as may be approved by the relevant authorities.



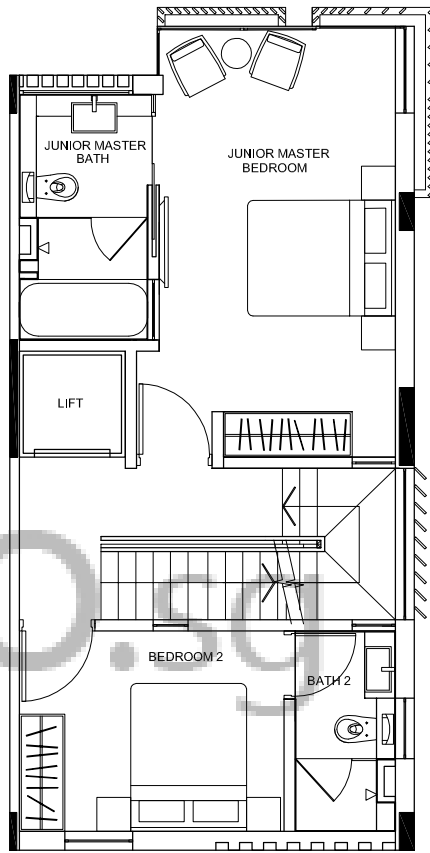
BASEMENT



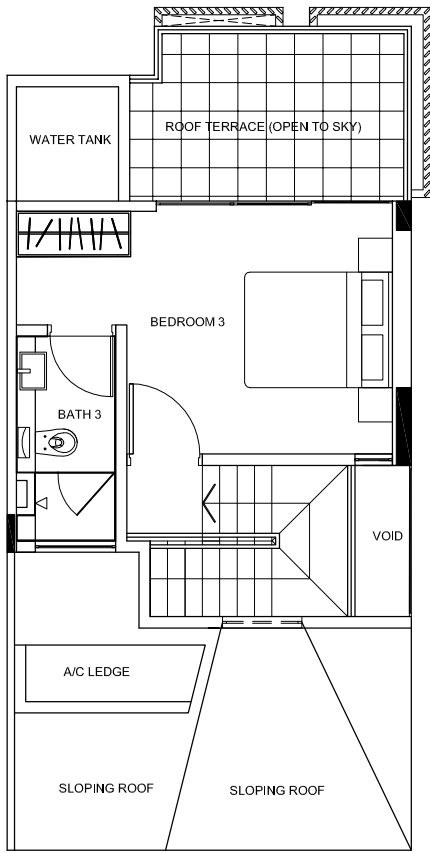
1ST STOREY



2nd STOREY



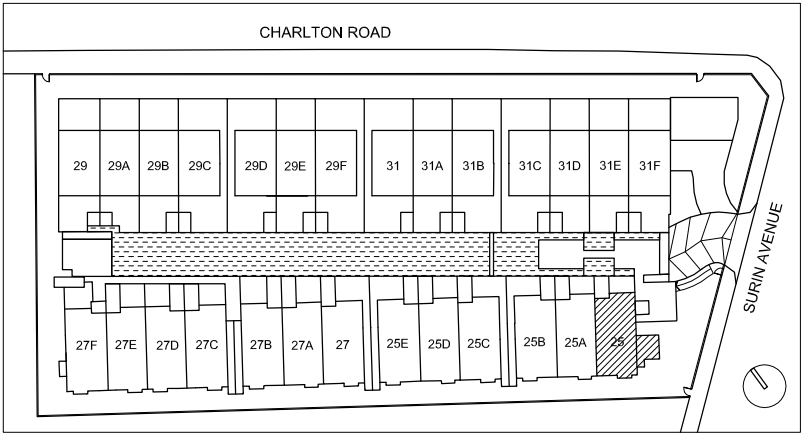
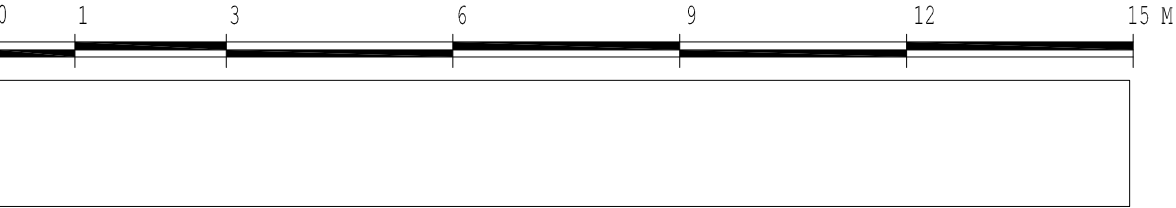
3rd STOREY



ATTIC

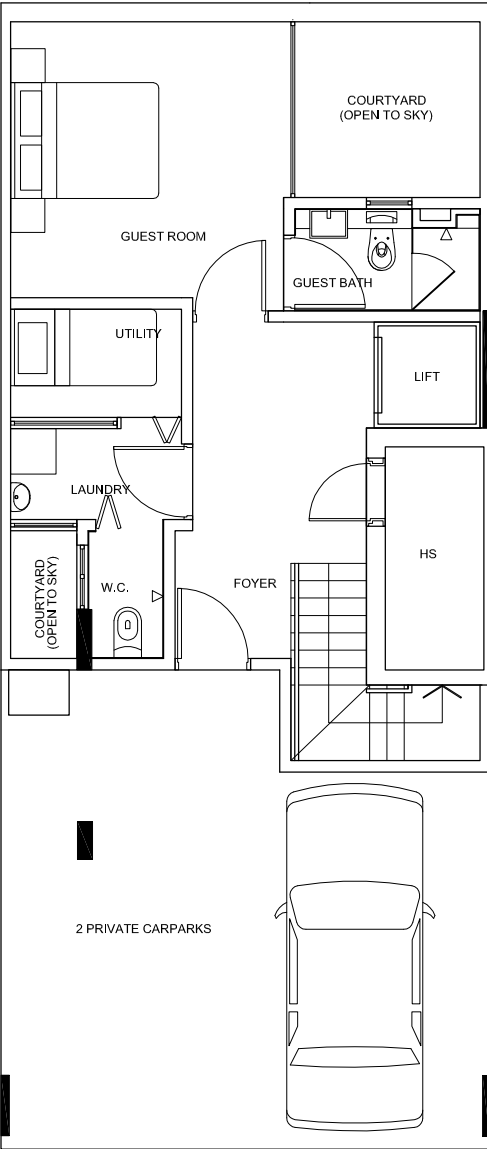
TYPE C1

B.P No./ Date: A1678-08018-2012-BP01 dated 26-02-2013
UNIT NO. 25

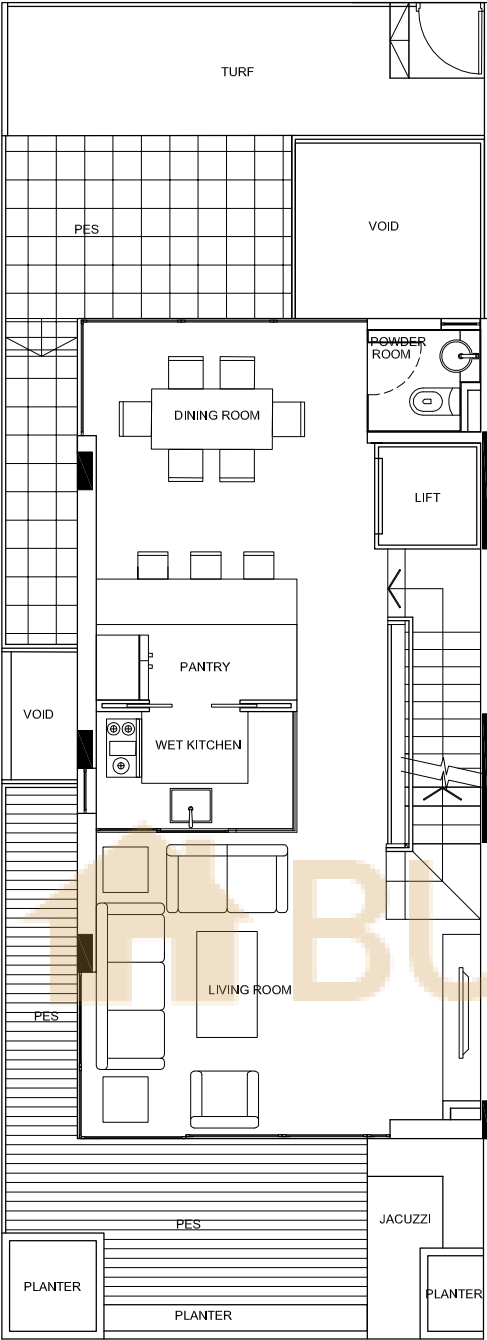


The above plan is subject to any amendments as may be approved by the relevant authorities.

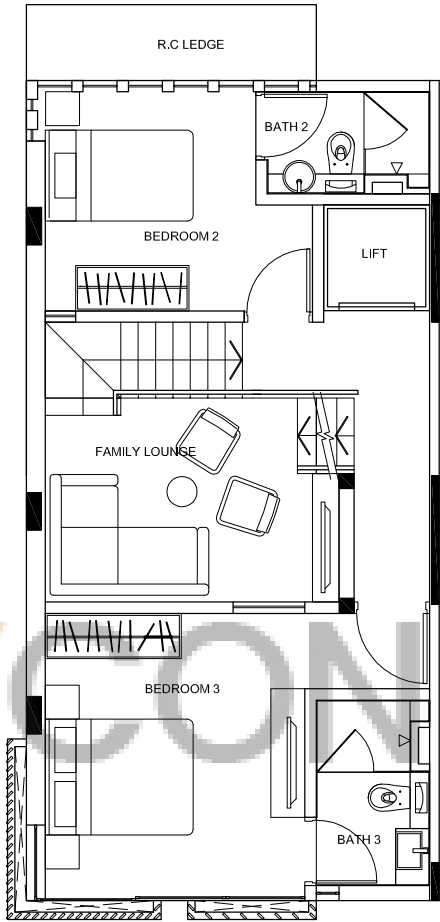
CHARLTON 27



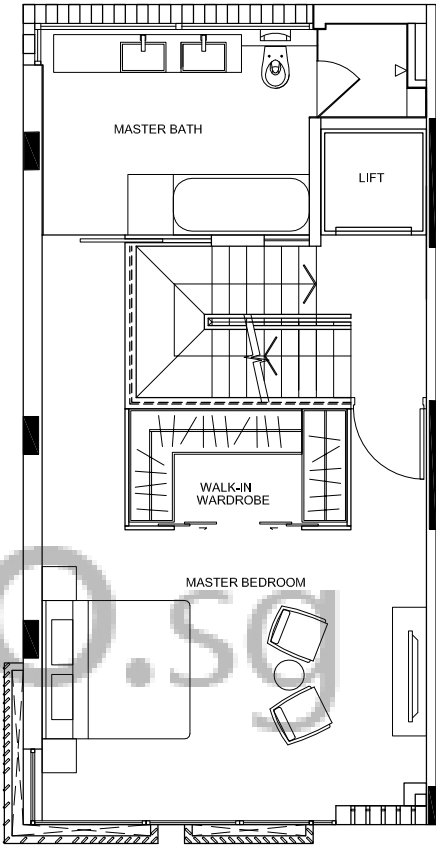
BASEMENT



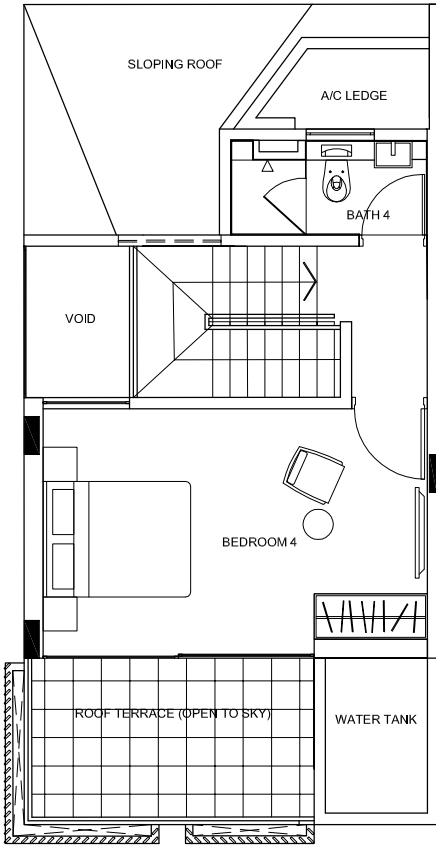
1ST STOREY



2nd STOREY



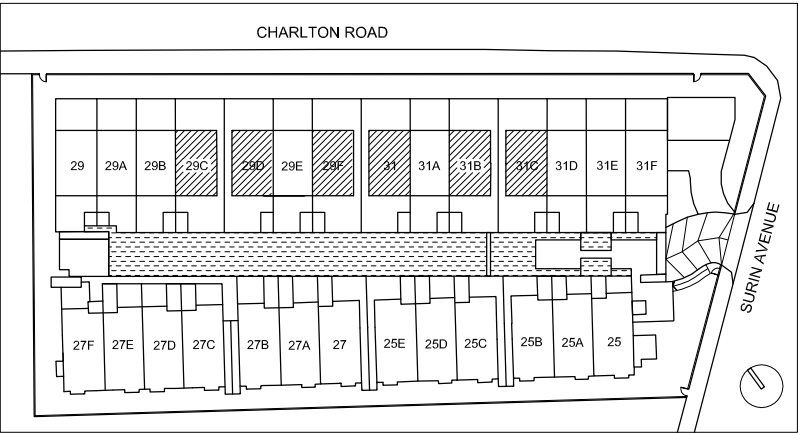
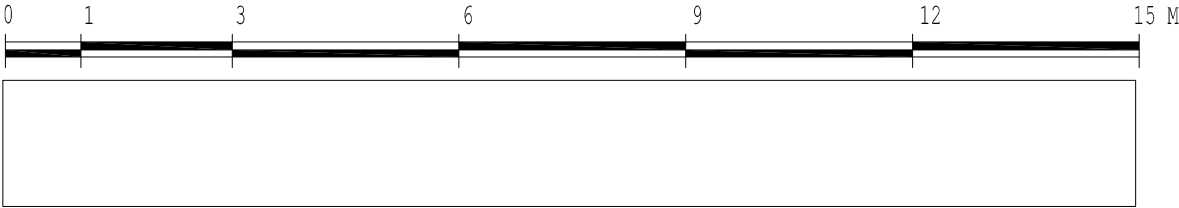
3rd STOREY



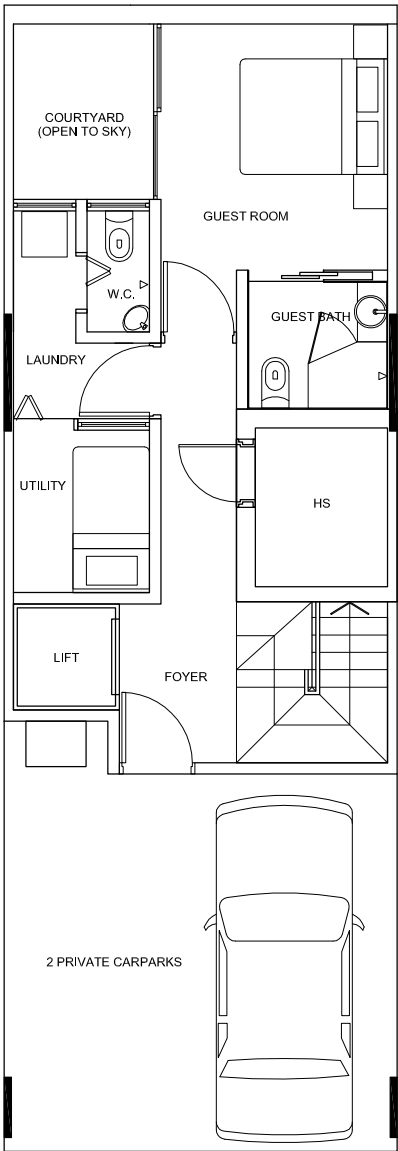
ATTIC

TYPE A2

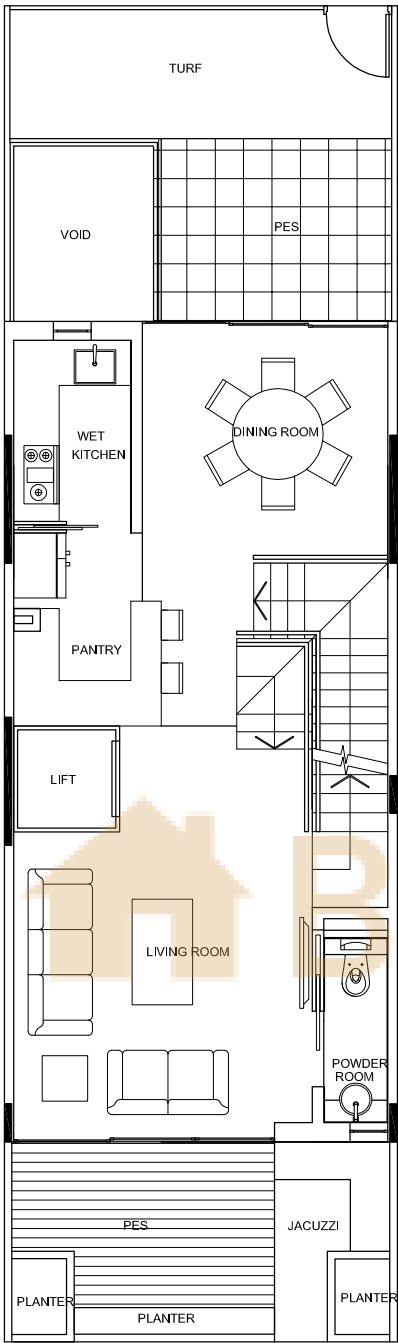
B.P No./ Date: A1678-08018-2012-BP01 dated 26-02-2013
UNIT NO. 29C/29D/29F/31/31B/31C



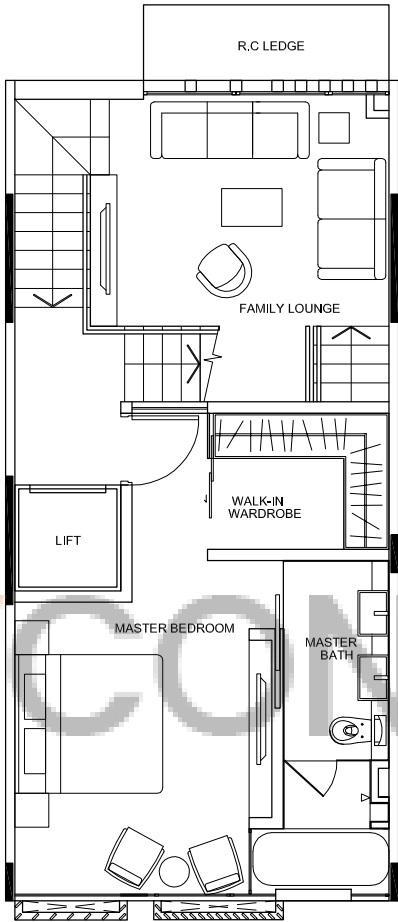
The above plan is subject to any amendments as may be approved by the relevant authorities.



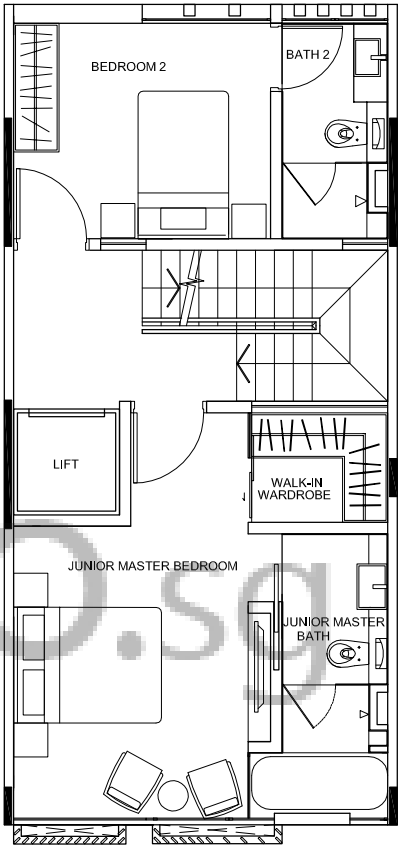
BASEMENT



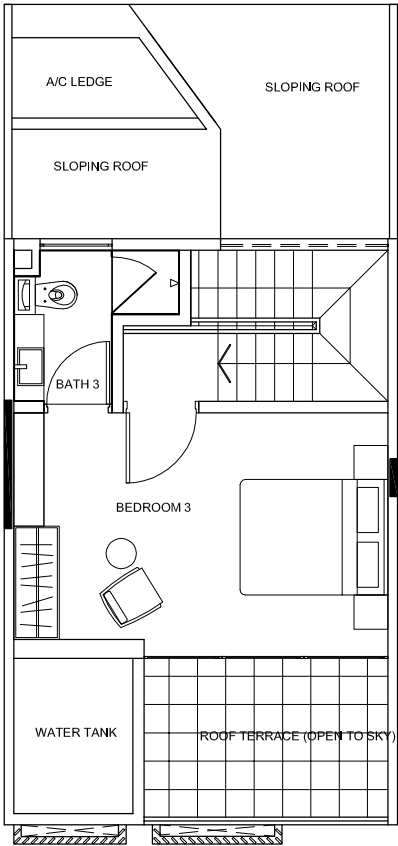
1ST STOREY



2nd STOREY



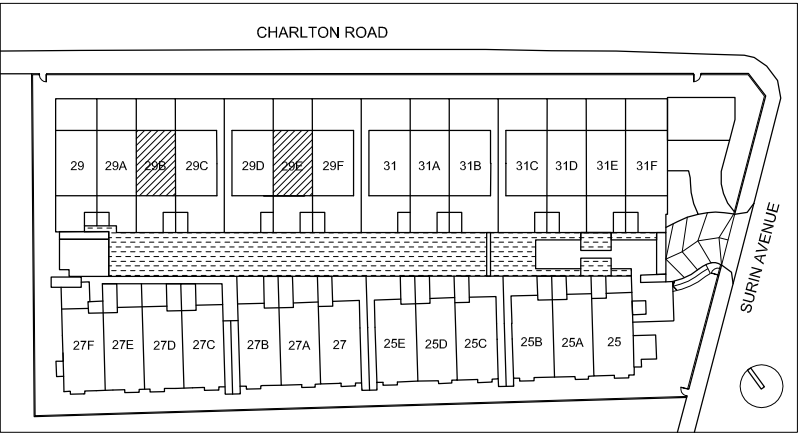
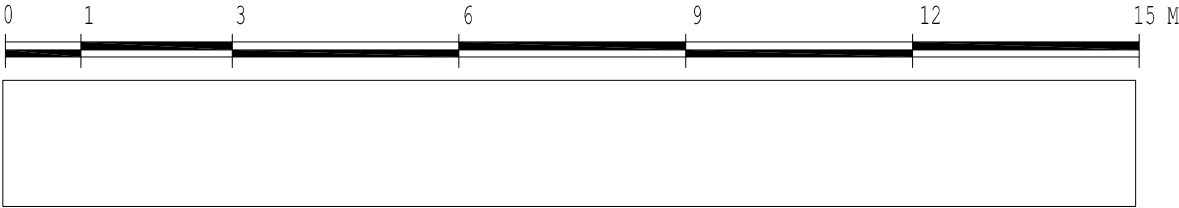
3rd STOREY



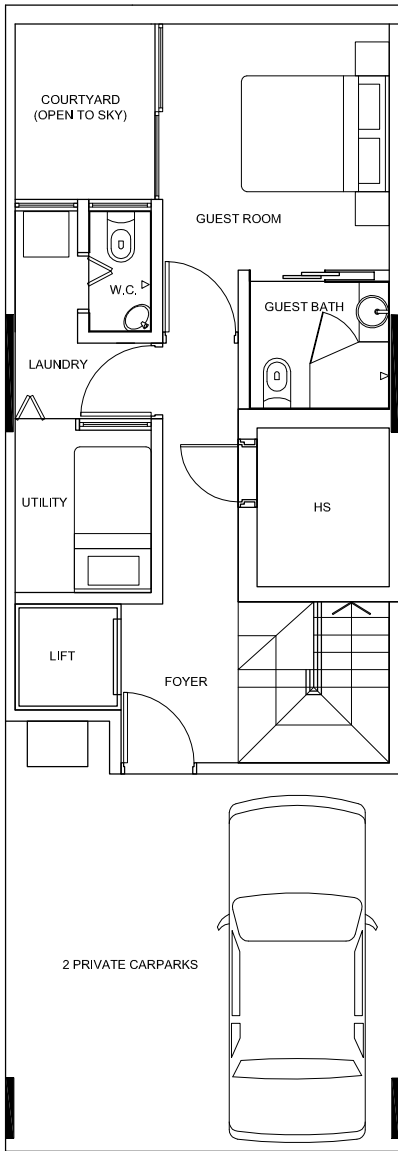
ATTIC

TYPE B3

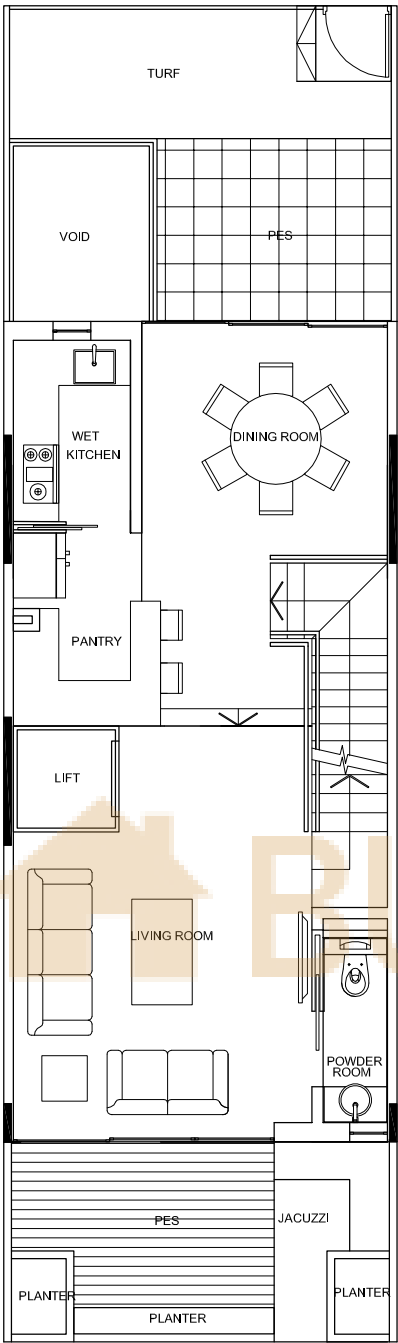
B.P No./ Date: A1678-08018-2012-BP01 dated 26-02-2013
UNIT NO. 29E/29B



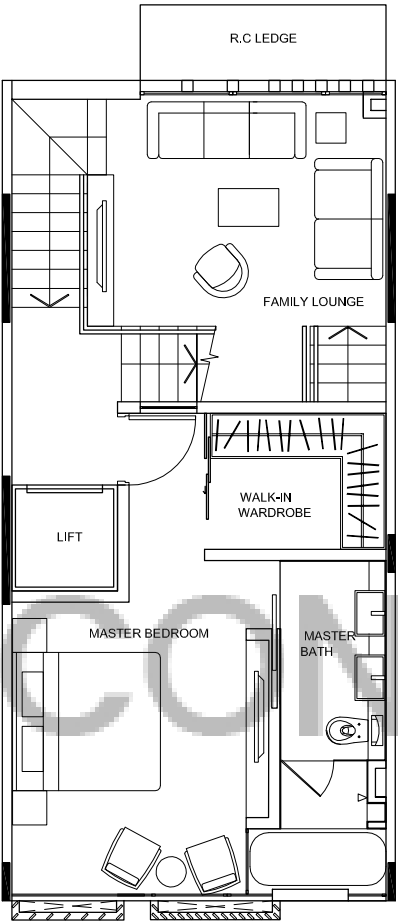
The above plan is subject to any amendments as may be approved by the relevant authorities.



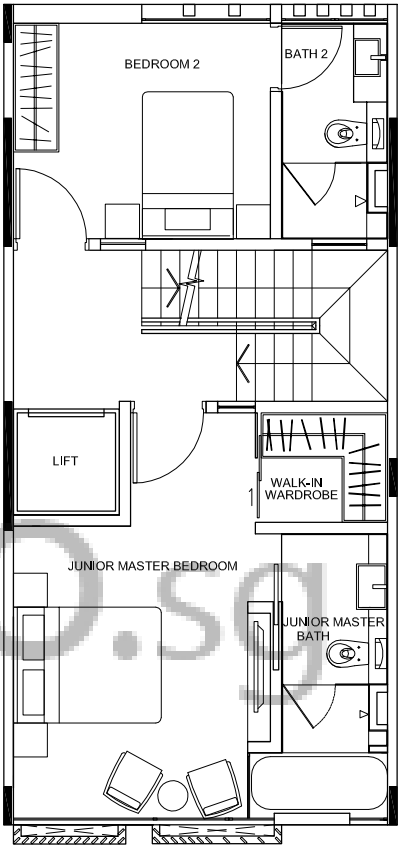
BASEMENT



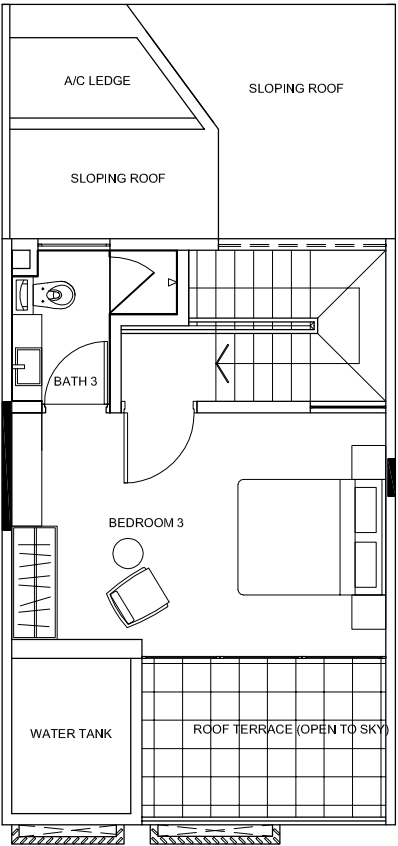
1ST STOREY



2nd STOREY



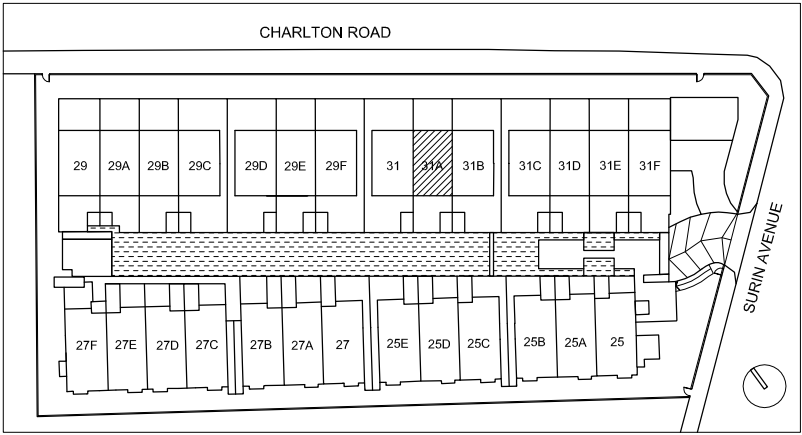
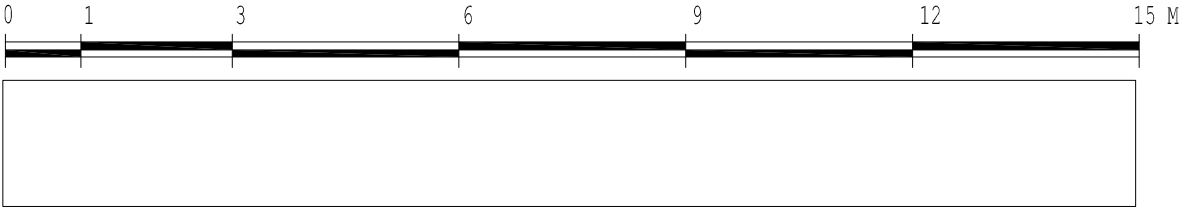
3rd STOREY



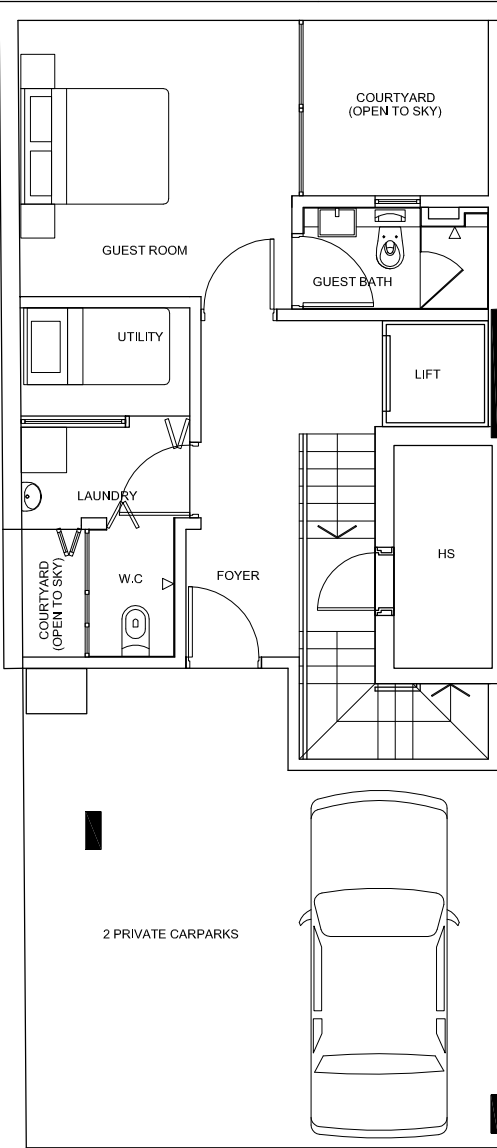
ATTIC

TYPE B2

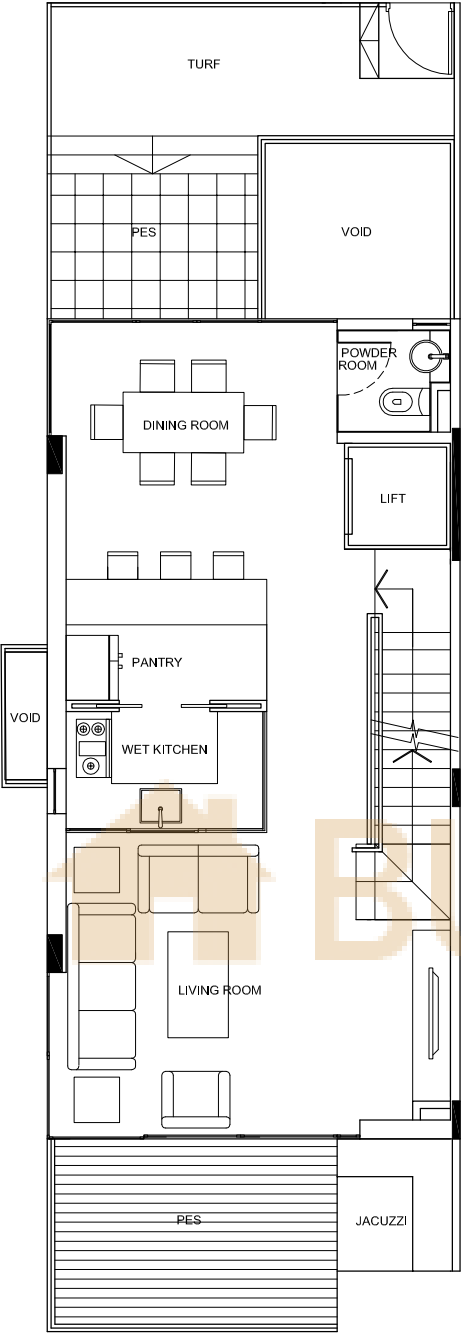
B.P No./ Date: A1678-08018-2012-BP01 dated 26-02-2013
UNIT NO. 31A



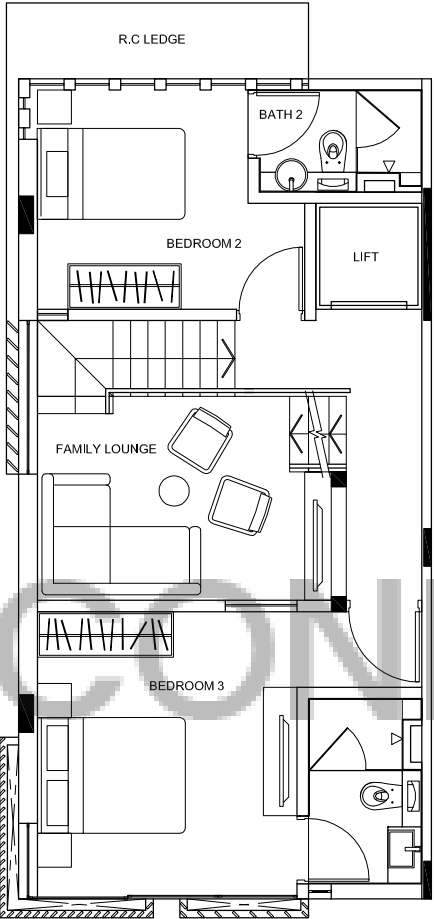
The above plan is subject to any amendments as may be approved by the relevant authorities.



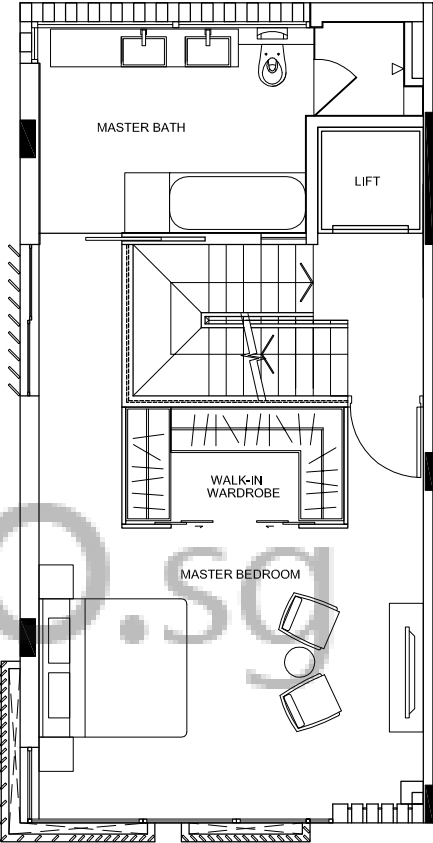
BASEMENT



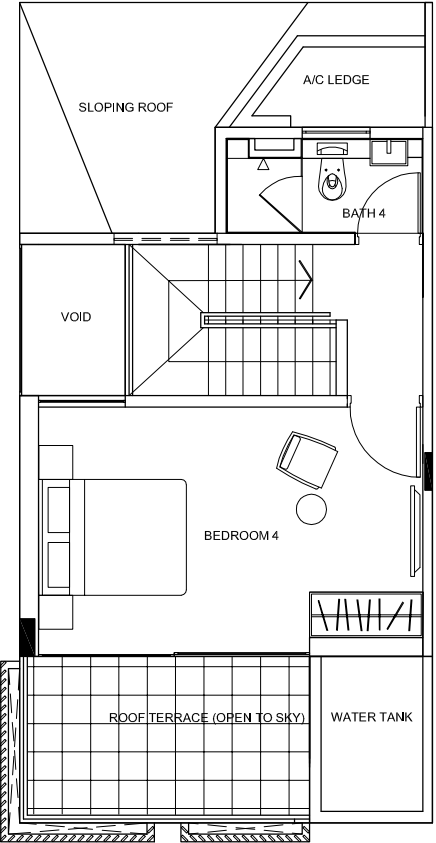
1ST STOREY



2nd STOREY



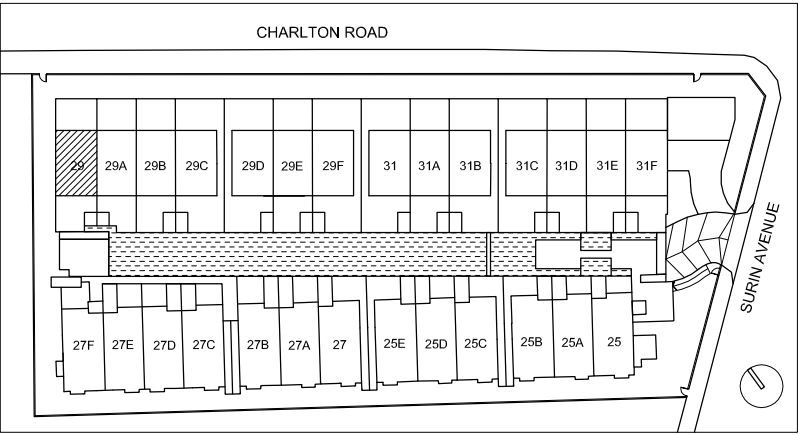
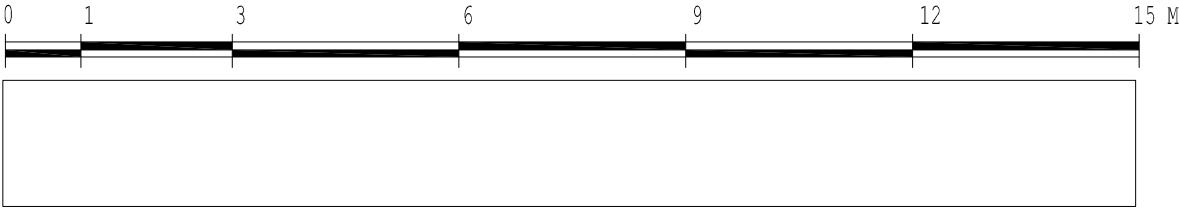
3rd STOREY



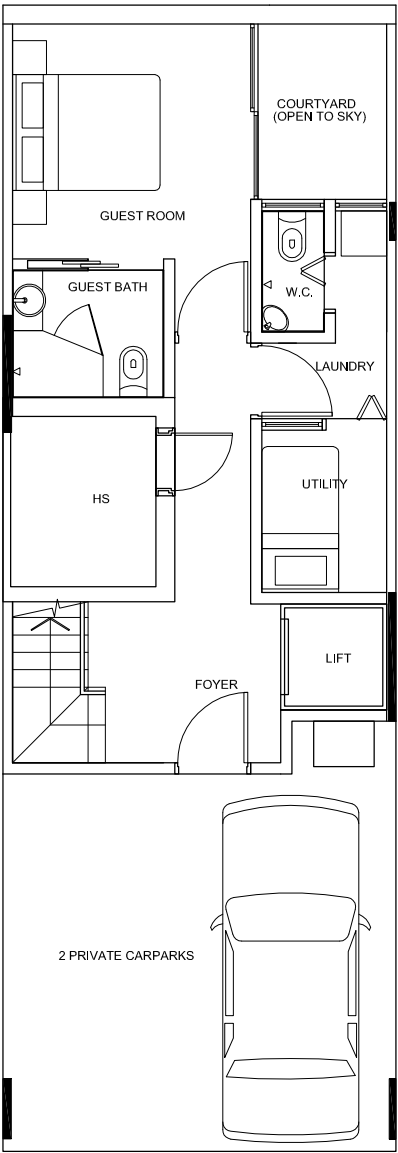
ATTIC

TYPE A3

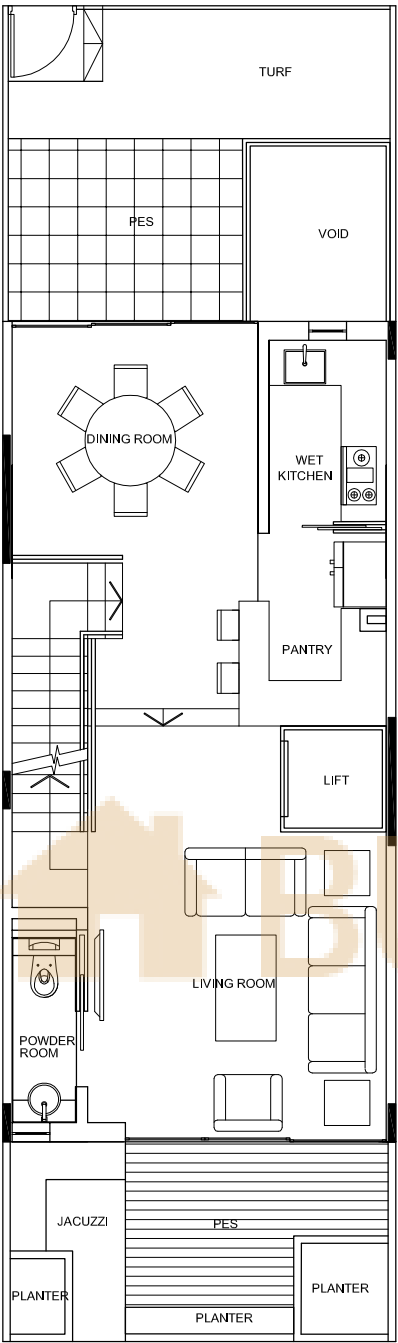
B.P No./ Date: A1678-08018-2012-BP01 dated 26-02-2013
UNIT NO. 29



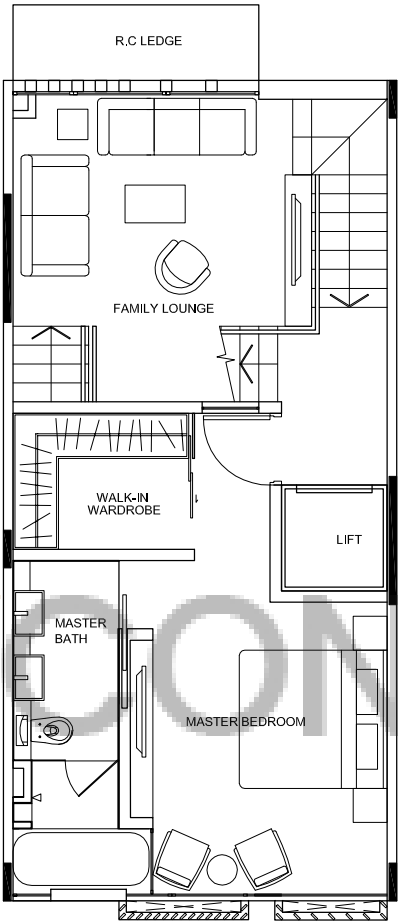
The above plan is subject to any amendments as may be approved by the relevant authorities.



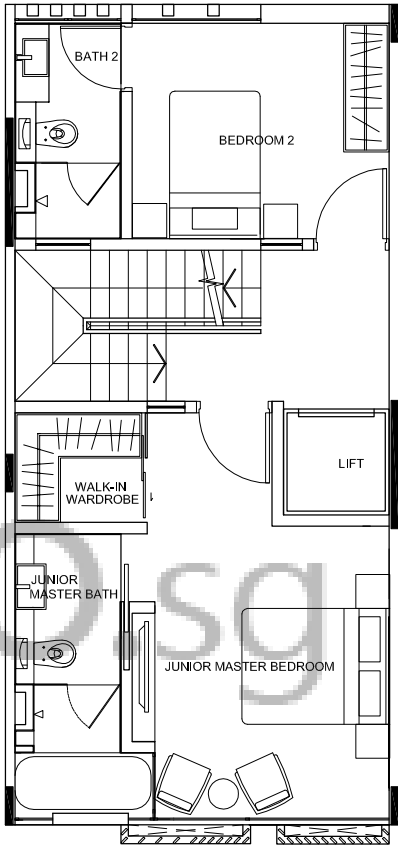
BASEMENT



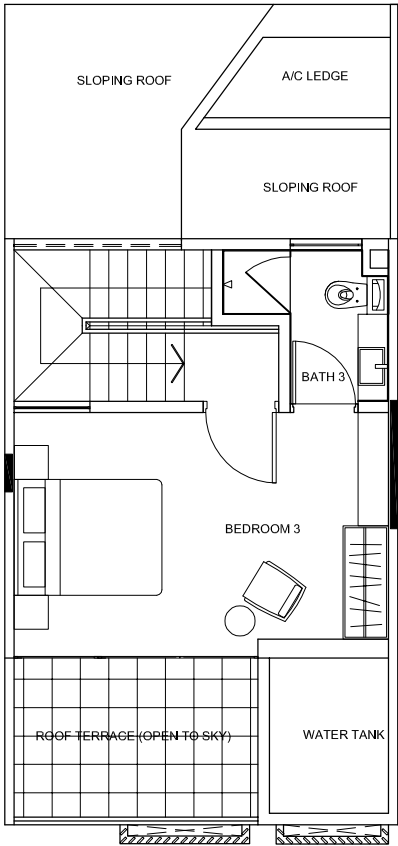
1ST STOREY



2nd STOREY



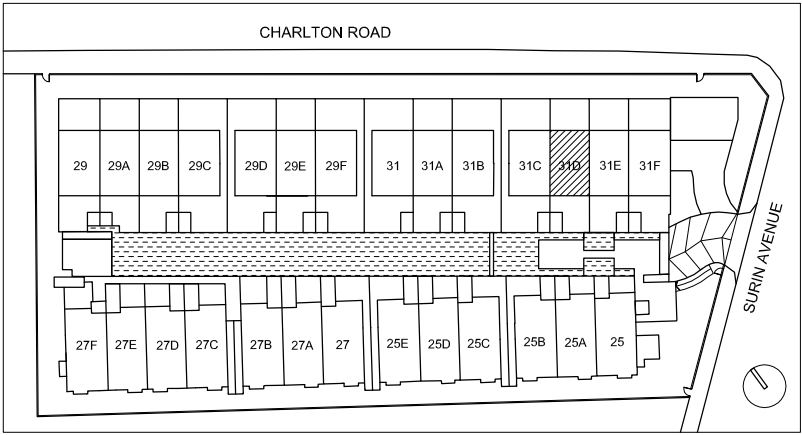
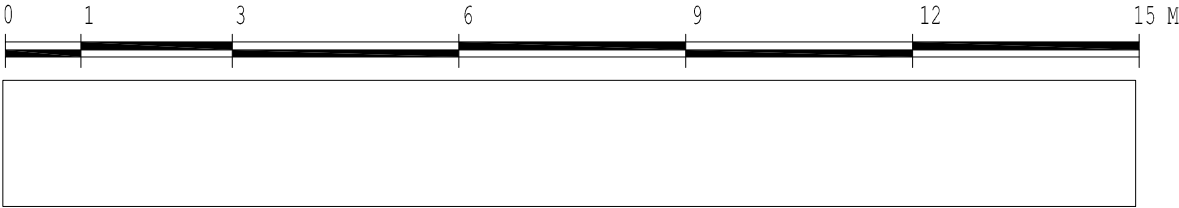
3rd STOREY



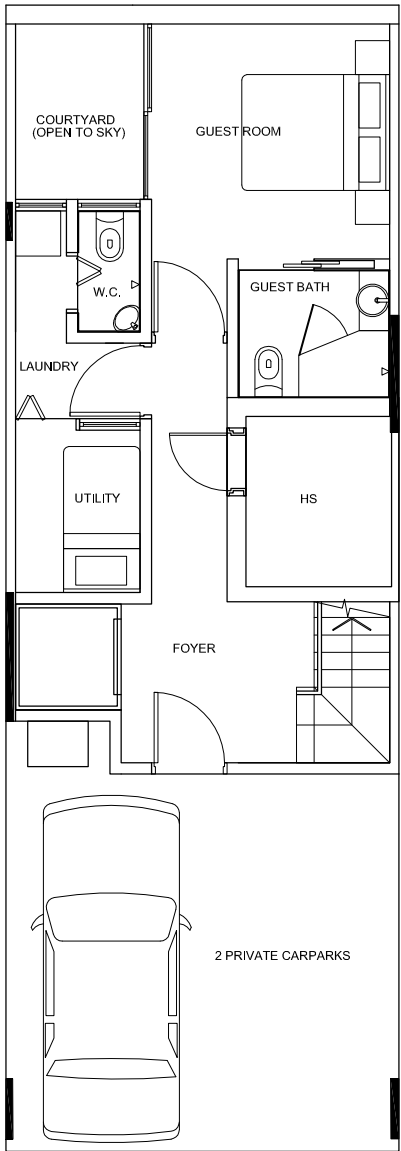
ATTIC

TYPE B1

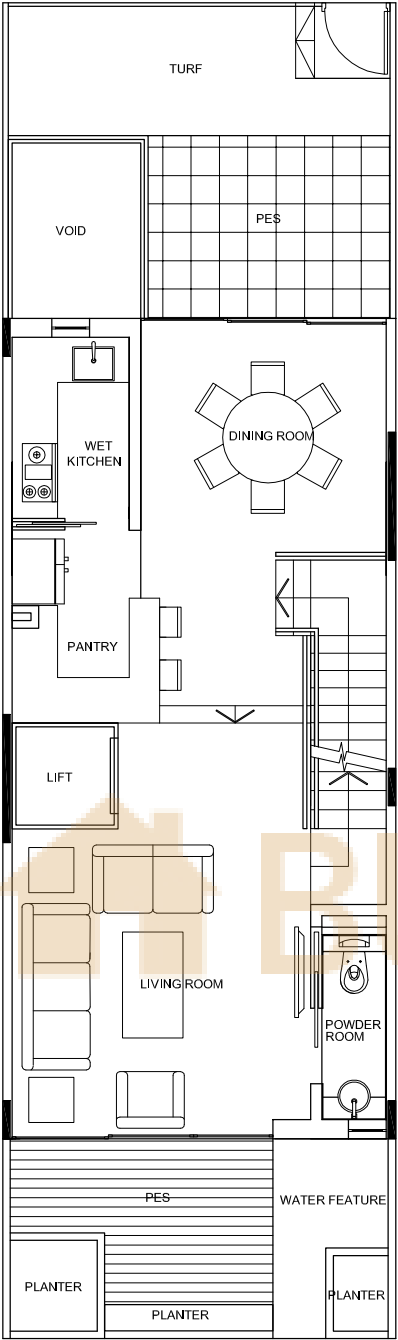
B.P No./ Date: A1678-08018-2012-BP01 dated 26-02-2013
UNIT NO. 31D



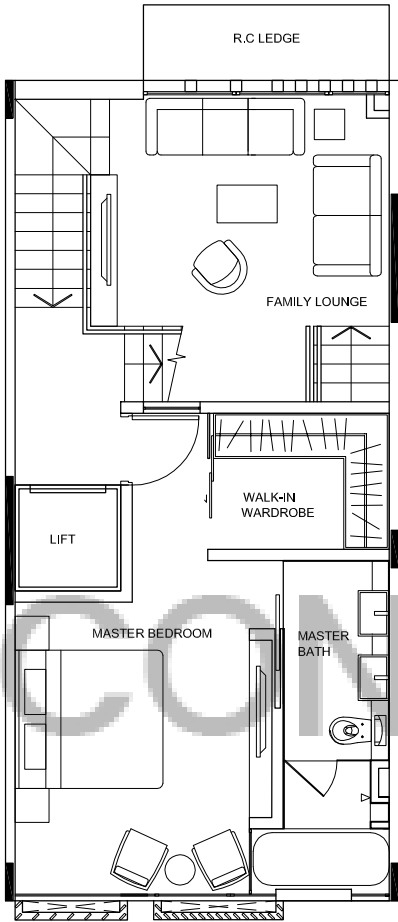
The above plan is subject to any amendments as may be approved by the relevant authorities.



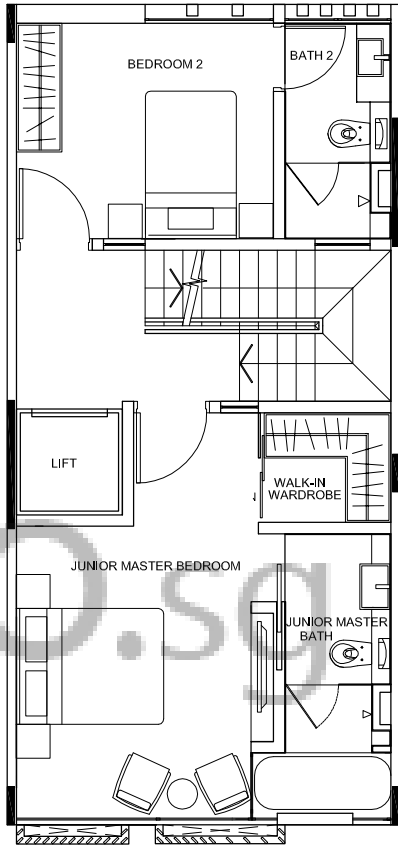
BASEMENT



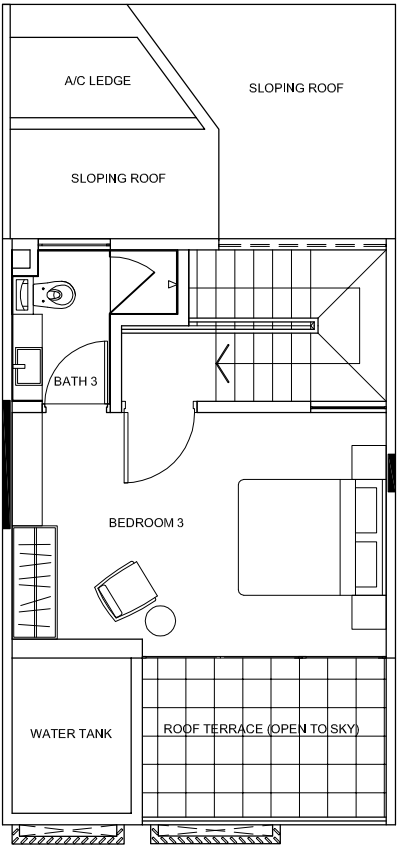
1ST STOREY



2nd STOREY



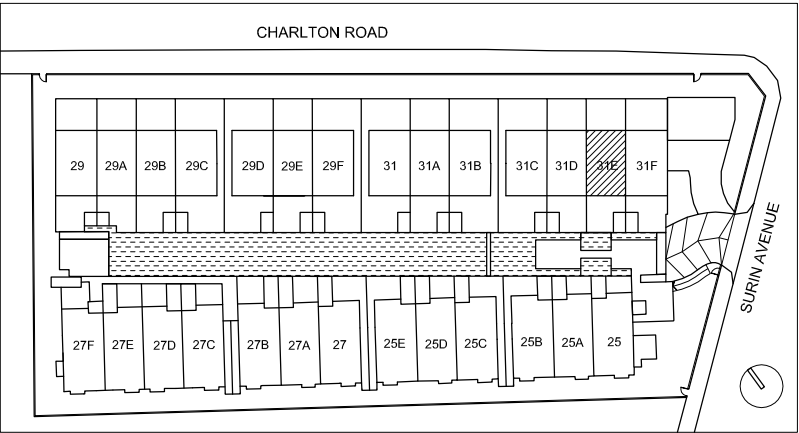
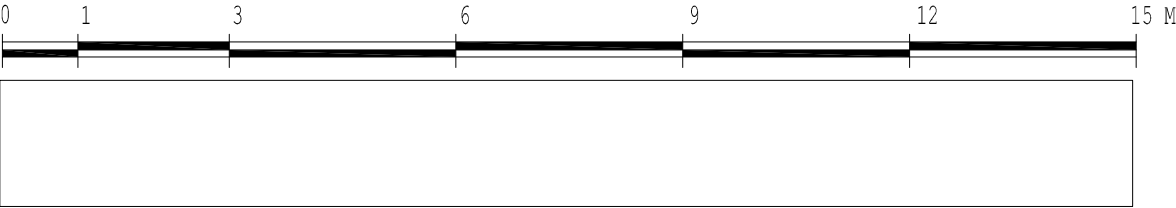
3rd STOREY



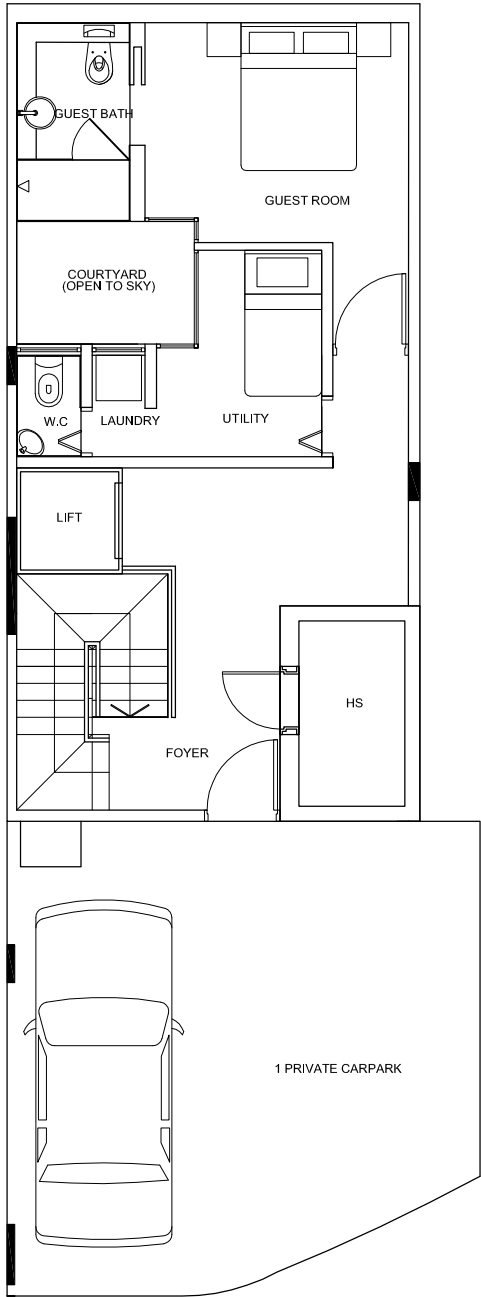
ATTIC

TYPE B5

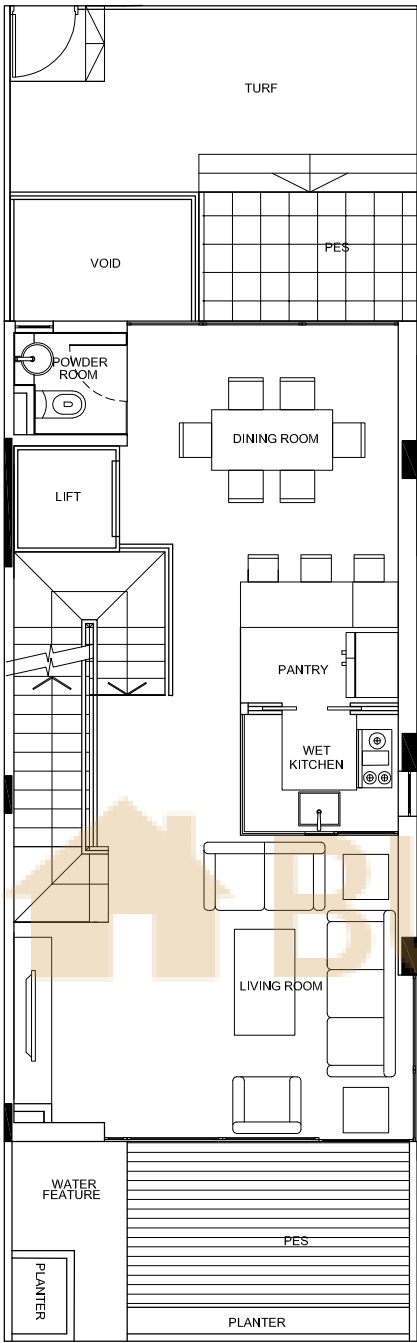
B.P No./ Date: A1678-08018-2012-BP01 dated 26-02-2013
UNIT NO. 31E



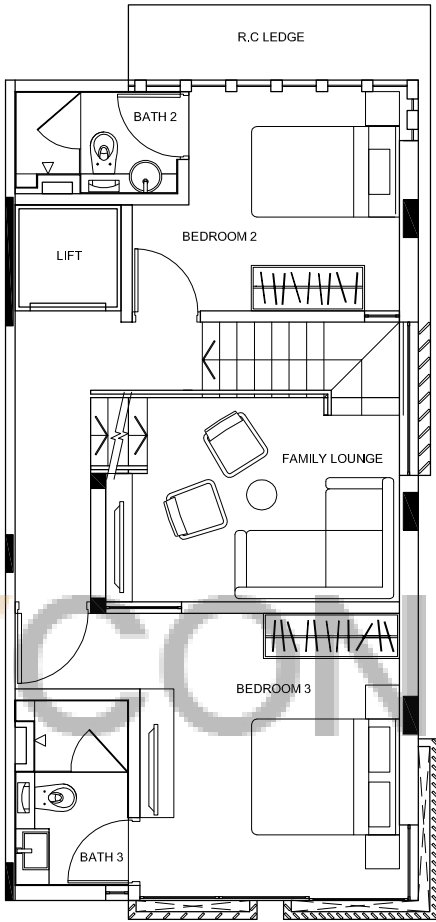
The above plan is subject to any amendments as may be approved by the relevant authorities.



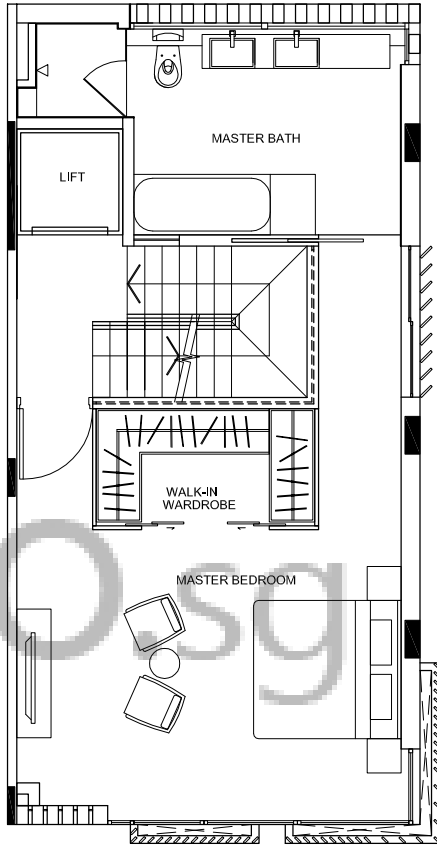
BASEMENT



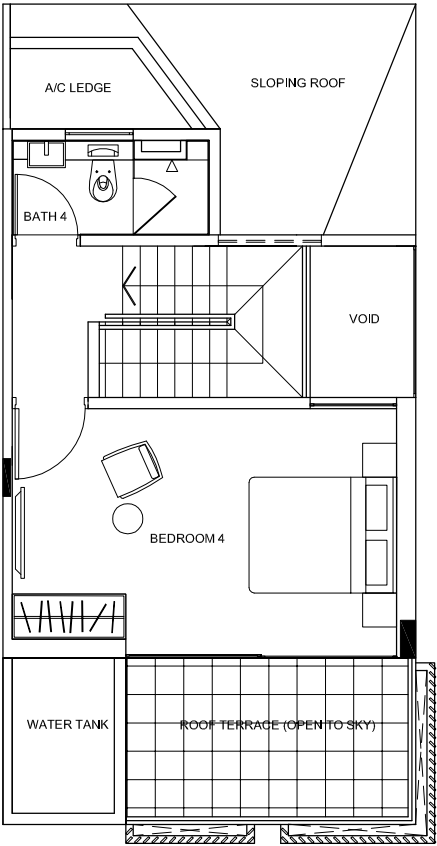
1ST STOREY



2nd STOREY



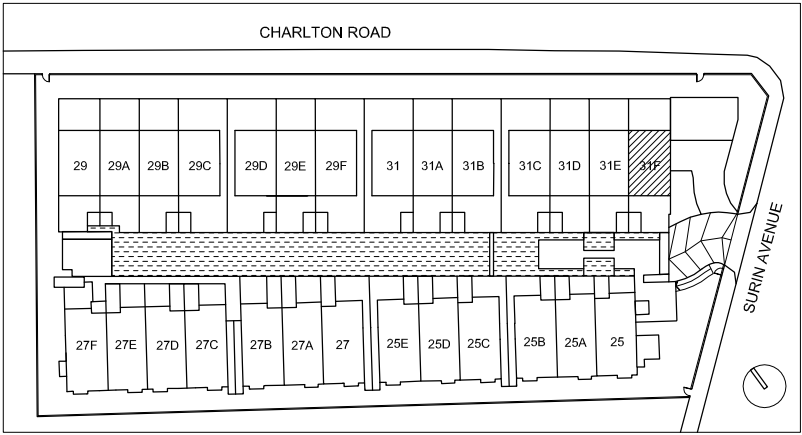
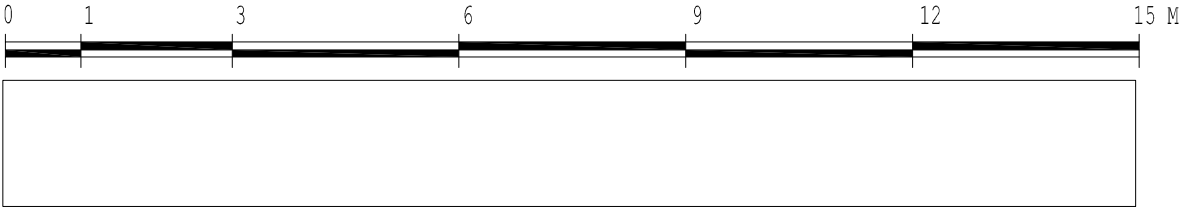
3rd STOREY



ATTIC

TYPE A1

B.P No./ Date: A1678-08018-2012-BP01 dated 26-02-2013
UNIT NO. 31F



The above plan is subject to any amendments as may be approved by the relevant authorities.