

TRIGONIA

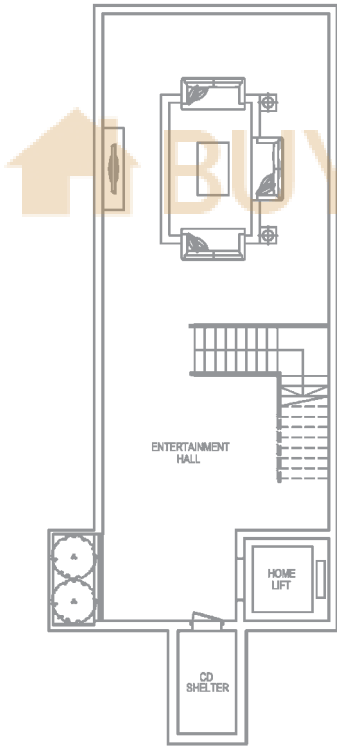


HOUSE NO. 263

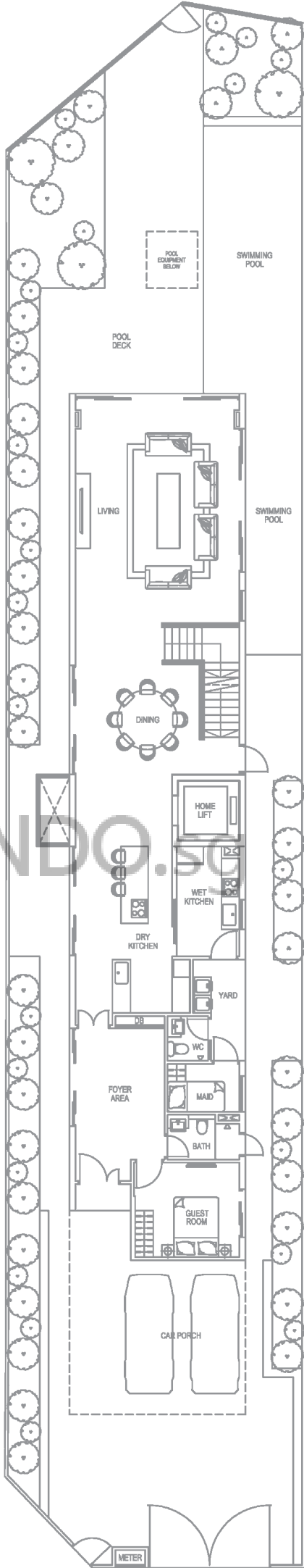
LAND AREA 5,425 SQFT / 504 SQM

FLOOR AREA 9,233 SQFT / 857.77 SQM

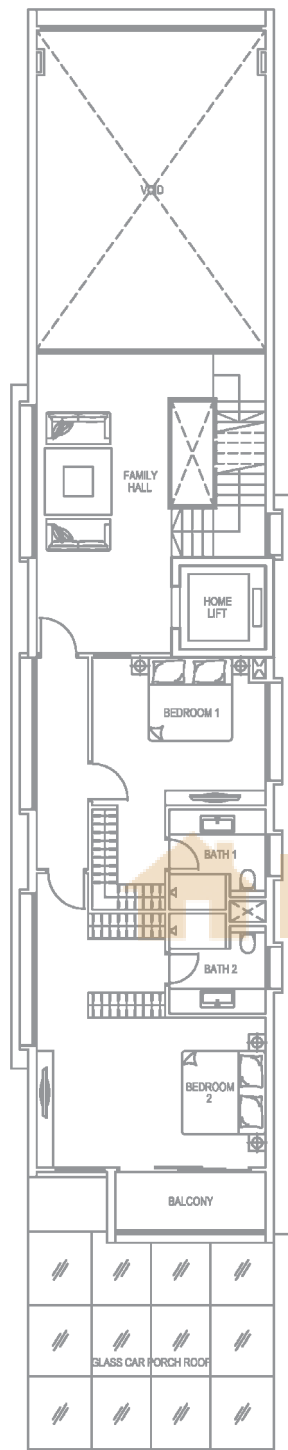
Floor area includes covered car porch, swimming pool, pool deck, planter boxes, void above living, a/c ledge, balconies & open roof terrace



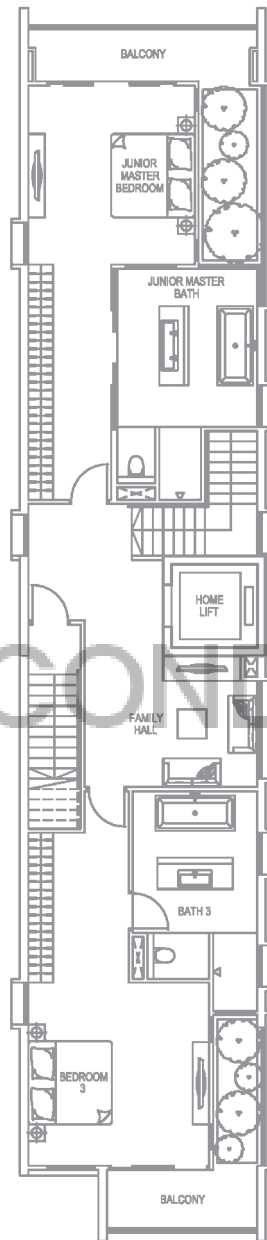
BASEMENT



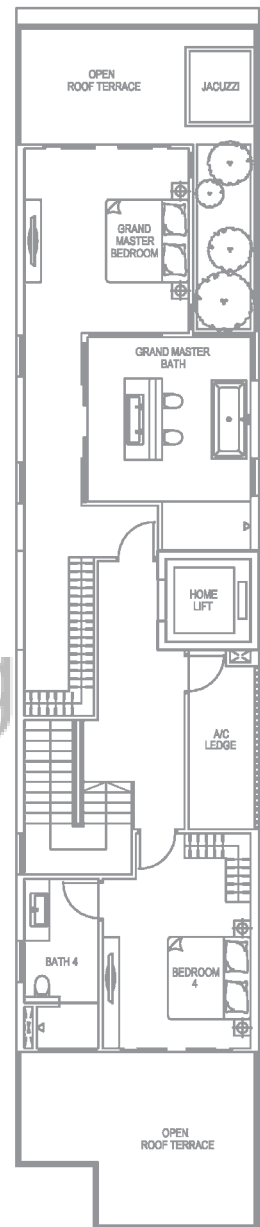
1ST STOREY



2ND STOREY



3RD STOREY



ATTIC



DALIUM

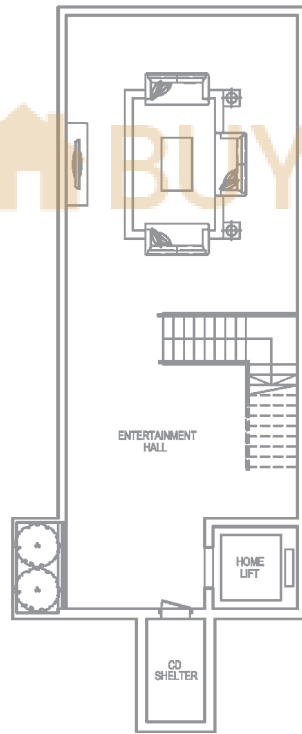


HOUSE NO. 265

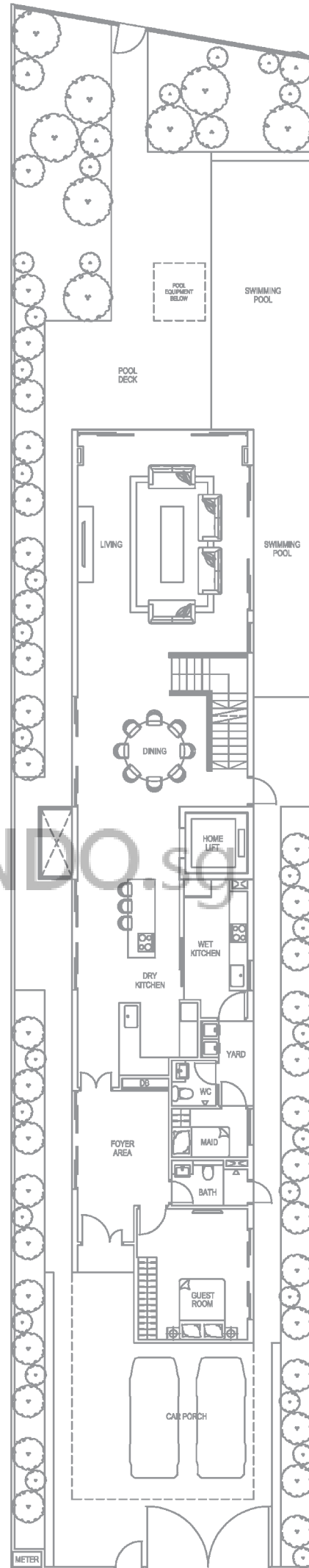
LAND AREA 5,468 SQFT / 508 SQM

FLOOR AREA 9,753 SQFT / 906.13 SQM

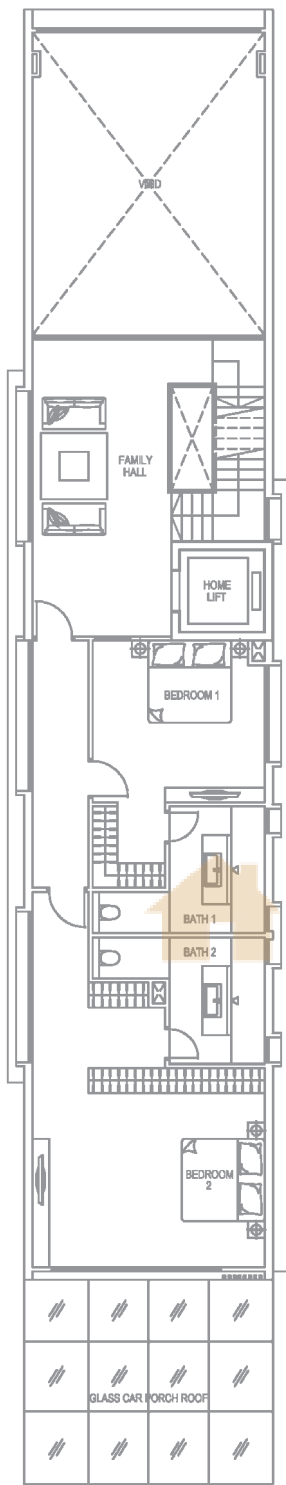
Floor area includes covered car porch, swimming pool, pool deck, planter boxes, void above living, a/c ledge, balconies & open roof terrace



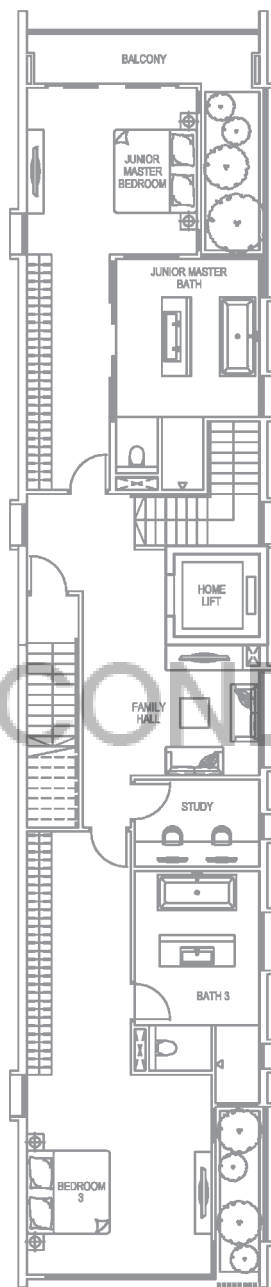
BASEMENT



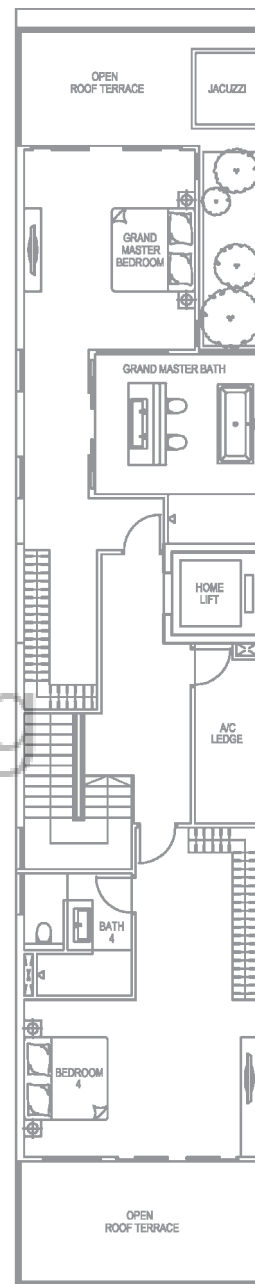
1ST STOREY



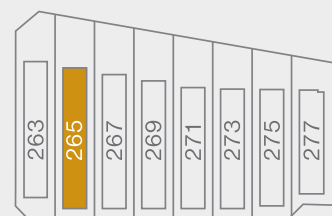
2ND STOREY



3RD STOREY



ATTIC



EUVOLA

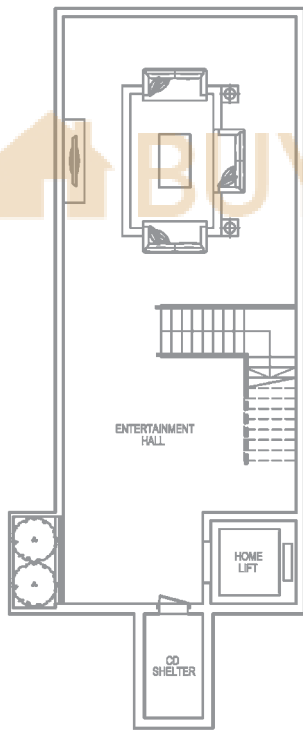


HOUSE NO. 267

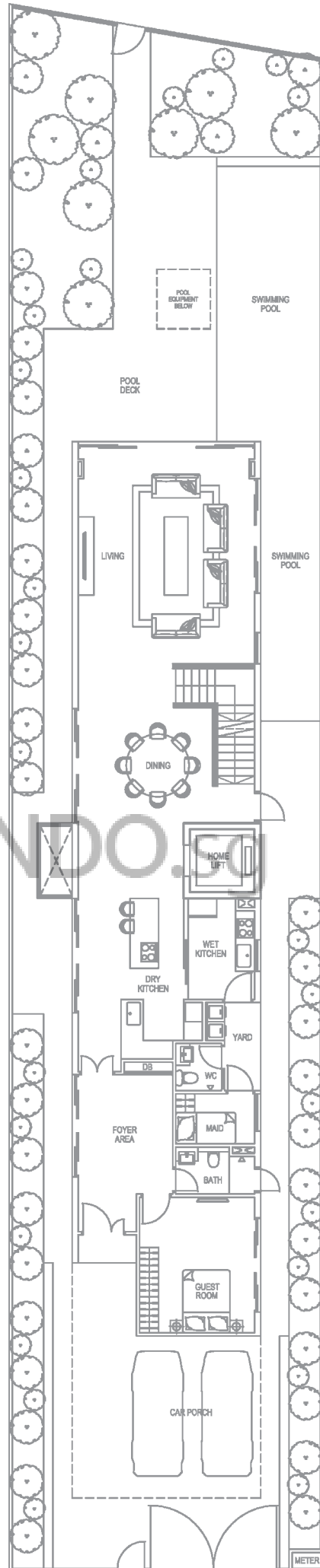
LAND AREA 5,285 SQFT / 491 SQM

FLOOR AREA 9,305 SQFT / 864.49 SQM

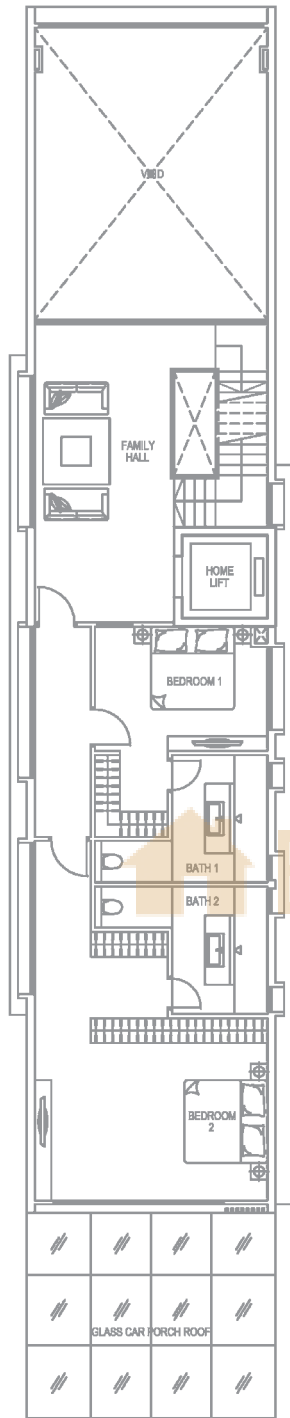
Floor area includes covered car porch, swimming pool, pool deck, planter boxes, void above living, a/c ledge, balconies & open roof terrace



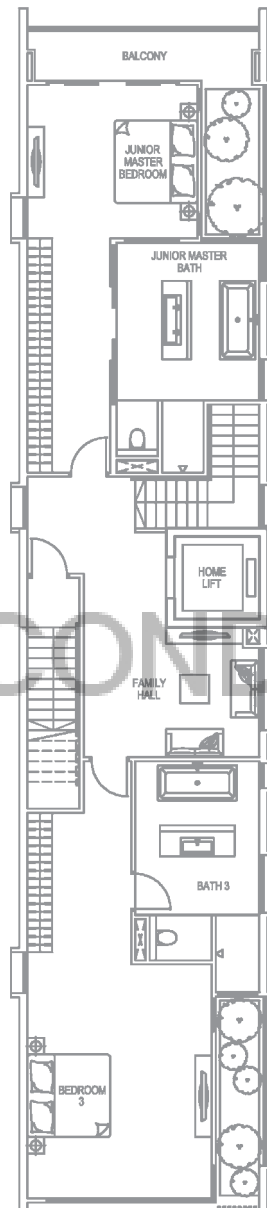
BASEMENT



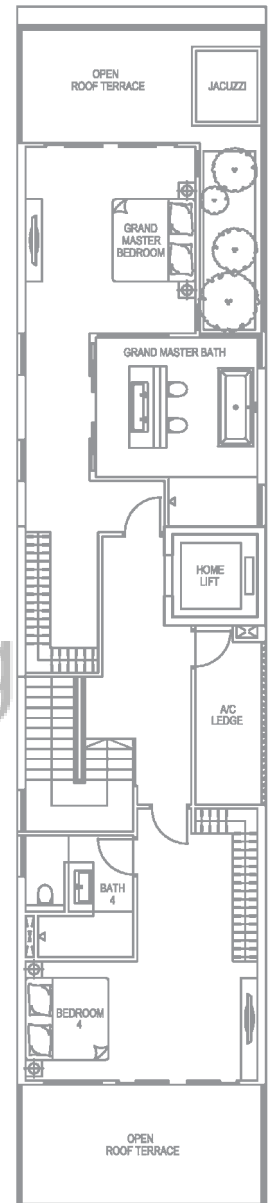
1ST STOREY



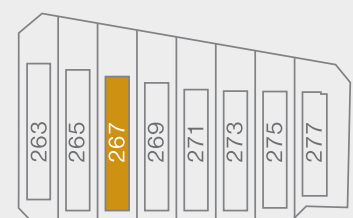
2ND STOREY



3RD STOREY



ATTIC



UVANILLA

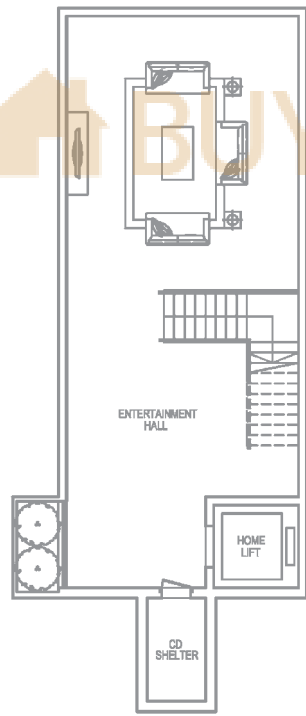


HOUSE NO. 269

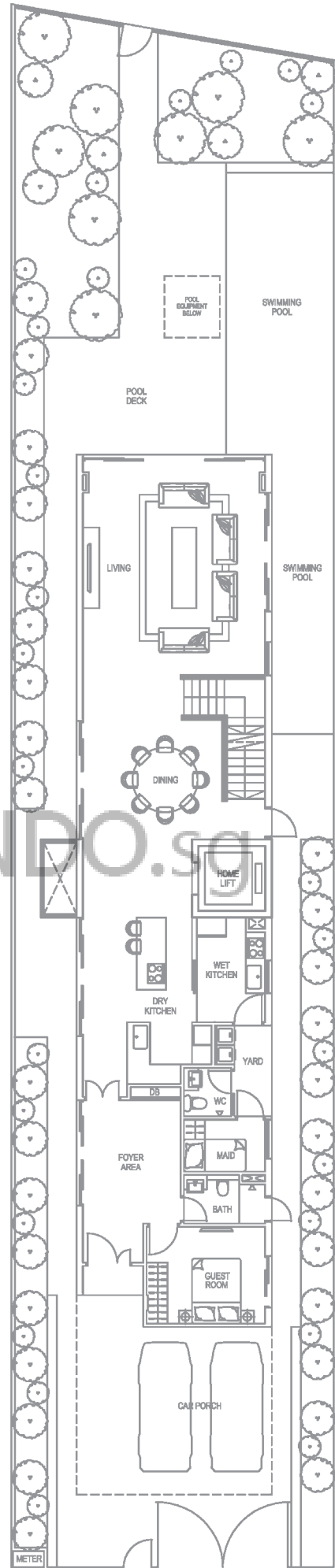
LAND AREA 5,091 SQFT / 473 SQM

FLOOR AREA 8,883 SQFT / 825.31 SQM

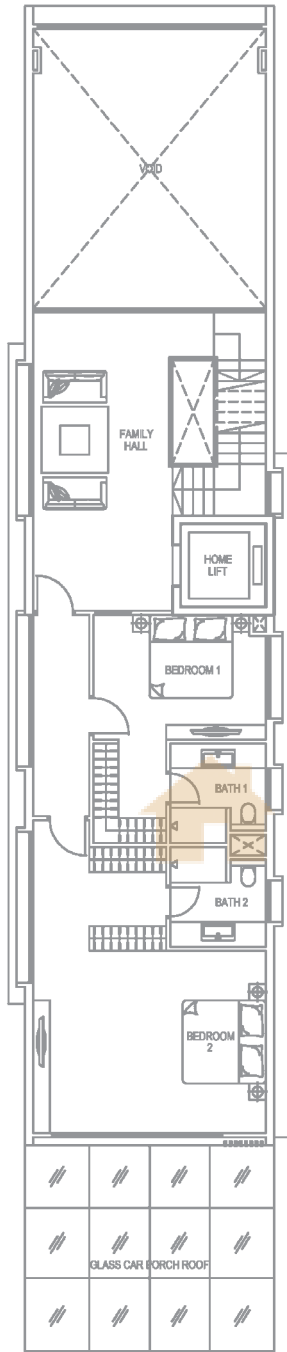
Floor area includes covered car porch, swimming pool, pool deck, planter boxes, void above living, a/c ledge, balconies & open roof terrace



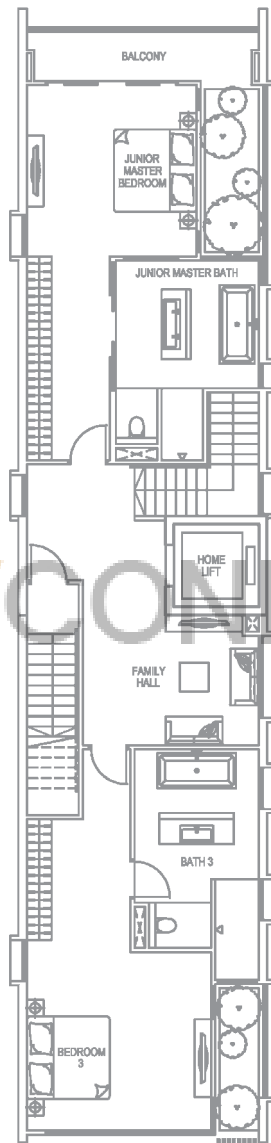
BASEMENT



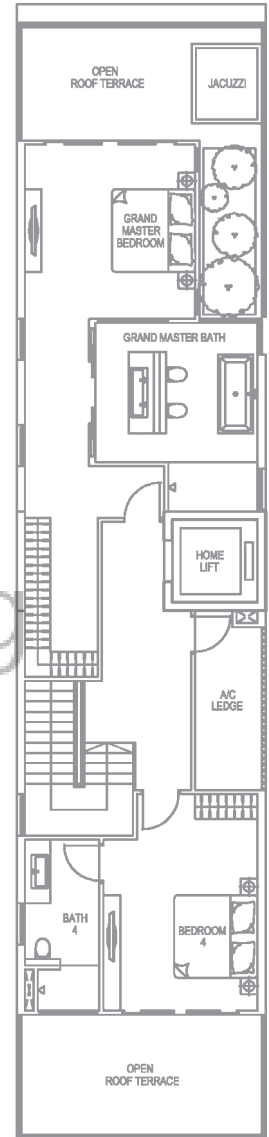
1ST STOREY



2ND STOREY

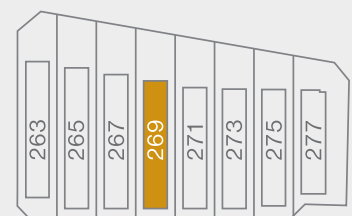


3RD STOREY



ATTIC

BUYCONDO.sg



MODELIA

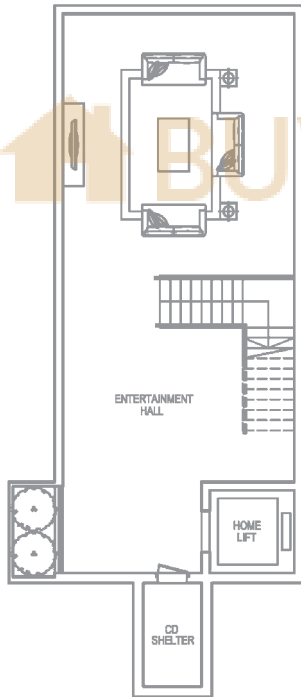


HOUSE NO. 271

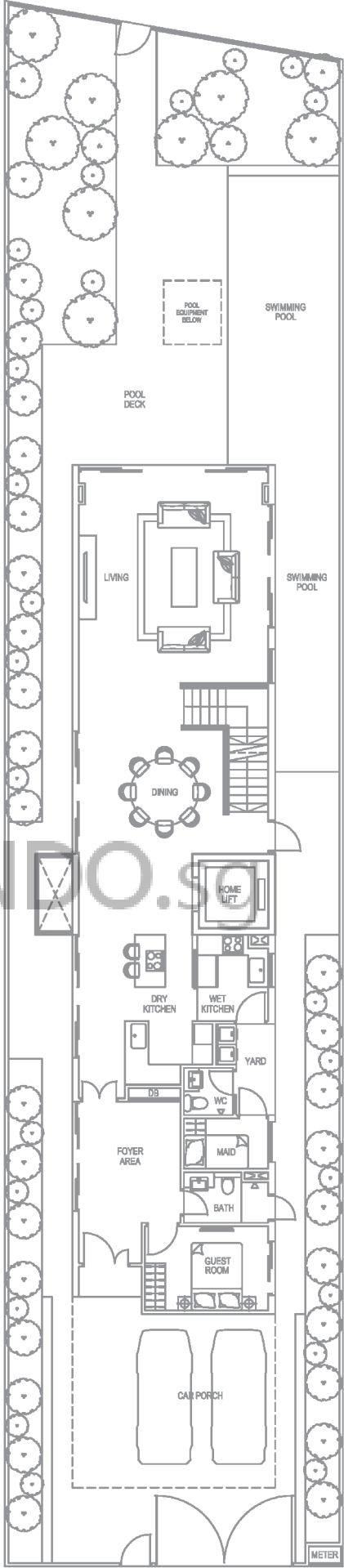
LAND AREA 4,908 SQFT / 456 SQM

FLOOR AREA 8,442 SQFT / 784.35 SQM

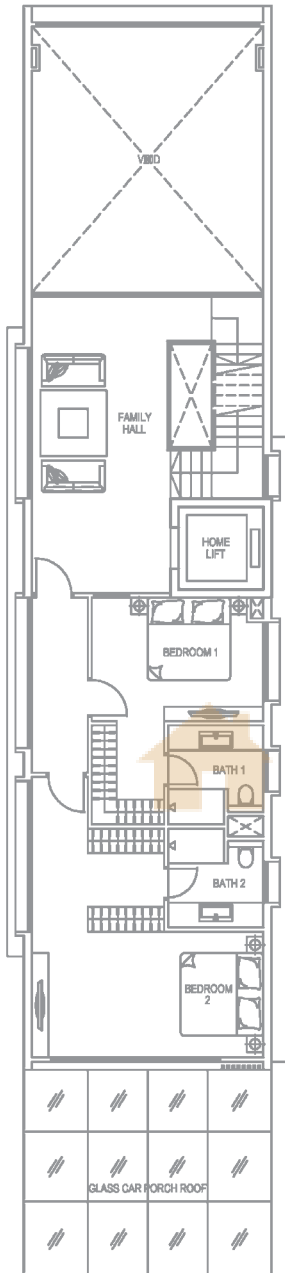
Floor area includes covered car porch, swimming pool, pool deck, planter boxes, void above living, a/c ledge, balconies & open roof terrace



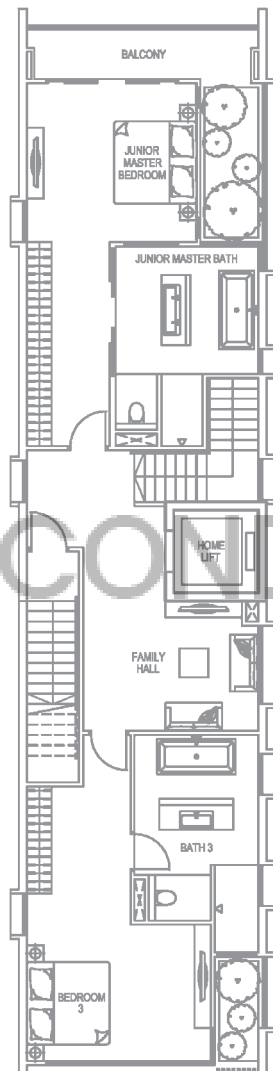
BASEMENT



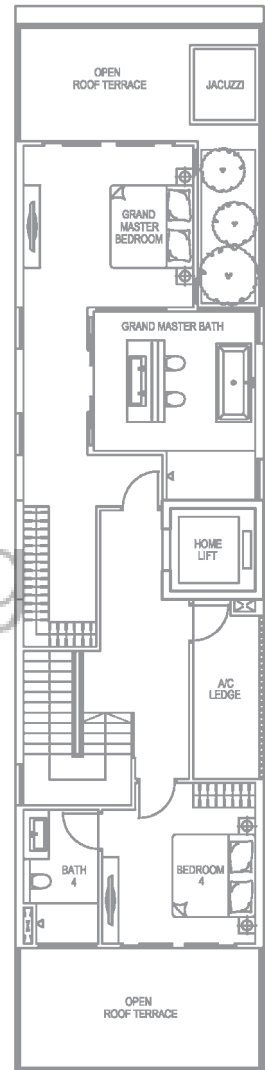
1ST STOREY



2ND STOREY



3RD STOREY



ATTIC

BUYCONDO.sg



TRITON

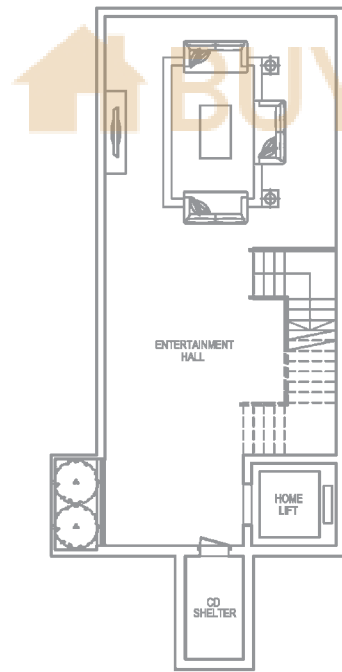


HOUSE NO. 273

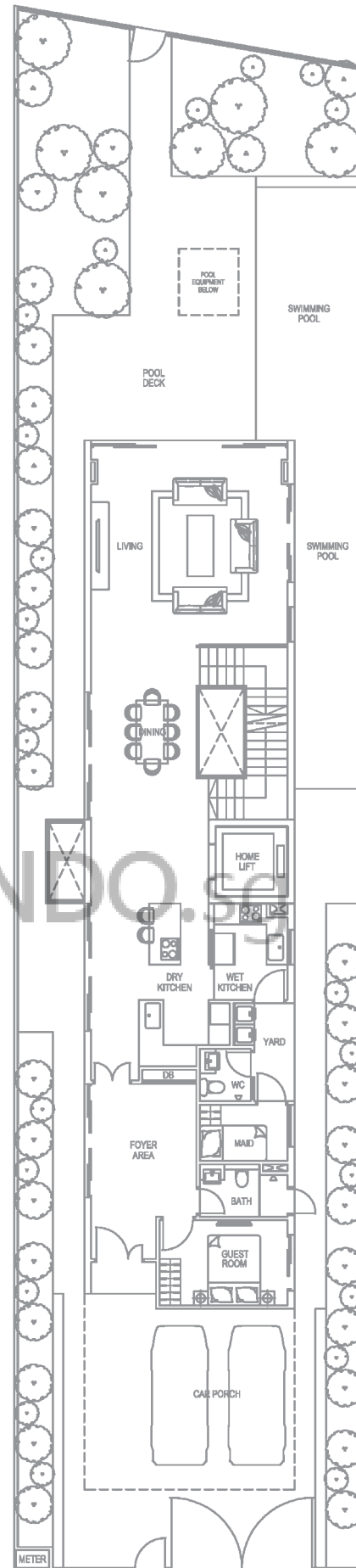
LAND AREA 4,725 SQFT / 439 SQM

FLOOR AREA 8,199 SQFT / 761.78 SQM

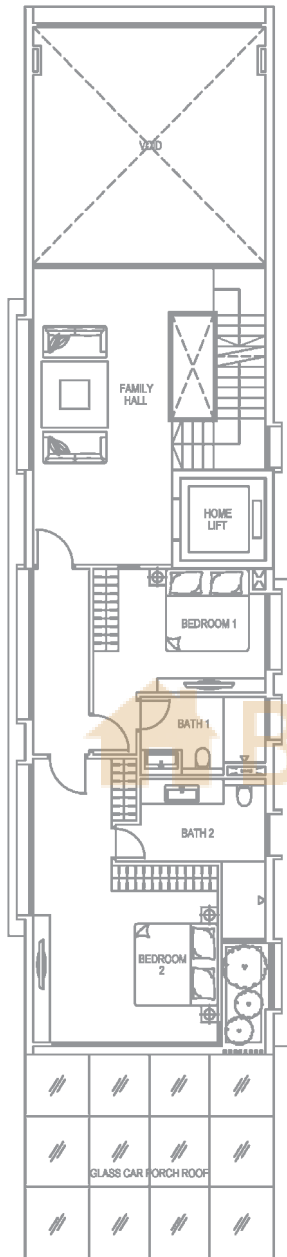
Floor area includes covered car porch, swimming pool, pool deck, planter boxes, void above living, a/c ledge, balconies & open roof terrace



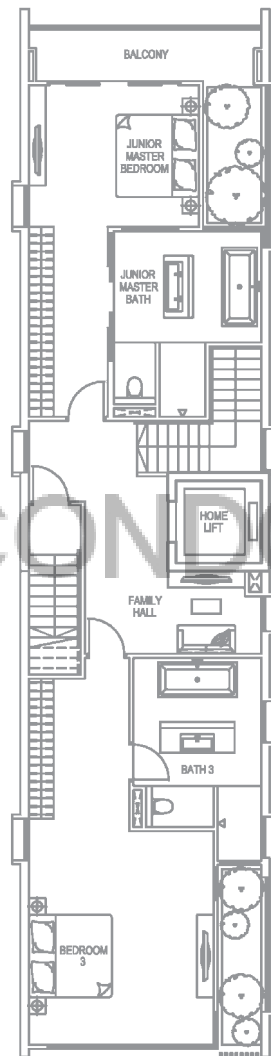
BASEMENT



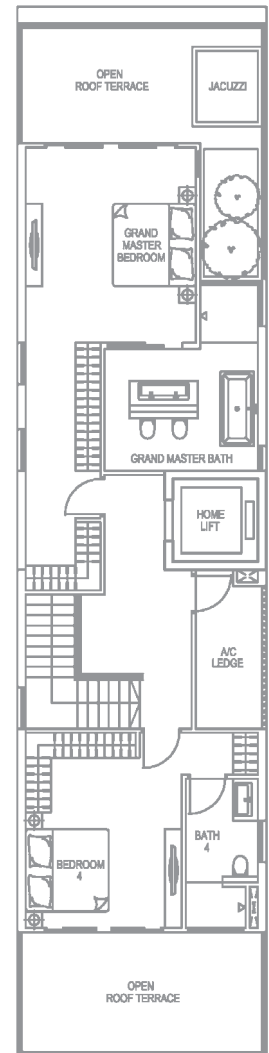
1ST STOREY



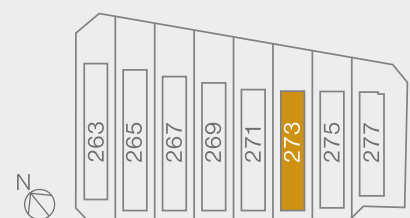
2ND STOREY



3RD STOREY



ATTIC



ASPRELLA

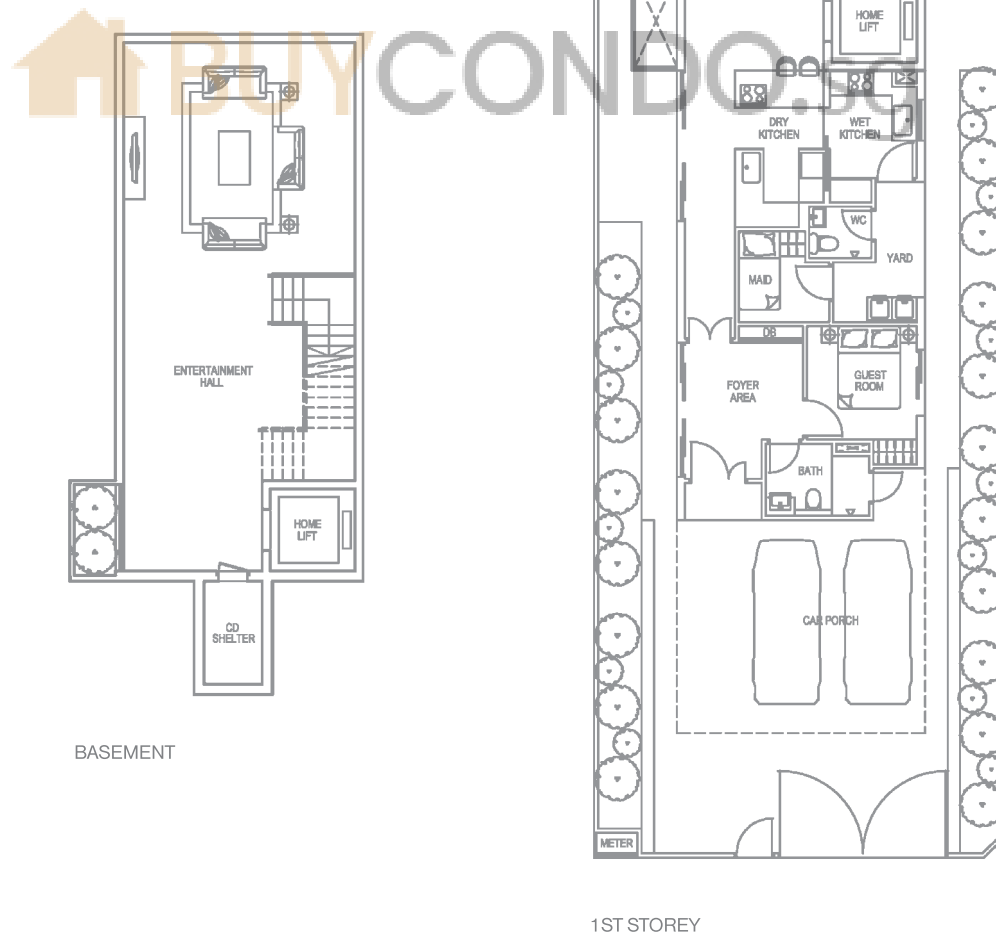


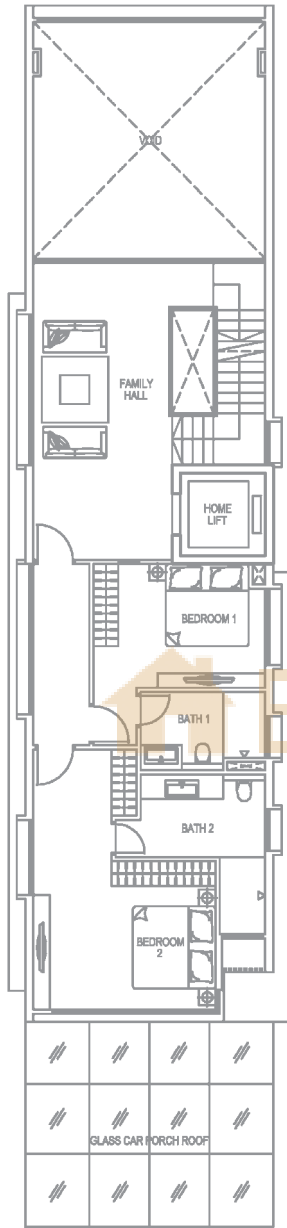
HOUSE NO. 275

LAND AREA 4,531 SQFT / 421 SQM

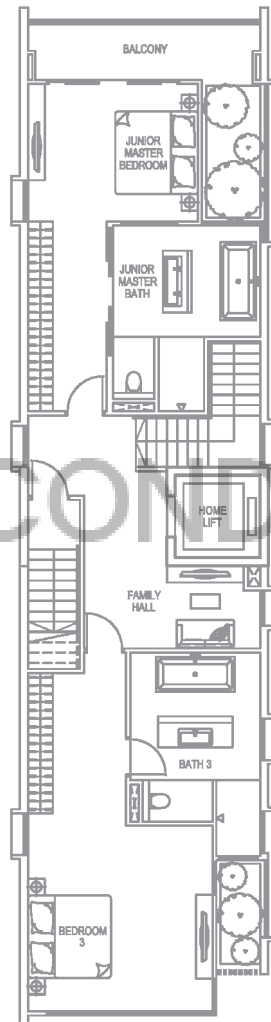
FLOOR AREA 7,843 SQFT / 728.69 SQM

Floor area includes covered car porch, swimming pool, pool deck, planter boxes, void above living, a/c ledge, balconies & open roof terrace

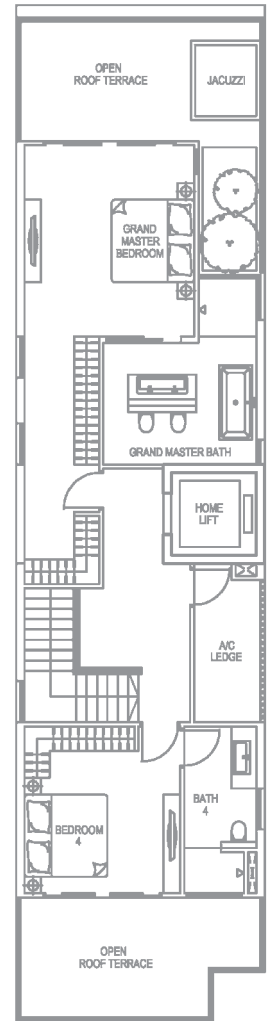




2ND STOREY



3RD STOREY



ATTIC



MITRA

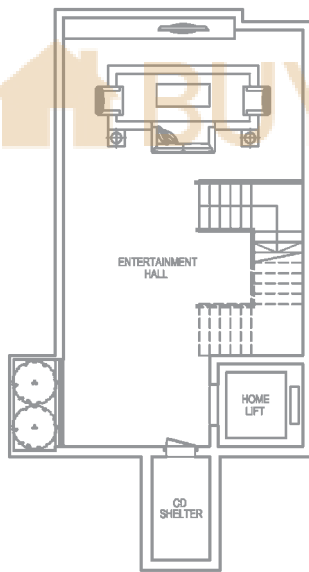


HOUSE NO. 277

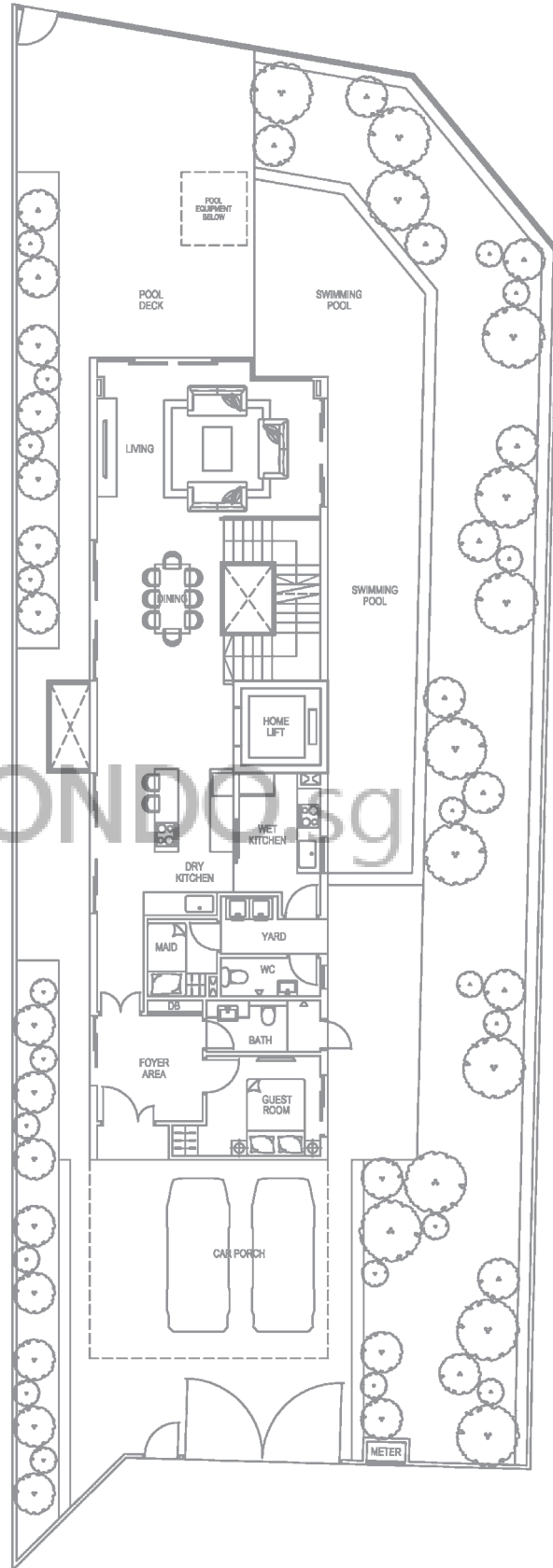
LAND AREA 5,414 SQFT / 503 SQM

FLOOR AREA 7,410 SQFT / 688.47 SQM

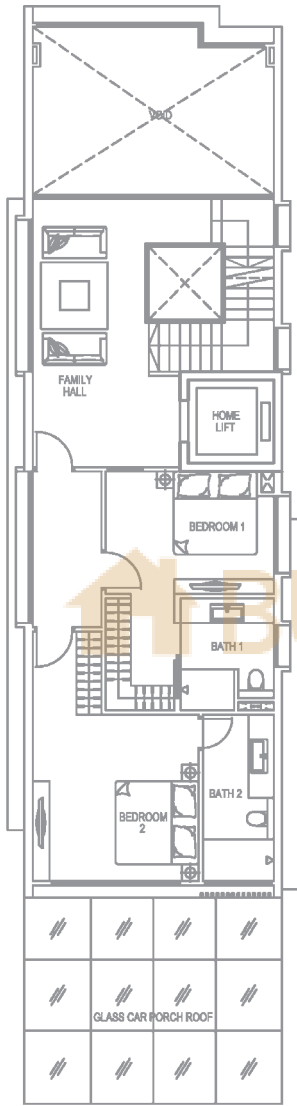
Floor area includes covered car porch, swimming pool, pool deck, planter boxes, void above living, a/c ledge, balconies & open roof terrace



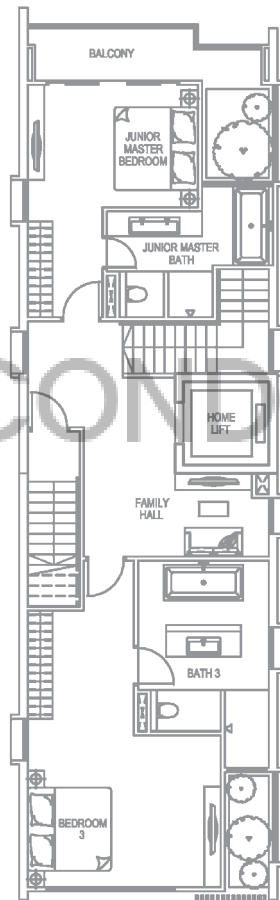
BASEMENT



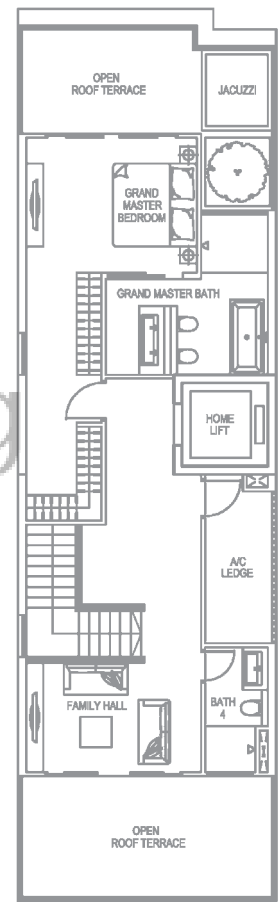
1ST STOREY



2ND STOREY



3RD STOREY



ATTIC

