

1-BEDROOM

TYPE (1)a

#02-05 to #04-05,
#06-05 to #23-05,
#25-05 to #43-05

41 sqm

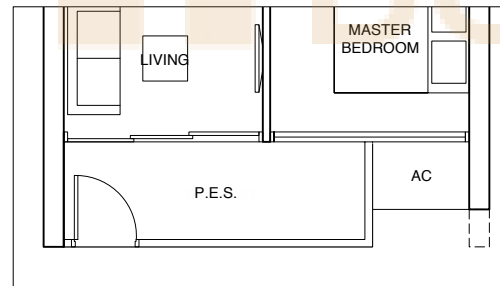
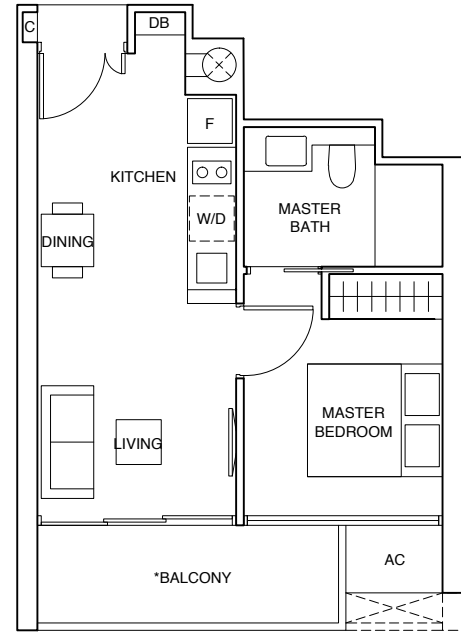
Incl A/C Ledge 2 sqm
& Balcony 6 sqm

TYPE (1)a1

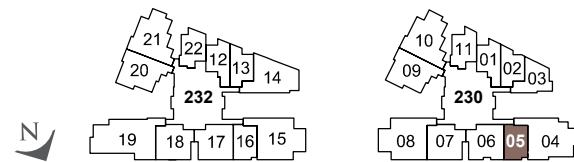
#01-05

41 sqm

Incl A/C Ledge 2 sqm
& PES 6 sqm



Applicable to Type (1)a1 only



LEGEND:

F - FRIDGE DB - DISTRIBUTION BOARD WC - WATER CLOSET W/D - WASHER CUM DRYER W - WASHER D - DRYER C - CABINET AC - AIRCON LEDGE

* THE BALCONY IN THE UNIT SHALL NOT BE ENCLOSED UNLESS WITH THE APPROVED BALCONY SCREEN.
FOR AN ILLUSTRATION OF THE APPROVED BALCONY SCREEN, PLEASE REFER TO THE LAST PAGE OF THIS BROCHURE.

ALL PLANS ARE SUBJECT TO CHANGE AS MAY BE REQUIRED OR APPROVED BY THE RELEVANT AUTHORITIES. INDICATED FLOOR AREAS ARE APPROXIMATE AND ARE SUBJECT TO FINAL SURVEY.

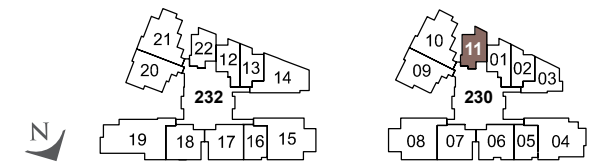
1-BEDROOM

TYPE (1)b

#06-11 to #23-11,
#25-11 to #43-11

41 sqm

Incl A/C Ledge 1 sqm
& Balcony 6 sqm



LEGEND:

F - FRIDGE DB - DISTRIBUTION BOARD WC - WATER CLOSET W/D - WASHER CUM DRYER W - WASHER D - DRYER C - CABINET AC - AIRCON LEDGE

* THE BALCONY IN THE UNIT SHALL NOT BE ENCLOSED UNLESS WITH THE APPROVED BALCONY SCREEN.
FOR AN ILLUSTRATION OF THE APPROVED BALCONY SCREEN, PLEASE REFER TO THE LAST PAGE OF THIS BROCHURE.

ALL PLANS ARE SUBJECT TO CHANGE AS MAY BE REQUIRED OR APPROVED BY THE RELEVANT AUTHORITIES. INDICATED FLOOR AREAS ARE APPROXIMATE AND ARE SUBJECT TO FINAL SURVEY.

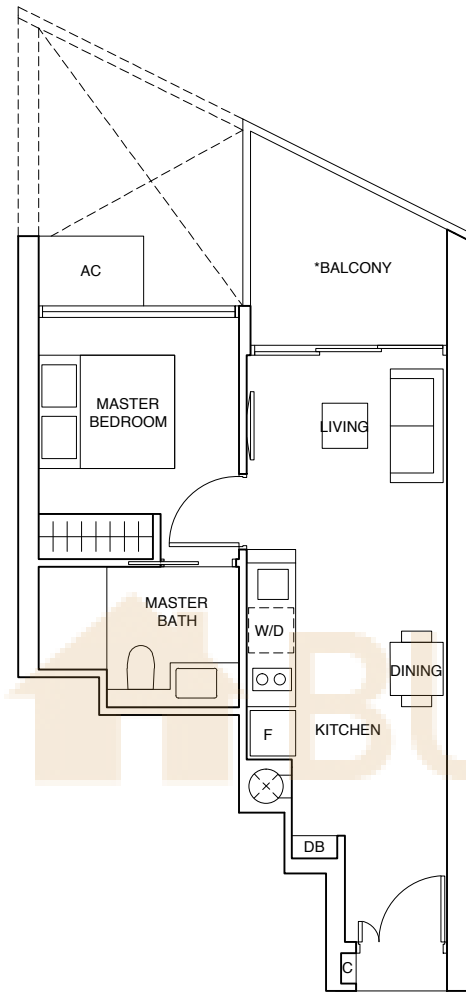
1-BEDROOM

TYPE (1)c

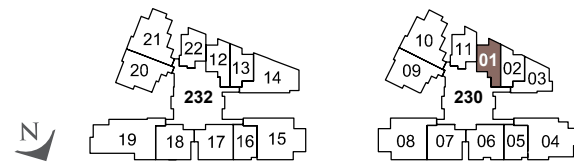
#06-01 to #23-01,
#25-01 to #43-01

44 sqm

Incl A/C Ledge 1 sqm
& Balcony 7 sqm



0 0.5 1 1.5 3 5m



LEGEND:

F - FRIDGE DB - DISTRIBUTION BOARD WC - WATER CLOSET W/D - WASHER CUM DRYER W - WASHER D - DRYER C - CABINET AC - AIRCON LEDGE

* THE BALCONY IN THE UNIT SHALL NOT BE ENCLOSED UNLESS WITH THE APPROVED BALCONY SCREEN.
FOR AN ILLUSTRATION OF THE APPROVED BALCONY SCREEN, PLEASE REFER TO THE LAST PAGE OF THIS BROCHURE.

ALL PLANS ARE SUBJECT TO CHANGE AS MAY BE REQUIRED OR APPROVED BY THE RELEVANT AUTHORITIES. INDICATED FLOOR AREAS ARE APPROXIMATE AND ARE SUBJECT TO FINAL SURVEY.

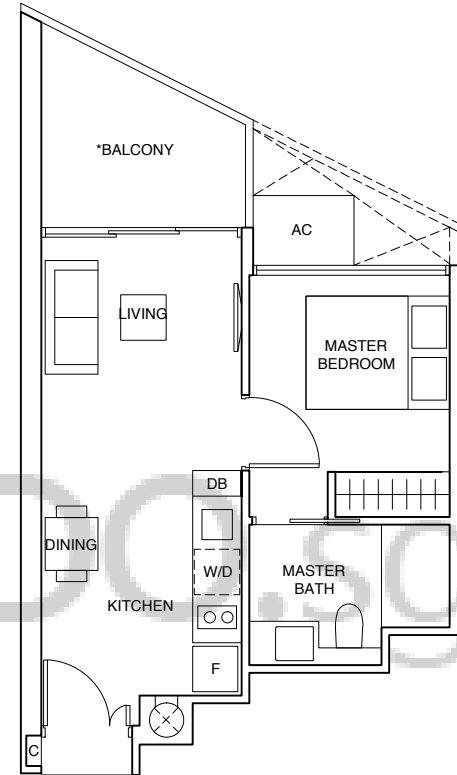
1-BEDROOM

TYPE (1)d

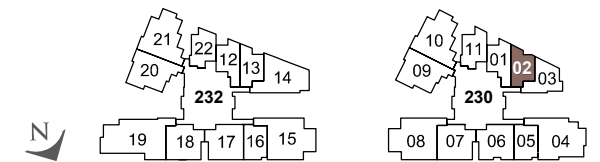
#06-02 to #23-02,
#25-02 to #43-02

42 sqm

Incl A/C Ledge 1 sqm
& Balcony 7 sqm



0 0.5 1 1.5 3 5m



LEGEND:

F - FRIDGE DB - DISTRIBUTION BOARD WC - WATER CLOSET W/D - WASHER CUM DRYER W - WASHER D - DRYER C - CABINET AC - AIRCON LEDGE

* THE BALCONY IN THE UNIT SHALL NOT BE ENCLOSED UNLESS WITH THE APPROVED BALCONY SCREEN.
FOR AN ILLUSTRATION OF THE APPROVED BALCONY SCREEN, PLEASE REFER TO THE LAST PAGE OF THIS BROCHURE.

ALL PLANS ARE SUBJECT TO CHANGE AS MAY BE REQUIRED OR APPROVED BY THE RELEVANT AUTHORITIES. INDICATED FLOOR AREAS ARE APPROXIMATE AND ARE SUBJECT TO FINAL SURVEY.

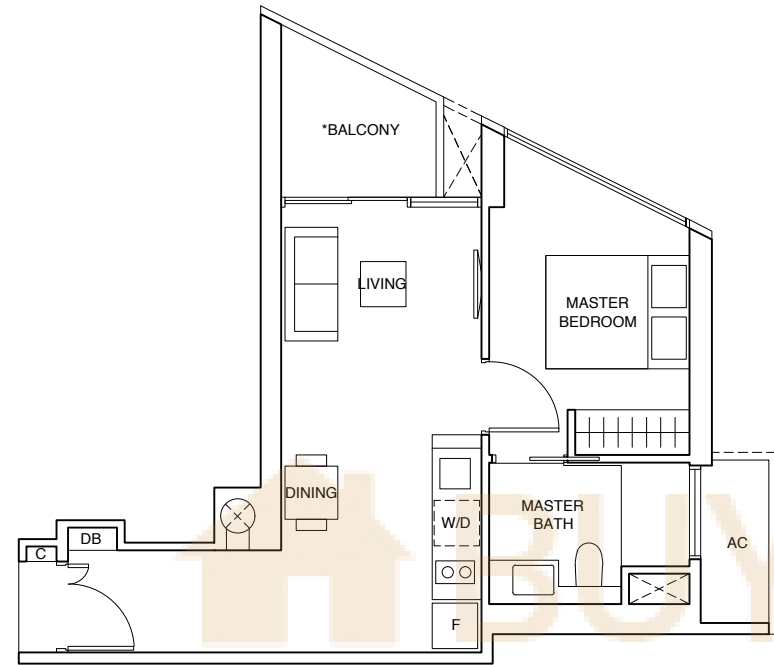
1-BEDROOM

TYPE (1)e

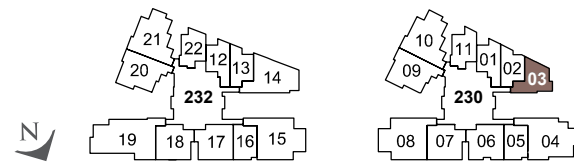
#06-03 to #23-03,
#25-03 to #43-03

45 sqm

Incl A/C Ledge 2 sqm
& Balcony 5 sqm



0 0.5 1 1.5 3 5m



LEGEND:

F - FRIDGE DB - DISTRIBUTION BOARD WC - WATER CLOSET W/D - WASHER CUM DRYER W - WASHER D - DRYER C - CABINET AC - AIRCON LEDGE

* THE BALCONY IN THE UNIT SHALL NOT BE ENCLOSED UNLESS WITH THE APPROVED BALCONY SCREEN.
FOR AN ILLUSTRATION OF THE APPROVED BALCONY SCREEN, PLEASE REFER TO THE LAST PAGE OF THIS BROCHURE.

ALL PLANS ARE SUBJECT TO CHANGE AS MAY BE REQUIRED OR APPROVED BY THE RELEVANT AUTHORITIES. INDICATED FLOOR AREAS ARE APPROXIMATE AND ARE SUBJECT TO FINAL SURVEY.

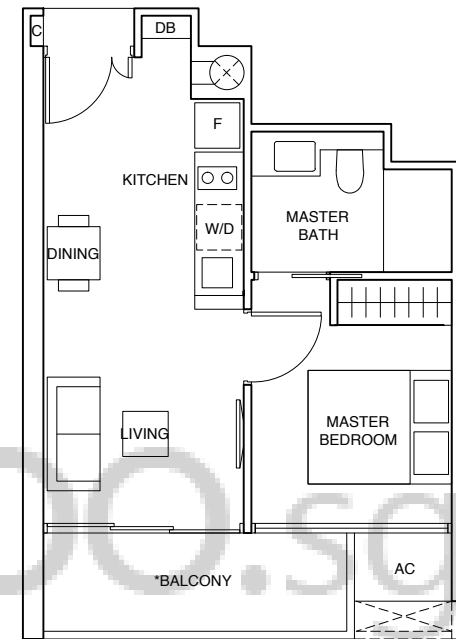
1-BEDROOM

TYPE (1)f

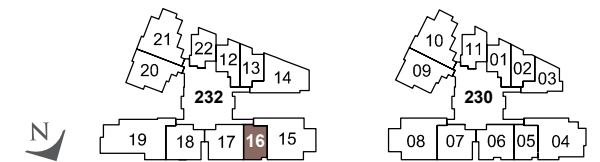
#04-16 to #13-16,
#15-16 to #33-16,
#35-16 to #43-16

41 sqm

Incl A/C Ledge 2 sqm
& Balcony 6 sqm



0 0.5 1 1.5 3 5m



LEGEND:

F - FRIDGE DB - DISTRIBUTION BOARD WC - WATER CLOSET W/D - WASHER CUM DRYER W - WASHER D - DRYER C - CABINET AC - AIRCON LEDGE

* THE BALCONY IN THE UNIT SHALL NOT BE ENCLOSED UNLESS WITH THE APPROVED BALCONY SCREEN.
FOR AN ILLUSTRATION OF THE APPROVED BALCONY SCREEN, PLEASE REFER TO THE LAST PAGE OF THIS BROCHURE.

ALL PLANS ARE SUBJECT TO CHANGE AS MAY BE REQUIRED OR APPROVED BY THE RELEVANT AUTHORITIES. INDICATED FLOOR AREAS ARE APPROXIMATE AND ARE SUBJECT TO FINAL SURVEY.

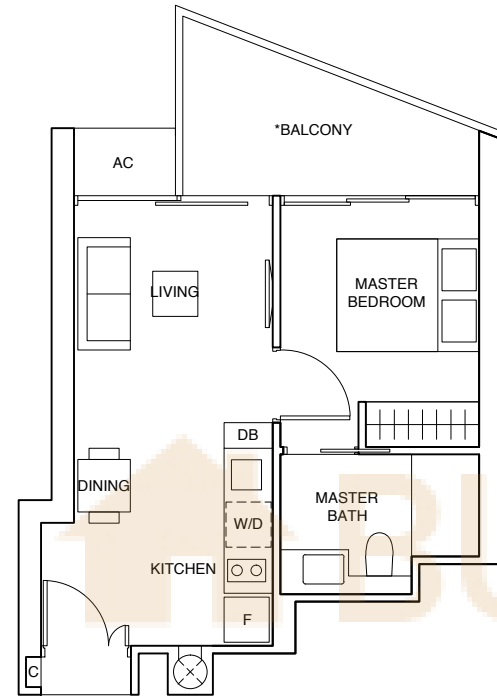
1-BEDROOM

TYPE (1)g

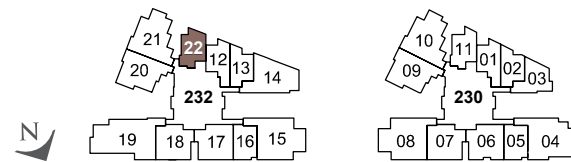
#04-22 to #13-22,
#15-22 to #33-22,
#35-22 to #43-22

43 sqm

Incl A/C Ledge 1 sqm
& Balcony 8 sqm



0 0.5 1 1.5 3 5m



LEGEND:

F - FRIDGE DB - DISTRIBUTION BOARD WC - WATER CLOSET W/D - WASHER CUM DRYER W - WASHER D - DRYER C - CABINET AC - AIRCON LEDGE

* THE BALCONY IN THE UNIT SHALL NOT BE ENCLOSED UNLESS WITH THE APPROVED BALCONY SCREEN.
FOR AN ILLUSTRATION OF THE APPROVED BALCONY SCREEN, PLEASE REFER TO THE LAST PAGE OF THIS BROCHURE.

ALL PLANS ARE SUBJECT TO CHANGE AS MAY BE REQUIRED OR APPROVED BY THE RELEVANT AUTHORITIES. INDICATED FLOOR AREAS ARE APPROXIMATE AND ARE SUBJECT TO FINAL SURVEY.

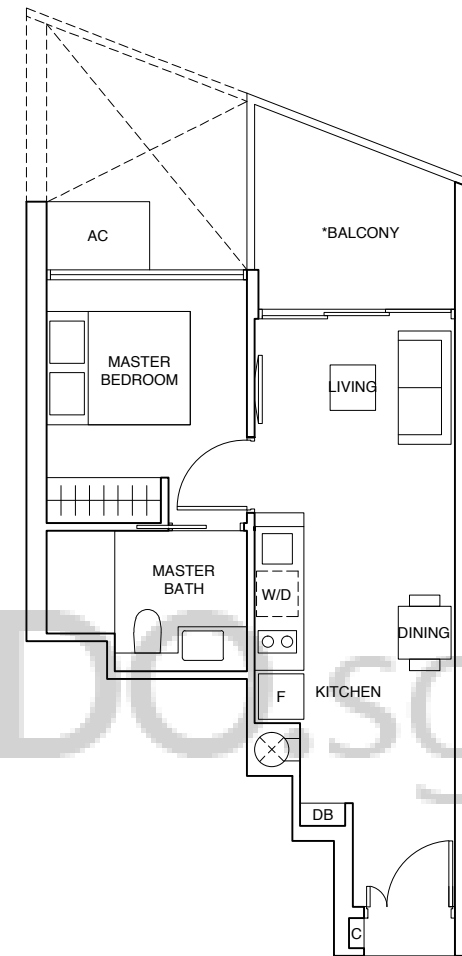
1-BEDROOM

TYPE (1)h

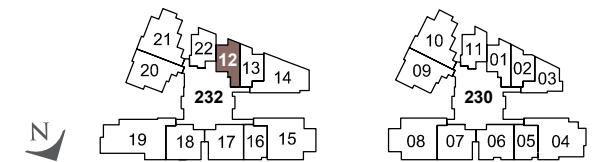
#04-12 to #13-12,
#15-12 to #33-12,
#35-12 to #43-12

44 sqm

Incl A/C Ledge 1 sqm
& Balcony 7 sqm



0 0.5 1 1.5 3 5m



LEGEND:

F - FRIDGE DB - DISTRIBUTION BOARD WC - WATER CLOSET W/D - WASHER CUM DRYER W - WASHER D - DRYER C - CABINET AC - AIRCON LEDGE

* THE BALCONY IN THE UNIT SHALL NOT BE ENCLOSED UNLESS WITH THE APPROVED BALCONY SCREEN.
FOR AN ILLUSTRATION OF THE APPROVED BALCONY SCREEN, PLEASE REFER TO THE LAST PAGE OF THIS BROCHURE.

ALL PLANS ARE SUBJECT TO CHANGE AS MAY BE REQUIRED OR APPROVED BY THE RELEVANT AUTHORITIES. INDICATED FLOOR AREAS ARE APPROXIMATE AND ARE SUBJECT TO FINAL SURVEY.

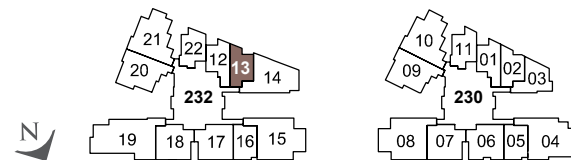
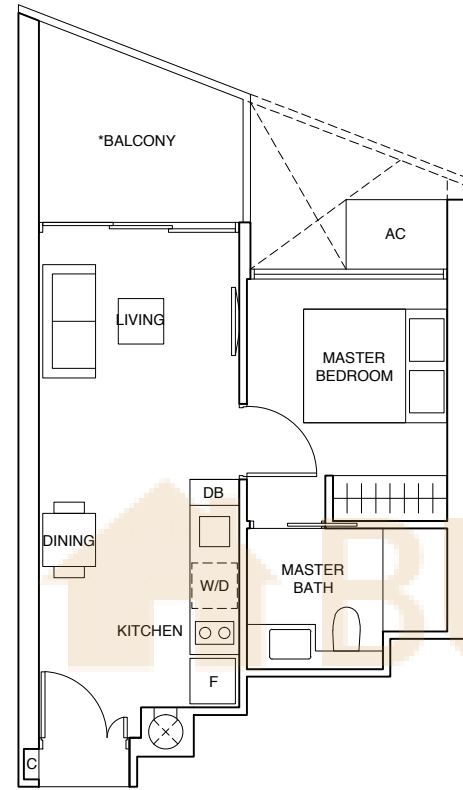
1-BEDROOM

TYPE (1)i

#04-13 to #13-13,
#15-13 to #33-13,
#35-13 to #43-13

43 sqm

Incl A/C Ledge 1 sqm
& Balcony 7 sqm



LEGEND:

F - FRIDGE DB - DISTRIBUTION BOARD WC - WATER CLOSET W/D - WASHER CUM DRYER W - WASHER D - DRYER C - CABINET AC - AIRCON LEDGE

* THE BALCONY IN THE UNIT SHALL NOT BE ENCLOSED UNLESS WITH THE APPROVED BALCONY SCREEN.
FOR AN ILLUSTRATION OF THE APPROVED BALCONY SCREEN, PLEASE REFER TO THE LAST PAGE OF THIS BROCHURE.

ALL PLANS ARE SUBJECT TO CHANGE AS MAY BE REQUIRED OR APPROVED BY THE RELEVANT AUTHORITIES. INDICATED FLOOR AREAS ARE APPROXIMATE AND ARE SUBJECT TO FINAL SURVEY.

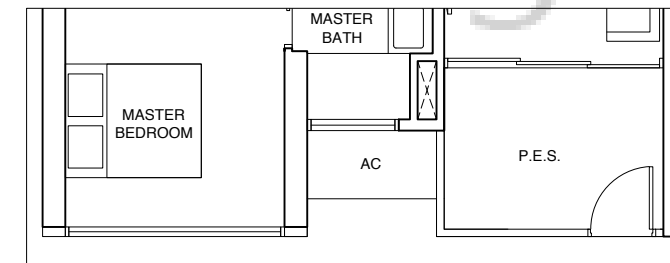
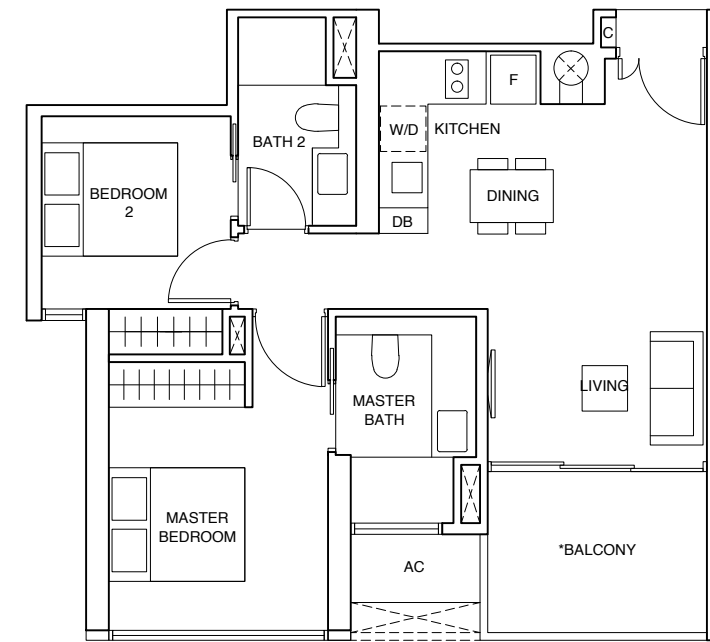
2-BEDROOM

TYPE (2)a

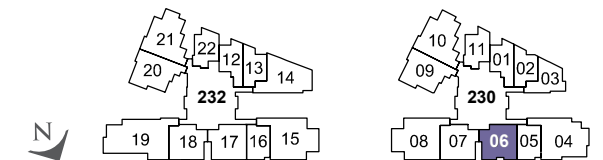
#02-06 to #04-06,
#06-06 to #23-06,
#25-06 to #43-06

64 sqm

Incl A/C Ledge 2 sqm
& Balcony 7 sqm



Applicable to Type (2)a1 only



LEGEND:

F - FRIDGE DB - DISTRIBUTION BOARD WC - WATER CLOSET W/D - WASHER CUM DRYER W - WASHER D - DRYER C - CABINET AC - AIRCON LEDGE

* THE BALCONY IN THE UNIT SHALL NOT BE ENCLOSED UNLESS WITH THE APPROVED BALCONY SCREEN.
FOR AN ILLUSTRATION OF THE APPROVED BALCONY SCREEN, PLEASE REFER TO THE LAST PAGE OF THIS BROCHURE.

ALL PLANS ARE SUBJECT TO CHANGE AS MAY BE REQUIRED OR APPROVED BY THE RELEVANT AUTHORITIES. INDICATED FLOOR AREAS ARE APPROXIMATE AND ARE SUBJECT TO FINAL SURVEY.

2-BEDROOM

TYPE (2)b

#02-07 to #04-07,
#06-07 to #23-07,
#25-07 to #43-07

64 sqm

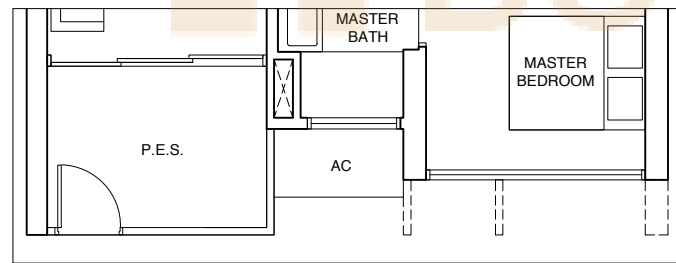
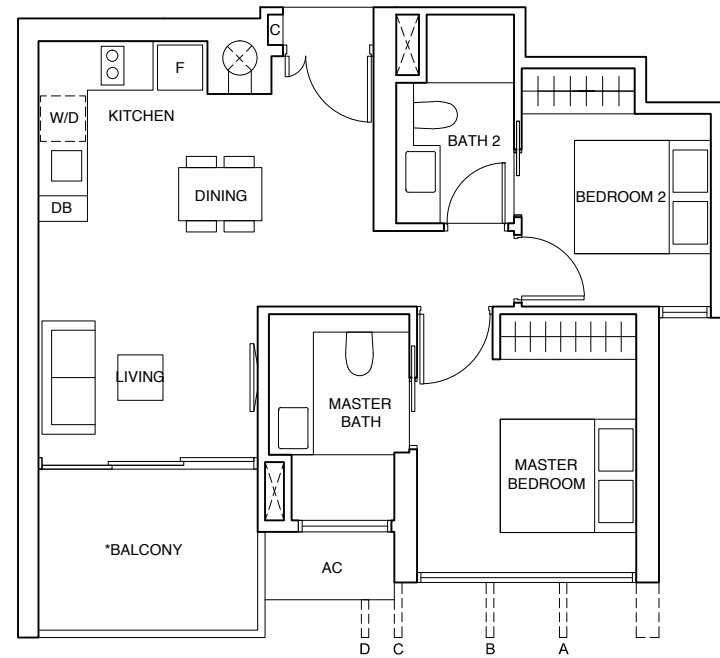
Incl A/C Ledge 2 sqm
& Balcony 7 sqm

TYPE (2)b1

#01-07

64 sqm

Incl A/C Ledge 2 sqm
& PES 7 sqm

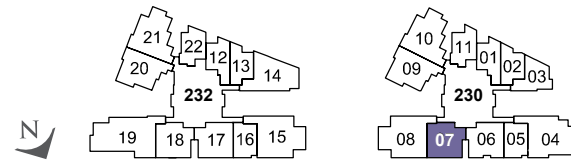


Applicable to Type (2)b1 only

Fin at Levels:

- (A) 02, 06, 09, 12, 15, 18, 21, 25, 28, 31, 34, 37, 40, 43
- (B) 03, 04, 07, 08, 10, 11, 13, 14, 16, 17, 19, 20, 22, 23, 26, 27, 29, 30, 32, 33, 35, 36, 38, 39, 41, 42
- (C) 04, 08, 11, 14, 17, 20, 23, 27, 30, 33, 36, 39, 42
- (D) 02, 03, 06, 07, 09, 10, 12, 13, 15, 16, 18, 19, 21, 22, 25, 26, 28, 29, 31, 32, 34, 35, 37, 38, 40, 41, 43

0 0.5 1 1.5 3 5m



LEGEND:

F - FRIDGE DB - DISTRIBUTION BOARD WC - WATER CLOSET W/D - WASHER CUM DRYER W - WASHER D - DRYER C - CABINET AC - AIRCON LEDGE

* THE BALCONY IN THE UNIT SHALL NOT BE ENCLOSED UNLESS WITH THE APPROVED BALCONY SCREEN.

FOR AN ILLUSTRATION OF THE APPROVED BALCONY SCREEN, PLEASE REFER TO THE LAST PAGE OF THIS BROCHURE.

ALL PLANS ARE SUBJECT TO CHANGE AS MAY BE REQUIRED OR APPROVED BY THE RELEVANT AUTHORITIES. INDICATED FLOOR AREAS ARE APPROXIMATE AND ARE SUBJECT TO FINAL SURVEY.

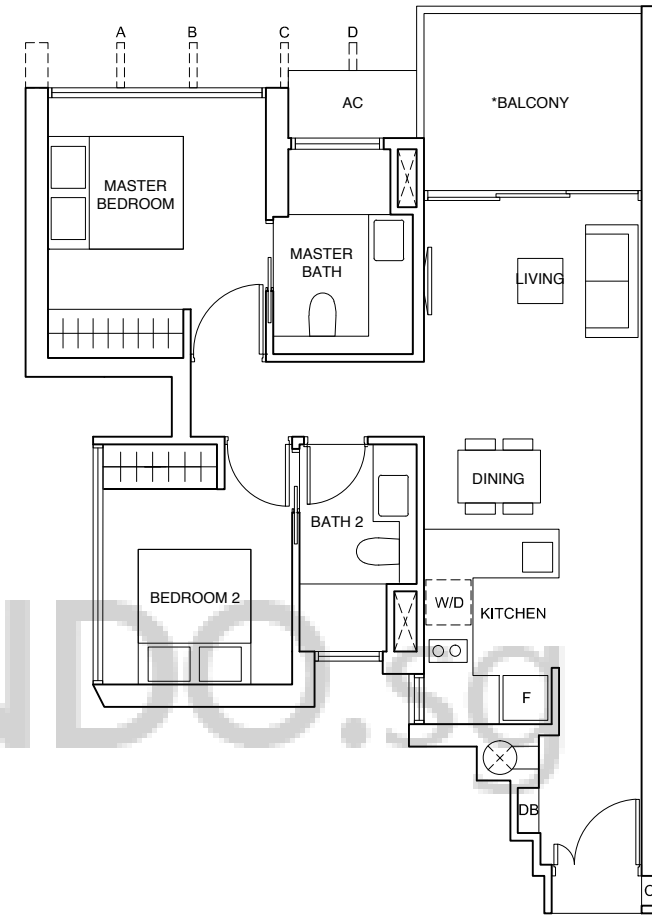
2-BEDROOM

TYPE (2)c

#06-09 to #23-09,
#25-09 to #43-09

70 sqm

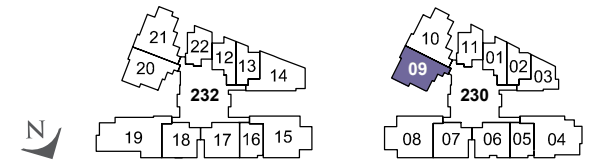
Incl A/C Ledge 2 sqm
& Balcony 8 sqm



Fin at Levels:

- (A) 06, 09, 12, 15, 18, 21, 25, 28, 31, 34, 37, 40, 43
- (B) 07, 08, 10, 11, 13, 14, 16, 17, 19, 20, 22, 23, 26, 27, 29, 30, 32, 33, 35, 36, 38, 39, 41, 42
- (C) 08, 11, 14, 17, 20, 23, 27, 30, 33, 36, 39, 42
- (D) 06, 07, 09, 10, 12, 13, 15, 16, 18, 19, 21, 22, 25, 26, 28, 29, 31, 32, 34, 35, 37, 38, 40, 41, 43

0 0.5 1 1.5 3 5m



LEGEND:

F - FRIDGE DB - DISTRIBUTION BOARD WC - WATER CLOSET W/D - WASHER CUM DRYER W - WASHER D - DRYER C - CABINET AC - AIRCON LEDGE

* THE BALCONY IN THE UNIT SHALL NOT BE ENCLOSED UNLESS WITH THE APPROVED BALCONY SCREEN.

FOR AN ILLUSTRATION OF THE APPROVED BALCONY SCREEN, PLEASE REFER TO THE LAST PAGE OF THIS BROCHURE.

ALL PLANS ARE SUBJECT TO CHANGE AS MAY BE REQUIRED OR APPROVED BY THE RELEVANT AUTHORITIES. INDICATED FLOOR AREAS ARE APPROXIMATE AND ARE SUBJECT TO FINAL SURVEY.

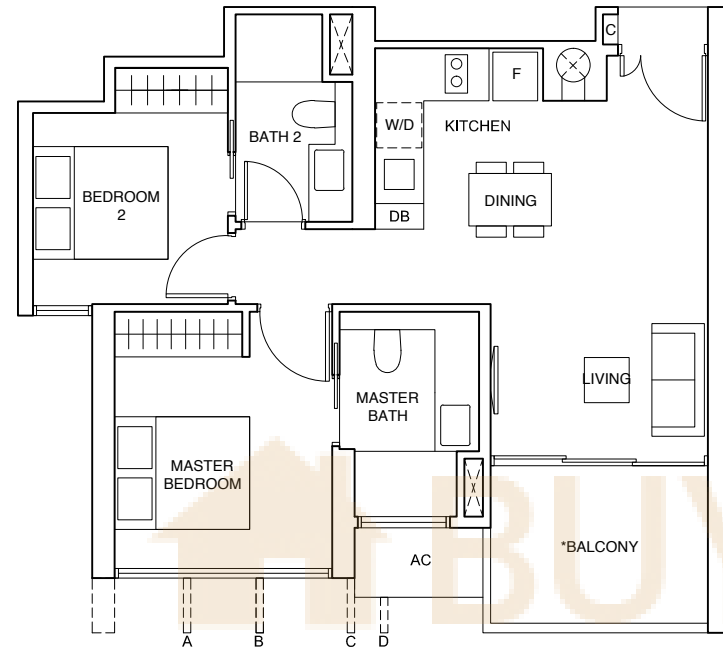
2-BEDROOM

TYPE (2)d

#04-17 to #13-17,
#15-17 to #33-17,
#35-17 to #43-17

64 sqm

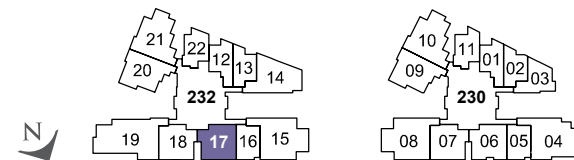
Incl A/C Ledge 2 sqm
& Balcony 7 sqm



Fin at Levels:

- (A) 04, 07, 10, 13, 15, 18, 21, 24, 27, 30, 33, 35, 38, 41
- (B) 05, 06, 08, 09, 11, 12, 16, 17, 19, 20, 22, 23, 25, 26, 28, 29, 31, 32, 36, 37, 39, 40, 42, 43
- (C) 06, 09, 12, 17, 20, 23, 26, 29, 32, 37, 40, 43
- (D) 04, 05, 07, 08, 10, 11, 13, 15, 16, 18, 19, 21, 22, 24, 25, 27, 28, 30, 31, 33, 35, 36, 38, 39, 41, 42

0 0.5 1 1.5 3 5m



LEGEND:

F - FRIDGE DB - DISTRIBUTION BOARD WC - WATER CLOSET W/D - WASHER CUM DRYER W - WASHER D - DRYER C - CABINET AC - AIRCON LEDGE

* THE BALCONY IN THE UNIT SHALL NOT BE ENCLOSED UNLESS WITH THE APPROVED BALCONY SCREEN.
FOR AN ILLUSTRATION OF THE APPROVED BALCONY SCREEN, PLEASE REFER TO THE LAST PAGE OF THIS BROCHURE.

ALL PLANS ARE SUBJECT TO CHANGE AS MAY BE REQUIRED OR APPROVED BY THE RELEVANT AUTHORITIES. INDICATED FLOOR AREAS ARE APPROXIMATE AND ARE SUBJECT TO FINAL SURVEY.

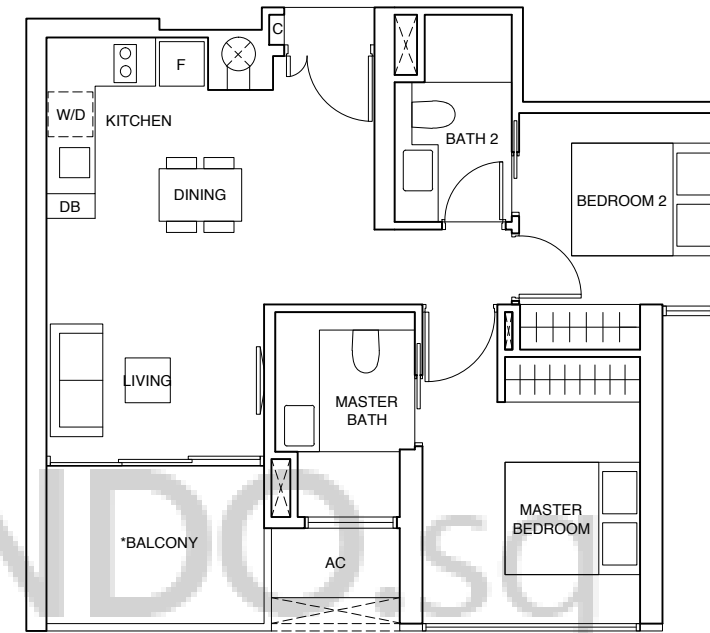
2-BEDROOM

TYPE (2)e

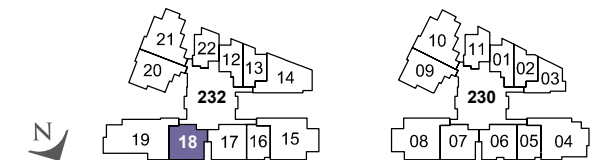
#04-18 to #13-18,
#15-18 to #33-18,
#35-18 to #43-18

65 sqm

Incl A/C Ledge 2 sqm
& Balcony 7 sqm



0 0.5 1 1.5 3 5m



LEGEND:

F - FRIDGE DB - DISTRIBUTION BOARD WC - WATER CLOSET W/D - WASHER CUM DRYER W - WASHER D - DRYER C - CABINET AC - AIRCON LEDGE

* THE BALCONY IN THE UNIT SHALL NOT BE ENCLOSED UNLESS WITH THE APPROVED BALCONY SCREEN.
FOR AN ILLUSTRATION OF THE APPROVED BALCONY SCREEN, PLEASE REFER TO THE LAST PAGE OF THIS BROCHURE.

ALL PLANS ARE SUBJECT TO CHANGE AS MAY BE REQUIRED OR APPROVED BY THE RELEVANT AUTHORITIES. INDICATED FLOOR AREAS ARE APPROXIMATE AND ARE SUBJECT TO FINAL SURVEY.

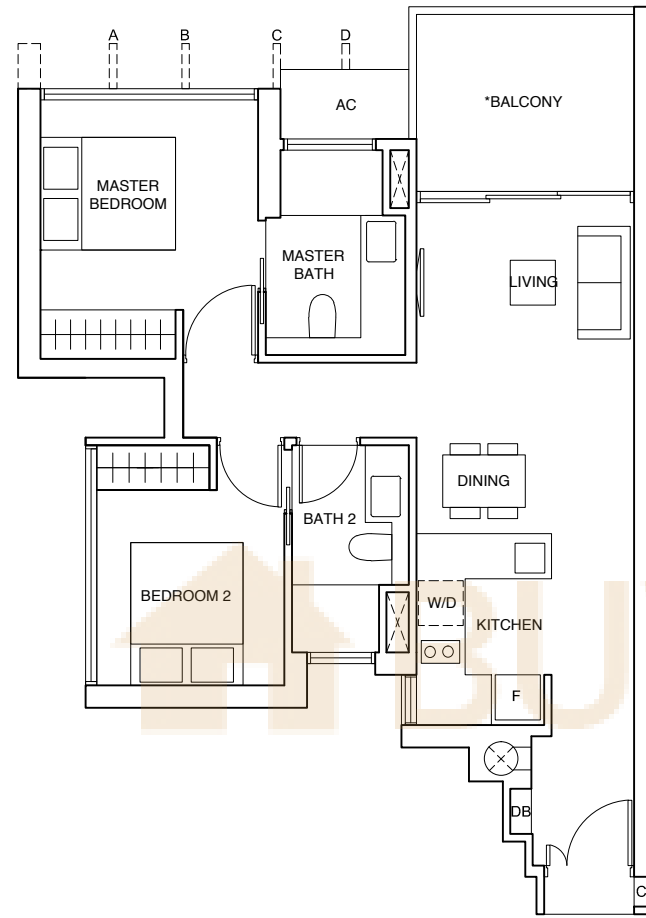
2-BEDROOM

TYPE (2)f

#04-20 to #13-20,
#15-20 to #33-20,
#35-20 to #43-20

70 sqm

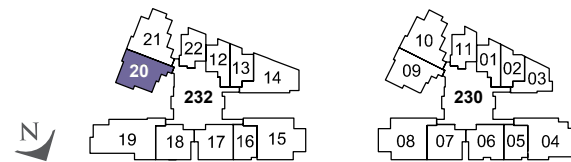
Incl A/C Ledge 2 sqm
& Balcony 8 sqm



Fin at Levels:

- (A) 04, 07, 10, 13, 15, 18, 21, 24, 27, 30, 33, 35, 38, 41
- (B) 05, 06, 08, 09, 11, 12, 16, 17, 19, 20, 22, 23, 25, 26, 28, 29, 31, 32, 36, 37, 39, 40, 42, 43
- (C) 06, 09, 12, 17, 20, 23, 26, 29, 32, 37, 40, 43
- (D) 04, 05, 07, 08, 10, 11, 13, 15, 16, 18, 19, 21, 22, 24, 25, 27, 28, 30, 31, 33, 35, 36, 38, 39, 41, 42

0 0.5 1 1.5 3 5m



LEGEND:

F - FRIDGE DB - DISTRIBUTION BOARD WC - WATER CLOSET W/D - WASHER CUM DRYER W - WASHER D - DRYER C - CABINET AC - AIRCON LEDGE

* THE BALCONY IN THE UNIT SHALL NOT BE ENCLOSED UNLESS WITH THE APPROVED BALCONY SCREEN.
FOR AN ILLUSTRATION OF THE APPROVED BALCONY SCREEN, PLEASE REFER TO THE LAST PAGE OF THIS BROCHURE.

ALL PLANS ARE SUBJECT TO CHANGE AS MAY BE REQUIRED OR APPROVED BY THE RELEVANT AUTHORITIES. INDICATED FLOOR AREAS ARE APPROXIMATE AND ARE SUBJECT TO FINAL SURVEY.

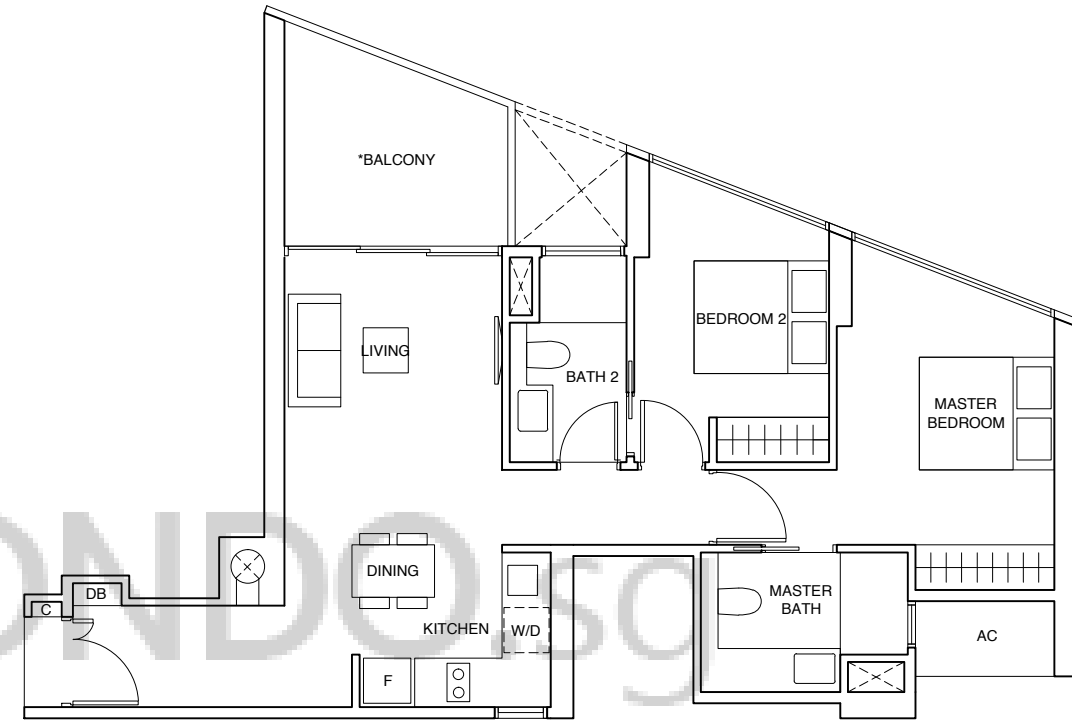
2-BEDROOM

TYPE (2)g

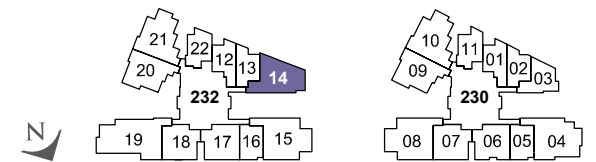
#04-14 to #13-14,
#15-14 to #33-14,
#35-14 to #43-14

74 sqm

Incl A/C Ledge 2 sqm
& Balcony 9 sqm



0 0.5 1 1.5 3 5m



LEGEND:

F - FRIDGE DB - DISTRIBUTION BOARD WC - WATER CLOSET W/D - WASHER CUM DRYER W - WASHER D - DRYER C - CABINET AC - AIRCON LEDGE

* THE BALCONY IN THE UNIT SHALL NOT BE ENCLOSED UNLESS WITH THE APPROVED BALCONY SCREEN.
FOR AN ILLUSTRATION OF THE APPROVED BALCONY SCREEN, PLEASE REFER TO THE LAST PAGE OF THIS BROCHURE.

ALL PLANS ARE SUBJECT TO CHANGE AS MAY BE REQUIRED OR APPROVED BY THE RELEVANT AUTHORITIES. INDICATED FLOOR AREAS ARE APPROXIMATE AND ARE SUBJECT TO FINAL SURVEY.

3-BEDROOM

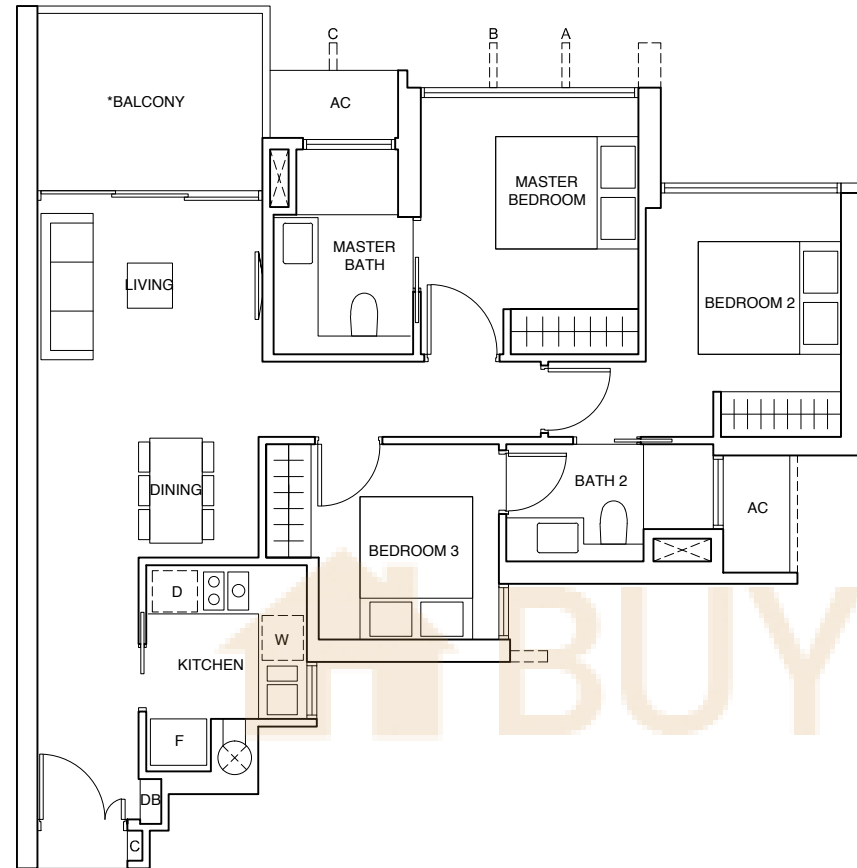
TYPE (3)a

#06-10 to #23-10,
#25-10 to #43-10

#04-21 to #13-21,
#15-21 to #33-21,
#35-21 to #43-21

84 sqm

Incl A/C Ledge 3 sqm
& Balcony 8 sqm



Fin at Levels:

For Stack 10

(A) 06, 09, 12, 15, 18, 21, 25, 28, 31, 34, 37, 40, 43

(B) 07, 08, 10, 11, 13, 14, 16, 17, 19, 20, 22, 23, 26,
27, 29, 30, 32, 33, 35, 36, 38, 39, 41, 42

(C) 06, 08, 09, 11, 12, 14, 15, 17, 18, 20, 21, 23, 25,
27, 28, 30, 31, 33, 34, 36, 37, 39, 40, 42, 43

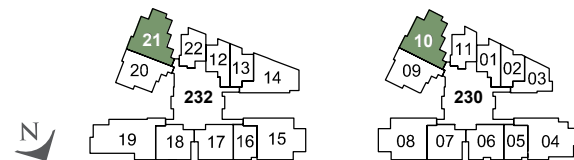
For Stack 21

(A) 04, 07, 10, 13, 15, 18, 21, 24, 27, 30, 33, 35, 38, 41

(B) 05, 06, 08, 09, 11, 12, 16, 17, 19, 20, 22, 23, 25,
26, 28, 29, 31, 32, 36, 37, 39, 40, 42, 43

(C) 04, 06, 07, 09, 10, 12, 13, 15, 17, 18, 20, 21, 23,
24, 26, 27, 29, 30, 32, 33, 35, 37, 38, 40, 41, 43

0 0.5 1 1.5 3 5m



LEGEND:

F - FRIDGE DB - DISTRIBUTION BOARD WC - WATER CLOSET W/D - WASHER CUM DRYER W - WASHER D - DRYER C - CABINET AC - AIRCON LEDGE

* THE BALCONY IN THE UNIT SHALL NOT BE ENCLOSED UNLESS WITH THE APPROVED BALCONY SCREEN.
FOR AN ILLUSTRATION OF THE APPROVED BALCONY SCREEN, PLEASE REFER TO THE LAST PAGE OF THIS BROCHURE.

ALL PLANS ARE SUBJECT TO CHANGE AS MAY BE REQUIRED OR APPROVED BY THE RELEVANT AUTHORITIES. INDICATED FLOOR AREAS ARE APPROXIMATE AND ARE SUBJECT TO FINAL SURVEY.

3-BEDROOM (WITH YARD)

TYPE (3y)a

#02-04 to #04-04,
#06-04 to #23-04,
#25-04 to #43-04

100 sqm

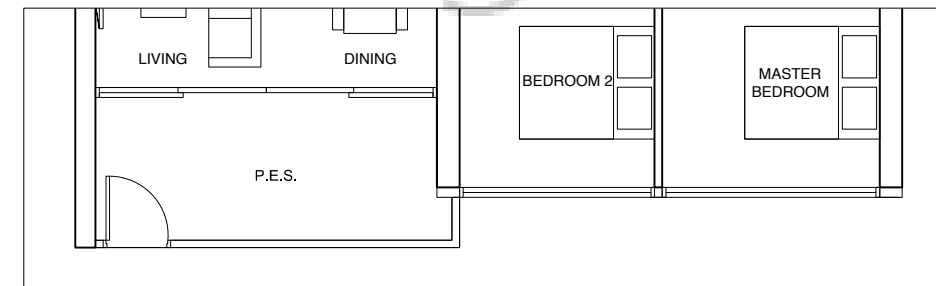
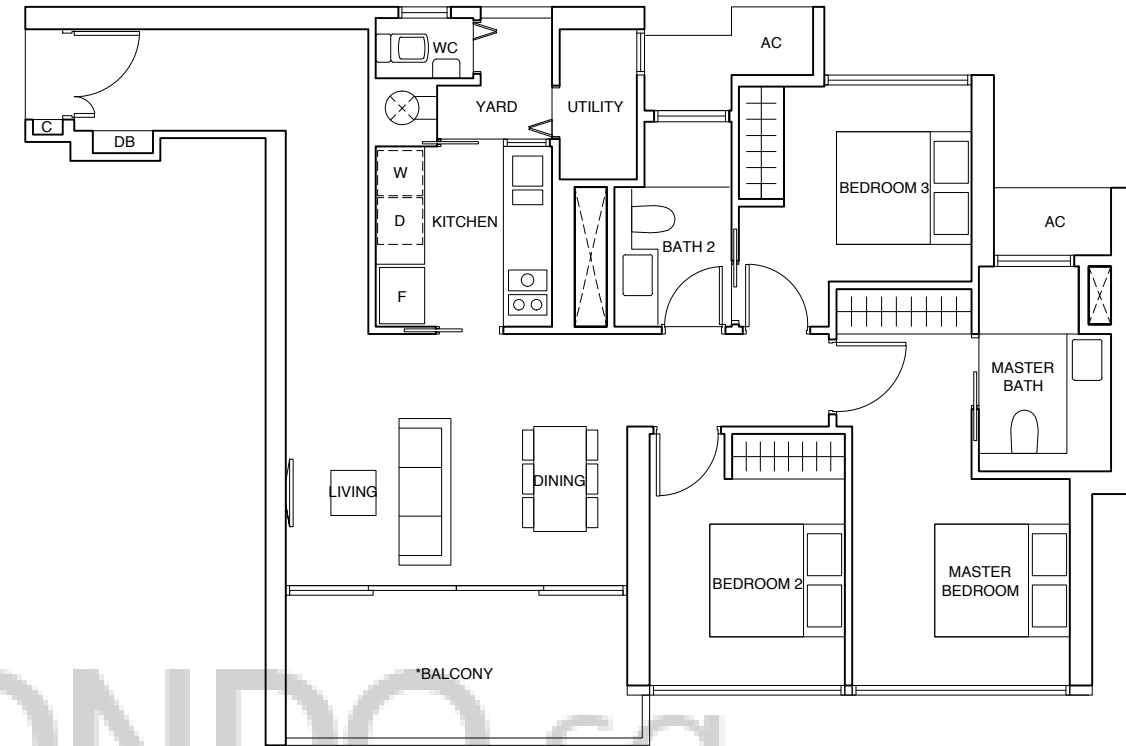
Incl A/C Ledge 4 sqm
& Balcony 10 sqm

TYPE (3y)a1

#01-04

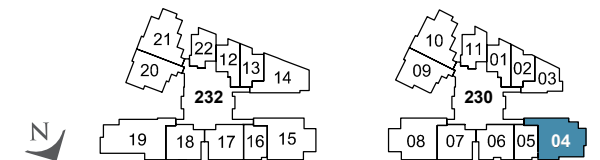
100 sqm

Incl A/C Ledge 4 sqm
& PES 10 sqm



Applicable to Type (3y)a1 only

0 0.5 1 1.5 3 5m



LEGEND:

F - FRIDGE DB - DISTRIBUTION BOARD WC - WATER CLOSET W/D - WASHER CUM DRYER W - WASHER D - DRYER C - CABINET AC - AIRCON LEDGE

* THE BALCONY IN THE UNIT SHALL NOT BE ENCLOSED UNLESS WITH THE APPROVED BALCONY SCREEN.
FOR AN ILLUSTRATION OF THE APPROVED BALCONY SCREEN, PLEASE REFER TO THE LAST PAGE OF THIS BROCHURE.

ALL PLANS ARE SUBJECT TO CHANGE AS MAY BE REQUIRED OR APPROVED BY THE RELEVANT AUTHORITIES. INDICATED FLOOR AREAS ARE APPROXIMATE AND ARE SUBJECT TO FINAL SURVEY.

3-BEDROOM (WITH YARD)

TYPE (3y)b

#02-08 to #04-08,
#06-08 to #23-08,
#25-08 to #43-08

96 sqm

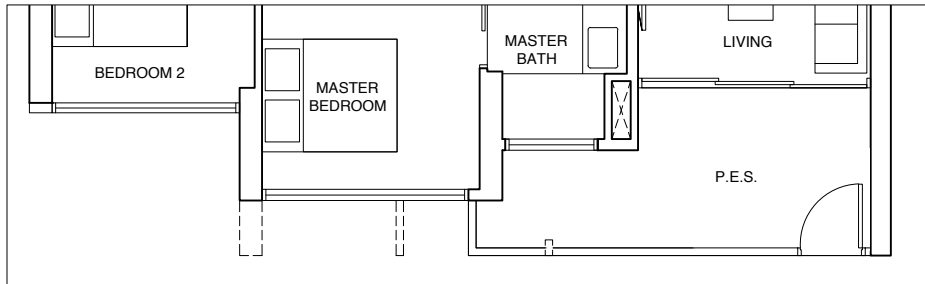
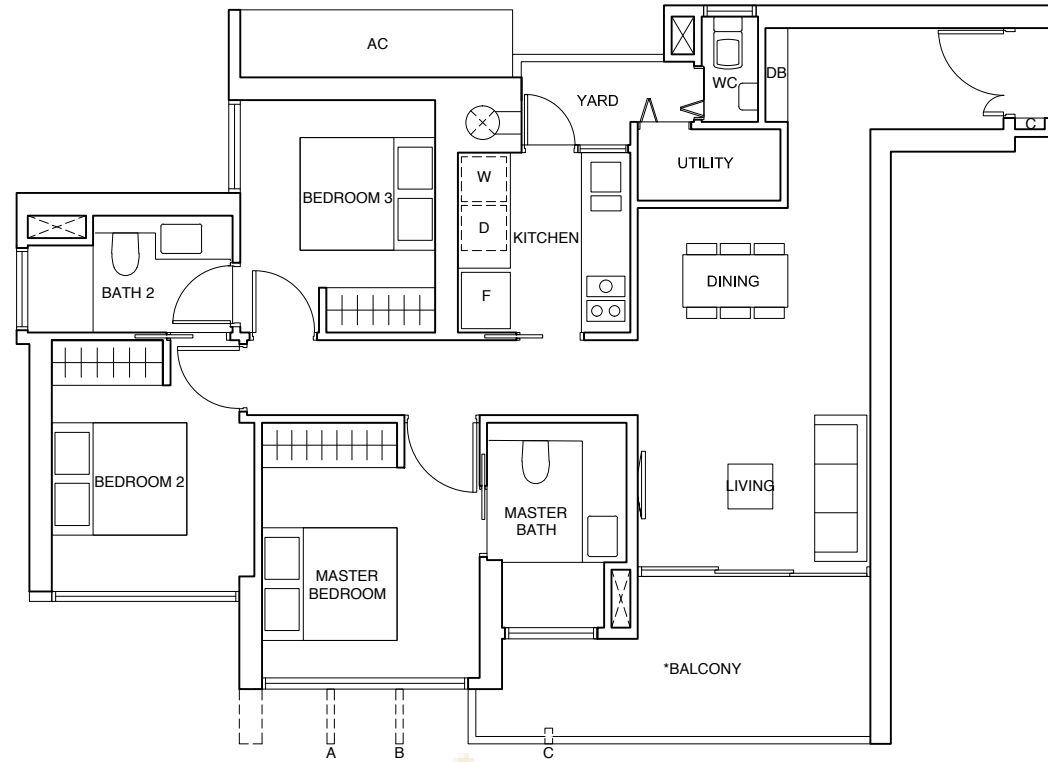
Incl A/C Ledge 4 sqm
& Balcony 11 sqm

TYPE (3y)b1

#01-08

96 sqm

Incl A/C Ledge 4 sqm
& PES 11 sqm

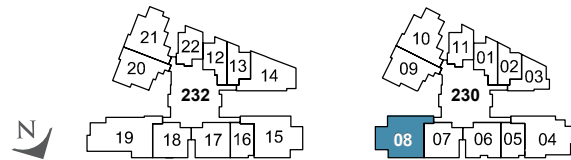


Applicable to Type (3y)b1 only

Fin at Levels:

- (A) 02, 06, 09, 12, 15, 18, 21, 25, 28, 31, 34, 37, 40, 43
- (B) 03, 04, 07, 08, 10, 11, 13, 14, 16, 17, 19, 20, 22, 23, 26, 27, 29, 30, 32, 33, 35, 36, 38, 39, 41, 42
- (C) 02, 04, 06, 08, 09, 11, 12, 14, 15, 17, 18, 20, 21, 23, 25, 27, 28, 30, 31, 33, 34, 36, 37, 39, 40, 42, 43

0 0.5 1 1.5 3 5m



LEGEND:

F - FRIDGE DB - DISTRIBUTION BOARD WC - WATER CLOSET W/D - WASHER CUM DRYER W - WASHER D - DRYER C - CABINET AC - AIRCON LEDGE

* THE BALCONY IN THE UNIT SHALL NOT BE ENCLOSED UNLESS WITH THE APPROVED BALCONY SCREEN.
FOR AN ILLUSTRATION OF THE APPROVED BALCONY SCREEN, PLEASE REFER TO THE LAST PAGE OF THIS BROCHURE.

ALL PLANS ARE SUBJECT TO CHANGE AS MAY BE REQUIRED OR APPROVED BY THE RELEVANT AUTHORITIES. INDICATED FLOOR AREAS ARE APPROXIMATE AND ARE SUBJECT TO FINAL SURVEY.

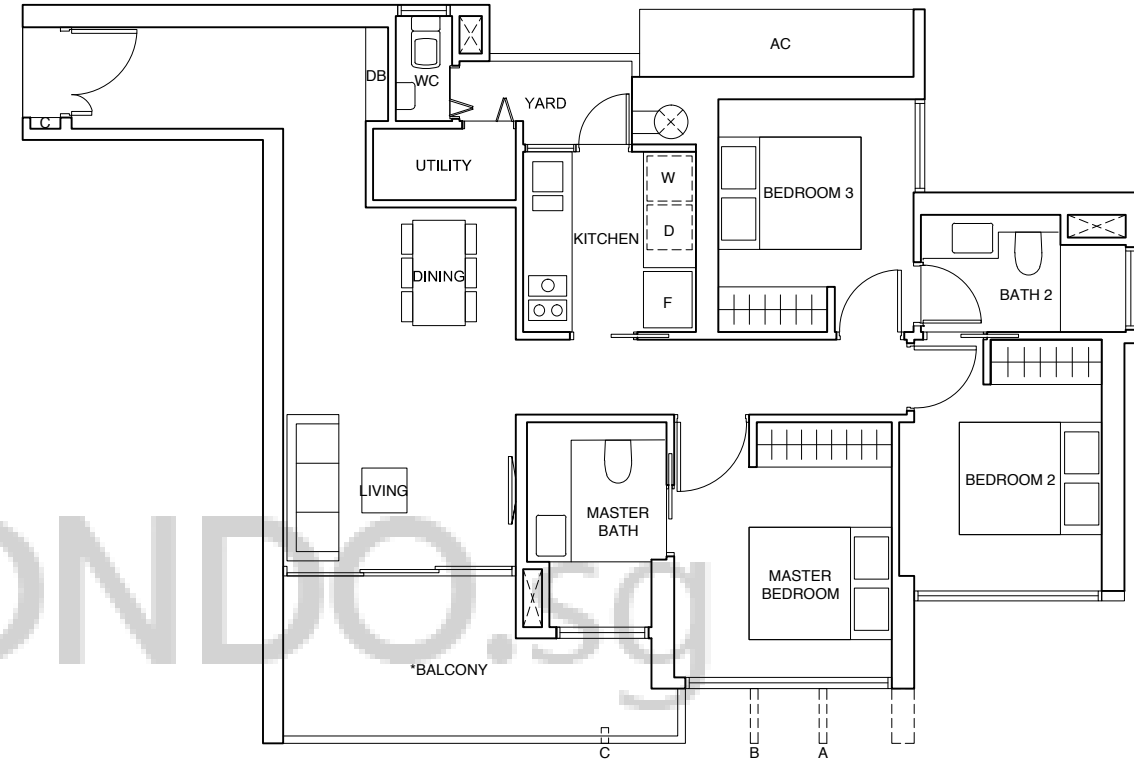
3-BEDROOM (WITH YARD)

TYPE (3y)c

#04-15 to #13-15,
#15-15 to #33-15,
#35-15 to #43-15

98 sqm

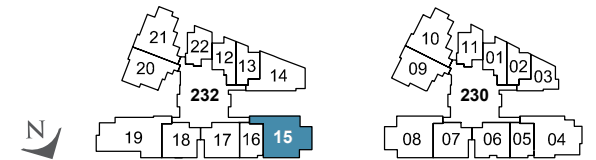
Incl A/C Ledge 4 sqm
& Balcony 11 sqm



Fin at Levels:

- (A) 04, 07, 10, 13, 15, 18, 21, 24, 27, 30, 33, 35, 38, 41
- (B) 05, 06, 08, 09, 11, 12, 16, 17, 19, 20, 22, 23, 25, 26, 28, 29, 31, 32, 36, 37, 39, 40, 42, 43
- (C) 04, 06, 07, 09, 10, 12, 13, 15, 17, 18, 20, 21, 23, 24, 26, 27, 29, 30, 32, 33, 35, 37, 38, 40, 41, 43

0 0.5 1 1.5 3 5m



LEGEND:

F - FRIDGE DB - DISTRIBUTION BOARD WC - WATER CLOSET W/D - WASHER CUM DRYER W - WASHER D - DRYER C - CABINET AC - AIRCON LEDGE

* THE BALCONY IN THE UNIT SHALL NOT BE ENCLOSED UNLESS WITH THE APPROVED BALCONY SCREEN.
FOR AN ILLUSTRATION OF THE APPROVED BALCONY SCREEN, PLEASE REFER TO THE LAST PAGE OF THIS BROCHURE.

ALL PLANS ARE SUBJECT TO CHANGE AS MAY BE REQUIRED OR APPROVED BY THE RELEVANT AUTHORITIES. INDICATED FLOOR AREAS ARE APPROXIMATE AND ARE SUBJECT TO FINAL SURVEY.

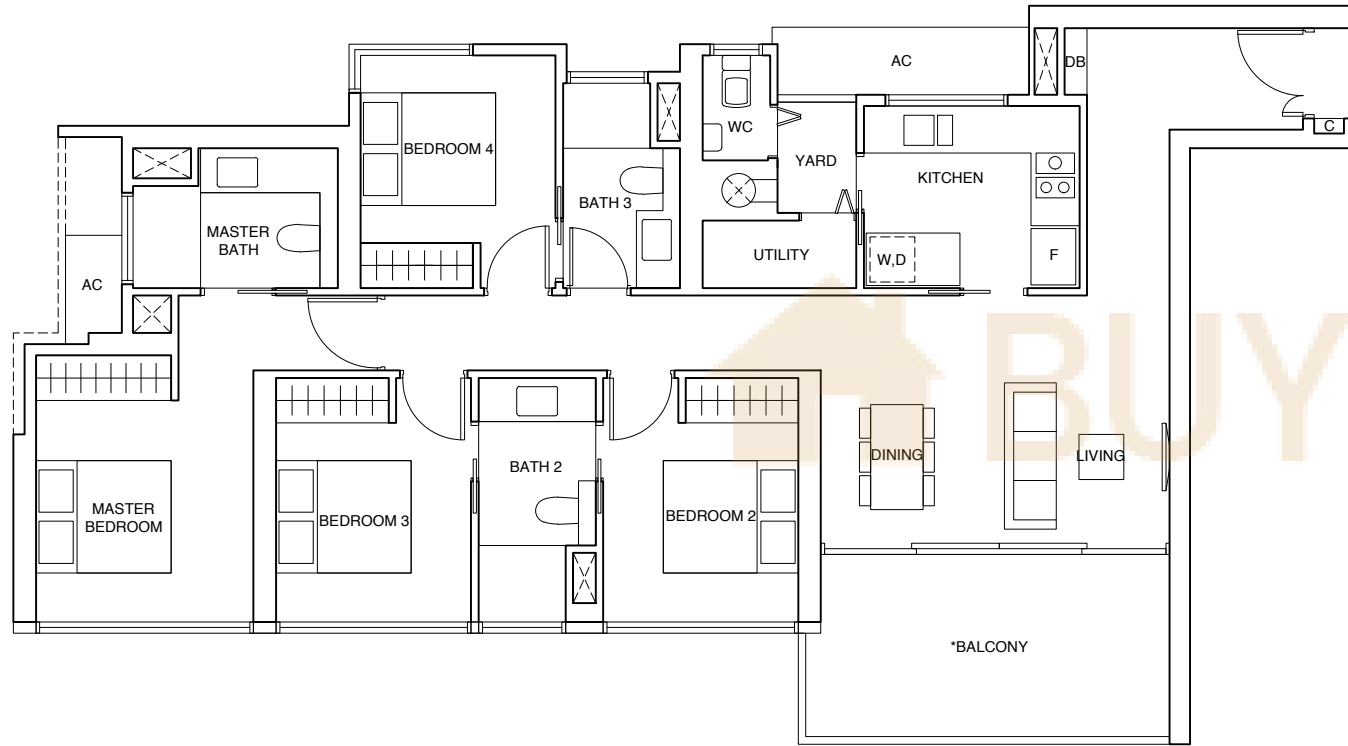
4-BEDROOM

TYPE (4)a

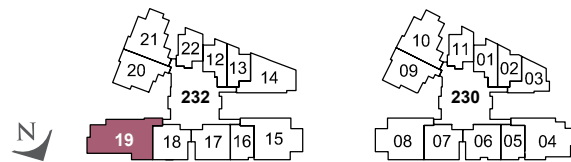
#04-19 to #13-19,
#15-19 to #33-19,
#35-19 to #43-19

121 sqm

Incl A/C Ledge 5 sqm
& Balcony 13 sqm



0 0.5 1 1.5 3 5m



LEGEND:

F - FRIDGE DB - DISTRIBUTION BOARD WC - WATER CLOSET W/D - WASHER CUM DRYER W - WASHER D - DRYER C - CABINET AC - AIRCON LEDGE

* THE BALCONY IN THE UNIT SHALL NOT BE ENCLOSED UNLESS WITH THE APPROVED BALCONY SCREEN.
FOR AN ILLUSTRATION OF THE APPROVED BALCONY SCREEN, PLEASE REFER TO THE LAST PAGE OF THIS BROCHURE.

ALL PLANS ARE SUBJECT TO CHANGE AS MAY BE REQUIRED OR APPROVED BY THE RELEVANT AUTHORITIES. INDICATED FLOOR AREAS ARE APPROXIMATE AND ARE SUBJECT TO FINAL SURVEY.

SPECIFICATIONS

1) FOUNDATION

Reinforced concrete raft slab and/or cast in-situ bored piles and/or driven pre-cast reinforced concrete piles in accordance with Singapore Standard CP 4 : 2003 and Singapore Standard CP 65 and/or BC2 : 2008.

2) SUPERSTRUCTURE

Cast in-situ and/or precast reinforced concrete structure using between Grade 35 to Grade 80 concrete manufactured from cement in accordance with Singapore Standard SS 26, steel reinforcement bars and/or strands in accordance with Singapore Standard SS 2 and/or Singapore Standard SS 475 and/or Singapore Standard CP65 and/or BC2 : 2008.

3) WALLS

- External wall
In-situ and/or pre-cast reinforced concrete wall and/or masonry wall.
- Internal wall
Masonry and/or reinforced concrete and/or lightweight concrete panels and/or pre-cast wall panels and/or dry wall partition system.

4) ROOF

Reinforced concrete flat roof with heat insulation and waterproofing system.

5) CEILING

- Apartment Unit**
Skim coat and/or ceiling boards with emulsion paint to living, dining, bedrooms, kitchen, yard, balcony, PES, baths, wc, utility and passageway, where applicable.
- Common Areas**
 - Skim coat and/or ceiling boards with emulsion paint to lift lobbies, corridors, function rooms, library, gym, handicapped toilets, changing rooms and toilets.
 - Skim coat and/or ceiling boards with emulsion paint to staircase, carpark and driveway.

6) FINISHES

(A) WALL FINISHES

- Apartment Unit – Internal** (finishes provided up to false ceiling level and exposed areas only). For all unit types:
 - Plaster and/or skim coat with emulsion paint to living, dining, bedrooms, passageway, utility and yard, where applicable.
 - Natural stone tiles to master bath.
 - Homogenous and/or ceramic and/or porcelain tiles to bath 2 and bath 3, where applicable.
 - Homogenous and/or ceramic and/or porcelain tiles to kitchen and wc, where applicable.
- Apartment Unit – External**
 - Plaster and/or skim coat with emulsion paint to balcony and PES, where applicable.
 - Laminated glass parapet with stainless steel and/or aluminium railing to balcony, where applicable.
 - Glass parapet with stainless steel and/or

aluminium railing to PES, where applicable.

c) Common Areas – Internal

- Agglomerated marble and/or natural stone and/or homogenous and/or ceramic and/or porcelain tiles and/or plaster and/or skim coat with emulsion and/or laminated paneling to lift lobbies.
- Plaster and/or skim coat with emulsion paint to passageways, function rooms, gym and library.
- Homogenous and/or ceramic and/or porcelain and/or mosaic tiles to changing rooms, toilets and handicapped toilet.
- Plaster and/or skim coat with emulsion paint to carpark, corridor and staircase.

d) Common Areas – External

- Natural stone and/or homogenous and/or ceramic and/or porcelain tiles and/or pebble wash finish and/or plaster and/or skim coat with emulsion paint to wall.
- Natural stone and/or homogenous and/or ceramic and/or porcelain tiles and/or pebble wash finish to water feature.

(B) FLOOR FINISHES

a) Apartment Unit

- Natural stone tiles with matching skirting to living, dining and passageway, where applicable.
- Natural stone tiles to kitchen (for unit types (1) & (2) only).
- Homogenous and/or ceramic and/or porcelain tiles to kitchen (for unit types (3), (3y) & (4) only).
- Solid timber flooring with matching skirting to bedrooms.
- Natural stone tiles to master bath.
- Homogenous and/or ceramic and/or porcelain tiles to bath 2, bath 3 and wc, where applicable.
- Homogenous and/or ceramic and/or porcelain tiles with matching skirting to balcony, PES, utility and yard, where applicable.

b) Common Areas – Internal

- Natural stone and/or agglomerated marble and/or homogenous and/or ceramic and/or porcelain tiles with matching skirting to lift lobbies at basements and 1st storey.
- Homogenous and/or ceramic and/or porcelain tiles with matching skirting to other common lift lobbies.
- Carpet and/or natural stone and/or agglomerated marble and/or homogenous and/or ceramic and/or porcelain tiles to function rooms and library.
- Reconstituted timber flooring and/or vinyl flooring and/or carpet to gym.
- Homogenous and/or ceramic and/or porcelain tiles to changing rooms, toilets and handicapped toilets.

c) Common Areas – External

- Reconstituted timber strip and/or natural stone and/or homogenous and/or ceramic and/or reconstituted stone tiles and/or pebble wash finishes to pool decks, sun deck, walkway, linkway and footpath.

- Ceramic tiles and/or mosaic tiles to lifestyle pool, lap pool, hydrotherapy pool, wading pool, aqua gym and jacuzzis.
- Natural stone and/or homogenous and/or ceramic and/or porcelain tiles and/or pebble wash finish to water feature.
- Natural stone and/or homogenous and/or ceramic tiles and/or pebble wash and/or reconstituted timber to communal outdoor pavilions.
- Reconstituted rubber flooring to children's playground.
- Reconstituted timber strip and/or natural stone and/or homogenous and/or ceramic tiles and/or reconstituted rubber flooring to outdoor fitness area.

7) WINDOWS

Aluminium framed windows with minimum 6mm thick clear and/or tinted glass, where applicable.

- Top-hung window and/or fixed panel to all bedrooms (except unit type (1)g only).
- Top-hung window and/or fixed panel to baths, except:
 - No window provision to:
 - master bath (for all unit types (1)a, (1)a1, (1)b, (1)c, (1)d, (1)f, (1)g, (1)h & (1)i only).
 - bath 2 (for unit types (2)a, (2)a1, (2)b, (2)b1, (2)d & (2)e only).
 - Casement window and/or fixed panel to master bath (for unit types (1)e, (2)g, (3y)a & (3y)a1 only).
- Casement window and/or fixed panel to utility (for unit type (3y)a & (3y)a1 only).
- Top-hung window and/or fixed panel to all kitchens, except no window provision to kitchen for all unit types (1) & (2)a, (2)a1, (2)b, (2)b1, (2)d & (2)e only.

8) DOORS

- Fire-rated solid timber swing doors to unit main entrance.
- Hollow core timber swing door to bedrooms.
- Hollow core timber sliding door to all baths, except:
 - Hollow core swing and sliding door to bath 2 (for all unit types (2), (3) & (3y) only)
 - Hollow core swing and sliding door to bath 3 (for unit type (4)a only).
- Timber framed glass sliding door to kitchen (for all unit types (3), (3y) & (4) only).
- Slide-and-fold door with top hung panel to wc and utility (for all unit types (3y) & (4) only).
- Aluminium framed glass sliding door to balcony and PES, where applicable.
- Aluminium framed glass sliding door to yard (for unit types (3y)a & (4)a only).
- Aluminium framed glass swing door to yard (for unit types (3y)b & (3y)c only).
- Stainless steel and/or aluminium framed glass swing door to PES, where applicable.
- Good quality locksets and ironmongery to be provided.