

**TOWER B**

25 Upper Serangoon View

UNIT LEVEL	7	8	9	10
18	C6	C3	C5	C6
17	C6	C3	C5	C6
16	C6	C3	C5	C6
15	C6	C3	C5	C6
14	C6	C3	C5	C6
13	C6	C3	C5	C6
12	C6	C3	C5	C6
11	C6	C3	C5	C6
10	C6	C3	C5	C6
9	C6	C3	C5	C6
8	C6	C3	C5	C6
7	C6	C3	C5	C6
6	C6	C3	C5	C6
5	C6	C3	C5	C6
4	C6	C3	C5	C6
3	C6	C3	C5	C6
2	C6	C3	C5	C6
1	C6P	C3P	C5P	C6P

**TOWER C**

27 Upper Serangoon View

UNIT LEVEL	11	12	13	14
18	D		C	C1
17	D	B2	C	C1
16	D	B2	C	C1
15	D	B2	C	C1
14	D	B2	C	C1
13	D	B2	C	C1
12	D	B2	C	C1
11	D	B2	C	C1
10	D	B2	C	C1
9	D	B2	C	C1
8	D	B2	C	C1
7	D	B2	C	C1
6	D	B2	C	C1
5	D	B2	C	C1
4	D	B2	C	C1
3	D	B2	C	C1
2	D	B2	C	C1
1	DP	B2P	CP	C1P

**TOWER D**

29 Upper Serangoon View

UNIT LEVEL	15	16	17	18
18	D		C	DK
17	D	B2	C	DK
16	D	B2	C	DK
15	D	B2	C	DK
14	D	B2	C	DK
13	D	B2	C	DK
12	D	B2	C	DK
11	D	B2	C	DK
10	D	B2	C	DK
9	D	B2	C	DK
8	D	B2	C	DK
7	D	B2	C	DK
6	D	B2	C	DK
5	D	B2	C	DK
4	D	B2	C	DK
3	D	B2	C	DK
2	D	B2	C	DK
1	DP	B2P	CP	DKP

**TOWER E**

31 Upper Serangoon View

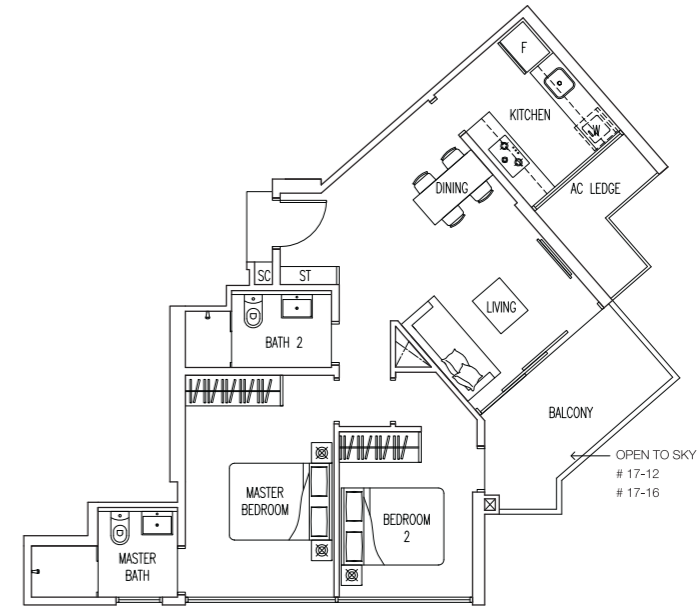
UNIT LEVEL	19	20	21	22
18	C4	C3	C2	C6
17	C4	C3	C2	C6
16	C4	C3	C2	C6
15	C4	C3	C2	C6
14	C4	C3	C2	C6
13	C4	C3	C2	C6
12	C4	C3	C2	C6
11	C4	C3	C2	C6
10	C4	C3	C2	C6
9	C4	C3	C2	C6
8	C4	C3	C2	C6
7	C4	C3	C2	C6
6	C4	C3	C2	C6
5	C4	C3	C2	C6
4	C4	C3	C2	C6
3	C4	C3	C2	C6
2	C4	C3	C2	
1	C4P	B3P	SHOP	

2 Bedroom
  3 Bedroom (Compact)
  3 Bedroom
  3 Bedroom Dual key
  4 Bedroom

**Type B2**

78 sq m / 840 sq ft

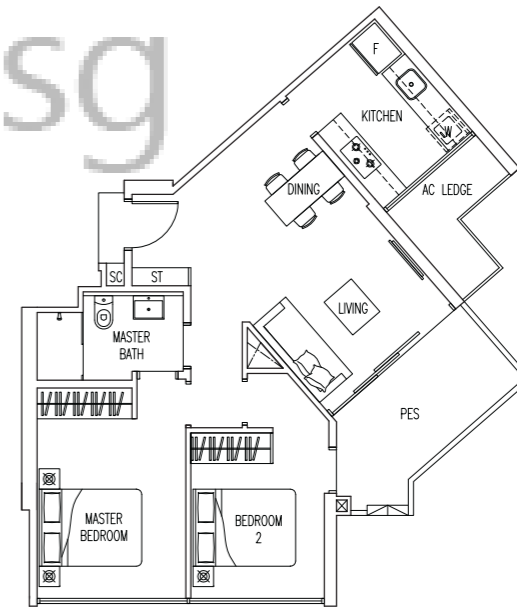
# 02-12 to # 17-12  
# 02-16 to # 17-16



**Type B2P**

74 sq m / 797 sq ft

# 01-12  
# 01-16



Area includes AC ledge, balcony, PES, roof terrace and void area. Some units are mirror images of the apartment plans shown in the brochure. Please refer to the key plans for orientation. The plans are subject to change as may be approved by the relevant authorities. All floor areas are approximate measurements only and are subject to government resurvey.  
Abbreviation : AC Ledge (Aircon Ledge), PES (Private Enclosed Space), SC (Shoe Cabinet) and ST (Store)

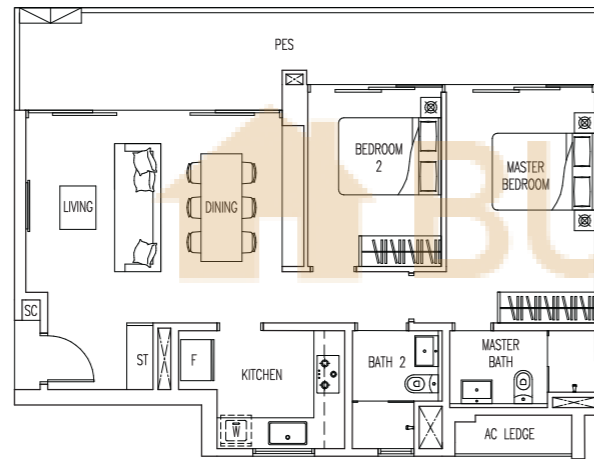


Key plan is not to scale

### Type B3P

93 sq m / 1001 sq ft

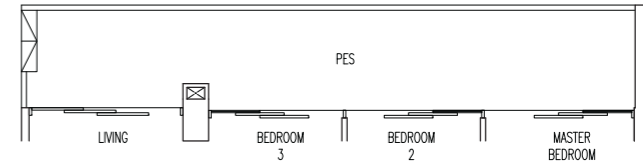
# 01-20



### Type CP

111 sq m / 1195 sq ft

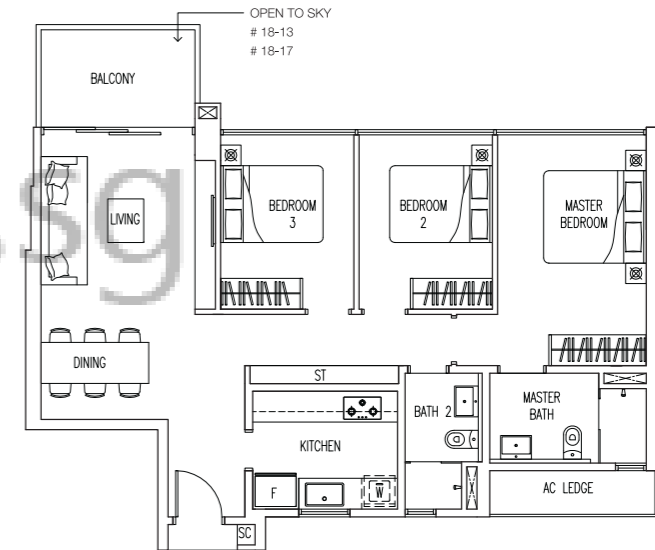
# 01-13  
# 01-17



### Type C

93 sq m / 1001 sq ft

# 02-13 to # 18-13  
# 02-17 to # 18-17



Area includes AC ledge, balcony, PES, roof terrace and void area. Some units are mirror images of the apartment plans shown in the brochure. Please refer to the key plans for orientation. The plans are subject to change as may be approved by the relevant authorities. All floor areas are approximate measurements only and are subject to government resurvey.

Abbreviation : AC Ledge (Aircon Ledge), PES (Private Enclosed Space), SC (Shoe Cabinet) and ST (Store)



Key plan is not to scale



Area includes AC ledge, balcony, PES, roof terrace and void area. Some units are mirror images of the apartment plans shown in the brochure. Please refer to the key plans for orientation. The plans are subject to change as may be approved by the relevant authorities. All floor areas are approximate measurements only and are subject to government resurvey.

Abbreviation : AC Ledge (Aircon Ledge), PES (Private Enclosed Space), SC (Shoe Cabinet) and ST (Store)

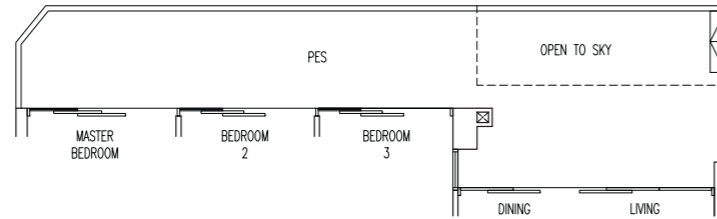


Key plan is not to scale

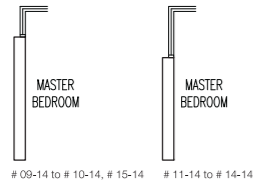
### Type C1P

126 sq m / 1356 sq ft

# 01-14



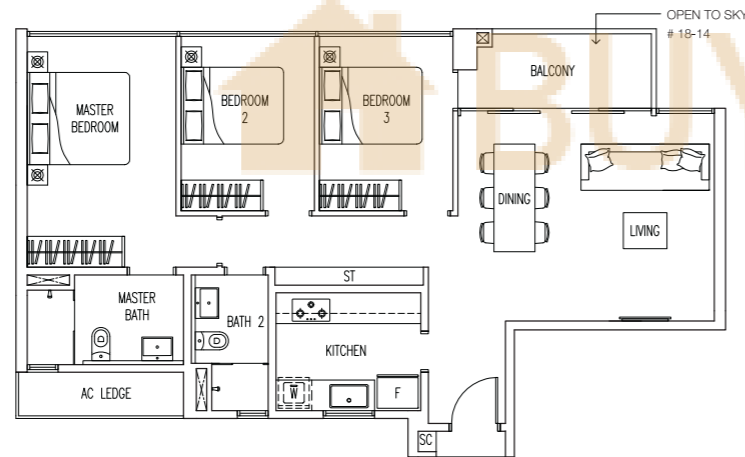
Variation to Windows in Units



### Type C1

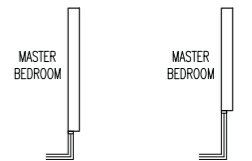
94 sq m / 1012 sq ft

# 02-14 to # 18-14



# 09-14 to # 10-14, # 15-14 # 11-14 to # 14-14

Variation to Windows in Units

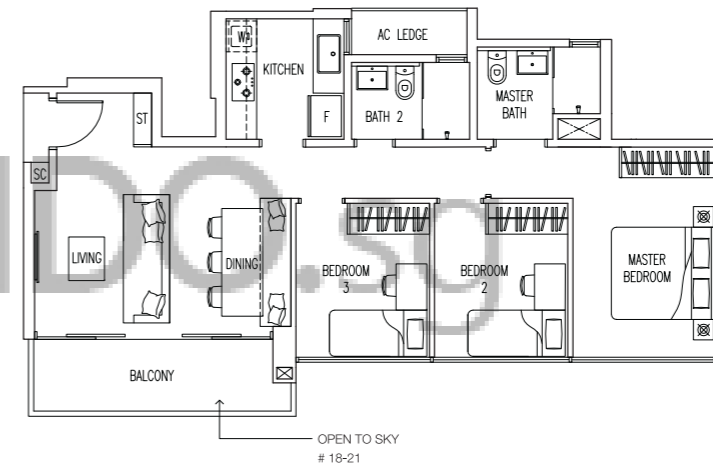


# 09-21 to # 10-21, # 15-21 # 11-21 to # 14-21

### Type C2

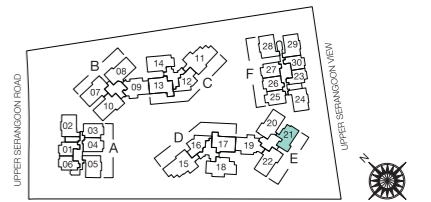
83 sq m / 893 sq ft

# 02-21 to # 18-21



Key plan is not to scale

Area includes AC ledge, balcony, PES, roof terrace and void area. Some units are mirror images of the apartment plans shown in the brochure. Please refer to the key plans for orientation. The plans are subject to change as may be approved by the relevant authorities. All floor areas are approximate measurements only and are subject to government resurvey.  
**Abbreviation :** AC Ledge (Aircon Ledge), PES (Private Enclosed Space), SC (Shoe Cabinet) and ST (Store)



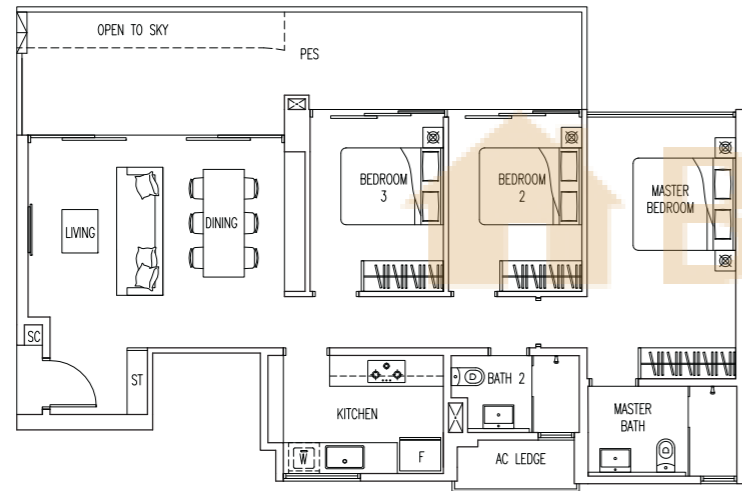
Key plan is not to scale

Area includes AC ledge, balcony, PES, roof terrace and void area. Some units are mirror images of the apartment plans shown in the brochure. Please refer to the key plans for orientation. The plans are subject to change as may be approved by the relevant authorities. All floor areas are approximate measurements only and are subject to government resurvey.  
**Abbreviation :** AC Ledge (Aircon Ledge), PES (Private Enclosed Space), SC (Shoe Cabinet) and ST (Store)

### Type C3P

115 sq m / 1238 sq ft

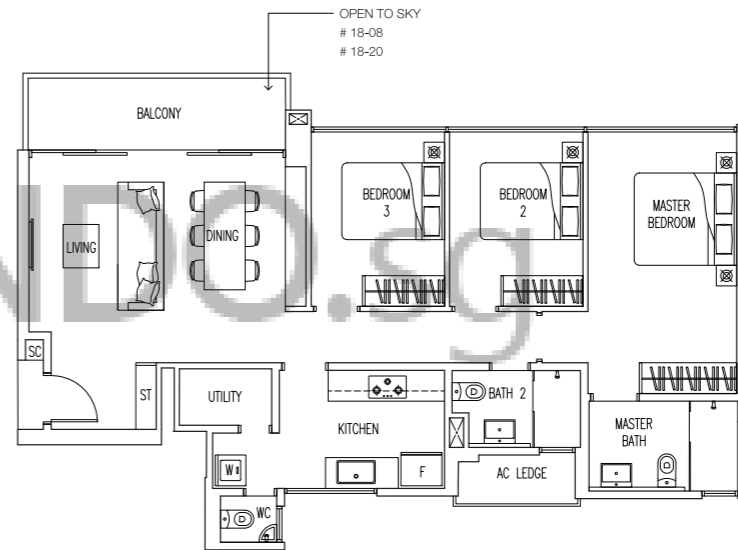
# 01-08



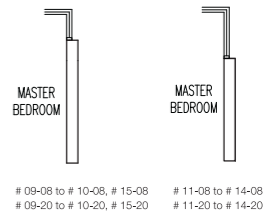
### Type C3

103 sq m / 1109 sq ft

# 02-08 to # 18-08  
# 02-20 to # 18-20



Variation to Windows in Units



Area includes AC ledge, balcony, PES, roof terrace and void area. Some units are mirror images of the apartment plans shown in the brochure. Please refer to the key plans for orientation. The plans are subject to change as may be approved by the relevant authorities. All floor areas are approximate measurements only and are subject to government resurvey.  
Abbreviation : AC Ledge (Aircon Ledge), PES (Private Enclosed Space), SC (Shoe Cabinet) and ST (Store)



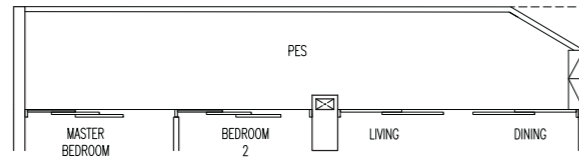
Area includes AC ledge, balcony, PES, roof terrace and void area. Some units are mirror images of the apartment plans shown in the brochure. Please refer to the key plans for orientation. The plans are subject to change as may be approved by the relevant authorities. All floor areas are approximate measurements only and are subject to government resurvey.  
Abbreviation : AC Ledge (Aircon Ledge), PES (Private Enclosed Space), SC (Shoe Cabinet) and ST (Store)



**Type C4P**

115 sq m / 1238 sq ft

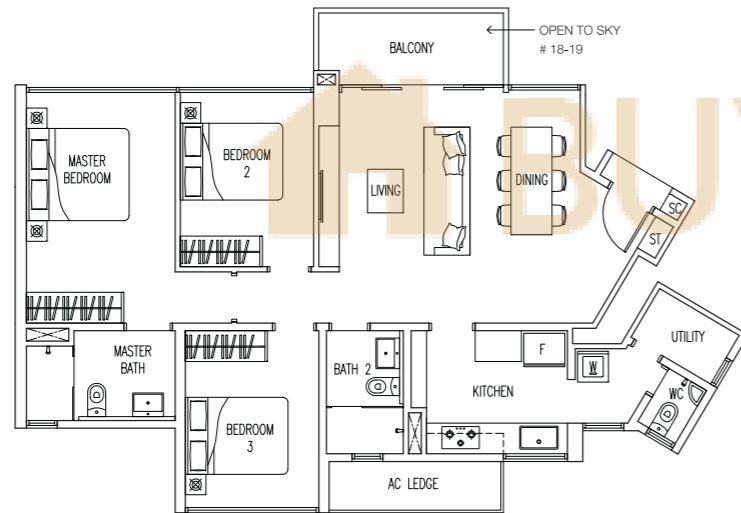
# 01-19



**Type C4**

98 sq m / 1055 sq ft

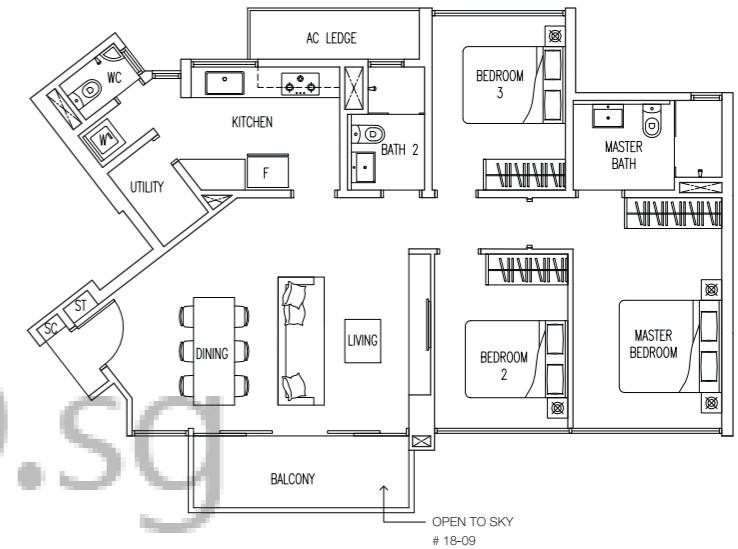
# 02-19 to # 18-19



**Type C5**

100 sq m / 1076 sq ft

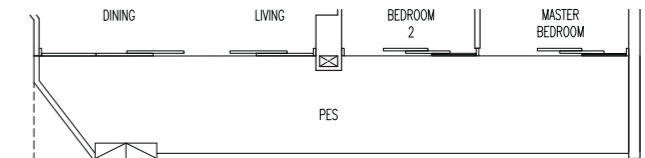
# 02-09 to #18-09



**Type C5P**

116 sq m / 1249 sq ft

# 01-09



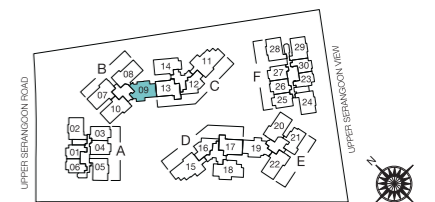
Area includes AC ledge, balcony, PES, roof terrace and void area. Some units are mirror images of the apartment plans shown in the brochure. Please refer to the key plans for orientation. The plans are subject to change as may be approved by the relevant authorities. All floor areas are approximate measurements only and are subject to government resurvey.  
**Abbreviation :** AC Ledge (Aircon Ledge), PES (Private Enclosed Space), SC (Shoe Cabinet) and ST (Store)



Key plan is not to scale



Area includes AC ledge, balcony, PES, roof terrace and void area. Some units are mirror images of the apartment plans shown in the brochure. Please refer to the key plans for orientation. The plans are subject to change as may be approved by the relevant authorities. All floor areas are approximate measurements only and are subject to government resurvey.  
**Abbreviation :** AC Ledge (Aircon Ledge), PES (Private Enclosed Space), SC (Shoe Cabinet) and ST (Store)

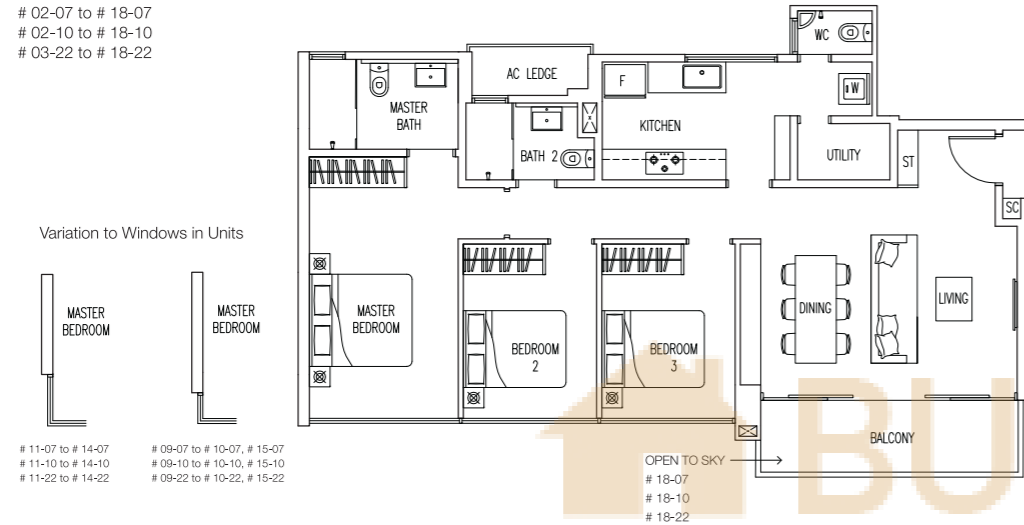


Key plan is not to scale

### Type C6

104 sq m / 1119 sq ft

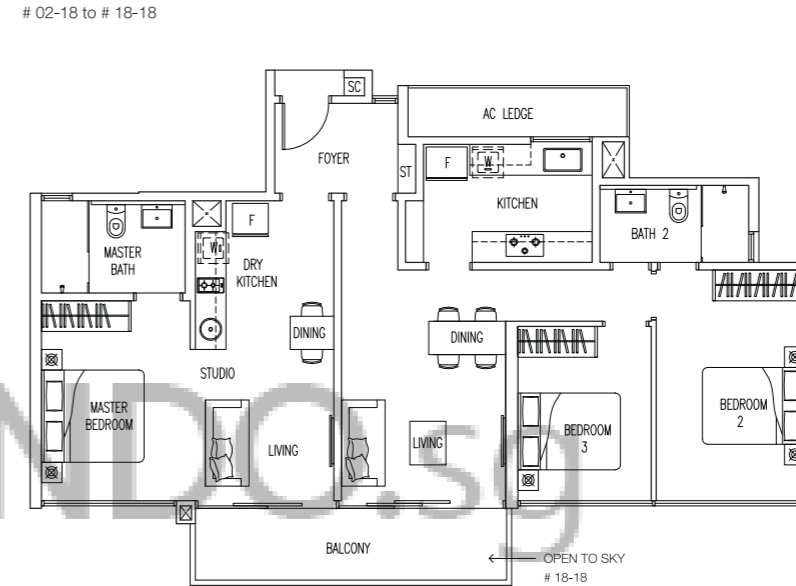
# 02-07 to # 18-07  
 # 02-10 to # 18-10  
 # 03-22 to # 18-22



### Type DK

115 sq m / 1238 sq ft

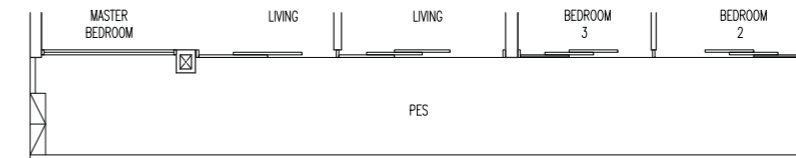
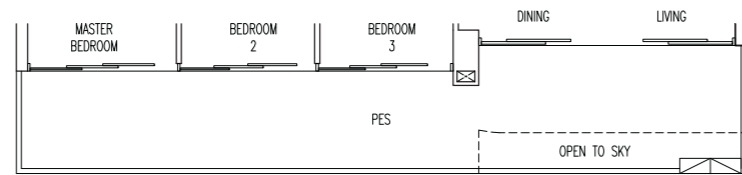
# 02-18 to # 18-18



### Type C6P

128 sq m / 1378 sq ft

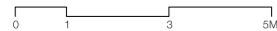
# 01-07  
 # 01-10



### Type DKP

136 sq m / 1464 sq ft

# 01-18



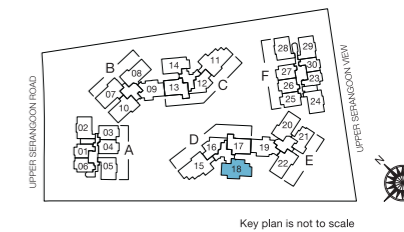
Area includes AC ledge, balcony, PES, roof terrace and void area. Some units are mirror images of the apartment plans shown in the brochure. Please refer to the key plans for orientation. The plans are subject to change as may be approved by the relevant authorities. All floor areas are approximate measurements only and are subject to government resurvey.

Abbreviation : AC Ledge (Aircon Ledge), PES (Private Enclosed Space), SC (Shoe Cabinet) and ST (Store)



Area includes AC ledge, balcony, PES, roof terrace and void area. Some units are mirror images of the apartment plans shown in the brochure. Please refer to the key plans for orientation. The plans are subject to change as may be approved by the relevant authorities. All floor areas are approximate measurements only and are subject to government resurvey.

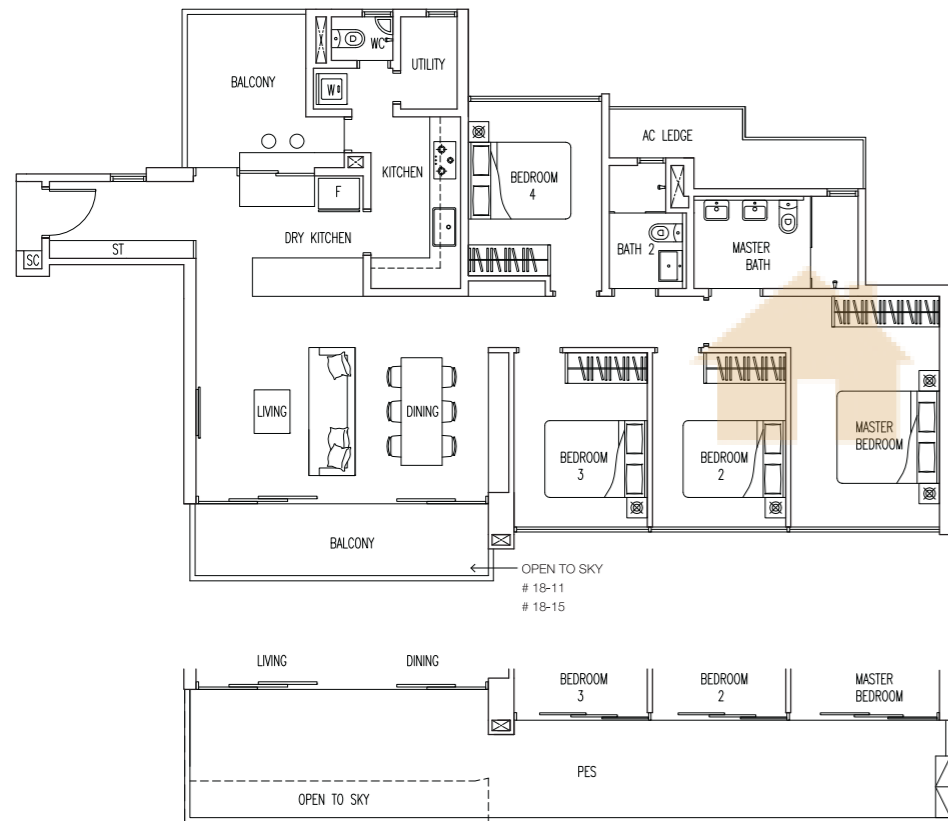
Abbreviation : AC Ledge (Aircon Ledge), PES (Private Enclosed Space), SC (Shoe Cabinet) and ST (Store)



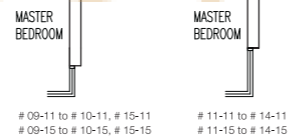
## Type D

136 sq m / 1464 sq ft

# 02-11 to # 18-11  
# 02-15 to # 18-15



Variation to Windows in Units



## Type DP

161 sq m / 1733 sq ft

# 01-11  
# 01-15



Area includes AC ledge, balcony, PES, roof terrace and void area. Some units are mirror images of the apartment plans shown in the brochure. Please refer to the key plans for orientation. The plans are subject to change as may be approved by the relevant authorities. All floor areas are approximate measurements only and are subject to government resurvey.  
**Abbreviation:** AC Ledge (Aircon Ledge), PES (Private Enclosed Space), SC (Shoe Cabinet) and ST (Store)

Key plan is not to scale

BUYCONDO.sg

Sales Enquiries  
6387 8200 / 6273 2122

[www.boathouse.sg](http://www.boathouse.sg)

Jointly Developed By:



**Developer:** Easthouse Properties Pte Ltd Co. Reg. No. 201026603W • **Legal Description:** Lot 9460X Mukim 22 at Upper Serangoon View • **Tenure:** Leasehold 99 years w.o.J. 9 February 2011 • **Developer's License No.:** C0806 • **Building Plan No.:** A712-00311-2011-BP01 dated 29 July 2011 • **Expected Date of TOP:** 11 November 2015 • **Expected Date of Legal Completion:** 11 November 2018

While every reasonable care has been taken in preparing this brochure and in constructing the models and showflats, the Developer and the Marketing Agents cannot be held responsible for any inaccuracies or omissions. Visual representations, models, showflat displays and illustrations, photographs, art renderings and other graphic representations and references are intended to portray only artist's impressions of the development and cannot be regarded as representations of the fact. Floor areas are approximate measurements and are subject to final survey. The property is subject to final inspection by the relevant authorities to comply with the current codes of practice.

All information, specifications, renderings, visual representations and plans are correct at the time of publication and are subject to changes as may be required by us and/or the competent authorities and shall not form part of any offer or contract nor constitute any warranty by us and shall not be regarded as statements or representation of fact.

All facts are subject to amendments as directed and/or approved by the building authorities. All areas are approximate measurements only and subject to final survey. The Sale and Purchase Agreement shall form the entire agreement between us as the Developer and the Purchaser and shall supercede all statements, representations or promises made prior to the signing of the Sales & Purchase Agreement and shall in no way be modified by any statements, representations or promises made by us or the Marketing Agents.