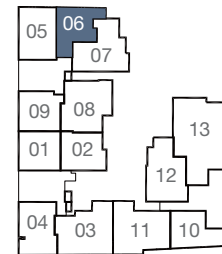
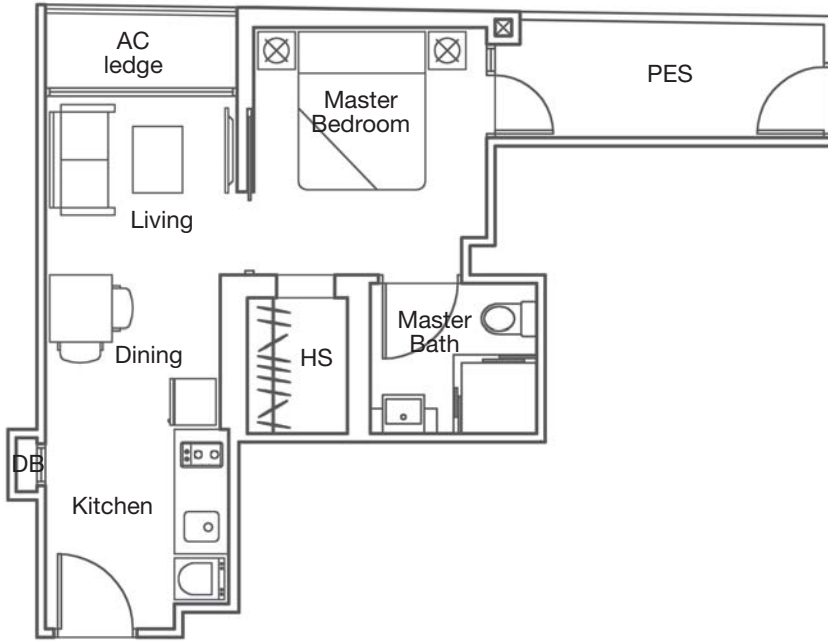


### Type A1-G (1-Bedroom)

#03-06

Area: 452 sqft / 42 sqm

(Inclusive of A/C ledge & PES)

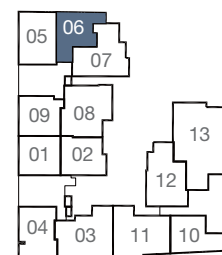
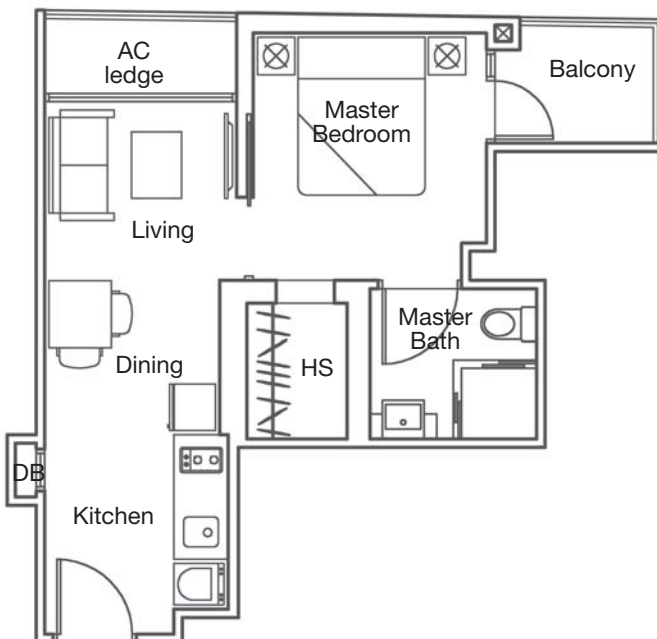


### Type A1 (1-Bedroom)

#04-06 to #08-06

Area: 420 sqft / 39 sqm

(Inclusive of A/C ledge & Balcony)

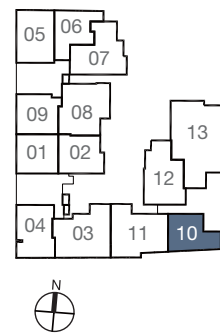
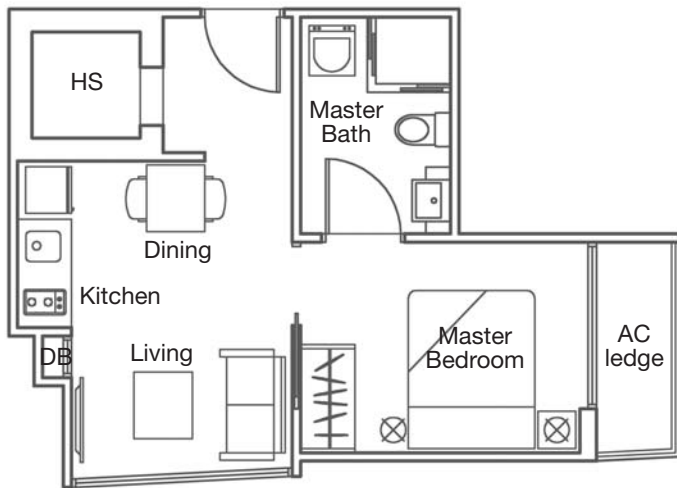


### Type A2, A2-G (1-Bedroom)

#03-10 to #08-10

Area: 388 sqft / 36 sqm

(Inclusive of A/C ledge)

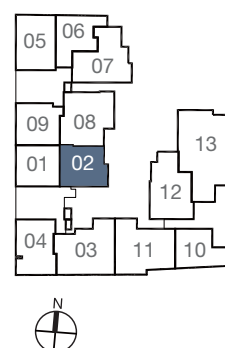
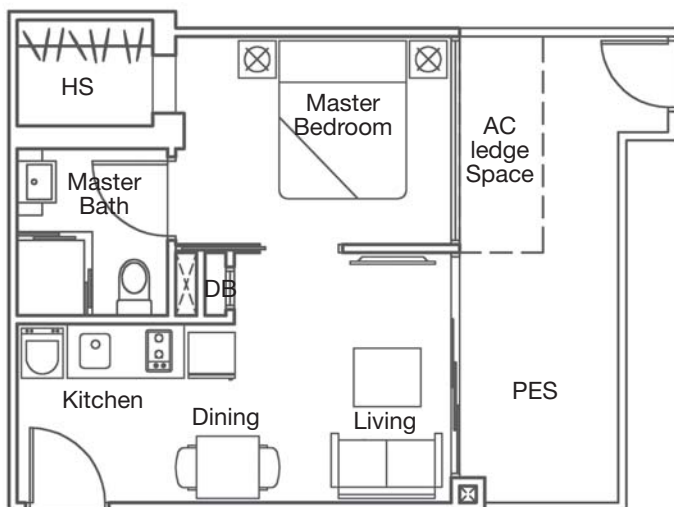


### Type A3-G (1-Bedroom)

#03-02

Area: 463 sqft / 43 sqm

(Inclusive of A/C ledge & PES)

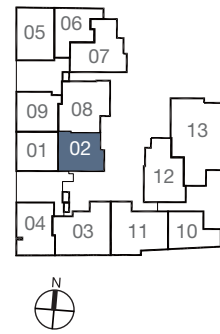
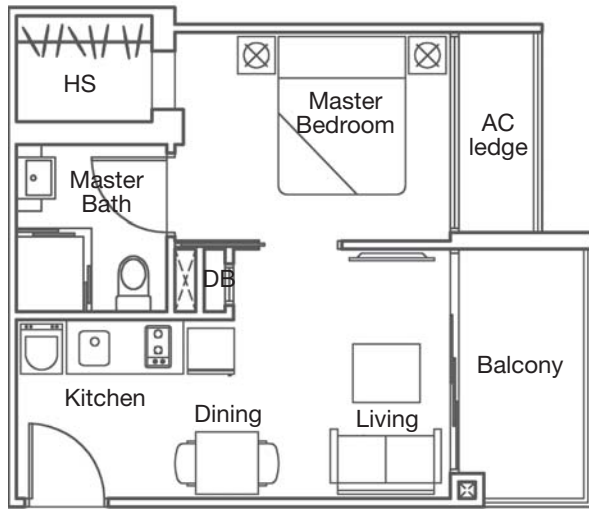


### Type A3 (1-Bedroom)

#04-02 to #08-02

Area: 420 sqft / 39 sqm

(Inclusive of A/C ledge & Balcony)

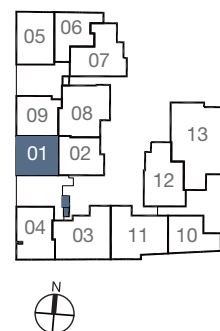
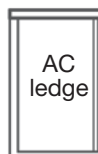
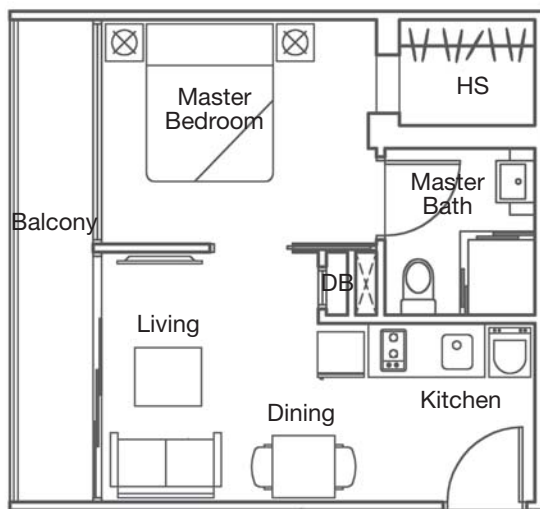


### Type A4, A4-G (1-Bedroom)

#03-01 to #08-01

Area: 431 sqft / 40 sqm

(Inclusive of A/C ledge & Balcony)

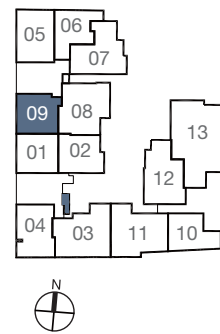
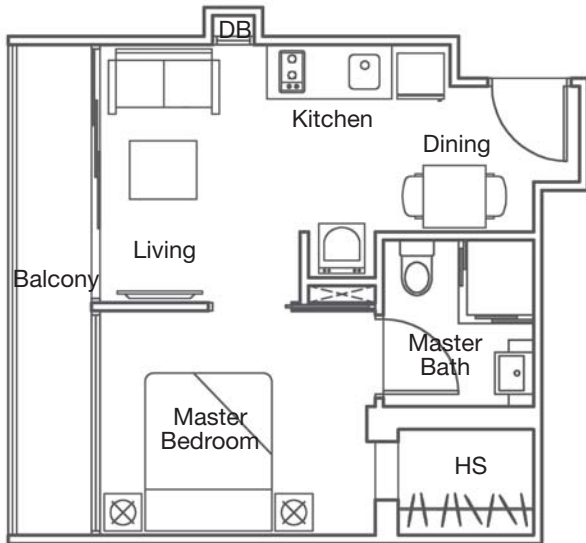


### Type A5, A5-G (1-Bedroom)

#03-09 to #08-09

Area: 441 sqft / 41 sqm

(Inclusive of A/C ledge & Balcony)

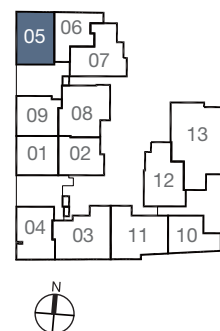
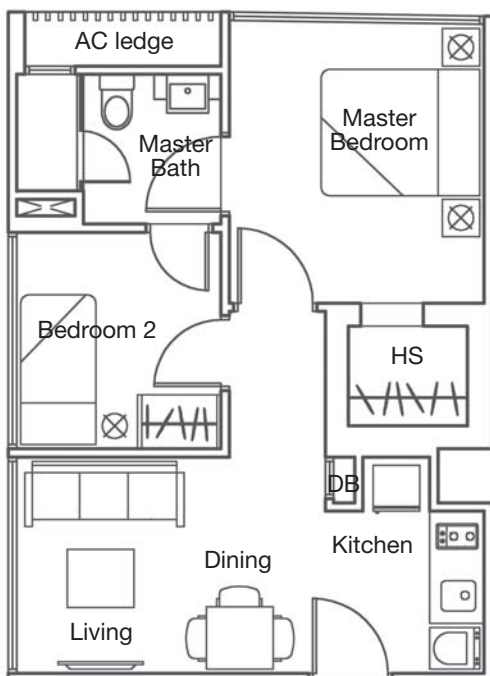


### Type B1, B1-G (2-Bedroom)

#03-05 to #08-05

Area: 484 sqft / 45 sqm

(Inclusive of A/C ledge)

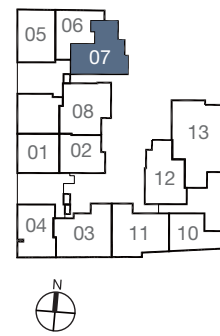
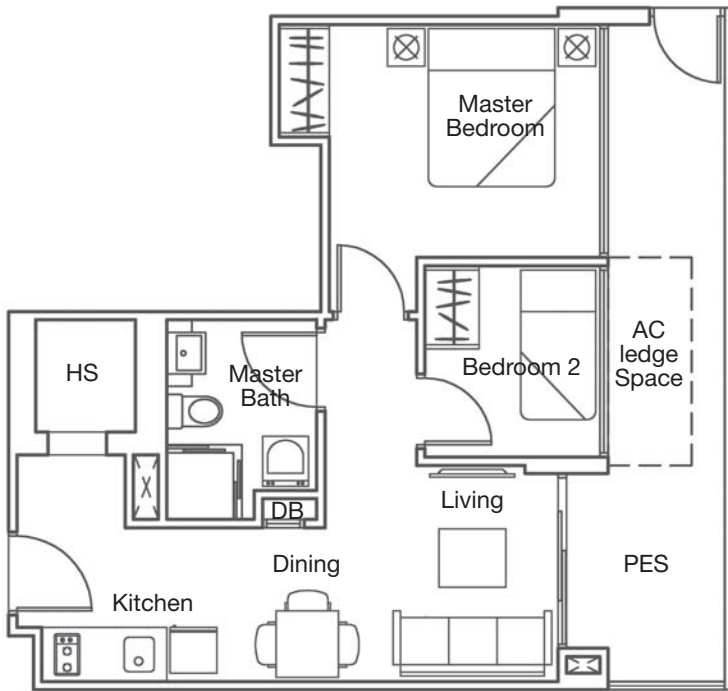


### Type B2-G (2-Bedroom)

#03-07

Area: 603 sqft / 56 sqm

(Inclusive of A/C ledge & PES)

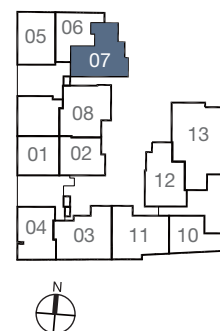
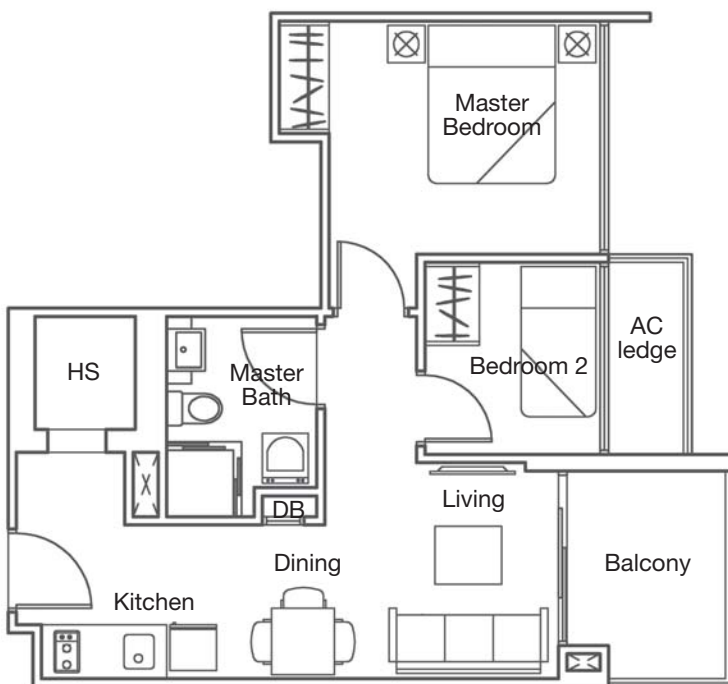


### Type B2 (2-Bedroom)

#04-07 to #08-07

Area: 549 sqft / 51 sqm

(Inclusive of A/C ledge & Balcony)

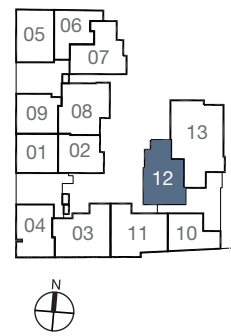
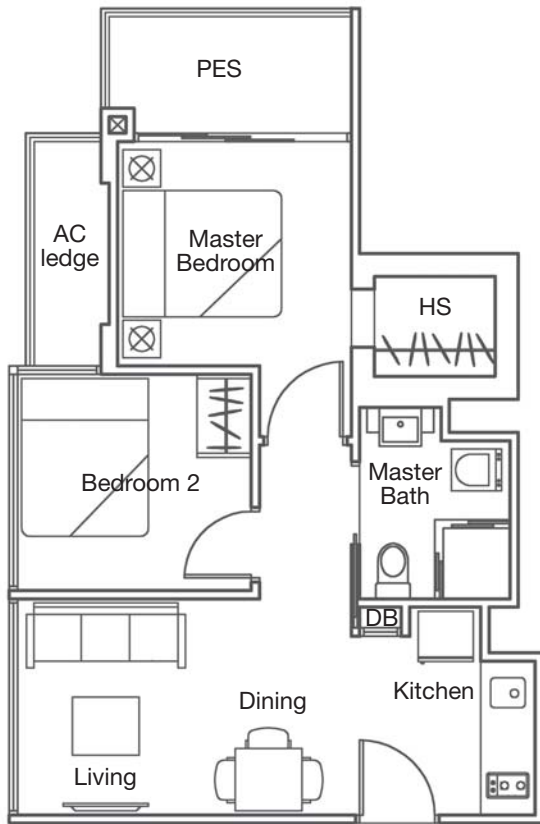


### Type B3-G (2-Bedroom)

#03-12

Area: 549 sqft / 51 sqm

(Inclusive of A/C ledge & PES)

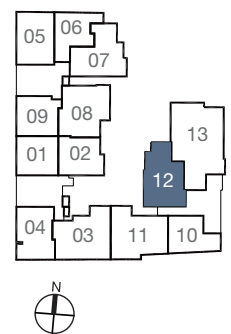
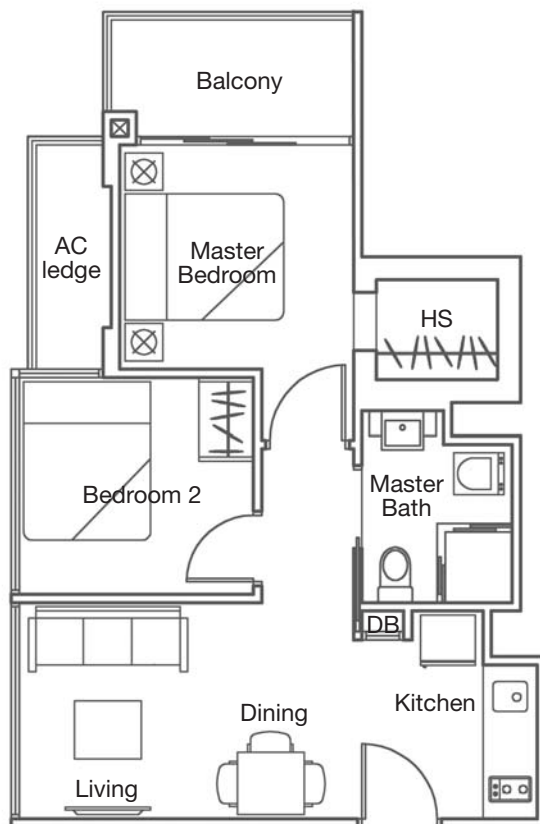


### Type B3 (2-Bedroom)

#04-12 to #08-12

Area: 549 sqft / 51 sqm

(Inclusive of A/C ledge & Balcony)

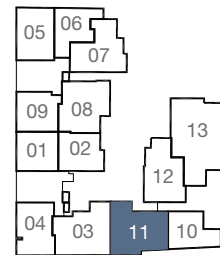
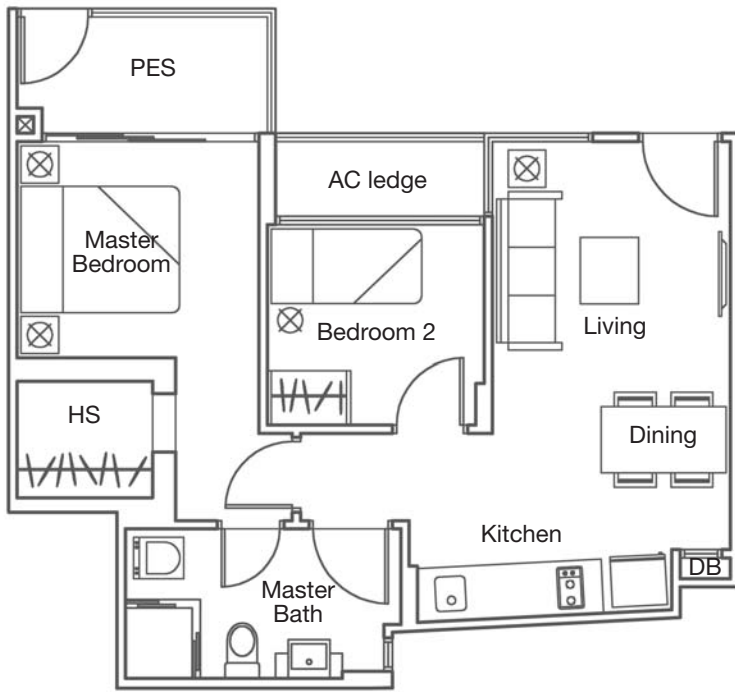


### Type B4-G (2-Bedroom)

#03-11

Area: 603 sqft / 56 sqm

(Inclusive of A/C ledge & PES)

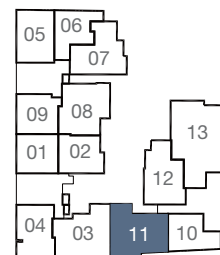
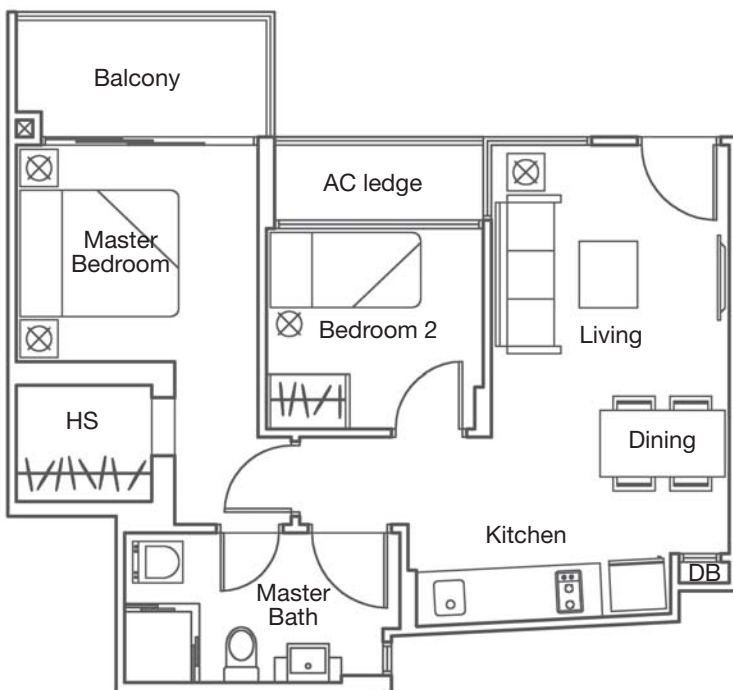


### Type B4 (2-Bedroom)

#04-11 to #08-11

Area: 603 sqft / 56 sqm

(Inclusive of A/C ledge & Balcony)

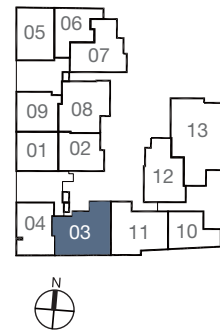
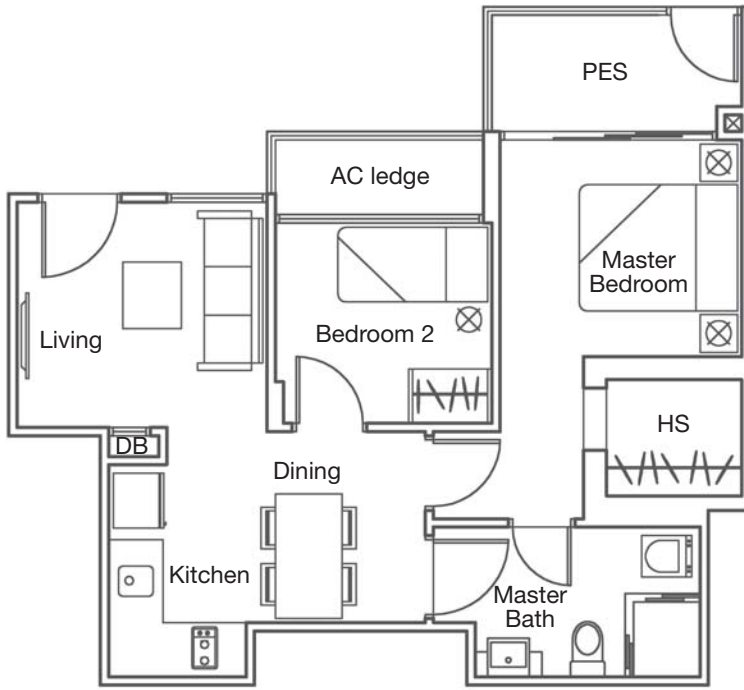


### Type B5-G (2-Bedroom)

#03-03

Area: 592 sqft / 55 sqm

(Inclusive of A/C ledge & PES)

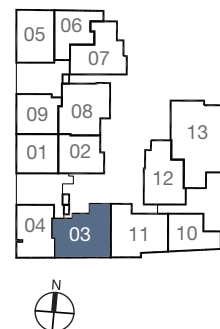
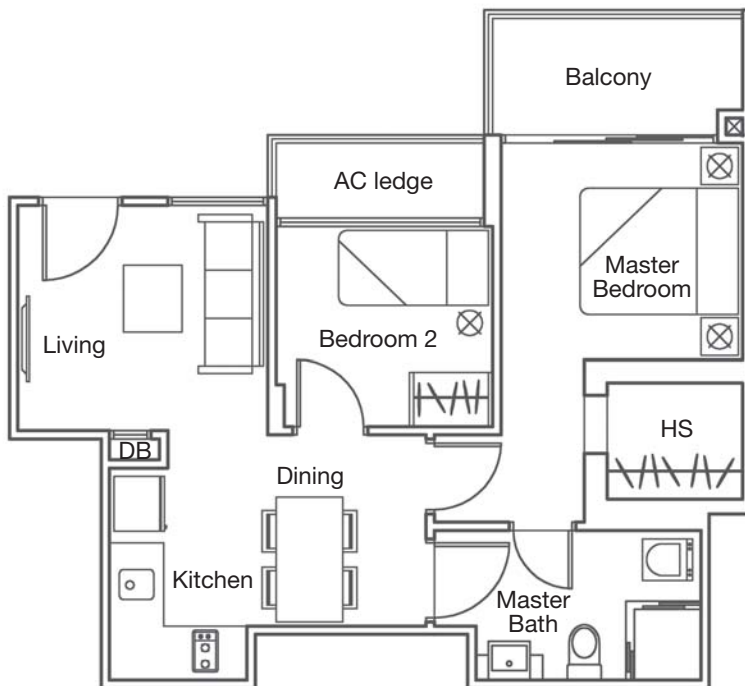


### Type B5 (2-Bedroom)

#04-03 to #08-03

Area: 592 sqft / 55 sqm

(Inclusive of A/C ledge & Balcony)



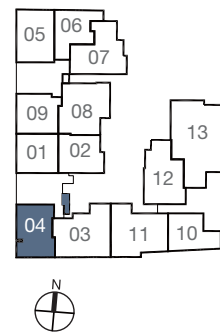
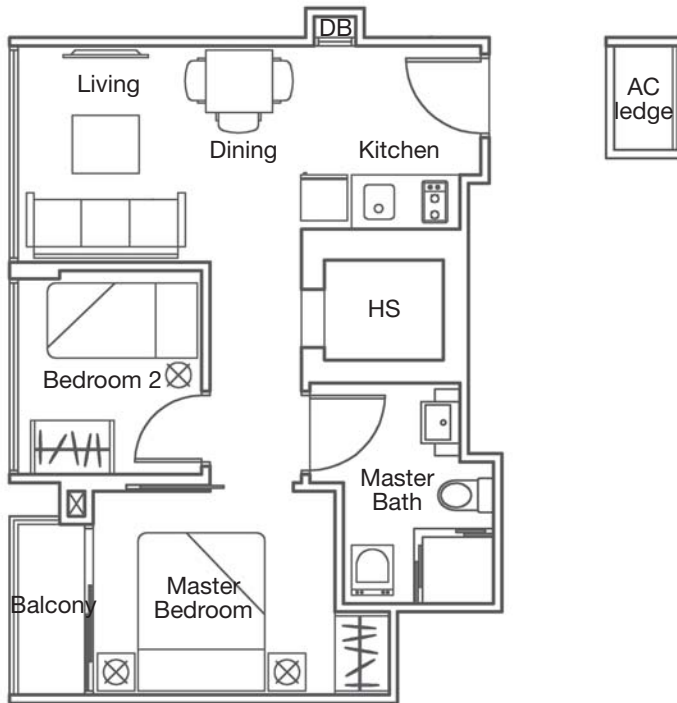


### Type B6, B6-G (2-Bedroom)

#03-04 to #08-04

Area: 484 sqft / 45 sqm

(Inclusive of A/C ledge & Balcony)

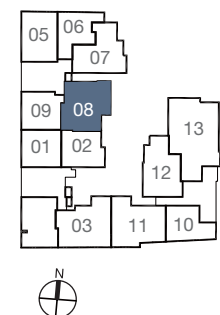
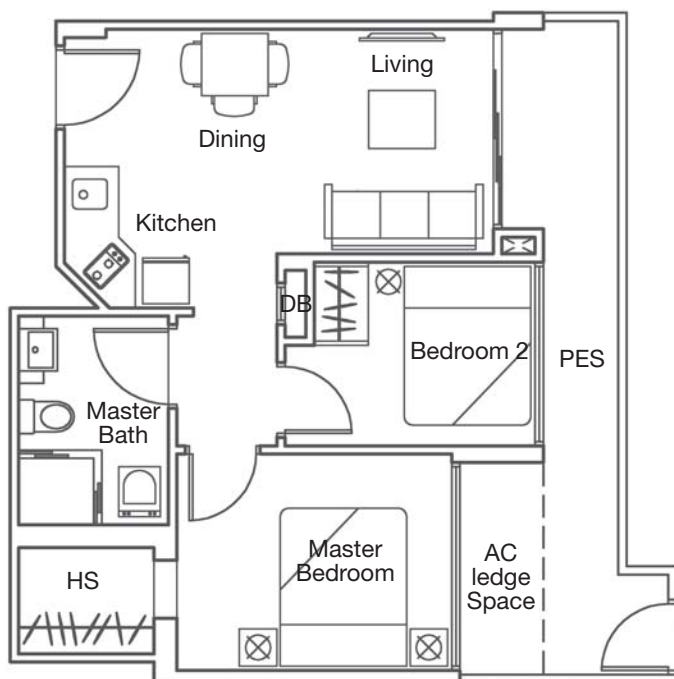


### Type B7-G (2-Bedroom)

#03-08

Area: 603 sqft / 56 sqm

(Inclusive of A/C ledge & PES)

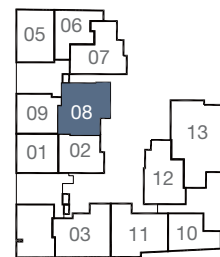
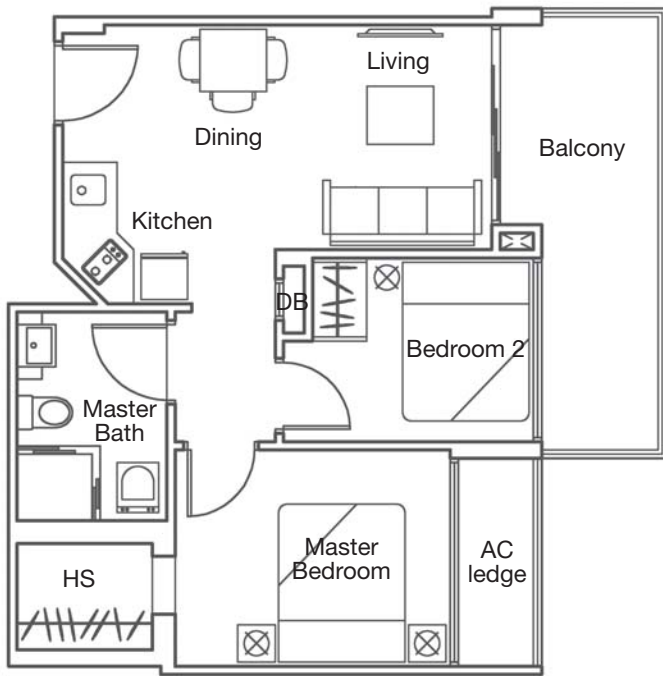


### Type B7 (2-Bedroom)

#04-08 to #08-08

Area: 603 sqft / 56 sqm

(Inclusive of A/C ledge & Balcony)

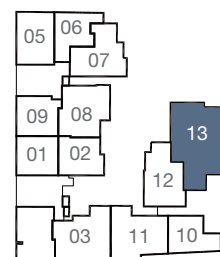
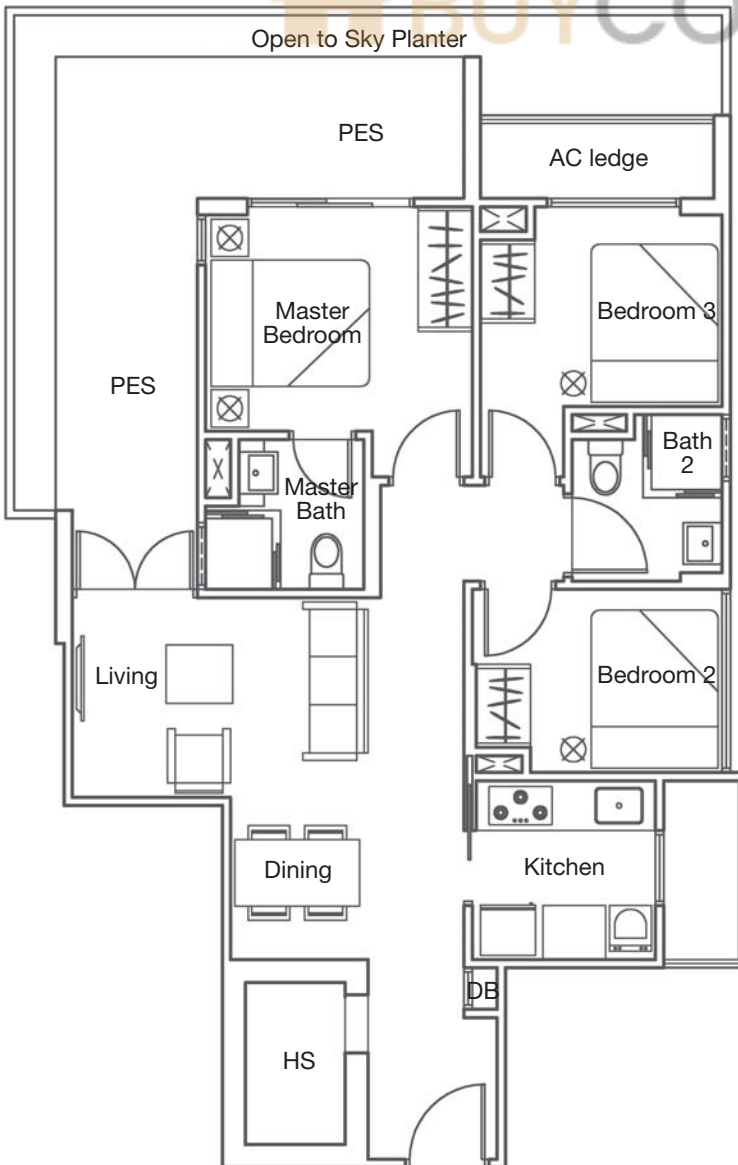


### Type C-G (3-Bedroom)

#03-13

Area: 1076 sqft / 100 sqm

(Inclusive of A/C ledge, Open To Sky Planter & PES)



**Type C (3-Bedroom)**

#04-13 to #08-13

Area: 969 sqft / 90 sqm

(Inclusive of A/C ledge, Balcony)

