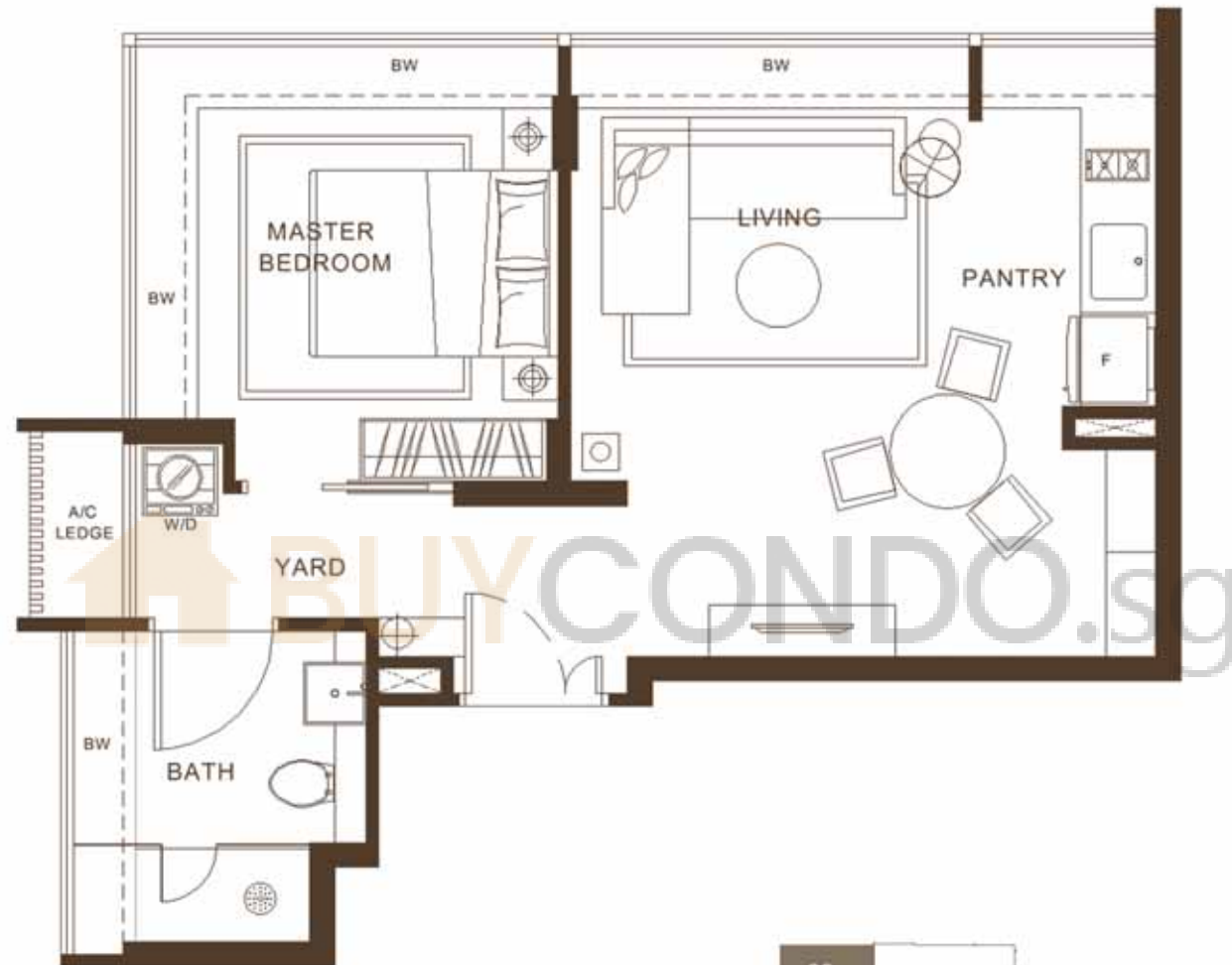


# Type A1

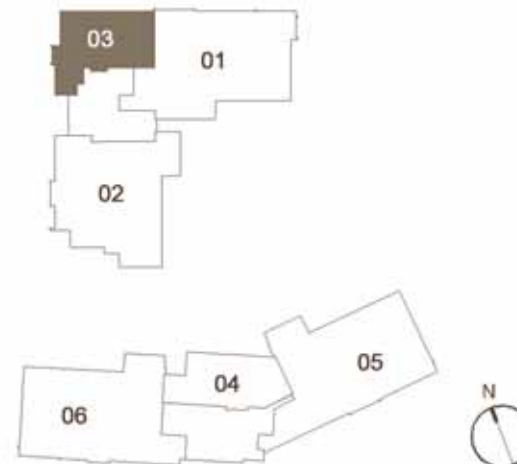
1 bdrm 527sq ft



Unit #02-03

#03-03

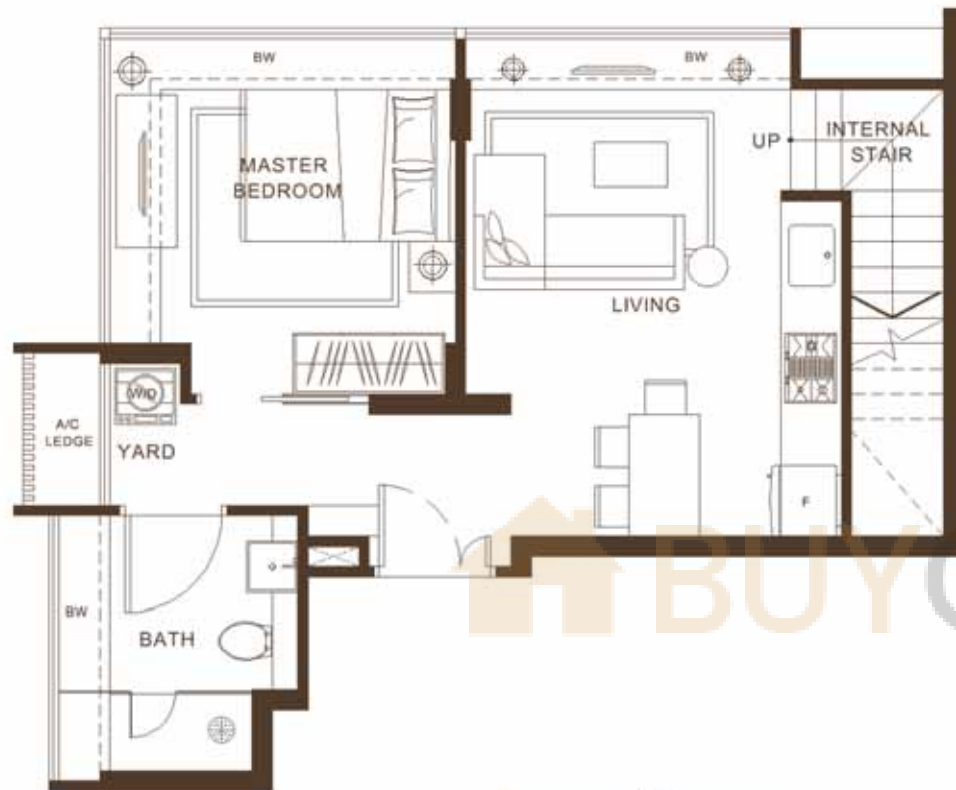
#04-03



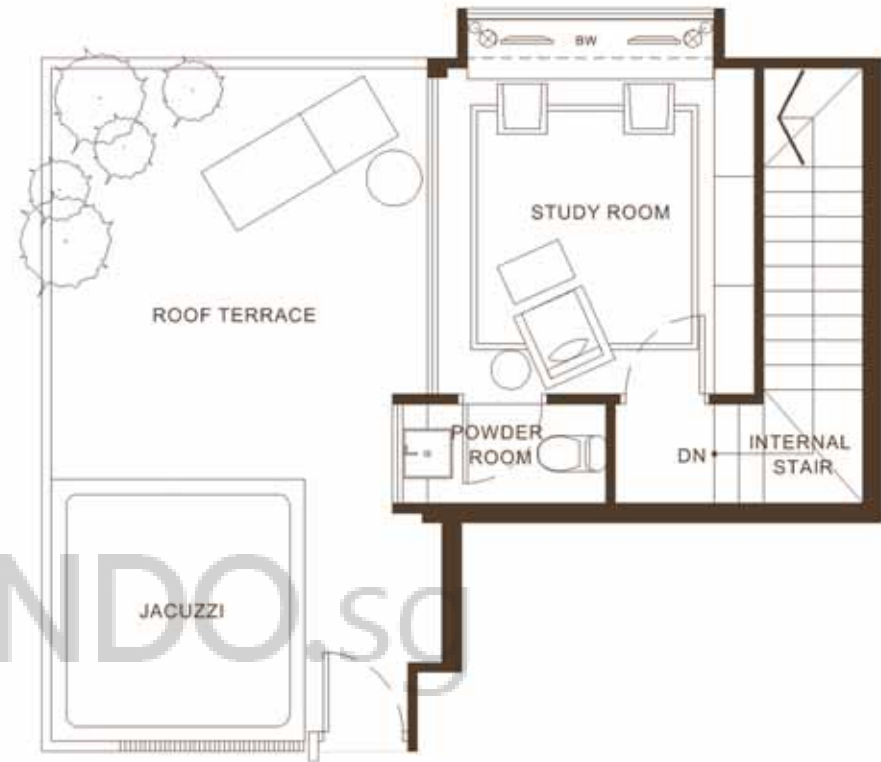
The plans are subject to change as may be required or approved by the relevant authorities. These are not drawn to scale and are for the purpose of a visual presentation of the different layouts that are available. Areas are estimates only and are subject to final survey.

# Type A2

PH 1 bdrm + 1 stdy 1,054sq ft

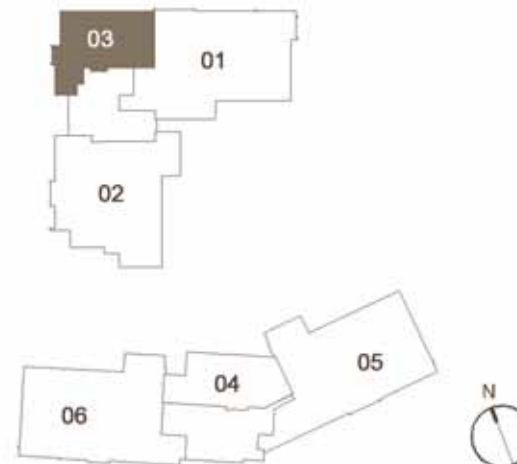


Lower Storey



Upper Storey

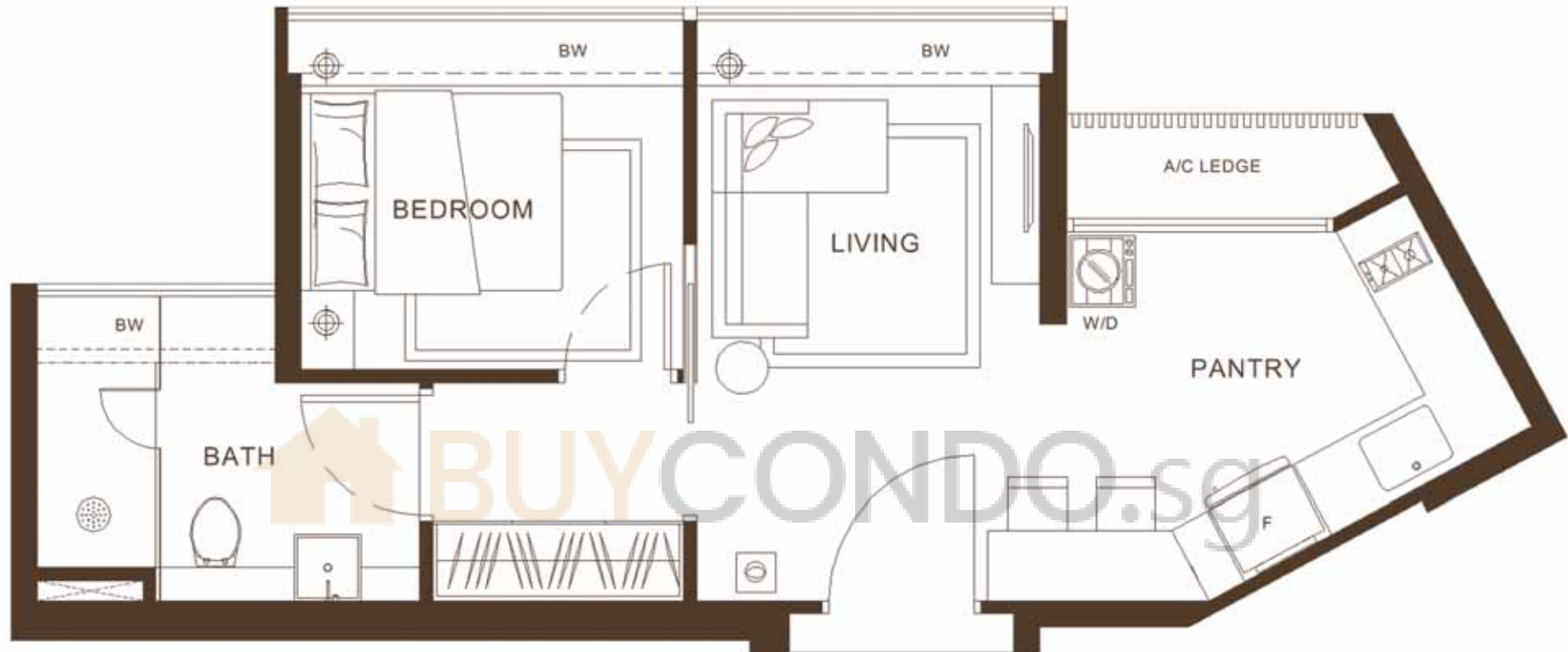
Unit #05-03



The plans are subject to change as may be required or approved by the relevant authorities. These are not drawn to scale and are for the purpose of a visual presentation of the different layouts that are available. Areas are estimates only and are subject to final survey.

# Type A3

1 bdrm 462sq ft



Unit #02-04



The plans are subject to change as may be required or approved by the relevant authorities. These are not drawn to scale and are for the purpose of a visual presentation of the different layouts that are available. Areas are estimates only and are subject to final survey.

# Type B1

Duplex 2 bdrm 947sq ft



Lower Storey



Upper Storey

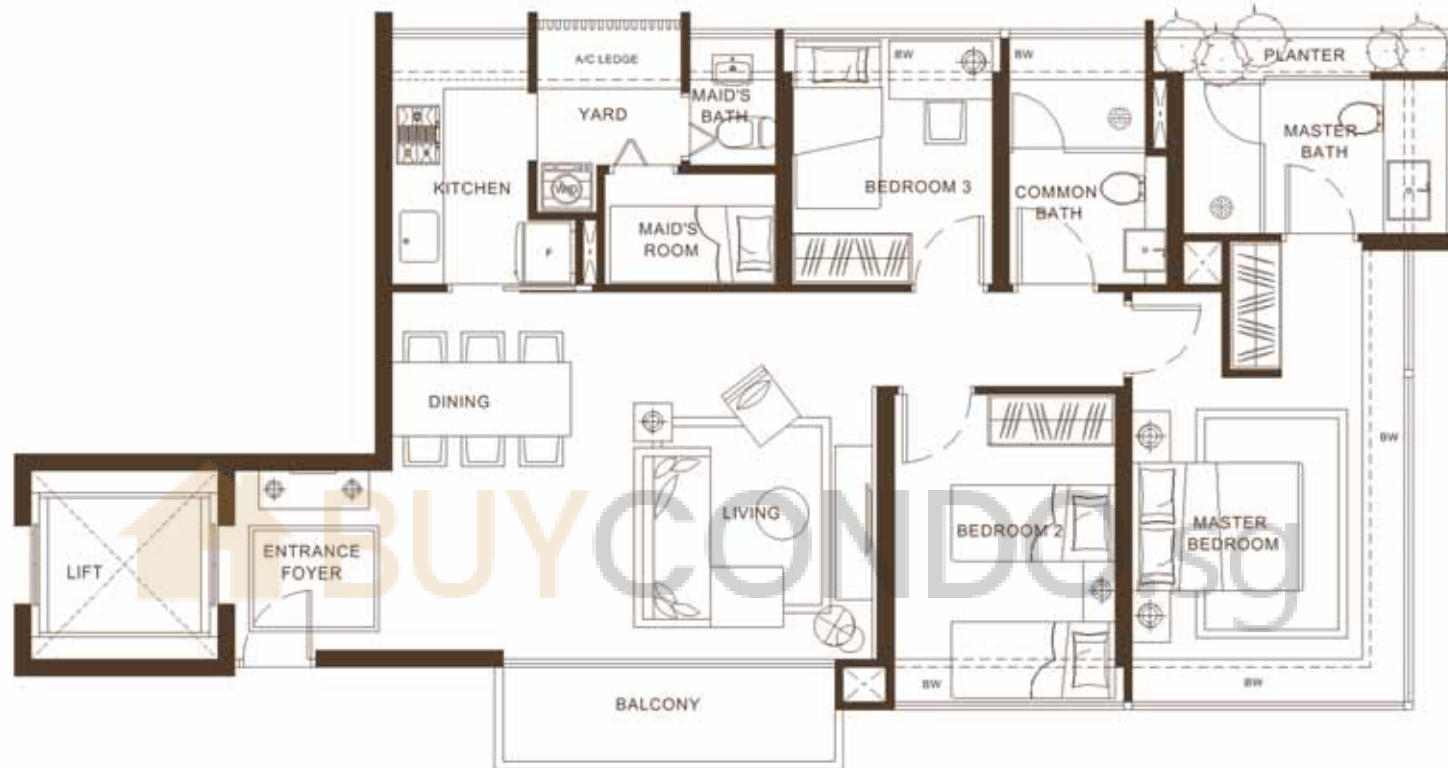
Unit #03-04  
#05-04



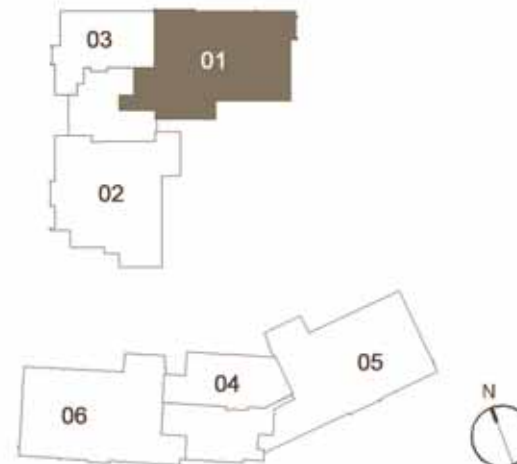
The plans are subject to change as may be required or approved by the relevant authorities. These are not drawn to scale and are for the purpose of a visual presentation of the different layouts that are available. Areas are estimates only and are subject to final survey.

# Type C1

3 bdrm 1,098sq ft



Unit #02-01



The plans are subject to change as may be required or approved by the relevant authorities. These are not drawn to scale and are for the purpose of a visual presentation of the different layouts that are available. Areas are estimates only and are subject to final survey.

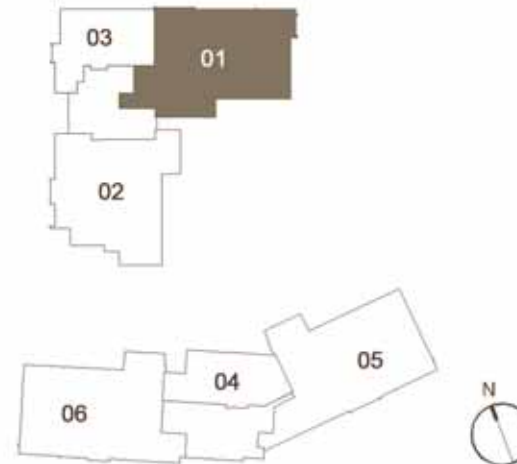


# Type C2

3 bdrm 1,216sq ft



Unit #03-01  
#04-01



The plans are subject to change as may be required or approved by the relevant authorities. These are not drawn to scale and are for the purpose of a visual presentation of the different layouts that are available. Areas are estimates only and are subject to final survey.

# Type C3

3 bdrm 1,098sq ft



Unit #02-02

#03-02

#04-02



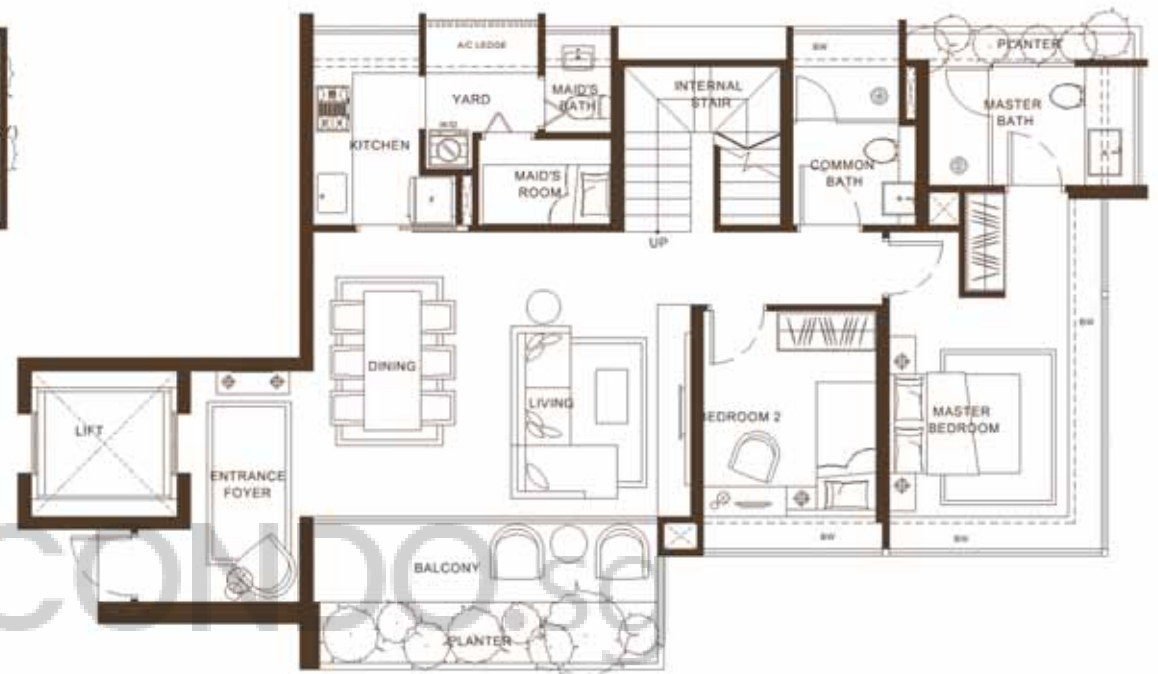
The plans are subject to change as may be required or approved by the relevant authorities. These are not drawn to scale and are for the purpose of a visual presentation of the different layouts that are available. Areas are estimates only and are subject to final survey.

# Type C4

PH 3 bdrm 2,045sq ft

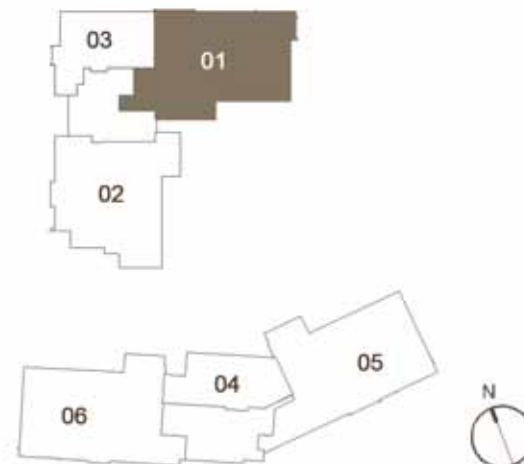


Upper Storey



Lower Storey

Unit #05-01



The plans are subject to change as may be required or approved by the relevant authorities. These are not drawn to scale and are for the purpose of a visual presentation of the different layouts that are available. Areas are estimates only and are subject to final survey.



# Type C5

PH 3 bdrm 1,959sq ft



Upper Storey



Lower Storey

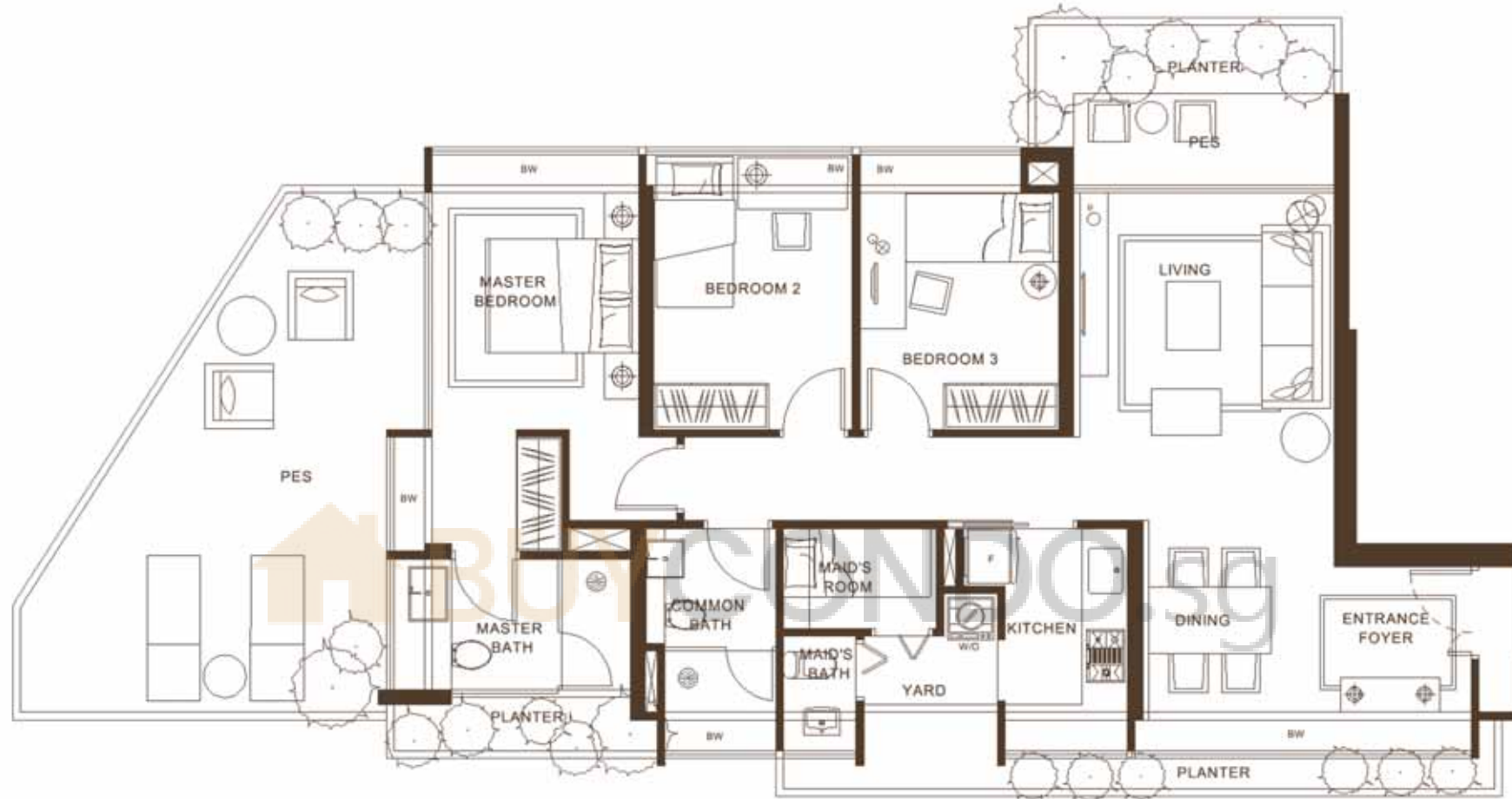
Unit #05-02



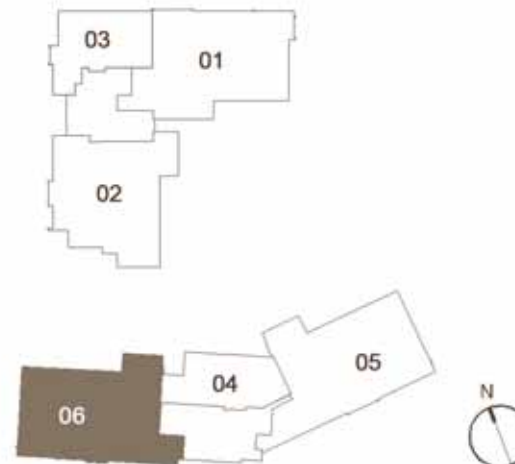
The plans are subject to change as may be required or approved by the relevant authorities. These are not drawn to scale and are for the purpose of a visual presentation of the different layouts that are available. Areas are estimates only and are subject to final survey.

# Type C6

PH 3 bdrm 1,496sq ft



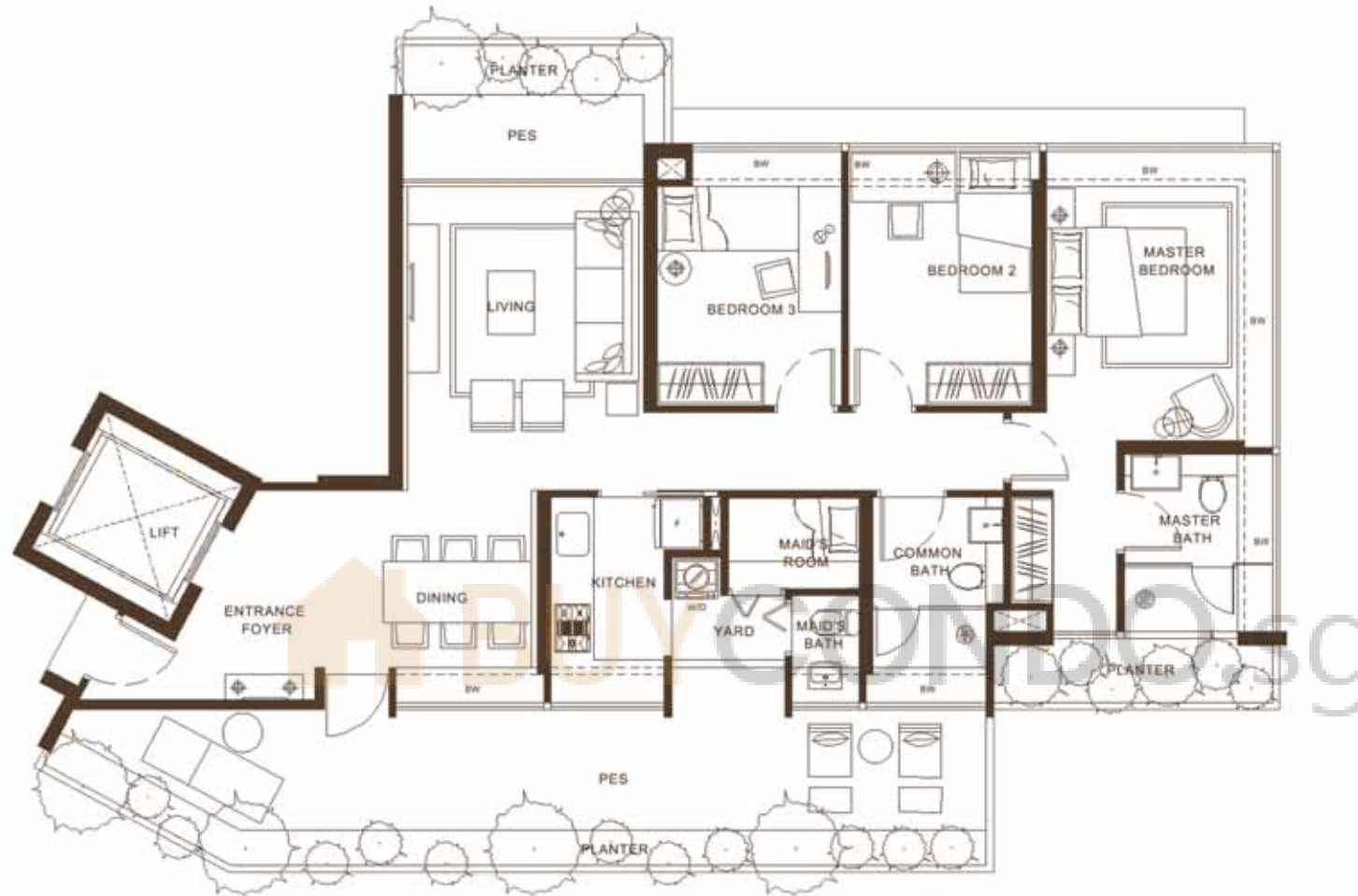
Unit #01-06



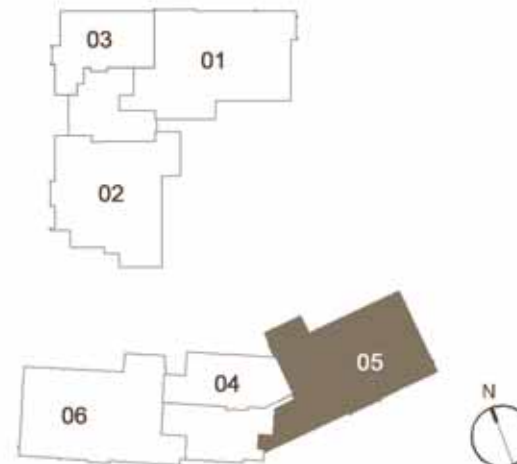
The plans are subject to change as may be required or approved by the relevant authorities. These are not drawn to scale and are for the purpose of a visual presentation of the different layouts that are available. Areas are estimates only and are subject to final survey.

# Type C7

3 bdrm 1,539sq ft



Unit #01-05



The plans are subject to change as may be required or approved by the relevant authorities. These are not drawn to scale and are for the purpose of a visual presentation of the different layouts that are available. Areas are estimates only and are subject to final survey.

# Type C8

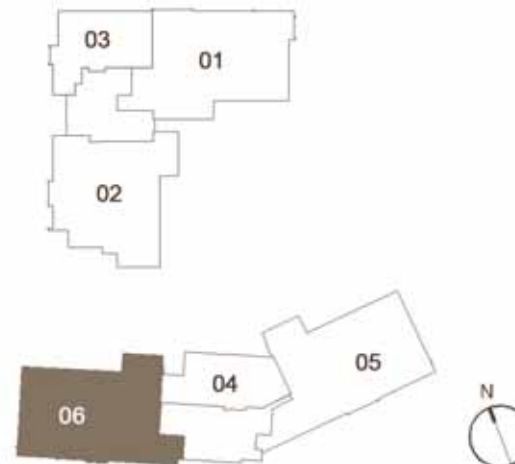
3 bdrm 1,173sq ft



Unit #02-06

#03-06

#04-06



The plans are subject to change as may be required or approved by the relevant authorities. These are not drawn to scale and are for the purpose of a visual presentation of the different layouts that are available. Areas are estimates only and are subject to final survey.



# Type C9

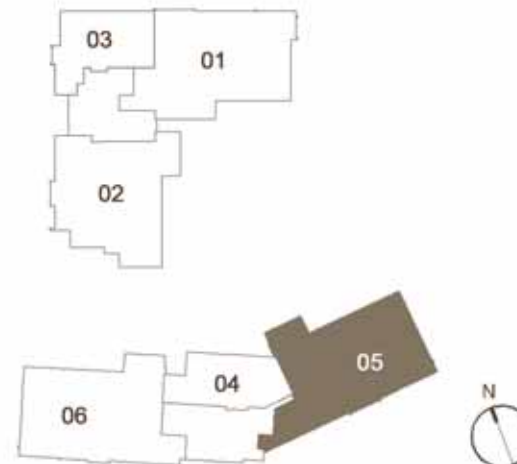
3 bdrm 1,227sq ft



Unit #02-05

#03-05

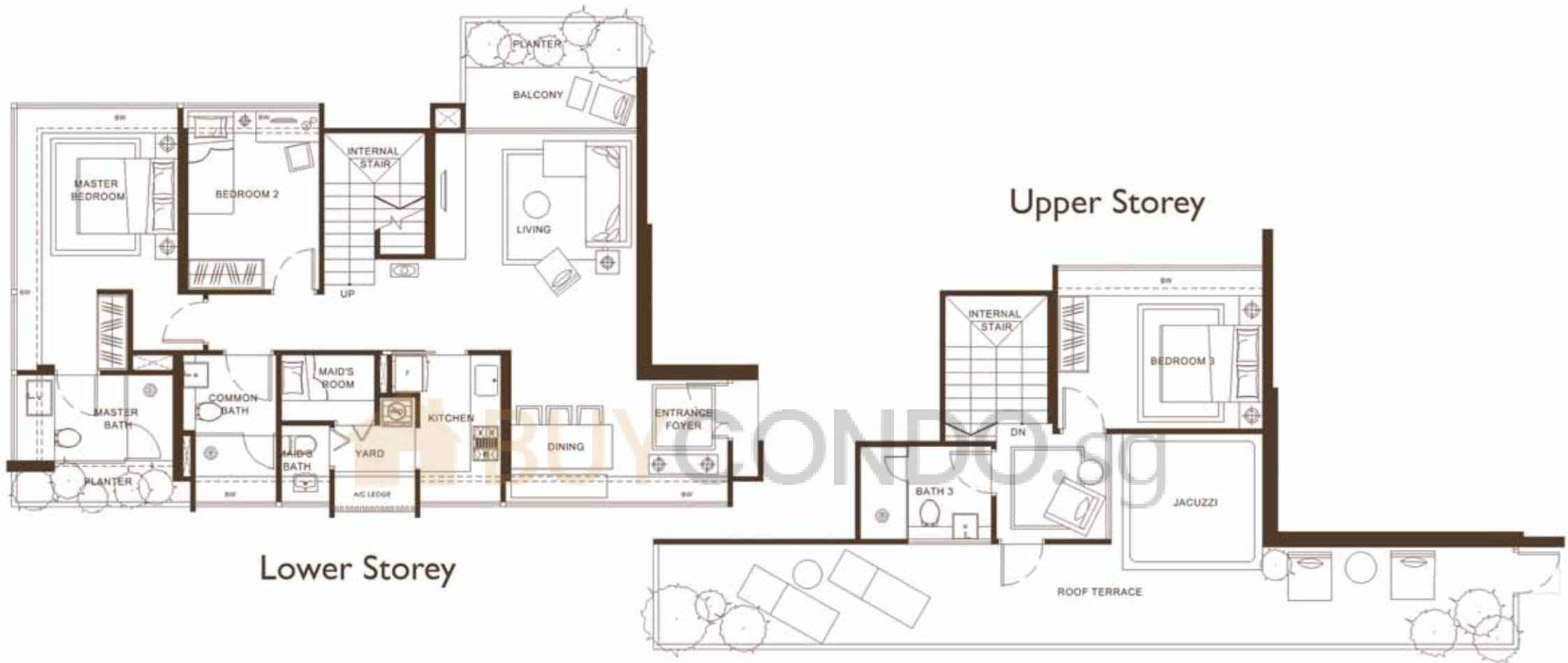
#04-05



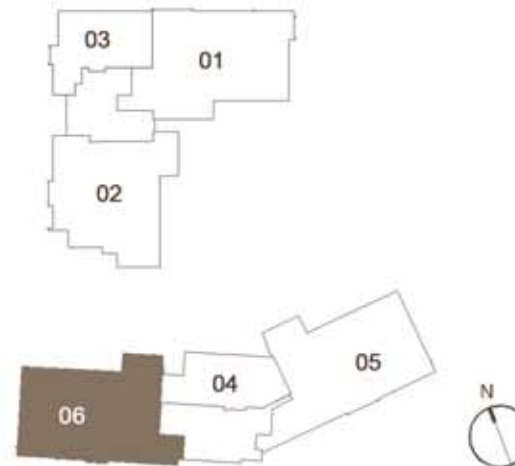
The plans are subject to change as may be required or approved by the relevant authorities. These are not drawn to scale and are for the purpose of a visual presentation of the different layouts that are available. Areas are estimates only and are subject to final survey.



# Type C10 PH 3 bdrm 1,926sq ft



Unit #05-06



The plans are subject to change as may be required or approved by the relevant authorities. These are not drawn to scale and are for the purpose of a visual presentation of the different layouts that are available. Areas are estimates only and are subject to final survey.

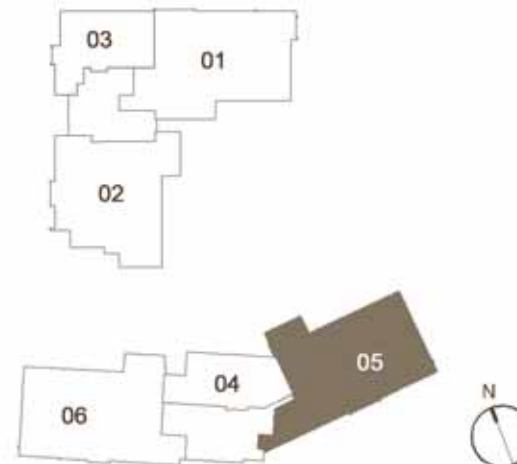
# Type C I I

PH 3 bdrm 2,056sq ft



Lower Storey

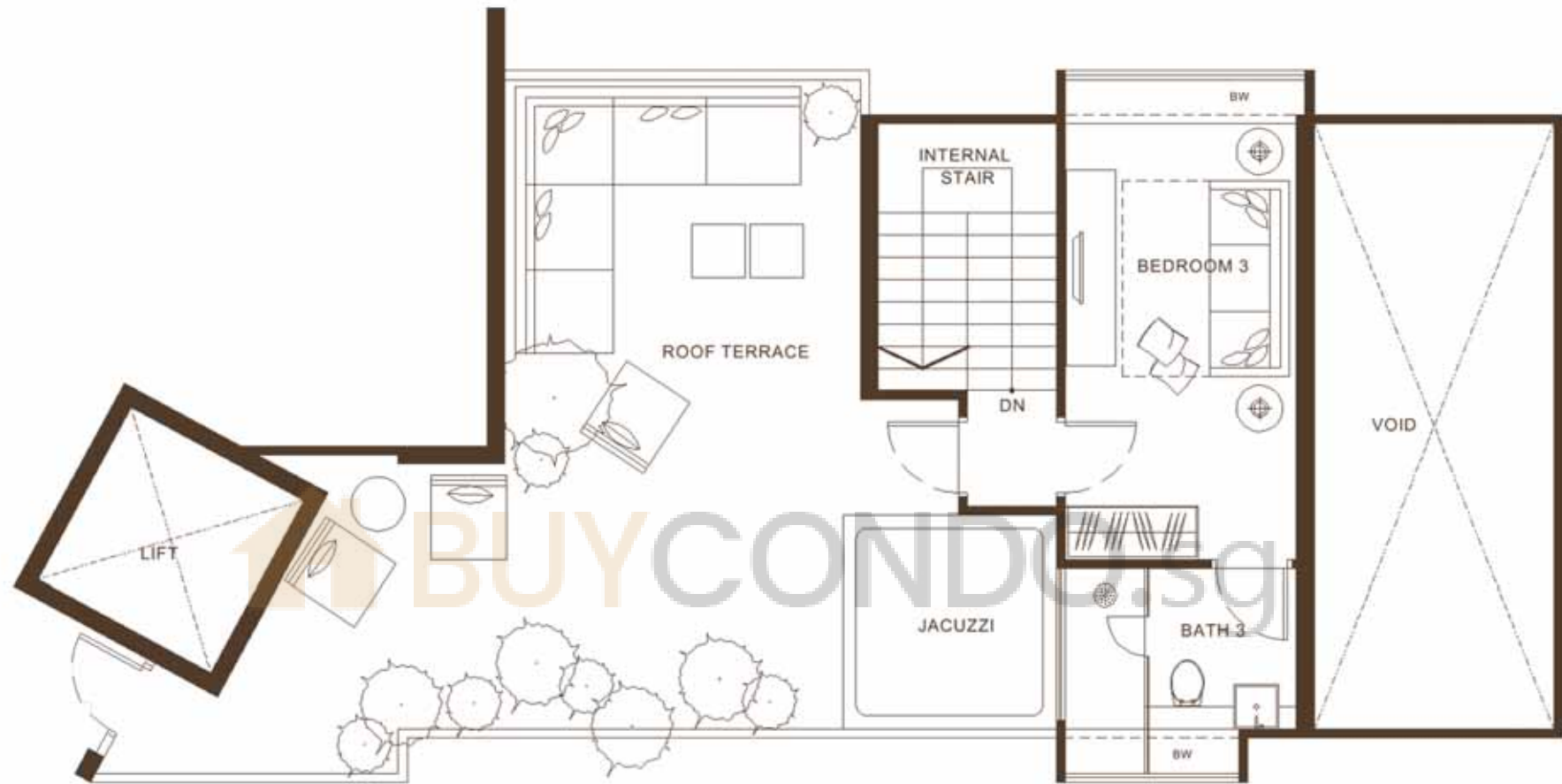
Unit #05-05



The plans are subject to change as may be required or approved by the relevant authorities. These are not drawn to scale and are for the purpose of a visual presentation of the different layouts that are available. Areas are estimates only and are subject to final survey.

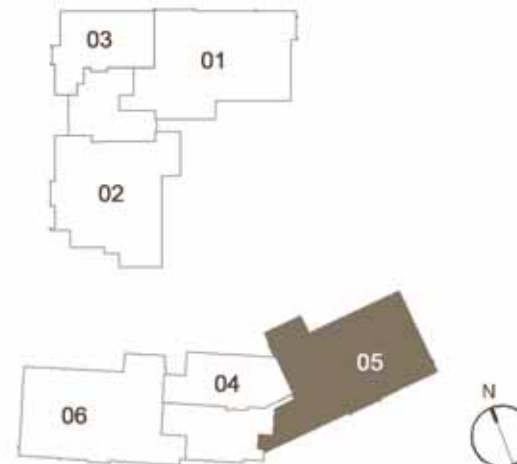
# Type C11

PH 3 bdrm 2,056sq ft



Upper Storey

Unit #05-05



The plans are subject to change as may be required or approved by the relevant authorities. These are not drawn to scale and are for the purpose of a visual presentation of the different layouts that are available. Areas are estimates only and are subject to final survey.