

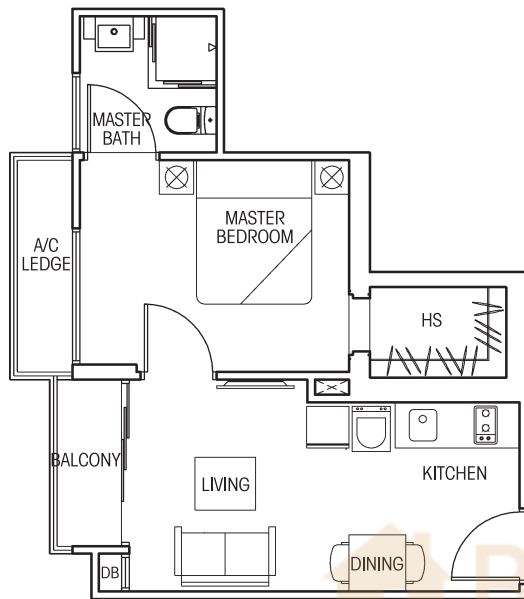
# TYPE A1

## 1-BEDROOM

Unit #04-03 to #07-03

Area 37 sqm / 398 sqft

(Inclusive of Balcony and A/C Ledge)



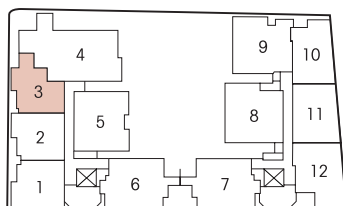
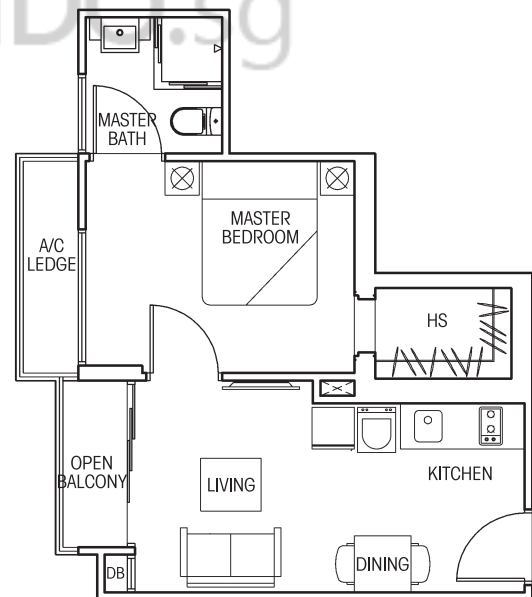
# TYPE A1-P

## 1-BEDROOM

Unit #08-03

Area 37 sqm / 398 sqft

(Inclusive of Open Balcony and A/C Ledge)

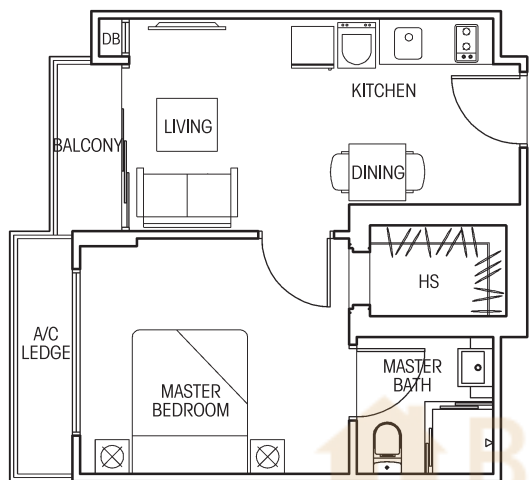


# TYPE A2

## 1-BEDROOM

Unit #03-01 to #07-01  
Area 39 sqm / 420 sqft  
(Inclusive of Balcony and A/C Ledge)

Unit #03-02 to #07-02  
Area 39 sqm / 420 sqft  
(Inclusive of Balcony and A/C Ledge)

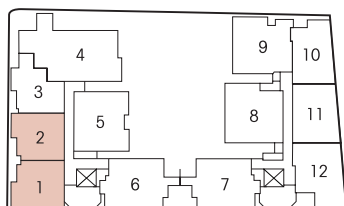
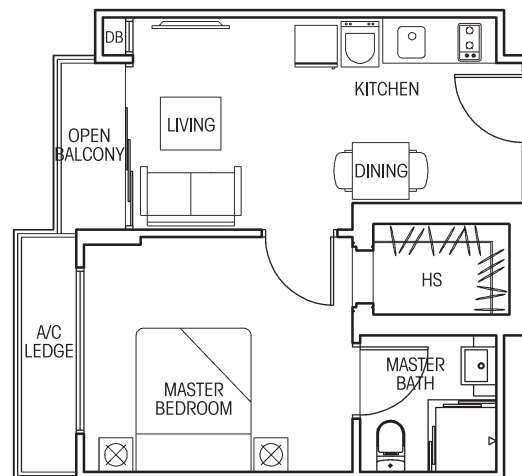


# TYPE A2-P

## 1-BEDROOM

Unit #08-01  
Area 39 sqm / 420 sqft  
(Inclusive of Open Balcony and A/C Ledge)

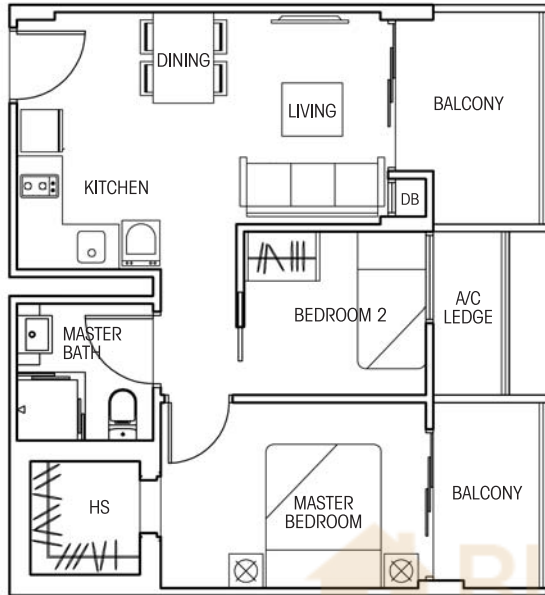
Unit #08-02  
Area 39 sqm / 420 sqft  
(Inclusive of Open Balcony and A/C Ledge)



# TYPE B1

## 2-BEDROOM

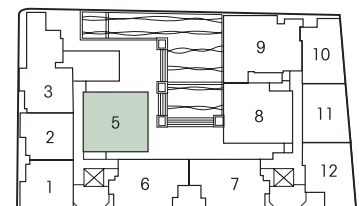
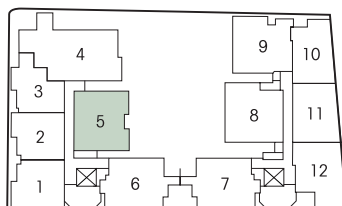
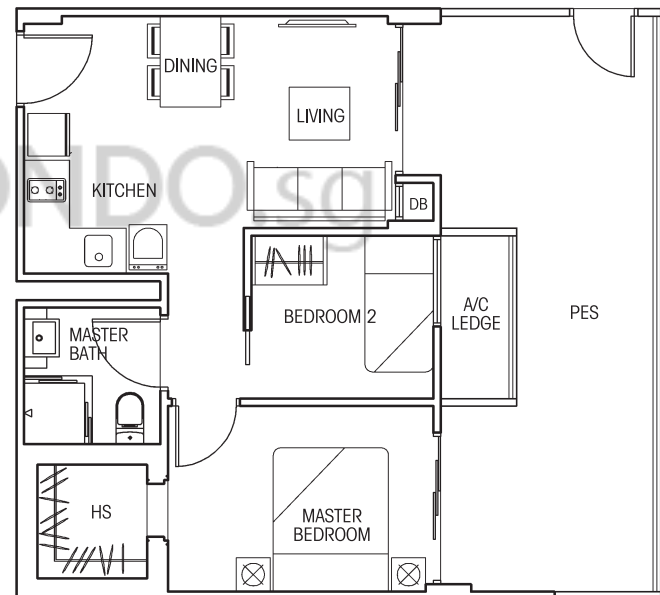
Unit #04-05 to #07-05  
 Area 52 sqm / 560 sqft  
 (Inclusive of Balcony and A/C Ledge)



# TYPE B1-G

## 2-BEDROOM

Unit #03-05  
 Area 64 sqm / 689 sqft  
 (Inclusive of PES and A/C Ledge)

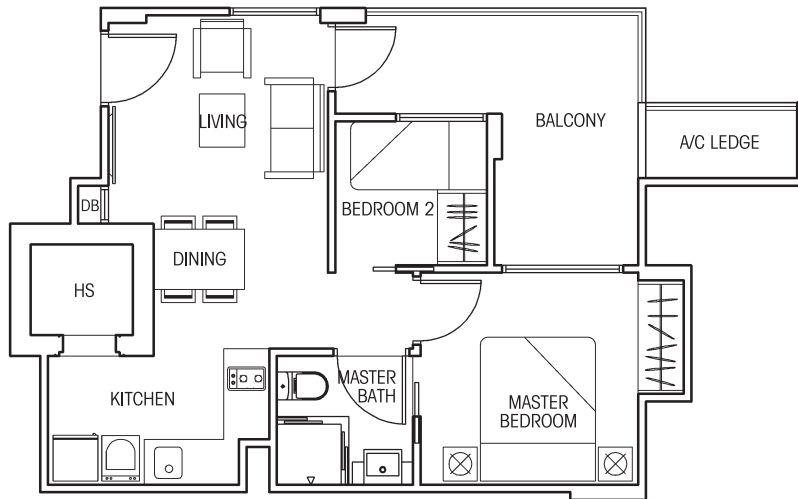


# TYPE B2

## 2-BEDROOM

Unit #04-06 to #07-06  
#04-07 to #07-07

Area 51 sqm / 549 sqft  
(Inclusive of Balcony and A/C Ledge)

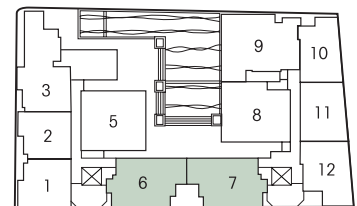
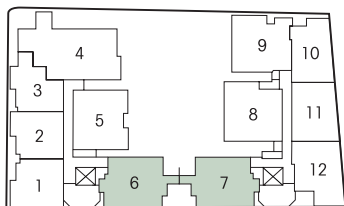
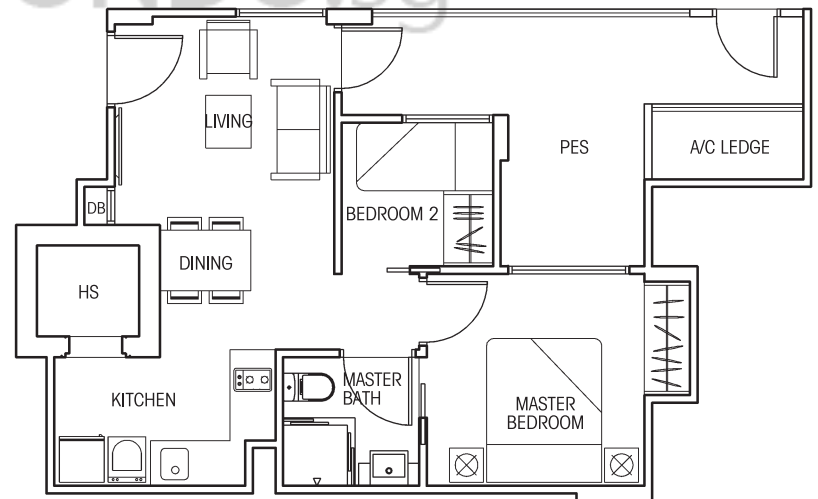


# TYPE B2-G

## 2-BEDROOM

Unit #03-06 & #03-07

Area 54 sqm / 581 sqft  
(Inclusive of PES and A/C Ledge)



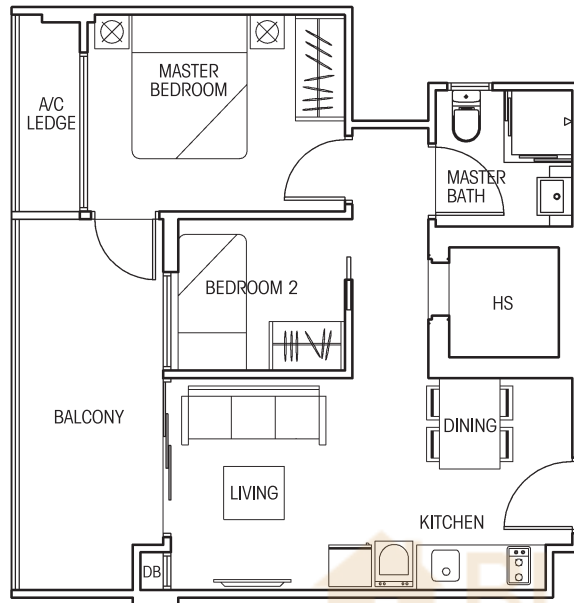
# TYPE B3

## 2-BEDROOM

Unit #04-08 to #07-08

Area 53 sqm / 570 sqft

(Inclusive of Balcony and A/C Ledge)



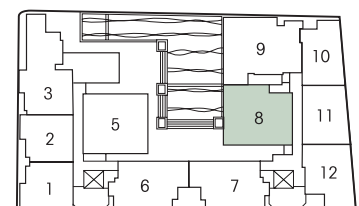
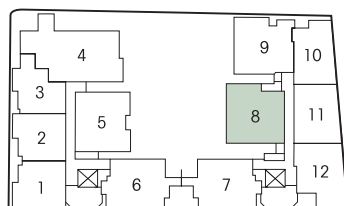
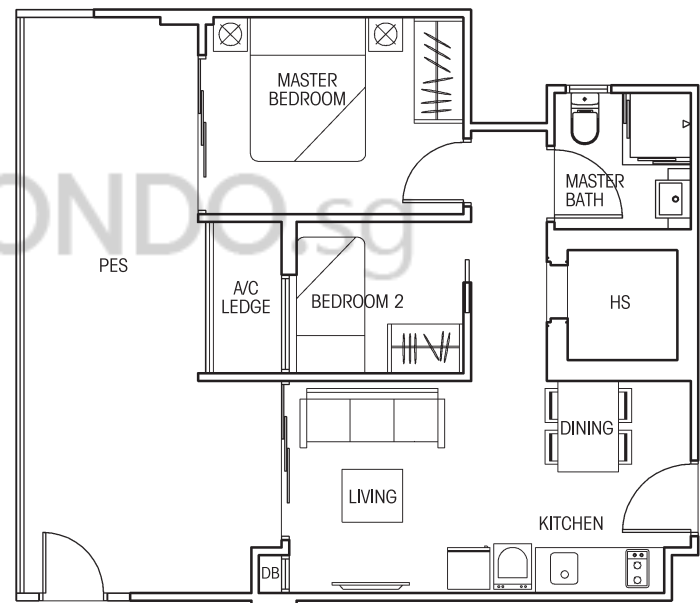
# TYPE B3-G

## 2-BEDROOM

Unit #03-08

Area 65 sqm / 700 sqft

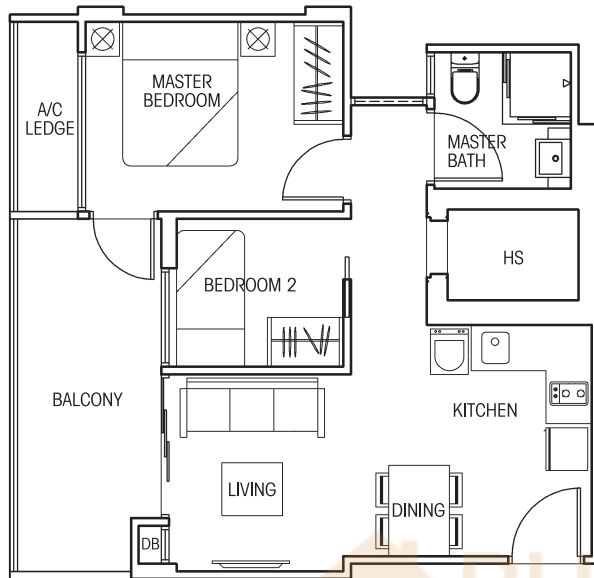
(Inclusive of PES and A/C Ledge)



# TYPE B4

## 2-BEDROOM

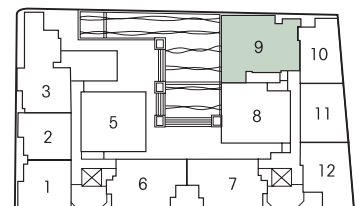
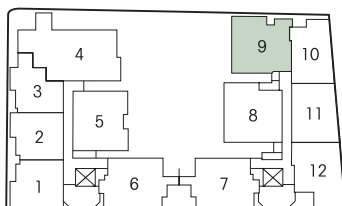
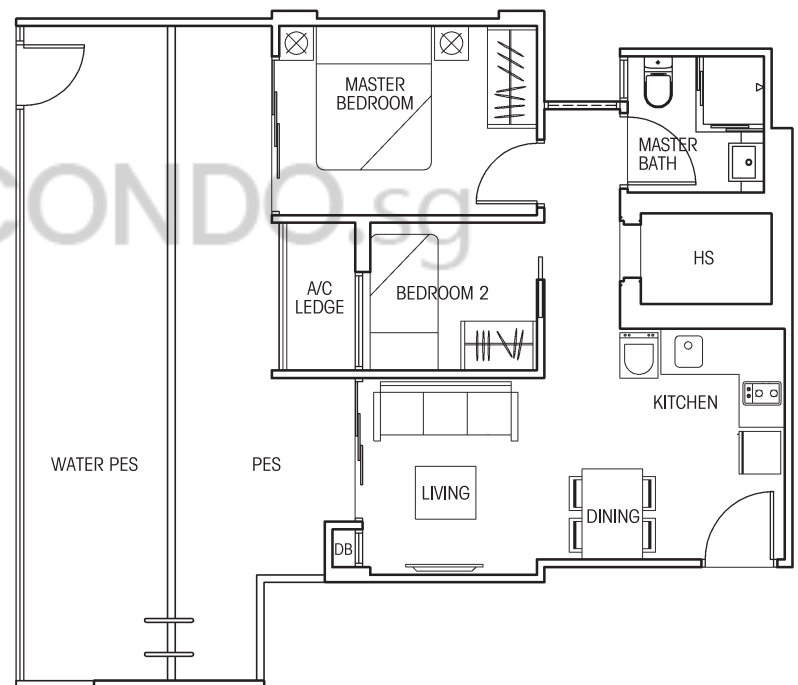
Unit #04-09 to #07-09  
 Area 54 sqm / 581 sqft  
 (Inclusive of Balcony and A/C Ledge)



# TYPE B4-G

## 2-BEDROOM

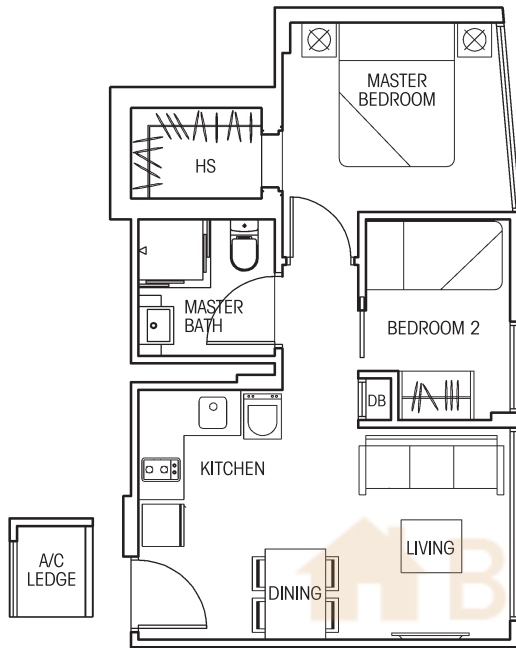
Unit #03-09  
 Area 77 sqm / 829 sqft  
 (Inclusive of Water PES, PES and A/C Ledge)



# TYPE B5

## 2-BEDROOM

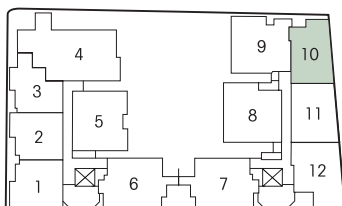
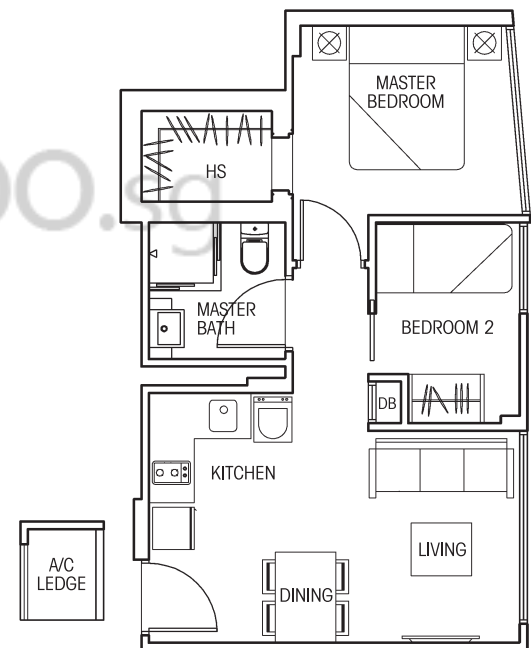
Unit #03-10, #05-10 & #07-10  
Area 41 sqm / 441 sqft  
(Inclusive of A/C Ledge)



# TYPE B5A

## 2-BEDROOM

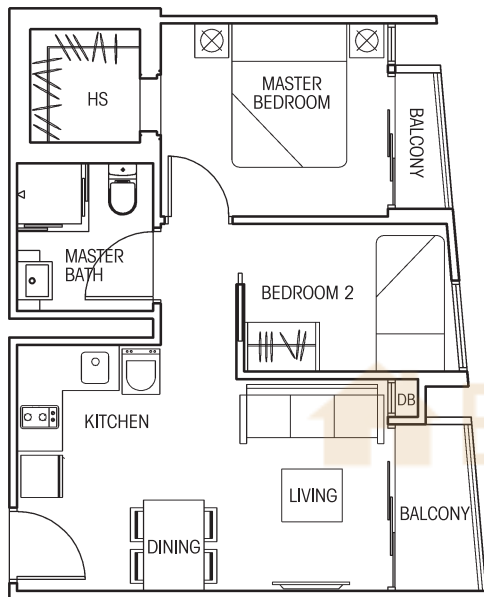
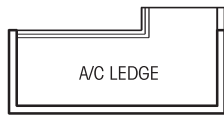
Unit #04-10, #06-10 & #08-10  
Area 41 sqm / 441 sqft  
(Inclusive of A/C Ledge)



# TYPE B6

## 2-BEDROOM

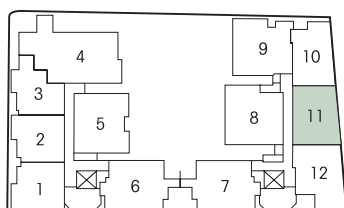
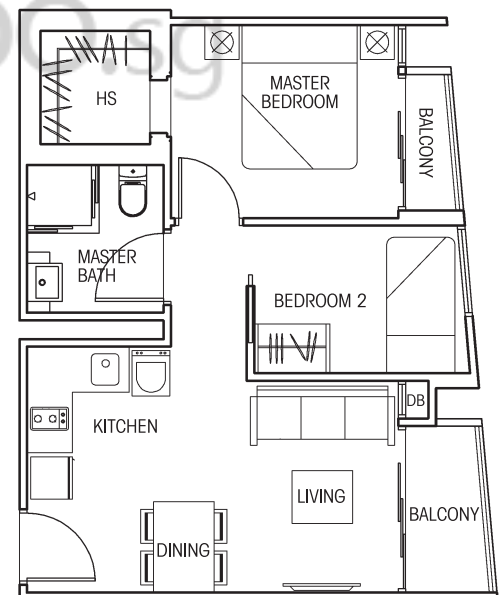
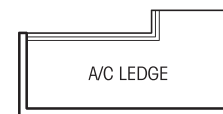
Unit #03-11, #05-11 & #07-11  
Area 47 sqm / 506 sqft  
(Inclusive of Balcony and A/C Ledge)



# TYPE B6A

## 2-BEDROOM

Unit #04-11 & #06-11  
Area 47 sqm / 506 sqft  
(Inclusive of Balcony and A/C Ledge)





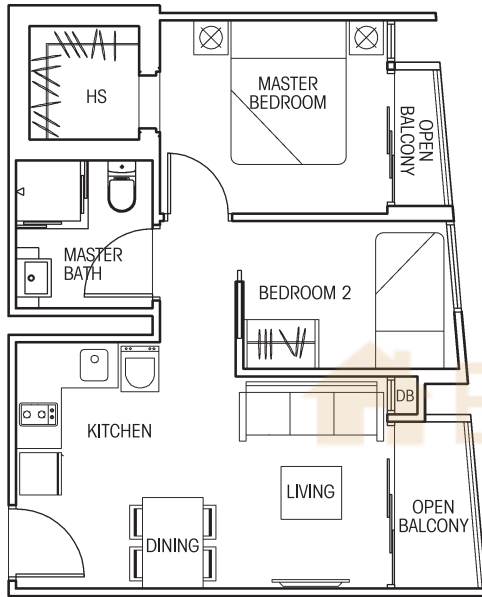
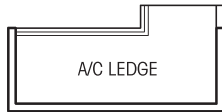
# TYPE B6-P

## 2-BEDROOM

Unit #08-11

Area 47 sqm / 506 sqft

(Inclusive of Open Balcony and A/C Ledge)



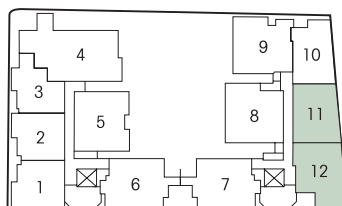
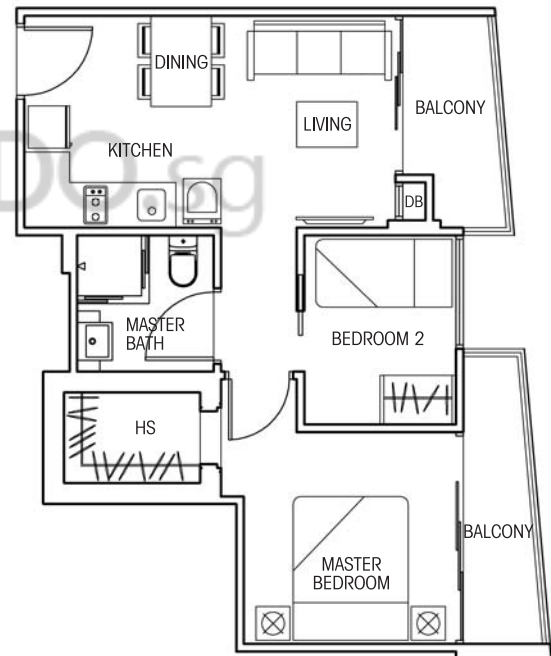
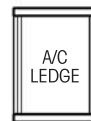
# TYPE B7

## 2-BEDROOM

Unit #03-12, #05-12 & #07-12

Area 48 sqm / 517 sqft

(Inclusive of Balcony and A/C Ledge)



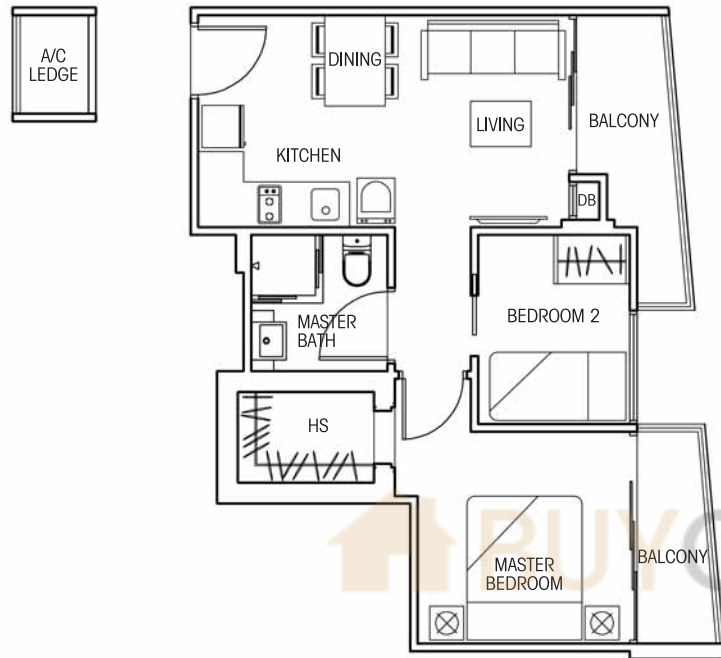
# TYPE B7A

## 2-BEDROOM

Unit #04-12 & #06-12

Area 48 sqm / 517 sqft

(Inclusive of Balcony and A/C Ledge)



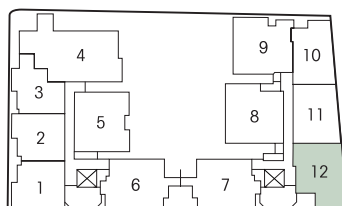
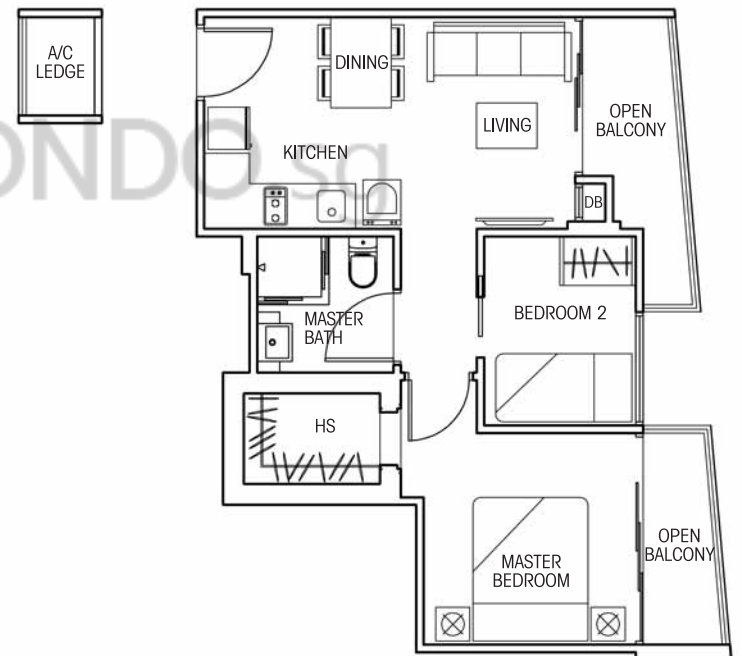
# TYPE B7-P

## 2-BEDROOM

Unit #08-12

Area 48 sqm / 517 sqft

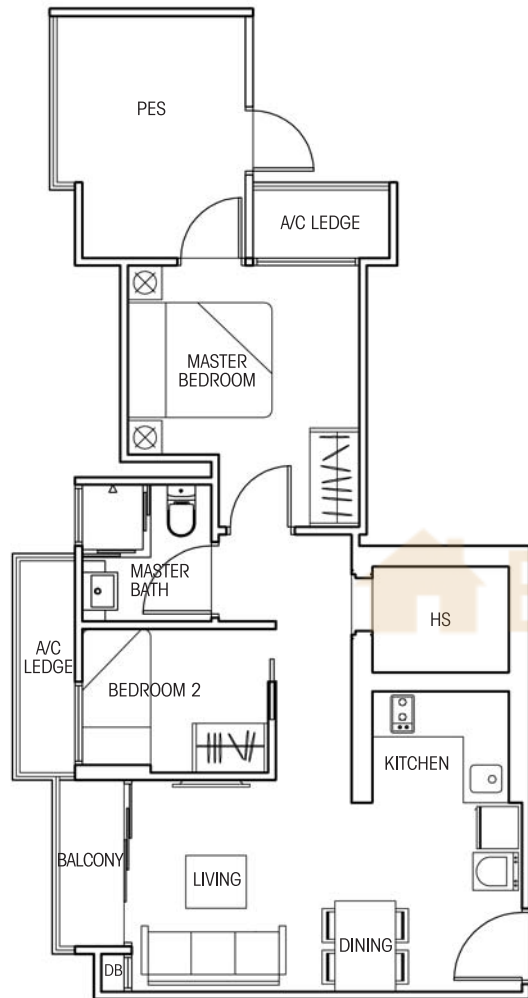
(Inclusive of Open Balcony and A/C Ledge)



# TYPE B8-G

## 2-BEDROOM

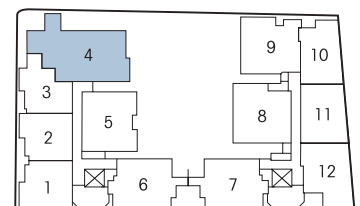
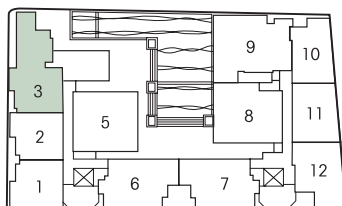
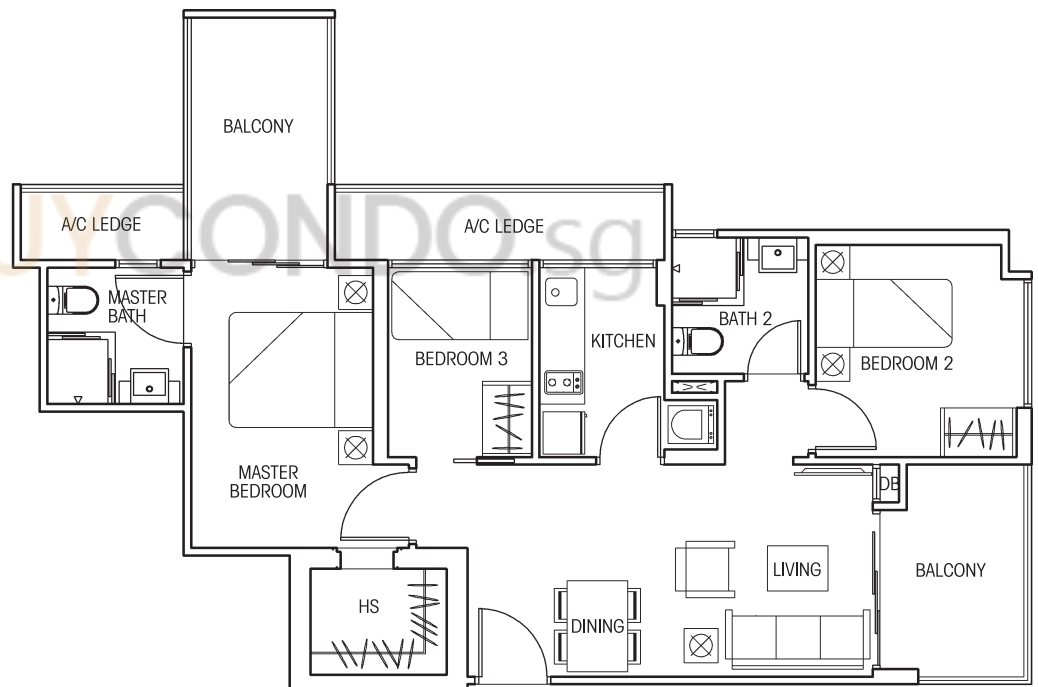
Unit #03-03  
 Area 60 sqm / 646 sqft  
 (Inclusive of PES, Balcony and A/C Ledge)



# TYPE C

## 3-BEDROOM

Unit #04-04 to #07-04  
 Area 78 sqm / 840 sqft  
 (Inclusive of Balcony and A/C Ledge)



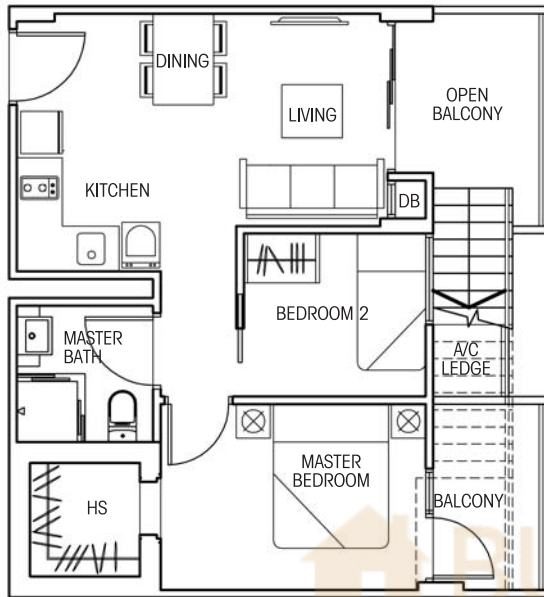
# TYPE B1-P

## 2-BEDROOM PENTHOUSE

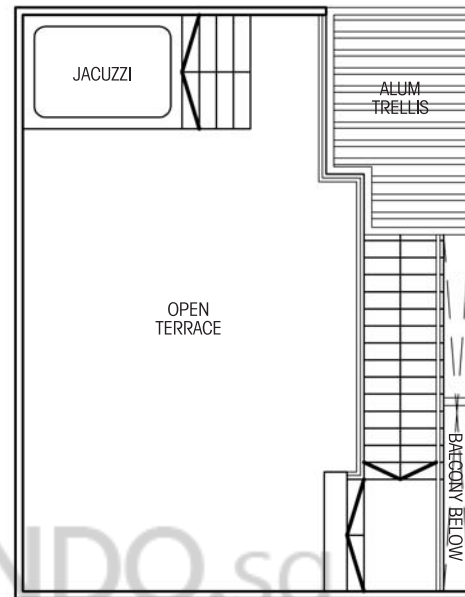
Unit #08-05

Area 87 sqm / 936 sqft

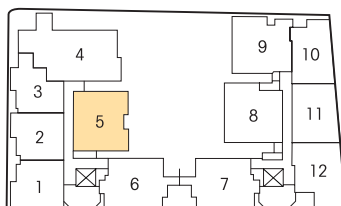
(Inclusive of Open Balcony, Roof Terrace and A/C Ledge)



Lower Storey



Upper Storey



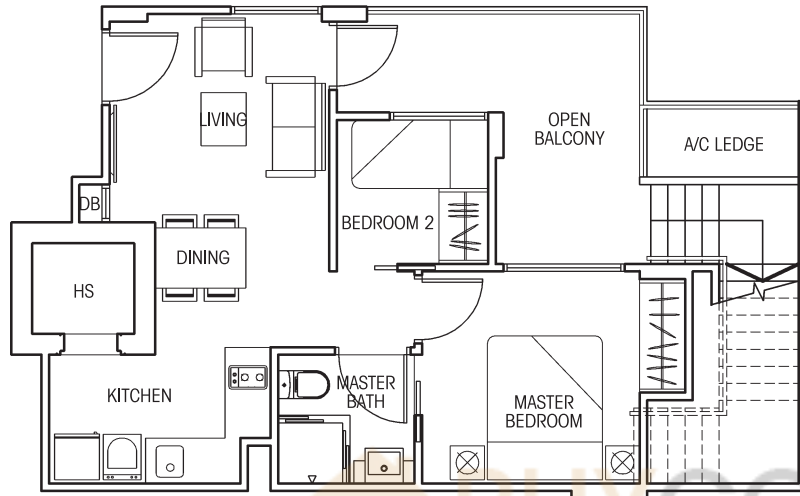
# TYPE B2-P

## 2-BEDROOM PENTHOUSE

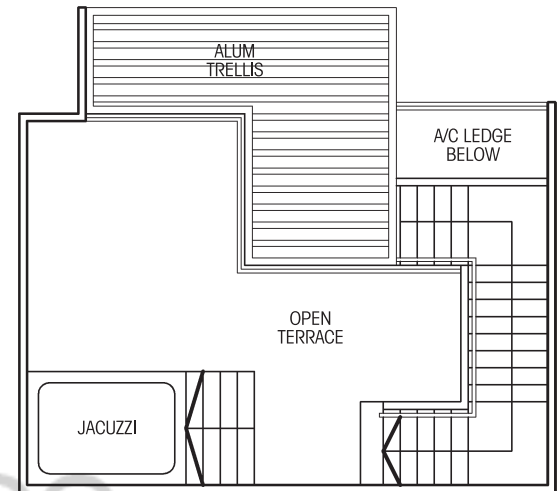
Unit #08-06 & #08-07

Area 83 sqm / 893 sqft

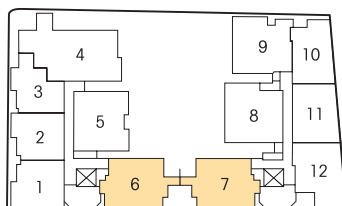
(Inclusive of Open Balcony, Roof Terrace and A/C Ledge)



Lower Storey



Upper Storey



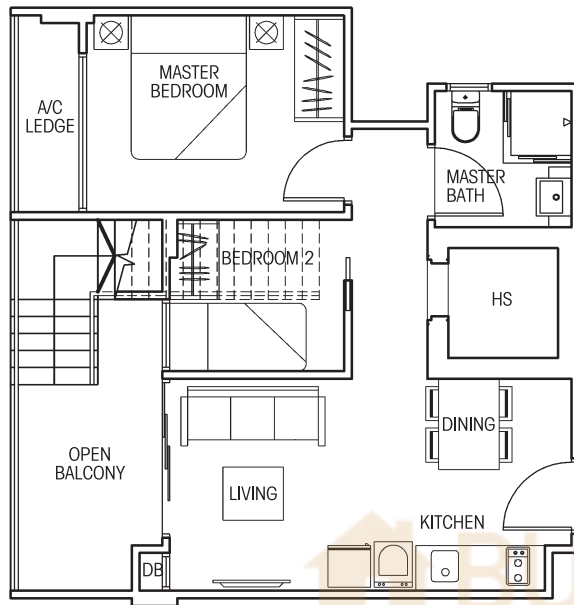
# TYPE B3-P

## 2-BEDROOM PENTHOUSE

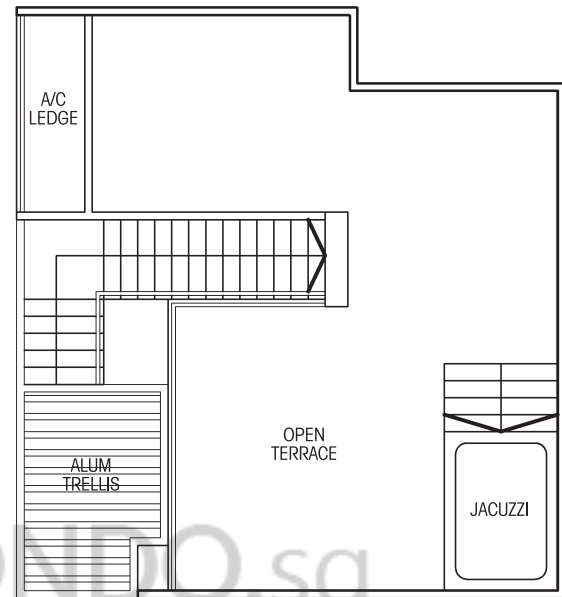
Unit #08-08

Area 98 sqm / 1055 sqft

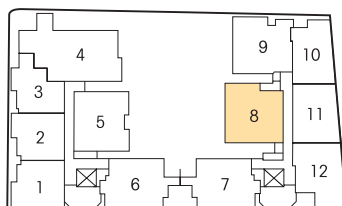
(Inclusive of Open Balcony, Roof Terrace and A/C Ledge)



Lower Storey



Upper Storey



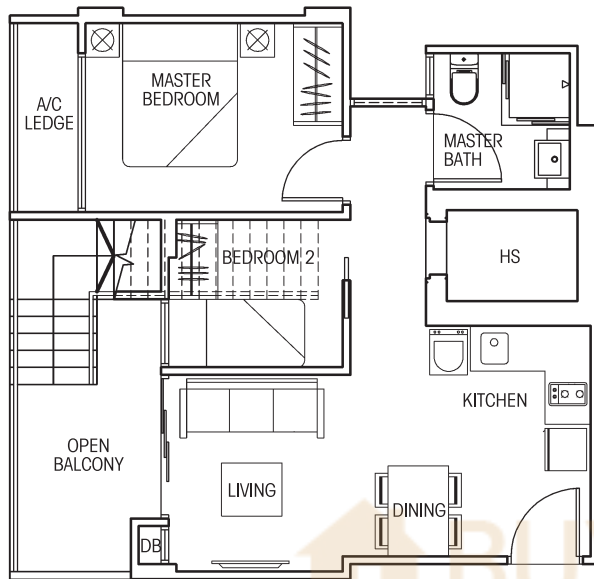
# TYPE B4-P

## 2-BEDROOM PENTHOUSE

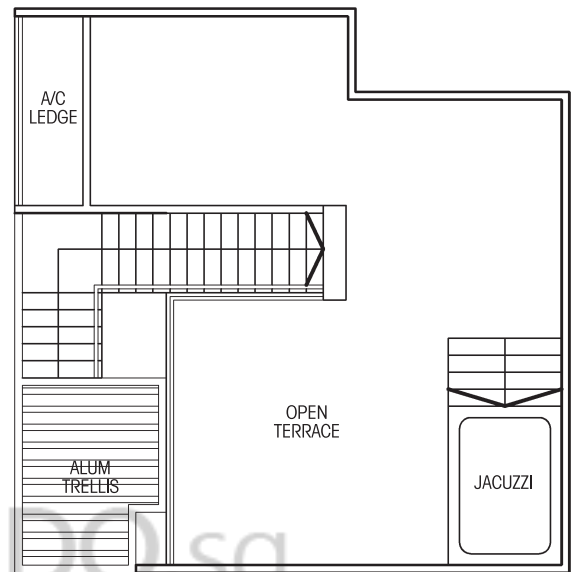
Unit #08-09

Area 96 sqm / 1033 sqft

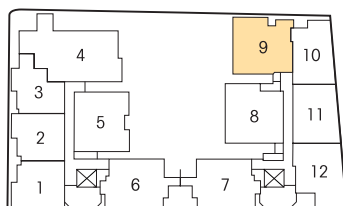
(Inclusive of Open Balcony, Roof Terrace and A/C Ledge)



Lower Storey



Upper Storey



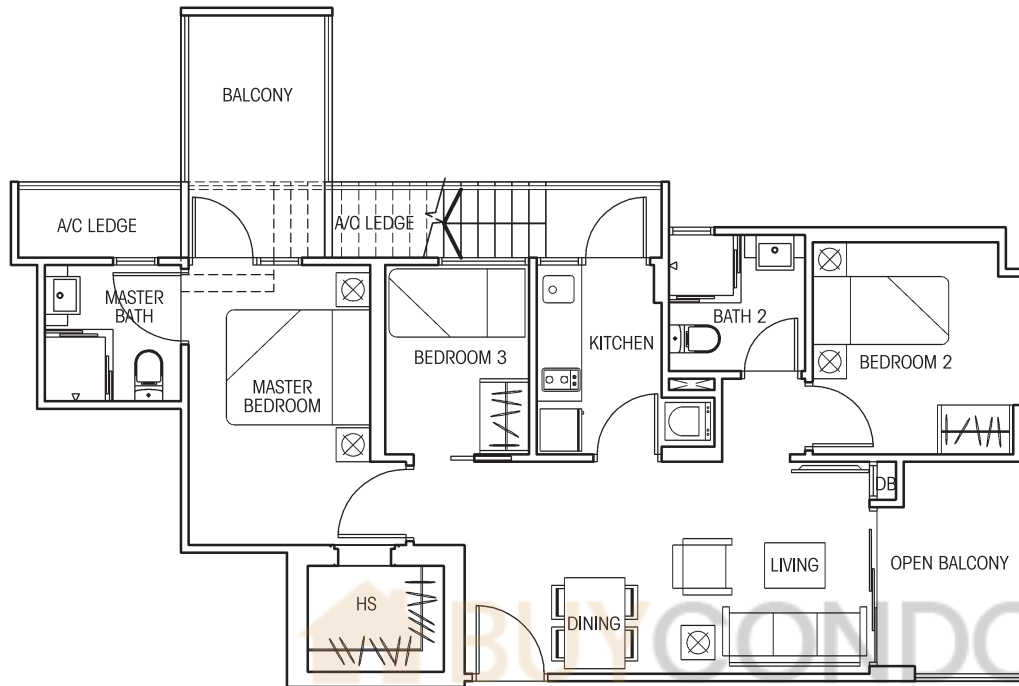
# TYPE C-P

## 3-BEDROOM PENTHOUSE

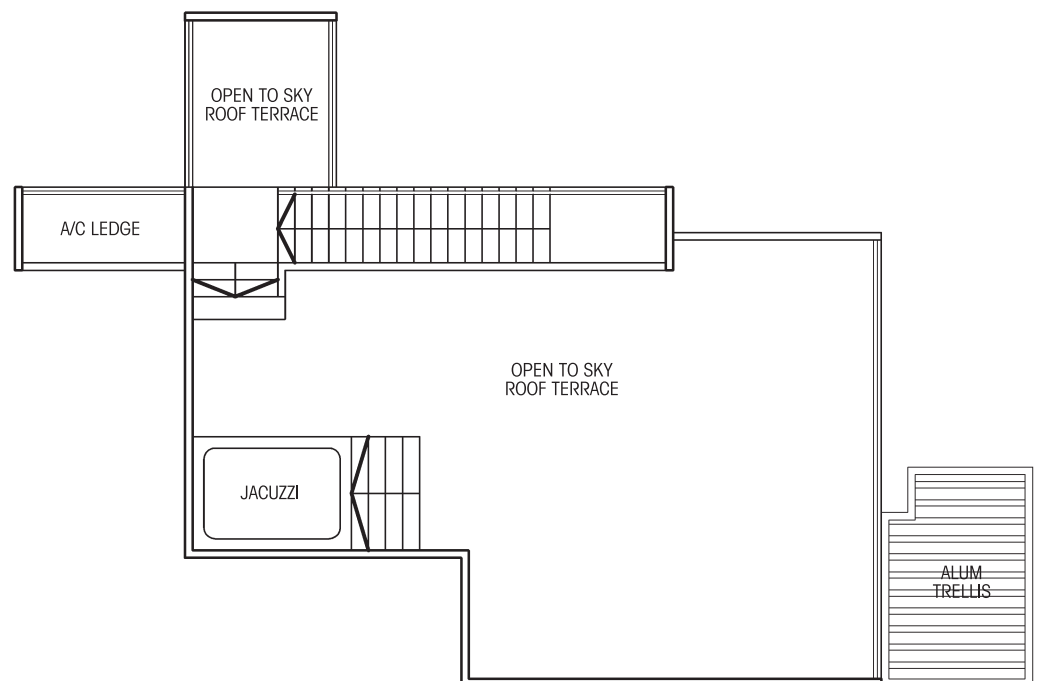
Unit #08-04

Area 131 sqm / 1410 sqft

(Inclusive of Open Balcony, Roof Terrace and A/C Ledge)



Lower Storey



Upper Storey

