

# 15

## Unit layout plans

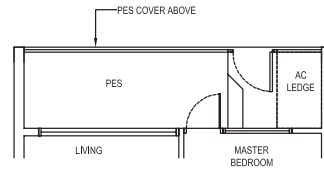
### 15-16 • E Maison

#### 1 Classic (1 Bedroom)

Type:  
A1 (p6)  
(inclusive of PES & A/C Ledge)

56 sqm (603 sqft)

#01-20

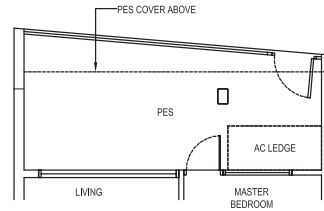


#### 1 Classic (1 Bedroom)

Type:  
A1 (p2)  
(inclusive of PES & A/C Ledge)

62 sqm (667 sqft)

#01-02



#### 1 Classic (1 Bedroom)

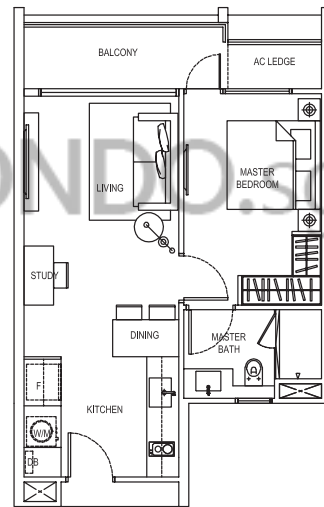
Type:  
A1  
(inclusive of Balcony & A/C Ledge)

53 sqm (570 sqft)

#02-02, #02-09, #02-20, #02-27,  
#03-02, #03-09, #03-20, #03-27,  
#04-02, #04-09, #04-20, #04-27,  
#05-09

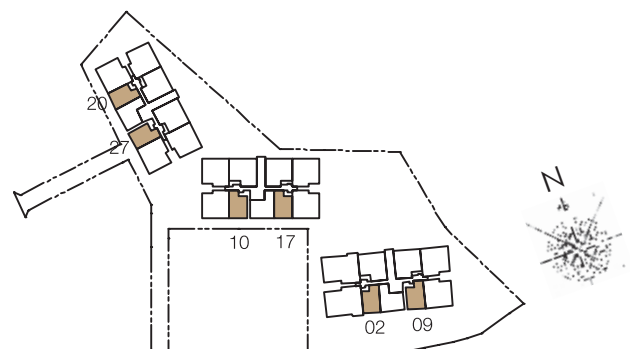
(MIRRORED)

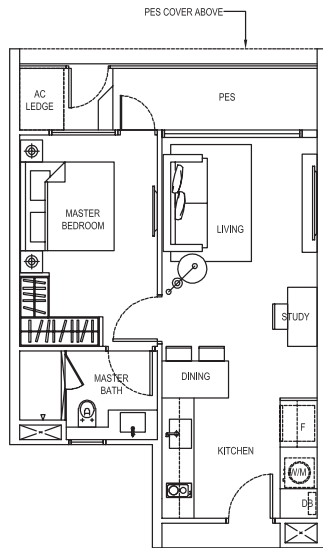
#02-10, #02-17, #03-10, #03-17,  
#04-10, #04-17, #05-10, #05-17



E MAISON

The plans are subject to change as may be required or approved by the relevant authorities. Areas are estimates only and are subject to final survey. Plans are not drawn to scale and do not form part of the contract.



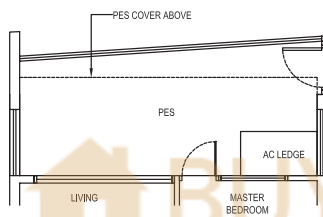


**1 Classic (1 Bedroom)**

Type:  
**A1 (p8)**  
 (inclusive of PES & A/C Ledge)

54 sqm (581 sqft)

#01-17

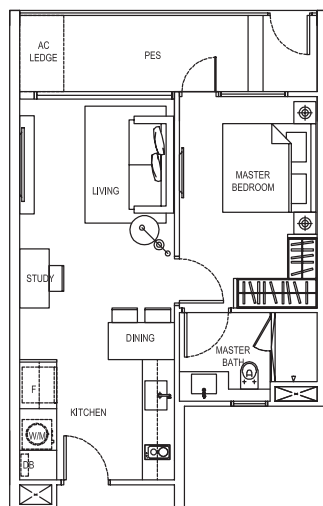


**1 Classic (1 Bedroom)**

Type:  
**A1 (p3)**  
 (inclusive of PES & A/C Ledge)

62 sqm (667 sqft)

#01-09



**1 Classic (1 Bedroom)**

Type:  
**A1 (p1)**  
 (inclusive of PES & A/C Ledge)

56 sqm (603 sqft)

#01-27

(MIRRORED)  
 #01-10



E MAISON

The plans are subject to change as may be required or approved by the relevant authorities. Areas are estimates only and are subject to final survey. Plans are not drawn to scale and do not form part of the contract.

# 17

## Unit layout plans

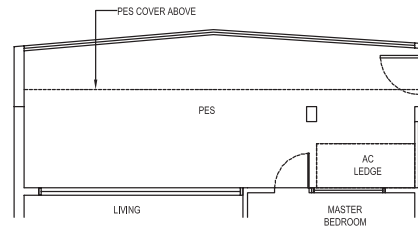
### 17-18 • E Maison

#### 2 Compact (1+1 Bedroom)

Type:  
A2 (p2)  
(inclusive of PES & A/C Ledge)

77 sqm (829 sqft)

(MIRRORED)  
#01-01



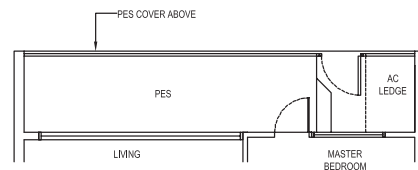
#### 2 Compact (1+1 Bedroom)

Type:  
A2 (p1)  
(inclusive of PES & A/C Ledge)

65 sqm (700 sqft)

#01-18

(MIRRORED)  
#01-19



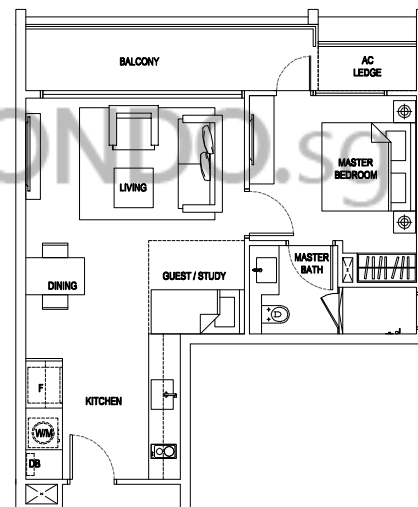
#### 2 Compact (1+1 Bedroom)

Type:  
A2  
(inclusive of Balcony & A/C Ledge)

62 sqm (667 sqft)

#02-18, #03-18, #04-18, #05-18

(MIRRORED)  
#02-01, #02-19, #03-01, #03-19,  
#04-01, #04-19



E MAISON

The plans are subject to change as may be required or approved by the relevant authorities. Areas are estimates only and are subject to final survey. Plans are not drawn to scale and do not form part of the contract.



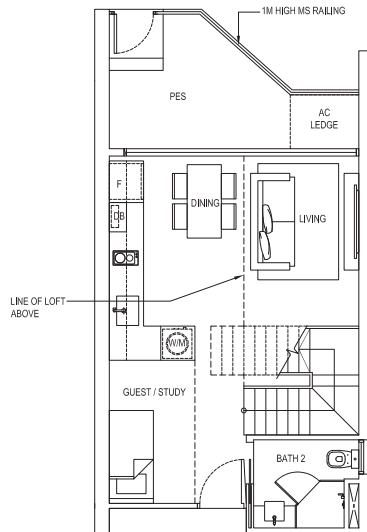
2 Compact Loft (1+1 Bedroom Loft)

Type:  
A3

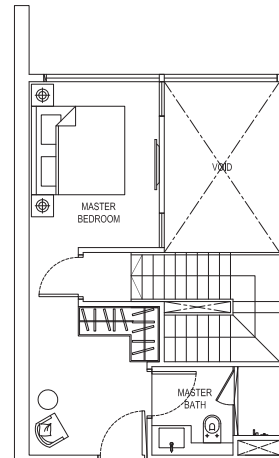
(inclusive of PES & A/C Ledge)

93 sqm (1,001 sqft)

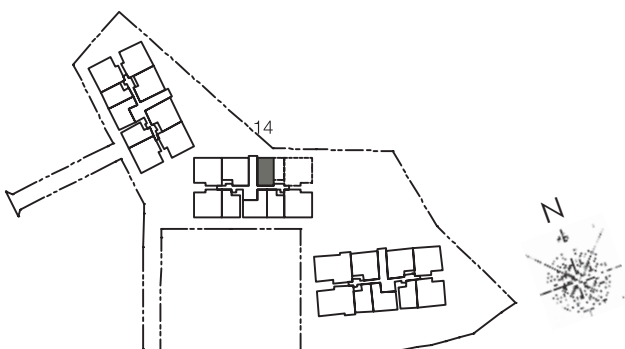
#01-14



LOWER LEVEL PLAN



UPPER LEVEL PLAN



E MAISON

The plans are subject to change as may be required or approved by the relevant authorities. Areas are estimates only and are subject to final survey. Plans are not drawn to scale and do not form part of the contract.

## Unit layout plans

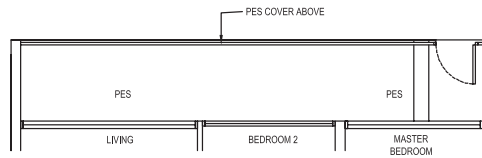
### 19-20 • E Maison

#### 3 Compact (2+1 Bedroom)

Type:  
B1a (p4)  
(inclusive of PES & A/C Ledge)

90 sqm (969 sqft)

#01-21

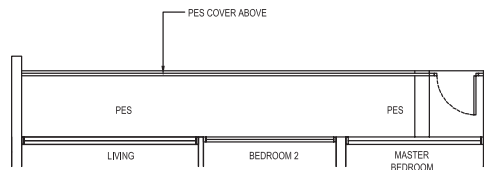


#### 3 Compact (2+1 Bedroom)

Type:  
B1a (p2)  
(inclusive of PES & A/C Ledge)

87 sqm (936 sqft)

(MIRRORED)  
#01-16



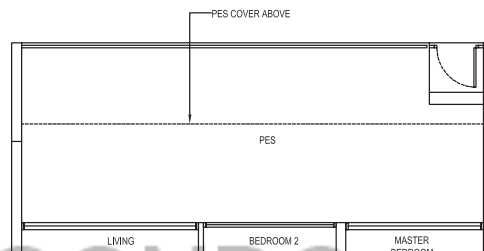
#### 3 Compact (2+1 Bedroom)

Type:  
B1a (p1)  
(inclusive of PES & A/C Ledge)

110 sqm (1,184 sqft)

#01-25

(MIRRORED)  
#01-12



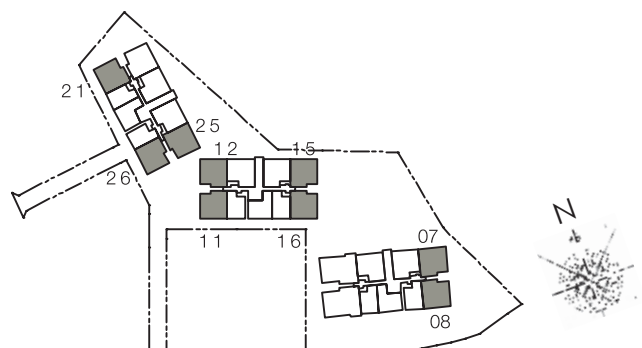
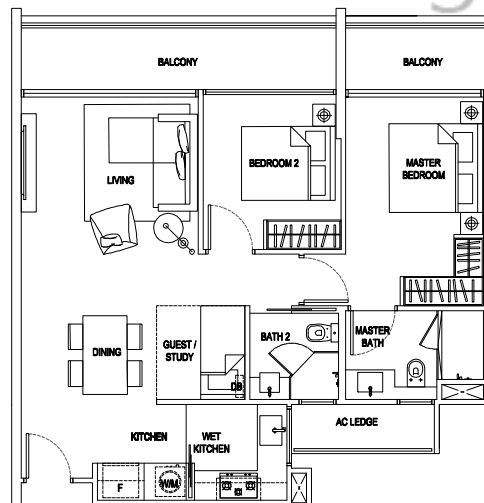
#### 3 Compact (2+1 Bedroom)

Type:  
B1a  
(inclusive of Balcony & A/C Ledge)

87 sqm (936 sqft)

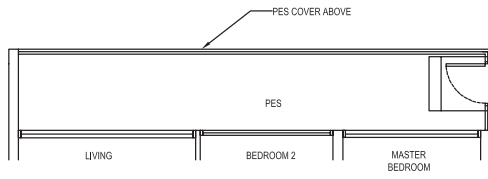
#02-07, #02-11, #02-21, #02-25,  
#03-07, #03-11, #03-15, #03-21, #03-25,  
#04-07, #04-11, #04-15, #04-21, #04-25,  
#05-11

(MIRRORED)  
#02-12, #02-16, #02-26,  
#03-08, #03-12, #03-16, #03-26,  
#04-08, #04-12, #04-16, #04-26,  
#05-08, #05-16



E MAISON

The plans are subject to change as may be required or approved by the relevant authorities. Areas are estimates only and are subject to final survey. Plans are not drawn to scale and do not form part of the contract.



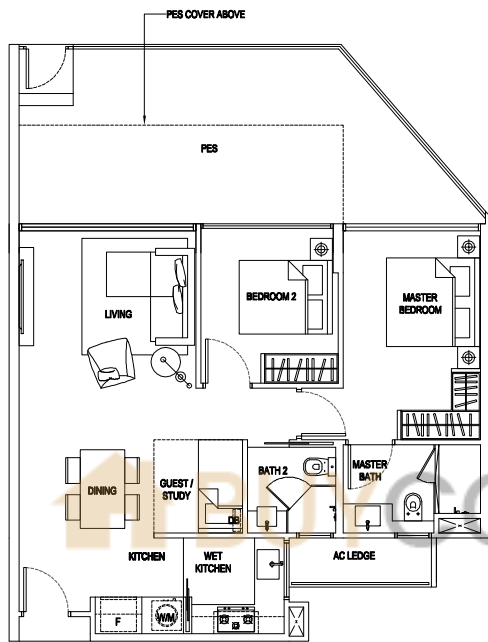
**3 Compact (2+1 Bedroom)**

Type:  
B1a (p7)  
(inclusive of PES & A/C Ledge)

90 sqm (969 sqft)

#01-11

(MIRRORED)  
#01-26

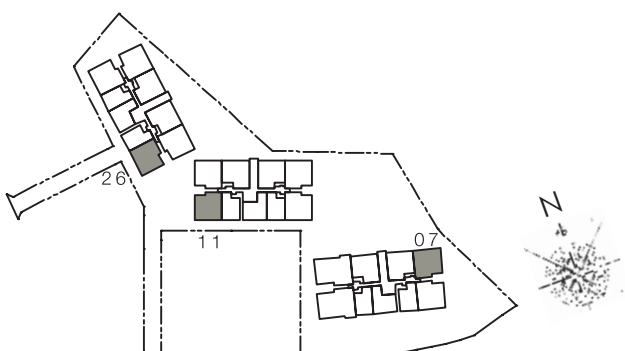


**3 Compact (2+1 Bedroom)**

Type:  
B1a (p5)  
(inclusive of PES & A/C Ledge)

104 sqm (1,119 sqft)

#01-07



E MAISON

The plans are subject to change as may be required or approved by the relevant authorities. Areas are estimates only and are subject to final survey. Plans are not drawn to scale and do not form part of the contract.

# 21

## Unit layout plans

### 21-22 • E Maison

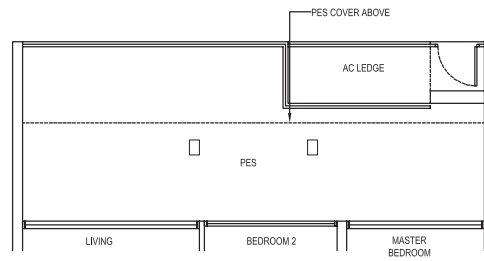
#### 3 Compact (2+1 Bedroom)

Type:  
B1b (p1)  
(inclusive of PES & A/C Ledge)

107 sqm (1,152 sqft)

#01-06, #01-24

(MIRRORED)  
#01-05, #01-13, #01-23



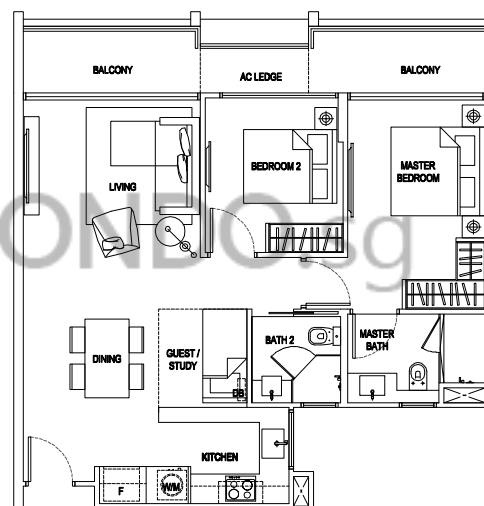
#### 3 Compact (2+1 Bedroom)

Type:  
B1b  
(inclusive of Balcony & A/C Ledge)

84 sqm (904 sqft)

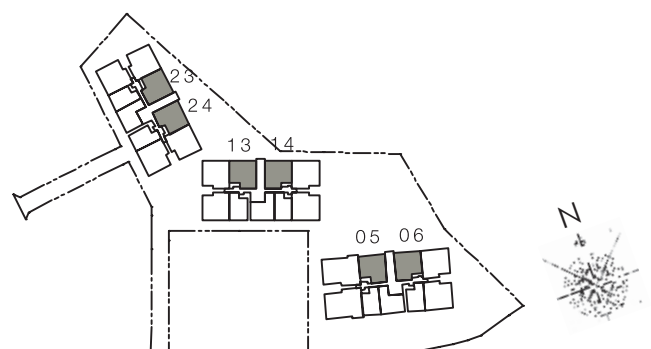
#02-06, #02-24,  
#03-06, #03-14, #03-24,  
#04-06, #04-14, #04-24

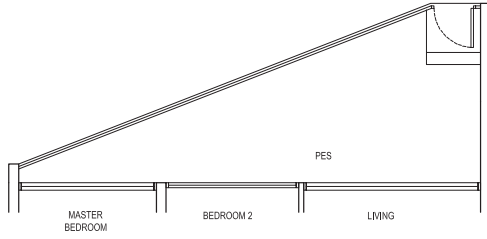
(MIRRORED)  
#02-05, #02-13, #02-23,  
#03-05, #03-13, #03-23,  
#04-05, #04-13, #04-23



E MAISON

The plans are subject to change as may be required or approved by the relevant authorities. Areas are estimates only and are subject to final survey. Plans are not drawn to scale and do not form part of the contract.



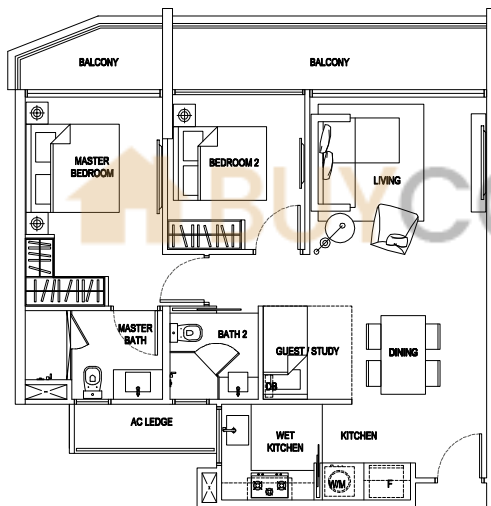


**3 Compact (2+1 Bedroom)**

Type:  
**B1c (p3)**  
 (inclusive of PES & A/C Ledge)

95 sqm (1,023 sqft)

#01-22

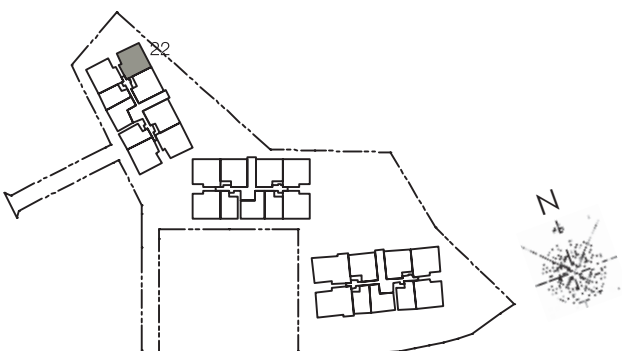


**3 Compact (2+1 Bedroom)**

Type:  
**B1c**  
 (inclusive of Balcony & A/C Ledge)

87 sqm (936 sqft)

#02-22, #03-22, #04-22



E MAISON

The plans are subject to change as may be required or approved by the relevant authorities. Areas are estimates only and are subject to final survey. Plans are not drawn to scale and do not form part of the contract.



# 23

## Unit layout plans

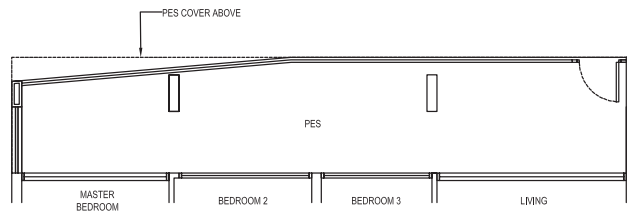
### 23-24 • E Maison

#### 3 Deluxe (3 Bedroom)

Type:  
Cb1 (p3)  
(inclusive of PES & A/C Ledge)

122 sqm (1,313 sqft)

(MIRRORED)  
#01-03

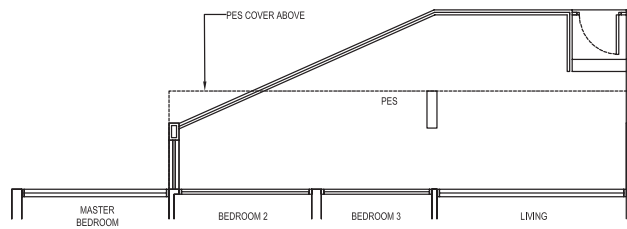


#### 3 Deluxe (3 Bedroom)

Type:  
Cb1 (p2)  
(inclusive of PES & A/C Ledge)

122 sqm (1,313 sqft)

#01-04



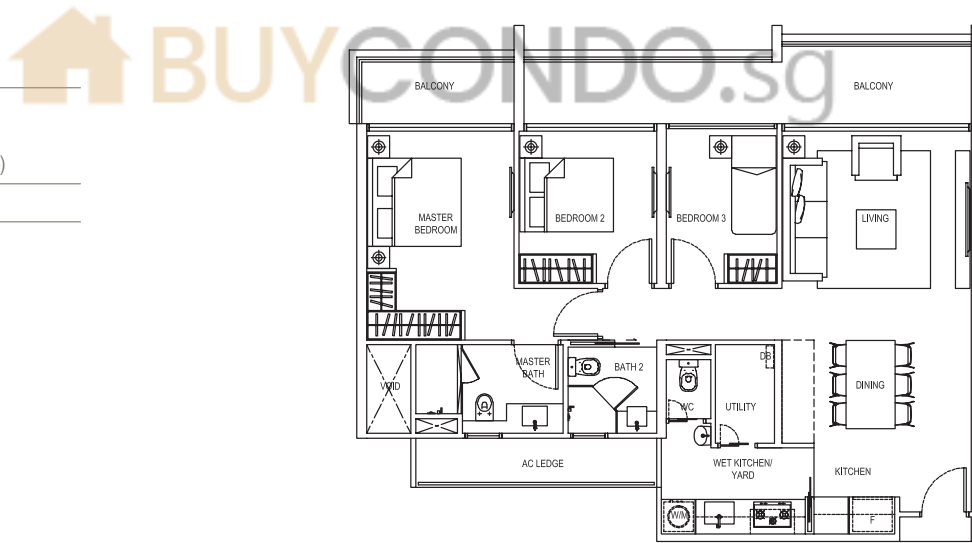
#### 3 Deluxe (3 Bedroom)

Type:  
Cb1  
(inclusive of Balcony & A/C Ledge)

112 sqm (1,206 sqft)

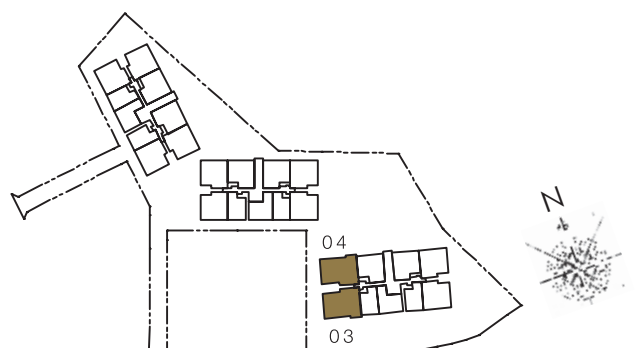
#02-04, #03-04, #04-04

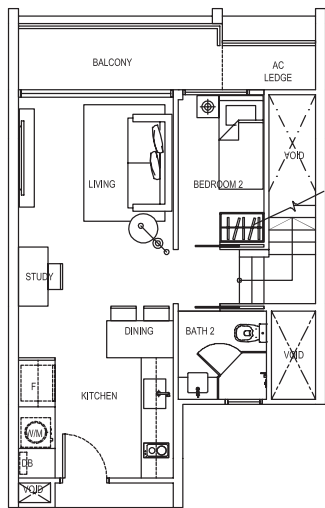
(MIRRORED)  
#02-03, #03-03, #04-03



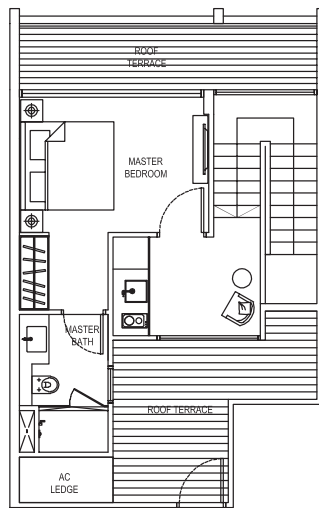
E MAISON

The plans are subject to change as may be required or approved by the relevant authorities. Areas are estimates only and are subject to final survey. Plans are not drawn to scale and do not form part of the contract.





LOWER LEVEL PLAN



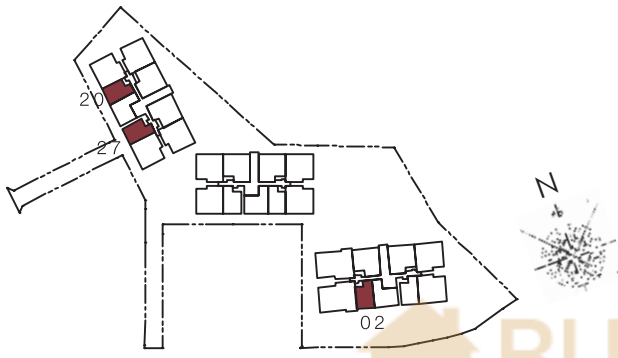
UPPER LEVEL PLAN

**2 Deluxe Penthouse**  
(2 Bedroom Penthouse)

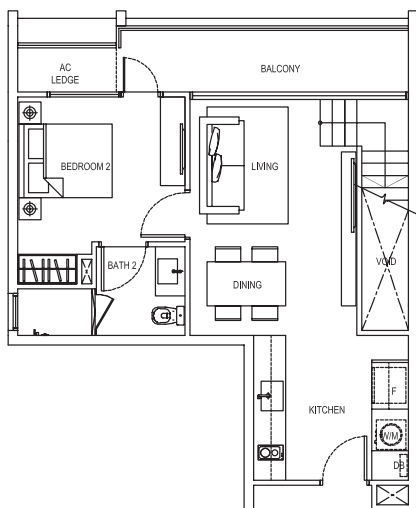
Type:  
PH1  
(inclusive of Balcony, Terrace & A/C Ledge)

109 sqm (1,173 sqft)

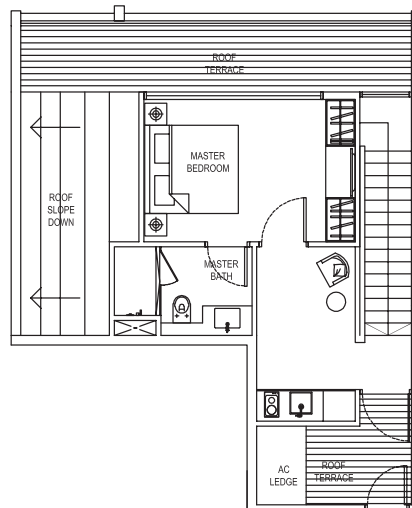
#05-02, #05-20, #05-27



**BUYCONDO.sg**



LOWER LEVEL PLAN



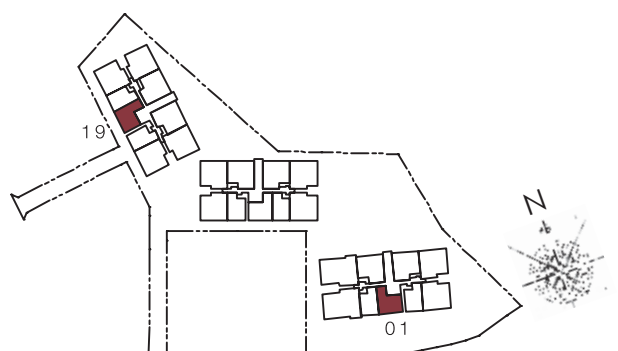
UPPER LEVEL PLAN

**2 Deluxe Penthouse**  
(2 Bedroom Penthouse)

Type:  
PH1a  
(inclusive of Balcony, Terrace & A/C Ledge)

114 sqm (1,227 sqft)

#05-01, #05-19



E MAISON

The plans are subject to change as may be required or approved by the relevant authorities. Areas are estimates only and are subject to final survey. Plans are not drawn to scale and do not form part of the contract.

# 25

## Unit layout plans

### 25-26 • E Maison

#### 3 Compact Penthouse

(2+1 Bedroom Penthouse)

Type:  
PH2

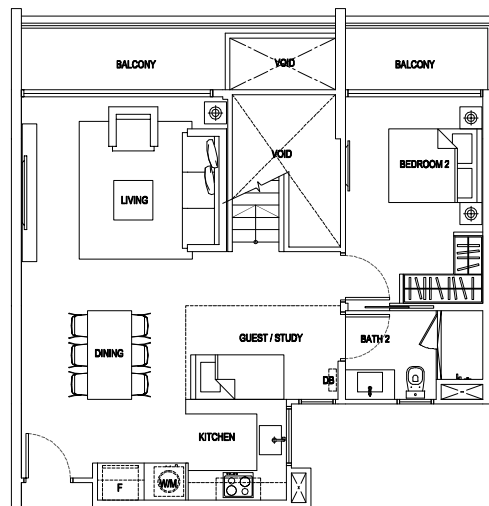
(inclusive of Balcony, Terrace & A/C Ledge)

150 sqm (1,615 sqft)

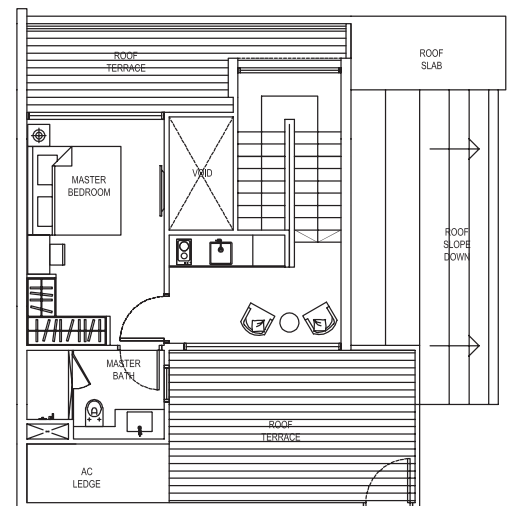
#05-06, #05-07, #05-14, #05-15, #05-21,  
#05-24, #05-25

(MIRRORED)

#05-05, #05-12, #05-13, #05-23, #05-26



LOWER LEVEL PLAN

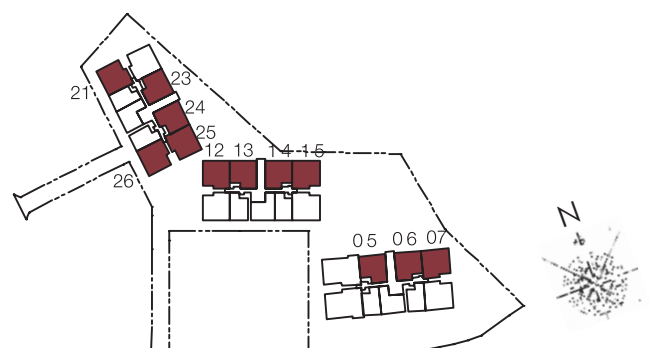


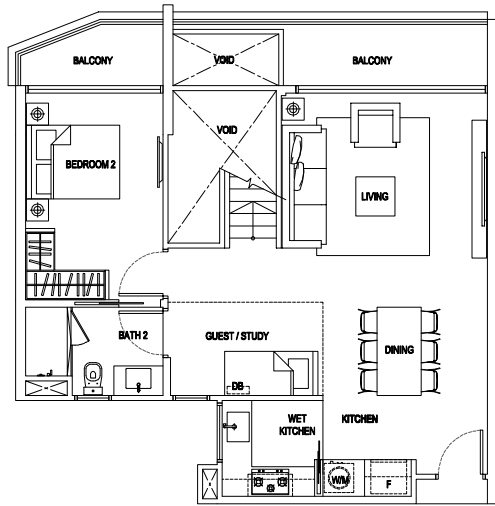
UPPER LEVEL PLAN



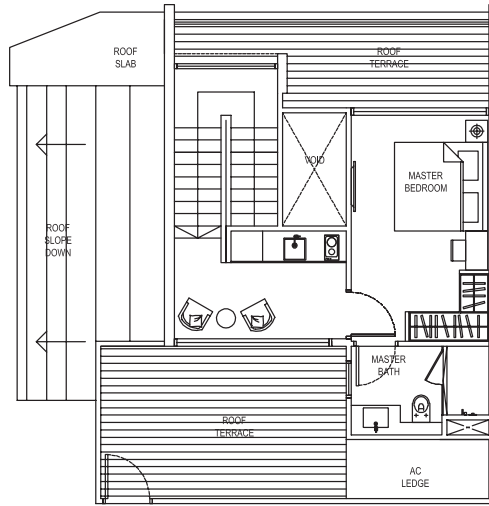
E MAISON

The plans are subject to change as may be required or approved by the relevant authorities. Areas are estimates only and are subject to final survey. Plans are not drawn to scale and do not form part of the contract.





LOWER LEVEL PLAN



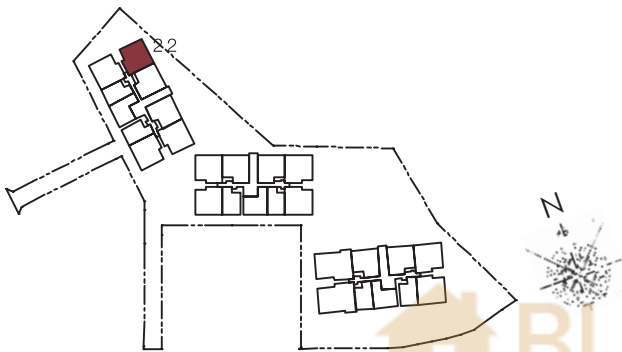
UPPER LEVEL PLAN

**3 Compact Penthouse**  
(2+1 Bedroom Penthouse)

Type:  
PH2a  
(inclusive of Balcony, Terrace & A/C Ledge)

149 sqm (1,604 sqft)

#05-22

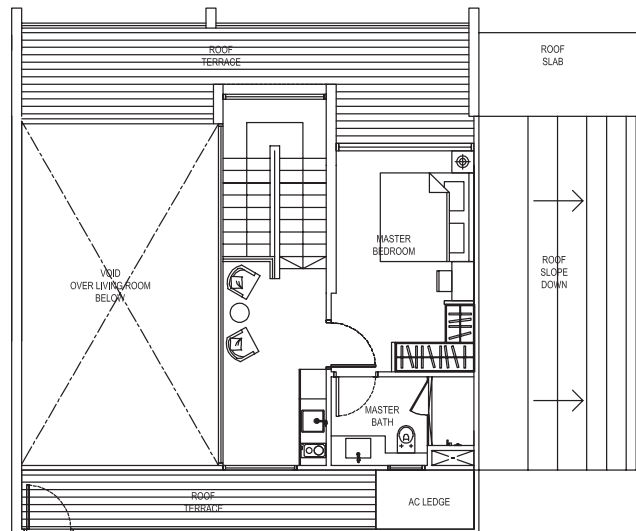
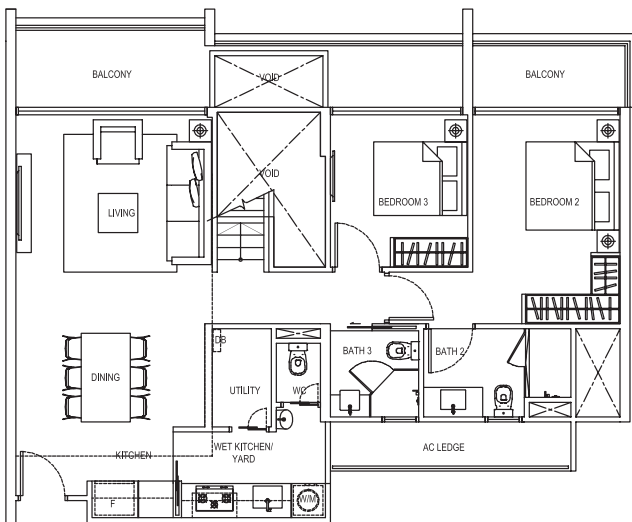


**3 Deluxe Loft Penthouse**  
(3 Bedroom Loft Penthouse)

Type:  
PH3a  
(inclusive of Balcony, Terrace & A/C Ledge)

206 sqm (2,217 sqft)

#05-03



(MIRRORED)  
#05-04



E MAISON

The plans are subject to change as may be required or approved by the relevant authorities. Areas are estimates only and are subject to final survey. Plans are not drawn to scale and do not form part of the contract.