

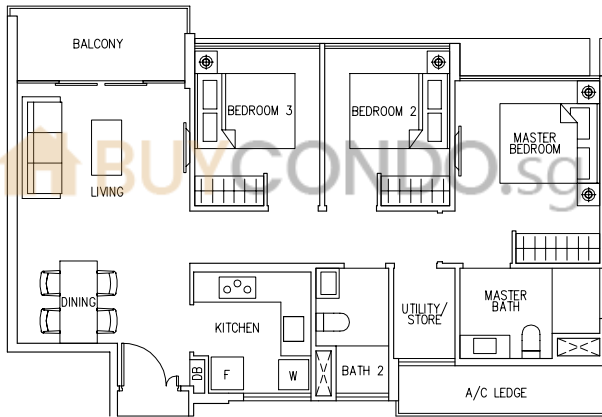
3

BEDROOM

Type C1

83 sqm / 893 sq ft

#02-29, #04-29, #06-29, #08-29, #10-29, #12-29, #14-29

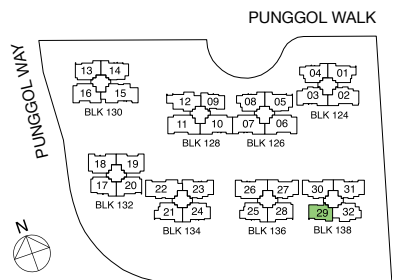


LEGEND:

* - Unit in mirror image

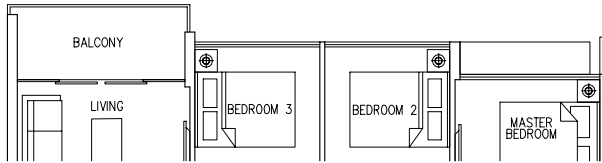
□ - Architectural facade feature or sunshade

Areas includes A/C ledge, Balcony, Open Balcony, PES and Strata Void (where applicable). Orientations and facings will differ depending on the unit you are purchasing. Please refer to the key plan. All plans are not to scale and are subject to changes as may be approved by the relevant authorities. All floor areas are estimates and are subject to final survey.

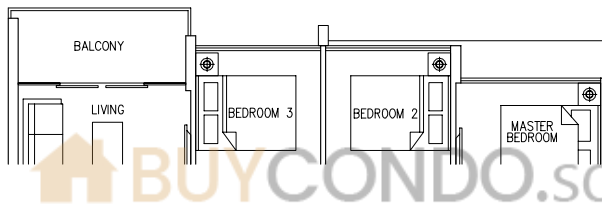


3

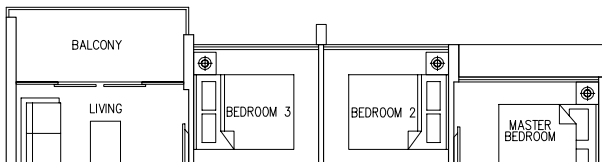
BEDROOM



#03-29, #05-29, #07-29, #09-29, #11-29, #13-29, #15-29



#02-09, #04-09, #06-09, #08-09, #10-09, #12-09, #14-09



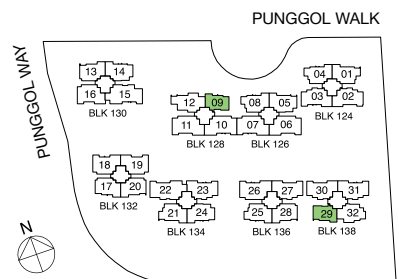
#03-09, #05-09, #07-09, #09-09, #11-09, #13-09, #15-09

LEGEND:

* - Unit in mirror image

□ - Architectural facade feature or sunshade

Areas includes A/C ledge, Balcony, Open Balcony, PES and Strata Void (where applicable). Orientations and facings will differ depending on the unit you are purchasing. Please refer to the key plan. All plans are not to scale and are subject to changes as may be approved by the relevant authorities. All floor areas are estimates and are subject to final survey.



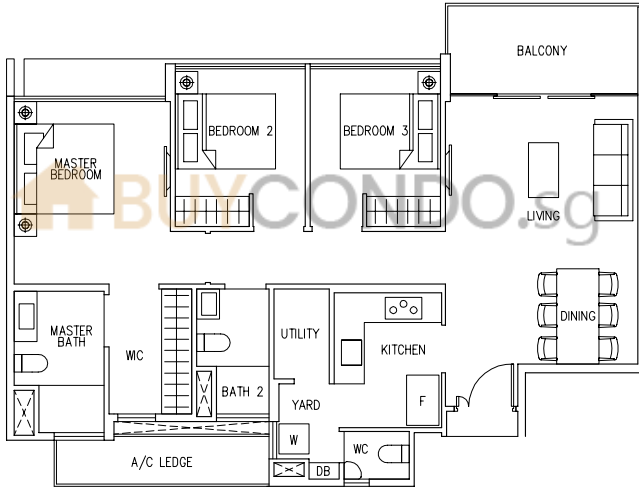
3

BEDROOM
PREMIUM

Type C2

98 sqm / 1055 sq ft

#02-13, #04-13, #06-13, #08-13, #10-13, #12-13, #14-13,
#02-20, #04-20, #06-20, #08-20, #10-20, #12-20, #14-20,
#02-28, #04-28, #06-28, #08-28, #10-28, #12-28, #14-28

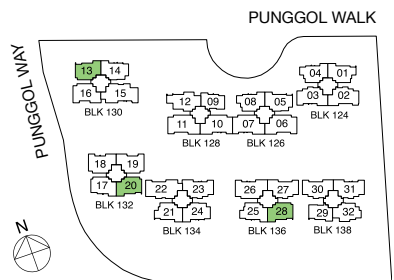


LEGEND:

* - Unit in mirror image

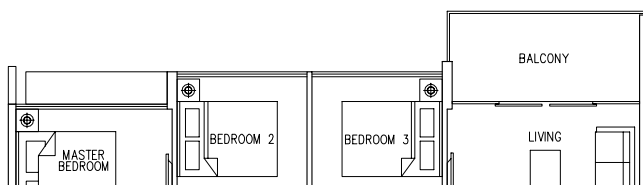
□ - Architectural facade feature or sunshade

Areas includes A/C ledge, Balcony, Open Balcony, PES and Strata Void (where applicable). Orientations and facings will differ depending on the unit you are purchasing. Please refer to the key plan. All plans are not to scale and are subject to changes as may be approved by the relevant authorities. All floor areas are estimates and are subject to final survey.

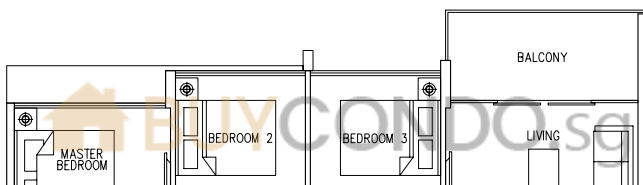


3

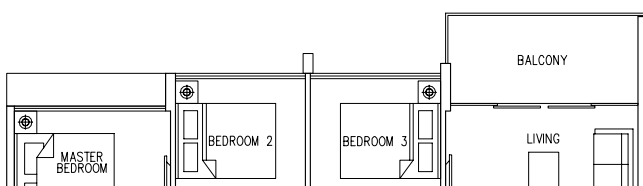
BEDROOM PREMIUM



#03-13, #05-13, #07-13, #09-13, #11-13, #13-13 #15-13,
 #03-20, #05-20, #07-20, #09-20, #11-20, #13-20, #15-20,
 #03-28, #05-28, #07-28, #09-28, #11-28, #13-28, #15-28



#02-17*, #04-17*, #06-17*, #08-17*, #10-17*, #12-17*, #14-17*



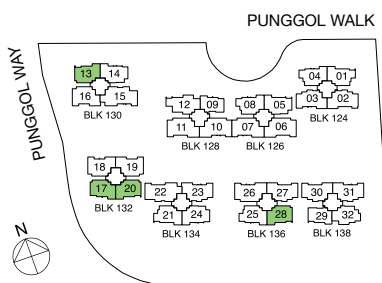
#03-17*, #05-17*, #07-17*, #09-17*, #11-17*, #13-17*, #15-17*

LEGEND:

* - Unit in mirror image

□ - Architectural facade feature or sunshade

Areas includes A/C ledge, Balcony, Open Balcony, PES and Strata Void (where applicable). Orientations and facings will differ depending on the unit you are purchasing. Please refer to the key plan. All plans are not to scale and are subject to changes as may be approved by the relevant authorities. All floor areas are estimates and are subject to final survey.



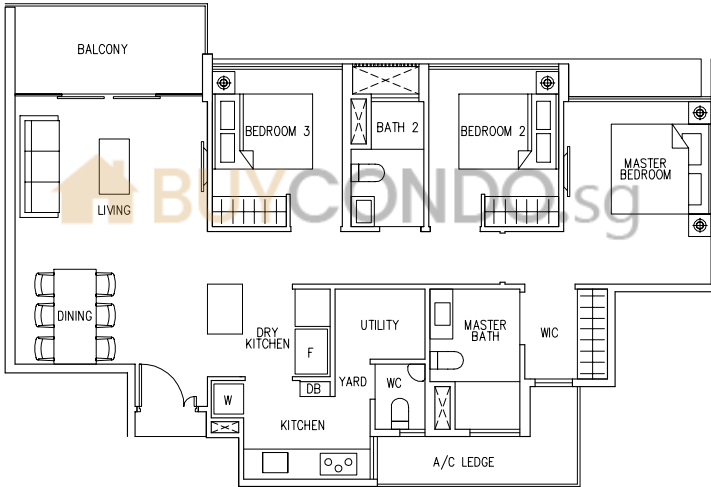
3

BEDROOM
PREMIUM

Type C3

102 sqm /1098 sq ft

#02-01, #04-01, #06-01, #08-01, #10-01, #12-01, #14-01,
#02-21, #04-21, #06-21, #08-21, #10-21, #12-21, #14-21

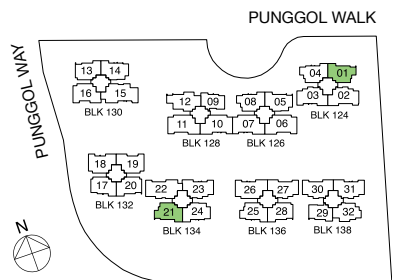


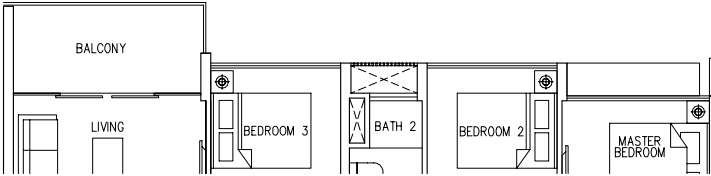
LEGEND:

* - Unit in mirror image

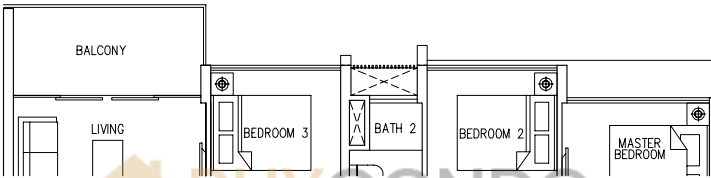
□ - Architectural facade feature or sunshade

Areas includes A/C ledge, Balcony, Open Balcony, PES and Strata Void (where applicable). Orientations and facings will differ depending on the unit you are purchasing. Please refer to the key plan. All plans are not to scale and are subject to changes as may be approved by the relevant authorities. All floor areas are estimates and are subject to final survey.

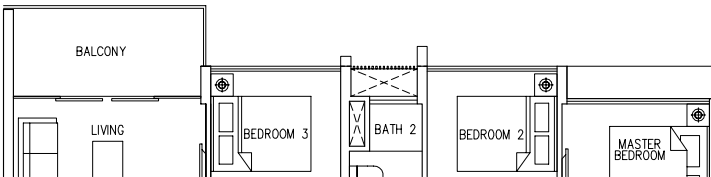




#03-01, #05-01, #07-01, #09-01, #11-01, #13-01, #15-01,
#03-21, #05-21, #07-21, #09-21, #11-21, #13-21, #15-21



#02-04*, #04-04*, #06-04*, #08-04*, #10-04*, #12-04*, #14-04*,
#02-08*, #04-08*, #06-08*, #08-08*, #10-08*, #12-08*, #14-08*,
#02-25, #04-25, #06-25, #08-25, #10-25, #12-25, #14-25



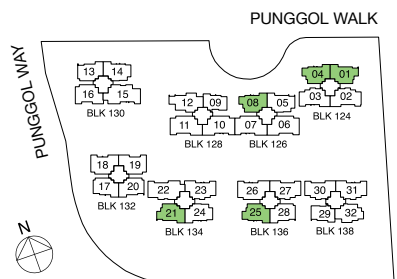
#03-04*, #05-04*, #07-04*, #09-04*, #11-04*, #13-04*, #15-04*,
#03-08*, #05-08*, #07-08*, #09-08*, #11-08*, #13-08*, #15-08*,
#03-25, #05-25, #07-25, #09-25, #11-25, #13-25, #15-25

LEGEND:

* - Unit in mirror image

□ - Architectural facade feature or sunshade

Areas includes A/C ledge, Balcony, Open Balcony, PES and Strata Void (where applicable). Orientations and facings will differ depending on the unit you are purchasing. Please refer to the key plan. All plans are not to scale and are subject to changes as may be approved by the relevant authorities. All floor areas are estimates and are subject to final survey.



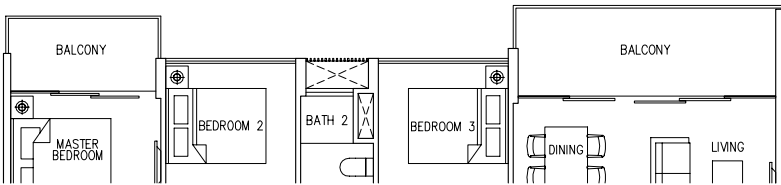
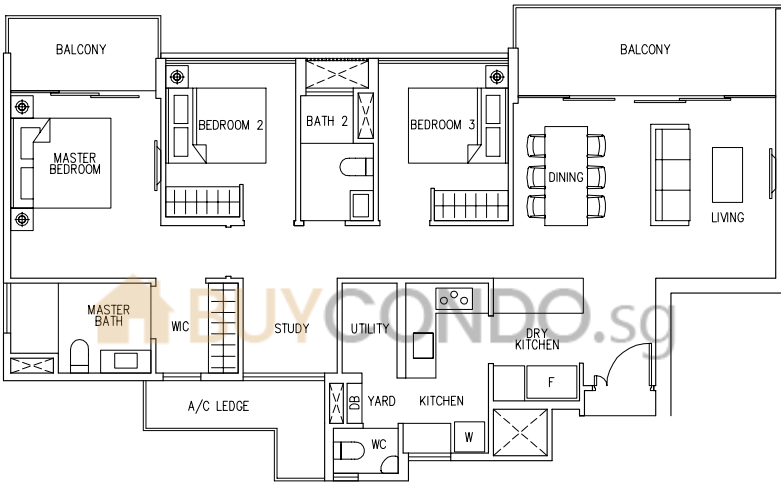
3

BEDROOM COSPACE

Type C4

113 sqm / 1216 sq ft

#02-02, #04-02, #06-02, #08-02, #10-02, #12-02, #14-02,
#02-27*, #04-27*, #06-27*, #08-27*, #10-27*, #12-27*, #14-27*,
#02-30, #04-30, #06-30, #08-30, #10-30, #12-30, #14-30



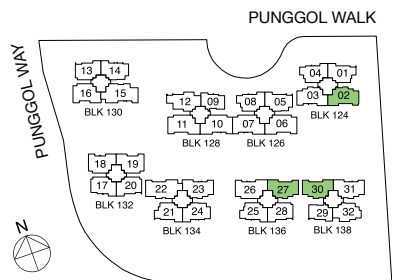
#03-02, #05-02, #07-02, #09-02, #11-02, #13-02, #15-02,
#03-27*, #05-27*, #07-27*, #09-27*, #11-27*, #13-27*, #15-27*,
#03-30, #05-30, #07-30, #09-30, #11-30, #13-30, #15-30

LEGEND:

* - Unit in mirror image

□ - Architectural facade feature or sunshade

Areas includes A/C ledge, Balcony, Open Balcony, PES and Strata Void (where applicable). Orientations and facings will differ depending on the unit you are purchasing. Please refer to the key plan. All plans are not to scale and are subject to changes as may be approved by the relevant authorities. All floor areas are estimates and are subject to final survey.



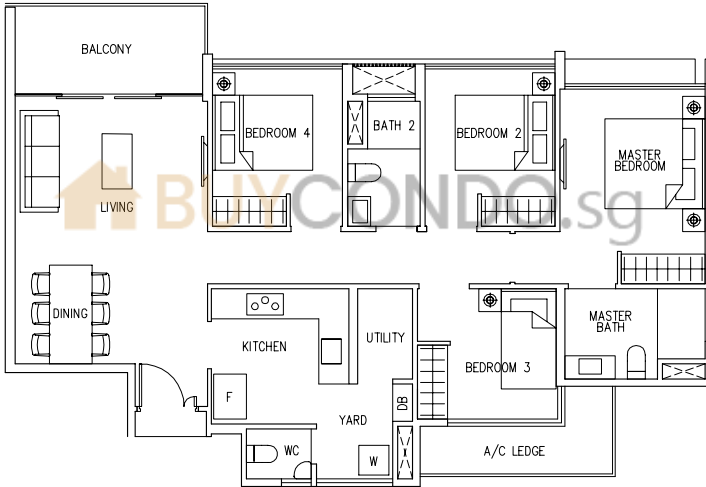
4

BEDROOM

Type D1

106 sqm / 1141 sq ft

#02-05, #04-05, #06-05, #08-05, #10-05, #12-05, #14-05

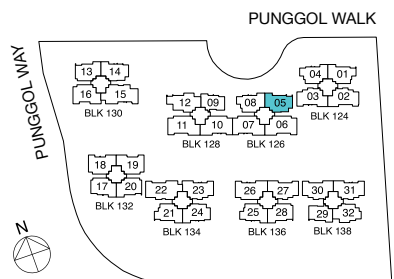


LEGEND:

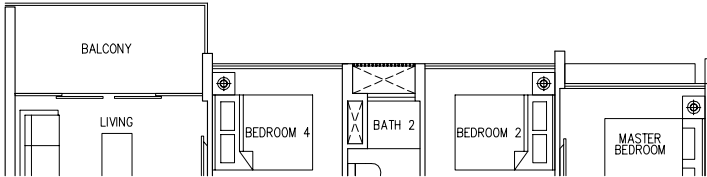
* - Unit in mirror image

☐ - Architectural facade feature or sunshade

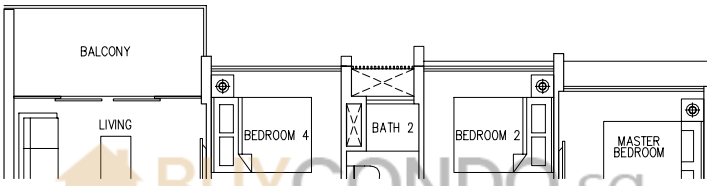
Areas includes A/C ledge, Balcony, Open Balcony, PES and Strata Void (where applicable). Orientations and facings will differ depending on the unit you are purchasing. Please refer to the key plan. All plans are not to scale and are subject to changes as may be approved by the relevant authorities. All floor areas are estimates and are subject to final survey.



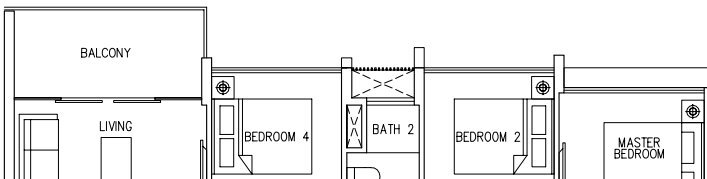
4 BEDROOM



#03-05, #05-05, #07-05, #09-05, #11-05, #13-05, #15-05



#02-14, #04-14, #06-14, #08-14, #10-14, #12-14, #14-14,
#02-24*, #04-24*, #06-24*, #08-24*, #10-24*, #12-24*, #14-24*



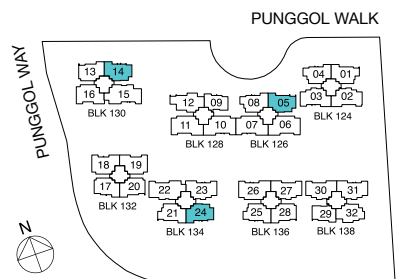
#03-14, #05-14, #07-14, #09-14, #11-14, #13-14, #15-14,
#03-24*, #05-24*, #07-24*, #09-24*, #11-24*, #13-24*, #15-24*

LEGEND:

* - Unit in mirror image

□ - Architectural facade feature or sunshade

Areas includes A/C ledge, Balcony, Open Balcony, PES and Strata Void (where applicable). Orientations and facings will differ depending on the unit you are purchasing. Please refer to the key plan. All plans are not to scale and are subject to changes as may be approved by the relevant authorities. All floor areas are estimates and are subject to final survey.



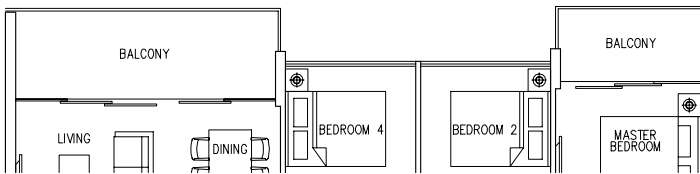
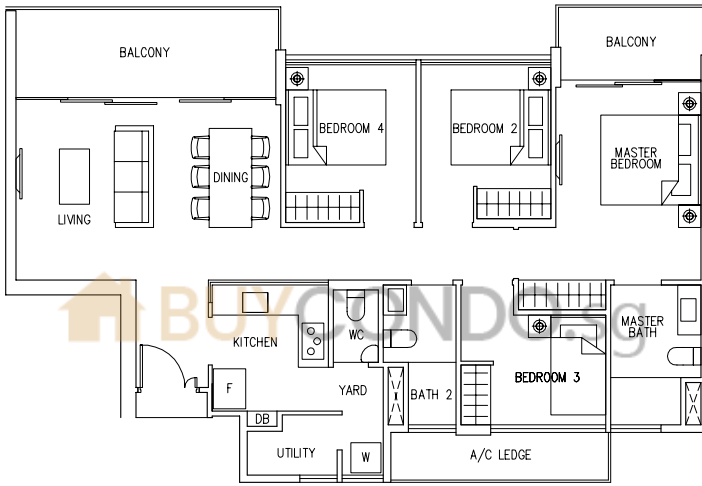
4

BEDROOM
PREMIUM

Type D2

111 sqm / 1195 sq ft

#02-19, #04-19, #06-19, #08-19, #10-19, #12-19, #14-19



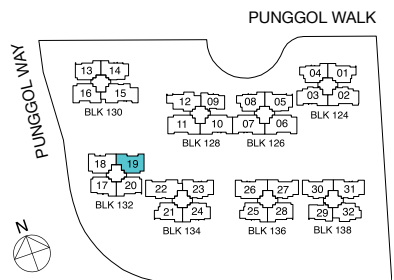
#03-19, #05-19, #07-19, #09-19, #11-19, #13-19, #15-19

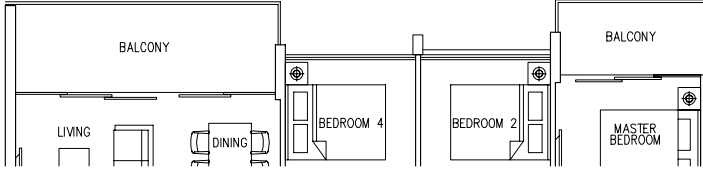
LEGEND:

* - Unit in mirror image

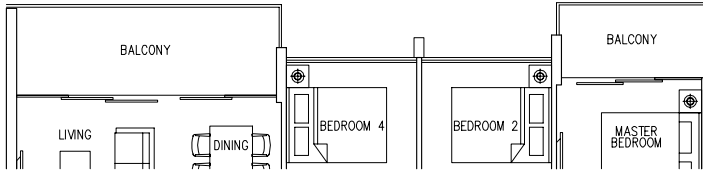
□ - Architectural facade feature or sunshade

Areas includes A/C ledge, Balcony, Open Balcony, PES and Strata Void (where applicable). Orientations and facings will differ depending on the unit you are purchasing. Please refer to the key plan. All plans are not to scale and are subject to changes as may be approved by the relevant authorities. All floor areas are estimates and are subject to final survey.





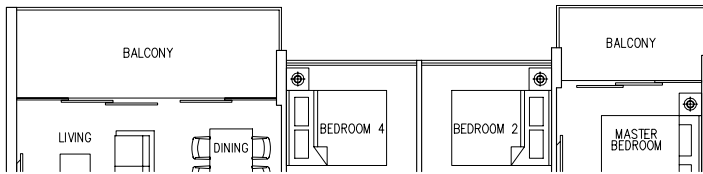
#02-18*, #04-18*, #06-18*, #08-18*, #10-18*, #12-18*, #14-18*



#03-18*, #05-18*, #07-18*, #09-18*, #11-18*, #13-18*, #15-18*



#02-16, #04-16, #06-16, #08-16, #10-16, #12-16, #14-16



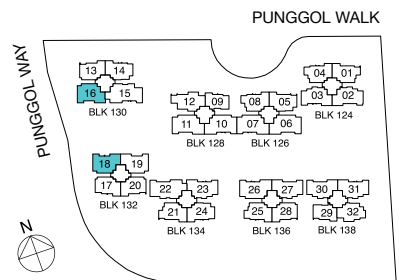
#03-16, #05-16, #07-16, #09-16, #11-16, #13-16, #15-16

LEGEND:

* - Unit in mirror image

□ - Architectural facade feature or sunshade

Areas includes A/C ledge, Balcony, Open Balcony, PES and Strata Void (where applicable). Orientations and facings will differ depending on the unit you are purchasing. Please refer to the key plan. All plans are not to scale and are subject to changes as may be approved by the relevant authorities. All floor areas are estimates and are subject to final survey.



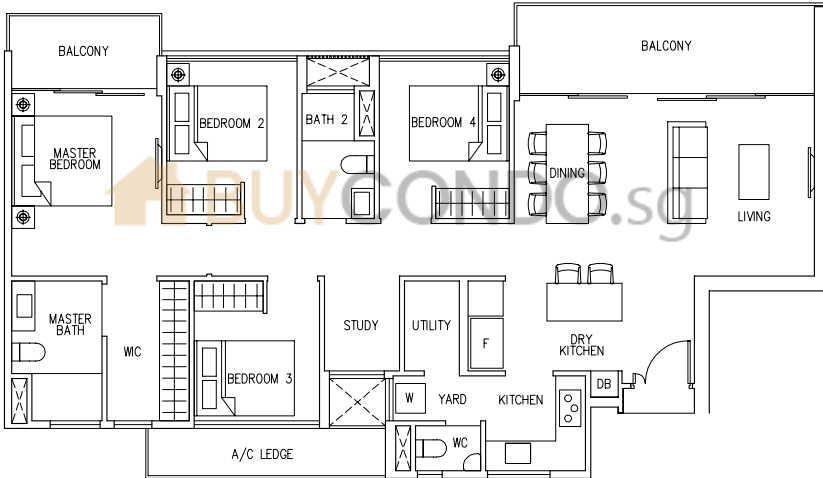
4

BEDROOM
COSPACE

Type D3

127 sqm / 1367 sq ft

#02-06, #04-06, #06-06, #08-06, #10-06, #12-06, #14-06,
#02-11*, #04-11*, #06-11*, #08-11*, #10-11*, #12-11*, #14-11*

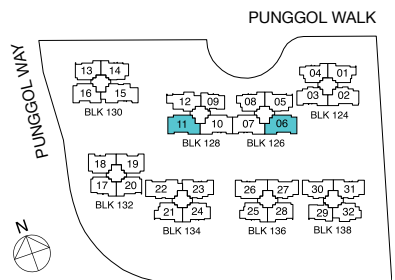


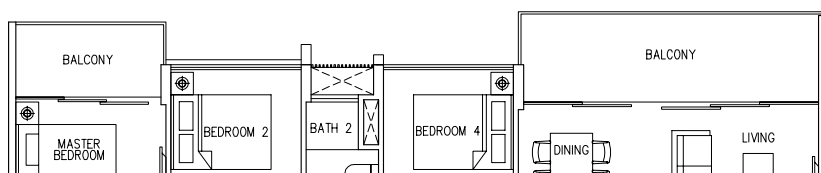
LEGEND:

* - Unit in mirror image

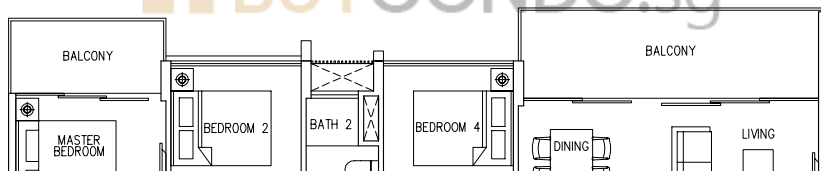
□ - Architectural facade feature or sunshade

Areas includes A/C ledge, Balcony, Open Balcony, PES and Strata Void (where applicable). Orientations and facings will differ depending on the unit you are purchasing. Please refer to the key plan. All plans are not to scale and are subject to changes as may be approved by the relevant authorities. All floor areas are estimates and are subject to final survey.





#02-07*, #04-07*, #06-07*, #08-07*, #10-07*, #12-07*, #14-07*,
#02-10, #04-10, #06-10, #08-10, #10-10, #12-10, #14-10



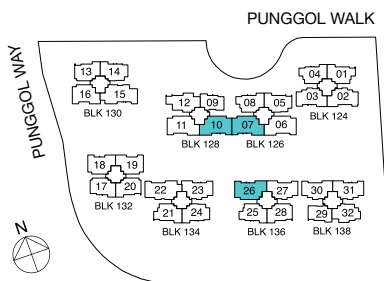
#02-26, #04-26, #06-26, #08-26, #10-26, #12-26, #14-26

LEGEND:

* - Unit in mirror image

□ - Architectural facade feature or sunshade

Areas includes A/C ledge, Balcony, Open Balcony, PES and Strata Void (where applicable). Orientations and facings will differ depending on the unit you are purchasing. Please refer to the key plan. All plans are not to scale and are subject to changes as may be approved by the relevant authorities. All floor areas are estimates and are subject to final survey.



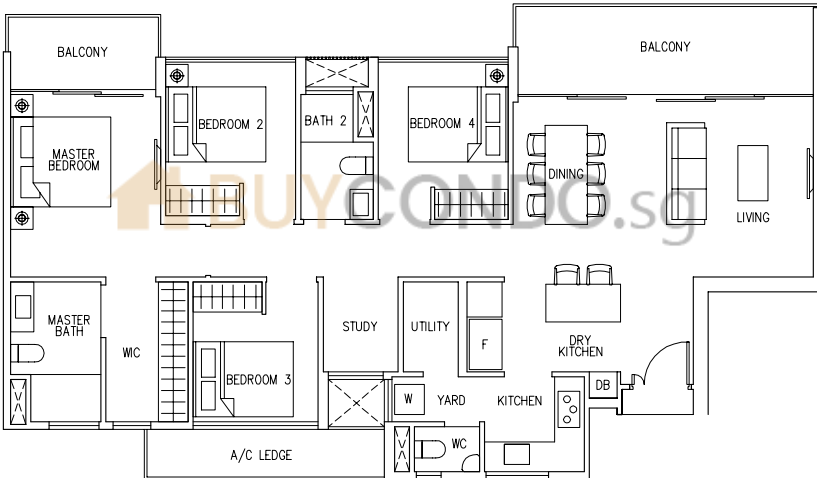
4

BEDROOM
COSPACE

Type D3

127 sqm /1367 sq ft

#03-06, #05-06, #07-06, #09-06, #11-06, #13-06, #15-06,
#03-11*, #05-11*, #07-11*, #09-11*, #11-11*, #13-11*, #15-11*

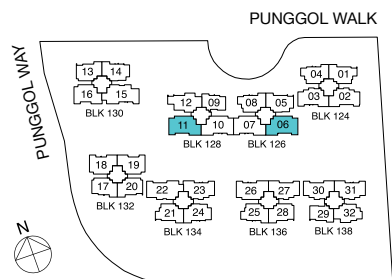


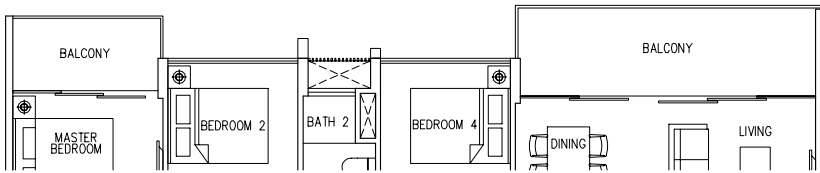
LEGEND:

* - Unit in mirror image

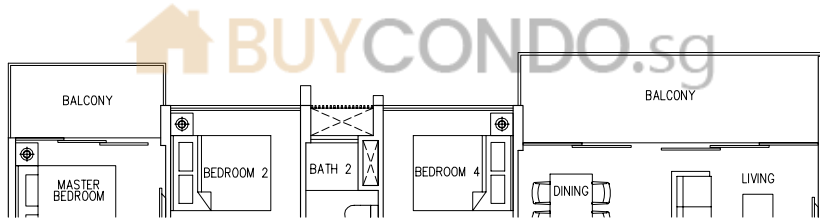
□ - Architectural facade feature or sunshade

Areas includes A/C ledge, Balcony, Open Balcony, PES and Strata Void (where applicable). Orientations and facings will differ depending on the unit you are purchasing. Please refer to the key plan. All plans are not to scale and are subject to changes as may be approved by the relevant authorities. All floor areas are estimates and are subject to final survey.





#03-07*, #05-07*, #07-07*, #09-07*, #11-07*, #13-07*, #15-07*,
#03-10, #05-10, #07-10, #09-10, #11-10, #13-10, #15-10



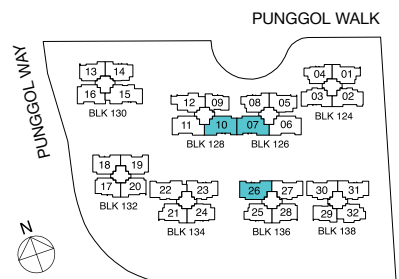
#03-26, #05-26, #07-26, #09-26, #11-26, #13-26, #15-26

LEGEND:

* - Unit in mirror image

□ - Architectural facade feature or sunshade

Areas includes A/C ledge, Balcony, Open Balcony, PES and Strata Void (where applicable). Orientations and facings will differ depending on the unit you are purchasing. Please refer to the key plan. All plans are not to scale and are subject to changes as may be approved by the relevant authorities. All floor areas are estimates and are subject to final survey.



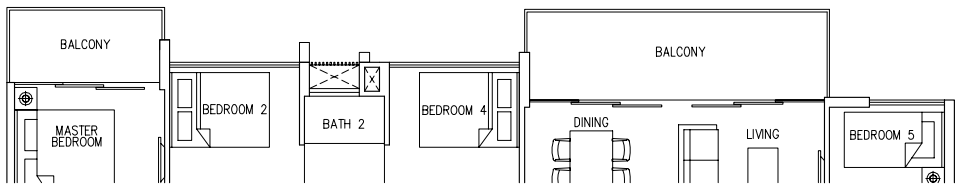
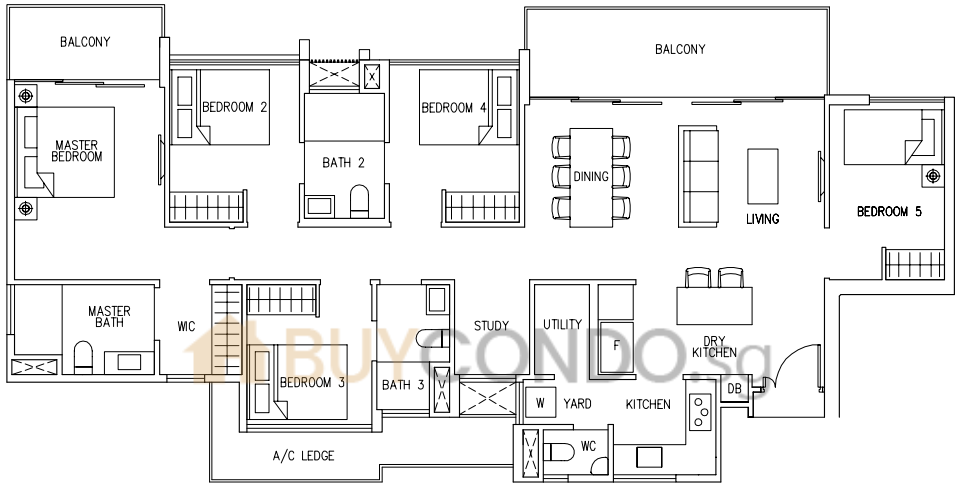
5

BEDROOM COSPACE

Type E1

141 sqm / 1518 sq ft

#02-15, #04-15, #06-15, #08-15, #10-15, #12-15, #14-15



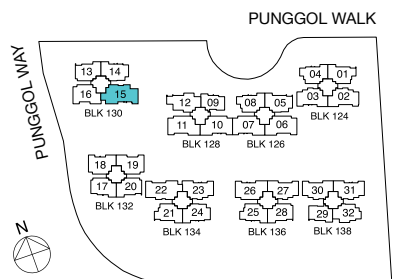
#03-15, #05-15, #07-15, #09-15, #11-15, #13-15, #15-15

LEGEND:

* - Unit in mirror image

□ - Architectural facade feature or sunshade

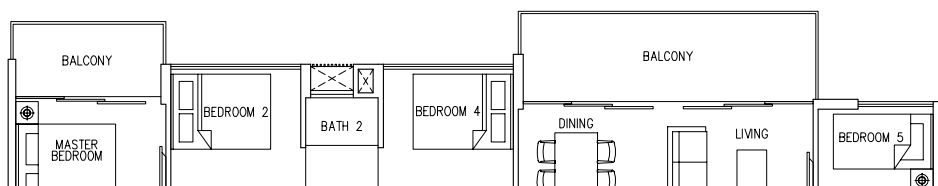
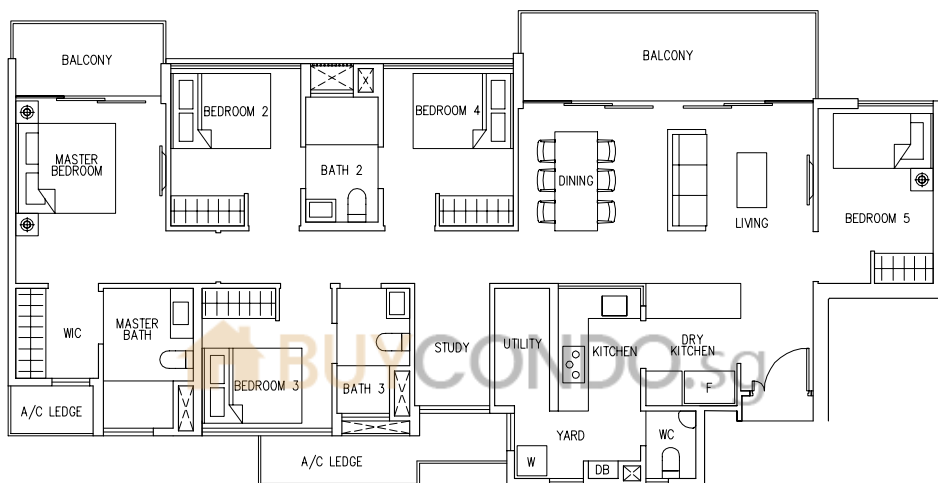
Areas includes A/C ledge, Balcony, Open Balcony, PES and Strata Void (where applicable). Orientations and facings will differ depending on the unit you are purchasing. Please refer to the key plan. All plans are not to scale and are subject to changes as may be approved by the relevant authorities. All floor areas are estimates and are subject to final survey.



Type E2

142 sqm / 1528 sq ft

#02-22, #04-22, #06-22, #08-22, #10-22, #12-22, #14-22



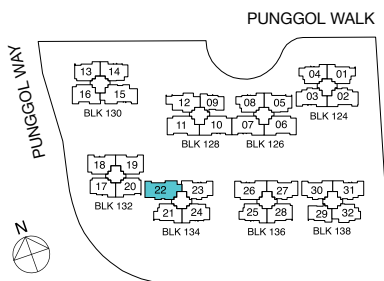
#03-22, #05-22, #07-22, #09-22, #11-22, #13-22, #15-22

LEGEND:

* - Unit in mirror image

□ - Architectural facade feature or sunshade

Areas includes A/C ledge, Balcony, Open Balcony, PES and Strata Void (where applicable). Orientations and facings will differ depending on the unit you are purchasing. Please refer to the key plan. All plans are not to scale and are subject to changes as may be approved by the relevant authorities. All floor areas are estimates and are subject to final survey.



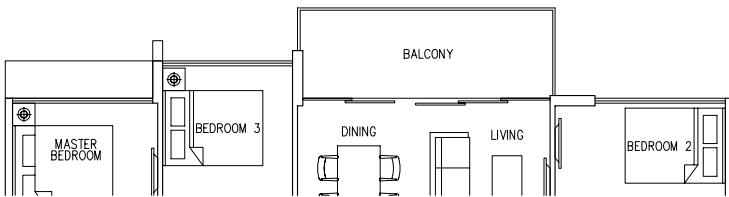
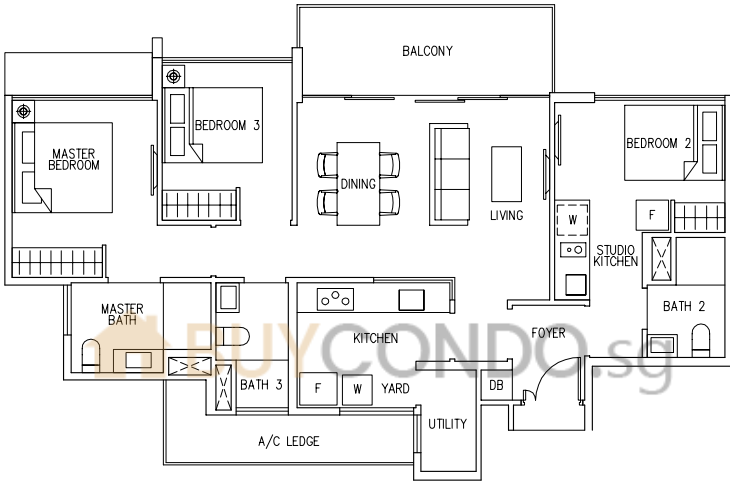
3

**BEDROOM
DUAL KEY**

Type C5(DK)

101 sqm / 1087 sq ft

#02-32, #04-32, #06-32, #08-32, #10-32, #12-32, #14-32



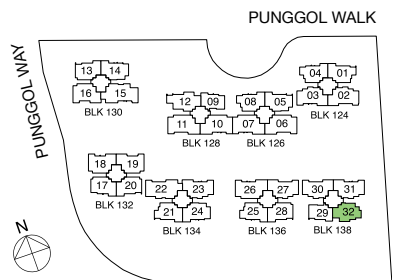
#03-32, #05-32, #07-32, #09-32, #11-32, #13-32, #15-32

LEGEND:

* - Unit in mirror image

□ - Architectural facade feature or sunshade

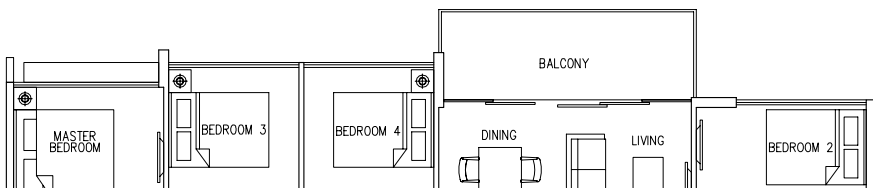
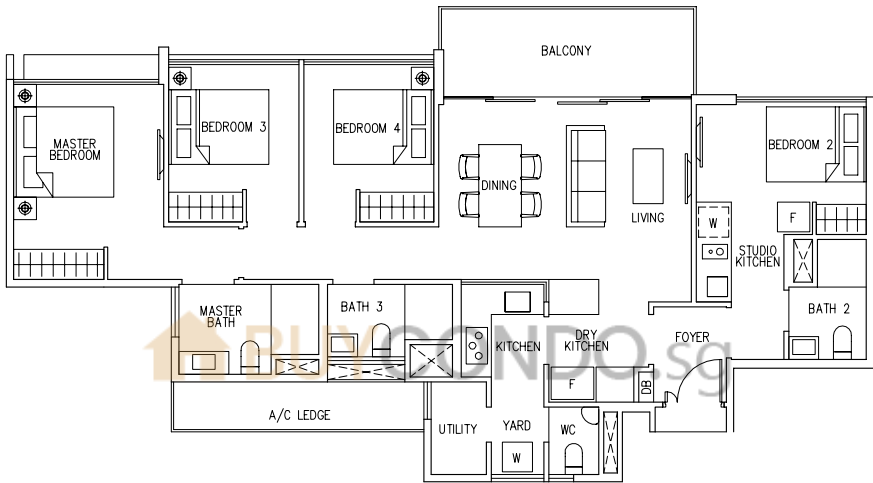
Areas includes A/C ledge, Balcony, Open Balcony, PES and Strata Void (where applicable). Orientations and facings will differ depending on the unit you are purchasing. Please refer to the key plan. All plans are not to scale and are subject to changes as may be approved by the relevant authorities. All floor areas are estimates and are subject to final survey.



Type D4(DK)

116 sqm / 1249 sq ft

#02-12, #04-12, #06-12, #08-12, #10-12, #12-12, #14-12



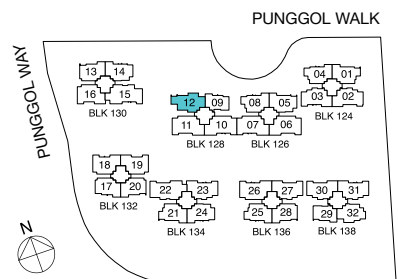
#03-12, #05-12, #07-12, #09-12, #11-12, #13-12, #15-12

LEGEND:

* - Unit in mirror image

□ - Architectural facade feature or sunshade

Areas includes A/C ledge, Balcony, Open Balcony, PES and Strata Void (where applicable). Orientations and facings will differ depending on the unit you are purchasing. Please refer to the key plan. All plans are not to scale and are subject to changes as may be approved by the relevant authorities. All floor areas are estimates and are subject to final survey.





A new dimension of luxury and urban chic

Every nook and corner in your exclusive abode is thoughtfully considered. From the refined details of the walk-in wardrobe in your master bedroom to the quality fittings in your bath areas. In the spacious living and dining rooms, the glass windows allow more natural lighting into the home while keeping the framing minimal.

GROUND UNIT

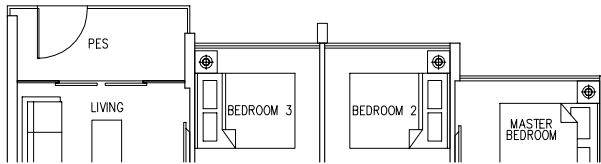
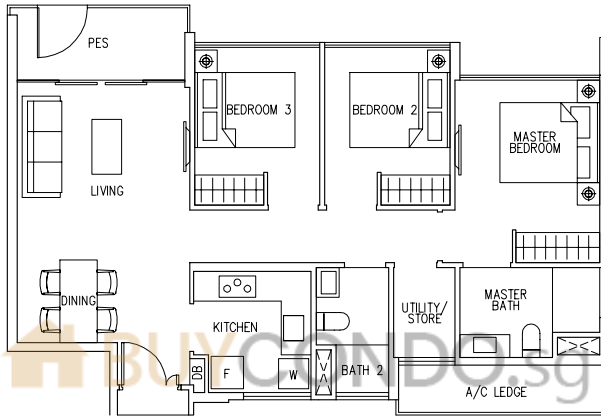


3
BEDROOM

Type C1P

83 sqm / 893 sq ft

#01-29



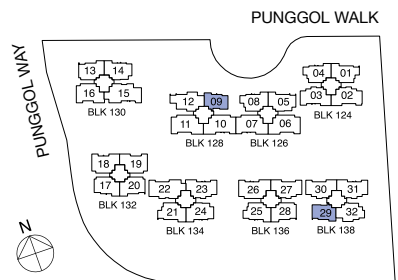
#01-09

LEGEND:

* - Unit in mirror image

□ - Architectural facade feature or sunshade

Areas includes A/C ledge, Balcony, Open Balcony, PES and Strata Void (where applicable). Orientations and facings will differ depending on the unit you are purchasing. Please refer to the key plan. All plans are not to scale and are subject to changes as may be approved by the relevant authorities. All floor areas are estimates and are subject to final survey.



3

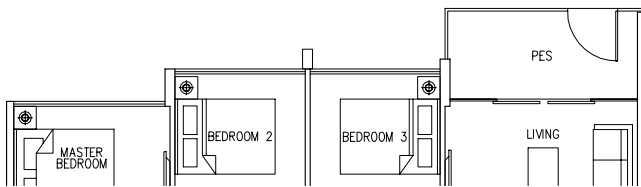
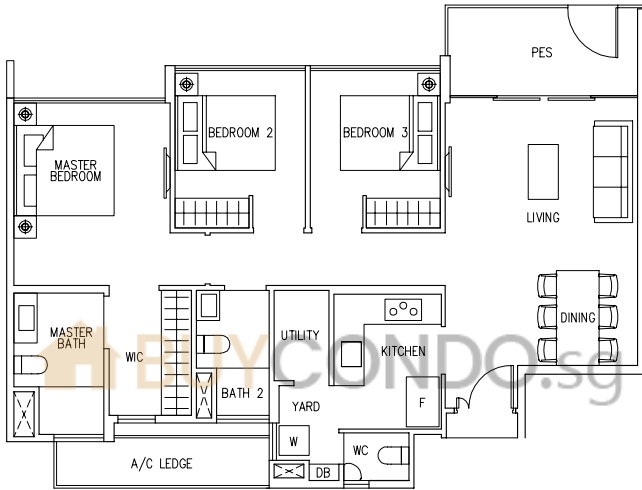
BEDROOM
PREMIUM

GROUND UNIT

Type C2P

98 sqm / 1055 sq ft

#01-13, #01-20, #01-28



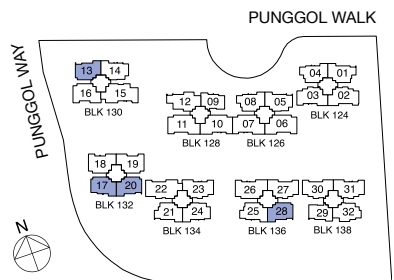
#01-17*

LEGEND:

* - Unit in mirror image

□ - Architectural facade feature or sunshade

Areas includes A/C ledge, Balcony, Open Balcony, PES and Strata Void (where applicable). Orientations and facings will differ depending on the unit you are purchasing. Please refer to the key plan. All plans are not to scale and are subject to changes as may be approved by the relevant authorities. All floor areas are estimates and are subject to final survey.

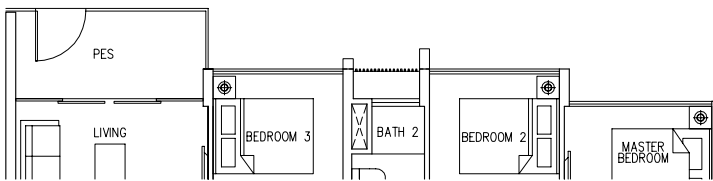
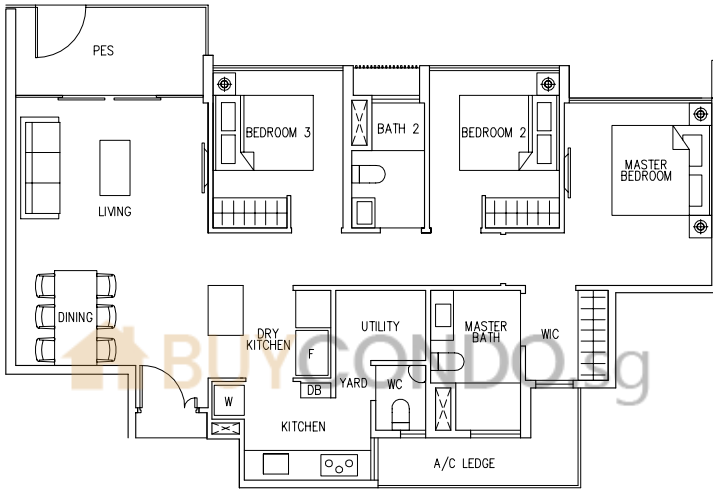




Type C3P

102 sqm / 1098 sq ft

#01-01, #01-21



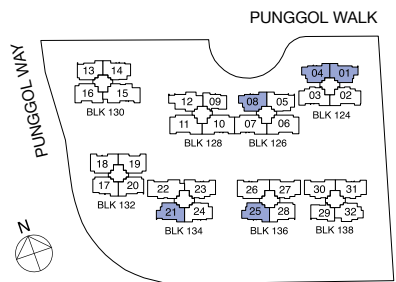
#01-04*, #01-08*, #01-25

LEGEND:

* - Unit in mirror image

□ - Architectural facade feature or sunshade

Areas includes A/C ledge, Balcony, Open Balcony, PES and Strata Void (where applicable). Orientations and facings will differ depending on the unit you are purchasing. Please refer to the key plan. All plans are not to scale and are subject to changes as may be approved by the relevant authorities. All floor areas are estimates and are subject to final survey.



3

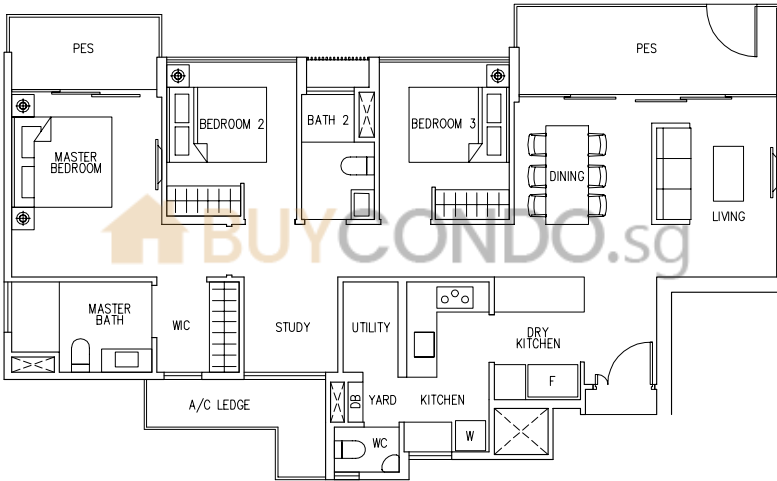
BEDROOM
COSPSPACE

GROUND UNIT

Type C4P

113 sqm / 1216 sq ft

#01-02, #01-27*, #01-30

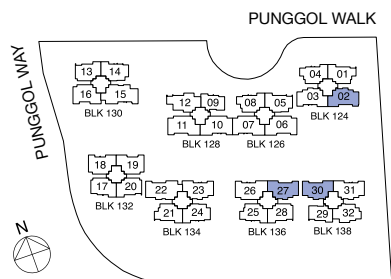


LEGEND:

* - Unit in mirror image

□ - Architectural facade feature or sunshade

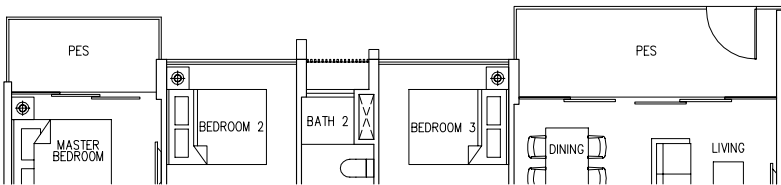
Areas includes A/C ledge, Balcony, Open Balcony, PES and Strata Void (where applicable). Orientations and facings will differ depending on the unit you are purchasing. Please refer to the key plan. All plans are not to scale and are subject to changes as may be approved by the relevant authorities. All floor areas are estimates and are subject to final survey.



GROUND UNIT



3 BEDROOM COSPACE



#01-03*, #01-31*



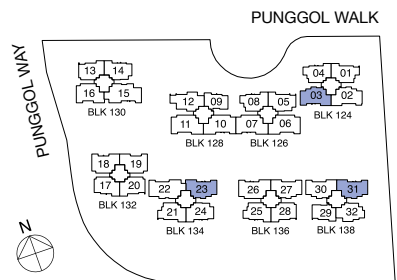
#01-23*

LEGEND:

* - Unit in mirror image

☐ - Architectural facade feature or sunshade

Areas includes A/C ledge, Balcony, Open Balcony, PES and Strata Void (where applicable). Orientations and facings will differ depending on the unit you are purchasing. Please refer to the key plan. All plans are not to scale and are subject to changes as may be approved by the relevant authorities. All floor areas are estimates and are subject to final survey.



3

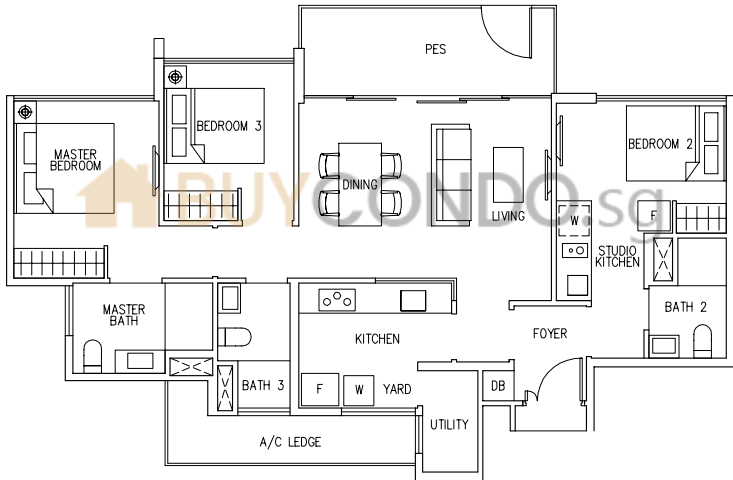
BEDROOM
DUAL KEY

GROUND UNIT

Type C5P(DK)

101 sqm / 1087 sq ft

#01-32

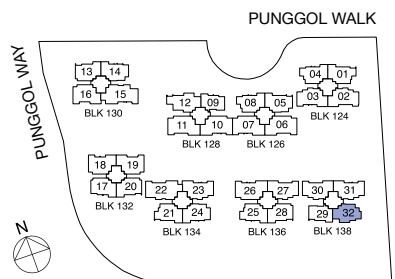


LEGEND:

* - Unit in mirror image

□ - Architectural facade feature or sunshade

Areas includes A/C ledge, Balcony, Open Balcony, PES and Strata Void (where applicable). Orientations and facings will differ depending on the unit you are purchasing. Please refer to the key plan. All plans are not to scale and are subject to changes as may be approved by the relevant authorities. All floor areas are estimates and are subject to final survey.



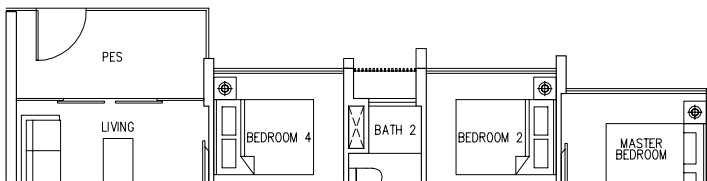
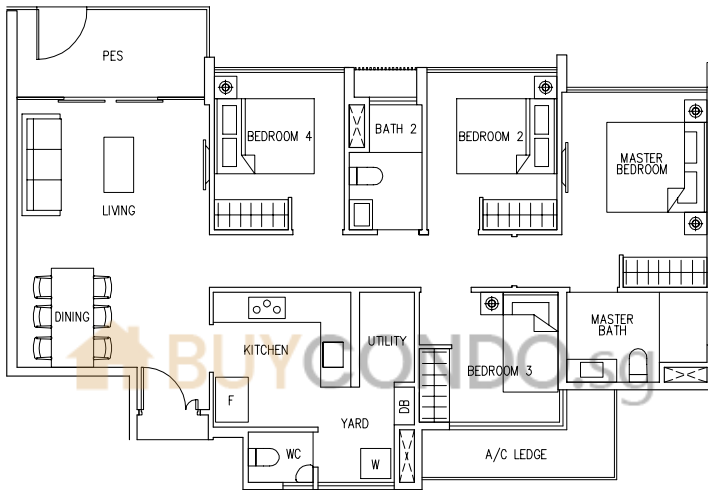
GROUND UNIT

4
BEDROOM

Type D1P

106 sqm / 1141 sq ft

#01-05



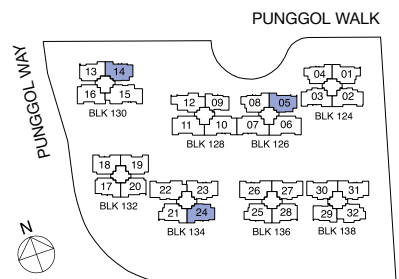
#01-14, #01-24*

LEGEND:

* - Unit in mirror image

□ - Architectural facade feature or sunshade

Areas includes A/C ledge, Balcony, Open Balcony, PES and Strata Void (where applicable). Orientations and facings will differ depending on the unit you are purchasing. Please refer to the key plan. All plans are not to scale and are subject to changes as may be approved by the relevant authorities. All floor areas are estimates and are subject to final survey.



4

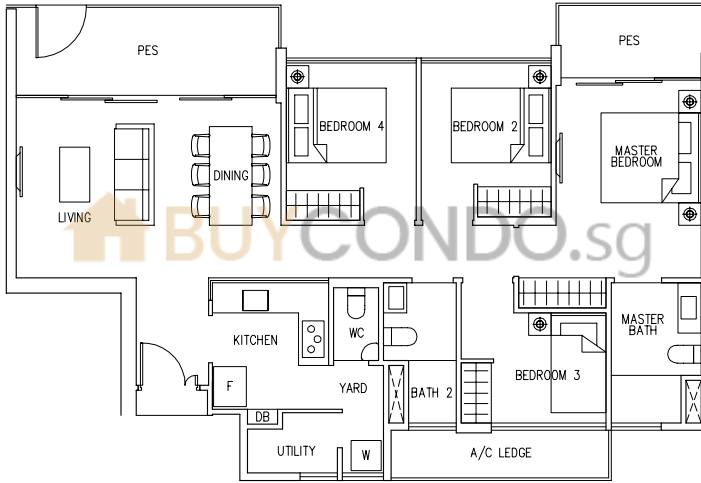
BEDROOM
PREMIUM

GROUND UNIT

Type D2P

111 sqm / 1195 sq ft

#01-19

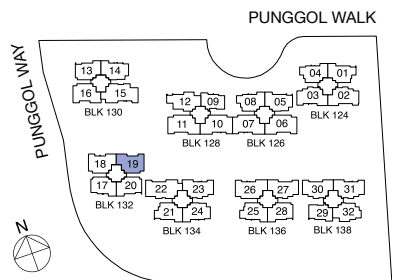


LEGEND:

* - Unit in mirror image

□ - Architectural facade feature or sunshade

Areas includes A/C ledge, Balcony, Open Balcony, PES and Strata Void (where applicable). Orientations and facings will differ depending on the unit you are purchasing. Please refer to the key plan. All plans are not to scale and are subject to changes as may be approved by the relevant authorities. All floor areas are estimates and are subject to final survey.

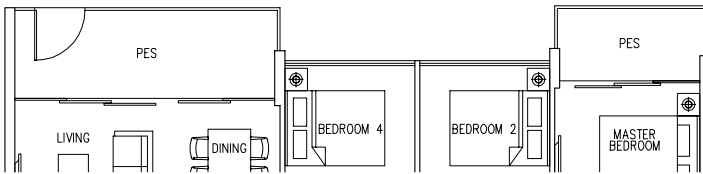


GROUND UNIT



4

BEDROOM
PREMIUM



#01-16



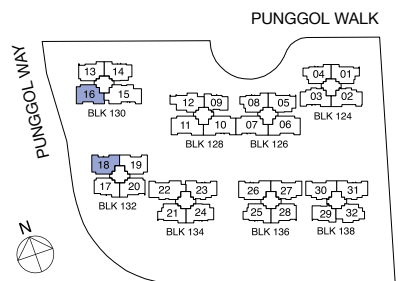
#01-18*

LEGEND:

* - Unit in mirror image

□ - Architectural facade feature or sunshade

Areas includes A/C ledge, Balcony, Open Balcony, PES and Strata Void (where applicable). Orientations and facings will differ depending on the unit you are purchasing. Please refer to the key plan. All plans are not to scale and are subject to changes as may be approved by the relevant authorities. All floor areas are estimates and are subject to final survey.



4

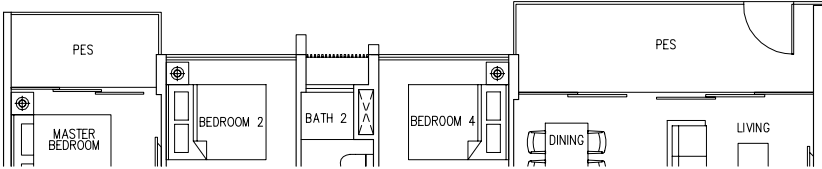
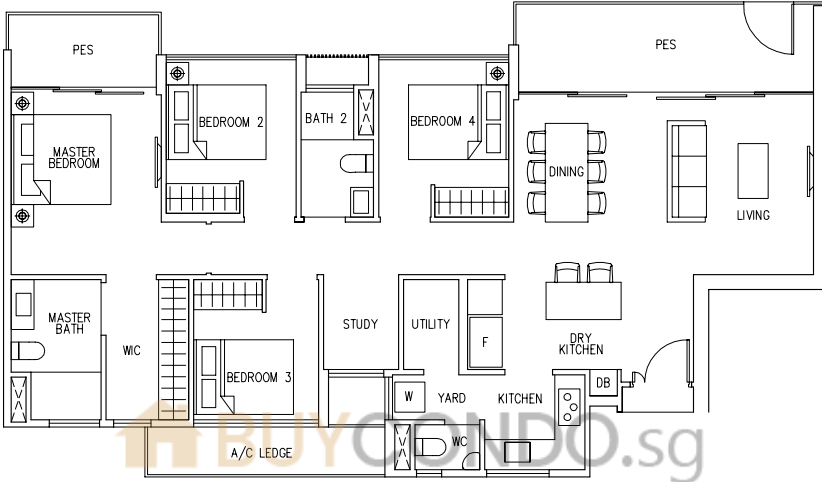
BEDROOM
COSPACE

GROUND UNIT

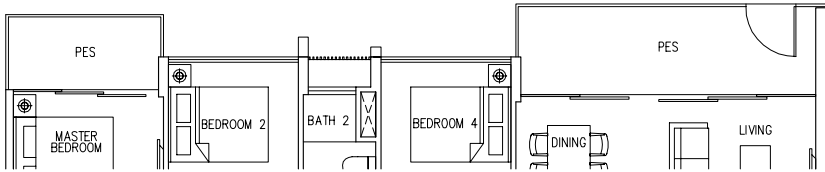
Type D3P

127 sqm / 1367 sq ft

#01-06, #01-11*



#01-07*, #01-10



#01-26

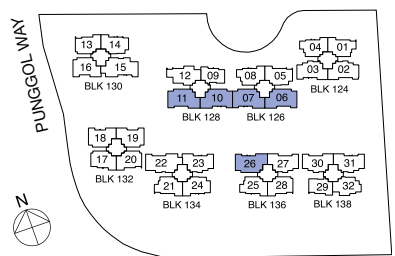
LEGEND:

* - Unit in mirror image

□ - Architectural facade feature or sunshade

Areas includes A/C ledge, Balcony, Open Balcony, PES and Strata Void (where applicable). Orientations and facings will differ depending on the unit you are purchasing. Please refer to the key plan. All plans are not to scale and are subject to changes as may be approved by the relevant authorities. All floor areas are estimates and are subject to final survey.

PUNGGOL WALK



GROUND UNIT

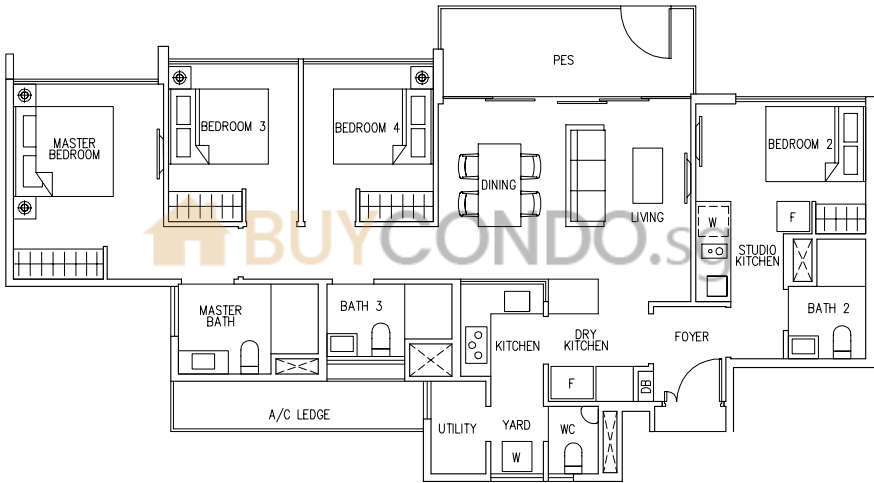
4

BEDROOM
DUAL KEY

Type D4P(DK)

116 sqm / 1249 sq ft

#01-12

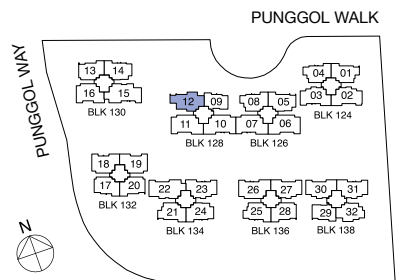


LEGEND:

* - Unit in mirror image

□ - Architectural facade feature or sunshade

Areas includes A/C ledge, Balcony, Open Balcony, PES and Strata Void (where applicable). Orientations and facings will differ depending on the unit you are purchasing. Please refer to the key plan. All plans are not to scale and are subject to changes as may be approved by the relevant authorities. All floor areas are estimates and are subject to final survey.



5

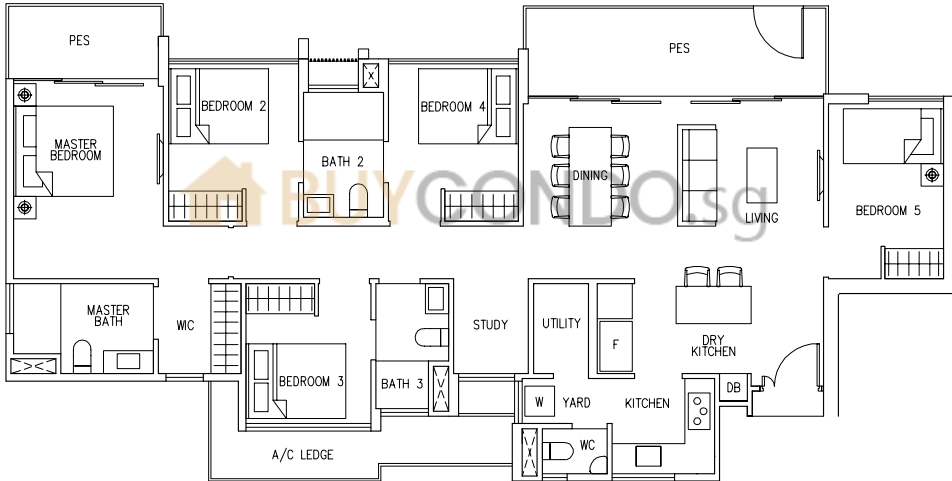
BEDROOM
COSPAC

GROUND UNIT

Type E1P

141 sqm / 1518 sq ft

#01-15

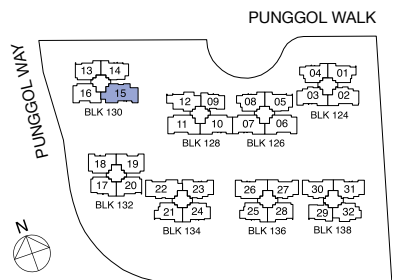


LEGEND:

* - Unit in mirror image

□ - Architectural facade feature or sunshade

Areas includes A/C ledge, Balcony, Open Balcony, PES and Strata Void (where applicable). Orientations and facings will differ depending on the unit you are purchasing. Please refer to the key plan. All plans are not to scale and are subject to changes as may be approved by the relevant authorities. All floor areas are estimates and are subject to final survey.



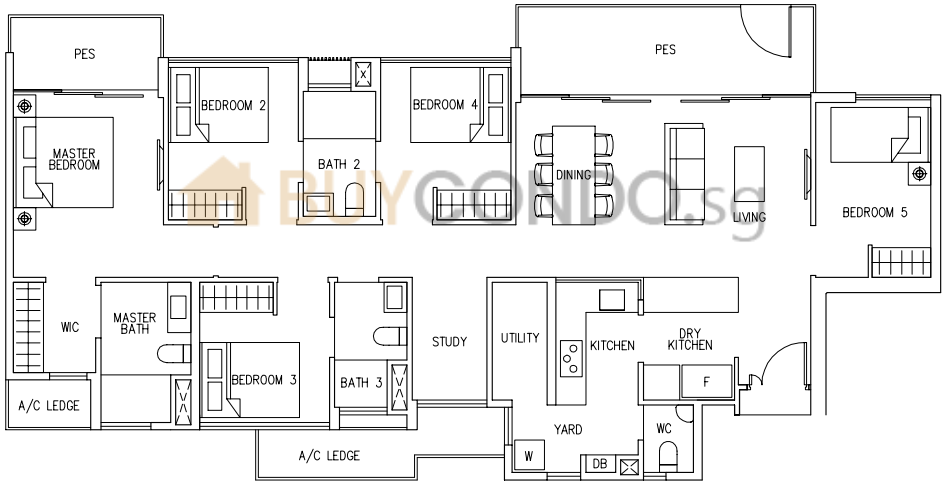
GROUND UNIT

5
BEDROOM
COSPACE

Type E2P

142 sqm / 1528 sq ft

#01-22

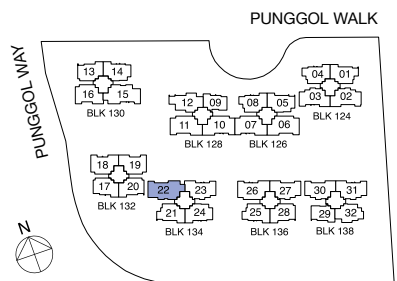


LEGEND:

* - Unit in mirror image

□ - Architectural facade feature or sunshade

Areas includes A/C ledge, Balcony, Open Balcony, PES and Strata Void (where applicable). Orientations and facings will differ depending on the unit you are purchasing. Please refer to the key plan. All plans are not to scale and are subject to changes as may be approved by the relevant authorities. All floor areas are estimates and are subject to final survey.





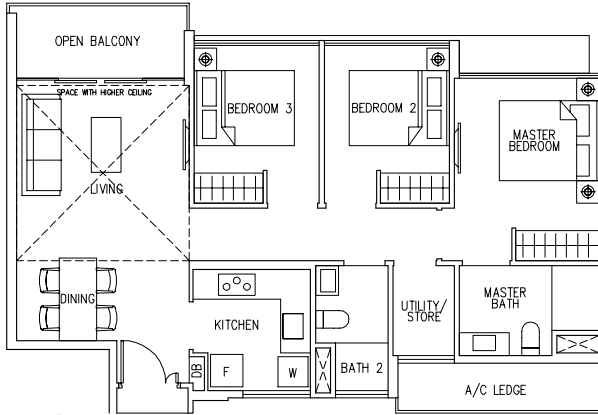
SKY UNIT

3
BEDROOM

Type C1R(a)

96 sqm / 1033 sq ft

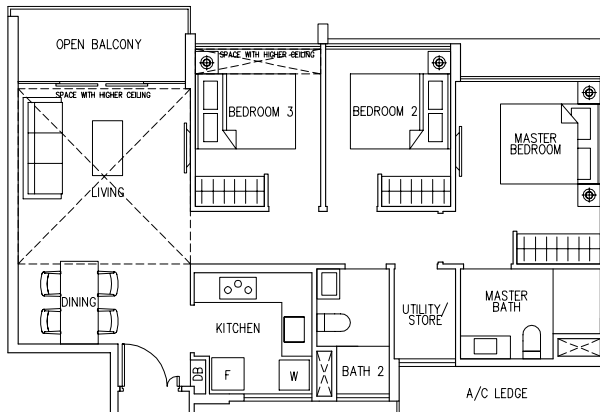
#16-29



Type C1R(b)

98 sqm / 1055 sq ft

#16-09



LEGEND:

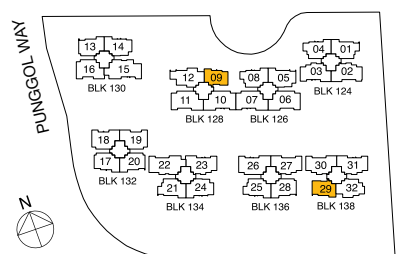
* - Unit in mirror image

☐ - Architectural facade feature or sunshade

Areas includes A/C ledge, Balcony, Open Balcony, PES and Strata Void (where applicable). Orientations and facings will differ depending on the unit you are purchasing. Please refer to the key plan. All plans are not to scale and are subject to changes as may be approved by the relevant authorities. All floor areas are estimates and are subject to final survey.



PUNGGOL WALK



3

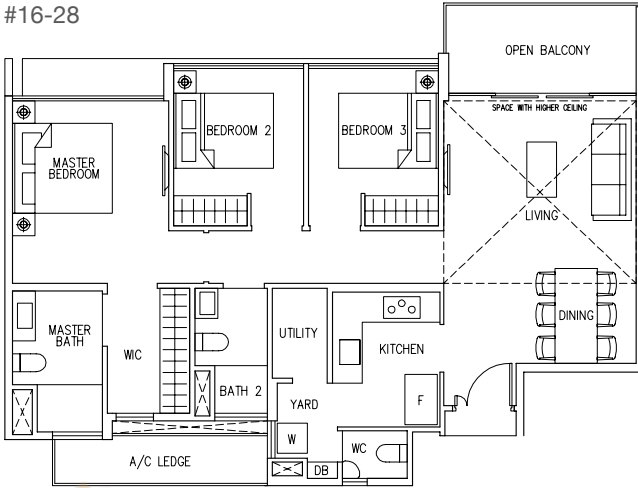
BEDROOM
PREMIUM

SKY UNIT

Type C2R(a)

113 sqm / 1216 sq ft

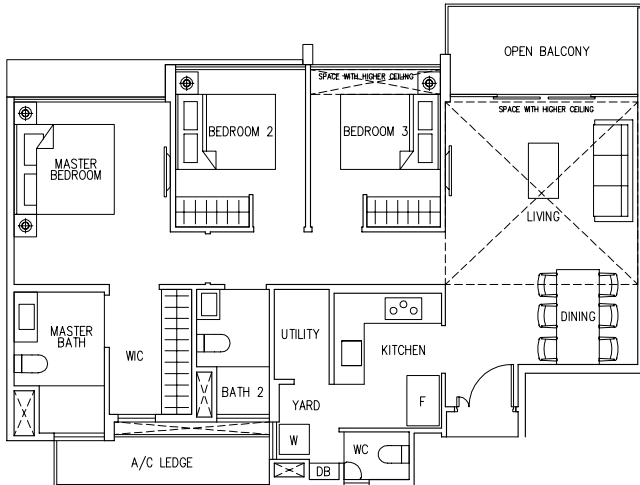
#16-13, #16-20, #16-28



Type C2R(b)

115 sqm / 1238 sq ft

#16-17*



LEGEND:

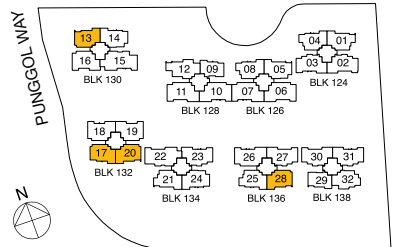
* - Unit in mirror image

□ - Architectural facade feature or sunshade

Areas includes A/C ledge, Balcony, Open Balcony, PES and Strata Void (where applicable). Orientations and facings will differ depending on the unit you are purchasing. Please refer to the key plan. All plans are not to scale and are subject to changes as may be approved by the relevant authorities. All floor areas are estimates and are subject to final survey.

BUYCONDO.sg

PUNGGOL WALK



SKY UNIT

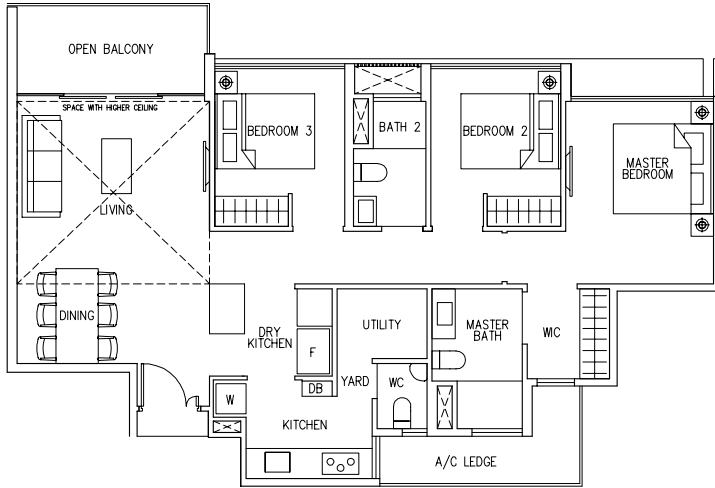
3

BEDROOM
PREMIUM

Type C3R(a)

117 sqm / 1259 sq ft

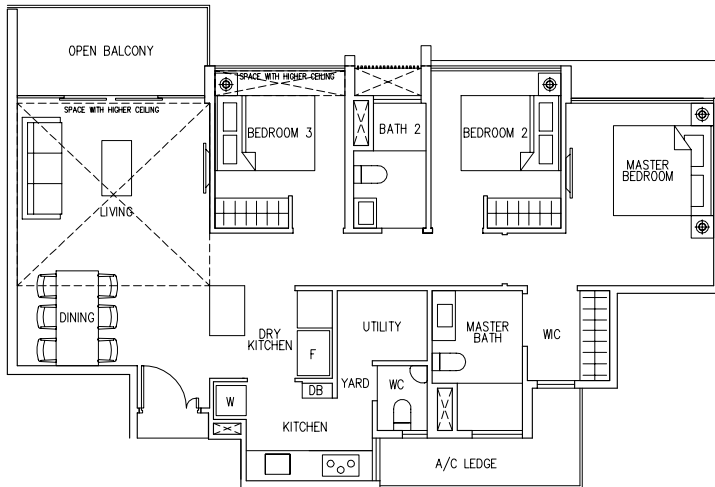
#16-01, #16-21



Type C3R(b)

119 sqm / 1281 sq ft

#16-04*, #16-08*,
#16-25



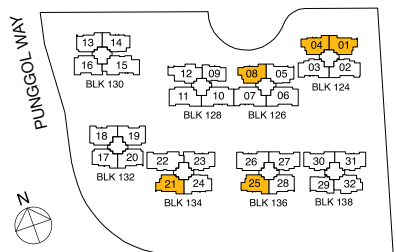
LEGEND:

* - Unit in mirror image

□ - Architectural facade feature or sunshade

Areas includes A/C ledge, Balcony, Open Balcony, PES and Strata Void (where applicable). Orientations and facings will differ depending on the unit you are purchasing. Please refer to the key plan. All plans are not to scale and are subject to changes as may be approved by the relevant authorities. All floor areas are estimates and are subject to final survey.

PUNGGOL WALK



3

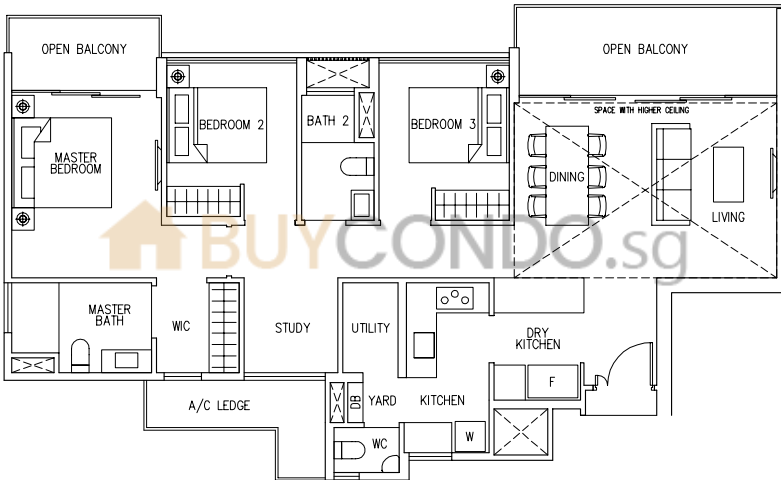
BEDROOM
COSPACE

SKY UNIT

Type C4R(a)

133 sqm / 1432 sq ft

#16-02, #16-27*, #16-30

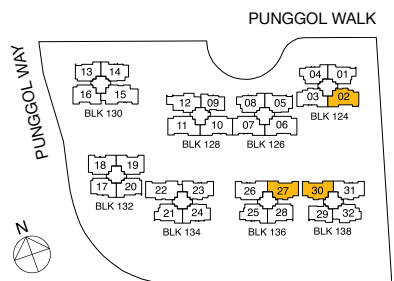


LEGEND:

* - Unit in mirror image

□ - Architectural facade feature or sunshade

Areas includes A/C ledge, Balcony, Open Balcony, PES and Strata Void (where applicable). Orientations and facings will differ depending on the unit you are purchasing. Please refer to the key plan. All plans are not to scale and are subject to changes as may be approved by the relevant authorities. All floor areas are estimates and are subject to final survey.



SKY UNIT

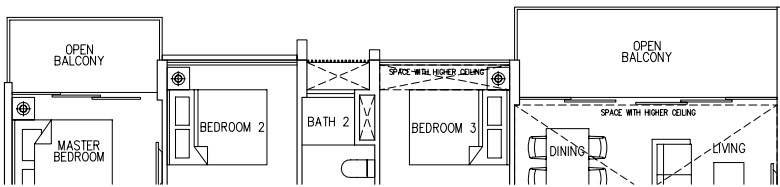
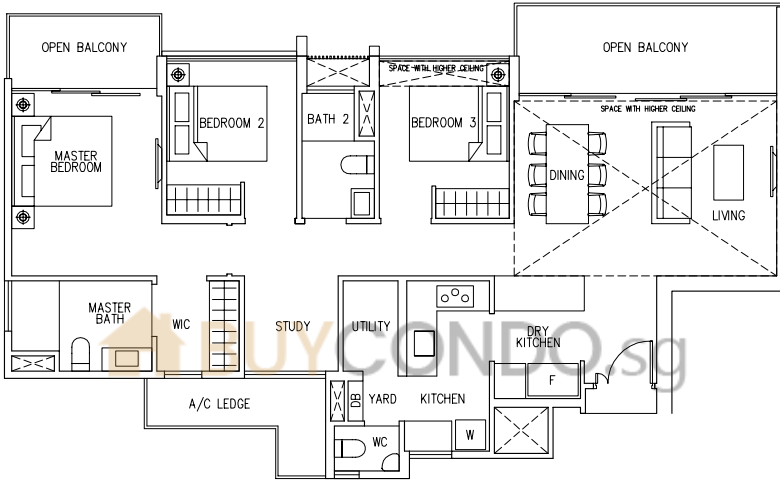
3

BEDROOM
COSPACE

Type C4R(b)

134 sqm / 1442 sq ft

#16-03*, #16-31*



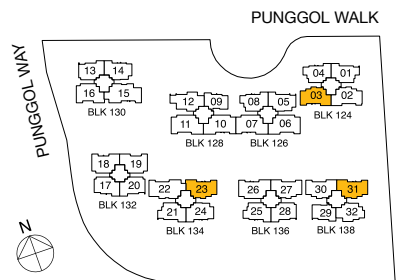
#16-23*

LEGEND:

* - Unit in mirror image

□ - Architectural facade feature or sunshade

Areas includes A/C ledge, Balcony, Open Balcony, PES and Strata Void (where applicable). Orientations and facings will differ depending on the unit you are purchasing. Please refer to the key plan. All plans are not to scale and are subject to changes as may be approved by the relevant authorities. All floor areas are estimates and are subject to final survey.



3

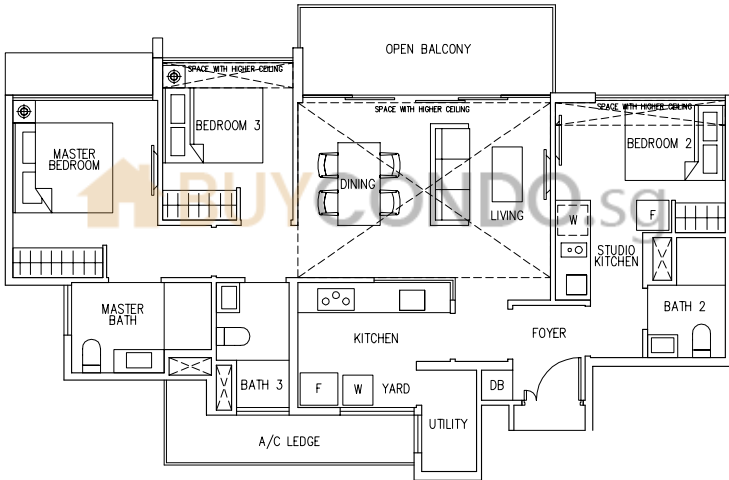
BEDROOM
DUAL KEY

SKY UNIT

Type C5R(DK)

124 sqm / 1335 sq ft

#16-32

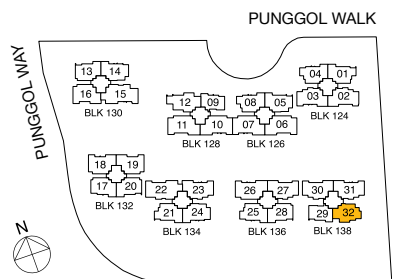


LEGEND:

* - Unit in mirror image

□ - Architectural facade feature or sunshade

Areas includes A/C ledge, Balcony, Open Balcony, PES and Strata Void (where applicable). Orientations and facings will differ depending on the unit you are purchasing. Please refer to the key plan. All plans are not to scale and are subject to changes as may be approved by the relevant authorities. All floor areas are estimates and are subject to final survey.



SKY UNIT

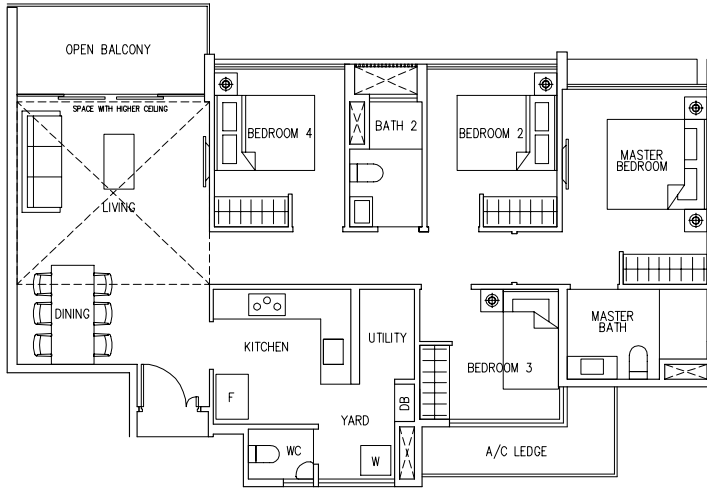
4

BEDROOM

Type D1R(a)

121 sqm / 1302 sq ft

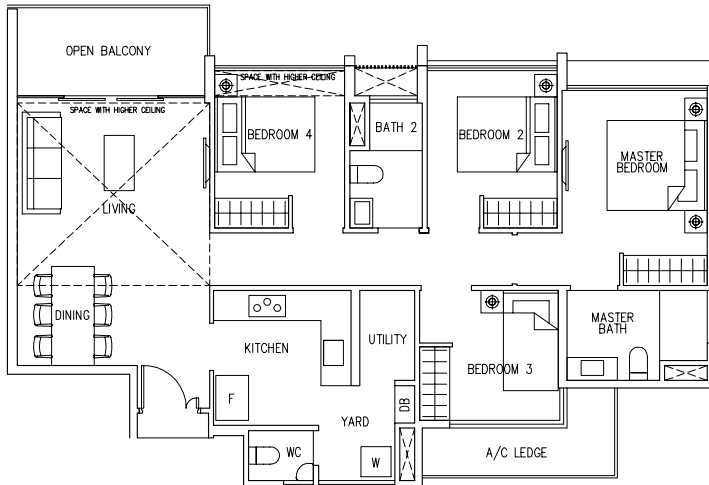
#16-05



Type D1R(b)

123 sqm / 1324 sq ft

#16-14, #16-24*



LEGEND:

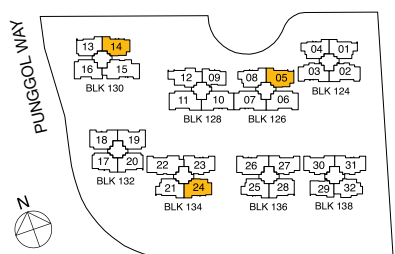
* - Unit in mirror image

☐ - Architectural facade feature or sunshade

Areas includes A/C ledge, Balcony, Open Balcony, PES and Strata Void (where applicable). Orientations and facings will differ depending on the unit you are purchasing. Please refer to the key plan. All plans are not to scale and are subject to changes as may be approved by the relevant authorities. All floor areas are estimates and are subject to final survey.



PUNGGOL WALK



4

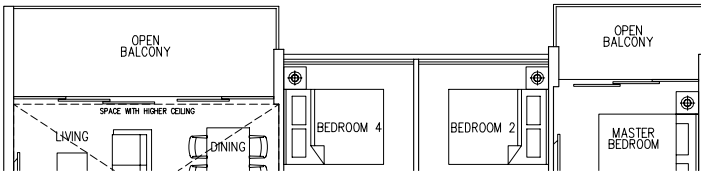
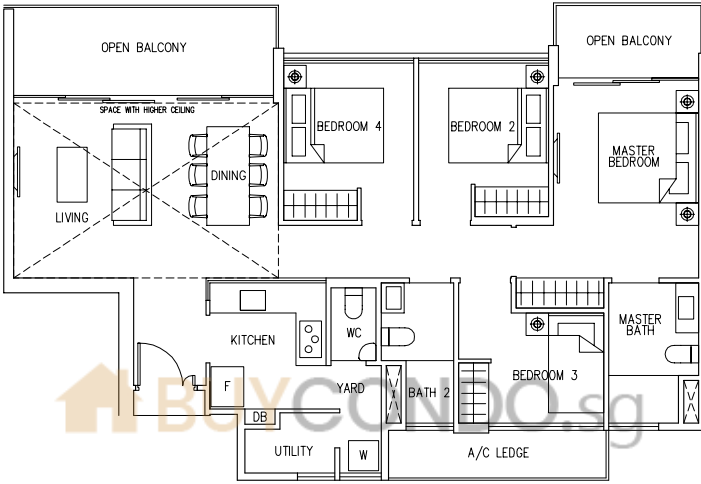
BEDROOM
PREMIUM

SKY UNIT

Type D2R(a)

131 sqm / 1410 sq ft

#16-19



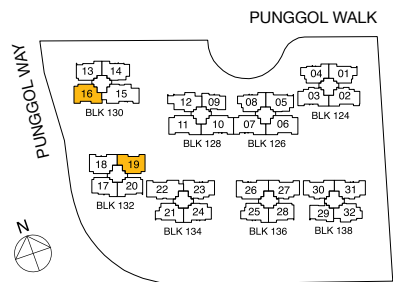
#16-16

LEGEND:

* - Unit in mirror image

□ - Architectural facade feature or sunshade

Areas includes A/C ledge, Balcony, Open Balcony, PES and Strata Void (where applicable). Orientations and facings will differ depending on the unit you are purchasing. Please refer to the key plan. All plans are not to scale and are subject to changes as may be approved by the relevant authorities. All floor areas are estimates and are subject to final survey.



SKY UNIT

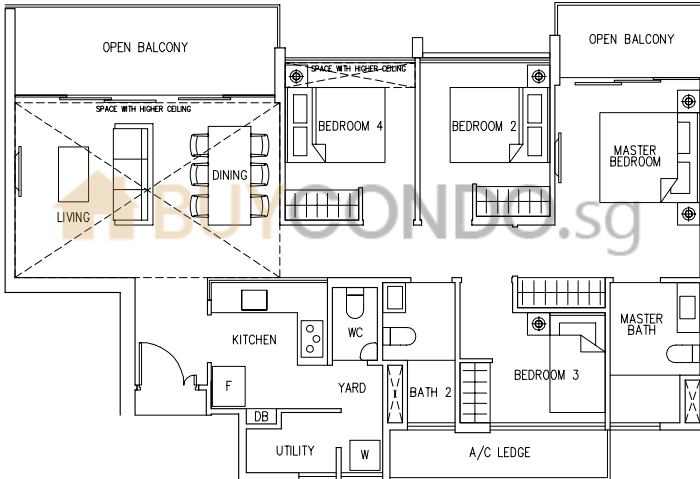
4

BEDROOM
PREMIUM

Type D2R(b)

133 sqm / 1432 sq ft

#16-18*

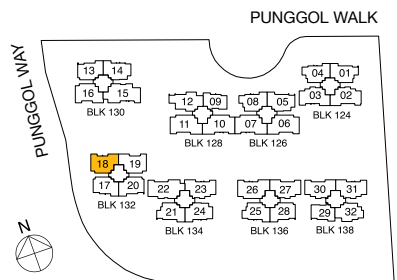


LEGEND:

* - Unit in mirror image

☐ - Architectural facade feature or sunshade

Areas includes A/C ledge, Balcony, Open Balcony, PES and Strata Void (where applicable). Orientations and facings will differ depending on the unit you are purchasing. Please refer to the key plan. All plans are not to scale and are subject to changes as may be approved by the relevant authorities. All floor areas are estimates and are subject to final survey.



4

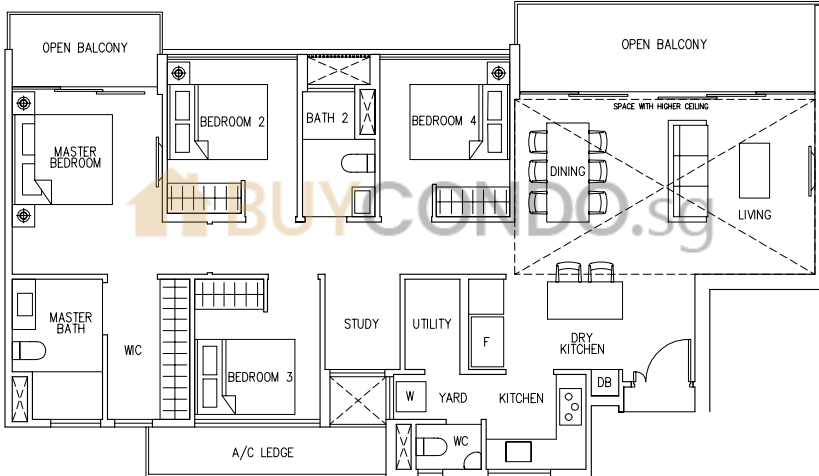
BEDROOM
COSPAC

SKY UNIT

Type D3R(a)

150 sqm / 1615 sq ft

#16-06, #16-11*

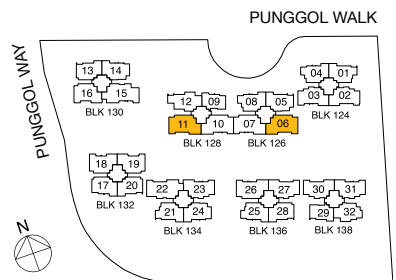


LEGEND:

* - Unit in mirror image

□ - Architectural facade feature or sunshade

Areas includes A/C ledge, Balcony, Open Balcony, PES and Strata Void (where applicable). Orientations and facings will differ depending on the unit you are purchasing. Please refer to the key plan. All plans are not to scale and are subject to changes as may be approved by the relevant authorities. All floor areas are estimates and are subject to final survey.



SKY UNIT

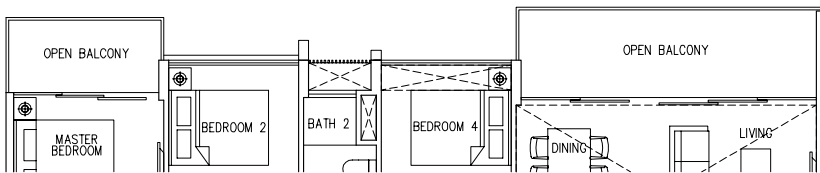
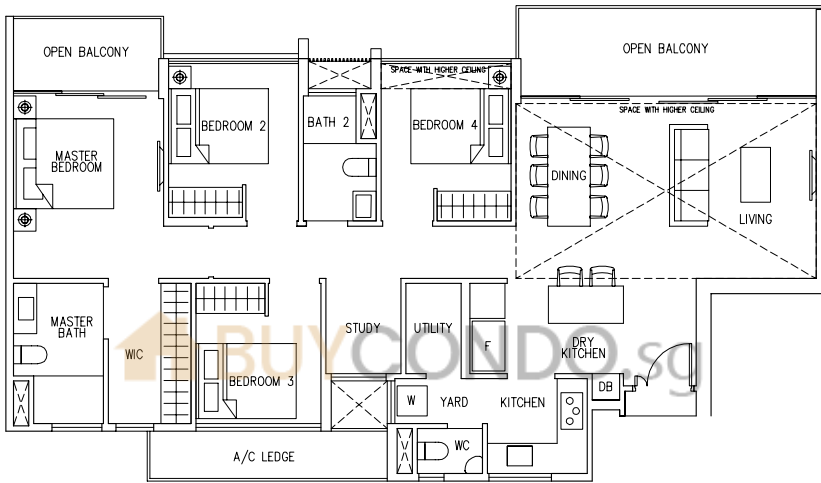
4

BEDROOM
COSPACE

Type D3R(b)

151 sqm / 1625 sq ft

#16-07*, #16-10



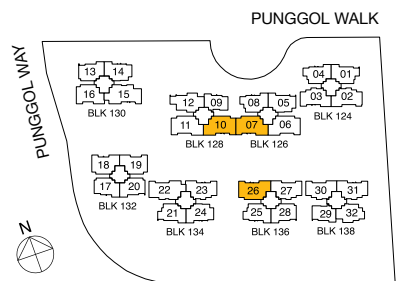
#16-26

LEGEND:

* - Unit in mirror image

□ - Architectural facade feature or sunshade

Areas includes A/C ledge, Balcony, Open Balcony, PES and Strata Void (where applicable). Orientations and facings will differ depending on the unit you are purchasing. Please refer to the key plan. All plans are not to scale and are subject to changes as may be approved by the relevant authorities. All floor areas are estimates and are subject to final survey.



4

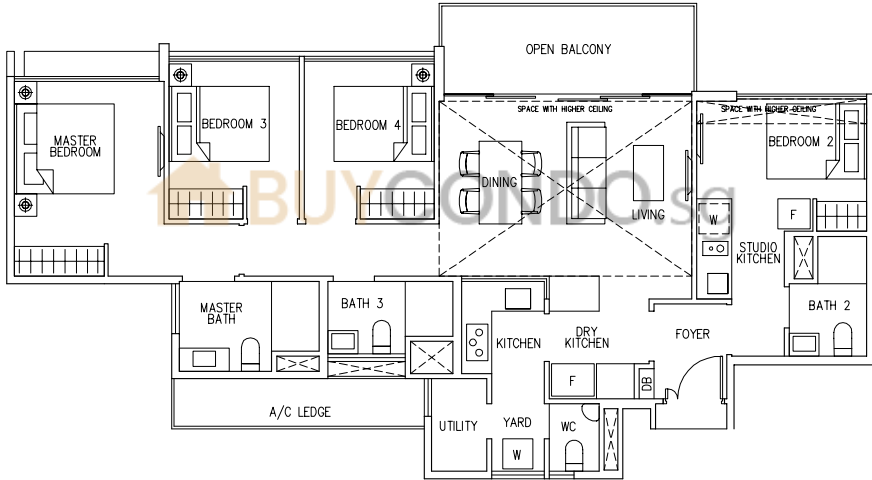
BEDROOM
DUAL KEY

SKY UNIT

Type D4R(DK)

137 sqm / 1475 sq ft

#16-12

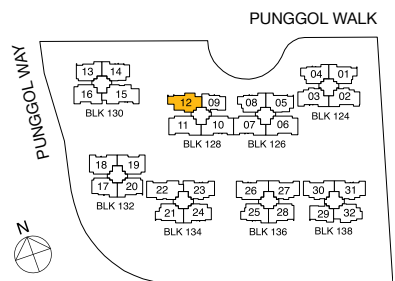


LEGEND:

* - Unit in mirror image

□ - Architectural facade feature or sunshade

Areas includes A/C ledge, Balcony, Open Balcony, PES and Strata Void (where applicable). Orientations and facings will differ depending on the unit you are purchasing. Please refer to the key plan. All plans are not to scale and are subject to changes as may be approved by the relevant authorities. All floor areas are estimates and are subject to final survey.



SKY UNIT

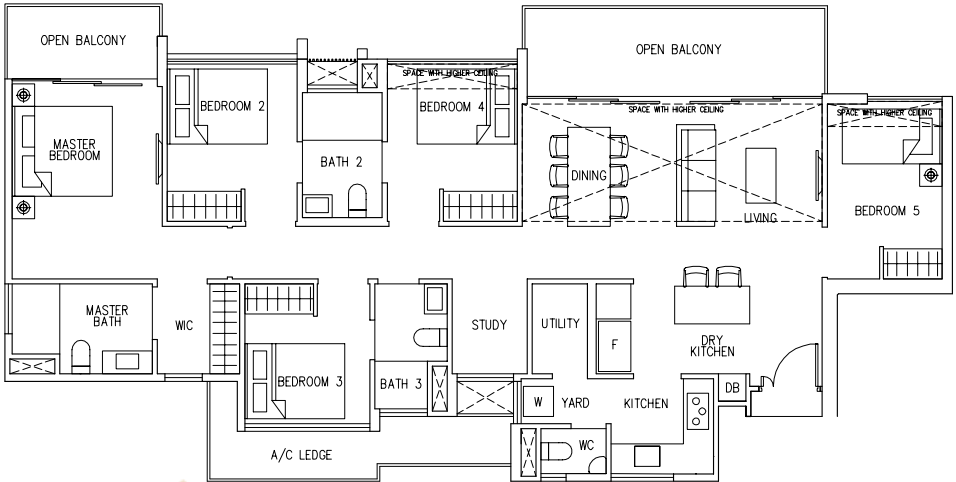
5

BEDROOM
COSPACE

Type E1R

159 sqm / 1711 sq ft

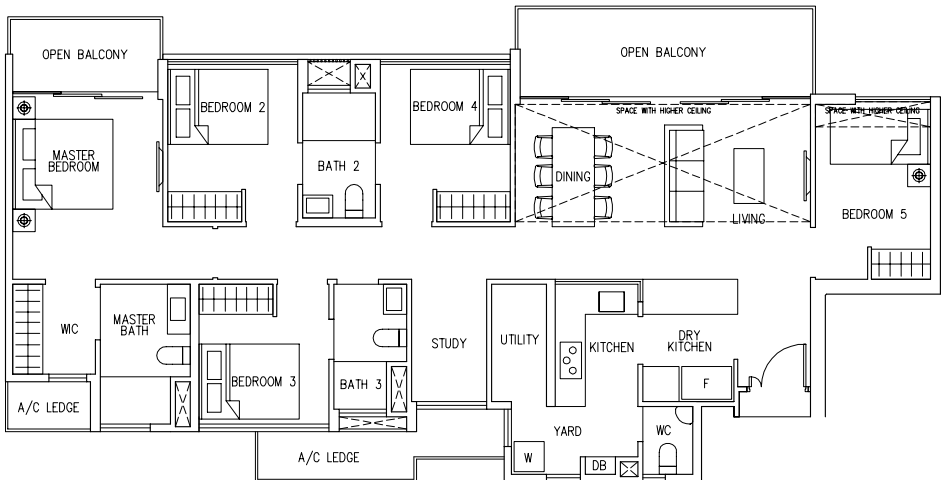
#16-15



Type E2R

158 sqm / 1701 sq ft

#16-22



LEGEND:

* - Unit in mirror image

□ - Architectural facade feature or sunshade

Areas includes A/C ledge, Balcony, Open Balcony, PES and Strata Void (where applicable). Orientations and facings will differ depending on the unit you are purchasing. Please refer to the key plan. All plans are not to scale and are subject to changes as may be approved by the relevant authorities. All floor areas are estimates and are subject to final survey.

