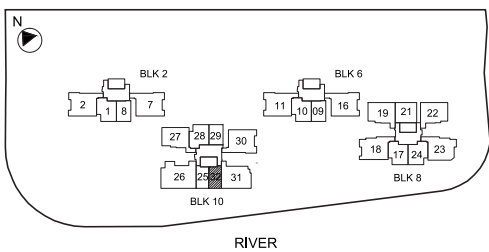
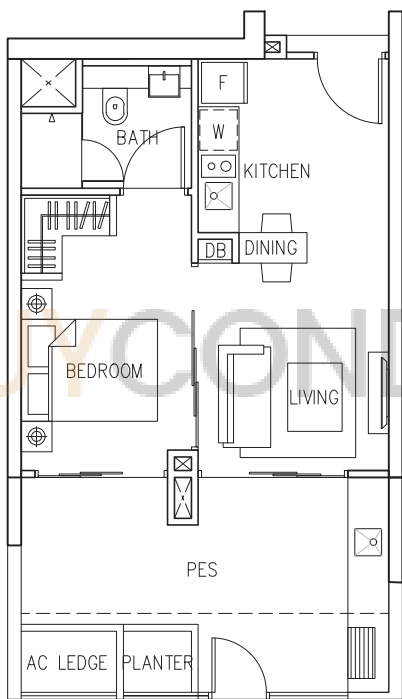


Type A1a PES
 53 sqm
 570 sqft



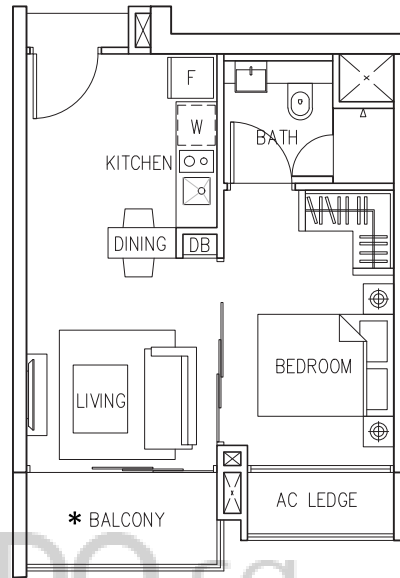
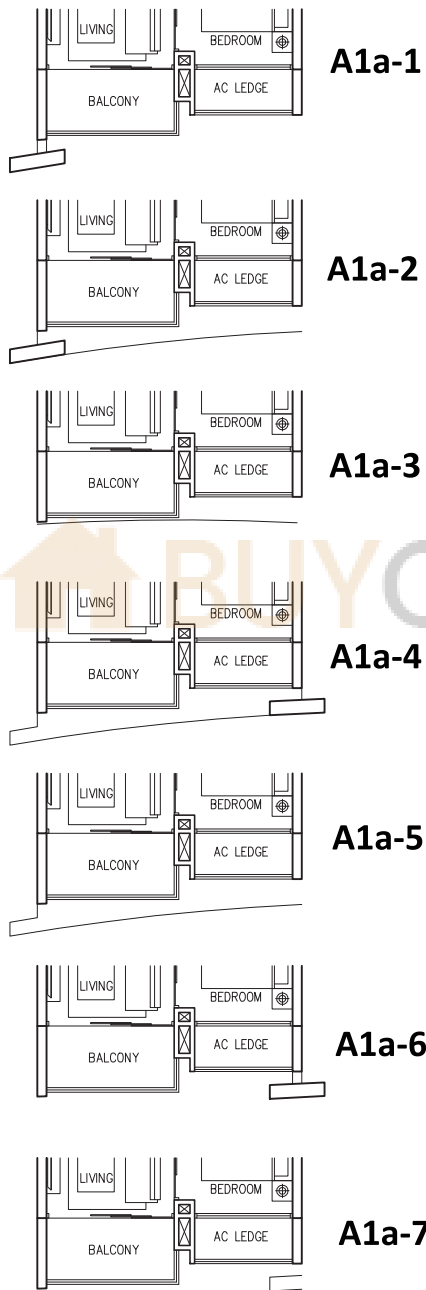
A1a PES

Blk 10: #01-32

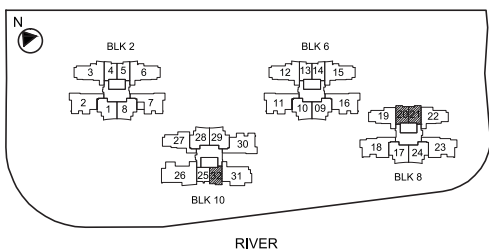
The plans are subject to change as may be required or approved by the relevant authorities. These are not drawn to scale and are for the purpose of visual presentation of the different layouts that are available. Areas are estimates only and are subject to final survey.

Type A1a
41 sqm
441 sqft

Part Plan LOCATION OF FACADE FEATURE FIN AT UNITS REFER TO STACKING DIAGRAM



BUYCONDO.sg



A1a Blk 8 : #02-21 to #27-21

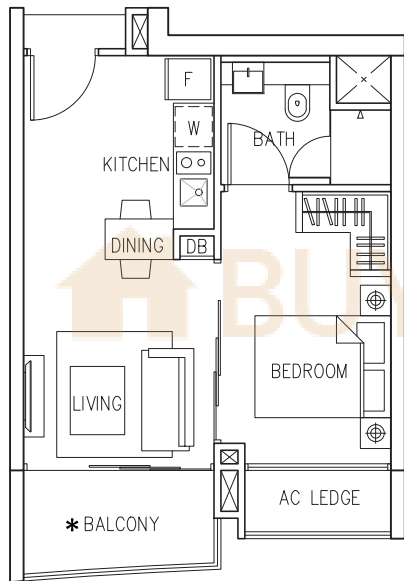
MIRROR IMAGE
Blk 8 : #02-20 to #27-20
Blk 10: #02-32 to #28-32

*OPEN BALCONY FOR UNITS:
Blk 8: #28-21

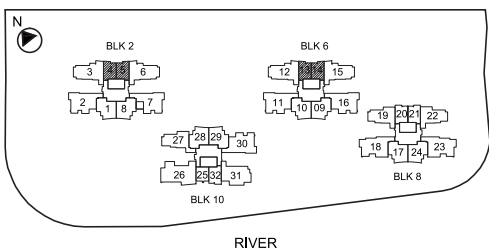
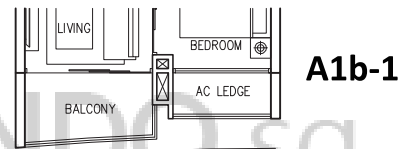
MIRROR IMAGE
Blk 8: #28-20

The plans are subject to change as may be required or approved by the relevant authorities. These are not drawn to scale and are for the purpose of visual presentation of the different layouts that are available. Areas are estimates only and are subject to final survey.

Type A1b
 41 sqm
 441 sqft



Part Plan LOCATION OF FACADE FEATURE FIN AT UNITS REFER TO STACKING DIAGRAM



A1b

Blk 2: #07-05 to #28-05
 Blk 6: #07-14 to #27-14

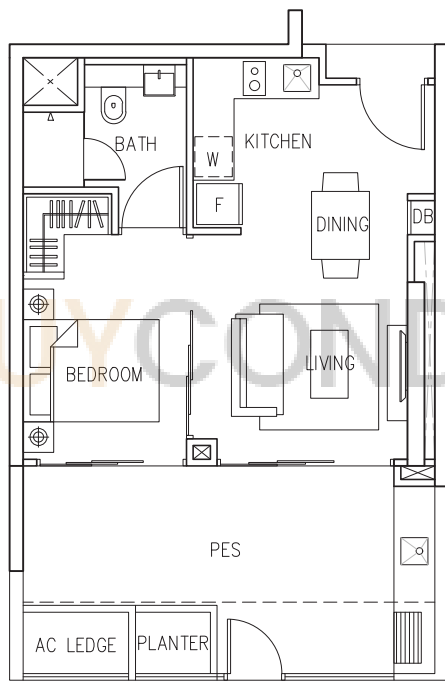
*OPEN BALCONY FOR UNITS:
 Blk 2: #29-05
 Blk 6: #28-14

MIRROR IMAGE
 Blk 2: #07-04 to #28-04
 Blk 6: #07-13 to #27-13

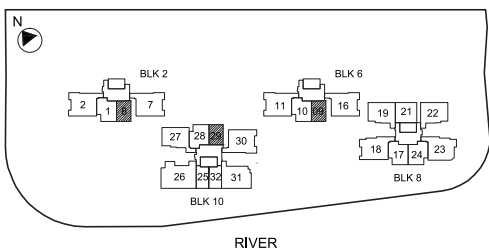
MIRROR IMAGE
 Blk 2: #29-04
 Blk 6: #28-13

The plans are subject to change as may be required or approved by the relevant authorities. These are not drawn to scale and are for the purpose of visual presentation of the different layouts that are available. Areas are estimates only and are subject to final survey.

Type A2 PES
 55 sqm
 592 sqft



BUYCONDO.sg



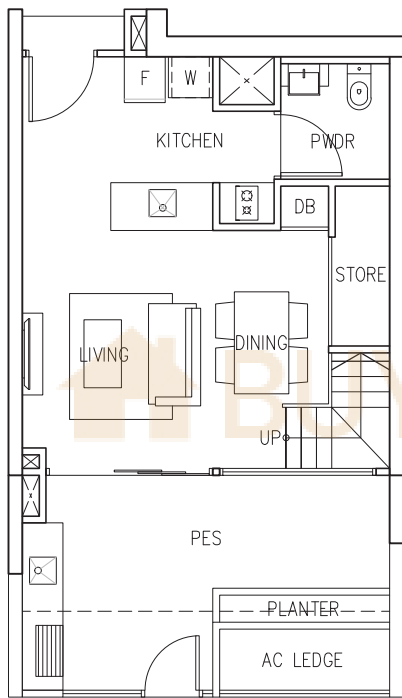
A2 PES

Blk 2 : #01-08
 Blk 6 : #01-09

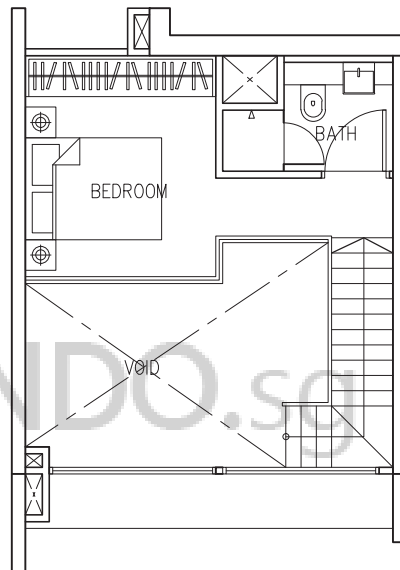
MIRROR IMAGE
 Blk 10: #01-29

The plans are subject to change as may be required or approved by the relevant authorities. These are not drawn to scale and are for the purpose of visual presentation of the different layouts that are available. Areas are estimates only and are subject to final survey.

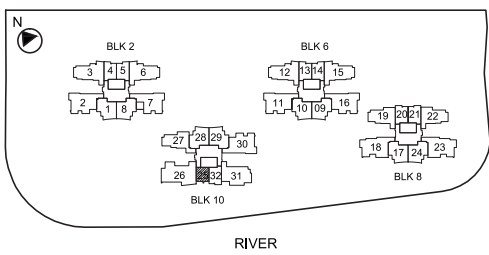
Type A3 PES
 87 sqm
 936 sqft



LOWER



UPPER

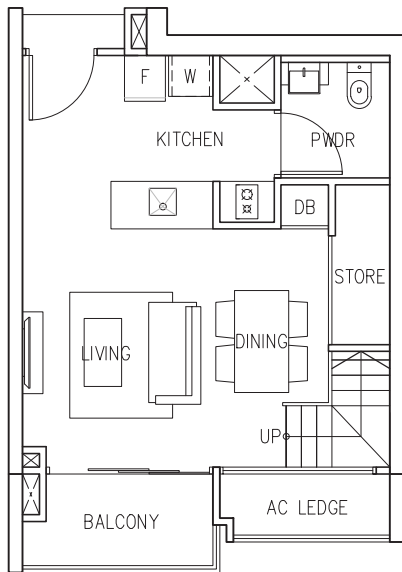


A3 PES

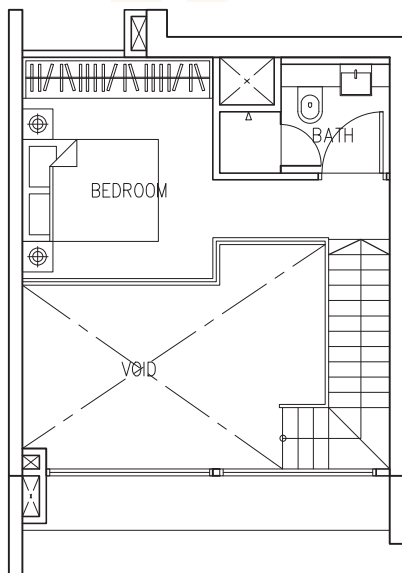
Blk 10 : #01-25

The plans are subject to change as may be required or approved by the relevant authorities. These are not drawn to scale and are for the purpose of visual presentation of the different layouts that are available. Areas are estimates only and are subject to final survey.

Type A3
76 sqm
818 sqft

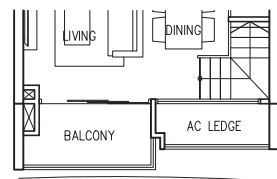


LOWER

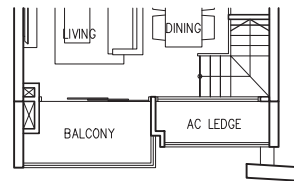


UPPER

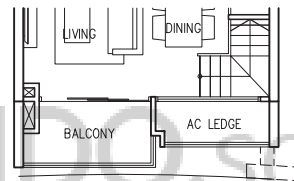
Part Plan LOCATION OF FACADE FEATURE FIN AT UNITS REFER TO STACKING DIAGRAM



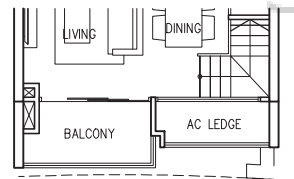
A3-1



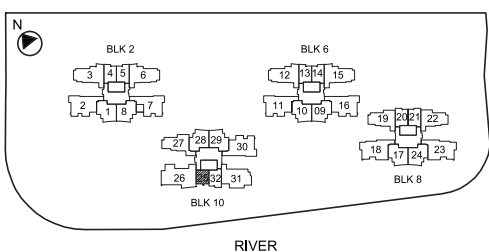
A3-2



A3-3



A3-4



A3

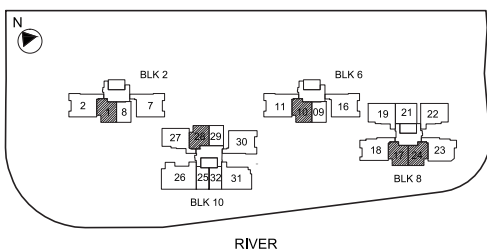
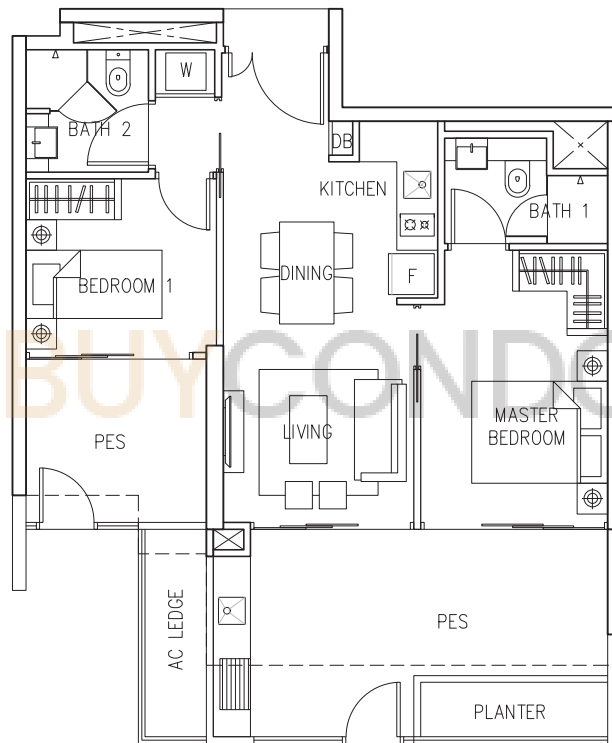
Blk 10: #03-25, #05-25, #07-25, #09-25, #11-25, #13-25, #15-25, #17-25, #19-25, #21-25, #23-25, #25-25, #27-25

The plans are subject to change as may be required or approved by the relevant authorities. These are not drawn to scale and are for the purpose of visual presentation of the different layouts that are available. Areas are estimates only and are subject to final survey.

Type B1 PES

79 sqm

850 sqft



**B1
PES**

Blk 2 : #01-01

Blk 6 : #01-10

Blk 8 : #01-17

MIRROR IMAGE

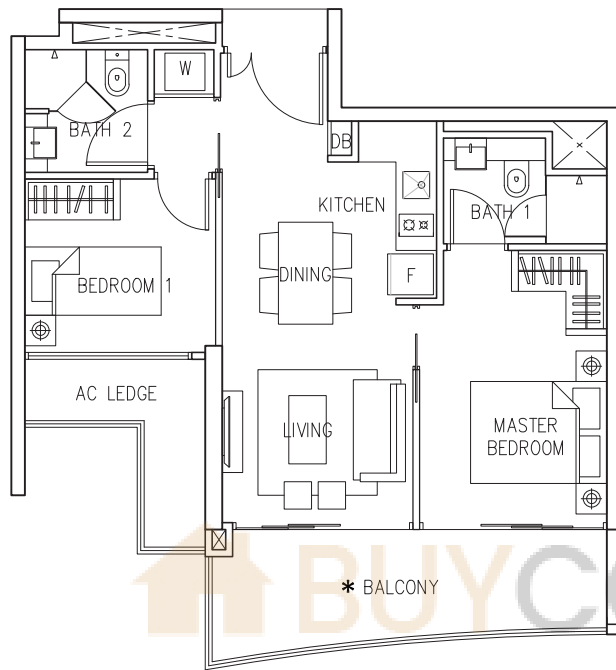
Blk 8 : #01-24

Blk 10: #01-28

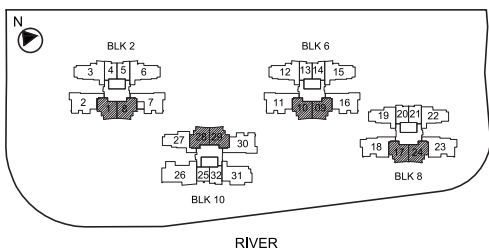
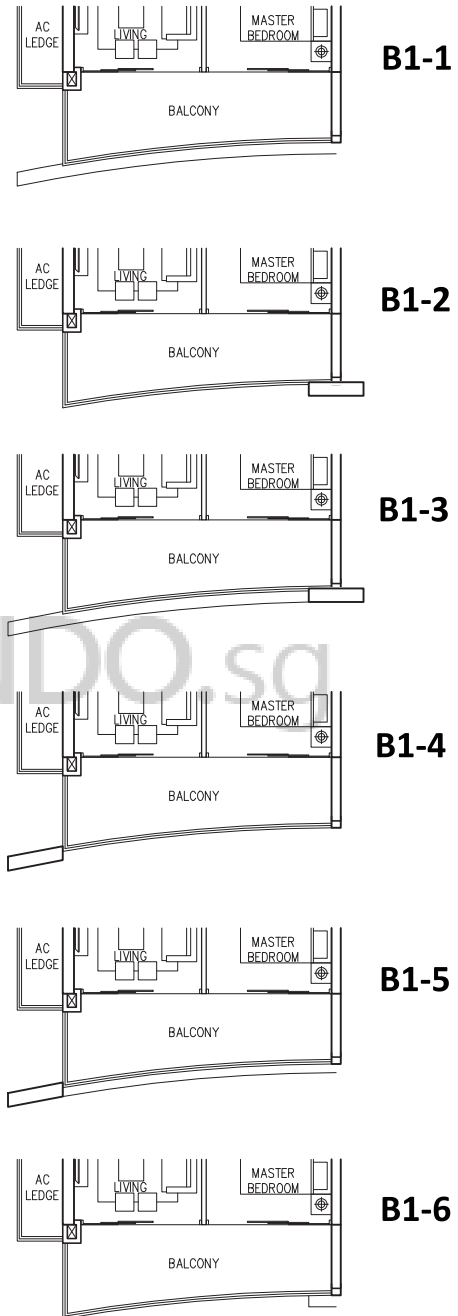
The plans are subject to change as may be required or approved by the relevant authorities. These are not drawn to scale and are for the purpose of visual presentation of the different layouts that are available. Areas are estimates only and are subject to final survey.

Type B1

65 sqm
700 sqft



Part Plan LOCATION OF FACADE FEATURE FIN AT UNITS REFER TO STACKING DIAGRAM



B1

Blk 2 : #02-01 to #28-01
Blk 6 : #02-10 to #27-10
Blk 8 : #02-17 to #27-17
Blk 10: #02-29 to #28-29

*OPEN BALCONY FOR UNITS:
Blk 10: #29-29

MIRROR IMAGE

Blk 2 : #02-08 to #28-08
Blk 6 : #02-09 to #27-09
Blk 8 : #02-24 to #27-24
Blk 10: #02-28 to #28-28

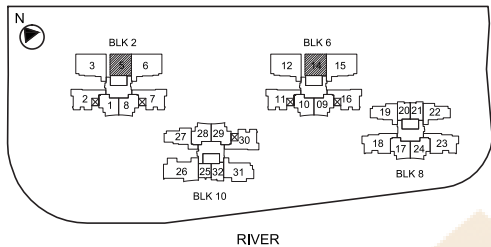
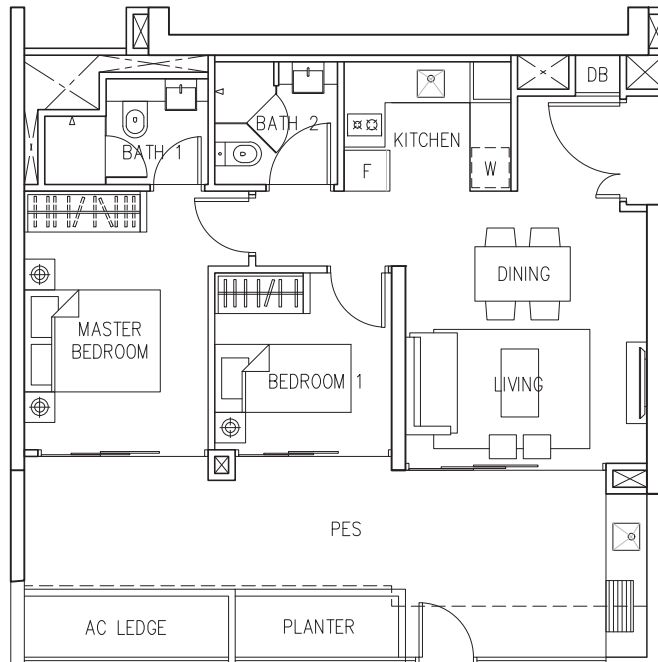
MIRROR IMAGE

Blk 10: #29-28

The plans are subject to change as may be required or approved by the relevant authorities. These are not drawn to scale and are for the purpose of visual presentation of the different layouts that are available. Areas are estimates only and are subject to final survey.

Type B2 PES1

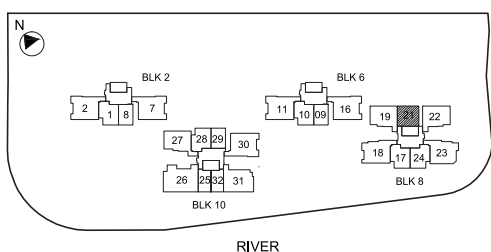
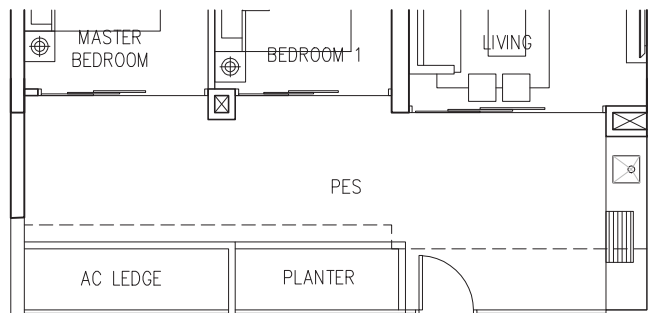
81 sqm
872 sqft





Type B2 PES2

83 sqm
893 sqft



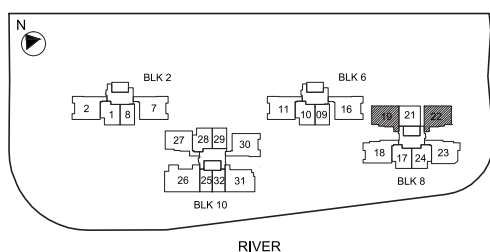
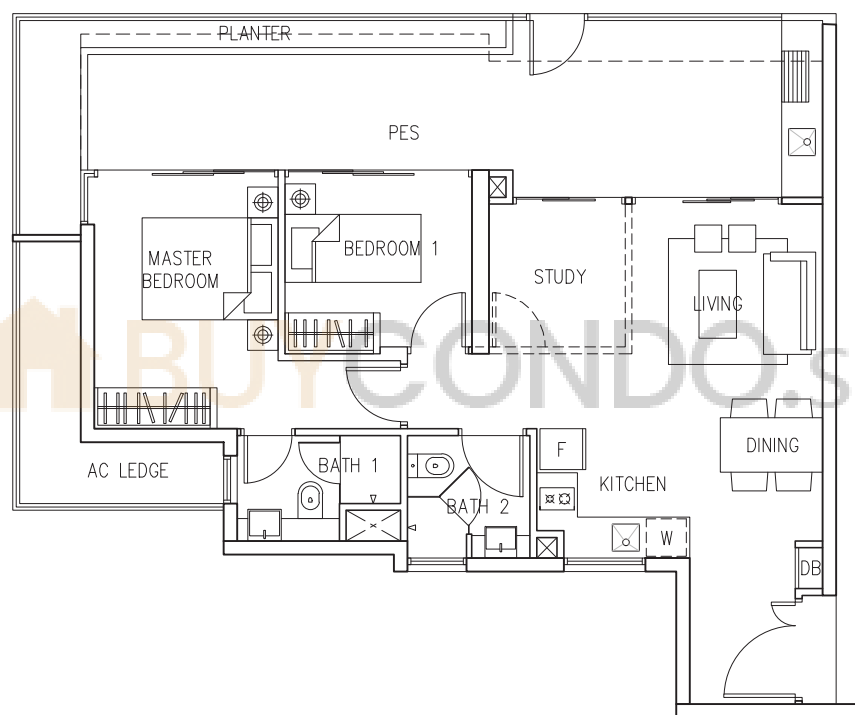
B2 PES1 Blk 2: #06-05
Blk 6: #06-14

B2 PES2 MIRROR IMAGE
Blk 8: #01-21

Type C1 PES

97 sqm

1044 sqft



C1
PES

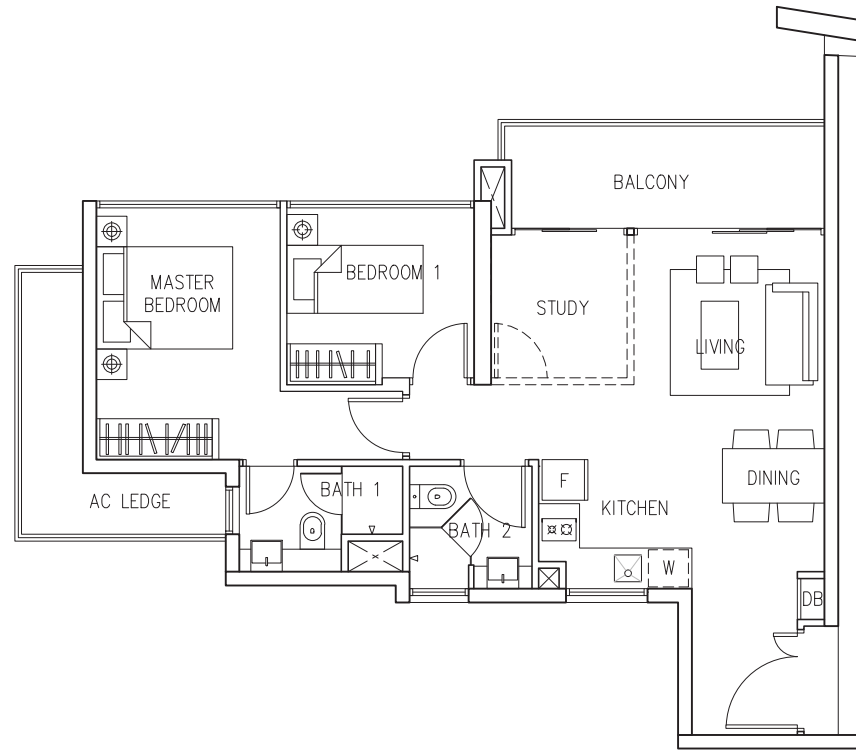
Blk 8: #01-19

MIRROR IMAGE

Blk 8: #01-22

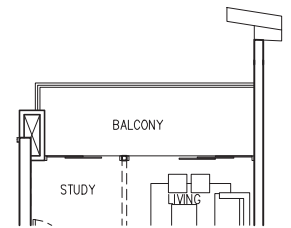
Type C1a

75 sqm
807 sqft



Part Plan

LOCATION OF FACADE FEATURE FIN AT UNITS REFER TO STACKING DIAGRAM

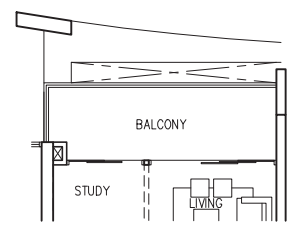
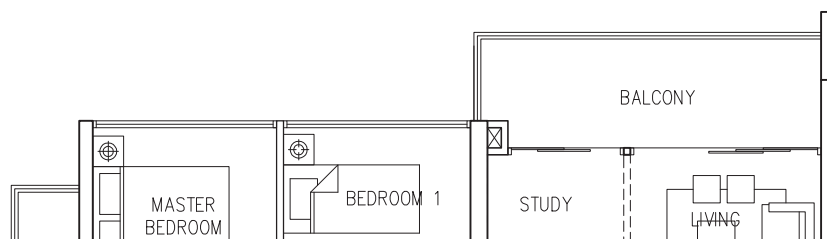


C1a-1

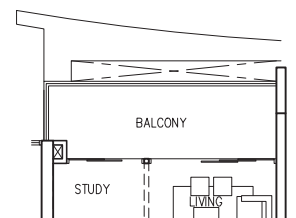


Type C1b

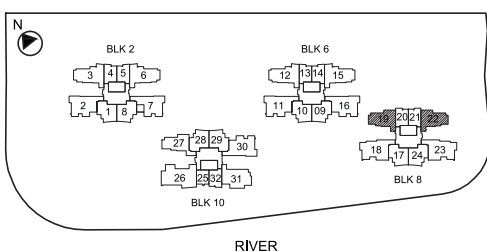
75 sqm
807 sqft



C1b-1



C1b-2

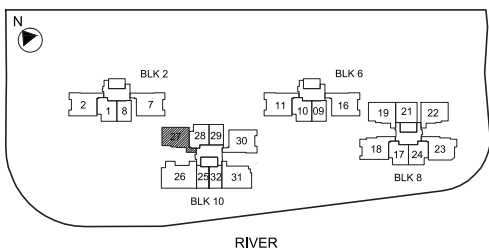
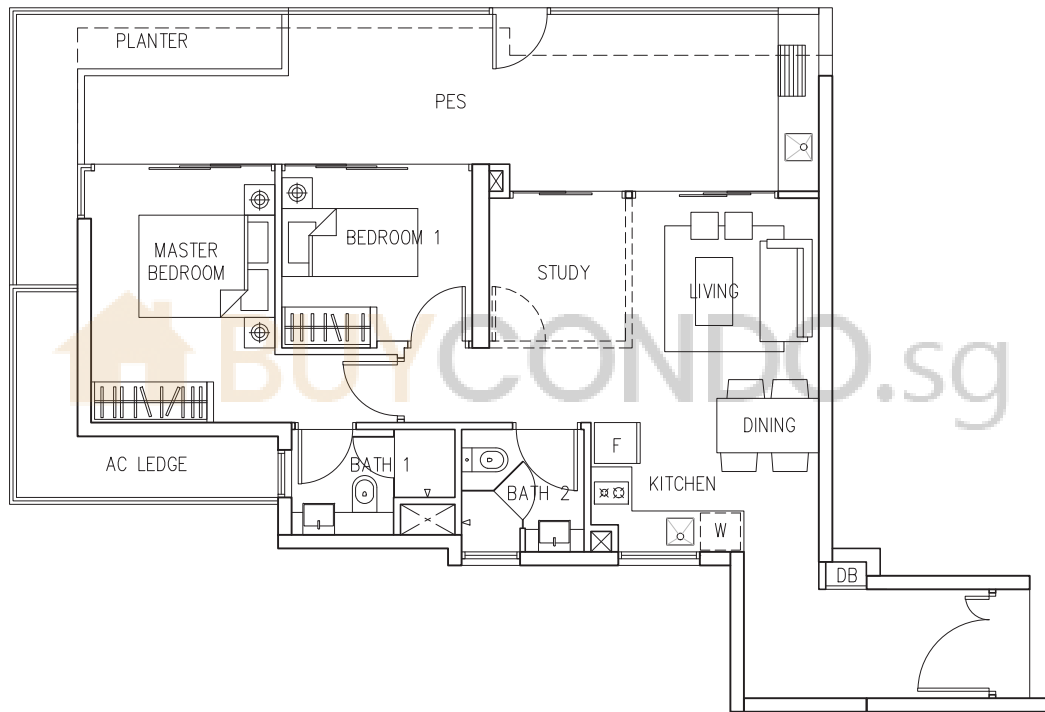


C1a Blk 8: #02-19 to #27-19

C1b MIRROR IMAGE
Blk 8: #02-22 to #27-22

The plans are subject to change as may be required or approved by the relevant authorities. These are not drawn to scale and are for the purpose of visual presentation of the different layouts that are available. Areas are estimates only and are subject to final survey.

Type C2 PES
 100 sqm
 1076 sqft

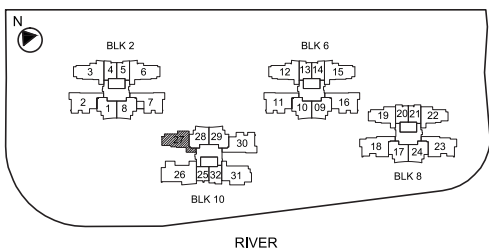
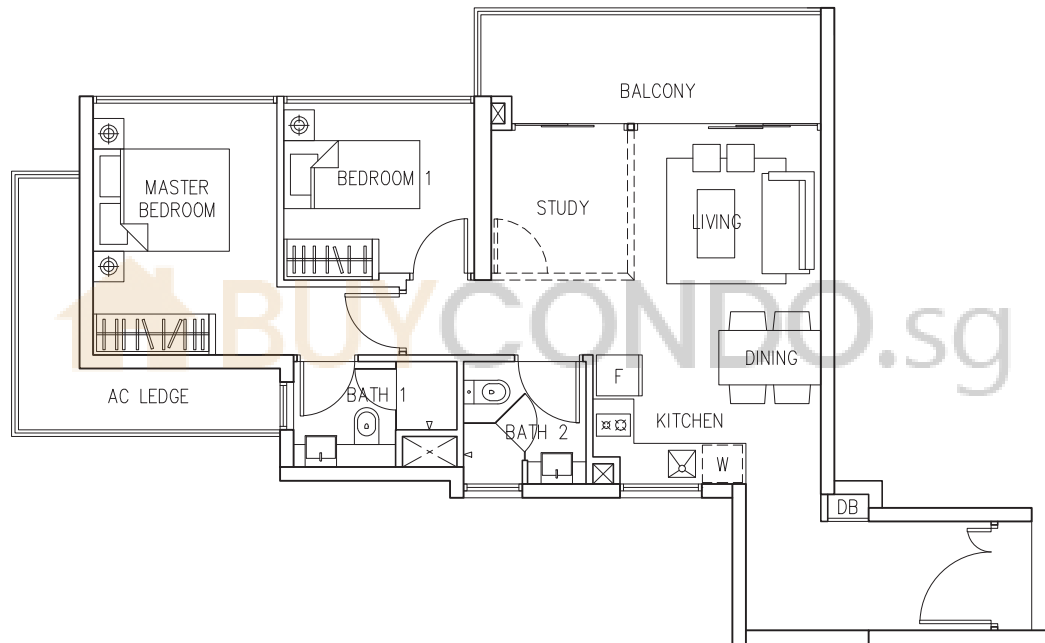


C2 PES

Blk 10: #01-27

The plans are subject to change as may be required or approved by the relevant authorities. These are not drawn to scale and are for the purpose of visual presentation of the different layouts that are available. Areas are estimates only and are subject to final survey.

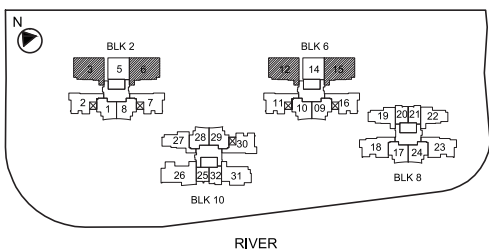
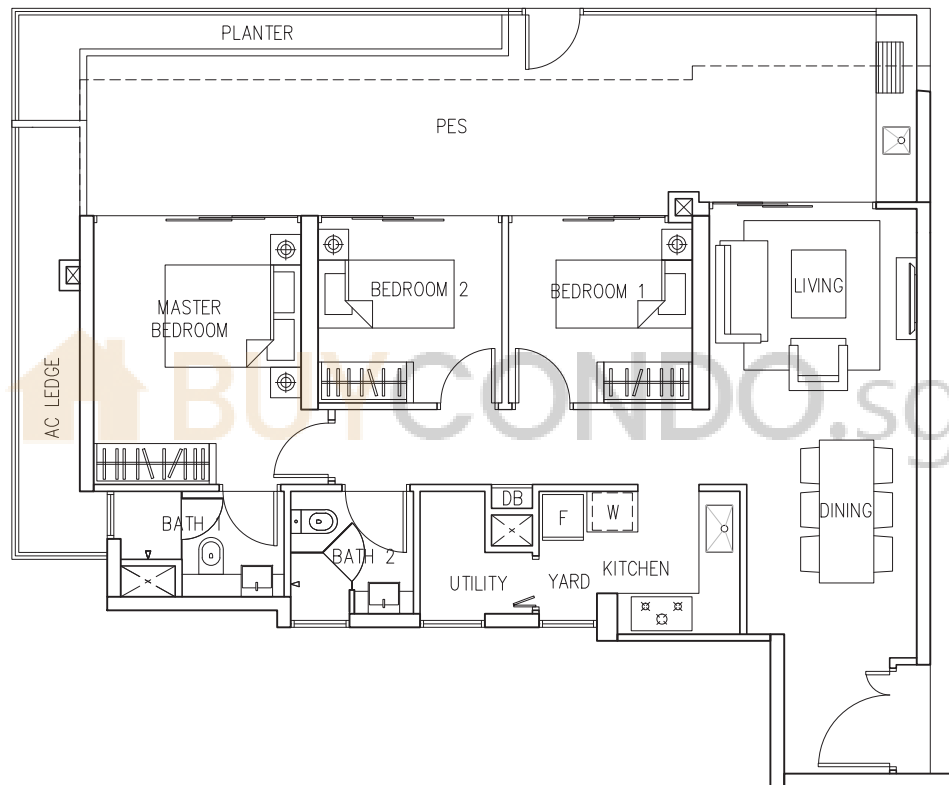
Type C2
 78 sqm
 840 sqft



C2 Blk 10: #02-27 to #28-27

The plans are subject to change as may be required or approved by the relevant authorities. These are not drawn to scale and are for the purpose of visual presentation of the different layouts that are available. Areas are estimates only and are subject to final survey.

Type D1 PES
 123 sqm
 1324 sqft



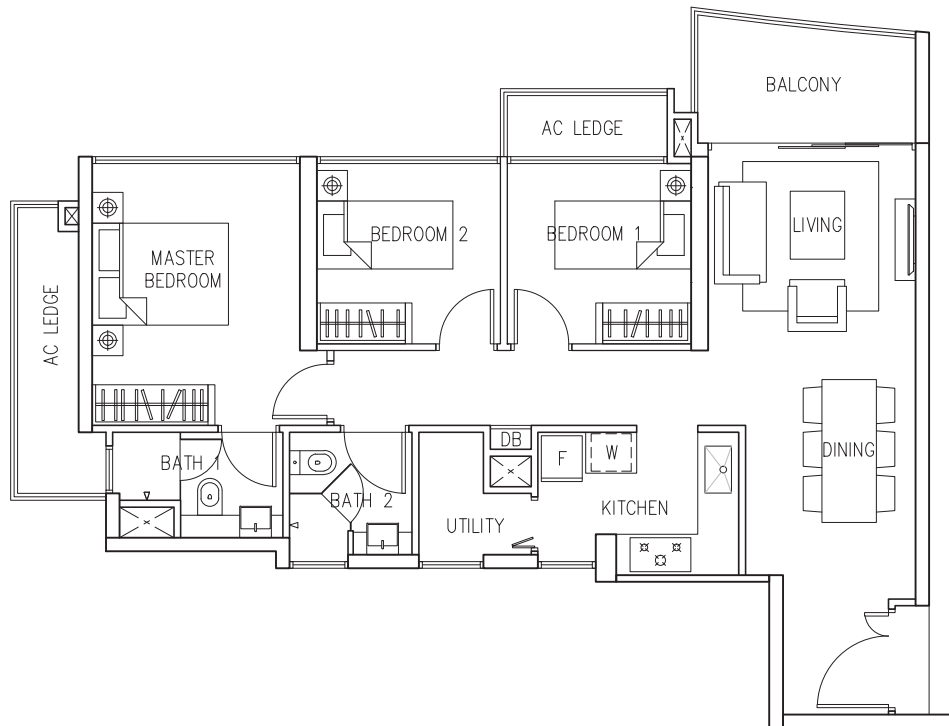
D1 PES

Blk 2: #06-03
 Blk 6: #06-12

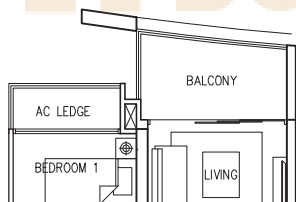
MIRROR IMAGE
 Blk 2: #06-06
 Blk 6: #06-15

The plans are subject to change as may be required or approved by the relevant authorities. These are not drawn to scale and are for the purpose of visual presentation of the different layouts that are available. Areas are estimates only and are subject to final survey.

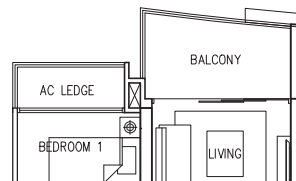
Type D1
 91 sqm
 980 sqft



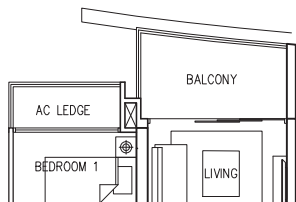
Part Plan LOCATION OF FACADE FEATURE FIN AT UNITS REFER TO STACKING DIAGRAM



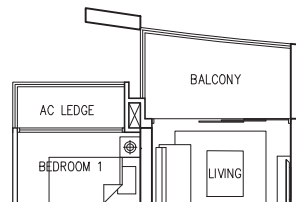
D1-1



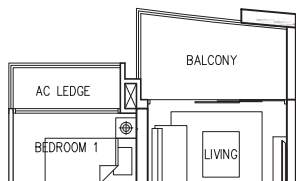
D1-4



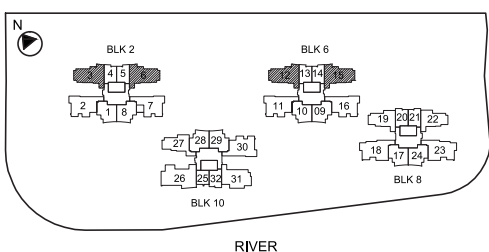
D1-2



D1-5



D1-3



D1

Blk 2: #07-03 to #28-03
 Blk 6: #07-12 to #27-12

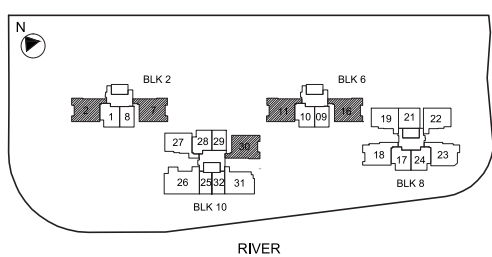
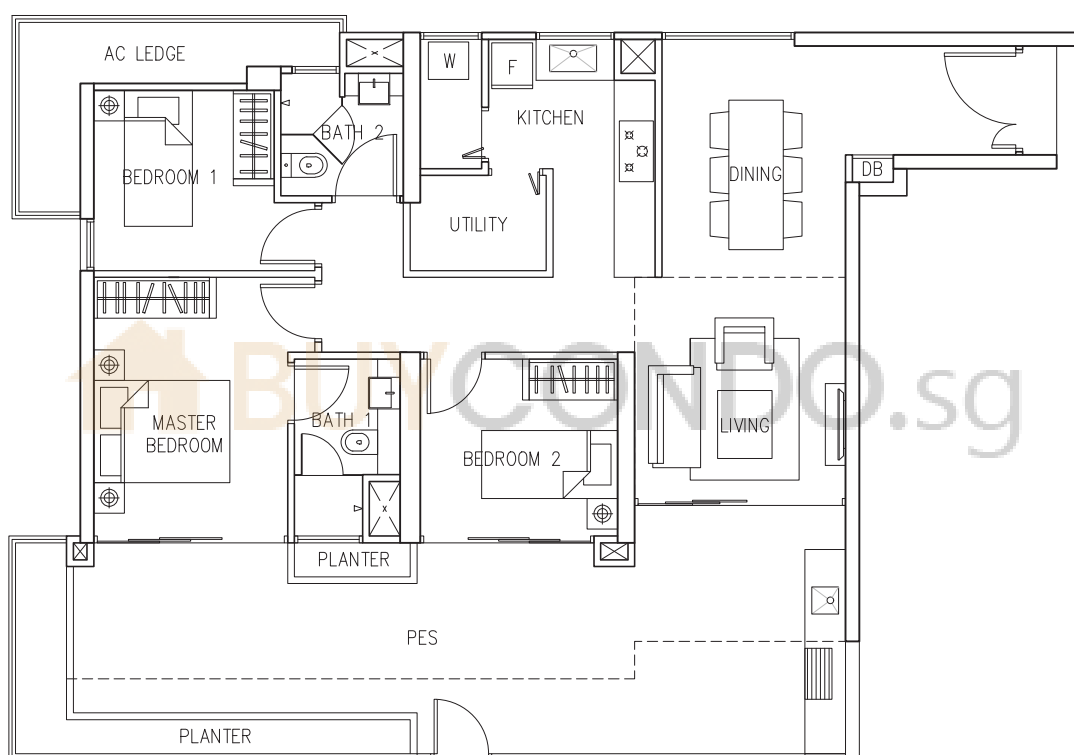
MIRROR IMAGE

Blk 2: #07-06 to #28-06
 Blk 6: #07-15 to #27-15

The plans are subject to change as may be required or approved by the relevant authorities. These are not drawn to scale and are for the purpose of visual presentation of the different layouts that are available. Areas are estimates only and are subject to final survey.

Type D2a PES

142 sqm
1528 sqft



**D2a
PES**

Blk 2 : #01-02
Blk 6 : #01-11
Blk 10: #01-30

MIRROR IMAGE

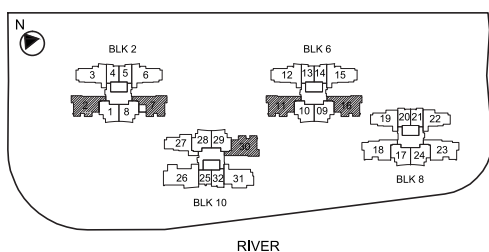
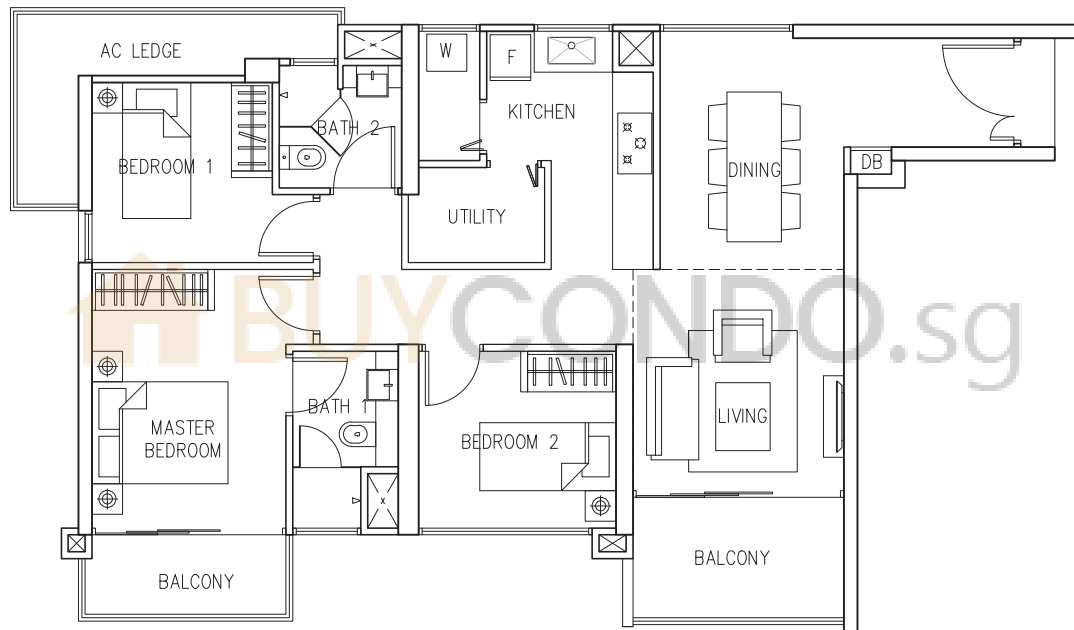
Blk 2: #01-07
Blk 6: #01-16

The plans are subject to change as may be required or approved by the relevant authorities. These are not drawn to scale and are for the purpose of visual presentation of the different layouts that are available. Areas are estimates only and are subject to final survey.

Type D2a

111 sqm

1195 sqft



D2a

Blk 2 : #03-02, #05-02, #07-02, #09-02, #11-02, #15-02, #17-02, #21-02, #23-02

Blk 6 : #03-11, #05-11, #07-11, #09-11, #11-11, #15-11, #17-11, #21-11, #23-11

Blk 10: #03-30, #05-30, #07-30, #09-30, #11-30, #13-30, #15-30, #17-30, #19-30, #21-30, #23-30, #25-30, #27-30

MIRROR IMAGE

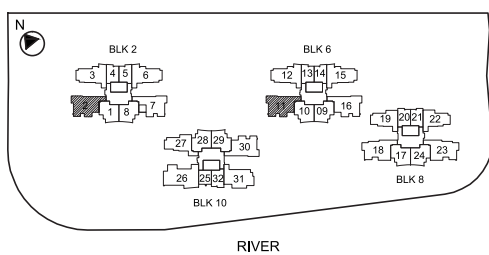
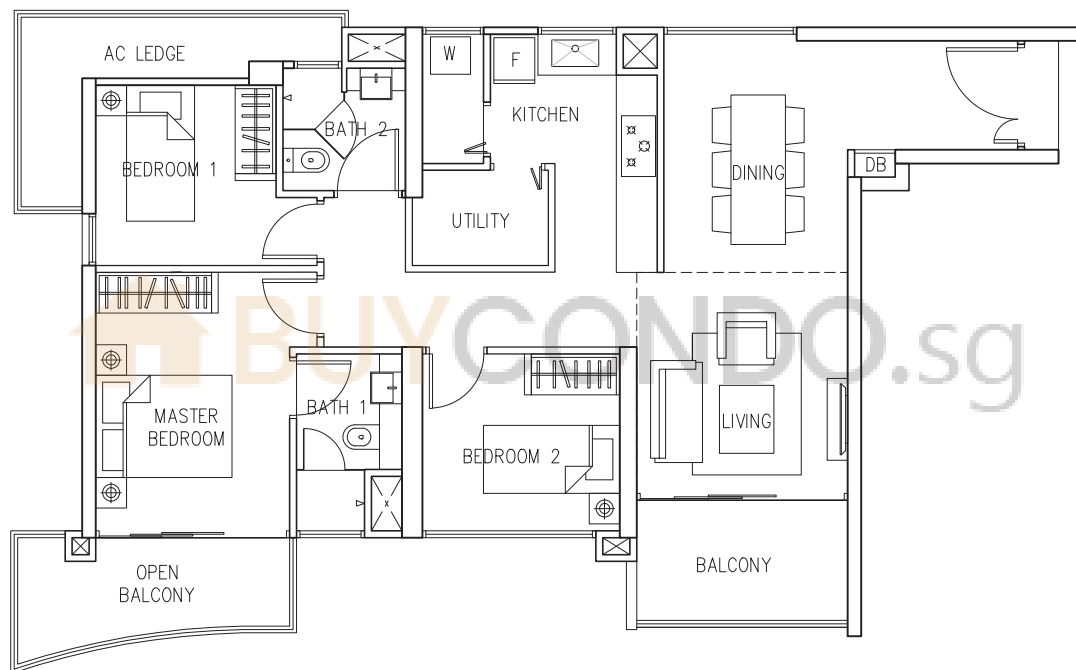
Blk 2 : #03-07, #05-07, #07-07, #09-07, #11-07, #13-07, #15-07, #17-07, #19-07, #21-07, #23-07, #25-07, #27-07

Blk 6 : #03-16, #05-16, #07-16, #09-16, #11-16, #13-16, #15-16, #17-16, #19-16, #21-16, #23-16, #25-16

Type D2b

113 sqm

1216 sqft



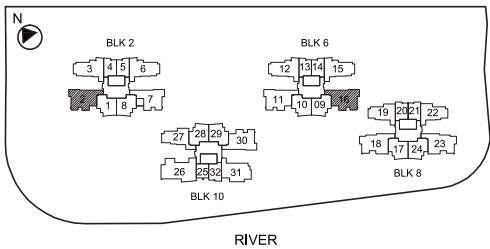
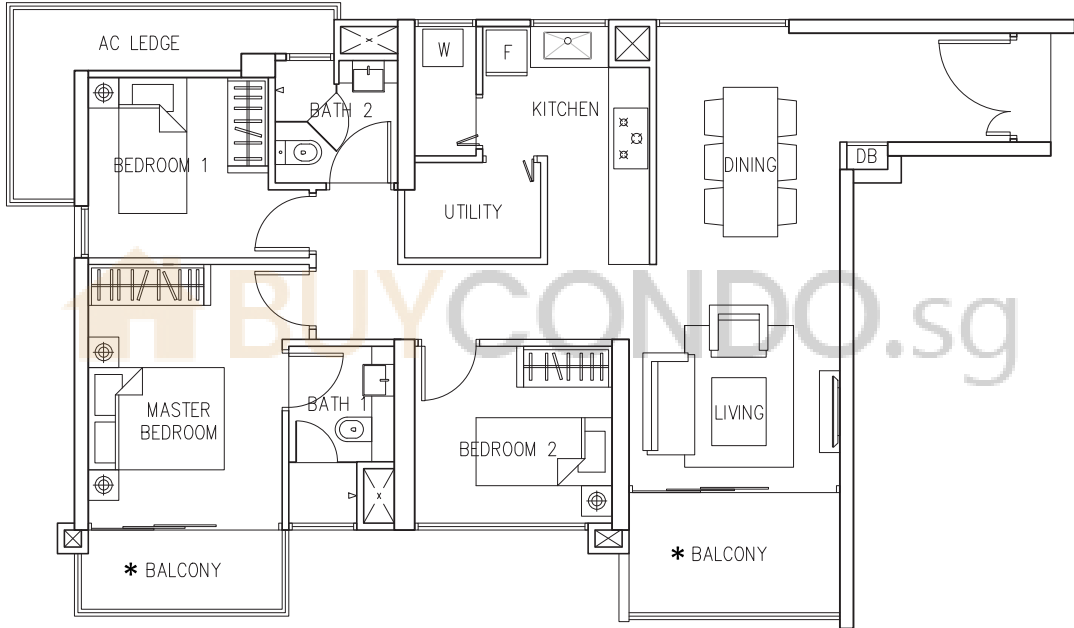
D2b

Blk 2: #13-02, #19-02, #25-02

Blk 6: #13-11, #19-11, #25-11

The plans are subject to change as may be required or approved by the relevant authorities. These are not drawn to scale and are for the purpose of visual presentation of the different layouts that are available. Areas are estimates only and are subject to final survey.

Type D2c
 100 sqm
 1076 sqft



D2c MIRROR IMAGE
 Blk 6: #27-16

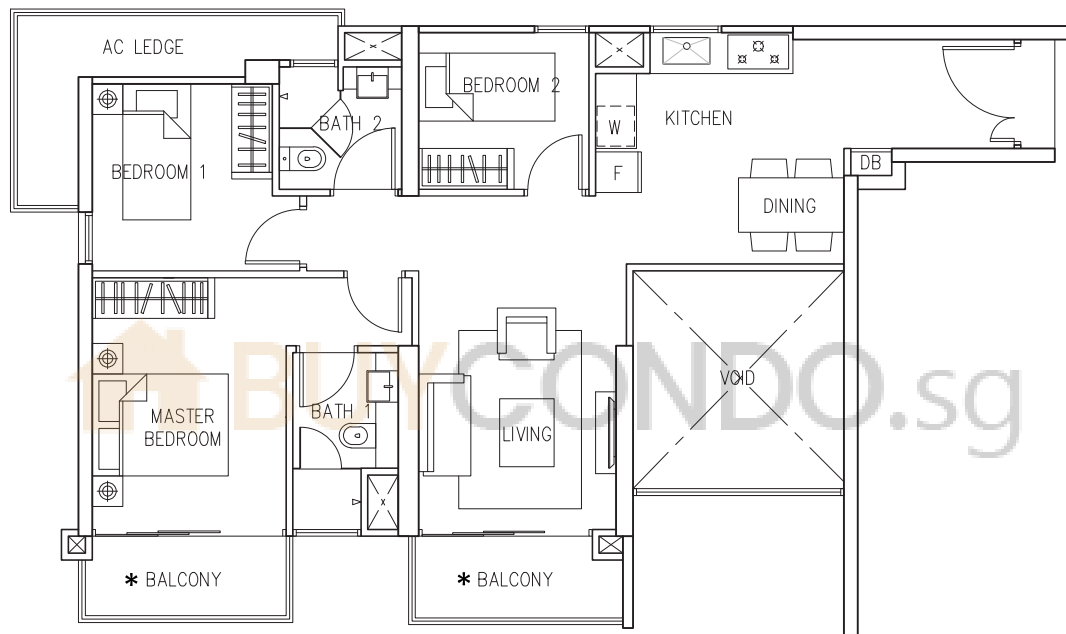
*OPEN BALCONY FOR UNIT:
 Blk 2: #27-02

The plans are subject to change as may be required or approved by the relevant authorities. These are not drawn to scale and are for the purpose of visual presentation of the different layouts that are available. Areas are estimates only and are subject to final survey.

Type D2d

87 sqm

936 sqft



D2d

Blk 2 : #02-02, #04-02, #06-02, #08-02, #10-02, #12-02, #14-02, #16-02, #18-02, #20-02, #22-02, #24-02, #26-02

Blk 6 : #02-11, #04-11, #06-11, #08-11, #10-11, #12-11, #14-11, #16-11, #18-11, #20-11, #22-11, #24-11

Blk 10: #02-30, #04-30, #06-30, #08-30, #10-30, #12-30, #14-30, #16-30, #18-30, #20-30, #22-30, #24-30, #26-30, #28-30

MIRROR IMAGE

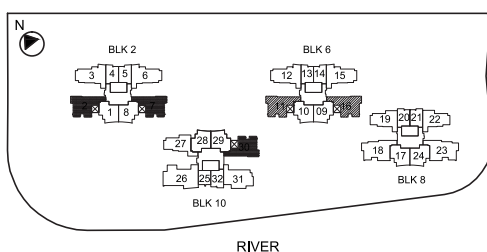
Blk 2 : #02-07, #04-07, #06-07, #08-07, #10-07, #12-07, #14-07, #16-07, #18-07, #20-07, #22-07, #24-07, #26-07, #28-07

Blk 6 : #02-16, #04-16, #06-16, #08-16, #10-16, #12-16, #14-16, #16-16, #18-16, #20-16, #22-16, #24-16, #26-16

*OPEN BALCONY FOR UNIT:

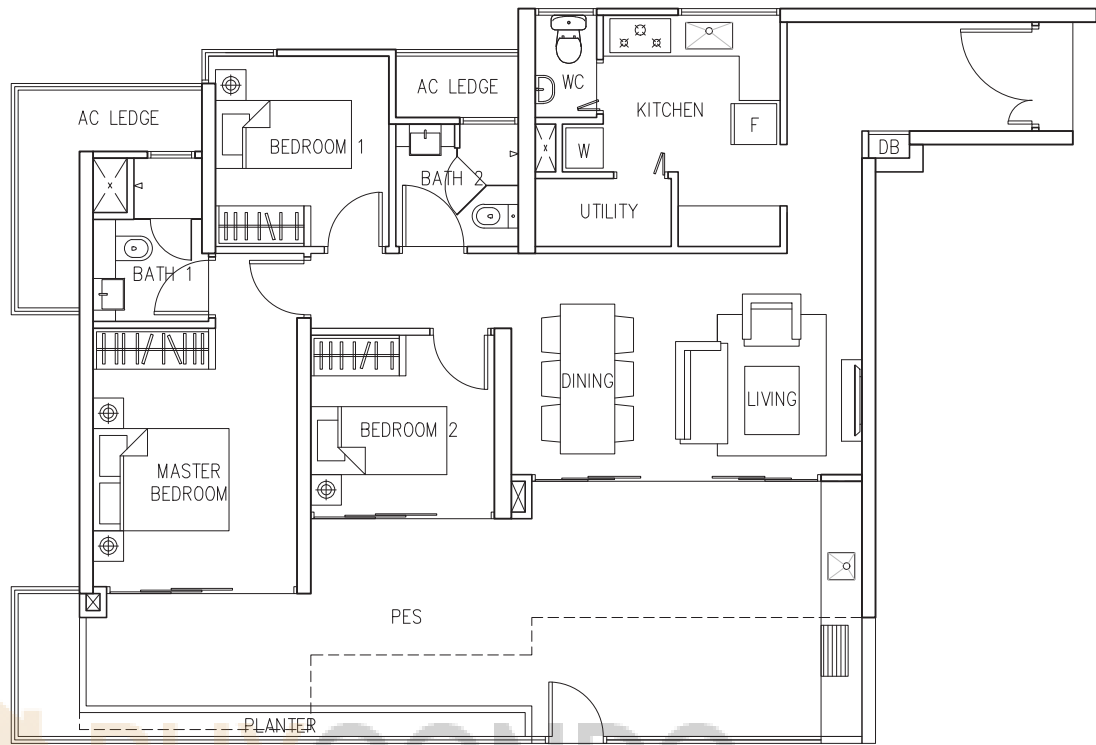
MIRROR IMAGE

Blk 6 : #26-11

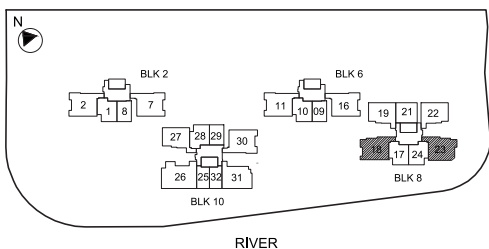
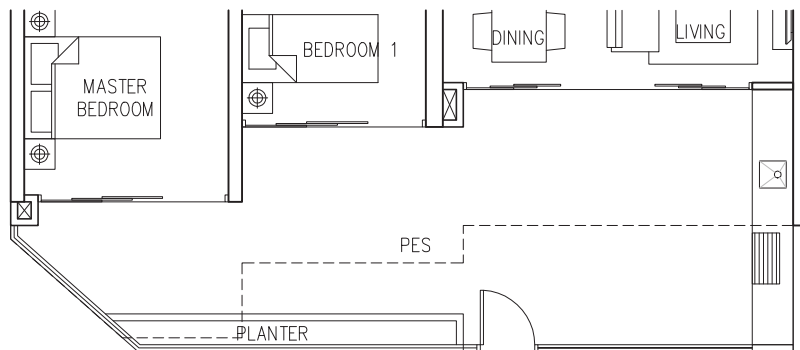


The plans are subject to change as may be required or approved by the relevant authorities. These are not drawn to scale and are for the purpose of visual presentation of the different layouts that are available. Areas are estimates only and are subject to final survey.

Type D2e PES1
 129 sqm
 1389 sqft



Type D2e PES2
 125 sqm
 1346 sqft

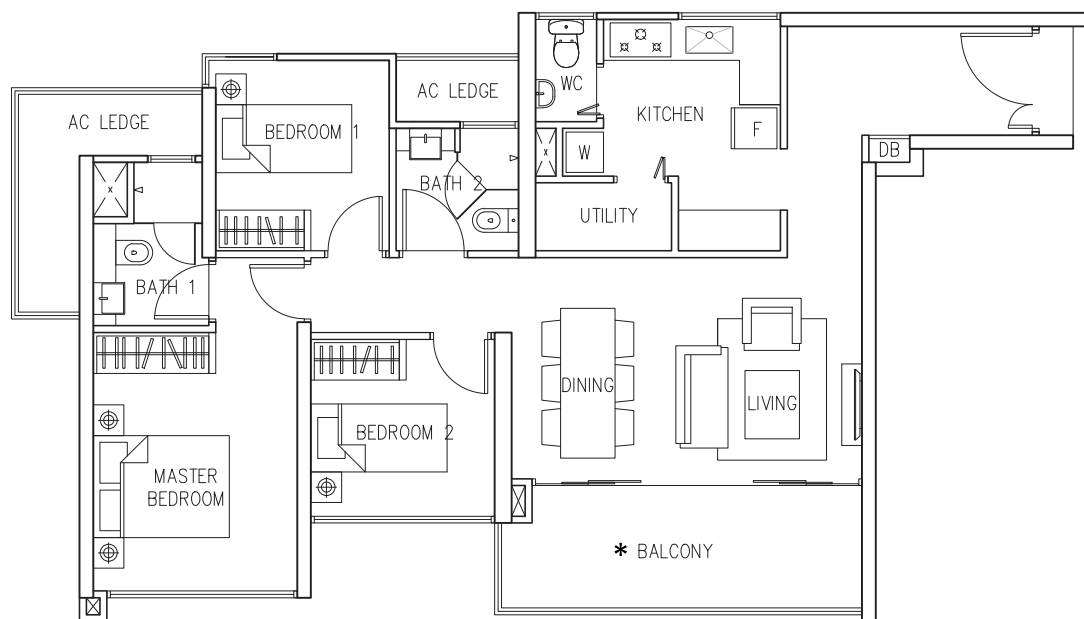


D2e PES1 Blk 8: #01-18

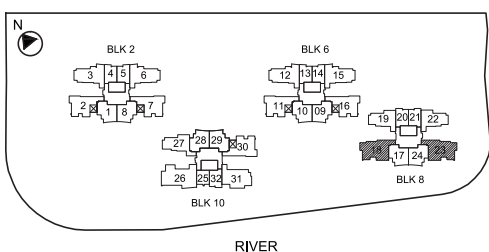
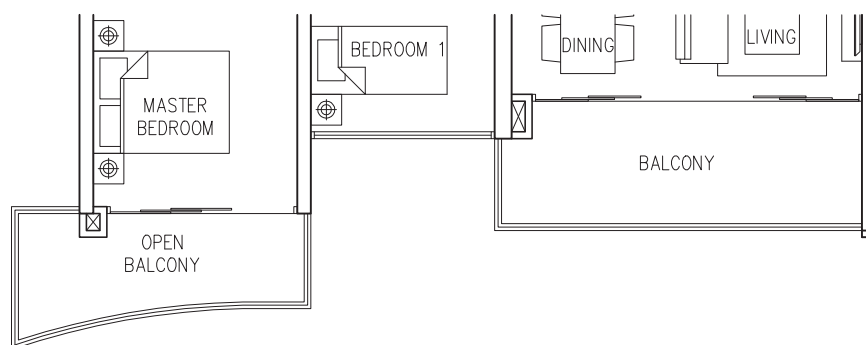
D2e PES2 MIRROR IMAGE
 Blk 8: #01-23

The plans are subject to change as may be required or approved by the relevant authorities. These are not drawn to scale and are for the purpose of visual presentation of the different layouts that are available. Areas are estimates only and are subject to final survey.

Type D2e
 100 sqm
 1076 sqft



Type D2f
 106 sqm
 1141 sqft



D2e Blk 8: #02-18 to #27-18
 MIRROR IMAGE
 Blk 8: #02-23 to #12-23
 : #14-23 to #18-23
 : #20-23 to #24-23

D2f MIRROR IMAGE
 Blk 8: #13-23
 : #19-23
 : #25-23,

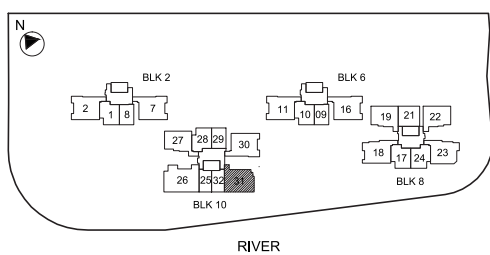
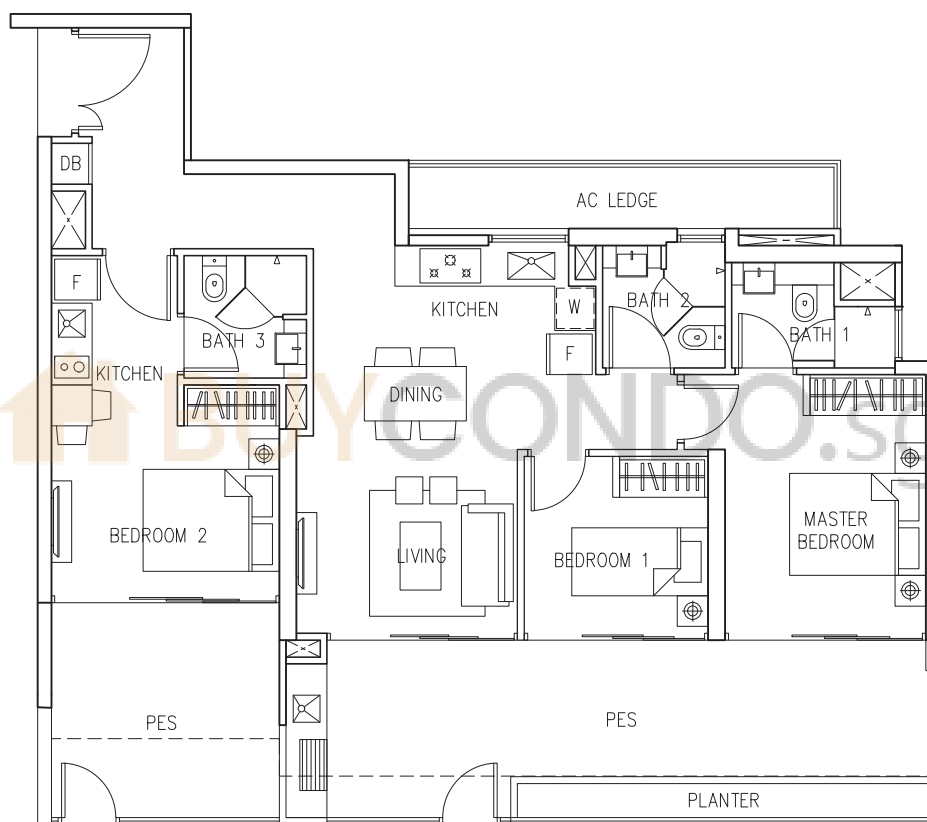
*OPEN BALCONY FOR UNIT:
 MIRROR IMAGE
 Blk 8: #26-23

The plans are subject to change as may be required or approved by the relevant authorities. These are not drawn to scale and are for the purpose of visual presentation of the different layouts that are available. Areas are estimates only and are subject to final survey.

Type E1 PES

126 sqm

1356 sqft

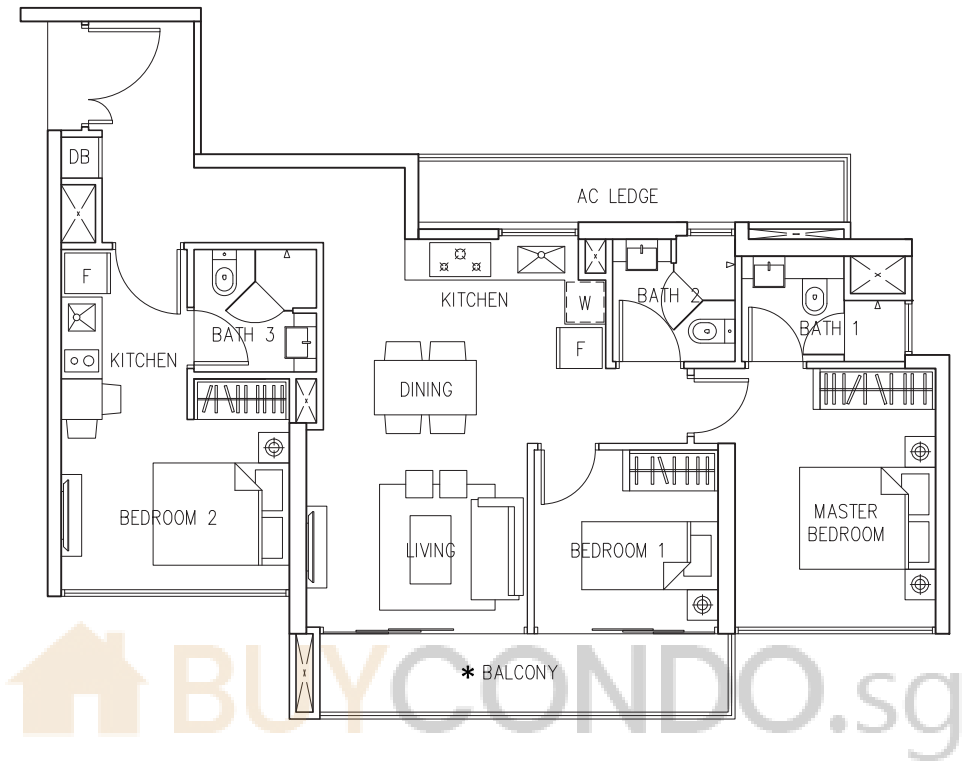


E1
PES

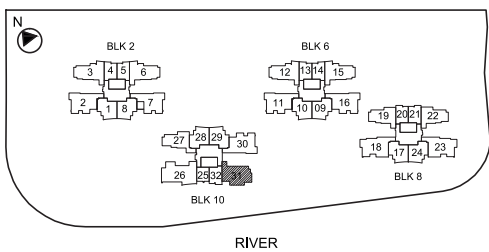
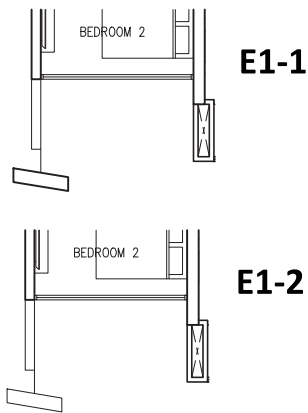
Blk 10: #01-31

The plans are subject to change as may be required or approved by the relevant authorities. These are not drawn to scale and are for the purpose of visual presentation of the different layouts that are available. Areas are estimates only and are subject to final survey.

Type E1
 96 sqm
 1033 sqft



Part Plan LOCATION OF FACADE FEATURE FIN AT UNITS REFER TO STACKING DIAGRAM

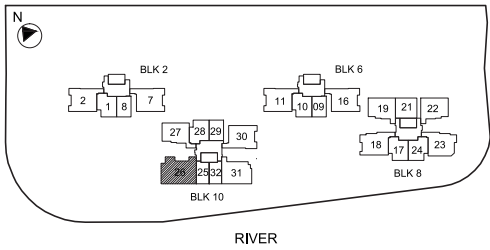
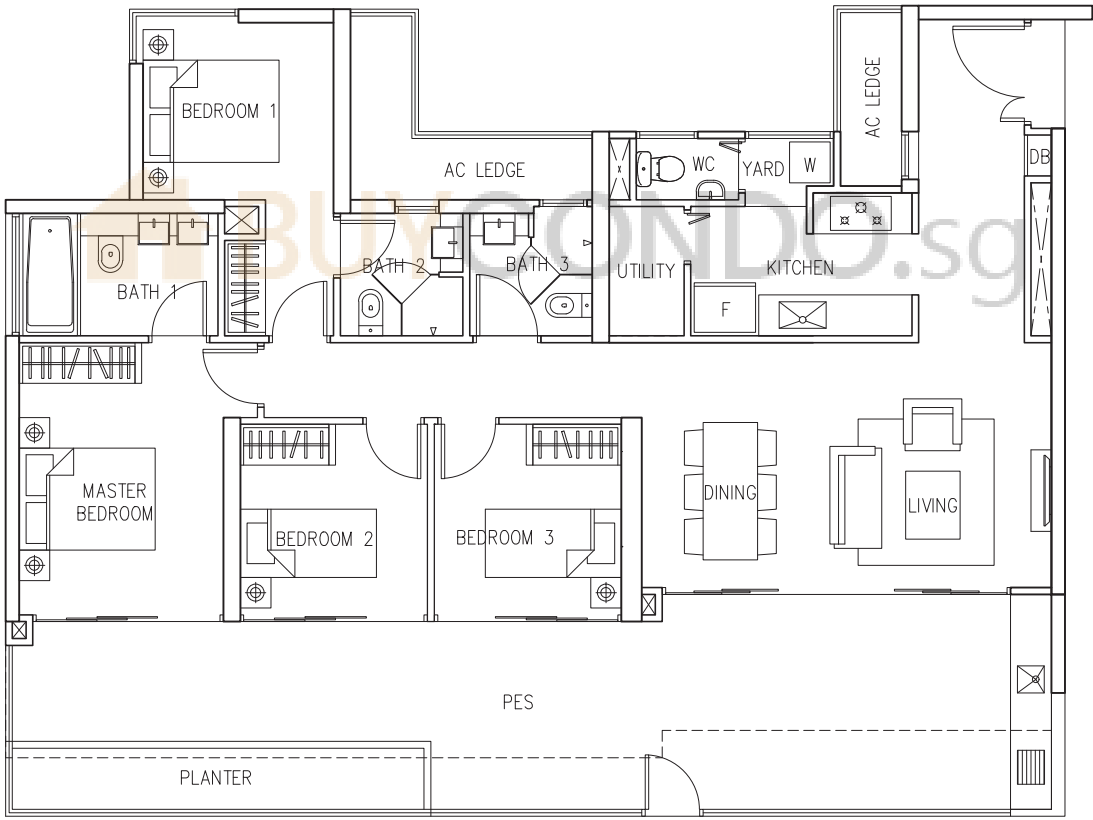
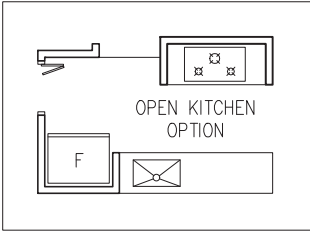


E1 Blk 10: #02-31 to #26-31

*OPEN BALCONY FOR UNIT:
 Blk 10: #27-31

The plans are subject to change as may be required or approved by the relevant authorities. These are not drawn to scale and are for the purpose of visual presentation of the different layouts that are available. Areas are estimates only and are subject to final survey.

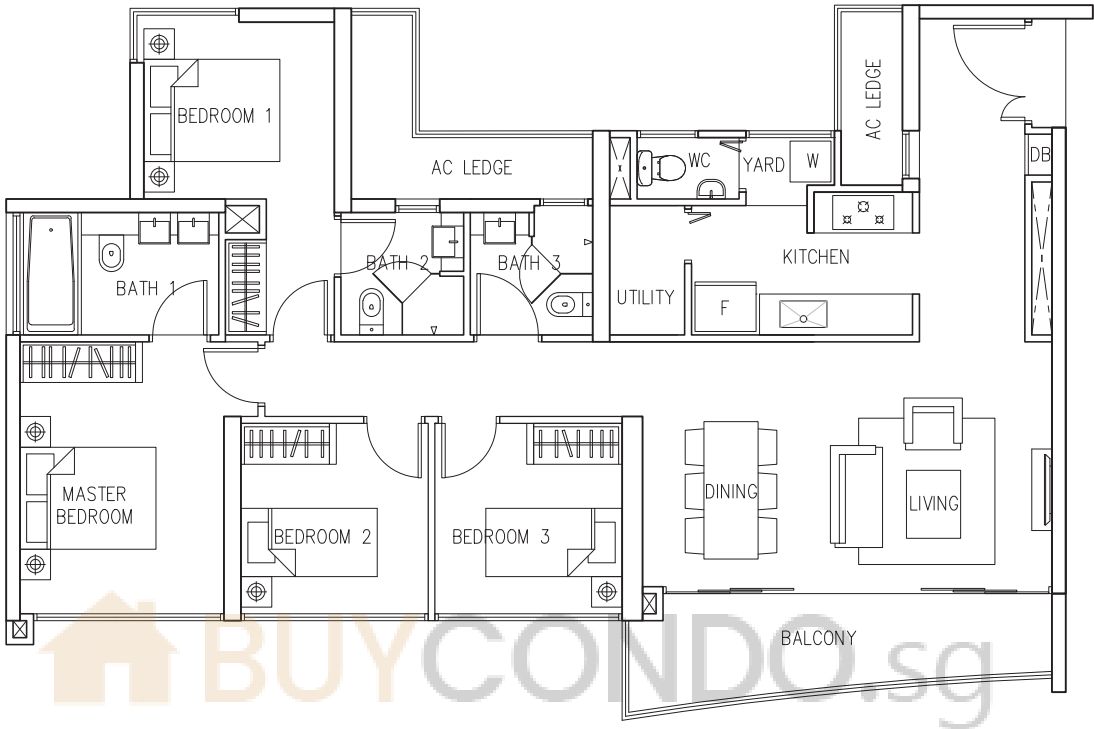
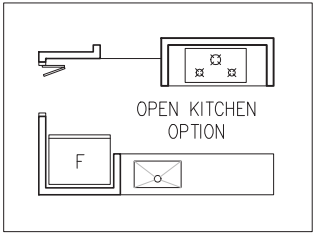
Type F1 PES
 163 sqm
 1755 sqft



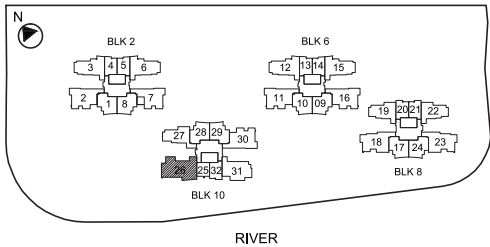
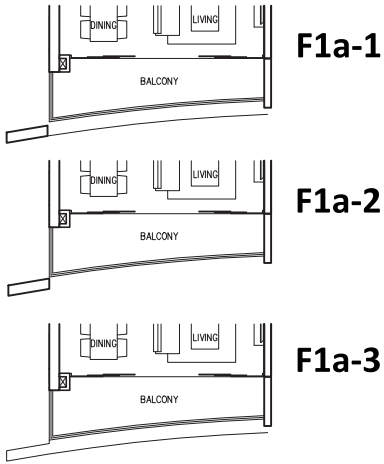
F1 PES Blk 10: #01-26

The plans are subject to change as may be required or approved by the relevant authorities. These are not drawn to scale and are for the purpose of visual presentation of the different layouts that are available. Areas are estimates only and are subject to final survey.

Type F1a
 126 sqm
 1356 sqft



Part Plan LOCATION OF FACADE FEATURE FIN AT
 UNITS REFER TO STACKING DIAGRAM



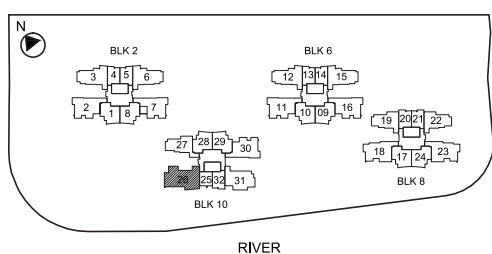
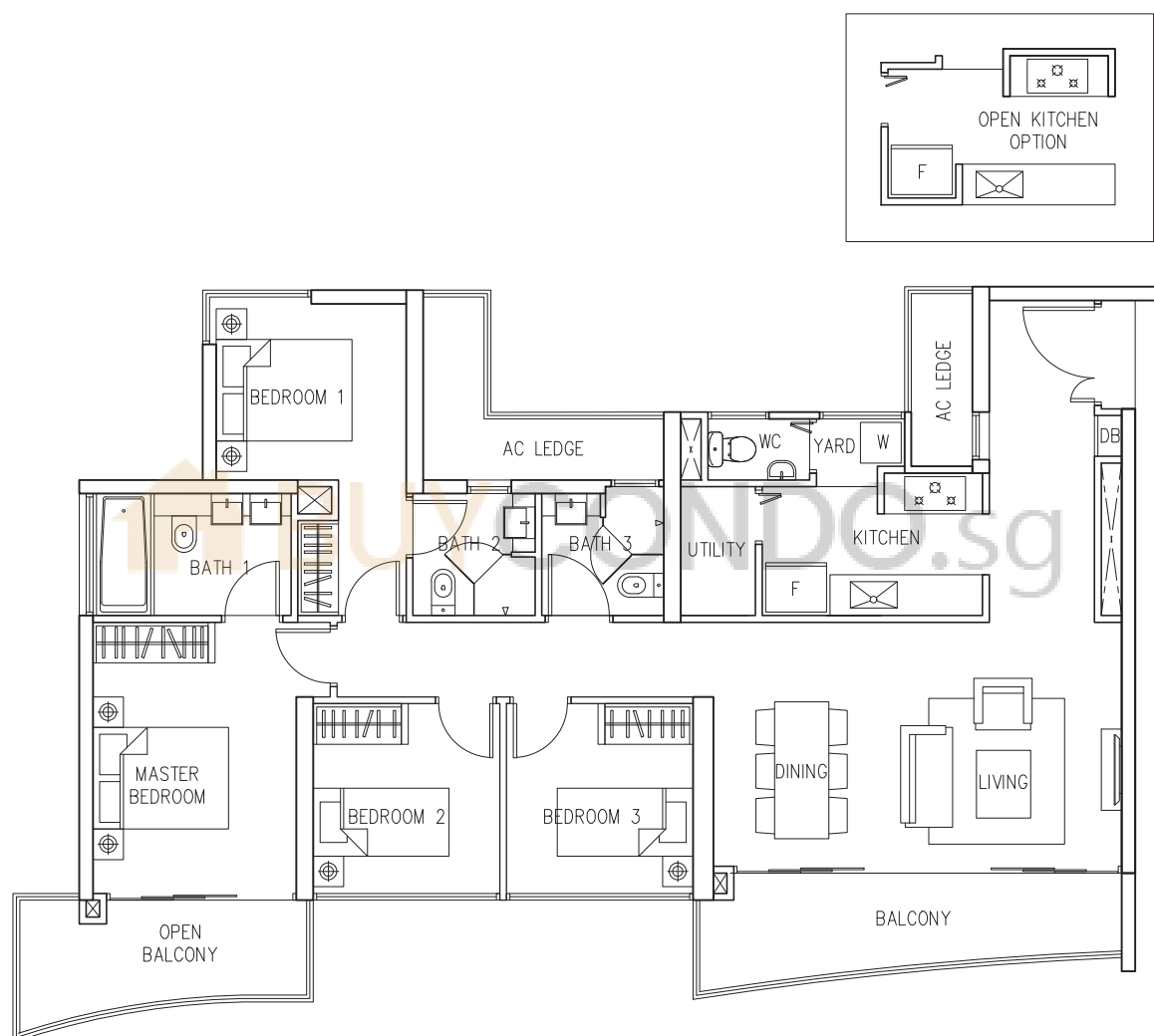
F1a Blk 10: #02-26 to #12-26
 : #14-26 to #18-26
 : #20-26 to #24-26
 : #26-26 to #28-26

The plans are subject to change as may be required or approved by the relevant authorities. These are not drawn to scale and are for the purpose of visual presentation of the different layouts that are available. Areas are estimates only and are subject to final survey.

Type F1b

133 sqm

1432 sqft



F1b

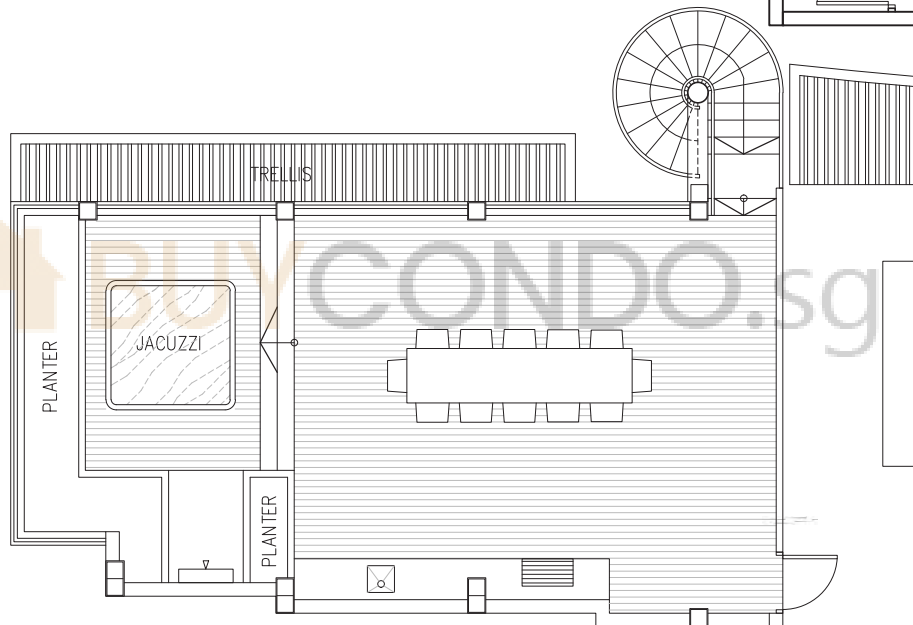
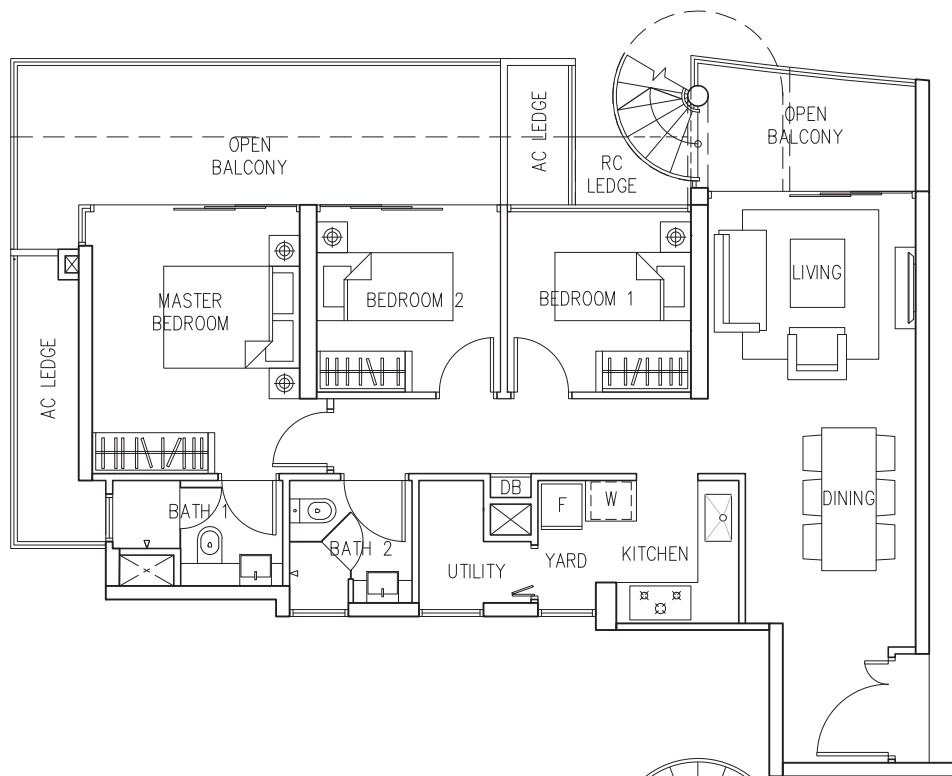
Blk 10: #13-26

: #19-26

: #25-26

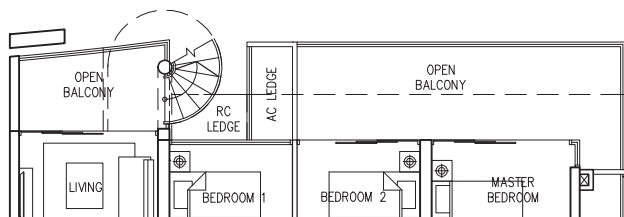
The plans are subject to change as may be required or approved by the relevant authorities. These are not drawn to scale and are for the purpose of visual presentation of the different layouts that are available. Areas are estimates only and are subject to final survey.

Type PH1
 178 sqm
 1916 sqft

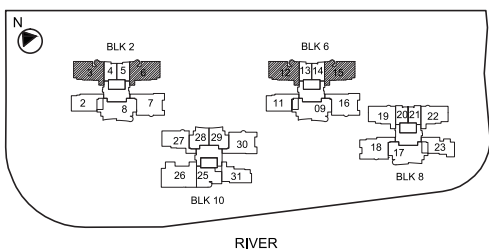


Roof Terrace

Part Plan LOCATION OF FACADE
 FEATURE FIN AT UNITS
 REFER TO STACKING
 DIAGRAM



PH1-1

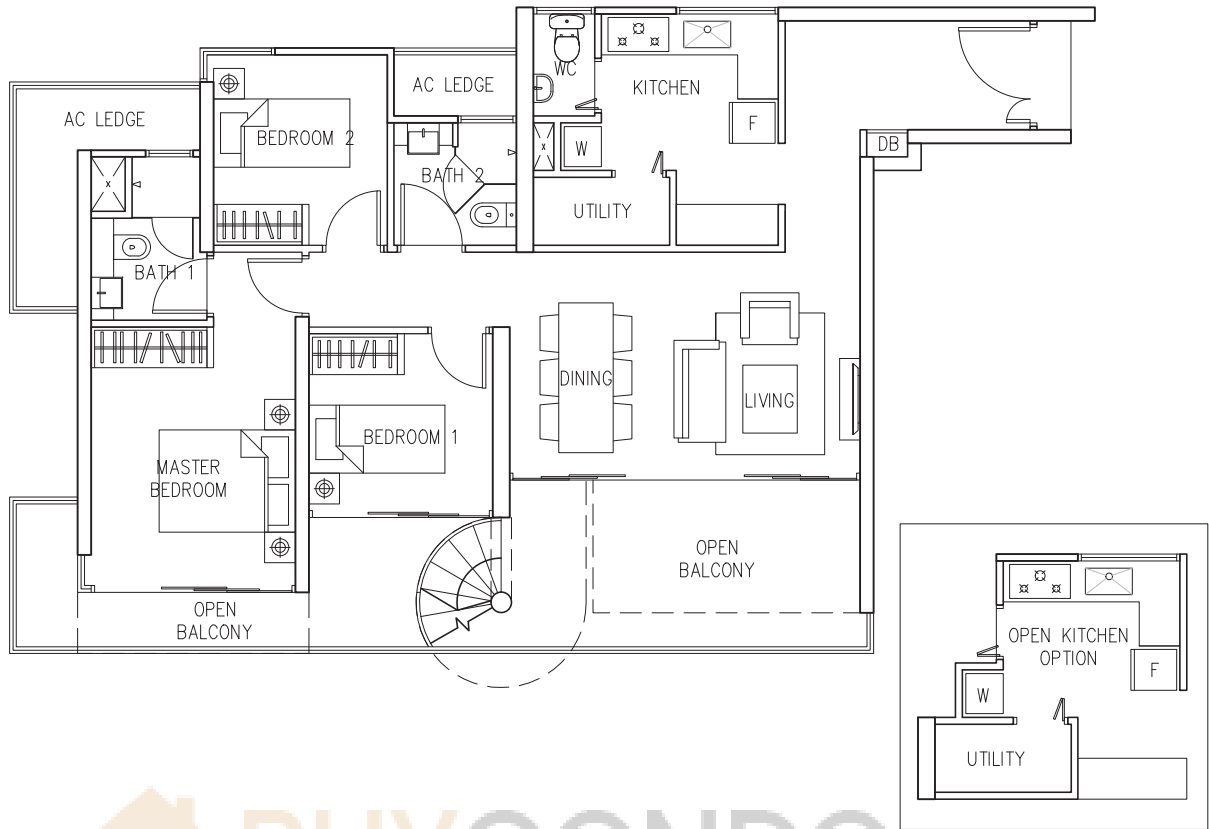


PH1 Blk 6: #28-12
 Blk 2: #29-03

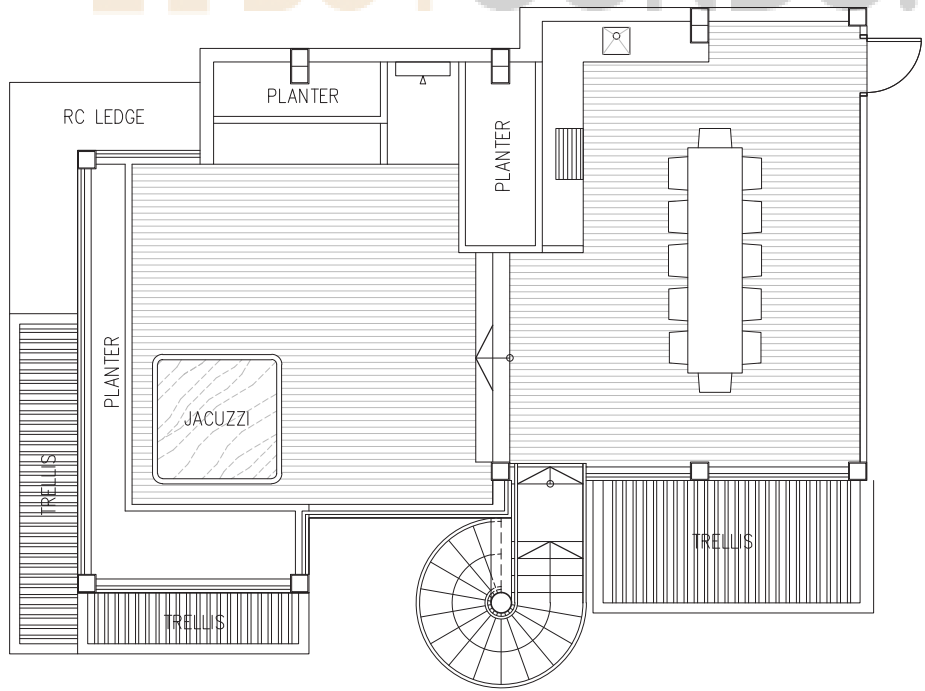
MIRROR IMAGE
 Blk 6: #28-15
 Blk 2: #29-06

The plans are subject to change as may be required or approved by the relevant authorities. These are not drawn to scale and are for the purpose of visual presentation of the different layouts that are available. Areas are estimates only and are subject to final survey.

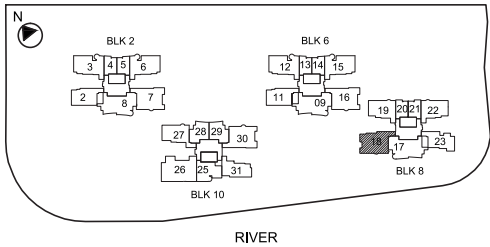
Type PH2
 198 sqm
 2131 sqft



BUYCONDO.sg



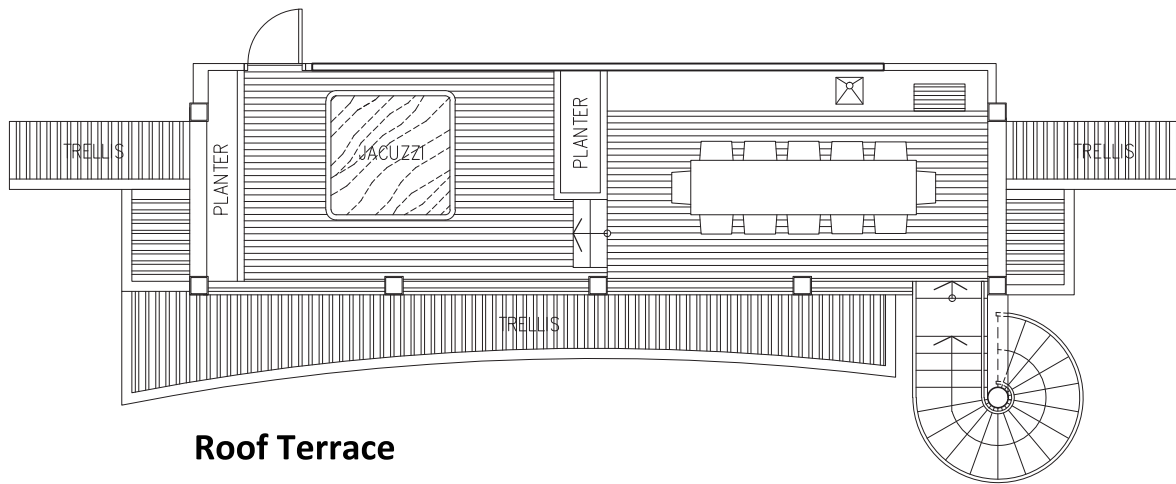
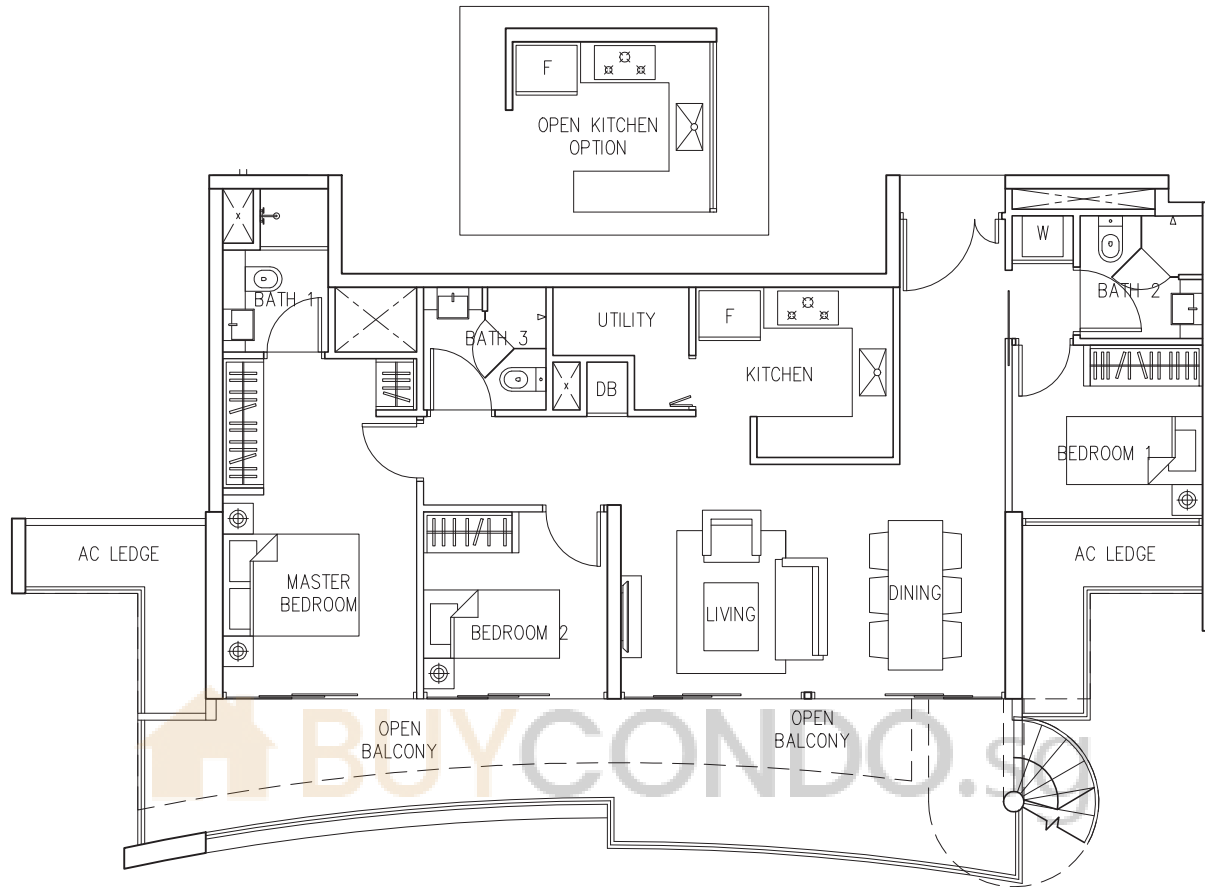
Roof Terrace



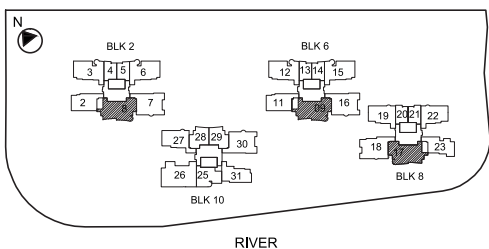
PH2 Blk 8: #28-18

The plans are subject to change as may be required or approved by the relevant authorities. These are not drawn to scale and are for the purpose of visual presentation of the different layouts that are available. Areas are estimates only and are subject to final survey.

Type PH3
 170 sqm
 1830 sqft



Roof Terrace

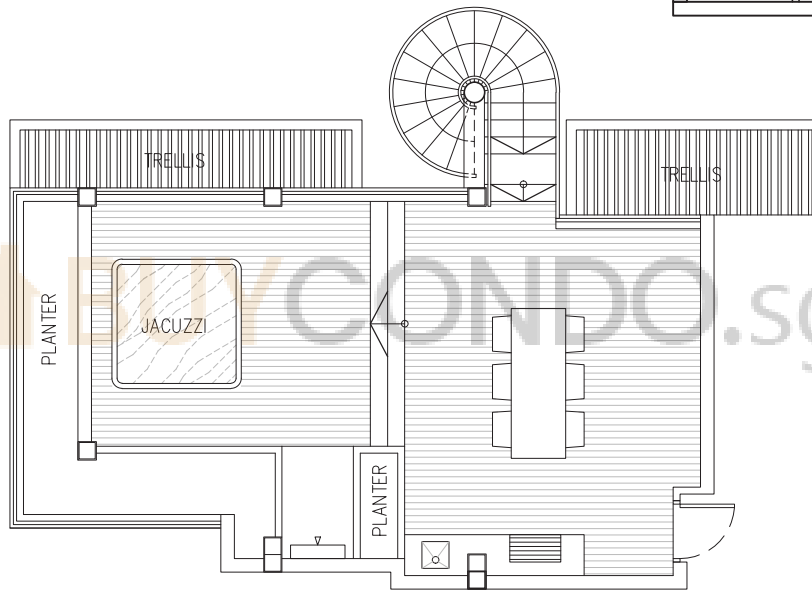
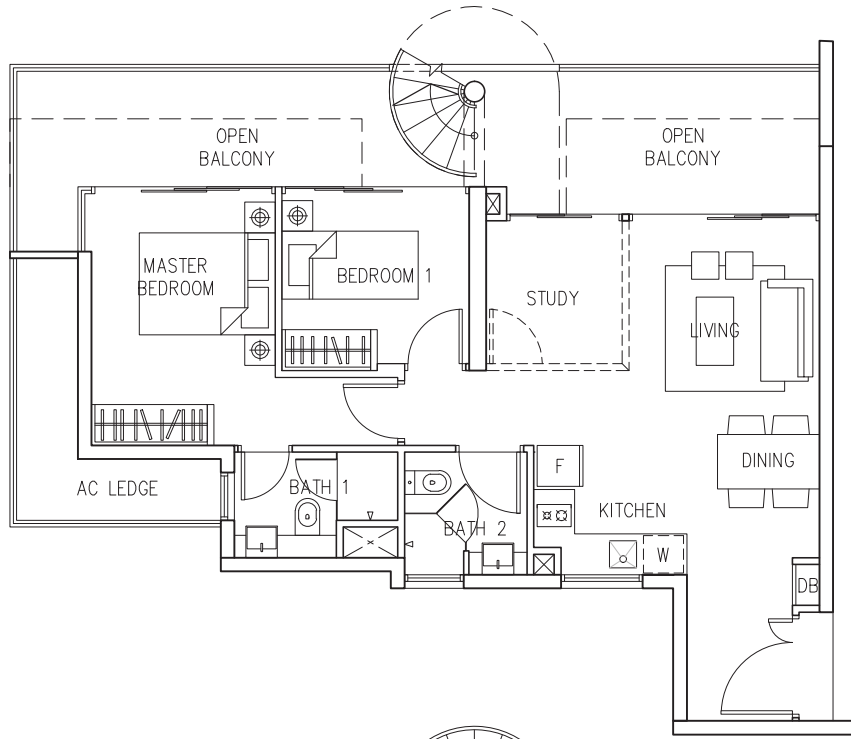


PH3 Blk 2: #29-08
 Blk 6: #28-09

MIRROR IMAGE
 Blk 8: #28-17

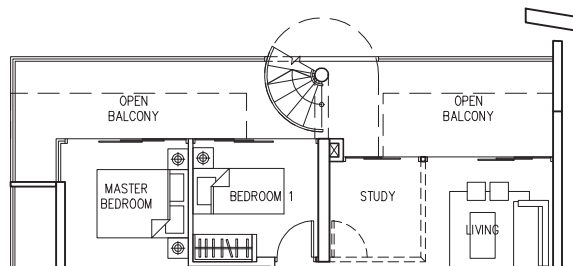
The plans are subject to change as may be required or approved by the relevant authorities. These are not drawn to scale and are for the purpose of visual presentation of the different layouts that are available. Areas are estimates only and are subject to final survey.

Type PH4
 151 sqm
 1625 sqft

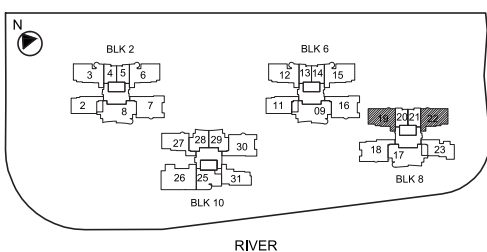


Roof Terrace

Part Plan LOCATION OF FACADE FEATURE FIN AT
 UNITS REFER TO STACKING DIAGRAM



PH4-1



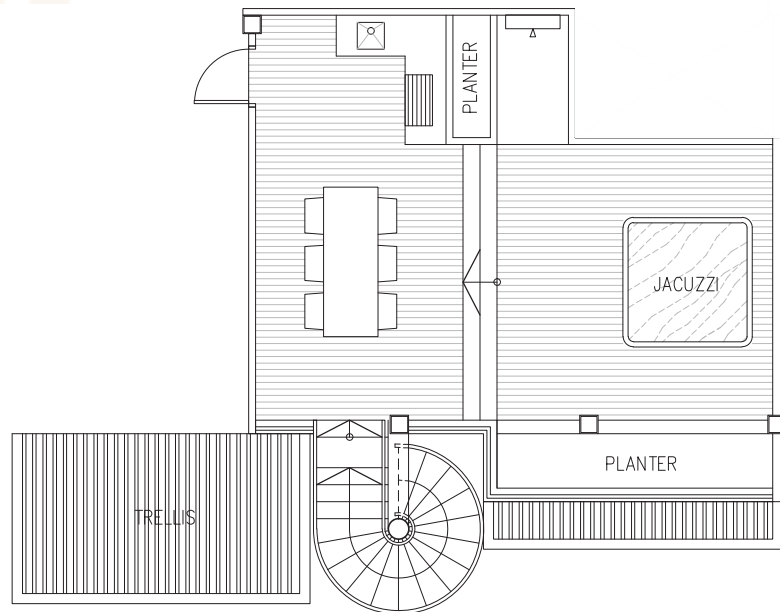
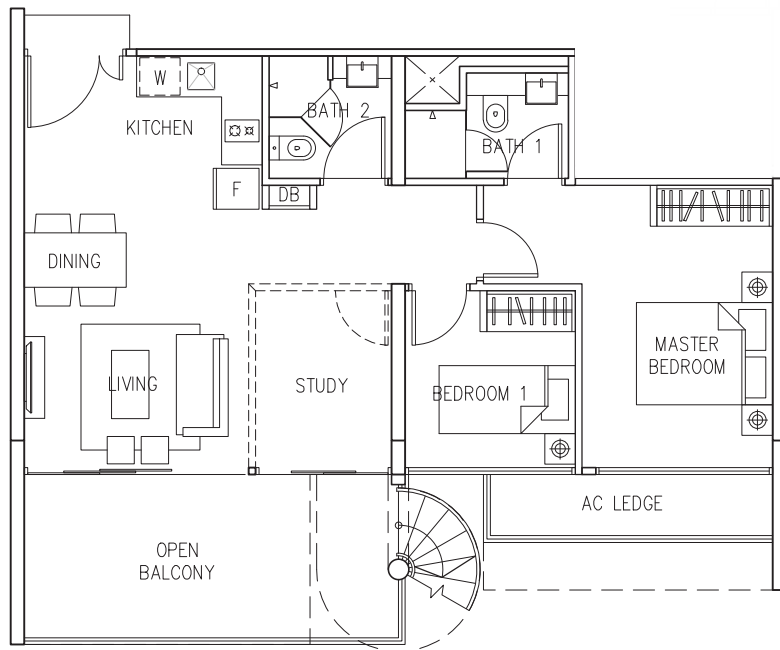
PH4 Blk 8: #28-22

MIRROR IMAGE

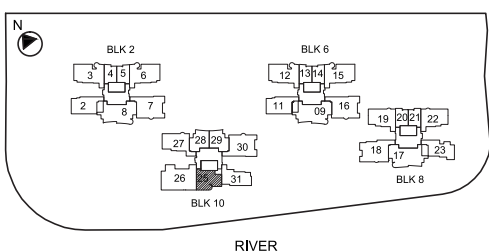
Blk 8: #28-19

The plans are subject to change as may be required or approved by the relevant authorities. These are not drawn to scale and are for the purpose of visual presentation of the different layouts that are available. Areas are estimates only and are subject to final survey.

Type PH5
 135 sqm
 1453 sqft



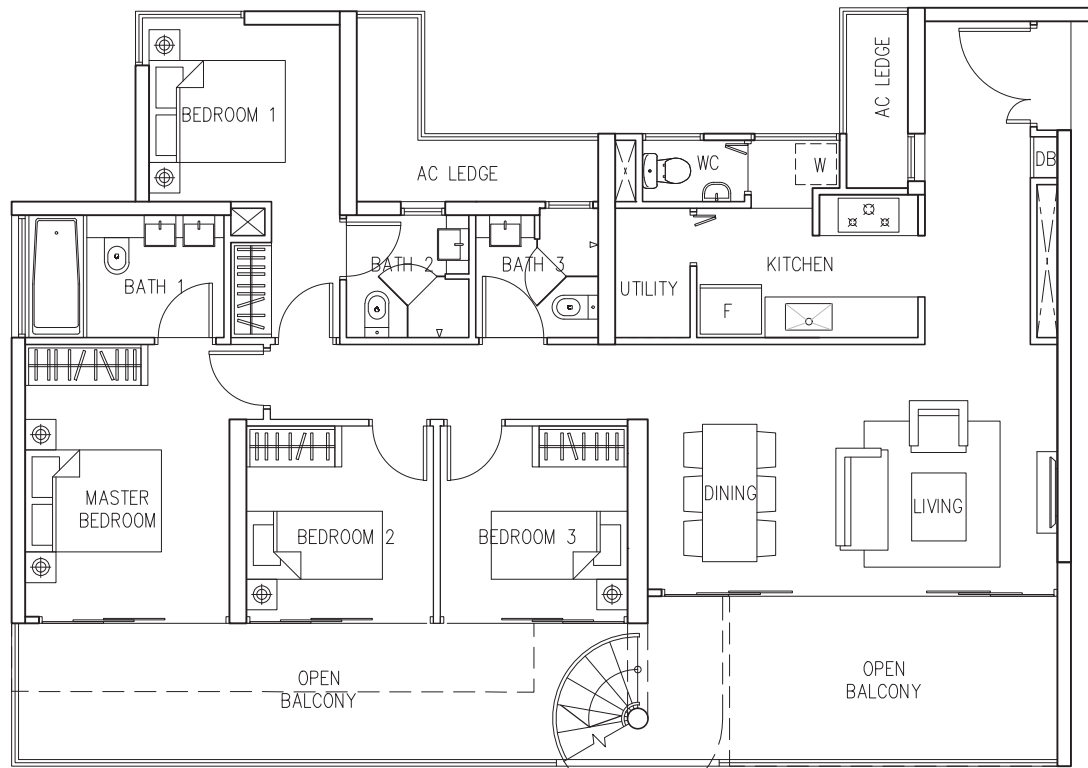
Roof Terrace



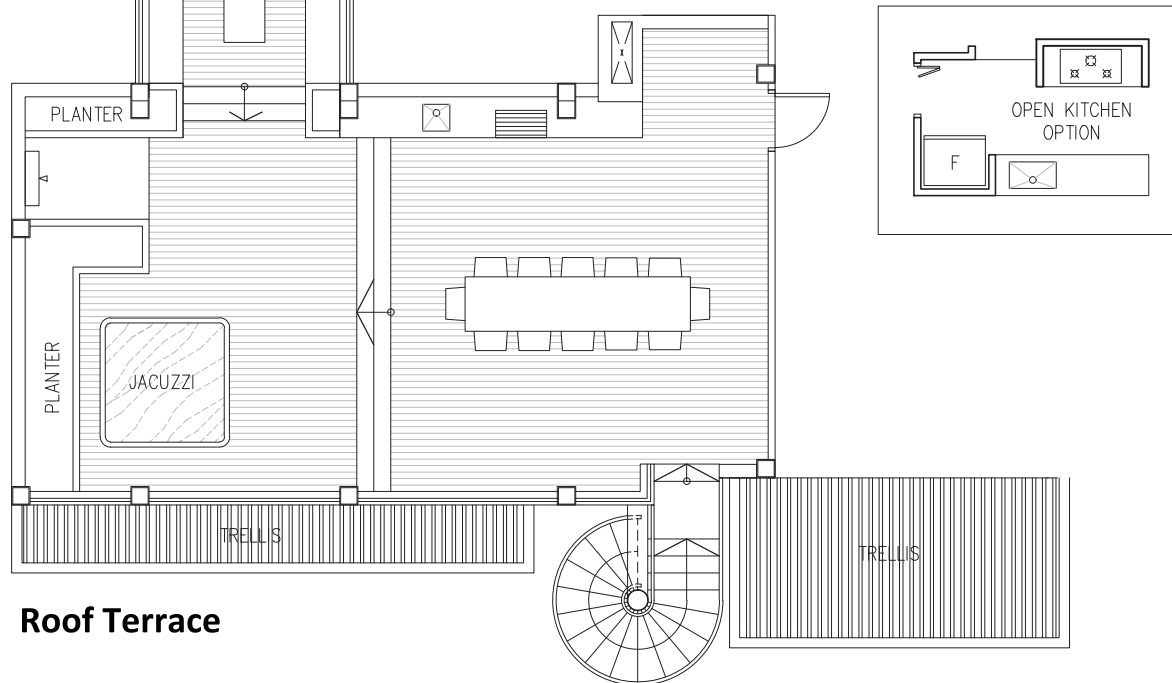
PH5 Blk 10: #29-25

The plans are subject to change as may be required or approved by the relevant authorities. These are not drawn to scale and are for the purpose of visual presentation of the different layouts that are available. Areas are estimates only and are subject to final survey.

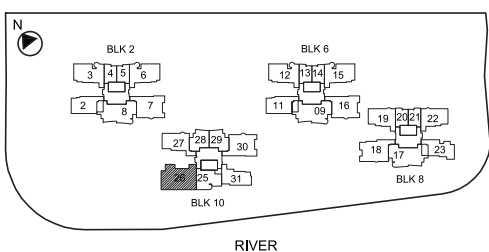
Type PH6
 233 sqm
 2508 sqft



BUYCONDO.sg



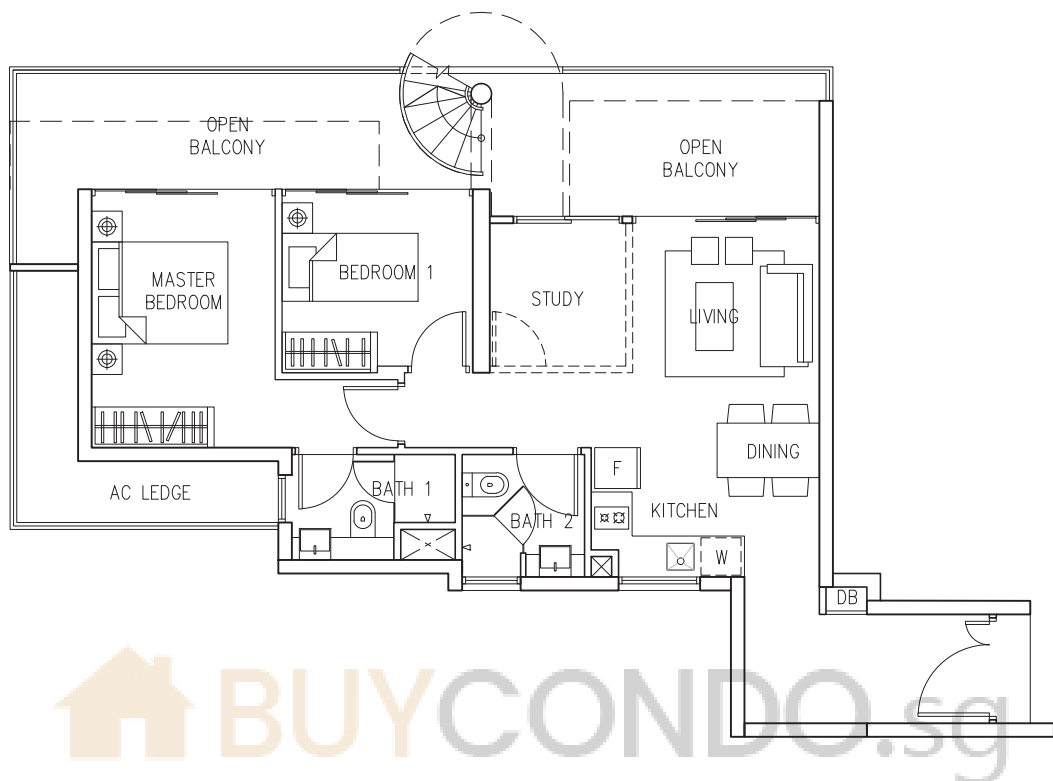
Roof Terrace



PH6 Blk 10: #29-26

The plans are subject to change as may be required or approved by the relevant authorities. These are not drawn to scale and are for the purpose of visual presentation of the different layouts that are available. Areas are estimates only and are subject to final survey.

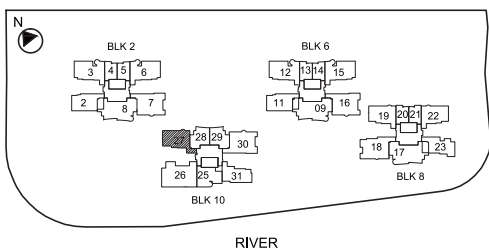
Type PH7
 154 sqm
 1658 sqft



BUYCONDO.sg



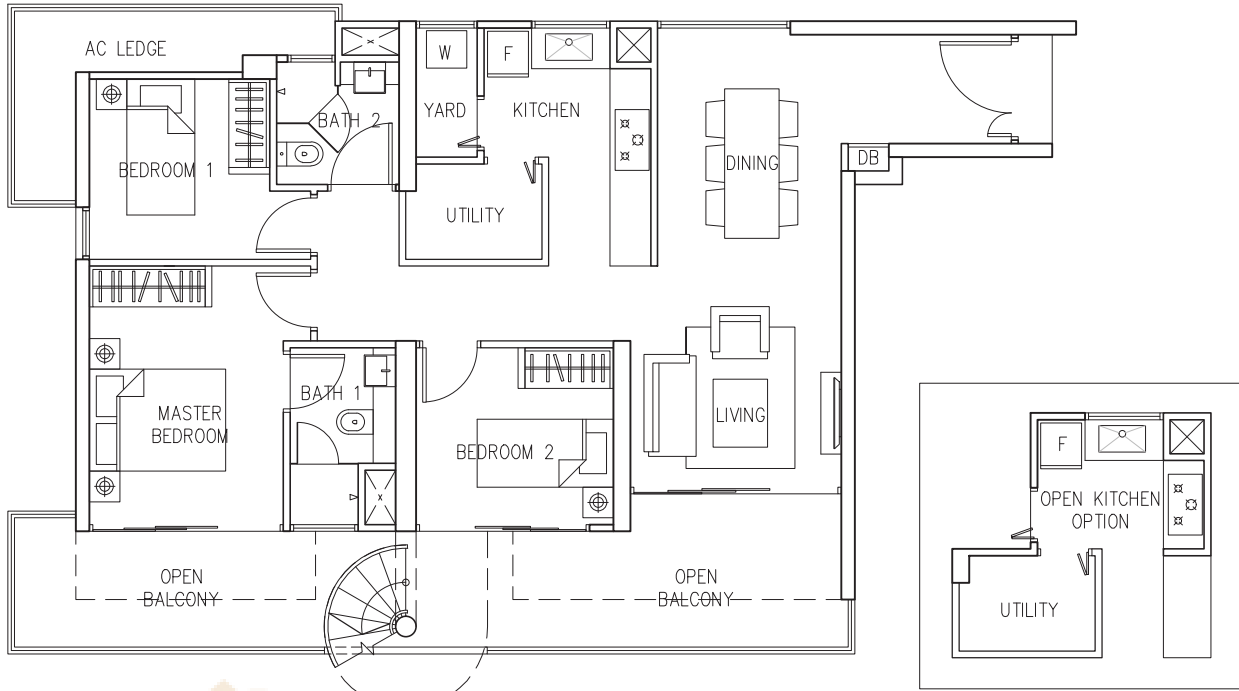
Roof Terrace



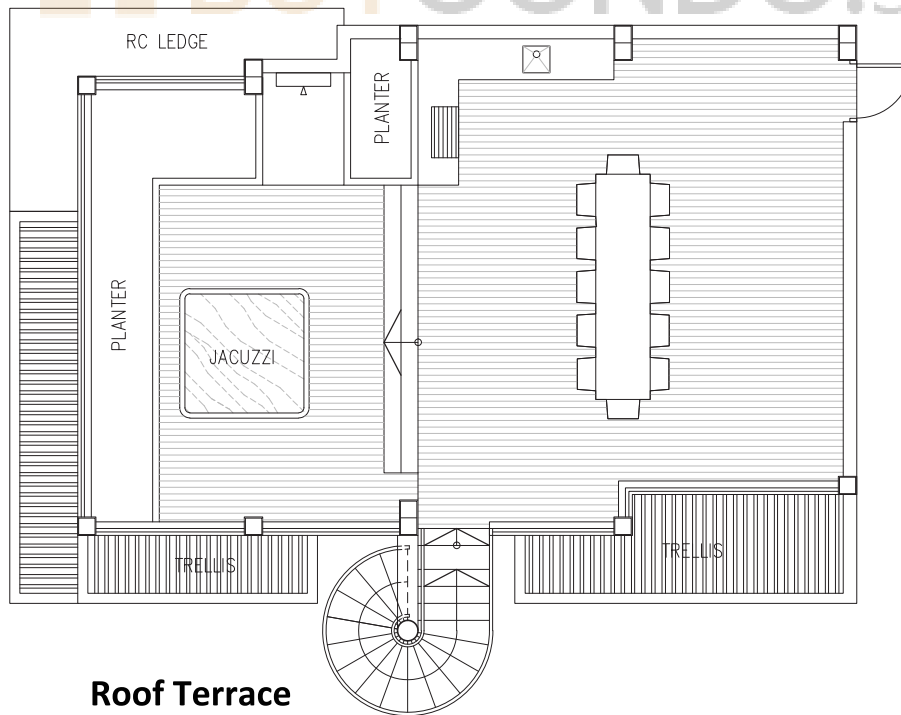
PH7 Blk 10: #29-27

The plans are subject to change as may be required or approved by the relevant authorities. These are not drawn to scale and are for the purpose of visual presentation of the different layouts that are available. Areas are estimates only and are subject to final survey.

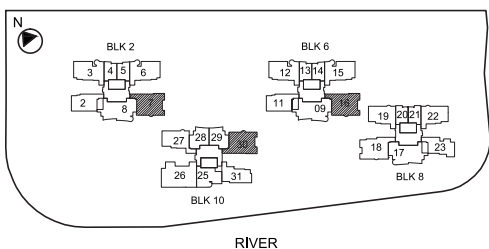
Type PH8
 199 sqm
 2142 sqft



BUYCONDO.sg



Roof Terrace

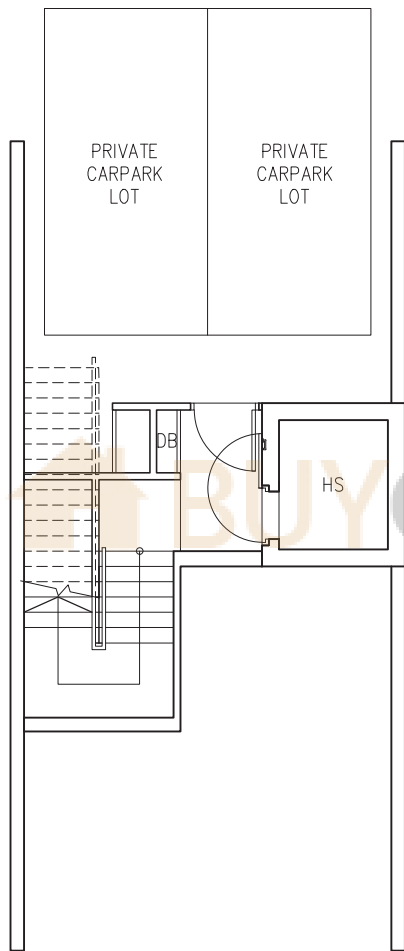


PH8 Blk 10: #29-30

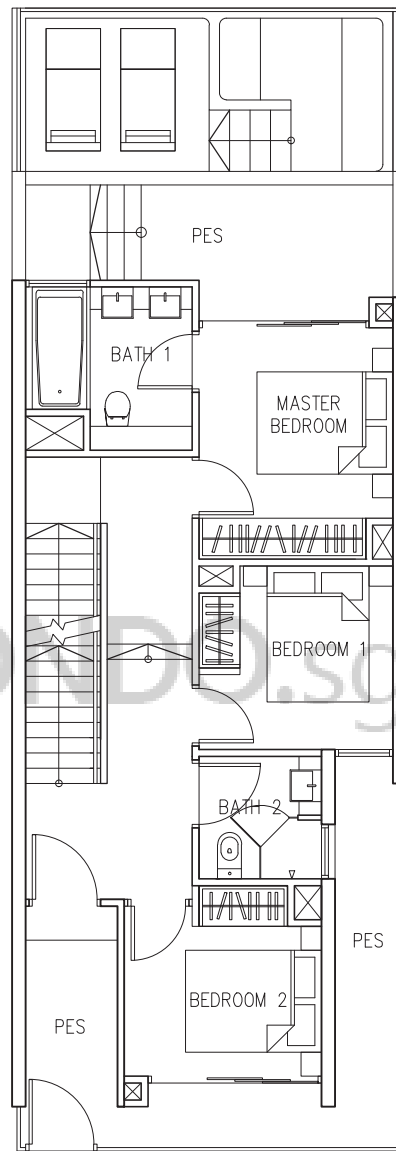
MIRROR IMAGE
 Blk 2 : #29-07
 Blk 6 : #28-16

The plans are subject to change as may be required or approved by the relevant authorities. These are not drawn to scale and are for the purpose of visual presentation of the different layouts that are available. Areas are estimates only and are subject to final survey.

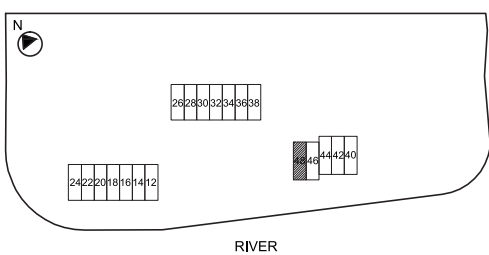
Type ST1
 275 sqm
 2960 sqft



CP



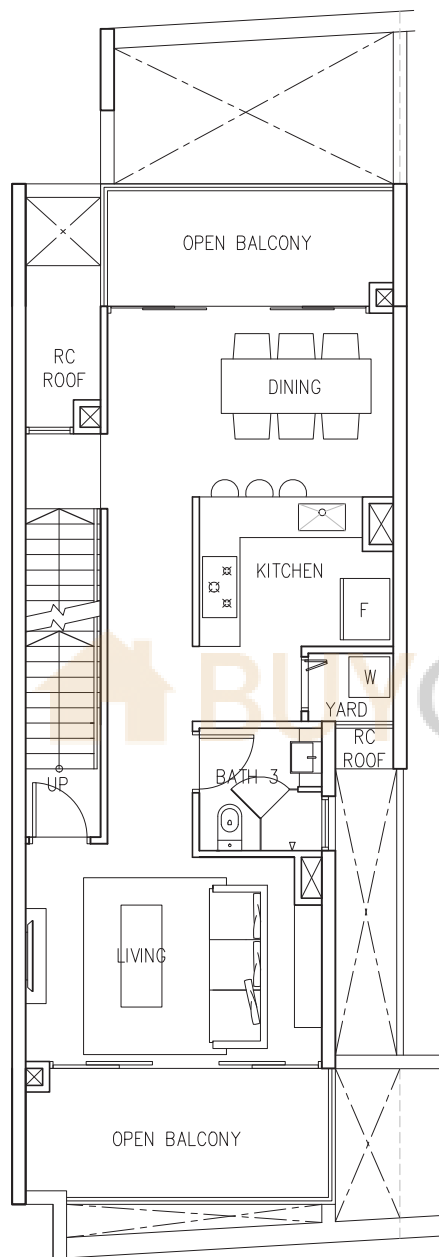
1ST STOREY



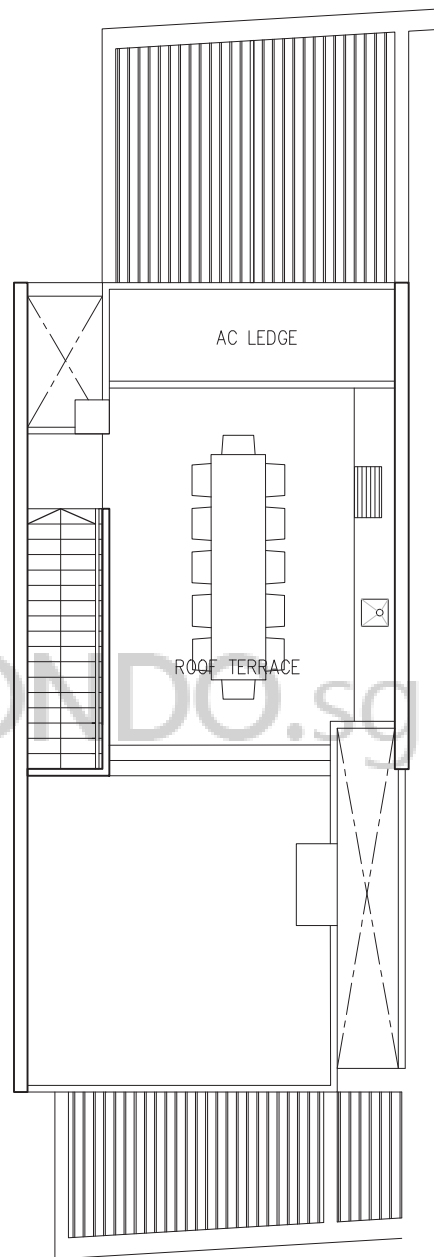
ST1 No. 48

The plans are subject to change as may be required or approved by the relevant authorities. These are not drawn to scale and are for the purpose of visual presentation of the different layouts that are available. Areas are estimates only and are subject to final survey.

Type ST1
275 sqm
2960 sqft



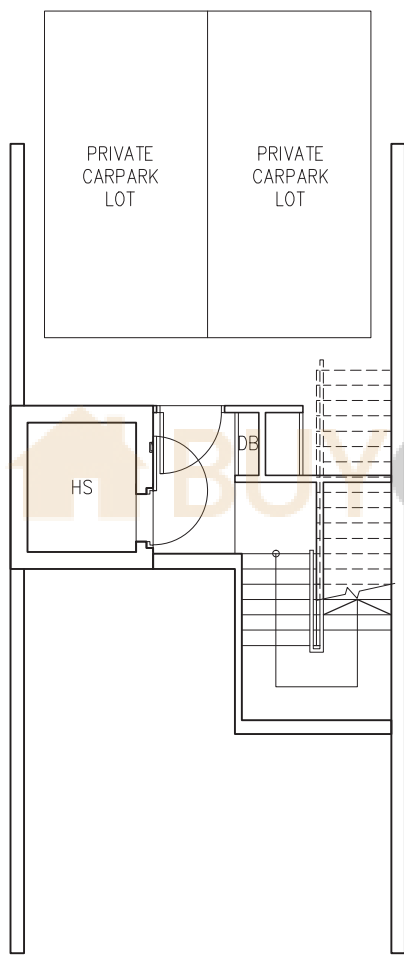
2ND STOREY



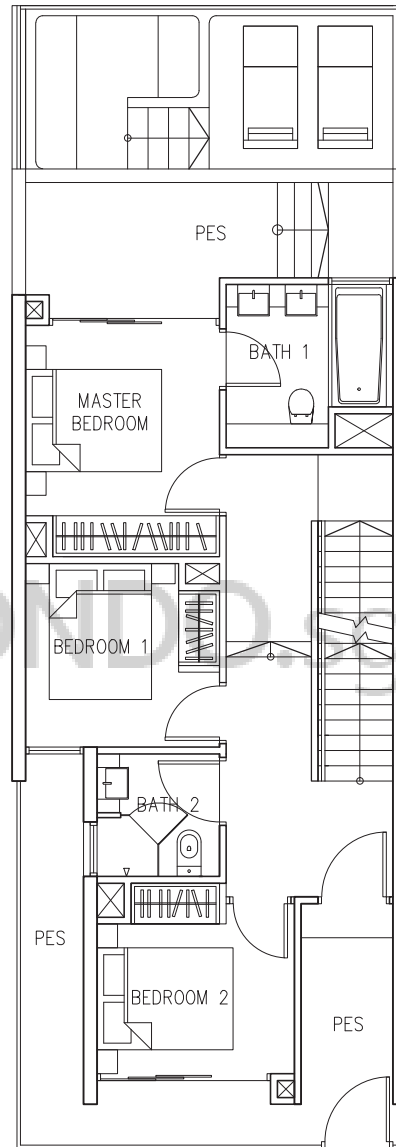
ROOF TERRACE

ST1 No. 48

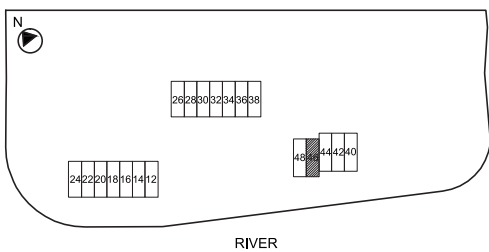
Type ST1
 275 sqm
 2960 sqft



CP



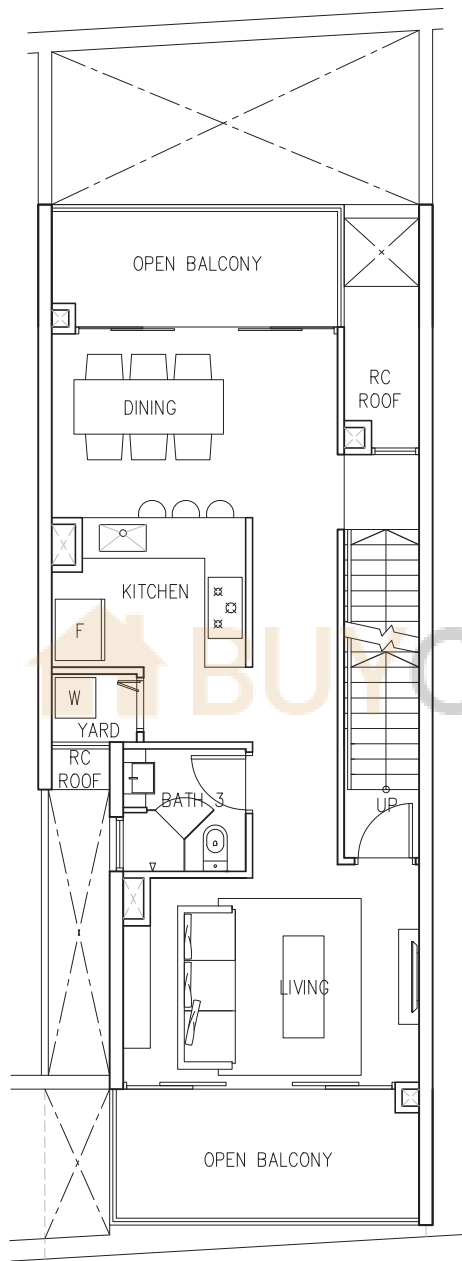
1ST STOREY



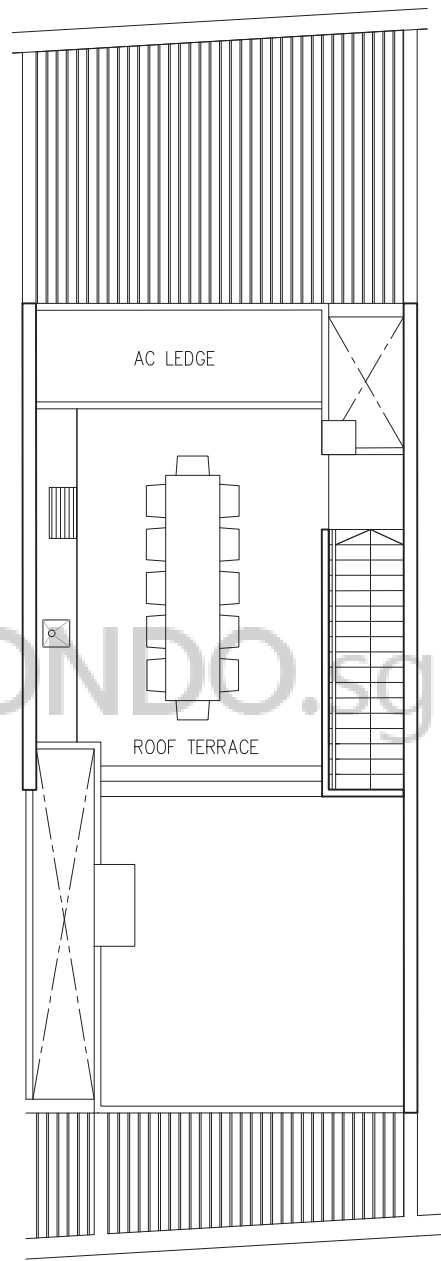
ST1 No. 46

The plans are subject to change as may be required or approved by the relevant authorities. These are not drawn to scale and are for the purpose of visual presentation of the different layouts that are available. Areas are estimates only and are subject to final survey.

Type ST1
275 sqm
2960 sqft



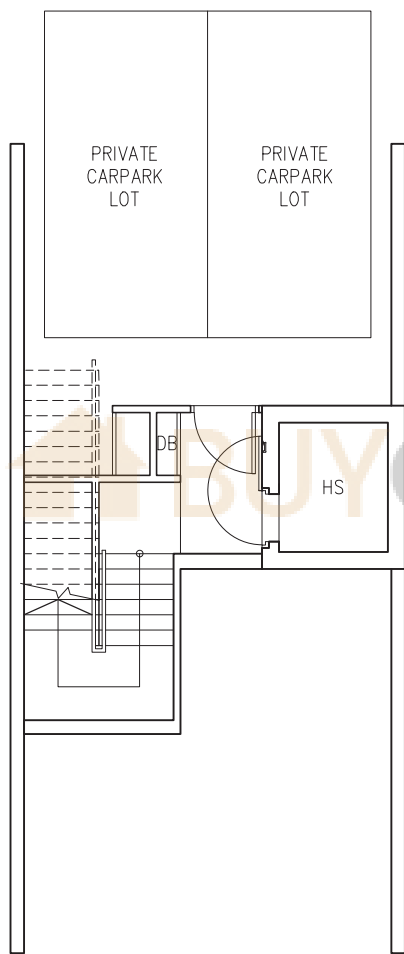
2ND STOREY



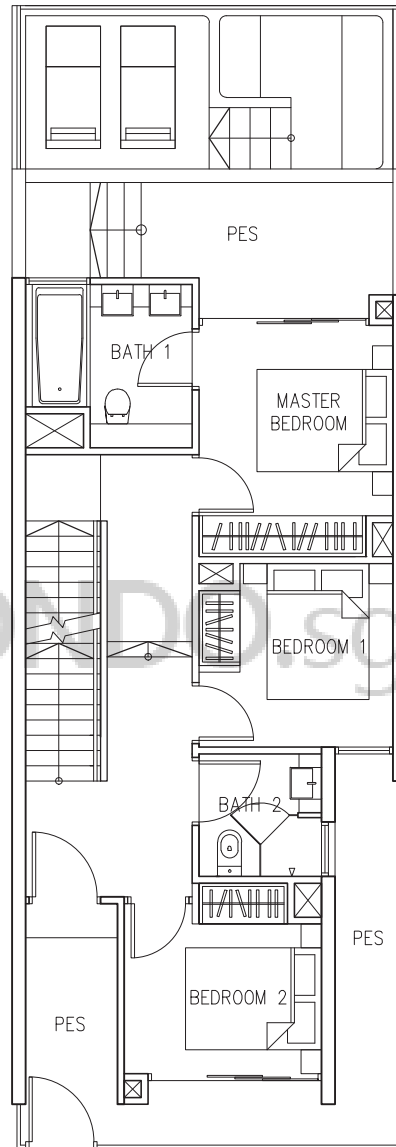
ROOF TERRACE

ST1 No. 46

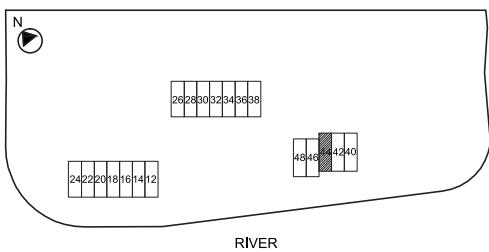
Type ST1
 275 sqm
 2960 sqft



CP



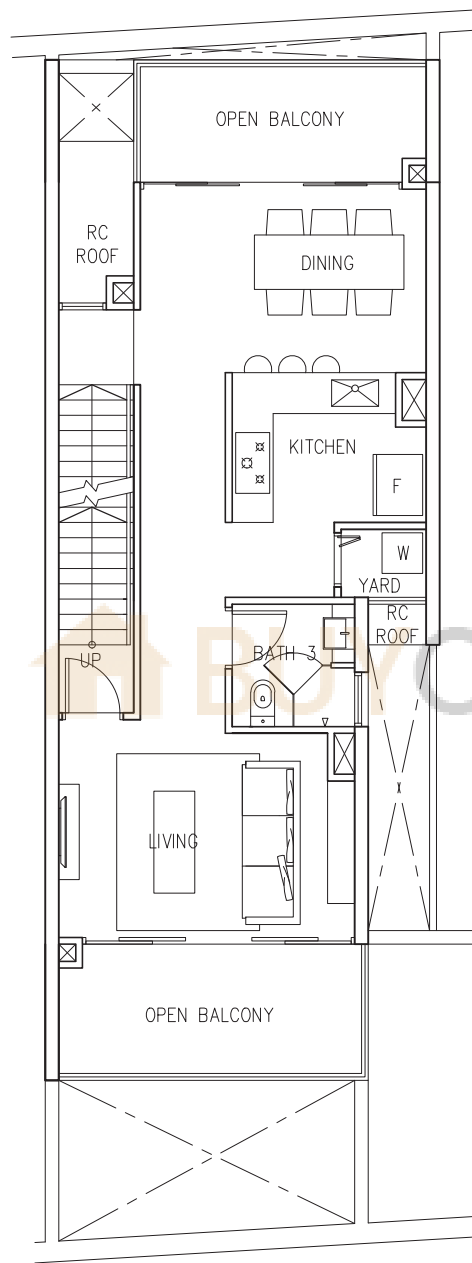
1ST STOREY



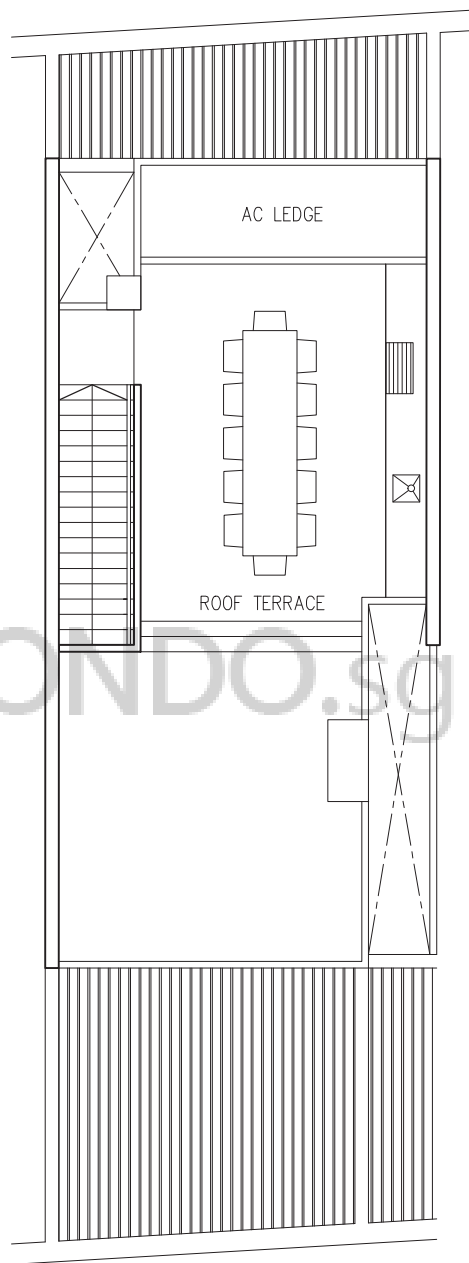
ST1 No. 44

The plans are subject to change as may be required or approved by the relevant authorities. These are not drawn to scale and are for the purpose of visual presentation of the different layouts that are available. Areas are estimates only and are subject to final survey.

Type ST1
275 sqm
2960 sqft



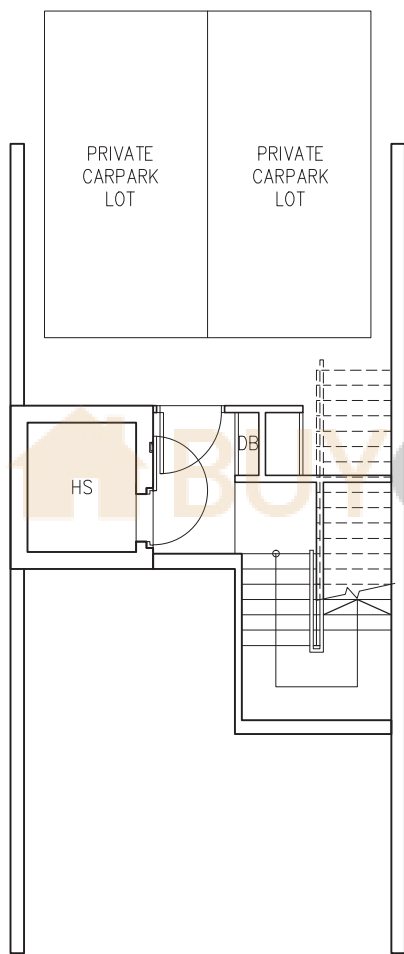
2ND STOREY



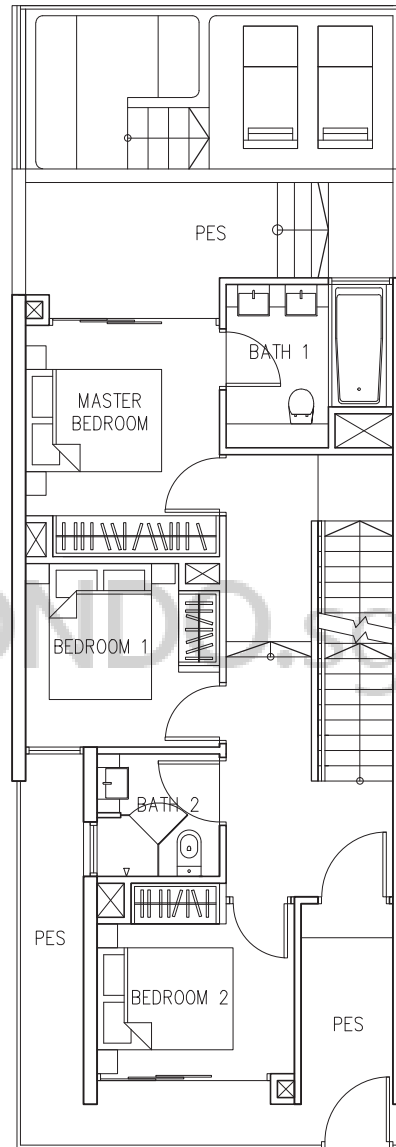
ROOF TERRACE

ST1 No. 44

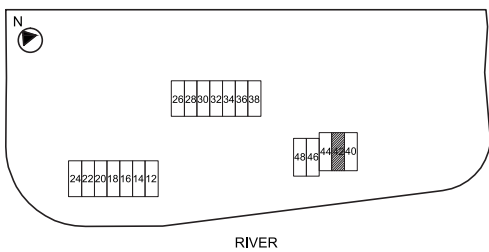
Type ST1
 275 sqm
 2960 sqft



CP



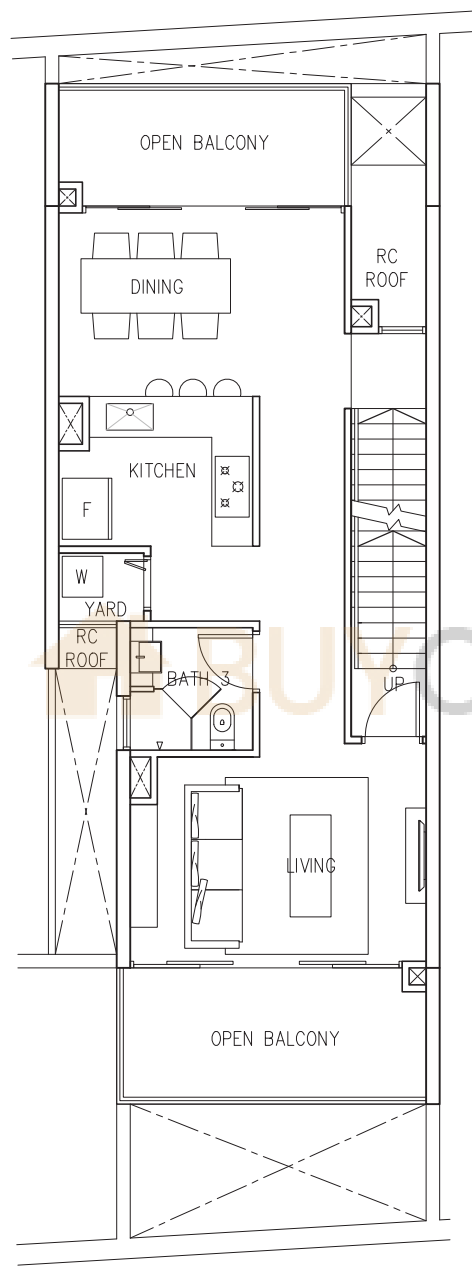
1ST STOREY



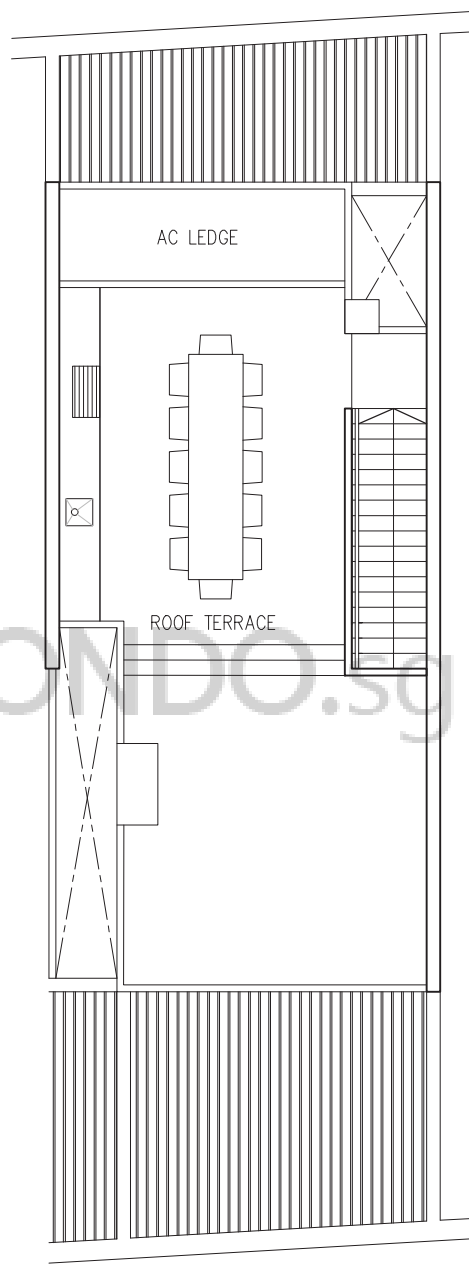
ST1 No. 42

The plans are subject to change as may be required or approved by the relevant authorities. These are not drawn to scale and are for the purpose of visual presentation of the different layouts that are available. Areas are estimates only and are subject to final survey.

Type ST1
 275 sqm
 2960 sqft



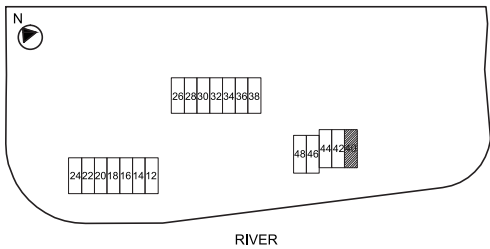
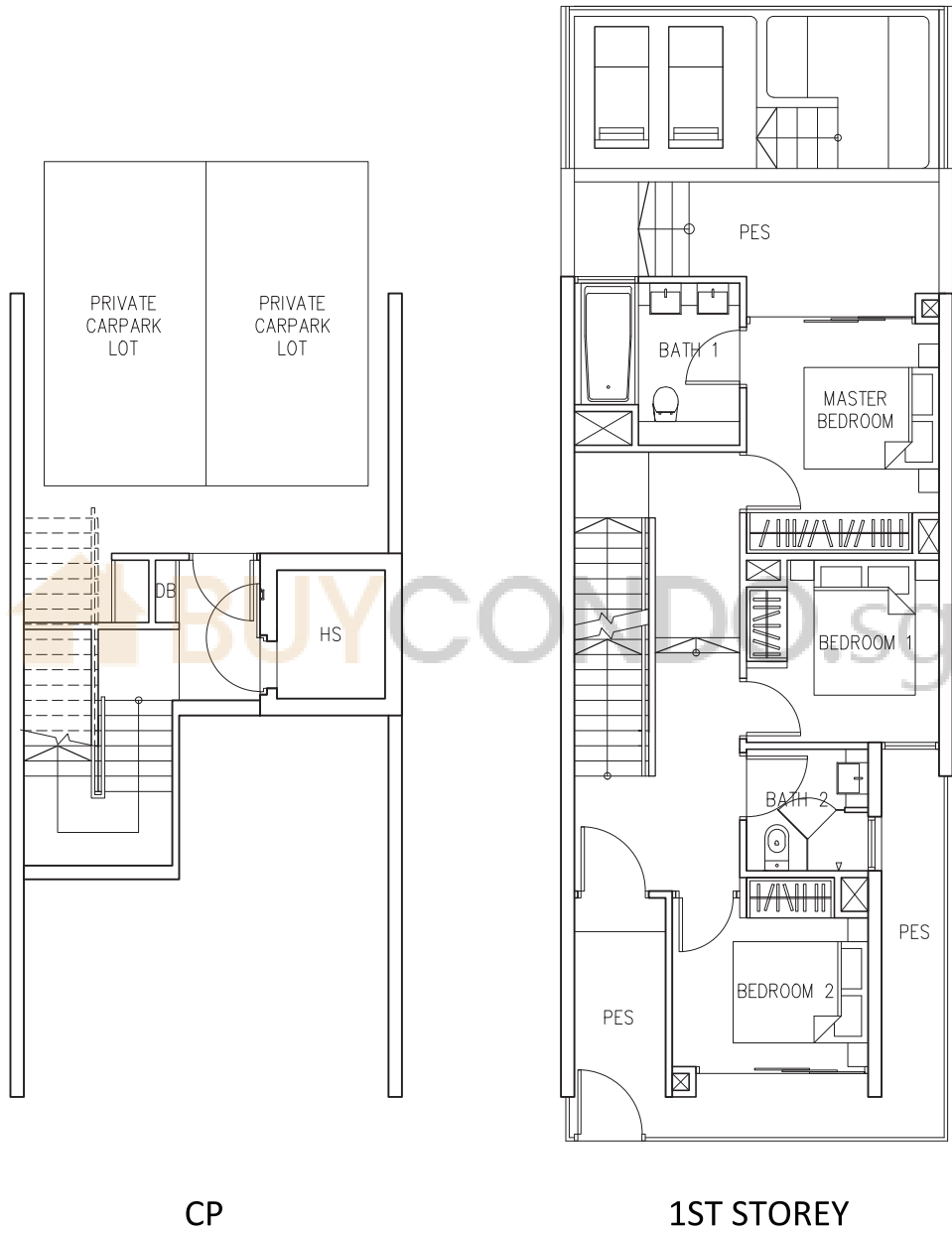
2ND STOREY



ROOF TERRACE

ST1 No. 42

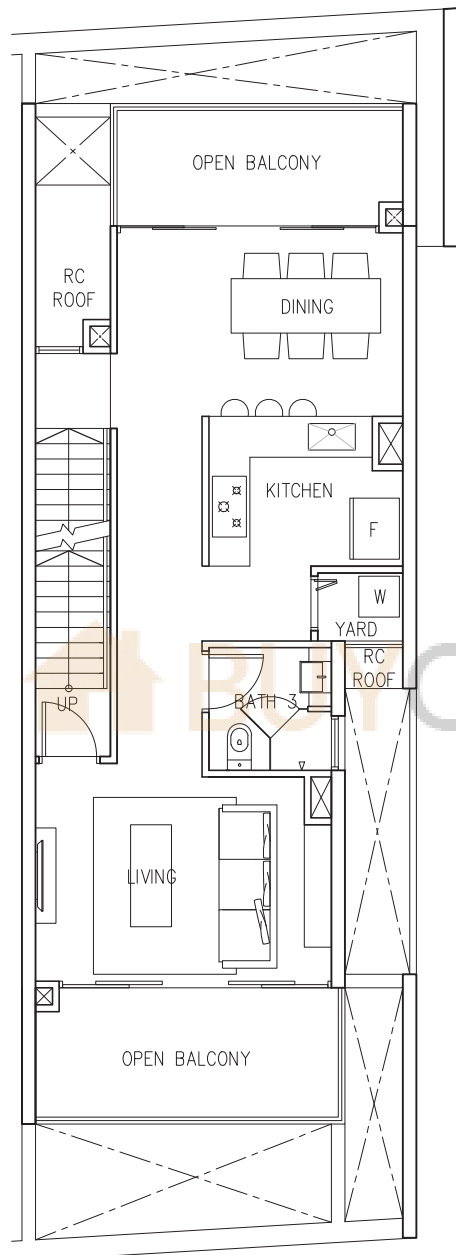
Type ST1
 275 sqm
 2960 sqft



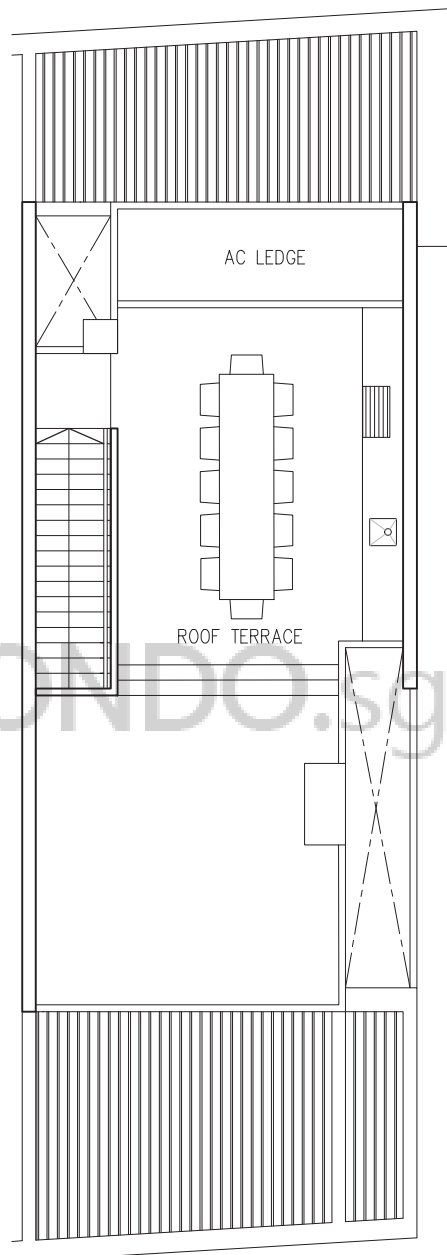
ST1 No. 40

The plans are subject to change as may be required or approved by the relevant authorities. These are not drawn to scale and are for the purpose of visual presentation of the different layouts that are available. Areas are estimates only and are subject to final survey.

Type ST1
275 sqm
2960 sqft



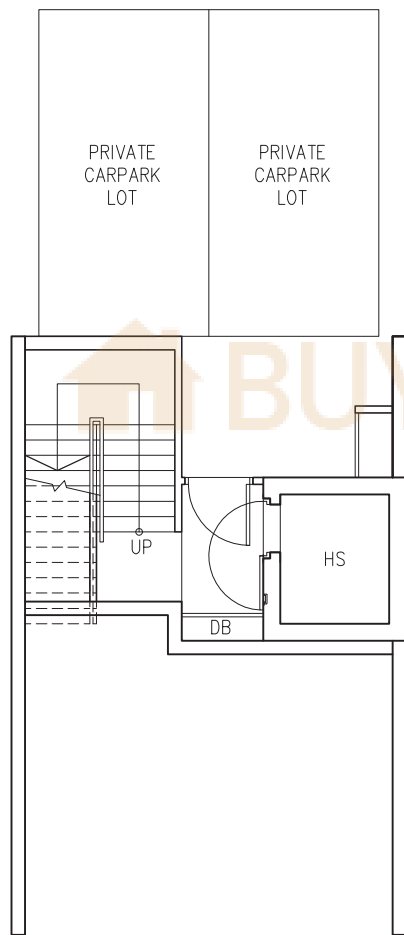
2ND STOREY



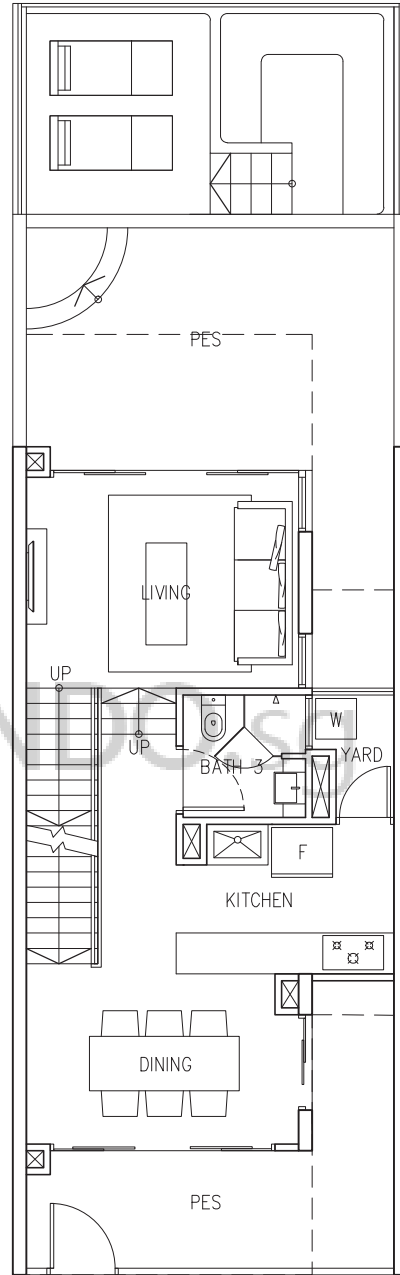
ROOF TERRACE

ST1 No. 40

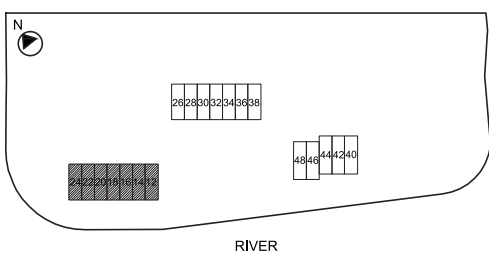
Type ST2
 279 sqm
 3003 sqft



CP



1ST STOREY

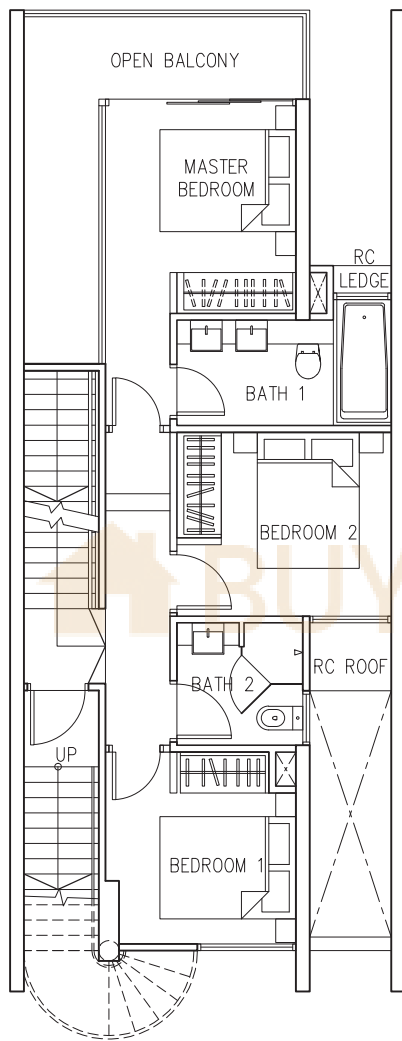


ST2

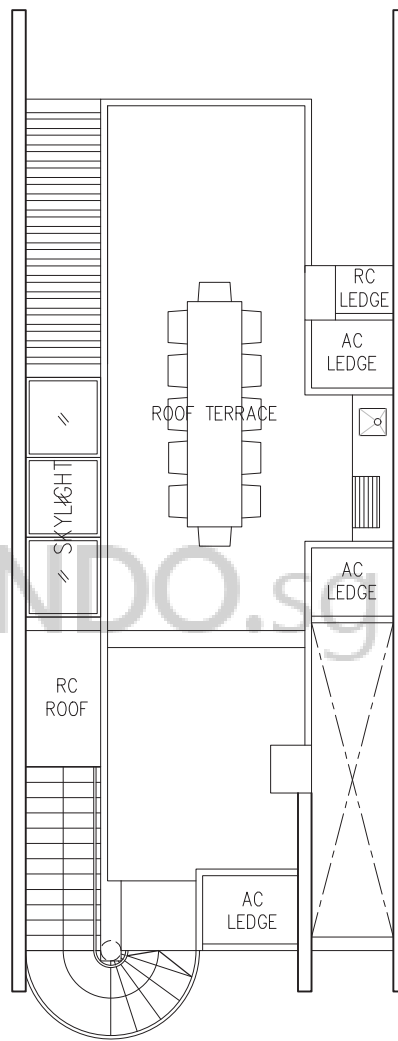
No. 12, 14, 16, 18, 20, 22 & 24

The plans are subject to change as may be required or approved by the relevant authorities. These are not drawn to scale and are for the purpose of visual presentation of the different layouts that are available. Areas are estimates only and are subject to final survey.

Type ST2
 279 sqm
 3003 sqft



2ND STOREY

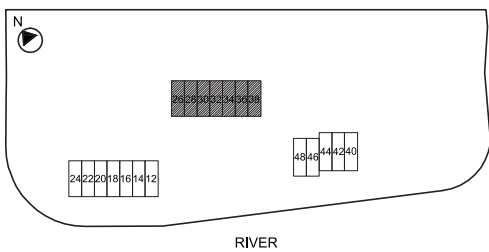
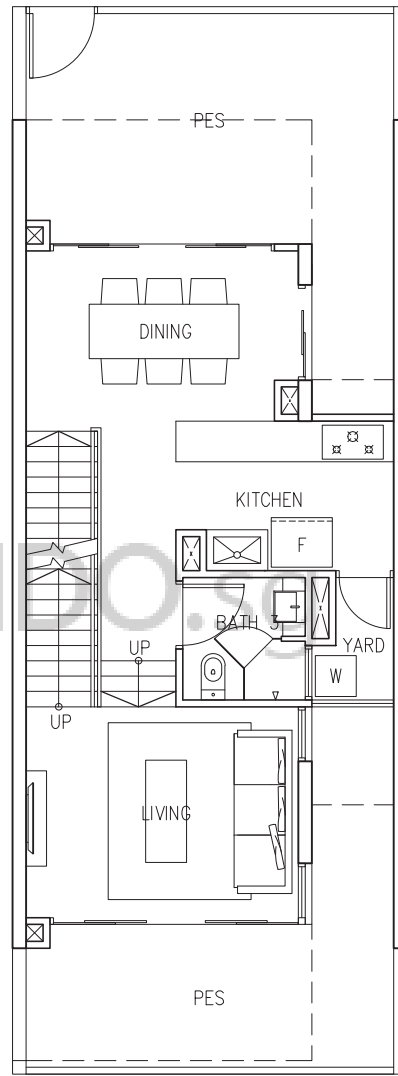
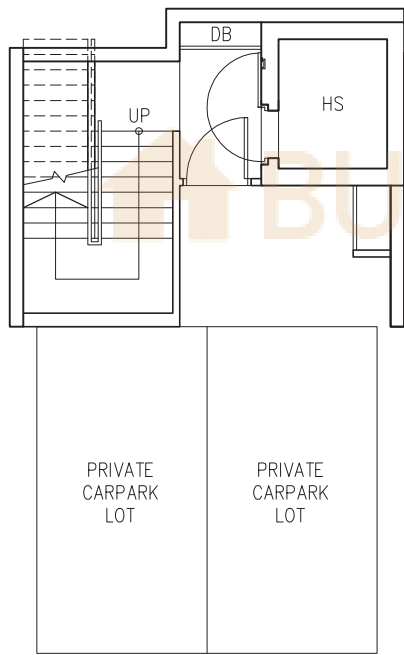


ROOF TERRACE

ST2 No. 12, 14, 16, 18, 20, 22 & 24

The plans are subject to change as may be required or approved by the relevant authorities. These are not drawn to scale and are for the purpose of visual presentation of the different layouts that are available. Areas are estimates only and are subject to final survey.

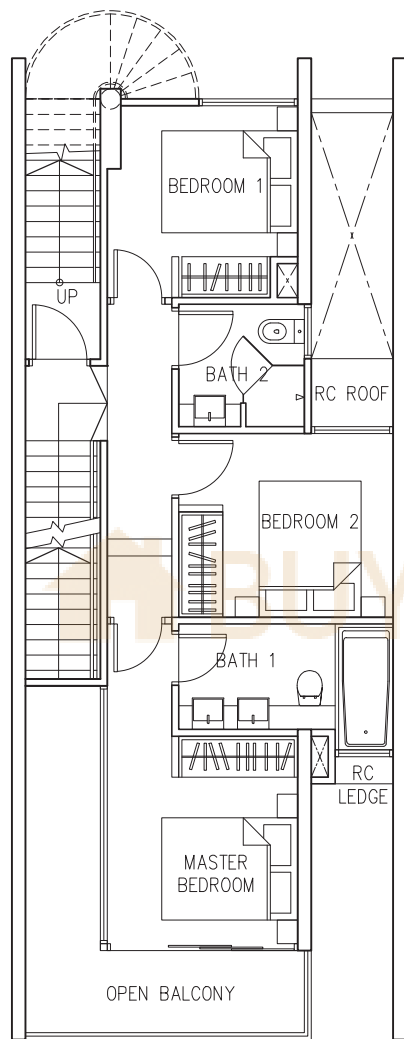
Type ST3
 262 sqm
 2820 sqft



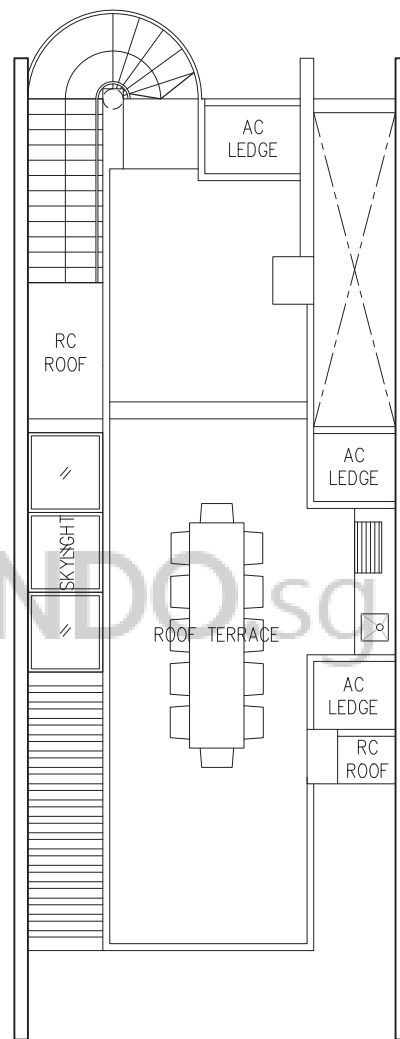
ST3 No. 26, 28, 30, 32, 34, 36 & 38

The plans are subject to change as may be required or approved by the relevant authorities. These are not drawn to scale and are for the purpose of visual presentation of the different layouts that are available. Areas are estimates only and are subject to final survey.

Type ST3
 262 sqm
 2820 sqft



2ND STOREY



ROOF TERRACE

ST3

No. 26, 28, 30, 32, 34, 36 & 38