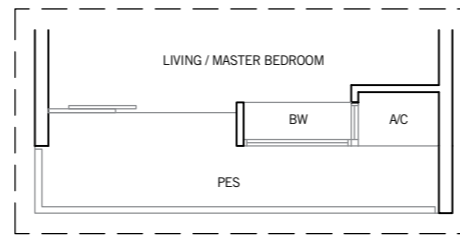
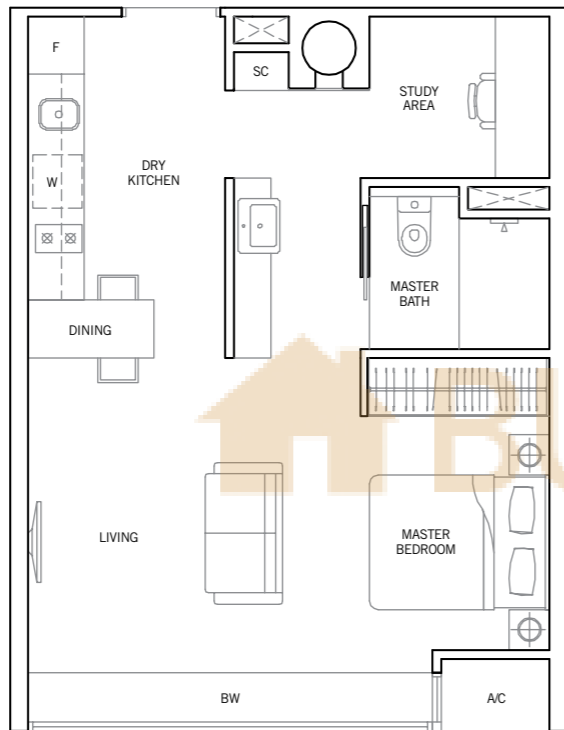


1 BEDROOM + STUDY

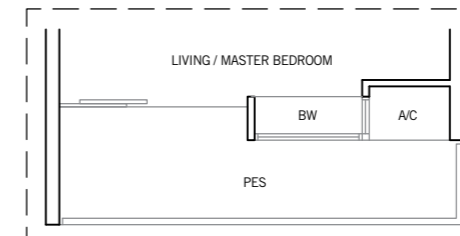
TYPE A1

48 sq m / 517 sq ft

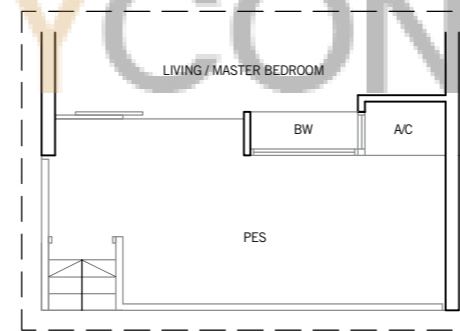
#01-32 to #04-32, #01-35 to #04-35, #02-50 to #05-50
 #02-55 to #05-55, #02-62 to #05-62, #02-71 to #05-71
 #02-74 to #04-74, #02-77 to #05-77, #02-83 to #04-83



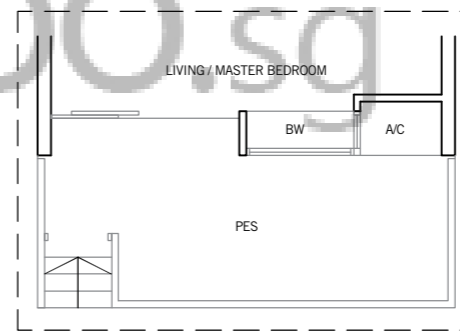
TYPE A1-P1
 54 sq m / 581 sq ft
 #01-62, #01-71



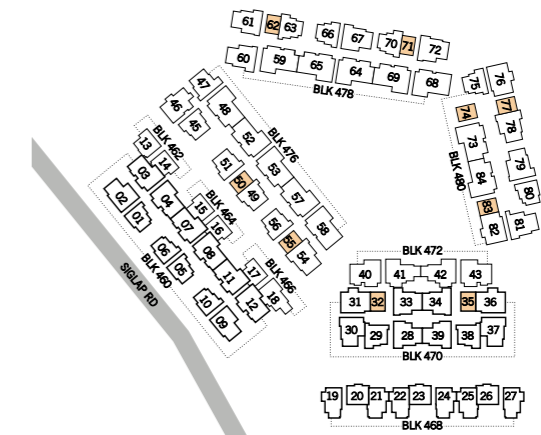
TYPE A1-P2
 56 sq m / 603 sq ft
 #01-77



TYPE A1-P3
 62 sq m / 667 sq ft
 #01-50, #01-55, #01-83



TYPE A1-P4
 63 sq m / 678 sq ft
 #01-74



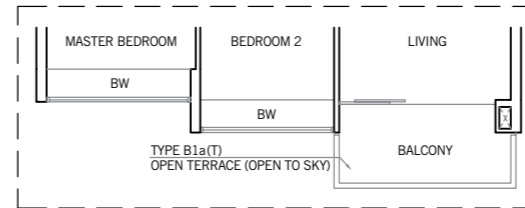
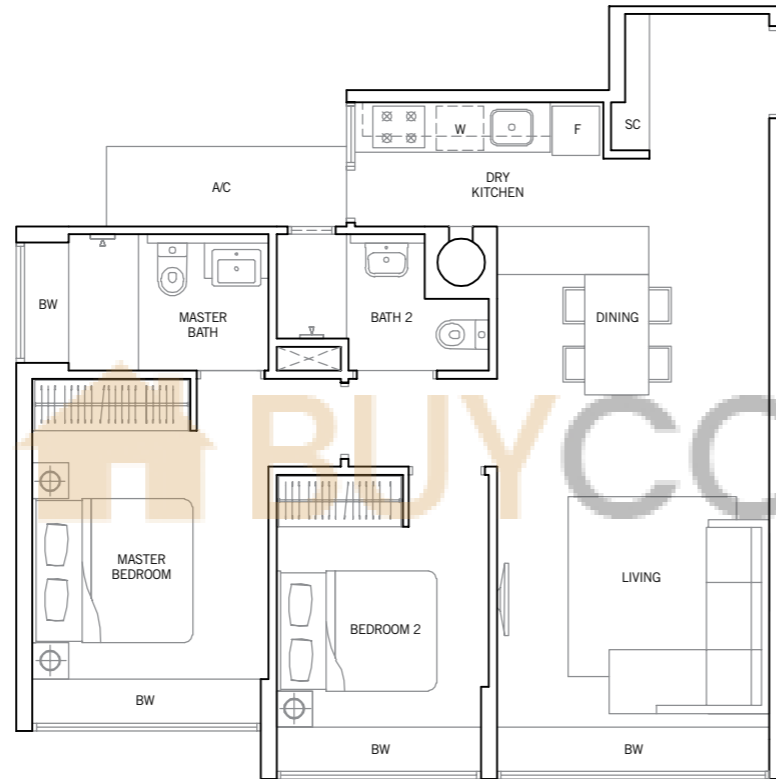
Area includes PES, A/C ledge, bay window, balcony, open terrace, roof terrace and void. Some units are mirror images of the apartment plans shown in the brochure. Please refer to the key plans for orientation.
 All plans are not drawn to scale and are subject to changes as may be approved by the relevant authorities. All floor areas are approximate measurements only and are subject to government resurvey.
Abbreviation: A/C (Air-Con Ledge), BW (Bay Window), HS (Household Shelter), PES (Private Enclosed Space), SC (Shoe Cabinet) and ST (Store).

2 BEDROOM

TYPE B1

76 sq m / 818 sq ft

#01-01 to #05-01, #01-05 to #04-05
 #01-06 to #05-06, #01-10 to #05-10



TYPE B1a

81 sq m / 872 sq ft

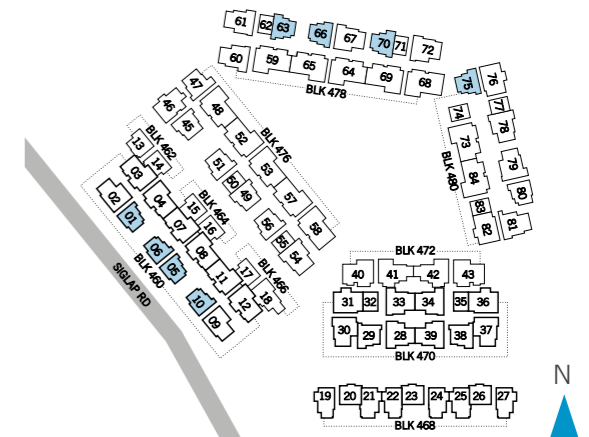
#02-63 to #04-63, #02-66 to #04-66
 #02-70 to #04-70, #02-75 to #04-75

TYPE B1a(T)

81 sq m / 872 sq ft
 #05-75

BUY CONDO.sg

Area includes PES, A/C ledge, bay window, balcony, open terrace, roof terrace and void. Some units are mirror images of the apartment plans shown in the brochure. Please refer to the key plans for orientation.
 All plans are not drawn to scale and are subject to changes as may be approved by the relevant authorities. All floor areas are approximate measurements only and are subject to government resurvey.
Abbreviation: A/C (Air-Con Ledge), BW (Bay Window), HS (Household Shelter), PES (Private Enclosed Space), SC (Shoe Cabinet) and ST (Store).

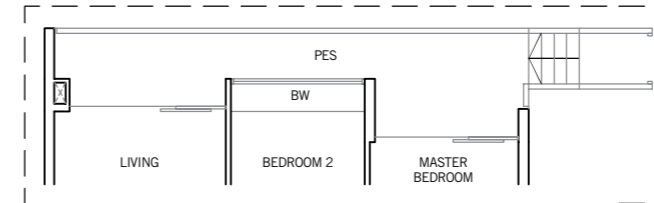
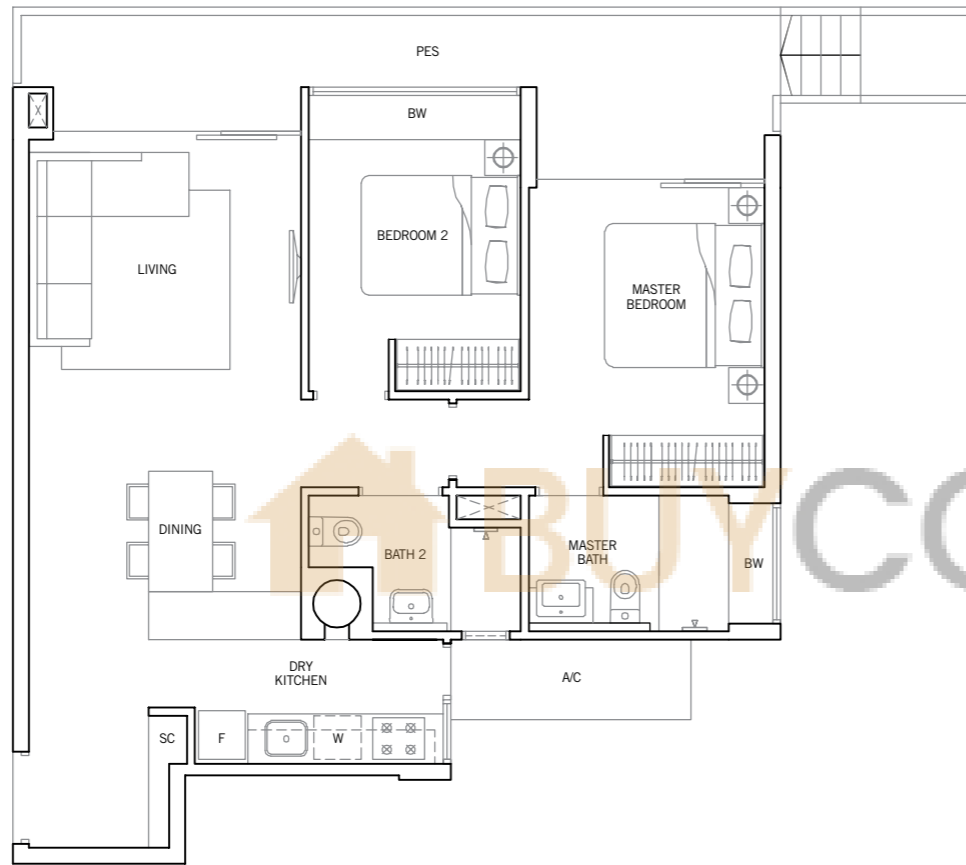


2 BEDROOM

TYPE B1a-P1

93 sq m / 1,001 sq ft

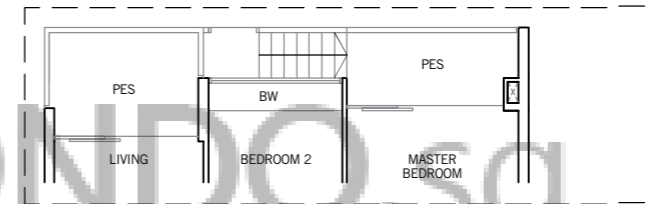
#01-66



TYPE B1a-P2

93 sq m / 1,001 sq ft

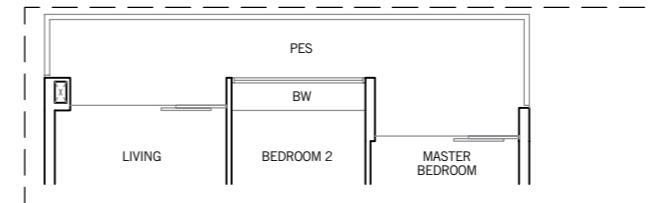
#01-63



TYPE B1a-P3

90 sq m / 969 sq ft

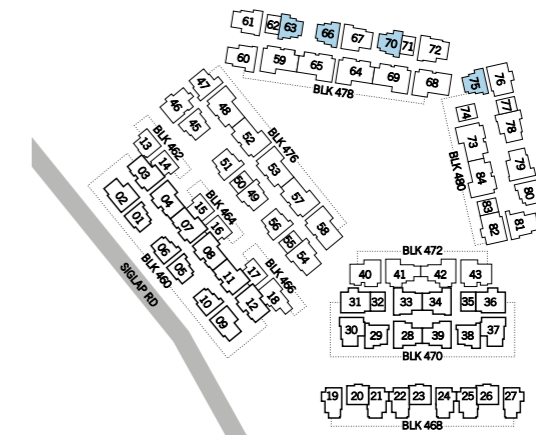
#01-70



TYPE B1a-P4

92 sq m / 990 sq ft

#01-75



Area includes PES, A/C ledge, bay window, balcony, open terrace, roof terrace and void. Some units are mirror images of the apartment plans shown in the brochure. Please refer to the key plans for orientation.
All plans are not drawn to scale and are subject to changes as may be approved by the relevant authorities. All floor areas are approximate measurements only and are subject to government resurvey.

Abbreviation: A/C (Air-Con Ledge), BW (Bay Window), HS (Household Shelter), PES (Private Enclosed Space), SC (Shoe Cabinet) and ST (Store).

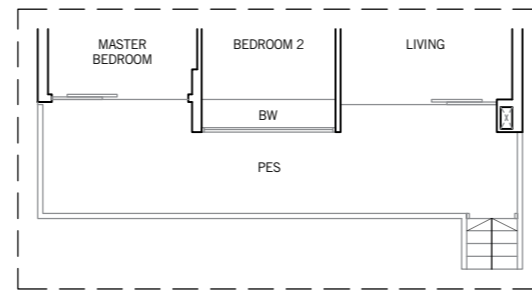
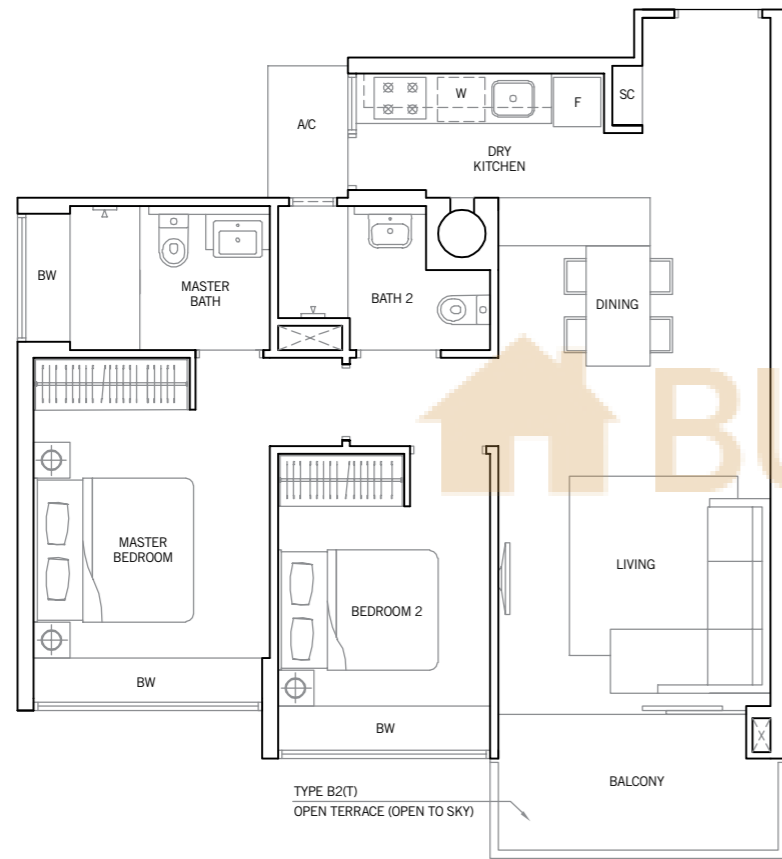
2 BEDROOM

TYPE B2

80 sq m / 861 sq ft
#02-29 to #04 -29, #02-38 to #04-38

TYPE B2(T)

80 sq m / 861 sq ft
#05-29, #05-38

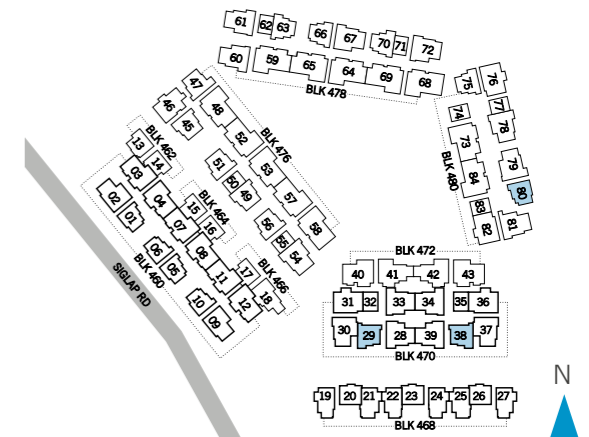
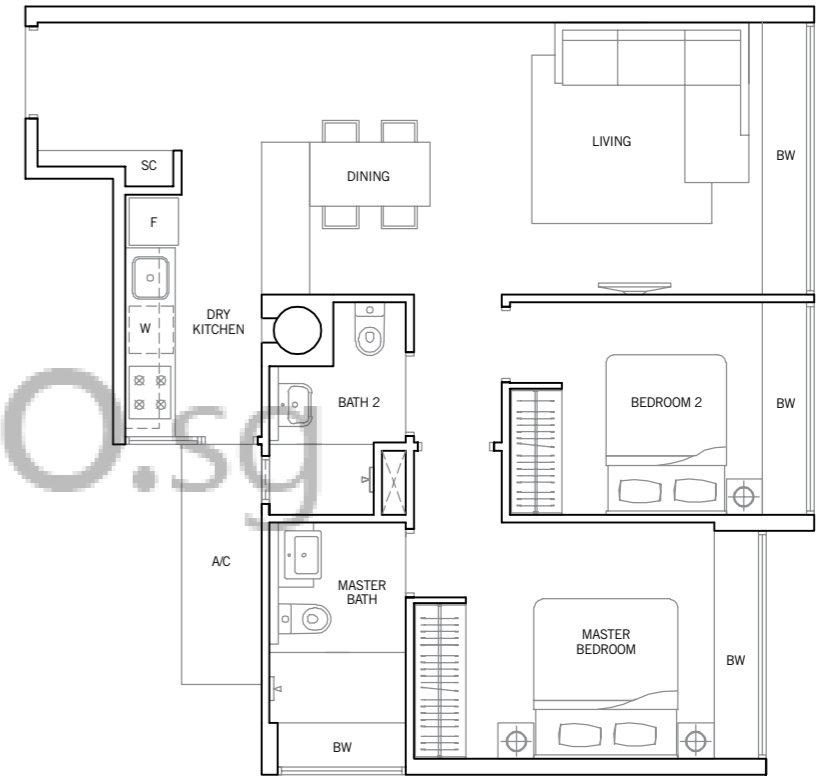


TYPE B2-P1

95 sq m / 1,023 sq ft
#01-29, #01-38

TYPE B3

77 sq m / 829 sq ft
#01-80 to #04-80



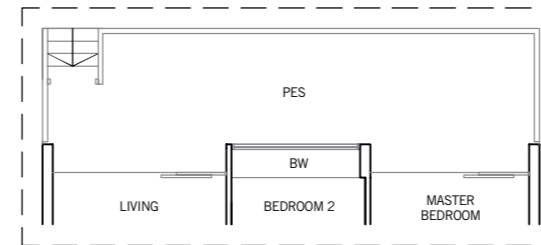
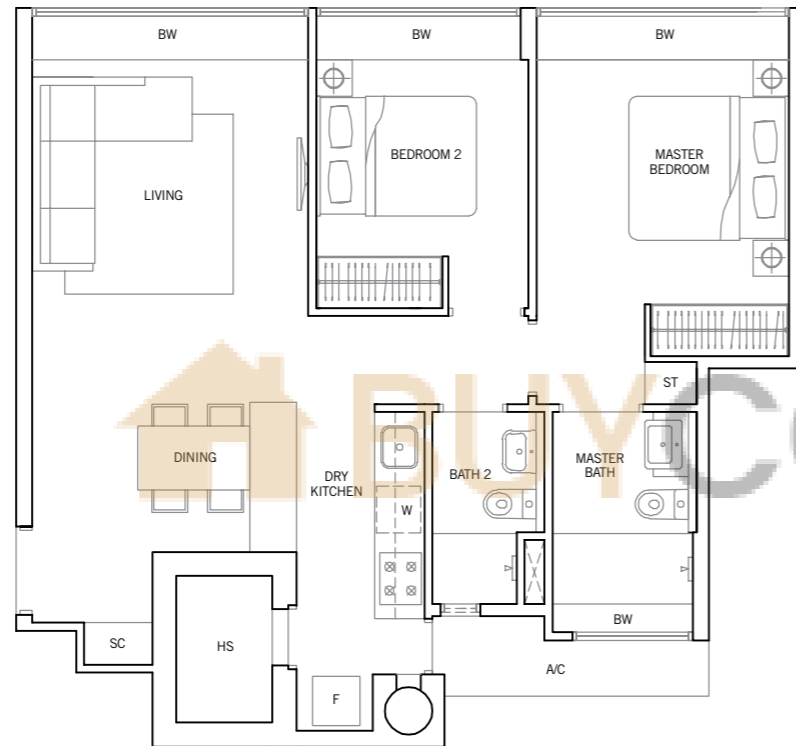
Area includes PES, A/C ledge, bay window, balcony, open terrace, roof terrace and void. Some units are mirror images of the apartment plans shown in the brochure. Please refer to the key plans for orientation.
All plans are not drawn to scale and are subject to changes as may be approved by the relevant authorities. All floor areas are approximate measurements only and are subject to government resurvey.
Abbreviation: A/C (Air-Con Ledge), BW (Bay Window), HS (Household Shelter), PES (Private Enclosed Space), SC (Shoe Cabinet) and ST (Store).

2 BEDROOM

TYPE B4

78 sq m / 840 sq ft

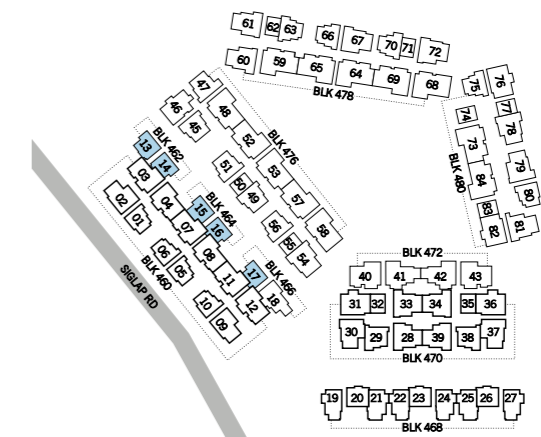
#02-13, #03-13, #02-14, #03-14
#02-15, #03-15, #02-16, #03-16
#02-17, #03-17



TYPE B4-P1

101 sq m / 1,087 sq ft

#01-13, #01-14, #01-15, #01-16, #01-17



Area includes PES, A/C ledge, bay window, balcony, open terrace, roof terrace and void. Some units are mirror images of the apartment plans shown in the brochure. Please refer to the key plans for orientation.
All plans are not drawn to scale and are subject to changes as may be approved by the relevant authorities. All floor areas are approximate measurements only and are subject to government resurvey.
Abbreviation: A/C (Air-Con Ledge), BW (Bay Window), HS (Household Shelter), PES (Private Enclosed Space), SC (Shoe Cabinet) and ST (Store).

2 BEDROOM + STUDY

TYPE BS1

89 sq m / 958 sq ft

#02-49 to #04-49

TYPE BS1(T)

89 sq m / 958 sq ft

#05-49

TYPE BS1a

89 sq m / 958 sq ft

#02-45 to #04-45, #02-51 to #04-51

#02-56 to #04-56

TYPE BS1a(T)

89 sq m / 958 sq ft

#05-45, #05-51, #05-56

TYPE BS1b

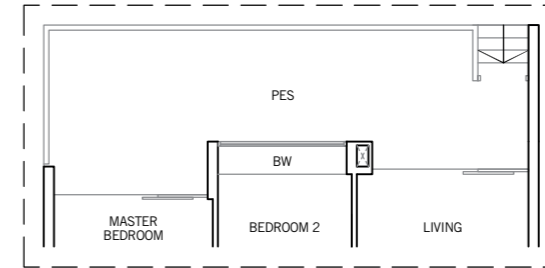
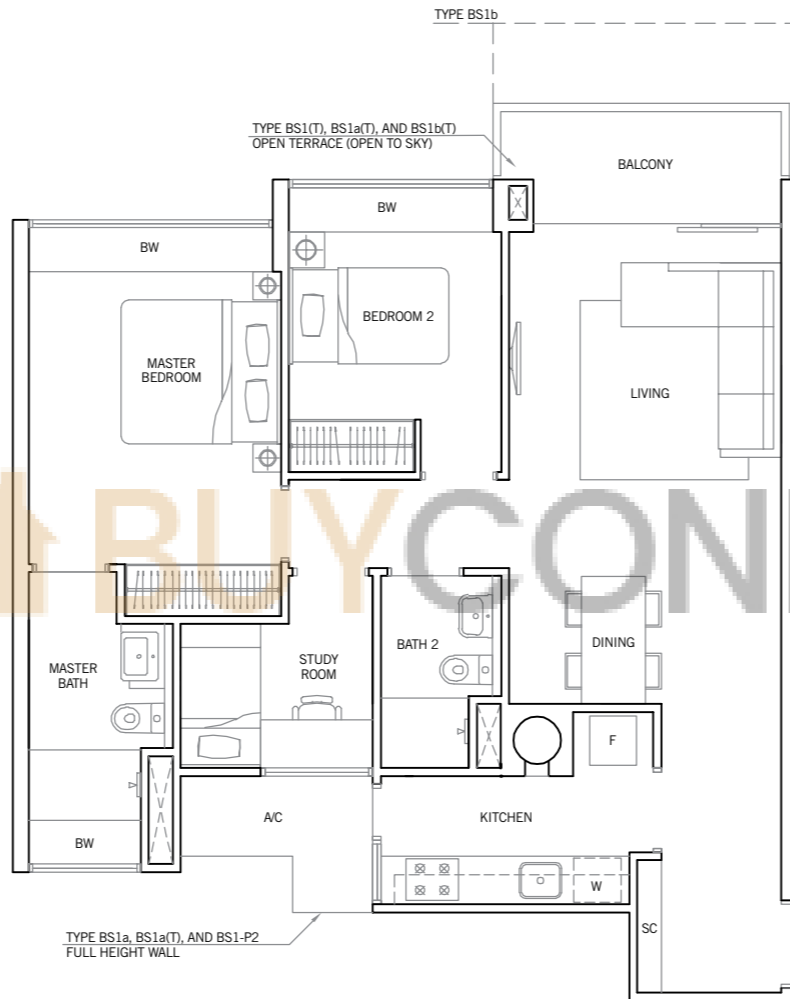
93 sq m / 1,001 sq ft

#02-47, #03-47

TYPE BS1b(T)

93 sq m / 1,001 sq ft

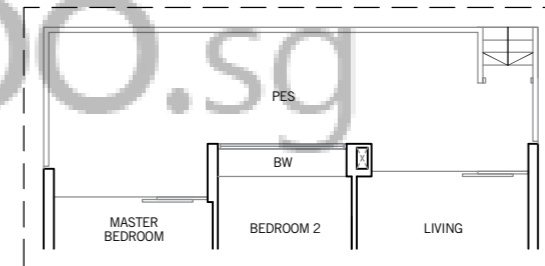
#04-47



TYPE BS1-P1

111 sq m / 1,195 sq ft

#01-49



TYPE BS1-P2

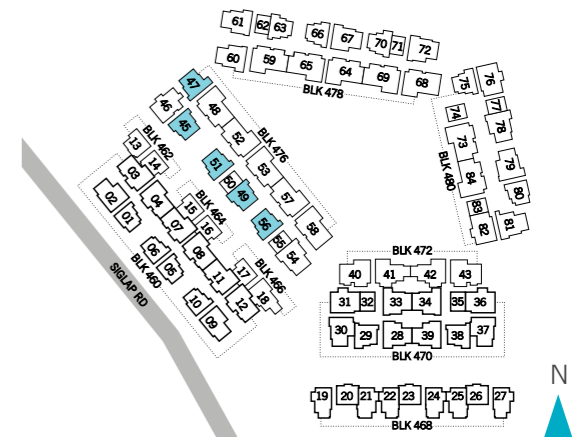
111 sq m / 1,195 sq ft

#01-45, #01-51, #01-56

TYPE BS1-P3

111 sq m / 1,195 sq ft

#01-47

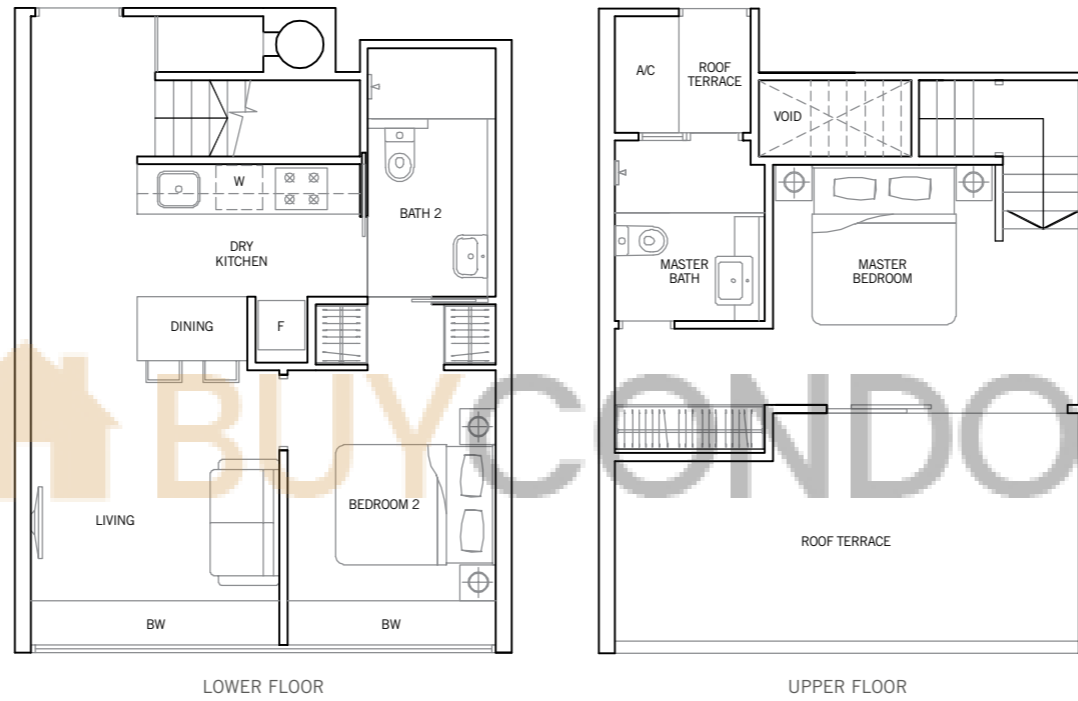


Area includes PES, A/C ledge, bay window, balcony, open terrace, roof terrace and void. Some units are mirror images of the apartment plans shown in the brochure. Please refer to the key plans for orientation.
 All plans are not drawn to scale and are subject to changes as may be approved by the relevant authorities. All floor areas are approximate measurements only and are subject to government resurvey.
Abbreviation: A/C (Air-Con Ledge), BW (Bay Window), HS (Household Shelter), PES (Private Enclosed Space), SC (Shoe Cabinet) and ST (Store).

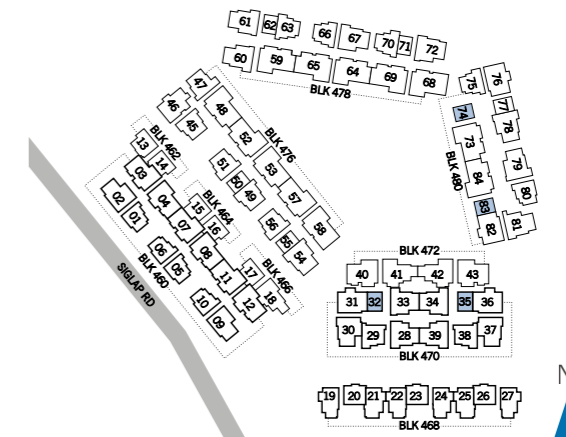
2 BEDROOM LOFT

TYPE BL1

92 sq m / 990 sq ft
(includes 2 sq m of void area)
#05-32, #05-35, #05-74, #05-83



Area includes PES, A/C ledge, bay window, balcony, open terrace, roof terrace and void. Some units are mirror images of the apartment plans shown in the brochure. Please refer to the key plans for orientation.
All plans are not drawn to scale and are subject to changes as may be approved by the relevant authorities. All floor areas are approximate measurements only and are subject to government resurvey.
Abbreviation: A/C (Air-Con Ledge), BW (Bay Window), HS (Household Shelter), PES (Private Enclosed Space), SC (Shoe Cabinet) and ST (Store).



3 BEDROOM

TYPE C1

112 sq m / 1,206 sq ft

#02-28 to #04-28, #02-39 to #04-39
 #02-60, #03-60, #02-61, #03-61
 #02-67, #03-67, #02-72, #03-72

TYPE C1(T)

112 sq m / 1,206 sq ft

#05-28, #05-39, #04-60, #04-61
 #04-67, #04-72

TYPE C1a

111 sq m / 1,195 sq ft

#02-54 to #04-54

TYPE C1a(T)

111 sq m / 1,195 sq ft

#05-54

TYPE C1b

113 sq m / 1,216 sq ft

#02-78, #03-78, #02-79, #03-79

TYPE C1b(T)

113 sq m / 1,216 sq ft

#04-78, #04-79

TYPE C1c

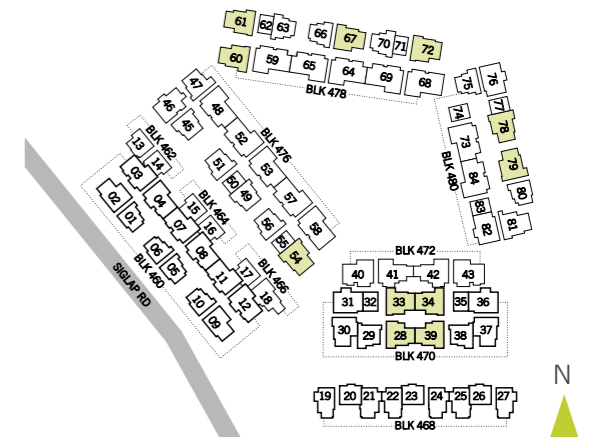
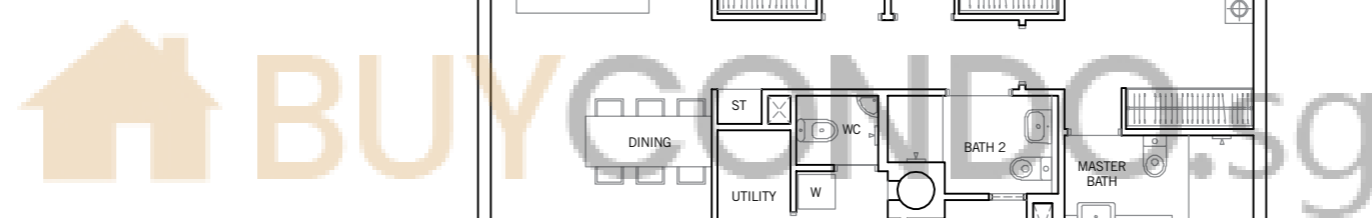
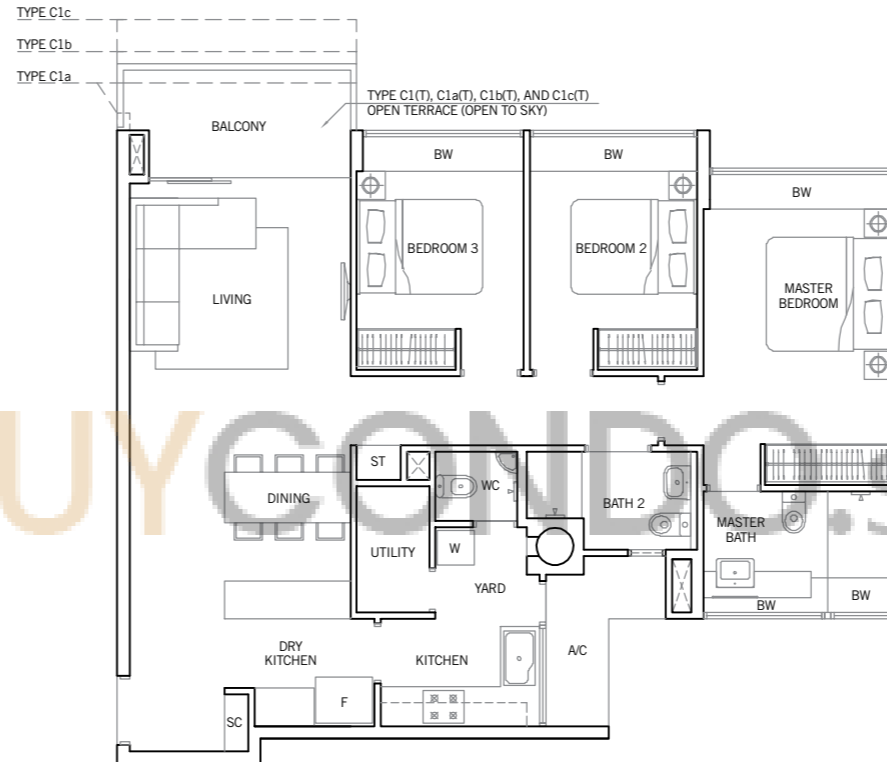
115 sq m / 1,238 sq ft

#01-33 to #03-33, #01-34 to #03-34

TYPE C1c(T)

115 sq m / 1,238 sq ft

#04-33, #04-34



Area includes PES, A/C ledge, bay window, balcony, open terrace, roof terrace and void. Some units are mirror images of the apartment plans shown in the brochure. Please refer to the key plans for orientation.
 All plans are not drawn to scale and are subject to changes as may be approved by the relevant authorities. All floor areas are approximate measurements only and are subject to government resurvey.
Abbreviation: A/C (Air-Con Ledge), BW (Bay Window), HS (Household Shelter), PES (Private Enclosed Space), SC (Shoe Cabinet) and ST (Store).

3 BEDROOM

TYPE C1-P1

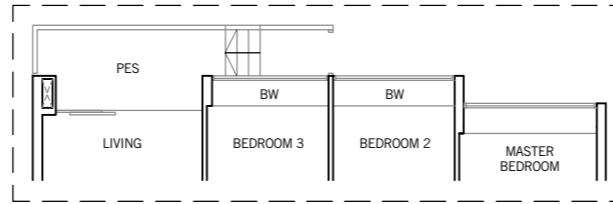
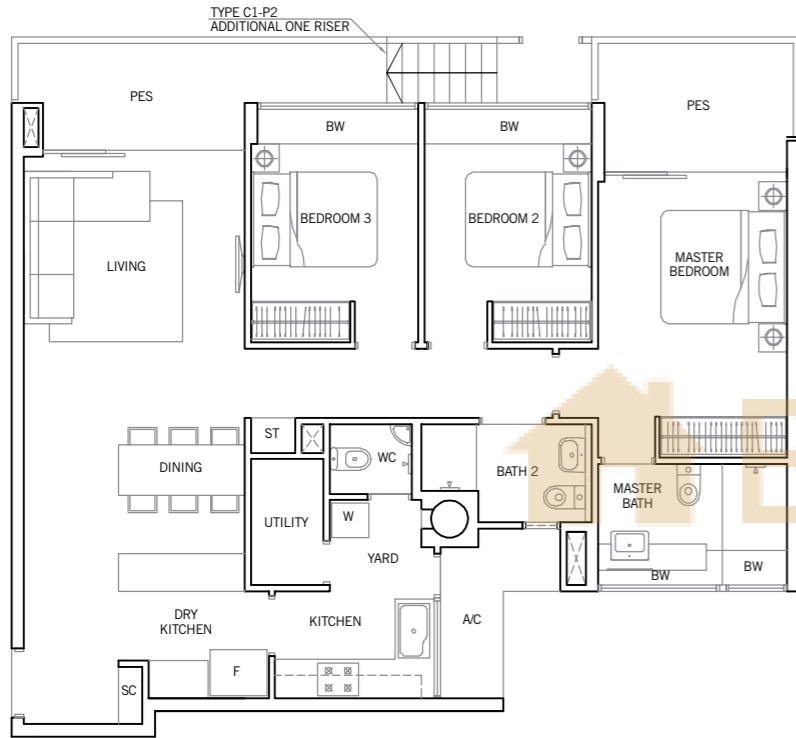
124 sq m / 1,335 sq ft

#01-67

TYPE C1-P2

124 sq m / 1,335 sq ft

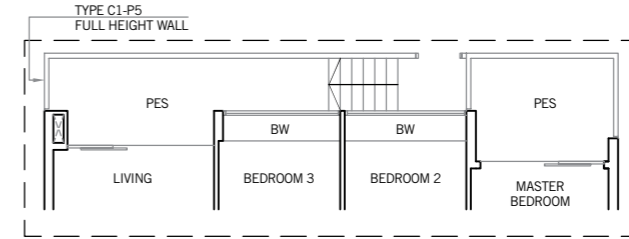
#01-72



TYPE C1-P3

115 sq m / 1,238 sq ft

#01-61



TYPE C1-P4

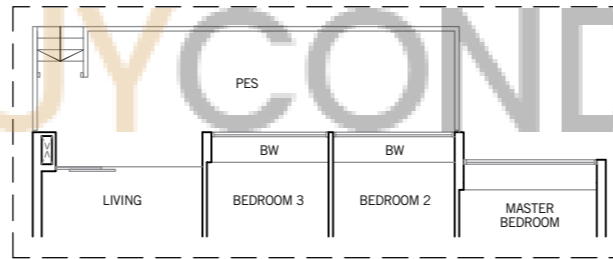
127 sq m / 1,367 sq ft

#01-79

TYPE C1-P5

127 sq m / 1,367 sq ft

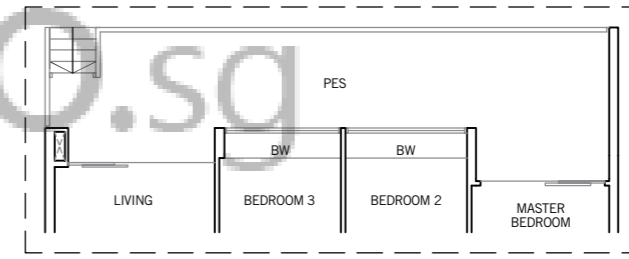
#01-78



TYPE C1-P6

130 sq m / 1,399 sq ft

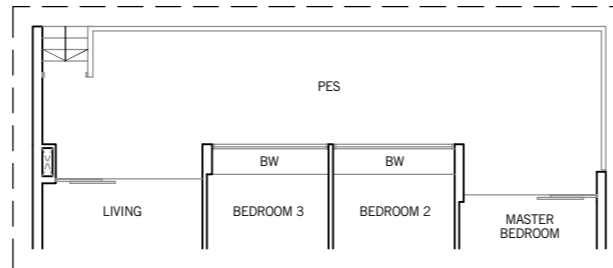
#01-60



TYPE C1-P7

138 sq m / 1,485 sq ft

#01-28, #01-39

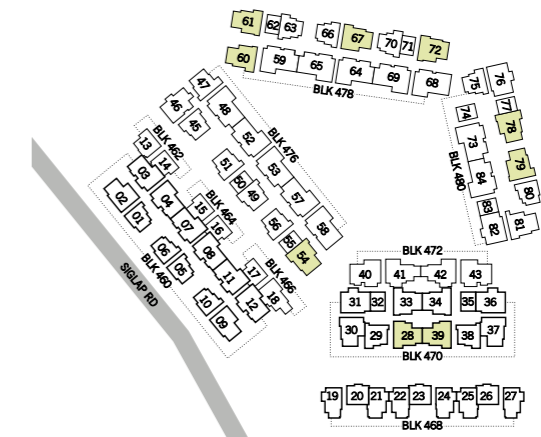


TYPE C1-P8

143 sq m / 1,539 sq ft

#01-54

Area includes PES, A/C ledge, bay window, balcony, open terrace, roof terrace and void. Some units are mirror images of the apartment plans shown in the brochure. Please refer to the key plans for orientation.
 All plans are not drawn to scale and are subject to changes as may be approved by the relevant authorities. All floor areas are approximate measurements only and are subject to government resurvey.
Abbreviation: A/C (Air-Con Ledge), BW (Bay Window), HS (Household Shelter), PES (Private Enclosed Space), SC (Shoe Cabinet) and ST (Store).

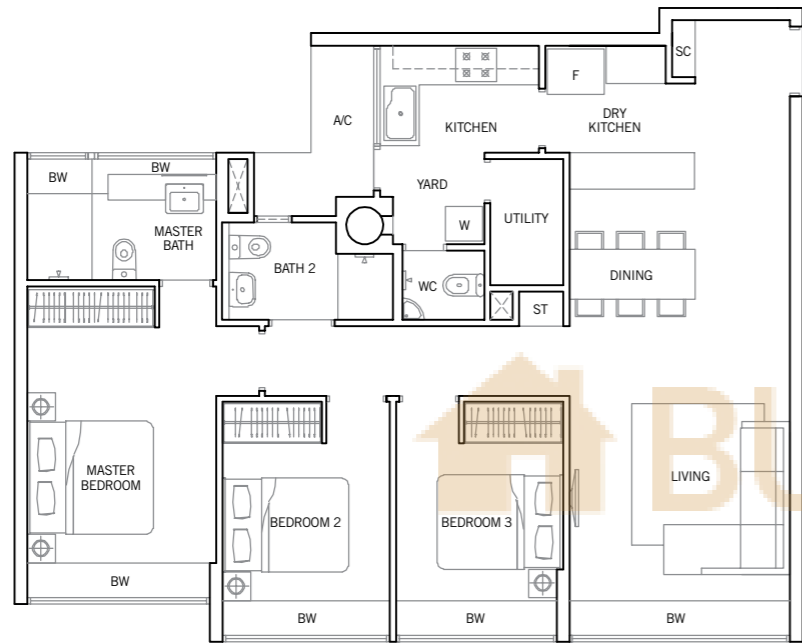


3 BEDROOM

TYPE C2

107 sq m / 1,152 sq ft

#01-02 to #04-02, #01-09 to #04-09



TYPE C3

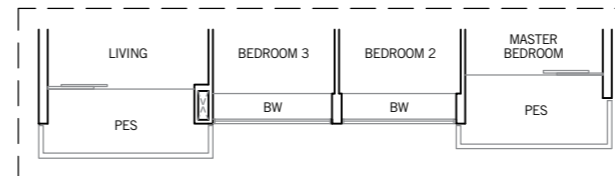
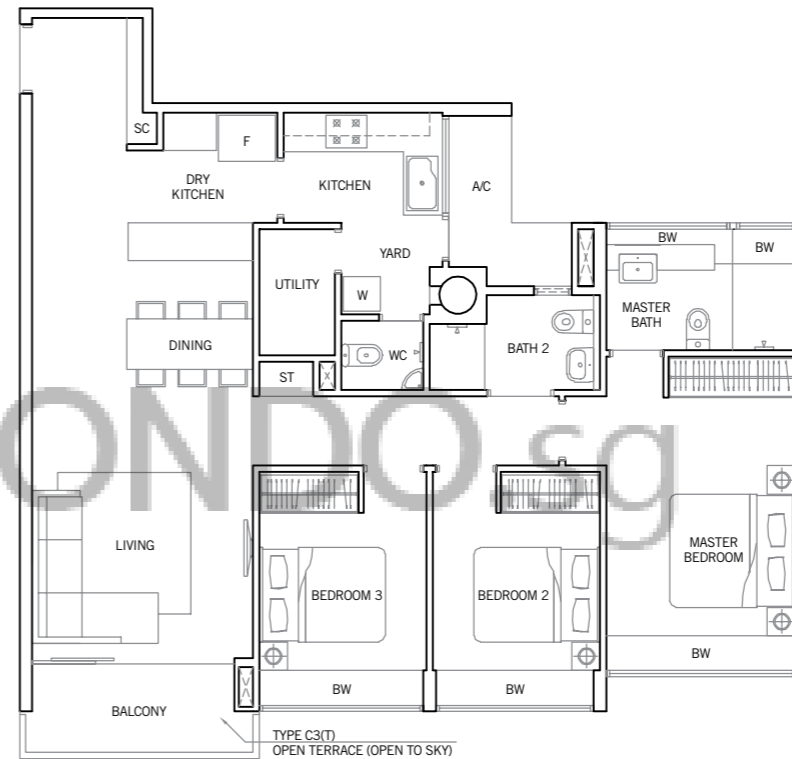
113 sq m / 1,216 sq ft

#02-81, #03-81

TYPE C3(T)

113 sq m / 1,216 sq ft

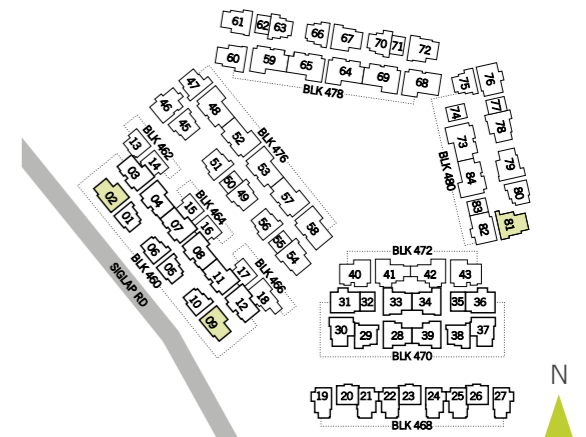
#04-81



TYPE C3-P1

118 sq m / 1,270 sq ft

#01-81



Area includes PES, A/C ledge, bay window, balcony, open terrace, roof terrace and void. Some units are mirror images of the apartment plans shown in the brochure. Please refer to the key plans for orientation.
 All plans are not drawn to scale and are subject to changes as may be approved by the relevant authorities. All floor areas are approximate measurements only and are subject to government resurvey.
Abbreviation: A/C (Air-Con Ledge), BW (Bay Window), HS (Household Shelter), PES (Private Enclosed Space), SC (Shoe Cabinet) and ST (Store).

3 BEDROOM

TYPE C4

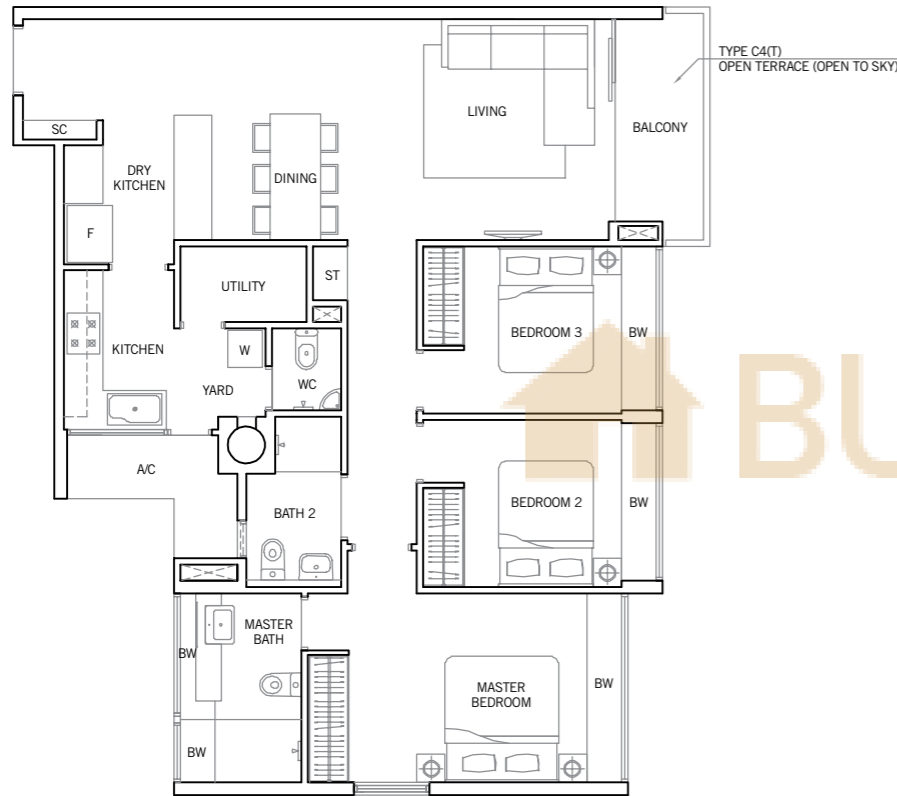
112 sq m / 1,206 sq ft

#01-30 to #03-30, #01-37 to #03-37

TYPE C4(T)

112 sq m / 1,206 sq ft

#04-30, #04-37



TYPE C5

129 sq m / 1,389 sq ft

#01-03 to #03-03, #01-08 to #03-08, #01-12 to #03-12

TYPE C5(T)

129 sq m / 1,389 sq ft

#04-03, #04-08, #04-12

TYPE C5a

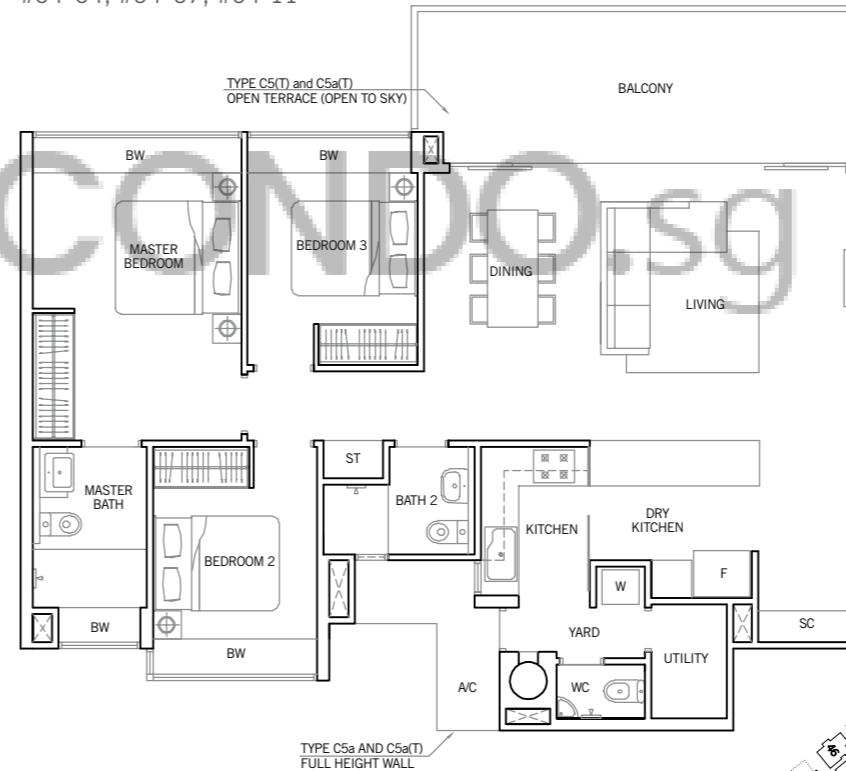
129 sq m / 1,389 sq ft

#01-04 to #03-04, #01-07 to #03-07, #01-11 to #03-11

TYPE C5a(T)

129 sq m / 1,389 sq ft

#04-04, #04-07, #04-11



Area includes PES, A/C ledge, bay window, balcony, open terrace, roof terrace and void. Some units are mirror images of the apartment plans shown in the brochure. Please refer to the key plans for orientation.
All plans are not drawn to scale and are subject to changes as may be approved by the relevant authorities. All floor areas are approximate measurements only and are subject to government resurvey.
Abbreviation: A/C (Air-Con Ledge), BW (Bay Window), HS (Household Shelter), PES (Private Enclosed Space), SC (Shoe Cabinet) and ST (Store).



3 BEDROOM

TYPE C6

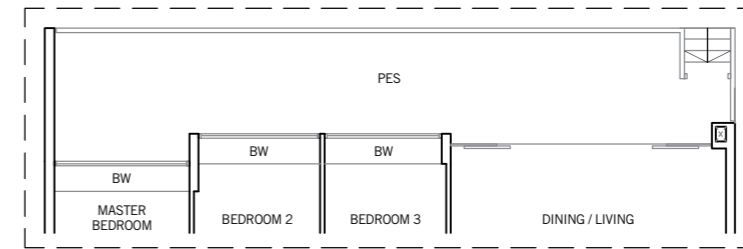
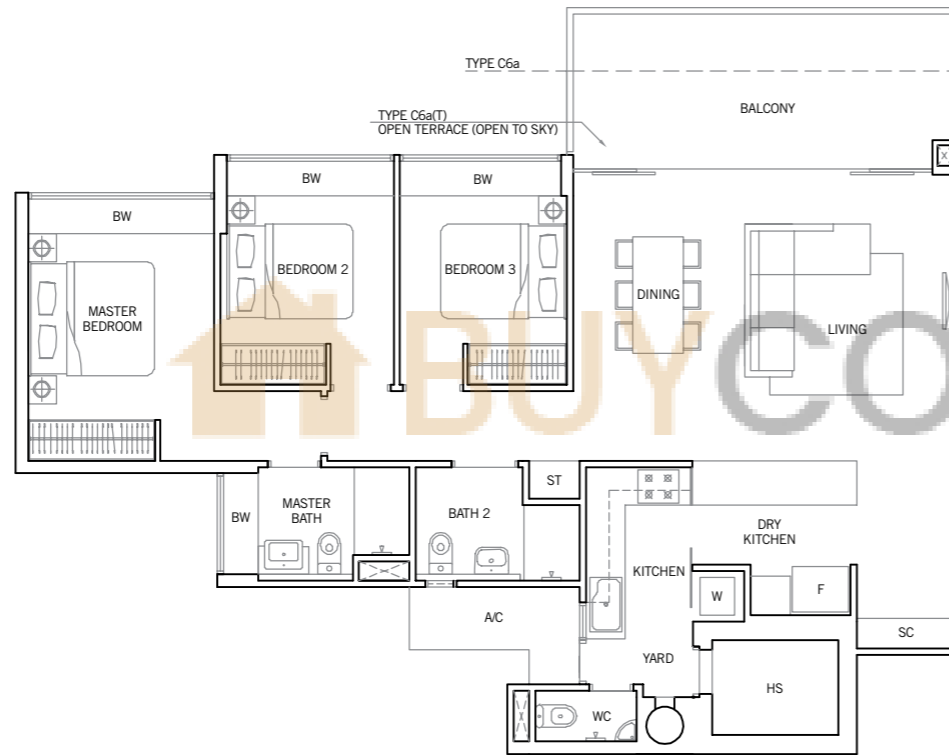
126 sq m / 1,356 sq ft
#02-41, #02-42

TYPE C6a

119 sq m / 1,281 sq ft
#02-18

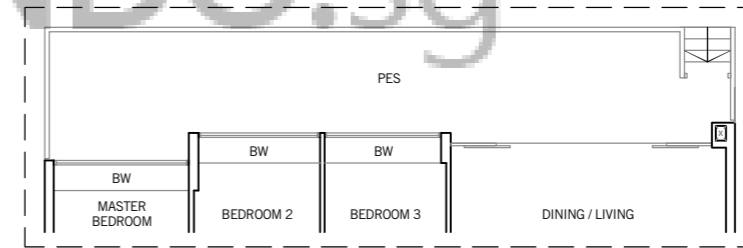
TYPE C6a(T)

119 sq m / 1,281 sq ft
#03-18



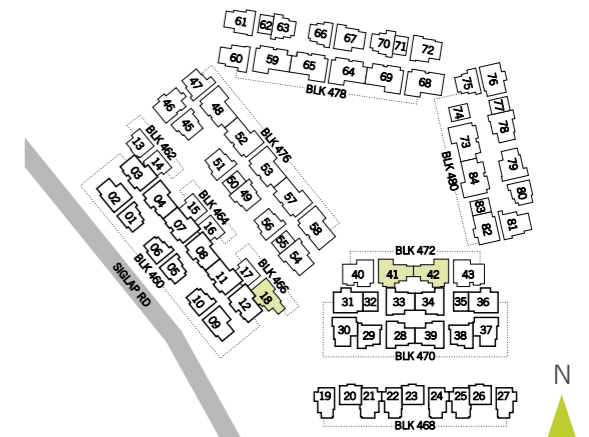
TYPE C6-P1

148 sq m / 1,593 sq ft
#01-41, #01-42



TYPE C6-P2

148 sq m / 1,593 sq ft
#01-18

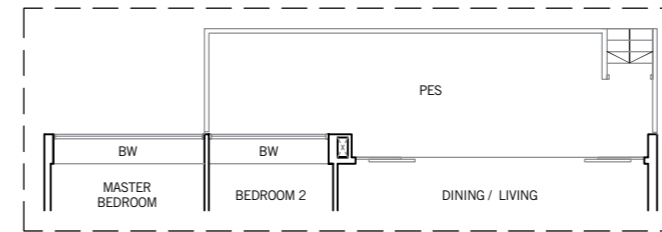
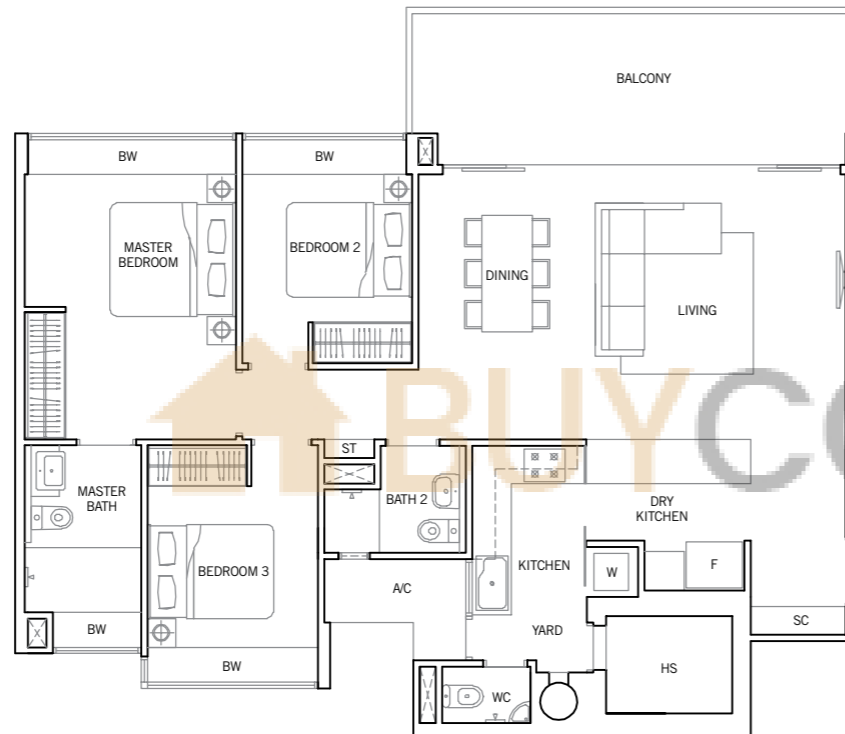


Area includes PES, A/C ledge, bay window, balcony, open terrace, roof terrace and void. Some units are mirror images of the apartment plans shown in the brochure. Please refer to the key plans for orientation.
All plans are not drawn to scale and are subject to changes as may be approved by the relevant authorities. All floor areas are approximate measurements only and are subject to government resurvey.
Abbreviation: A/C (Air-Con Ledge), BW (Bay Window), HS (Household Shelter), PES (Private Enclosed Space), SC (Shoe Cabinet) and ST (Store).

3 BEDROOM

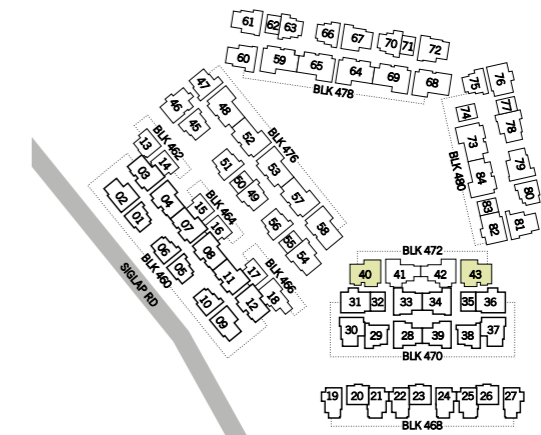
TYPE C7

130 sq m / 1,399 sq ft
#02-40, #02-43



TYPE C7-P1
138 sq m / 1,485 sq ft
#01-40, #01-43

BUY CONDO.sg



Area includes PES, A/C ledge, bay window, balcony, open terrace, roof terrace and void. Some units are mirror images of the apartment plans shown in the brochure. Please refer to the key plans for orientation.
All plans are not drawn to scale and are subject to changes as may be approved by the relevant authorities. All floor areas are approximate measurements only and are subject to government resurvey.
Abbreviation: A/C (Air-Con Ledge), BW (Bay Window), HS (Household Shelter), PES (Private Enclosed Space), SC (Shoe Cabinet) and ST (Store).



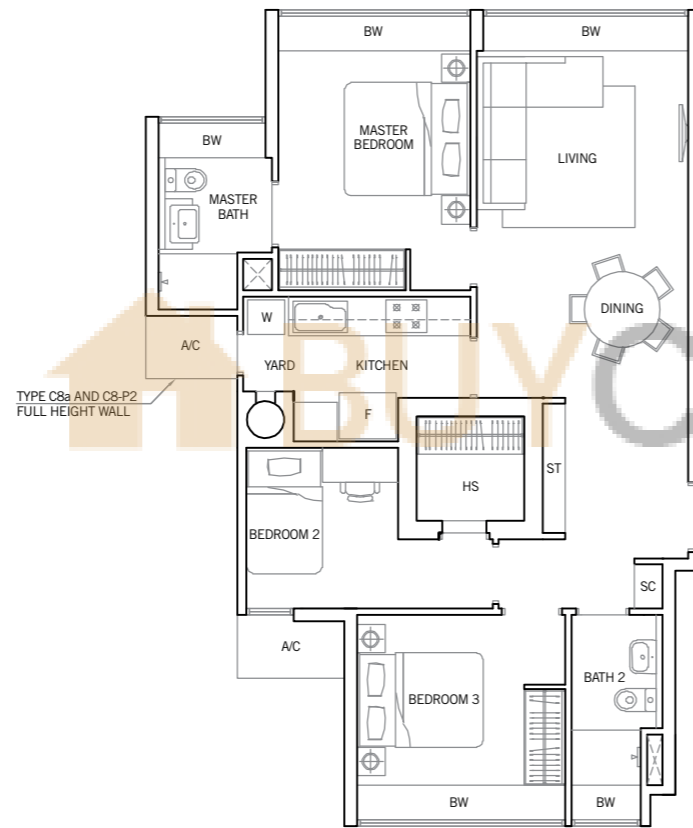
3 BEDROOM

TYPE C8

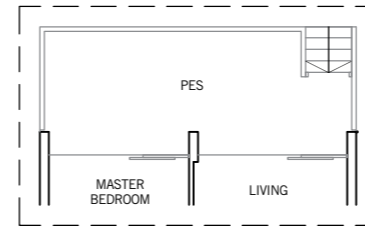
92 sq m / 990 sq ft
 #02-19 to #04-19, #02-27 to #04-27

TYPE C8a

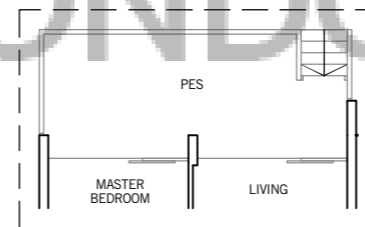
92 sq m / 990 sq ft
 #02-21 to #04-21, #02-22 to #04-22
 #02-24 to #04-24, #02-25 to #04-25



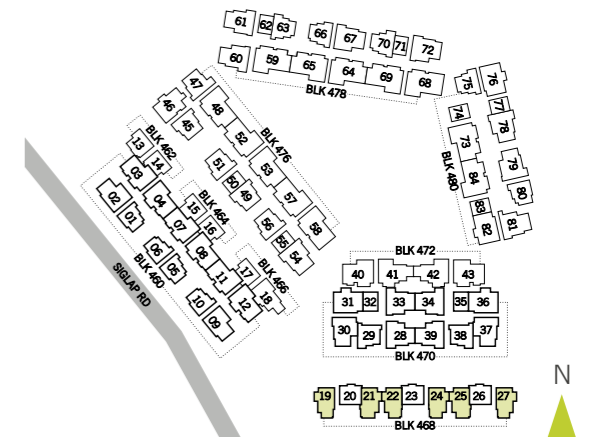
TYPE C8a AND C8-P2
 FULL HEIGHT WALL



TYPE C8-P1
 109 sq m / 1,173 sq ft
 #01-19, #01-27



TYPE C8-P2
 109 sq m / 1,173 sq ft
 #01-21, #01-22, #01-24, #01-25

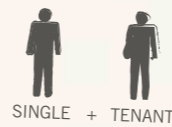


Area includes PES, A/C ledge, bay window, balcony, open terrace, roof terrace and void. Some units are mirror images of the apartment plans shown in the brochure. Please refer to the key plans for orientation.
 All plans are not drawn to scale and are subject to changes as may be approved by the relevant authorities. All floor areas are approximate measurements only and are subject to government resurvey.
Abbreviation: A/C (Air-Con Ledge), BW (Bay Window), HS (Household Shelter), PES (Private Enclosed Space), SC (Shoe Cabinet) and ST (Store).

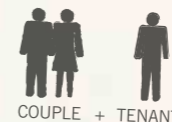
DUAL KEY UNITS: 2 homes under one roof



Living together doesn't mean you have to live apart from freedom. Our unique selection of dual key units is ideal for families living with grandparents, or young adults who want to stay with parents without compromising their privacy. Savvy homeowners could also get more out of their investment by having a tenant in the adjoining space. Take your pick of 1-bedroom units with an adjoining studio apartment, or 2-bedroom units with an additional studio apartment. Now you never have to be in 2 minds about sharing the same roof.



SINGLE + TENANT



COUPLE + TENANT



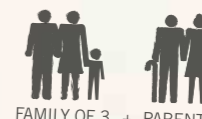
FAMILY OF 3 + TENANTS



PARENTS + GROWN CHILD



COUPLE + PARENTS



FAMILY OF 3 + PARENTS

2 BEDROOM DUAL KEY

TYPE D1

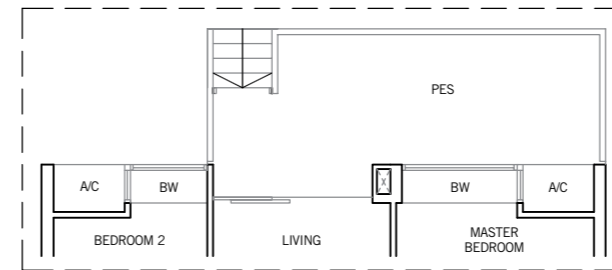
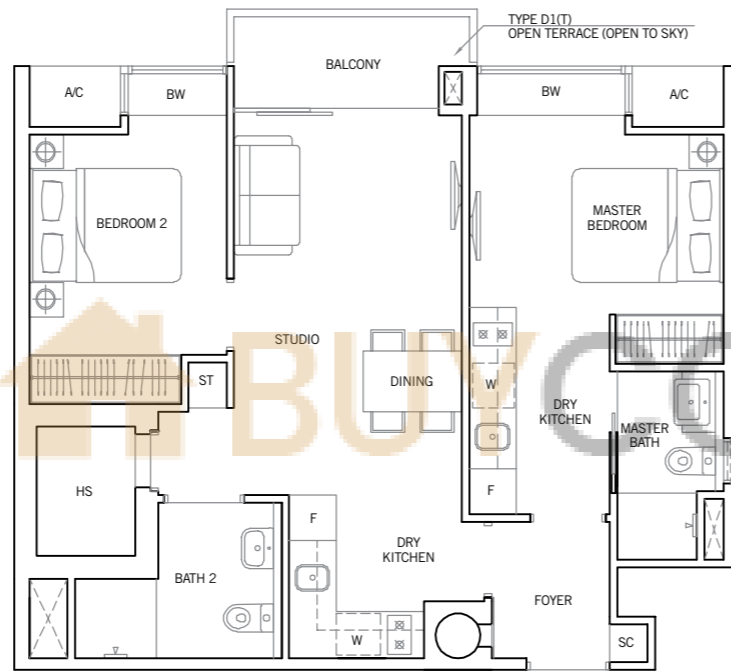
73 sq m / 786 sq ft

#02-20 to #04-20, #02-23 to #04-23, #02-26 to #04-26

TYPE D1(T)

73 sq m / 786 sq ft

#05-20, #05-23, #05-26

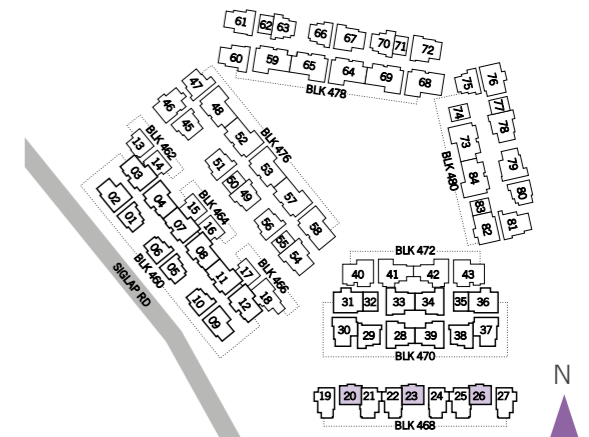


TYPE D1-P1

87 sq m / 936 sq ft

#01-20, #01-23, #01-26

Area includes PES, A/C ledge, bay window, balcony, open terrace, roof terrace and void. Some units are mirror images of the apartment plans shown in the brochure. Please refer to the key plans for orientation.
 All plans are not drawn to scale and are subject to changes as may be approved by the relevant authorities. All floor areas are approximate measurements only and are subject to government resurvey.
Abbreviation: A/C (Air-Con Ledge), BW (Bay Window), HS (Household Shelter), PES (Private Enclosed Space), SC (Shoe Cabinet) and ST (Store).



3 BEDROOM DUAL KEY

TYPE D2

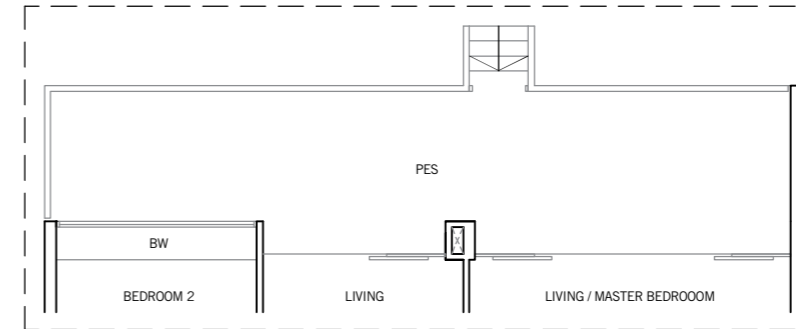
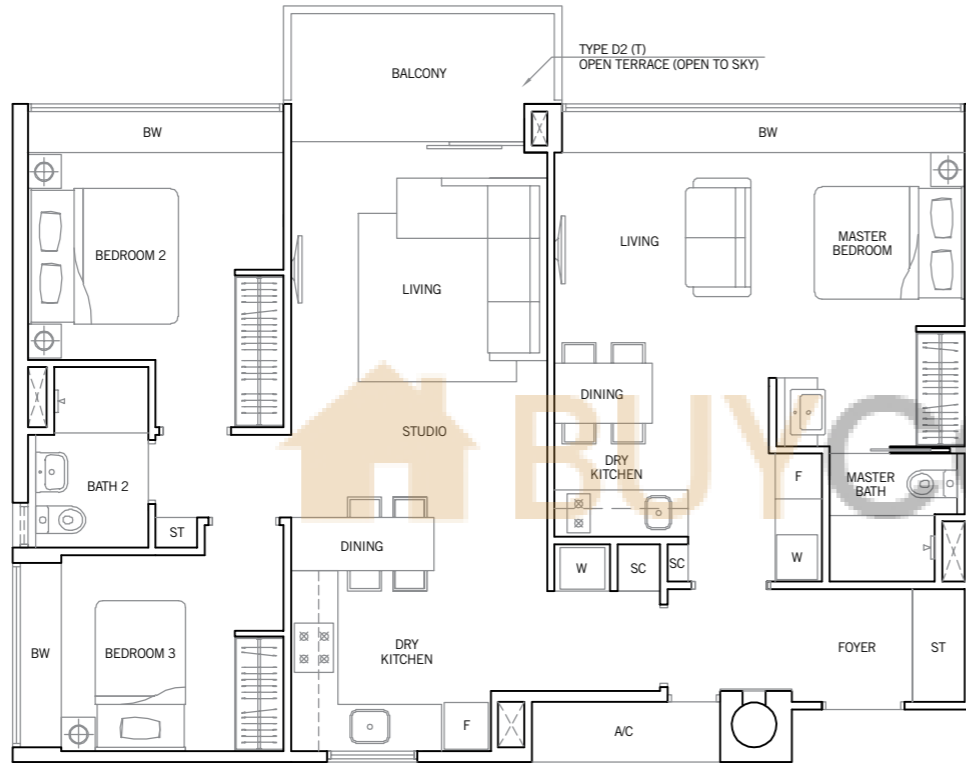
113 sq m / 1,216 sq ft

#01-31 to #03-31, #01-36 to #03-36
#02-76, #03-76, #02-82, #03-82

TYPE D2(T)

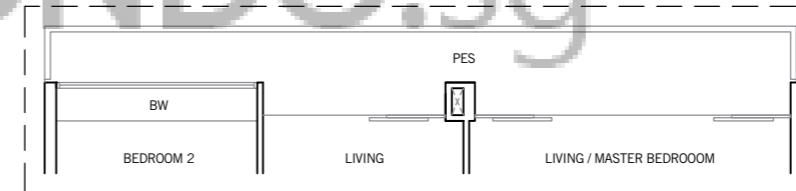
113 sq m / 1,216 sq ft

#04-31, #04-36, #04-76, #04-82



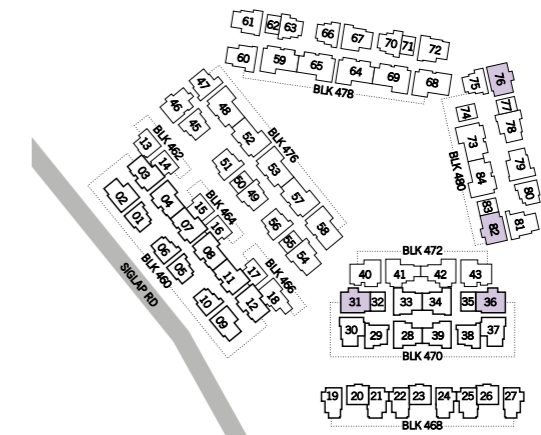
TYPE D2-P1

138 sq m / 1,485 sq ft
#01-82



TYPE D2-P2

121 sq m / 1,302 sq ft
#01-76



Area includes PES, A/C ledge, bay window, balcony, open terrace, roof terrace and void. Some units are mirror images of the apartment plans shown in the brochure. Please refer to the key plans for orientation.
All plans are not drawn to scale and are subject to changes as may be approved by the relevant authorities. All floor areas are approximate measurements only and are subject to government resurvey.
Abbreviation: A/C (Air-Con Ledge), BW (Bay Window), HS (Household Shelter), PES (Private Enclosed Space), SC (Shoe Cabinet) and ST (Store).

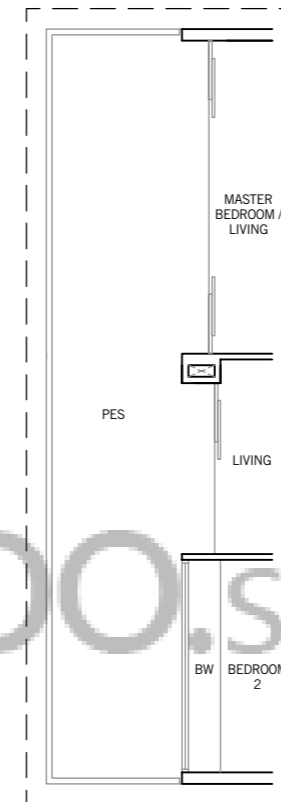
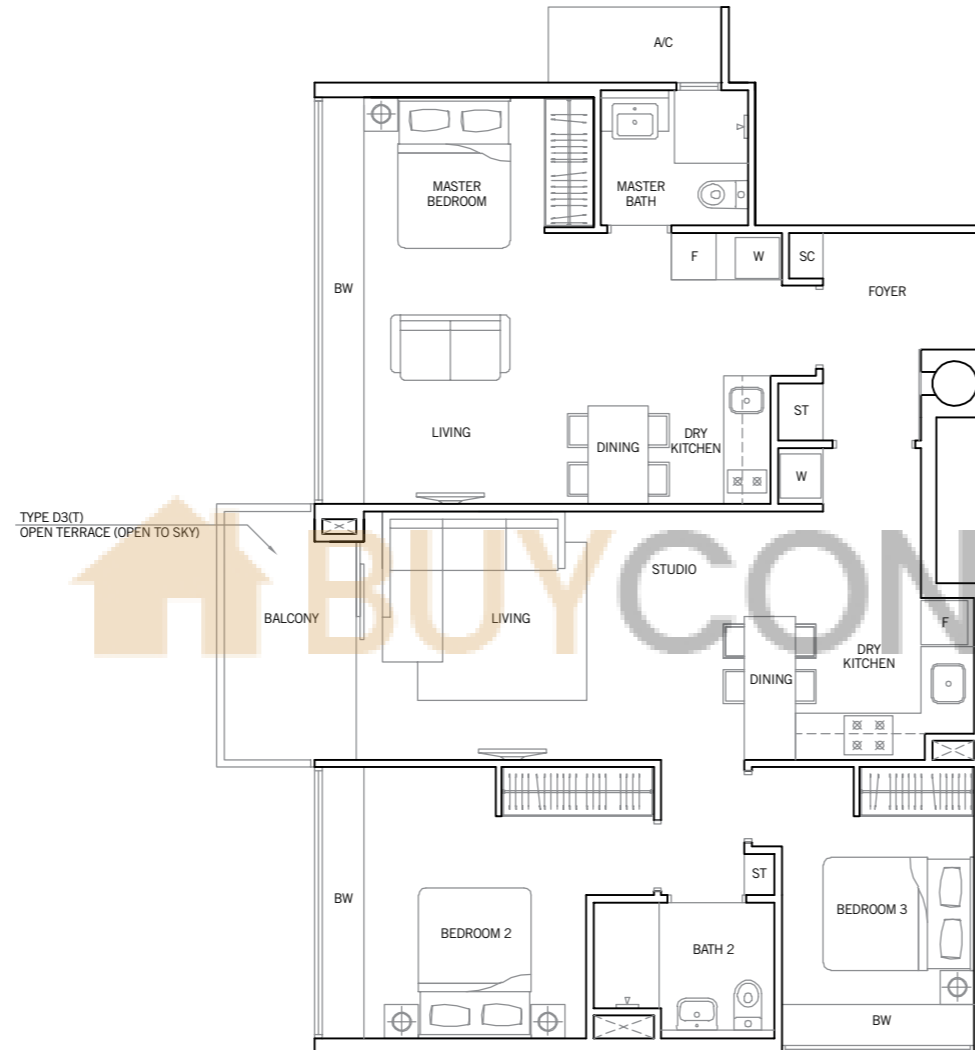
3 BEDROOM DUAL KEY

TYPE D3

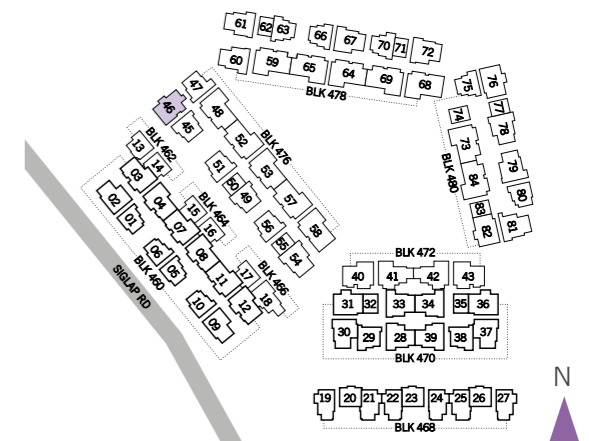
112 sq m / 1,206 sq ft
#02-46 to #04-46

TYPE D3(T)

112 sq m / 1,206 sq ft
#05-46



TYPE D3-P1
141 sq m / 1,518 sq ft
#01-46



Area includes PES, A/C ledge, bay window, balcony, open terrace, roof terrace and void. Some units are mirror images of the apartment plans shown in the brochure. Please refer to the key plans for orientation.
All plans are not drawn to scale and are subject to changes as may be approved by the relevant authorities. All floor areas are approximate measurements only and are subject to government resurvey.
Abbreviation: A/C (Air-Con Ledge), BW (Bay Window), HS (Household Shelter), PES (Private Enclosed Space), SC (Shoe Cabinet) and ST (Store).

4 BEDROOM

TYPE E1

148 sq m / 1,593 sq ft

#02-48, #03-48, #02-52, #03-52, #02-57, #03-57
#02-59, #03-59, #02-65, #03-65, #02-69, #03-69

TYPE E1(T)

148 sq m / 1,593 sq ft

#04-48, #04-52, #04-57, #04-59, #04-65, #04-69

TYPE E1a

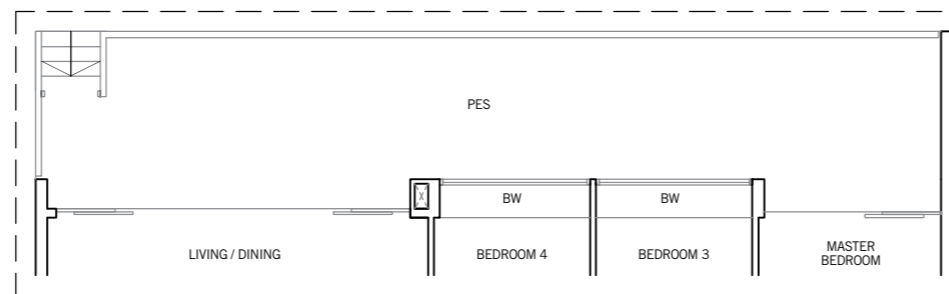
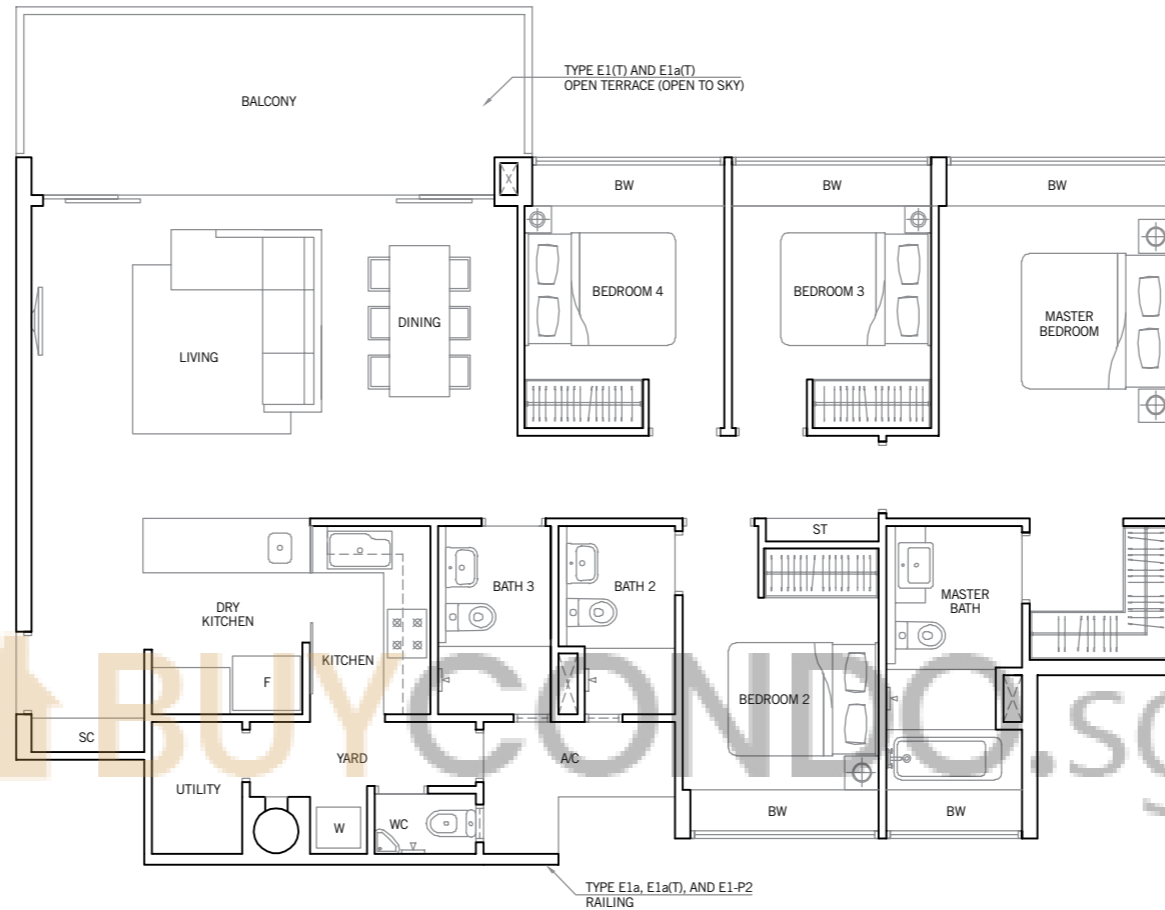
148 sq m / 1,593 sq ft

#02-53, #03-53, #02-64, #03-64, #02-73, #03-73
#02-84, #03-84

TYPE E1a(T)

148 sq m / 1,593 sq ft

#04-53, #04-64, #04-73, #04-84



TYPE E1-P1

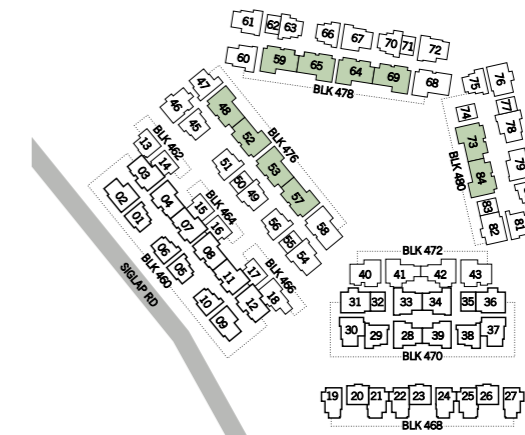
174 sq m / 1,873 sq ft

#01-48, #01-52, #01-57
#01-59, #01-69

TYPE E1-P2

174 sq m / 1,873 sq ft

#01-53, #01-64, #01-65
#01-73, #01-84



Area includes PES, A/C ledge, bay window, balcony, open terrace, roof terrace and void. Some units are mirror images of the apartment plans shown in the brochure. Please refer to the key plans for orientation.
All plans are not drawn to scale and are subject to changes as may be approved by the relevant authorities. All floor areas are approximate measurements only and are subject to government resurvey.
Abbreviation: A/C (Air-Con Ledge), BW (Bay Window), HS (Household Shelter), PES (Private Enclosed Space), SC (Shoe Cabinet) and ST (Store).

4 BEDROOM

TYPE E2

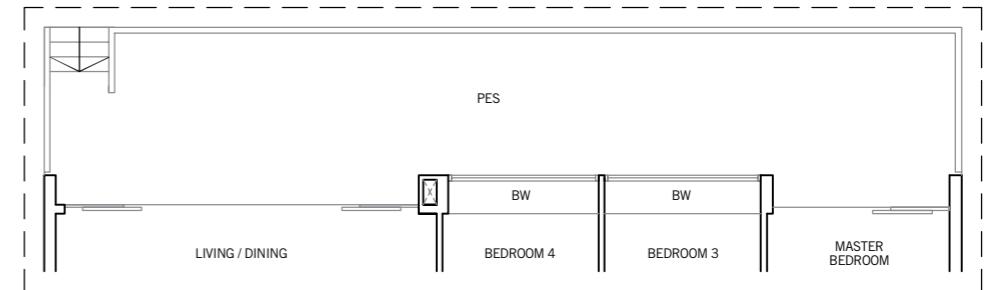
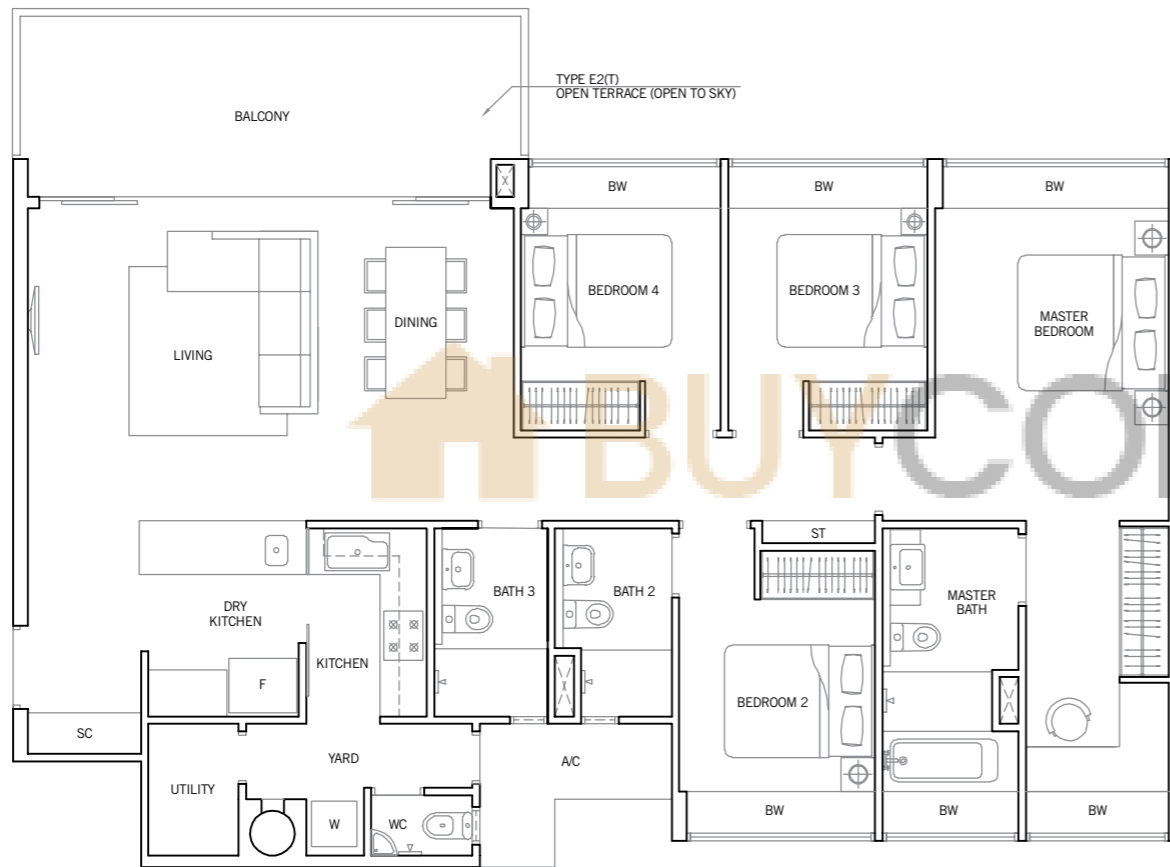
152 sq m / 1,636 sq ft

#02-58, #03-58, #02-68, #03-68

TYPE E2(T)

152 sq m / 1,636 sq ft

#04-58, #04-68

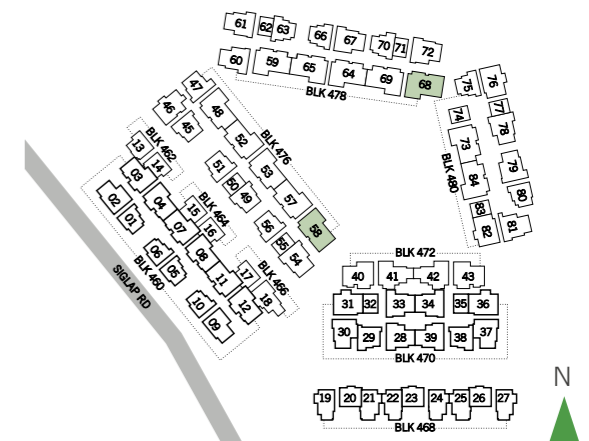


TYPE E2-P1

179 sq m / 1,927 sq ft

#01-58, #01-68

BUY CONDO.sg



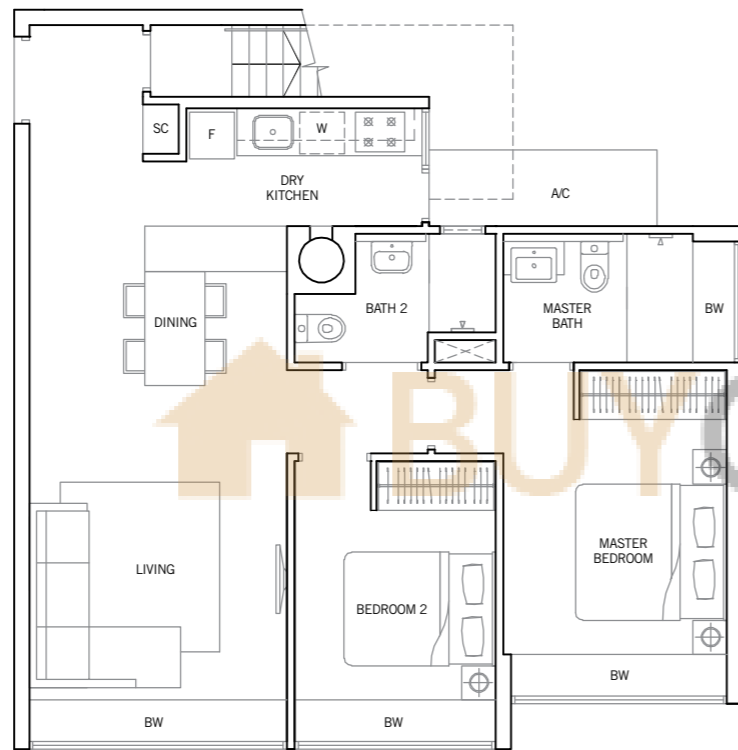
Area includes PES, A/C ledge, bay window, balcony, open terrace, roof terrace and void. Some units are mirror images of the apartment plans shown in the brochure. Please refer to the key plans for orientation.
 All plans are not drawn to scale and are subject to changes as may be approved by the relevant authorities. All floor areas are approximate measurements only and are subject to government resurvey.
Abbreviation: A/C (Air-Con Ledge), BW (Bay Window), HS (Household Shelter), PES (Private Enclosed Space), SC (Shoe Cabinet) and ST (Store).

2 BEDROOM ROOF TERRACE PENTHOUSE

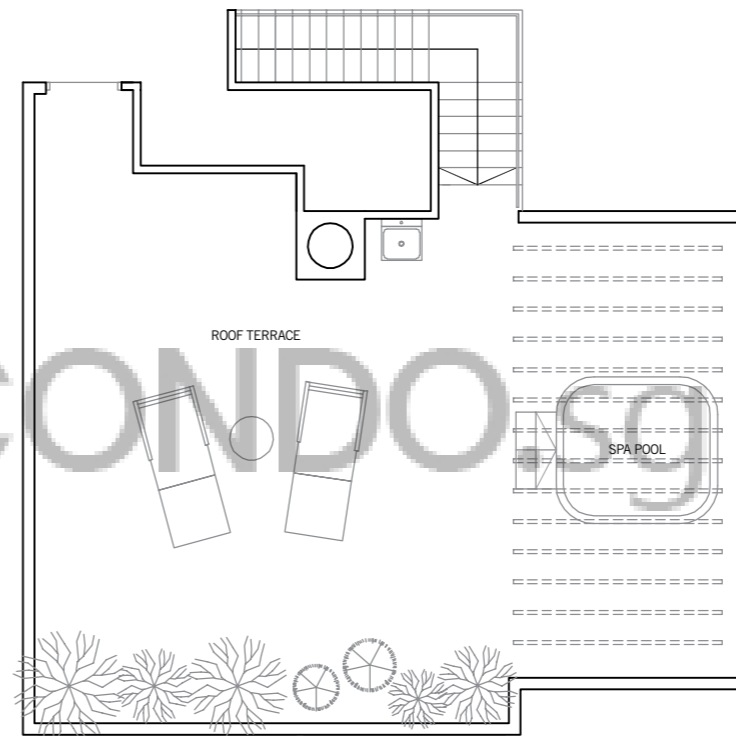
TYPE PH1

153 sq m / 1,647 sq ft

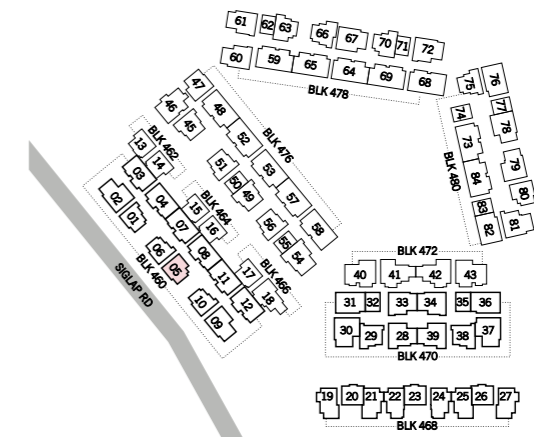
#05-05



LOWER FLOOR



UPPER FLOOR



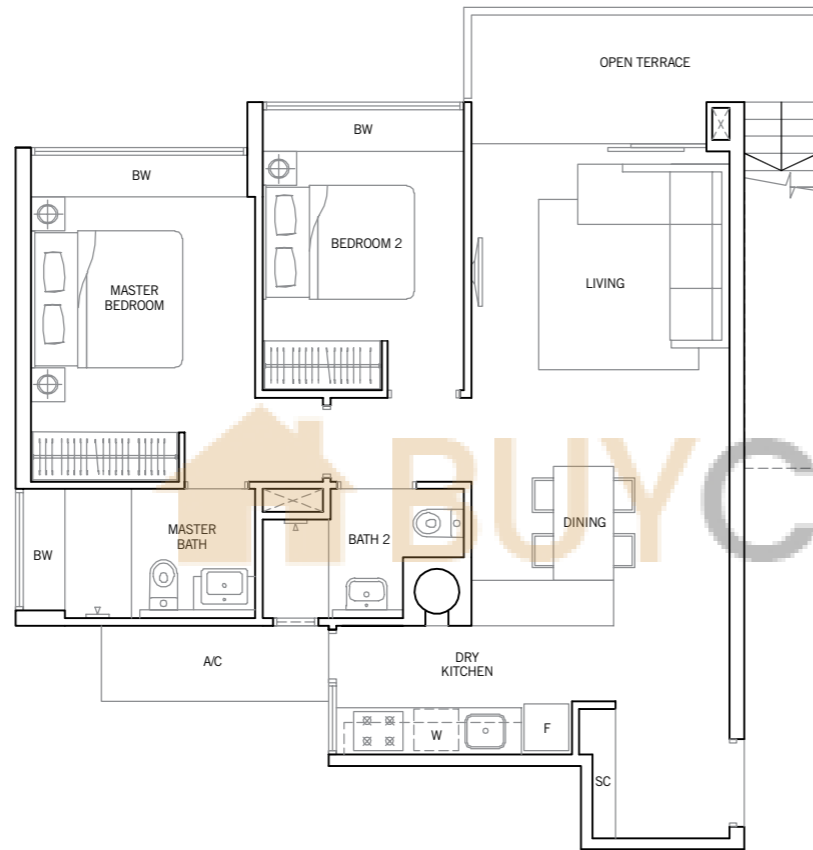
Area includes PES, A/C ledge, bay window, balcony, open terrace, roof terrace and void. Some units are mirror images of the apartment plans shown in the brochure. Please refer to the key plans for orientation.
 All plans are not drawn to scale and are subject to changes as may be approved by the relevant authorities. All floor areas are approximate measurements only and are subject to government resurvey.
Abbreviation: A/C (Air-Con Ledge), BW (Bay Window), HS (Household Shelter), PES (Private Enclosed Space), SC (Shoe Cabinet) and ST (Store).

2 BEDROOM ROOF TERRACE PENTHOUSE

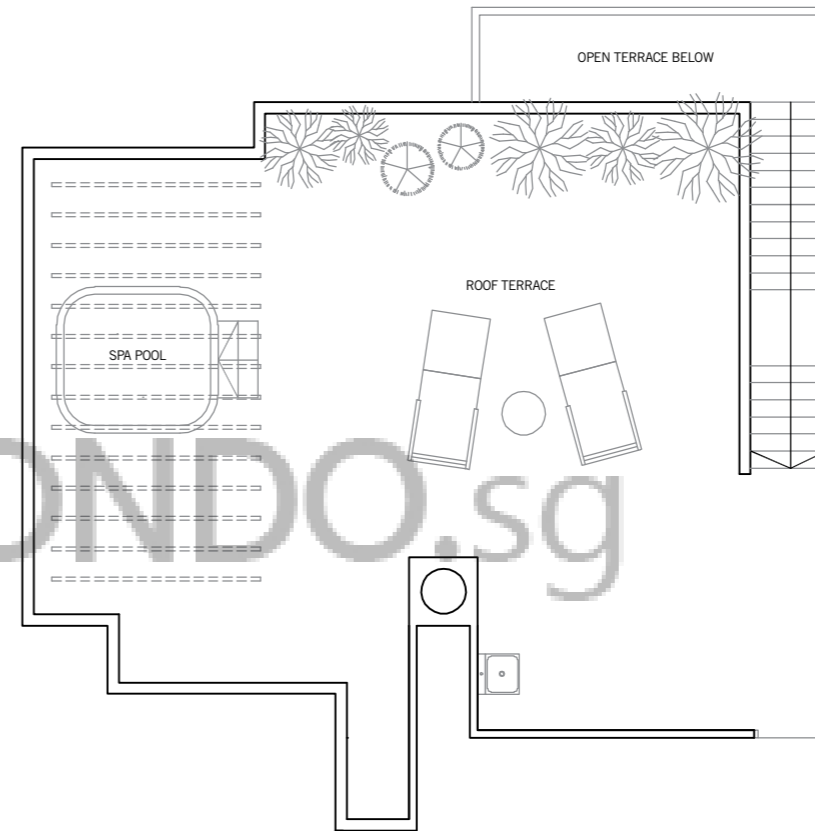
TYPE PH2

171 sq m / 1,841 sq ft

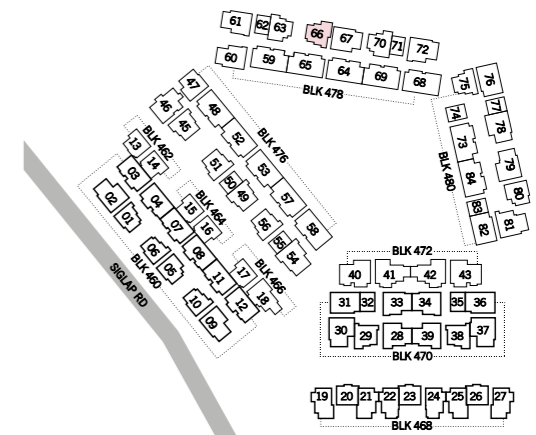
#05-66



LOWER FLOOR



UPPER FLOOR



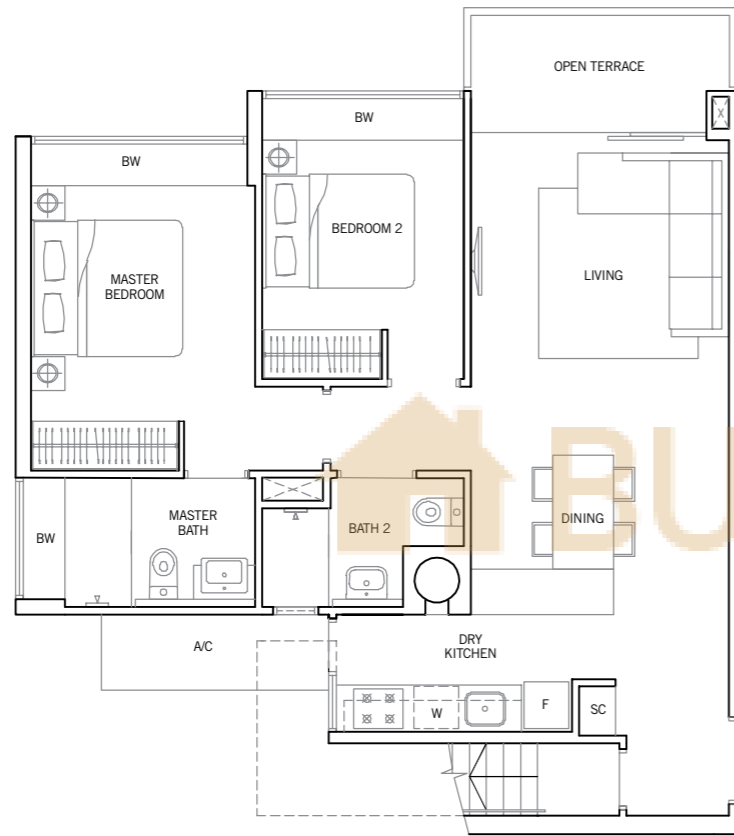
Area includes PES, A/C ledge, bay window, balcony, open terrace, roof terrace and void. Some units are mirror images of the apartment plans shown in the brochure. Please refer to the key plans for orientation.
 All plans are not drawn to scale and are subject to changes as may be approved by the relevant authorities. All floor areas are approximate measurements only and are subject to government resurvey.
Abbreviation: A/C (Air-Con Ledge), BW (Bay Window), HS (Household Shelter), PES (Private Enclosed Space), SC (Shoe Cabinet) and ST (Store).

2 BEDROOM ROOF TERRACE PENTHOUSE

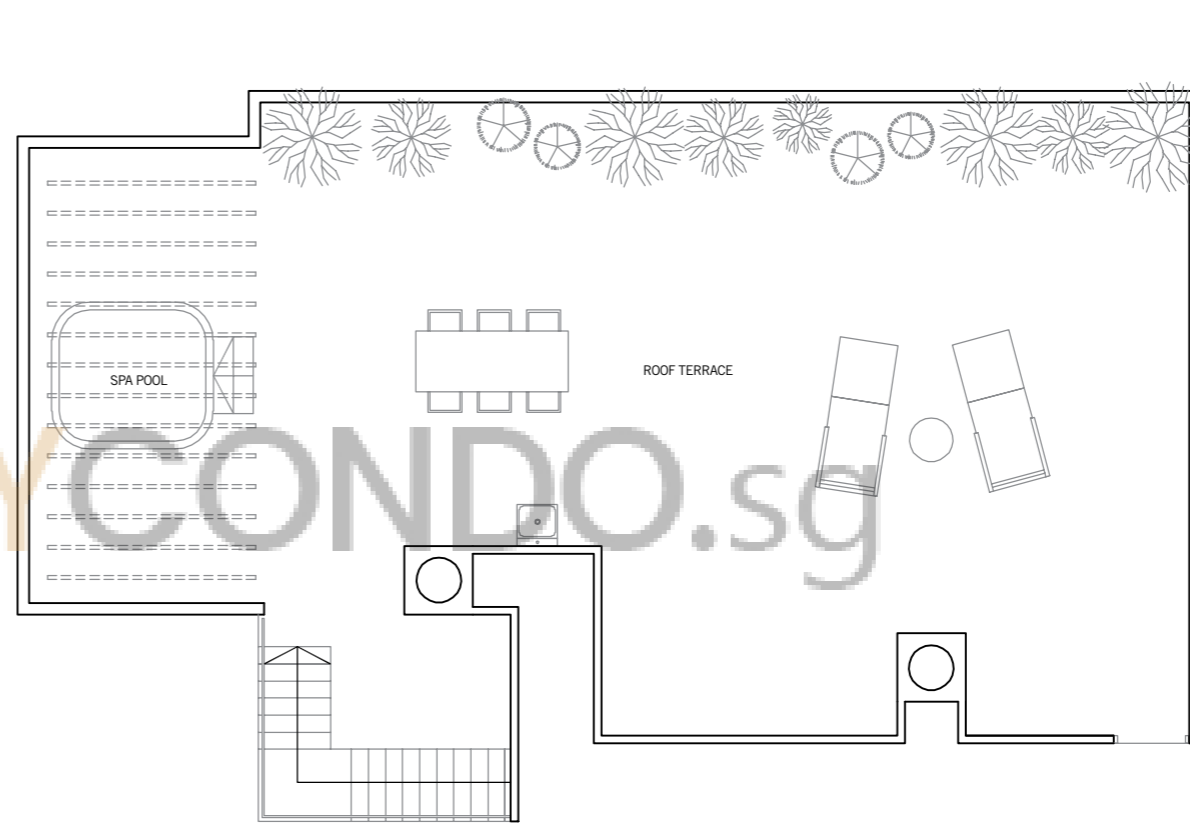
TYPE PH3

209 sq m / 2,250 sq ft

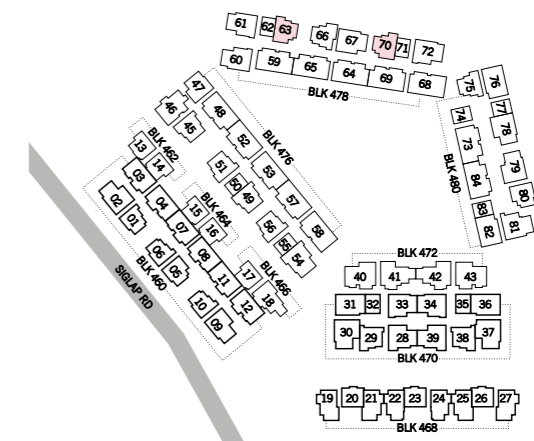
#05-63, #05-70



LOWER FLOOR



UPPER FLOOR



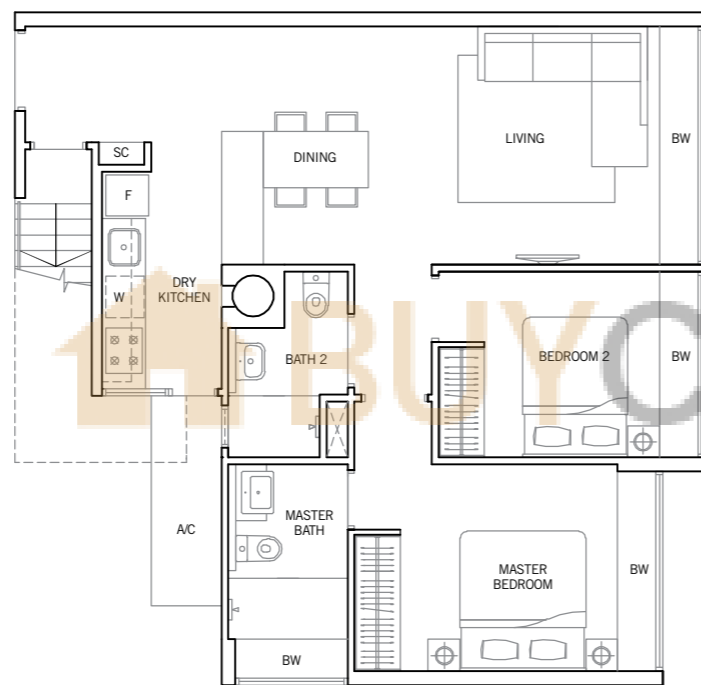
Area includes PES, A/C ledge, bay window, balcony, open terrace, roof terrace and void. Some units are mirror images of the apartment plans shown in the brochure. Please refer to the key plans for orientation.
 All plans are not drawn to scale and are subject to changes as may be approved by the relevant authorities. All floor areas are approximate measurements only and are subject to government resurvey.
Abbreviation: A/C (Air-Con Ledge), BW (Bay Window), HS (Household Shelter), PES (Private Enclosed Space), SC (Shoe Cabinet) and ST (Store).

2 BEDROOM ROOF TERRACE PENTHOUSE

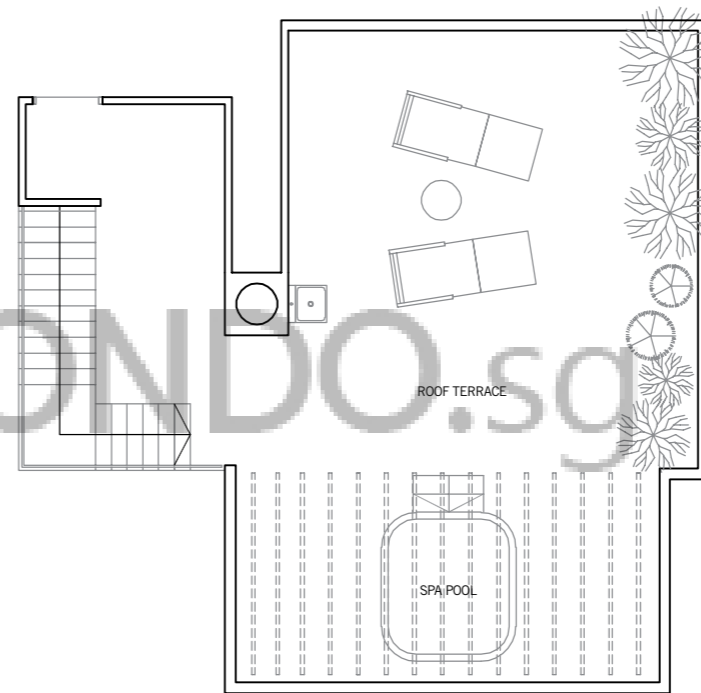
TYPE PH4

158 sq m / 1,701 sq ft

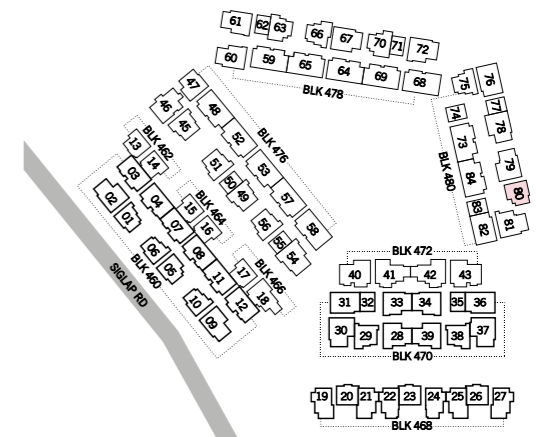
#05-80



LOWER FLOOR



UPPER FLOOR



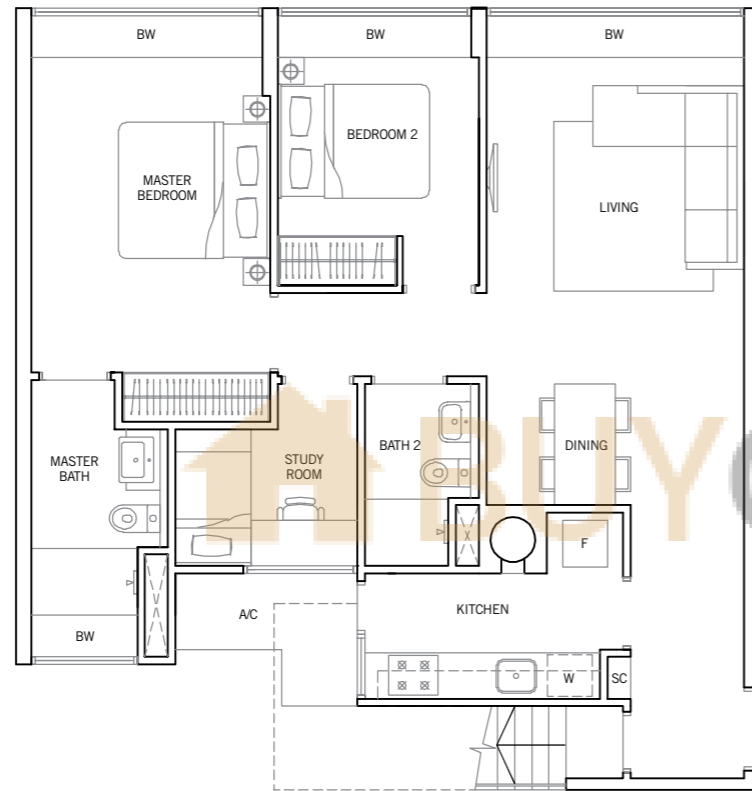
Area includes PES, A/C ledge, bay window, balcony, open terrace, roof terrace and void. Some units are mirror images of the apartment plans shown in the brochure. Please refer to the key plans for orientation.
All plans are not drawn to scale and are subject to changes as may be approved by the relevant authorities. All floor areas are approximate measurements only and are subject to government resurvey.
Abbreviation: A/C (Air-Con Ledge), BW (Bay Window), HS (Household Shelter), PES (Private Enclosed Space), SC (Shoe Cabinet) and ST (Store).

2 BEDROOM + STUDY ROOF TERRACE PENTHOUSE

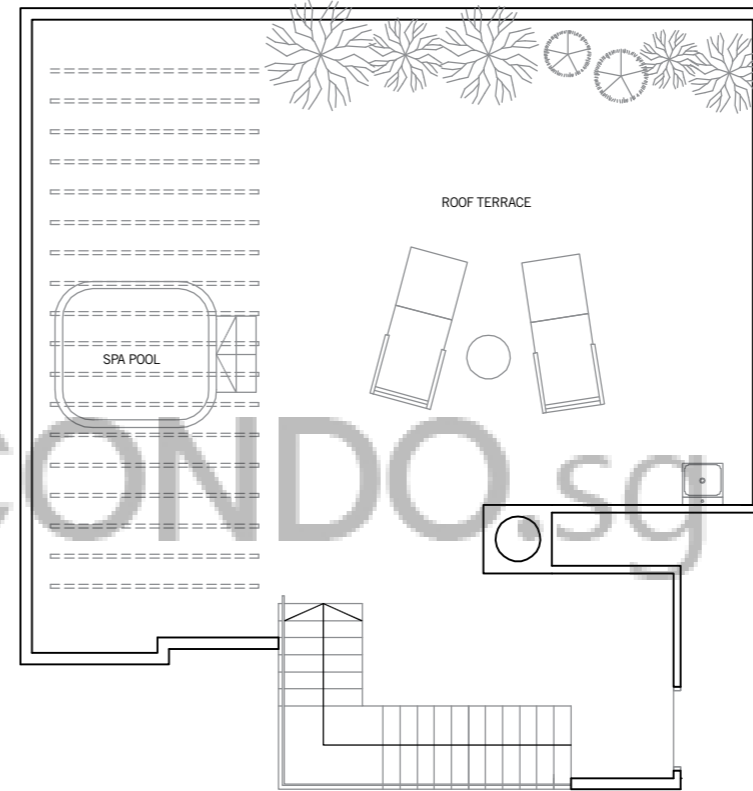
TYPE PH5

178 sq m / 1,916 sq ft

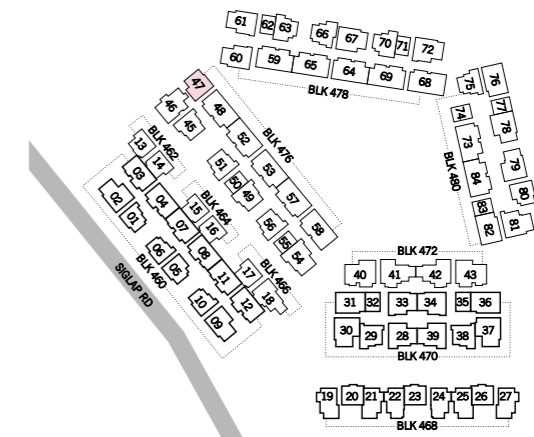
#05-47



LOWER FLOOR



UPPER FLOOR



Area includes PES, A/C ledge, bay window, balcony, open terrace, roof terrace and void. Some units are mirror images of the apartment plans shown in the brochure. Please refer to the key plans for orientation.
All plans are not drawn to scale and are subject to changes as may be approved by the relevant authorities. All floor areas are approximate measurements only and are subject to government resurvey.

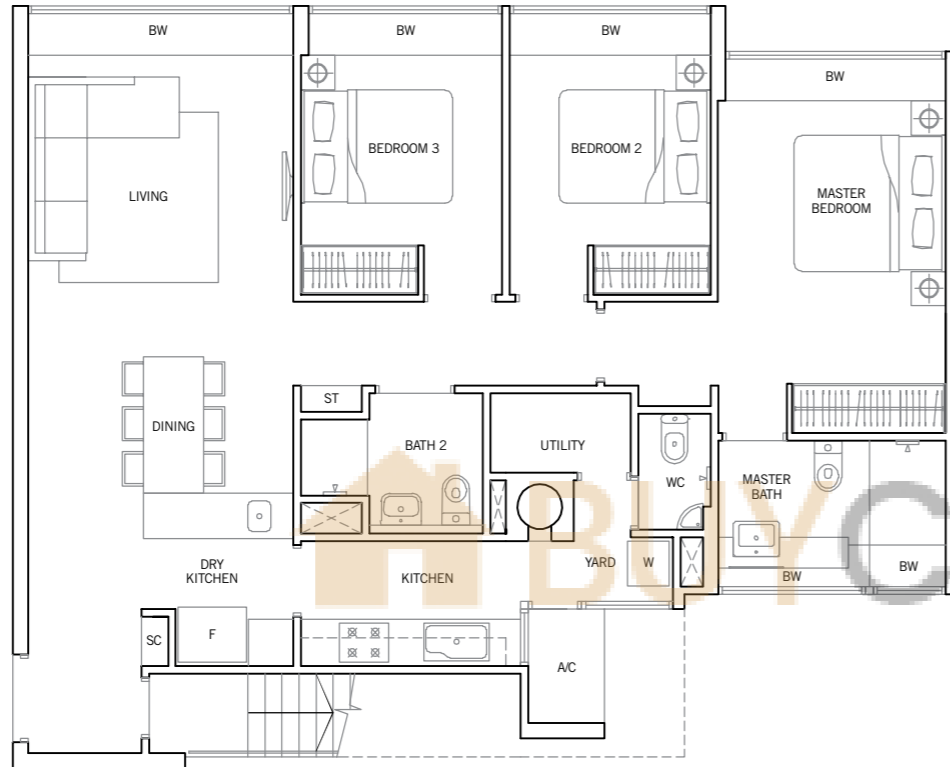
Abbreviation: A/C (Air-Con Ledge), BW (Bay Window), HS (Household Shelter), PES (Private Enclosed Space), SC (Shoe Cabinet) and ST (Store).

3 BEDROOM ROOF TERRACE PENTHOUSE

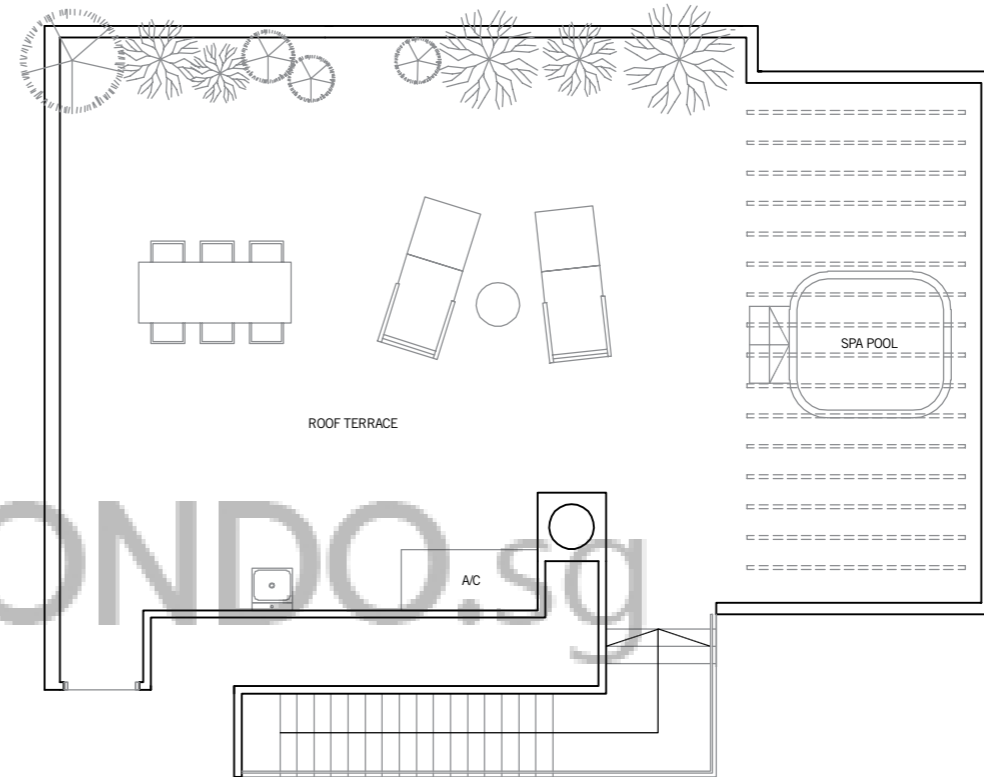
TYPE PH6

213 sq m / 2,293 sq ft

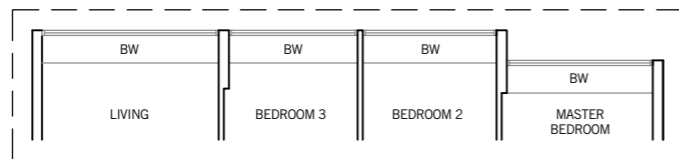
#05-67, #05-78, #05-79



LOWER FLOOR



UPPER FLOOR



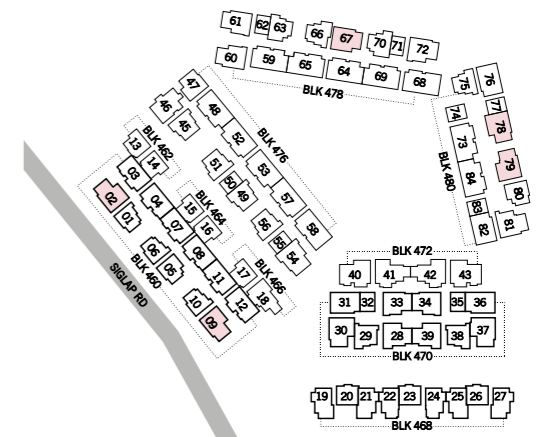
LOWER FLOOR

TYPE PH6a

213 sq m / 2,293 sq ft

#05-02, #05-09

Area includes PES, A/C ledge, bay window, balcony, open terrace, roof terrace and void. Some units are mirror images of the apartment plans shown in the brochure. Please refer to the key plans for orientation. All plans are not drawn to scale and are subject to changes as may be approved by the relevant authorities. All floor areas are approximate measurements only and are subject to government resurvey.
Abbreviation: A/C (Air-Con Ledge), BW (Bay Window), HS (Household Shelter), PES (Private Enclosed Space), SC (Shoe Cabinet) and ST (Store).

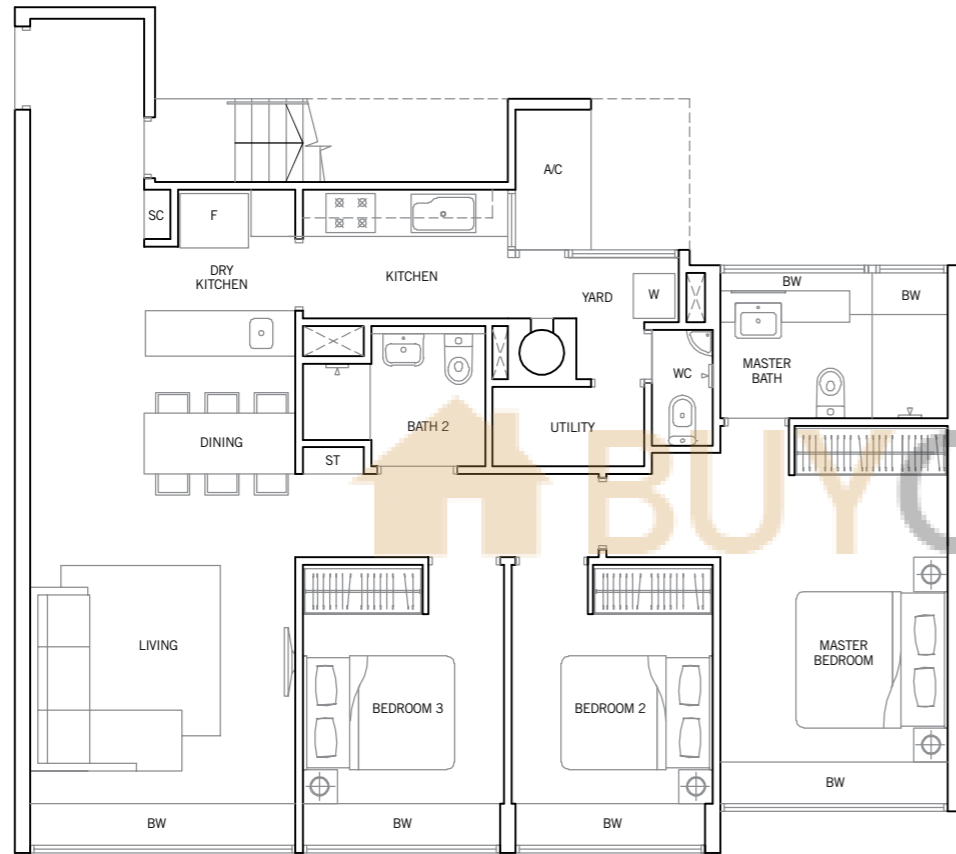


3 BEDROOM ROOF TERRACE PENTHOUSE

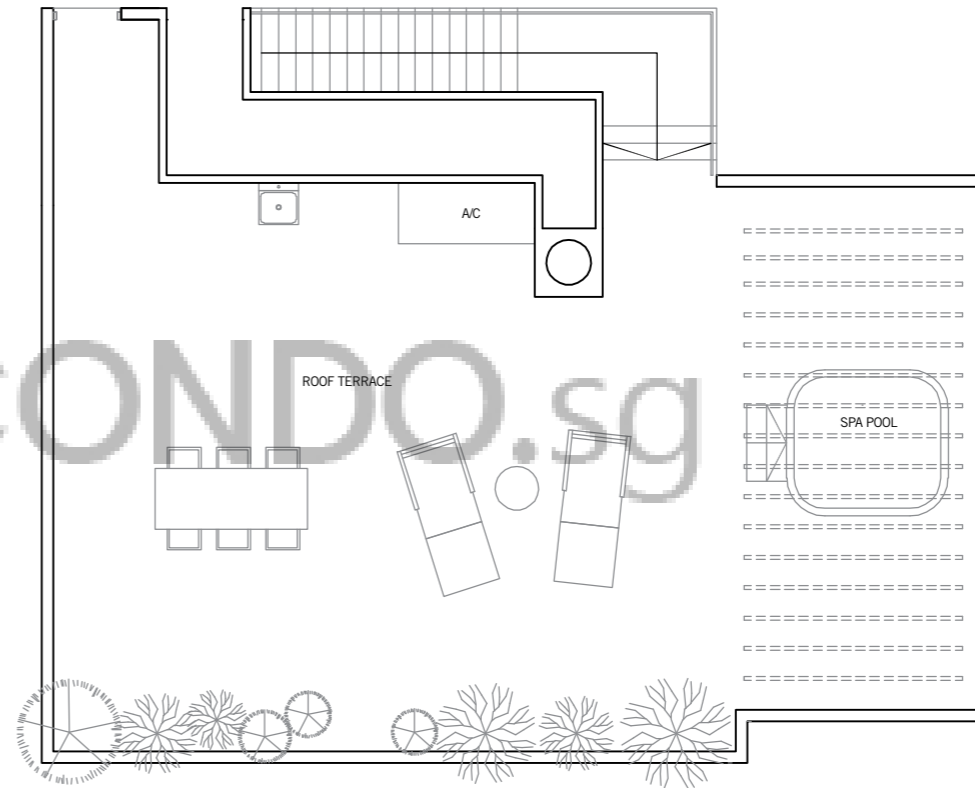
TYPE PH7

217 sq m / 2,336 sq ft

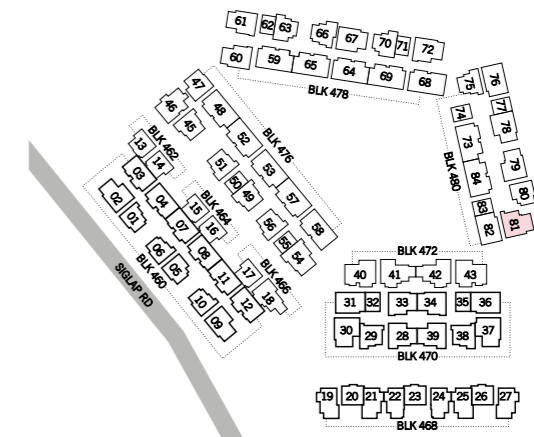
#05-81



LOWER FLOOR



UPPER FLOOR



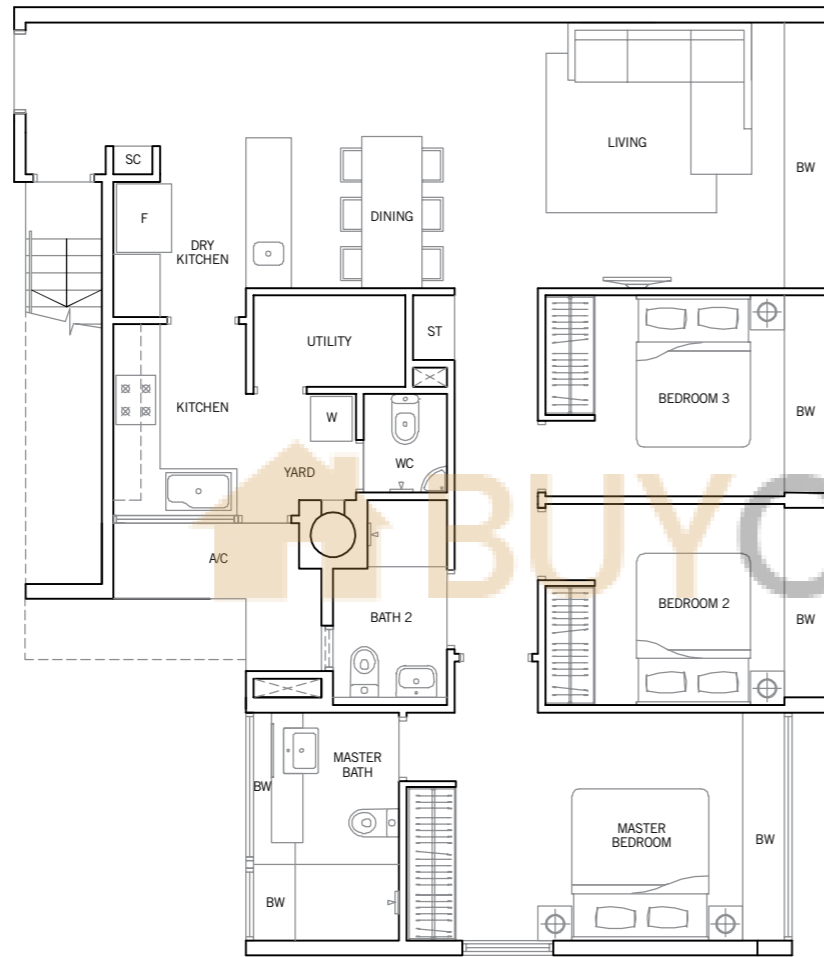
Area includes PES, A/C ledge, bay window, balcony, open terrace, roof terrace and void. Some units are mirror images of the apartment plans shown in the brochure. Please refer to the key plans for orientation.
 All plans are not drawn to scale and are subject to changes as may be approved by the relevant authorities. All floor areas are approximate measurements only and are subject to government resurvey.
Abbreviation: A/C (Air-Con Ledge), BW (Bay Window), HS (Household Shelter), PES (Private Enclosed Space), SC (Shoe Cabinet) and ST (Store).

3 BEDROOM ROOF TERRACE PENTHOUSE

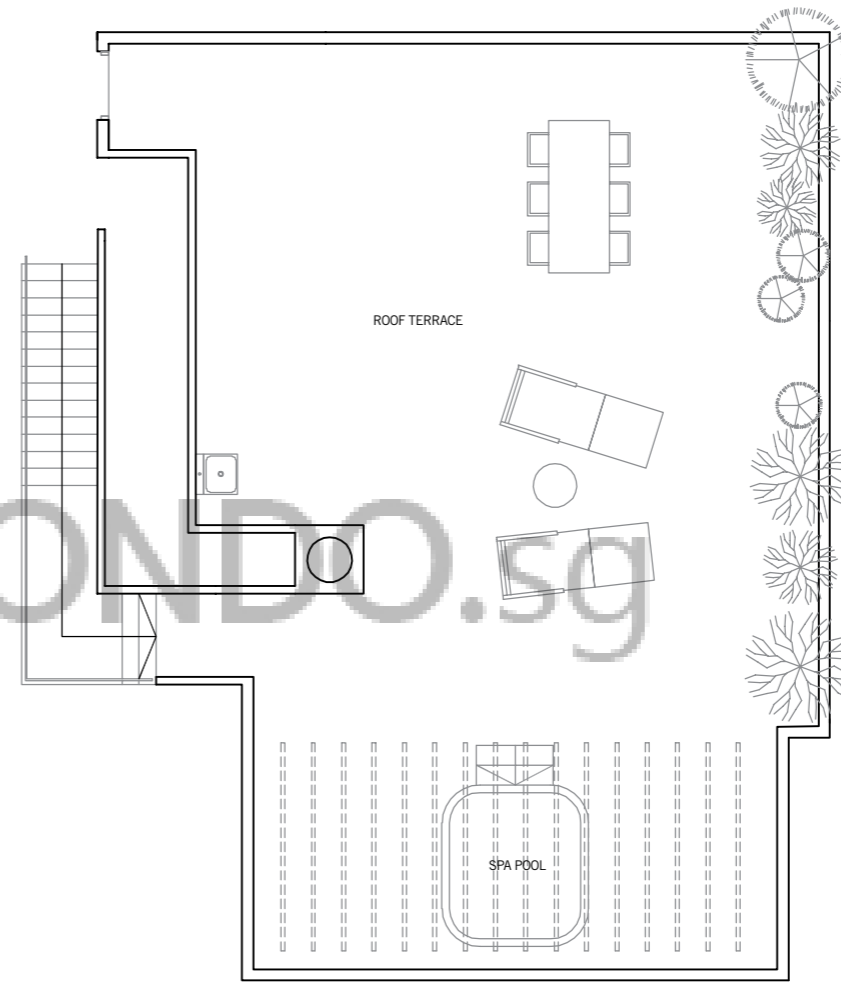
TYPE PH8

223 sq m / 2,400 sq ft

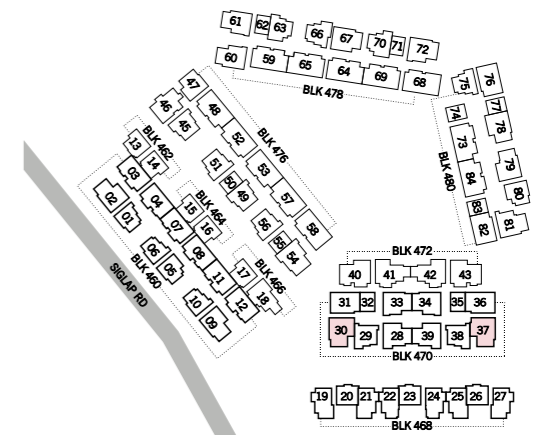
#05-30, #05-37



LOWER FLOOR



UPPER FLOOR



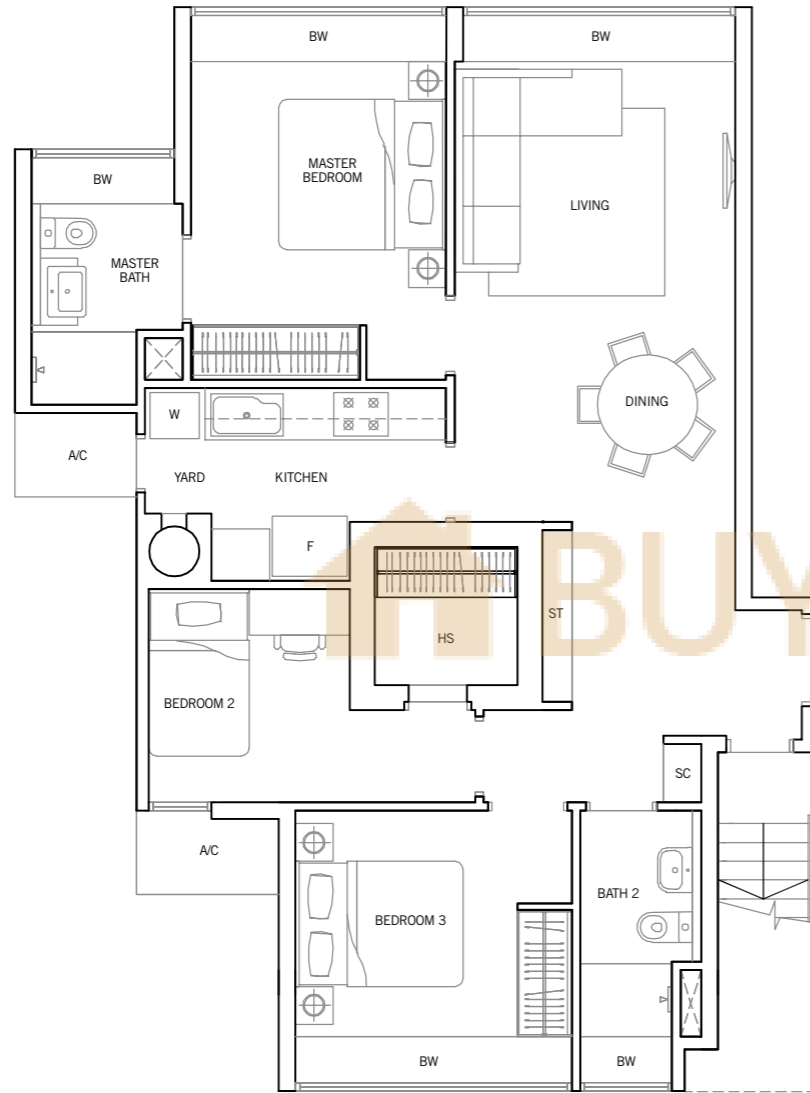
Area includes PES, A/C ledge, bay window, balcony, open terrace, roof terrace and void. Some units are mirror images of the apartment plans shown in the brochure. Please refer to the key plans for orientation.
 All plans are not drawn to scale and are subject to changes as may be approved by the relevant authorities. All floor areas are approximate measurements only and are subject to government resurvey.
Abbreviation: A/C (Air-Con Ledge), BW (Bay Window), HS (Household Shelter), PES (Private Enclosed Space), SC (Shoe Cabinet) and ST (Store).

3 BEDROOM ROOF TERRACE PENTHOUSE

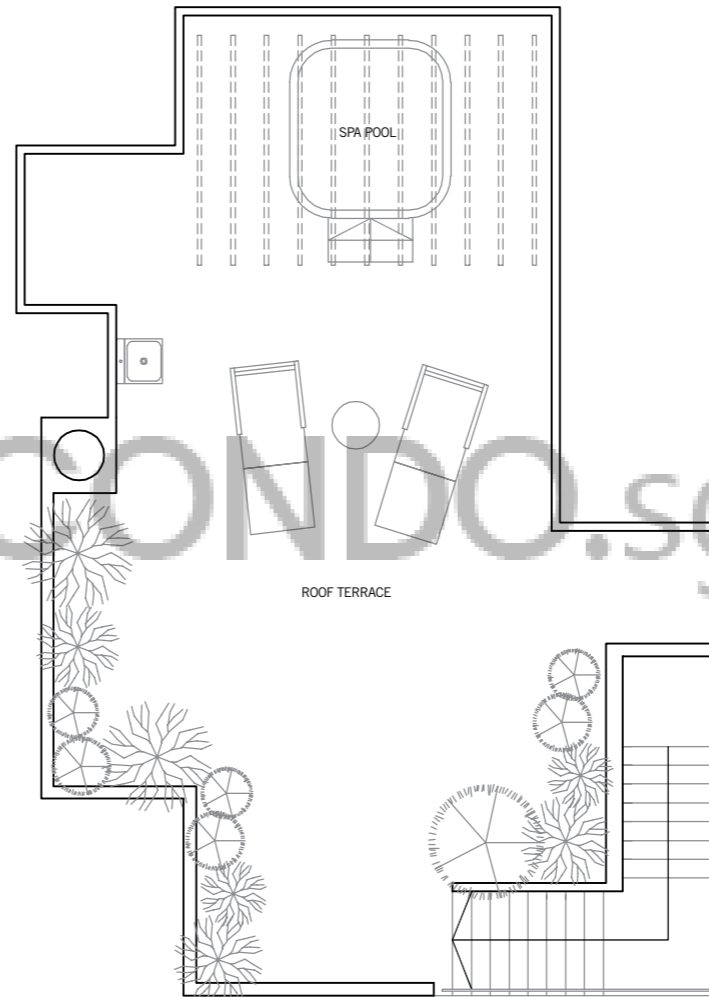
TYPE PH9

172 sq m / 1,851 sq ft

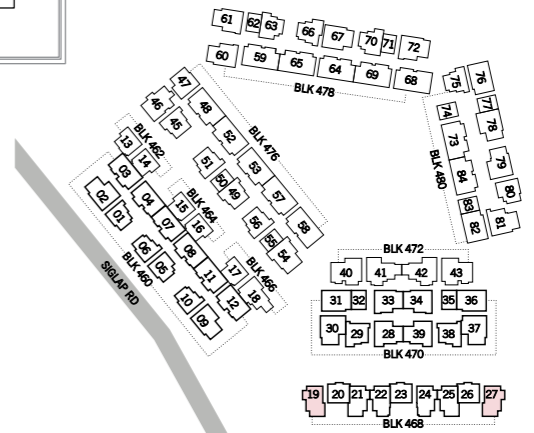
#05-19, #05-27



LOWER FLOOR



UPPER FLOOR



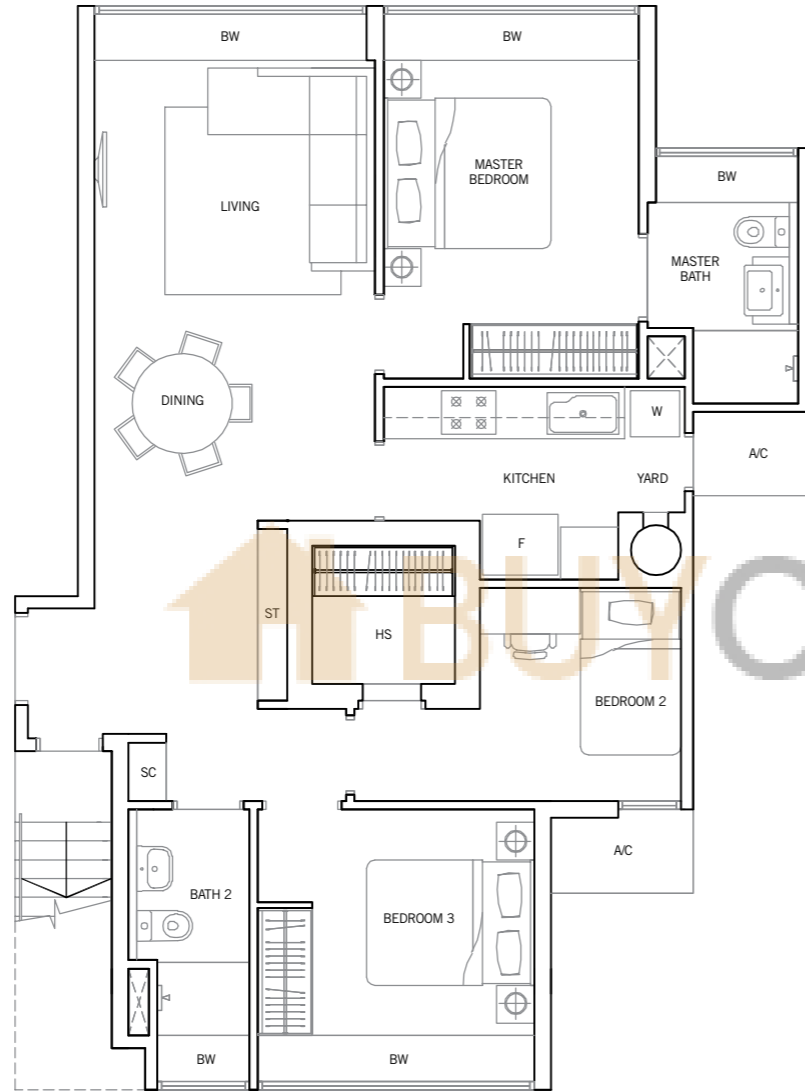
Area includes PES, A/C ledge, bay window, balcony, open terrace, roof terrace and void. Some units are mirror images of the apartment plans shown in the brochure. Please refer to the key plans for orientation.
 All plans are not drawn to scale and are subject to changes as may be approved by the relevant authorities. All floor areas are approximate measurements only and are subject to government resurvey.
Abbreviation: A/C (Air-Con Ledge), BW (Bay Window), HS (Household Shelter), PES (Private Enclosed Space), SC (Shoe Cabinet) and ST (Store).

3 BEDROOM ROOF TERRACE PENTHOUSE

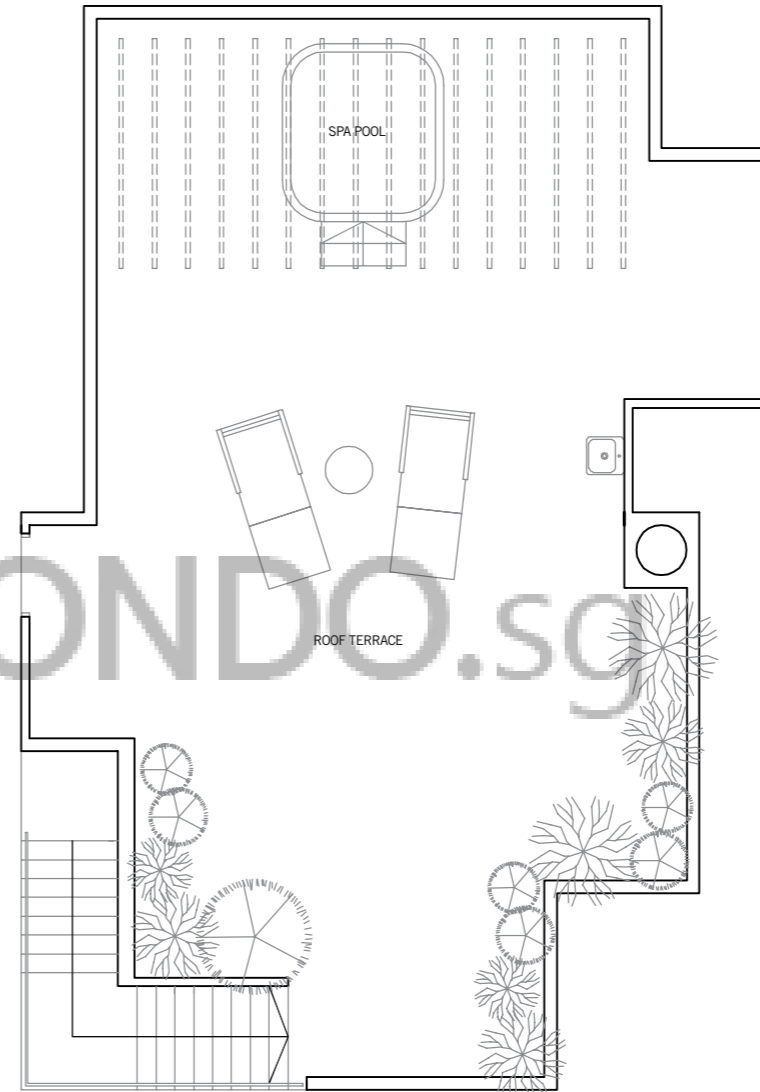
TYPE PH10

192 sq m / 2,067 sq ft

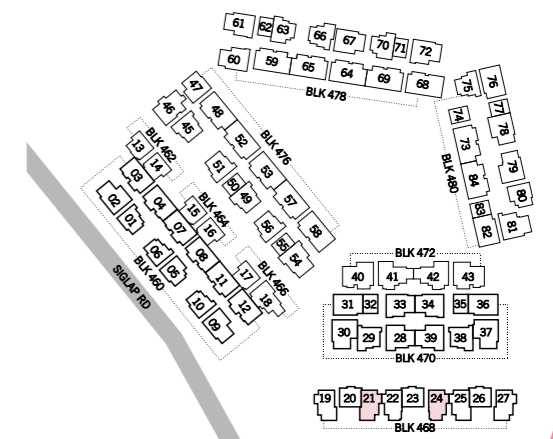
#05-21, #05-24



LOWER FLOOR



UPPER FLOOR



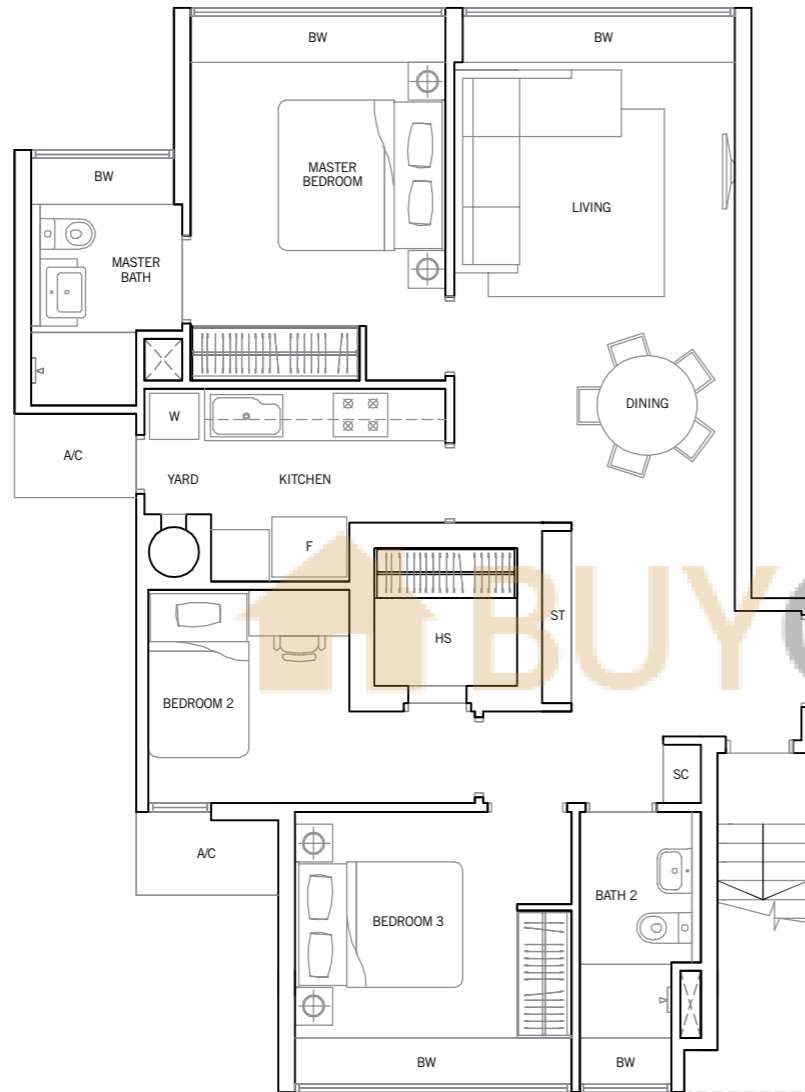
Area includes PES, A/C ledge, bay window, balcony, open terrace, roof terrace and void. Some units are mirror images of the apartment plans shown in the brochure. Please refer to the key plans for orientation.
 All plans are not drawn to scale and are subject to changes as may be approved by the relevant authorities. All floor areas are approximate measurements only and are subject to government resurvey.
Abbreviation: A/C (Air-Con Ledge), BW (Bay Window), HS (Household Shelter), PES (Private Enclosed Space), SC (Shoe Cabinet) and ST (Store).

3 BEDROOM ROOF TERRACE PENTHOUSE

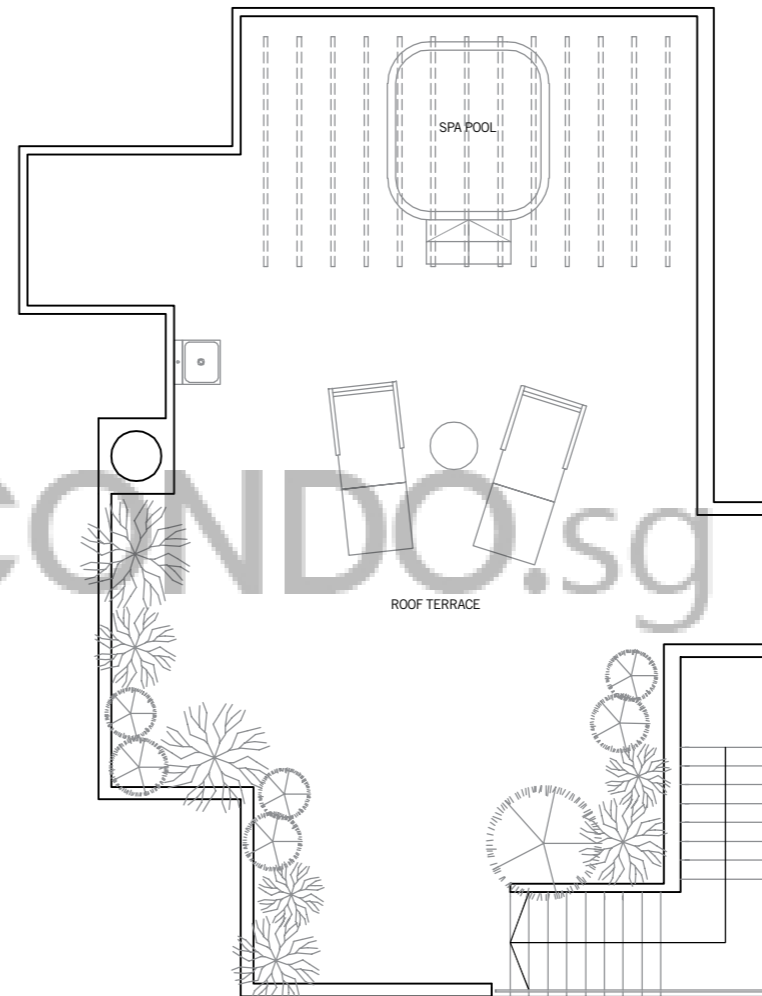
TYPE PH11

180 sq m / 1,938 sq ft

#05-22, #05-25



LOWER FLOOR



UPPER FLOOR

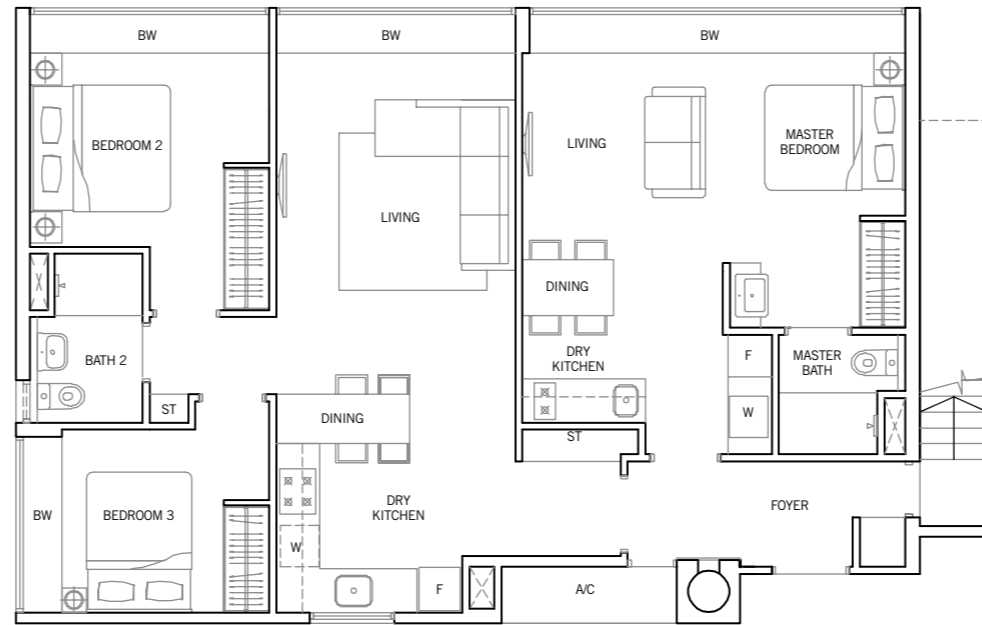


Area includes PES, A/C ledge, bay window, balcony, open terrace, roof terrace and void. Some units are mirror images of the apartment plans shown in the brochure. Please refer to the key plans for orientation.
 All plans are not drawn to scale and are subject to changes as may be approved by the relevant authorities. All floor areas are approximate measurements only and are subject to government resurvey.
Abbreviation: A/C (Air-Con Ledge), BW (Bay Window), HS (Household Shelter), PES (Private Enclosed Space), SC (Shoe Cabinet) and ST (Store).

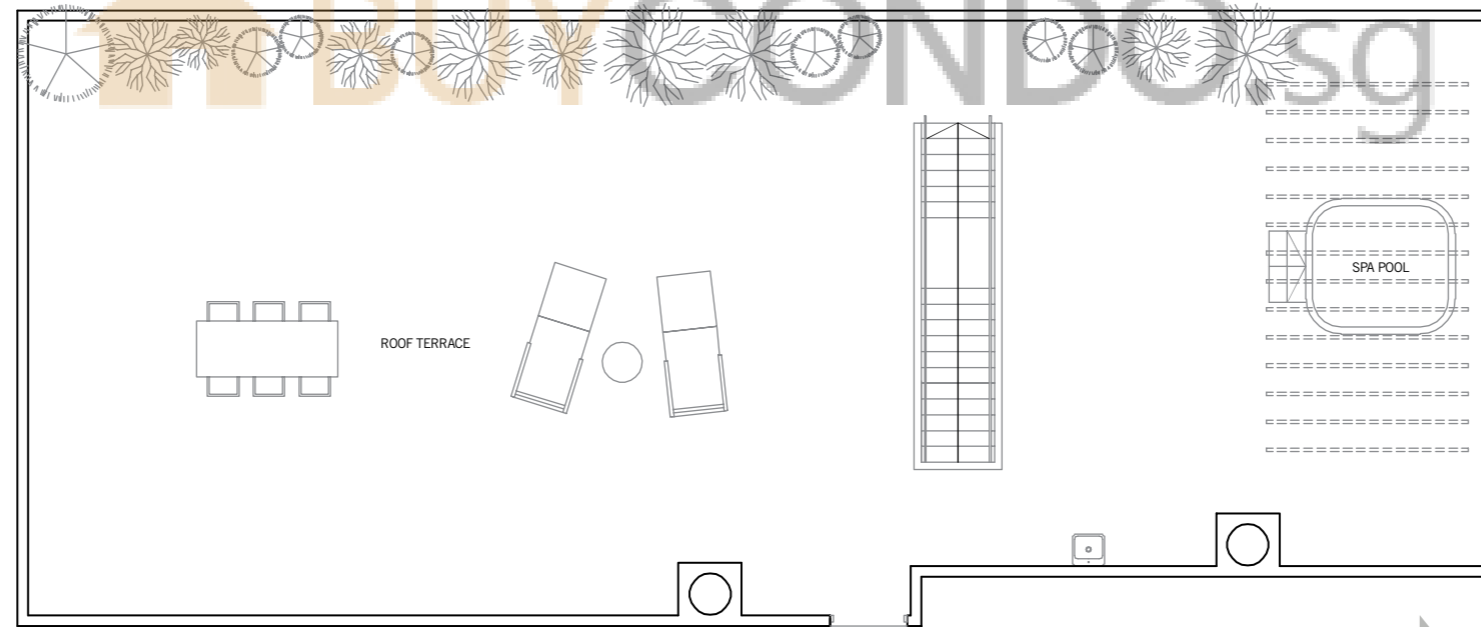
3 BEDROOM DUAL KEY ROOF TERRACE PENTHOUSE

TYPE PH12

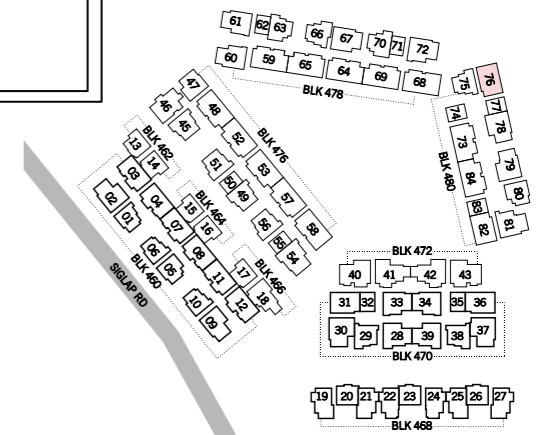
289 sq m / 3,111 sq ft
#05-76



LOWER FLOOR



UPPER FLOOR



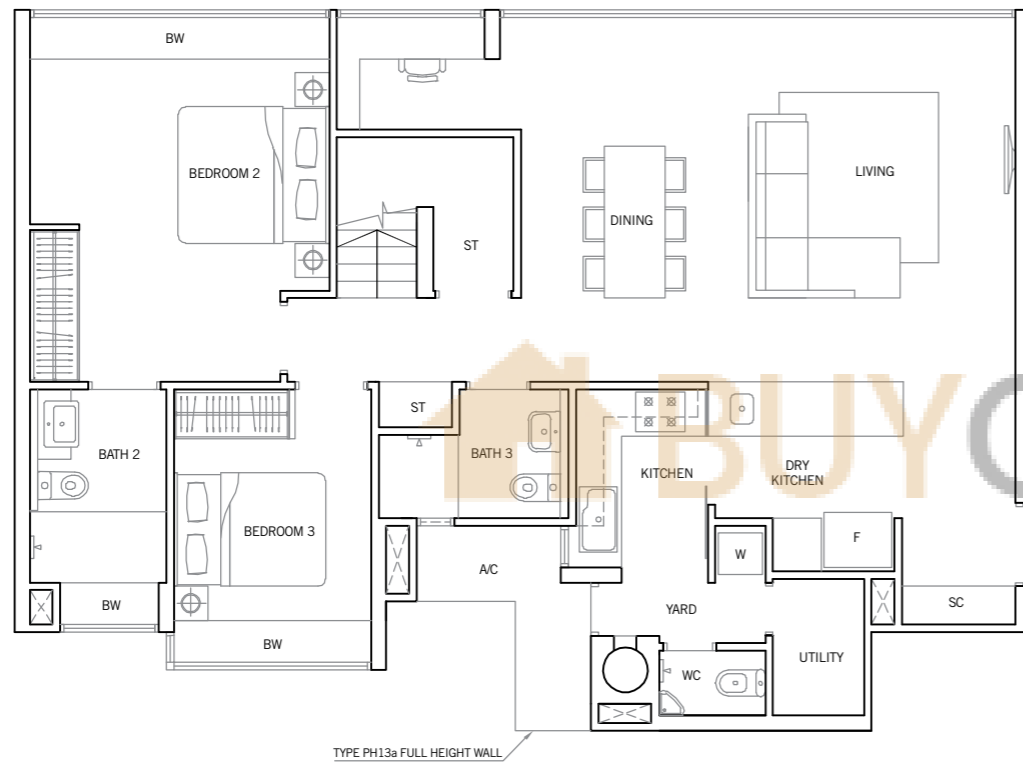
Area includes PES, A/C ledge, bay window, balcony, open terrace, roof terrace and void. Some units are mirror images of the apartment plans shown in the brochure. Please refer to the key plans for orientation.
All plans are not drawn to scale and are subject to changes as may be approved by the relevant authorities. All floor areas are approximate measurements only and are subject to government resurvey.
Abbreviation: A/C (Air-Con Ledge), BW (Bay Window), HS (Household Shelter), PES (Private Enclosed Space), SC (Shoe Cabinet) and ST (Store).

3 BEDROOM DUPLEX PENTHOUSE

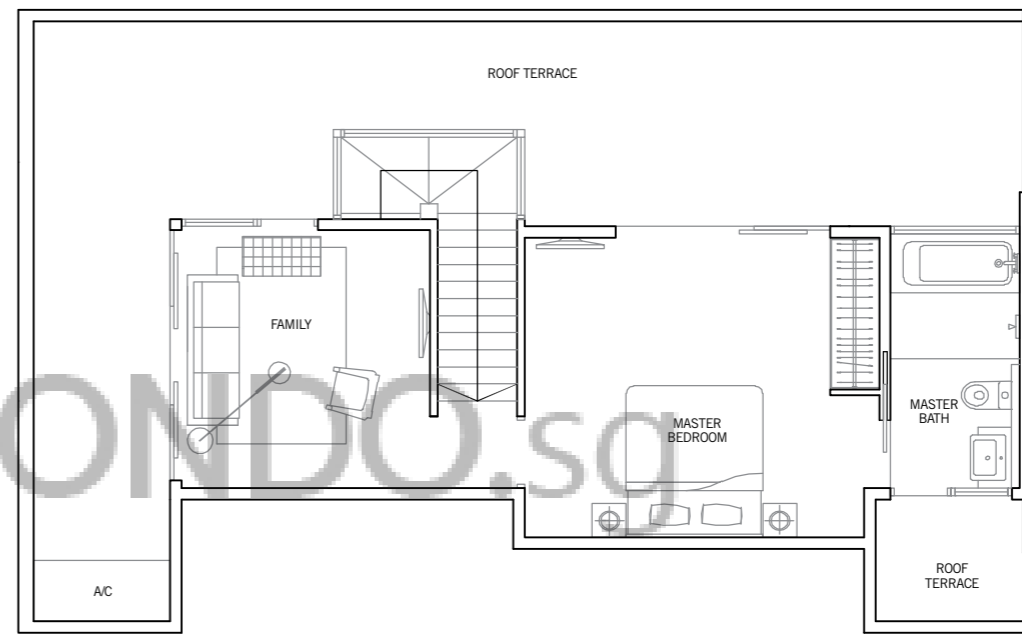
TYPE PH13

207 sq m / 2,228 sq ft
#05-03, #05-08, #05-12

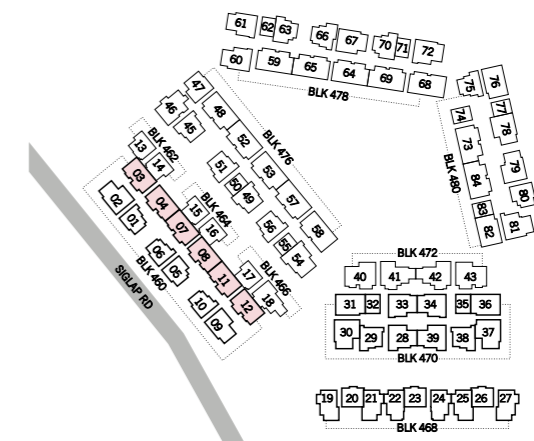
TYPE PH13a
207 sq m / 2,228 sq ft
#05-04, #05-07, #05-11



LOWER FLOOR



UPPER FLOOR

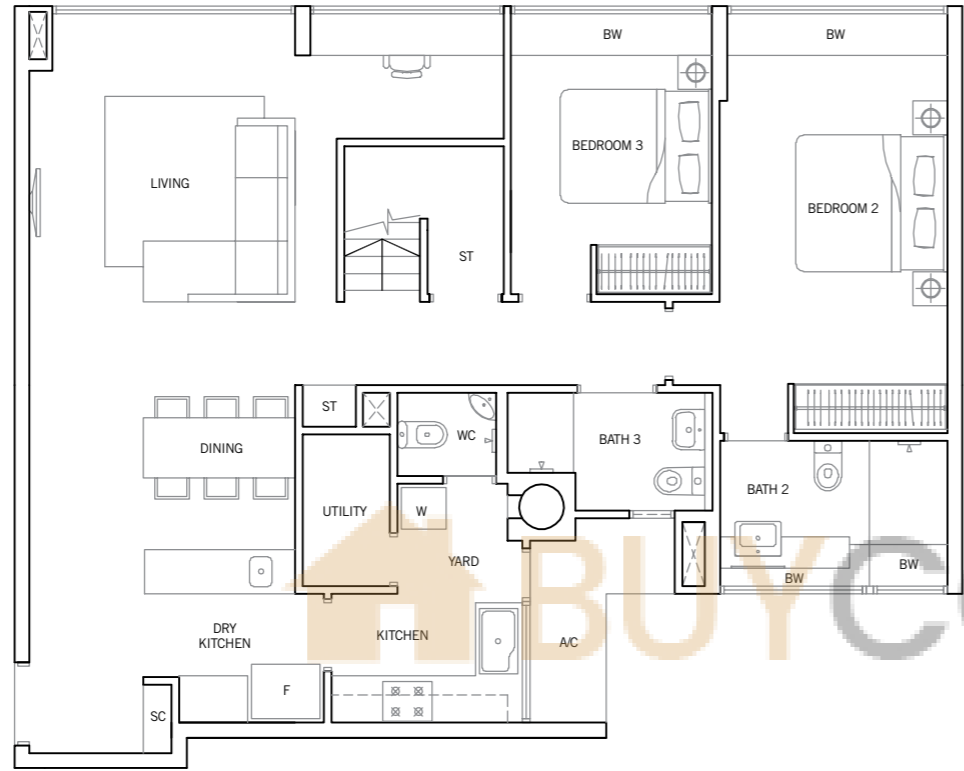


Area includes PES, A/C ledge, bay window, balcony, open terrace, roof terrace and void. Some units are mirror images of the apartment plans shown in the brochure. Please refer to the key plans for orientation.
All plans are not drawn to scale and are subject to changes as may be approved by the relevant authorities. All floor areas are approximate measurements only and are subject to government resurvey.
Abbreviation: A/C (Air-Con Ledge), BW (Bay Window), HS (Household Shelter), PES (Private Enclosed Space), SC (Shoe Cabinet) and ST (Store).

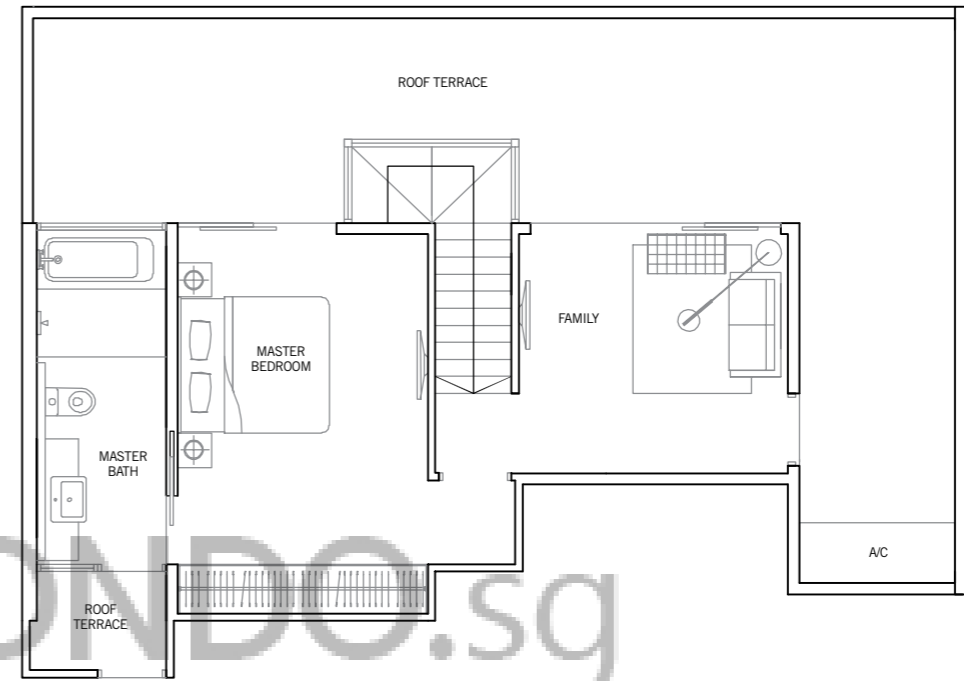
3 BEDROOM DUPLEX PENTHOUSE

TYPE PH14

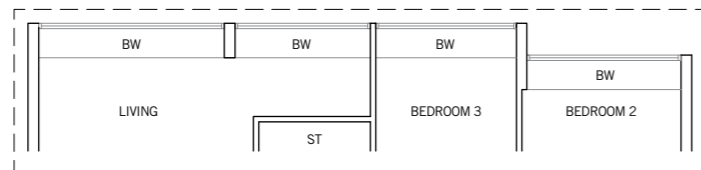
199 sq m / 2,142 sq ft
 #05-33, #05-34, #05-60



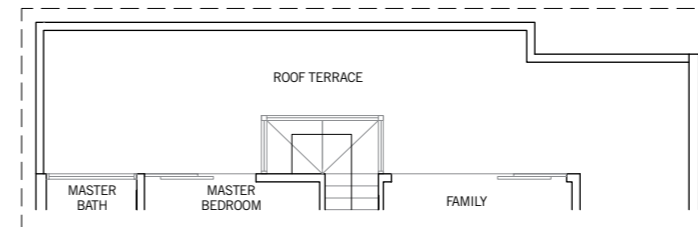
LOWER FLOOR



UPPER FLOOR



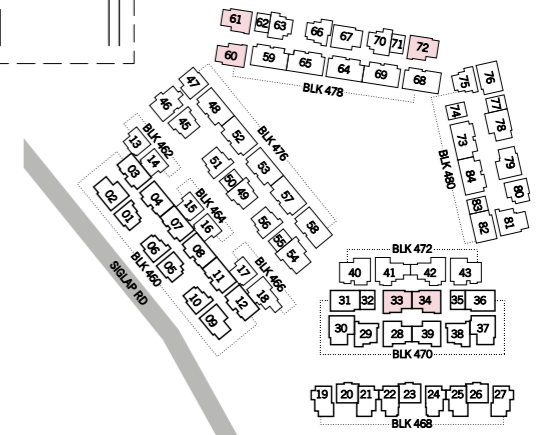
LOWER FLOOR



UPPER FLOOR

TYPE PH14a
 197 sq m / 2,121 sq ft
 #05-61, #05-72

Area includes PES, A/C ledge, bay window, balcony, open terrace, roof terrace and void. Some units are mirror images of the apartment plans shown in the brochure. Please refer to the key plans for orientation.
 All plans are not drawn to scale and are subject to changes as may be approved by the relevant authorities. All floor areas are approximate measurements only and are subject to government resurvey.
Abbreviation: A/C (Air-Con Ledge), BW (Bay Window), HS (Household Shelter), PES (Private Enclosed Space), SC (Shoe Cabinet) and ST (Store).



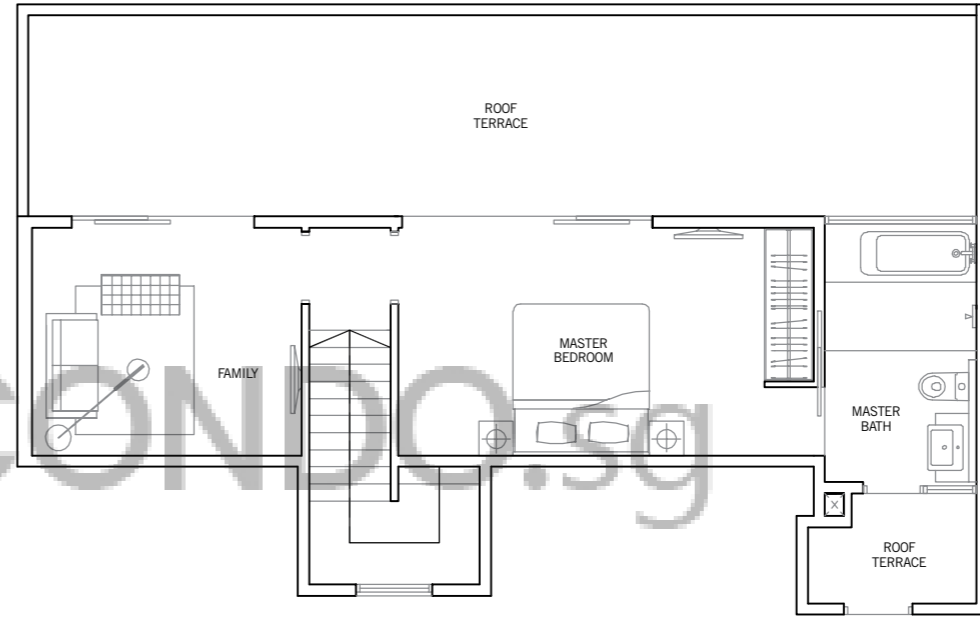
4 BEDROOM DUPLEX PENTHOUSE

TYPE PH15

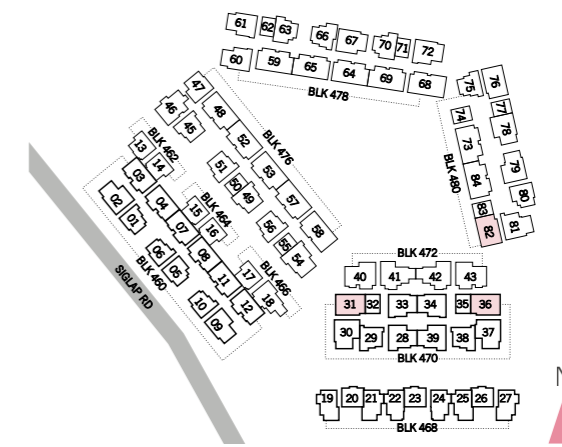
192 sq m / 2,067 sq ft
 #05-31, #05-36, #05-82



LOWER FLOOR



UPPER FLOOR



Area includes PES, A/C ledge, bay window, balcony, open terrace, roof terrace and void. Some units are mirror images of the apartment plans shown in the brochure. Please refer to the key plans for orientation.
 All plans are not drawn to scale and are subject to changes as may be approved by the relevant authorities. All floor areas are approximate measurements only and are subject to government resurvey.
Abbreviation: A/C (Air-Con Ledge), BW (Bay Window), HS (Household Shelter), PES (Private Enclosed Space), SC (Shoe Cabinet) and ST (Store).

4 BEDROOM + STUDY DUPLEX PENTHOUSE

TYPE PH16

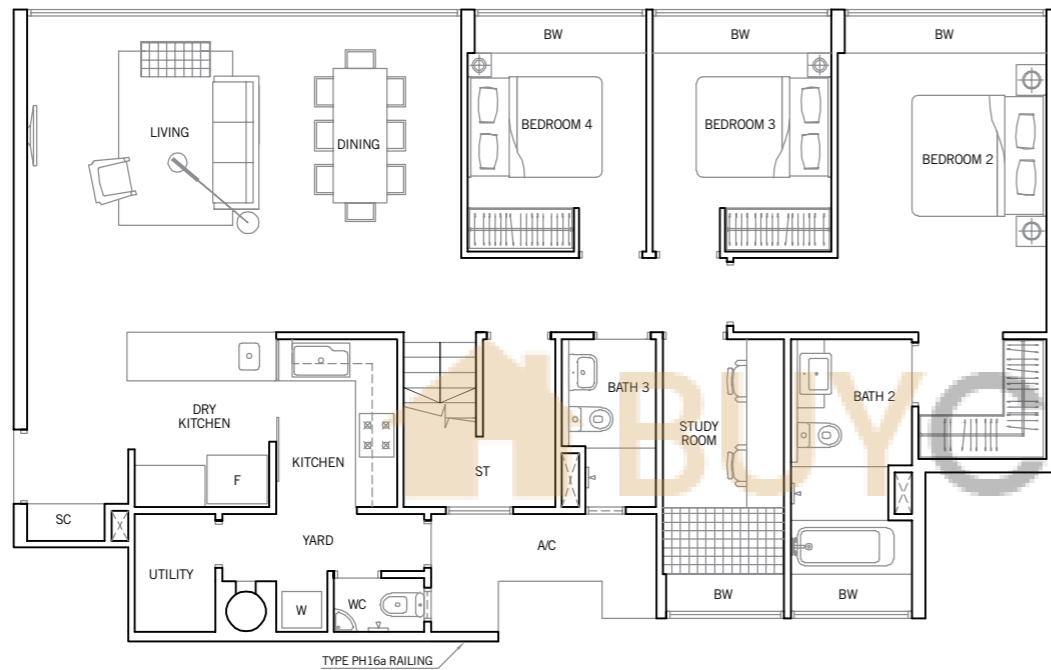
239 sq m / 2,573 sq ft

#05-48, #05-52, #05-57, #05-59
#05-65, #05-69

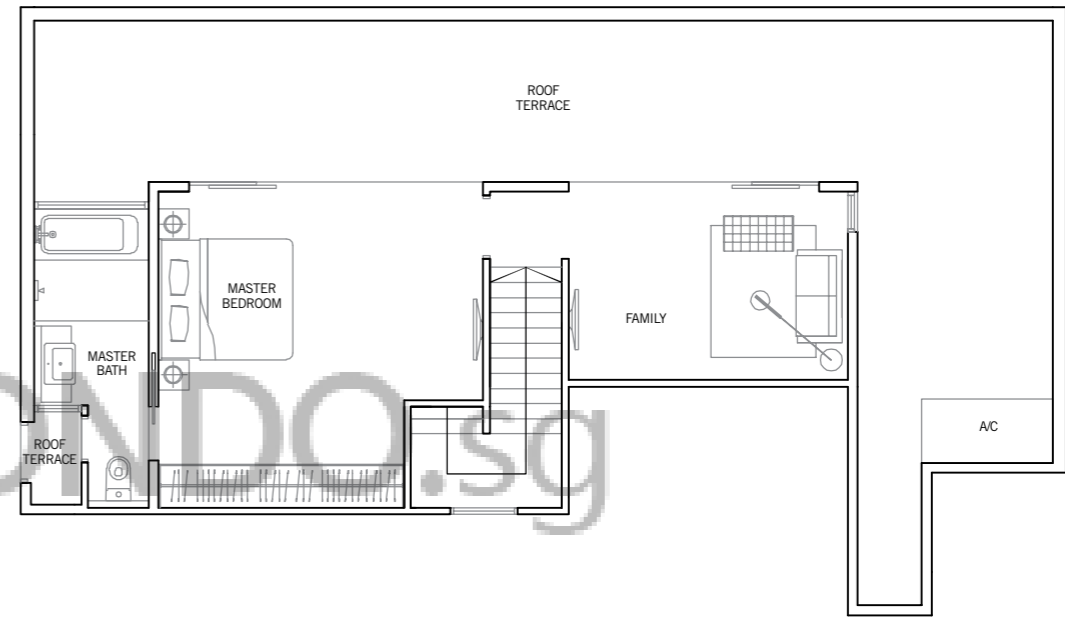
TYPE PH16a

239 sq m / 2,573 sq ft

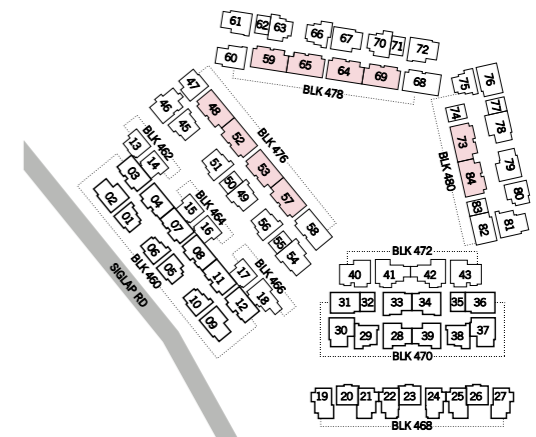
#05-53, #05-64, #05-73, #05-84



LOWER FLOOR



UPPER FLOOR



Area includes PES, A/C ledge, bay window, balcony, open terrace, roof terrace and void. Some units are mirror images of the apartment plans shown in the brochure. Please refer to the key plans for orientation.
All plans are not drawn to scale and are subject to changes as may be approved by the relevant authorities. All floor areas are approximate measurements only and are subject to government resurvey.
Abbreviation: A/C (Air-Con Ledge), BW (Bay Window), HS (Household Shelter), PES (Private Enclosed Space), SC (Shoe Cabinet) and ST (Store).

4 BEDROOM + STUDY DUPLEX PENTHOUSE

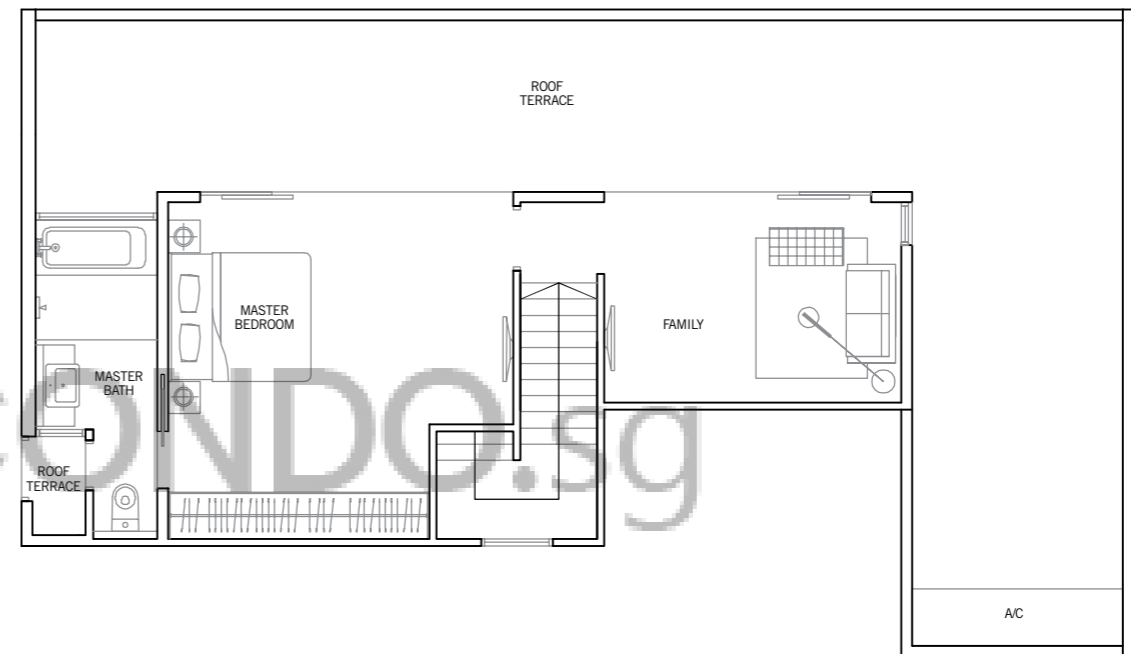
TYPE PH17

249 sq m / 2,680 sq ft

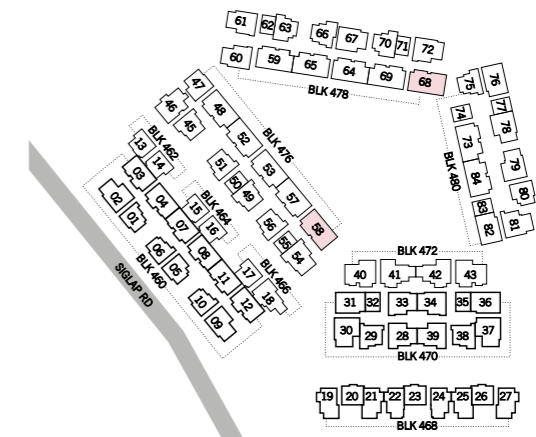
#05-58, #05-68



LOWER FLOOR



UPPER FLOOR



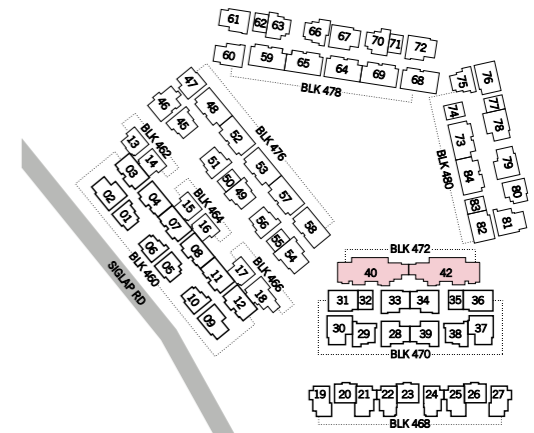
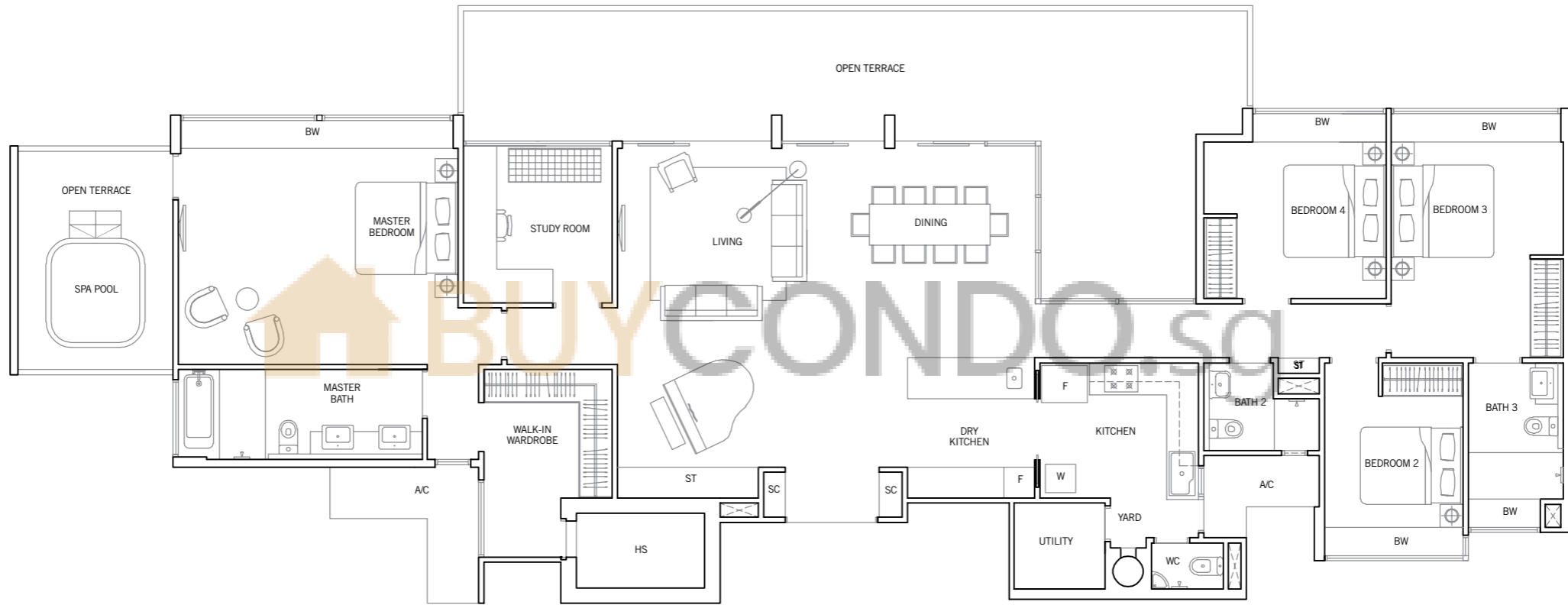
Area includes PES, A/C ledge, bay window, balcony, open terrace, roof terrace and void. Some units are mirror images of the apartment plans shown in the brochure. Please refer to the key plans for orientation.
 All plans are not drawn to scale and are subject to changes as may be approved by the relevant authorities. All floor areas are approximate measurements only and are subject to government resurvey.
Abbreviation: A/C (Air-Con Ledge), BW (Bay Window), HS (Household Shelter), PES (Private Enclosed Space), SC (Shoe Cabinet) and ST (Store).

4 BEDROOM + STUDY SINGLE LEVEL PENTHOUSE

TYPE PH18

275 sq m / 2,960 sq ft

#03-40, #03-42



Area includes PES, A/C ledge, bay window, balcony, open terrace, roof terrace and void. Some units are mirror images of the apartment plans shown in the brochure. Please refer to the key plans for orientation.
 All plans are not drawn to scale and are subject to changes as may be approved by the relevant authorities. All floor areas are approximate measurements only and are subject to government resurvey.
Abbreviation: A/C (Air-Con Ledge), BW (Bay Window), HS (Household Shelter), PES (Private Enclosed Space), SC (Shoe Cabinet) and ST (Store).

