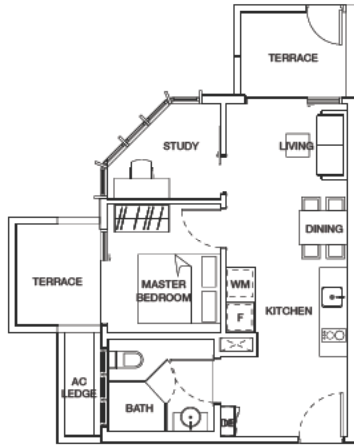


**TYPE A2-T**

1 bdrm  
50 sqm

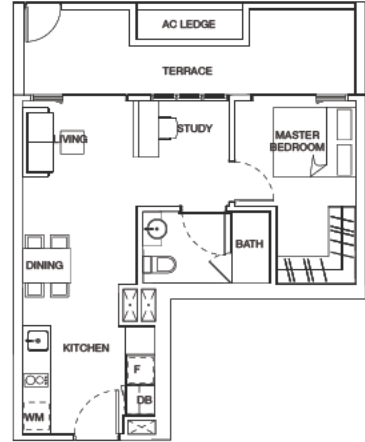
#02-21



**TYPE A3(L)-T**

1 + 1 bdrm  
55 sqm

#02-04

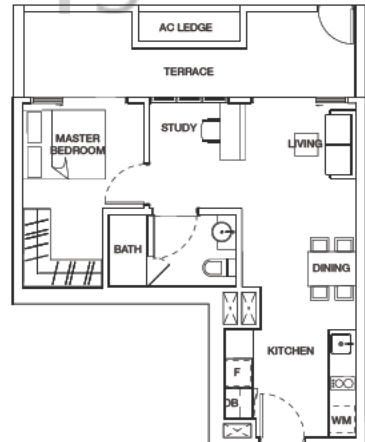


www.hbttycasnroo.sg.com

**TYPE A3(R)-T**

1 + 1 bdrm  
55 sqm

#02-17

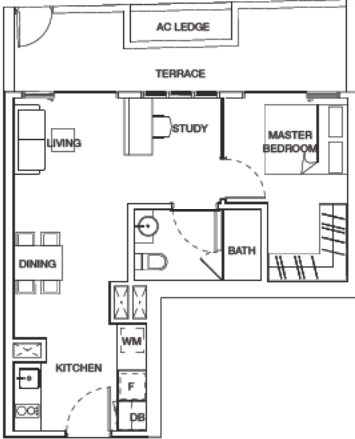


Note: Unit area includes a/c ledge & / or terrace where applicable.  
All plans are subject to amendments as approved by the relevant authorities.

**TYPE A4a-T**

1 + 1 bdrm  
55 sqm

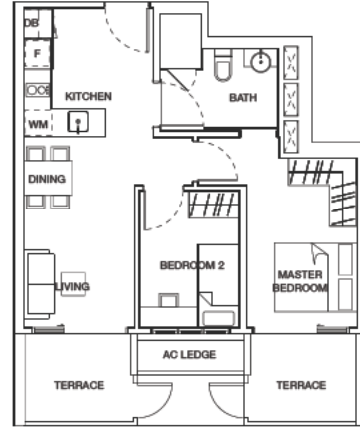
#02-16



**TYPE B1(L)-T**

2 bdrm  
61 sqm

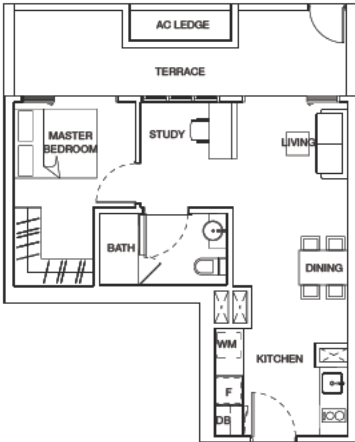
#02-01  
#02-11



**TYPE A4b-T**

1 + 1 bdrm  
55 sqm

#02-05



www.hbttycasindo.sg.com

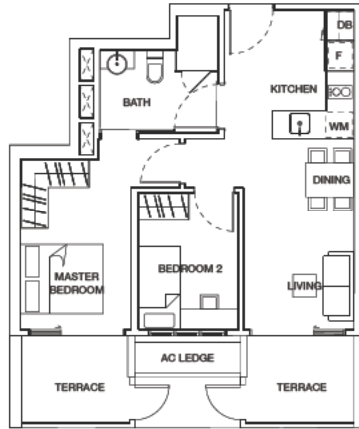


Note: Unit area includes a/c ledge & / or terrace where applicable.  
All plans are subject to amendments as approved by the relevant authorities.

**TYPE B1(R)-T**

2 bdrm  
61 sqm

#02-10  
#02-20



**TYPE B2(L)-T**

2 bdrm  
65 sqm

#02-09

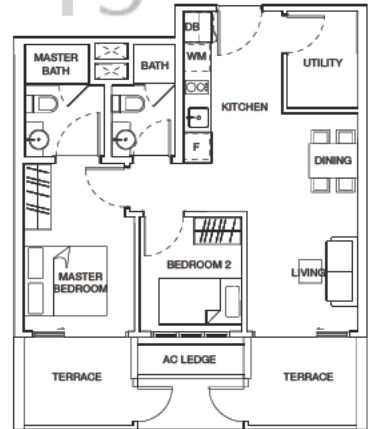


www.hbttycasnroo.sg.com

**TYPE B2(R)-T**

2 bdrm  
65 sqm

#02-12

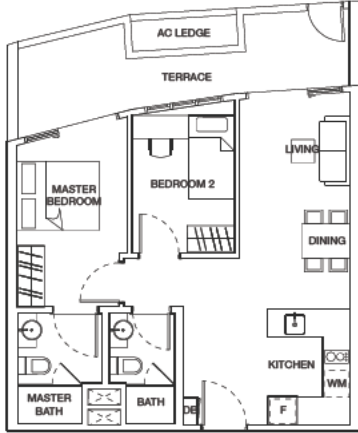


Note: Unit area includes a/c ledge & / or terrace where applicable.  
All plans are subject to amendments as approved by the relevant authorities.

**TYPE B3-T**

2 bdrm  
66 sqm

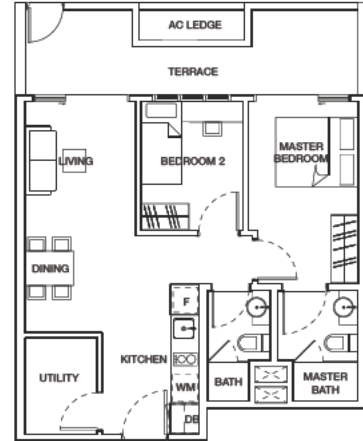
#02-15



**TYPE B4(R)-T**

2 bdrm  
67 sqm

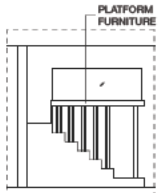
#02-06  
#02-23



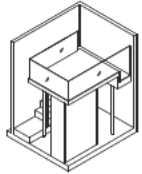
**TYPE B4(L)-T**

2 bdrm  
67 sqm

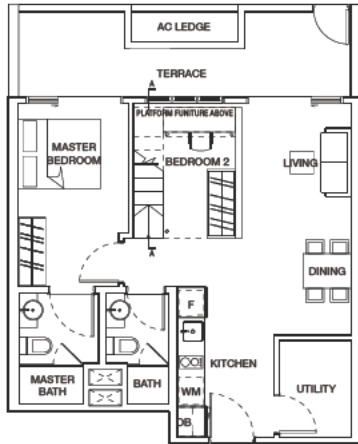
#02-22  
#02-29



SECTION A-A



ISOMETRIC VIEW



www.hbtvcaseand.sg.com

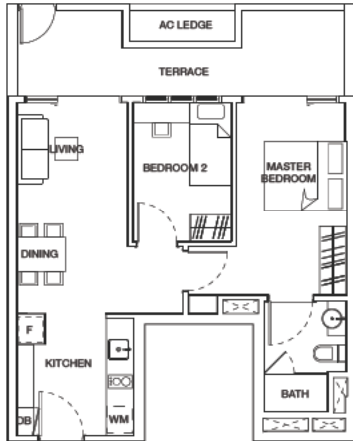


Note: Unit area includes a/c ledge & / or terrace where applicable.  
All plans are subject to amendments as approved by the relevant authorities.

**TYPE B5-T**

2 bdrm  
61 sqm

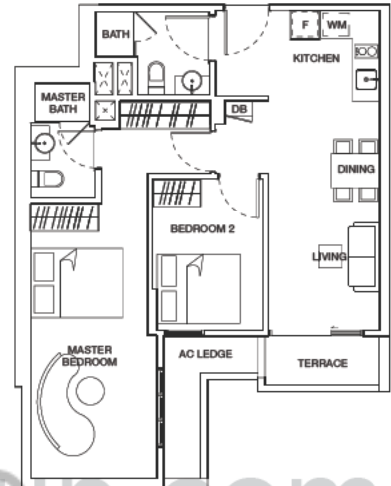
#02-30



**TYPE B6-T**

2 bdrm  
70 sqm

#02-26

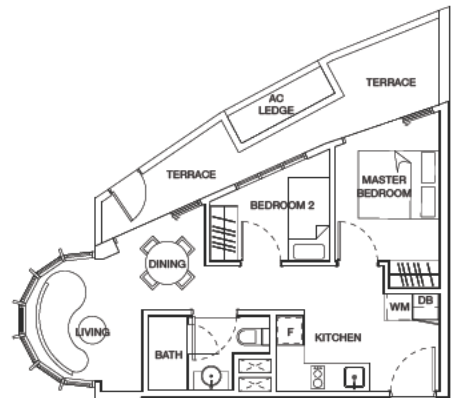


www.hbttycasnido.sg.com

**TYPE B7-T**

2 bdrm  
52 sqm

#02-14

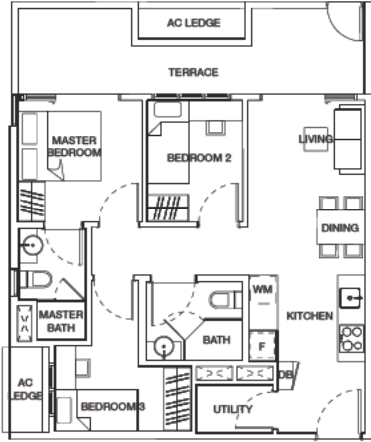


KEY PLAN (NOT TO SCALE)  
Note: Unit area includes a/c ledge & / or terrace where applicable.  
All plans are subject to amendments as approved by the relevant authorities.

**TYPE C1(L)-T**

3 bdrm  
72 sqm

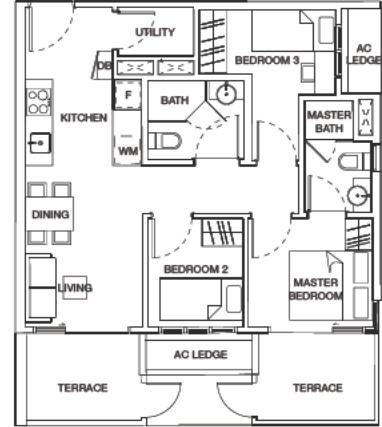
#02-03



**TYPE C2a-T**

3 bdrm  
70 sqm

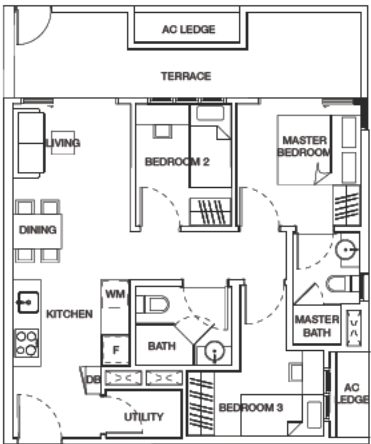
#02-19



**TYPE C1(R)-T**

3 bdrm  
72 sqm

#02-18



www.Btvcasindo.sg.com

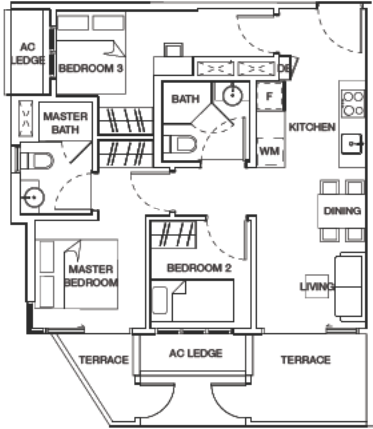


KEY PLAN (NOT TO SCALE)  
Note: Unit area includes a/c ledge & / or terrace where applicable.  
All plans are subject to amendments as approved by the relevant authorities.

**TYPE C2b-T**

3 bdrm  
66 sqm

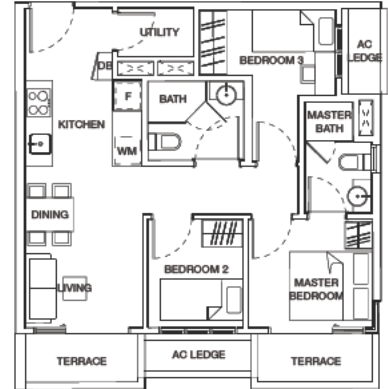
#02-02



**TYPE C2c-T**

3 bdrm  
62 sqm

#02-25

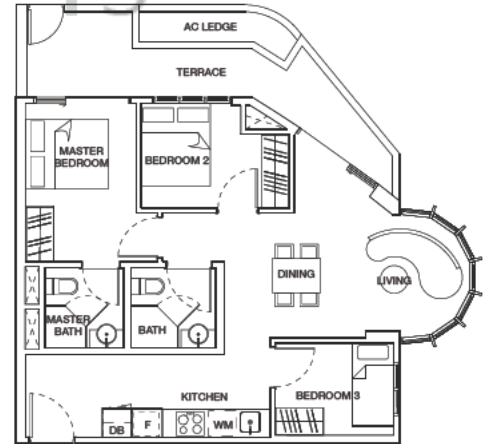


www.hbttycondoo.sg.com

**TYPE C3-T**

3 bdrm  
75 sqm

#02-07

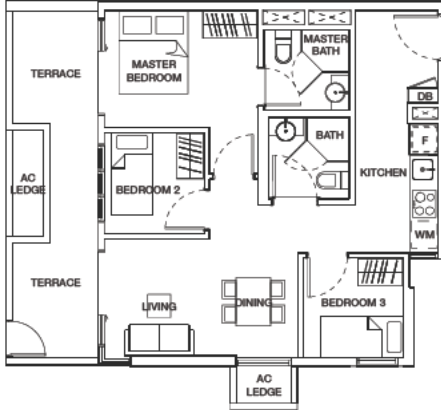


Note: Unit area includes a/c ledge & / or terrace where applicable.  
All plans are subject to amendments as approved by the relevant authorities.

**TYPE C4a-T**

3 bdrm  
71 sqm

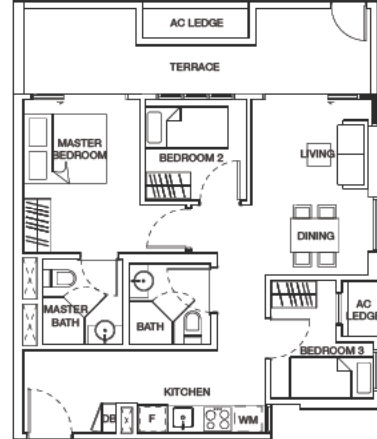
#02-28



**TYPE C4c-T**

3 bdrm  
70 sqm

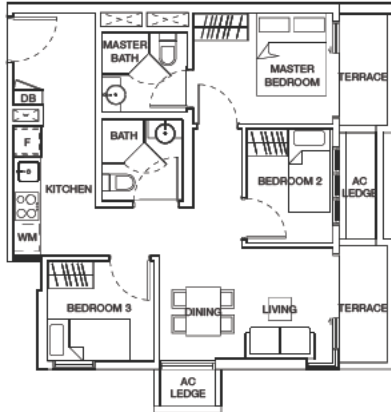
#02-24



**TYPE C4b-T**

3 bdrm  
62 sqm

#02-27



www.hbttycasindo.sg.com



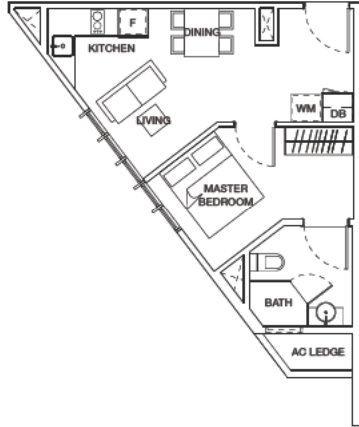
Note: Unit area includes a/c ledge & / or terrace where applicable.  
All plans are subject to amendments as approved by the relevant authorities.



**TYPE A1**

1 bdrm  
35 sqm

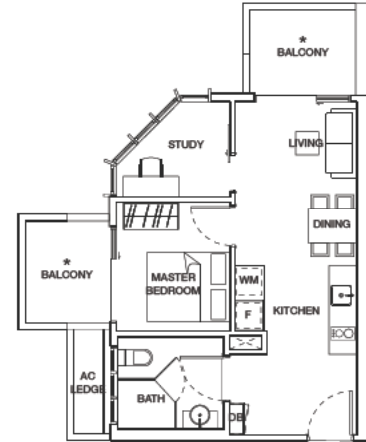
#02-13  
#03-13



**TYPE A2**

1 bdrm  
50 sqm

#03-21



www.hbttycasindo.sg.com

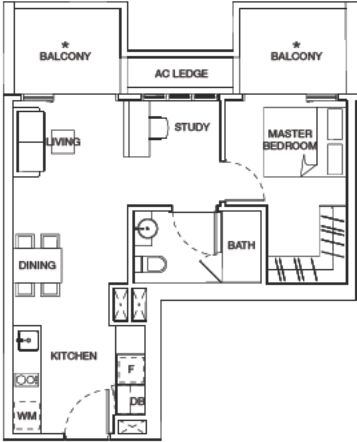


Note: Unit area includes a/c ledge & / or balcony\* where applicable. All plans are subject to amendments as approved by the relevant authorities.  
\* Balcony shall not be enclosed. Only approved balcony screens are to be used. For an illustration of the approved balcony screen, please refer to page 48 of this brochure.

**TYPE A3(L)**

1 + 1 bdrm  
53 sqm

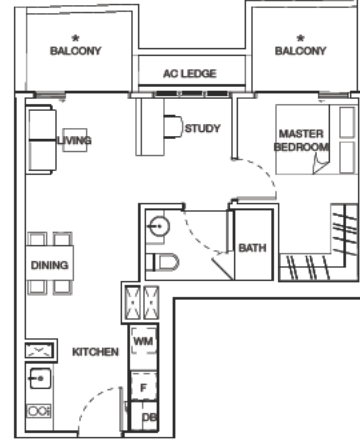
#03-04



**TYPE A4a**

1 + 1 bdrm  
52 sqm

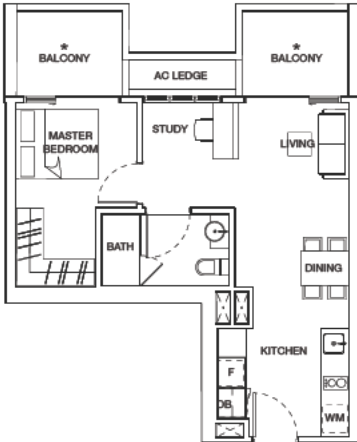
#03-16



**TYPE A3(R)**

1 + 1 bdrm  
53 sqm

#03-17



www.hbttycasindo.sg.com

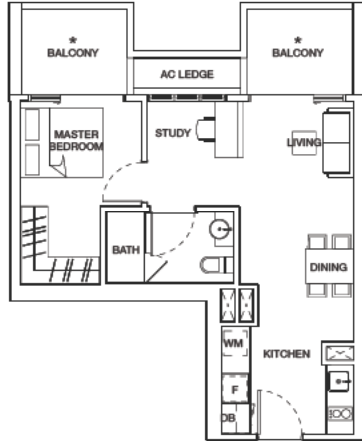


Note: Unit area includes a/c ledge & / or balcony\* where applicable. All plans are subject to amendments as approved by the relevant authorities.  
\* Balcony shall not be enclosed. Only approved balcony screens are to be used. For an illustration of the approved balcony screen, please refer to page 48 of this brochure.

**TYPE A4b**

1 + 1 bdrm  
53 sqm

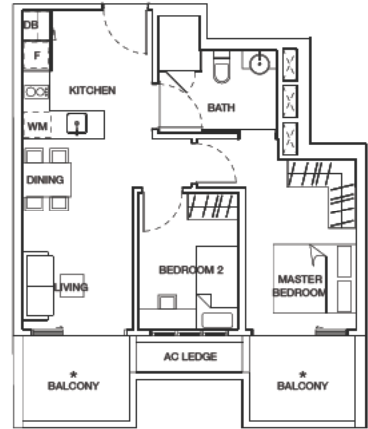
#03-05



**TYPE B1(L)**

2 bdrm  
58 sqm

#03-01  
#03-11

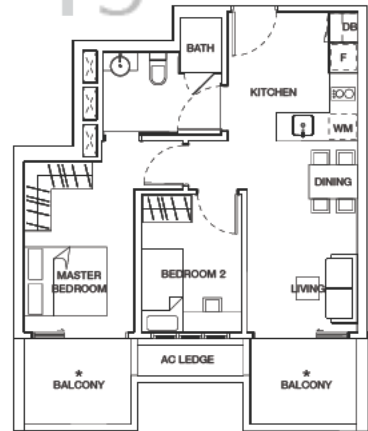


www.hbttycasnido.sg.com

**TYPE B1(R)**

2 bdrm  
58 sqm

#03-10  
#03-20

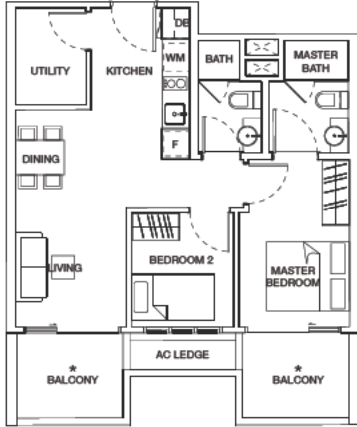


Note: Unit area includes a/c ledge & / or balcony\* where applicable. All plans are subject to amendments as approved by the relevant authorities.  
\* Balcony shall not be enclosed. Only approved balcony screens are to be used. For an illustration of the approved balcony screen, please refer to page 48 of this brochure.

**TYPE B2(L)**

2 bdrm  
62 sqm

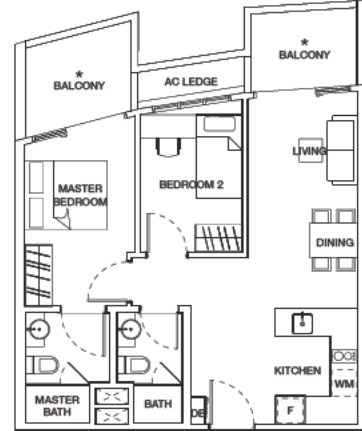
#03-09



**TYPE B3**

2 bdrm  
63 sqm

#03-15



**TYPE B2(R)**

2 bdrm  
62 sqm

#03-12



www.hbttycasindo.sg.com

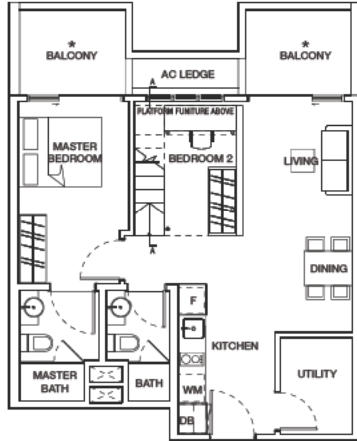
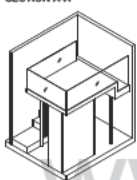
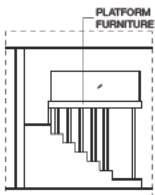


Note: Unit area includes a/c ledge & / or balcony\* where applicable. All plans are subject to amendments as approved by the relevant authorities.  
\* Balcony shall not be enclosed. Only approved balcony screens are to be used. For an illustration of the approved balcony screen, please refer to page 48 of this brochure.

**TYPE B4(L)**

2 bdrm  
64 sqm

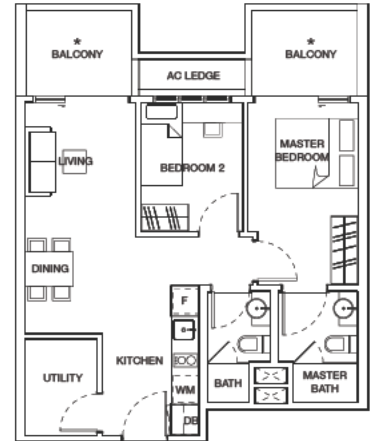
#03-22  
#03-29



**TYPE B4(R)**

2 bdrm  
64 sqm

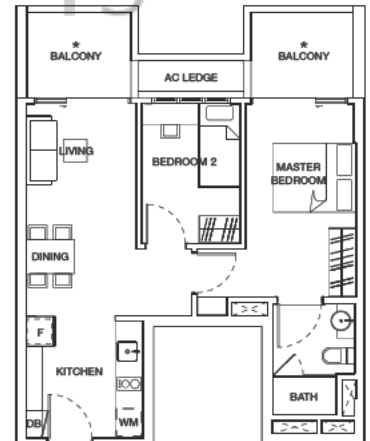
#03-06  
#03-23



**TYPE B5**

2 bdrm  
58 sqm

#03-30

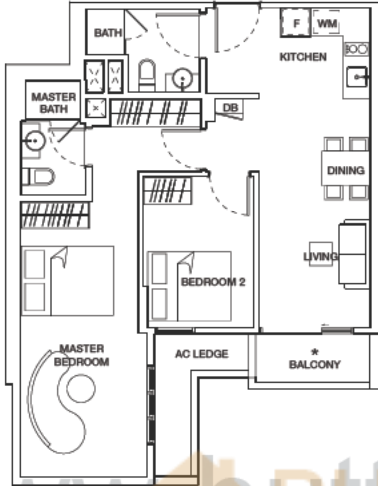


Note: Unit area includes a/c ledge & / or balcony\* where applicable. All plans are subject to amendments as approved by the relevant authorities.  
\* Balcony shall not be enclosed. Only approved balcony screens are to be used. For an illustration of the approved balcony screen, please refer to page 48 of this brochure.

**TYPE B6**

2 bdrm  
70 sqm

#03-26



**TYPE B8**

2 bdrm  
43 sqm

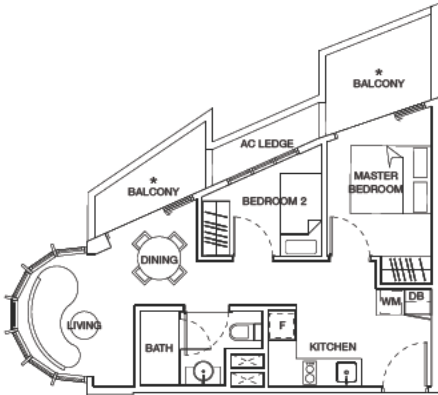
#02-08  
#03-08



**TYPE B7**

2 bdrm  
50 sqm

#03-14



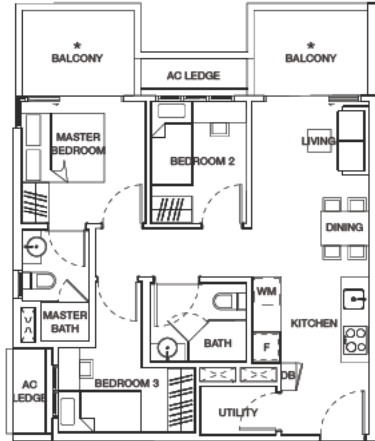
www.hbttycasindo.sg.com

Note: Unit area includes a/c ledge & / or balcony\* where applicable. All plans are subject to amendments as approved by the relevant authorities.  
\* Balcony shall not be enclosed. Only approved balcony screens are to be used. For an illustration of the approved balcony screen, please refer to page 48 of this brochure.

**TYPE C1(L)**

3 bdrm  
69 sqm

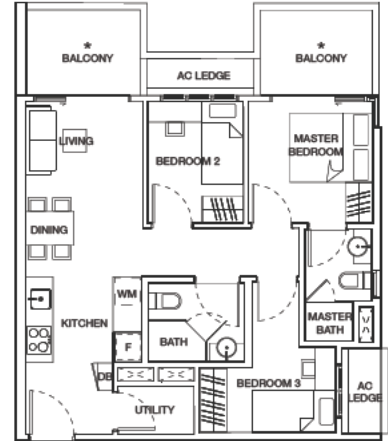
#03-03



**TYPE C1(R)**

3 bdrm  
69 sqm

#03-18

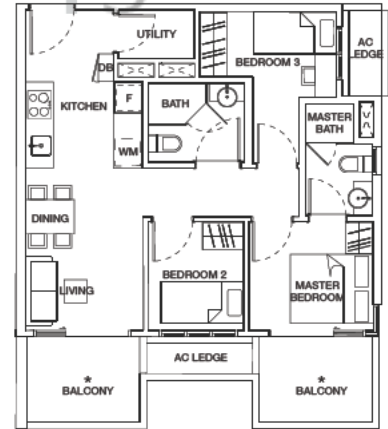


www.hbttyocsnndd.sg.com

**TYPE C2a**

3 bdrm  
67 sqm

#03-19

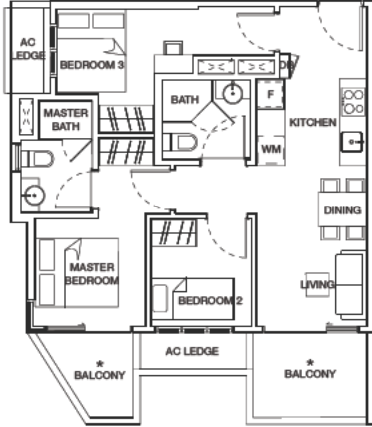


Note: Unit area includes a/c ledge & / or balcony\* where applicable. All plans are subject to amendments as approved by the relevant authorities.  
\* Balcony shall not be enclosed. Only approved balcony screens are to be used. For an illustration of the approved balcony screen, please refer to page 48 of this brochure.

**TYPE C2b**

3 bdrm  
64 sqm

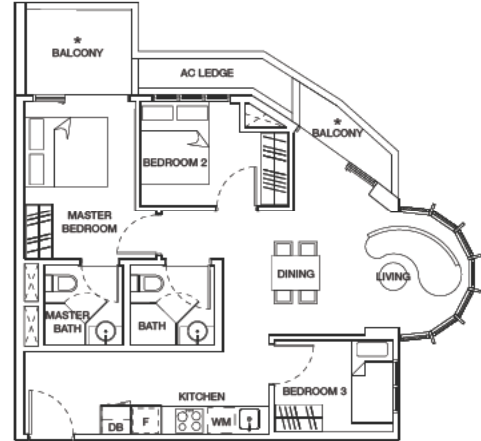
#03-02



**TYPE C3**

3 bdrm  
70 sqm

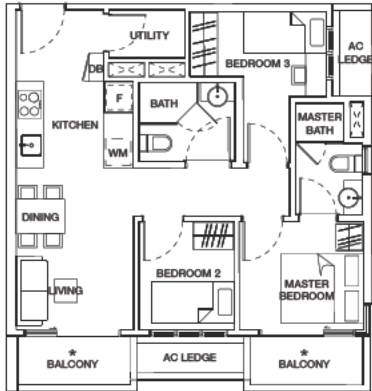
#03-07



**TYPE C2c**

3 bdrm  
62 sqm

#03-25



www.hbttycasindo.sg.com



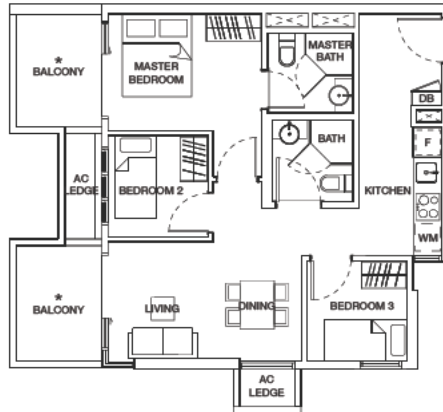
Note: Unit area includes a/c ledge & / or balcony\* where applicable. All plans are subject to amendments as approved by the relevant authorities.  
\* Balcony shall not be enclosed. Only approved balcony screens are to be used. For an illustration of the approved balcony screen, please refer to page 48 of this brochure.



**TYPE C4a**

3 bdrm  
68 sqm

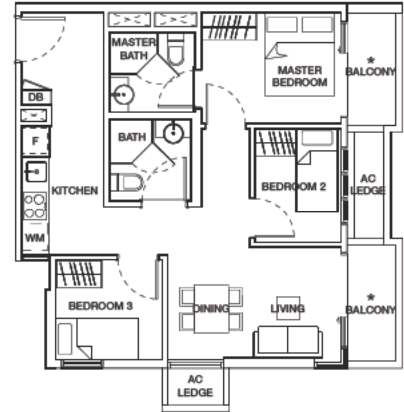
#03-28



**TYPE C4b**

3 bdrm  
62 sqm

#03-27

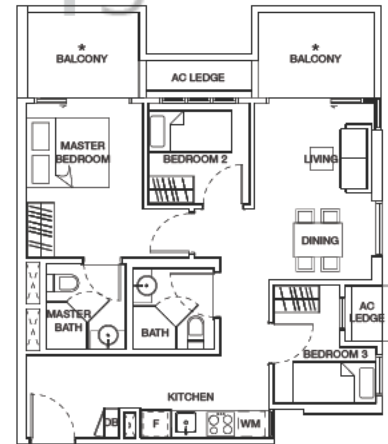


www.hbttycondoo.sg.com

**TYPE C4c**

3 bdrm  
67 sqm

#03-24



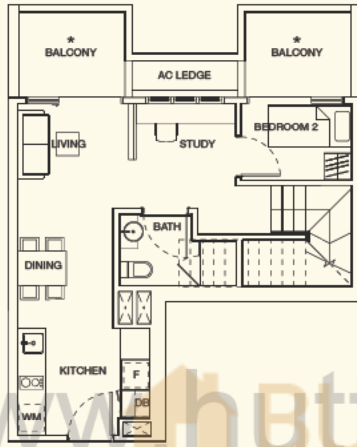
Note: Unit area includes a/c ledge & / or balcony\* where applicable. All plans are subject to amendments as approved by the relevant authorities.  
\* Balcony shall not be enclosed. Only approved balcony screens are to be used. For an illustration of the approved balcony screen, please refer to page 48 of this brochure.

PENTHOUSE

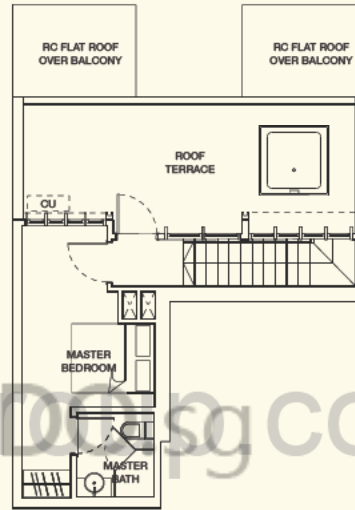
TYPE B1(L)-PH

2 bdrm  
98 sqm

#04-04



LOWER LEVEL



UPPER LEVEL

www.bttocaseanddesign.com



KEY PLAN (NOT TO SCALE)

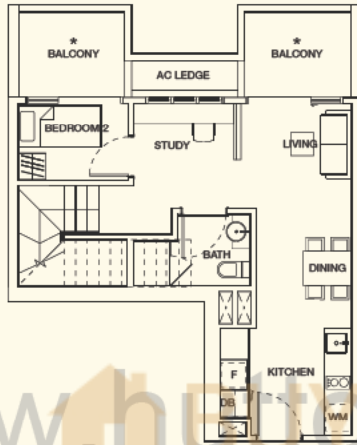
Note: Unit area includes a/c ledge & / or balcony\* & / or roof terrace & / or strata void where applicable. All plans are subject to amendments as approved by the relevant authorities.  
\* Balcony shall not be enclosed. Only approved balcony screens are to be used. For an illustration of the approved balcony screen, please refer to page 48 of this brochure.

PENTHOUSE

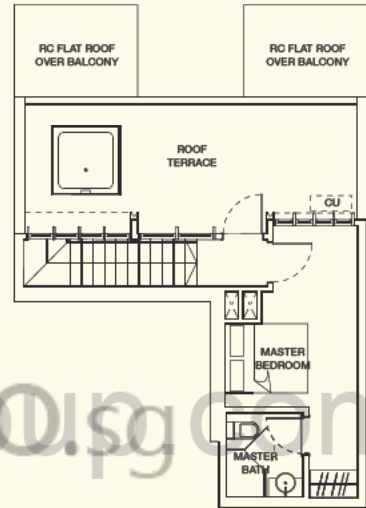
TYPE B1(R)-PH

2 bdrm  
98 sqm

#04-17



LOWER LEVEL



UPPER LEVEL

www.hartcoasynido.sg.com



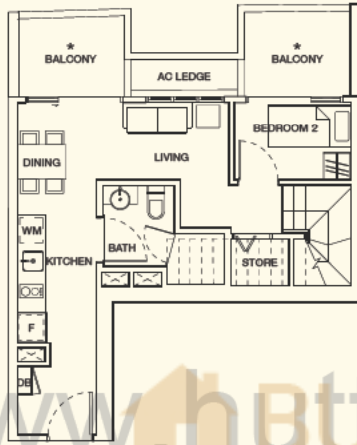
Note: Unit area includes a/c ledge & / or balcony\* & / or roof terrace & / or strata void where applicable. All plans are subject to amendments as approved by the relevant authorities.  
\* Balcony shall not be enclosed. Only approved balcony screens are to be used. For an illustration of the approved balcony screen, please refer to page 48 of this brochure.

PENTHOUSE

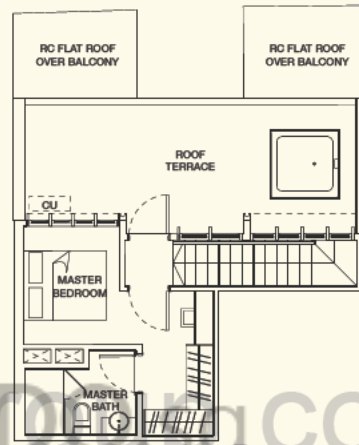
TYPE B2(L)-PH

2 bdrm  
93 sqm

#04-16



LOWER LEVEL



UPPER LEVEL

www.bttv.com



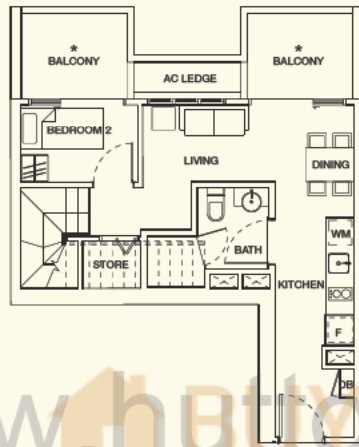
Note: Unit area includes a/c ledge & / or balcony\* & / or roof terrace & / or strata void where applicable. All plans are subject to amendments as approved by the relevant authorities.  
\* Balcony shall not be enclosed. Only approved balcony screens are to be used. For an illustration of the approved balcony screen, please refer to page 48 of this brochure.

PENTHOUSE

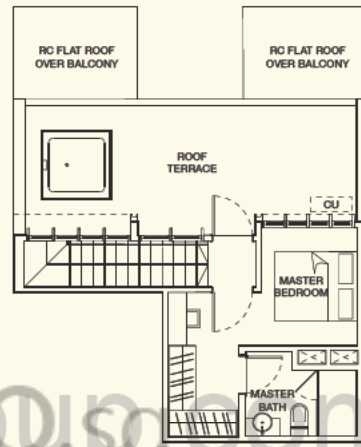
TYPE B2(R)-PH

2 bdrm  
93 sqm

#04-05



LOWER LEVEL



UPPER LEVEL

www.btlvacancy.com



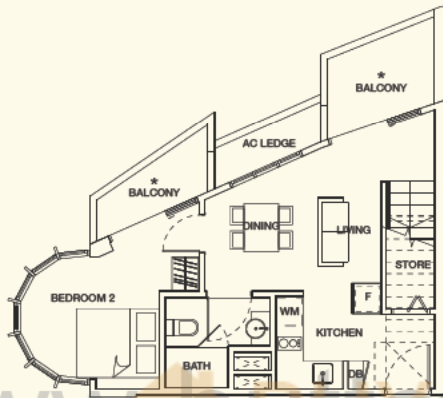
Note: Unit area includes a/c ledge & / or balcony\* & / or roof terrace & / or strata void where applicable. All plans are subject to amendments as approved by the relevant authorities.  
\* Balcony shall not be enclosed. Only approved balcony screens are to be used. For an illustration of the approved balcony screen, please refer to page 48 of this brochure.

PENTHOUSE

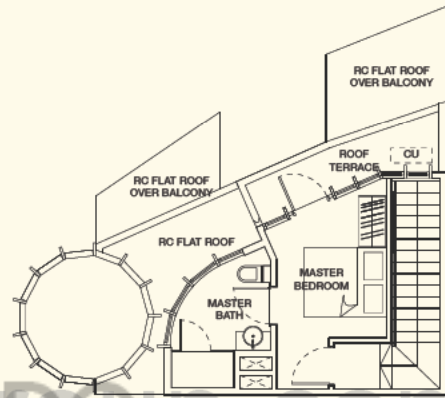
TYPE B3-PH

2 bdrm  
77 sqm

#04-14



LOWER LEVEL



UPPER LEVEL

www.helloasindoo.sg.com



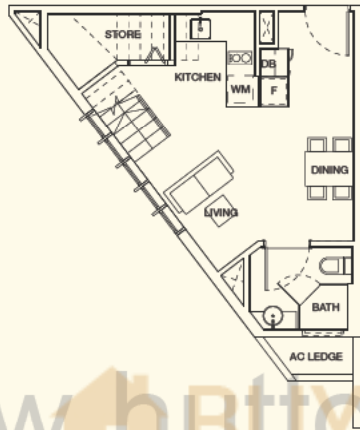
Note: Unit area includes a/c ledge & / or balcony\* & / or roof terrace & / or strata void where applicable. All plans are subject to amendments as approved by the relevant authorities.  
\* Balcony shall not be enclosed. Only approved balcony screens are to be used. For an illustration of the approved balcony screen, please refer to page 48 of this brochure.

PENTHOUSE

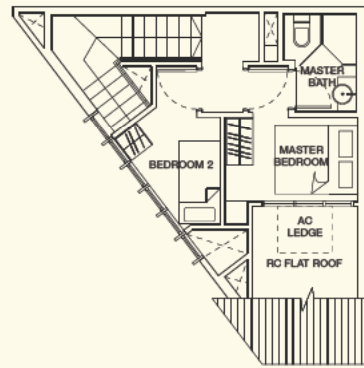
TYPE B4-PH

2 bdrm  
61 sqm

#04-13



LOWER LEVEL



UPPER LEVEL

www.hbttycasindo.sg.com

Note: Unit area includes a/c ledge & / or roof terrace & / or strata void where applicable.  
All plans are subject to amendments as approved by the relevant authorities.



KEY PLAN (NOT TO SCALE)

PENTHOUSE

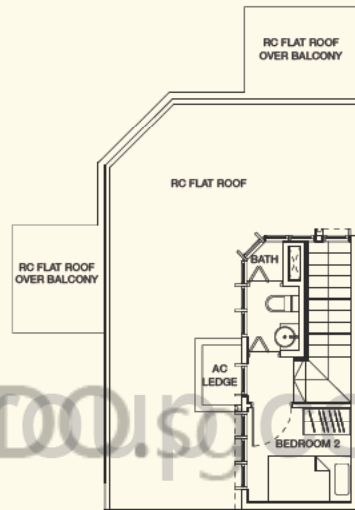
TYPE B5-PH

2 bdrm  
65 sqm

#04-21



LOWER LEVEL



UPPER LEVEL

www.hetvooasindoos.com



Note: Unit area includes a/c ledge & / or balcony\* & / or roof terrace & / or strata void where applicable. All plans are subject to amendments as approved by the relevant authorities.  
\* Balcony shall not be enclosed. Only approved balcony screens are to be used. For an illustration of the approved balcony screen, please refer to page 48 of this brochure.

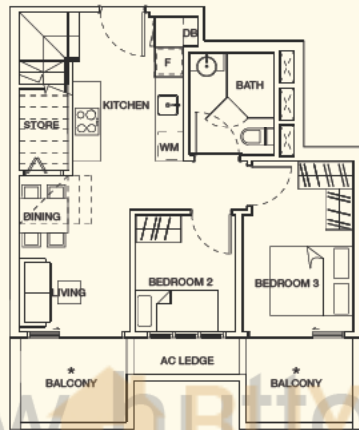


PENTHOUSE

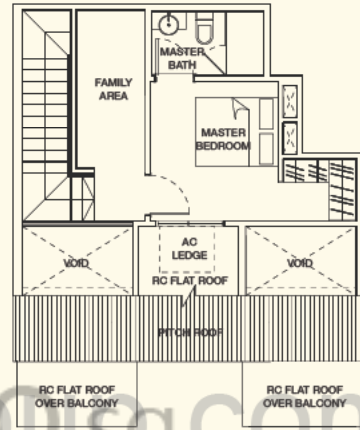
TYPE C1a(L)-PH

3 bdrm  
95 sqm

#04-11

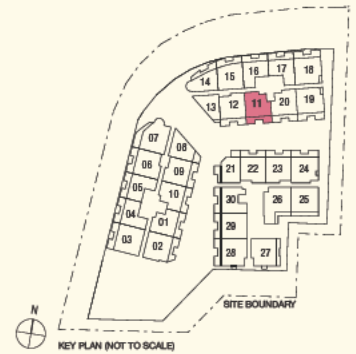


LOWER LEVEL



UPPER LEVEL

www.bttocsgiddo.sg.com



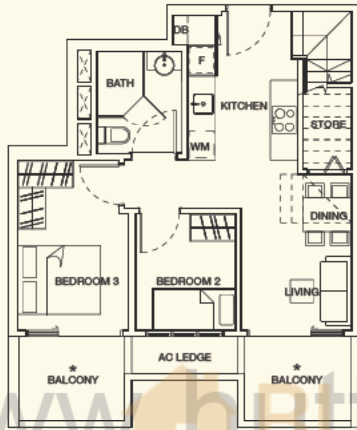
Note: Unit area includes a/c ledge & / or balcony\* & / or roof terrace & / or strata void where applicable. All plans are subject to amendments as approved by the relevant authorities.  
\* Balcony shall not be enclosed. Only approved balcony screens are to be used. For an illustration of the approved balcony screen, please refer to page 48 of this brochure.

PENTHOUSE

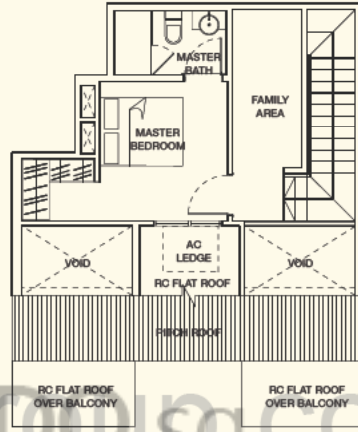
TYPE C1a(R)-PH

3 bdrm  
95 sqm

#04-10



LOWER LEVEL



UPPER LEVEL

www.hattocastle.com



KEY PLAN (NOT TO SCALE)

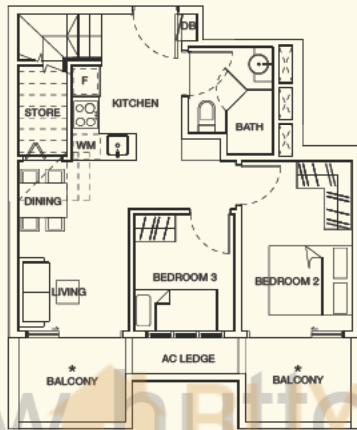
Note: Unit area includes a/c ledge & / or balcony\* & / or roof terrace & / or strata void where applicable. All plans are subject to amendments as approved by the relevant authorities.  
\* Balcony shall not be enclosed. Only approved balcony screens are to be used. For an illustration of the approved balcony screen, please refer to page 48 of this brochure.

PENTHOUSE

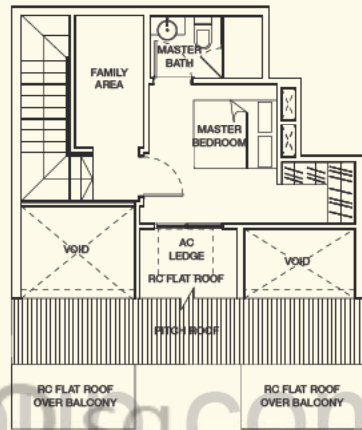
TYPE C1b(L)-PH

3 bdrm  
95 sqm

#04-01



LOWER LEVEL



UPPER LEVEL

www.huttonsido.com



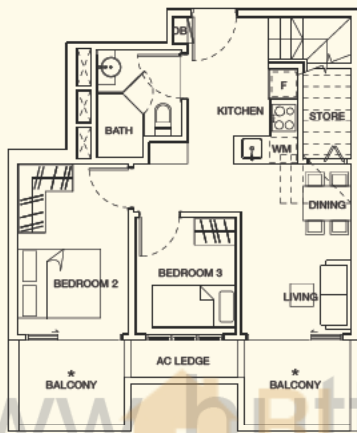
Note: Unit area includes a/c ledge & / or balcony\* & / or roof terrace & / or strata void where applicable. All plans are subject to amendments as approved by the relevant authorities.  
\* Balcony shall not be enclosed. Only approved balcony screens are to be used. For an illustration of the approved balcony screen, please refer to page 48 of this brochure.

PENTHOUSE

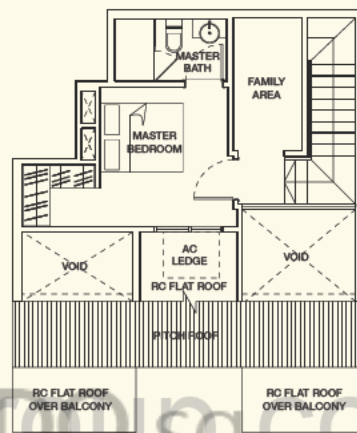
TYPE C1b(R)-PH

3 bdrm  
95 sqm

#04-20



LOWER LEVEL



UPPER LEVEL

www.hattocastle.com.sg

Note: Unit area includes a/c ledge & / or balcony\* & / or roof terrace & / or strata void where applicable. All plans are subject to amendments as approved by the relevant authorities.  
\* Balcony shall not be enclosed. Only approved balcony screens are to be used. For an illustration of the approved balcony screen, please refer to page 48 of this brochure.



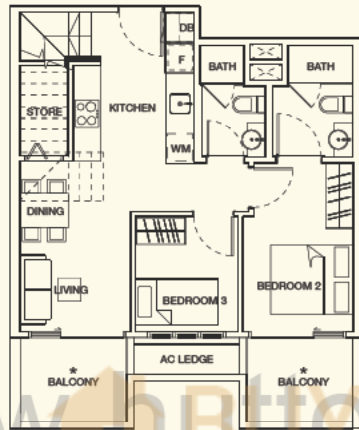
KEY PLAN (NOT TO SCALE)

PENTHOUSE

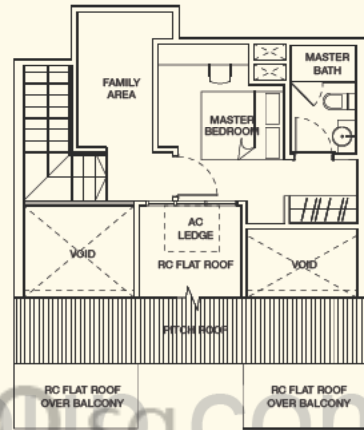
TYPE C2(L)-PH

3 bdrm  
99 sqm

#04-09



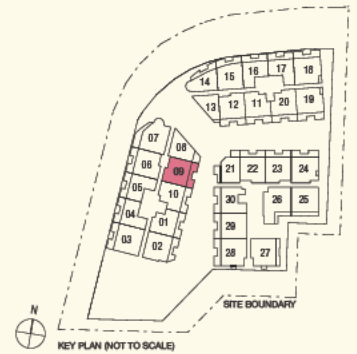
LOWER LEVEL



UPPER LEVEL

www.bttocsgid.com

Note: Unit area includes a/c ledge & / or balcony\* & / or roof terrace & / or strata void where applicable. All plans are subject to amendments as approved by the relevant authorities.  
\* Balcony shall not be enclosed. Only approved balcony screens are to be used. For an illustration of the approved balcony screen, please refer to page 48 of this brochure.



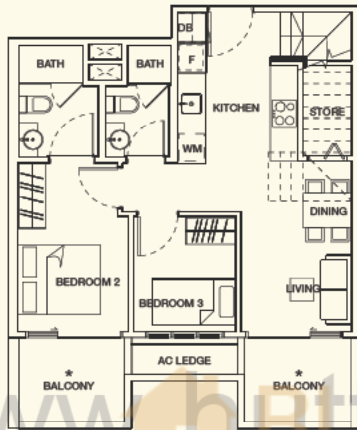
KEY PLAN (NOT TO SCALE)

PENTHOUSE

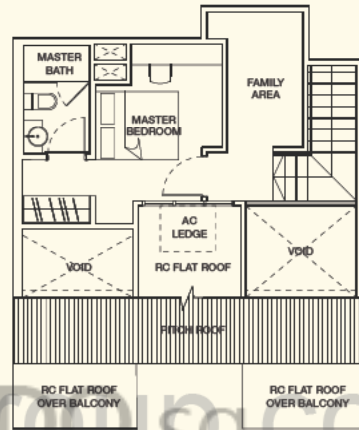
TYPE C2(R)-PH

3 bdrm  
99 sqm

#04-12



LOWER LEVEL



UPPER LEVEL

www.hettocast.com.sg



KEY PLAN (NOT TO SCALE)

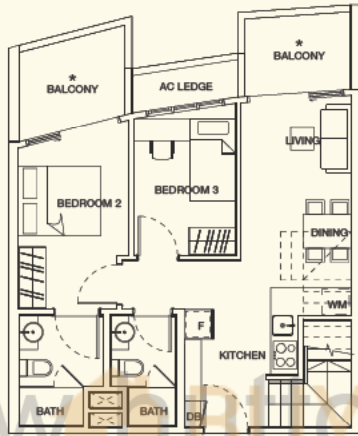
Note: Unit area includes a/c ledge & / or balcony\* & / or roof terrace & / or strata void where applicable. All plans are subject to amendments as approved by the relevant authorities.  
\* Balcony shall not be enclosed. Only approved balcony screens are to be used. For an illustration of the approved balcony screen, please refer to page 48 of this brochure.

PENTHOUSE

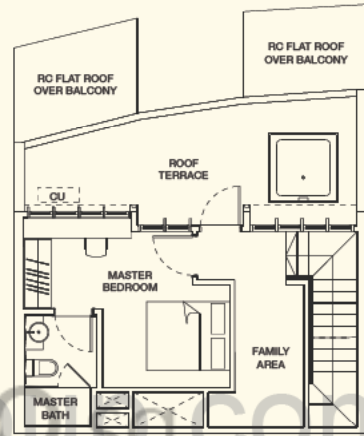
TYPE C3-PH

3 bdrm  
112 sqm

#04-15

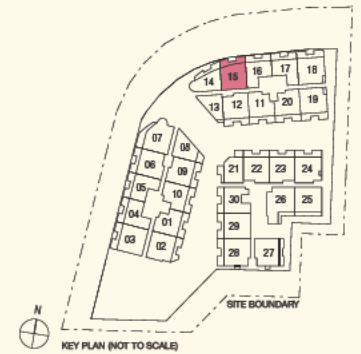


LOWER LEVEL



UPPER LEVEL

www.hdb.com.sg



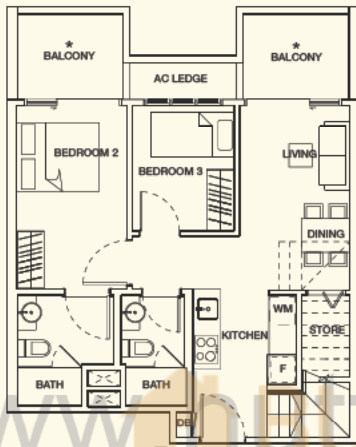
Note: Unit area includes a/c ledge & / or balcony\* & / or roof terrace & / or strata void where applicable. All plans are subject to amendments as approved by the relevant authorities.  
\* Balcony shall not be enclosed. Only approved balcony screens are to be used. For an illustration of the approved balcony screen, please refer to page 48 of this brochure.

PENTHOUSE

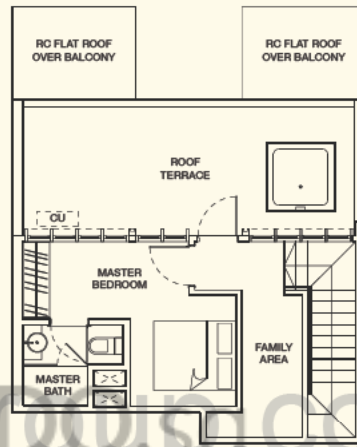
TYPE C4(L)-PH

3 bdrm  
115 sqm

#04-22  
#04-29



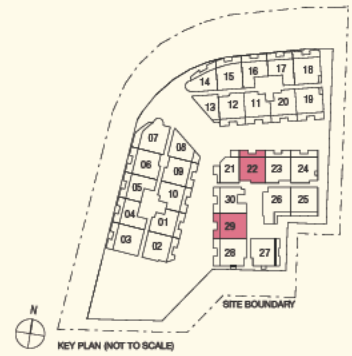
LOWER LEVEL



UPPER LEVEL

www.huntcoasynld.com

Note: Unit area includes a/c ledge & / or balcony\* & / or roof terrace & / or strata void where applicable. All plans are subject to amendments as approved by the relevant authorities.  
\* Balcony shall not be enclosed. Only approved balcony screens are to be used. For an illustration of the approved balcony screen, please refer to page 48 of this brochure.



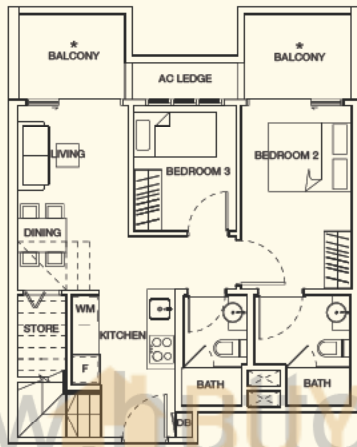


PENTHOUSE

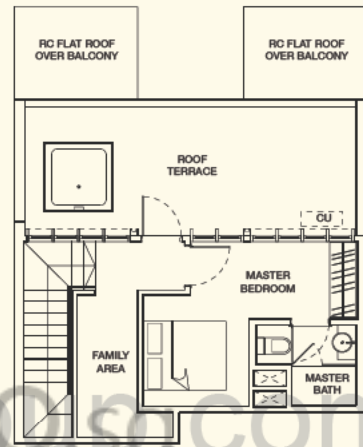
TYPE C4(R)-PH

3 bdrm  
115 sqm

#04-06  
#04-23



LOWER LEVEL



UPPER LEVEL

www.westcoastindia.com



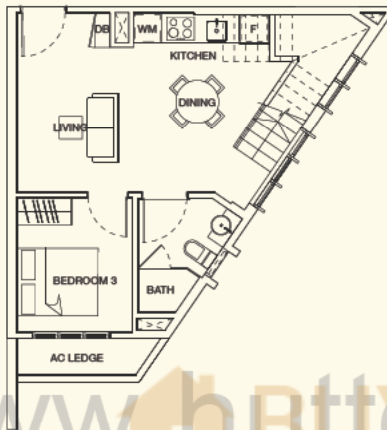
Note: Unit area includes a/c ledge & / or balcony\* & / or roof terrace & / or strata void where applicable. All plans are subject to amendments as approved by the relevant authorities.  
\* Balcony shall not be enclosed. Only approved balcony screens are to be used. For an illustration of the approved balcony screen, please refer to page 48 of this brochure.

PENTHOUSE

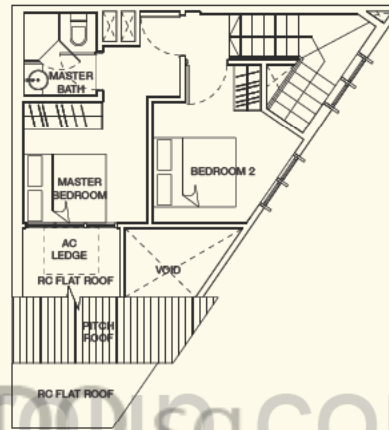
TYPE C5-PH

3 bdrm  
74 sqm

#04-08



LOWER LEVEL



UPPER LEVEL

www.hbttycasidw.sg.com

Note: Unit area includes a/c ledge & / or roof terrace & / or strata void where applicable.  
All plans are subject to amendments as approved by the relevant authorities.



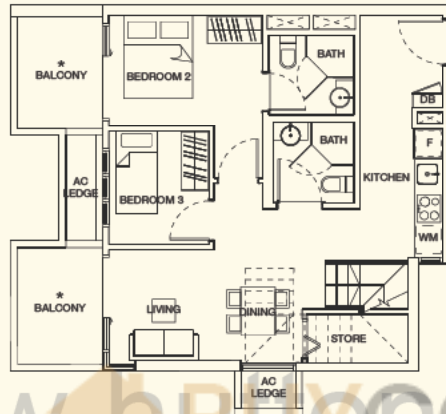
KEY PLAN (NOT TO SCALE)

PENTHOUSE

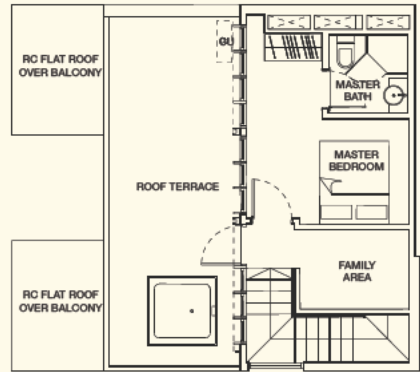
TYPE C6a-PH

3 bdrm  
118 sqm

#04-28



LOWER LEVEL



UPPER LEVEL

www.hBUYASINDO.sg.com



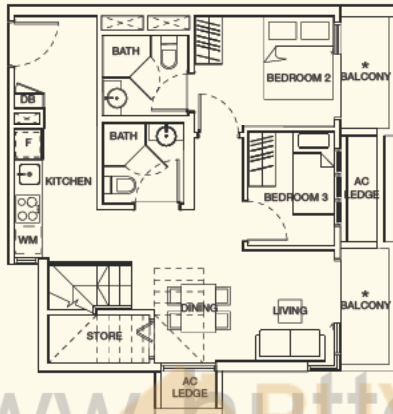
Note: Unit area includes a/c ledge & / or balcony\* & / or roof terrace & / or strata void where applicable. All plans are subject to amendments as approved by the relevant authorities.  
\* Balcony shall not be enclosed. Only approved balcony screens are to be used. For an illustration of the approved balcony screen, please refer to page 48 of this brochure.

PENTHOUSE

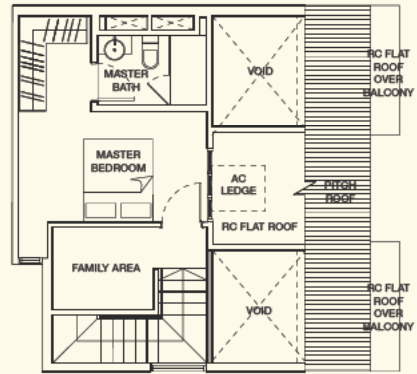
TYPE C6b-PH

3 bdrm  
103 sqm

#04-27



LOWER LEVEL



UPPER LEVEL

www.Btvcasindo.sg.com

Note: Unit area includes a/c ledge & / or balcony\* & / or roof terrace & / or strata void where applicable. All plans are subject to amendments as approved by the relevant authorities.  
\* Balcony shall not be enclosed. Only approved balcony screens are to be used. For an illustration of the approved balcony screen, please refer to page 48 of this brochure.



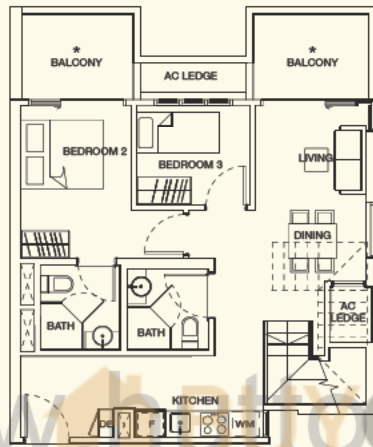
KEY PLAN (NOT TO SCALE)

PENTHOUSE

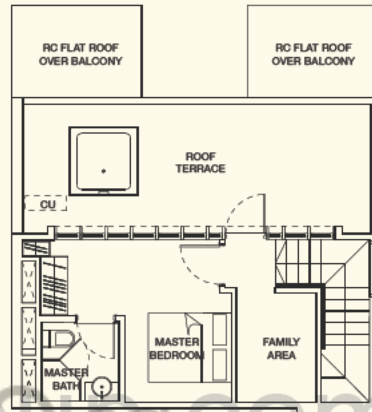
TYPE C6c-PH

3 bdrm  
117 sqm

#04-24

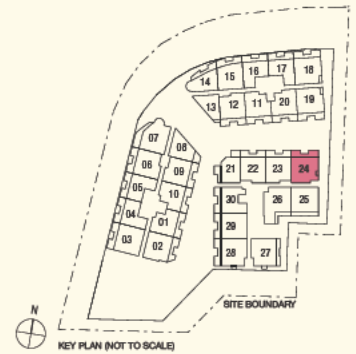


LOWER LEVEL



UPPER LEVEL

www.123456789.com



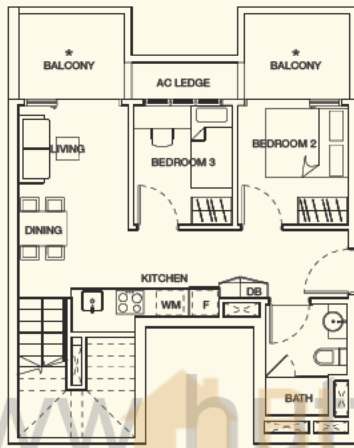
Note: Unit area includes a/c ledge & / or balcony\* & / or roof terrace & / or strata void where applicable. All plans are subject to amendments as approved by the relevant authorities.  
\* Balcony shall not be enclosed. Only approved balcony screens are to be used. For an illustration of the approved balcony screen, please refer to page 48 of this brochure.

PENTHOUSE

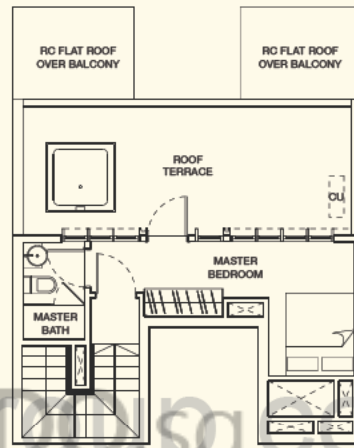
TYPE C7-PH

3 bdrm  
102 sqm

#04-30

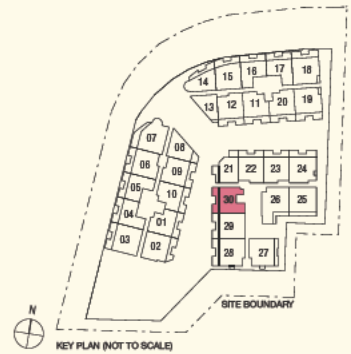


LOWER LEVEL



UPPER LEVEL

www.hartocasa.com



KEY PLAN (NOT TO SCALE)

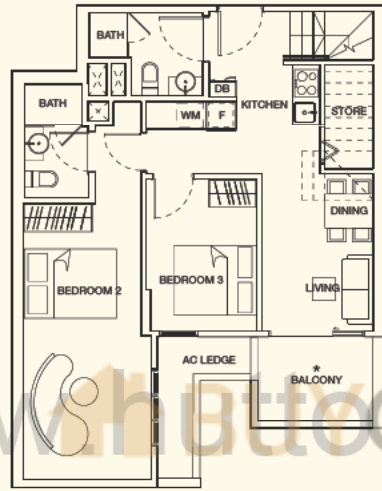
Note: Unit area includes a/c ledge & / or balcony\* & / or roof terrace & / or strata void where applicable. All plans are subject to amendments as approved by the relevant authorities.  
\* Balcony shall not be enclosed. Only approved balcony screens are to be used. For an illustration of the approved balcony screen, please refer to page 48 of this brochure.

PENTHOUSE

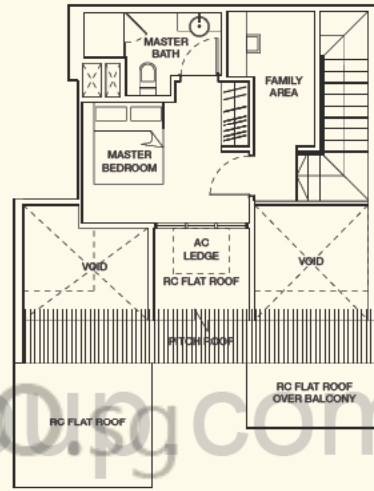
TYPE C8-PH

3 bdrm  
109 sqm

#04-26



LOWER LEVEL



UPPER LEVEL

www.Bt.co.sg

Note: Unit area includes a/c ledge & / or balcony\* & / or roof terrace & / or strata void where applicable. All plans are subject to amendments as approved by the relevant authorities.  
\* Balcony shall not be enclosed. Only approved balcony screens are to be used. For an illustration of the approved balcony screen, please refer to page 48 of this brochure.



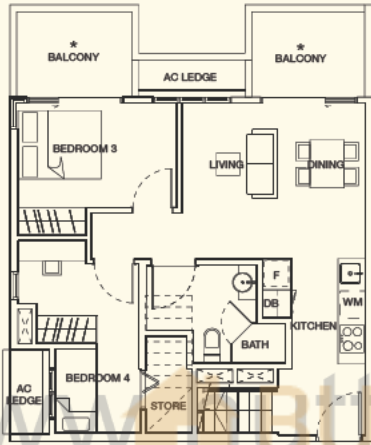
KEY PLAN (NOT TO SCALE)

PENTHOUSE

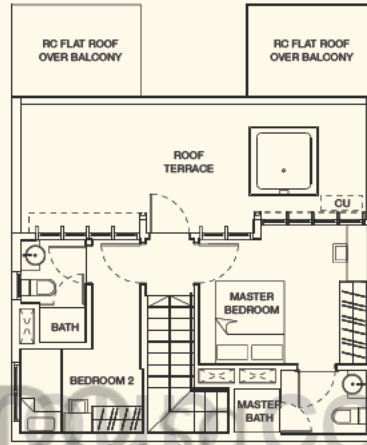
TYPE D1(L)-PH

4 bdrm  
125 sqm

#04-03



LOWER LEVEL



UPPER LEVEL

www.rajiv.co.singapore.com

Note: Unit area includes a/c ledge & / or balcony\* & / or roof terrace & / or strata void where applicable. All plans are subject to amendments as approved by the relevant authorities.  
\* Balcony shall not be enclosed. Only approved balcony screens are to be used. For an illustration of the approved balcony screen, please refer to page 48 of this brochure.



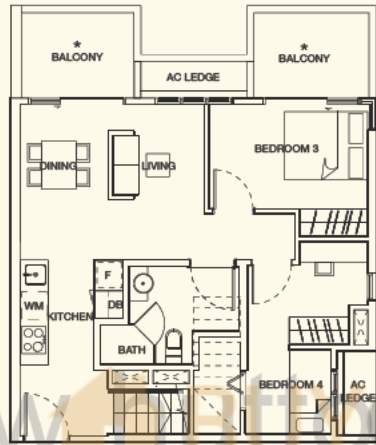


PENTHOUSE

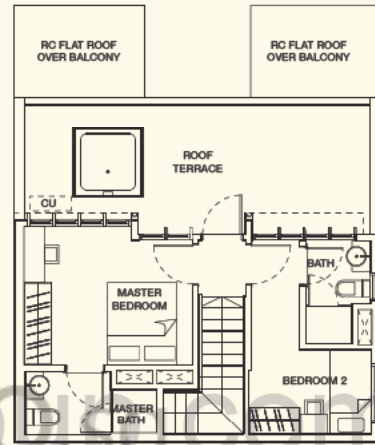
TYPE D1(R)-PH

4 bdrm  
125 sqm

#04-18



LOWER LEVEL



UPPER LEVEL

www.mattiasindoo.com



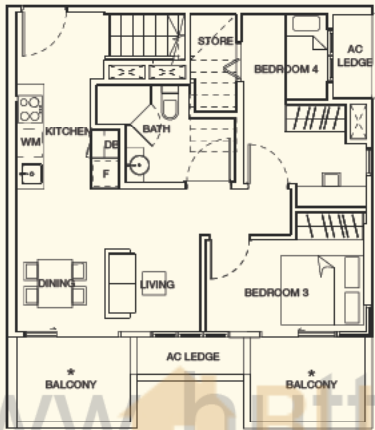
Note: Unit area includes a/c ledge & / or balcony\* & / or roof terrace & / or strata void where applicable. All plans are subject to amendments as approved by the relevant authorities.  
\* Balcony shall not be enclosed. Only approved balcony screens are to be used. For an illustration of the approved balcony screen, please refer to page 48 of this brochure.

PENTHOUSE

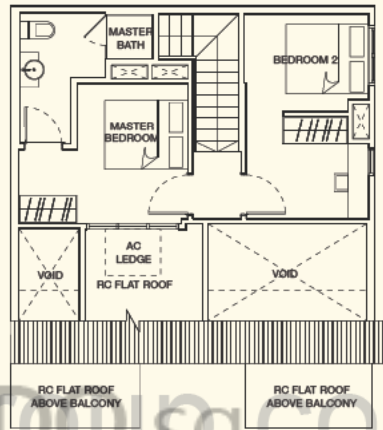
TYPE D2a-PH

4 bdrm  
110 sqm

#04-19



LOWER LEVEL



UPPER LEVEL

www.hettocasing.com



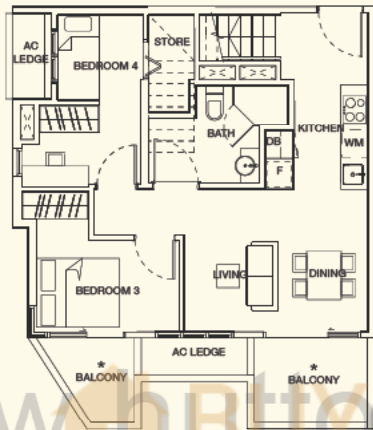
Note: Unit area includes a/c ledge & / or balcony\* & / or roof terrace & / or strata void where applicable. All plans are subject to amendments as approved by the relevant authorities.  
\* Balcony shall not be enclosed. Only approved balcony screens are to be used. For an illustration of the approved balcony screen, please refer to page 48 of this brochure.

PENTHOUSE

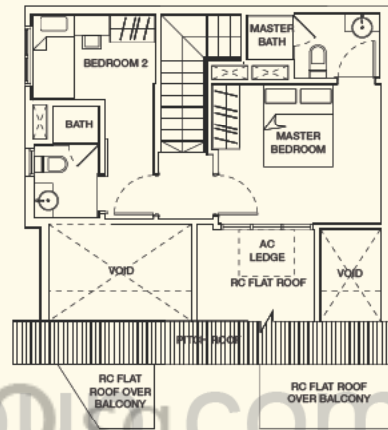
TYPE D2b-PH

4 bdrm  
107 sqm

#04-02



LOWER LEVEL



UPPER LEVEL

www.hbtty.com.sg



Note: Unit area includes a/c ledge & / or balcony\* & / or roof terrace & / or strata void where applicable. All plans are subject to amendments as approved by the relevant authorities.  
\* Balcony shall not be enclosed. Only approved balcony screens are to be used. For an illustration of the approved balcony screen, please refer to page 48 of this brochure.

PENTHOUSE

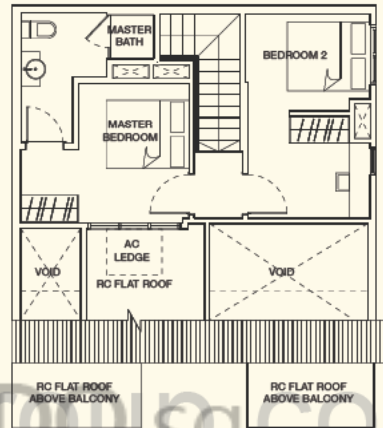
TYPE D2c-PH

4 bdrm  
110 sqm

#04-25



LOWER LEVEL



UPPER LEVEL

www.hettocast.com.sg

Note: Unit area includes a/c ledge & / or balcony\* & / or roof terrace & / or strata void where applicable. All plans are subject to amendments as approved by the relevant authorities.  
\* Balcony shall not be enclosed. Only approved balcony screens are to be used. For an illustration of the approved balcony screen, please refer to page 48 of this brochure.



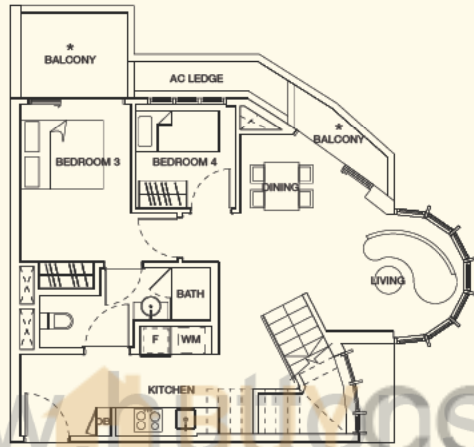
KEY PLAN (NOT TO SCALE)

PENTHOUSE

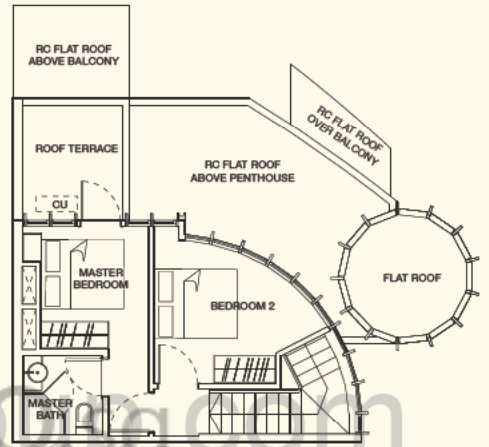
TYPE D3-PH

4 bdrm  
103 sqm

#04-07



LOWER LEVEL



UPPER LEVEL

www.housing.com



Note: Unit area includes a/c ledge & / or balcony\* & / or roof terrace & / or strata void where applicable. All plans are subject to amendments as approved by the relevant authorities.  
\* Balcony shall not be enclosed. Only approved balcony screens are to be used. For an illustration of the approved balcony screen, please refer to page 48 of this brochure.