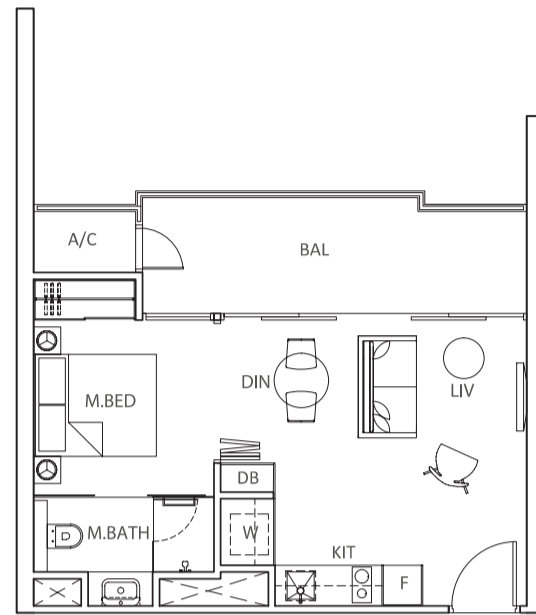


TYPE A1

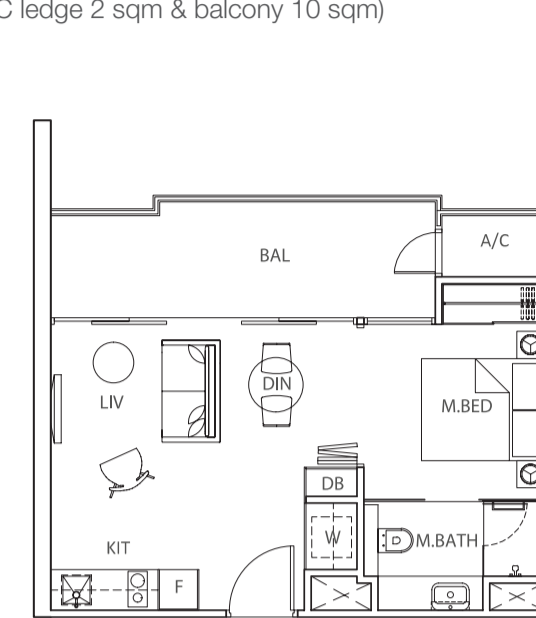
1-Bedroom
 Approx 44 sqm
 (Includes A/C ledge 2 sqm & balcony 10 sqm)



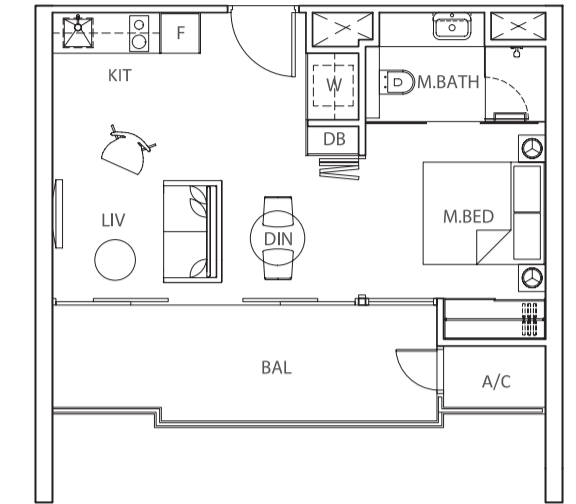
- #(02,03)-04 S17,18
- #04-05 S17,18
- #(02,03)-03 S3,2 (MIRRORED)
- #04-04 S3,2 (MIRRORED)

TYPE A2

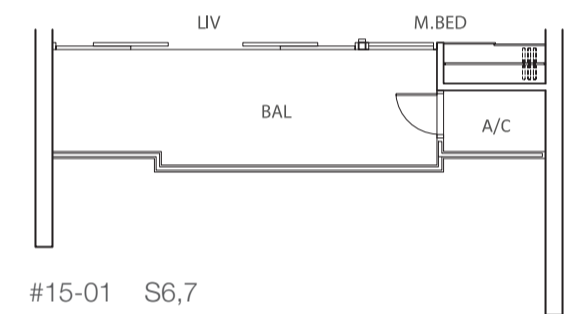
1-Bedroom
 Approx 44 sqm
 (Includes A/C ledge 2 sqm & balcony 10 sqm)



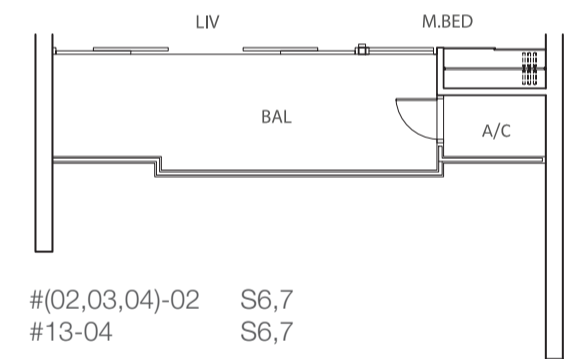
- #(02,03)-05 S13,14
- #04-07 S13,14
- #(05,07,09)-13 S13,14
- #11-10 S13,14



- #04-03 S4,5
- #11-06 S4,5
- #15-02 S4,5
- #04-06 S15,16 (MIRRORED)
- #(05,07,09)-12 S15,16 (MIRRORED)
- #11-09 S15,16 (MIRRORED)



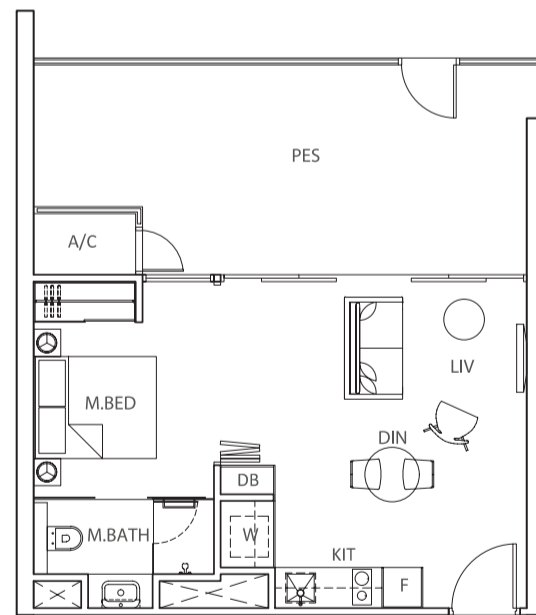
- #15-01 S6,7



- #(02,03,04)-02 S6,7
- #13-04 S6,7

TYPE A1-G

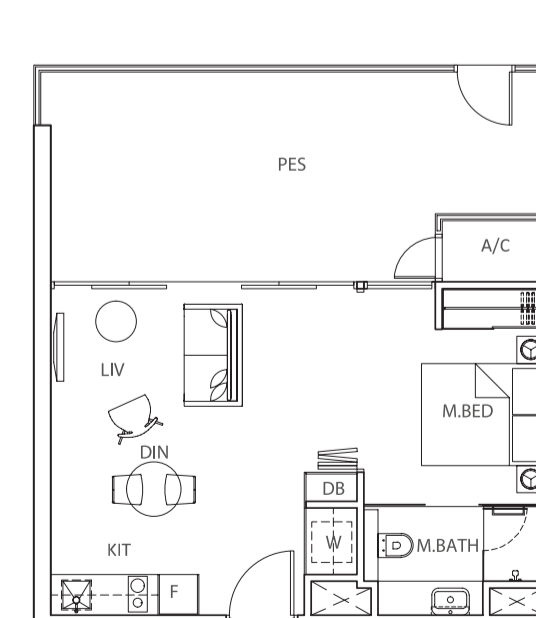
1-Bedroom
 Approx 59 sqm
 (Includes A/C ledge 2 sqm & PES 22 sqm)



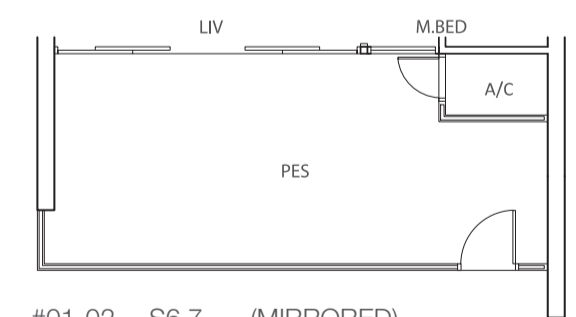
- #01-04 S17,18
- #01-03 S3,2 (MIRRORED)

TYPE A2-G

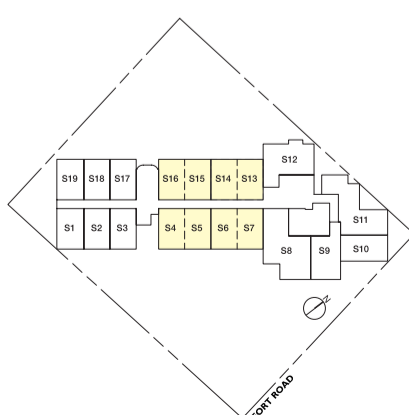
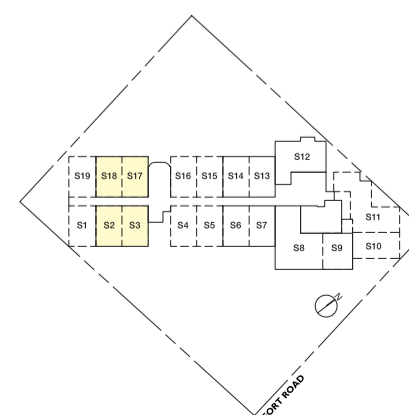
1-Bedroom
 Approx 60 sqm
 (Includes A/C ledge 2 sqm & PES 22 sqm)



- #01-05 S13,14



- #01-02 S6,7 (MIRRORED)

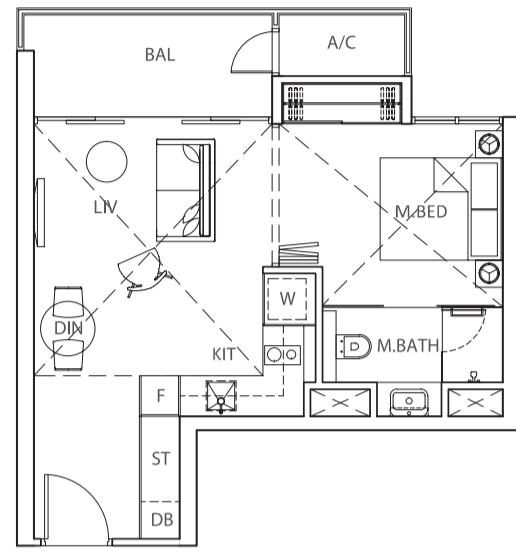


The plans are subject to change as may be required or approved by the relevant authorities. These are not drawn to scale and are for the purpose of visual presentation of the different layouts that are available. Areas are estimates only and are subject to final survey.

The plans are subject to change as may be required or approved by the relevant authorities. These are not drawn to scale and are for the purpose of visual presentation of the different layouts that are available. Areas are estimates only and are subject to final survey.

TYPE A3

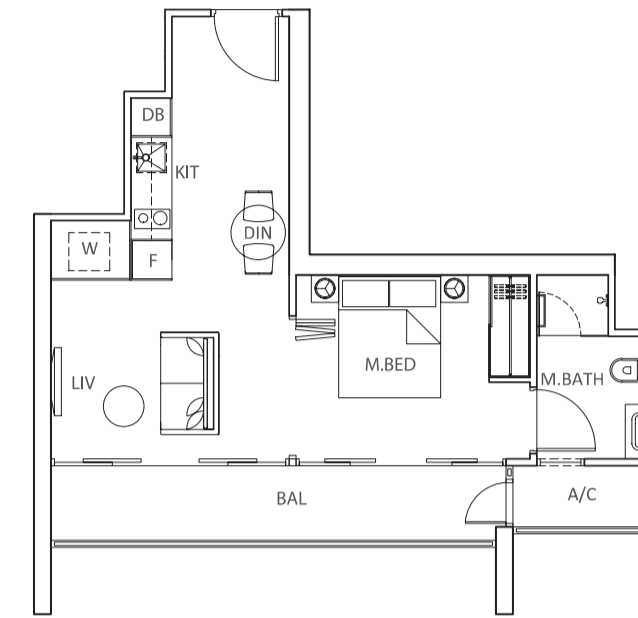
1-Bedroom
 Approx 44 sqm
 (Includes A/C ledge 2 sqm & balcony 6 sqm)
 Double volume for liv/din & m.bed



#03-06 S12

TYPE A4

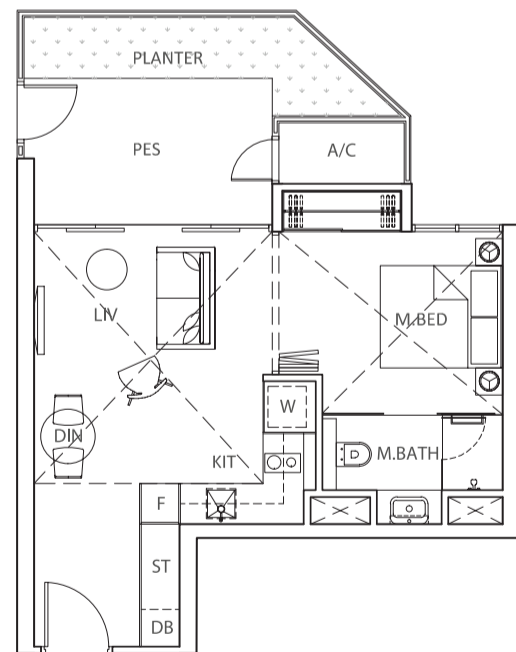
1-Bedroom
 Approx 46 sqm
 (Includes A/C ledge 3 sqm & balcony 8 sqm)



#(02,03,04)-01 S8,9

TYPE A3-G

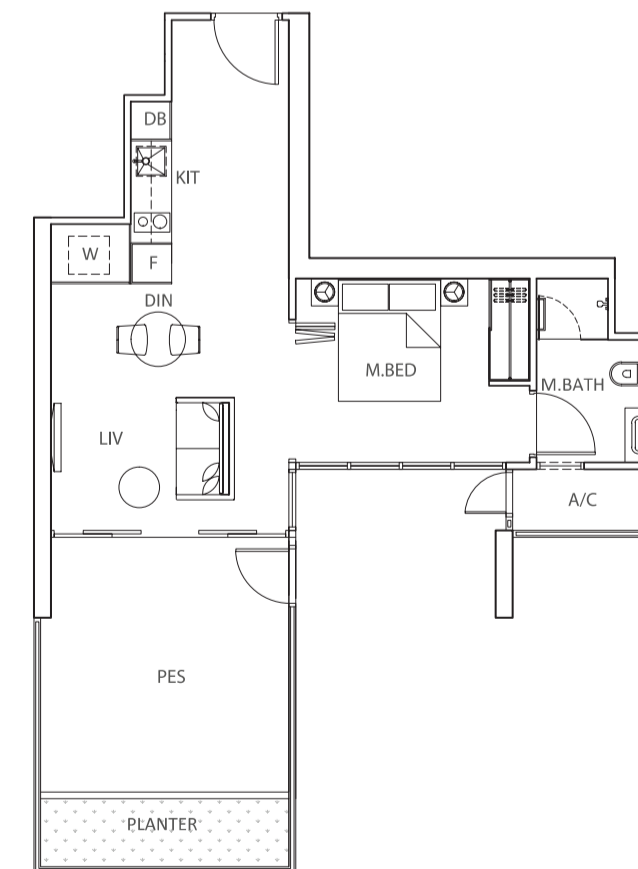
1-Bedroom
 Approx 52 sqm
 (Includes A/C ledge 2 sqm, planter 6 sqm & PES 8 sqm)
 Double volume for liv/din & m.bed



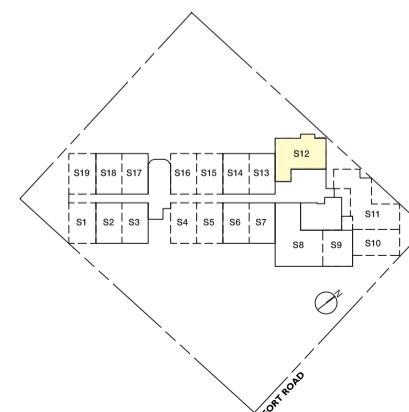
#01-06 S12

TYPE A4-G

1-Bedroom
 Approx 60 sqm
 (Includes A/C ledge 3 sqm, planter 4 sqm & PES 14 sqm)



#01-01 S8,9

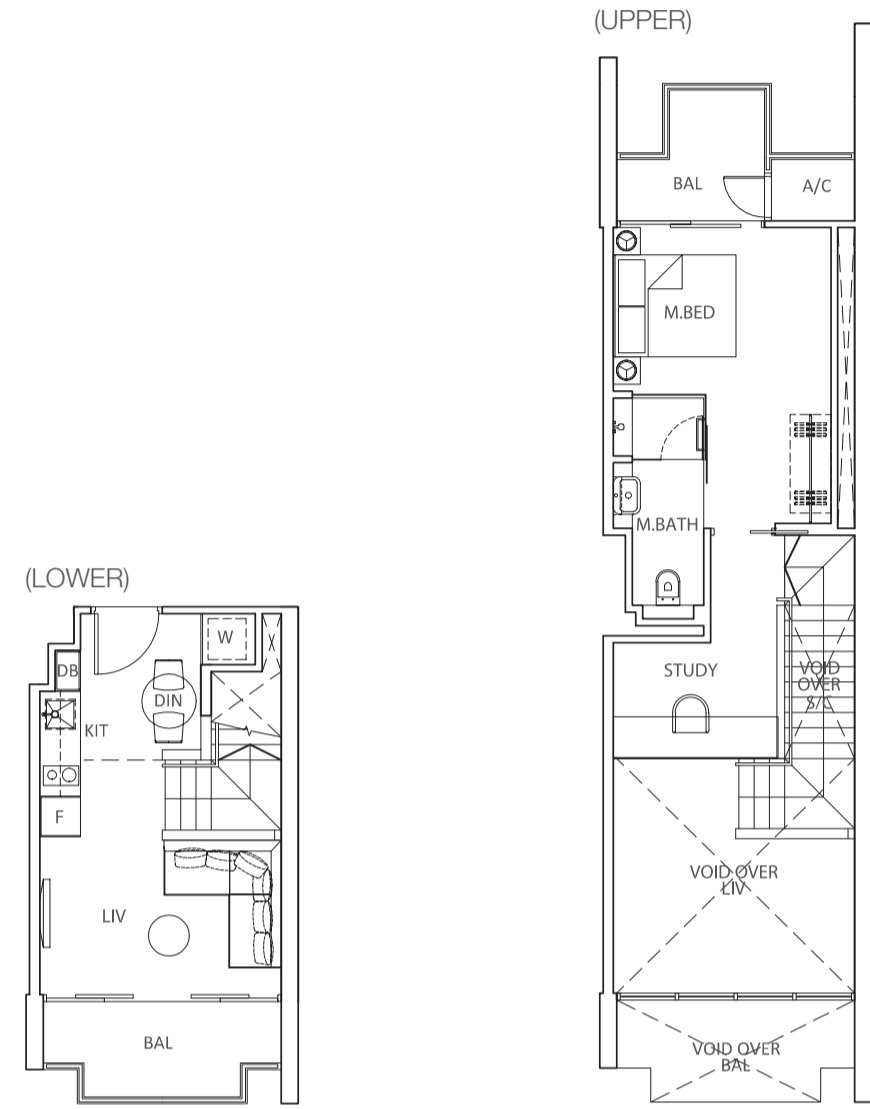


The plans are subject to change as may be required or approved by the relevant authorities. These are not drawn to scale and are for the purpose of visual presentation of the different layouts that are available. Areas are estimates only and are subject to final survey.

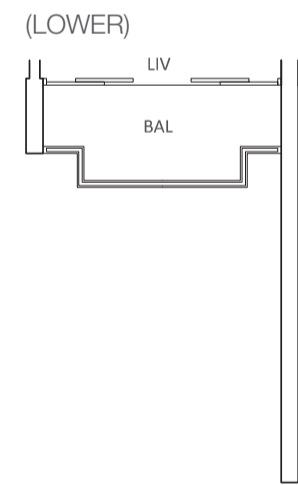
The plans are subject to change as may be required or approved by the relevant authorities. These are not drawn to scale and are for the purpose of visual presentation of the different layouts that are available. Areas are estimates only and are subject to final survey.

TYPE A5L

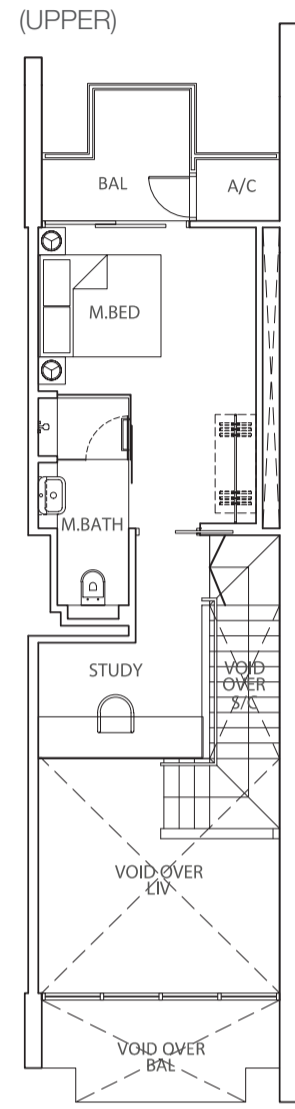
1-Bedroom Loft
 Approx 76 sqm
 (Includes A/C ledge 2 sqm, balcony 9 sqm & void 21 sqm)



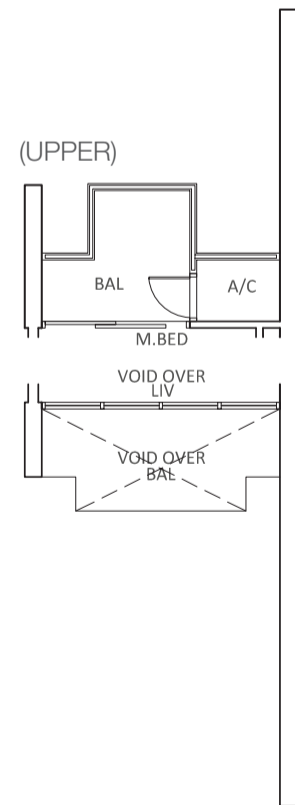
- #(05,07,09,11)-05 S6,14 (MIRRORED)
- #(05,07,09)-07 S4,16 (MIRRORED)
- #(05,07,09)-09 S2,18 (MIRRORED)
- #(05,07,09)-06 S5,15
- #(05,07,09)-08 S3,17



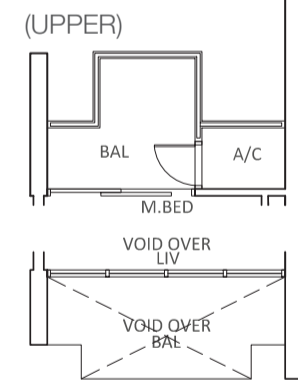
#(05,07,09,11)-04 S7,13



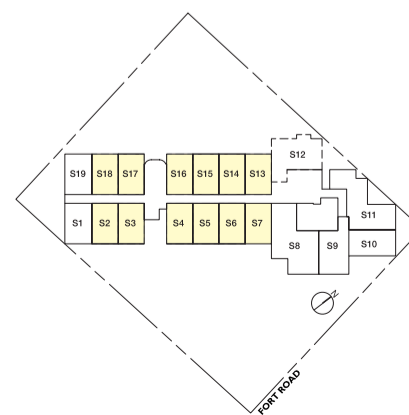
- #(05,07,09)-09 S2,18 (MIRRORED)
- #(05,07,09)-08 S3,17



#(05,07,09,11)-04 S7,13

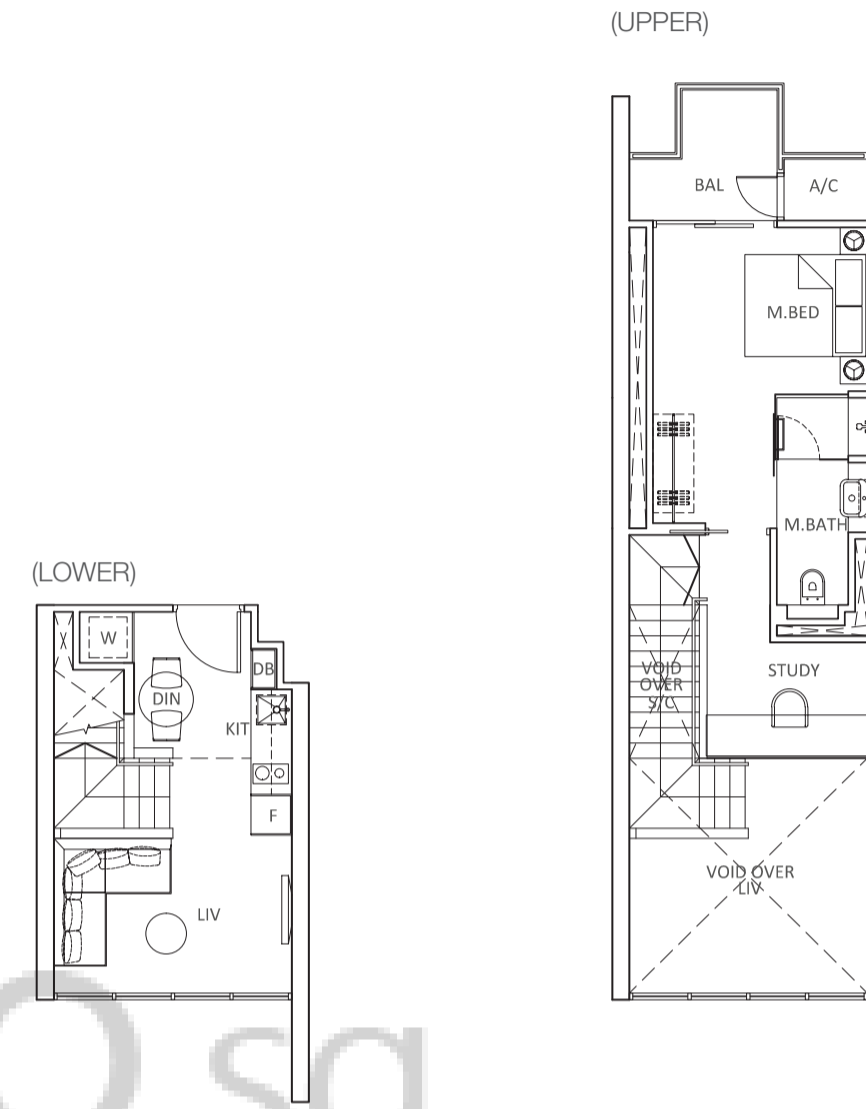


- #(05,07,09,11)-05 S6,14 (MIRRORED)
- #(05,07,09)-07 S4,16 (MIRRORED)
- #(05,07,09)-06 S5,15



TYPE A5aL

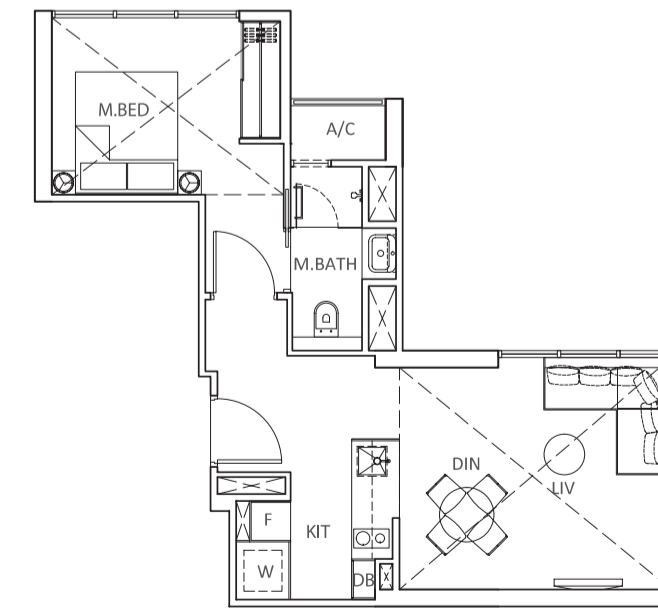
1-Bedroom Loft
 Approx 66 sqm
 (Includes A/C ledge 2 sqm, balcony 4 sqm & void 16 sqm)



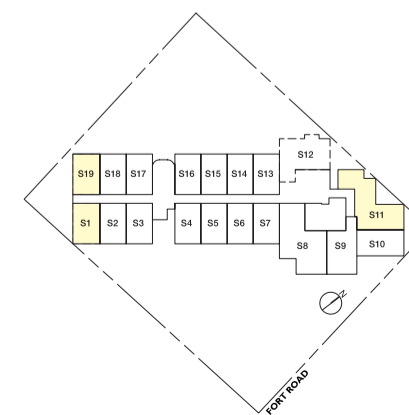
#(05,07,09)-10 S1,19

TYPE A6

1-Bedroom
 Approx 41 sqm
 (Includes A/C ledge 2 sqm)
 Double volume for liv/din & m.bed



#(05,07,09,11,13)-01 S11

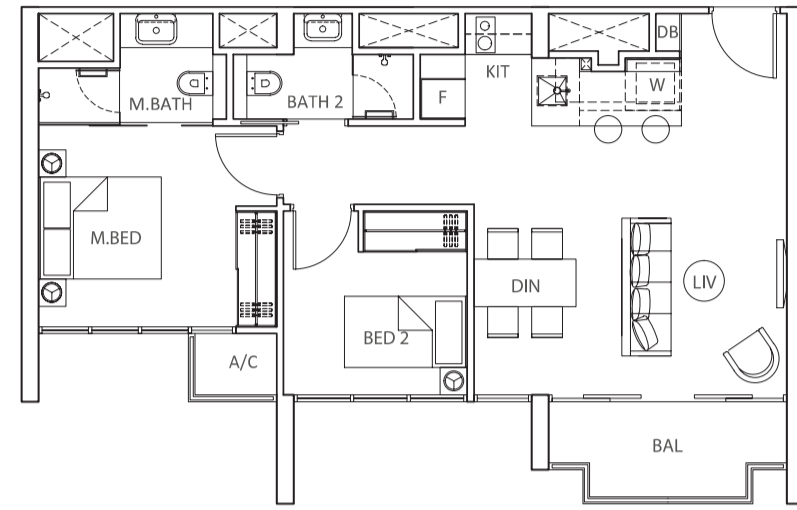


The plans are subject to change as may be required or approved by the relevant authorities. These are not drawn to scale and are for the purpose of visual presentation of the different layouts that are available. Areas are estimates only and are subject to final survey.

The plans are subject to change as may be required or approved by the relevant authorities. These are not drawn to scale and are for the purpose of visual presentation of the different layouts that are available. Areas are estimates only and are subject to final survey.

TYPE B1

2-Bedroom
 Approx 63 sqm
 (Includes A/C ledge 2 sqm & balcony 5 sqm)

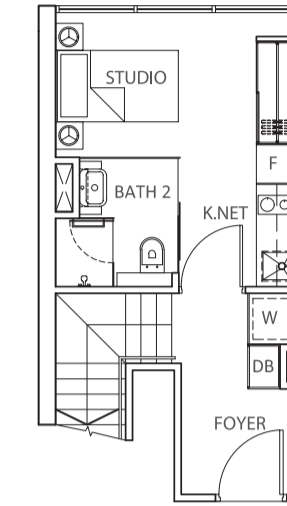


#11-07	S3,2,1	
#15-03	S3,2,1	
#(17,19,21)-05	S3,2,1	
#(17,19,21)-04	S6,5,4	
#11-08	S17,18,19	(MIRRORED)
#(05,07,09)-11	S17,18,19	(MIRRORED)

TYPE B3L

2-Bedroom Loft/Dual
 Approx 77 sqm
 (Includes A/C ledge 2 sqm,
 balcony 8 sqm & void 4 sqm)

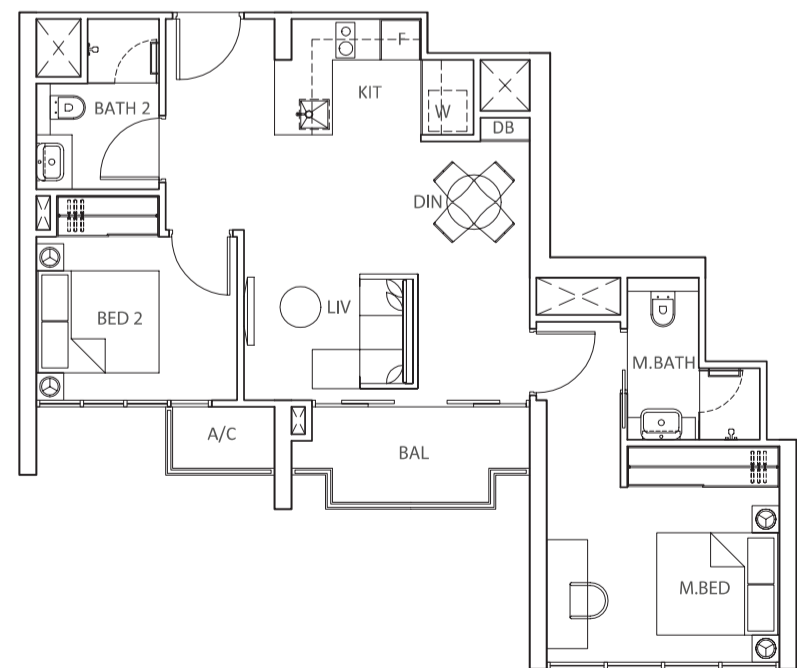
(LOWER)



#13-05	S14,6	
#15-09	S14,6	
#(17,19)-11	S14,6	
#15-07	S16,4	
#(17,19)-09	S16,4	
#15-05	S18,2	
#(17,19,21)-07	S18,2	
#13-06	S13,7	(MIRRORED)
#15-10	S13,7	(MIRRORED)
#(17,19)-12	S13,7	(MIRRORED)
#15-08	S15,5	(MIRRORED)
#(17,19)-10	S15,5	(MIRRORED)
#15-06	S17,3	(MIRRORED)
#(17,19,21)-08	S17,3	(MIRRORED)

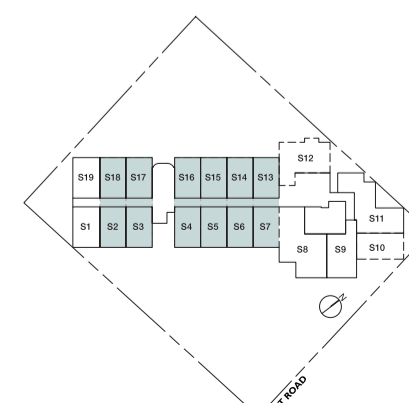
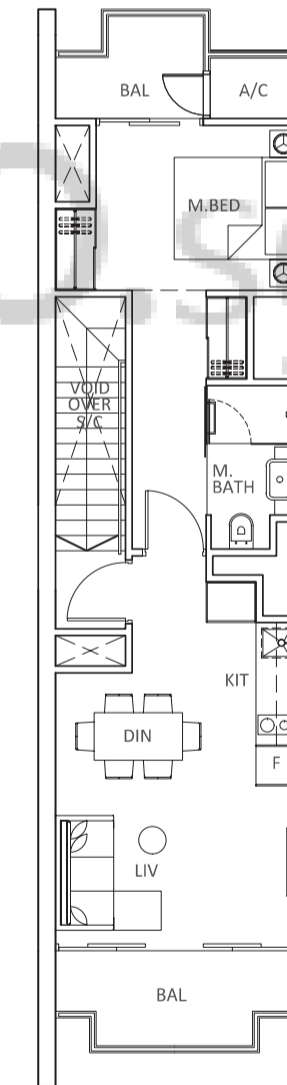
TYPE B2

2-Bedroom
 Approx 65 sqm
 (Includes A/C ledge 2 sqm & balcony 5 sqm)



#(17,19,21)-03	S7,8	
----------------	------	--

(UPPER)

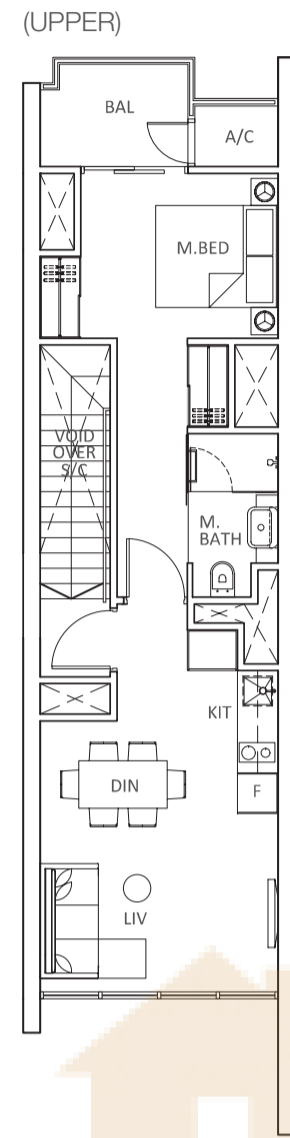
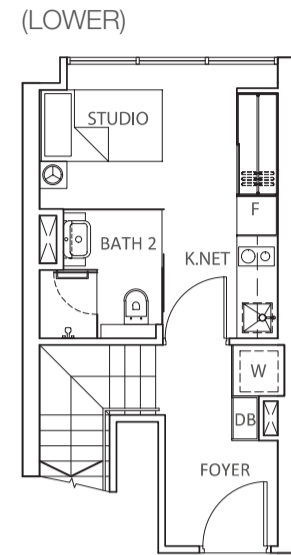


The plans are subject to change as may be required or approved by the relevant authorities. These are not drawn to scale and are for the purpose of visual presentation of the different layouts that are available. Areas are estimates only and are subject to final survey.

The plans are subject to change as may be required or approved by the relevant authorities. These are not drawn to scale and are for the purpose of visual presentation of the different layouts that are available. Areas are estimates only and are subject to final survey.

TYPE B3aL

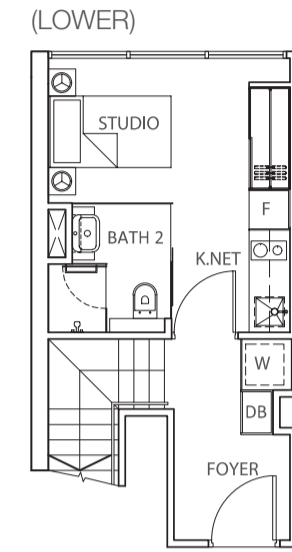
2-Bedroom Loft/Dual
 Approx 72 sqm
 (Includes A/C ledge 2 sqm, balcony 3 sqm & void 4 sqm)



#15-04 S19,1
 #(17,19,21)-06 S19,1

TYPE B3cL

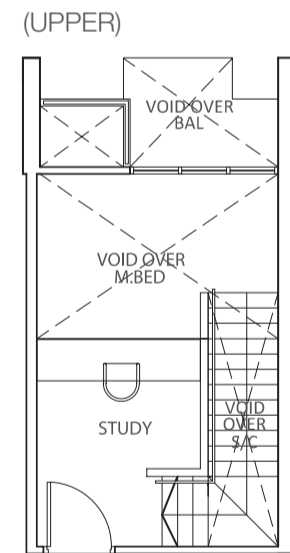
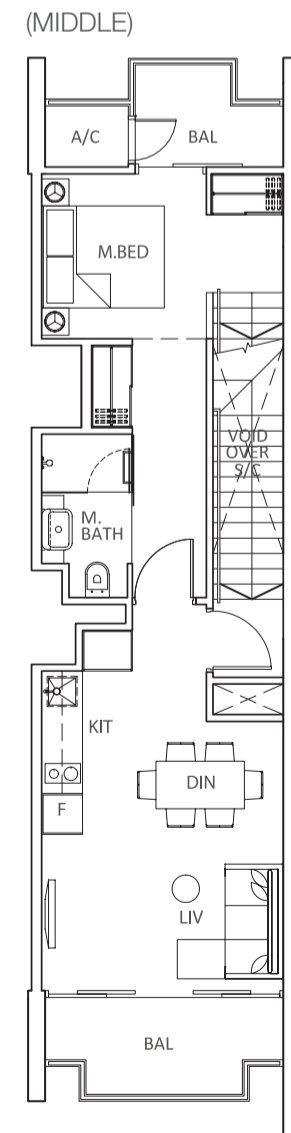
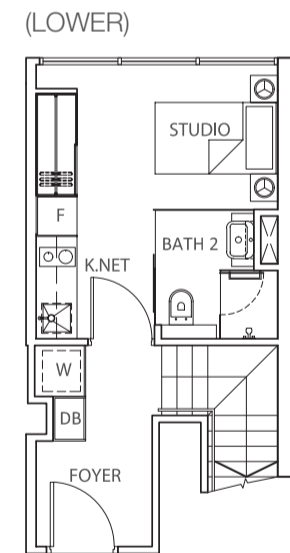
2-Bedroom Loft/Dual
 Approx 77 sqm
 (Includes A/C ledge 2 sqm, balcony 8 sqm & void 4 sqm)
 Double volume for m.bed & bal



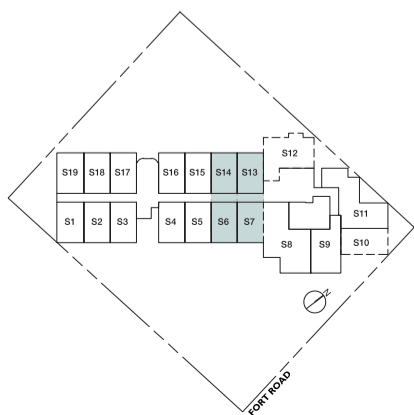
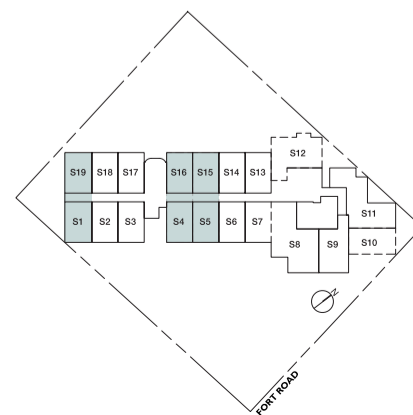
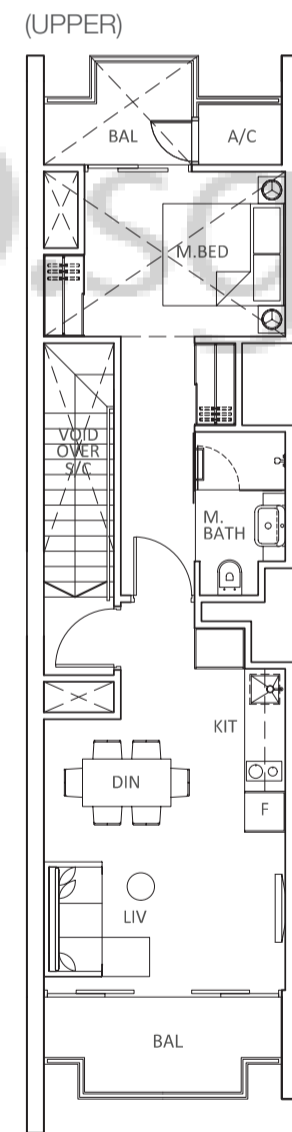
#21-11 S14,6
 #21-12 S13,7 (MIRRORED)

TYPE B3bL

2-Bedroom Loft/Dual
 Approx 102 sqm
 (Includes A/C ledge 2 sqm, balcony 8 sqm & void 16 sqm)



#21-10 S15,5
 #21-09 S16,4 (MIRRORED)

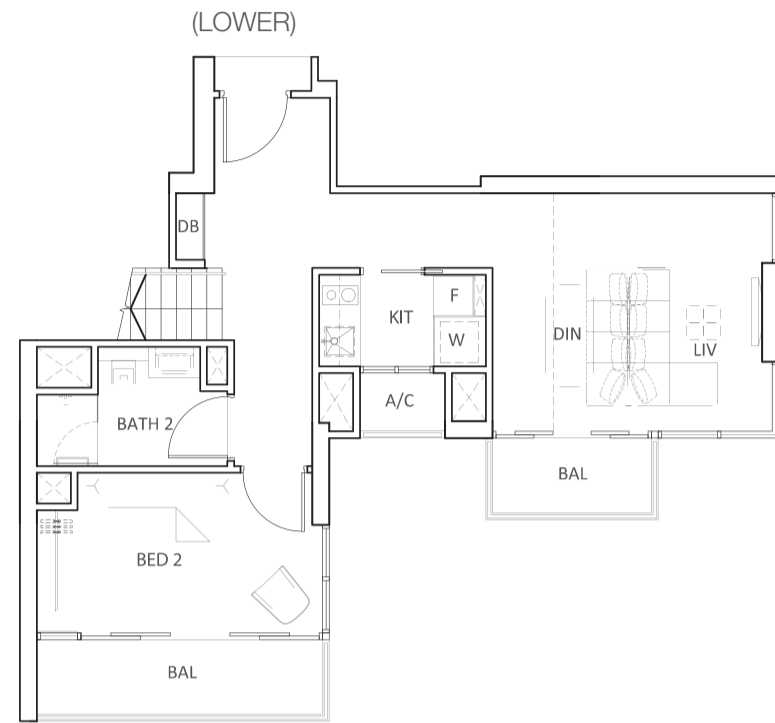


The plans are subject to change as may be required or approved by the relevant authorities. These are not drawn to scale and are for the purpose of visual presentation of the different layouts that are available. Areas are estimates only and are subject to final survey.

The plans are subject to change as may be required or approved by the relevant authorities. These are not drawn to scale and are for the purpose of visual presentation of the different layouts that are available. Areas are estimates only and are subject to final survey.

TYPE B4L

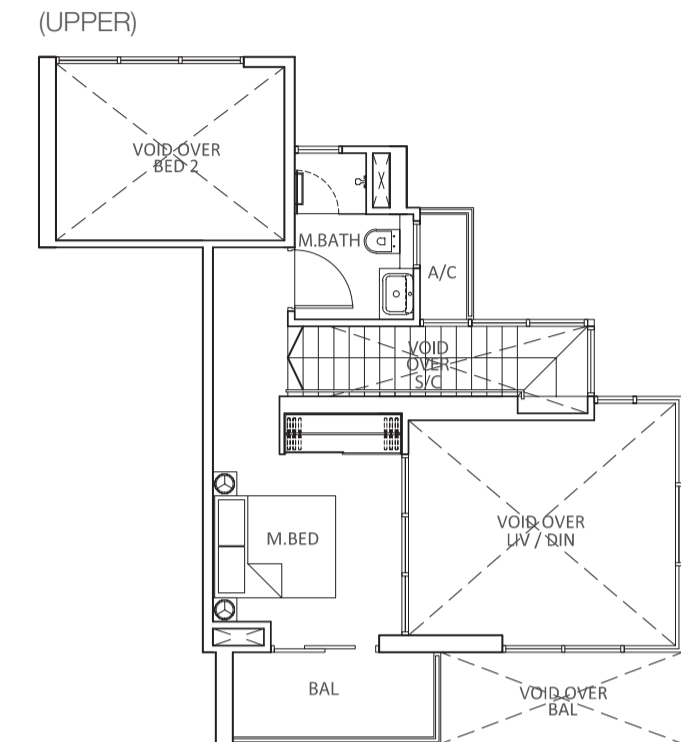
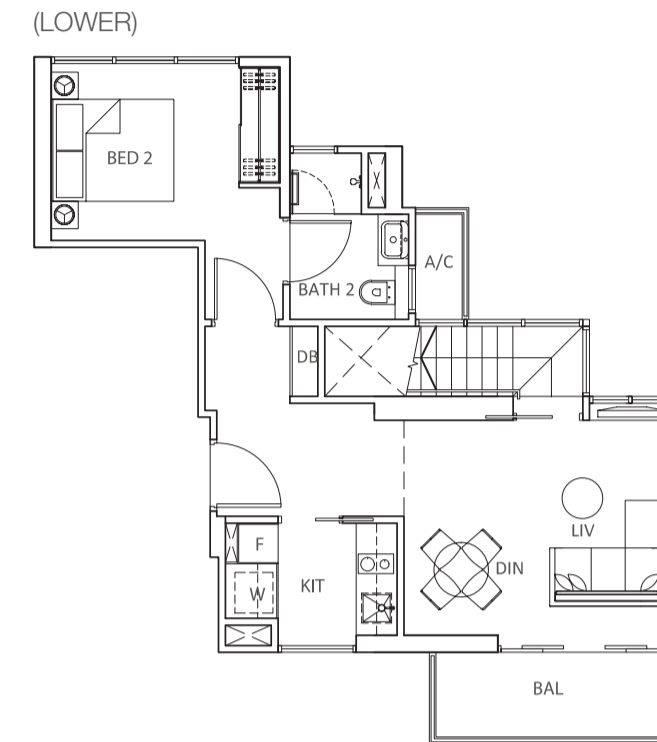
2-Bedroom Loft
 Approx 98 sqm
 (Includes A/C ledge 2 sqm, balcony 8 sqm & void 19 sqm)



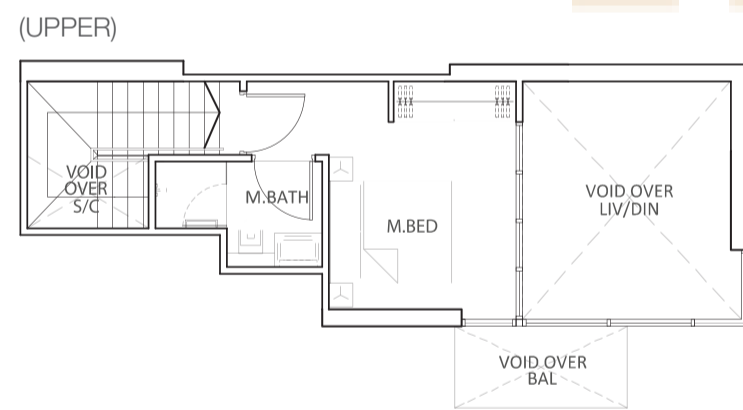
#(05,07,09,11,13)-02 S9,10

TYPE B5L

2-Bedroom Loft
 Approx 109 sqm
 (Includes A/C ledge 4 sqm, balcony 9 sqm & void 33 sqm)

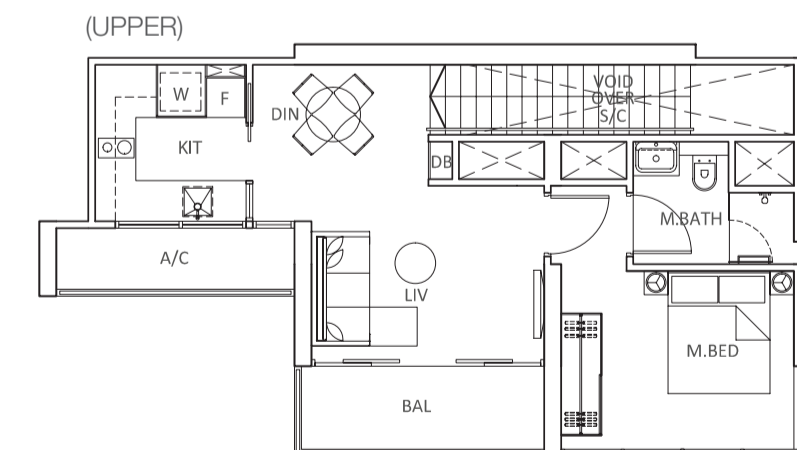
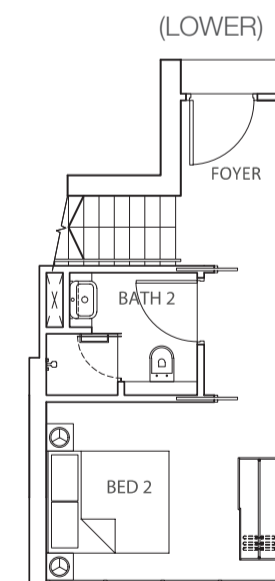


#(17,19,21)-01 S11



TYPE B6L

2-Bedroom Loft
 Approx 78 sqm
 (Includes A/C ledge 4 sqm, balcony 5 sqm & void 6 sqm)



#(17,19,21)-02 S9,8



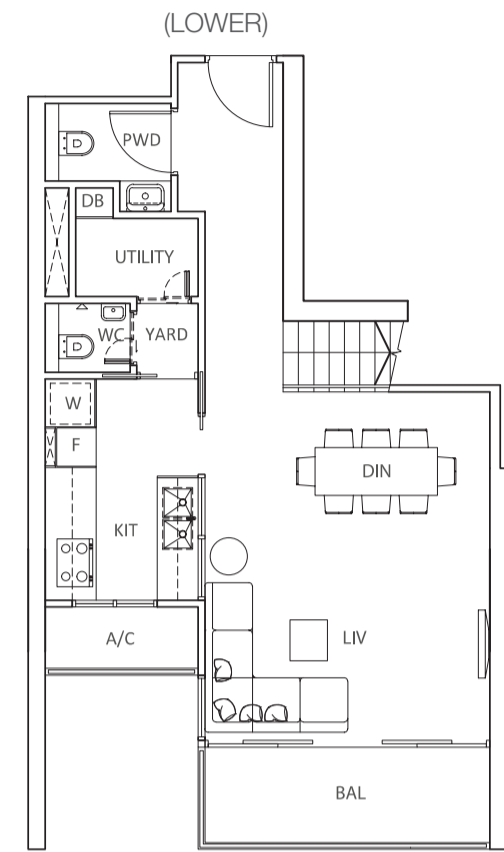
The plans are subject to change as may be required or approved by the relevant authorities. These are not drawn to scale and are for the purpose of visual presentation of the different layouts that are available. Areas are estimates only and are subject to final survey.

The plans are subject to change as may be required or approved by the relevant authorities. These are not drawn to scale and are for the purpose of visual presentation of the different layouts that are available. Areas are estimates only and are subject to final survey.



TYPE C1L

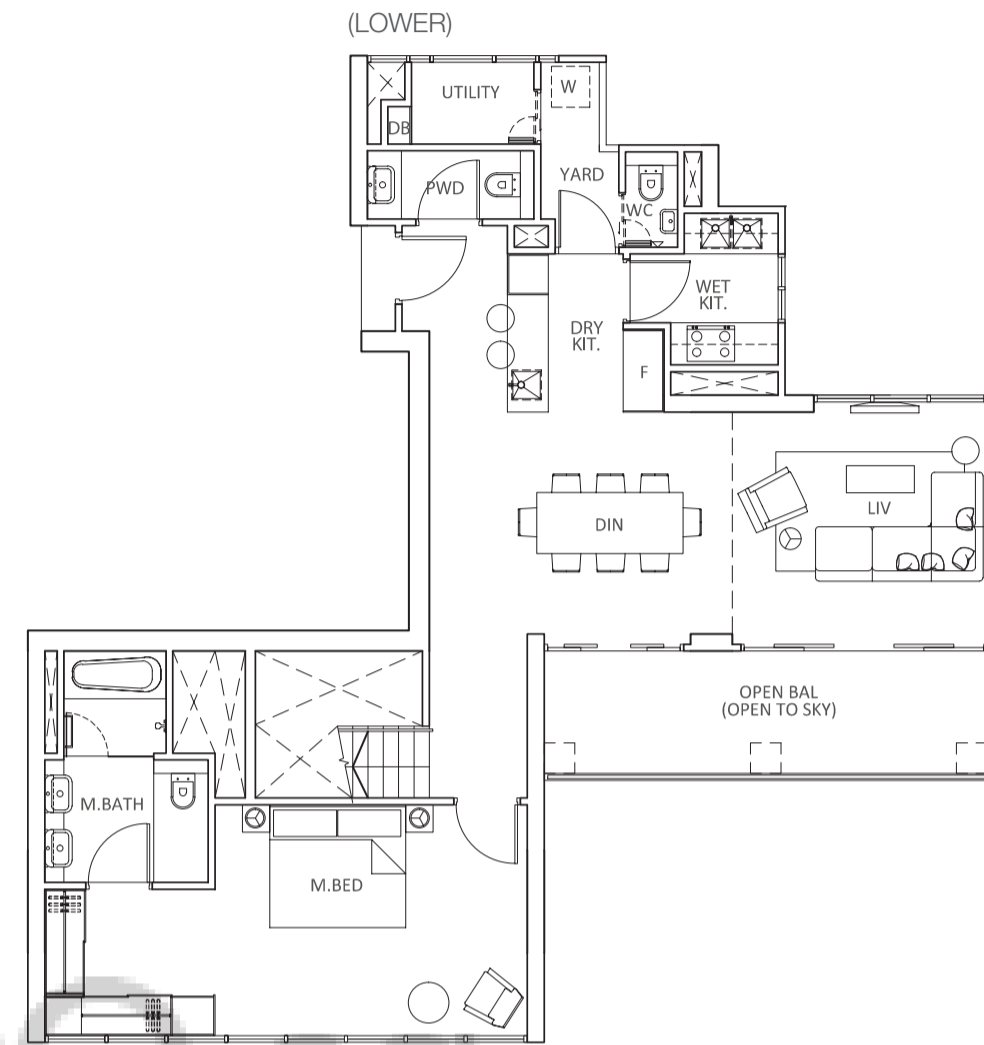
3-Bedroom
 Approx 125 sqm
 (Includes A/C ledge 3 sqm, balcony 7 sqm & void 11 sqm)



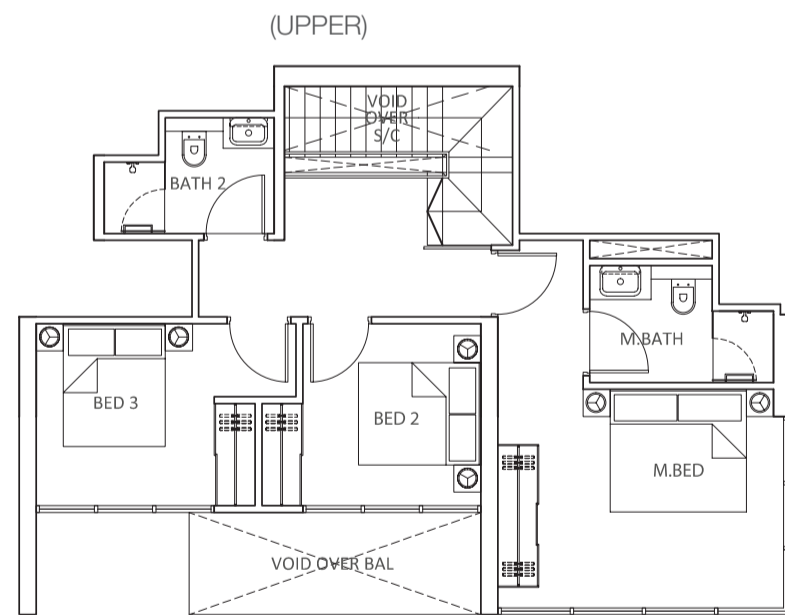
#(05,07,09,11,13)-03 S8,9

TYPE P1

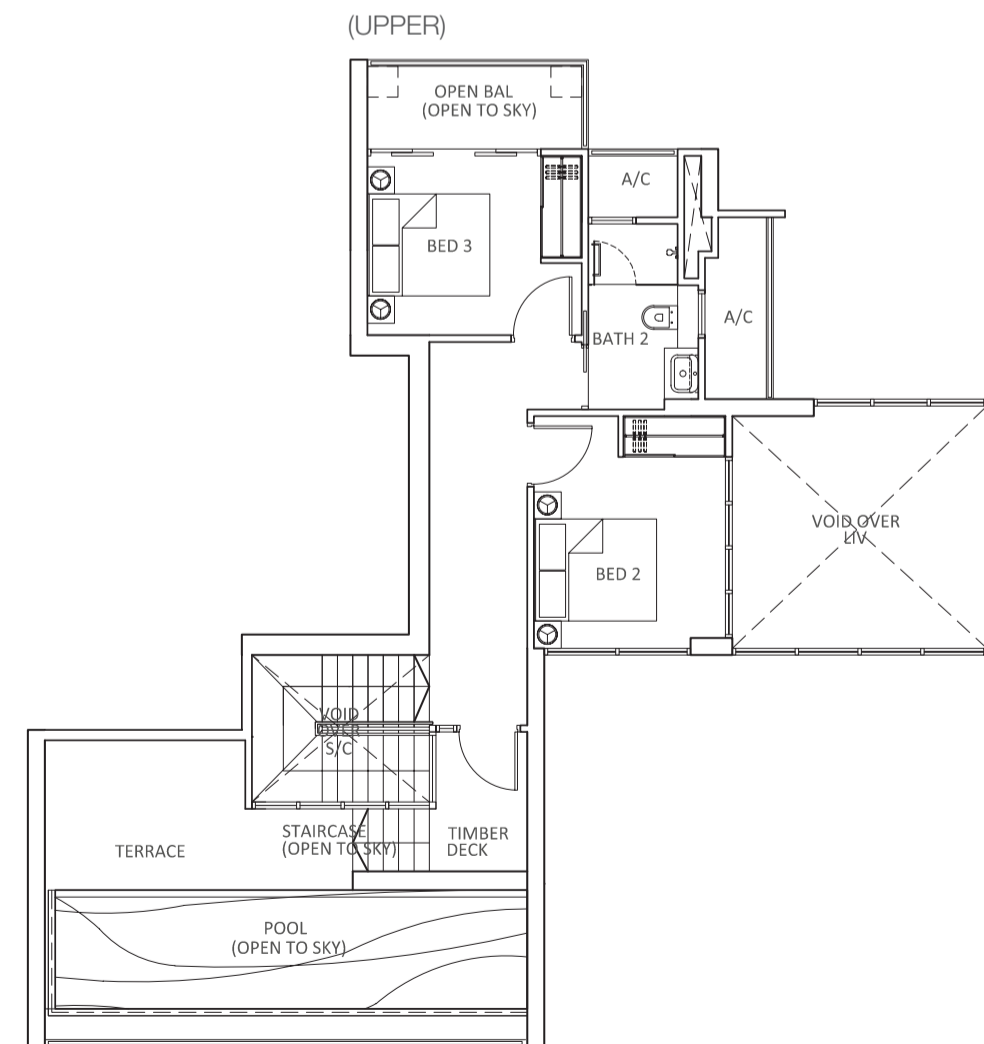
Penthouse
 Approx 200 sqm
 (Includes A/C ledge 5 sqm, balcony 17 sqm, roof terrace/pool 31 sqm & void 20 sqm)



#23-01 S11,10,9



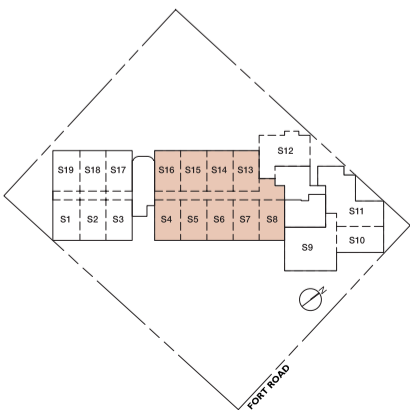
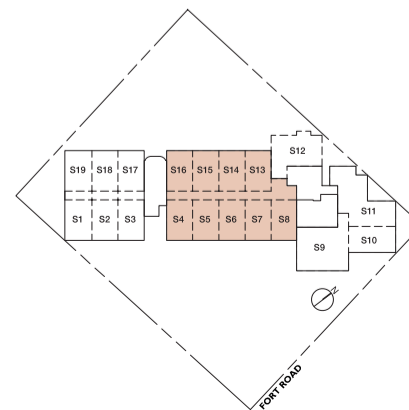
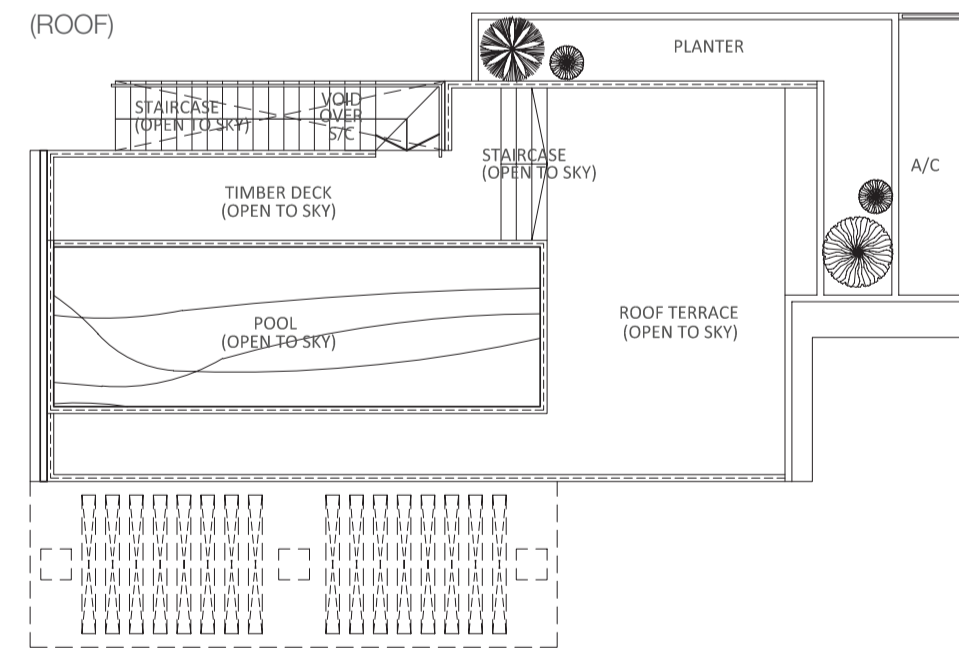
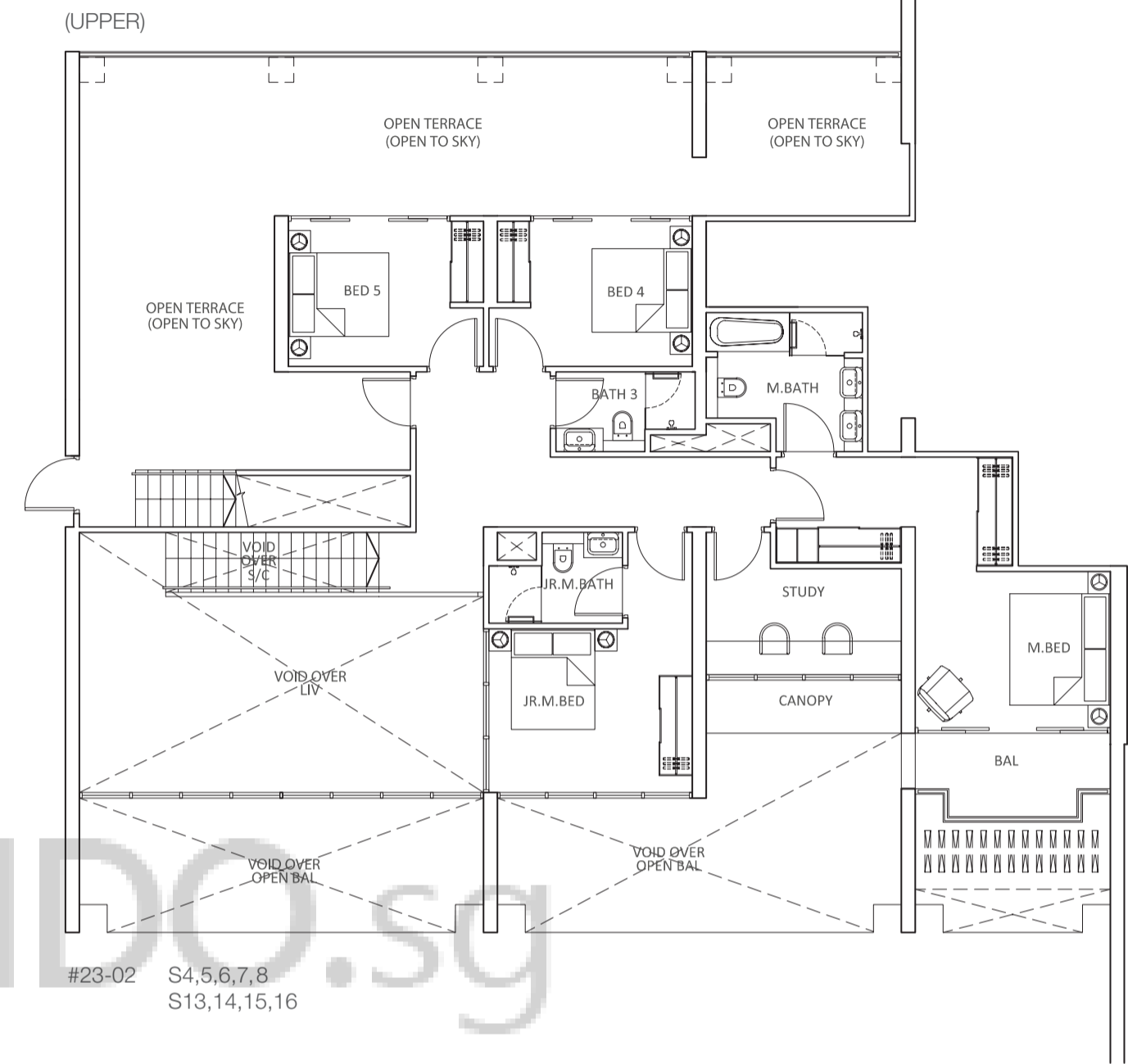
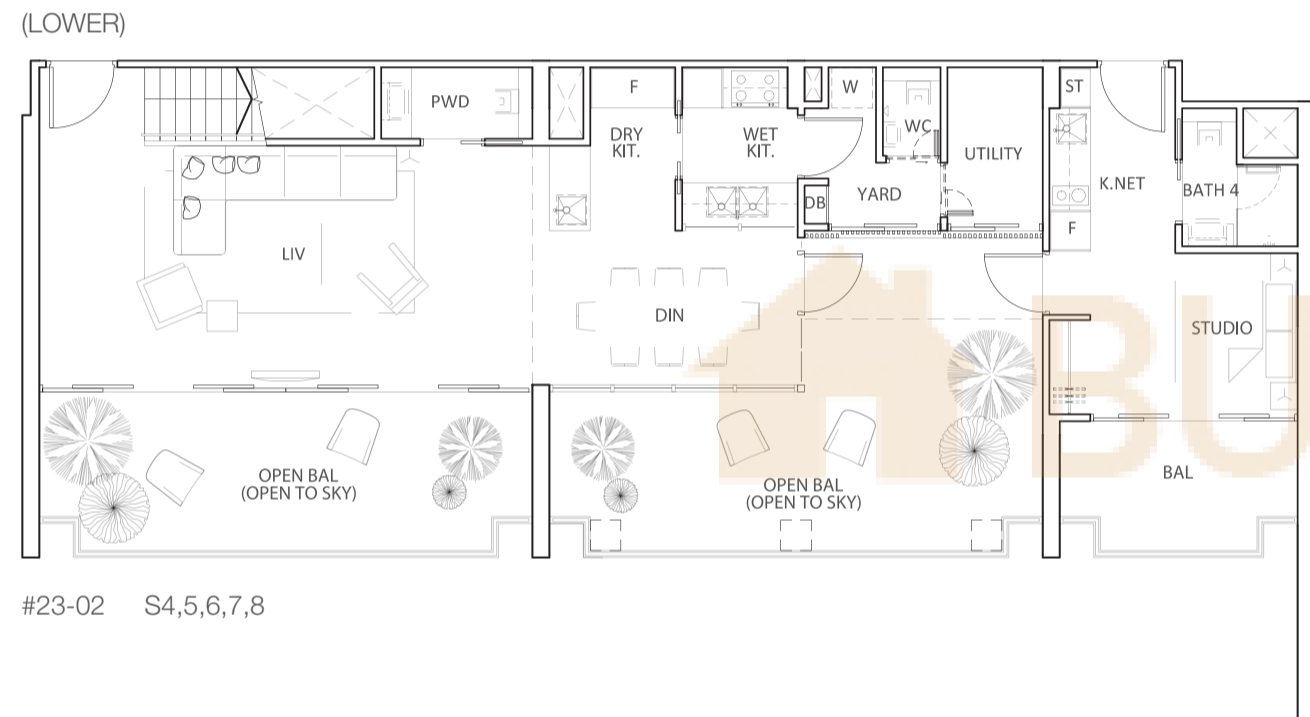
The plans are subject to change as may be required or approved by the relevant authorities. These are not drawn to scale and are for the purpose of visual presentation of the different layouts that are available. Areas are estimates only and are subject to final survey.



The plans are subject to change as may be required or approved by the relevant authorities. These are not drawn to scale and are for the purpose of visual presentation of the different layouts that are available. Areas are estimates only and are subject to final survey.

TYPE P2

Penthouse
 Approx 452 sqm
 (Includes A/C ledge 5 sqm, balcony 55 sqm, planter 9 sqm, open/roof terrace/pool 125 sqm & void 81 sqm)



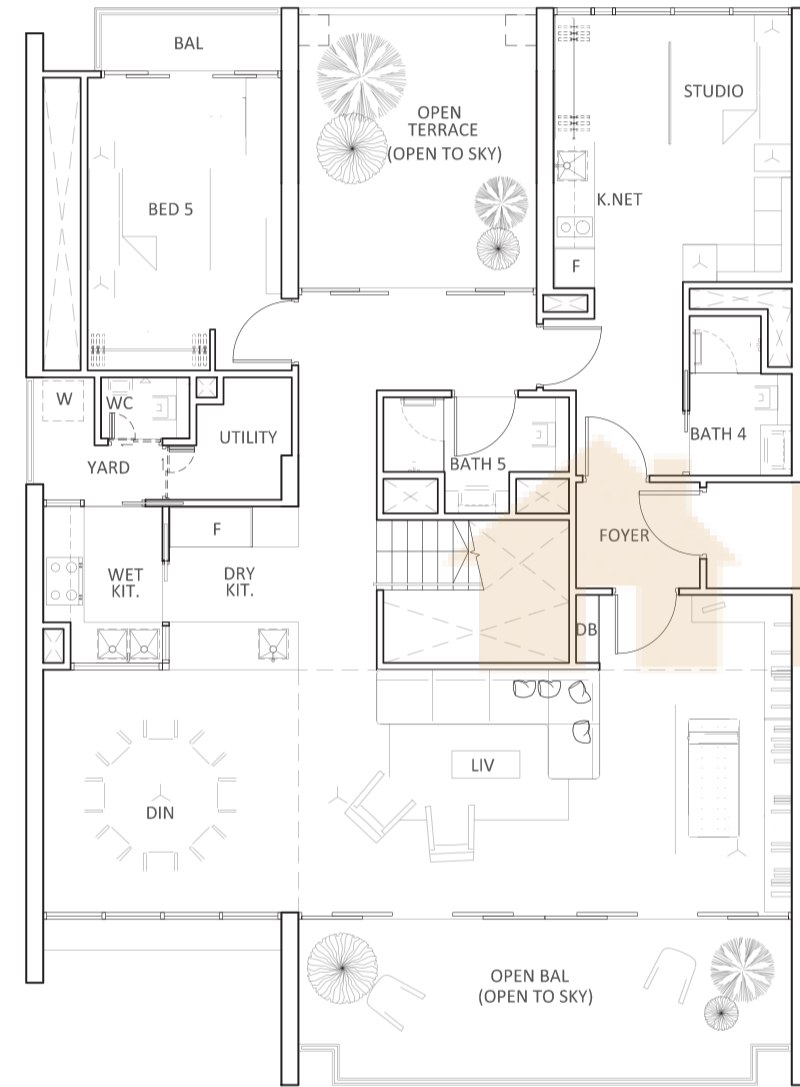
The plans are subject to change as may be required or approved by the relevant authorities. These are not drawn to scale and are for the purpose of visual presentation of the different layouts that are available. Areas are estimates only and are subject to final survey.

The plans are subject to change as may be required or approved by the relevant authorities. These are not drawn to scale and are for the purpose of visual presentation of the different layouts that are available. Areas are estimates only and are subject to final survey.

TYPE P3

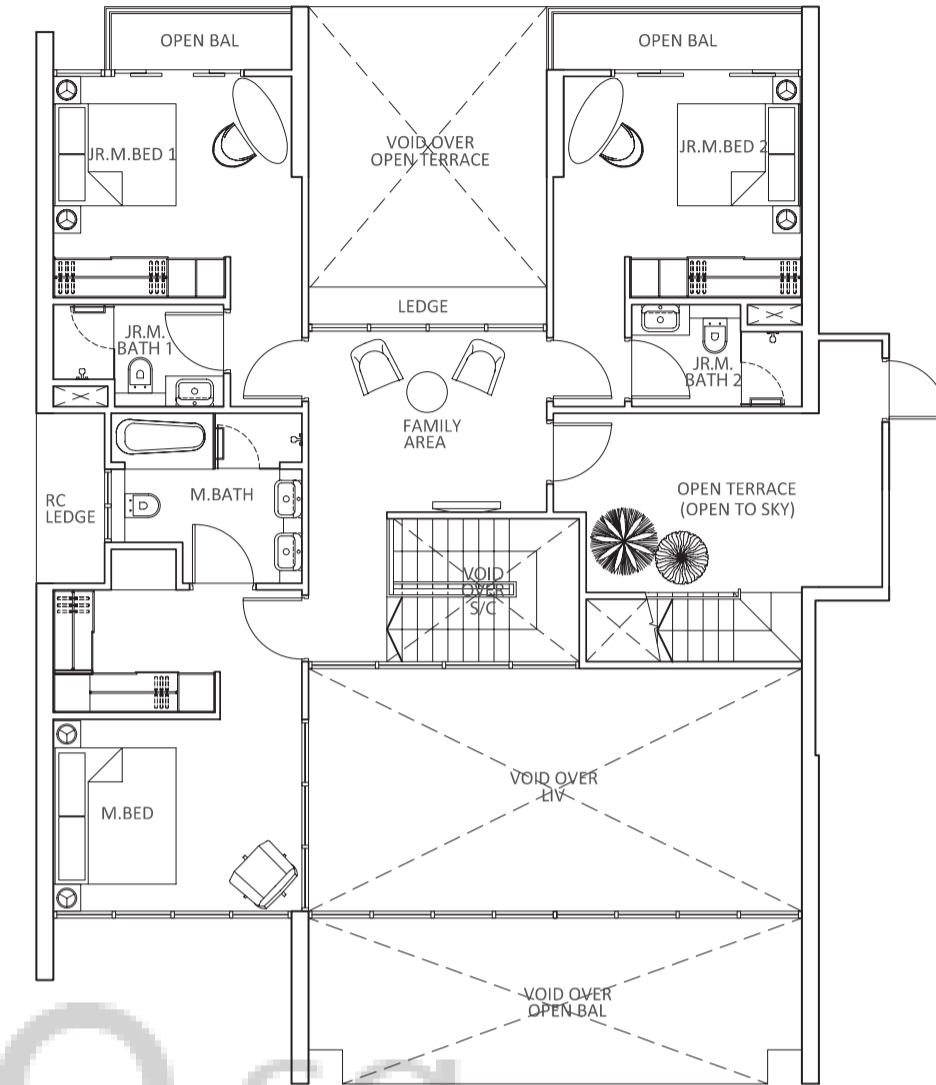
Penthouse
 Approx 401 sqm
 (Includes A/C ledge 6 sqm, balcony 26 sqm, planter 7 sqm, open/roof terrace/pool 87sqm & void 71 sqm)

(LOWER)



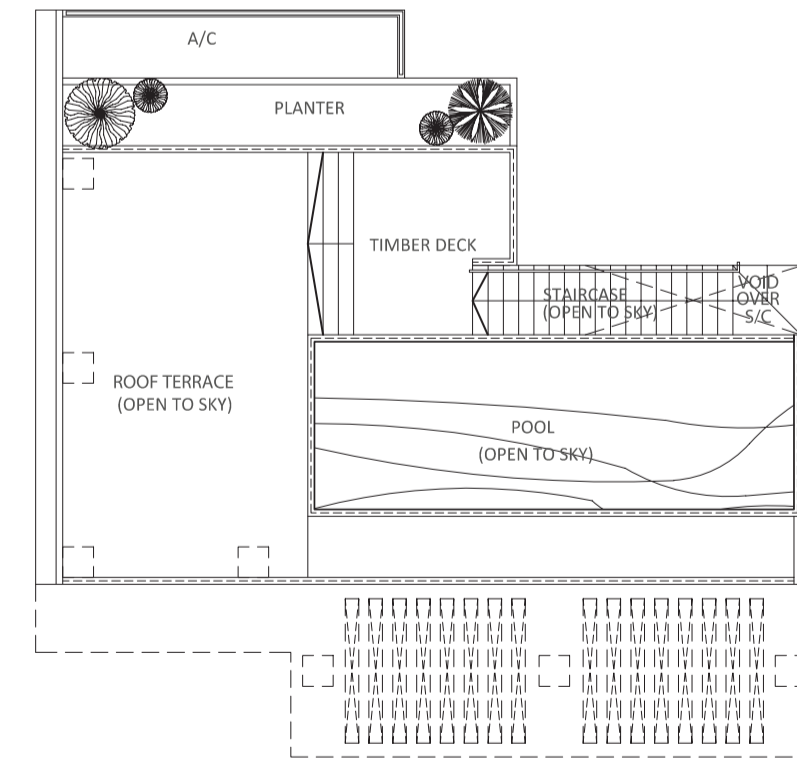
#23-03 S3,2,1,17,18,19

(UPPER)

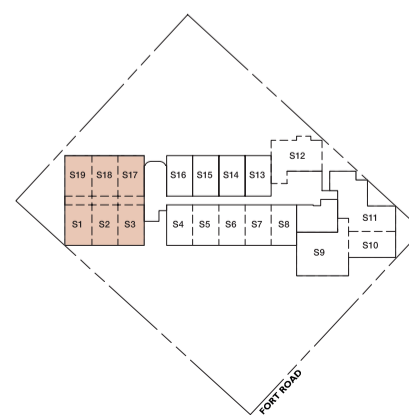


#23-03 S3,2,1,17,18,19

(ROOF)



#23-03 S3,2,1



The plans are subject to change as may be required or approved by the relevant authorities. These are not drawn to scale and are for the purpose of visual presentation of the different layouts that are available. Areas are estimates only and are subject to final survey.

The plans are subject to change as may be required or approved by the relevant authorities. These are not drawn to scale and are for the purpose of visual presentation of the different layouts that are available. Areas are estimates only and are subject to final survey.