

UNIT DISTRIBUTION

2-BEDROOM+STUDY

Tower Block
16 Balmoral Road

Level	Unit	1	2	3	4	5	6	7
Roof		3PH(R) #12-01		3PH(R) #12-02		4PH(R) #12-03		
12		3PH #11-01		3PH #11-02		4PH #11-03		
11		Sky Terrace						
10		C1	BS1	BS1	C1	C2	BS2	C2
9		C1	BS1	BS1	C1	C2	BS2	C2
8		C1	BS1	BS1	C1	C2	BS2	C2
7		C1	BS1	BS1	C1	C2	BS2	C2
6		C1	BS1	BS1	C1	C2	BS2	C2
5		C1	BS1	BS1	C1	C2	BS2	C2
4		C1	BS1	BS1	C1	C2	BS2	C2
3		C1	BS1	BS1	C1	C2	BS2	C2
2		C1			C1	C2	BS2	C2
1		C1(P)			C1(P)	C2(P)	BS2(P)	C2(P)

Strata Bungalows
18, 20, 22, 24, 26, 28, 30 & 32 Balmoral Road

House No.	Type
18	D2
20	D1
22	D1
24	D3
26	D4
28	D1
30	D1
32	D5

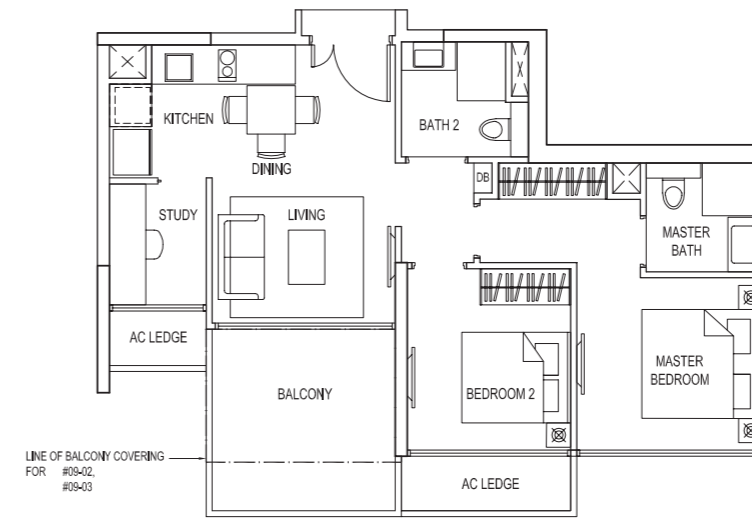
- BS1 2-bedroom + Study
 - BS2 2-bedroom + Study
 - C1 3-bedroom
 - C2 3-bedroom + Utility
 - 3PH 3-bedroom Penthouse
 - 4PH 4-bedroom Penthouse
 - D Strata Bungalows
- (P) - PES | (R) - Roof

TYPE:BS1

Area: 72 sqm / 775 sqft

Unit:
#03-03, #04-03, #05-03, #06-03,
#07-03, #08-03, #09-03

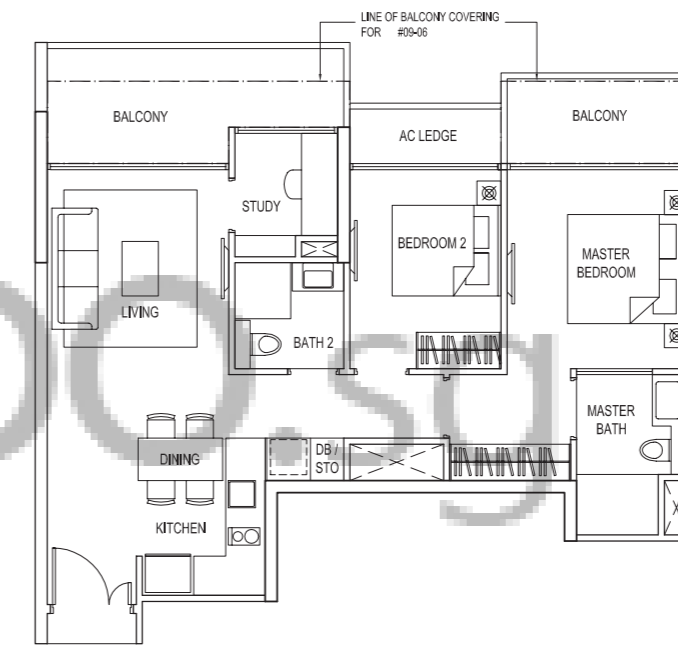
Mirror Image Unit:
#03-02, #04-02, #05-02, #06-02,
#07-02, #08-02, #09-02



TYPE:BS2

Area: 83 sqm / 893 sqft

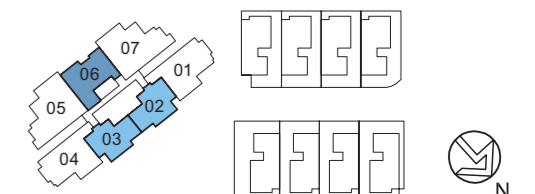
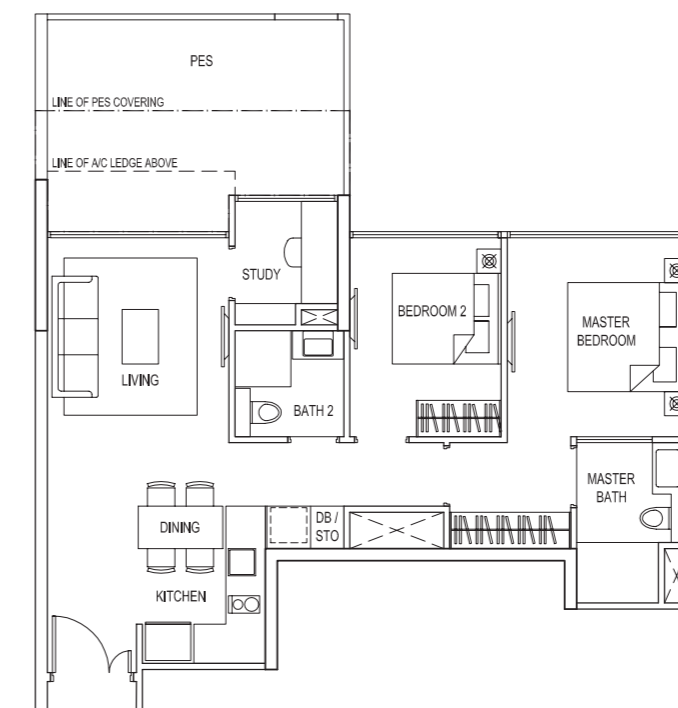
Unit:
#02-06, #03-06, #04-06, #05-06,
#06-06, #07-06, #08-06, #09-06



TYPE:BS2(P)

Area: 83 sqm / 893 sqft

Unit: #01-06



Note: The plans are subject to change as may be required or approved by the relevant authorities. These are not drawn to scale and are for the purpose of visual presentation of the different layouts that are available. Areas are estimates only and are subject to final survey.

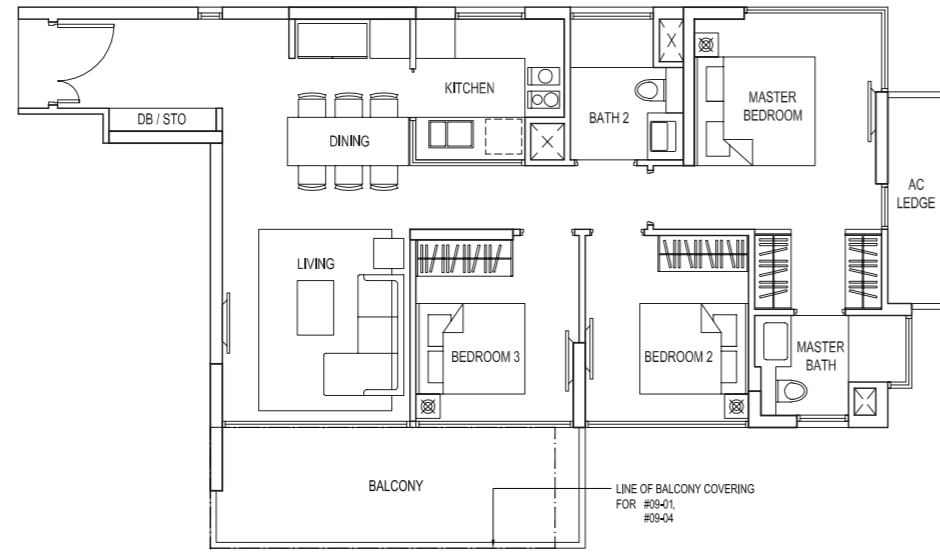
3-BEDROOM

TYPE:C1

Area: 97 sqm / 1044 sqft

Unit:
#02-01, #03-01, #04-01, #05-01,
#06-01, #07-01, #08-01, #09-01

Mirror Image Unit:
#02-04, #03-04, #04-04, #05-04,
#06-04, #07-04, #08-04, #09-04



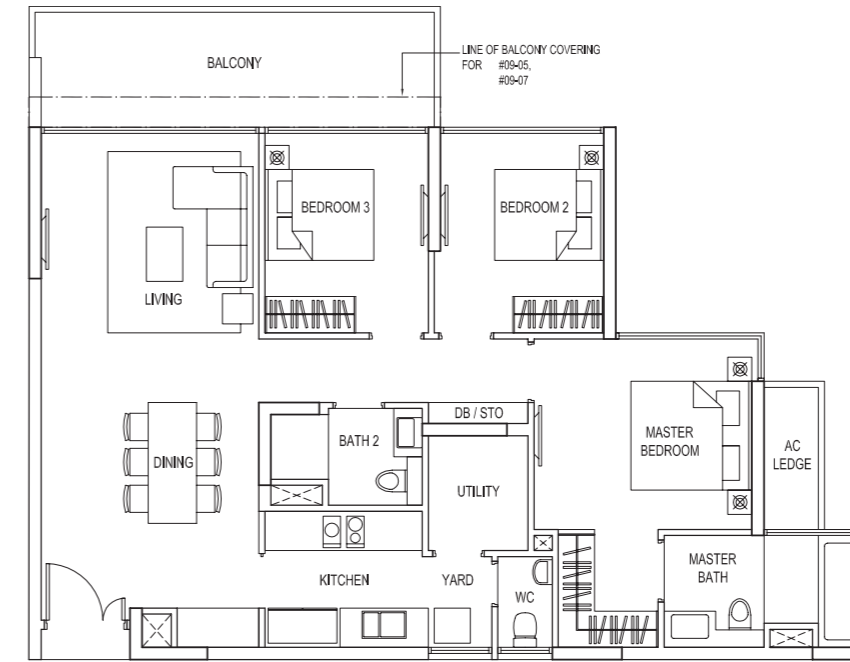
3-BEDROOM+UTILITY

TYPE:C2

Area: 114 sqm / 1227 sqft

Unit:
#02-07, #03-07, #04-07, #05-07,
#06-07, #07-07, #08-07, #09-07

Mirror Image Unit:
#02-05, #03-05, #04-05, #05-05,
#06-05, #07-05, #08-05, #09-05

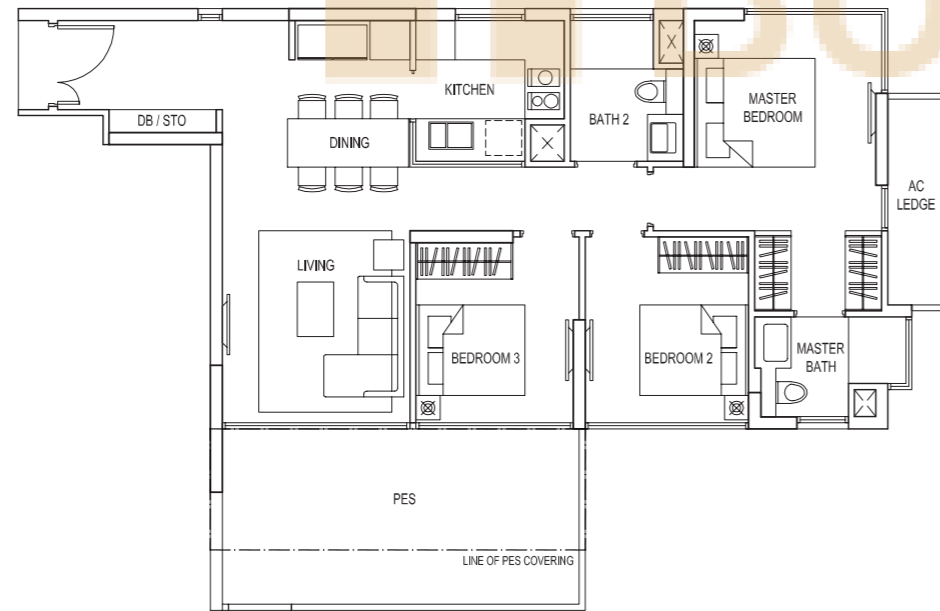


TYPE:C1(P)

Area: 103 sqm / 1109 sqft

Unit: #01-01

Mirror Image: #01-04

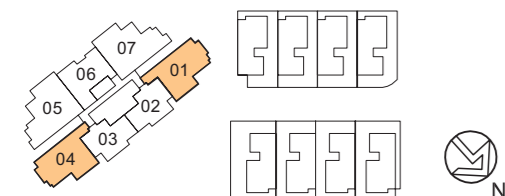
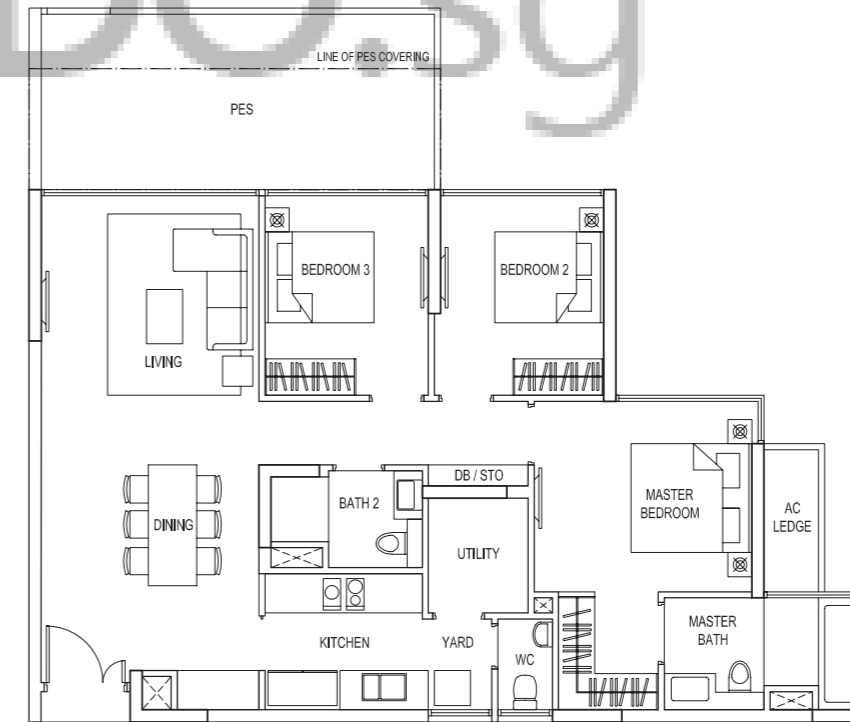


TYPE:C2(P)

Area: 121 sqm / 1302 sqft

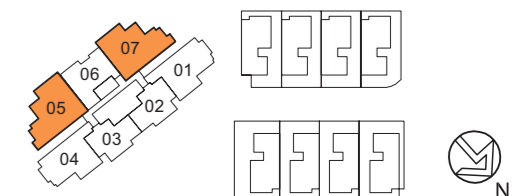
Unit: #01-07

Mirror Image: #01-05



Note: The plans are subject to change as may be required or approved by the relevant authorities. These are not drawn to scale and are for the purpose of visual presentation of the different layouts that are available. Areas are estimates only and are subject to final survey.

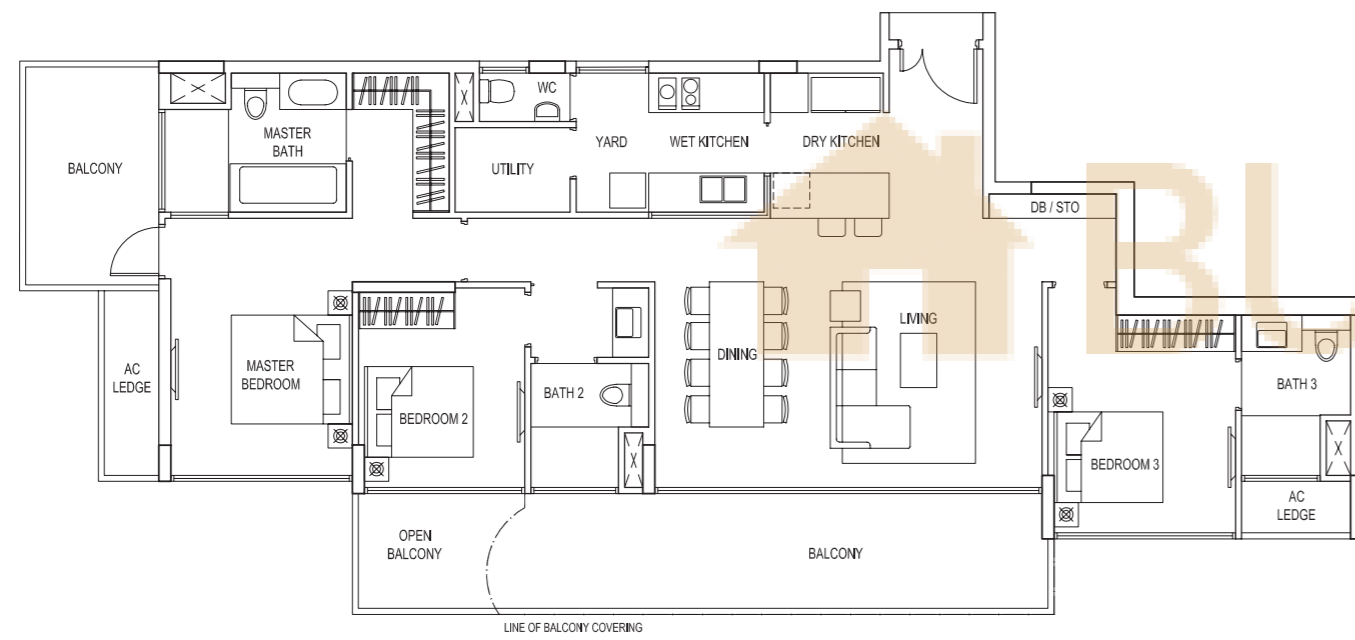
Note: The plans are subject to change as may be required or approved by the relevant authorities. These are not drawn to scale and are for the purpose of visual presentation of the different layouts that are available. Areas are estimates only and are subject to final survey.



3-BEDROOM PH

TYPE:3PH

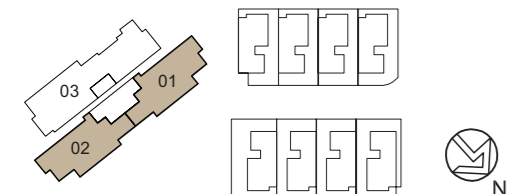
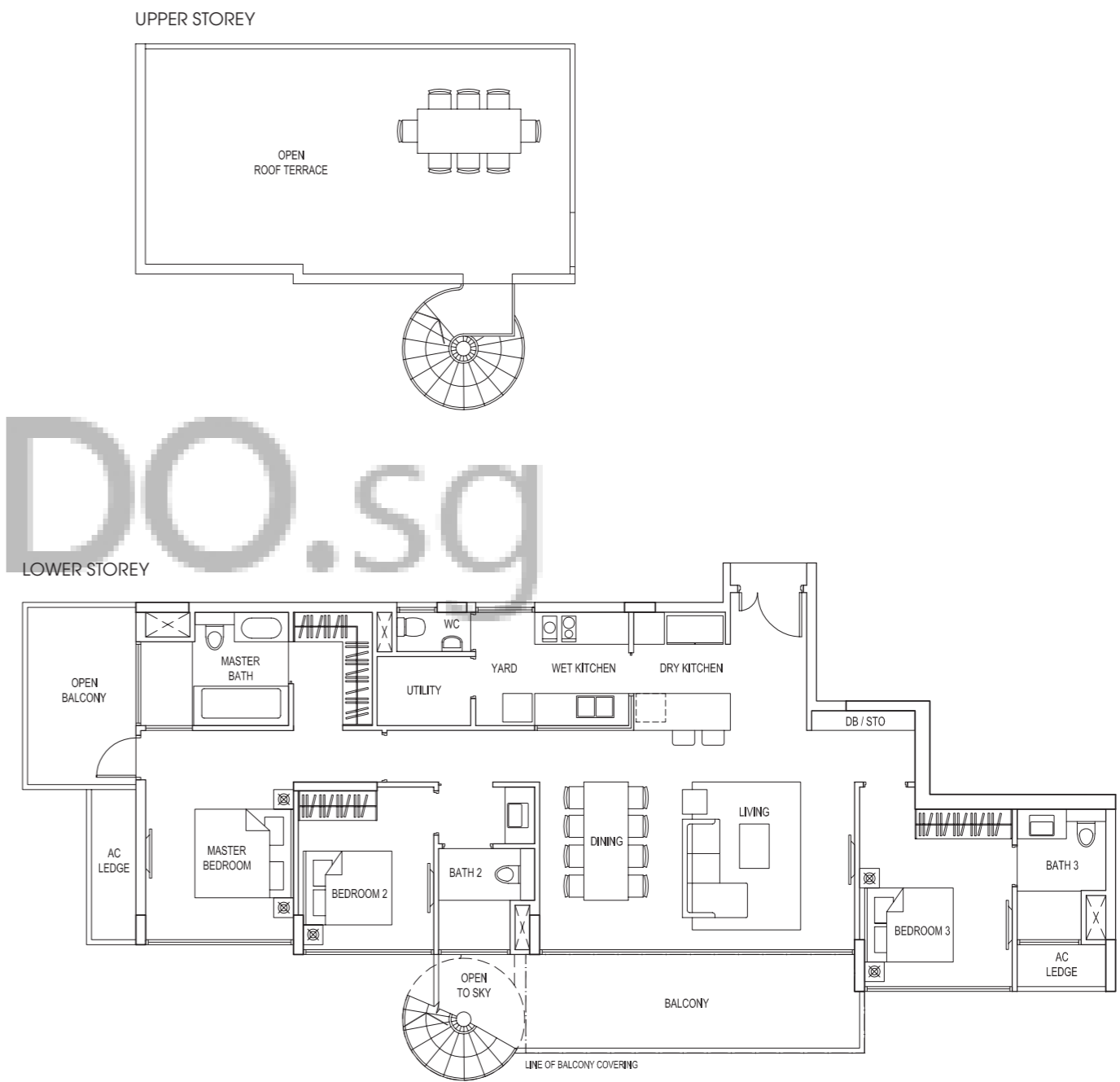
Area: 156 sqm / 1679 sqft
 Unit: #11-02
 Mirror Image Unit: #11-01



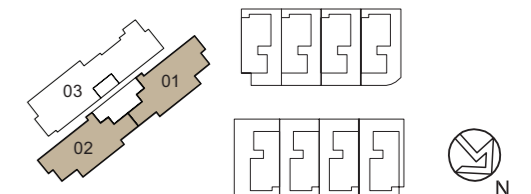
3-BEDROOM PH(R)

TYPE:3PH(R)

Area: 199 sqm / 2142 sqft
 Unit: #12-02
 Mirror Image Unit: #12-01



Note: The plans are subject to change as may be required or approved by the relevant authorities. These are not drawn to scale and are for the purpose of visual presentation of the different layouts that are available. Areas are estimates only and are subject to final survey.

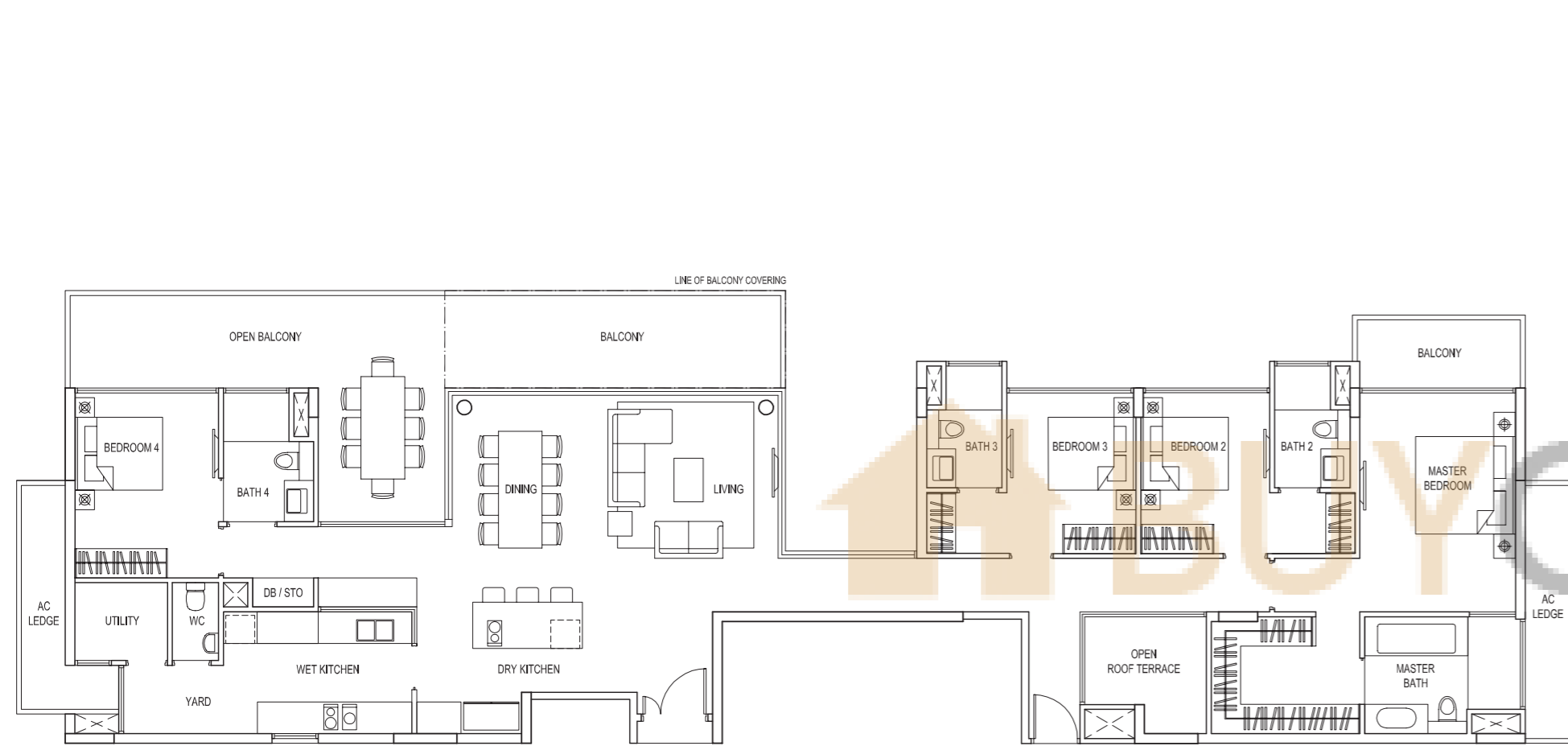


Note: The plans are subject to change as may be required or approved by the relevant authorities. These are not drawn to scale and are for the purpose of visual presentation of the different layouts that are available. Areas are estimates only and are subject to final survey.

4-BEDROOM PH

TYPE:4PH

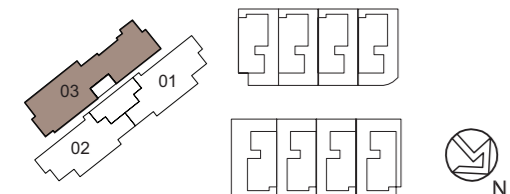
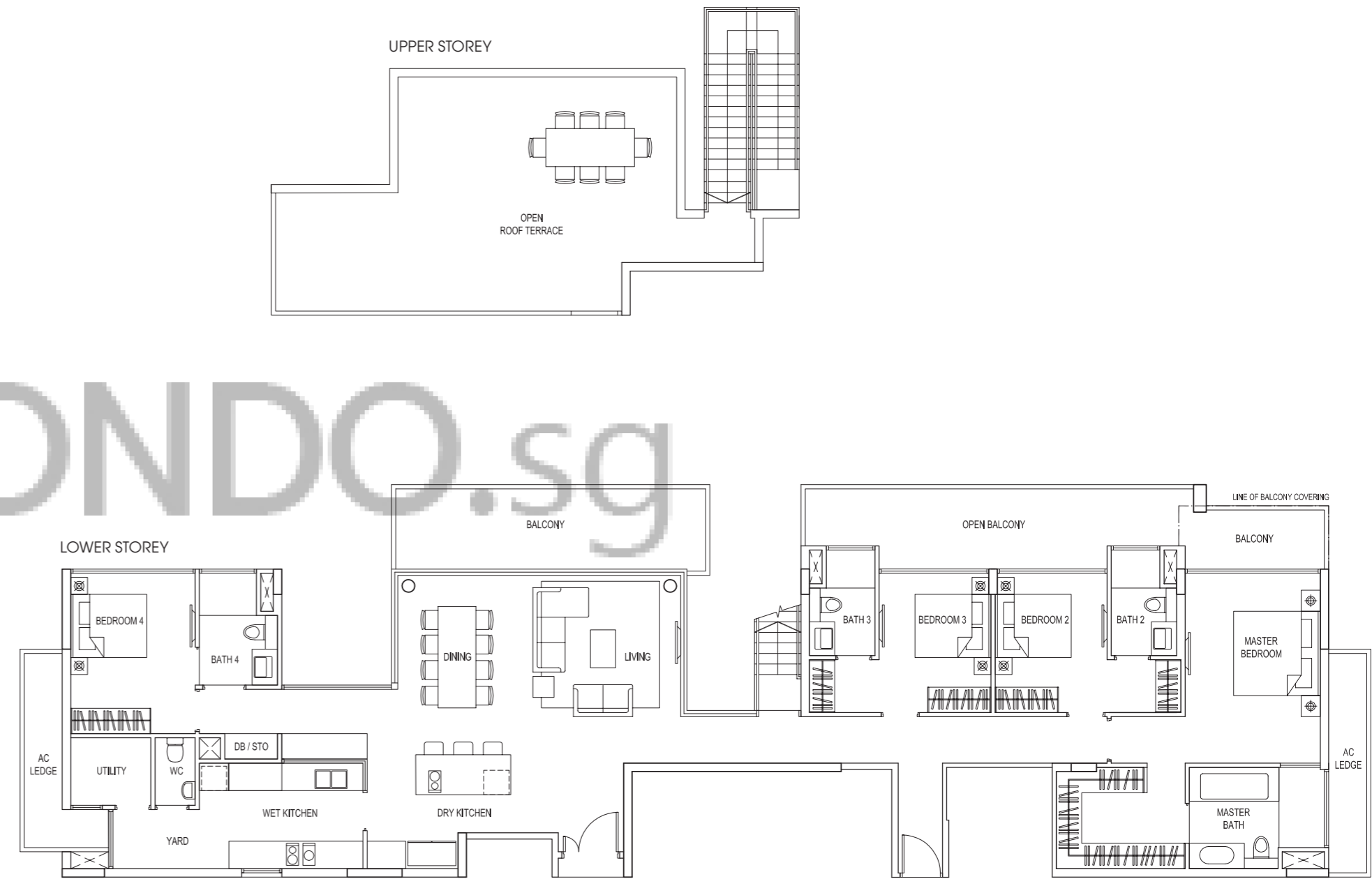
Area: 231 sqm / 2486 sqft
Unit: #11-03



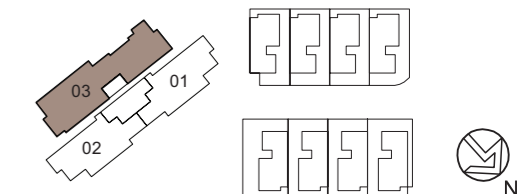
4-BEDROOM PH(R)

TYPE:4PH(R)

Area: 289 sqm / 3111 sqft
Unit: #12-03



Note: The plans are subject to change as may be required or approved by the relevant authorities. These are not drawn to scale and are for the purpose of visual presentation of the different layouts that are available. Areas are estimates only and are subject to final survey.



Note: The plans are subject to change as may be required or approved by the relevant authorities. These are not drawn to scale and are for the purpose of visual presentation of the different layouts that are available. Areas are estimates only and are subject to final survey.

STRATA BUNGALOWS

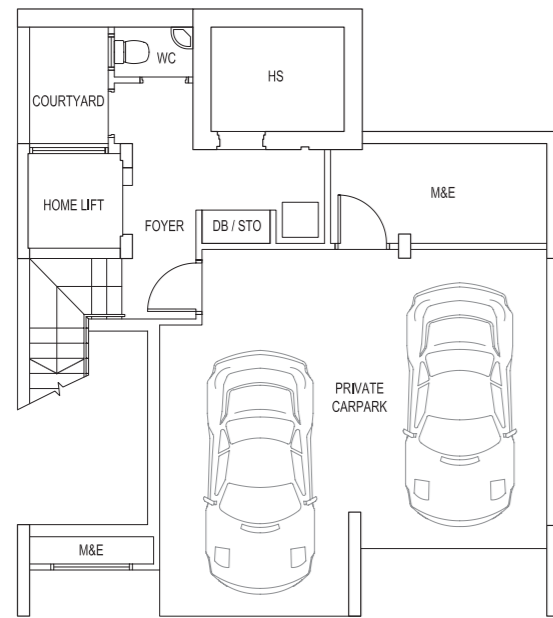
TYPE:D1

Area: 486 sqm / 5231 sqft

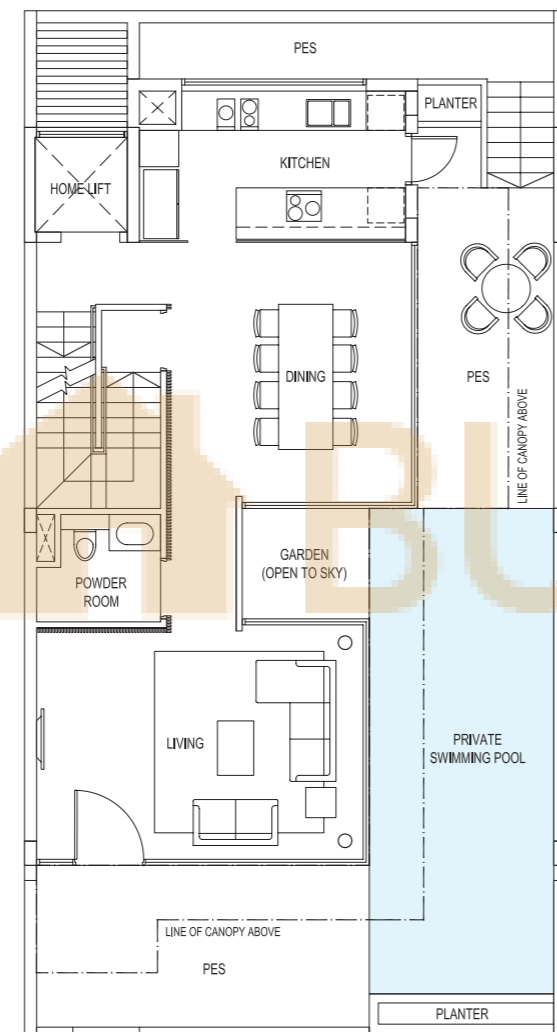
House No. 28, 30

Mirror image house no. 20, 22

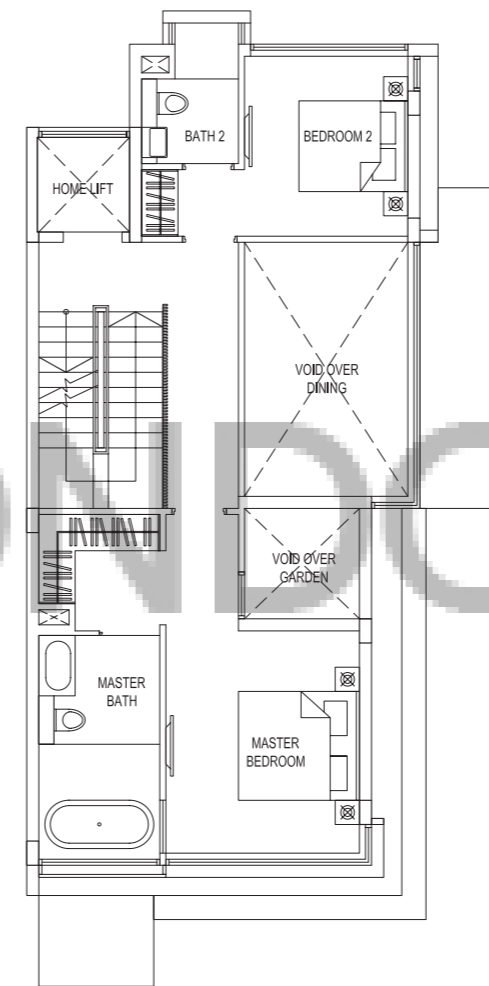
BASEMENT



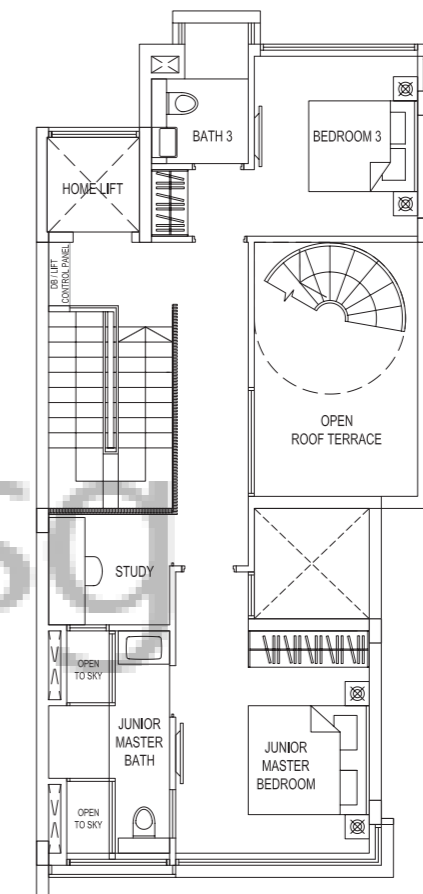
1ST STOREY



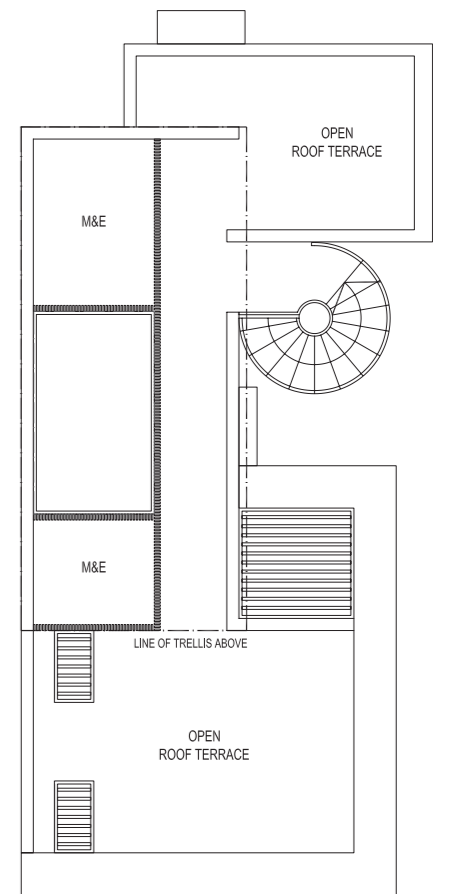
2ND STOREY



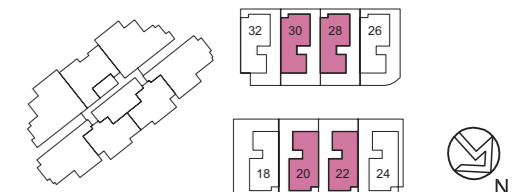
3RD STOREY



ROOF TERRACE



Note: The plans are subject to change as may be required or approved by the relevant authorities. These are not drawn to scale and are for the purpose of visual presentation of the different layouts that are available. Areas are estimates only and are subject to final survey.



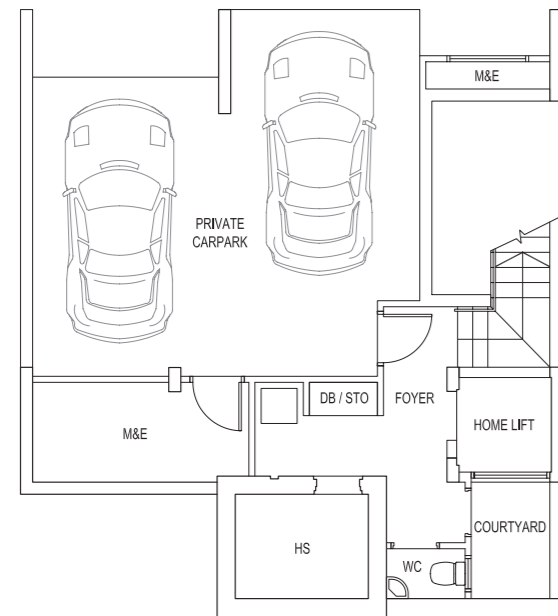
STRATA BUNGALOWS

TYPE:D2

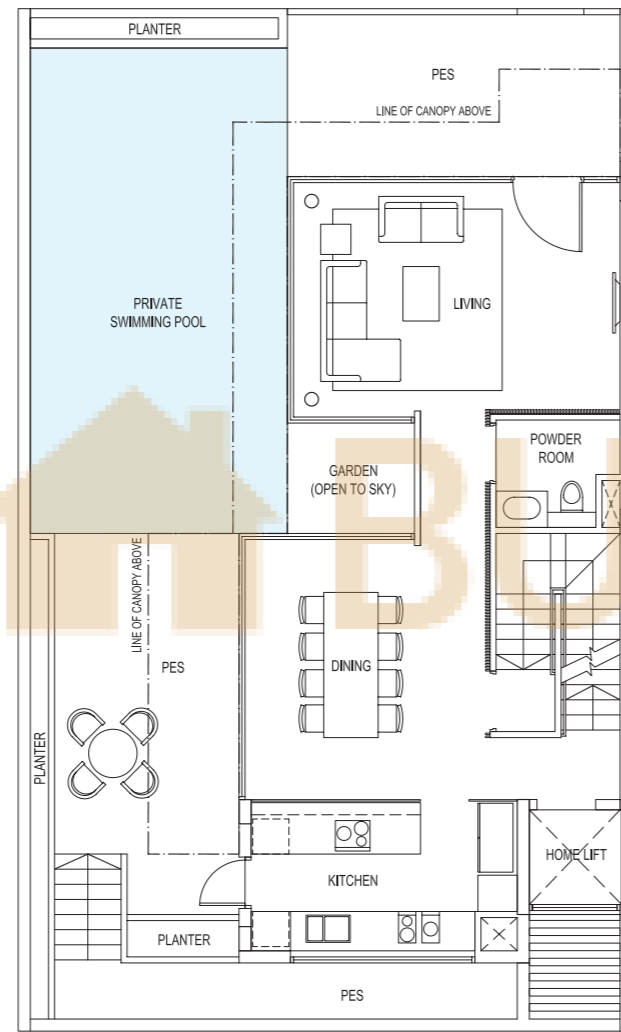
Area: 509 sqm / 5479 sqft

House No. 18

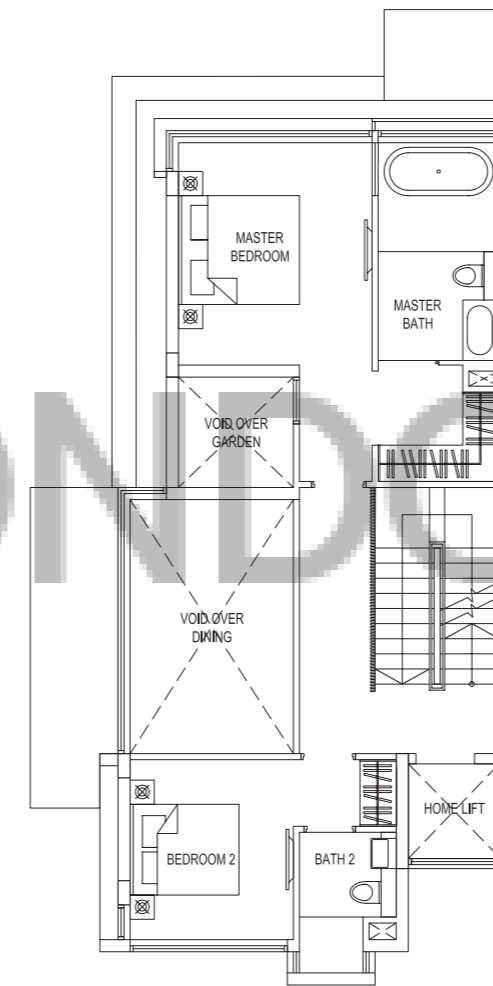
BASEMENT



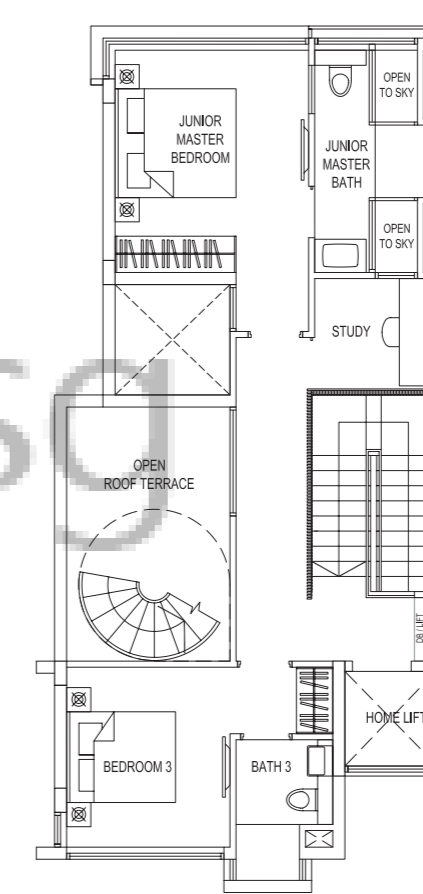
1ST STOREY



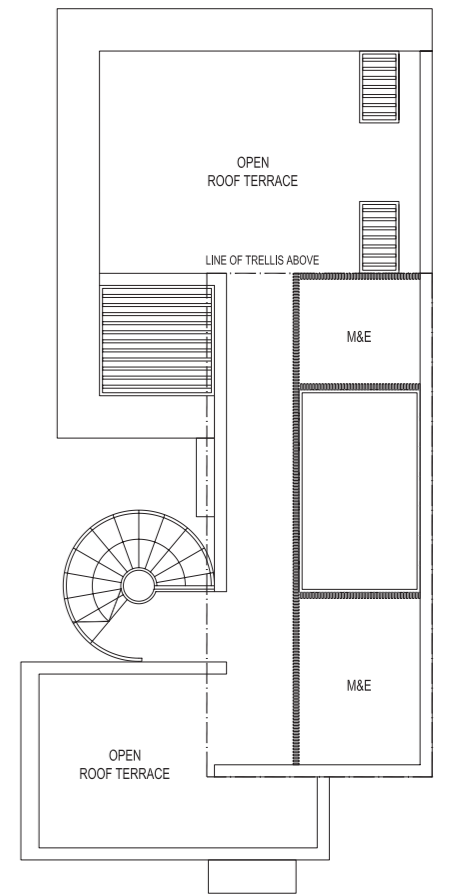
2ND STOREY



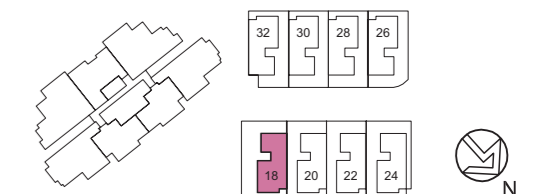
3RD STOREY



ROOF TERRACE



Note: The plans are subject to change as may be required or approved by the relevant authorities. These are not drawn to scale and are for the purpose of visual presentation of the different layouts that are available. Areas are estimates only and are subject to final survey.



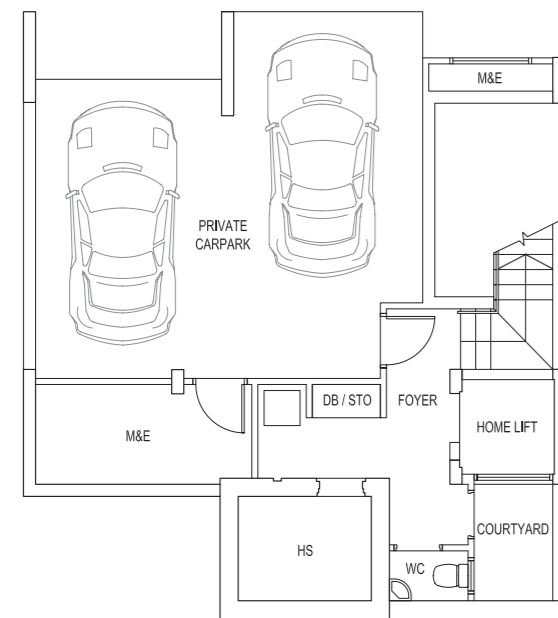
STRATA BUNGALOWS

TYPE:D3

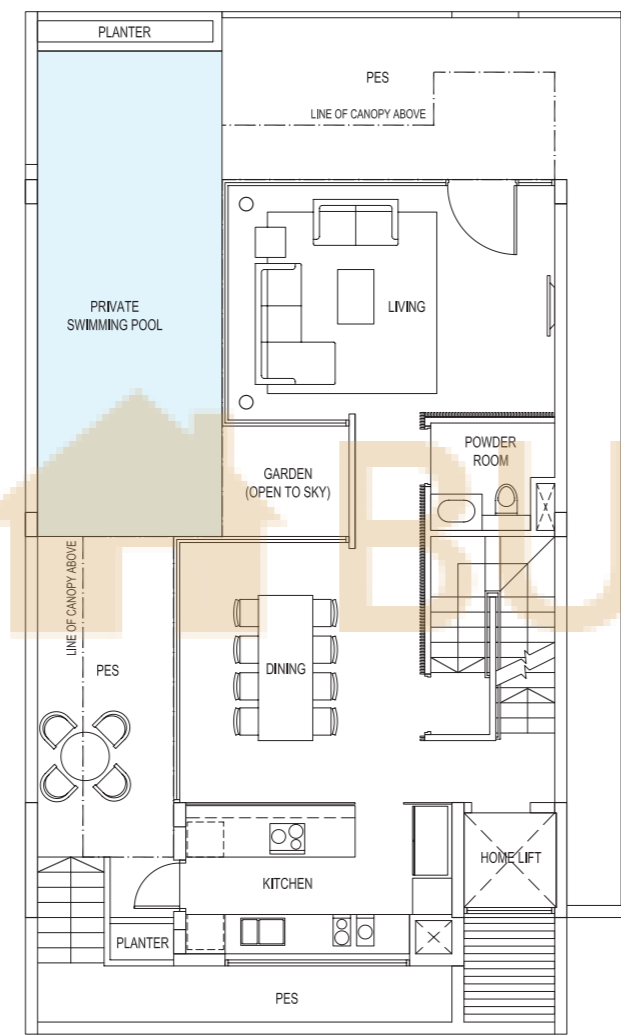
Area: 502 sqm / 5404 sqft

House No. 24

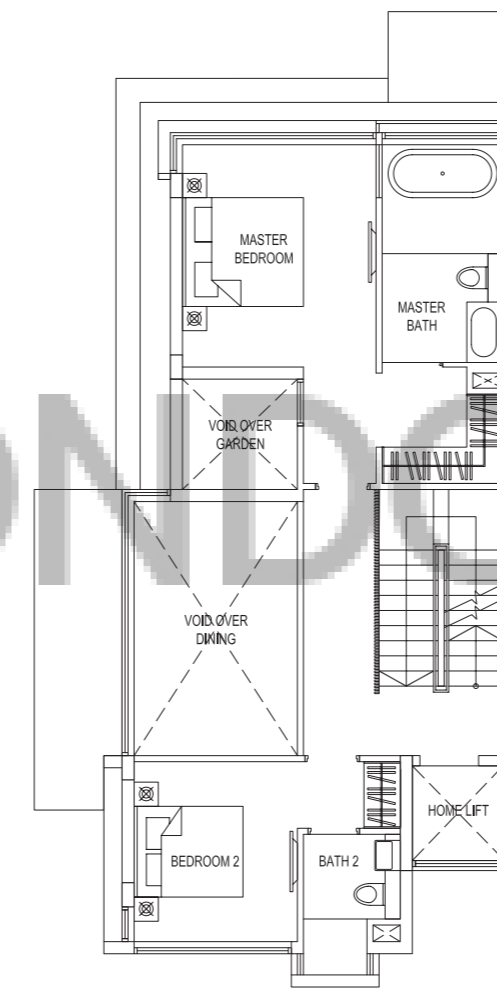
BASEMENT



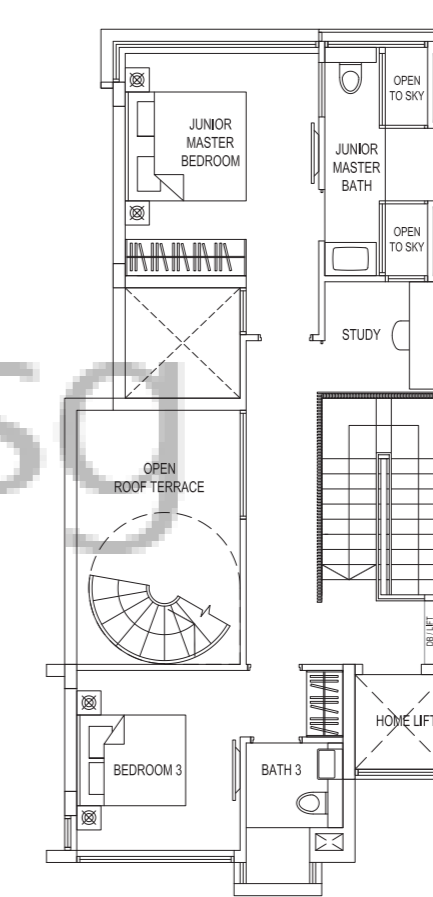
1ST STOREY



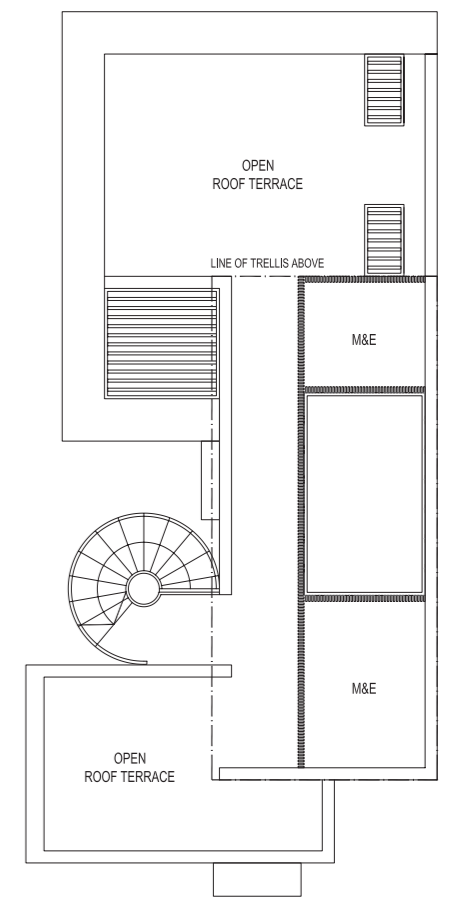
2ND STOREY



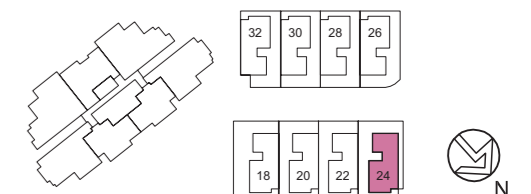
3RD STOREY



ROOF TERRACE



Note: The plans are subject to change as may be required or approved by the relevant authorities. These are not drawn to scale and are for the purpose of visual presentation of the different layouts that are available. Areas are estimates only and are subject to final survey.



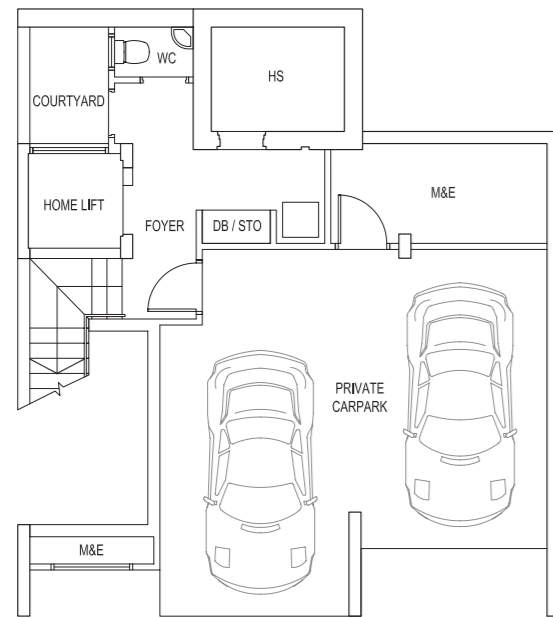
STRATA BUNGALOWS

TYPE:D4

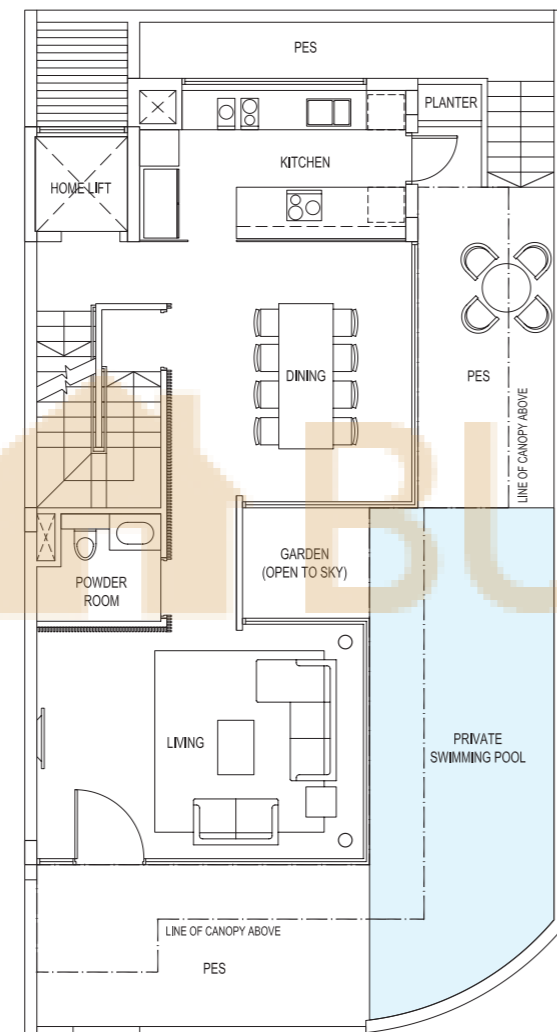
Area: 487 sqm / 5242 sqft

House No. 26

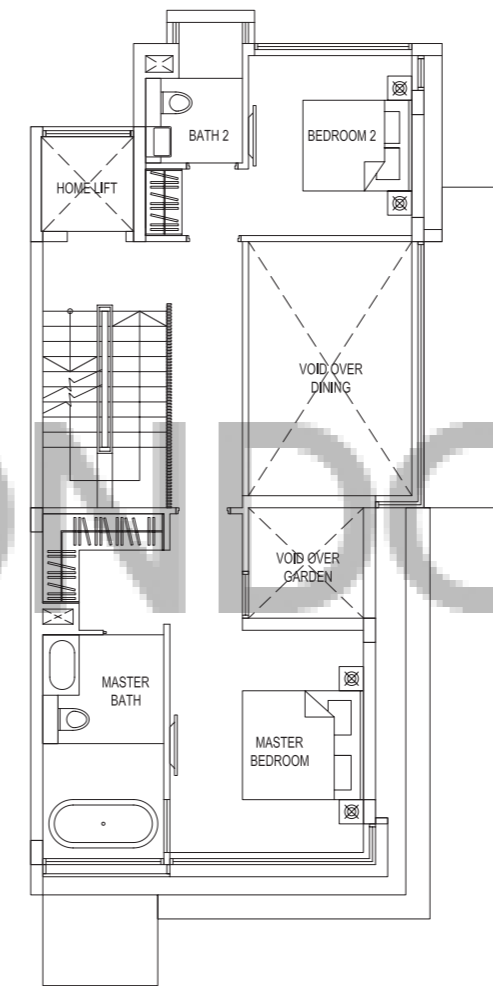
BASEMENT



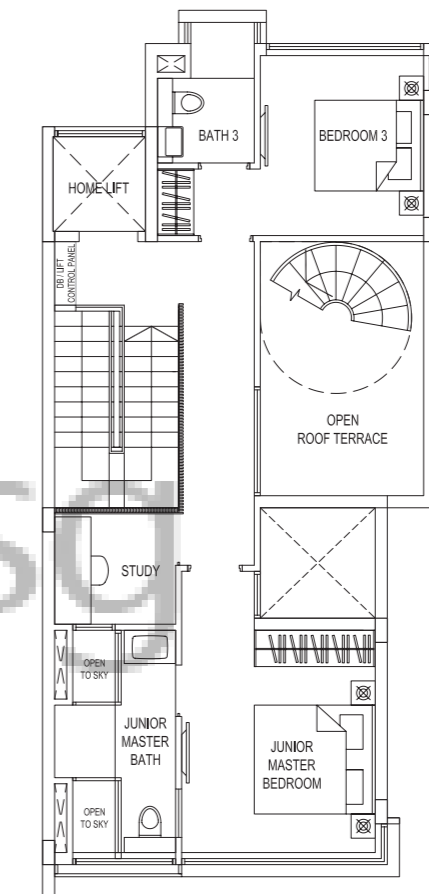
1ST STOREY



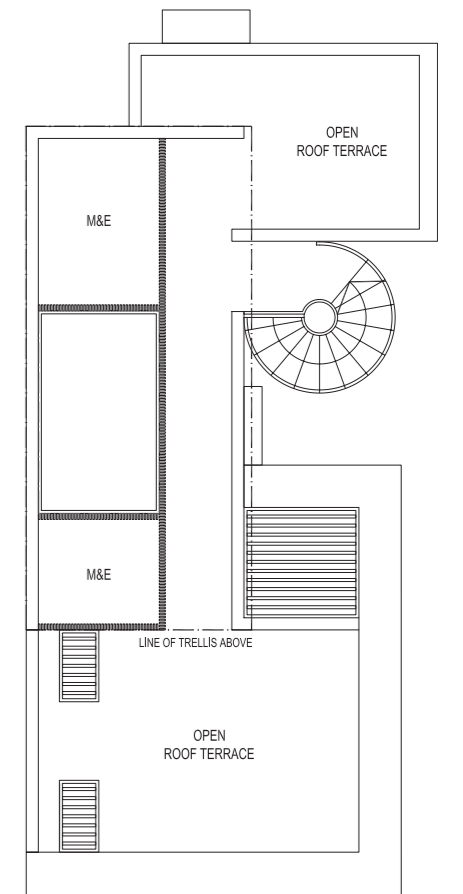
2ND STOREY



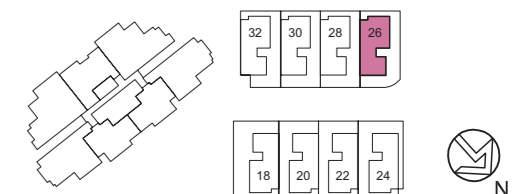
3RD STOREY



ROOF TERRACE



Note: The plans are subject to change as may be required or approved by the relevant authorities. These are not drawn to scale and are for the purpose of visual presentation of the different layouts that are available. Areas are estimates only and are subject to final survey.



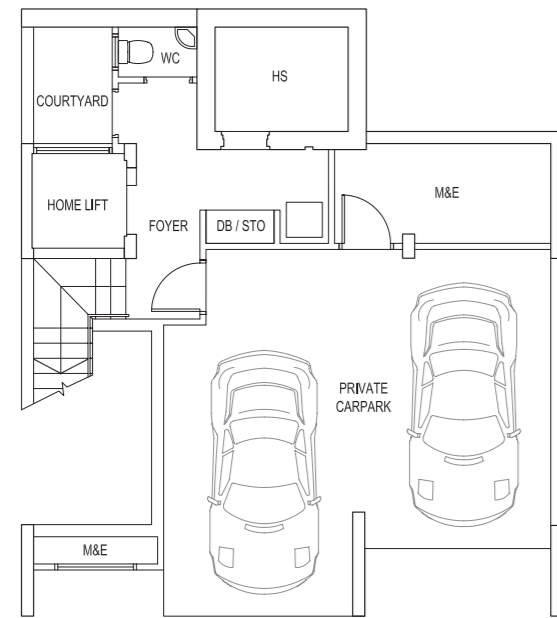
STRATA BUNGALOWS

TYPE:D5

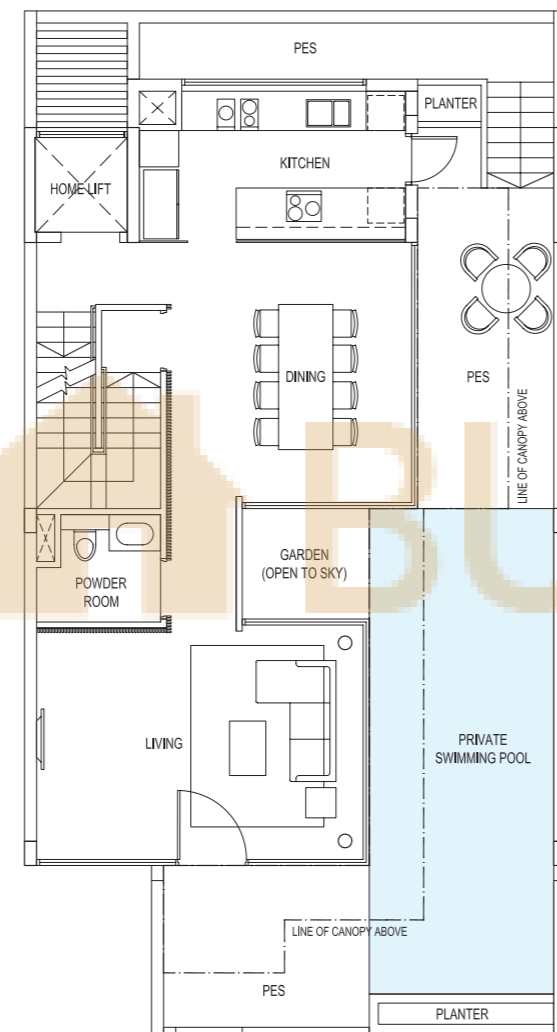
Area: 480 sqm / 5167 sqft

House No. 32

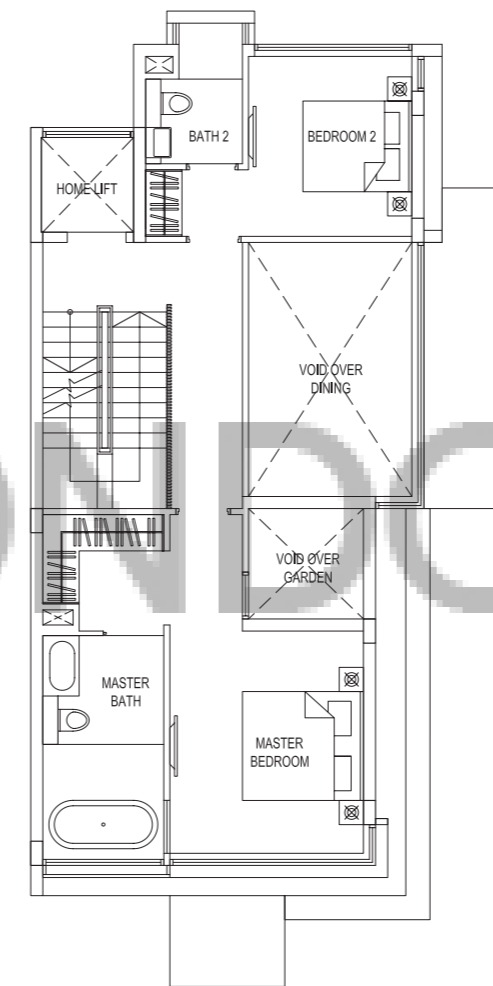
BASEMENT



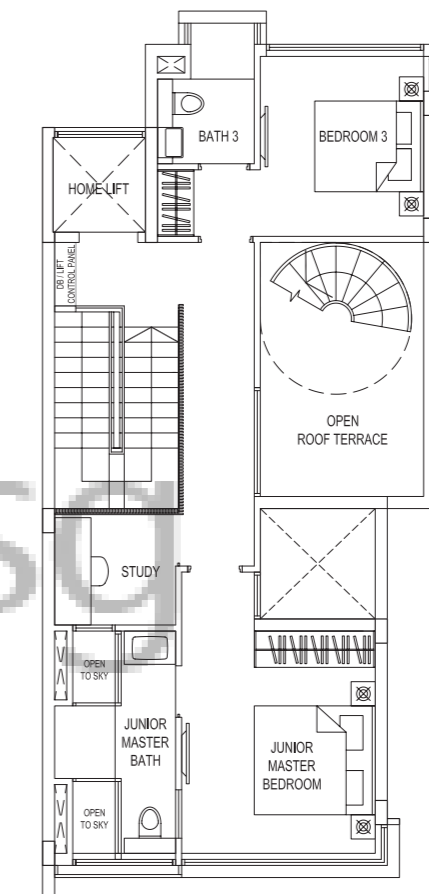
1ST STOREY



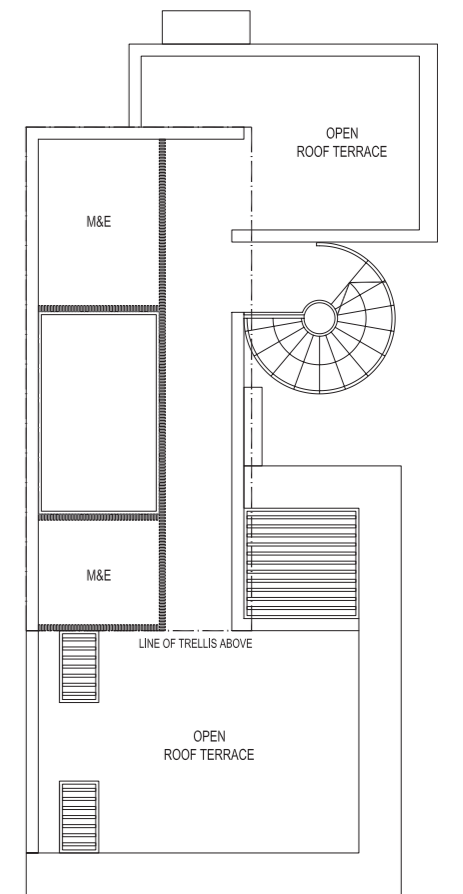
2ND STOREY



3RD STOREY



ROOF TERRACE



Note: The plans are subject to change as may be required or approved by the relevant authorities. These are not drawn to scale and are for the purpose of visual presentation of the different layouts that are available. Areas are estimates only and are subject to final survey.

