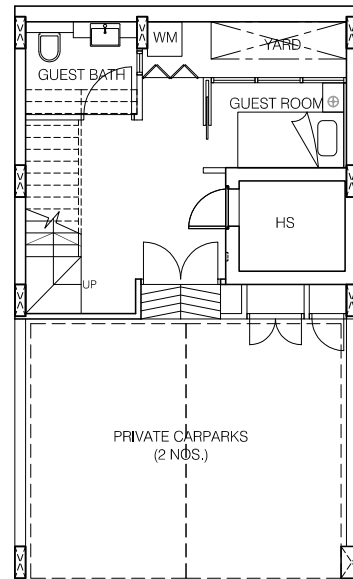
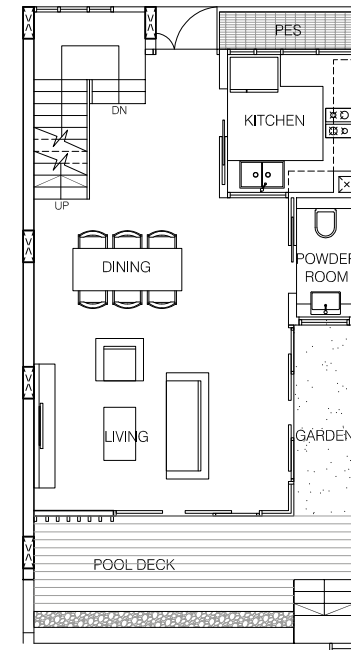


Unit 81,83,85 Grove Drive

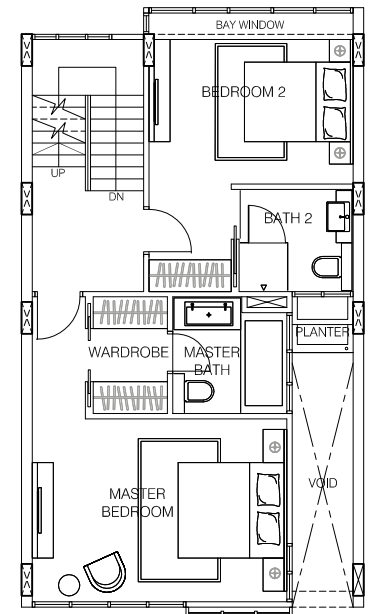
Area 270sqm / 2,906sqft
(inclusive of PES, a/c ledge, planter, terraces,
private carpark)



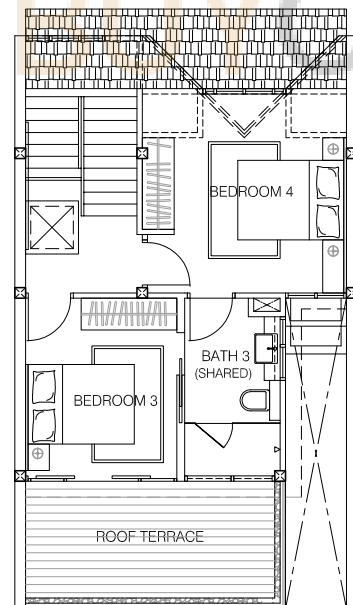
BASEMENT PLAN



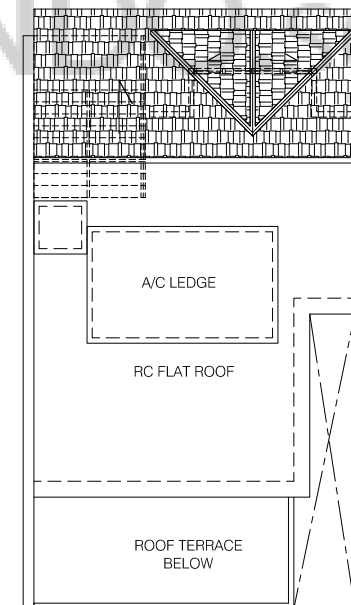
1ST STOREY PLAN



2ND STOREY PLAN



ATTIC PLAN



ROOF PLAN

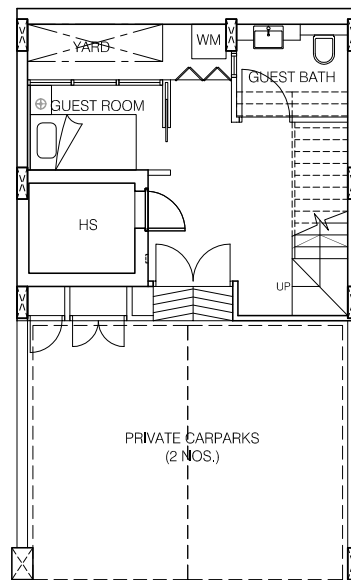
Notes:

1. Areas include PES, a/c ledge, bay windows, planter and open terrace (where applicable).
2. All plans are not to scale and are subject to change as may be approved by the relevant authorities.
3. All floor areas are approximates only and subject to survey.

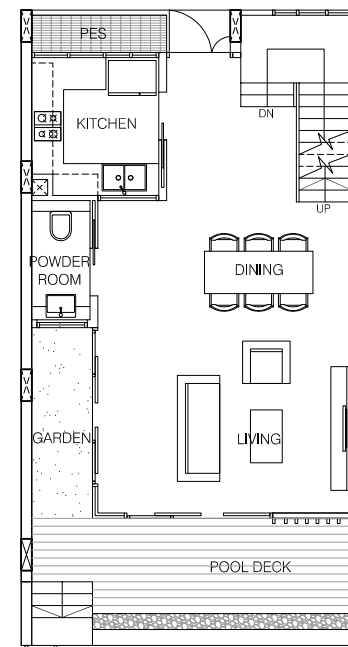


Unit 81a & 83a Grove Drive

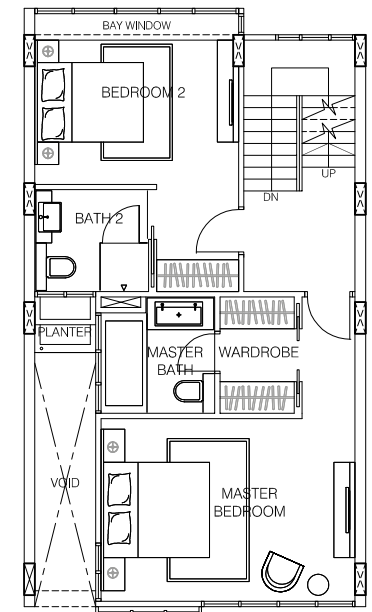
Area 270 sqm / 2906 sqft
(inclusive of PES, a/c ledge, planter, terraces,
private carpark)



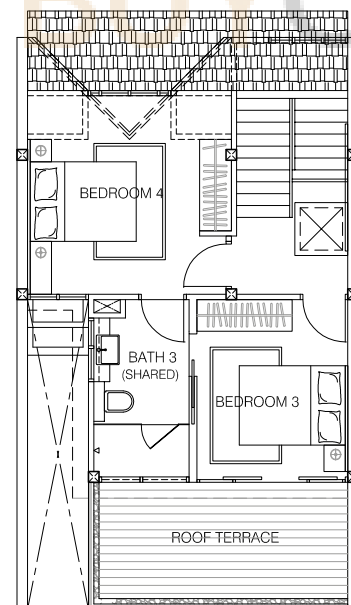
BASEMENT PLAN



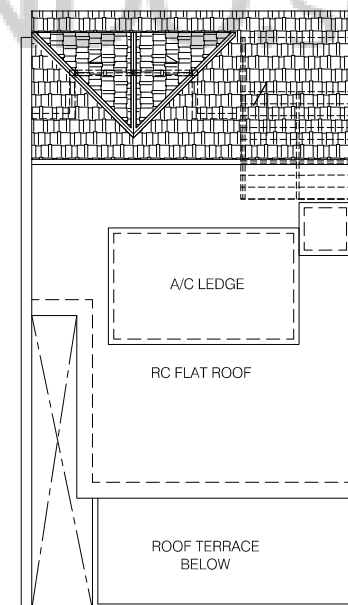
1ST STOREY PLAN



2ND STOREY PLAN



ATTIC PLAN



ROOF PLAN

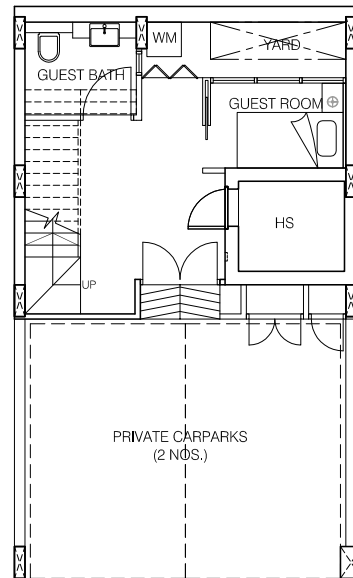
Notes:

1. Areas include PES, a/c ledge, bay windows, planter and open terrace (where applicable).
2. All plans are not to scale and are subject to change as may be approved by the relevant authorities.
3. All floor areas are approximates only and subject to survey.

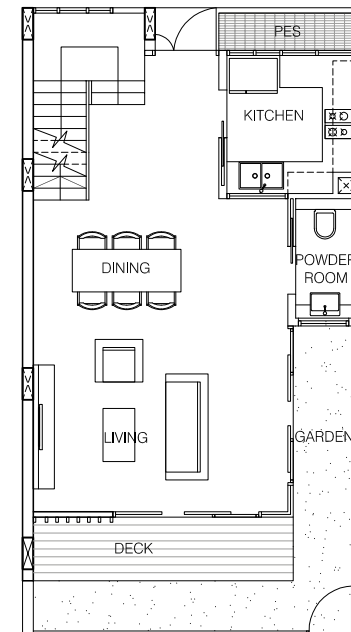


Unit 87 Grove Drive

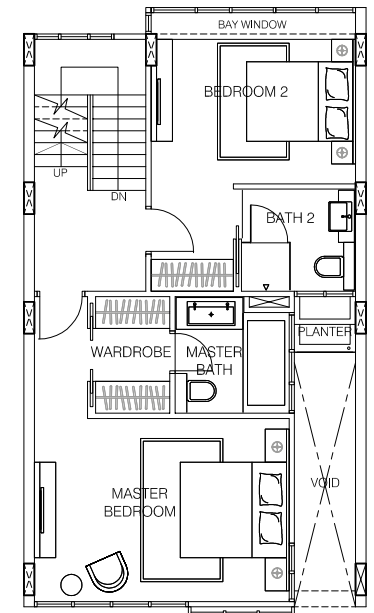
Area 269sqm / 2,895sqft
(inclusive of PES, a/c ledge, planter, terraces,
private carpark)



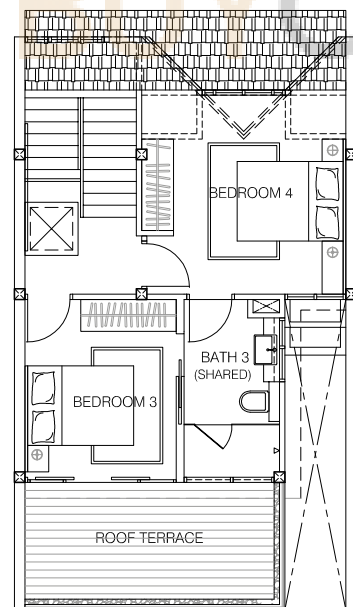
BASEMENT PLAN



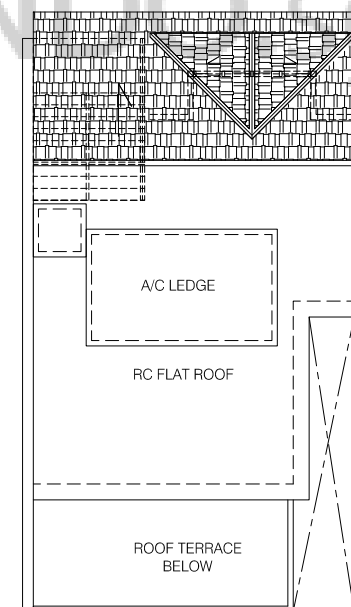
1ST STOREY PLAN



2ND STOREY PLAN



ATTIC PLAN



ROOF PLAN

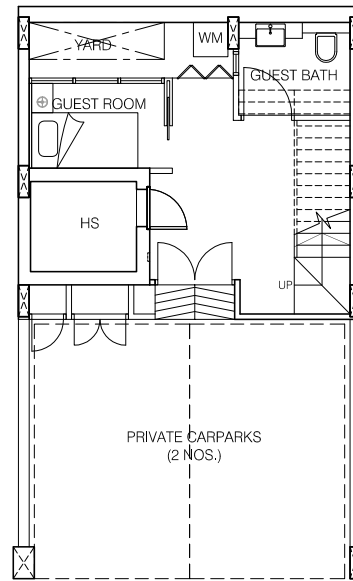
Notes:

1. Areas include PES, a/c ledge, bay windows, planter and open terrace (where applicable).
2. All plans are not to scale and are subject to change as may be approved by the relevant authorities.
3. All floor areas are approximates only and subject to survey.

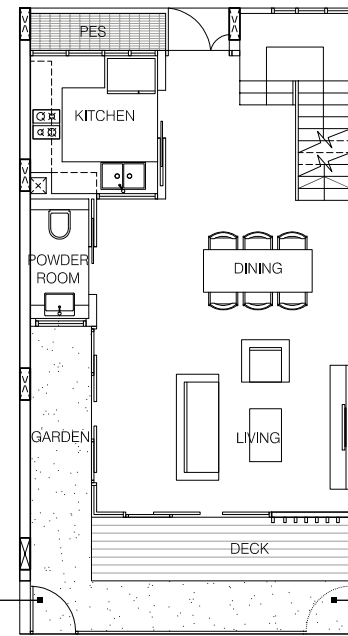


Unit 85a & 87a Grove Drive

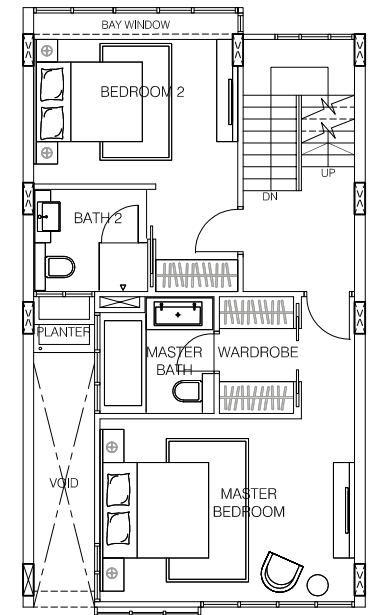
Area 269 sqm / 2895 sqft
(inclusive of PES, a/c ledge, planter, terraces,
private carpark)



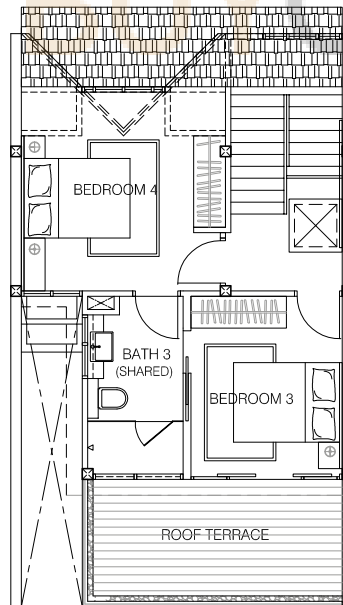
BASEMENT PLAN



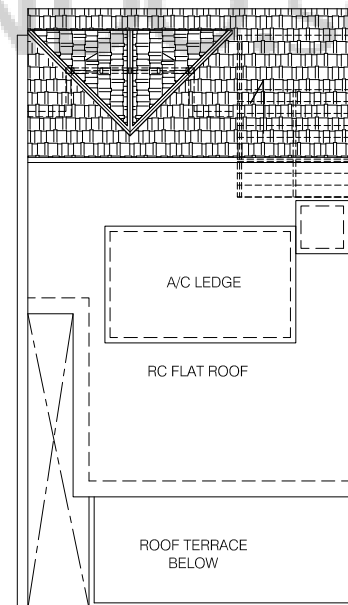
1ST STOREY PLAN



2ND STOREY PLAN



ATTIC PLAN



ROOF PLAN

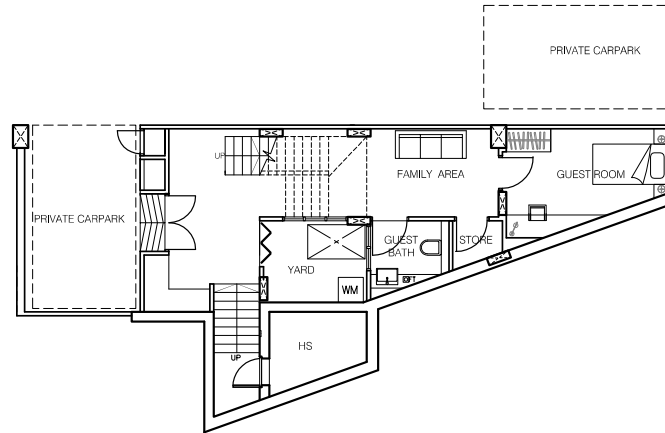
Notes:

1. Areas include PES, a/c ledge, bay windows, planter and open terrace (where applicable).
2. All plans are not to scale and are subject to change as may be approved by the relevant authorities.
3. All floor areas are approximates only and subject to survey.

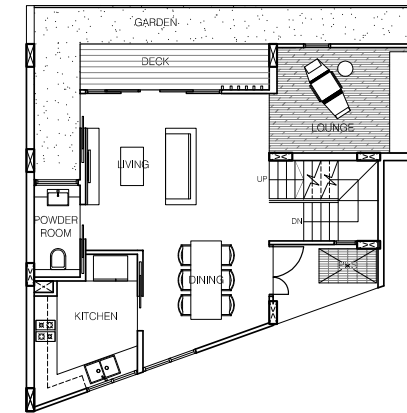


Unit 876 Grove Drive

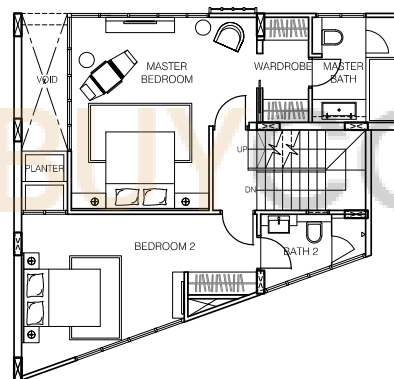
Area 343sqm / 3,692sqft
(inclusive of PES, a/c ledge, planter, terraces,
private carpark)



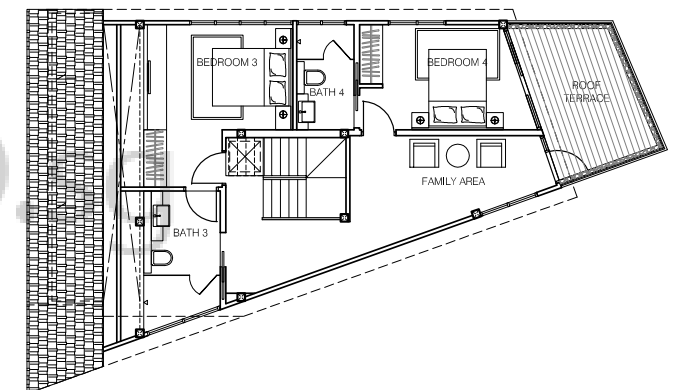
BASEMENT PLAN



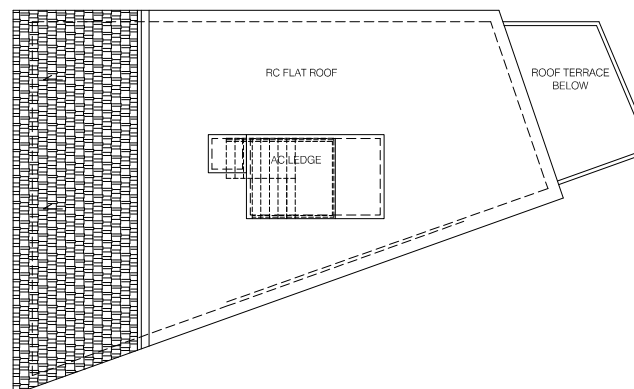
1ST STOREY PLAN



2ND STOREY PLAN



ATTIC PLAN



ROOF PLAN

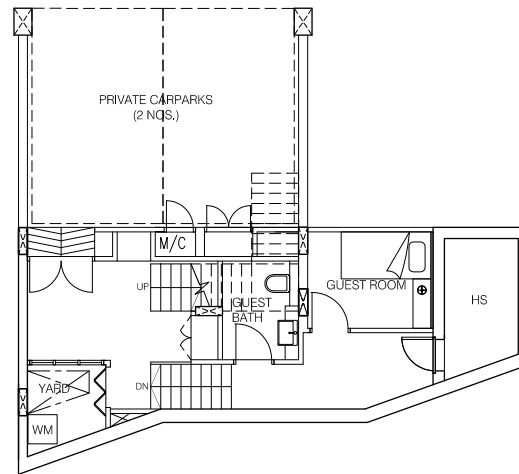
Notes:

1. Areas include PES, a/c ledge, bay windows, planter and open terrace (where applicable).
2. All plans are not to scale and are subject to change as may be approved by the relevant authorities.
3. All floor areas are approximates only and subject to survey.

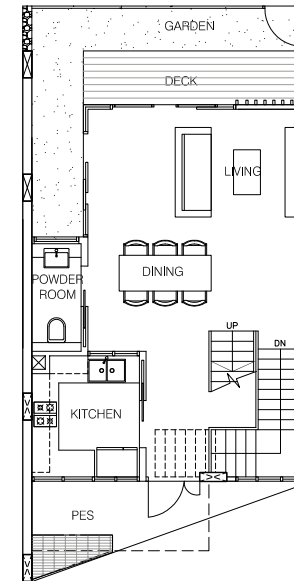


Unit 89 Grove Drive

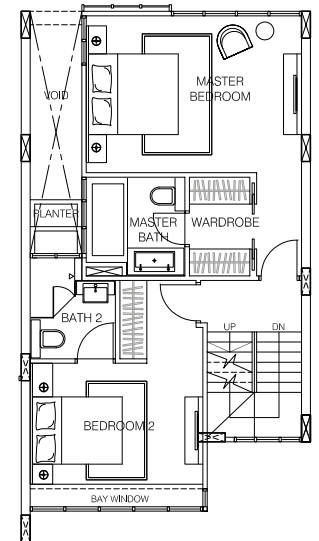
Area 270sqm / 2,906sqft
(inclusive of PES, a/c ledge, planter, terraces,
private carpark)



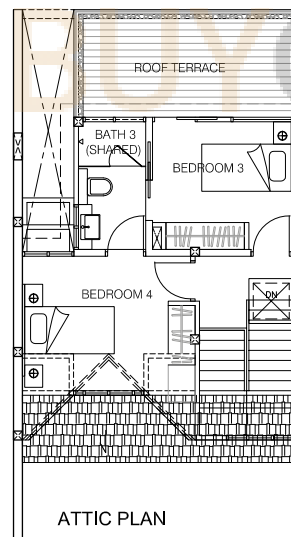
BASEMENT PLAN



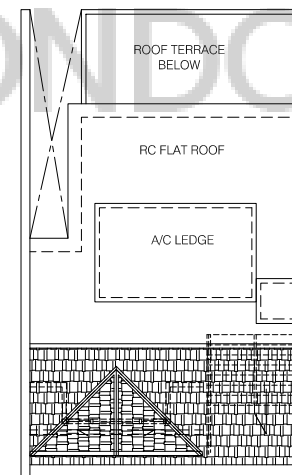
1ST STOREY PLAN



2ND STOREY PLAN



ATTIC PLAN



ROOF PLAN

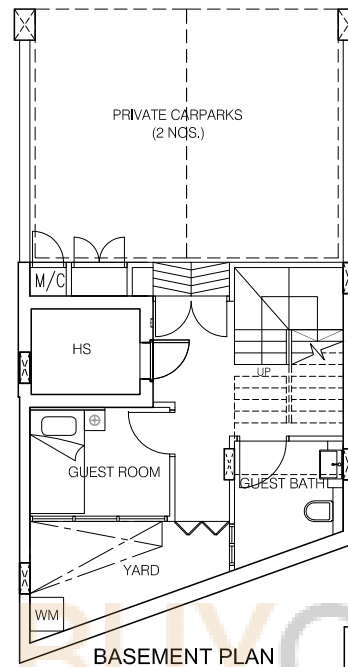
Notes:

1. Areas include PES, a/c ledge, bay windows, planter and open terrace (where applicable).
2. All plans are not to scale and are subject to change as may be approved by the relevant authorities.
3. All floor areas are approximates only and subject to survey.

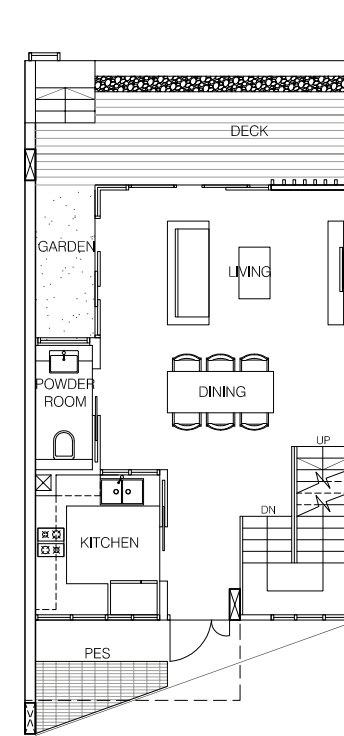


Unit 89a Grove Drive

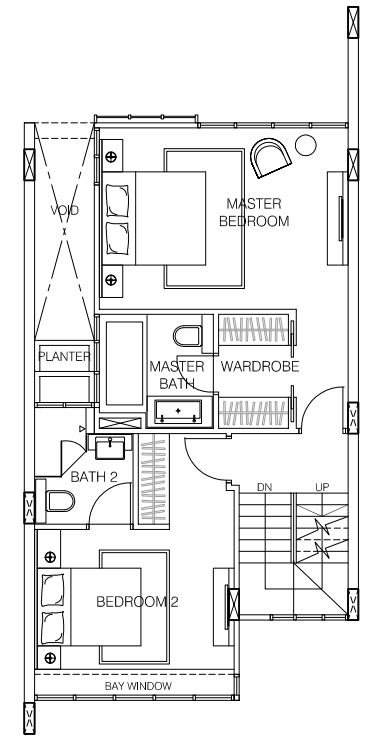
Area 265sqm / 2,852sqft
(inclusive of PES, a/c ledge, planter, terraces,
private carpark)



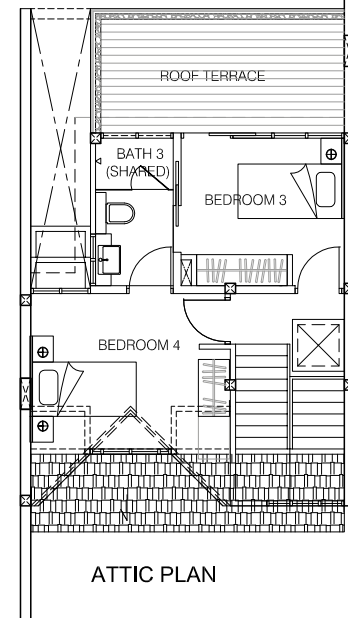
BASEMENT PLAN



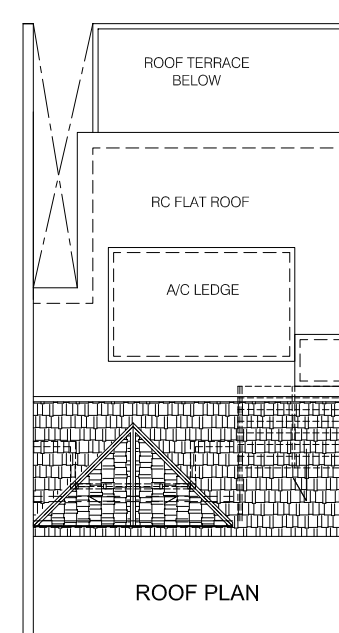
1ST STOREY PLAN



2ND STOREY PLAN



ATTIC PLAN



ROOF PLAN

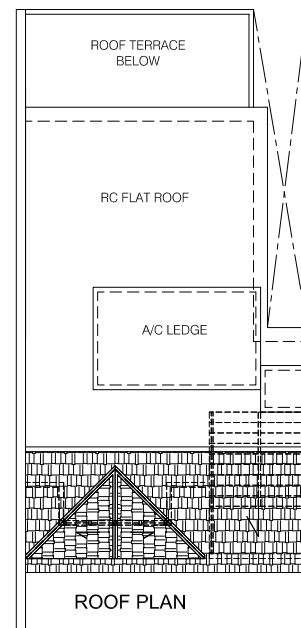
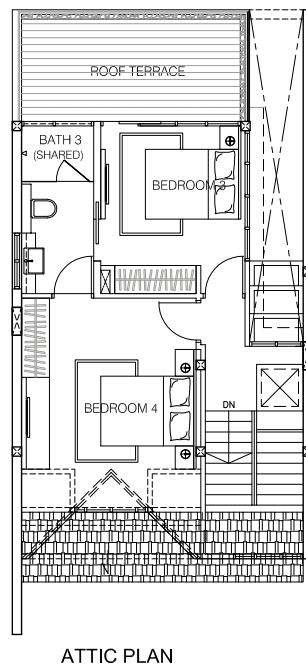
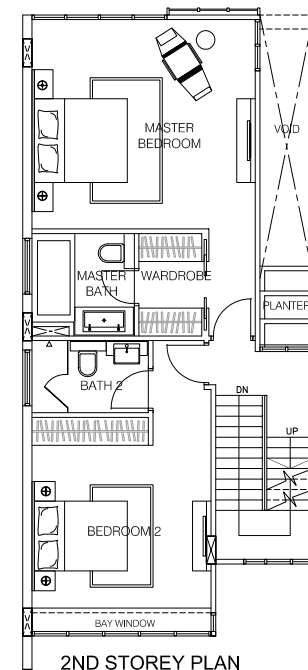
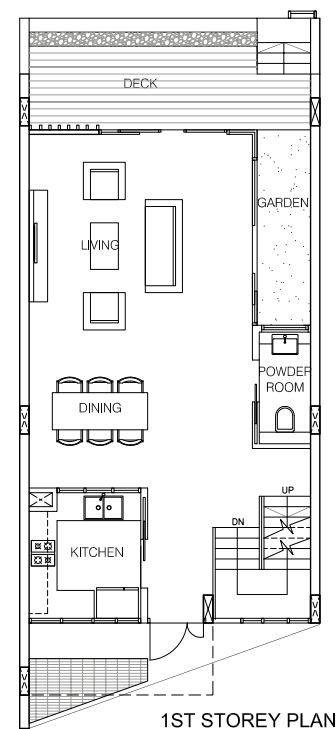
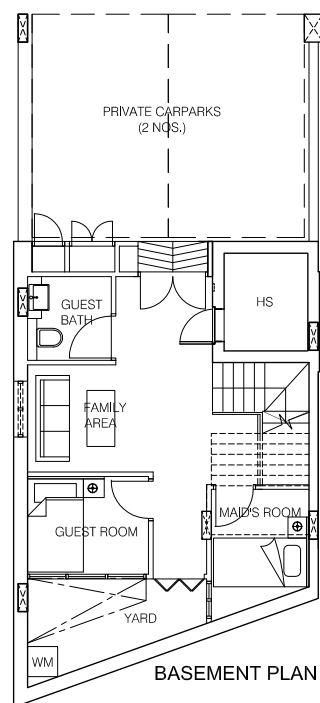
Notes:

1. Areas include PES, a/c ledge, bay windows, planter and open terrace (where applicable).
2. All plans are not to scale and are subject to change as may be approved by the relevant authorities.
3. All floor areas are approximates only and subject to survey.



Unit 89b Grove Drive

Area 317sqm / 3,412sqft
(inclusive of PES, a/c ledge, planter, terraces,
private carpark)



Notes:

1. Areas include PES, a/c ledge, bay windows, planter and open terrace (where applicable).
2. All plans are not to scale and are subject to change as may be approved by the relevant authorities.
3. All floor areas are approximates only and subject to survey.

