

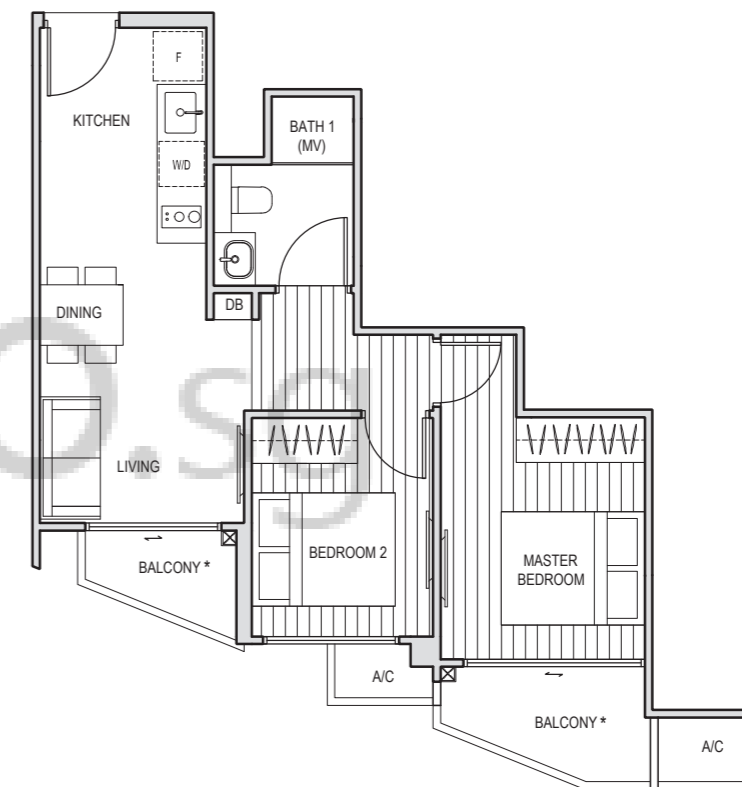
# FLOOR PLANS

## 2 BEDROOM

## TYPE A1

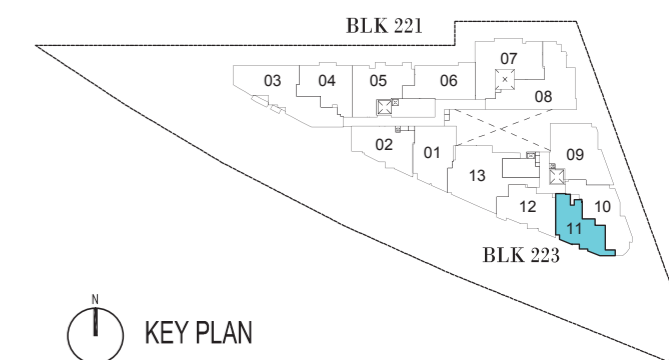
53 sq m

#02-11, #03-11, #04-11, #05-11



\* The balcony / PES (Private Enclosed Space) shall not be enclosed. Only approved balcony screens are to be used. For illustration of the approved balcony screen, please refer to page 55 of this brochure.

All plans are subject to amendments as approved by the relevant authorities. Floor areas are approximate measurements and subject to final survey. Plans are not drawn to scale and do not form part of the contract.



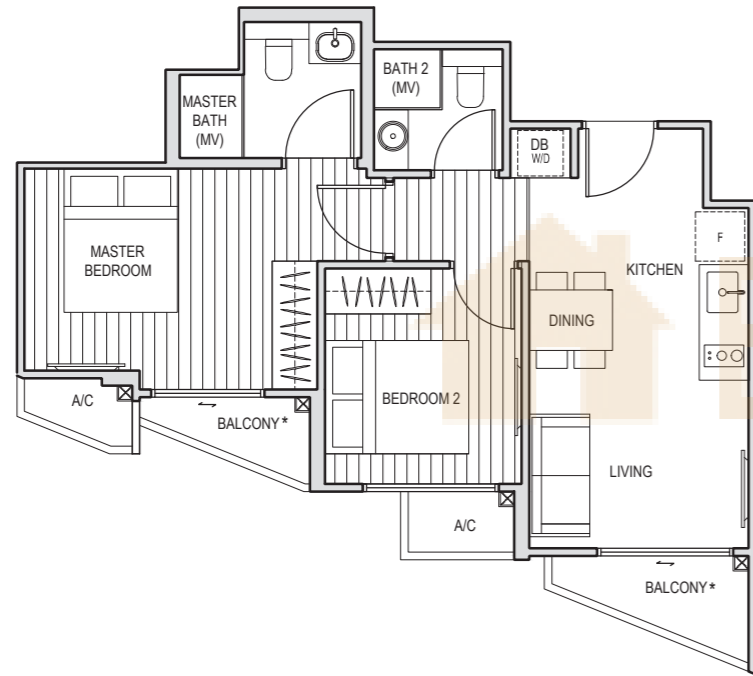
N  
KEY PLAN

## 2 BEDROOM

## TYPE A2

56 sq m

#02-12, #03-12, #04-12, #05-12

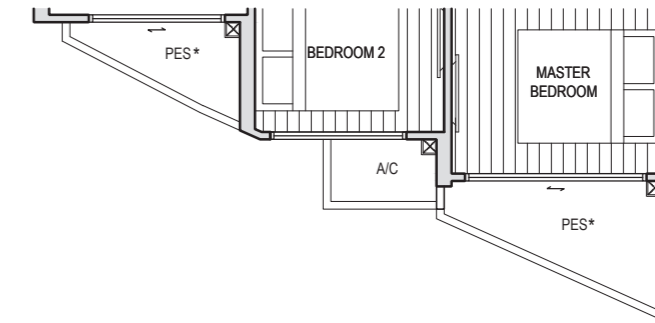
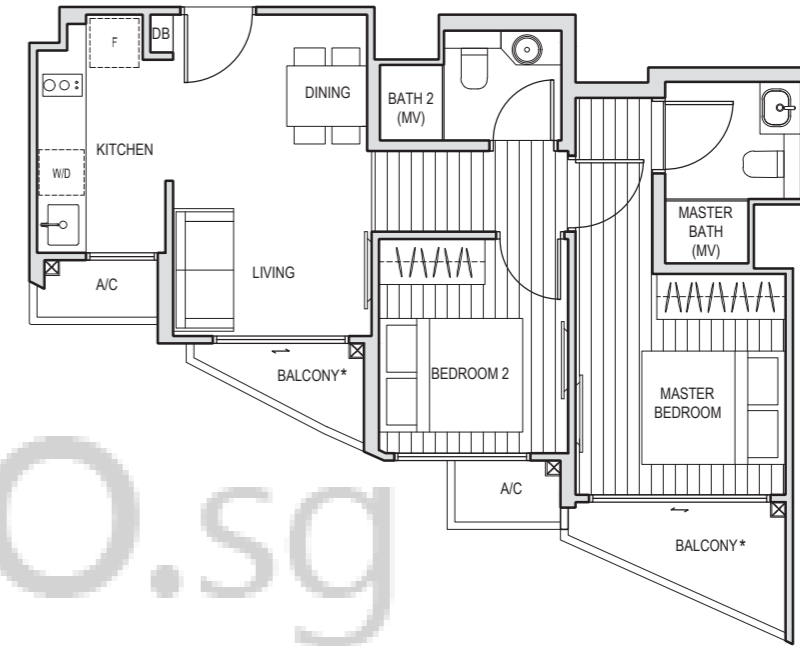


## 2 BEDROOM

## TYPE A3

58 sq m

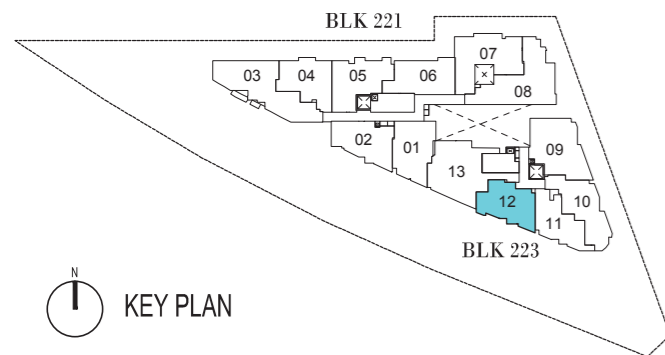
#02-02, #03-02, #04-02, #05-02



## TYPE A3-G

58 sq m

#01-02

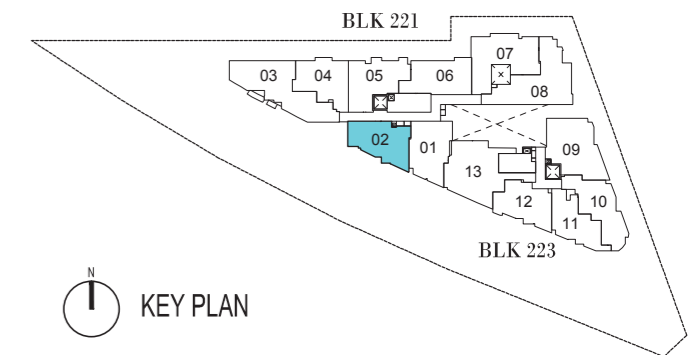


\* The balcony / PES (Private Enclosed Space) shall not be enclosed. Only approved balcony screens are to be used. For illustration of the approved balcony screen, please refer to page 55 of this brochure.

All plans are subject to amendments as approved by the relevant authorities. Floor areas are approximate measurements and subject to final survey. Plans are not drawn to scale and do not form part of the contract.

\* The balcony / PES (Private Enclosed Space) shall not be enclosed. Only approved balcony screens are to be used. For illustration of the approved balcony screen, please refer to page 55 of this brochure.

All plans are subject to amendments as approved by the relevant authorities. Floor areas are approximate measurements and subject to final survey. Plans are not drawn to scale and do not form part of the contract.

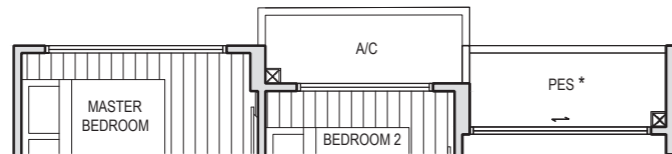
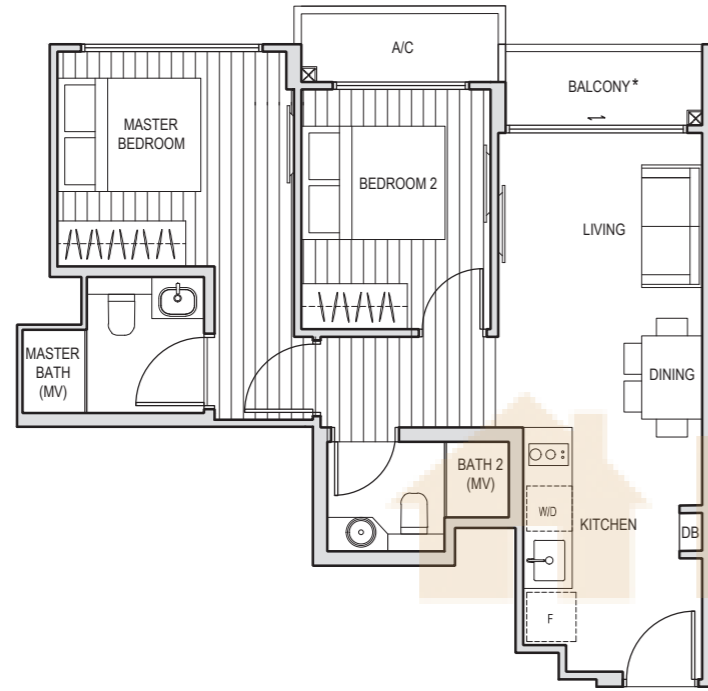


## 2 BEDROOM

## TYPE A4

59 sq m

#02-04, #03-04, #04-04, #05-04



## TYPE A4-G

59 sq m

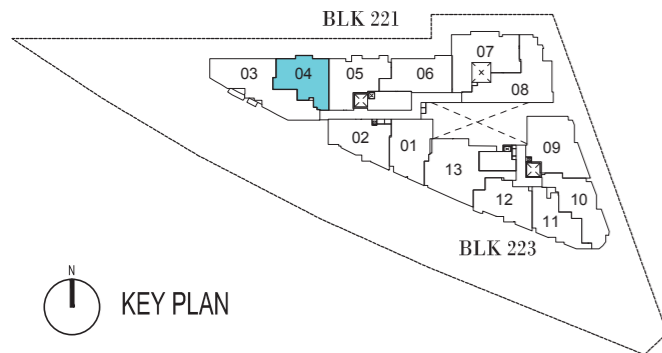
#01-04

## 2 BEDROOM

## TYPE A5

60 sq m

#02-06, #03-06, #04-06, #05-06

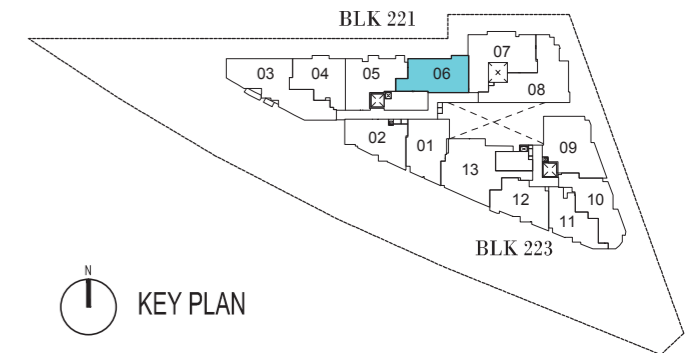


\* The balcony / PES (Private Enclosed Space) shall not be enclosed. Only approved balcony screens are to be used. For illustration of the approved balcony screen, please refer to page 55 of this brochure.

All plans are subject to amendments as approved by the relevant authorities. Floor areas are approximate measurements and subject to final survey. Plans are not drawn to scale and do not form part of the contract.

\* The balcony / PES (Private Enclosed Space) shall not be enclosed. Only approved balcony screens are to be used. For illustration of the approved balcony screen, please refer to page 55 of this brochure.

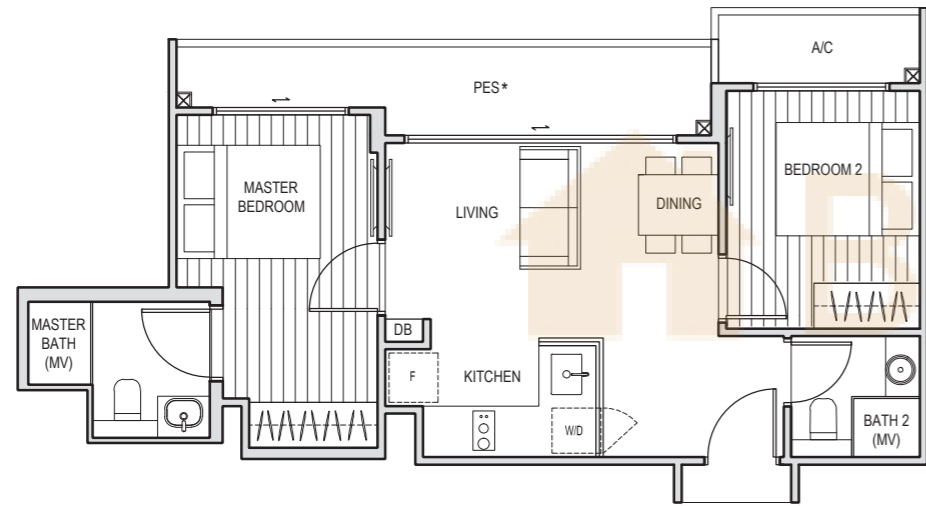
All plans are subject to amendments as approved by the relevant authorities. Floor areas are approximate measurements and subject to final survey. Plans are not drawn to scale and do not form part of the contract.



## 2 BEDROOM

## TYPE A5-G

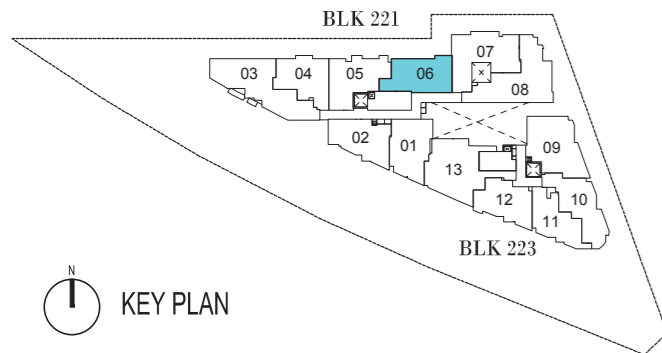
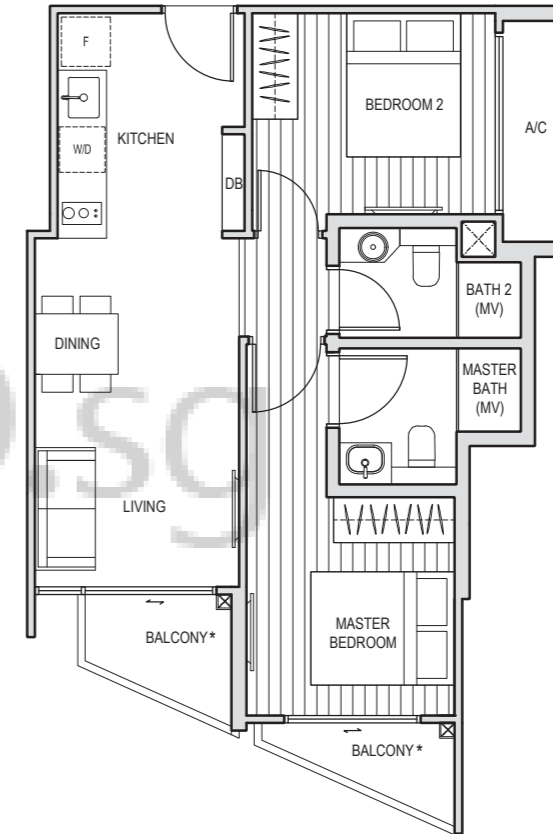
61 sq m  
#01-06



## 2 BEDROOM

## TYPE A6

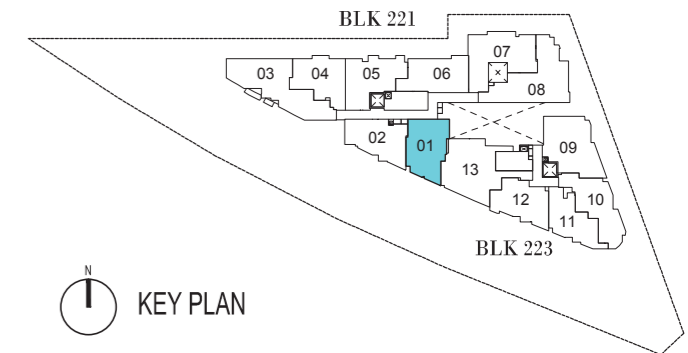
61 sq m  
#02-01, #03-01, #04-01, #05-01



N  
KEY PLAN

\* The balcony / PES (Private Enclosed Space) shall not be enclosed. Only approved balcony screens are to be used. For illustration of the approved balcony screen, please refer to page 55 of this brochure.

All plans are subject to amendments as approved by the relevant authorities. Floor areas are approximate measurements and subject to final survey. Plans are not drawn to scale and do not form part of the contract.



N  
KEY PLAN

\* The balcony / PES (Private Enclosed Space) shall not be enclosed. Only approved balcony screens are to be used. For illustration of the approved balcony screen, please refer to page 55 of this brochure.

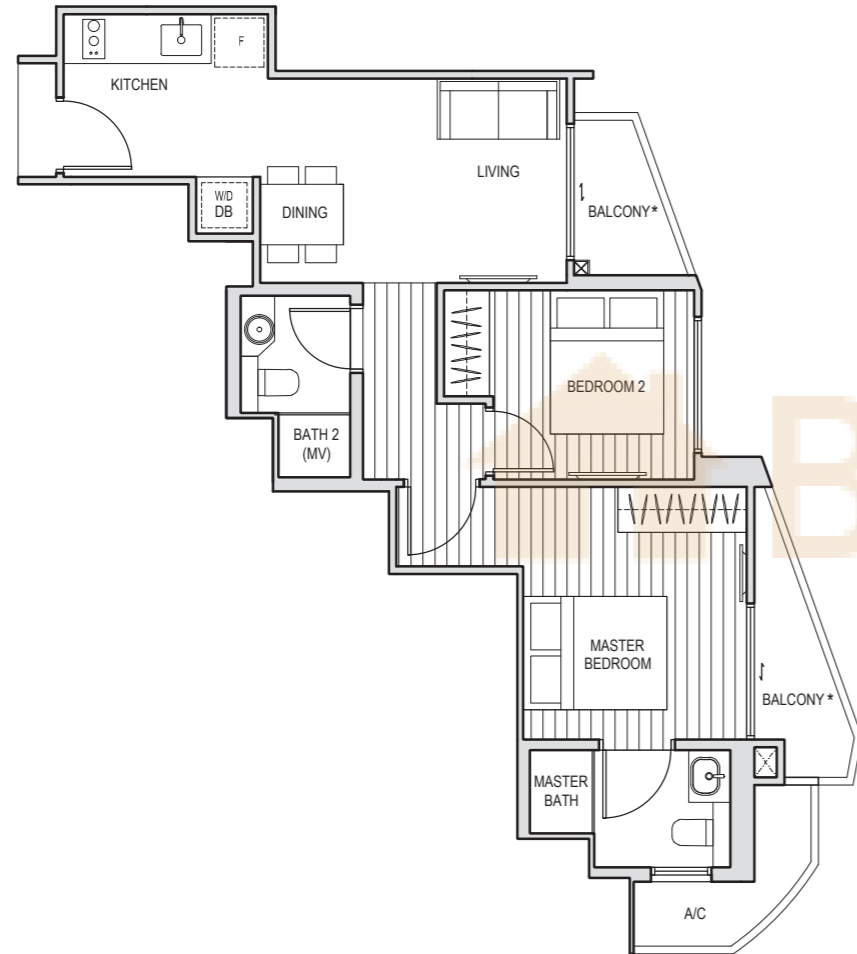
All plans are subject to amendments as approved by the relevant authorities. Floor areas are approximate measurements and subject to final survey. Plans are not drawn to scale and do not form part of the contract.

## 2 BEDROOM

## TYPE A7

63 sq m

#02-10, #03-10, #04-10, #05-10

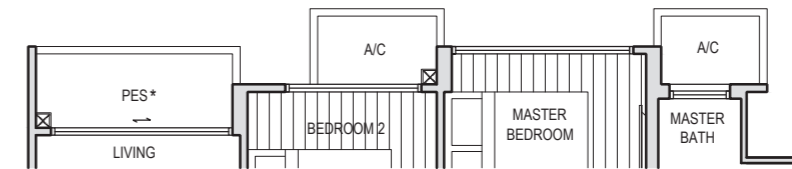
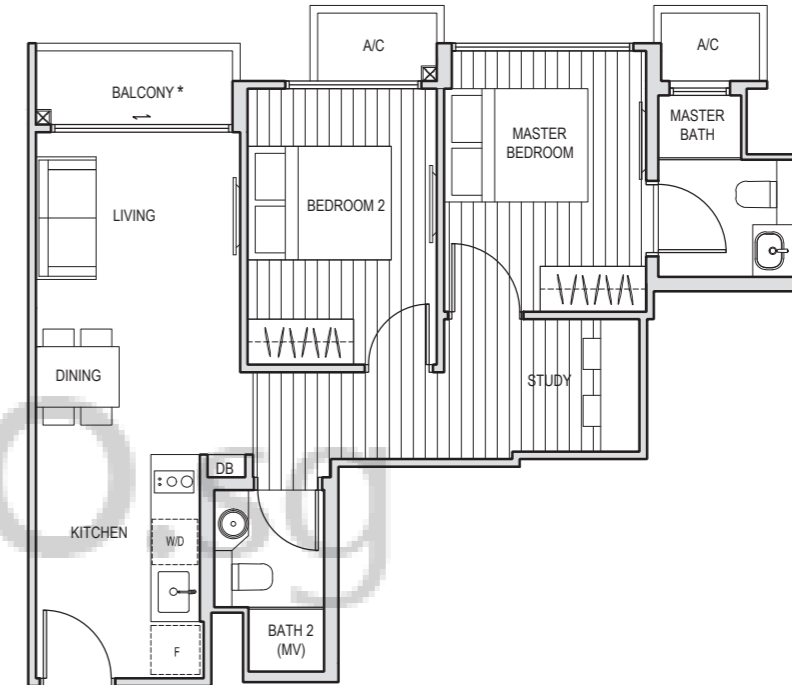


## 2 BEDROOM + STUDY

## TYPE B1

64 sq m

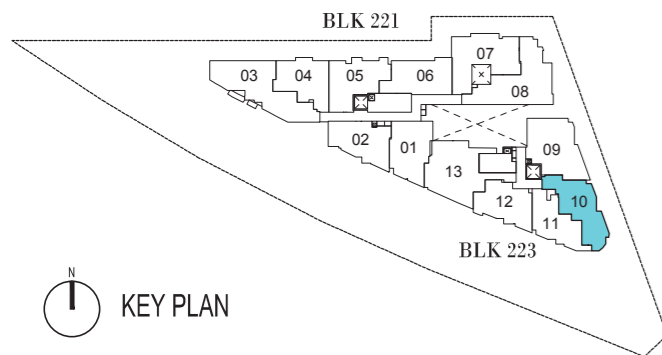
#02-05, #03-05, #04-05, #05-05



## TYPE B1-G

64 sq m

#01-05

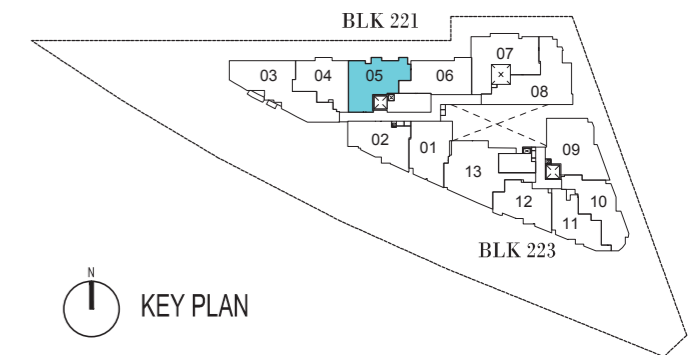


\* The balcony / PES (Private Enclosed Space) shall not be enclosed. Only approved balcony screens are to be used. For illustration of the approved balcony screen, please refer to page 55 of this brochure.

All plans are subject to amendments as approved by the relevant authorities. Floor areas are approximate measurements and subject to final survey. Plans are not drawn to scale and do not form part of the contract.

\* The balcony / PES (Private Enclosed Space) shall not be enclosed. Only approved balcony screens are to be used. For illustration of the approved balcony screen, please refer to page 55 of this brochure.

All plans are subject to amendments as approved by the relevant authorities. Floor areas are approximate measurements and subject to final survey. Plans are not drawn to scale and do not form part of the contract.

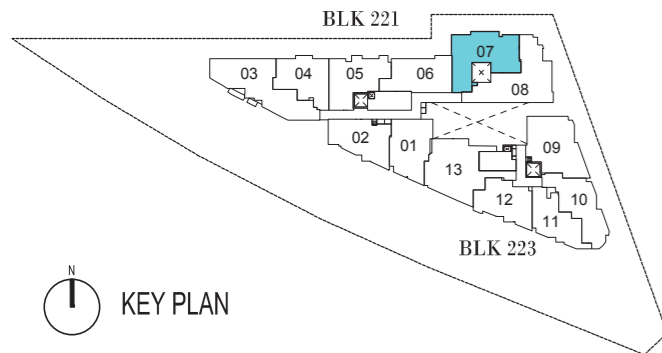
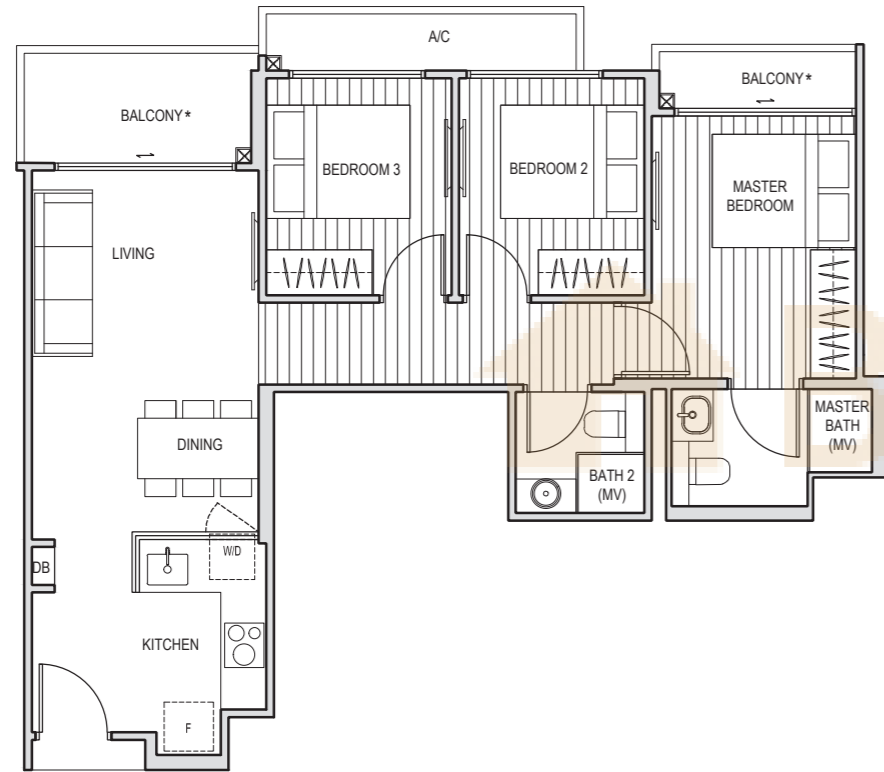


### 3 BEDROOM

### TYPE C1

76 sq m

#02-07, #03-07, #04-07, #05-07



N  
KEY PLAN

\* The balcony / PES (Private Enclosed Space) shall not be enclosed. Only approved balcony screens are to be used. For illustration of the approved balcony screen, please refer to page 55 of this brochure.

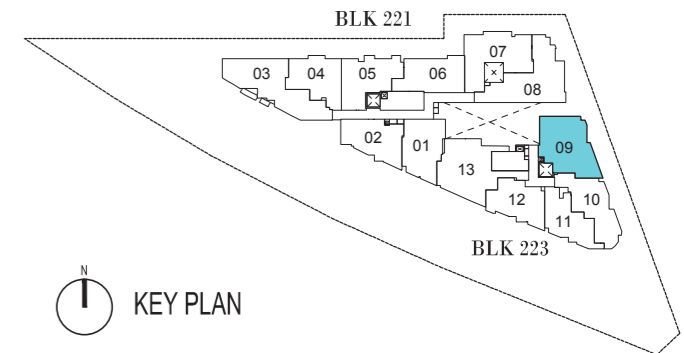
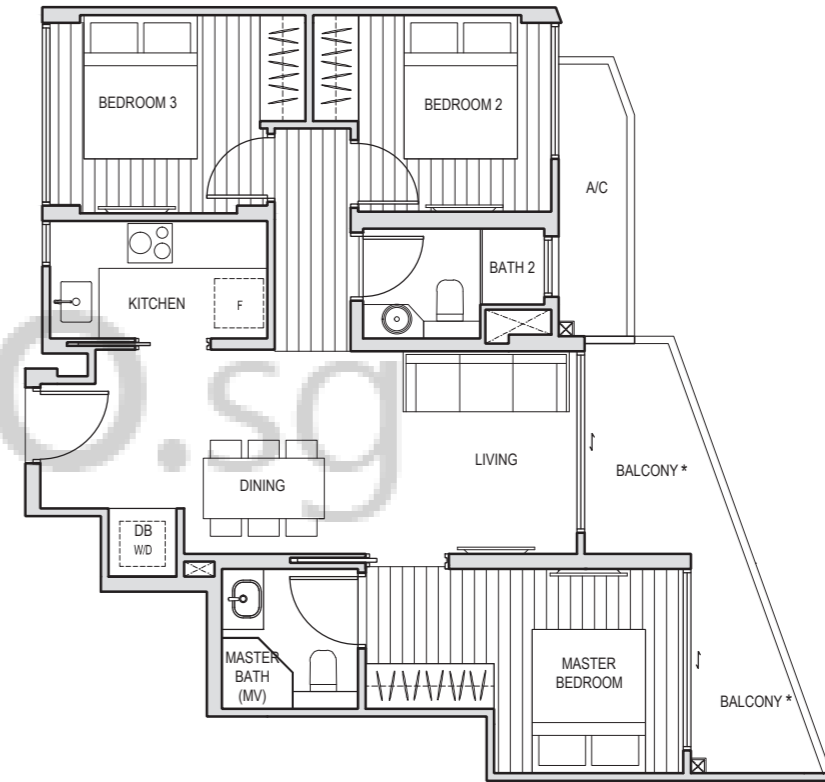
All plans are subject to amendments as approved by the relevant authorities. Floor areas are approximate measurements and subject to final survey. Plans are not drawn to scale and do not form part of the contract.

### 3 BEDROOM

### TYPE C2

78 sq m

#02-09, #03-09, #04-09, #05-09



N  
KEY PLAN

\* The balcony / PES (Private Enclosed Space) shall not be enclosed. Only approved balcony screens are to be used. For illustration of the approved balcony screen, please refer to page 55 of this brochure.

All plans are subject to amendments as approved by the relevant authorities. Floor areas are approximate measurements and subject to final survey. Plans are not drawn to scale and do not form part of the contract.

BUYCONDO.SG

### 3 BEDROOM + GUEST ROOM

### TYPE D1

84 sq m

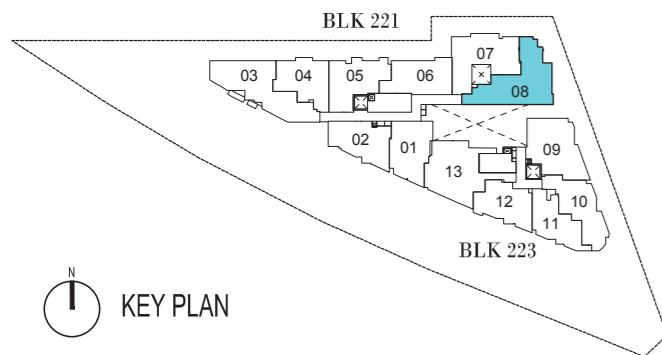
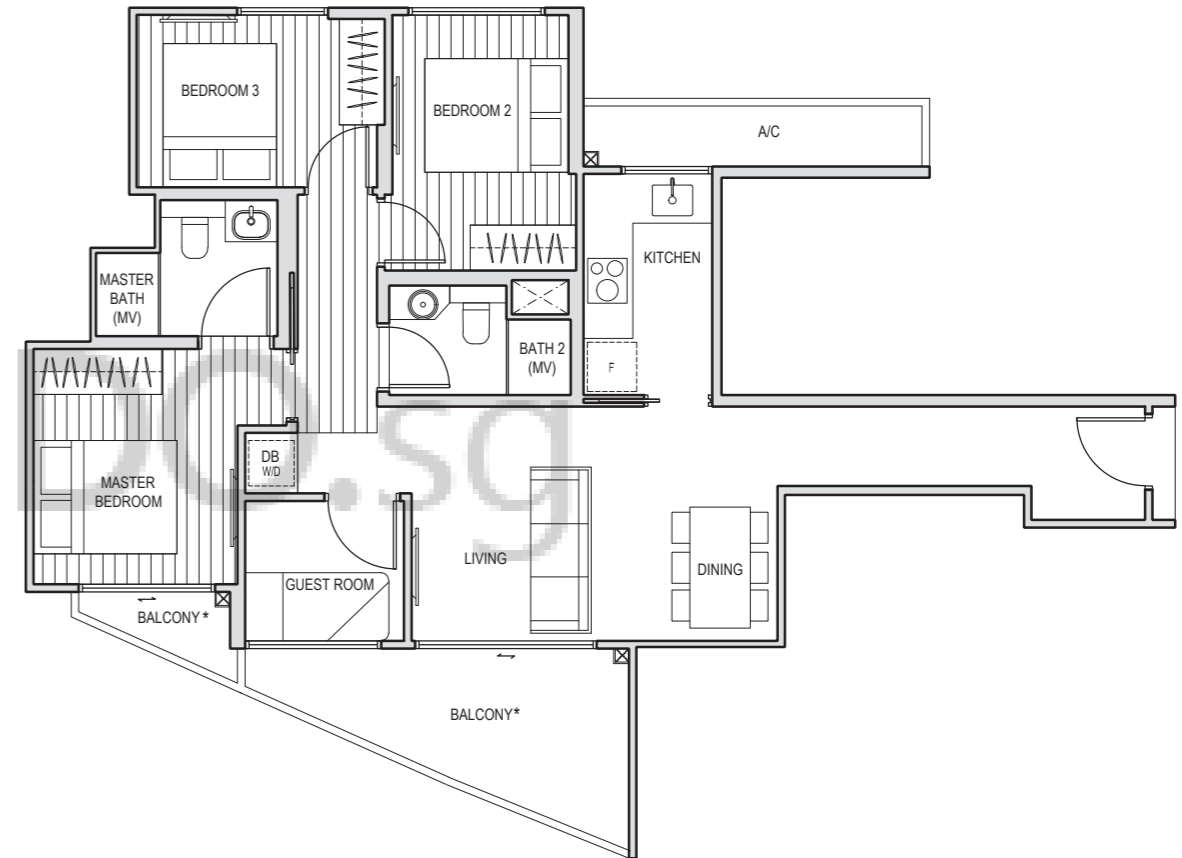
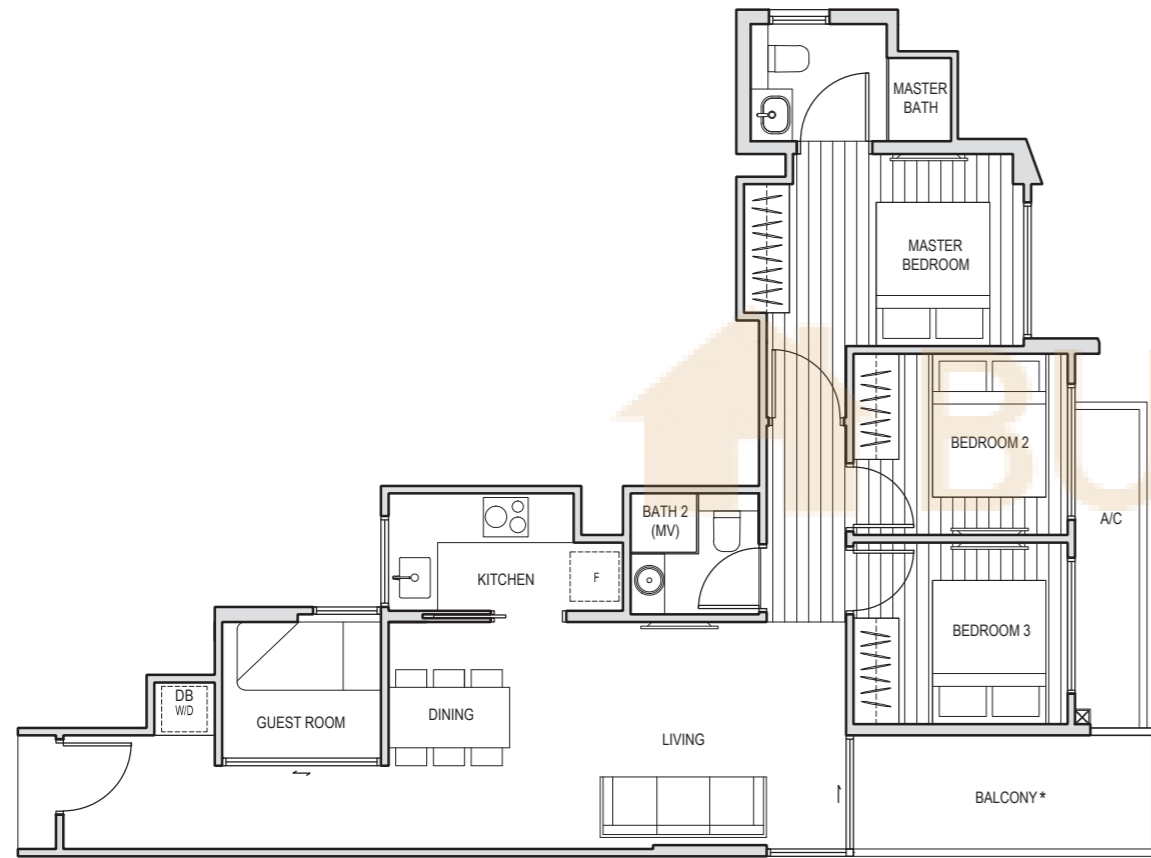
#02-08, #03-08, #04-08, #05-08

### 3 BEDROOM + GUEST ROOM

### TYPE D2

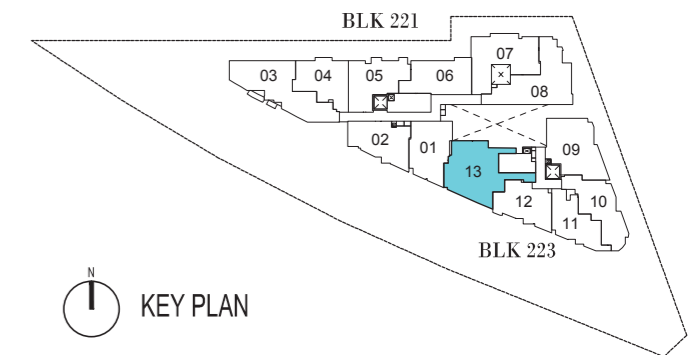
91 sq m

#02-13, #03-13, #04-13, #05-13



\* The balcony / PES (Private Enclosed Space) shall not be enclosed. Only approved balcony screens are to be used. For illustration of the approved balcony screen, please refer to page 55 of this brochure.

All plans are subject to amendments as approved by the relevant authorities. Floor areas are approximate measurements and subject to final survey. Plans are not drawn to scale and do not form part of the contract.



\* The balcony / PES (Private Enclosed Space) shall not be enclosed. Only approved balcony screens are to be used. For illustration of the approved balcony screen, please refer to page 55 of this brochure.

All plans are subject to amendments as approved by the relevant authorities. Floor areas are approximate measurements and subject to final survey. Plans are not drawn to scale and do not form part of the contract.

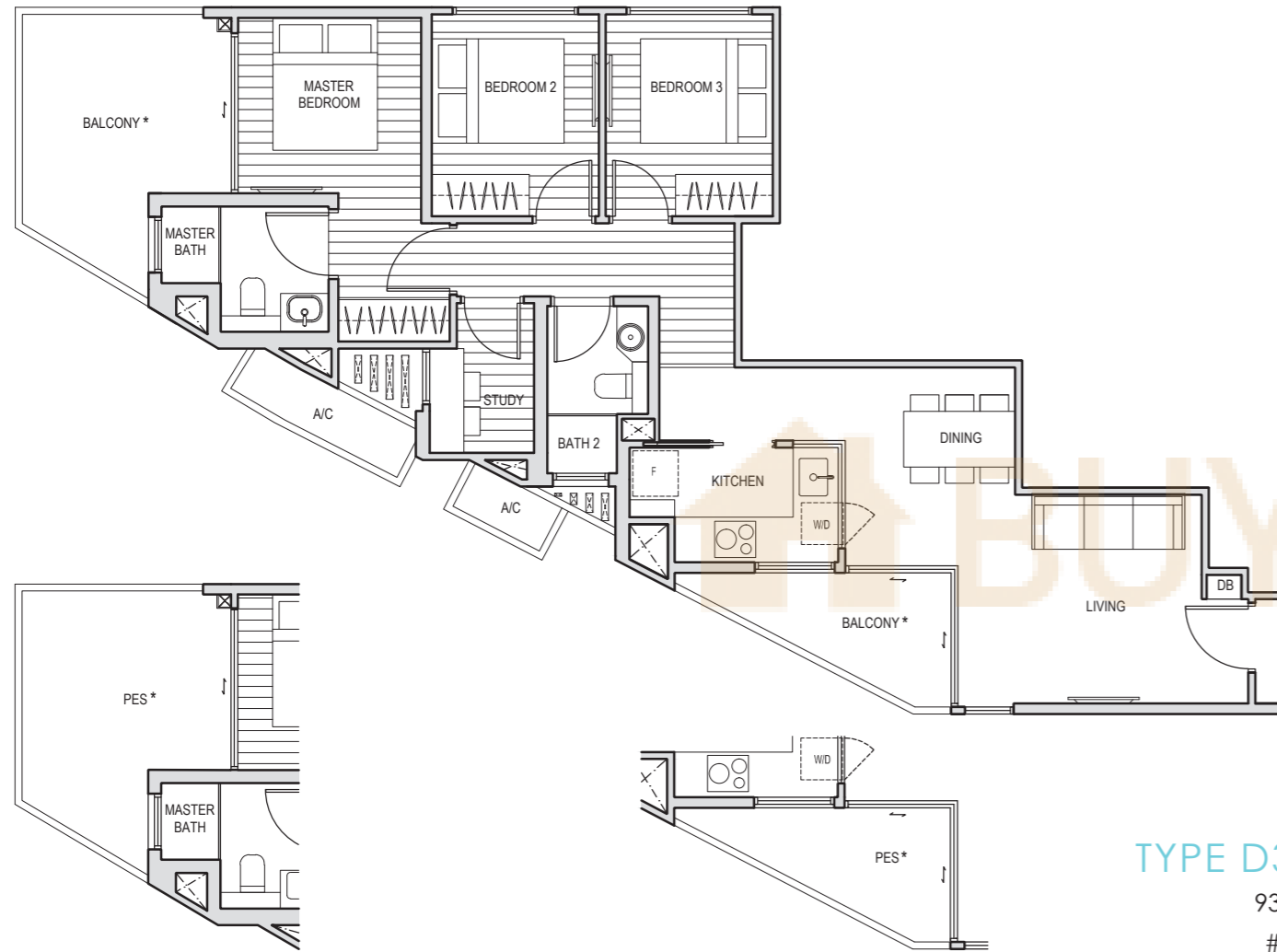
### 3 BEDROOM + STUDY

### TYPE D3

93 sq m

#02-03, #03-03, #04-03, #05-03

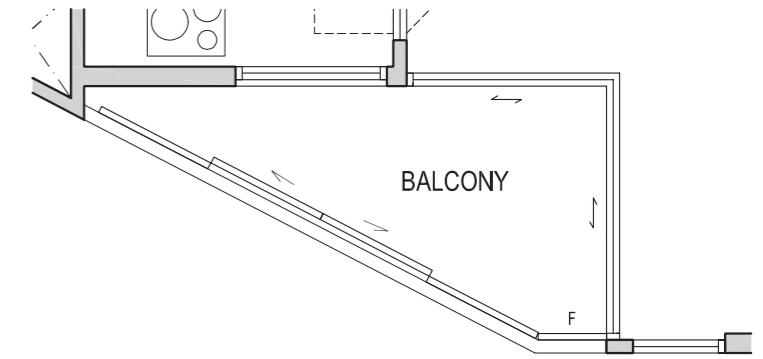
### BALCONY SCREENING



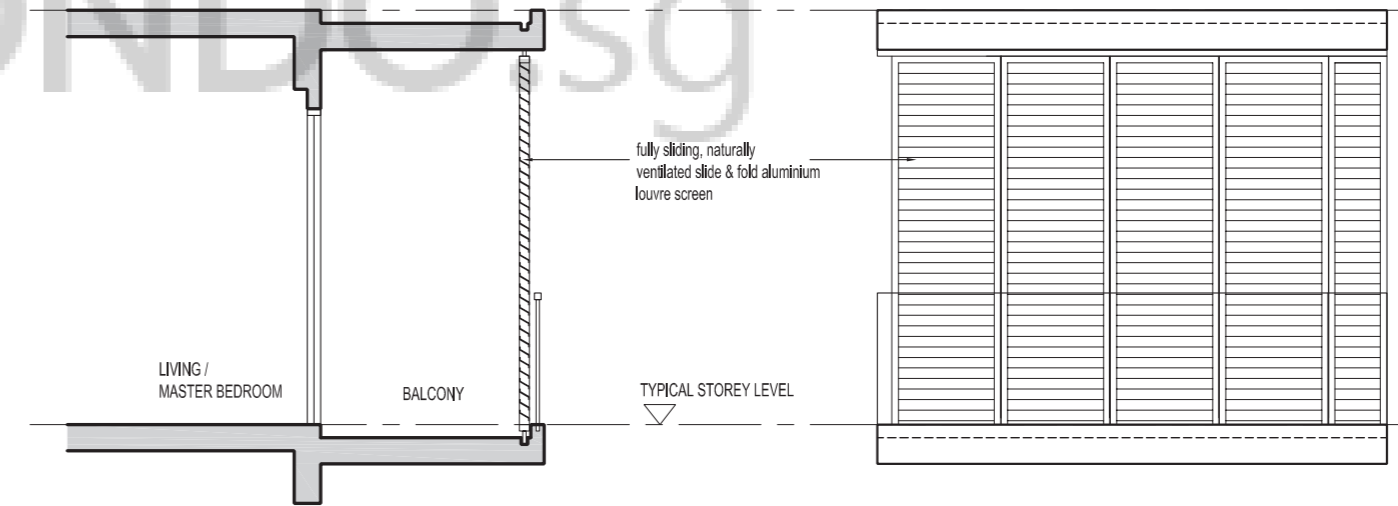
### TYPE D3-G

93 sq m

#01-03

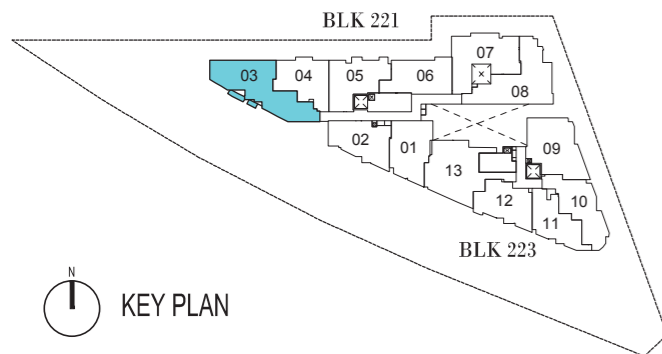


PLAN (IN FRONT OF LIVING-DINING)



SECTION

FRONT ELEVATION



KEY PLAN

\* The balcony / PES (Private Enclosed Space) shall not be enclosed. Only approved balcony screens are to be used. For illustration of the approved balcony screen, please refer to page 55 of this brochure.

All plans are subject to amendments as approved by the relevant authorities. Floor areas are approximate measurements and subject to final survey. Plans are not drawn to scale and do not form part of the contract.

This drawing is for reference only. The screen design is provided for aesthetic uniformity of the development. Materials to be aluminium with powder coated finish. Fixing details are by contractor and fixing shall not damage the existing waterproofing and structure. Owner shall verify all dimensions prior to fabrication and commencement work. Drawings are not to scale. The cost of screen and installation shall be borne by the owner.