

HILLSTA

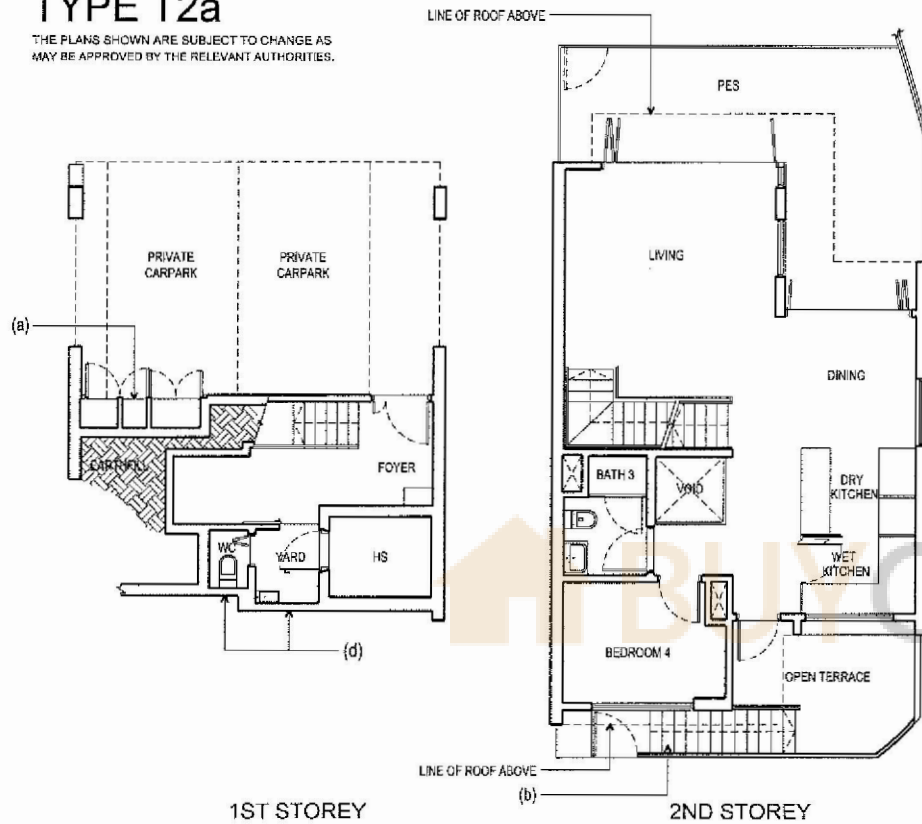
UNIT #38 (Annex B3)

TYPE T2a

THE PLANS SHOWN ARE SUBJECT TO CHANGE AS
MAY BE APPROVED BY THE RELEVANT AUTHORITIES.

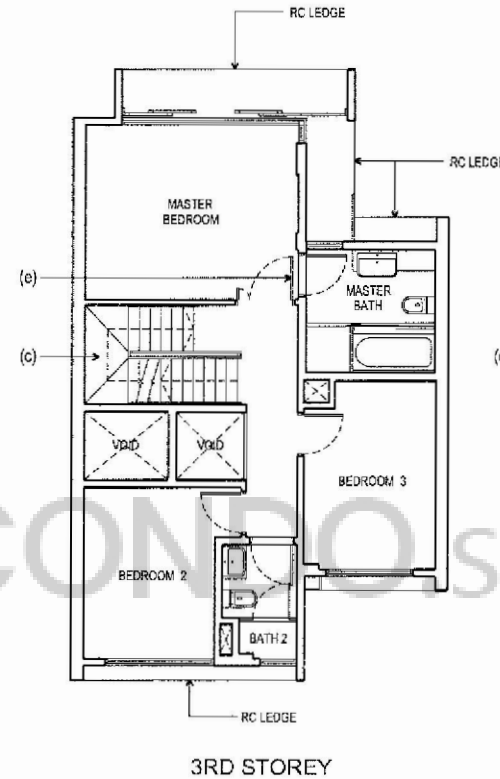
BP NO. : A1606-00001-2011 BP01

DATE : 2ND APRIL 2012

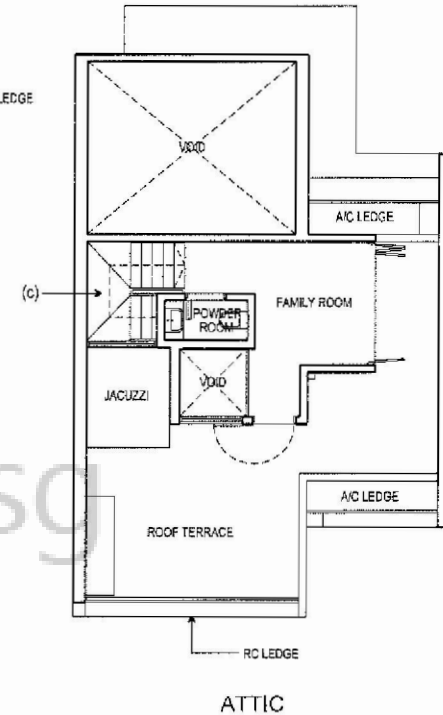


1ST STOREY

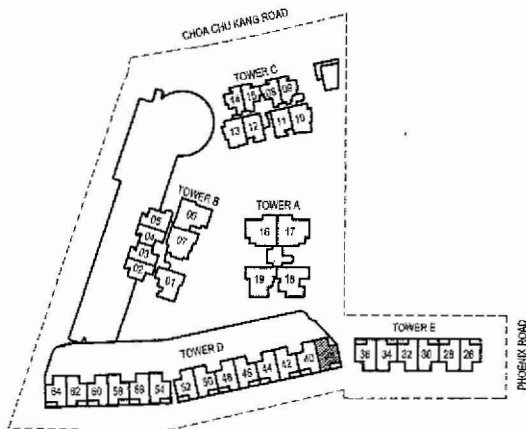
2ND STOREY



3RD STOREY



ATTIC



KEY PLAN
THIS KEY PLAN IS NOT TO SCALE

- CHANGES TO BE SUBMITTED IN THE NEXT BP AMENDMENT ARE SHOWN IN THESE PLANS:
- (a) RELOCATION OF METERING
 - (b) NUMBER OF STEPS AT OPEN TERRACE
 - (c) STEPS AT LANDING HAD BEEN RELOCATED TO UPPER FLIGHT
 - (d) REMOVAL OF WINDOWS AND ADDITION OF MECHANICAL VENTILATION
 - (e) 2 LEAVES TYPE DOOR CHANGED TO 1.5 LEAF TYPE DOOR



HILLSTA

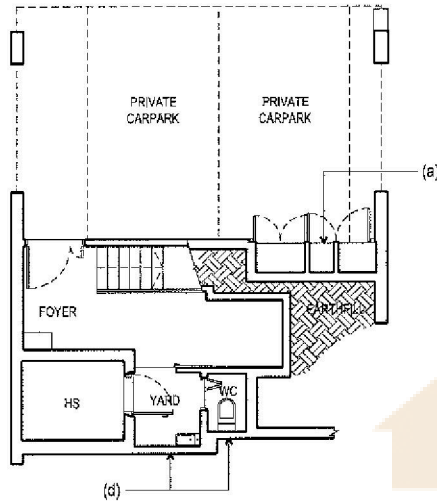
UNIT #40 (Annex B3)

TYPE T1a

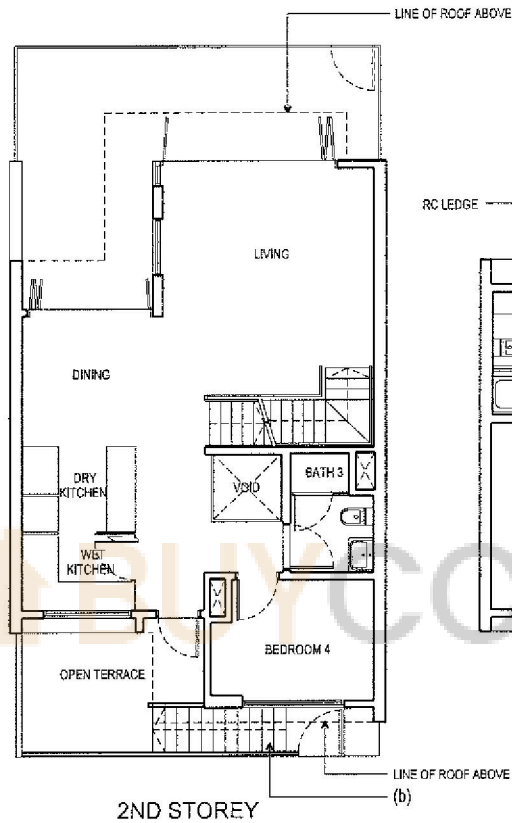
THE PLANS SHOWN ARE SUBJECT TO CHANGE AS
MAY BE APPROVED BY THE RELEVANT AUTHORITIES.

BP NO. : A1606-00001-2011 BP01

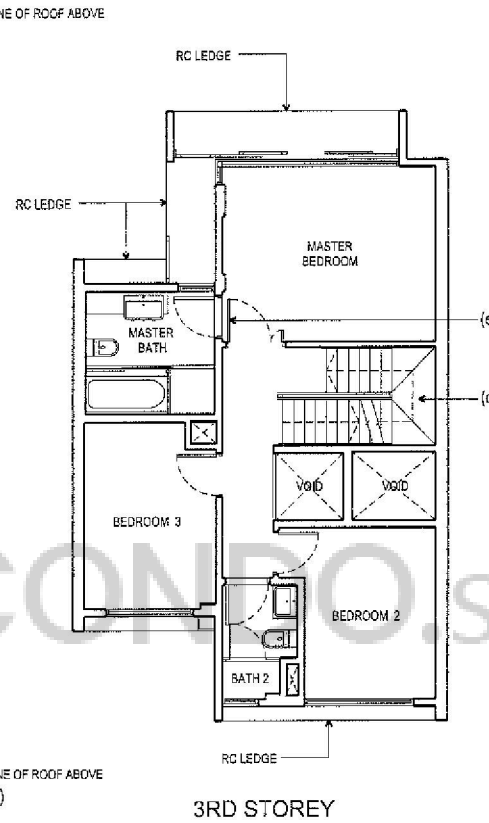
DATE : 2ND APRIL 2012



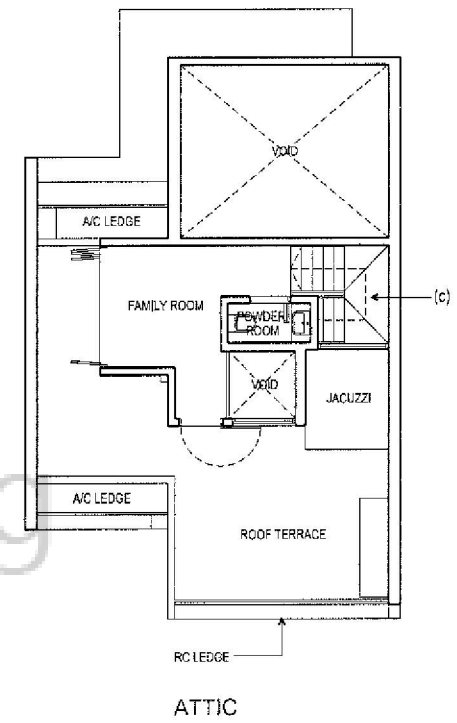
1ST STOREY



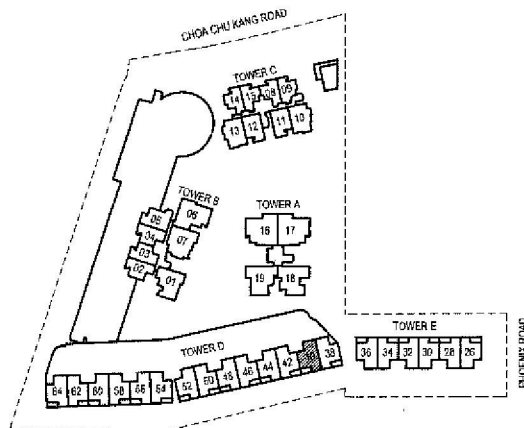
2ND STOREY



3RD STOREY



ATTIC



KEY PLAN
THIS KEY PLAN IS NOT TO SCALE

CHANGES TO BE SUBMITTED IN THE NEXT BP AMENDMENT ARE SHOWN IN THESE PLANS:

- (a) RELOCATION OF METERING
- (b) NUMBER OF STEPS AT OPEN TERRACE
- (c) STEPS AT LANDING HAD BEEN RELOCATED TO UPPER FLIGHT
- (d) REMOVAL OF WINDOWS AND ADDITION OF MECHANICAL VENTILATION
- (e) 2 LEAVES TYPE DOOR CHANGED TO 1.5 LEAF TYPE DOOR



HILLSTA

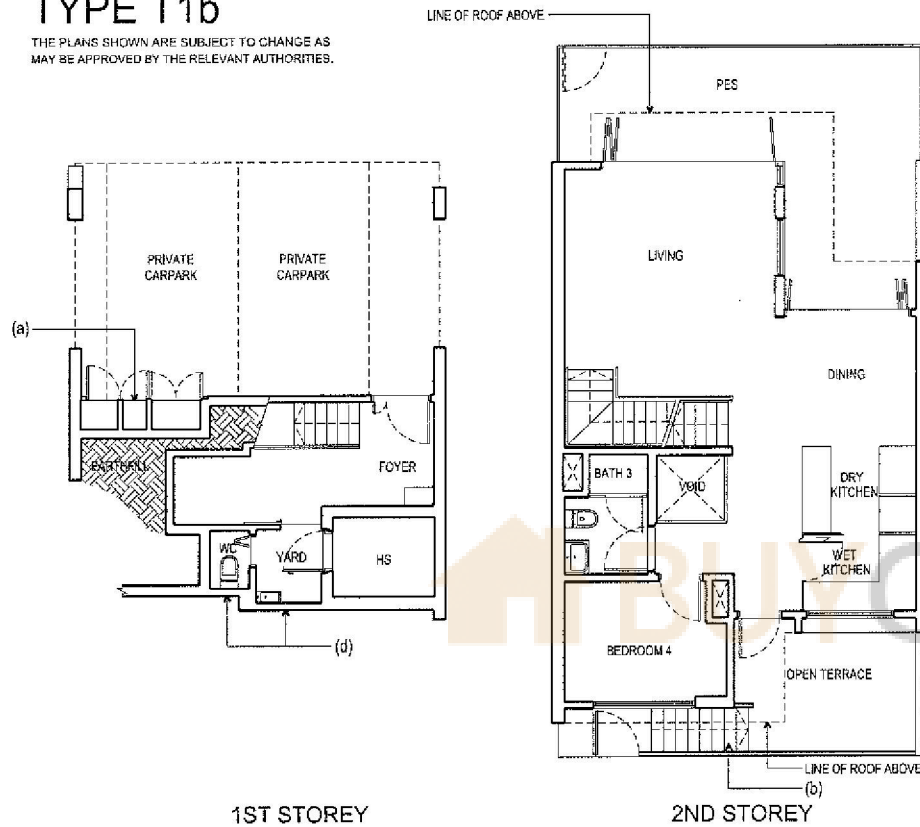
UNIT #42 (Annex B3)

TYPE T1b

THE PLANS SHOWN ARE SUBJECT TO CHANGE AS
MAY BE APPROVED BY THE RELEVANT AUTHORITIES.

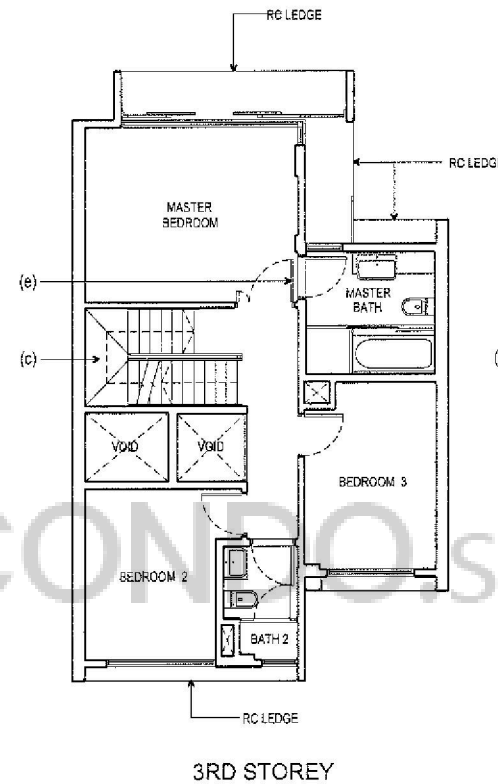
BP NO. : A1606-00001-2011 BP01

DATE : 2ND APRIL 2012

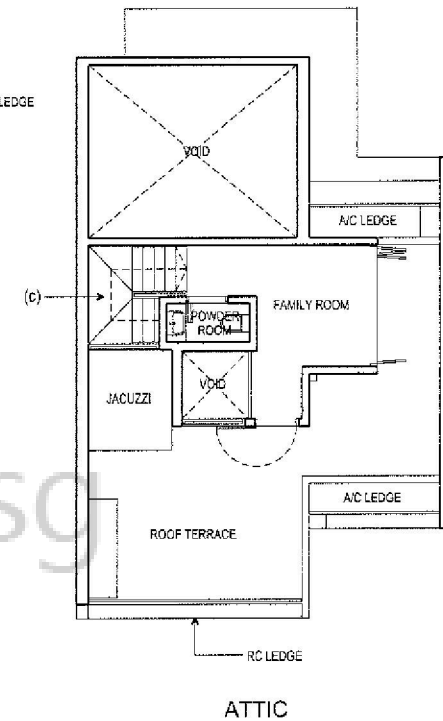


1ST STOREY

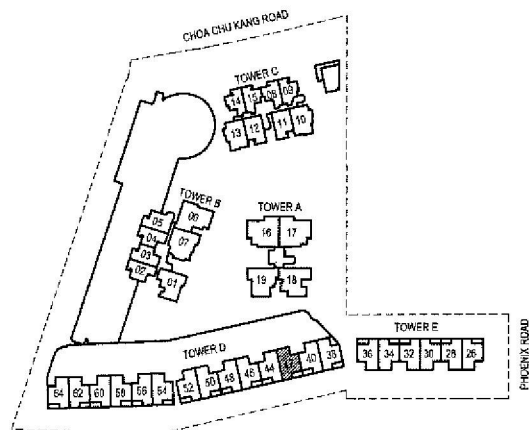
2ND STOREY



3RD STOREY



ATTIC



KEY PLAN
THIS KEY PLAN IS NOT TO SCALE



CHANGES TO BE SUBMITTED IN THE NEXT BP
AMENDMENT ARE SHOWN IN THESE PLANS:

- (a) RELOCATION OF METERING
- (b) NUMBER OF STEPS AT OPEN TERRACE
- (c) STEPS AT LANDING HAD BEEN RELOCATED TO UPPER FLIGHT
- (d) REMOVAL OF WINDOWS AND ADDITION OF MECHANICAL VENTILATION
- (e) 2 LEAVES TYPE DOOR CHANGED TO 1.5 LEAF TYPE DOOR



HILLSTA

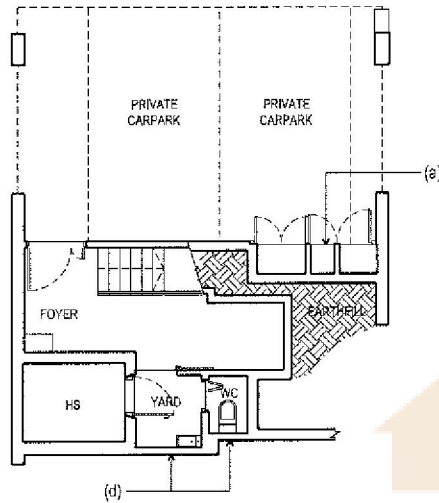
UNIT #44 (Annex B3)

TYPE T1c

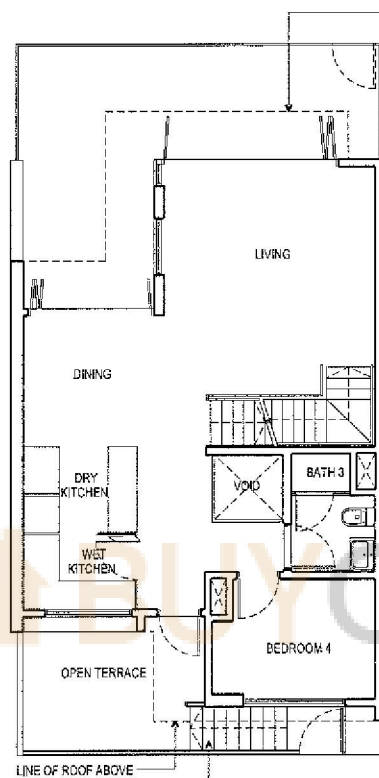
THE PLANS SHOWN ARE SUBJECT TO CHANGE AS
MAY BE APPROVED BY THE RELEVANT AUTHORITIES.

BP NO. : A1606-00001-2011 BP01

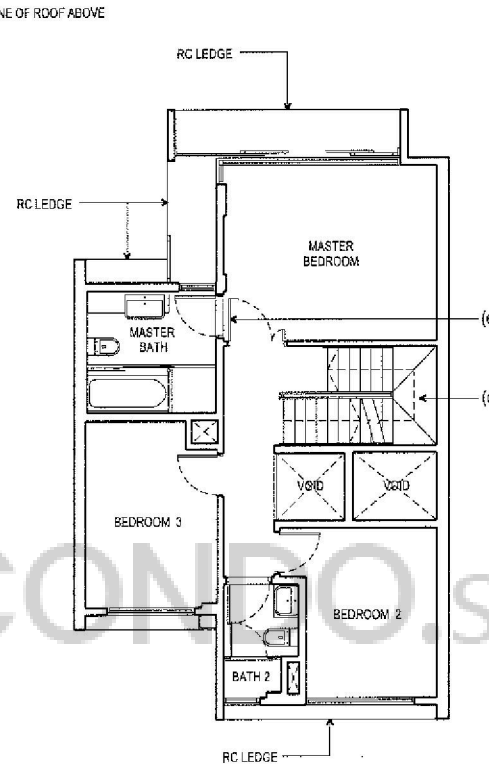
DATE : 2ND APRIL 2012



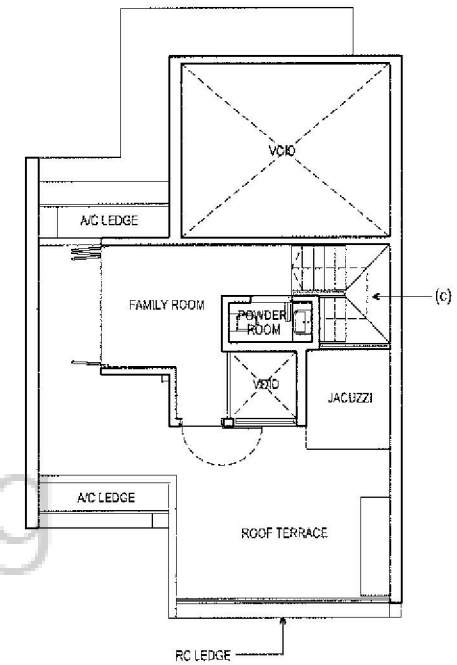
1ST STOREY



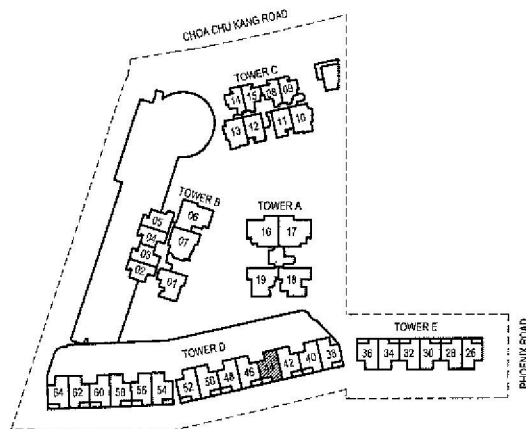
2ND STOREY



3RD STOREY



ATTIC



KEY PLAN
THIS KEY PLAN IS NOT TO SCALE



CHANGES TO BE SUBMITTED IN THE NEXT BP
AMENDMENT ARE SHOWN IN THESE PLANS:

- (a) RELOCATION OF METERING
- (b) NUMBER OF STEPS AT OPEN TERRACE
- (c) STEPS AT LANDING HAD BEEN RELOCATED
TO UPPER FLIGHT
- (d) REMOVAL OF WINDOWS AND ADDITION OF
MECHANICAL VENTILATION
- (e) 2 LEAVES TYPE DOOR CHANGED TO
1.5 LEAF TYPE DOOR



HILLSTA

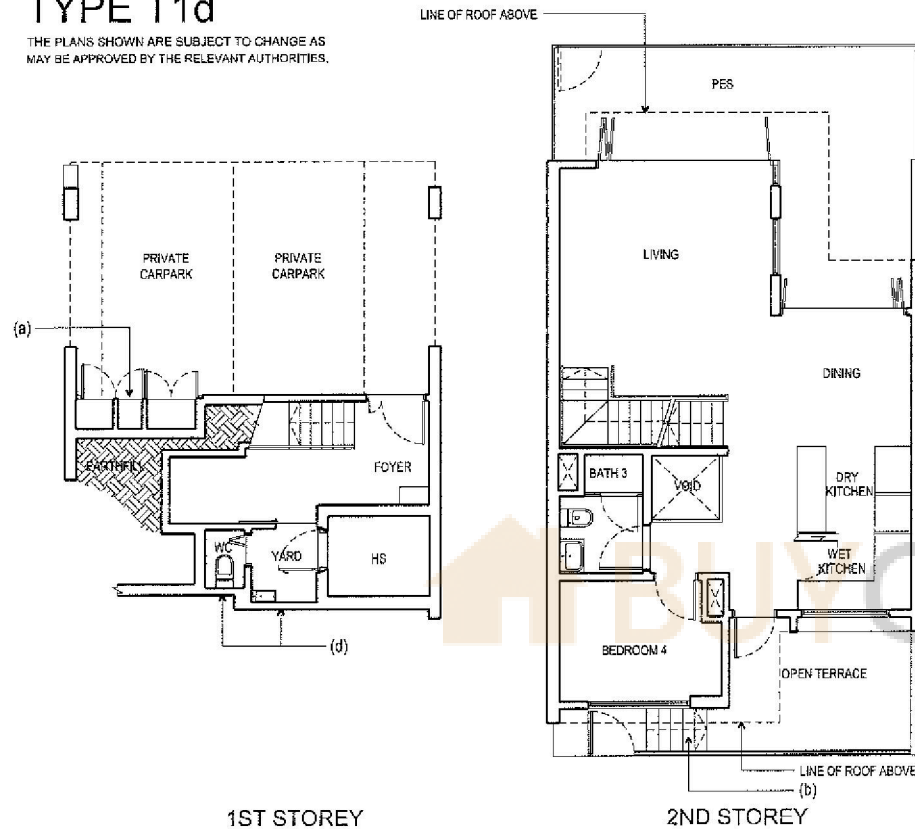
UNIT #46 (Annex B3)

TYPE T1d

THE PLANS SHOWN ARE SUBJECT TO CHANGE AS
MAY BE APPROVED BY THE RELEVANT AUTHORITIES.

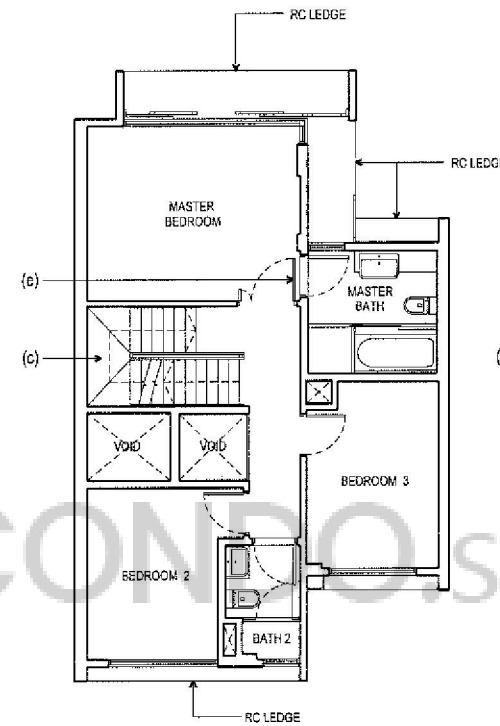
BP NO. : A1606-00001-2011 BP01

DATE : 2ND APRIL 2012

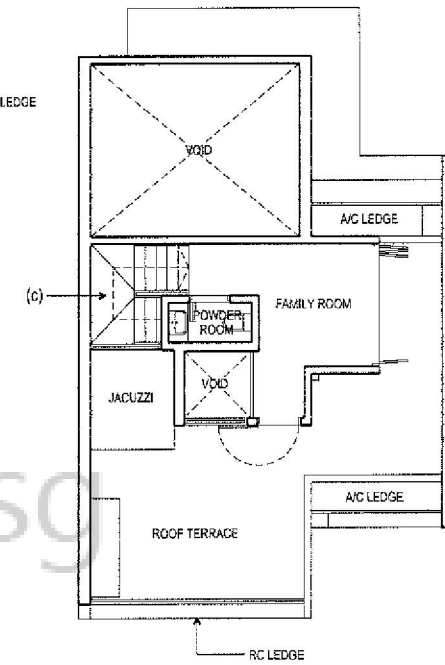


1ST STOREY

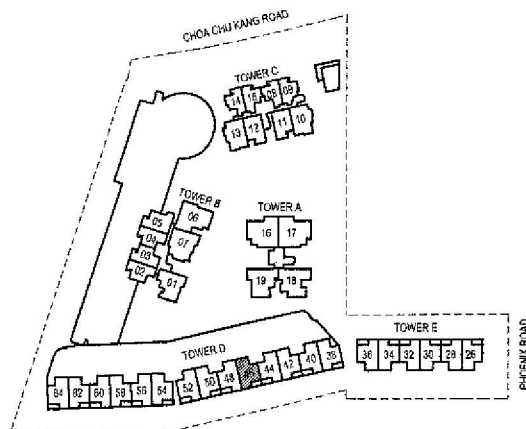
2ND STOREY



3RD STOREY



ATTIC



KEY PLAN
THIS KEY PLAN IS NOT TO SCALE

CHANGES TO BE SUBMITTED IN THE NEXT BP
AMENDMENT ARE SHOWN IN THESE PLANS:

- (a) RELOCATION OF METERING
- (b) NUMBER OF STEPS AT OPEN TERRACE
- (c) STEPS AT LANDING HAD BEEN RELOCATED TO UPPER FLIGHT
- (d) REMOVAL OF WINDOWS AND ADDITION OF MECHANICAL VENTILATION
- (e) 2 LEAVES TYPE DOOR CHANGED TO 1.5 LEAF TYPE DOOR



HILLSTA

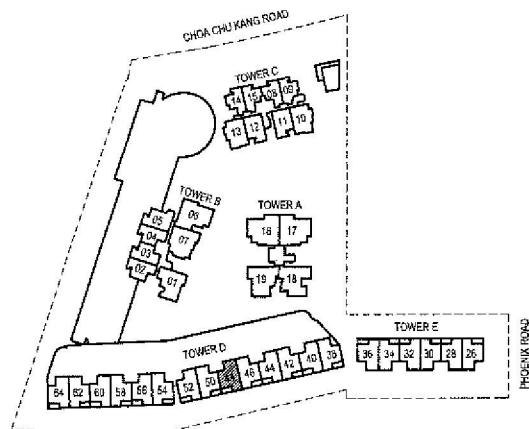
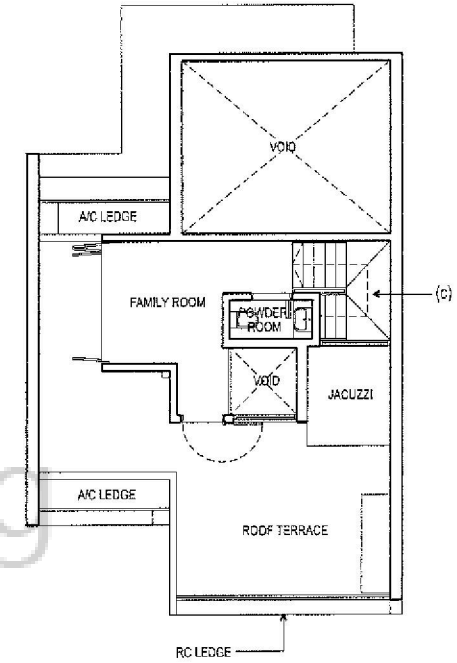
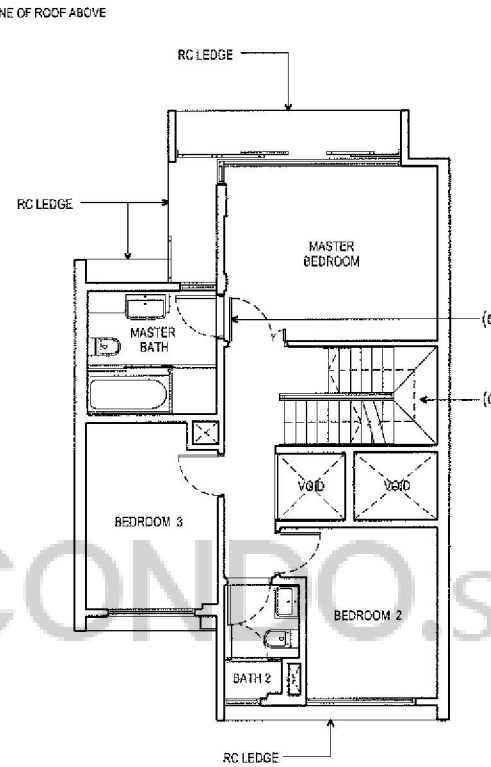
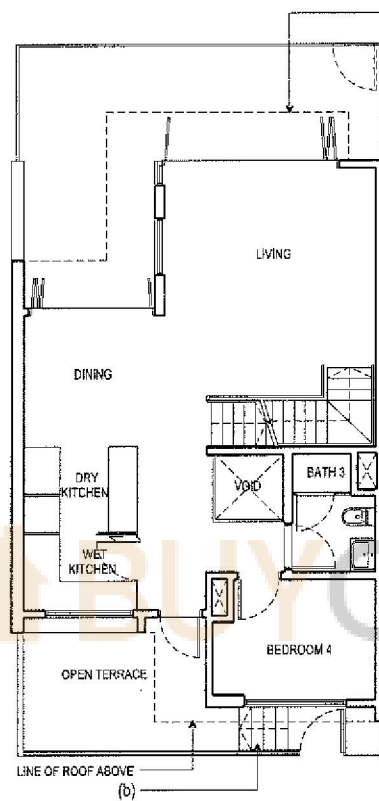
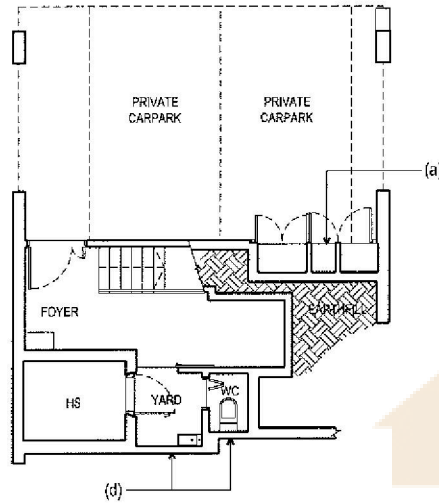
UNIT #48 (Annex B3)

TYPE T1e

THE PLANS SHOWN ARE SUBJECT TO CHANGE AS
MAY BE APPROVED BY THE RELEVANT AUTHORITIES.

BP NO. : A1606-00001-2011 BP01

DATE : 2ND APRIL 2012



CHANGES TO BE SUBMITTED IN THE NEXT BP AMENDMENT ARE SHOWN IN THESE PLANS:

- (a) RELOCATION OF METERING
- (b) NUMBER OF STEPS AT OPEN TERRACE
- (c) STEPS AT LANDING HAD BEEN RELOCATED TO UPPER FLIGHT
- (d) REMOVAL OF WINDOWS AND ADDITION OF MECHANICAL VENTILATION
- (e) 2 LEAVES TYPE DOOR CHANGED TO 1.5 LEAF TYPE DOOR



HILLSTA

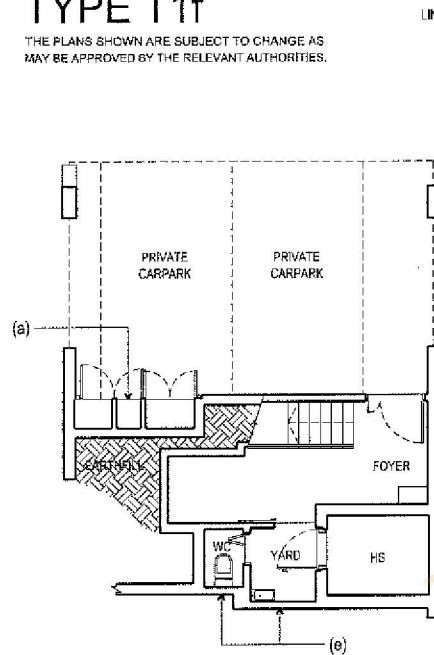
UNIT #50 (Annex B3)

TYPE T1f

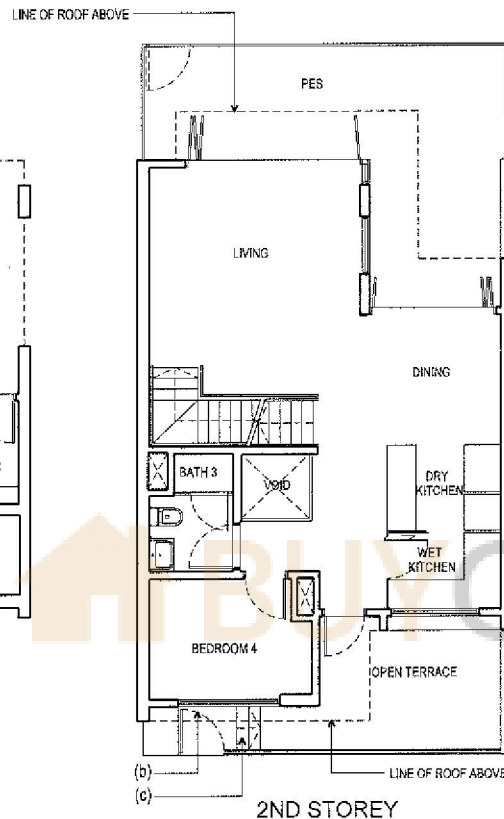
THE PLANS SHOWN ARE SUBJECT TO CHANGE AS
MAY BE APPROVED BY THE RELEVANT AUTHORITIES.

BP NO. : A1606-00001-2011 BP01

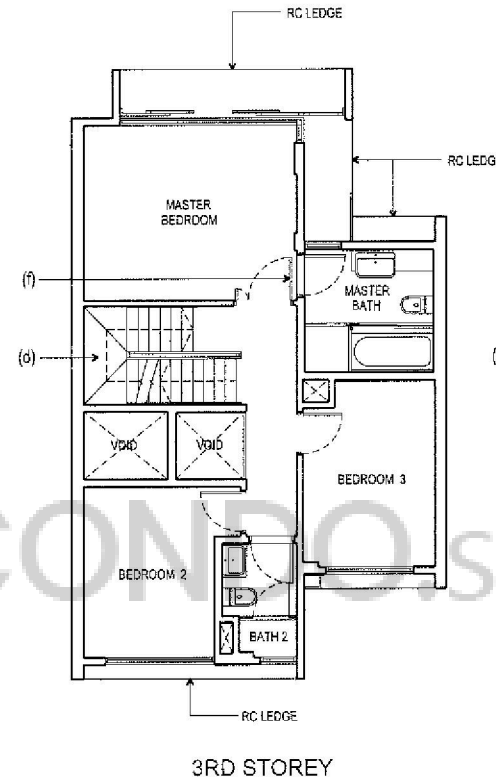
DATE : 2ND APRIL 2012



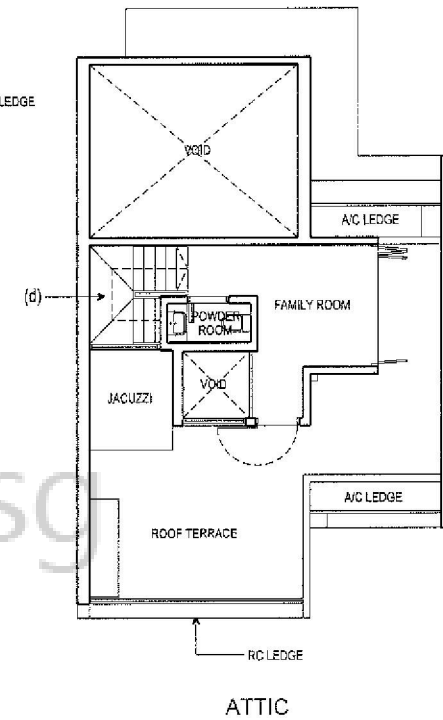
1ST STOREY



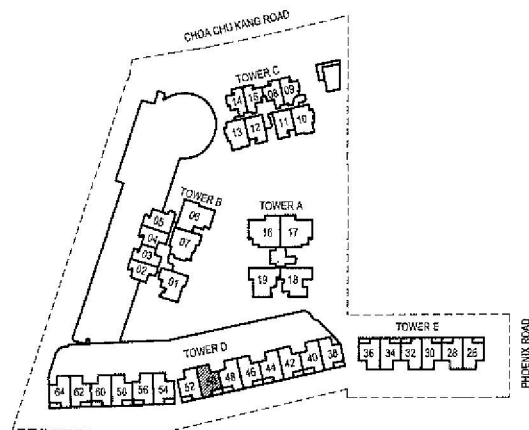
2ND STOREY



3RD STOREY



ATTIC



KEY PLAN
THIS KEY PLAN IS NOT TO SCALE

CHANGES TO BE SUBMITTED IN THE NEXT BP
AMENDMENT ARE SHOWN IN THESE PLANS:

- (a) RELOCATION OF METERING
- (b) RELOCATION OF ENTRANCE GATE
- (c) NUMBER OF STEPS AT OPEN TERRACE
- (d) STEPS AT LANDING HAD BEEN RELOCATED TO UPPER FLIGHT
- (e) REMOVAL OF WINDOWS AND ADDITION OF MECHANICAL VENTILATION
- (f) 2 LEAVES TYPE DOOR CHANGED TO 1.5 LEAF TYPE DOOR



HILLSTA

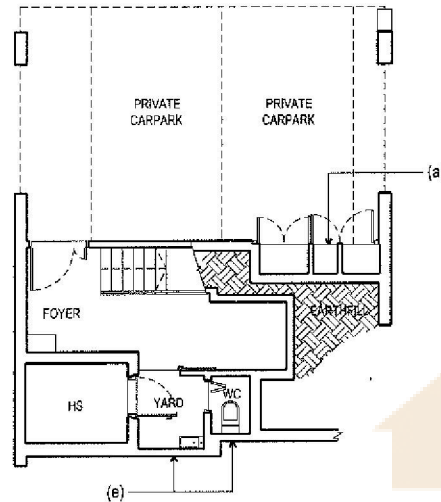
UNIT #52 (Annex B3)

TYPE T1g

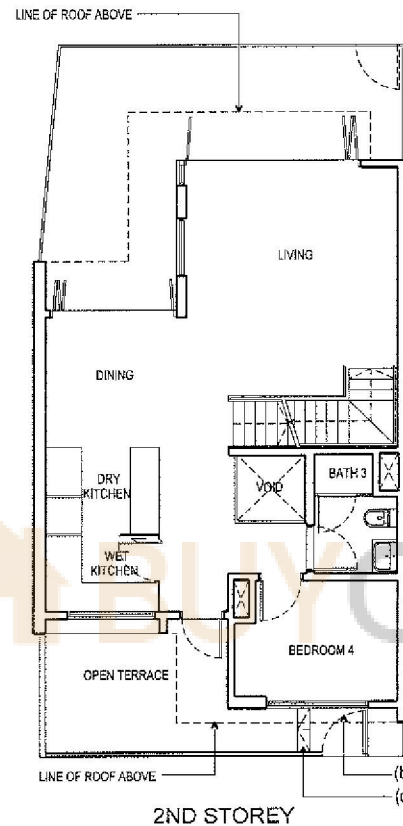
THE PLANS SHOWN ARE SUBJECT TO CHANGE AS
MAY BE APPROVED BY THE RELEVANT AUTHORITIES.

BP NO. : A1606-00001-2011 BP01

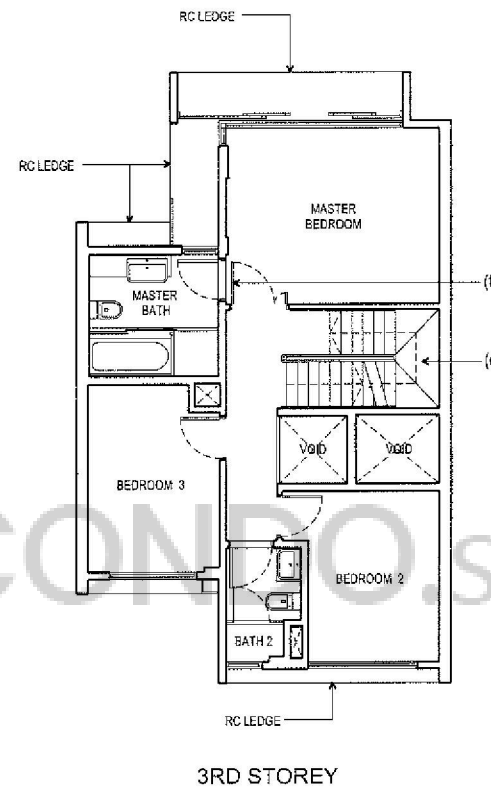
DATE : 2ND APRIL 2012



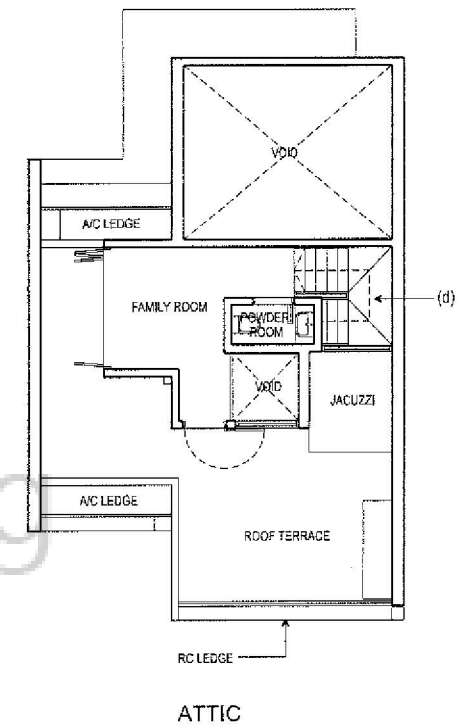
1ST STOREY



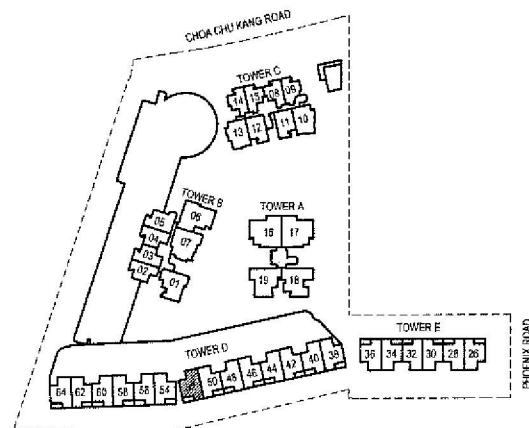
2ND STOREY



3RD STOREY



ATTIC



KEY PLAN
THIS KEY PLAN IS NOT TO SCALE

CHANGES TO BE SUBMITTED IN THE NEXT BP AMENDMENT ARE SHOWN IN THESE PLANS:

- (a) RELOCATION OF METERING
- (b) RELOCATION OF ENTRANCE GATE
- (c) RELOCATION OF STAIRCASE AT OPEN TERRACE
- (d) STEPS AT LANDING HAD BEEN RELOCATED TO UPPER FLIGHT
- (e) REMOVAL OF WINDOWS AND ADDITION OF MECHANICAL VENTILATION
- (f) 2 LEAVES TYPE DOOR CHANGED TO 1.5 LEAF TYPE DOOR



HILLSTA

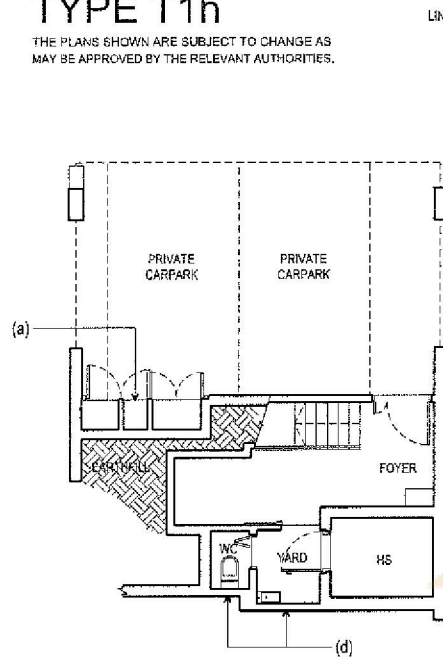
UNIT #54 (Annex B3)

TYPE T1h

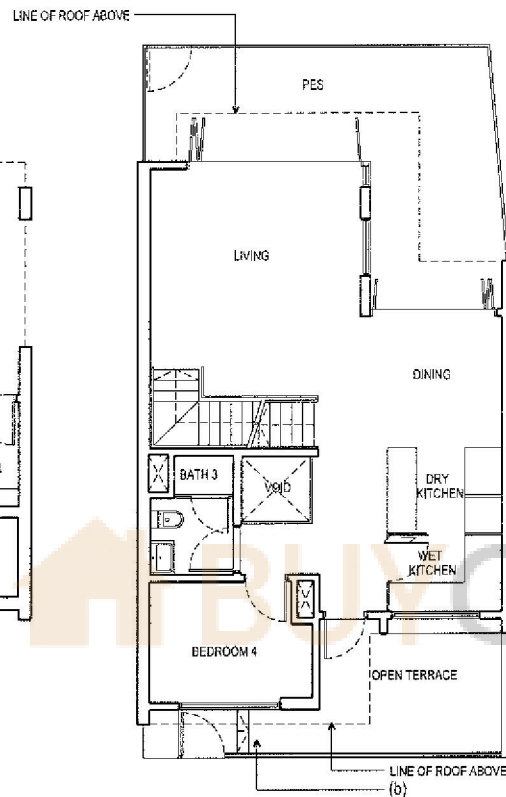
THE PLANS SHOWN ARE SUBJECT TO CHANGE AS
MAY BE APPROVED BY THE RELEVANT AUTHORITIES.

BP NO. : A1606-00001-2011 BP01

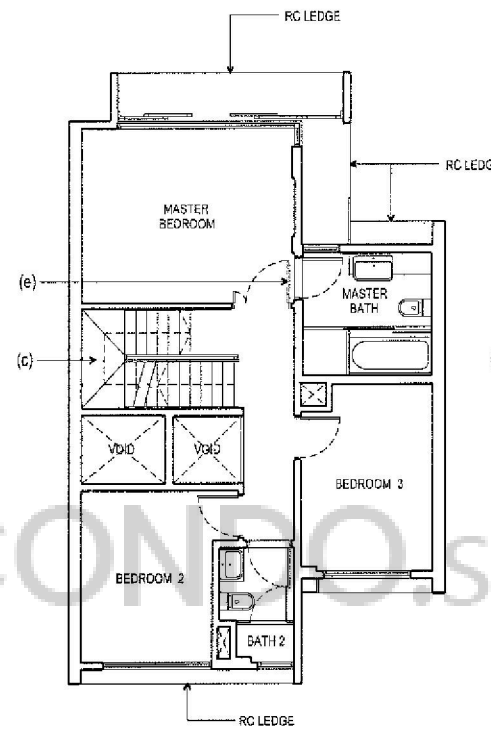
DATE : 2ND APRIL 2012



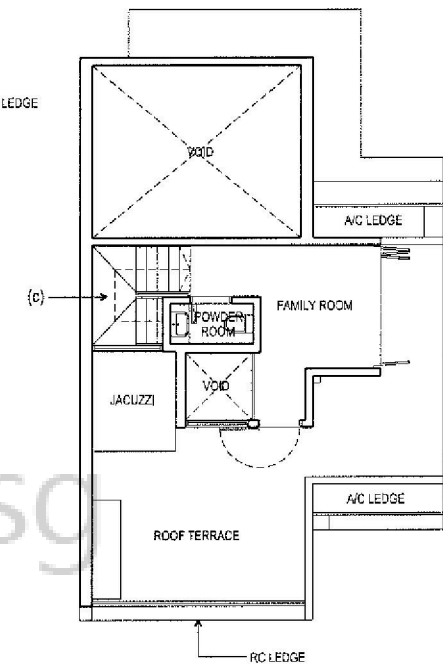
1ST STOREY



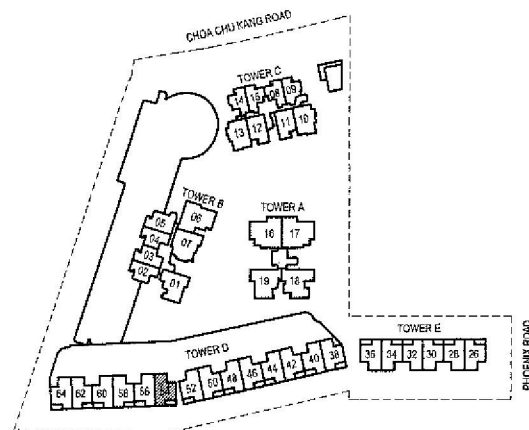
2ND STOREY



3RD STOREY



ATTIC



KEY PLAN
THIS KEY PLAN IS NOT TO SCALE

CHANGES TO BE SUBMITTED IN THE NEXT BP AMENDMENT ARE SHOWN IN THESE PLANS:

- (a) RELOCATION OF METERING
- (b) NUMBER OF STEPS AT OPEN TERRACE
- (c) STEPS AT LANDING HAD BEEN RELOCATED TO UPPER FLIGHT
- (d) REMOVAL OF WINDOWS AND ADDITION OF MECHANICAL VENTILATION
- (e) 2 LEAVES TYPE DOOR CHANGED TO 1.5 LEAF TYPE DOOR



HILLSTA

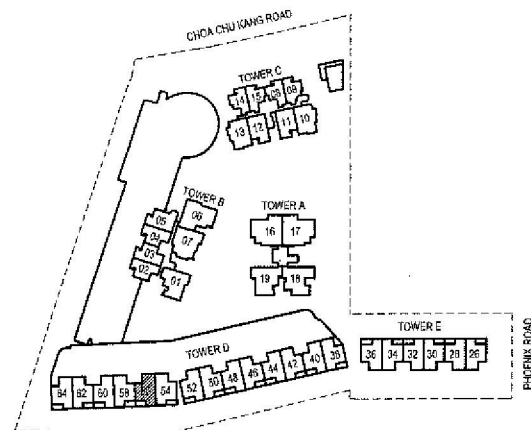
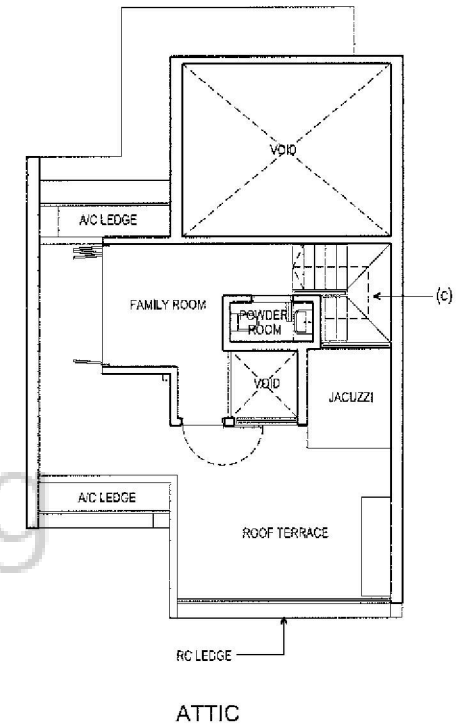
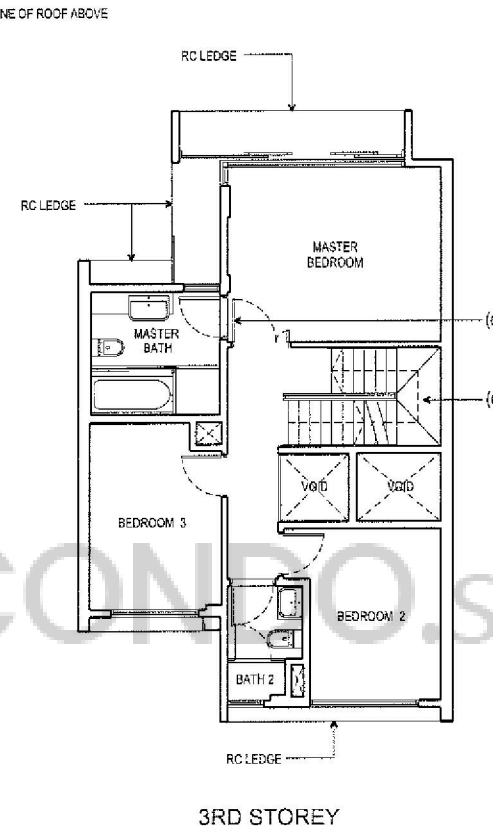
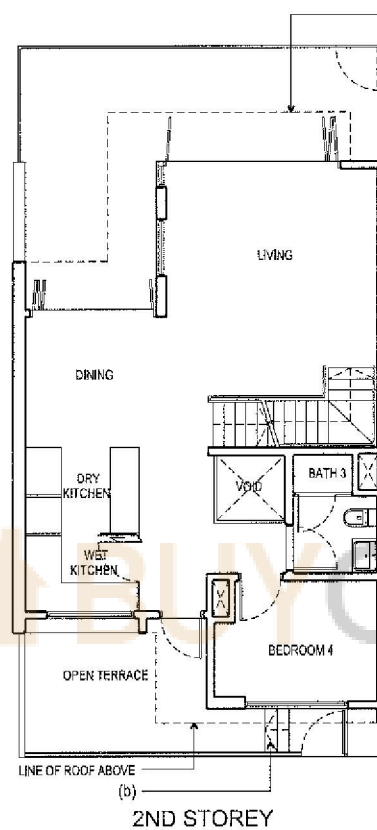
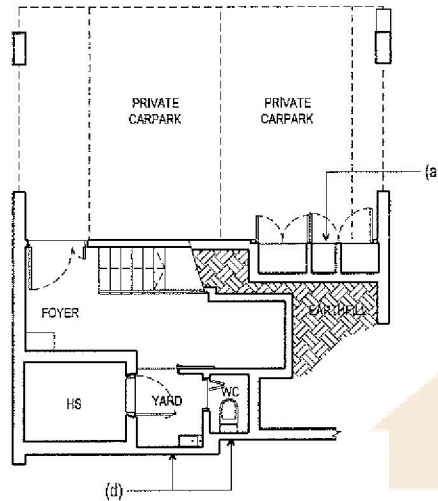
UNIT #56 (Annex B3)

TYPE T1i

THE PLANS SHOWN ARE SUBJECT TO CHANGE AS
MAY BE APPROVED BY THE RELEVANT AUTHORITIES.

BP NO. : A1606-00001-2011 BP01

DATE : 2ND APRIL 2012



CHANGES TO BE SUBMITTED IN THE NEXT BP AMENDMENT ARE SHOWN IN THESE PLANS:

- (a) RELOCATION OF METERING
- (b) NUMBER OF STEPS AT OPEN TERRACE
- (c) STEPS AT LANDING HAD BEEN RELOCATED TO UPPER FLIGHT
- (d) REMOVAL OF WINDOWS AND ADDITION OF MECHANICAL VENTILATION
- (e) 2 LEAVES TYPE DOOR CHANGED TO 1.5 LEAF TYPE DOOR



HILLSTA

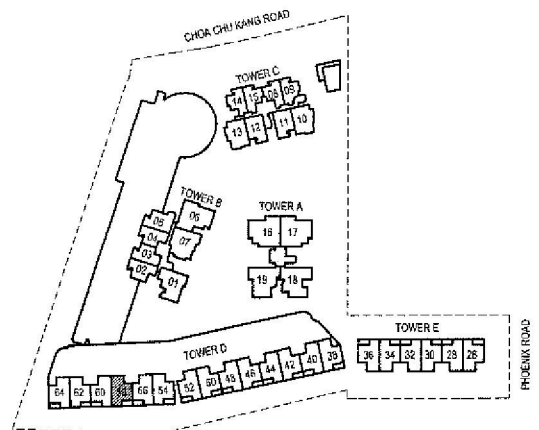
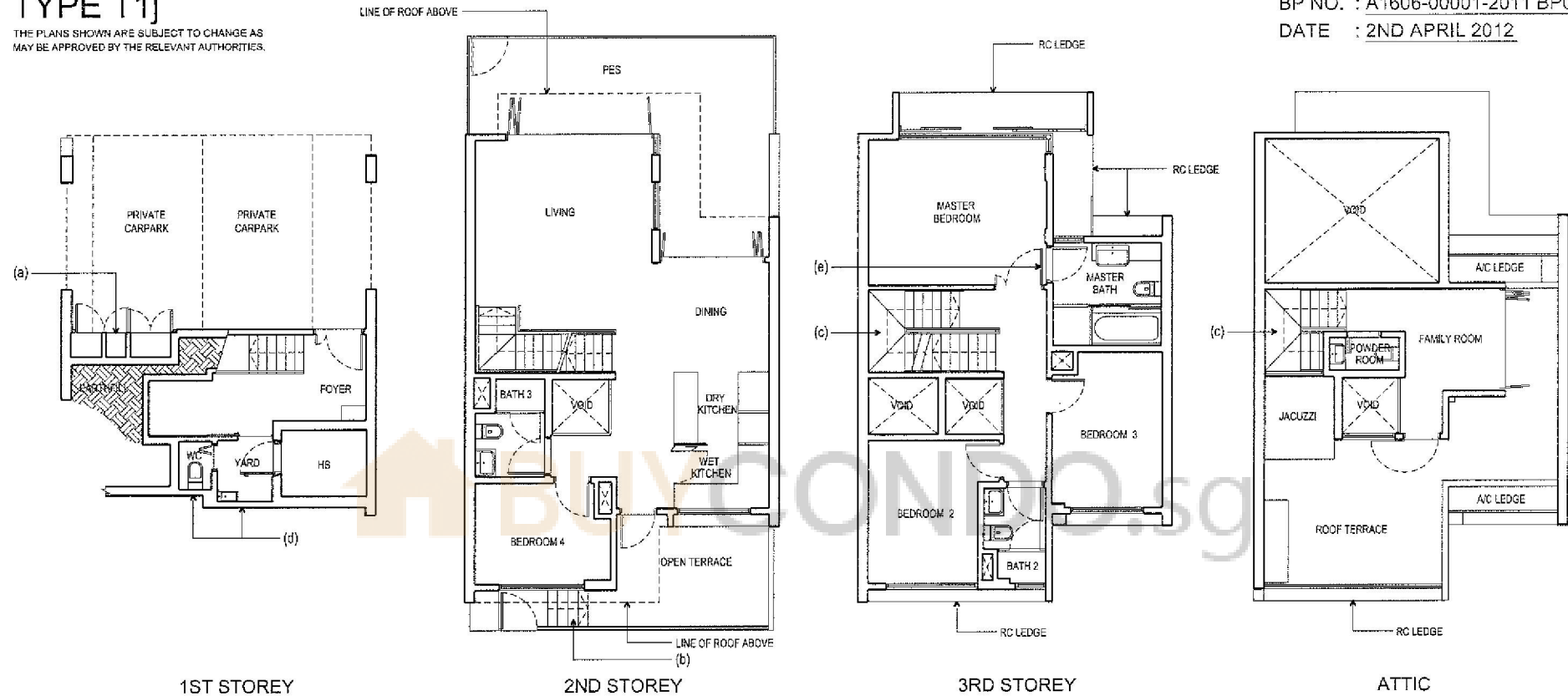
UNIT #58 (Annex B3)

TYPE T1j

THE PLANS SHOWN ARE SUBJECT TO CHANGE AS MAY BE APPROVED BY THE RELEVANT AUTHORITIES.

BP NO. : A1606-00001-2011 BP01

DATE : 2ND APRIL 2012



CHANGES TO BE SUBMITTED IN THE NEXT BP AMENDMENT ARE SHOWN IN THESE PLANS:

- (a) RELOCATION OF METERING
- (b) NUMBER OF STEPS AT OPEN TERRACE
- (c) STEPS AT LANDING HAD BEEN RELOCATED TO UPPER FLIGHT
- (d) REMOVAL OF WINDOWS AND ADDITION OF MECHANICAL VENTILATION
- (e) 2 LEAVES TYPE DOOR CHANGED TO 1.5 LEAF TYPE DOOR



HILLSTA

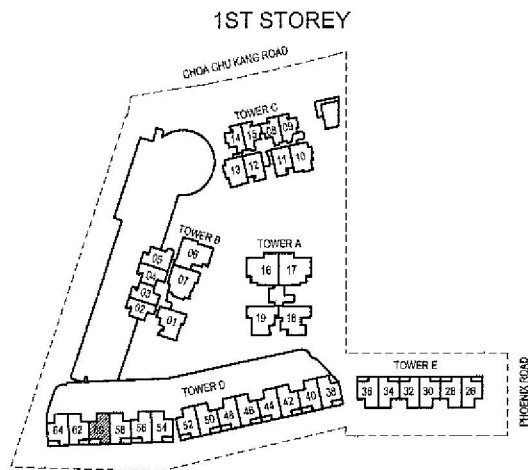
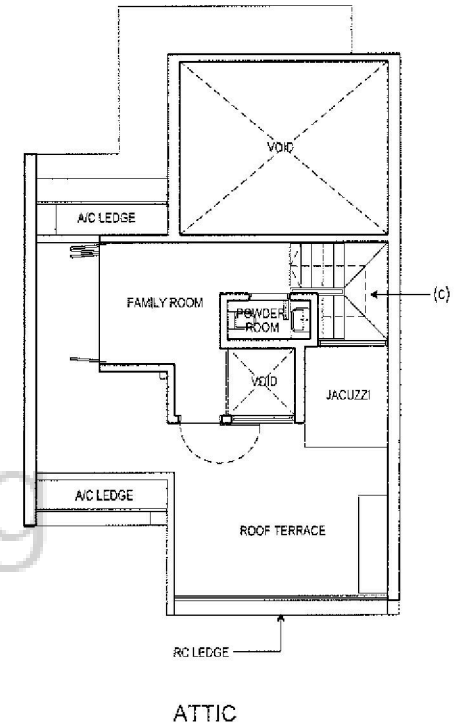
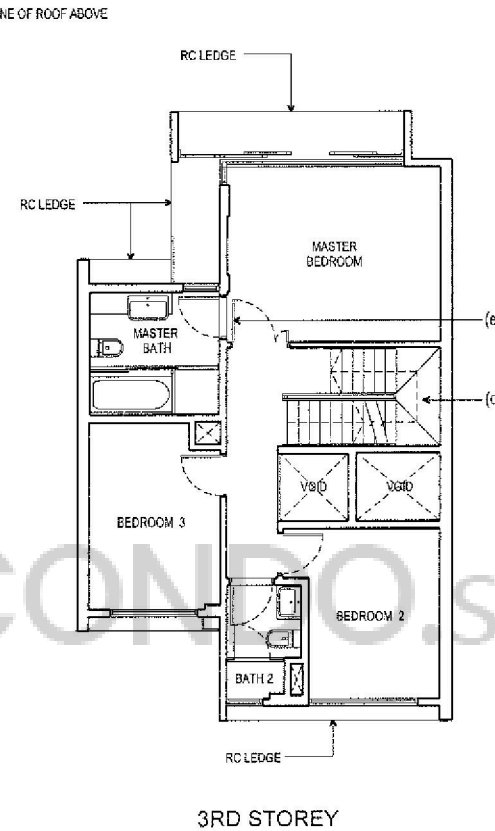
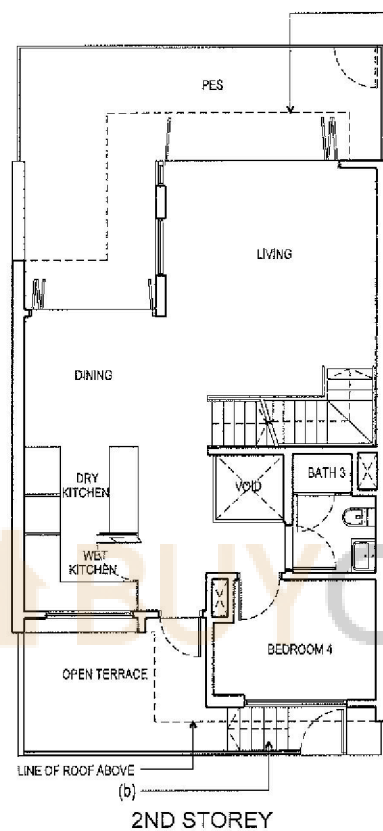
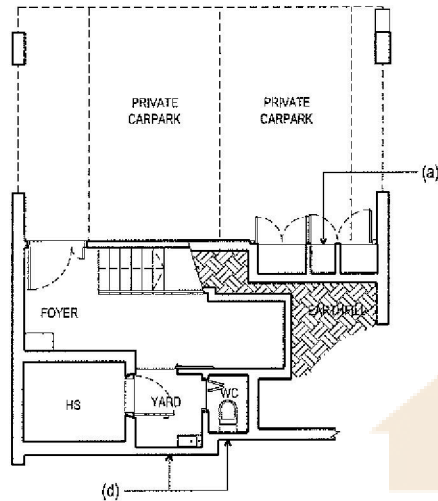
UNIT #60 (Annex B3)

TYPE T1k

THE PLANS SHOWN ARE SUBJECT TO CHANGE AS
MAY BE APPROVED BY THE RELEVANT AUTHORITIES.

BP NO. : A1606-00001-2011 BP01

DATE : 2ND APRIL 2012



- CHANGES TO BE SUBMITTED IN THE NEXT BP AMENDMENT ARE SHOWN IN THESE PLANS:
- (a) RELOCATION OF METERING
 - (b) NUMBER OF STEPS AT OPEN TERRACE
 - (c) STEPS AT LANDING HAD BEEN RELOCATED TO UPPER FLIGHT
 - (d) REMOVAL OF WINDOWS AND ADDITION OF MECHANICAL VENTILATION
 - (e) 2 LEAVES TYPE DOOR CHANGED TO 1.5 LEAF TYPE DOOR

