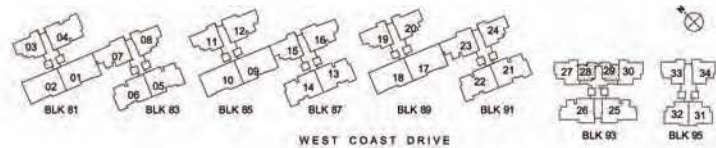


Hundred Trees - Floor Plans
Strictly not for circulation
* Areas are not finalised and subj to change

1 - Bedroom
Type A1

Unit #02-28 to #11-28
Unit #02-29 to #11-29 (mirror image)

45sqm/ 484sqft



Hundred Trees - Floor Plans
Strictly not for circulation
* Areas are not finalised and subj to change

1 - Bedroom
Type A1-P

Unit #01-28

Unit #01-29 (mirror image)

45sqm/ 484sqft



Hundred Trees - Floor Plans
Strictly not for circulation
*** Areas are not finalised and subj to change**

**2 - Bedroom
Type B1**

Unit #02-31 to #11-31
Unit #02-32 to #11-32 (mirror image)

73sqm/ 786sqft



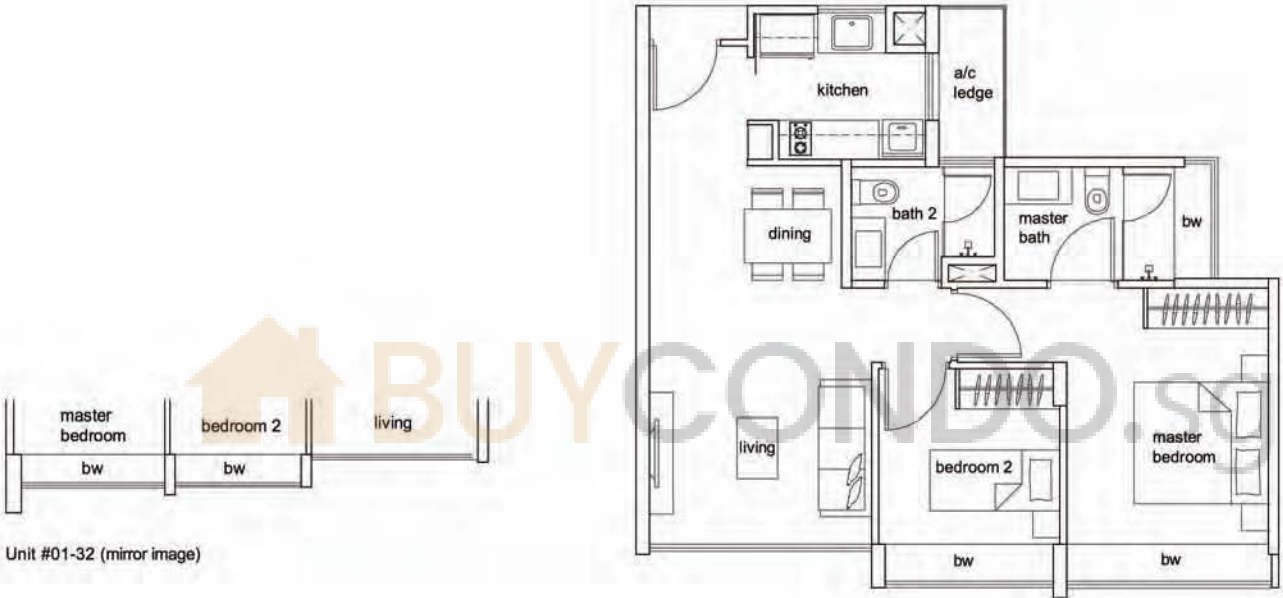
Hundred Trees - Floor Plans
Strictly not for circulation
* Areas are not finalised and subj to change

2 - Bedroom
Type B1-P

Unit #01-31

Unit #01-32 (mirror image)

67sqm/ 721sqft



Hundred Trees - Floor Plans
Strictly not for circulation
* Areas are not finalised and subj to change

2 - Bedroom
Type B2

Unit #02-33 to #11-33 (mirror image)

Unit #02-34 to #11-34

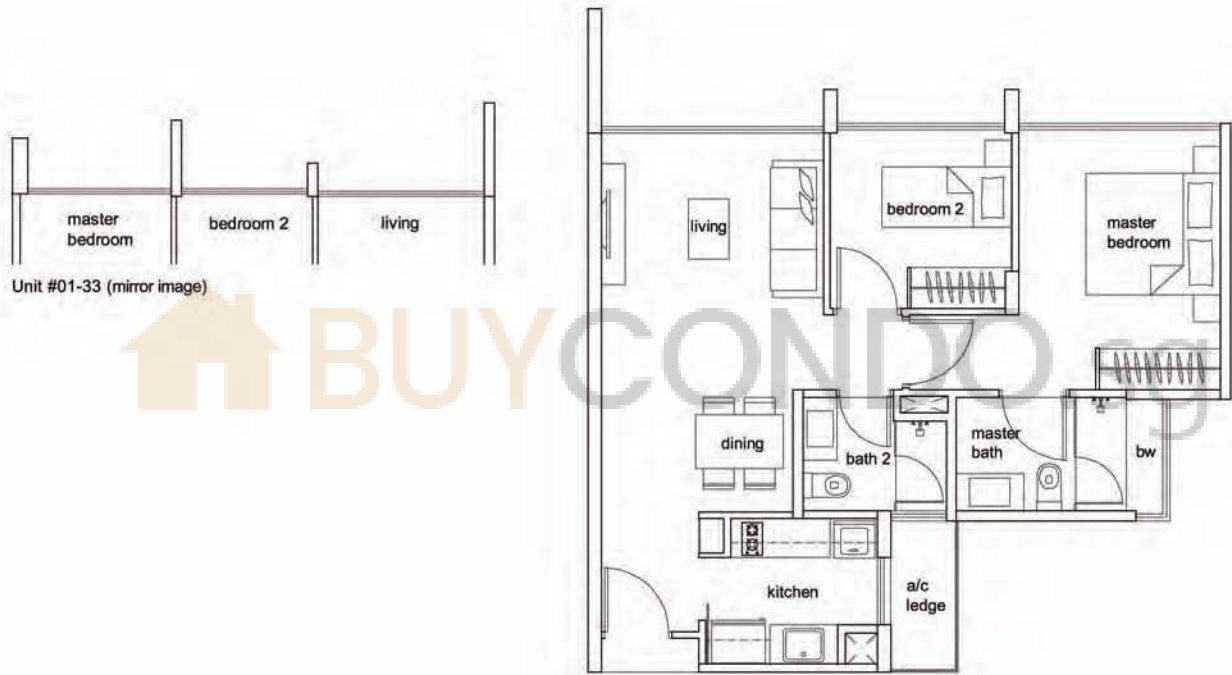
73sqm/ 786sqft



Hundred Trees - Floor Plans
Strictly not for circulation
* Areas are not finalised and subj to change

2 - Bedroom
Type B2-P

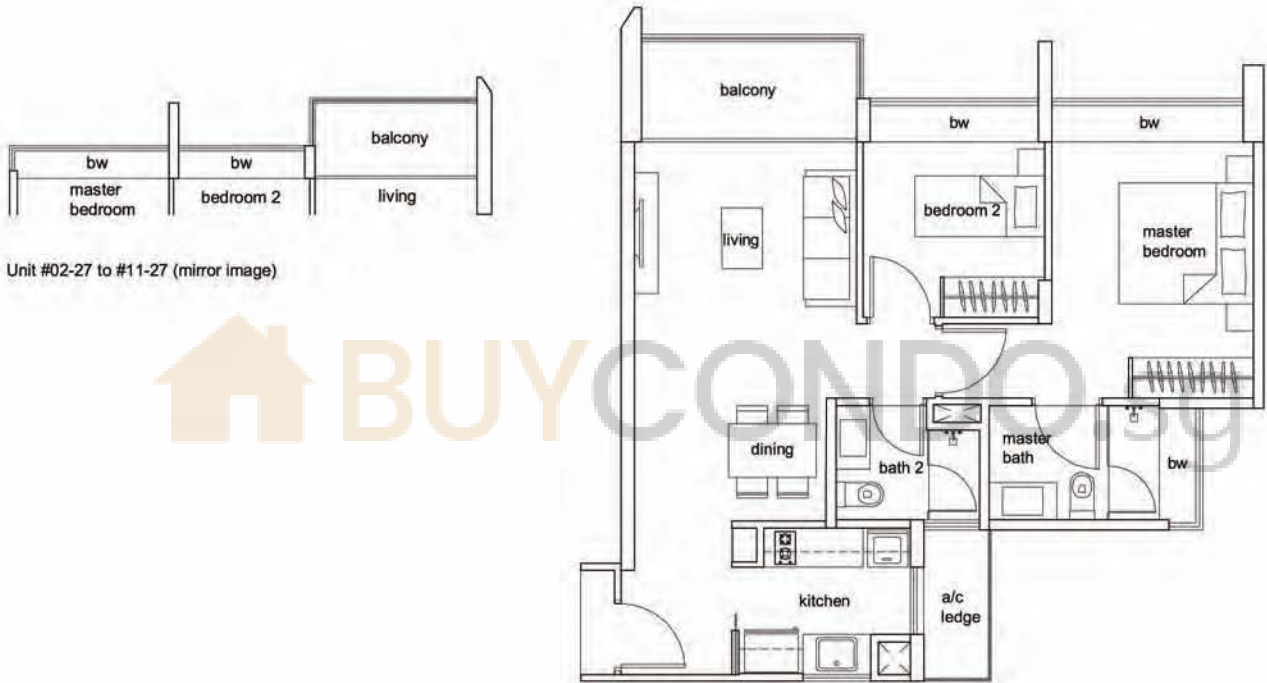
Unit #01-33 (mirror image)
Unit #01-34
64sqm/ 689sqft



Hundred Trees - Floor Plans
Strictly not for circulation
* Areas are not finalised and subj to change

2 - Bedroom
Type B3

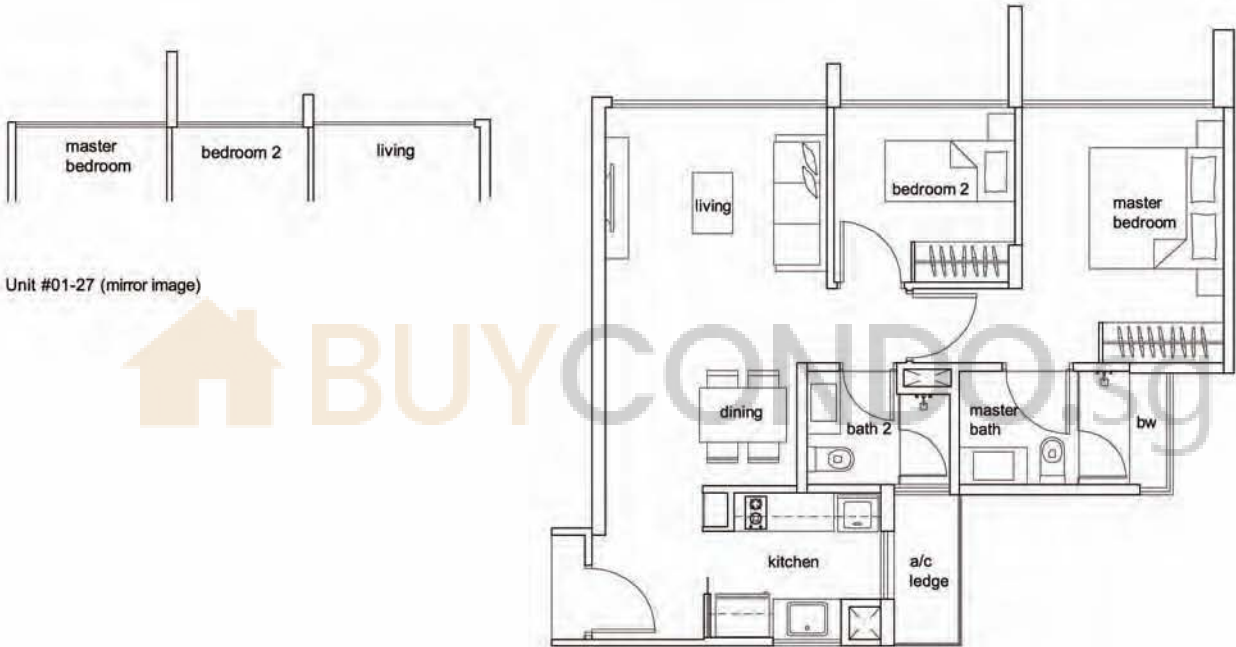
Unit #02-27 to #11-27 (mirror image)
Unit #02-30 to #11-30
73sqm/ 786sqft



Hundred Trees - Floor Plans
Strictly not for circulation
* Areas are not finalised and subj to change

2 - Bedroom
Type B3-P

Unit #01-27 (mirror image)
Unit #01-30
65sqm/ 700sqft

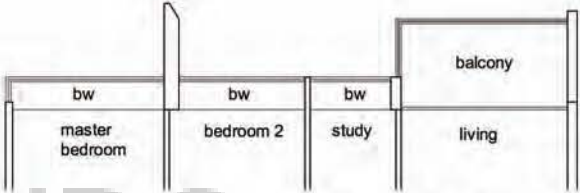


Hundred Trees - Floor Plans
Strictly not for circulation
* Areas are not finalised and subj to change

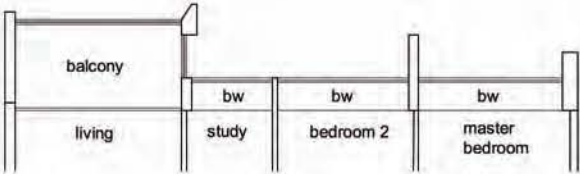


2 - Bedroom + Study
Type B4-S

Unit #02-03 to #12-03 (mirror image)
Unit #02-08 to #12-08
Unit #02-11 to #12-11 (mirror image)
Unit #02-19 to #12-19 (mirror image)
Unit #02-20 to #12-20
Unit #02-24 to #12-24
85sqm/ 915sqft



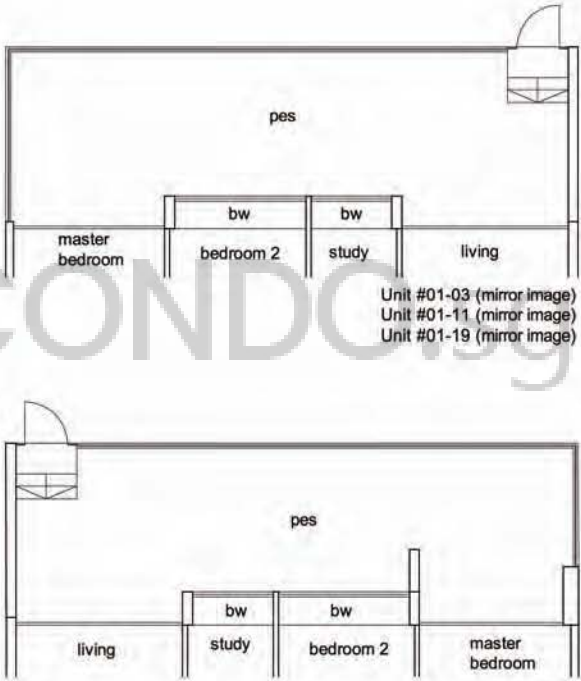
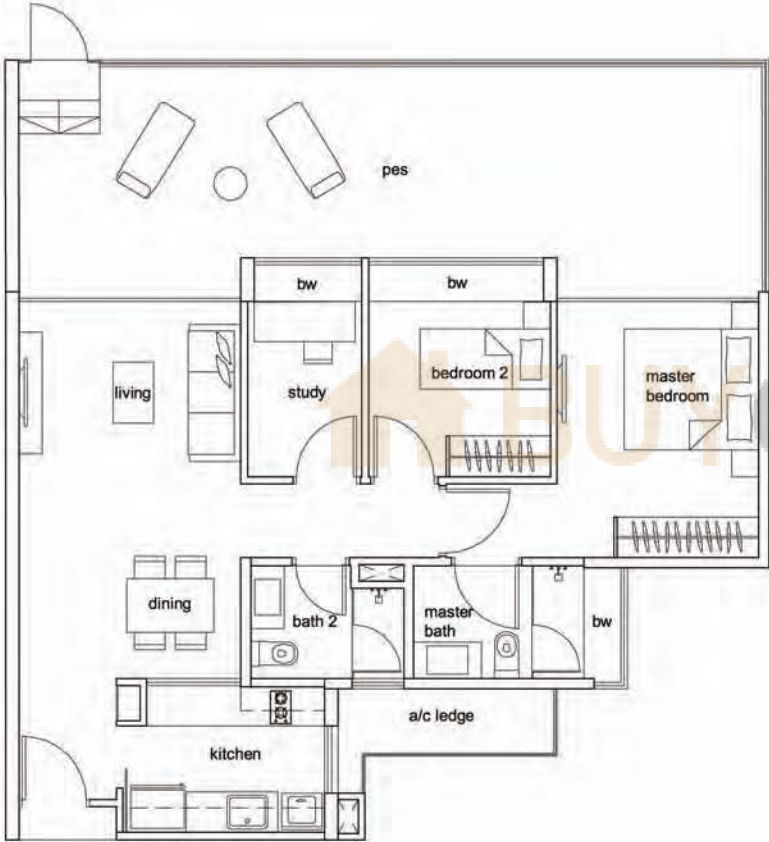
Unit #02-03 to #12-03 (mirror image)
Unit #02-11 to #12-11 (mirror image)
Unit #02-19 to #12-19 (mirror image)



Unit #02-20 to #12-20



Hundred Trees - Floor Plans
Strictly not for circulation
*** Areas are not finalised and subj to change**



2 - Bedroom + Study
Type B4-SP

Unit #01-03 (mirror image)
Unit #01-08
Unit #01-11 (mirror image)
Unit #01-19 (mirror image)
Unit #01-20
Unit #01-24
114sqm/ 1227sqft

Unit #01-03 (mirror image)
Unit #01-11 (mirror image)
Unit #01-19 (mirror image)

Unit #01-20

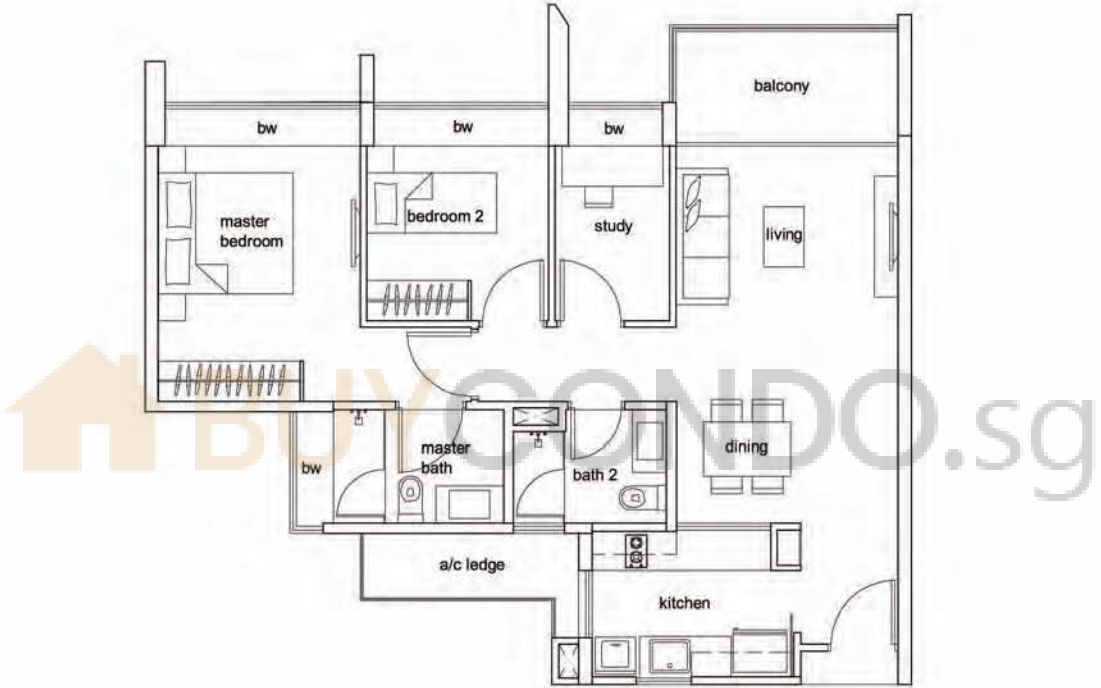


Hundred Trees - Floor Plans
Strictly not for circulation
* Areas are not finalised and subj to change

2 - Bedroom + Study
Type B5-S

Unit #02-15 to #12-15

85sqm/ 915sqft



Hundred Trees - Floor Plans
Strictly not for circulation
* Areas are not finalised and subj to change

2 - Bedroom + Study
Type B5-SP

Unit #01-15

114sqm/ 1227sqft



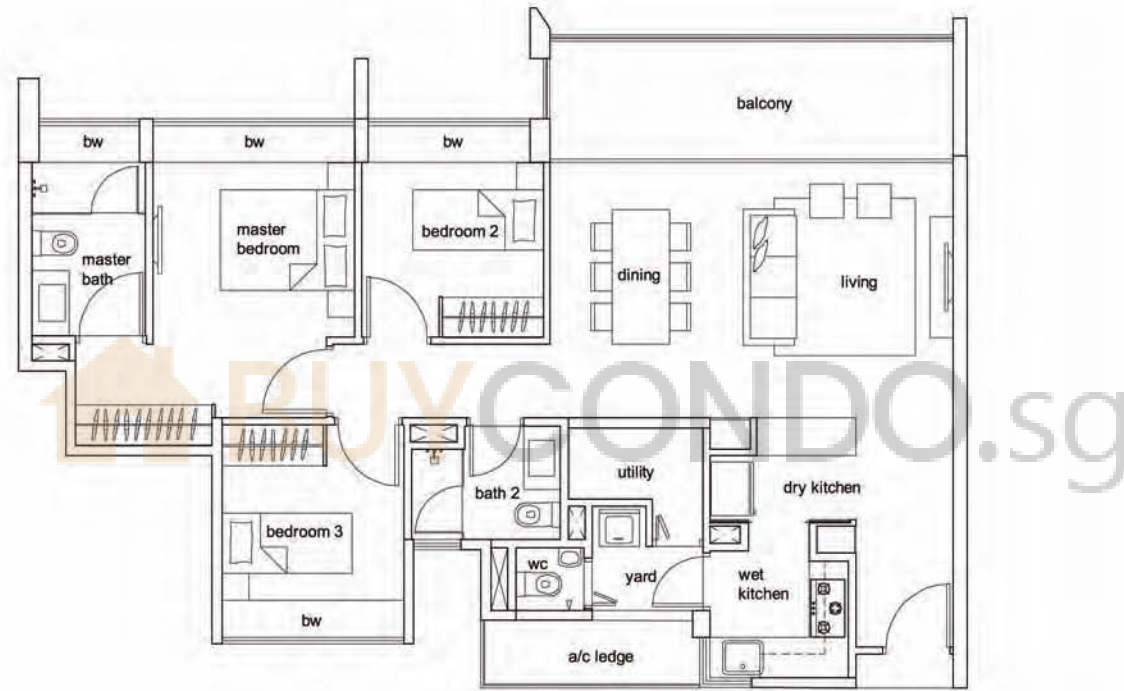
Hundred Trees - Floor Plans
Strictly not for circulation
* Areas are not finalised and subj to change

3 - Bedroom
Type C1

Unit #02-07 to #12-07

Unit #02-23 to #12-23

108sqm/ 1163sqft



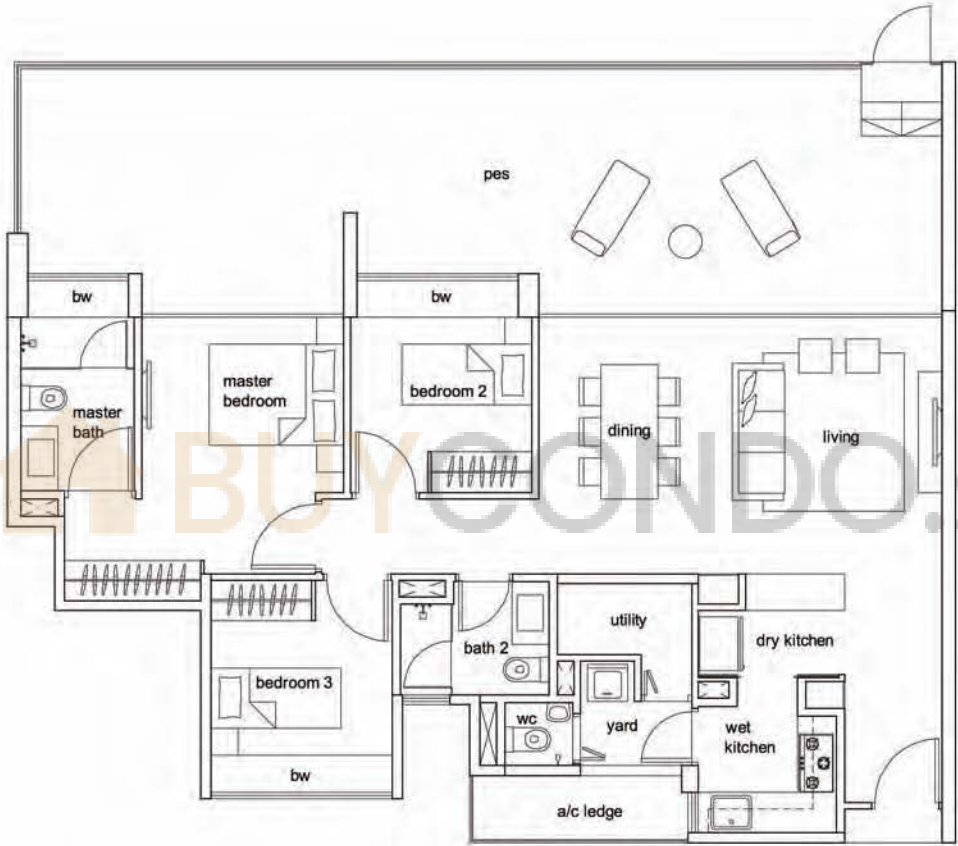
Hundred Trees - Floor Plans
Strictly not for circulation
* Areas are not finalised and subj to change

3 - Bedroom
Type C1-P

Unit #01-07

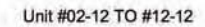
Unit #01-23

144sqm/ 1550sqft



*** Areas are not finalised and subj to change**

108sqm/ 1163sqft

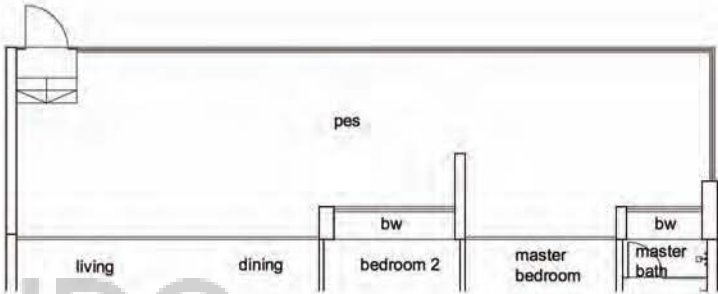
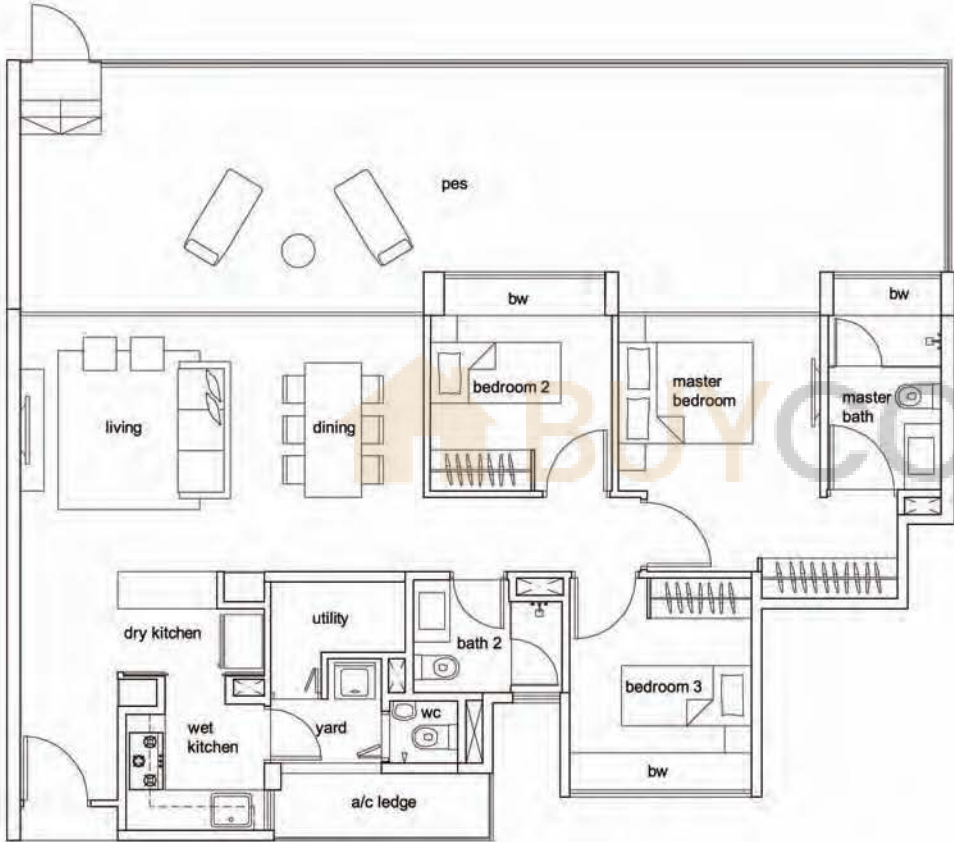


Hundred Trees - Floor Plans
Strictly not for circulation
* Areas are not finalised and subj to change

3 - Bedroom
Type C2-P

Unit #01-12
Unit #01-16

144sqm/ 1550sqft



Unit #01-12



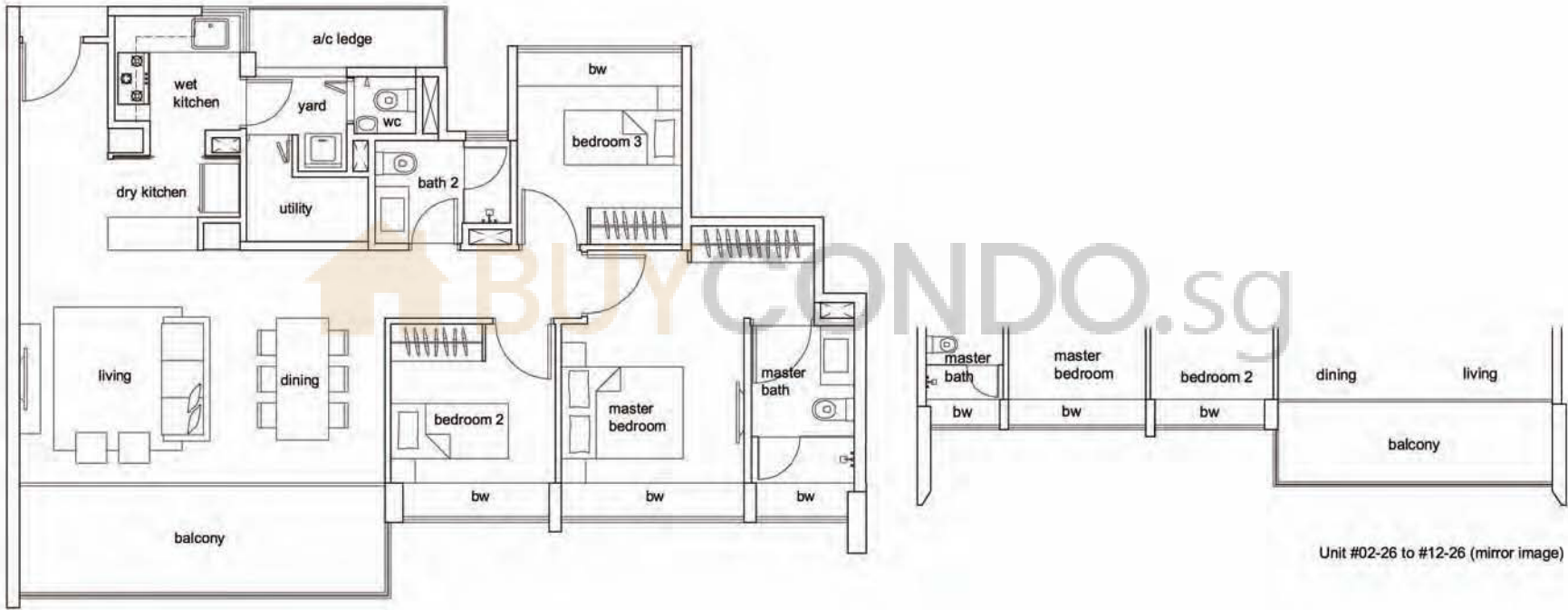
Hundred Trees - Floor Plans
Strictly not for circulation
* Areas are not finalised and subj to change

3 - Bedroom
Type C3

Unit #02-25 to #12-25

Unit #02-26 to #12-26 (mirror image)

108sqm/ 1163sqft



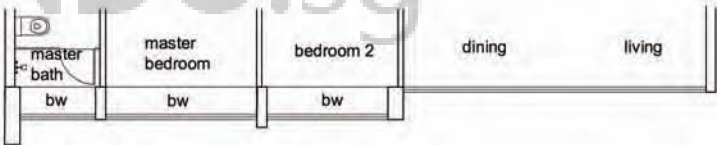
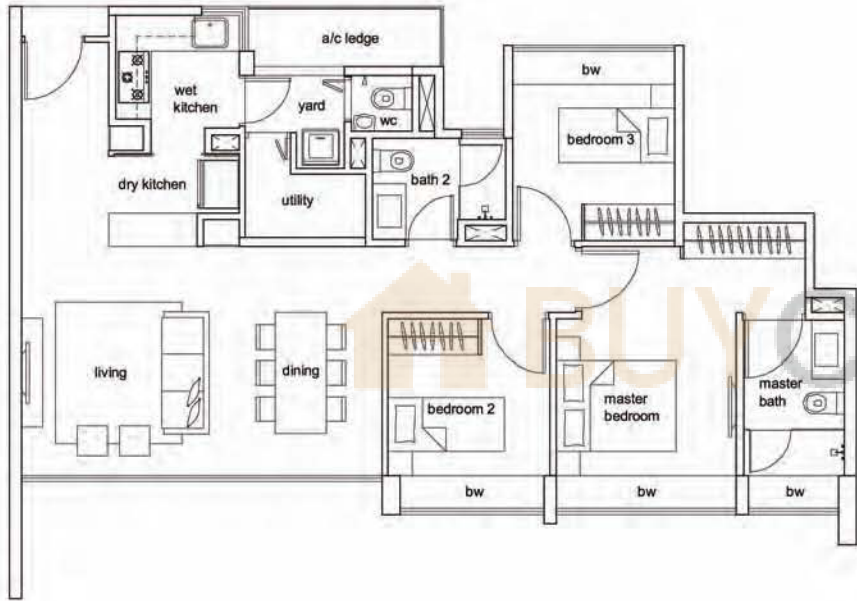
Hundred Trees - Floor Plans
Strictly not for circulation
* Areas are not finalised and subj to change

3 - Bedroom
Type C3-P

Unit #01-25

Unit #01-26 (mirror image)

97sqm/ 1044sqft



Unit #01-26 (mirror image)

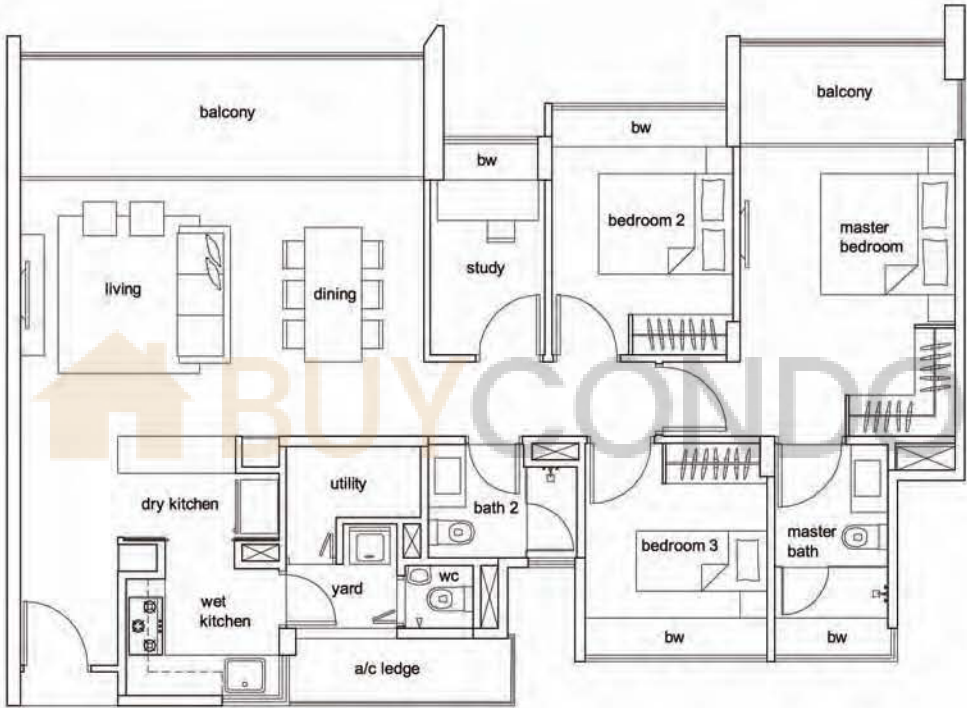


Hundred Trees - Floor Plans
Strictly not for circulation
* Areas are not finalised and subj to change

3 - Bedroom + Study
Type C4-S

Unit #02-04 to #12-04

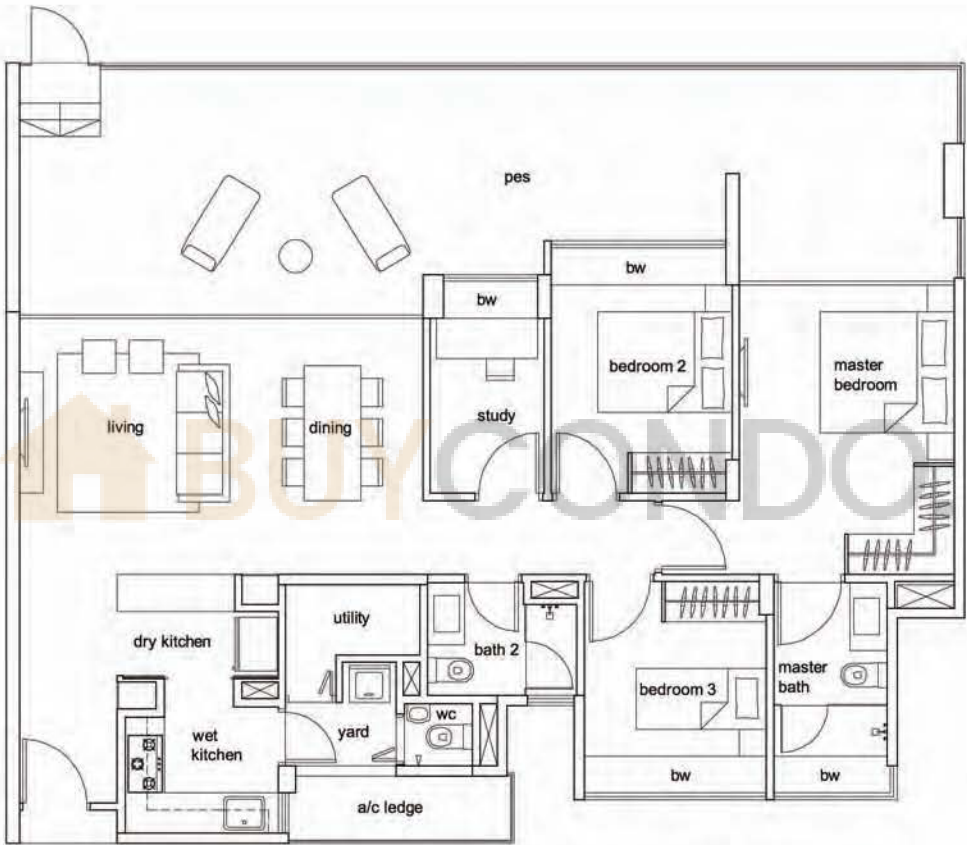
122sqm/ 1313sqft



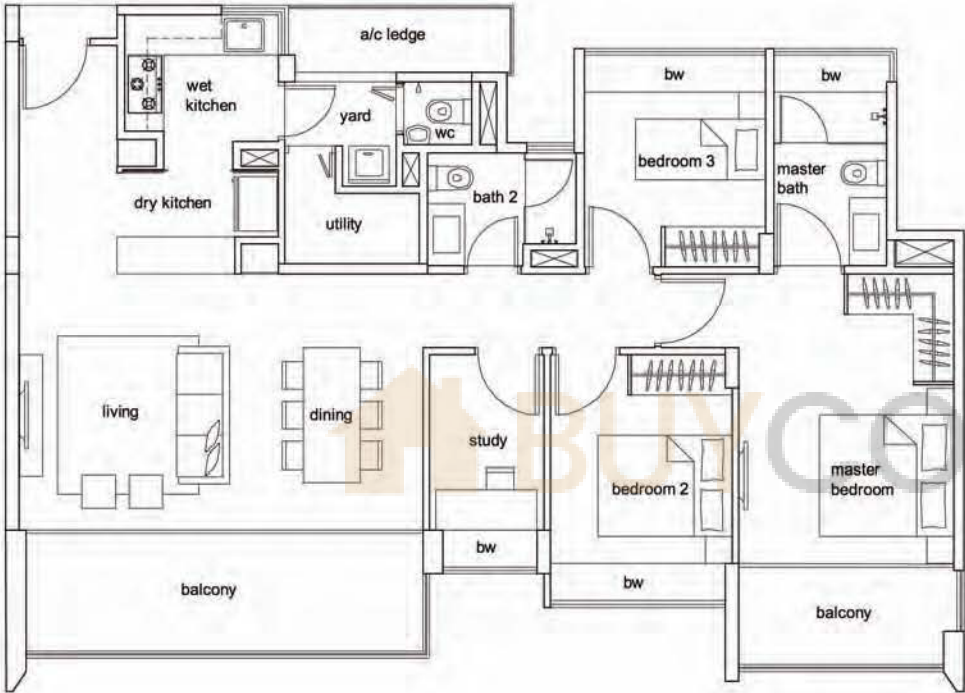
Hundred Trees - Floor Plans
Strictly not for circulation
* Areas are not finalised and subj to change

3 - Bedroom + Study
Type C4-SP

Unit #01-04
152sqm/ 1636sqft



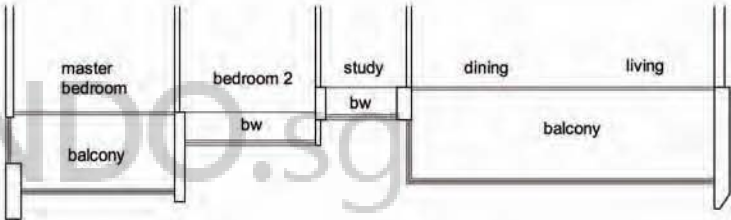
Hundred Trees - Floor Plans
Strictly not for circulation
*** Areas are not finalised and subj to change**



3 - Bedroom + Study
Type C5-S

Unit #02-05 to #11-05
Unit #02-06 to #12-06 (mirror image)
Unit #02-13 to #11-13
Unit #02-14 to #12-14 (mirror image)
Unit #02-21 to #11-21
Unit #02-22 to #12-22 (mirror image)

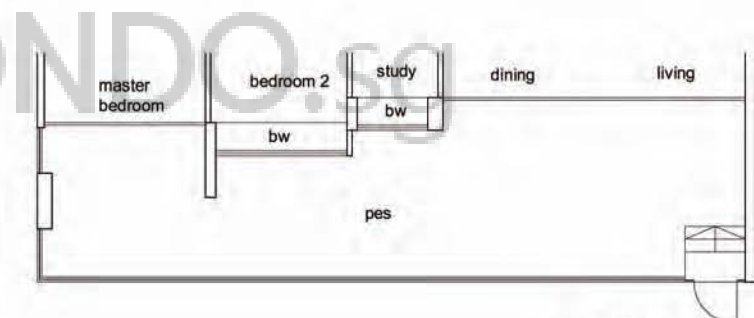
121sqm/ 1302sqft



Unit #02-06 to #12-06 (mirror image)
Unit #02-14 to #12-14 (mirror image)
Unit #02-22 to #12-22 (mirror image)



*** Areas are not finalised and subj to change**



Unit #01-05
Unit #01-06 (mirror image)
Unit #01-14 (mirror image)
Unit #01-21
Unit #01-22 (mirror image)

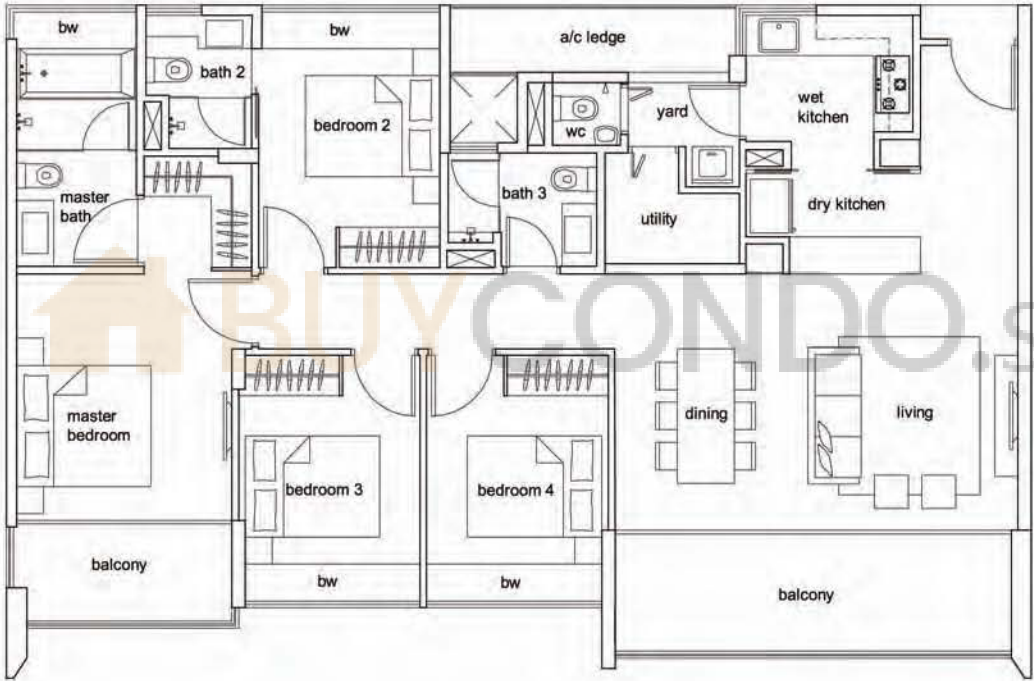
Unit #01-06 (mirror image)
Unit #01-14 (mirror image)
Unit #01-22 (mirror image)



Hundred Trees - Floor Plans
Strictly not for circulation
*** Areas are not finalised and subj to change**

**4 - Bedroom
Type D1**

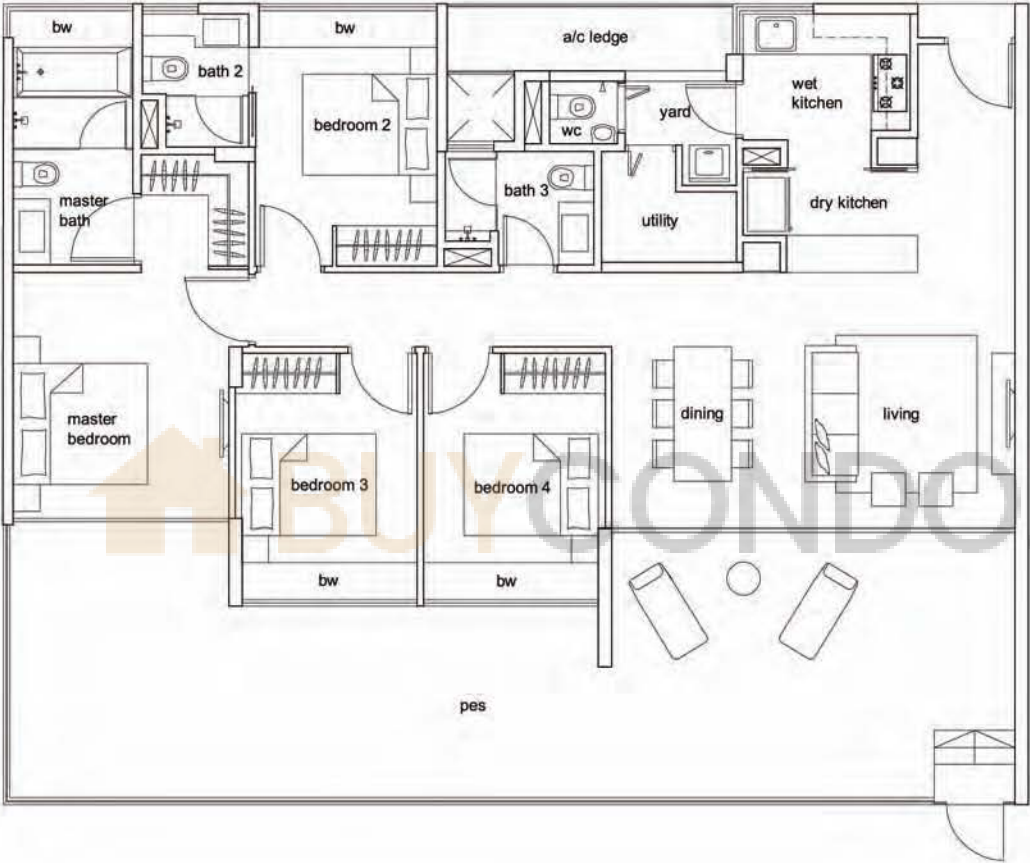
Unit #02-02 to #11-02
Unit #02-10 to #11-10
Unit #02-18 to #11-18
137sqm/ 1475sqft



Hundred Trees - Floor Plans
Strictly not for circulation
* Areas are not finalised and subj to change

4 - Bedroom
Type D1-P

Unit #01-02
Unit #01-10
176sqm/ 1894sqft



Hundred Trees - Floor Plans
Strictly not for circulation
* Areas are not finalised and subj to change

4 - Bedroom
Type D2

Unit #02-01 to #12-01
Unit #02-09 to #12-09
Unit #02-17 to #12-17

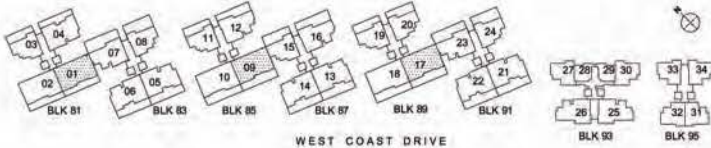
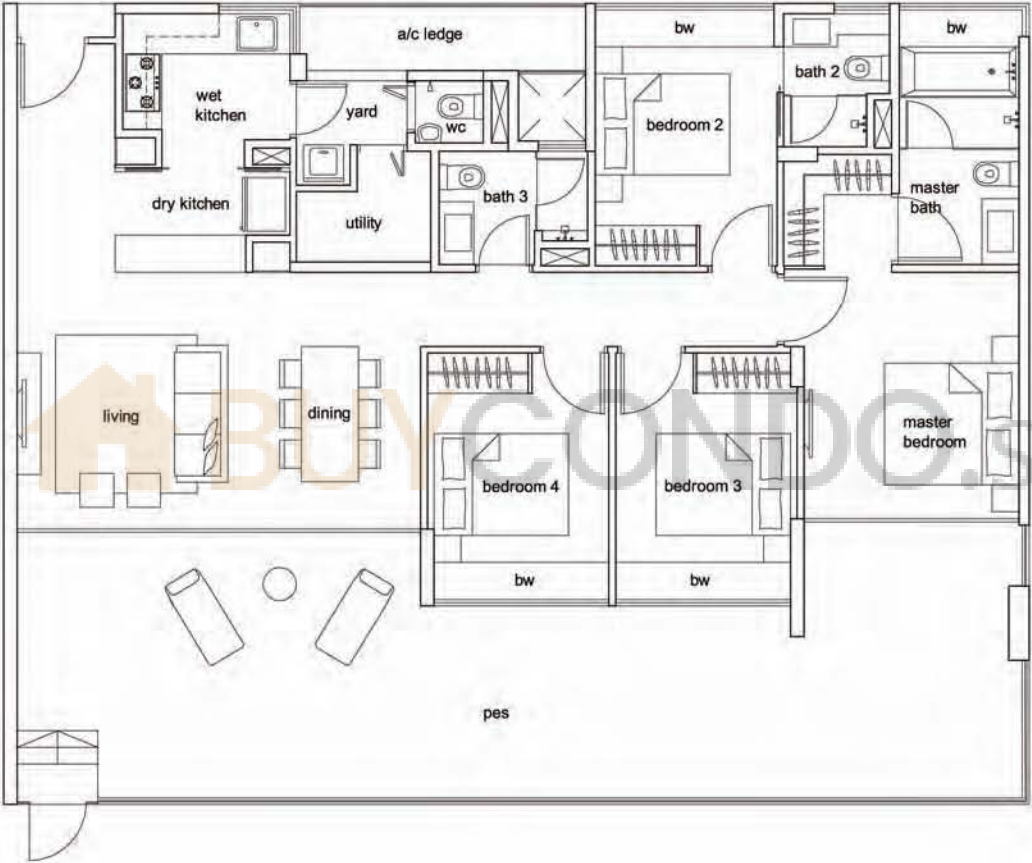
137sqm/ 1475sqft



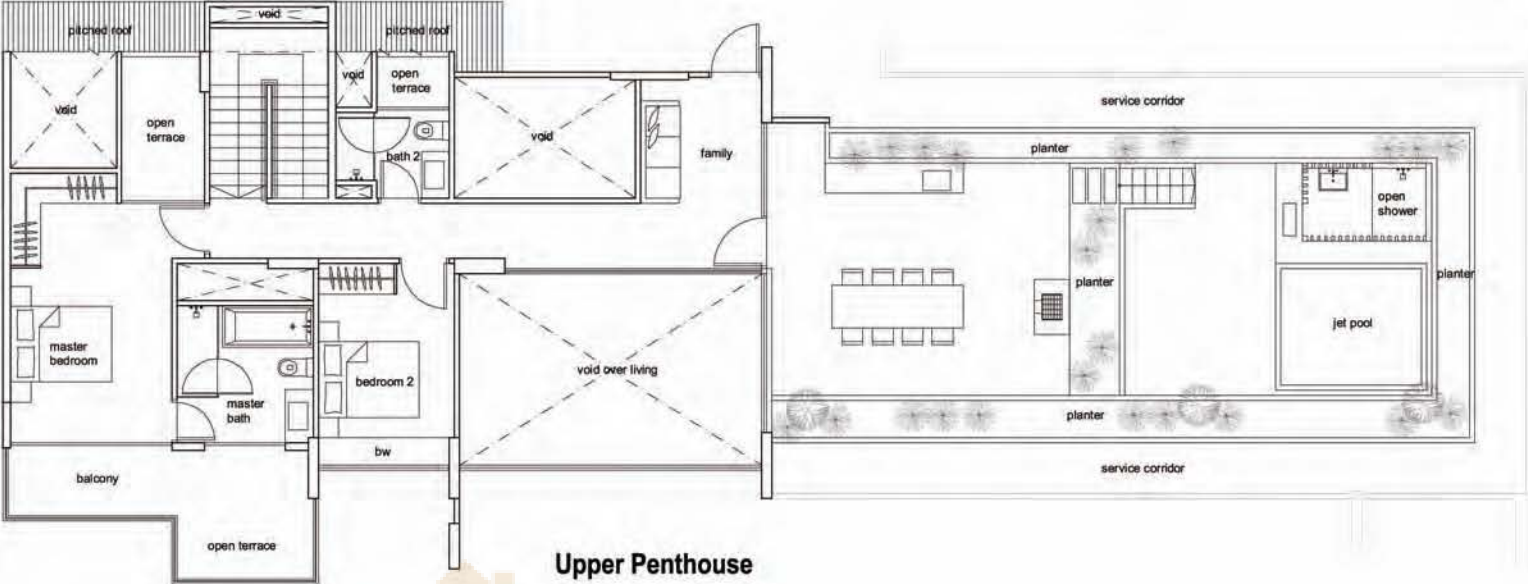
Hundred Trees - Floor Plans
Strictly not for circulation
* Areas are not finalised and subj to change

4 - Bedroom
Type D2-P

Unit #01-01
Unit #01-09
Unit #01-17
176sqm/ 1894sqft



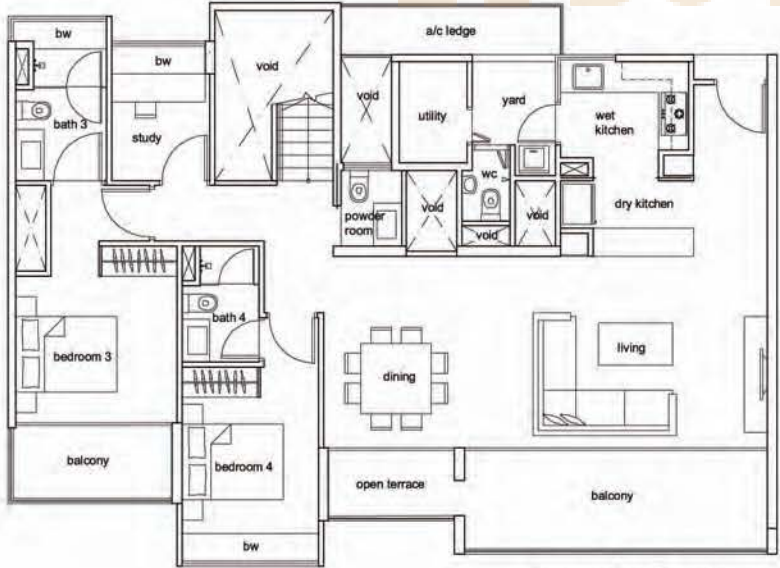
Hundred Trees - Floor Plans
Strictly not for circulation
*** Areas are not finalised and subj to change**



**Penthouse
Type PH1**

Unit #12-02
Unit #12-10
Unit #12-18
345sqm/ 3714sqft

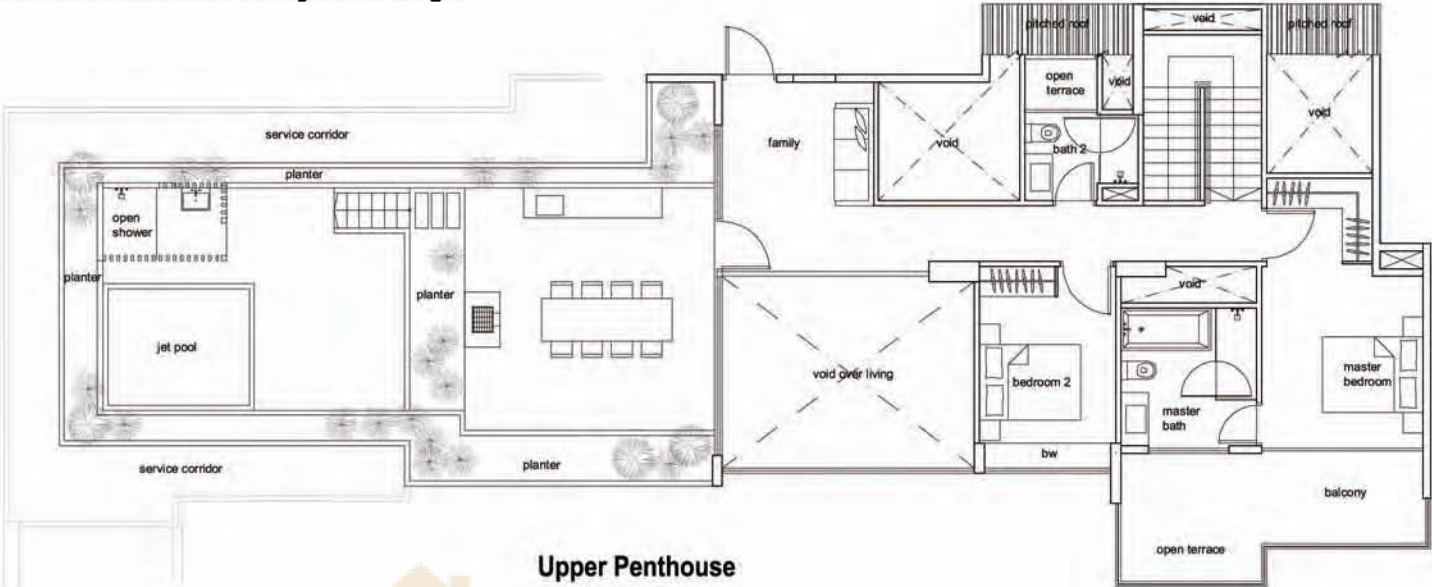
Upper Penthouse



Lower Penthouse

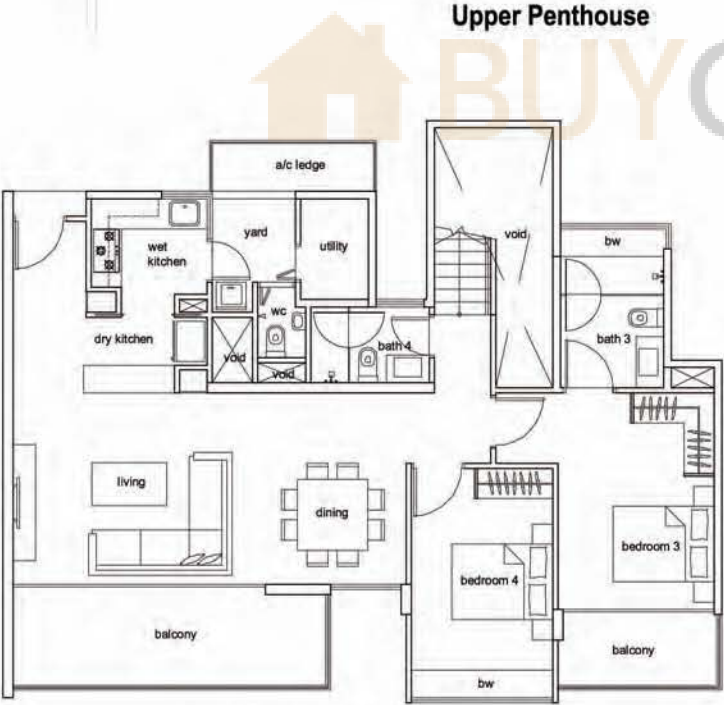


Hundred Trees - Floor Plans
Strictly not for circulation
*** Areas are not finalised and subj to change**



**Penthouse
Type PH2**

Unit #12-05
Unit #12-13
Unit #12-21
316sqm/ 3401sqft



BUYCONDO.sg

