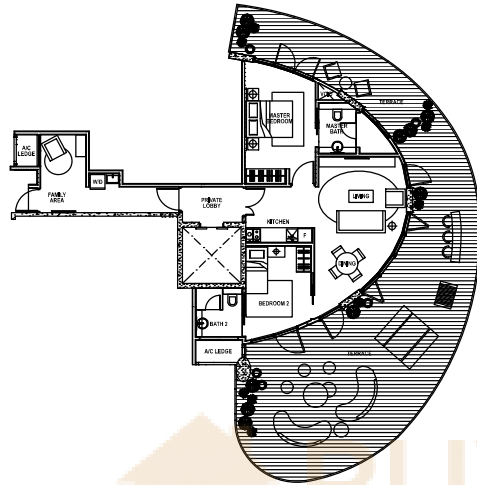


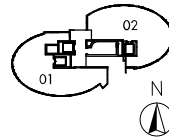
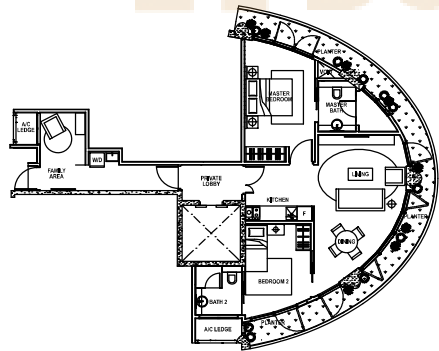
**Type A1
2-Bedroom
+ Family**

#03-02
176sq m (1,894sq ft)



**Type A2
2-Bedroom
+ Family**

#05-02
108sq m (1,163sq ft)

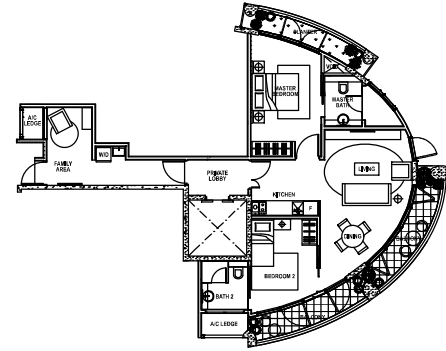


All plans are not drawn to scale and are subject to changes as may be necessary or approved by the relevant authorities. All floor areas are approximate only and are subject to final survey.

BP No. A128240010320078R03 approved on 20 Sep 2013.

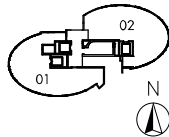
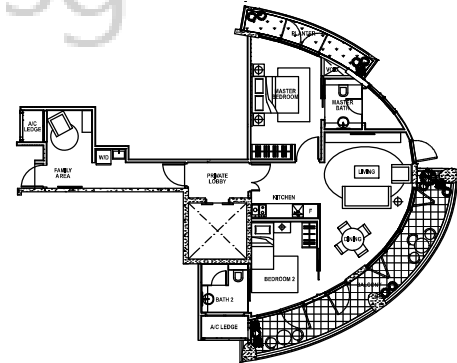
**Type A3
2-Bedroom
+ Family**

#07-02
102sq m (1,098sq ft)



**Type A4
2-Bedroom
+ Family**

#09-02
108sq m (1,163sq ft)



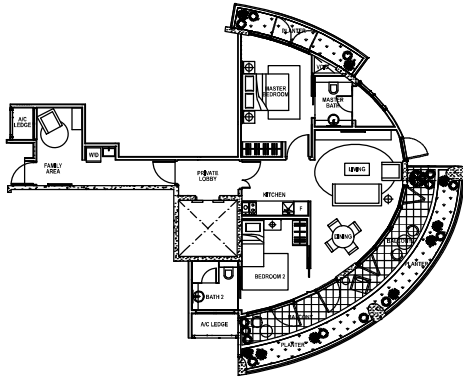
All plans are not drawn to scale and are subject to changes as may be necessary or approved by the relevant authorities. All floor areas are approximate only and are subject to final survey.

BP No. A128240010320078R03 approved on 20 Sep 2013.

BUYCONDO.sg

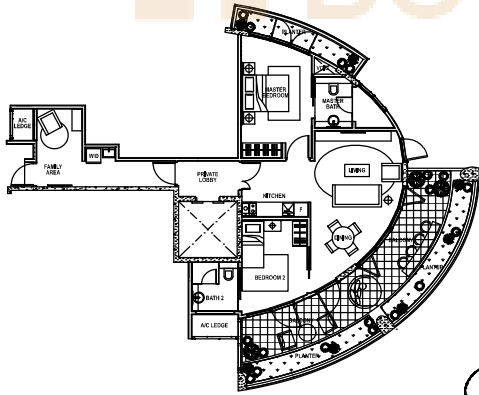
Type A5
2-Bedroom
+ Family

#11-02
 117sq m (1,259sq ft)



Type A6
2-Bedroom
+ Family

#13-02
 126sq m (1,356sq ft)

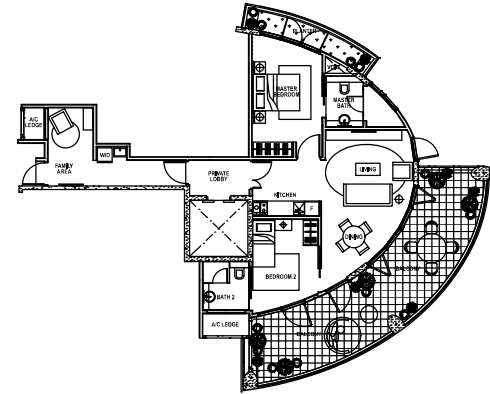


All plans are not drawn to scale and are subject to changes as may be necessary or approved by the relevant authorities. All floor areas are approximate only and are subject to final survey.

BP No. A12824010320078R03 approved on 20 Sep 2013.

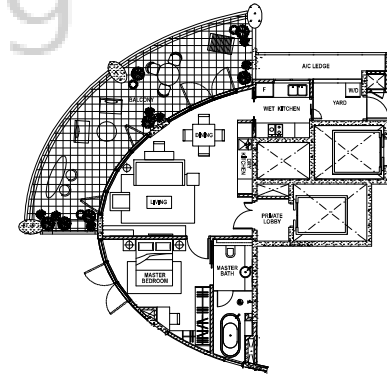
Type A7
2-Bedroom
+ Family

#15-02
 125sq m (1,345sq ft)



Type A8
1-Bedroom
+ Family

#15-01
 107sq m (1,152sq ft)



All plans are not drawn to scale and are subject to changes as may be necessary or approved by the relevant authorities. All floor areas are approximate only and are subject to final survey.

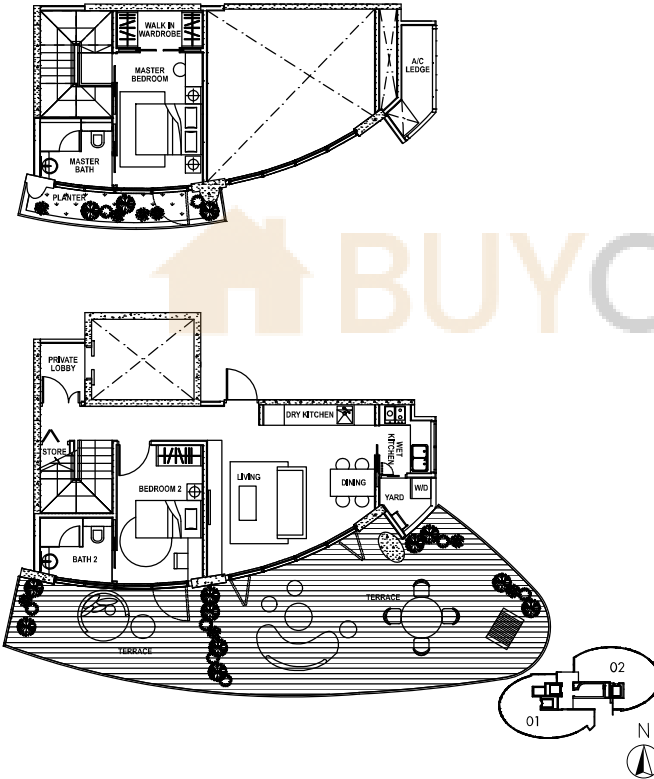
BP No. A12824010320078R03 approved on 20 Sep 2013.

BUYCONDO.sg

Type B1 2-Bedroom Loft

#04-01

174sq m (1,873sq ft)



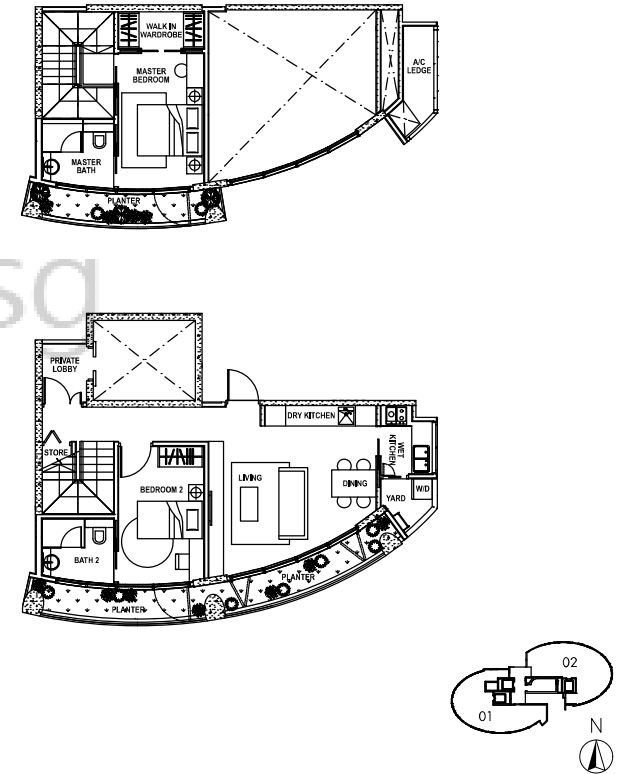
All plans are not drawn to scale and are subject to changes as may be necessary or approved by the relevant authorities. All floor areas are approximate only and are subject to final survey.

BP No. A12824010320078R03 approved on 20 Sep 2013.

Type B2 2-Bedroom Loft

#06-01

130sq m (1,399sq ft)



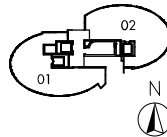
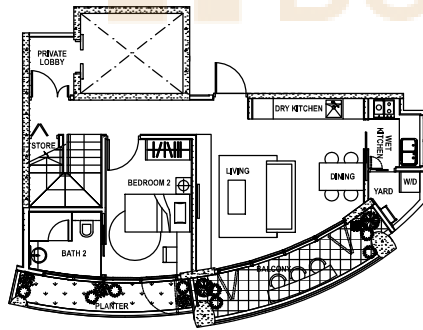
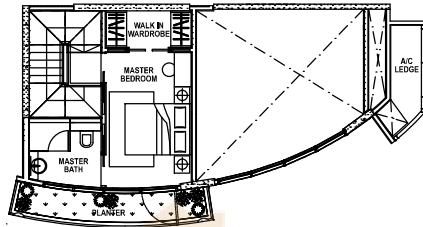
All plans are not drawn to scale and are subject to changes as may be necessary or approved by the relevant authorities. All floor areas are approximate only and are subject to final survey.

BP No. A12824010320078R03 approved on 20 Sep 2013.

Type B3 2-Bedroom Loft

#08-01

132sq m (1,421sq ft)



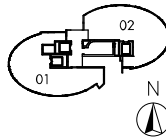
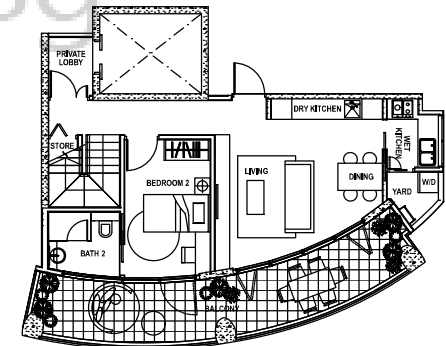
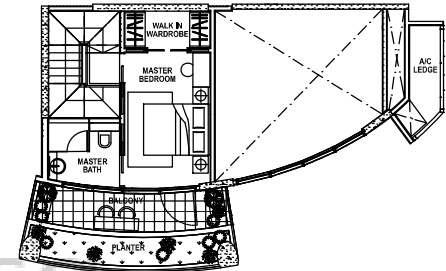
All plans are not drawn to scale and are subject to changes as may be necessary or approved by the relevant authorities. All floor areas are approximate only and are subject to final survey.

BP No. A12824010320078R03 approved on 20 Sep 2013.

Type B4 2-Bedroom Loft

#10-01

148sq m (1,593sq ft)



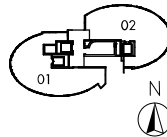
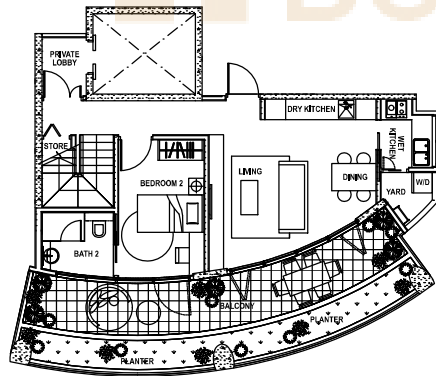
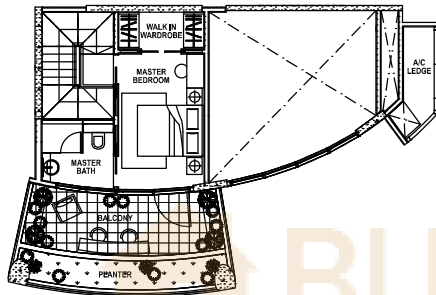
All plans are not drawn to scale and are subject to changes as may be necessary or approved by the relevant authorities. All floor areas are approximate only and are subject to final survey.

BP No. A12824010320078R03 approved on 20 Sep 2013.

Type B5 2-Bedroom Loft

#12-01

162sq m (1,744sq ft)



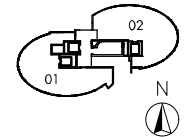
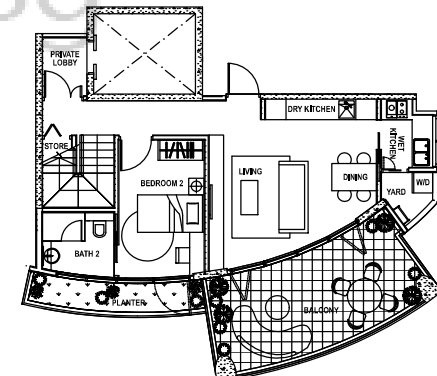
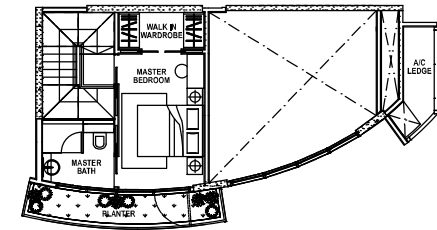
All plans are not drawn to scale and are subject to changes as may be necessary or approved by the relevant authorities. All floor areas are approximate only and are subject to final survey.

BP No. A128240010320078R03 approved on 20 Sep 2013.

Type B6 2-Bedroom Loft

#14-01

141sq m (1,518sq ft)



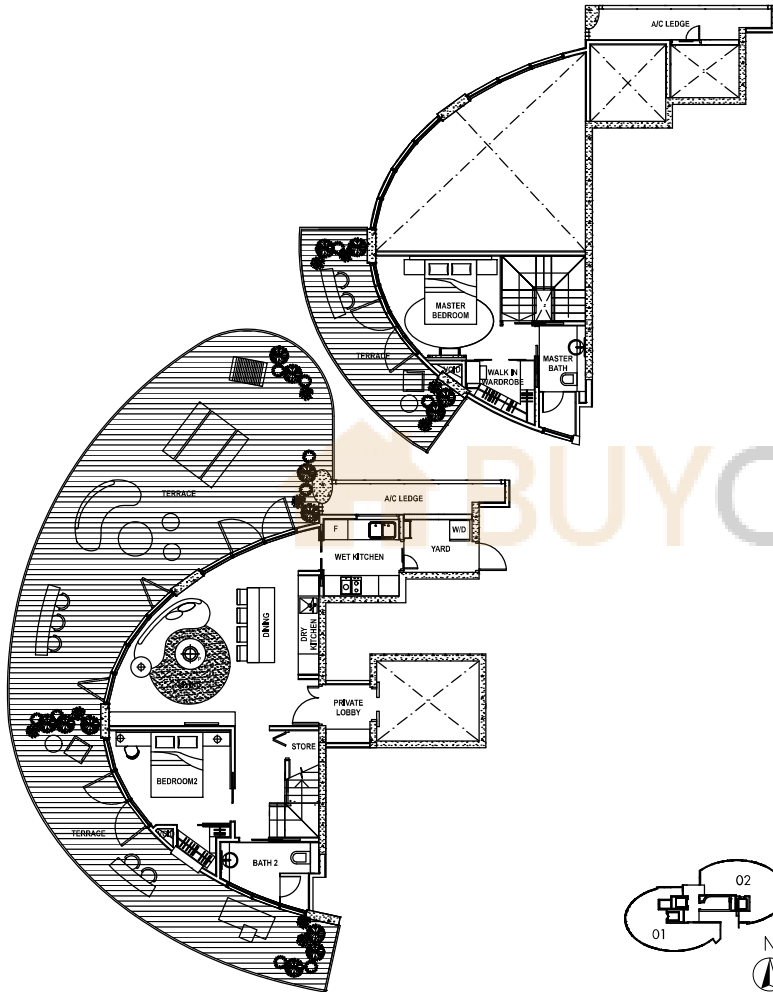
All plans are not drawn to scale and are subject to changes as may be necessary or approved by the relevant authorities. All floor areas are approximate only and are subject to final survey.

BP No. A128240010320078R03 approved on 20 Sep 2013.

Type C1 2-Bedroom Loft

#03-01

238sq m (2,562sq ft)



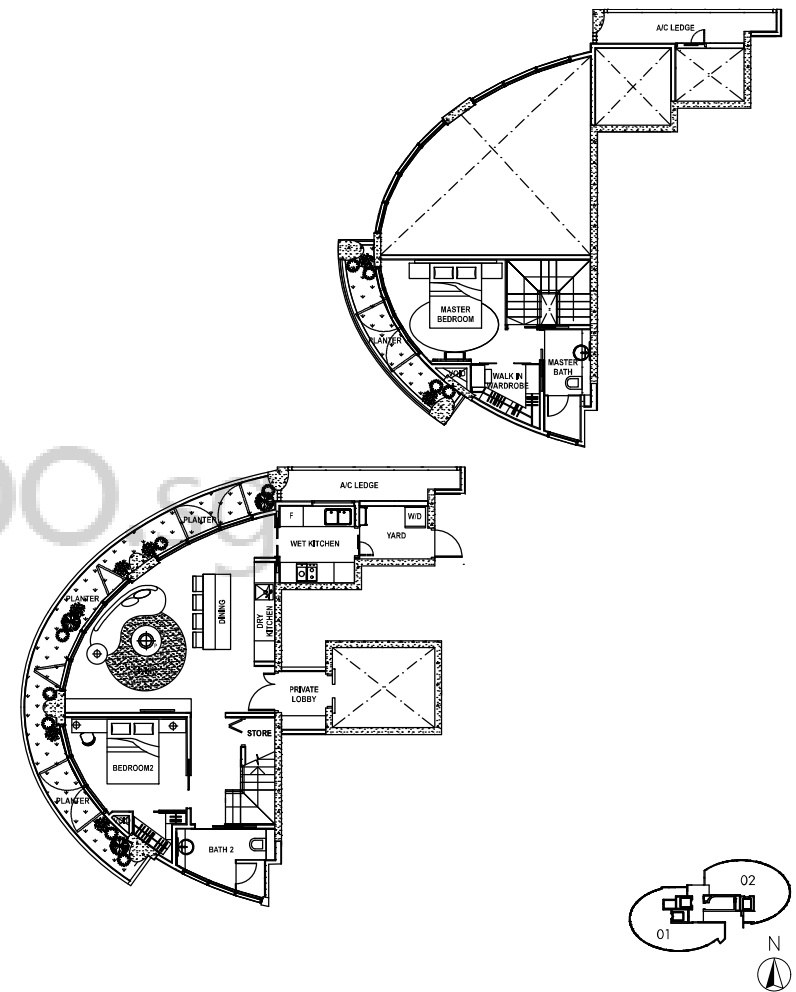
All plans are not drawn to scale and are subject to changes as may be necessary or approved by the relevant authorities. All floor areas are approximate only and are subject to final survey.

BP No. A12824010320078R03 approved on 20 Sep 2013.

Type C2 2-Bedroom Loft

#05-01

163sq m (1,755sq ft)



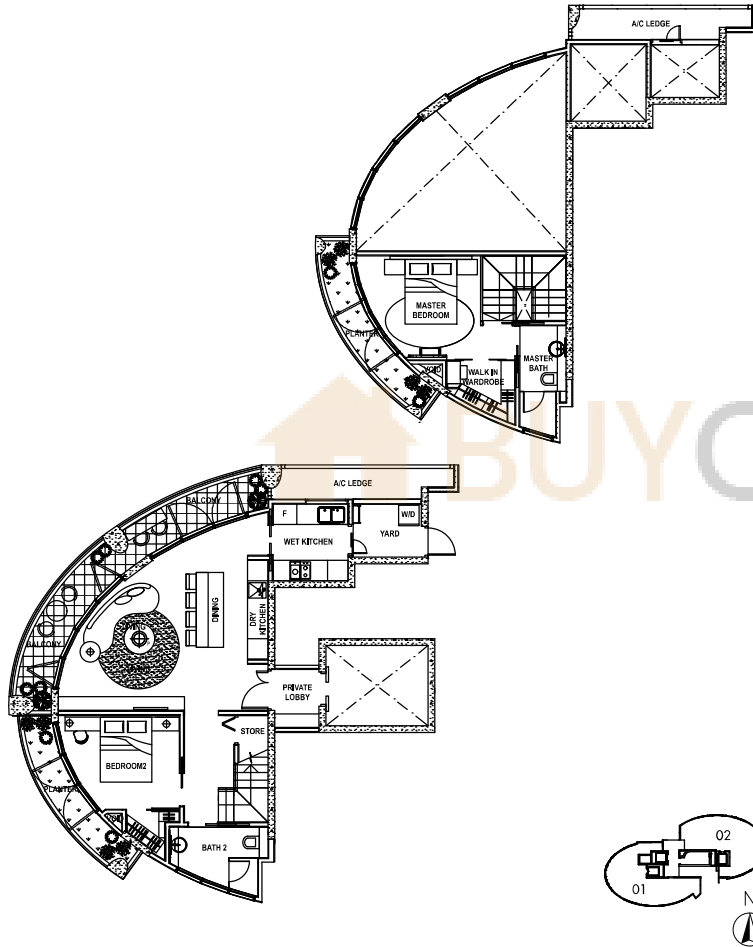
All plans are not drawn to scale and are subject to changes as may be necessary or approved by the relevant authorities. All floor areas are approximate only and are subject to final survey.

BP No. A12824010320078R03 approved on 20 Sep 2013.

Type C3 2-Bedroom Loft

#07-01

164sq m (1,765sq ft)



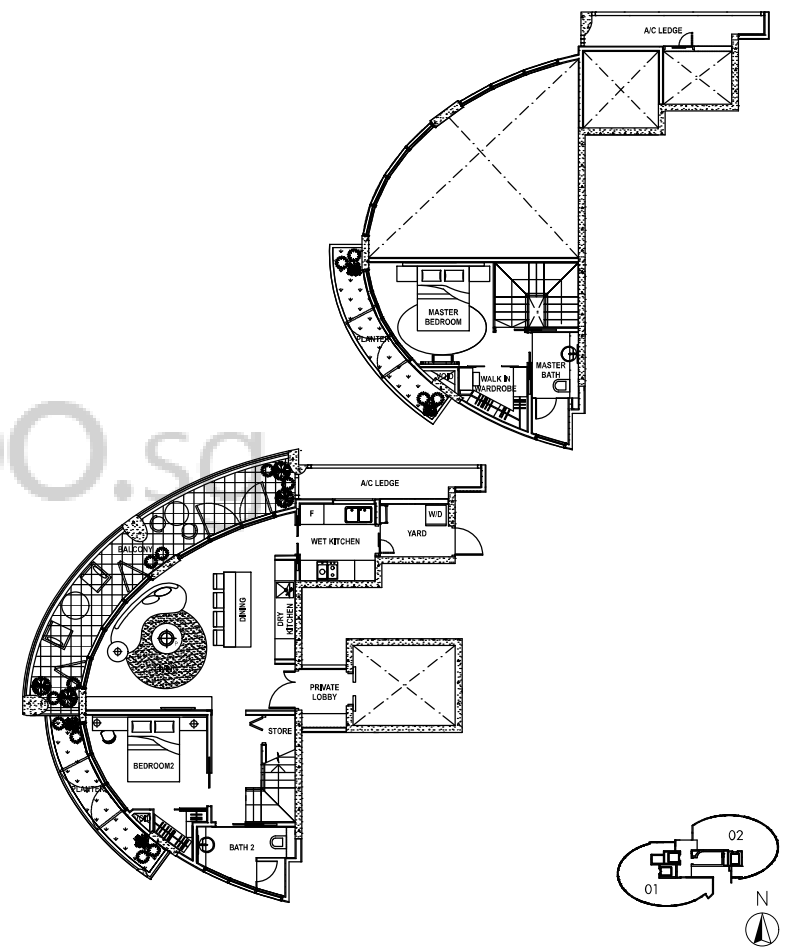
All plans are not drawn to scale and are subject to changes as may be necessary or approved by the relevant authorities. All floor areas are approximate only and are subject to final survey.

BP No. A12824010320078R03 approved on 20 Sep 2013.

Type C4 2-Bedroom Loft

#09-01

168sq m (1,808sq ft)



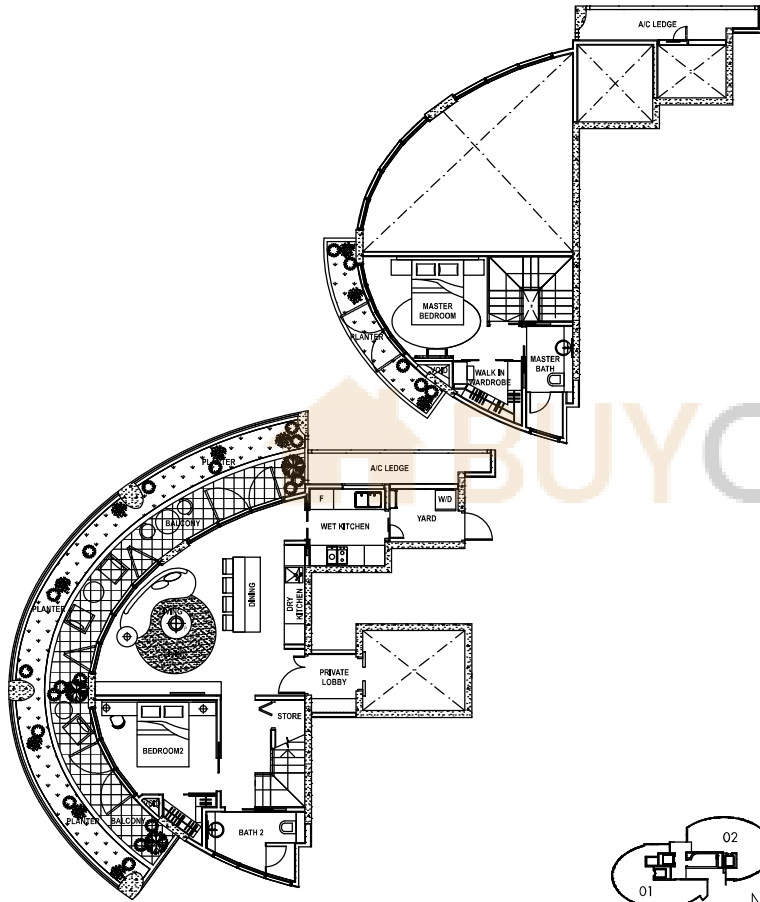
All plans are not drawn to scale and are subject to changes as may be necessary or approved by the relevant authorities. All floor areas are approximate only and are subject to final survey.

BP No. A12824010320078R03 approved on 20 Sep 2013.

Type C5 2-Bedroom Loft

#11-01

18.5sq m (1,991sq ft)



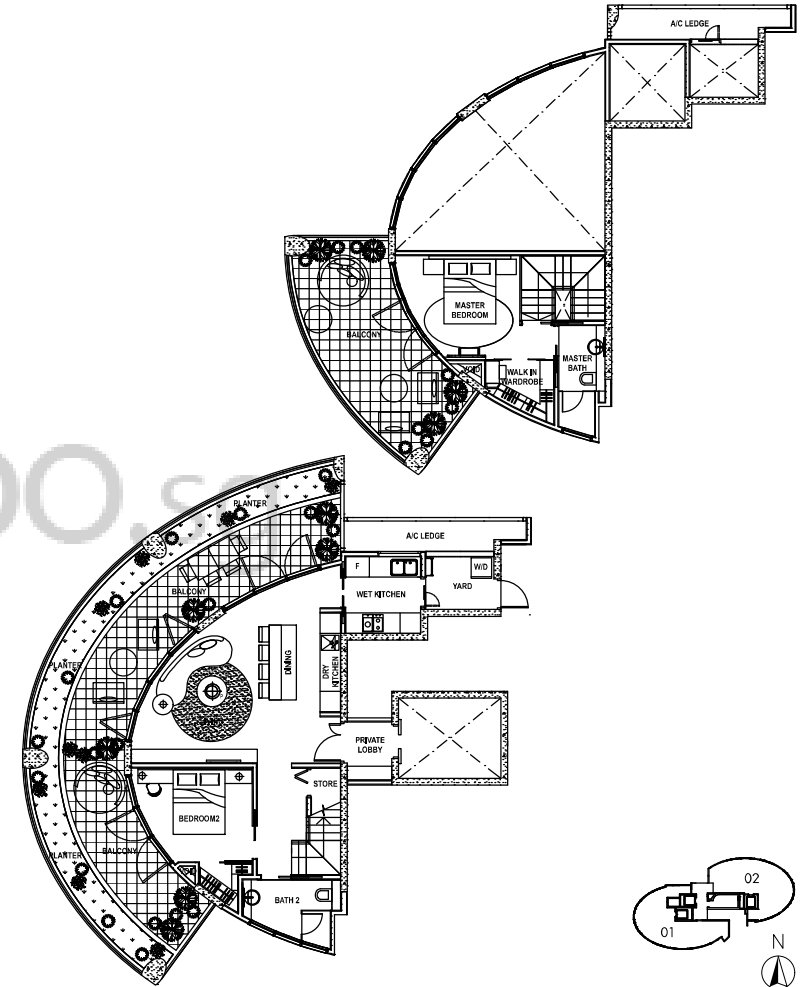
All plans are not drawn to scale and are subject to change as may be necessary or approved by the relevant authorities. All floor areas are approximate only and are subject to final survey.

BP No. A12824010320078R03 approved on 20 Sep 2013.

Type C6 2-Bedroom Loft

#13-01

21.2sq m (2,282sq ft)

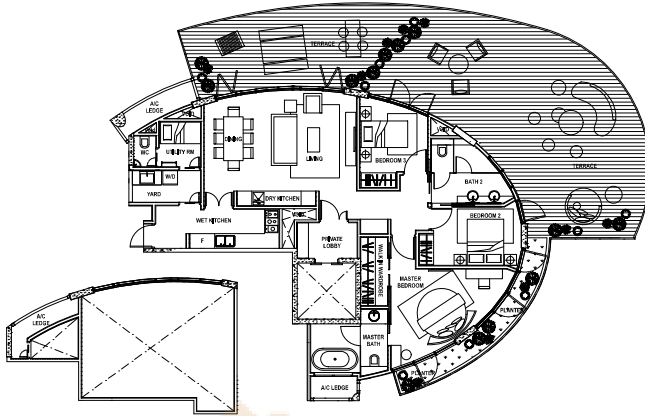


All plans are not drawn to scale and are subject to change as may be necessary or approved by the relevant authorities. All floor areas are approximate only and are subject to final survey.

BP No. A12824010320078R03 approved on 20 Sep 2013.

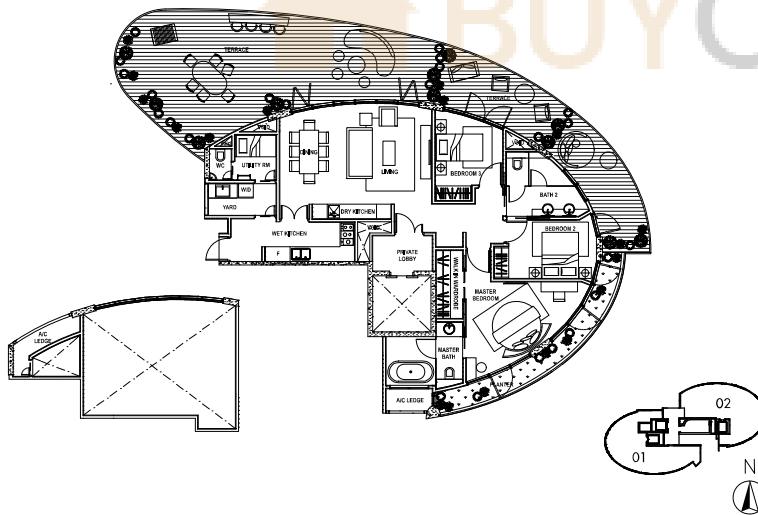
Type D1
3-Bedroom
+ Utility

#02-02
 268sq m (2,885sq ft)



Type D2
3-Bedroom
+ Utility

#04-02
 250sq m (2,691sq ft)

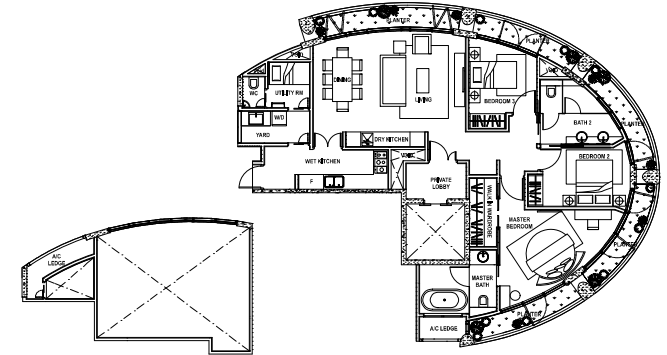


All plans are not drawn to scale and are subject to changes as may be necessary or approved by the relevant authorities. All floor areas are approximate only and are subject to final survey.

BP No. A128240010320078R03 approved on 20 Sep 2013.

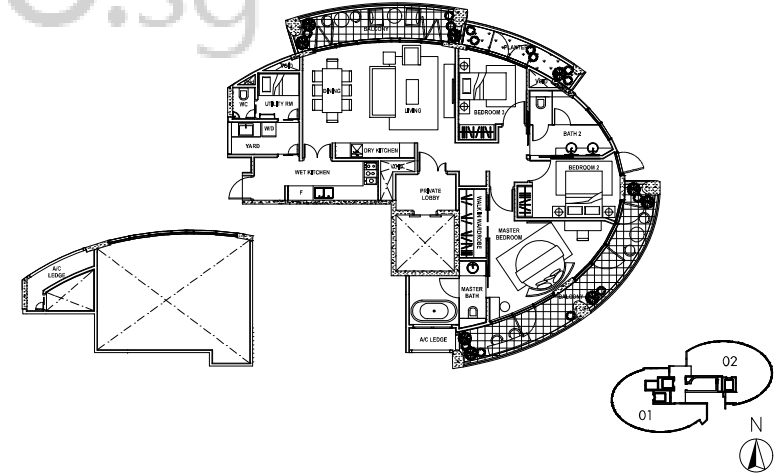
Type D3
3-Bedroom
+ Utility

#06-02
 187sq m (2,013sq ft)



Type D4
3-Bedroom
+ Utility

#08-02
 190sq m (2,045sq ft)

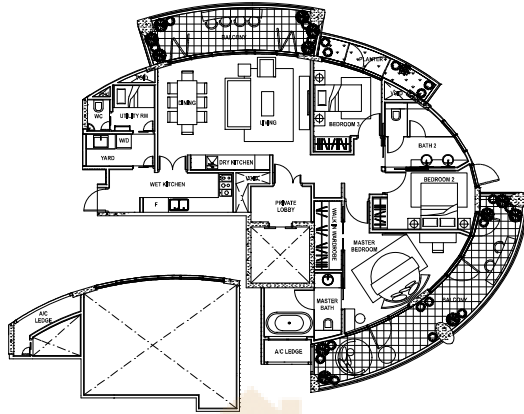


All plans are not drawn to scale and are subject to changes as may be necessary or approved by the relevant authorities. All floor areas are approximate only and are subject to final survey.

BP No. A128240010320078R03 approved on 20 Sep 2013.

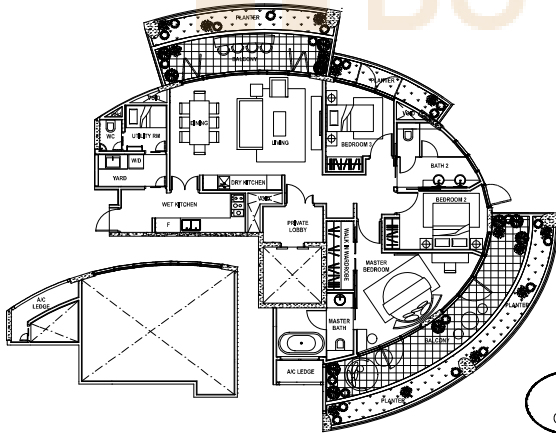
Type D5
3-Bedroom
+ Utility

#10-02
 200sq m (2,153sq ft)



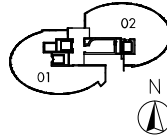
Type D6
3-Bedroom
+ Utility

#12-02
 216sq m (2,325sq ft)



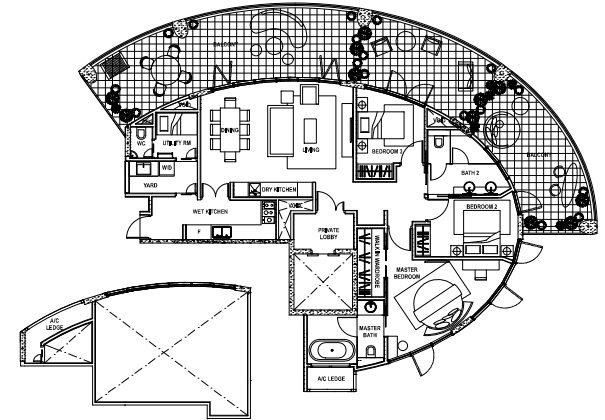
All plans are not drawn to scale and are subject to changes as may be necessary or approved by the relevant authorities. All floor areas are approximate only and are subject to final survey.

BP No. A12824010320078R03 approved on 20 Sep 2013.



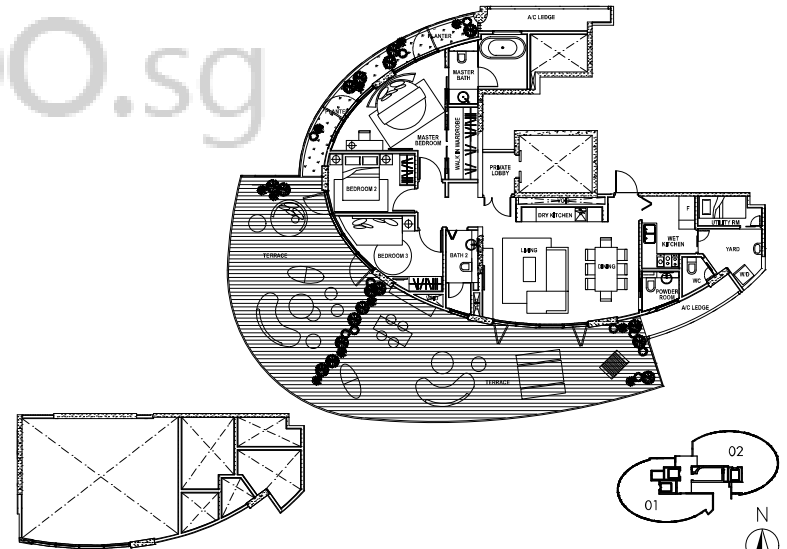
Type D7
3-Bedroom
+ Utility

#14-02
 230sq m (2,476sq ft)



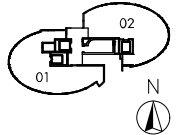
Type E
3-Bedroom
+ Utility

#02-01
 282sq m (3,035sq ft)



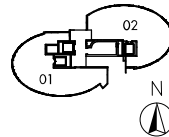
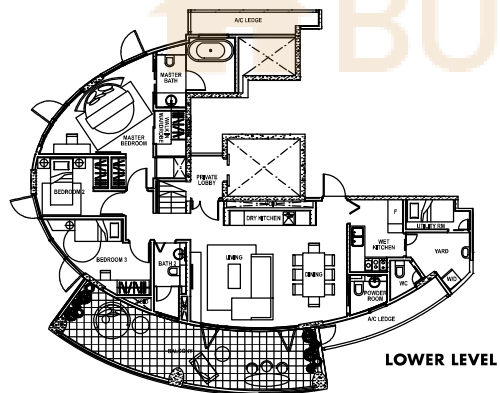
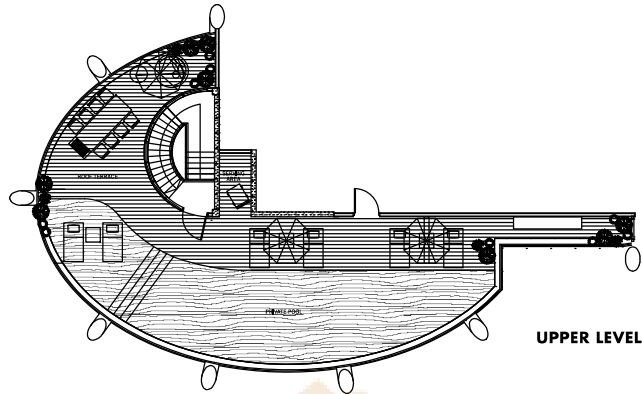
All plans are not drawn to scale and are subject to changes as may be necessary or approved by the relevant authorities. All floor areas are approximate only and are subject to final survey.

BP No. A12824010320078R03 approved on 20 Sep 2013.



Type F Penthouse with Roof Terrace and Private Pool

#16-01
306sq m (3,294sq ft)

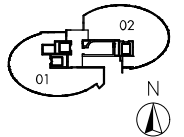
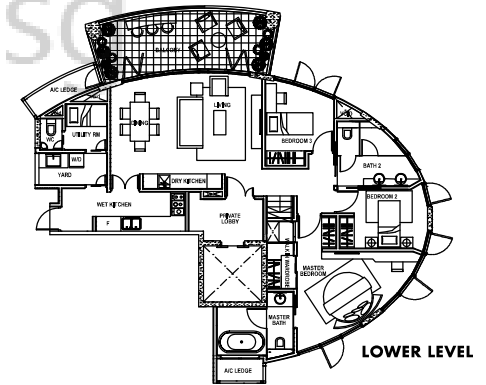
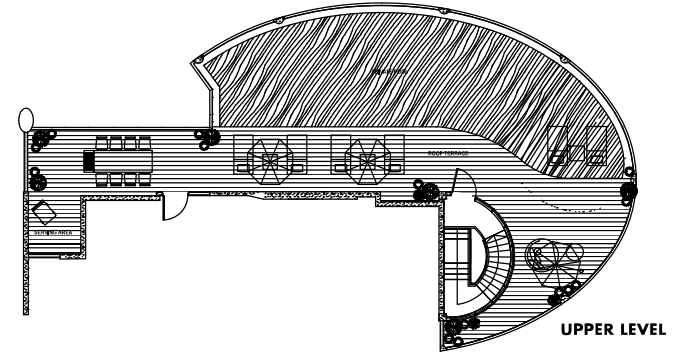


All plans are not drawn to scale and are subject to change as may be necessary or approved by the relevant authorities. All floor areas are approximate only and are subject to final survey.

BP No. A12824010340078R03 approved on 20 Sep 2013.

Type G Penthouse with Roof Terrace and Private Pool

#16-02
323sq m (3,477sq ft)



All plans are not drawn to scale and are subject to change as may be necessary or approved by the relevant authorities. All floor areas are approximate only and are subject to final survey.

BP No. A12824010340078R03 approved on 20 Sep 2013.