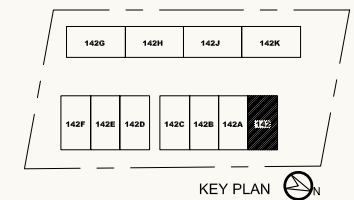
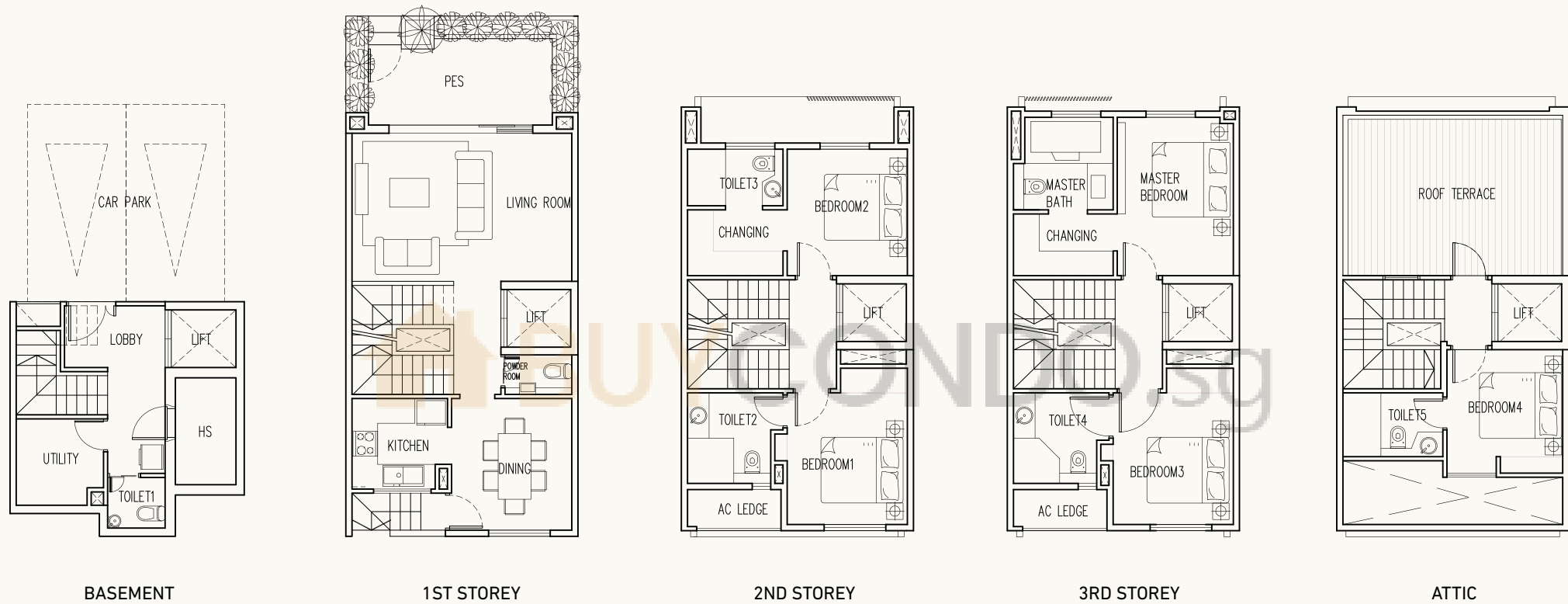


UNIT 142

Strata Area : 382 M² / 4,112 SQF (Corner)

All plans are not scale and subject to amendments as may be approved by the relevant authorities. Area includes A/C Ledge, Balcony, PES, Void, Planter Box, Duct & Carpack etc. Floor areas are approximate measurements and subject to final survey.

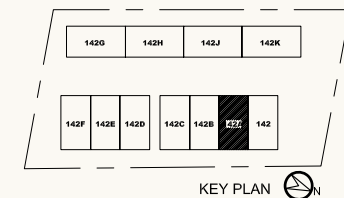


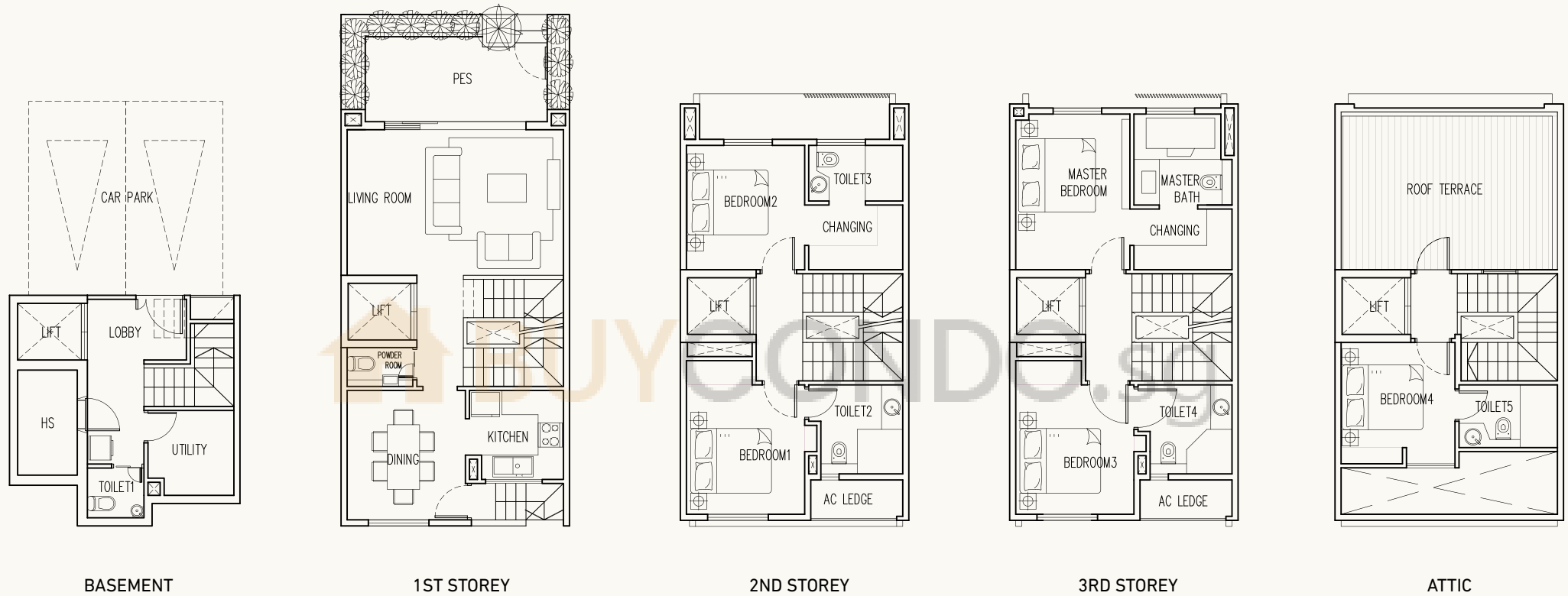


UNIT 142A

Strata Area : 330 M² / 3,552 SQF

All plans are not scale and subject to amendments as may be approved by the relevant authorities. Area includes A/C Ledge, Balcony, PES, Void, Planter Box, Duct & Carpack etc. Floor areas are approximate measurements and subject to final survey.

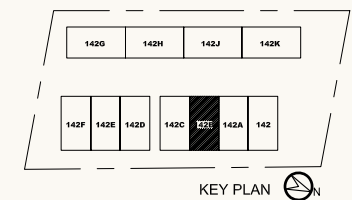


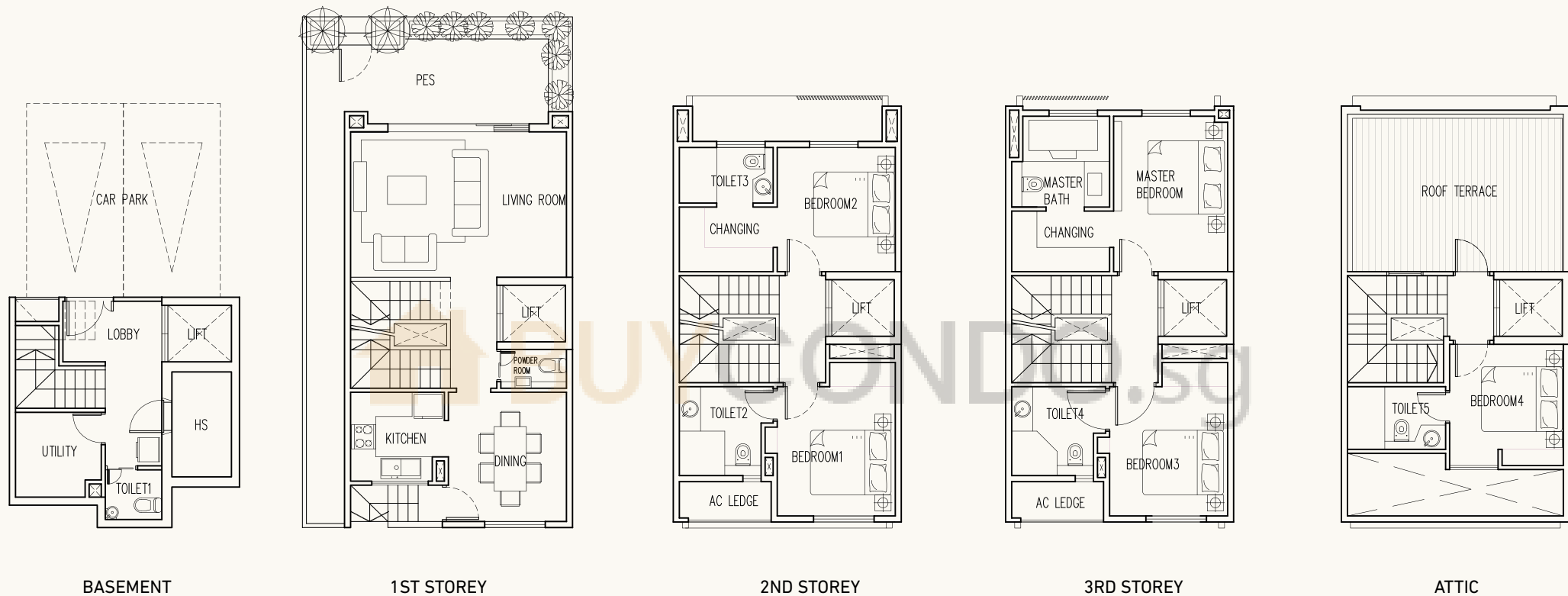


UNIT 142B

Strata Area : 330 M² / 3,552 SQF

All plans are not scale and subject to amendments as may be approved by the relevant authorities. Area includes A/C Ledge, Balcony, PES, Void, Planter Box, Duct & Carpack etc. Floor areas are approximate measurements and subject to final survey.

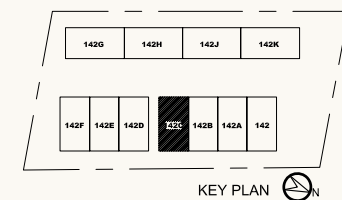


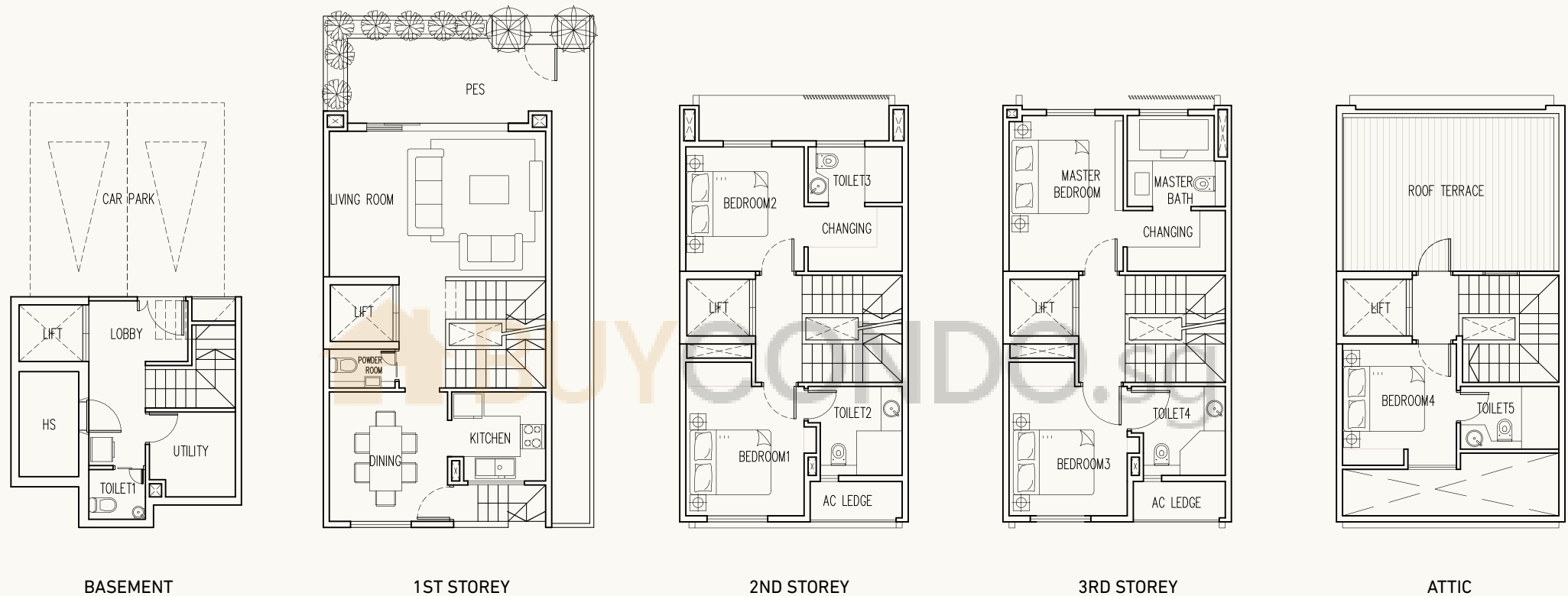


UNIT 142C

Strata Area : 382 M² / 4,112 SQF (Corner)

All plans are not scale and subject to amendments as may be approved by the relevant authorities. Area includes A/C Ledge, Balcony, PES, Void, Planter Box, Duct & Carpack etc. Floor areas are approximate measurements and subject to final survey.

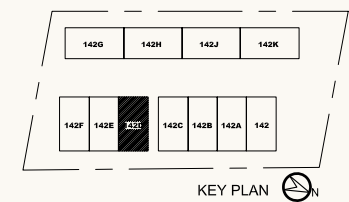


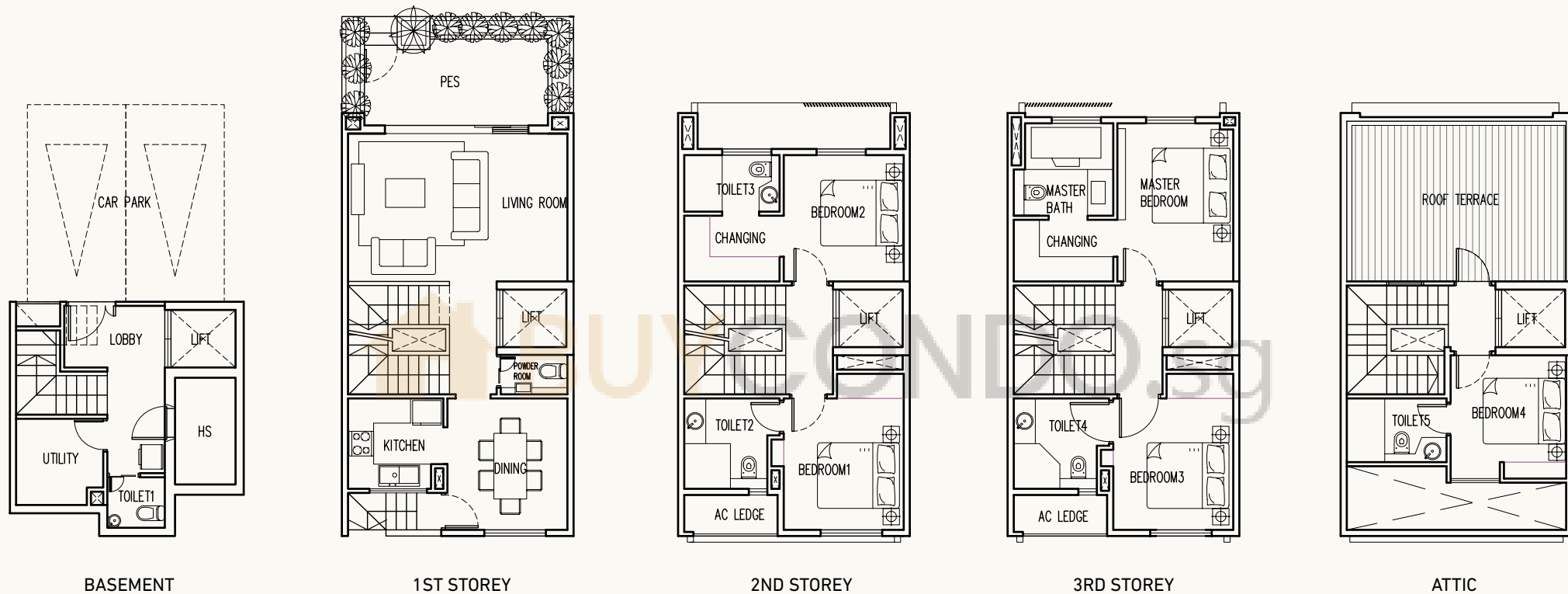


UNIT 142D

Strata Area : 382 M² / 4,112 SQF (Corner)

All plans are not scale and subject to amendments as may be approved by the relevant authorities. Area includes A/C Ledge, Balcony, PES, Void, Planter Box, Duct & Carpack etc. Floor areas are approximate measurements and subject to final survey.

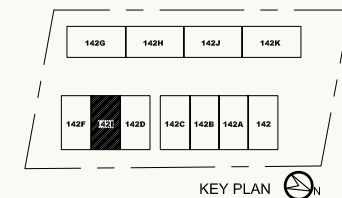


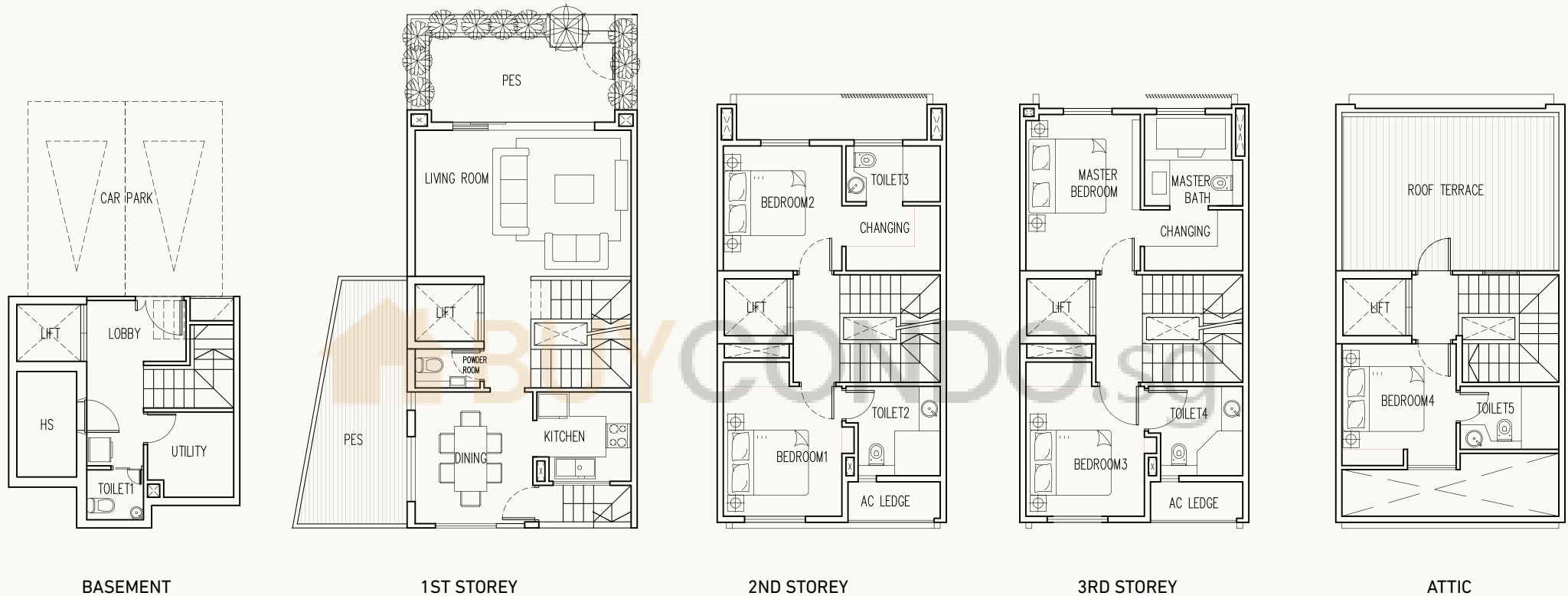


UNIT 142E

Strata Area : 330 M² / 3,552 SQF

All plans are not scale and subject to amendments as may be approved by the relevant authorities. Area includes A/C Ledge, Balcony, PES, Void, Planter Box, Duct & Carpack etc. Floor areas are approximate measurements and subject to final survey.

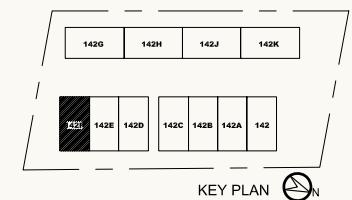


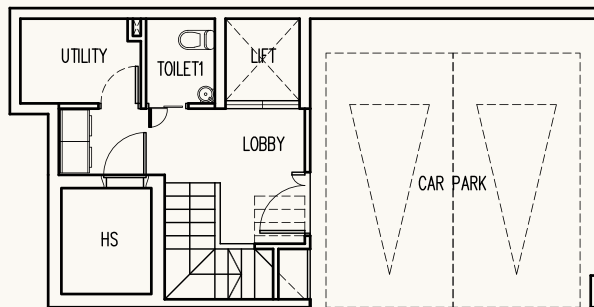


UNIT 142F

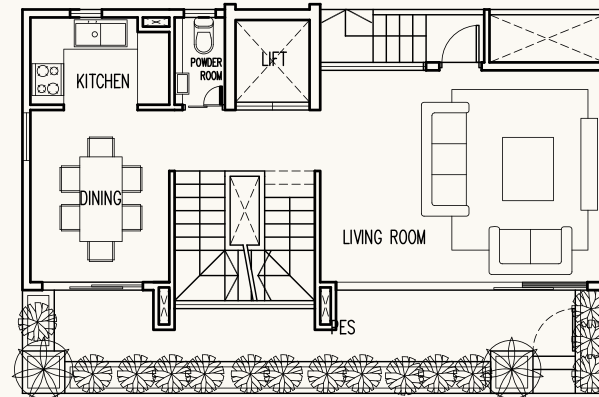
Strata Area : 386 M² / 4,155 SQF (Corner)

All plans are not scale and subject to amendments as may be approved by the relevant authorities. Area includes A/C Ledge, Balcony, PES, Void, Planter Box, Duct & Carpack etc. Floor areas are approximate measurements and subject to final survey.

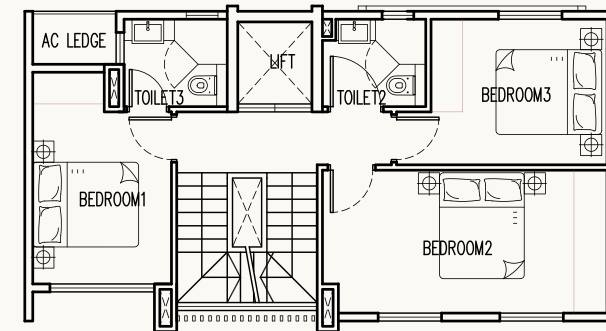




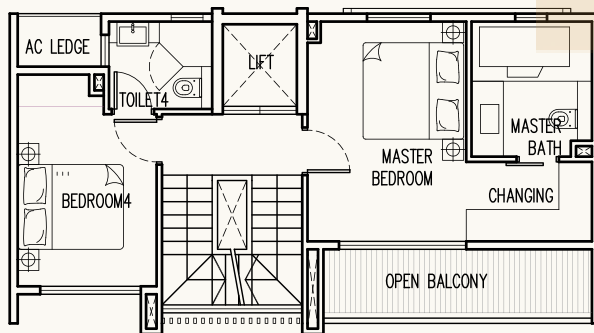
BASEMENT



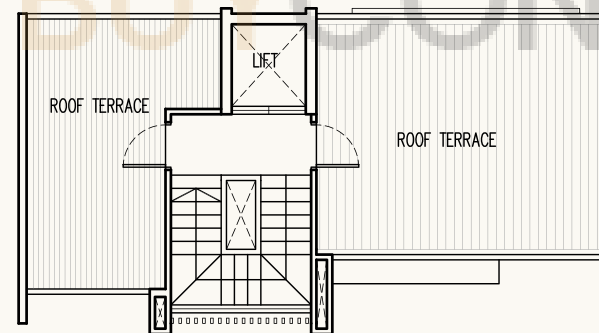
1ST STOREY



2ND STOREY



3RD STOREY

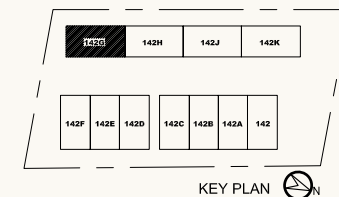


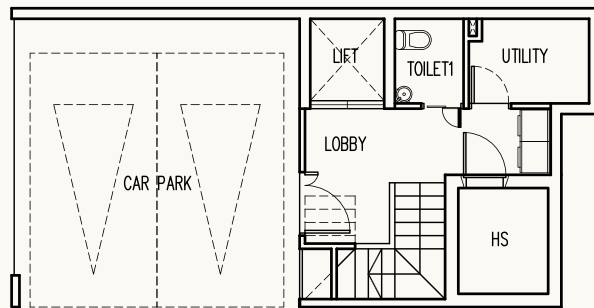
ATTIC

UNIT 142G

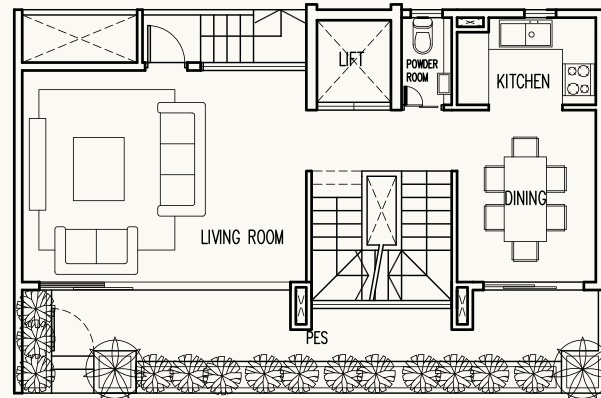
Strata Area : 370 M² / 3,983 SQF (Corner)

All plans are not scale and subject to amendments as may be approved by the relevant authorities. Area includes A/C Ledge, Balcony, PES, Void, Planter Box, Duct & Carpack etc. Floor areas are approximate measurements and subject to final survey.

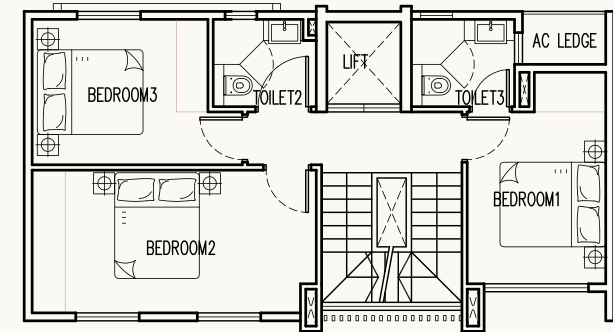




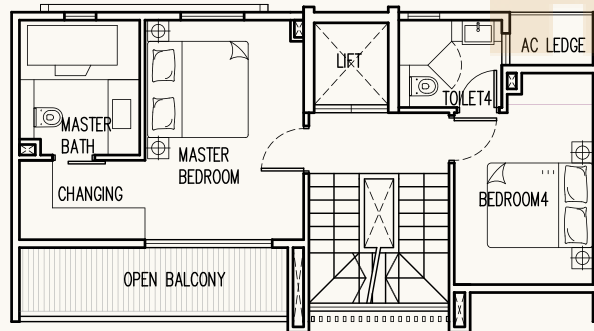
BASEMENT



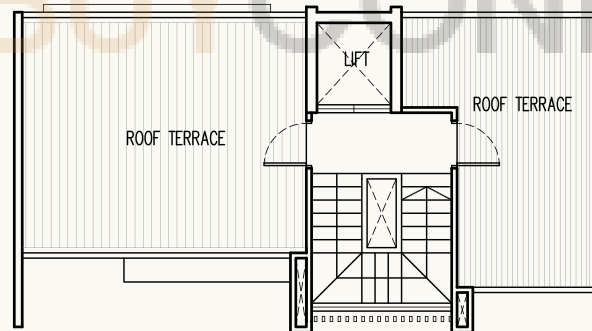
1ST STOREY



2ND STOREY



3RD STOREY

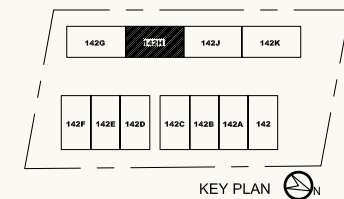


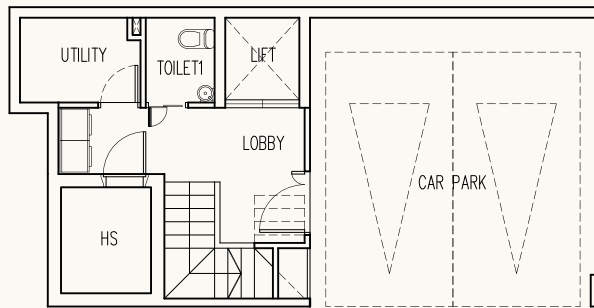
ATTIC

UNIT 142H

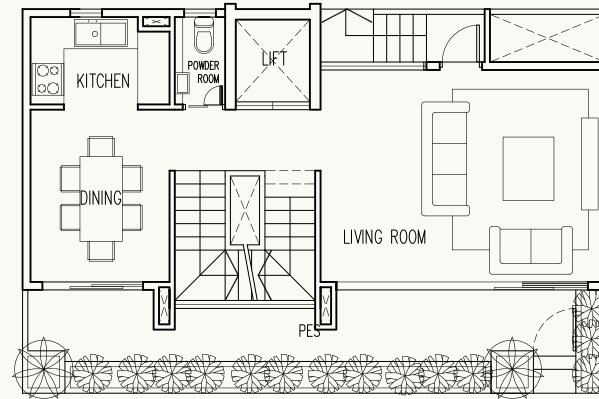
Strata Area : 370 M² / 3,983 SQF

All plans are not scale and subject to amendments as may be approved by the relevant authorities. Area includes A/C Ledge, Balcony, PES, Void, Planter Box, Duct & Carpack etc. Floor areas are approximate measurements and subject to final survey.

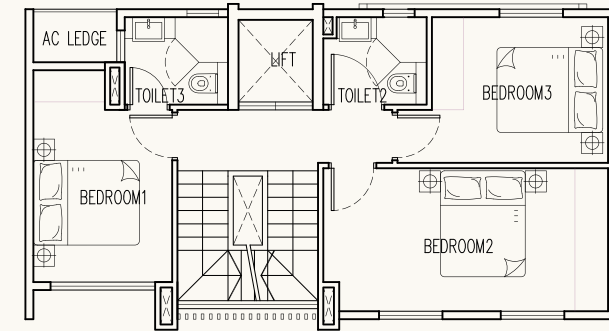




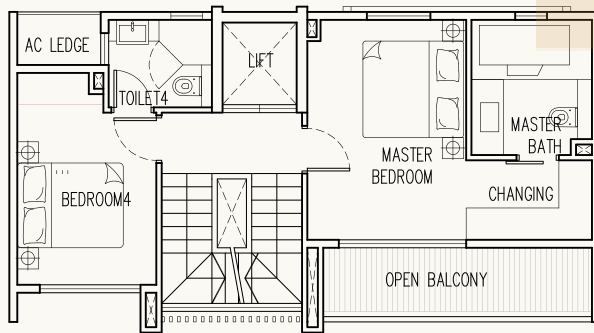
BASEMENT



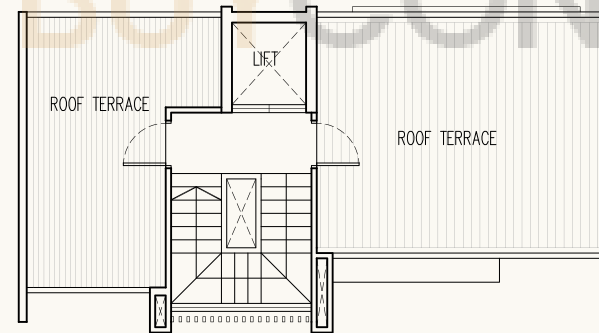
1ST STOREY



2ND STOREY



3RD STOREY

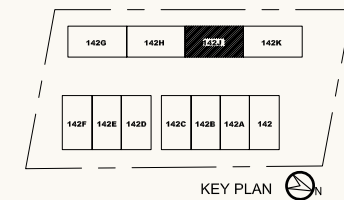


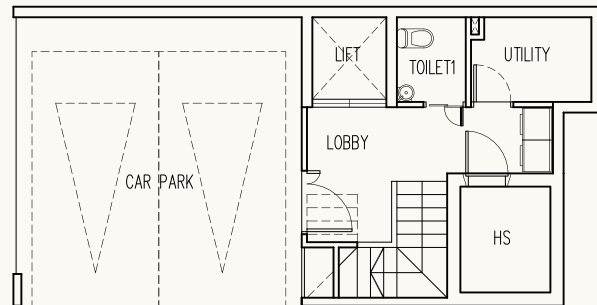
ATTIC

UNIT 142J

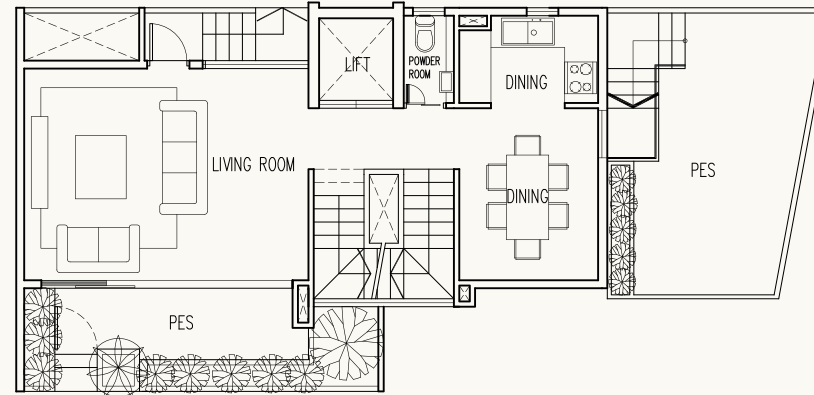
Strata Area : 370 M² / 3,983 SQF

All plans are not scale and subject to amendments as may be approved by the relevant authorities. Area includes A/C Ledge, Balcony, PES, Void, Planter Box, Duct & Carpack etc. Floor areas are approximate measurements and subject to final survey.

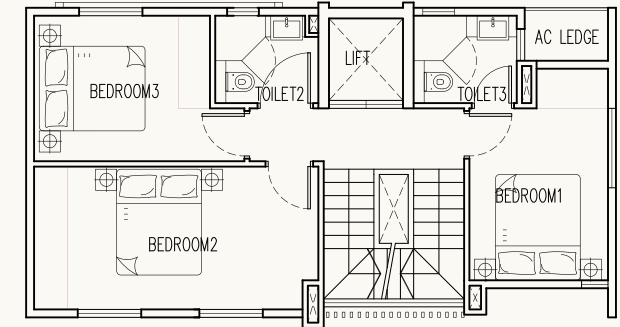




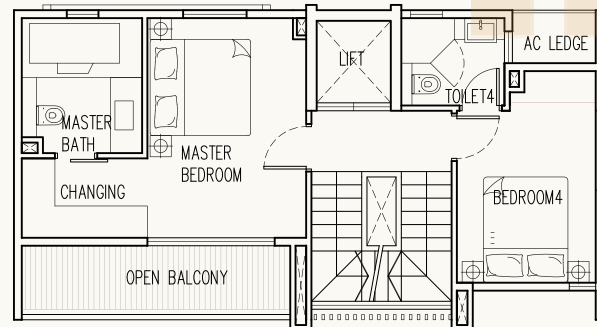
BASEMENT



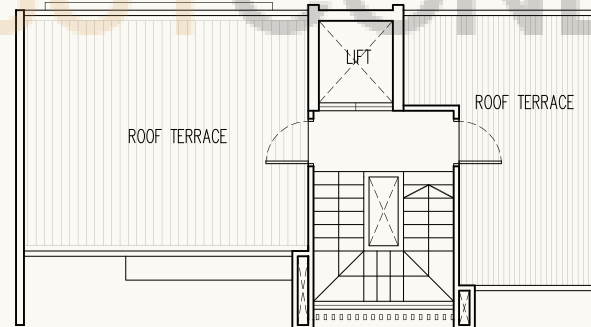
1ST STOREY



2ND STOREY



3RD STOREY



ATTIC

UNIT 142K

Strata Area : 422 M² / 4,542 SQF (Corner)

All plans are not scale and subject to amendments as may be approved by the relevant authorities. Area includes A/C Ledge, Balcony, PES, Void, Planter Box, Duct & Carpack etc. Floor areas are approximate measurements and subject to final survey.

