

# 1 BEDROOM

**EFFICIENT  
SMART  
STYLISH**

For you, a space with big ambitions.



**TYPE A1**  
38 sq m | 409 sq ft  
#02-22 TO #16-22  
#03-33 TO #16-33

**TYPE A1-R**  
47 sq m | 506 sq ft  
#17-22  
#17-33

incl. of 9 sq m /  
97 sq ft of  
void area (high ceiling)  
above living

**TYPE A2**  
44 sq m | 474 sq ft  
#02-26 TO #16-26  
#02-37 TO #16-37

**TYPE A2-R**  
57 sq m | 614 sq ft  
#17-26  
#17-37

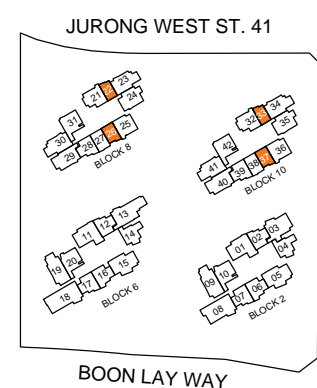
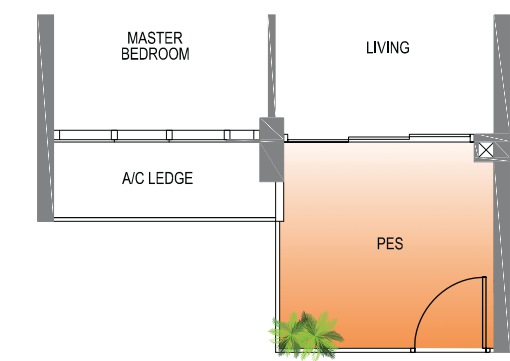
incl. of 13 sq m /  
140 sq ft of  
void area (high ceiling)  
above living & dining



**TYPE A1-P**  
41 sq m | 441 sq ft  
#01-22  
#02-33



**TYPE A2-P**  
47 sq m | 506 sq ft  
#01-26  
#01-37



AREA INCLUDES PES, A/C LEDGE, BALCONY AND VOID AREA. THE PLANS ARE SUBJECT TO CHANGE AS MAY BE REQUIRED OR APPROVED BY THE RELEVANT AUTHORITIES. AREAS ARE APPROXIMATE. MEASUREMENTS ONLY AND ARE SUBJECT TO FINAL SURVEY. PLANS ARE NOT DRAWN TO SCALE AND DO NOT FORM PART OF THE CONTRACT.

FOR ILLUSTRATION ONLY

# 1 BEDROOM + STUDY

**TYPE A3**  
48 sq m | 517 sq ft  
#02-27 TO #16-27  
#02-38 TO #16-38

**TYPE A3-R**  
61 sq m | 657 sq ft  
#17-27  
#17-38  
incl. of 13 sq m /  
140 sq ft of  
void area (high ceiling)  
above living & dining



# 2 BEDROOM

**TYPE B1**  
57 sq m | 614 sq ft  
#02-02 TO #16-02  
#02-07 TO #16-07  
#02-12 TO #16-12  
#02-17 TO #16-17  
#02-28 TO #16-28  
#02-39 TO #16-39

**TYPE B1-R**  
69 sq m | 743 sq ft  
#17-02  
#17-07  
#17-12  
#17-17  
#17-28  
#17-39  
incl. of 12 sq m /  
129 sq ft of  
void area (high ceiling)  
above living & dining

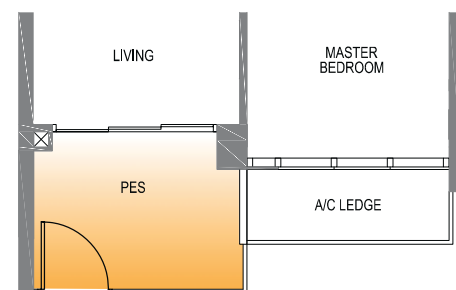


**TYPE B1a**  
58 sq m | 624 sq ft  
#02-06 TO #16-06  
#02-16 TO #16-16

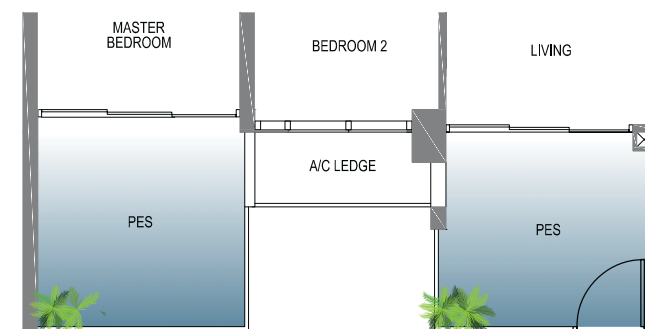
**TYPE B1a-R**  
70 sq m | 753 sq ft  
#17-06  
#17-16  
incl. of 12 sq m /  
129 sq ft of  
void area (high ceiling)  
above living & dining



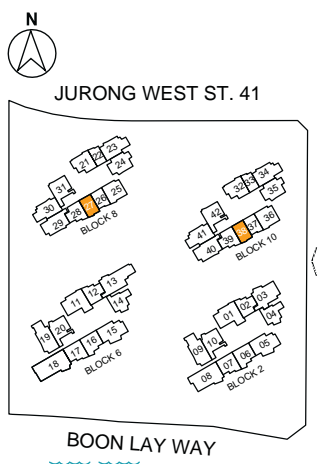
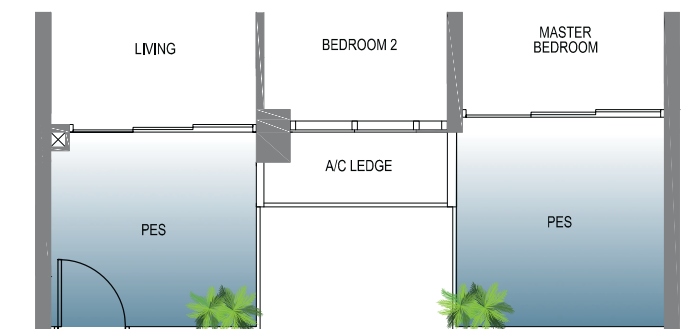
**TYPE A3-P**  
50 sq m | 538 sq ft  
#01-27  
#01-38



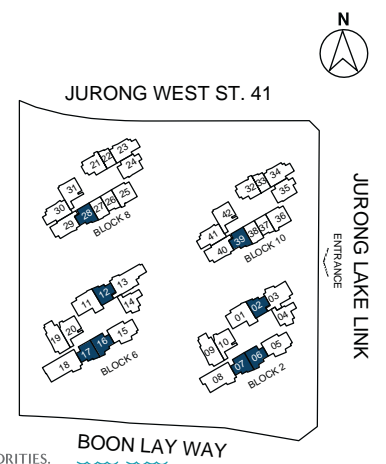
**TYPE B1-P**  
67 sq m | 721 sq ft  
#01-02 #01-17  
#01-07 #01-28  
#01-12 #01-39



**TYPE B1a-P**  
67 sq m | 721 sq ft  
#01-06  
#01-16



AREA INCLUDES PES, A/C LEDGE, BALCONY AND VOID AREA. THE PLANS ARE SUBJECT TO CHANGE AS MAY BE REQUIRED OR APPROVED BY THE RELEVANT AUTHORITIES. AREAS ARE APPROXIMATE. MEASUREMENTS ONLY AND ARE SUBJECT TO FINAL SURVEY. PLANS ARE NOT DRAWN TO SCALE AND DO NOT FORM PART OF THE CONTRACT.



AREA INCLUDES PES, A/C LEDGE, BALCONY AND VOID AREA. THE PLANS ARE SUBJECT TO CHANGE AS MAY BE REQUIRED OR APPROVED BY THE RELEVANT AUTHORITIES. AREAS ARE APPROXIMATE. MEASUREMENTS ONLY AND ARE SUBJECT TO FINAL SURVEY. PLANS ARE NOT DRAWN TO SCALE AND DO NOT FORM PART OF THE CONTRACT.

# 2 BEDROOM

**TYPE B2**  
62 sq m | 667 sq ft  
#02-04 TO #16-04

**TYPE B2-R**  
76 sq m | 818 sq ft  
#17-04  
incl. of 14 sq m / 151 sq ft of void area (high ceiling) above living & dining

**TYPE B2a**  
62 sq m | 667 sq ft  
#02-14 TO #16-14

**TYPE B2a-R**  
76 sq m | 818 sq ft  
#17-14  
incl. of 14 sq m / 151 sq ft of void area (high ceiling) above living & dining



**TYPE B3**  
67 sq m | 721 sq ft  
#02-25 TO #16-25  
#02-36 TO #16-36

**TYPE B3-R**  
80 sq m | 861 sq ft  
#17-25  
#17-36  
incl. of 13 sq m / 140 sq ft of void area (high ceiling) above living & dining

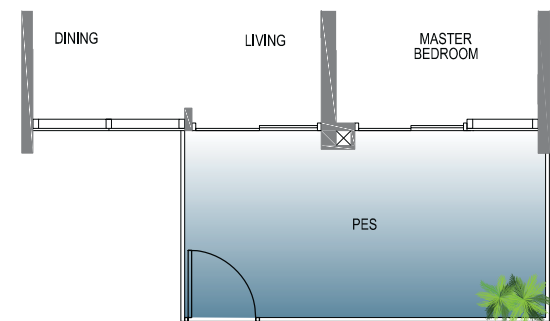


**TYPE B3a**  
67 sq m | 721 sq ft  
#02-21 TO #16-21  
#03-32 TO #16-32

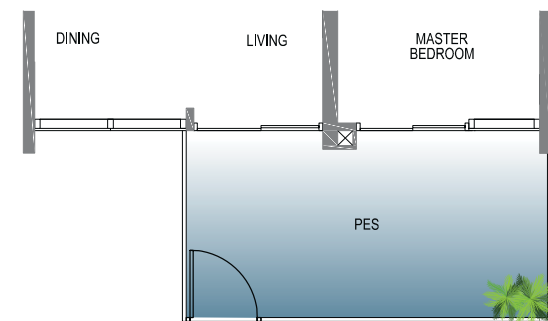
**TYPE B3a-R**  
80 sq m | 861 sq ft  
#17-21  
#17-32  
incl. of 13 sq m / 140 sq ft of void area (high ceiling) above living & dining



**TYPE B2-P**  
69 sq m | 743 sq ft  
#01-04



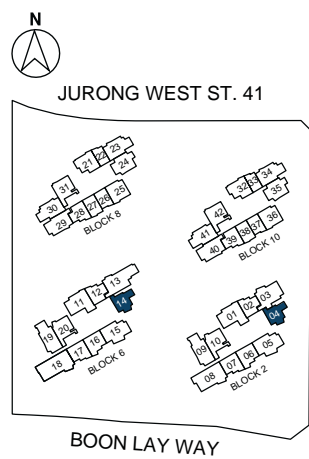
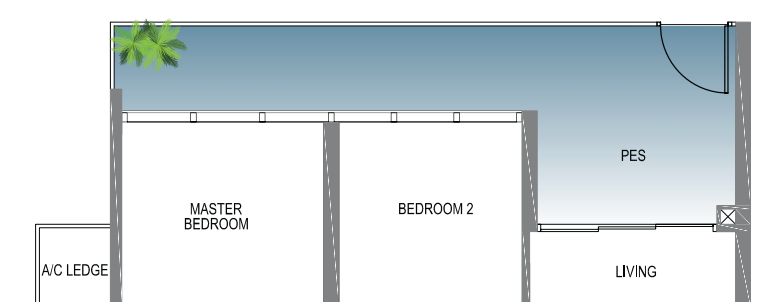
**TYPE B2a-P**  
69 sq m | 743 sq ft  
#01-14



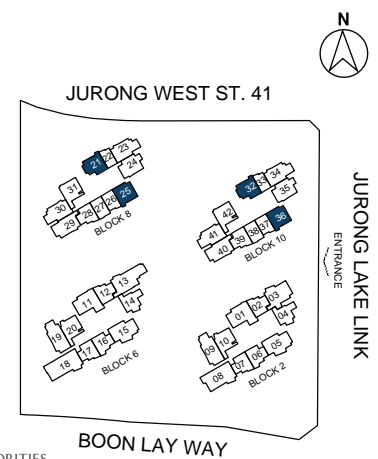
**TYPE B3-P**  
70 sq m | 753 sq ft  
#01-25  
#01-36



**TYPE B3a-P**  
76 sq m | 818 sq ft  
#01-21  
#02-32



AREA INCLUDES PES, A/C LEDGE, BALCONY AND VOID AREA. THE PLANS ARE SUBJECT TO CHANGE AS MAY BE REQUIRED OR APPROVED BY THE RELEVANT AUTHORITIES. AREAS ARE APPROXIMATE. MEASUREMENTS ONLY AND ARE SUBJECT TO FINAL SURVEY. PLANS ARE NOT DRAWN TO SCALE AND DO NOT FORM PART OF THE CONTRACT.



AREA INCLUDES PES, A/C LEDGE, BALCONY AND VOID AREA. THE PLANS ARE SUBJECT TO CHANGE AS MAY BE REQUIRED OR APPROVED BY THE RELEVANT AUTHORITIES. AREAS ARE APPROXIMATE. MEASUREMENTS ONLY AND ARE SUBJECT TO FINAL SURVEY. PLANS ARE NOT DRAWN TO SCALE AND DO NOT FORM PART OF THE CONTRACT.

# 2 BEDROOM

# 2 BEDROOM

**TYPE B4**  
72 sq m | 775 sq ft  
#02-10 TO #16-10  
#02-20 TO #16-20

**TYPE B4-R**  
89 sq m | 958 sq ft  
#17-10  
#17-20  
incl. of 17 sq m / 183 sq ft of void area (high ceiling) above living & dining



dotted line denotes high ceiling above living and dining for type B4-R

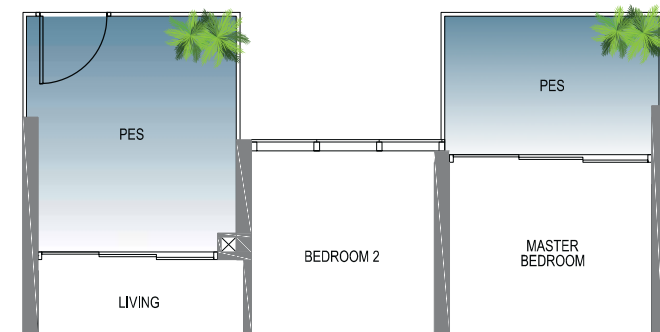
**TYPE B4a**  
72 sq m | 775 sq ft  
#02-31 TO #16-31  
#02-42 TO #16-42

**TYPE B4a-R**  
89 sq m | 958 sq ft  
#17-31  
#17-42  
incl. of 17 sq m / 183 sq ft of void area (high ceiling) above living & dining

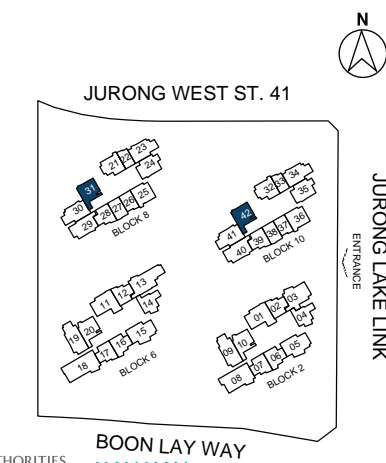
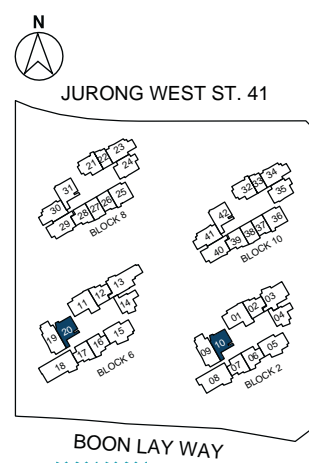
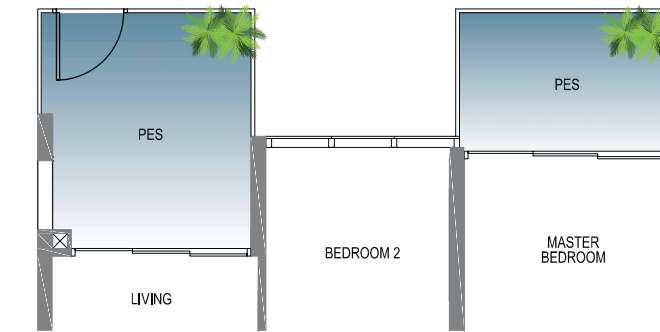


dotted line denotes high ceiling above living and dining for type B4a-R

**TYPE B4-P**  
82 sq m | 883 sq ft  
#01-10  
#01-20



**TYPE B4a-P**  
82 sq m | 883 sq ft  
#01-31  
#01-42



AREA INCLUDES PES, A/C LEDGE, BALCONY AND VOID AREA. THE PLANS ARE SUBJECT TO CHANGE AS MAY BE REQUIRED OR APPROVED BY THE RELEVANT AUTHORITIES. AREAS ARE APPROXIMATE. MEASUREMENTS ONLY AND ARE SUBJECT TO FINAL SURVEY. PLANS ARE NOT DRAWN TO SCALE AND DO NOT FORM PART OF THE CONTRACT.

AREA INCLUDES PES, A/C LEDGE, BALCONY AND VOID AREA. THE PLANS ARE SUBJECT TO CHANGE AS MAY BE REQUIRED OR APPROVED BY THE RELEVANT AUTHORITIES. AREAS ARE APPROXIMATE. MEASUREMENTS ONLY AND ARE SUBJECT TO FINAL SURVEY. PLANS ARE NOT DRAWN TO SCALE AND DO NOT FORM PART OF THE CONTRACT.

# 2 BEDROOM + STUDY

# 2 BEDROOM + STUDY

## TYPE B5

72 sq m | 775 sq ft  
#02-24 TO #16-24  
#03-35 TO #16-35

## TYPE B5-R

81 sq m | 872 sq ft  
#17-24  
#17-35  
incl. of 9 sq m / 97 sq ft of void area (high ceiling) above living & dining



## TYPE B6

76 sq m | 818 sq ft  
#02-23 TO #16-23  
#03-34 TO #16-34

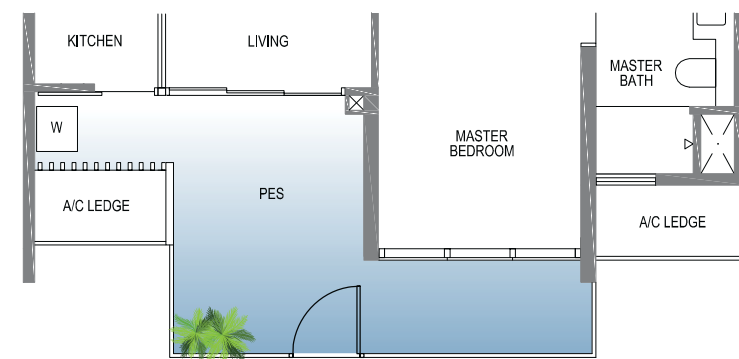
## TYPE B6-R

90 sq m | 969 sq ft  
#17-23  
#17-34  
incl. of 14 sq m / 151 sq ft of void area (high ceiling) above living & dining



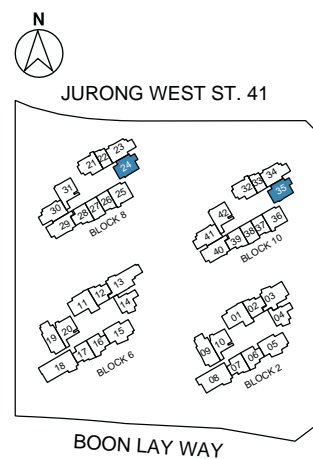
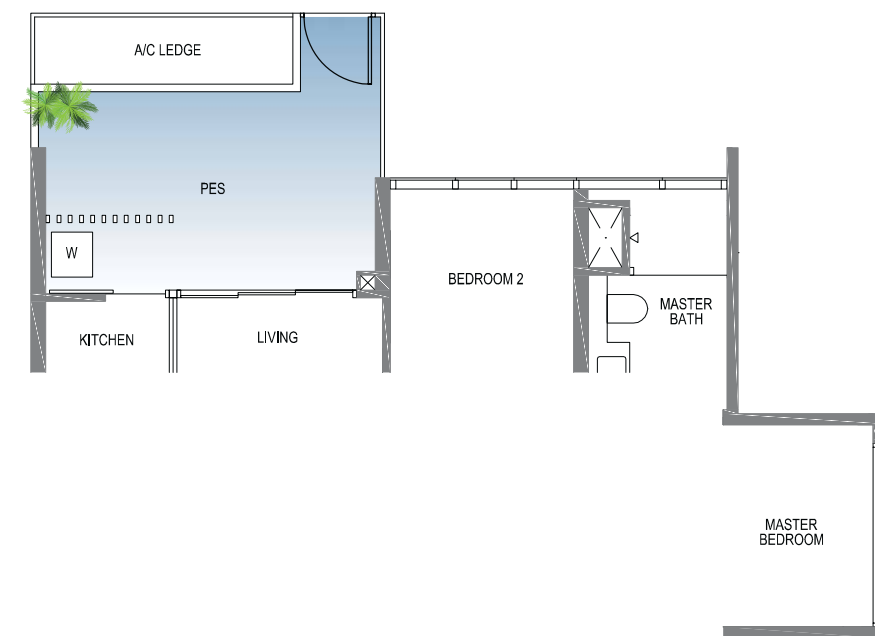
## TYPE B5-P

79 sq m | 850 sq ft  
#01-24  
#02-35

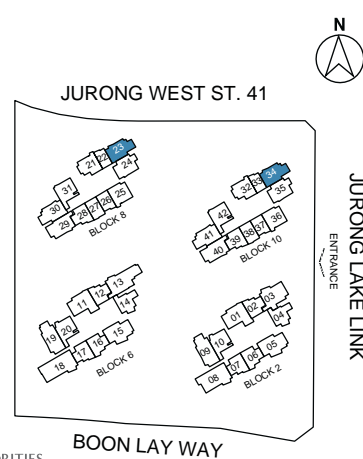


## TYPE B6-P

78 sq m | 840 sq ft  
#01-23  
#02-34



AREA INCLUDES PES, A/C LEDGE, BALCONY AND VOID AREA. THE PLANS ARE SUBJECT TO CHANGE AS MAY BE REQUIRED OR APPROVED BY THE RELEVANT AUTHORITIES. AREAS ARE APPROXIMATE. MEASUREMENTS ONLY AND ARE SUBJECT TO FINAL SURVEY. PLANS ARE NOT DRAWN TO SCALE AND DO NOT FORM PART OF THE CONTRACT.



AREA INCLUDES PES, A/C LEDGE, BALCONY AND VOID AREA. THE PLANS ARE SUBJECT TO CHANGE AS MAY BE REQUIRED OR APPROVED BY THE RELEVANT AUTHORITIES. AREAS ARE APPROXIMATE. MEASUREMENTS ONLY AND ARE SUBJECT TO FINAL SURVEY. PLANS ARE NOT DRAWN TO SCALE AND DO NOT FORM PART OF THE CONTRACT.

# 2 BEDROOM + STUDY

# 2 BEDROOM + STUDY

## TYPE B6a

76 sq m | 818 sq ft  
#02-30 TO #16-30  
#02-41 TO #16-41

## TYPE B6a-R

89 sq m | 958 sq ft  
#17-30  
#17-41  
incl. of 13 sq m / 140 sq ft  
of void area (high ceiling)  
above living & dining

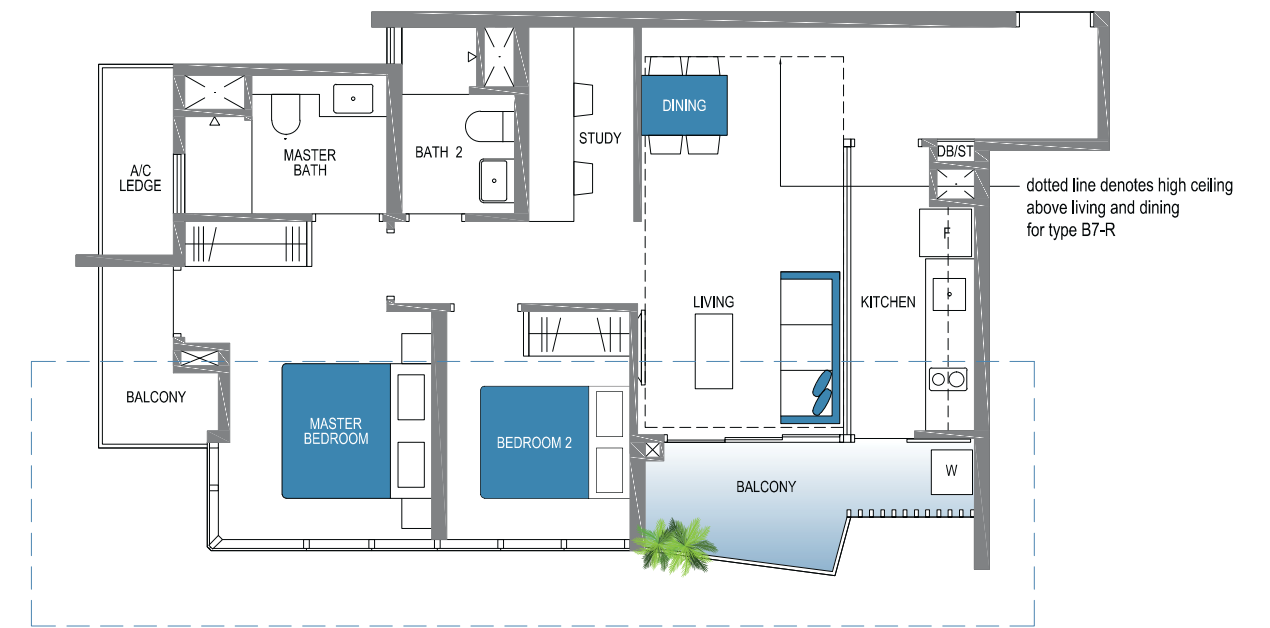


## TYPE B7

80 sq m | 861 sq ft  
#02-29 TO #16-29  
#02-40 TO #16-40

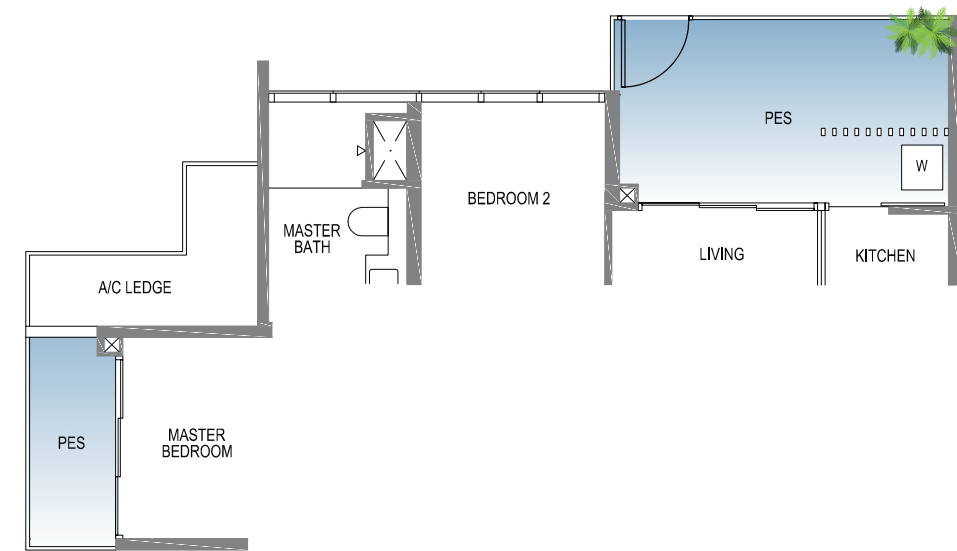
## TYPE B7-R

94 sq m | 1,012 sq ft  
#17-29  
#17-40  
incl. of 14 sq m / 151 sq ft  
of void area (high ceiling)  
above living & dining



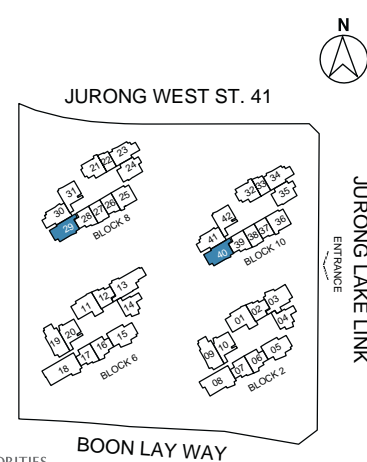
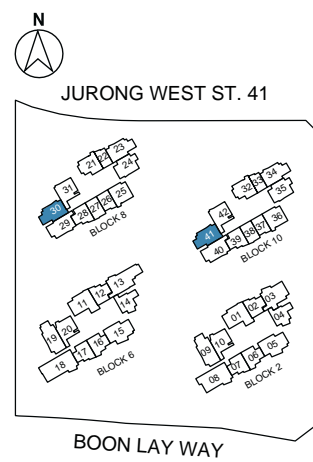
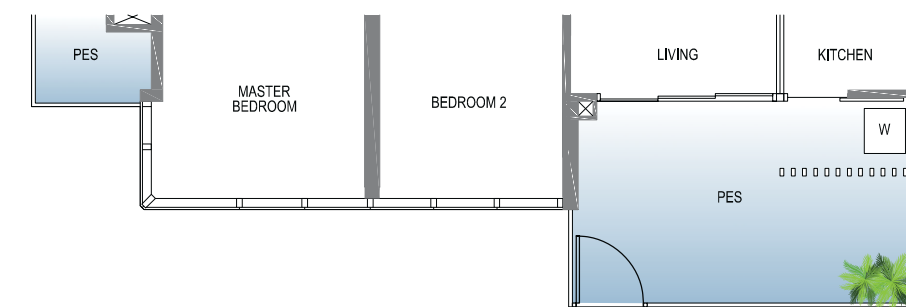
## TYPE B6a-P

81 sq m | 872 sq ft  
#01-30  
#01-41



## TYPE B7-P

86 sq m | 926 sq ft  
#01-29  
#01-40



AREA INCLUDES PES, A/C LEDGE, BALCONY AND VOID AREA. THE PLANS ARE SUBJECT TO CHANGE AS MAY BE REQUIRED OR APPROVED BY THE RELEVANT AUTHORITIES. AREAS ARE APPROXIMATE. MEASUREMENTS ONLY AND ARE SUBJECT TO FINAL SURVEY. PLANS ARE NOT DRAWN TO SCALE AND DO NOT FORM PART OF THE CONTRACT.

AREA INCLUDES PES, A/C LEDGE, BALCONY AND VOID AREA. THE PLANS ARE SUBJECT TO CHANGE AS MAY BE REQUIRED OR APPROVED BY THE RELEVANT AUTHORITIES. AREAS ARE APPROXIMATE. MEASUREMENTS ONLY AND ARE SUBJECT TO FINAL SURVEY. PLANS ARE NOT DRAWN TO SCALE AND DO NOT FORM PART OF THE CONTRACT.

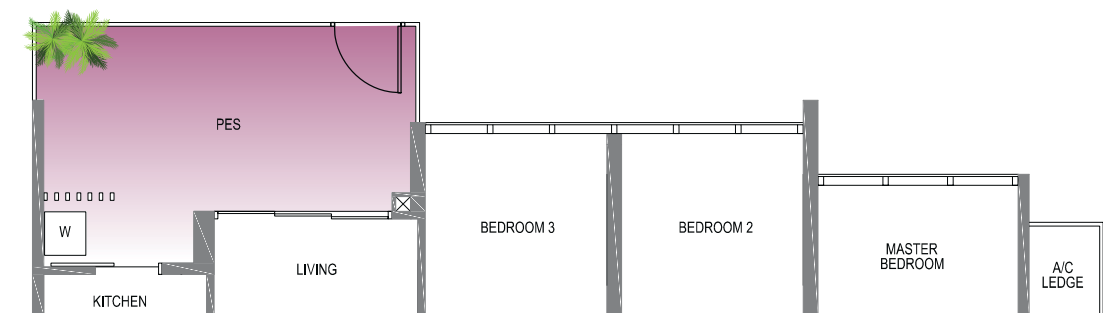
# 3 BEDROOM

**TYPE C1**  
84 sq m | 904 sq ft  
#02-09 TO #16-09  
#02-19 TO #16-19

**TYPE C1-R**  
94 sq m | 1,012 sq ft  
#17-09  
#17-19  
incl. of 10 sq m / 108 sq ft  
of void area (high ceiling)  
above living



**TYPE C1-P**  
91 sq m | 980 sq ft  
#01-09  
#01-19



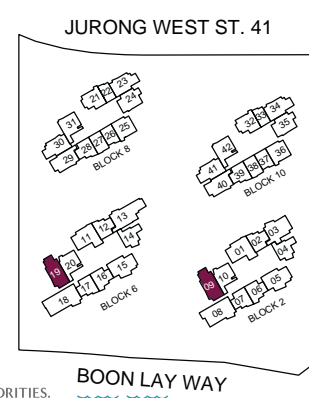
THE  
SPACE  
FOR MORE

Where all your lifestyle  
needs are met.



FOR ILLUSTRATION ONLY

RENTALBYONDO.sg



AREA INCLUDES PES, A/C LEDGE, BALCONY AND VOID AREA. THE PLANS ARE SUBJECT TO CHANGE AS MAY BE REQUIRED OR APPROVED BY THE RELEVANT AUTHORITIES. AREAS ARE APPROXIMATE. MEASUREMENTS ONLY AND ARE SUBJECT TO FINAL SURVEY. PLANS ARE NOT DRAWN TO SCALE AND DO NOT FORM PART OF THE CONTRACT.

BOON LAY WAY

# 3 BEDROOM

# 3 BEDROOM

**TYPE C2**  
86 sq m | 926 sq ft  
#02-05 TO #16-05  
#02-15 TO #16-15

**TYPE C2-R**  
99 sq m | 1,066 sq ft  
#17-05  
#17-15  
incl. of 13 sq m / 140 sq ft  
of void area (high ceiling)  
above living & dining



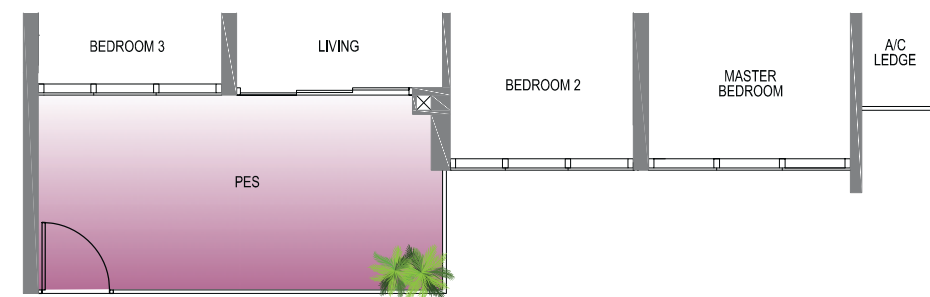
**TYPE C3**  
88 sq m | 947 sq ft  
#02-01 TO #16-01  
#02-11 TO #16-11

**TYPE C3-R**  
103 sq m | 1,109 sq ft  
#17-01  
#17-11  
incl. of 15 sq m / 161 sq ft  
of void area (high ceiling)  
above living & dining

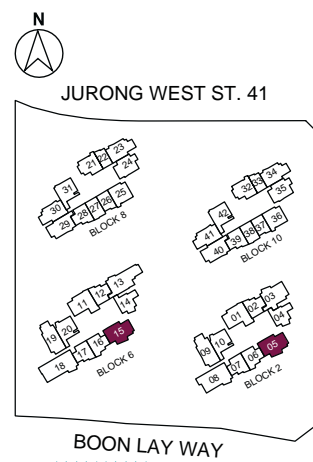
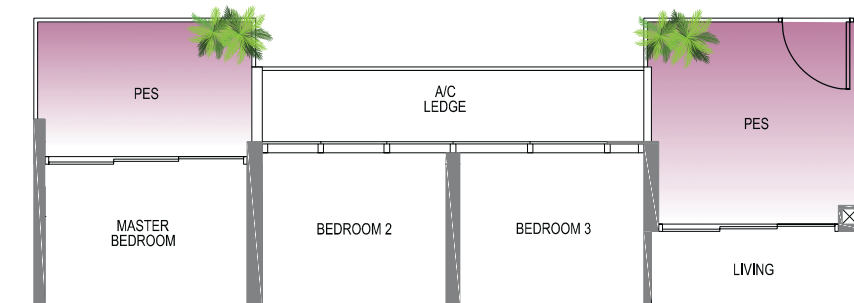


BUYCONDO.sg

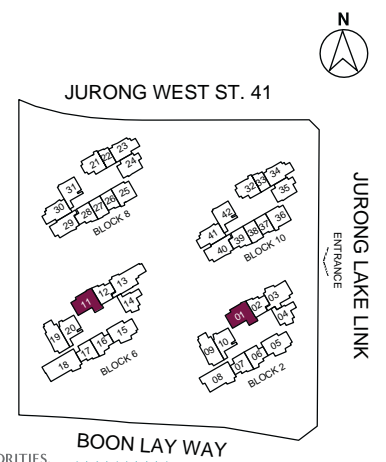
**TYPE C2-P**  
91 sq m | 980 sq ft  
#01-05  
#01-15



**TYPE C3-P**  
94 sq m | 1,012 sq ft  
#01-01  
#01-11



AREA INCLUDES PES, A/C LEDGE, BALCONY AND VOID AREA. THE PLANS ARE SUBJECT TO CHANGE AS MAY BE REQUIRED OR APPROVED BY THE RELEVANT AUTHORITIES. AREAS ARE APPROXIMATE. MEASUREMENTS ONLY AND ARE SUBJECT TO FINAL SURVEY. PLANS ARE NOT DRAWN TO SCALE AND DO NOT FORM PART OF THE CONTRACT.



AREA INCLUDES PES, A/C LEDGE, BALCONY AND VOID AREA. THE PLANS ARE SUBJECT TO CHANGE AS MAY BE REQUIRED OR APPROVED BY THE RELEVANT AUTHORITIES. AREAS ARE APPROXIMATE. MEASUREMENTS ONLY AND ARE SUBJECT TO FINAL SURVEY. PLANS ARE NOT DRAWN TO SCALE AND DO NOT FORM PART OF THE CONTRACT.

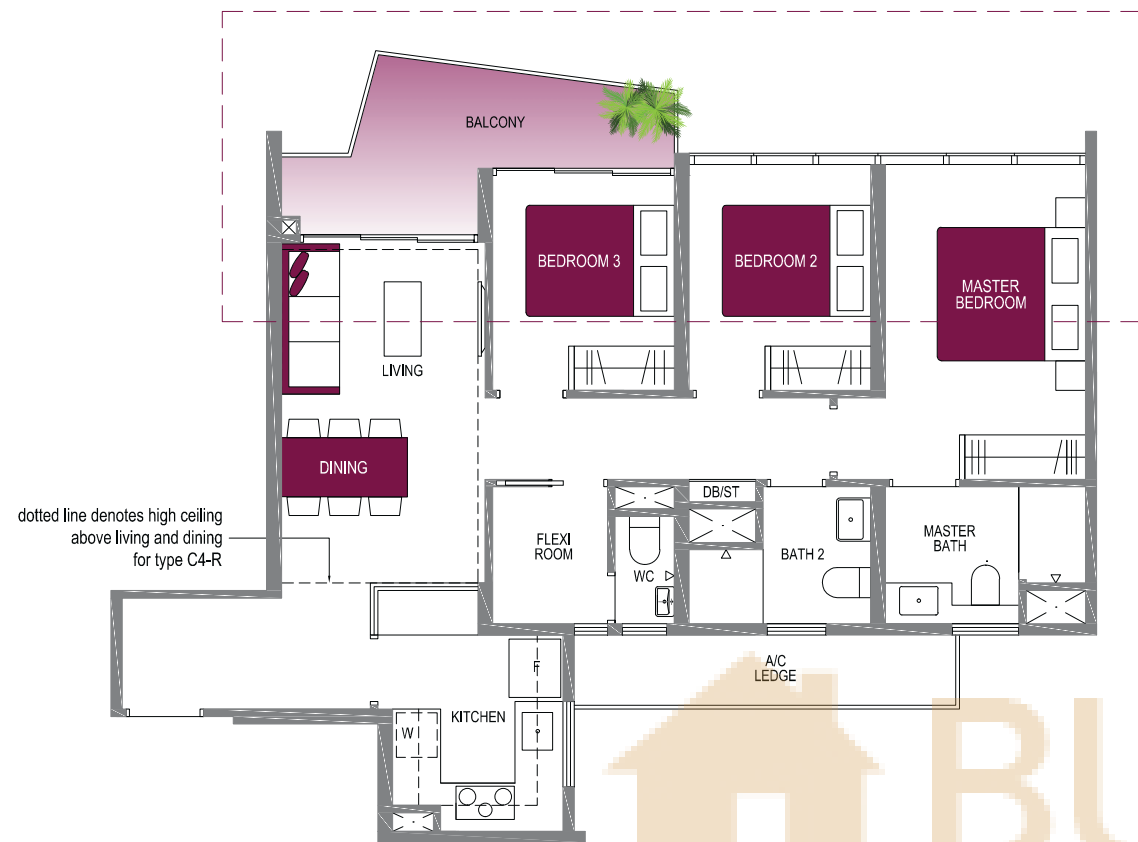


# 3 BEDROOM

# 4 BEDROOM

**TYPE C4**  
91 sq m | 980 sq ft  
#02-03 TO #16-03

**TYPE C4-R**  
104 sq m | 1,119 sq ft  
#17-03  
incl. of 13 sq m / 140 sq ft of void area (high ceiling) above living & dining



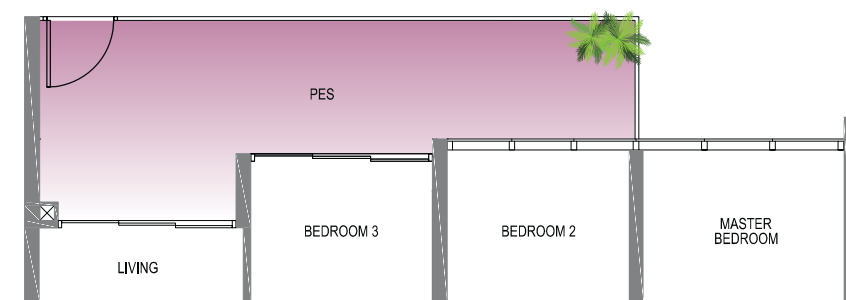
**TYPE D1**  
107 sq m | 1,152 sq ft  
#02-08 TO #16-08

**TYPE D1-R**  
124 sq m | 1,335 sq ft  
#17-08  
incl. of 17 sq m / 183 sq ft of void area (high ceiling) above living & dining

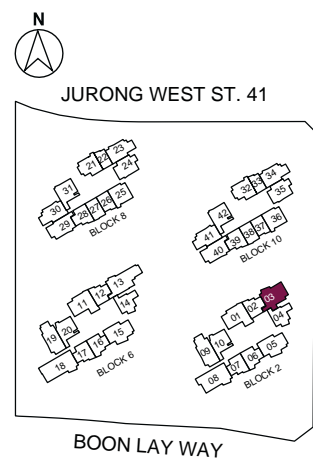
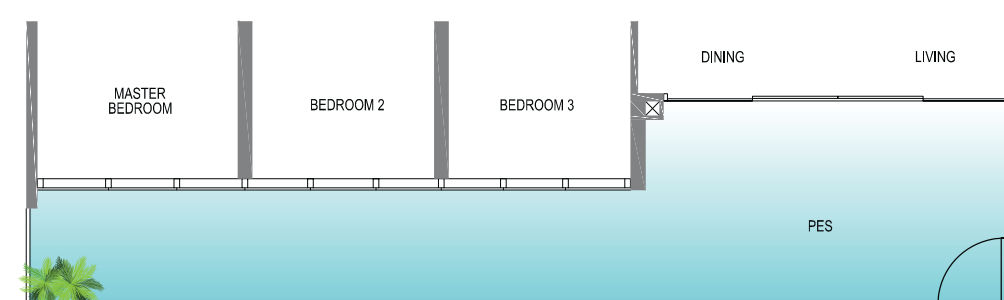


BUYCONDO.sg

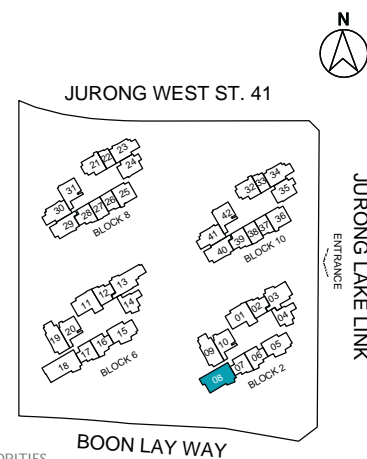
**TYPE C4-P**  
100 sq m | 1,076 sq ft  
#01-03



**TYPE D1-P**  
124 sq m | 1,335 sq ft  
#01-08



AREA INCLUDES PES, A/C LEDGE, BALCONY AND VOID AREA. THE PLANS ARE SUBJECT TO CHANGE AS MAY BE REQUIRED OR APPROVED BY THE RELEVANT AUTHORITIES. AREAS ARE APPROXIMATE. MEASUREMENTS ONLY AND ARE SUBJECT TO FINAL SURVEY. PLANS ARE NOT DRAWN TO SCALE AND DO NOT FORM PART OF THE CONTRACT.



AREA INCLUDES PES, A/C LEDGE, BALCONY AND VOID AREA. THE PLANS ARE SUBJECT TO CHANGE AS MAY BE REQUIRED OR APPROVED BY THE RELEVANT AUTHORITIES. AREAS ARE APPROXIMATE. MEASUREMENTS ONLY AND ARE SUBJECT TO FINAL SURVEY. PLANS ARE NOT DRAWN TO SCALE AND DO NOT FORM PART OF THE CONTRACT.

# 4 BEDROOM

## TYPE D2

109 sq m | 1,173 sq ft  
#02-13 TO #16-13

## TYPE D2-R

125 sq m | 1,346 sq ft  
#17-13

incl. of 16 sq m / 172 sq ft  
of void area (high ceiling)  
above living & dining



# 5 BEDROOM

## TYPE E1

121 sq m | 1,302 sq ft  
#02-18 TO #16-18

## TYPE E1-R

138 sq m | 1,485 sq ft  
#17-18

incl. of 17 sq m / 183 sq ft  
of void area (high ceiling)  
above living & dining



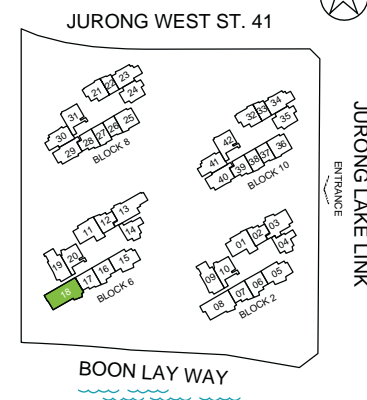
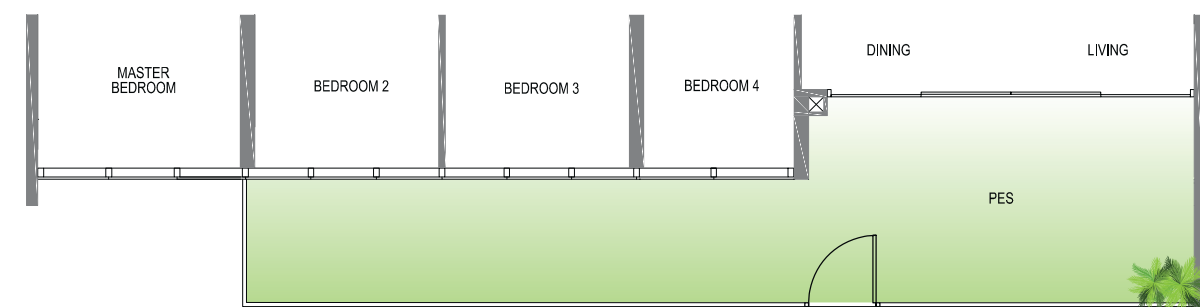
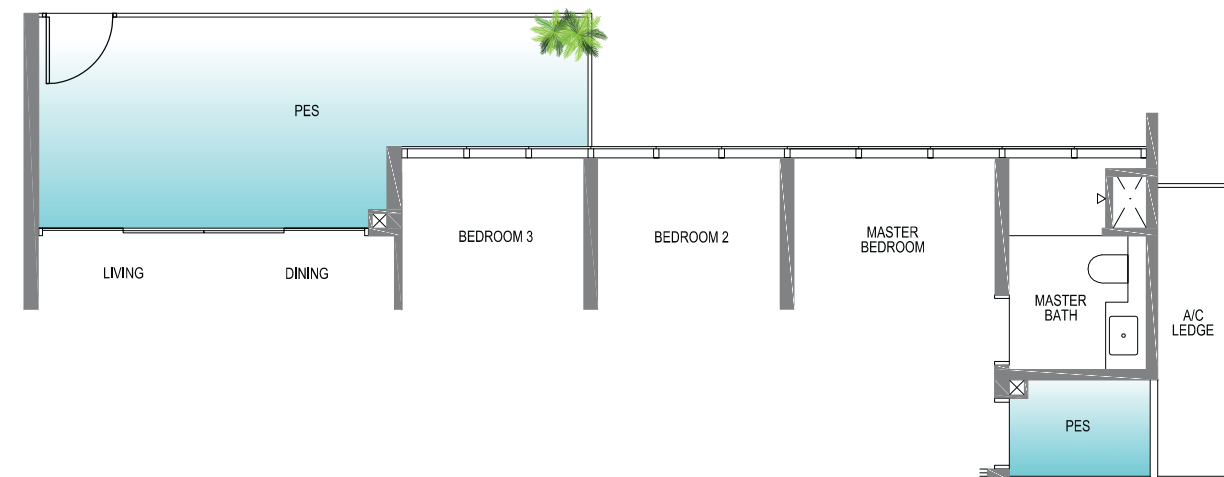
BUYCONDO.sg

## TYPE E1-P

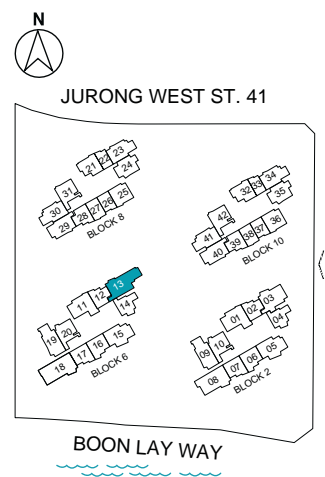
138 sq m | 1,485 sq ft  
#01-18

## TYPE D2-P

119 sq m | 1,281 sq ft  
#01-13

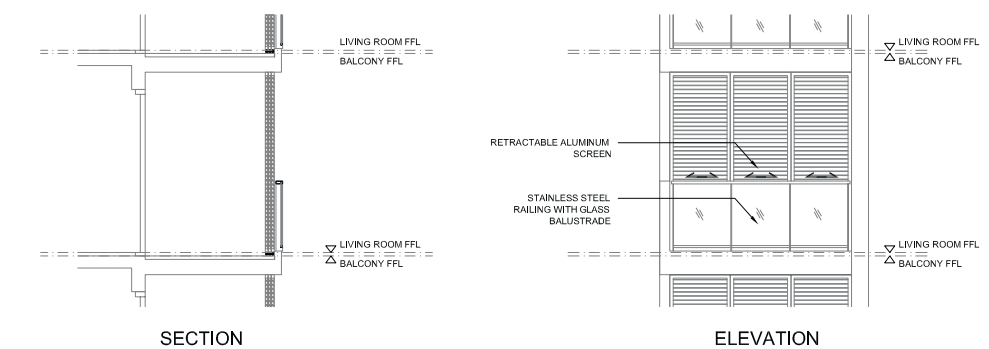


AREA INCLUDES PES, A/C LEDGE, BALCONY AND VOID AREA. THE PLANS ARE SUBJECT TO CHANGE AS MAY BE REQUIRED OR APPROVED BY THE RELEVANT AUTHORITIES. AREAS ARE APPROXIMATE MEASUREMENTS ONLY AND ARE SUBJECT TO FINAL SURVEY. PLANS ARE NOT DRAWN TO SCALE AND DO NOT FORM PART OF THE CONTRACT.



AREA INCLUDES PES, A/C LEDGE, BALCONY AND VOID AREA. THE PLANS ARE SUBJECT TO CHANGE AS MAY BE REQUIRED OR APPROVED BY THE RELEVANT AUTHORITIES. AREAS ARE APPROXIMATE MEASUREMENTS ONLY AND ARE SUBJECT TO FINAL SURVEY. PLANS ARE NOT DRAWN TO SCALE AND DO NOT FORM PART OF THE CONTRACT.

## Approved balcony screen design



ALL BALCONIES SHALL NOT BE ENCLOSED UNLESS WITH THE APPROVED BALCONY SCREEN. FOR AN ILLUSTRATION OF THE APPROVED BALCONY SCREEN, PLEASE REFER TO THE ABOVE DIAGRAM.