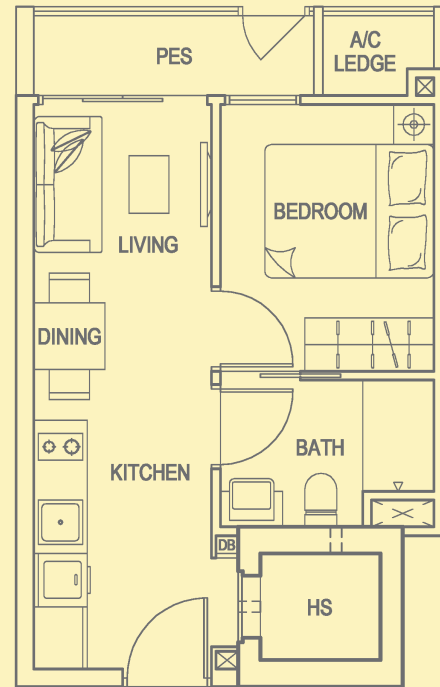


RESIDENTIAL

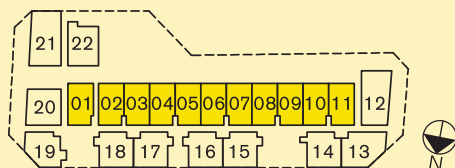
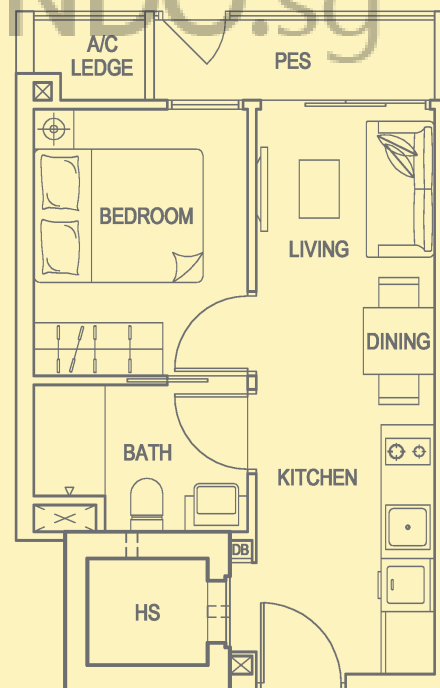
TYPE A

Total Area 366sqft / 34sqm
 Unit #02-01, #02-02
 #02-04, #02-06
 #02-08, #02-10

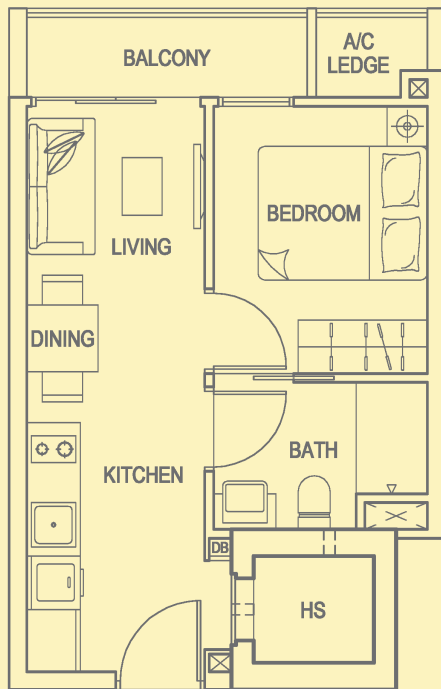


TYPE B

Total Area 366sqft / 34sqm
 Unit #02-03, #02-05
 #02-07, #02-09
 #02-11

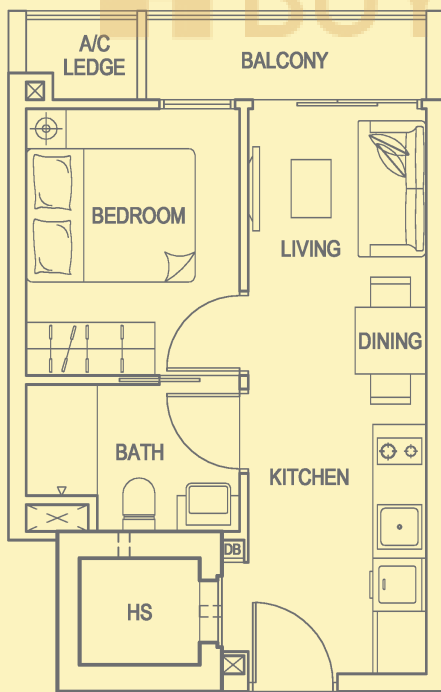


All areas stated herein include PES, A/C Ledges, Balconies, Roof Terraces, Outdoor Jacuzzi, Outdoor Planter where applicable. All areas and measurements stated herein are approximate and subject to adjustment on final survey. All plans are not to scale and subject to amendment as approved by the relevant authorities.



TYPE A1

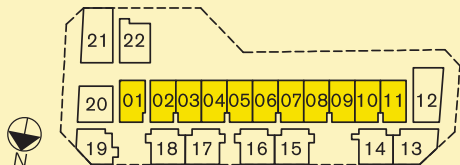
Total Area 366sqft / 34sqm
 Unit #03-01 to #05-01
 #03-02 & #04-02
 #03-04 & #04-04
 #03-06 & #04-06
 #03-08 & #04-08
 #03-10 & #04-10



TYPE B1

Total Area 366sqft / 34sqm
 Unit #03-03 & #04-03
 #03-05 & #04-05
 #03-07 & #04-07
 #03-09 & #04-09
 #03-11 & #04-11

 BUYCONDO.sg

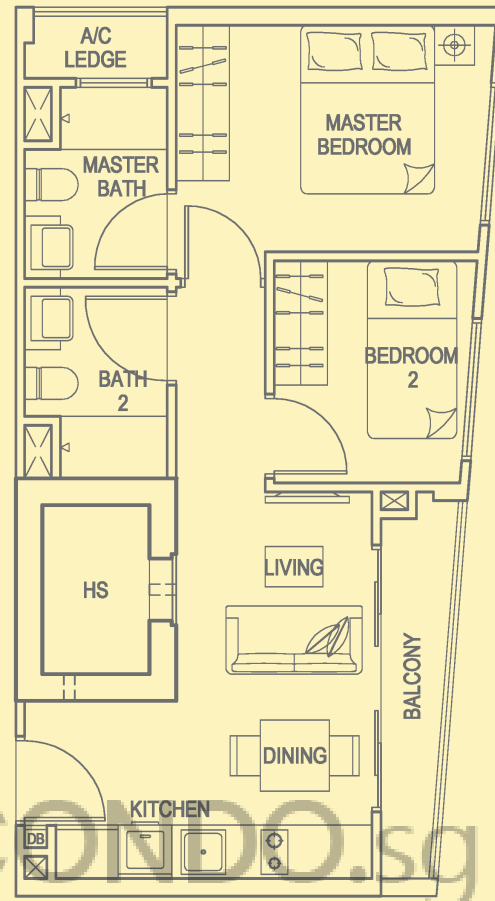


All areas stated herein include PES, A/C Ledges, Balconies, Roof Terraces, Outdoor Jacuzzi, Outdoor Planter where applicable. All areas and measurements stated herein are approximate and subject to adjustment on final survey. All plans are not to scale and subject to amendment as approved by the relevant authorities.

RESIDENTIAL

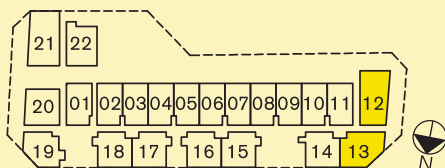
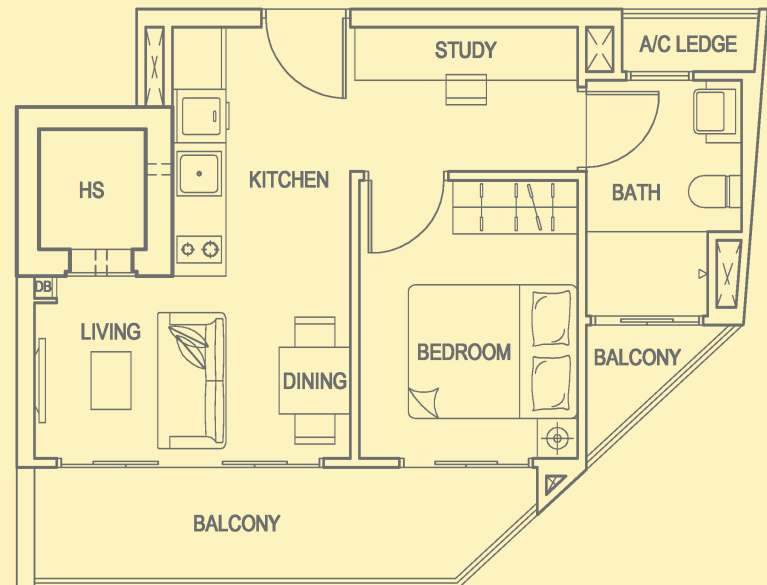
TYPE C

Total Area 517sqft / 48sqm
Unit #02-12 to #05-12

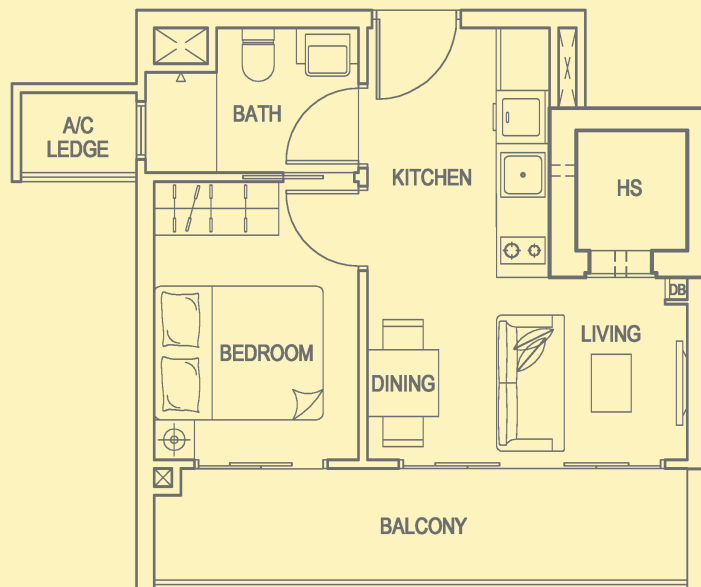


TYPE D

Total Area 474sqft / 44sqm
Unit #02-13 to #04-13

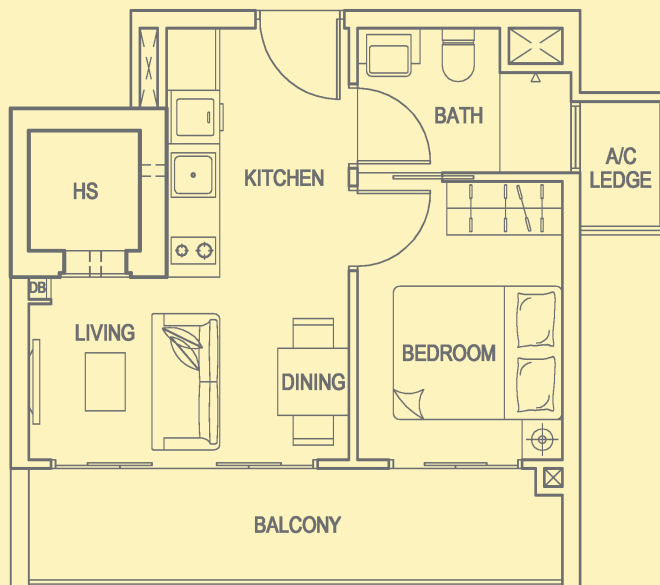


All areas stated herein include PES, A/C Ledges, Balconies, Roof Terraces, Outdoor Jacuzzi, Outdoor Planter where applicable. All areas and measurements stated herein are approximate and subject to adjustment on final survey. All plans are not to scale and subject to amendment as approved by the relevant authorities.



TYPE E

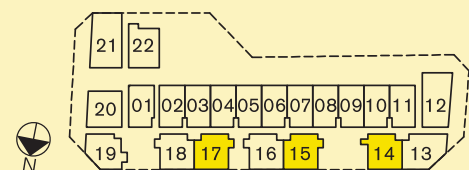
Total Area 420sqft / 39sqm
 Unit #02-14 to #04-14



TYPE F

Total Area 420sqft / 39sqm
 Unit #02-15 to #04-15
 #02-17 to #04-17

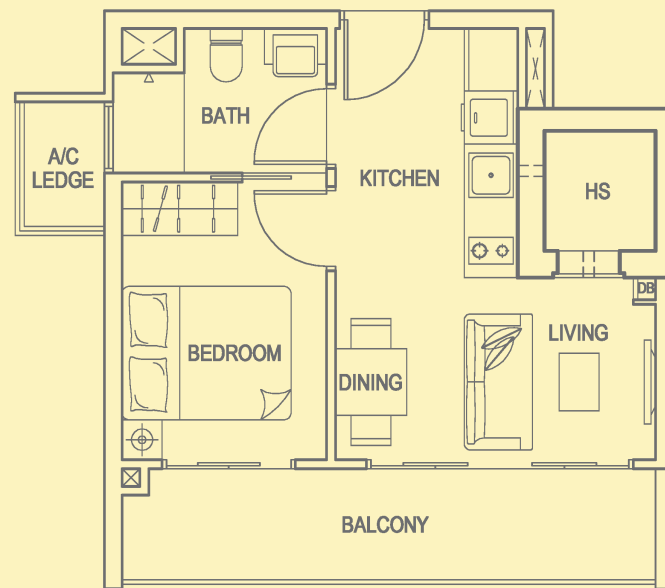
All areas stated herein include PES, A/C Ledges, Balconies, Roof Terraces, Outdoor Jacuzzi, Outdoor Planter where applicable. All areas and measurements stated herein are approximate and subject to adjustment on final survey. All plans are not to scale and subject to amendment as approved by the relevant authorities.



RESIDENTIAL

TYPE G

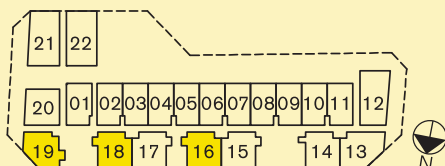
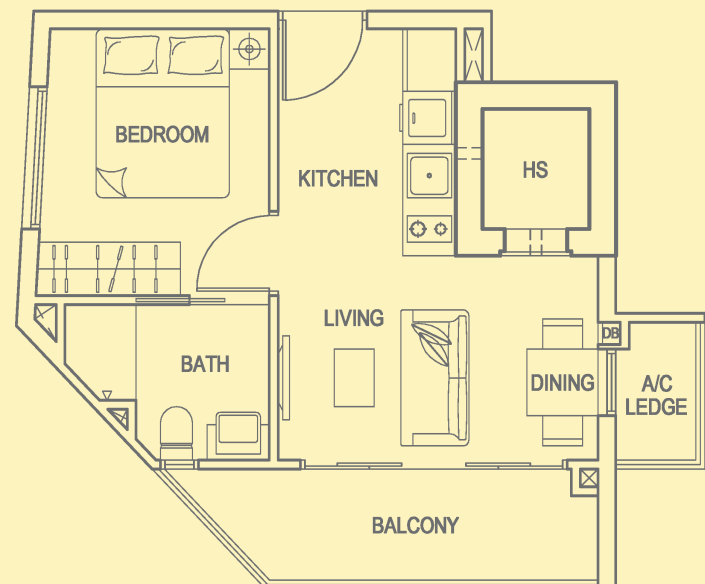
Total Area 420sqft / 39sqm
Unit #02-16 to #04-16
#02-18 to #04-18



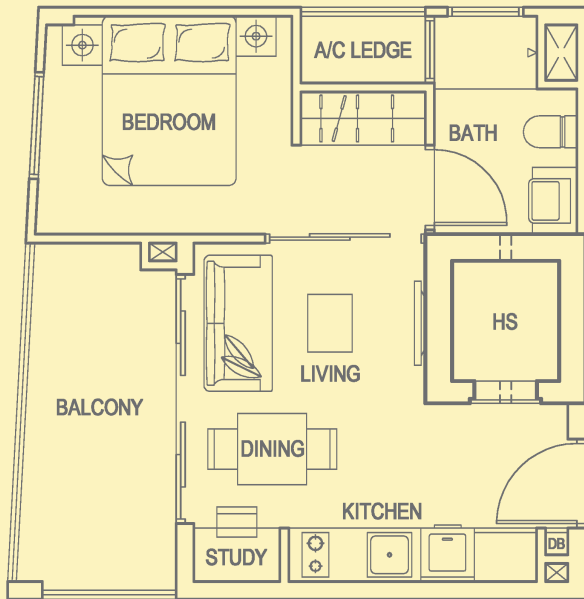
BUYCONDO.sg

TYPE H

Total Area 398sqft / 37sqm
Unit #02-19 to #04-19

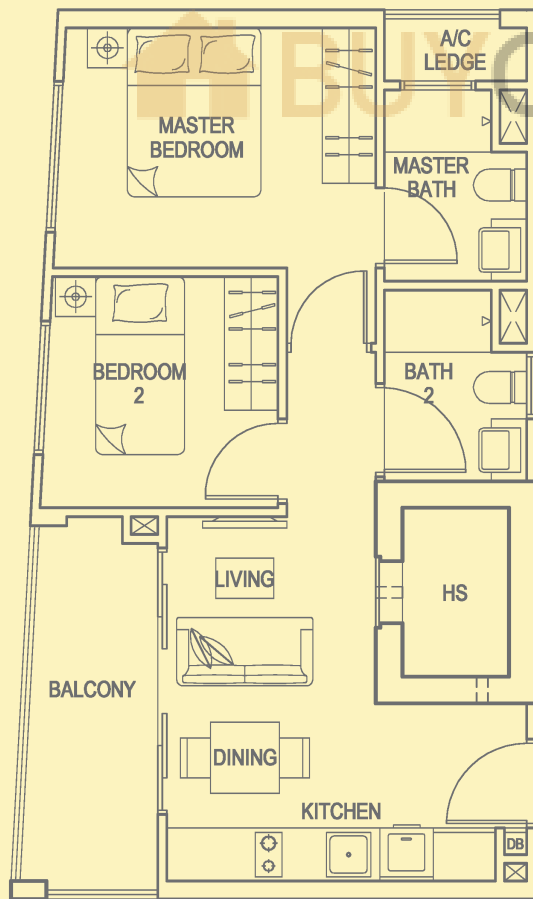


All areas stated herein include PES, A/C Ledges, Balconies, Roof Terraces, Outdoor Jacuzzi, Outdoor Planter where applicable. All areas and measurements stated herein are approximate and subject to adjustment on final survey. All plans are not to scale and subject to amendment as approved by the relevant authorities.



TYPE I

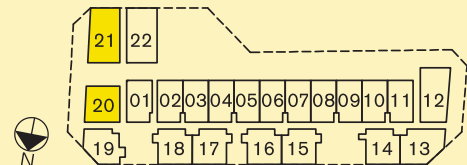
Total Area 431sqft / 40sqm
 Unit #02-20 to #04-20



TYPE J

Total Area 570sqft / 53sqm
 Unit #02-21 to #04-21

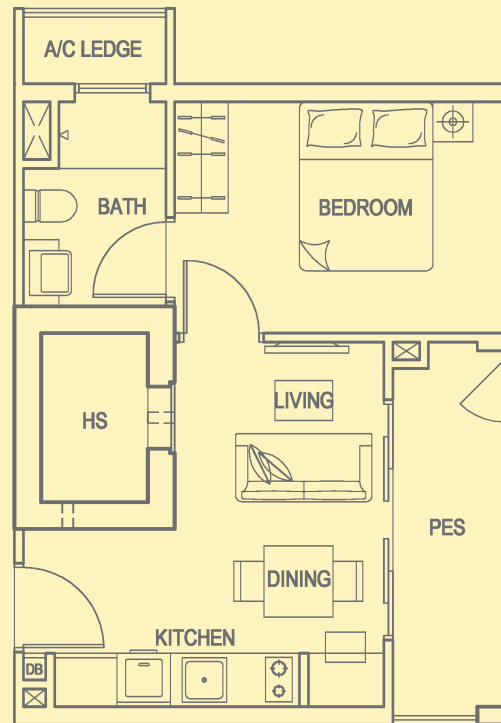
All areas stated herein include PES, A/C Ledges, Balconies, Roof Terraces, Outdoor Jacuzzi, Outdoor Planter where applicable. All areas and measurements stated herein are approximate and subject to adjustment on final survey. All plans are not to scale and subject to amendment as approved by the relevant authorities.



RESIDENTIAL

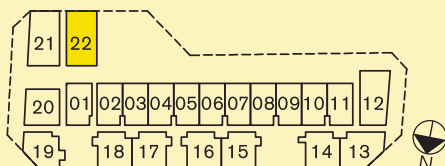
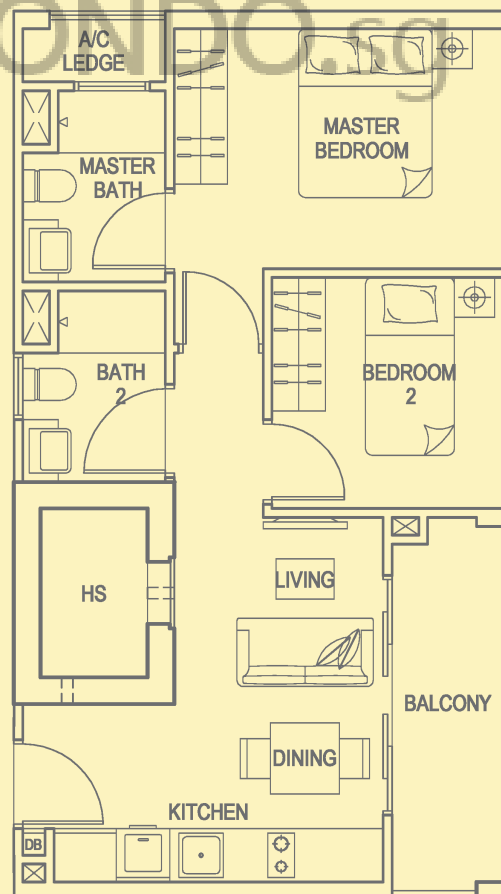
TYPE K

Total Area 420sqft / 39sqm
Unit #02-22

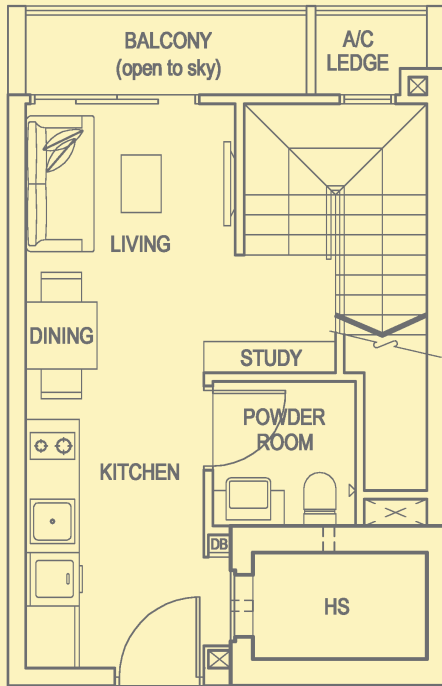


TYPE K1

Total Area 570sqft / 53sqm
Unit #03-22 & #04-22

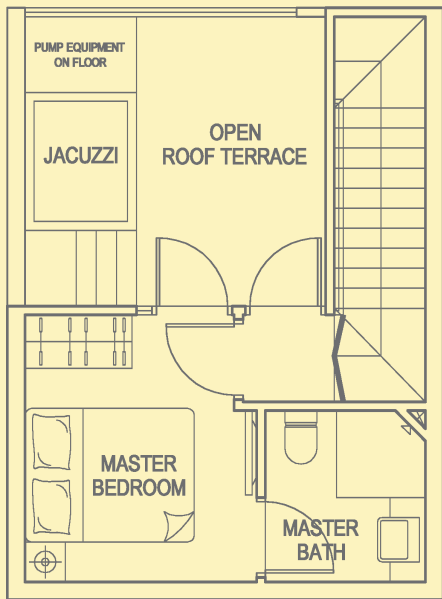


All areas stated herein include PES, A/C Ledges, Balconies, Roof Terraces, Outdoor Jacuzzi, Outdoor Planter where applicable. All areas and measurements stated herein are approximate and subject to adjustment on final survey. All plans are not to scale and subject to amendment as approved by the relevant authorities.

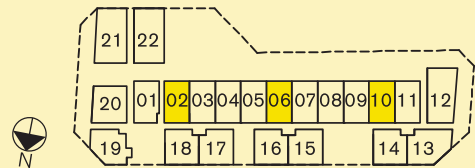


TYPE A2-PH

Total Area 689sqft / 64sqm
 Unit #05-02, #05-06
 #05-10



UPPER STOREY



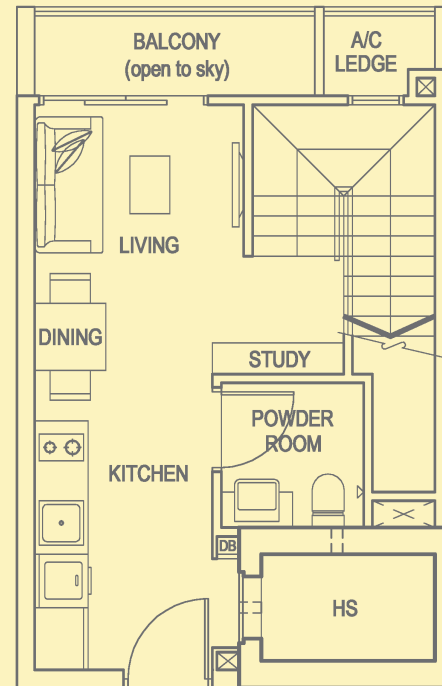
All areas stated herein include PES, A/C Ledges, Balconies, Roof Terraces, Outdoor Jacuzzi, Outdoor Planter where applicable. All areas and measurements stated herein are approximate and subject to adjustment on final survey. All plans are not to scale and subject to amendment as approved by the relevant authorities.



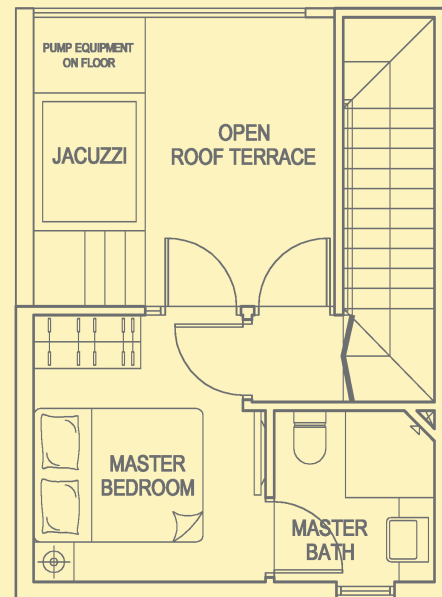
RESIDENTIAL

TYPE A3-PH

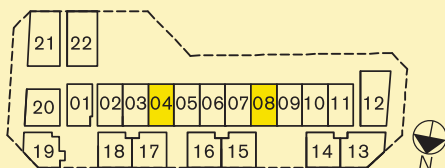
Total Area 689sqft / 64sqm
Unit #05-04, #05-08



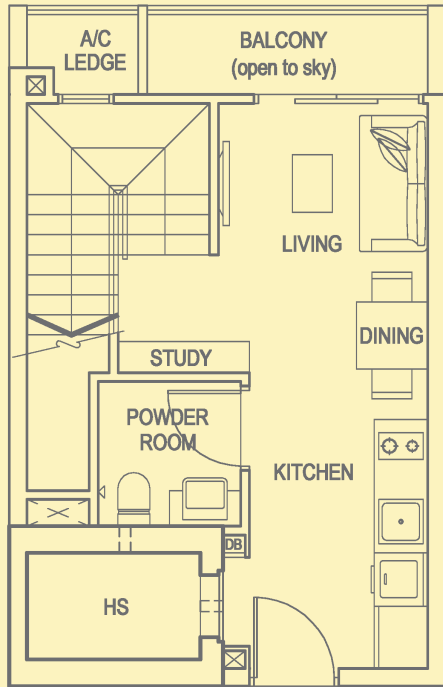
LOWER STOREY



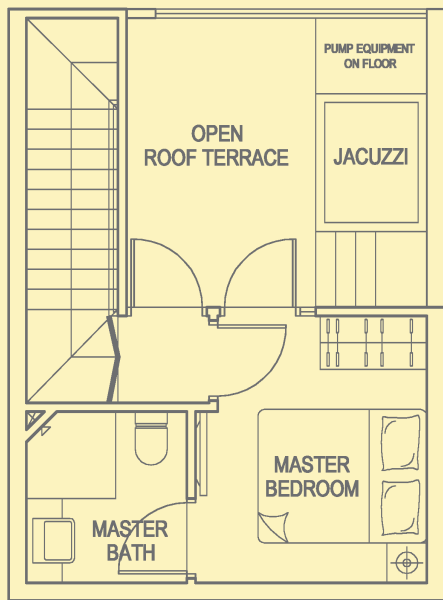
UPPER STOREY



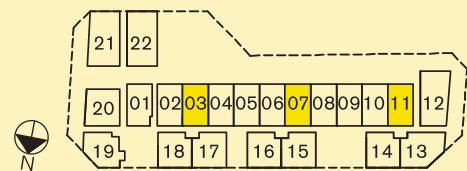
All areas stated herein include PES, A/C Ledges, Balconies, Roof Terraces, Outdoor Jacuzzi, Outdoor Planter where applicable. All areas and measurements stated herein are approximate and subject to adjustment on final survey. All plans are not to scale and subject to amendment as approved by the relevant authorities.



TYPE B2-PH
 Total Area 689sqft / 64sqm
 Unit #05-03, #05-07
 #05-11



UPPER STOREY

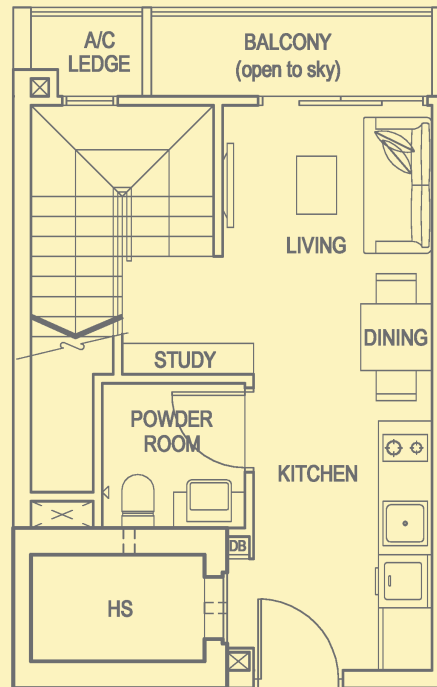


All areas stated herein include PES, A/C Ledges, Balconies, Roof Terraces, Outdoor Jacuzzi, Outdoor Planter where applicable. All areas and measurements stated herein are approximate and subject to adjustment on final survey. All plans are not to scale and subject to amendment as approved by the relevant authorities.

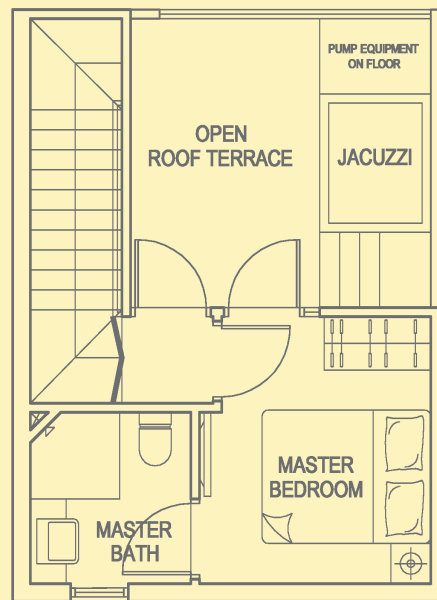
RESIDENTIAL

TYPE B3-PH

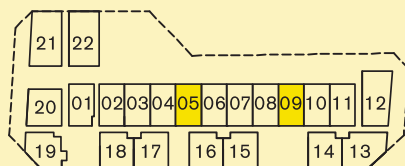
Total Area 689sqft / 64sqm
 Unit #05-05, #05-09



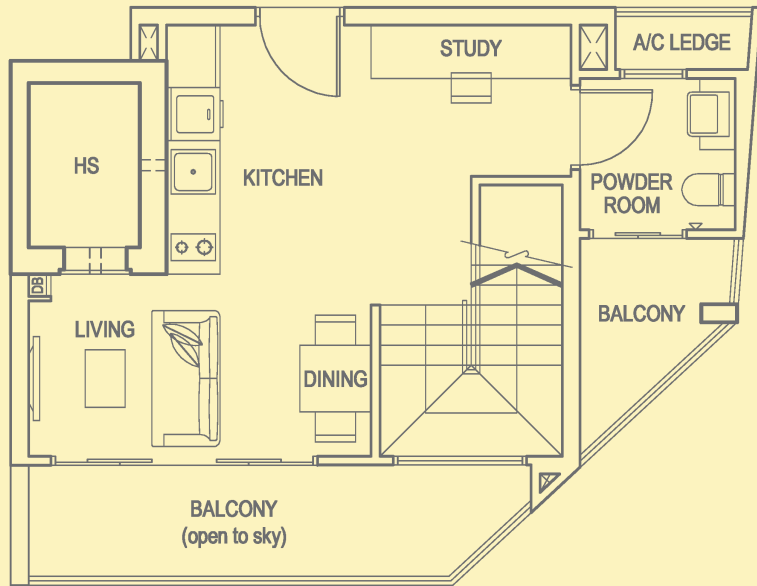
LOWER STOREY



UPPER STOREY

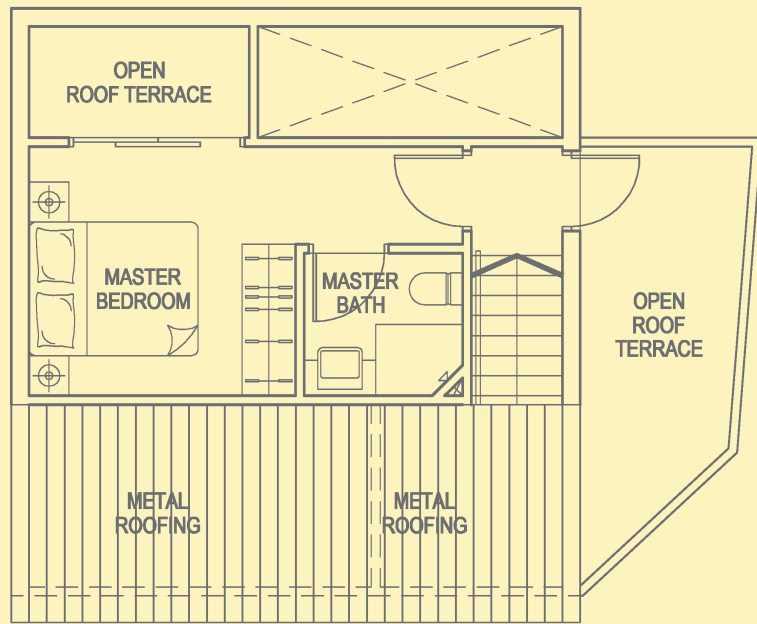


All areas stated herein include PES, A/C Ledges, Balconies, Roof Terraces, Outdoor Jacuzzi, Outdoor Planter where applicable. All areas and measurements stated herein are approximate and subject to adjustment on final survey. All plans are not to scale and subject to amendment as approved by the relevant authorities.



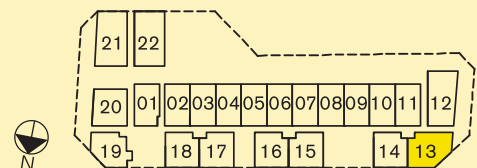
LOWER STOREY

TYPE D1-PH
 Total Area 850sqft / 79sqm
 Unit #05-13



UPPER STOREY

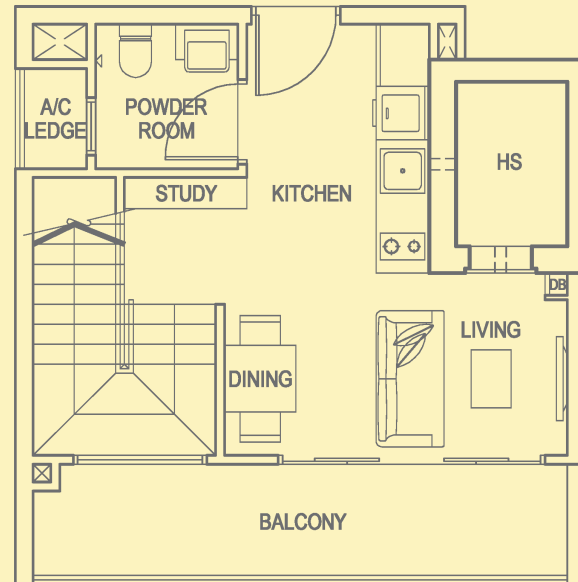
All areas stated herein include PES, A/C Ledges, Balconies, Roof Terraces, Outdoor Jacuzzi, Outdoor Planter where applicable. All areas and measurements stated herein are approximate and subject to adjustment on final survey. All plans are not to scale and subject to amendment as approved by the relevant authorities.



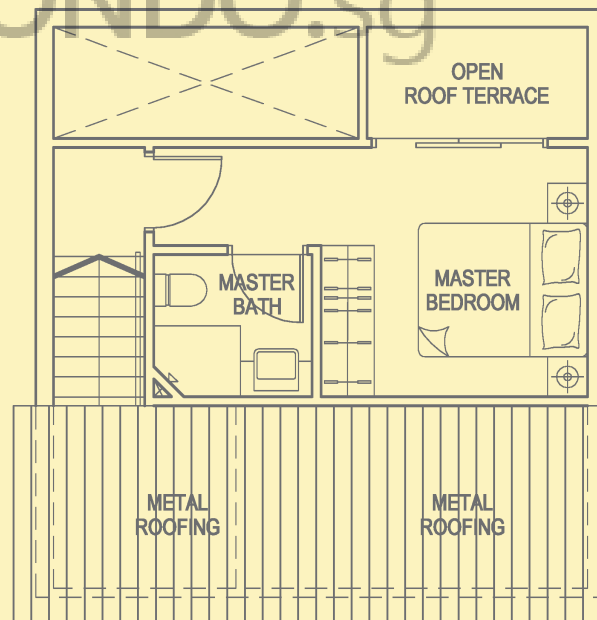
RESIDENTIAL

TYPE E1-PH

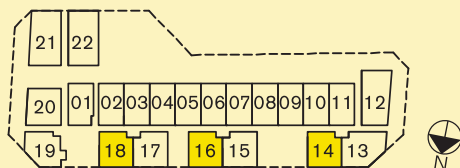
Total Area 689sqft / 64sqm
 Unit #05-14, #05-16
 #05-18



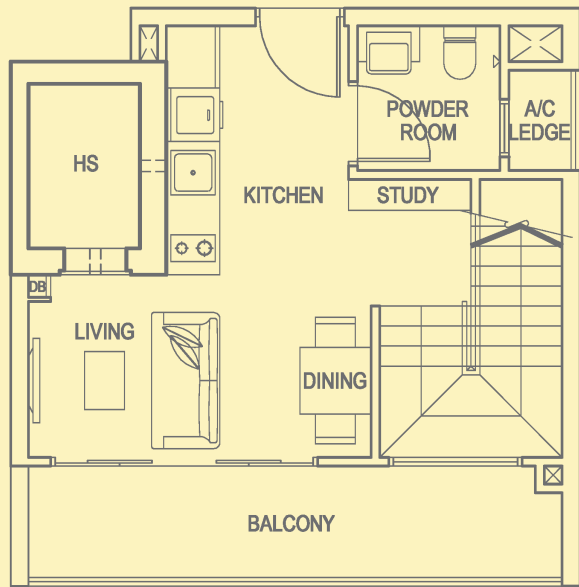
LOWER STOREY



UPPER STOREY

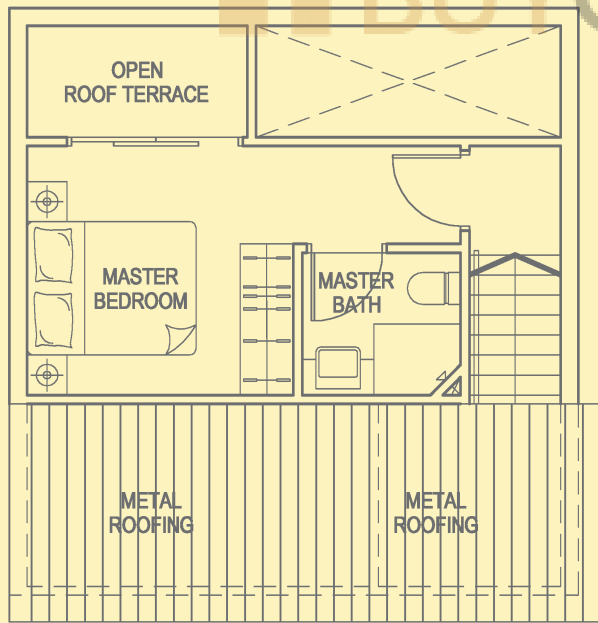


All areas stated herein include PES, A/C Ledges, Balconies, Roof Terraces, Outdoor Jacuzzi, Outdoor Planter where applicable. All areas and measurements stated herein are approximate and subject to adjustment on final survey. All plans are not to scale and subject to amendment as approved by the relevant authorities.



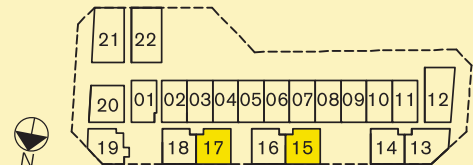
LOWER STOREY

TYPE F1-PH
 Total Area 689sqft / 64sqm
 Unit #05-15 & #05-17



UPPER STOREY

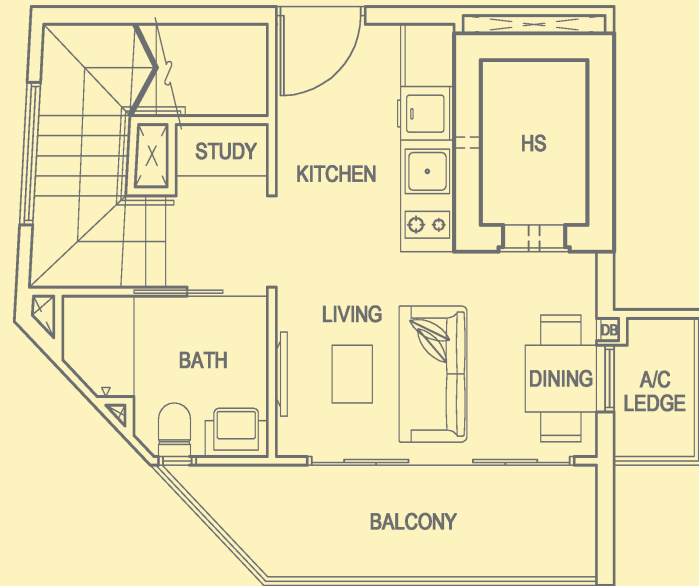
All areas stated herein include PES, A/C Ledges, Balconies, Roof Terraces, Outdoor Jacuzzi, Outdoor Planter where applicable. All areas and measurements stated herein are approximate and subject to adjustment on final survey. All plans are not to scale and subject to amendment as approved by the relevant authorities.



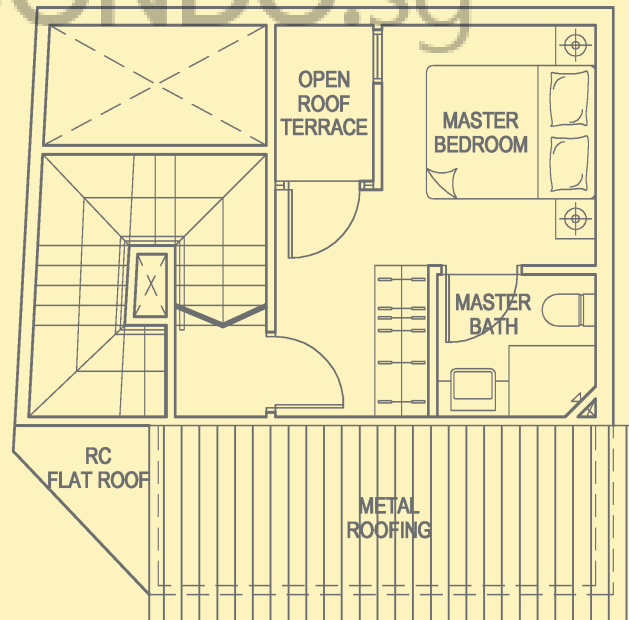
RESIDENTIAL

TYPE H1-PH

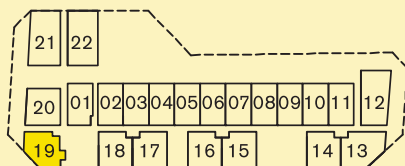
Total Area 678sqft / 63sqm
Unit #05-19



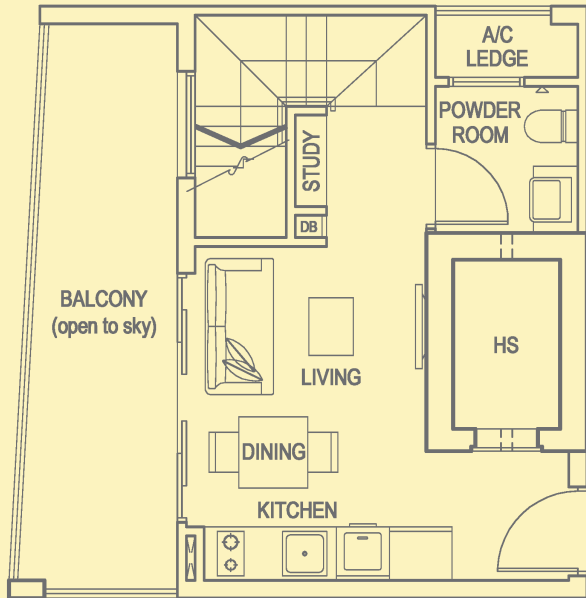
LOWER STOREY



UPPER STOREY



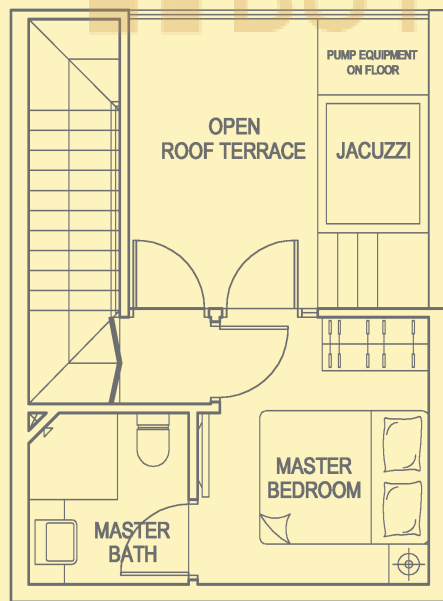
All areas stated herein include PES, A/C Ledges, Balconies, Roof Terraces, Outdoor Jacuzzi, Outdoor Planter where applicable. All areas and measurements stated herein are approximate and subject to adjustment on final survey. All plans are not to scale and subject to amendment as approved by the relevant authorities.



LOWER STOREY

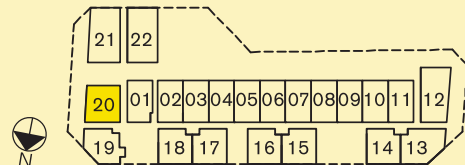
TYPE I1-PH

Total Area 872sqft / 81sqm
Unit #05-20



UPPER STOREY

BUYCONDO.sg

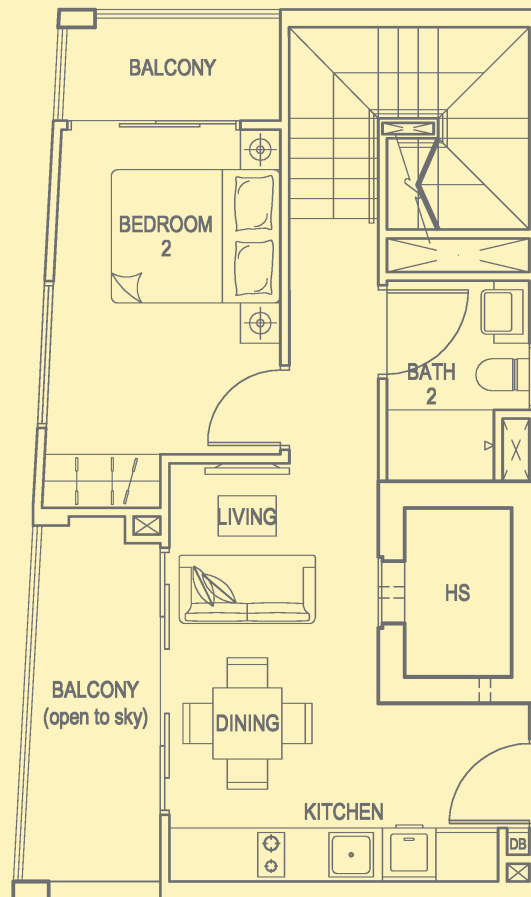


All areas stated herein include PES, A/C Ledges, Balconies, Roof Terraces, Outdoor Jacuzzi, Outdoor Planter where applicable. All areas and measurements stated herein are approximate and subject to adjustment on final survey. All plans are not to scale and subject to amendment as approved by the relevant authorities.

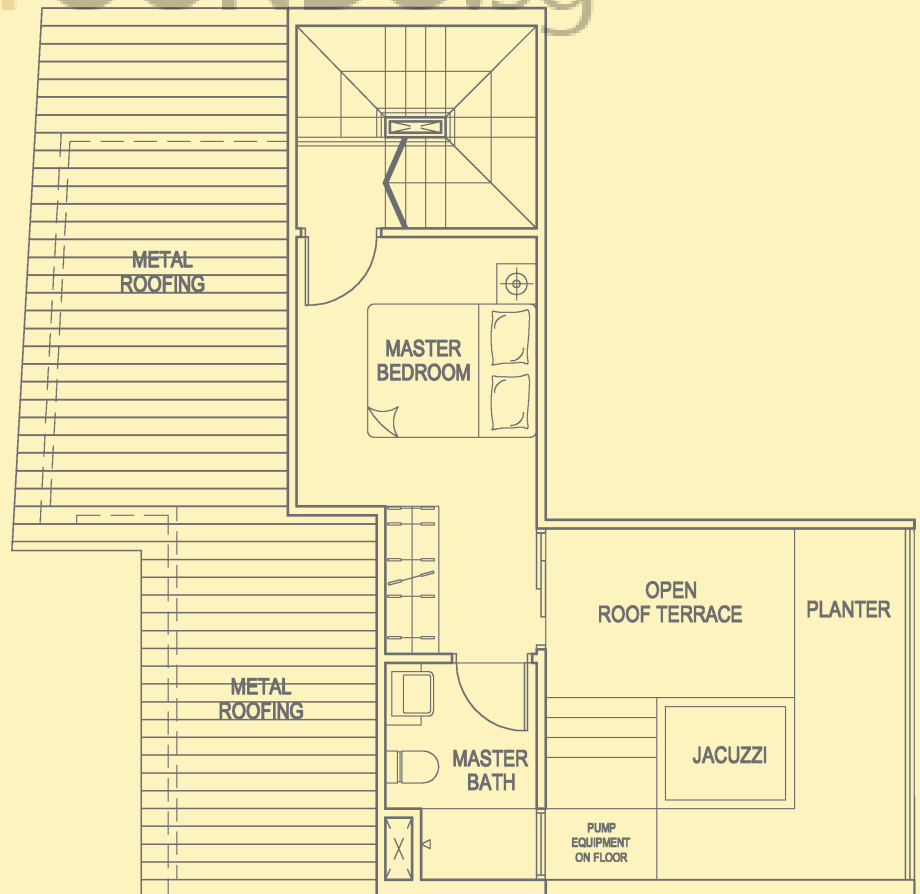
RESIDENTIAL

TYPE J1-PH

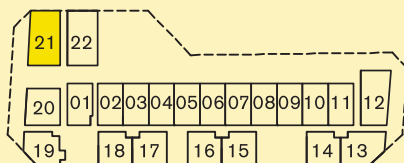
Total Area 990sqft / 92sqm
Unit #05-21



LOWER STOREY

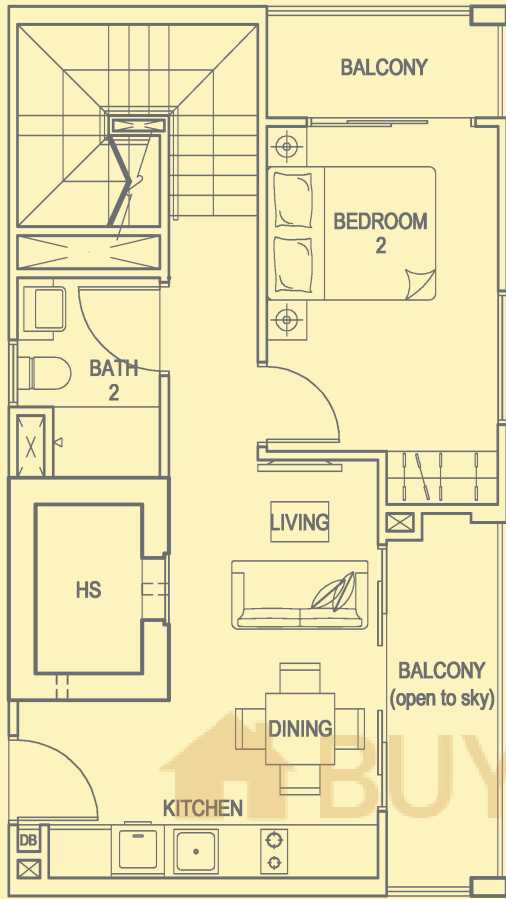


UPPER STOREY

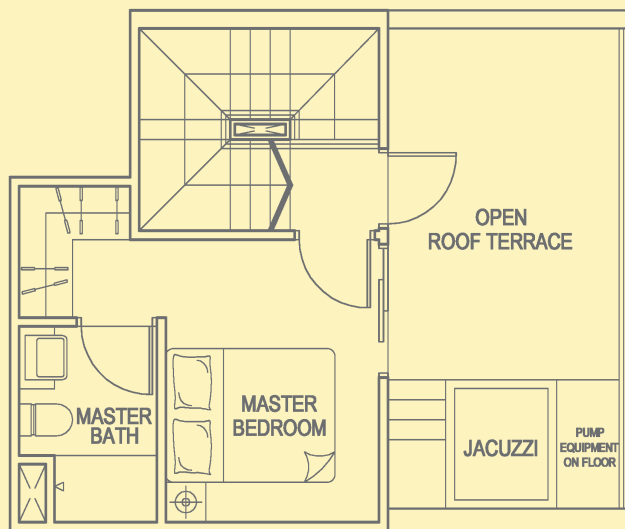


All areas stated herein include PES, A/C Ledges, Balconies, Roof Terraces, Outdoor Jacuzzi, Outdoor Planter where applicable. All areas and measurements stated herein are approximate and subject to adjustment on final survey. All plans are not to scale and subject to amendment as approved by the relevant authorities.

 BUYCONDO.sg



LOWER STOREY



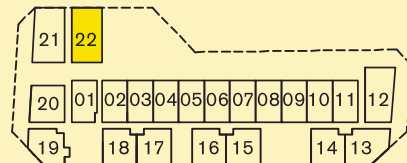
UPPER STOREY

TYPE K2-PH

Total Area 947sqft / 88sqm
 Unit #05-22

BUY CONDO.sg

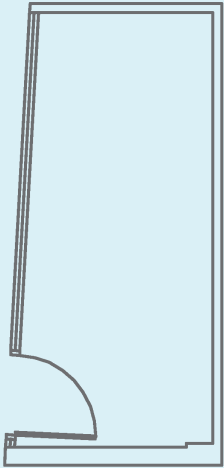
All areas stated herein include PES, A/C Ledges, Balconies, Roof Terraces, Outdoor Jacuzzi, Outdoor Planter where applicable. All areas and measurements stated herein are approximate and subject to adjustment on final survey. All plans are not to scale and subject to amendment as approved by the relevant authorities.



COMMERCIAL

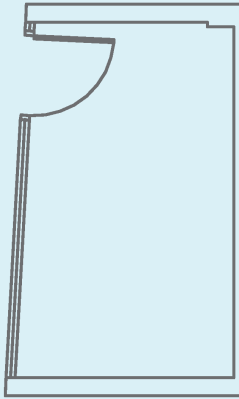
SHOP 1

Total Area 118sqft / 11sqm
Unit #01-01



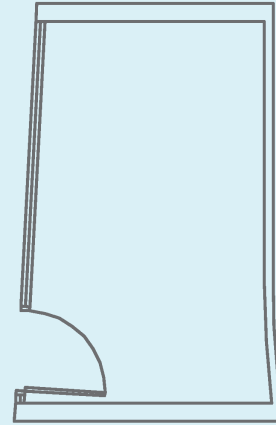
SHOP 2

Total Area 108sqft / 10sqm
Unit #01-02



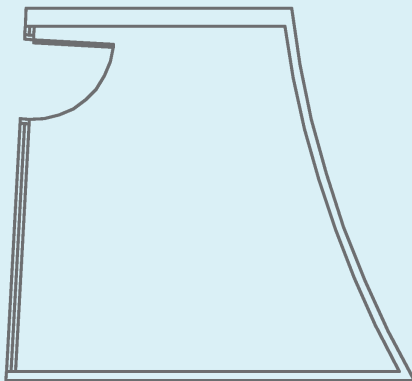
SHOP 3

Total Area 129sqft / 12sqm
Unit #01-03



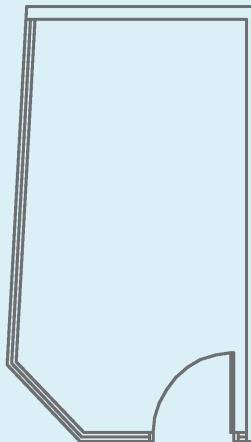
SHOP 4

Total Area 151sqft / 14sqm
Unit #01-04



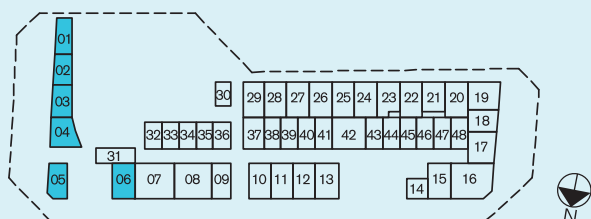
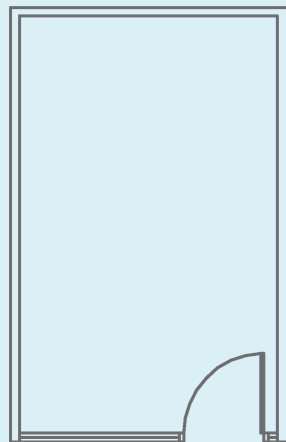
SHOP 5

Total Area 129sqft / 12sqm
Unit #01-05



SHOP 6

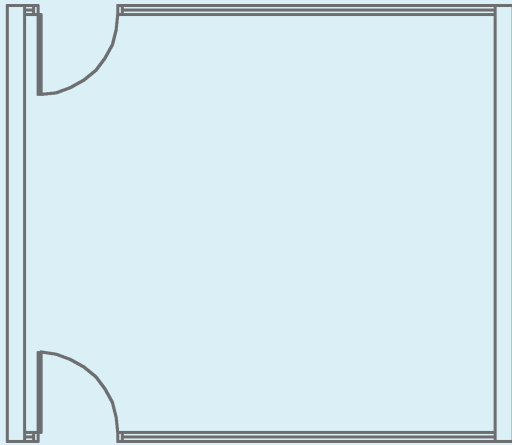
Total Area 161sqft / 15sqm
Unit #01-06



All areas and measurements stated herein are approximate and subject to adjustment on final survey. All plans are not to scale and subject to amendment as approved by the relevant authorities.

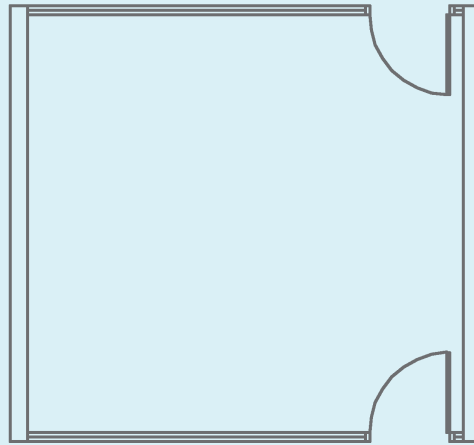
SHOP 7

Total Area 280sqft / 26sqm
Unit #01-07



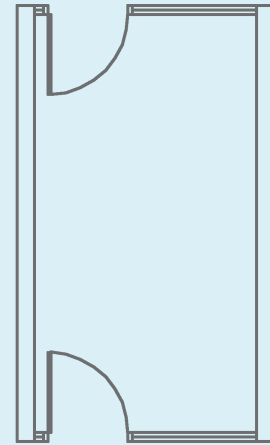
SHOP 8

Total Area 269sqft / 25sqm
Unit #01-08



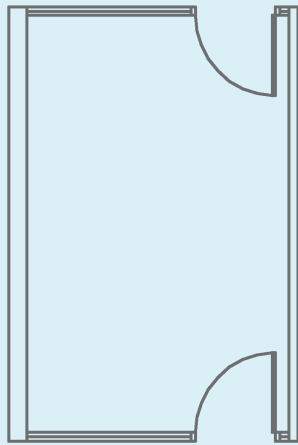
SHOP 9

Total Area 140sqft / 13sqm
Unit #01-09



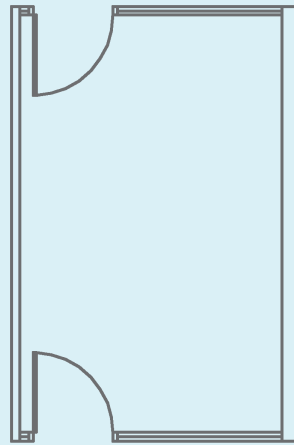
SHOP 10 & 12

Total Area 161sqft / 15sqm
Unit #01-10 & #01-12



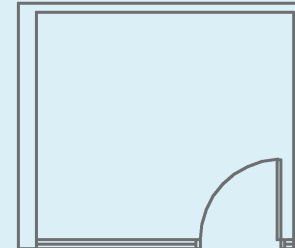
SHOP 11 & 13

Total Area 161sqft / 15sqm
Unit #01-11 & #01-13



SHOP 14

Total Area 86sqft / 8sqm
Unit #01-14



BUYCONDO.SG

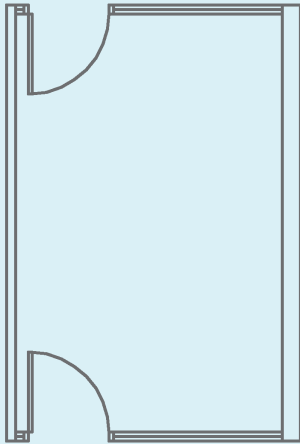
All areas and measurements stated herein are approximate and subject to adjustment on final survey. All plans are not to scale and subject to amendment as approved by the relevant authorities.



COMMERCIAL

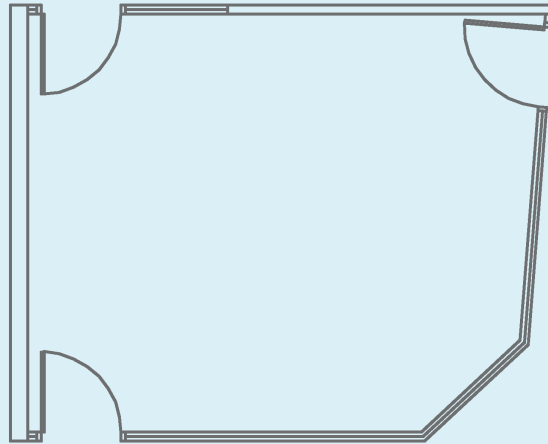
SHOP 15

Total Area 161sqft / 15sqm
Unit #01-15



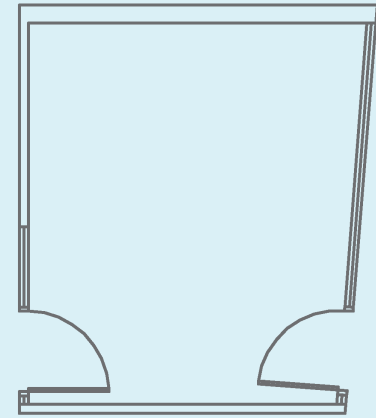
SHOP 16

Total Area 291sqft / 27sqm
Unit #01-16



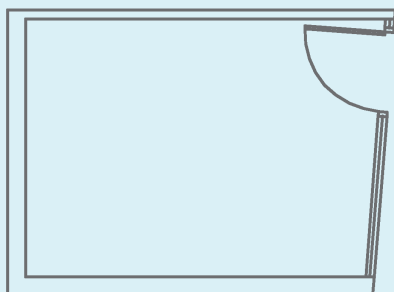
SHOP 17

Total Area 183sqft / 17sqm
Unit #01-17



SHOP 18

Total Area 140sqft / 13sqm
Unit #01-18



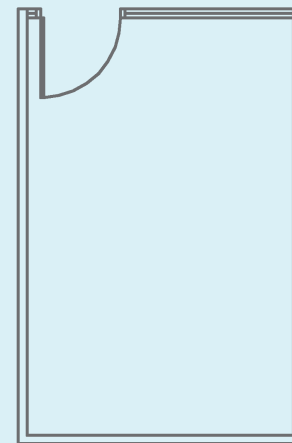
SHOP 19

Total Area 183sqft / 17sqm
Unit #01-19

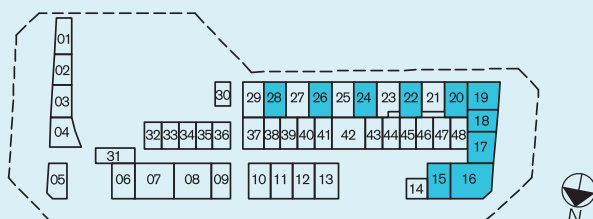


SHOP 20, 22, 24, 26 & 28

Total Area 161sqft / 15sqm
Unit #01-20, #01-22, #01-24
#01-26 & #01-28



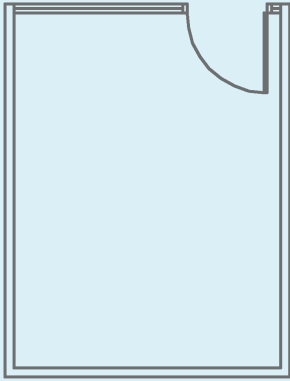
 BUYCONDO.sg



All areas and measurements stated herein are approximate and subject to adjustment on final survey. All plans are not to scale and subject to amendment as approved by the relevant authorities.

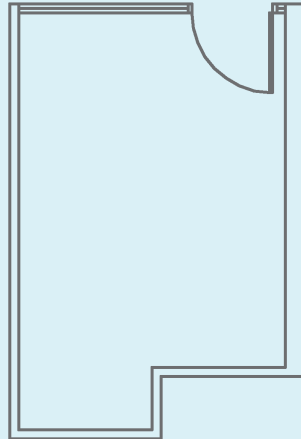
SHOP 21

Total Area 140sqft / 13sqm
Unit #01-21



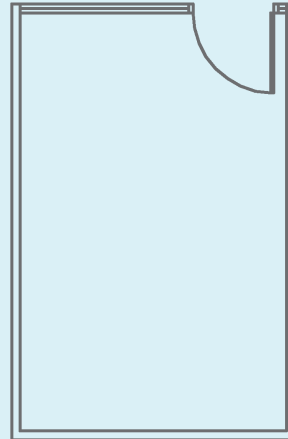
SHOP 23

Total Area 151sqft / 14sqm
Unit #01-23



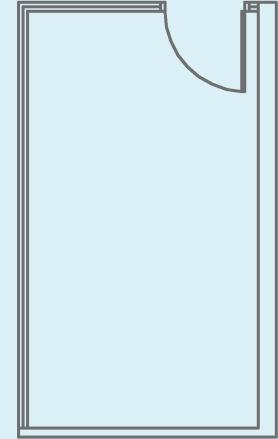
SHOP 25 & 27

Total Area 161sqft / 15sqm
Unit #01-25 & #01-27



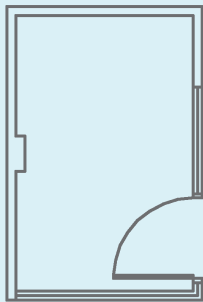
SHOP 29

Total Area 140sqft / 13sqm
Unit #01-29



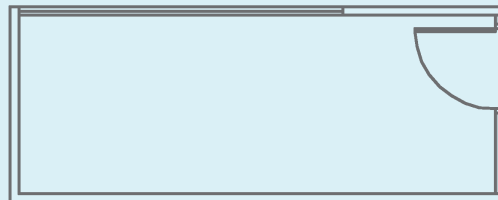
SHOP 30

Total Area 75sqft / 7sqm
Unit #01-30



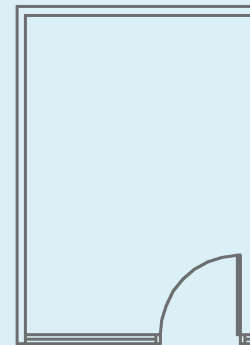
SHOP 31

Total Area 129sqft / 12sqm
Unit #01-31



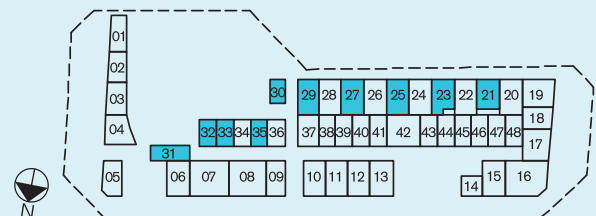
SHOP 32, 33 & 35

Total Area 108sqft / 10sqm
Unit #01-32, #01-33 & #01-35



BUY CONDO.sg

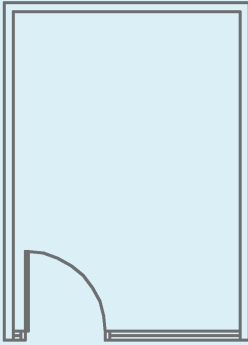
All areas and measurements stated herein are approximate and subject to adjustment on final survey. All plans are not to scale and subject to amendment as approved by the relevant authorities.



COMMERCIAL

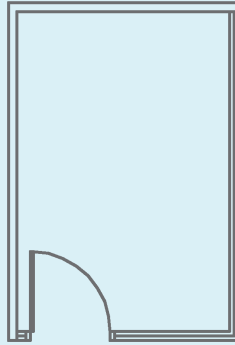
SHOP 34

Total Area 108sqft / 10sqm
Unit #01-34



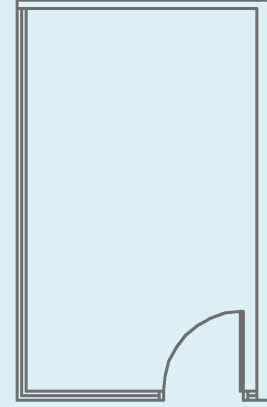
SHOP 36

Total Area 97sqft / 9sqm
Unit #01-36



SHOP 37

Total Area 129sqft / 12sqm
Unit #01-37



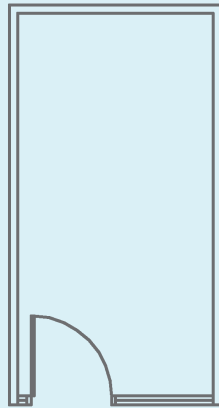
SHOP 38, 40, 43, 45 & 47

Total Area 108sqft / 10sqm
Unit #01-38, #01-40, #01-43
#01-45 & #01-47



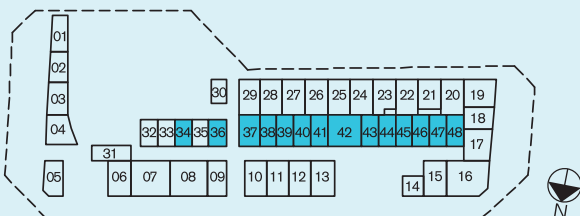
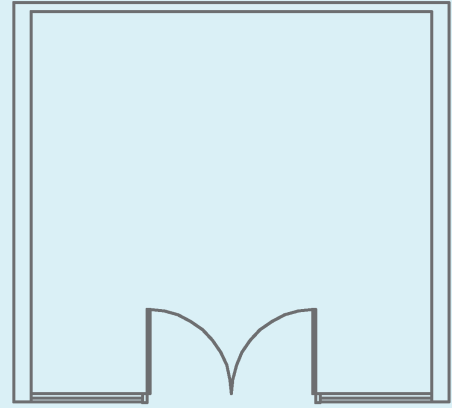
SHOP 39, 41, 44, 46 & 48

Total Area 108sqft / 10sqm
Unit #01-39, #01-41, #01-44
#01-46 & #01-48



SHOP 42

Total Area 226sqft / 21sqm
Unit #01-42



All areas and measurements stated herein are approximate and subject to adjustment on final survey. All plans are not to scale and subject to amendment as approved by the relevant authorities.