

# 3-BEDROOM

# 3-BEDROOM

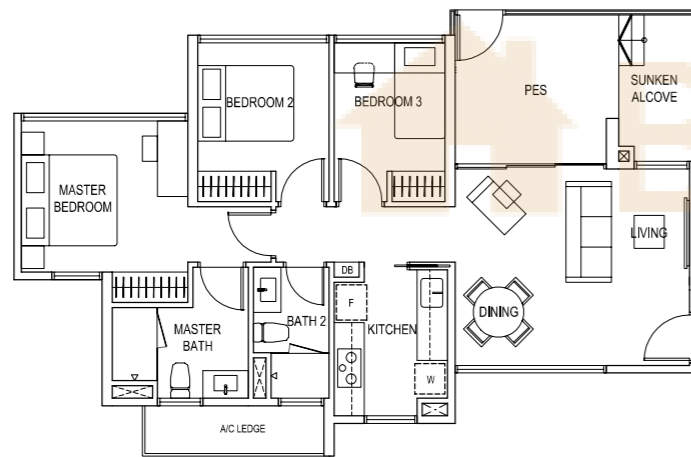
## Classic Entrance

Type A1(p)

90 sq m / 969 sq ft

BLK 1  
#01-03†

BLK 5  
#02-10\*  
#01-11†



## Classic Entrance

Type A1a

85 sq m / 915 sq ft

BLK 1  
#02-03, #04-03, #06-03, #08-03,  
#10-03, #12-03, #14-03, #16-03,  
#18-03, #20-03, #22-03, #24-03

BLK 5  
#03-10\*, #05-10\*, #07-10\*, #09-10\*,  
#11-10\*, #13-10\*, #15-10\*, #17-10\*,  
#19-10\*, #21-10\*

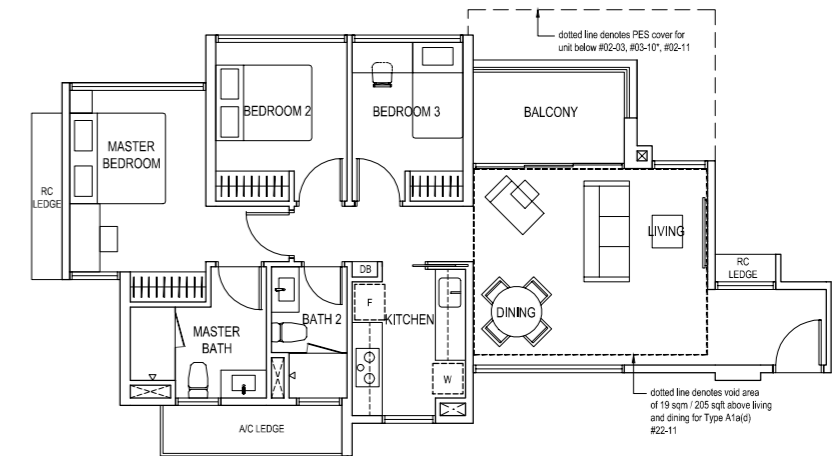
#02-11, #04-11, #06-11, #08-11,  
#10-11, #12-11, #14-11, #16-11,  
#18-11, #20-11

Type A1a(d)

104 sq m / 1119 sq ft

including void area of 19 sq m /  
205 sq ft above living and dining

BLK 5  
#22-11



## Balcony Entrance

Type A1b

86 sq m / 926 sq ft

BLK 1  
#03-03, #05-03, #07-03, #09-03,  
#11-03, #13-03, #15-03, #17-03,  
#19-03, #21-03, #23-03

BLK 5  
#04-10\*, #06-10\*, #08-10\*, #10-10\*,  
#12-10\*, #14-10\*, #16-10\*, #18-10\*,  
#20-10\*

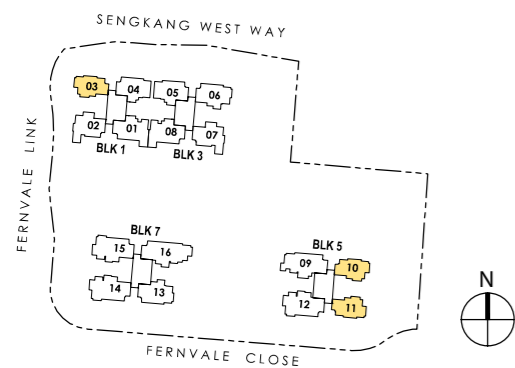
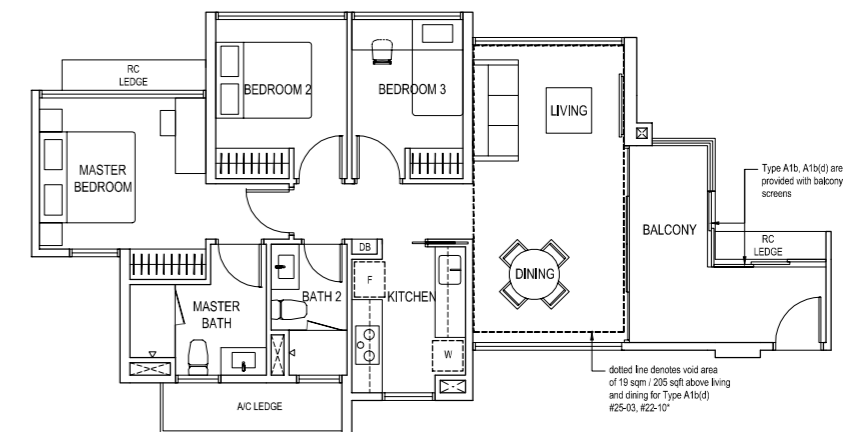
#03-11, #05-11, #07-11, #09-11,  
#11-11, #13-11, #15-11, #17-11,  
#19-11, #21-11

Type A1b(d)

105 sq m / 1130 sq ft

including void area of 19 sq m /  
205 sq ft above living and dining

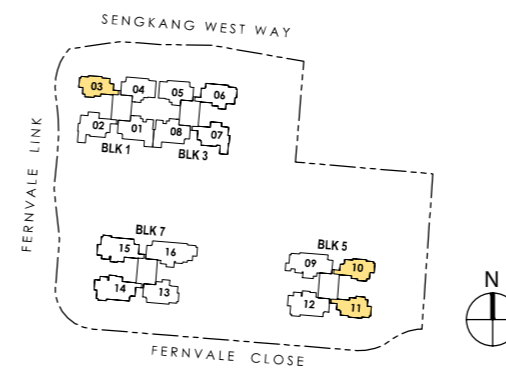
BLK 1     BLK 5  
#25-03    #22-10\*



Keyplan is not drawn to scale

† Approx. 4.5m floor to ceiling height at living, dining, and bedrooms. Open storage space in different dimensions is provided above Bedroom wardrobe.

\* Mirror image



Keyplan is not drawn to scale

\* Mirror image



# 3-BEDROOM SUITE

# 3-BEDROOM SUITE

## Classic Entrance

Type A2(p)

112 sq m / 1206 sq ft

BLK 1  
#02-02\*

BLK 3  
#02-07



## Classic Entrance

Type A2a

105 sq m / 1130 sq ft

BLK 1  
#03-02\*, #05-02\*, #07-02\*, #09-02\*,  
#11-02\*, #13-02\*, #15-02\*, #17-02\*,  
#19-02\*, #21-02\*, #23-02\*

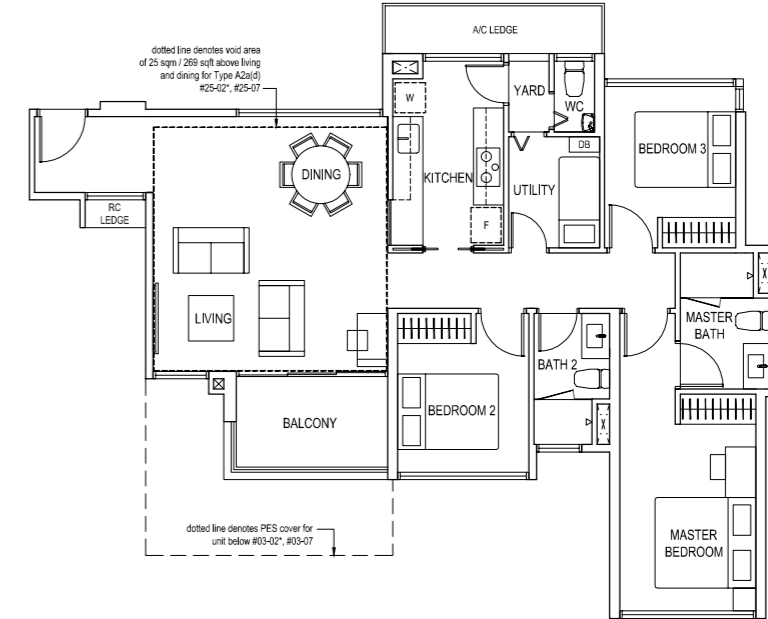
BLK 3  
#03-07, #05-07, #07-07, #09-07,  
#11-07, #13-07, #15-07, #17-07,  
#19-07, #21-07, #23-07

## Type A2a(d)

130 sq m / 1399 sq ft

including void area of 25 sq m /  
269 sq ft above living and dining

BLK 1    BLK 3  
#25-02\*    #25-07



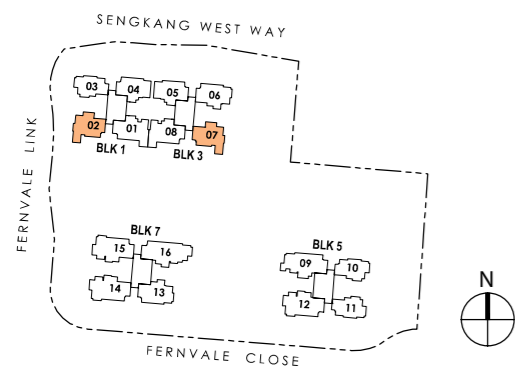
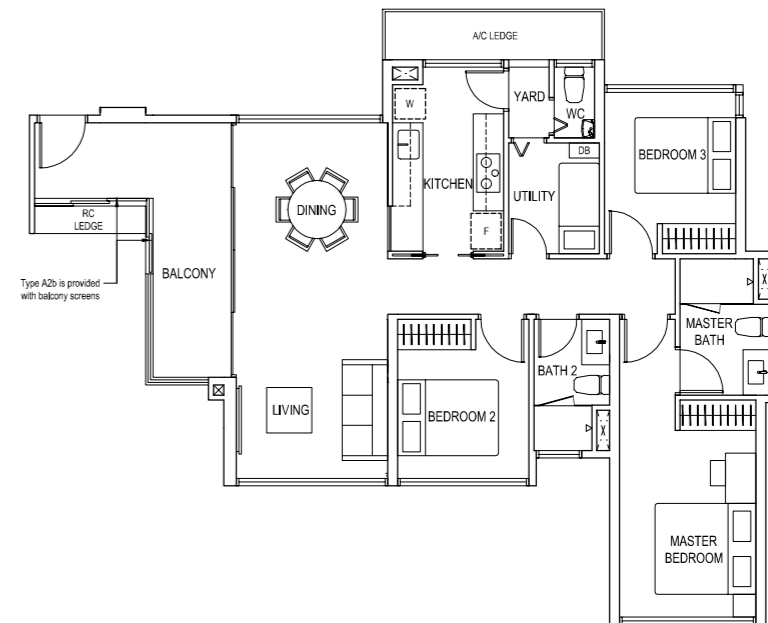
## Balcony Entrance

Type A2b

105 sq m / 1130 sq ft

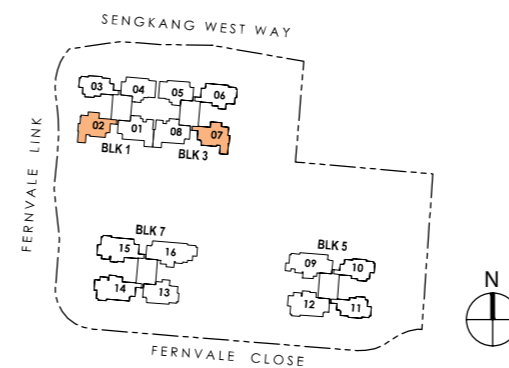
BLK 1  
#04-02\*, #06-02\*, #08-02\*, #10-02\*,  
#12-02\*, #14-02\*, #16-02\*, #18-02\*,  
#20-02\*, #22-02\*, #24-02\*

BLK 3  
#04-07, #06-07, #08-07, #10-07,  
#12-07, #14-07, #16-07, #18-07,  
#20-07, #22-07, #24-07



Keyplan is not drawn to scale

\*Mirror image



Keyplan is not drawn to scale

\*Mirror image



# 3-BEDROOM SUITE

# 3-BEDROOM SUITE

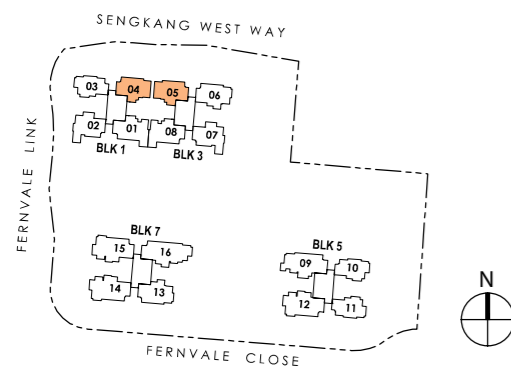
## Classic Entrance

Type A3(p)

108 sq m / 1163 sq ft

BLK 1  
#01-04†

BLK 3  
#01-05\*†



Keyplan is not drawn to scale

## Classic Entrance

Type A3a

98 sq m / 1055 sq ft

BLK 1  
#03-04, #05-04, #07-04, #09-04,  
#11-04, #13-04, #15-04, #17-04,  
#19-04, #21-04, #23-04

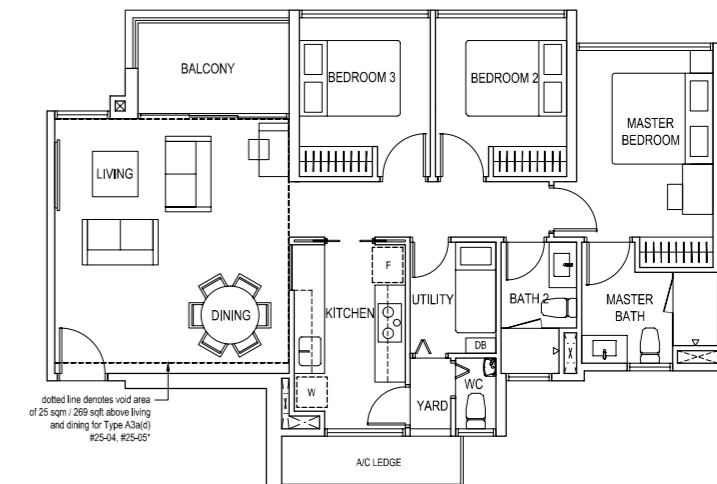
BLK 3  
#03-05\*, #05-05\*, #07-05\*, #09-05\*,  
#11-05\*, #13-05\*, #15-05\*, #17-05\*,  
#19-05\*, #21-05\*, #23-05\*

## Type A3a(d)

123 sq m / 1324 sq ft

including void area of 25 sq m /  
269 sq ft above living and dining

BLK 1      BLK 3  
#25-04    #25-05\*



dotted line denotes void area of 25 sqm / 269 sqft above living and dining for Type A3a(d) #25-04, #25-05\*

## Balcony Entrance

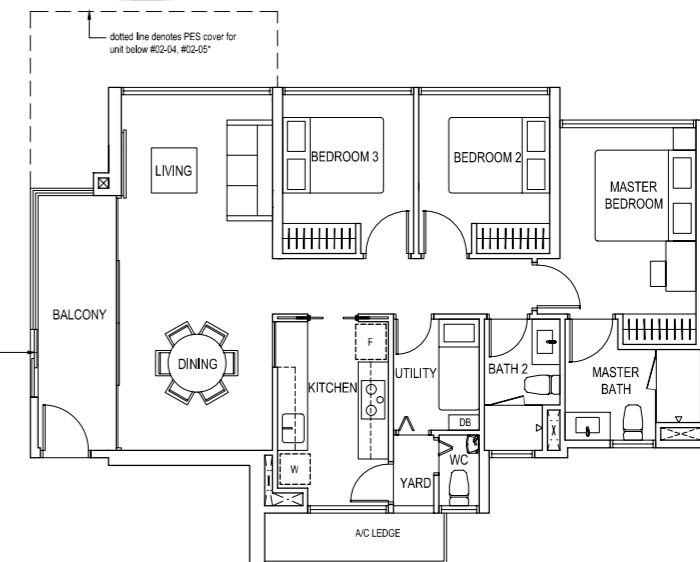
Type A3b

98 sq m / 1055 sq ft

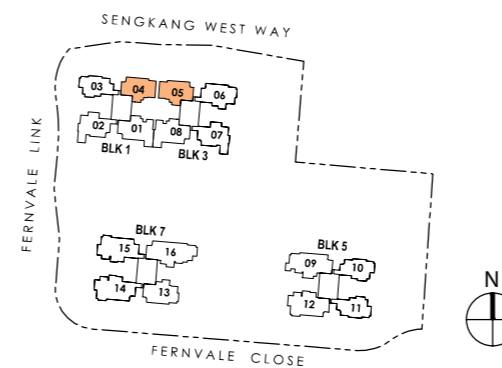
BLK 1  
#02-04, #04-04, #06-04, #08-04,  
#10-04, #12-04, #14-04, #16-04,  
#18-04, #20-04, #22-04, #24-04

BLK 3  
#02-05\*, #04-05\*, #06-05\*, #08-05\*,  
#10-05\*, #12-05\*, #14-05\*, #16-05\*,  
#18-05\*, #20-05\*, #22-05\*, #24-05\*

Type A3b is provided with balcony screens



dotted line denotes PES cover for unit below #02-04, #02-05\*



Keyplan is not drawn to scale

† Approx. 4.5m floor to ceiling height at living, dining, and bedrooms. Open storage space in different dimensions is provided above Bedroom wardrobe.

\* Mirror image



\* Mirror image



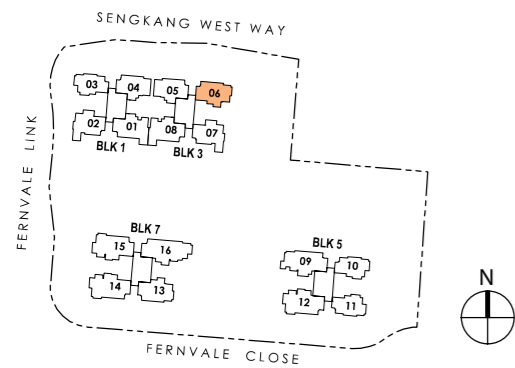
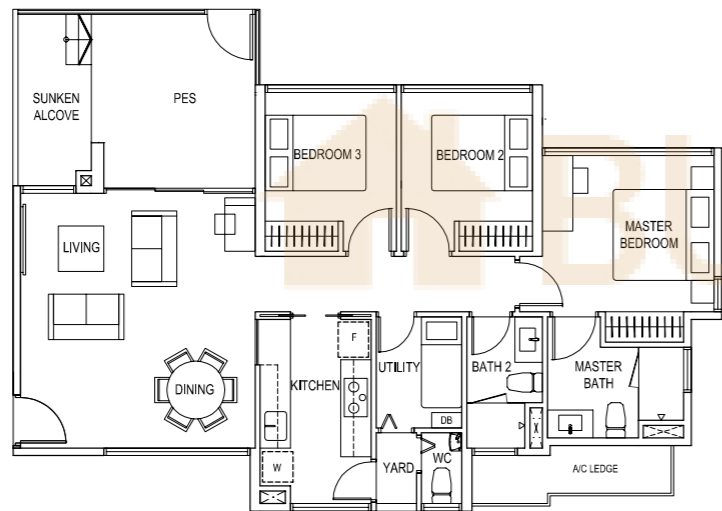
# 3-BEDROOM SUITE

## Classic Entrance

Type A4(p)

109 sq m / 1173 sq ft

BLK 3  
#01-06†



Keyplan is not drawn to scale

† Approx. 4.5m floor to ceiling height at living, dining, and bedrooms. Open storage space in different dimensions is provided above Bedroom wardrobe.



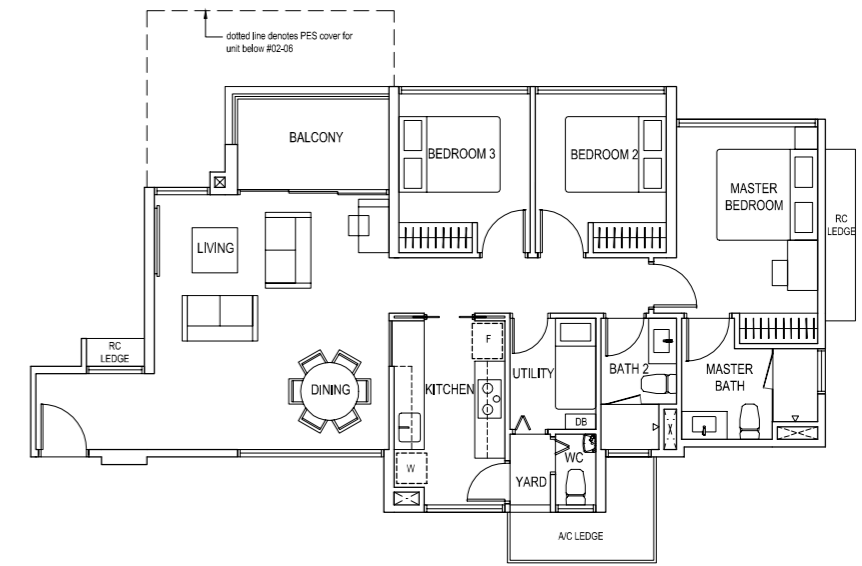
# 3-BEDROOM SUITE

## Classic Entrance

Type A4a

102 sq m / 1098 sq ft

BLK 3  
#02-06, #04-06, #06-06, #08-06,  
#10-06, #12-06, #14-06, #16-06,  
#18-06, #20-06, #22-06, #24-06



## Balcony Entrance

Type A4b

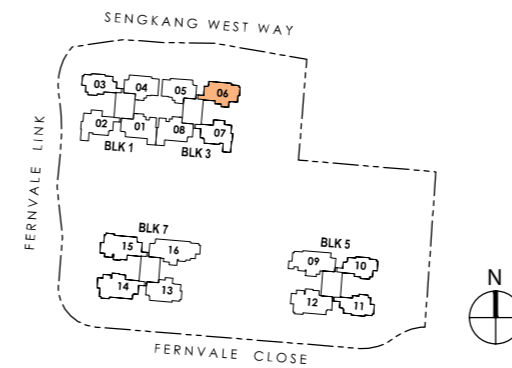
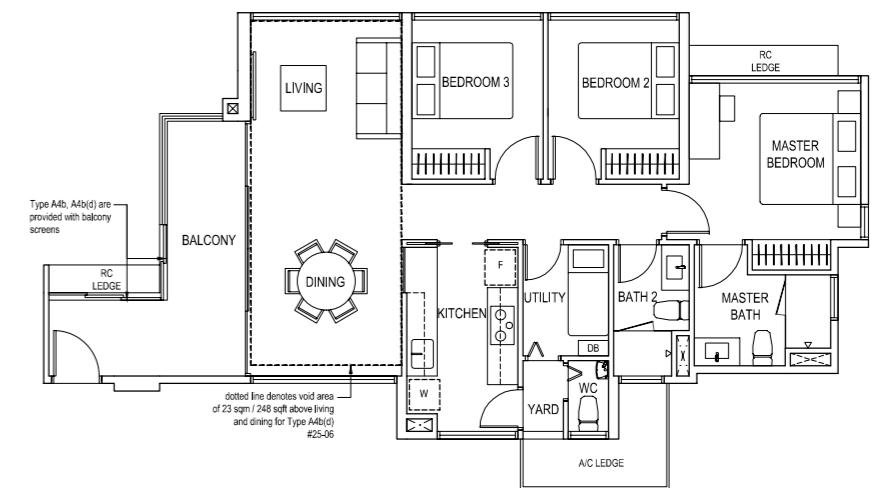
102 sq m / 1098 sq ft

BLK 3  
#03-06, #05-06, #07-06, #09-06,  
#11-06, #13-06, #15-06, #17-06,  
#19-06, #21-06, #23-06

## Type A4b(d)

125 sq m / 1346 sq ft  
including void area of 23 sq m /  
248 sq ft above living and dining

BLK 3  
#25-06



Keyplan is not drawn to scale

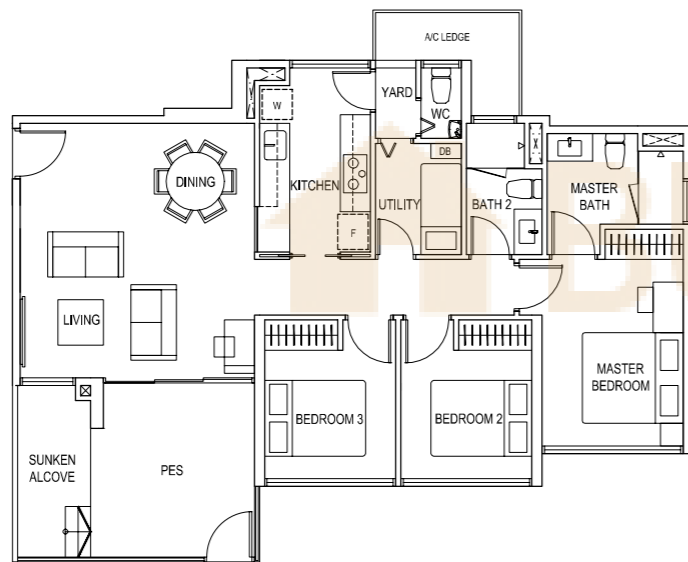


# 3-BEDROOM SUITE

# 3-BEDROOM SUITE

Classic Entrance  
 Type A5(p)  
 109 sq m / 1173 sq ft

BLK 7  
 #01-13<sup>†</sup>

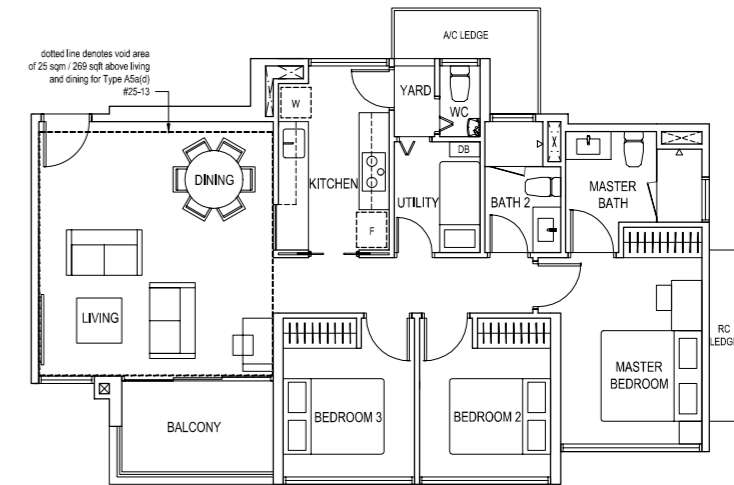


Classic Entrance  
 Type A5a  
 98 sq m / 1055 sq ft

BLK 7  
 #03-13, #05-13, #07-13, #09-13,  
 #11-13, #13-13, #15-13, #17-13,  
 #19-13, #21-13, #23-13

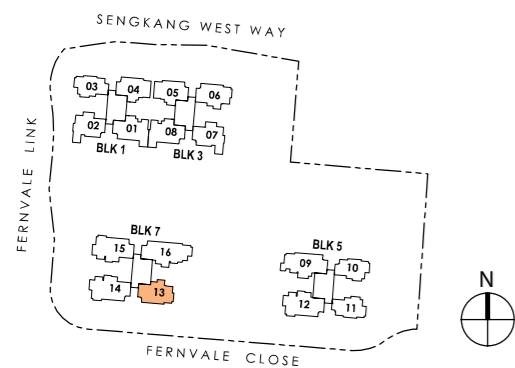
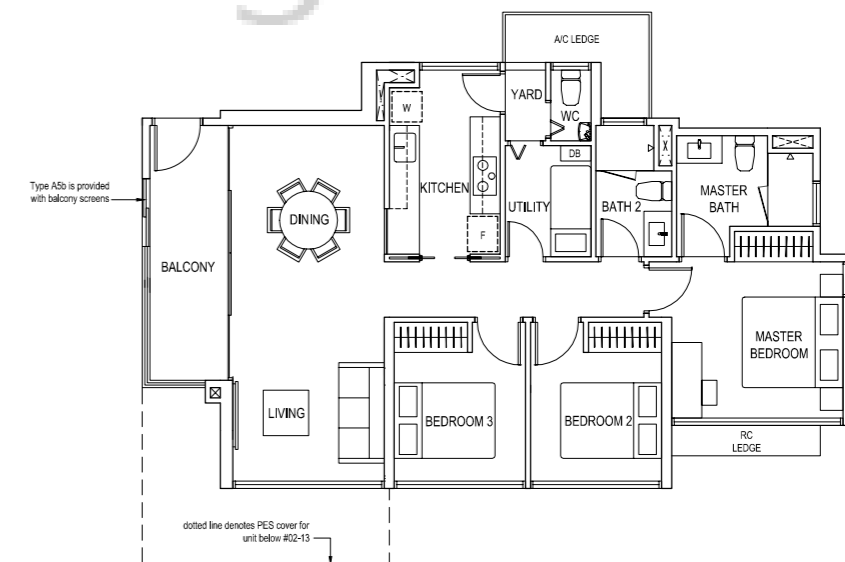
Type A5a(d)  
 123 sq m / 1324 sq ft  
 including void area of 25 sq m /  
 269 sq ft above living and dining

BLK 7  
 #25-13



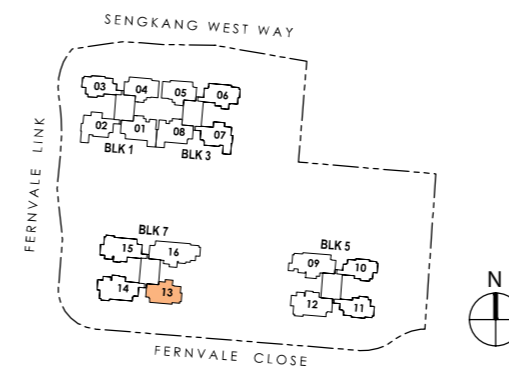
Balcony Entrance  
 Type A5b  
 99 sq m / 1066 sq ft

BLK 7  
 #02-13, #04-13, #06-13, #08-13,  
 #10-13, #12-13, #14-13, #16-13,  
 #18-13, #20-13, #22-13, #24-13



Keyplan is not drawn to scale

<sup>†</sup> Approx. 4.5m floor to ceiling height at living, dining, and bedrooms. Open storage space in different dimensions is provided above Bedroom wardrobe.



Keyplan is not drawn to scale



# 4-BEDROOM

# 4-BEDROOM

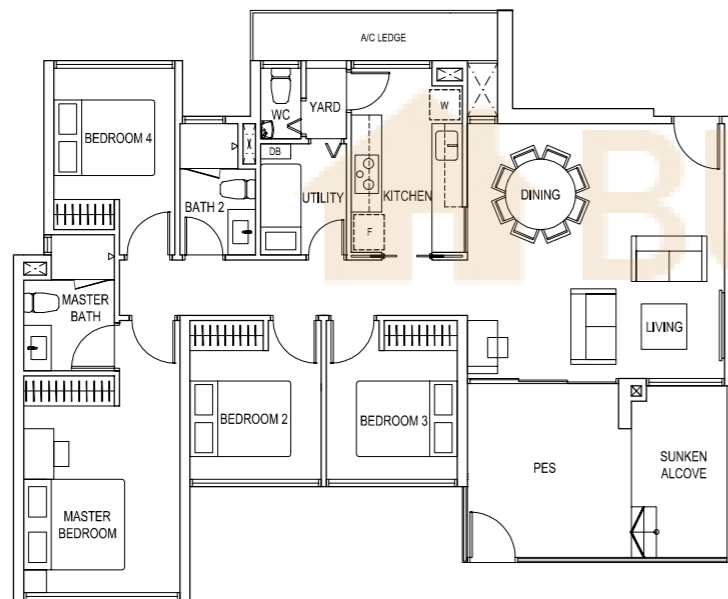
## Classic Entrance

Type B1(p)

127 sq m / 1367 sq ft

BLK 1  
#02-01\*

BLK 3  
#02-08



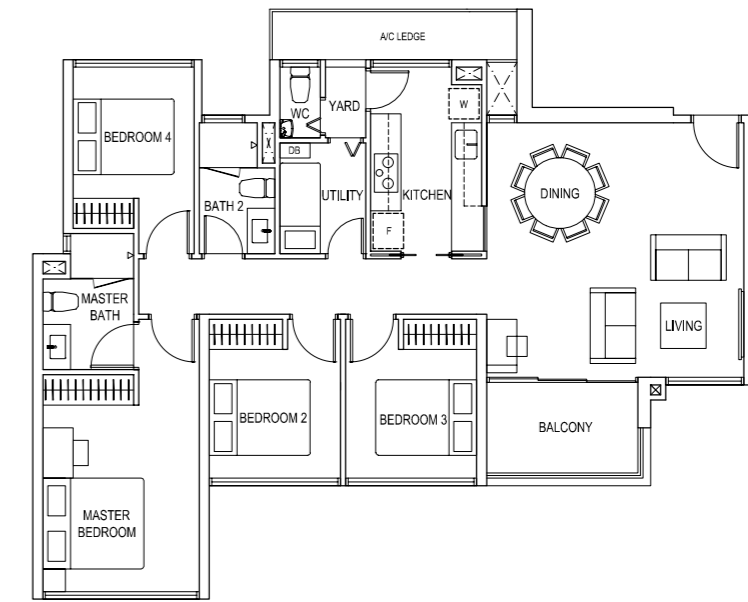
## Classic Entrance

Type B1a

115 sq m / 1238 sq ft

BLK 1  
#04-01\*, #06-01\*, #08-01\*, #10-01\*,  
#12-01\*, #14-01\*, #16-01\*, #18-01\*,  
#20-01\*, #22-01\*, #24-01\*

BLK 3  
#04-08, #06-08, #08-08, #10-08,  
#12-08, #14-08, #16-08, #18-08,  
#20-08, #22-08, #24-08



## Balcony Entrance

Type B1b

115 sq m / 1238 sq ft

BLK 1  
#03-01\*, #05-01\*, #07-01\*, #09-01\*,  
#11-01\*, #13-01\*, #15-01\*, #17-01\*,  
#19-01\*, #21-01\*, #23-01\*

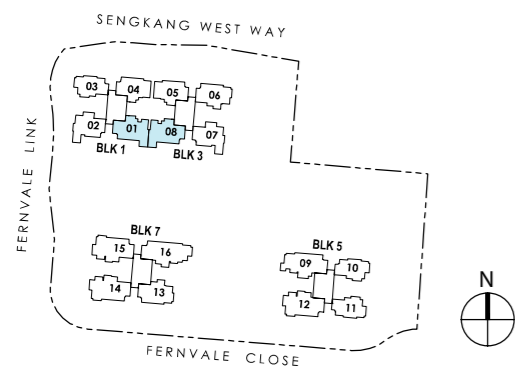
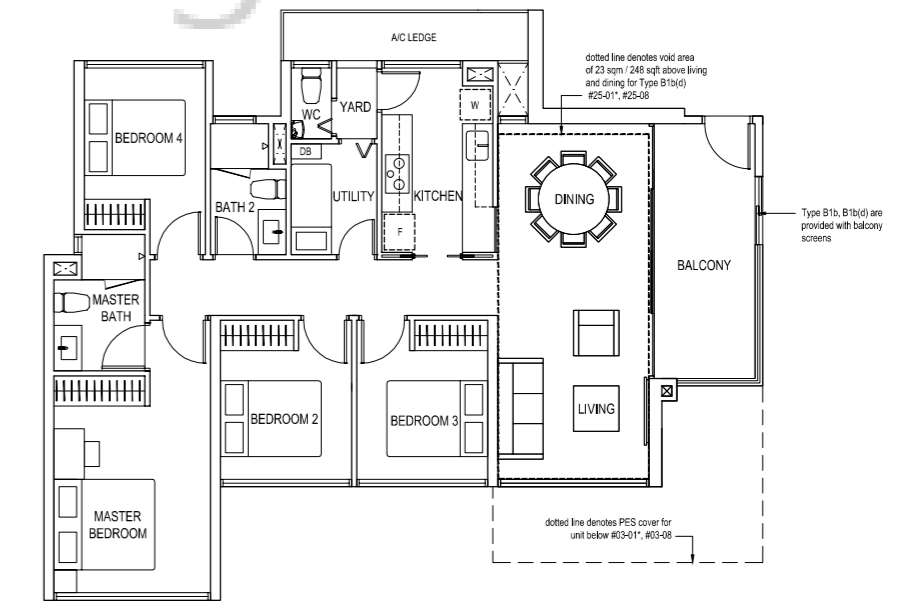
BLK 3  
#03-08, #05-08, #07-08, #09-08,  
#11-08, #13-08, #15-08, #17-08,  
#19-08, #21-08, #23-08

## Type B1b(d)

138 sq m / 1485 sq ft

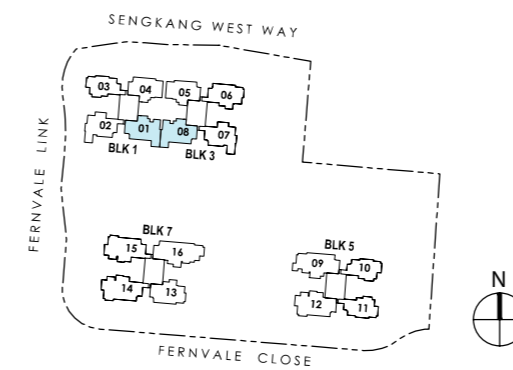
including void area of 23 sq m /  
248 sq ft above living and dining

BLK 1    BLK 3  
#25-01\*    #25-08



Keyplan is not drawn to scale

\*Mirror image



Keyplan is not drawn to scale

\*Mirror image



# 4-BEDROOM SUITE

# 4-BEDROOM SUITE

## Classic Entrance

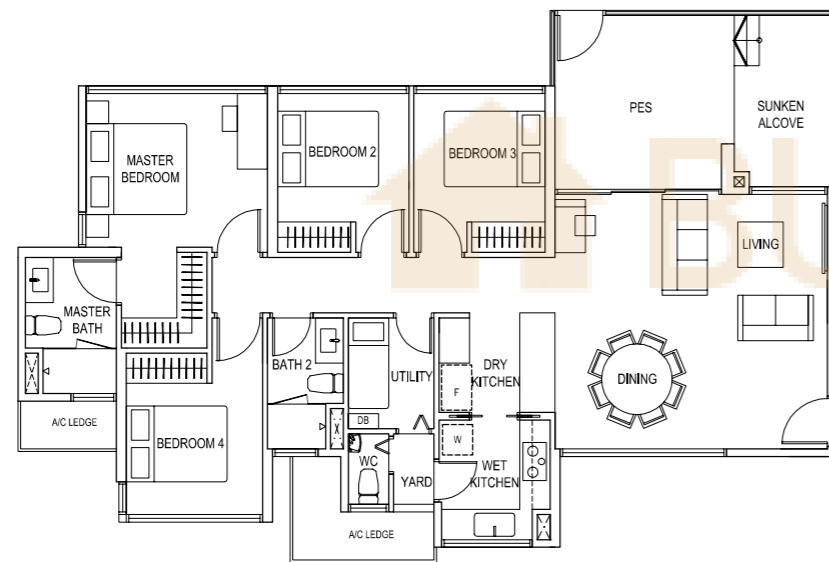
Type B2(p)

134 sq m / 1442 sq ft

BLK 7

#01-14\*†

#02-15



## Classic Entrance

Type B2a

125 sq m / 1346 sq ft

BLK 7

#02-14\*, #04-14\*, #06-14\*, #08-14\*, #10-14\*, #12-14\*, #14-14\*, #16-14\*, #18-14\*, #20-14\*, #22-14\*, #24-14\*

#03-15, #05-15, #07-15, #09-15, #11-15, #13-15, #15-15, #17-15, #19-15, #21-15, #23-15

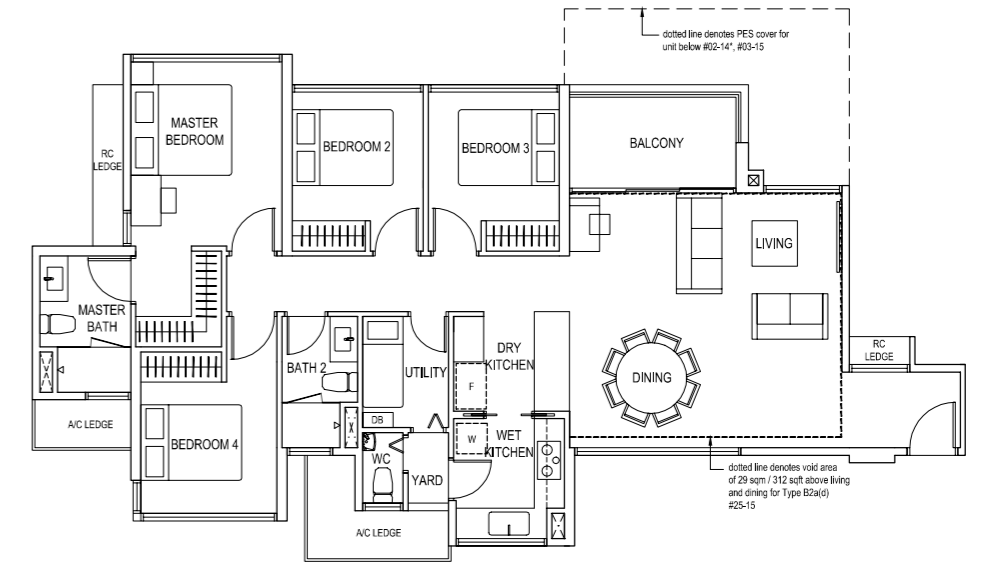
Type B2a(d)

154 sq m / 1658 sq ft

including void area of 29 sq m / 312 sq ft above living and dining

BLK 7

#25-15



## Balcony Entrance

Type B2b

125 sq m / 1346 sq ft

BLK 7

#03-14\*, #05-14\*, #07-14\*, #09-14\*, #11-14\*, #13-14\*, #15-14\*, #17-14\*, #19-14\*, #21-14\*, #23-14\*

#04-15, #06-15, #08-15, #10-15, #12-15, #14-15, #16-15, #18-15, #20-15, #22-15, #24-15

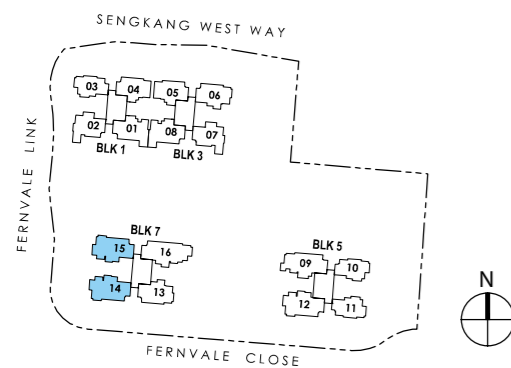
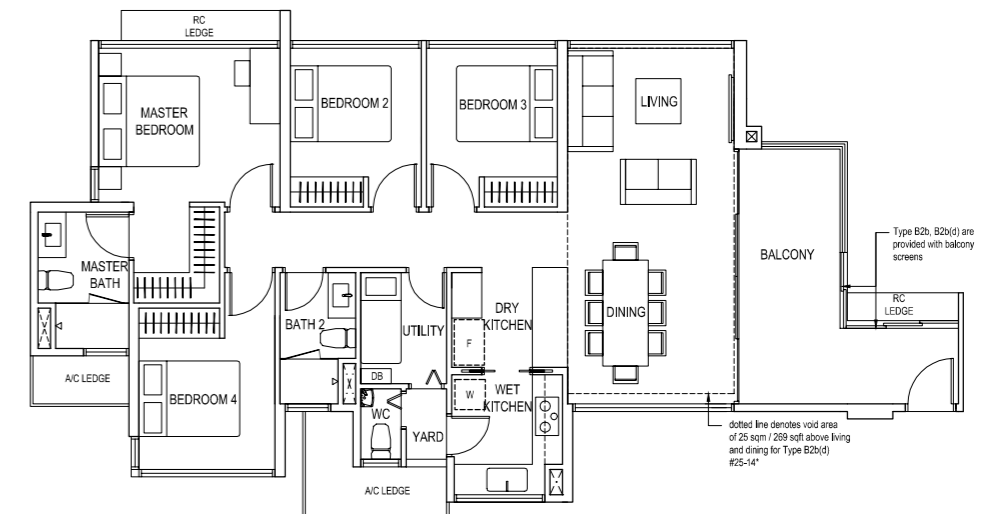
Type B2b(d)

150 sq m / 1615 sq ft

including void area of 25 sq m / 269 sq ft above living and dining

BLK 7

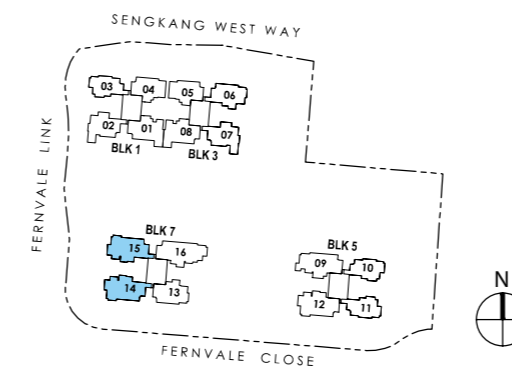
#25-14\*



Keyplan is not drawn to scale

† Approx. 4.5m floor to ceiling height at living, dining, and bedrooms. Open storage space in different dimensions is provided above Bedroom wardrobe.

\* Mirror image



Keyplan is not drawn to scale

\* Mirror image



# 4-BEDROOM SUITE

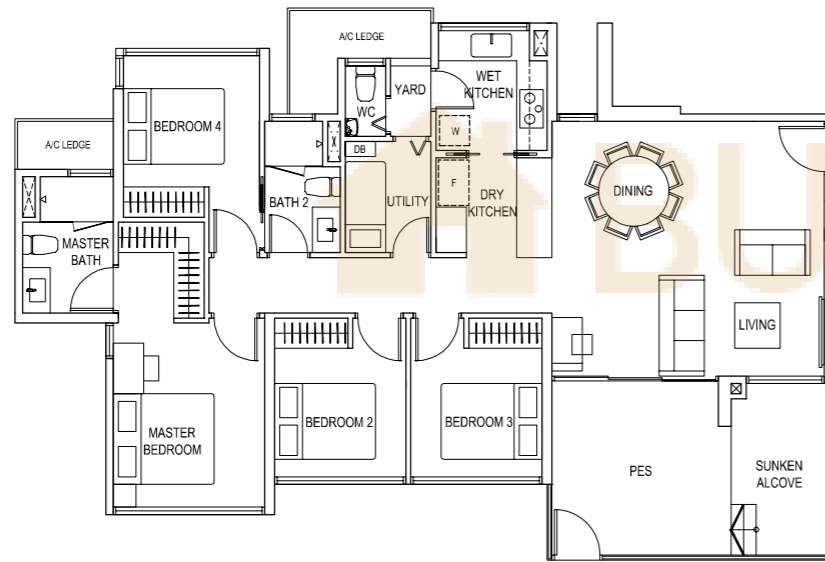
# 4-BEDROOM SUITE

## Classic Entrance

Type B3(p)

134 sq m / 1442 sq ft

BLK 5  
#01-12<sup>†</sup>

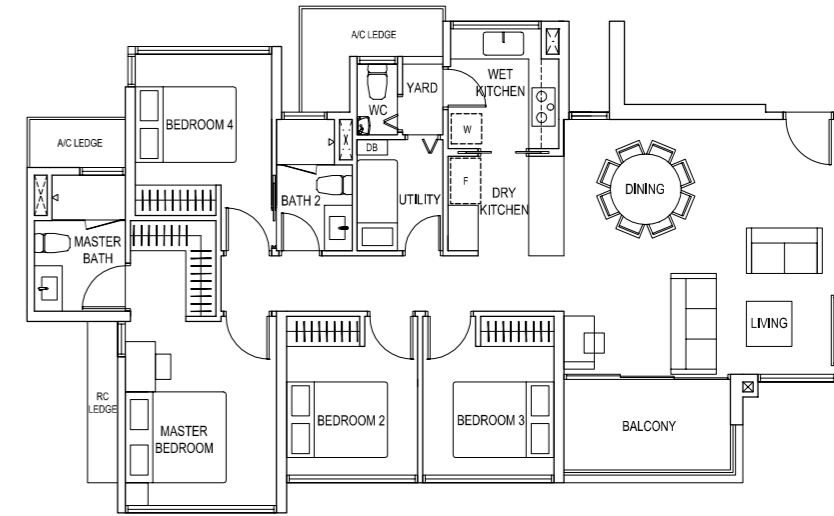


## Classic Entrance

Type B3a

121 sq m / 1302 sq ft

BLK 5  
#03-12, #05-12, #07-12, #09-12,  
#11-12, #13-12, #15-12, #17-12,  
#19-12, #21-12



## Balcony Entrance

Type B3b

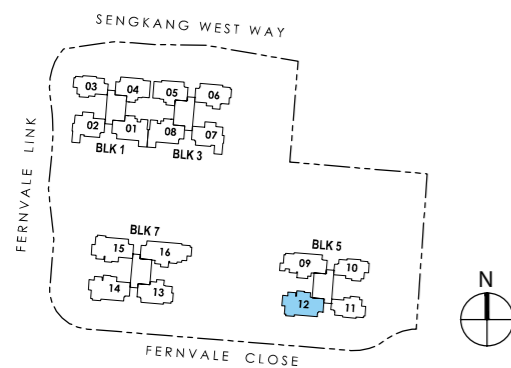
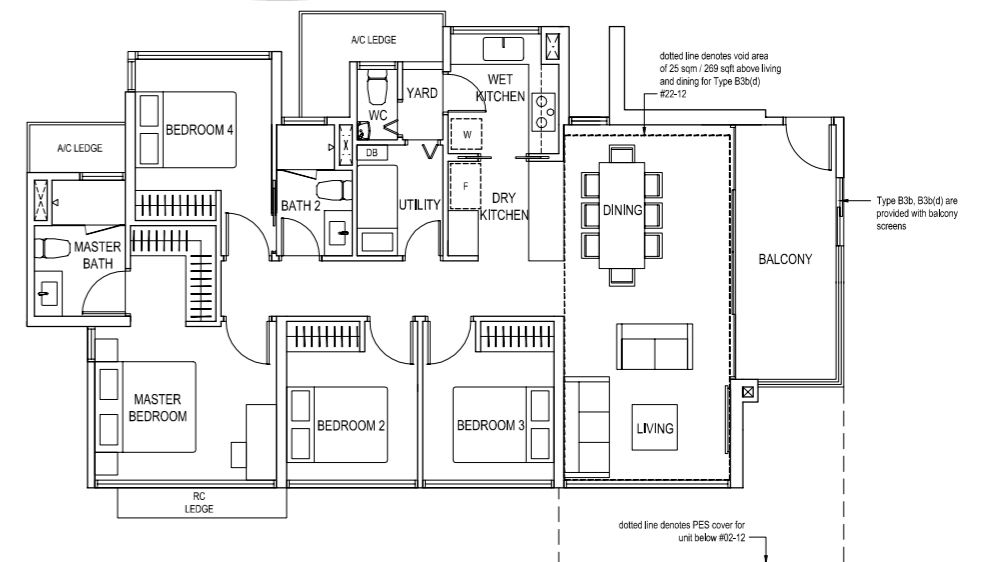
121 sq m / 1302 sq ft

BLK 5  
#02-12, #04-12, #06-12, #08-12,  
#10-12, #12-12, #14-12, #16-12,  
#18-12, #20-12

## Type B3b(d)

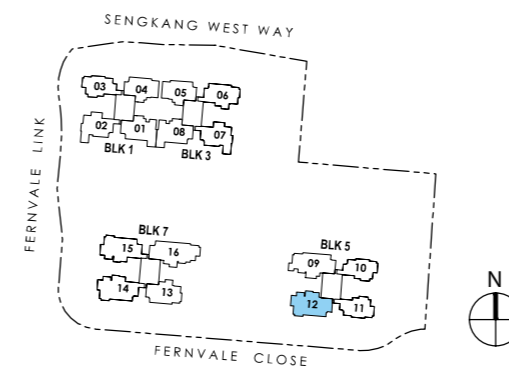
146 sq m / 1572 sq ft  
including void area of 25 sq m /  
269 sq ft above living and dining

BLK 5  
#22-12



Keyplan is not drawn to scale

<sup>†</sup> Approx. 4.5m floor to ceiling height at living, dining, and bedrooms. Open storage space in different dimensions is provided above Bedroom wardrobe.



Keyplan is not drawn to scale





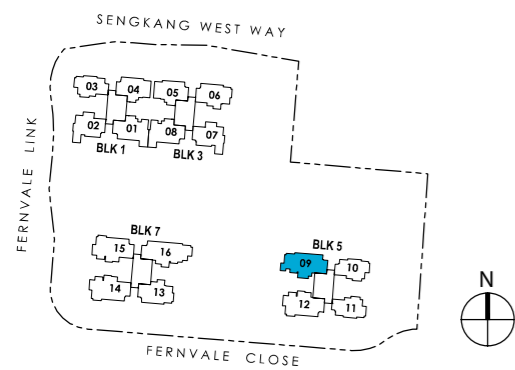
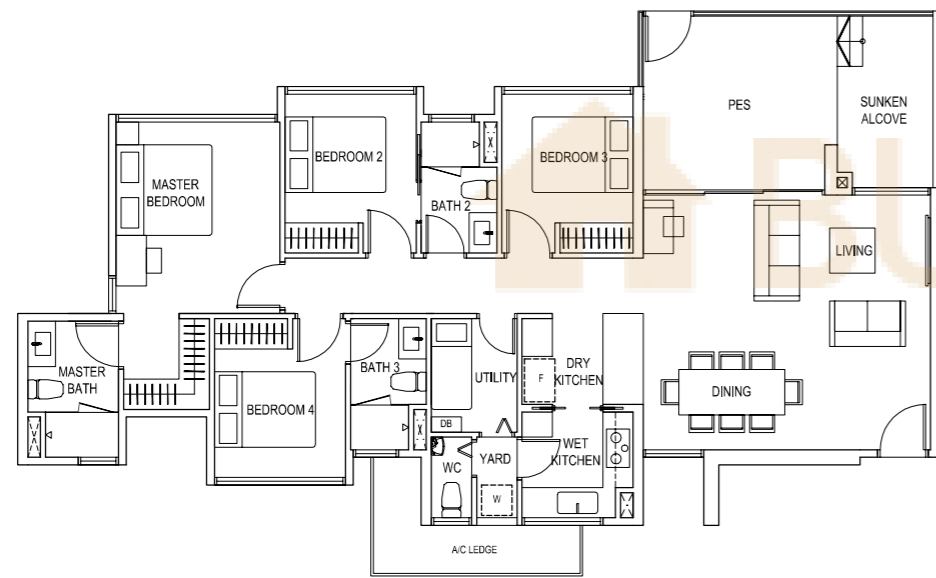
# 4-BEDROOM PREMIUM

## Classic Entrance

Type B4(p)

140 sq m / 1507 sq ft

BLK 5  
#02-09



Keyplan is not drawn to scale



# 4-BEDROOM PREMIUM

## Classic Entrance

Type B4a

126 sq m / 1356 sq ft

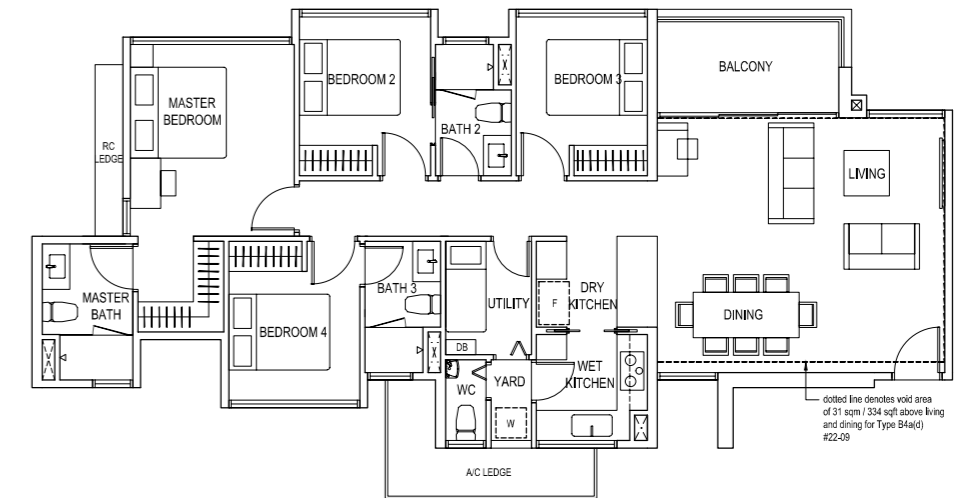
BLK 5  
#04-09, #06-09, #08-09, #10-09,  
#12-09, #14-09, #16-09, #18-09,  
#20-09

## Type B4a(d)

157 sq m / 1690 sq ft

including void area of 31 sq m /  
334 sq ft above living and dining

BLK 5  
#22-09

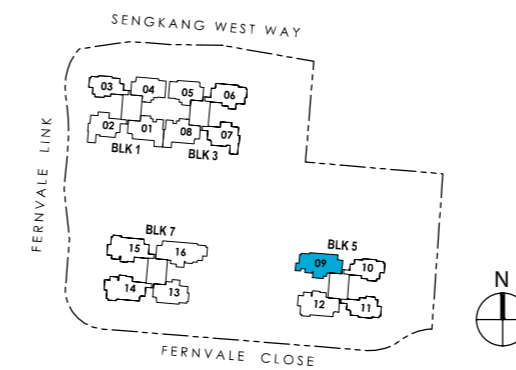
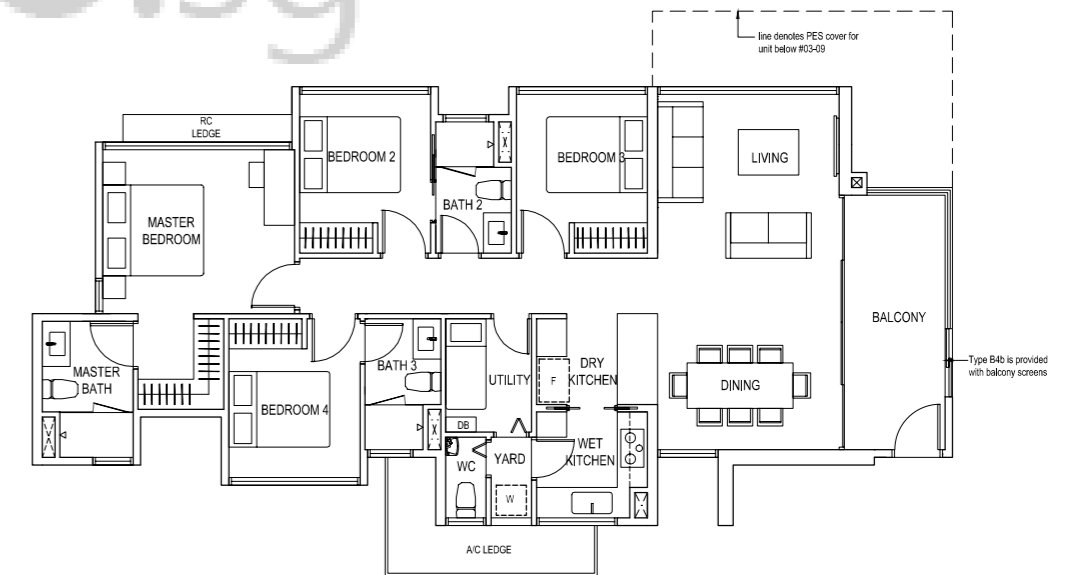


## Balcony Entrance

Type B4b

127 sq m / 1367 sq ft

BLK 5  
#03-09, #05-09, #07-09, #09-09,  
#11-09, #13-09, #15-09, #17-09,  
#19-09, #21-09



Keyplan is not drawn to scale

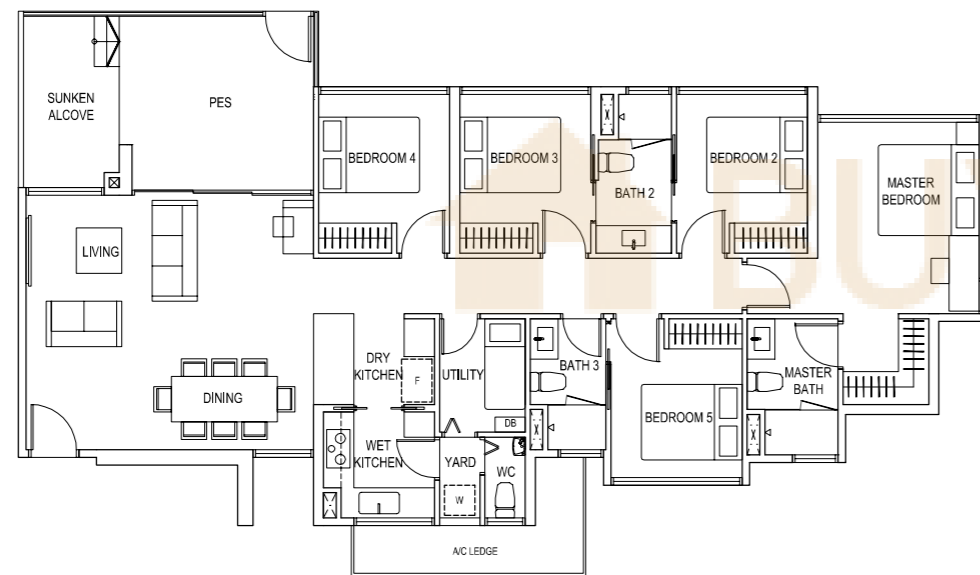


# 5-BEDROOM

# 5-BEDROOM

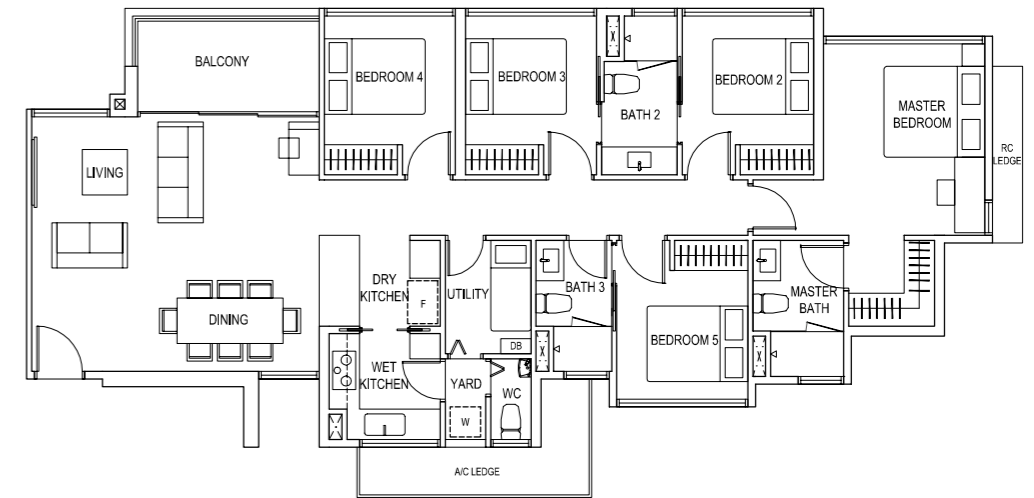
Classic Entrance  
Type C1(p)  
153 sq m / 1647 sq ft

BLK 7  
#02-16



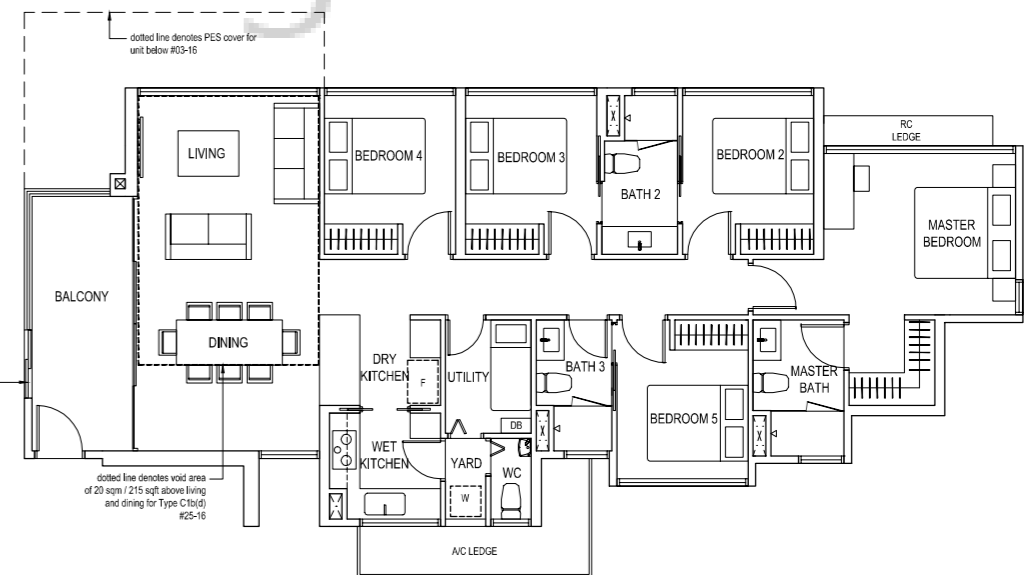
Classic Entrance  
Type C1a  
140 sq m / 1507 sq ft

BLK 7  
#04-16, #06-16, #08-16, #10-16,  
#12-16, #14-16, #16-16, #18-16,  
#20-16, #22-16, #24-16



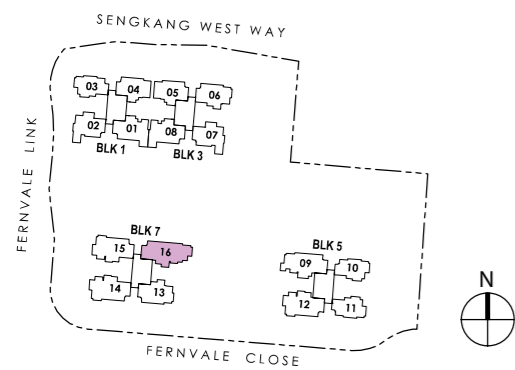
Balcony Entrance  
Type C1b  
140 sq m / 1507 sq ft

BLK 7  
#03-16, #05-16, #07-16, #09-16,  
#11-16, #13-16, #15-16, #17-16,  
#19-16, #21-16, #23-16

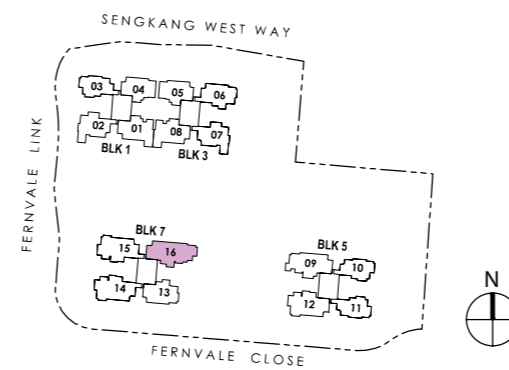


Type C1b(d)  
160 sq m / 1722 sq ft  
including void area of 20 sq m /  
215 sq ft above living and dining

BLK 7  
#25-16



Keyplan is not drawn to scale



Keyplan is not drawn to scale

