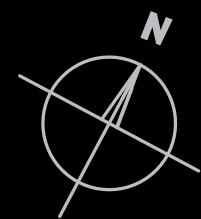


# Site Plan

## Type A1

SFA 43 sqm  
2ND, 3RD & 4TH  
STOREY



### Legend

- 1. Entrance
- 2. Swimming Pool
- 3. Gym Room
- 4. Playground

UNIT	#02-05	#02-14
	#03-05	#03-14
	#04-05	#04-14



The above plans are subjected to changes as may be approved by relevant authorities. Plans are not drawn to scale

# Type A1

SFA 43 sqm  
2ND, 3RD & 4TH  
STOREY

# Type A1

SFA 43 sqm  
2ND, 3RD & 4TH  
STOREY



UNIT #02-10  
#03-10  
#04-10



The above plans are subjected to changes as may be approved by relevant authorities. Plans are not drawn to scale

UNIT #02-08  
#03-08  
#04-08



The above plans are subjected to changes as may be approved by relevant authorities. Plans are not drawn to scale

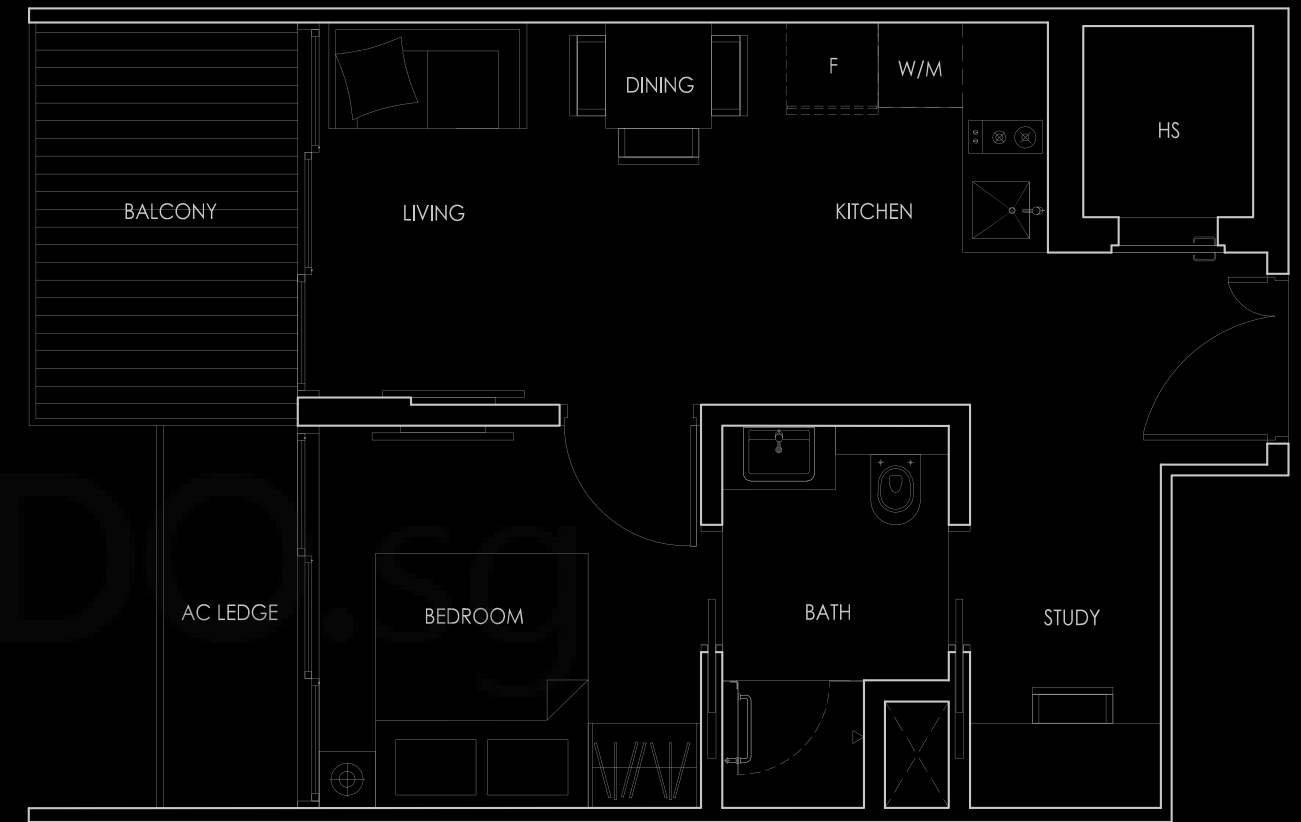
# Type A1

SFA 43 sqm  
2ND, 3RD & 4TH  
STOREY



# Type A2

SFA 46 sqm  
2ND, 3RD & 4TH  
STOREY



UNIT #02-02  
#03-02  
#04-02



The above plans are subjected to changes as may be approved by relevant authorities. Plans are not drawn to scale

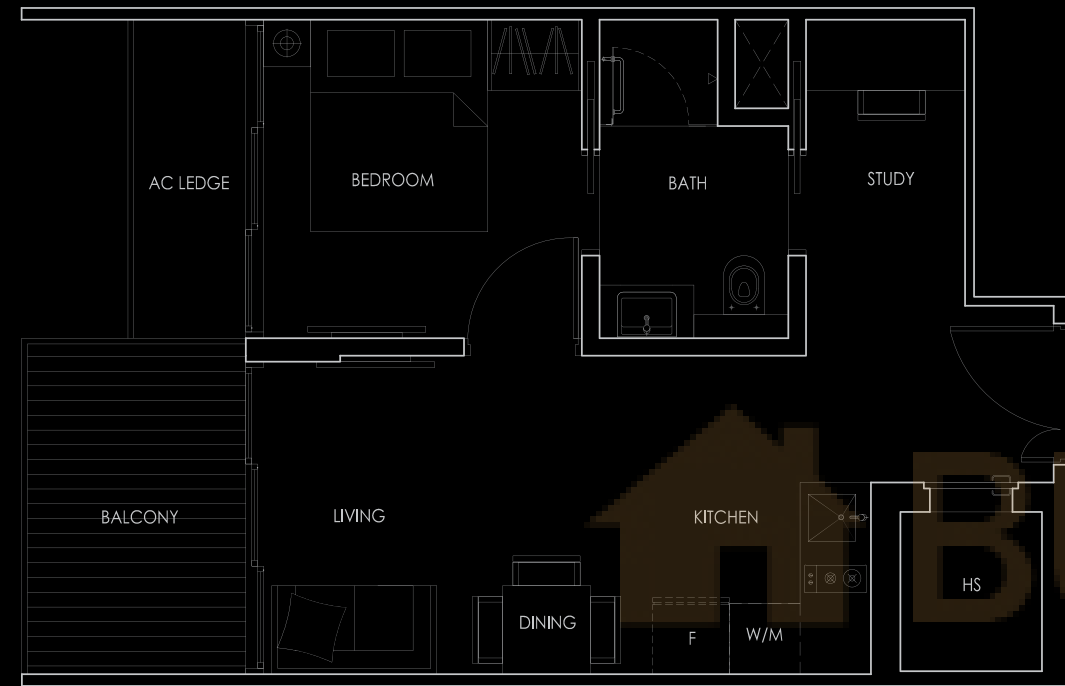
UNIT #03-04 #02-11 #02-12  
#04-04 #03-11 #03-12  
#04-11 #04-12



The above plans are subjected to changes as may be approved by relevant authorities. Plans are not drawn to scale

# Type A2

SFA 46 sqm  
2ND, 3RD & 4TH  
STOREY

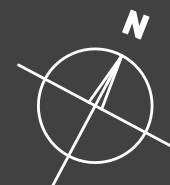


# Type A3

SFA 48 sqm  
2ND, 3RD & 4TH  
STOREY



UNIT #02-13  
#03-13  
#04-13



The above plans are subjected to changes as may be approved by relevant authorities. Plans are not drawn to scale

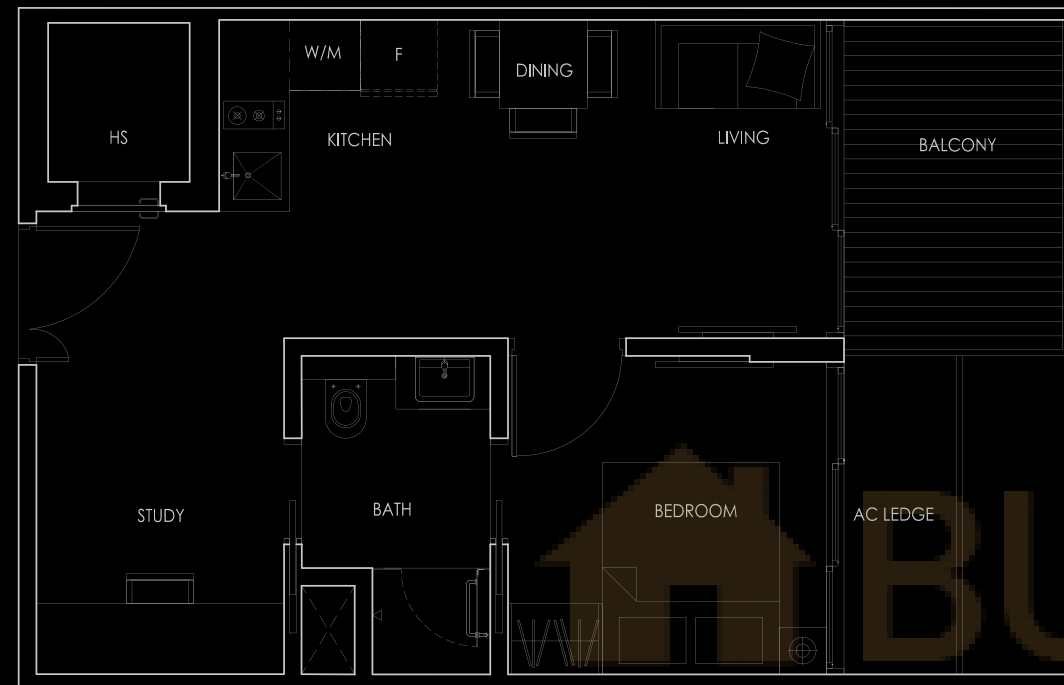
UNIT #02-17  
#03-17  
#04-17



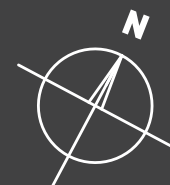
The above plans are subjected to changes as may be approved by relevant authorities. Plans are not drawn to scale

# Type A3

SFA 48 sqm  
2ND, 3RD & 4TH  
STOREY



UNIT #03-18  
#04-18



The above plans are subjected to changes as may be approved by relevant authorities. Plans are not drawn to scale

# Type B1

SFA 60 sqm  
2ND, 3RD & 4TH  
STOREY



UNIT #02-16  
#03-16  
#04-16



The above plans are subjected to changes as may be approved by relevant authorities. Plans are not drawn to scale

# Type B2

SFA 58 sqm  
2ND, 3RD & 4TH  
STOREY



# Type B3

SFA 60 sqm  
2ND, 3RD & 4TH  
STOREY



UNIT #02-01  
#03-01  
#04-01



The above plans are subjected to changes as may be approved by relevant authorities. Plans are not drawn to scale

UNIT #02-09  
#03-09  
#04-09



The above plans are subjected to changes as may be approved by relevant authorities. Plans are not drawn to scale

# Type B3a

SFA 62 sqm  
2ND, 3RD & 4TH  
STOREY

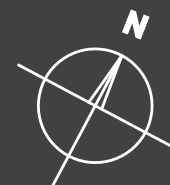


# Type B4

SFA 59 sqm  
2ND, 3RD & 4TH  
STOREY



- UNIT #02-03
- #03-03
- #04-03



The above plans are subjected to changes as may be approved by relevant authorities. Plans are not drawn to scale

- UNIT #02-15
- #03-15
- #04-15



The above plans are subjected to changes as may be approved by relevant authorities. Plans are not drawn to scale

# Type C1

SFA 72 sqm  
2ND, 3RD & 4TH  
STOREY



UNIT #02-06  
#03-06  
#04-06



The above plans are subjected to changes as may be approved by relevant authorities. Plans are not drawn to scale

# Type C1

SFA 72 sqm  
2ND, 3RD & 4TH  
STOREY



UNIT #02-07  
#03-07  
#04-07

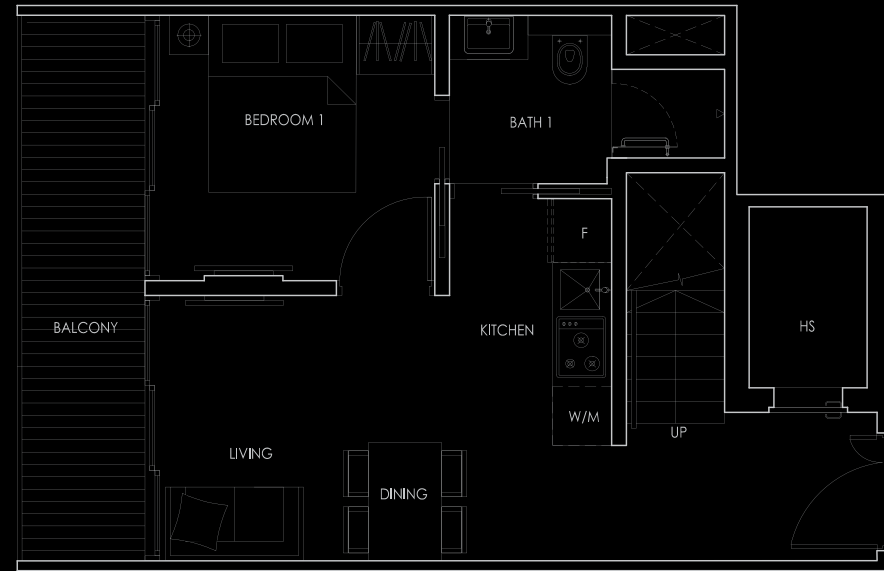


The above plans are subjected to changes as may be approved by relevant authorities. Plans are not drawn to scale



# Type D1

SFA 100 sqm  
5TH STOREY



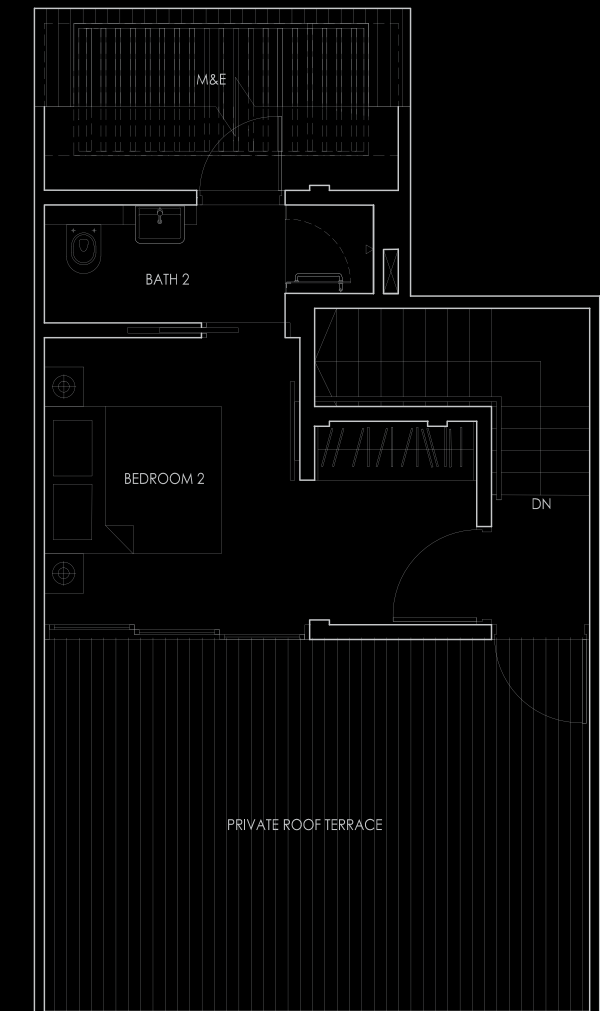
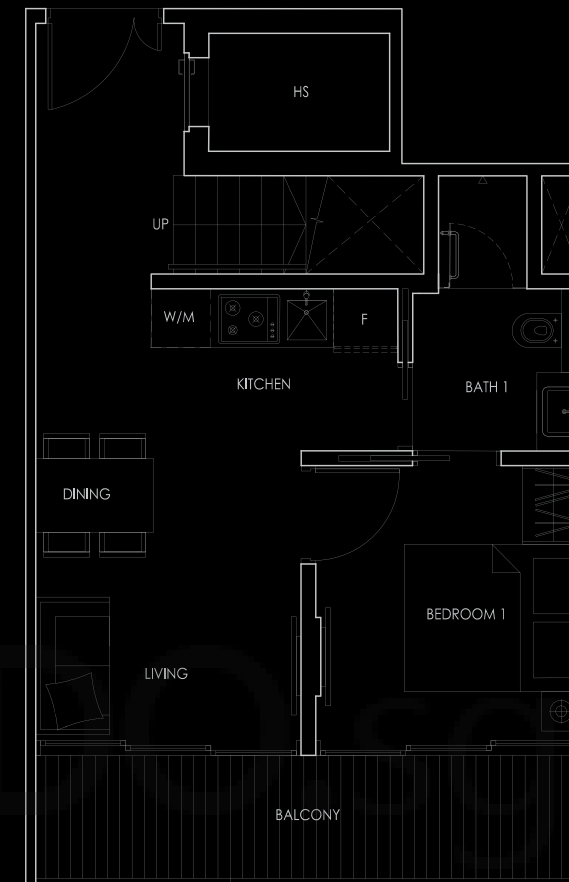
UNIT #05-05  
#05-14



The above plans are subjected to changes as may be approved by relevant authorities. Plans are not drawn to scale

# Type D1

SFA 100 sqm  
5TH STOREY



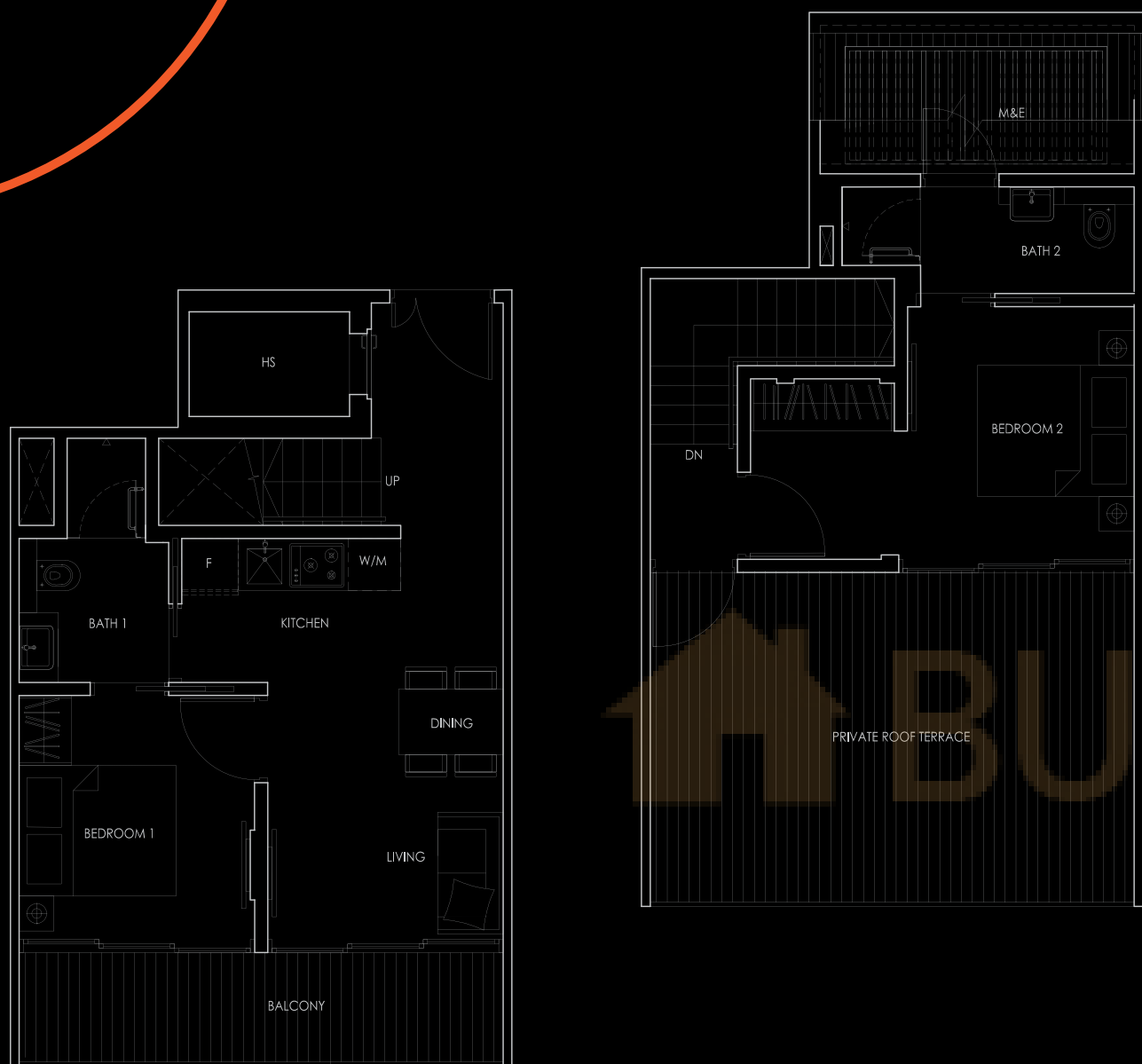
UNIT #05-08



The above plans are subjected to changes as may be approved by relevant authorities. Plans are not drawn to scale

# Type D1a

SFA 99 sqm  
5TH STOREY



UNIT #05-02



The above plans are subjected to changes as may be approved by relevant authorities. Plans are not drawn to scale

# Type D1b

SFA 99 sqm  
5TH STOREY



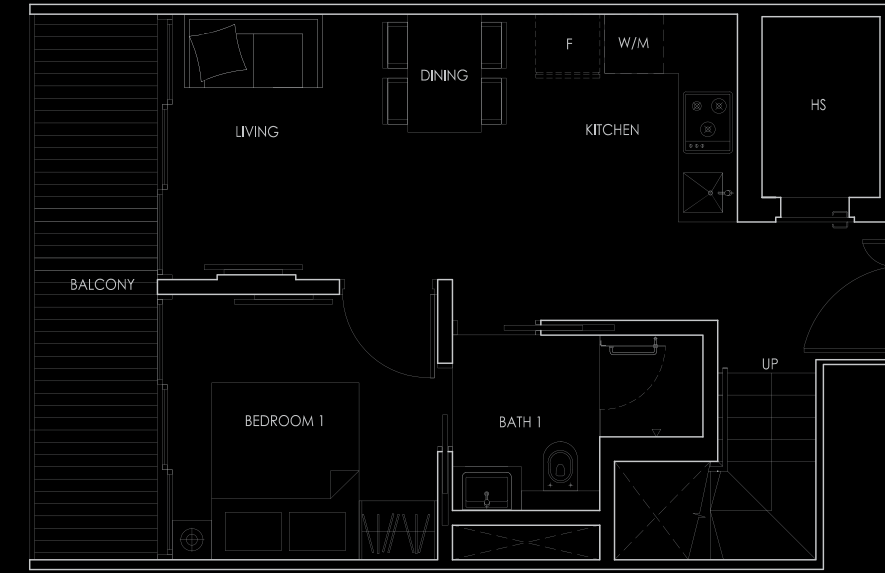
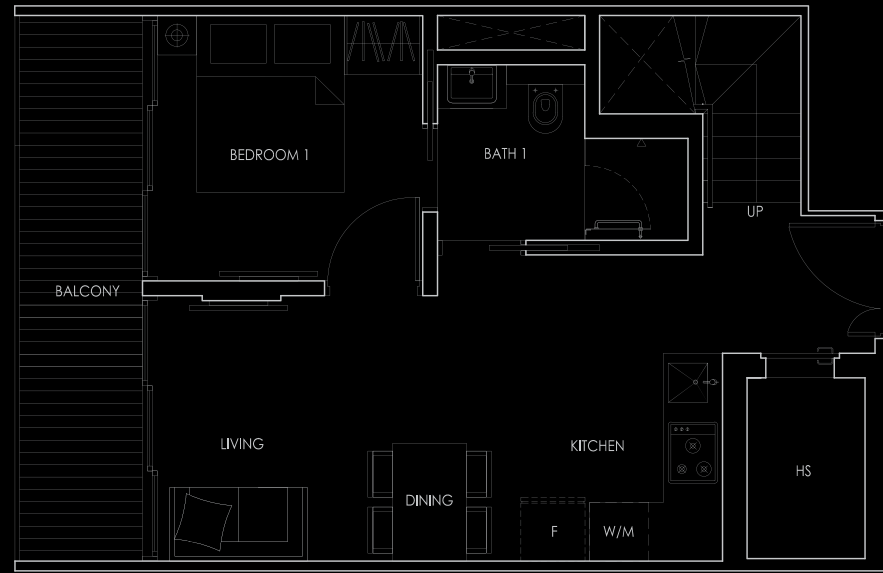
UNIT #05-10



The above plans are subjected to changes as may be approved by relevant authorities. Plans are not drawn to scale

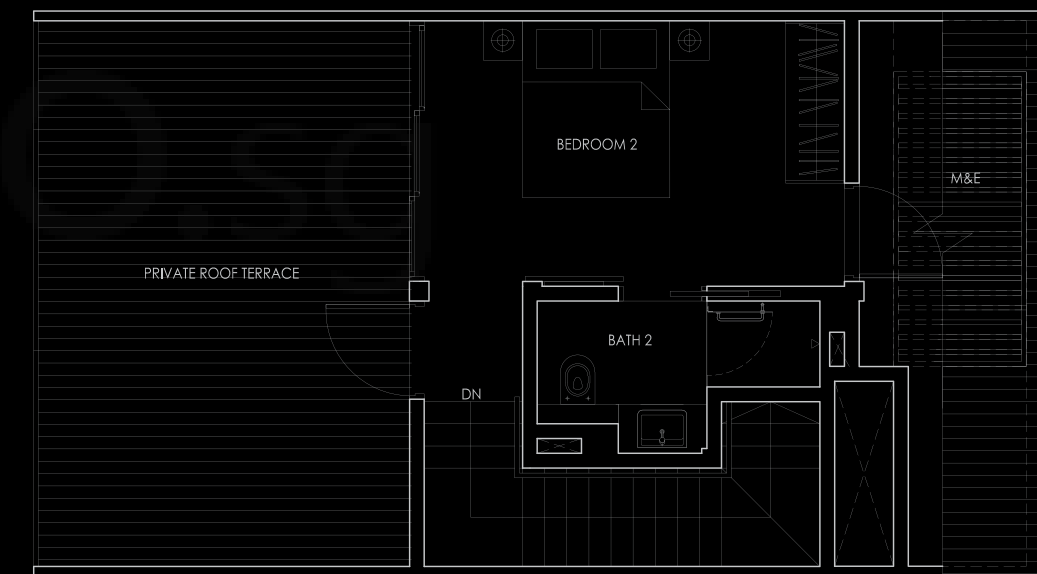
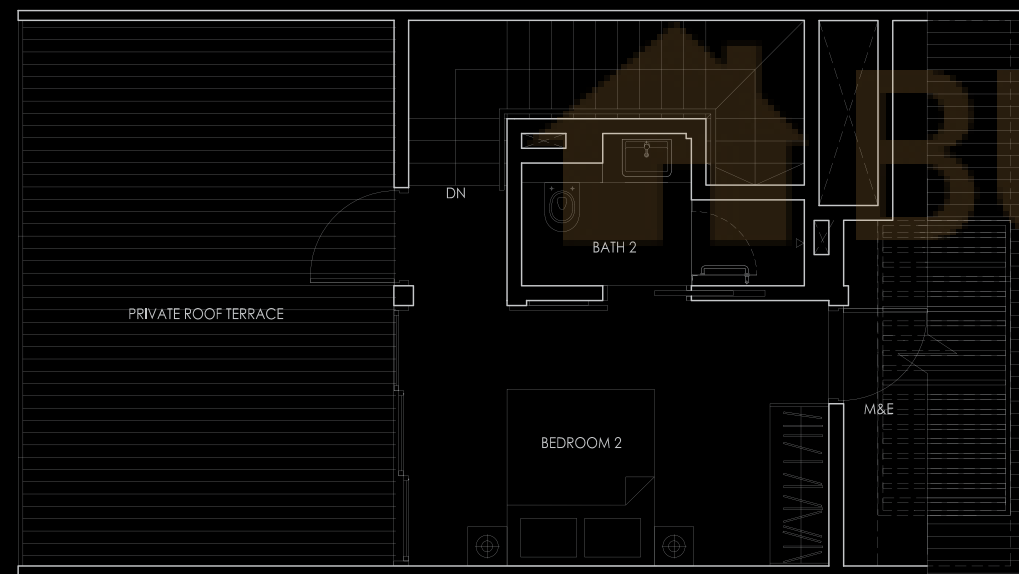
# Type D2

SFA 105 sqm  
5TH STOREY



# Type D2

SFA 105 sqm  
5TH STOREY



UNIT #05-13



UNIT #05-04  
#05-11  
#05-12



The above plans are subjected to changes as may be approved by relevant authorities. Plans are not drawn to scale

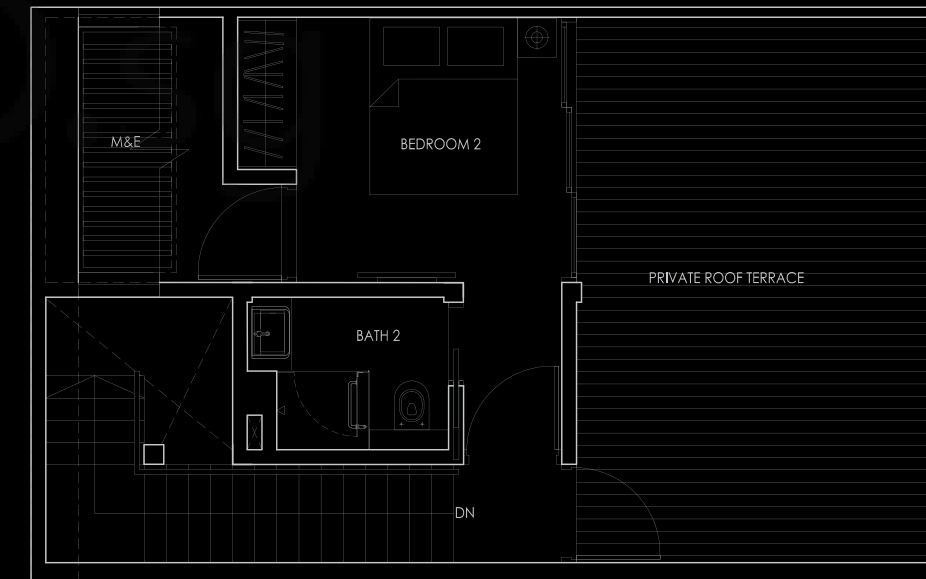
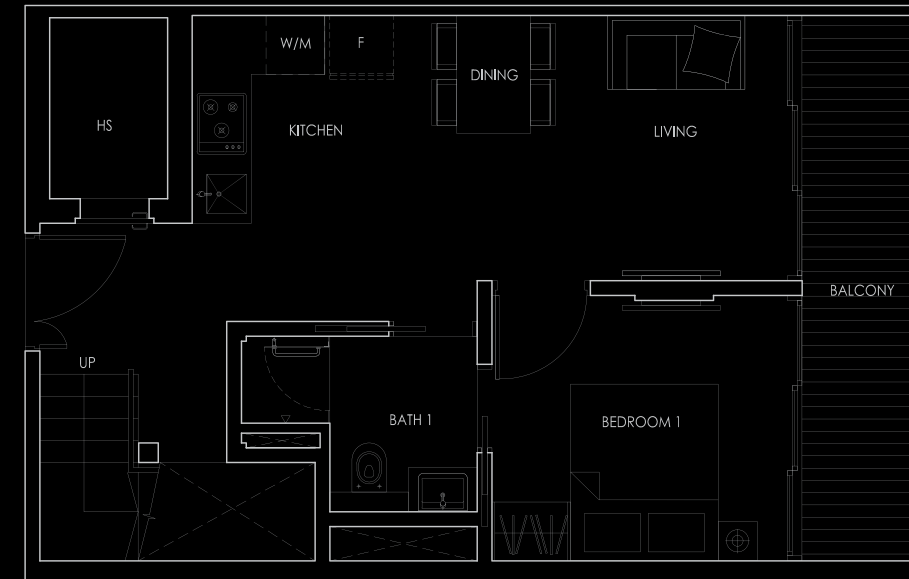
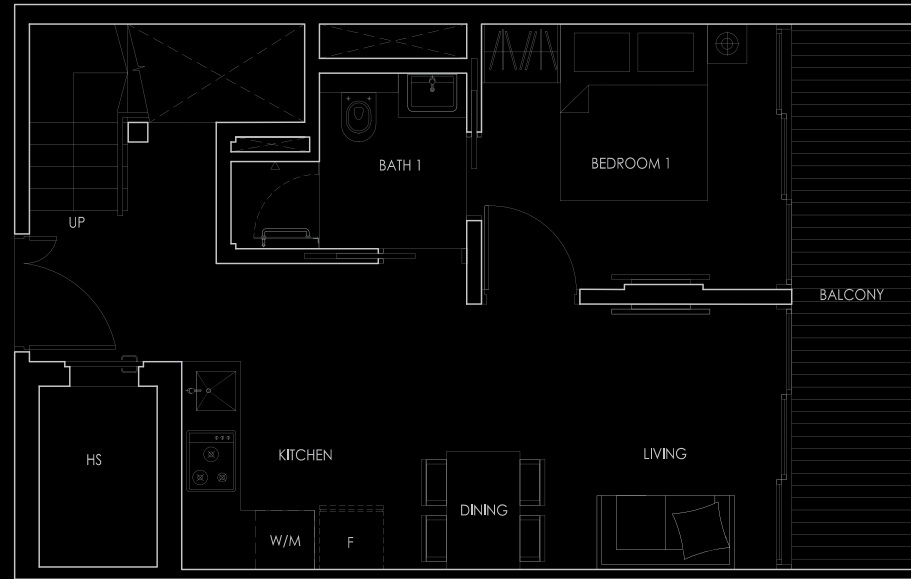
The above plans are subjected to changes as may be approved by relevant authorities. Plans are not drawn to scale

# Type D3

SFA 102sqm  
5TH STOREY

# Type D3

SFA 102sqm  
5TH STOREY



UNIT #05-17



UNIT #05-18

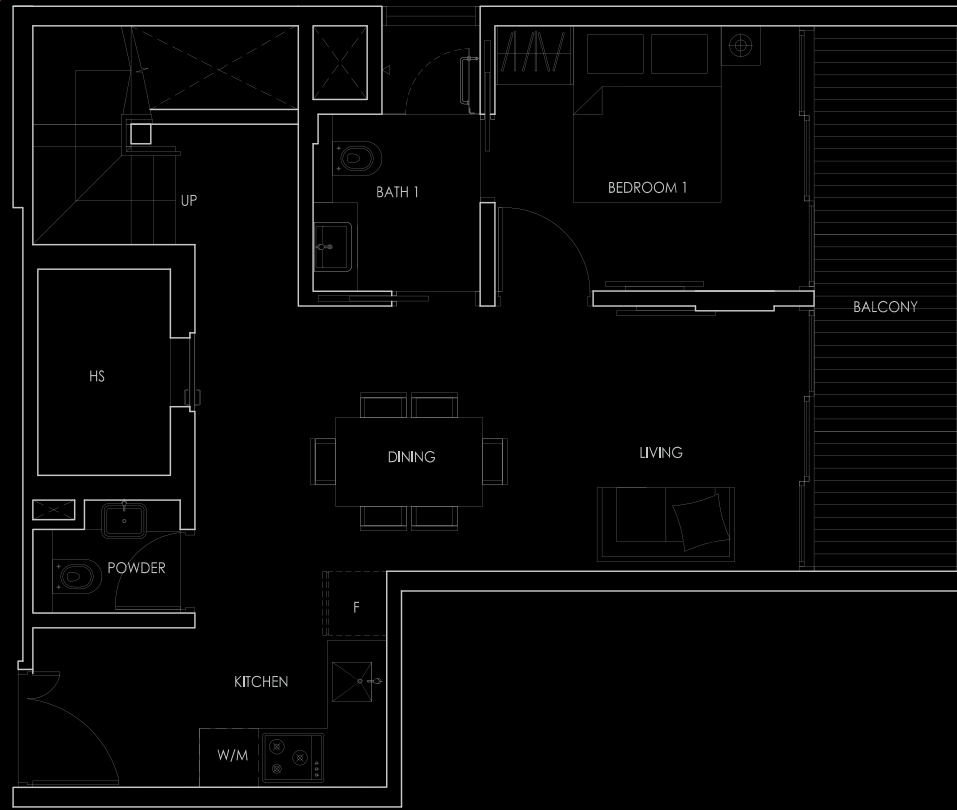


The above plans are subjected to changes as may be approved by relevant authorities. Plans are not drawn to scale

The above plans are subjected to changes as may be approved by relevant authorities. Plans are not drawn to scale

# Type E1

SFA 126sqm  
5TH STOREY



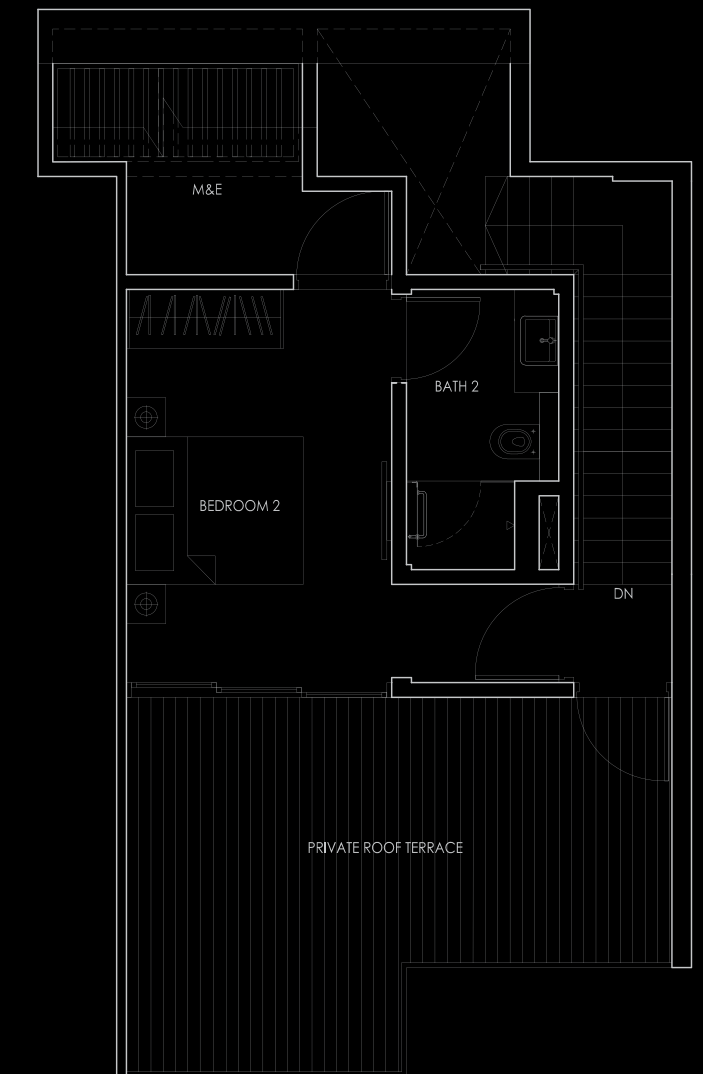
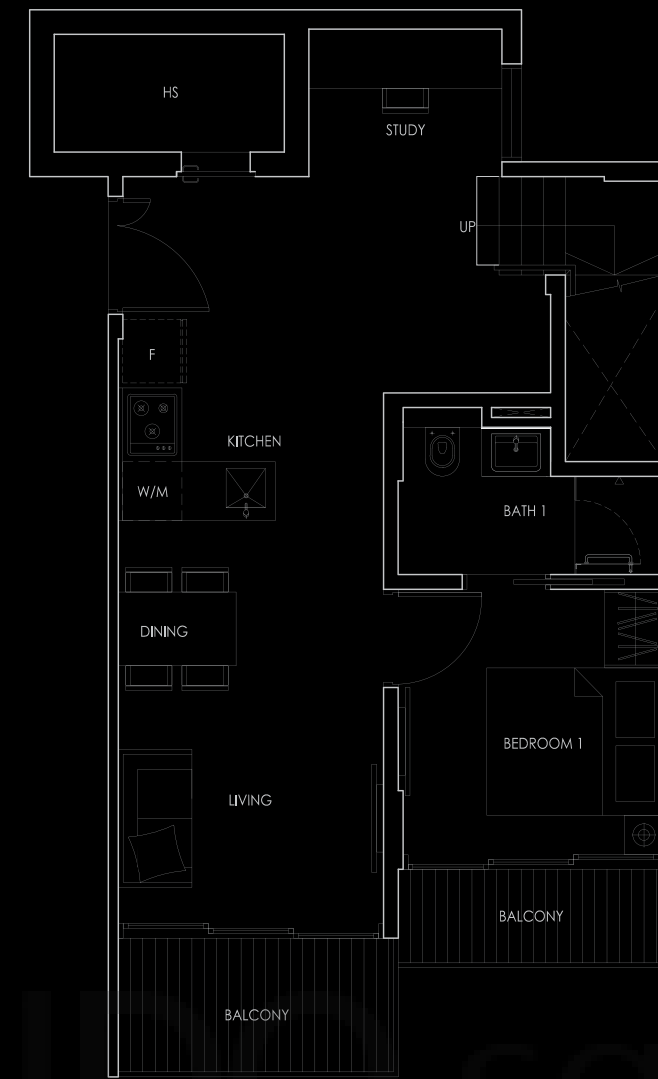
UNIT #05-16



The above plans are subjected to changes as may be approved by relevant authorities. Plans are not drawn to scale

# Type E2

SFA 114sqm  
5TH STOREY



UNIT #05-01



The above plans are subjected to changes as may be approved by relevant authorities. Plans are not drawn to scale

# Type E3

SFA 118 sqm  
5TH STOREY



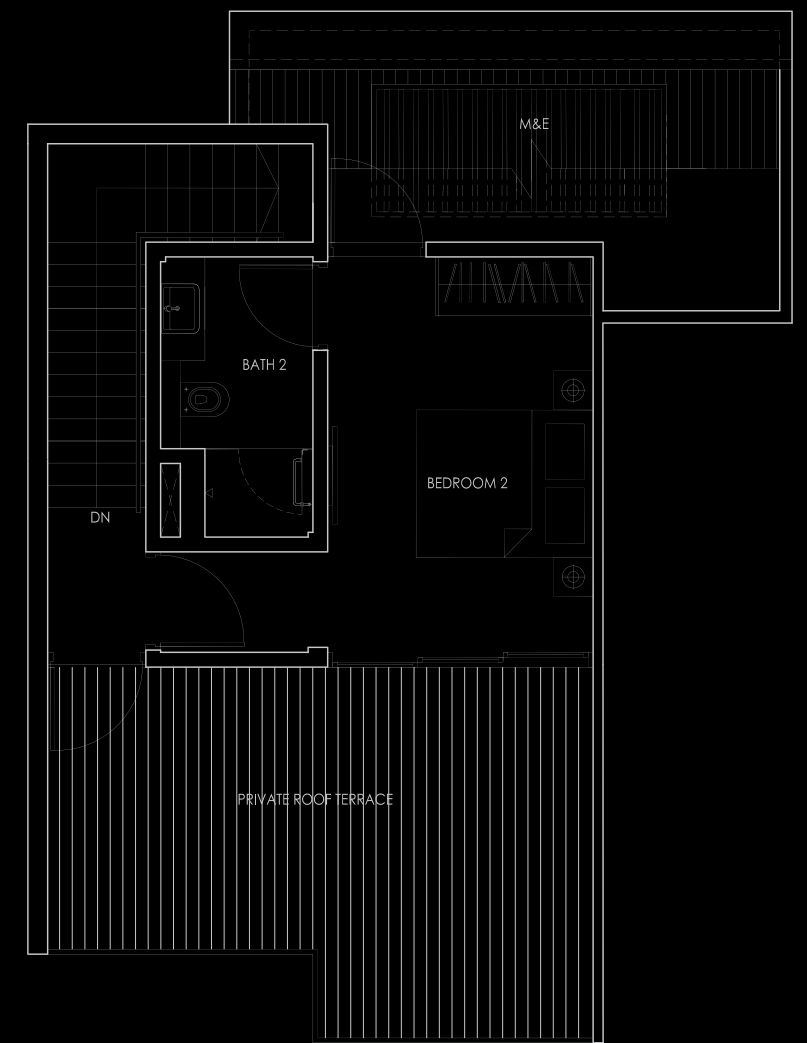
UNIT #05-09



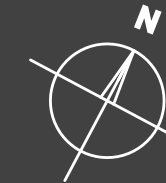
The above plans are subjected to changes as may be approved by relevant authorities. Plans are not drawn to scale

# Type E3a

SFA 120 sqm  
5TH STOREY



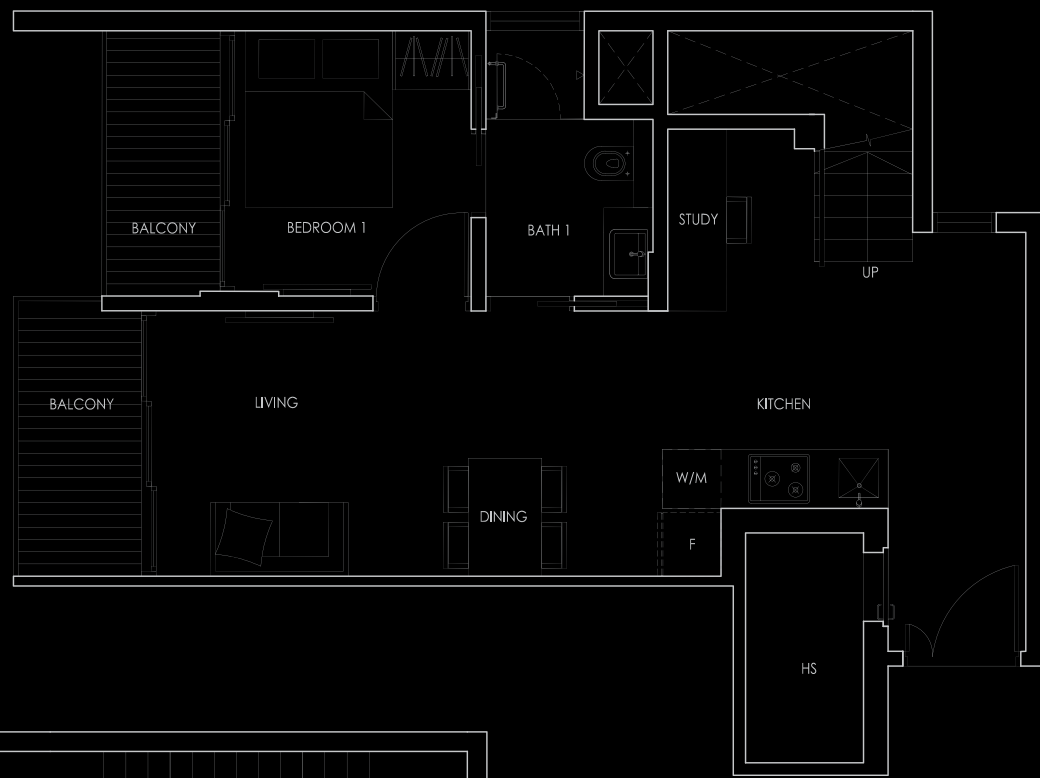
UNIT #05-03



The above plans are subjected to changes as may be approved by relevant authorities. Plans are not drawn to scale

# Type E4

SFA 118 sqm  
5TH STOREY



# Type F1

SFA 143 sqm  
5TH STOREY



UNIT #05-15



UNIT #05-06



The above plans are subjected to changes as may be approved by relevant authorities. Plans are not drawn to scale

The above plans are subjected to changes as may be approved by relevant authorities. Plans are not drawn to scale

# Type F1

SFA 143sqm  
5TH STOREY



UNIT #05-07



## specifications

### 1 FOUNDATION

Reinforced concrete pile & footings to engineer's requirements

### 2 SUPERSTRUCTURE

Reinforced concrete framework to engineer's requirements

### 3 WALL

- External - Pre-cast concrete panels and/or Common clay brick
- Internal - Pre-cast concrete panels and/or Dry wall partition and/or Common clay brick

### 4 ROOF

- Reinforced concrete flat roof to Engineer's requirements
- Light-weight metal roof to Architect's requirements

### 5 CEILING

#### For Units

#### 5.1 Living/ Dining/ Kitchen/ Bedrooms & Household Shelter /Study

Skim coat and/or ceiling boards with emulsion paint finish  
Note : Extend of ceiling board/box up are limited to localized area only to conceal M & E services as per Architect's design.

#### 5.2 Bathrooms

- Moisture resistant ceiling boards with emulsion paint finish

#### For Common Areas

#### 5.3 Lift lobbies/ Corridors

- Skim coat and/or Moisture resistant ceiling boards with emulsion paint finish

#### 5.4 Staircases

- Skim coat with emulsion paint finish

### 6 FINISHES

#### 6.1 WALL

##### For Units

#### 6.1.1 Living/Dining/ Bedrooms/Household Shelter / Study

- Plaster and/or skim coat with emulsion paint

#### 6.1.2 Bathroom

- Homogeneous and/or ceramic tiles lay up to the false ceiling height(exposed area only) to Architect's design

Note : no tiles behind mirrors and false ceilings

#### 6.1.3 Kitchen

- Homogeneous and/or ceramic tiles

- Plaster and/or skim coat with emulsion paint to Architect's design

Note : no tiles behind kitchen cabinets and above false ceilings

#### 6.1.4 Balcony/Private Roof Terrace

- Plaster and/or skim coat with weather resistant paint /textured coating

#### For Common Areas

#### 6.1.5 Lift lobbies/Staircases/Gym room

- Plaster and/or skim coat with emulsion paint

#### 6.1.6 External walls/Swimming pool area

- Plaster and/or skim coat with weather resistant paint/textured coating

#### 6.1.7 All M+E service rooms/Surface/Car park

- Plaster and/or skim coat with emulsion paint

### 6.2 FLOOR

#### For Units

#### 6.2.1 Living/ Dining/ Kitchen/ Study/ Household Shelter/Bathrooms

- Homogenous tiles /ceramic tiles to Architect's selection

#### 6.2.2 Bedrooms

- Timber Flooring to Architect's selection

#### 6.2.3 Balcony/ Private Roof Terrace

- Homogenous tiles /ceramic tiles to Architect's selection

#### 6.2.4 Internal staircase (Penthouse units only)

- RC staircase with homogeneous tiles/ceramic tiles to Architect's selection

#### For Common Areas

#### 6.2.4 Lift lobbies/Gym room /Swimming pool area/Walkway

- Homogenous tiles /ceramic tiles to Architect's selection

#### 6.2.5 Staircases

- screed finish with nosing tiles to Architect's selection

#### 6.2.6 All M+E service rooms

- screed finish

### 7 WINDOWS

Powder coated aluminium framed windows with glass to Architect's selection

### 8 DOORS

#### 8.1 Main entrance

- Fire-rated timber doors to Architect's design

#### 8.2 Bedrooms/Bathroom

- Timber door to Architect's design

#### 8.3 Household Shelter

- PSB approved blast door

#### 8.4 Living/Dining/Bedroom to Balcony/Roof terrace

- Powder coated aluminium framed doors with glass to Architect's selection.

#### 8.5 Attic room/bath to M & E area

- Powder coated aluminum door

#### 8.6 Ironmongery

- Imported quality lockset

### 9 RAILINGS

Mild steel for common staircase railings to Architect's design

Mild steel and/or glass railings to unit staircase to Architect's design

### 10 SANITARY WARES & FITTINGS

#### 10.1 Bathrooms

a) 1 shower screen with shower/bath mixer set to Architect's selection

b) 1 vanity top complete with basin and mixer tap to Architect's selection

c) 1 water closet to Architect's selection

d) 1 mirror to Architect's design

e) 1 paper holder to Architect's selection

f) 1 towel rail to Architect's selection

#### 10.2 Powder room

a) 1 vanity top complete with basin and mixer tap to Architect's selection

b) 1 water closet to Architect's selection

c) 1 mirror to Architect's design

d) 1 paper holder to Architect's selection

Note: The type and colour of wares, fittings and accessories are subject to availability and to Architect's selection.

### 11 ELECTRICAL INSTALLATION

All electrical wiring to be in concealed conduits and main in surface trunking / pipes. Where there is a false ceiling, the electrical wiring above false ceiling is in exposed conduits. Mechanical ventilation is provided in bathroom (if required) Refer to Electrical Schedule for details

### 12 TV / Telephone point

Refer to Electrical Schedule for details

### 13 LIGHTNING PROTECTION

Lightning protection system shall be provided in accordance with the current edition of Singapore Code of Practice

### 14 PAINTING

#### 14.1 Internal Wall

- Emulsion paint to Architect's selection

#### 14.2 External Wall

- Weather resistant paint to Architect's selection

### 15 WATERPROOFING

Waterproofing to floor of Swimming Pool, Bathrooms, Kitchen(where applicable), Balcony, Private Roof Terrace

### 16 DRIVEWAY AND CAR PARK

#### 16.1 Surface driveway

- Concrete finish

#### 16.2 Surface Car park and handicapped Car Park

- Concrete finish

#### 16.3 Mechanical Car Parking

- According to specialist's specification

### 17 RECREATION FACILITIES

#### a) Swimming pool

#### b) Gym room

### 18 ADDITIONAL ITEMS

#### a) Kitchen Cabinets

- Kitchen cabinets with Hard Surface Worktop including sink/taps, cooker hob & hood

#### b) Bedroom Wardrobe

- Built in wardrobe for all bedrooms to Architect's design & selection

#### c) Air-conditioning

- Air-conditioning to all bedrooms and Living/Dining to M&E Engineer's selection

#### d) Audio Intercom System

- Gate post with audio intercom to apartment units to M&E Engineer's selection

#### e) Electric water heater

- Hot water supply to all bathrooms and kitchen except WC to M&E Engineer's requirements

#### f) Soil treatment

- Anti- termite soil treatment by specialist's specifications

#### g) Cable vision

- Provision of cable and outlet only

#### h) Lift

- 2 passenger lifts for the development ie 1 passenger lift on each block serving the 1st storey to 5th storey