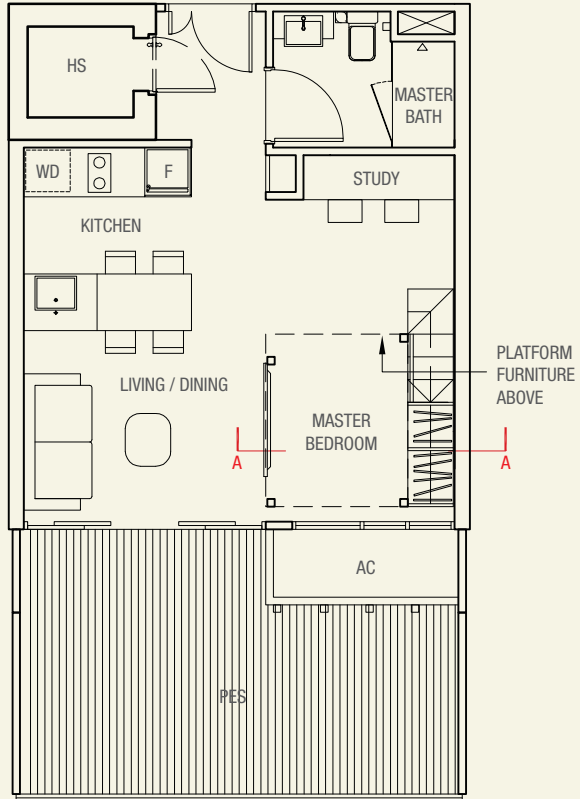


> type eA

1 bdrm + study
61 sq m

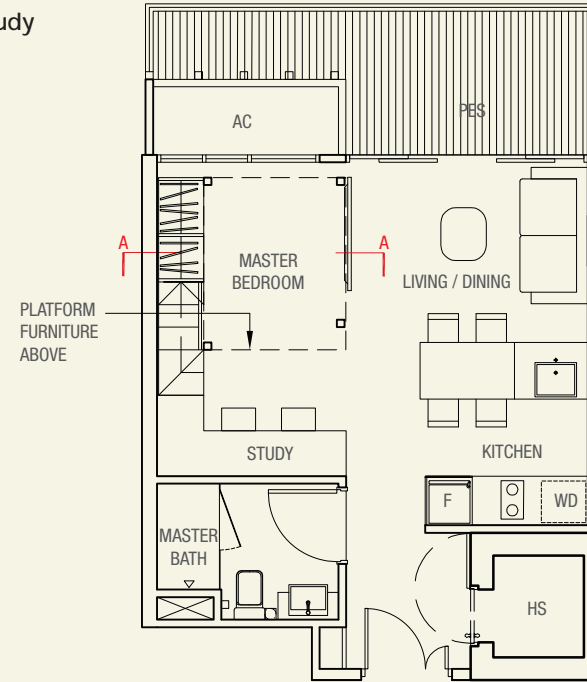
#03-17



> type eA-a1

1 bdrm + study
50 sq m

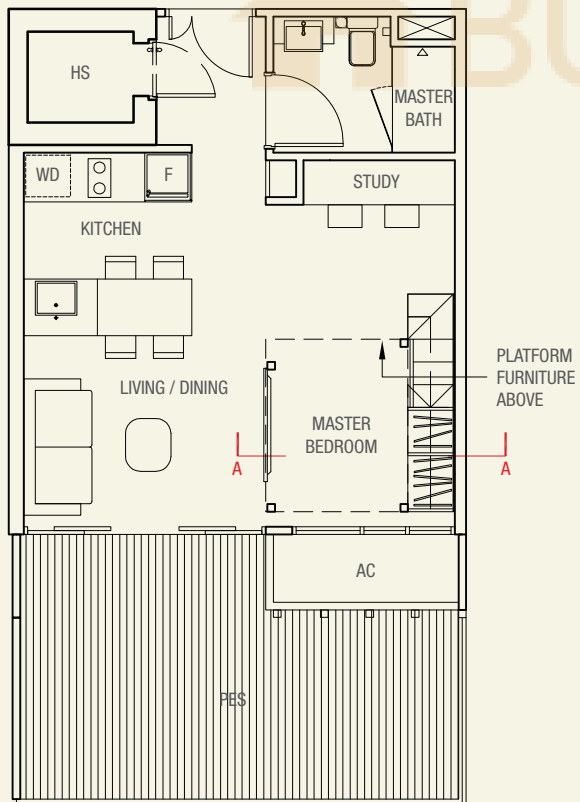
#03-31
#03-30*
* Mirror image



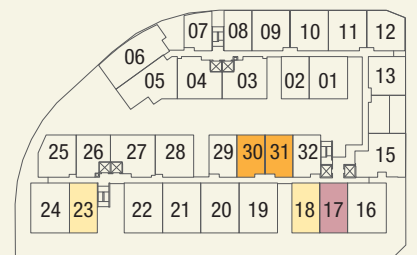
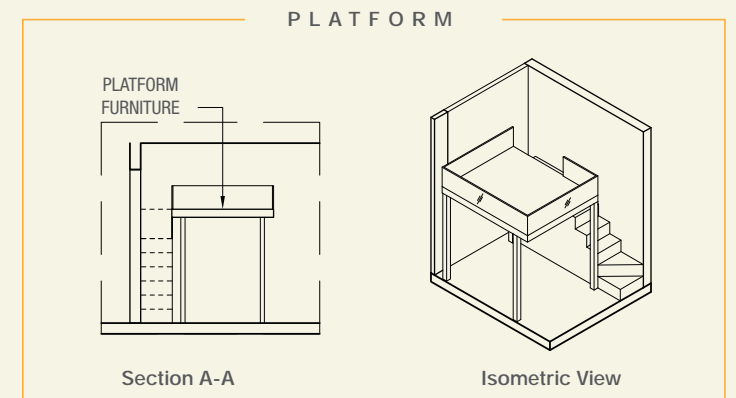
> type eA-a

1 bdrm + study
61 sq m

#03-23
#03-18*
* Mirror image



BUYCONDO.sg



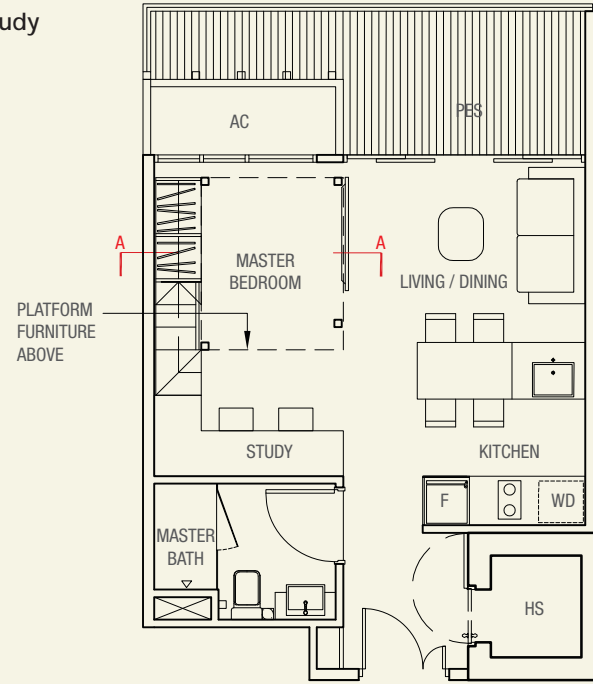
NOTE: Unit area includes a/c ledge & void &/or PES where applicable. All plans are subject to amendments as approved by the relevant authorities.

KEY PLAN (Not to scale)

> type eA1

1 bdrm + study
50 sq m

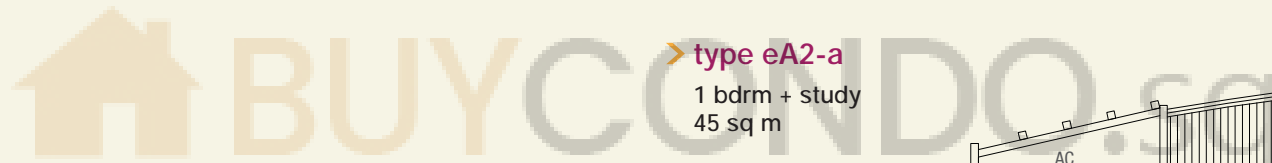
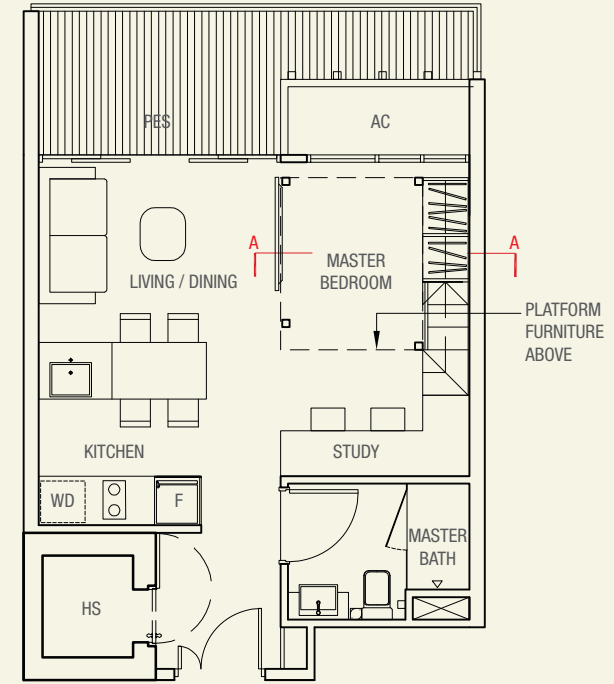
#03-29



> type eA2

1 bdrm + study
50 sq m

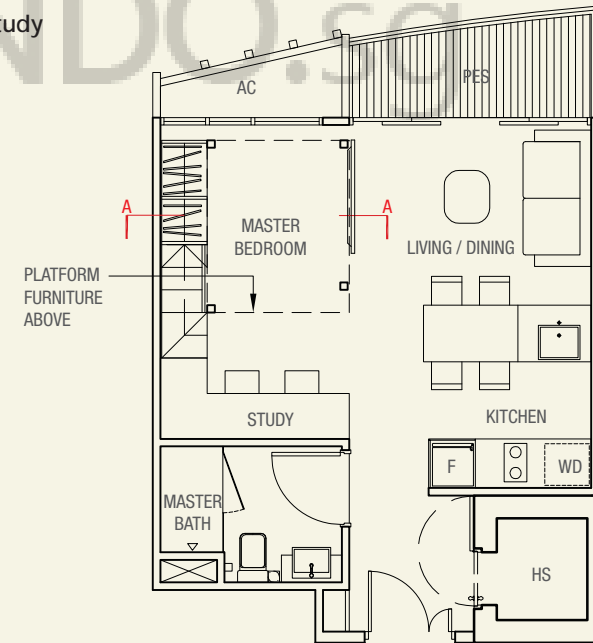
#03-32



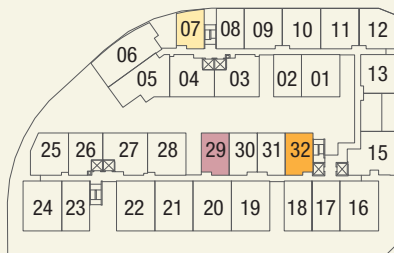
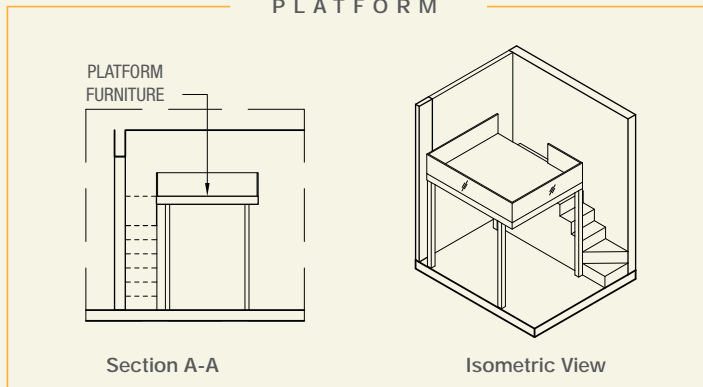
> type eA2-a

1 bdrm + study
45 sq m

#03-07



PLATFORM



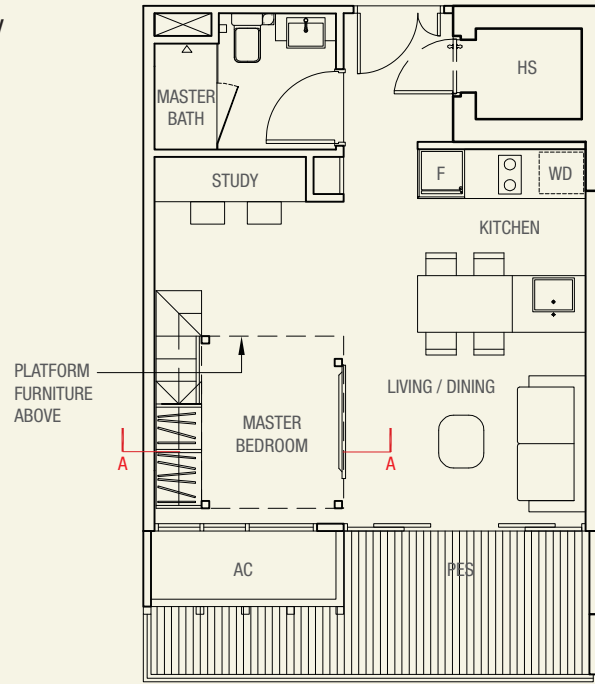
KEY PLAN (Not to scale)

NOTE: Unit area includes a/c ledge & void &/or PES where applicable. All plans are subject to amendments as approved by the relevant authorities.

> type eA2-b

1 bdrm + study
51 sq m

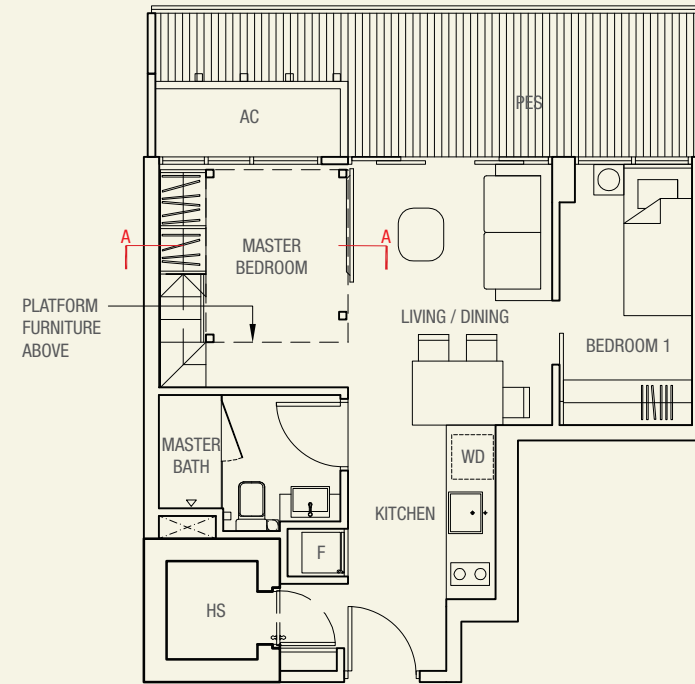
#03-02



> type eB

2 bdrm
55 sq m

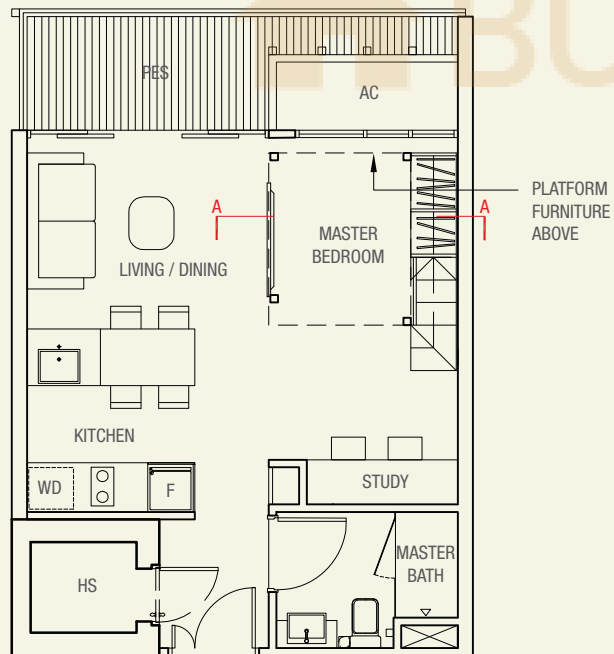
#03-26



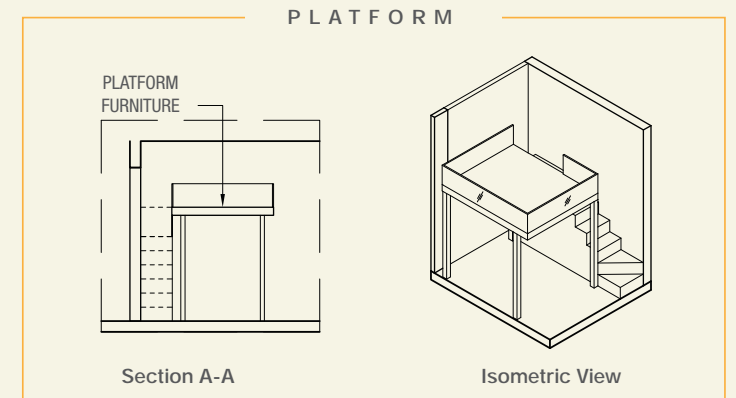
> type eA3

1 bdrm + study
49 sq m

#03-08

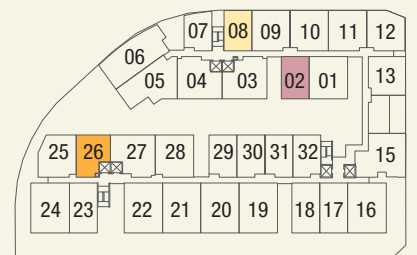


BUYCONDO.sg



NOTE: Unit area includes a/c ledge & void &/or PES where applicable. All plans are subject to amendments as approved by the relevant authorities.

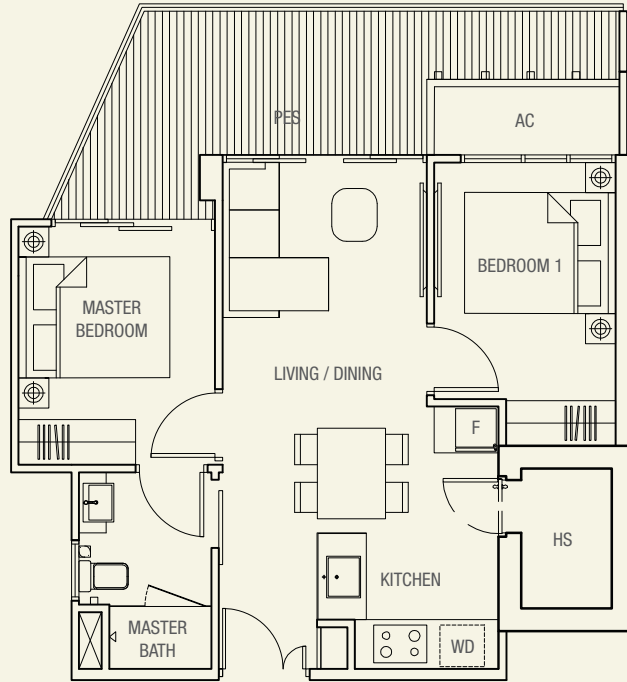
KEY PLAN (Not to scale)



> type eB1

2 bdrm
65 sq m

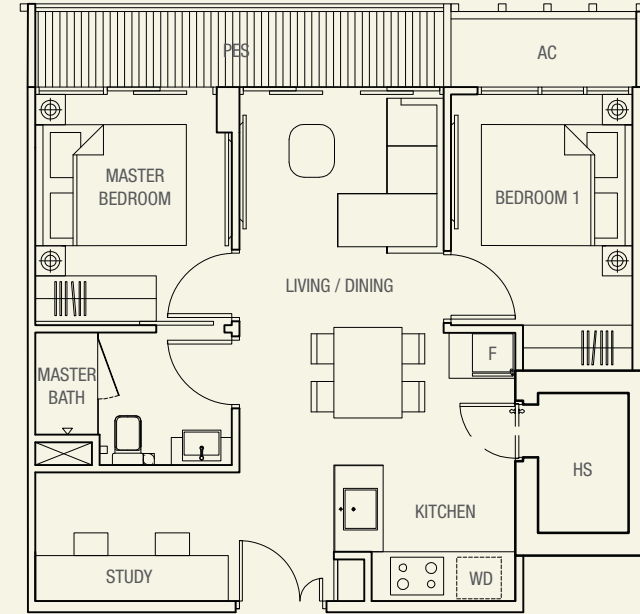
#03-25



> type eB2-a1

2 bdrm + study
62 sq m

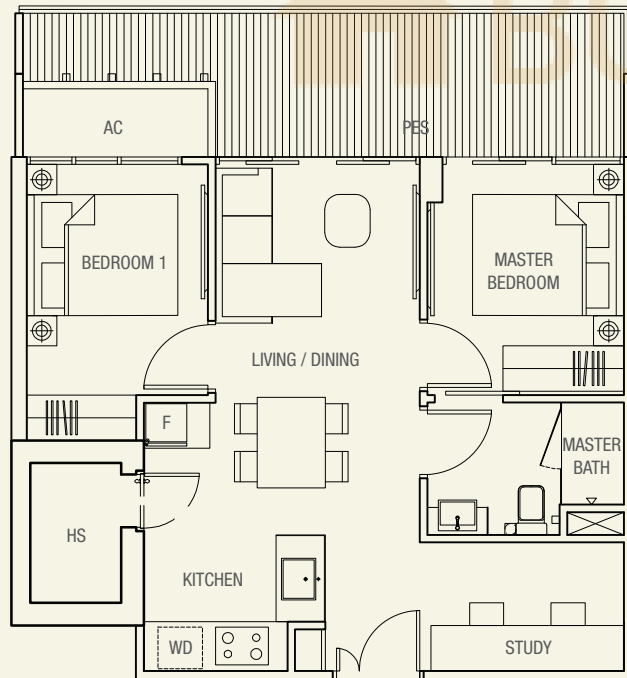
#03-13



> type eB2-a

2 bdrm + study
70 sq m

#03-28



> type eB3

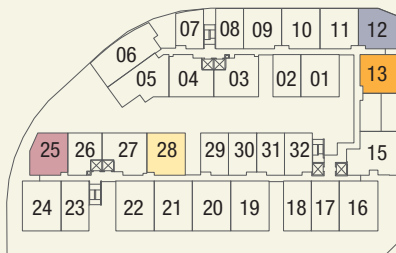
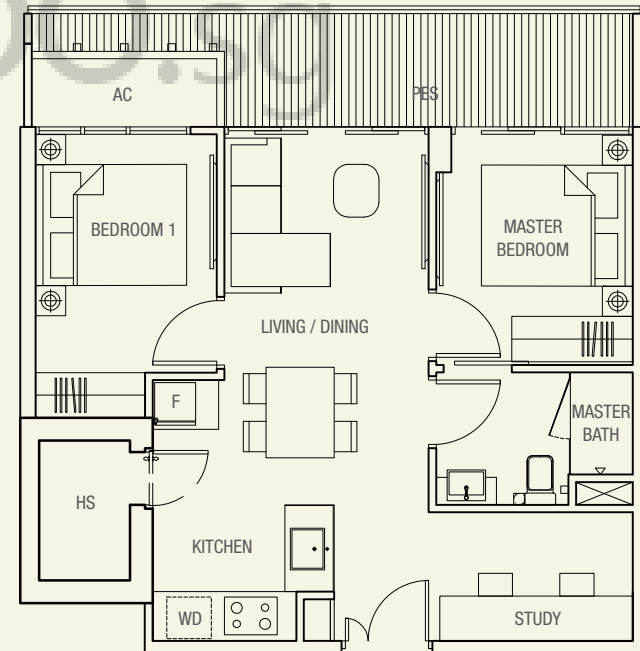
2 bdrm + study
67 sq m

#03-10

#03-09*

#03-11*

* Mirror image



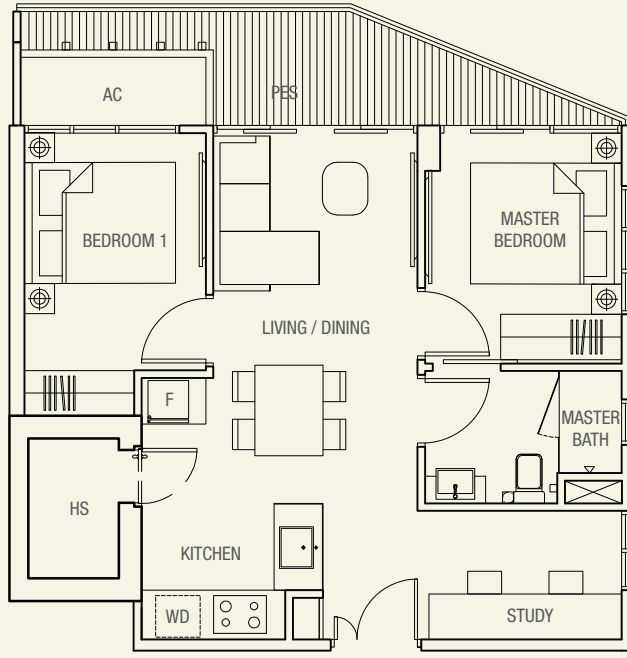
KEY PLAN (Not to scale)

NOTE: Unit area includes a/c ledge & void &/or PES where applicable. All plans are subject to amendments as approved by the relevant authorities.

> type eB4

2 bdrm + study
64 sq m

#03-12



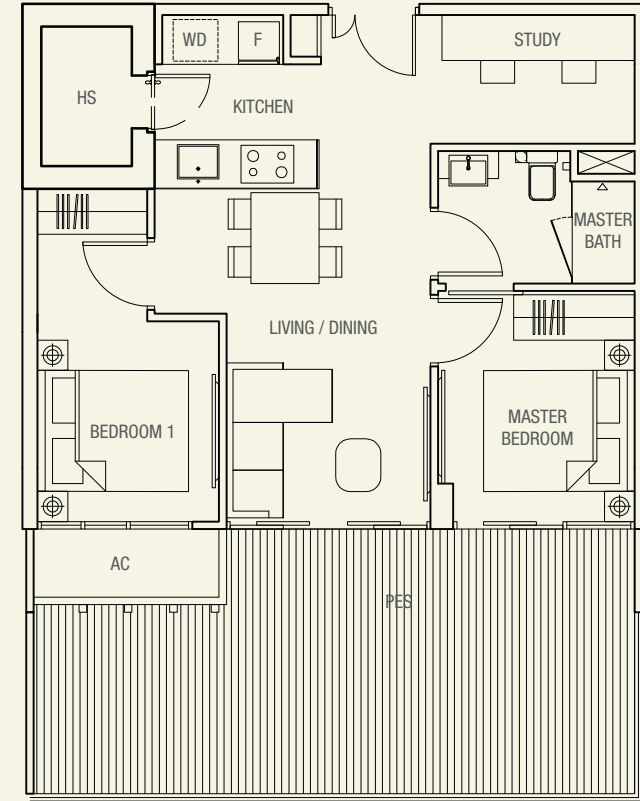
> type eB5-a

2 bdrm + study
79 sq m

#03-19

#03-22*

* Mirror image



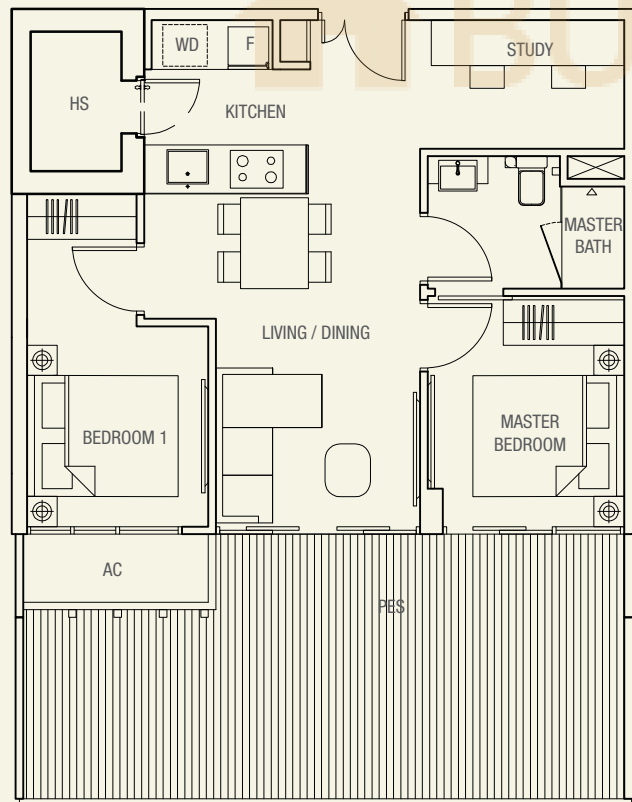
> type eB5

2 bdrm + study
79 sq m

#03-21

#03-20*

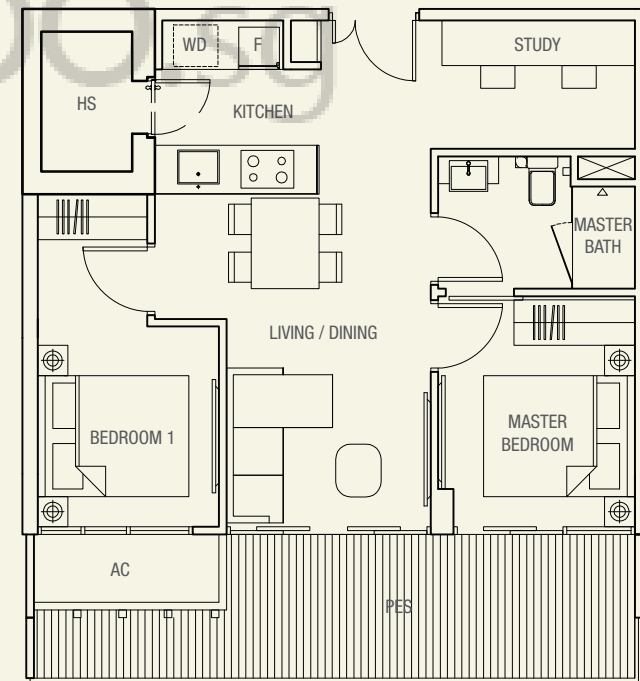
* Mirror image



> type eB5-a1

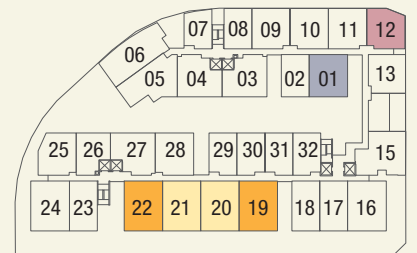
2 bdrm + study
71 sq m

#03-01



NOTE: Unit area includes a/c ledge & void &/or PES where applicable. All plans are subject to amendments as approved by the relevant authorities.

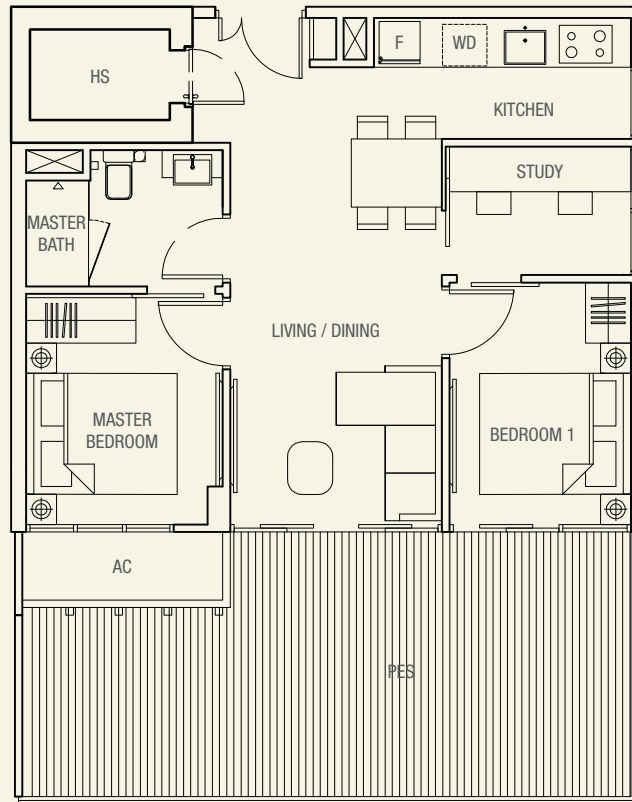
KEY PLAN (Not to scale)



> type eB6

2 bdrm + study
84 sq m

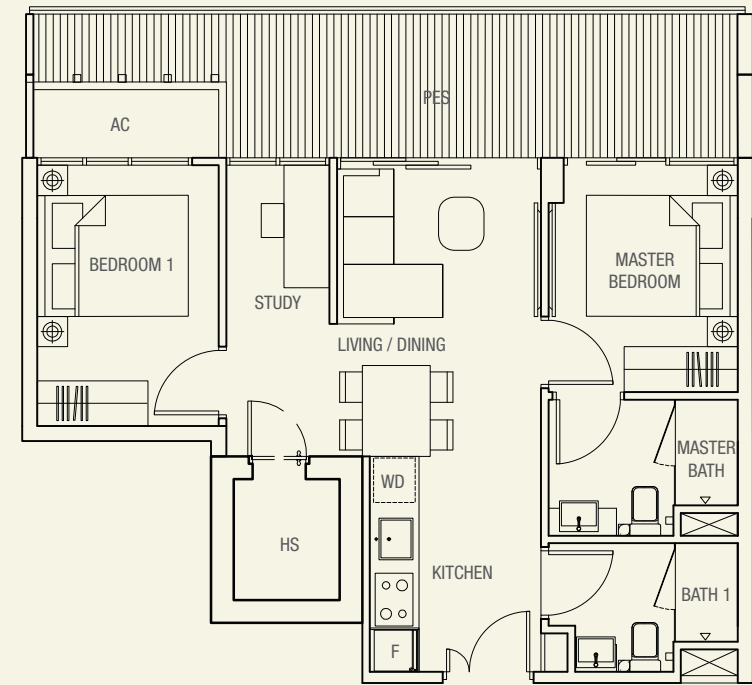
#03-16
#03-24*
* Mirror image



> type eB7-a

2 bdrm + study
73 sq m

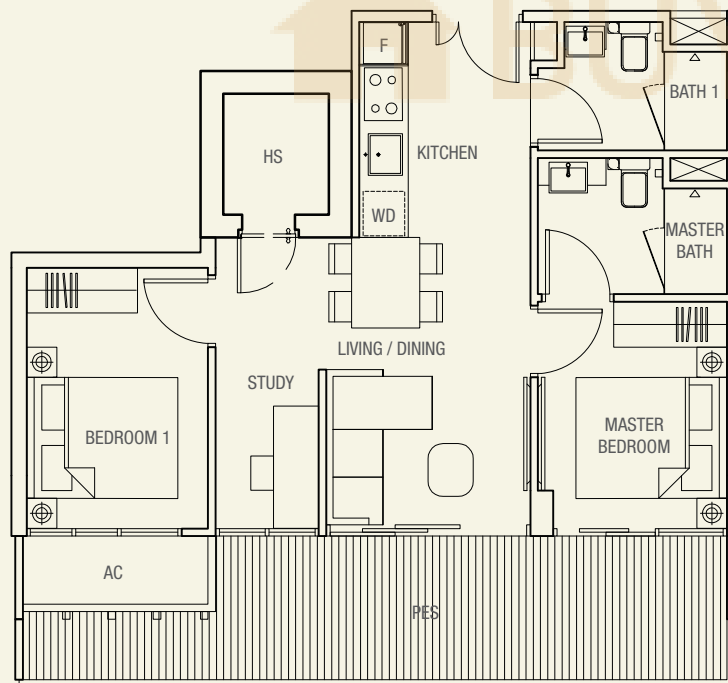
#03-04
#03-27



> type eB7

2 bdrm + study
72 sq m

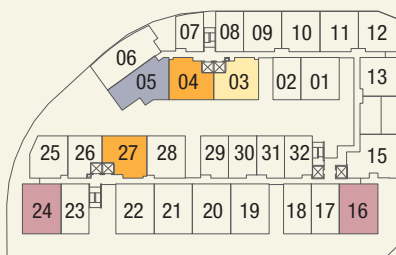
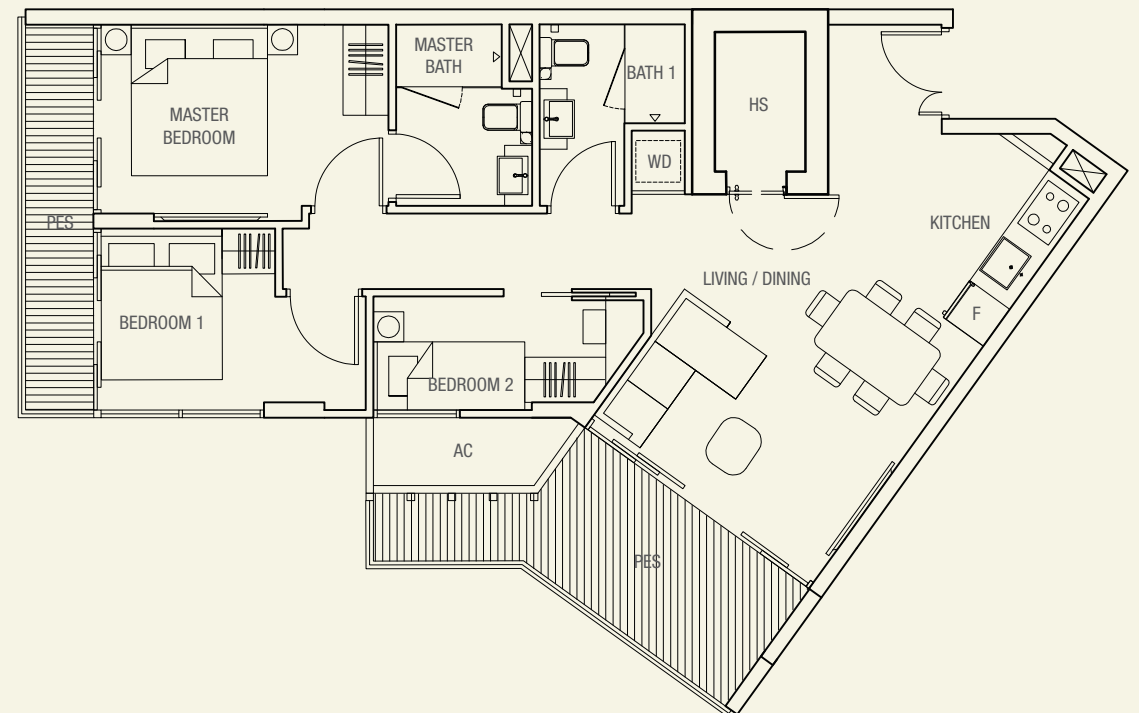
#03-03



> type eC

3 bdrm
86 sq m

#03-05



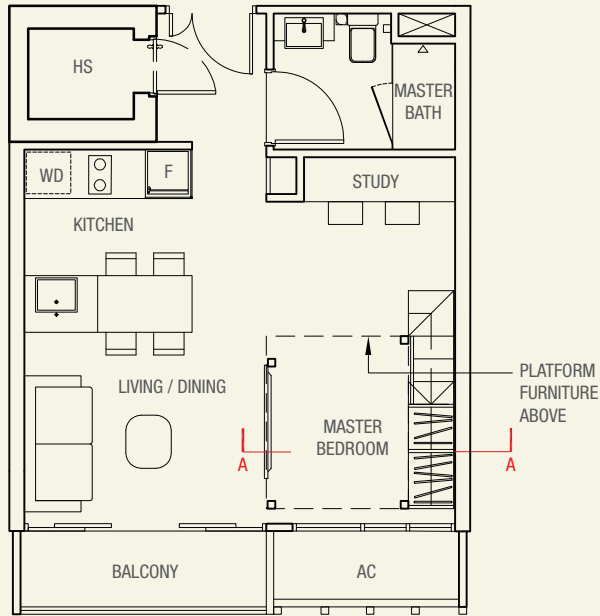
KEY PLAN (Not to scale)

NOTE: Unit area includes a/c ledge & void &/or PES where applicable. All plans are subject to amendments as approved by the relevant authorities.

> type A

1 bdrm + study
46 sq m

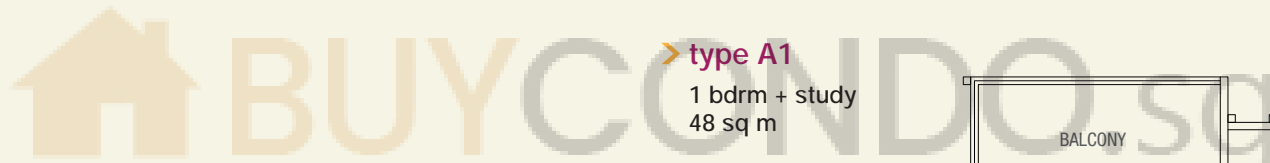
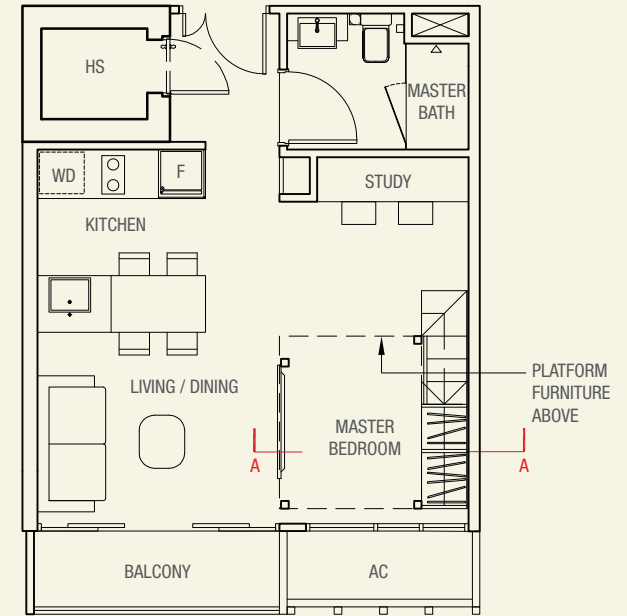
#04-17
#05-17



> type A-a

1 bdrm + study
46 sq m

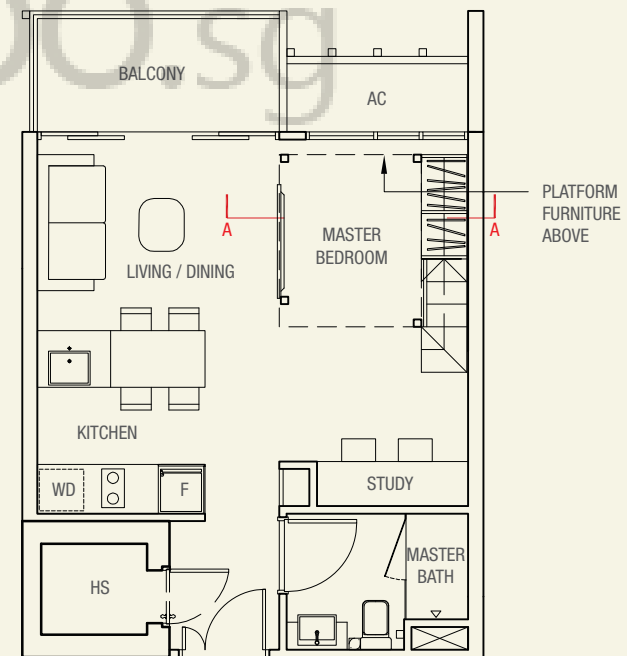
#04-23
#05-23
#04-02*
#05-02*
#06-02*
#04-18*
#05-18*
* Mirror image



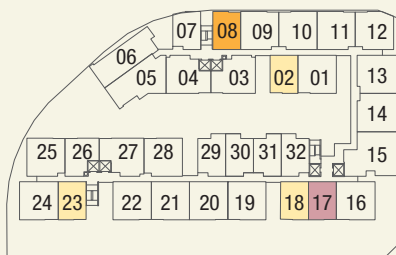
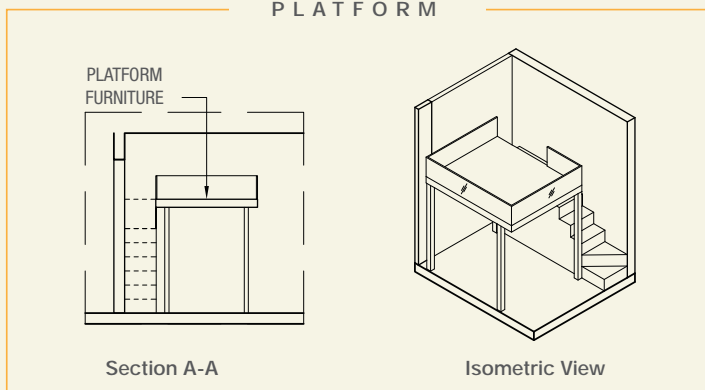
> type A1

1 bdrm + study
48 sq m

#04-08
#05-08
#06-08



PLATFORM



KEY PLAN (Not to scale)

NOTE: Unit area includes a/c ledge & void &/or PES where applicable. All plans are subject to amendments as approved by the relevant authorities.

> type A2

1 bdrm + study
47 sq m

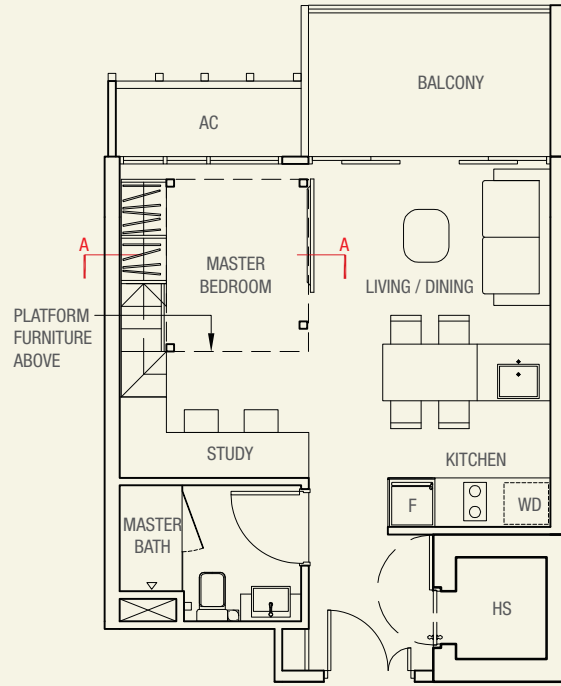
#04-31

#05-31

#04-30*

#05-30*

* Mirror image

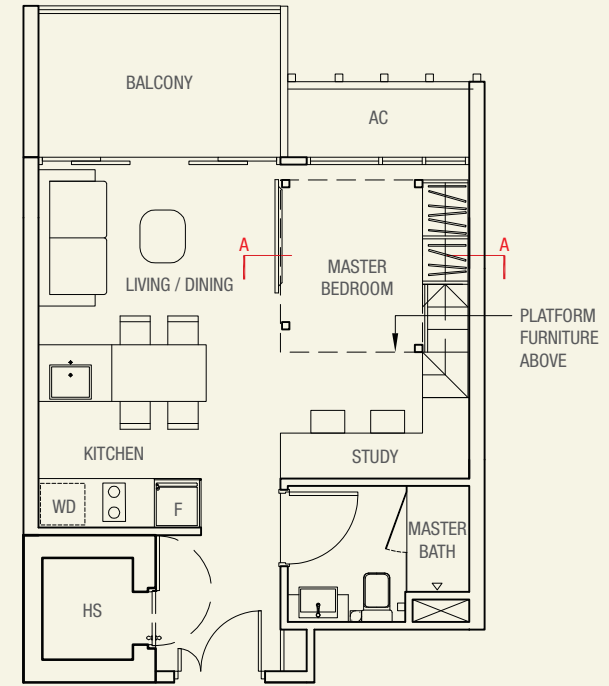


> type A2-b

1 bdrm + study
47 sq m

#04-32

#05-32

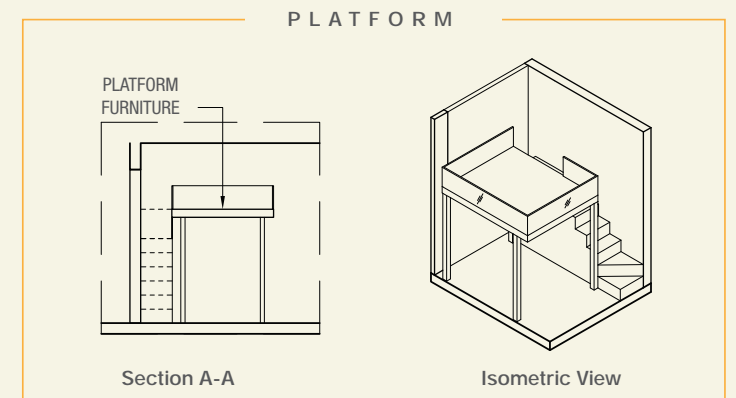
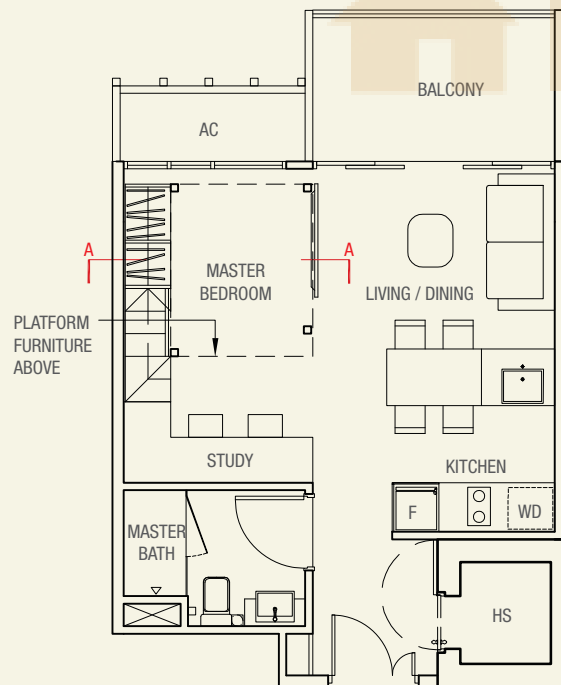


> type A2-a

1 bdrm + study
47 sq m

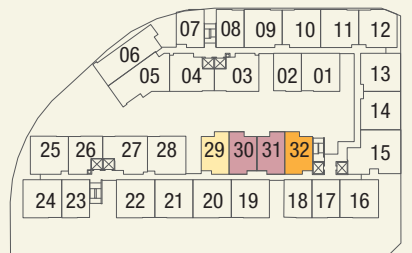
#04-29

#05-29



NOTE: Unit area includes a/c ledge & void &/or PES where applicable. All plans are subject to amendments as approved by the relevant authorities.

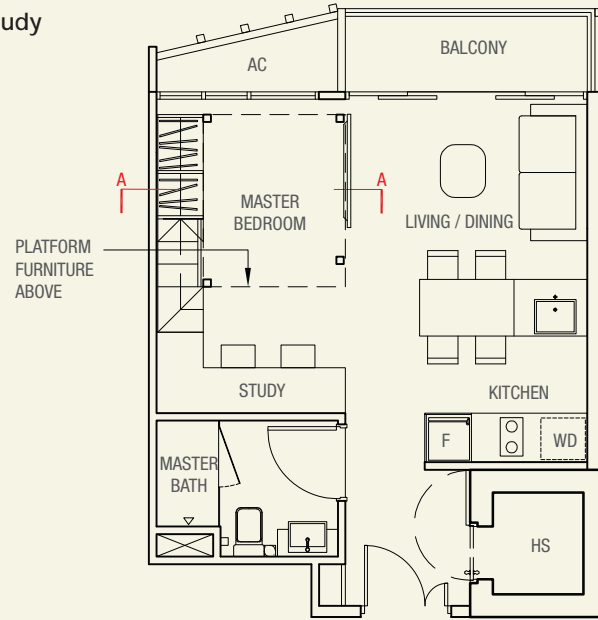
KEY PLAN (Not to scale)



> type A3

1 bdrm + study
44 sq m

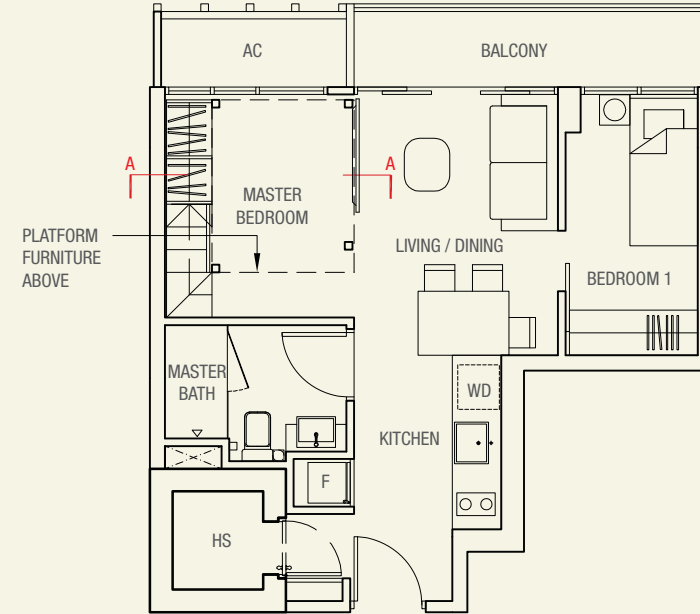
#04-07
#05-07
#06-07



> type B

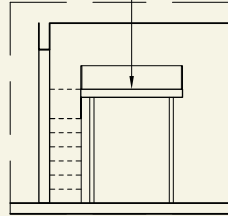
2 bdrm
48 sq m

#04-26
#05-26

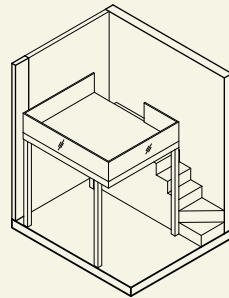


PLATFORM

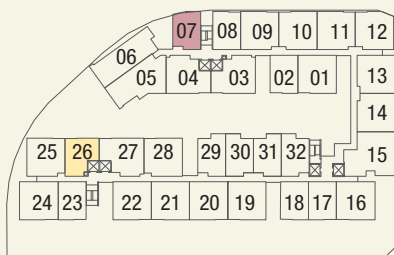
PLATFORM
FURNITURE



Section A-A



Isometric View



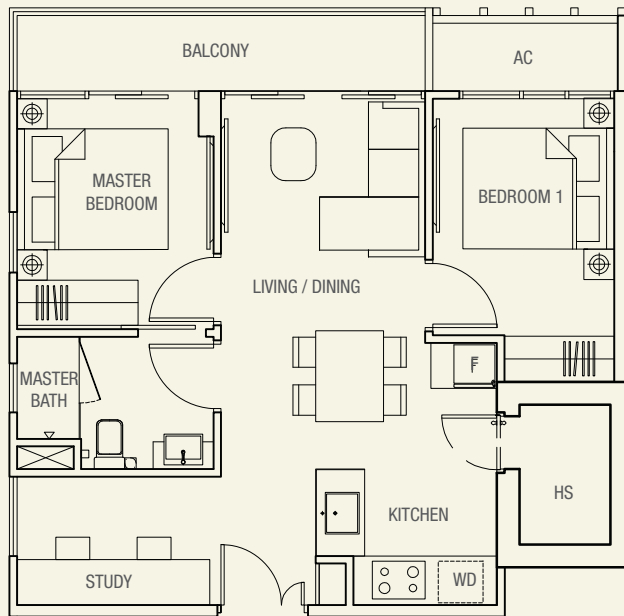
KEY PLAN (Not to scale)

NOTE: Unit area includes a/c ledge & void &/or PES where applicable. All plans are subject to amendments as approved by the relevant authorities.

> type B1

2 bdrm + study
62 sq m

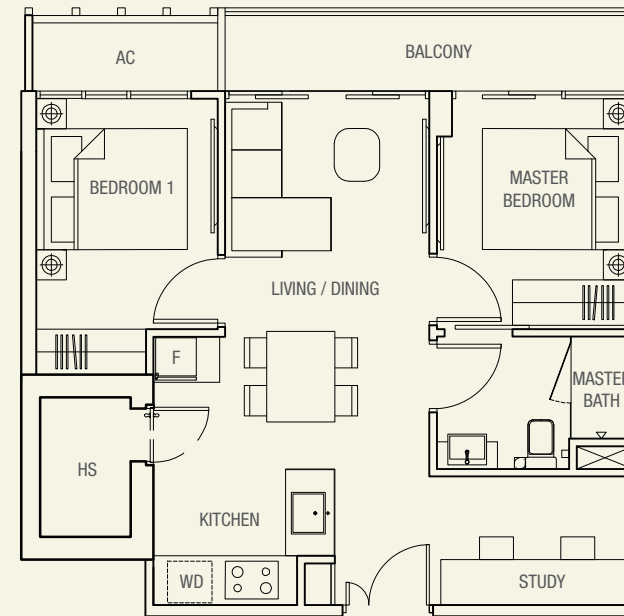
#04-25
#05-25



> type B2-a

2 bdrm + study
62 sq m

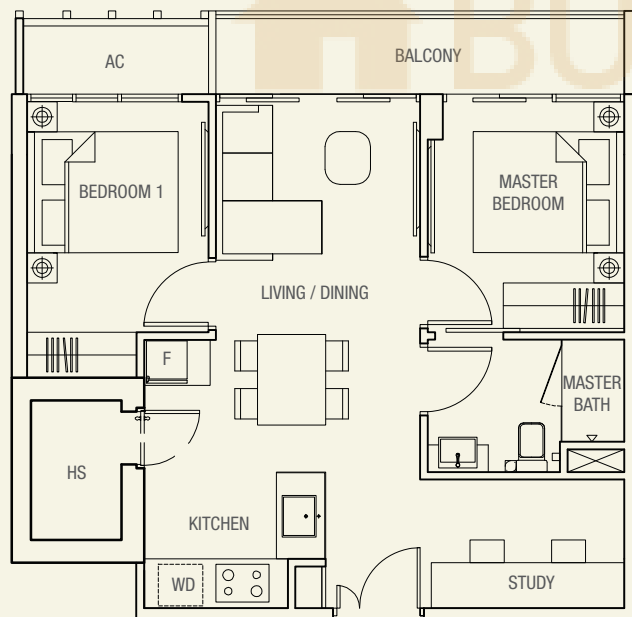
#04-28
#05-28
#04-13*
#05-13*
#06-13*
* Mirror image



> type B2

2 bdrm + study
62 sq m

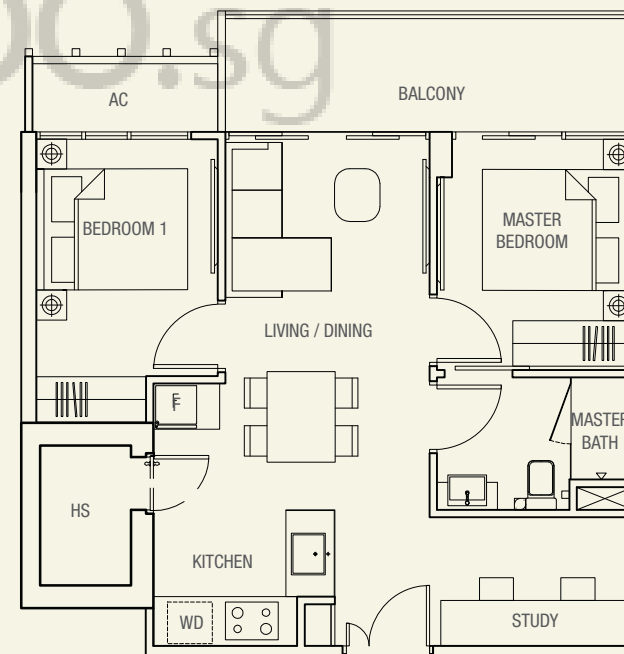
#04-14
#05-14
#06-14



> type B3

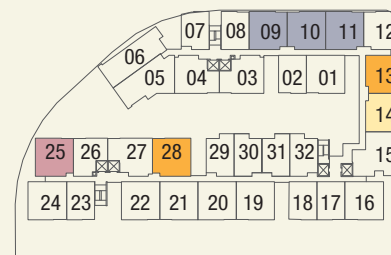
2 bdrm + study
65 sq m

#04-10
#05-10
#06-10
#04-09*
#05-09*
#06-09*
#04-11*
#05-11*
#06-11*
* Mirror image



NOTE: Unit area includes a/c ledge & void &/or PES where applicable. All plans are subject to amendments as approved by the relevant authorities.

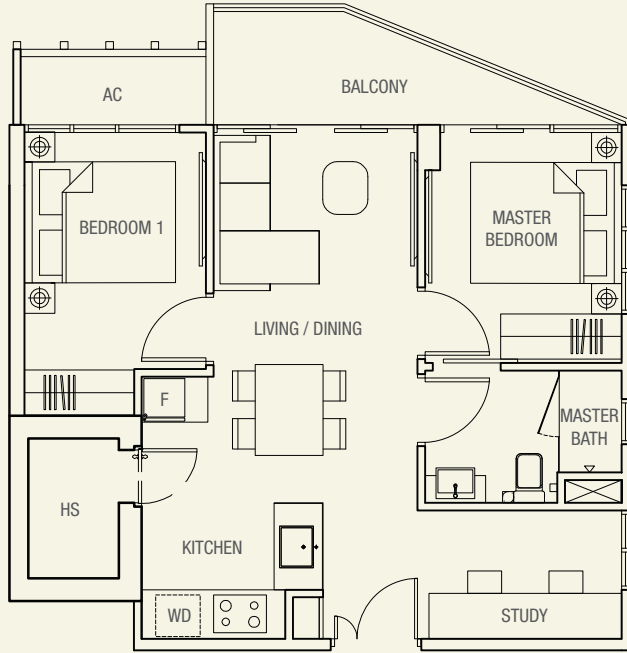
KEY PLAN (Not to scale)



> type B4

2 bdrm + study
62 sq m

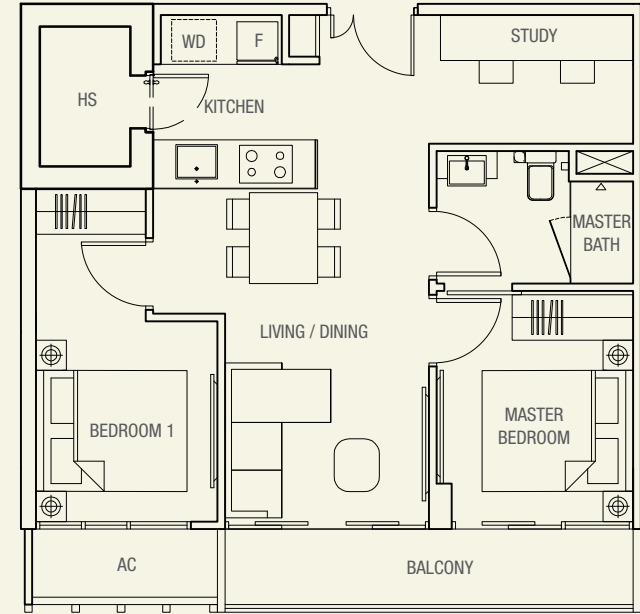
- #04-12
- #05-12
- #06-12



> type B5-a

2 bdrm + study
63 sq m

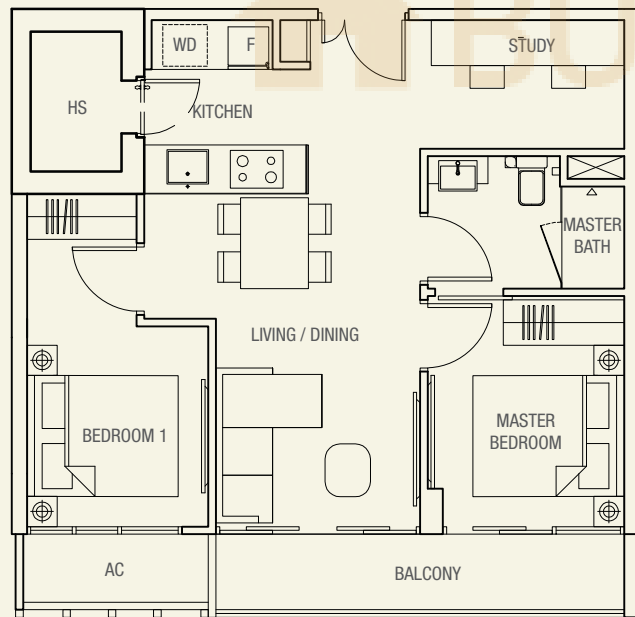
- #04-01
 - #05-01
 - #06-01
 - #04-19
 - #05-19
 - #04-22*
 - #05-22*
- * Mirror image



> type B5

2 bdrm + study
63 sq m

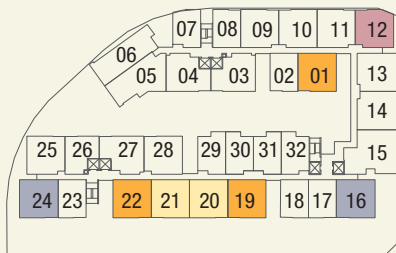
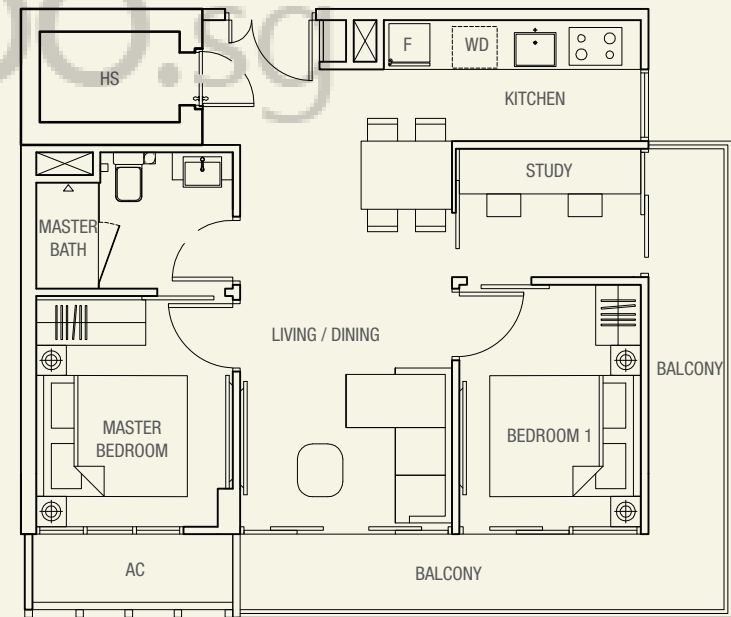
- #04-21
 - #05-21
 - #04-20*
 - #05-20*
- * Mirror image



> type B6

2 bdrm + study
70 sq m

- #04-16
 - #05-16
 - #04-24*
 - #05-24*
- * Mirror image



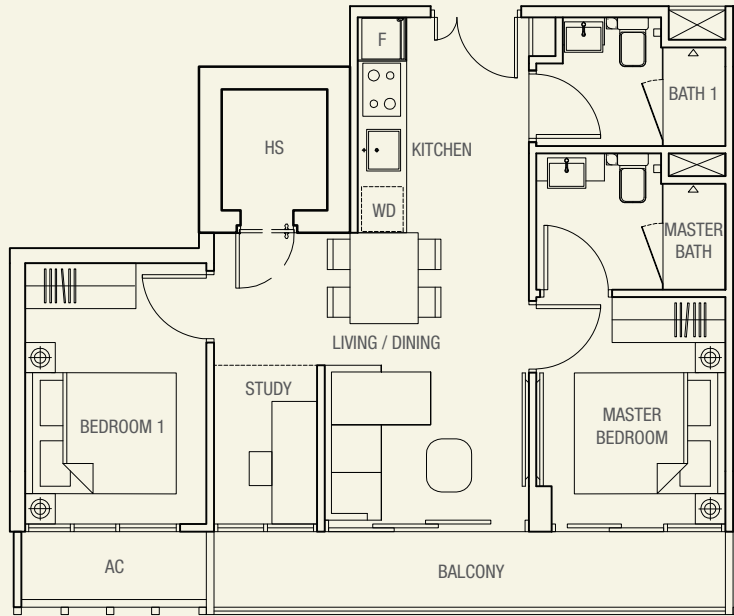
KEY PLAN (Not to scale)

NOTE: Unit area includes a/c ledge & void &/or PES where applicable. All plans are subject to amendments as approved by the relevant authorities.

> type B7

2 bdrm + study
64 sq m

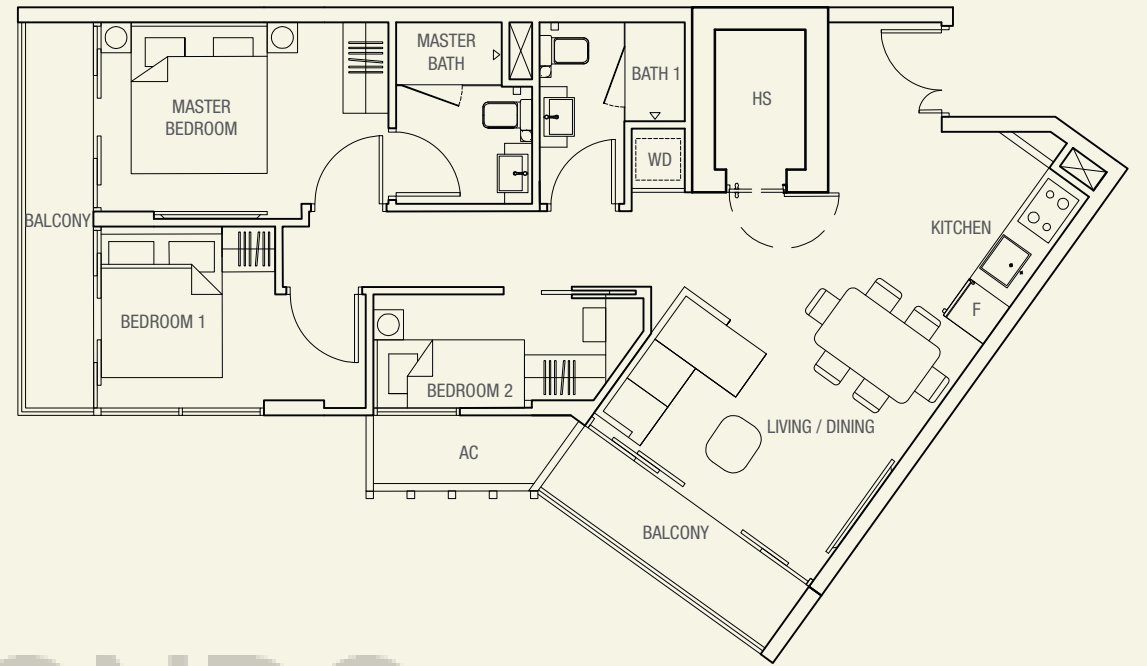
#04-03
#05-03
#06-03



> type C

3 bdrm
81 sq m

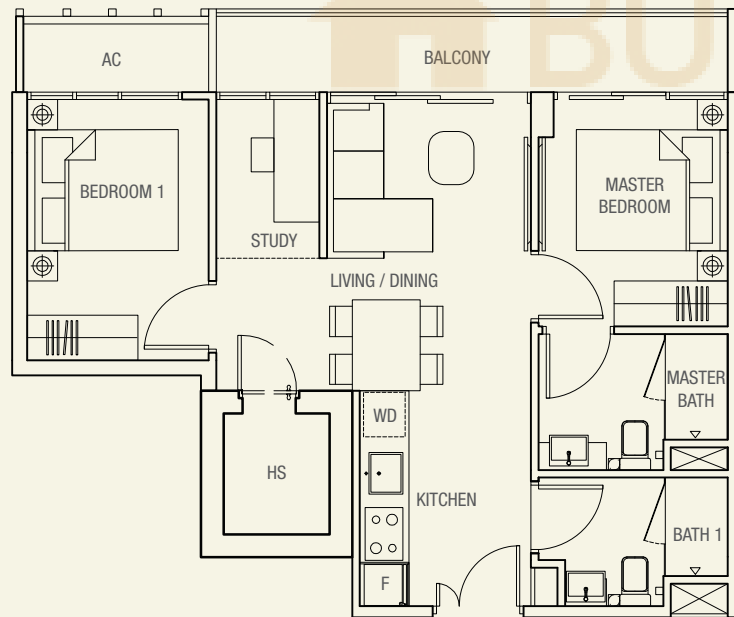
#04-05
#05-05
#06-05



> type B7-a

2 bdrm + study
64 sq m

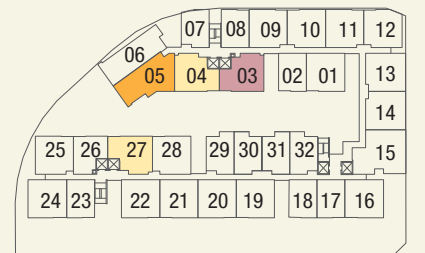
#04-04
#05-04
#06-04
#04-27
#05-27



BUYCONDO.sg

NOTE: Unit area includes a/c ledge & void &/or PES where applicable. All plans are subject to amendments as approved by the relevant authorities.

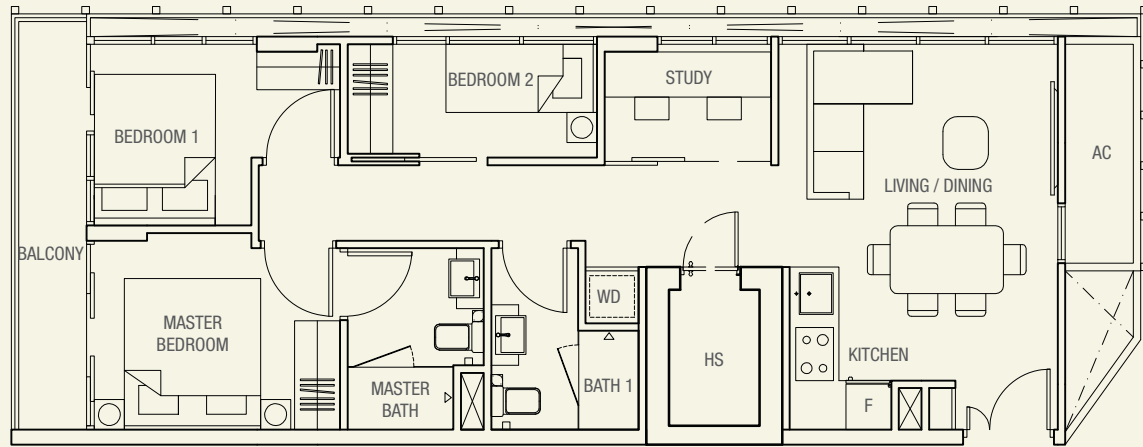
KEY PLAN (Not to scale)



> type C1

3 bdrm + study
75 sq m

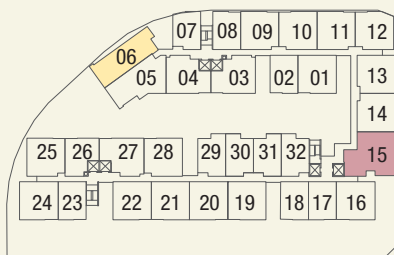
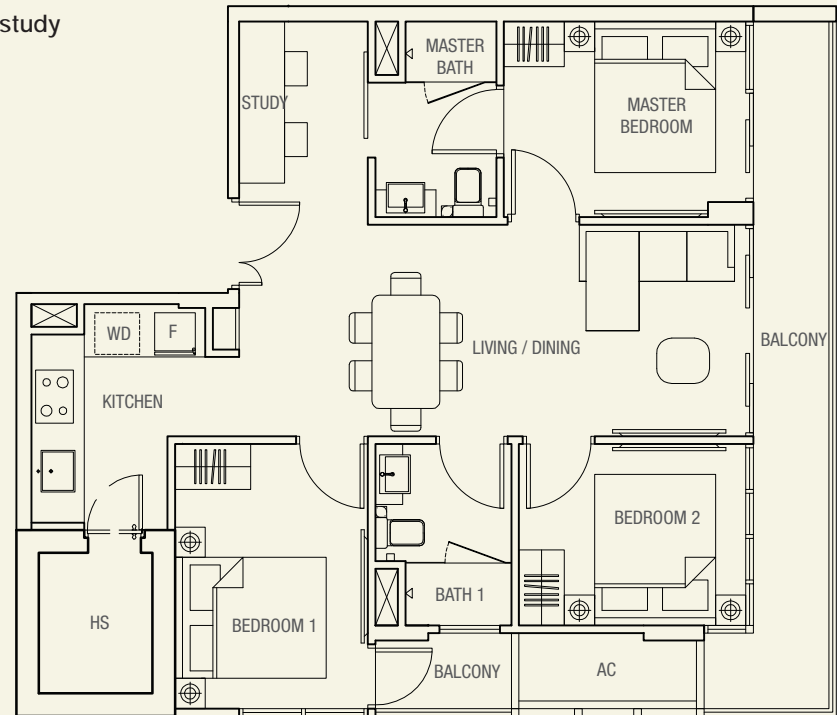
#04-06
#05-06
#06-06



> type C2

3 bdrm + study
87 sq m

#04-15
#05-15
#06-15



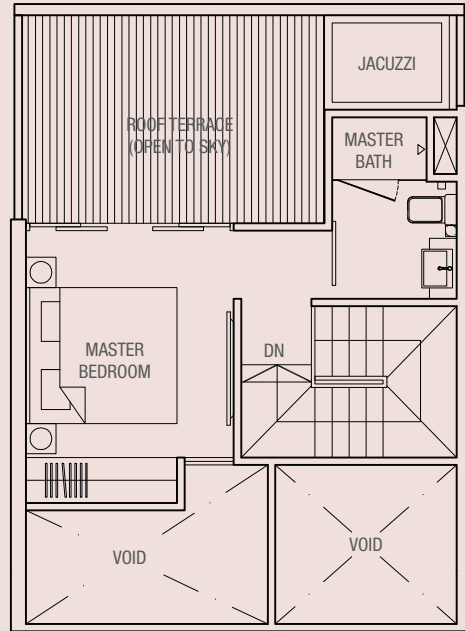
KEY PLAN (Not to scale)

NOTE: Unit area includes a/c ledge & void &/or PES where applicable. All plans are subject to amendments as approved by the relevant authorities.

> type phA

2 bdrm
94 sq m

#06-17



Upper Level

> type phA-a

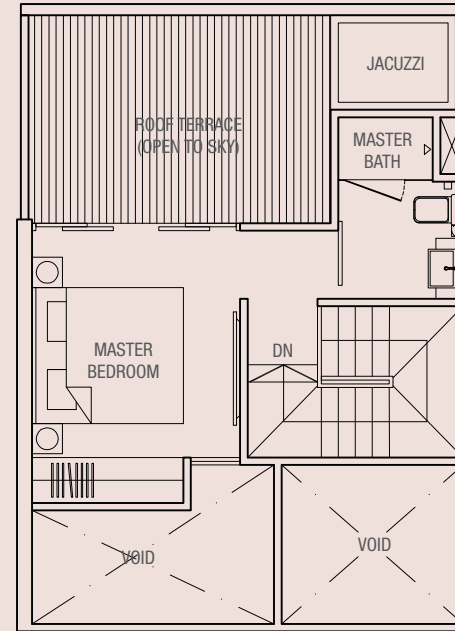
2 bdrm
94 sq m

#06-23

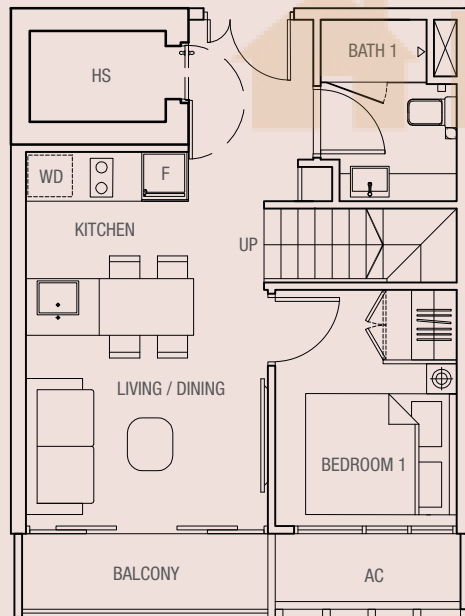
#06-18*

#07-02*

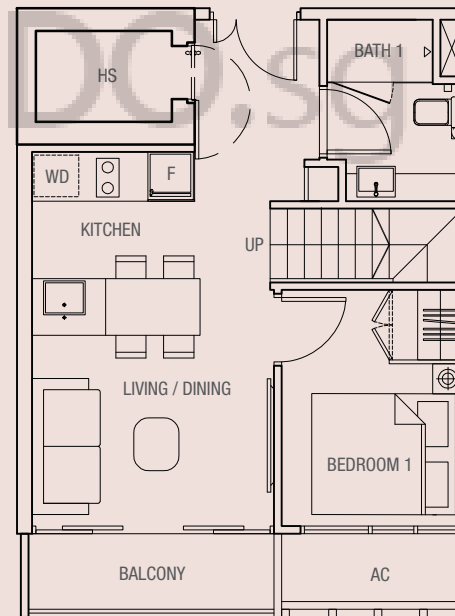
* Mirror image



Upper Level



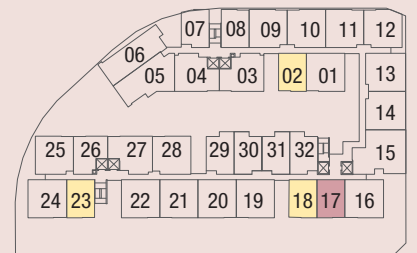
Lower Level



Lower Level

NOTE: Unit area includes a/c ledge & void &/or PES where applicable. All plans are subject to amendments as approved by the relevant authorities.

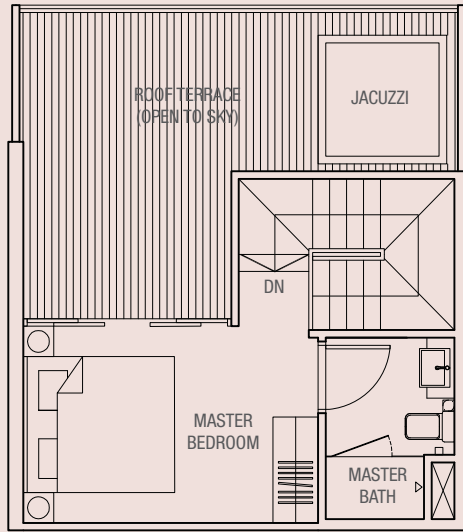
KEY PLAN (Not to scale)



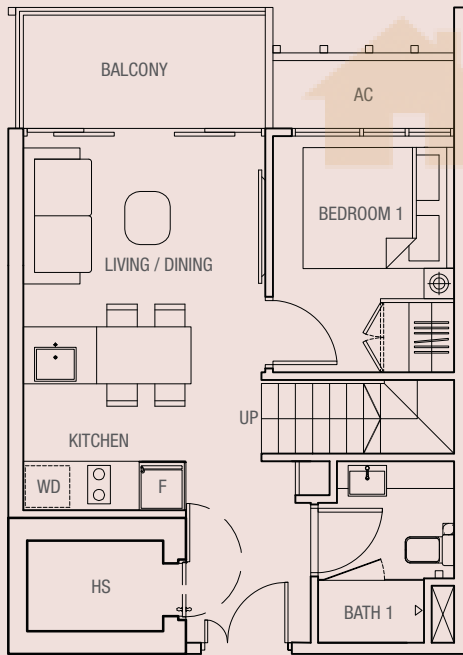
> type phA1

2 bdrm
88 sq m

#07-08



Upper Level



Lower Level

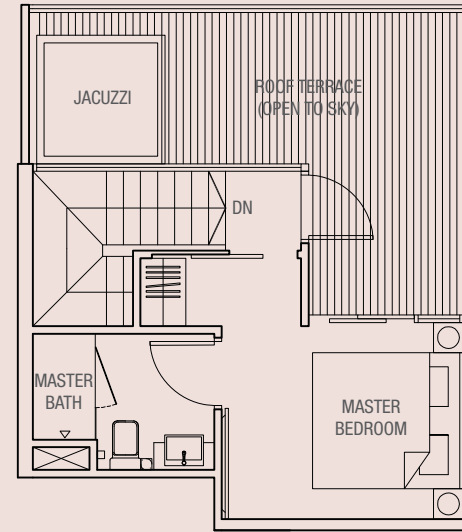
> type phA2

2 bdrm
86 sq m

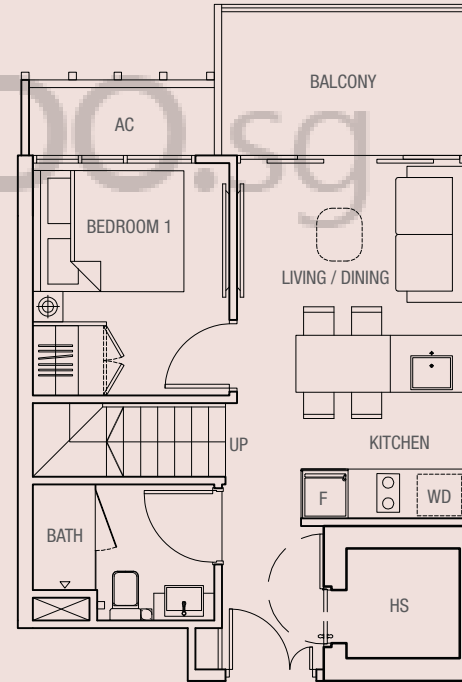
#06-31

#06-30*

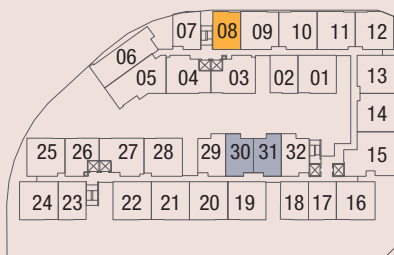
* Mirror image



Upper Level



Lower Level



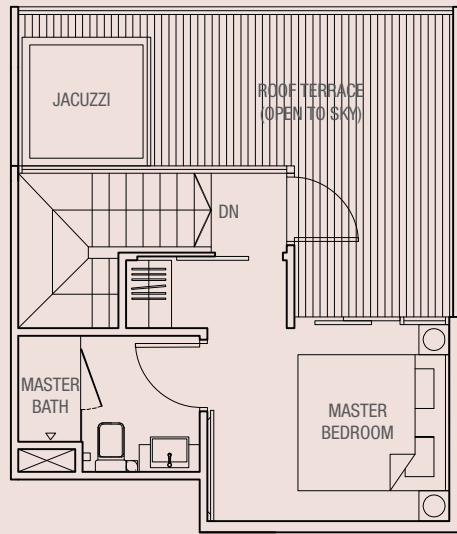
KEY PLAN (Not to scale)

NOTE: Unit area includes a/c ledge & void &/or PES where applicable. All plans are subject to amendments as approved by the relevant authorities.

> type phA2-a

2 bdrm
86 sq m

#06-29

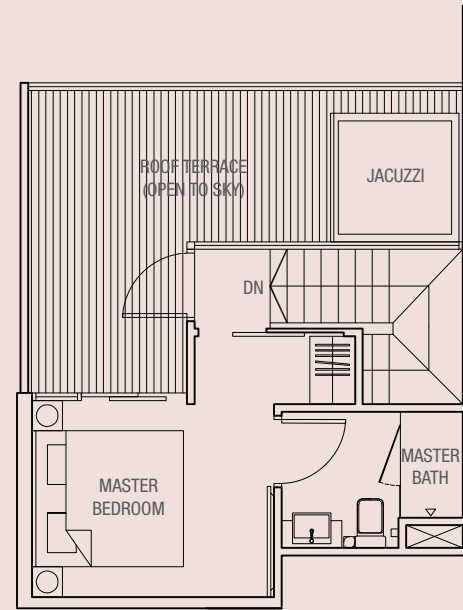


Upper Level

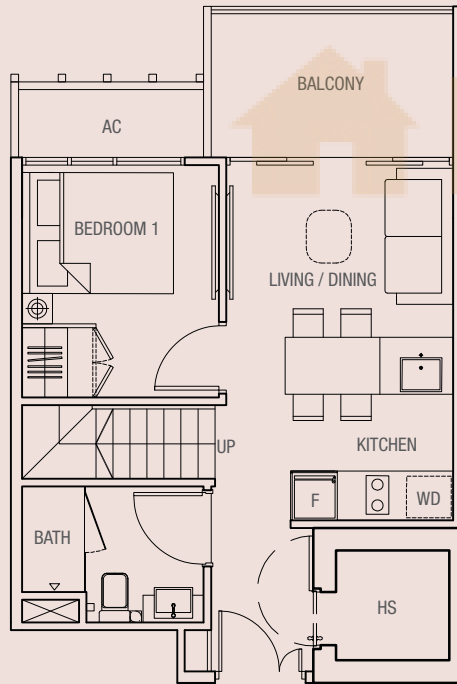
> type phA2-b

2 bdrm
86 sq m

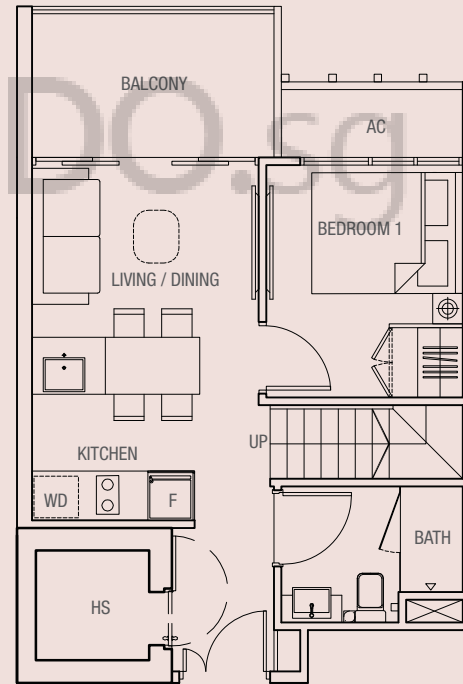
#06-32



Upper Level



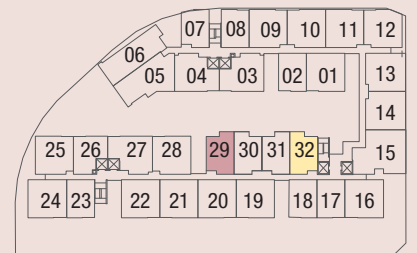
Lower Level



Lower Level

NOTE: Unit area includes a/c ledge & void &/or PES where applicable. All plans are subject to amendments as approved by the relevant authorities.

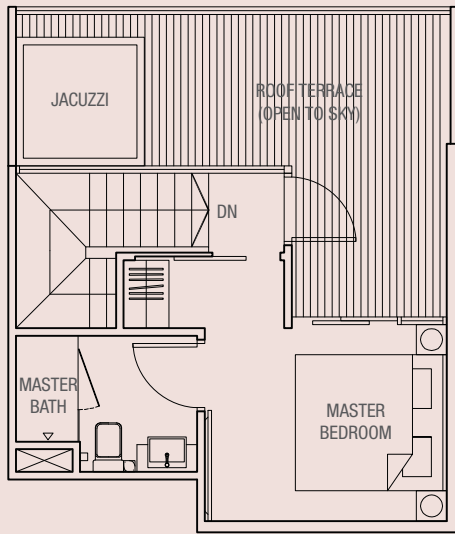
KEY PLAN (Not to scale)



> type phA3

2 bdrm
82 sq m

#07-07

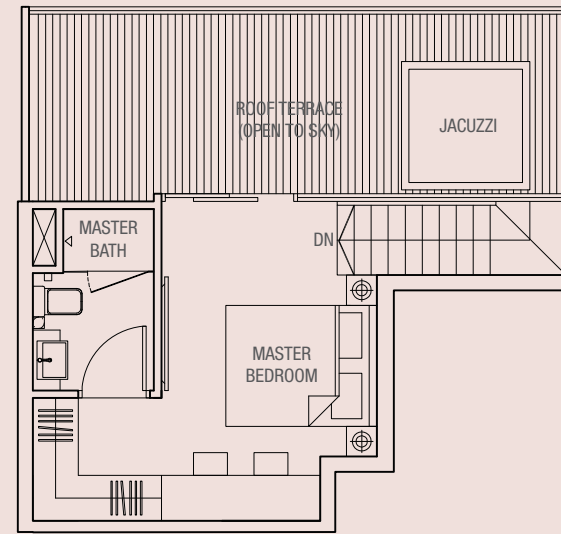


Upper Level

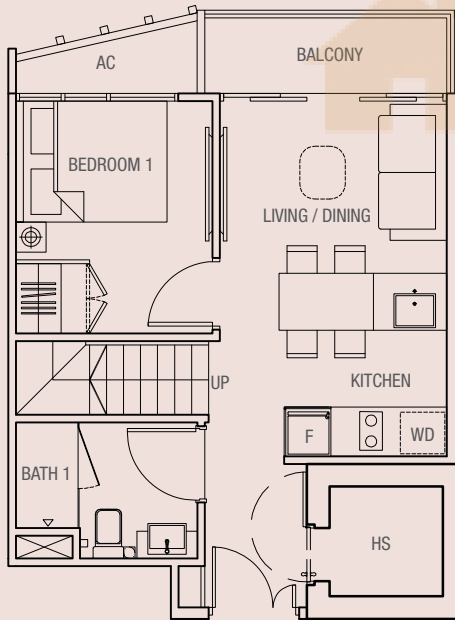
> type phB

2 bdrm
88 sq m

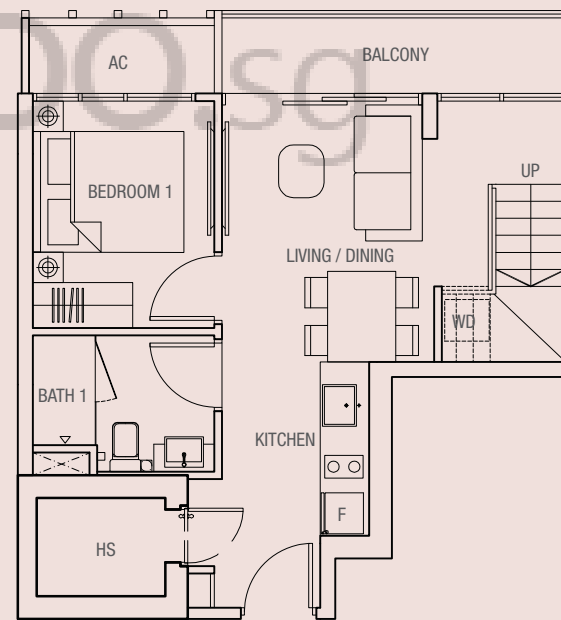
#06-26



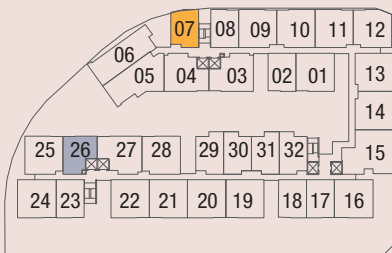
Upper Level



Lower Level



Lower Level



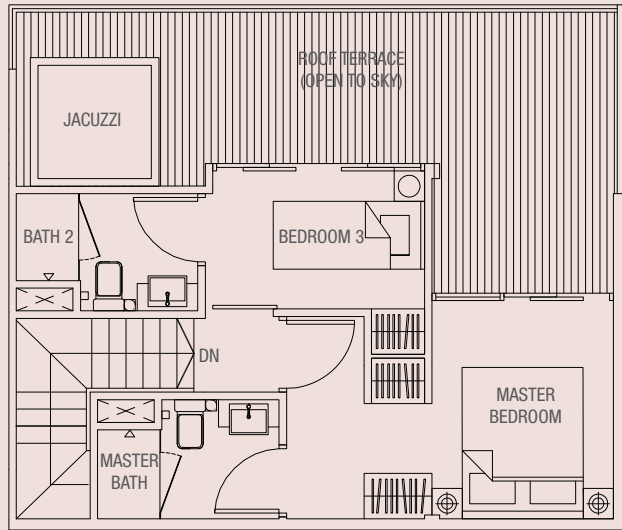
KEY PLAN (Not to scale)

NOTE: Unit area includes a/c ledge & void &/or PES where applicable. All plans are subject to amendments as approved by the relevant authorities.

> type phB1

4 bdrm
116 sq m

#06-25

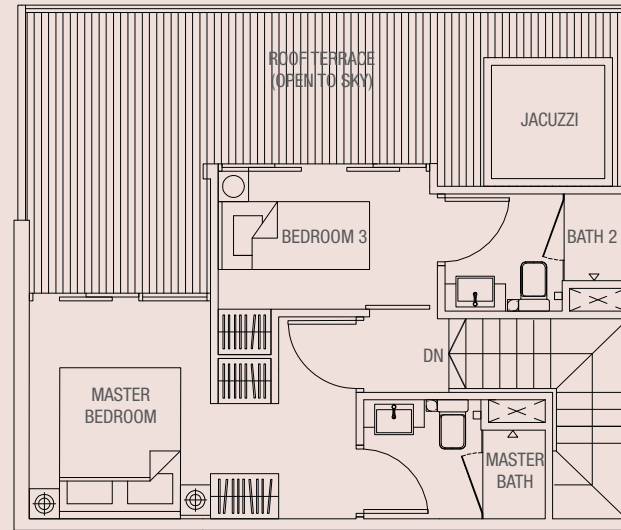


Upper Level

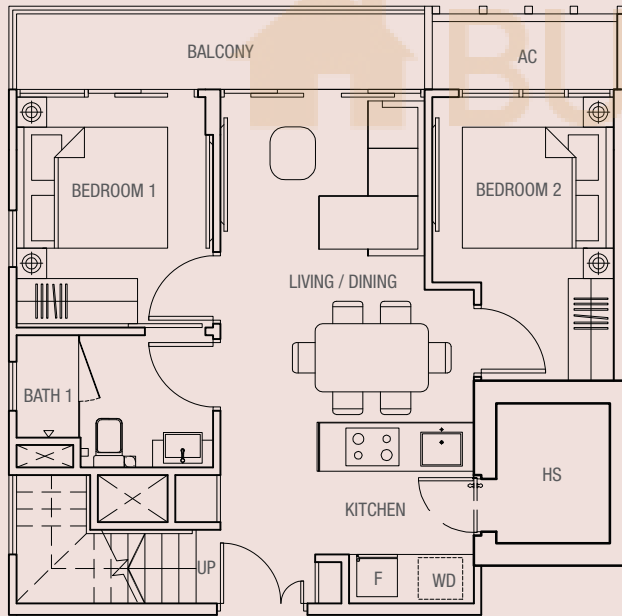
> type phB2-a

4 bdrm
116 sq m

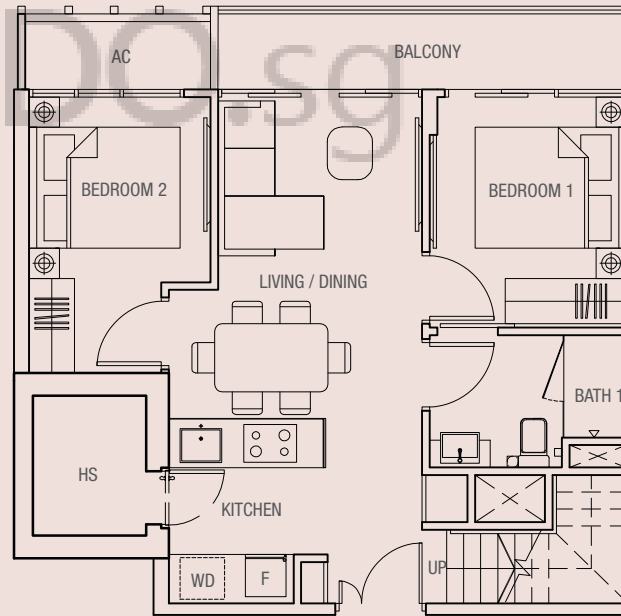
#06-28



Upper Level



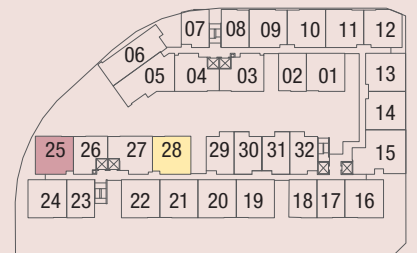
Lower Level



Lower Level

NOTE: Unit area includes a/c ledge & void &/or PES where applicable. All plans are subject to amendments as approved by the relevant authorities.

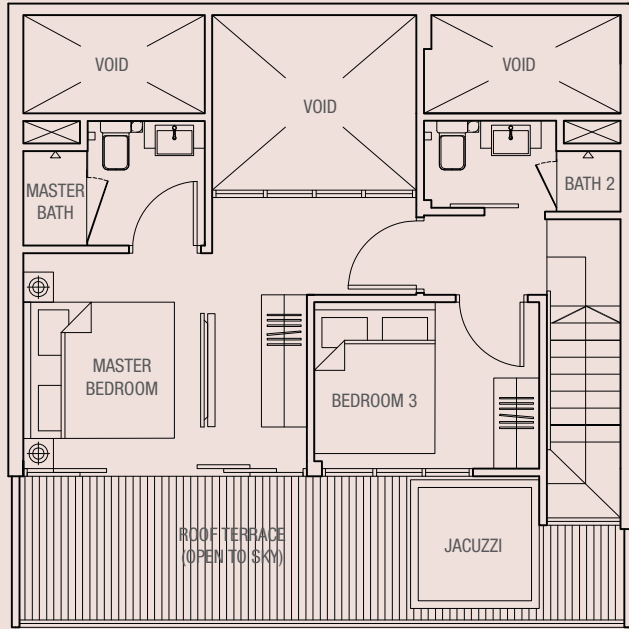
KEY PLAN (Not to scale)



> type pHB2

4 bdrm
127 sq m

#07-14

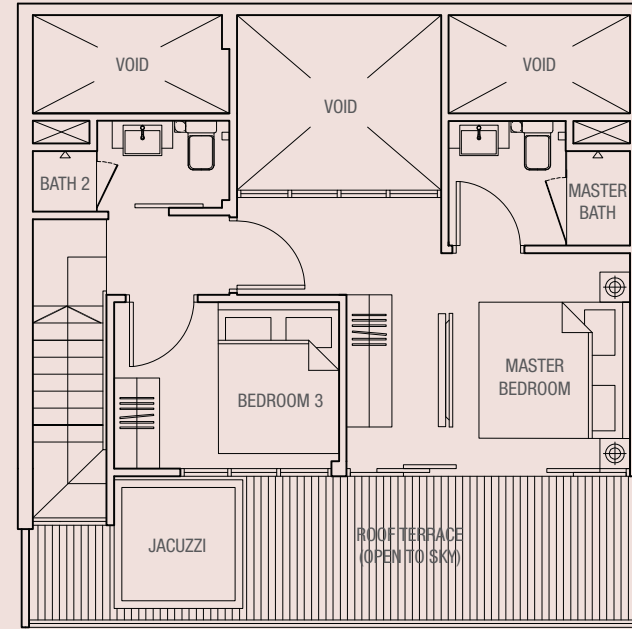


Upper Level

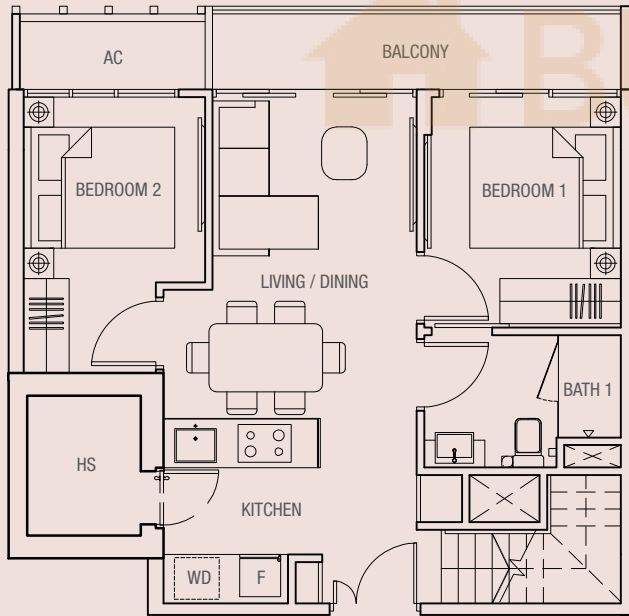
> type pHB2-a1

4 bdrm
127 sq m

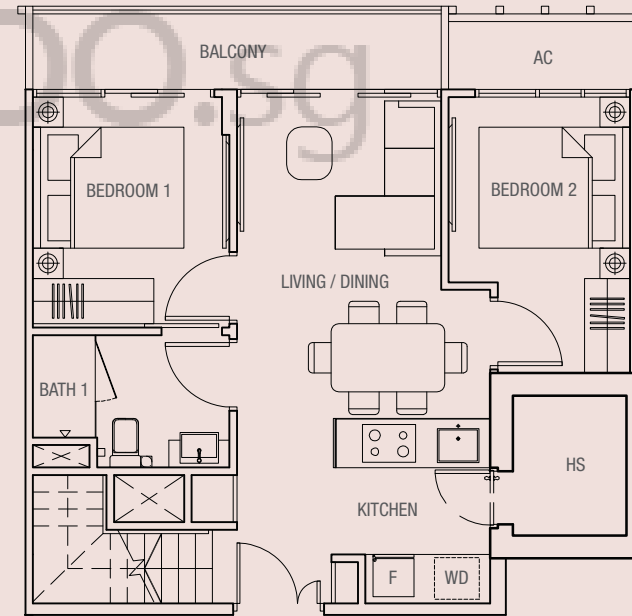
#07-13



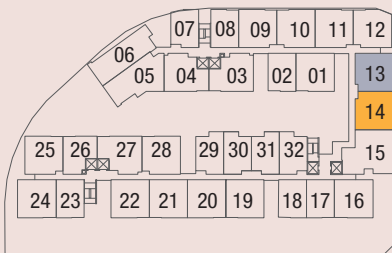
Upper Level



Lower Level



Lower Level



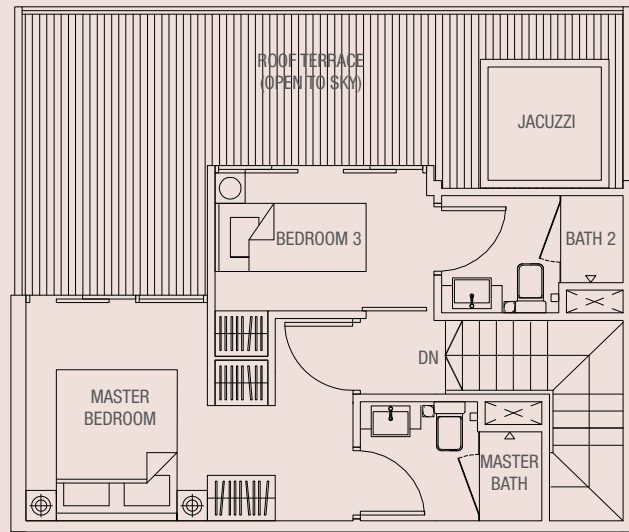
KEY PLAN (Not to scale)

NOTE: Unit area includes a/c ledge & void &/or PES where applicable. All plans are subject to amendments as approved by the relevant authorities.

> type phB3

4 bdrm
119 sq m

- #07-10
- #07-09*
- #07-11*
- * Mirror image

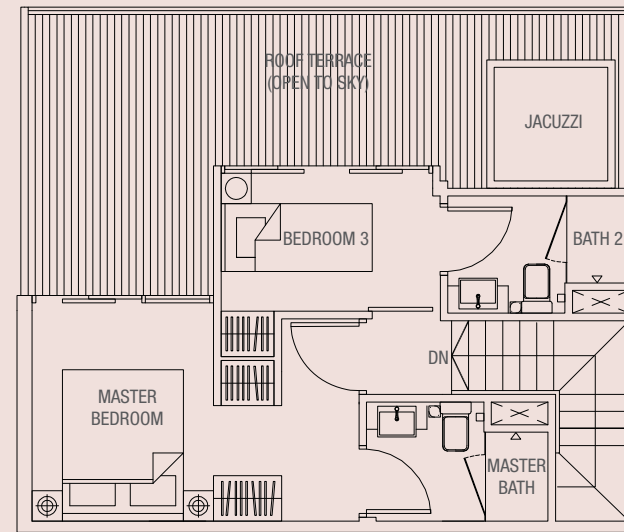


Upper Level

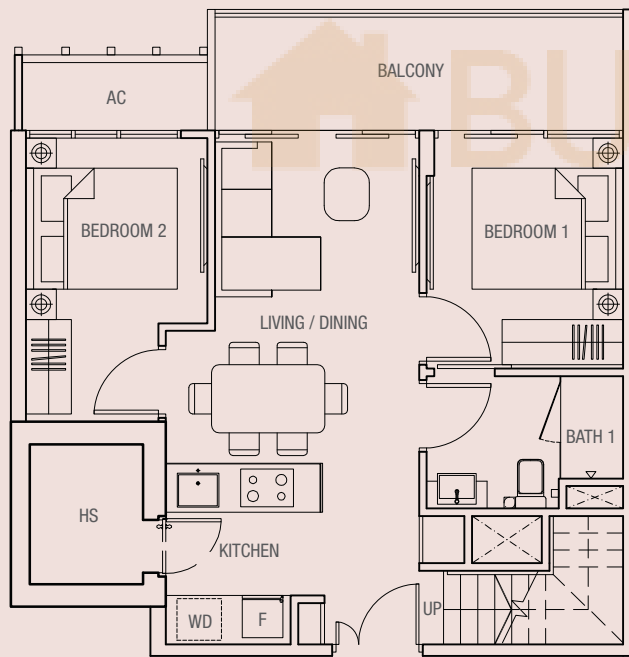
> type phB4

4 bdrm
116 sq m

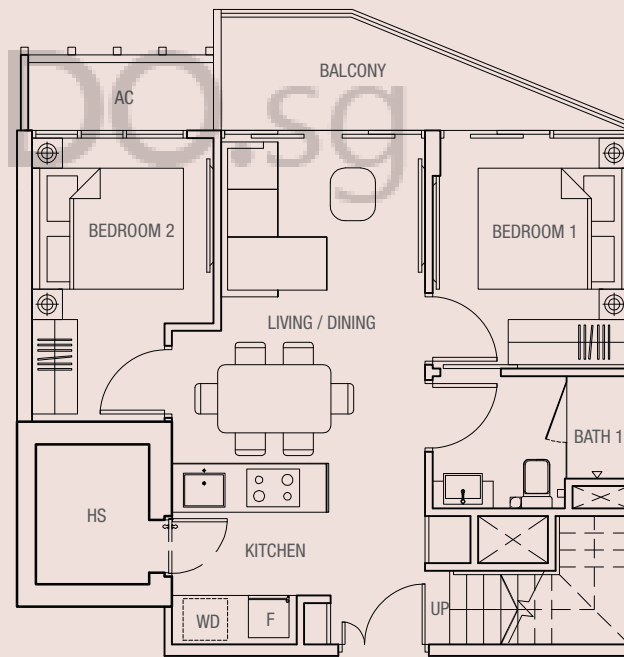
#07-12



Upper Level



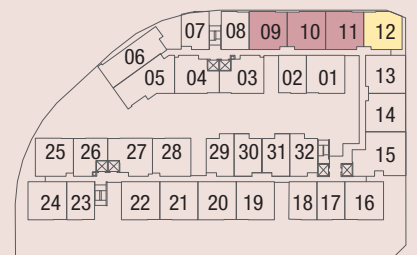
Lower Level



Lower Level

NOTE: Unit area includes a/c ledge & void &/or PES where applicable. All plans are subject to amendments as approved by the relevant authorities.

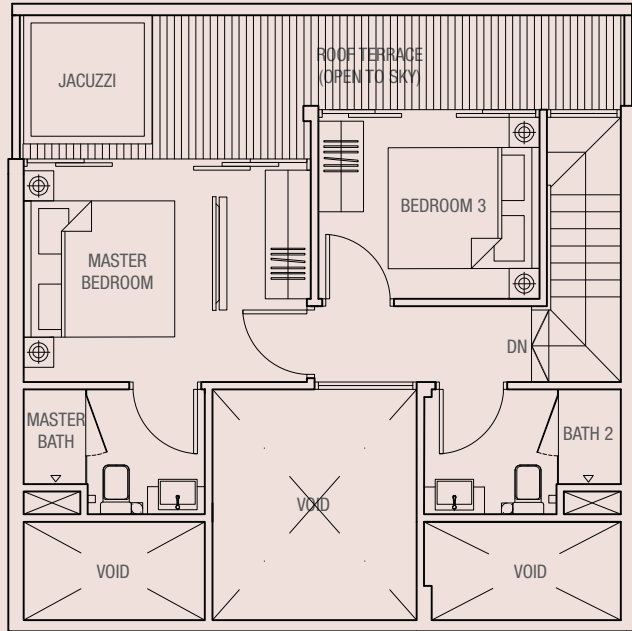
KEY PLAN (Not to scale)



> type phB5

4 bdrm
128 sq m

#06-21
#06-20*
* Mirror image

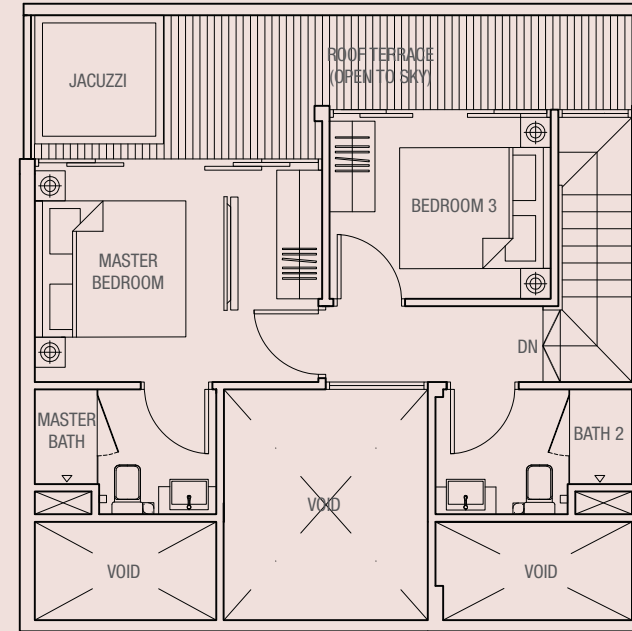


Upper Level

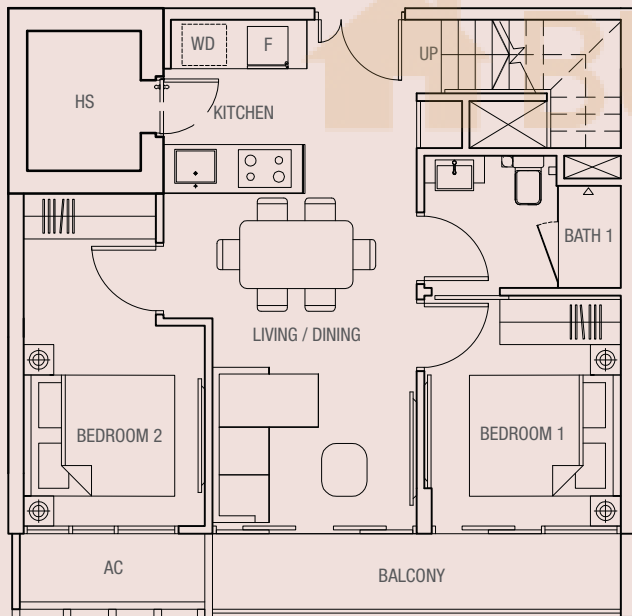
> type phB5-a

4 bdrm
128 sq m

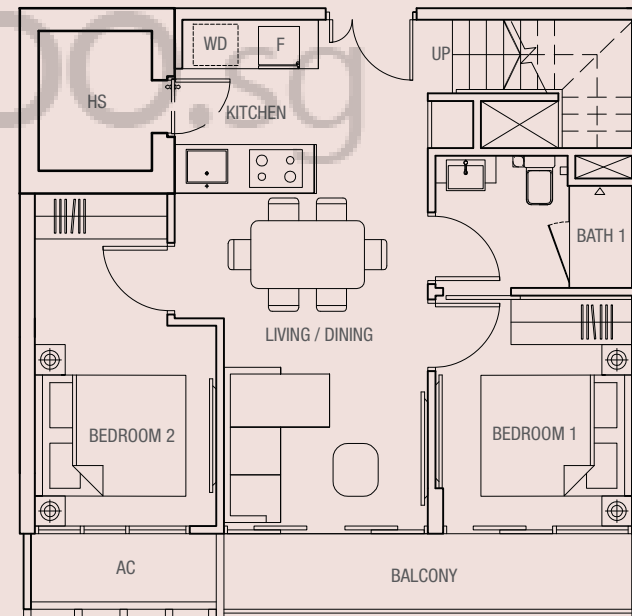
#06-19
#07-01
#06-22*
* Mirror image



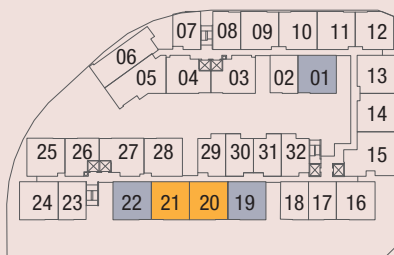
Upper Level



Lower Level



Lower Level



KEY PLAN (Not to scale)

NOTE: Unit area includes a/c ledge & void &/or PES where applicable. All plans are subject to amendments as approved by the relevant authorities.

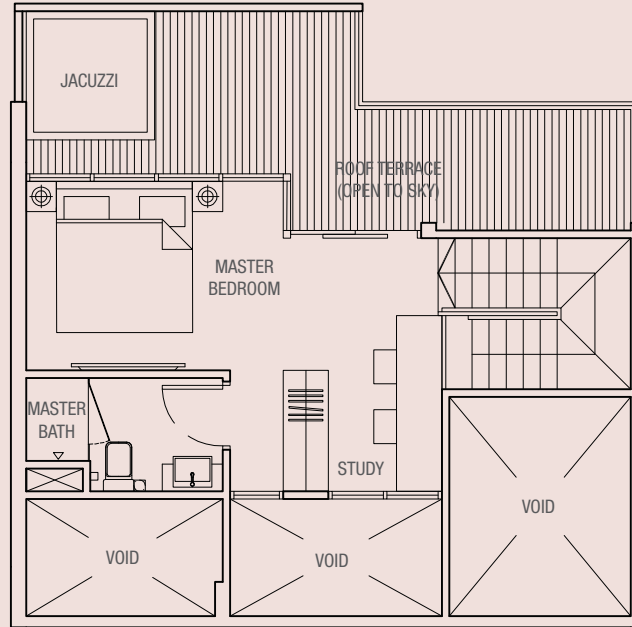
> type phB6

3 bdrm + study
131 sq m

#06-16

#06-24*

* Mirror image

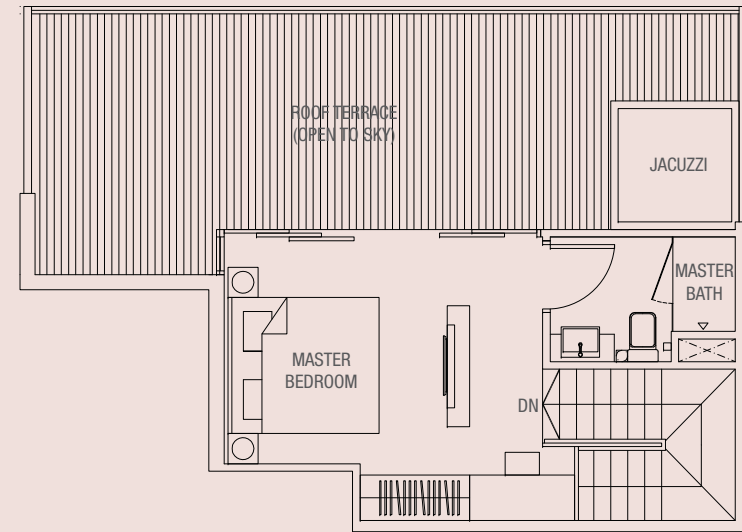


Upper Level

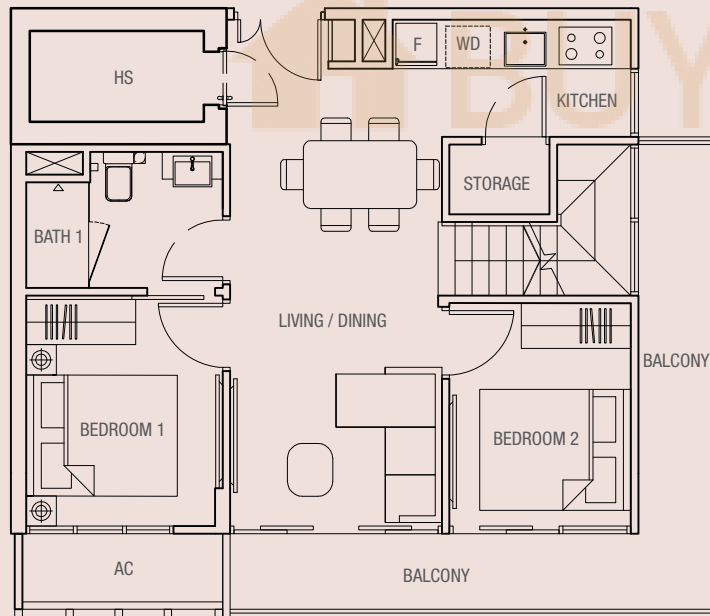
> type phB7-a1

3 bdrm + study
119 sq m

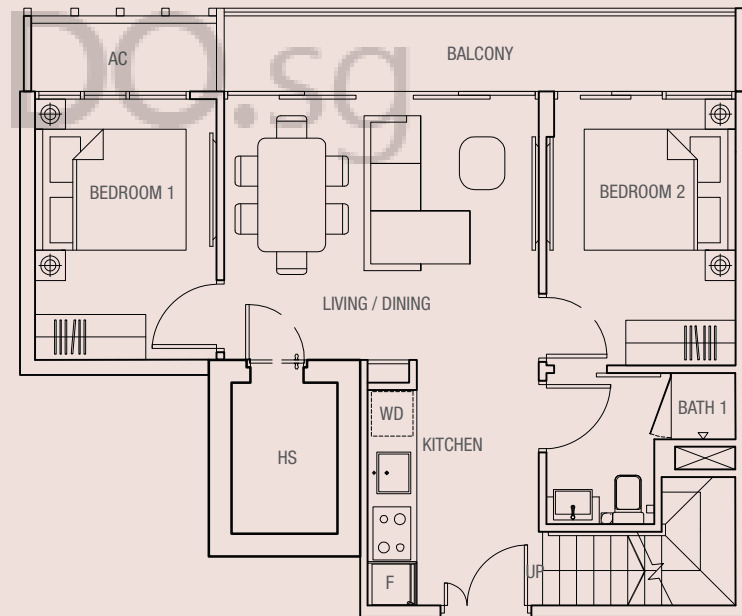
#06-27



Upper Level



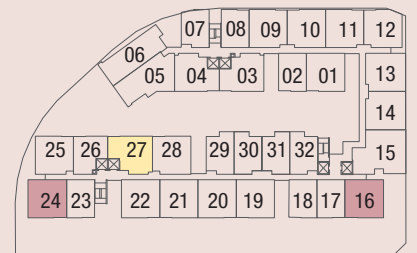
Lower Level



Lower Level

NOTE: Unit area includes a/c ledge & void &/or PES where applicable. All plans are subject to amendments as approved by the relevant authorities.

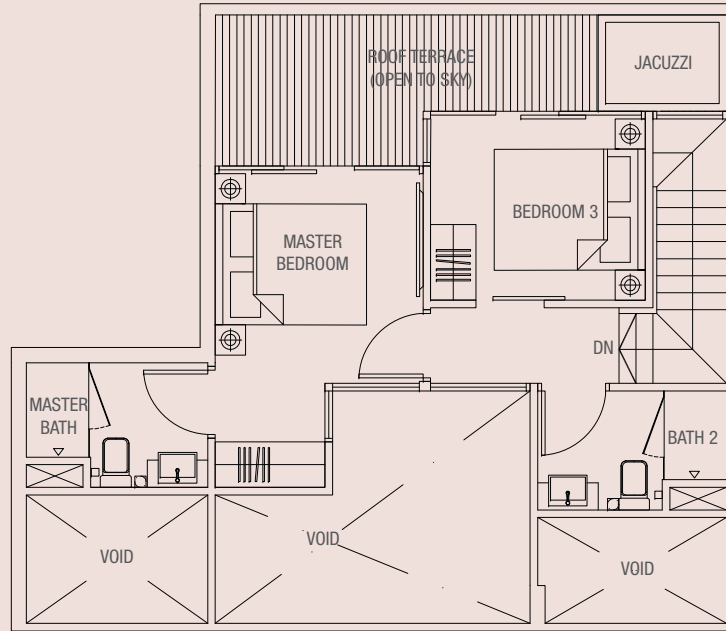
KEY PLAN (Not to scale)



> type phB7

4 bdrm
129 sq m

#07-03

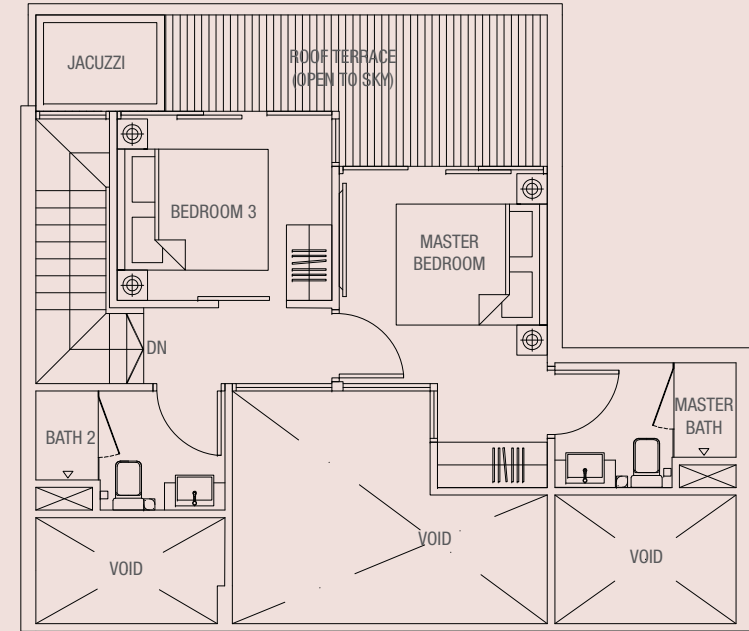


Upper Level

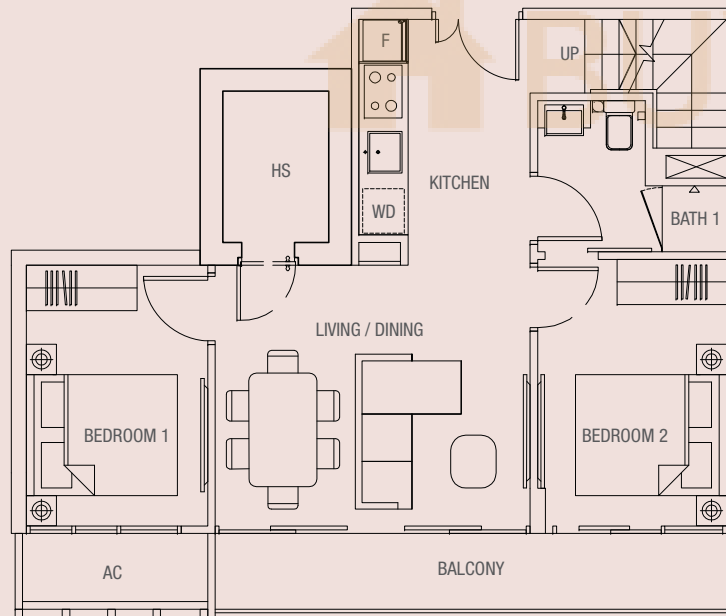
> type phB7-a

4 bdrm
129 sq m

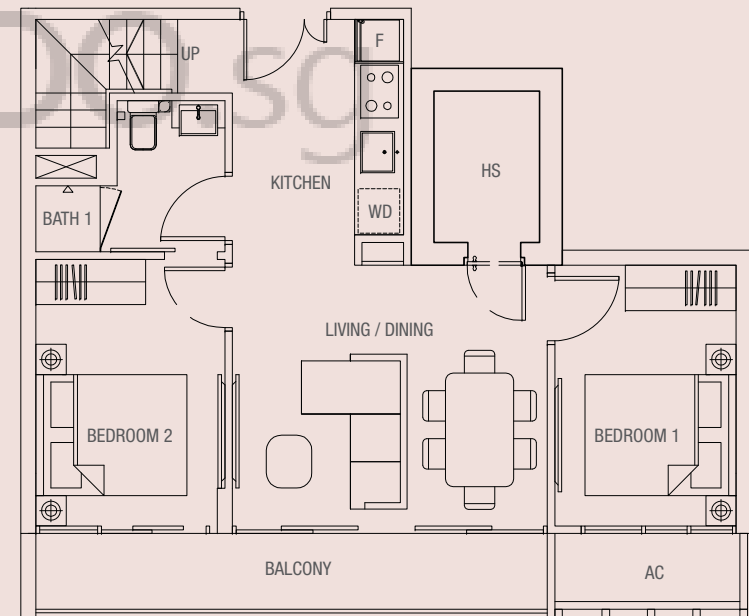
#07-04



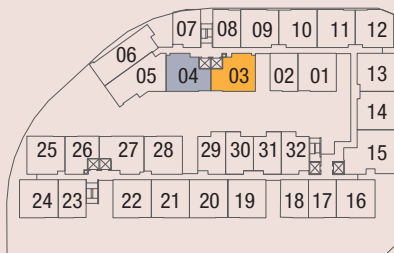
Upper Level



Lower Level



Lower Level



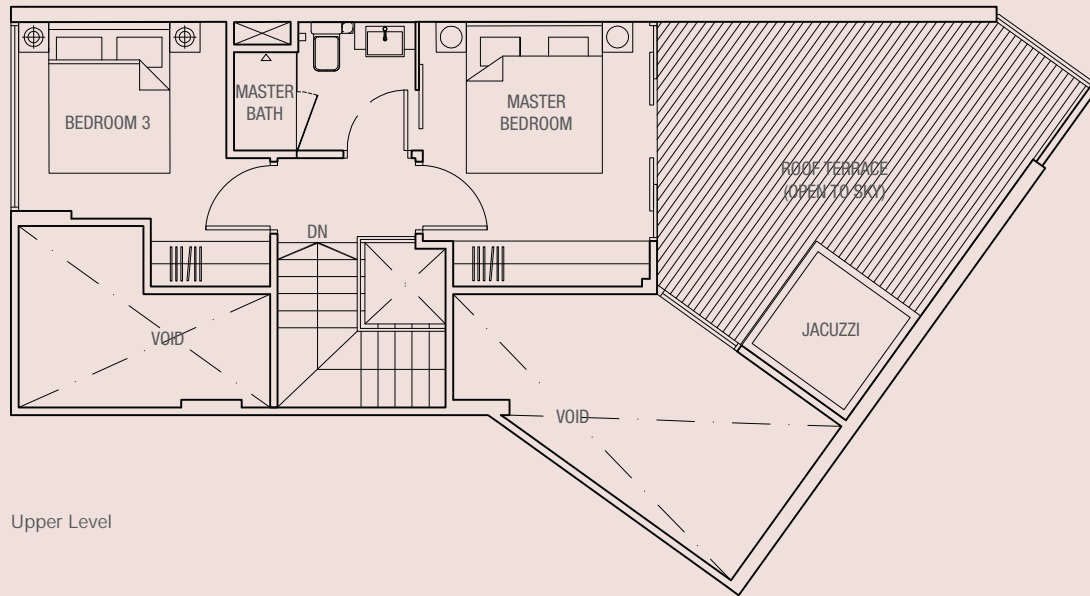
KEY PLAN (Not to scale)

NOTE: Unit area includes a/c ledge & void &/or PES where applicable. All plans are subject to amendments as approved by the relevant authorities.

> type phC

4 bdrm
154 sq m

#07-05

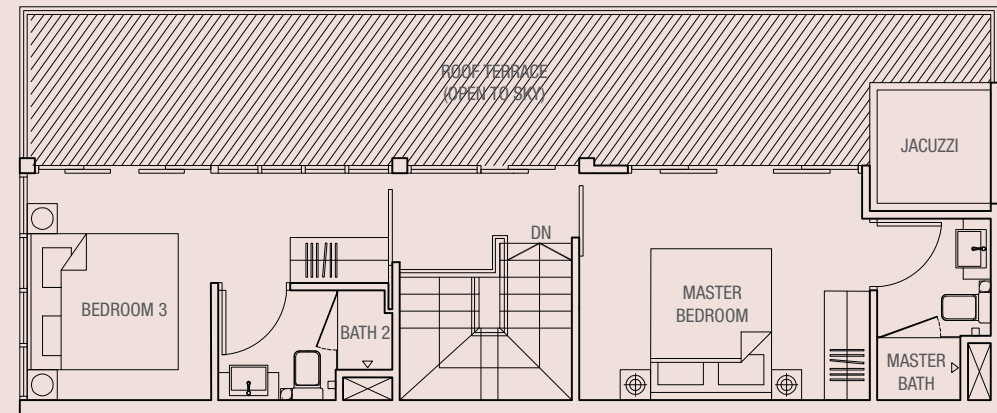


Upper Level

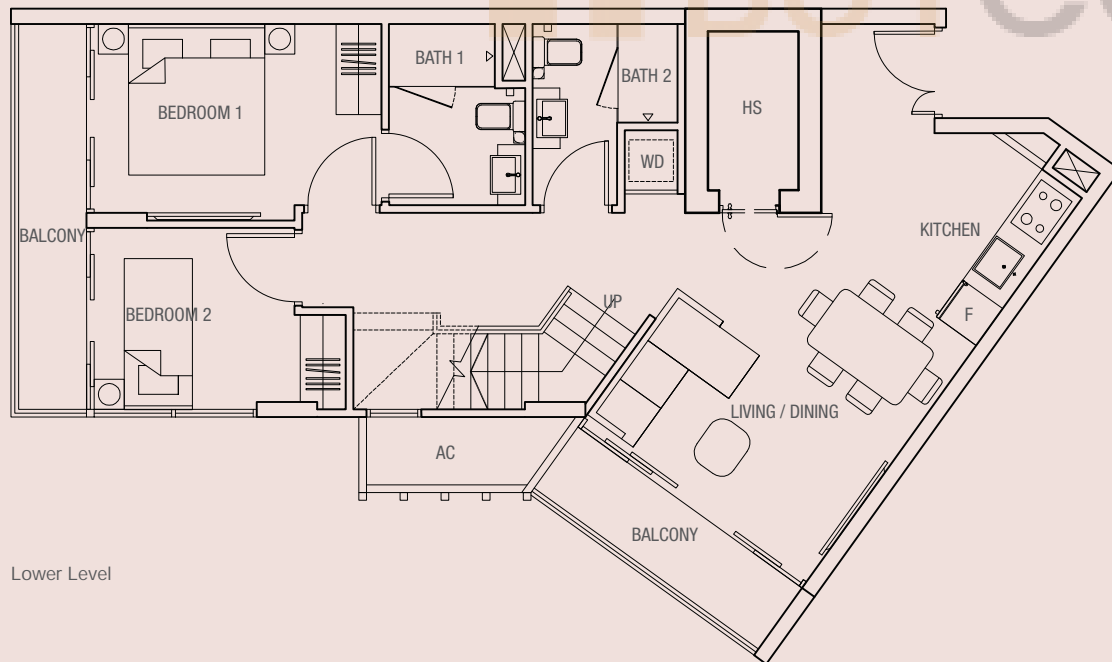
> type phC1

5 bdrm + study
143 sq m

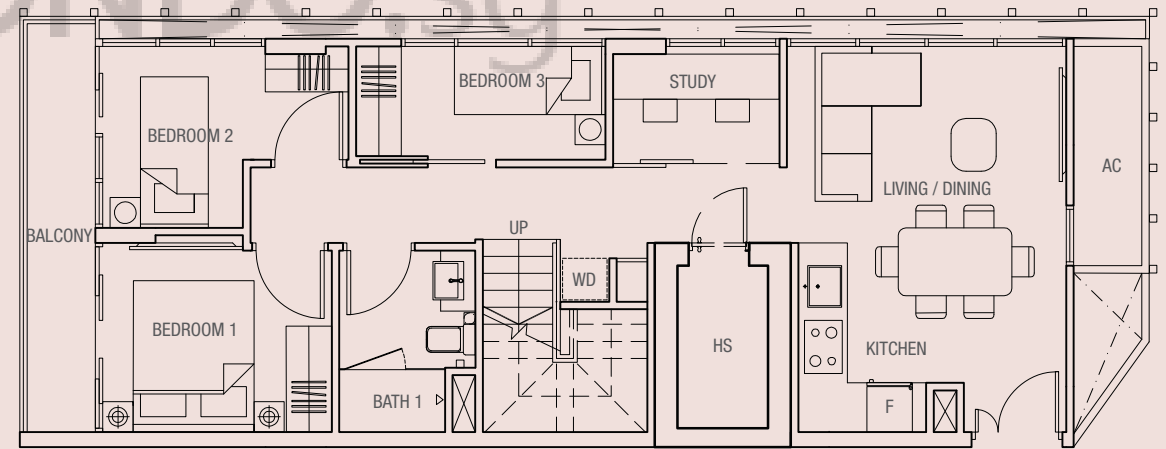
#07-06



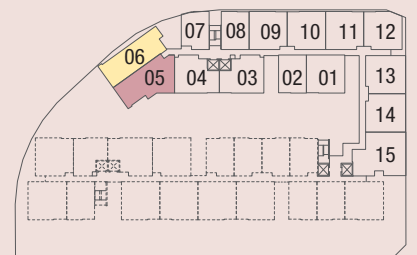
Upper Level



Lower Level



Lower Level



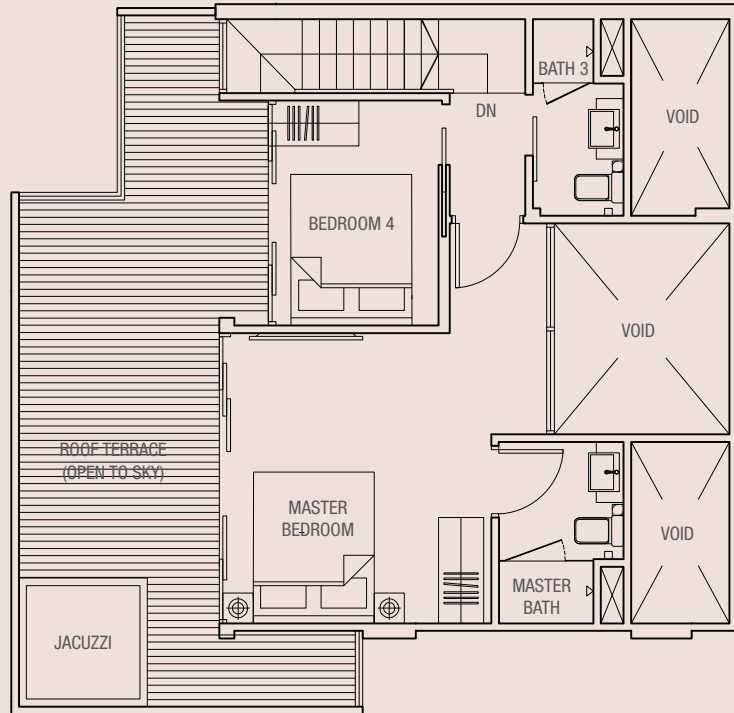
NOTE: Unit area includes a/c ledge & void &/or PES where applicable. All plans are subject to amendments as approved by the relevant authorities.

KEY PLAN (Not to scale)

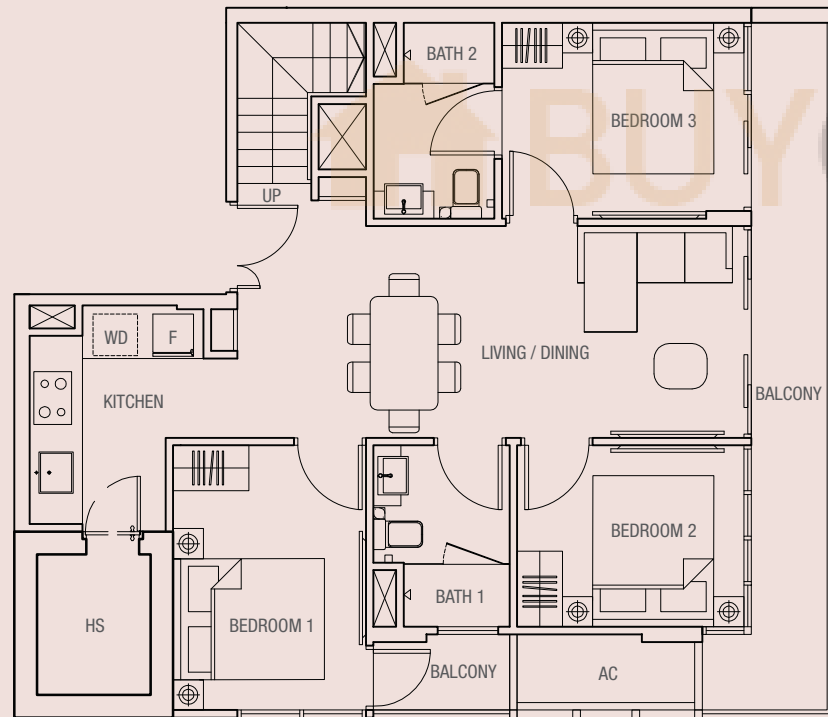
> type pHC2

5 bdrm
164 sq m

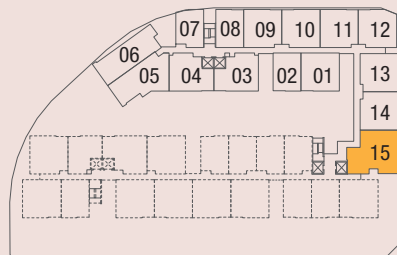
#07-15



Upper Level



Lower Level



KEY PLAN (Not to scale)

NOTE: Unit area includes a/c ledge & void &/or PES where applicable. All plans are subject to amendments as approved by the relevant authorities.