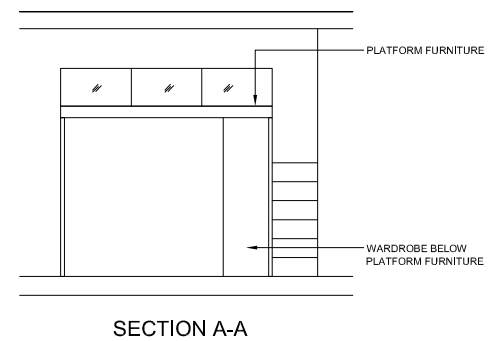
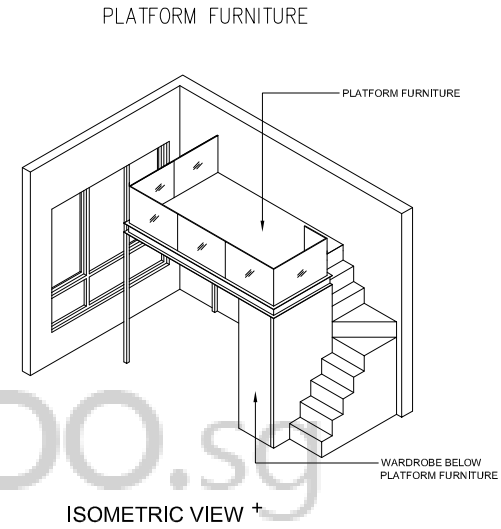
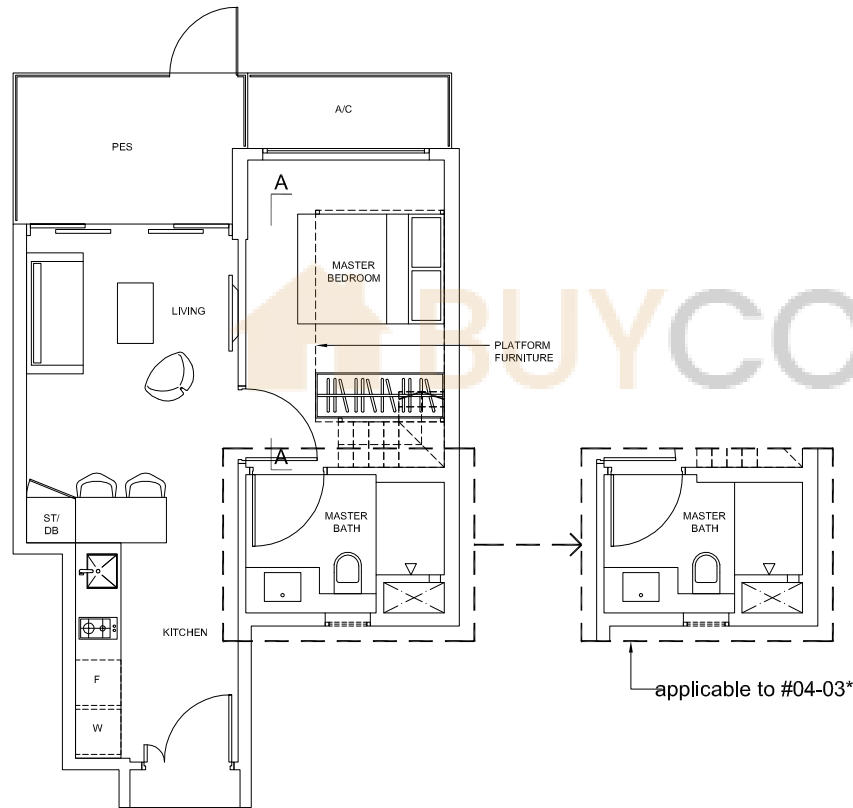


# 1-Bedroom

## TYPE A-1G

Area: 46 sq m (include 3 sq m A/C LEDGE, 6 sq m PES)

Unit(s): #04-03\*, #04-04, #04-09\*, #04-14

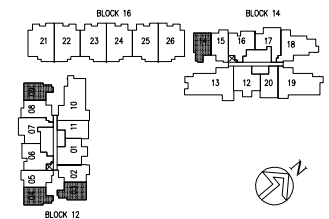


### NOTE:

\* units in mirror image

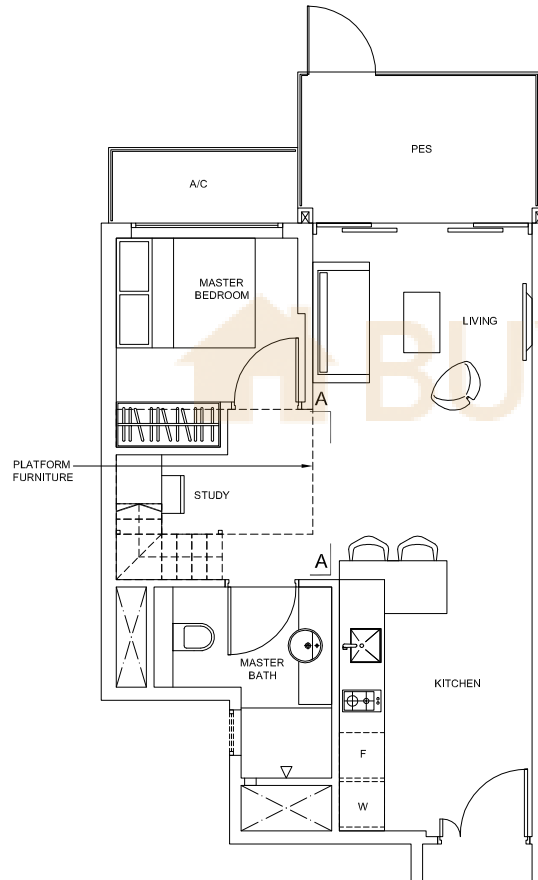
+ isometric views have excluded railings drawings

Plans are subject to change as may be required or approved by the relevant authorities. These are not drawn to scale and are for the purpose of visual presentation only. Indicated areas are estimates only and subject to final survey.

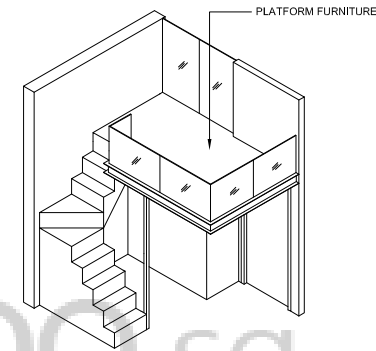


# 1-Bedroom + Study

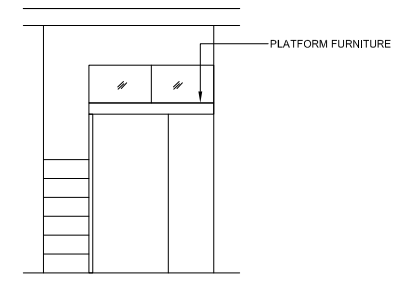
TYPE AS-1G  
Area: 51 sq m (include 3 sq m A/C LEDGE, 7 sq m PES)  
Unit(s): #04-02\*, #04-05, #04-15



PLATFORM FURNITURE



ISOMETRIC VIEW +

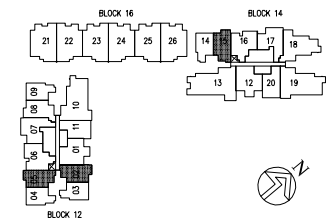


SECTION A-A

**NOTE:**

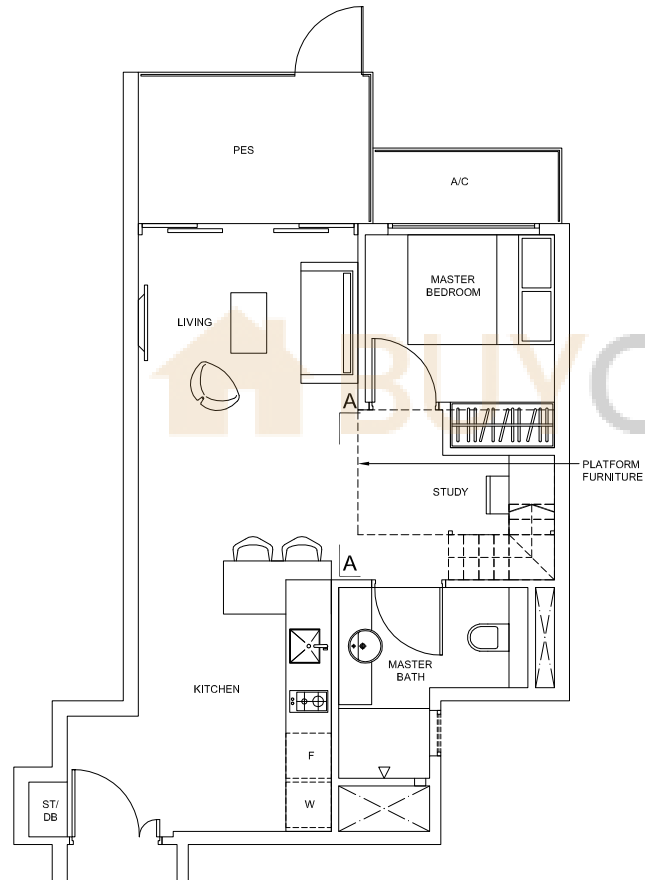
- \* units in mirror image
- + isometric views have excluded railings drawings

*Plans are subject to change as may be required or approved by the relevant authorities. These are not drawn to scale and are for the purpose of visual presentation only. Indicated areas are estimates only and subject to final survey.*

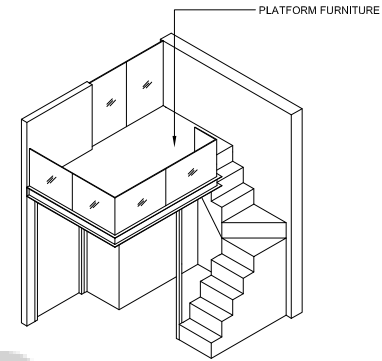


# 1-Bedroom + Study

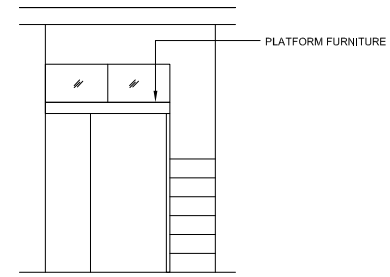
TYPE AS-2G  
Area: 53 sq m (include 3 sq m A/C LEDGE, 7 sq m PES)  
Unit(s): #04-08



PLATFORM FURNITURE



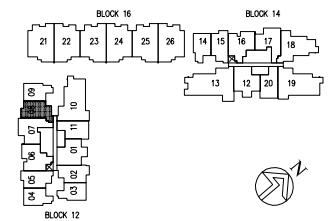
ISOMETRIC VIEW +



SECTION A-A

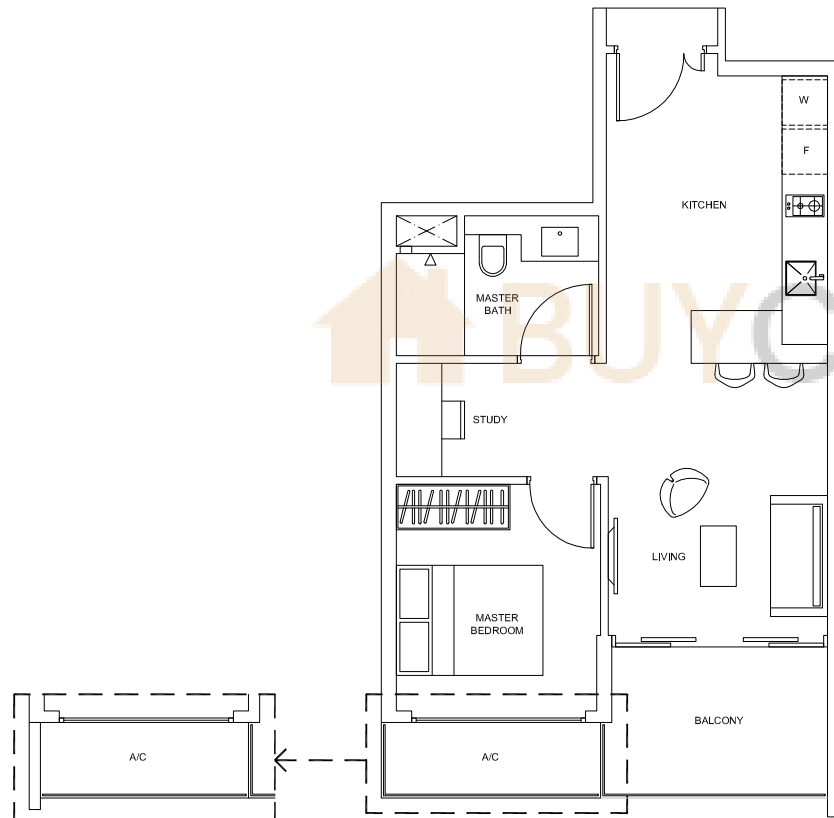
NOTE:  
+ isometric views have excluded railings drawings

*Plans are subject to change as may be required or approved by the relevant authorities. These are not drawn to scale and are for the purpose of visual presentation only. Indicated areas are estimates only and subject to final survey.*



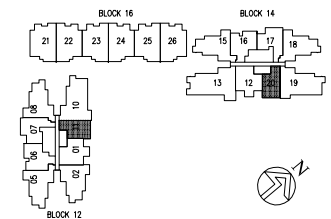
# 1-Bedroom + Study

TYPE AS-3  
Area: 53 sq m (include 3 sq m A/C LEDGE, 6 sq m BALCONY)  
Unit(s): #05-11 TO #13-11, #05-20 TO #13-20



applicable to #11-11 TO #13-11, #11-20 TO #13-20

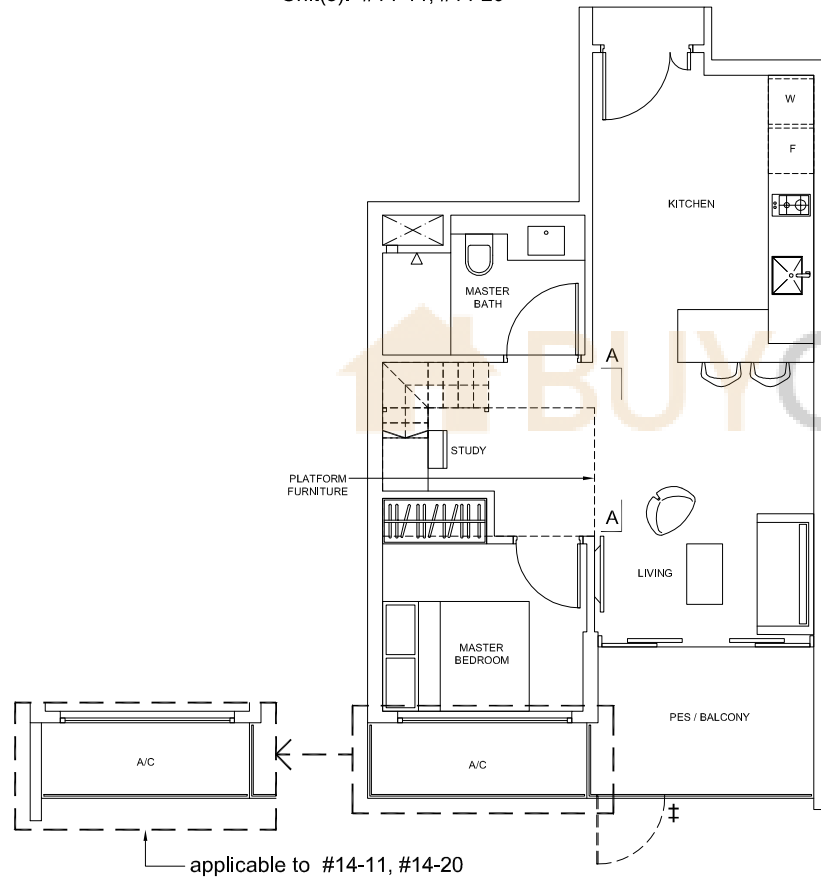
*Plans are subject to change as may be required or approved by the relevant authorities. These are not drawn to scale and are for the purpose of visual presentation only. Indicated areas are estimates only and subject to final survey.*



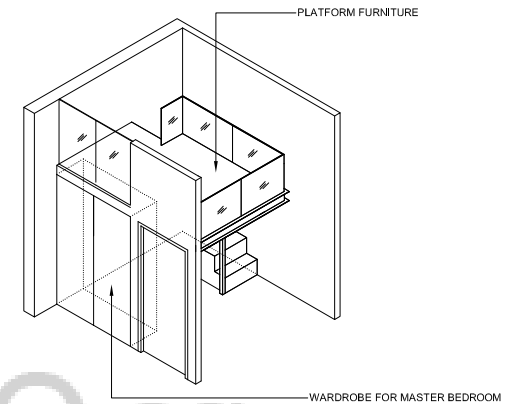
# 1-Bedroom + Study

TYPE AS-3G  
 Area: 53 sq m (include 3 sq m A/C LEDGE, 6 sq m PES)  
 Unit(s): #04-11, #04-20

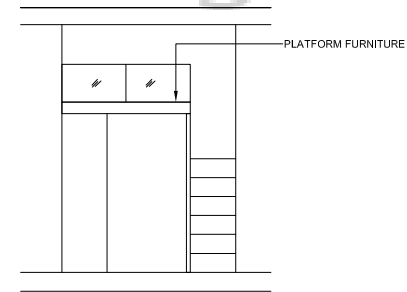
TYPE AS-3PH  
 Area: 53 sq m (include 3 sq m A/C LEDGE, 6 sq m BALCONY)  
 Unit(s): #14-11, #14-20



PLATFORM FURNITURE



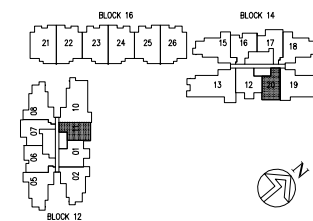
ISOMETRIC VIEW +



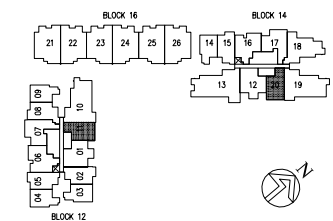
SECTION A-A

NOTE:  
 + isometric views have excluded railings drawings  
 ‡ applicable to type AS-3G only

*Plans are subject to change as may be required or approved by the relevant authorities. These are not drawn to scale and are for the purpose of visual presentation only. Indicated areas are estimates only and subject to final survey.*



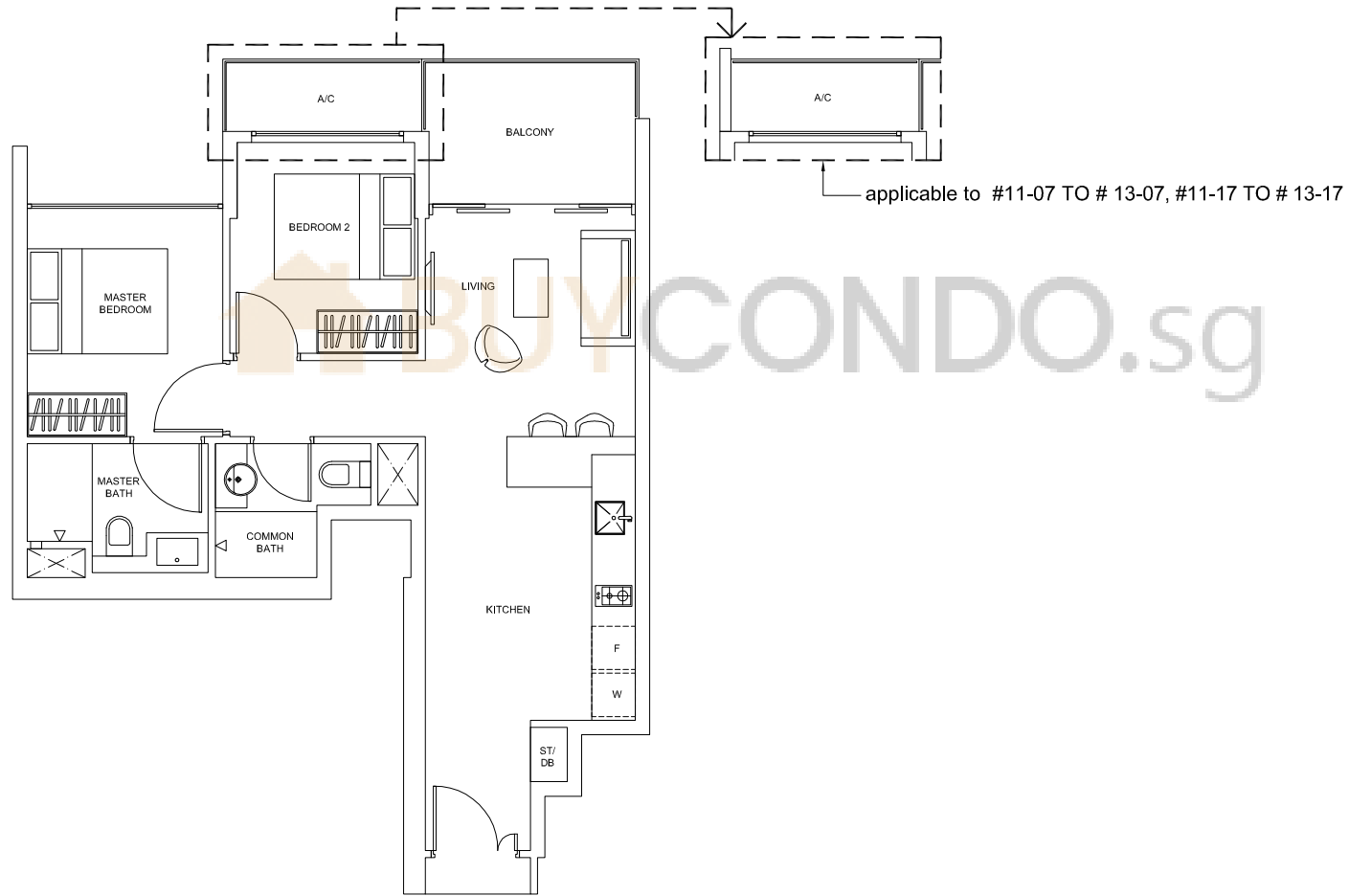
applicable to type AS-3PH



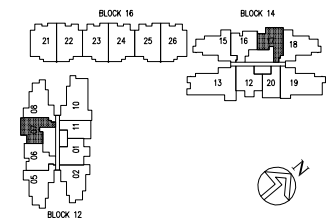
applicable to type AS-3G

2-Bedroom

TYPE B-1  
Area: 65 sq m (include 3 sq m A/C LEDGE, 6 sq m BALCONY)  
Unit(s): #05-07 TO # 13-07, #05-17 TO # 13-17



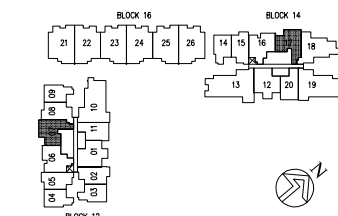
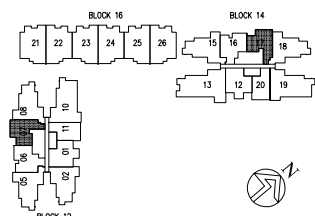
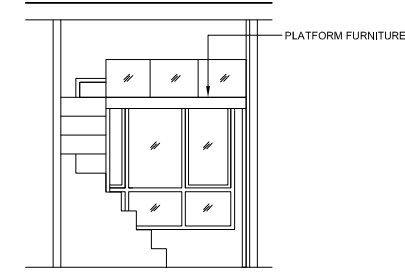
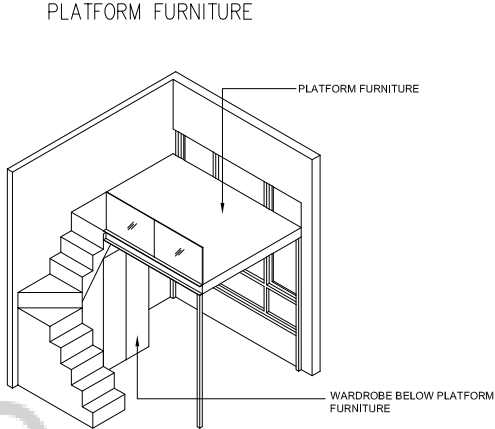
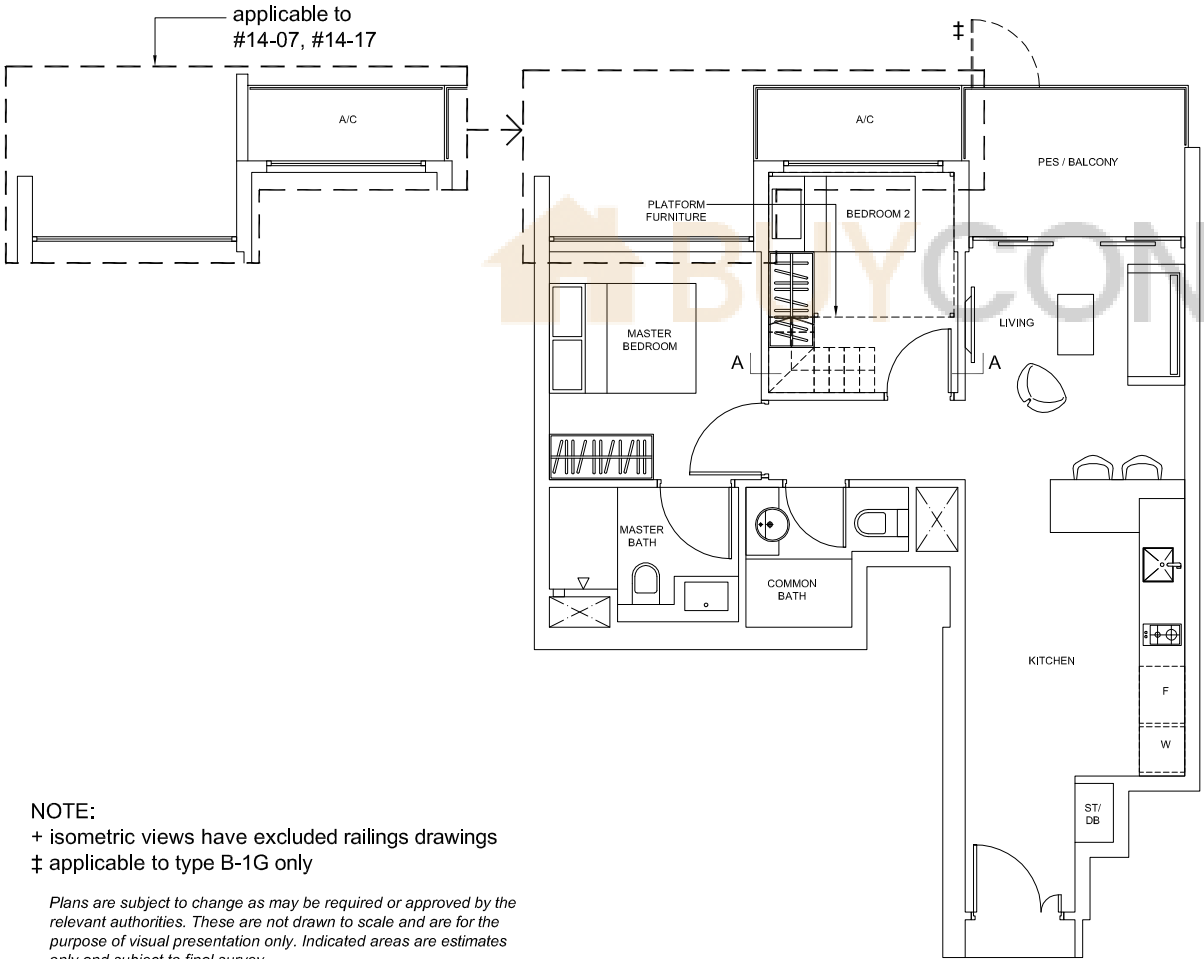
Plans are subject to change as may be required or approved by the relevant authorities. These are not drawn to scale and are for the purpose of visual presentation only. Indicated areas are estimates only and subject to final survey.



2-Bedroom

TYPE B-1G  
 Area: 65 sq m (include 3 sq m A/C LEDGE, 6 sq m PES)  
 Unit(s): #04-07, #04-17

TYPE B-1PH  
 Area: 65 sq m (include 3 sq m A/C LEDGE, 6 sq m BALCONY)  
 Unit(s): #14-07, #14-17

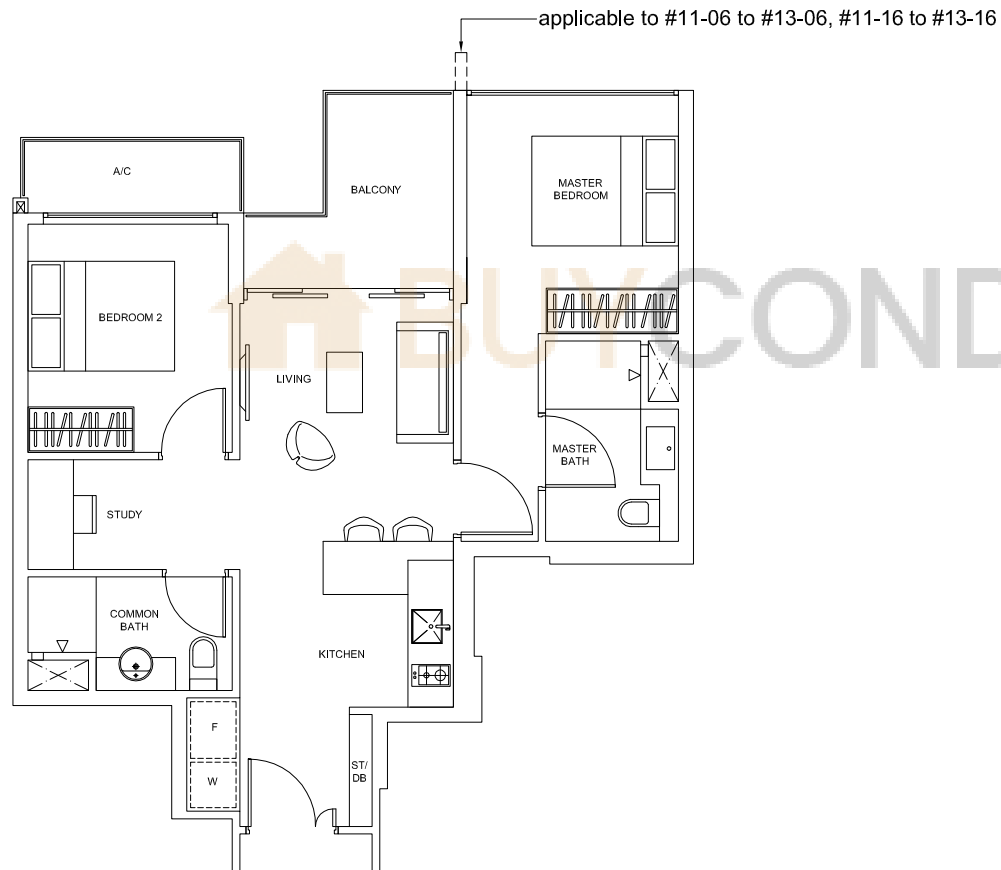


NOTE:  
 + isometric views have excluded railings drawings  
 ‡ applicable to type B-1G only  
 Plans are subject to change as may be required or approved by the relevant authorities. These are not drawn to scale and are for the purpose of visual presentation only. Indicated areas are estimates only and subject to final survey.

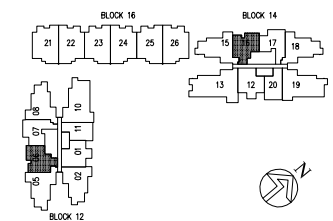
applicable to type B-1PH      applicable to type B-1G

## 2-Bedroom + Study

TYPE BS-1  
Area: 66 sq m (include 3 sq m A/C LEDGE, 6 sq m BALCONY)  
Unit(s): #05-06 TO #13-06, #05-16 TO #13-16



Plans are subject to change as may be required or approved by the relevant authorities. These are not drawn to scale and are for the purpose of visual presentation only. Indicated areas are estimates only and subject to final survey.





## 2-Bedroom + Study

### TYPE BS-1G

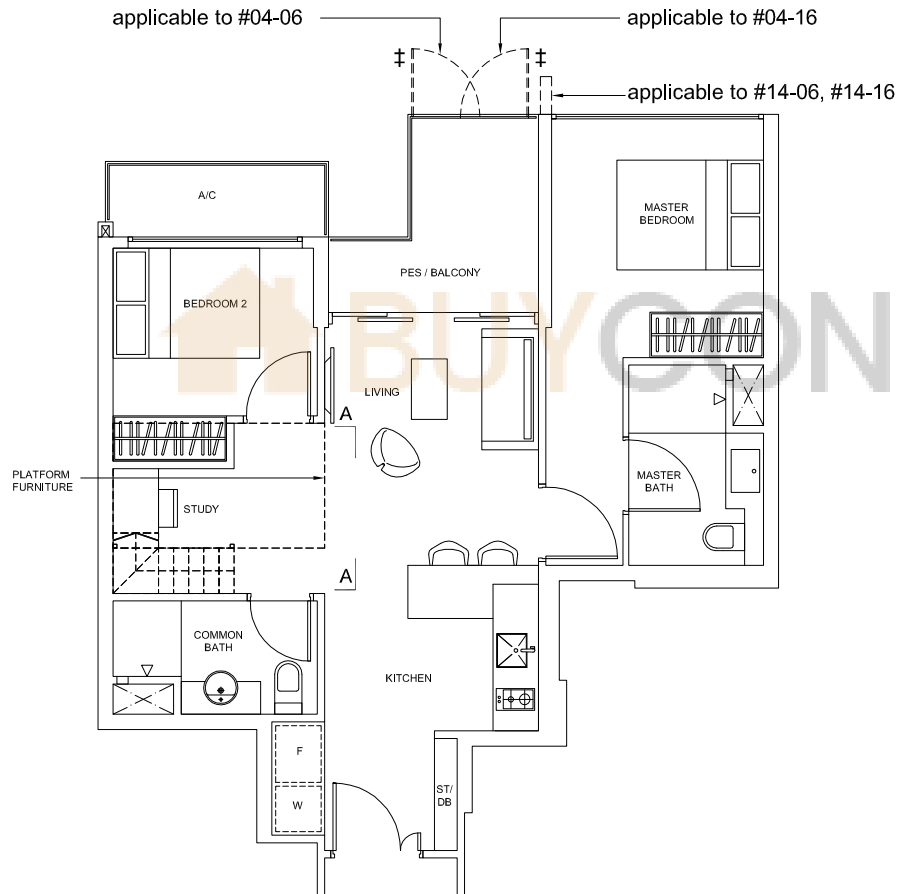
Area: 66 sq m (include 3 sq m A/C LEDGE, 6 sq m PES)

Unit(s): #04-06, #04-16

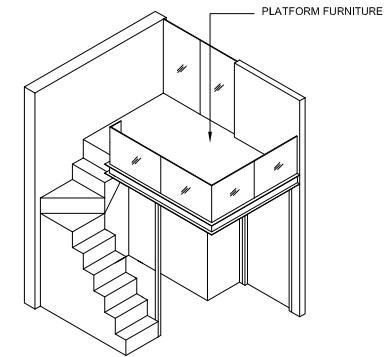
### TYPE BS-1PH

Area: 66 sq m (include 3 sq m A/C LEDGE, 6 sq m BALCONY)

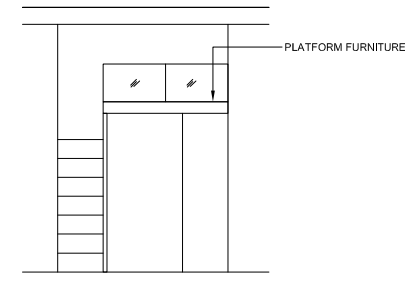
Unit(s): #14-06, #14-16



PLATFORM FURNITURE



ISOMETRIC VIEW +

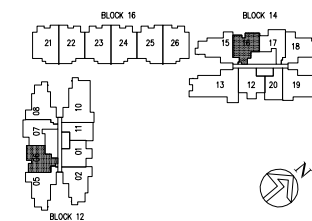


SECTION A-A

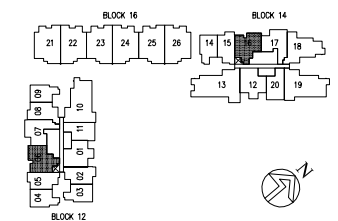
### NOTE:

+ isometric views have excluded railings drawings  
 ‡ applicable to type BS-1G only

*Plans are subject to change as may be required or approved by the relevant authorities. These are not drawn to scale and are for the purpose of visual presentation only. Indicated areas are estimates only and subject to final survey.*



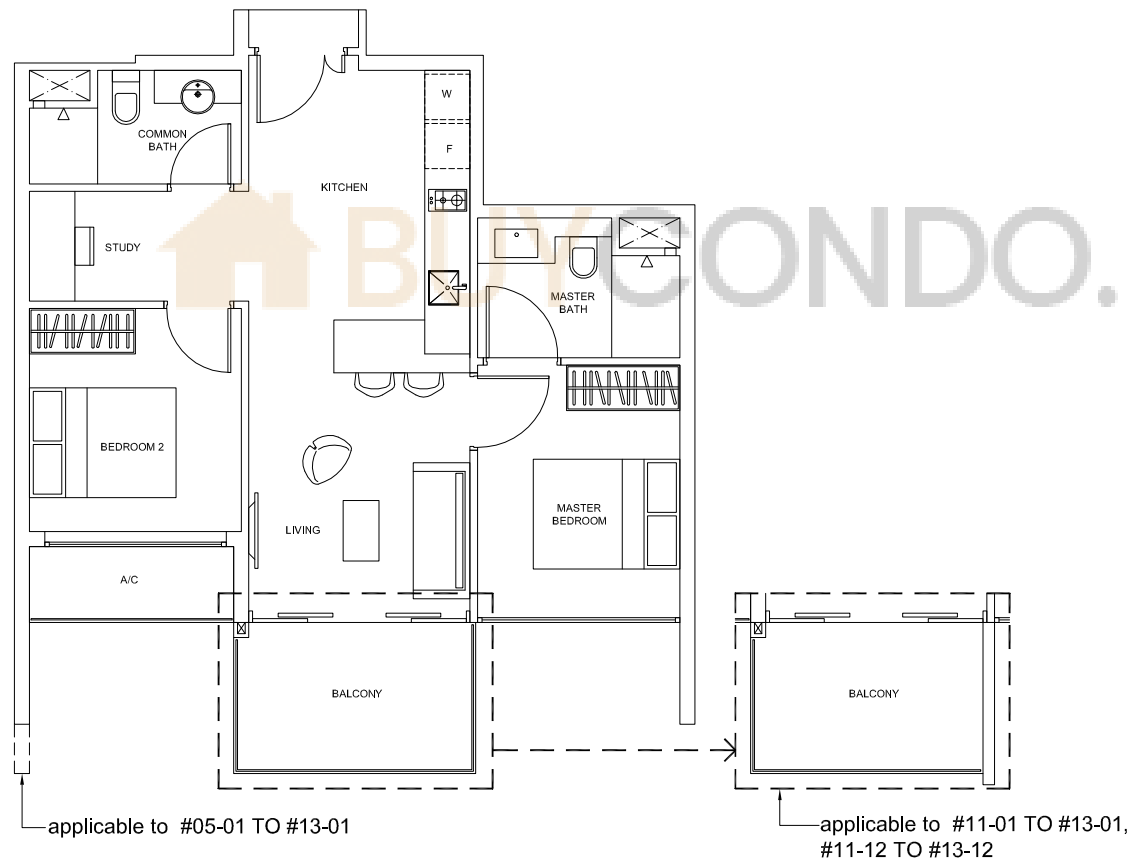
applicable to type BS-1PH



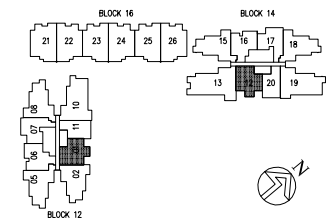
applicable to type BS-1G

## 2-Bedroom + Study

TYPE BS-2  
Area: 66 sq m (include 3 sq m A/C LEDGE, 6 sq m BALCONY)  
Unit(s): #05-01 TO #13-01, #05-12 TO #13-12



Plans are subject to change as may be required or approved by the relevant authorities. These are not drawn to scale and are for the purpose of visual presentation only. Indicated areas are estimates only and subject to final survey.



## 2-Bedroom + Study

### TYPE BS-2G

Area: 66 sq m (include 3 sq m A/C LEDGE, 6 sq m PES)

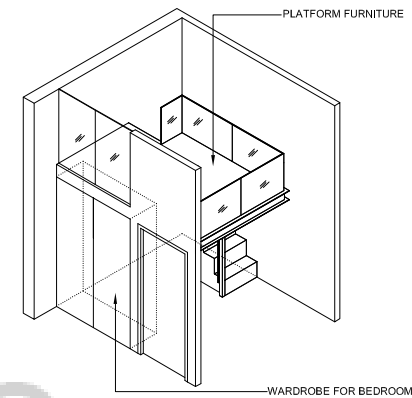
Unit(s): #04-01, #04-12

### TYPE BS-2PH

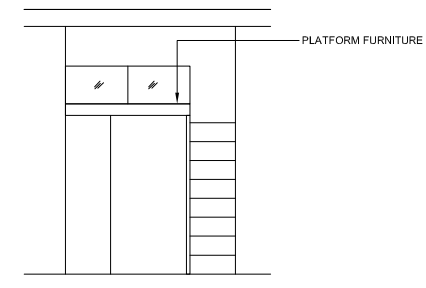
Area: 66 sq m (include 3 sq m A/C LEDGE, 6 sq m BALCONY)

Unit(s): #14-01, #14-12

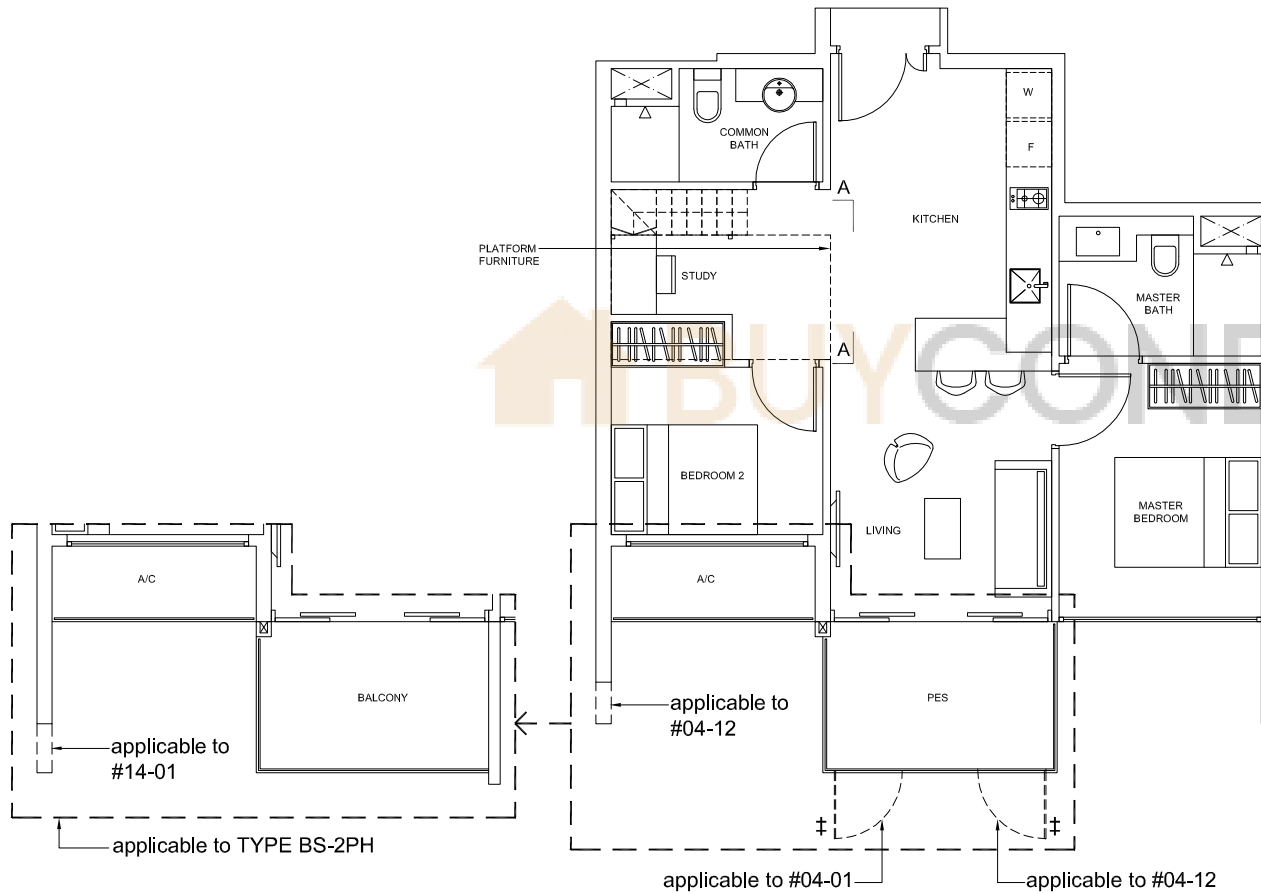
PLATFORM FURNITURE



ISOMETRIC VIEW +



SECTION A-A

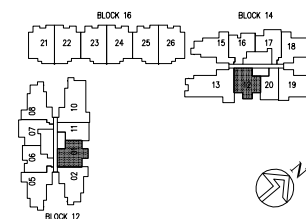


### NOTE:

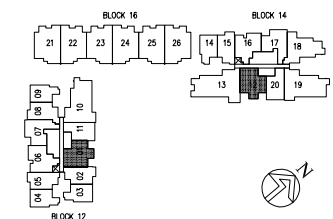
+ isometric views have excluded railings drawings

‡ applicable to type BS-2G only

Plans are subject to change as may be required or approved by the relevant authorities. These are not drawn to scale and are for the purpose of visual presentation only. Indicated areas are estimates only and subject to final survey.



applicable to type BS-2PH



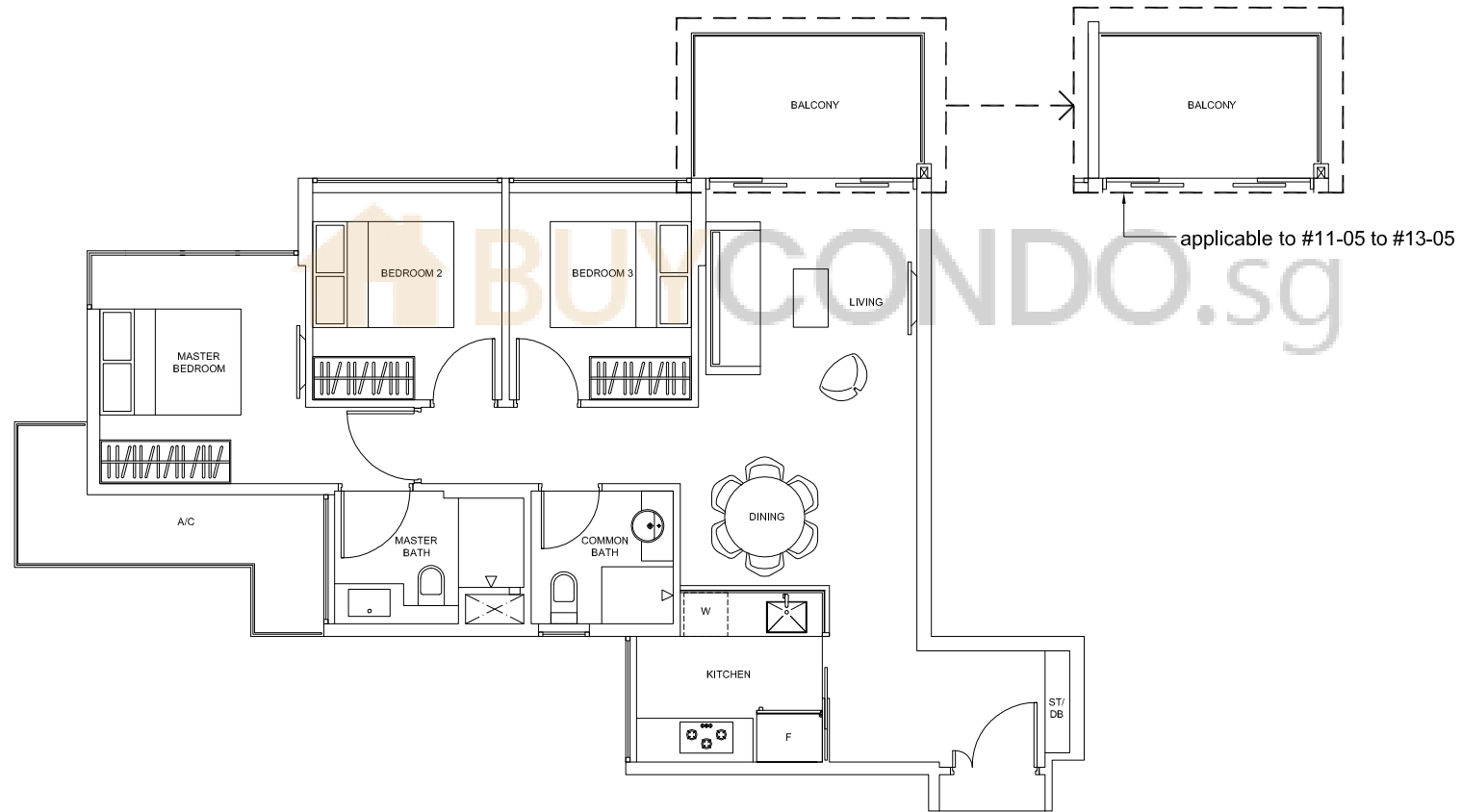
applicable to type BS-2G

# 3-Bedroom

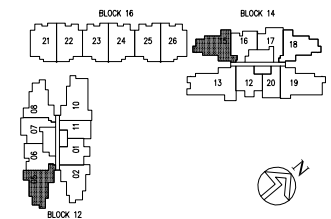
TYPE C-1

Area: 86 sq m (include 7 sq m A/C LEDGE, 7 sq m BALCONY)

Unit(s): #05-05 TO #13-05, #05-15 TO #10-15

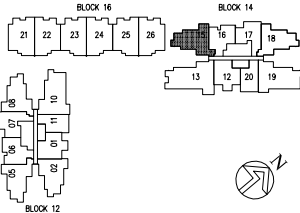
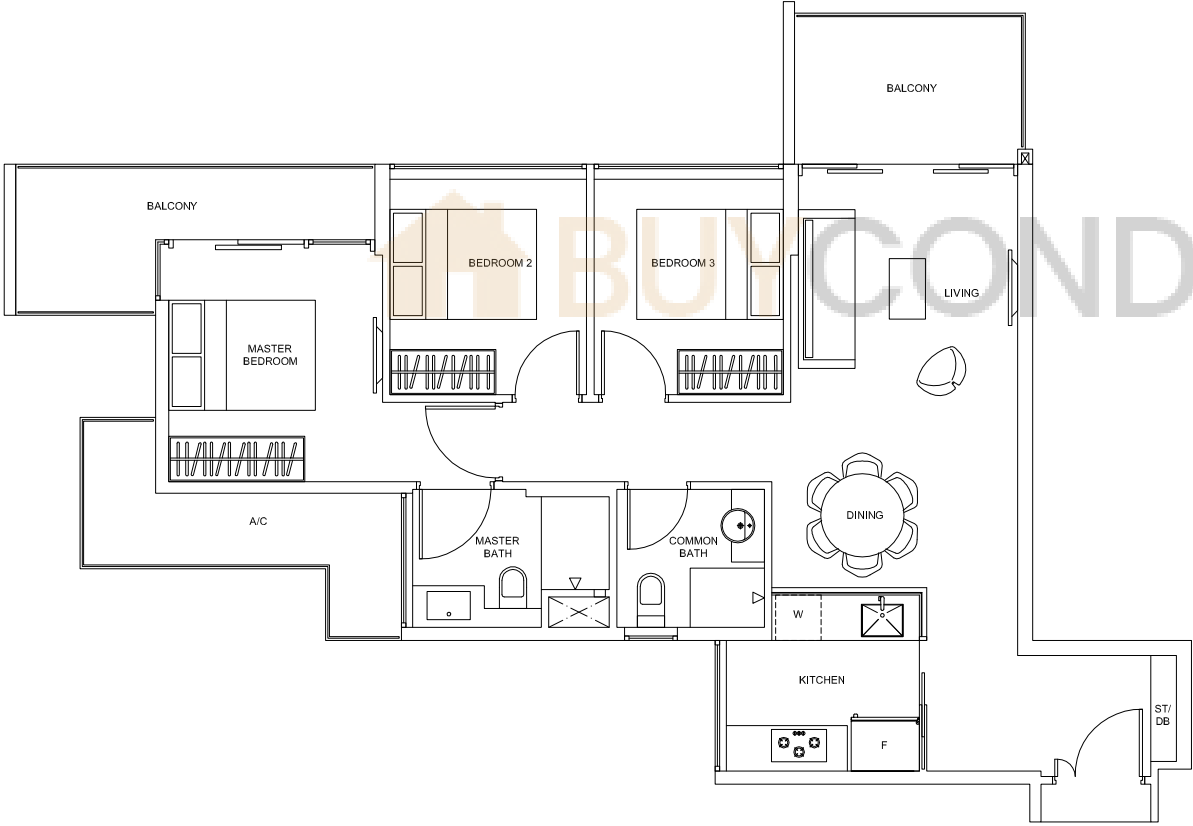


Plans are subject to change as may be required or approved by the relevant authorities. These are not drawn to scale and are for the purpose of visual presentation only. Indicated areas are estimates only and subject to final survey.



3-Bedroom

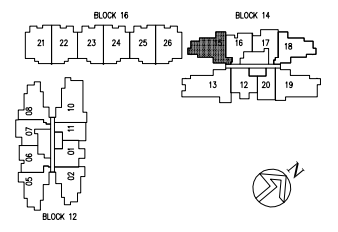
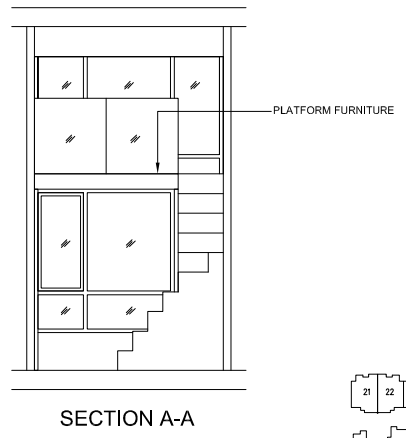
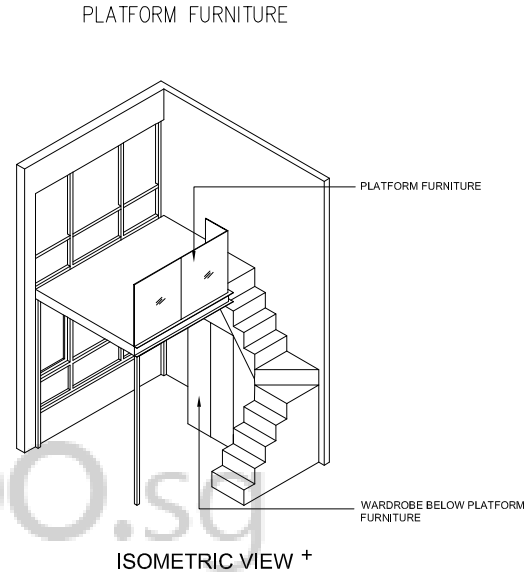
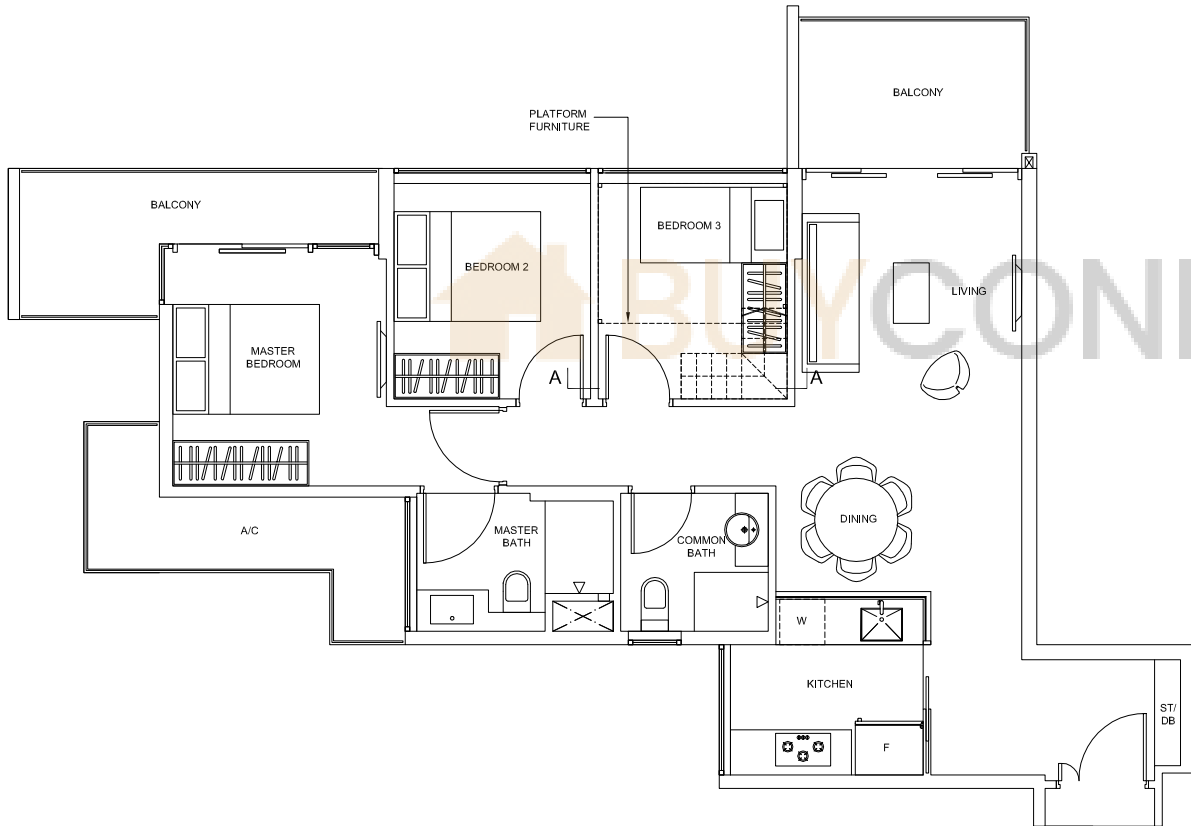
TYPE C-1a  
Area: 93 sq m (include 7 sq m A/C LEDGE, 13 sq m BALCONY)  
Unit(s): #11-15 TO #13-15



Plans are subject to change as may be required or approved by the relevant authorities. These are not drawn to scale and are for the purpose of visual presentation only. Indicated areas are estimates only and subject to final survey.

# 3-Bedroom

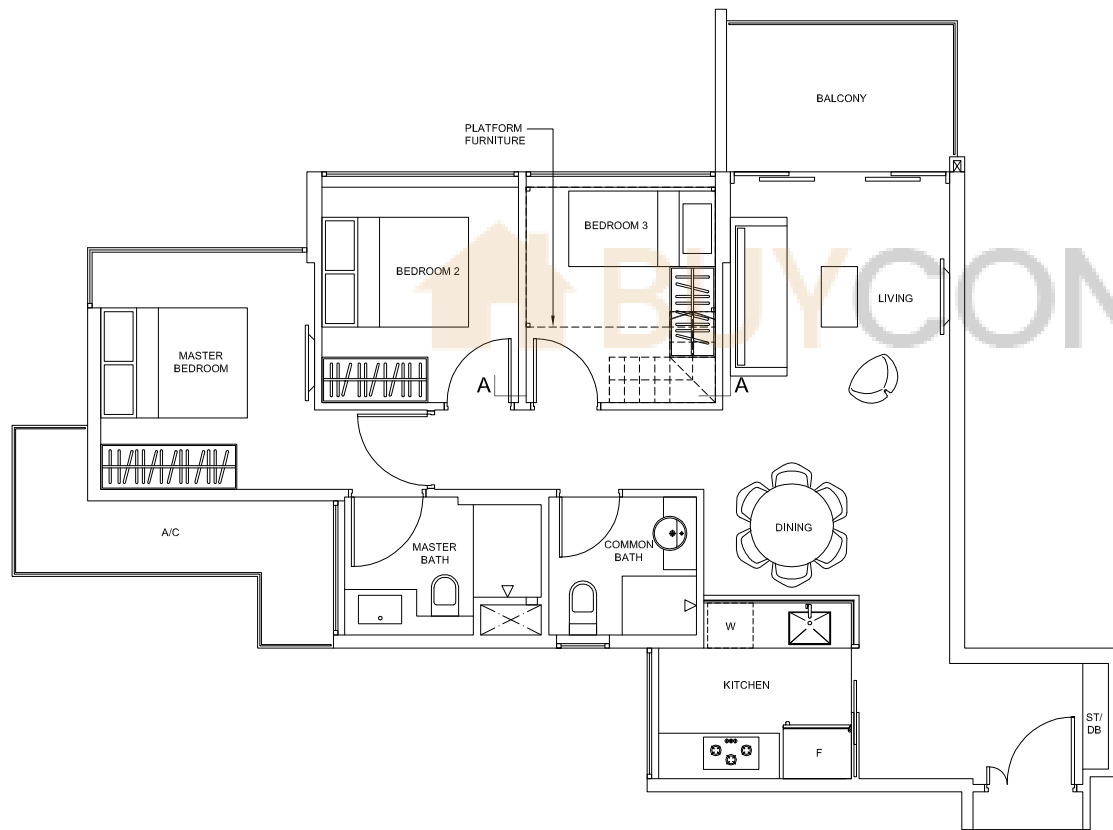
TYPE C-1aPH  
Area: 93 sq m (include 7 sq m A/C LEDGE, 13 sq m BALCONY)  
Unit(s): #14-15



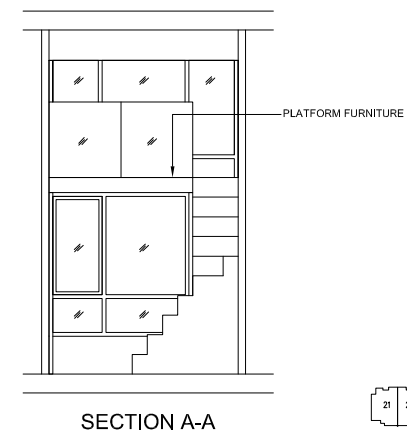
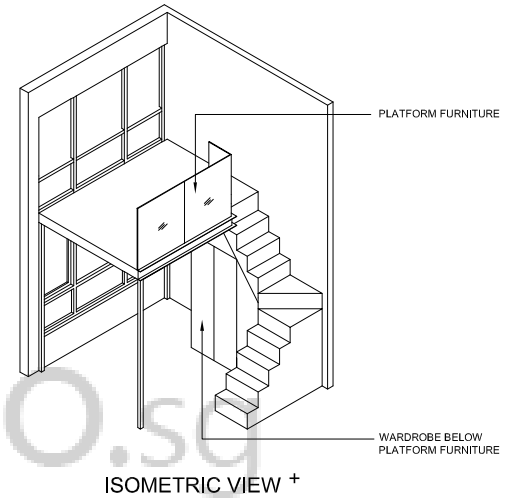
**NOTE:**  
+ isometric views have excluded railings drawings  
*Plans are subject to change as may be required or approved by the relevant authorities. These are not drawn to scale and are for the purpose of visual presentation only. Indicated areas are estimates only and subject to final survey.*

# 3-Bedroom

TYPE C-1PH  
Area: 86 sq m (include 7 sq m A/C LEDGE, 7 sq m BALCONY)  
Unit(s): #14-05

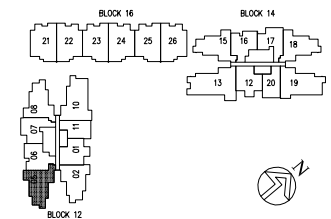


PLATFORM FURNITURE



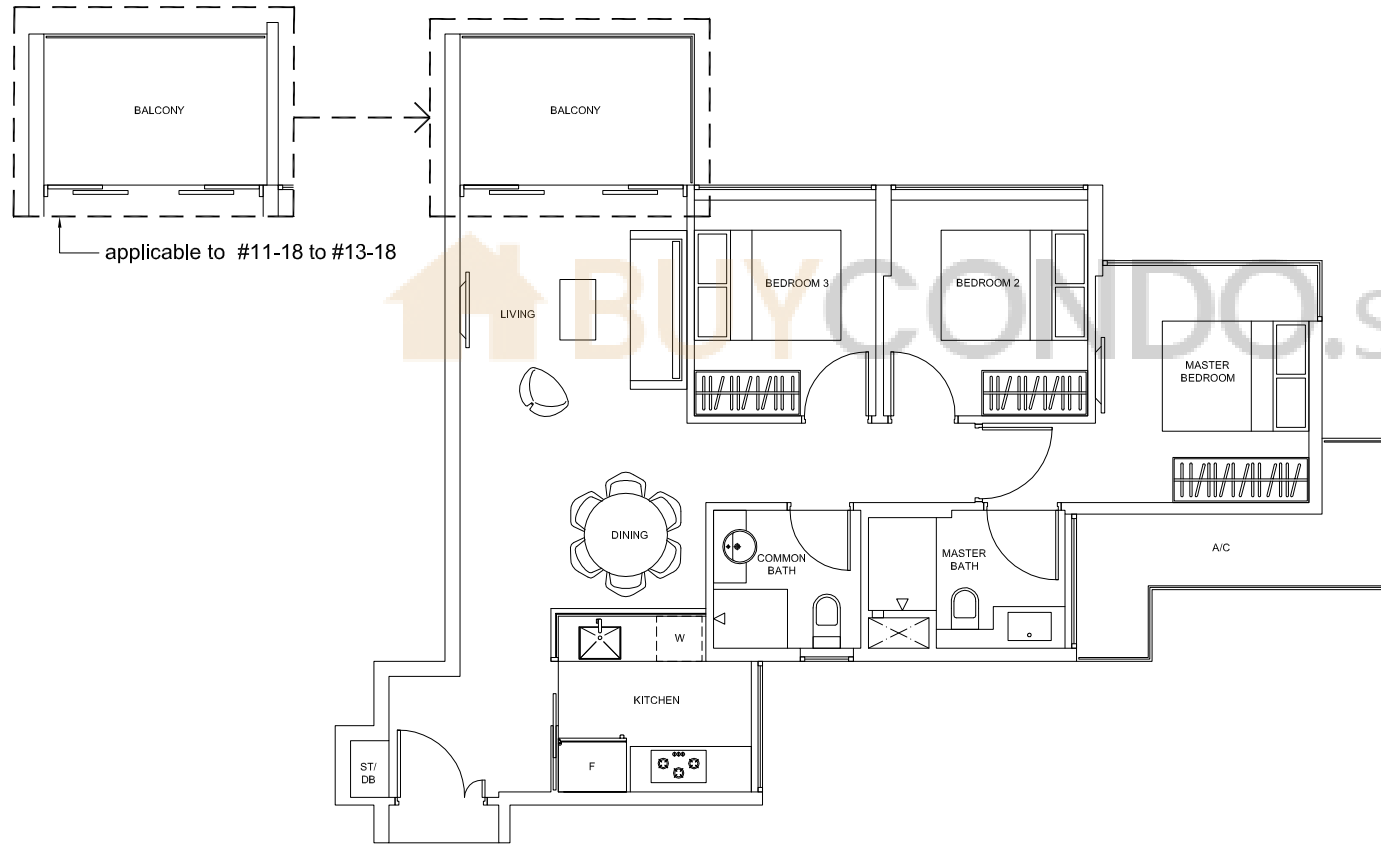
NOTE:  
+ isometric views have excluded railings drawings

Plans are subject to change as may be required or approved by the relevant authorities. These are not drawn to scale and are for the purpose of visual presentation only. Indicated areas are estimates only and subject to final survey.

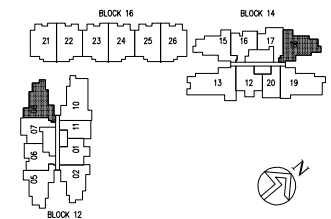


# 3-Bedroom

TYPE C-2  
Area: 85 sq m (include 7 sq m A/C LEDGE, 7 sq m BALCONY)  
Unit(s): #05-08 TO #10-08, #05-18 TO #13-18



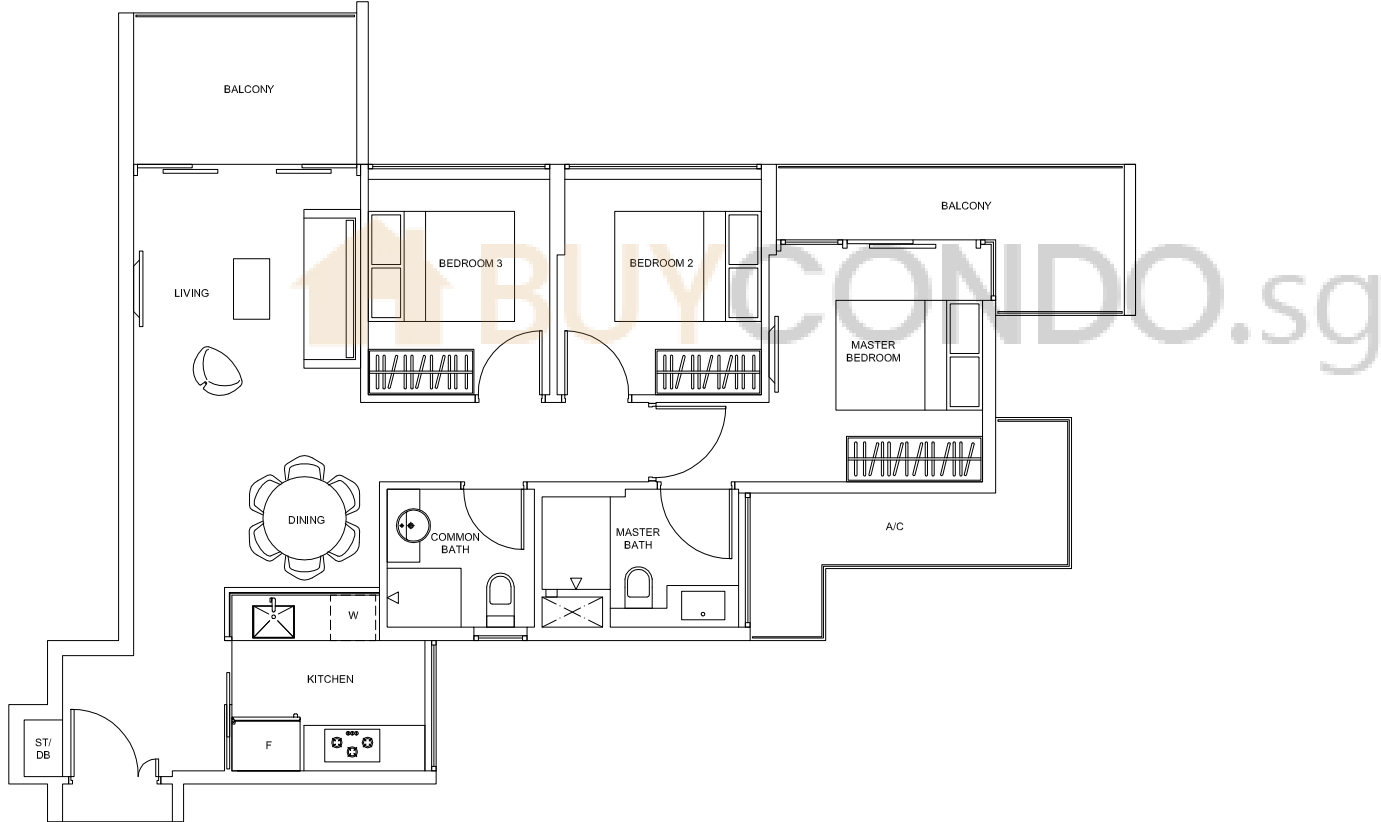
Plans are subject to change as may be required or approved by the relevant authorities. These are not drawn to scale and are for the purpose of visual presentation only. Indicated areas are estimates only and subject to final survey.



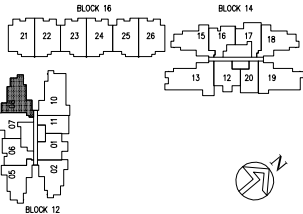


3-Bedroom

TYPE C-2a  
Area: 92 sq m (include 7 sq m A/C LEDGE, 13 sq m BALCONY)  
Unit(s): #11-08 TO #13-08



Plans are subject to change as may be required or approved by the relevant authorities. These are not drawn to scale and are for the purpose of visual presentation only. Indicated areas are estimates only and subject to final survey.

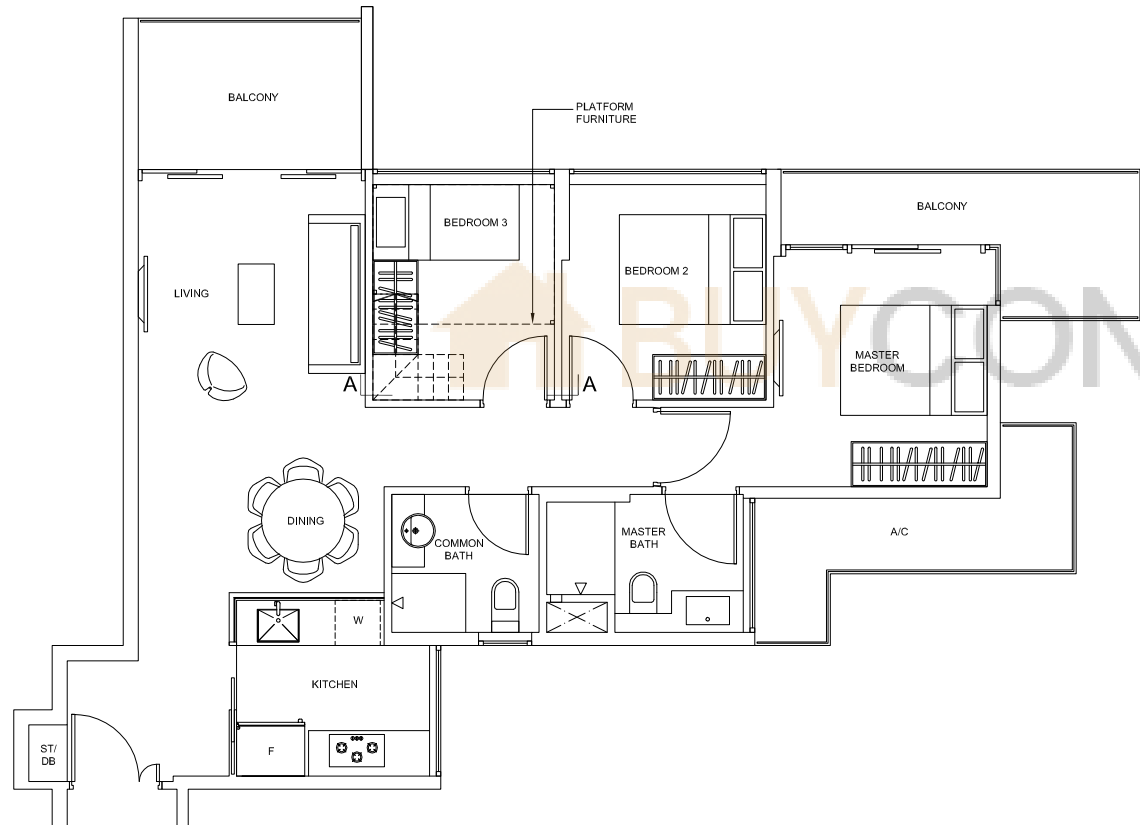


# 3-Bedroom

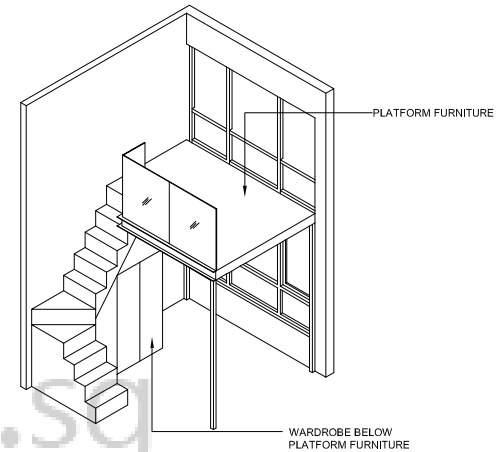
TYPE C-2aPH

Area: 92 sq m (include 7 sq m A/C LEDGE, 13 sq m BALCONY)

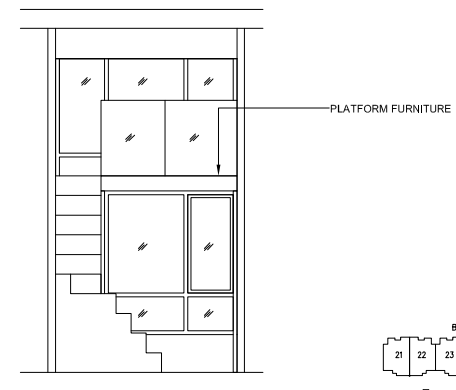
Unit(s): #14-08



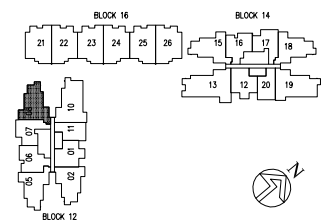
PLATFORM FURNITURE



ISOMETRIC VIEW +



SECTION A-A



**NOTE:**

+ isometric views have excluded railings drawings

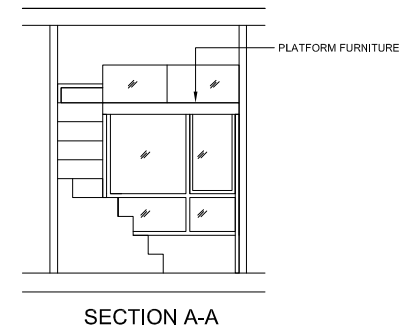
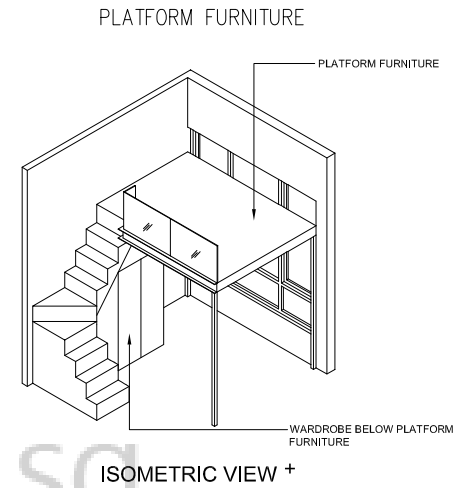
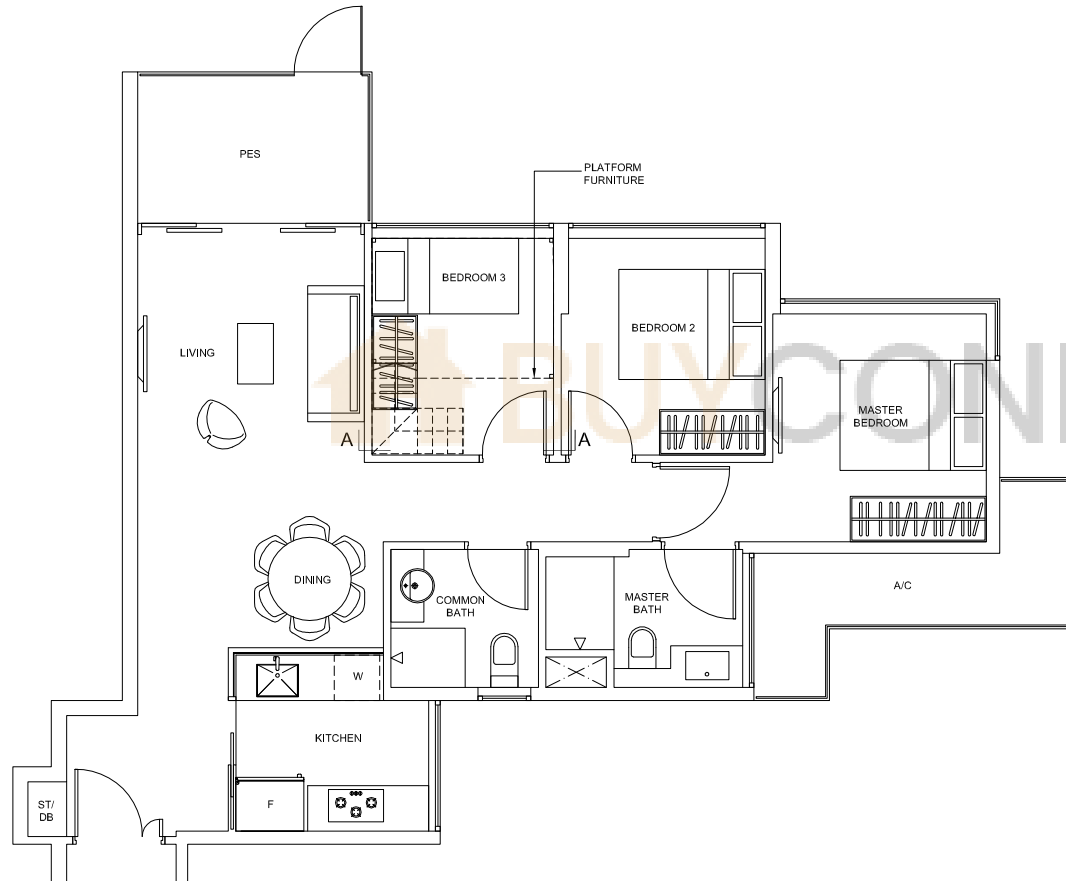
*Plans are subject to change as may be required or approved by the relevant authorities. These are not drawn to scale and are for the purpose of visual presentation only. Indicated areas are estimates only and subject to final survey.*

# 3-Bedroom

TYPE C-2G

Area: 85 sq m (include 7 sq m A/C LEDGE, 7 sq m PES)

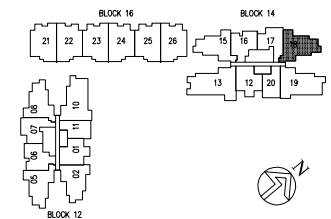
Unit(s): #04-18



## NOTE:

+ isometric views have excluded railings drawings

Plans are subject to change as may be required or approved by the relevant authorities. These are not drawn to scale and are for the purpose of visual presentation only. Indicated areas are estimates only and subject to final survey.

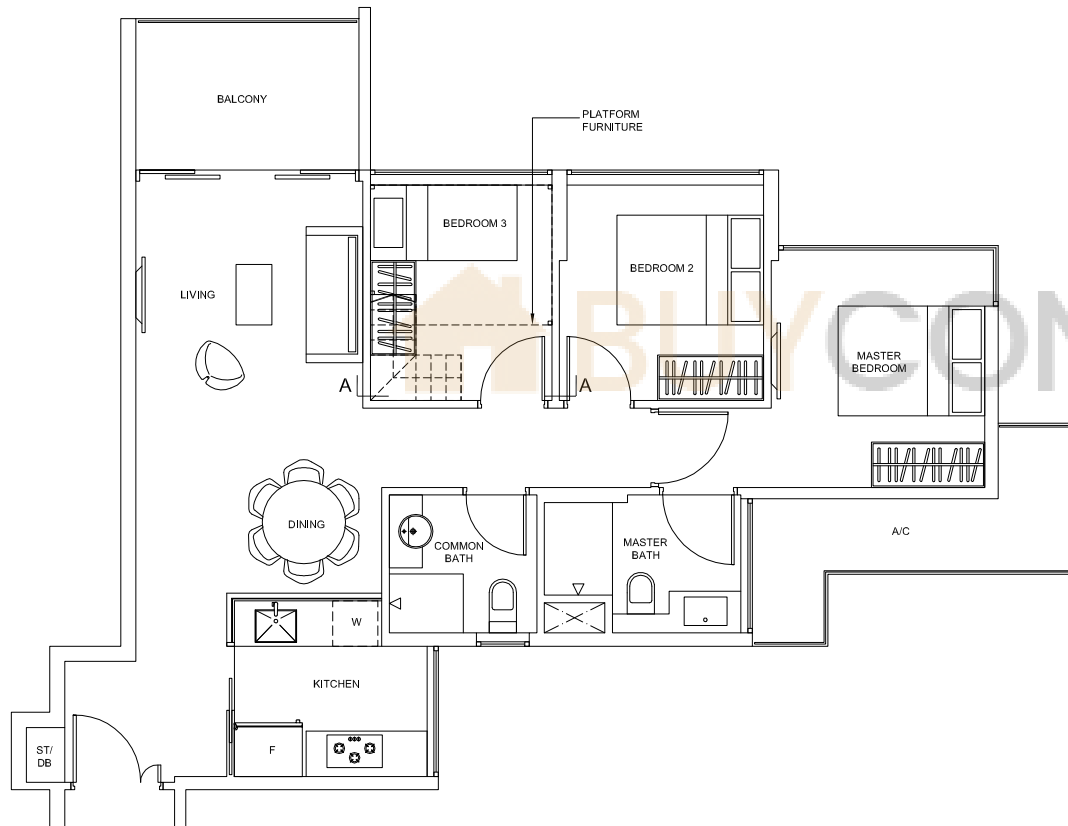


# 3-Bedroom

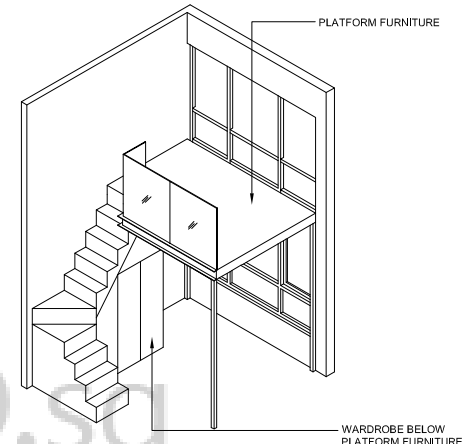
## TYPE C-2PH

Area: 85 sq m (include 7 sq m A/C LEDGE, 6 sq m BALCONY)

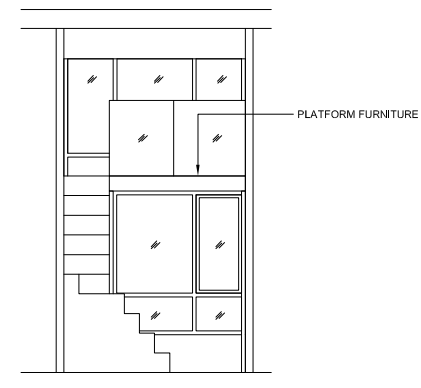
Unit(s): #14-18



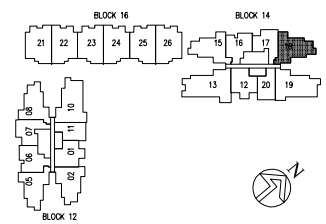
PLATFORM FURNITURE



ISOMETRIC VIEW +



SECTION A-A



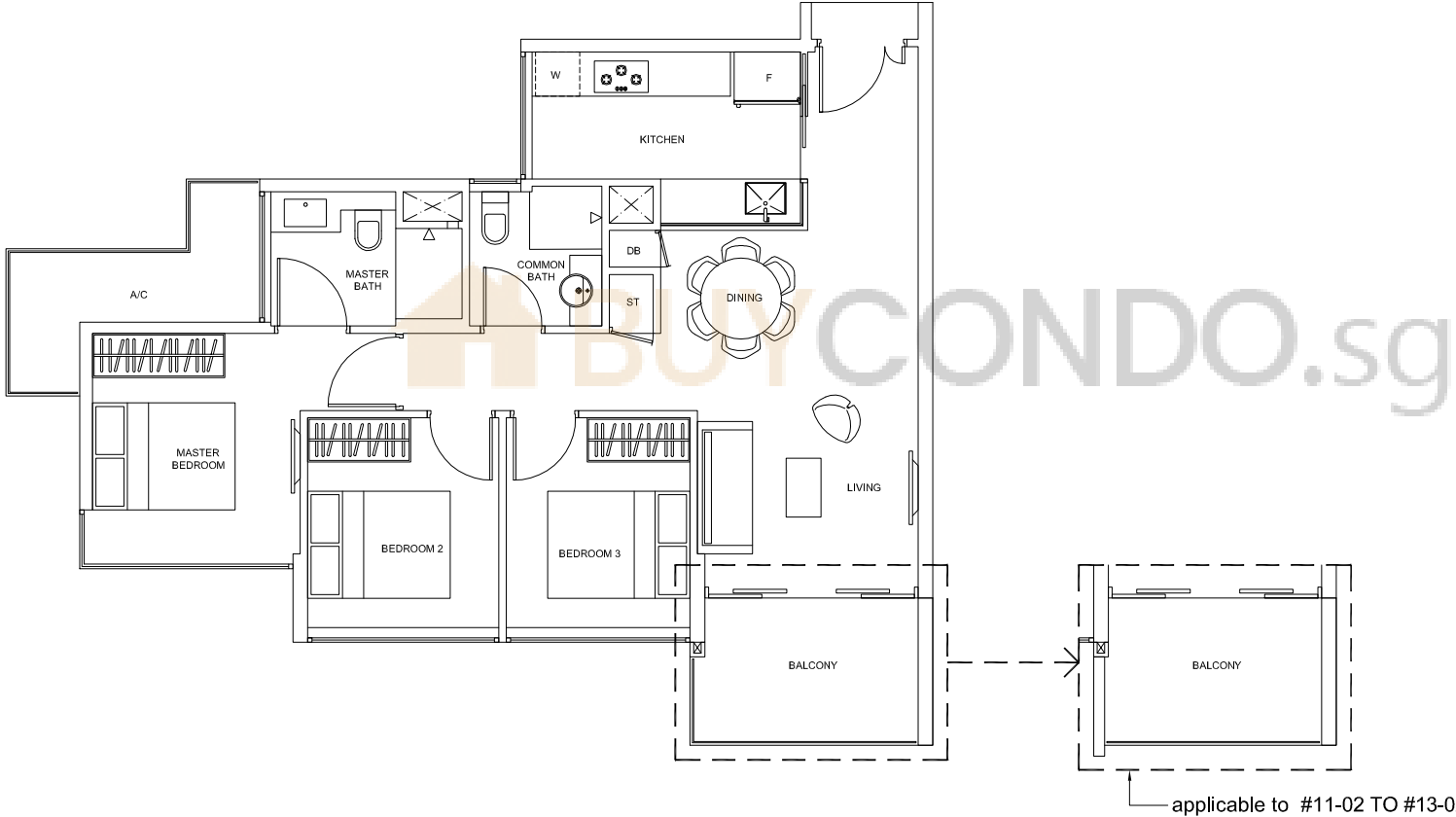
**NOTE:**

+ isometric views have excluded railings drawings

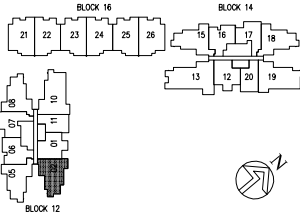
*Plans are subject to change as may be required or approved by the relevant authorities. These are not drawn to scale and are for the purpose of visual presentation only. Indicated areas are estimates only and subject to final survey.*

3-Bedroom

TYPE C-3  
Area: 84 sq m (include 6 sq m A/C LEDGE, 7 sq m BALCONY)  
Unit(s): #05-02 TO #13-02

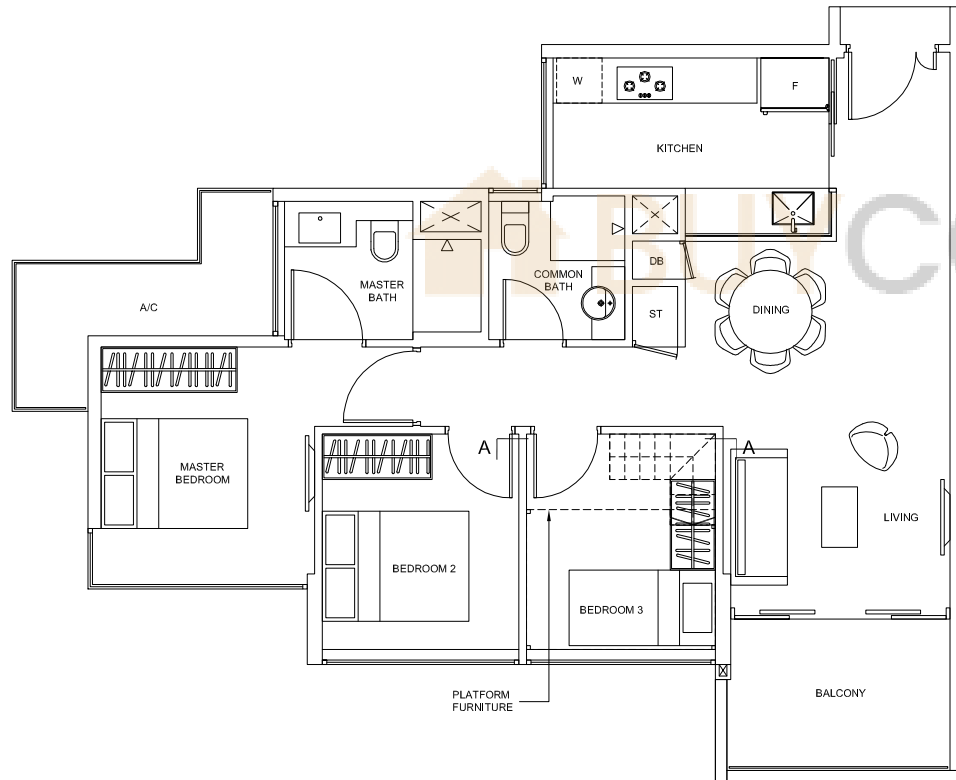


Plans are subject to change as may be required or approved by the relevant authorities. These are not drawn to scale and are for the purpose of visual presentation only. Indicated areas are estimates only and subject to final survey.

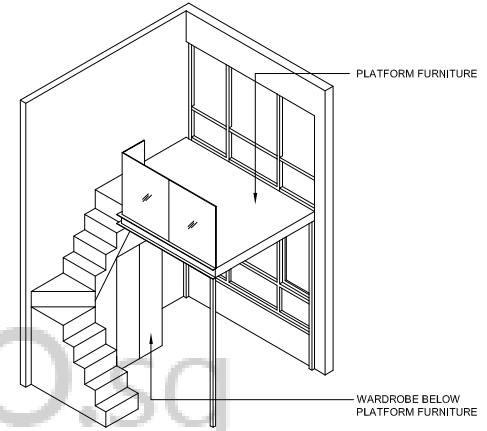


# 3-Bedroom

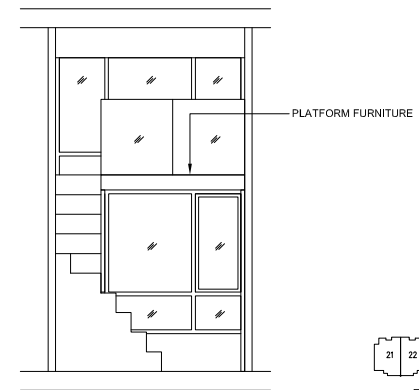
TYPE C-3PH  
 Area: 84 sq m (include 6 sq m A/C LEDGE, 7 sq m BALCONY)  
 Unit(s): #14-02



PLATFORM FURNITURE



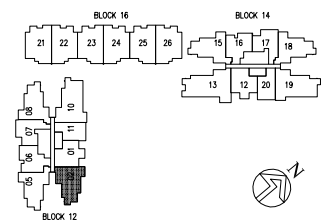
ISOMETRIC VIEW +



SECTION A-A

**NOTE:**  
 + isometric views have excluded railings drawings

*Plans are subject to change as may be required or approved by the relevant authorities. These are not drawn to scale and are for the purpose of visual presentation only. Indicated areas are estimates only and subject to final survey.*

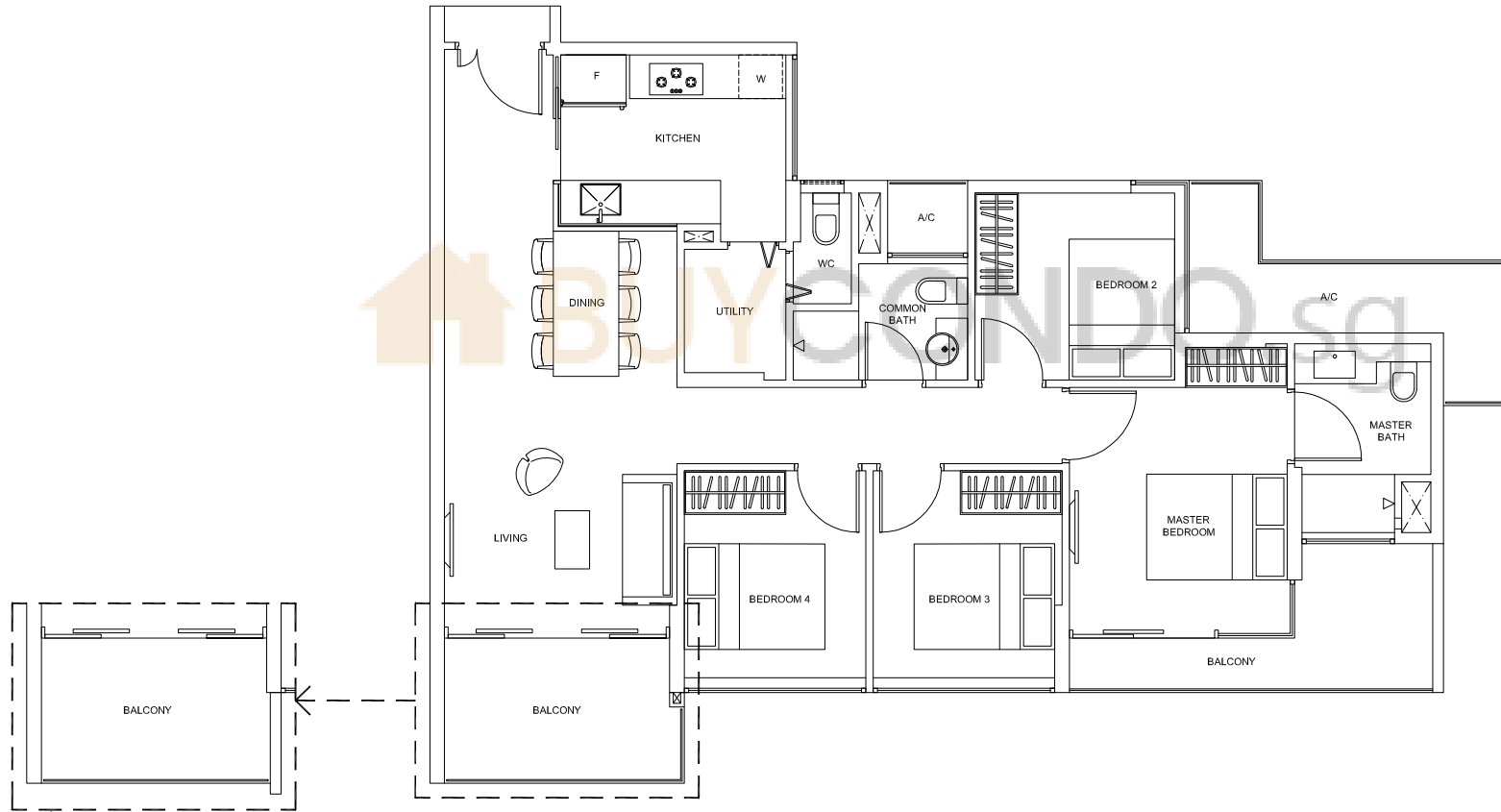


# 4-Bedroom

## TYPE D

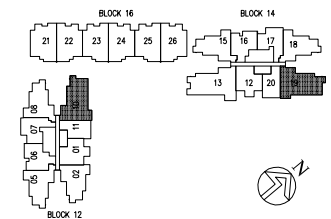
Area: 109 sq m (include 8 sq m A/C LEDGE, 13 sq m BALCONY)

Unit(s): #05-10 TO #13-10, #05-19 TO #13-19



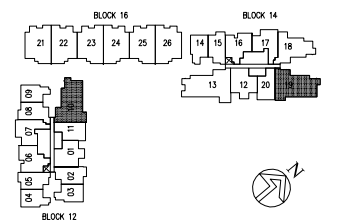
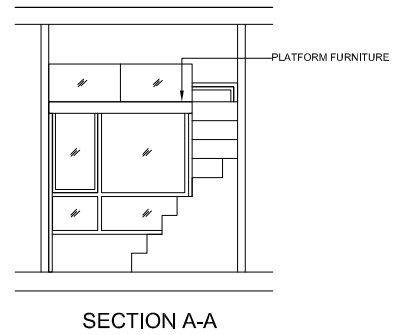
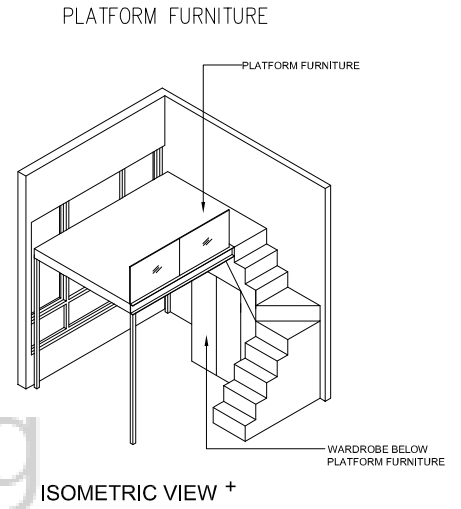
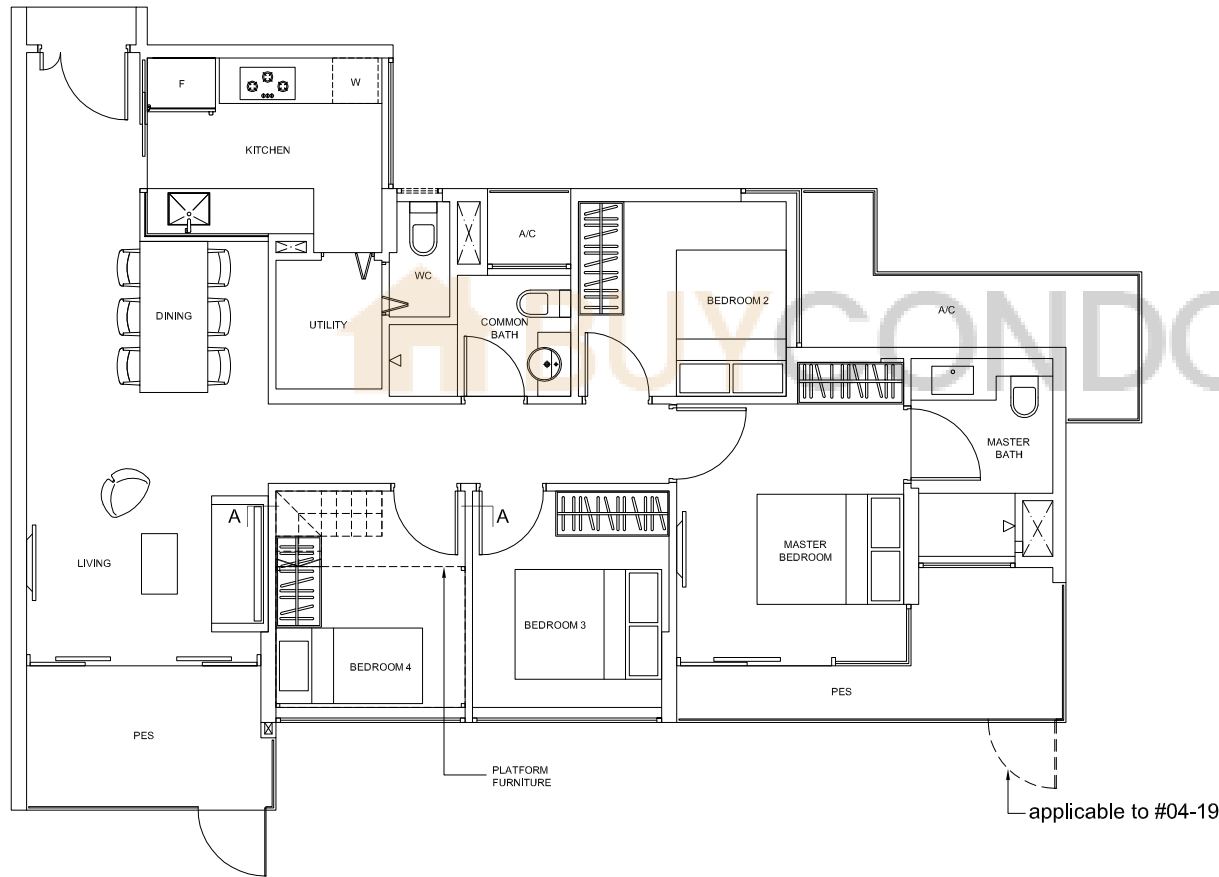
applicable to #11-10 TO #13-10,  
#11-19 TO #13-19

*Plans are subject to change as may be required or approved by the relevant authorities. These are not drawn to scale and are for the purpose of visual presentation only. Indicated areas are estimates only and subject to final survey.*



# 4-Bedroom

TYPE D-G  
 Area: 109 sq m (include 8 sq m A/C LEDGE, 13 sq m PES)  
 Unit(s): #04-10, #04-19

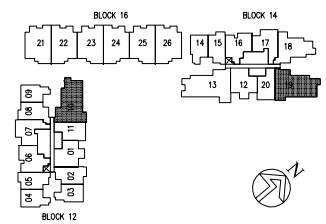
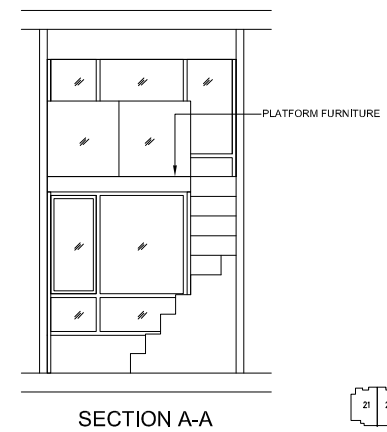
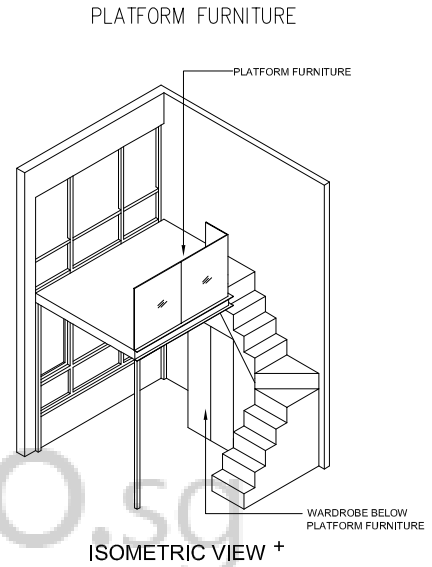
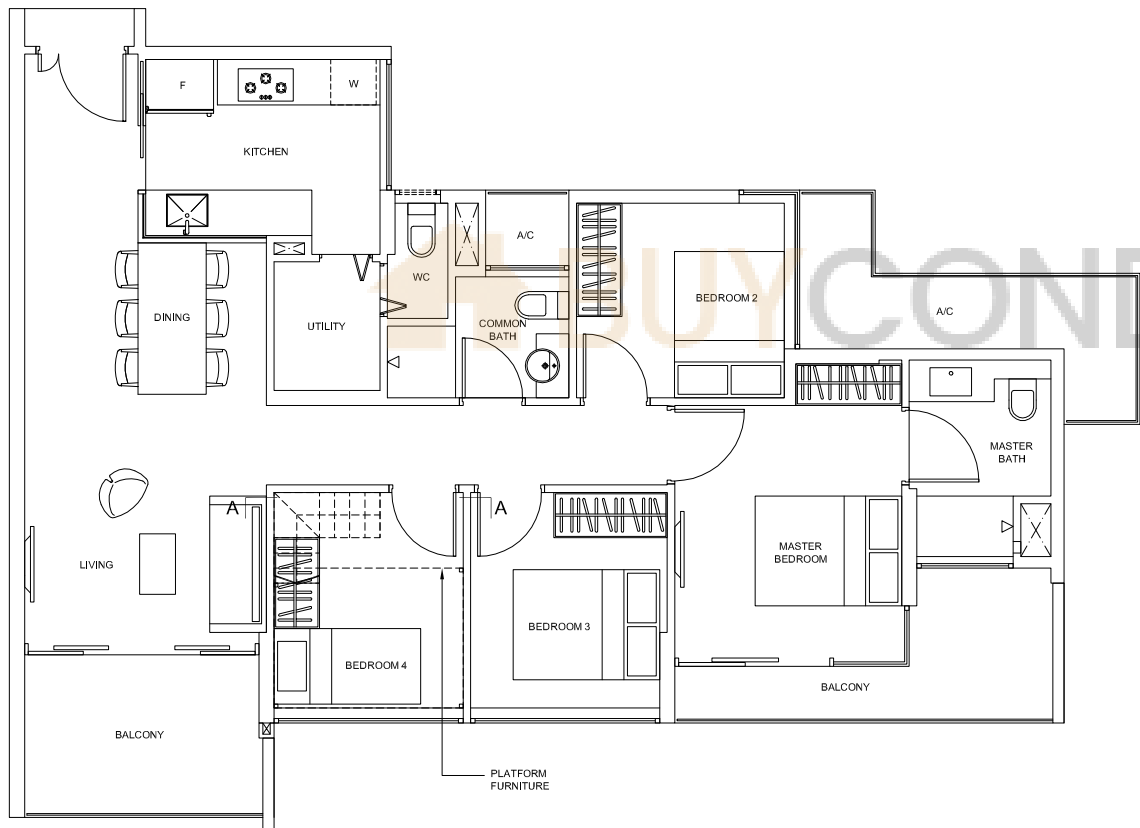


**NOTE:**  
 + isometric views have excluded railings drawings  
 Plans are subject to change as may be required or approved by the relevant authorities. These are not drawn to scale and are for the purpose of visual presentation only. Indicated areas are estimates only and subject to final survey.



# 4-Bedroom

TYPE D-PH  
Area: 109 sq m (include 8 sq m A/C LEDGE, 13 sq m BALCONY)  
Unit(s): #14-10, #14-19



**NOTE:**  
+ isometric views have excluded railings drawings  
*Plans are subject to change as may be required or approved by the relevant authorities. These are not drawn to scale and are for the purpose of visual presentation only. Indicated areas are estimates only and subject to final survey.*

5-Bedroom

TYPE E

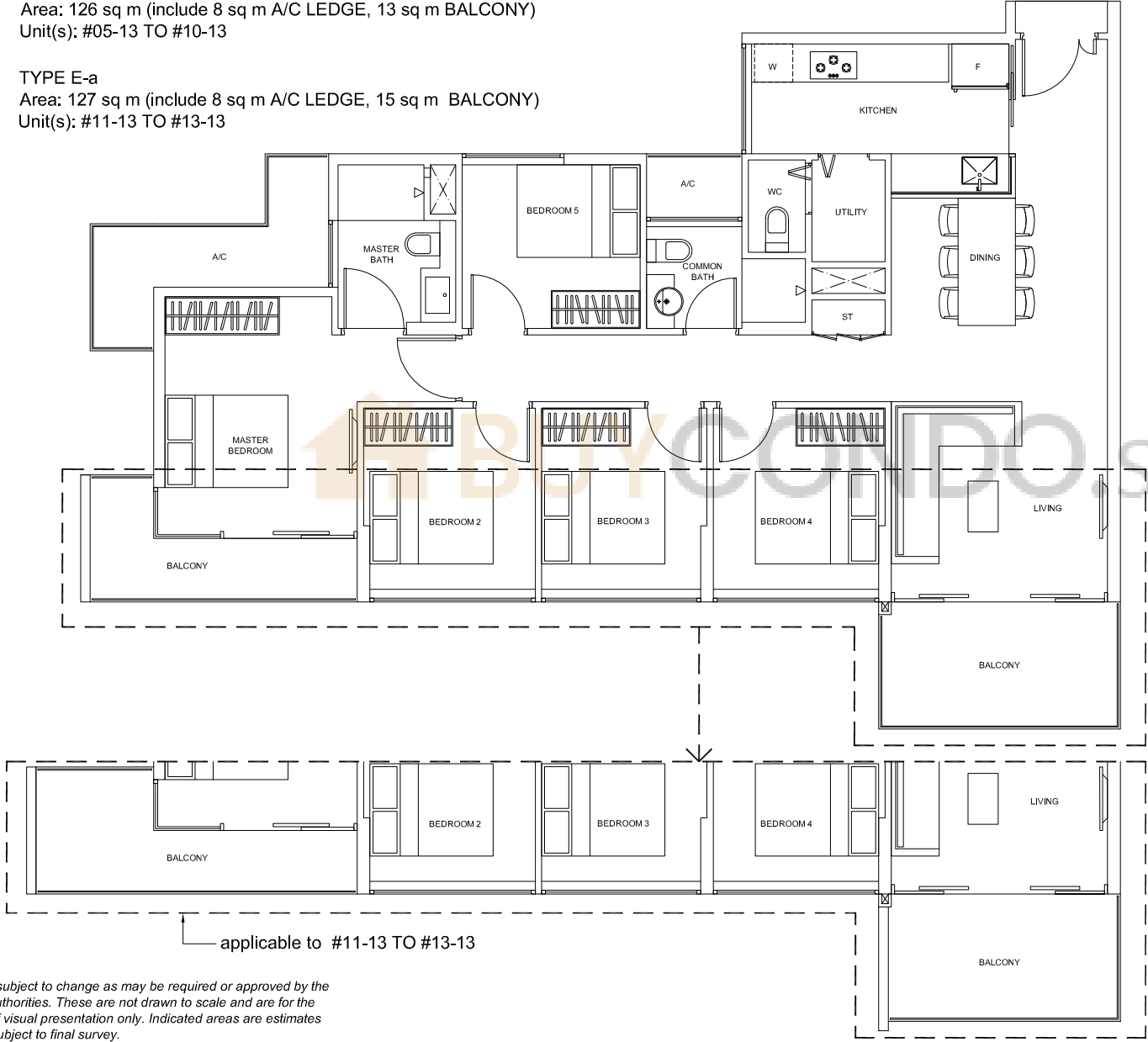
Area: 126 sq m (include 8 sq m A/C LEDGE, 13 sq m BALCONY)

Unit(s): #05-13 TO #10-13

TYPE E-a

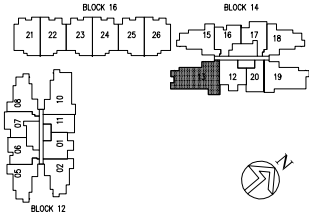
Area: 127 sq m (include 8 sq m A/C LEDGE, 15 sq m BALCONY)

Unit(s): #11-13 TO #13-13



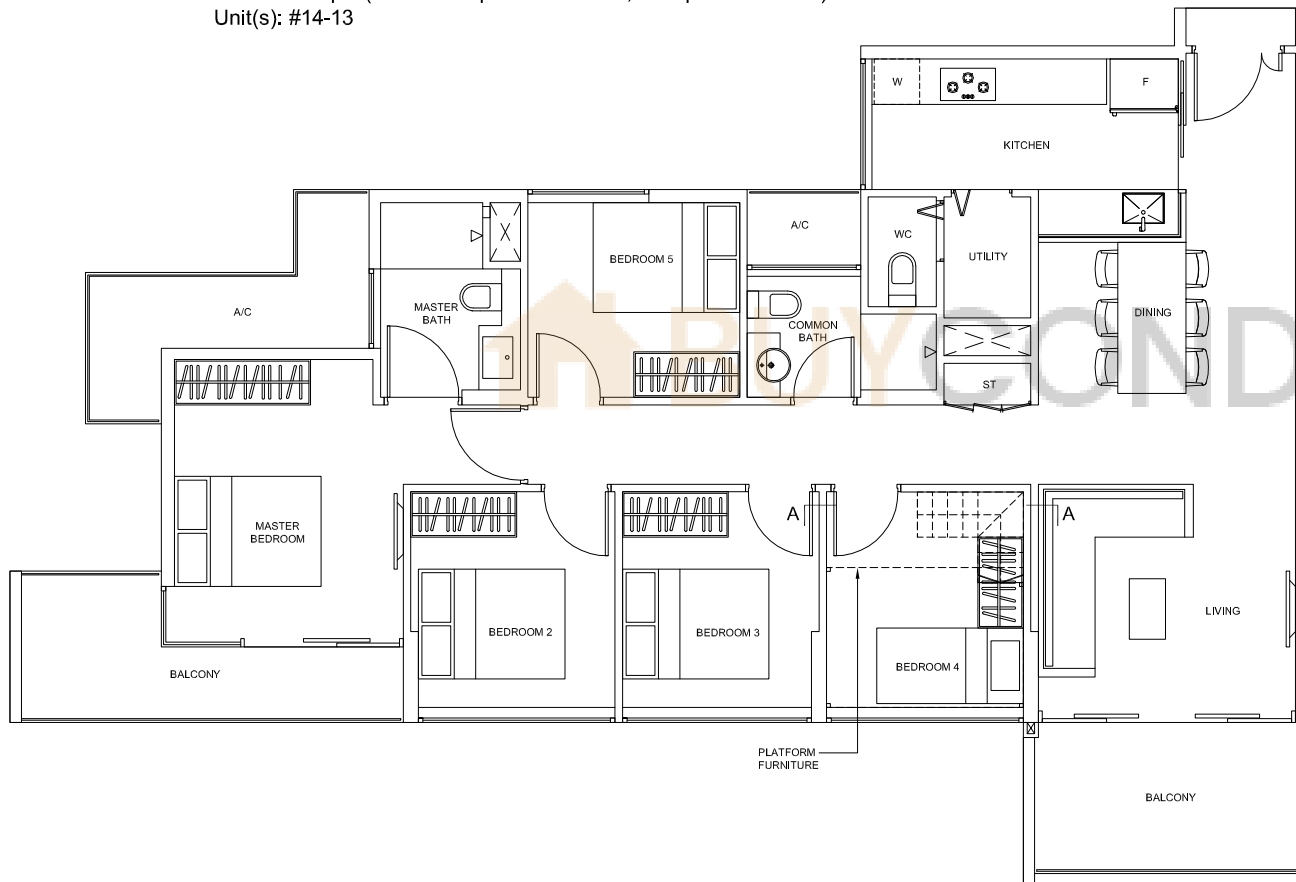
applicable to #11-13 TO #13-13

Plans are subject to change as may be required or approved by the relevant authorities. These are not drawn to scale and are for the purpose of visual presentation only. Indicated areas are estimates only and subject to final survey.

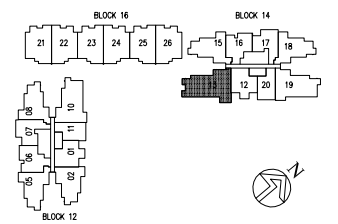
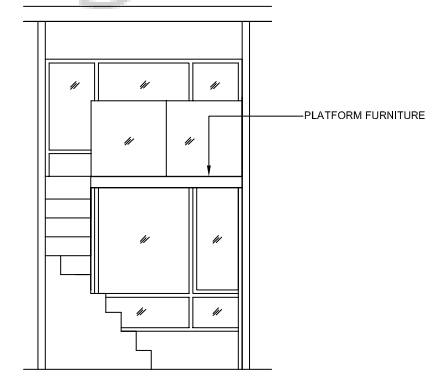
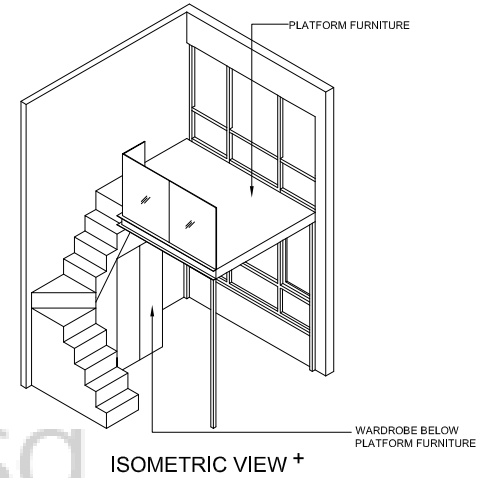


# 5-Bedroom

TYPE E-aPH  
 Area: 127 sq m (include 8 sq m A/C LEDGE, 15 sq m BALCONY)  
 Unit(s): #14-13



PLATFORM FURNITURE



**NOTE:**  
 + isometric views have excluded railings drawings

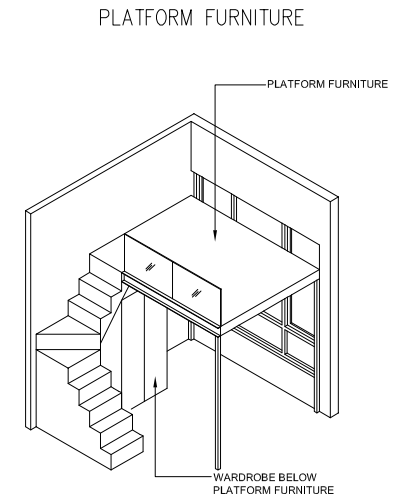
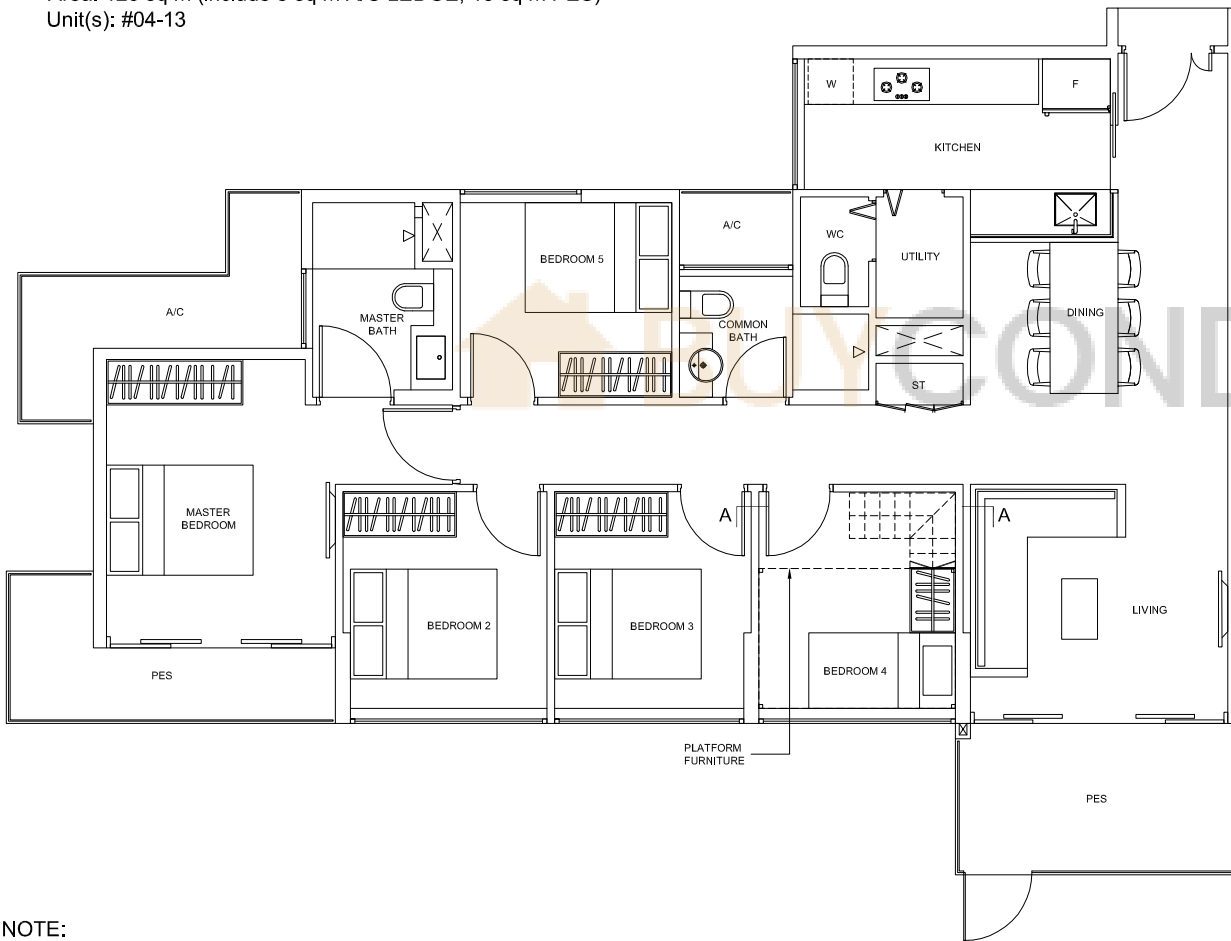
*Plans are subject to change as may be required or approved by the relevant authorities. These are not drawn to scale and are for the purpose of visual presentation only. Indicated areas are estimates only and subject to final survey.*

# 5-Bedroom

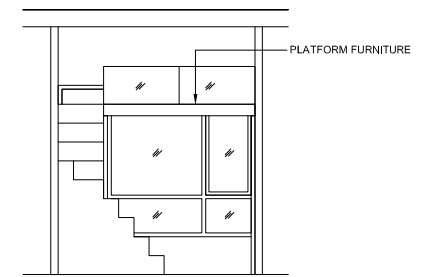
TYPE E-G

Area: 126 sq m (include 8 sq m A/C LEDGE, 13 sq m PES)

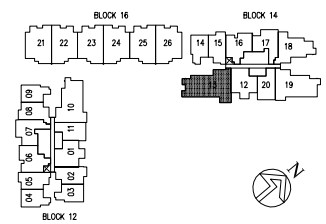
Unit(s): #04-13



ISOMETRIC VIEW +



SECTION A-A



**NOTE:**

+ isometric views have excluded railings drawings

*Plans are subject to change as may be required or approved by the relevant authorities. These are not drawn to scale and are for the purpose of visual presentation only. Indicated areas are estimates only and subject to final survey.*



**TYPE F-1**

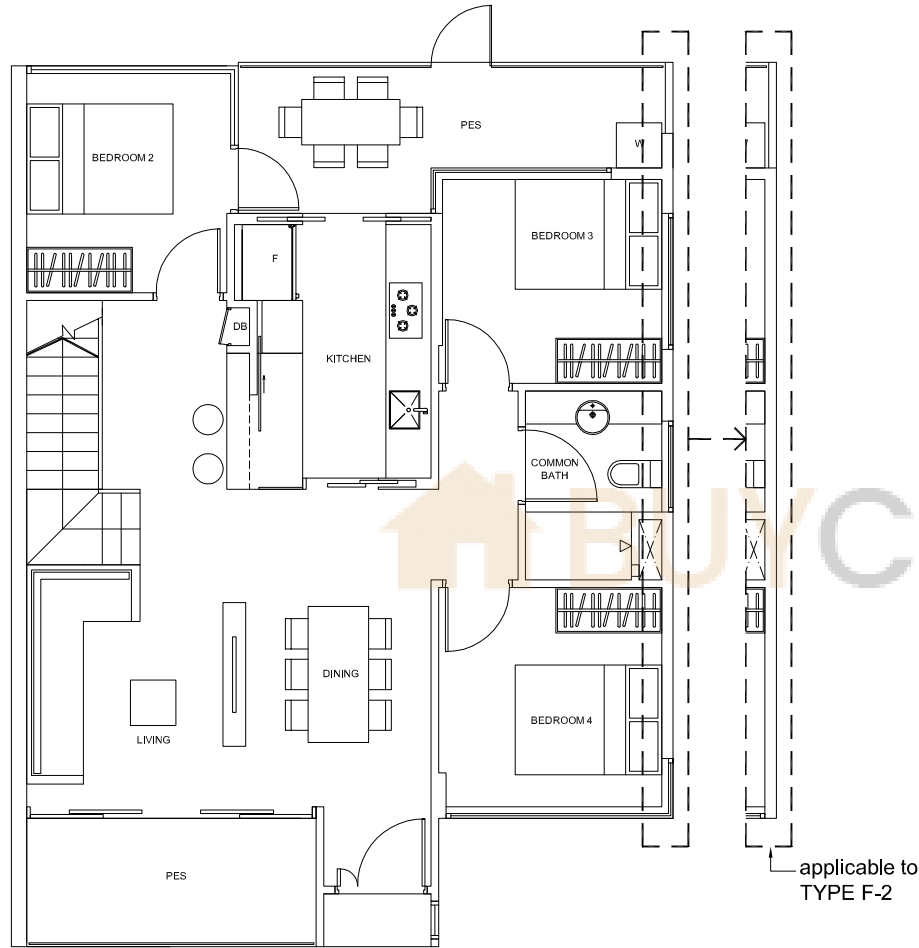
Area: 144 sq m (include 17 sq m PES, 8 sq m A/C LEDGE, exclude 31 sq m VOID)

Unit(s): #04-21\*,#04-26

**TYPE F-2**

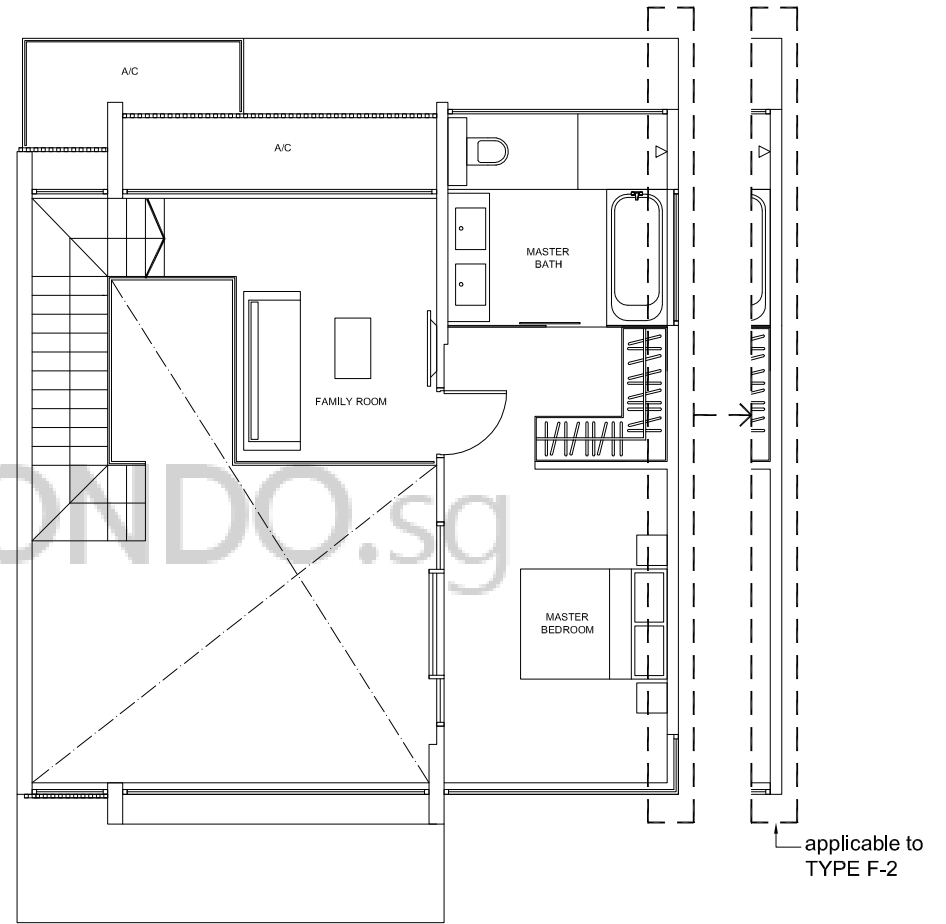
Area: 144 sq m (include 17 sq m PES, 8 sq m A/C LEDGE, exclude 31 sq m VOID )

Unit(s): #04-22, #04-23\*, #04-24, #04-25\*



LOWER FLOOR LEVEL

applicable to  
TYPE F-2



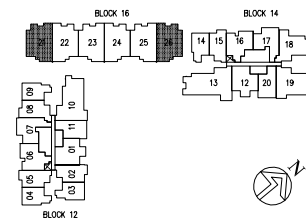
UPPER FLOOR LEVEL

applicable to  
TYPE F-2

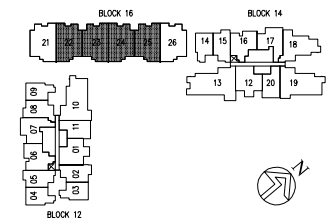
**NOTE:**

\*units in mirror image

Plans are subject to change as may be required or approved by the relevant authorities. These are not drawn to scale and are for the purpose of visual presentation only. Indicated areas are estimates only and subject to final survey.



applicable to type F-1



applicable to type F-2