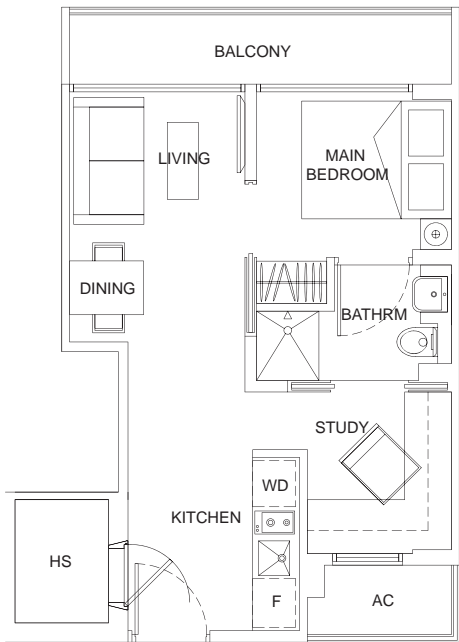


type A1

1+1 bdrm • 441 sq ft

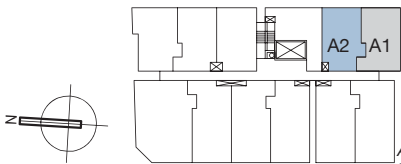
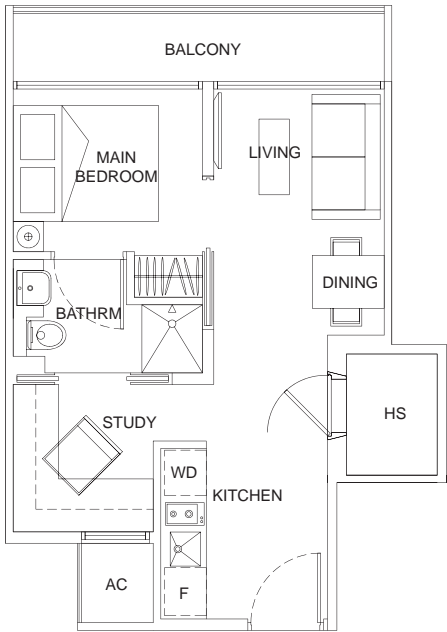
- #02-03
- #03-03
- #04-03
- #05-03
- #06-03



type A2

1+1 bdrm • 431 sq ft

- #02-02
- #03-02
- #04-02
- #05-02
- #06-02

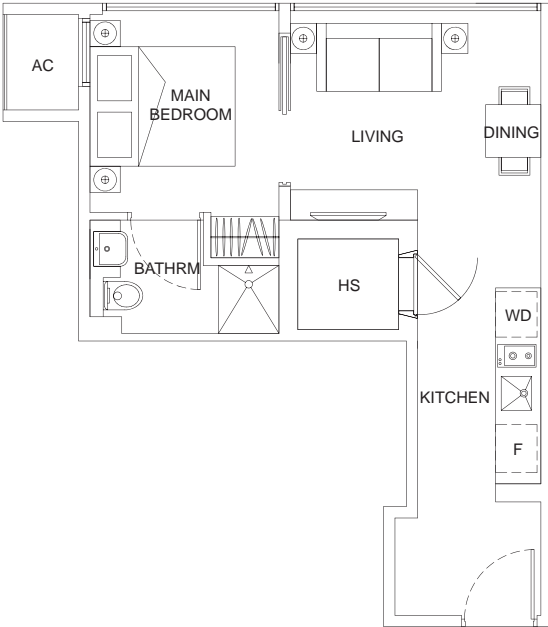


All plans are subject to amendments as approved by the relevant authorities.
Floor areas are approximate measurements and subject to final survey.

type B

1 bdrm • 388 sq ft

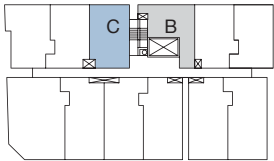
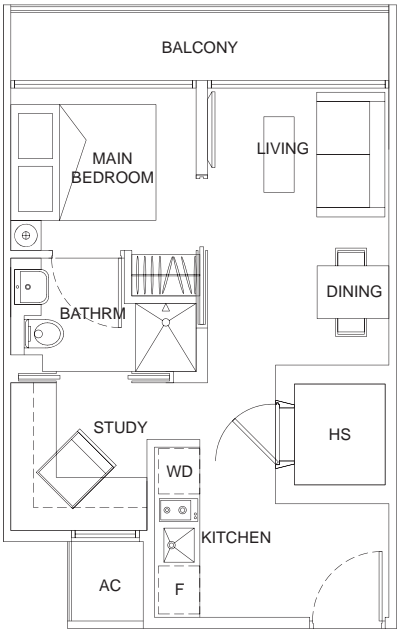
- #02-01
- #03-01
- #04-01
- #05-01
- #06-01
- #07-01



type C

1+1 bdrm • 441 sq ft

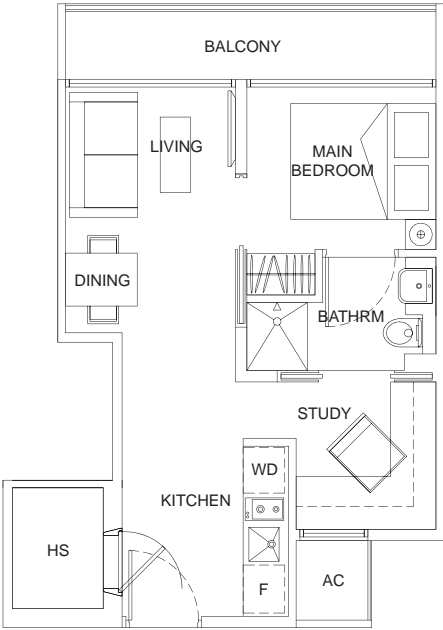
- #02-12
- #03-12
- #04-12
- #05-12
- #06-12
- #07-12



All plans are subject to amendments as approved by the relevant authorities.
Floor areas are approximate measurements and subject to final survey.

type D1

1+1 bdrm • 431 sq ft

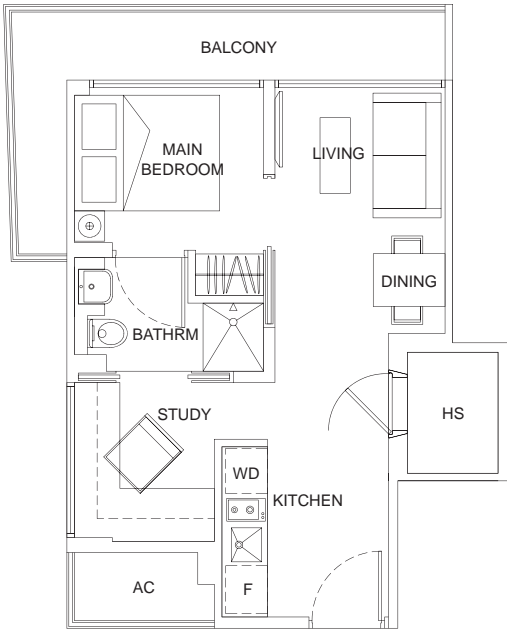


- #02-11
- #03-11
- #04-11
- #05-11
- #06-11

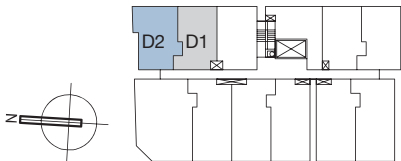


type D2

1+1 bdrm • 463 sq ft



- #02-10
- #03-10
- #04-10
- #05-10
- #06-10

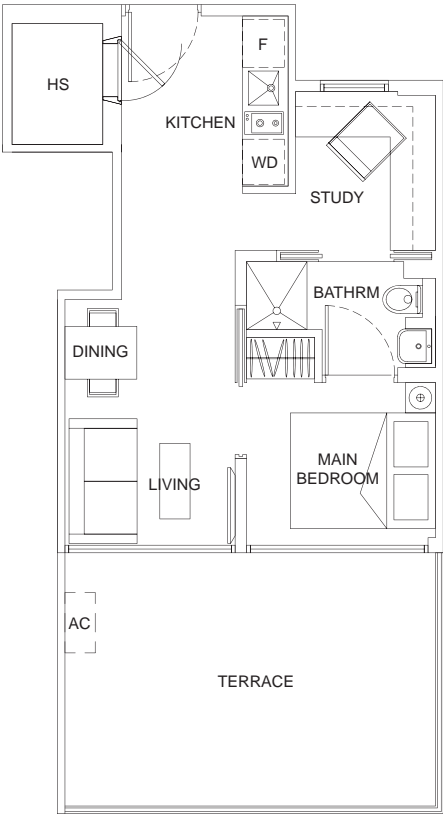


All plans are subject to amendments as approved by the relevant authorities.
Floor areas are approximate measurements and subject to final survey.

type E1

1+1 bdrm • 549 sq ft

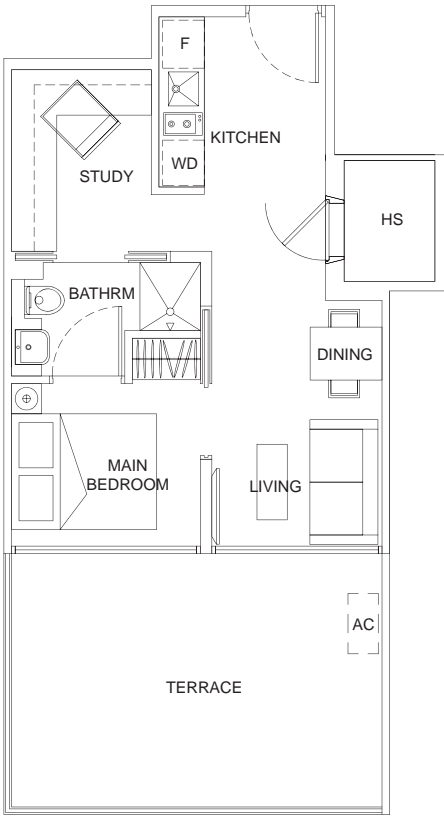
#04-04



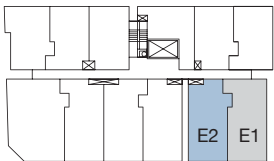
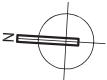
type E2

1+1 bdrm • 560 sq ft

#04-05



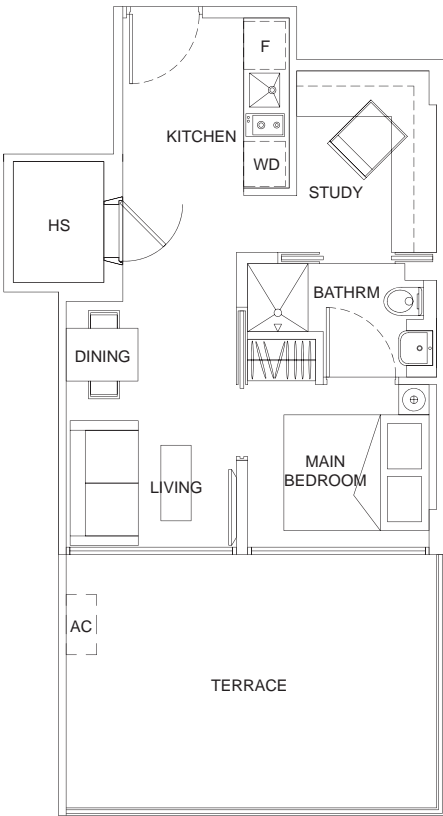
All plans are subject to amendments as approved by the relevant authorities.
Floor areas are approximate measurements and subject to final survey.



type E3

1+1 bdrm • 560 sq ft

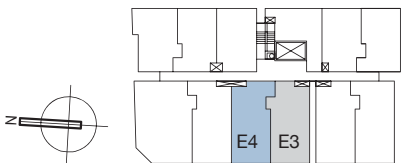
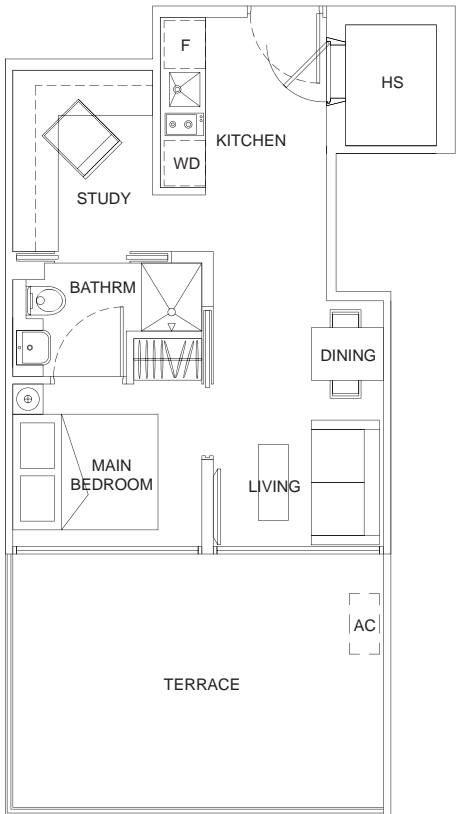
#04-06



type E4

1+1 bdrm • 570 sq ft

#04-07

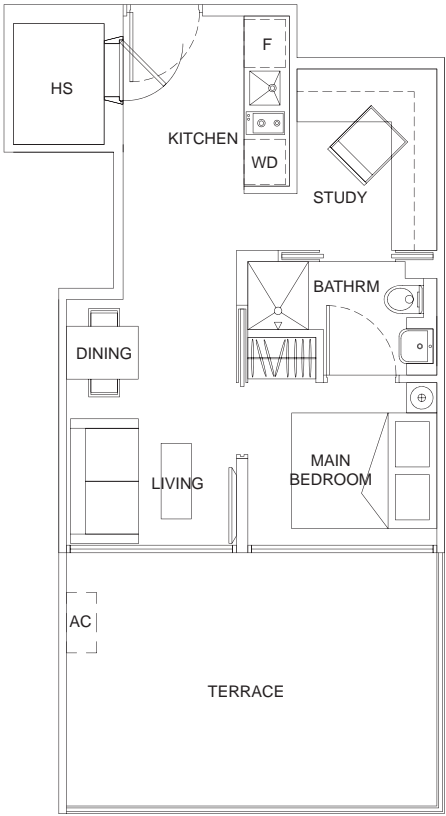


All plans are subject to amendments as approved by the relevant authorities.
Floor areas are approximate measurements and subject to final survey.

type E5

1+1 bdrm • 570 sq ft

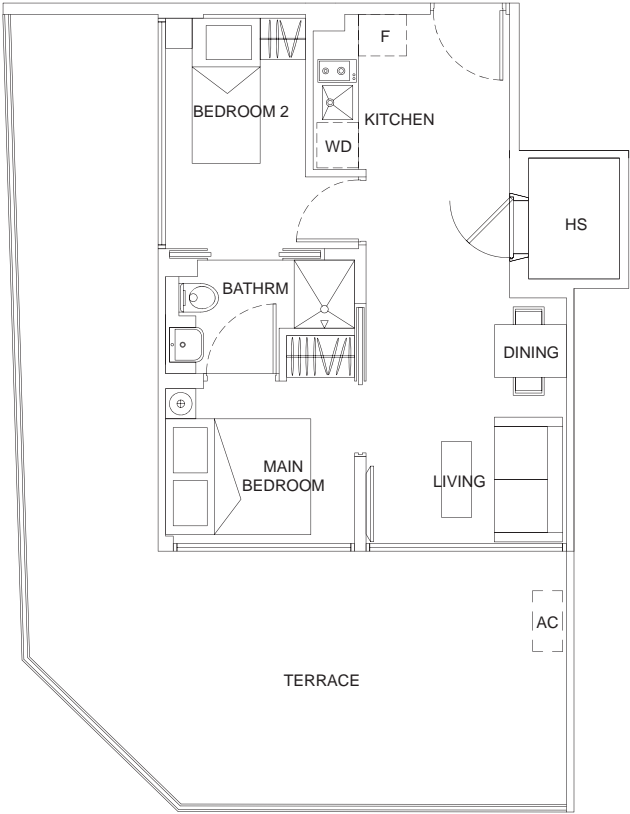
#04-08



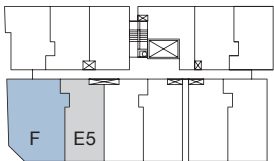
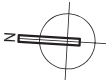
type F

2 bdrm • 818 sq ft

#04-09



All plans are subject to amendments as approved by the relevant authorities.
Floor areas are approximate measurements and subject to final survey.

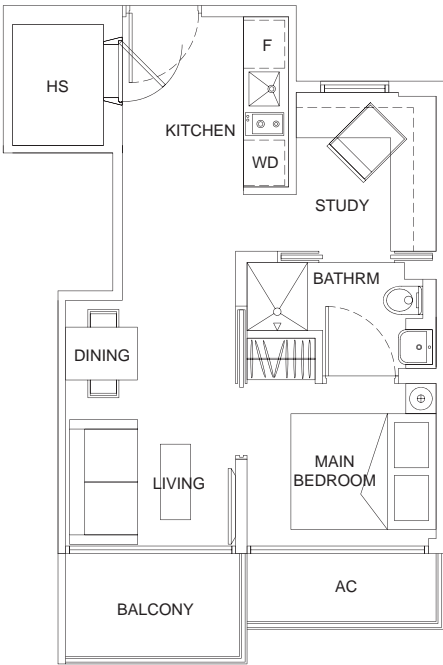


type G1

1+1 bdrm • 431 sq ft

#05-04

#06-04



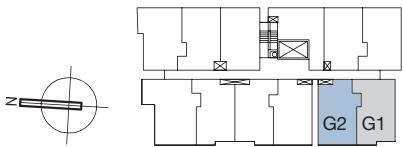
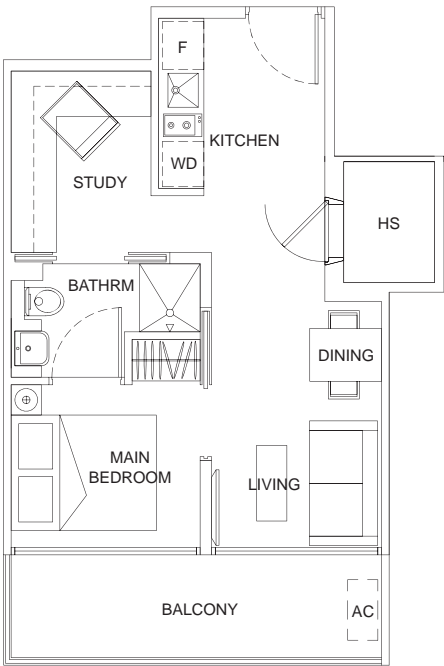
type G2

1+1 bdrm • 452 sq ft

#05-05

#06-05

#07-05

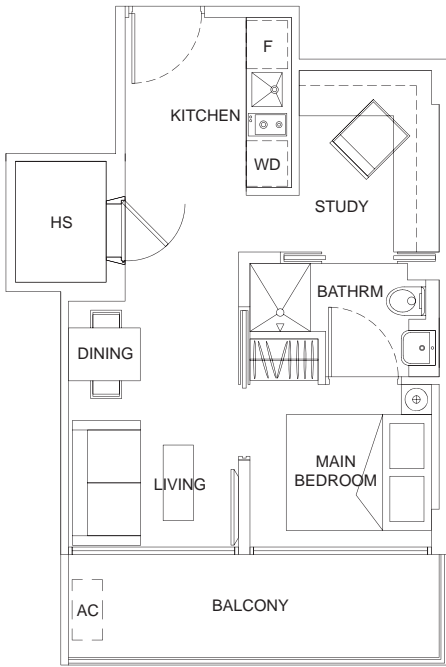


All plans are subject to amendments as approved by the relevant authorities.
Floor areas are approximate measurements and subject to final survey.

type G3

1+1 bdrm • 452 sq ft

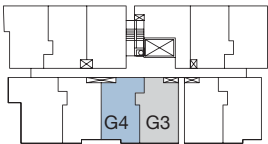
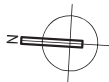
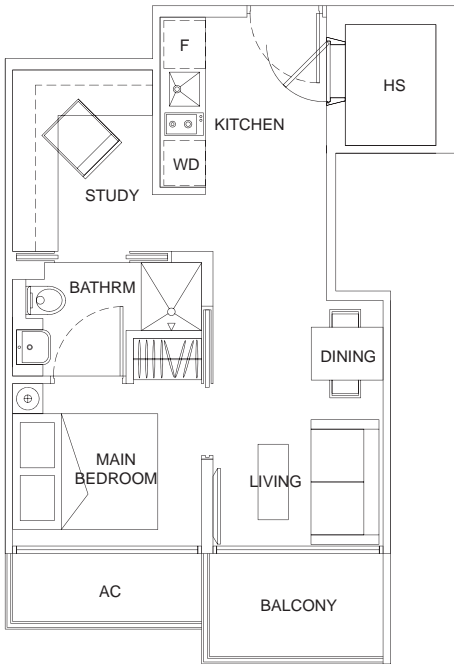
#05-06
#06-06
#07-06



type G4

1+1 bdrm • 441 sq ft

#05-07
#06-07
#07-07

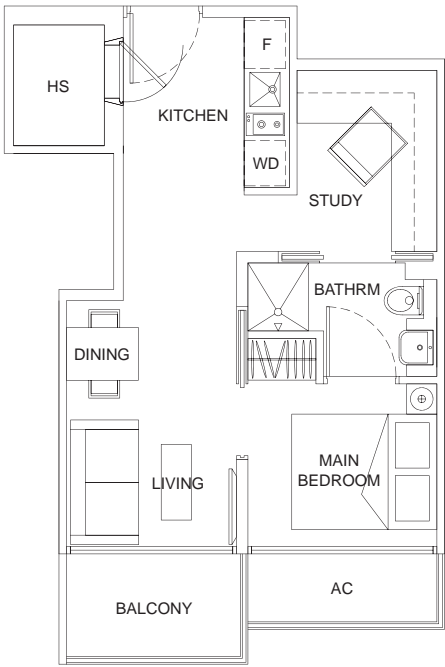


All plans are subject to amendments as approved by the relevant authorities.
Floor areas are approximate measurements and subject to final survey.

type G5

1+1 bdrm • 441 sq ft

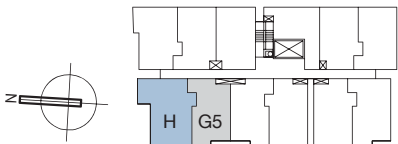
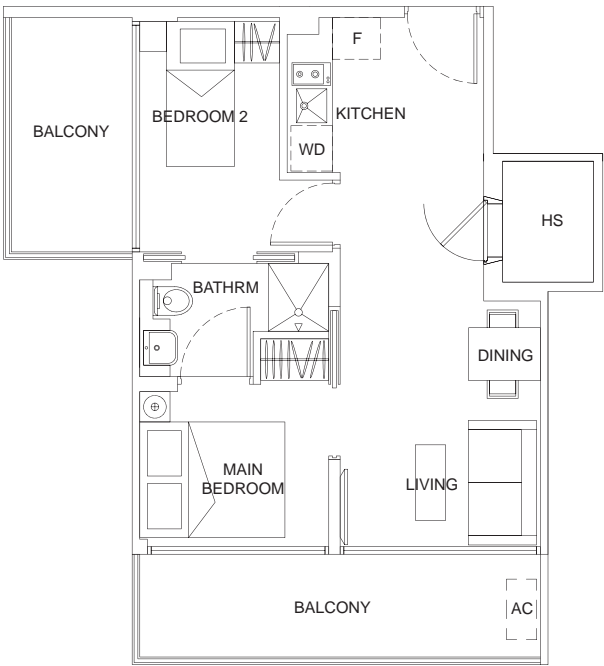
#05-08
#06-08
#07-08



type H

2 bdrm • 570 sq ft

#05-09
#06-09
#07-09

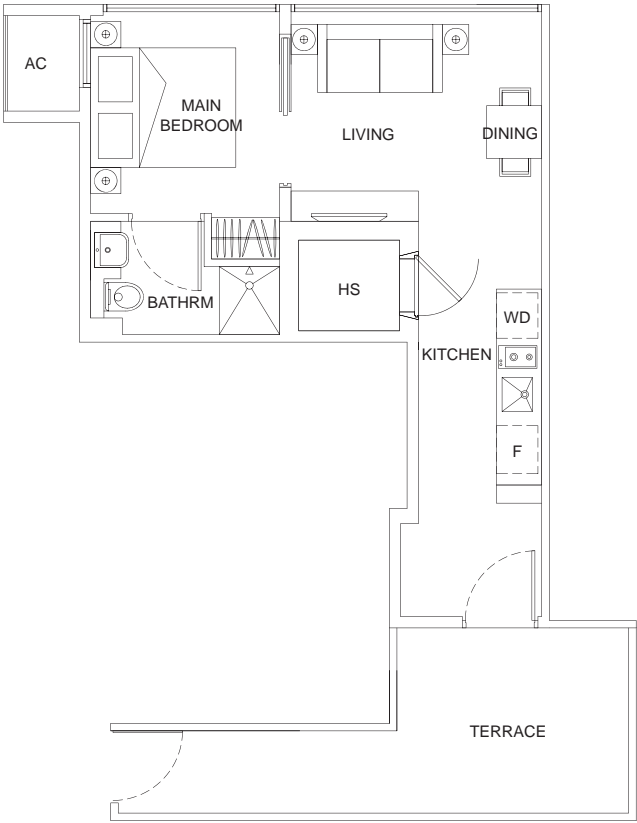


All plans are subject to amendments as approved by the relevant authorities.
Floor areas are approximate measurements and subject to final survey.

type L

1 bdrm • 517 sq ft

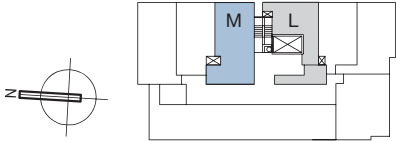
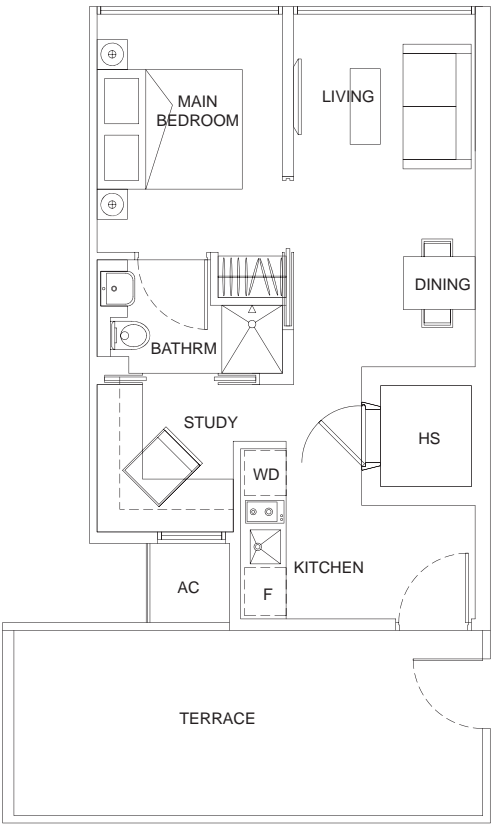
#08-01



type M

1+1 bdrm • 624 sq ft

#08-12



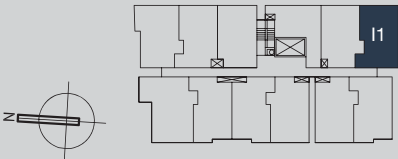
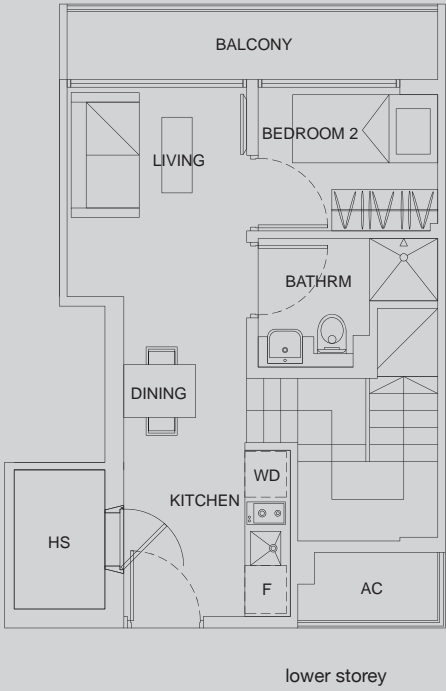
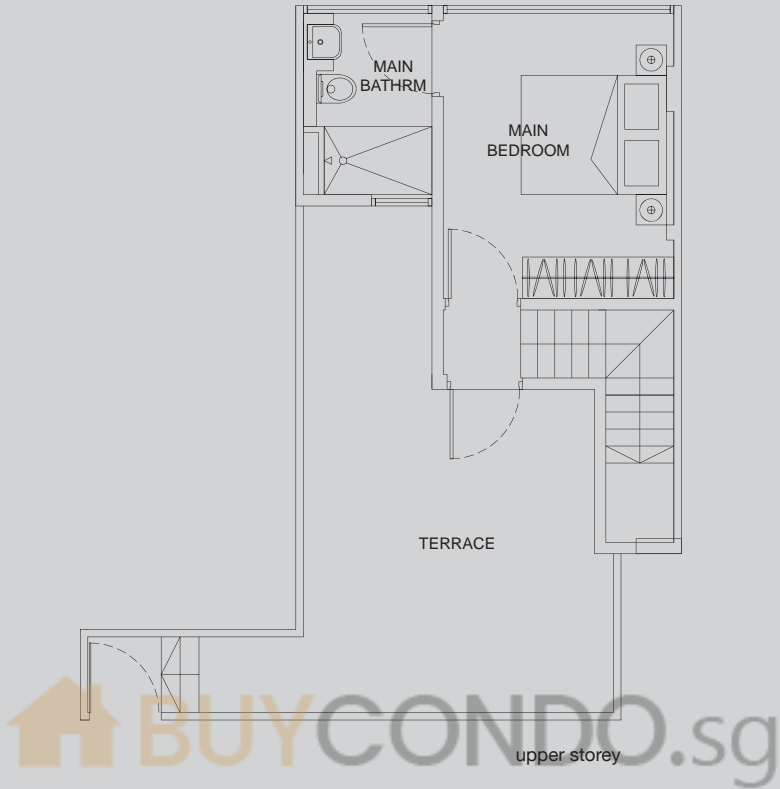
All plans are subject to amendments as approved by the relevant authorities.
Floor areas are approximate measurements and subject to final survey.

PENTHOUSE

type I1

2 bdrm • 969 sq ft

#07-03



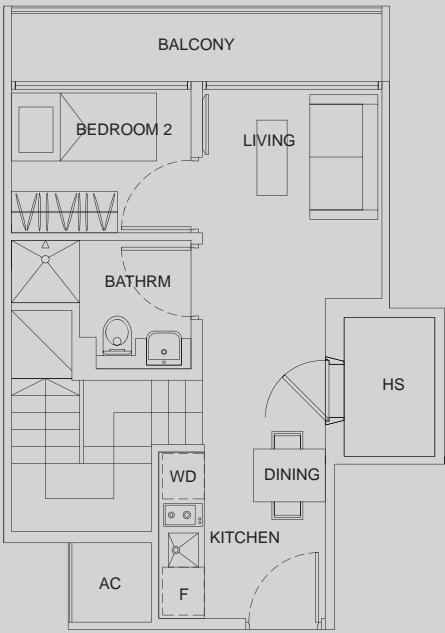
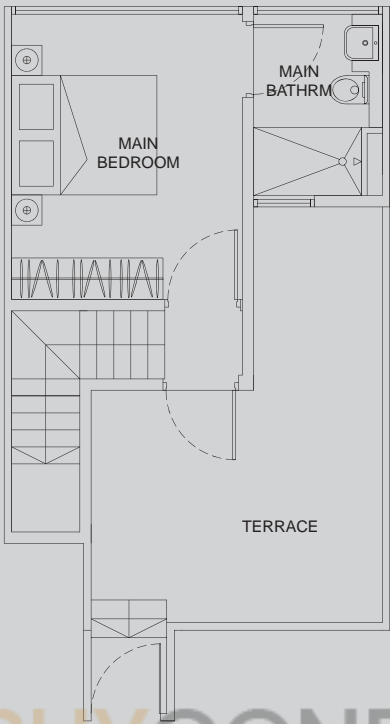
All plans are subject to amendments as approved by the relevant authorities.
Floor areas are approximate measurements and subject to final survey.

PENTHOUSE

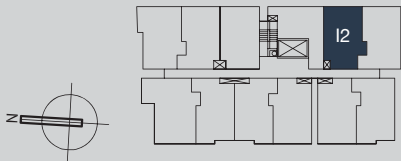
type I2

2 bdrm • 883 sq ft

#07-02



lower storey



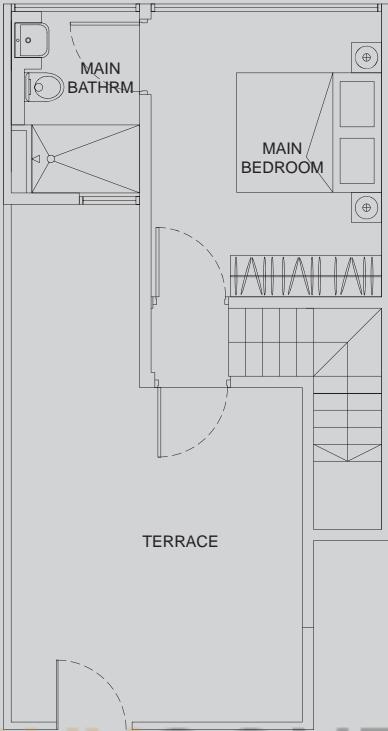
All plans are subject to amendments as approved by the relevant authorities.
Floor areas are approximate measurements and subject to final survey.

PENTHOUSE

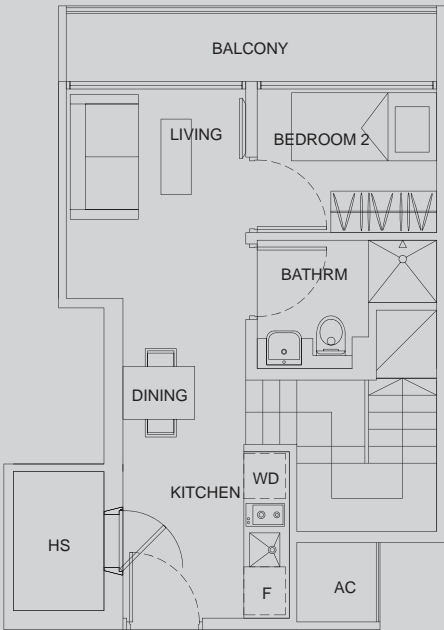
type J1

2 bdrm • 926 sq ft

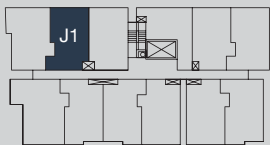
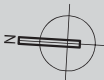
#07-11



upper storey



lower storey



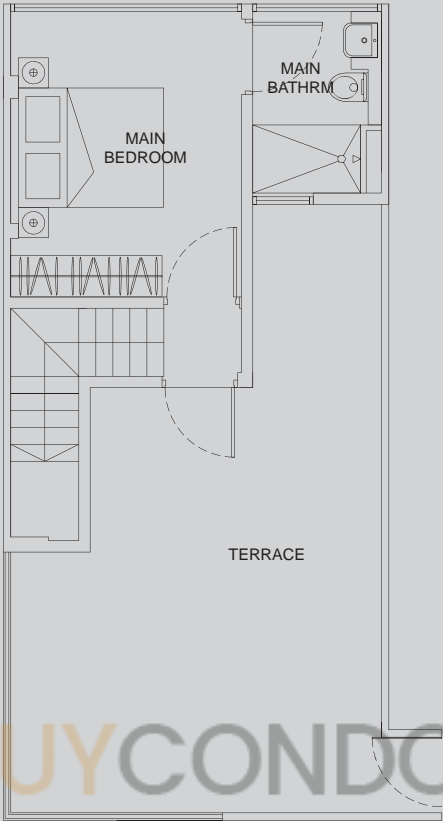
All plans are subject to amendments as approved by the relevant authorities.
Floor areas are approximate measurements and subject to final survey.

PENTHOUSE

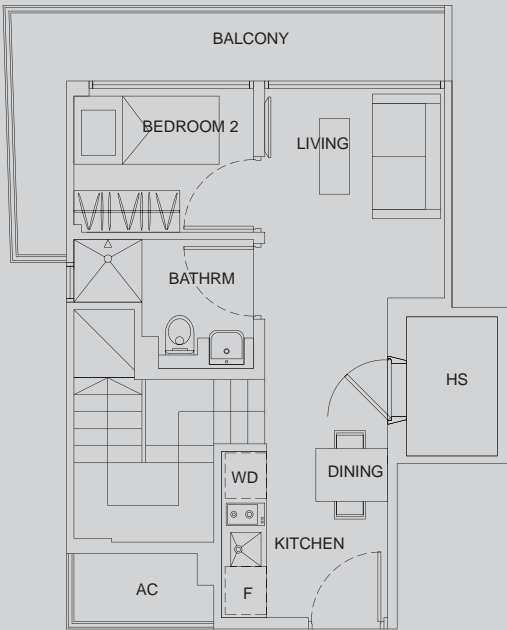
type J2

2 bdrm • 1055 sq ft

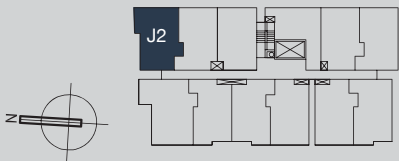
#07-10



upper storey



lower storey



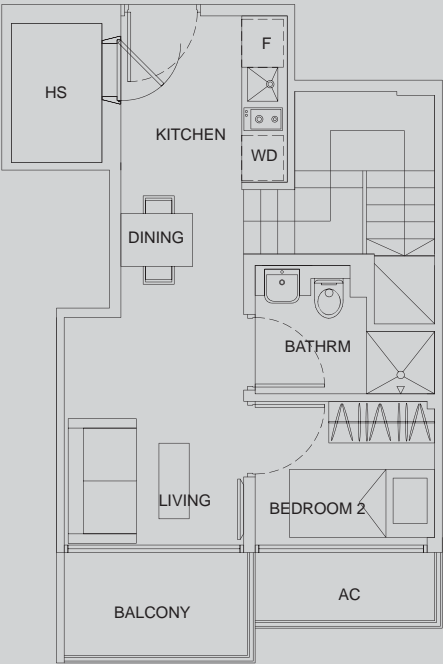
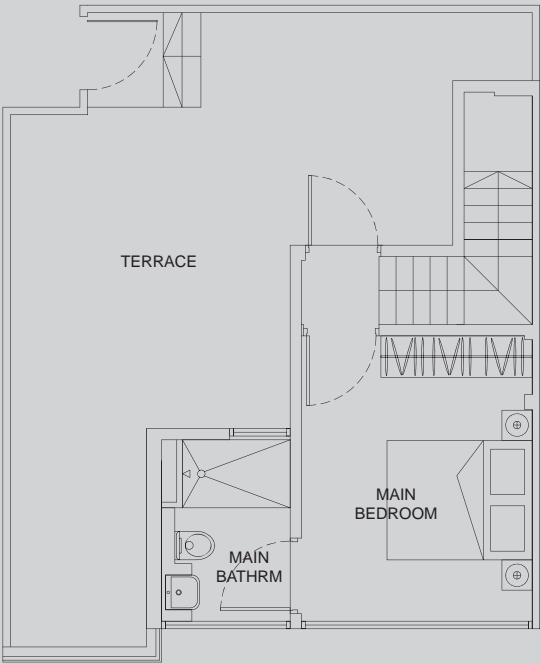
All plans are subject to amendments as approved by the relevant authorities.
Floor areas are approximate measurements and subject to final survey.

PENTHOUSE

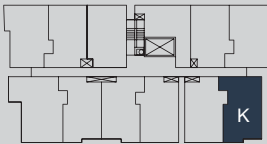
type K

2 bdrm • 1044 sq ft

#07-04



lower storey



All plans are subject to amendments as approved by the relevant authorities.
Floor areas are approximate measurements and subject to final survey.