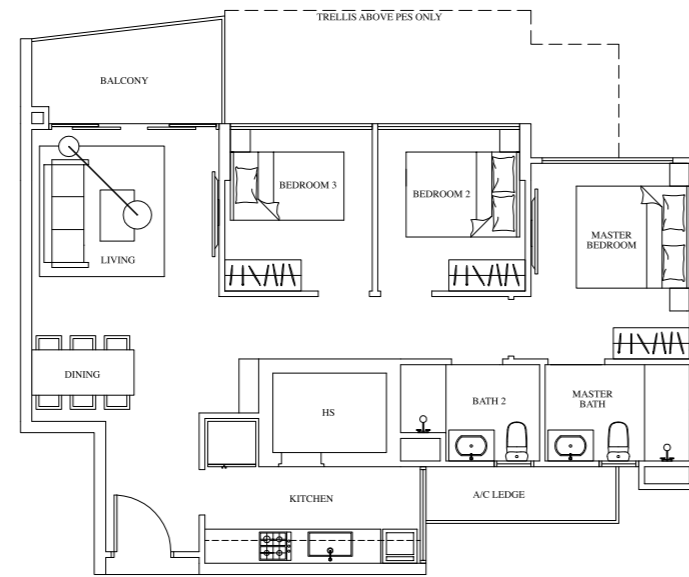


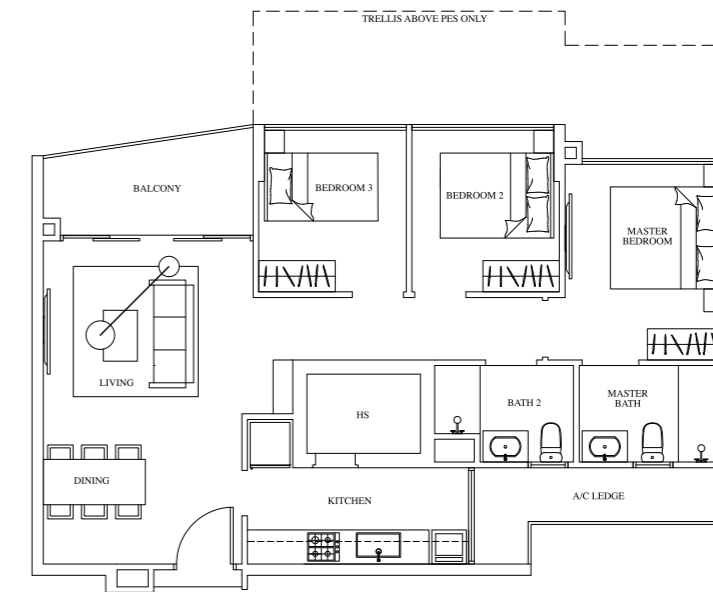
TYPE C1
88 sqm / 947 sqft

- Mirrored Units
- | | | | |
|--------|--------|--------|--------|
| #02-03 | #02-08 | #02-50 | #02-42 |
| #04-03 | #04-08 | #04-50 | #04-42 |
| #06-03 | #06-08 | #06-50 | #06-42 |
| #08-03 | #08-08 | #08-50 | #08-42 |
| #10-03 | #10-08 | #10-50 | #10-42 |
| #12-03 | #12-08 | #12-50 | #12-42 |

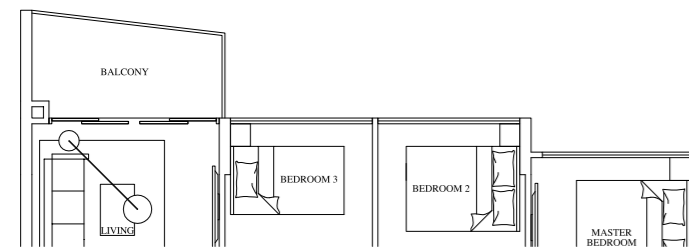


TYPE C1
88 sqm / 947 sqft

- Mirrored Units
- | | | | |
|--------|--------|--------|--------|
| #02-04 | #02-07 | #02-12 | #02-15 |
| #04-04 | #04-07 | #04-12 | #04-15 |
| #06-04 | #06-07 | #06-12 | #06-15 |
| #08-04 | #08-07 | #08-12 | #08-15 |
| #10-04 | #10-07 | #10-12 | #10-15 |
| #12-04 | #12-07 | #12-12 | #12-15 |

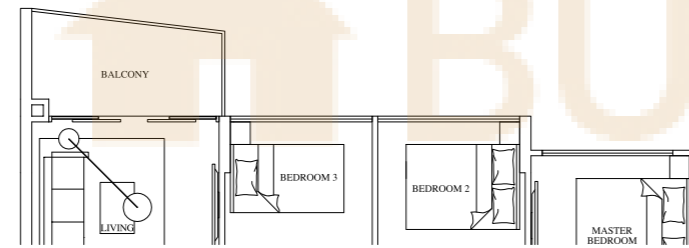


TYPE C2
90 sqm / 969 sqft
#02-02 to #12-02



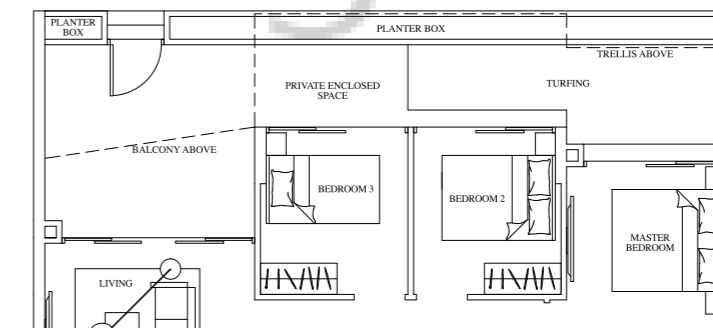
TYPE C1
88 sqm / 947 sqft

- Mirrored Units
- | | | | |
|--------|--------|--------|--------|
| #03-03 | #03-08 | #03-50 | #03-42 |
| #05-03 | #05-08 | #05-50 | #05-42 |
| #07-03 | #07-08 | #07-50 | #07-42 |
| #09-03 | #09-08 | #09-50 | #09-42 |
| #11-03 | #11-08 | #11-50 | #11-42 |
| #13-03 | | #13-50 | #13-42 |

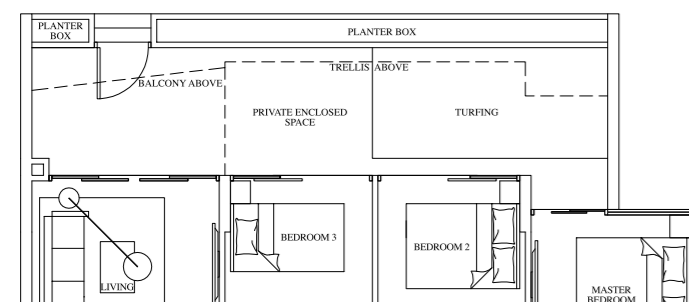


TYPE C1
88 sqm / 947 sqft

- Mirrored Units
- | | | | |
|--------|--------|--------|--------|
| #03-04 | #03-07 | #03-12 | #03-15 |
| #05-04 | #05-07 | #05-12 | #05-15 |
| #07-04 | #07-07 | #07-12 | #07-15 |
| #09-04 | #09-07 | #09-12 | #09-15 |
| #11-04 | #11-07 | #11-12 | #11-15 |
| #13-04 | | #13-12 | |

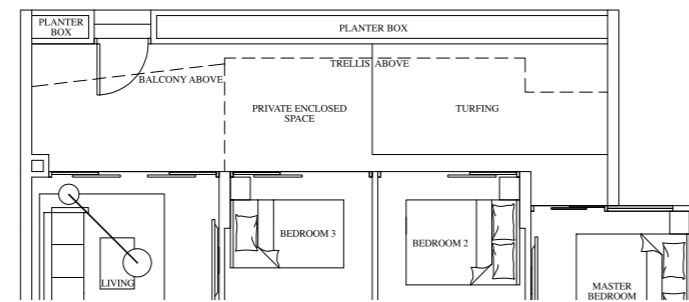


TYPE C2 (P)
118 sqm / 1,270 sqft
#01-02



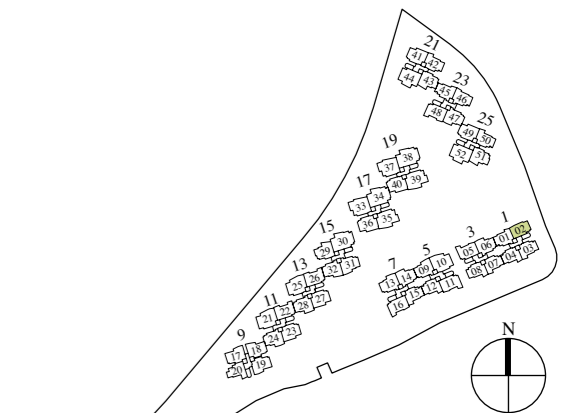
TYPE C1 (P)
112 sqm / 1,206 sqft

- Mirrored Units
- | | |
|--------|--------|
| #01-03 | #01-08 |
| #01-42 | #01-50 |



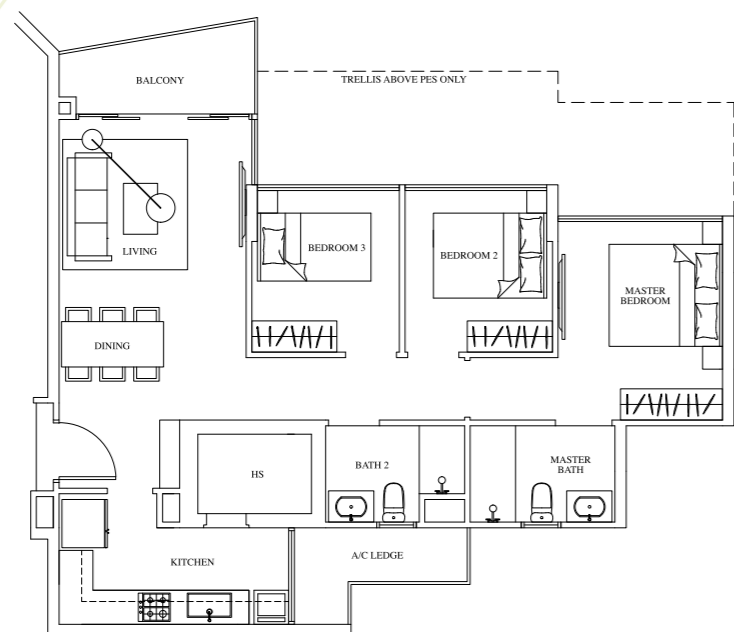
TYPE C1 (P)
112 sqm / 1,206 sqft

- Mirrored Units
- | | |
|--------|--------|
| #01-04 | #01-07 |
| #01-12 | #01-15 |

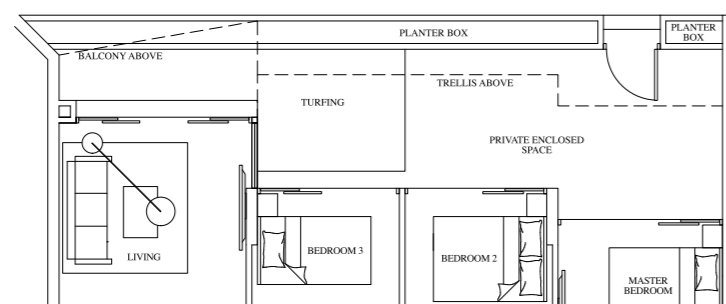


The plans are subject to change as may be required or approved by the relevant authorities. These are not drawn to scale and are for the purpose of a visual representation of the different layouts that are available. The areas are approximate and subject to final survey. The developer and its agents cannot be held liable for any inaccuracies.

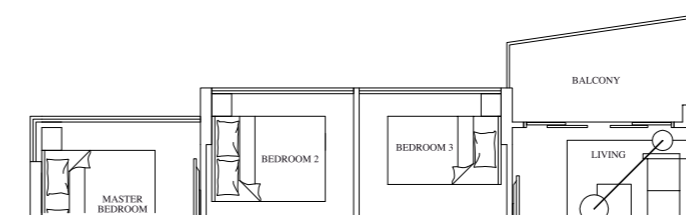
The plans are subject to change as may be required or approved by the relevant authorities. These are not drawn to scale and are for the purpose of a visual representation of the different layouts that are available. The areas are approximate and subject to final survey. The developer and its agents cannot be held liable for any inaccuracies.



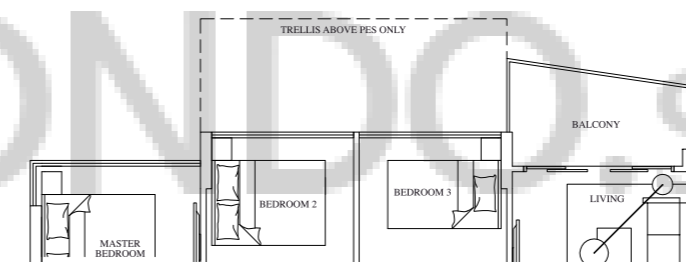
TYPE C3
87 sqm / 936 sqft
#02-20 to #12-20



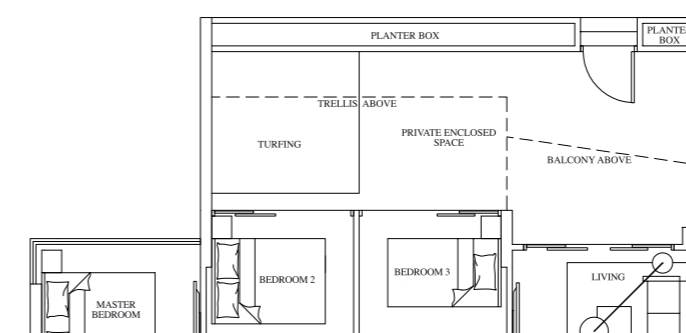
TYPE C3 (P)
116 sqm / 1,249 sqft
#01-20



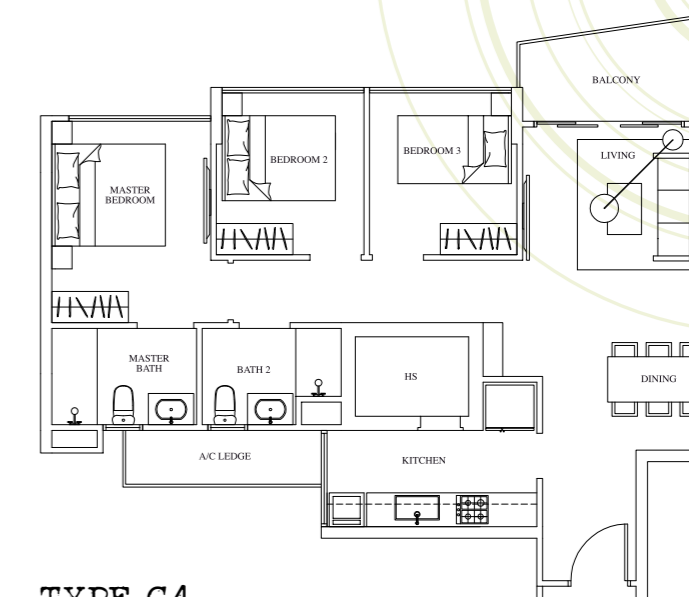
TYPE C4
89 sqm / 958 sqft
Mirrored Units
#03-46
#05-46
#07-46
#09-46
#11-46



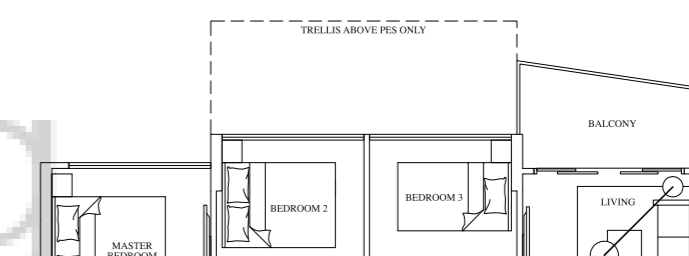
TYPE C4
89 sqm / 958 sqft
Mirrored Units
#02-46
#04-46
#06-46
#08-46
#10-46
#12-46



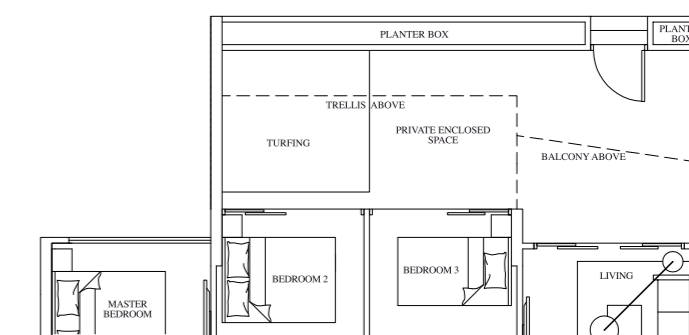
TYPE C4 (P)
115 sqm / 1,238 sqft
Mirrored Units
#01-46



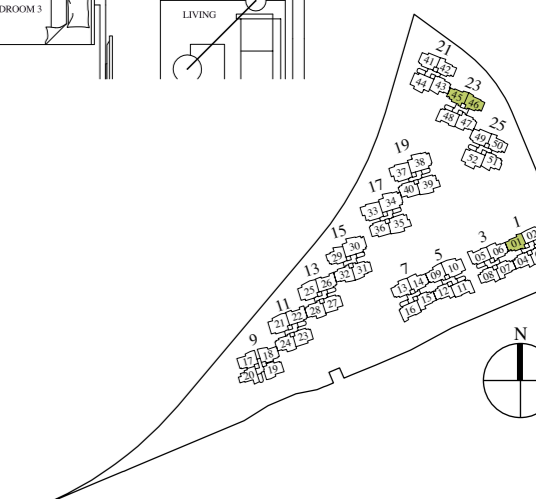
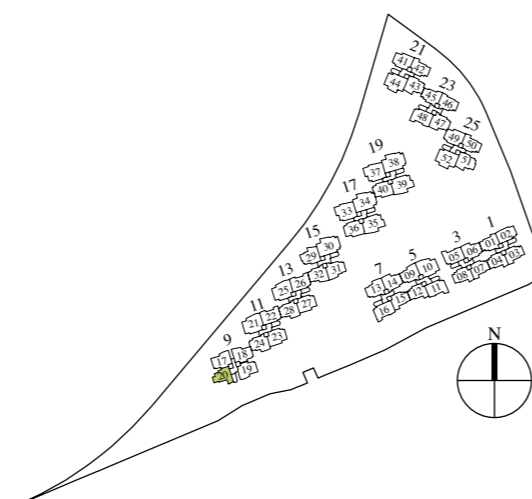
TYPE C4
89 sqm / 958 sqft
#03-45
#05-45
#07-45
#09-45
#11-45
#13-45



TYPE C4
89 sqm / 958 sqft
#02-01 to #12-01
#02-45
#04-45
#06-45
#08-45
#10-45
#12-45

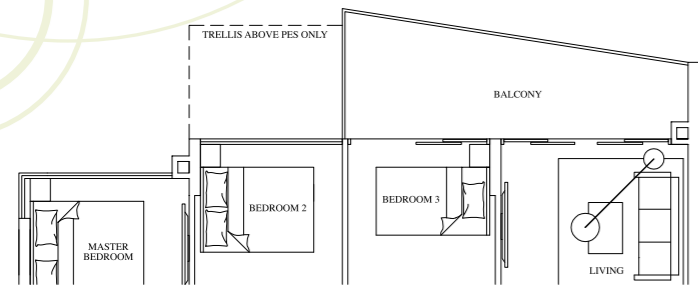


TYPE C4 (P)
115 sqm / 1,238 sqft
#01-01 #01-45



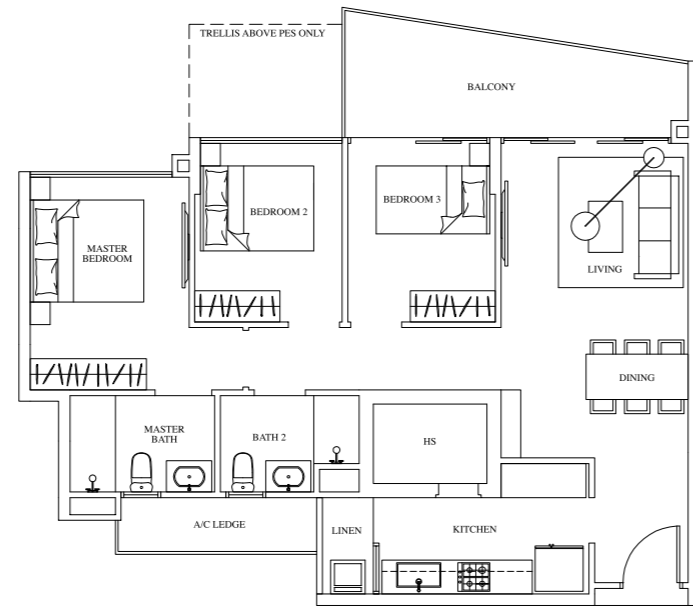
The plans are subject to change as may be required or approved by the relevant authorities. These are not drawn to scale and are for the purpose of a visual representation of the different layouts that are available. The areas are approximate and subject to final survey. The developer and its agents cannot be held liable for any inaccuracies.

The plans are subject to change as may be required or approved by the relevant authorities. These are not drawn to scale and are for the purpose of a visual representation of the different layouts that are available. The areas are approximate and subject to final survey. The developer and its agents cannot be held liable for any inaccuracies.



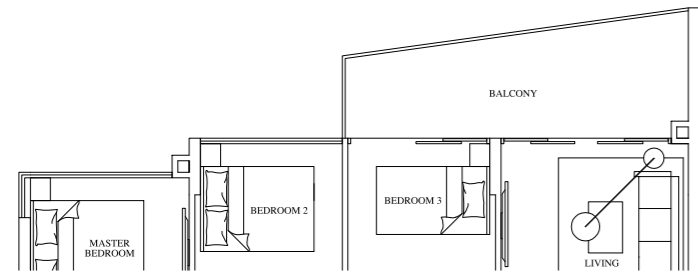
TYPE C5
98 sqm / 1,055 sqft

- | | | | |
|--------|--------|--------|--------|
| #02-29 | #09-29 | #02-51 | #08-51 |
| #04-29 | #10-29 | #04-51 | #10-51 |
| #06-29 | #11-29 | #06-51 | #12-51 |
| #08-29 | #12-29 | | |



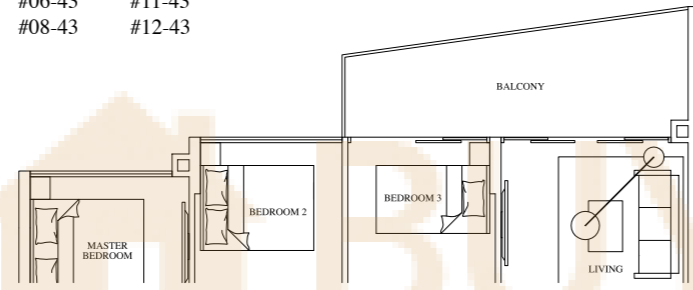
TYPE C5
98 sqm / 1,055 sqft

- | | |
|--------|--------|
| #02-43 | #09-43 |
| #04-43 | #10-43 |
| #06-43 | #11-43 |
| #08-43 | #12-43 |



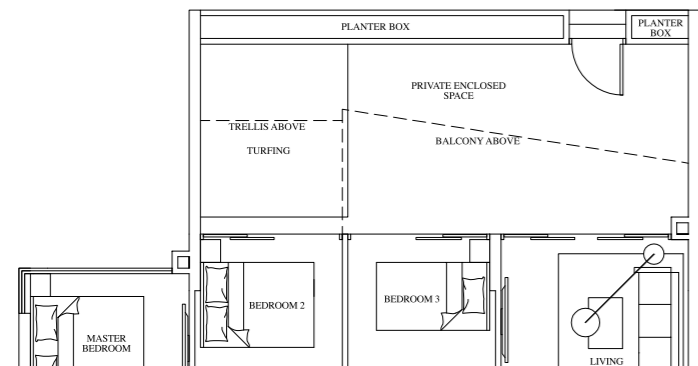
TYPE C5
98 sqm / 1,055 sqft

- | | |
|--------|--------|
| #03-29 | #03-51 |
| #05-29 | #05-51 |
| #07-29 | #07-51 |
| | #09-51 |
| | #11-51 |



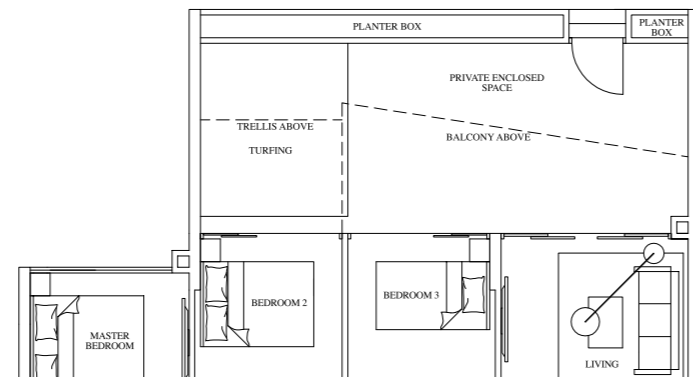
TYPE C5
98 sqm / 1,055 sqft

- | |
|--------|
| #03-43 |
| #05-43 |
| #07-43 |



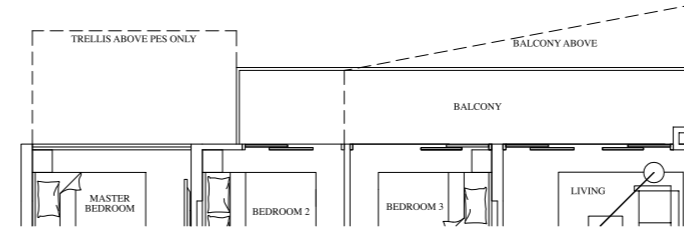
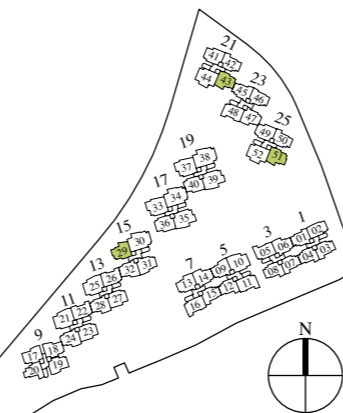
TYPE C5 (P)
121 sqm / 1,302 sqft

- | | |
|--------|--------|
| #01-29 | #01-51 |
|--------|--------|



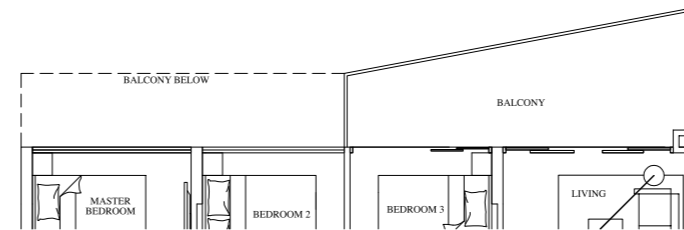
TYPE C5
121 sqm / 1,302 sqft

- | |
|--------|
| #01-43 |
|--------|



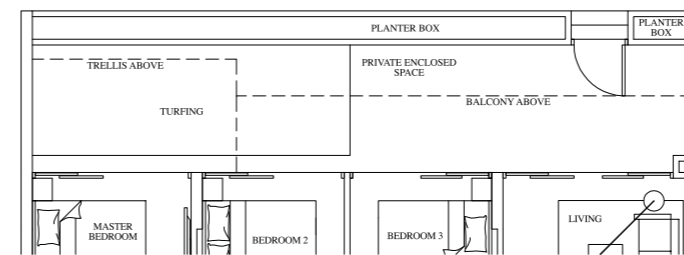
TYPE C6
98 sqm / 1,055 sqft

- Mirrored Units
- | | |
|--------|---------------|
| #02-40 | #02 to #12-49 |
| #04-40 | |
| #06-40 | |
| #08-40 | |
| #10-40 | |
| #12-40 | |



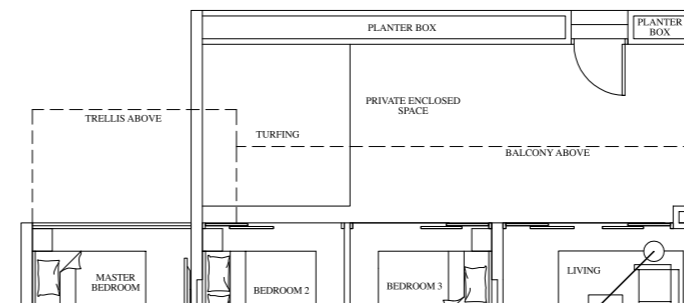
TYPE C6
98 sqm / 1,055 sqft

- Mirrored Units
- | |
|--------|
| #03-40 |
| #05-40 |
| #07-40 |
| #09-40 |
| #11-40 |
| #13-40 |



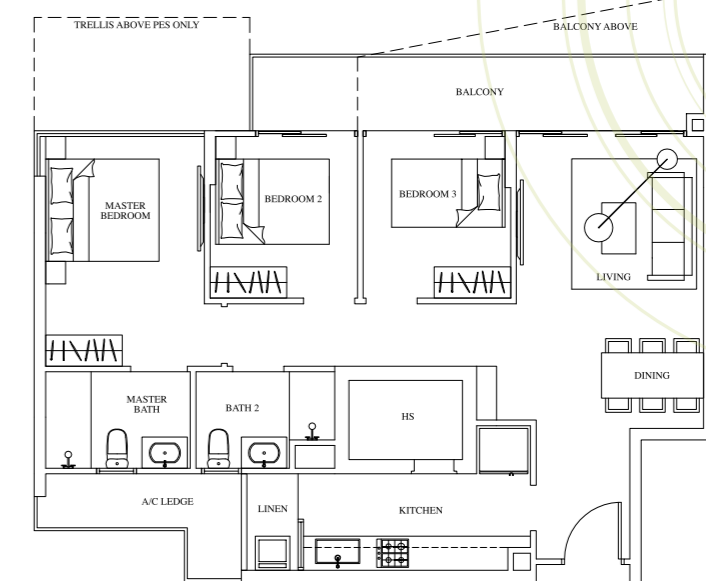
TYPE C6 (P)
120 sqm / 1,292 sqft

- Mirrored Units
- | |
|--------|
| #01-40 |
|--------|



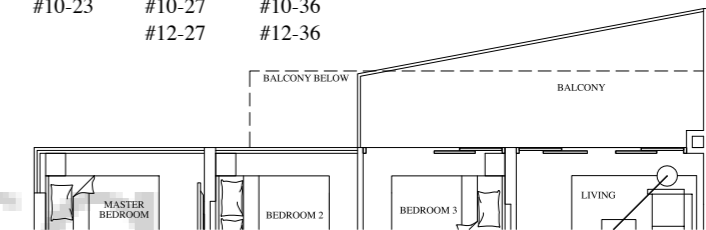
TYPE C6 (P)
120 sqm / 1,292 sqft

- #01-49



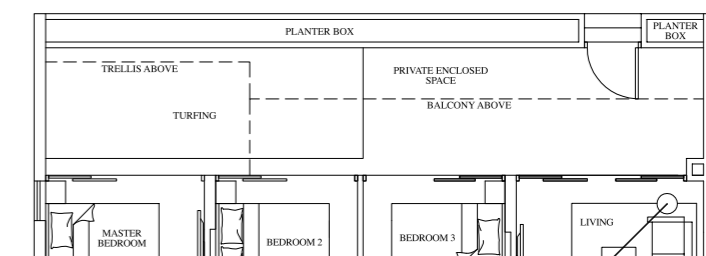
TYPE C6
98 sqm / 1,055 sqft

- Mirrored Units
- | | | | |
|--------|--------|--------|---------------|
| #02-23 | #02-27 | #02-36 | #02 to #12-41 |
| #04-23 | #04-27 | #04-36 | |
| #06-23 | #06-27 | #06-36 | |
| #08-23 | #08-27 | #08-36 | |
| #10-23 | #10-27 | #10-36 | |
| | #12-27 | #12-36 | |



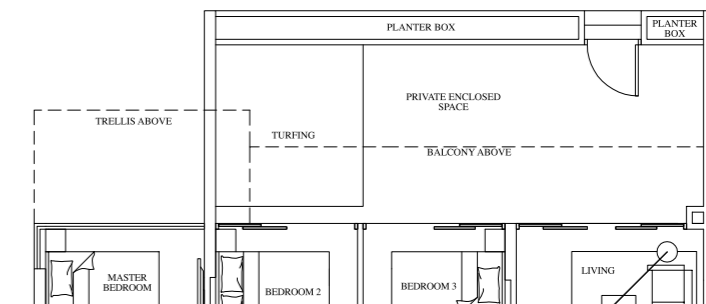
TYPE C6
98 sqm / 1,055 sqft

- Mirrored Units
- | | | |
|--------|--------|--------|
| #03-23 | #03-27 | #03-36 |
| #05-23 | #05-27 | #05-36 |
| #07-23 | #07-27 | #07-36 |
| #09-23 | #09-27 | #09-36 |
| #11-23 | #11-27 | #11-36 |



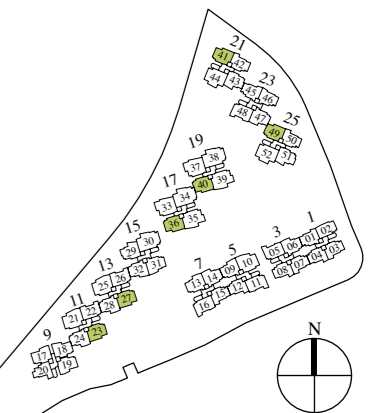
TYPE C6 (P)
120 sqm / 1,292 sqft

- Mirrored Units
- | | | |
|--------|--------|--------|
| #01-23 | #01-27 | #01-36 |
|--------|--------|--------|



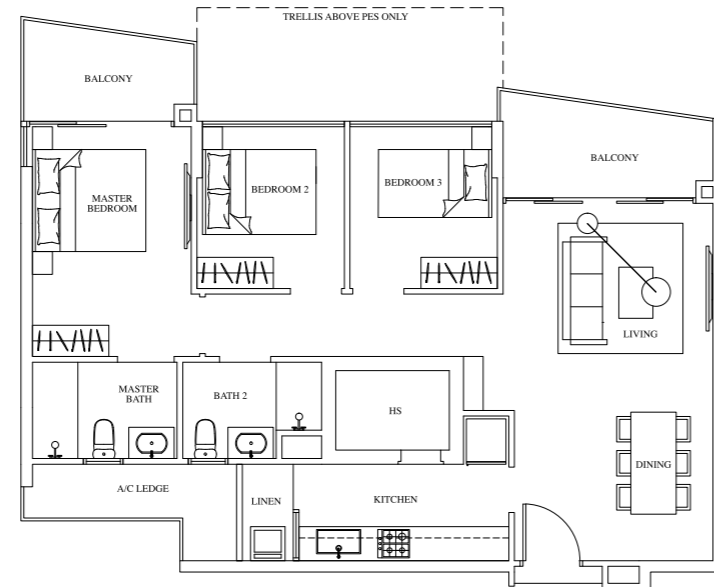
TYPE C6 (P)
120 sqm / 1,292 sqft

- #01-41



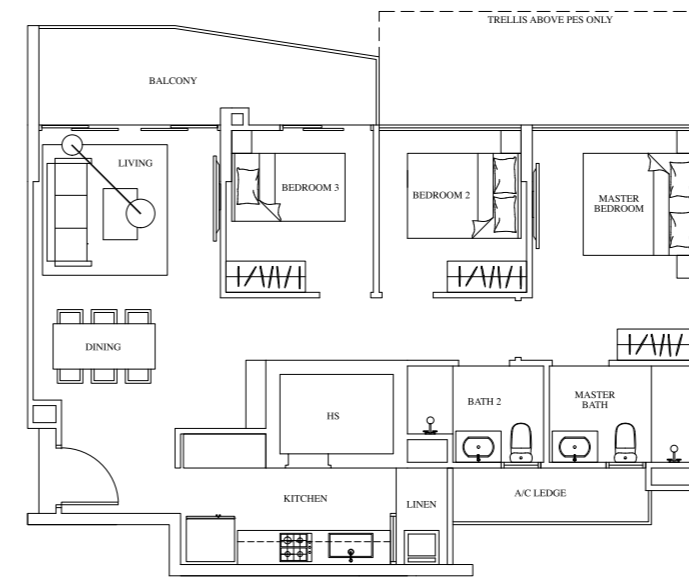
RIVERVISTA - 3-BEDROOM

RIVERVISTA - 3-BEDROOM



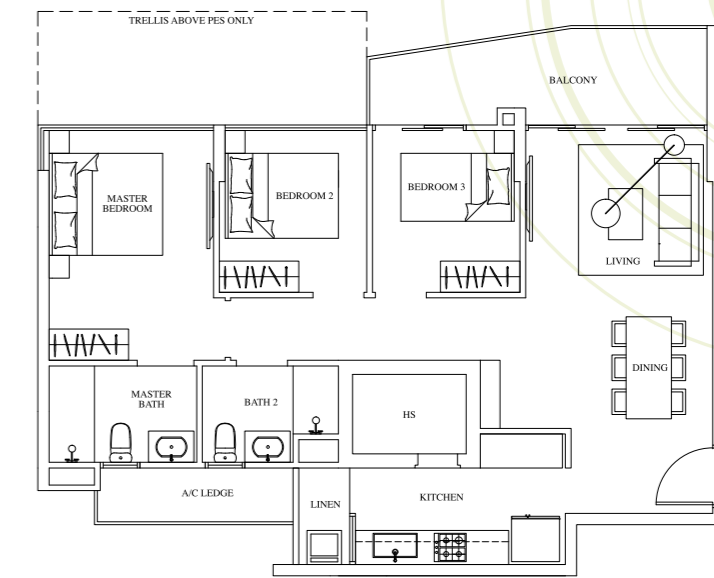
TYPE C7
99 sqm / 1,066 sqft

Mirrored Units
#02-05 to #12-05 #02-11 to #12-11 #02-16 to #12-16



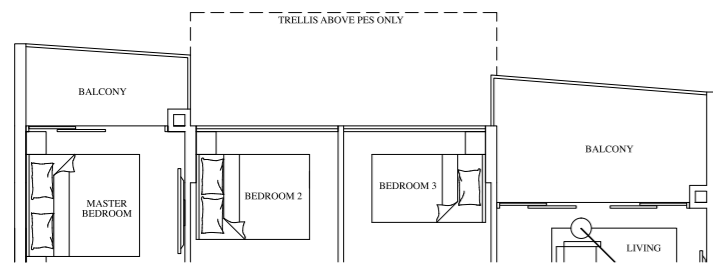
TYPE C8
94 sqm / 1,012 sqft

#02-19 to #12-19



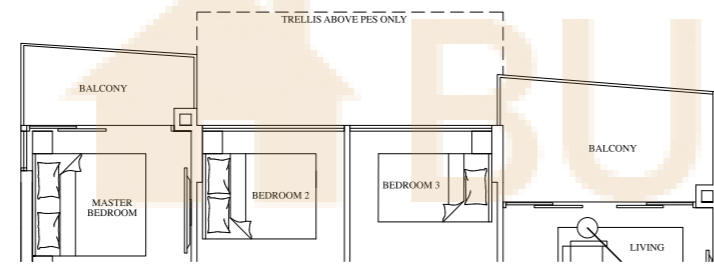
TYPE C8
95 sqm / 1,023 sqft

Mirrored Units
#02-17 #08-17 #11-17
#04-17 #09-17
#06-17 #10-17



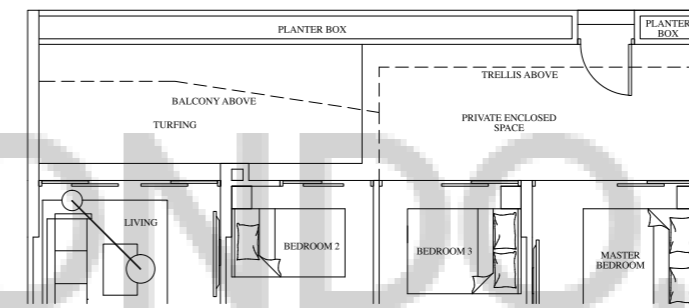
TYPE C7
100 sqm / 1,076 sqft

Mirrored Units
#02-22 to #11-22 #02-26 to #12-26



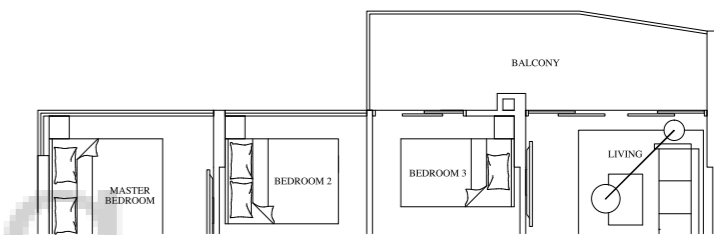
TYPE C7
100 sqm / 1,076 sqft

Mirrored Units
#02-48 to #12-48



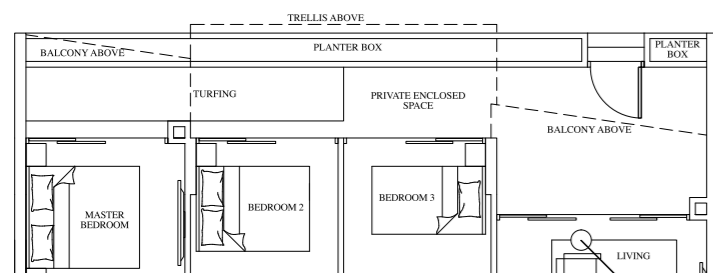
TYPE C8 (P)
121 sqm / 1,302 sqft

#01-18



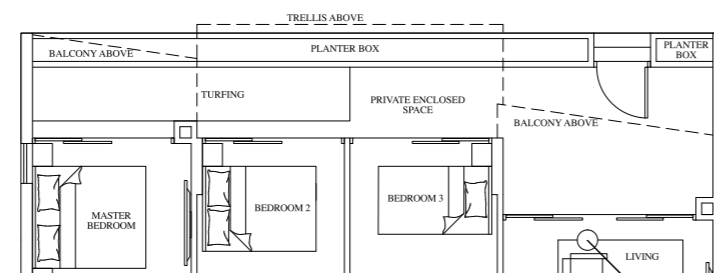
TYPE C8
95 sqm / 1,023 sqft

Mirrored Units
#03-17 #05-17 #07-17



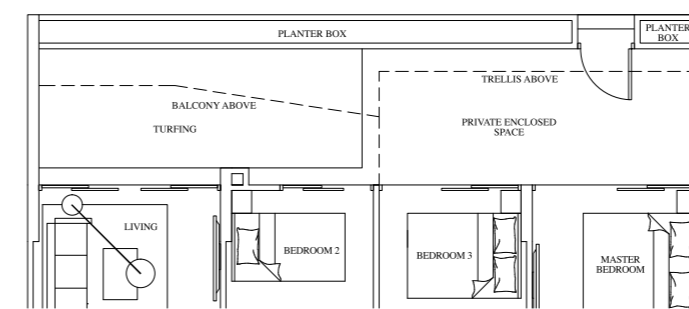
TYPE C7 (P)
116 sqm / 1,249 sqft

Mirrored Units
#01-22 #01-26



TYPE C7 (P)
116 sqm / 1,249 sqft

Mirrored Units
#01-05 #01-11 #01-16 #01-48

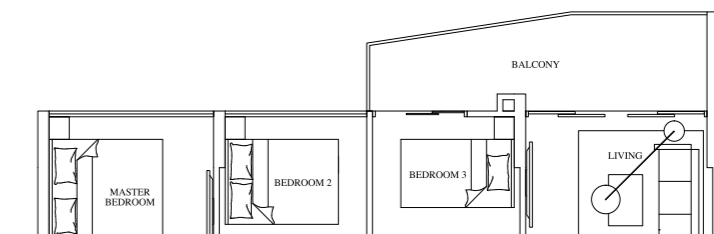


TYPE C8 (P)
121 sqm / 1,302 sqft

Mirrored Units
#01-17

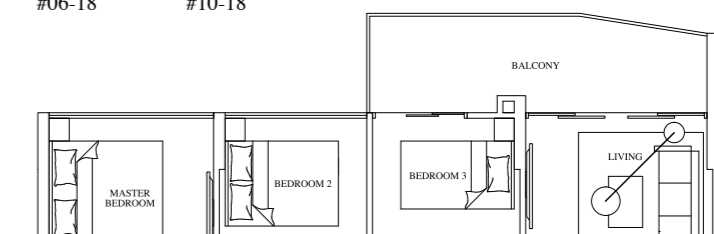
120 sqm / 1,292 sqft

#01-19



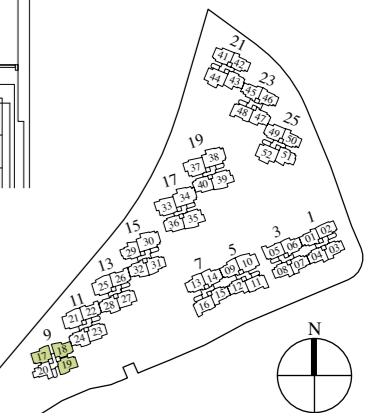
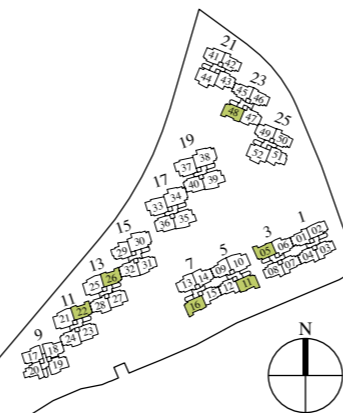
TYPE C8
95 sqm / 1,023 sqft

Mirrored Units
#02-18 #08-18 #11-18
#04-18 #09-18
#06-18 #10-18



TYPE C8
95 sqm / 1,023 sqft

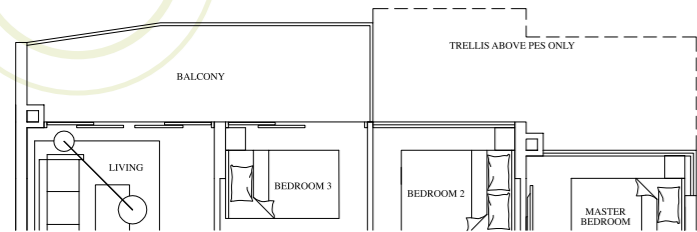
Mirrored Units
#03-18 #05-18 #07-18



The plans are subject to change as may be required or approved by the relevant authorities. These are not drawn to scale and are for the purpose of a visual representation of the different layouts that are available. The areas are approximate and subject to final survey. The developer and its agents cannot be held liable for any inaccuracies.

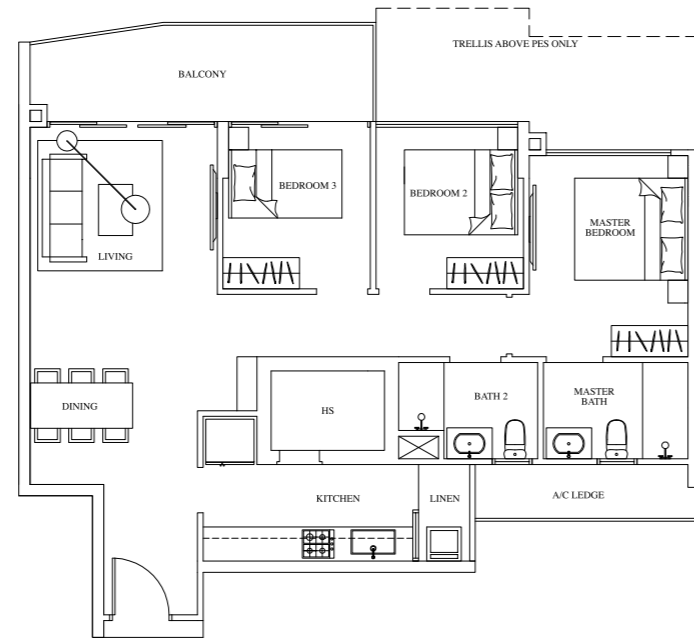
The plans are subject to change as may be required or approved by the relevant authorities. These are not drawn to scale and are for the purpose of a visual representation of the different layouts that are available. The areas are approximate and subject to final survey. The developer and its agents cannot be held liable for any inaccuracies.

RIVERVISTA - 3-BEDROOM



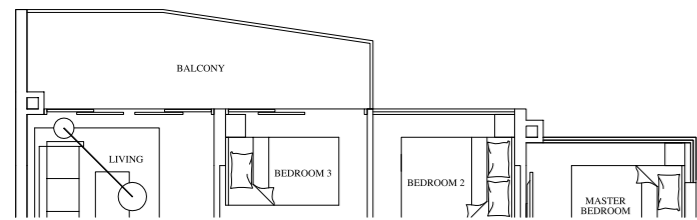
TYPE C9
97 sqm / 1,044 sqft

- | | |
|----------------|----------------|
| Mirrored Units | Mirrored Units |
| #02-13 | #02-31 |
| #04-13 | #04-31 |
| #06-13 | #06-31 |
| #08-13 | #08-31 |
| #10-13 | #10-31 |
| #12-13 | #12-31 |



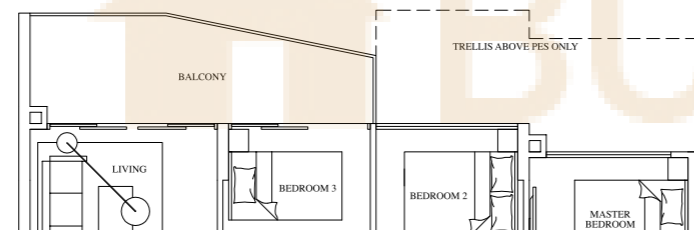
TYPE C9
97 sqm / 1,044 sqft

- | | | | |
|---------------|--------|--------|--------|
| #02 to #12-06 | #02-14 | #02-32 | #02-47 |
| #02 to #11-24 | #04-14 | #04-32 | #04-47 |
| #02 to #12-28 | #06-14 | #06-32 | #06-47 |
| | #08-14 | #08-32 | #08-47 |
| | #10-14 | #10-32 | #10-47 |
| | #12-14 | #12-32 | #11-47 |
| | | | #12-47 |



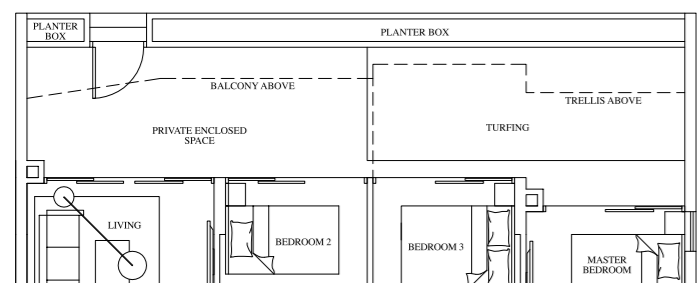
TYPE C9
97 sqm / 1,044 sqft

- | | |
|----------------|----------------|
| Mirrored Units | Mirrored Units |
| #03-13 | #03-31 |
| #05-13 | #05-31 |
| #07-13 | #07-31 |
| #09-13 | #09-31 |
| #11-13 | #11-31 |



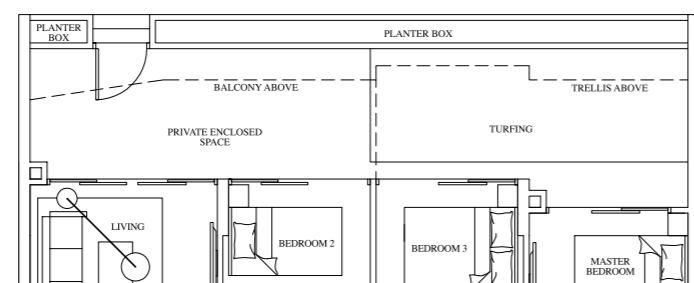
TYPE C9
97 sqm / 1,044 sqft

- | | | |
|----------------|----------------|----------------|
| Mirrored Units | Mirrored Units | Mirrored Units |
| #02 to #12-09 | #03-14 | #03-32 |
| | #05-14 | #05-32 |
| | #07-14 | #07-32 |
| | #09-14 | #09-32 |
| | #11-14 | #11-32 |
| | | #13-32 |



TYPE C9 (P)
123 sqm / 1,324 sqft

- | | |
|----------------|----------------|
| Mirrored Units | Mirrored Units |
| #01-13 | #01-31 |



TYPE C9 (P)
123 sqm / 1,324 sqft

- | | |
|----------------|----------------|
| Mirrored Units | Mirrored Units |
| #01-06 | #01-09 |
| #01-14 | #01-47 |
| #01-24 | |
| #01-28 | |
| #01-32 | |



DELUXE RIVERINE - 4-BEDROOM DUAL KEY

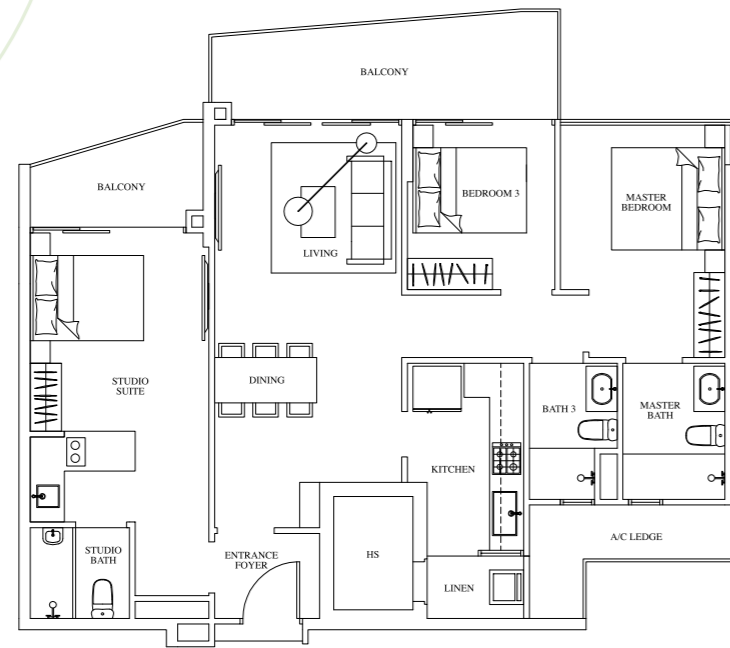


Known as Deluxe RIVERINE, the expansive and luxurious 4-bedroom Dual Key apartments offer space and privacy. Entertain guests in the spacious living and dining area. Step out into the balcony that extends all the way from the living room to the master bedroom and gaze at the unobstructed view of the river and beyond. The attached Studio Unit with kitchenette is perfect for extended families and can be accessed through a separate entrance giving everyone the privacy they desire.



DELUXE RIVERVISTA - 3-BEDROOM DUAL KEY

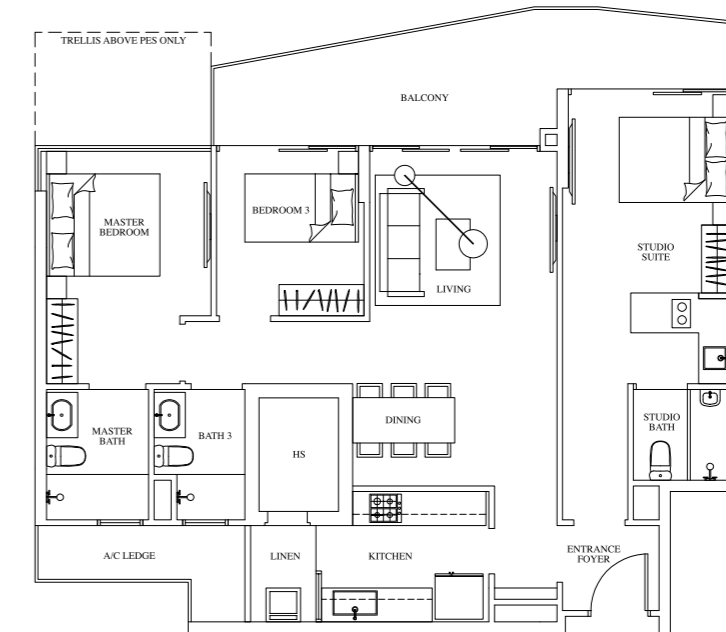
DELUXE RIVERVISTA - 3-BEDROOM DUAL KEY



TYPE C10-DK

116 sqm / 1,249 sqft

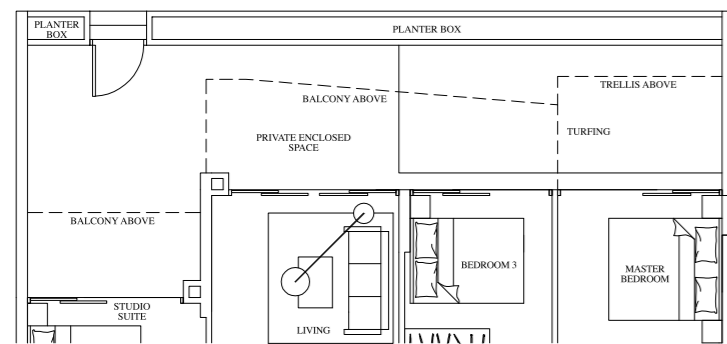
- #03-44 #03-52
- #05-44 #05-52
- #07-44 #07-52
- #09-52
- #11-52



TYPE C11-DK

117 sqm / 1,259 sqft

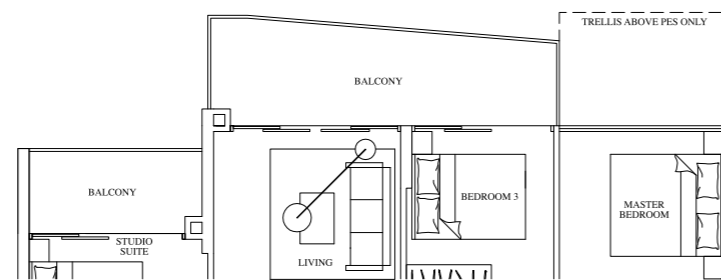
- #02-21 #02-25
- #04-21 #04-25
- #06-21 #06-25
- #08-21 #08-25
- #09-21 #09-25
- #10-21 #10-25
- #11-21 #11-25
- #12-21 #12-25



TYPE C10-DK (P)

146 sqm / 1,572 sqft

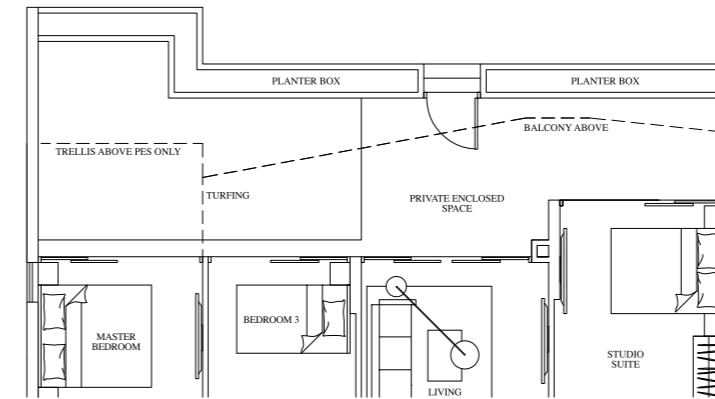
- #01-44 #01-52



TYPE C10-DK

116 sqm / 1,249 sqft

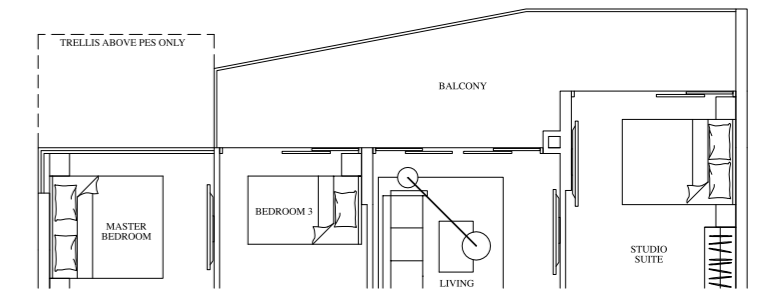
- #02-44 #02-52
- #04-44 #04-52
- #06-44 #06-52
- #08-44 #08-52
- #09-44 #10-52
- #10-44 #12-52
- #11-44
- #12-44



TYPE C11-DK (P)

143 sqm / 1,539 sqft

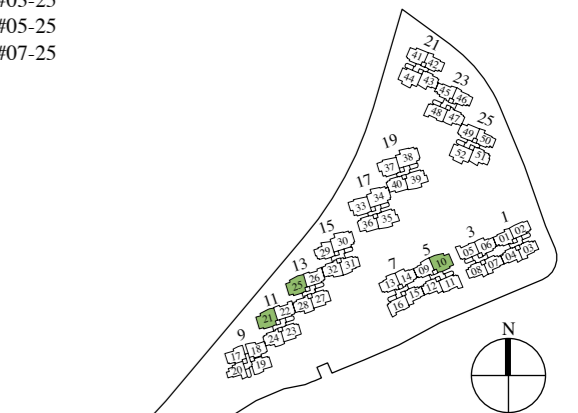
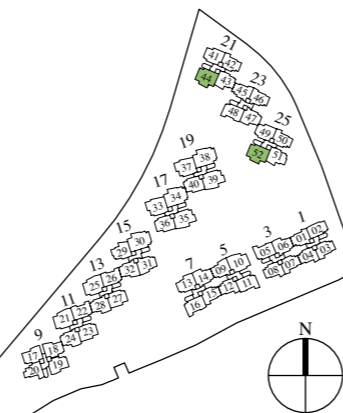
- Mirrored Units
- #01-10 #01-21 #01-25



TYPE C11-DK

117 sqm / 1,259 sqft

- #02-10 to #12-10 #03-21 #03-25
- #05-21 #05-25
- #07-21 #07-25

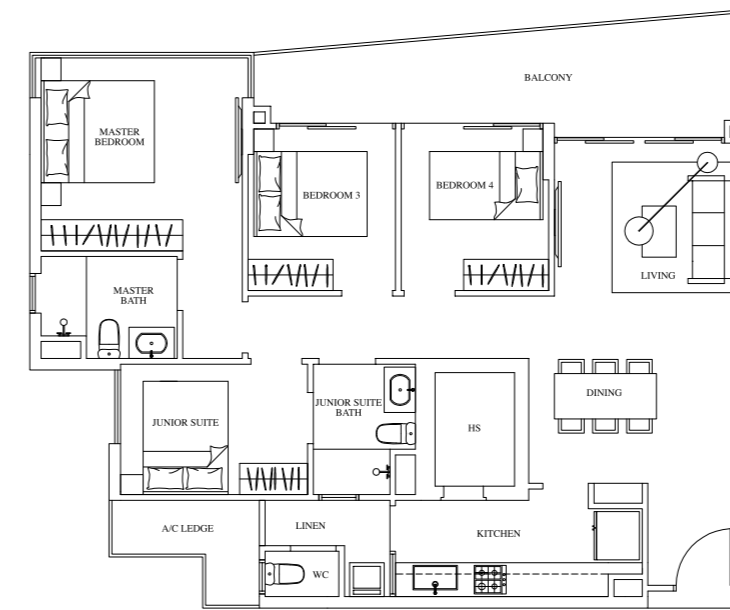


The plans are subject to change as may be required or approved by the relevant authorities. These are not drawn to scale and are for the purpose of a visual representation of the different layouts that are available. The areas are approximate and subject to final survey. The developer and its agents cannot be held liable for any inaccuracies.

The plans are subject to change as may be required or approved by the relevant authorities. These are not drawn to scale and are for the purpose of a visual representation of the different layouts that are available. The areas are approximate and subject to final survey. The developer and its agents cannot be held liable for any inaccuracies.

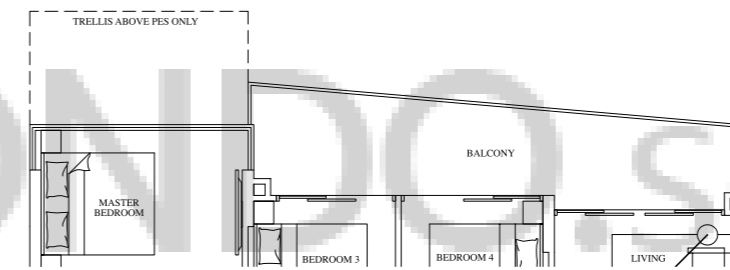
RIVERINE - 4-BEDROOM

Called RIVERINE, the expansive and luxurious 4-bedroom apartments offer stunning views of the river, pool and beyond, thanks to a balcony that stretches from the living room to two bedrooms. There is more than enough space for the entire family and more should you choose to entertain. You can look forward to more family bonding and building stronger relationships with friends in this really spacious home.



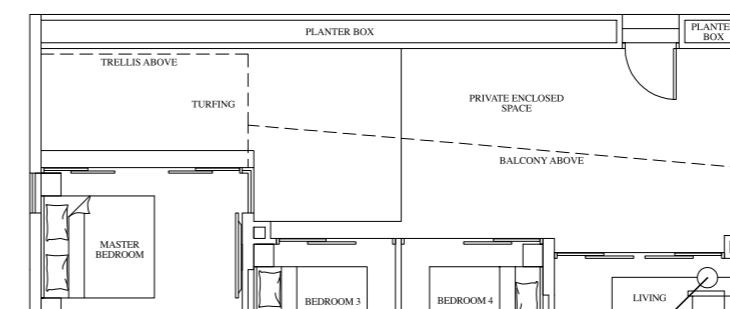
TYPE D1
116 sqm / 1,249 sqft

#03-33	#03-37
#05-33	#05-37
#07-33	#07-37



TYPE D1
116 sqm / 1,249 sqft

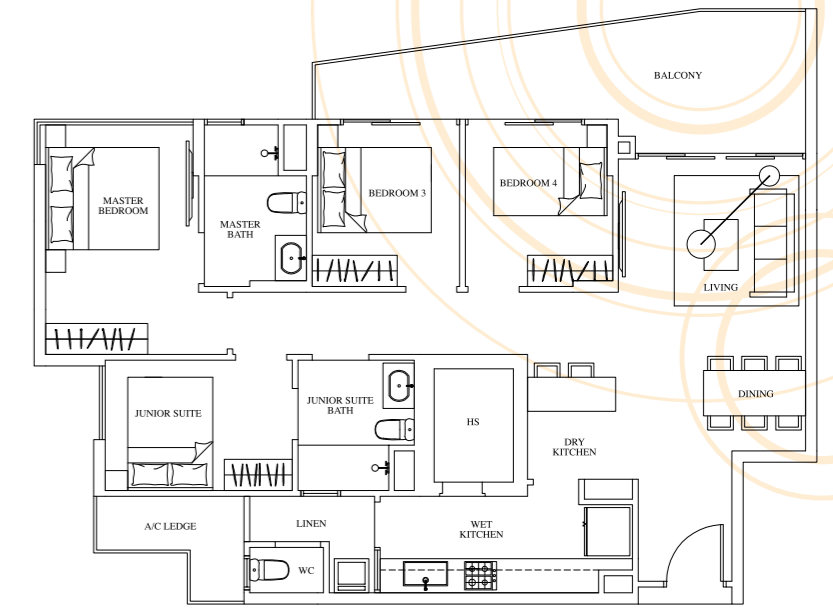
#02-33	#02-37
#04-33	#04-37
#06-33	#06-37
#08-33	#08-37
#09-33	#09-37
#10-33	#10-37
#11-33	#11-37
#12-33	#12-37



TYPE D1 (P)
147 sqm / 1,582 sqft

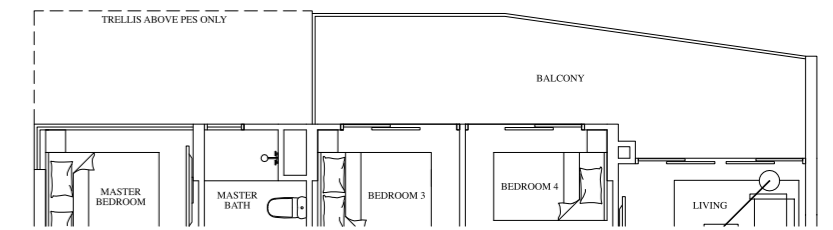
#01-33	#01-37
--------	--------

RIVERINE - 4-BEDROOM



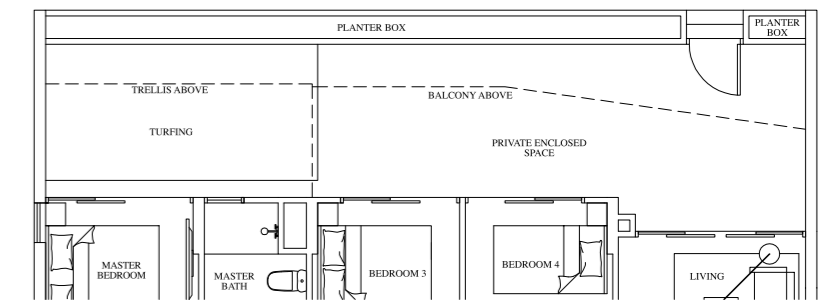
TYPE D2
118 sqm / 1,270 sqft

#03-35	#03-39
#05-35	#05-39
#07-35	#07-39
#09-35	#09-39
#11-35	#11-39



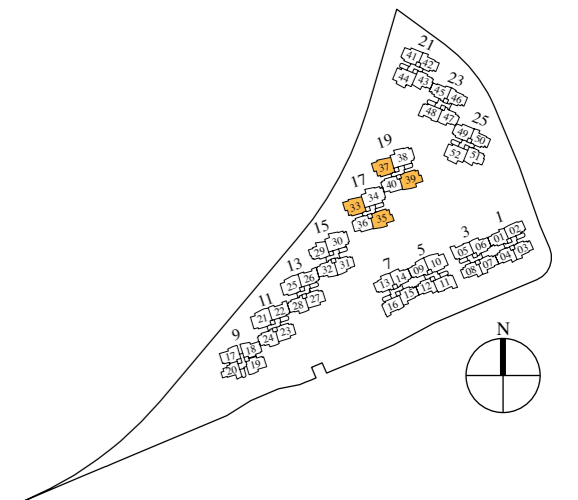
TYPE D2
119 sqm / 1,281 sqft

#02-35	#02-39
#04-35	#04-39
#06-35	#06-39
#08-35	#08-39
#10-35	#10-39
#12-35	#12-39



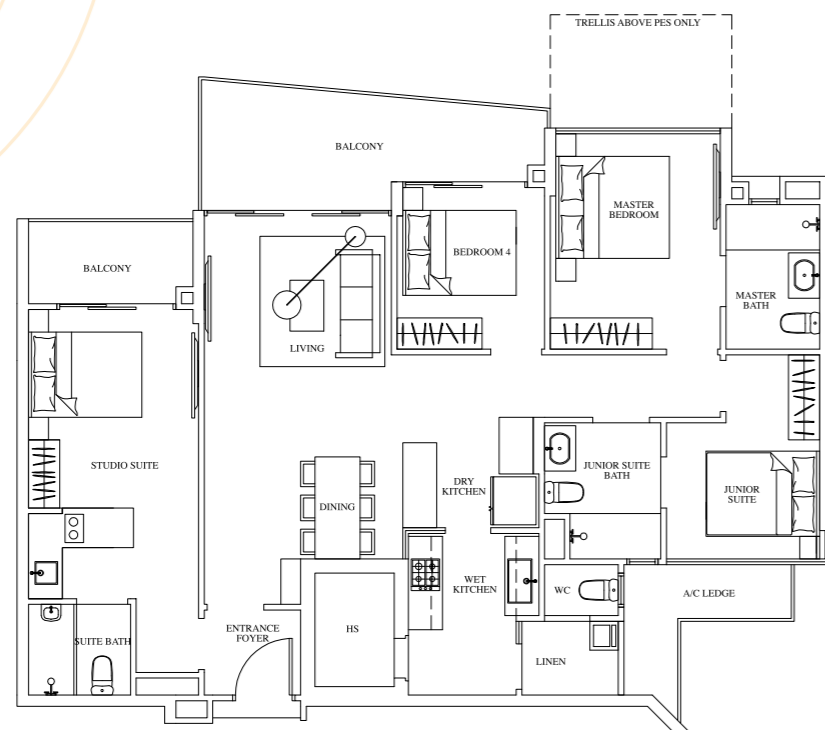
TYPE D2 (P)
149 sqm / 1,604 sqft

#01-35	#01-39
--------	--------



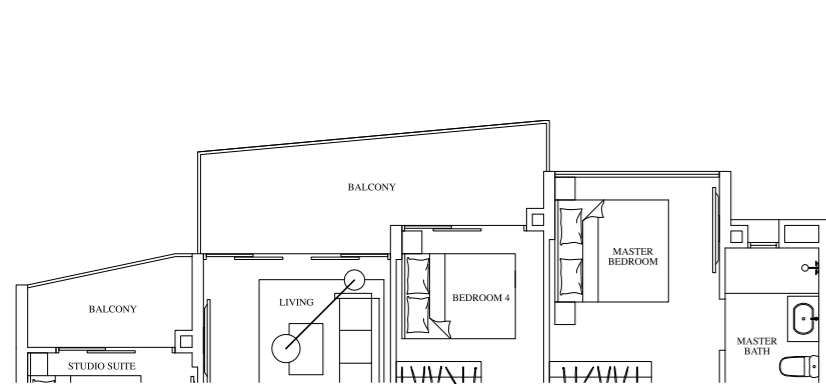
The plans are subject to change as may be required or approved by the relevant authorities. These are not drawn to scale and are for the purpose of a visual representation of the different layouts that are available. The areas are approximate and subject to final survey. The developer and its agents cannot be held liable for any inaccuracies.

DELUXE RIVERINE - 4-BEDROOM DUAL KEY



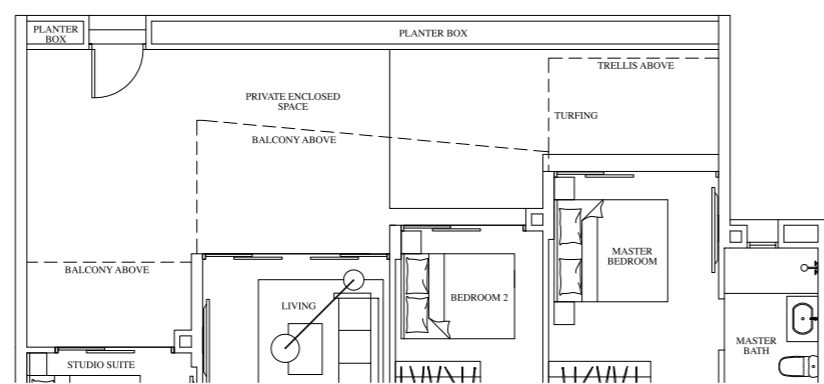
TYPE D3-DK
134 sqm / 1,442 sqft

- | | | |
|--------|--------|--------|
| #02-30 | #02-34 | #02-38 |
| #04-30 | #04-34 | #04-38 |
| #06-30 | #06-34 | #06-38 |
| #08-30 | #08-34 | #08-38 |
| #09-30 | #09-34 | #09-38 |
| #10-30 | #10-34 | #10-38 |
| #11-30 | #11-34 | #11-38 |
| #12-30 | #12-34 | #12-38 |



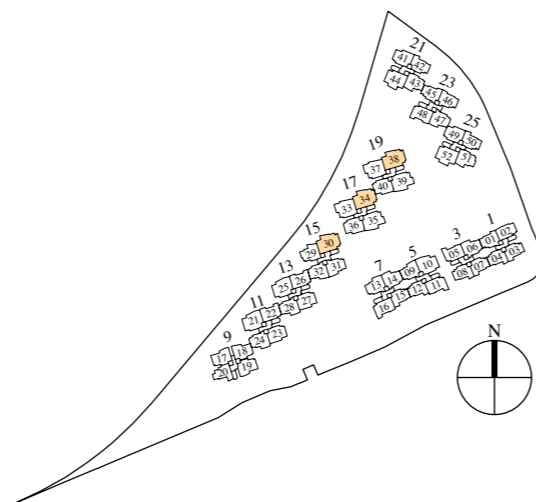
TYPE D3-DK
134 sqm / 1,442 sqft

- | | | |
|--------|--------|--------|
| #03-30 | #03-34 | #03-38 |
| #05-30 | #05-34 | #05-38 |
| #07-30 | #07-34 | #07-38 |



TYPE D3-DK(P)
170 sqm / 1,830 sqft

- | | | |
|--------|--------|--------|
| #01-30 | #01-34 | #01-38 |
|--------|--------|--------|



GARDEN RIVERVILLA - SINGLE-STOREY PENTHOUSE



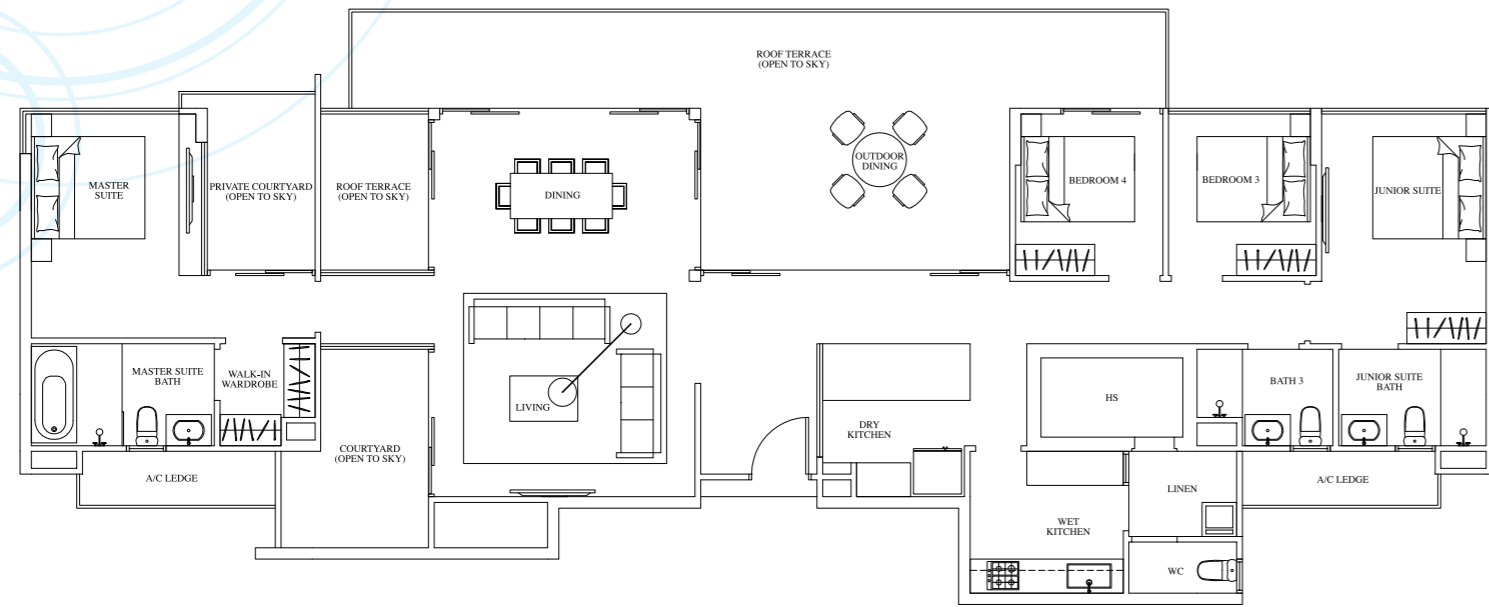
Known as GARDEN RIVERVILLA, the spacious single-level penthouse has an alfresco dining area and a balcony that stretches across the entirety of the dining room, the garden patio area and the bedroom. This is the ideal space for entertaining guests or family gatherings - it's almost as if 3 huge units have joined into one large penthouse-type of apartment. Have your breakfast in the garden patio area or bask in the courtyard amidst nature. The junior suite comes with an attached bathroom for more privacy.



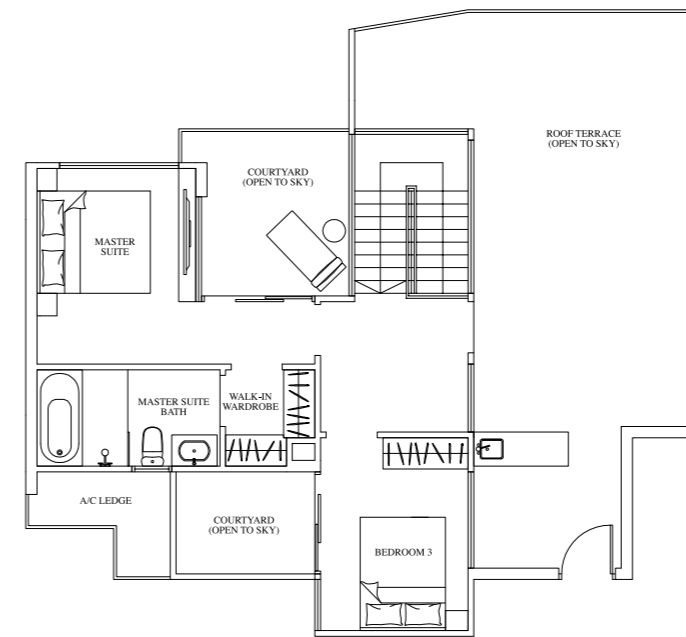
The plans are subject to change as may be required or approved by the relevant authorities. These are not drawn to scale and are for the purpose of a visual representation of the different layouts that are available. The areas are approximate and subject to final survey. The developer and its agents cannot be held liable for any inaccuracies.

GARDEN RIVERVILLA - PENTHOUSE

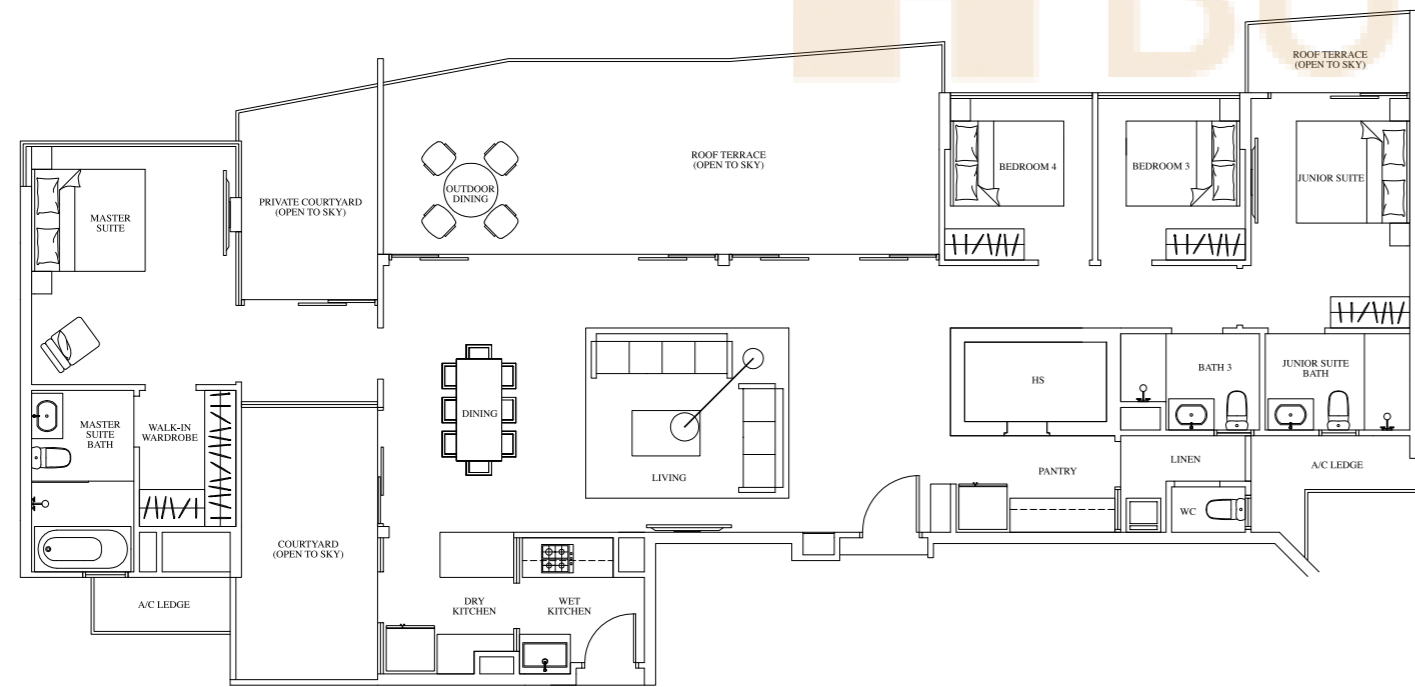
RIVERVILLA - DOUBLE-STOREY PENTHOUSE



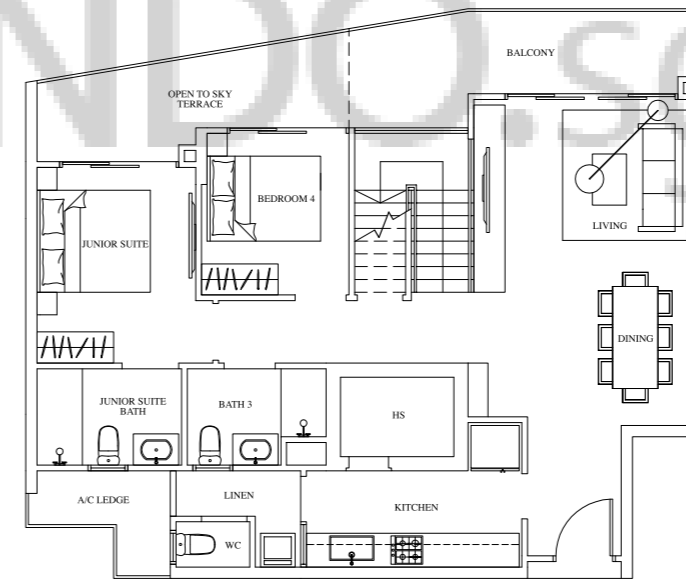
TYPE PH1
213 sqm / 2,293 sqft
#12-18



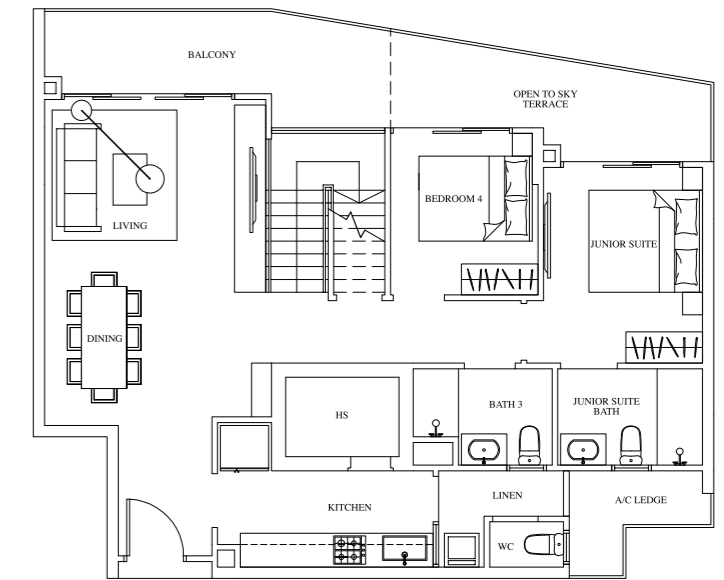
TYPE PH3 (Upper Level)
102 sqm / 1,098 sqft
Mirrored Units
#13-07 #13-08 #13-15



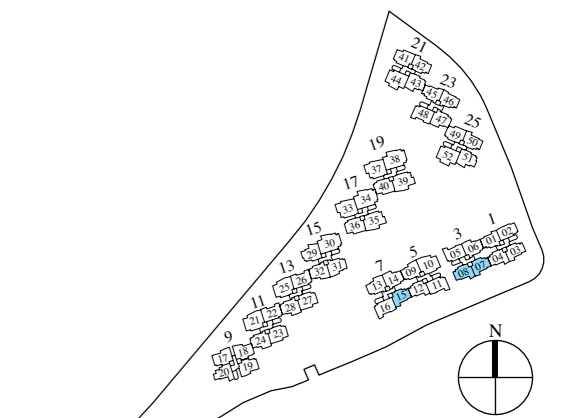
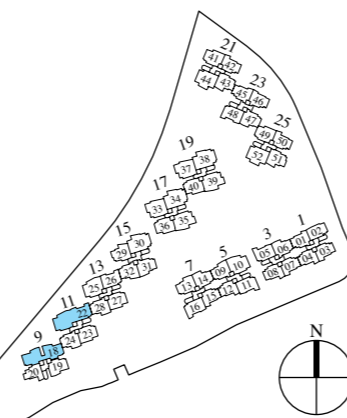
TYPE PH2
218 sqm / 2,347 sqft
#12-22



TYPE PH3 (Lower Level)
107 sqm / 1,152 sqft
#13-07 #13-15

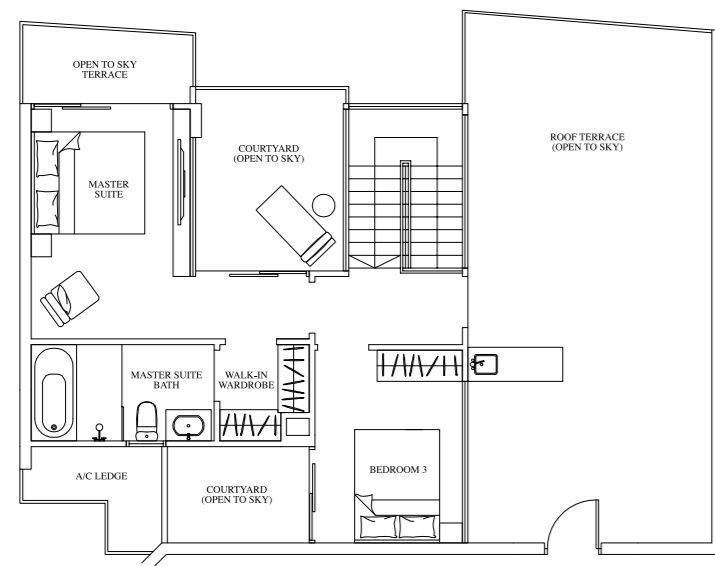


TYPE PH3 (Lower Level)
107 sqm / 1,152 sqft
#13-08



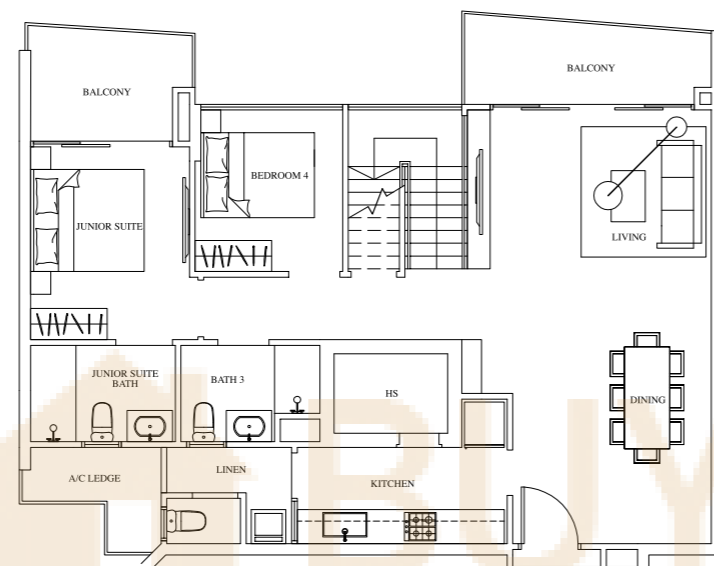
The plans are subject to change as may be required or approved by the relevant authorities. These are not drawn to scale and are for the purpose of a visual representation of the different layouts that are available. The areas are approximate and subject to final survey. The developer and its agents cannot be held liable for any inaccuracies.

The plans are subject to change as may be required or approved by the relevant authorities. These are not drawn to scale and are for the purpose of a visual representation of the different layouts that are available. The areas are approximate and subject to final survey. The developer and its agents cannot be held liable for any inaccuracies.



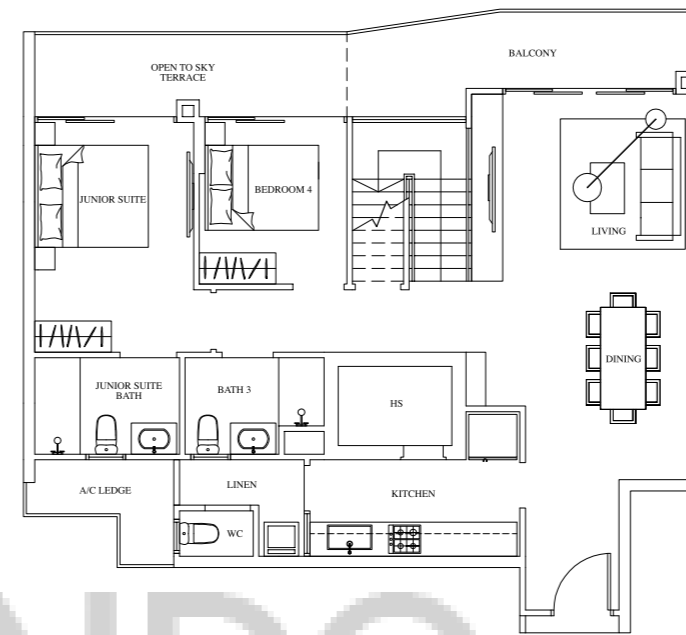
TYPE PH4 (Upper Level)
106 sqm / 1,141 sqft

- Mirrored Units
- #13-05 #13-02
 - #13-11 #13-16
 - #13-26
 - #13-48



TYPE PH4 (Lower Level)
104 sqm / 1,119 sqft

- Mirrored Units
- #13-05 #13-02
 - #13-11 #13-16
 - #13-26
 - #13-48



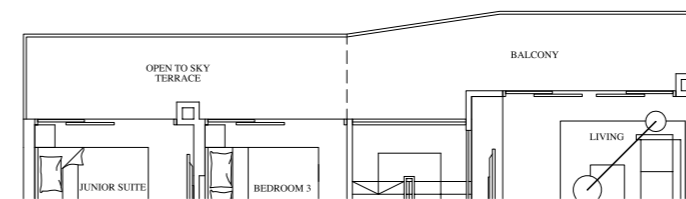
TYPE PH5 (Lower Level)
110 sqm / 1,184 sqft

- Mirrored Units
- #13-01 #13-06
 - #13-09 #13-28
 - #13-13
 - #13-47



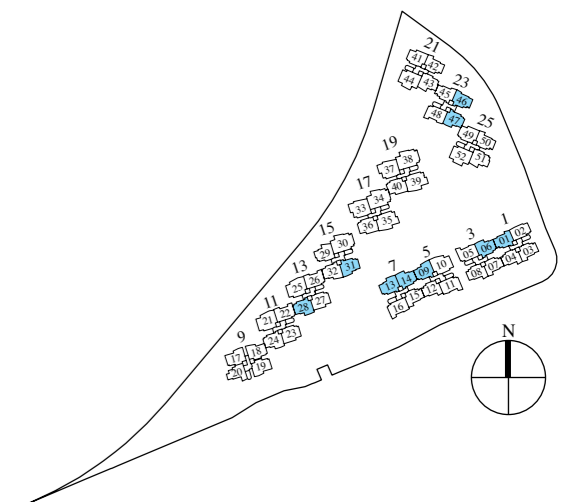
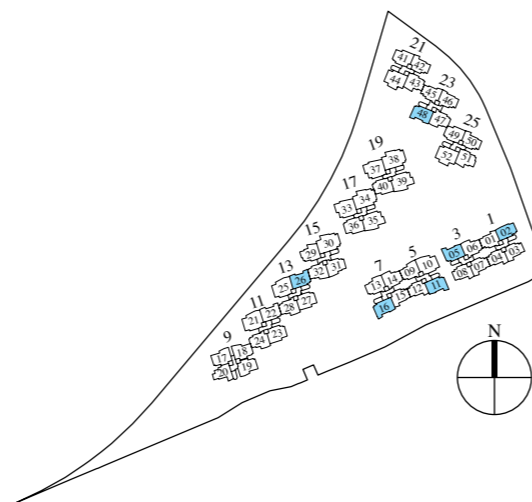
TYPE PH5 (Upper Level)
108 sqm / 1,163 sqft

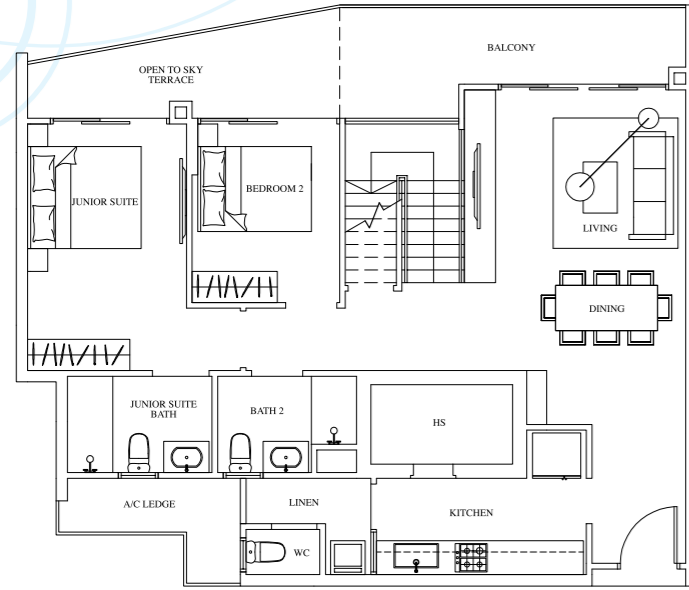
- Mirrored Units
- #13-01 #13-06
 - #13-09 #13-14
 - #13-13 #13-28
 - #13-31 #13-46
 - #13-47



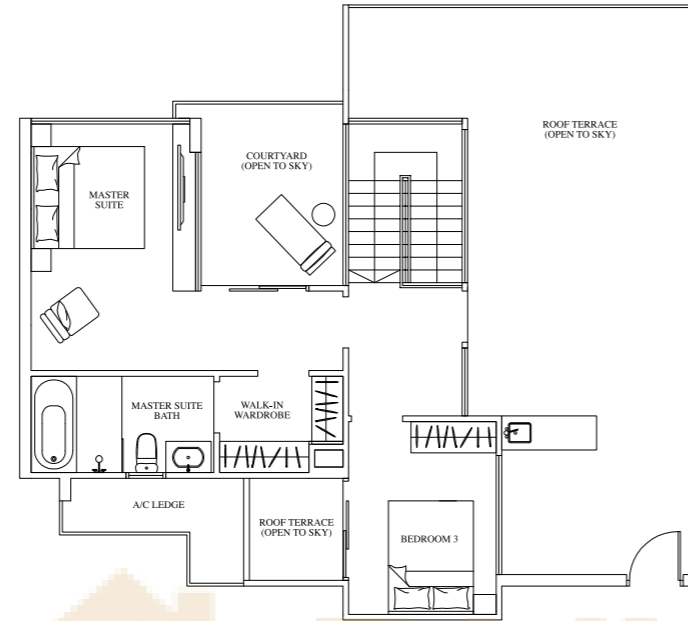
TYPE PH5 (Lower Level)
110 sqm / 1,184 sqft

- Mirrored Units
- #13-14 #13-46
 - #13-31

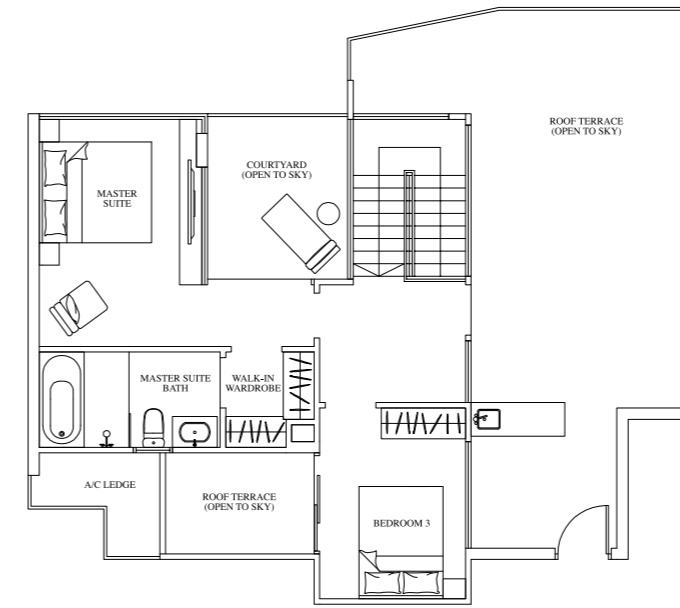




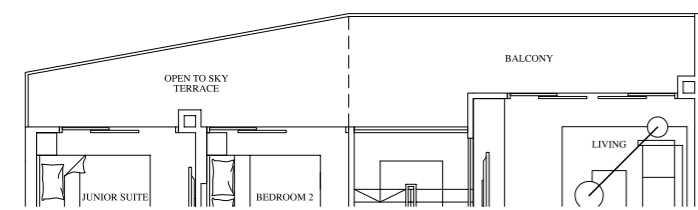
TYPE PH6 (Lower Level)
112 sqm / 1,206 sqft
#13-43



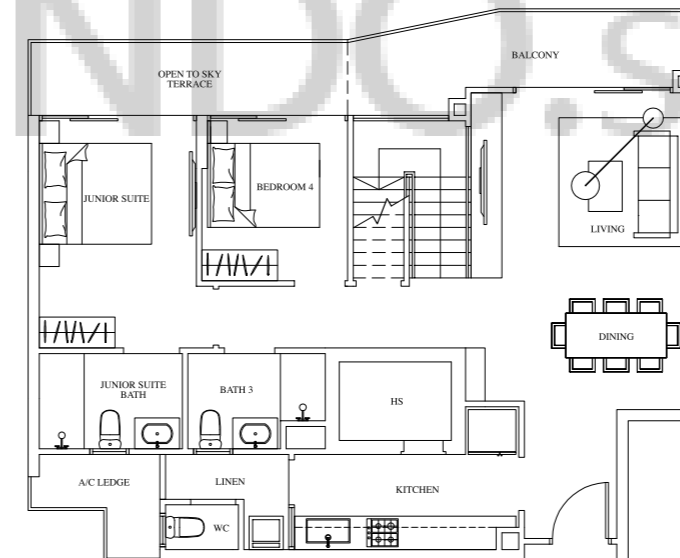
TYPE PH6 (Upper Level)
108 sqm / 1,162 sqft
#13-29
#13-43
#13-51



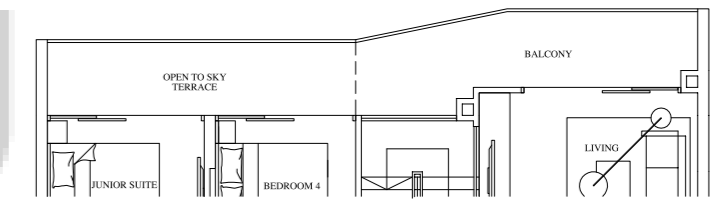
TYPE PH7 (Upper Level)
101 sqm / 1,087 sqft
Mirrored Units
#13-27 #13-36
#13-41
#13-49



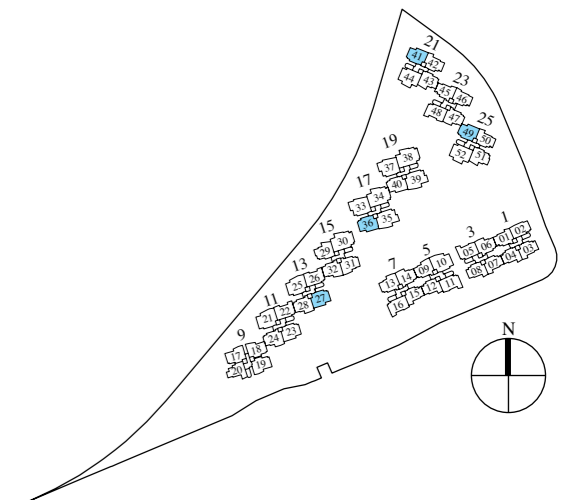
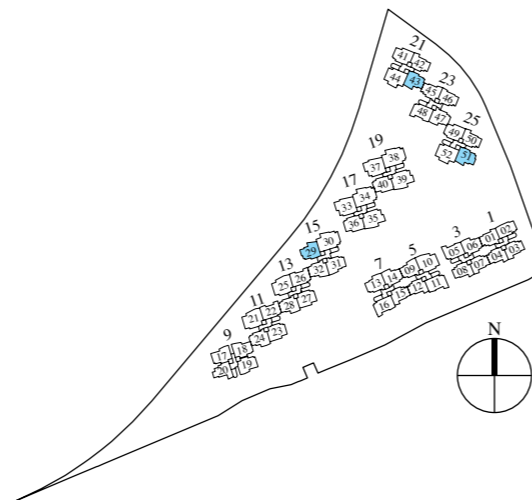
TYPE PH6 (Lower Level)
112 sqm / 1,206 sqft
#13-29
#13-51



TYPE PH7 (Lower Level)
106 sqm / 1,141 sqft
Mirrored Units
#13-27 #13-36
#13-41



TYPE PH7 (Lower Level)
106 sqm / 1,141 sqft
#13-49



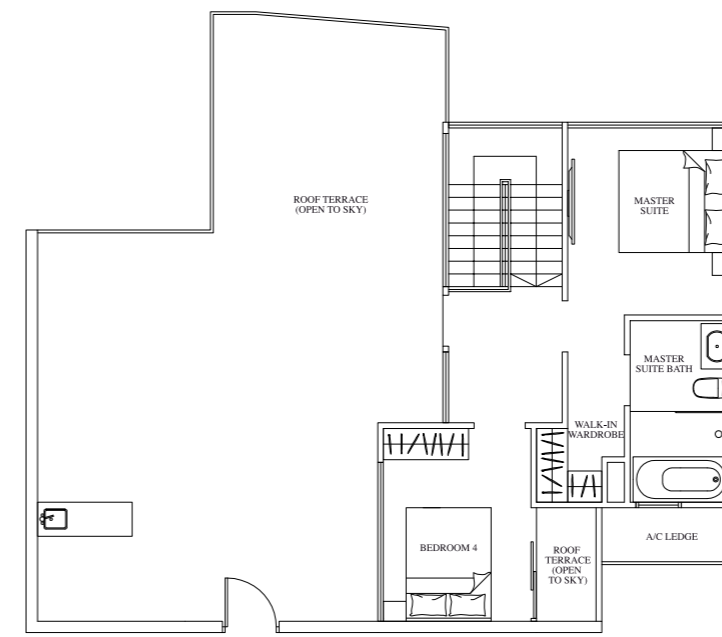
The plans are subject to change as may be required or approved by the relevant authorities. These are not drawn to scale and are for the purpose of a visual representation of the different layouts that are available. The areas are approximate and subject to final survey. The developer and its agents cannot be held liable for any inaccuracies.

The plans are subject to change as may be required or approved by the relevant authorities. These are not drawn to scale and are for the purpose of a visual representation of the different layouts that are available. The areas are approximate and subject to final survey. The developer and its agents cannot be held liable for any inaccuracies.

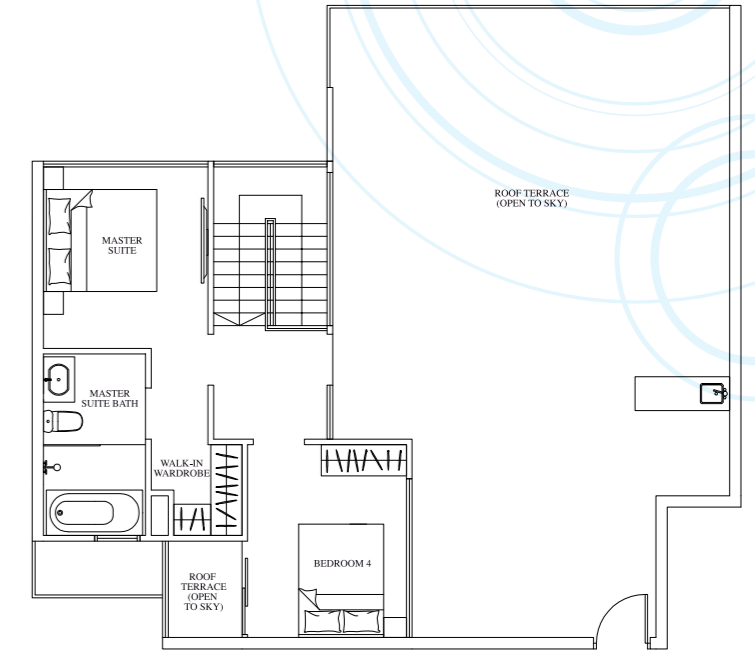
DELUXE RIVERVILLA - DUAL KEY DOUBLE-STOREY PENTHOUSE

DELUXE RIVERVILLA - DUAL KEY DOUBLE-STOREY PENTHOUSE

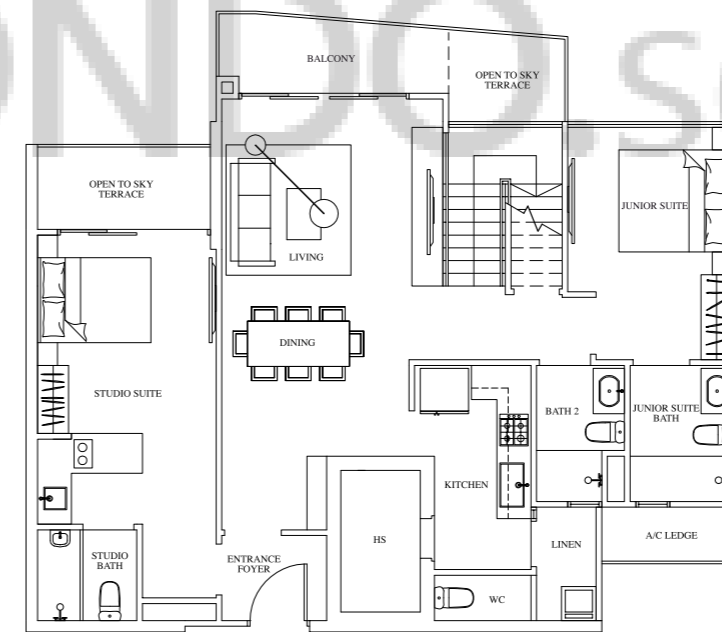
Want to live it up in style? DELUXE RIVERVILLA is the double-storey penthouse with attached studio unit that helps you turn your dream into reality. Entertain your guests or have a family gathering at the roof terrace which has an outdoor gourmet island countertop. Relax in the private garden next to the master bedroom. The balcony extends across living and bedrooms and the junior suite comes with an attached bathroom. In addition to space, the separate entrance for the penthouse and the junior suite affords much needed privacy for everyone.



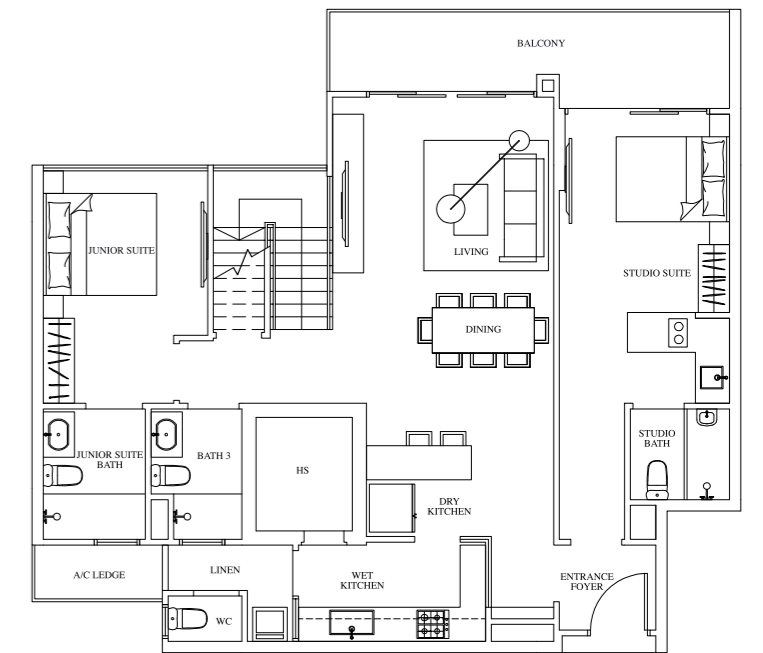
TYPE PH8-DK (Upper Level)
109 sqm / 1,173 sqft
#13-44
#13-52



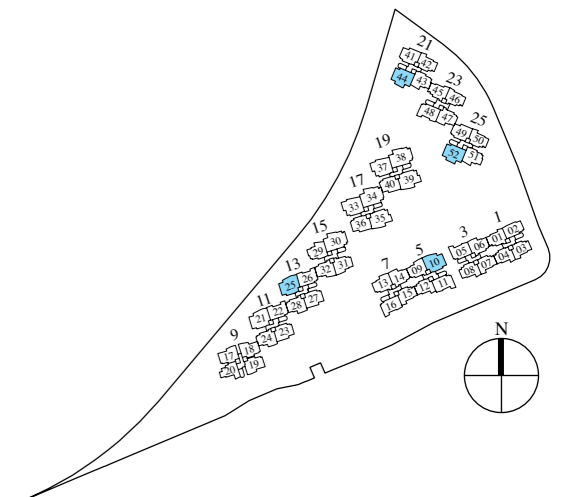
TYPE PH9-DK (Upper Level)
118 sqm / 1,270 sqft
Mirrored Units
#13-10 #13-25



TYPE PH8-DK (Lower Level)
116 sqm / 1,249 sqft
#13-44
#13-52



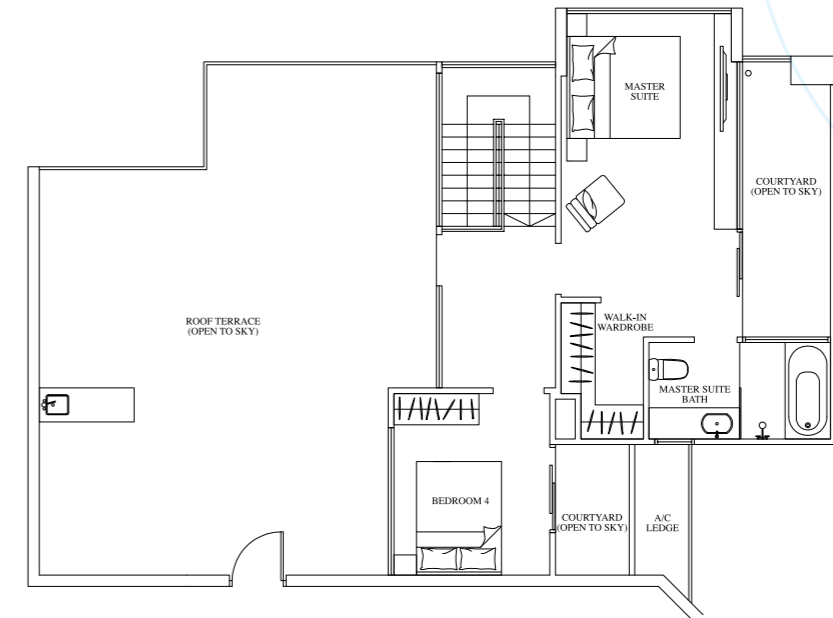
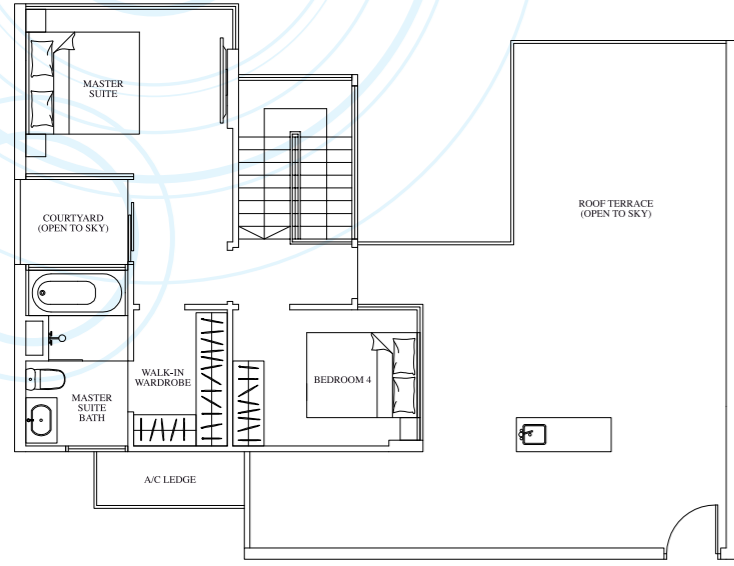
TYPE PH9-DK (Lower Level)
118 sqm / 1,270 sqft
Mirrored Units
#13-10 #13-25



The plans are subject to change as may be required or approved by the relevant authorities. These are not drawn to scale and are for the purpose of a visual representation of the different layouts that are available. The areas are approximate and subject to final survey. The developer and its agents cannot be held liable for any inaccuracies.

RIVERVILLA - DOUBLE-STOREY PENTHOUSE

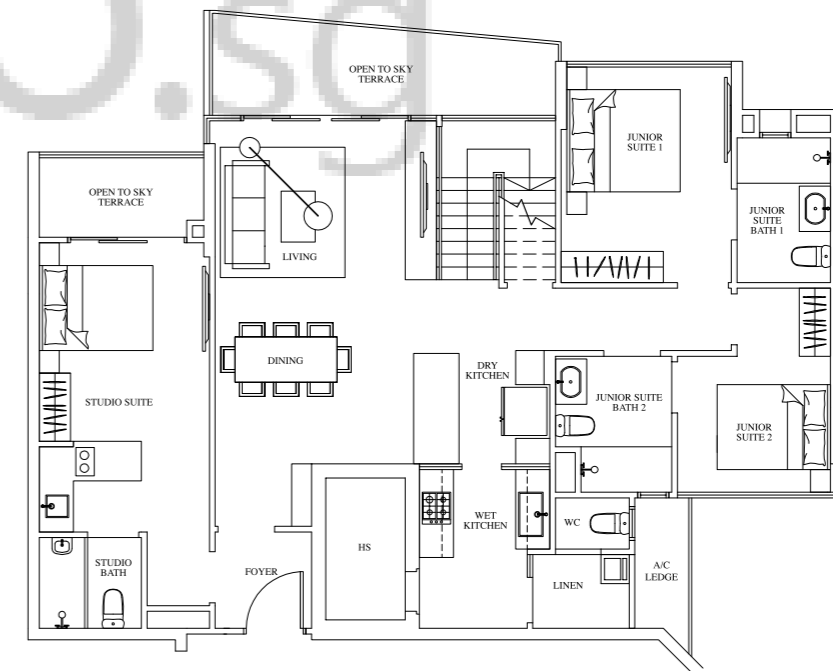
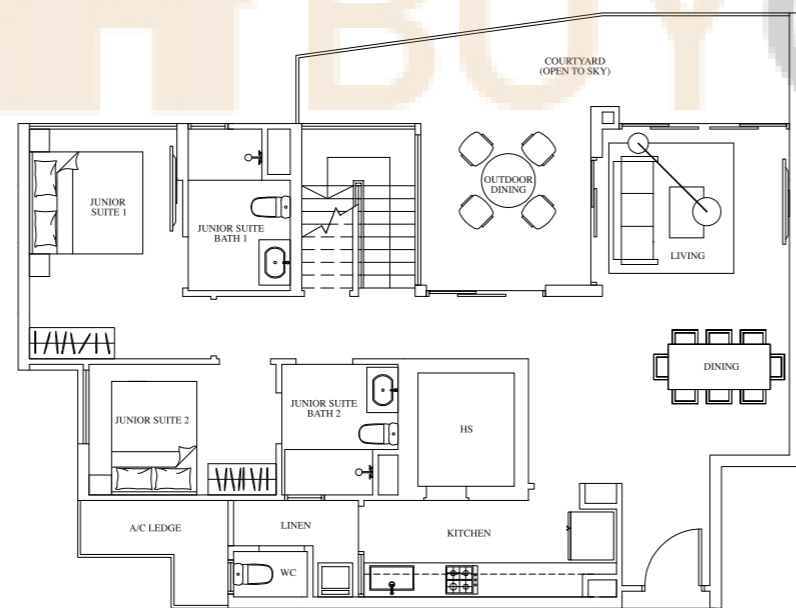
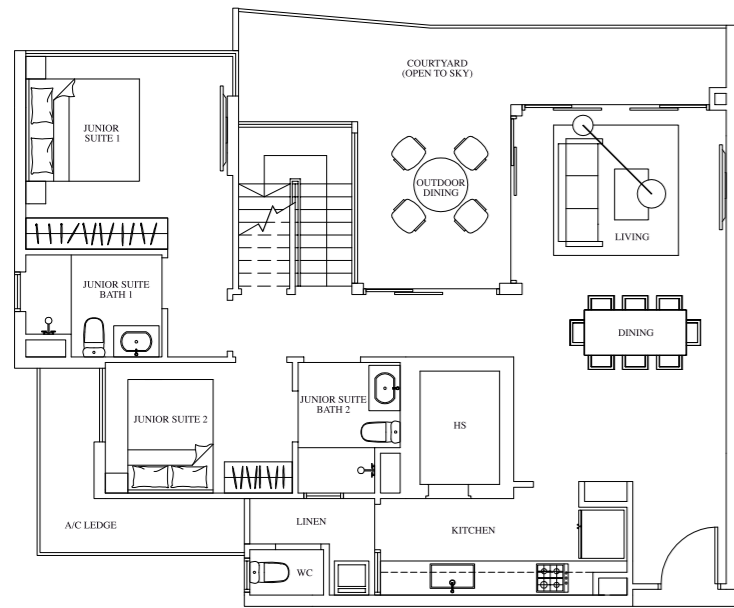
DELUXE RIVERVILLA - DUAL KEY DOUBLE-STOREY PENTHOUSE



TYPE PH10 (Upper Level)
 100 sqm / 1,076 sqft
 #13-33
 #13-37

TYPE PH11 (Upper Level)
 98 sqm / 1,055 sqft
 #13-35
 #13-39

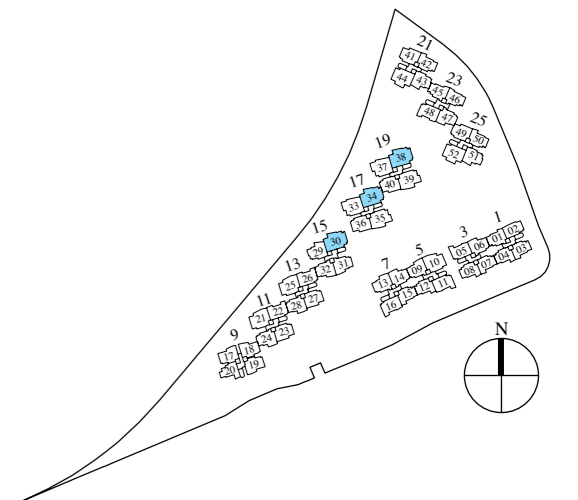
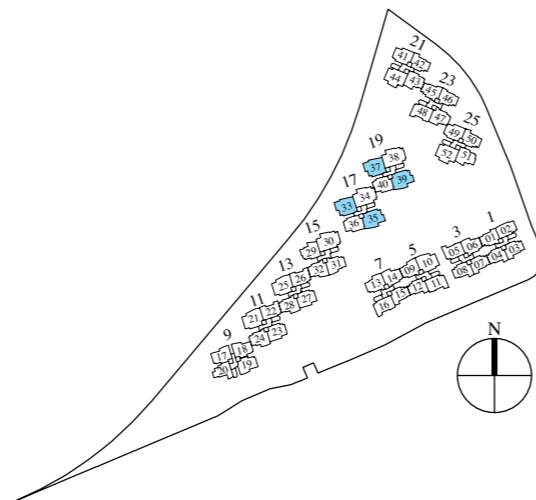
TYPE PH12-DK (Upper Level)
 120 sqm / 1,292 sqft
 #13-30
 #13-34
 #13-38



TYPE PH10 (Lower Level)
 121 sqm / 1,302 sqft
 #13-33
 #13-37

TYPE PH11 (Lower Level)
 120 sqm / 1,292 sqft
 #13-35
 #13-39

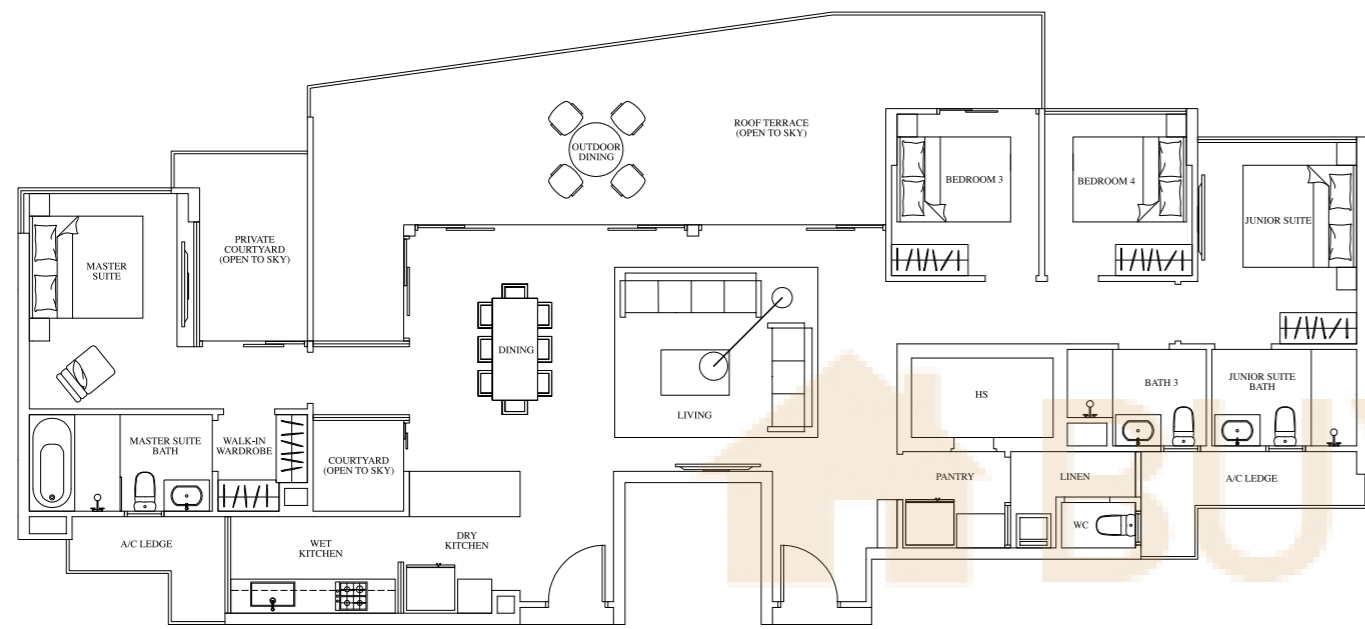
TYPE PH12-DK (Lower Level)
 132 sqm / 1,421 sqft
 #13-30
 #13-34
 #13-38



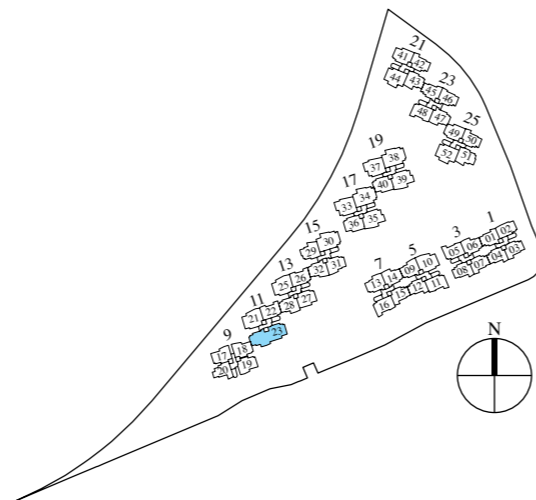
The plans are subject to change as may be required or approved by the relevant authorities. These are not drawn to scale and are for the purpose of a visual representation of the different layouts that are available. The areas are approximate and subject to final survey. The developer and its agents cannot be held liable for any inaccuracies.

The plans are subject to change as may be required or approved by the relevant authorities. These are not drawn to scale and are for the purpose of a visual representation of the different layouts that are available. The areas are approximate and subject to final survey. The developer and its agents cannot be held liable for any inaccuracies.

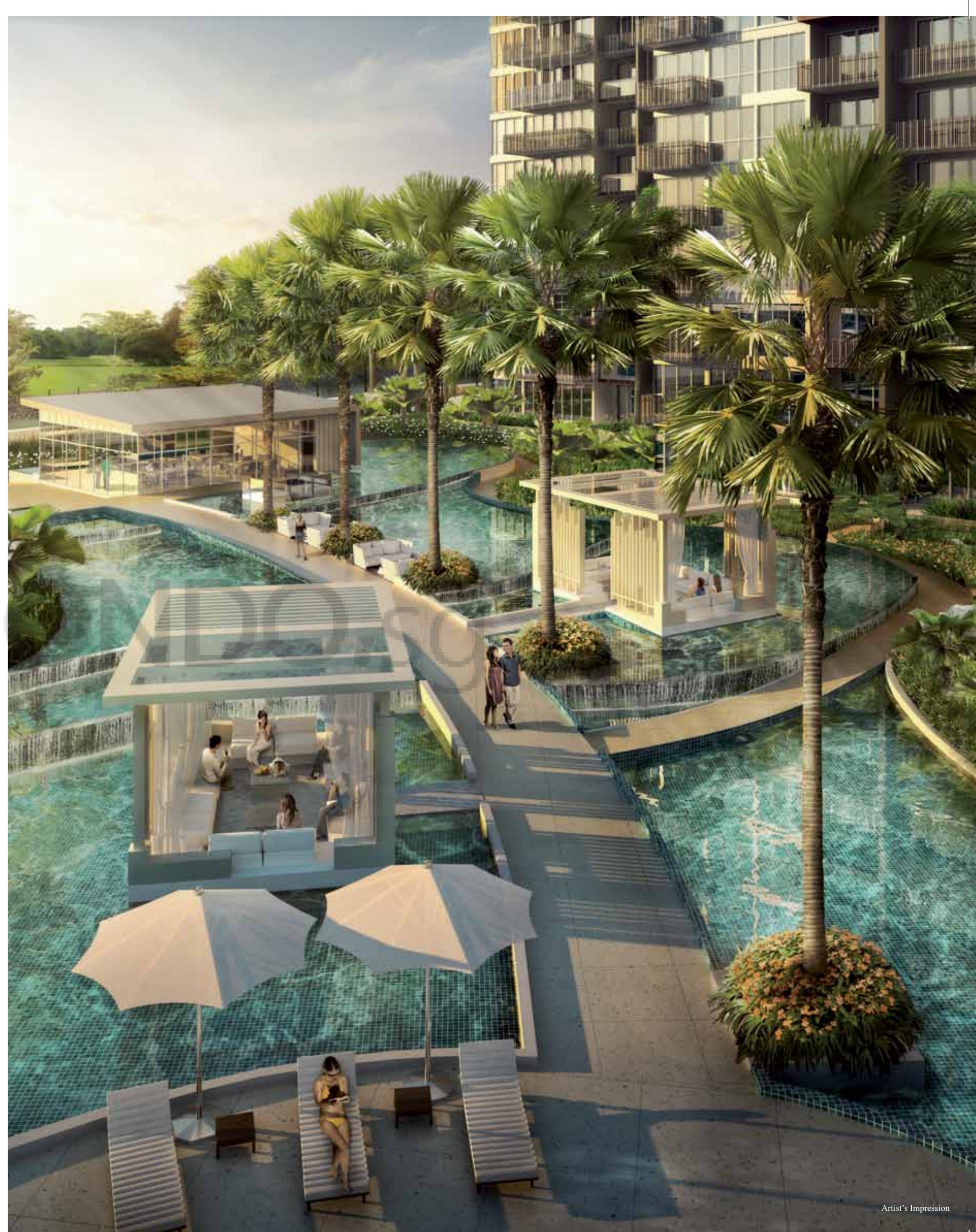
GARDEN RIVERVILLA - PENTHOUSE



TYPE PH13
 197 sqm / 2,120 sqft
 #12-23



The plans are subject to change as may be required or approved by the relevant authorities. These are not drawn to scale and are for the purpose of a visual representation of the different layouts that are available. The areas are approximate and subject to final survey. The developer and its agents cannot be held liable for any inaccuracies.



Artist's Impression