

COVE HOUSE

*Exclusive landed living
by the Reservoir
Eight Cove Houses*

TYPE CH – Hse 33, Hse 35*, Hse 41, Hse 43*

TYPE CH(a) – Hse 31*, Hse 37, Hse 39*, Hse 45

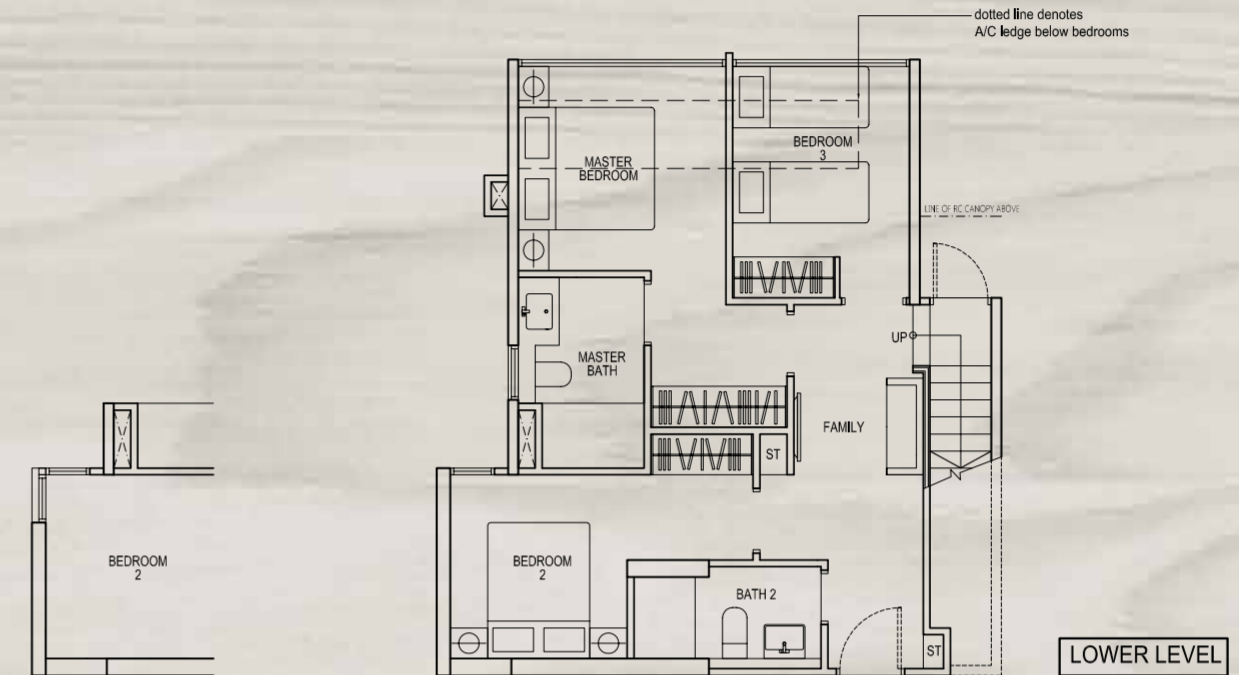
142sqm/1528sqft

Inclusive of void area of 7 sqm above above staircase and private carpark lot of 12 sqm



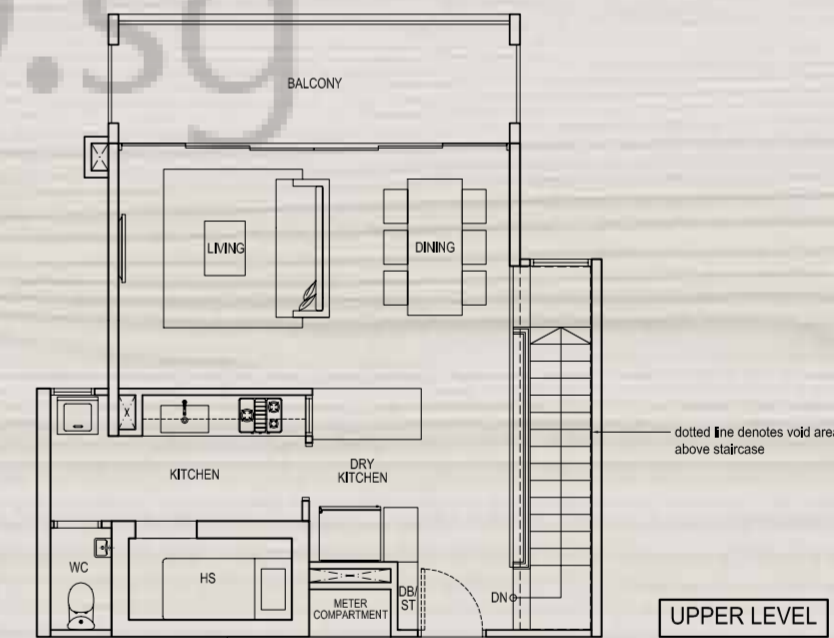
Artist's Impression

Imagine stepping out of your home to an invigorating jog along the reservoir. This is as close as you will get to serenity when you own a breathtaking frontal view of nature's best. And this privilege is only extended to 8 rare Cove Houses by the reservoir - a new concept in luxurious waterfront living.

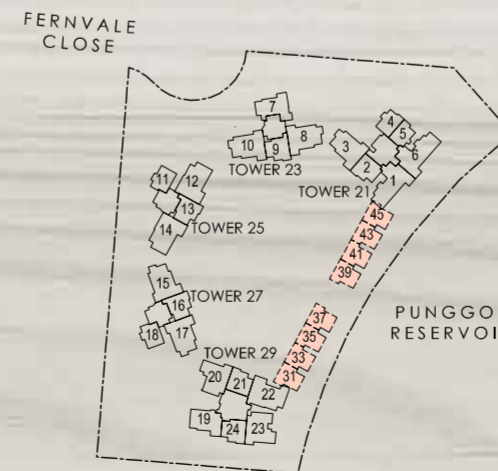


LOWER LEVEL

APPLICABLE TO TYPE CH(a)

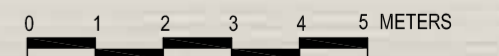


UPPER LEVEL



KEY PLAN

*Mirror image



Area includes A/C ledge, balcony, PES and void area. Some units are mirror images of the apartment plans shown in the brochure. Please refer to the key plans for orientation. The plans are subjected to change as may be approved by relevant authorities. All floor plans are approximate measurements only and are subjected to government resurvey. Abbreviation: A/C ledge (Aircon Ledge), PES (Private Enclosed Space), ST (Store), DB (Distribution Board).

EXTRAORDINARY VIEW

WITH AN EXTRAORDINARY DIFFERENCE

*Exclusive Apartment Designs
for Waterfront Living*

SUITES


VANTAGE HOMES

VISTA HOMES

VERANDAH HOMES

TRIO

PRIVE



In the luxurious comforts of your extraordinary abode, enjoy your special view of a gleaming reservoir, awash with enchanting blooms and occasional glimpses of native river birds.

TYPE A

1 Bedroom
47sqm/506sqft
#02-05 to #21-05

TYPE A(a)

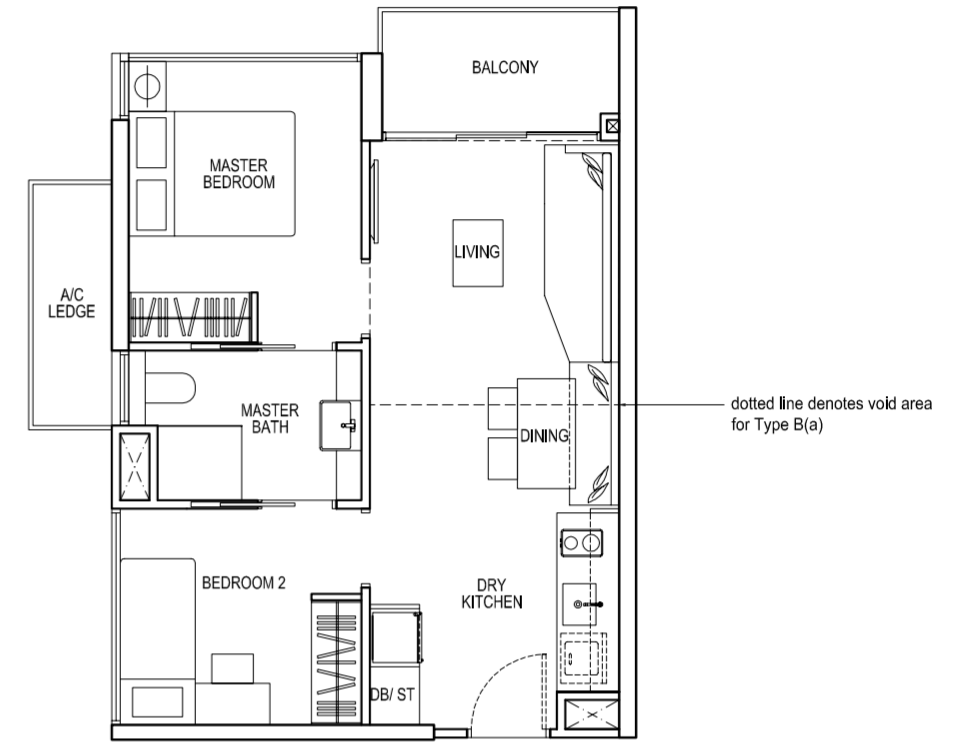
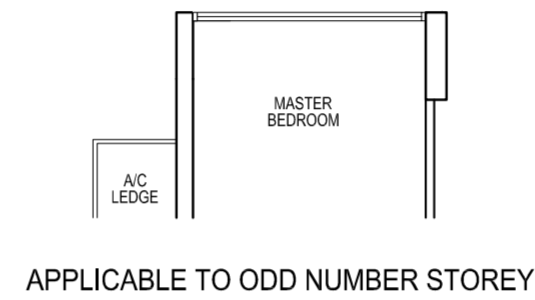
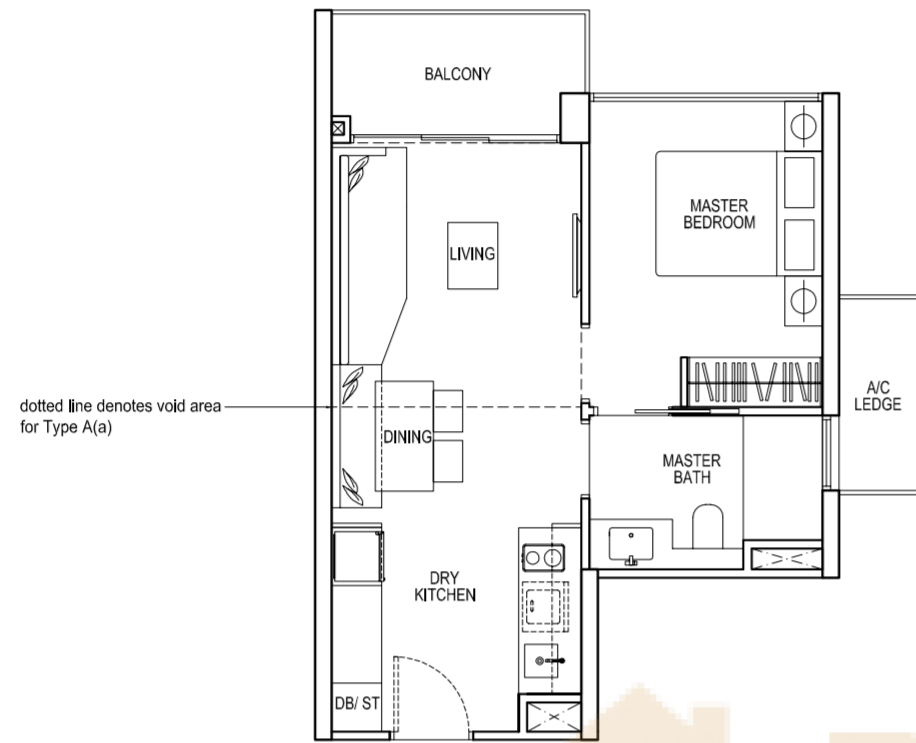
1 Bedroom
57sqm/614sqft
#22-05
Inclusive of void area
of 10 sqm above living

TYPE B

2 Bedroom
54sqm/581sqft
#02-04 to #21-04

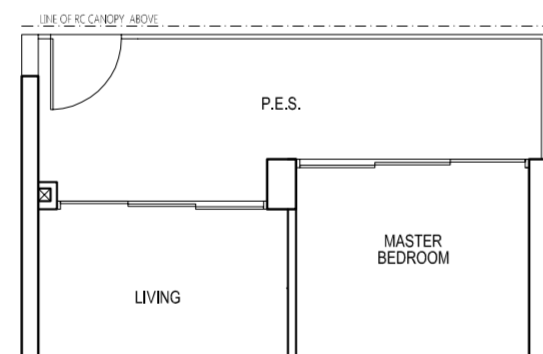
TYPE B(a)

2 Bedroom
64sqm/689sqft
#22-04
Inclusive of void area
of 10 sqm above living



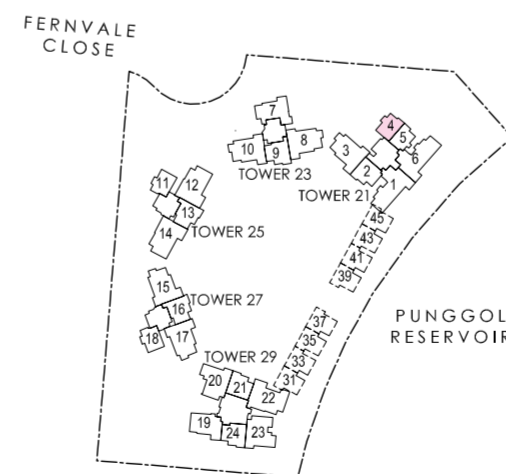
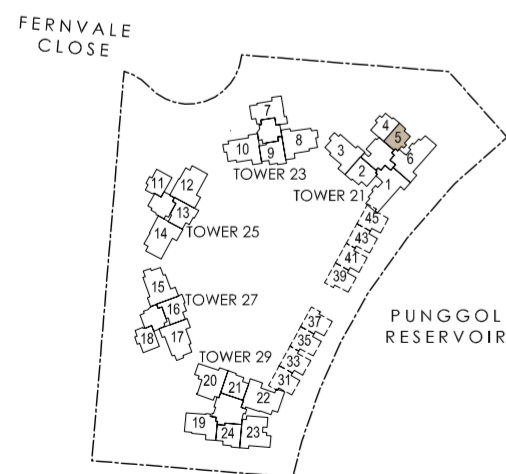
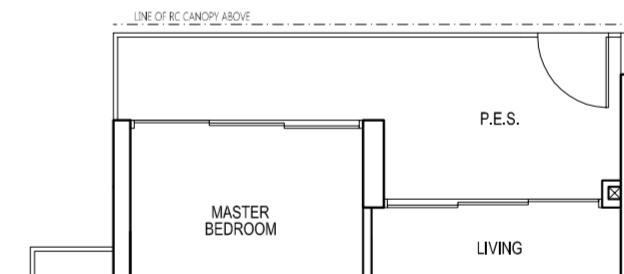
TYPE Ap

1 Bedroom
53sqm/570sqft
#01-05



TYPE Bp

2 Bedroom
59sqm/635sqft
#01-04



Area includes A/C ledge, balcony, PES and void area. Some units are mirror images of the apartment plans shown in the brochure. Please refer to the key plans for orientation. The plans are subjected to change as may be approved by relevant authorities. All floor plans are approximate measurements only and are subjected to government resurvey. Abbreviation: A/C ledge (Aircon Ledge), PES (Private Enclosed Space), ST (Store), DB (Distribution Board).

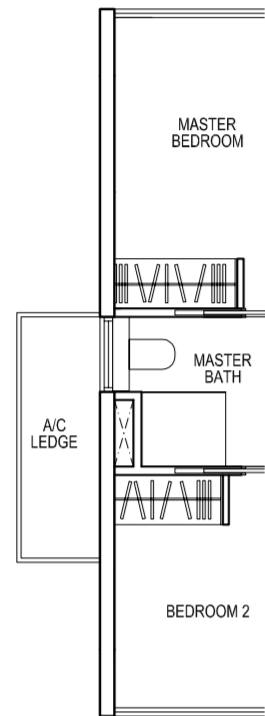
Area includes A/C ledge, balcony, PES and void area. Some units are mirror images of the apartment plans shown in the brochure. Please refer to the key plans for orientation. The plans are subjected to change as may be approved by relevant authorities. All floor plans are approximate measurements only and are subjected to government resurvey. Abbreviation: A/C ledge (Aircon Ledge), PES (Private Enclosed Space), ST (Store), DB (Distribution Board).

TYPE B1

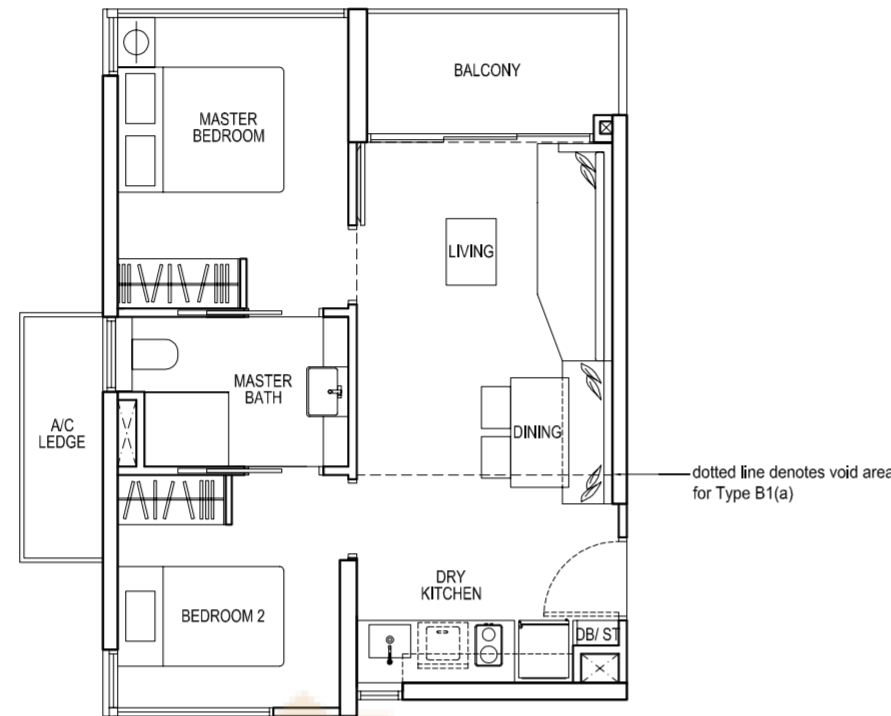
2 Bedroom
54sqm/581sqft
#03-11 to #19-11
#02-18* to #19-18*

TYPE B1(a)

2 Bedroom
67sqm/721sqft
#20-11
#20-18*
Inclusive of void area
of 13 sqm above living



APPLICABLE TO ODD NUMBER STOREY



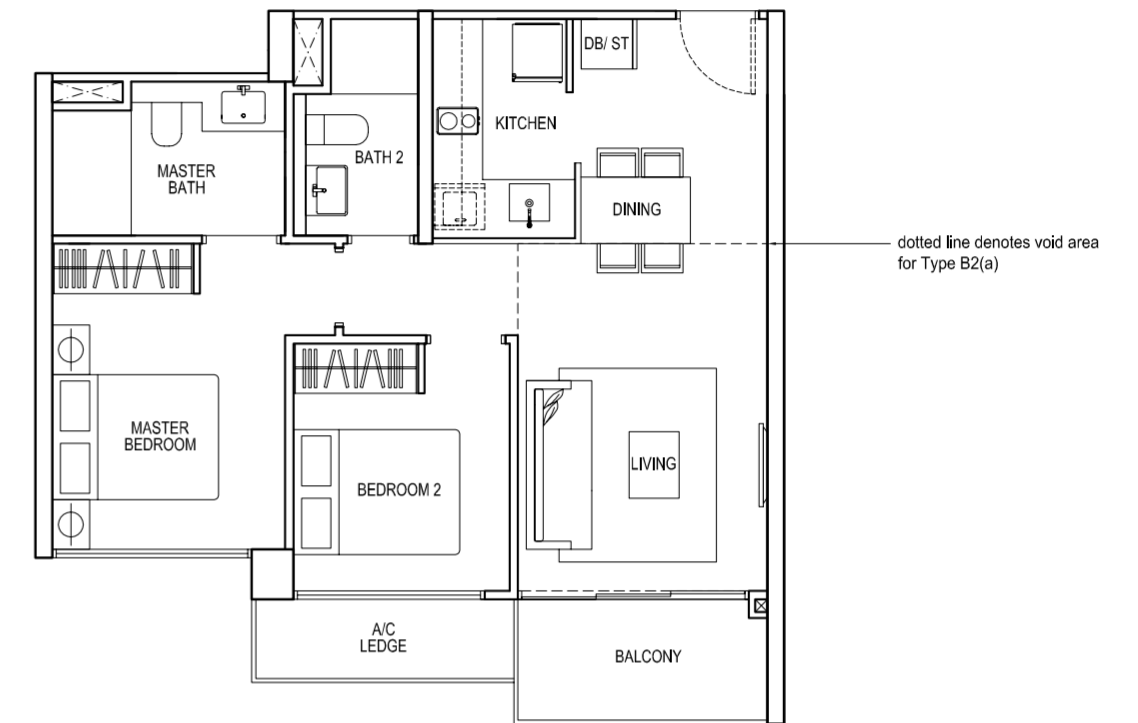
HIGH CEILING

TYPE B2

2 Bedroom Deluxe
65sqm/700sqft
#02-24 to #21-24

TYPE B2(a)

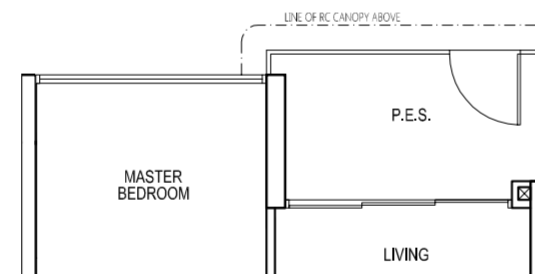
2 Bedroom Deluxe
78sqm/840sqft
#22-24
Inclusive of void area
of 13 sqm above living



HIGH CEILING

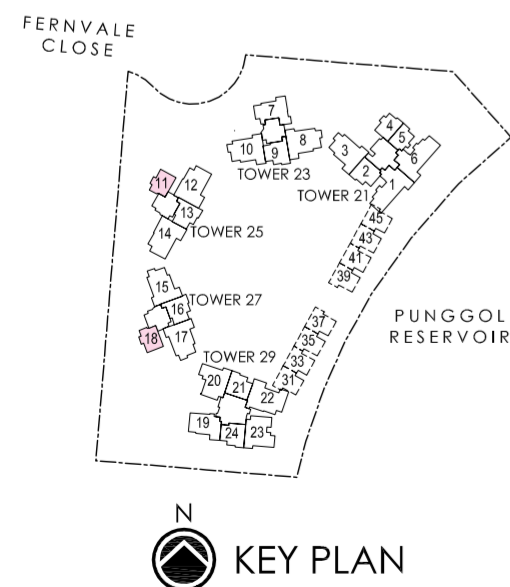
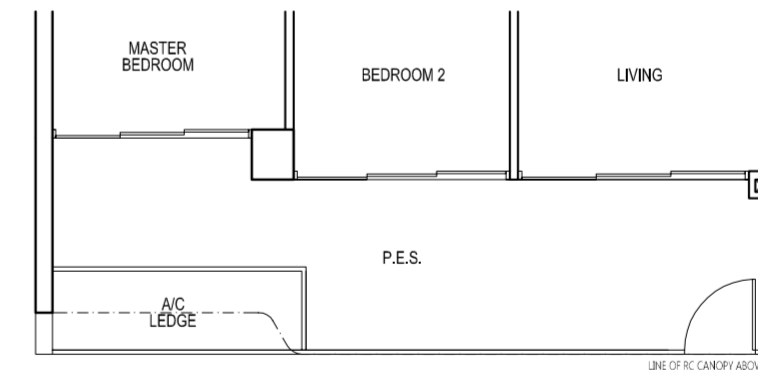
TYPE B1p

2 Bedroom
55sqm/592sqft
#01-18*

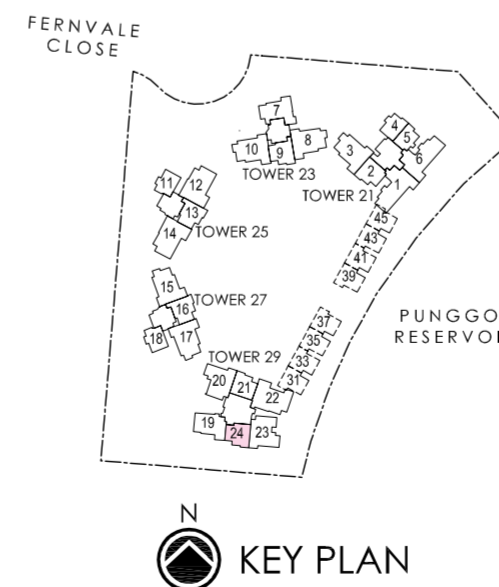


TYPE B2p

2 Bedroom Deluxe
77sqm/829sqft
#01-24



*Mirror image



Area includes A/C ledge, balcony, PES and void area. Some units are mirror images of the apartment plans shown in the brochure. Please refer to the key plans for orientation. The plans are subjected to change as may be approved by relevant authorities. All floor plans are approximate measurements only and are subjected to government resurvey. Abbreviation: A/C ledge (Aircon Ledge), PES (Private Enclosed Space), ST (Store), DB (Distribution Board).

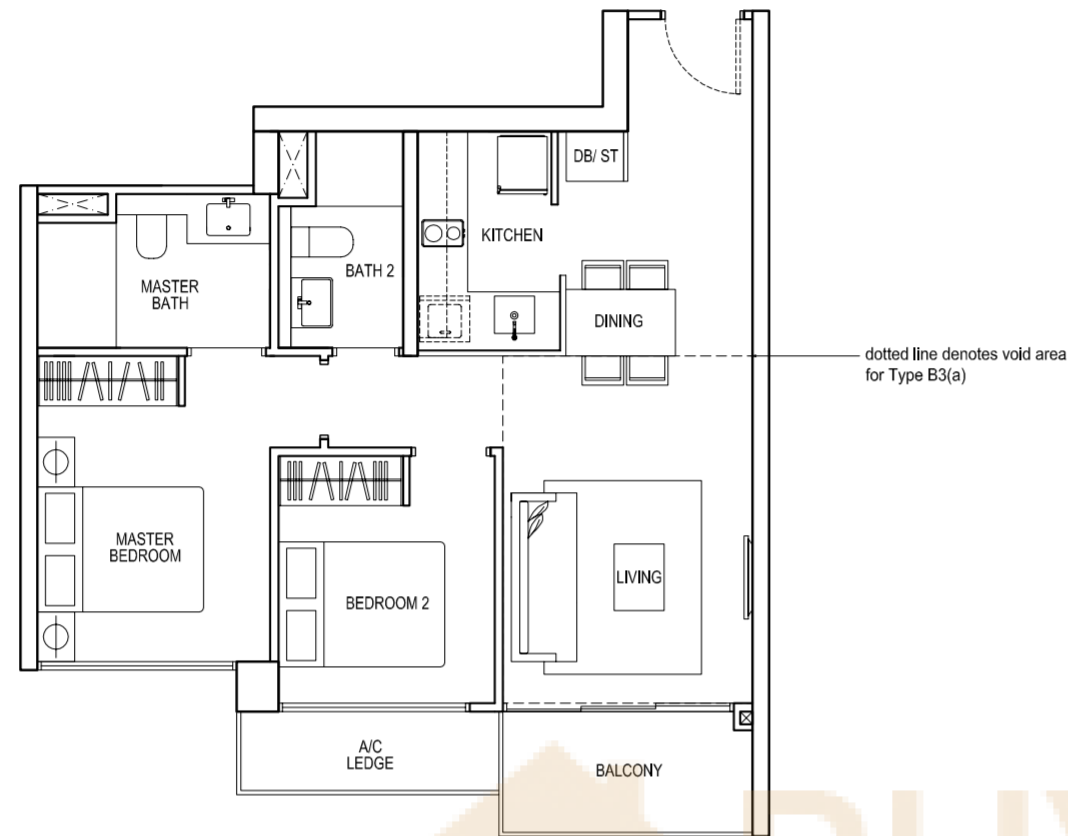
Area includes A/C ledge, balcony, PES and void area. Some units are mirror images of the apartment plans shown in the brochure. Please refer to the key plans for orientation. The plans are subjected to change as may be approved by relevant authorities. All floor plans are approximate measurements only and are subjected to government resurvey. Abbreviation: A/C ledge (Aircon Ledge), PES (Private Enclosed Space), ST (Store), DB (Distribution Board).

TYPE B3

2 Bedroom Deluxe
68sqm/732sqft
#03-09 to #19-09
#03-13 to #19-13
#03-16 to #19-16

TYPE B3(a)

2 Bedroom Deluxe
81sqm/872sqft
#20-09
#20-13
#20-16
Inclusive of void area
of 13 sqm above living

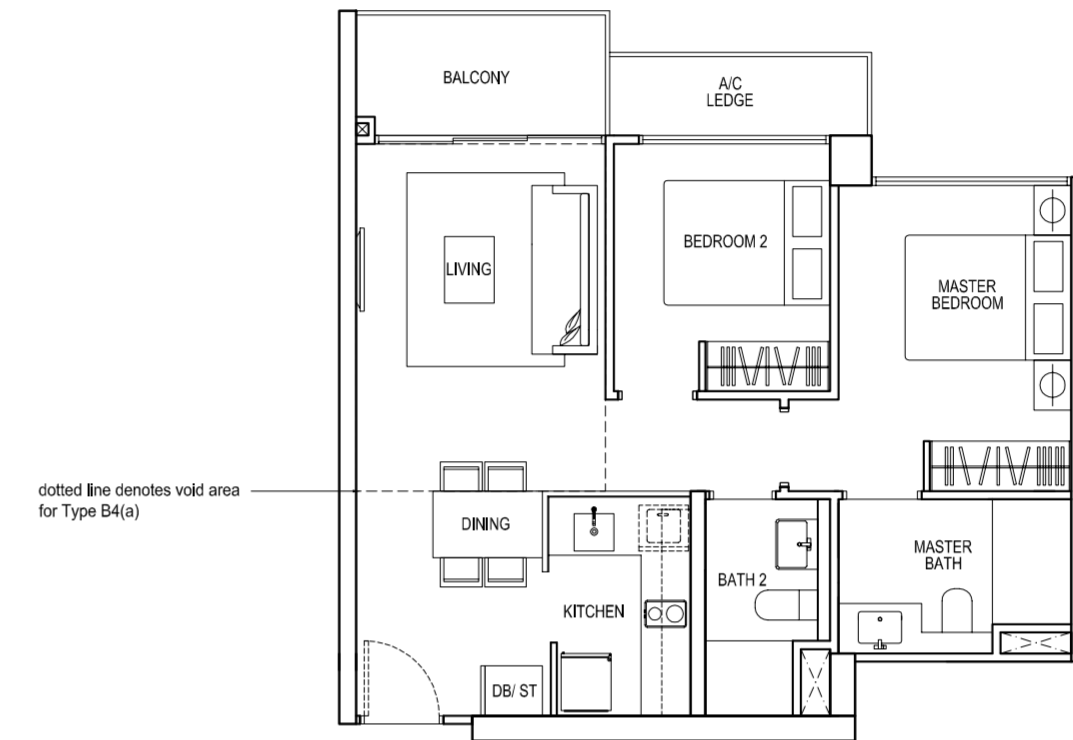


TYPE B4

2 Bedroom Deluxe
66sqm/710sqft
#03-21 to #21-21

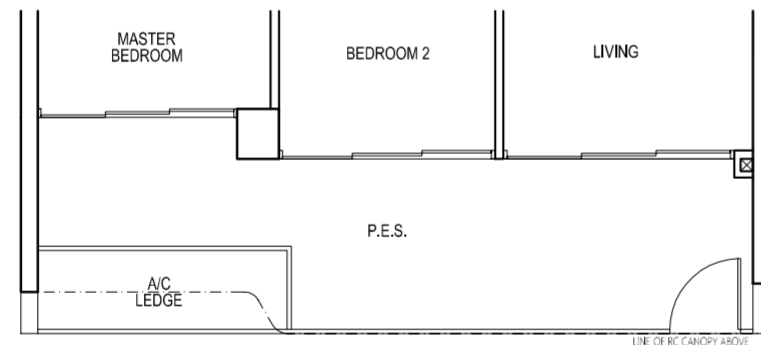
TYPE B4(a)

2 Bedroom Deluxe
79sqm/850sqft
#22-21
Inclusive of void area
of 13 sqm above living



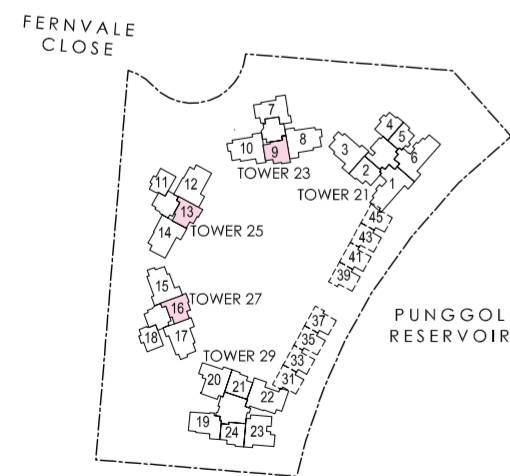
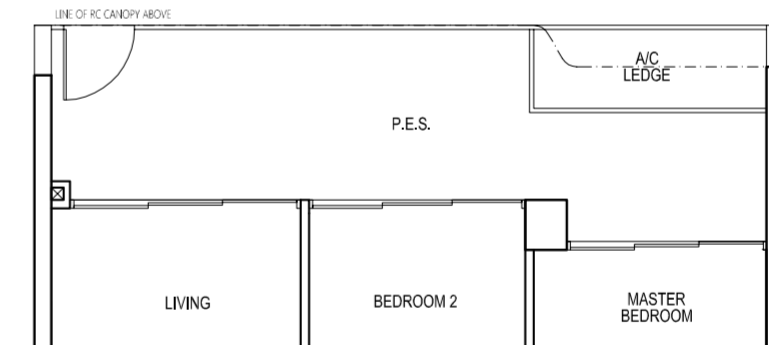
TYPE B3p

2 Bedroom Deluxe
80sqm/861sqft
#02-09
#02-13
#02-16

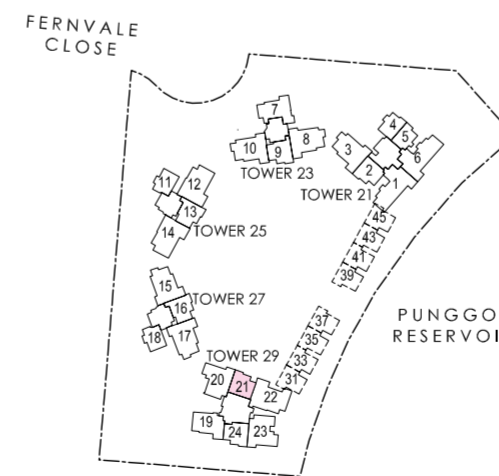


TYPE B4p

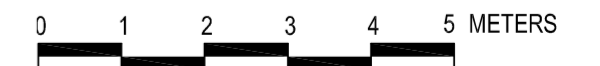
2 Bedroom Deluxe
78sqm/840sqft
#02-21



KEY PLAN



KEY PLAN



Area includes A/C ledge, balcony, PES and void area. Some units are mirror images of the apartment plans shown in the brochure. Please refer to the key plans for orientation. The plans are subjected to change as may be approved by relevant authorities. All floor plans are approximate measurements only and are subjected to government resurvey. Abbreviation: A/C ledge (Aircon Ledge), PES (Private Enclosed Space), ST (Store), DB (Distribution Board).

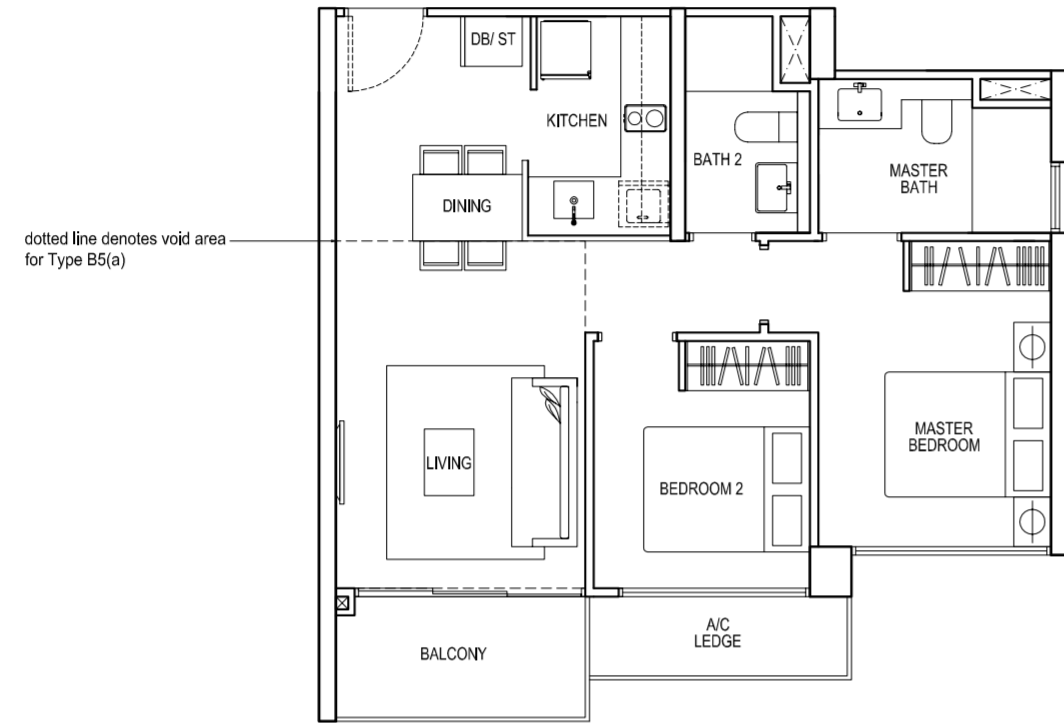
Area includes A/C ledge, balcony, PES and void area. Some units are mirror images of the apartment plans shown in the brochure. Please refer to the key plans for orientation. The plans are subjected to change as may be approved by relevant authorities. All floor plans are approximate measurements only and are subjected to government resurvey. Abbreviation: A/C ledge (Aircon Ledge), PES (Private Enclosed Space), ST (Store), DB (Distribution Board).

TYPE B5

2 Bedroom Deluxe
65sqm/700sqft
#03-02 to #21-02

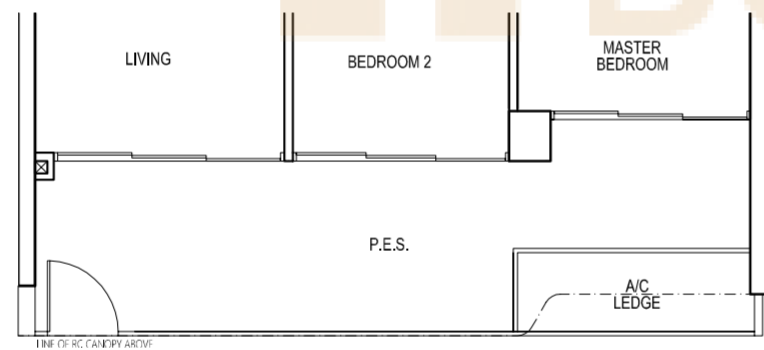
TYPE B5(a)

2 Bedroom Deluxe
78sqm/840sqft
#22-02
Inclusive of void area
of 13 sqm above living



TYPE B5p

2 Bedroom Deluxe
77sqm/829sqft
#02-02

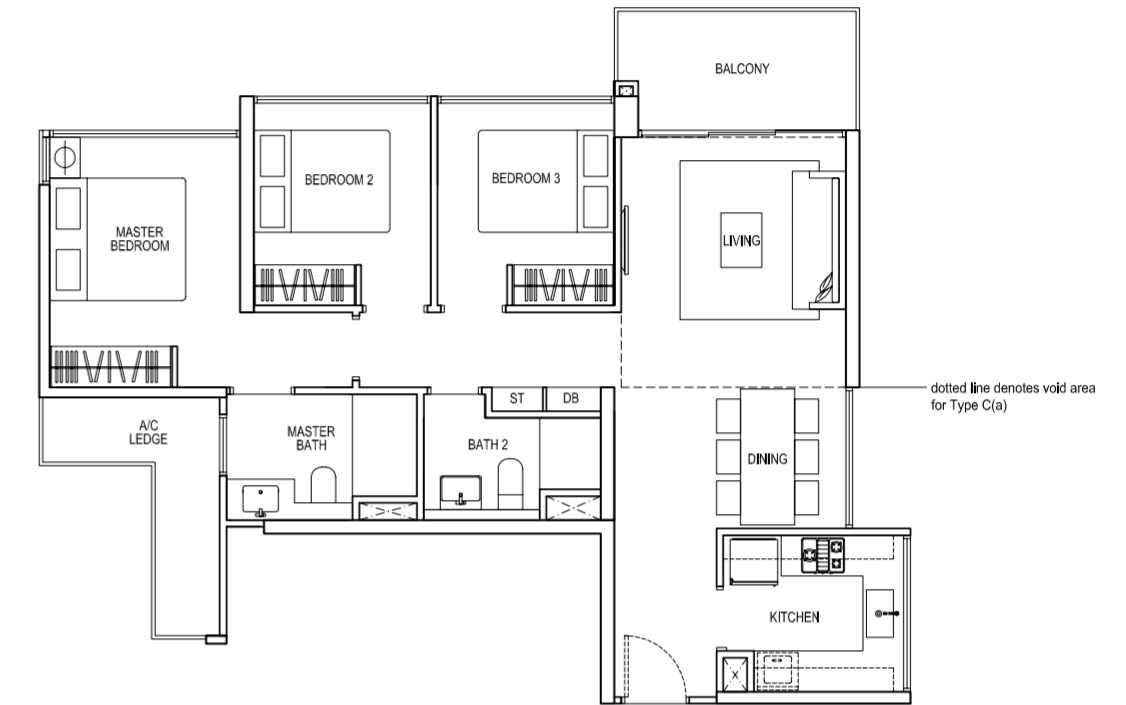
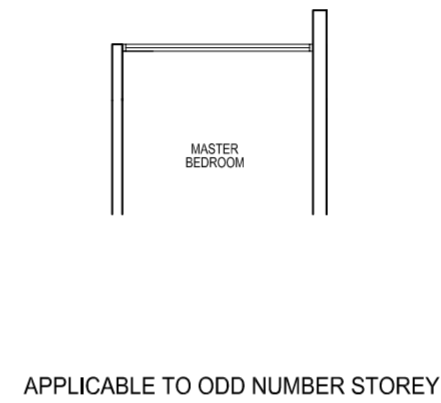


TYPE C

3 Bedroom
88sqm/947sqft
#02-07 to #19-07

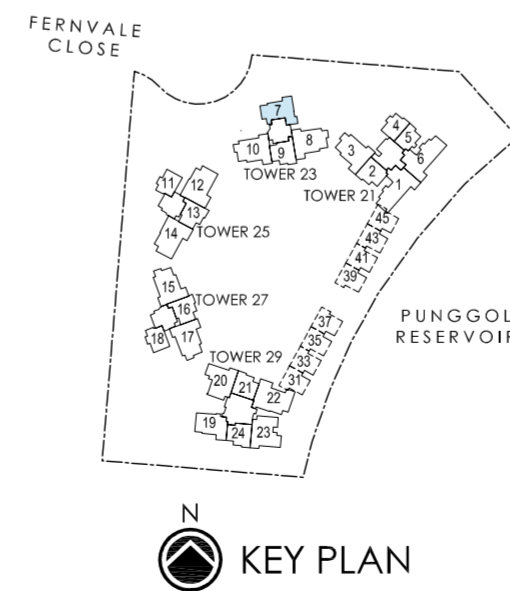
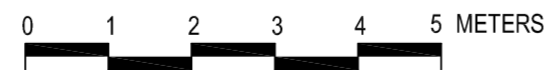
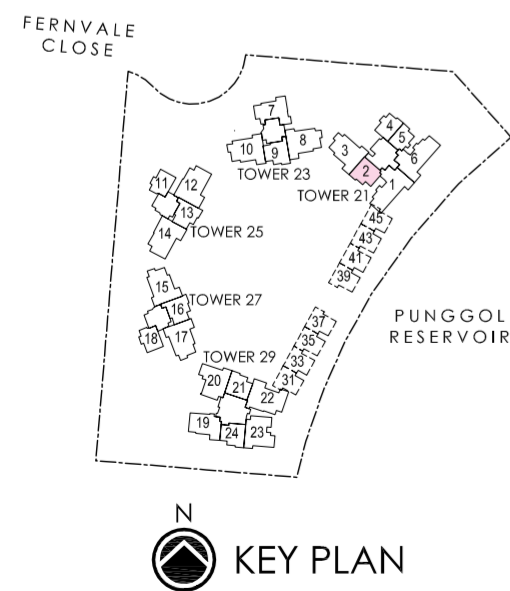
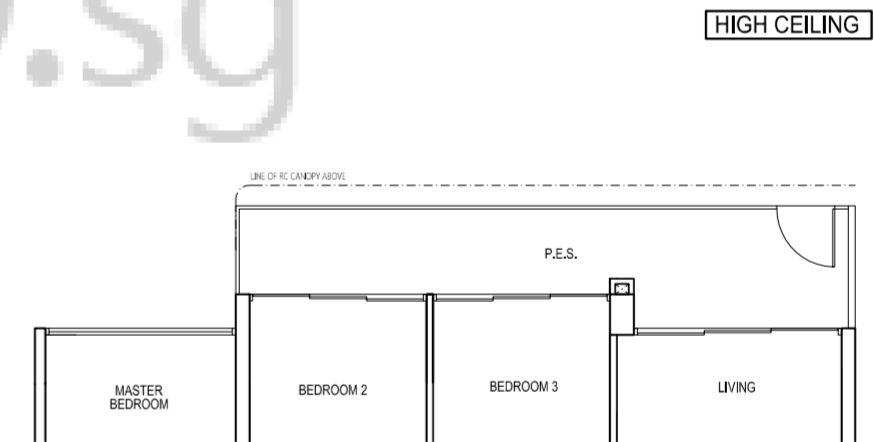
TYPE C(a)

3 Bedroom
101sqm/1087sqft
#20-07
Inclusive of void area
of 13 sqm above living



TYPE Cp

3 Bedroom
95sqm/1023sqft
#01-07



Area includes A/C ledge, balcony, PES and void area. Some units are mirror images of the apartment plans shown in the brochure. Please refer to the key plans for orientation. The plans are subjected to change as may be approved by relevant authorities. All floor plans are approximate measurements only and are subjected to government resurvey. Abbreviation: A/C ledge (Aircon Ledge), PES (Private Enclosed Space), ST (Store), DB (Distribution Board).

Area includes A/C ledge, balcony, PES and void area. Some units are mirror images of the apartment plans shown in the brochure. Please refer to the key plans for orientation. The plans are subjected to change as may be approved by relevant authorities. All floor plans are approximate measurements only and are subjected to government resurvey. Abbreviation: A/C ledge (Aircon Ledge), PES (Private Enclosed Space), ST (Store), DB (Distribution Board).

TYPE C1

3 Bedroom
88sqm/947sqft
#02-19 to #21-19

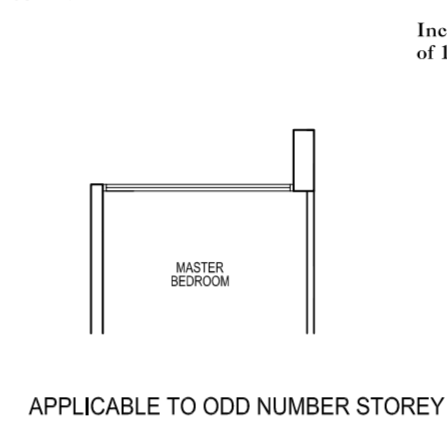
TYPE C1(a)

3 Bedroom
113sqm/1216sqft
#22-19
Inclusive of void area
of 25 sqm above living



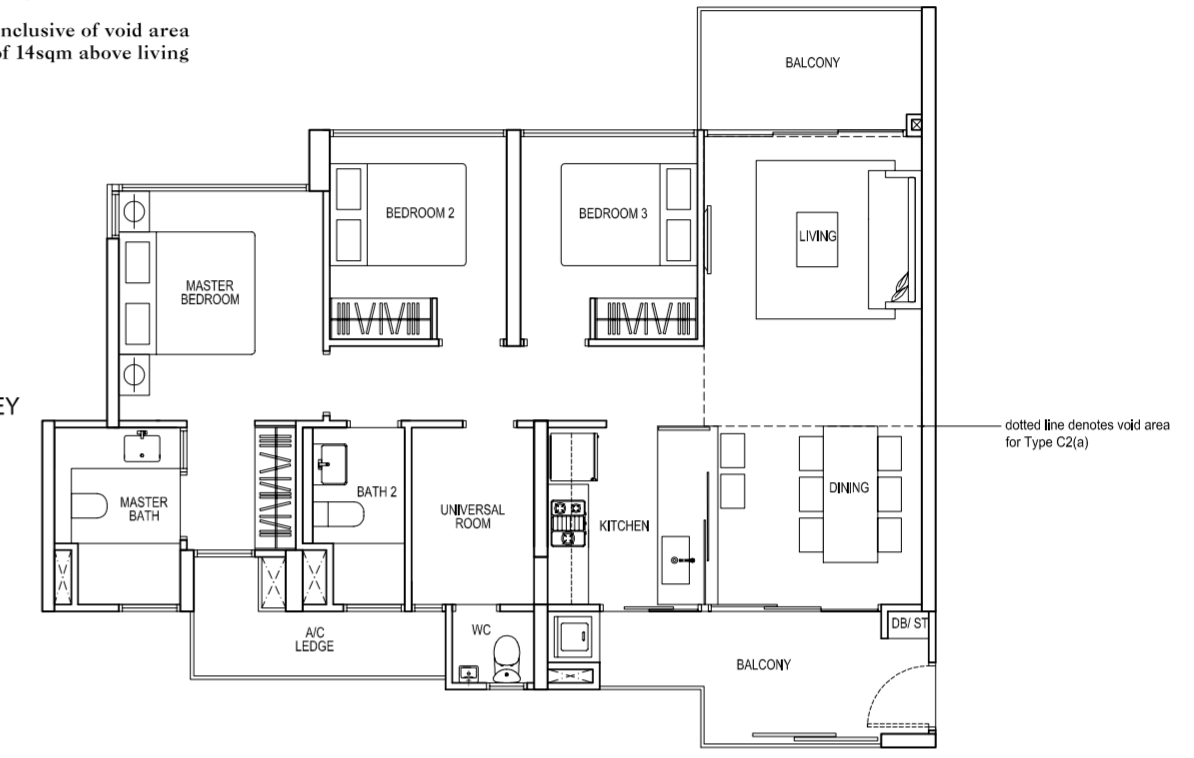
TYPE C2

3 Bedroom Deluxe
104sqm/1119sqft
#03-03* to #21-03*
#03-08 to #19-08
#03-10* to #19-10*
#03-15 to #19-15
#03-17* to #19-17*



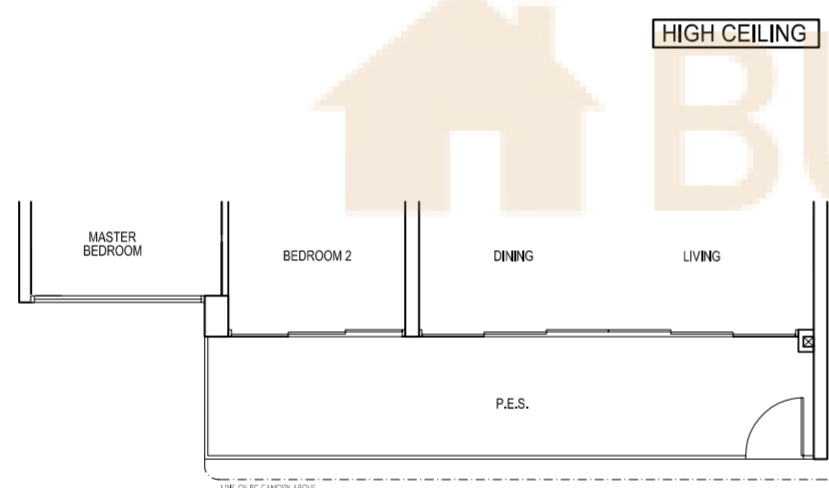
TYPE C2(a)

3 Bedroom Deluxe
118sqm/1270sqft
#22-03*
#20-08
#20-10*
#20-15
#20-17*
Inclusive of void area
of 14sqm above living



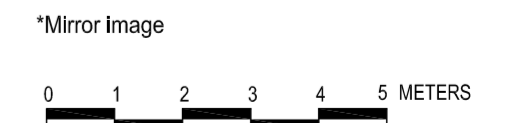
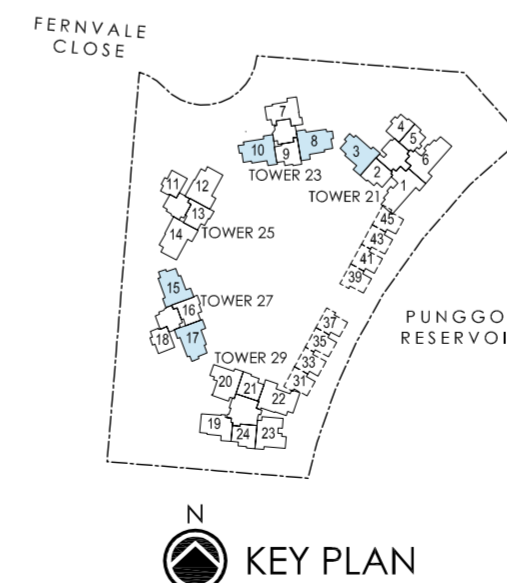
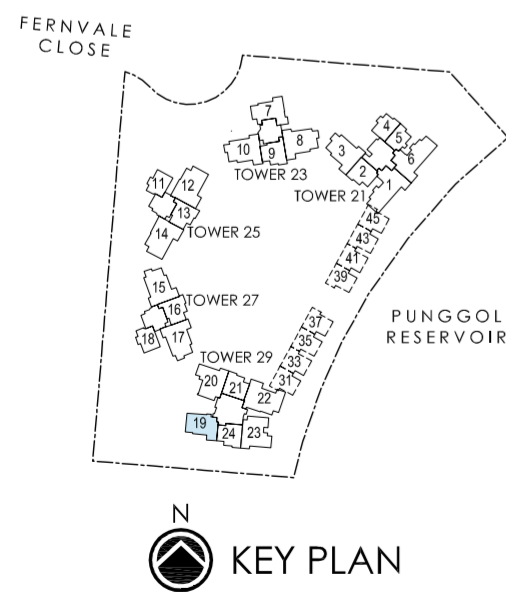
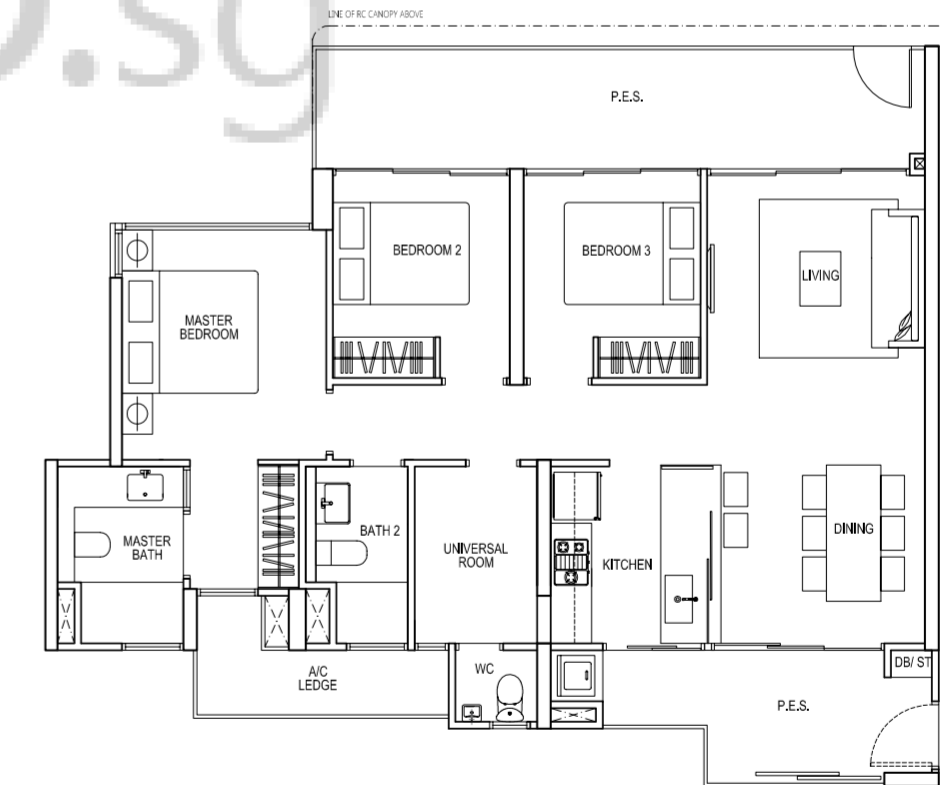
TYPE C1p

3 Bedroom
97sqm/1044sqft
#01-19



TYPE C2p

3 Bedroom Deluxe
114sqm/1227sqft
#02-03*
#02-08
#02-10*
#02-15
#02-17*



Area includes A/C ledge, balcony, PES and void area. Some units are mirror images of the apartment plans shown in the brochure. Please refer to the key plans for orientation. The plans are subjected to change as may be approved by relevant authorities. All floor plans are approximate measurements only and are subjected to government resurvey. Abbreviation: A/C ledge (Aircon Ledge), PES (Private Enclosed Space), ST (Store), DB (Distribution Board).

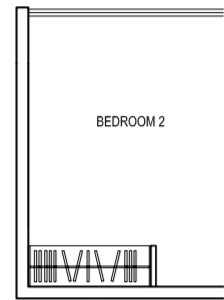
Area includes A/C ledge, balcony, PES and void area. Some units are mirror images of the apartment plans shown in the brochure. Please refer to the key plans for orientation. The plans are subjected to change as may be approved by relevant authorities. All floor plans are approximate measurements only and are subjected to government resurvey. Abbreviation: A/C ledge (Aircon Ledge), PES (Private Enclosed Space), ST (Store), DB (Distribution Board).

TYPE CTR

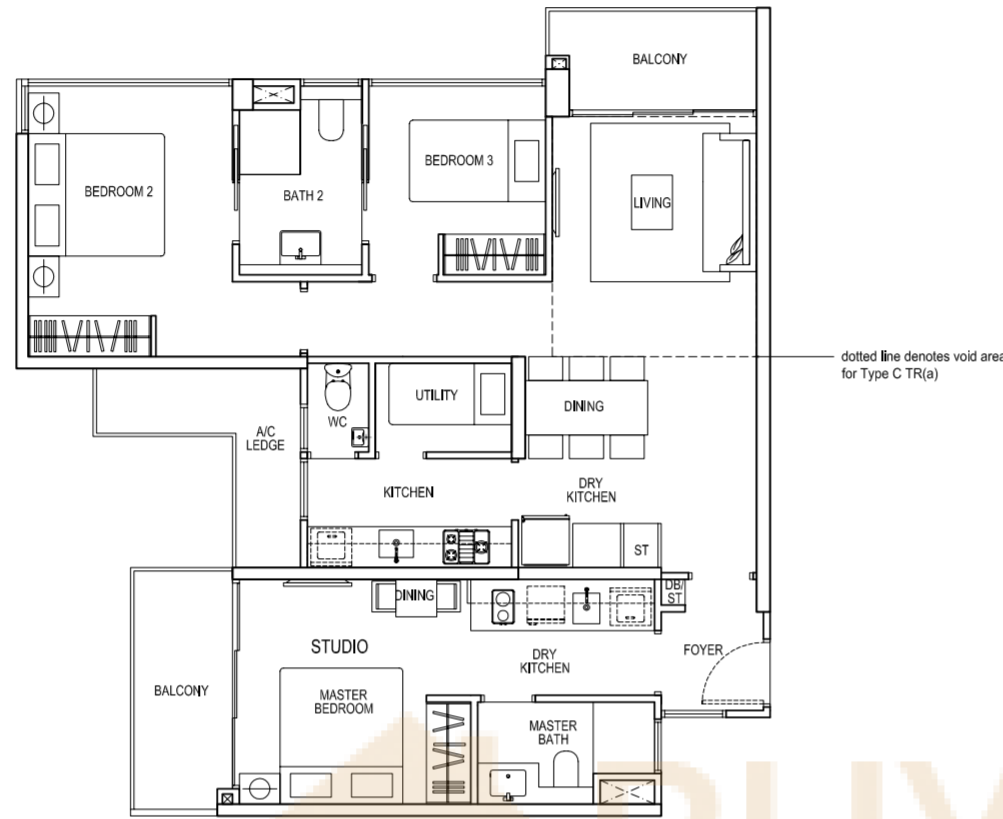
3 Bedroom
104sqm/1119sqft
#03-20 to #21-20
#02-23 to #21-23

TYPE CTR(a)

3 Bedroom
115sqm/1238sqft
#22-20
#22-23
Inclusive of void area
of 11 sqm above living



APPLICABLE TO ODD NUMBER STOREY



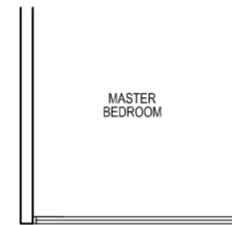
dotted line denotes void area
for Type CTR(a)

TYPE D

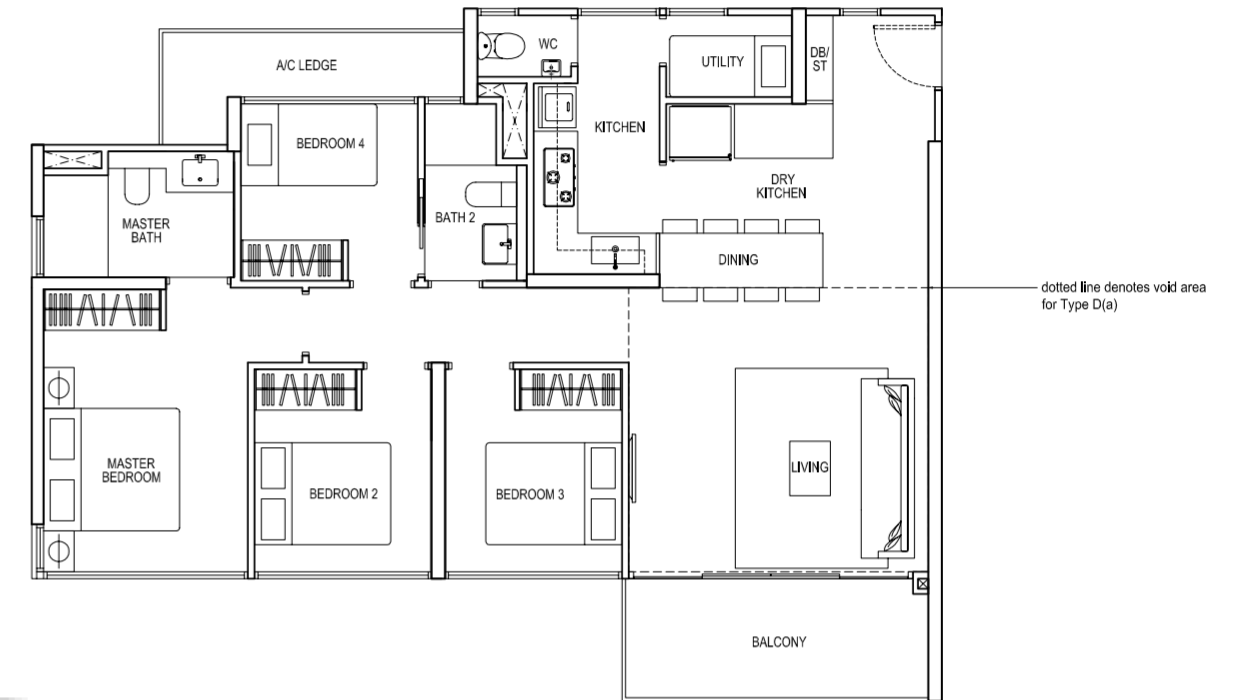
4 Bedroom
112sqm/1206sqft
#03-12* to #19-12*
#03-14 to #19-14

TYPE D(a)

4 Bedroom
131sqm/1410sqft
#20-12*
#20-14
Inclusive of void area
of 19 sqm above living



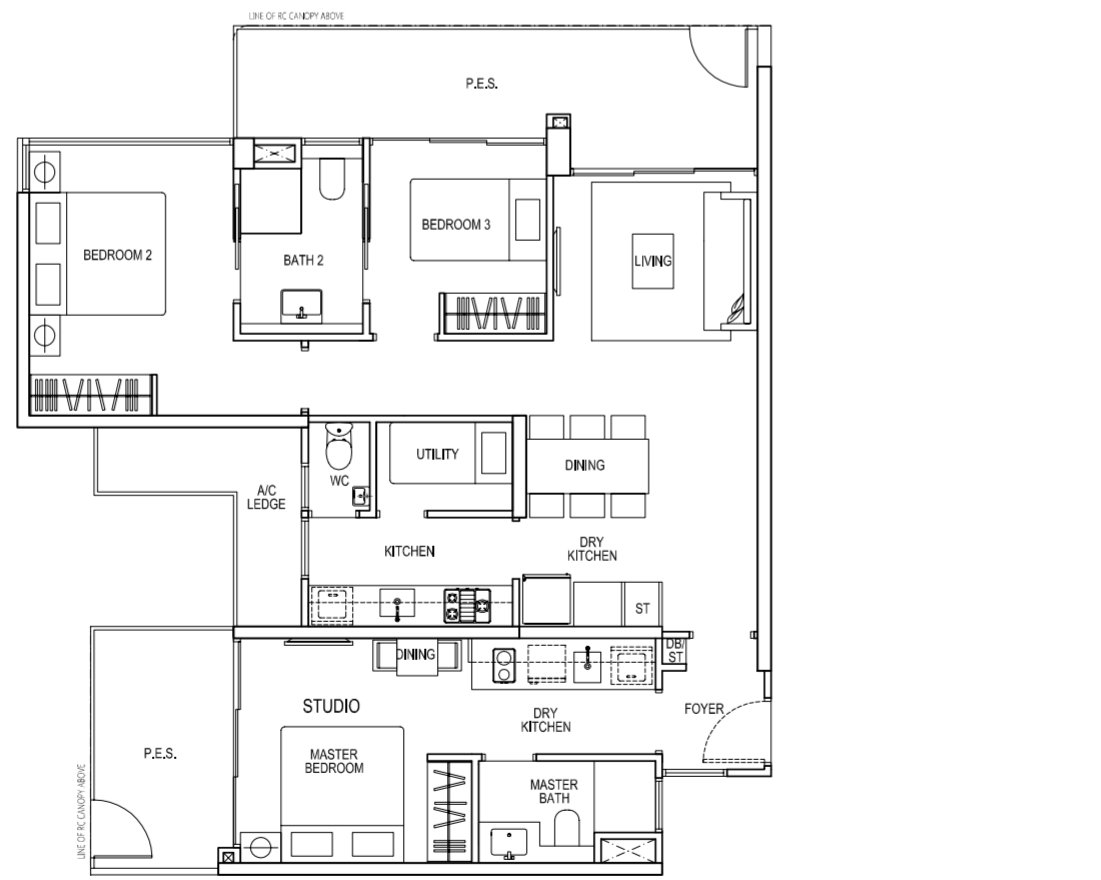
APPLICABLE TO ODD NUMBER STOREY



dotted line denotes void area
for Type D(a)

TYPE CTRp

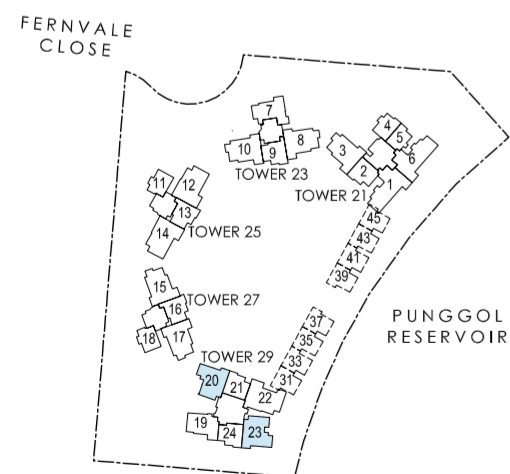
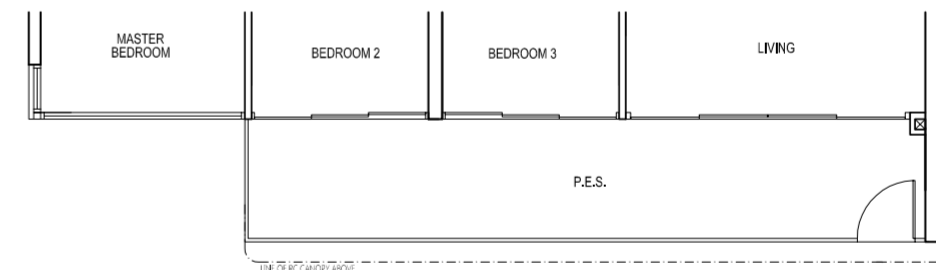
3 Bedroom
116sqm/1249sqft
#02-20
#01-23



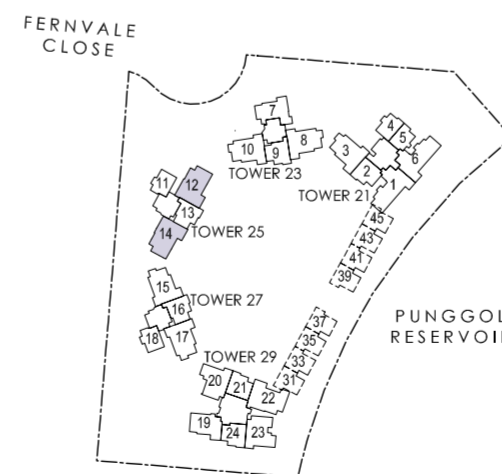
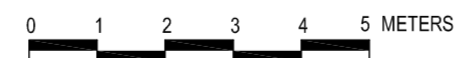
HIGH CEILING

TYPE Dp

4 Bedroom
122sqm/1313sqft
#02-12*
#02-14



KEY PLAN



KEY PLAN

*Mirror image



Area includes A/C ledge, balcony, PES and void area. Some units are mirror images of the apartment plans shown in the brochure. Please refer to the key plans for orientation. The plans are subjected to change as may be approved by relevant authorities. All floor plans are approximate measurements only and are subjected to government resurvey. Abbreviation: A/C ledge (Aircon Ledge), PES (Private Enclosed Space), ST (Store), DB (Distribution Board).

Area includes A/C ledge, balcony, PES and void area. Some units are mirror images of the apartment plans shown in the brochure. Please refer to the key plans for orientation. The plans are subjected to change as may be approved by relevant authorities. All floor plans are approximate measurements only and are subjected to government resurvey. Abbreviation: A/C ledge (Aircon Ledge), PES (Private Enclosed Space), ST (Store), DB (Distribution Board).

TYPE D1

4 Bedroom
118sqm/1270sqft
#03-22 to #21-22

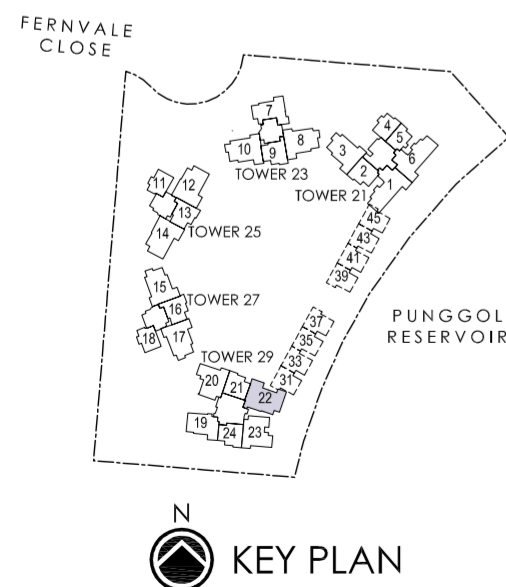
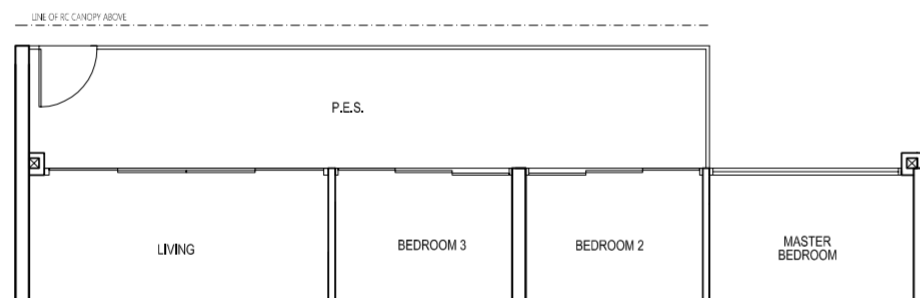
TYPE D1(a)

4 Bedroom
137sqm/1475sqft
#22-22
Inclusive of void area
of 19 sqm above living



TYPE D1p

4 Bedroom
123sqm/1324sqft
#02-22

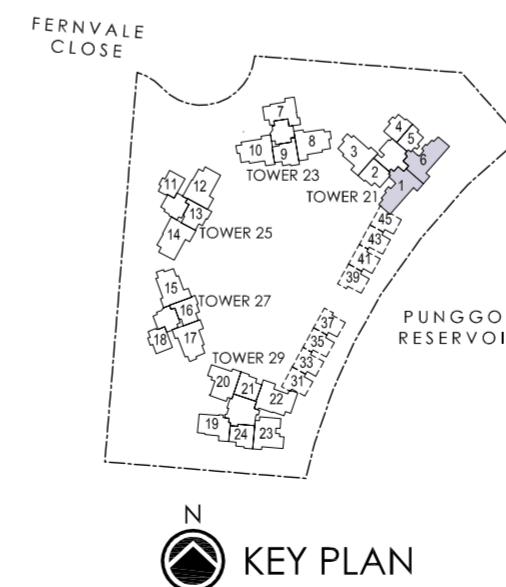
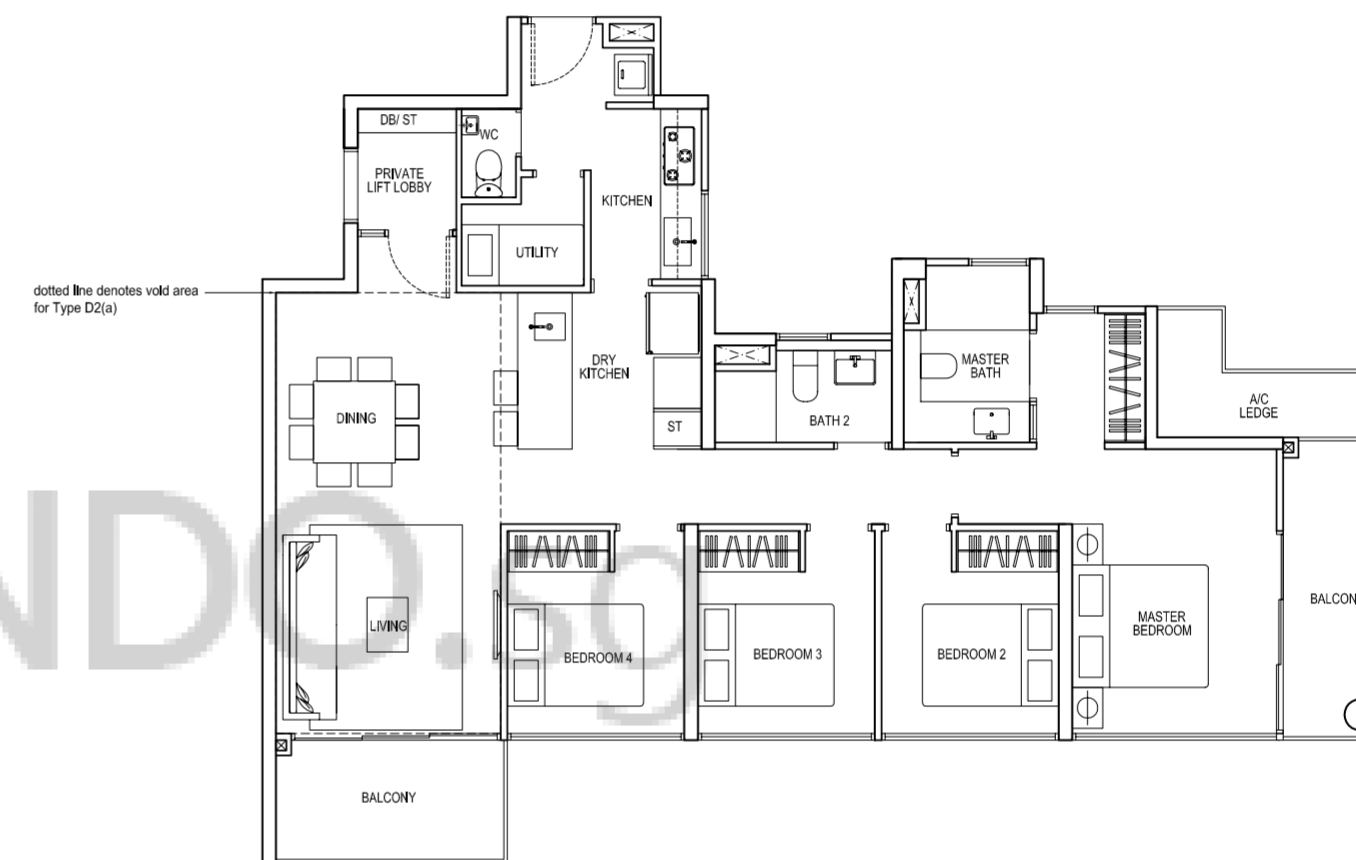


TYPE D2

4 Bedroom
126sqm/1356sqft
#03-01* to #21-01*
#02-06 to #21-06

TYPE D2(a)

4 Bedroom
148sqm/1593sqft
#22-01*
#22-06
Inclusive of void area
of 22 sqm above living



*Mirror image

Area includes A/C ledge, balcony, PES and void area. Some units are mirror images of the apartment plans shown in the brochure. Please refer to the key plans for orientation. The plans are subjected to change as may be approved by relevant authorities. All floor plans are approximate measurements only and are subjected to government resurvey. Abbreviation: A/C ledge (Aircon Ledge), PES (Private Enclosed Space), ST (Store), DB (Distribution Board).

Area includes A/C ledge, balcony, PES and void area. Some units are mirror images of the apartment plans shown in the brochure. Please refer to the key plans for orientation. The plans are subjected to change as may be approved by relevant authorities. All floor plans are approximate measurements only and are subjected to government resurvey. Abbreviation: A/C ledge (Aircon Ledge), PES (Private Enclosed Space), ST (Store), DB (Distribution Board).

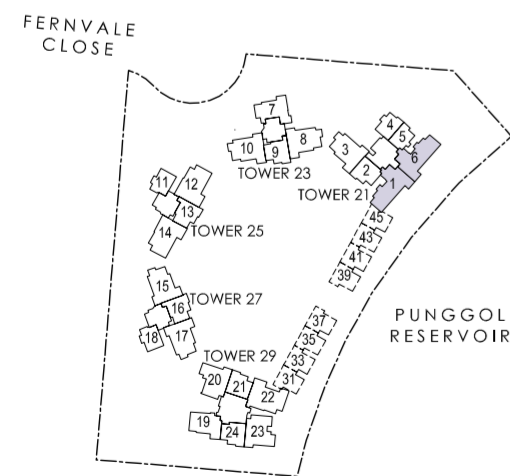
TYPE D2p

4 Bedroom
139sqm/1496sqft
#02-01

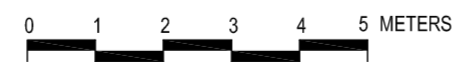


TYPE D2p1

4 Bedroom
148sqm/1593sqft
#01-06



KEY PLAN



Area includes A/C ledge, balcony, PES and void area. Some units are mirror images of the apartment plans shown in the brochure. Please refer to the key plans for orientation. The plans are subjected to change as may be approved by relevant authorities. All floor plans are approximate measurements only and are subjected to government resurvey. Abbreviation: A/C ledge (Aircon Ledge), PES (Private Enclosed Space), ST (Store), DB (Distribution Board).