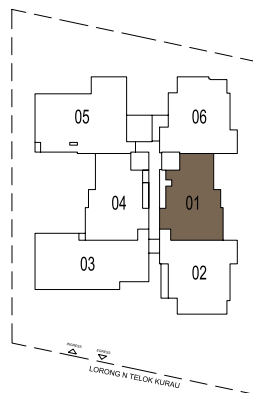
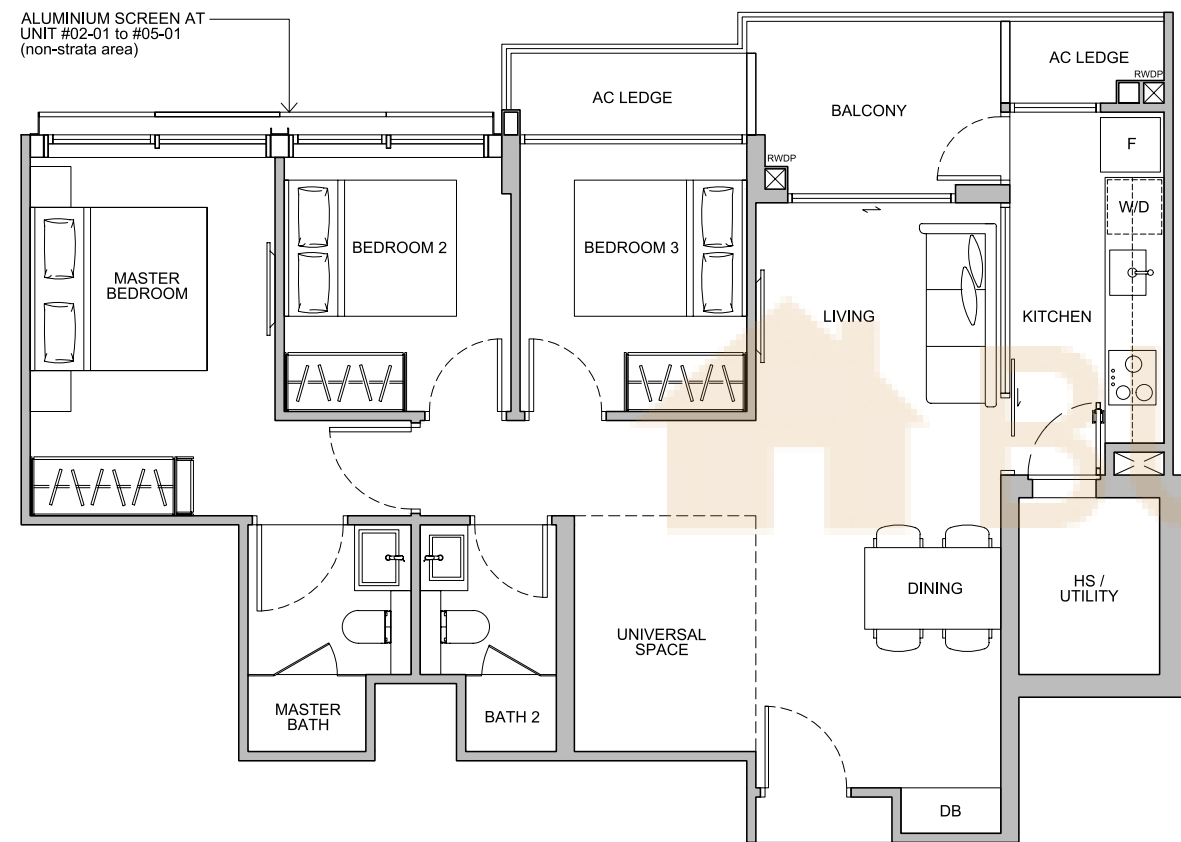


FLOOR PLAN

TYPE A1

3-BEDROOM

Area: 969 sqft
Unit: #02-01 to #05-01

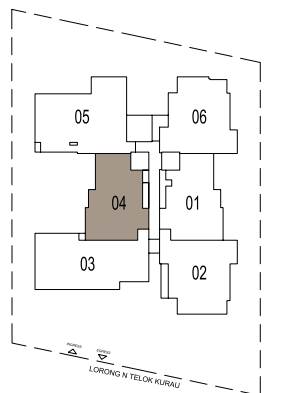
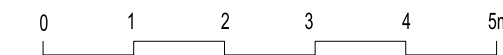
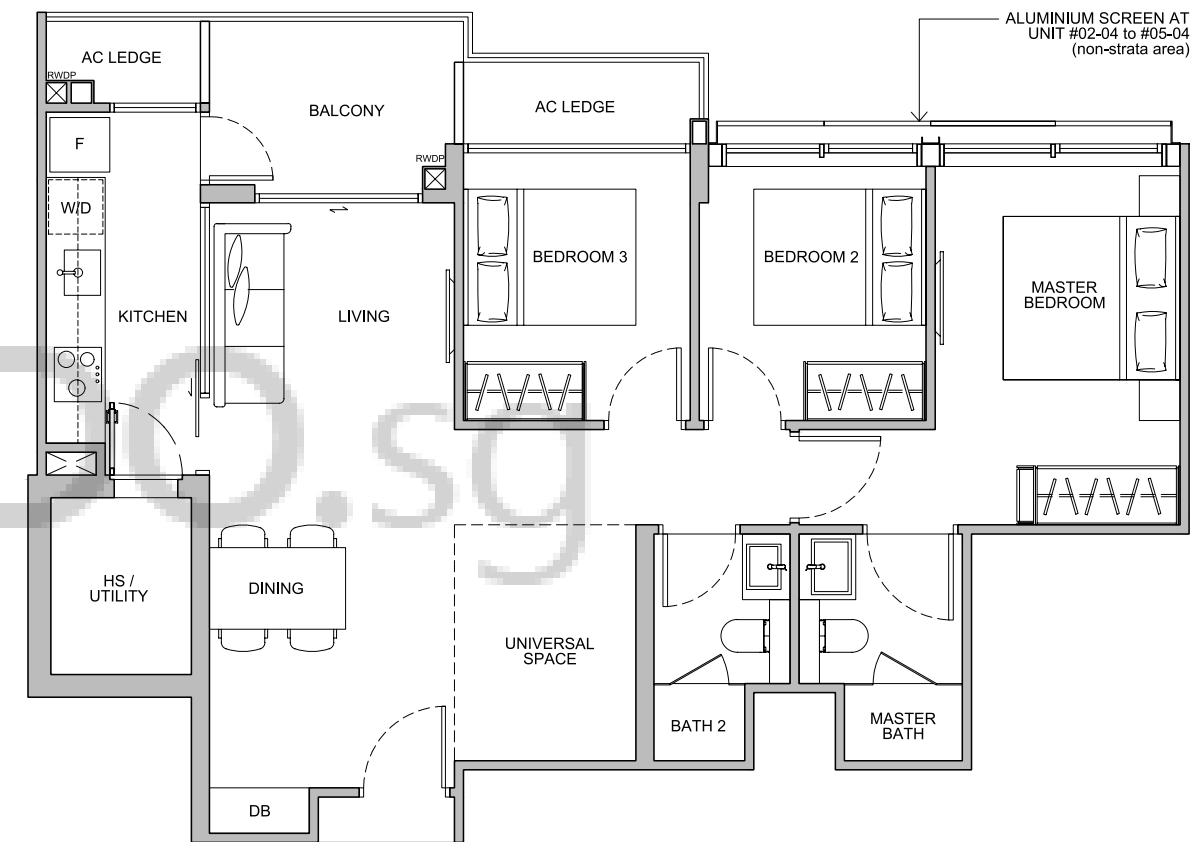


FLOOR PLAN

TYPE A2

3-BEDROOM

Area: 969 sqft
Unit: #02-04 to #05-04

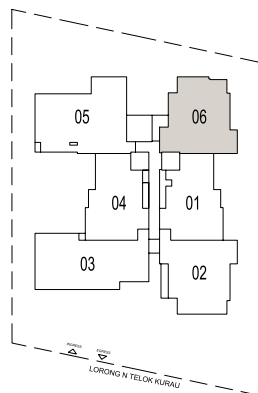
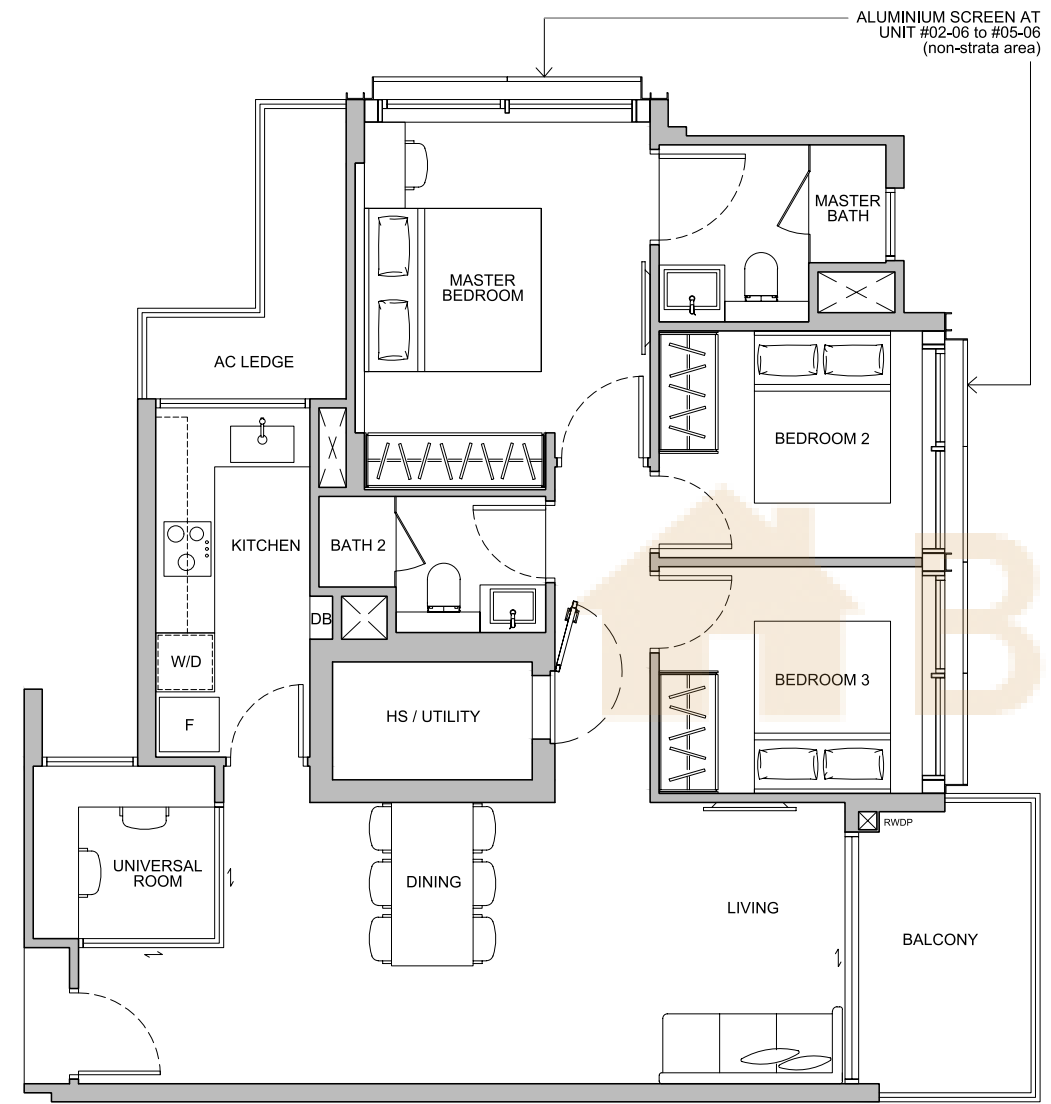


FLOOR PLAN

TYPE B1

3-BEDROOM

Area: 1,055 sqft
Unit: #02-06 to #05-06

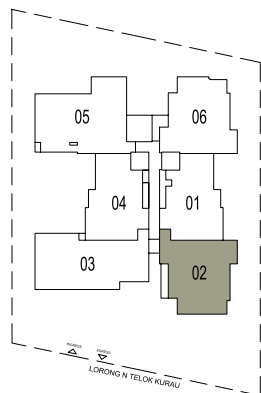
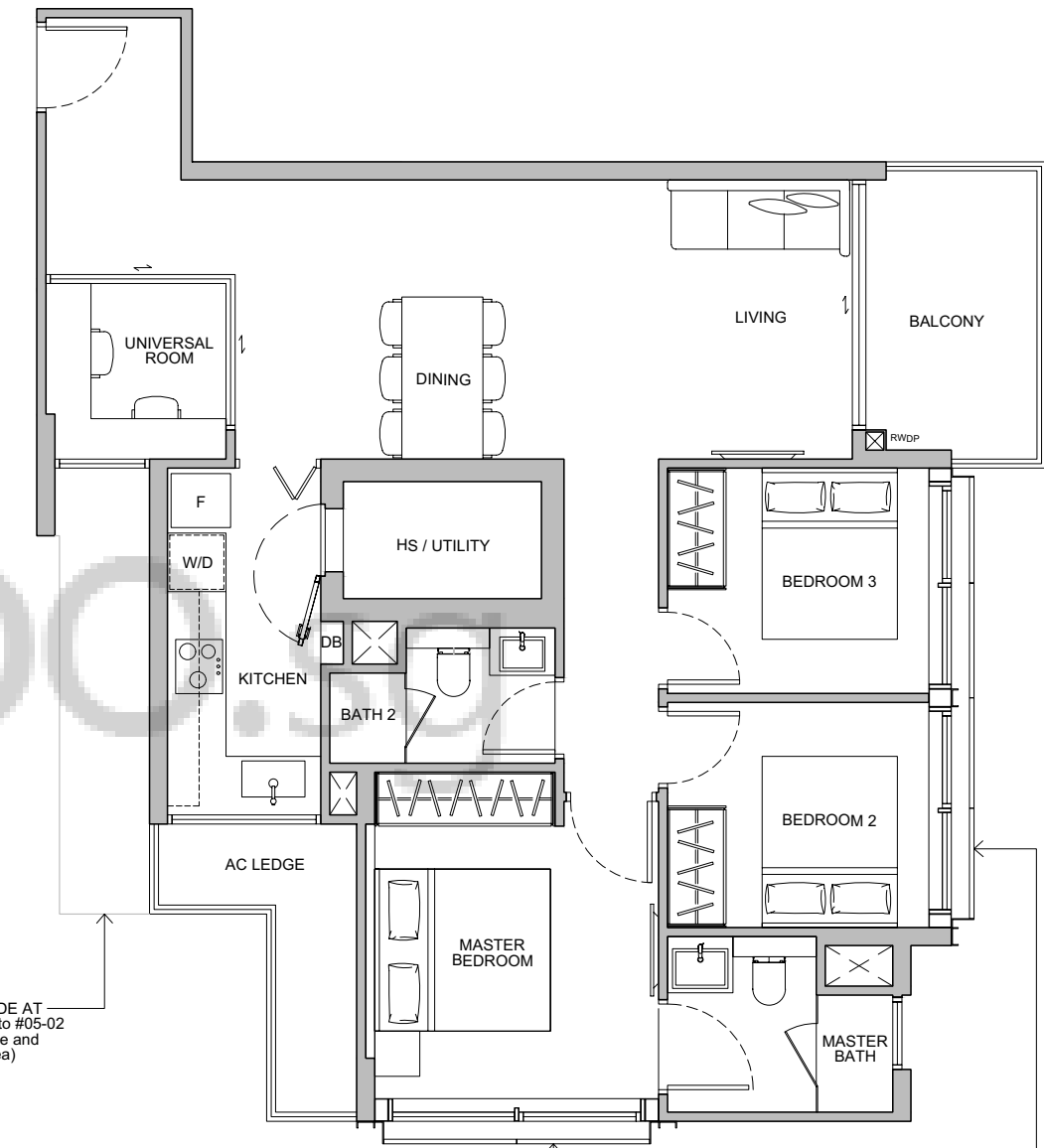


FLOOR PLAN

TYPE B2

3-BEDROOM

Area: 1,066 sqft
Unit: #02-02 to #05-02



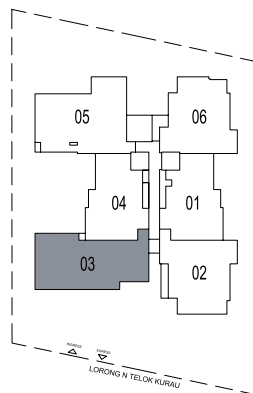
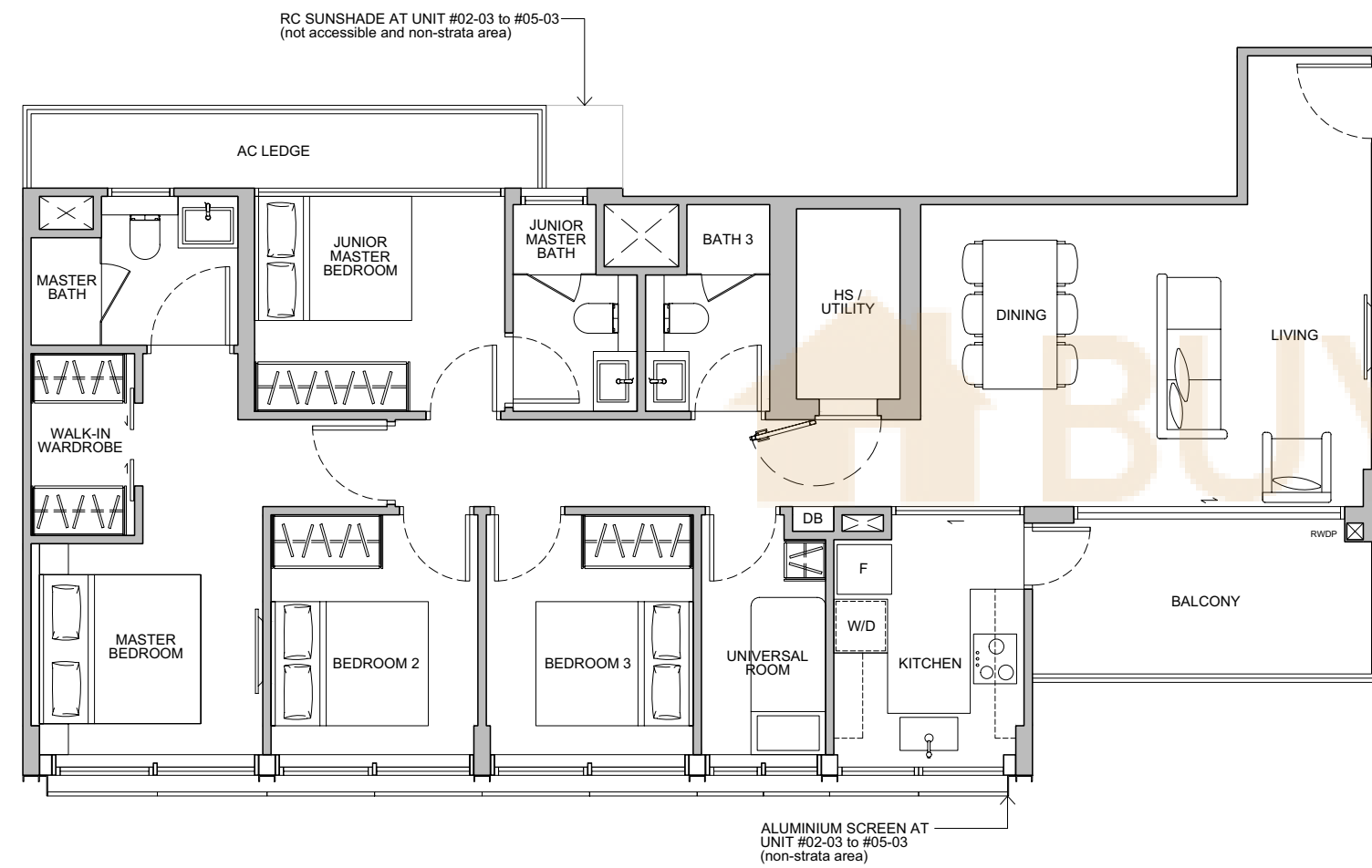
FLOOR PLAN

TYPE C1

4+1 BEDROOM

Area: 1,270 sqft

Unit: #02-03 to #05-03



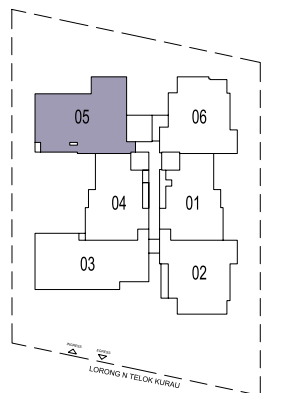
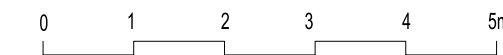
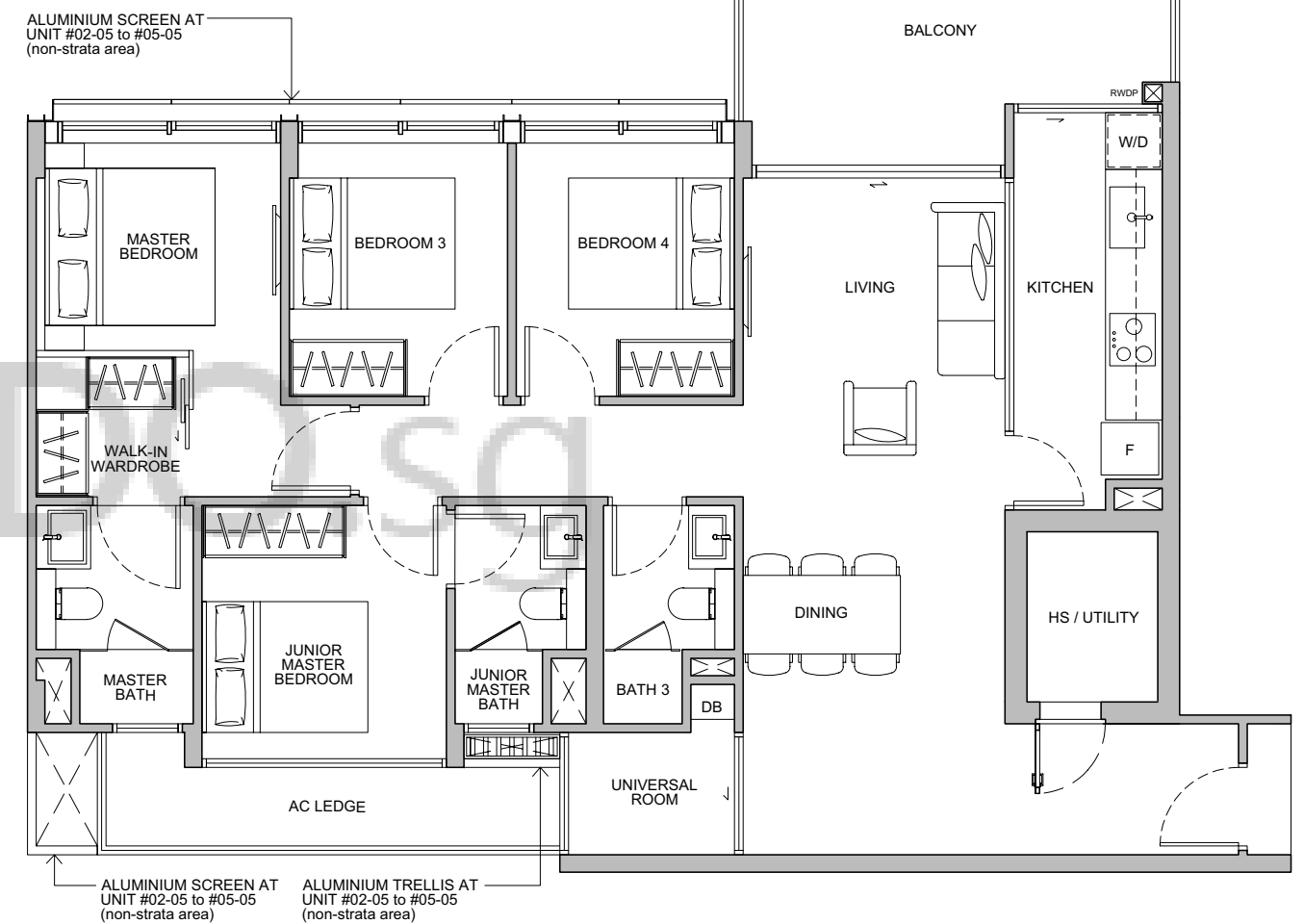
FLOOR PLAN

TYPE C2

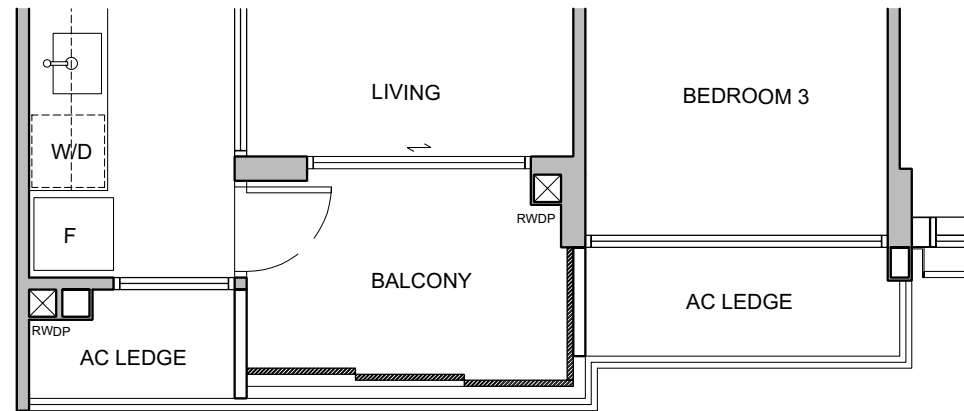
4+1 BEDROOM

Area: 1,313 sqft

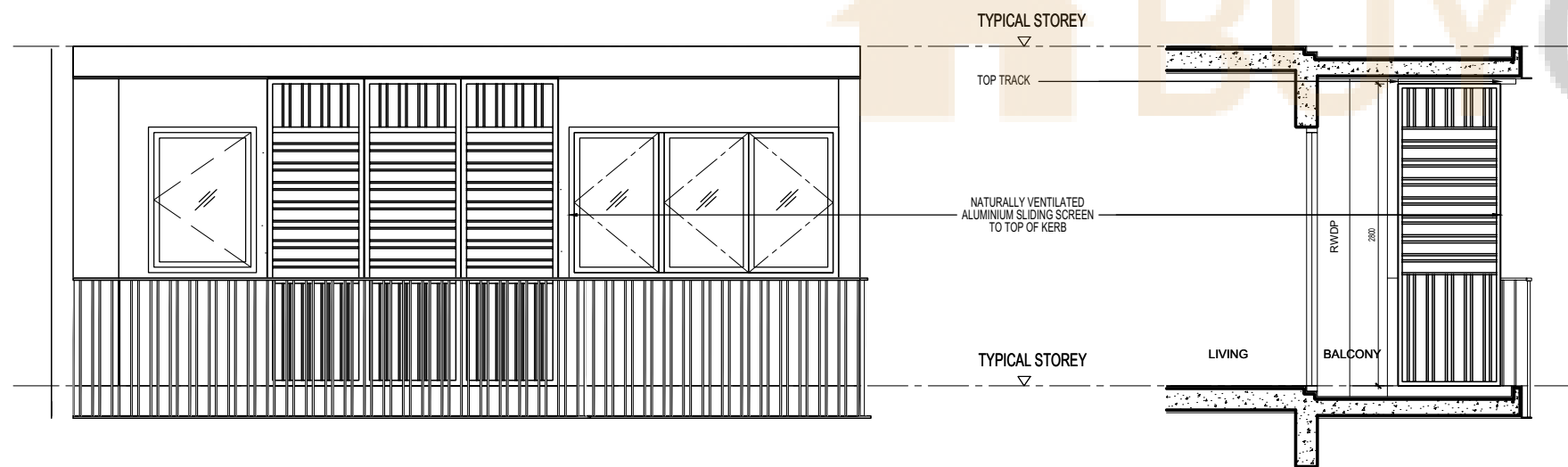
Unit: #02-05 to #05-05



BALCONY SCREEN DETAILS



PLAN



FRONT ELEVATION

SECTION

This drawing is for reference only. The screen design is provided for aesthetic uniformity of the development. Materials to be aluminium with powder coated finish. Fixing details are by contractor, and fixing shall not damage the existing waterproofing and structure. Owner shall verify all dimensions prior to fabrication and commencement of work. Drawings are not to scale. The cost of screen and installation shall be borne by the Owner.

CREDENTIALS



LWH Holdings Pte Ltd

Lim Wen Heng Holdings (est. 1994) is an established construction group in Singapore, registered as an A1 contractor with the Building and Construction Authority. Priding itself on its ability to build exquisite yet functional homes, Lim Wen Heng hopes to capitalize on their two decades of experience as a builder and realize their vision of "Creating Beautiful Homes for Everyone".

The Group's portfolio of recent project and joint ventures include Carmael Thirty-Eight, Neu at Novena and The Iveria.



CARMAEL THIRTY-EIGHT



NEU AT NOVENA



THE IVERIA



ABR Holdings Limited

Founded in 1978, ABR Holdings Limited is a Mainboard-listed company on the Singapore Exchange focusing on food services and property investments. Managing established brands including Swensens, Tip Top Curry Puffs, Season's Café, and Season Confectionary and Bakery, it has strategically expanded into property development within Singapore and the region driven by the belief that participation in quality property projects will open up new revenue opportunities and enhance its future prospects.