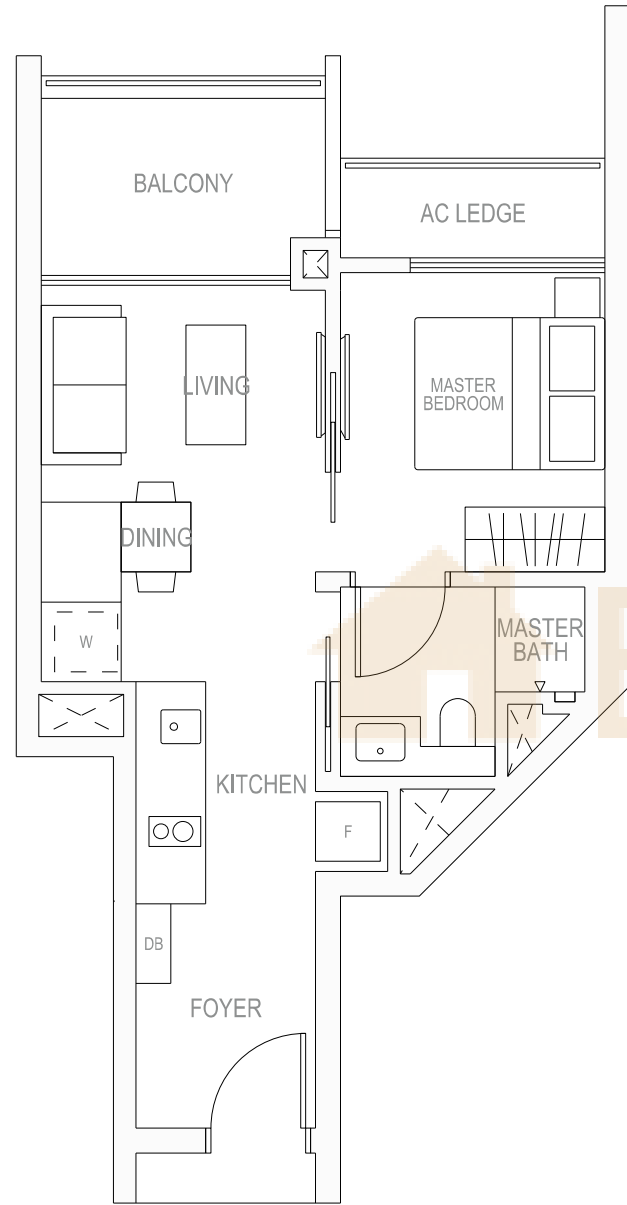


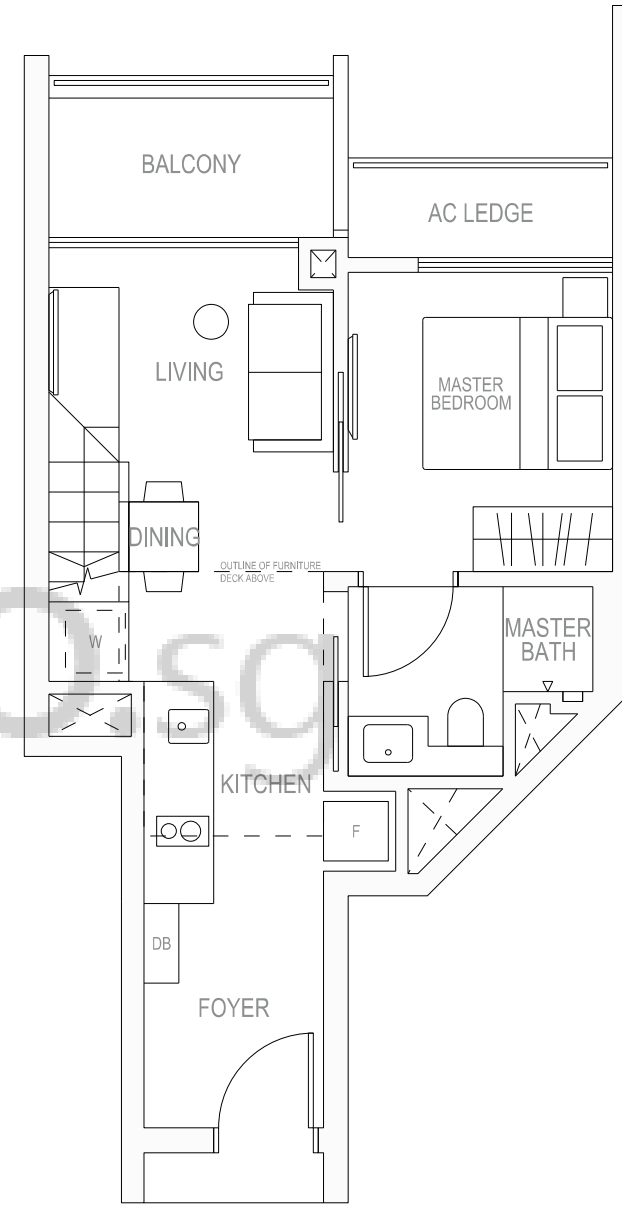
A

1 BEDROOM

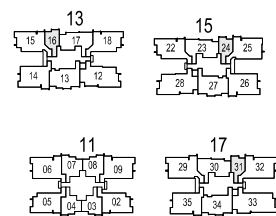


AP LOFT

1 BEDROOM



TYPE A



AREA 46 SQM, 495 SQFT

BLOCK 13
#02-16 TO #18-16

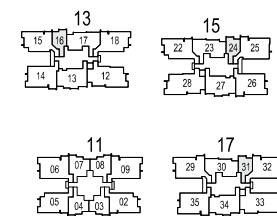
BLOCK 15
#02-24 TO #18-24

BLOCK 17
#02-31 TO #18-31

THE PLANS ARE SUBJECT TO CHANGE AS MAY BE REQUIRED OR APPROVED BY THE RELEVANT AUTHORITIES. AREAS ARE ESTIMATES ONLY AND ARE SUBJECT TO FINAL SURVEY. PLANS ARE NOT DRAWN TO SCALE AND DO NOT FORM PART OF THE CONTRACT.

RIVERBANK @ FERNVALE

TYPE AP LOFT



AREA 46 SQM, 495 SQFT

BLOCK 13
#19-16

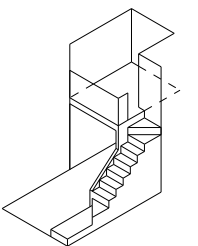
BLOCK 15
#19-24

BLOCK 17
#19-31

THE PLANS ARE SUBJECT TO CHANGE AS MAY BE REQUIRED OR APPROVED BY THE RELEVANT AUTHORITIES. AREAS ARE ESTIMATES ONLY AND ARE SUBJECT TO FINAL SURVEY. PLANS ARE NOT DRAWN TO SCALE AND DO NOT FORM PART OF THE CONTRACT.

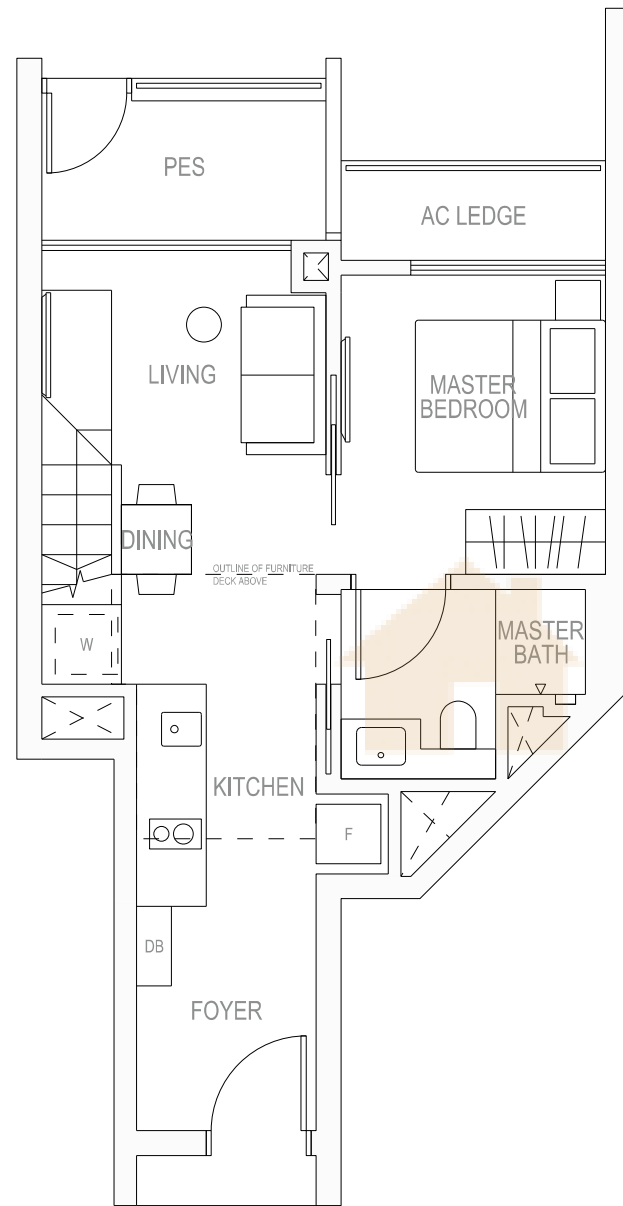
RIVERBANK @ FERNVALE

FURNITURE DECK ISOMETRIC



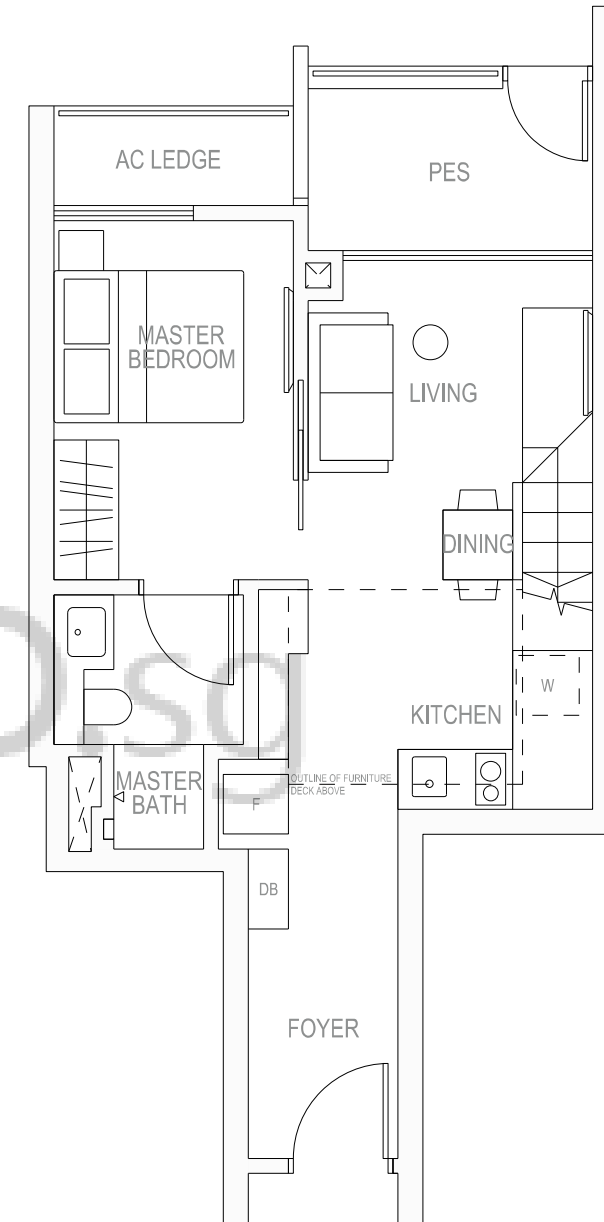
A a G LOFT

1 BEDROOM



A b G LOFT

1 BEDROOM

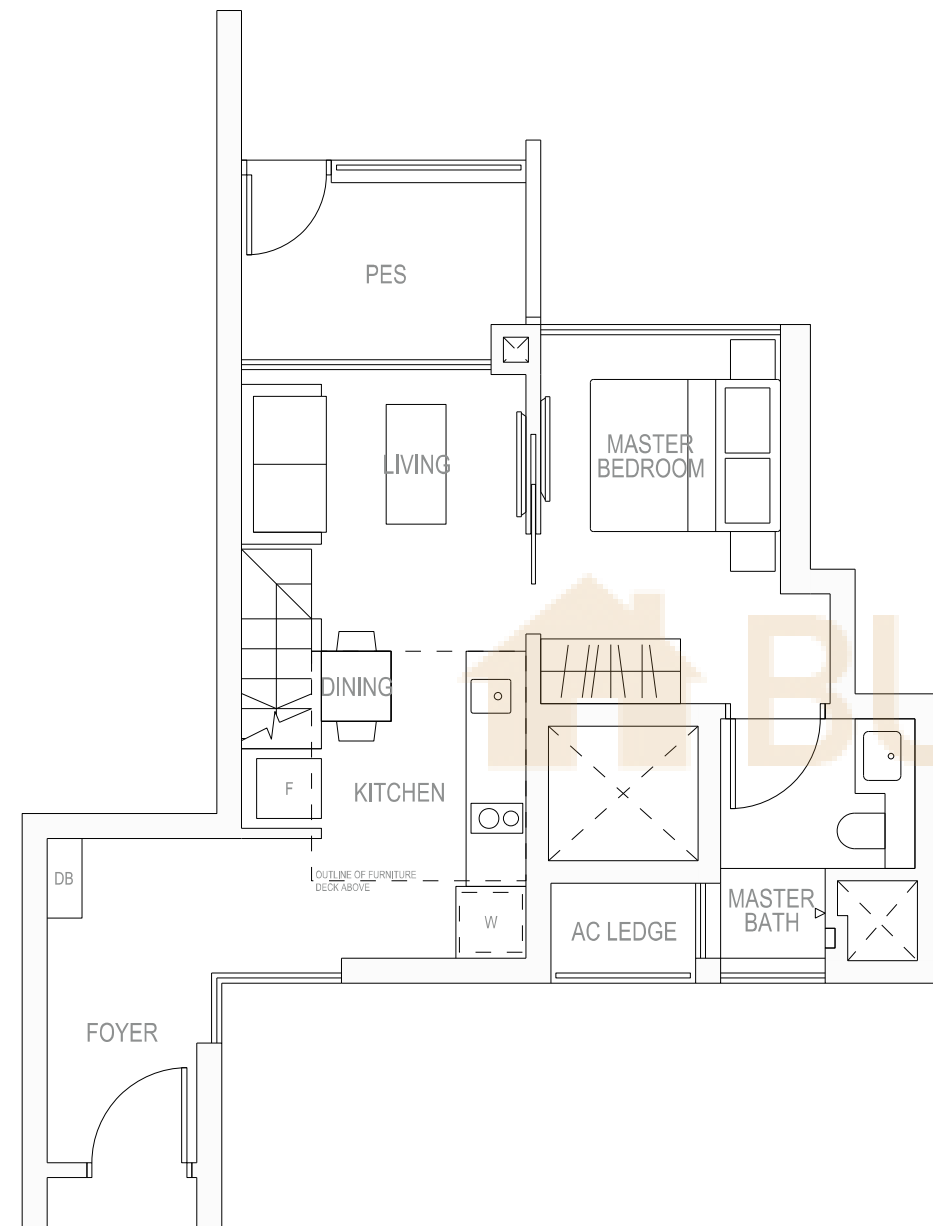


<p>TYPE AaG LOFT</p>	<p>AREA 46 SQM, 495 SQFT</p> <table border="1"> <tr> <td>BLOCK 13 # 01-16</td> <td>BLOCK 15 # 01-24</td> <td>BLOCK 17 # 01-31</td> </tr> </table> <p>THE PLANS ARE SUBJECT TO CHANGE AS MAY BE REQUIRED OR APPROVED BY THE RELEVANT AUTHORITIES. AREAS ARE ESTIMATES ONLY AND ARE SUBJECT TO FINAL SURVEY. PLANS ARE NOT DRAWN TO SCALE AND DO NOT FORM PART OF THE CONTRACT.</p>	BLOCK 13 # 01-16	BLOCK 15 # 01-24	BLOCK 17 # 01-31	<p>FURNITURE DECK ISOMETRIC</p>
BLOCK 13 # 01-16	BLOCK 15 # 01-24	BLOCK 17 # 01-31			

<p>TYPE AbG LOFT</p>	<p>AREA 49 SQM, 527 SQFT</p> <p>BLOCK 11 # 01-04</p> <p>THE PLANS ARE SUBJECT TO CHANGE AS MAY BE REQUIRED OR APPROVED BY THE RELEVANT AUTHORITIES. AREAS ARE ESTIMATES ONLY AND ARE SUBJECT TO FINAL SURVEY. PLANS ARE NOT DRAWN TO SCALE AND DO NOT FORM PART OF THE CONTRACT.</p>	<p>FURNITURE DECK ISOMETRIC</p>
----------------------	--	---------------------------------

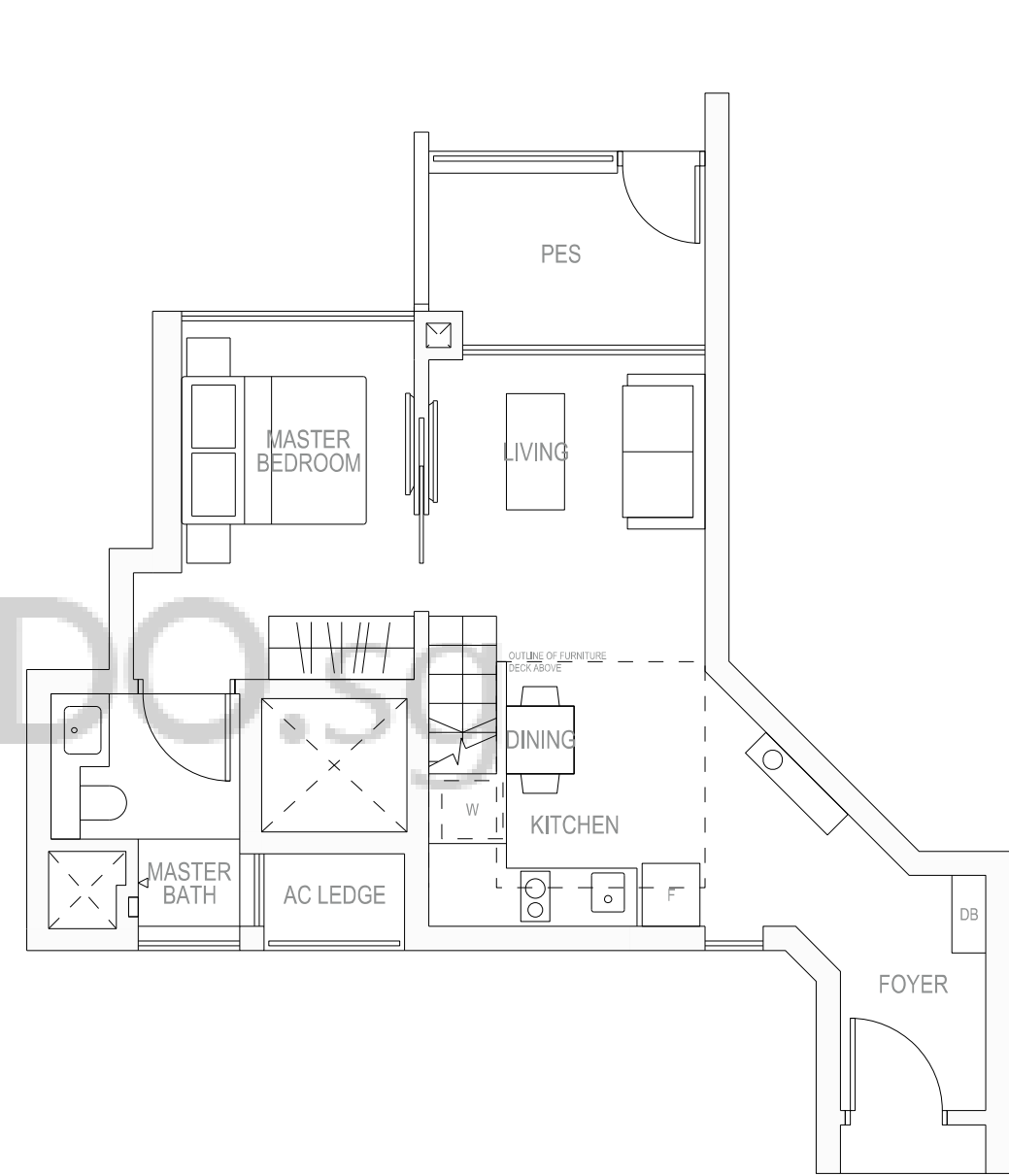
A c G LOFT

1 BEDROOM



A d G LOFT

1 BEDROOM

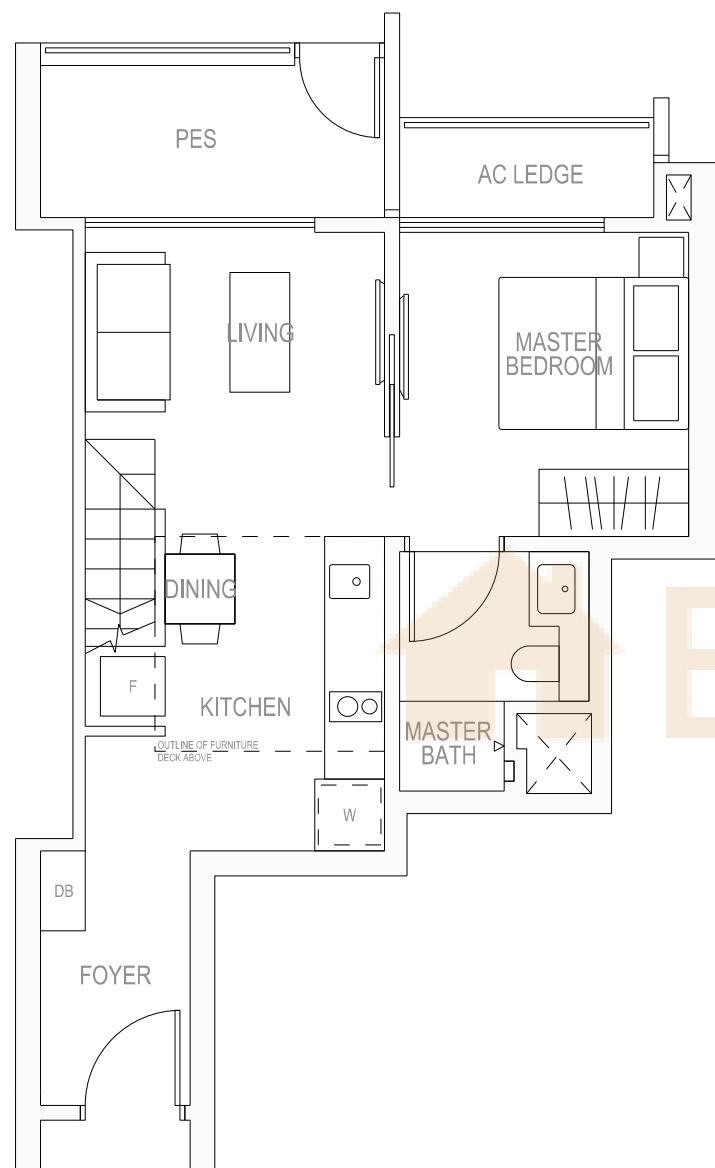


<p>TYPE AcG LOFT</p>	<p>AREA 50 SQM, 538 SQFT</p> <p>BLOCK 11 # 01-05</p> <p>THE PLANS ARE SUBJECT TO CHANGE AS MAY BE REQUIRED OR APPROVED BY THE RELEVANT AUTHORITIES. AREAS ARE ESTIMATES ONLY AND ARE SUBJECT TO FINAL SURVEY. PLANS ARE NOT DRAWN TO SCALE AND DO NOT FORM PART OF THE CONTRACT.</p>	<p>FURNITURE DECK ISOMETRIC</p>
----------------------	--	---------------------------------

<p>TYPE AdG LOFT</p>	<p>AREA 51 SQM, 549 SQFT</p> <p>BLOCK 13 # 01-15</p> <p>THE PLANS ARE SUBJECT TO CHANGE AS MAY BE REQUIRED OR APPROVED BY THE RELEVANT AUTHORITIES. AREAS ARE ESTIMATES ONLY AND ARE SUBJECT TO FINAL SURVEY. PLANS ARE NOT DRAWN TO SCALE AND DO NOT FORM PART OF THE CONTRACT.</p>	<p>FURNITURE DECK ISOMETRIC</p>
----------------------	--	---------------------------------

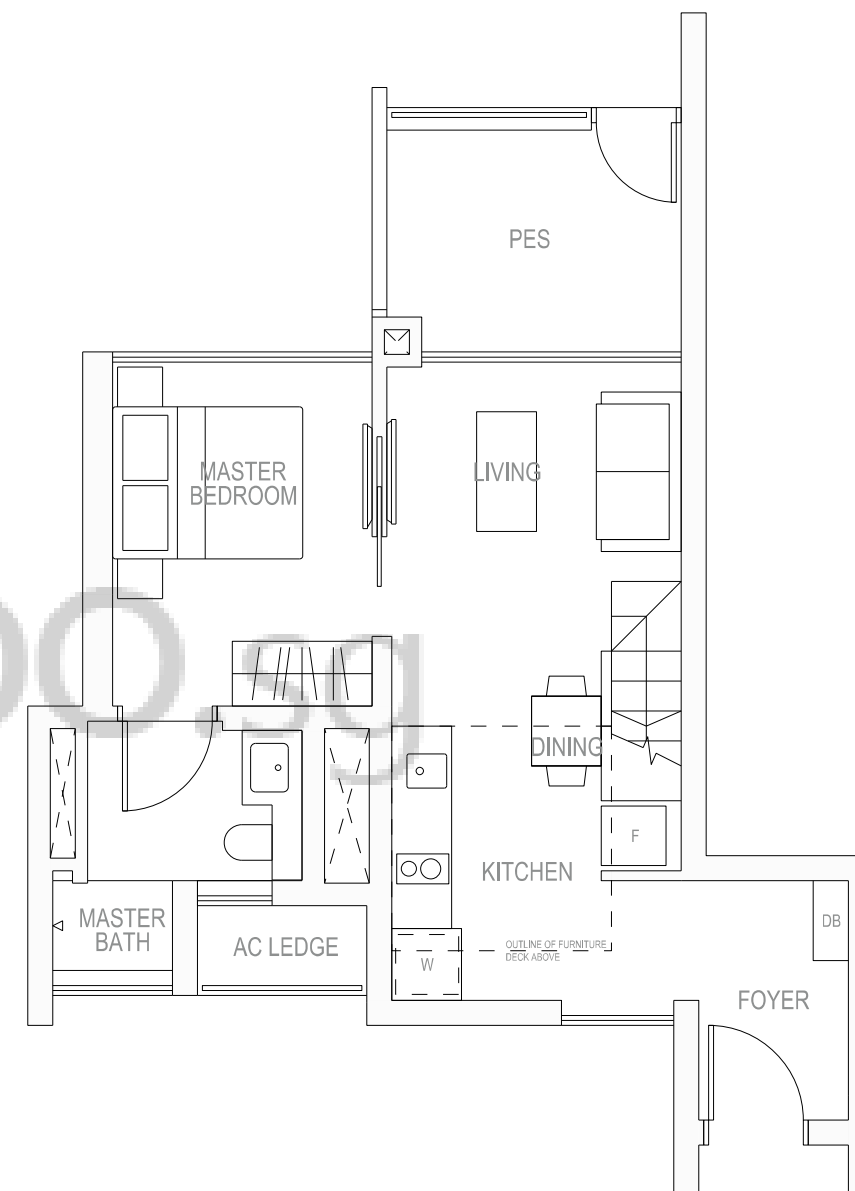
AeG LOFT

1 BEDROOM



AfG LOFT

1 BEDROOM



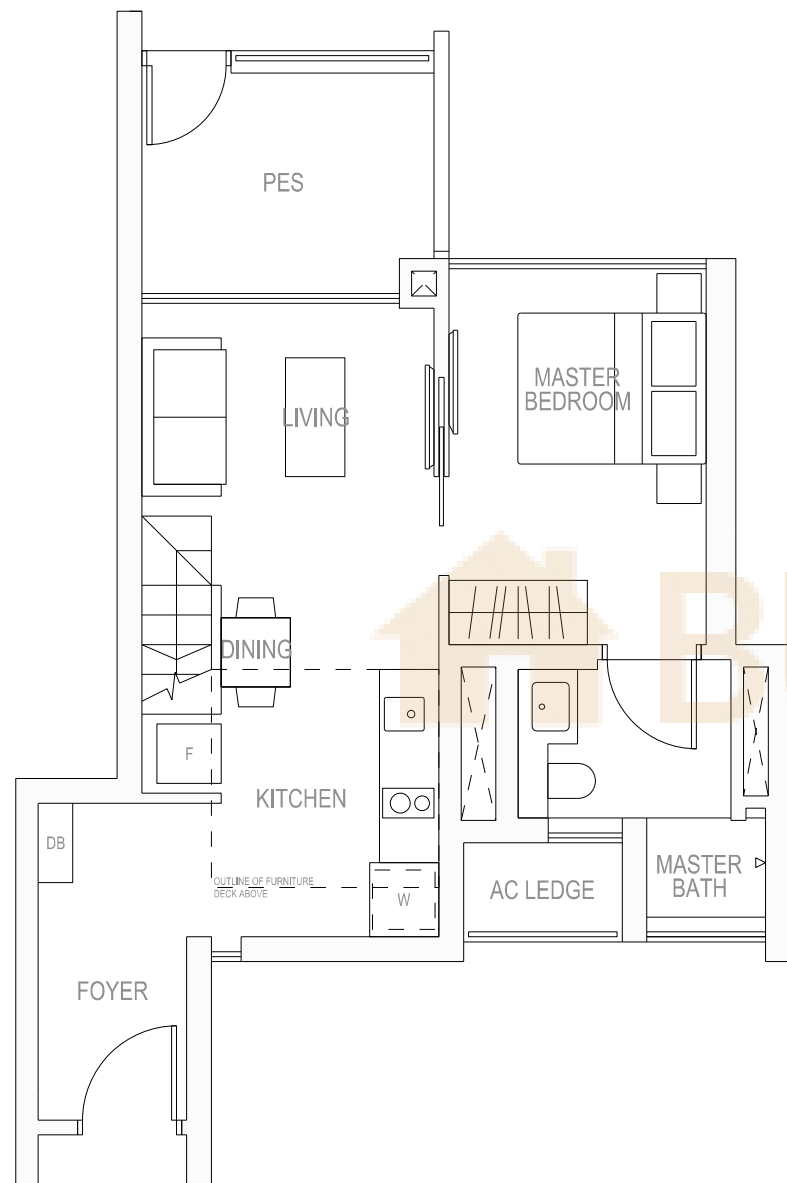
BUYCONDO.SG

<p>TYPE AeG LOFT</p>	<p>AREA 50 SQM, 538 SQFT</p> <table border="1"> <tr> <td>BLOCK 13 # 01-13</td> <td>BLOCK 15 # 01-27 <small>MIRROR IMAGE</small></td> <td>BLOCK 17 # 01-34</td> </tr> </table> <p>THE PLANS ARE SUBJECT TO CHANGE AS MAY BE REQUIRED OR APPROVED BY THE RELEVANT AUTHORITIES. AREAS ARE ESTIMATES ONLY AND ARE SUBJECT TO FINAL SURVEY. PLANS ARE NOT DRAWN TO SCALE AND DO NOT FORM PART OF THE CONTRACT.</p>	BLOCK 13 # 01-13	BLOCK 15 # 01-27 <small>MIRROR IMAGE</small>	BLOCK 17 # 01-34	<p>FURNITURE DECK ISOMETRIC</p>
BLOCK 13 # 01-13	BLOCK 15 # 01-27 <small>MIRROR IMAGE</small>	BLOCK 17 # 01-34			

<p>TYPE AfG LOFT</p>	<p>AREA 52 SQM, 560 SQFT</p> <p>BLOCK 11 # 01-06</p> <p>THE PLANS ARE SUBJECT TO CHANGE AS MAY BE REQUIRED OR APPROVED BY THE RELEVANT AUTHORITIES. AREAS ARE ESTIMATES ONLY AND ARE SUBJECT TO FINAL SURVEY. PLANS ARE NOT DRAWN TO SCALE AND DO NOT FORM PART OF THE CONTRACT.</p>	<p>FURNITURE DECK ISOMETRIC</p>
----------------------	--	---------------------------------

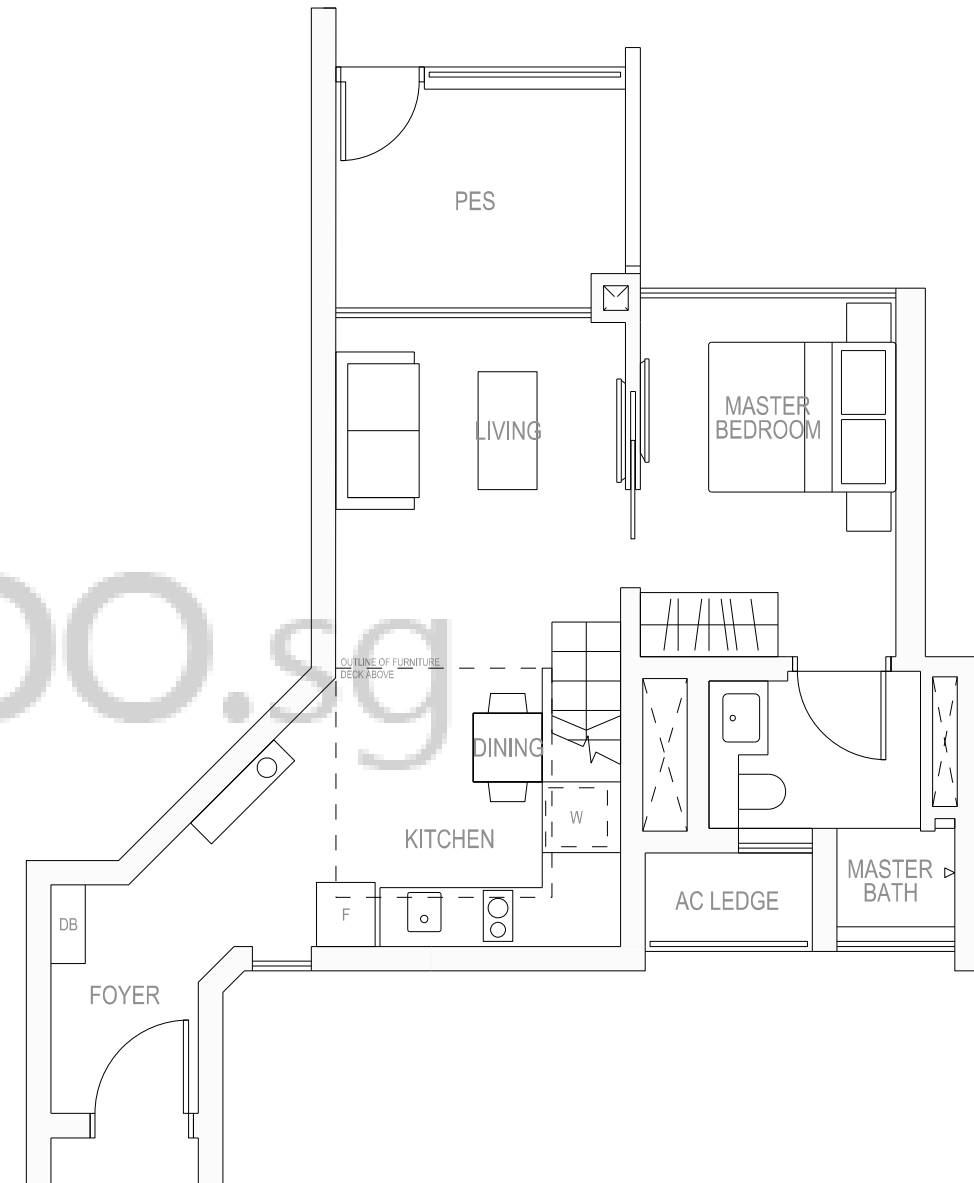
AgG LOFT

1 BEDROOM



AhG LOFT

1 BEDROOM



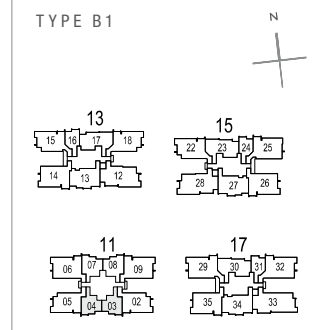
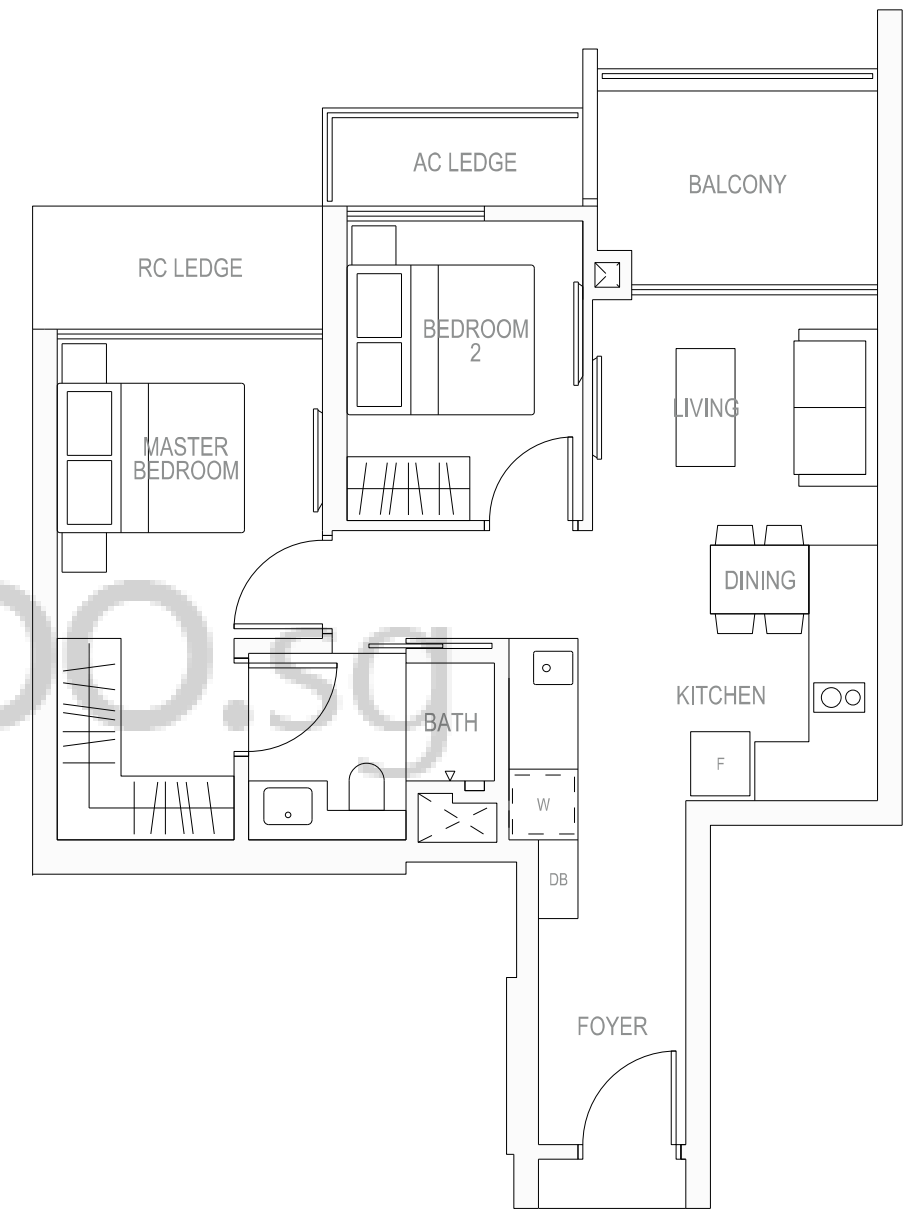
<p>TYPE AgG LOFT</p>	<p>AREA 54 SQM, 581 SQFT</p> <p>BLOCK 13 #01-14</p> <p>BLOCK 15 #01-26</p> <p>THE PLANS ARE SUBJECT TO CHANGE AS MAY BE REQUIRED OR APPROVED BY THE RELEVANT AUTHORITIES. AREAS ARE ESTIMATES ONLY AND ARE SUBJECT TO FINAL SURVEY. PLANS ARE NOT DRAWN TO SCALE AND DO NOT FORM PART OF THE CONTRACT.</p>	<p>FURNITURE DECK ISOMETRIC</p>
----------------------	--	---------------------------------

<p>TYPE AhG LOFT</p>	<p>AREA 56 SQM, 603 SQFT</p> <p>BLOCK 15 #01-25</p> <p>THE PLANS ARE SUBJECT TO CHANGE AS MAY BE REQUIRED OR APPROVED BY THE RELEVANT AUTHORITIES. AREAS ARE ESTIMATES ONLY AND ARE SUBJECT TO FINAL SURVEY. PLANS ARE NOT DRAWN TO SCALE AND DO NOT FORM PART OF THE CONTRACT.</p>	<p>FURNITURE DECK ISOMETRIC</p>
----------------------	---	---------------------------------



ARTIST'S IMPRESSION

B 1
2 BEDROOM



TYPE B1

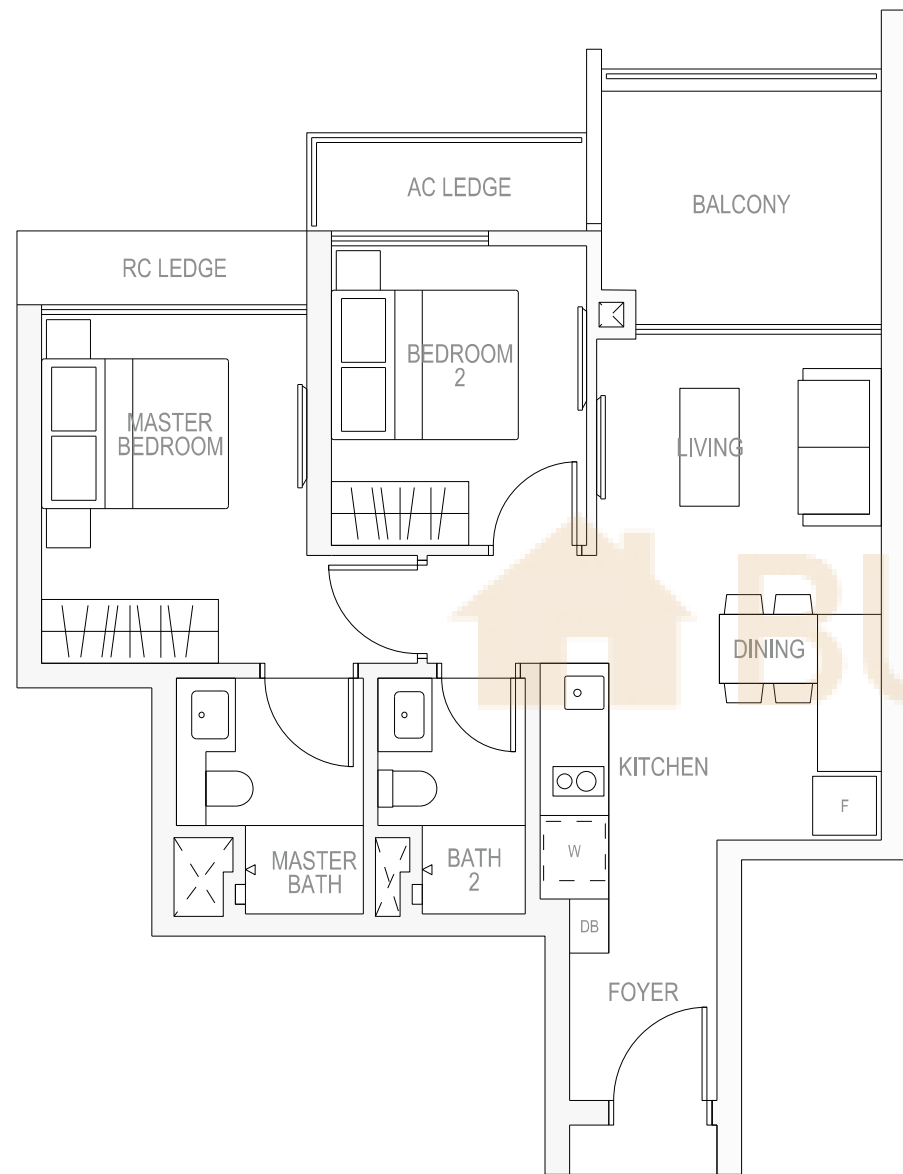


AREA 64 SQM, 689 SQFT

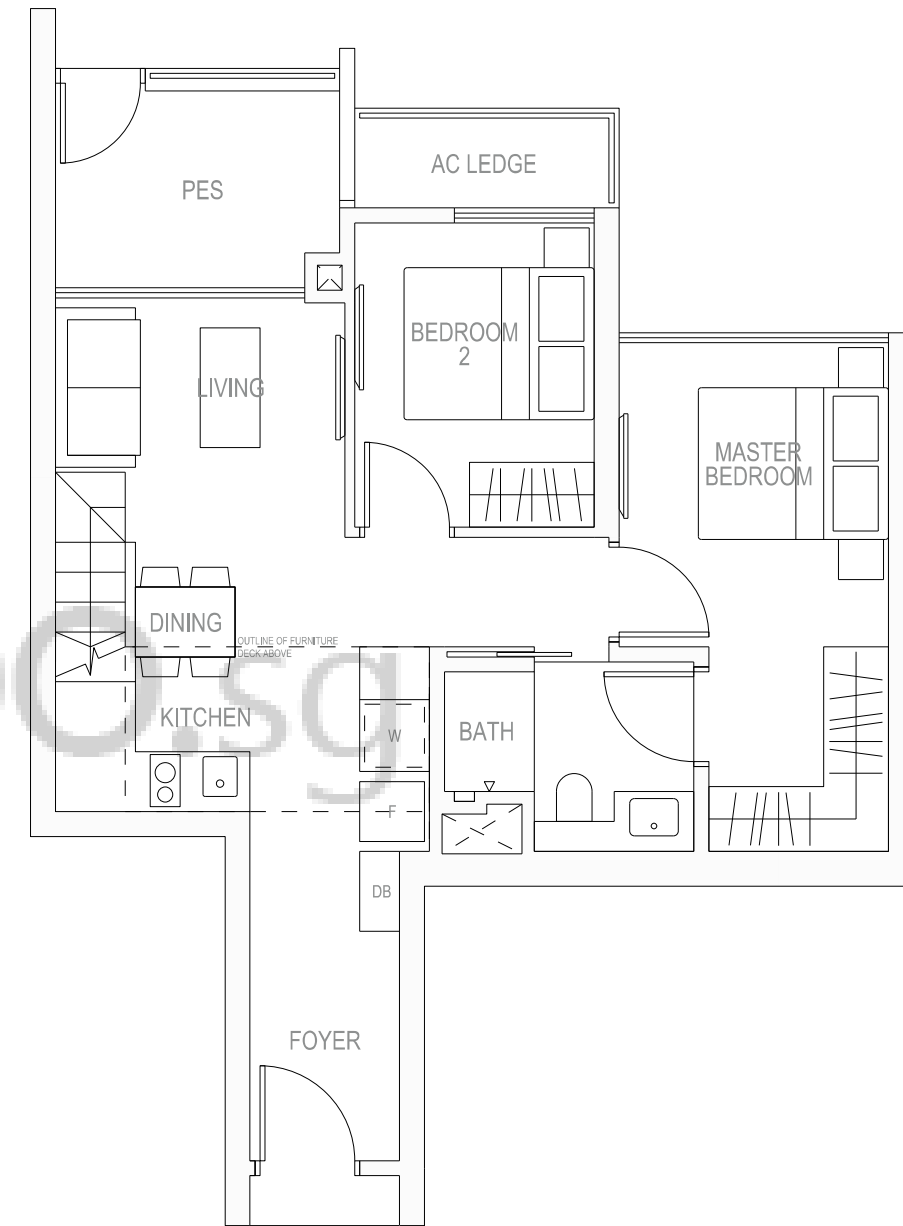
BLOCK 11
#02-04 TO #19-04
#02-03 TO #19-03 MIRROR IMAGE

THE PLANS ARE SUBJECT TO CHANGE AS MAY BE REQUIRED OR APPROVED BY THE RELEVANT AUTHORITIES. AREAS ARE ESTIMATES ONLY AND ARE SUBJECT TO FINAL SURVEY. PLANS ARE NOT DRAWN TO SCALE AND DO NOT FORM PART OF THE CONTRACT.

B 2 2 BEDROOM DELUXE



B1G LOFT 2 BEDROOM



<p>TYPE B2</p>	<p>AREA 66 SQM, 710 SQFT</p>
<p>BLOCK 11 #02-07 TO #18-07</p>	<p>BLOCK 11 #02-08 TO #18-08</p>
<p>THE PLANS ARE SUBJECT TO CHANGE AS MAY BE REQUIRED OR APPROVED BY THE RELEVANT AUTHORITIES. AREAS ARE ESTIMATES ONLY AND ARE SUBJECT TO FINAL SURVEY. PLANS ARE NOT DRAWN TO SCALE AND DO NOT FORM PART OF THE CONTRACT.</p>	

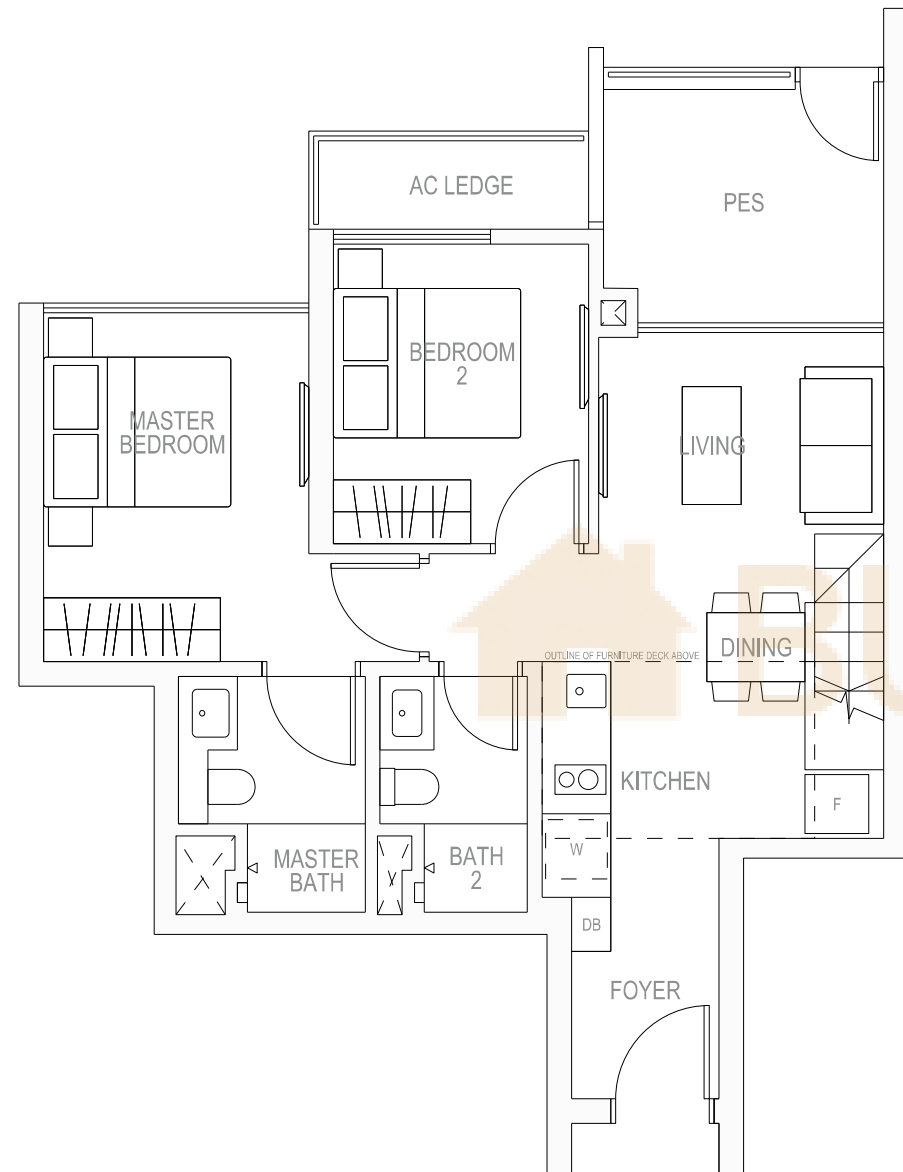
RIVERBANK @ FERNVALE

<p>TYPE B1G LOFT</p>	<p>AREA 64 SQM, 689 SQFT</p>	<p>FURNITURE DECK ISOMETRIC</p>
<p>BLOCK 11 #01-03</p>		
<p>THE PLANS ARE SUBJECT TO CHANGE AS MAY BE REQUIRED OR APPROVED BY THE RELEVANT AUTHORITIES. AREAS ARE ESTIMATES ONLY AND ARE SUBJECT TO FINAL SURVEY. PLANS ARE NOT DRAWN TO SCALE AND DO NOT FORM PART OF THE CONTRACT.</p>		

RIVERBANK @ FERNVALE

B2aG LOFT

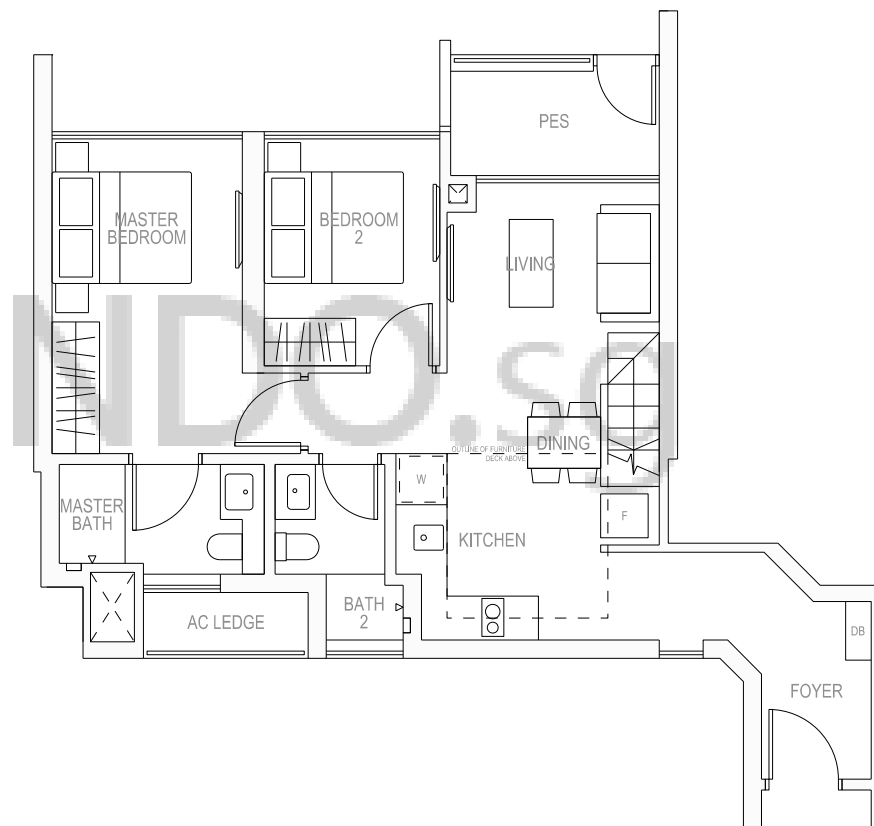
2 BEDROOM DELUXE



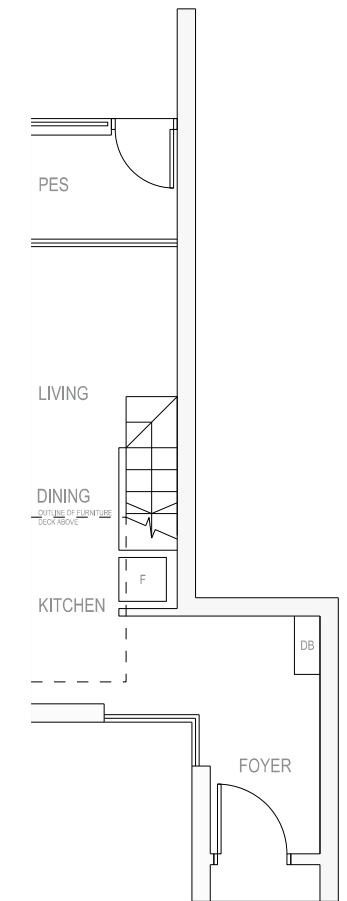
B2bG LOFT & B2cG LOFT

2 BEDROOM DELUXE

① B2bG LOFT



② B2cG LOFT

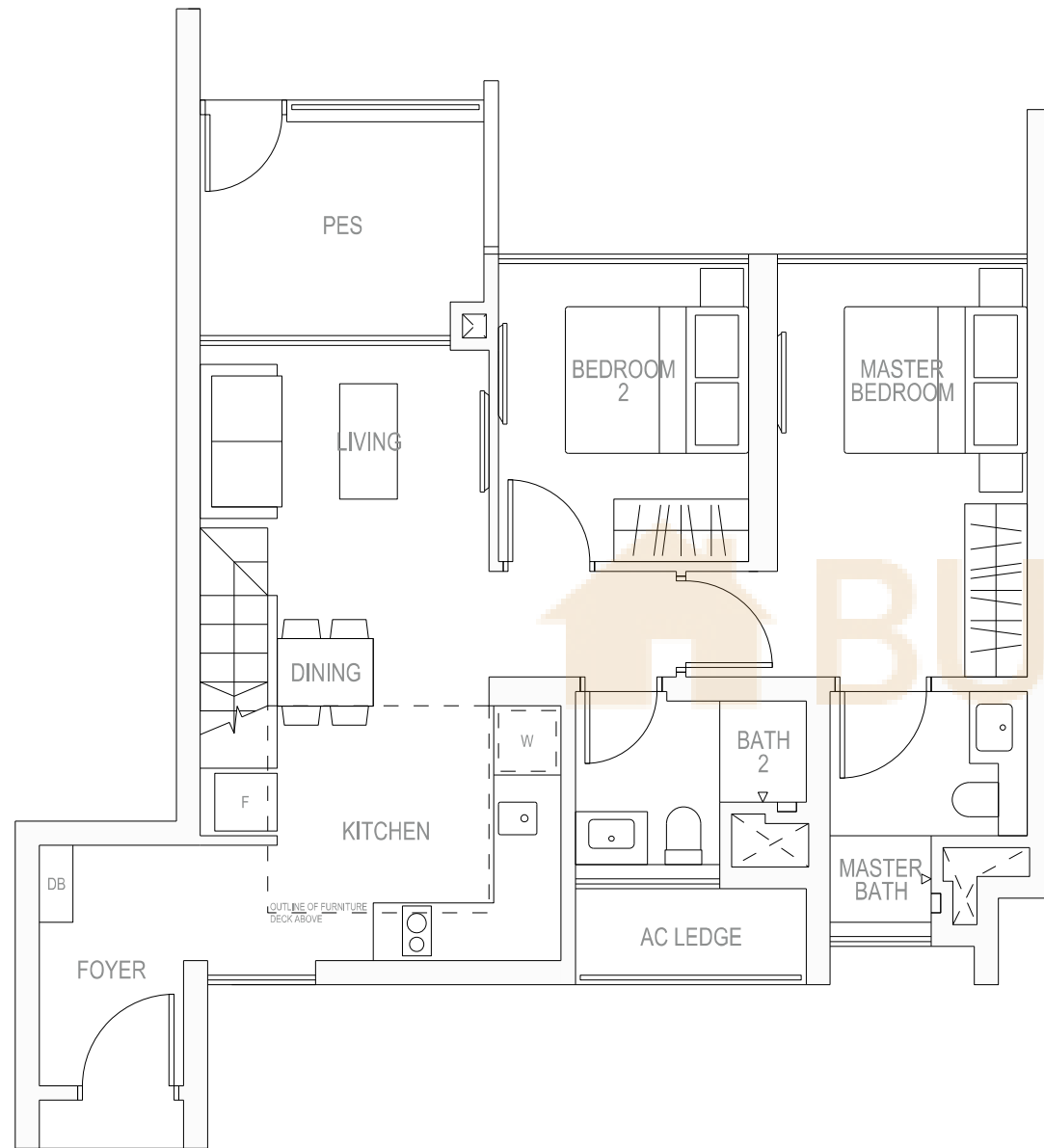


<p>TYPE B2aG LOFT</p>	<p>AREA 66 SQM, 710 SQFT</p> <p>BLOCK 11 #01-07</p> <p>BLOCK 11 #01-08</p> <p>THE PLANS ARE SUBJECT TO CHANGE AS MAY BE REQUIRED OR APPROVED BY THE RELEVANT AUTHORITIES. AREAS ARE ESTIMATES ONLY AND ARE SUBJECT TO FINAL SURVEY. PLANS ARE NOT DRAWN TO SCALE AND DO NOT FORM PART OF THE CONTRACT.</p>	<p>FURNITURE DECK ISOMETRIC</p>
-----------------------	--	---------------------------------

<p>① TYPE B2bG LOFT</p> <p>② TYPE B2cG LOFT</p>	<p>① AREA 70 SQM, 753 SQFT</p> <p>② AREA 69 SQM, 743 SQFT</p> <p>① BLOCK 13 #01-18</p> <p>① BLOCK 15 #01-22</p> <p>② BLOCK 11 #01-02</p> <p>THE PLANS ARE SUBJECT TO CHANGE AS MAY BE REQUIRED OR APPROVED BY THE RELEVANT AUTHORITIES. AREAS ARE ESTIMATES ONLY AND ARE SUBJECT TO FINAL SURVEY. PLANS ARE NOT DRAWN TO SCALE AND DO NOT FORM PART OF THE CONTRACT.</p>	<p>FURNITURE DECK ISOMETRIC</p>
---	--	---------------------------------

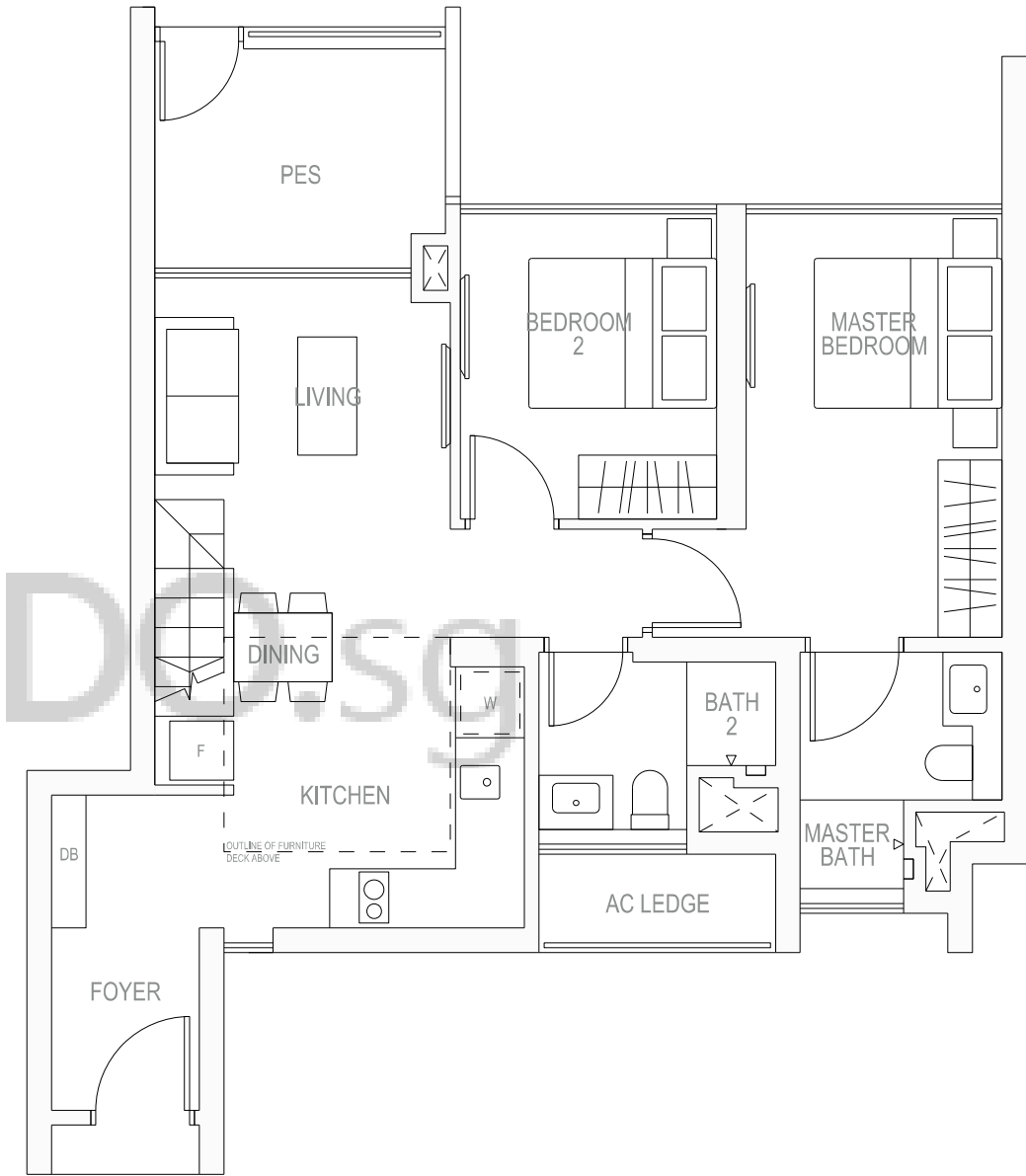
B2dG LOFT

2 BEDROOM DELUXE



B2eG LOFT

2 BEDROOM DELUXE

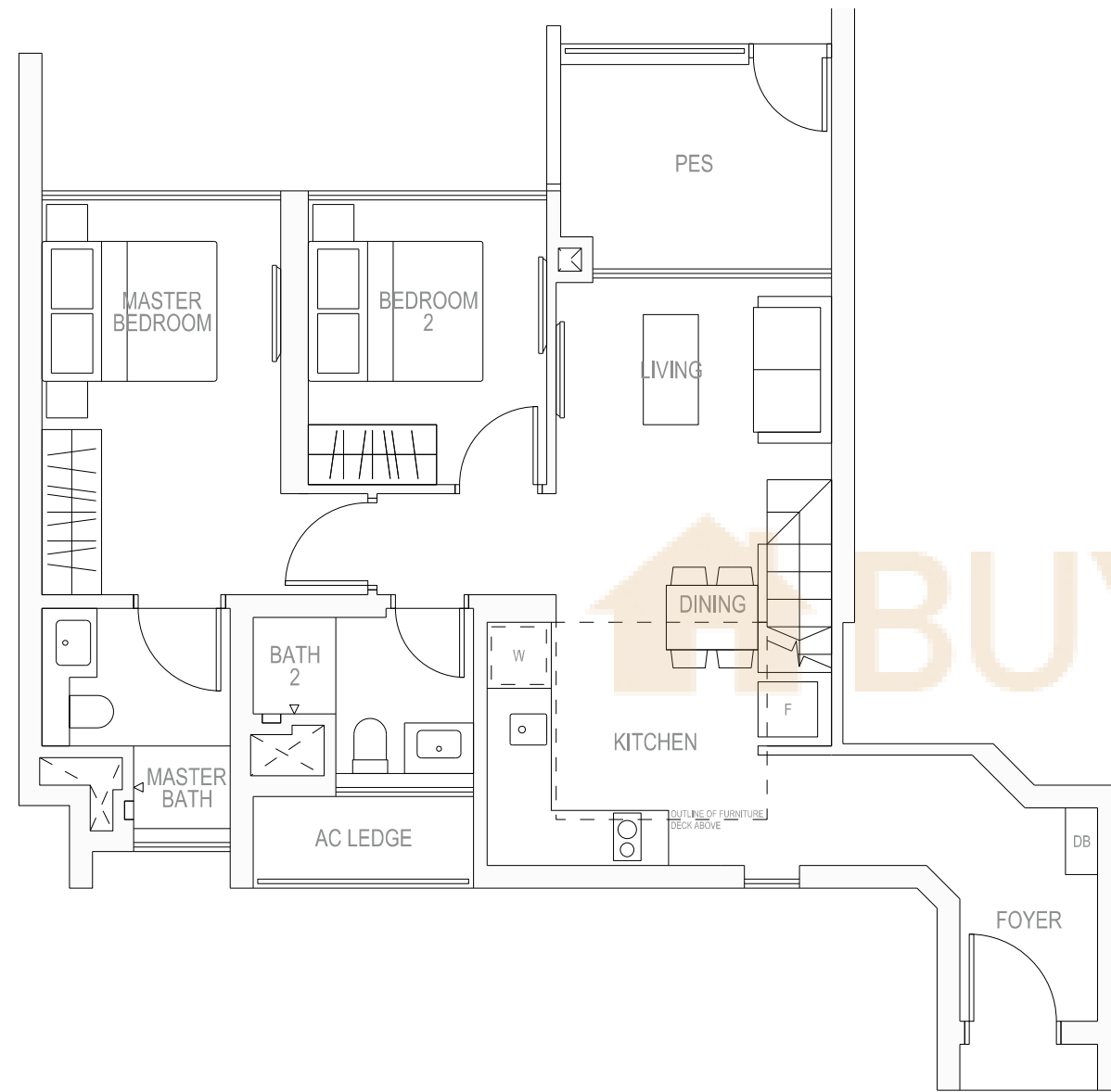


<p>TYPE B2dG LOFT</p>	<p>AREA 74 SQM, 797 SQFT</p> <p>BLOCK 11 # 01-09</p> <p>THE PLANS ARE SUBJECT TO CHANGE AS MAY BE REQUIRED OR APPROVED BY THE RELEVANT AUTHORITIES. AREAS ARE ESTIMATES ONLY AND ARE SUBJECT TO FINAL SURVEY. PLANS ARE NOT DRAWN TO SCALE AND DO NOT FORM PART OF THE CONTRACT.</p>	<p>FURNITURE DECK ISOMETRIC</p>
-----------------------	--	---------------------------------

<p>TYPE B2eG LOFT</p>	<p>AREA 75 SQM, 807 SQFT</p> <p>BLOCK 17 # 01-35</p> <p>THE PLANS ARE SUBJECT TO CHANGE AS MAY BE REQUIRED OR APPROVED BY THE RELEVANT AUTHORITIES. AREAS ARE ESTIMATES ONLY AND ARE SUBJECT TO FINAL SURVEY. PLANS ARE NOT DRAWN TO SCALE AND DO NOT FORM PART OF THE CONTRACT.</p>	<p>FURNITURE DECK ISOMETRIC</p>
-----------------------	--	---------------------------------

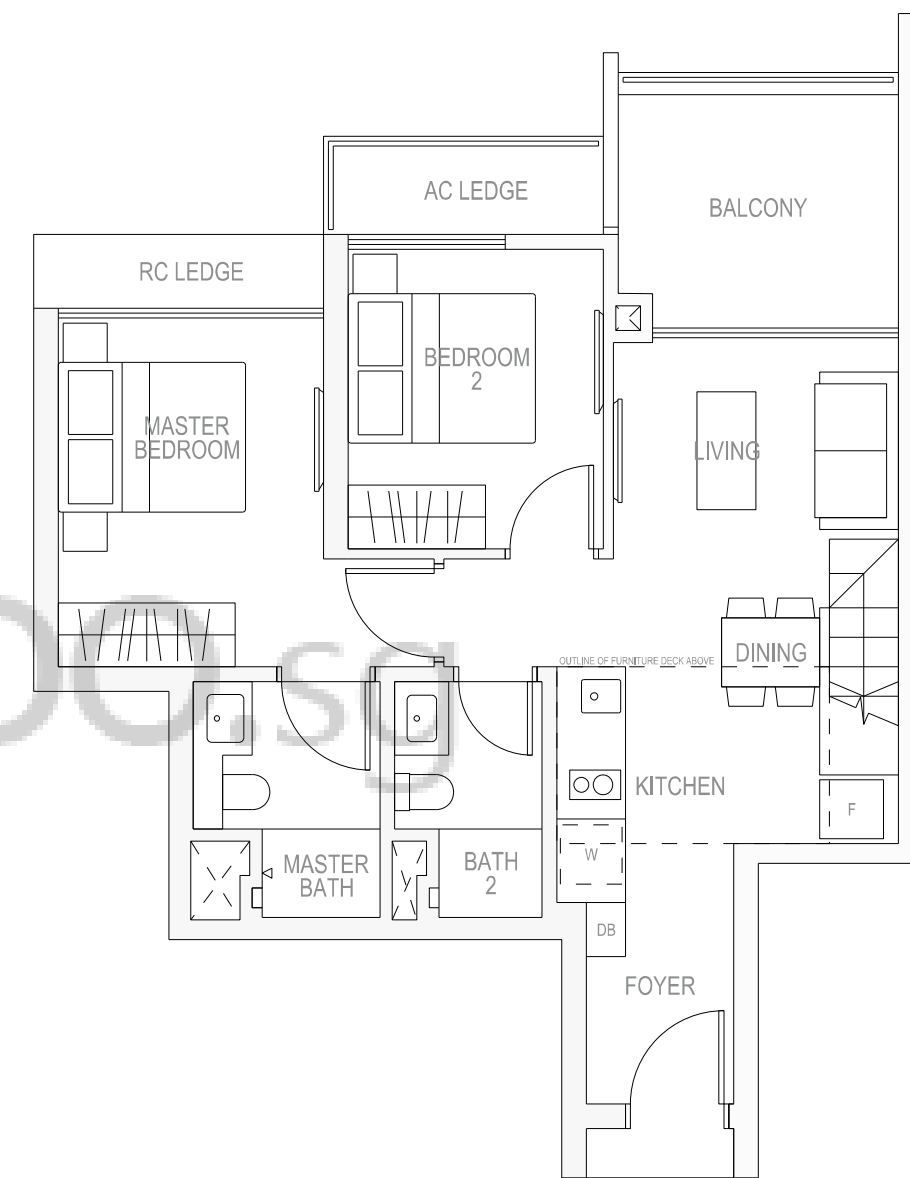
B2fG LOFT

2 BEDROOM DELUXE



B2P LOFT

2 BEDROOM DELUXE



<p>TYPE B2fG LOFT</p>	<p>AREA 76 SQM, 818 SQFT</p> <p>BLOCK 17 #01-29</p> <p>THE PLANS ARE SUBJECT TO CHANGE AS MAY BE REQUIRED OR APPROVED BY THE RELEVANT AUTHORITIES. AREAS ARE ESTIMATES ONLY AND ARE SUBJECT TO FINAL SURVEY. PLANS ARE NOT DRAWN TO SCALE AND DO NOT FORM PART OF THE CONTRACT.</p>	<p>FURNITURE DECK ISOMETRIC</p>
-----------------------	---	---------------------------------

<p>TYPE B2P LOFT</p>	<p>AREA 66 SQM, 710 SQFT</p> <p>BLOCK 11 #19-07 <small>MIRROR IMAGE</small></p> <p>BLOCK 11 #19-08</p> <p>THE PLANS ARE SUBJECT TO CHANGE AS MAY BE REQUIRED OR APPROVED BY THE RELEVANT AUTHORITIES. AREAS ARE ESTIMATES ONLY AND ARE SUBJECT TO FINAL SURVEY. PLANS ARE NOT DRAWN TO SCALE AND DO NOT FORM PART OF THE CONTRACT.</p>	<p>FURNITURE DECK ISOMETRIC</p>
----------------------	--	---------------------------------

C1a & C1a1

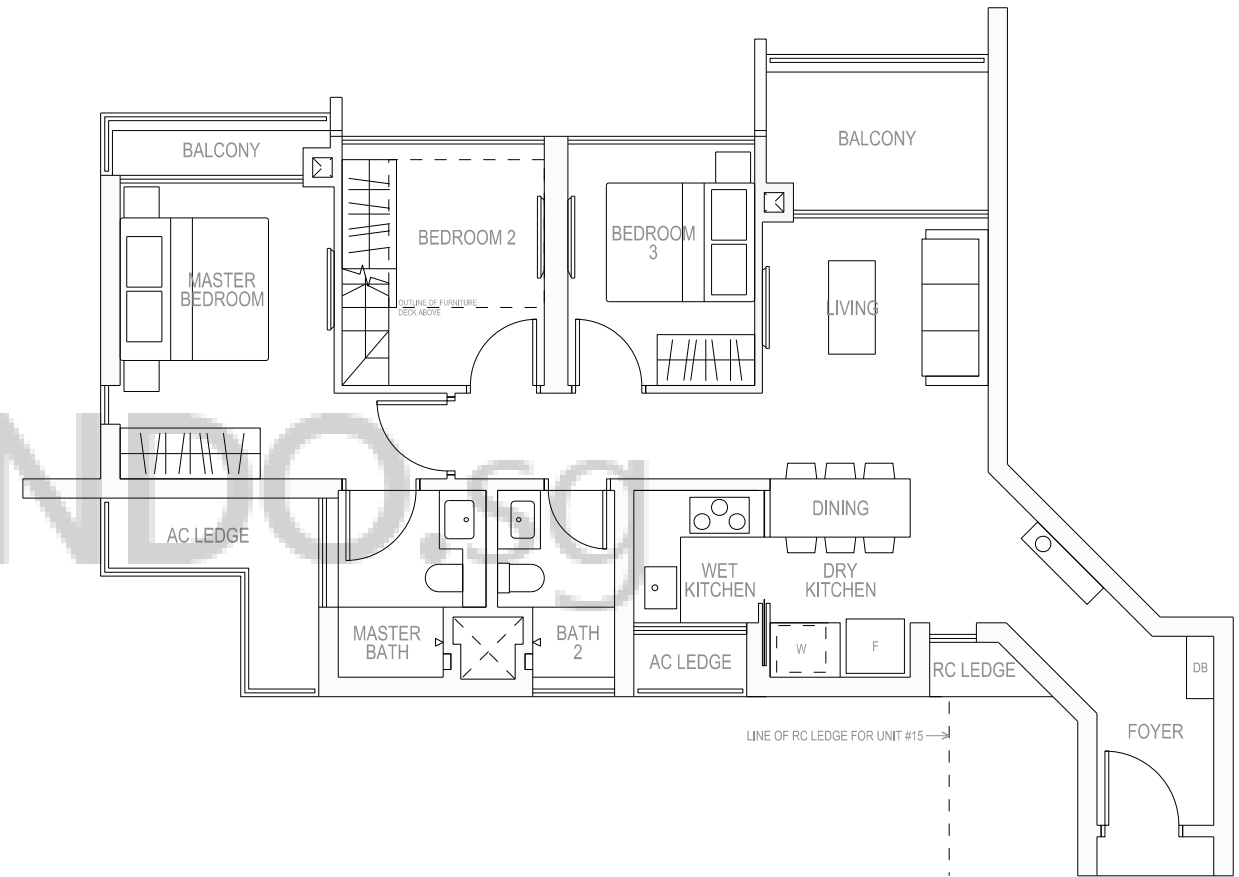
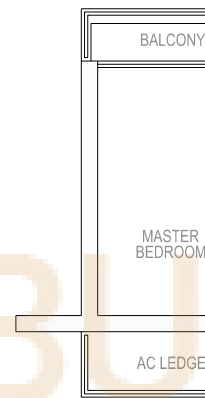
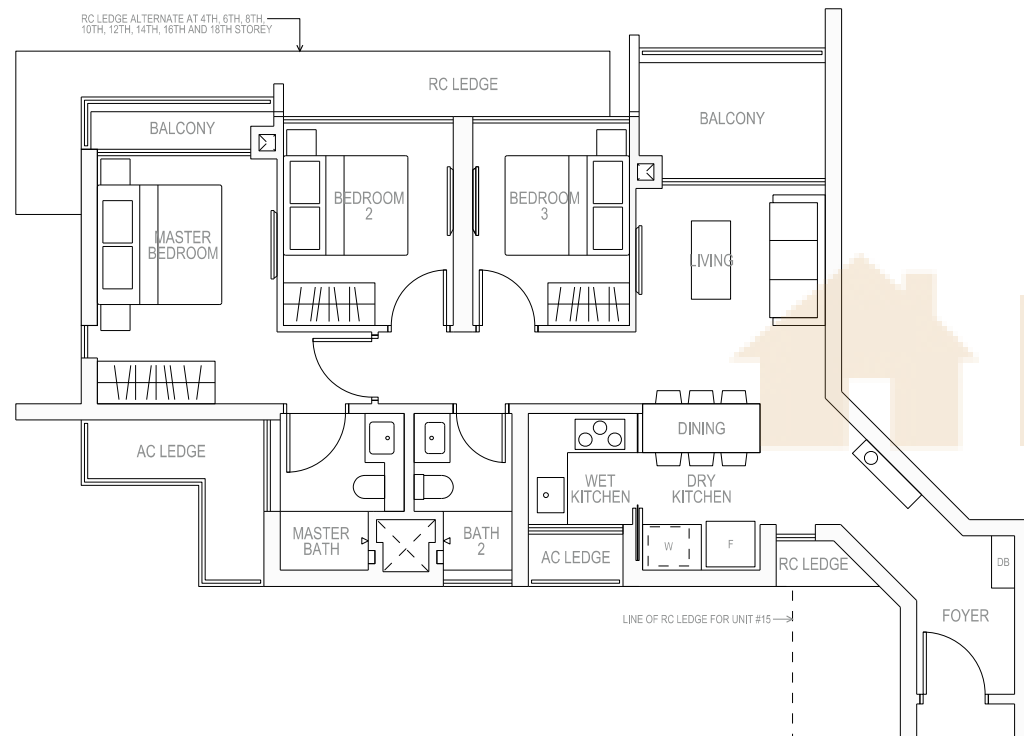
3 BEDROOM

C1aP LOFT

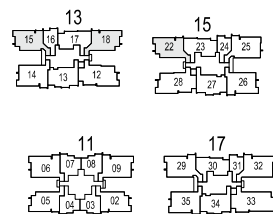
3 BEDROOM

① C1a

② C1a1



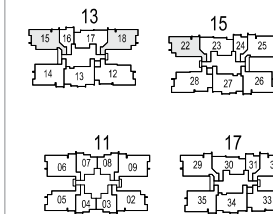
- ① TYPE C1a
- ② TYPE C1a1



- ① BLOCK 13 #02-15 TO #18-15
- ① BLOCK 13 #04-18 TO #18-18
- ① BLOCK 15 #04-22 TO #18-22
- ② BLOCK 13 #03-18
- ② BLOCK 15 #03-22

THE PLANS ARE SUBJECT TO CHANGE AS MAY BE REQUIRED OR APPROVED BY THE RELEVANT AUTHORITIES. AREAS ARE ESTIMATES ONLY AND ARE SUBJECT TO FINAL SURVEY. PLANS ARE NOT DRAWN TO SCALE AND DO NOT FORM PART OF THE CONTRACT.

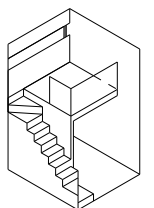
TYPE C1aP LOFT



- BLOCK 13 #19-15
- BLOCK 13 #19-18
- BLOCK 15 #19-22

THE PLANS ARE SUBJECT TO CHANGE AS MAY BE REQUIRED OR APPROVED BY THE RELEVANT AUTHORITIES. AREAS ARE ESTIMATES ONLY AND ARE SUBJECT TO FINAL SURVEY. PLANS ARE NOT DRAWN TO SCALE AND DO NOT FORM PART OF THE CONTRACT.

FURNITURE DECK ISOMETRIC



C1b & C1b1

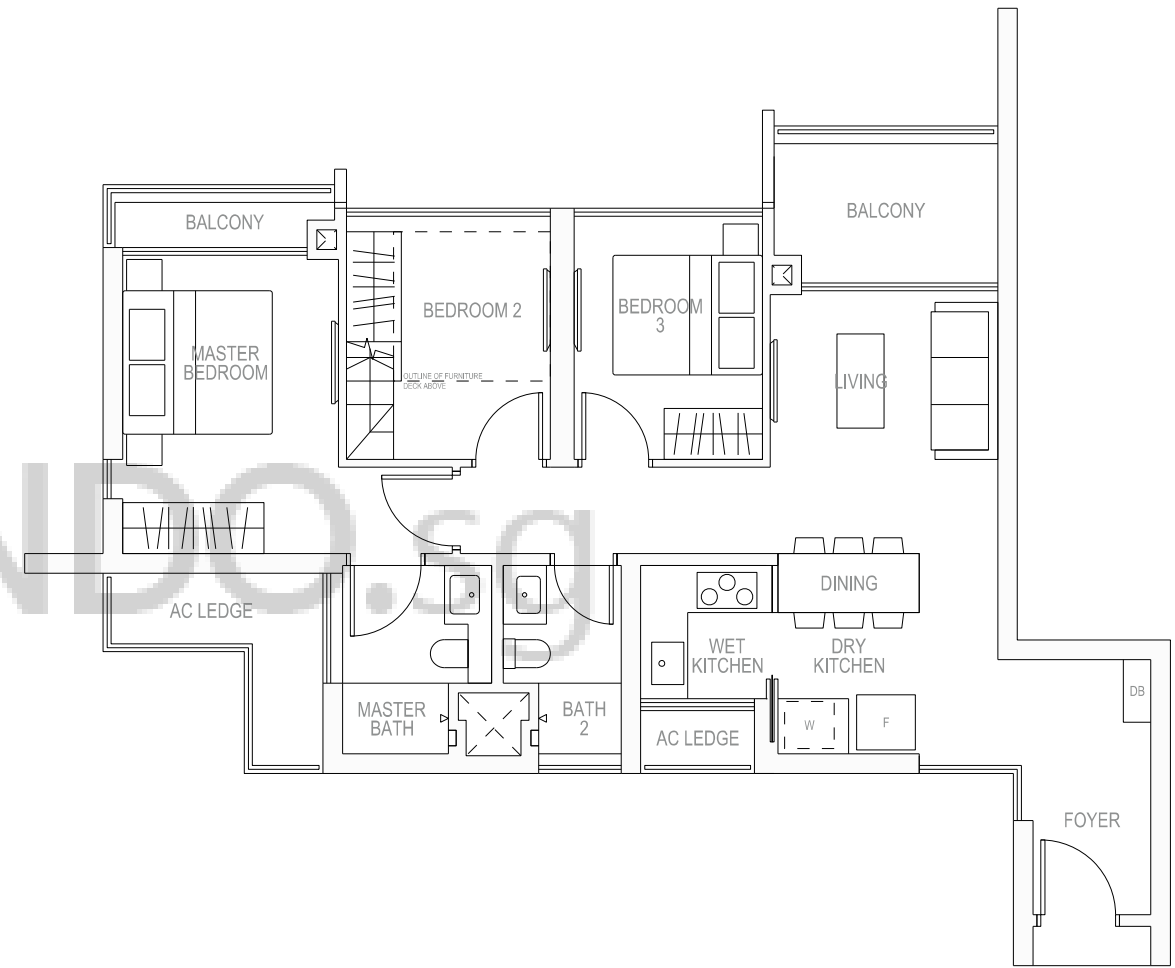
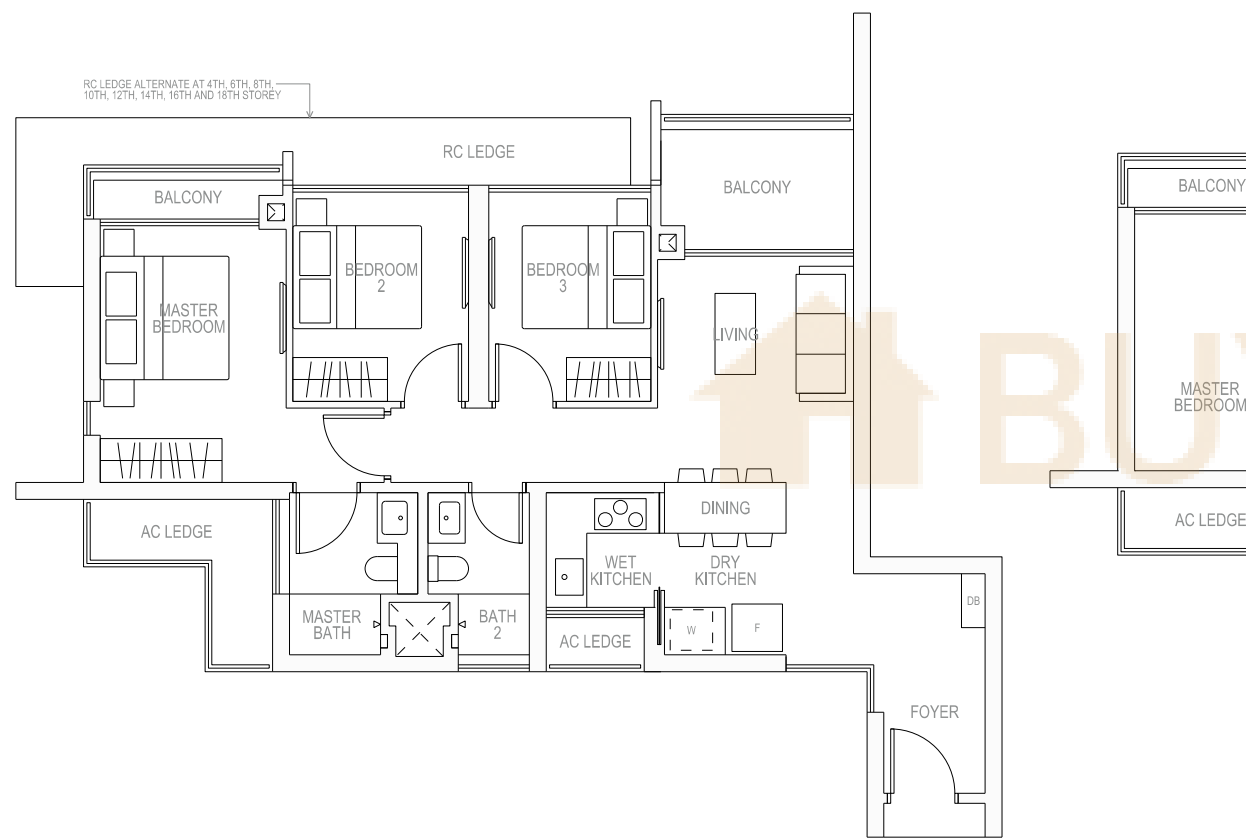
3 BEDROOM

C1bP LOFT

3 BEDROOM

① C1b

② C1b1



<p>① TYPE C1b</p> <p>② TYPE C1b1</p>	<p>① AREA 88 SQM, 947 SQFT</p> <p>② AREA 88 SQM, 947 SQFT</p>
<p>① BLOCK 11 #04-02 TO #18-02</p> <p>② BLOCK 11 #02-05 TO #18-05</p> <p>③ BLOCK 11 #03-02</p>	<p>① BLOCK 11 #04-02 TO #18-02</p> <p>② BLOCK 11 #02-05 TO #18-05</p> <p>③ BLOCK 11 #03-02</p>
<p>THE PLANS ARE SUBJECT TO CHANGE AS MAY BE REQUIRED OR APPROVED BY THE RELEVANT AUTHORITIES. AREAS ARE ESTIMATES ONLY AND ARE SUBJECT TO FINAL SURVEY. PLANS ARE NOT DRAWN TO SCALE AND DO NOT FORM PART OF THE CONTRACT.</p>	

<p>TYPE C1bP LOFT</p>	<p>AREA 88 SQM, 947 SQFT</p>	<p>FURNITURE DECK ISOMETRIC</p>
<p>BLOCK 11 #19-02</p> <p>BLOCK 11 #19-05</p>	<p>BLOCK 11 #19-02</p> <p>BLOCK 11 #19-05</p>	
<p>THE PLANS ARE SUBJECT TO CHANGE AS MAY BE REQUIRED OR APPROVED BY THE RELEVANT AUTHORITIES. AREAS ARE ESTIMATES ONLY AND ARE SUBJECT TO FINAL SURVEY. PLANS ARE NOT DRAWN TO SCALE AND DO NOT FORM PART OF THE CONTRACT.</p>		

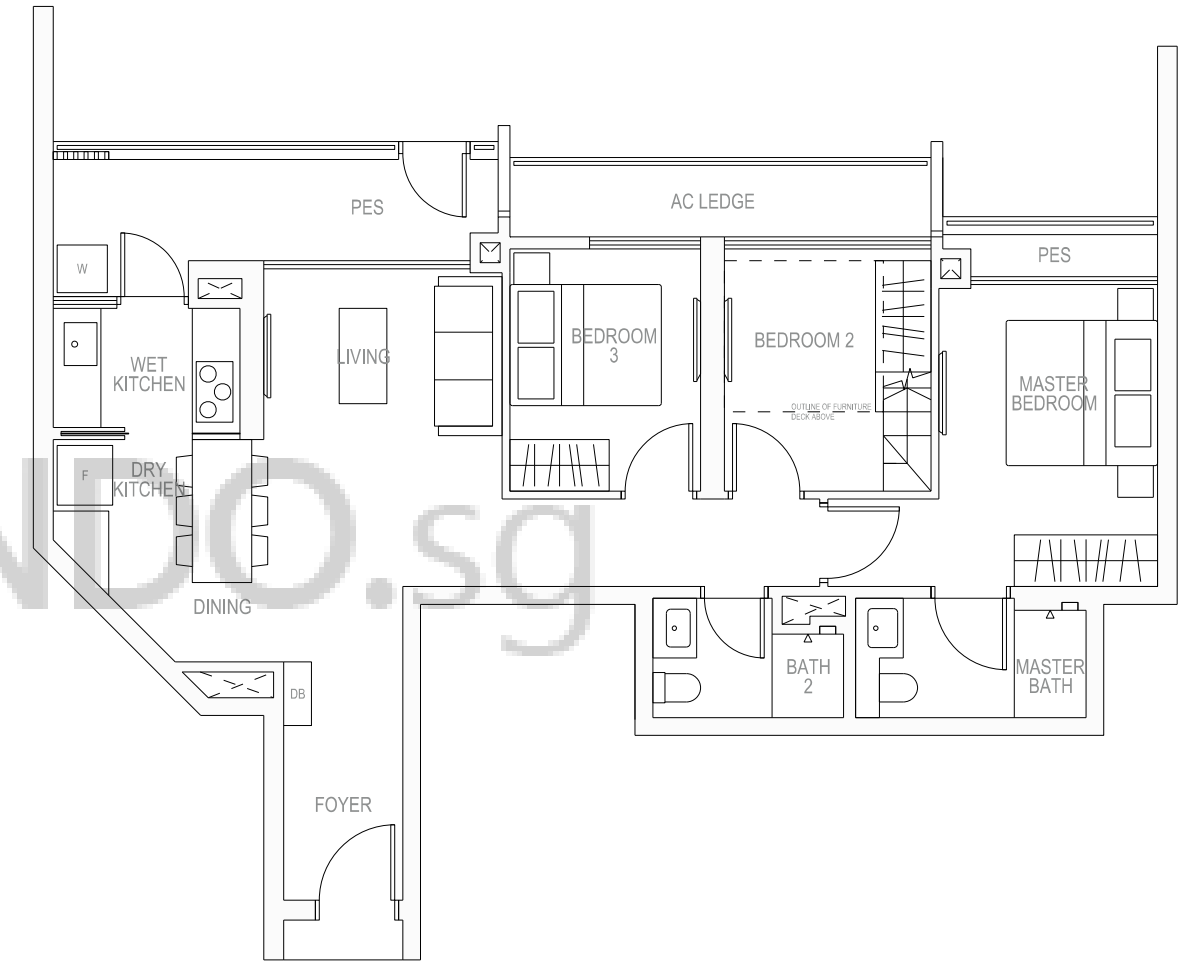
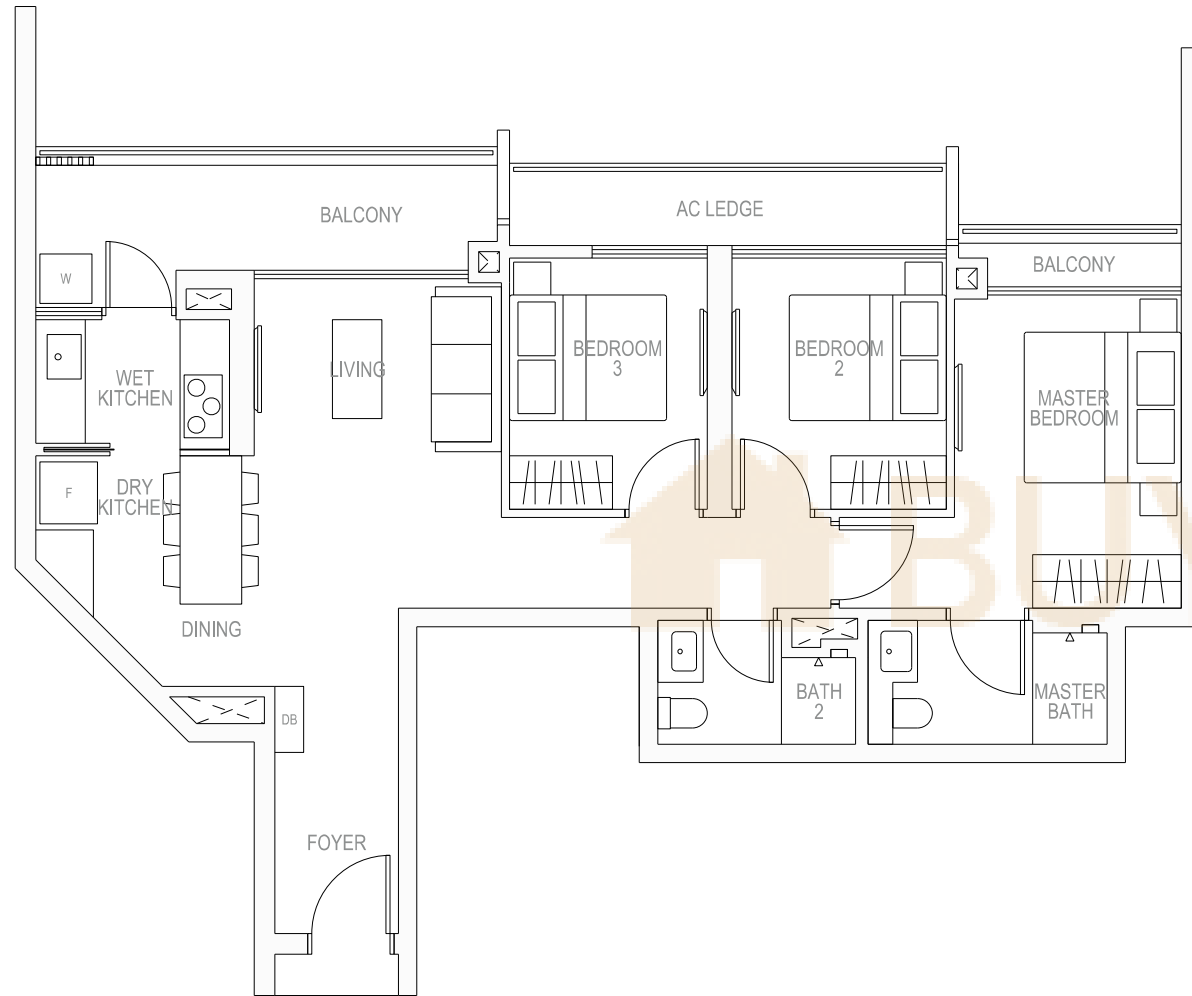
C1c

3 BEDROOM



C1cG LOFT

3 BEDROOM

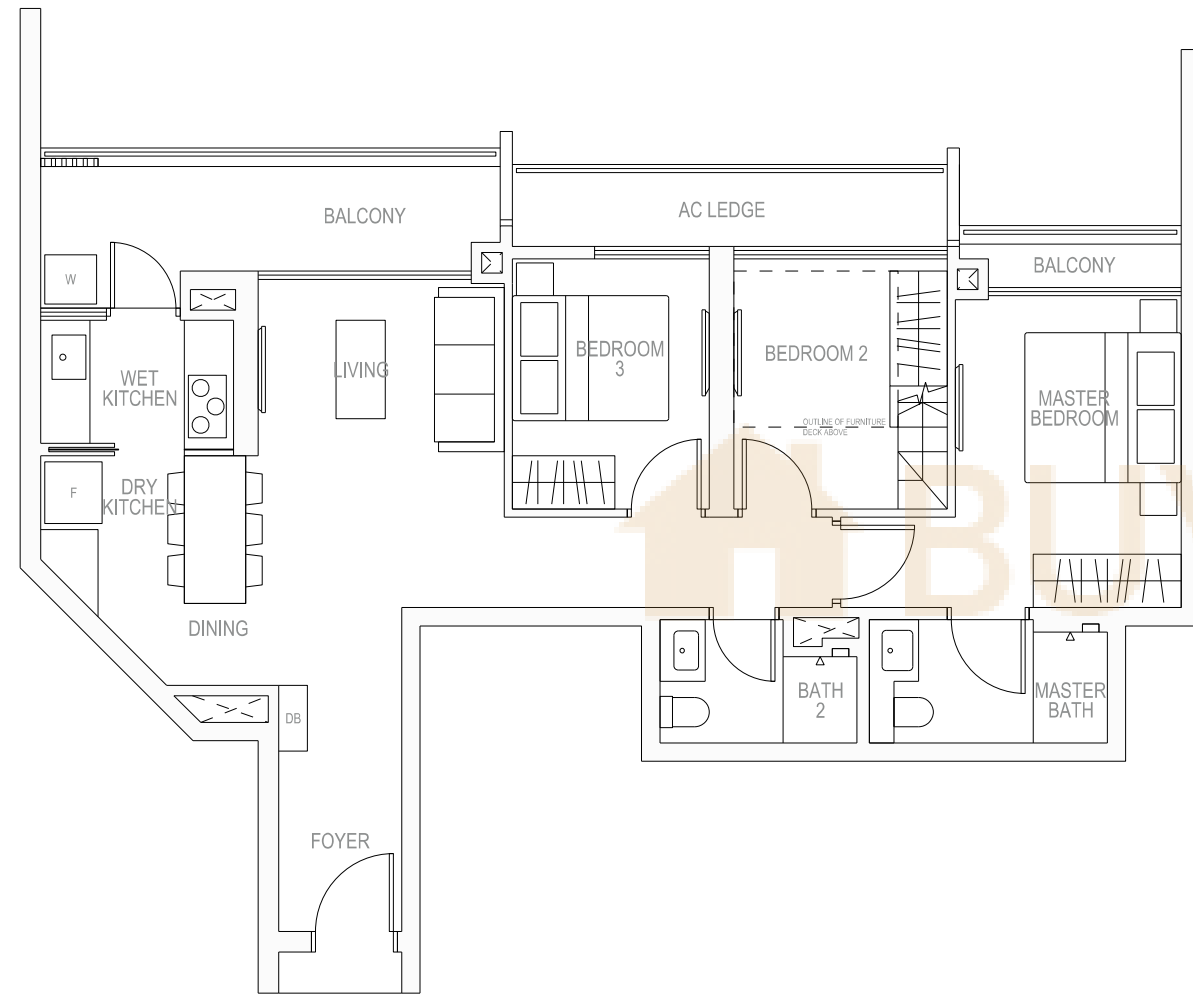


<p>TYPE C1c</p>	<p>AREA 94 SQM, 1012 SQFT</p>		
	<p>BLOCK 13 #02-17 TO #18-17</p>	<p>BLOCK 15 #02-23 TO #18-23</p>	<p>BLOCK 17 #02-30 TO #18-30</p>
<p>THE PLANS ARE SUBJECT TO CHANGE AS MAY BE REQUIRED OR APPROVED BY THE RELEVANT AUTHORITIES. AREAS ARE ESTIMATES ONLY AND ARE SUBJECT TO FINAL SURVEY. PLANS ARE NOT DRAWN TO SCALE AND DO NOT FORM PART OF THE CONTRACT.</p>			

<p>TYPE C1cG LOFT</p>	<p>AREA 94 SQM, 1012 SQFT</p>		<p>FURNITURE DECK ISOMETRIC</p>
	<p>BLOCK 13 #01-17</p>	<p>BLOCK 15 #01-23</p>	
<p>THE PLANS ARE SUBJECT TO CHANGE AS MAY BE REQUIRED OR APPROVED BY THE RELEVANT AUTHORITIES. AREAS ARE ESTIMATES ONLY AND ARE SUBJECT TO FINAL SURVEY. PLANS ARE NOT DRAWN TO SCALE AND DO NOT FORM PART OF THE CONTRACT.</p>			

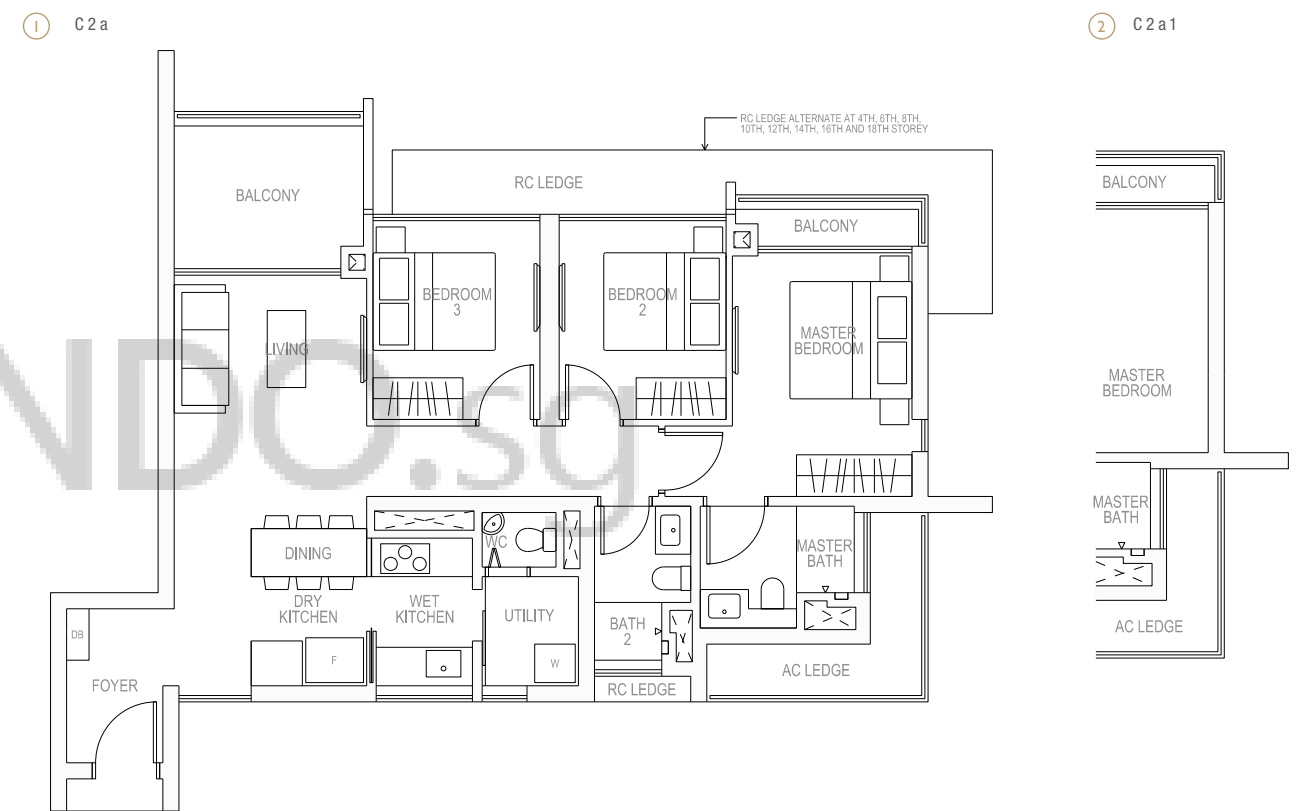
C1cP LOFT

3 BEDROOM



C2a & C2a1

3 BEDROOM DELUXE

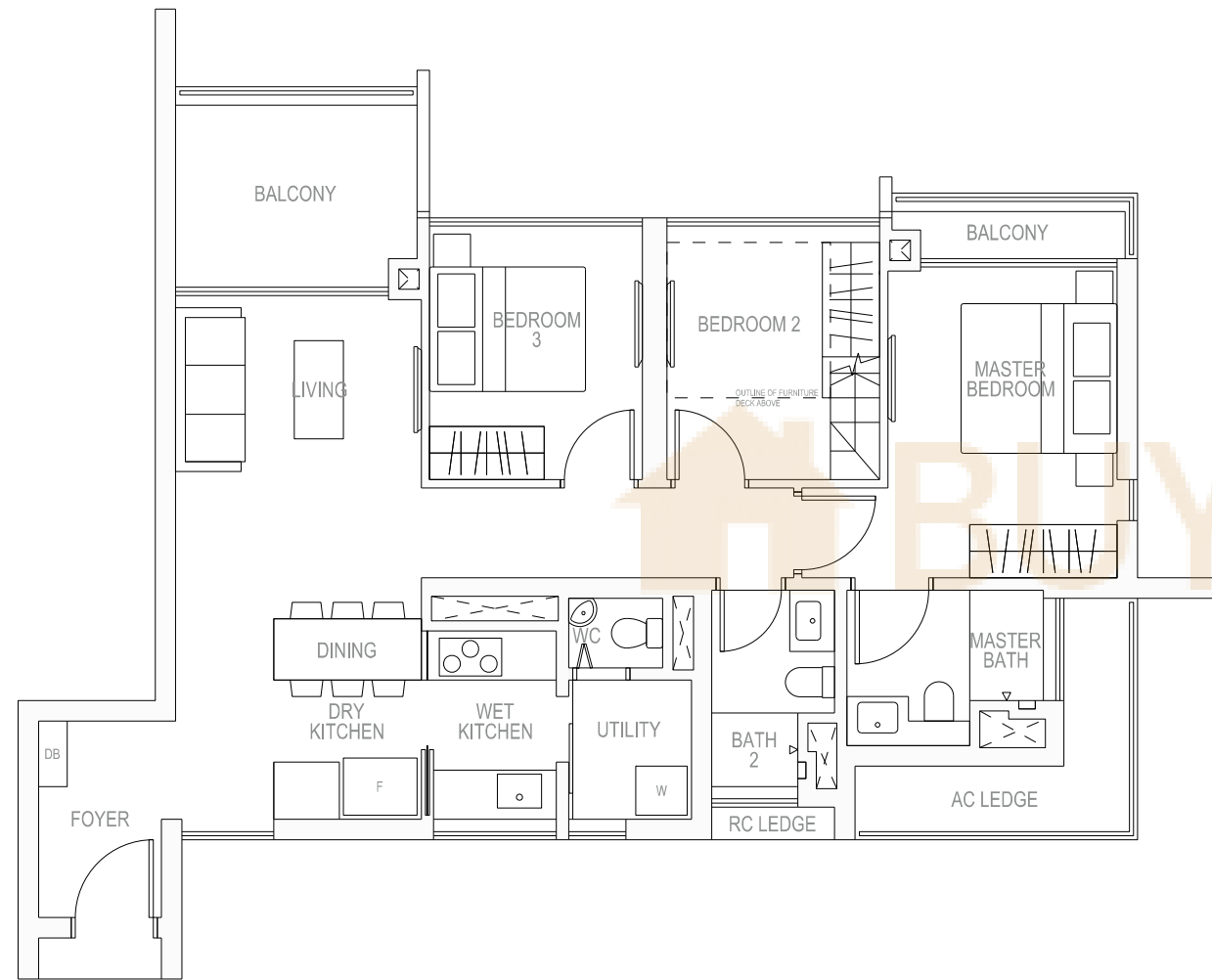


<p>TYPE C1cP LOFT</p>	<p>AREA 94 SQM, 1012 SQFT</p>	<p>FURNITURE DECK ISOMETRIC</p>
	<p>BLOCK 13 #19-17</p> <p>BLOCK 15 #19-23</p> <p>BLOCK 17 #19-30</p>	
<p>THE PLANS ARE SUBJECT TO CHANGE AS MAY BE REQUIRED OR APPROVED BY THE RELEVANT AUTHORITIES. AREAS ARE ESTIMATES ONLY AND ARE SUBJECT TO FINAL SURVEY. PLANS ARE NOT DRAWN TO SCALE AND DO NOT FORM PART OF THE CONTRACT.</p>		

<p>① TYPE C2a</p> <p>② TYPE C2a1</p>	<p>① AREA 97 SQM, 1044 SQFT</p> <p>② AREA 97 SQM, 1044 SQFT</p>	
	<p>① BLOCK 11 #04-09 TO #18-09</p> <p>① BLOCK 11 #02-06 TO #18-06</p> <p>② BLOCK 11 #03-09</p>	
<p>THE PLANS ARE SUBJECT TO CHANGE AS MAY BE REQUIRED OR APPROVED BY THE RELEVANT AUTHORITIES. AREAS ARE ESTIMATES ONLY AND ARE SUBJECT TO FINAL SURVEY. PLANS ARE NOT DRAWN TO SCALE AND DO NOT FORM PART OF THE CONTRACT.</p>		

C2aP LOFT

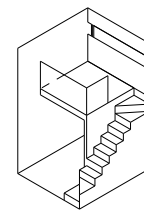
3 BEDROOM DELUXE



TYPE C2aP LOFT

AREA 97 SQM, 1044 SQFT

FURNITURE DECK ISOMETRIC



BLOCK 11
#19-06

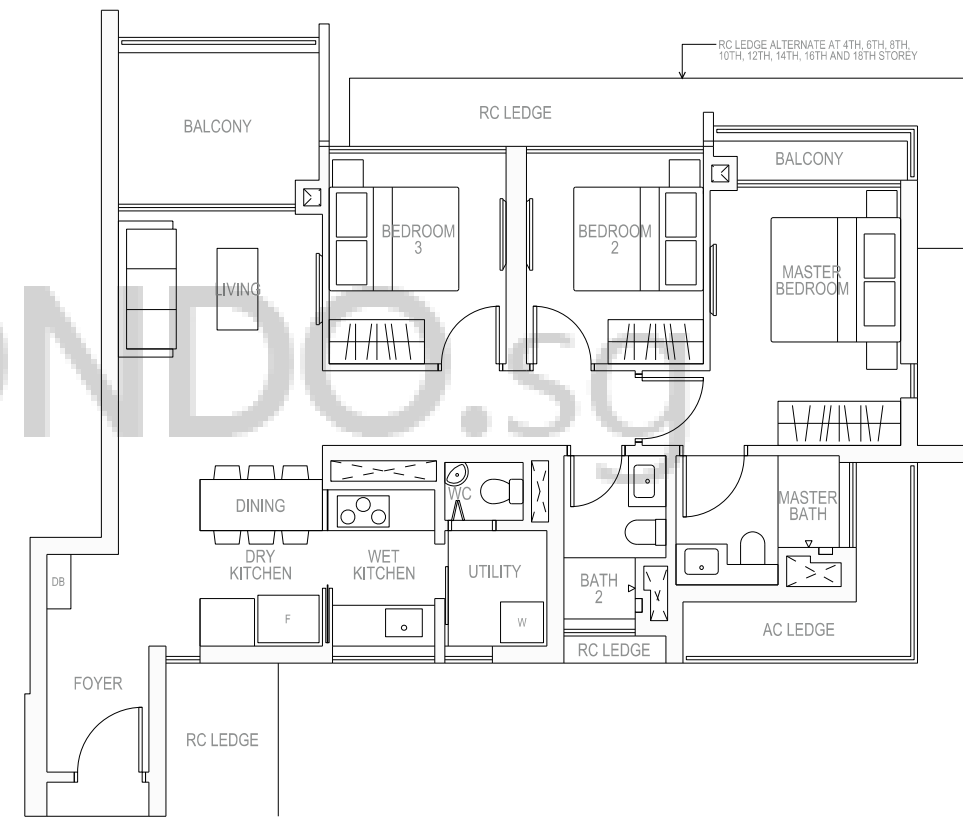
BLOCK 11
#19-09

THE PLANS ARE SUBJECT TO CHANGE AS MAY BE REQUIRED OR APPROVED BY THE RELEVANT AUTHORITIES. AREAS ARE ESTIMATES ONLY AND ARE SUBJECT TO FINAL SURVEY. PLANS ARE NOT DRAWN TO SCALE AND DO NOT FORM PART OF THE CONTRACT.

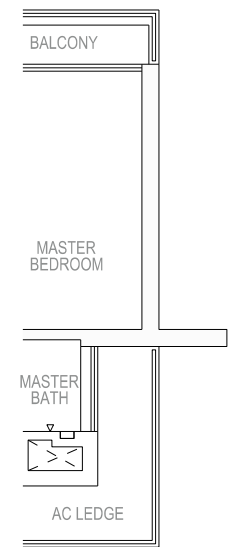
C2b & C2b1

3 BEDROOM DELUXE

① C2b

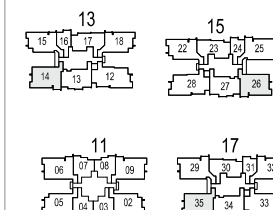


② C2b1



① TYPE C2b
② TYPE C2b1

① AREA 97 SQM, 1044 SQFT
② AREA 97 SQM, 1044 SQFT



① BLOCK 13
#02-14
TO #18-14

① BLOCK 15
#02-26
TO #18-26

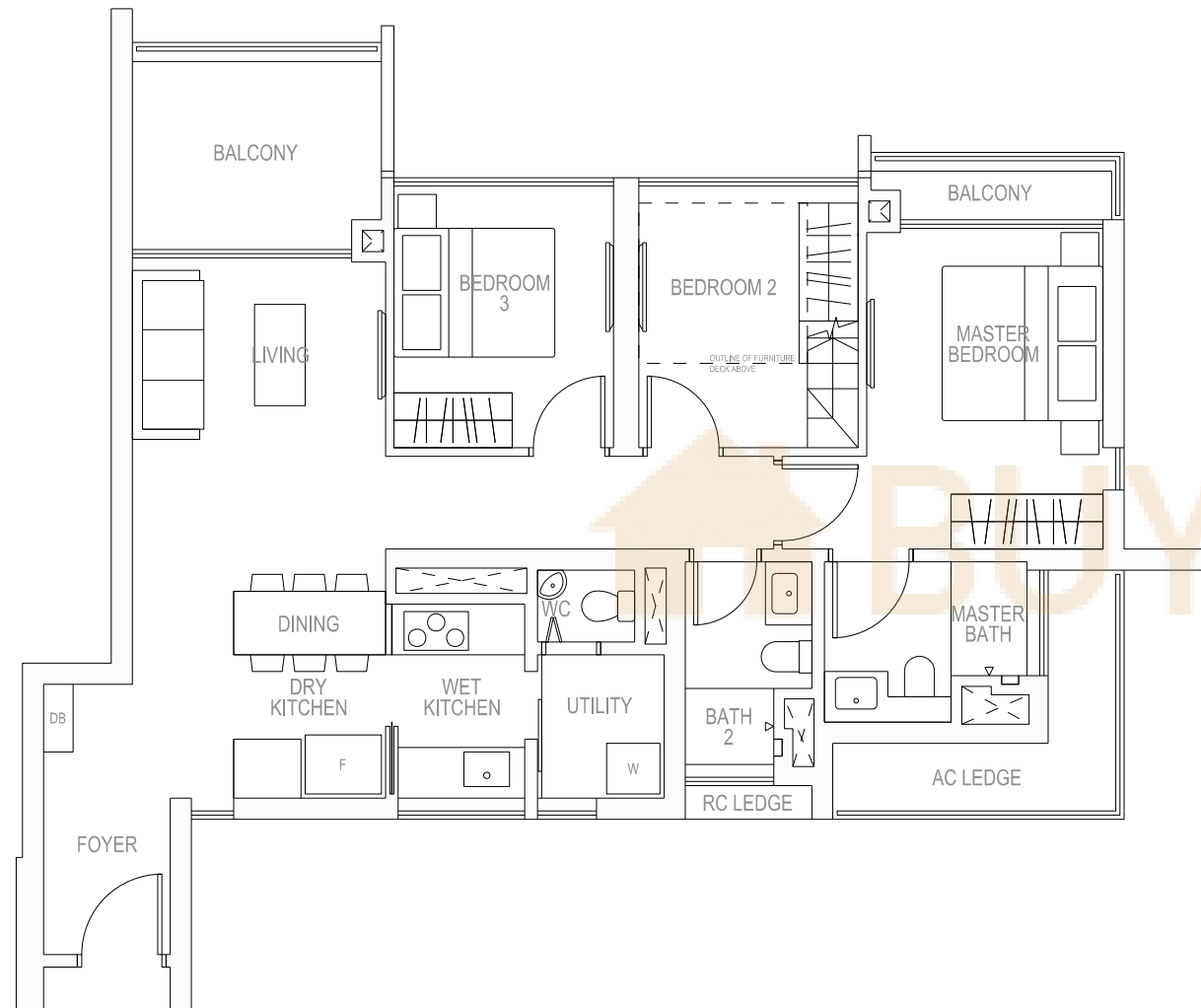
① BLOCK 17
#04-35
TO #18-35

② BLOCK 17
#03-35

THE PLANS ARE SUBJECT TO CHANGE AS MAY BE REQUIRED OR APPROVED BY THE RELEVANT AUTHORITIES. AREAS ARE ESTIMATES ONLY AND ARE SUBJECT TO FINAL SURVEY. PLANS ARE NOT DRAWN TO SCALE AND DO NOT FORM PART OF THE CONTRACT.

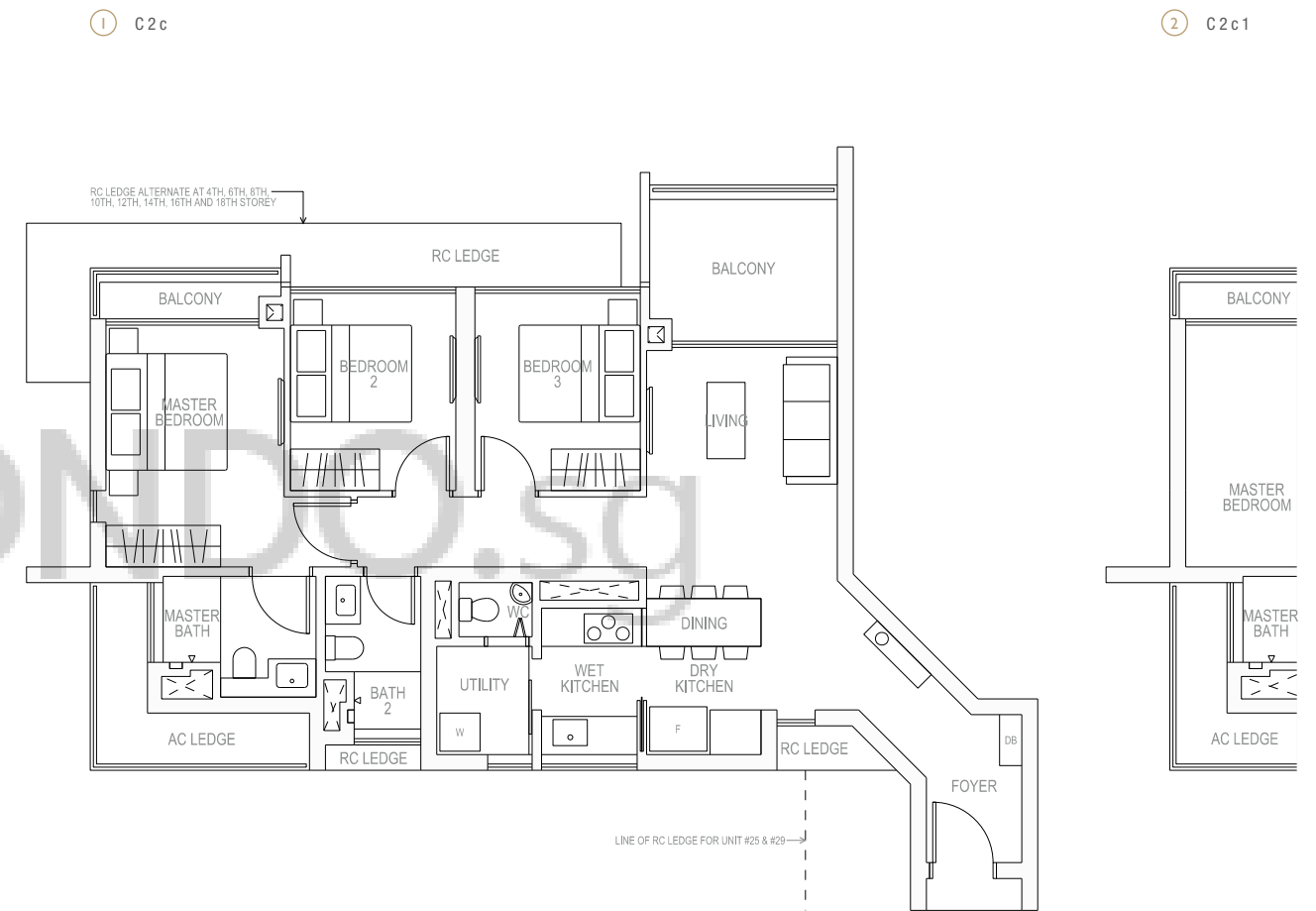
C2bP LOFT

3 BEDROOM DELUXE



C2c & C2c1

3 BEDROOM DELUXE

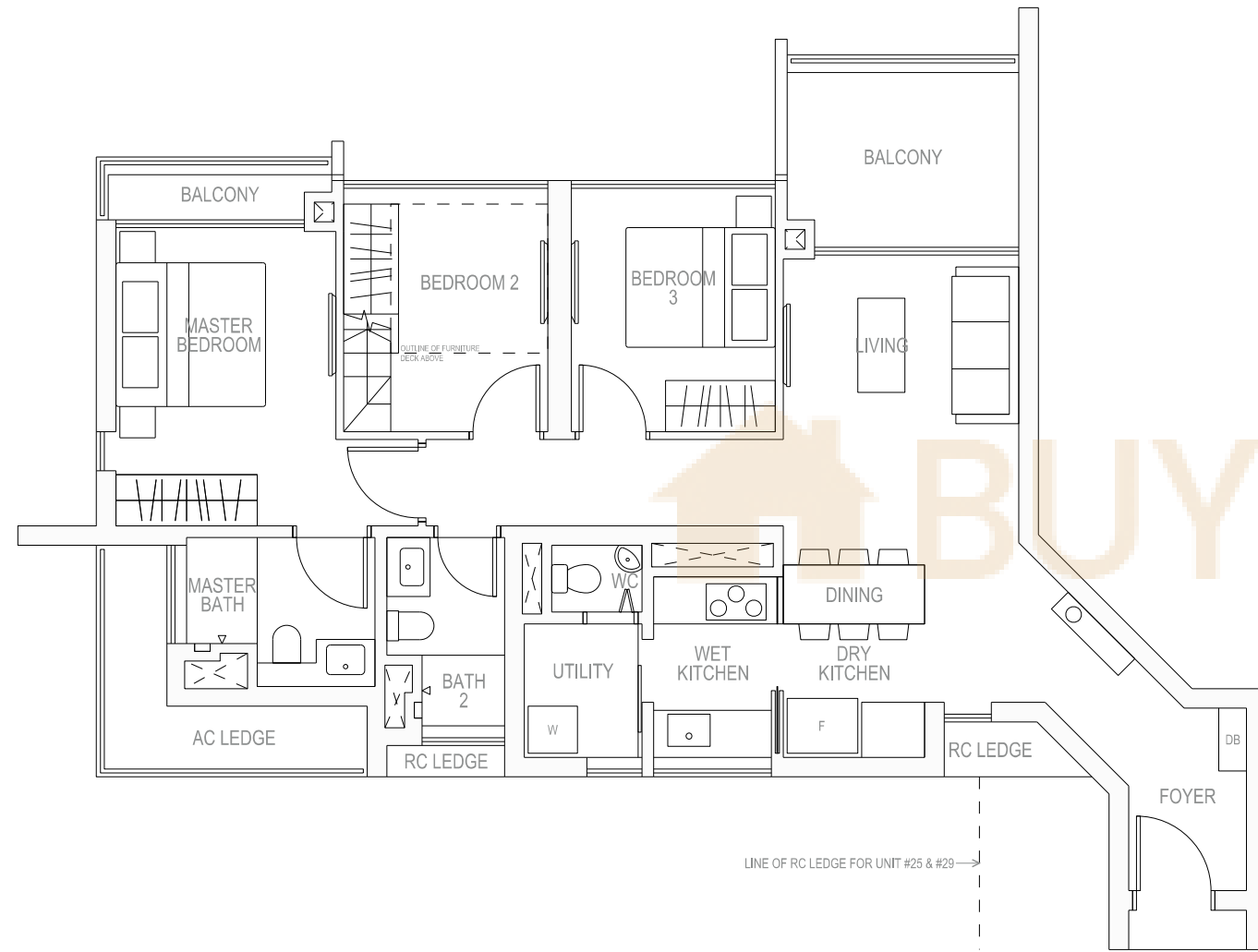


<p>TYPE C2bP LOFT</p>	<p>AREA 97 SQM, 1044 SQFT</p>			<p>FURNITURE DECK ISOMETRIC</p>
	<p>BLOCK 13 #19-14</p>	<p>BLOCK 15 #19-26 <small>MIRROR IMAGE</small></p>	<p>BLOCK 17 #19-35</p>	
<p>THE PLANS ARE SUBJECT TO CHANGE AS MAY BE REQUIRED OR APPROVED BY THE RELEVANT AUTHORITIES. AREAS ARE ESTIMATES ONLY AND ARE SUBJECT TO FINAL SURVEY. PLANS ARE NOT DRAWN TO SCALE AND DO NOT FORM PART OF THE CONTRACT.</p>				

<p>① TYPE C2c ② TYPE C2c1</p>	<p>① AREA 98 SQM, 1055 SQFT ② AREA 98 SQM, 1055 SQFT</p>			
	<p>① BLOCK 15 #02-25 TO #18-25 <small>MIRROR IMAGE</small></p>	<p>① BLOCK 17 #04-29 TO #18-29</p>	<p>① BLOCK 17 #03-32 TO #18-32 <small>MIRROR IMAGE</small></p>	<p>② BLOCK 17 #03-29</p>
<p>THE PLANS ARE SUBJECT TO CHANGE AS MAY BE REQUIRED OR APPROVED BY THE RELEVANT AUTHORITIES. AREAS ARE ESTIMATES ONLY AND ARE SUBJECT TO FINAL SURVEY. PLANS ARE NOT DRAWN TO SCALE AND DO NOT FORM PART OF THE CONTRACT.</p>				

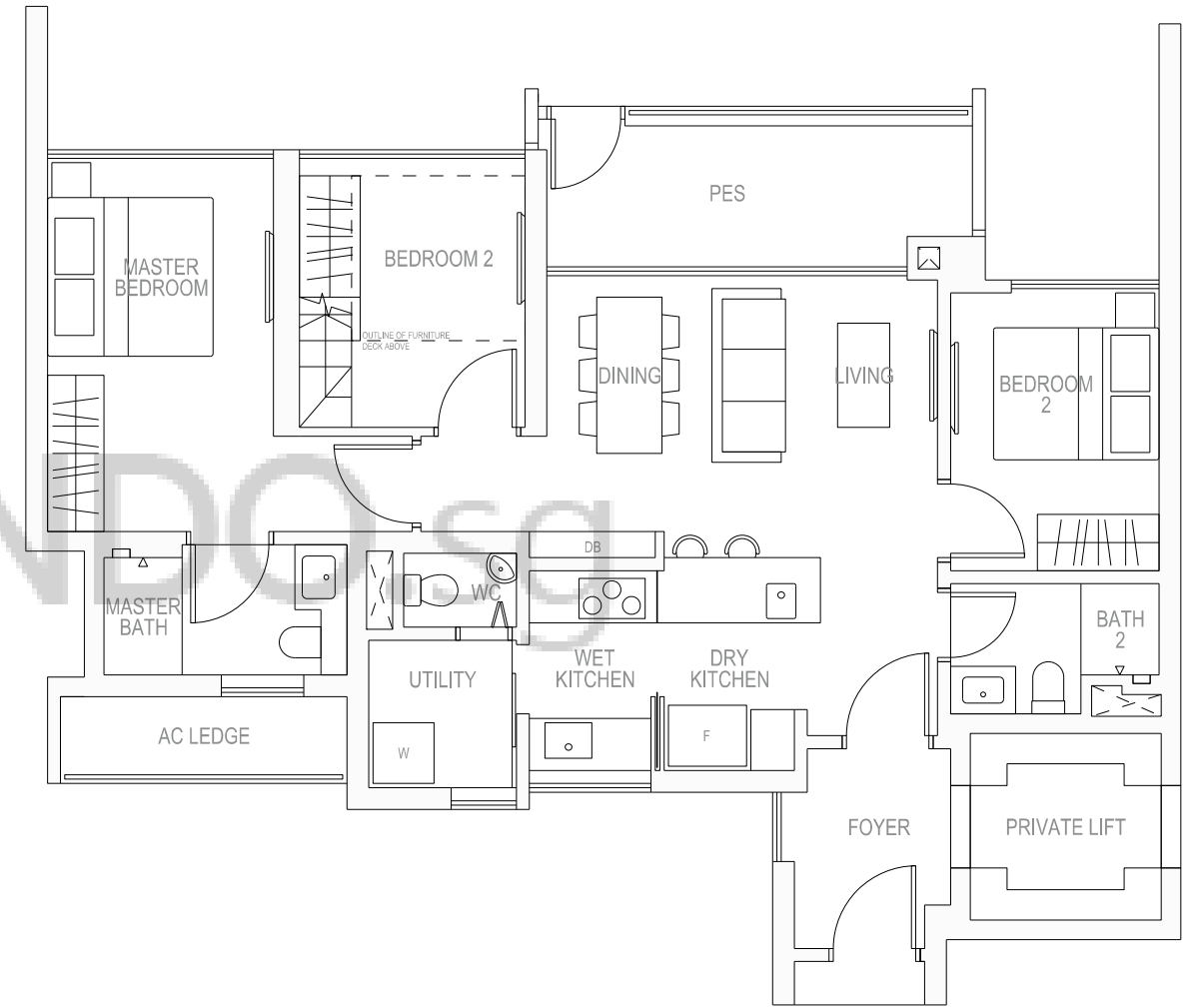
C2cP LOFT

3 BEDROOM DELUXE



C2dG LOFT

3 BEDROOM DELUXE



<p>TYPE C2cP LOFT</p>	<p>AREA 98 SQM, 1055 SQFT</p>			<p>FURNITURE DECK ISOMETRIC</p>
	<p>BLOCK 15 #19-25 <small>MIRROR IMAGE</small></p>	<p>BLOCK 17 #19-29</p>	<p>BLOCK 17 #19-32 <small>MIRROR IMAGE</small></p>	
<p>THE PLANS ARE SUBJECT TO CHANGE AS MAY BE REQUIRED OR APPROVED BY THE RELEVANT AUTHORITIES. AREAS ARE ESTIMATES ONLY AND ARE SUBJECT TO FINAL SURVEY. PLANS ARE NOT DRAWN TO SCALE AND DO NOT FORM PART OF THE CONTRACT.</p>				

<p>TYPE C2dG LOFT</p>	<p>AREA 95 SQM, 1023 SQFT</p>		<p>FURNITURE DECK ISOMETRIC</p>
	<p>BLOCK 13 #01-12</p>	<p>BLOCK 15 #01-28 <small>MIRROR IMAGE</small></p>	
<p>THE PLANS ARE SUBJECT TO CHANGE AS MAY BE REQUIRED OR APPROVED BY THE RELEVANT AUTHORITIES. AREAS ARE ESTIMATES ONLY AND ARE SUBJECT TO FINAL SURVEY. PLANS ARE NOT DRAWN TO SCALE AND DO NOT FORM PART OF THE CONTRACT.</p>			

3 BEDROOM DUAL-KEY

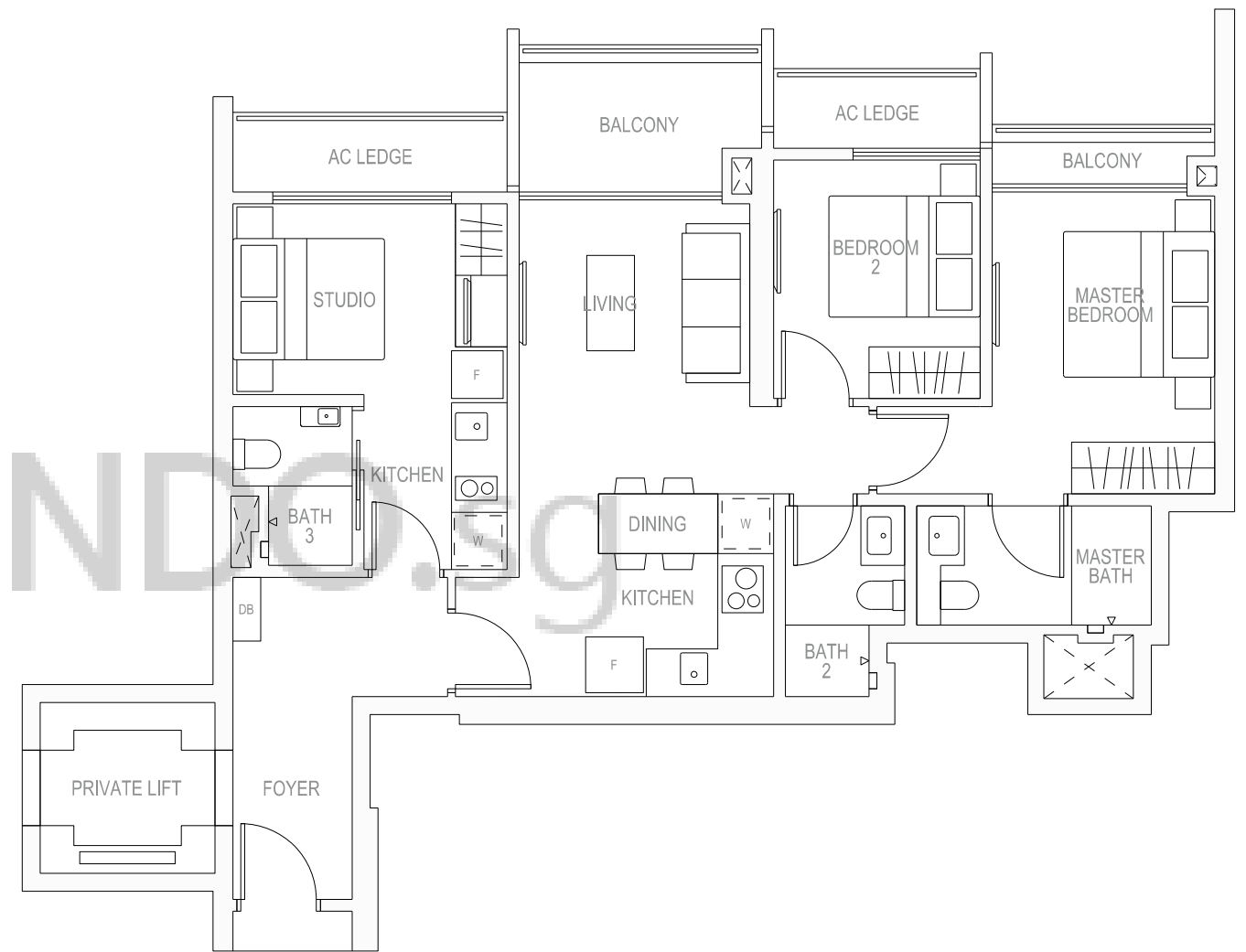
UNIT TYPES

DK a
97 SQM

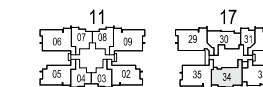
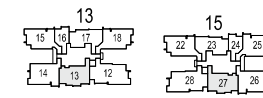
DK a P LOFT
97 SQM

DK b
92 SQM

DK a 3 BEDROOM DUAL-KEY



TYPE DKa



AREA 97 SQM, 1044 SQFT

BLOCK 13
#02-13 TO #03-13
#05-13 TO #08-13
#10-13 TO #13-13
#15-13 TO #18-13

BLOCK 15
#02-27 TO #03-27
#05-27 TO #08-27
#10-27 TO #13-27
#15-27 TO #18-27

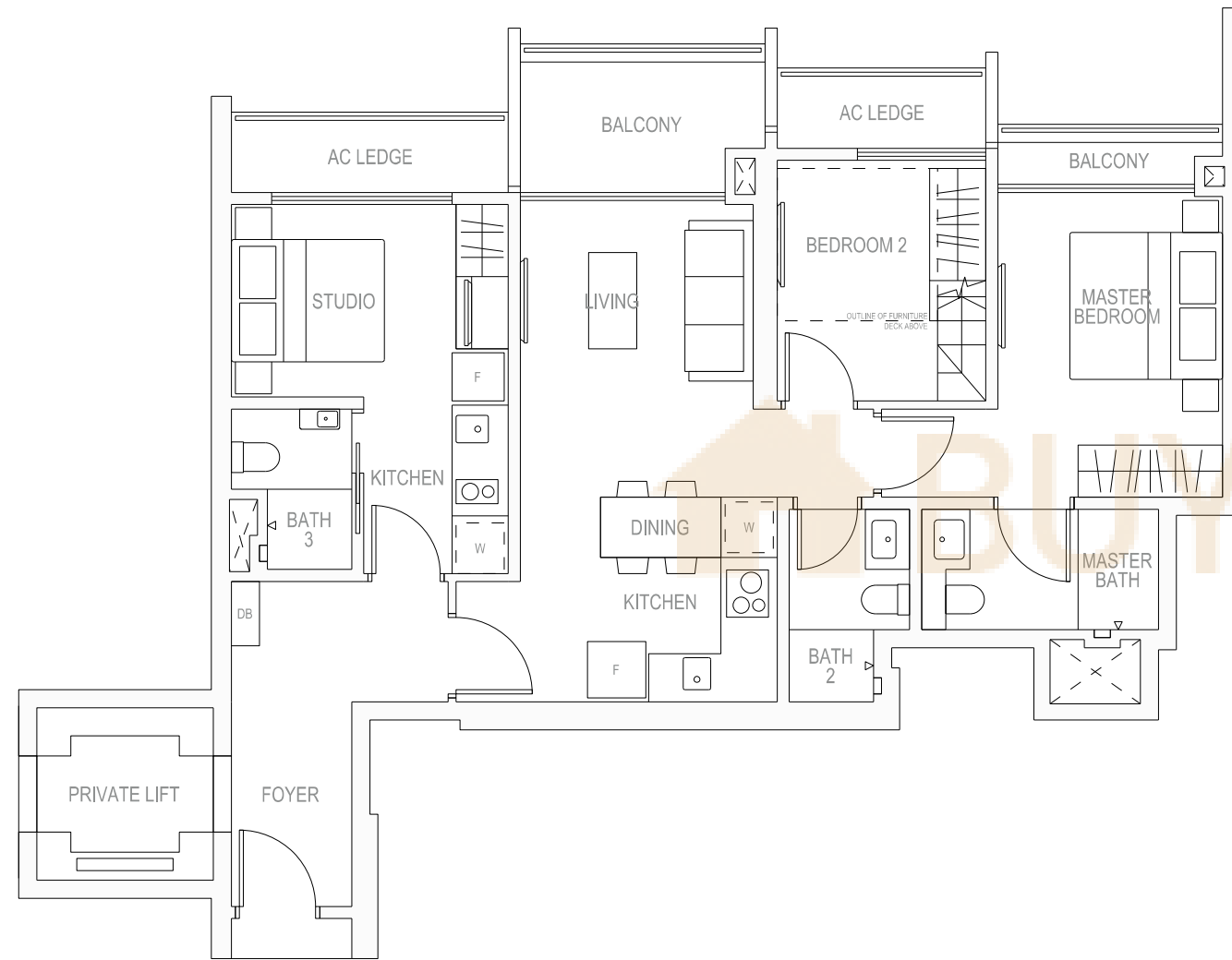
MIRROR IMAGE

BLOCK 17
#02-34 TO #03-34
#05-34 TO #08-34
#10-34 TO #13-34
#15-34 TO #19-34

THE PLANS ARE SUBJECT TO CHANGE AS MAY BE REQUIRED OR APPROVED BY THE RELEVANT AUTHORITIES. AREAS ARE ESTIMATES ONLY AND ARE SUBJECT TO FINAL SURVEY. PLANS ARE NOT DRAWN TO SCALE AND DO NOT FORM PART OF THE CONTRACT.

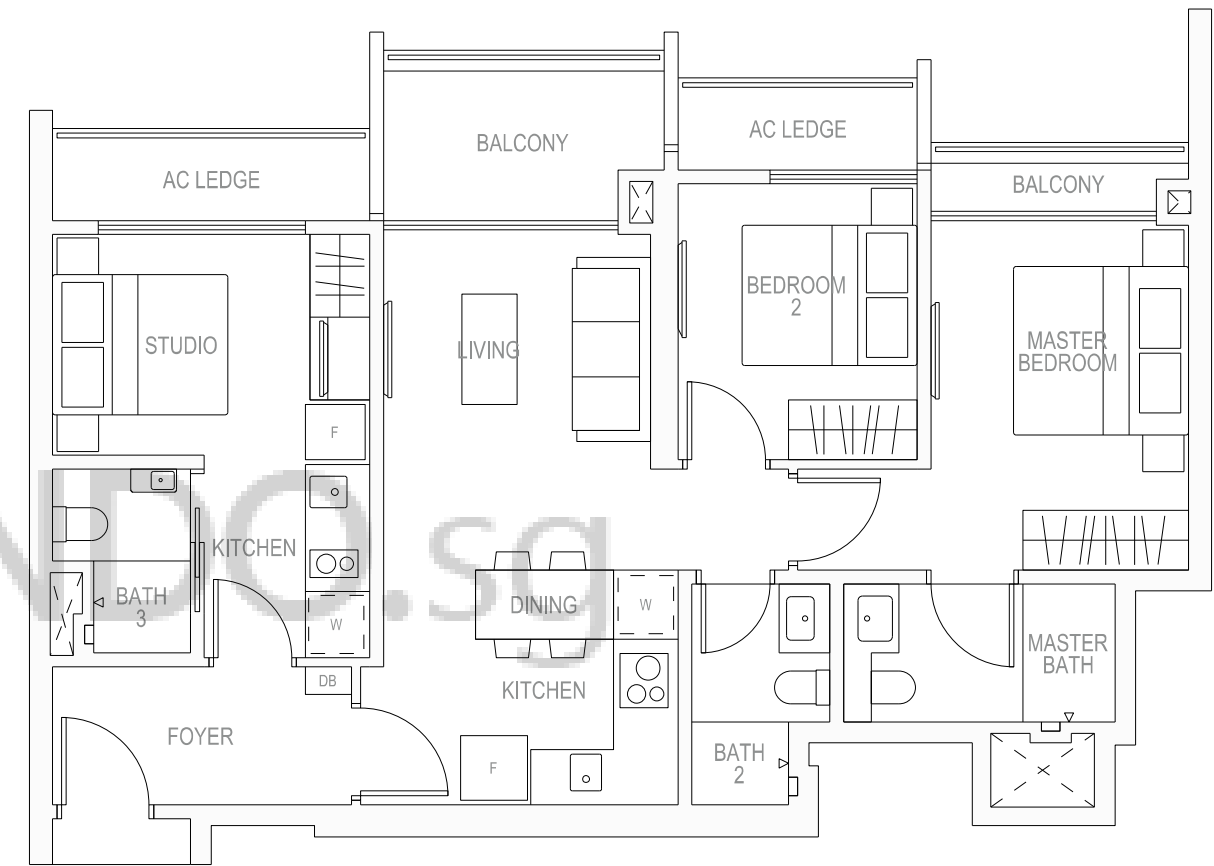
DKaP LOFT

3 BEDROOM DUAL-KEY



DKb

3 BEDROOM DUAL-KEY



<p>TYPE DKaP LOFT</p>	<p>AREA 97 SQM, 1044 SQFT</p> <p>BLOCK 13 #19-13</p> <p>BLOCK 15 #19-27 <small>MIRROR IMAGE</small></p> <p>THE PLANS ARE SUBJECT TO CHANGE AS MAY BE REQUIRED OR APPROVED BY THE RELEVANT AUTHORITIES. AREAS ARE ESTIMATES ONLY AND ARE SUBJECT TO FINAL SURVEY. PLANS ARE NOT DRAWN TO SCALE AND DO NOT FORM PART OF THE CONTRACT.</p>	<p>FURNITURE DECK ISOMETRIC</p>
-----------------------	---	---------------------------------

<p>TYPE DKb</p>	<p>AREA 92 SQM, 990 SQFT</p> <p>BLOCK 13 #04-13 #09-13 #14-13</p> <p>BLOCK 15 #04-27 #09-27 #14-27 <small>MIRROR IMAGE</small></p> <p>BLOCK 17 #04-34 #09-34 #14-34</p> <p>THE PLANS ARE SUBJECT TO CHANGE AS MAY BE REQUIRED OR APPROVED BY THE RELEVANT AUTHORITIES. AREAS ARE ESTIMATES ONLY AND ARE SUBJECT TO FINAL SURVEY. PLANS ARE NOT DRAWN TO SCALE AND DO NOT FORM PART OF THE CONTRACT.</p>
-----------------	---

Da & Da1

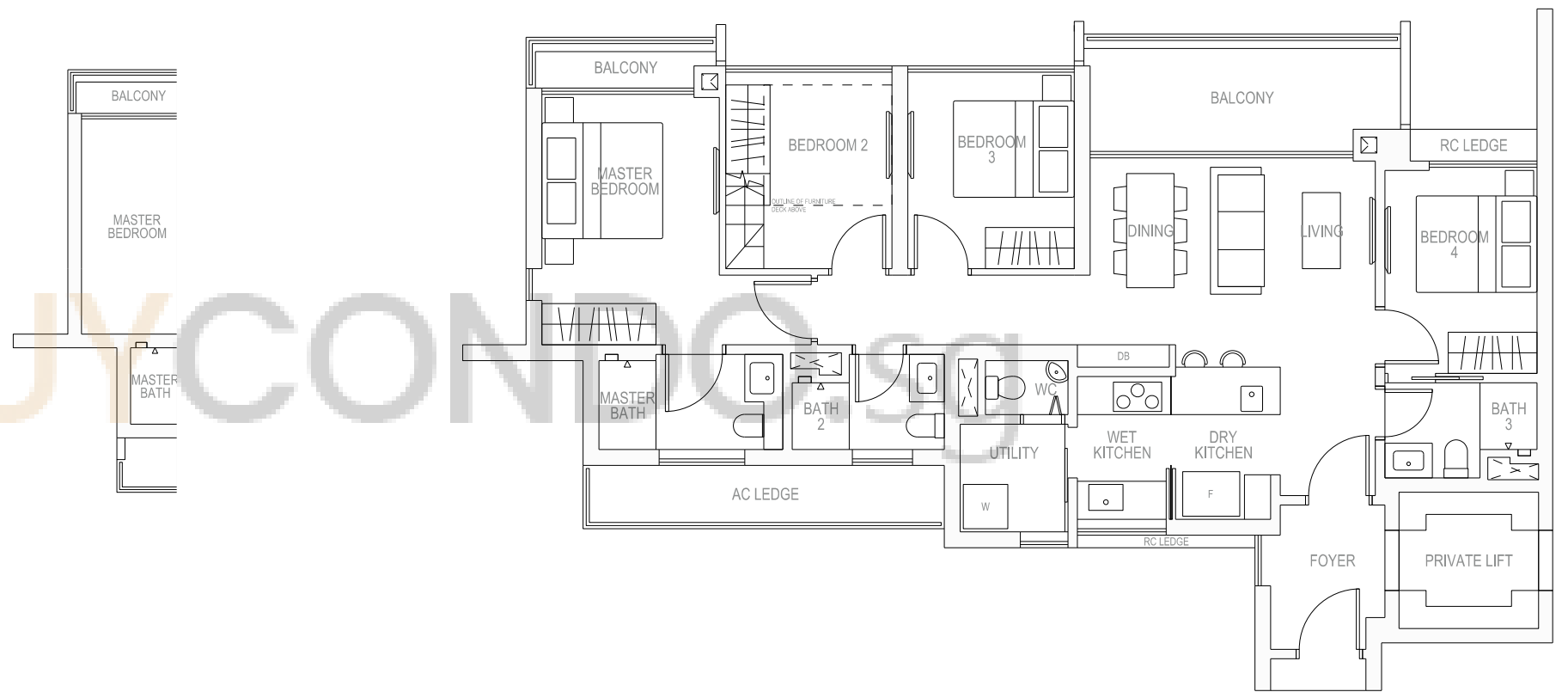
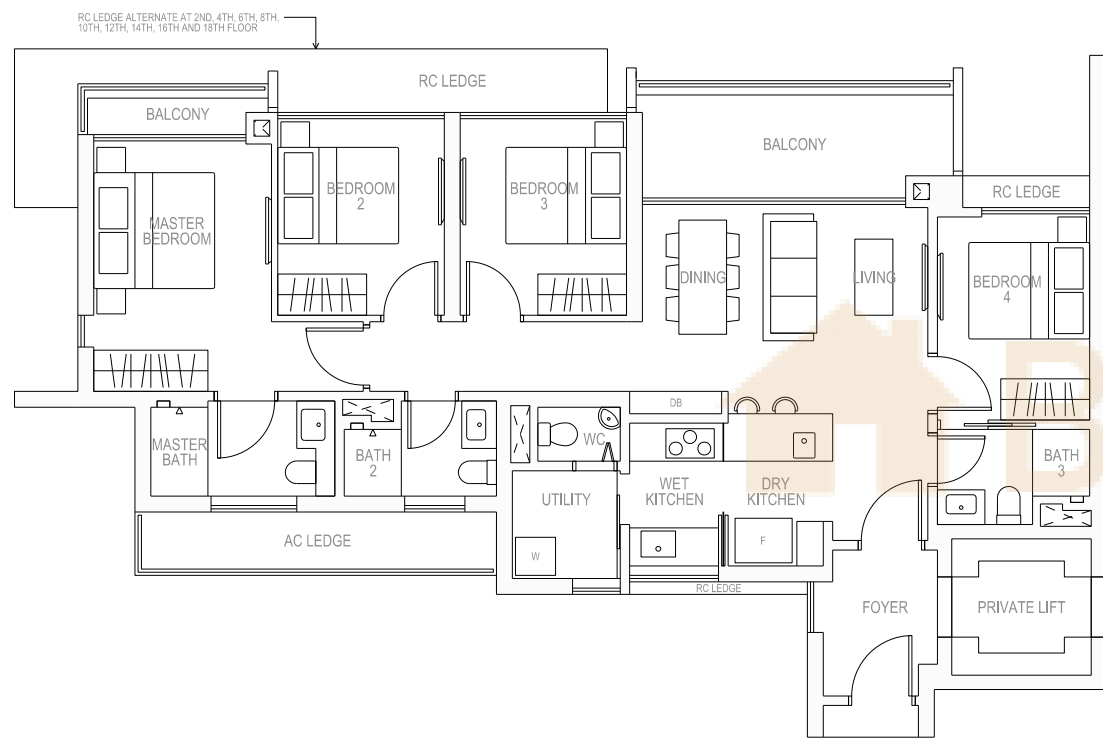
4 BEDROOM

DaP LOFT

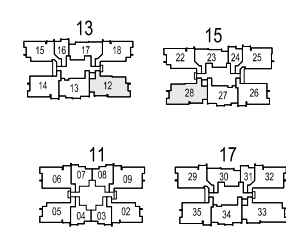
4 BEDROOM

① Da

② Da1



- ① TYPE Da
- ② TYPE Da1

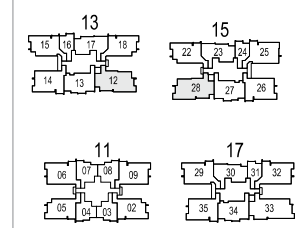


- ① AREA 115 SQM, 1238 SQFT
- ② AREA 115 SQM, 1238 SQFT

- ① BLOCK 13 #04-12 TO #18-12
- ① BLOCK 15 #04-28 TO #18-28 MIRROR IMAGE
- ② BLOCK 13 #03-12
- ② BLOCK 15 #03-28 MIRROR IMAGE

THE PLANS ARE SUBJECT TO CHANGE AS MAY BE REQUIRED OR APPROVED BY THE RELEVANT AUTHORITIES. AREAS ARE ESTIMATES ONLY AND ARE SUBJECT TO FINAL SURVEY. PLANS ARE NOT DRAWN TO SCALE AND DO NOT FORM PART OF THE CONTRACT.

TYPE DaP LOFT

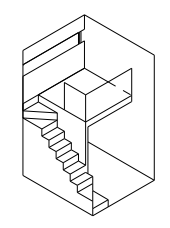


AREA 115 SQM, 1238 SQFT

- BLOCK 13 #19-12
- BLOCK 15 #19-28 MIRROR IMAGE

THE PLANS ARE SUBJECT TO CHANGE AS MAY BE REQUIRED OR APPROVED BY THE RELEVANT AUTHORITIES. AREAS ARE ESTIMATES ONLY AND ARE SUBJECT TO FINAL SURVEY. PLANS ARE NOT DRAWN TO SCALE AND DO NOT FORM PART OF THE CONTRACT.

FURNITURE DECK ISOMETRIC



Db & Dc

4 BEDROOM

Dd & De

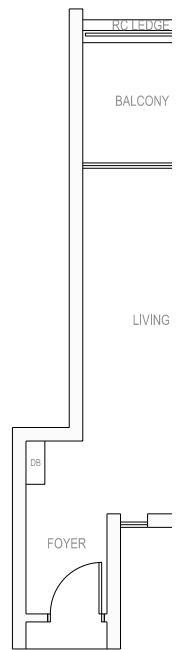
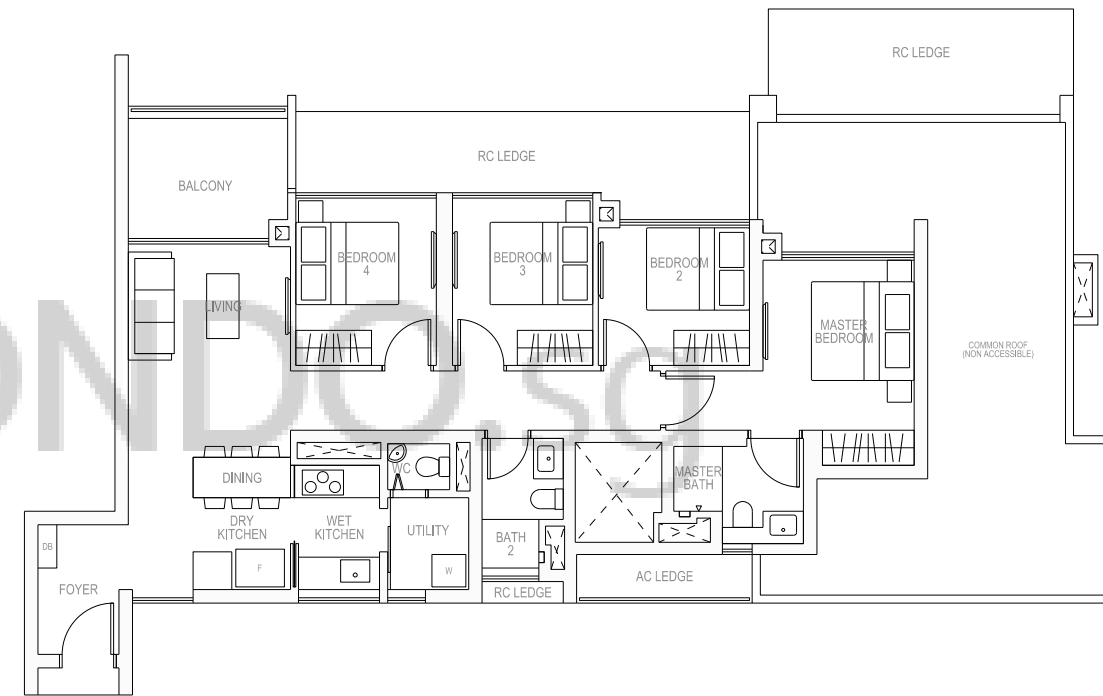
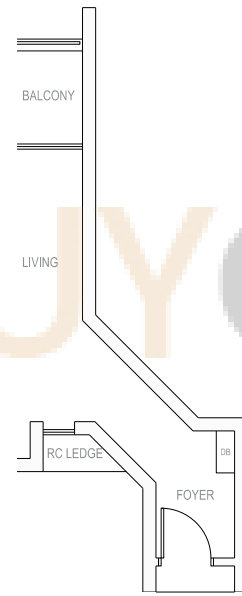
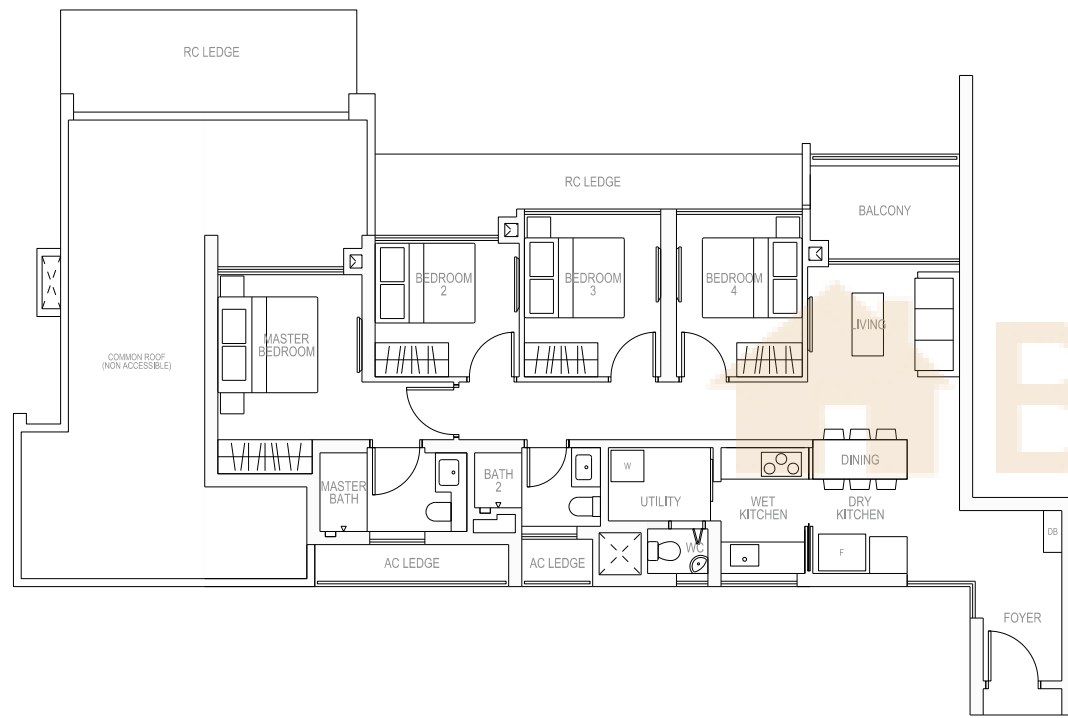
4 BEDROOM

① Db

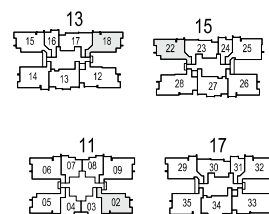
② Dc

① Dd

② De



① TYPE Db
② TYPE Dc



① AREA 102 SQM, 1098 SQFT
② AREA 103 SQM, 1109 SQFT

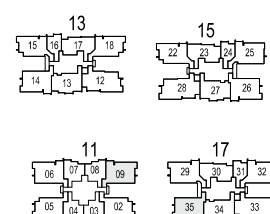
① BLOCK 11
#02-02

② BLOCK 13
#02-18

② BLOCK 15
#02-22

THE PLANS ARE SUBJECT TO CHANGE AS MAY BE REQUIRED OR APPROVED BY THE RELEVANT AUTHORITIES. AREAS ARE ESTIMATES ONLY AND ARE SUBJECT TO FINAL SURVEY. PLANS ARE NOT DRAWN TO SCALE AND DO NOT FORM PART OF THE CONTRACT.

TYPE Dd
TYPE De



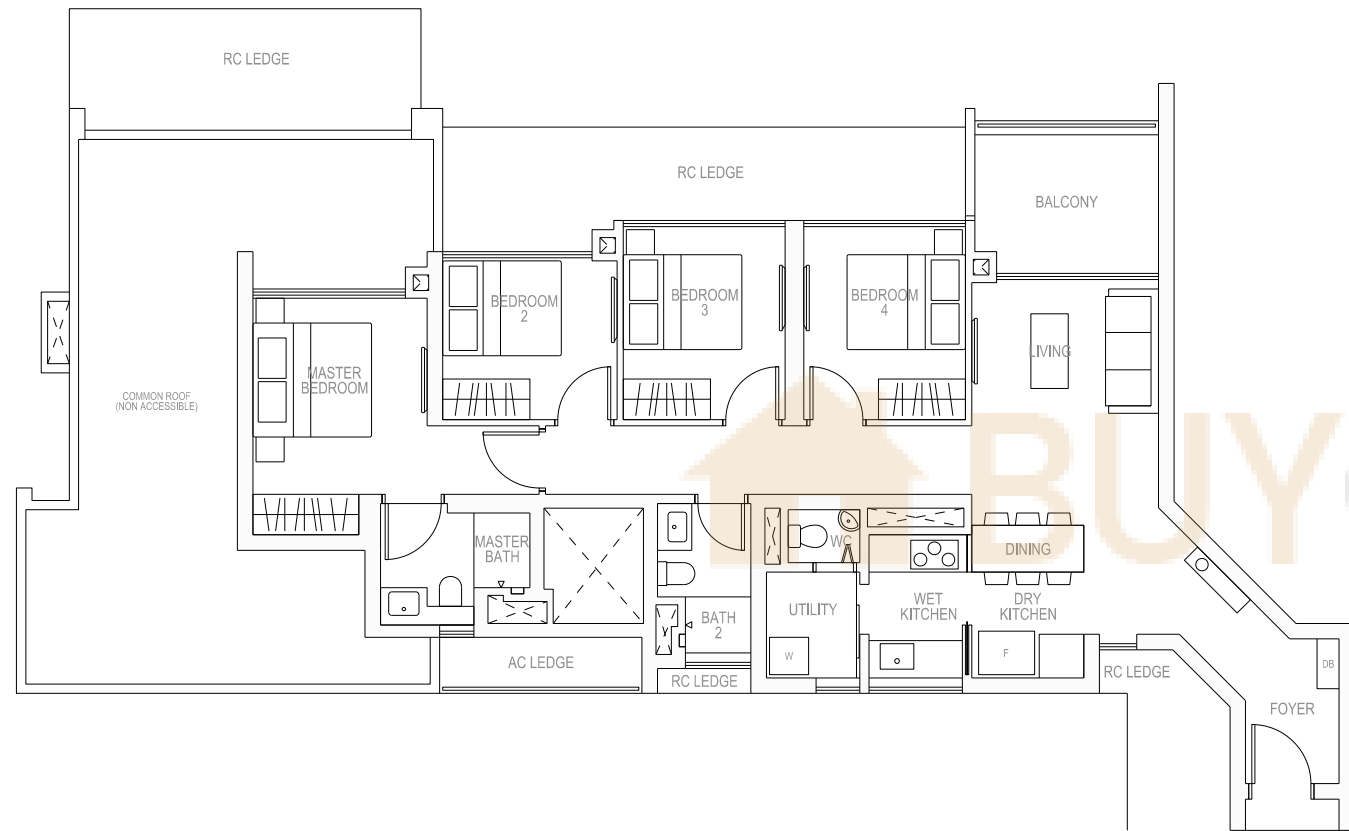
① AREA 104 SQM, 1119 SQFT
② AREA 104 SQM, 1119 SQFT

① BLOCK 11
#02-09

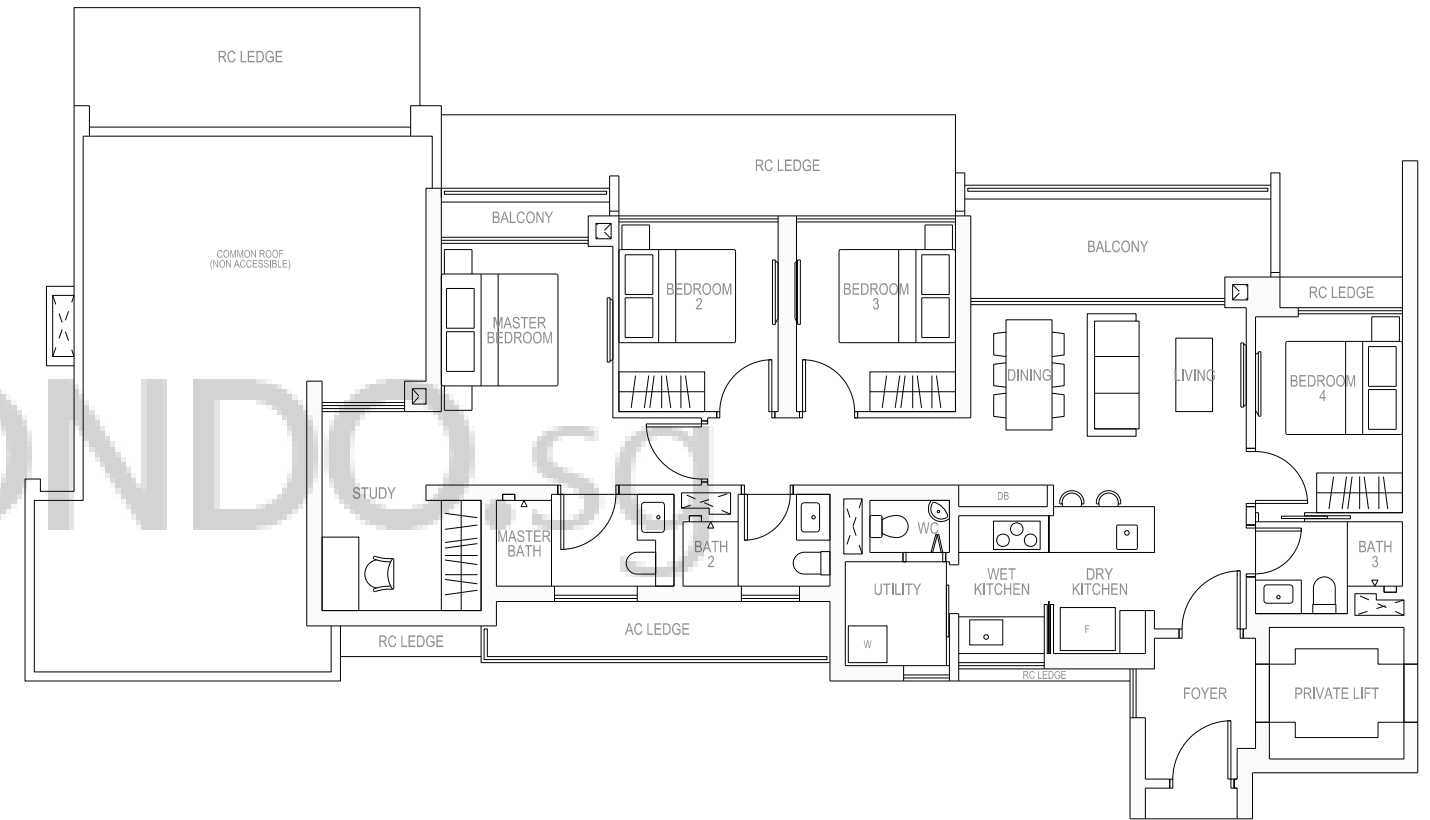
② BLOCK 17
#02-35

THE PLANS ARE SUBJECT TO CHANGE AS MAY BE REQUIRED OR APPROVED BY THE RELEVANT AUTHORITIES. AREAS ARE ESTIMATES ONLY AND ARE SUBJECT TO FINAL SURVEY. PLANS ARE NOT DRAWN TO SCALE AND DO NOT FORM PART OF THE CONTRACT.

D f
4 BEDROOM



D g
4 BEDROOM + STUDY

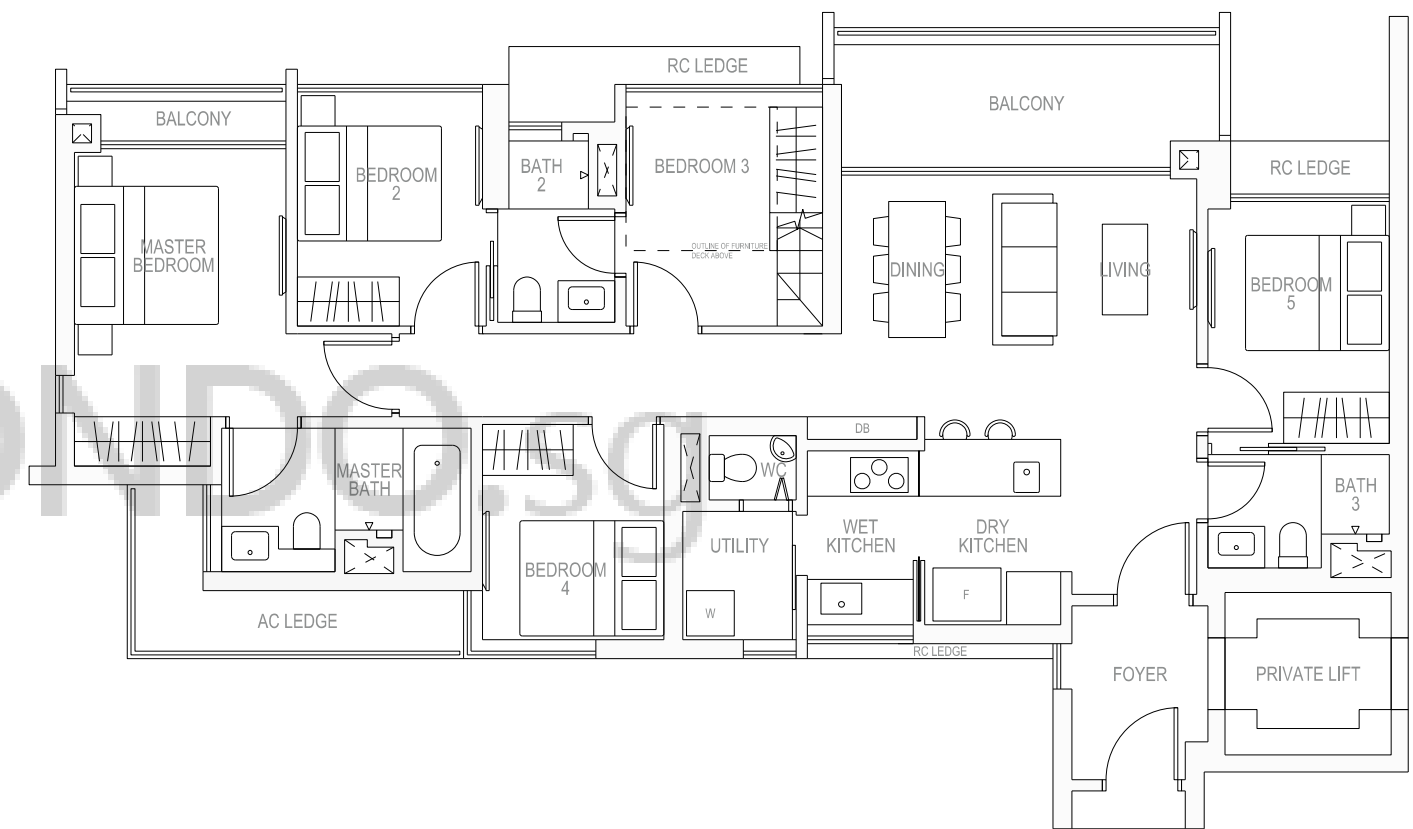
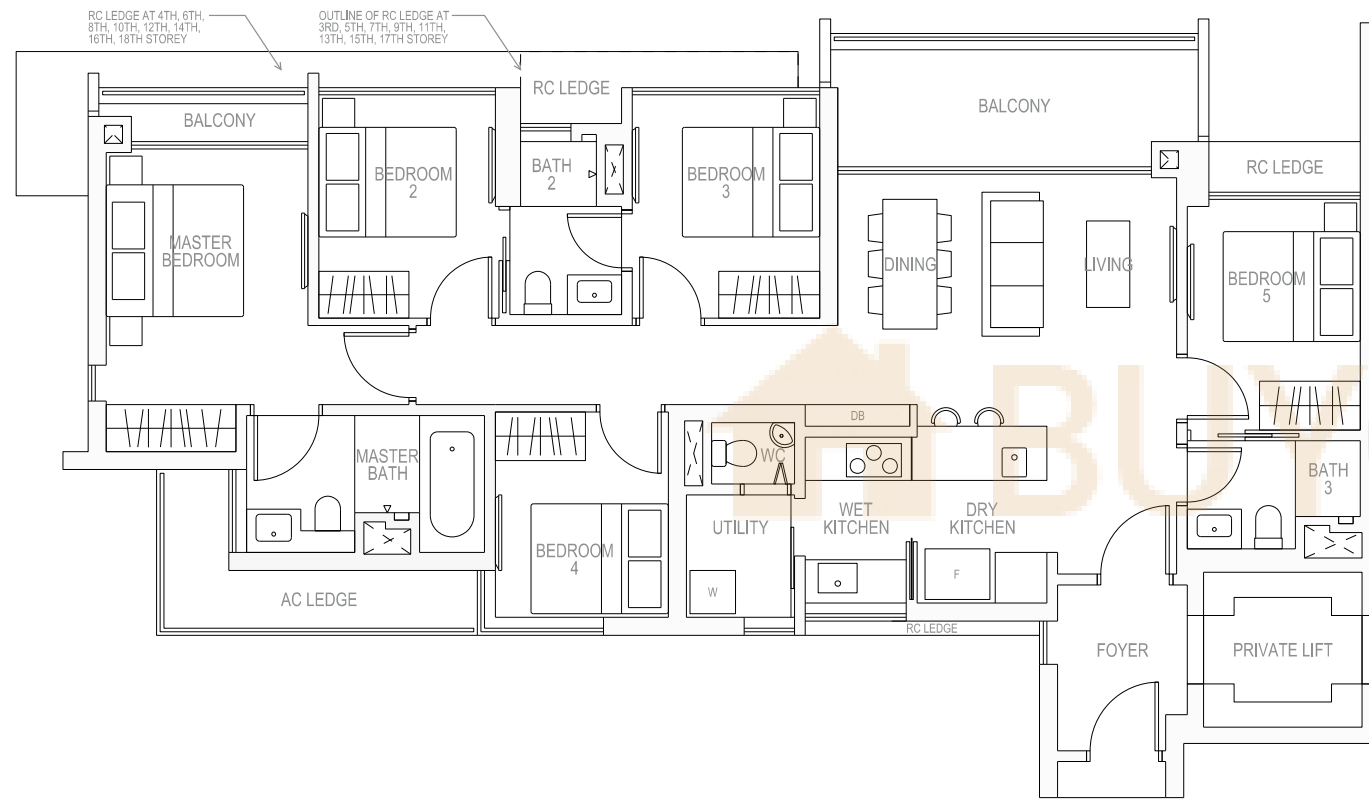


<p>TYPE Df</p>	<p>AREA 106 SQM, 1141 SQFT</p>
	<p>BLOCK 17 #02-29</p>
<p>THE PLANS ARE SUBJECT TO CHANGE AS MAY BE REQUIRED OR APPROVED BY THE RELEVANT AUTHORITIES. AREAS ARE ESTIMATES ONLY AND ARE SUBJECT TO FINAL SURVEY. PLANS ARE NOT DRAWN TO SCALE AND DO NOT FORM PART OF THE CONTRACT.</p>	

<p>TYPE Dg</p>	<p>AREA 124 SQM, 1335 SQFT</p>
	<p>BLOCK 13 #02-12</p> <p>BLOCK 15 #02-28 <small>MIRROR IMAGE</small></p>
<p>THE PLANS ARE SUBJECT TO CHANGE AS MAY BE REQUIRED OR APPROVED BY THE RELEVANT AUTHORITIES. AREAS ARE ESTIMATES ONLY AND ARE SUBJECT TO FINAL SURVEY. PLANS ARE NOT DRAWN TO SCALE AND DO NOT FORM PART OF THE CONTRACT.</p>	

E 5 BEDROOM

EP LOFT 5 BEDROOM

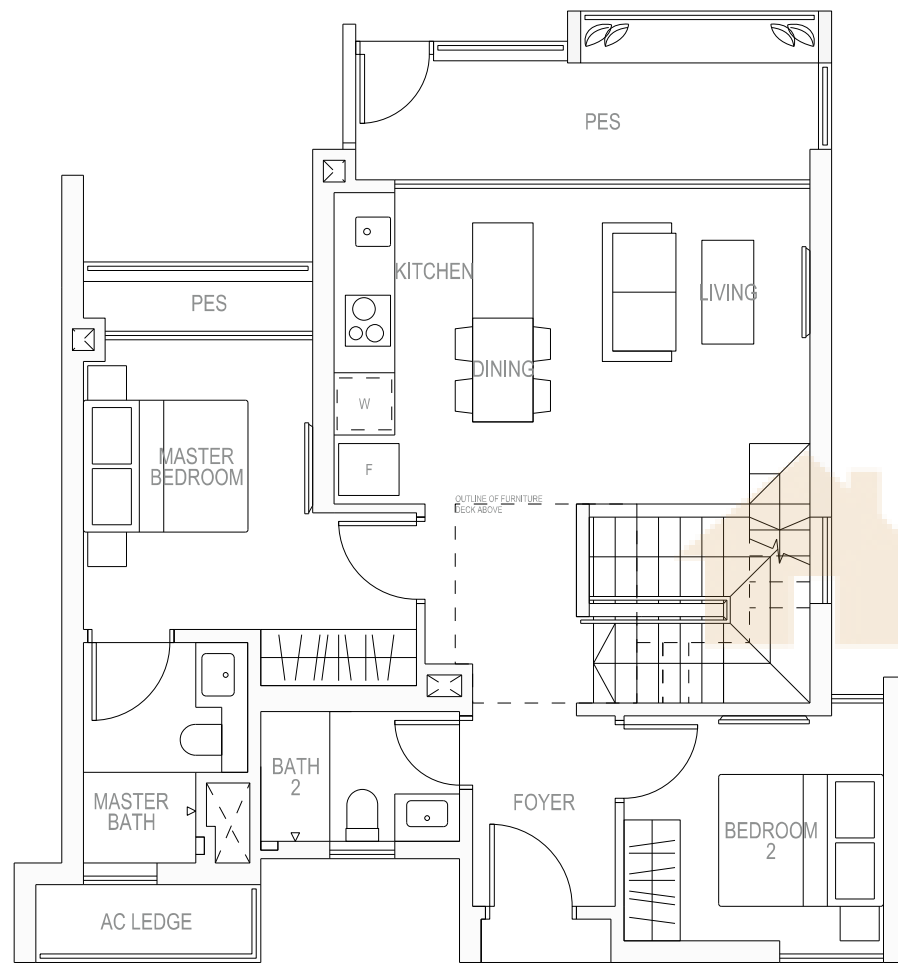


<p>TYPE E</p>	<p>AREA 129 SQM, 1389 SQFT</p> <p>BLOCK 17 #03-33 TO #18-33</p> <p>THE PLANS ARE SUBJECT TO CHANGE AS MAY BE REQUIRED OR APPROVED BY THE RELEVANT AUTHORITIES. AREAS ARE ESTIMATES ONLY AND ARE SUBJECT TO FINAL SURVEY. PLANS ARE NOT DRAWN TO SCALE AND DO NOT FORM PART OF THE CONTRACT.</p>
---------------	---

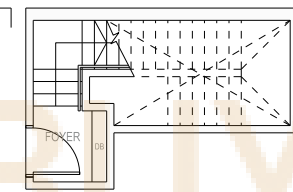
<p>TYPE EP LOFT</p>	<p>AREA 129 SQM, 1389 SQFT</p> <p>BLOCK 17 #19-33</p> <p>THE PLANS ARE SUBJECT TO CHANGE AS MAY BE REQUIRED OR APPROVED BY THE RELEVANT AUTHORITIES. AREAS ARE ESTIMATES ONLY AND ARE SUBJECT TO FINAL SURVEY. PLANS ARE NOT DRAWN TO SCALE AND DO NOT FORM PART OF THE CONTRACT.</p>	<p>FURNITURE DECK ISOMETRIC</p>
---------------------	---	---------------------------------

F a
CABANA

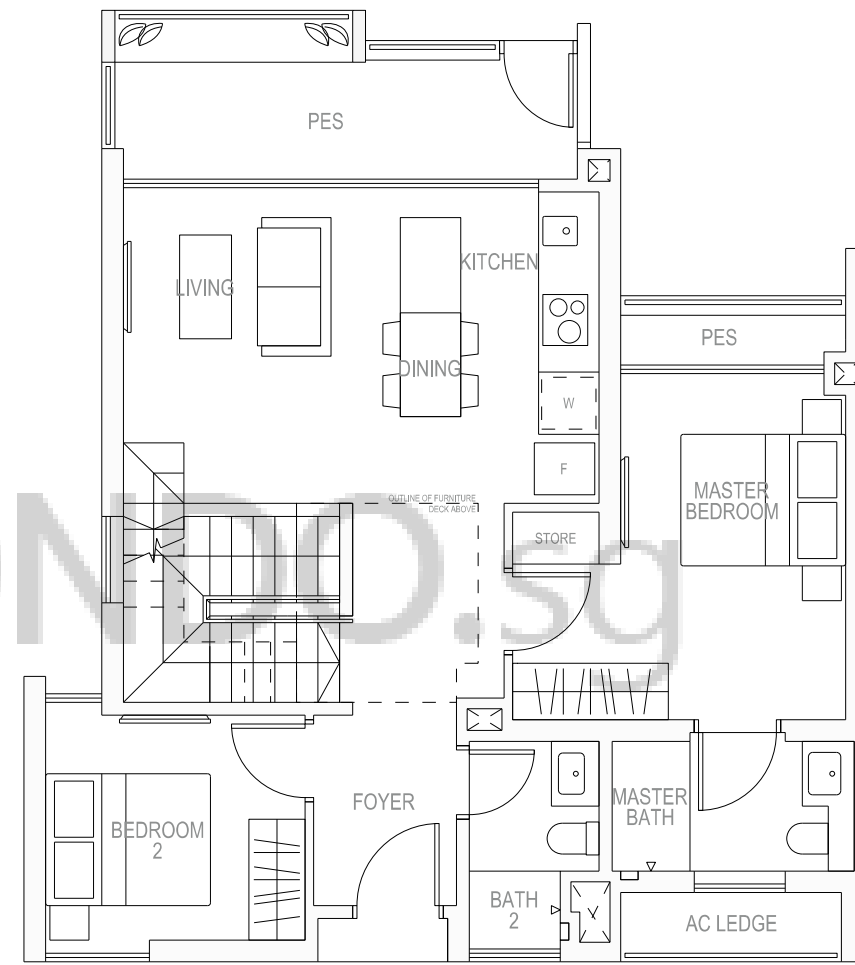
F b
CABANA



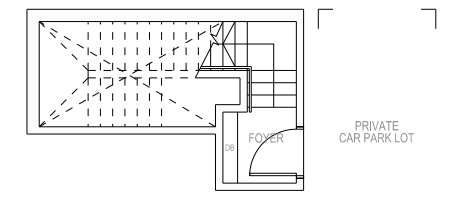
FIRST STOREY PLAN



BASEMENT PLAN



FIRST STOREY PLAN

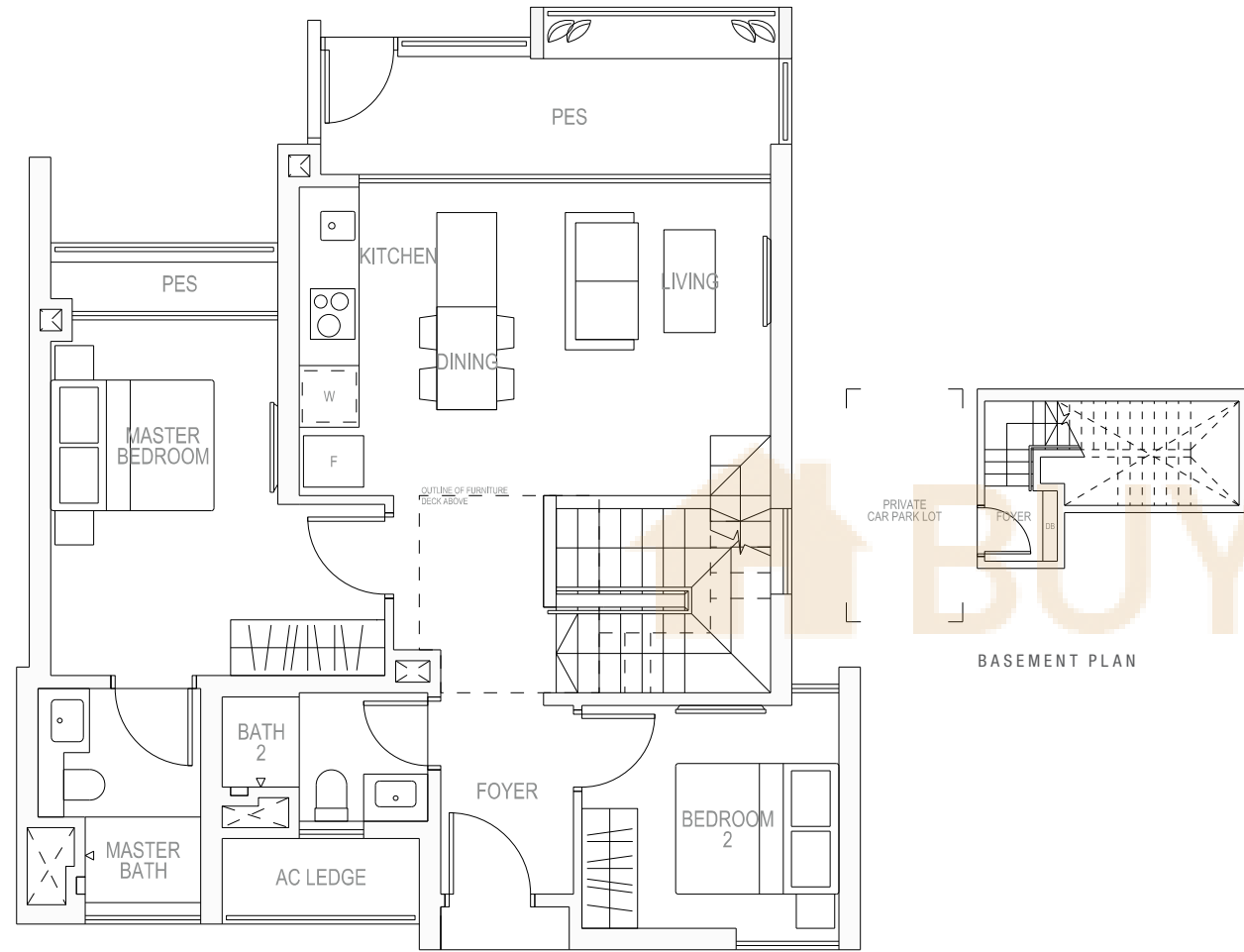


BASEMENT PLAN

<p>TYPE Fa</p>	<p>AREA 111 SQM, 1195 SQFT</p>			<p>FURNITURE DECK ISOMETRIC</p>
	<p>BLOCK 11 #01-10</p>	<p>BLOCK 17 #01-36</p>	<p>BLOCK 17 #01-37 <small>MIKKOR IMAGE</small></p>	
	<p>THE PLANS ARE SUBJECT TO CHANGE AS MAY BE REQUIRED OR APPROVED BY THE RELEVANT AUTHORITIES. AREAS ARE ESTIMATES ONLY AND ARE SUBJECT TO FINAL SURVEY. PLANS ARE NOT DRAWN TO SCALE AND DO NOT FORM PART OF THE CONTRACT.</p>			

<p>TYPE Fb</p>	<p>AREA 113 SQM, 1216 SQFT</p>			<p>FURNITURE DECK ISOMETRIC</p>
	<p>BLOCK 11 #01-01</p>	<p>BLOCK 13 #01-19 <small>MIKKOR IMAGE</small></p>	<p>BLOCK 15 #01-21</p>	
	<p>THE PLANS ARE SUBJECT TO CHANGE AS MAY BE REQUIRED OR APPROVED BY THE RELEVANT AUTHORITIES. AREAS ARE ESTIMATES ONLY AND ARE SUBJECT TO FINAL SURVEY. PLANS ARE NOT DRAWN TO SCALE AND DO NOT FORM PART OF THE CONTRACT.</p>			

F c
CABANA



FIRST STOREY PLAN

BASEMENT PLAN

S P E C I F I C A T I O N S



BUYCONDO.sg

<p>TYPE Fc</p>	<p>AREA 113 SQM, 1216 SQFT</p> <p>BLOCK 13 # 01-11</p> <p>BLOCK 15 # 01-20</p> <p>THE PLANS ARE SUBJECT TO CHANGE AS MAY BE REQUIRED OR APPROVED BY THE RELEVANT AUTHORITIES. AREAS ARE ESTIMATES ONLY AND ARE SUBJECT TO FINAL SURVEY. PLANS ARE NOT DRAWN TO SCALE AND DO NOT FORM PART OF THE CONTRACT.</p>	<p>FURNITURE DECK ISOMETRIC</p>
----------------	--	---------------------------------