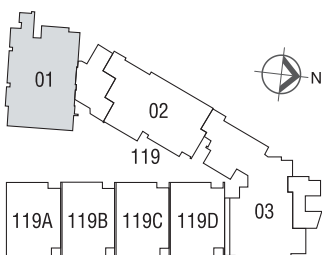


3-BEDROOM APARTMENT

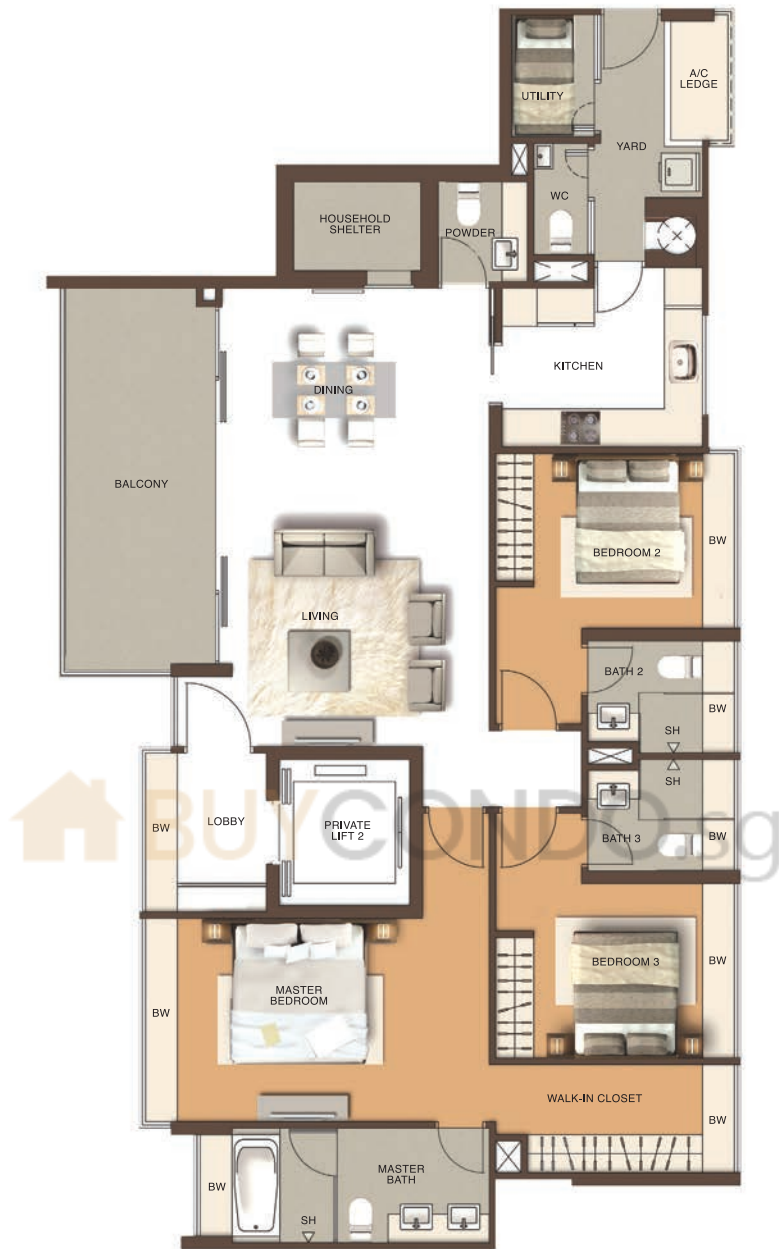


Type A

172 sqm / 1,851 sq ft
#03-01 to #11-01

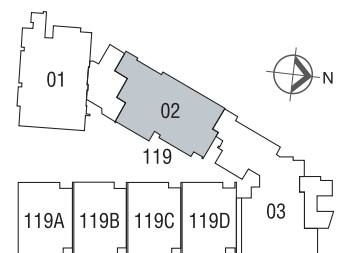


3-BEDROOM APARTMENT



Type B

154 sqm / 1,657 sq ft
#03-02 to #11-02

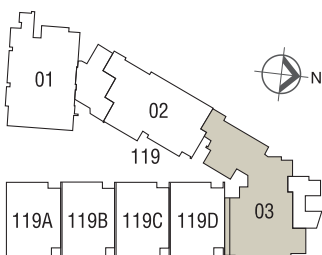


4-BEDROOM APARTMENT



Type C

212 sqm / 2,282 sq ft
#05-03 to #11-03



4-BEDROOM APARTMENT



Type C1

204 sqm / 2,196 sq ft
#03-03 to #04-03

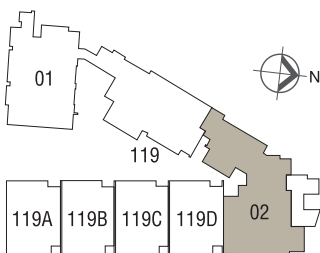


PENTHOUSE



Type C2 (Lower)

348 sqm / 3,746 sq ft
#12-02



PENTHOUSE



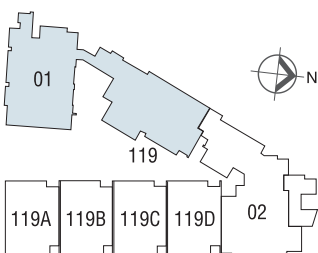
Type C2 (Upper)

PENTHOUSE

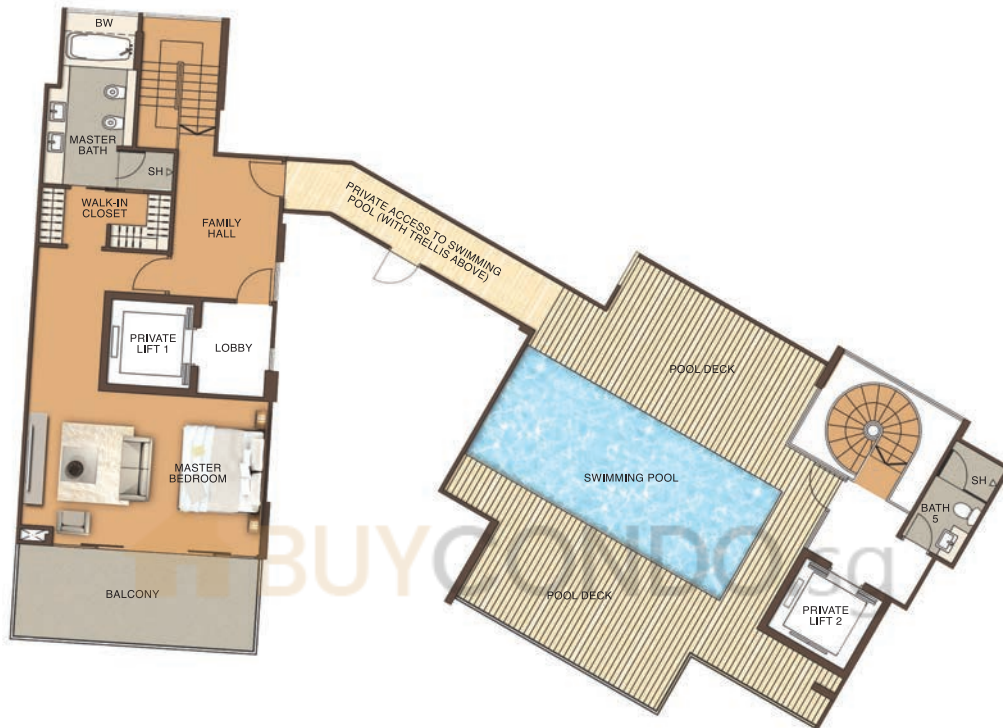


Type D (Lower)

533 sqm / 5,737 sq ft
#12-01



PENTHOUSE



Type D (Upper)

STRATA-LANDED TERRACE HOUSE



Basement



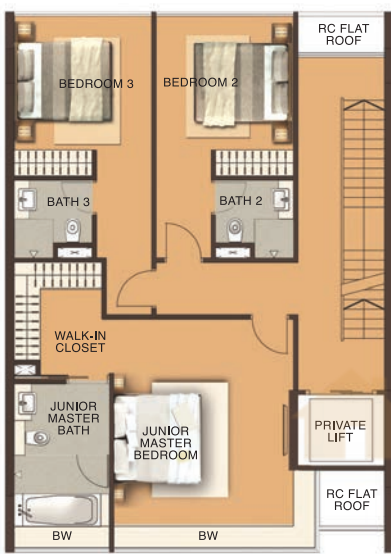
1st Storey

- Type E (#119A)
- Type F (#119B)
- Type G (#119C)
- Type H (#119D)

538 sqm / 5,791 sq ft



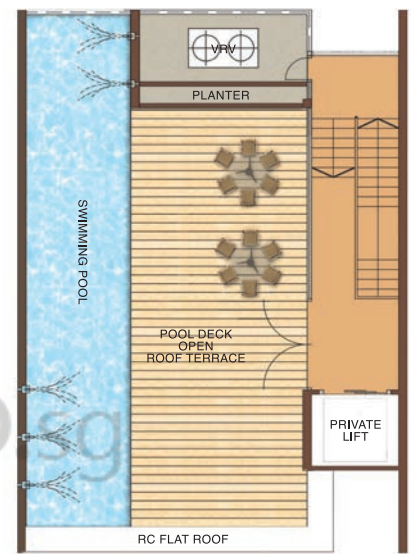
STRATA-LANDED TERRACE HOUSE



2nd Storey



3rd Storey



Roof Terrace