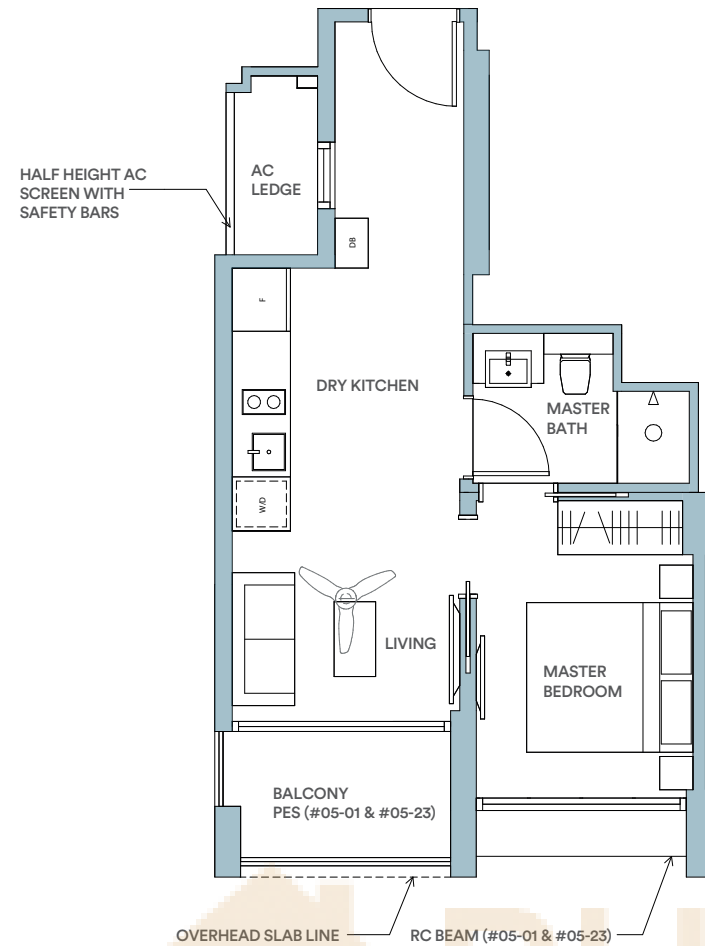


1 BEDROOM

### TYPE A1/A1Pb

45sqm / 484sqft

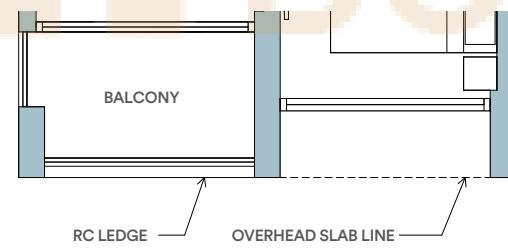
#05-01, #08-01, #11-01, #14-01, #17-01  
#08-12, #11-12, #14-12, #17-12  
#05-23, #08-23, #11-23, #14-23, #17-23



### TYPE A1

45sqm / 484sqft

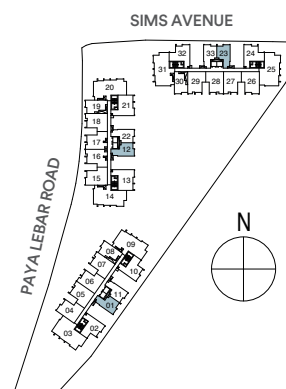
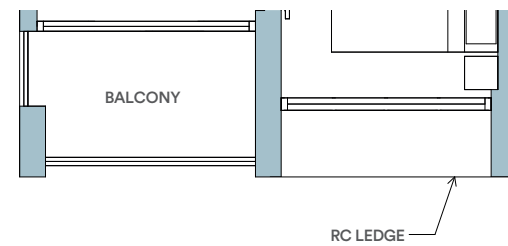
#06-01, #09-01, #12-01, #15-01  
#06-12, #09-12, #12-12, #15-12  
#06-23, #09-23, #12-23, #15-23



### TYPE A1

45sqm / 484sqft

#07-01, #10-01, #13-01, #16-01  
#07-12, #10-12, #13-12, #16-12  
#07-23, #10-23, #13-23, #16-23



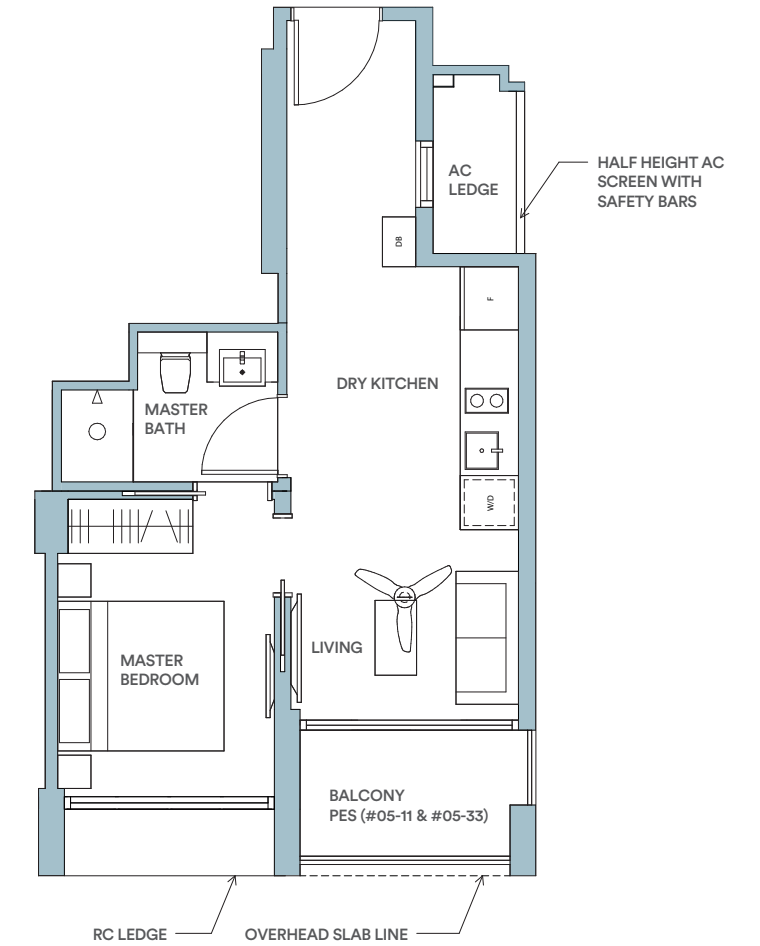
The above plans and illustration are subject to change as may be required or approved by the relevant authorities. Areas are estimates only and are subject to final survey.

1 BEDROOM

### TYPE A1\*/A1Pb\*

45sqm / 484sqft

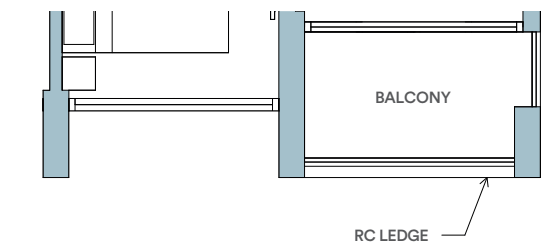
#05-11, #08-11, #11-11, #14-11, #17-11  
#08-22, #11-22, #14-22, #17-22  
#05-33, #08-33, #11-33, #14-33, #17-33



### TYPE A1\*

45sqm / 484sqft

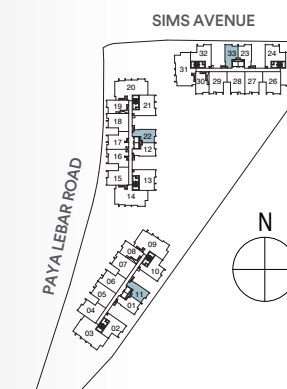
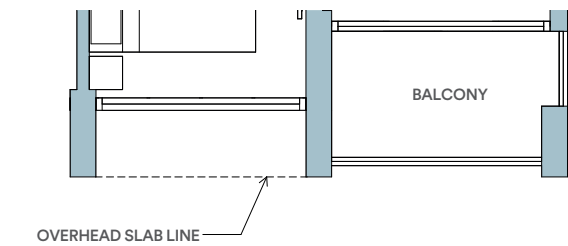
#06-11, #09-11, #12-11, #15-11  
#06-22, #09-22, #12-22, #15-22  
#06-33, #09-33, #12-33, #15-33



### TYPE A1\*

45sqm / 484sqft

#07-11, #10-11, #13-11, #16-11  
#07-22, #10-22, #13-22, #16-22  
#07-33, #10-33, #13-33, #16-33



The above plans and illustration are subject to change as may be required or approved by the relevant authorities. Areas are estimates only and are subject to final survey.

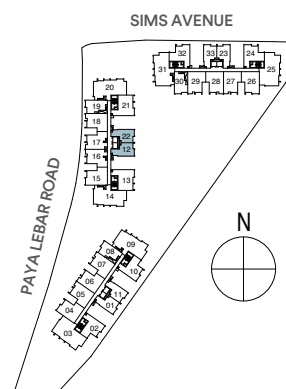
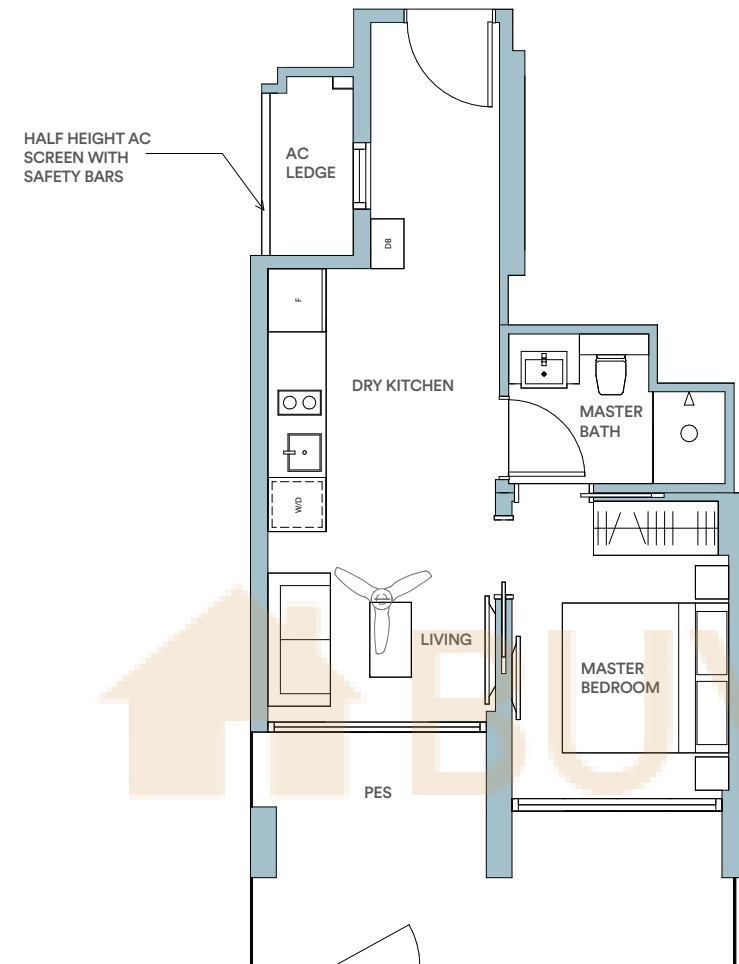
1 BEDROOM

**TYPE A1Pa**

54sqm / 581sqft

#05-12  
#05-22\*

\*mirrored



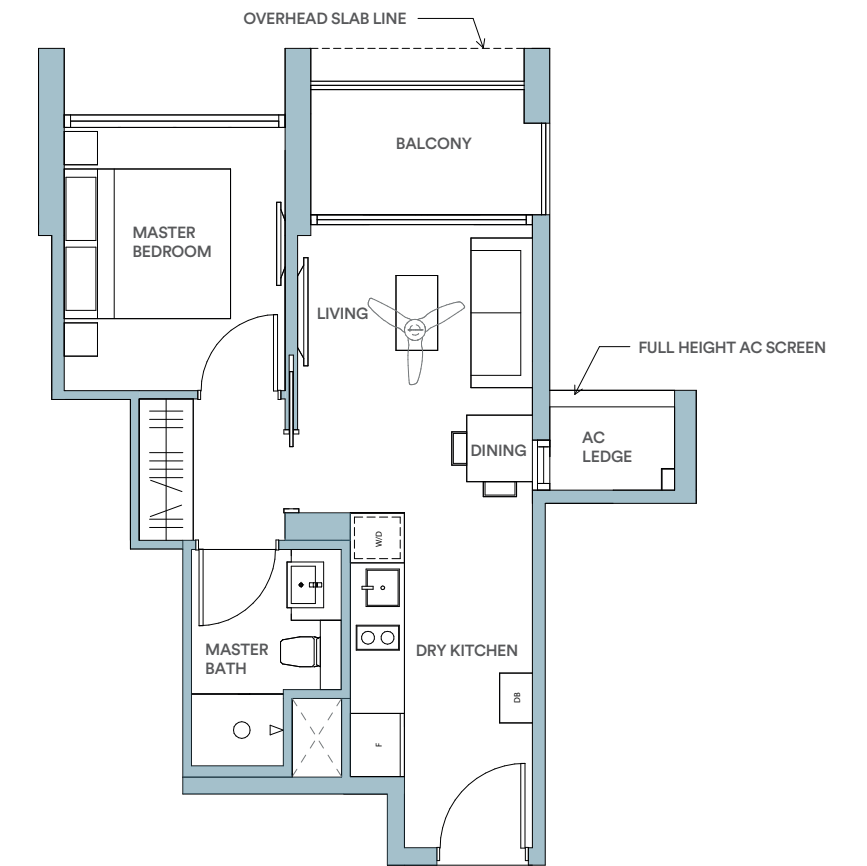
The above plans and illustration are subject to change as may be required or approved by the relevant authorities. Areas are estimates only and are subject to final survey.

1 BEDROOM

**TYPE A2**

45sqm / 484sqft

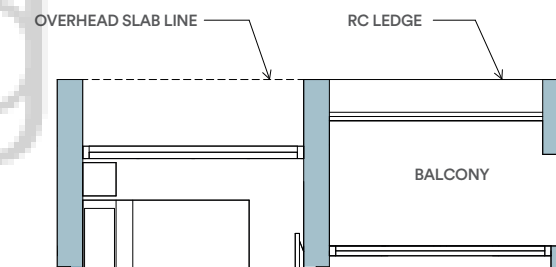
#08-08, #11-08, #14-08, #17-08  
#08-19, #11-19, #14-19, #17-19  
#08-30, #11-30, #14-30, #17-30



**TYPE A2**

45sqm / 484sqft

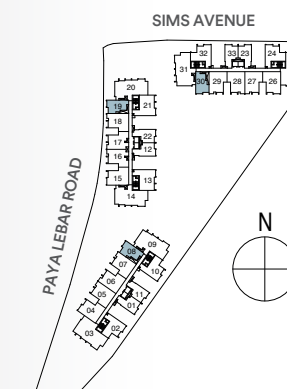
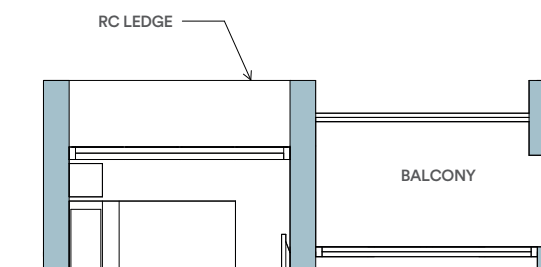
#06-08, #09-08, #12-08, #15-08  
#06-19, #09-19, #12-19, #15-19  
#06-30, #09-30, #12-30, #15-30



**TYPE A2**

45sqm / 484sqft

#07-08, #10-08, #13-08, #16-08  
#07-19, #10-19, #13-19, #16-19  
#07-30, #10-30, #13-30, #16-30



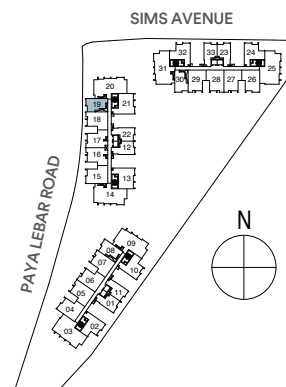
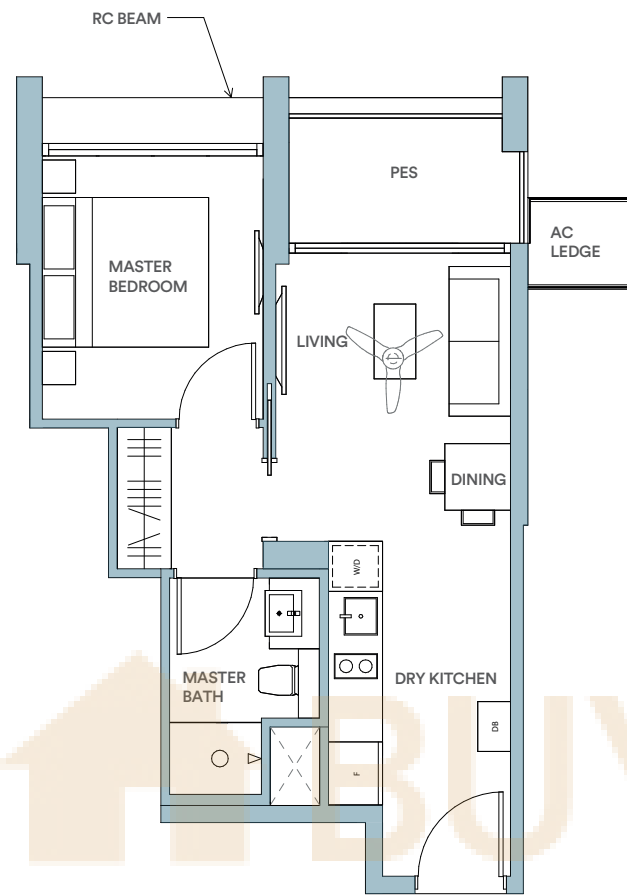
The above plans and illustration are subject to change as may be required or approved by the relevant authorities. Areas are estimates only and are subject to final survey.

1 BEDROOM

### TYPE A2Pa

44sqm / 474sqft

#05-19



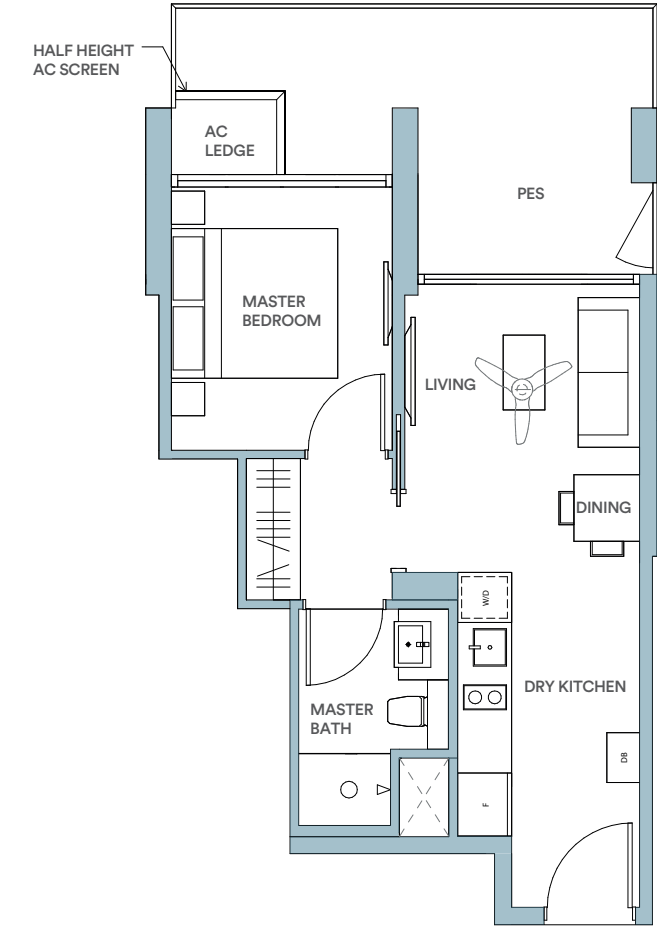
The above plans and illustration are subject to change as may be required or approved by the relevant authorities. Areas are estimates only and are subject to final survey.

1 BEDROOM

### TYPE A2Pb

54sqm / 581sqft

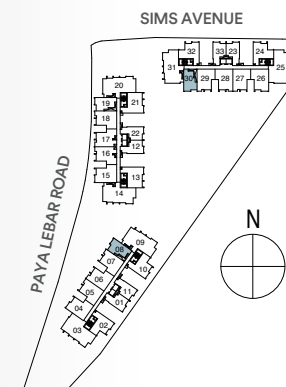
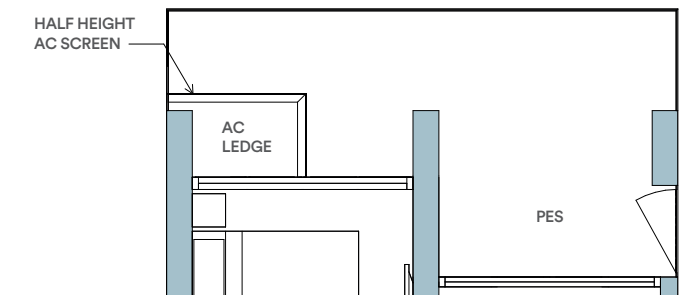
#05-08



### TYPE A2Pc

54sqm / 581sqft

#05-30



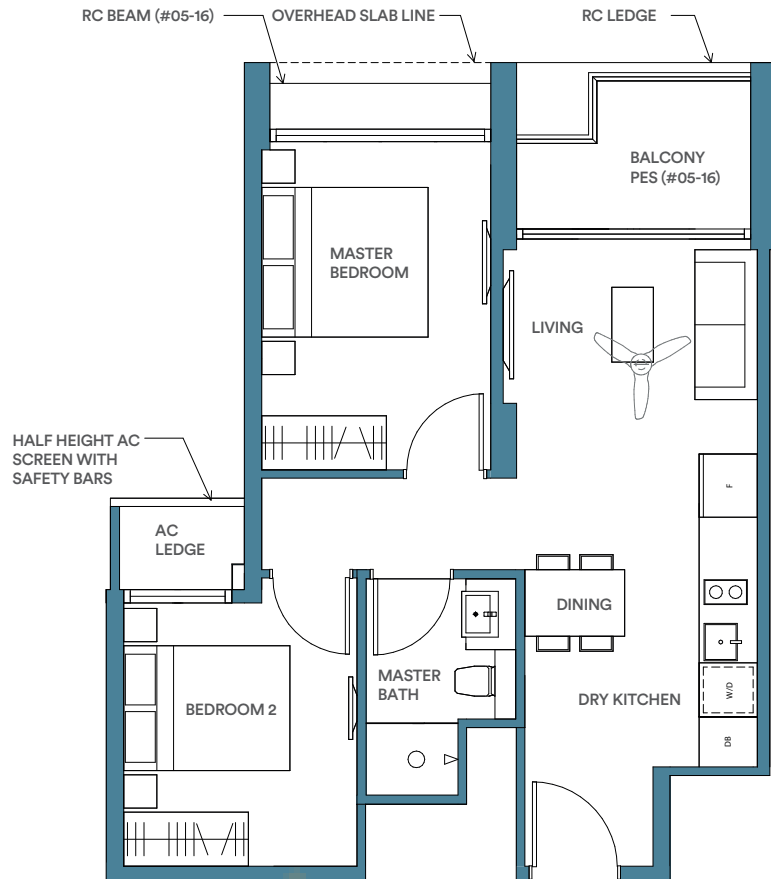
The above plans and illustration are subject to change as may be required or approved by the relevant authorities. Areas are estimates only and are subject to final survey.

2 BEDROOM

**TYPE B1/B1P**

60sqm / 646sqft

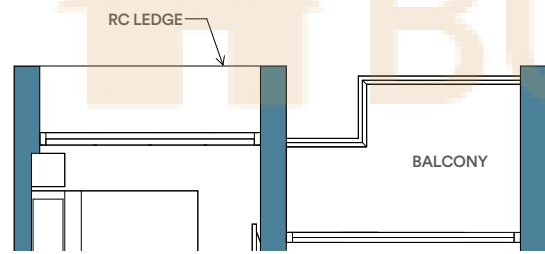
#05-16, #08-16, #11-16, #14-16, #17-16



**TYPE B1**

60sqm / 646sqft

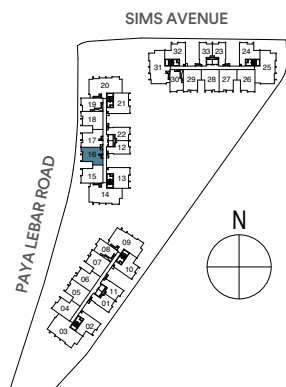
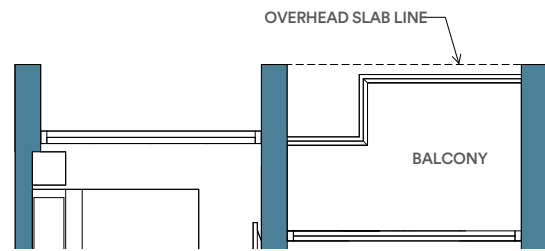
#06-16, #09-16, #12-16, #15-16



**TYPE B1**

60sqm / 646sqft

#07-16, #10-16, #13-16, #16-16



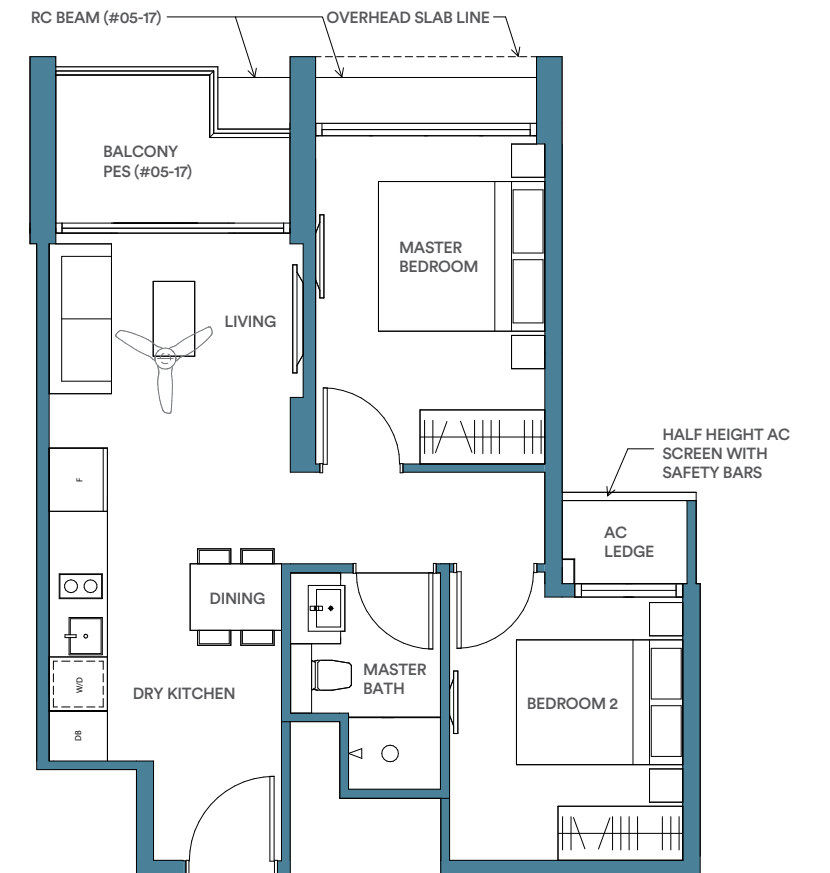
The above plans and illustration are subject to change as may be required or approved by the relevant authorities. Areas are estimates only and are subject to final survey.

2 BEDROOM

**TYPE B1\*/B1P\***

60sqm / 646sqft

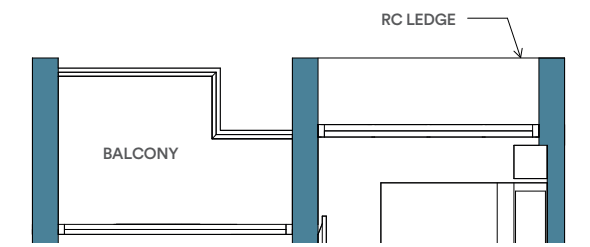
#05-17, #08-17, #11-17, #14-17, #17-17



**TYPE B1\***

60sqm / 646sqft

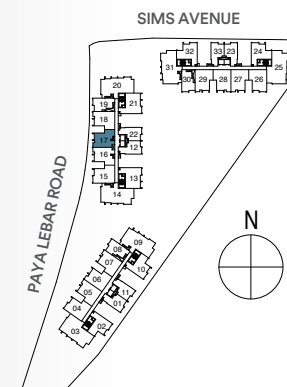
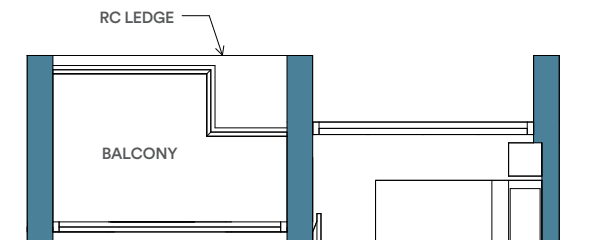
#06-17, #09-17, #12-17, #15-17



**TYPE B1\***

60sqm / 646sqft

#07-17, #10-17, #13-17, #16-17



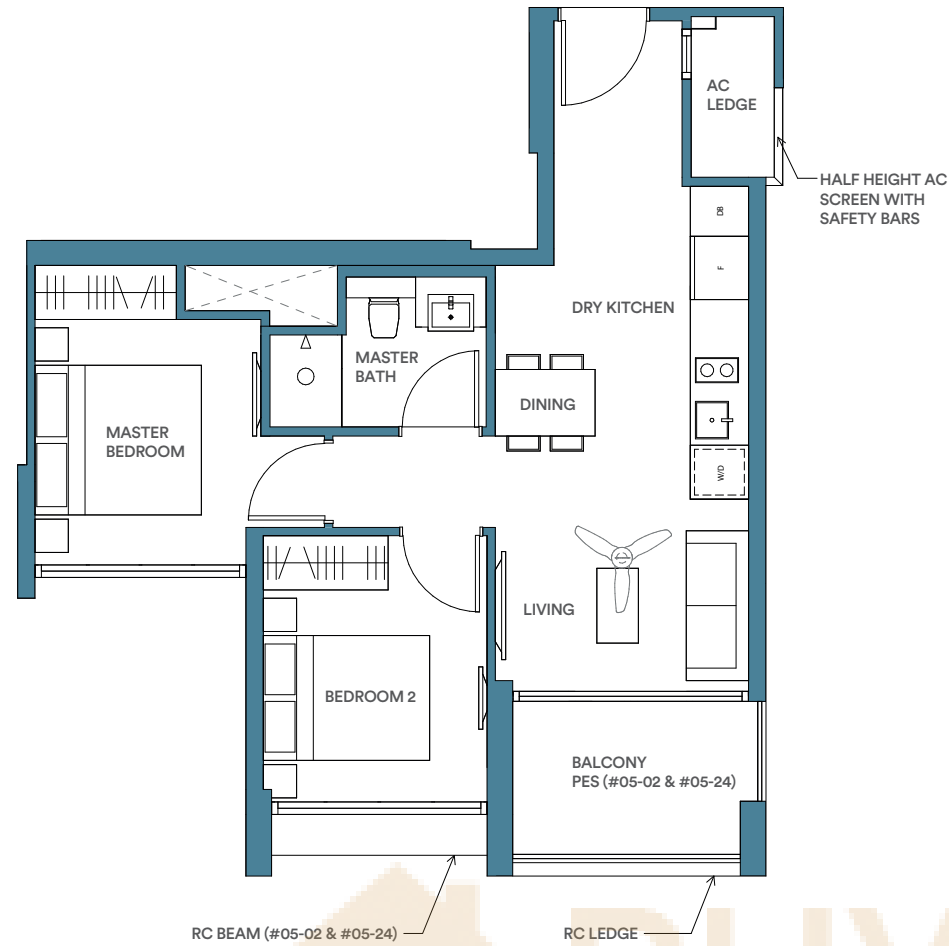
The above plans and illustration are subject to change as may be required or approved by the relevant authorities. Areas are estimates only and are subject to final survey.

2 BEDROOM

**TYPE B2/B2P**

60sqm / 646sqft

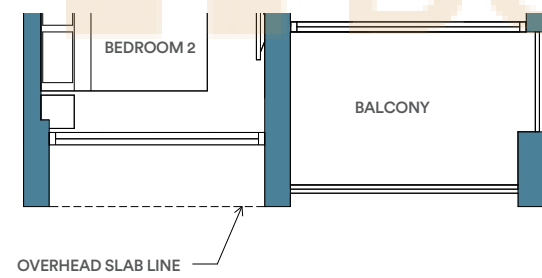
#05-02, #08-02, #11-02, #14-02, #17-02  
#05-24, #08-24, #11-24, #14-24, #17-24



**TYPE B2**

60sqm / 646sqft

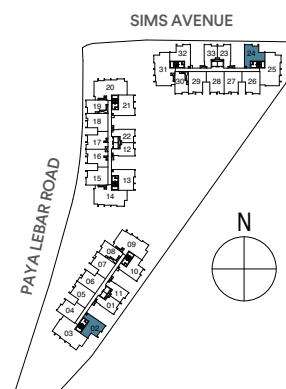
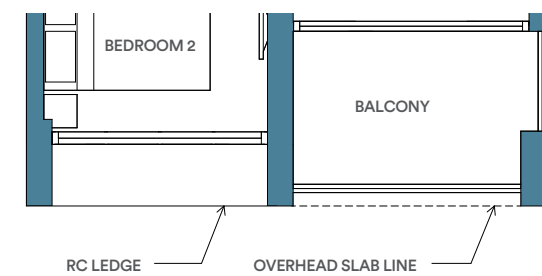
#06-02, #09-02, #12-02, #15-02  
#06-24, #09-24, #12-24, #15-24



**TYPE B2**

60sqm / 646sqft

#07-02, #10-02, #13-02, #16-02  
#07-24, #10-24, #13-24, #16-24



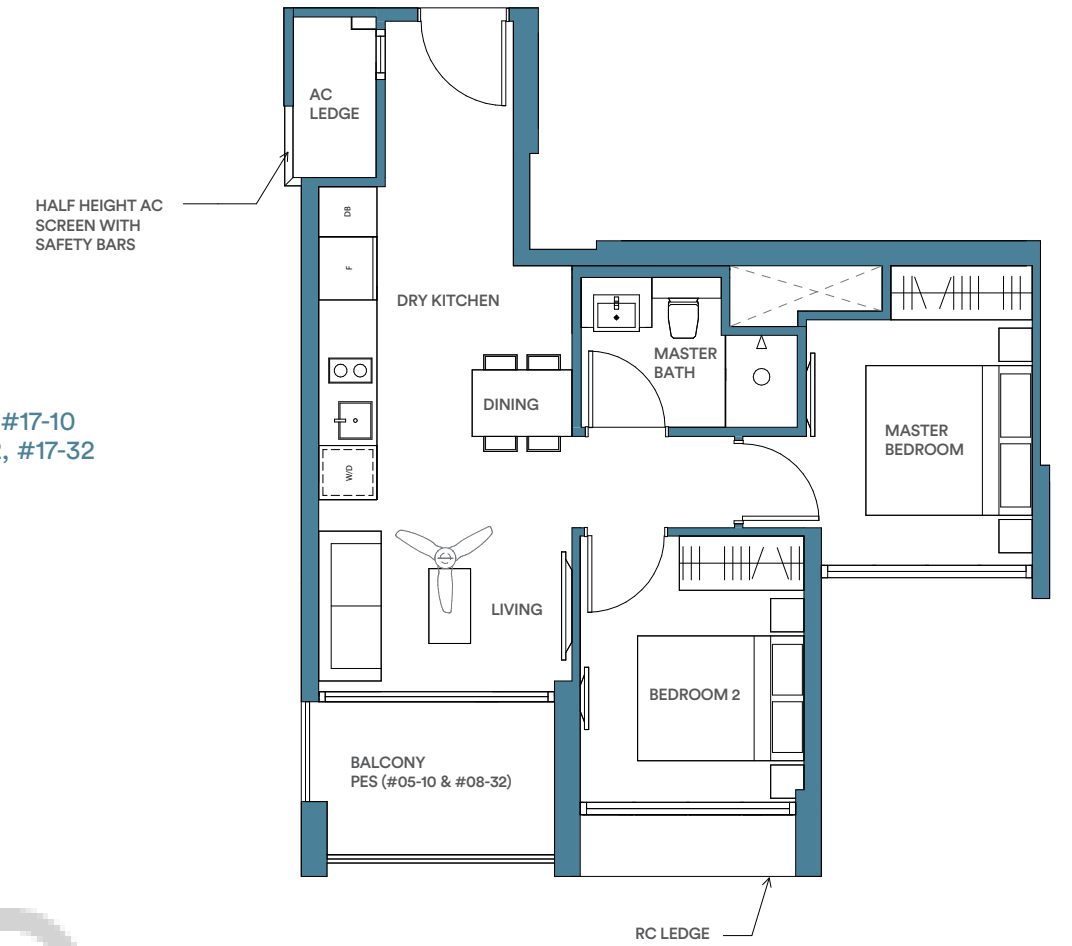
The above plans and illustration are subject to change as may be required or approved by the relevant authorities. Areas are estimates only and are subject to final survey.

2 BEDROOM

**TYPE B2\*/B2P\***

60sqm / 646sqft

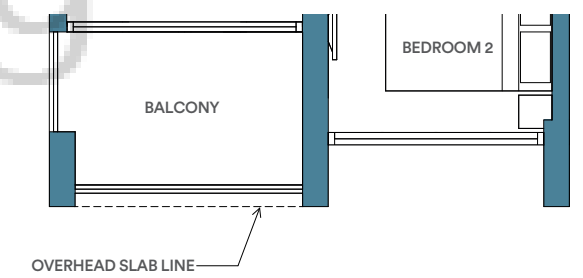
#05-10, #08-10, #11-10, #14-10, #17-10  
#05-32, #08-32, #11-32, #14-32, #17-32



**TYPE B2\***

60sqm / 646sqft

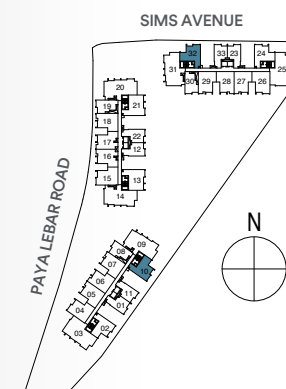
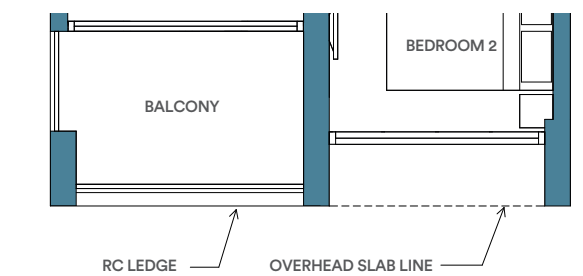
#06-10, #09-10, #12-10, #15-10  
#06-32, #09-32, #12-32, #15-32



**TYPE B2\***

60sqm / 646sqft

#07-10, #10-10, #13-10, #16-10  
#07-32, #10-32, #13-32, #16-32



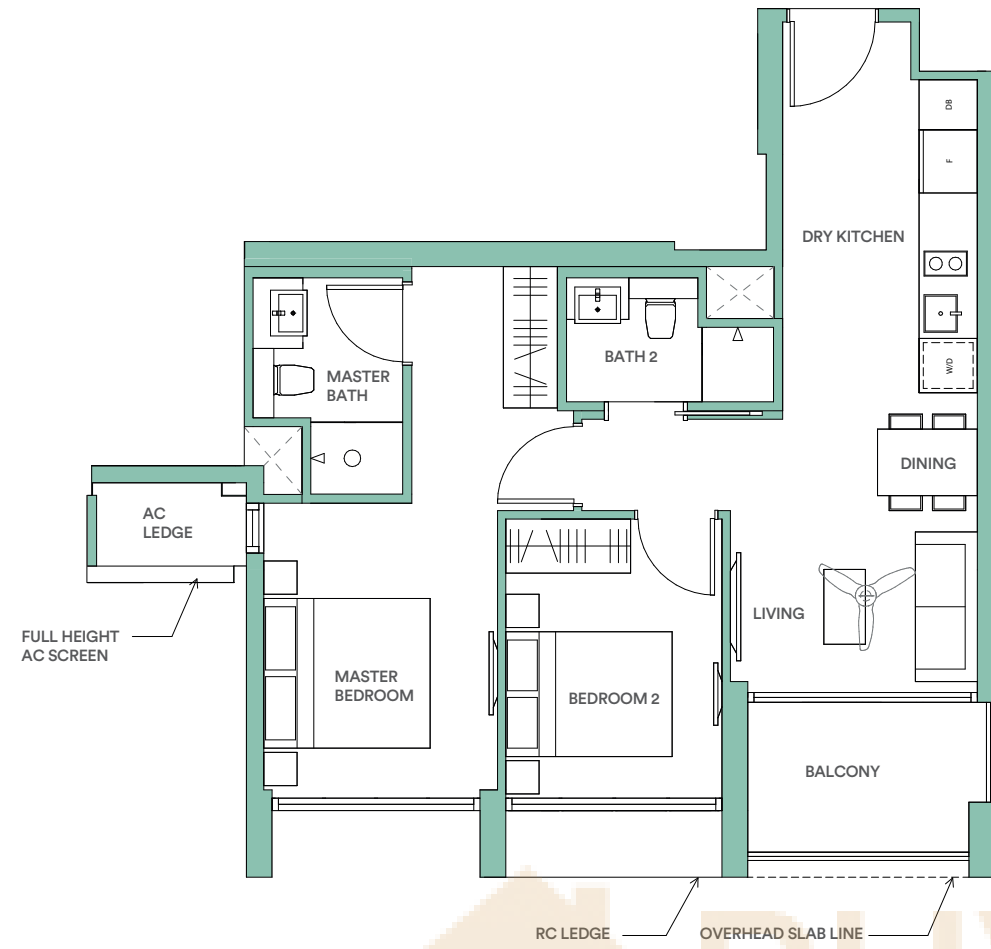
The above plans and illustration are subject to change as may be required or approved by the relevant authorities. Areas are estimates only and are subject to final survey.

2 BEDROOM PREMIUM

**TYPE C1**

69sqm / 743sqft

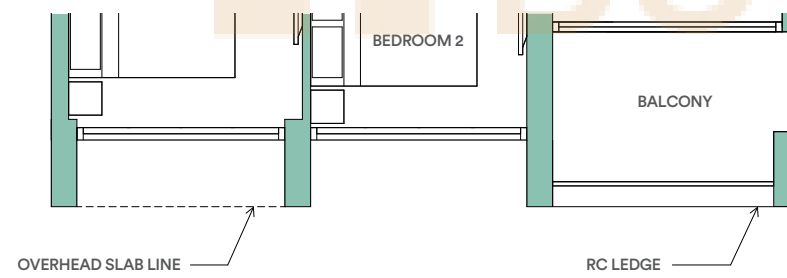
#08-13, #11-13, #14-13, #17-13



**TYPE C1**

69sqm / 743sqft

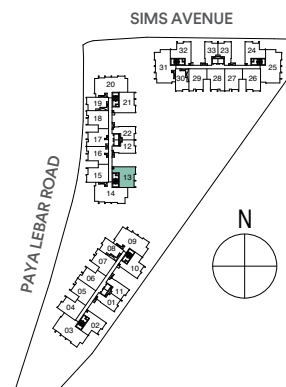
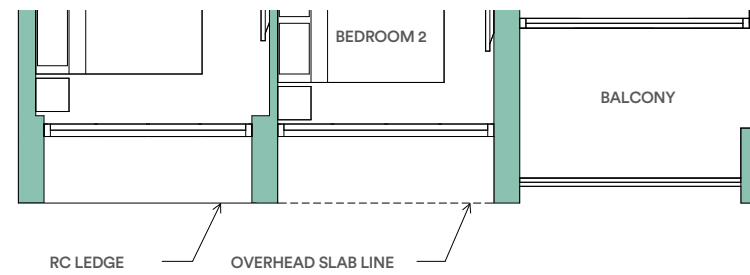
#06-13, #09-13, #12-13, #15-13



**TYPE C1**

69sqm / 743sqft

#07-13, #10-13, #13-13, #16-13



The above plans and illustration are subject to change as may be required or approved by the relevant authorities. Areas are estimates only and are subject to final survey.

2 BEDROOM PREMIUM

**TYPE C1\***

69sqm / 743sqft

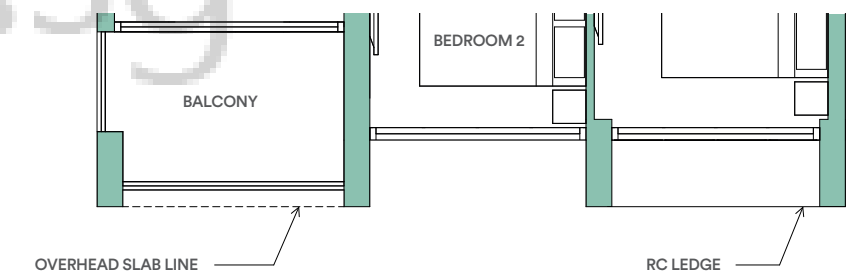
#08-21, #11-21, #14-21, #17-21



**TYPE C1\***

69sqm / 743sqft

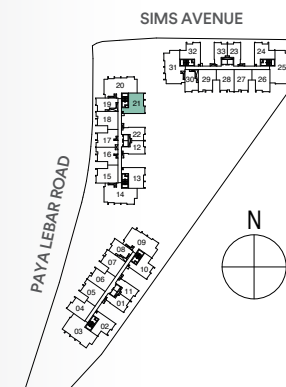
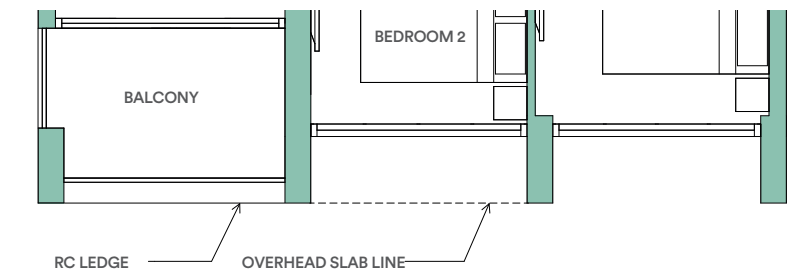
#06-21, #09-21, #12-21, #15-21



**TYPE C1\***

69sqm / 743sqft

#07-21, #10-21, #13-21, #16-21



The above plans and illustration are subject to change as may be required or approved by the relevant authorities. Areas are estimates only and are subject to final survey.

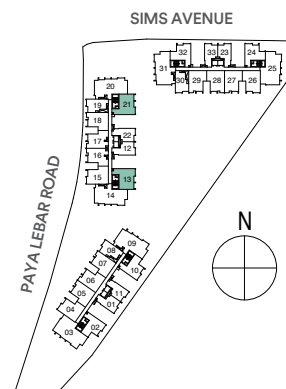
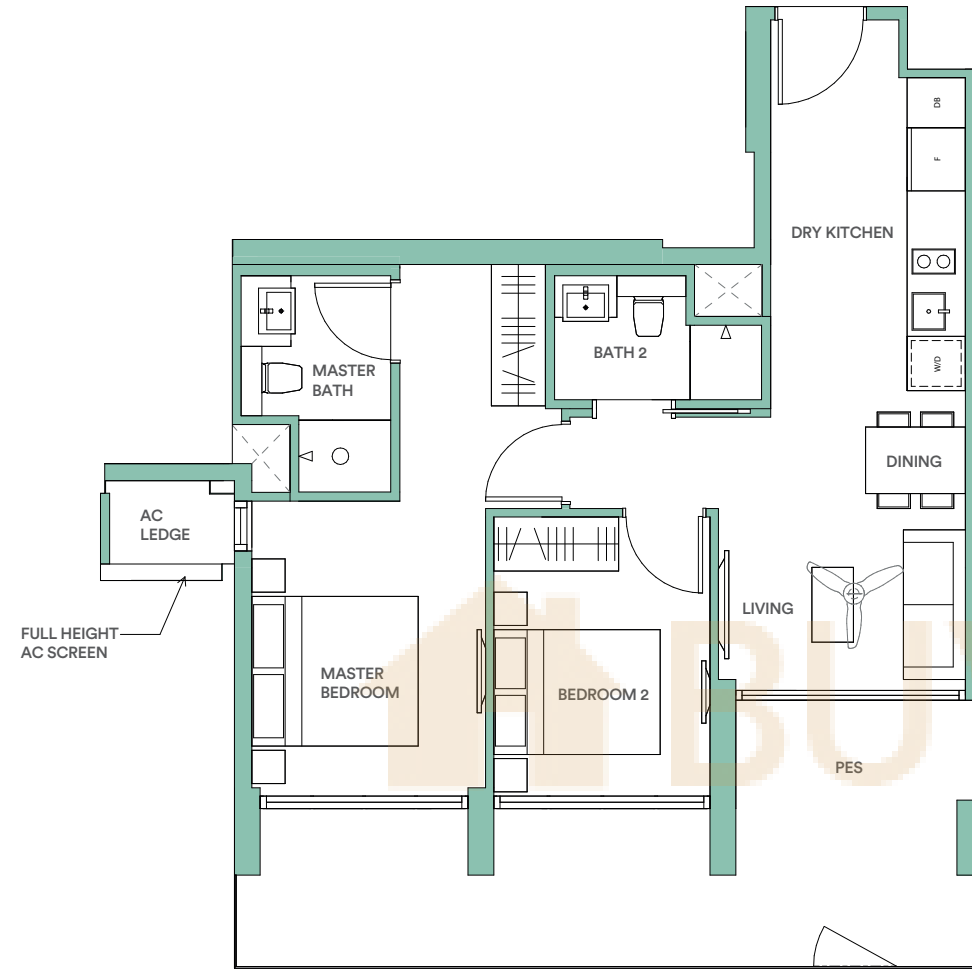
2 BEDROOM PREMIUM

**TYPE C1P**

84sqm / 904sqft

#05-13  
#05-21\*

\*mirrored



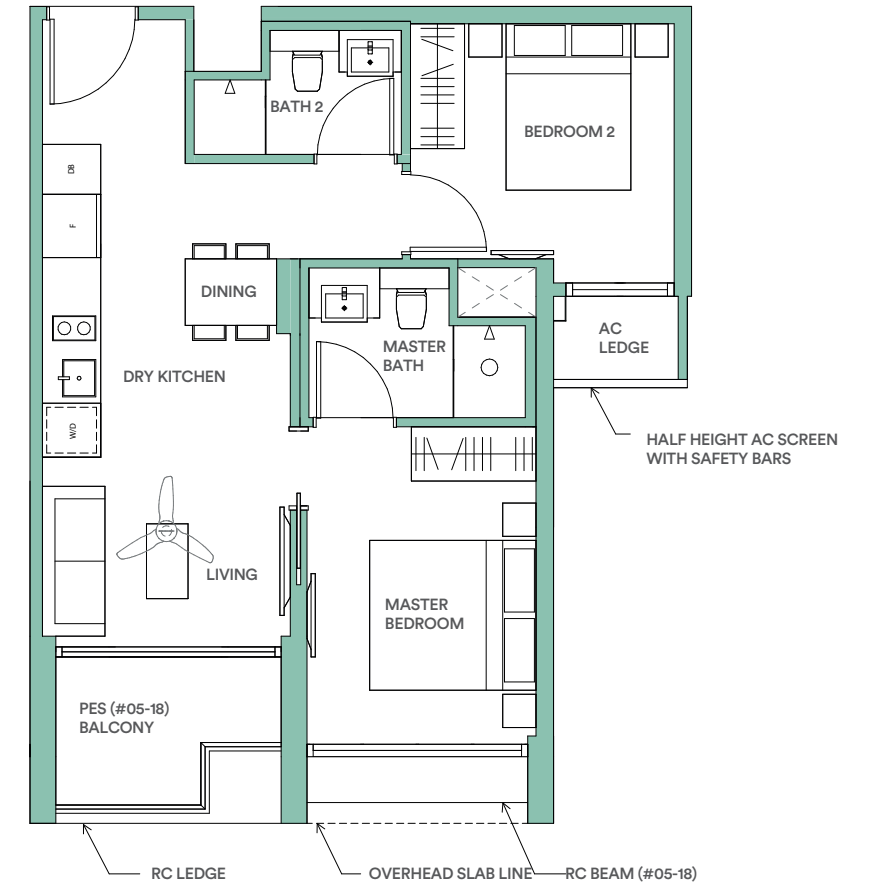
The above plans and illustration are subject to change as may be required or approved by the relevant authorities. Areas are estimates only and are subject to final survey.

2 BEDROOM PREMIUM

**TYPE C2/C2Pa**

62sqm / 667sqft

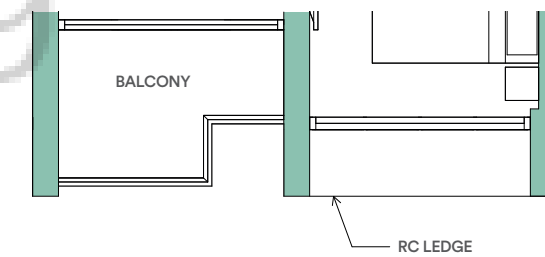
#05-18, #08-18, #11-18, #14-18, #17-18  
#08-29, #11-29, #14-29, #17-29



**TYPE C2**

62sqm / 667sqft

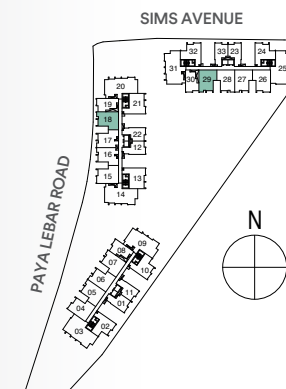
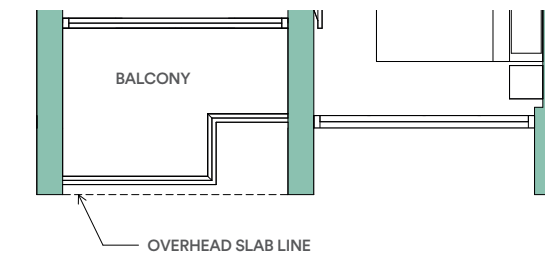
#06-18, #09-18, #12-18, #15-18  
#06-29, #09-29, #12-29, #15-29



**TYPE C2**

62sqm / 667sqft

#07-18, #10-18, #13-18, #16-18  
#07-29, #10-29, #13-29, #16-29



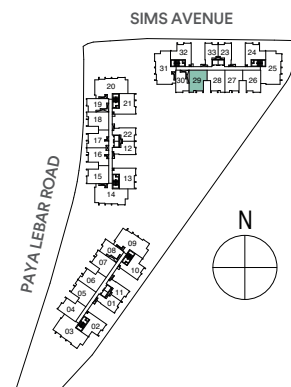
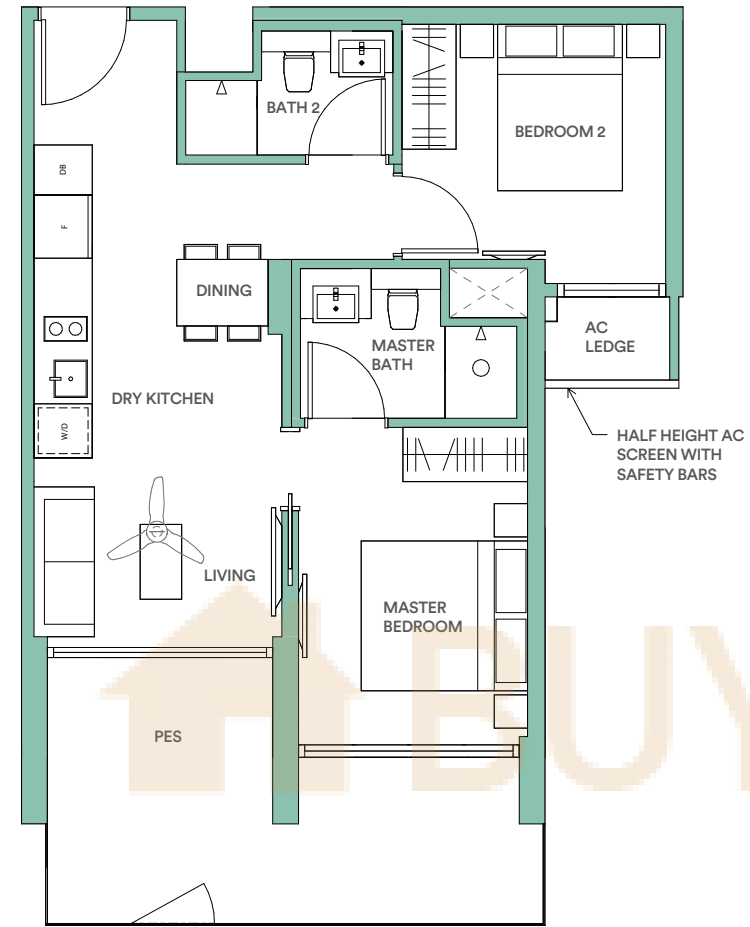
The above plans and illustration are subject to change as may be required or approved by the relevant authorities. Areas are estimates only and are subject to final survey.

2 BEDROOM PREMIUM

TYPE C2Pb

73sqm / 786sqft

#05-29



The above plans and illustration are subject to change as may be required or approved by the relevant authorities. Areas are estimates only and are subject to final survey.

2 BEDROOM PREMIUM

TYPE C3

62sqm / 667sqft

#08-05, #11-05, #14-05, #17-05  
#08-27, #11-27, #14-27, #17-27

TYPE C3Pc

62sqm / 667sqft

#05-05

TYPE C3

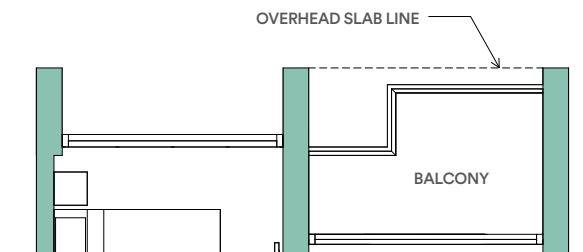
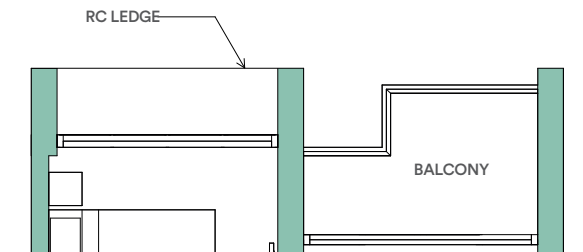
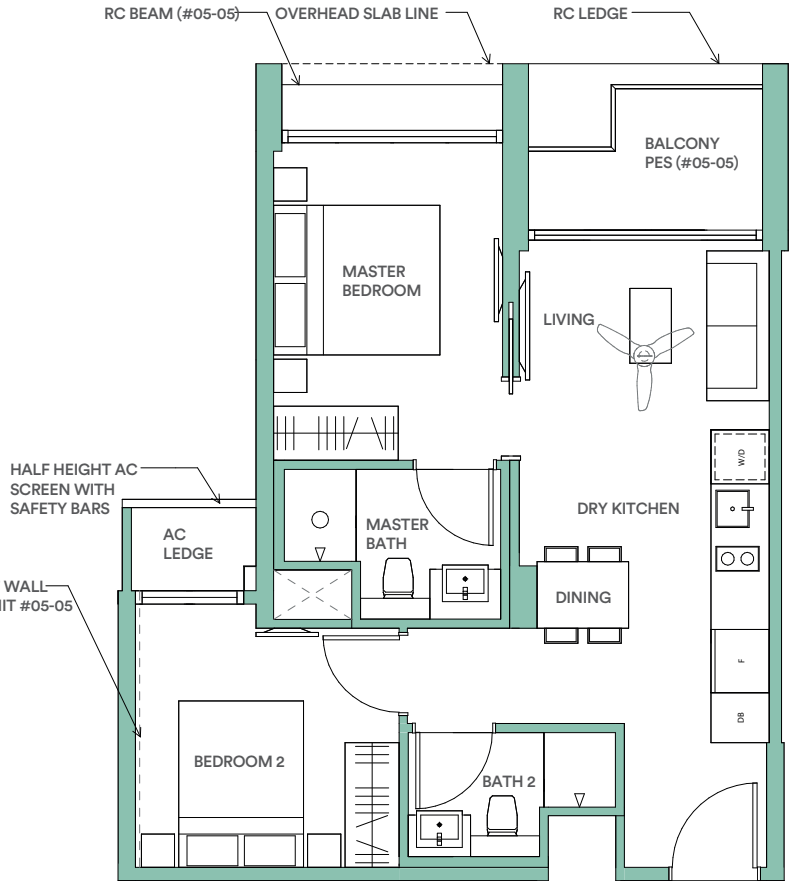
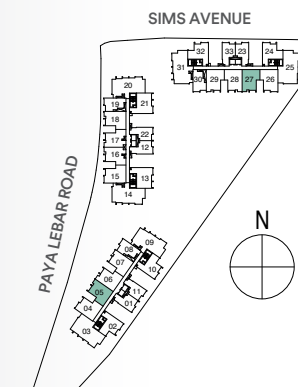
62sqm / 667sqft

#06-05, #09-05, #12-05, #15-05  
#06-27, #09-27, #12-27, #15-27

TYPE C3

62sqm / 667sqft

#07-05, #10-05, #13-05, #16-05  
#07-27, #10-27, #13-27, #16-27



The above plans and illustration are subject to change as may be required or approved by the relevant authorities. Areas are estimates only and are subject to final survey.

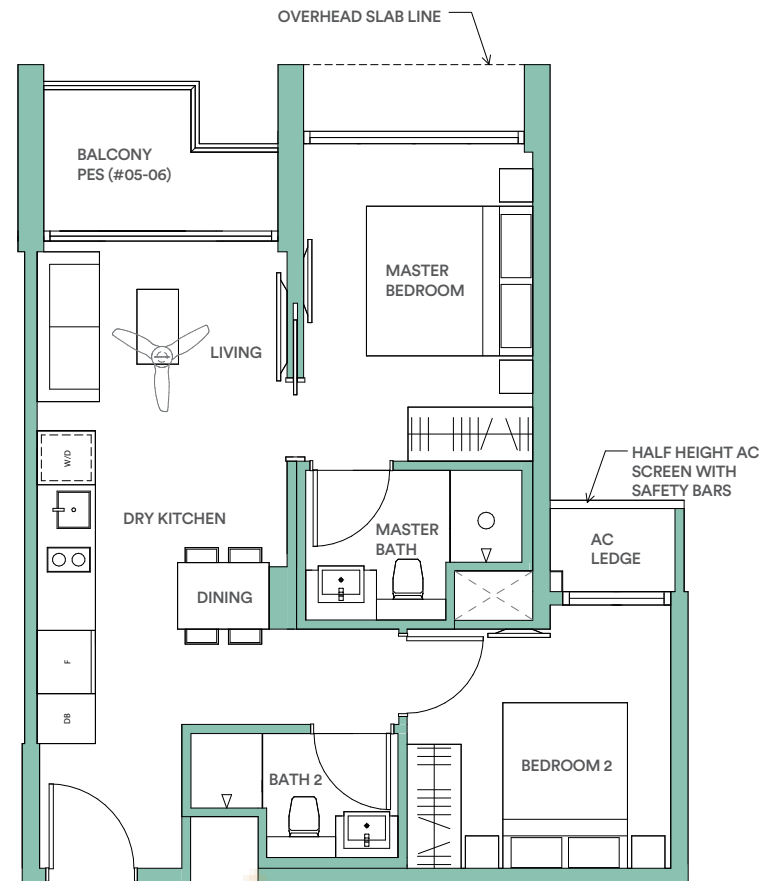


2 BEDROOM PREMIUM

**TYPE C3\*/C3Pa\***

62sqm / 667sqft

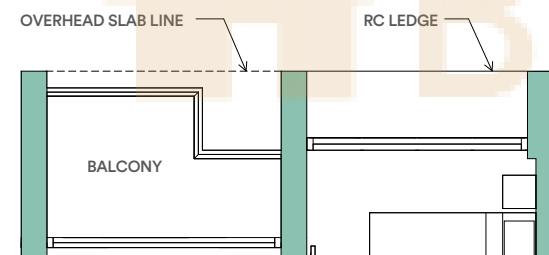
#05-06, #08-06, #11-06, #14-06, #17-06  
#08-28, #11-28, #14-28, #17-28



**TYPE C3\***

62sqm / 667sqft

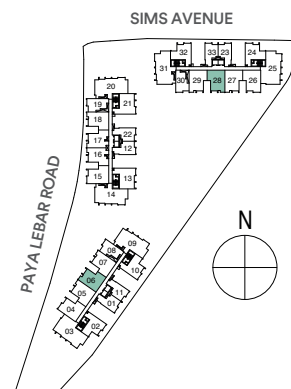
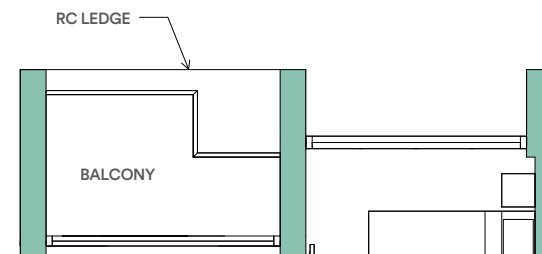
#06-06, #09-06, #12-06, #15-06  
#06-28, #09-28, #12-28, #15-28



**TYPE C3\***

62sqm / 667sqft

#07-06, #10-06, #13-06, #16-06  
#07-28, #10-28, #13-28, #16-28



The above plans and illustration are subject to change as may be required or approved by the relevant authorities. Areas are estimates only and are subject to final survey.

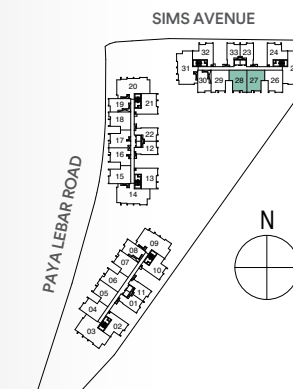
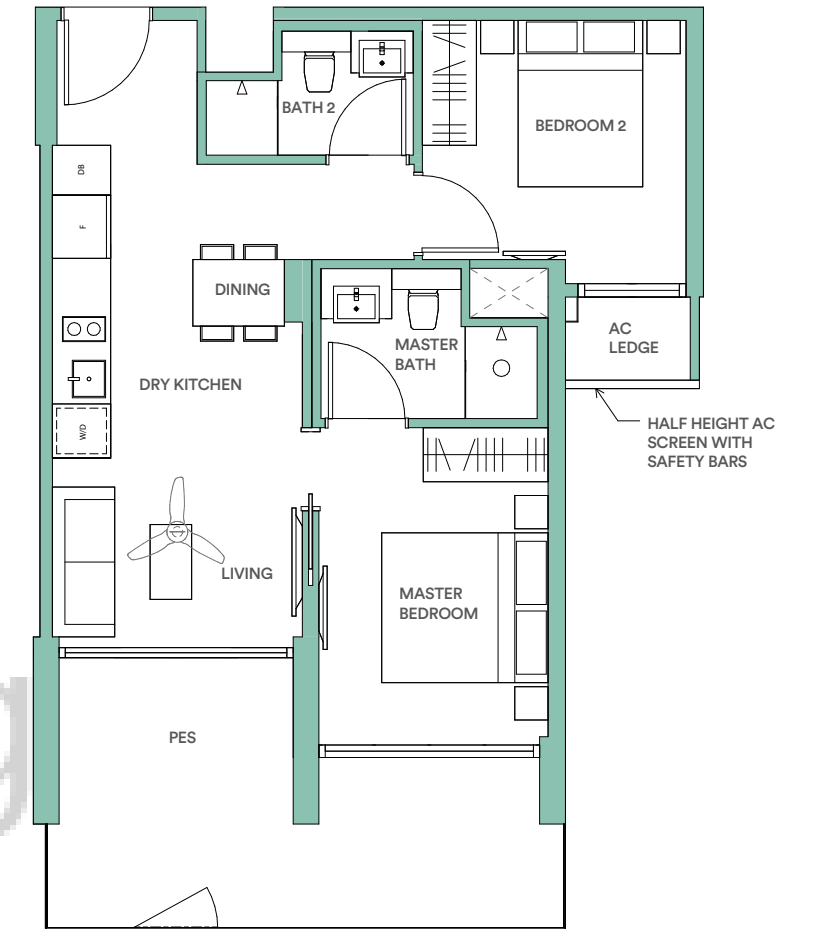
2 BEDROOM PREMIUM

**TYPE C3Pb**

74sqm / 797sqft

#05-27  
#05-28\*

\*mirrored



The above plans and illustration are subject to change as may be required or approved by the relevant authorities. Areas are estimates only and are subject to final survey.

2 BEDROOM PREMIUM

**TYPE C4**

63sqm / 678sqft

#08-04, #11-04, #14-04, #17-04  
#08-26, #11-26, #14-26, #17-26

**TYPE C4Pc**

63sqm / 678sqft

#05-04

**TYPE C4**

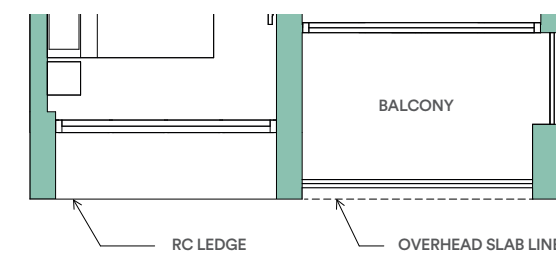
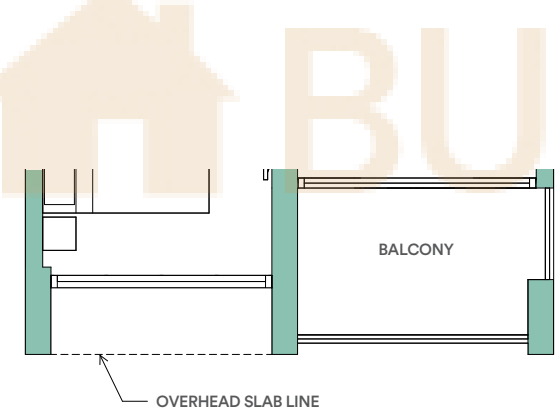
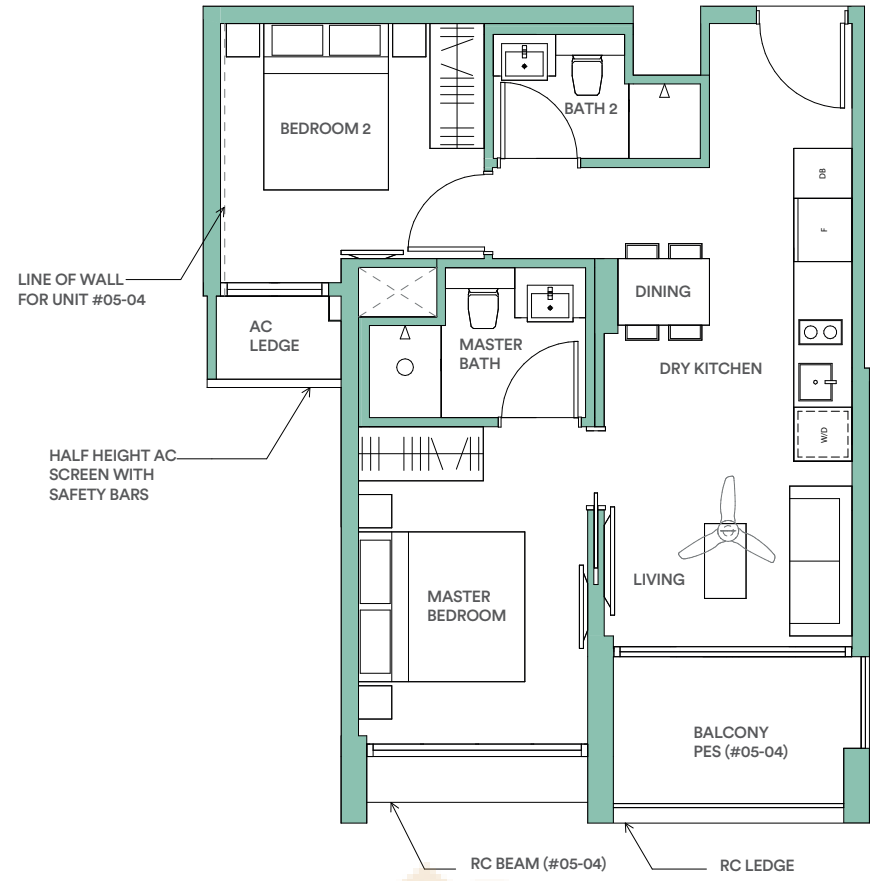
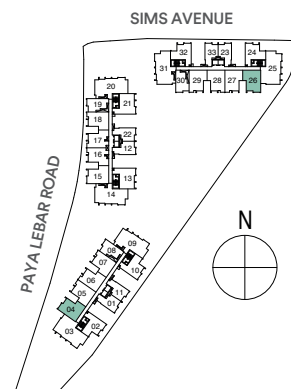
63sqm / 678sqft

#06-04, #09-04, #12-04, #15-04  
#06-26, #09-26, #12-26, #15-26

**TYPE C4**

63sqm / 678sqft

#07-04, #10-04, #13-04, #16-04  
#07-26, #10-26, #13-26, #16-26

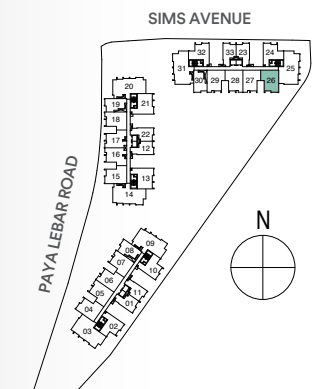
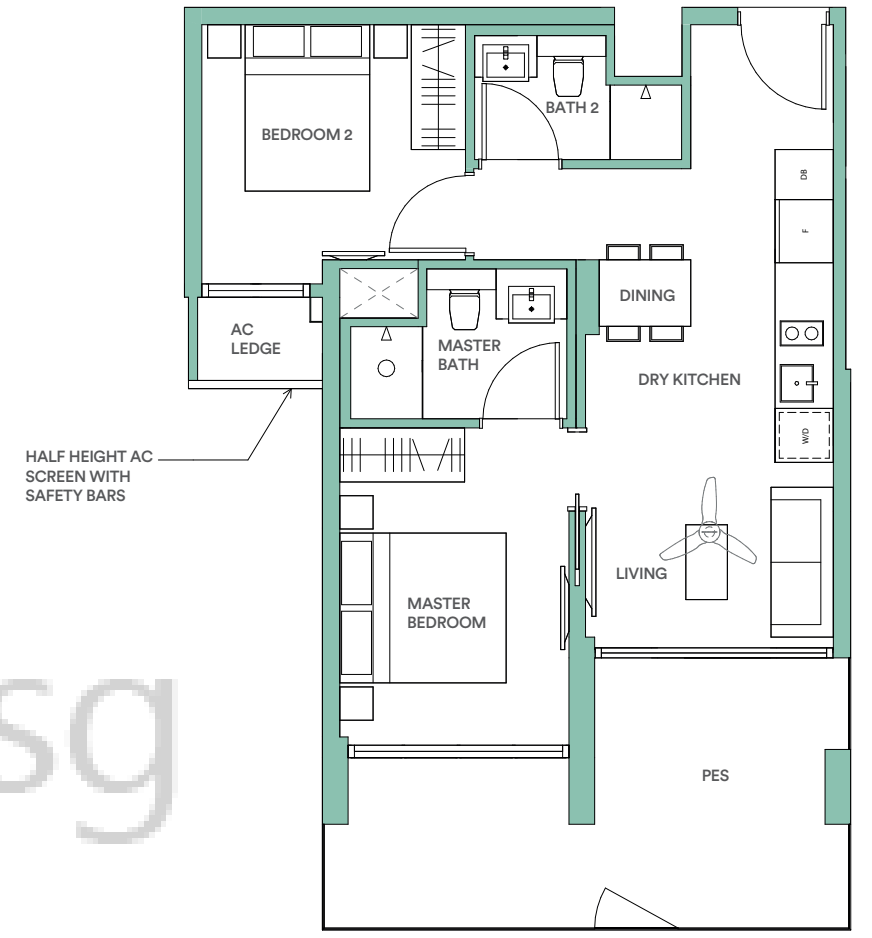


2 BEDROOM PREMIUM

**TYPE C4Pb**

74sqm / 797sqft

#05-26



The above plans and illustration are subject to change as may be required or approved by the relevant authorities. Areas are estimates only and are subject to final survey.

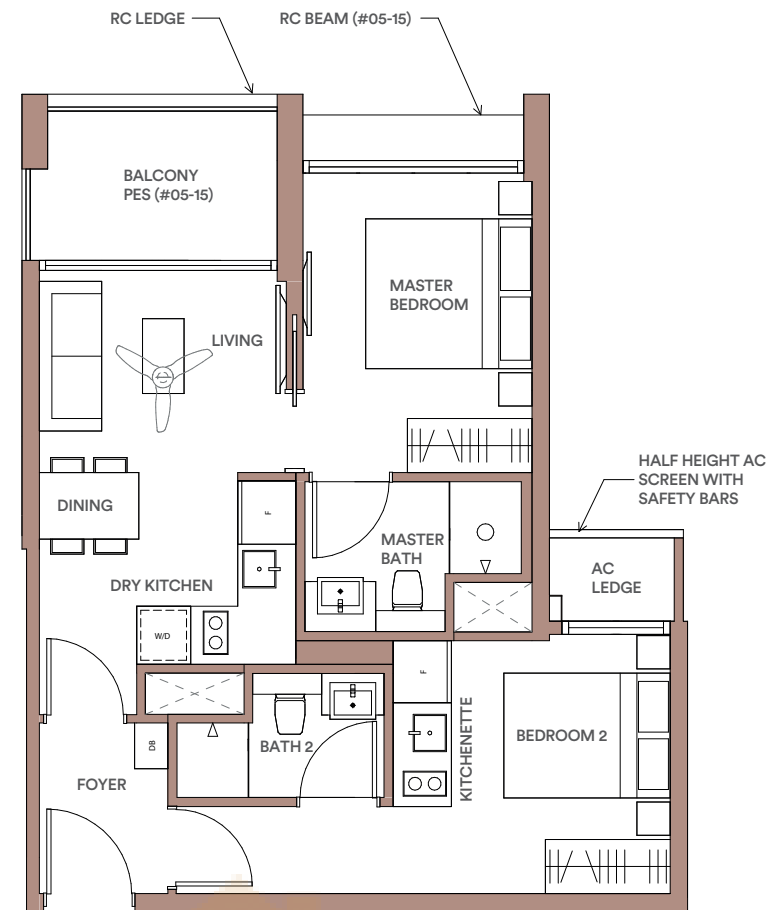
The above plans and illustration are subject to change as may be required or approved by the relevant authorities. Areas are estimates only and are subject to final survey.

2 BEDROOM DUAL KEY

**TYPE D1/D1P**

63sqm / 678sqft

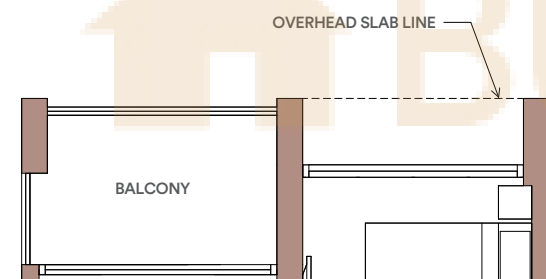
#05-15, #08-15, #11-15, #14-15, #17-15



**TYPE D1**

63sqm / 678sqft

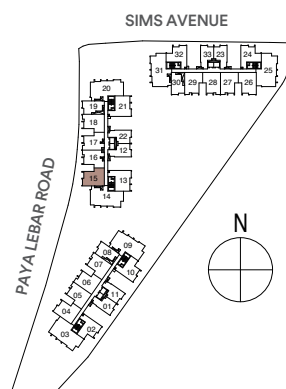
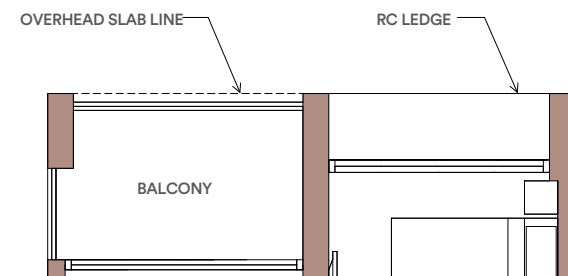
#06-15, #09-15, #12-15, #15-15



**TYPE D1**

63sqm / 678sqft

#07-15, #10-15, #13-15, #16-15



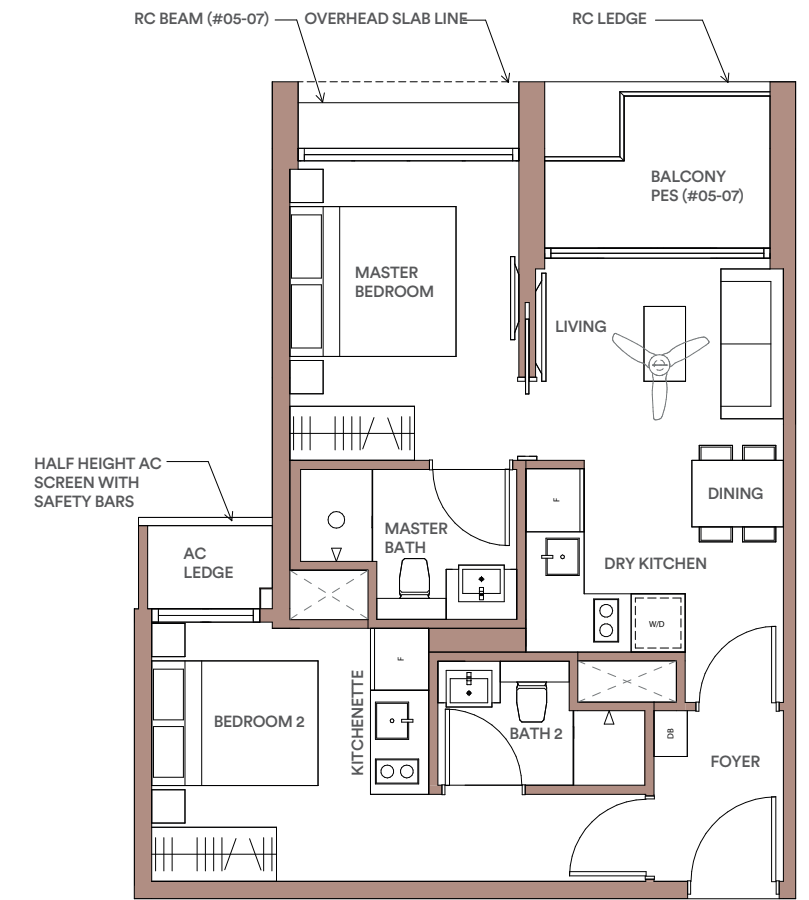
The above plans and illustration are subject to change as may be required or approved by the relevant authorities. Areas are estimates only and are subject to final survey.

2 BEDROOM DUAL KEY

**TYPE D2/D2P**

62sqm / 667sqft

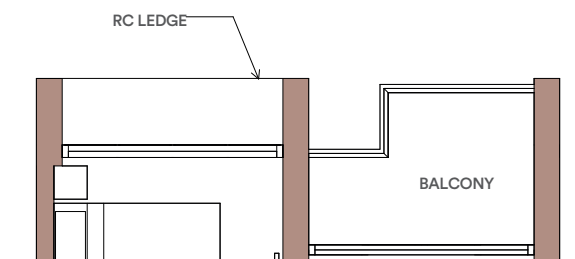
#05-07, #08-07, #11-07, #14-07, #17-07



**TYPE D2**

62sqm / 667sqft

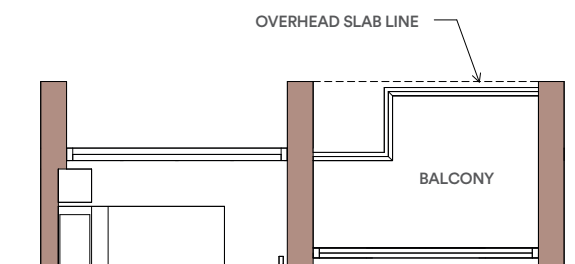
#06-07, #09-07, #12-07, #15-07



**TYPE D2**

62sqm / 667sqft

#07-07, #10-07, #13-07, #16-07



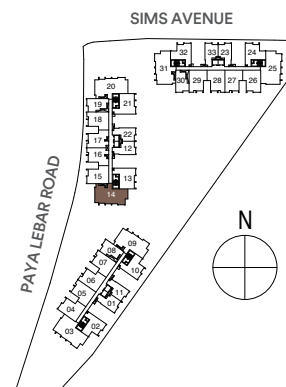
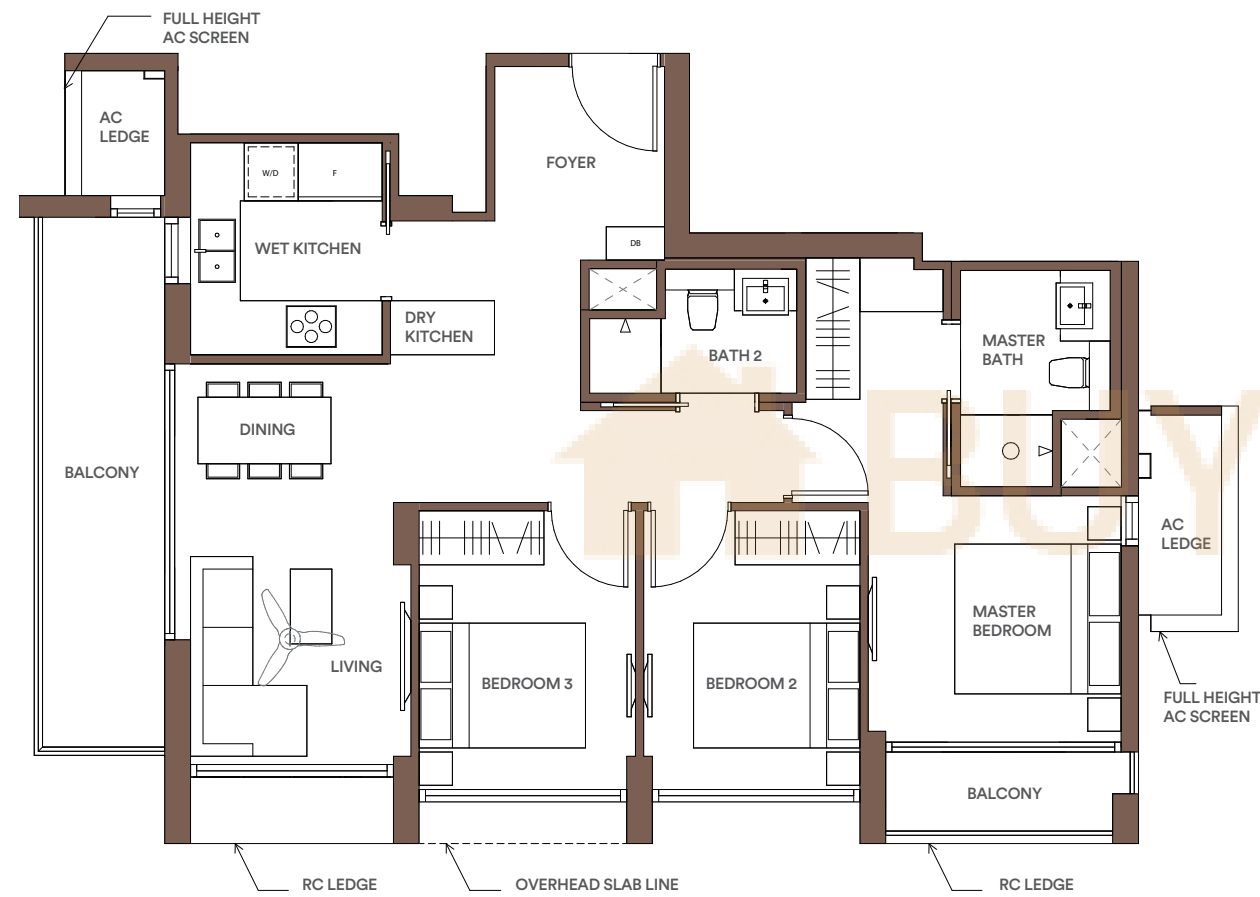
The above plans and illustration are subject to change as may be required or approved by the relevant authorities. Areas are estimates only and are subject to final survey.

3 BEDROOM

### TYPE E1a

100sqm / 1,076sqft

#08-14, #11-14, #14-14, #17-14



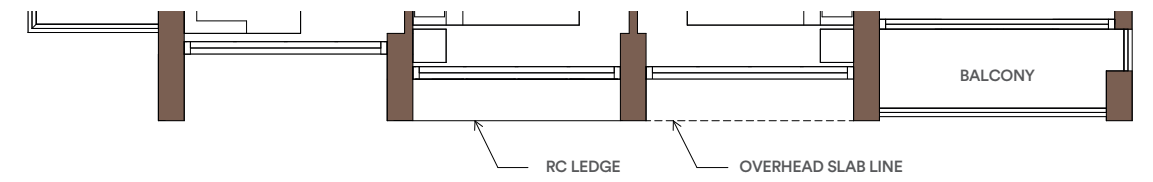
The above plans and illustration are subject to change as may be required or approved by the relevant authorities. Areas are estimates only and are subject to final survey.

3 BEDROOM

### TYPE E1a

100sqm / 1,076sqft

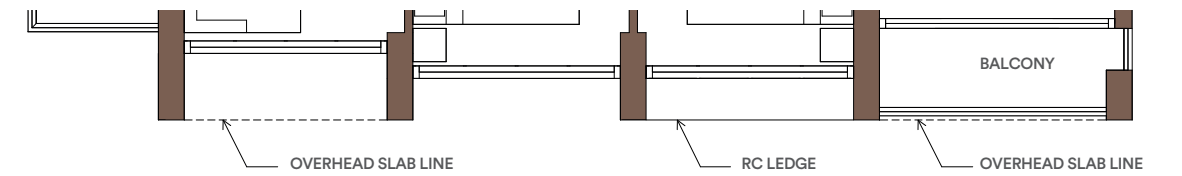
#06-14, #09-14, #12-14, #15-14



### TYPE E1a

100sqm / 1,076sqft

#07-14, #10-14, #13-14, #16-14



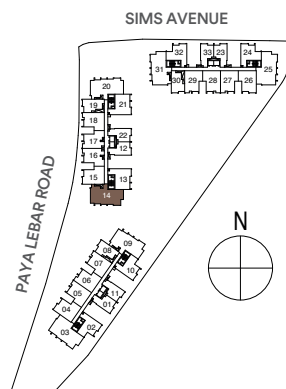
The above plans and illustration are subject to change as may be required or approved by the relevant authorities. Areas are estimates only and are subject to final survey.

3 BEDROOM

**TYPE E1Pa**

127sqm / 1,367sqft

#05-14



The above plans and illustration are subject to change as may be required or approved by the relevant authorities. Areas are estimates only and are subject to final survey.

Did you know...

The average Singaporean spends 80 minutes commuting to work each day.

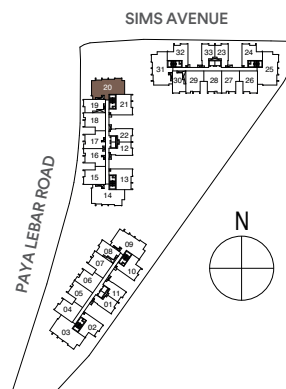
RESIDING NEAR YOUR WORKPLACE  
SAVES YOU 1.5 YEARS IN YOUR LIFETIME!

3 BEDROOM

### TYPE E1b

100sqm / 1,076sqft

#08-20, #11-20, #14-20, #17-20



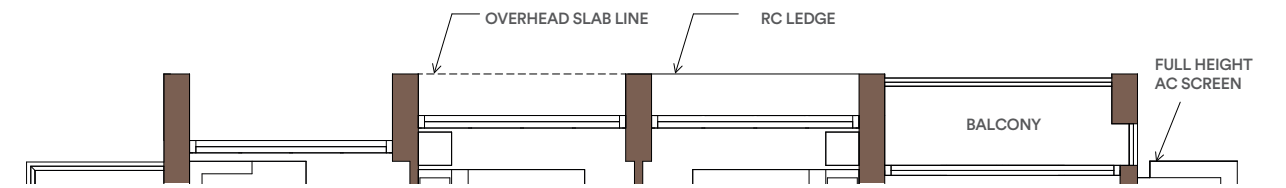
The above plans and illustration are subject to change as may be required or approved by the relevant authorities. Areas are estimates only and are subject to final survey.

3 BEDROOM

### TYPE E1b

100sqm / 1,076sqft

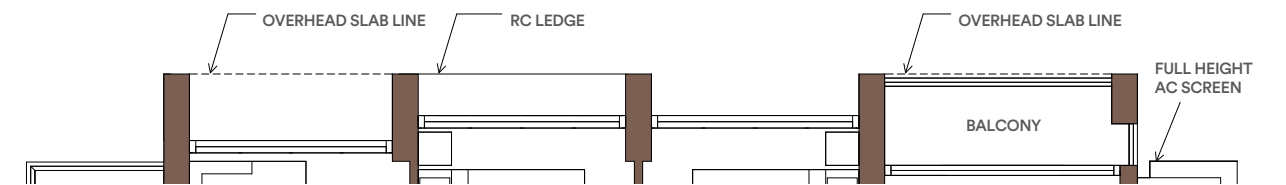
#06-20, #09-20, #12-20, #15-20



### TYPE E1b

100sqm / 1,076sqft

#07-20, #10-20, #13-20, #16-20



The above plans and illustration are subject to change as may be required or approved by the relevant authorities. Areas are estimates only and are subject to final survey.

Living amidst green spaces boosts your well-being and improves your life.

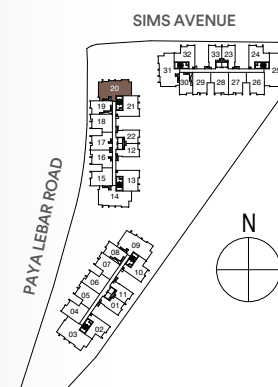
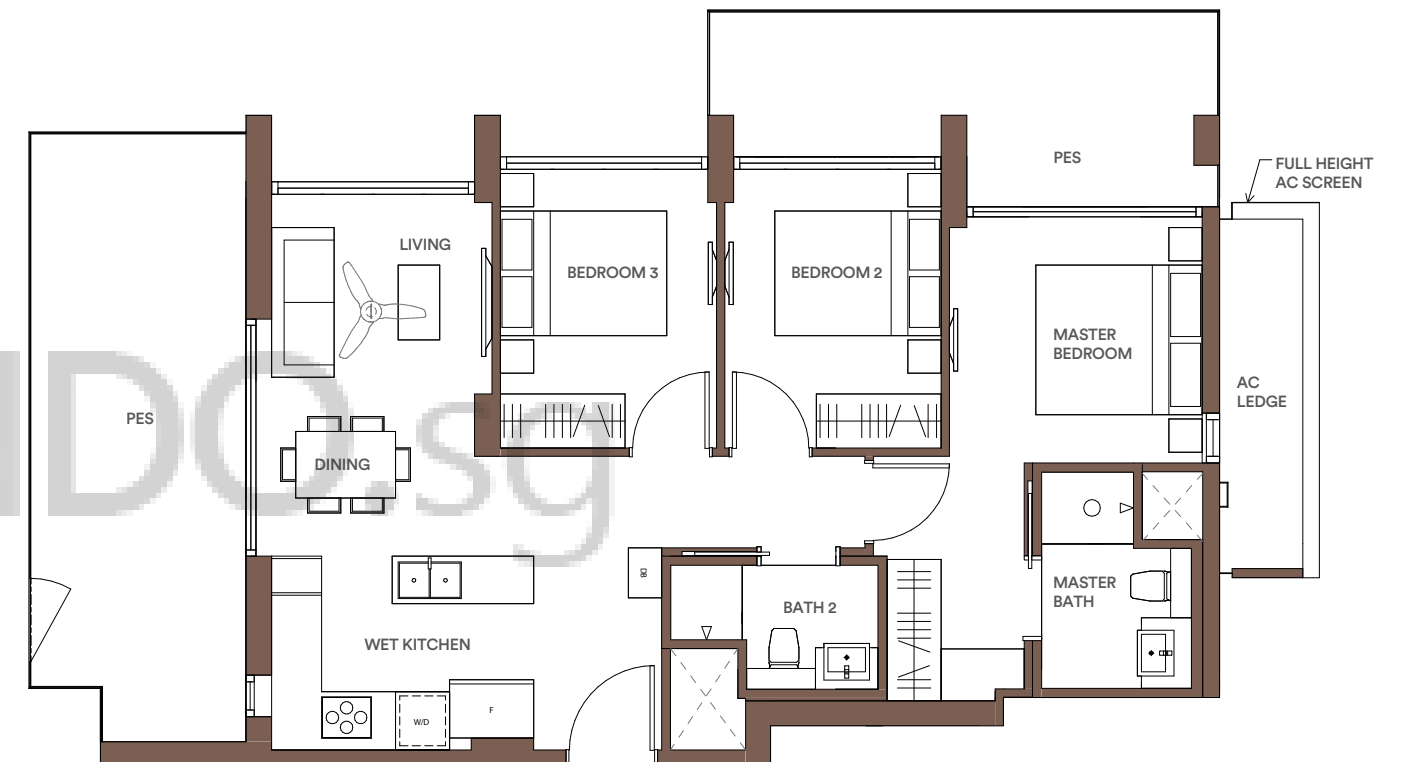
BUYCONDO.SG

3 BEDROOM

**TYPE E1Pb**

112sqm / 1,206sqft

#05-20



IMMERSE YOURSELF IN THE LUSH LANDSCAPING WITHIN PARK PLACE RESIDENCES.

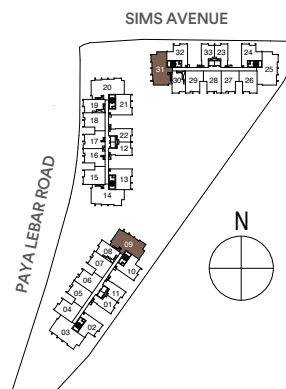
The above plans and illustration are subject to change as may be required or approved by the relevant authorities. Areas are estimates only and are subject to final survey.

3 BEDROOM

### TYPE E1c

101sqm / 1,087sqft

#08-09, #11-09, #14-09, #17-09  
#08-31, #11-31, #14-31, #17-31



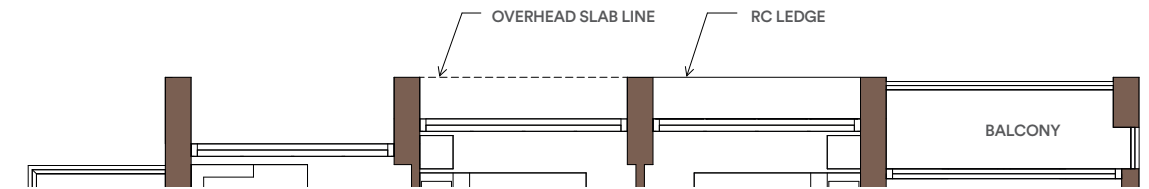
The above plans and illustration are subject to change as may be required or approved by the relevant authorities. Areas are estimates only and are subject to final survey.

3 BEDROOM

### TYPE E1c

101sqm / 1,087sqft

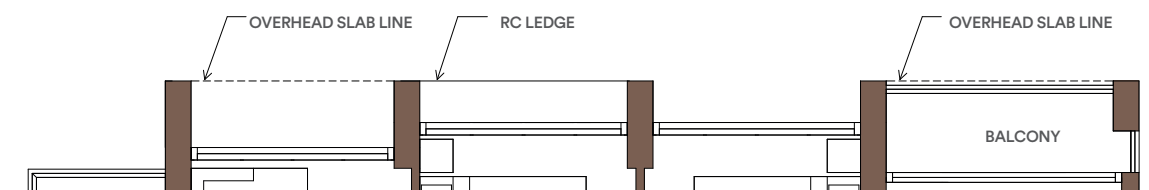
#06-09, #09-09, #12-09, #15-09  
#06-31, #09-31, #12-31, #15-31



### TYPE E1c

101sqm / 1,087sqft

#07-09, #10-09, #13-09, #16-09  
#07-31, #10-31, #13-31, #16-31



The above plans and illustration are subject to change as may be required or approved by the relevant authorities. Areas are estimates only and are subject to final survey.

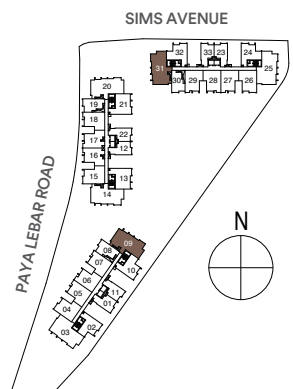
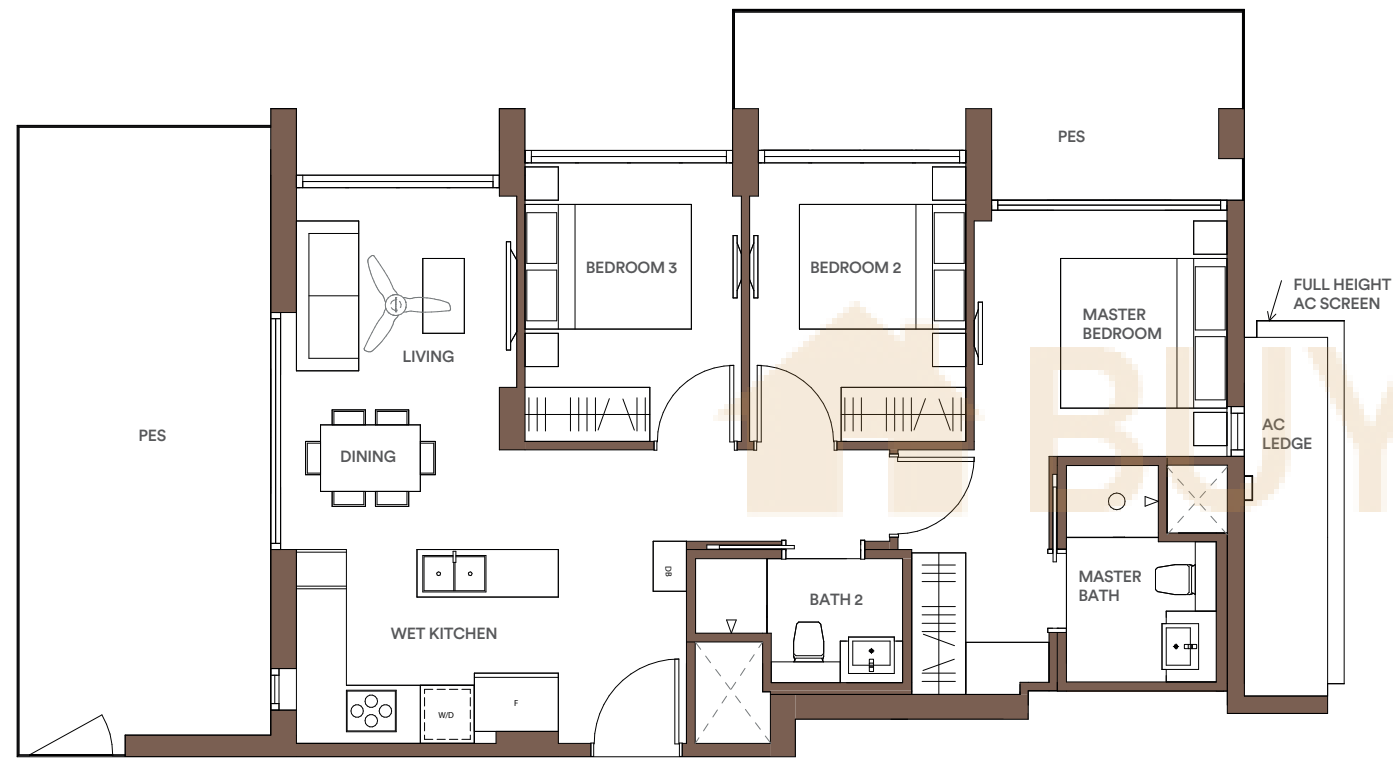


3 BEDROOM

**TYPE E1Pc**

116sqm / 1,249sqft

#05-09  
#05-31



The above plans and illustration are subject to change as may be required or approved by the relevant authorities. Areas are estimates only and are subject to final survey.

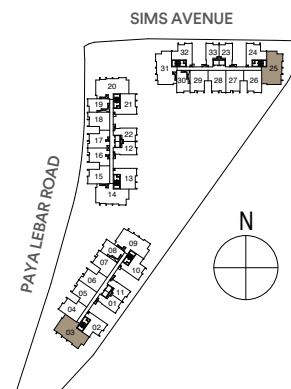
6 stops to CBD,  
6 stops to  
Changi Airport.

WORK OR LEISURE, WITHIN EASY REACH.

### TYPE F1/F1P

108sqm / 1,163sqft

#05-03, #08-03, #11-03, #14-03, #17-03  
#05-25, #08-25, #11-25, #14-25, #17-25

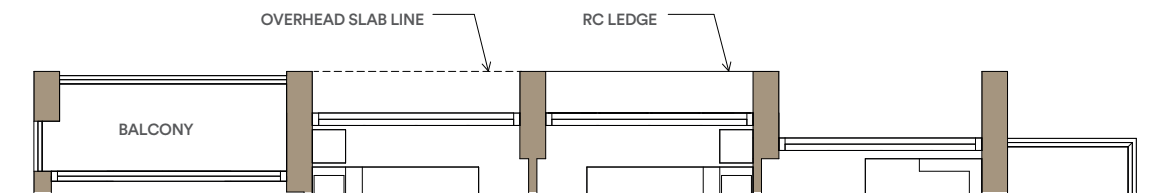


The above plans and illustration are subject to change as may be required or approved by the relevant authorities. Areas are estimates only and are subject to final survey.

### TYPE F1

108sqm / 1,163sqft

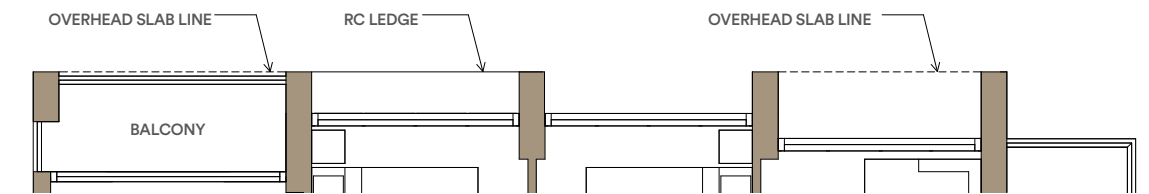
#06-03, #09-03, #12-03, #15-03  
#06-25, #09-25, #12-25, #15-25



### TYPE F1

108sqm / 1,163sqft

#07-03, #10-03, #13-03, #16-03  
#07-25, #10-25, #13-25, #16-25



The above plans and illustration are subject to change as may be required or approved by the relevant authorities. Areas are estimates only and are subject to final survey.