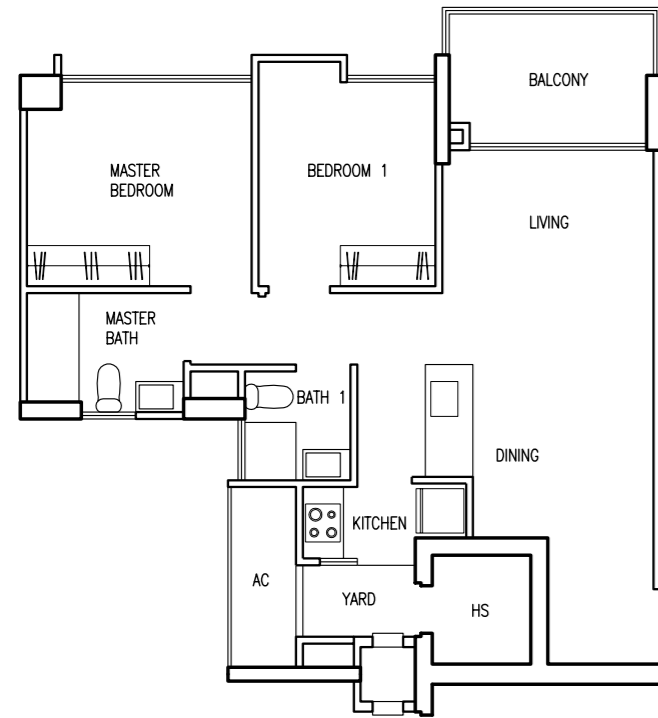


2-Bedroom

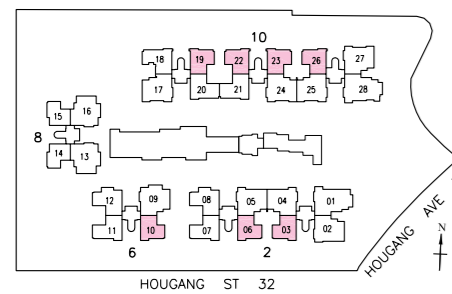


Type A1

73 sqm / 786 sqft

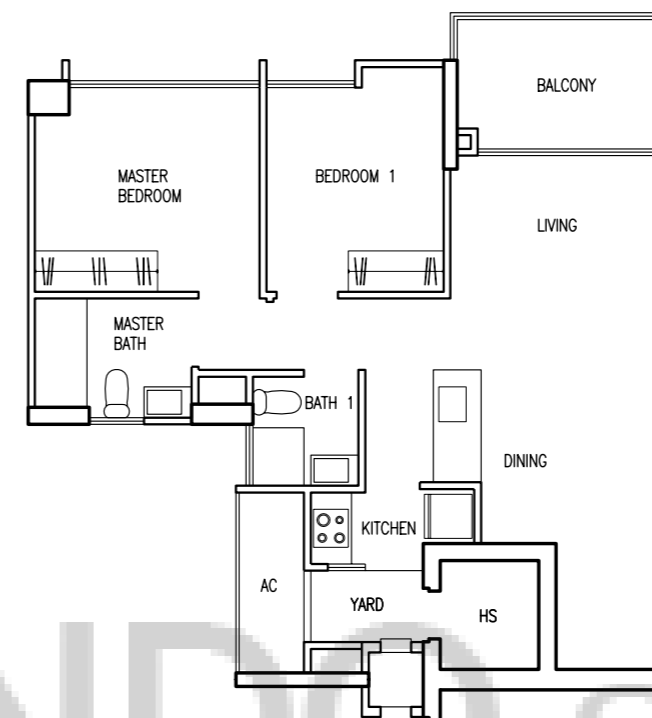
#03-03 #03-06 #03-10
 #04-03 #04-06 #04-10
 #07-03 #07-06 #07-10
 #08-03 #08-06 #08-10
 #11-03 #11-06 #11-10
 #12-10

#03-19 #03-22 #03-23 #03-26
 #04-19 #04-22 #04-23 #04-26
 #07-19 #07-22 #07-23 #07-26
 #08-19 #08-22 #08-23 #08-26
 #11-19 #11-22 #11-23 #11-26
 #12-19 #12-22 #12-23 #12-26



The plans are subjected to change as may be required by relevant authorities. Areas are approximate and subject to final survey. Plans are not to scale.

2-Bedroom

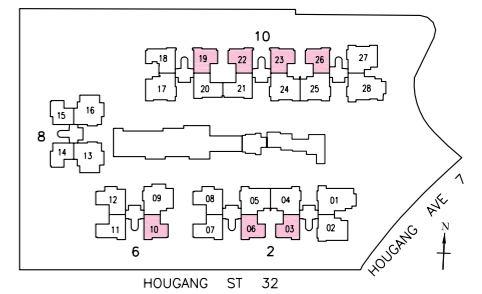


Type A2

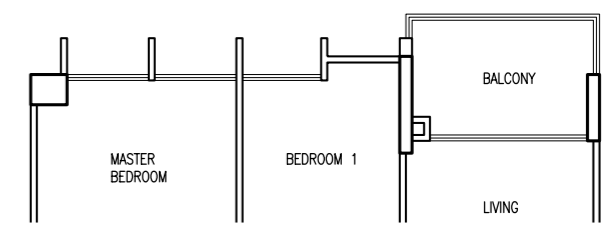
73 sqm / 786 sqft

#02-03 #02-06 #02-10
 #05-03 #05-06 #05-10
 #06-03 #06-06 #06-10
 #09-03 #09-06 #09-10
 #10-03 #10-06 #10-10
 #13-10

#02-19 #02-22 #02-23 #02-26
 #05-19 #05-22 #05-23 #05-26
 #06-19 #06-22 #06-23 #06-26
 #09-19 #09-22 #09-23 #09-26
 #10-19 #10-22 #10-23 #10-26
 #13-19 #13-22 #13-23 #13-26



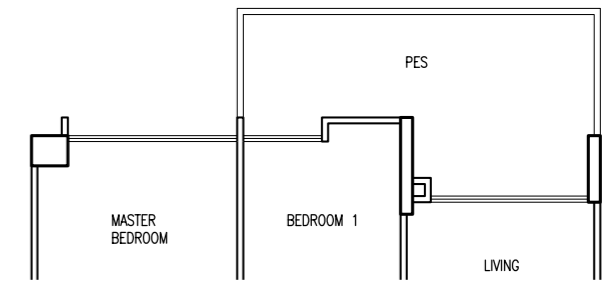
The plans are subjected to change as may be required by relevant authorities. Areas are approximate and subject to final survey. Plans are not to scale.



Type A2a

73 sqm / 786 sqft

#13-03 #13-06 #14-10
 #14-03 #14-06
 #14-19 #14-22 #14-23 #14-26

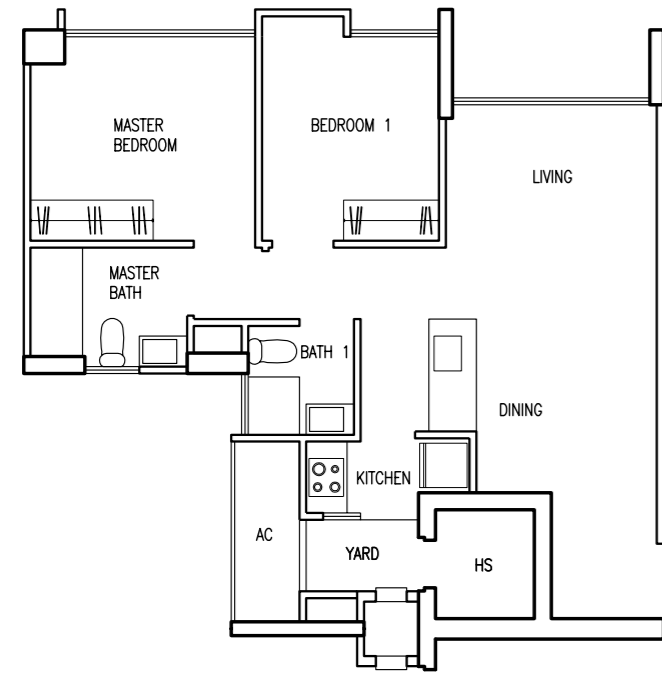


Type A2b

82 sqm / 883 sqft

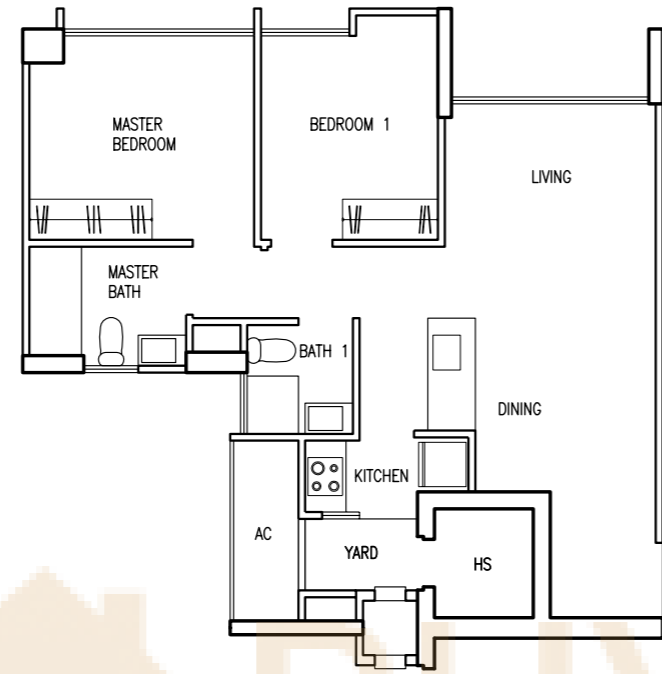
#01-03 #01-06 #01-10
 #01-19 #01-26

2-Bedroom



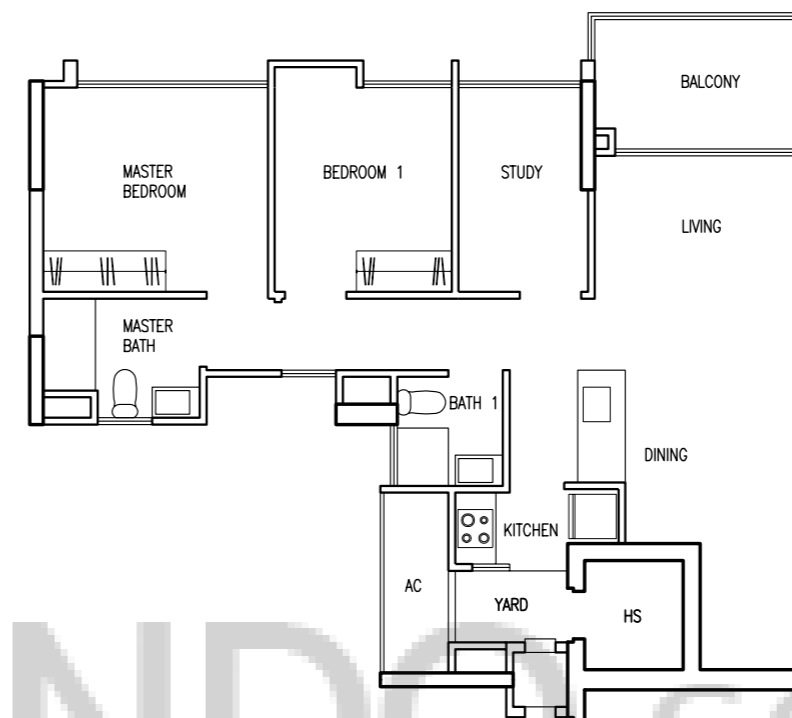
Type A3
66 sqm / 710 sqft

#03-14 #03-15
#04-14 #04-15
#07-14 #07-15
#08-14 #08-15
#11-14 #11-15
#12-14 #12-15
#15-14 #15-15
#16-14 #16-15



Type A4
66 sqm / 710 sqft

#05-14 #05-15
#06-14 #06-15
#09-14 #09-15
#10-14 #10-15
#13-14 #13-15
#14-14 #14-15

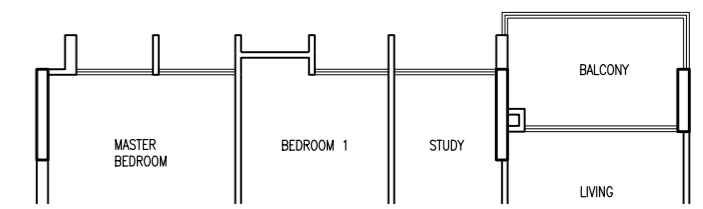


Type B1
81 sqm / 872 sqft

#03-07 #05-08 #03-11 #05-12
#04-07 #06-08 #04-11 #06-12
#07-07 #09-08 #07-11 #09-12
#08-07 #10-08 #08-11 #10-12
#11-07 #11-11 #13-12
#12-11

#03-18 #04-20 #03-21
#04-18 #07-20 #04-21
#07-18 #08-20 #07-21
#08-18 #11-20 #08-21
#11-18 #12-20 #11-21
#12-18 #12-21

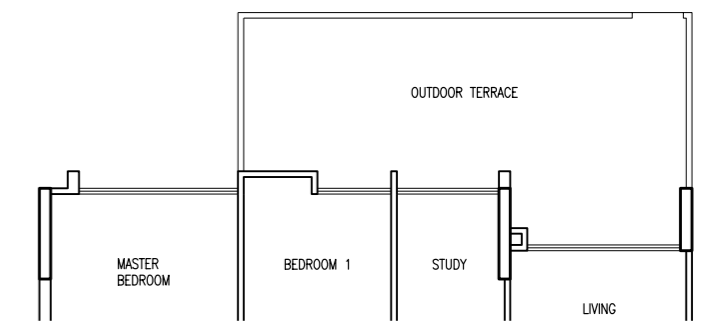
2-Bedroom + Study



Type B1a
81 sqm / 872 sqft

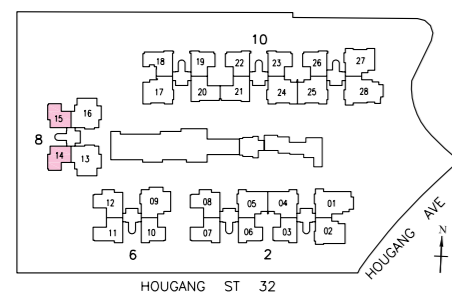
#12-07 #13-08 #15-11 #14-12
#15-07 #14-08 #16-11
#16-07

#15-18 #15-20 #15-21
#16-18 #16-20 #16-21

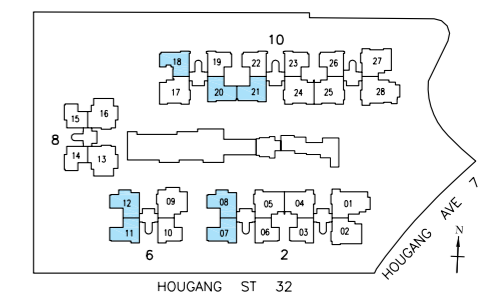


Type B1c
103 sqm / 1,109 sqft

#03-20

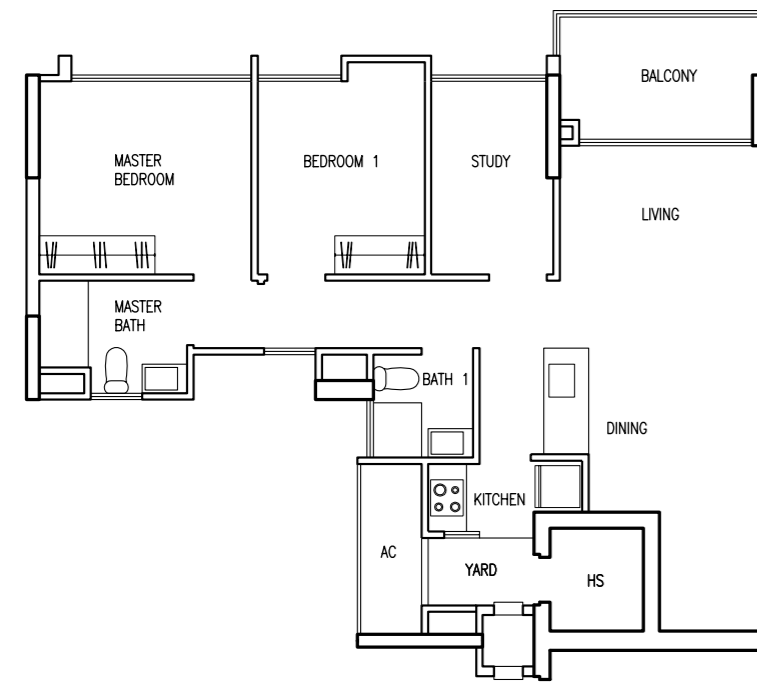


The plans are subjected to change as may be required by relevant authorities. Areas are approximate and subject to final survey. Plans are not to scale.



The plans are subjected to change as may be required by relevant authorities. Areas are approximate and subject to final survey. Plans are not to scale.

2-Bedroom + Study

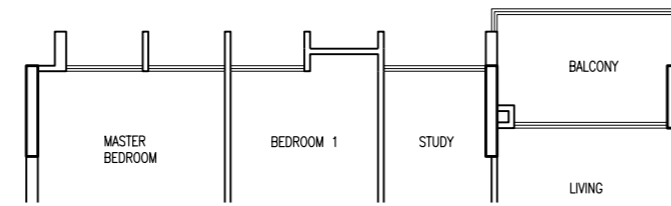
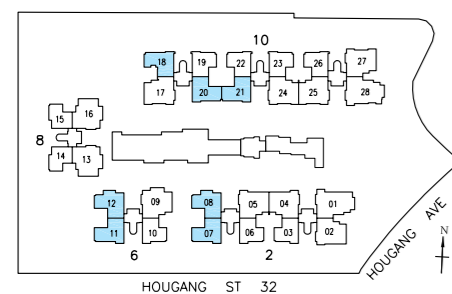


Type B2

81 sqm / 872 sqft

#02-07 #04-08 #02-11 #04-12
 #05-07 #07-08 #05-11 #07-12
 #06-07 #08-08 #06-11 #08-12
 #09-07 #11-08 #09-11 #11-12
 #10-07 #10-11 #12-12
 #13-11

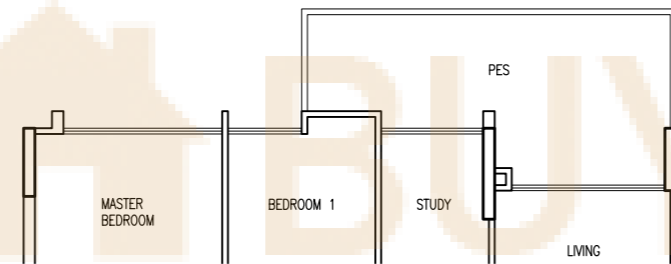
#02-18 #05-20 #05-21
 #05-18 #06-20 #06-21
 #06-18 #09-20 #09-21
 #09-18 #10-20 #10-21
 #10-18 #13-20 #13-21
 #13-18



Type B2a

81 sqm / 872 sqft

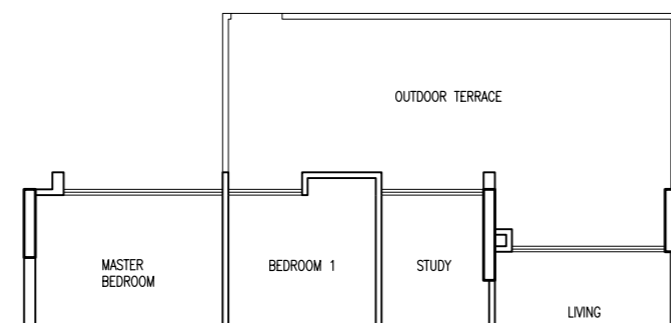
#13-07 #12-08 #14-11 #15-12
 #14-07 #15-08 #16-12
 #16-08
 #14-18 #14-20 #14-21



Type B2b

92 sqm / 990 sqft

#01-07 #01-11 #01-18

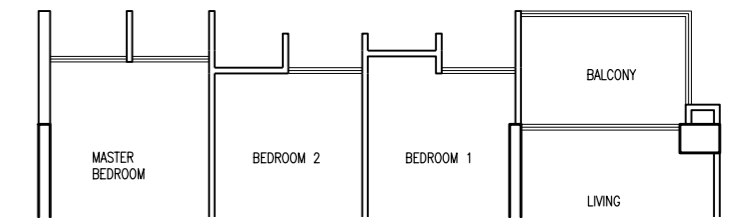


Type B2c

103 sqm / 1,109 sqft

#03-08 #03-12

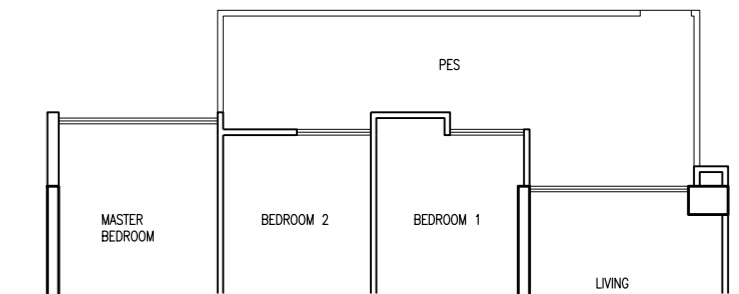
3-Bedroom



Type C1a

106 sqm / 1,141 sqft

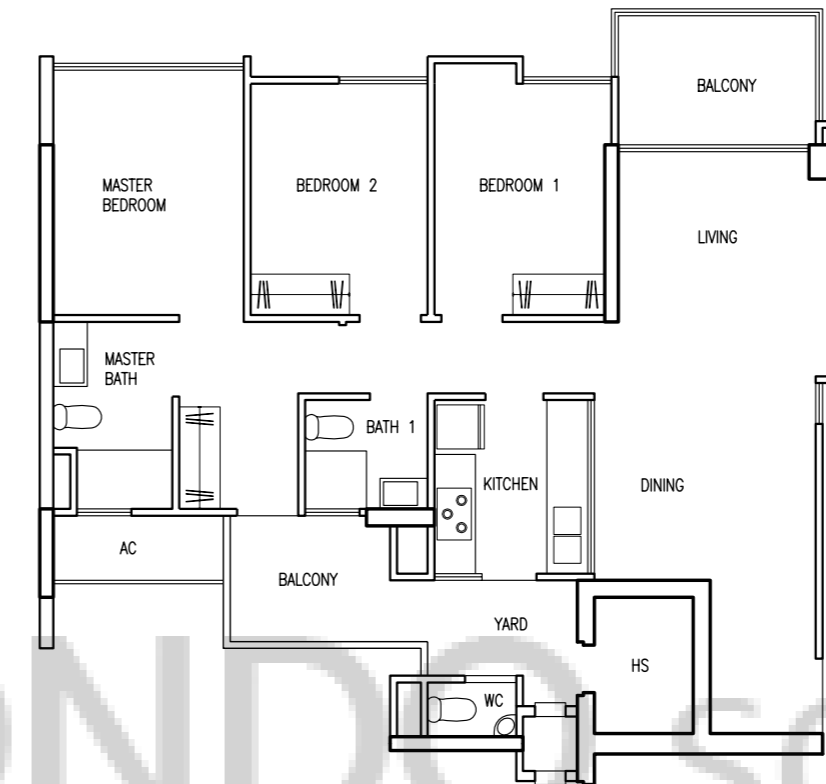
#13-04 #13-05 #14-09 #14-13 #14-16
 #14-04 #14-05
 #14-17 #14-24 #14-25 #14-27



Type C1b

121 sqm / 1,302 sqft

#01-04 #01-24 #01-25 #01-27

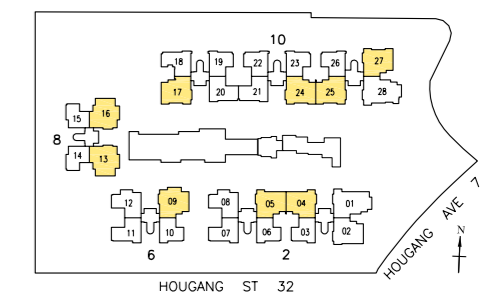


Type C1

106 sqm / 1,141 sqft

#02-04 #05-05 #05-09 #05-13 #05-16
 #05-04 #06-05 #06-09 #06-13 #06-16
 #06-04 #09-05 #09-09 #09-13 #09-16
 #09-04 #10-05 #10-09 #10-13 #10-16
 #10-04 #13-09 #13-13 #13-16

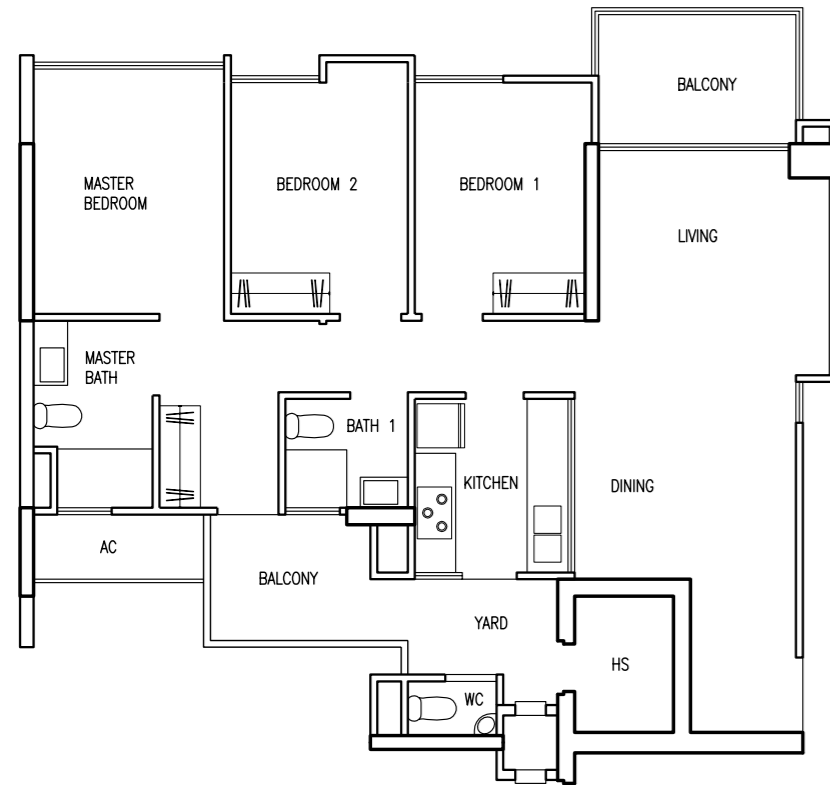
#05-17 #02-24 #02-25 #02-27
 #06-17 #05-24 #05-25 #05-27
 #09-17 #06-24 #06-25 #06-27
 #10-17 #09-24 #09-25 #09-27
 #13-17 #10-24 #10-25 #10-27
 #13-24 #13-25 #13-27



The plans are subjected to change as may be required by relevant authorities. Areas are approximate and subject to final survey. Plans are not to scale.

The plans are subjected to change as may be required by relevant authorities. Areas are approximate and subject to final survey. Plans are not to scale.

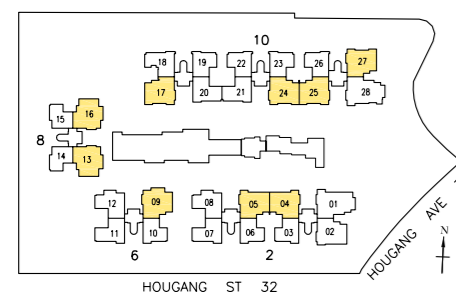
3-Bedroom



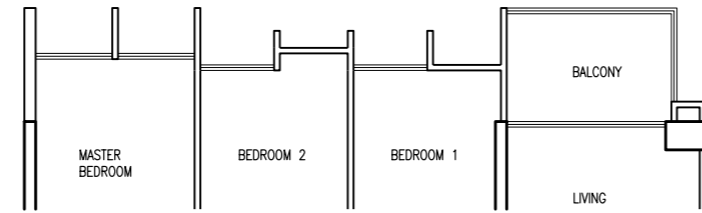
Type C2
106 sqm / 1,141 sqft

- #03-04 #03-05 #04-09 #04-13 #04-16
- #04-04 #04-05 #07-09 #07-13 #07-16
- #07-04 #07-05 #08-09 #08-13 #08-16
- #08-04 #08-05 #11-09 #11-13 #11-16
- #11-04 #11-05 #12-09 #12-13 #12-16

- #04-17 #03-24 #03-25 #03-27
- #07-17 #04-24 #04-25 #04-27
- #08-17 #07-24 #07-25 #07-27
- #11-17 #08-24 #08-25 #08-27
- #12-17 #11-24 #11-25 #11-27
- #12-24 #12-25 #12-27



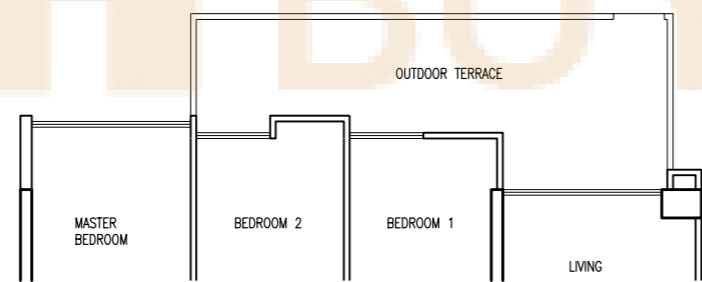
The plans are subjected to change as may be required by relevant authorities. Areas are approximate and subject to final survey. Plans are not to scale.



Type C2a
106 sqm / 1,141 sqft

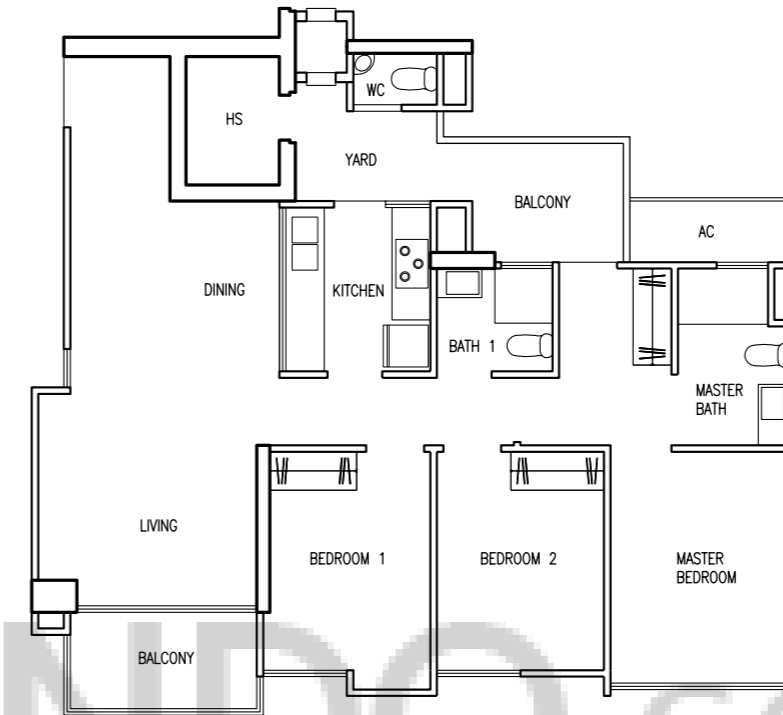
- #12-04 #12-05 #15-09 #15-13 #15-16
- #15-04 #15-05 #16-09 #16-13 #16-16
- #16-04 #16-05

- #15-17 #15-24 #15-25 #15-27
- #16-17 #16-24 #16-25 #16-27



Type C2c
121 sqm / 1,302 sqft

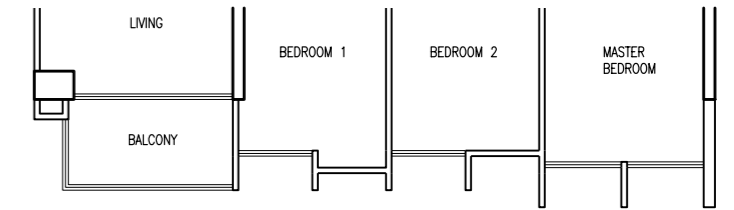
- #03-09 #03-13 #03-16 #03-17



Type C3
105 sqm / 1,130 sqft

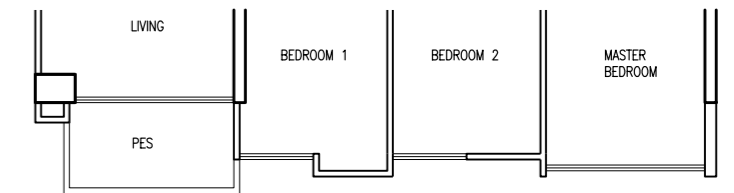
- #02-02
- #05-02
- #06-02
- #09-02
- #10-02

3-Bedroom



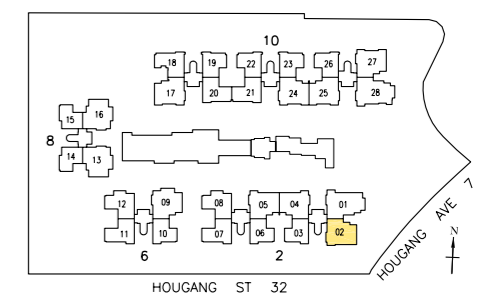
Type C3a
105 sqm / 1,130 sqft

- #13-02
- #14-02



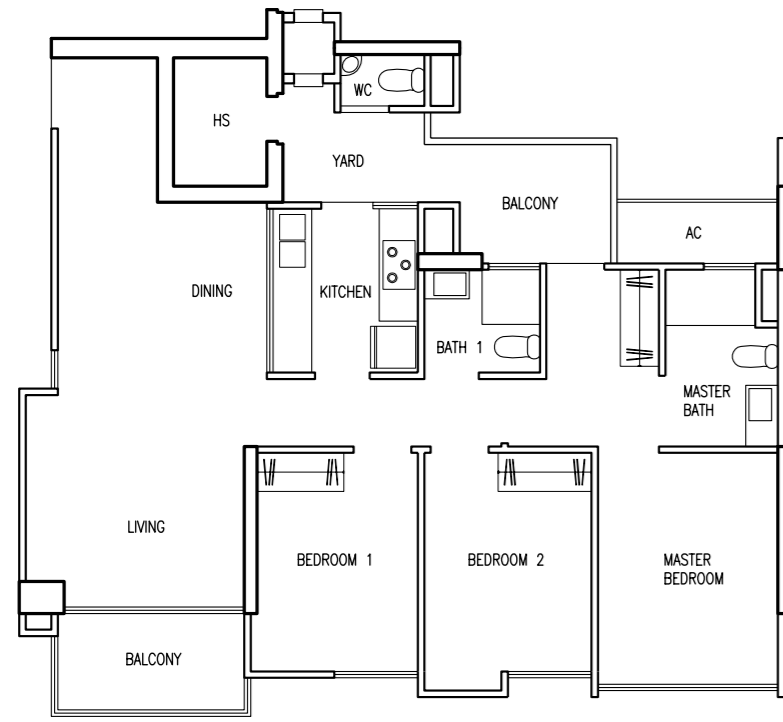
Type C3b
105 sqm / 1,130 sqft

- #01-02



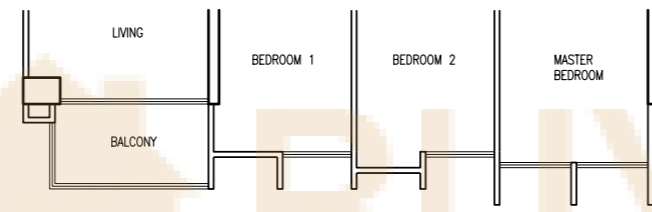
The plans are subjected to change as may be required by relevant authorities. Areas are approximate and subject to final survey. Plans are not to scale.

3-Bedroom



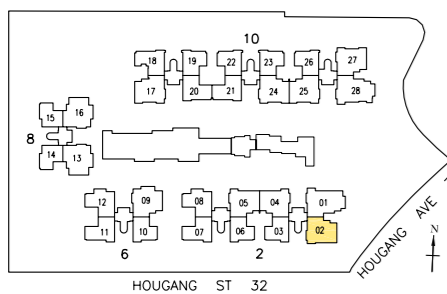
Type C4
105 sqm / 1,130 sqft

- #03-02
- #04-02
- #07-02
- #08-02
- #11-02



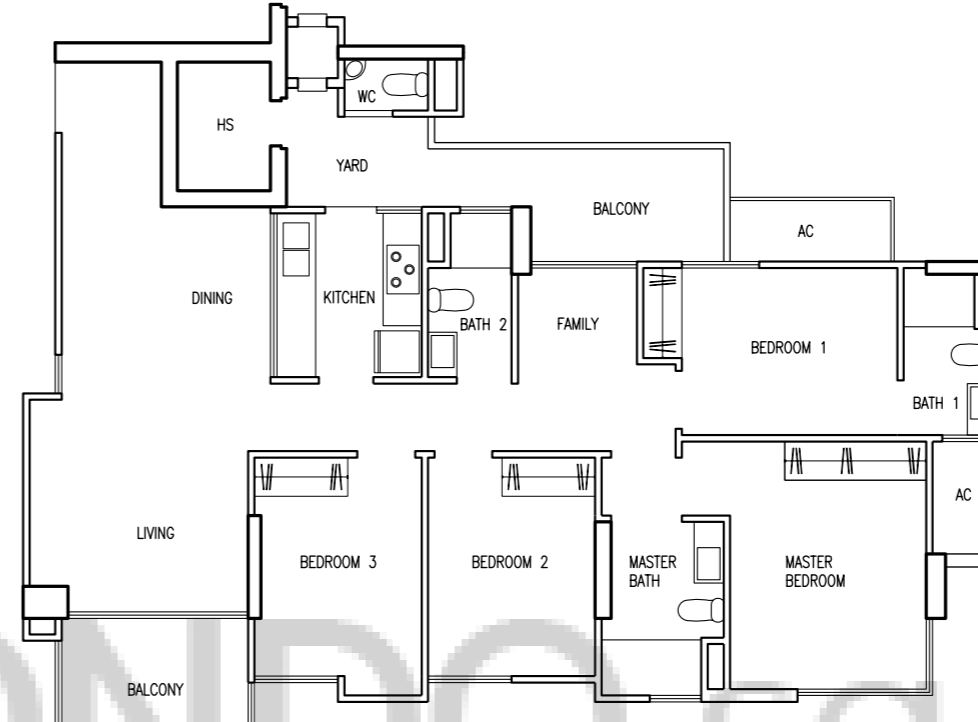
Type C4a
105 sqm / 1,130 sqft

- #12-02
- #15-02
- #16-02



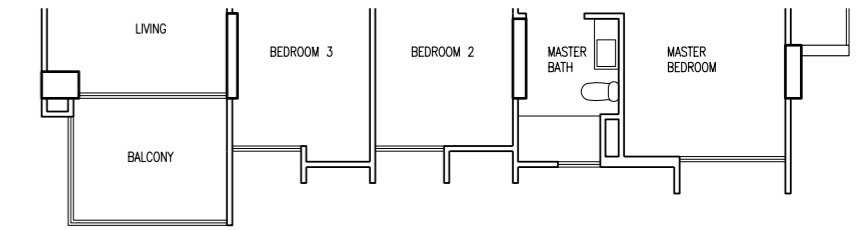
The plans are subjected to change as may be required by relevant authorities. Areas are approximate and subject to final survey. Plans are not to scale.

4-Bedroom



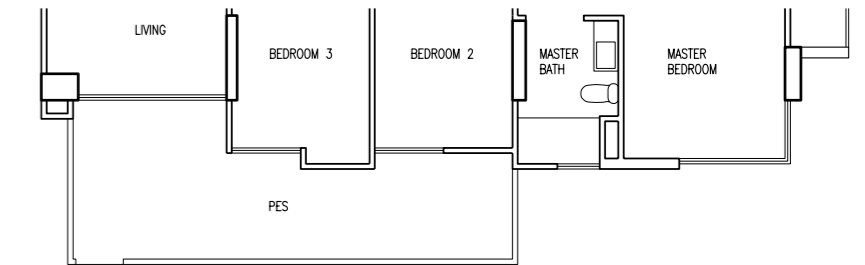
Type D1
131 sqm / 1,410 sqft

- #02-01 #02-28
- #05-01 #05-28
- #06-01 #06-28
- #09-01 #09-28
- #10-01 #10-28
- #13-28



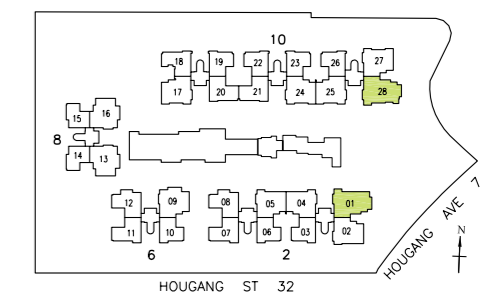
Type D1a
131 sqm / 1,410 sqft

- #13-01 #14-28
- #14-01



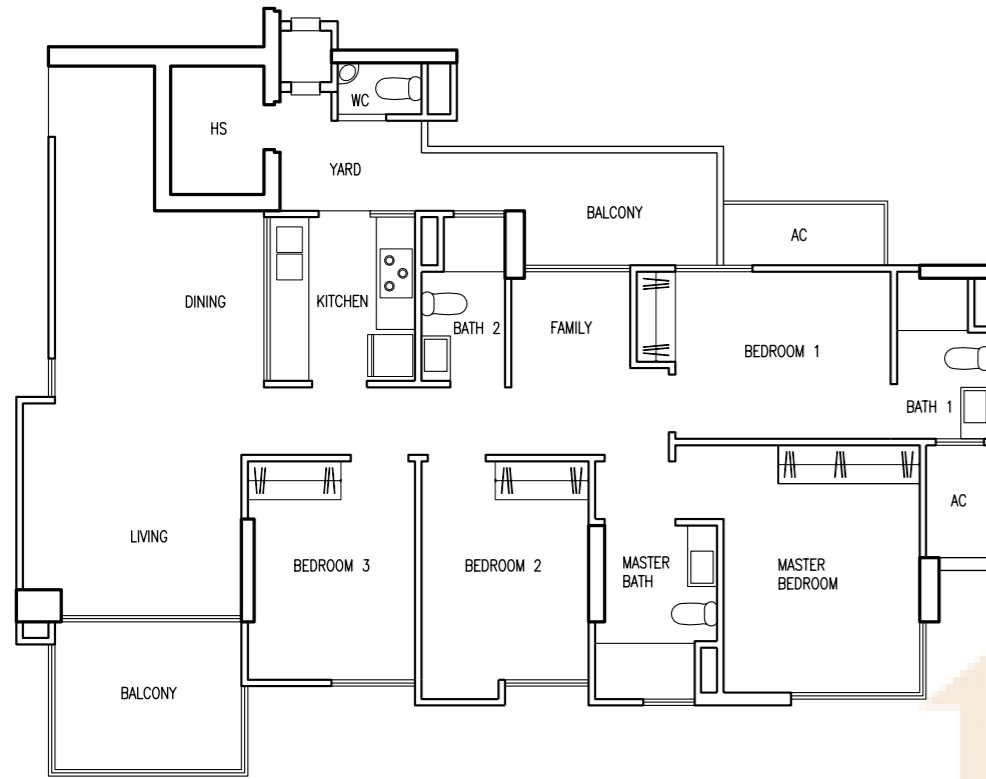
Type D1b
144 sqm / 1,550 sqft

- #01-01 #01-28



The plans are subjected to change as may be required by relevant authorities. Areas are approximate and subject to final survey. Plans are not to scale.

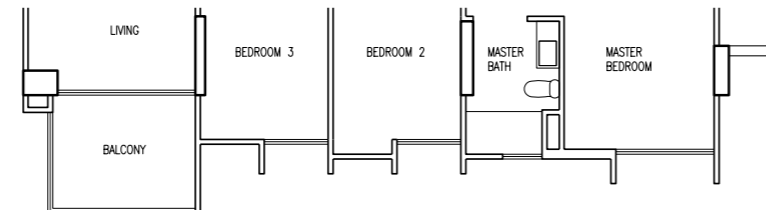
4-Bedroom



Type D2

131 sqm / 1,410 sqft

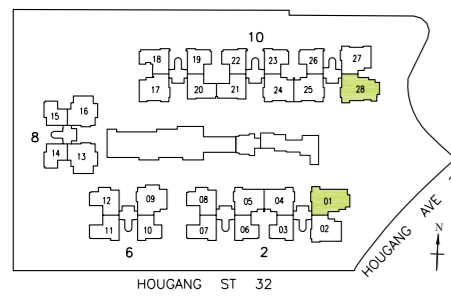
- #03-01 #03-28
- #04-01 #04-28
- #07-01 #07-28
- #08-01 #08-28
- #11-01 #11-28
- #12-01 #12-28



Type D2a

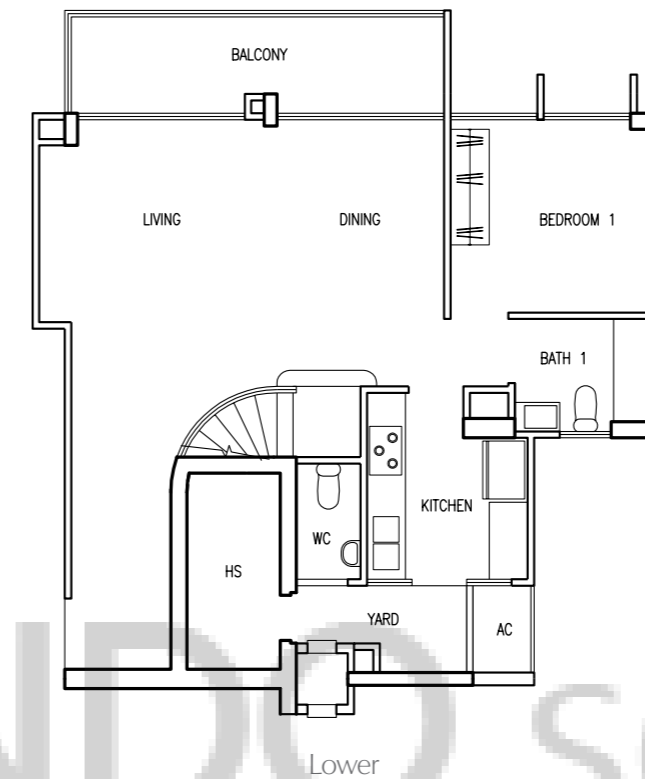
131 sqm / 1,410 sqft

- #12-01 #15-28
- #15-01 #16-28
- #16-01

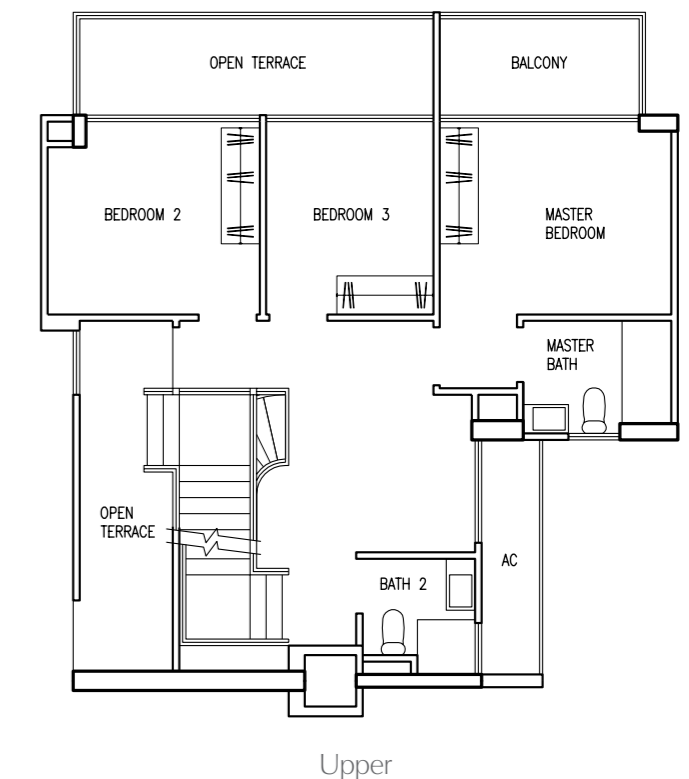


The plans are subjected to change as may be required by relevant authorities. Areas are approximate and subject to final survey. Plans are not to scale.

Penthouse



Lower



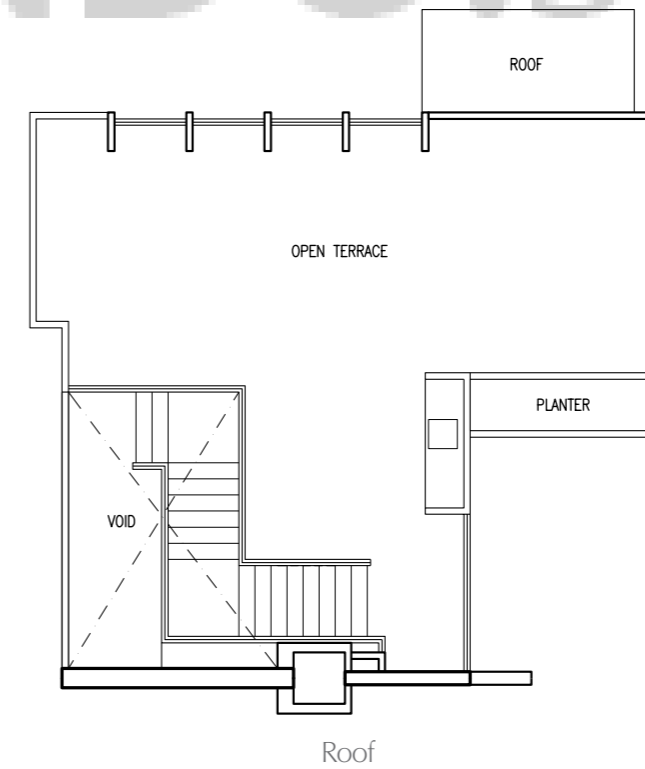
Upper

Type P1

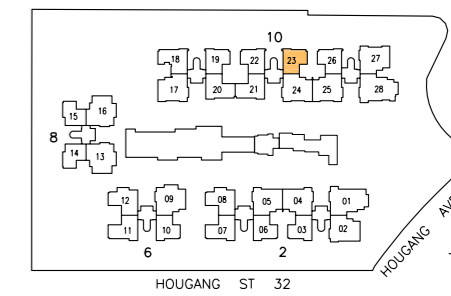
243 sqm / 2,616 sqft

(Area inclusive of strata void of 19 sqm)

#17-23

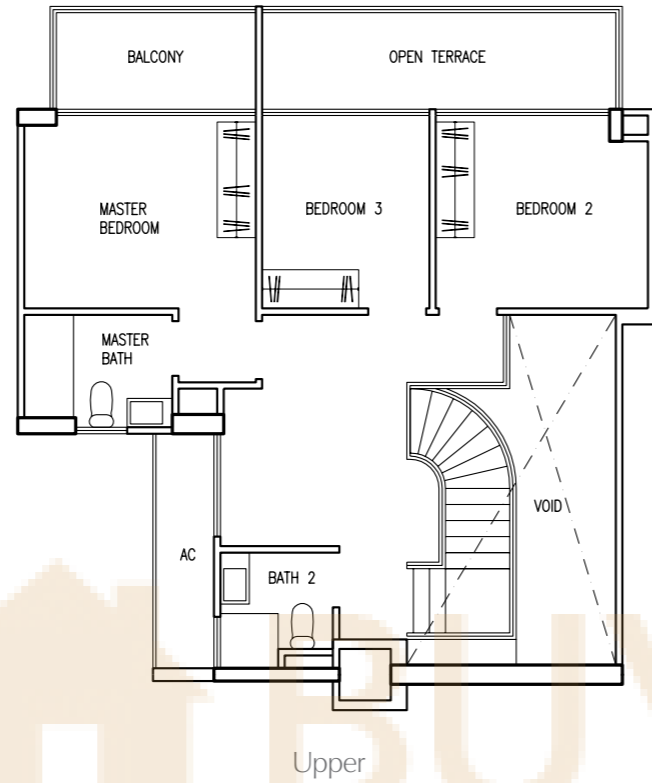
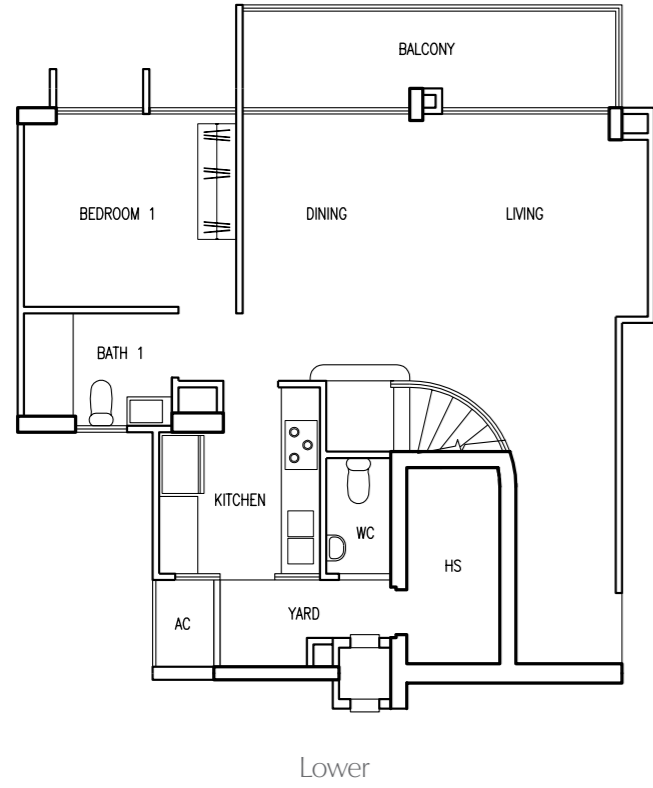


Roof



The plans are subjected to change as may be required by relevant authorities. Areas are approximate and subject to final survey. Plans are not to scale.

Penthouse

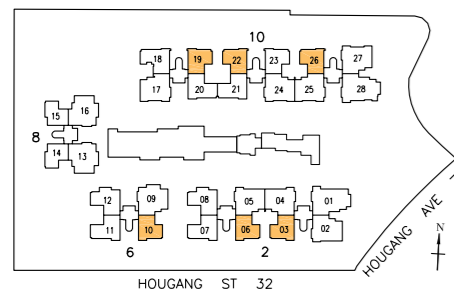


Type P1a

173 sqm / 1,862 sqft

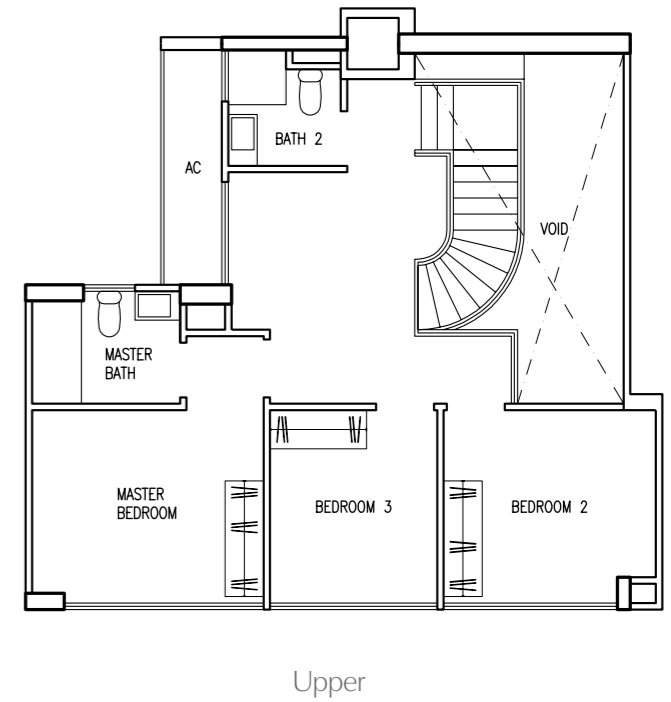
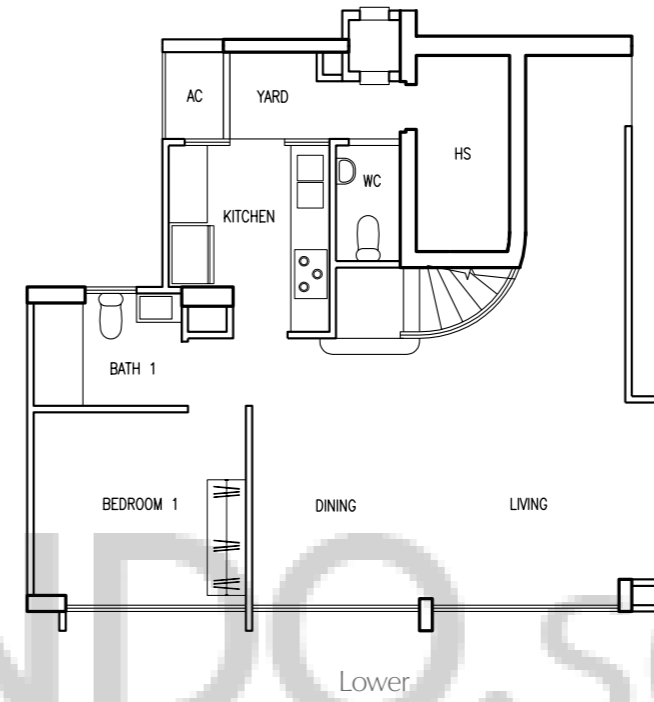
(Area inclusive of strata void of 15 sqm)

#17-03 #17-06 #17-10
#17-19 #17-22 #17-26



The plans are subjected to change as may be required by relevant authorities. Areas are approximate and subject to final survey. Plans are not to scale.

Penthouse

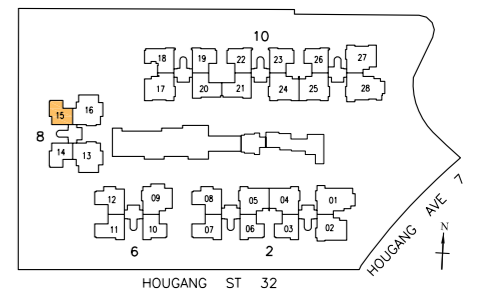


Type P1b

150 sqm / 1,615 sqft

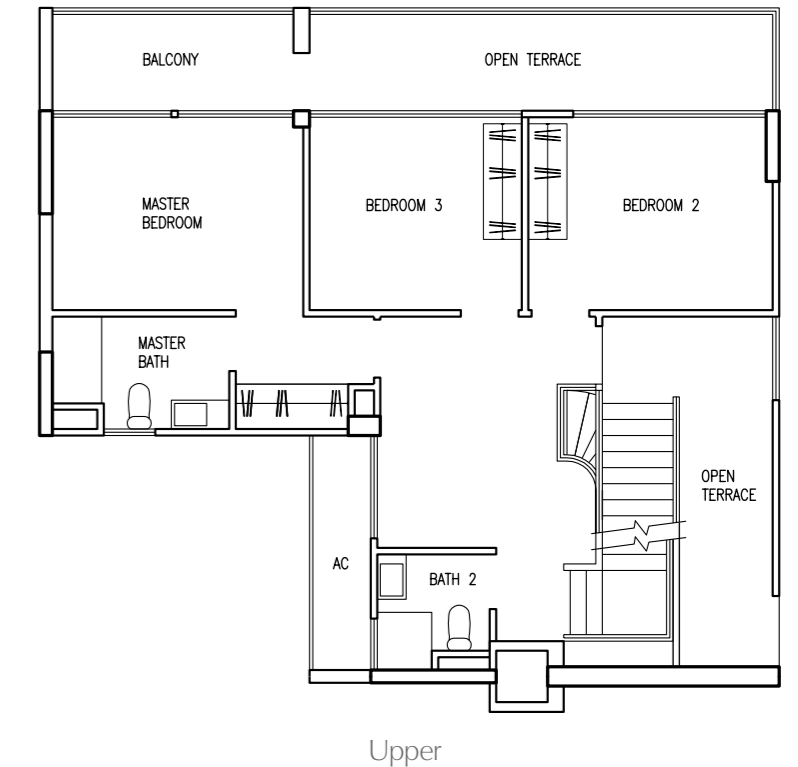
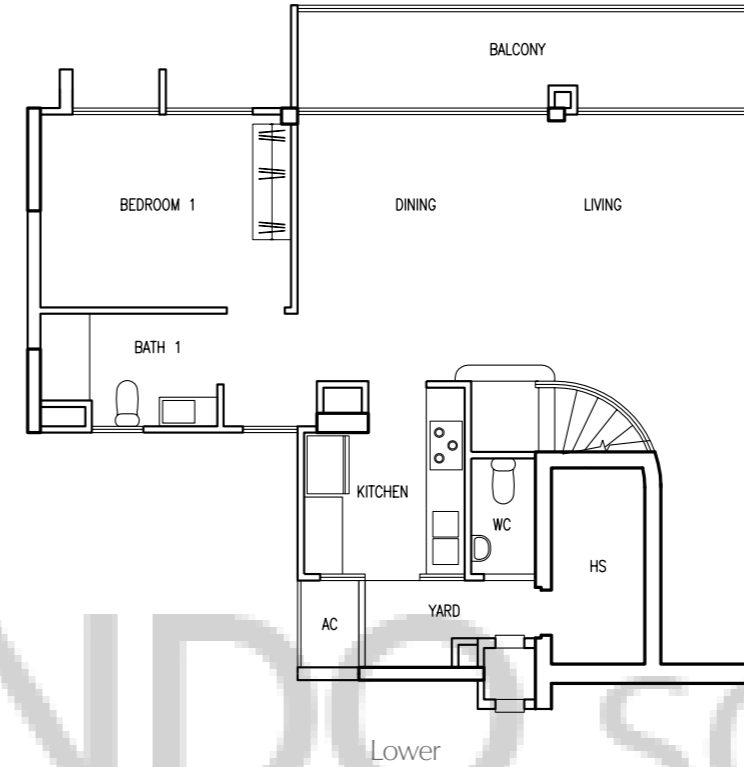
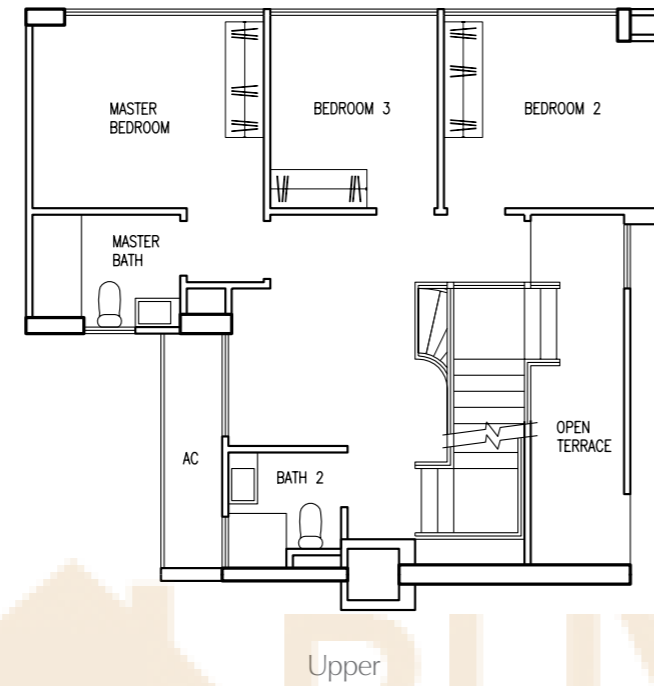
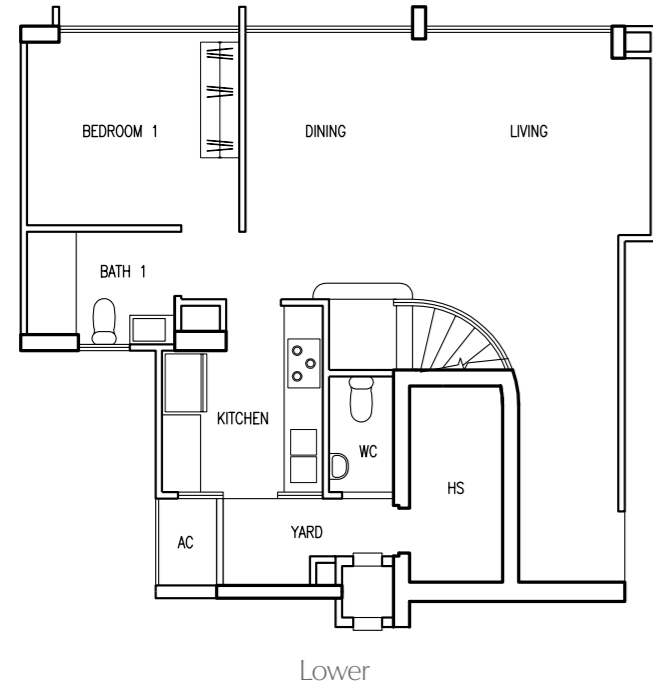
(Area inclusive of strata void of 15 sqm)

#17-15



The plans are subjected to change as may be required by relevant authorities. Areas are approximate and subject to final survey. Plans are not to scale.

Penthouse

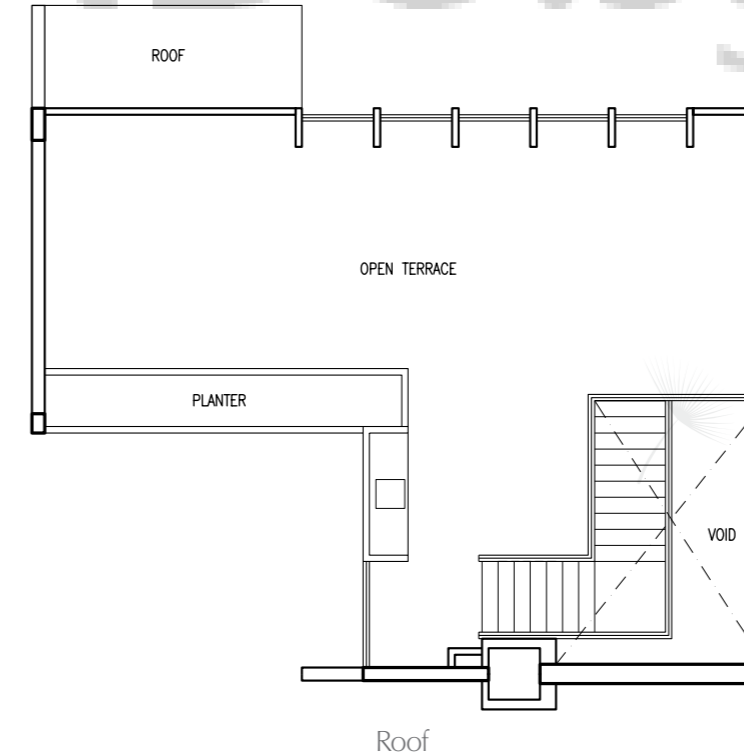
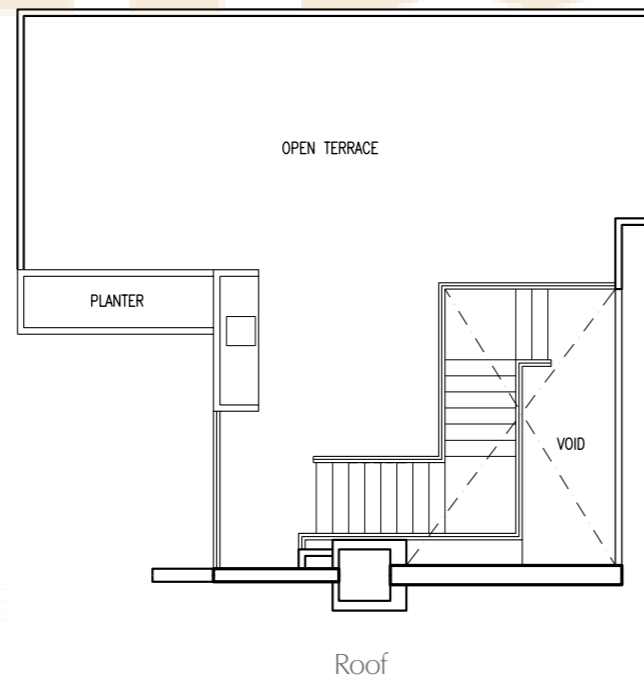


Type P1c

221 sqm / 2,379 sqft

(Area inclusive of strata void of 19 sqm)

#17-14

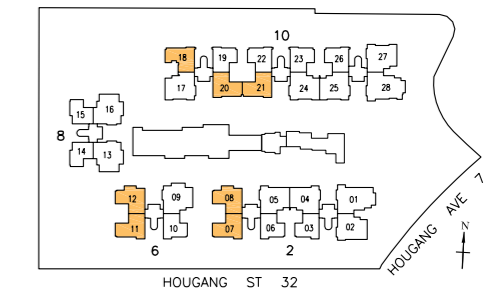
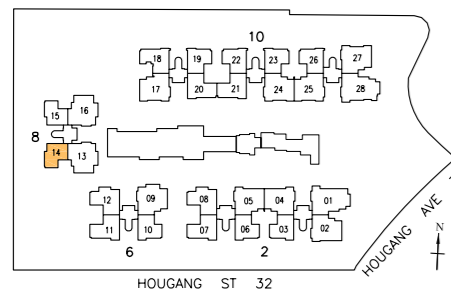


Type P2

276 sqm / 2,971 sqft

(Area inclusive of strata void of 18 sqm)

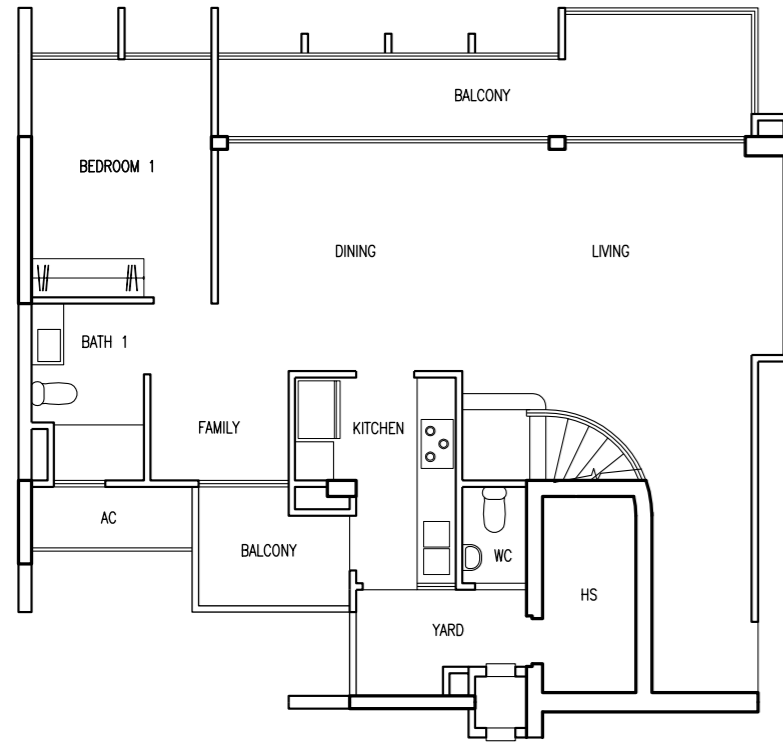
#17-07 #17-08 #17-11 #17-12
#17-18 #17-20 #17-21



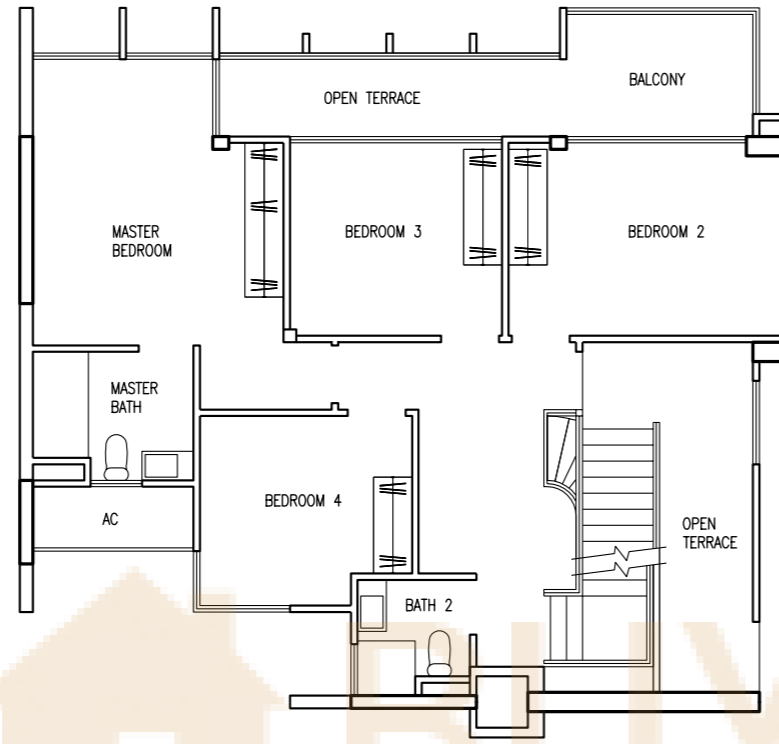
The plans are subjected to change as may be required by relevant authorities. Areas are approximate and subject to final survey. Plans are not to scale.

The plans are subjected to change as may be required by relevant authorities. Areas are approximate and subject to final survey. Plans are not to scale.

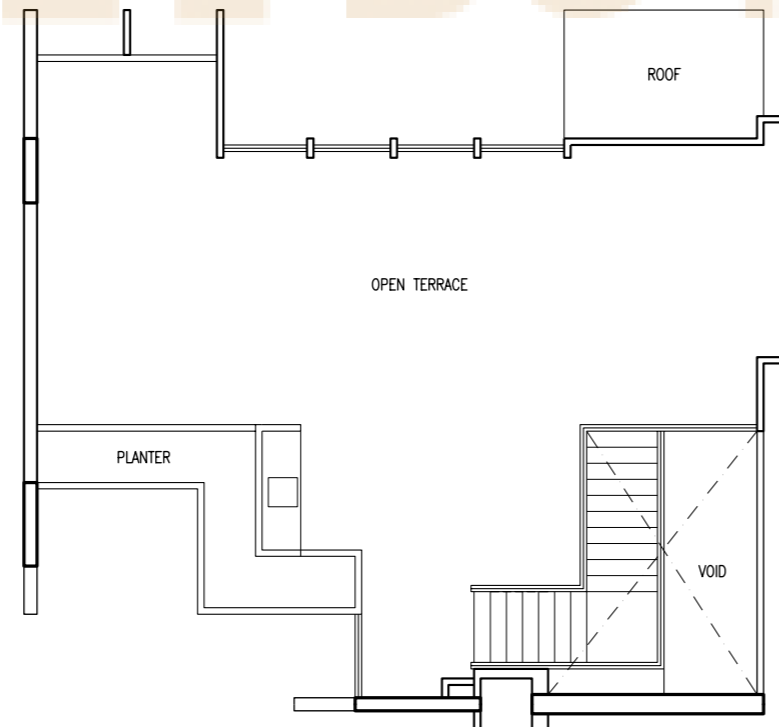
Penthouse



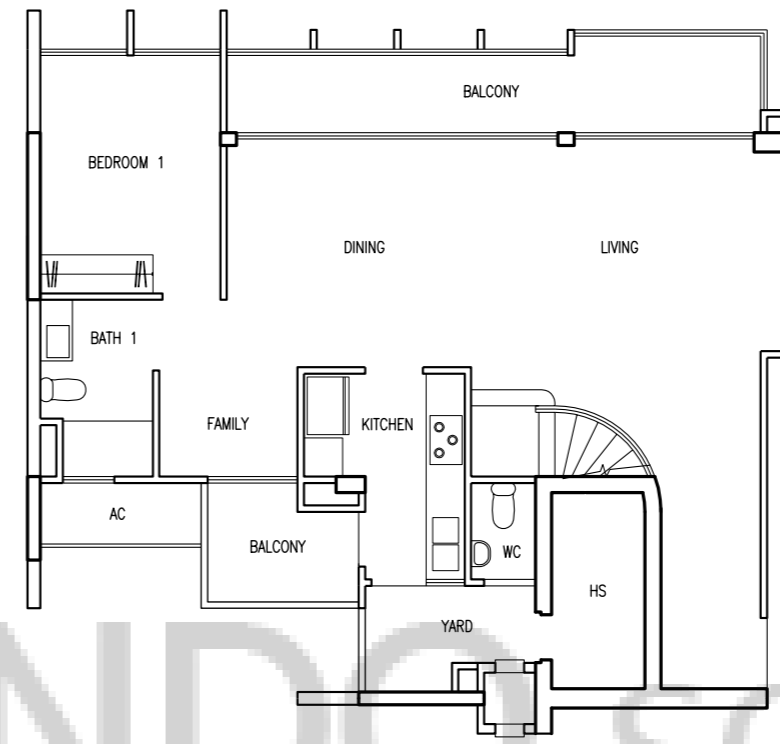
Lower



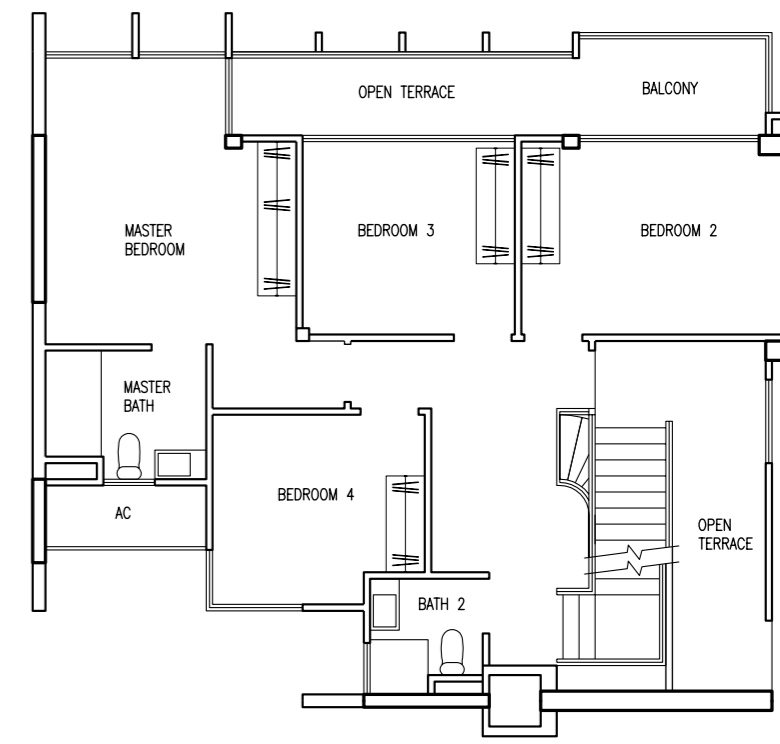
Upper



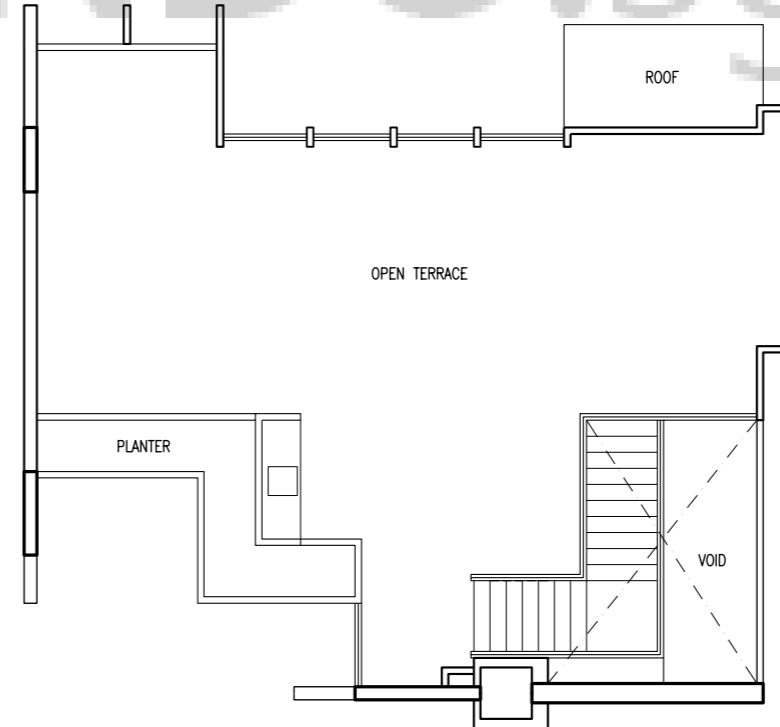
Roof



Lower



Upper



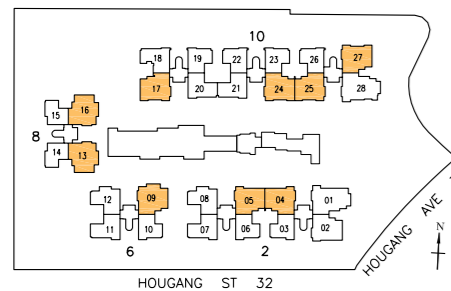
Roof

Type P3

307 sqm / 3,305 sqft

(Area inclusive of strata void of 18 sqm)

- #17-04 #17-05 #17-09 #17-13 #17-16
- #17-17 #17-24 #17-25 #17-27



The plans are subjected to change as may be required by relevant authorities. Areas are approximate and subject to final survey. Plans are not to scale.

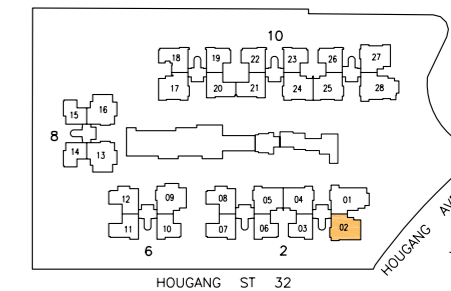
Penthouse

Type P3a

305 sqm / 3,283 sqft

(Area inclusive of strata void of 18 sqm)

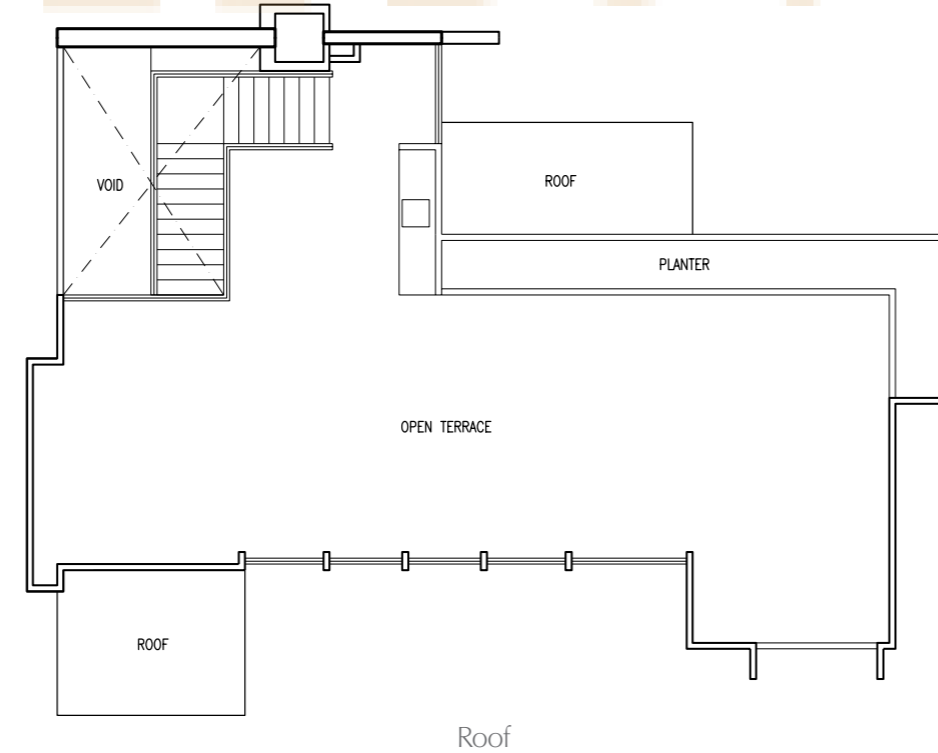
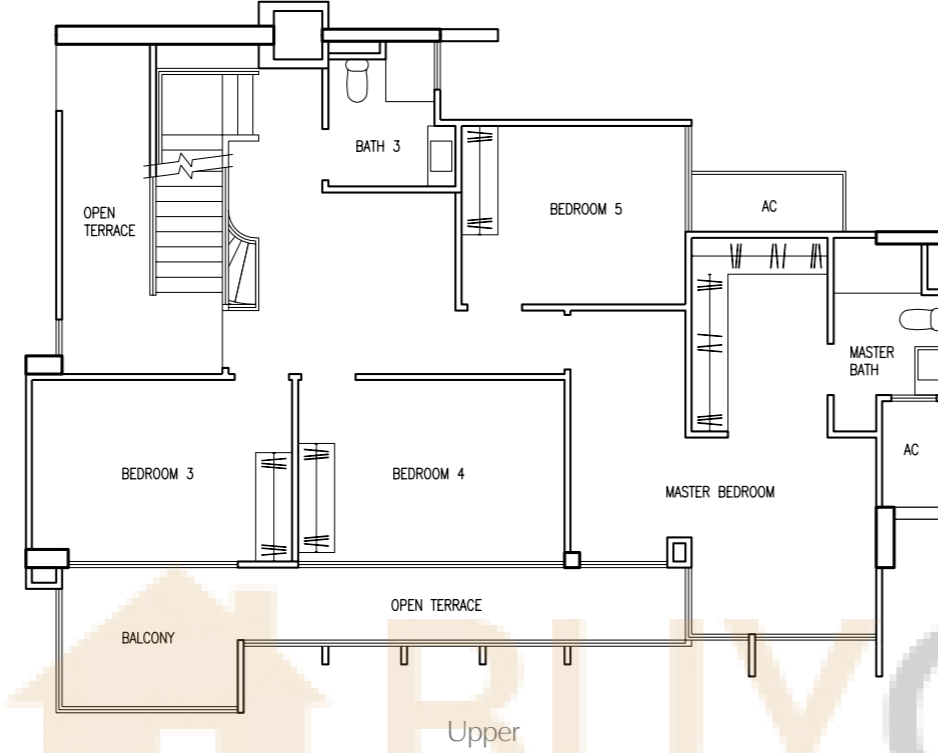
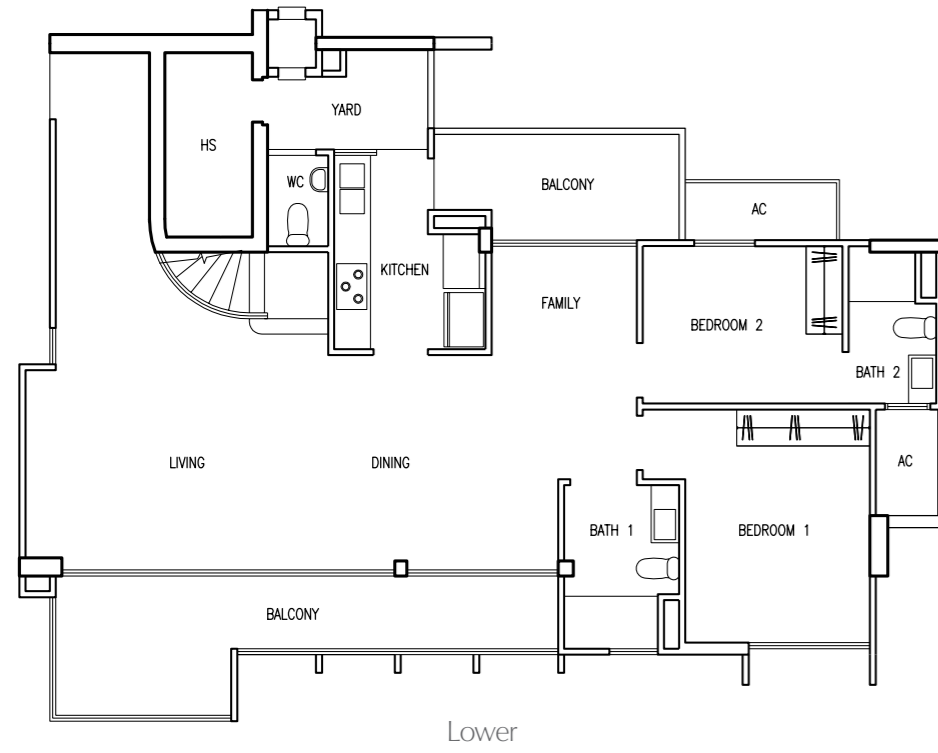
- #17-02



The plans are subjected to change as may be required by relevant authorities. Areas are approximate and subject to final survey. Plans are not to scale.

Penthouse

Notes:

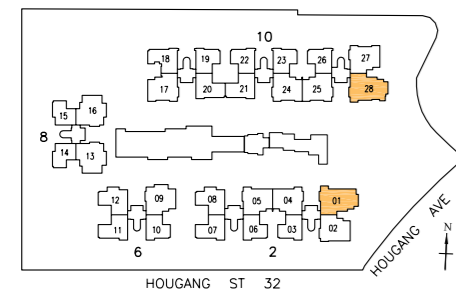


Type P4

367 sqm / 3,950 sqft

(Area inclusive of strata void of 18 sqm)

#17-01 #17-28



The plans are subjected to change as may be required by relevant authorities. Areas are approximate and subject to final survey. Plans are not to scale.