

2 - Bedroom

TYPE A

92 sq m, 990 sq ft

#05-01 - #11-01

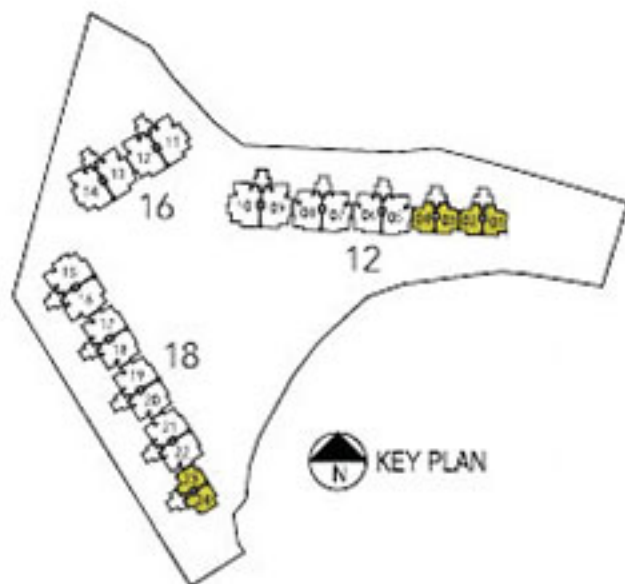
#05-02 - #11-02

#03-03 - #11-03

#03-04 - #11-04

#03-23 - #11-23

#05-24 - #11-24



2 - Bedroom (with PES)

TYPE Ag-1

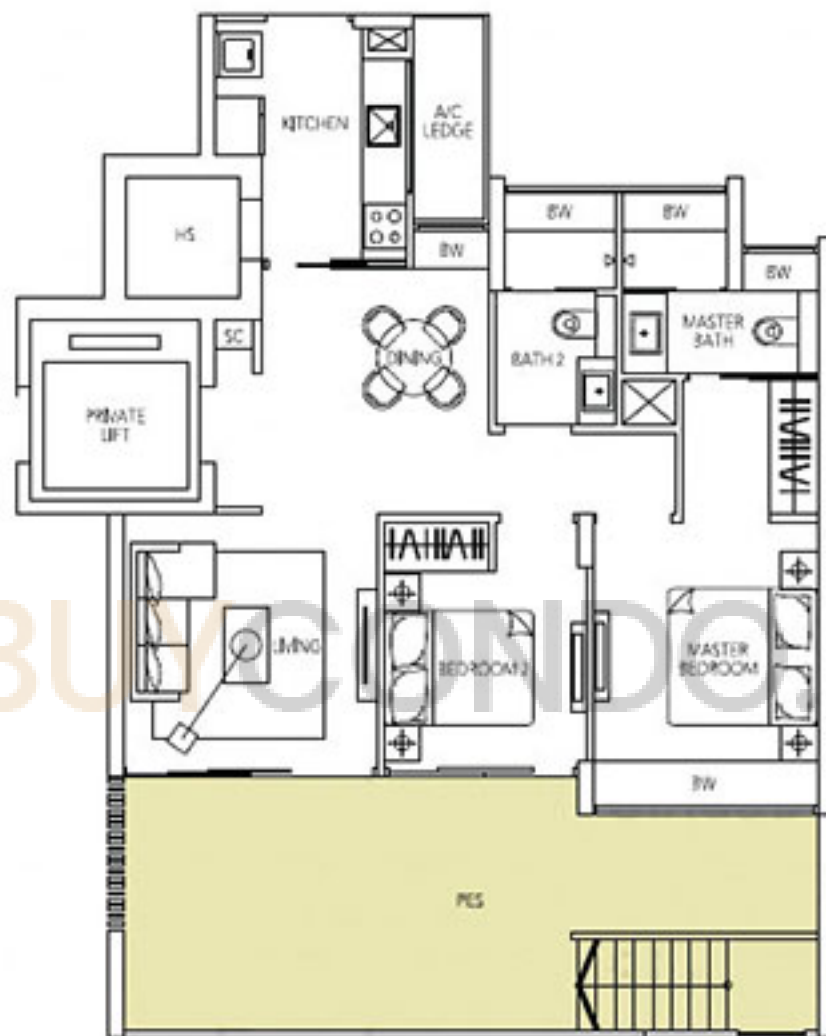
111 sq m, 1,195 sq ft
(Including PES of 31 sq m)

#02-03 - #02-04

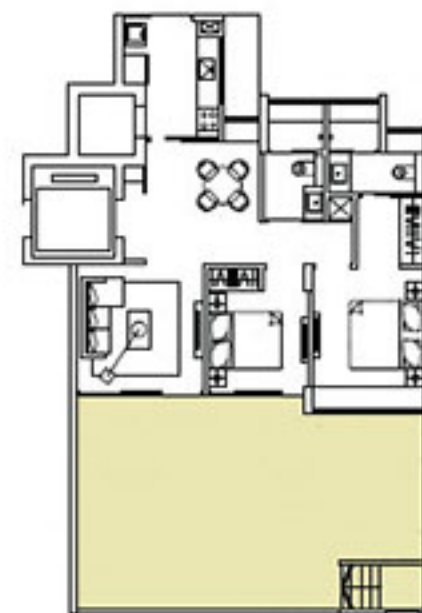
TYPE Ag-2

134 sq m, 1,442 sq ft
(Including PES of 54 sq m)

#02-23

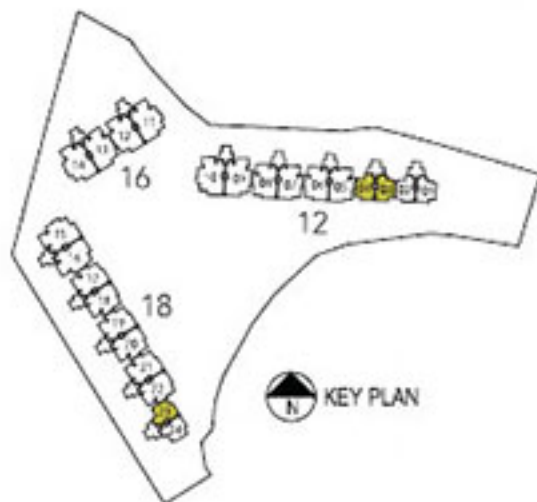


TYPE Ag-1



TYPE Ag-2

Differences between Types Ag-1 and Ag-2 are in the sizes of the PES areas, which are shaded. The rest of their layouts are otherwise identical.

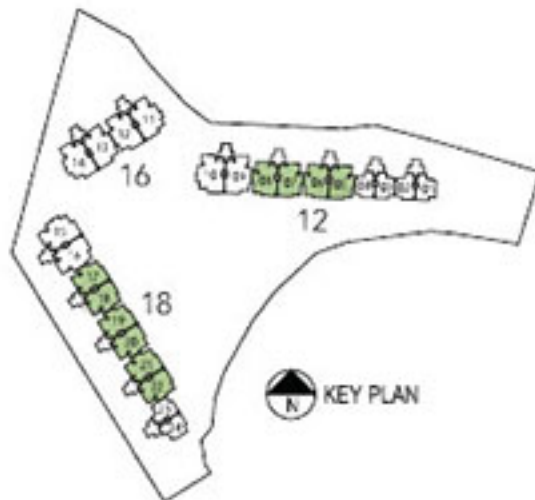
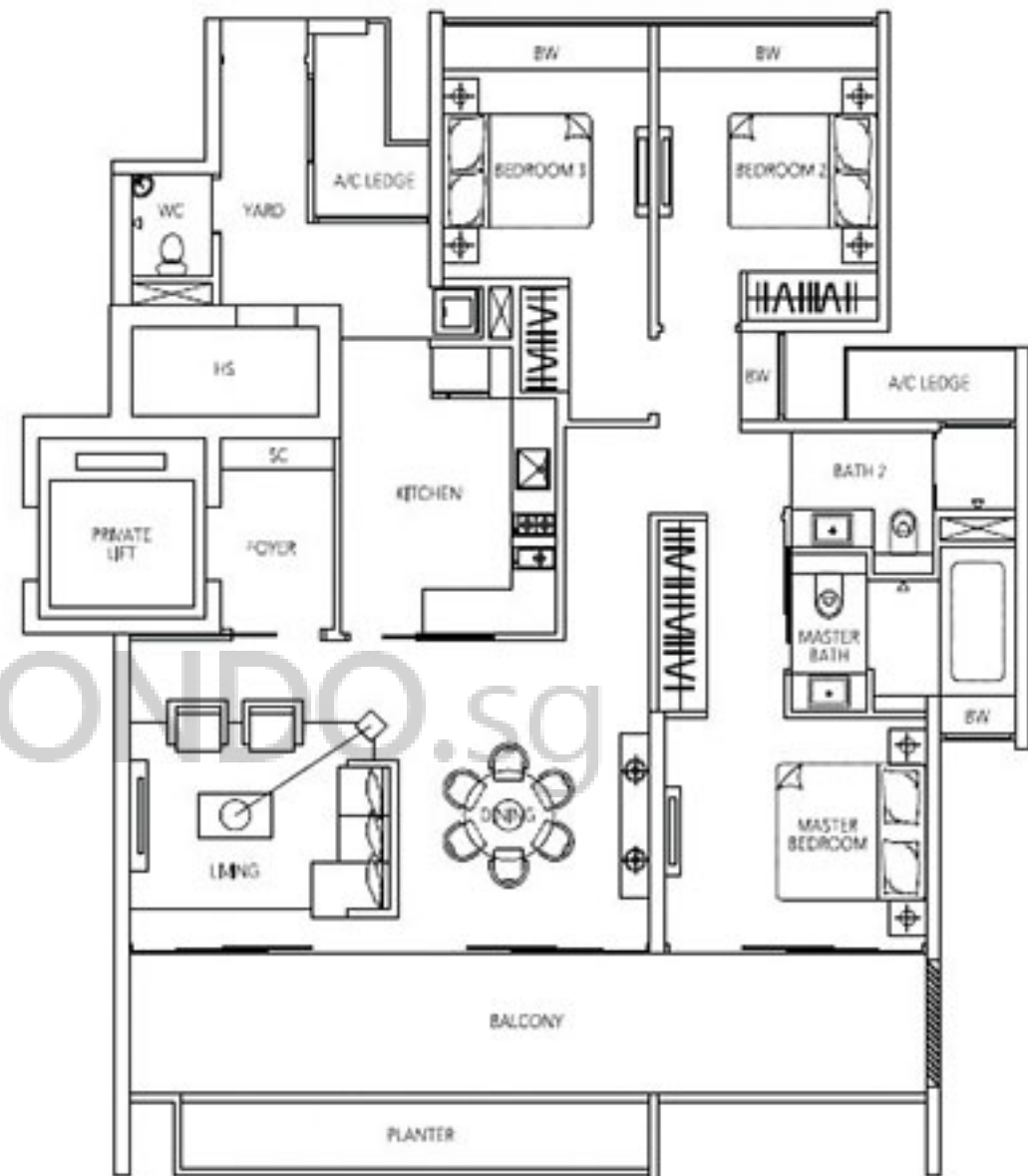


3 - Bedroom

TYPE B

158 sq m, 1,701 sq ft

- #03-05 - #11-05
- #03-06 - #11-06
- #03-07 - #11-07
- #03-08 - #11-08
- #03-17 - #11-17
- #03-18 - #11-18
- #03-19 - #11-19
- #03-20 - #11-20
- #03-21 - #11-21
- #03-22 - #11-22



BUYCONDO.SG

3 - Bedroom (with PES)

TYPE Bg-1

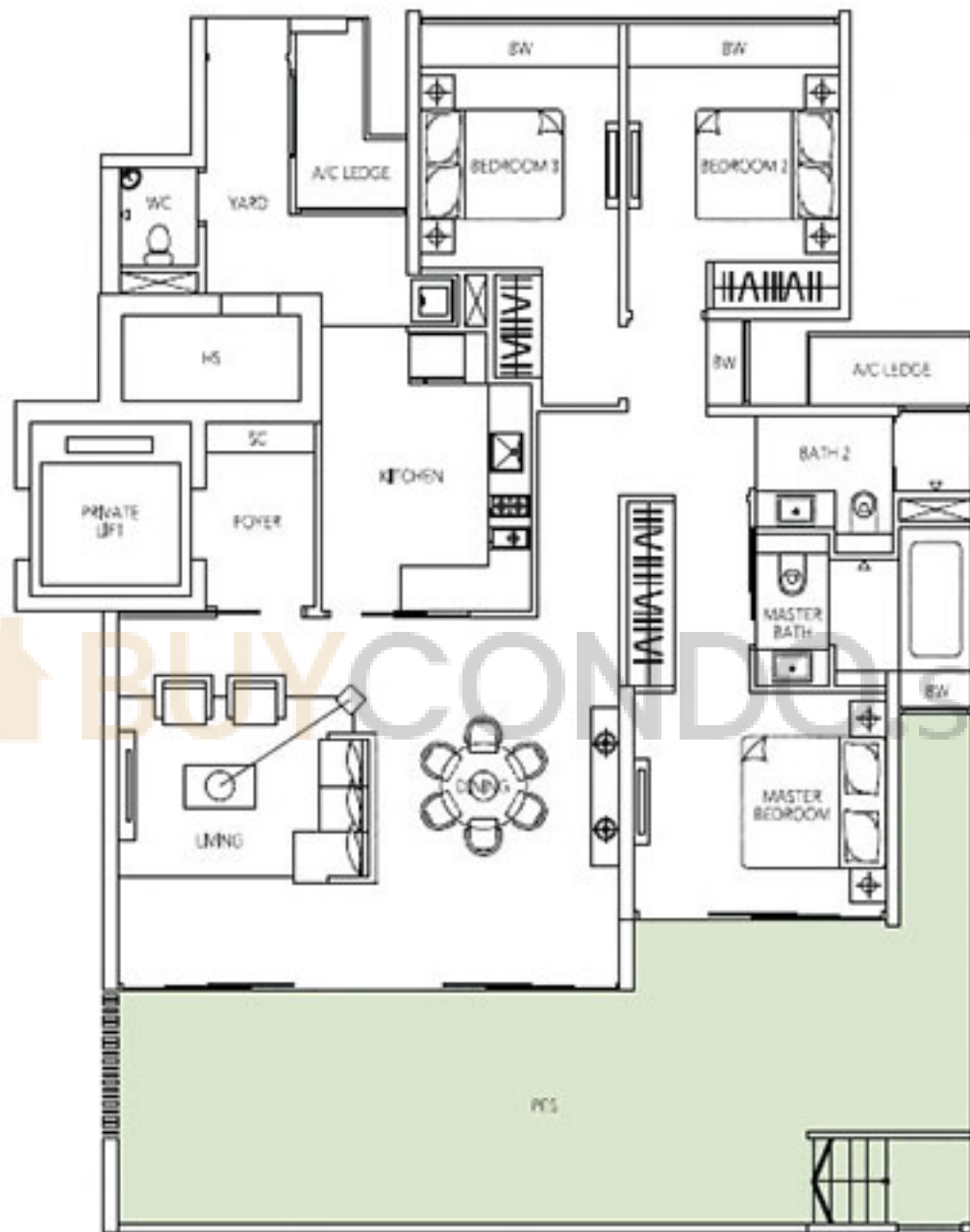
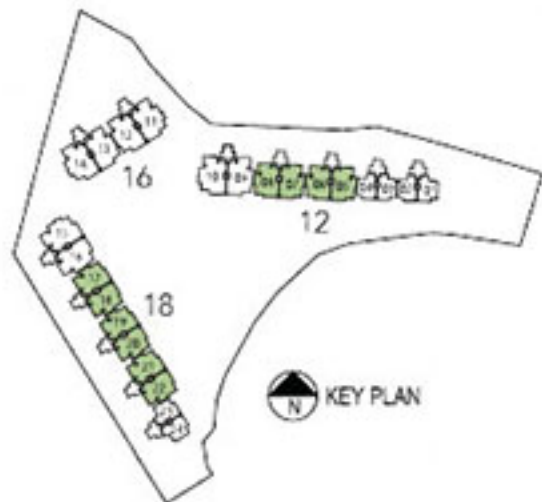
186 sq m, 2,002 sq ft
(Including PES of 49 sq m)
#02-06 - #02-08

TYPE Bg-1(a)

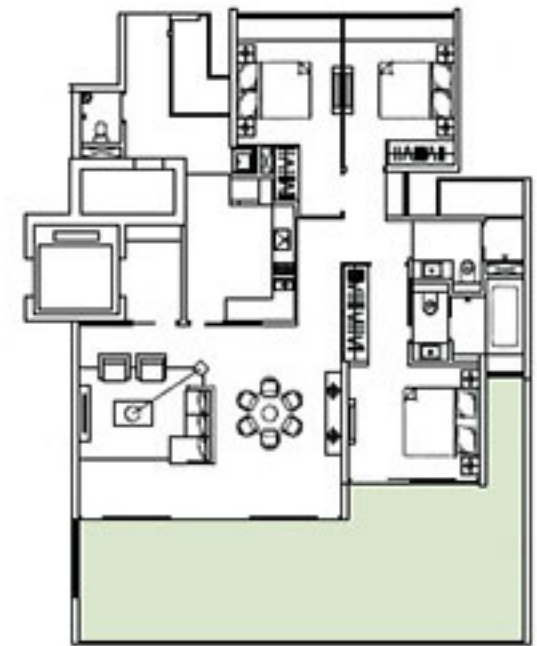
186 sq m, 2,002 sq ft
(Including PES of 49 sq m)
#02-05

TYPE Bg-2

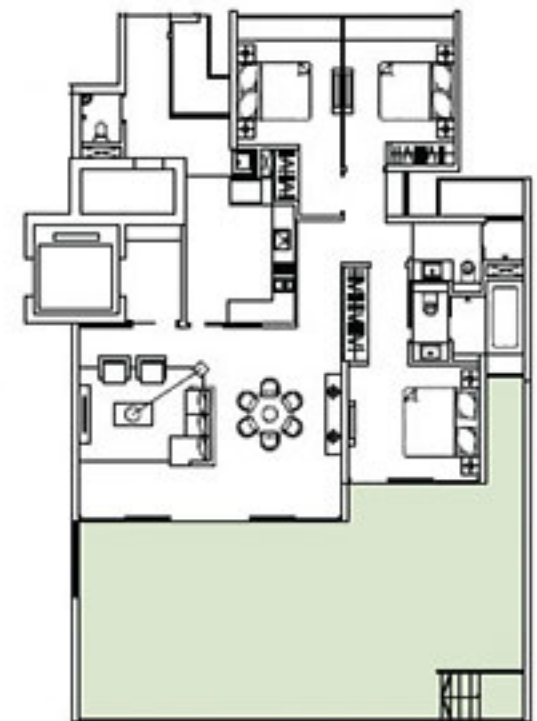
210 sq m, 2,260 sq ft
(Including PES of 73 sq m)
#02-17 - #02-22



TYPE Bg-1



TYPE Bg-1(a)



TYPE Bg-2

Differences between Types Bg-1, Bg-1(a) and Bg-2 are in the sizes of the PES areas, which are shaded. The rest of their layouts are otherwise identical.

4 - Bedroom

TYPE C

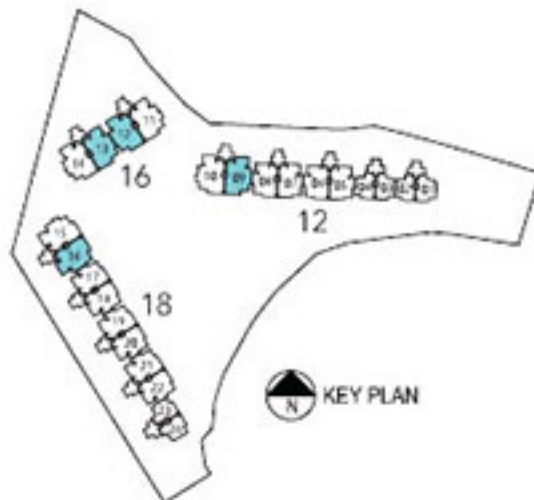
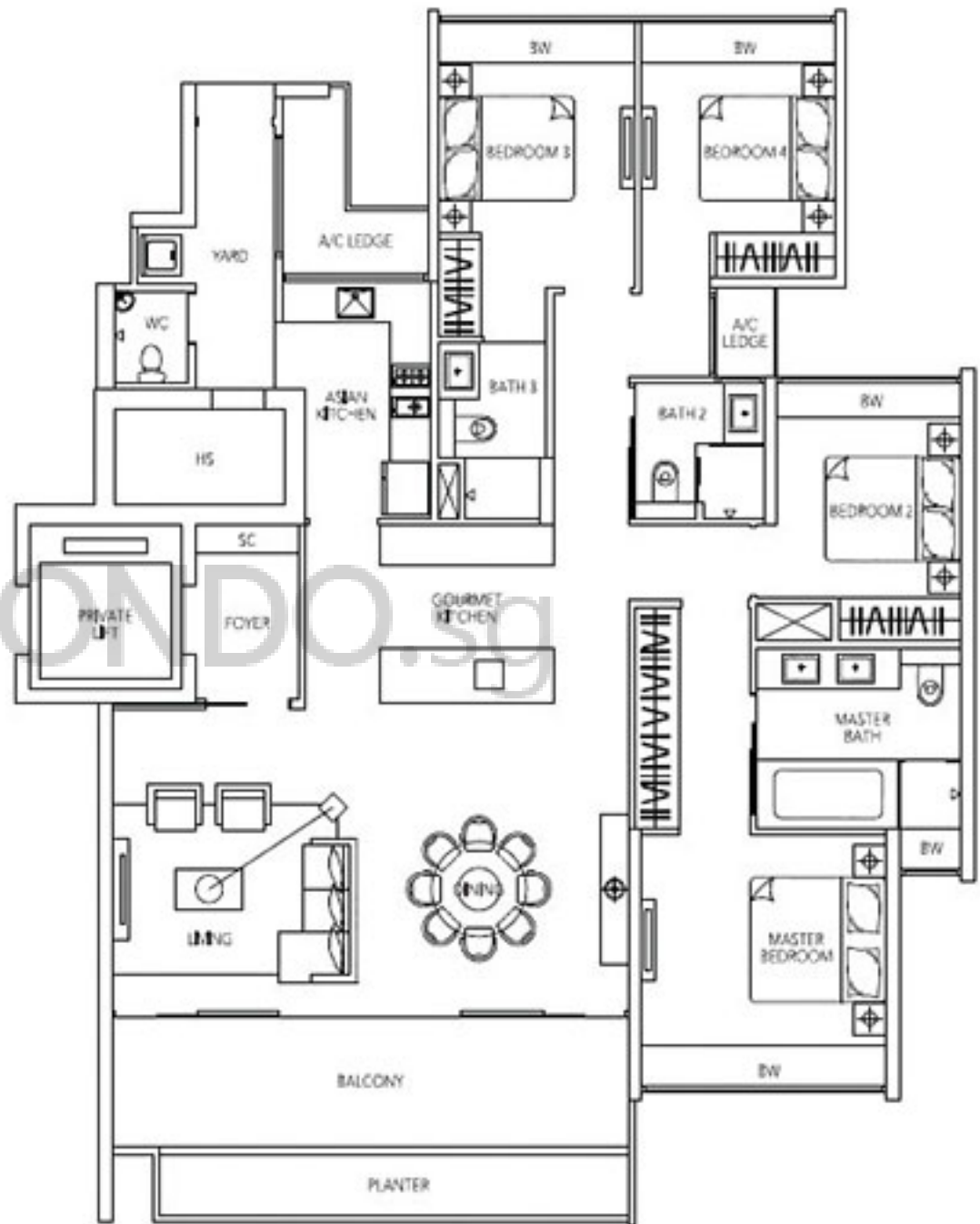
185 sq m, 1,991 sq ft

#03-09 - #11-09

#04-12 - #11-12

#04-13 - #11-13

#03-16 - #11-16



4 - Bedroom

TYPE C1

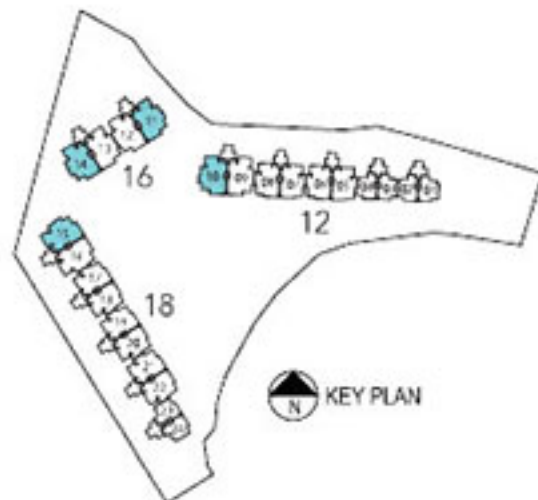
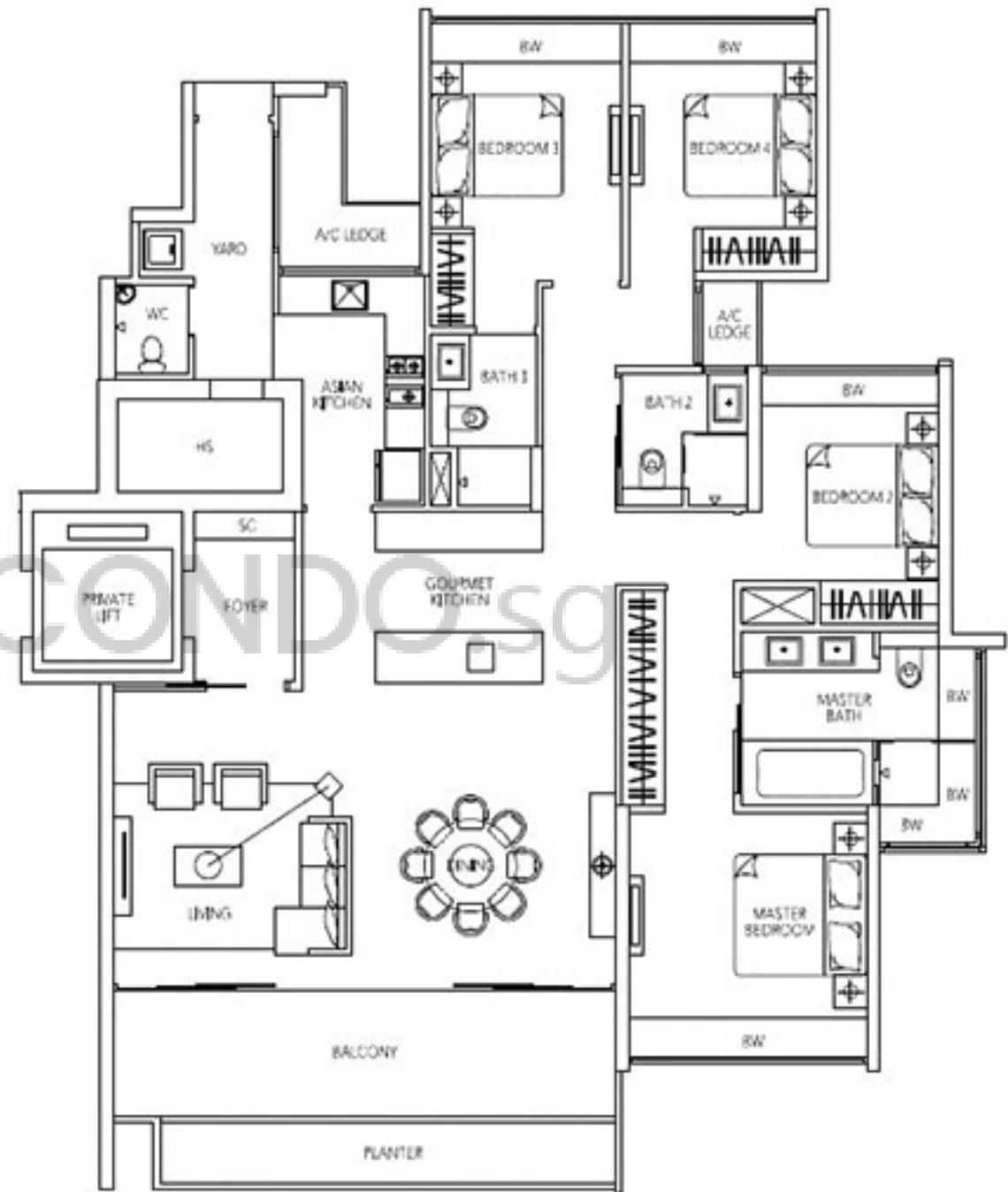
187 sq m, 2,013 sq ft

#03-10 - #11-10

#03-11 - #11-11

#03-14 - #11-14

#03-15 - #11-15



4 - Bedroom (with PES)

TYPE C1g-1

218 sq m, 2,347 sq ft
(Including PES of 46 sq m)

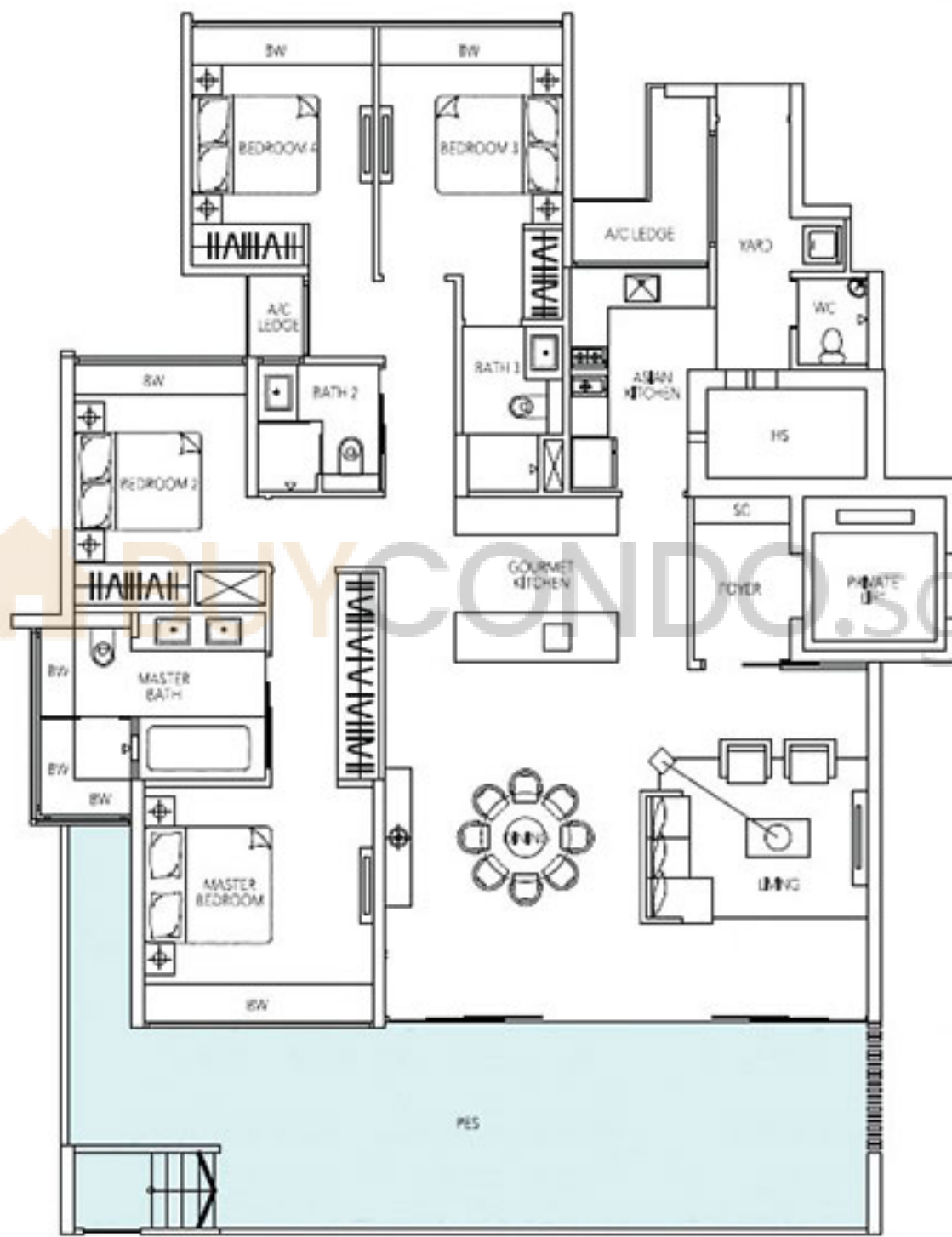
#02-10

TYPE C1g-2

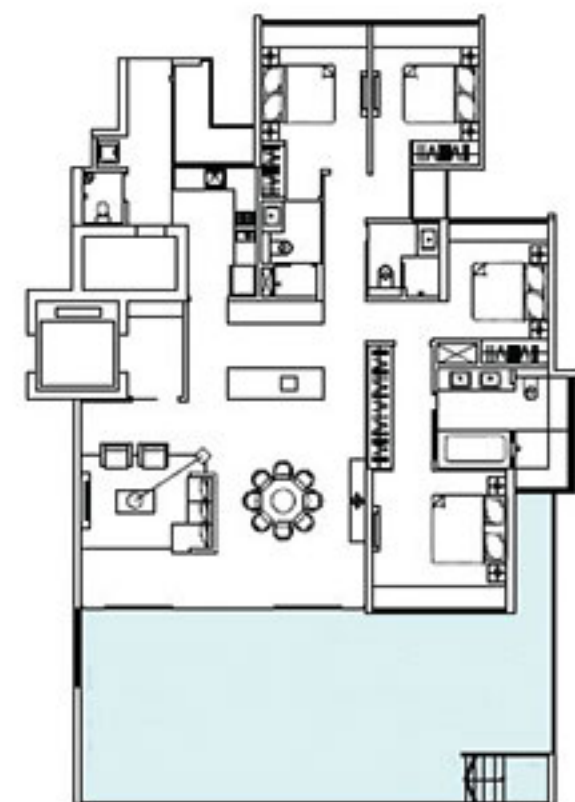
242 sq m, 2,605 sq ft
(Including PES of 70 sq m)

#02-11

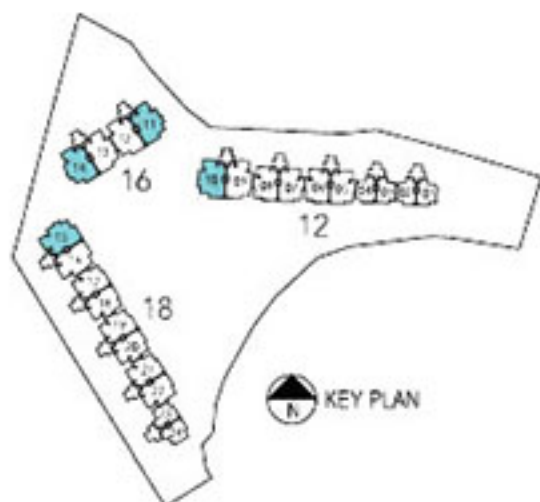
#02-14 - #02-15



TYPE C1g-1



TYPE C1g-2

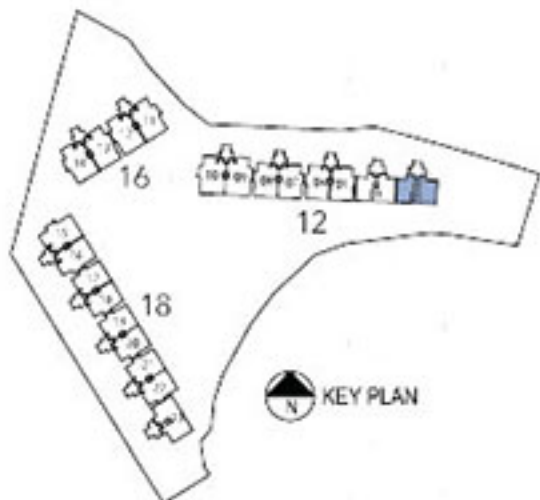
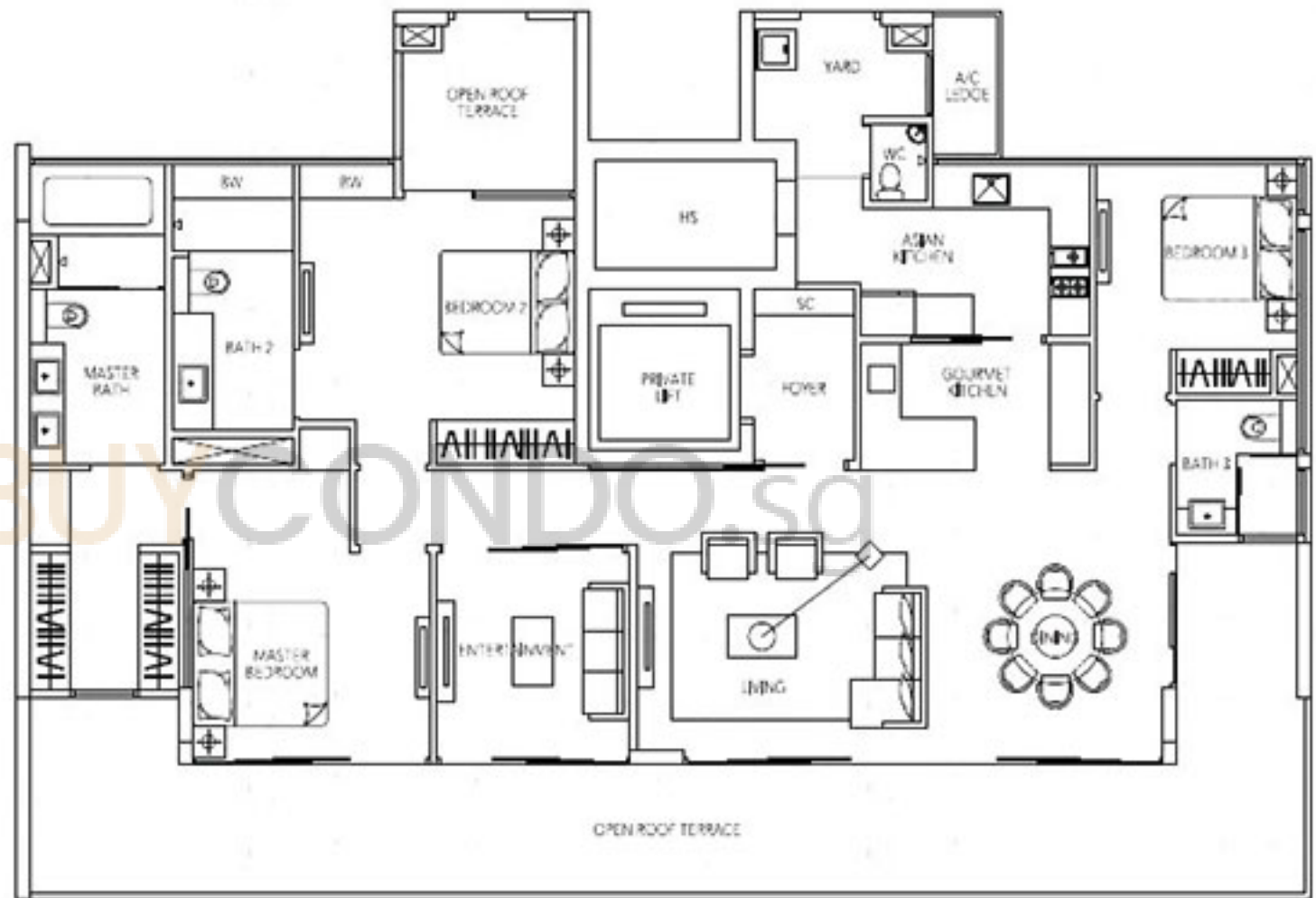


Penthouse

TYPE PH(a1)

213 sq m, 2,293 sq ft
(Including Open Roof Terrace of 47 sq m)

#12-01



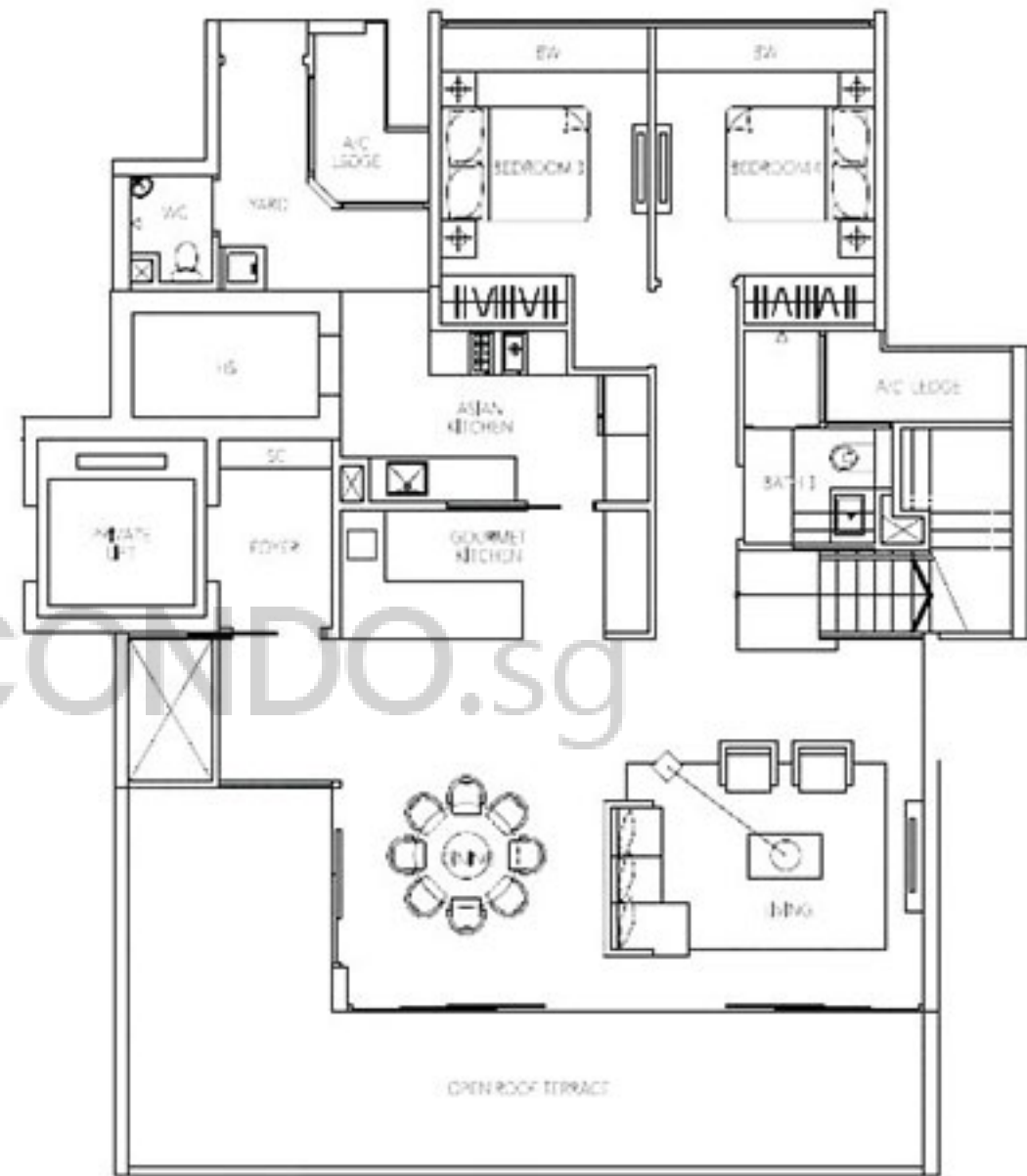
Penthouse

TYPE PH(b)

259 sq m, 2,788 sq ft
(Including Open Roof Terrace &
A/C Condenser Space of 64 sq m)

#12-05 - #12-08

#12-17 - #12-22



Lower Penthouse



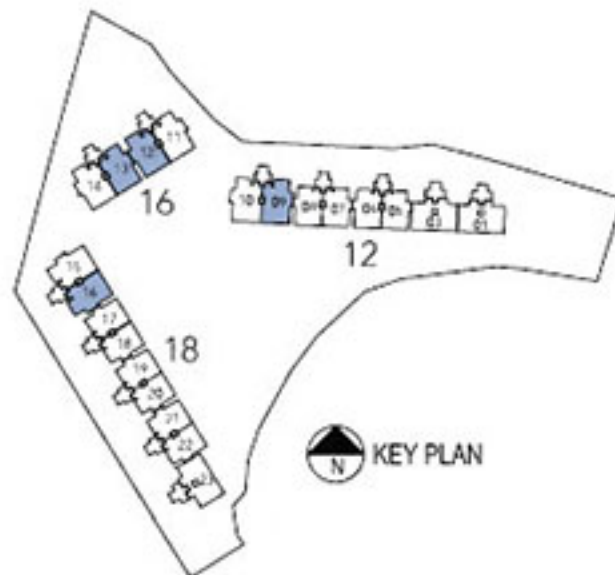
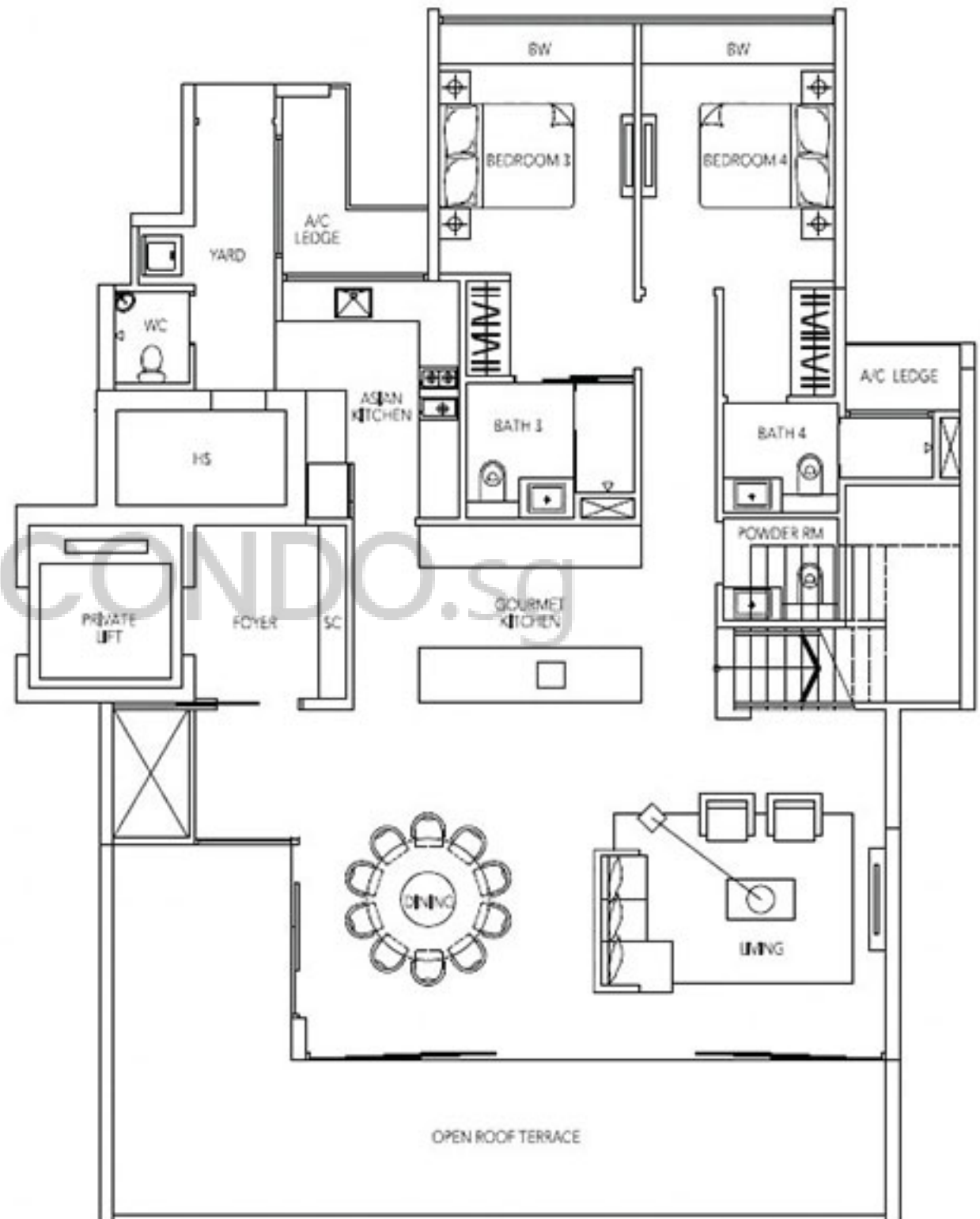
TYPE PH(c)

300 sq m, 3,229 sq ft
(Including Open Roof Terrace &
A/C Condenser Space of 74 sq m)

#12-09

#12-12 - #12-13

#12-16



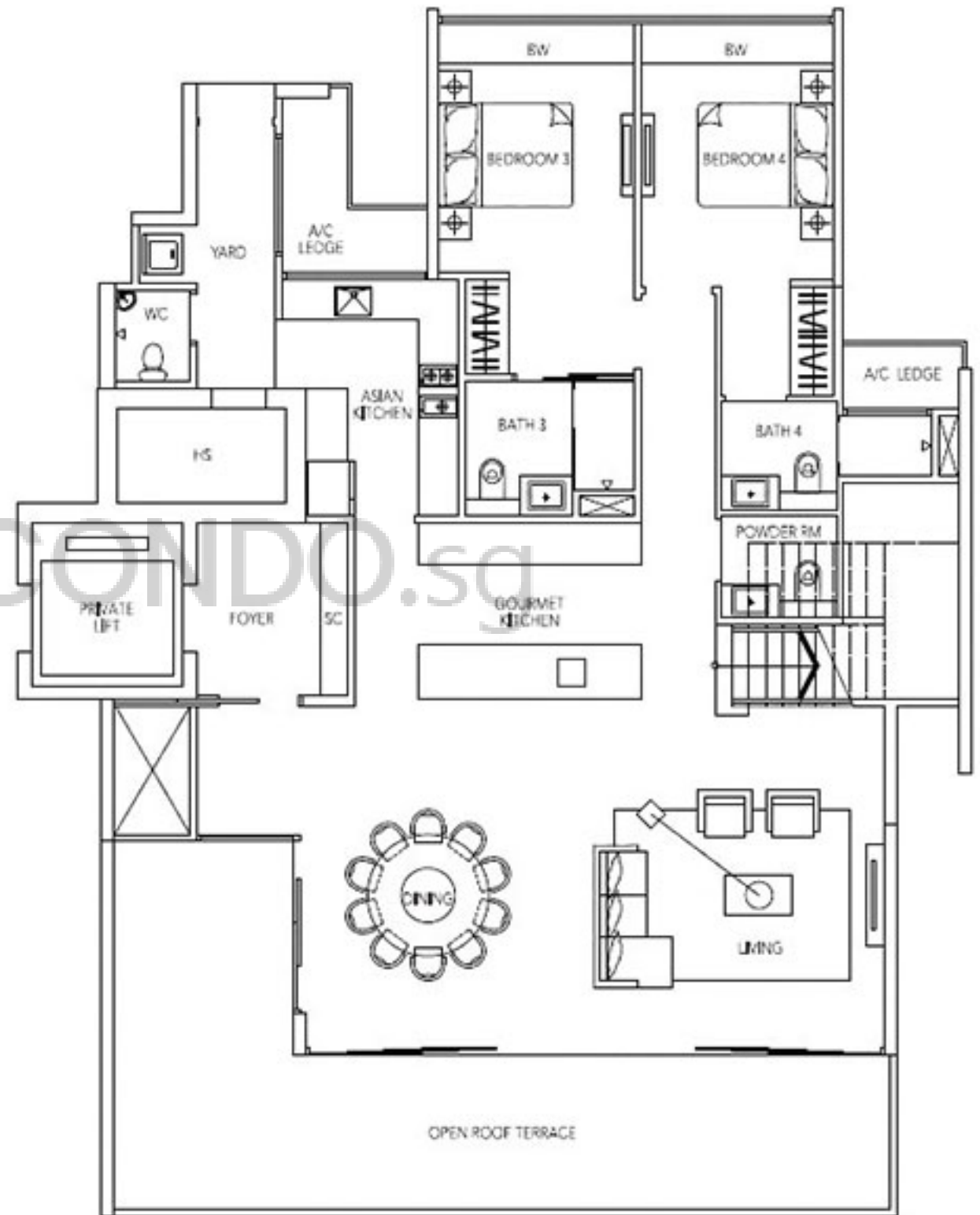
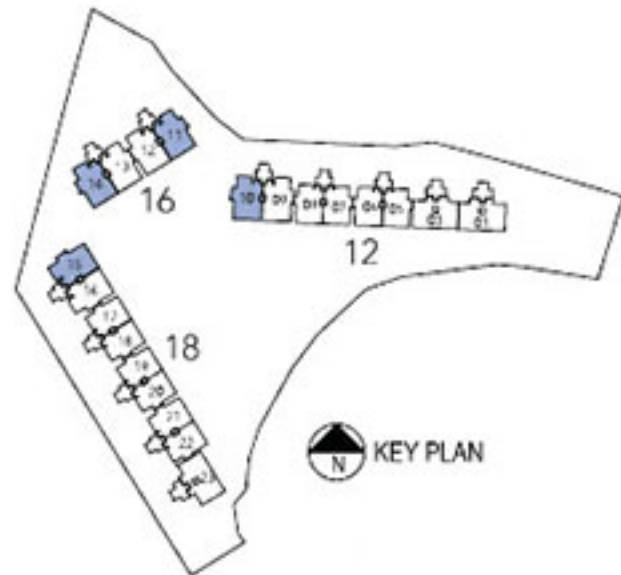
Lower Penthouse

TYPE PH(c1)

300 sq m, 3,229 sq ft
(Including Open Roof Terrace &
A/C Condenser Space of 74 sq m)

#12-10 - #12-11

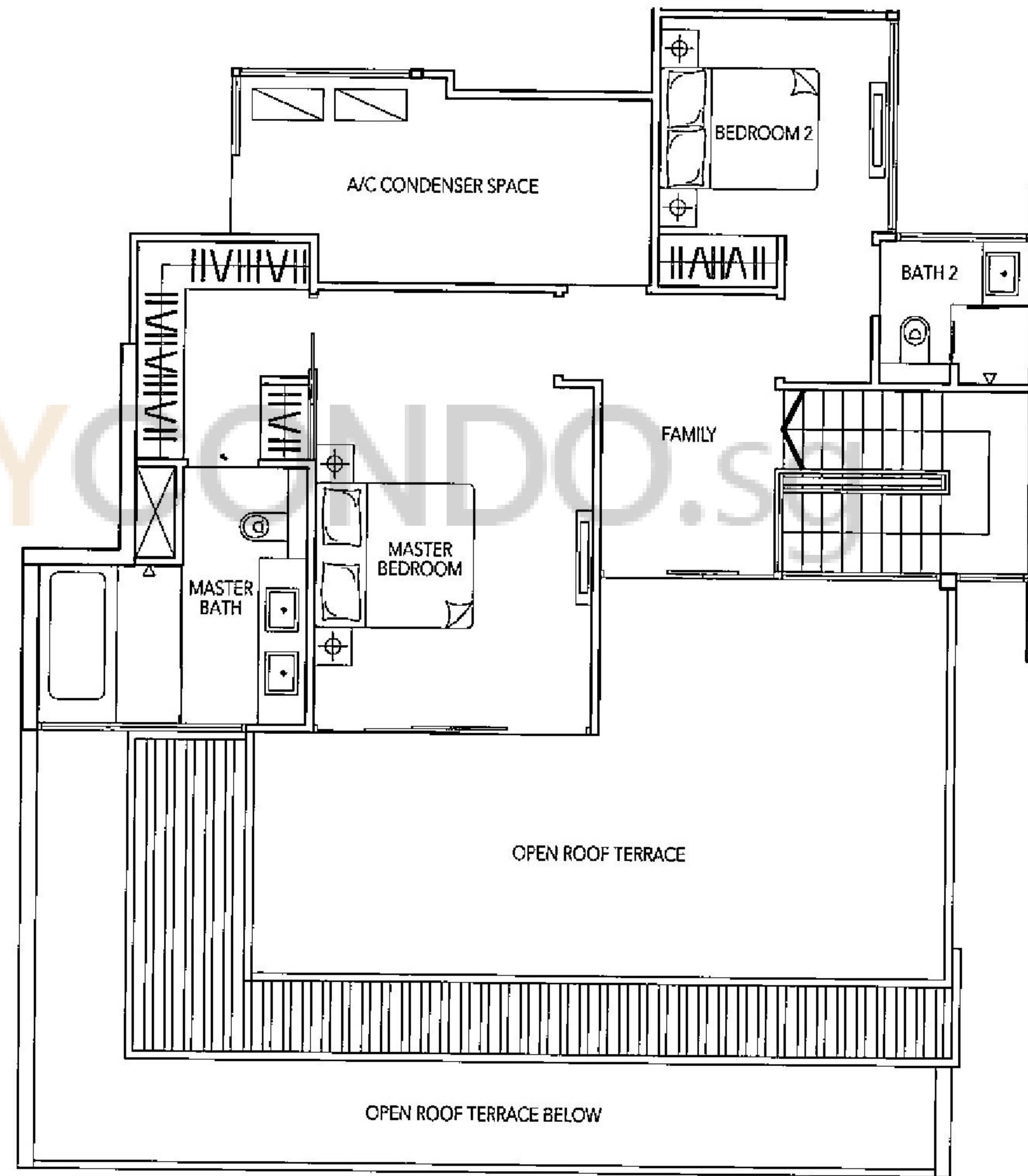
#12-14 - #12-15



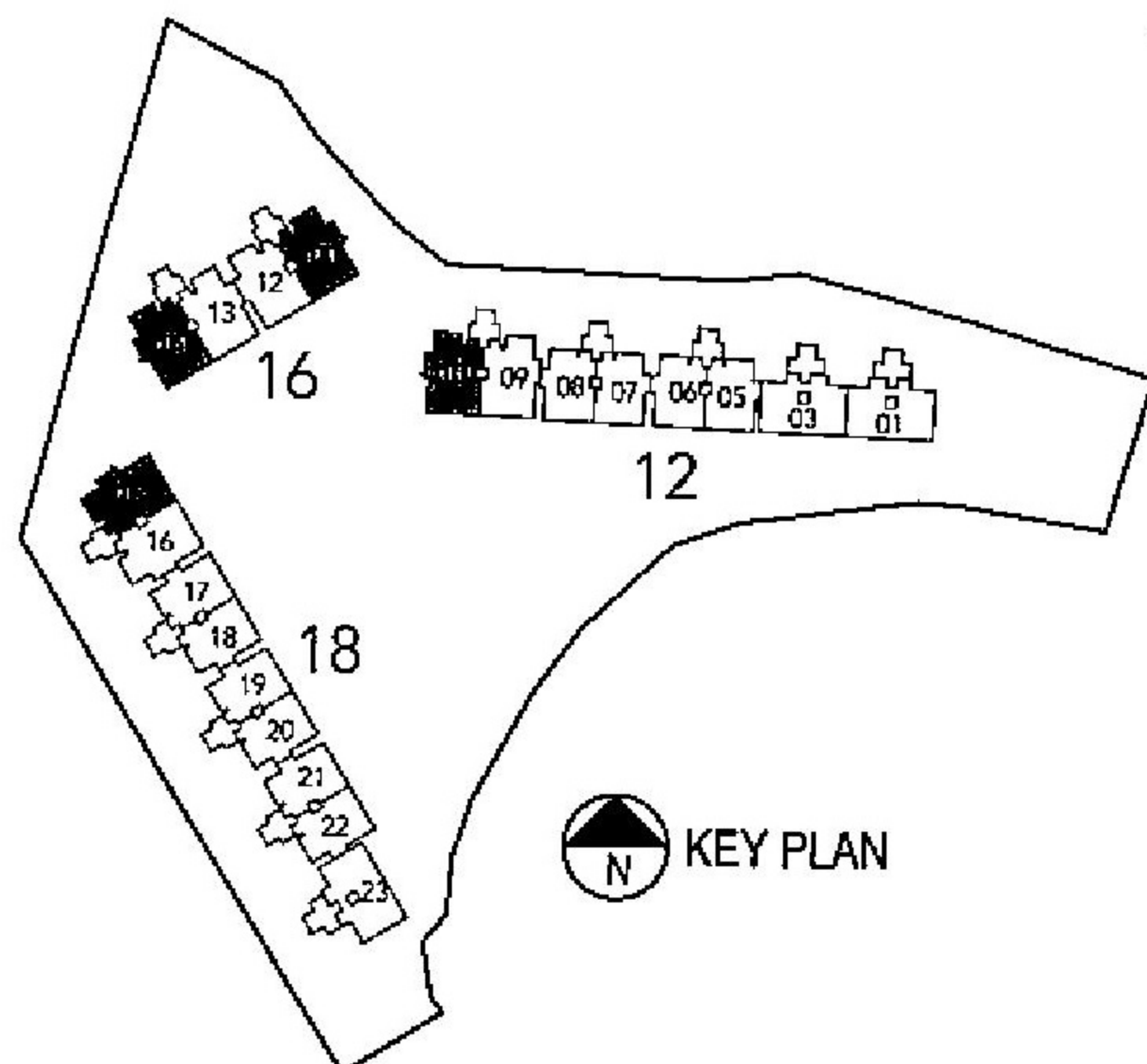
Lower Penthouse

Penthouse

TYPE PH(c1)



Upper Penthouse



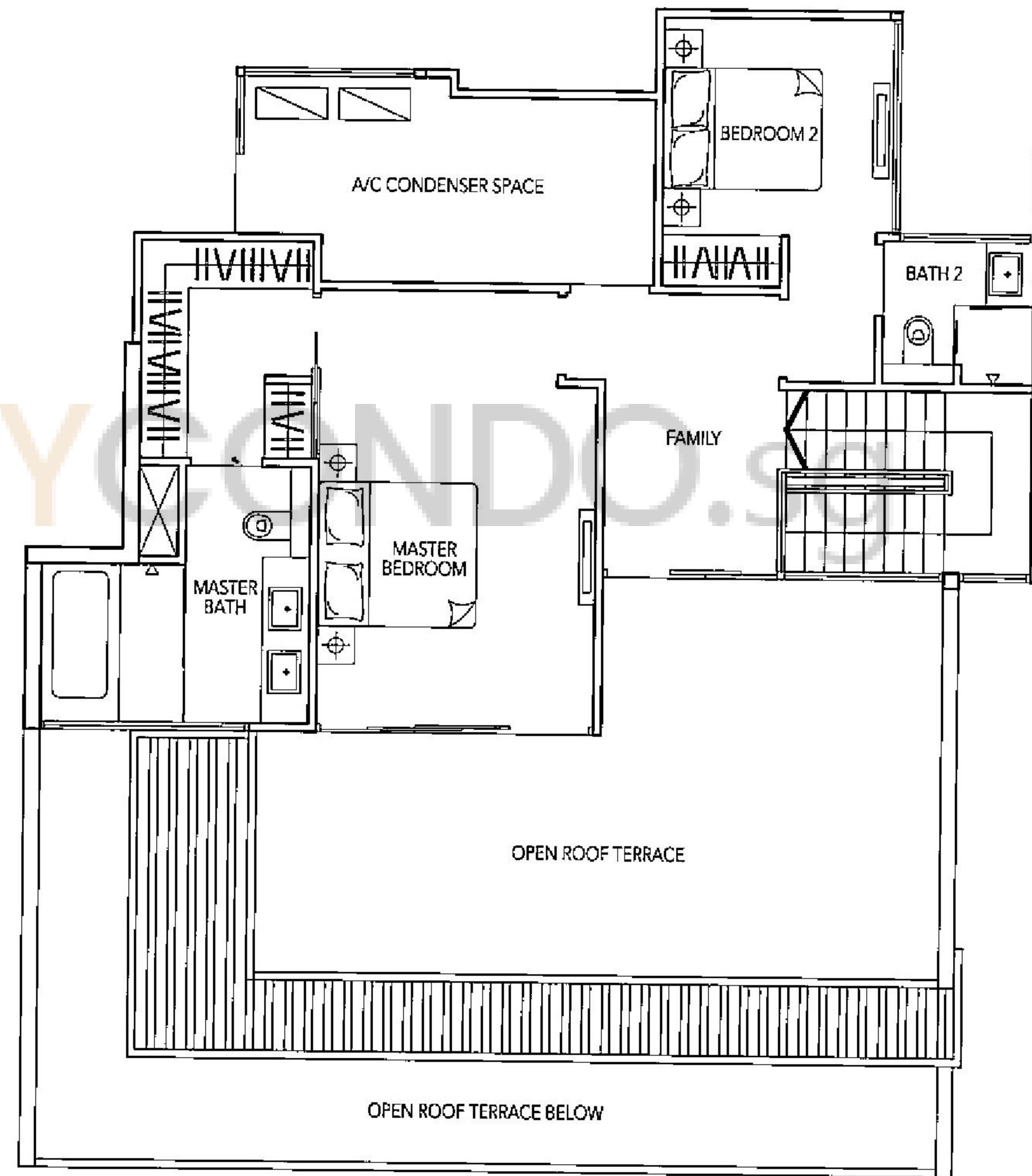
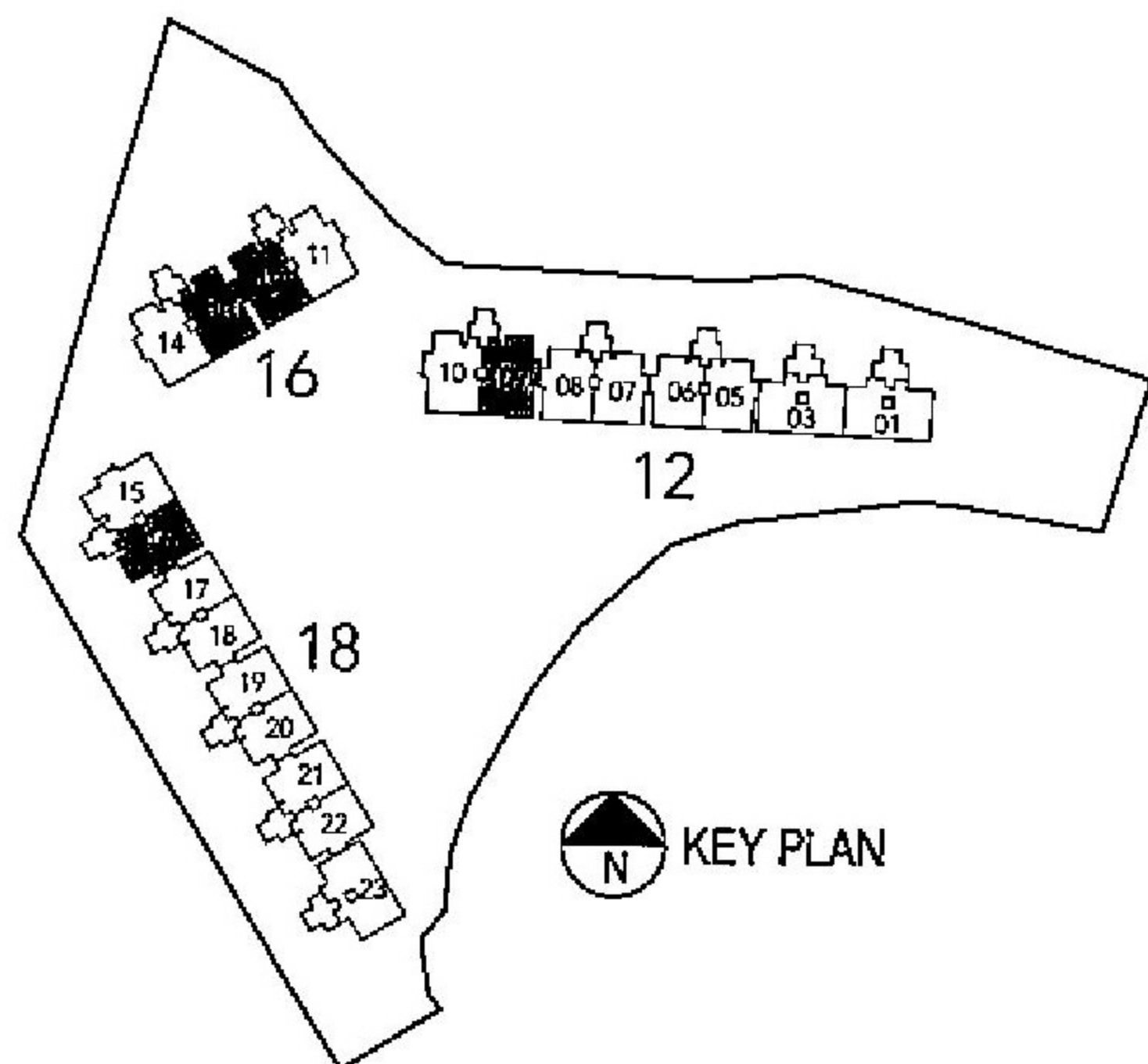
KEY PLAN

Plans are not to scale and are subject to any amendment as may be approved by the relevant authorities. All floor areas are approximate and are subject to final survey.

Penthouse

TYPE PH(c)

BUY CONDO.SG

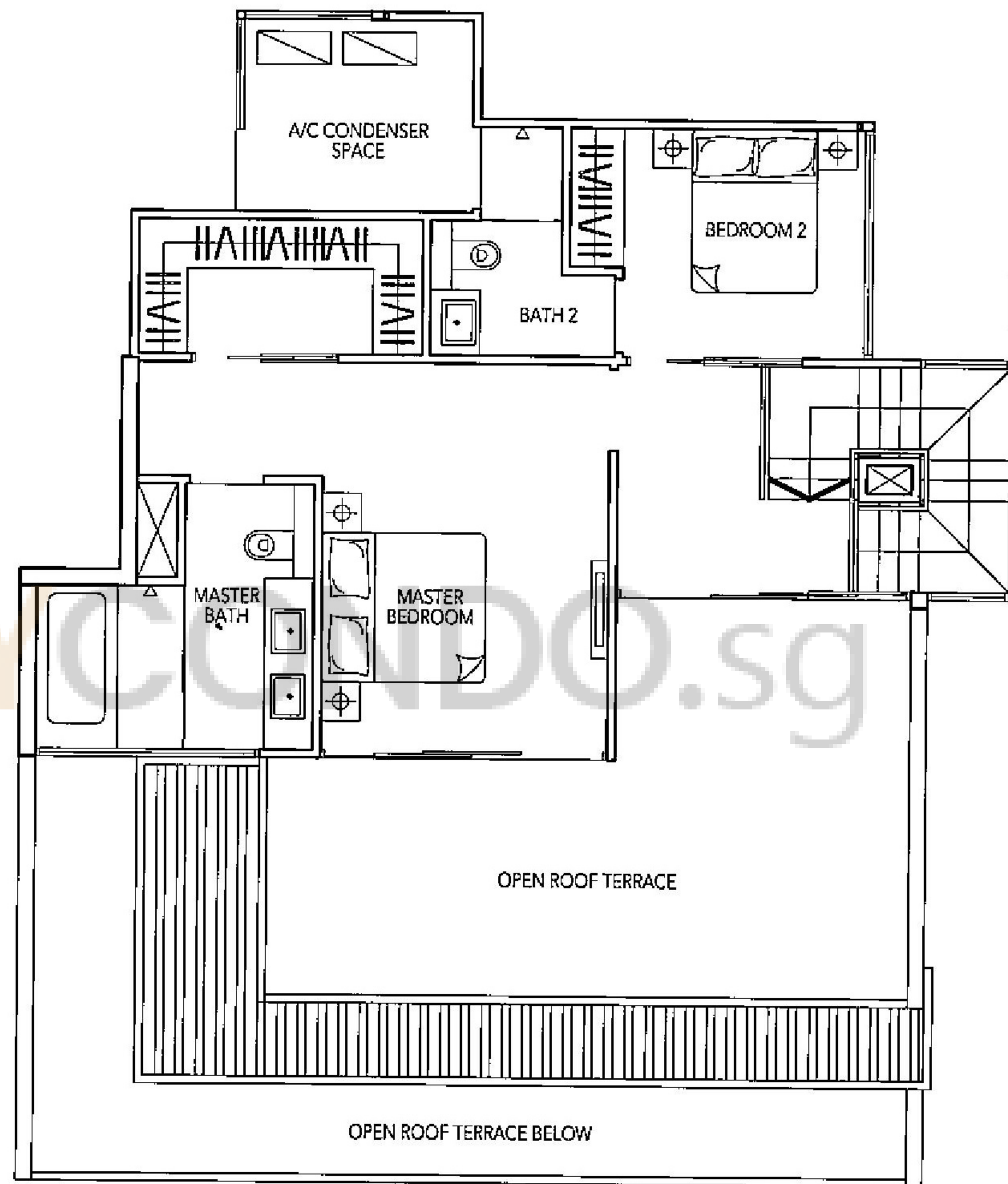
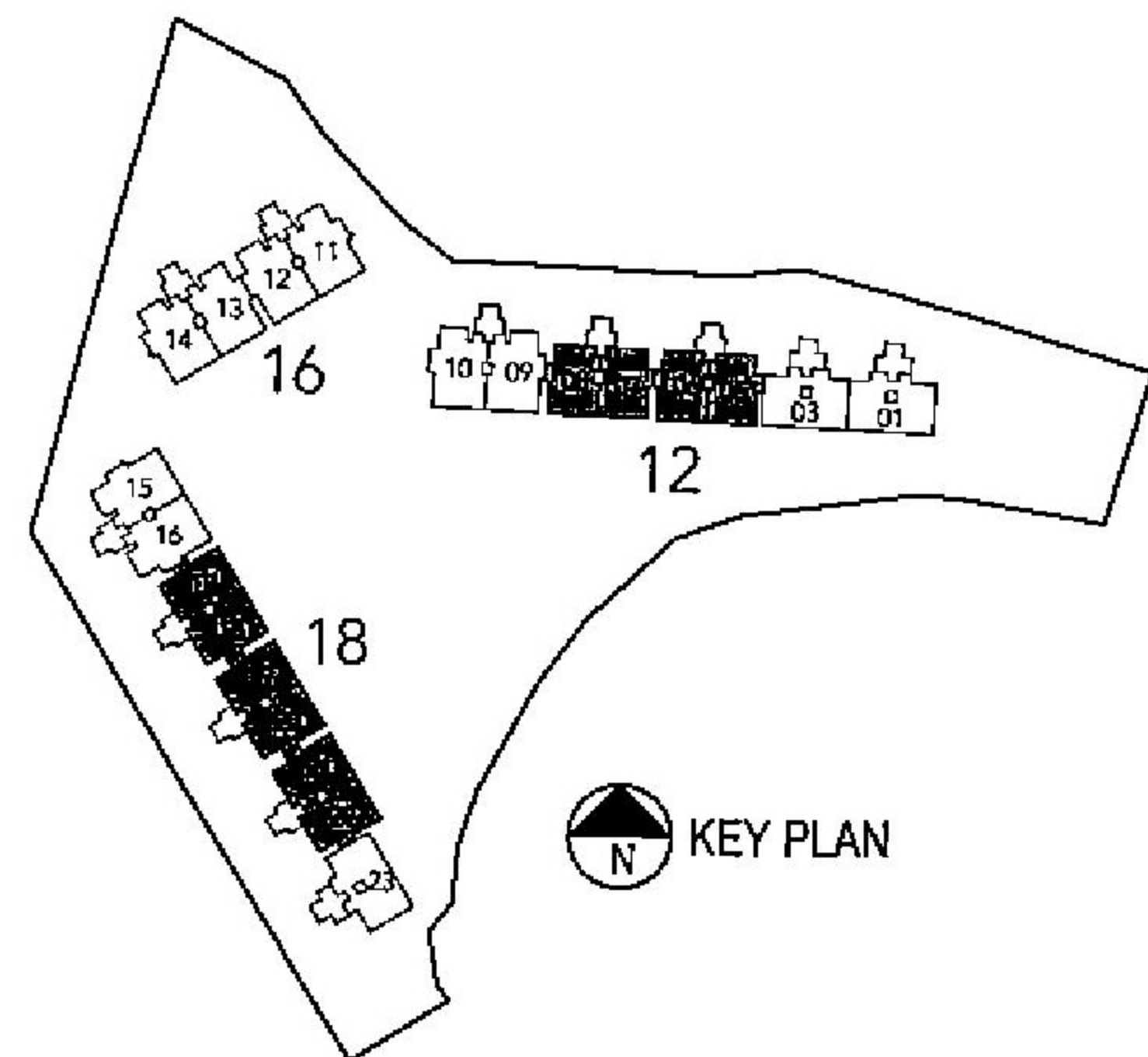


Upper Penthouse

Plans are not to scale and are subject to any amendment as may be approved by the relevant authorities. All floor areas are approximate and are subject to final survey.

Penthouse

TYPE PH(b)



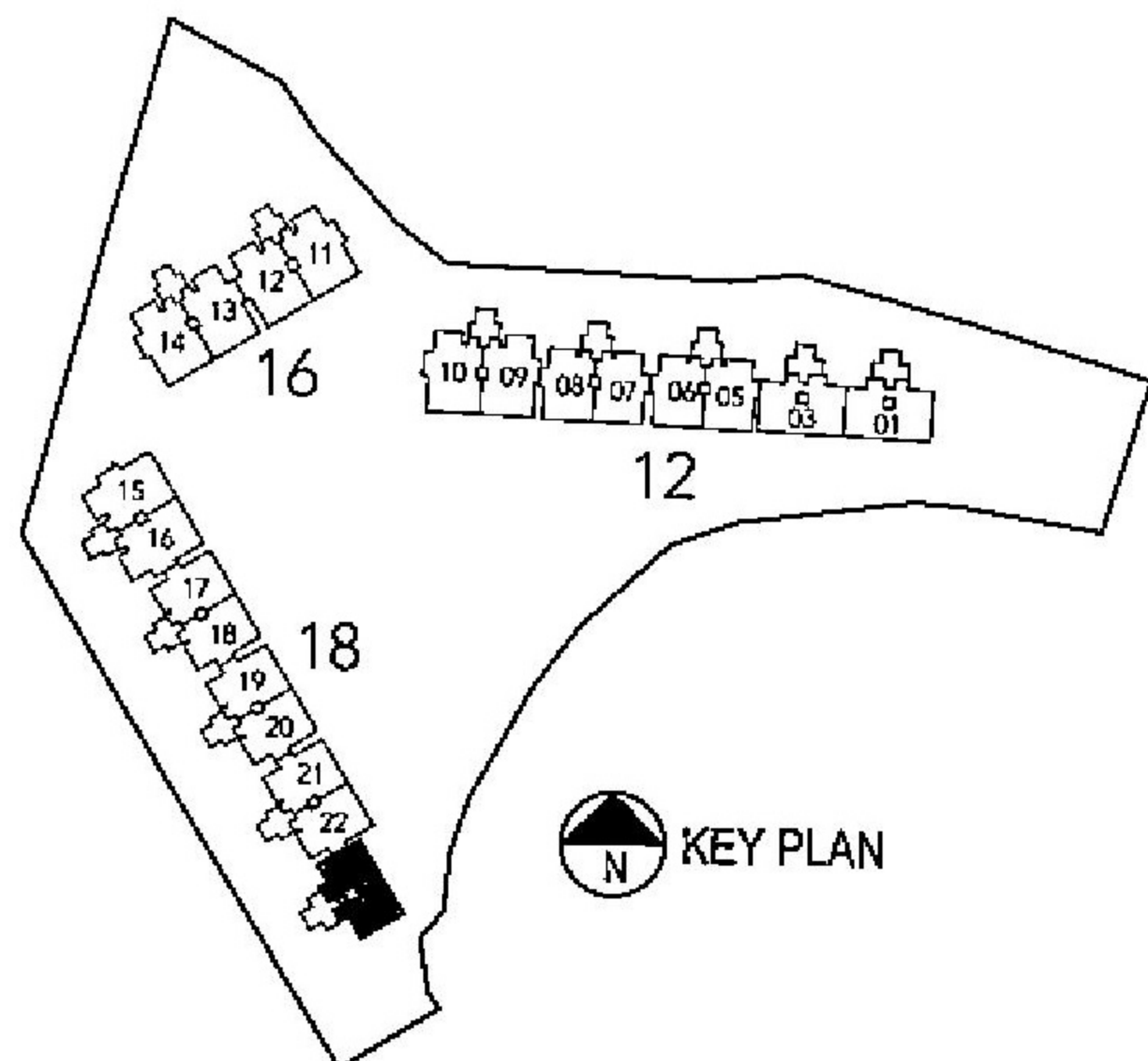
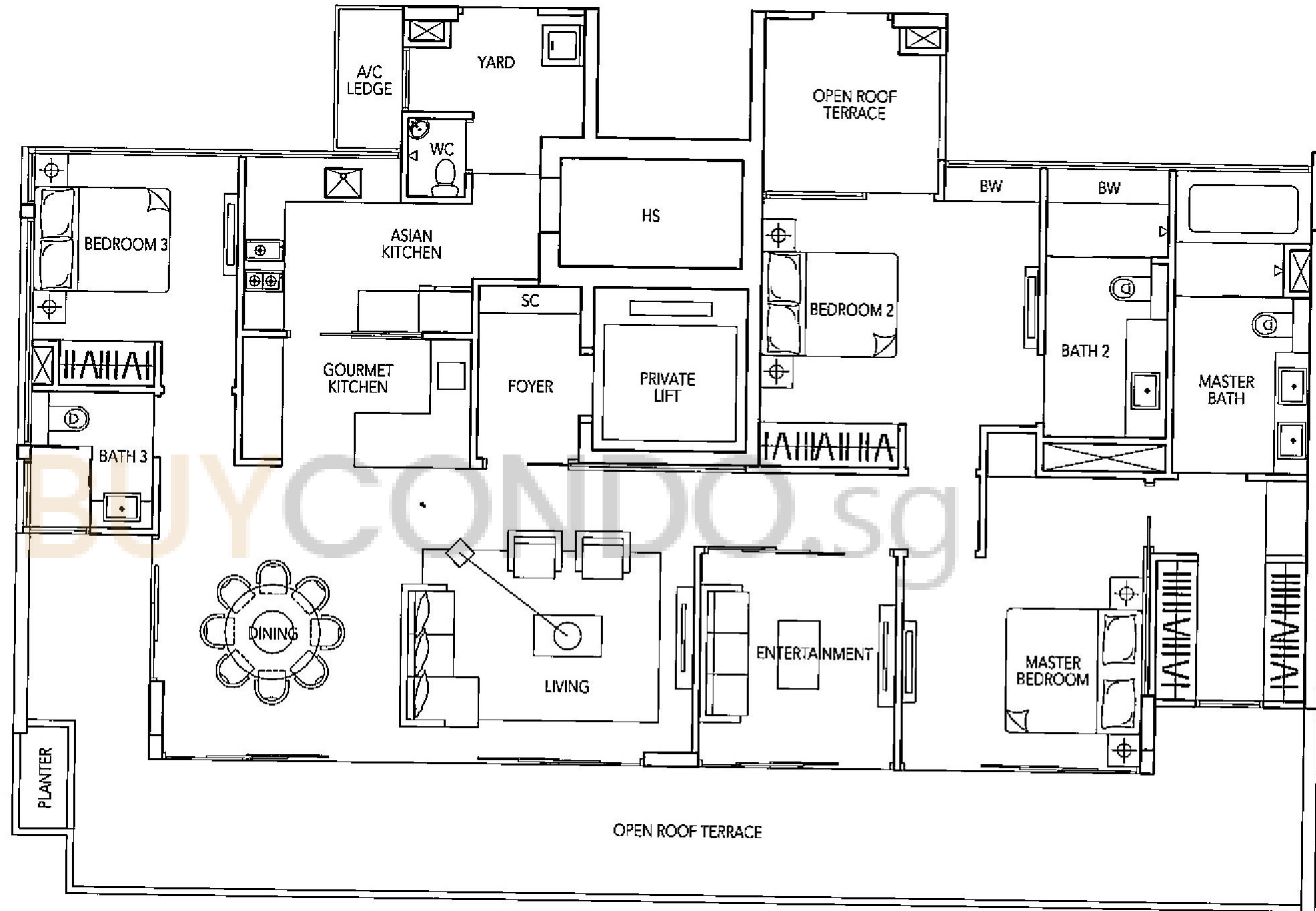
Upper Penthouse

Penthouse

TYPE PH(a2)

212 sq m, 2,282 sq ft
(Including Open Roof Terrace of 46 sq m)

#12-23



Plans are not to scale and are subject to any amendment as may be approved by the relevant authorities. All floor areas are approximate and are subject to final survey.