

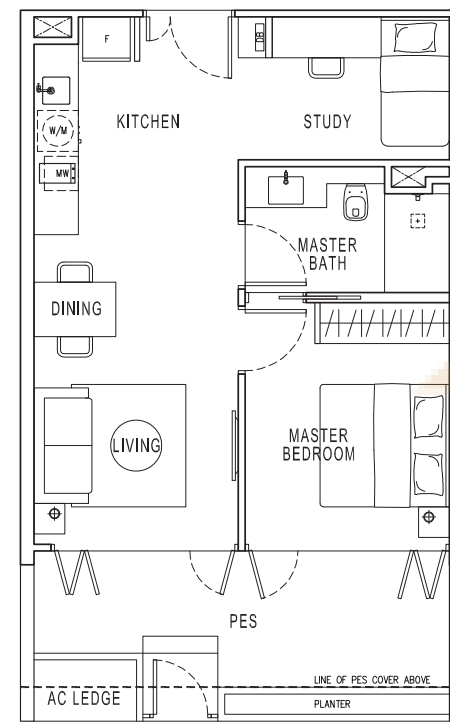
# GARDEN TERRASSE

## TYPE SH1

Area 65 sqm / 700 sqft

#01-01 to #01-02  
#01-12 to #01-15

(Mirrored)  
#01-03 to #01-06  
#01-11, #01-16 to #01-17



WINDOW VARIATION ON CORNER UNITS  
# 01-01  
# 01-12  
(MIRRORED)  
# 01-11, # 01-17

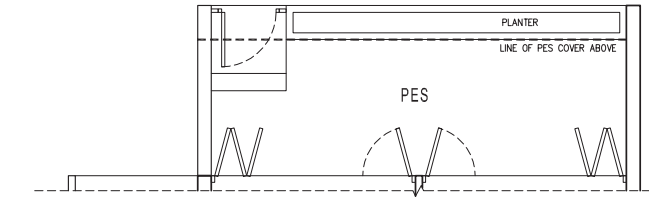
# GARDEN TERRASSE

## TYPE SH2

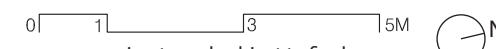
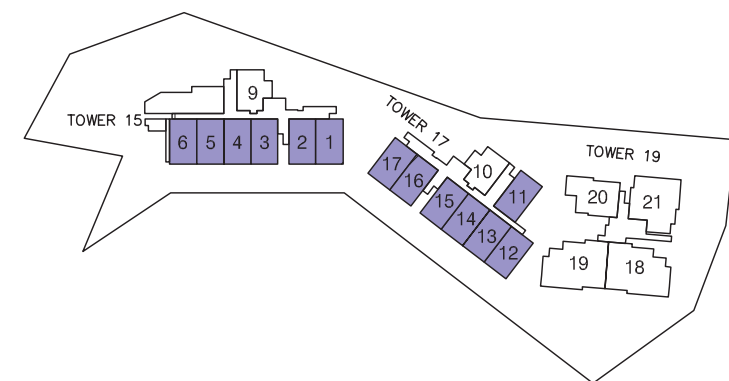
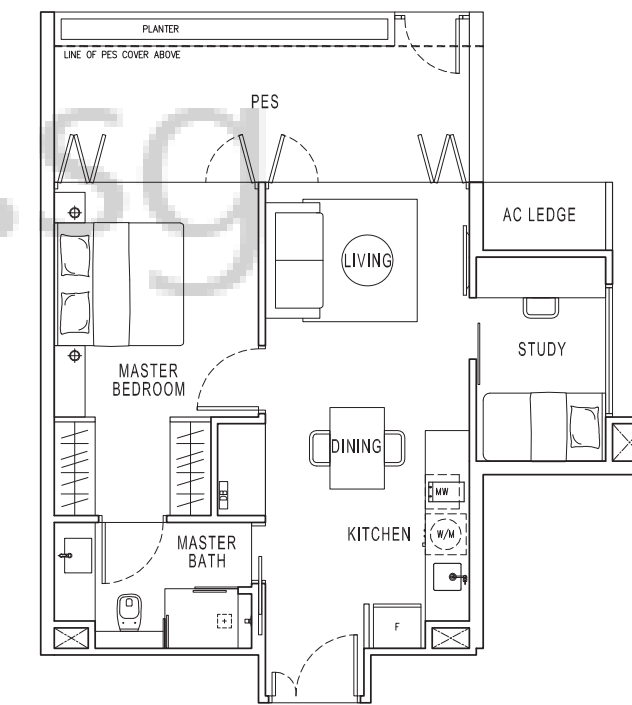
Area 68 sqm / 732 sqft

#01-09

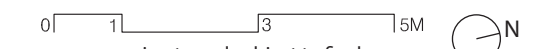
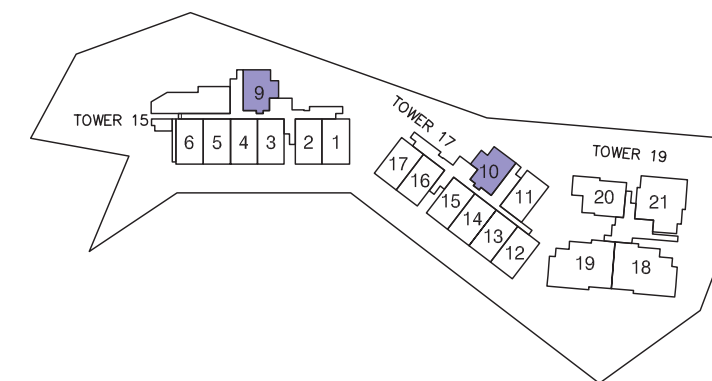
(Mirrored)  
#01-10



PES VARIATION  
# 01-10



Plans are not drawn to scale and are subject to amendments as may be required or approved by the relevant authorities. All floor areas are approximate and subject to final survey.



Plans are not drawn to scale and are subject to amendments as may be required or approved by the relevant authorities. All floor areas are approximate and subject to final survey.

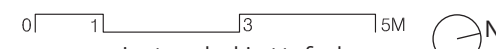
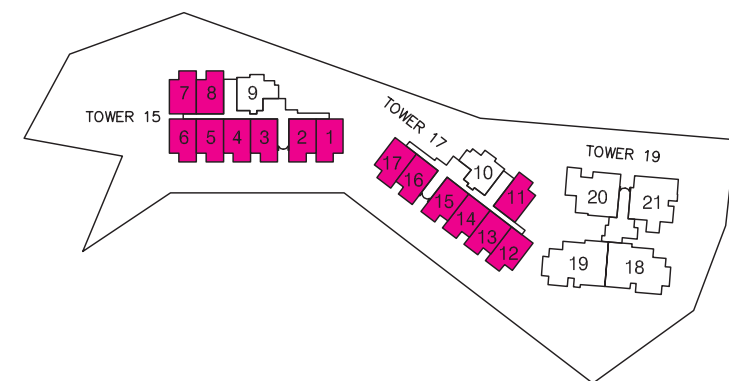
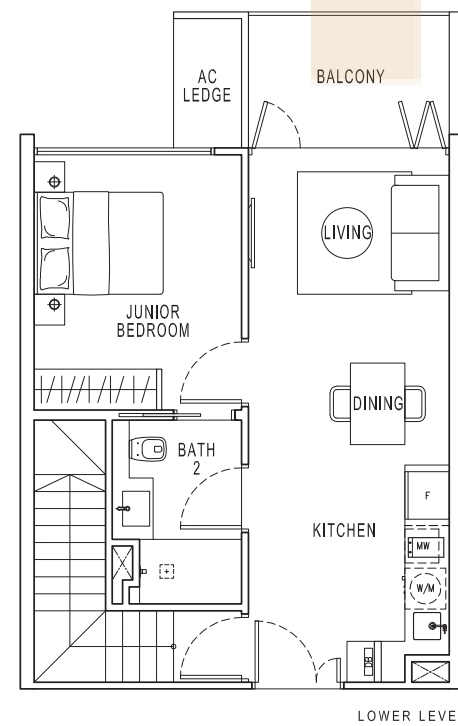
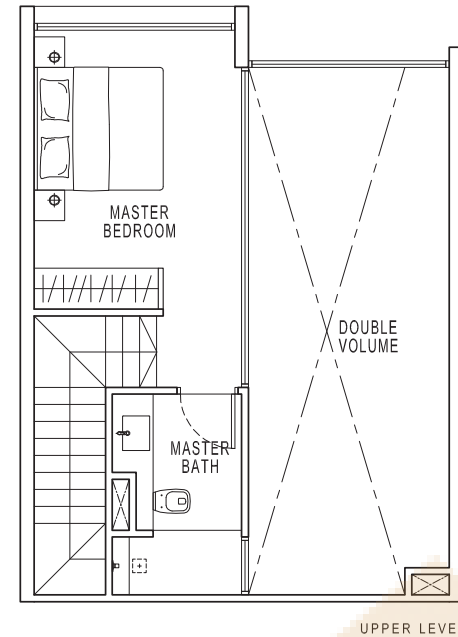
# ATELIER LOFT

## TYPE LF1

Area 108 sqm / 1163 sqft

#02-01 to #02-02  
#02-07 to #02-08  
#02-12 to #02-15

(Mirrored)  
#02-03 to #02-06  
#02-11, #02-16 to #02-17



Plans are not drawn to scale and are subject to amendments as may be required or approved by the relevant authorities. All floor areas are approximate and subject to final survey.

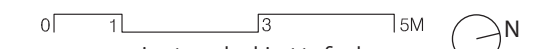
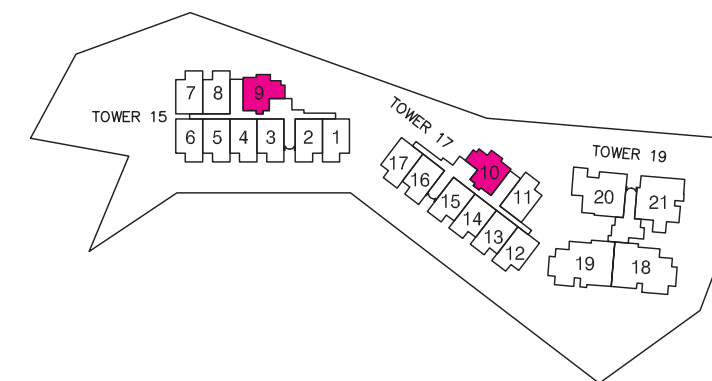
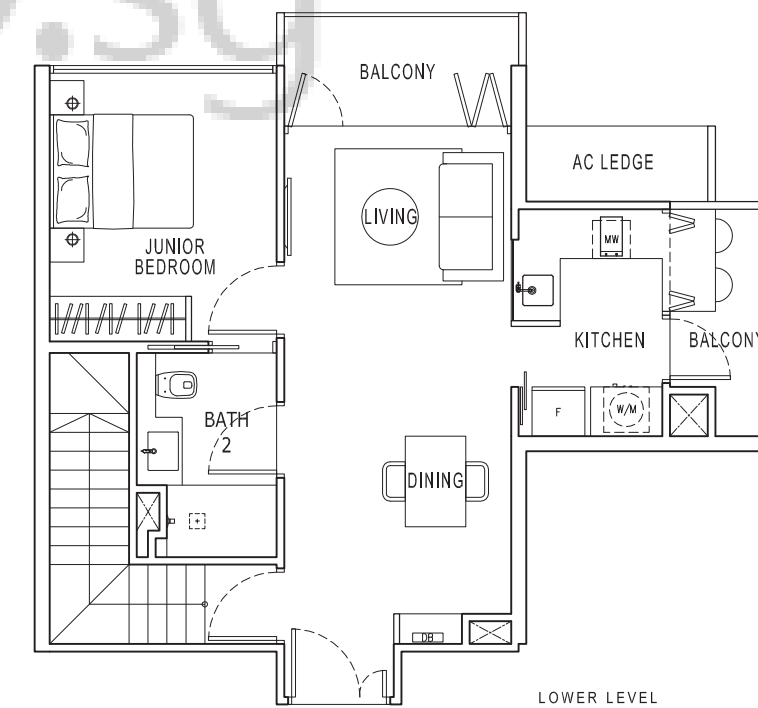
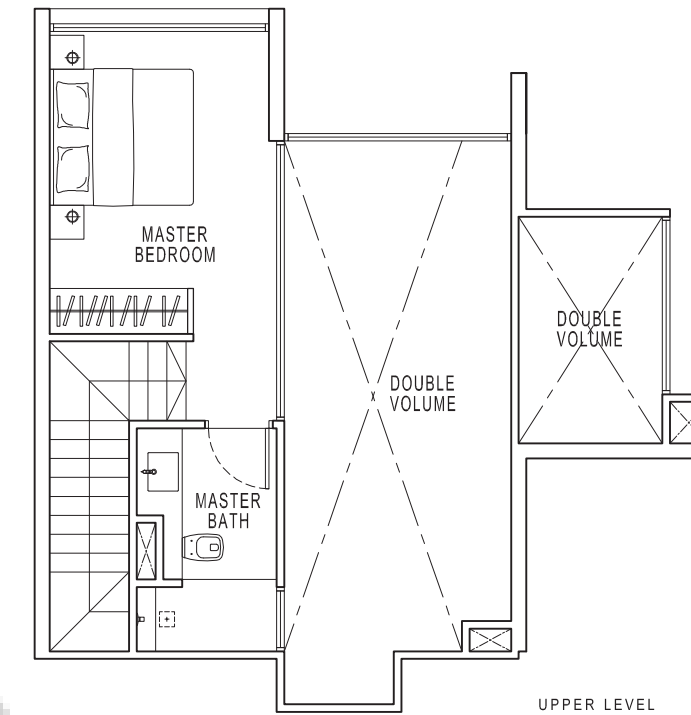
# ATELIER LOFT

## TYPE LF2

Area 118 sqm / 1270 sqft

#02-09

(Mirrored)  
#02-10



Plans are not drawn to scale and are subject to amendments as may be required or approved by the relevant authorities. All floor areas are approximate and subject to final survey.

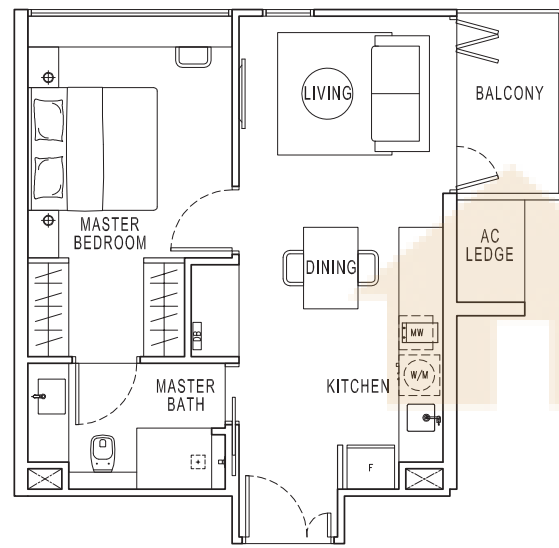
# 1-BEDROOM

## TYPE A1

Area 51 sqm / 549 sqft

#05-09 to #08-09

(Mirrored)  
#05-10 to #08-10



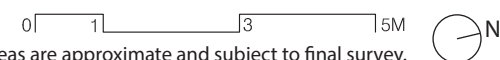
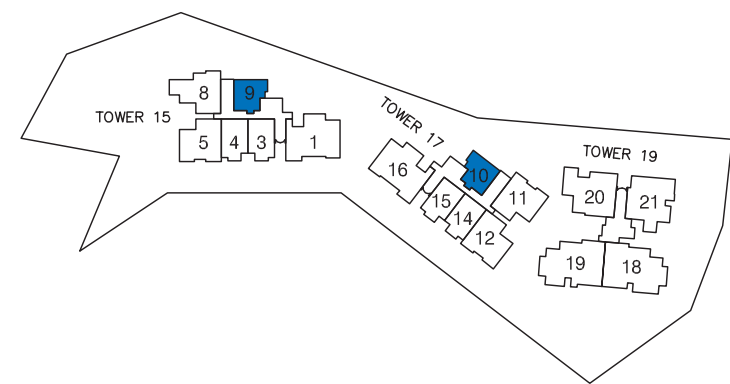
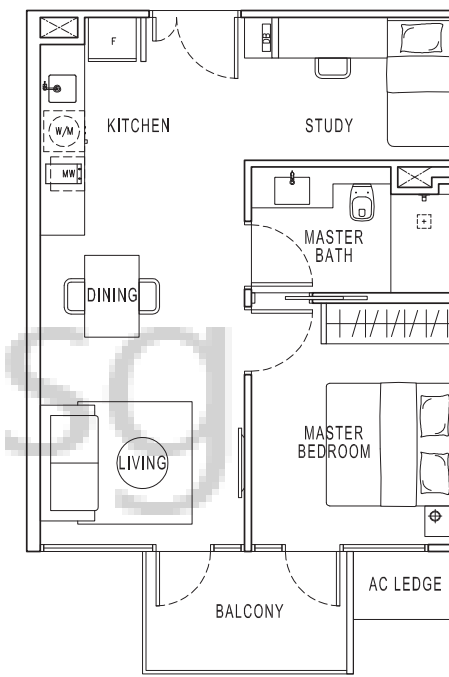
# 1-BEDROOM + STUDY

## TYPE A2

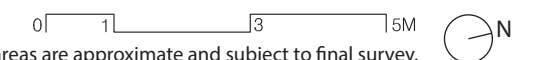
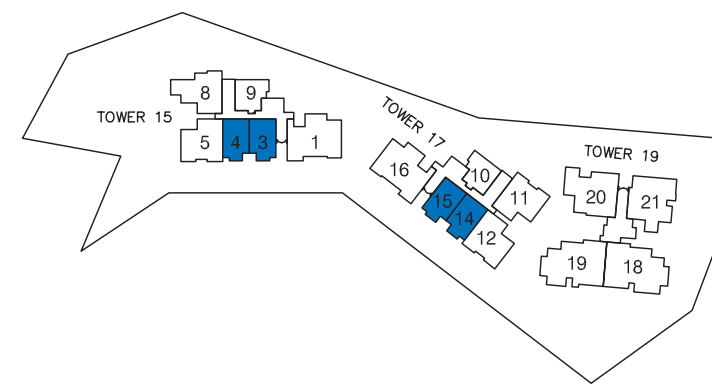
Area 56 sqm / 603 sqft

#05-03 to #07-03  
#05-14 to #07-14

(Mirrored)  
#05-04 to #07-04  
#05-15 to #07-15



Plans are not drawn to scale and are subject to amendments as may be required or approved by the relevant authorities. All floor areas are approximate and subject to final survey.



Plans are not drawn to scale and are subject to amendments as may be required or approved by the relevant authorities. All floor areas are approximate and subject to final survey.

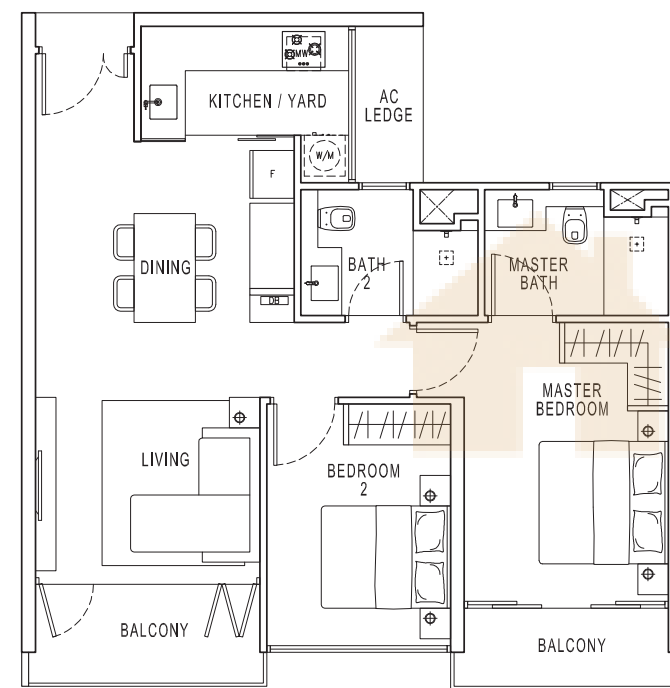
# 2-BEDROOM

## TYPE B1

Area 81 sqm / 872 sqft

#05-12 to #07-12

(Mirrored)  
#05-05 to #07-05  
#05-11 to #08-11

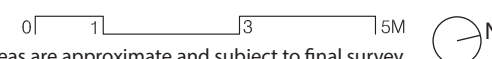
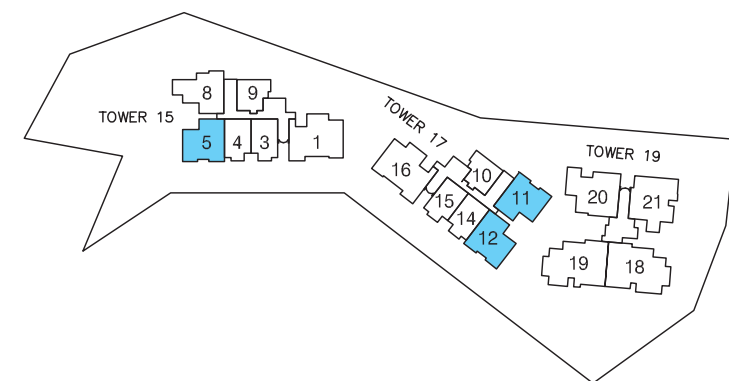
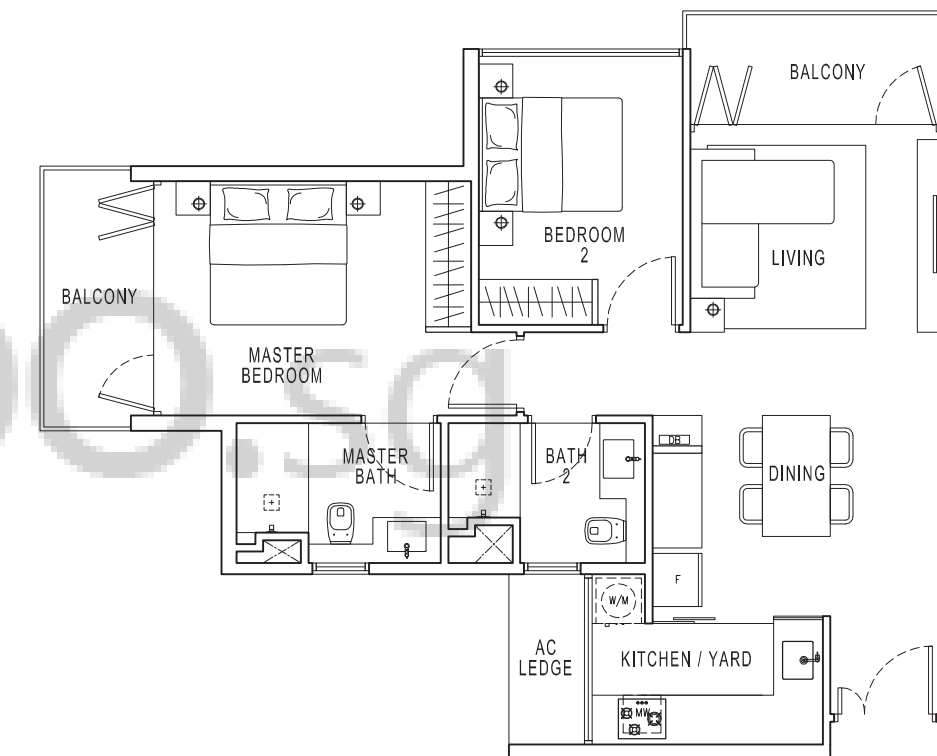


# 2-BEDROOM

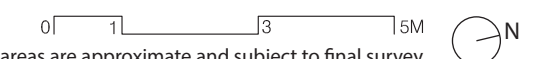
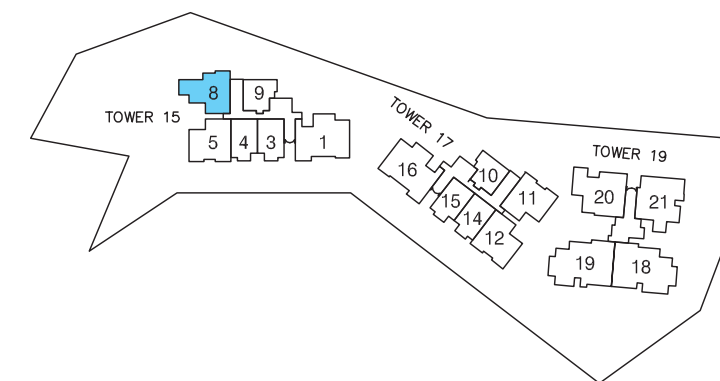
## TYPE B2

Area 83 sqm / 893 sqft

#05-08 to #08-08



Plans are not drawn to scale and are subject to amendments as may be required or approved by the relevant authorities. All floor areas are approximate and subject to final survey.



Plans are not drawn to scale and are subject to amendments as may be required or approved by the relevant authorities. All floor areas are approximate and subject to final survey.

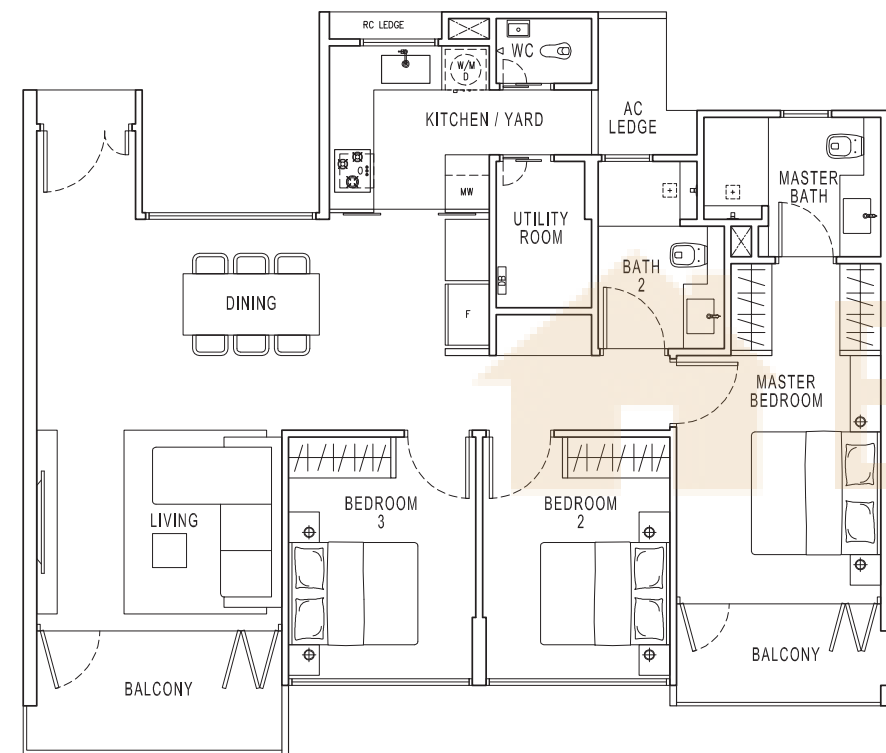
# 3-BEDROOM

## TYPE C1 (b)

Area 112 sqm / 1206 sqft

#05-01 to #07-01

(Mirrored)  
#05-16 to #07-16

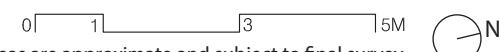
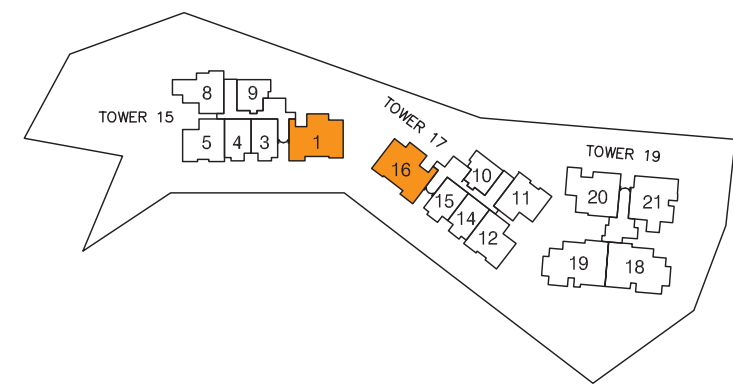
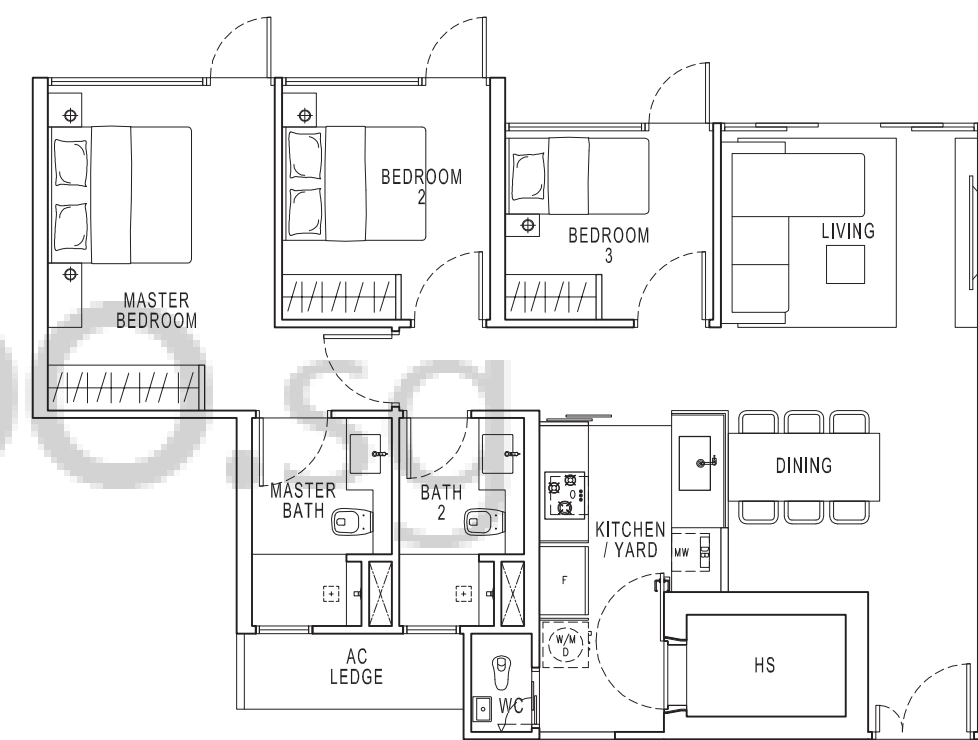


# 3-BEDROOM

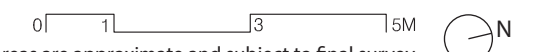
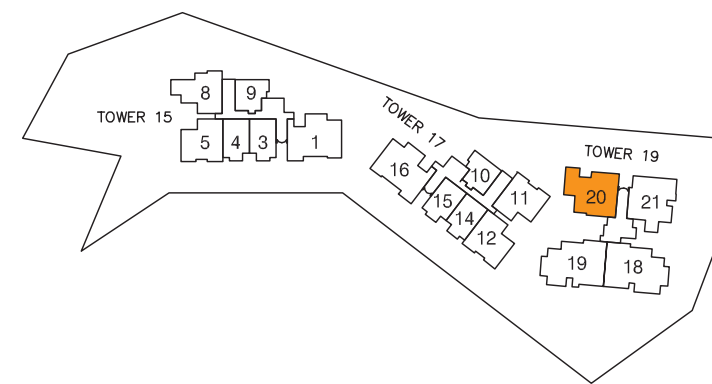
## TYPE C2 (p)

Area 91 sqm / 980 sqft

#01-20



Plans are not drawn to scale and are subject to amendments as may be required or approved by the relevant authorities. All floor areas are approximate and subject to final survey.



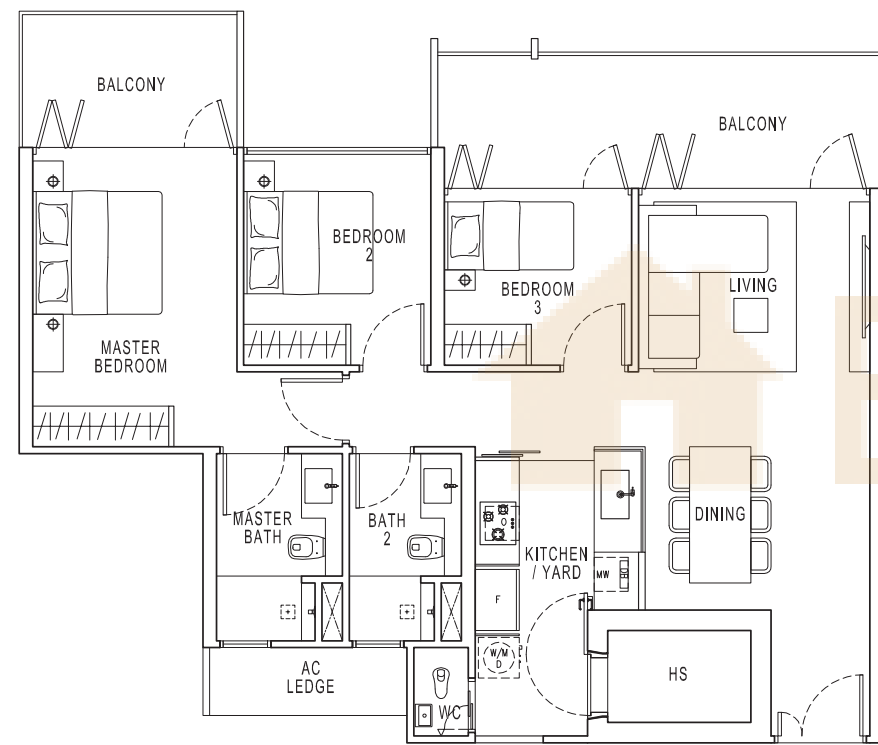
Plans are not drawn to scale and are subject to amendments as may be required or approved by the relevant authorities. All floor areas are approximate and subject to final survey.

# 3-BEDROOM

TYPE C2 (b1)

#03-20, #05-20, #07-20

Area 110 sqm / 1184 sqft

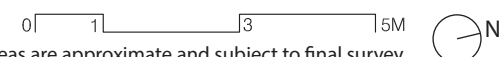
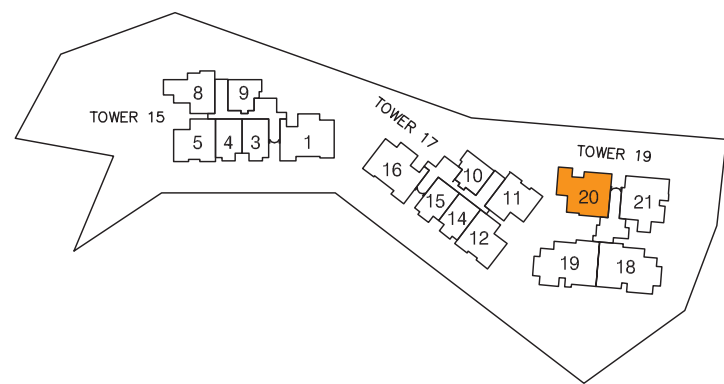
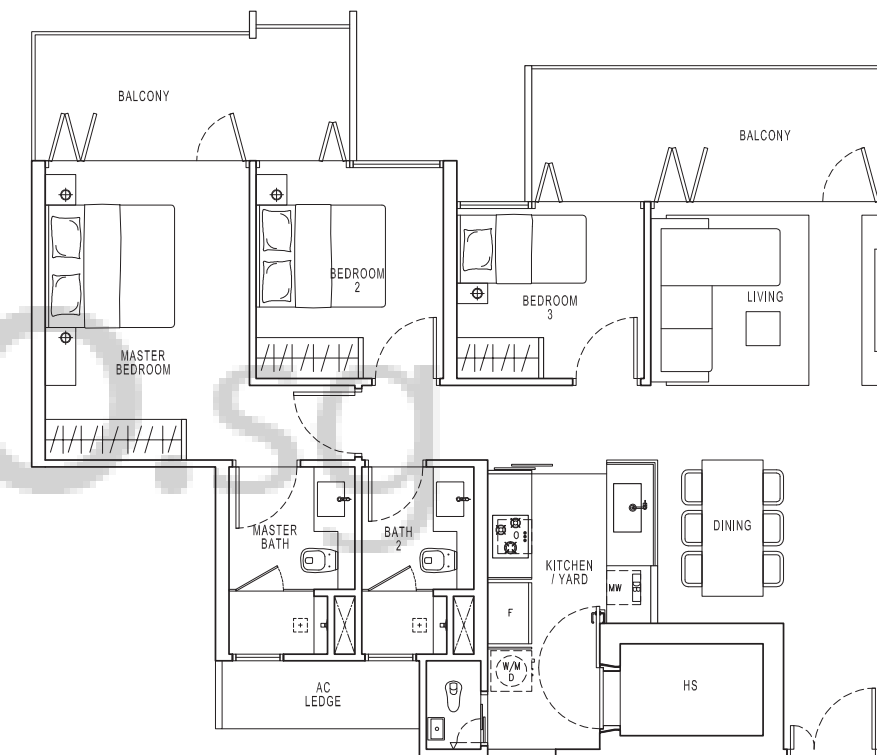


# 3-BEDROOM

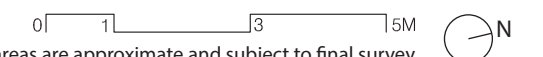
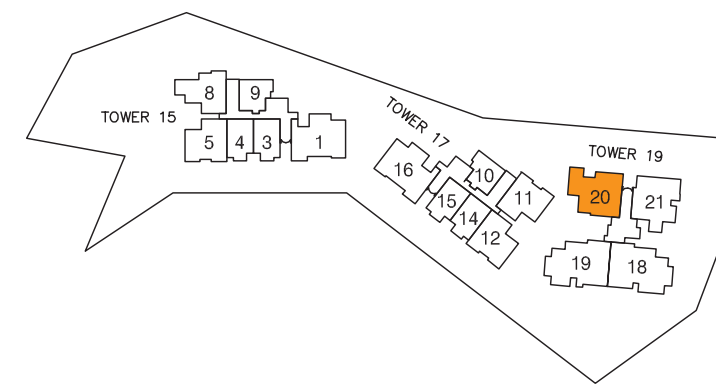
TYPE C2 (b2)

#02-20, #06-20

Area 110 sqm / 1184 sqft



Plans are not drawn to scale and are subject to amendments as may be required or approved by the relevant authorities. All floor areas are approximate and subject to final survey.



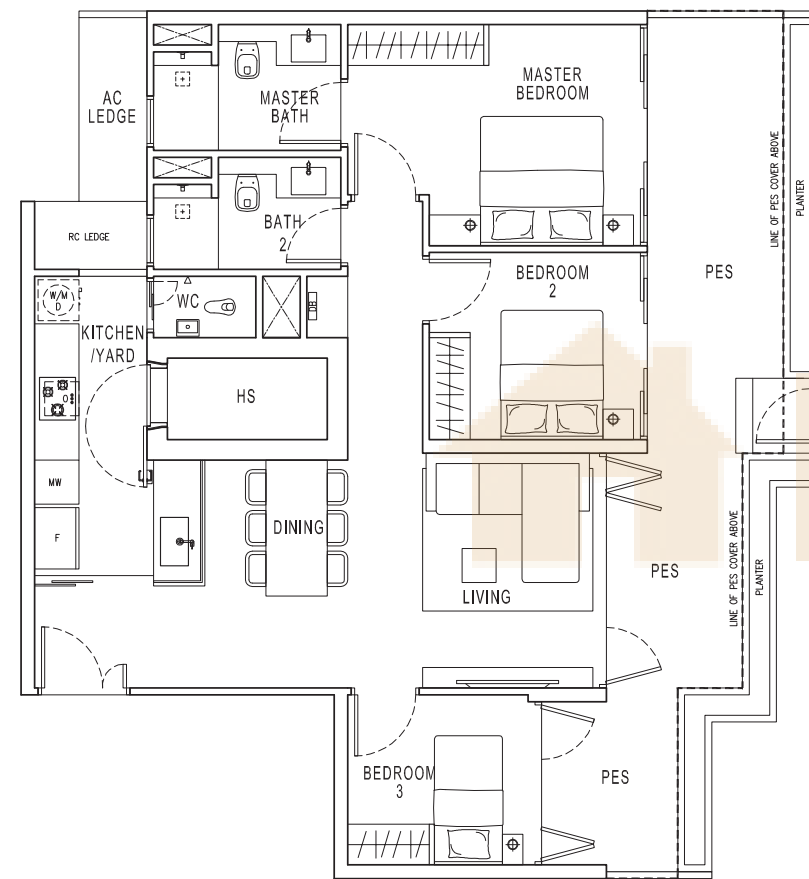
Plans are not drawn to scale and are subject to amendments as may be required or approved by the relevant authorities. All floor areas are approximate and subject to final survey.

# 3-BEDROOM

TYPE C3 (p)

Area 122 sqm / 1313 sqft

#01-21

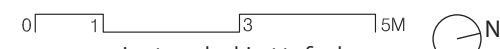
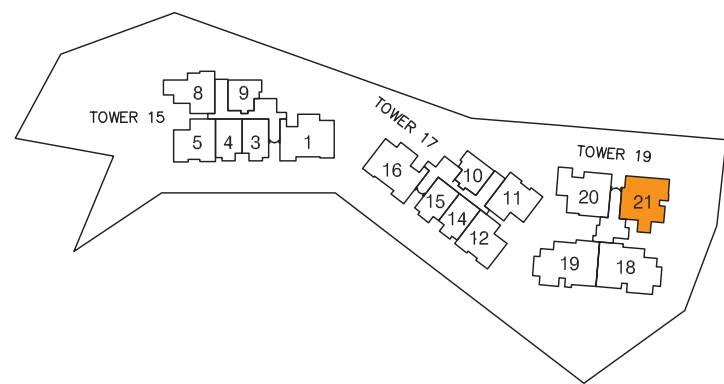
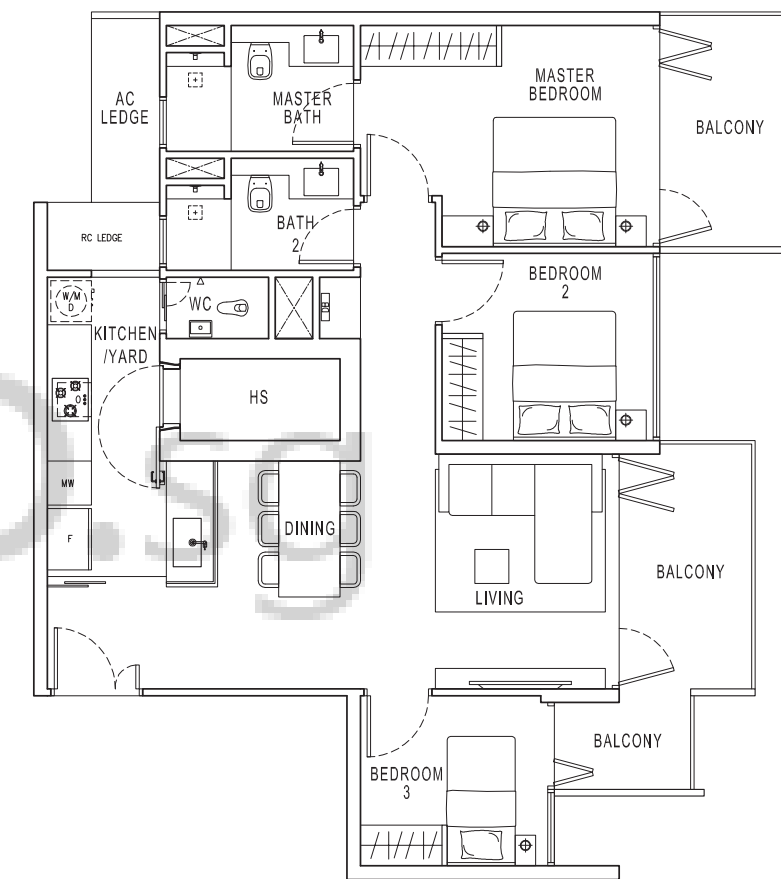


# 3-BEDROOM

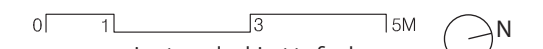
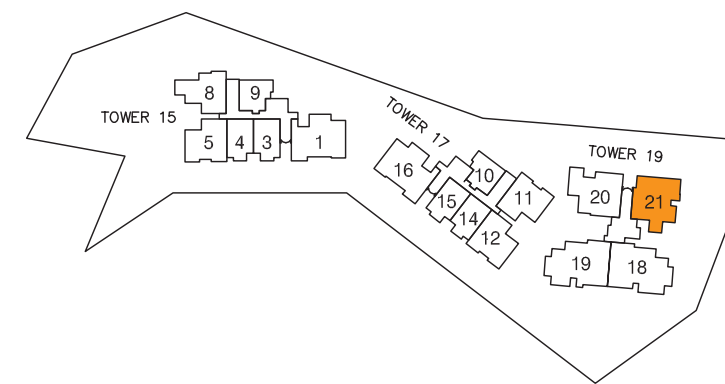
TYPE C3 (b1)

Area 106 sqm / 1141 sqft

#02-21, #06-21



Plans are not drawn to scale and are subject to amendments as may be required or approved by the relevant authorities. All floor areas are approximate and subject to final survey.



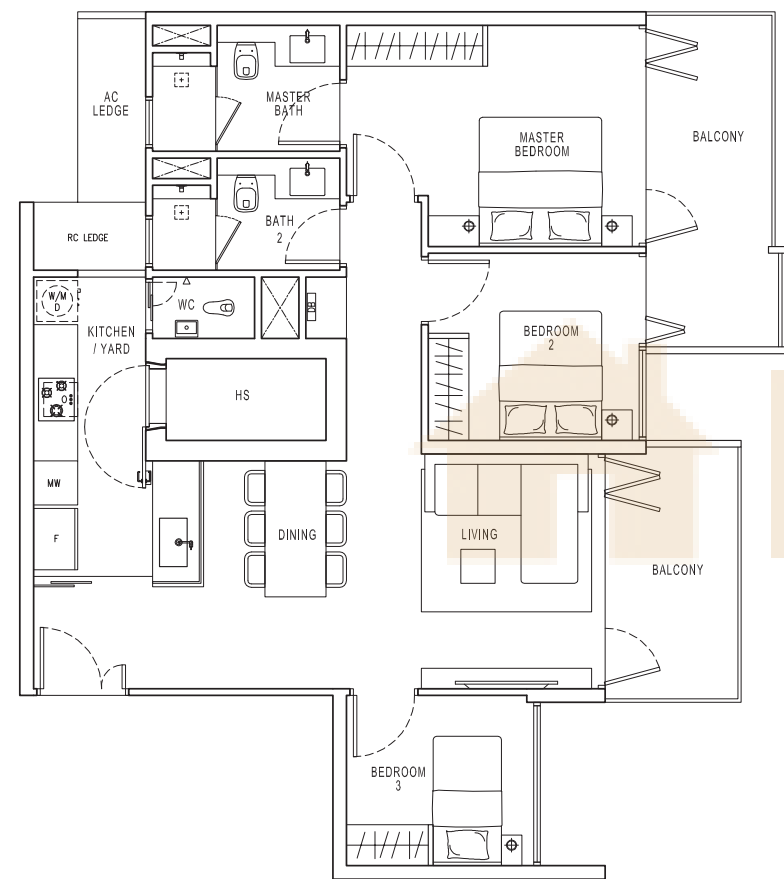
Plans are not drawn to scale and are subject to amendments as may be required or approved by the relevant authorities. All floor areas are approximate and subject to final survey.

# 3-BEDROOM

TYPE C3 (b2)

Area 106 sqm / 1141 sqft

#03-21, #05-21, #07-21



# 4-BEDROOM

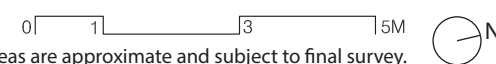
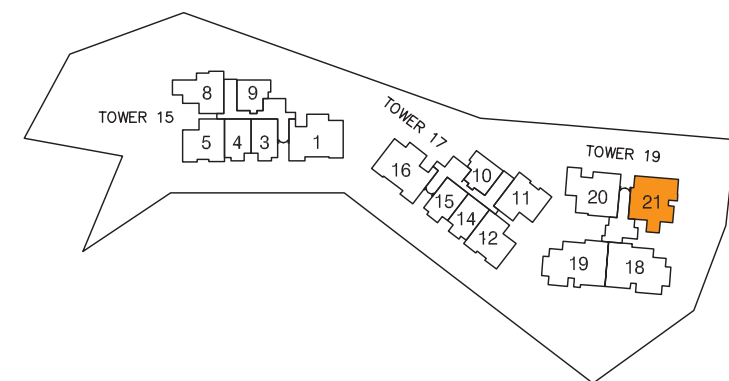
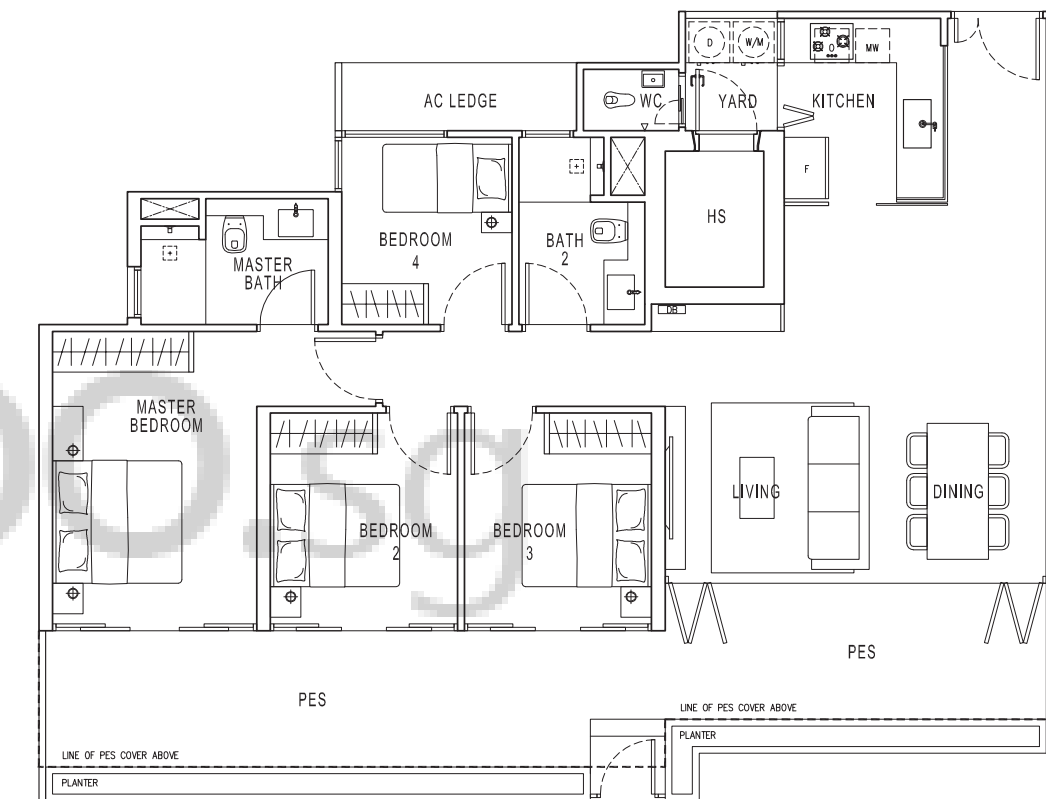
TYPE D (p)

Area 148 sqm / 1593 sqft

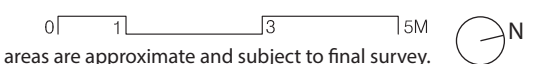
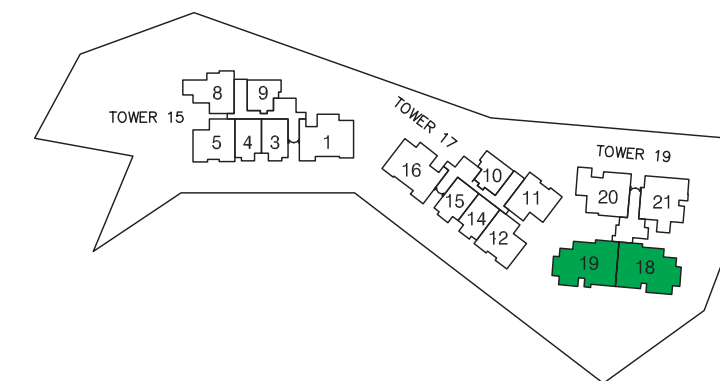
#01-19

(Mirrored)

#01-18



Plans are not drawn to scale and are subject to amendments as may be required or approved by the relevant authorities. All floor areas are approximate and subject to final survey.



Plans are not drawn to scale and are subject to amendments as may be required or approved by the relevant authorities. All floor areas are approximate and subject to final survey.



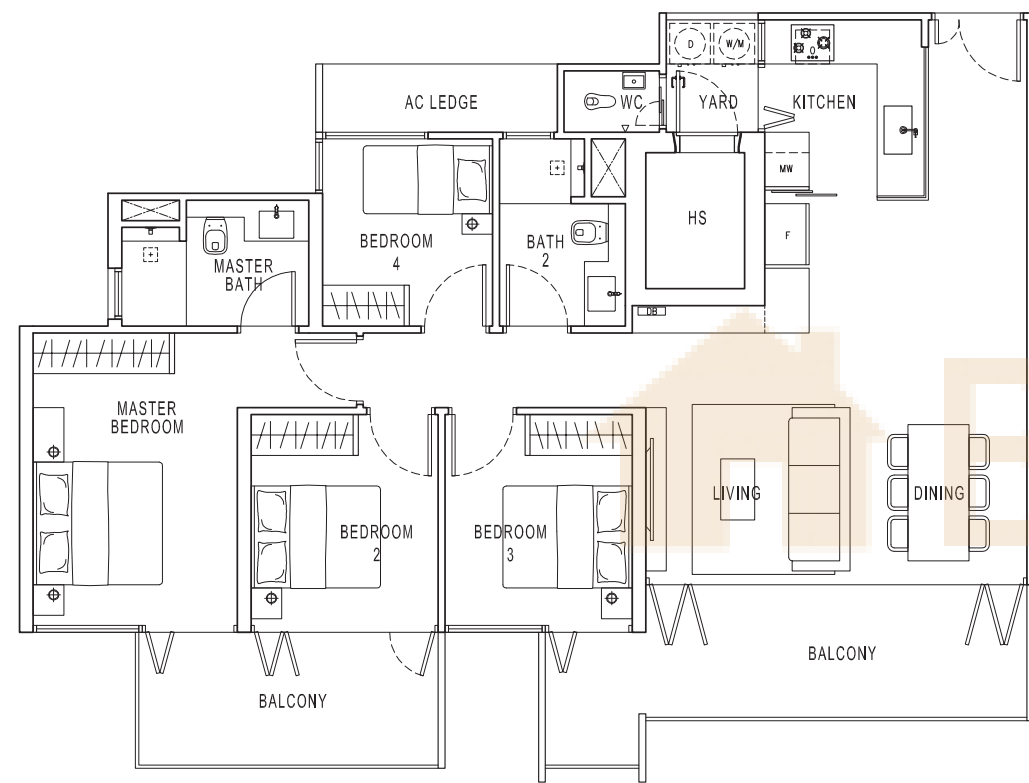
# 4-BEDROOM

## TYPE D (b1)

Area 134 sqm / 1442 sqft

#03-19, #05-19, #07-19

(Mirrored)  
#02-18, #06-18



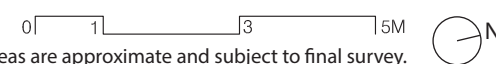
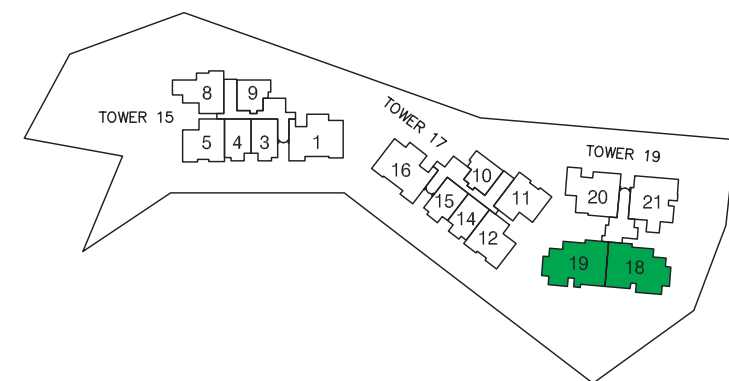
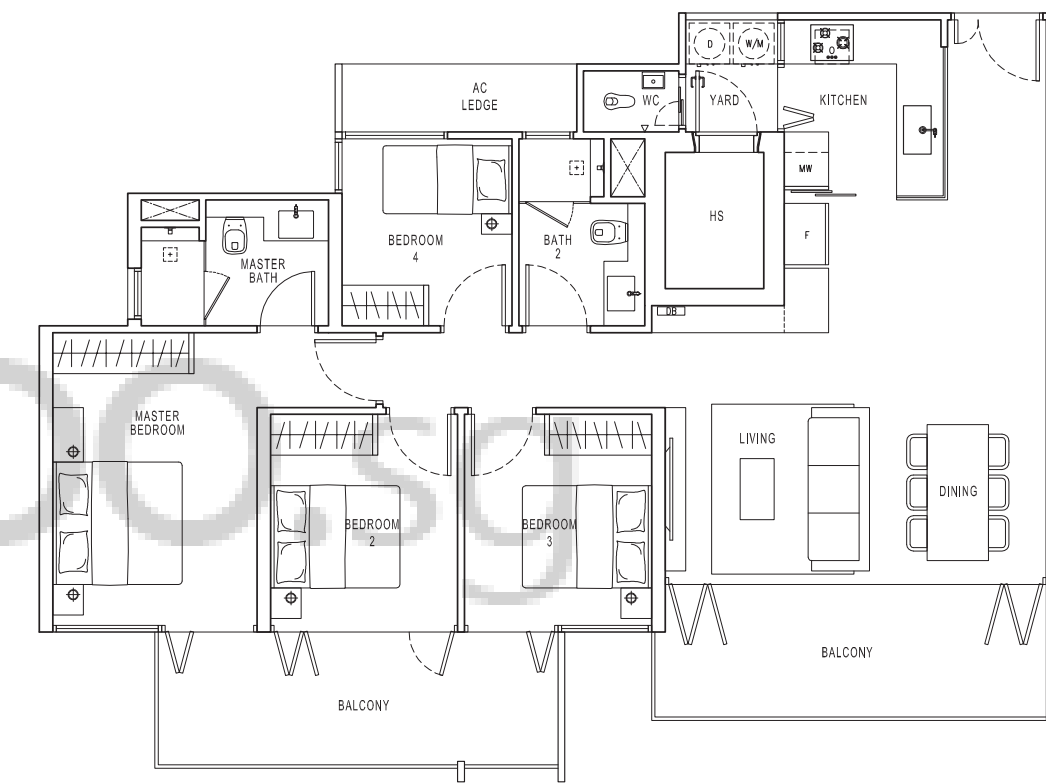
# 4-BEDROOM

## TYPE D (b2)

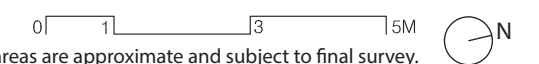
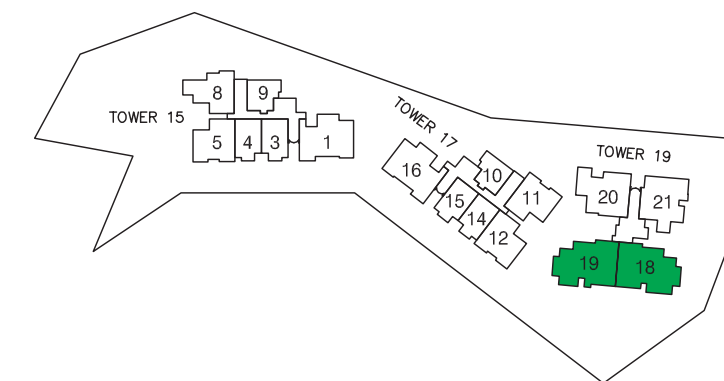
Area 133 sqm / 1432 sqft

#02-19, #06-19

(Mirrored)  
#03-18, #05-18, #07-18



Plans are not drawn to scale and are subject to amendments as may be required or approved by the relevant authorities. All floor areas are approximate and subject to final survey.



Plans are not drawn to scale and are subject to amendments as may be required or approved by the relevant authorities. All floor areas are approximate and subject to final survey.

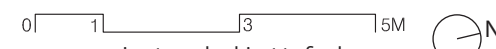
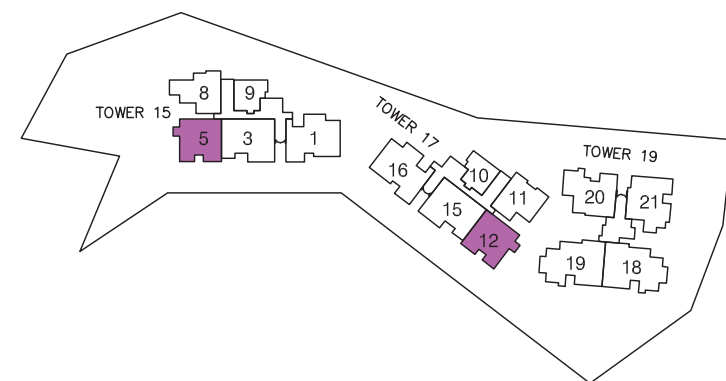
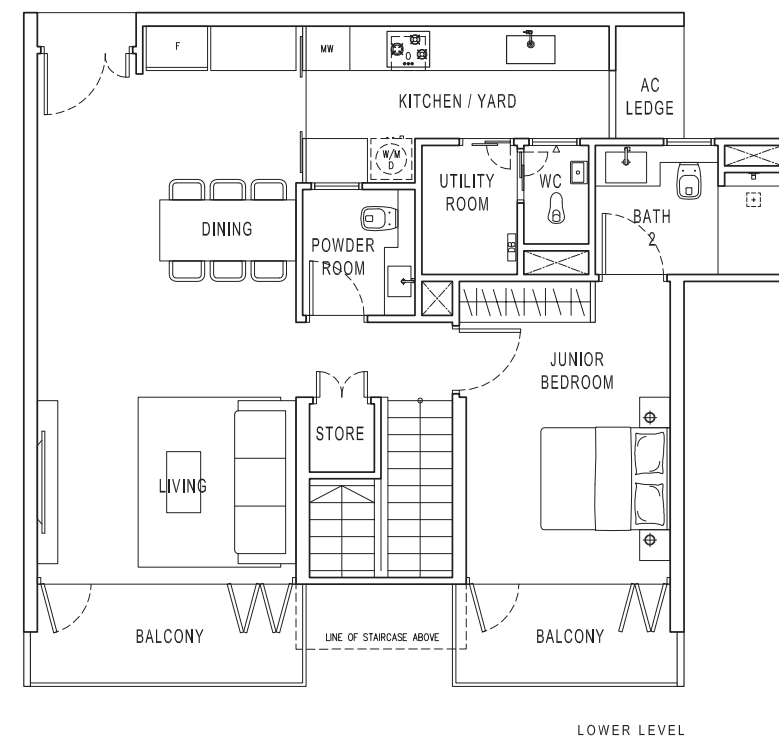
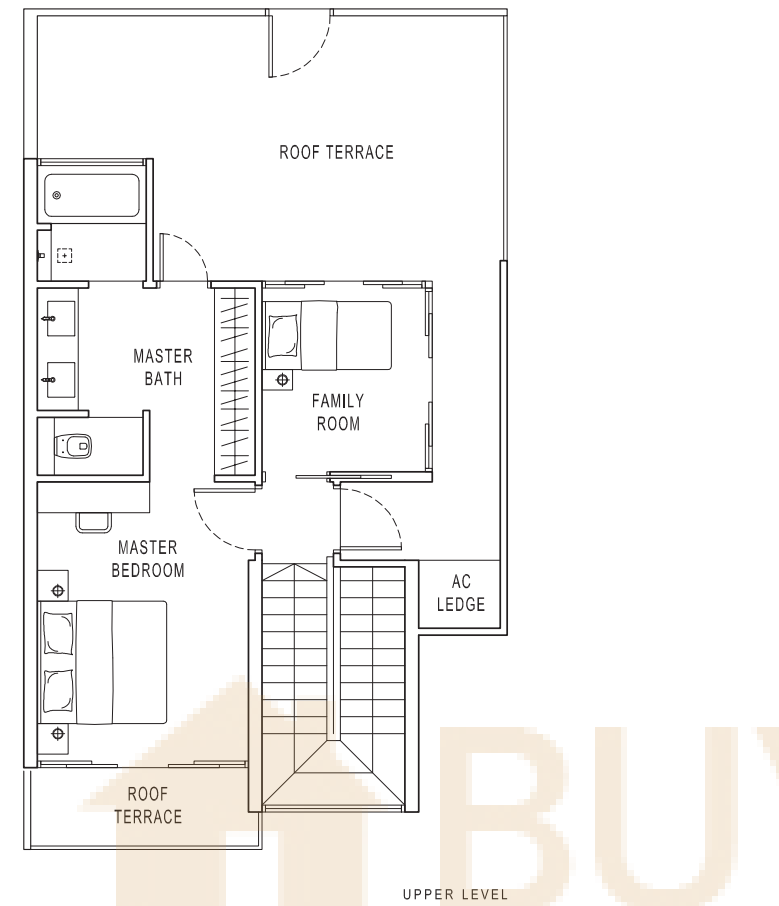
# PENTHOUSE

## TYPE PH1

Area 171 sqm / 1841 sqft

#08-12

(Mirrored)  
#08-05



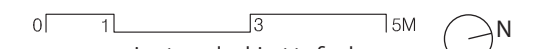
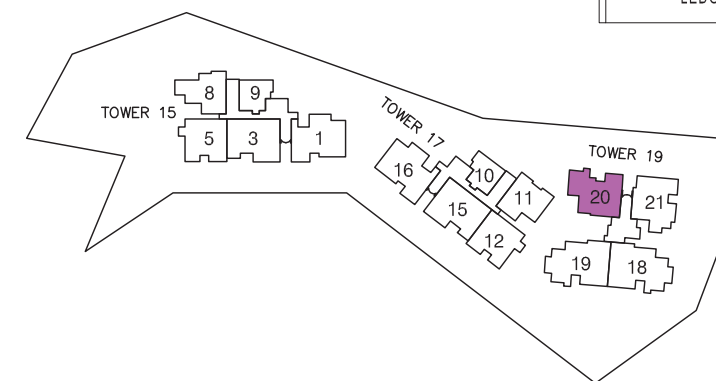
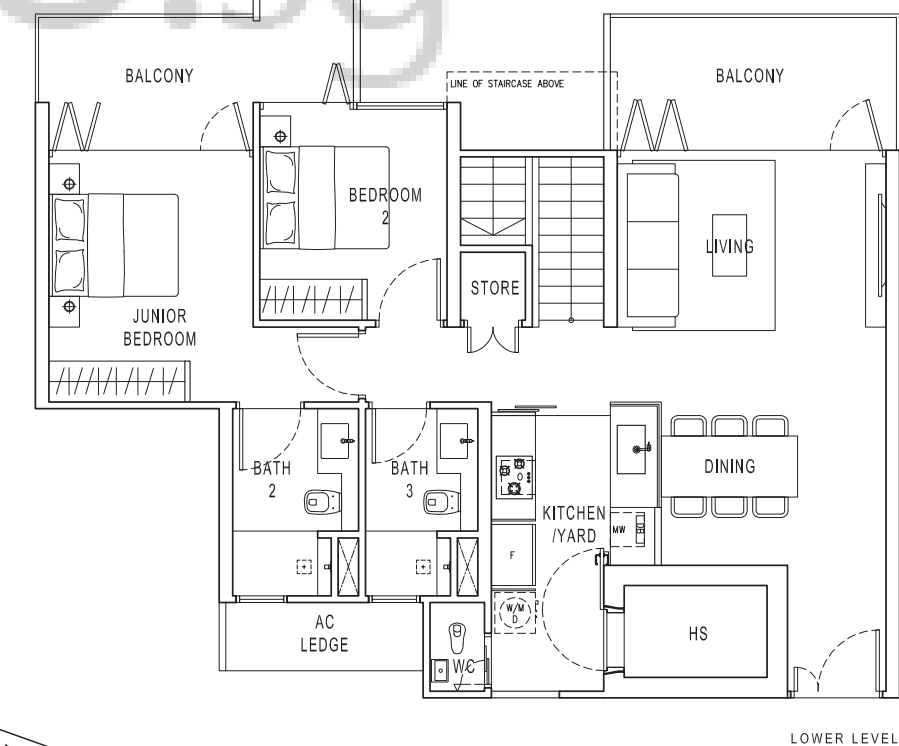
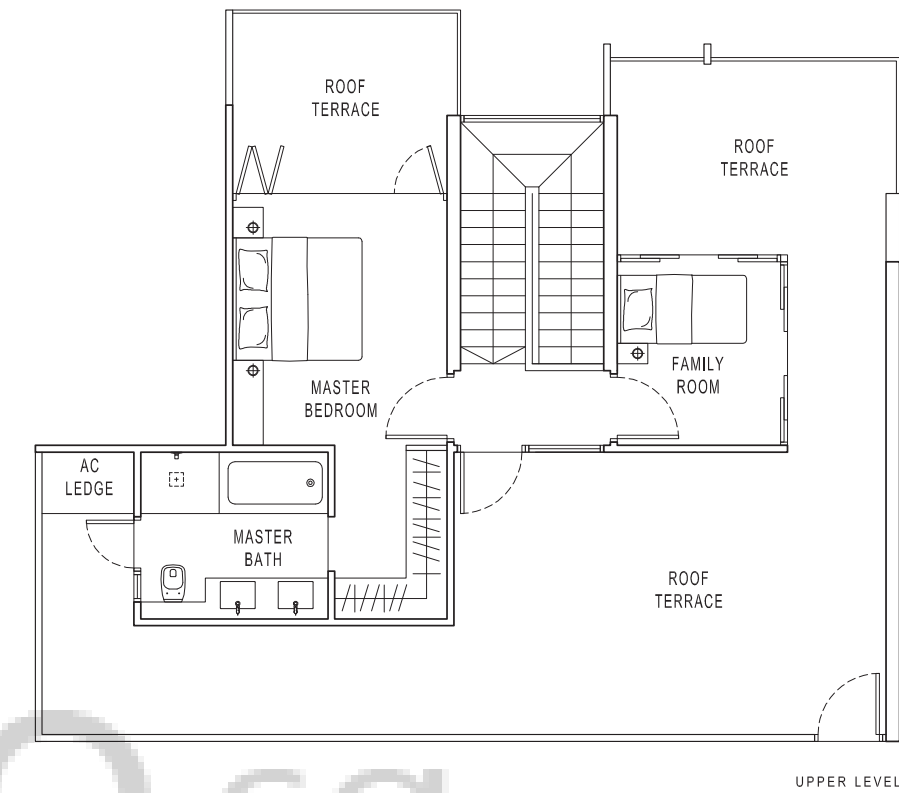
Plans are not drawn to scale and are subject to amendments as may be required or approved by the relevant authorities. All floor areas are approximate and subject to final survey.

# PENTHOUSE

## TYPE PH2

Area 214 sqm / 2303 sqft

#08-20



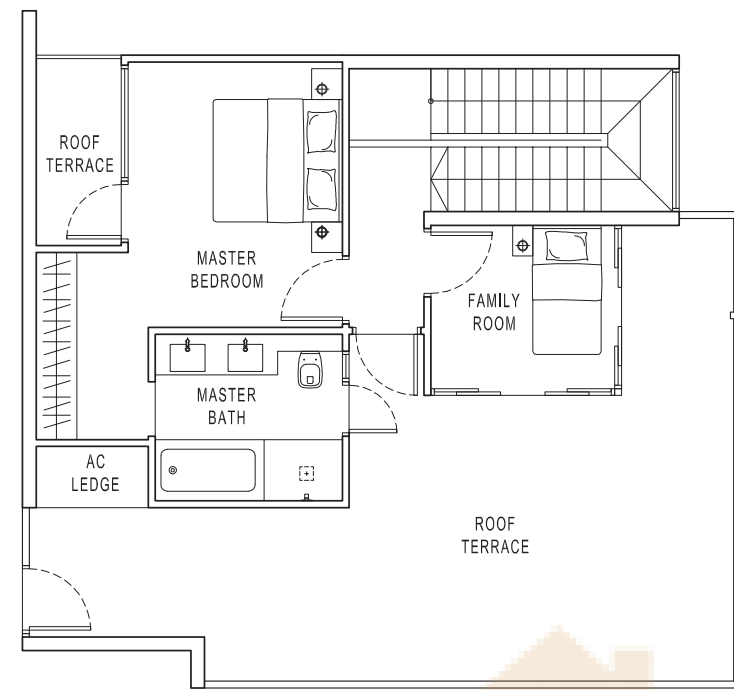
Plans are not drawn to scale and are subject to amendments as may be required or approved by the relevant authorities. All floor areas are approximate and subject to final survey.

# PENTHOUSE

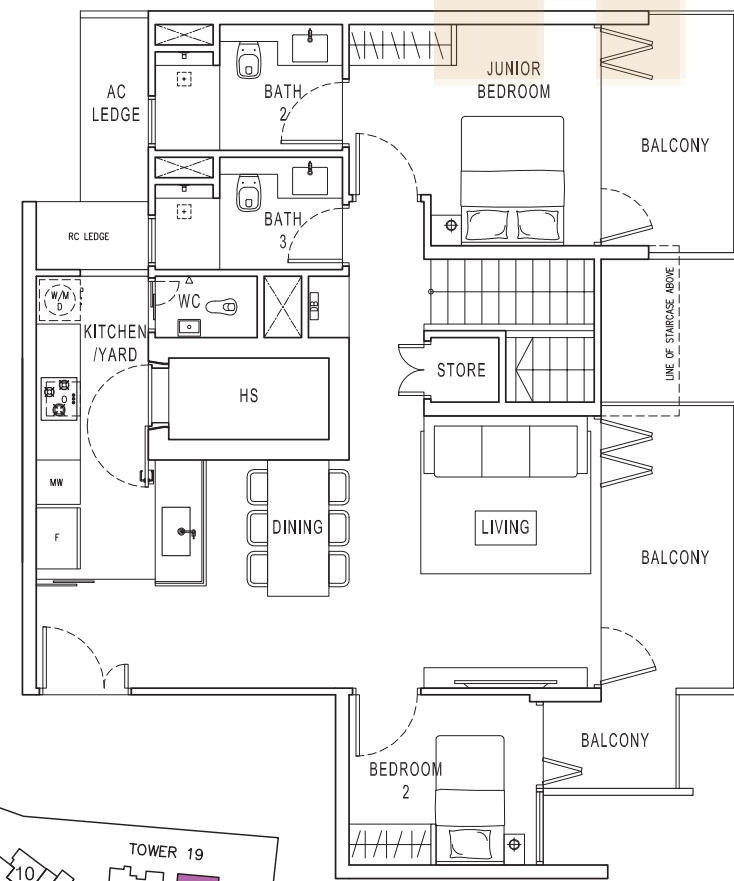
TYPE PH3

Area 195 sqm / 2099 sqft

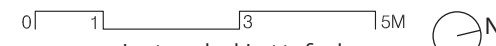
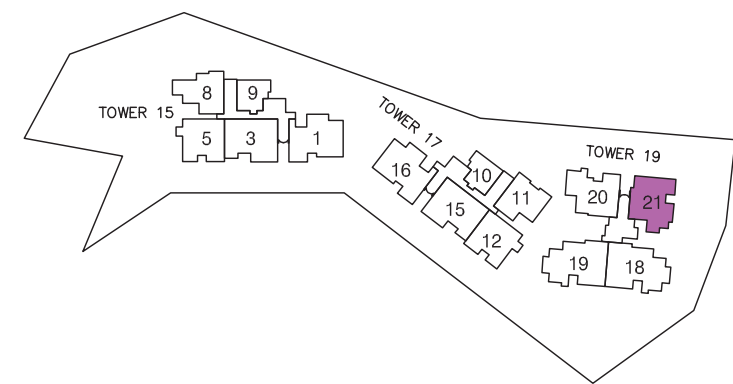
#08-21



UPPER LEVEL



LOWER LEVEL



Plans are not drawn to scale and are subject to amendments as may be required or approved by the relevant authorities. All floor areas are approximate and subject to final survey.

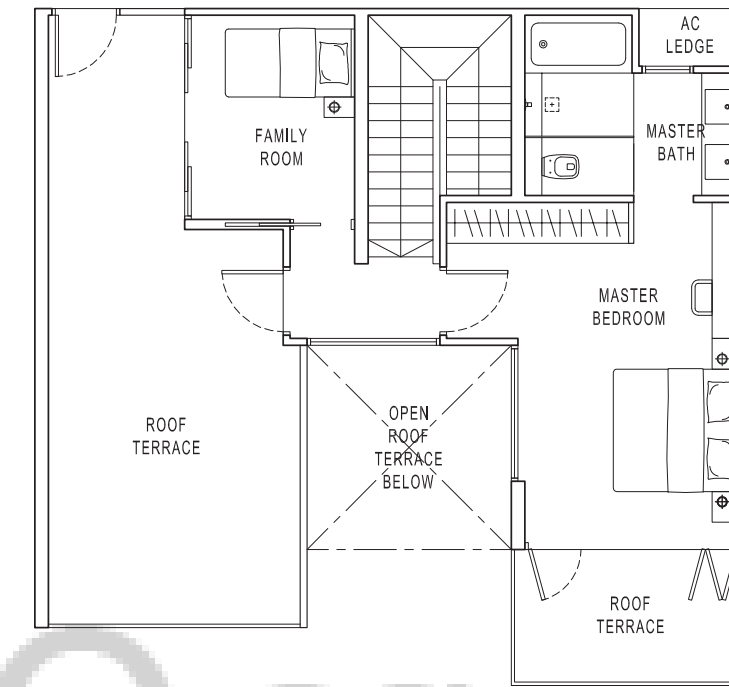
# PENTHOUSE

TYPE PH4

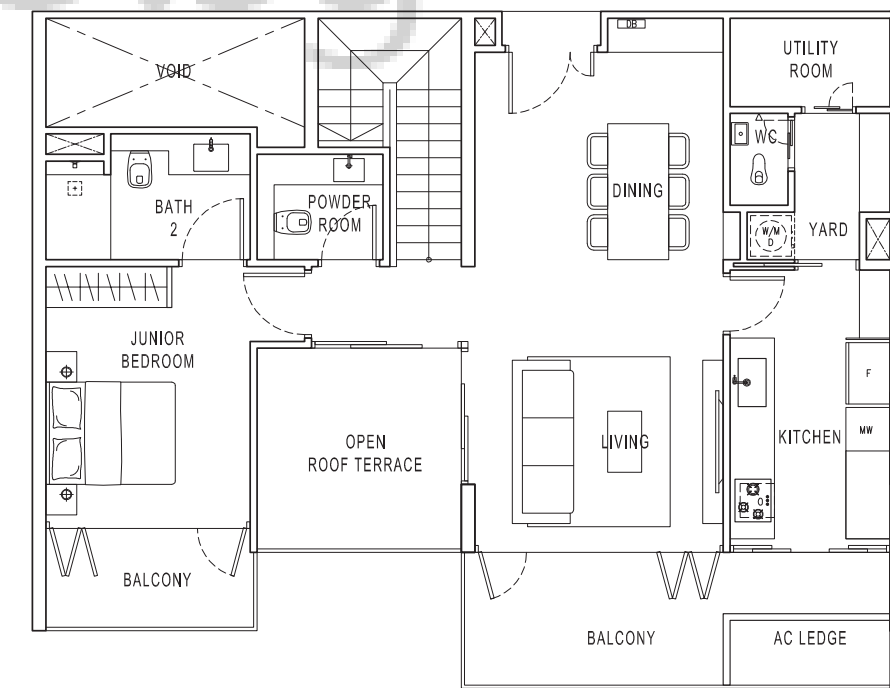
Area 190 sqm / 2045 sqft

#08-03

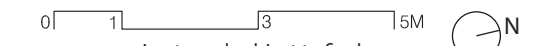
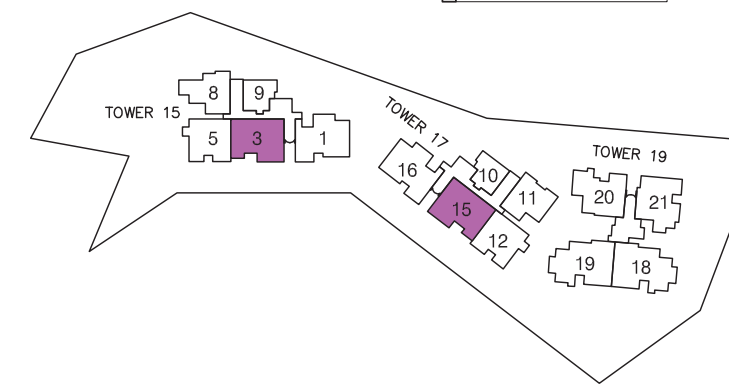
(Mirrored)  
#08-15



UPPER LEVEL



LOWER LEVEL



Plans are not drawn to scale and are subject to amendments as may be required or approved by the relevant authorities. All floor areas are approximate and subject to final survey.

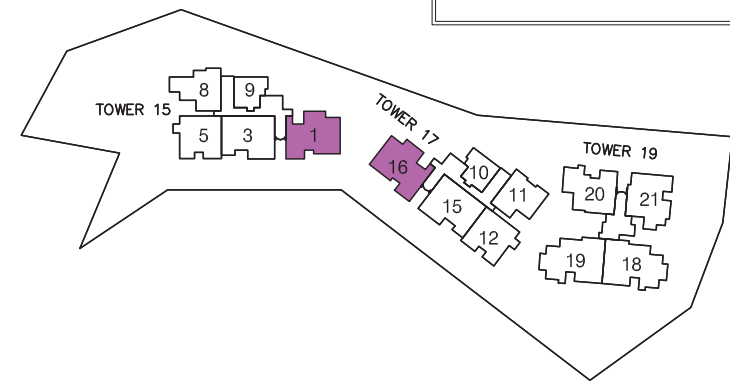
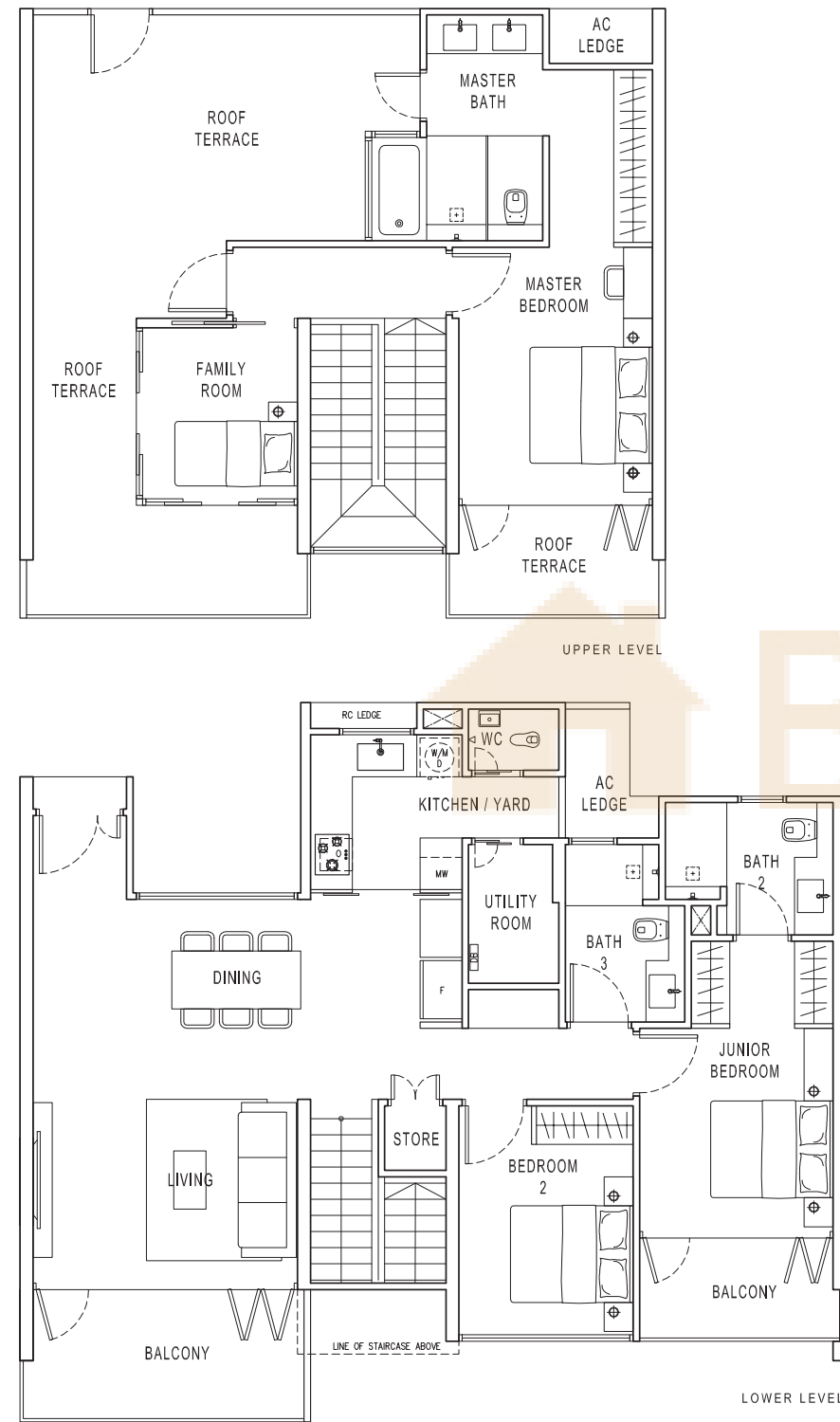
# PENTHOUSE

## TYPE PH5

Area 200 sqm / 2153 sqft

#08-01

(Mirrored)  
#08-16



0 1 3 5M



Plans are not drawn to scale and are subject to amendments as may be required or approved by the relevant authorities. All floor areas are approximate and subject to final survey.

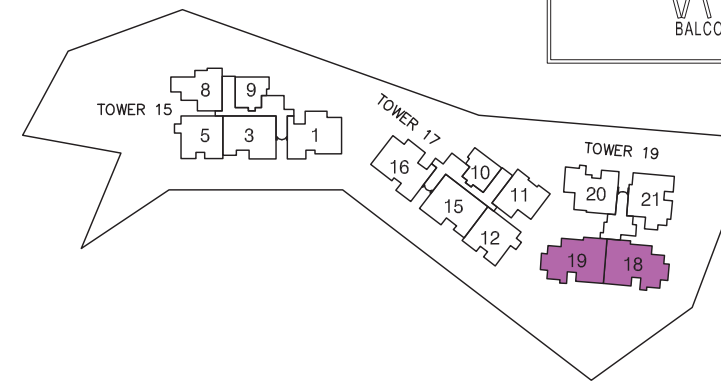
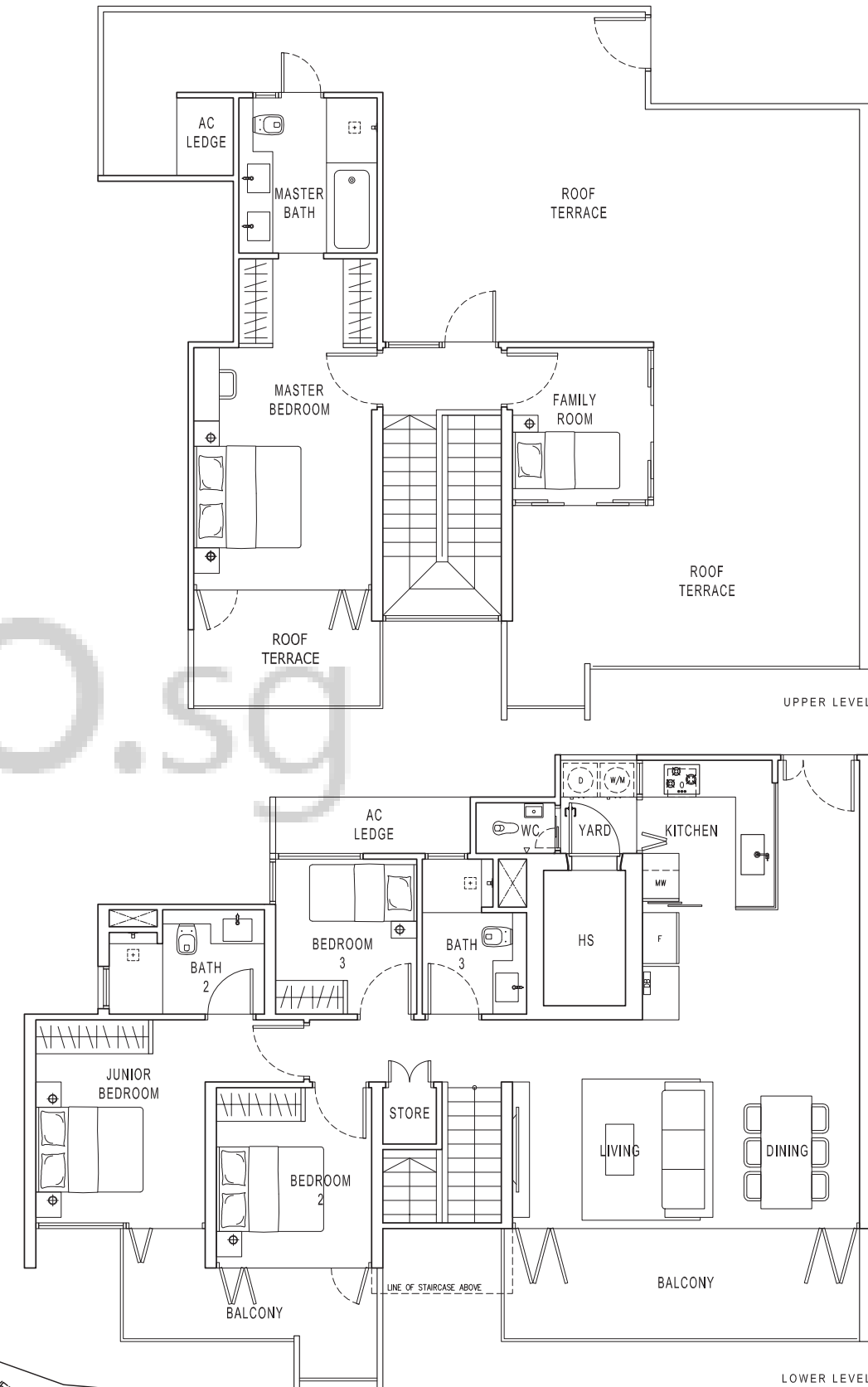
# PENTHOUSE

## TYPE PH6

Area 263 sqm / 2831 sqft

#08-19

(Mirrored)  
#08-18



0 1 3 5M



Plans are not drawn to scale and are subject to amendments as may be required or approved by the relevant authorities. All floor areas are approximate and subject to final survey.