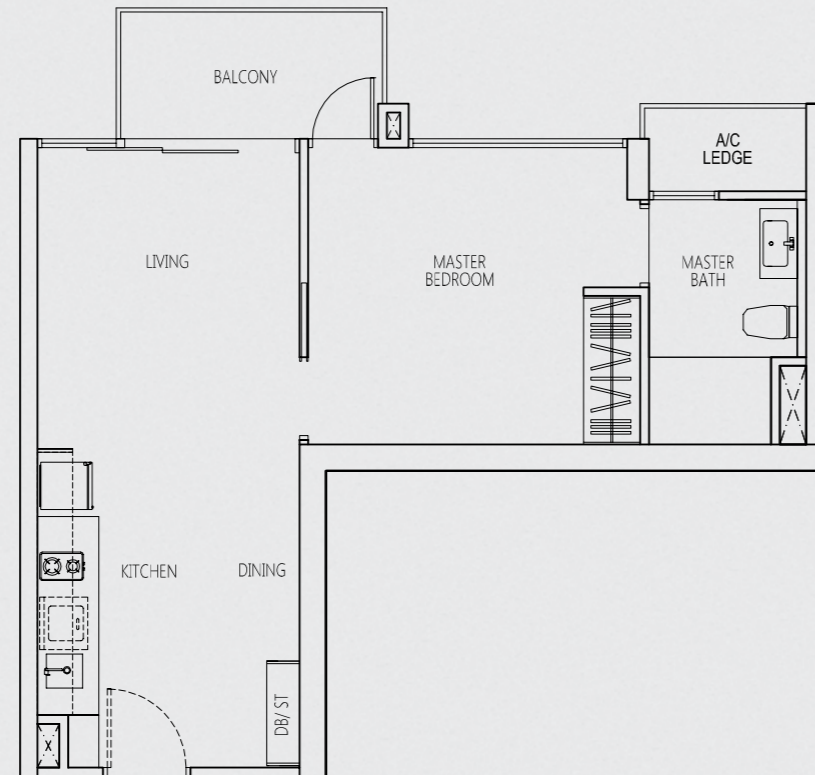


1-BEDROOM

TYPE A

1 - BEDROOM
49 sq m / 527 sq ft

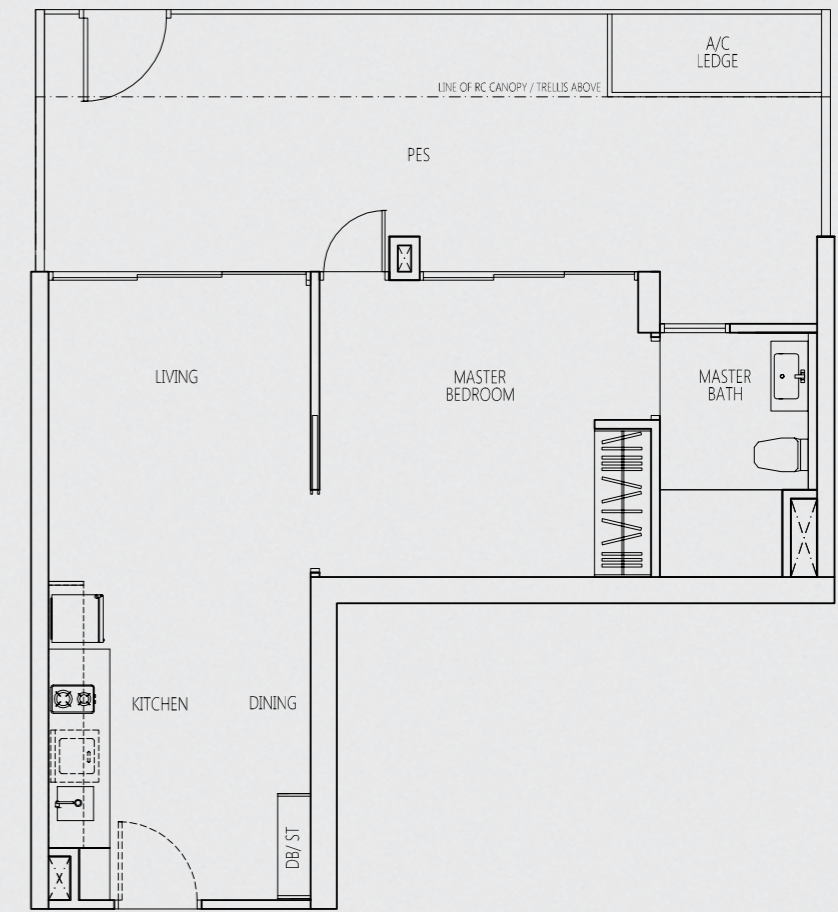
- #02-01 to #15-01 (mirror unit)
- #02-03 to #15-03 (mirror unit)
- #03-07 to #15-07
- #03-14 to #15-14
- #02-17 to #15-17



TYPE Ap

1 - BEDROOM
71 sq m / 764 sq ft

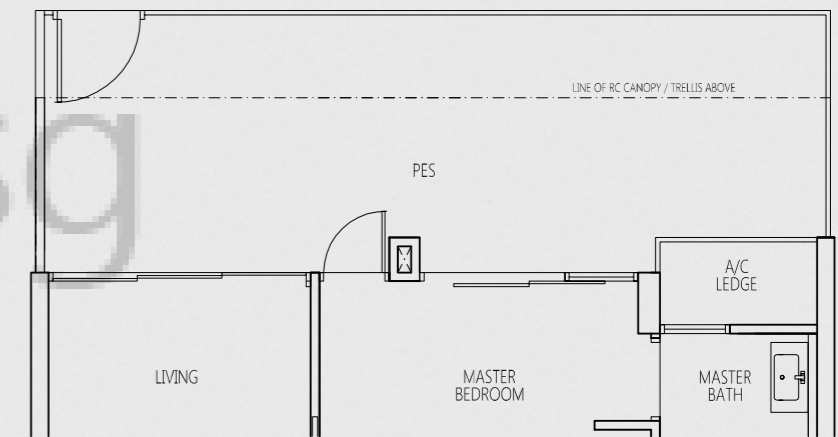
- #01-01 (mirror unit) HIGH CEILING
- #01-03 (mirror unit) HIGH CEILING
- #01-17 HIGH CEILING



TYPE Ap1

1 - BEDROOM
71 sq m / 764 sq ft

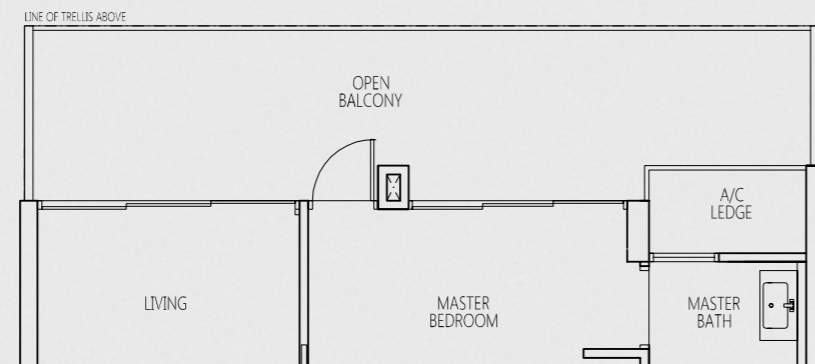
- #02-14



TYPE AT

1 - BEDROOM
62 sq m / 667 sq ft

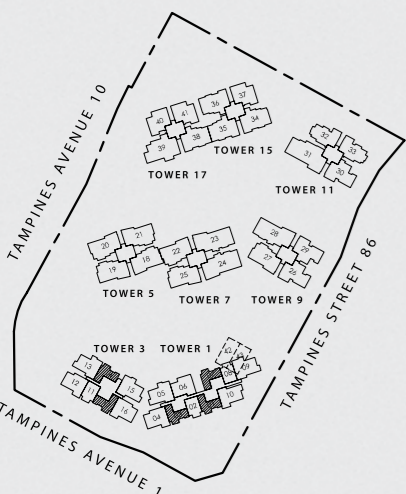
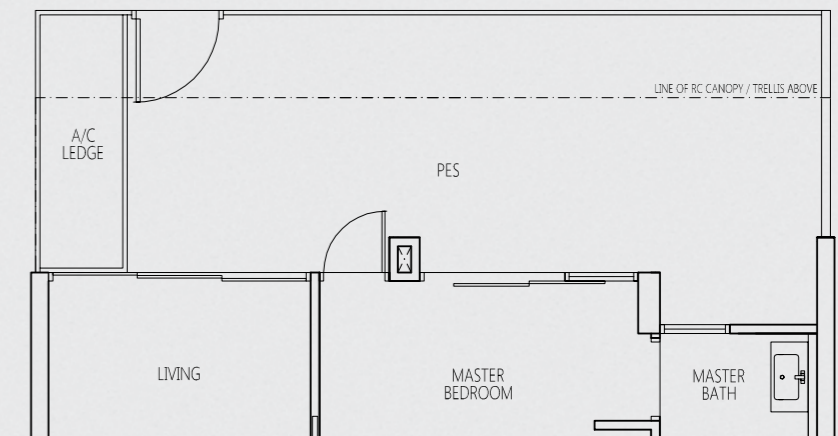
- #16-01 (mirror unit)
- #16-03 (mirror unit)
- #16-07
- #16-14
- #16-17



TYPE Ap2

1 - BEDROOM
71 sq m / 764 sq ft

- #02-07



KEY PLAN

Area includes A/C ledge, balcony, PES, roof terrace and void area. Some units are mirror images of the apartment plans shown in the brochure. Please refer to the key plans for orientation. The plans are subject to change as may be approved by the relevant authorities. All floor areas are approximate measurements only and are subject to government resurvey. Abbreviation: A/C ledge (Aircon Ledge), PES (Private Enclosed Space), SC (Shoe Cabinet), ST (Store)

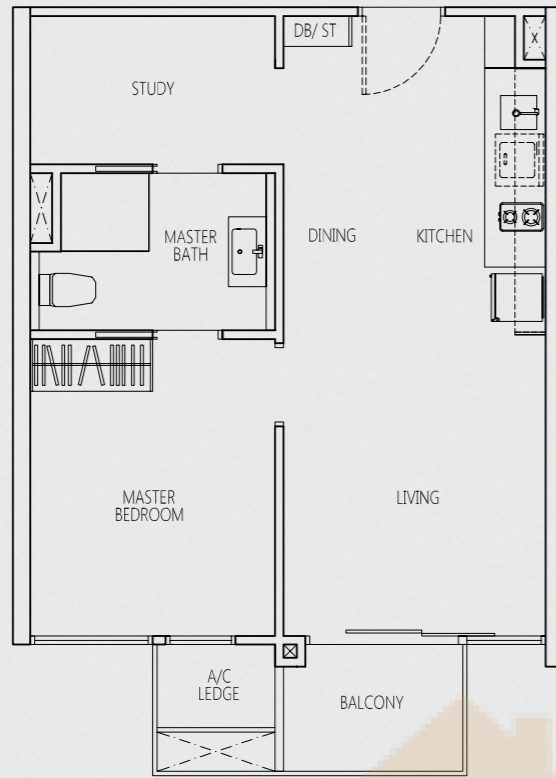
0 1 2 3 4 5 METRES

1-BEDROOM + STUDY

TYPE AS

1 - BEDROOM + STUDY
48 sq m / 517 sq ft

#02-02 to #15-02
#03-08 to #15-08 (mirror unit)
#02-11 to #15-11 (mirror unit)



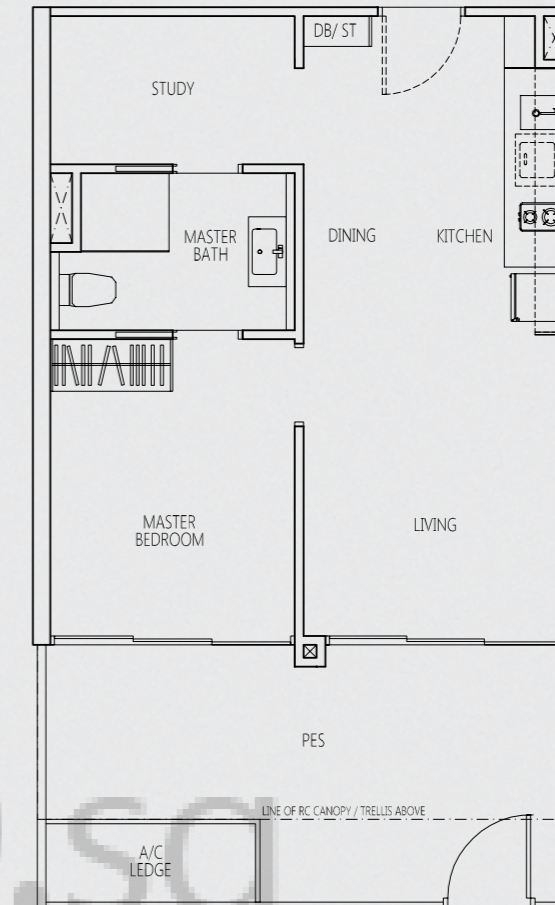
TYPE ASp

1 - BEDROOM + STUDY
62 sq m / 667 sq ft

#01-02
#01-11 (mirror unit)

HIGH CEILING

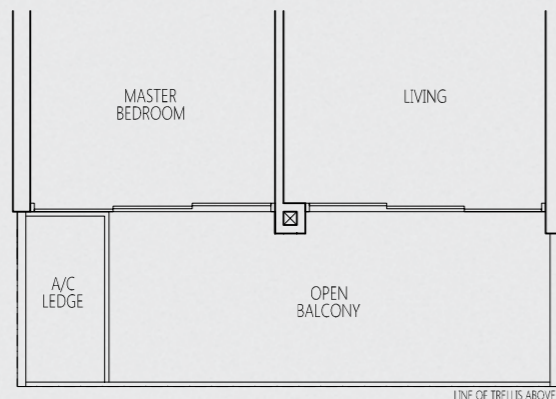
HIGH CEILING



TYPE AST

1 - BEDROOM + STUDY
56 sq m / 603 sq ft

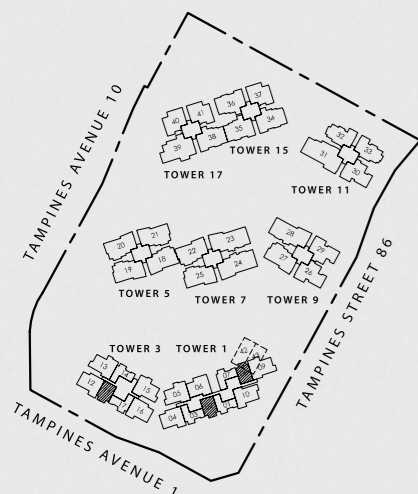
#16-02
#16-08 (mirror unit)
#16-11 (mirror unit)



TYPE ASp1

1 - BEDROOM + STUDY
62 sq m / 667 sq ft

#02-08 (mirror unit)



KEY PLAN

Area includes A/C ledge, balcony, PES, roof terrace and void area. Some units are mirror images of the apartment plans shown in the brochure. Please refer to the key plans for orientation. The plans are subject to change as may be approved by the relevant authorities. All floor areas are approximate measurements only and are subject to government resurvey. Abbreviation: A/C ledge (Aircon Ledge), PES (Private Enclosed Space), SC (Shoe Cabinet), ST (Store)

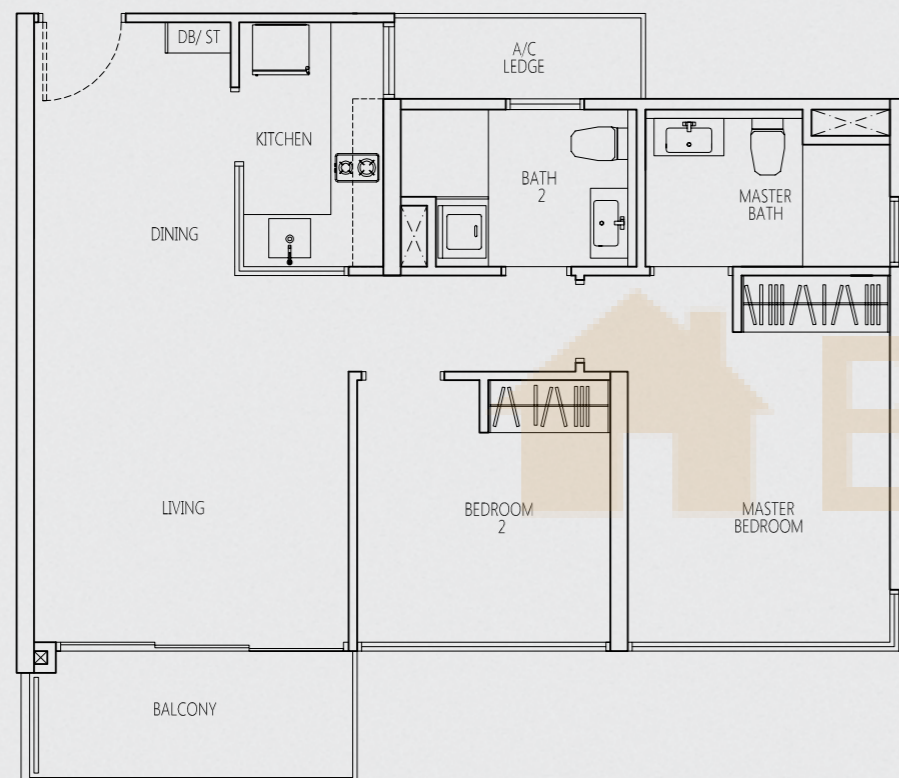
0 1 2 3 4 5 METRES

2-BEDROOM

TYPE B

2 - BEDROOM
74 sq m / 797 sq ft

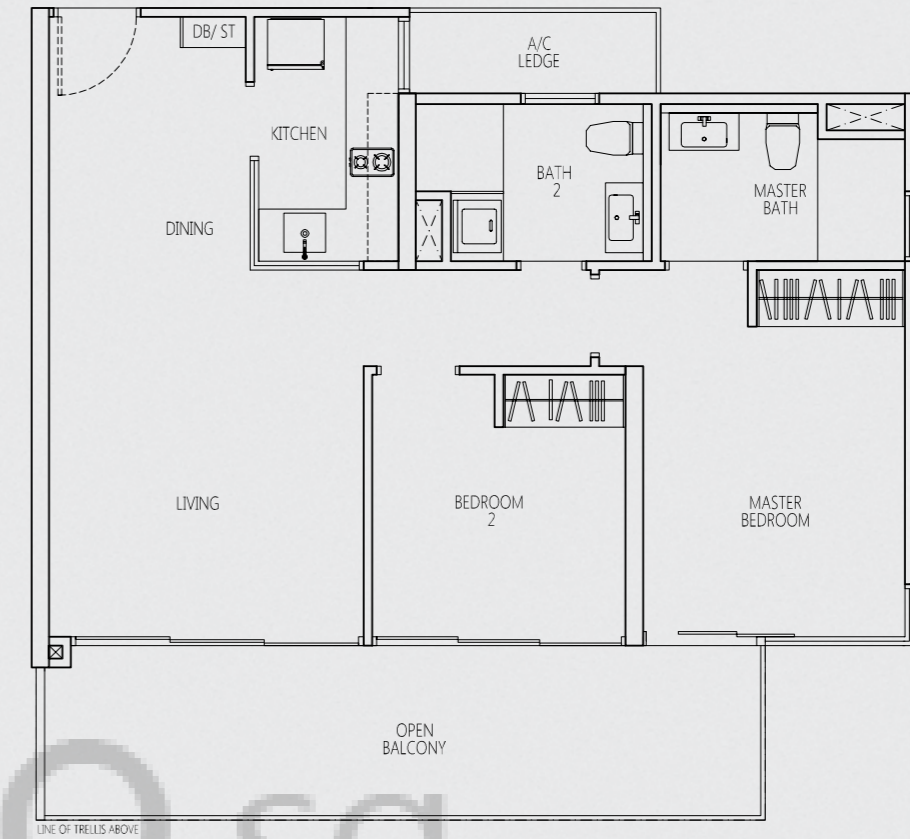
#02-04 to #15-04 (mirror unit)
#02-12 to #15-12 (mirror unit)
#02-16 to #15-16



TYPE BT

2 - BEDROOM
85 sq m / 915 sq ft

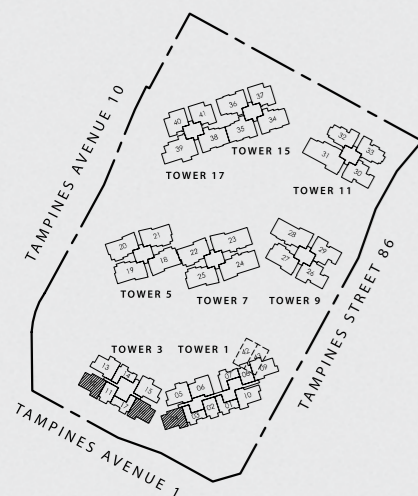
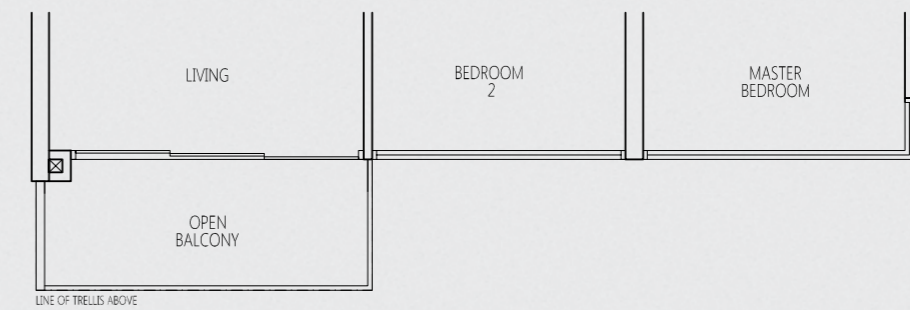
#16-04 (mirror unit)
#16-12 (mirror unit)



TYPE BT1

2 - BEDROOM
74 sq m / 797 sq ft

#16-16



KEY PLAN

Area includes A/C ledge, balcony, PES, roof terrace and void area. Some units are mirror images of the apartment plans shown in the brochure. Please refer to the key plans for orientation. The plans are subject to change as may be approved by the relevant authorities. All floor areas are approximate measurements only and are subject to government resurvey. Abbreviation: A/C ledge (Aircon Ledge), PES (Private Enclosed Space), SC (Shoe Cabinet), ST (Store)

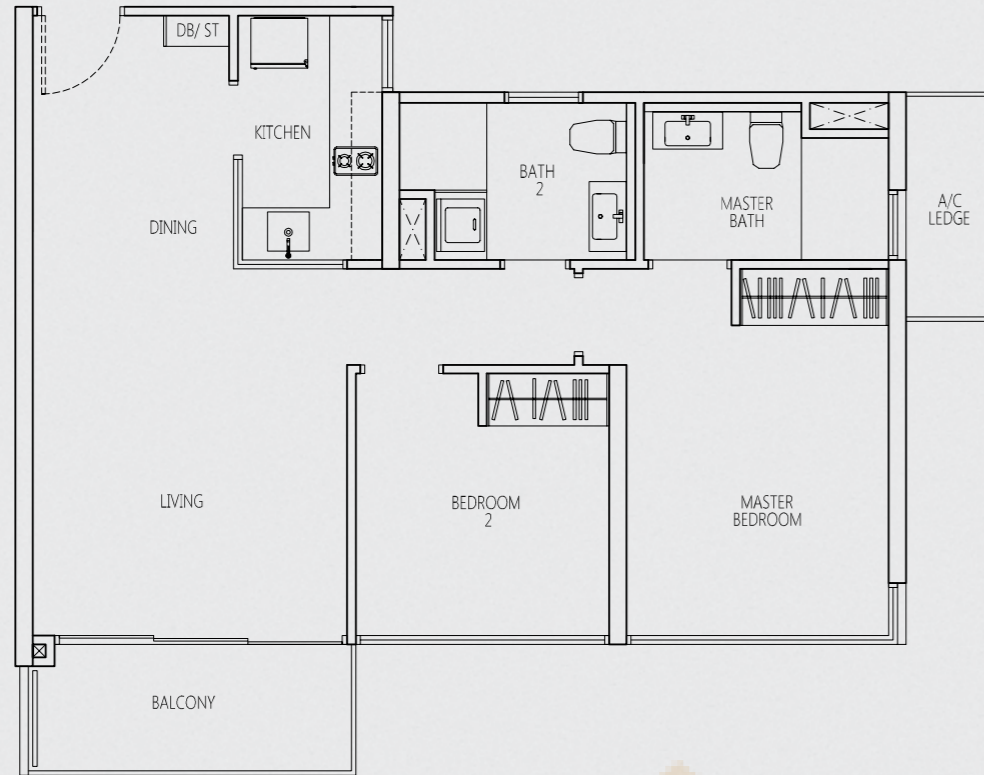
0 1 2 3 4 5 METRES

2-BEDROOM

TYPE B-a

2 - BEDROOM
74 sq m / 797 sqft

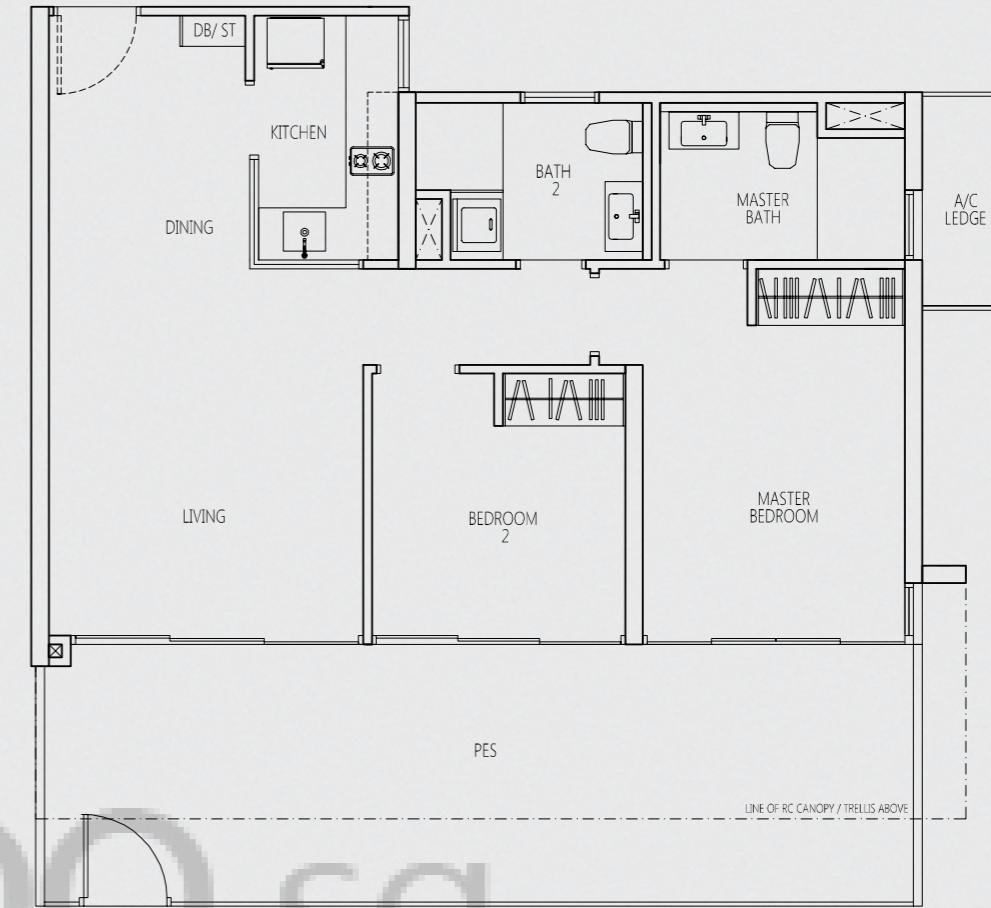
#02-10 to #15-10



TYPE B-ap

2 - BEDROOM
98 sq m / 1055 sq ft

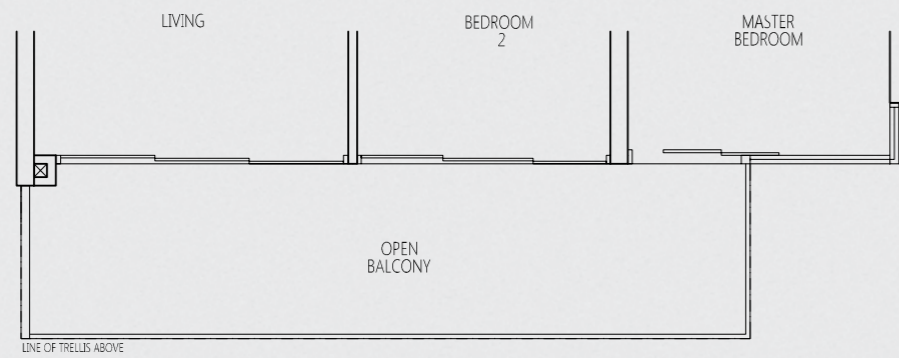
#01-16 HIGH CEILING



TYPE B-aT

2 - BEDROOM
85 sq m / 915 sq ft

#16-10

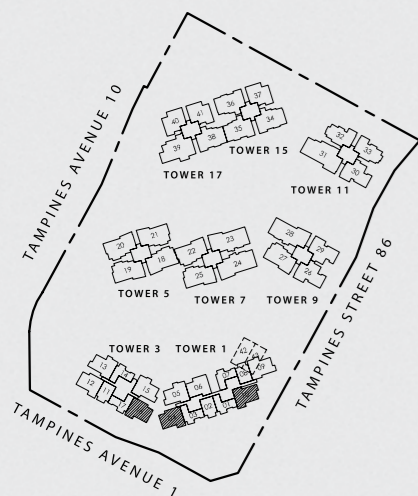
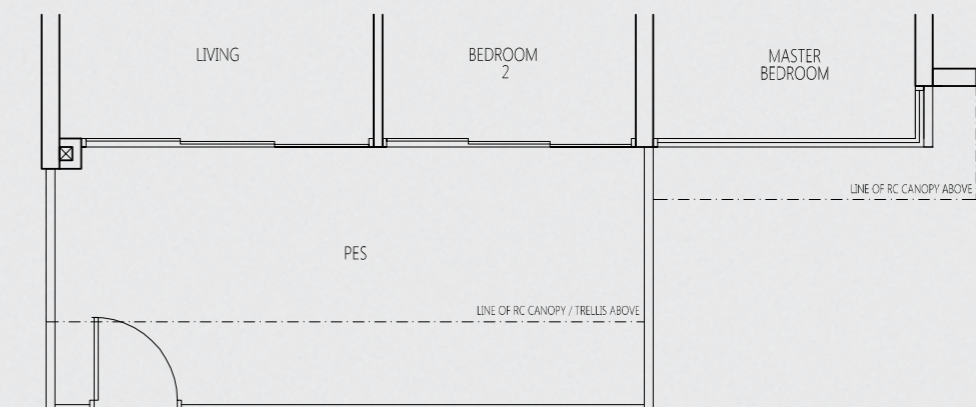


TYPE B-ap1

2 - BEDROOM
89 sq m / 958 sq ft

#01-04 (mirror unit) HIGH CEILING

#01-10 HIGH CEILING



KEY PLAN

Area includes A/C ledge, balcony, PES, roof terrace and void area. Some units are mirror images of the apartment plans shown in the brochure. Please refer to the key plans for orientation. The plans are subject to change as may be approved by the relevant authorities. All floor areas are approximate measurements only and are subject to government resurvey. Abbreviation: A/C ledge (Aircon Ledge), PES (Private Enclosed Space), SC (Shoe Cabinet), ST (Store)

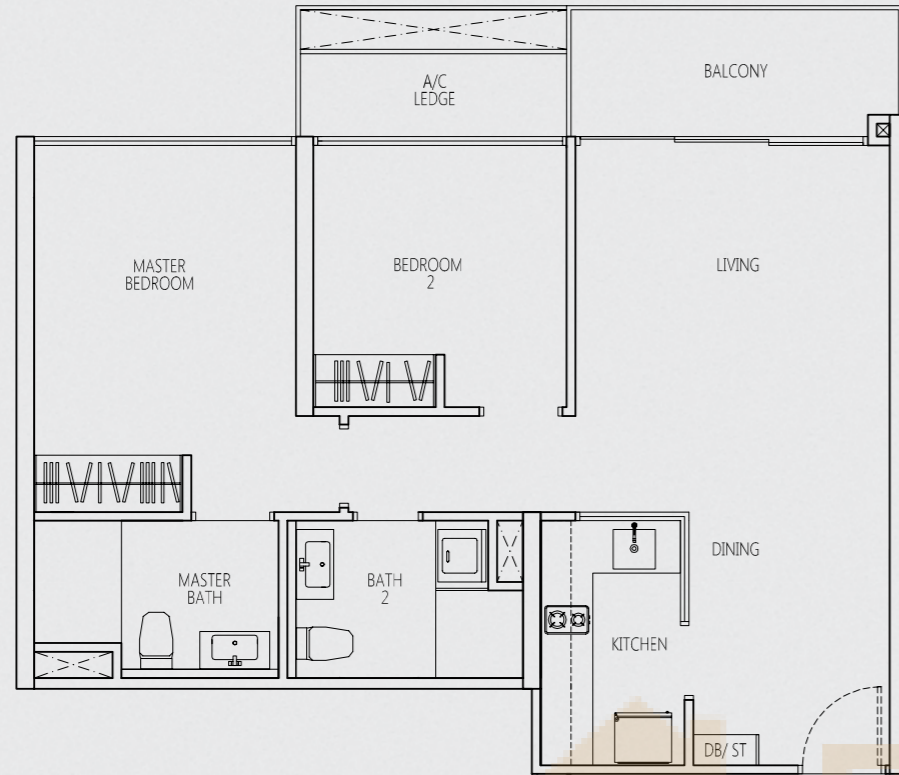
0 1 2 3 4 5 METRES

2-BEDROOM

TYPE B-b

2 - BEDROOM
74 sq m / 797 sq ft

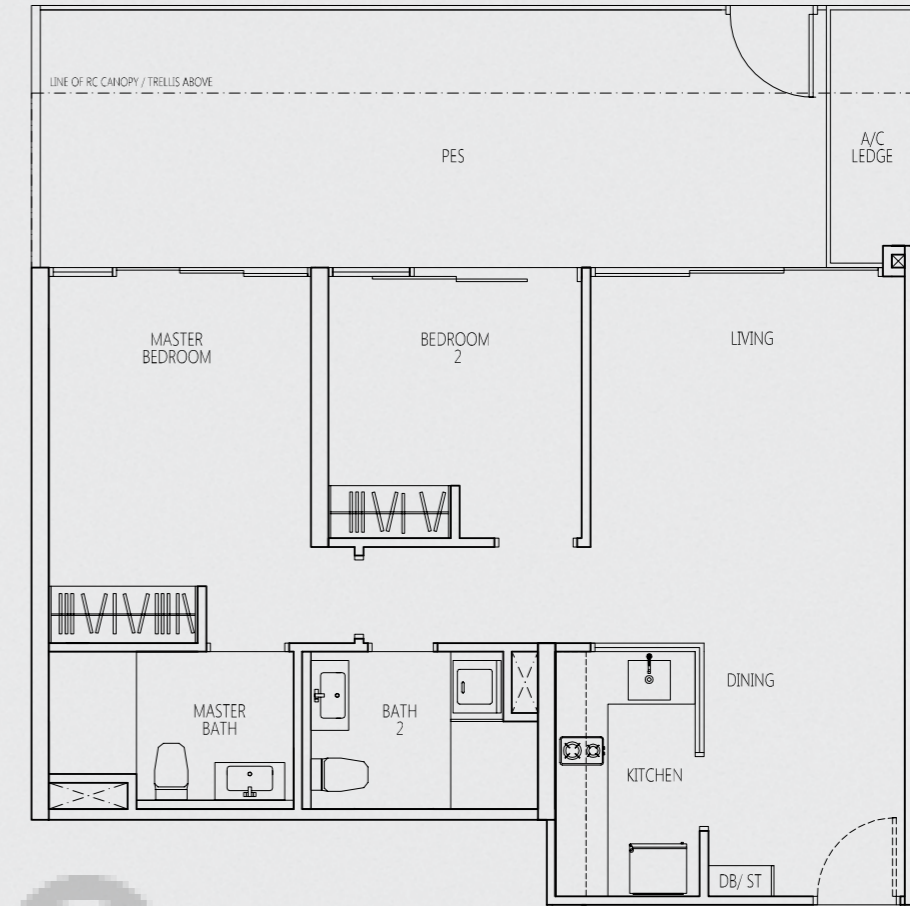
#03-06 to #15-06



TYPE B-bp

2 - BEDROOM
96 sq m / 1033 sq ft

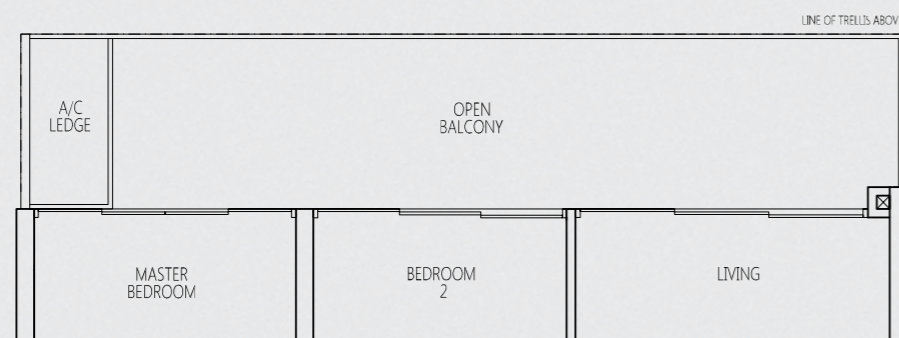
#02-06



TYPE B-bT

2 - BEDROOM
86 sq m / 926 sq ft

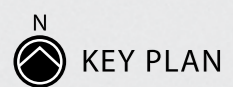
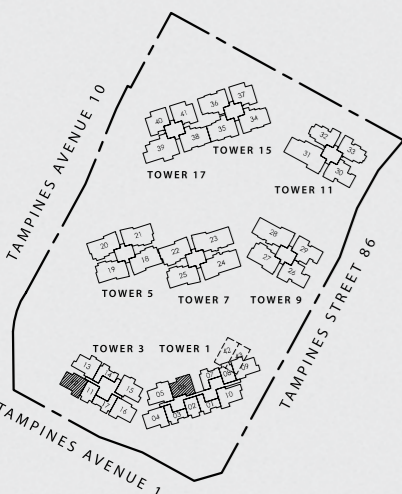
#16-06



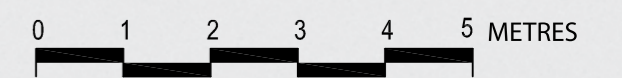
TYPE B-bp1

2 - BEDROOM
96 sq m / 1033 sq ft

#01-12 (mirror unit) HIGH CEILING



Area includes A/C ledge, balcony, PES, roof terrace and void area. Some units are mirror images of the apartment plans shown in the brochure. Please refer to the key plans for orientation. The plans are subject to change as may be approved by the relevant authorities. All floor areas are approximate measurements only and are subject to government resurvey. Abbreviation: A/C ledge (Aircon Ledge), PES (Private Enclosed Space), SC (Shoe Cabinet), ST (Store)

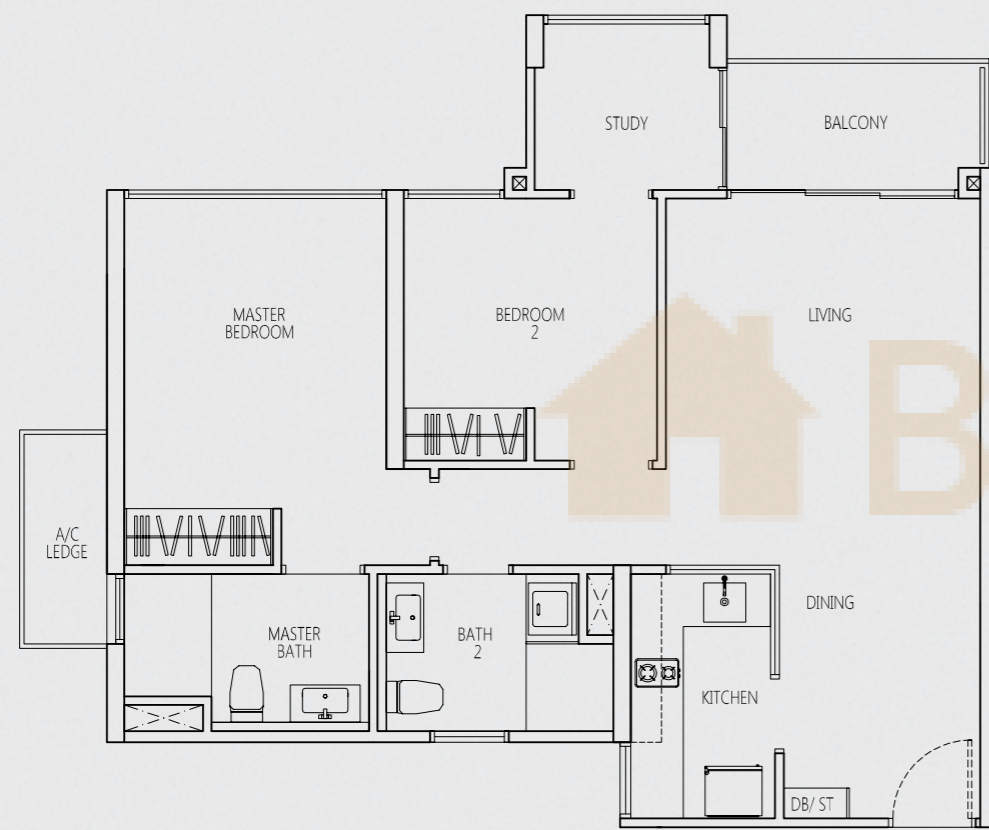


2-BEDROOM + STUDY

TYPE BS

2 - BEDROOM+ STUDY
77 sq m / 829 sq ft

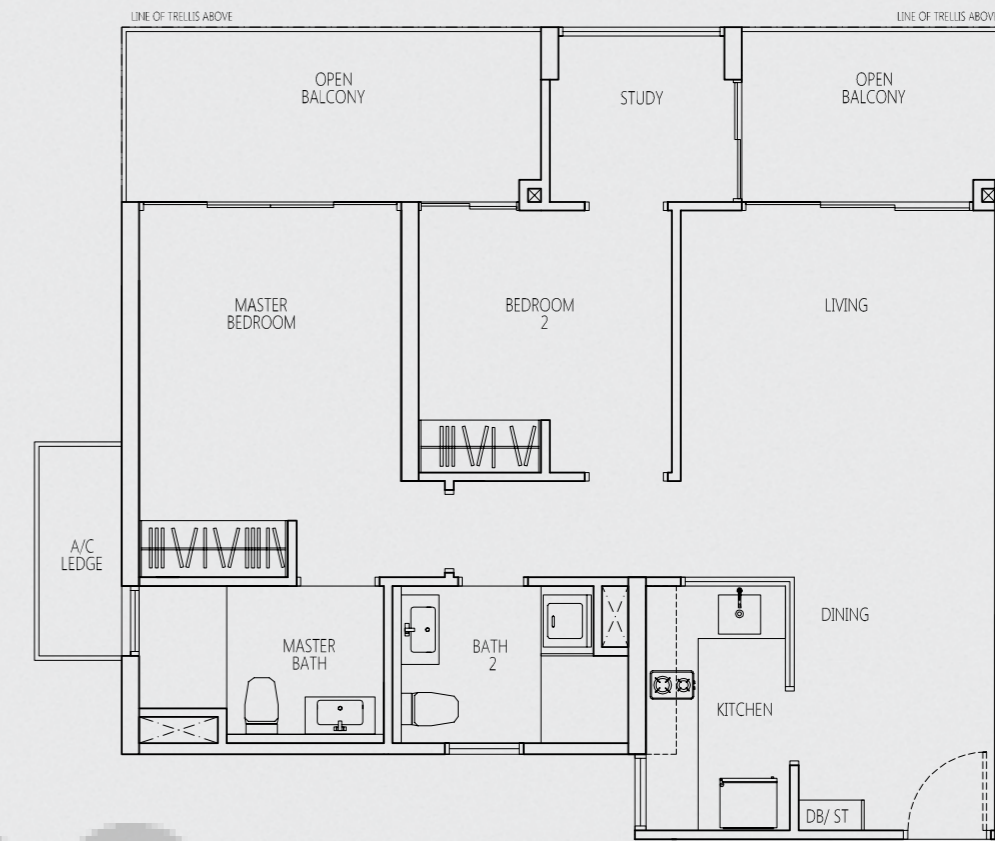
#03-05 to #15-05
#03-09 to #15-09 (mirror unit)
#03-13 to #15-13
#03-15 to #15-15 (mirror unit)



TYPE BST

2 - BEDROOM + STUDY
88 sq m / 947 sq ft

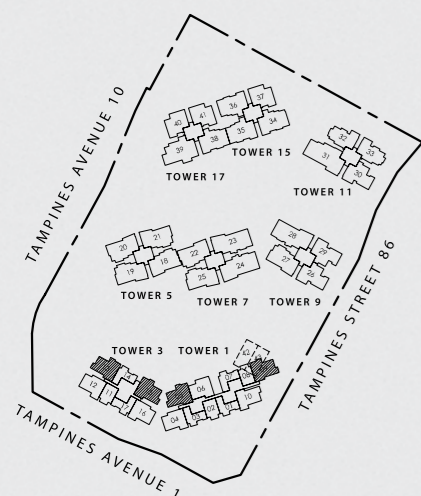
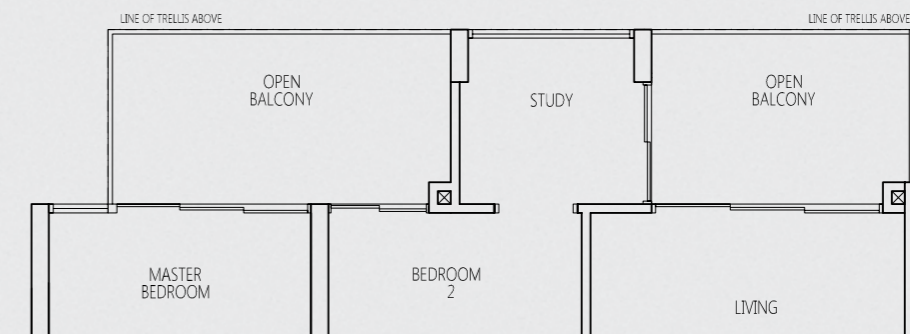
#16-09 (mirror unit)
#16-13



TYPE BST1

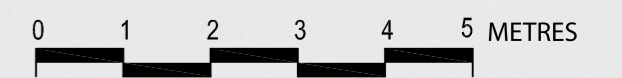
2 - BEDROOM + STUDY
87 sq m / 936 sq ft

#16-05
#16-15 (mirror unit)



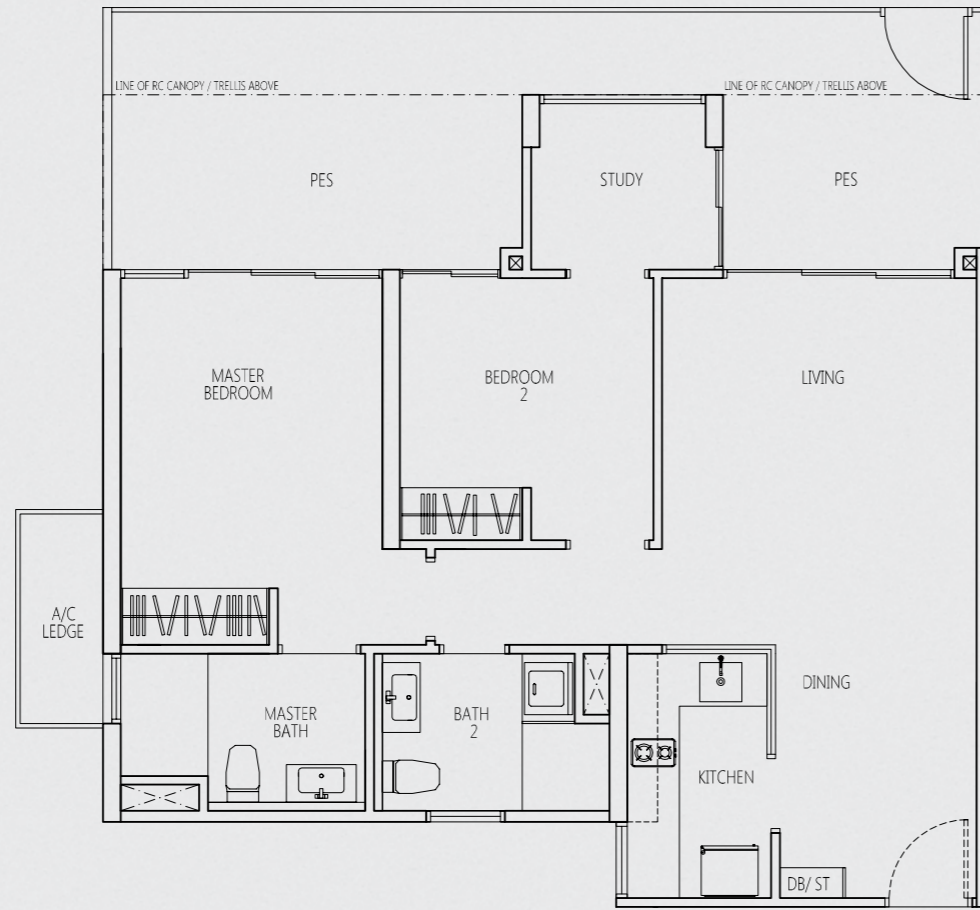
KEY PLAN

Area includes A/C ledge, balcony, PES, roof terrace and void area. Some units are mirror images of the apartment plans shown in the brochure. Please refer to the key plans for orientation. The plans are subject to change as may be approved by the relevant authorities. All floor areas are approximate measurements only and are subject to government resurvey. Abbreviation: A/C ledge (Aircon Ledge), PES (Private Enclosed Space), SC (Shoe Cabinet), ST (Store)

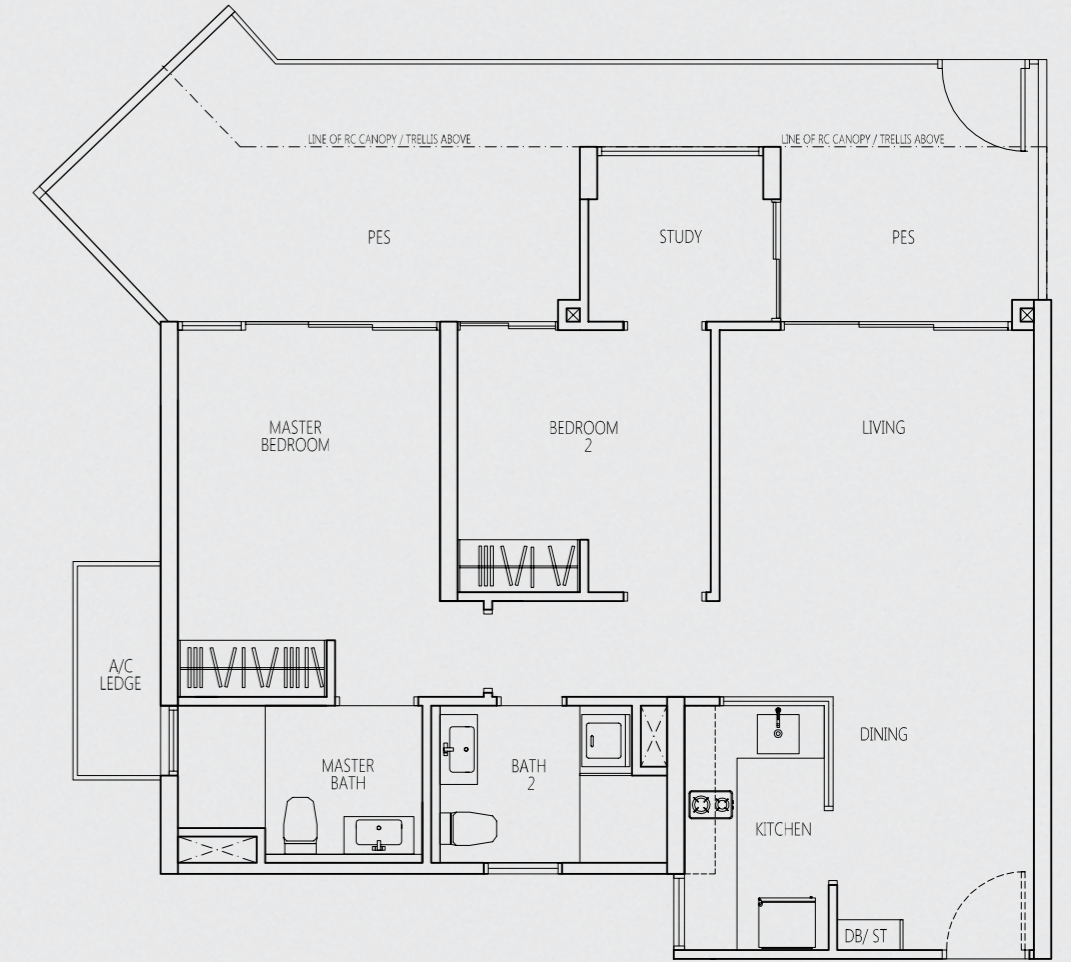


2-BEDROOM + STUDY

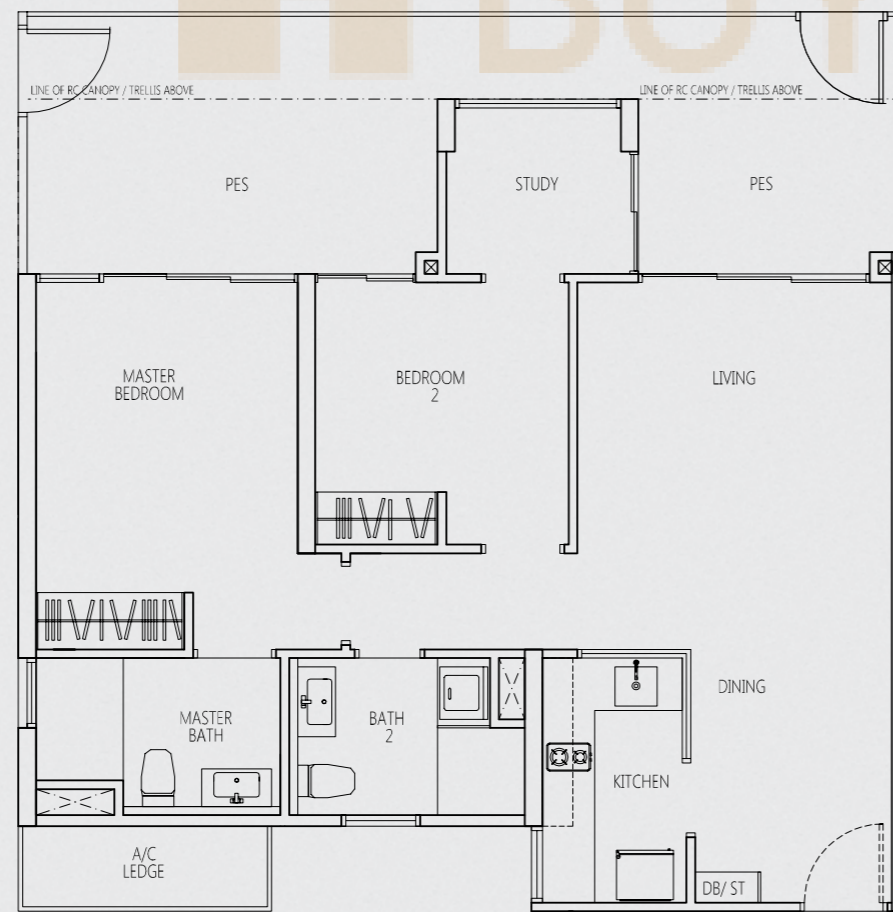
TYPE BSp
 2 - BEDROOM + STUDY
 98 sq m / 1055 sq ft
 #02-15 (mirror unit)



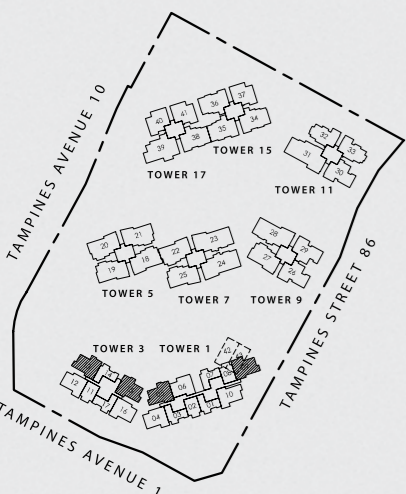
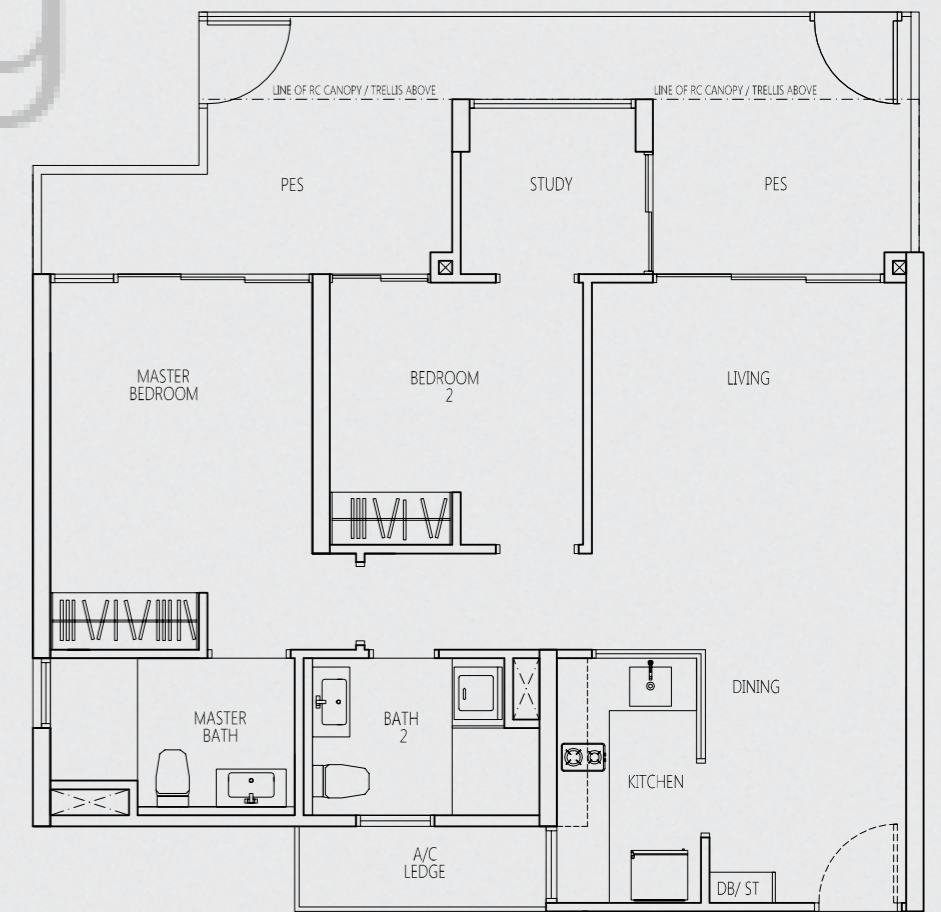
TYPE BSp2
 2 - BEDROOM + STUDY
 101 sq m / 1087 sq ft
 #02-05



TYPE BSp1
 2 - BEDROOM + STUDY
 99 sq m / 1066 sq ft
 #02-13

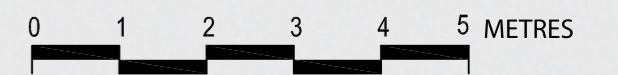


TYPE BSp3
 2 - BEDROOM + STUDY
 95 sq m / 1023 sq ft
 #02-09 (mirror unit)



KEY PLAN

Area includes A/C ledge, balcony, PES, roof terrace and void area. Some units are mirror images of the apartment plans shown in the brochure. Please refer to the key plans for orientation. The plans are subject to change as may be approved by the relevant authorities. All floor areas are approximate measurements only and are subject to government resurvey. Abbreviation: A/C ledge (Aircon Ledge), PES (Private Enclosed Space), SC (Shoe Cabinet), ST (Store)

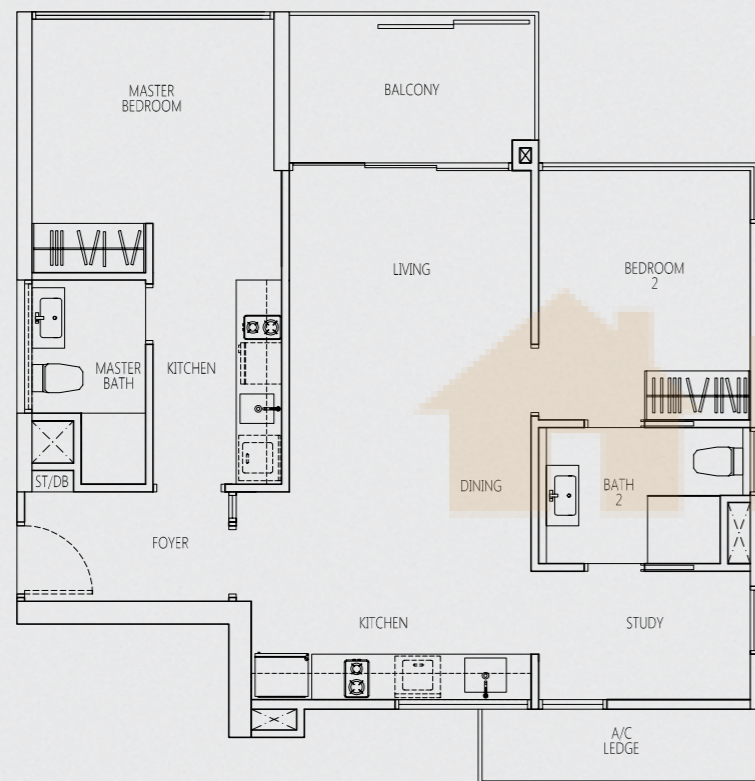


2-BEDROOM + STUDY

TYPE TR-BS

2 - BEDROOM + STUDY
82 sq m / 883 sq ft

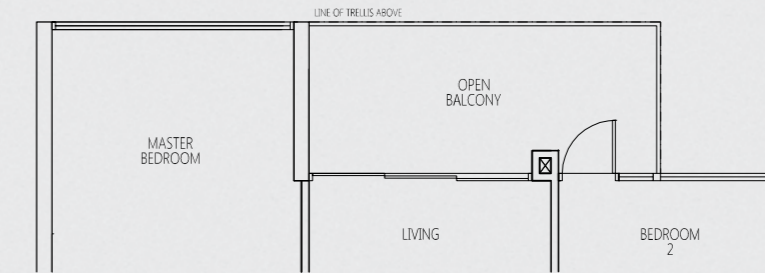
#02-37 TO #15-37
#02-40 TO #15-40 (mirror unit)
#02-41 TO #15-41



TYPE TR-BST

2 - BEDROOM + STUDY
85 sq m / 915 sq ft

#16-37
#16-40 (mirror unit)
#16-41

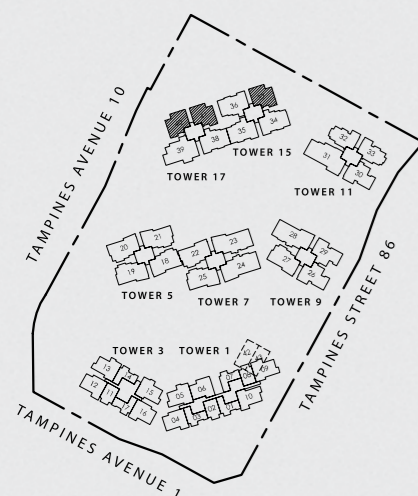
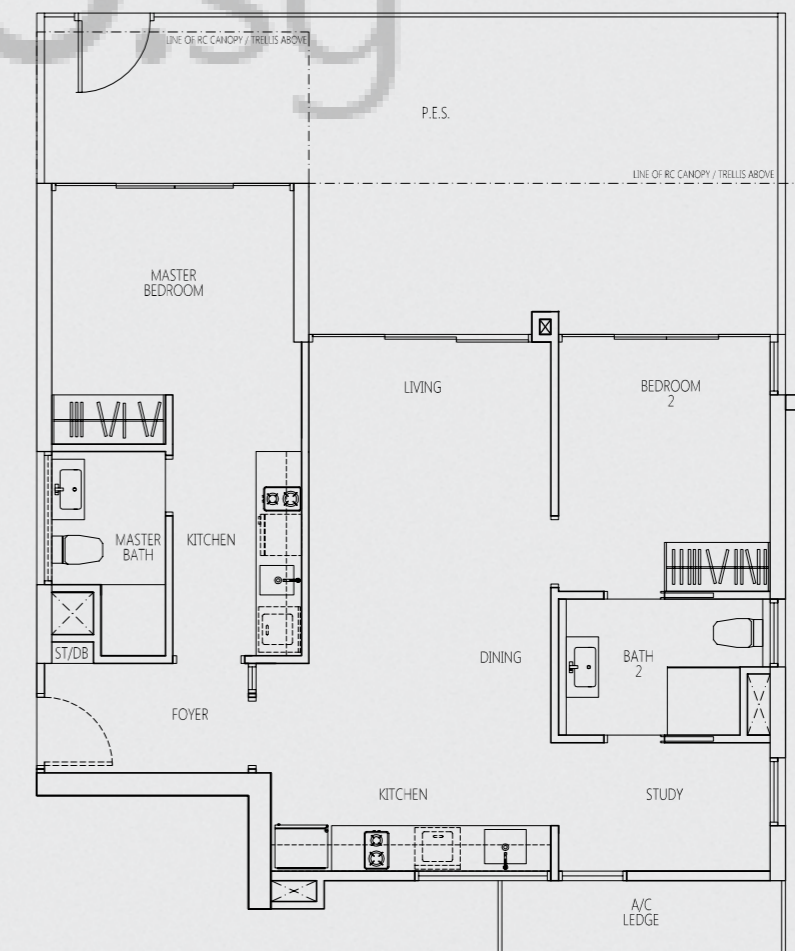


TYPE TR-BSp

2 - BEDROOM + STUDY
110 sq m / 1184 sq ft

#01-37
#01-40 (mirror unit)
#01-41

HIGH CEILING
HIGH CEILING
HIGH CEILING



KEY PLAN

Area includes A/C ledge, balcony, P.E.S., roof terrace and void area. Some units are mirror images of the apartment plans shown in the brochure. Please refer to the key plans for orientation. The plans are subject to change as may be approved by the relevant authorities. All floor areas are approximate measurements only and are subject to government resurvey. Abbreviation: A/C ledge (Aircon Ledge), P.E.S. (Private Enclosed Space), SC (Shoe Cabinet), ST (Store)

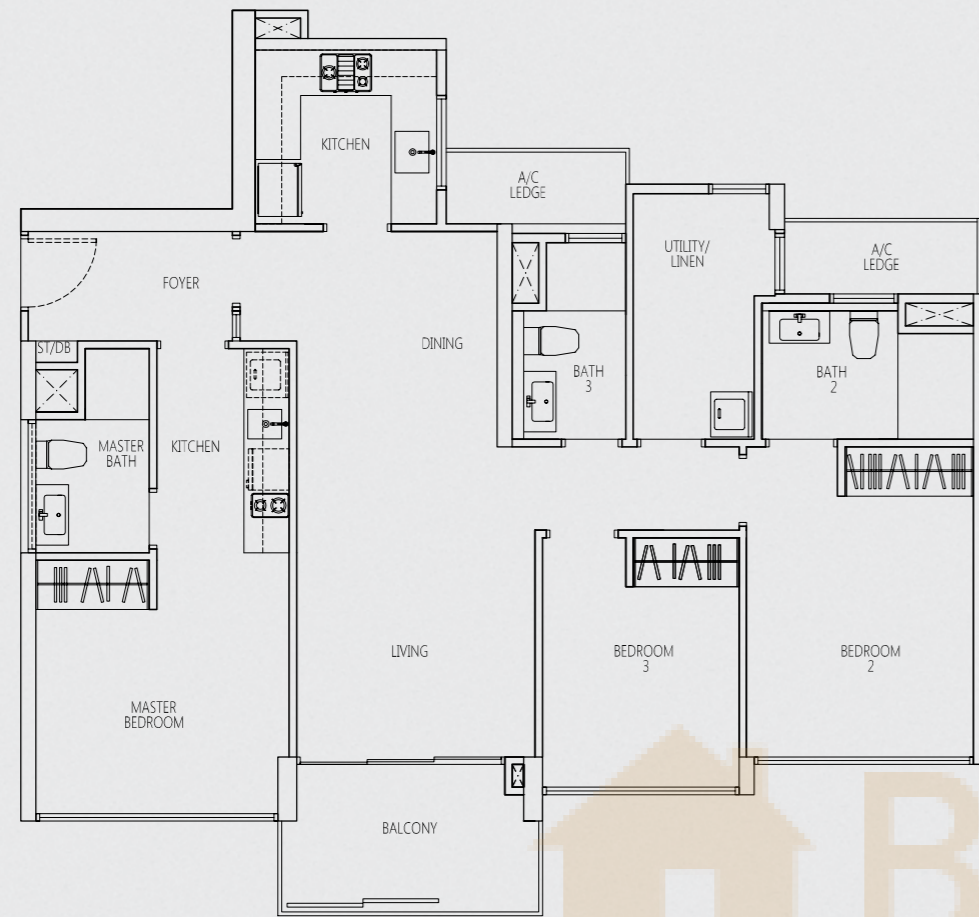
0 1 2 3 4 5 METRES

3-BEDROOM

TYPE TR-C

3 - BEDROOM
108 sq m / 1163 sq ft

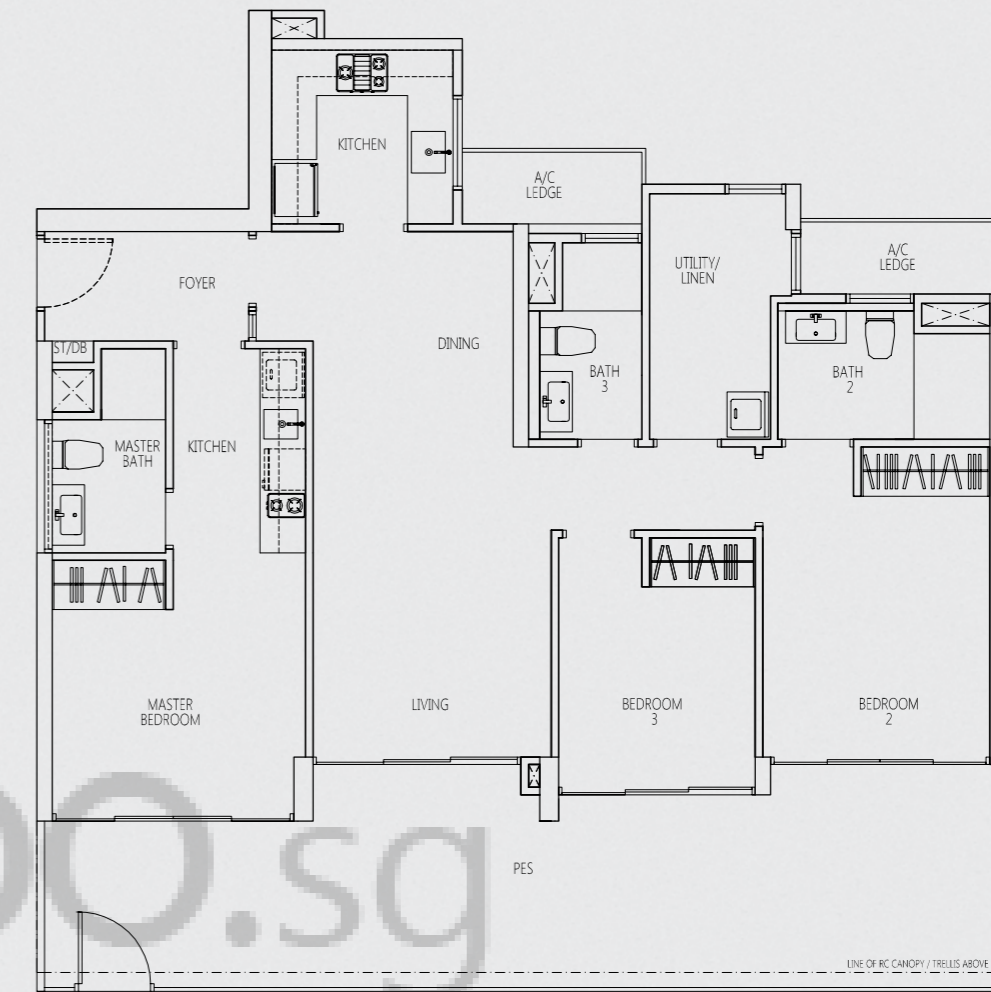
#03-34 TO #15-34
#03-35 TO #15-35 (mirror unit)
#02-36 TO #15-36
#03-38 TO #15-38



TYPE TR-Cp

3 - BEDROOM
136 sq m / 1464 sq ft

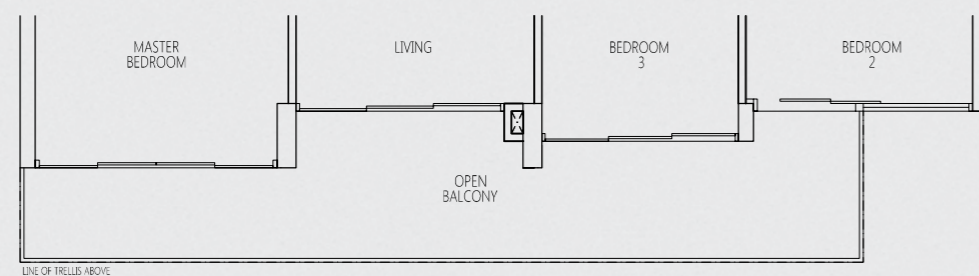
#01-36 **HIGH CEILING**



TYPE TR-CT

3 - BEDROOM
120 sq m / 1292 sq ft

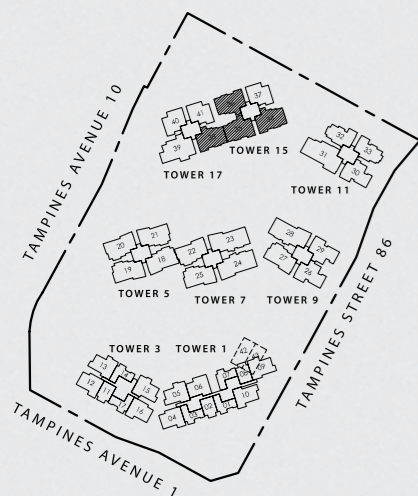
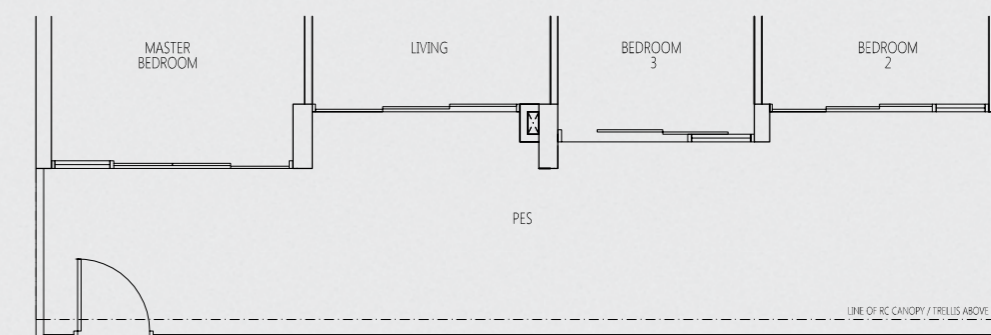
#16-34
#16-35 (mirror unit)
#16-36
#16-38



TYPE TR-Cp1

3 - BEDROOM
136 sq m / 1464 sq ft

#02-34
#02-35 (mirror unit)
#02-38



KEY PLAN

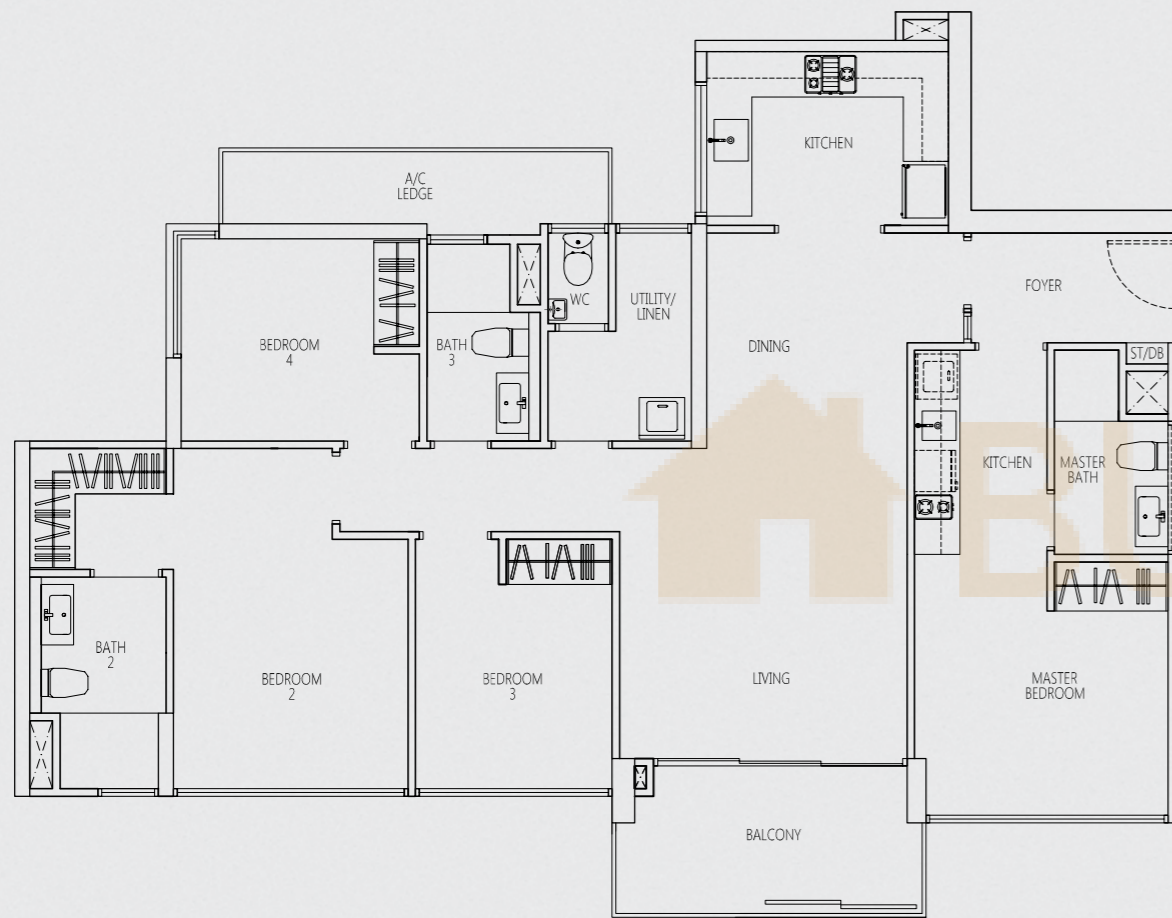
Area includes A/C ledge, balcony, PES, roof terrace and void area. Some units are mirror images of the apartment plans shown in the brochure. Please refer to the key plans for orientation. The plans are subject to change as may be approved by the relevant authorities. All floor areas are approximate measurements only and are subject to government resurvey. Abbreviation: A/C ledge (Aircon Ledge), PES (Private Enclosed Space), SC (Shoe Cabinet), ST (Store)

0 1 2 3 4 5 METRES

4-BEDROOM

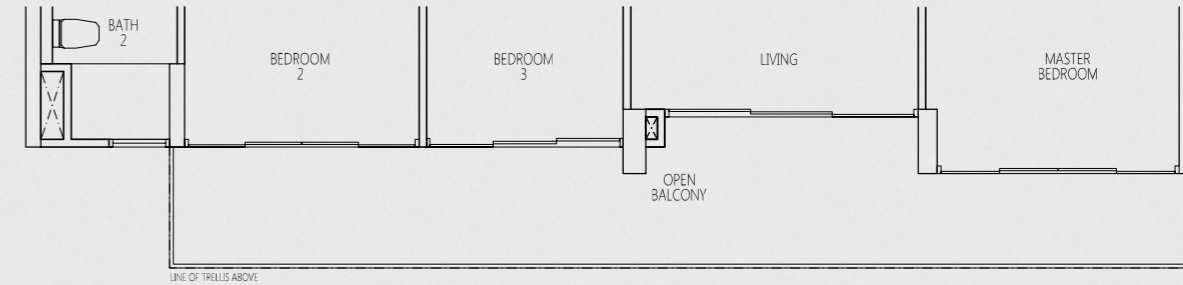
TYPE TR-D
4 - BEDROOM
128 sq m / 1378 sq ft

#03-39 TO #15-39



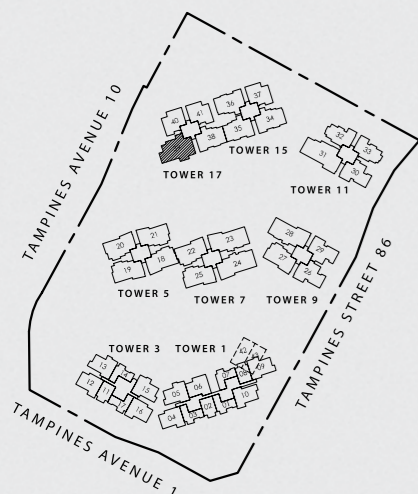
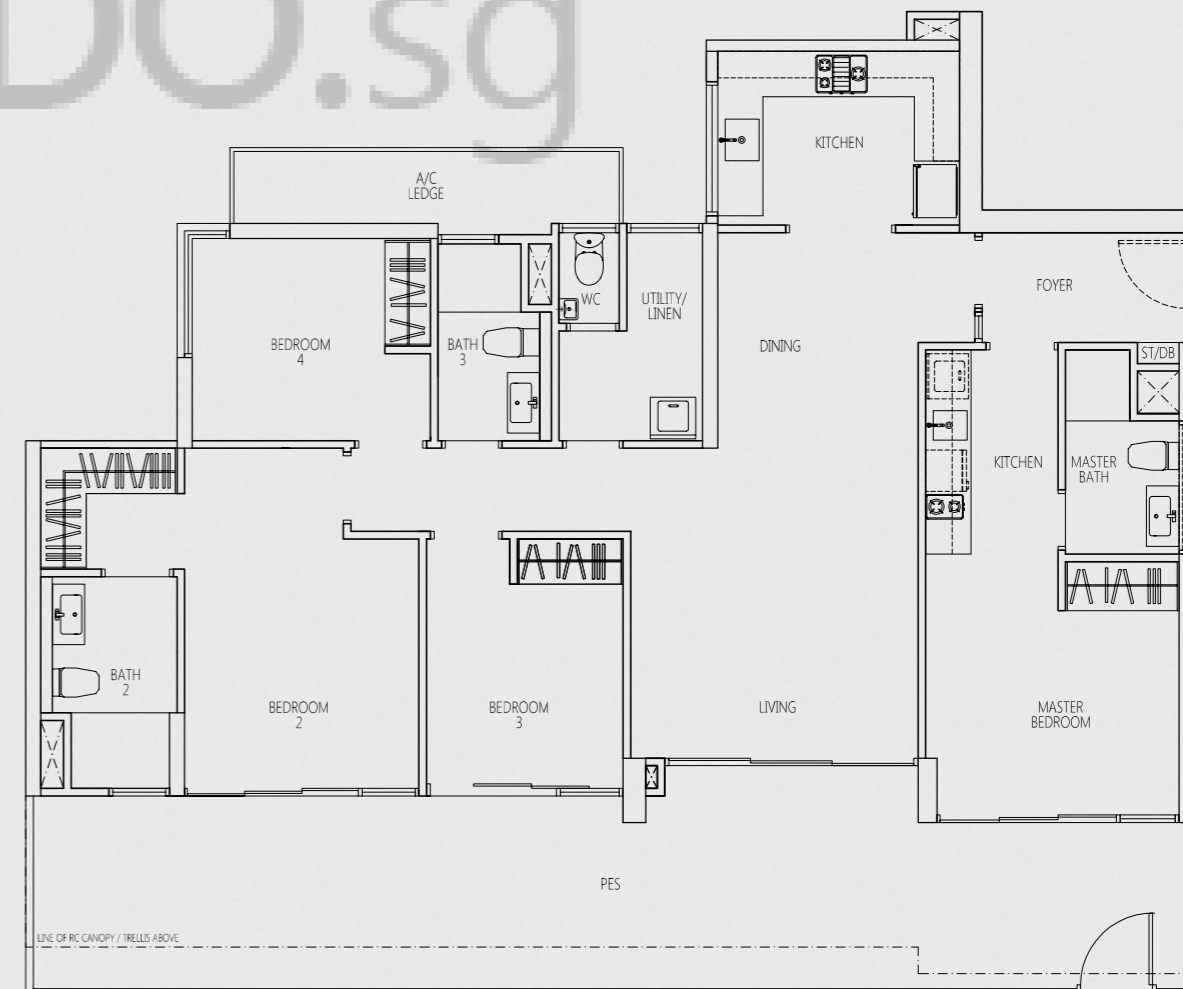
TYPE TR-DT
4 - BEDROOM
142 sq m / 1528 sq ft

#16-39



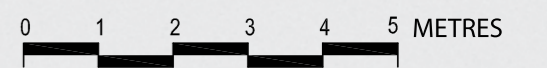
TYPE TR-Dp
4 - BEDROOM
161 sq m / 1733 sq ft

#02-39



KEY PLAN

Area includes A/C ledge, balcony, PES, roof terrace and void area. Some units are mirror images of the apartment plans shown in the brochure. Please refer to the key plans for orientation. The plans are subject to change as may be approved by the relevant authorities. All floor areas are approximate measurements only and are subject to government resurvey.
Abbreviation: A/C ledge (Aircon Ledge), PES (Private Enclosed Space), SC (Shoe Cabinet), ST (Store)

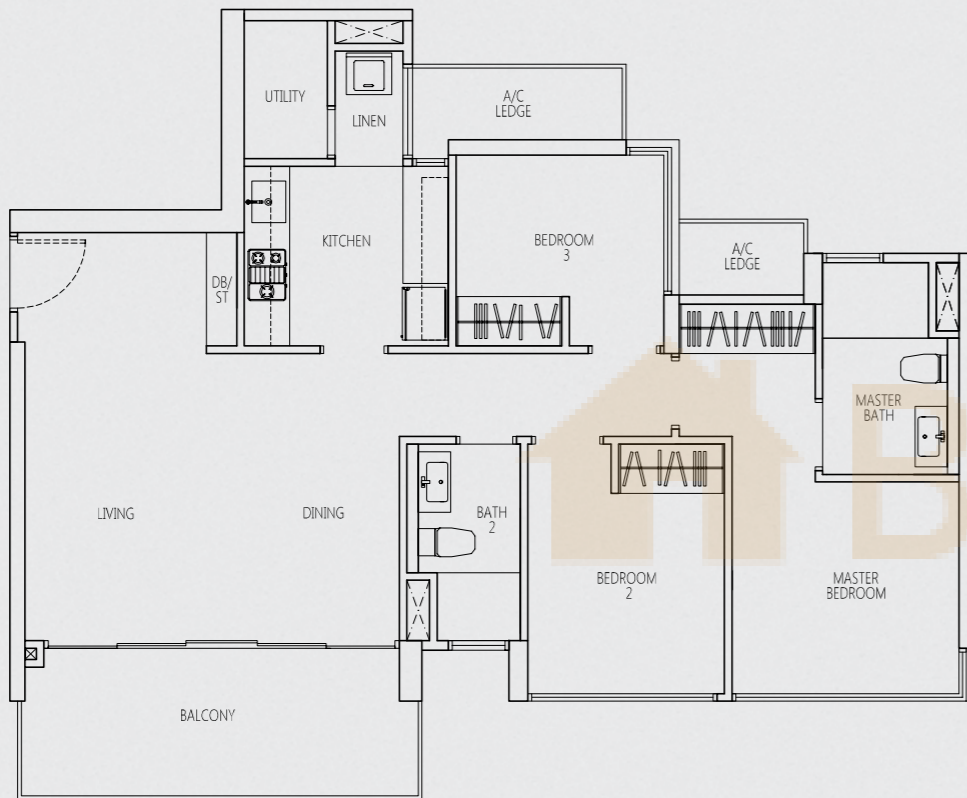


3-BEDROOM

TYPE Cc1

3 - BEDROOM
96 sq m / 1033 sq ft

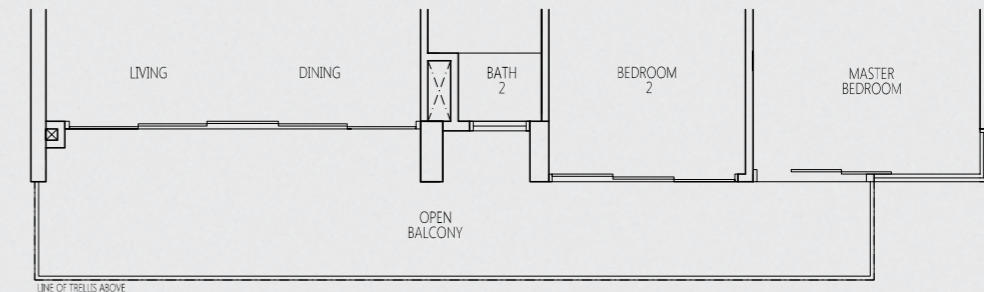
#03-26 TO #15-26
#03-29 TO #15-29 (mirror unit)
#03-30 TO #15-30



TYPE Cc1T

3 - BEDROOM
104 sq m / 1119 sq ft

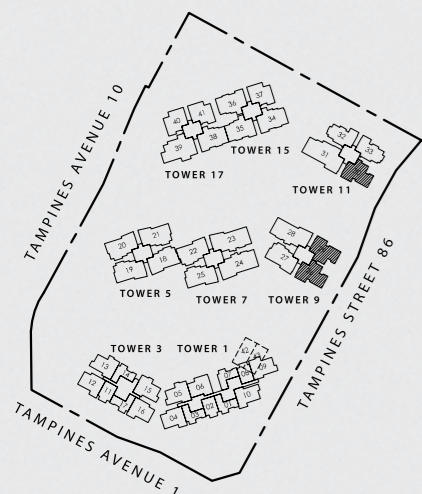
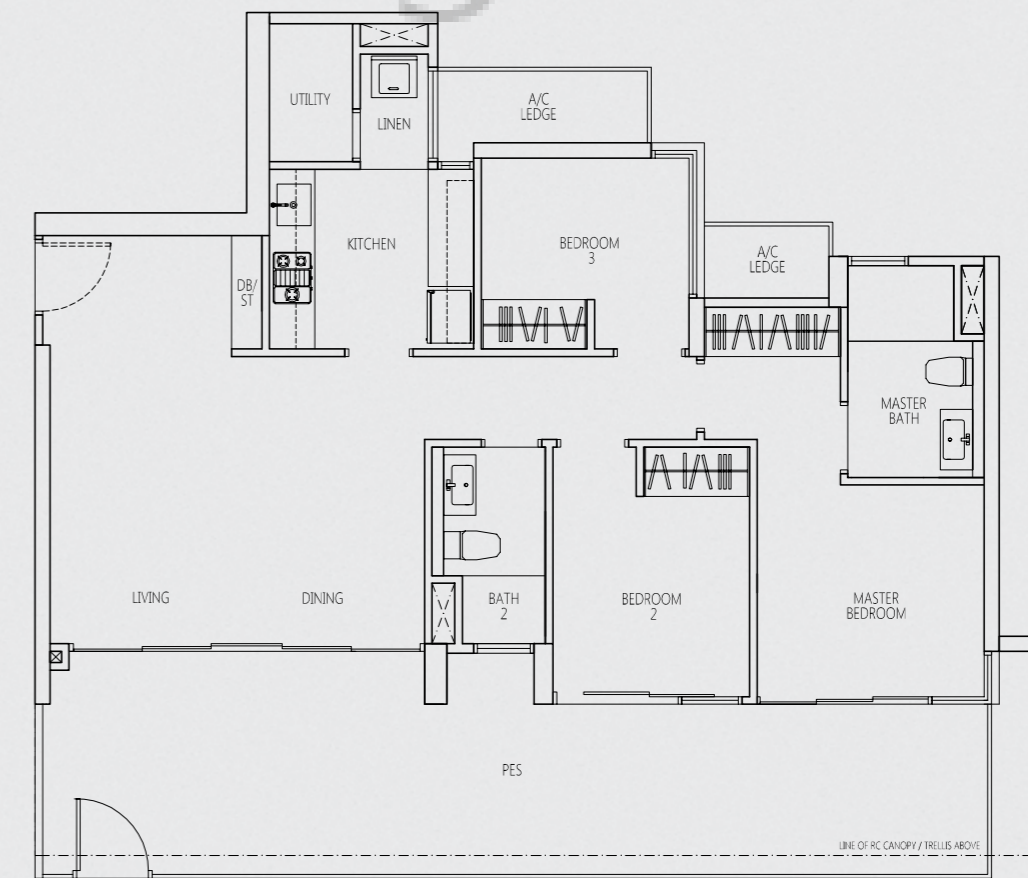
#16-26
#16-29 (mirror unit)
#16-30



TYPE Cc1p

3 - BEDROOM
119 sq m / 1281 sq ft

#02-26
#02-29 (mirror unit)
#02-30



KEY PLAN

Area includes A/C ledge, balcony, PES, roof terrace and void area. Some units are mirror images of the apartment plans shown in the brochure. Please refer to the key plans for orientation. The plans are subject to change as may be approved by the relevant authorities. All floor areas are approximate measurements only and are subject to government resurvey. Abbreviation: A/C ledge (Aircon Ledge), PES (Private Enclosed Space), SC (Shoe Cabinet), ST (Store)

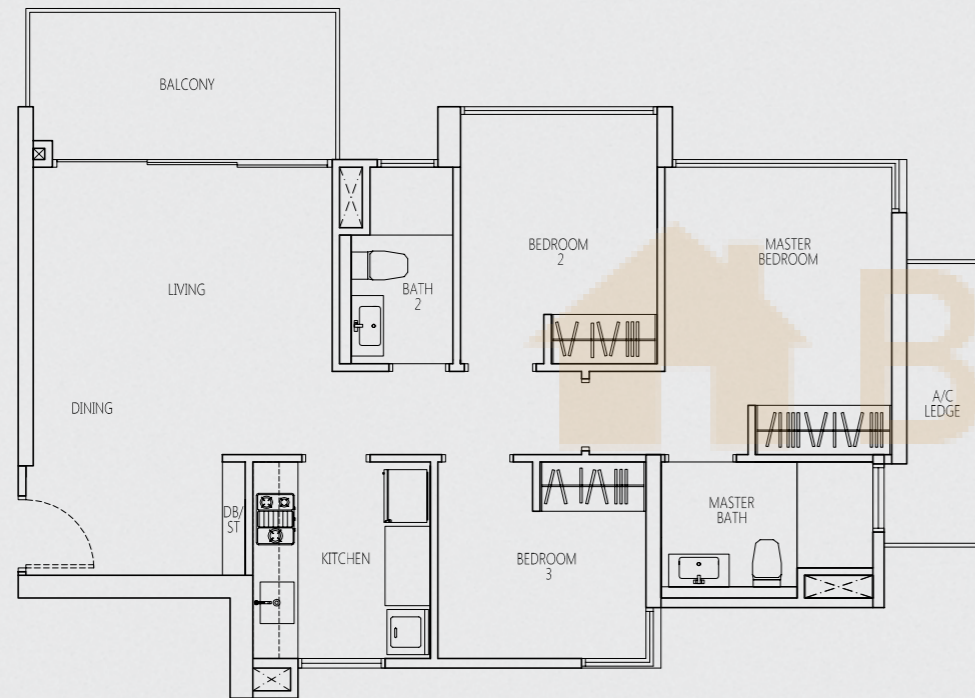
0 1 2 3 4 5 METRES

3-BEDROOM

TYPE Cc2

3 - BEDROOM
84 sq m / 904 sq ft

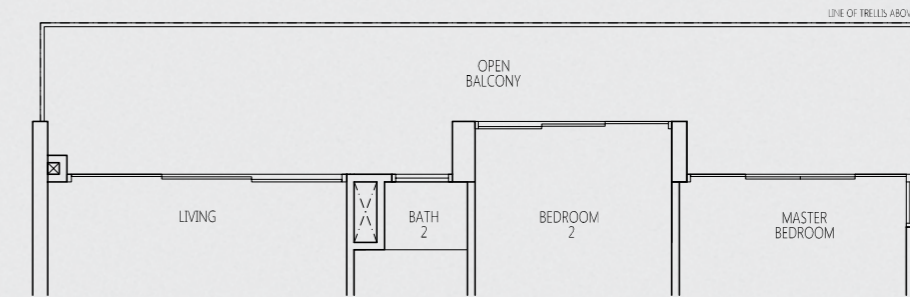
#02-32 TO #15-32 (mirror unit)
#02-33 TO #15-33



TYPE Cc2T

3 - BEDROOM
97 sq m / 1044 sq ft

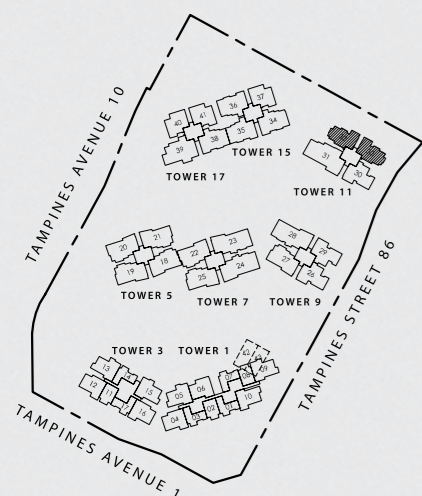
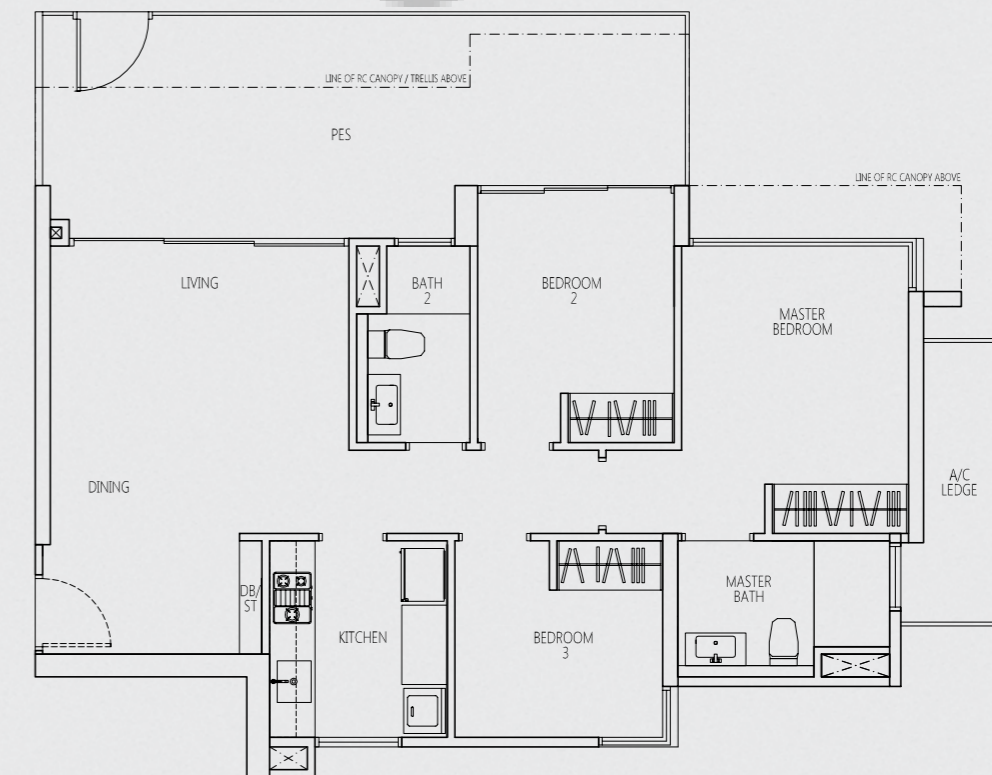
#16-32 (mirror unit)
#16-33



TYPE Cc2p

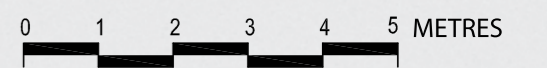
3 - BEDROOM
100 sq m / 1076 sq ft

#01-32 (mirror unit) HIGH CEILING
#01-33 HIGH CEILING



KEY PLAN

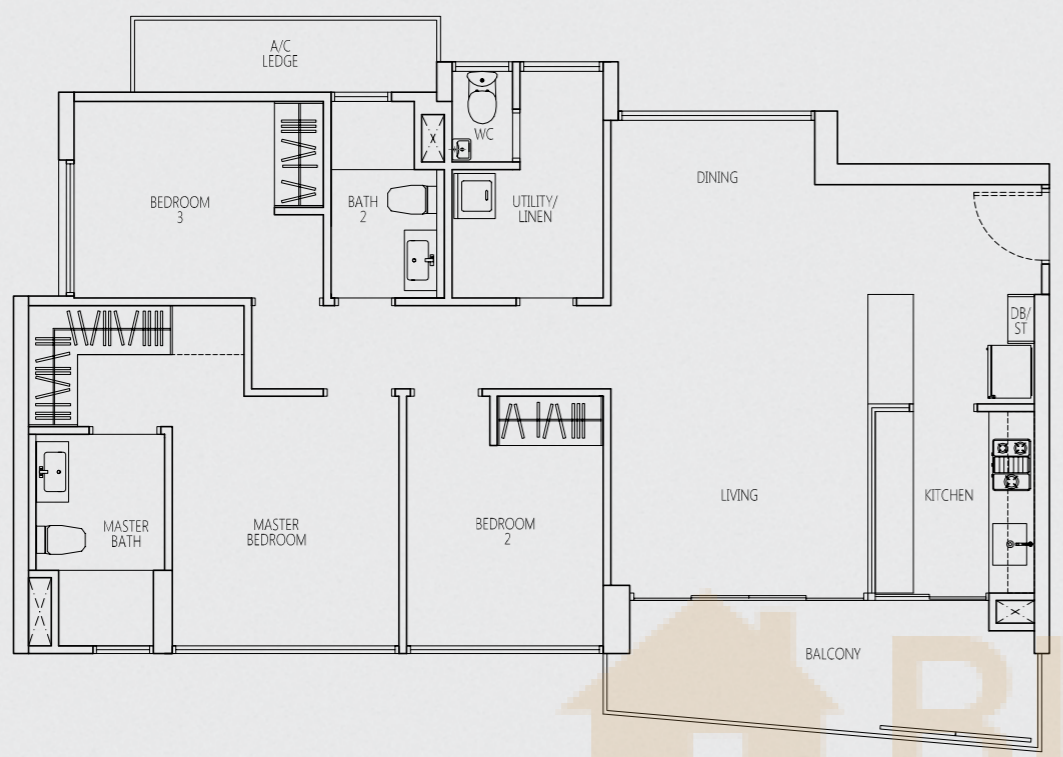
Area includes A/C ledge, balcony, PES, roof terrace and void area. Some units are mirror images of the apartment plans shown in the brochure. Please refer to the key plans for orientation. The plans are subject to change as may be approved by the relevant authorities. All floor areas are approximate measurements only and are subject to government resurvey. Abbreviation: A/C ledge (Aircon Ledge), PES (Private Enclosed Space), SC (Shoe Cabinet), ST (Store)



3-BEDROOM VERANDAH HOMES

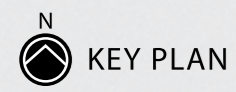
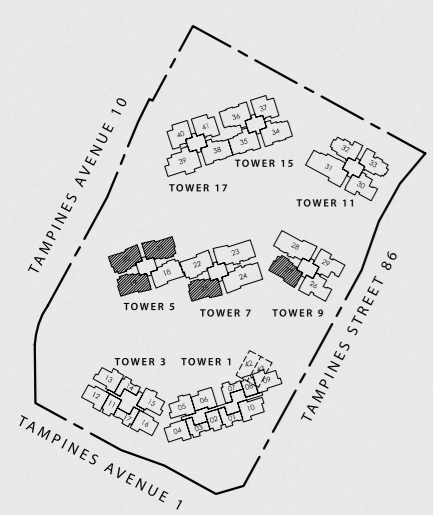
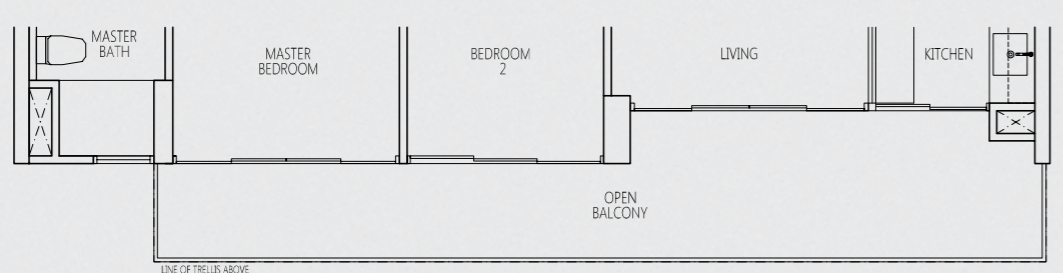
TYPE VH-C
3 - BEDROOM
104 sq m / 1119 sq ft

#03-19 TO #15-19
#02-20 TO #15-20 (mirror unit)
#03-21 TO #15-21
#03-25 TO #15-25
#03-27 TO #15-27



TYPE VH-CT
3 - BEDROOM
113 sq m / 1216 sq ft

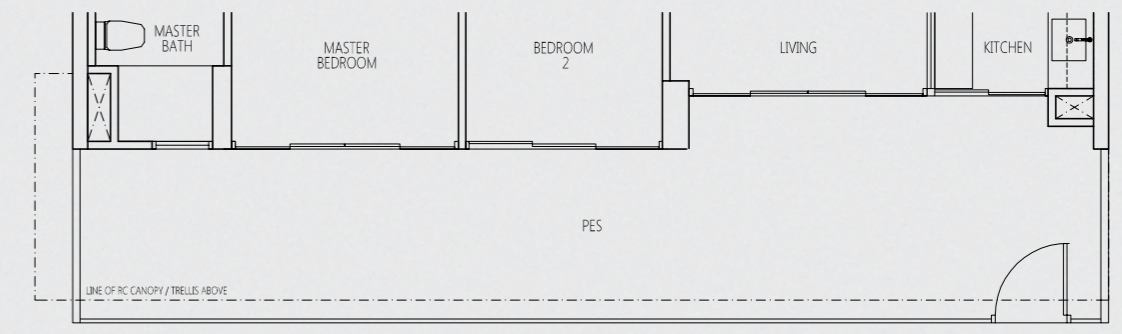
#16-19
#16-20 (mirror unit)
#16-21
#16-25
#16-27



Area includes A/C ledge, balcony, PES, roof terrace and void area. Some units are mirror images of the apartment plans shown in the brochure. Please refer to the key plans for orientation. The plans are subject to change as may be approved by the relevant authorities. All floor areas are approximate measurements only and are subject to government resurvey. Abbreviation: A/C ledge (Aircon Ledge), PES (Private Enclosed Space), SC (Shoe Cabinet), ST (Store)

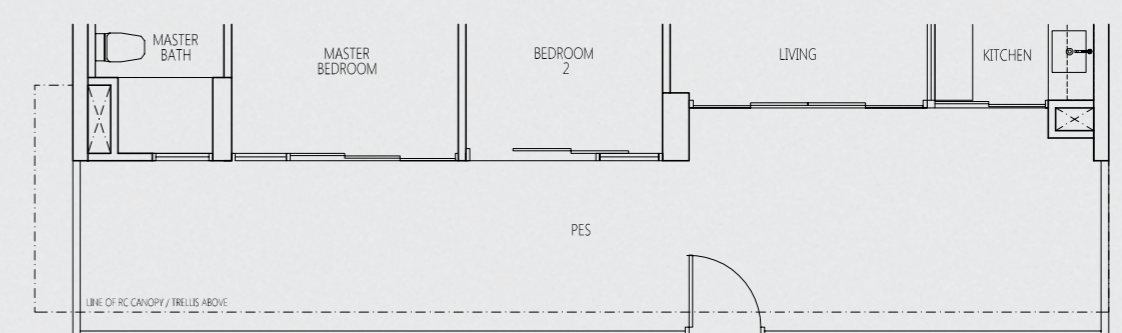
TYPE VH-Cp
3 - BEDROOM
129 sq m / 1389 sq ft

#01-20 (mirror unit) **HIGH CEILING**



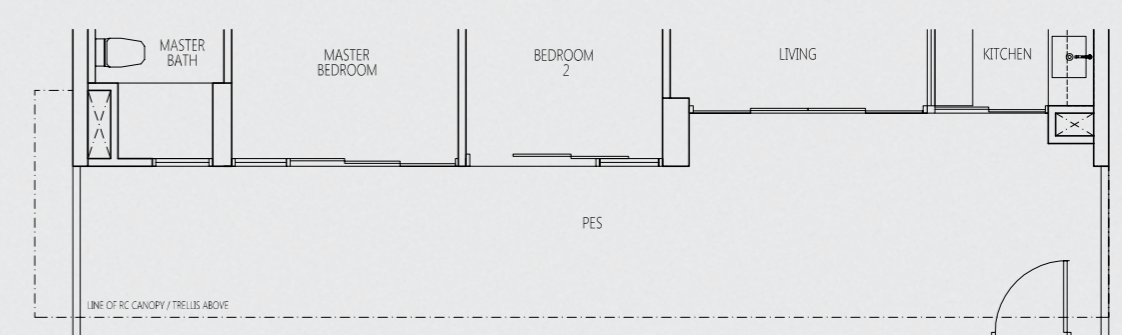
TYPE VH-Cp1
3 - BEDROOM
129 sq m / 1389 sq ft

#02-25



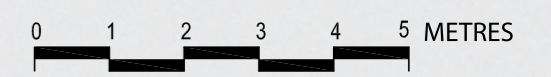
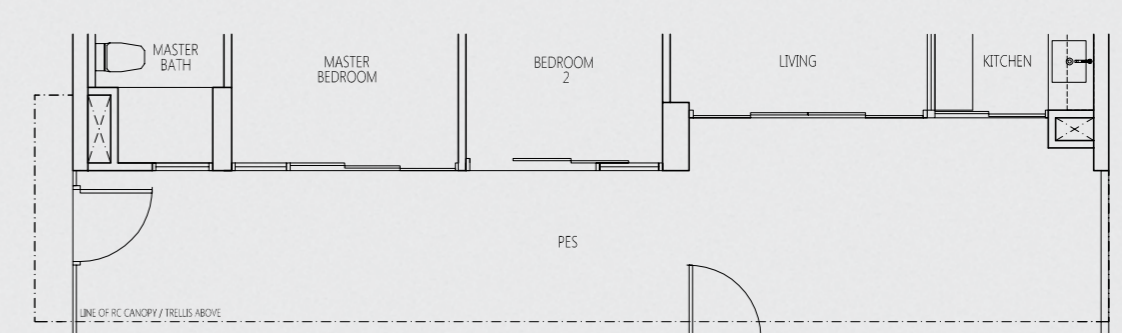
TYPE VH-Cp2
3 - BEDROOM
129 sq m / 1389 sq ft

#02-27



TYPE VH-Cp3
3 - BEDROOM
129 sq m / 1389 sq ft

#02-19

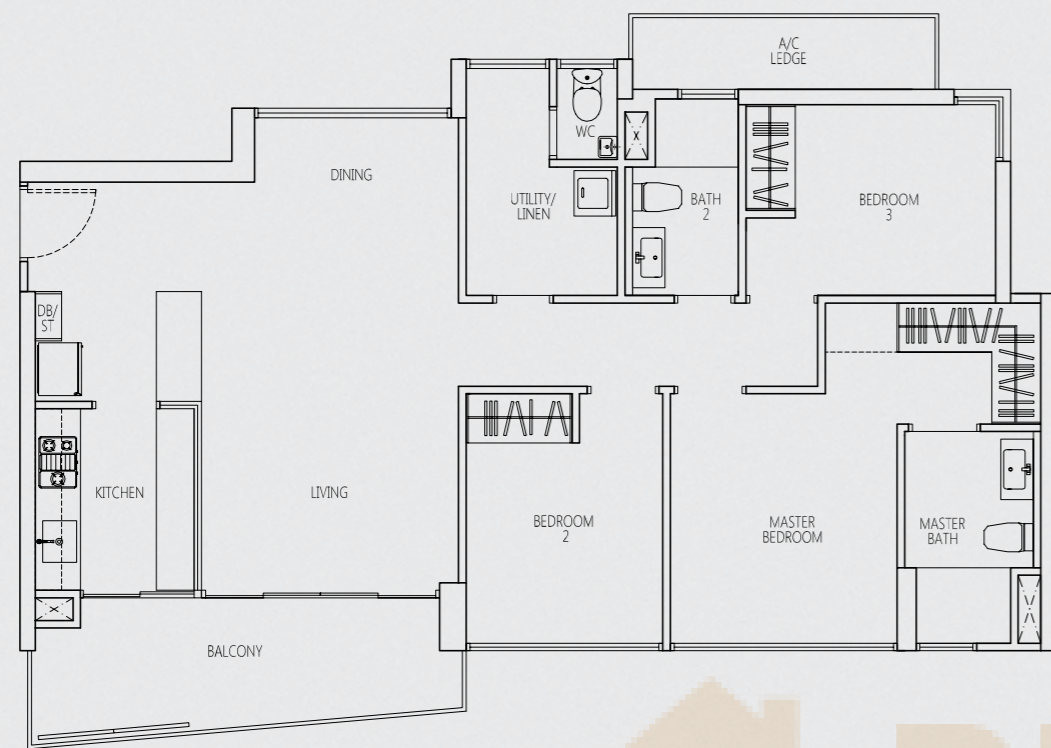


3-BEDROOM VERANDAH HOMES

TYPE VH-Ca

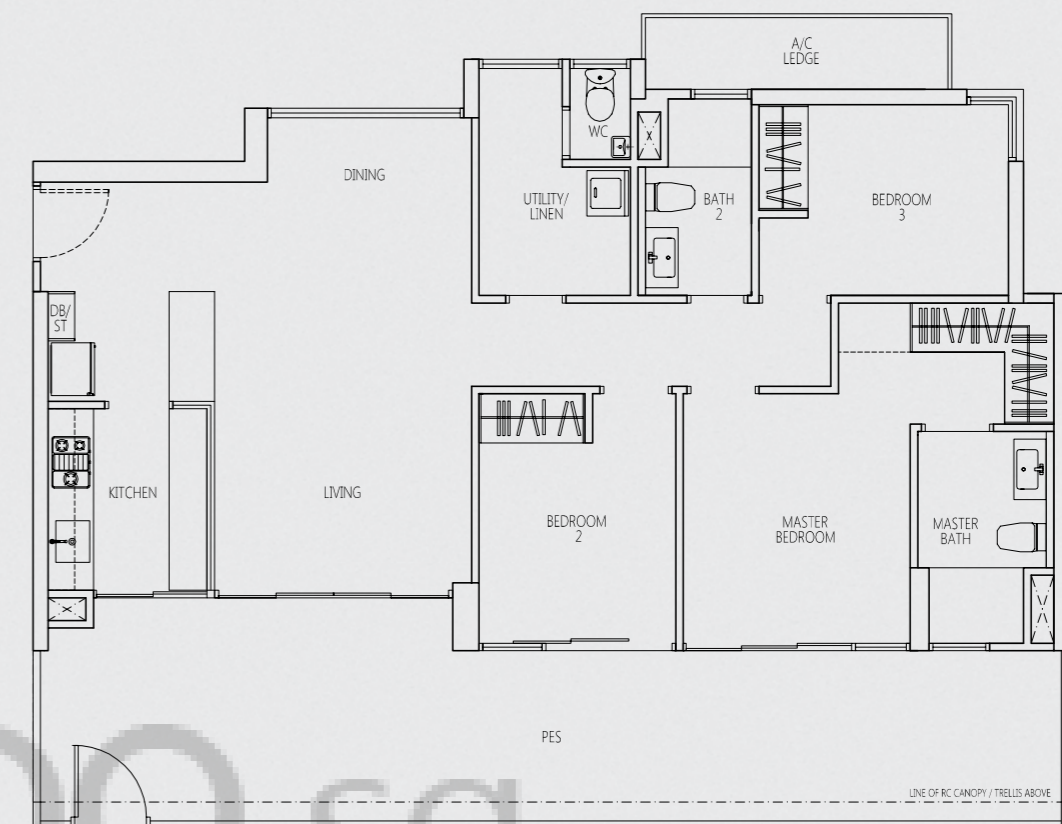
3 - BEDROOM
104 sq m / 1119 sq ft

#03-18 TO #15-18
#03-22 TO #15-22



TYPE VH-Cap

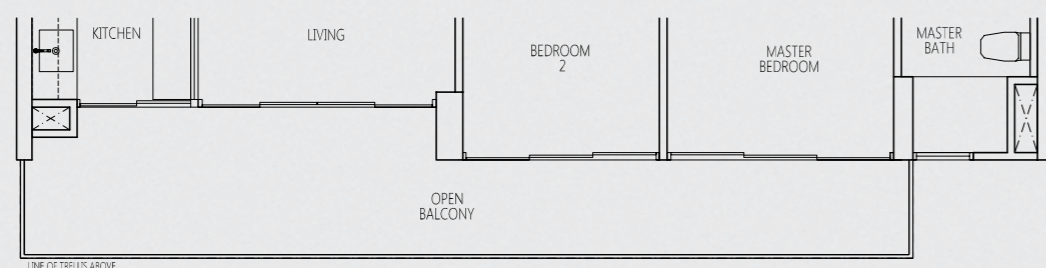
3 - BEDROOM
129 sq m / 1389 sq ft #02-22



TYPE VH-CaT

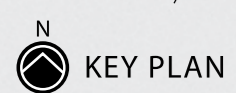
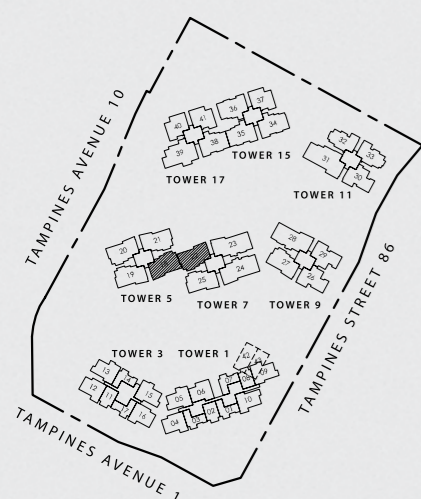
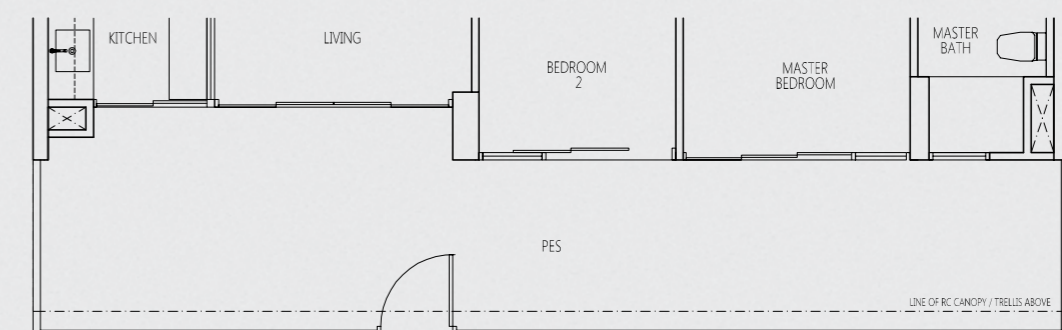
3 - BEDROOM
113 sq m / 1216 sq ft

#16-18
#16-22

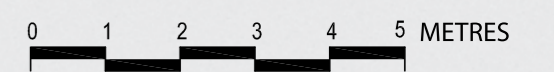


TYPE VH-Cap1

3 - BEDROOM
129 sq m / 1389 sq ft #02-18



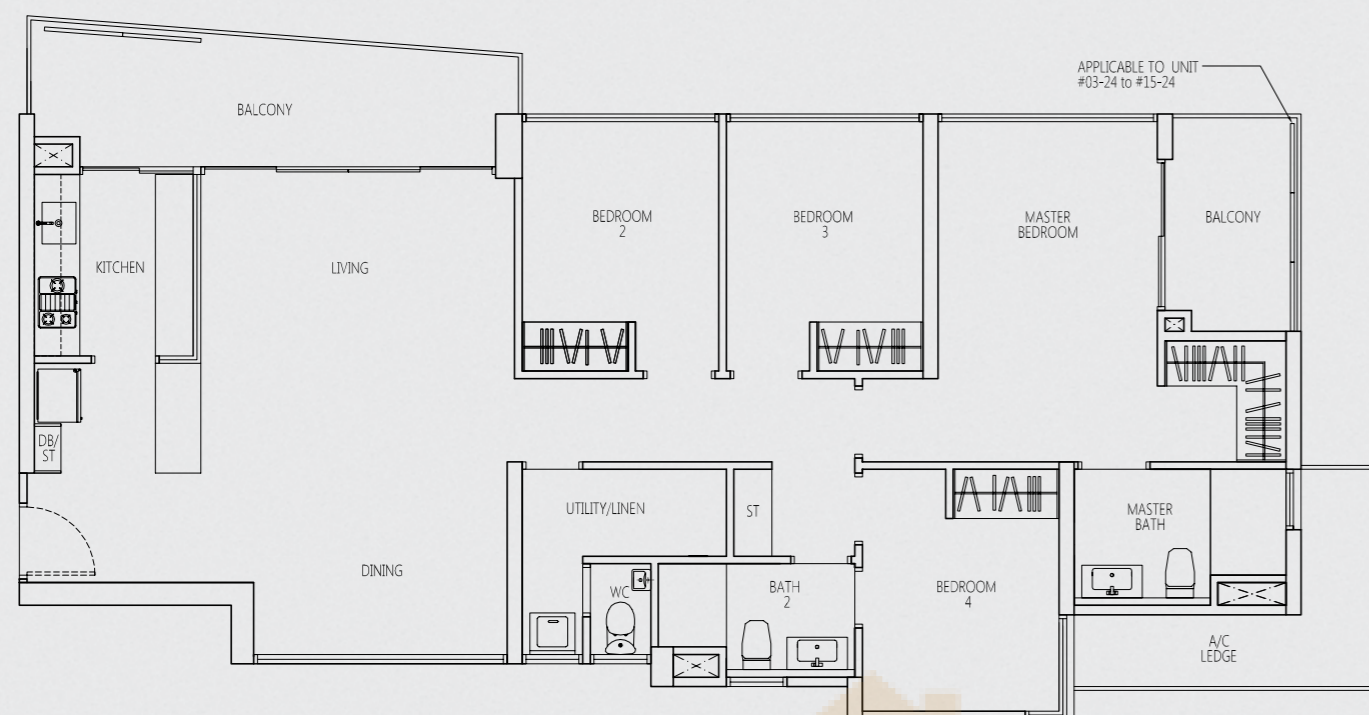
Area includes A/C ledge, balcony, PES, roof terrace and void area. Some units are mirror images of the apartment plans shown in the brochure. Please refer to the key plans for orientation. The plans are subject to change as may be approved by the relevant authorities. All floor areas are approximate measurements only and are subject to government resurvey. Abbreviation: A/C ledge (Aircon Ledge), PES (Private Enclosed Space), SC (Shoe Cabinet), ST (Store)



4-BEDROOM VERANDAH HOMES

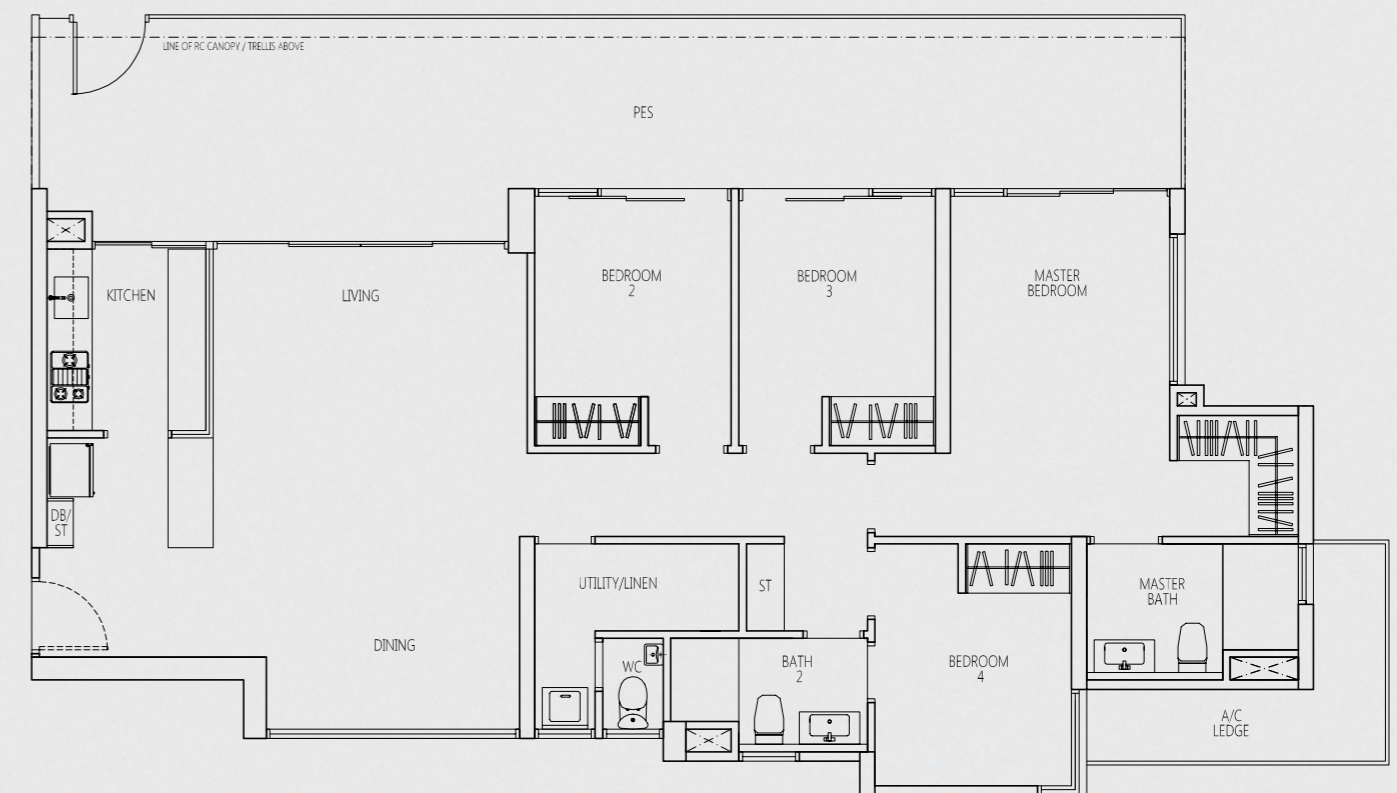
TYPE VH-D
4 - BEDROOM
131 sq m / 1410 sq ft

#03-23 TO #15-23
#03-24 TO #15-24 (mirror unit)
#03-28 TO #15-28 (mirror unit)



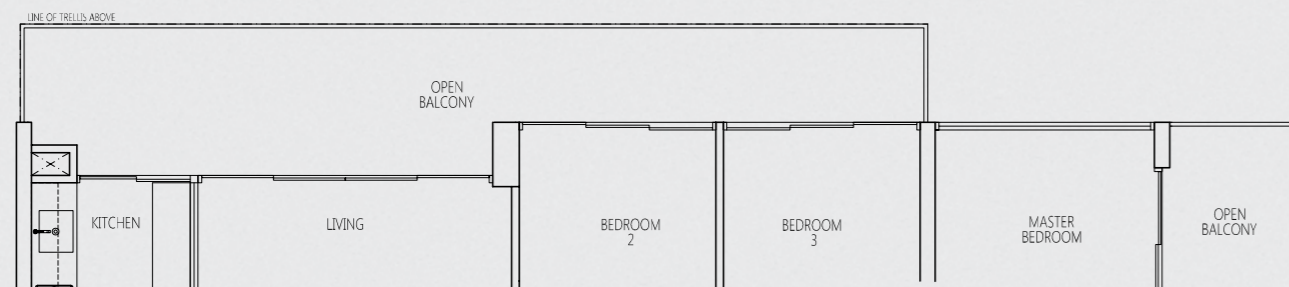
TYPE VH-Dp
4 - BEDROOM
154 sq m / 1658 sq ft

#02-23
#02-28 (mirror unit)



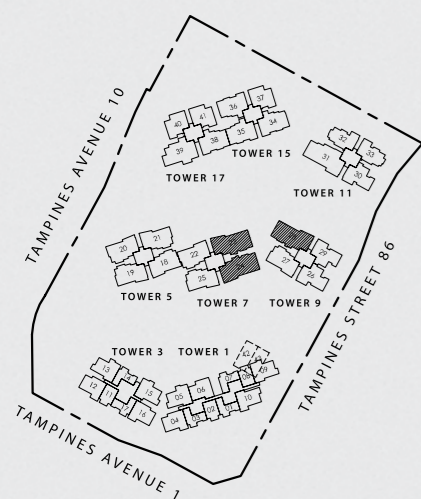
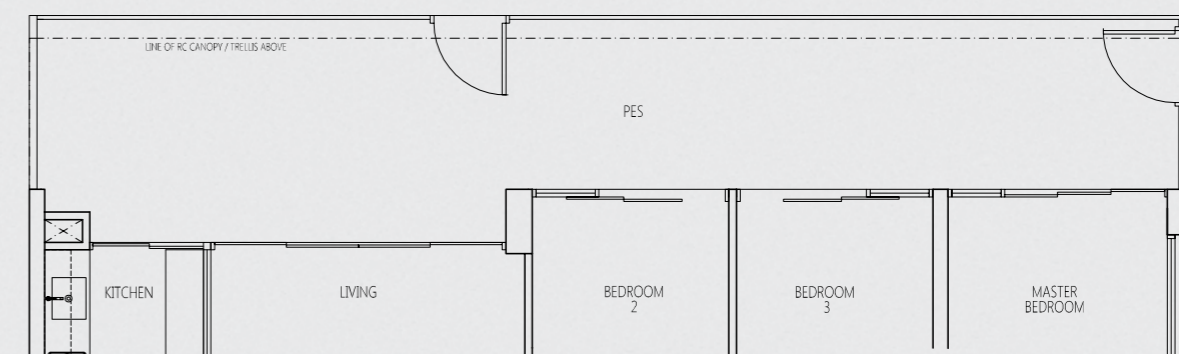
TYPE VH-DT
4 - BEDROOM
140 sq m / 1507 sq ft

#16-23
#16-24 (mirror unit)
#16-28 (mirror unit)



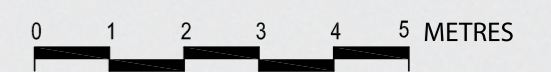
TYPE VH-Dp1
4 - BEDROOM
154 sq m / 1658 sq ft

#02-24 (mirror unit)



KEY PLAN

Area includes A/C ledge, balcony, PES, roof terrace and void area. Some units are mirror images of the apartment plans shown in the brochure. Please refer to the key plans for orientation. The plans are subject to change as may be approved by the relevant authorities. All floor areas are approximate measurements only and are subject to government resurvey. Abbreviation: A/C ledge (Aircon Ledge), PES (Private Enclosed Space), SC (Shoe Cabinet), ST (Store)



5-BEDROOM

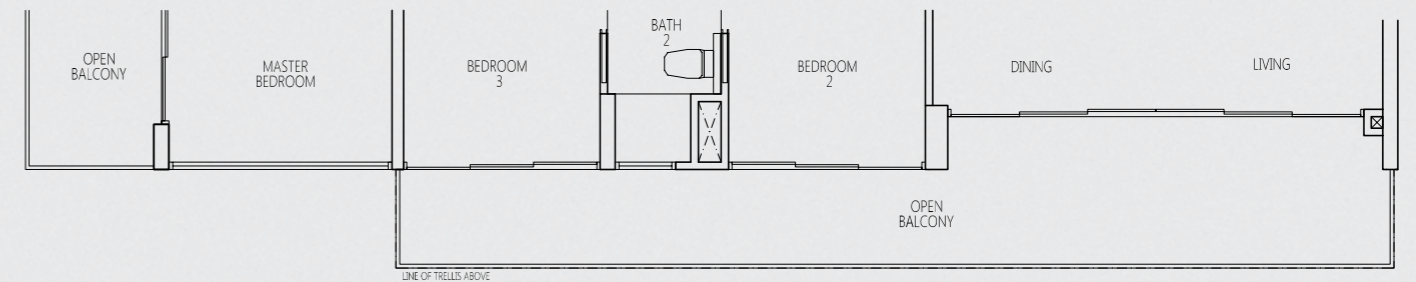
TYPE E

5 - BEDROOM
150 sq m / 1615 sq ft #03-31 TO #15-31



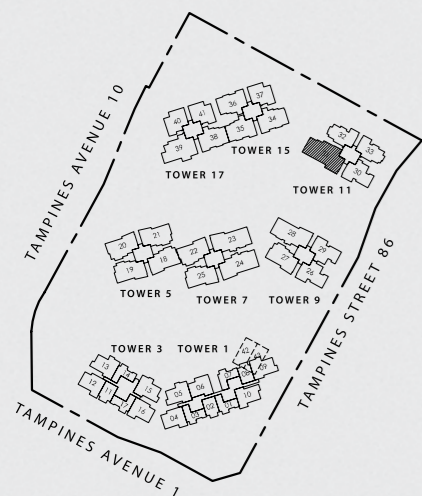
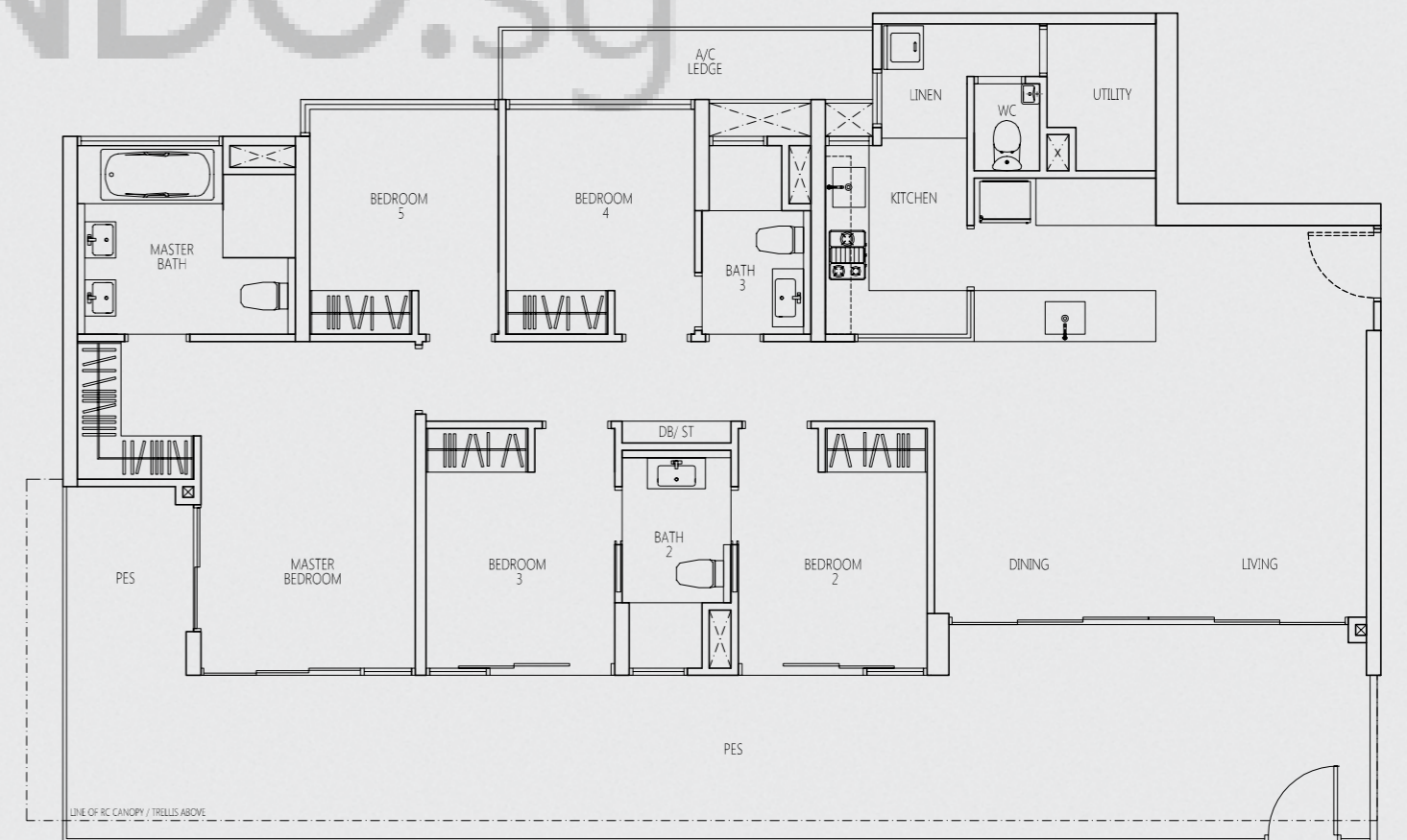
TYPE ET

5 - BEDROOM
159 sq m / 1711 sq ft #16-31



TYPE Ep

5 - BEDROOM
184 sq m / 1981 sq ft #02-31



KEY PLAN

Area includes A/C ledge, balcony, PES, roof terrace and void area. Some units are mirror images of the apartment plans shown in the brochure. Please refer to the key plans for orientation. The plans are subject to change as may be approved by the relevant authorities. All floor areas are approximate measurements only and are subject to government resurvey. Abbreviation: A/C ledge (Aircon Ledge), PES (Private Enclosed Space), SC (Shoe Cabinet), ST (Store)

