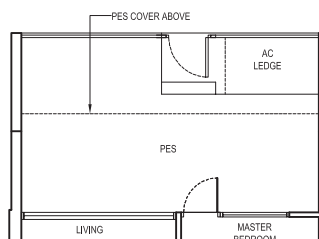


**1 Classic (1 Bedroom)**

Type:  
A1 (p4) - pool deck view  
(inclusive of PES & A/C Ledge)

69 sqm (743 sqft)

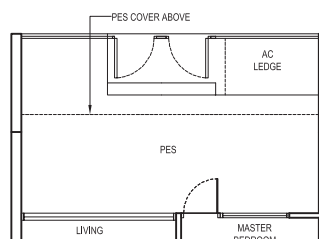
#01-05

**1 Classic (1 Bedroom)**

Type:  
A1 (p4) - pool view  
(inclusive of PES & A/C Ledge)

69 sqm (743 sqft)

#01-04

**1 Classic (1 Bedroom)**

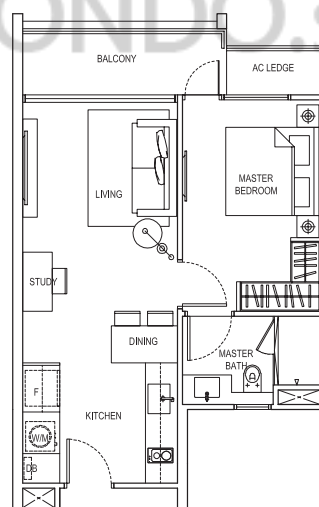
Type:  
A1  
(inclusive of Balcony & A/C Ledge)

54 sqm (581 sqft)

#02-04, #02-05, #03-04, #03-05,  
#03-09, #04-04, #04-05, #04-09

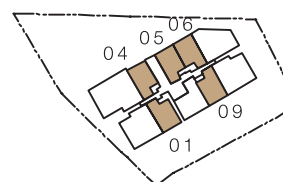
(MIRRORED)

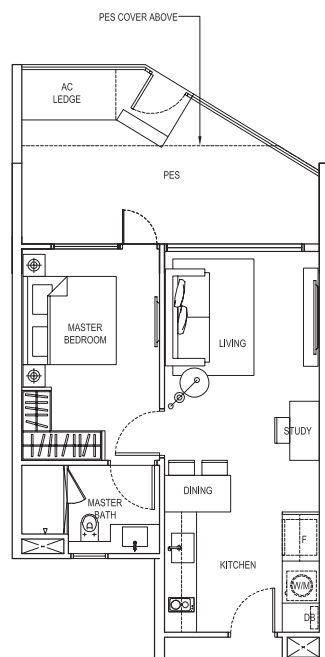
#02-01, #02-06, #03-01, #03-06,  
#04-01, #04-06, #05-01, #05-06



R MAISON

The plans are subject to change as may be required or approved by the relevant authorities. Areas are estimates only and are subject to final survey. Plans are not drawn to scale and do not form part of the contract.



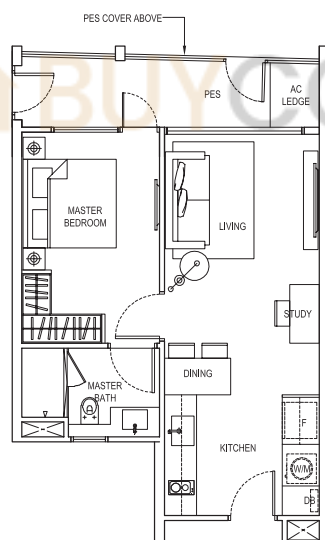


## 1 Classic (1 Bedroom)

Type:  
A1 (p5)  
(inclusive of PES & A/C Ledge)

64 sqm (689 sqft)

#01-06

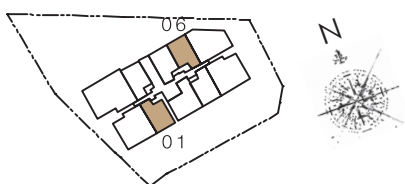


## 1 Classic (1 Bedroom)

Type:  
A1 (p9)  
(inclusive of PES & A/C Ledge)

55 sqm (592 sqft)

#01-01



R MAISON

The plans are subject to change as may be required or approved by the relevant authorities. Areas are estimates only and are subject to final survey. Plans are not drawn to scale and do not form part of the contract.

**2 Compact (1+1 Bedroom)**

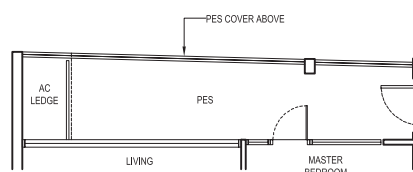
Type:

**A2 (p3)**

(inclusive of PES &amp; A/C Ledge)

65 sqm (700 sqft)

#01-10

**2 Compact (1+1 Bedroom)**

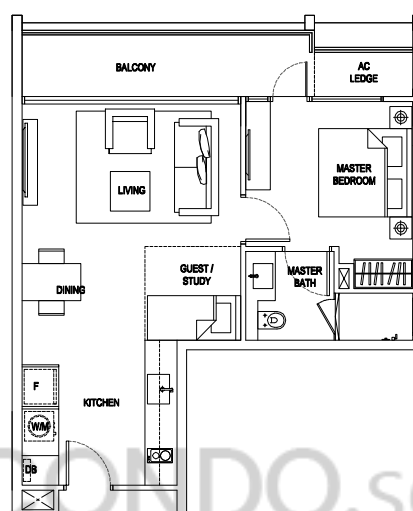
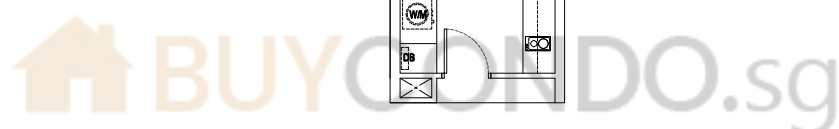
Type:

**A2**

(inclusive of Balcony &amp; A/C Ledge)

62 sqm (667 sqft)

#02-10, #03-10, #04-10



**R MAISON**

The plans are subject to change as may be required or approved by the relevant authorities. Areas are estimates only and are subject to final survey. Plans are not drawn to scale and do not form part of the contract.



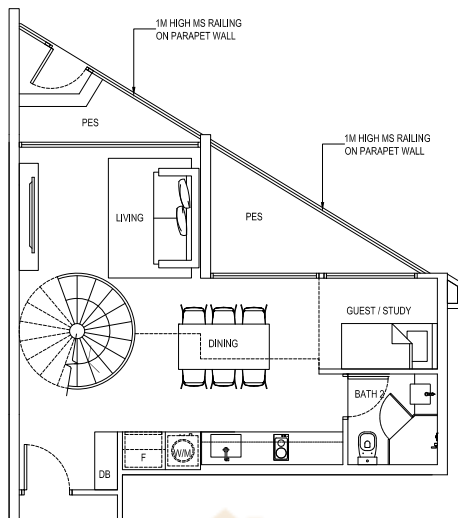
## 2 Compact Loft (1+1 Bedroom Loft)

Type:  
A4

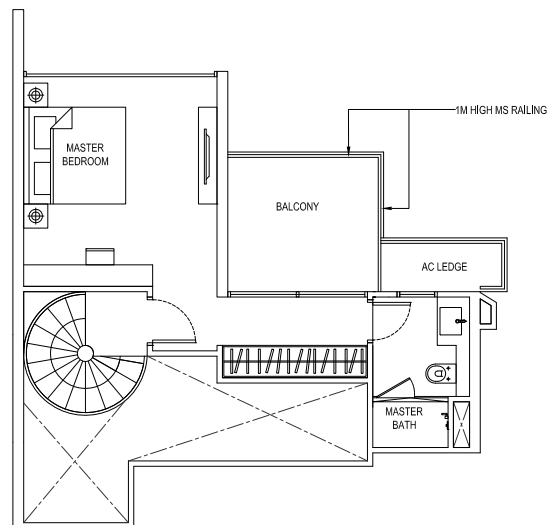
(inclusive of PES, Balcony & A/C Ledge)

110 sqm (1,184 sqft)

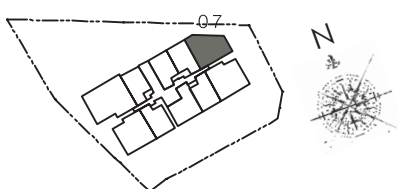
#01-07



LOWER LEVEL PLAN



UPPER LEVEL PLAN



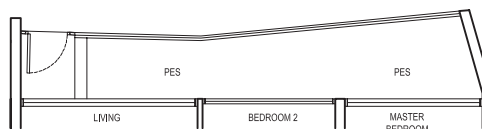
R MAISON

The plans are subject to change as may be required or approved by the relevant authorities. Areas are estimates only and are subject to final survey. Plans are not drawn to scale and do not form part of the contract.

**3 Compact (2+1 Bedroom)**

Type:  
B1a (p6)  
(inclusive of PES & A/C Ledge)  
88 sqm (947 sqft)

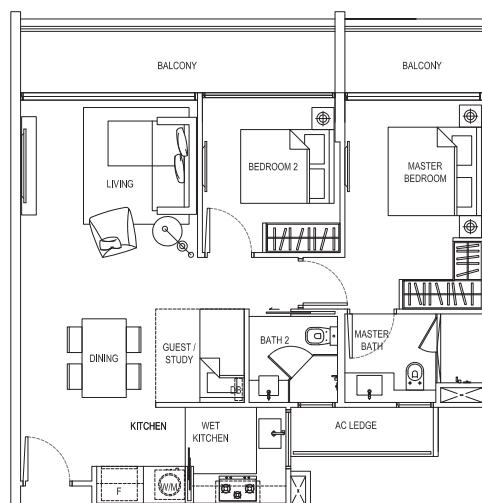
#01-02

**3 Compact (2+1 Bedroom)**

Type:  
B1a  
(inclusive of Balcony & A/C Ledge)  
87 sqm (936 sqft)

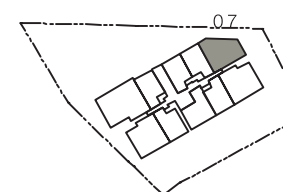
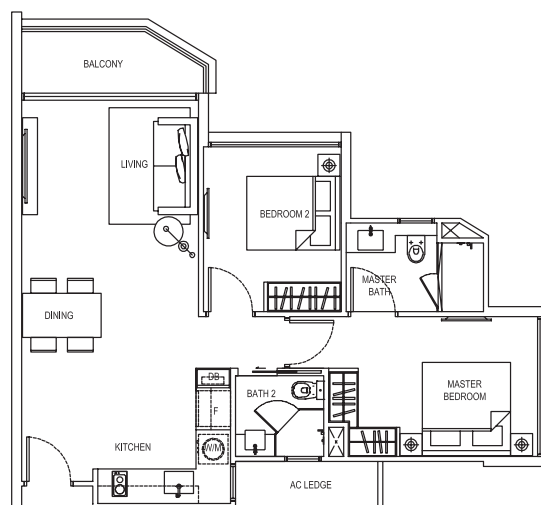
#02-02, #03-02, #04-02, #05-02

(MIRRORED)  
#03-08, #04-08


**2 Deluxe (2 Bedroom)**

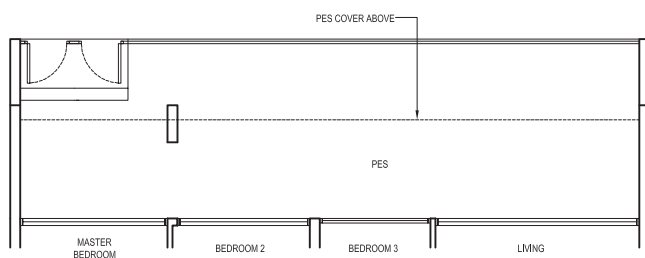
Type:  
B2  
(inclusive of Balcony & A/C Ledge)  
75 sqm (807 sqft)

#03-07, #04-07



R MAISON

The plans are subject to change as may be required or approved by the relevant authorities. Areas are estimates only and are subject to final survey. Plans are not drawn to scale and do not form part of the contract.



### 3 Deluxe (3 Bedroom)

Type:  
Cb2 (p1)  
(inclusive of PES & A/C Ledge)  
144 sqm (1,550 sqft)

#01-03



### 3 Deluxe (3 Bedroom)

Type:  
Cb2  
(inclusive of Balcony & A/C Ledge)  
123 sqm (1,324 sqft)

#02-03, #03-03, #04-03



R MAISON

The plans are subject to change as may be required or approved by the relevant authorities. Areas are estimates only and are subject to final survey. Plans are not drawn to scale and do not form part of the contract.

## 2 Deluxe Penthouse

(2 Bedroom Penthouse)

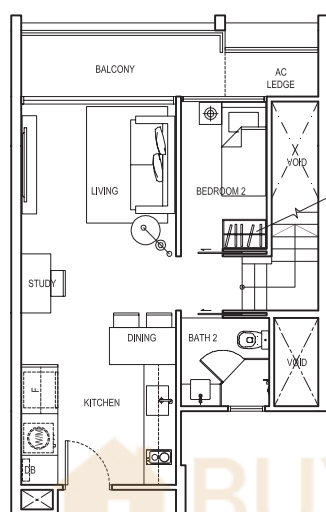
Type:

PH1

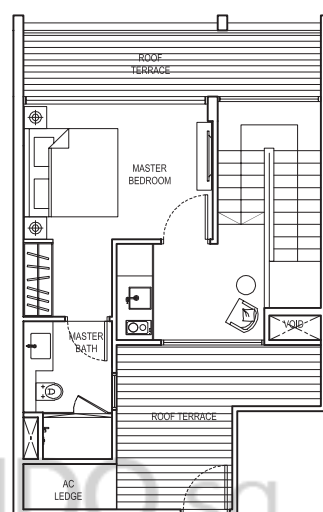
(inclusive of Balcony, Terrace &amp; A/C Ledge)

108 sqm (1,163 sqft)

#05-04, #05-09



LOWER LEVEL PLAN



UPPER LEVEL PLAN



R MAISON

The plans are subject to change as may be required or approved by the relevant authorities. Areas are estimates only and are subject to final survey. Plans are not drawn to scale and do not form part of the contract.



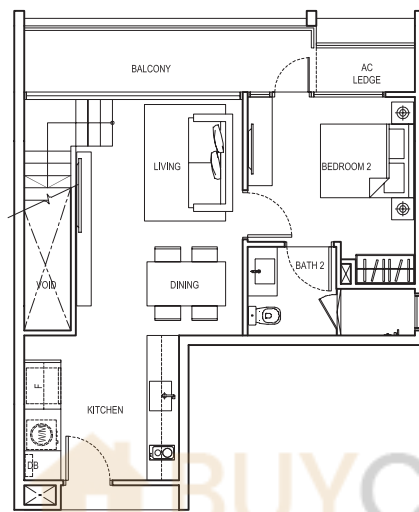
2 Deluxe Penthouse  
(2 Bedroom Penthouse)

Type:  
PH1a

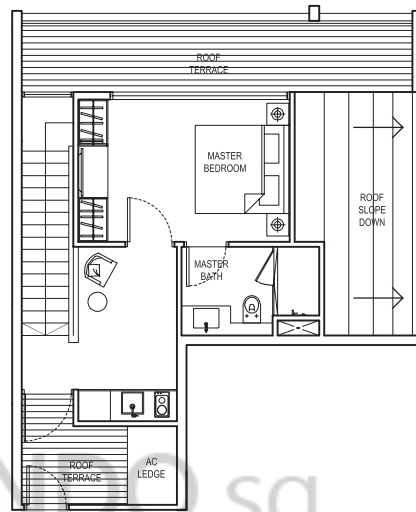
(inclusive of Balcony, Terrace & A/C Ledge)

114 sqm (1,227 sqft)

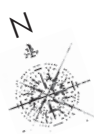
#05-10



LOWER LEVEL PLAN



UPPER LEVEL PLAN



R MAISON

The plans are subject to change as may be required or approved by the relevant authorities. Areas are estimates only and are subject to final survey. Plans are not drawn to scale and do not form part of the contract.

## 3 Compact Penthouse

(2+1 Bedroom Penthouse)

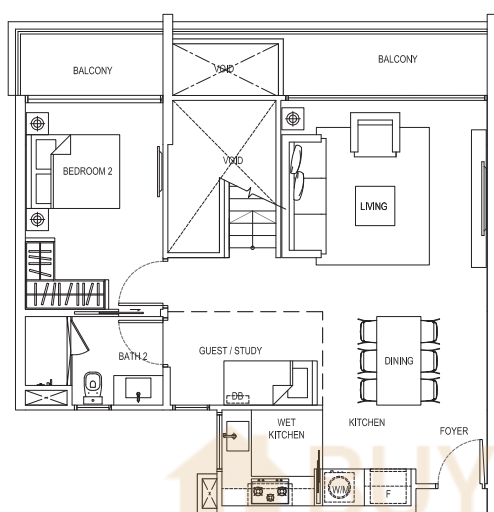
Type:

PH2

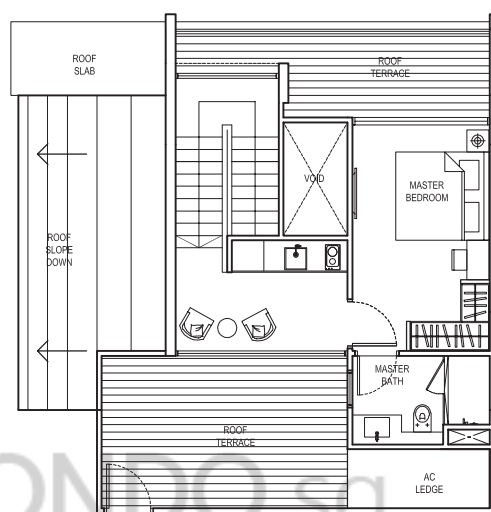
(inclusive of Balcony, Terrace &amp; A/C Ledge)

150 sqm (1,615 sqft)

#05-08



LOWER LEVEL PLAN



UPPER LEVEL PLAN



R MAISON

The plans are subject to change as may be required or approved by the relevant authorities. Areas are estimates only and are subject to final survey. Plans are not drawn to scale and do not form part of the contract.



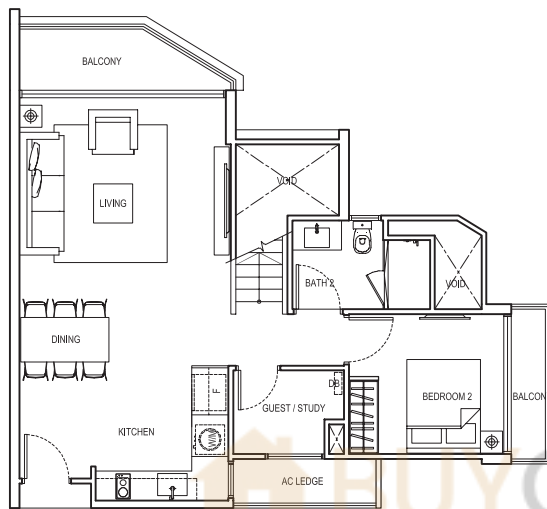
## 2+1 Bedroom Penthouse

Type:  
PH2b

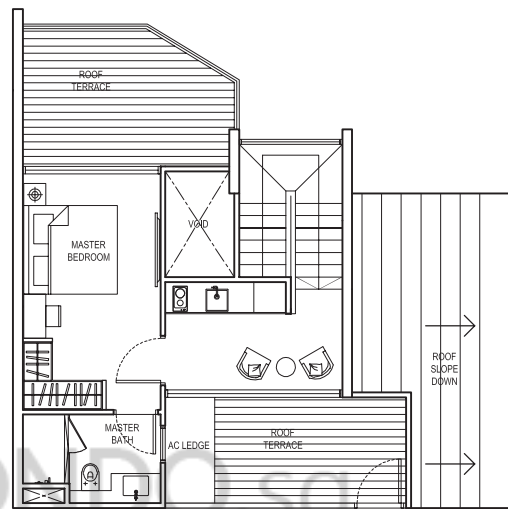
(inclusive of Balcony, Terrace & A/C Ledge)

136 sqm (1,464 sqft)

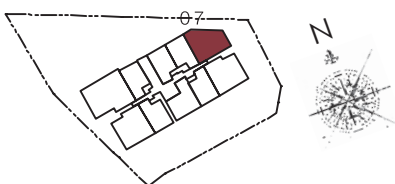
#05-07



LOWER LEVEL PLAN



UPPER LEVEL PLAN



R MAISON

The plans are subject to change as may be required or approved by the relevant authorities. Areas are estimates only and are subject to final survey. Plans are not drawn to scale and do not form part of the contract.

## 3 Deluxe Loft Penthouse

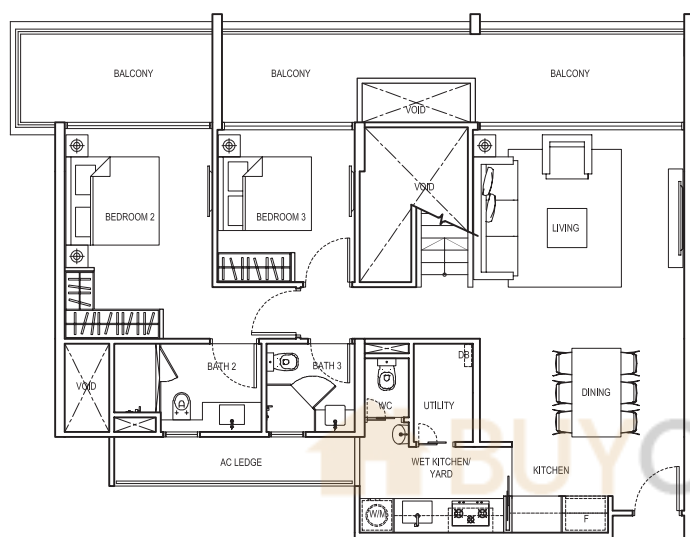
(3 Bedroom Loft Penthouse)

Type:  
PH3b

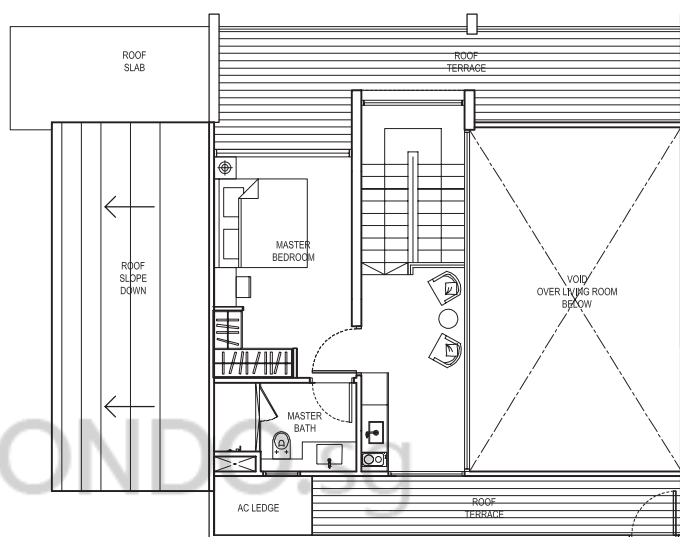
(inclusive of Balcony, Terrace &amp; A/C Ledge)

219 sqm (2,357 sqft)

#05-03



LOWER LEVEL PLAN

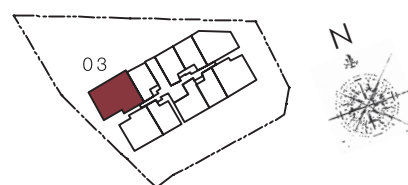


UPPER LEVEL PLAN



R MAISON

The plans are subject to change as may be required or approved by the relevant authorities. Areas are estimates only and are subject to final survey. Plans are not drawn to scale and do not form part of the contract.



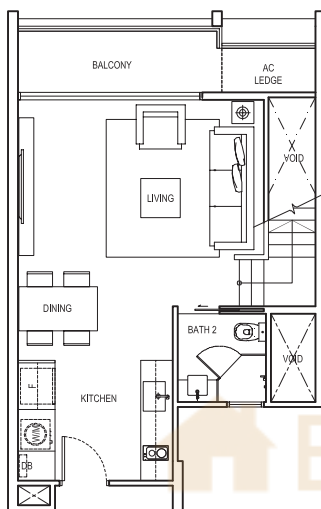
## 2 Deluxe Penthouse (2 Bedroom Penthouse)

Type:  
PH4

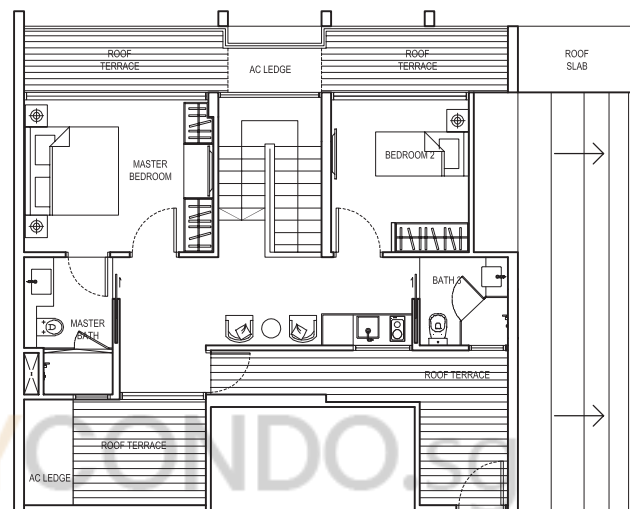
(inclusive of Balcony, Terrace & A/C Ledge)

137 sqm (1,475 sqft)

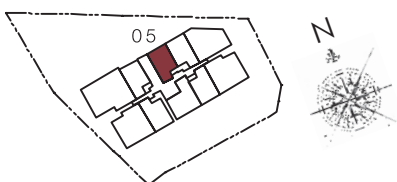
#05-05



LOWER LEVEL PLAN



UPPER LEVEL PLAN



R MAISON

The plans are subject to change as may be required or approved by the relevant authorities. Areas are estimates only and are subject to final survey. Plans are not drawn to scale and do not form part of the contract.