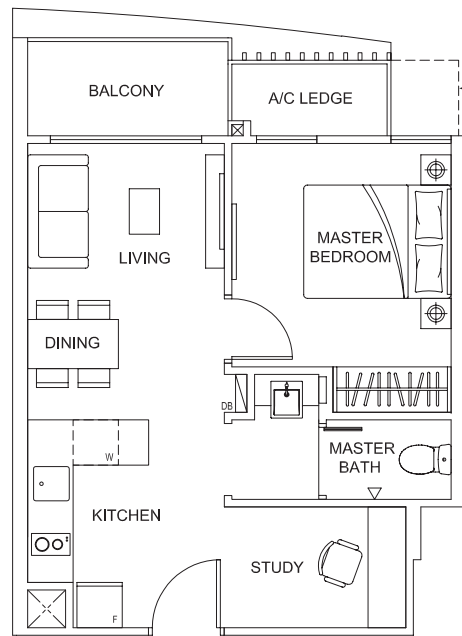




1-BEDROOM + STUDY

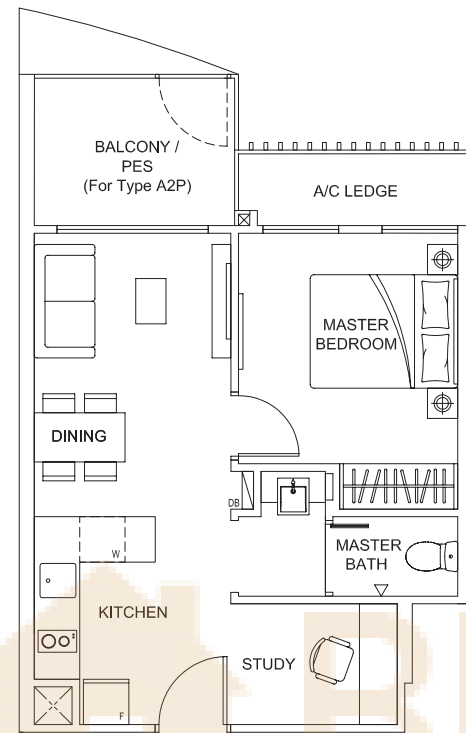


TYPE A1A

#03-05/06/08/09
43 sqm / 463 sqft

TYPE A1

#04 to #08-05/06/08/09
42 sqm / 452 sqft

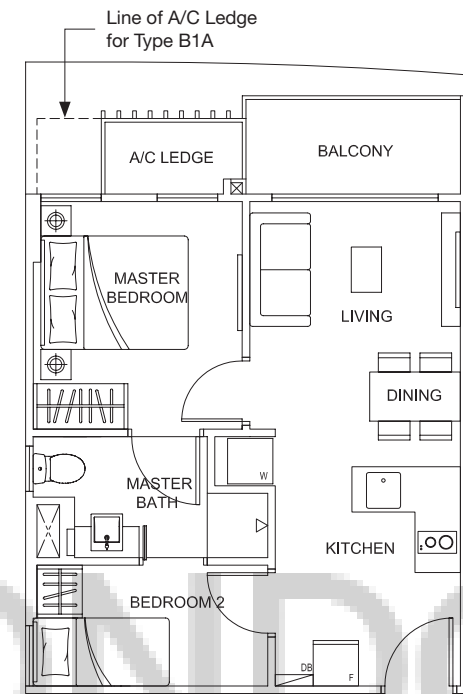


TYPE A2P

#03-12
46 sqm / 495 sqft

TYPE A2

#04 to #08-02/12
46 sqm / 495 sqft

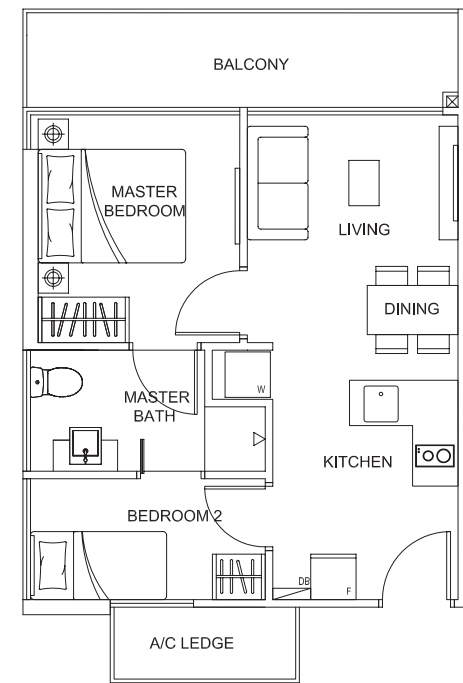


TYPE B1A

#03-10
45 sqm / 484 sqft

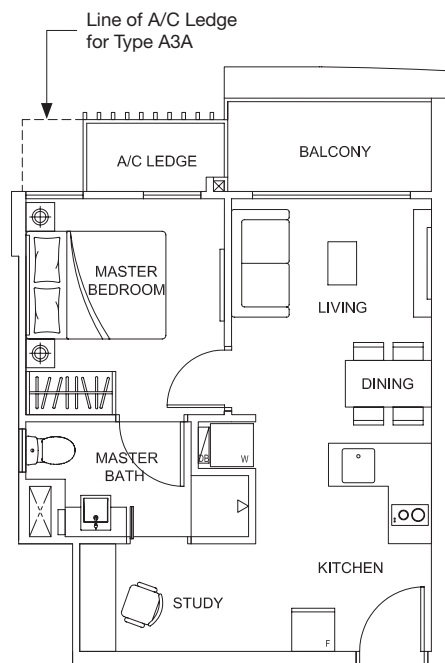
TYPE B1

#04 to #08-10
44 sqm / 474 sqft



TYPE B2

#08-04
49 sqm / 527 sqft

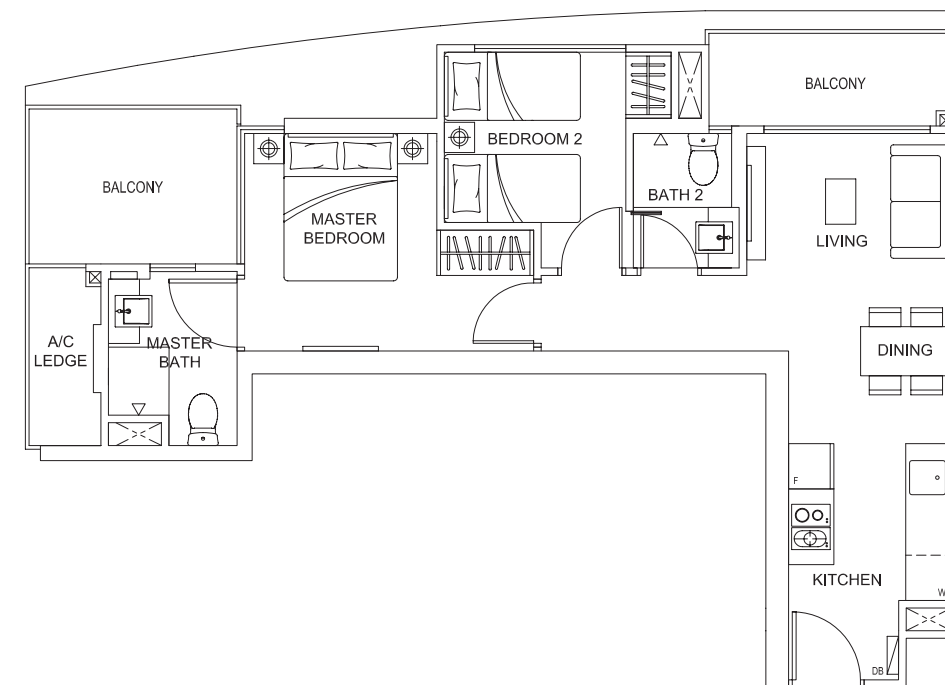


TYPE A3A

#03-07
44 sqm / 474 sqft

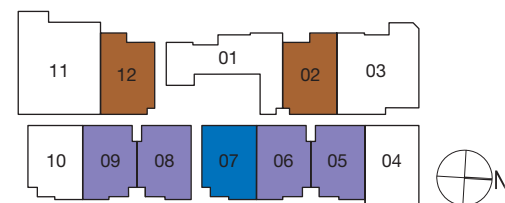
TYPE A3

#04 to #08-07
43 sqm / 463 sqft



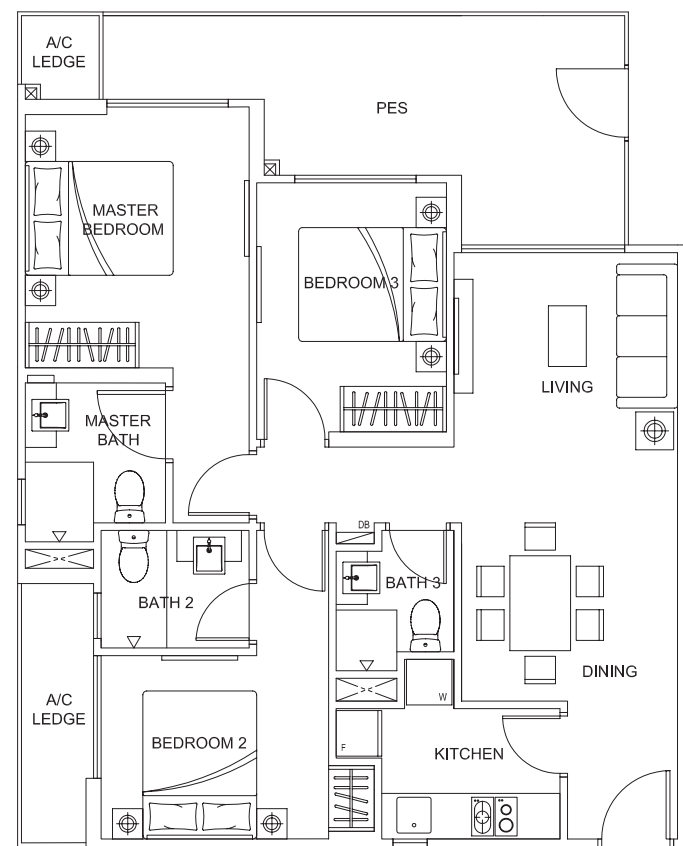
TYPE B3

#04 to #08-01
60 sqm / 646 sqft

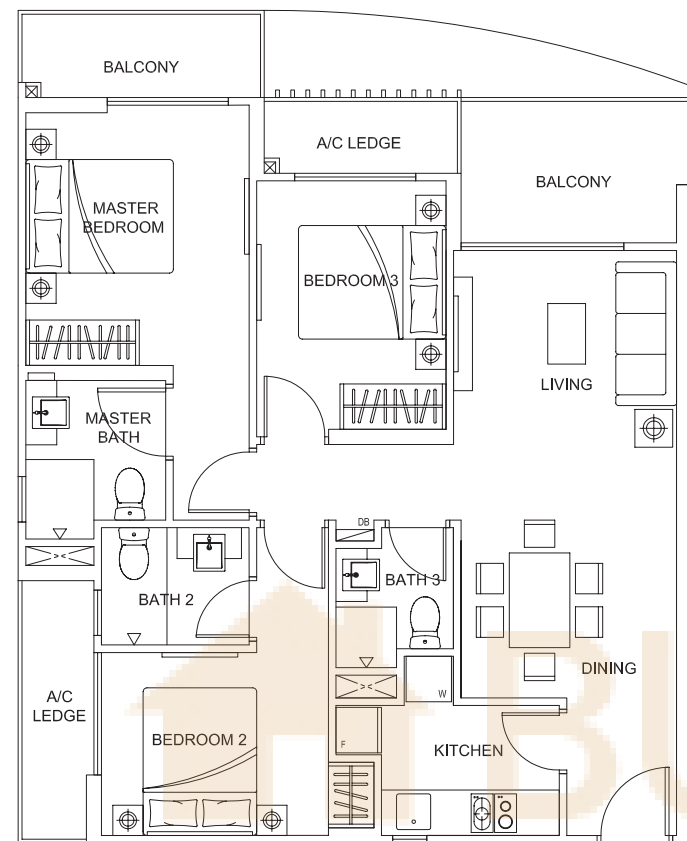




3-BEDROOM



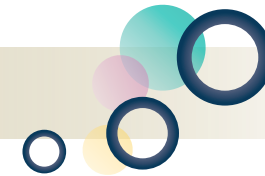
TYPE C1P
#03-11
94 sqm / 1,012 sqft



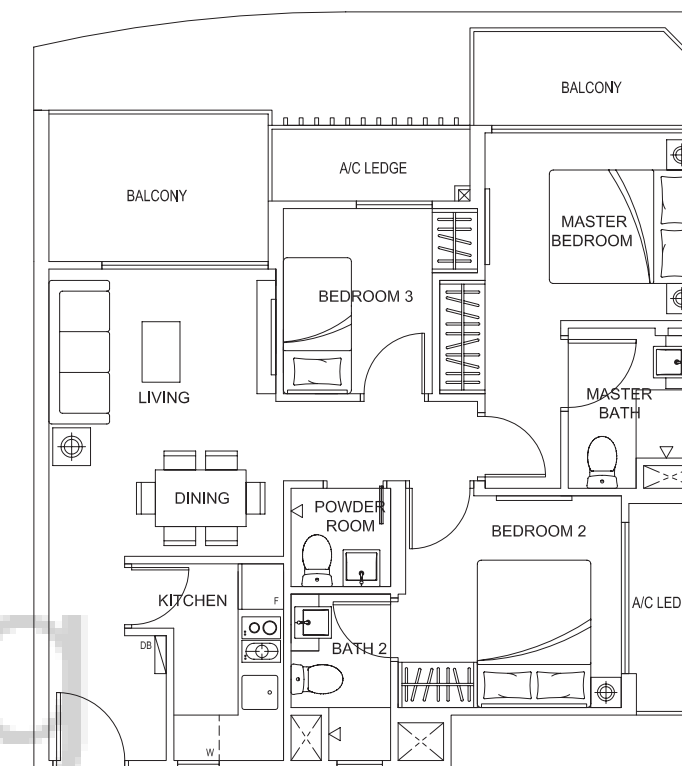
TYPE C1
#04 to #08-11
90 sqm / 969 sqft



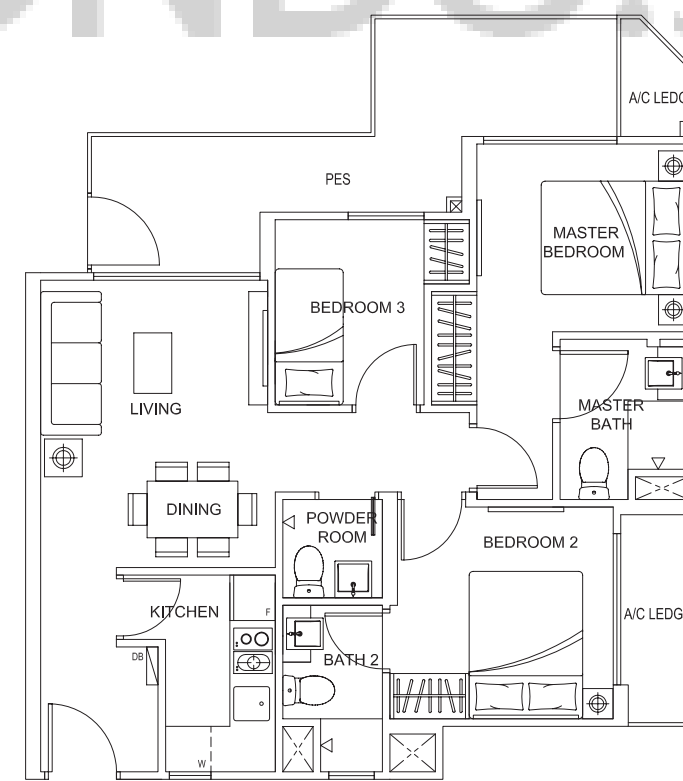
All plans are not to scale and are subject to change as may be approved by authorities. All floor areas are approximate only and are subject to final survey.



3-BEDROOM



TYPE C2
#04 to #08-03
76 sqm / 818 sqft



TYPE C2P
#03-03
77 sqm / 829 sqft



All plans are not to scale and are subject to change as may be approved by authorities. All floor areas are approximate only and are subject to final survey.